

 Open access • Journal Article • DOI:10.1088/0965-0393/17/6/064006

Finite element model of primary recrystallization in polycrystalline aggregates using a level set framework — [Source link](#)

Marc Bernacki, Héba Resk, Thierry Coupez, Roland E. Logé

Published on: 24 Aug 2009 - Modelling and Simulation in Materials Science and Engineering (IOP Publishing)

Topics: Finite element method, Recrystallization (metallurgy) and Set function

Related papers:

- [Level set framework for the numerical modelling of primary recrystallization in polycrystalline materials](#)
- [Level set framework for the finite-element modelling of recrystallization and grain growth in polycrystalline materials](#)
- [Linking plastic deformation to recrystallization in metals, using digital microstructures](#)
- [Fronts propagating with curvature-dependent speed: algorithms based on Hamilton-Jacobi formulations](#)
- [Precise generation of complex statistical Representative Volume Elements \(RVEs\) in a finite element context](#)

Share this paper:    

View more about this paper here: <https://typeset.io/papers/finite-element-model-of-primary-recrystallization-in-hcxec4o4p7>



HAL
open science

Finite element model of primary recrystallization in polycrystalline aggregates using a level set framework

Marc Bernacki, Héba Resk, Thierry Coupez, Roland E. Logé

► To cite this version:

Marc Bernacki, Héba Resk, Thierry Coupez, Roland E. Logé. Finite element model of primary recrystallization in polycrystalline aggregates using a level set framework. Modelling and Simulation in Materials Science and Engineering, IOP Publishing, 2009, 17 (6), 22 p. - Article Number: 064006. 10.1088/0965-0393/17/6/064006 . hal-00508362

HAL Id: hal-00508362

<https://hal-mines-paristech.archives-ouvertes.fr/hal-00508362>

Submitted on 30 Mar 2011

HAL is a multi-disciplinary open access archive for the deposit and dissemination of scientific research documents, whether they are published or not. The documents may come from teaching and research institutions in France or abroad, or from public or private research centers.

L'archive ouverte pluridisciplinaire **HAL**, est destinée au dépôt et à la diffusion de documents scientifiques de niveau recherche, publiés ou non, émanant des établissements d'enseignement et de recherche français ou étrangers, des laboratoires publics ou privés.

Finite element model of primary recrystallization in polycrystalline aggregates using a level set framework

M Bernacki, H Resk, T Coupez and R E Logé

Centre de mise en forme des matériaux (CEMEF), Mines-Paristech, UMR CNRS
7635, BP 207, 06904 Sophia Antipolis Cedex, France

E-mail : Marc.Bernacki@mines-paristech.fr

Abstract

The paper describes a robust finite element model of interface motion in media with multiple domains and junctions, as the case in polycrystalline materials. The adopted level set framework describes each domain (grain) with a single level set function, while avoiding the creation of overlap or vacuum between these domains. The finite element mesh provides information on stored energies, calculated from a previous deformation step. Nucleation and growth of new grains are modelled by inserting additional level set functions around chosen nodes of the mesh. The kinetics and topological evolutions induced by primary recrystallization are discussed from simple test cases to more complex configurations and compared with the Johnson-Mehl-Avrami-Kolmogorov (JMAK) theory.

1. Introduction

Recrystallization phenomena inevitably occur during thermal and mechanical processes and have a major impact on the final in-use properties of metallic materials. Theories for recrystallization that provide quantitatively correct predictions of crystallographic orientation and grain size distributions have long been sought to fill a critical link in our ability to model material processing from start to finish. To date, no such theory exists. The phenomena of recrystallization seem simple but their mechanisms are not very well understood. Various features of the microstructure contribute to strain energy, particularly defect populations and mismatches in lattice orientation at grain boundaries. On the other hand, kinetics of grain or subgrain boundary motion is controlled not only by the boundary features, but also by the interactions with other defect populations, like dislocations, cells walls, particles or solute atoms. And this kinetics will itself affect the strain energy distribution. In summary, the strain energy distribution factors heavily into the progression of change from old to new grain arrangement, and itself is directly affected by that progression. This dynamic interplay underscores why multiscale models are in principle needed to fully describe recrystallization phenomena in a generic way [1-5].

Historical approaches of recrystallization were based on the Johnson-Mehl-Avrami-Kolmogorov (JMAK) analytical model where equation (1) is used for the description of recrystallization kinetics [6]:

$$X(t) = 1 - \exp(-bt^n), \quad (1)$$

where X is the recrystallized volume fraction, b a constant which depends on nucleation and growth and n the Avrami exponent. If this equation is accurate for very simple loading histories and for some materials, it is no longer the case for complex thermomechanical paths and/or complex microstructures. Heterogeneous nucleation, non-homogeneous stored energy or anisotropic mobility of grain boundaries are only a few of the phenomena to be considered in those cases, especially when the prediction of grain size or crystallographic textures is of concern [1].

Considerable progress has been made in the numerical simulation of recrystallization phenomena since the JMAK approach [7]. In the Microstructural Path Method (MPM) [8], the microstructure was not only characterized by the volume fraction transformed but also by the interfacial area between the recrystallized and unrecrystallized material. This allowed the analysis of more complex grain geometries. Based on the work of Mahin [9], several groups have employed so-called "geometric models" which have extended the analytical methods of the JMAK approach and the MPM to incorporate computer simulation of grain structure evolution. The major disadvantage of these approaches, however, is that they are "blind" approaches: grain growth without regard to the stored energy field into which they intrude.

Monte Carlo (MC) and Cellular Automaton (CA) methods [10] are both probabilistic techniques which deliver grain structures with kinetics: they are associated with 2D or 3D geometric representations of the microstructure, discretized on a regular grid made of "cells" which are allocated to the grains. Both methods have been successfully applied to recrystallization. The standard MC method as derived from the Potts model (multistate Ising model) applies probabilistic rules at each cell in each time step of the simulation. In this model, contrary to the vertex approach, the interfaces between the grains are implicitly defined thanks to the membership of the cells to the various grains. In this context, kinks or steps on the boundaries can execute random walks along the boundaries, which allow changes in curvature to be communicated along the boundaries. The energy of the system is defined by a Hamiltonian which sums the interfacial energy and the topological events appear in a natural way by minimization of this energy, which represents an important advantage of this approach. Moreover, the use of this model in 3D is relatively easy and efficient [11] and can be extended to the recrystallization modelling [10]. However the comparison between MC results and experiments is not straightforward [1]. Furthermore, the standard form of the model does not result in a linear relationship between migration rate and stored energy and the absence of length and time scales can complicate the comparison with the experimental results.

The CA method uses physically based rules to determine the propagation rate of a transformation from one cell to a neighbouring cell [6], and can therefore be readily applied to the microstructure change kinetics of a real system. In the case of recrystallization the switch rule is simple: an unrecrystallized cell will switch to being recrystallized if one of its neighbours is recrystallized. In the standard CA method, the state of all cells are simultaneously updated, which provides efficiency but does not enable the curvature to be a driving force for grain boundary migration [10]. Another major problem of the CA method to model recrystallization is the absence of effective methods for the treatment of nucleation phenomena [1].

Several workers have preferred to define microstructures in terms of vertices. Historically, the vertex models (also called "front tracking" models) described only the grain growth stage and not primary recrystallization [12]. In these models the grain boundaries are considered as continuous interfaces transported by a velocity defined thanks to the local curvature of the grains boundaries. The main idea is to model the interfaces by a set of points and to move these points at each time increment by using the velocity and the normal to the interfaces, which explains the term "front tracking". Complex topological events such as the disappearance of grains or node dissociations are treated thanks to a set of rules which is completed by a repositioning of the nodes. More recently, the vertex model was extended in order to take into account both recrystallization and grain growth [13]. However, even if 2D results for isotropic grain growth seem to show a good agreement with the theory [14], the difficulty remains the non-natural treatment of the topological events, mainly in 3D, where the set of rules becomes very complex and numerically expensive [15]. Moreover, the nucleation modelling remains an open problem.

Other methods suitable for the recrystallization modelling include the phase field model, as in [16], and the level-set method, as in [4,5,17]. These two methods have many common points. They have both the advantage of avoiding the difficult problem of tracking interfaces. More precisely, in both approaches, artificial fields are introduced for the sole purpose of avoiding this difficulty. The initial concept of the phase-field model was to describe the location of two phases by introducing an order parameter (the phase field) which varies smoothly from one to zero (or minus one to one) through a diffuse interface [18]. This concept has been extended to deal with more complex problems involving more than two phases and for modelling microstructure evolution [19,20]. In the case of polycrystalline microstructures, each grain orientation is used as a non-conserved order parameter

field and the free energy density of a grain is formulated as a Landau expansion in terms of the structural order parameters. The grain boundary energy is introduced as gradients of the structural order parameters and the boundaries themselves are represented by an isovalue of the order parameter fields. As for the MC or CA methods, the topological events are treated in a natural way as a result of energy minimization. In the case of 2D ideal normal grain growth, some results illustrate the potential of this approach [19]. However, the difficulties of the method remain: (i) the construction of the free energy density function which must reflect the physical properties of the microstructure and the considered problem; (ii) the very rapid change of the phase field across the diffuse interface which can involve very expensive and intensive calculations, particularly for three-dimensional systems; and (iii) the nucleation modelling which remains, despite recent developments [21], an open problem.

In this paper, a new finite element model based on a level set framework, briefly described in [5], is shown to be effective in modelling primary recrystallization. The model works in 2D and in 3D, and computational cost is reduced thanks to an appropriate mesh refinement around the interfaces. As the interface moves, periodic remeshing is performed such as the refinement zone always coincides with the interface position. In primary recrystallization, the kinetics of interface motion is directly linked to the state variables stored in the mesh, related to the stored strain energy. The formalism also allows to trigger the nucleation of new grains, based on desired criteria (mechanical, crystallographic, etc.). In section 2 the context of the model is introduced. Section 3 then details the finite element approach and the associated level set framework. The associated meshing aspects – automatic meshing and remeshing – are developed in section 4. Numerical results finally illustrate the potential of the method in section 5, through several test cases and comparisons with the JMAK model.

2. Context and equations

It is generally assumed for pure metals that the kinetic law for grain boundary motion is well approximated by [2,22,23] :

$$\vec{v} = M\Delta f\vec{n}, \quad (2)$$

where M corresponds to the grain boundary mobility, Δf to the driving force per unit area, and \vec{n} to the outward unit normal to the grain boundary. Generally, as in [23], M is calculated with:

$$M = \frac{b\delta D_b}{kT} \exp\left(\frac{Q_b}{RT}\right), \quad (3)$$

where b is burger's vector, δ is the characteristic grain boundary thickness, D_b the boundary self diffusion coefficient, Q_b the boundary diffusion activation energy and k the Boltzmann's constant. The driving force Δf is defined by [2,22,23]:

$$\Delta f = \tau\Delta\rho - 2\gamma\kappa, \quad (4)$$

where τ corresponds to the dislocation line energy, $\Delta\rho$ to the total dislocation density difference across the interface, γ to the grain boundary energy and κ to the curvature of the grain boundary. If we assume that the boundary energy is a function of the boundary misorientation, γ can be defined by:

$$\gamma = \frac{\gamma_m}{\theta_m} \theta \left(1 - \ln\left(\frac{\theta}{\theta_m}\right)\right), \quad (5)$$

where θ is the grain boundary misorientation, γ_m and θ_m are the boundary energy and misorientation when the grain boundary corresponds to a high-angle boundary. In first approximation, we can see the normal velocity defined in (2) as a multiple of the curvature of the interface plus the difference of the bulk energies. Considering the three grains configuration (in 2D) of figure 1(a), if each interface Γ_{ij} separates grains G_i and G_j , the oriented normal velocity from G_i to G_j can be defined as:

$$\vec{v}_{ij} \cdot \vec{n}_{ij} = M_{ij} \left(c_{ij} \kappa_{ij} + (e_j - e_i) \right), \quad (6)$$

with $e_i = \tau\rho_i$ the average stored energy of grain G_i and $c_{ij} = -2\gamma_{ij}$. The triple junction has prescribed angles which can be shown, as in [17], to be defined by:

$$\frac{\sin \alpha_1}{c_{23}} = \frac{\sin \alpha_2}{c_{13}} = \frac{\sin \alpha_3}{c_{12}}, \quad (7)$$

with α_i the angle at the triple junction inside grain G_i . The problem is complex, principally for the treatment of the triple junction where, initially, the curvature is not defined. Moreover, even in the simplified case where only bulk energies are considered, it has been shown that if no further conditions on the motion are imposed, the solution is not unique [24-26]. In [26] it is proved, by considering a particular energy functional, that if the energy of the interfaces are not null ($c_{ij} \neq 0 \forall(i, j)$), the time decrease of this functional is equivalent to the condition defined by equation (7). However if we consider only the bulk energy term of the velocity expression, the results are more complex: uniqueness of the solution is not guaranteed. For example, figure 1(a) describes an initial three grains configuration and figure 1(b) and figure 1(c) correspond to two solutions at $t=1$ for the problem described by equation (6) and this particular geometry. In [26] the authors developed the concept of "vanishing surface tension" solution (called VST solution) by considering the limit problem defined by:

$$\bar{v}_{ij} \cdot \bar{n}_{ij} = \varepsilon M_{ij} c_{ij} \kappa_{ij} + M_{ij} (e_j - e_i) \nabla(i, j), \text{ with } \varepsilon \rightarrow 0. \quad (8)$$

Using various 2D tests cases and a perturbation analysis, they strongly suggest that the VST solution corresponds to one of the solutions of the considered problem for $\varepsilon = 0$, while it corresponds to the unique solution of the problem for $\varepsilon \rightarrow 0$.

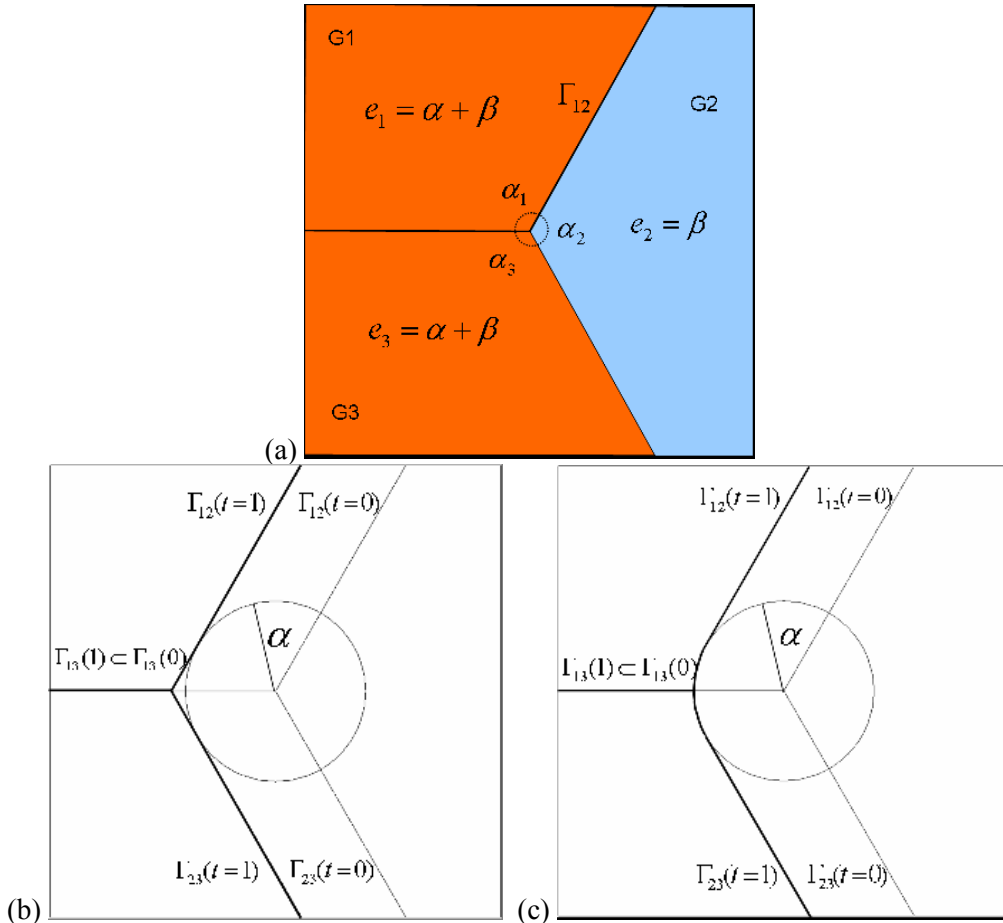


Figure 1. (a) Example of a triple junction configuration; two solutions at $t=1$ of this configuration for the problem defined by equation (6): (b) the VST solution and (c) another solution.

In this paper, a new algorithm is proposed to model the problem defined by equation (6), in 2D or in 3D, and for any polycrystalline microstructure configuration. The numerical approach is detailed but the treatment of the curvature term at the multiple junction and the simulations with this term will be discussed in a forthcoming publication. The presented approach is based on a level set method [5,25,26], now commonly used to follow propagating fronts in various numerical models [27-29]. In Ref. [25], the authors have extended the standard level set method to model the motion of multiple junctions; the method is appropriate for the case of grain growth, i.e. with zero bulk energies. Each region has its own private level set function, and this function moves each level set with a normal velocity defined by the conditions at the nearest interface. A reassignment step is used to avoid kinematic incompatibilities, i.e. the development of vacuum and overlapping regions. The present model proposes a new formulation accounting for bulk stored energies as well as nucleation events, and still avoiding the development of vacuum and overlapping regions.

3. Finite element model and level set framework

3.1. Introduction

Figure 2 illustrates the procedure of creating a virtual microstructure, and the associated finite element mesh. Figure 2(a) shows a two hundred grains digital sample [3,30-32], made of Voronoï cells. The Voronoï tessellation is fully described by N seeds or Voronoï sites shown in Figure 2(b). Each site s_i defines a Voronoï cell or grain G_i , which consists of all points closer to s_i than to any other site. The conversion of the Voronoï tessellation into a finite element mesh is illustrated in Figure 2(c). The location of the interfaces (grain boundaries) is defined implicitly using a level set framework. For each individual cell or grain, a signed distance function ϕ_i , defined over a domain Ω , gives at any point x the distance to the grain boundary Γ_i . In turn, the interface Γ_i is then given by the level 0 of the function ϕ_i :

$$\begin{cases} \phi_i(x) = d(x, \Gamma_i), x \in \Omega \\ \Gamma_i = \{x \in \Omega, \phi_i(x) = 0\} \end{cases} \quad (9)$$

Assuming that the domain Ω contains N_G grains, we have $\{\phi_i, 1 \leq i \leq N_G\}$ with the sign convention $\phi_i \geq 0$ inside grain G_i , and $\phi_i \leq 0$ outside grain G_i . The procedure to evaluate these functions at all nodes x of the finite element mesh goes through evaluating the functions

$$\alpha_{ij}(x) = \frac{1}{2} \left\| \frac{\vec{s}_i \vec{s}_j}{\|\vec{s}_i \vec{s}_j\|} - \frac{\vec{s}_i \vec{s}_j \cdot \vec{s}_i x}{\|\vec{s}_i \vec{s}_j\|} \right\|, 1 \leq i, j \leq N_G, j \neq i, \quad (10)$$

which correspond to the signed distance of x to the bisector of the segment $[s_i, s_j]$. $\phi_i(x)$ is then defined as:

$$\phi_i(x) = \min_{\substack{1 \leq j \leq N_G \\ j \neq i}} (\alpha_{ij}(x)). \quad (11)$$

One can also define a global unsigned distance function as:

$$\phi_{glob}(x) = \max\{\phi_i(x), 1 \leq i \leq N_G\}. \quad (12)$$

This function is positive everywhere and the zero value corresponds to the grain boundary network. Figure 2(c) displays the function $\phi_{glob}(x)$ corresponding to the microstructure of Figure 2(a) and calculated at the nodal points of the finite element mesh (in white).

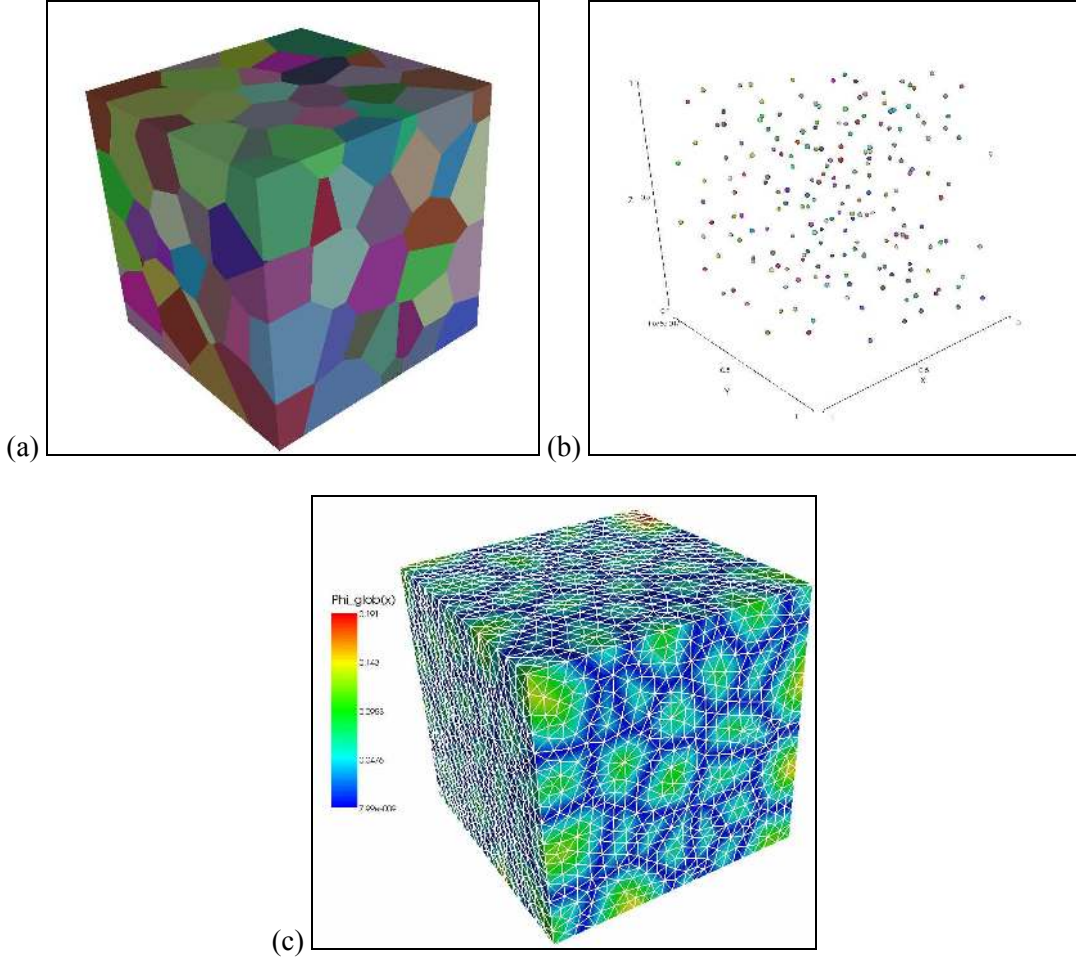


Figure 2. (a) A 200 grains virtual cubic microstructure; the color scale describes the identity of the different grains, (b) the corresponding Voronoi sites, (c) the corresponding $\phi_{glob}(x)$ function for the finite element mesh, the latter appears in white.

If a velocity field \bar{v} is defined over Ω , the motion of the interfaces (or any surfaces defined by a given isovalue of the level set functions) is described by:

$$\begin{cases} \frac{\partial \phi_i}{\partial t} + \bar{v} \cdot \nabla \phi_i = 0 \\ \phi_i(t=0, x) = \phi_i^0(x) \end{cases}, \forall i \in \{1, \dots, N_G\} \quad (13)$$

At any time t the interface Γ_i of grain G_i is given implicitly by the equation $\phi_i(t, x) = 0$. The expression of \bar{v} in Ω will be detailed in paragraph 3.4. If the initial value of equation (13) is a signed distance function, a priori it is not the case of the solution ($\|\nabla \phi_i(t, x)\| \neq 1$). If one wants to keep the property of a distance function, a re-initialization technique is introduced and applied periodically [28,33], as detailed below.

3.2. Re-initialization

The re-initialization technique consists in building, from a level set function ϕ which is not a signed distance function, a new signed distance function β whose zero isovalue corresponds to the

zero isovalue of ϕ . The most common method to re-initialize level set functions is to solve the following Hamilton-Jacobi equation [28]:

$$\begin{cases} \frac{\partial \beta_i}{\partial \tau} + s_i (\|\nabla \beta_i\| - 1) = 0, & \text{with } s_i = \text{sign}(\beta_i). \\ \beta_i(\tau = 0, x) = \phi_i(t, x) \end{cases} \quad (14)$$

In practice, equation (14) is solved periodically, typically every few time steps. Equation (14) can be seen as a pure convective equation. Indeed, if we write $\vec{U}_i = s_i \frac{\nabla \beta_i}{\|\nabla \beta_i\|}$, it becomes:

$$\begin{cases} \frac{\partial \beta_i}{\partial \tau} + \vec{U}_i \cdot \nabla \beta_i = s_i \\ \beta_i(\tau = 0, x) = \phi_i(t, x) \end{cases} \quad (15)$$

To define the fictitious time τ , a stability condition is used: $\|\vec{U}_i\| \Delta \tau = \Delta \tau = h$, where h corresponds to the mesh size. Hence the fictitious time step is usually chosen as h .

To summarize, this algorithm allows to transform a given irregular level set function into a distance function without changing the zero isovalue. This is illustrated in Figure 3: Figure 3(a) represents an irregular level set function with 50 equally spaced isovalues (with the zero level in bold), and figure 3(b) corresponds to the re-initialized level set function.

In this paper, we propose to use a formulation developed in [33] which performs the stage of re-initialization automatically during the resolution of the convection problem. The formulation is recalled below.

3.3 Automatic re-initialization

The idea proposed by this author is to modify equation (13) in order to keep the property of a signed distance function. The parameter $\lambda = d\tau/dt$ is introduced (in practice $\lambda \approx h/\Delta t$), to write the following equality $\frac{\partial}{\partial \tau} = \frac{\partial t}{\partial \tau} \frac{\partial}{\partial t} + \frac{\partial x}{\partial \tau} \cdot \nabla = \frac{1}{\lambda} \left(\frac{\partial}{\partial t} + \vec{v} \cdot \nabla \right)$ and to transform equation (14):

$$\frac{\partial \beta_i}{\partial t} + \vec{v} \cdot \nabla \beta_i + \lambda s_i (\|\nabla \beta_i\| - 1) = 0. \quad (16)$$

The new formulation with convection and re-initialization becomes:

$$\begin{cases} \frac{\partial \phi_i}{\partial t} + \vec{v} \cdot \nabla \phi_i + \lambda s_i (\|\nabla \phi_i\| - 1) = 0, & \forall i \in \{1, \dots, N_G\}, \\ \phi_i(t = 0, x) = \phi_i^0(x) \end{cases} \quad (17)$$

which can be written as a pure convective problem:

$$\begin{cases} \frac{\partial \phi_i}{\partial t} + (\vec{v} + \lambda \vec{U}_i) \cdot \nabla \phi_i = \lambda s_i, & \forall i \in \{1, \dots, N_G\}, \\ \phi_i(t = 0, x) = \phi_i^0(x) \end{cases} \quad (18)$$

Remark 3.1: the function $s_i = s(\phi_i)$ can take the values 1, -1 or 0 if $\phi_i = 0$. To force equation (18) to be conservative near the interface, the following expression is used:

$$s_i = \frac{\phi_i}{|\phi_i|} \text{ if } \phi_i > \varepsilon, \quad s_i = 0 \text{ if } \phi_i \leq \varepsilon, \quad \varepsilon \approx h. \quad (19)$$

Remark 3.2: we refer the reader to [33] for a complete description of the method and its possible extension (regular truncation of the level set functions).

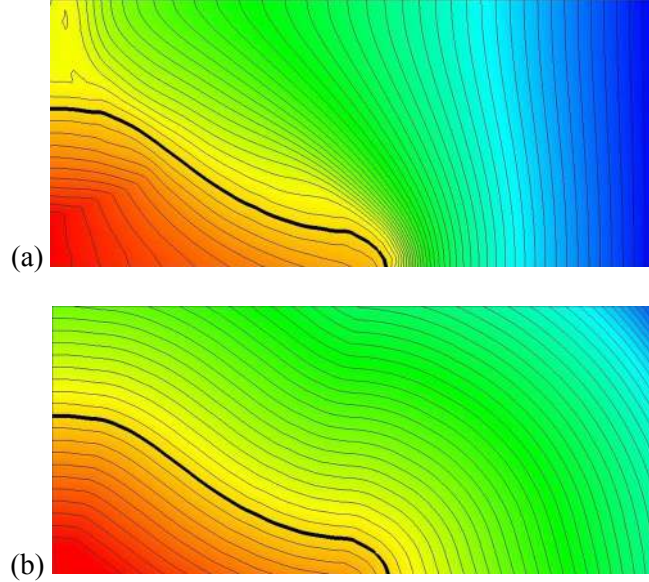


Figure 3. (a) An irregular level set function with 50 equally spaced isovalues and the zero level in bold, (b) the same representation after re-initialization.

3.4 Expression of the velocity field

In the considered problem, the expression of the velocity field is of prime importance. Several comments should be made:

- In order to avoid kinematic incompatibilities (overlapping or vacuum regions), it is necessary to work with the same velocity field for all the level set functions. However the kinetic law defined by equation (6) is built according to parameters which are specific to a single level set function (grain): bulk stored energy difference across the boundary and unit normal (neglecting the curvature term).
- The construction of the velocity field around multiple junctions is critical for a good description of microstructure evolution. On a numerical point of view, it must be as regular as possible.
- The expression (6) of the kinetic law implies a very accurate calculation of the normal to each interface.

The proposed level set framework gives an answer to each of these comments. Concerning the geometric parameters of the interface, it is well known that the level set method is perfectly adapted to their accurate calculation [25]. Indeed, keeping in mind the sign convention described previously, if the function ϕ_i corresponds to the signed distance function of grain G_i :

- The outward unit normal to any isovalue of ϕ_i is defined by:

$$\vec{n}_i = -\frac{\nabla \phi_i}{\|\nabla \phi_i\|_{\|\nabla \phi_i\|=1}} = -\nabla \phi_i. \quad (20)$$

- The curvature of any isovalue of ϕ_i is defined by:

$$\kappa_i = -\nabla \cdot \bar{n}_i \Big|_{\|\nabla\phi_i\|=1} = \Delta\phi_i. \quad (21)$$

Concerning the definition of the velocity field, it is useful to divide it in two parts: $\bar{v} = \bar{v}_\kappa + \bar{v}_e$. The first part is related to the curvature of the boundary, while the second part refers to the bulk energy term. First of all, some general remarks apply:

- At any time t a given point $M \in \Omega$ of coordinates x , is easily located, i.e. the grain to which it belongs is easily identified. Indeed, as the set $\{G_i \setminus \Gamma_i, 1 \leq i \leq N_G\}$ corresponds to a partition of the domain Ω and with the sign convention described previously, the following results are verified:

$$M \in \Gamma_i \Leftrightarrow \phi_i(t, x) = 0, \quad (22)$$

$$M \in G_i \setminus \Gamma_i \Leftrightarrow M \notin \bigcup_{j \neq i} G_j \Leftrightarrow \phi_i(t, x) > 0 \Leftrightarrow \forall j \neq i \phi_j(t, x) \leq 0. \quad (23)$$

- The description of an interface by a level set function remains a « fuzzy » description, which means that the zero level of the level set function (the interface) does not inevitably correspond to nodes of the mesh. The point M is located using the following relationship:

$$M \in G_i \Leftrightarrow \phi_i(t, x) = \max_{1 \leq k \leq N_G} (\phi_k(t, x)). \quad (24)$$

A classical way to build the velocity field \bar{v} , for any node of the mesh, is as follows:

- Find i with $\phi_i(t, x) = \max_{1 \leq k \leq N_G} (\phi_k(t, x))$.
- Compare $\phi_i(t, x)$ with a positive fixed parameter ℓ which defines a length scale related to the proximity of the node to the interface:

$$\begin{cases} \text{If } \phi_i(t, x) > \ell \Rightarrow \bar{v}(t, x) = \bar{0} \text{ else} \\ \text{find } j \text{ with } \phi_j(t, x) = \max_{\substack{1 \leq k \leq N_G \\ k \neq i}} (\phi_k(t, x)) \Rightarrow \bar{v}_e(t, x) = M_{ij} f(\phi_i(t, x), \ell) (e_j - e_i) \bar{n}_i(t, x), \end{cases} \quad (25)$$

with f a decreasing continuous function varying from 1 to 0 when $\phi_i(t, x)$ varies from 0 to ℓ , and M_{ij} the mobility at the interface between grain i and grain j . The main disadvantage of this approach lies in the management of multiple junctions: discontinuous velocity fields are generated, which then lead to convergence problems in the resolution of the convection equation (18). We propose another algorithm which considers, at any point x , all N_G level set functions:

Find i with,

$$\phi_i(t, x) = \max_{1 \leq k \leq N_G} (\phi_k(t, x)) \Rightarrow \bar{v}_e(t, x) = \sum_{\substack{j=1 \\ j \neq i}}^{N_G} M_{ij} \exp(-\alpha |\phi_j(t, x)|) (e_i - e_j) \bar{n}_j(t, x), \quad (26)$$

with α a positive fixed parameter [5]. Expression (26) leads to a smoother velocity field and avoids topological considerations, i.e. there is no need to identify neighbouring grains at point x . The difference between these two approaches (25) and (26) is illustrated in [5] for the triple junction case of Figure 2, where the smoothing effect of (26) appears clearly when compared to (25). As stated earlier, we do not detail here the method used to estimate the curvatures of the interfaces (defined by the functions $-\Delta\phi$), in particular at multiple junctions where these curvatures are not defined. All

simulations described in section 5 will therefore involve only the stored energy part of the velocity, in the context of primary recrystallization phenomena.

To summarize, the velocity field for primary recrystallization could be defined as follows:

$$\vec{v}(t, x) = \vec{v}_e(t, x) = \sum_{i=1}^{N_G} \sum_{\substack{j=1 \\ j \neq i}}^{N_G} \chi_{G_i}(t, x) M_{ij} \exp(-\alpha |\phi_j(t, x)|) (e_j - e_i) \nabla \phi_j(t, x), \quad (27)$$

with $\chi_{G_i}(t, x)$ the characteristic function of the grain G_i . To solve the problem defined by equations (18) and (27), a finite element method based on the C++ library ‘Cimlib’ [33] is used, with unstructured meshes and a stabilized P1 solver as SUPG or RFB method. The quality of the described approach is strongly related to the accuracy of level set function calculations around the interfaces. Indeed, a little disturbance of the levels around an interface leads to an error in the velocity estimation and consequently in their own evolution. For a given computational cost, optimal accuracy is obtained by using anisotropic meshes, with refinement close to the boundaries [3-5]. The technique to generate anisotropic meshes adapted to a polycrystalline aggregate is presented in section 4.

3.5 Nucleation modelling and disappearance of grains

One of the prominent advantages in using front capturing methods for describing interface motion is that there is no need for specific treatment when some regions (grains) disappear. Complex topological evolutions are handled automatically. In a similar way, it is possible to introduce new regions (grains), based on given criteria. For example, new grains can nucleate during primary recrystallization, with an assumed low (often zero) stored energy.

A very simple method to create a nucleation site is to build a new signed distance function at a desired time increment and at a given spatial position. For example, the new distance function can be such that the boundary of the nucleus is spherical (3D) or circular (2D), centred around one node of the mesh. Each nucleus, described by a new signed distance function, evolves subsequently according to the principles described by equation (27). In particular, spontaneous growth occurs if a zero stored energy is assumed inside the new region. Different rules have been developed for the time and space nucleation laws. For example, at each time step of the simulation, a probabilistic or deterministic law of nucleation can be used considering a set of possible nucleation sites. This set can be chosen in different ways: (i) randomly in the domain Ω , (ii) only at grain boundaries, or (iii) according to specific criteria based on crystallographic or mechanical variables calculated from a previous deformation step of the polycrystal. This last method can be implemented for example when the deformation step is modelled using crystal plasticity based constitutive laws [34].

Instead of nucleating new grains, topological evolutions can also lead to the disappearance of grains. Level set methods automatically manage this type of event, but the numerical cost of the simulation needs to be considered. It is clearly optimized by not taking into account the signed distance functions which correspond to grains which have disappeared. Each level set function indeed leads to a computational effort related to the evaluation of the velocity field according to the kinetic law (27), the resolution of the convection equation together with the re-initialization (18), and the remeshing operations around the interface every few increments. Hence, the problem solved evolves dynamically during the calculation: for each time step, the signed distance functions which become negative on the whole domain (disappearance of the corresponding grain) are excluded from the calculation as well as the corresponding solvers.

Finally, at each time step, the following simplified algorithm concerning the nucleation and the disappearance of grains is used:

- Evaluations of the maximum of each signed distance function and decision to exclude or not the corresponding grain.
- Probabilistic or deterministic rule to choose the new nucleation sites (in agreement with the set of possible sites, and ignoring the part of the domain which is already recrystallized).
- If at least one nucleation site is activated, the corresponding new signed distance functions are built and the signed distance functions of the existing grains, which have an intersection with these new grains, are accordingly modified.

- If at least one site is activated, an anisotropic remeshing operation is performed to obtain an adapted anisotropic mesh around the new grain(s).
- Velocity field re-evaluated in the new topological configuration.

Tests cases illustrating this algorithm will be described in section 5.

4. Generation of finite element meshes

Figure 4(a) and figure 4(b) illustrate an adapted anisotropic mesh to the microstructure detailed in Figure 2. The mesh is made of tetrahedral elements, whose size and shape are not homogeneous. Anisotropic meshing is used along the interfaces of the grains, with a smaller size in the direction perpendicular to the boundary.

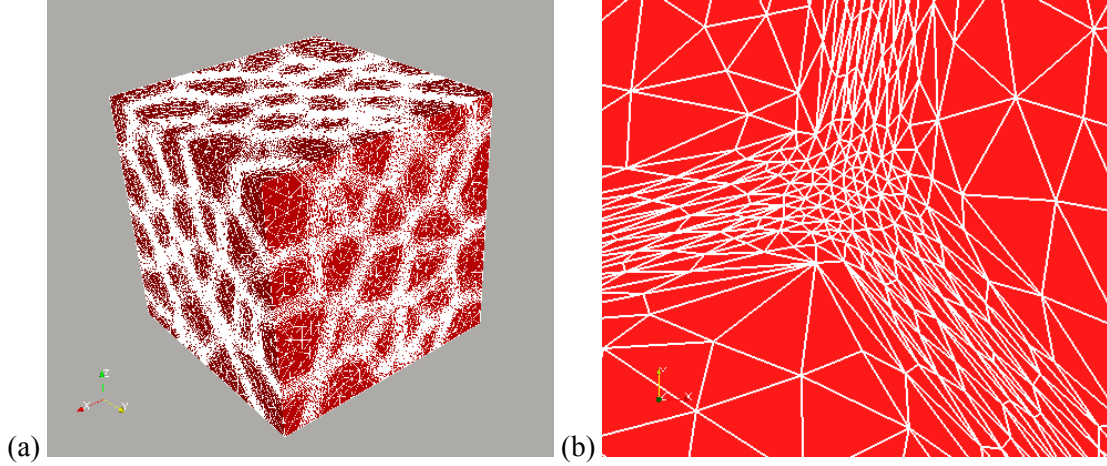


Figure 4. (a) An adapted anisotropic mesh to the microstructure detailed in Figure 2, (b) A zoom on the surface of a triple junction

The technique used to generate such meshes lies in the definition of a metric. A metric is a symmetric positive defined tensor which represents a local base modifying the way to compute a distance, such that:

$$\|\vec{u}\|_{\mathbf{M}} = \sqrt{{}^t\vec{u}\mathbf{M}\vec{u}}, \quad \langle \vec{u}, \vec{v} \rangle_{\mathbf{M}} = {}^t\vec{u}\mathbf{M}\vec{v}. \quad (28)$$

If \mathbf{M} is the identity tensor, the distance corresponds to the usual one in the Euclidian space. As \mathbf{M} is a symmetric positive defined tensor, it is diagonalizable in an orthonormal basis of eigenvectors and all the eigenvalues are strictly positive. The metric \mathbf{M} can be interpreted as a tensor whose eigenvalues are linked to the mesh sizes, and whose eigenvectors define the direction in which these mesh sizes are applied. Let us consider the simple case of figure 5 with only two grains (hence, one interface). The direction of mesh refinement is the unit normal to the interface (vector $\nabla\phi$ in figure 5). To specify the mesh size in that direction, and its evolution in space, a characteristic thickness E is introduced (see figure 5):

$$\begin{cases} |\phi(x)| < E/2 & \text{near the interface} \\ |\phi(x)| > E/2 & \text{far from the interface} \end{cases} \quad (29)$$

The mesh size takes a default value far from the interface, and is reduced in the direction perpendicular to the interface when $|\phi|$ is reduced. A simple example is given by the following choice of h :

$$\begin{cases} |\phi(x)| \geq E/2 & \Rightarrow h = h_d \\ |\phi(x)| < E/2 & \Rightarrow h = \frac{2h_d(m-1)}{mE}|\phi(x)| + \frac{h_d}{m} \end{cases} \quad (30)$$

At the interface the mesh size is reduced by a factor m with respect to the default value h_d . This mesh size increases with the distance ϕ to the default value h_d at the distance $E/2$. The unit normal to the interface $\nabla\phi$, and the mesh size h defined by equation (30), lead to the following metric:

$$\mathbf{M} = C(\nabla\phi \otimes \nabla\phi) + \frac{\mathbf{Id}}{h_d^2} \quad \text{with } C = \begin{cases} 0 & \text{if } |\phi| \geq \frac{E}{2} \\ \frac{1}{h^2} - \frac{1}{h_d^2} & \text{if } |\phi| < \frac{E}{2} \end{cases} \quad (31)$$

with \mathbf{Id} the identity tensor. This metric corresponds to an isotropic metric far from the interface (with a mesh size equal to h_d for all directions) and an anisotropic metric near the interface (with a mesh size equal to h in the direction $\nabla\phi$ and equal to h_d for the other directions, i.e. in the plane normal to $\nabla\phi$).

When dealing with polycrystalline aggregates and multiple interfaces, the above strategy is repeated for each grain. Combining all information, the number of refinement directions is then evaluated at each node of the mesh. For the nodes at which:

$$|\phi_i(x)| \geq E/2, \quad 1 \leq i \leq N_G, \quad (32)$$

there is no direction of refinement, and the mesh size is isotropic with $h = h_d$. As the number of directions of refinement increases, the mesh size is reduced in one or several directions. This happens when there is more than one level set function for which $|\phi_i(x)| < E/2$, and when the corresponding normal directions \vec{n}_i calculated from equation (20) are not co-linear. A vector base is then constructed from these normals, and refinement is performed along these independent vectors, which are the eigenvectors of the metric. For each vector direction the mesh size is calculated from equation (30), with $\phi_i(x)$ being the signed distance function associated to the considered normal. At triple or multiple junctions, the refinement may therefore become isotropic [35].

Anisotropic meshes are built using the MTC mesher-remesher developed by T. Coupez [36], it is based on local mesh topology optimizations and works for all meshing applications from adaptive remeshing to mesh generation by using a minimal volume principle. MTC improves a mesh topology by considering the quality of the elements. The quality of an element is defined through a shape factor that gives to equilateral triangles the highest quality, while the worst quality corresponds to a triangle which degenerates into a segment (2D). In 3D, degeneration corresponds to a tetrahedron becoming a surface. The element quality is normalised within an interval $[0,1]$, and the shape factor is given by :

$$c(e) = c_0 \frac{|e|}{l(e)^d}, \quad (33)$$

where c_0 is a normalised coefficient, $|e|$ the volume of the element, $l(e)$ the average length of the element edges and d the space dimension. The shape factor takes into account the metric by calculating volume and lengths according to equation (28). More details and illustrations of the robustness and capability of this meshing technique for microstructure are described in [35].

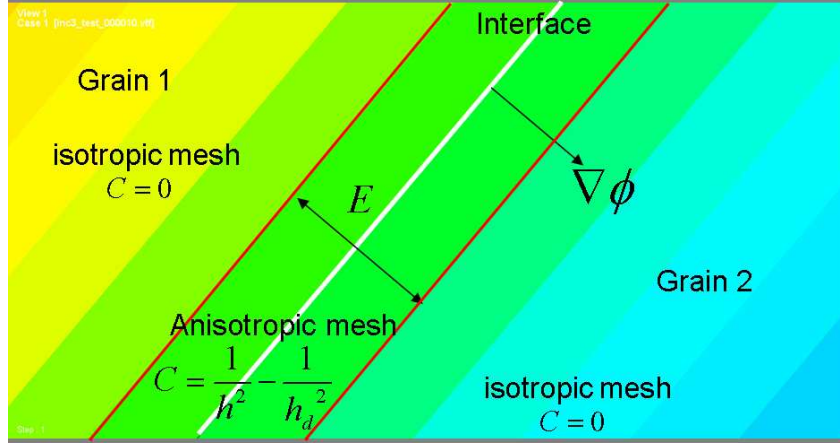


Figure 5. A 2D grain boundary

5. Numerical results

As explained in section 3, the investigated applications study the motion of interfaces under \bar{v}_e caused by the spatial distribution of bulk stored energy, in the context of primary recrystallization. For the sake of simplicity, the mobility is assumed to be a constant equal to one, independent from the crystallographic nature of the interfaces.

5.1 A three grains academic test case

The first test case, which is very classical and instructive [5,26], corresponds to the configuration detailed in figure 1: three straight lines meeting at 120° in an unit square domain. We set $e_1 = e_3 = 2$ and $e_2 = 1$, the challenge is to check the growth of grain 2 at the expense of grains 1 and 3. The time step considered is equal to $1.4e-3$ s. Figure 6 shows the comparison, after 20 time steps, of isovalues of ϕ_1 using an adapted anisotropic mesh, with and without re-initialization. This comparison illustrates the need for re-initialization steps of the level set functions to avoid the appearance of discontinuities and associated numerical instabilities. Figure 7 shows the influence of the mesh on the evolution of the distance functions. Lines indicate the $\pm 5 \cdot 10^{-3}$ isovalues of the three distance functions as a function of time, with an isotropic constant mesh size equal to 0.01 and with an adapted anisotropic mesh close to the interfaces. In the latter case, automatic operations of anisotropic remeshing are performed every five time steps in order to track the interfaces and the anisotropic metric was built thanks to equation (31) with $E = 0.015$, $h_d = 0.01$ and $h = 1e-3$. The bad quality of the results with an isotropic constant mesh underlines the need to work with very fine meshes near the interfaces. Working with anisotropic meshes avoids the use of too fine elements far from the interfaces. At the same time, it is seen in figure 7 that the non uniform anisotropic meshing procedure leads to results which are in very good agreement with one of the exact solutions of this configuration (see [26] or Figure 1), although this solution does not correspond to the VST solution. In terms of accuracy, the L_2 error between the exact and calculated function defined by $\max_{0 \leq t \leq T_{end}} \left(\max_{1 \leq k \leq N_G} (\phi_k(t, x)) \right)$

is less than 3%. At the triple junction, the numerical treatment smoothes out the geometrical discontinuity and, as underlined in the introduction, it is a way of imposing the uniqueness of the solution, i.e. the configuration now evolves in a deterministic way. The numerical result is coherent with the construction method of the velocity field, which allows (i) the accurate account of stored energy differences across boundaries, and (ii) regularizing the discontinuous nature of the problem, incompatible with the resolution of the convection equations given by (18). Obviously, the proposed numerical strategy has a cost. On average, there is an approximate 10% difference in terms of number of nodes or elements between the constant isotropic mesh and the non uniform anisotropic mesh. Besides, the cost of successive remeshing operations (typically every 5 time steps) must be added to

this 10% difference. The simulation of Figure 7 was performed on 4 processors of an Opteron 2,4GHz linux cluster in 7min20s with no remeshing, and in 18min32s with automatic anisotropic remeshing. It is therefore important to find a good compromise between numerical cost and desired accuracy.

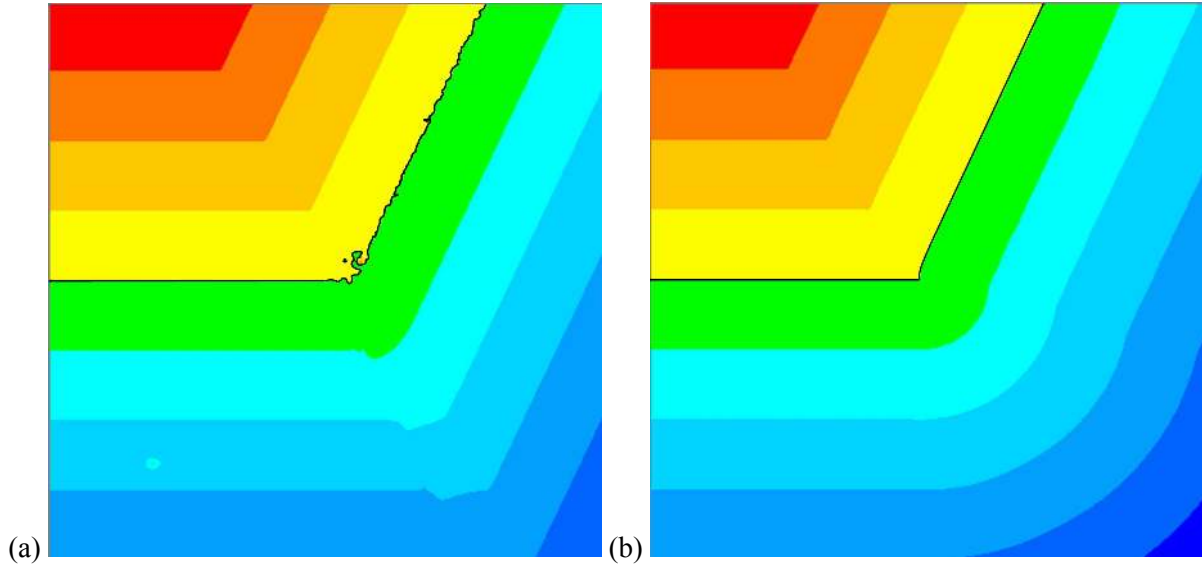


Figure 6. Function ϕ after 20 time steps: (a) without re-initialization and (b) with re-initialization

5.2 A simple nucleation case

Figure 8 describes primary recrystallization in a unit square domain, starting from a 25 grains aggregate. A uniform stored energy field is assumed initially, such that the recrystallization front is convected everywhere with a velocity of the same magnitude. A random set of 1000 potential nucleation sites is considered, and a probability of activation of $2 \cdot 10^{-4}$ is used at each time step of the simulation. A new activated site is effectively taken into account if it does not belong to the existing recrystallized volume fraction of the domain. Figure 10 illustrates the evolution of the recrystallized volume fraction in white. The computation time is 30 minutes, performed on 8 processors of the cluster described previously. Two hundred time steps were necessary to achieve 100% of recrystallization with an automatic remeshing operation every five time steps and a time step equal to $8.6e-3$ s. The anisotropic metric was calculated thanks to equation (31) with $E = 0.04$, $h_d = 0.01$ and $h = 2.66e-3$. The adopted level set framework, associated with the smoothed definition of the interface velocities, and automatic adapted remeshing operations, is shown here to systematically avoid kinematic incompatibilities (no development of vacuum or overlapping regions [23]). Furthermore, the approach is very effective and natural in the modelling of nucleation events. Comparison can be made with the JMAK theory [6,37,38] predicting the recrystallized volume fraction X as a function of the annealing time t using equation (1). Assuming a two-dimensional growth, the JMAK theory predicts $n=3$ for a low and constant nucleation rate. A linear kinetics refers to a constant value of n ; i.e. a linear JMAK plot displaying $\ln[-\ln(1-X)]$ as a function of $\ln(t)$. A least-square regression analysis on the numerical results of Figure 8 was performed, providing $n=2.95$. Figure 9 describes the comparison between the numerical results and the curve obtained by the least-square regression. This result is considered as a validation of our model in 2D.

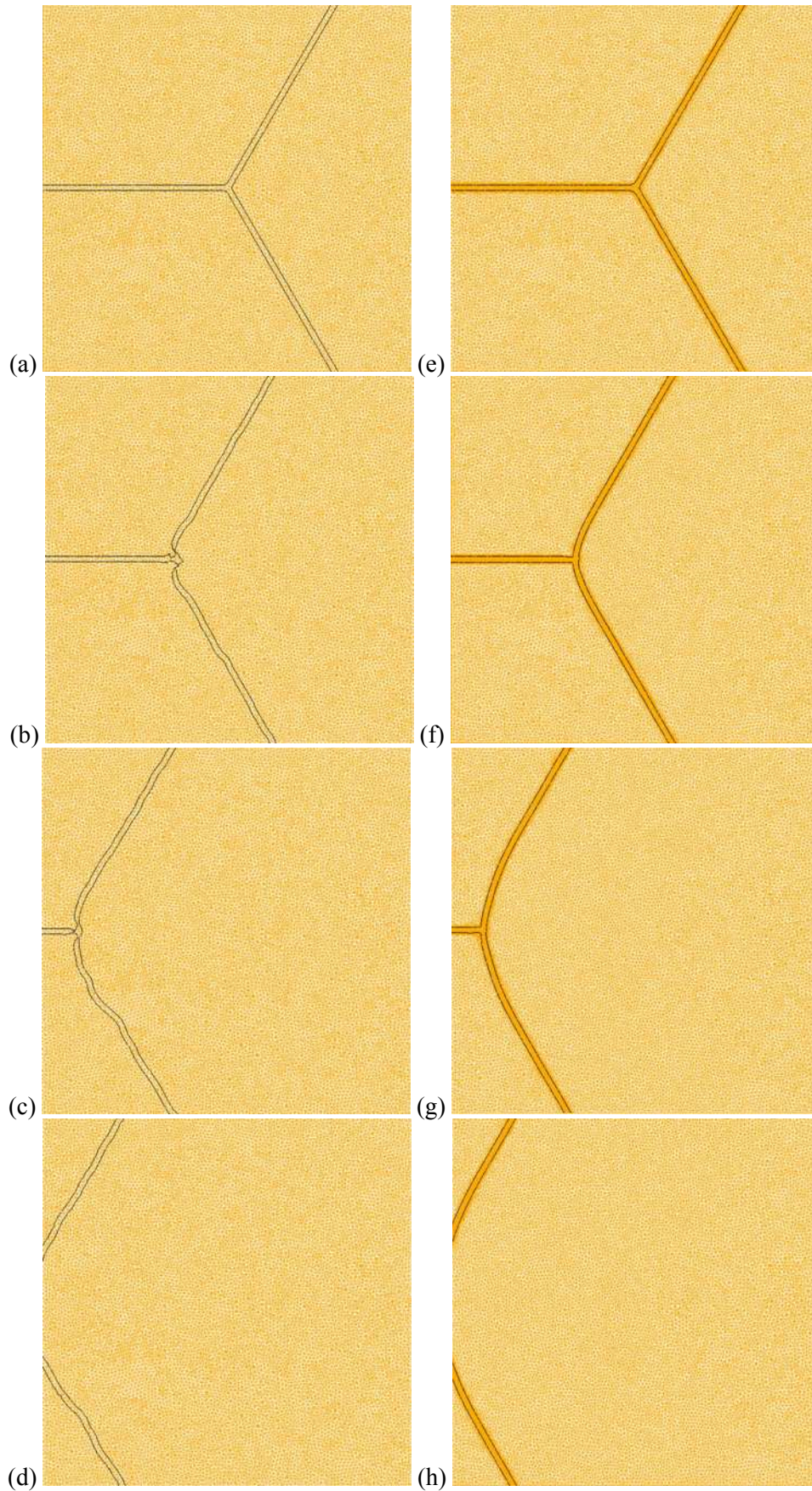


Figure 7. $\pm 5 \cdot 10^{-3}$ isovalues of the three distance functions with isotropic mesh after (a) 0, (b) 120, (c) 300 and (d) 395 time steps and with adapted anisotropic mesh at the grain boundaries (darker orange) after (e) 0, (f) 120, (g) 300 and (h) 395 time steps

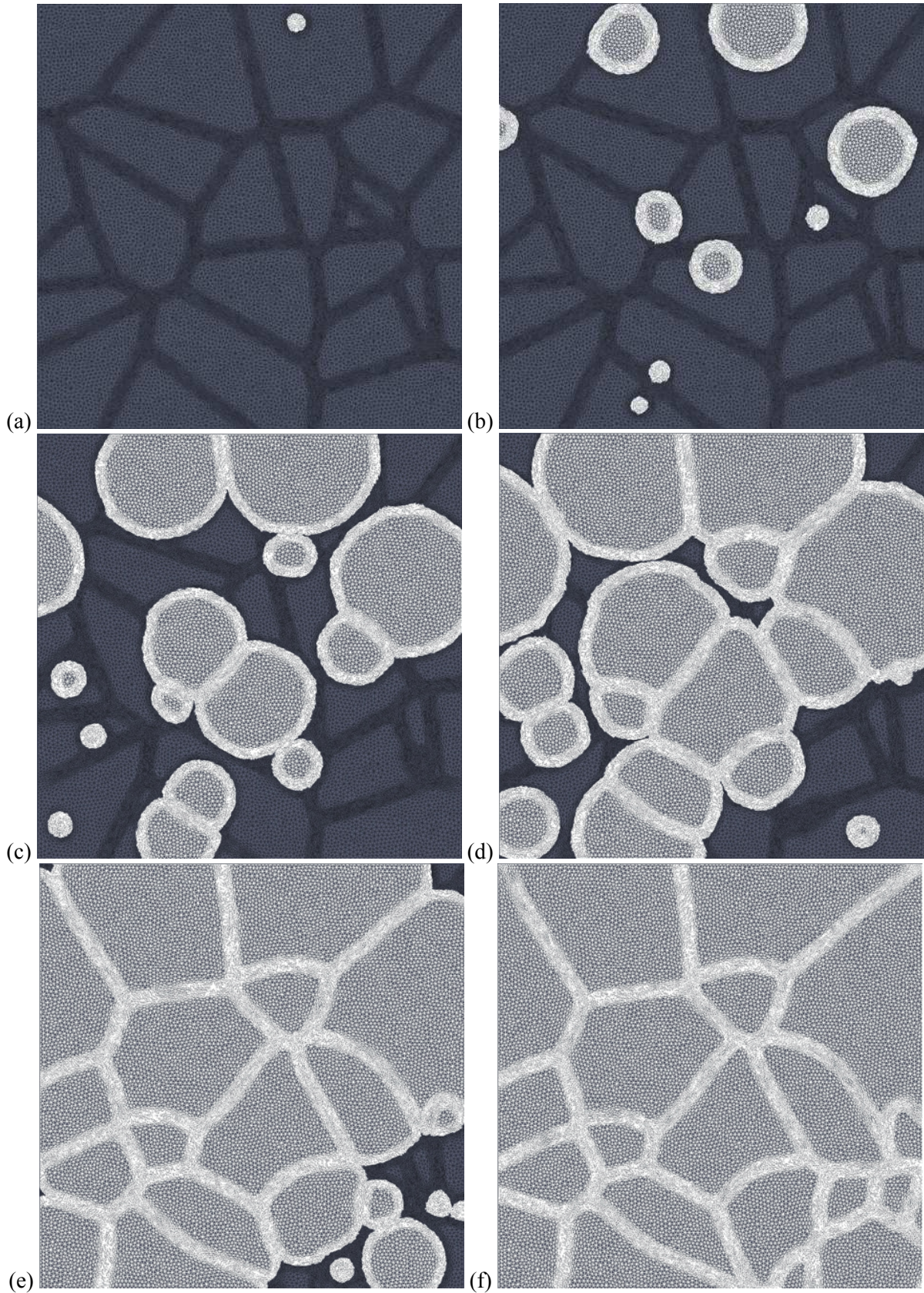


Figure 8. 2D simulation of primary recrystallization with an initial uniform stored energy. Recrystallized part in white corresponding to volume fractions of (a) 1%, (b) 10%, (c) 40%, (d) 60%, (e) 90% and (f) 100%

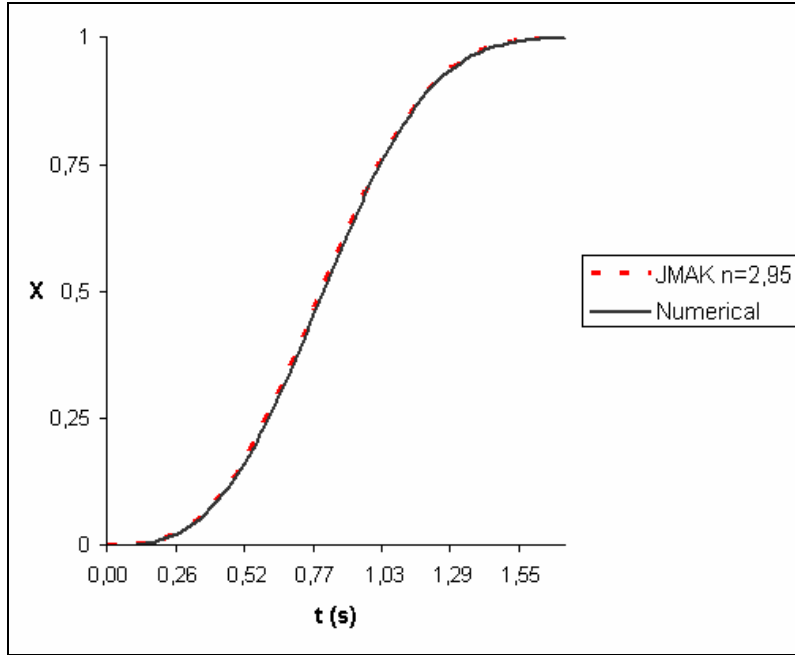


Figure 9. JMAK approximation of the numerical recrystallization kinetics extracted from Figure 8.

5.3 A case with stored energy

A ten grains microstructure in a unit cubic domain is considered, and mechanical testing is performed using finite element simulations where each integration point of the mesh behaves as a single crystal subjected to finite strain increments. The finite element approach is based on a mixed velocity–pressure formulation with an enhanced (P1+/P1) four-node tetrahedral element [39]. Classical theory of crystal plasticity [40,41] is considered, using a slightly modified version of the time integration algorithm developed by Delannay et al. [34,42]. For computational efficiency, one computes rates of lattice rotation and rates of dislocation slip in a decoupled way. The objective of the test case is to analyze the spatial distribution of stored strain energy in a digital aggregate, subjected to large deformations. A channel die test has been chosen. Slip is assumed to operate on the 12 $\{111\}\langle 110\rangle$ slip systems as is typically considered in fcc crystals at room temperature. For more details, see [34,35]. A 20% reduction in height is applied, and the stored energy is computed from:

$$En = \delta \int \sigma : \nabla \bar{v} dt . \quad (34)$$

with δ the fraction of the strain energy which is stored in the material, considered constant in a first approximation. The stored energy corresponds to defects (dislocations essentially), which represent the driving force for subsequent static recrystallization when performing a heat treatment. Figure 10 illustrates the final stored energy distribution and the corresponding norm of the stored energy gradient $\|\nabla En\|$, together with the adaptive and anisotropic meshing used to model subsequent recrystallization (see section 4 for the meshing strategy). More accurate measures of stored energy could be implemented in the future, by directly relying on dislocation densities computed within the crystal plasticity approach [43].

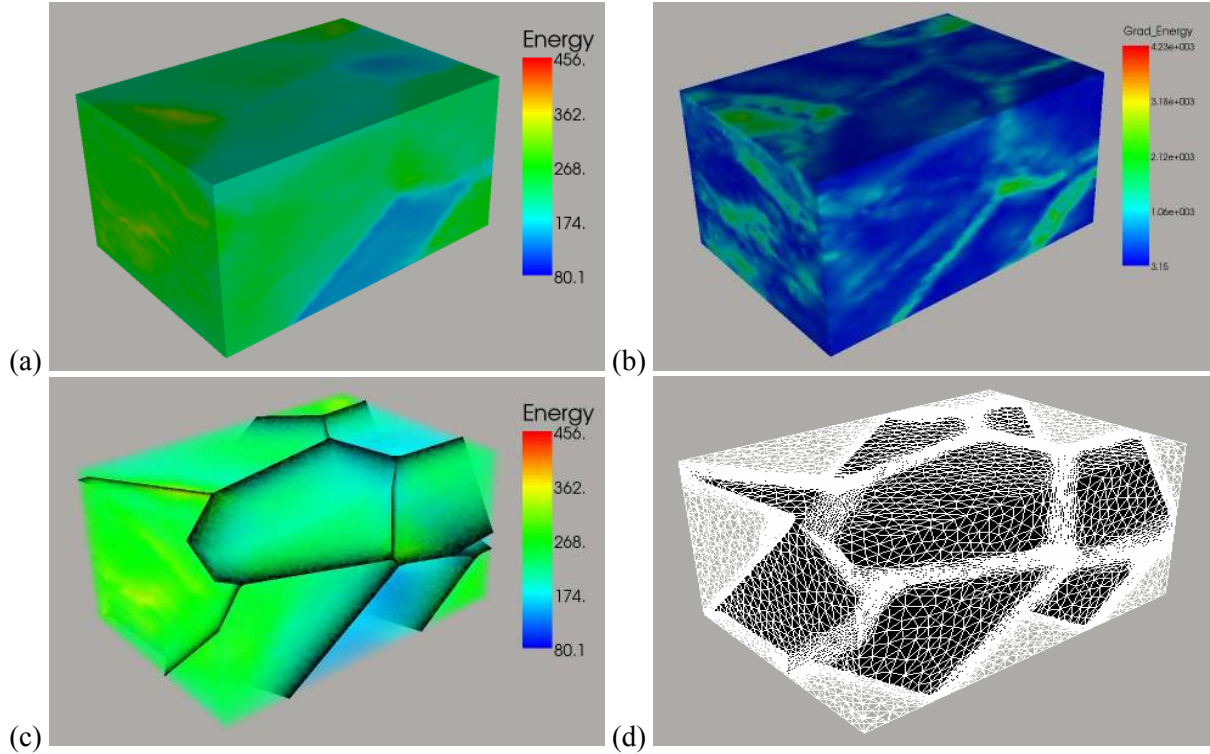


Figure 10. A 3D ten grains microstructure after plastic deformation: (a) external surface view of stored energy, (b) corresponding norm of the stored energy gradient ($\|\nabla En\|$), (c) volumetric view of the stored energy with grain boundaries in black and (d) adaptive and anisotropic meshing in white, grain boundaries in black.

The calculated stored energy field is used as an input to model recrystallization. A normalized average of the stored energy is computed for each grain G_i , and the distribution of $\|\nabla En\|$ is used to define the set of potential nucleation sites. The selection of 1000 potential sites is done by choosing the nodes of the mesh for which $\|\nabla En\|$ is the highest, while considering a safe distance between two neighbouring nuclei equal to 3 times the average element size. As for the previous test case, a probability of activation of 2.10^{-4} is used at each time step, and 1200 time steps were simulated to achieve 100% of recrystallization with a time step equal to $3e-3$ s. Figure 11 illustrates the increasing recrystallized volume fractions and the corresponding recrystallized front in blue. The simulation was performed in 6 hours on 16 processors of the cluster described previously and the final microstructure is made of 27 grains. The anisotropic metric was calculated thanks to equation (31) with $E = 0.1$ for the anisotropic thickness, $h_a = 0.05$ and $h = 6.66e-3$.

Comparisons with the JMAK theory were performed again, and are described in Figure 12. A first simple comparison was done with no consideration of the stored energy field, with a random choice of nucleation sites. A least-square regression analysis on the numerical results provided a JMAK exponent $n=3.91$ (Figure 12(a)), while the theoretical value is $n=4$ in 3D. This result validates our method in 3D. The second case, illustrated by Figure 12(b), corresponds to the numerical recrystallization kinetics of the numerical simulation described by Figure 11. Interestingly, in this case, a single value of n does not allow fitting the numerical results with sufficient accuracy. This result must be placed in the context of repeated discussions in the literature on the reasons of deviations from the standard JMAK theory. Heterogeneous distribution of stored energy [44], and, spatial and time distribution of nuclei [45] can explain these deviations. These can be studied in details with the present level-set model.

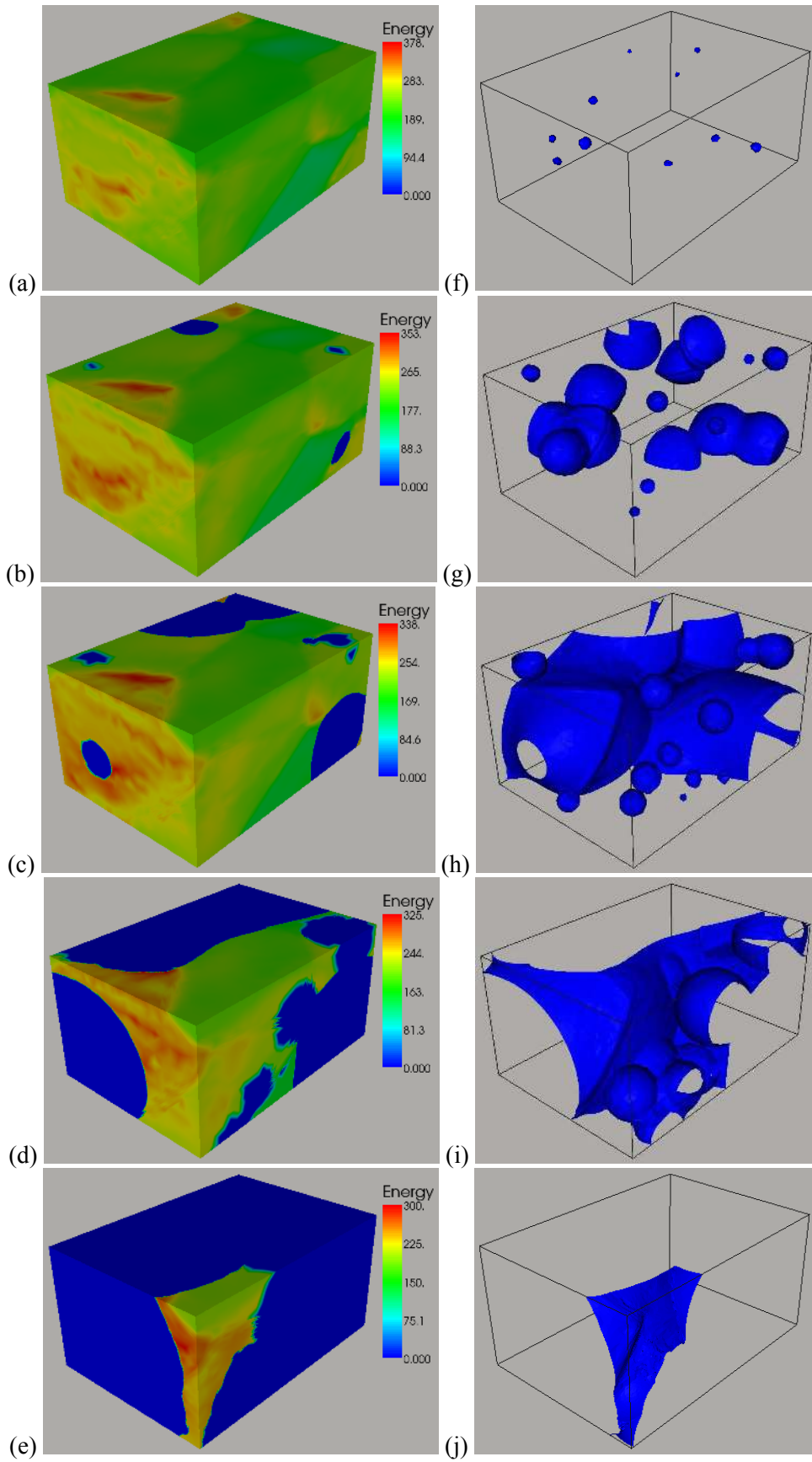


Figure 11. 3D recrystallization with a non uniform initial stored energy field: external surface view of the stored energy for recrystallized volume fractions of (a) 1%, (b) 15%, (c) 58%, (d) 80%, (e) 95%, and corresponding recrystallized front in blue (f-j).

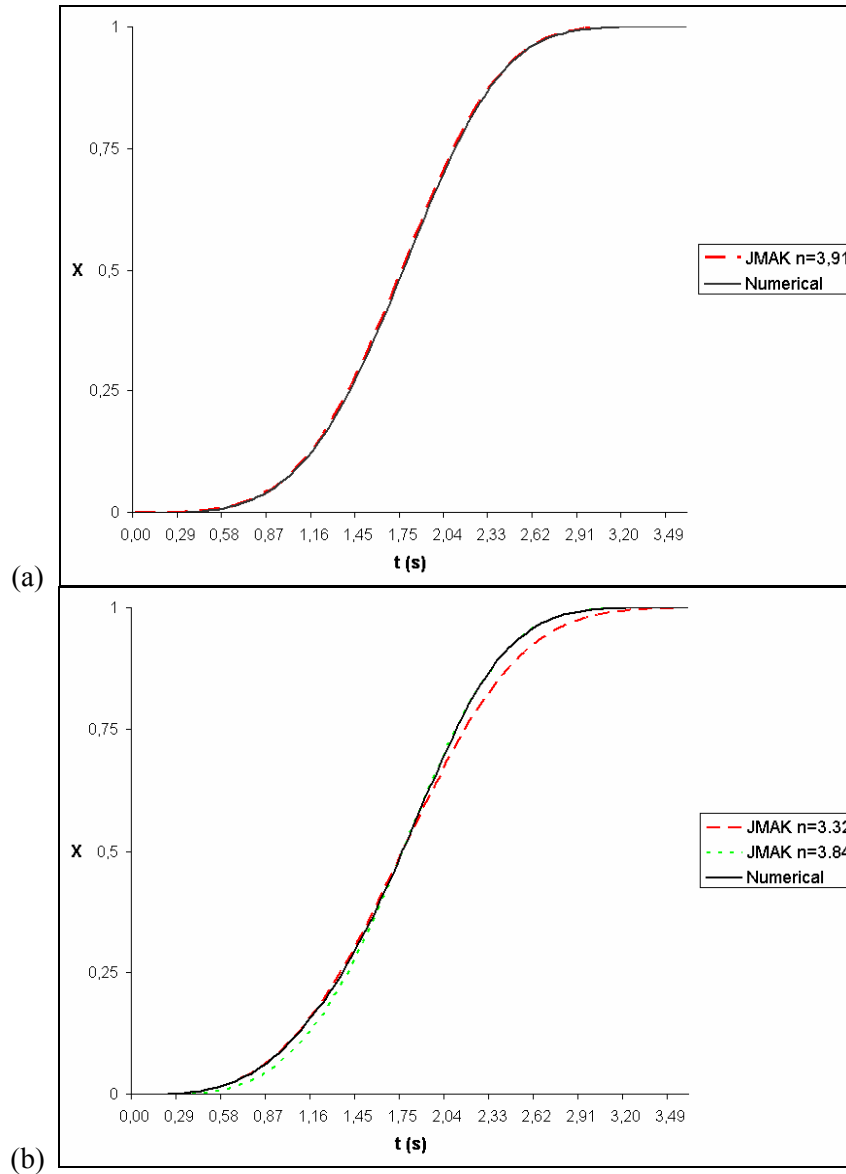


Figure 12. JMAK approximations of the numerical recrystallization kinetics extracted from Figure 11: (a) random choice of nucleation sites, low and constant nucleation rate of $2 \cdot 10^{-4}$; (b) considering the non uniform stored energy field and choosing nucleation sites at highest values of $\|\nabla E_n\|$.

6. Conclusion

It has been shown that a finite element model associated to a level set framework, using adaptive anisotropic automatic remeshing, is a promising tool to describe primary recrystallization in a polycrystalline material. A special smoothing algorithm is applied to the calculated velocity field, which allows avoiding the appearance of vacuum or overlapping regions. The method allows efficient and natural modelling of nucleation phenomena. On going work is currently addressing:

- The modelling of primary recrystallization with stored energy due to prior deformation steps, modelled with crystal plasticity and 3D aggregates composed of a statistical number of grains.
- Comparisons with experiments and other models, like the Monte-Carlo or phase field methods.

- The respective influences of initial microstructure topology, stored energy field, and local crystallographic orientations, on the nucleation and growth kinetics involved in static recrystallization.
- The extension of the method to model grain growth and discontinuous dynamic recrystallization.

Acknowledgments

This work was supported by the European Communities under the contract no. NMP3-CT-2006-017105 (DIGIMAT project).

The authors would like to thank the Professor J.-L. Chenot for his precious advice.

References

- [1] Rollett A D 1997 Overview of modeling and simulation of recrystallization *Progress in Mat. Sci.* **42** 79-99
- [2] Kugler G and Turk R 2006 Study of the influence of initial microstructure topology on the kinetics of static recrystallization using a cellular automata model *Comp. Mat. Sc.* **37** 284-291
- [3] Bernacki M Chastel Y Digonnet H Resk H Coupez T and Logé R E 2007 Development of numerical tools for the multiscale modelling of recrystallization in metals, based on a digital material framework *Comp. Met. in Mat. Sc.* **7** 142-149
- [4] Logé R E Bernacki M Resk H Digonnet H and Coupez T 2007 Numerical modelling of plastic deformation and subsequent recrystallization in polycrystalline materials, based on a digital material framework *Recrystallization and Grain Growth III proceedings* Korea 1133-1138
- [5] Bernacki M Chastel Y Coupez T and Logé R E 2008 Level set method for the numerical modelling of primary recrystallization in the polycrystalline materials *Scripta. Mater.* **58** 1129-1132
- [6] Raabe D 1999 Introduction of a scaleable 3D cellular automaton with a probabilistic switching rule for the discrete mesoscale simulation of recrystallization phenomena *Phil. Mag. A* **79** 2339-2358
- [7] Miodownik M A 2002 A review of microstructural computer models used to simulate grain growth and recrystallisation in aluminium alloys *J. Light Metals* **2** 125-135
- [8] Vandermeer R A and Rath B B 1989 Modeling recrystallization kinetics in a deformed iron single crystal *Metall. Trans.* **20A** 391-401
- [9] Mahin K W Hanson K and Morris J W 1980 Comparative analysis of the cellular and Johnson-Mehl microstructures through computer simulation *Acta Metall.* **28** 443-453
- [10] Rollett A D and Raabe D 2001 A hybrid model for mesoscopic simulation of recrystallization *Comp. Mat. Sc.* **21** 69-78
- [11] Hassold G N and Holm E A 1993 A fast serial algorithm for the finite temperature quenched Potts model *J. Comput. Phys.* **7** 97-107
- [12] Nagai T Ohta S Kawasaki K and Okuzono T 1990 Computer simulation of cellular pattern growth in two and three dimensions *Phase Trans.* **28** 177-211
- [13] Piekos K Tarasiuk J Wierzbanski K and Bacroix B 2007 Generalized vertex model-Study of Recrystallization in copper *Recrystallization and grain growth III proceedings* Korea 1157-1162
- [14] Maurice C 2001 2- and 3-d curvature driven vertex simulations of grain growth *Recrystallization and grain growth proceedings* Berlin 123-134
- [15] Weygand D Brechet Y and Lepinoux J 2001 A vertex simulation of grain growth in 2D and 3D *Adv. Engng. Mater.* **3** 67-71
- [16] Chen L Q 1995 A novel computer simulation technique for modeling grain growth *Scripta Metall. Mater.* **32** 115-120
- [17] Zhao H K Chan T Merriman B and Osher S 1996 A variational level set approach to multiphase motion *J. Comp. Phys.* **127** 179-195
- [18] Collins J B and Levine H 1985 Diffuse interface model of diffusion-limited crystal growth *Phys. Rev.* **B31** 6119-6122

- [19] Chen L Q 2002 Phase-field models for microstructure evolution *Ann. Rev. Mater. Res.* **32** 113-140
- [20] Karma A 2001 Phase-field formulation for quantitative modelling of alloy solidification *Phys. Rev. Letters* **8711** 115701
- [21] Takaki T Yamanaka A Higa Y and Tomita Y 2008 Phase-field model during static recrystallization based on crystal-plasticity theory *J. Comp.-Aided Mater. Des.* **14** 75-84
- [22] Humphreys F J and Haterly M 1995 Recrystallization and related annealing phenomena *Oxford: Pergamon Press*
- [23] Kugler G and Turk R 2004 Modeling the dynamic recrystallization under multi-stage hot deformation, *Acta Mat.* **52** 4659-4668
- [24] Taylor J E 1995 The motion of multiple-phase junctions under prescribed phase-boundary velocities *J. Differ. Eq.* **119** 109-136
- [25] Merriman B Bence J and Osher S J 1994 Motion of Multiple Junctions: A Level Set Approach *J. Comp. Phys.* **112** 334-363
- [26] Reitich F and Soner H M 1996 Three-phase boundary motions under constant velocities. I: The vanishing surface tension limit *Proc. of the Roy. Soc. of Edinburgh* **126A** 837-865
- [27] Sethian J A 1996 Level Set methods *Cambridge University Press*
- [28] Osher S and Sethian J A 1988 Fronts propagating with curvature-dependent speed: Algorithms based on Hamilton-Jacobi formulations *J. Comp. Phys.* **79** 12-49
- [29] Sussman M Smereka P and Osher S 1994 A Level Set Approach for Computing Solutions to Incompressible Two-Phase Flow *J. Comp. Phys.* **114** 146-159
- [30] Dawson P R 2000 Computational crystal plasticity *Int. J. Solids Struct.* **37** 115-130
- [31] Dawson P R Miller M P Han T S and Bernier J 2005 An Accelerated Methodology for the Evaluation of Critical Properties in Polyphase Alloys *Metall. Mater. Trans. A* **36** 1627-1641
- [32] Logé R E and Chastel Y 2006 Coupling the thermal and mechanical fields to metallurgical evolutions within a finite element description of a forming process *Comp. Meth. in Appl. Mech. and Eng.* **195** 6843-6857
- [33] Coupez T 2007 Convection of local level set function for moving surfaces and interfaces in moving flow *NUNIFORM'07 proceedings* Plenary lecture 61-66
- [34] Logé R Bernacki M Resk H Delannay L Dignonnet H Chastel Y and Coupez T 2008 Linking plastic deformation to recrystallization in metals using digital microstructures *Phil. Mag.* **88** 3691-3712
- [35] Resk H Delannay L Bernacki M Coupez T and Logé R Adaptive mesh refinement and automatic remeshing in crystal plasticity finite element simulations *to appear in Modelling and Simulation in Materials Science and Engineering*
- [36] Coupez T Dignonnet H and Ducloux R 2000 Parallel meshing and remeshing by repartitioning *Appl. Math. Modeling* **25** 153-175
- [37] Johnson W A and Mehl R F 1939 Reaction kinetics in processes of nucleation and growth *Trans. Am. Inst. Miner. Eng.* **135** 416-458
- [38] Avrami M 1939 Kinetics of Phase Change. I. General Theory *J. Chem. Phys.* **7** 1103-1112
- [39] Mocellin K Fourment L Coupez T and Chenot J-L 2001 Toward large scale F.E. computation of hot forging process using iterative solvers, parallel computation and multigrid algorithms *Int. J. Num. Methods. Eng.* **2** 473-488
- [40] Kalidindi S R Bronkhorst C A and Anand L 1992 Crystallographic evolution in bulk deformation processing of FCC metals *J. Mech. Phys. Solids* **40** 537-569
- [41] Marin E B and Dawson P R 1998 Elastoplastic finite element analyses of metal deformations using polycrystal constitutive models *Comput. Meth. Appl. Mech. Eng.* **165** 23-41
- [42] Delannay L Jacques P J and Kalidindi S R 2006 Finite element modeling of crystal plasticity with grains shaped as truncated octahedrons *Int. J. Plast.* **22** 1879-1898

- [43] Baudin T, Etter A, L Gerber P, Samet A, Penelle R and Rey C 2005 Influence of thermo-mechanical treatments on the stored energy simulated by FEM for two low carbon steels *Mater. Sci. Forum* **495/497** 1291-1296
- [44] Oyarzabal M, Matrinez-de-Guerenu A and Gutierrez I 2008 Effect of stored energy and recovery on the overall recrystallization kinetics of a cold rolled low carbon steel *Mater. Sci. Eng. A* **485** 200-209
- [45] Liu F and Yang G 2007 Effects of anisotropic growth on the deviations from Johnson–Mehl–Avrami kinetics *Acta Mater.* **55** 1629-1639