

# **Fishing Livelihoods as Key to Marine Protected Areas: Insights from the World Parks Congress**



**Anthony Charles**

**Saint Mary's University, Halifax, Canada**

**[www.AnthonyCharles.ca](http://www.AnthonyCharles.ca)**

**IIFET 2016**

# Marine Protected Areas

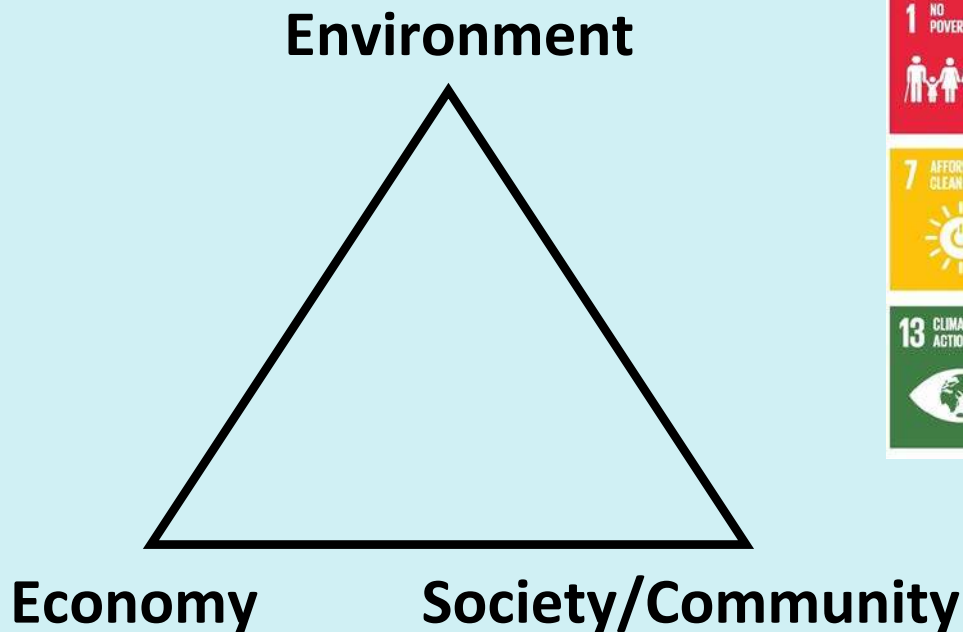
- **CBD: “essential tool for conservation & sustainable use”**
- **Aichi Target 11: “equitably managed, ecologically representative and well-connected systems of protected areas and other effective area-based conservation measures”**
- **What are the effects of MPAs on fishers, communities, food security and sustainable livelihoods?**
- **Example: hundreds of Locally Managed Marine Areas (LMMA) in the Pacific Islands, South-east Asia: success story with PAs positive for fishery and conservation.**

# **Three Ingredients of MPA Effectiveness**

# Ingredients of MPA Effectiveness:

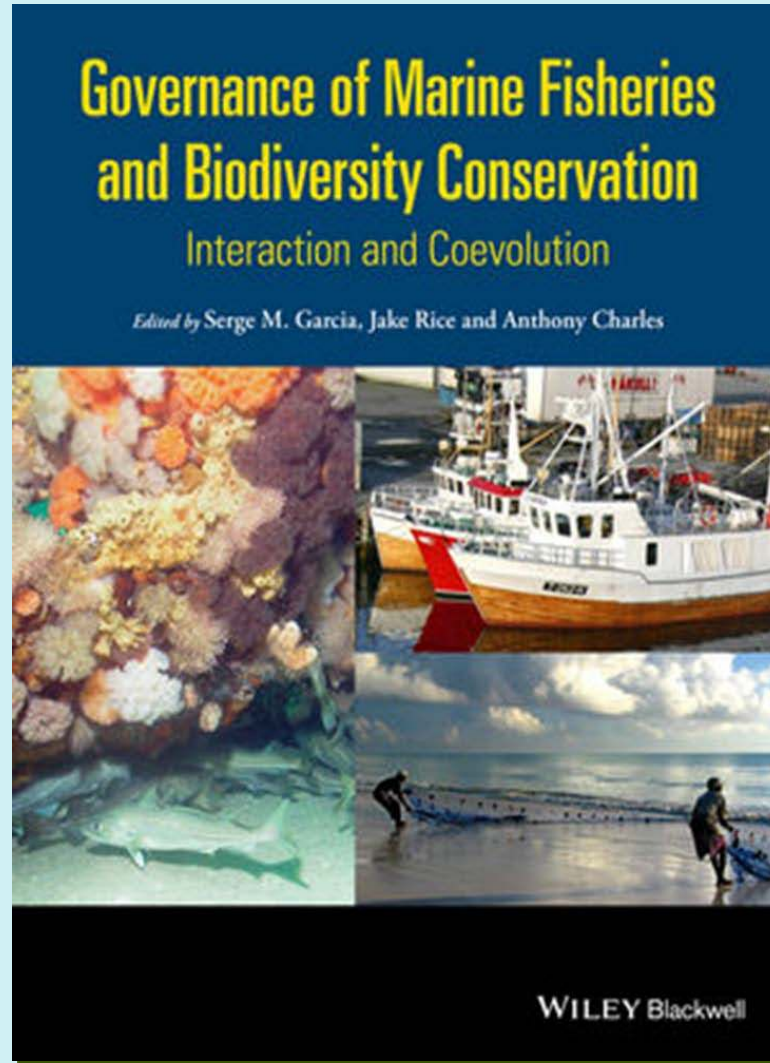
## 1. Objectives

### Sustainable Development Goals



# Ingredients of MPA Effectiveness:

## 2. Governance



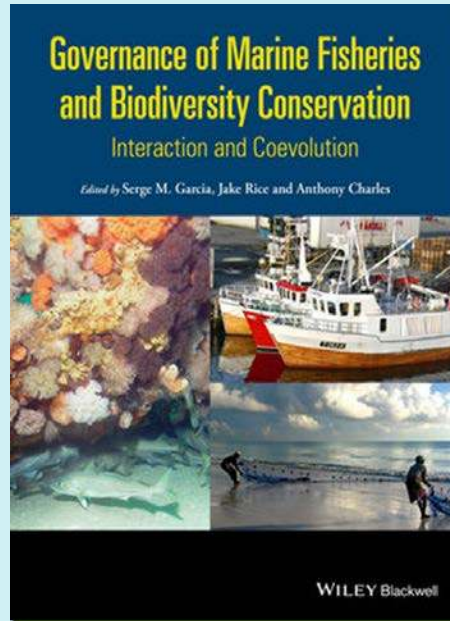


# Two Governance Streams



**Governance  
of fisheries  
management**

...FAO, fishery depts. &  
fisher organizations



**Governance  
of biodiversity  
conservation**

...CBD, environment  
ministries & ENGOs

*MPAs need to be effective within both governance streams, to meet objectives of fishery management and biodiversity conservation...*

# Ingredients of MPA Effectiveness:

## 3. People

Systems

Rights

Attitudes

Equity

Knowledge

Entry Points

Costs & Benefits

Displacement

Participation

Human dimensions of the ecosystem approach to fisheries: an overview of context, concepts, tools and methods

FAO  
FISHERIES  
TECHNICAL  
PAPER

489



Charles, A. and L Wilson (2009) Human dimensions of Marine Protected Areas. *ICES Journal of Marine Science* 66: 6-15.

# **Ingredients of MPA Effectiveness:**

## **Key Conclusion**

**Efficiency and effectiveness in pursuing conservation goals, achieving success not failure, depends on:**

- Meeting Objectives (including finding the right balance of all Sustainable Development Goals)**
- Linking People and participatory Governance (especially involving those whose livelihoods depend on direct use of aquatic environments)**

**Conservation ignoring these may seem 'cheaper', 'easier', or 'faster', but may produce negative results to conservation and to wellbeing of local people.**





# Community Conservation Research Network



[www.CommunityConservation.net](http://www.CommunityConservation.net)

# **The World Parks Congress**





# 2014 World Parks Congress

<u>Streams</u>	<u>Cross-cut themes</u>			
1. Reaching conservation goals	<b>Marine</b>	<b>World Heritage</b>	<b>Capacity Development</b>	<b>New Social Compact</b>
2. Responding to climate change				
3. Improving health and well-being				
4. Supporting human life				
5. Reconciling development challenges				
6. Enhancing diversity and quality of governance				
7. Respecting indigenous and traditional knowledge and culture				
8. Inspiring a new generation				



AQUATIC CONSERVATION: MARINE AND FRESHWATER ECOSYSTEMS

*Aquatic Conserv. Mar. Freshw. Ecosyst.* (2016)

Published online in Wiley Online Library  
(wileyonlinelibrary.com). DOI: 10.1002/aqc.2648

***Fishing livelihoods as key to marine protected areas: insights from  
the World Parks Congress***

ANTHONY CHARLES<sup>a,\*</sup>, LENA WESTLUND<sup>b</sup>, DEVIN M. BARTLEY<sup>b</sup>, WARRICK J. FLETCHER<sup>c</sup>, SERGE GARCIA<sup>d</sup>,  
HUGH GOVAN<sup>e</sup> and JESSICA SANDERS<sup>b</sup>

<sup>a</sup>*School of the Environment and School of Business, Saint Mary's University, Halifax, Canada*

<sup>b</sup>*Fisheries and Aquaculture Department, Food and Agriculture Organization of the United Nations, Rome, Italy*

<sup>c</sup>*Department of Fisheries, Western Australia, Perth, Australia*

<sup>d</sup>*Fisheries Expert Group, IUCN Commission on Ecosystem Management, Fiumicino, Italy*

<sup>e</sup>*LMMA Network & WCPA Marine – Melanesia, Suva, Fiji Islands*

**For special issue to be launched at  
IUCN World Conservation Congress 2016**



# Topic 1. People & PAs at the WPC

- ‘people side’ of conservation prominent in formal structure of WPC 2014
- strong incorporation of human dimensions of protected areas within sessions of the WPC
- good coverage of the need to involve resource users & their communities in designing and implementing PAs.
- Good coverage of the need for participatory governance.



# **Fishery Livelihoods & MPAs in FAO & IUCN-FEG sessions**

- Several WPC sessions were held on the interactions (positive or negative) of fishery livelihoods, food security and MPAs.
- From these, 10 case studies were compiled from Indonesia, Costa Rica, Philippines, Japan, Australia, Mauritania, Madagascar, and Southeast Asia regionally.
- Analytical chapter added on MPA impact on food security
- Editors: FAO (Jessica Sanders, Lena Westlund) & IUCN Fisheries Expert Group (Serge Garcia, Anthony Charles)



# **Topic 2: MPA coverage targets**

- Conservation Goals group: 30% target for no-take MPAs**
- This was the least people-centred stream at WPC 2014.**
- Controversy erupted over the 30% MPA target...**
- Proponents argued the 30% target builds on 2003 WPC, which called for MPAs that “include strictly protected areas that amount to at least 20–30% of each habitat”.**
- Opponents argued the target risks harm to food security & livelihoods, especially in States with no social safety nets & where management performance is poor. Also it is strategically better to have support of ocean users.**
- But the 30% target is in the WPC’s final Marine Statement.**

# Topic 3: The “Promise of Sydney” and its Marine Statement



IUCN  
WORLD PARKS  
CONGRESS  
SYDNEY 2014

**A strategy of innovative approaches and recommendations to enhance implementation of **marine conservation** in the next decade**

Submitted on 22 December 2014, following the deliberations of the  
IUCN World Parks Congress 2014

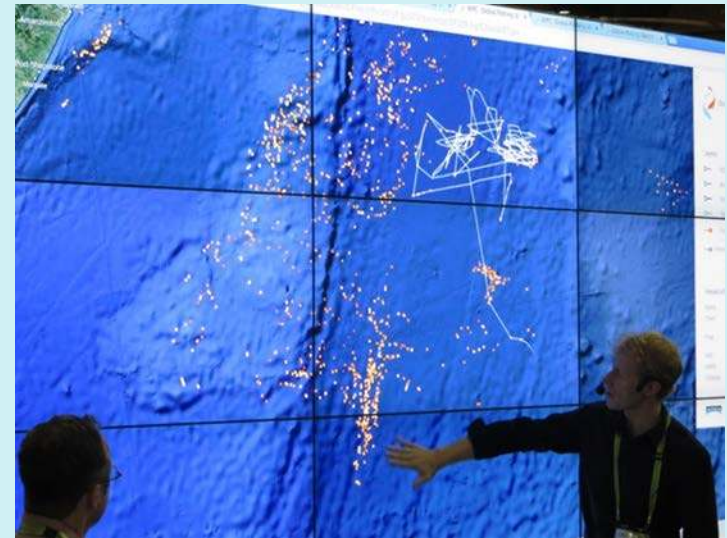
- **Preamble: PAs “must reflect indigenous, local community and other stakeholder needs, aspirations and knowledge”.**
- **However, coverage of links between conservation & people not commensurate with its major WPC role. Governance, at the heart of MPA success, is also not covered well.**
- **But 2 recommendations reflect the spirit of people-focused marine discussions at WPC; important directions for MPAs.**



# Two Key Recommendations

**#8. Design and manage MPAs for human as well as ecological benefits, through committed partnerships and engagement with indigenous and local coastal communities, resource users and other stakeholders, as well as new partnerships with humanitarian, development and human rights organizations.**

**#9. Strengthen support for marine conservation actions by scaling up the many effective & inspiring solutions being undertaken by coastal communities & resource user groups around the world...**





# **C o n c l u s i o n s**

# Conclusions

- PAs implemented properly (maintaining livelihoods, involving people in decisions) can help meet UN SDG, CBD Aichi targets.
- It may be more efficient for PAs to be developed with human objectives at least as prominent as biodiversity conservation.
- It may be more efficient to choose well-accepted PAs rather than seeking those that are theoretically 'ideal'.
- Focus on equity & fairness, e.g. consider compensation to communities (suffering costs) by global system (gets benefits).
- Treat coastal versus open ocean MPAs differently in targets and implementation.

