

ARTICLE

Received 20 May 2010 | Accepted 12 Jan 2011 | Published 15 Feb 2011

DOI: 10.1038/ncomms1191

Flammable biomes dominated by eucalypts originated at the Cretaceous–Palaeogene boundary

Michael D. Crisp¹, Geoffrey E. Burrows², Lyn G. Cook³, Andrew H. Thornhill¹ & David M. J. S. Bowman⁴

Fire is a major modifier of communities, but the evolutionary origins of its prevalent role in shaping current biomes are uncertain. Australia is among the most fire-prone continents, with most of the landmass occupied by the fire-dependent sclerophyll and savanna biomes. In contrast to biomes with similar climates in other continents, Australia has a tree flora dominated by a single genus, *Eucalyptus*, and related Myrtaceae. A unique mechanism in Myrtaceae for enduring and recovering from fire damage likely resulted in this dominance. Here, we find a conserved phylogenetic relationship between post-fire resprouting (epicormic) anatomy and biome evolution, dating from 60 to 62 Ma, in the earliest Palaeogene. Thus, fire-dependent communities likely existed 50 million years earlier than previously thought. We predict that epicormic resprouting could make eucalypt forests and woodlands an excellent long-term carbon bank for reducing atmospheric CO₂ compared with biomes with similar fire regimes in other continents.

¹ Division of Evolution, Ecology and Genetics, Research School of Biology, The Australian National University, Canberra, Australian Capital Territory 0200, Australia. ² Institute for Land, Water and Society, Charles Sturt University, Locked Bag 588, Wagga Wagga, New South Wales 2678, Australia. ³ School of Biological Sciences, The University of Queensland, Brisbane, Queensland 4072, Australia. ⁴ School of Plant Science, Private Bag, Hobart, Tasmania 7001, Australia. Correspondence and requests for materials should be addressed to M.D.C. (email: mike.crisp@anu.edu.au).

Open-canopied communities are far more extensive across the world than predicted by consideration of climate and soil fertility alone¹. Moreover, boundaries between open woodlands and closed-canopy rainforest are often surprisingly sharp^{1,2}. Fire is known to have a major role in maintaining open communities: both plot experiments and modelling show that, in the absence of fire, closed forests would cover much of both Australia^{2,3} and the world¹—hence their definition as ‘fire-dependent’¹. In Australia this effect is extreme, with rainforest marginalized by fire to a tiny portion (2%) of the continent and absent from much of the climatically and edaphically suitable landscape². Even the vast central Australian arid zone is dominated by fire^{4,5} at frequencies similar to those in temperate grassy woodlands and dry sclerophyll forests⁶ (global modelling suggesting that this region is ‘bare’¹ is simplistic). In contrast with other continents, a single diverse family, Myrtaceae, dominates Australian fire-dependent woodlands and forests, with 1,600 species, including 800 eucalypts and their close relatives⁷. Many are excellent post-fire epicormic resprouters from the stems and branches after high-intensity fires^{8–11}. In most investigated angiosperm trees, dormant epicormic buds are situated in the outer bark^{8,12}, where they are likely killed by fire, but in eucalypts, the epicormic bud-forming structures are located deeply, where they are protected by the full thickness of the bark and can sprout even after high-intensity fires⁸. Moreover, the epicormic structures of eucalypts appear unique, consisting not of buds but of narrow, radially oriented strips of cells of meristematic appearance, and as such differ from those recorded in other families^{8–11}.

Given the above, it has been hypothesized that evolution of fire tolerance in Myrtaceae was directly linked with the origins and expansion of the fire-dependent biomes in Australia, especially the southern sclerophyll and northern savanna biomes^{2,6,13}. However, the influence of wildfire on the evolution of Australian biomes through the Palaeogene, when Australia was still part of East Gondwana, has been little studied. The Australian fossil record has provided little direct evidence of fire (fusain charcoal) before the mid-Miocene, when the climate aridified and charcoal levels increased dramatically^{2,14}. Here, we show that specialized epicormic resprouting originated in the eucalypt lineage much earlier, at least 60 million years ago. We find a significant link between the evolution of this unique anatomy and the timing of shifts by Myrtaceae into the flammable sclerophyll biome. However, there was no statistical association with the more recent shifts into the monsoonal biome, which experiences more frequent but less intense fires. Our results contrast with the current view that fire-dominated vegetation originated much later, after global climate aridified and the monsoonal biome developed, in the late Miocene^{14–16}.

Results

Ancestral biomes and epicormic structures. Using trait mapping on a dated molecular phylogeny, we found that both epicormic resprouting in Myrtaceae and their adaptation to the sclerophyll biome probably evolved in the earliest Palaeogene, 60–62 Ma (Figs 1 and 2; Table 1; Supplementary Figs S1 and S2). The myrtoid ancestor reconstructs as a non-resprouting inhabitant of rainforest (Table 1; Fig. 1; Supplementary Fig. S2). Thus, fire-dependent sclerophyll communities likely existed 50 million years before the well-documented late-Miocene expansion of fire-dependent biomes^{14–16}. We tested the hypothesis that protection of epicormic regenerative tissue in Myrtaceae is positively correlated with flammability of habitat. Using phylogenetically independent contrasts, we found that these traits are correlated (Pagel94 maximum likelihood (ML) test, $P=0.027$; Bayesian stochastic mapping test, $P<0.000001$).

Biome transitions. We tested whether the variables in question are phylogenetically conserved, because biome conservation has been demonstrated previously in eucalypts¹⁷, and conservation of post-fire

persistence traits has been found in taxa occurring in fire-dependent communities. Biome adaptations in the Myrtaceae are significantly conserved (tip randomization test, $P<0.001$) and the transitions that have occurred are strongly directional—all sclerophyll lineages originated from a rainforest ancestor and all monsoonal savanna lineages arose more recently, from sclerophyll or rainforest ancestors. Two-thirds (21) of biome shifts were into savanna, confirming that this biome is a sink relative to the other biomes and suggesting that the advent of monsoonal climate opened a major ecological opportunity that pre-adapted Myrtaceae were able to exploit effectively. However, we found no support for the hypothesis that this new environment (with its more frequent but less intense fires^{6,18}) exerted sufficient selection to alter the epicormic anatomy of the Myrtaceae overall (Pagel94 ML test, $P=0.137$; Bayesian stochastic mapping test, $P=0.2$), except in *Xanthostemon* and perhaps *Melaleuca* (Supplementary Fig. S1). By contrast, five of the seven transitions in epicormic resprouting anatomy coincided with shifts between the everwet and sclerophyll biomes (Table 1).

Alternative reconstructions. The sequence of events at the base of the eucalypts is unclear because of uncertain trait reconstructions at nodes M and K (Figs 1 and 2; Supplementary Figs S1 and S2) and lack of support for the position of *Syncarpia*. The inferred trait transitions shown in Table 1 are a shift into the sclerophyll biome with a gain of resprouting epicormic type A between nodes Y and K, and a reversal of both traits in the *Stockwellia* clade (node Q). The alternative reconstruction infers an independent transition to sclerophyll and epicormic resprouting in each of *Syncarpia* and Eucalyptae, with retention of the ancestral everwet biome and epicormic resprouting in the *Stockwellia* clade. The timing of these alternative reconstructions (62–55 Ma) is about the same as in the reconstructions shown in the Figures and Table 1. The lack of branch length data for interpolated species within *Syncarpia*, *Tristaniopsis* and *Xanthostemon* resulted in wide bounds on the timing estimates of transitions within these lineages (Table 1). Reversals to non-resprouting types occurred within *Melaleuca*, whose most recent common ancestor reconstructs as a resprouter occurring in the sclerophyll biome. The timing of these shifts is uncertain because of lack of branch length information within the group.

Discussion

We have shown that both epicormic resprouting in Myrtaceae and flammable sclerophyll biomes likely originated in the earliest Cenozoic, 60–62 Ma, and that their evolution is significantly linked. In eucalypts, the distinctive epicormic resprouting anatomy has been strictly conserved until the present, despite changes in habitat and response to fire. For example, *Eucalyptus brachyandra* grows on fire-protected cliffs and *E. regnans* dominates wet sclerophyll forest and, although usually killed by high-intensity fires, still retains capacity to resprout epicormically after less intense fires¹⁰.

Sclerophyllous morphology is often assumed to be an adaptation to fire and a driver of diversification^{13,19,20}, but sclerophylls have diverse functions and is not necessarily an indicator of climates in general or fire-prone vegetation in particular^{2,21,22}. Nevertheless, in Australia, the unique epicormic anatomy (types A and B; Supplementary Table S1) of Myrtaceae, especially eucalypts, is known to be responsible for post-fire recovery^{8,9,11}. Although scleromorphy in the Australian flora dates back to the late Cretaceous²¹, there is little direct charcoal fossil evidence for wildfire until the late Miocene¹⁴. Hence, it has been widely assumed that fire-dominated biomes became extensive only when the global climate aridified and became more seasonal after 15 Ma^{12,14}. In other parts of the world, there is charcoal evidence that, in the lead-up to the Palaeocene–Eocene thermal maximum at 55 Ma, fire frequency increased²³, with global atmospheric oxygen levels above those of the present²⁴. During this period, seasonally hot and dry climates originated both in

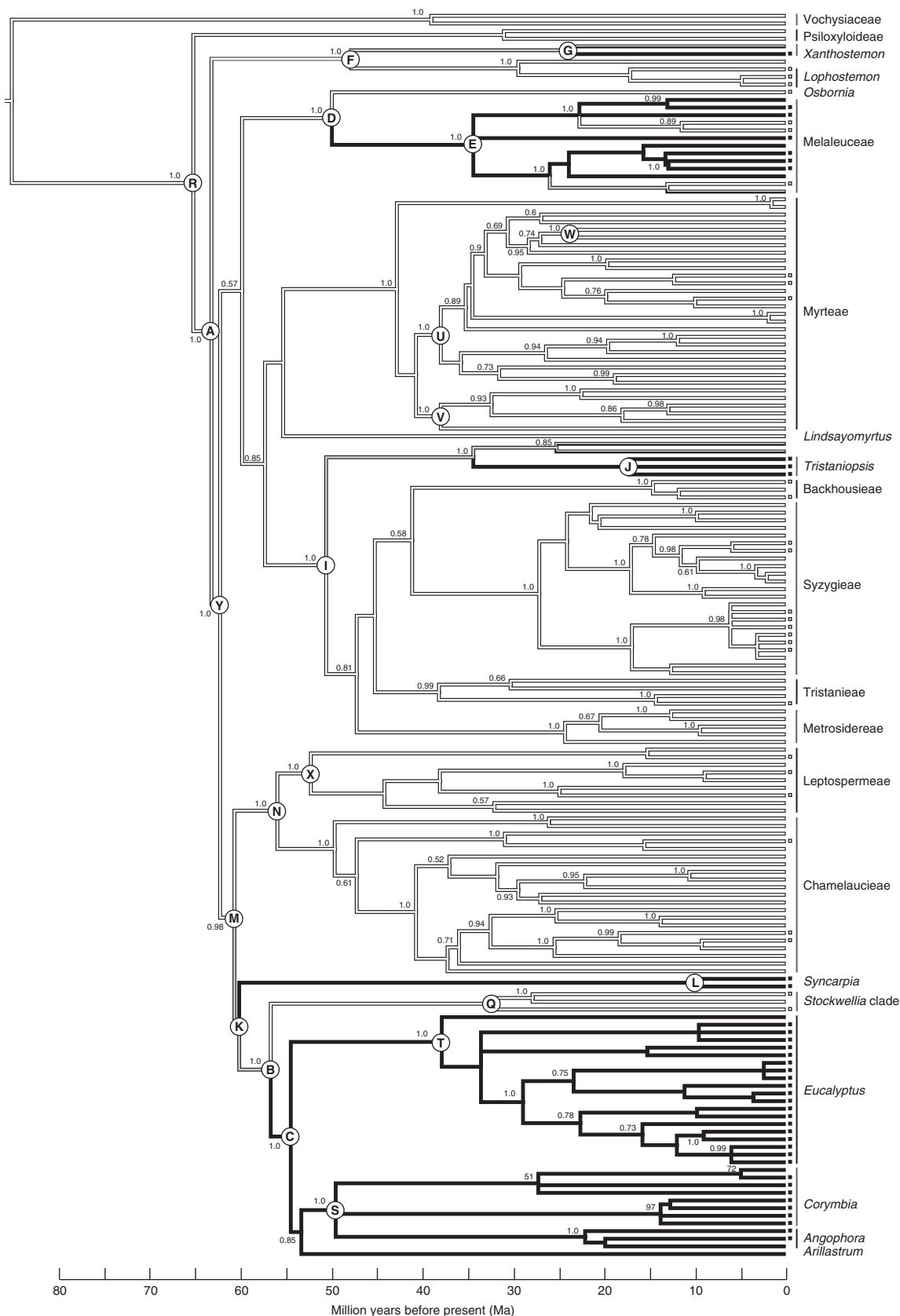


Figure 1 | Inferred evolutionary history of post-fire epicormic resprouting mapped onto a Bayesian phylogeny of Myrtaceae. Time scale is millions of years before present (Ma). Labels indicate higher taxa mentioned in the text. Shading of boxes at tips indicates scoring for the trait 'likely epicormic resprouter' (black), 'likely non-resprouter' (white) or not scored (no box). Ancestral states reconstructed by parsimony are shown at internal branches; grey indicates an equivocal reconstruction. Nodes labelled with upper case letters in circles are for reference from the text and tables. Decimal values on branches indicate Bayesian posterior probabilities; integers (in *Corymbia*) indicate parsimony bootstrap scores.

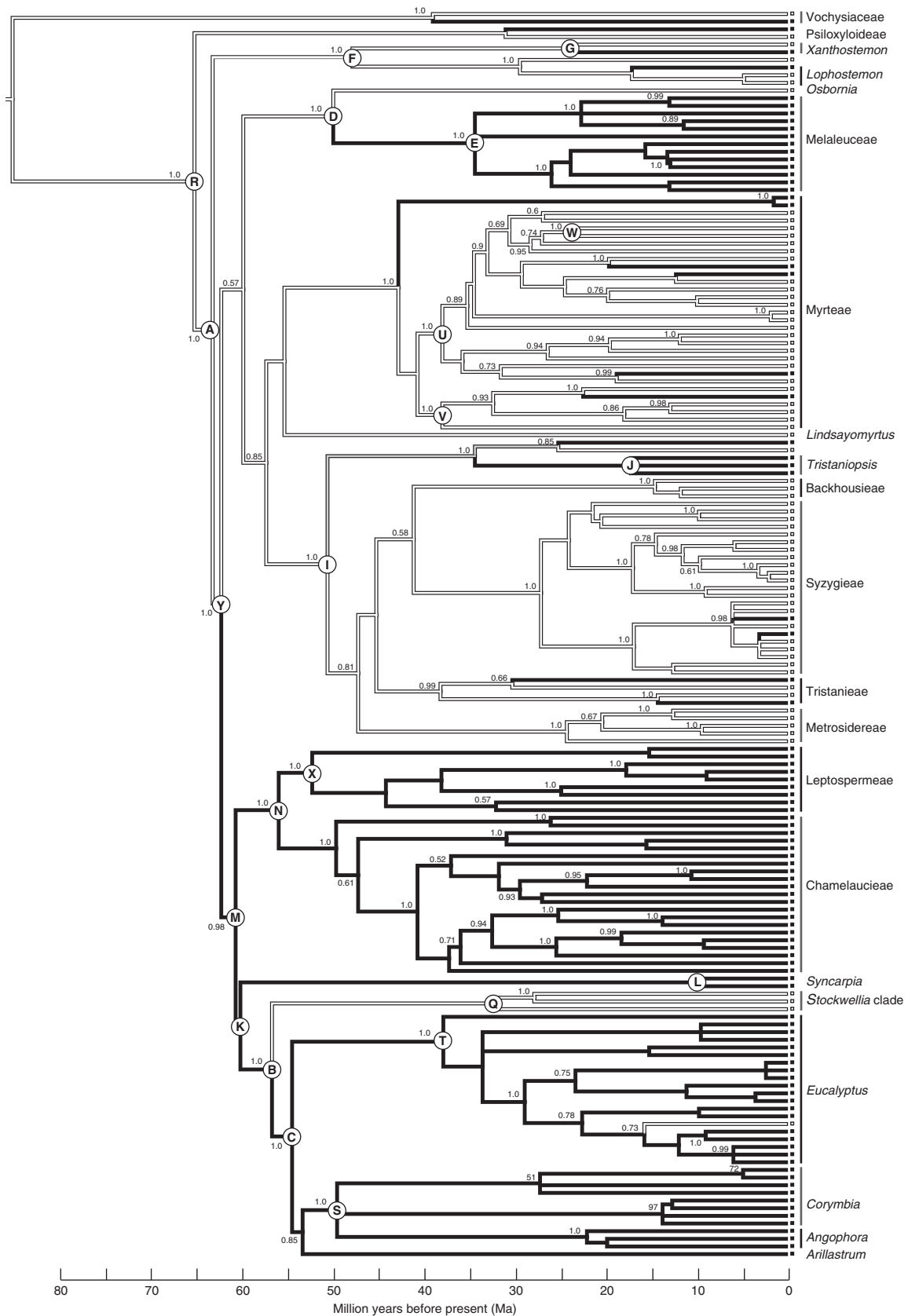


Figure 2 | Inferred evolutionary history of biome flammability mapped onto a Bayesian phylogeny of Myrtaceae. Time scale is millions of years before present (Ma). Labels indicate higher taxa mentioned in the text. Shading of boxes at tips and along branches indicates scoring for the trait ‘biome flammable’ (black) or ‘non-flammable’ (white). Ancestral states reconstructed by parsimony are shown at internal branches; grey indicates an equivocal reconstruction. Nodes labelled with upper case letters in circles are for reference from the text and tables. Decimal values on branches indicate Bayesian posterior probabilities; integers (in *Corymbia*) indicate parsimony bootstrap scores.

Table 1 | Estimated timing of transitions in epicormic and biome traits.

Nodes (letter labels as in Figures)	Age (median Ma with 95% HPD*)	Reconstructed as resprouter			Reconstructed as flammable		
		Parsimony state	ML state†	Shift period (Ma, 95% HPD*)	Parsimony state	ML state†	Shift period (Ma, 95% HPD*)
A: Myrtoideae crown	63 (61–65)	No	No	—	No	No	—
<i>Epicormic plus biome shifts</i>							
Y: Stem of Eucalypteae + Chamelaucieae + Leptospermeae‡,§	62 (60–64)	No	No	—	No	No	—
M: Crown of Eucalypteae + Chamelaucieae + Leptospermeae	60 (58–63)	No	No	—	Yes	Yes	—
K: Eucalypteae + Syncarpieae	60 (—)	Uncertain	No	—	Yes	Yes	—
C: Eucalyptinae	54 (52–57)	Yes	Yes	63–52	Yes	Yes	63–58
D: <i>Melaleuca</i> + <i>Osbornia</i> ‡	50 (37–60)	No	No	—	No	No	—
E: <i>Melaleuca</i> s.l. crown	34 (22–47)	Yes	Yes	60–22	Yes	Yes	60–22
F: <i>Xanthostemon</i> + <i>Lophostemon</i> ‡	48 (30–61)	No	No	—	No	No	—
G: <i>Xanthostemon</i> crown	Uncertain	Uncertain	Uncertain	—	No	No	—
H: <i>X. paradoxus</i>	0	Yes	Yes	<61	Yes	Yes	<61
B: Eucalypteae‡,§	57 (54–59)	Uncertain	No	—	Yes	Yes	—
Q: <i>Stockwellia</i> clade	>28 (<49)	No	No	59–10	No	No	59–10
I: <i>Tristaniopsis</i> + <i>Syzygium</i> ‡	50 (41–59)	No	No	—	No	No	—
J: <i>Tristaniopsis</i> crown	<34 (<49)	Yes	Yes	59–41	Yes	Yes	59–41
<i>Epicormic shifts, no biome shift</i>							
<i>Melaleuca armillaris</i> + <i>M. hypericifolia</i>	<34 (<47)	No	No	<47	Yes	Yes	No shift
<i>Calothamnus quadrifidus</i>	<34 (<47)	No	No	<47	Yes	Yes	No shift
<i>Biome shift, no epicormic shift¶</i>							
Y: Stem of Chamelaucieae + Leptospermeae + Eucalypteae‡,§	62 (60–64)	No	No	—	No	No	—
M: Crown of Chamelaucieae + Leptospermeae + Eucalypteae	61 (58–63)	No	No	—	Yes	Yes	—
N: Chamelaucieae + Leptospermeae	56 (54–58)	No	No	No shift	Yes	Yes	54–64

*HPD is the Bayesian highest posterior density²², equivalent to a 95% confidence interval.
†ML is the maximum likelihood estimate of the preferred state. Entry given in bold indicates a significant preference from a likelihood ratio test ($P < 0.05$).
‡This row represents the ancestral node and the following rows its descendants.
§The sequence of events at the base of the eucalypts is unclear and the alternative reconstruction is described in the Results.
||Reversals to non-resprouting types within *Melaleuca*, whose ancestor reconstructs as a resprouter occurring in the sclerophyll biome. The timing of these shifts is uncertain because of lack of branch length information within the group.
¶Also, in terminals *Lophostemon lactiflorus*, *Tristania neriifolia*, *Syzygium eucalyptoides*, *S. suborbiculare* and *Austromyrtus dulcis*. All these transitions occurred ≤ 15 Ma.

Australia²⁵ and elsewhere²⁶, and such climates are characterized by fires ignited by electrical storms². Our results suggest, independently of the fossil record, that fire-dominated communities were present in Australia during this period.

Limited palaeontological evidence suggests that a monsoonal climate might have originated in Australia by 30 Ma^{18,27}. Some of

the shifts into savanna inferred for Myrtaceae could have occurred before 30 Ma, in the Oligocene or Eocene (Supplementary Fig. S2); however, all monsoonal lineages have long stems that terminate in the Miocene or even in the present. As a transition could have occurred at any point along a lineage stem, none positively indicates a pre-Miocene origin of savanna (Supplementary Fig. S2). Multiple

lines of evidence show that the savanna biome expanded worldwide in the late Miocene^{15,16} and our results for Myrtaceae are consistent with this.

Did the Myrtaceae make the flammable biomes or *vice versa*? These two alternatives make different predictions. If fire drove evolutionary change, one might expect multiple consequent origins of the trait that conveys tolerance. Alternatively, if the dominance of Myrtaceae led to biome flammability, this could have resulted from a single preceding shift to epicormic resprouting in the family. Foliar glands that produce aromatic oils are found throughout Myrtaceae, and probably evolved in their ancestor as a toxic defence against herbivores and also promoted flammability of plants²⁸. Thus, epicormic resprouting could be the result of selection originating as a by-product of a defense system. However, our data show multiple origins of resprouting in Myrtaceae: once in each of *Melaleuca*, *Tristaniopsis* and *Xanthostemon* and once or twice in the eucalypt–*Syncarpia* lineage (Fig. 1), favouring the hypothesis that flammable biomes originated first. There is no evidence that the epicormic change preceded the shift to a flammable biome in any lineage; rather, the biome transition apparently occurred before the epicormic change in the eucalypt–*Syncarpia* lineage (see, Supplementary Figs S1 and S2). A third possibility combines these scenarios. Myrtaceae could have risen to dominance first, favouring a fire regime that then selected for epicormic shifts in multiple lineages, thus initiating a feedback loop that maintained or increased the dominance of Myrtaceae.

The eucalypts appear to be the key to the rise to dominance of the Myrtaceae in Australia. Why then have eucalypts not taken over the seasonally dry regions of the world? During the Miocene, eucalypts were present in New Zealand and Southeast Asia in association with other sclerophyll and xeric flora, such as acacias, chenopods and Casuarinaceae^{7,29,30}. At this time, there was an abundance of charcoal, indicating frequent burning in these communities^{29,30}. Multiple crown-group eucalypt lineages were also present in Patagonia during the early Eocene³¹. They persist in Southeast Asia today, but have since gone extinct in New Zealand and Patagonia, likely as a result of climate change to wetter and colder conditions that are no longer so prone to fire^{19,32}. Dispersal limitation may account for the lack of spread of eucalypts beyond the immediate region since the end of the Eocene, when Australia separated from East Gondwana.

Recently, it was suggested that eucalypts could make a large contribution to carbon sequestration in a future greenhouse world, based on a demonstrated positive growth response to an elevation of either atmospheric CO₂ or temperature³³. Our results independently predict that eucalypt forests and woodlands could be a superior long-term carbon bank compared with climatically similar fire-dependent biomes in other continents. By resprouting from the trunk and branches, eucalypts preserve most of their aboveground woody biomass after wildfires, both in northern savanna³ and in sclerophyll forest of the temperate southeast³⁴. In contrast, other trees that do not resprout epicormically lose their aerial wood after high-intensity fire (as opposed to lower-intensity fires, which their stems might survive). Consequently, in non-epicormic resprouters, the woody biomass decays and the stored carbon is released after the fire. Such trees either resprout from the base or are killed and regenerate from seed^{35,36}. They recover more slowly than eucalypts after fire³⁷ and are forced to accumulate aboveground wood from scratch. When a pine forest planted for carbon capture burns, the trees die and the carbon bank drains.

Methods

Phylogenetics. A dated molecular phylogeny of Myrtaceae was constructed using 66 species with known epicormic anatomy (Supplementary Table S1) and 97 additional taxa, totalling 163 terminals representing higher taxa across the family, on the basis of a recent phylogenetic classification of the family³⁸. Most deep-level phylogenetic diversity in the family is found within Australia (for example, 14 of 15 tribes in subfamily Myrtoideae), but we also sampled extra-Australian members of these (where applicable) and the sixteenth tribe (Metrosiderae) to ensure

representation of their geography and biomes. Additionally, we sampled both genera of subfamily Psiloxylloideae and of the sister group, Vochysiaceae.

The phylogeny was constructed in two stages. First, sequences of 111 taxa of ITS (internal transcribed spacers of nuclear ribosomal DNA), *matK* and *ndhF* from Genbank (Supplementary Table S3) were aligned and concatenated after checking for pseudogenes (ITS) and conflicts between data partitions. A rate-smoothed phylogeny, in which branch lengths were proportional to time (chronogram), was derived using Bayesian inference in BEAST³⁹, ver. 1.5.4. The alignment was divided into seven partitions: ITS, 5' flanking region of *matK*, first codon sites of *matK*, second codon sites of *matK*, third codon sites of *matK*, first codon sites of *ndhF*, second codon sites of *ndhF* and third codon sites of *ndhF*. Each partition was assigned an independent General Time Reversible model of nucleotide substitution, chosen using the Bayesian information criterion, as calculated using Model-generator⁴⁰. Rate variation among lineages was modelled using an uncorrelated lognormal relaxed clock and a birth–death process was used for the tree prior probability distribution. Posterior distributions of all parameter values, including the tree, were estimated via Markov chain Monte Carlo (MCMC) sampling. Three replicate MCMC runs were performed, with the tree and parameter values sampled every 5 × 10³ steps over a total of 5 × 10⁷ steps. Tracer 1.5 (ref. 41) was used to assess convergence between runs and to estimate an appropriate number of samples to discard as burn-in by ensuring that effective sample sizes were sufficient (that is, > 200) to provide reasonable estimates of model parameter variance. This was done by progressively discarding samples until all effective sample sizes exceeded 200. Posterior samples from the three independent runs were combined and the trees and parameter values were summarized. The sampled tree with the maximum product of clade credibilities was identified using TreeAnnotator³⁹ and viewed using FigTree 1.3.1 (ref. 42). The phylogeny was estimated both with and without internal constraints to test whether calibration affected the topology⁴³.

Calibration of the relaxed molecular clock. To estimate absolute divergence times, the analysis was calibrated using pollen fossils of known age placed at seven internal nodes. Fossil pollens suitable for calibration were identified using a backbone-constraint test¹⁹. This method searches for the most parsimonious placement of fossil pollens on a molecular phylogeny, using a pollen character data matrix scored for the terminal taxa. A total of 26 pollen fossils were added one at a time to a morphological matrix containing 111 extant taxa and 11 pollen characters. The phylogenetic placement of each fossil on the unconstrained molecular phylogeny was estimated using heuristic parsimony searches of 100 random-addition replicates with tree-bisection-reconnection in PAUP⁴⁴, with the tree-search constrained by the molecular phylogeny estimated without internal calibrations. As suggested¹⁹, the most parsimonious +1 and +2 trees were also saved, to assess confidence of fossil placements. The test identified seven fossils as suitable for calibration (Supplementary Table S2). In cases in which more than one fossil was placed at a given node, the oldest was used for calibration. Nodes used as calibration points (Supplementary Table S2) were constrained to be monophyletic in the BEAST analysis; all these nodes were supported in the unconstrained analysis.

A prior distribution (lognormal or normal) was assigned to each calibration point, as recommended⁴⁵. The root of the tree, being the stem node of Myrtaceae, was calibrated with a normally distributed age estimate of 85 Ma with s.d. = 2.5 (Supplementary Table S2). We used the fossil *Myrtaceidites mesonesus* (61 Ma) to calibrate the crown of Myrtaceae instead of *M. lisamae* (~86 Ma), used previously⁴⁵, because the backbone-constraint test¹⁹ indicated that the latter was probably misplaced as a member of the Myrtaceae crown. Recently, 52-*Ma Eucalyptus* macrofossils were discovered in Patagonia³¹ and are older than our 37 Ma constraint (*M. eucalyptoides*, Supplementary Table S2) for the crown node of the genus. However, we could not use the Patagonian fossils as a constraint because morphological descriptions needed to place them on the phylogeny are not yet published. If we had been able to use these fossils as a constraint, our dating estimates could have been even older, implying even earlier origins of flammability.

Interpolation of taxa with known anatomy. In the second stage of the phylogenetics, 52 taxa with known epicormic anatomy (Supplementary Table S1), but lacking sequence data, were interpolated by hand into the chronogram (Figs 1 and 2; Supplementary Figs S1 and S2) on the basis of their position in other phylogenies, that is, eucalypts^{27,46,47}, *Melaleuca*⁴⁸, *Syzygium s.l.*⁴⁹ and Myrtaceae, using *matK* only³⁸. Chronological branch lengths were unavailable for some interpolated taxa and, in these cases, branch lengths were arbitrarily equalized above and below the interpolated nodes. This did not affect the inferences of trait evolution in the eucalypt lineage because the transitions to flammability occurred near the base of the tree, where branch length information was available. However, branch length uncertainty within *Syncarpia*, *Tristaniopsis* and *Xanthostemon* resulted in wide bounds on the timing estimates of transitions within these lineages (Table 1).

Epicormic anatomy. We scored a matrix for five epicormic structural types across 66 myrtaceous taxa studied to date^{8–11,50} and for their biome of occurrence (Supplementary Table S1). In the first (type A), the bud-forming cells comprise meristem strips (that is, radially oriented strips of cells of meristematic appearance) and are present at all depths in the bark, and in most cases probably extend a short distance into the outer secondary xylem. For the available bark thickness, this

structure provides the maximum heat protection for the bud-forming cells. In the second type (B), the epicormic buds or bud-forming meristems are located close to the cambial surface and covered by numerous layers of dead bark (paperbarks). The papery structure provides maximum heat protection for the bud-forming cells, but buds need to emerge through numerous bark layers. In the third type (C), epicormic buds are located at the base of a narrow depression in the bark and are thus about halfway between the bark surface and the cambial surface. This provides an intermediate level of protection for the available bark thickness. In the fourth type (D), epicormic buds are situated at or near the bark surface, giving minimal protection from the heat of a fire. In the fifth type (E), epicormic bud-forming structures are apparently absent. Various processes have been implicated in the death of epicormic buds or failure in their initial development¹⁰.

Trait evolution. These data were imported into Mesquite ver. 2.7 (ref. 51) and SIMMAP ver. 1.5 (ref. 52) together with the phylogeny constructed as above. Some of the statistical tests used in Mesquite required binary variables; hence, the epicormic character was rescored to indicate whether the anatomy of each species indicated a likely (types A–C) or unlikely (types D and E) epicormic resprouter after a moderate-to-intense fire, on the basis of the degree of protection given to the epicormic buds and meristems (Supplementary Table S1). Similarly, the biomes were rescored according to whether they are fire-dependent (subject to recurrent fires, that is, monsoonal savanna and southern sclerophyll) or not (everwet, that is, rainforest and mangrove). Additionally, all 163 taxa in the phylogeny were scored for the biome and flammability characters, whether their epicormic traits were known or not.

Ancestral states of each trait were reconstructed at the crown node of Myrtoideae, as well as the number and timing of transitions in each trait, using the parsimony and ML models in Mesquite. In Mesquite, likelihood ratio tests determined that the single transition-rate model, Mk1⁵³, sufficed for the epicormic traits, whereas the Mk2 model (with differential forward and reverse rates) was a significantly better fit for the biome traits.

Comparative hypothesis tests. A primary aim of this study was to test whether protection of epicormic regenerative tissue in Myrtaceae is positively correlated with flammability of habitat. First, we tested whether the variables in question are phylogenetically conserved, because biome conservation has been demonstrated previously in eucalypts¹⁷ and conservation of post-fire persistence traits has been found in taxa occurring in fire-dependent communities⁵⁴. Phylogenetic conservatism of all four traits was tested in Mesquite using a null distribution generated from 1,000 randomizations of the tips of the phylogeny, with parsimony tree length as the test variable¹⁷. Significant results ($P < 0.001$) from all these tests indicated that a tree-based correlation test was necessary to assess the relationship between the traits. We used the Pagel94 implementation in Mesquite of Pagel's⁵⁵ test, which takes phylogenetic conservatism into account. As recommended, we generated a null distribution using 1,000 simulations and set the number of iterations of the likelihood estimation to 20, rather than the default 8. For testing the primary hypothesis, the Y (dependent) variable was 'likely resprouter/not' and the X (independent) variable was 'biome fire-dependent/not'. The same test was used to address the question whether taxa in the monsoonal savanna biome are less likely to have resprouting epicormic anatomy than those in the southern sclerophyll biome, that is $Y =$ 'likely resprouter/not' and $X =$ 'biome savanna/sclerophyll'. In this case, taxa occurring in rainforest were irrelevant and eliminated from the analysis. These tests were repeated using Bayesian stochastic mapping as implemented in SIMMAP ver. 1.5 (ref. 52). The advantage of the Bayesian approach over parsimony and ML mapping is that uncertainty in parameters can be accommodated by using MCMC samples from their respective posterior distributions⁵⁶. We accepted default prior values for the transition bias (β , uninformative, $\alpha = 1.0$), γ and MCMC sampling parameters.

References

- Bond, W. J., Woodward, F. I. & Midgley, G. F. The global distribution of ecosystems in a world without fire. *New Phytol.* **165**, 525–537 (2005).
- Bowman, D.M.J.S. *Australian Rainforests: Islands of Green in a Land of Fire* (Cambridge Univ. Press, 2000).
- Russell-Smith, J., Whitehead, P. J., Cook, G. D. & Hoare, J. L. Response of *Eucalyptus*-dominated savanna to frequent fires: lessons from Munmarlary, 1973–1996. *Ecol. Monogr.* **743**, 349–375 (2003).
- Latz, P. K. *The Flaming Desert: Arid Australia—a Fire-shaped Landscape* (NT Print Management, 2007).
- Bowman, D. M. J. S., Boggs, G. S. & Prior, L. D. Fire maintains an *Acacia aneura* shrubland—*Triodia* grassland mosaic in central Australia. *J. Arid Environ.* **72**, 34–47 (2008).
- Bradstock, R. A. A biogeographic model of fire regimes in Australia: current and future implications. *Global Ecol. Biogeogr.* **19**, 145–158 (2010).
- Ladiges, P. Y., Udovicic, F. & Nelson, G. Australian biogeographical connections and the phylogeny of large genera in the plant family Myrtaceae. *J. Biogeogr.* **30**, 989–998 (2003).
- Burrows, G. E. Epicormic strand structure in *Angophora*, *Eucalyptus* and *Lophostemon* (Myrtaceae)—implications for fire resistance and recovery. *New Phytol.* **153**, 111–131 (2002).
- Burrows, G. E. *Syncarpia* and *Tristaniopsis* (Myrtaceae) possess specialised fire-resistant epicormic structures. *Aust. J. Bot.* **56**, 254–264 (2008).
- Waters, D. A., Burrows, G. E. & Harper, J. D. I. *Eucalyptus regnans* (Myrtaceae): a fire-sensitive eucalypt with a resprouter epicormic structure. *Am. J. Bot.* **97**, 545–556 (2010).
- Burrows, G. E. *et al.* A wide diversity of epicormic structures is present in Myrtaceae species in the northern Australian savanna biome—implications for adaptation to fire. *Aust. J. Bot.* **58**, 493–507 (2010).
- Fink, S. The occurrence of adventitious and preventitious buds within the bark of some temperate and tropical trees. *Am. J. Bot.* **70**, 532–542 (1983).
- Orians, G. H. & Milewski, A. V. Ecology of Australia: the effects of nutrient-poor soils and intense fires. *Biol. Rev.* **82**, 393–423 (2007).
- Kershaw, A. P., Clark, J. S., Gill, A. M. & D'Costa, D. M. In *Flammable Australia: The Fire Regimes and Biodiversity of Australia* (eds Bradstock, R. A., Williams, J. E. & Gill, M. A.) 3–25 (Cambridge Univ. Press, 2002).
- Bond, W. J. What limits trees in C-4 grasslands and savannas? *Annu. Rev. Ecol. Evol. Syst.* **39**, 641–659 (2008).
- Beerling, D. J. & Osborne, C. P. The origin of the savanna biome. *Global Change Biol.* **12**, 2023–2031 (2006).
- Crisp, M. D. *et al.* Phylogenetic biome conservatism on a global scale. *Nature* **458**, 754–756 (2009).
- Bowman, D. M. J. S. *et al.* Biogeography of the Australian monsoon tropics. *J. Biogeogr.* **37**, 201–216 (2010).
- Sauquet, H. *et al.* Contrasted patterns of hyperdiversification in Mediterranean hotspots. *Proc. Natl Acad. Sci. USA* **106**, 221–225 (2009).
- Verdu, M., Pausas, J. G., Segarra-Moragues, J. G. & Ojeda, F. Burning phylogenies: fire, molecular evolutionary rates, and diversification. *Evolution* **61**, 2195–2204 (2007).
- Hill, R. S. Fossil evidence for the onset of xeromorphy and scleromorphy in Australian Proteaceae. *Aust. Syst. Bot.* **11**, 391–400 (1998).
- Haworth, M. & McElwain, J. Hot, dry, wet, cold or toxic? Revisiting the ecological significance of leaf and cuticular micromorphology. *Palaeogeogr. Palaeoclimatol.* **262**, 79–90 (2008).
- Collinson, M. E. *et al.* Palynological evidence of vegetation dynamics in response to palaeoenvironmental change across the onset of the Paleocene-Eocene thermal maximum at Cobham, Southern England. *Grana* **48**, 38–66 (2009).
- Glasspool, I. J. & Scott, A. C. Phanerozoic concentrations of atmospheric oxygen reconstructed from sedimentary charcoal. *Nat. Geosci.* **3**, 627–630 (2010).
- Macphail, M. *Australian Palaeoclimates: Cretaceous to Tertiary. A Review of Palaeobotanical and Related Evidence to the Year 2000* (Cooperative Research Centre for Landscape Environments and Mineral Exploration, 2007).
- Raigemborn, M., Brea, M., Zucol, A. & Matheos, S. Early Paleogene climate at mid latitude in South America: mineralogical and paleobotanical proxies from continental sequences in Golfo San Jorge basin (Patagonia, Argentina). *Geol. Acta* **7**, 125–145 (2009).
- Crisp, M. D., Cook, L. G. & Steane, D. A. Radiation of the Australian flora: what can comparisons of molecular phylogenies across multiple taxa tell us about the evolution of diversity in present-day communities? *Philos. Trans. R. Soc. B Biol. Sci.* **359**, 1551–1571 (2004).
- Steinbauer, M. J. Latitudinal trends in foliar oils of eucalypts: environmental correlates and diversity of chrysomelid leaf-beetles. *Austral. Ecol.* **35**, 205–214 (2010).
- Rull, V. Ecostratigraphic study of Paleocene and early Eocene palynological cyclicity in northern South America. *Palaiois* **15**, 14–24 (2000).
- Pole, M. New Zealand climate in the Neogene and implications for global atmospheric circulation. *Palaeogeogr. Palaeoclimatol.* **193**, 269–284 (2003).
- Hermesen, E. J., Gandolfo, M. A., Wilf, P., Cuneo, N.R. & Johnson, K. R. Systematics of Eocene angiosperm reproductive structures from the Laguna del Huncu flora, NW Chubut province, Patagonia, Argentina. *Geol. Soc. Am.* **42**, 373 (2010).
- Pole, M., Dawson, J. & Denton, T. Fossil Myrtaceae from the Early Miocene of southern New Zealand. *Aust. J. Bot.* **56**, 67–81 (2008).
- Ghannoum, O. *et al.* Exposure to preindustrial, current and future atmospheric CO₂ and temperature differentially affects growth and photosynthesis in *Eucalyptus*. *Global Change Biol.* **16**, 303–319 (2010).
- Keith, H., Mackey, B., Berry, S., Lindenmayer, D. & Gibbons, P. Estimating carbon carrying capacity in natural forest ecosystems across heterogeneous landscapes: addressing sources of error. *Global Change Biol.* **16**, 2971–2989 (2010).
- Bond, W. J. & Midgley, J. J. Ecology of sprouting in woody plants: the persistence niche. *Trends Ecol. Evol.* **16**, 45–51 (2001).
- Hoffmann, W. A. *et al.* Tree topkill, not mortality, governs the dynamics of savanna-forest boundaries under frequent fire in central Brazil. *Ecology* **90**, 1326–1337 (2009).
- Gouveia, C., DaCamara, C. C. & Trigo, R. M. Post-fire vegetation recovery in Portugal based on spot vegetation data. *Nat. Hazard. Earth Syst.* **10**, 673–684 (2010).
- Wilson, P. G., O'Brien, M. M., Heslewood, M. M. & Quinn, C. J. Relationships within Myrtaceae *sensu lato* based on a *matK* phylogeny. *Plant Syst. Evol.* **251**, 3–20 (2005).

39. Drummond, A. J. & Rambaut, A. BEAST: Bayesian evolutionary analysis by sampling trees. *BMC Evol. Biol.* **7**, 214 (2007).
40. Keane, T. M., Creevey, C. J., Pentony, M. M., Naughton, T. J. & McInerney, J. O. Assessment of methods for amino acid matrix selection and their use on empirical data shows that *ad hoc* assumptions for choice of matrix are not justified. *BMC Evol. Biol.* **6**, 29 (2006).
41. Rambaut, A. & Drummond, A. J. Tracer v1.5, <http://beast.bio.ed.ac.uk/Tracer> (2007).
42. Rambaut, A. FigTree 1.3, <http://tree.bio.ed.ac.uk/software/figtree/> (2009).
43. Ho, S. Y. W. & Phillips, M. J. Accounting for calibration uncertainty in phylogenetic estimation of evolutionary divergence times. *Syst. Biol.* **58**, 367–380 (2009).
44. PAUP*. *Phylogenetic Analysis Using Parsimony (*and Other Methods) Version 4b10* (Sinauer Associates, 2002).
45. Sytsma, K. J. *et al.* Clades, clocks, and continents: historical and biogeographical analysis of Myrtaceae, Vochysiaceae, and relatives in the Southern Hemisphere. *Int. J. Plant Sci.* **165**, S85–S105 (2004).
46. Steane, D. A., Nicolle, D., McKinnon, G. E., Vaillancourt, R. E. & Potts, B. M. Higher-level relationships among the eucalypts are resolved by ITS sequence data. *Aust. Syst. Bot.* **15**, 49–62 (2002).
47. Steane, D. A., Nicolle, D. & Potts, B. M. Phylogenetic positioning of anomalous eucalypts by using ITS sequence data. *Aust. Syst. Bot.* **20**, 402–408 (2007).
48. Edwards, R. D., Craven, L. A., Crisp, M. D. & Cook, L. G. *Melaleuca* revisited: cpDNA data confirm that *Melaleuca* L. (Myrtaceae) is not monophyletic. *Taxon* **59**, 744–754 (2010).
49. Biffin, E. *et al.* Evolution of exceptional species richness amongst lineages of fleshy-fruited Myrtaceae. *Ann. Bot.* **106**, 79–93 (2010).
50. Burrows, G. E. An anatomical study of epicormic bud strand structure in *Eucalyptus cladocalyx* (Myrtaceae). *Aust. J. Bot.* **48**, 233–245 (2000).
51. Maddison, W. P. & Maddison, D. R. Mesquite: a modular system for evolutionary analysis. Version 2.7., <http://mesquiteproject.org> (2009).
52. Bollback, J. P. SIMMAP: Stochastic character mapping of discrete traits on phylogenies. *BMC Bioinf.* **7**, 88 (2006).
53. Lewis, P. O. A likelihood approach to estimating phylogeny from discrete morphological character data. *Syst. Biol.* **50**, 913–925 (2001).
54. Verdu, M., Davila, P., Garcia-Fayos, P., Flores-Hernandez, N. & Valiente-Banuet, A. 'Convergent' traits of mediterranean woody plants belong to pre-mediterranean lineages. *Biol. J. Linn. Soc.* **78**, 415–427 (2003).
55. Pagel, M. Detecting correlated evolution on phylogenies—a general method for the comparative analysis of discrete characters. *Proc. R. Soc. B Biol. Sci.* **255**, 37–45 (1994).
56. Huelsenbeck, J. P., Nielsen, R. & Bollback, J. P. Stochastic mapping of morphological characters. *Syst. Biol.* **52**, 131–158 (2003).

Acknowledgments

We acknowledge funding from the Australian Research Council and the Hermon Slade Foundation. We are grateful to Simon Ho, Richard Carter and Lindsay Popple for assistance with the BEAST analysis and Mike Macphail for fossil pollen data used for calibration. Lindsay Popple and Richard Carter commented on the manuscript.

Author contributions

G.E.B. contributed the epicormic anatomy data and interpretation for scoring. A.H.T. contributed the sequence and calibration data and did the Bayesian phylogenetic analysis. D.M.J.S.B. conceived the study and provided background information on fire ecology. M.D.C. made the final phylogeny, performed the trait evolution analyses and wrote the manuscript in collaboration with L.G.C. All authors discussed the results and commented on the manuscript.

Additional information

Supplementary Information accompanies this paper at <http://www.nature.com/naturecommunications>

Competing financial interests: The authors declare no competing financial interests.

Reprints and permission information is available online at <http://npg.nature.com/reprintsandpermissions/>

How to cite this article: Crisp, M. D. *et al.* Flammable biomes dominated by eucalypts originated at the Cretaceous–Palaeogene boundary. *Nat. Commun.* **2**:193 doi: 10.1038/ncomms1191 (2011).