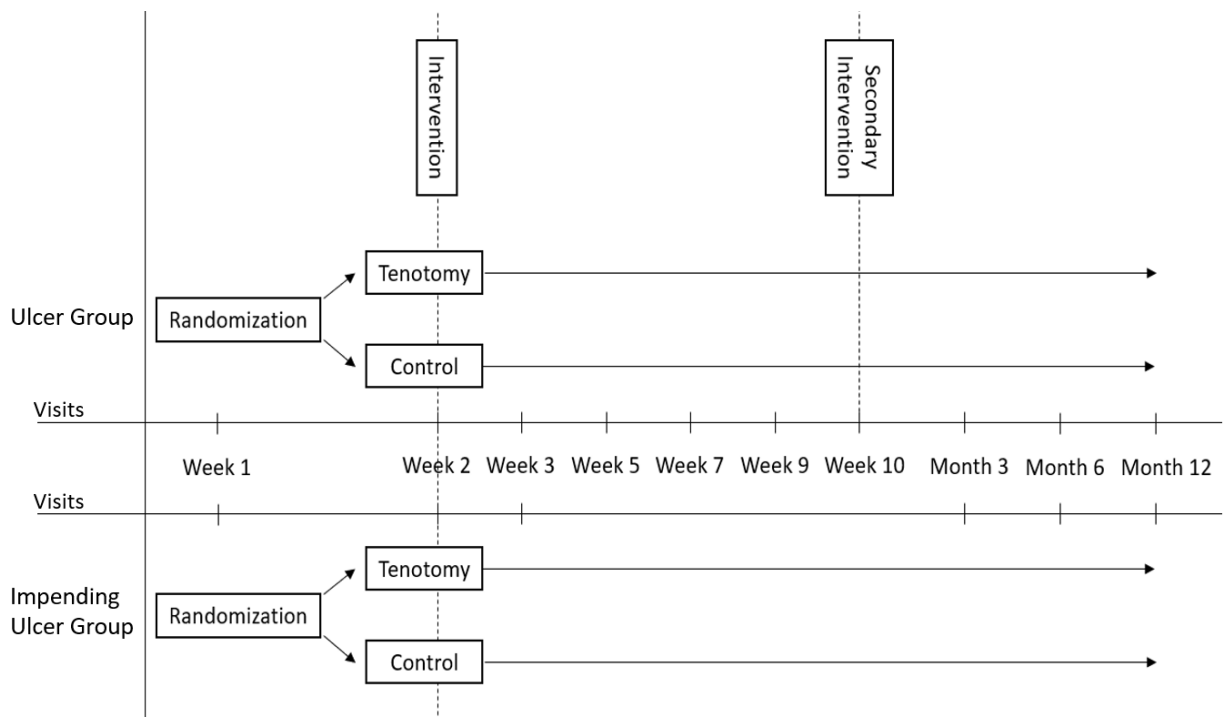
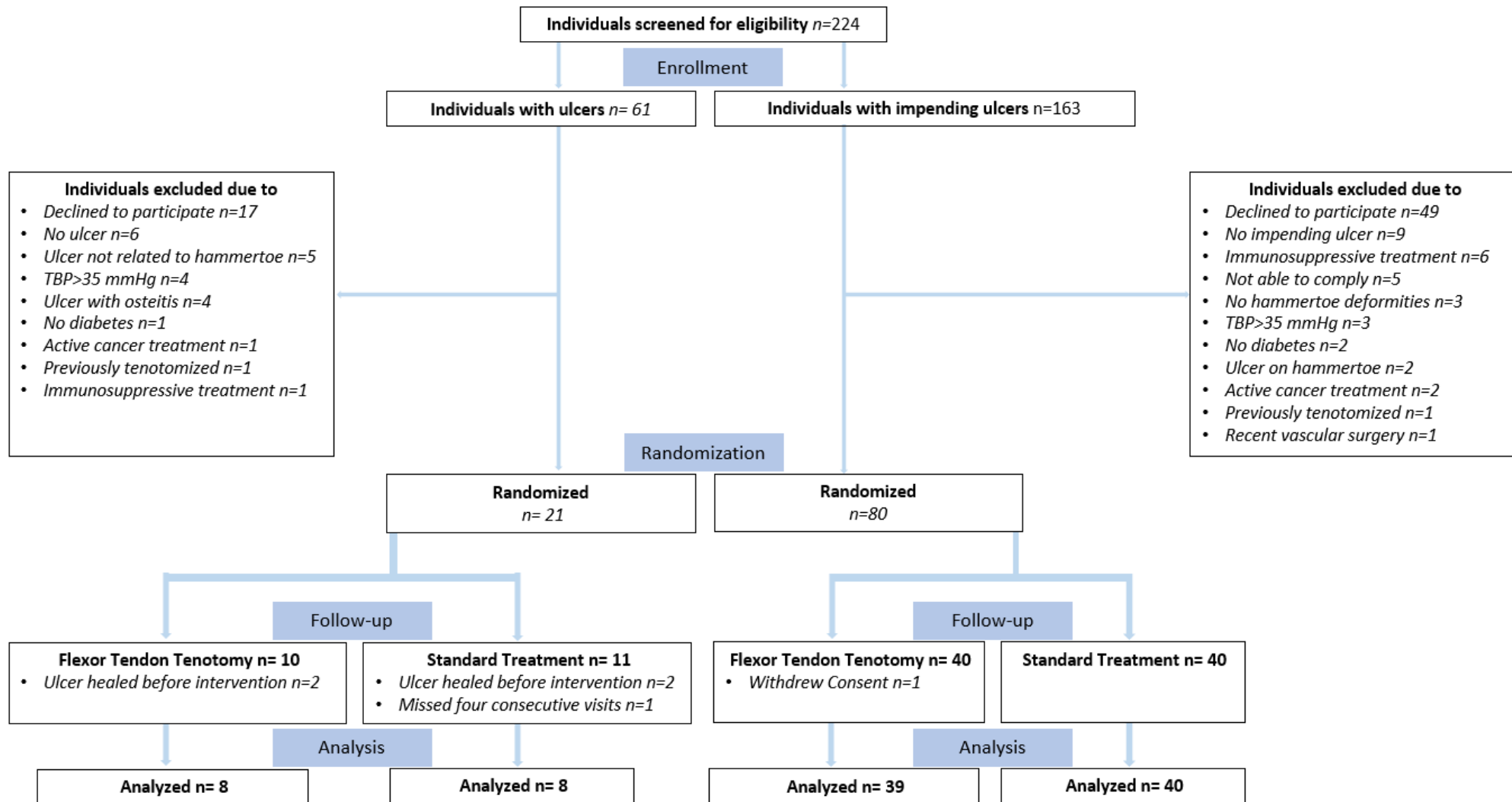


Supplemental Figure 1. Flowchart RCT (tenotomy) study



Flowchart showing visit plan for RCT study, divided in Ulcer-group and Impending Ulcer-Group. Secondary intervention refers to date where secondary intervention was offered if participant, in control group, did not achieve healing of index ulcer or incurred recurrence after primary healing of index ulcer.

Supplemental Figure 2. Consort diagram for tenotomy study



Consort diagram for individuals screened for the tenotomy study.
TBP: Toe Blood Pressure

