

 Open access • Posted Content • DOI:10.1101/306951

## **FMRIPrep: a robust preprocessing pipeline for functional MRI** — [Source link](#)

[Oscar Esteban](#), [Christopher J. Markiewicz](#), [Ross Blair](#), [Craig A. Moodie](#) ...+12 more authors

**Institutions:** [Stanford University](#), [Max Planck Society](#), [University of Iowa](#), [Massachusetts Institute of Technology](#) ...+2 more institutions

**Published on:** 06 May 2018 - [bioRxiv](#) (Cold Spring Harbor Laboratory)

### Related papers:

- [Nipype: A Flexible, Lightweight and Extensible Neuroimaging Data Processing Framework in Python](#)
- [Accurate and robust brain image alignment using boundary-based registration.](#)
- [N4ITK: Improved N3 Bias Correction](#)
- [Methods to detect, characterize, and remove motion artifact in resting state fMRI](#)
- [Segmentation of brain MR images through a hidden Markov random field model and the expectation-maximization algorithm](#)

Share this paper:    

View more about this paper here: <https://typeset.io/papers/fmriprep-a-robust-preprocessing-pipeline-for-functional-mri-3hqk1p52t>

# FMRIPrep: a robust preprocessing pipeline for functional MRI

Oscar Esteban<sup>1\*</sup>, Christopher J. Markiewicz<sup>1</sup>, Ross W. Blair<sup>1</sup>, Craig A. Moodie<sup>2</sup>, A. Ilkay Isik<sup>3</sup>, Asier Erramuzpe<sup>4</sup>, James D. Kent<sup>5</sup>, Mathias Goncalves<sup>6</sup>, Elizabeth DuPre<sup>7</sup>, Madeleine Snyder<sup>8</sup>, Hiroyuki Oya<sup>9</sup>, Satrajit S. Ghosh<sup>6,10</sup>, Jessey Wright<sup>1</sup>, Joke Durnez<sup>1</sup>, Russell A. Poldrack<sup>1‡</sup>, Krzysztof J. Gorgolewski<sup>1‡\*</sup>

\*For correspondence:

[phd@oscaresteban.es](mailto:phd@oscaresteban.es) (OE);  
[krzysztof.gorgolewski@gmail.com](mailto:krzysztof.gorgolewski@gmail.com) (KG)

‡Contributed equally to this work

<sup>1</sup>Department of Psychology, Stanford University, California, USA; <sup>2</sup>Medical School Center, Stanford University, California, USA; <sup>3</sup>Max Planck Institute for Empirical Aesthetics, Hesse, Germany; <sup>4</sup>Computational Neuroimaging Lab, Biocruces Health Research Institute, Bilbao, Spain; <sup>5</sup>Neuroscience Program, University of Iowa, USA; <sup>6</sup>McGovern Institute for Brain Research, Massachusetts Institute of Technology: MIT, Cambridge, MA, USA; <sup>7</sup>Montreal Neurological Institute, McGill University; <sup>8</sup>Department of Psychiatry, Stanford Medical School, Stanford University, California, USA; <sup>9</sup>Department of Neurosurgery, University of Iowa Health Care, Iowa City, Iowa; <sup>10</sup>Department of Otolaryngology, Harvard Medical School, Boston, MA, USA

**Preprocessing of functional MRI (fMRI) involves numerous steps to clean and standardize data before statistical analysis. Generally, researchers create *ad hoc* preprocessing workflows for each new dataset, building upon a large inventory of tools available for each step. The complexity of these workflows has snowballed with rapid advances in MR data acquisition and image processing techniques. We introduce *fMRIPrep*, an analysis-agnostic tool that addresses the challenge of robust and reproducible preprocessing for task-based and resting fMRI data. *fMRIPrep* automatically adapts a best-in-breed workflow to the idiosyncrasies of virtually any dataset, ensuring high-quality preprocessing with no manual intervention. By introducing visual assessment checkpoints into an iterative integration framework for software-testing, we show that *fMRIPrep* robustly produces high-quality results on a diverse fMRI data collection comprising participants from 54 different studies in the OpenfMRI repository. We review the distinctive features of *fMRIPrep* in a qualitative comparison to other preprocessing workflows. We demonstrate that *fMRIPrep* achieves higher spatial accuracy as it introduces less uncontrolled spatial smoothness than commonly used preprocessing tools. *fMRIPrep* has the potential to transform fMRI research by equipping neuroscientists with a high-quality, robust, easy-to-use and transparent preprocessing workflow which can help ensure the validity of inference and the interpretability of their results.**

Functional magnetic resonance imaging (fMRI) is a commonly used technique to map human brain activity<sup>1</sup>. However, the blood-oxygen-level dependent (BOLD) signal measured by fMRI is typically mixed with many non-neural sources of variability<sup>2</sup>. Preprocessing identifies the nuisance sources and reduces their effect on the data<sup>3</sup>. Other major preprocessing steps<sup>4</sup> deal with particular imaging artifacts and the anatomical location of signals. For instance, slice-timing<sup>5</sup> correction (STC), head-motion correction (HMC), and susceptibility distortion correction (SDC) address particular artifacts; while co-registration, and spatial normalization are concerned with signal location (see Online Methods, sec. Preprocessing of fMRI in a nutshell, for a summary). Extracting a signal that is most faithful to the underlying neural activity is crucial to ensure the validity of inference and interpretability of results<sup>6</sup>. Faulty preprocessing may lead to the interpretation of noise patterns as signals of interest. For example, Power et al. demonstrated that unaccounted-for head-motion can generate spurious and systematic correlations in resting-state fMRI<sup>7</sup>, which would be interpreted as functional connectivity. An illustration of failed spatial normalization familiar to most researchers is finding significant activation outside of the brain. Other preprocessing

choices may result in the removal of signal originating from brain activity. The ongoing debate on the need for regressing out global signals<sup>2,8,9</sup> reflects just such concerns. Thus, a primary goal of preprocessing is to reduce sources of Type I errors without inducing excessive Type II errors.

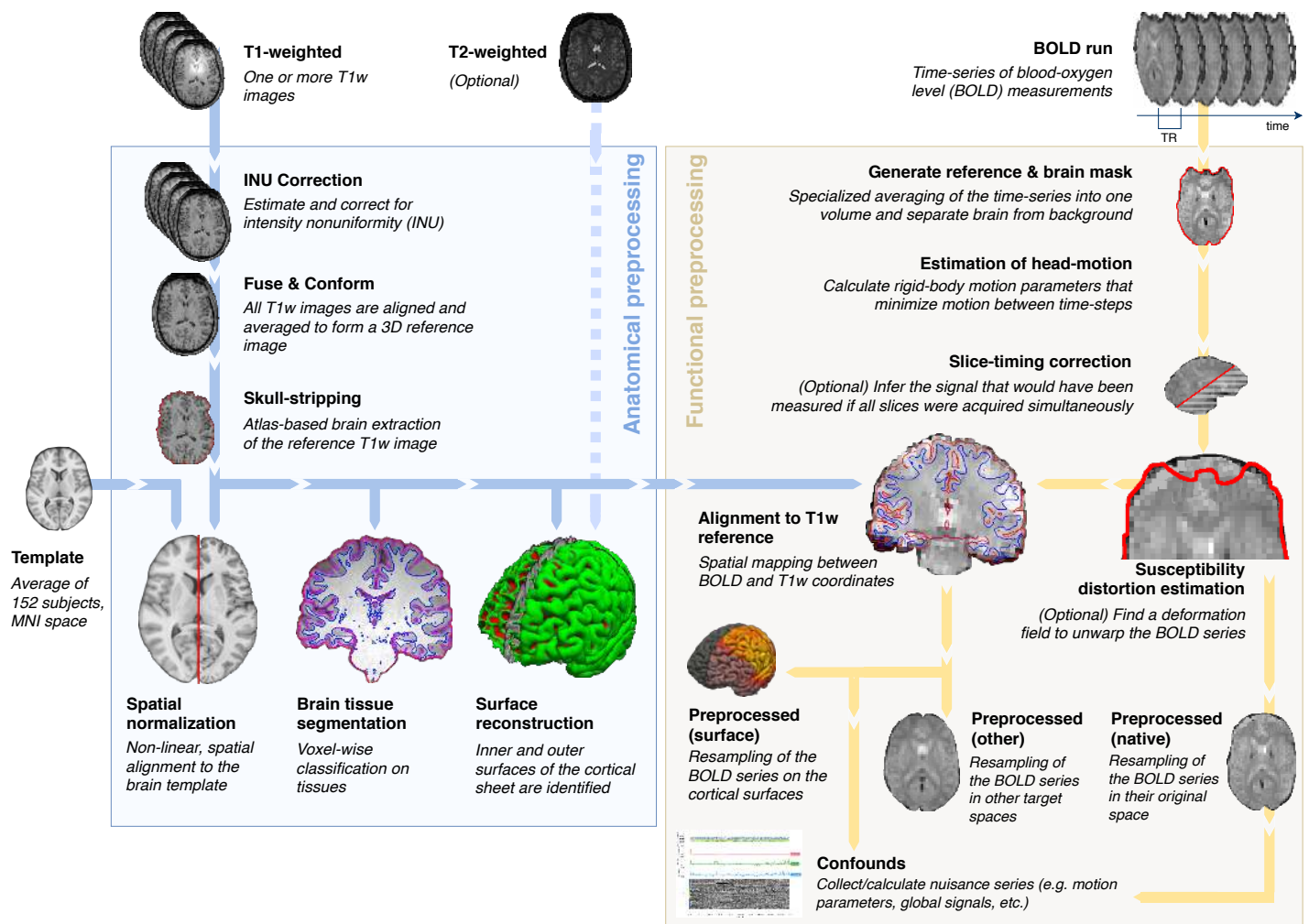
Workflows for preprocessing fMRI produce two broad classes of outputs: *preprocessed* data (as opposed to *raw*, original data) and measurements of experimental *confounds* for use in later modeling. Preprocessed data generally include new fMRI time-series after the application of retrospective signal correction and filtering algorithms. In addition, these data are typically resampled onto a target space appropriate for analysis, such as a standardized anatomical reference. The *confounds* are additional time-series such as physiological recordings and estimated noise sources that are useful for analysis (e.g. they can be applied as nuisance regressors). Some commonly used confounds include: motion parameters, framewise displacement (FD<sup>7</sup>), spatial standard deviation of the data after temporal differencing (DVARS<sup>7</sup>), global signals, etc. Preprocessing may include further steps for denoising and estimation of confounds. For instance, dimensionality reduction methods based on principal components analysis (PCA) or independent components analysis (ICA), such as component-based noise correction (*CompCor*<sup>10</sup>) or automatic removal of motion artifacts (ICA-AROMA<sup>11</sup>).

The neuroimaging community is well equipped with tools that implement the majority of the individual steps of preprocessing described so far. These tools are readily available within software packages including AFNI<sup>12</sup>, ANTs<sup>13</sup>, FreeSurfer<sup>14</sup>, FSL<sup>15</sup>, Nilearn<sup>16</sup>, or SPM<sup>17</sup>. Despite the wealth of accessible software and multiple attempts to outline best practices for preprocessing<sup>2,4,6,18</sup>, the large variety of data acquisition protocols have led to the use of *ad hoc* pipelines customized for nearly every study; for example, Carp<sup>19</sup> found 223 unique analysis workflows across 241 fMRI studies. Thus, current preprocessing workflows offer a poor trade-off between the quality of results and robust, consistent performance on datasets other than those that they were built for. Alternatively, researchers can adopt the acquisition protocols defined by large neuroimaging consortia like the Human Connectome Project (HCP<sup>20</sup>) or the UK Biobank<sup>21</sup>, which then allows the use of their preprocessing pipelines<sup>22,23</sup> developed for those studies. Since these pipelines are optimized for particular data acquisition protocols, they are not applicable to datasets acquired using different protocols. In practice, the neuroimaging community lacks a preprocessing workflow that reliably provides high-quality and consistent results on arbitrary datasets.

Here we introduce *fMRIPrep*, a preprocessing workflow for task-based and resting-state fMRI. *fMRIPrep* is built around four driving principles: 1) **robustness** to the idiosyncrasies of the input dataset; 2) **quality** of preprocessing outcomes; 3) **transparency** to encourage the scrutiny of preprocessing results for quality, and to facilitate accurate communication of the methods; and 4) **ease-of-use** with the minimization of manual intervention. *fMRIPrep* is robust by virtue of a flexible, self-adapting architecture that combines tools from existing neuroimaging analysis packages. Tools for each processing operation are selected through an evidence-driven and community-informed optimization process. Here we also report a comprehensive evaluation of the workflow on a large and heterogeneous subsample of the OpenfMRI repository, to quantify robustness and quality of the results. This evaluation leverages the comprehensive visual reports generated by *fMRIPrep*, which facilitate assessment and curation of the results. These reports contribute to the “glass-box” philosophy with which the software was developed; rather than hiding a complex set of operations within a monolithic black box, *fMRIPrep* exposes interim results at multiple steps to encourage active engagement by the scientist.

## RESULTS

*fMRIPrep* is a robust and convenient tool for researchers and clinicians to prepare both task-based and resting-state fMRI data for analysis. Its outputs enable a broad range of applications, including within-subject analysis using functional localizers, voxel-based analysis, surface-based analysis, task-based group analysis, resting-state connectivity analysis, and many others. In the following, we describe the overall architecture, software engineering principles, and a comprehensive validation of the tool.



**Figure 1.** *fMRIPrep* is an fMRI preprocessing tool that adapts to the input dataset. Leveraging the Brain Imaging Data Structure (BIDS<sup>24</sup>), the software self-adjusts automatically, configuring the optimal workflow for the given input dataset. Thus, no manual intervention is required to locate the required inputs (one T1-weighted image and one BOLD series), read acquisition parameters (such as the repetition time  $-TR-$  and the slice acquisition-times) or find additional acquisitions intended for specific preprocessing steps (like field maps and other alternatives for the estimation of the susceptibility distortion). Outputs are easy to navigate due to compliance with the BIDS Extension Proposal for derived data (see Online Methods, Figure S4).

### A modular design allows for a flexible, adaptive workflow

The foundation of *fMRIPrep* is presented in Figure 1. The workflow is composed of sub-workflows that are dynamically assembled into different configurations depending on the input data. These building blocks combine tools from widely-used, open-source neuroimaging packages (see Table 1 for a summary). *Nipype*<sup>25</sup> is used to stage the workflows and to deal with execution details (such as resource management). As presented in Figure 1, the workflow comprises two major blocks, separated into anatomical and functional MRI processing streams.

**Automatically understanding the input dataset.** The Brain Imaging Data Structure (BIDS<sup>24</sup>) allows *fMRIPrep* to precisely identify the structure of the input data and gather all the available metadata (e.g. imaging parameters). Online Methods, sec. The BIDS ecosystem describes how BIDS enables workflow flexibility. *fMRIPrep* reliably adapts to dataset irregularities such as missing acquisitions or runs through a set of heuristics. For instance, if only one participant of a sample lacks field-mapping acquisitions, *fMRIPrep* will by-pass the correction step for that one participant.

**Table 1. State-of-the-art neuroimaging offers a large catalog of readily available software tools.** *fMRIPrep* integrates best-in-breed tools for each of the preprocessing tasks that its workflow covers, except for steps implemented as part of the development of *fMRIPrep* (*in-house* implementations). Tasks listed on the first column are described in detail in Online Methods, sec. Preprocessing of fMRI in a nutshell.

Preprocessing task	<i>fMRIPrep</i> includes	Alternatives (not included within <i>fMRIPrep</i> )
Anatomical T1w brain-extraction	antsBrainExtraction.sh (ANTs)	bet (FSL), 3dSkullstrip (AFNI), MRTOOL (SPM Plug-in)
Anatomical surface reconstruction	recon-all (FreeSurfer)	CIVET, BrainSuite, Computational Anatomy (SPM Plug-in)
Head-motion estimation (and correction)	mcflirt (FSL)	3dvolreg (AFNI), spm_realign (SPM), cross_realign_4dfp (4dfp), antsBrainRegistration (ANTs)
Susceptibility-derived distortion estimation (and unwarping)	3dqwarp (AFNI)	fugue and topup (FSL), FieldMap and HySCO (SPM Plug-ins)
Slice-timing correction	3dTshift (AFNI)	slicetimer (FSL), spm_slice_timing (SPM), interp_4dfp (4dfp)
Intra-subject registration	bbregister (FreeSurfer), flirt (FSL)	3dvolreg (AFNI), antsRegistration (ANTs), Coregister (SPM GUI)
Spatial normalization (inter-subject co-registration)	antsRegistration (ANTs)	@auto_t1rc (AFNI), fnirt (FSL), Normalize (SPM GUI)
Surface sampling	mri_vol2surf (FreeSurfer)	MNE, Nilearn
Subspace projection denoising (ICA, PCA, etc)	melodic (FSL), ICA-AROMA	Nilearn, LMGS (SPM Plug-in)
Confounds	<i>in-house</i> implementation	fsl_motion_outliers (FSL), TAPAS PhysIO (SPM Plug-in)
Detection of nonsteady-states	<i>in-house</i> implementation	<i>Ad hoc</i> implementations, manual setting

**Preprocessing anatomical images.** The T1-weighted (T1w) image is corrected for intensity non-uniformity (INU) using N4BiasFieldCorrection<sup>26</sup> (ANTs), and skull-stripped using antsBrainExtraction.sh (ANTs). Skull-stripping is performed through coregistration to a template, with two options available: the OASIS template<sup>27</sup> (default) or the NKI template<sup>28</sup>. Using visual inspection, we have found that this approach outperforms other common approaches, which is consistent with previous reports<sup>22</sup>. When several T1w volumes are found, the INU-corrected versions are first fused into a reference T1w map of the subject with mri\_robust\_template<sup>29</sup> (FreeSurfer). Brain surfaces are reconstructed from the subject's T1w reference (and T2-weighted images if available) using recon-all<sup>30</sup> (FreeSurfer). The brain mask estimated previously is refined with a custom variation of a method (originally introduced in Mindboggle<sup>31</sup>) to reconcile ANTs-derived and FreeSurfer-derived segmentations of the cortical gray matter (GM). Both surface reconstruction and subsequent mask refinement are optional and can be disabled to save run time when surface-based analysis is not needed. Spatial normalization to the ICBM 152 Nonlinear Asymmetrical template<sup>32</sup> (version 2009c) is performed through nonlinear registration with antsRegistration<sup>33</sup> (ANTs), using brain-extracted versions of both the T1w reference and the standard template. ANTs was selected due to its superior performance in terms of volumetric group level overlap<sup>34</sup>. Brain tissues –cerebrospinal fluid (CSF), white matter (WM) and GM– are segmented from the reference, brain-extracted T1w using fast<sup>35</sup> (FSL).

**Preprocessing functional runs.** For every BOLD run found in the dataset, a reference volume and its skull-stripped version are generated using an in-house methodology (reported in Online Methods, sec. Particular processing elements of *fMRIPrep*). Then, head-motion parameters (volume-to-reference transform matrices, and corresponding rotation and translation parameters) are estimated using mcflirt<sup>36</sup> (FSL). Among several alternatives (see *Table 1*), mcflirt is used because its results are comparable to other tools<sup>37</sup> and it stores the estimated parameters in a format that facilitates the composition of spatial transforms to achieve one-step interpolation (see below). If slice timing information is available, BOLD runs are (optionally) slice time corrected using 3dTshift (AFNI<sup>12</sup>). When field map information is

available, or the experimental “fieldmap-less” correction is requested (see *Highlights of fMRIPrep* within the neuroimaging context), SDC is performed using the appropriate methods (see *Online Methods, Figure S3*). This is followed by co-registration to the corresponding T1w reference using boundary-based registration<sup>38</sup> with nine degrees of freedom (to minimize remaining distortions). If surface reconstruction is selected, *fMRIPrep* uses *bbregister* (FreeSurfer). Otherwise, the boundary based coregistration implemented in *fslirt* (FSL) is applied. In our experience, *bbregister* yields the better results<sup>38</sup> due to the high resolution and the topological correctness of the GM/WM surfaces driving registration. To support a large variety of output spaces for the results (e.g. the native space of BOLD runs, the corresponding T1w, FreeSurfer’s *fsaverage* spaces, the template used as target in the spatial normalization step, etc.), the transformations between spaces can be combined. For example, to generate preprocessed BOLD runs in template space (e.g. MNI), the following transforms are concatenated: head-motion parameters, the warping to reverse susceptibility-distortions (if calculated), BOLD-to-T1w, and T1w-to-template mappings. The BOLD signal is also sampled onto the corresponding participant’s surfaces using *mr\_i\_vol2surf* (FreeSurfer), when surface reconstruction is being performed. Thus, these sampled surfaces can easily be transformed onto different output spaces available by concatenating transforms calculated throughout *fMRIPrep* and internal mappings between spaces calculated with *recon-all*. The composition of transforms allows for a single-interpolation resampling of volumes using *antsApplyTransforms* (ANTs). Lanczos interpolation is applied to minimize the smoothing effects of linear or Gaussian kernels<sup>39</sup>. Optionally, ICA-AROMA can be performed and corresponding “non-aggressively” denoised runs are then produced. When ICA-AROMA is enabled, the time-series are first smoothed and then denoised, following the description of the original method<sup>11</sup>.

**Extraction of nuisance time-series.** To avoid restricting *fMRIPrep*’s outputs to particular analysis types, the tool does not perform any temporal denoising by default. Nonetheless, it provides researchers with a diverse set of confound estimates that could be used for explicit nuisance regression or as part of higher-level models. This lends itself to decoupling preprocessing and behavioral modeling as well as evaluating robustness of final results across different denoising schemes. A set of physiological noise regressors are extracted for the purpose of performing component-based noise correction (*CompCor*<sup>10</sup>). Principal components are estimated after high-pass filtering the BOLD time-series (using a discrete cosine filter with 128s cut-off) for the two *CompCor* variants: temporal (*tCompCor*) and anatomical (*aCompCor*). Six *tCompCor* components are then calculated from the top 5% variable voxels within a mask covering the subcortical regions. This subcortical mask is obtained by heavily eroding the brain mask, which ensures it does not include cortical GM regions. For *aCompCor*, six components are calculated within the intersection of the aforementioned mask and the union of CSF and WM masks calculated in T1w space, after their projection to the native space of each functional run (using the inverse BOLD-to-T1w transformation). Framewise displacement<sup>40</sup> and DVARS are calculated for each functional run, both using their implementations in *Nipype* (following the definitions by Power et al.<sup>7</sup>). Three global signals are extracted within the CSF, the WM, and the whole-brain masks using *Nilearn*<sup>16</sup>. If ICA-AROMA<sup>11</sup> is requested, the “aggressive” noise-regressors are collected and placed within the corresponding confounds files. Since the non-aggressive cleaning with ICA-AROMA is performed after extraction of other nuisance signals, the “aggressive” regressors can be used to orthogonalize those other nuisance signals to avoid the risk of re-introducing nuisance signal within regression. In addition, a “non-aggressive” version of preprocessed data is also provided since this variant of ICA-AROMA denoising cannot be performed using only nuisance regressors.

### Visual reports ease quality control and maximize transparency

Users can assess the quality of preprocessing with an individual report generated per participant. *Figure 2* shows an example of such reports and describes their structure. Reports contain dynamic and static mosaic views of images at different quality control points along the preprocessing pipeline. Many visual elements of the reports, as well as some of the figures in this manuscript are generated using *Nilearn*<sup>16</sup>. Only a web browser is required to open the reports on any platform, since they are

written in hypertext markup language (HTML). HTML also enables the trivial integration within online neuroimaging services such as [OpenNeuro.org](https://openneuro.org), and maximizes shareability between peers. These reports effectively minimize the amount of time required for assessing the quality of the results. They also help understand the internals of processing by visually reporting the full provenance of data throughout the workflow. As an additional transparency enhancement, reports are accompanied by a *citation boilerplate* (see Online Methods, *Box S1*) that follows the guidelines for reporting fMRI studies by Poldrack et al.<sup>41</sup>. Meant for its inclusion within the methodological section of papers using *fMRIPrep*, the boilerplate provides a literate description of the processing that includes software versions of all tools involved in the particular workflow and gives due credit to all authors of all of the individual pieces of software used within *fMRIPrep*.

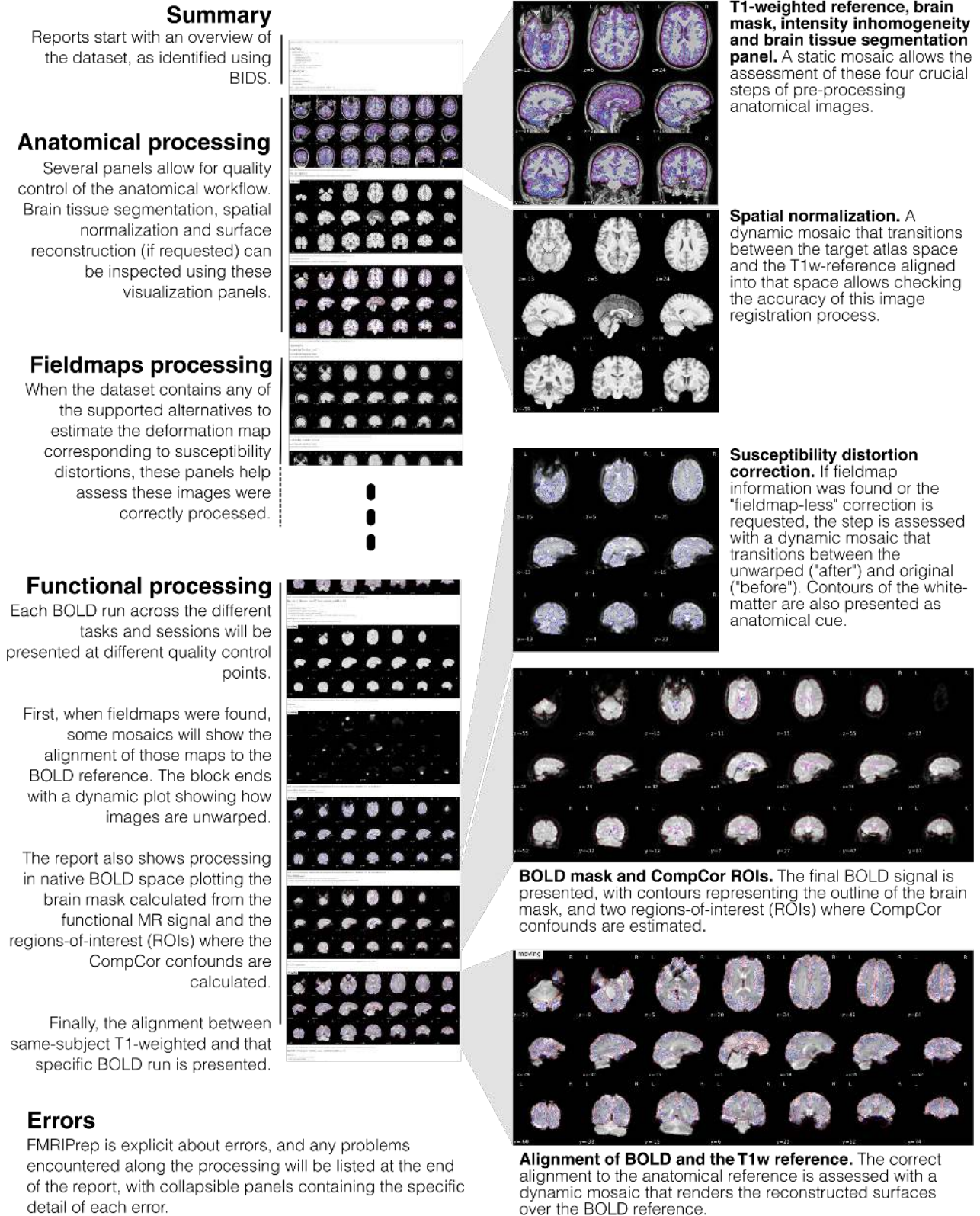
### Highlights of *fMRIPrep* within the neuroimaging context

*fMRIPrep* is not the first preprocessing pipeline for fMRI data. The most widely used neuroimaging packages generally provide workflows, such as `afni_proc.py` (AFNI) or `feat` (FSL). Other alternatives include C-PAC<sup>42</sup> (configurable pipeline for the analysis of connectomes), HCP Pipelines<sup>22</sup> or the Batch Editor of SPM. In this section, we highlight some additional features beyond robustness and quality that will likely incline scientists to find in *fMRIPrep* the best fit for their fMRI preprocessing needs.

**Analysis-agnostic: *fMRIPrep* supports a wide range of existing, higher-level analysis and modeling.** Alternative workflows are not *agnostic* to currently-available analysis options because they prescribe particular methodologies to analyze the preprocessed data. Important limitations to compatibility with downstream analysis derive from the coordinates space of the outputs and the regular (volume) vs. irregular (surface) sampling of the BOLD signal. For example, HCP Pipelines supports surface-based analyses on subject or template space. Conversely, C-PAC and `feat` are volume-based only. Although `afni_proc.py` is volume-based by default, pre-reconstructed surfaces can be manually set for sampling the BOLD signal prior to analysis. *fMRIPrep* allows a multiplicity of output spaces including subject-space and atlases for both volume-based and surface-based analyses. While *fMRIPrep* avoids including processing steps that may limit further analysis (e.g. spatial smoothing), other tools are designed to perform preprocessing that supports specific analysis pipelines. For instance, C-PAC performs several processing steps towards the connectivity analysis of resting-state fMRI.

**Susceptibility distortion correction (SDC) in the absence of field maps.** Many legacy and current human fMRI protocols lack the MR field maps necessary to perform standard methods for SDC. *fMRIPrep* adapts the “fieldmap-less” correction method for diffusion echo-planar imaging (EPI) images introduced by Wang et al.<sup>43</sup>. They propose using the same-subject T1w reference as the *undistorted* target in a nonlinear registration scheme. To maximize the similarity between the T2\* contrast of the EPI scan and the reference T1w, the intensities of the latter are inverted. To regularize the optimization of the deformation field only displacements along the phase-encoding (PE) direction are allowed, and the magnitude of the displacements is modulated using priors. To our knowledge, no other existing pipeline applies “fieldmap-less” SDC to the BOLD images.

***fMRIPrep* is thoroughly documented, community-driven, and developed with high-standards of software engineering.** Preprocessing pipelines are generally well documented, however the extreme flexibility of *fMRIPrep* makes its proper documentation substantially more challenging. As for other large scientific software communities, *fMRIPrep* contributors pledge to keep the documentation thorough and updated along coding iterations. Packages also differ on the involvement of the community: while *fMRIPrep* includes researchers in the decision making process and invites their suggestions and contributions, other packages have a more closed model where the feedback from users is more limited (e.g. a mailing list). In contrast to other pipelines, *fMRIPrep* is community-driven. This paradigm allows the fast adoption of cutting-edge advances on fMRI preprocessing, tend to render existing workflows (including *fMRIPrep*) obsolete. For example, while *fMRIPrep* initially performed STC before HMC, we adapted the tool to



**Figure 2. The visual reports ease quality control and help understand the processing flow.** The reports enhance the transparency of the tool, because they reflect the multiple steps that the workflow performs, and how these elements are intertwined.



the recent recommendations of Power et al.<sup>18</sup> upon a user's request\*. This model has allowed the user base to grow rapidly and enabled substantial third-party contributions to be included in the software, such as the support for processing datasets without anatomical information. The open-source nature of *fMRIPrep* has permitted frequent code reviews that are effective in enhancing the software's quality and reliability<sup>44</sup>. Online Methods, sec. Community-centered, peer-reviewed development, and adoption of *fMRIPrep* describes how the community interacts, discusses the code review process, and underscores how the modular design of *fMRIPrep* successfully facilitates contributions from peers. Finally, *fMRIPrep* undergoes continuous integration testing (see Online Methods, *Figure S5*), a technique that has recently been proposed as a means to ensure reproducibility of analyses in computational sciences<sup>45,46</sup>.

**Ensuring reproducibility with hard versioning and containers.** For enhanced reproducibility, *fMRIPrep* fully supports execution via the Docker (<https://docker.com>) and Singularity<sup>47</sup> container platforms. Container images are generated and uploaded to a public repository for each new version of *fMRIPrep*. This helps address the widespread lack of reporting of specific software versions and the large variability of software versions, which threaten the reproducibility of fMRI analyses<sup>19</sup>. These containers are released with a fixed set of software versions for *fMRIPrep* and all its dependencies, maximizing run-to-run reproducibility in an easy way. Except for C-PAC, alternative pipelines do not provide official support for containers. The adoption of the BIDS-Apps<sup>45</sup> container model makes *fMRIPrep* amenable to a multiplicity of infrastructures and platforms: PC, high-performance computing (HPC), Cloud, etc.

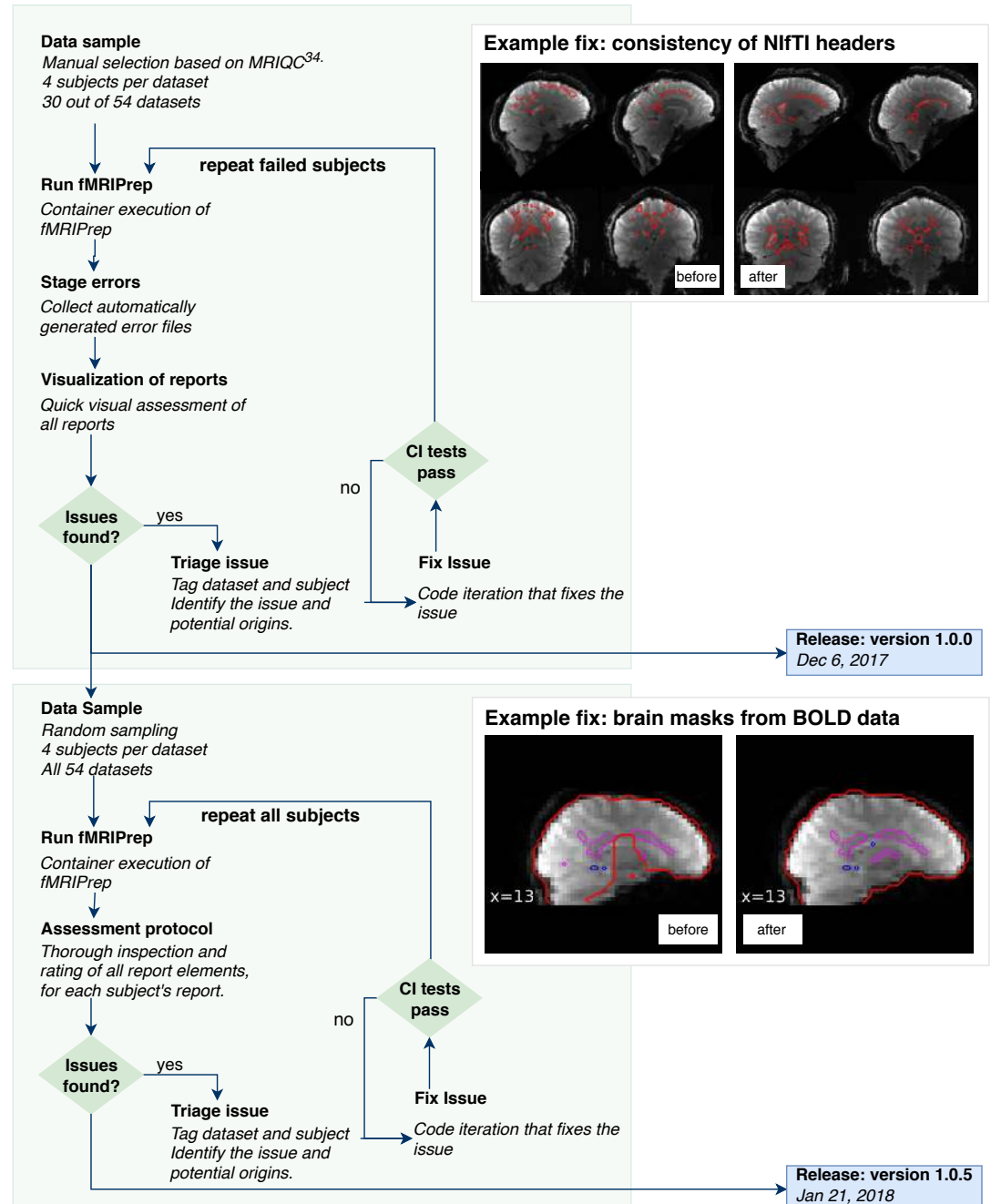
### ***fMRIPrep* yields high-quality results on a diverse set of input data**

*Figure 3* presents the validation framework that we applied to iteratively maximize the robustness of the tool and validate the quality of the results. The validation framework implements a testing plan elaborated prior the release of the version 1.0 of the software (see Online Methods, sec. Evaluation of *fMRIPrep*). The plan is divided in two validation phases in which different data samples and validation procedures are applied. *Table 2* describes the data samples used on each phase and emphasizes how these data are collected from a large number of different, unrelated studies. In Phase I, we ran *fMRIPrep* on a manually selected sample of participants that are potentially challenging to the tool's robustness, exercising the adaptiveness to the input data. Phase II focused on the visual assessment of the quality of preprocessing results on a large and heterogeneous sample.

**Validation Phase I – Fault-discovery testing.** We tested *fMRIPrep* on a set of 30 datasets from [OpenfMRI](#) (see *Table 2*). Included participants were manually selected for their low quality as visually assessed by two experts using MRIQC<sup>105</sup> (the assessment protocol is further described in in Online Methods, sec. Evaluation of *fMRIPrep*). Data showing substandard quality are known to likely degrade the outcomes of image processing<sup>105</sup>, and therefore they are helpful to test software reliability. Phase I concluded with the release of *fMRIPrep* version 1.0 on December 6, 2017.

**Validation Phase II – Quality assurance and reliability testing.** We extended the evaluation data up to 54 datasets from [OpenfMRI](#) (see *Table 2*). Participants were selected randomly as described in Online Methods, sec. Evaluation of *fMRIPrep*. Validation Phase II integrated a protocol for the screening of results into the software testing (*Figure 3*). As shown in *Figure 4*, this effectively contributed to substantive improvements on the quality of results. Three raters (authors CJM, KJG and OE) evaluated the 213 visual reports at six quality control points throughout the pipeline, and also assigned an overall score to each participant. Their ratings are made available with the corresponding reports for scrutiny. The scoring scale has three levels: 1 (“poor”), 2 (“acceptable”) and 3 (“excellent”). A special rating of 0 (“unusable”) is assigned to critical failures that hamper any further processing beyond the quality control checkpoint. Further details on how these quality categories were assigned are given in Online Methods, sec. Iterative quality and robustness assurance. After Phase II, 50 datasets out of the total 54 were rated above the “acceptable” average quality level. The remaining 4 datasets were all above the “poor” level and in or nearby the “acceptable” rating. *Figure 4* illustrates the quality of results, while Online Methods,

\*<https://neurostars.org/t/obtaining-movement-estimates-before-slice-time-correction/1007>



**Figure 3. Combining visual assessment within the software testing flow.** We complement well-established techniques for software integration testing with manual assessment of the outputs. The evaluation framework is designed with two subsequent testing phases. Phase I focuses on fault-discovery and visual reports are used to better understand the issues found. The top box (Example fix 1) shows an example of defect identified and solved during this testing cycle. After addressing a total of 21 issues affecting 7 datasets, and the release of *fMRIprep* version 1.0.0, the next testing stage is initiated. Phase II focuses on increasing the overall quality of results as evaluated visually by experts. Following an inspection protocol, reports from 213 participants belonging to 58 different studies were individually assessed. We found 12 additional issues affecting 11 datasets that have been addressed with the release of *fMRIprep* version 1.0.3 on January 3, 2018. The bottom box (Example fix 2) illustrates one of these issues, which produced errors in the brain extraction process from BOLD data. In Online Methods, sec. Iterative quality and robustness assurance, both examples and the corresponding solutions are described in detail.



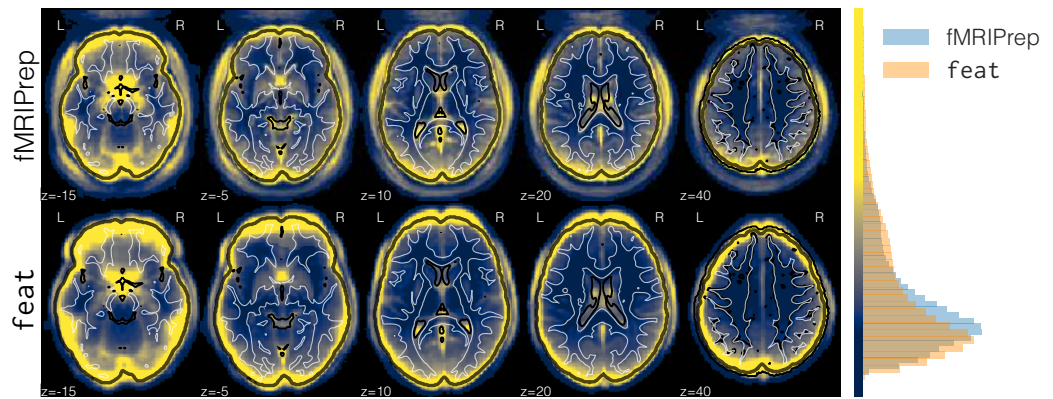
**Figure 4. Integrating visual assessment into the software testing framework effectively increases the quality of results.** In an early assessment of quality using *fMRIPrep* version 1.0.0, the overall rating of two datasets was below the “poor” category and four below the “acceptable” level (left column of colored circles). After addressing some outstanding issues detected by the early assessment, the overall quality of processing is substantially improved (right column of circles), and no datasets are below the “poor” quality level. Only two datasets are rated below the “acceptable” level in the second assessment (using *fMRIPrep* version 1.0.7).

*Figure S6* shows the individual evolution of every dataset at each of the seven quality control points. Phase II concluded with the release of *fMRIPrep* version 1.0.8 on February 22, 2018.

### ***fMRIPrep* improves spatial precision through reduced smoothing**

We investigate whether the focus on robustness against data irregularity comes at a cost in quality of the preprocessing outcomes by comparing it to the commonly used FSL feat workflow. Using all the scans of the “stop signal” task in DS000030 (N=257 participants) from *OpenfMRI*, we ran *fMRIPrep* and a standard feat workflow. We chose feat because DS000030 had successfully been preprocessed and analyzed with FSL tools previously<sup>55</sup>. Smoothing is intentionally excluded from both preprocessing routes with the aim to apply it early within a common (identical) analysis workflow. We calculated standard deviation maps in MNI space<sup>106</sup> for the temporal average map of the “stop signal” task derived from preprocessing with both alternatives. Visual inspection of these variability maps (*Figure 5*) reveals a higher anatomical accuracy of *fMRIPrep* over feat, likely reflecting the combined effects of a more precise spatial normalization scheme and the application of “fieldmap-less” SDC. *fMRIPrep* outcomes are particularly better aligned with the underlying anatomy in regions typically warped by susceptibility distortions such as the orbitofrontal lobe, as demonstrated by close-ups in Online Methods, *Figure S7*.

We also compared preprocessing done with *fMRIPrep* and FSL’s feat in two common fMRI analyses. First, we performed within subject statistical analysis using feat –the same tool provides preprocessing and first-level analysis– on both sets of preprocessed data. Second, we perform a group statistical analysis using ordinary least squares (OLS) mixed modeling (f1ame<sup>107</sup>, FSL). In both experiments, we applied identical analysis workflows and settings to both preprocessing alternatives. Using AFNI’s 3dFWHMx, we estimated the smoothness of data right after preprocessing (unsmoothed), and after an initial smoothing step of 5.0mm (full-width half-minimum, FWHM) of the common analysis workflow. As visually suggested by *Figure 5*, we indeed found that feat produces smoother data (*Figure 6A*). Although preprocessed data were resampled to an isotropic voxel size of 2.0×2.0×2.0 [mm], the smoothness estimation (before the prescribed smoothing step) for *fMRIPrep* was below 4.0mm, very close to the original resolution of



**Figure 5. Maps of between-subjects variability of the averaged BOLD time-series resampled into MNI space.** We preprocessed DS000030 (N=257) with *fMRIPrep* and FSL *feat*. This figure shows greater between-subject variability of the averaged BOLD series obtained with *feat*, in MNI space. The top box of the panel shows these maps at different axial planes of the image grid, with reference contours from the MNI atlas. The map summarizing *feat*-derived results displays greater variability around the brain outline (represented with a black contour). This effect is generally associated with a lower performance of spatial normalization<sup>106</sup>. The histogram at the right side plots the normalized frequency of variability (arbitrary units) for both maps, within the brain mask. The color bar maps the bins of the histogram to the corresponding colors that are used in the left panel. The heavier tail of *feat* in the distribution of variability is compensated in the case of *fMRIPrep* by the peak in voxel-counts located at a higher variability than that of *feat*. Such peak in *fMRIPrep*'s distribution corresponds to variability in cortical gray matter regions. See Online Methods, *Figure S7* for close-ups into regions affected by susceptibility-derived distortions.

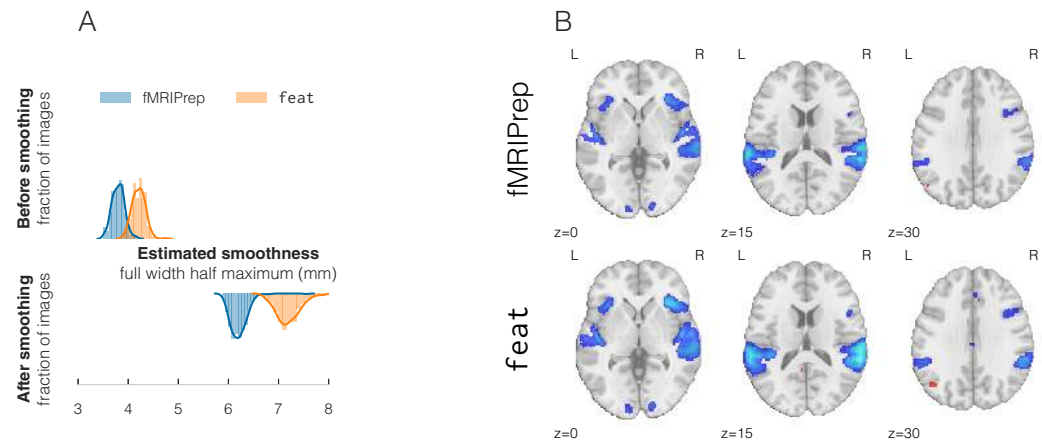
3.0×3.0×4.0 [mm] of these data. The first-level analysis showed that the thresholded activation count maps for the go vs. successful stop contrast in the “stop-signal” task were very similar (*Figure 6B*). It can be seen that the results from both pipelines identified activation in the same regions. However, since data preprocessed with *feat* are smoother, the results from *fMRIPrep* are more local and better aligned with the cortical sheet.

To investigate the implications of either pipeline on the group analysis use-case, we run the same OLS modeling on two disjoint subsets of randomly selected subjects. We calculate several metrics of spatial agreement on the resulting maps of (uncorrected) *p*-statistical values, and also after binarizing these maps with a threshold chosen to control for the false discovery rate at 5%. The overlap of statistical maps, as well as Pearson’s correlation, were tightly related to the smoothing of the input data. In Online Methods, sec. Comparison to FSL *feat* we report the group-level analysis in full. We ran two variants of the analysis: with a prescribed smoothing of 5.0mm FWHM, and without the smoothing step. These results showed that, at the group-level analysis, *fMRIPrep* and *feat* perform equivalently.

## DISCUSSION

*fMRIPrep* is an fMRI preprocessing workflow developed to excel at four aspects of scientific software: *robustness* to data idiosyncrasies, high *quality* and consistency of results, maximal *transparency*, and *ease-of-use*. We describe how using the Brain Imaging Data Structure (BIDS<sup>24</sup>) along with a flexible design allows the workflow to self-adapt to the idiosyncrasy of inputs (sec. A modular design allows for a flexible, adaptive workflow). The workflow (briefly summarized in *Figure 1*) integrates state-of-art tools from widely used neuroimaging software packages at each preprocessing step (see *Table 1*). Some other relevant facets of *fMRIPrep* and how they relate to existing alternative pipelines are presented in sec. Highlights of *fMRIPrep* within the neuroimaging context. We stress that *fMRIPrep* is developed with the best software engineering principles, which are fundamental to ensure software reliability. The pipeline is easy to use for researchers and clinicians without extensive computer engineering experience, and produces comprehensive visual reports (*Figure 2*).

In sec. *fMRIPrep* yields high-quality results on a diverse set of input data, we demonstrate the



**Figure 6.** **A** | Estimating the spatial smoothness of data before and after the initial smoothing step of the analysis workflow confirmed that results of preprocessing with feat are intrinsically smoother. Therefore, *fMRIprep* affords the researcher finer control over the smoothness of their analysis. **B** | Thresholded activation count maps for the go vs. successful stop contrast in the “stop-signal” task after preprocessing using either *fMRIprep* or FSL’s feat, with identical single subject statistical modeling. Both tools obtained similar activation maps, with *fMRIprep* results being slightly better aligned with the underlying anatomy.

robustness of *fMRIprep* on a representative collection of data from datasets associated with different studies (Table 2). We then interrogate the quality of those results with the individual inspection of the corresponding visual reports by experts (sec. Visual reports ease quality control and maximize transparency and the corresponding summary in Figure 4). A comparison to FSL’s feat (sec. *fMRIprep* improves spatial precision through reduced smoothing) demonstrates that *fMRIprep* achieves higher spatial accuracy and introduces less uncontrolled smoothness (Figures 5, 6). Group *p*-statistical maps only differed on their smoothness (sharper for the case of *fMRIprep*). The fact that first-level and second-level analyses resulted in small differences between *fMRIprep* and our *ad hoc* implementation of a feat-based workflow indicates that the individual preprocessing steps perform similarly when they are fine-tuned to the input data. That justifies the need for *fMRIprep*, which autonomously adapts the workflow to the data without error-prone manual intervention. To a limited extent, that also mitigates some concerns and theoretical risks arisen from the analytical degrees-of-freedom<sup>19</sup> available to researchers. *fMRIprep* stands out amongst pipelines because it automates the adaptation to the input dataset without compromising the quality of results.

One limitation of this work is the use of visual (the reports) and semi-visual (e.g. Figure 5 and Figure 6) assessments for the quality of preprocessing outcomes. Although some frameworks have been proposed for the quantitative evaluation of preprocessing on task-based (such as NPAIRS<sup>108</sup>) and resting-state<sup>109</sup> fMRI, they impose a set of assumptions on the test data and the workflow being assessed that severely limit their suitability. The modular design of *fMRIprep* defines an interface to each processing step, which will permit the programmatic evaluation of the many possible combinations of software tools and processing steps. That will also enable the use of quantitative testing frameworks to pursue the minimization of Type I errors without the cost of increasing Type II errors.

The range of possible applications for *fMRIprep* also presents some boundaries. For instance, very narrow field-of-view (FoV) images oftentimes do not contain enough information for standard image registration methods to work correctly. Reduced FoV datasets from OpenfMRI were excluded from the evaluation since they are not yet fully supported by *fMRIprep*. Extending *fMRIprep*’s support for these particular images is already a future line of the development road-map. *fMRIprep* may also under-perform for particular populations (e.g. infants) or when brains show nonstandard structures, such as tumors, resected regions or lesions. Nonetheless, *fMRIprep*’s modular architecture makes it straightforward to

extend the tool to support specific populations or new species by providing appropriate atlases of those brains. This future line of work would be particularly interesting in order to adapt the workflow to data collected from rodents and nonhuman primates. By contrast, *fMRIPrep* performed robustly on data from a simultaneous MRI/electrocorticography (ECoG) study, which is extremely challenging to analyze due to the massive BOLD signal drop-out near the implanted cortical electrodes (see Online Methods, *Figure S11*). Likewise, *fMRIPrep* successfully preprocessed multiple multi-band datasets.

Approximately 80% of the analysis pipelines investigated by Carp<sup>19</sup> were implemented using either AFNI<sup>12</sup>, FSL<sup>15</sup>, or SPM<sup>17</sup>. *Ad hoc* pipelines adapt the basic workflows provided by these tools to the particular dataset at hand. Although workflow frameworks like Nipype<sup>110</sup> ease the integration of tools from different packages, these pipelines are typically restricted to just one of these alternatives (AFNI, FSL or SPM). Otherwise, scientists can adopt the acquisition protocols and associated preprocessing software of large consortia like the Human Connectome Project (HCP) or the UK Biobank. The *off-the-shelf* applicability of these workflows is contravened by important limitations on the experimental design. Therefore, researchers typically opt to recode their custom preprocessing workflows with nearly every new study<sup>19</sup>. That practice entails a “pipeline debt”, which requires the investment on proper software engineering to ensure an acceptable correctness and stability of the results (e.g. continuous integration testing) and reproducibility (e.g. versioning, packaging, containerization, etc.). A trivial example of this risk would be the leakage of *magic numbers* that are hard-coded in the source (i.e. a crucial imaging parameter that inadvertently changed from one study to the next one). Until *fMRIPrep*, an analysis-agnostic approach that builds upon existing software instruments and optimizes preprocessing for robustness to data idiosyncrasies, quality of outcomes, ease-of-use, and transparency, was lacking.

The rapid increase in volume and diversity of data, as well as the evolution of available techniques for processing and analysis, presents an opportunity for significantly advancing research in neuroscience. The drawback resides in the need for progressively complex analysis workflows that rely on decreasingly interpretable models of the data. Such context encourages “black-box” solutions that efficiently perform a valuable service but do not provide insights into how the tool has transformed the data into the expected outputs. Black-boxes obscure important steps in the inductive process mediating between experimental measurements and reported findings. This way of moving forward risks producing a future generation of cognitive neuroscientists who have become experts in using sophisticated computational methods, but have little to no working knowledge of how data were transformed through processing. Transparency is often identified as a treatment for these problems. *fMRIPrep* ascribes to “glass-box” principles, which are defined in opposition to the many different facets or levels at which black-box solutions are opaque.

The visual reports that *fMRIPrep* generates are a crucial aspect of the glass-box. Their quality control checkpoints represent the logical flow of preprocessing, allowing scientists to critically inspect and better understand the underlying mechanisms of the workflow. A second transparency element is the citation boilerplate that formalizes all details of the workflow and provides the versions of all involved tools along with references to corresponding scientific literature. A third asset for transparency is the thorough documentation which delivers additional details on each of the building blocks that are represented in the visual reports and described in the boilerplate. Further, *fMRIPrep* is open-source since its inception: users have access to all the incremental additions to the tool through the history of the version-control system. The use of GitHub (<https://github.com/poldracklab/fmriprep>) grants access to the discussions held during development, allowing the retrieval of how and why the main design decisions were made. GitHub also provides an excellent platform to foster the community and provides useful tools such as source browsing, code review, bug tracking and reporting, submission of new features and bug fixes through pull-requests, etc. The modular design of *fMRIPrep* enhances its flexibility and helps transparency, as the main features of the software are more easily accessible to potential collaborators. In combination to some coding style and contribution guidelines, this modularity has enabled multiple contributions by peers and the creation of a rapidly growing community that would be difficult to nurture behind closed doors. A number of existing tools have implemented elements of “glass-box” philosophy (for example visual reports in FEAT, documentation in C-PAC, open source community of Nilearn), but the complete package (visual reports, educational documentation, reporting templates, collaborative open source community) is still

rare among scientific software. *fMRIPrep*'s transparent and accessible development and reporting aims to better equip fMRI practitioners to perform reliable, reproducible, statistical analyses with a high-standard, consistent, and adaptive preprocessing instrument.

## CONCLUSION

Despite efforts to achieve high-quality preprocessing of idiosyncratic fMRI datasets, doing so reliably has remained an open problem. *fMRIPrep* is an analysis-agnostic, preprocessing workflow that yields consistent results across a wide range of input datasets. *fMRIPrep* is built on top of the best neuroimaging tools selected from various software packages. These tools are integrated into workflows that can be dynamically combined to compose a full preprocessing workflow adapted to the input data. The optimal workflow for the input dataset is constructed at runtime, blending a set of heuristics with the Brain Imaging Data Structure (BIDS) to read the inputs. *fMRIPrep* excels in four design goals: robustness, high-quality of results, transparency and ease-of-use. To validate and demonstrate these features, we integrate the individual screening of preprocessing results with continuous integration techniques of software testing. The process is aided by comprehensive, portable reports that inform the scientist about the workflow, ease the quality control of results and maximize the shareability of research outcomes. We highlight the aspects that justify the development of *fMRIPrep* with respect to currently available preprocessing workflows. We quantitatively demonstrate that *fMRIPrep* does not introduce uncontrolled smoothing as compared to one alternative software. *fMRIPrep* aims to better equip fMRI practitioners to perform reliable, reproducible statistical analyses with a high-standard, transparent, and verifiable instrument.

## ACKNOWLEDGMENTS

This work was supported by the Laura and John Arnold Foundation, NIH R01 EB020740, NIH 1R24MH114705-01, and NINDS grant 1U01NS103780-01. JD has received funding from the European Union's Horizon 2020 research and innovation program under the Marie Skłodowska-Curie grant agreement No 706561. The authors thank S. Nastase and T. van Mourik for their thoughtful open reviews of a pre-print version of this paper.

## REFERENCES

- 1 Poldrack, R. A. & Farah, M. J. Progress and challenges in probing the human brain. *Nature* **526**, 371–379 (2015). doi:[10.1038/nature15692](https://doi.org/10.1038/nature15692).
- 2 Power, J. D., Plitt, M., Laumann, T. O. & Martin, A. Sources and implications of whole-brain fMRI signals in humans. *NeuroImage* **146**, 609–625 (2017). doi:[10.1016/j.neuroimage.2016.09.038](https://doi.org/10.1016/j.neuroimage.2016.09.038).
- 3 Lindquist, M. A. The Statistical Analysis of fMRI Data. *Statistical Science* **23**, 439–464 (2008). doi:[10.1214/09-STS282](https://doi.org/10.1214/09-STS282).
- 4 Strother, S. C. Evaluating fMRI preprocessing pipelines. *IEEE Engineering in Medicine and Biology Magazine* **25**, 27–41 (2006). doi:[10.1109/MEMB.2006.1607667](https://doi.org/10.1109/MEMB.2006.1607667).
- 5 Sladky, R. *et al.* Slice-timing effects and their correction in functional MRI. *NeuroImage* **58**, 588–594 (2011). doi:[10.1016/j.neuroimage.2011.06.078](https://doi.org/10.1016/j.neuroimage.2011.06.078).
- 6 Ashburner, J. Preparing fMRI Data for Statistical Analysis. In Filippi, M. (ed.) *fMRI Techniques and Protocols*, no. 41 in *Neuromethods*, 151–178 (Humana Press, 2009). doi:[10.1007/978-1-60327-919-2\\_6](https://doi.org/10.1007/978-1-60327-919-2_6).
- 7 Power, J. D., Barnes, K. A., Snyder, A. Z., Schlaggar, B. L. & Petersen, S. E. Spurious but systematic correlations in functional connectivity MRI networks arise from subject motion. *NeuroImage* **59**, 2142–2154 (2012). doi:[10.1016/j.neuroimage.2011.10.018](https://doi.org/10.1016/j.neuroimage.2011.10.018).
- 8 Murphy, K., Birn, R. M., Handwerker, D. A., Jones, T. B. & Bandettini, P. A. The impact of global signal regression on resting state correlations: Are anti-correlated networks introduced? *NeuroImage* **44**, 893–905 (2009). doi:[10.1016/j.neuroimage.2008.09.036](https://doi.org/10.1016/j.neuroimage.2008.09.036).
- 9 Liu, T. T., Nalci, A. & Falahpour, M. The global signal in fMRI: Nuisance or Information? *NeuroImage* **150**, 213–229 (2017). doi:[10.1016/j.neuroimage.2017.02.036](https://doi.org/10.1016/j.neuroimage.2017.02.036).

- 10 Behzadi, Y., Restom, K., Liu, J. & Liu, T. T. A component based noise correction method (CompCor) for BOLD and perfusion based fMRI. *NeuroImage* **37**, 90–101 (2007). doi:[10.1016/j.neuroimage.2007.04.042](https://doi.org/10.1016/j.neuroimage.2007.04.042).
- 11 Pruim, R. H. R. *et al.* ICA-AROMA: A robust ICA-based strategy for removing motion artifacts from fMRI data. *NeuroImage* **112**, 267–277 (2015). doi:[10.1016/j.neuroimage.2015.02.064](https://doi.org/10.1016/j.neuroimage.2015.02.064).
- 12 Cox, R. W. & Hyde, J. S. Software tools for analysis and visualization of fMRI data. *NMR in Biomedicine* **10**, 171–178 (1997). doi:[10.1002/\(SICI\)1099-1492\(199706/08\)10:4/5<171::AID-NBM453>3.0.CO;2-L](https://doi.org/10.1002/(SICI)1099-1492(199706/08)10:4/5<171::AID-NBM453>3.0.CO;2-L).
- 13 Avants, B. B. *et al.* A reproducible evaluation of ANTs similarity metric performance in brain image registration. *NeuroImage* **54**, 2033–44 (2011). doi:[10.1016/j.neuroimage.2010.09.025](https://doi.org/10.1016/j.neuroimage.2010.09.025).
- 14 Fischl, B. FreeSurfer. *NeuroImage* **62**, 774–781 (2012). doi:[10.1016/j.neuroimage.2012.01.021](https://doi.org/10.1016/j.neuroimage.2012.01.021).
- 15 Jenkinson, M., Beckmann, C. F., Behrens, T. E., Woolrich, M. W. & Smith, S. M. FSL. *NeuroImage* **62**, 782–790 (2012). doi:[10.1016/j.neuroimage.2011.09.015](https://doi.org/10.1016/j.neuroimage.2011.09.015).
- 16 Abraham, A. *et al.* Machine learning for neuroimaging with scikit-learn. *Frontiers in Neuroinformatics* **8** (2014). doi:[10.3389/fninf.2014.00014](https://doi.org/10.3389/fninf.2014.00014).
- 17 Friston, K. J., Ashburner, J., Kiebel, S. J., Nichols, T. E. & Penny, W. D. *Statistical parametric mapping : the analysis of functional brain images* (Academic Press, London, 2006).
- 18 Power, J. D., Plitt, M., Kundu, P., Bandettini, P. A. & Martin, A. Temporal interpolation alters motion in fMRI scans: Magnitudes and consequences for artifact detection. *PLOS ONE* **12**, e0182939 (2017). doi:[10.1371/journal.pone.0182939](https://doi.org/10.1371/journal.pone.0182939).
- 19 Carp, J. The secret lives of experiments: Methods reporting in the fMRI literature. *NeuroImage* **63**, 289–300 (2012). doi:[10.1016/j.neuroimage.2012.07.004](https://doi.org/10.1016/j.neuroimage.2012.07.004).
- 20 Van Essen, D. *et al.* The Human Connectome Project: A data acquisition perspective. *NeuroImage* **62**, 2222–2231 (2012). doi:[10.1016/j.neuroimage.2012.02.018](https://doi.org/10.1016/j.neuroimage.2012.02.018).
- 21 Miller, K. L. *et al.* Multimodal population brain imaging in the UK Biobank prospective epidemiological study. *Nature Neuroscience* **19**, 1523–1536 (2016). doi:[10.1038/nn.4393](https://doi.org/10.1038/nn.4393).
- 22 Glasser, M. F. *et al.* The minimal preprocessing pipelines for the Human Connectome Project. *NeuroImage* **80**, 105–124 (2013). doi:[10.1016/j.neuroimage.2013.04.127](https://doi.org/10.1016/j.neuroimage.2013.04.127).
- 23 Alfaro-Almagro, F. *et al.* Image processing and Quality Control for the first 10,000 brain imaging datasets from UK Biobank. *NeuroImage* (2017). doi:[10.1016/j.neuroimage.2017.10.034](https://doi.org/10.1016/j.neuroimage.2017.10.034).
- 24 Gorgolewski, K. J. *et al.* The brain imaging data structure, a format for organizing and describing outputs of neuroimaging experiments. *Scientific Data* **3**, 160044 (2016). doi:[10.1038/sdata.2016.44](https://doi.org/10.1038/sdata.2016.44).
- 25 Gorgolewski, K. J. *et al.* Nipype: a flexible, lightweight and extensible neuroimaging data processing framework in Python. *Zenodo [Software]* (2016). doi:[10.5281/zenodo.50186](https://doi.org/10.5281/zenodo.50186).
- 26 Tustison, N. J. *et al.* N4ITK: Improved N3 Bias Correction. *IEEE Transactions on Medical Imaging* **29**, 1310–1320 (2010). doi:[10.1109/TMI.2010.2046908](https://doi.org/10.1109/TMI.2010.2046908).
- 27 Marcus, D. S. *et al.* Open Access Series of Imaging Studies (OASIS): Cross-sectional MRI Data in Young, Middle Aged, Nondemented, and Demented Older Adults. *Journal of Cognitive Neuroscience* **19**, 1498–1507 (2007). doi:[10.1162/jocn.2007.19.9.1498](https://doi.org/10.1162/jocn.2007.19.9.1498).
- 28 Nooner, K. B. *et al.* The NKI-Rockland Sample: A Model for Accelerating the Pace of Discovery Science in Psychiatry. *Frontiers in Neuroscience* **6** (2012). doi:[10.3389/fnins.2012.00152](https://doi.org/10.3389/fnins.2012.00152).
- 29 Reuter, M., Rosas, H. D. & Fischl, B. Highly accurate inverse consistent registration: A robust approach. *NeuroImage* **53**, 1181–1196 (2010). doi:[10.1016/j.neuroimage.2010.07.020](https://doi.org/10.1016/j.neuroimage.2010.07.020).
- 30 Dale, A. M., Fischl, B. & Sereno, M. I. Cortical Surface-Based Analysis: I. Segmentation and Surface Reconstruction. *NeuroImage* **9**, 179–194 (1999). doi:[10.1006/nimg.1998.0395](https://doi.org/10.1006/nimg.1998.0395).
- 31 Klein, A. *et al.* Mindboggling morphometry of human brains. *PLOS Computational Biology* **13**, e1005350 (2017). doi:[10.1371/journal.pcbi.1005350](https://doi.org/10.1371/journal.pcbi.1005350).



- 32 Fonov, V., Evans, A., McKinstry, R., Almlí, C. & Collins, D. Unbiased nonlinear average age-appropriate brain templates from birth to adulthood. *NeuroImage* **47**, Supplement 1, S102 (2009). doi:[10.1016/S1053-8119\(09\)70884-5](https://doi.org/10.1016/S1053-8119(09)70884-5).
- 33 Avants, B., Epstein, C., Grossman, M. & Gee, J. Symmetric diffeomorphic image registration with cross-correlation: Evaluating automated labeling of elderly and neurodegenerative brain. *Medical Image Analysis* **12**, 26–41 (2008). doi:[10.1016/j.media.2007.06.004](https://doi.org/10.1016/j.media.2007.06.004).
- 34 Klein, A. *et al.* Evaluation of 14 nonlinear deformation algorithms applied to human brain MRI registration. *NeuroImage* **46**, 786–802 (2009). doi:[10.1016/j.neuroimage.2008.12.037](https://doi.org/10.1016/j.neuroimage.2008.12.037).
- 35 Zhang, Y., Brady, M. & Smith, S. Segmentation of brain MR images through a hidden Markov random field model and the expectation-maximization algorithm. *IEEE Transactions on Medical Imaging* **20**, 45–57 (2001). doi:[10.1109/42.906424](https://doi.org/10.1109/42.906424).
- 36 Jenkinson, M., Bannister, P., Brady, M. & Smith, S. Improved Optimization for the Robust and Accurate Linear Registration and Motion Correction of Brain Images. *NeuroImage* **17**, 825–841 (2002). doi:[10.1006/nimg.2002.1132](https://doi.org/10.1006/nimg.2002.1132).
- 37 Oakes, T. R. *et al.* Comparison of fMRI motion correction software tools. *NeuroImage* **28**, 529–543 (2005). doi:[10.1016/j.neuroimage.2005.05.058](https://doi.org/10.1016/j.neuroimage.2005.05.058).
- 38 Greve, D. N. & Fischl, B. Accurate and robust brain image alignment using boundary-based registration. *NeuroImage* **48**, 63–72 (2009). doi:[10.1016/j.neuroimage.2009.06.060](https://doi.org/10.1016/j.neuroimage.2009.06.060).
- 39 Lanczos, C. Evaluation of Noisy Data. *Journal of the Society for Industrial and Applied Mathematics Series B Numerical Analysis* **1**, 76–85 (1964). doi:[10.1137/0701007](https://doi.org/10.1137/0701007).
- 40 Power, J. D. *et al.* Methods to detect, characterize, and remove motion artifact in resting state fMRI. *NeuroImage* **84**, 320–341 (2014). doi:[10.1016/j.neuroimage.2013.08.048](https://doi.org/10.1016/j.neuroimage.2013.08.048).
- 41 Poldrack, R. A. *et al.* Guidelines for reporting an fMRI study. *NeuroImage* **40**, 409–414 (2008). doi:[10.1016/j.neuroimage.2007.11.048](https://doi.org/10.1016/j.neuroimage.2007.11.048).
- 42 Sikka, S. *et al.* Towards automated analysis of connectomes: The configurable pipeline for the analysis of connectomes (C-PAC). In *5th INCF Congress of Neuroinformatics*, vol. 117 (Munich, Germany, 2014). doi:[10.3389/conf.fninf.2014.08.00117](https://doi.org/10.3389/conf.fninf.2014.08.00117).
- 43 Wang, S. *et al.* Evaluation of Field Map and Nonlinear Registration Methods for Correction of Susceptibility Artifacts in Diffusion MRI. *Frontiers in Neuroinformatics* **11** (2017). doi:[10.3389/fninf.2017.00017](https://doi.org/10.3389/fninf.2017.00017).
- 44 McIntosh, S., Kamei, Y., Adams, B. & Hassan, A. E. The Impact of Code Review Coverage and Code Review Participation on Software Quality: A Case Study of the Qt, VTK, and ITK Projects. In *Proceedings of the 11th Working Conference on Mining Software Repositories, MSR 2014*, 192–201 (ACM, New York, NY, USA, 2014). doi:[10.1145/2597073.2597076](https://doi.org/10.1145/2597073.2597076).
- 45 Gorgolewski, K. J. *et al.* BIDS Apps: Improving ease of use, accessibility, and reproducibility of neuroimaging data analysis methods. *PLOS Computational Biology* **13**, e1005209 (2017). doi:[10.1371/journal.pcbi.1005209](https://doi.org/10.1371/journal.pcbi.1005209).
- 46 Beaulieu-Jones, B. K. & Greene, C. S. Reproducibility of computational workflows is automated using continuous analysis. *Nature Biotechnology* **35**, 342 (2017). doi:[10.1038/nbt.3780](https://doi.org/10.1038/nbt.3780).
- 47 Kurtzer, G. M., Sochat, V. & Bauer, M. W. Singularity: Scientific containers for mobility of compute. *PLOS ONE* **12**, e0177459 (2017). doi:[10.1371/journal.pone.0177459](https://doi.org/10.1371/journal.pone.0177459).
- 48 Schonberg, T. *et al.* Decreasing Ventromedial Prefrontal Cortex Activity During Sequential Risk-Taking: An fMRI Investigation of the Balloon Analog Risk Task. *Frontiers in Neuroscience* **6** (2012). doi:[10.3389/fnins.2012.00080](https://doi.org/10.3389/fnins.2012.00080).
- 49 Aron, A. R., Gluck, M. A. & Poldrack, R. A. Long-term test-retest reliability of functional MRI in a classification learning task. *NeuroImage* **29**, 1000–1006 (2006). doi:[10.1016/j.neuroimage.2005.08.010](https://doi.org/10.1016/j.neuroimage.2005.08.010).
- 50 Xue, G. & Poldrack, R. A. The Neural Substrates of Visual Perceptual Learning of Words: Implications for the Visual Word Form Area Hypothesis. *Journal of Cognitive Neuroscience* **19**, 1643–1655 (2007). doi:[10.1162/jocn.2007.19.10.1643](https://doi.org/10.1162/jocn.2007.19.10.1643).
- 51 Tom, S. M., Fox, C. R., Trepel, C. & Poldrack, R. A. The Neural Basis of Loss Aversion in Decision-Making Under Risk. *Science* **315**, 515–518 (2007). doi:[10.1126/science.1134239](https://doi.org/10.1126/science.1134239).

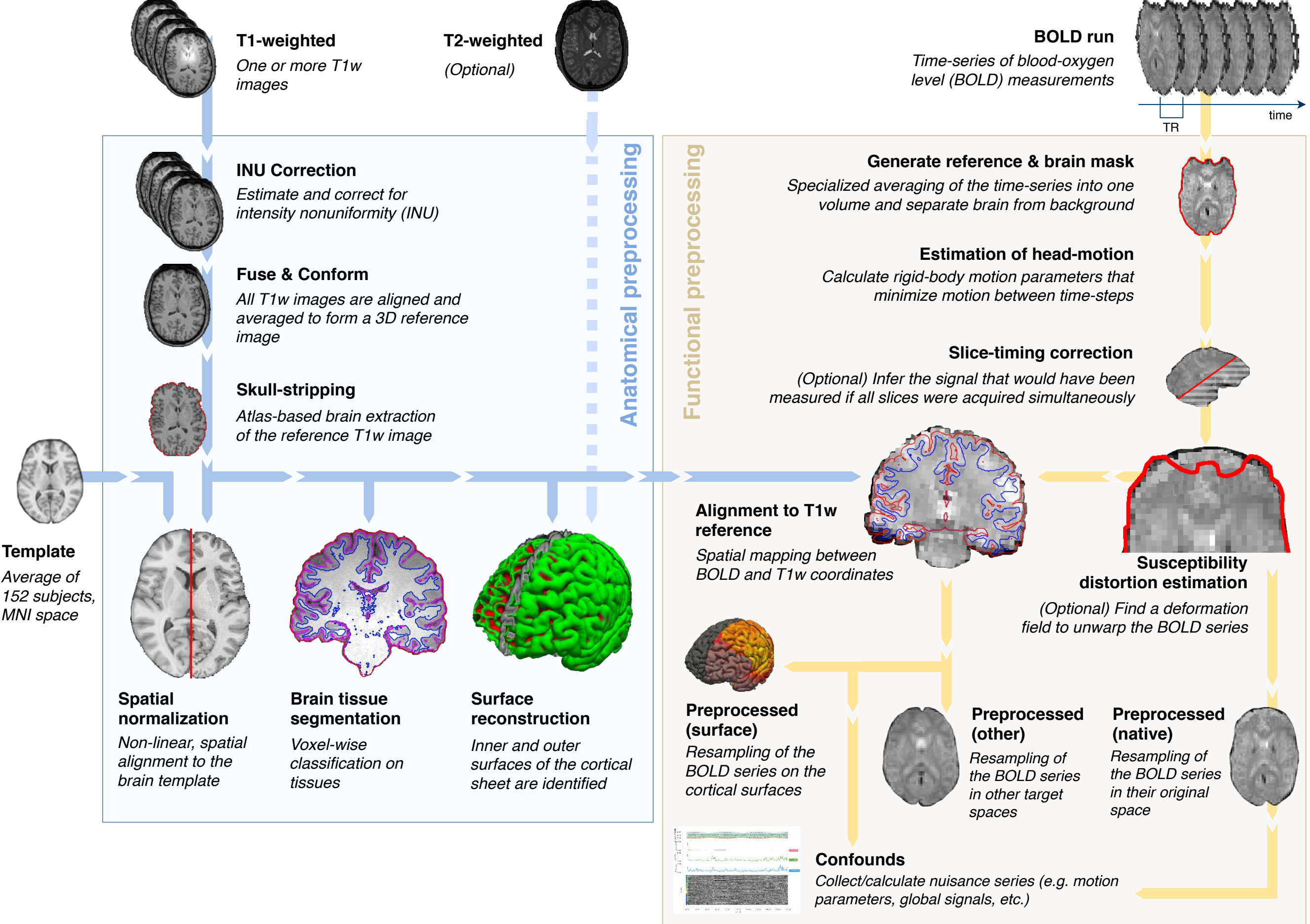
- 52 Xue, G., Aron, A. R. & Poldrack, R. A. Common Neural Substrates for Inhibition of Spoken and Manual Responses. *Cerebral Cortex* **18**, 1923–1932 (2008). doi:[10.1093/cercor/bhm220](https://doi.org/10.1093/cercor/bhm220).
- 53 Aron, A. R., Behrens, T. E., Smith, S., Frank, M. J. & Poldrack, R. A. Triangulating a Cognitive Control Network Using Diffusion-Weighted Magnetic Resonance Imaging (MRI) and Functional MRI. *Journal of Neuroscience* **27**, 3743–3752 (2007). doi:[10.1523/JNEUROSCI.0519-07.2007](https://doi.org/10.1523/JNEUROSCI.0519-07.2007).
- 54 Foerde, K., Knowlton, B. J. & Poldrack, R. A. Modulation of competing memory systems by distraction. *Proceedings of the National Academy of Sciences* **103**, 11778–11783 (2006). doi:[10.1073/pnas.0602659103](https://doi.org/10.1073/pnas.0602659103).
- 55 Poldrack, R. A. *et al.* A phenome-wide examination of neural and cognitive function. *Scientific Data* **3**, 160110 (2016). doi:[10.1038/sdata.2016.110](https://doi.org/10.1038/sdata.2016.110).
- 56 Gorgolewski, K. J., Durnez, J. & Poldrack, R. A. Preprocessed Consortium for Neuropsychiatric Phenomics dataset. *F1000Research* **6**, 1262 (2017). doi:[10.12688/f1000research.11964.2](https://doi.org/10.12688/f1000research.11964.2).
- 57 Laumann, T. O. *et al.* Functional System and Areal Organization of a Highly Sampled Individual Human Brain. *Neuron* **87**, 657–670 (2015). doi:[10.1016/j.neuron.2015.06.037](https://doi.org/10.1016/j.neuron.2015.06.037).
- 58 Alvarez, R., Jaszewski, G. & Poldrack, R. A. Building memories in two languages: an fMRI study of episodic encoding in bilinguals. In *SfN Neuroscience* (Orlando, FL, US, 2002). URL <http://www.sfn.org/annual-meeting/past-and-future-annual-meetings/abstract-archive/abstract-archive-detail>.
- 59 Poldrack, R. A. *et al.* Interactive memory systems in the human brain. *Nature* **414**, 546–550 (2001). doi:[10.1038/35107080](https://doi.org/10.1038/35107080).
- 60 Kelly, A. M. C., Uddin, L. Q., Biswal, B. B., Castellanos, F. X. & Milham, M. P. Competition between functional brain networks mediates behavioral variability. *NeuroImage* **39**, 527–537 (2008). doi:[10.1016/j.neuroimage.2007.08.008](https://doi.org/10.1016/j.neuroimage.2007.08.008).
- 61 Mennes, M. *et al.* Inter-individual differences in resting-state functional connectivity predict task-induced BOLD activity. *NeuroImage* **50**, 1690–1701 (2010). doi:[10.1016/j.neuroimage.2010.01.002](https://doi.org/10.1016/j.neuroimage.2010.01.002).
- 62 Mennes, M. *et al.* Linking inter-individual differences in neural activation and behavior to intrinsic brain dynamics. *NeuroImage* **54**, 2950–2959 (2011). doi:[10.1016/j.neuroimage.2010.10.046](https://doi.org/10.1016/j.neuroimage.2010.10.046).
- 63 Haxby, J. V. *et al.* Distributed and Overlapping Representations of Faces and Objects in Ventral Temporal Cortex. *Science* **293**, 2425–2430 (2001). doi:[10.1126/science.1063736](https://doi.org/10.1126/science.1063736).
- 64 Hanson, S. J., Matsuka, T. & Haxby, J. V. Combinatorial codes in ventral temporal lobe for object recognition: Haxby (2001) revisited: is there a “face” area? *NeuroImage* **23**, 156–166 (2004). doi:[10.1016/j.neuroimage.2004.05.020](https://doi.org/10.1016/j.neuroimage.2004.05.020).
- 65 Duncan, K. J., Pattamadilok, C., Knierim, I. & Devlin, J. T. Consistency and variability in functional localisers. *NeuroImage* **46**, 1018–1026 (2009). doi:[10.1016/j.neuroimage.2009.03.014](https://doi.org/10.1016/j.neuroimage.2009.03.014).
- 66 Wager, T. D., Davidson, M. L., Hughes, B. L., Lindquist, M. A. & Ochsner, K. N. Prefrontal-Subcortical Pathways Mediating Successful Emotion Regulation. *Neuron* **59**, 1037–1050 (2008). doi:[10.1016/j.neuron.2008.09.006](https://doi.org/10.1016/j.neuron.2008.09.006).
- 67 Moran, J. M., Jolly, E. & Mitchell, J. P. Social-Cognitive Deficits in Normal Aging. *Journal of Neuroscience* **32**, 5553–5561 (2012). doi:[10.1523/JNEUROSCI.5511-11.2012](https://doi.org/10.1523/JNEUROSCI.5511-11.2012).
- 68 Uncapher, M. R., Hutchinson, J. B. & Wagner, A. D. Dissociable Effects of Top-Down and Bottom-Up Attention during Episodic Encoding. *Journal of Neuroscience* **31**, 12613–12628 (2011). doi:[10.1523/JNEUROSCI.0152-11.2011](https://doi.org/10.1523/JNEUROSCI.0152-11.2011).
- 69 Gorgolewski, K. J. *et al.* A test-retest fMRI dataset for motor, language and spatial attention functions. *GigaScience* **2**, 1–4 (2013). doi:[10.1186/2047-217X-2-6](https://doi.org/10.1186/2047-217X-2-6).
- 70 Repovs, G. & Barch, D. M. Working memory related brain network connectivity in individuals with schizophrenia and their siblings. *Frontiers in Human Neuroscience* **6** (2012). doi:[10.3389/fnhum.2012.00137](https://doi.org/10.3389/fnhum.2012.00137).
- 71 Repovs, G., Csernansky, J. G. & Barch, D. M. Brain Network Connectivity in Individuals with Schizophrenia and Their Siblings. *Biological Psychiatry* **69**, 967–973 (2011). doi:[10.1016/j.biopsych.2010.11.009](https://doi.org/10.1016/j.biopsych.2010.11.009).
- 72 Walz, J. M. *et al.* Simultaneous EEG-fMRI Reveals Temporal Evolution of Coupling between Supramodal Cortical Attention Networks and the Brainstem. *Journal of Neuroscience* **33**, 19212–19222 (2013). doi:[10.1523/JNEUROSCI.2649-13.2013](https://doi.org/10.1523/JNEUROSCI.2649-13.2013).

- 73 Walz, J. M. *et al.* Simultaneous EEG-fMRI reveals a temporal cascade of task-related and default-mode activations during a simple target detection task. *NeuroImage* **102**, 229–239 (2014). doi:[10.1016/j.neuroimage.2013.08.014](https://doi.org/10.1016/j.neuroimage.2013.08.014).
- 74 Conroy, B. R., Walz, J. M. & Sajda, P. Fast Bootstrapping and Permutation Testing for Assessing Reproducibility and Interpretability of Multivariate fMRI Decoding Models. *PLOS ONE* **8**, e79271 (2013). doi:[10.1371/journal.pone.0079271](https://doi.org/10.1371/journal.pone.0079271).
- 75 Walz, J. M. *et al.* Prestimulus EEG alpha oscillations modulate task-related fMRI BOLD responses to auditory stimuli. *NeuroImage* **113**, 153–163 (2015). doi:[10.1016/j.neuroimage.2015.03.028](https://doi.org/10.1016/j.neuroimage.2015.03.028).
- 76 Velanova, K., Wheeler, M. E. & Luna, B. Maturation Changes in Anterior Cingulate and Frontoparietal Recruitment Support the Development of Error Processing and Inhibitory Control. *Cerebral Cortex* **18**, 2505–2522 (2008). doi:[10.1093/cercor/bhn012](https://doi.org/10.1093/cercor/bhn012).
- 77 Padmanabhan, A., Geier, C. F., Ordaz, S. J., Teslovich, T. & Luna, B. Developmental changes in brain function underlying the influence of reward processing on inhibitory control. *Developmental Cognitive Neuroscience* **1**, 517–529 (2011). doi:[10.1016/j.dcn.2011.06.004](https://doi.org/10.1016/j.dcn.2011.06.004).
- 78 Geier, C. F., Terwilliger, R., Teslovich, T., Velanova, K. & Luna, B. Immaturities in Reward Processing and Its Influence on Inhibitory Control in Adolescence. *Cerebral Cortex* **20**, 1613–1629 (2010). doi:[10.1093/cercor/bhp225](https://doi.org/10.1093/cercor/bhp225).
- 79 Cera, N., Tartaro, A. & Sensi, S. L. Modafinil Alters Intrinsic Functional Connectivity of the Right Posterior Insula: A Pharmacological Resting State fMRI Study. *PLOS ONE* **9**, e107145 (2014). doi:[10.1371/journal.pone.0107145](https://doi.org/10.1371/journal.pone.0107145).
- 80 Woo, C.-W., Roy, M., Buhle, J. T. & Wager, T. D. Distinct Brain Systems Mediate the Effects of Nociceptive Input and Self-Regulation on Pain. *PLOS Biology* **13**, e1002036 (2015). doi:[10.1371/journal.pbio.1002036](https://doi.org/10.1371/journal.pbio.1002036).
- 81 Smeets, P. A. M., Kroese, F. M., Evers, C. & de Ridder, D. T. D. Allured or alarmed: Counteractive control responses to food temptations in the brain. *Behavioural Brain Research* **248**, 41–45 (2013). doi:[10.1016/j.bbr.2013.03.041](https://doi.org/10.1016/j.bbr.2013.03.041).
- 82 Pernet, C. R. *et al.* The human voice areas: Spatial organization and inter-individual variability in temporal and extra-temporal cortices. *NeuroImage* **119**, 164–174 (2015). doi:[10.1016/j.neuroimage.2015.06.050](https://doi.org/10.1016/j.neuroimage.2015.06.050).
- 83 Verstynen, T. D. The organization and dynamics of corticostriatal pathways link the medial orbitofrontal cortex to future behavioral responses. *Journal of Neurophysiology* **112**, 2457–2469 (2014). doi:[10.1152/jn.00221.2014](https://doi.org/10.1152/jn.00221.2014).
- 84 Bursley, J. K., Nestor, A., Tarr, M. J. & Creswell, J. D. Awake, Offline Processing during Associative Learning. *PLOS ONE* **11**, e0127522 (2016). doi:[10.1371/journal.pone.0127522](https://doi.org/10.1371/journal.pone.0127522).
- 85 Ella, G., David, M. & Avi, K. Learning from the other limb's experience: sharing the trained M1 representation of the motor sequence knowledge. *The Journal of Physiology* **594**, 169–188 (2015). doi:[10.1113/JP270184](https://doi.org/10.1113/JP270184).
- 86 Gabitov, E., Manor, D. & Karni, A. Patterns of Modulation in the Activity and Connectivity of Motor Cortex during the Repeated Generation of Movement Sequences. *Journal of Cognitive Neuroscience* **27**, 736–751 (2014). doi:[10.1162/jocn\\_a\\_00751](https://doi.org/10.1162/jocn_a_00751).
- 87 Gabitov, E., Manor, D. & Karni, A. Done That: Short-term Repetition Related Modulations of Motor Cortex Activity as a Stable Signature for Overnight Motor Memory Consolidation. *Journal of Cognitive Neuroscience* **26**, 2716–2734 (2014). doi:[10.1162/jocn\\_a\\_00675](https://doi.org/10.1162/jocn_a_00675).
- 88 Lepping, R. J., Atchley, R. A. & Savage, C. R. Development of a validated emotionally provocative musical stimulus set for research. *Psychology of Music* **44**, 1012–1028 (2016). doi:[10.1177/0305735615604509](https://doi.org/10.1177/0305735615604509).
- 89 Park, C.-A. & Kang, C.-K. Sensing the effects of mouth breathing by using 3-tesla MRI. *Journal of the Korean Physical Society* **70**, 1070–1076 (2017). doi:[10.3938/jkps.70.1070](https://doi.org/10.3938/jkps.70.1070).
- 90 Iannilli, E. *et al.* Effects of Manganese Exposure on Olfactory Functions in Teenagers: A Pilot Study. *PLOS ONE* **11**, e0144783 (2016). doi:[10.1371/journal.pone.0144783](https://doi.org/10.1371/journal.pone.0144783).
- 91 Kim, J., Wang, J., Wedell, D. H. & Shinkareva, S. V. Identifying Core Affect in Individuals from fMRI Responses to Dynamic Naturalistic Audiovisual Stimuli. *PLOS ONE* **11**, e0161589 (2016). doi:[10.1371/journal.pone.0161589](https://doi.org/10.1371/journal.pone.0161589).
- 92 Tãtreault, P. *et al.* Brain Connectivity Predicts Placebo Response across Chronic Pain Clinical Trials. *PLOS Biology* **14**, e1002570 (2016). doi:[10.1371/journal.pbio.1002570](https://doi.org/10.1371/journal.pbio.1002570).
- 93 Chakroff, A. *et al.* When minds matter for moral judgment: intent information is neurally encoded for harmful but not impure acts. *Social Cognitive and Affective Neuroscience* **11**, 476–484 (2016). doi:[10.1093/scan/nsv131](https://doi.org/10.1093/scan/nsv131).

- 94 Koster-Hale, J., Saxe, R., Dungan, J. & Young, L. L. Decoding moral judgments from neural representations of intentions. *Proceedings of the National Academy of Sciences* **110**, 5648–5653 (2013). doi:[10.1073/pnas.1207992110](https://doi.org/10.1073/pnas.1207992110).
- 95 Gao, X. *et al.* My Body Looks Like That Girl! Body Mass Index Modulates Brain Activity during Body Image Self-Reflection among Young Women. *PLOS ONE* **11**, e0164450 (2016). doi:[10.1371/journal.pone.0164450](https://doi.org/10.1371/journal.pone.0164450).
- 96 Romaniuk, L., Pope, M., Nicol, K., Steele, D. & Hall, J. Neural correlates of fears of abandonment and rejection in borderline personality disorder. *Wellcome Open Research* **1**, 33 (2016). doi:[10.12688/wellcomeopenres.10331.1](https://doi.org/10.12688/wellcomeopenres.10331.1).
- 97 Cohen, A. D., Nencka, A. S., Lebel, R. M. & Wang, Y. Multiband multi-echo imaging of simultaneous oxygenation and flow timeseries for resting state connectivity. *PLOS ONE* **12**, e0169253 (2017). doi:[10.1371/journal.pone.0169253](https://doi.org/10.1371/journal.pone.0169253).
- 98 Dalenberg, J. R., Weitkamp, L., Renken, R. J., Nanetti, L. & Horst, G. J. t. Flavor pleasantness processing in the ventral emotion network. *PLOS ONE* **12**, e0170310 (2017). doi:[10.1371/journal.pone.0170310](https://doi.org/10.1371/journal.pone.0170310).
- 99 Roy, A. *et al.* The evolution of cost-efficiency in neural networks during recovery from traumatic brain injury. *PLOS ONE* **12**, e0170541 (2017). doi:[10.1371/journal.pone.0170541](https://doi.org/10.1371/journal.pone.0170541).
- 100 Gordon, E. M. *et al.* Precision Functional Mapping of Individual Human Brains. *Neuron* **95**, 791–807.e7 (2017). doi:[10.1016/j.neuron.2017.07.011](https://doi.org/10.1016/j.neuron.2017.07.011).
- 101 Veldhuizen, M. G. *et al.* Integration of Sweet Taste and Metabolism Determines Carbohydrate Reward. *Current Biology* **27**, 2476–2485.e6 (2017). doi:[10.1016/j.cub.2017.07.018](https://doi.org/10.1016/j.cub.2017.07.018).
- 102 Greene, D. J. *et al.* Behavioral interventions for reducing head motion during MRI scans in children. *NeuroImage* **171**, 234–245 (2018). doi:[10.1016/j.neuroimage.2018.01.023](https://doi.org/10.1016/j.neuroimage.2018.01.023).
- 103 Nastase, S. A. *et al.* Attention Selectively Reshapes the Geometry of Distributed Semantic Representation. *Cerebral Cortex* **27**, 4277–4291 (2017). doi:[10.1093/cercor/bhx138](https://doi.org/10.1093/cercor/bhx138).
- 104 Kanazawa, Y. *et al.* Phonological memory in sign language relies on the visuomotor neural system outside the left hemisphere language network. *PLOS ONE* **12**, e0177599 (2017). doi:[10.1371/journal.pone.0177599](https://doi.org/10.1371/journal.pone.0177599).
- 105 Esteban, O. *et al.* MRIQC: Advancing the automatic prediction of image quality in MRI from unseen sites. *PLOS ONE* **12**, e0184661 (2017). doi:[10.1371/journal.pone.0184661](https://doi.org/10.1371/journal.pone.0184661).
- 106 Calhoun, V. D. *et al.* The impact of T1 versus EPI spatial normalization templates for fMRI data analyses. *Human Brain Mapping* **38**, 5331–5342 (2017). doi:[10.1002/hbm.23737](https://doi.org/10.1002/hbm.23737).
- 107 Beckmann, C. F., Jenkinson, M. & Smith, S. M. General multilevel linear modeling for group analysis in FMRI. *NeuroImage* **20**, 1052–1063 (2003). doi:[10.1016/S1053-8119\(03\)00435-X](https://doi.org/10.1016/S1053-8119(03)00435-X).
- 108 Strother, S. C. *et al.* The Quantitative Evaluation of Functional Neuroimaging Experiments: The NPAIRS Data Analysis Framework. *NeuroImage* **15**, 747–771 (2002). doi:[10.1006/nimg.2001.1034](https://doi.org/10.1006/nimg.2001.1034).
- 109 Karaman, M., Nencka, A. S., Bruce, I. P. & Rowe, D. B. Quantification of the Statistical Effects of Spatiotemporal Processing of Nontask fMRI Data. *Brain Connectivity* **4**, 649–661 (2014). doi:[10.1089/brain.2014.0278](https://doi.org/10.1089/brain.2014.0278).
- 110 Gorgolewski, K. *et al.* Nipype: a flexible, lightweight and extensible neuroimaging data processing framework in Python. *Frontiers in Neuroinformatics* **5**, 13 (2011). doi:[10.3389/fninf.2011.00013](https://doi.org/10.3389/fninf.2011.00013).

**Table 2. Data from OpenfMRI used in evaluation.** S: number of sessions; T: number of tasks; R: number of BOLD runs; Modalities: number of runs for each modality, per subject (FM indicates acquisitions for susceptibility distortion correction); Part. IDs (phase): participant identifiers included in testing phase; N: total of unique participants; TR: repetition time (s); #TR: length of time-series (volumes); Resolution: voxel size of BOLD series (mm).

DS000XXX	Scanner	S	T	R	Modalities	Part. IDs (Phase I)	Part. IDs (Phase II)	N	TR	#TR	Resolution
001 <sup>48</sup>	SIEMENS	1	1	21	1 T1w, 3 BOLD	02, 03, 09, 15	01, 02, 07, 08	7	2.0	6300	3.12x3.12x4.00
002 <sup>49</sup>	SIEMENS	1	3	48	1 T1w, 6 BOLD	01, 11, 14, 15	02, 03, 04, 10	8	2.0	9510	3.12x3.12x5.00
003 <sup>50</sup>	SIEMENS	1	1	6	1 T1w, 1 BOLD	03, 07, 09, 11	02, 09, 10, 11	6	2.0	956	3.12x3.12x4.00
005 <sup>51</sup>	SIEMENS	1	1	21	1 T1w, 3 BOLD	01, 03, 06, 14	01, 04, 05, 15	7	2.0	5040	3.12x3.12x4.00
007 <sup>52</sup>	SIEMENS	1	3	46	1 T1w, 5 BOLD	09, 11, 18, 20	03, 04, 08, 12	8	2.0	8205	3.12x3.12x4.00
008 <sup>53</sup>	SIEMENS	1	2	38	1 T1w, 5 BOLD	04, 09, 12, 14	10, 12, 13, 15	7	2.0	6808	3.12x3.12x4.39
009	SIEMENS	1	4	48	1 T1w, 6 BOLD	01, 03, 09, 10	17, 18, 21, 23	8	2.0	10528	3.00x3.00x4.00
011 <sup>54</sup>	SIEMENS	1	4	41	1 T1w, 5 BOLD	01, 03, 06, 08	03, 09, 11, 14	7	2.0	8041	3.12x3.12x5.00
017	SIEMENS	2	2	48	4 T1w, 9 BOLD	2, 4, 7, 8	2, 5, 7, 8	5	2.0	8736	3.12x3.12x4.00
030 <sup>55,56</sup>	SIEMENS	1	8	30	1 T1w, 7 BOLD		10[440,638,668,855]	4	2.2	6254	3.00x3.00x4.00
031 <sup>57</sup>	SIEMENS	107	9	191	29 T1w, 18 T2w, 46 FM, 191 BOLD		01	1	1.2	79017	2.55x2.55x2.54
051 <sup>58</sup>	SIEMENS	1	1	54	2 T1w, 7 BOLD	03, 04, 05, 13	02, 04, 06, 09	7	2.0	10800	3.12x3.12x6.00
052 <sup>59</sup>	SIEMENS	1	2	28	2 T1w, 4 BOLD	06, 08, 12, 14	05, 10, 12, 13	7	2.0	6300	3.12x3.12x6.00
053	SIEMENS	1	3	32	1 T1w, 8 BOLD		002, 003, 005, 006	4	1.2	10712	2.40x2.40x2.40
101	SIEMENS	1	1	16	1 T1w, 2 BOLD	06, 08, 16, 19	05, 11, 17, 20	8	2.0	2416	3.00x3.00x4.00
102 <sup>60-62</sup>	SIEMENS	1	1	16	1 T1w, 2 BOLD	05, 19, 22, 23	08, 10, 16, 20	8	2.0	2336	3.00x3.00x4.00
105 <sup>63,64</sup>	GE	1	1	71	1 T1w, 11 BOLD	1, 2, 3, 6	1, 4, 5, 6	6	2.5	8591	3.50x3.75x3.75
107 <sup>65</sup>	SIEMENS	1	1	14	1 T1w, 2 BOLD	02, 05, 20, 29	05, 36, 39, 47	7	3.0	2315	3.00x3.00x3.00
108 <sup>66</sup>	GE	1	1	41	1 T1w, 5 BOLD	01, 03, 07, 17	03, 10, 24, 26	7	2.0	7860	3.44x3.44x4.50
109 <sup>67</sup>	SIEMENS	1	1	12	1 T1w, 2 BOLD	02, 10, 39, 47	02, 11, 15, 39	6	2.0	2148	3.00x3.00x3.54
110 <sup>68</sup>	GE	1	1	80	1 T1w, 10 BOLD	07, 09, 17, 18	01, 02, 03, 06	8	2.0	14880	3.44x3.44x4.01
114 <sup>69</sup>	GE	2	5	70	2 T1w, 10 BOLD	01, 05, 07, 08	02, 03, 04, 07	7	5.0	10626	4.00x4.00x4.00
115 <sup>70,71</sup>	SIEMENS	1	3	24	1 T1w, 3 BOLD	31, 68, 77, 78	04, 33, 67, 79	8	2.5	3288	4.00x4.00x4.00
116 <sup>72-75</sup>	PHILIPS	1	2	36	1 T1w, 6 BOLD	02, 08, 10, 15	08, 12, 15, 17	6	2.0	6120	3.00x3.00x4.00
119 <sup>76</sup>	SIEMENS	1	1	31	1 T1w, 3 BOLD	10, 51, 59, 74	11, 26, 56, 58	8	1.5	7564	3.12x3.12x4.00
120 <sup>77</sup>	SIEMENS	1	1	11	1 T1w, 2 BOLD		04, 05, 08, 24	4	1.5	2376	3.12x3.12x4.00
121 <sup>78</sup>	SIEMENS	1	1	28	1 T1w, 4 BOLD	01, 04, 05, 20	01, 18, 22, 26	7	1.5	5656	3.12x3.12x4.00
133 <sup>79</sup>	PHILIPS	2	1	24	2 T1w, 6 BOLD		06, 21, 22, 23	4	1.7	3480	4.00x4.00x4.00
140 <sup>80</sup>	PHILIPS	1	1	36	1 T1w, 9 BOLD		05, 27, 32, 33	4	2.0	7380	2.80x2.80x3.00
148	GE	1	1	12	1 T1w, 1 T2w, 3 BOLD		09, 26, 28, 33	4	1.8	3162	3.00x3.00x3.00
157 <sup>81</sup>	PHILIPS	1	1	4	1 T1w, 1 BOLD		04, 21, 23, 28	4	1.6	1485	4.00x4.00x3.99
158 <sup>82</sup>	SIEMENS	1	1	4	1 T1w, 1 BOLD		064, 081, 122, 149	4	2.0	1240	3.00x3.00x3.30
164 <sup>83</sup>	SIEMENS	1	1	4	1 T1w, 1 BOLD		006, 012, 019, 027	4	1.5	1480	3.50x3.50x3.50
168 <sup>84</sup>	SIEMENS	1	1	4	1 T1w, 1 BOLD		08, 27, 30, 49	4	2.5	2112	3.00x3.00x3.00
170 <sup>85-87</sup>	GE	1	4	48	1 T1w, 12 BOLD		1700, 1708, 1710, 1713	4	3.0	2160	3.44x3.44x3.40
171 <sup>88</sup>	SIEMENS	1	2	20	1 T1w, 5 BOLD		control0[4,8,14], mdd03	4	3.0	2066	2.90x2.90x3.00
177 <sup>89</sup>	SIEMENS	1	1	4	1 T1w, 1 BOLD		04, 07, 10, 11	4	3.0	920	3.00x3.00x3.00
200 <sup>90</sup>	SIEMENS	1	1	4	1 T1w, 1 BOLD		2004, 2011, 2012, 2014	4	2.5	480	3.28x3.28x4.29
205 <sup>91</sup>	SIEMENS	1	2	12	1 T1w, 3 BOLD		01, 05, 06, 07	4	2.2	4103	3.00x3.00x3.00
208 <sup>92</sup>	SIEMENS	1	1	4	1 T1w, 1 BOLD		27, 45, 56, 69	4	2.5	1200	3.44x3.44x3.00
212 <sup>93,94</sup>	SIEMENS	1	2	40	1 T1w, 10 BOLD		07, 13, 20, 29	4	3.0	5808	3.12x3.12x4.00
213 <sup>95</sup>	SIEMENS	1	1	4	1 T1w, 1 BOLD		06, 10, 12, 13	4	2.0	1120	3.00x3.00x3.99
214 <sup>96</sup>	SIEMENS	1	1	4	1 T1w, 1 BOLD		EESS0[06,31,33,34]	4	1.6	1364	3.44x3.44x5.00
216 <sup>97</sup>	GE	1	1	16	1 T1w, 4 BOLD (ME)		01, 02, 03, 04	4	3.5	2688	3.00x3.00x3.00
218 <sup>98</sup>	PHILIPS	1	1	12	1 T1w, 3 BOLD		02, 07, 12, 17	4	1.5	6709	2.88x3.00x2.88
219 <sup>98</sup>	PHILIPS	1	1	14	1 T1w, 3 BOLD		04, 09, 10, 12	4	1.5	7807	2.88x3.00x2.88
220 <sup>99</sup>	PHILIPS, SIEMENS	3	1	12	3 T1w, 3 BOLD		tbi[03,05,06,10]	4	2.0	1728	3.00x3.00x4.00
221	SIEMENS	2	1	15	1 MP2RAGE, 9 FM, 3 BOLD		010[016,064,125,251]	4	2.5	9855	2.30x2.30x2.30
224 <sup>100</sup>	SIEMENS	12	6	399	4 T1w, 4 T2w, 10 FM, 79 BOLD	MSC[05,06,08,09]	MSC[05,08,09,10]	5	2.2	88528	4.00x4.00x4.00
228	SIEMENS	1	1	4	1 T1w, 1 BOLD		pixar[001,017,103,132]	4	2.0	672	3.06x3.06x3.29
229 <sup>101</sup>	SIEMENS	1	1	12	1 T1w, 3 BOLD		02, 05, 07, 10	4	2.0	4680	3.44x3.44x3.00
231 <sup>102</sup>	SIEMENS	1	1	12	1 T1w, 3 BOLD		01, 02, 03, 09	4	2.0	4548	2.02x2.02x2.00
233 <sup>103</sup>	PHILIPS	1	2	80	2 T1w, 10 BOLD	rid0000[12,24,36,41]	rid0000[01,17,31,32]	8	2.0	15680	3.00x3.00x3.00
237 <sup>104</sup>	SIEMENS	1	1	41	1 T1w, 5 BOLD	03, 08, 11, 12	01, 03, 04, 06	7	1.0	19844	3.00x3.00x3.00
243 <sup>40</sup>	SIEMENS	1	1	13	1 T1w, 1 BOLD	012, 032, 042, 071	023, 066, 089, 094	8	2.5	2884	4.00x4.00x4.00
Total				2176		120	202	304		551769	



## Summary

Reports start with an overview of the dataset, as identified using BIDS.

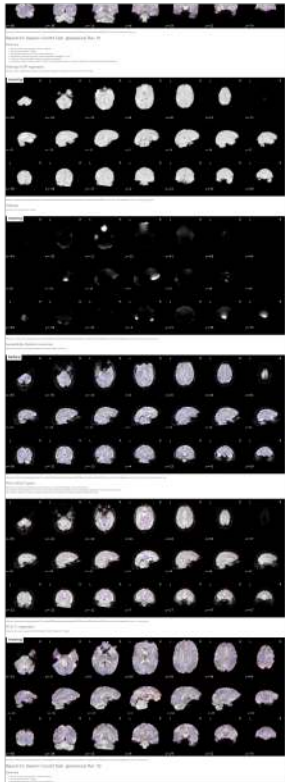
## Anatomical processing

Several panels allow for quality control of the anatomical workflow. Brain tissue segmentation, spatial normalization and surface reconstruction (if requested) can be inspected using these visualization panels.



## Fieldmaps processing

When the dataset contains any of the supported alternatives to estimate the deformation map corresponding to susceptibility distortions, these panels help assess these images were correctly processed.



## Functional processing

Each BOLD run across the different tasks and sessions will be presented at different quality control points.

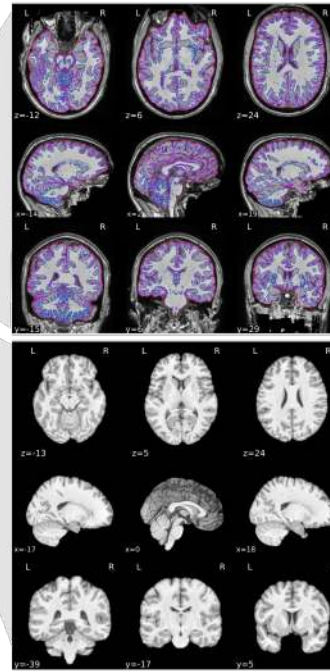
First, when fieldmaps were found, some mosaics will show the alignment of those maps to the BOLD reference. The block ends with a dynamic plot showing how images are unwarped.

The report also shows processing in native BOLD space plotting the brain mask calculated from the functional MR signal and the regions-of-interest (ROIs) where the CompCor confounds are calculated.

Finally, the alignment between same-subject T1-weighted and that specific BOLD run is presented.

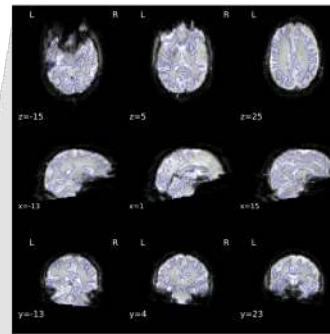
## Errors

fMRIPrep is explicit about errors, and any problems encountered along the processing will be listed at the end of the report, with collapsible panels containing the specific detail of each error.

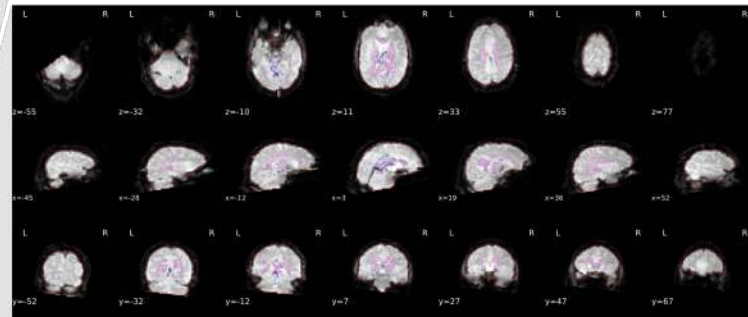


**T1-weighted reference, brain mask, intensity inhomogeneity and brain tissue segmentation panel.** A static mosaic allows the assessment of these four crucial steps of pre-processing anatomical images.

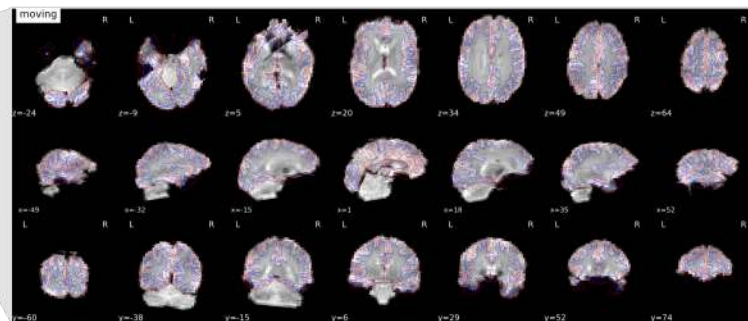
**Spatial normalization.** A dynamic mosaic that transitions between the target atlas space and the T1w-reference aligned into that space allows checking the accuracy of this image registration process.



**Susceptibility distortion correction.** If fieldmap information was found or the "fieldmap-less" correction is requested, the step is assessed with a dynamic mosaic that transitions between the unwarped ("after") and original ("before"). Contours of the white-matter are also presented as anatomical cue.



**BOLD mask and CompCor ROIs.** The final BOLD signal is presented, with contours representing the outline of the brain mask, and two regions-of-interest (ROIs) where CompCor confounds are estimated.



**Alignment of BOLD and the T1w reference.** The correct alignment to the anatomical reference is assessed with a dynamic mosaic that renders the reconstructed surfaces over the BOLD reference.

### Data sample

Manual selection based on MRIQC<sup>34</sup>.

4 subjects per dataset

30 out of 54 datasets

### Run fMRIPrep

Container execution of fMRIPrep

### Stage errors

Collect automatically generated error files

### Visualization of reports

Quick visual assessment of all reports

Issues found?

yes

### Triage issue

Tag dataset and subject  
Identify the issue and potential origins.

no

CI tests pass

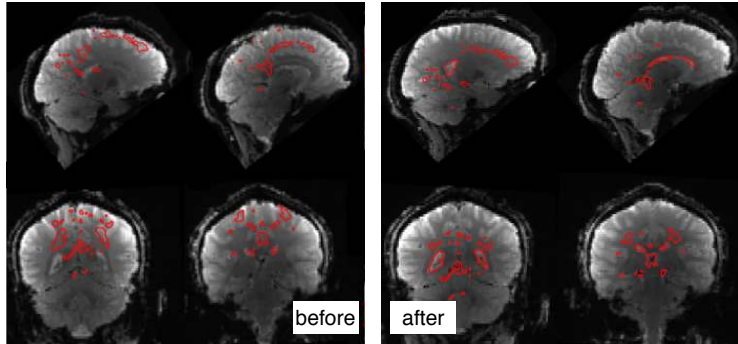
### Fix Issue

Code iteration that fixes the issue

Release: version 1.0.0

Dec 6, 2017

### Example fix: consistency of NIfTI headers



### Data Sample

Random sampling

4 subjects per dataset

All 54 datasets

### Run fMRIPrep

Container execution of fMRIPrep

### Assessment protocol

Thorough inspection and rating of all report elements, for each subject's report.

Issues found?

yes

### Triage issue

Tag dataset and subject  
Identify the issue and potential origins.

no

CI tests pass

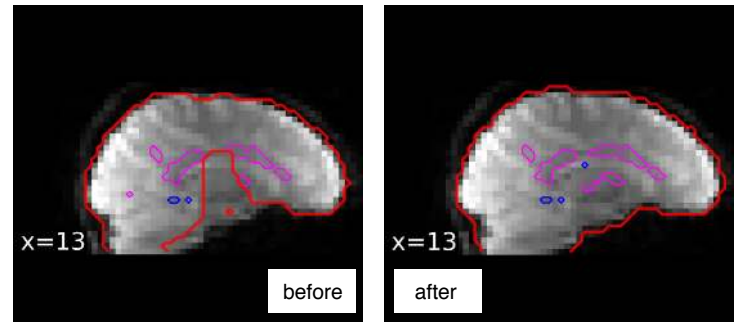
### Fix Issue

Code iteration that fixes the issue

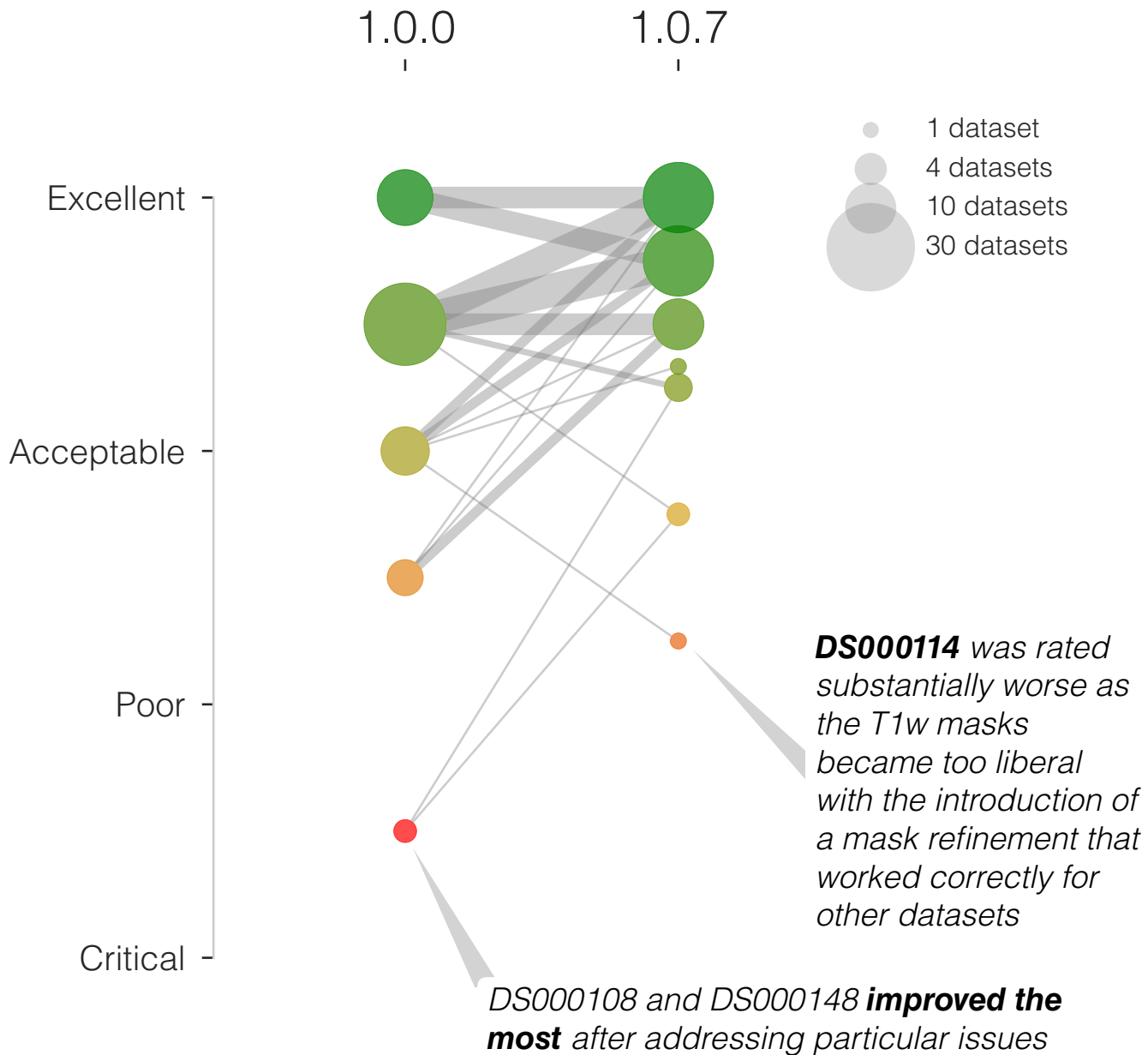
Release: version 1.0.5

Jan 21, 2018

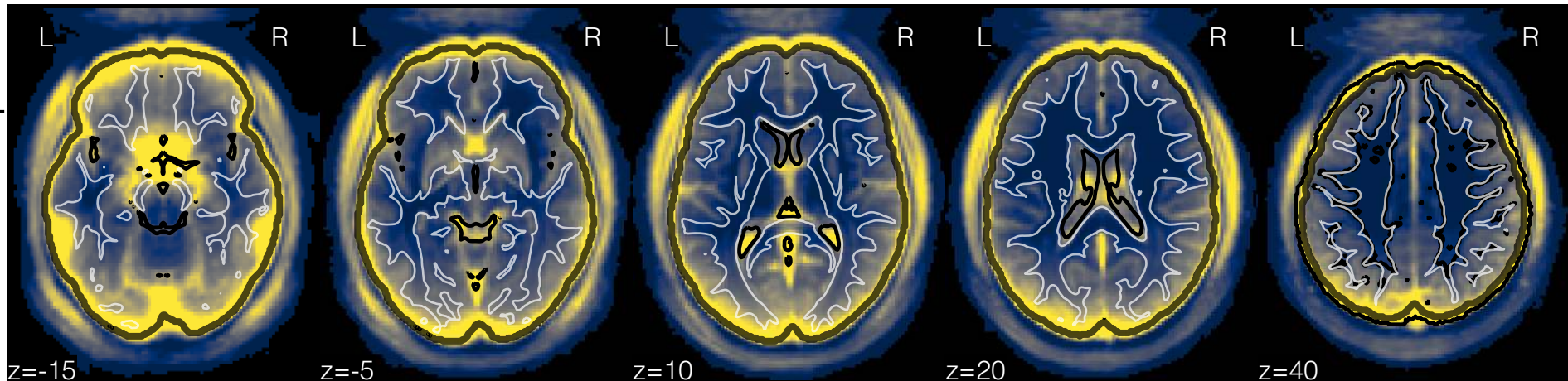
### Example fix: brain masks from BOLD data







fMRIPrep



z=-15

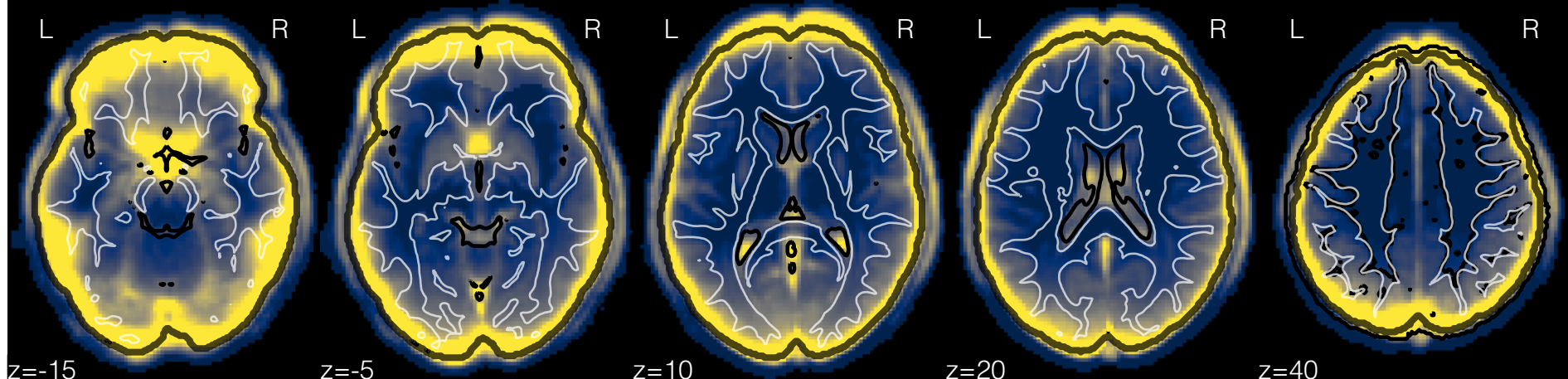
z=-5

z=10

z=20

z=40

feat



z=-15

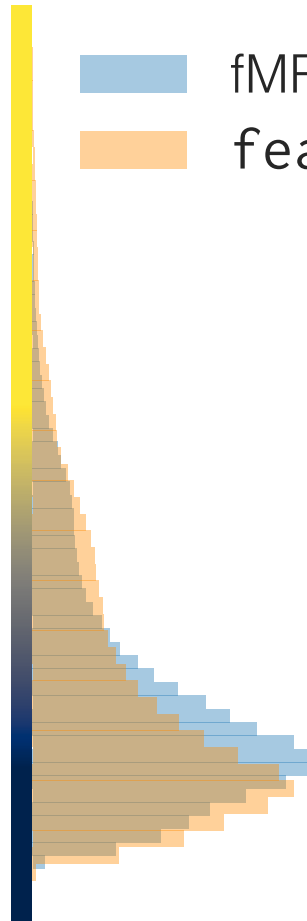
z=-5

z=10

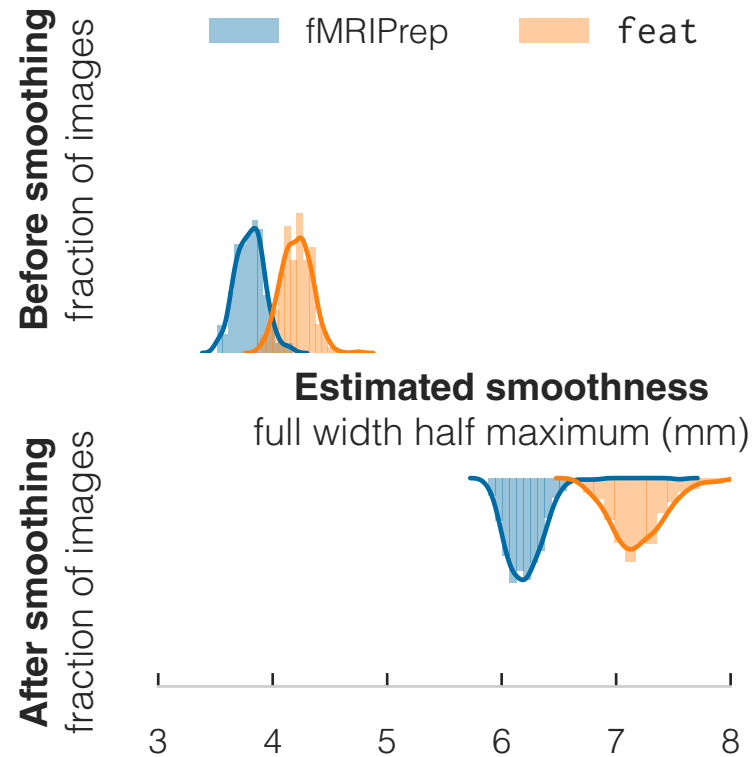
z=20

z=40

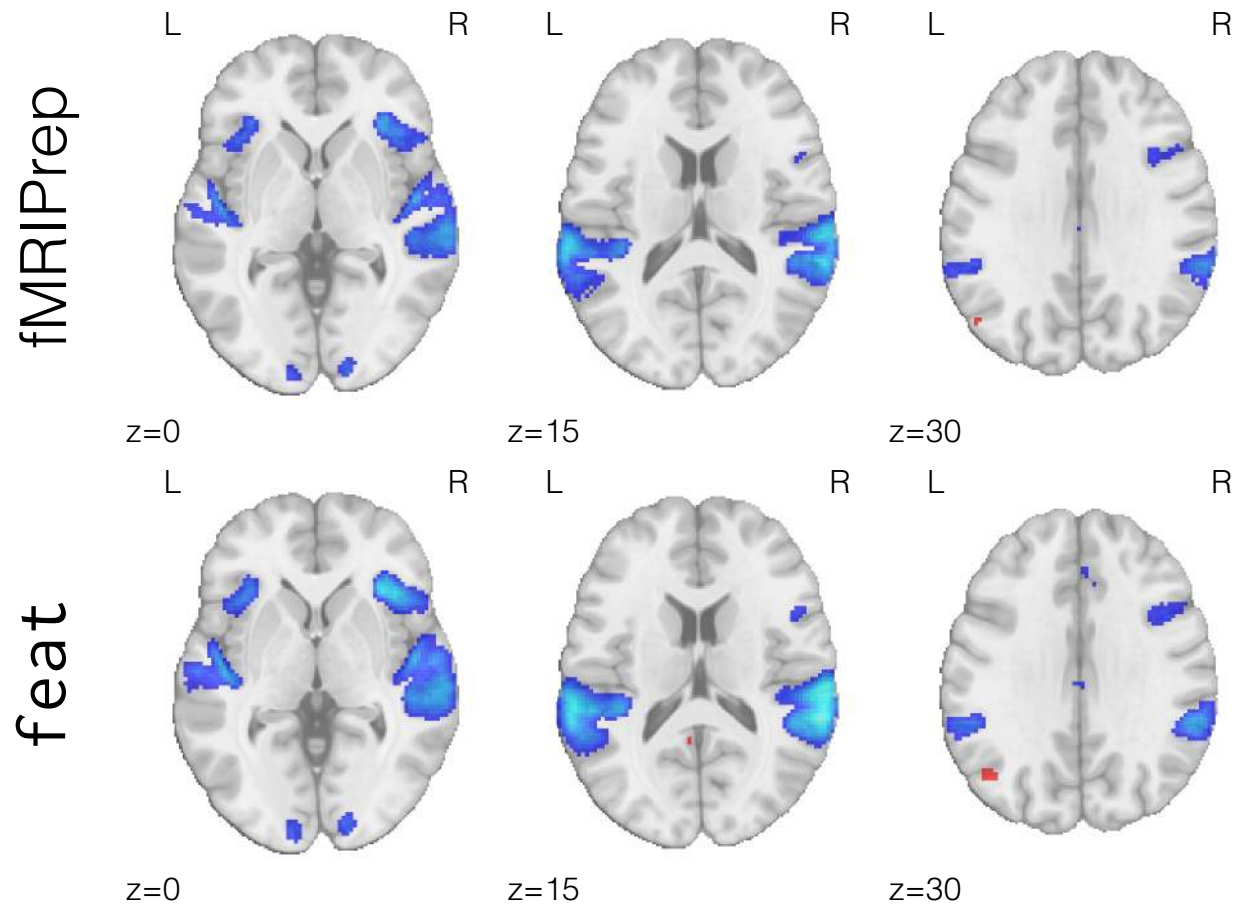
fMRIPrep  
feat



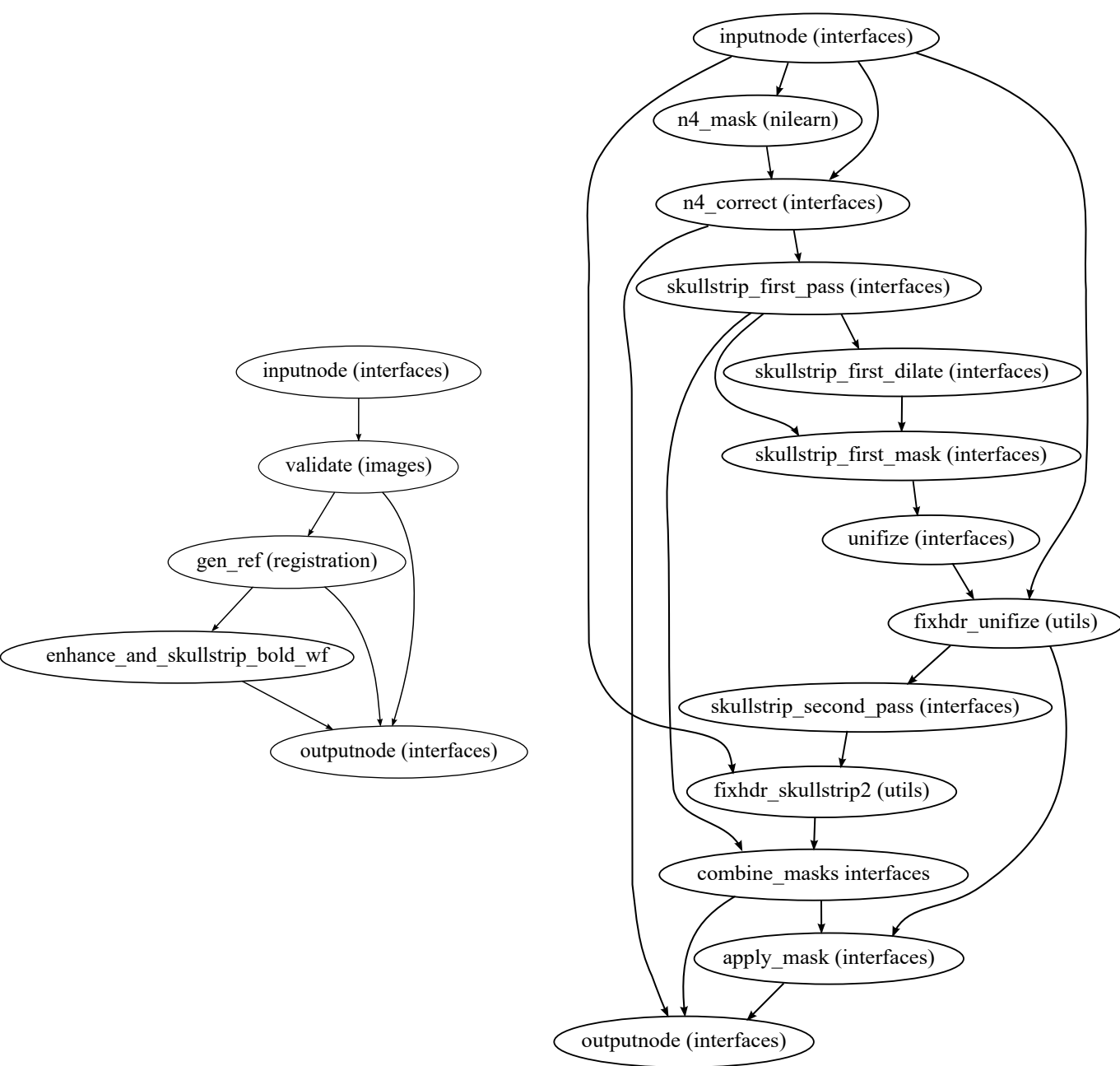
A



B



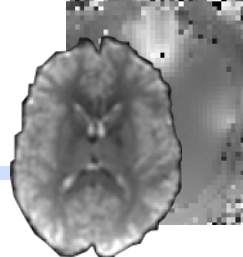






### Original BOLD image

*BOLD data acquired with EPI schemes typically present nonlinear distortions along the phase-encoding (PE) axis.*



### Additional acquisitions

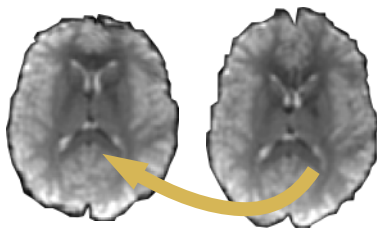
*Extra acquisitions are generally included within the imaging protocol to inform the susceptibility distortion correction (SDC) process.*

*Additional acquisitions with alternative PE directions available?*

Yes

### "PE-Polar" SDC

*A highly constrained nonlinear registration process is used to map images with opposing realizations of distortion in an intermediate, undistorted reference.*

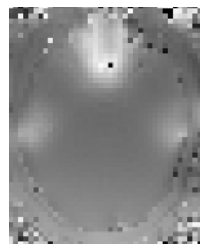


*Field-map acquisition available?*

Yes

### Direct field map estimation

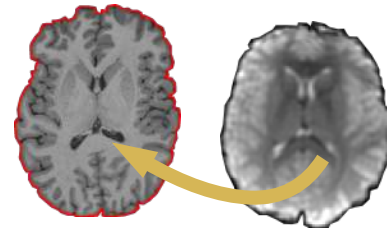
*Certain MR schemes allow for the estimation of a field inhomogeneity map, that can then be used to calculate the displacement along the PE each voxel has suffered.*



*"Fieldmap-less" correction enabled?*

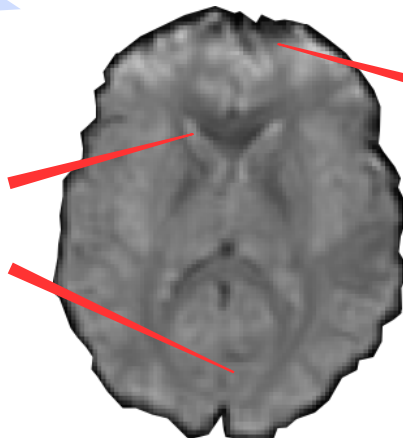
### "Fieldmap-less" SDC

*The T1w image can be used as "anatomically unwarped" reference. The intensities of the T1w image are inverted to maximize the similarity to the T2\* contrast of BOLD images.*



### Low-frequency distortion

*SDC compensates for the small displacements across the brain caused by the low-frequency component of the map of field inhomogeneity*



### Drop-out

*Regions where higher frequency components of the field map are present are not, generally, recoverable. As a result, signal is lost and a considerable amount of distortion may remain.*

derivatives/

fmriprep/

sub-E82  
sub-E83/

One folder containing derivatives per subject

anat/

sub-E83\_T1w\_brainmask.nii.gz  
sub-E83\_T1w\_class-CSF\_probdtissue.nii.gz  
sub-E83\_T1w\_class-GM\_probdtissue.nii.gz  
sub-E83\_T1w\_class-WM\_probdtissue.nii.gz  
sub-E83\_T1w\_dtissue.nii.gz  
sub-E83\_T1w\_preproc.nii.gz  
...  
sub-E83\_T1w\_space-MNI152NLin2009cAsym\_preproc.nii.gz

First derivatives of the T1-weighted image:  
Include the brain mask, tissue probability maps for CSF, GM and WM, a brain tissue segmentation and the T1w preprocessed (includes merging T1w images from sessions, INU correction, etc).

T1w derivatives in additional target spaces (e.g. MNI152NLin2009cAsym)

func/

sub-E83\_task-machinegame\_run-01\_bold\_confounds.tsv  
sub-E83\_task-machinegame\_run-01\_bold\_space-MNI152NLin2009cAsym\_brainmask.nii.gz  
sub-E83\_task-machinegame\_run-01\_bold\_space-MNI152NLin2009cAsym\_preproc.nii.gz  
sub-E83\_task-machinegame\_run-02\_bold\_confounds.tsv  
sub-E83\_task-machinegame\_run-02\_bold\_space-MNI152NLin2009cAsym\_brainmask.nii.gz  
sub-E83\_task-machinegame\_run-02\_bold\_space-MNI152NLin2009cAsym\_preproc.nii.gz

BOLD derivatives:  
for task "Machine Game" and run 01

BOLD derivatives:  
for task "Machine Game" and run 02

sub-E82.html  
sub-E83.html

One visual report per subject

✓ SUCCEEDED

1.0.11 (tag) / build\_test\_deploy

🕒 1 day ago

🕒 2:12:10

🔄 Run



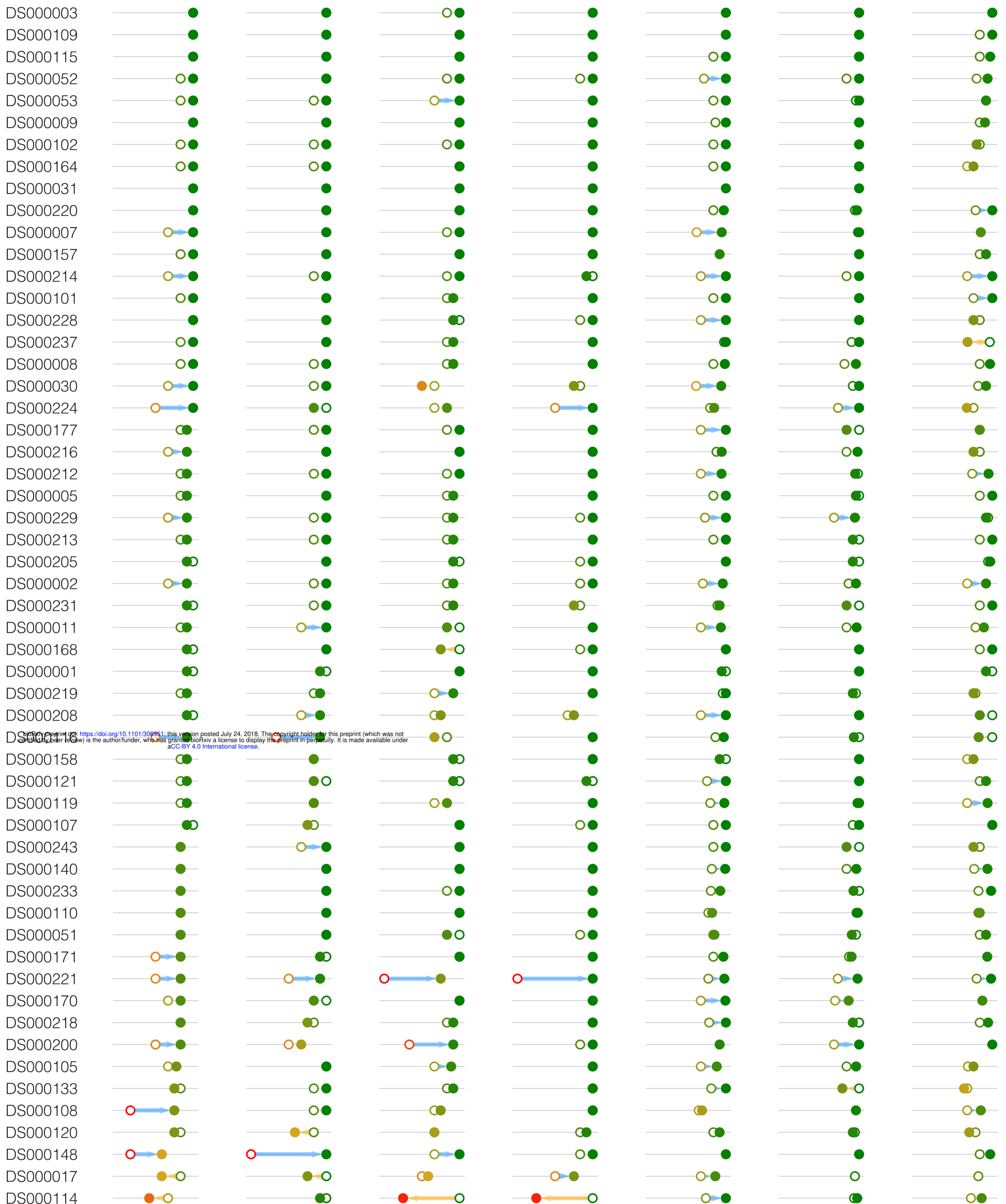
👁 244 views

## 9 jobs in this workflow





Overall Surf. recon. T1w ROIs T1w to MNI BOLD ROIs BOLD to T1w SyN SDC



bioRxiv preprint doi: <https://doi.org/10.1101/309951>; this version posted July 24, 2018. The copyright holder for this preprint (which was not certified by peer review) is the author/funder, who has granted bioRxiv a license to display the preprint in perpetuity. It is made available under aCC-BY 4.0 International license.

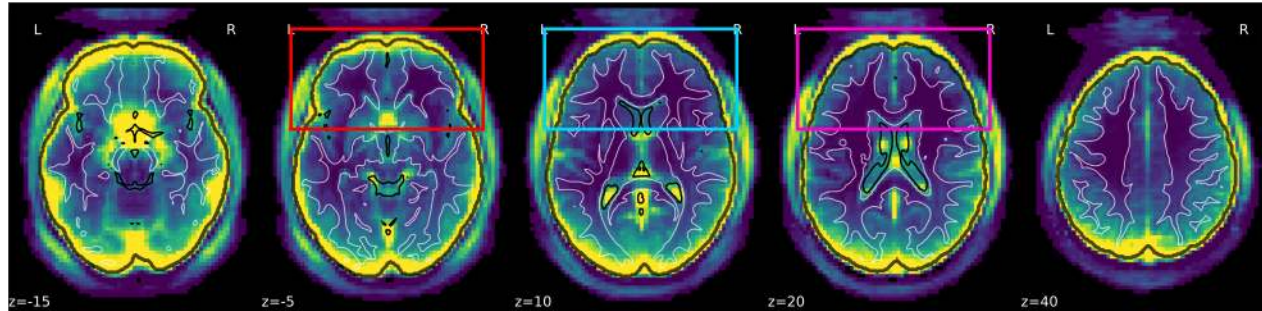
Average of quality ratings

Poor Excellent

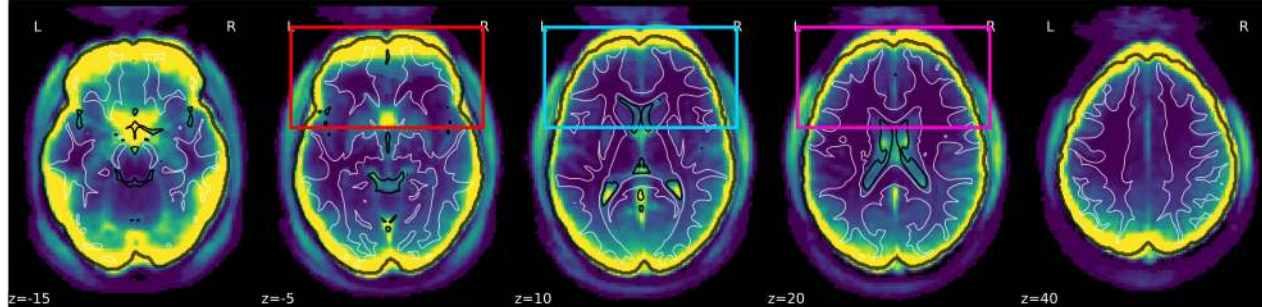
fMRIprep version

1.0.0 ○ ● 1.0.7

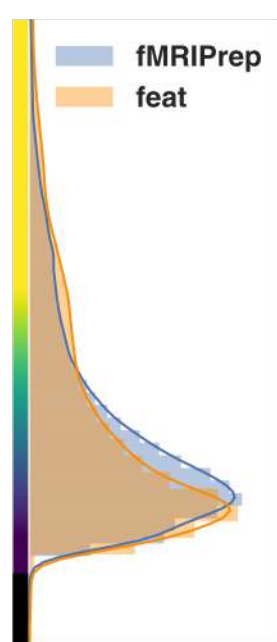
fMRIPrep



FSL FEAT



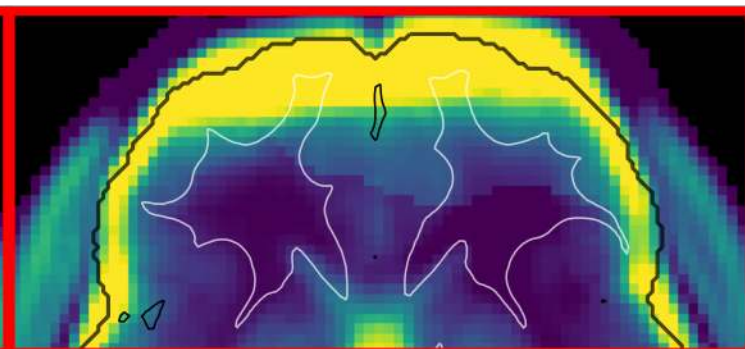
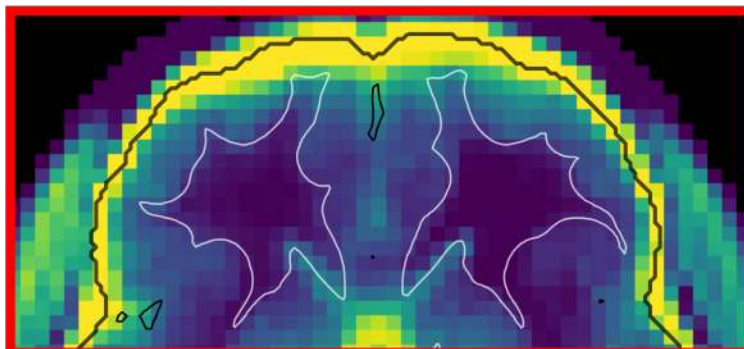
fMRIPrep  
feat



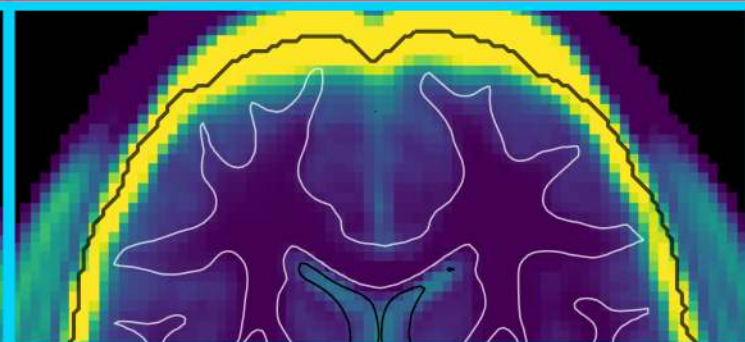
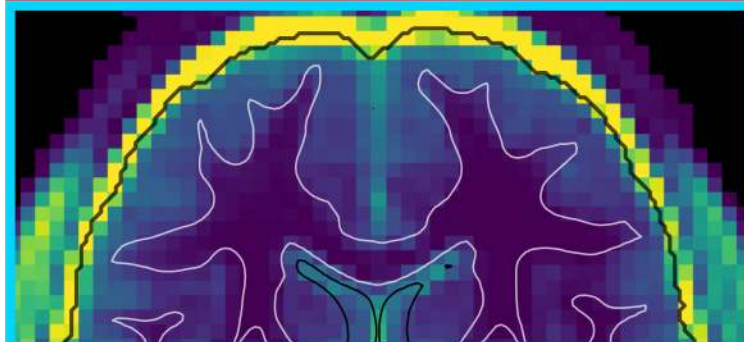
fMRIPrep

FSL FEAT

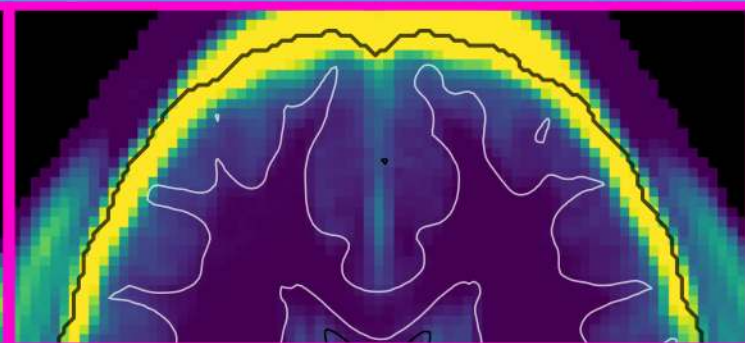
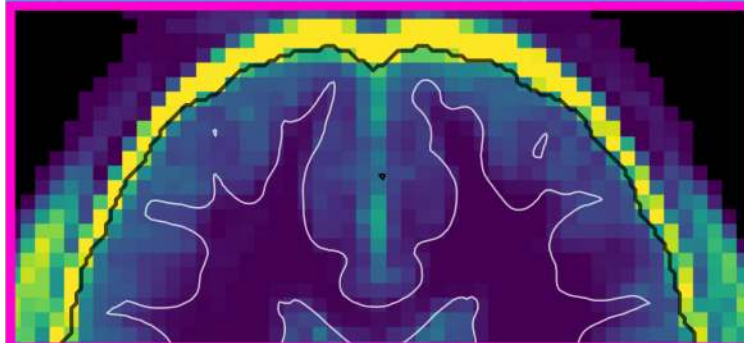
z = -5



z = 10

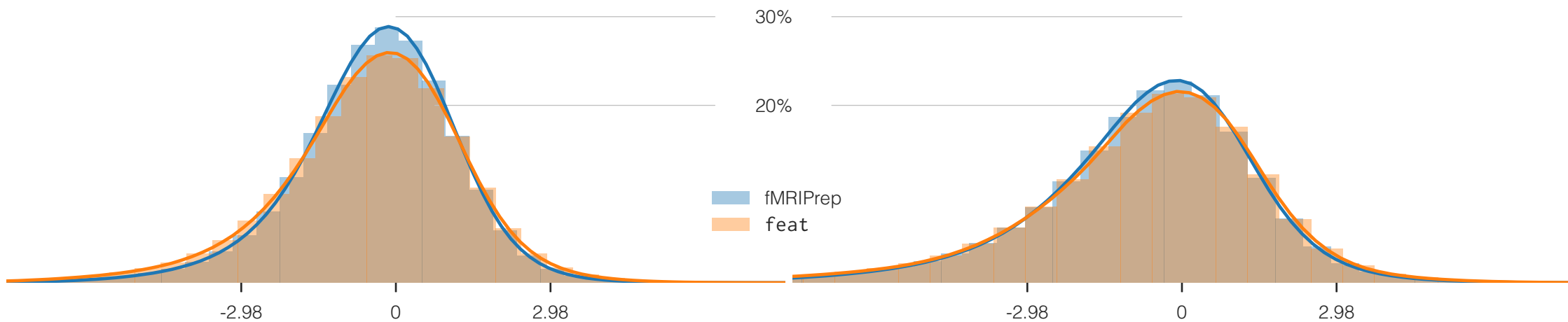


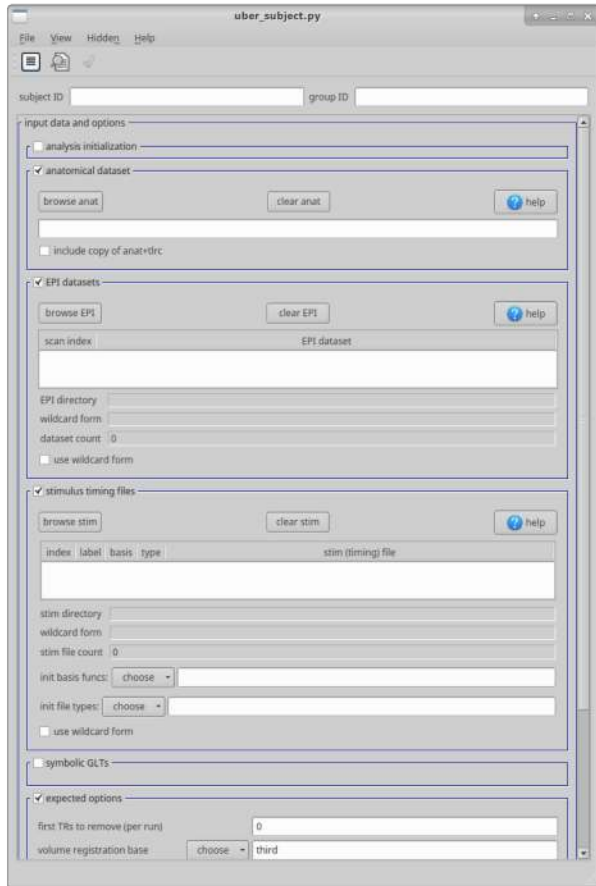
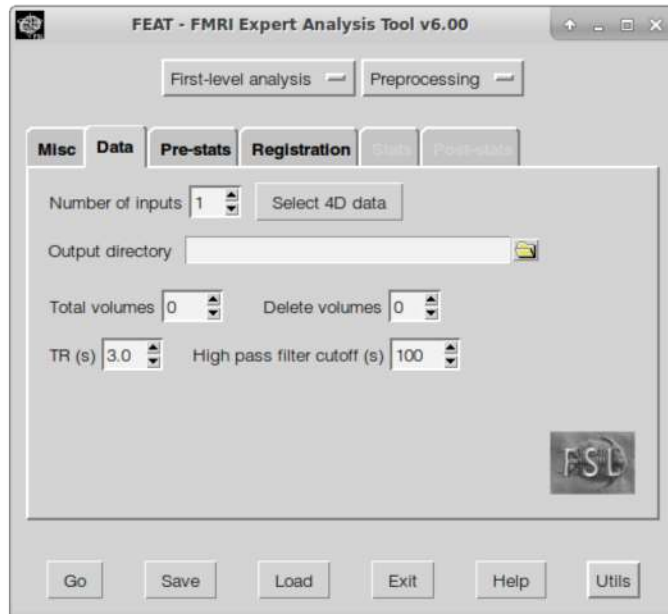
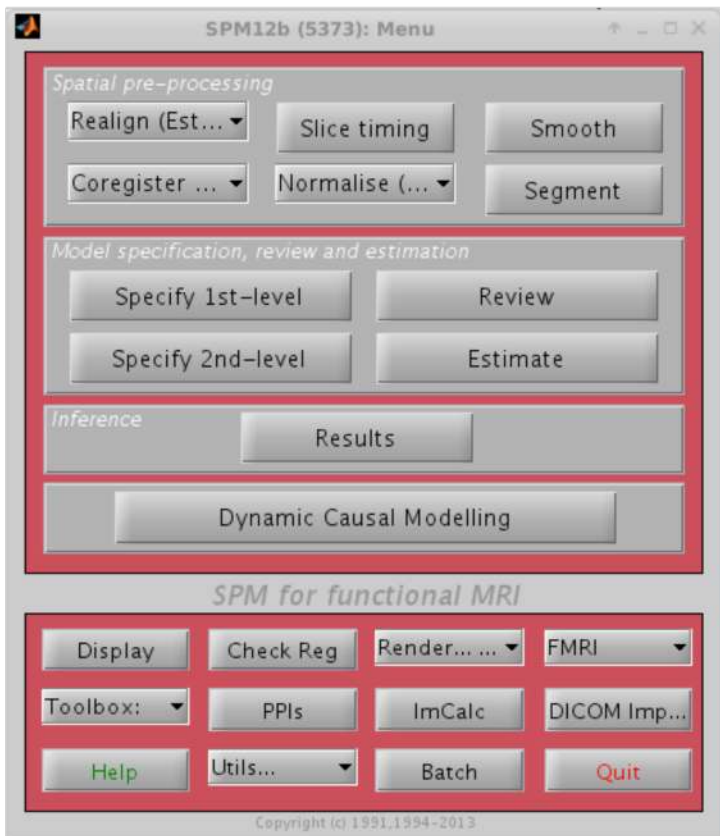
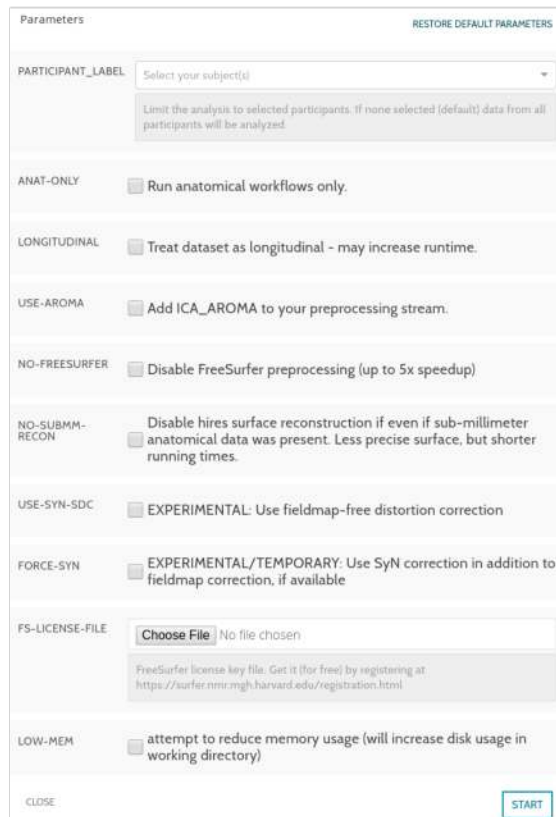
z = 20



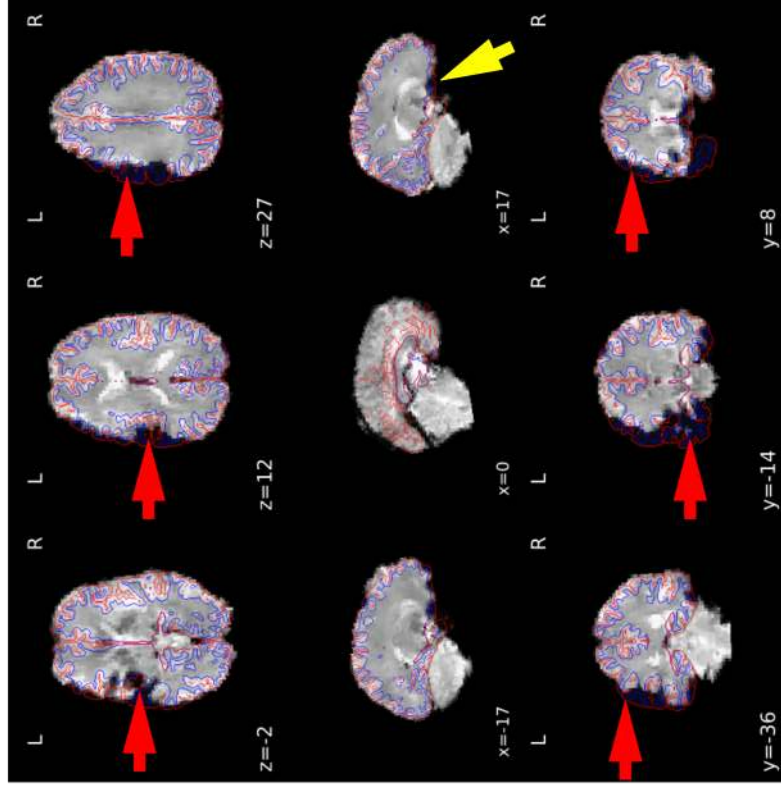
No smoothing

FWHM = 5.0mm



**a****b****c****d**



**A****B**