

From BPMN Process Models to BPEL Web Services*

Chun Ouyang, Marlon Dumas, Arthur H.M. ter Hofstede

Faculty of Information Technology
Queensland University of Technology
Brisbane, Australia

{c.ouyang,m.dumas,a.terhofstede}@qut.edu.au

Wil M.P. van der Aalst

Department of Technology Management
Eindhoven University of Technology
Eindhoven, The Netherlands

{w.m.p.v.d.aalst}@tm.tue.nl

Abstract

The Business Process Modelling Notation (BPMN) is a graph-oriented language in which control and action nodes can be connected almost arbitrarily. It is supported by various modelling tools but so far no systems can directly execute BPMN models. The Business Process Execution Language for Web Services (BPEL) on the other hand is a mainly block-structured language supported by several execution platforms. In the current setting, mapping BPMN models to BPEL code is a necessary step towards unified and standards-based business process development environments. It turns out that this mapping is challenging from a scientific viewpoint as BPMN and BPEL represent two fundamentally different classes of languages. Existing methods for mapping BPMN to BPEL impose limitations on the structure of the source model. This paper proposes a technique that overcomes these limitations. Beyond its direct relevance in the context of BPMN and BPEL, this technique addresses difficult problems that arise generally when translating between flow-based languages with parallelism.

1. Introduction

The *Business Process Execution Language for Web Services* (BPEL) [4] is emerging as a de-facto standard for implementing business processes on top of web services technology. Numerous platforms support the execution of BPEL processes. Some of these platforms also provide graphical editing tools for defining BPEL processes. However, these tools directly follow the syntax of BPEL without elevating the level of abstraction to make them usable during the analysis and design phases of the development cycle. On the other hand, the *Business Process Modelling Notation* (BPMN) [10] has attained some level of adoption among business analysts and system architects as a language for defining business process blueprints for subsequent implementation. Despite being a recent proposal, BPMN is already supported by more than 30 tools (see

*This work is supported by the Australian Research Council under the Discovery Grant "Expressiveness Comparison and Interchange Facilitation between Business Process Execution Languages" (DP0451092).

www.bpmn.org). Consistent with the level of abstraction targeted by BPMN, none of these tools supports the execution of BPMN models directly. Instead, some of them support the translation of BPMN to BPEL.

Close inspection of existing translations from BPMN to BPEL, e.g. the one sketched in [10], shows that these translations fail to fulfill the following key requirements: (i) completeness, i.e. applicable to any BPMN model; (ii) automation, i.e. capable of producing target code without requiring human intervention to identify patterns in the source model; and (iii) readability, i.e. consistently producing target code that is understandable by humans. The last requirement is important since the BPEL definitions produced by the translation are likely to require refinement (e.g. to specify data manipulation expressions) as well as testing and debugging. If BPEL was only intended as a language for machine consumption and not for human use, it could be replaced by mainstream programming languages or even machine languages, but this would defeat the purpose of BPEL as a domain-specific language for service composition.

The limitations of existing BPMN-to-BPEL translations are not surprising as BPMN and BPEL represent two fundamentally different classes of languages. BPMN is graph-oriented while BPEL is mainly block-structured (albeit providing graph-oriented constructs with syntactical limitations). Mapping from graph-oriented to block-structured languages is challenging. In the case of flowcharts, mapping unstructured flowcharts to structured ones is a well-understood problem. However, graph-oriented process definition languages extend flowcharts with parallelism and other constructs such as deferred choice [1].

This paper proposes a translation from BPMN to BPEL addressing the above requirements. This is a first step towards model-driven, standards-based tools for developing process-oriented web services. Beyond its direct relevance in this context, the proposed technique addresses difficult problems that arise when translating from graph-oriented process languages to block-structured ones.

Section 2 gives an overview of BPMN and BPEL and reviews related work. Section 3 presents an algorithm for translating BPMN into BPEL. The translation algorithm is then illustrated through a case study in Section 4. Finally, Section 5 concludes and outlines future work.

2. Background and Related Work

2.1. BPEL and BPMN

BPEL [4] is essentially an extension of imperative programming languages with constructs specific to web service implementations. A BPEL process definition relates a number of *activities*. An activity is either a basic or a structured activity. *Basic activities* correspond to atomic actions such as: *invoke*, invoking an operation on a web service; *receive*, waiting for a message from a partner; *exit*, terminating the entire service instance; *empty*, doing nothing; and etc. To enable the presentation of complex structures the following *structured activities* are defined: *sequence*, for defining an execution order; *flow*, for parallel routing; *switch*, for conditional routing; *pick*, for race conditions based on timing or external triggers; *while*, for structured looping; and *scope*, for grouping activities into blocks to which event and exception handlers may be attached. In particular, an event handler is an *event-action rule* associated with a scope. It is enabled when the associated scope is under execution and may execute concurrently with the main activity of the scope. When an occurrence of the event associated with an enabled event handler is registered. The completion of the scope is delayed until all active event handlers have completed. *Fault* and *compensation handlers* are designed for exception handling and are not used further in this paper.

There are over 20 execution engines supporting BPEL (see <http://en.wikipedia.org/wiki/BPEL>). Many of them come with an associated graphical editing tool. However, the notation supported by these tools directly reflects the underlying code, thus forcing users to reason in terms of BPEL constructs (e.g., block-structured activities and syntactically restricted links). Current practice suggests that the level of abstraction of BPEL is unsuitable for business process analysts and designers. These user categories rely on languages perceived as “higher-level” such as BPMN and UML, thus justifying the need for mapping languages such as BPMN into BPEL.

BPMN provides a graphical notation for business process modelling, with an emphasis on control-flow. It defines a *Business Process Diagram* (BPD), which is a kind of flowchart incorporating constructs tailored to business process modelling, such as AND-split, AND-join, XOR-split, XOR-join, and deferred (event-based) choice. We describe BPMN in more detail when we introduce the mapping.

2.2. Related Work

White [10] informally sketches a translation from BPMN to BPEL. However, as acknowledged in [10] this translation is limited, e.g. it excludes diagrams with arbitrary topologies. Also, several steps in White’s translation require human input to identify patterns in the source model.

Research into structured programming led to techniques for translating unstructured flowcharts into structured ones.

However, these techniques are not applicable when AND-splits and AND-joins are introduced. An identification of situations where unstructured process diagrams cannot be translated into equivalent structured ones (under weak bisimulation equivalence) can be found in [5, 7], while an approach to overcome some of these limitations for processes without parallelism is sketched in [6]. However, these related work only address a piece of the puzzle of translating from graph-oriented process languages to BPEL.

This paper combines insights from two of our previous publications. In [2], we describe a case study where the requirements of a bank system are captured as Colored Workflow nets (a subclass of Colored Petri nets) and the system is then implemented in BPEL. In this study we use a semi-automated mapping from (Colored) Petri nets to BPEL [3] that has commonalities with a subset of the translation discussed in this paper. In [9], we present a mapping from a graph-oriented language supporting AND-splits, AND-joins, XOR-splits, and XOR-joins, into BPEL. In the following section, we extend this previous mapping to cover a broader set of BPMN constructs and to improve the readability of the generated code. Whereas in [9] the generated code relies heavily on BPEL event handlers, in this paper we make greater use of BPEL’s block-structured constructs.

3. Mapping BPMN onto BPEL

This section presents a mapping from BPMN to BPEL. The mapping focuses on the control-flow perspective. First, we define the syntax of a *core* subset of BPDs used for mapping. Second, we discuss the transformation of a BPD from a graph structure to a block structure. We use the term “components” to refer to subsets of a BPD. A component may be *well-structured* so that it can be directly mapped onto BPEL structured activities, whereas a component that does not preserve such property can be translated into BPEL via *event-action rules*. We identify these two categories of components and introduce the corresponding translation approaches in two separate subsections. Finally, we propose the algorithm for mapping an entire BPD onto BPEL.

3.1. Business Process Diagram (BPD)

BPMN uses BPDs to describe business processes. A BPD is made up of BPMN elements. We consider a core subset of BPMN elements shown in Figure 1. There are *objects* and *sequence flow*. The sequence flow links two objects in a BPD and shows the control flow relation (i.e. execution order). An object can be an *event*, a *task* or a *gateway*. An event may signal the start of a process (*start event*), the end of a process (*end event*), the immediate termination of a process (*end terminate event*), a message that arrives or a specific time-date being reached during a process (*intermediate message/timer event*). A task is an atomic activity and stands for work to be performed within a process. A gateway is a routing construct used to control the divergence

and convergence of sequence flow. There are: *parallel fork gateways* for creating concurrent sequence flows, *parallel join gateways* for synchronizing concurrent sequence flows, *data/event-based XOR decision gateways* for selecting one out of a set of mutually exclusive alternative sequence flows where the choice is based on either the process data (data-based) or external event (event-based), and *XOR merge gateways* for joining a set of mutually exclusive alternative sequence flows into one sequence flow.

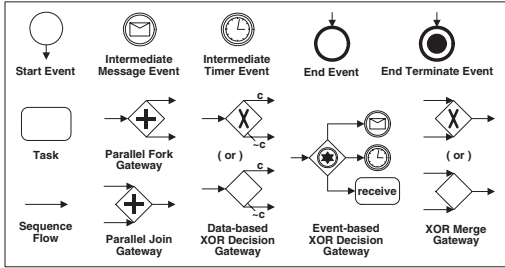


Figure 1. A core subset of BPMN elements.

A BPD, which is made up of the above core subset of BPMN elements, is hereafter referred to as a *core BPD*.

Definition 1 (Core BPD) A core BPD is a tuple $\mathcal{BPD} = (\mathcal{O}, \mathcal{T}, \mathcal{E}, \mathcal{G}, \mathcal{T}^R, \mathcal{E}^S, \mathcal{E}^I, \mathcal{E}^E, \mathcal{E}_M^I, \mathcal{E}_T^I, \mathcal{E}_T^E, \mathcal{G}^F, \mathcal{G}^J, \mathcal{G}^D, \mathcal{G}^M, \mathcal{G}^V, \mathcal{F}, \text{Cond})$ where:

- \mathcal{O} is a set of objects which can be partitioned into disjoint sets of tasks \mathcal{T} , events \mathcal{E} and gateways \mathcal{G} ,
- $\mathcal{T}^R \subseteq \mathcal{T}$ is a set of receive tasks,
- \mathcal{E} can be partitioned into disjoint sets of start events \mathcal{E}^S , intermediate events \mathcal{E}^I and end events \mathcal{E}^E ,
- \mathcal{E}^I can be further partitioned into disjoint sets of intermediate message events \mathcal{E}_M^I and timer events \mathcal{E}_T^I ,
- $\mathcal{E}_T^E \subseteq \mathcal{E}^E$ is a set of end terminate events,
- \mathcal{G} can be partitioned into disjoint sets of parallel fork gateways \mathcal{G}^F , parallel join gateways \mathcal{G}^J , data-based XOR decision gateways \mathcal{G}^D , event-based XOR decision gateways \mathcal{G}^V , and XOR merge gateways \mathcal{G}^M ,
- $\mathcal{F} \subseteq \mathcal{O} \times \mathcal{O}$ is the control flow relation, i.e., a set of sequence flows connecting objects,
- $\text{Cond}: \mathcal{F} \rightarrow \mathcal{C}$ is a function mapping sequence flows within $\text{dom}(\text{Cond}) = \mathcal{F} \cap (\mathcal{G}^D \times \mathcal{O})$ to conditions.¹

The relation \mathcal{F} defines a directed graph with nodes (objects) \mathcal{O} and arcs (sequence flows) \mathcal{F} . For a given node $x \in \mathcal{O}$, input nodes of x are given by $\text{in}(x) = \{y \in \mathcal{O} \mid y\mathcal{F}x\}$ and output nodes of x are given by $\text{out}(x) = \{y \in \mathcal{O} \mid x\mathcal{F}y\}$.

Definition 1 allows for graphs which are unconnected, not having start or end events, containing objects without any input and output, etc. Therefore we need to restrict the definition to *well-formed core BPDs*.

¹A condition is a boolean function operating over a set of propositional variables that can be abstracted out of the control flow definition. The condition may evaluate to true or false, which determines whether or not the associated sequence flow is taken during the process execution.

Definition 2 (Well-formed core BPD) A core BPD is well formed if relation \mathcal{F} satisfies the following requirements:

- $\forall s \in \mathcal{E}^S, \text{in}(s) = \emptyset \wedge |\text{out}(s)| = 1$, i.e., start events have an indegree of zero and an outdegree of one,
- $\forall e \in \mathcal{E}^E, \text{out}(e) = \emptyset \wedge |\text{in}(e)| = 1$, i.e., end events have an outdegree of zero and an indegree of one,
- $\forall x \in \mathcal{T} \cup \mathcal{E}^I, |\text{in}(x)| = 1$ and $|\text{out}(x)| = 1$, i.e., tasks and intermediate events have an indegree of one and an outdegree of one,
- $\forall g \in \mathcal{G}^F \cup \mathcal{G}^D \cup \mathcal{G}^V: |\text{in}(g)| = 1 \wedge |\text{out}(g)| > 1$, i.e., fork or decision gateways have an indegree of one and an outdegree of more than one,
- $\forall g \in \mathcal{G}^J \cup \mathcal{G}^M, |\text{out}(g)| = 1 \wedge |\text{in}(g)| > 1$, i.e., join or merge gateways have an outdegree of one and an indegree of more than one,
- $\forall g \in \mathcal{G}^V, \text{out}(g) \subseteq \mathcal{E}^I \cup \mathcal{T}^R$, i.e., event-based XOR decision gateways must be followed by intermediate events or receive tasks,
- $\forall g \in \mathcal{G}^D, \exists x \in \text{out}(g), \text{Cond}((g, x)) = \neg \bigwedge_{y \in \text{out}(g) \setminus \{x\}} \text{Cond}((g, y))$, i.e., (g, x) is the default flow among all the outgoing flows from g ,
- $\forall x \in \mathcal{O}, \exists (s, e) \in \mathcal{E}^S \times \mathcal{E}^E, s\mathcal{F}^*x \wedge x\mathcal{F}^*e$, i.e., every object is on a path from a start event to an end event.

In the remainder we only consider well-formed core BPDs, and will use a simplified notation $\mathcal{BPD} = (\mathcal{O}, \mathcal{F}, \text{Cond})$ for their representation. Moreover, without losing generality we assume that both \mathcal{E}^S and \mathcal{E}^E are singletons, i.e., $\mathcal{E}^S = \{s\}$ and $\mathcal{E}^E = \{e\}$.

3.2. Decomposing a BPD into components

We would like to achieve two goals when mapping BPMN onto BPEL. One is to define an algorithm which allows us to translate each well-formed core BPD into a valid BPEL process, the other is to generate readable and compact BPEL code. To map a BPD onto (readable) BPEL code, we need to transform a graph structure into a block structure. For this purpose, we decompose a BPD into *components*. A component is a subset of the BPD that has one entry point and one exit point. We then try to map components onto suitable “BPEL blocks”. For example, a component holding a purely sequential structure should be mapped onto a BPEL sequence construct while a component holding a parallel structure should be mapped onto a flow construct.

The next two subsections describe how to map components of a BPD onto BPEL constructs. Before describing the mapping, this section first formalizes the notion of components in a BPD. To facilitate the definitions, we specify an auxiliary function elt over a domain of singletons, i.e., if $X = \{x\}$, then $\text{elt}(X) = x$.

Definition 3 (Component) Let $\mathcal{BPD} = (\mathcal{O}, \mathcal{F}, \text{Cond})$ be a well-formed core BPD. $\mathcal{C} = (\mathcal{O}_c, \mathcal{F}_c, \text{Cond}_c)$ is a component of \mathcal{BPD} if and only if:

- $\mathcal{O}_c \subseteq \mathcal{O} \setminus (\mathcal{E}^S \cup \mathcal{E}^E)$, i.e., a component does not contain any start or end event;

- $|(\bigcup_{x \in \mathcal{O}_c} \text{in}(x)) \setminus \mathcal{O}_c| = 1$, i.e., there is a single entry point outside the component, which can be denoted as $\text{entry}(\mathcal{C}) = \text{elt}((\bigcup_{x \in \mathcal{O}_c} \text{in}(x)) \setminus \mathcal{O}_c)$,
- $|(\bigcup_{x \in \mathcal{O}_c} \text{out}(x)) \setminus \mathcal{O}_c| = 1$, i.e., there is a single exit point outside the component, which can be denoted as $\text{exit}(\mathcal{C}) = \text{elt}((\bigcup_{x \in \mathcal{O}_c} \text{out}(x)) \setminus \mathcal{O}_c)$,
- there exists a unique source object $i_c \in \mathcal{O}_c$ and a unique sink object $o_c \in \mathcal{O}_c$ and $i_c \neq o_c$, such that $\text{entry}(\mathcal{C}) \in \text{in}(i_c)$ and $\text{exit}(\mathcal{C}) \in \text{out}(o_c)$,
- $\mathcal{F}_c = \mathcal{F} \cap (\mathcal{O}_c \times \mathcal{O}_c)$,
- $\text{Cond}_c = \text{Cond}[\mathcal{F}_c]$, i.e. the Cond function where the domain is restricted to \mathcal{F}_c .

Note that all event objects in a component are intermediate events. Also, a component contains at least two objects: the source object and the sink object. A BPD without any component, which is referred to as a *trivial BPD*, has only a single task or intermediate event between the start event and the end event. Translating a trivial BPD into BPEL is straightforward and will be included in the final translation algorithm in Section 3.5.

The decomposition of a BPD helps to define an iterative approach which allows us to incrementally transform a “componentized” BPD to a block-structured BPEL process. Below, we define function **Fold** that replaces a component by a single task object in a BPD. This function can be used to perform iterative reduction of a componentized BPD until no component is left in the BPD. The function will play a crucial role in the final translation algorithm where we incrementally replace BPD components by BPEL constructs.

Definition 4 (Fold) Let $\mathcal{BPD} = (\mathcal{O}, \mathcal{F}, \text{Cond})$ be a well-formed core BPD and $\mathcal{C} = (\mathcal{O}_c, \mathcal{F}_c, \text{Cond}_c)$ be a component of \mathcal{BPD} . Function **Fold** replaces \mathcal{C} in \mathcal{BPD} by a task object $t_c \notin \mathcal{O}$, i.e. $\text{Fold}(\mathcal{BPD}, \mathcal{C}, t_c) = (\mathcal{O}', \mathcal{F}', \text{Cond}')$ with:

- $\mathcal{O}' = (\mathcal{O} \setminus \mathcal{O}_c) \cup \{t_c\}$,
- if \mathcal{T}_c denotes the set of tasks in \mathcal{C} and \mathcal{T}' denotes the set of tasks in $\text{Fold}(\mathcal{BPD}, \mathcal{C}, t_c)$, then $\mathcal{T}_c \subseteq \mathcal{O}_c$, $\mathcal{T}' \subseteq \mathcal{O}'$, and $\mathcal{T}' = (\mathcal{T} \setminus \mathcal{T}_c) \cup \{t_c\}$,
- $\mathcal{F}' = (\mathcal{F} \cap (\mathcal{O} \setminus \mathcal{O}_c \times \mathcal{O} \setminus \mathcal{O}_c)) \cup \{(\text{entry}(\mathcal{C}), t_c), (t_c, \text{exit}(\mathcal{C}))\}$,
- $\text{Cond}' = \begin{cases} \text{Cond}[\mathcal{F}'] & \text{if } \text{entry}(\mathcal{C}) \notin \mathcal{G}^D \\ \text{Cond}[\mathcal{F}'] \cup \{((\text{entry}(\mathcal{C}), t_c), (\text{entry}(\mathcal{C}), i_c))\} & \text{otherwise} \end{cases}$

3.3. Structured activity-based translation

As mentioned before, one of our goals for mapping BPMN onto BPEL is to generate readable BPEL code. For this purpose, BPEL structured activities comprising sequence, flow, switch, pick and while, have the first preference if the corresponding structures appear in the BPD. Components that can be suitably mapped onto one of these five structured constructs are considered *well-structured*. Below, we classify different types of well-structured components resembling these five structured constructs.

Definition 5 (Well-structured components) Let $\mathcal{BPD} = (\mathcal{O}, \mathcal{F}, \text{Cond})$ be a well-formed core BPD and $\mathcal{C} = (\mathcal{O}_c, \mathcal{F}_c, \text{Cond}_c)$ be a component of \mathcal{BPD} . i_c is the source object of \mathcal{C} and o_c is the sink object of \mathcal{C} . The following components are well-structured:

- \mathcal{C} is a *SEQUENCE*-component if $\mathcal{O}_c \subseteq \mathcal{T} \cup \mathcal{E}^I$ (i.e. $\forall x \in \mathcal{O}_c, |\text{in}(x)| = |\text{out}(x)| = 1$) and $\text{entry}(\mathcal{C}) \notin \mathcal{G}^V$. Also, \mathcal{C} is a maximal *SEQUENCE*-component if \mathcal{C} is a *SEQUENCE*-component and there is no other *SEQUENCE*-component \mathcal{C}' such that $\mathcal{O}_c \subset \mathcal{O}'_c$ where \mathcal{O}'_c is the set of objects in \mathcal{C}' ,
- \mathcal{C} is a *FLOW*-component if
 - $i_c \in \mathcal{G}^F \wedge o_c \in \mathcal{G}^J$,
 - $\mathcal{O}_c \subseteq \mathcal{T} \cup \mathcal{E}^I \cup \{i_c, o_c\}$,
 - $\forall x \in \mathcal{O}_c \setminus \{i_c, o_c\}, \text{in}(x) = \{i_c\} \wedge \text{out}(x) = \{o_c\}$.
- \mathcal{C} is a *SWITCH*-component if
 - $i_c \in \mathcal{G}^D \wedge o_c \in \mathcal{G}^M$,
 - $\mathcal{O}_c \subseteq \mathcal{T} \cup \mathcal{E}^I \cup \{i_c, o_c\}$,
 - $\forall x \in \mathcal{O}_c \setminus \{i_c, o_c\}, \text{in}(x) = \{i_c\} \wedge \text{out}(x) = \{o_c\}$.
- \mathcal{C} is a *PICK*-component if
 - $i_c \in \mathcal{G}^V \wedge o_c \in \mathcal{G}^M$,
 - $\mathcal{O}_c \subseteq \mathcal{T} \cup \mathcal{E}^I \cup \{i_c, o_c\}$,
 - $\forall x \in \text{out}(i_c), \exists y \in \mathcal{O}_c \setminus (\{i_c\} \cup \text{out}(i_c)), \text{in}(y) = \{x\} \wedge \text{out}(y) = \{o_c\}$,
 - $\forall y' \in \mathcal{O}_c \setminus (\{i_c, o_c\} \cup \text{out}(i_c)), \text{out}(y') = \{o_c\}$.
- \mathcal{C} is a *WHILE*-component if
 - $i_c \in \mathcal{G}^M \wedge o_c \in \mathcal{G}^D \wedge x \in \mathcal{T} \cup \mathcal{E}^I$,
 - $\mathcal{O}_c = \{i_c, o_c, x\}$,
 - $\mathcal{F}_c = \{(i_c, o_c), (o_c, x), (x, i_c)\}$.
- \mathcal{C} is a *REPEAT*-component if
 - $i_c \in \mathcal{G}^M \wedge o_c \in \mathcal{G}^D \wedge x \in \mathcal{T} \cup \mathcal{E}^I$,
 - $\mathcal{O}_c = \{i_c, o_c, x\}$,
 - $\mathcal{F}_c = \{(i_c, x), (x, o_c), (o_c, i_c)\}$.
- \mathcal{C} is a *REPEAT+WHILE*-component if
 - $i_c \in \mathcal{G}^M \wedge o_c \in \mathcal{G}^D \wedge x_1, x_2 \in \mathcal{T} \cup \mathcal{E}^I \wedge x_1 \neq x_2$,
 - $\mathcal{O}_c = \{i_c, o_c, x_1, x_2\}$,
 - $\mathcal{F}_c = \{(i_c, x_1), (x_1, o_c), (o_c, x_2), (x_2, i_c)\}$.

Figure 2 depicts examples of mapping each of the components mentioned above onto the corresponding BPEL structured activities. Using function **Fold** in Definition 4, a component \mathcal{C} is replaced by a single task t_c attached with the corresponding BPEL translation of \mathcal{C} . For simplicity, we assume that an initial task object (t_1, \dots , or t_n) in component \mathcal{C} is mapped onto an invoke activity. However, it should be noted that based on the nature of these task objects they may be mapped onto any types of BPEL activities.

In Figure 2(a) to (e), the mappings of the five components, SEQUENCE, FLOW, SWITCH, PICK and WHILE, are straightforward. In a PICK-component (Figure 2(d), an event-based XOR decision gateway must be followed by receive tasks or intermediate message or timer events. For this reason, a SEQUENCE-component (Figure 2(a)) cannot be preceded by an event-based XOR decision gateway.

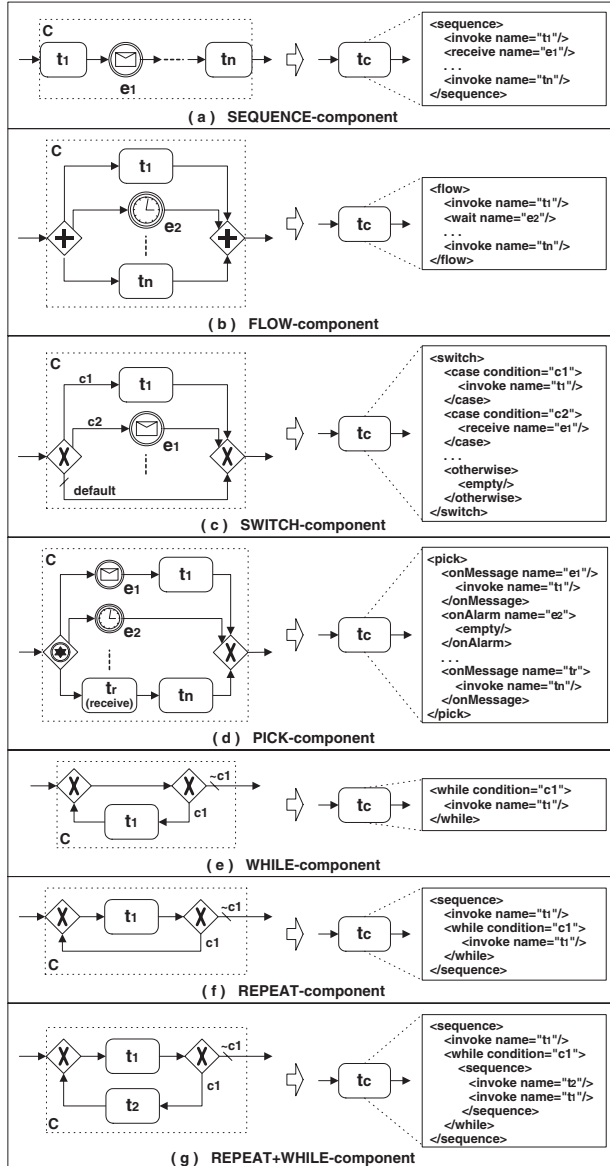


Figure 2. Examples of folding a well-structured component C into a single task object t_c attached with the corresponding BPEL translation of C .

In Figure 2(f) and (g), the two components, REPEAT and REPEAT+WHILE, represent repeat loops as the opposite of while loops. A while loop (Figure 2(e)) evaluates the loop condition *before* the body of the loop is executed, so that the loop is never executed if the condition is initially false. In a repeat loop, the condition is checked *after* the body of the loop is executed, so that the loop is always executed at least once. In Figure 2(f), a repeat loop of task t_1 is equivalent to a single execution of t_1 followed by a while loop of t_1 . In Figure 2(g), a repeat loop of task t_1 is combined with a while loop of task t_2 , and both loops share one loop condition. In this case, task t_1 is always executed once before the initial evaluation of the condition, which is then followed by a while loop of sequential execution of t_2 and t_1 .

3.4. Event-action rule-based translation

A well-formed core BPD may contain components that are not well-structured, e.g. components capturing multi-merge patterns [1] or unstructured loops. To map these components onto BPEL, the structured activity-based approach mentioned above is no longer applicable.

Definition 6 (Non-well-structured components) Let $C = (\mathcal{O}_C, \mathcal{F}_C, \text{Cond}_C)$ be a component of a well-formed core BPD. C is not well structured if it does not match any of the “patterns” given in Definition 5. C is a minimal non-well-structured component if C is not well structured and there is no other component $C' = (\mathcal{O}'_C, \mathcal{F}'_C, \text{Cond}'_C)$ such that $\mathcal{O}'_C \subset \mathcal{O}_C$.

We present an approach that can be used to translate a non-well-structured component into a *scope* activity by exploiting the “event handler” construct in BPEL. An event handler is an *event-action rule* associated with a scope, and the corresponding translation approach is based on event-action rules. This event-action rule-based approach can be applied to translating any component to BPEL. However, this approach produces less readable BPEL code and hence we resort only to this approach when there are only non-well-structured components left in the BPD.

First, we generate a set of *preconditions* for each object within a component. The term “precondition” is used to capture one possible way that leads to the execution of an object, and thus a set of preconditions associated with the object encodes all possible ways of reaching that object.

Figure 3 shows an algorithm for generating all precondition sets for a component. The algorithm is sketched using a functional programming notation. It defines three functions. The first one, namely AllPreCondSets, generates a set of precondition sets for all objects (given by the set $\text{Objects}(C)$) in component C by relying on a second function named PreCondSet. This function computes the set of preconditions for an object by relying on a third function named EventOnFlow. This function takes as input a sequence flow f and produces a single event² resulting from the execution of the source object of the flow (denoted as $\text{Source}(f)$). If the flow’s source object xs is outside the component to which the flow’s target object ($\text{Target}(f)$) belongs, it implies that the flow’s target object x is the source object of the above component ($\text{Component}(x)$). In this case, the function returns an event ($\text{Start}(\text{Component}(x))$) signaling to start the execution of this component. Otherwise, the function operates based on the type of xs ($\text{ObjectType}(xs)$). If xs is one of the objects (tasks, events, or join or merge gateways) that have only one *outgoing* flow, an event ($\text{end}(xs)$) is returned indicating the end of the execution of xs . Otherwise, xs could be one of the objects (fork or decision gateways) with multiple *outgoing* flows. Assume that x is an output object of xs . If xs is a fork gateway, an event ($\text{flow}(xs, x)$) is returned indicating the control flow is splitting from xs to x . Next, if xs is

²Note that these are events within the context of event-action rules, and are different from BPMN event objects.

```

AllPreCondSets(C: Component):
  let {x1, ..., xn} = Objects(C) in
  return {PreCondSet(x1), ..., PreCondSet(xn)}

PreCondSet(x: Object):
  if ObjectType(x) ∈ {"task", "event", "data-based decision",
                    "event-based decision", "fork"}
  return {EventOnFlow(InFlow(x))}
  else if ObjectType(x) = "merge"
  let {f1, ..., fn} = InFlows(x) in
  return {EventOnFlow(f1), ..., EventOnFlow(fn)}
  else if ObjectType(x) = "join"
  let {f1, ..., fn} = InFlows(x) in
  return {EventOnFlow(f1) ∧ ... ∧ EventOnFlow(fn)}

EventOnFlow(f: Flow):
  let xs = Source(f) and x = Target(f)
  if xs ∉ Objects(Component(x))
  return Start(Component(x))
  else if ObjectType(xs) ∈ {"task", "event", "join", "merge"}
  return end(xs)
  else if ObjectType(xs) = "fork"
  return flow(xs, x)
  else if ObjectType(xs) = "data-based decision"
  let c = Cond(f) in
  return switch(xs, x, c)
  else if ObjectType(x) = "event-based decision"
  return pick(xs, x)

```

Figure 3. Algorithm for deriving precondition sets from a component of a well-formed core BPD.

a data-based decision gateway, an event (switch(xs,x,c)) is returned indicating the control flow is leaving from xs to x given that condition c holds. Finally, if xs is an event-based decision gateway, an event (pick(xs,x)) is returned indicating the control flow is leaving from xs to x on the occurrence of a trigger that leads to the execution of x. Now we come back to the second function PreCondSet. It operates based on the object type of the input parameter x. If x is one of the objects (tasks, events, decision or fork gateways) that have a single *incoming* flow (InFlow(x)), the function returns a precondition set comprising just one precondition capturing a single event. Otherwise, if x is a merge gateway (resp. a join gateway), there exist multiple *incoming* flows (given by the set InFlows(x)), and the resulting precondition set contains a number of single events (resp. a conjunction of single events) from these incoming flows, to capture that when any (resp. all) of these events occurs (resp. occur) the corresponding merge (resp. join) gateway may be executed.

Second, we transform the above precondition sets with their associated objects into a set of event-action rules. An event-action rule can be written in the form of $E\{A\}$: E is a single event or a conjunction of single events (namely a *composite event*) causing the rule to be triggered, and A is a list of actions being executed when the rule is triggered. The list of actions can be executed in sequence ($a_1; a_2$) or in parallel ($a_1 || a_2$). If an event-action rule allows the use of single events only, it is called a *simple* event-action rule; otherwise, it is a *composite* event-action rule.

Figure 4 lists the event-action rules translated from the precondition sets related to different types of objects. There are three new notations: Flow(fg), Switch(dg) and Pick(eg). Let $out(fg) = \{x_1, \dots, x_n\}$, $out(dg) = \{y_1, \dots, y_n\}$ and $c_i = Cond((dg, y_i))$ ($i = 1, \dots, n$), and $out(eg) = \{z_1, \dots, z_n\}$, then

- Flow(fg) = {flow(fg, x₁), ..., flow(fg, x_n)},
- Switch(dg) = {switch(dg, y₁, c₁), ..., switch(dg, y_n, c_n)},
- Pick(eg) = {pick(eg, z₁), ..., pick(eg, z_n)}.

In Figure 4, most of the translations are straightforward except the following issue that is worth mentioning. The precondition set for a join gateway comprises just one precondition capturing a composite event, and in the general case, this leads to a composite event-action rule. However, BPEL only supports simple event-action rules. To address this issue, we translate the above composite event-action rule to a simple event-action rule, by separating the first single event (e_1) from the rest in the initial composite event. Although the resulting rule can be triggered by event e_1 , the action "invoke end(jg)" will not be performed until occurrences of all the remaining events e_2 to e_n have been registered.

| Object | Precondition Set | Event-Action Rule |
|-----------------------------------|-------------------------------------------|--------------------------------------------------------------------------------------|
| task/event (a) | { e } | e { do a ; invoke end(a) } |
| fork gateway (fg) | { e } | e { execute Flow(fg) } |
| data-based decision gateway (dg) | { e } | e { execute Switch(dg) } |
| event-based decision gateway (eg) | { e } | e { execute Pick(eg) } |
| merge gateway (mg) | { e ₁ , ..., e _n } | e ₁ { invoke end(mg) } ... e _n { invoke end(mg) } |
| join gateway (jg) | { e ₁ ∧ ... ∧ e _n } | e ₁ { on e ₂ ... on e _n ; invoke end(jg) } |

Figure 4. Event-action rules translated from the precondition sets for different types of objects.

As the last step, we translate event-action rules to BPEL. A simple event-action rule $e\{A\}$ can be realised by a BPEL event handler (onEvent) encoded as:

```

<onEvent e>
  <!-- BPEL translation of A -->
</onEvent>

```

The list of actions A can be mapped to BPEL as shown in Figure 5. Based on this, we translate the set of event-action rules derived from a component C to a BPEL scope. Let $m+1$ be the number of event-action rules derived from C , $\{Start(C), e_1, \dots, e_m\}$ be the set of events for triggering each of these rules, C can be mapped onto a scope encoded as:

```

<scope name="tc">
  <onEvent e1> ... </onEvent>
  ...
  <onEvent em> ... </onEvent>
  <invoke Start(C)/>
</scope>

```

The main activity of the scope is to invoke event Start(C). The occurrence of Start(C) triggers the execution of the source object of C , and the entire scope completes after its main activity and all active event handlers have completed.

Finally, it should be mentioned that the above events for triggering event-action rules are performed by a BPEL invoke activity via a *local* partner link between the final BPEL process (i.e. the mapping of the BPD to which the component C belongs) and itself. The interested reader may refer to [9] for definitions of a local partner link and an event being invoked or consumed via a local partner link.

| Action | BPEL Translation |
|--------------------|--------------------------------------------------------------------------------------------------------------------------------------------------------------------------------|
| do a | <i>an appropriate activity named "a"</i> |
| on e | <receive e/> |
| invoke end(x) | <invoke end(x)/> |
| execute Flow(fg) | <flow name="fg"> <invoke flow(fg, x1)/> ... <invoke flow(fg, xn)/> </flow> |
| execute Switch(dg) | <switch name="dg"> <case condition="c1"> <invoke switch(dg, y1, c1)/> </case> ... <case condition="cn"> <invoke switch(dg, yn, cn)/> </case> </switch> |
| execute Pick(eg) | <pick name="eg"> <onEvent name="z1"> <invoke pick(eg, z1)/> </onEvent> ... <onEvent name="zn"> <invoke pick(eg, zn)/> </onEvent> </pick> |
| ; | <sequence> ... </sequence> |
| | <flow> ... </flow> |

Figure 5. BPEL translation of actions.

3.5. Translation algorithm

Based on the mapping of each of the components aforementioned, we now define the algorithm to translate a well-formed core BPD into BPEL. The basic idea behind this algorithm is to select a component in the BPD, provide its BPEL translation, and fold the component. This is repeated until no component is left in the BPD. In the following, the set of components of a BPD named X is denoted as $[X]_c$.

Definition 7 (Algorithm) Let BPD be a well-formed core BPD with one start event and one end event.

- (1) $X := BPD$
- (2) if $[X]_c = \emptyset$ (i.e., X is initially a trivial BPD), output the BPEL translation of the single task or event object between the start and end events in X , and goto (5).
- (3) while $[X]_c \neq \emptyset$ (i.e., X is a non-trivial BPD)
 - (3-a) if there is a maximal SEQUENCE-component $C \in [X]_c$, selected it and goto (3-d).
 - (3-b) if there is a well-structured (non-sequence) component $C \in [X]_c$, select it and goto (3-d).
 - (3-c) if there is a minimal non-well-structured component $C \in [X]_c$, select it.
 - (3-d) Attach BPEL translation of C to task object t_c .
 - (3-e) $X := \text{Fold}(X, C, t_c)$ and return to (3).
- (4) Output the BPEL code attached to the task object t_c .
- (5) Start event and end event are translated into a pair of <process> and </process> tags to enclose the BPEL code generated in steps (2) or (4). In addition, for an end terminate event, add <exit/> activity after the above BPEL code (and before </process>).

In the above algorithm, the translation of components is done in step (3-d) followed by the folding in step (3-e). The component to be translated is selected in steps (3-a) to (3-c). To keep the translation as compact as possible, the selection always starts from a maximal SEQUENCE-component after each folding. Only if no sequences are left in the BPD, other well-structured components are considered. Since all well-structured non-sequence components are disjoint, the order of selecting them is irrelevant. Finally, the minimal non-well-structured components are considered.

4. Case Study

Consider the complaint handling process model shown in Figure 6. It is described as a well-formed core BPD. First the complaint is registered (task *register*), then in parallel a questionnaire is sent to the complainant (task *send questionnaire*) and the complaint is processed (task *process complaint*). If the complainant returns the questionnaire within two weeks (event *returned-questionnaire*), task *process questionnaire* is executed. Otherwise, the result of the questionnaire is discarded (event *time-out*). In parallel the complaint is evaluated (task *evaluate*). Based on the evaluation result, the processing is either done or continues to task *check processing*. If the check result is not ok, the complaint requires re-processing. Finally task *archive* is executed. Note that labels *DONE*, *CONT*, *OK* and *NOK* on the outgoing flows of each data-based XOR decision gateway, are abstract representations of conditions on these flows.

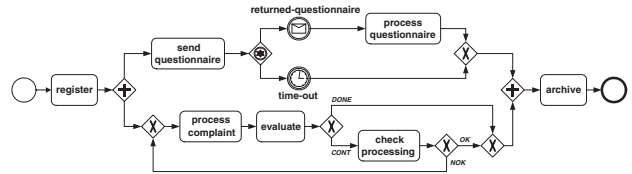


Figure 6. A complaint handling process model.

Following the algorithm presented in Section 3, we now translate the above BPD to a BPEL specification. Figure 7 sketches the translation procedure which shows how this BPD can be reduced to a trivial BPD. Each component is named C_i where i specifies in what order the components are processed, and C_i is folded into a task object named t_c^i . Also, we assign an identifier a_i to each task or intermediate event in the initial BPD, and use these identifiers to refer to the corresponding objects in the following translation.

In Figure 7, six components are identified. All these components except C_4 are well-structured. C_1 , C_3 and C_6 are SEQUENCE-components and are folded into sequence activities t_c^1 , t_c^3 and t_c^6 , respectively; C_2 is a PICK-component and is folded into a pick activity t_c^2 ; and C_5 is a FLOW-component and is folded into a flow activity t_c^5 . C_4 exhibits an unstructured loop, so it is not well structured. C_4 is also a minimal non-well-structured component after C_1 has been folded into t_c^1 . Hence, C_4 is folded into a scope t_c^4 with event handlers. Note that g_i is used to identify each

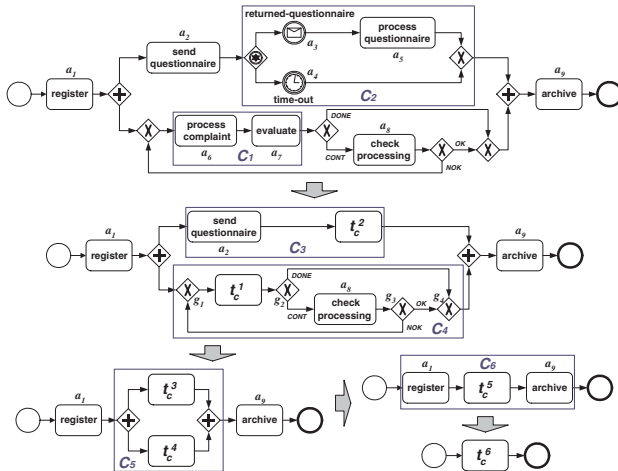


Figure 7. Translating the complaint handling process model in Figure 6 into BPEL.

of the gateways in C_4 . Figure 8 sketches the structure of the generated BPEL code. The detailed translation procedure and the full BPEL code are given in [8].

```

process
  sequence  $t_c^6$ :
    do  $a_1$ ;
    flow  $t_c^5$ : sequence  $t_c^3$ : do  $a_2$ ;
      pick  $t_c^2$ : onMessage  $a_3$ : do  $a_5$ 
        onAlarm  $a_4$ : empty
      scope  $t_c^4$ :
        onEvent Start( $C_4$ ): invoke end( $g_1$ )
        onEvent switch( $g_3, g_1, NOK$ ): invoke end( $g_1$ )
        onEvent end( $g_1$ ): sequence  $t_c^1$ : do  $a_6$ ; do  $a_7$ ;
          invoke end( $t_c^1$ )
        onEvent end( $t_c^1$ ): execute Switch( $g_2$ )
        onEvent switch( $g_2, a_8, CONT$ ): do  $a_8$ ;
          invoke end( $a_8$ )
        onEvent end( $a_8$ ): execute Switch( $g_3$ )
        onEvent switch( $g_2, g_4, DONE$ ): invoke end( $g_4$ )
        onEvent switch( $g_3, g_4, OK$ ): invoke end( $g_4$ )
        mainActivity: invoke Start( $C_4$ )
      do  $a_9$ 
    end process

```

Figure 8. Sketch of BPEL code generated from the complaint handling process model in Figure 6.

5. Conclusions

In this paper, we presented an algorithm to translate models captured in a core subset of BPMN into BPEL. The translation algorithm is capable of generating readable BPEL code by discovering “patterns” in the BPMN models that can be mapped onto BPEL structured constructs. The algorithm also exploits BPEL event handlers for unstructured subsets of the BPMN models. As a result, the algorithm can handle any BPMN model composed of tasks, events, parallel gateways, and XOR gateways (both data-based and event-based) connected in arbitrary topologies.

Implementation of the algorithm is ongoing. A first version of the implementation supports the translation of a subset of BPMN models (called *Standard Process Models*)

into BPEL event handlers and is available at <http://www.bpm.fit.qut.edu.au/projects/babel/tools>. We are now extending this tool with the ability to detect patterns in the BPMN models and to map these onto BPEL structured constructs.

Other ongoing work aims at exploring the use of BPEL’s non-structured constructs called *control links* in the translation. Our previous work [3] shows that a larger class of “patterns” could be mapped onto BPEL’s flow construct by making greater use of control links. However, since control links enable dead path elimination, such an extension, if not performed carefully, may hide errors such as deadlocks and livelocks in the source model during the translation, thus requiring verification technology for detection.

References

- [1] W.M.P. van der Aalst, A.H.M. ter Hofstede, B. Kiepuszewski, and A. P. Barros. Workflow Patterns. *Distributed and Parallel Databases*, 14(3):5–51, July 2003.
- [2] W.M.P. van der Aalst, J. Jørgensen, and K. Lassen. Let’s Go All the Way: From Requirements via Colored Workflow Nets to a BPEL Implementation of a New Bank System. In *OTM Confederated International Conferences, CoopIS, DOA, and ODBASE 2005*, volume 3760 of *Lecture Notes in Computer Science*, pages 22–39. Springer, 2005.
- [3] W.M.P. van der Aalst and K. Lassen. Translating Workflow Nets to BPEL. BETA Working Paper Series, WP 145, Eindhoven University of Technology, Eindhoven, 2005.
- [4] A. Arkin, S. Askary, B. Bloch, F. Curbera, Y. Goland, N. Kartha, C. Liu, S. Thatte, P. Yendluri, and A. Yiu, editors. *Web Services Business Process Execution Language Version 2.0*. Working Draft. WS-BPEL TC OASIS, May 2005.
- [5] B. Kiepuszewski, A.H.M. ter Hofstede, and C. Bussler. On Structured Workflow Modelling. In *Proceedings of 12th International Conference on Advanced Information Systems Engineering (CAiSE 2000)*, volume 1789 of *Lecture Notes in Computer Science*, pages 431–445. Springer, 2000.
- [6] J. Koehler and R. Hauser. Untangling Unstructured Cyclic Flows - A Solution Based on Continuations. In *OTM Confederated International Conferences, CoopIS, DOA, and ODBASE 2004*, volume 3290 of *Lecture Notes in Computer Science*, pages 121–138. Springer, 2004.
- [7] R. Liu and A. Kumar. An Analysis and Taxonomy of Unstructured Workflows. In *Proceedings of the International Conference on Business Process Management (BPM2005)*, volume 3649 of *Lecture Notes in Computer Science*, pages 268–284. Springer, 2005.
- [8] C. Ouyang, W.M.P. van der Aalst, M. Dumas, and A.H.M. ter Hofstede. Translating BPMN to BPEL. Technical Report BPM-06-02, BPMcenter.org, 2006. Available at <http://tinyurl.com/bbv7>.
- [9] C. Ouyang, M. Dumas, S. Breutel, and A.H.M. ter Hofstede. Translating Standard Process Models to BPEL. To appear in *Proceedings of 18th International Conference on Advanced Information Systems Engineering (CAiSE 2006)*, June 2006. An extended version as a technical report is available at <http://tinyurl.com/asu9q>.
- [10] S. A. White. *Business Process Modeling Notation (BPMN) Version 1.0*. Business Process Management Initiative, BPMI.org, May 2004.