

FROM INPUT-OUTPUT TO OUTPUT-ONLY MODAL IDENTIFICATION OF CIVIL ENGINEERING STRUCTURES

Álvaro Cunha, Faculty of Engineering, University of Porto (FEUP) Portugal

Elsa Caetano, Faculty of Engineering, University of Porto (FEUP) Portugal

E-mail: acunha@fe.up.pt Website: www.fe.up.pt/vibest

Abstract

This paper presents a brief characterization of the evolution of Experimental Modal Analysis in the Civil Engineering field, from Input-Output to Output-Only Modal Identification Techniques, taking particularly into account the experience of the authors at the Laboratory of Vibrations and Monitoring (VIBEST, www.fe.up.pt/vibest) of FEUP.

1 Introduction

Some decades ago, the major concern of Structural Engineers was the development and automatic application of new and powerful numerical methods for the analysis (static and dynamic) and design of large Civil Engineering structures. In this context, the fast development of the finite element techniques accompanied by the tremendous technological progress in the field of personal computers allowed the structural designer to use currently excellent structural analysis software packages, which enable to accurately simulate the structural behaviour.

However, the design and construction of more and more complex and ambitious civil structures, like dams, large cable-stayed or suspension bridges, or other special structures, made structural engineers feel the necessity to develop also appropriate experimental tools that might enable the accurate identification of the most relevant structural properties (static and dynamic), providing reliable data to support the calibration, updating and validation of the structural analysis numerical models used at the design stage.

Beyond that, the continuous ageing and subsequent structural deterioration of a large number of existing structures made structural engineers gradually more interested in the development and application of efficient vibration based damage detection techniques supported by structural health monitoring systems, in which the regular identification of modal properties plays also an important role.

Therefore, the first and natural tendency of Civil Engineering researchers was to take some profit from important previous developments made in System Identification and Experimental Modal Analysis in Electrical and Mechanical Engineering, trying to accurately identify the main dynamic properties of civil structures by applying well established input-output modal identification techniques.

The difficulty to excite large civil structures in a controlled form, as well as remarkable technological progresses registered in the area of transducers and analogue to digital converters, made however feasible to open a new and very promising road for the modal identification of large structures, exclusively based on the measurement of the structural response to ambient excitations and application of suitable stochastic modal identification methods.

Under these circumstances, the main purpose of this paper is to briefly present the perspective of the authors concerning the evolution of Experimental Modal Analysis in the Civil Engineering field, from Input-Output to Output-Only Modal Identification Techniques, which is naturally strongly influenced and conditioned by their own experience as researchers at the Laboratory of Vibrations and Monitoring (VIBEST, www.fe.up.pt/vibest) of FEUP.

2 Input-Output Modal Identification

2.1 Equipment and test procedures

The conventional Modal Testing is based on the estimation of a set of Frequency Response Functions (FRFs) relating the applied force and the corresponding response at several pairs of points along the structure, with enough high spatial and frequency resolution.

The construction of FRFs requires the use of an instrumentation chain for structural excitation, vibration measurement and data acquisition and signal processing.

In small and medium size structures, the excitation can be induced by an impulse hammer (Fig. 1a), similar to those currently used in Mechanical Engineering. This device has the advantage of providing a wide-band input, able to stimulate different modes of vibration. The main drawbacks are the relatively low spectral estimates' frequency resolution, which can preclude the accurate estimation of modal damping factors, and the lack of energy to excite some relevant modes of vibration. Due to this last factor, some laboratories have built special impulse devices more specifically designed to excite bridges (Fig. 1b). An alternative, also derived from Mechanical Engineering, is the use of large electrodynamic shakers (Fig. 1c), which can apply a large variety of input signals (random, multi-sine, etc.), when duly controlled both in frequency and amplitude using a signal generator and a power amplifier. The shakers have capacity to excite structures in a lower frequency range and higher frequency resolution can be attained. The possibility of application of sinusoidal forces allows for the excitation of the structure in resonance and, consequently, for a direct identification of the mode shape.



Figure 1. a) Impulse hammer; b) Impulse excitation device for bridges (K.U.Leuven); c) Electrodynamic shaker over three load cells; d) Eccentric mass vibrator.

The controlled excitation of large Civil Engineering structures requires however the use of specific and heavy excitation equipment. One option frequently used in the past in dynamic testing of dams was the eccentric mass vibrator (Fig. 1d), which enables the application of sinusoidal forces with variable frequency and amplitude. The main drawbacks of this technique are low force amplitude

induced at low frequencies and some difficulty to measure the applied force and ensure no relative movement of the vibrator with regard to the structure. A better option in terms of providing a wide band-excitation over the most interesting frequency range for large civil structures was the use servo-hydraulic shakers. Figure 2 shows, for instance, two shakers of this type built at EMPA (www.empa.ch) to excite bridges or dams, vertically and laterally, as well as the electro-hydraulic mass reaction shaker Victoria from Arsenal Research (www.arsenal.ac.at).

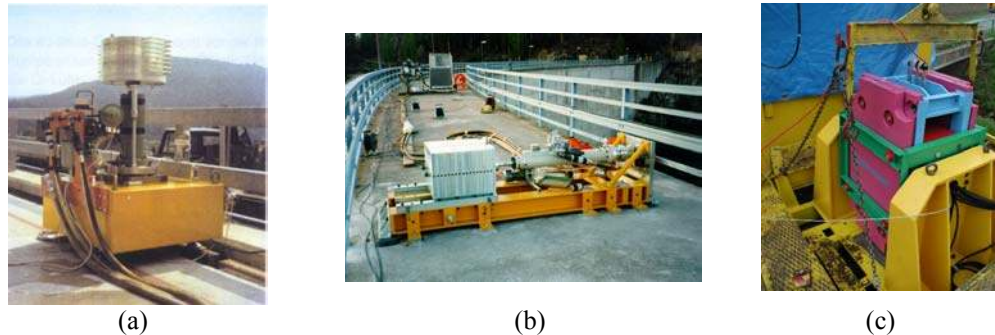


Figure 2. Servo-hydraulic shakers to excite (a) bridges (vertically), (b) dams (laterally) (EMPA); (c) Electro-hydraulic shaker from Arsenal Research.

The dynamic response of the structure is usually measured with accelerometers (Figure 3) (piezoelectric, piezoresistive, capacitive or force balance) [1], due to their relatively low cost and high sensitivity. A particular characteristic of piezoelectric accelerometers is that they don't need specific power supply and operate well over a wide frequency range. However, most of them are not suited to low frequency applications. On the contrary, piezoresistive, capacitive and force balance accelerometers can provide DC or low frequency response capability.

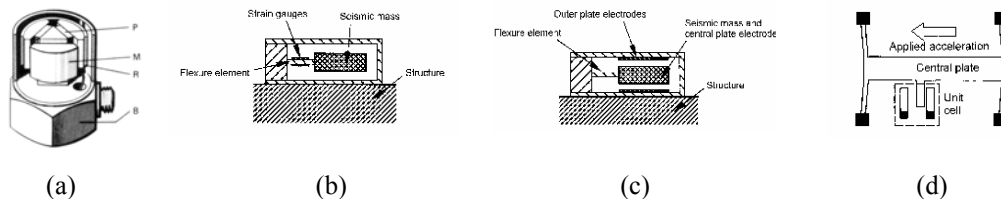


Figure 3. Schematic cross-section of (a) piezoelectric, (b) piezoresistive, (c) capacitive and (d) force balance accelerometers

The electrical signals captured by these transducers are usually rather low and so must be amplified by conditioning units, that may also provide anti-aliasing low-pass filtering (allowing lower sampling rates) and analogue integration to velocities or displacements.

The data acquisition and storage of measurement data involves the use of an analogue-to-digital (A/D) converter inserted in a digital computer. The digital raw data must be preliminary analysed and processed, considering operations of scale conversion, trend-removal and decimation. Afterwards, the acceleration time series can be multiplied by appropriate time windows (Hanning, Cosine-Taper, etc.), in order to reduce leakage effects, and subdivided in different blocks for evaluation of average spectral auto and cross spectra estimates, using the FFT algorithm. At last, estimates of FRFs can be obtained using estimators H_1 or H_2 [1]. The automatic evaluation of FRFs requires appropriate software for analysis and signal processing, which is already available in commercial Fourier analyzers. These analyzers are sometimes simply materialized through the

insertion of a specific PCMCIA card into a laptop, allowing either the acquisition of data through input channels or the control of a shaker through an output channel.

2.2 *Input-Output Modal Identification methods*

There is presently a wide variety of input-output modal identification methods, whose application relies either on estimates of a set of FRFs or on the corresponding Impulse Response Functions (IRFs), which can be obtained through the inverse Fourier Transform. These methods try to perform some fitting between measured and theoretical functions and employ different optimization procedures and different levels of simplification. Accordingly, they are usually classified according to the following criteria: (i) Domain of application (Time or Frequency); (ii) Type of formulation (Indirect or Modal and Direct); (iii) Number of modes analysed (SDOF or MDOF); (iv) Number of inputs and type of estimates (SISO, SIMO, MIMO, MISO).

The former methods of identification were developed in the frequency domain. In the simpler SDOF formulations (e.g. Peak Amplitude, Circle-Fit, Inverse methods), a fitting between a measured and a theoretical FRF of a SDOF system in the vicinity of each resonant frequency is developed, neglecting the contribute of resonant modes. In the more sophisticated MDOF methods (e.g. Rational Fraction Polynomial (RFP), Complex Exponential Frequency Domain (CEFD), Polyreference Frequency Domain (PRFD)), the fitting between measured and theoretical FRFs is made globally in a wide range of frequencies.

Time domain methods, which tend to provide the best results when a large frequency range or a large number of modes exist in the data, began to be developed as consequence of some limitation in terms of spectral estimates frequency resolution, as well as leakage errors in the estimates. The most widely known methods are either Indirect (e.g. Complex Exponential (CE), Least-Squares Complex Exponential (LSCE), Polyreference Complex Exponential (PRCE), Ibrahim Time Domain (ITD), Eigensystem Realization Algorithm (ERA)) or Direct (e.g. Autoregressive Moving-Average (ARMA)).

The gradual development of all these methods, which are extensively described by Maia et al. [1], shows a tendency to completely automated systems of acquisition, analysis, processing and identification, instead of some initial trend to the use of interactive programs. Beyond that, the best-performing methods have been implemented in robust Modal Analysis software [2].

A special class of modal identification methods, called Tuned-Sinusoidal methods (e.g. Asher, Mau) corresponds to the particular type of tests that are based on the application of a sinusoidal excitation at each natural frequency, as can happen using eccentric mass vibrators.

2.3 *Examples of forced vibration tests*

The performance of classical input-output modal identification tests in Civil Engineering structures can be of interest both on physical models and on prototypes.

Figure 4 shows the physical model of Jindo bridge (South Korea), which was extensively tested to analyze the importance of dynamic cable-structure interaction in terms of seismic response analysis [3]. In this context, several forced vibration tests were performed either using an electro-dynamic shaker or two different shaking tables (at Univ. Bristol and ISMES), and considering two alternative configurations for the model. First, additional masses were distributed along the cables, according to the similitude theory, in order to idealize the cables' mass and consider the lateral cables vibration. In a second phase, no distributed additional mass was introduced along the cables, but equivalent masses have been concentrated at their extremities. This study permitted to identify the existence of different sets of multiple modes, some being pure cable modes, but others coupled

modes. Each of these sets present a common shape for the deck and towers and different cables motion, the corresponding natural frequencies being very close, always in the vicinity of a global mode of the primary system (Figure 6).

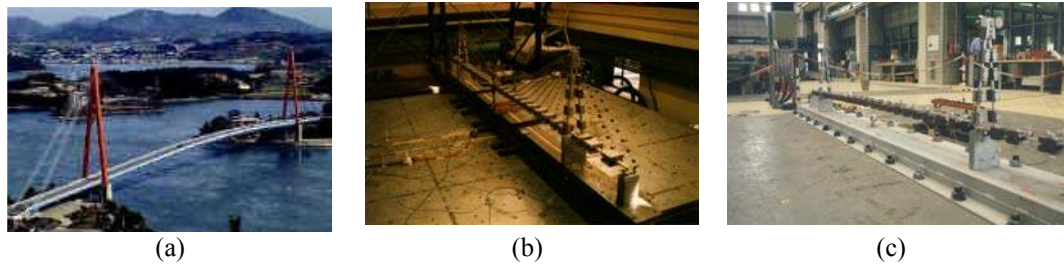


Figure 4. (a) Jindo cable-stayed bridge; (b) Physical model on shaking table (EERC, Univ. Bristol); (c) Physical model on shaking table (ISMES).

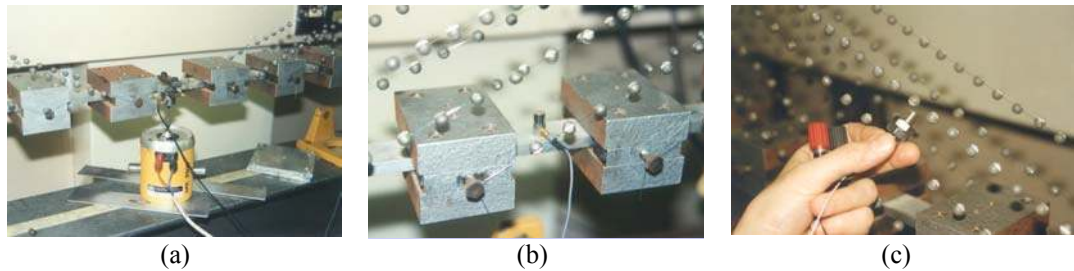


Figure 5. (a) Application of electro-dynamic shaker; (b) Response measurement with piezoelectric accelerometer; (c) Measurement of cables tensions.

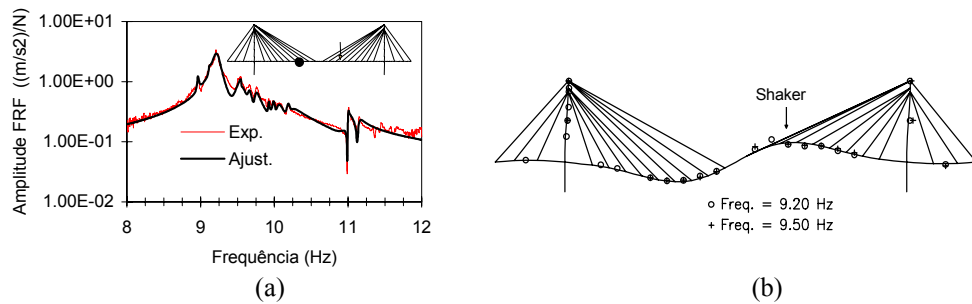


Figure 6. (a) Amplitude of FRF relating vertical acceleration at 1/3 span with the vertical force applied at the opposite 1/3 span; (b) Identified pattern of a set of multiple modes.

Several large Civil Engineering structures, like buildings, bridges or dams, have been also submitted to forced vibration tests in the past, using heavy excitation devices only available at important and well equipped laboratories. That was the case of EMPA, where Cantieni and other researchers have tested a significant number of bridges and dams [4-6]. Figures 7-9 show some examples of that remarkable activity, presenting in particular some of the modes of vibration accurately identified at the Swedish Norsjö dam.

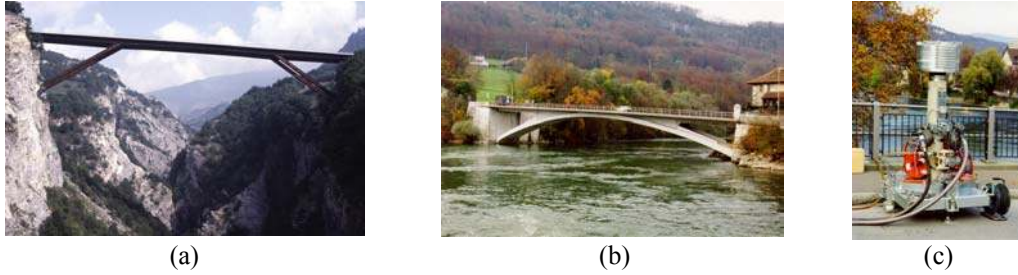


Figure 7. (a) Dala bridge; (b) Aarburg bridge; (c) Electro-hydraulic vibrator used at Aarburg bridge

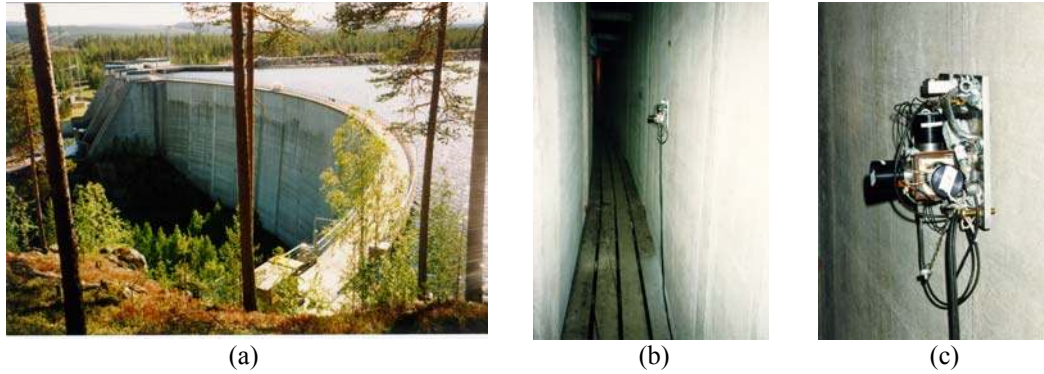


Figure 8. (a) Norsjö dam; (b,c) View of instrumented point at downstream side reinforced concrete wall

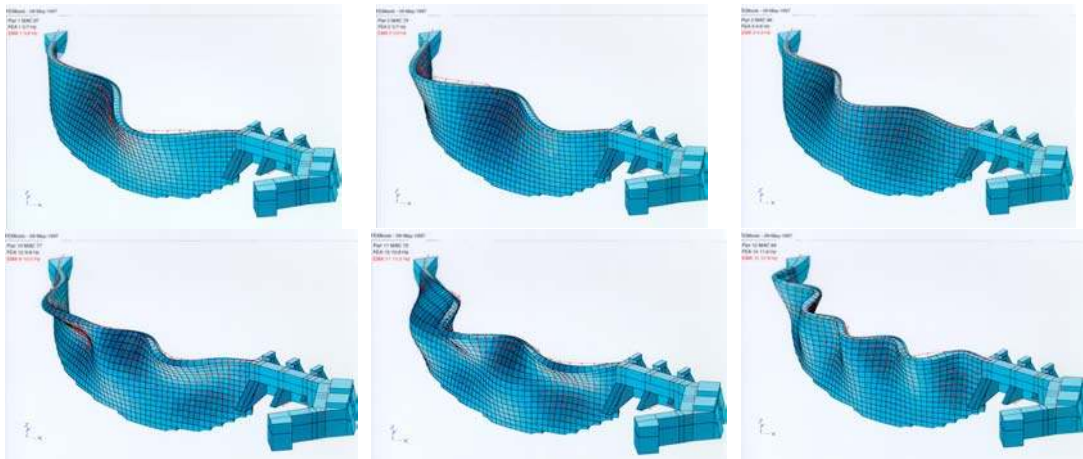


Figure 9. Some identified modes of vibration at Norsjö dam (modes 1, 2, 3, 10, 11, 12).

3 Output-Only Modal Identification

The main problem associated to the performance of forced vibration tests in bridges, buildings or dams stems from the difficulty to excite, with sufficient energy and in controlled manner, their most significant modes of vibration in a low range of frequencies. In very large and flexible structures like cable-stayed or suspension bridges, in particular, the forced excitation requires extremely heavy and expensive equipment very seldom available in most dynamic labs. Figure 10 shows, for instance, the impressive shakers used to excite the Tatara and the Yeongjong bridges.



Figure 10. Forced vibration tests of (a) Tatara cable-stayed bridge (<http://www.hsba.go.jp>) and (b) Yeongjong suspension bridge (<http://www.yeongjongbridge.com>)

However, the technological developments registered in the fields of transducers and A/D converters during the last years made feasible the very accurate measurement of very low levels of dynamic response induced by ambient excitations, like wind or traffic, strongly stimulating the development of output-only modal identification methods.

Therefore, the performance of output-only modal identification tests became an alternative of extraordinary importance in the field of Civil Engineering, allowing the accurate identification of modal properties of large structures at the commissioning stage or during the structure life time, in a much more comfortable way and avoiding any type of interruption of normal traffic in bridges.

3.1 Equipment and test procedures



Figure 11. (a) Force balance accelerometers; (b) Multi-channel data acquisition and processing system for ambient vibration tests; (c) Strong motion tri-axial seismograph

Modern force balance accelerometers (Fig. 11a), specially conceived for measurements in the range 0-50Hz and virtually insensitive to high frequency vibrations, have contributed very significantly to the success of ambient vibration tests. In such tests, the structural ambient response is captured by one or more reference sensors, at fixed positions, together with a set of roving sensors, placed at different measurement points along the structure, in different setups. The number of points used is conditioned by the spatial resolution needed to characterize appropriately the shape of the most relevant modes of vibration (according to preliminary finite element modeling), while the reference points must be conveniently far from the corresponding nodal points. Force balance accelerometers require appropriate power supply, and their analogue signals (that may be locally amplified) are usually transmitted to a data acquisition system with an A/D conversion card, of at least 16 bit, through relatively long electrical cables. This system can be based on a normal PC, although some data acquisition and processing systems, specifically conceived for the performance of ambient vibration tests are already available (Fig. 11b), playing a role similar to the Fourier analyzers in the context of classical Experimental Modal Analysis.

Although most of the output-only modal identification tests in large civil structures have been based worldwide on the use of long electrical cables, the implementation of this type of solution is rather cumbersome and time consuming. Therefore, there is presently a natural tendency to develop wireless architectures or, at least reduce drastically the cables length, by introducing local digitization and single cable signal transmission. A very efficient and comfortable alternative has been intensively used at FEUP[7] and LNEC[8], based on tri-axial strong motion recorders duly synchronized through GPS sensors.

3.2 *Output-Only Modal Identification methods*

The ambient excitation has commonly a multiple input nature and a wide band frequency content, stimulating a significant number of modes of vibration. For simplicity, output-only modal identification methods assume the excitation input as a zero mean Gaussian white noise, which means that the real excitation can be interpreted as the output of a suitable filter excited with that white noise input. Modelling the behaviour of the filter-structure system, one may conclude that some additional computational poles, without structural physical meaning, appear as consequence of the white noise assumption.

There are two main groups of output-only modal identification methods: non-parametric methods essentially developed in frequency domain and parametric methods in time domain.

The basic frequency domain method (Peak-Picking), though already applied some decades ago to the modal identification of buildings [9,10] and bridges [11,12], was only conveniently systematized by Felber [13] about twelve years ago. This approach, which leads in fact to estimates of operational mode shapes, is based on the construction of average normalized power spectral densities (ANPSDs) and ambient response transfer functions involving all the measurement points, and allowed the development of software for modal identification and visualization used at UBC and EMPA [13]. The frequency domain approach was subsequently improved [14,15] by performing a single value decomposition of the matrix of response spectra, so as to obtain power spectral densities of a set of SDOF systems. This method (Frequency Domain Decomposition (FDD)) was better detailed and systematized by Brincker *et al.* [16], and subsequently enhanced [17] in order to extract modal damping factors estimates. In this last approach (EFDD) these estimates are obtained through inspection of the decay of auto-correlation functions, evaluated by performing the inverse Fourier transform of the SDOF systems' power spectral densities.

The time domain parametric methods involve the choice of an appropriate mathematical model to idealize the dynamic structural behaviour (usually time discrete state space stochastic models, ARMAV or ARV models) and the identification of the values of the modal parameters so as that model fits as much as possible the experimental data, following some appropriate criterion. These methods can be directly applied to discrete response time series or, alternatively, to response correlation functions. The evaluation of these functions can be made based on their definition, using the FFT algorithm [18] or applying the Random Decrement method (RD) [19]. A peculiar aspect of output-only modal identification based on the fitting of response correlation functions is the possibility to use methods that stem from classical input-output identification methods, based on impulse response functions. Some of these methods are the Ibrahim Time Domain (ITD) [20], the Multiple Reference Ibrahim Time Domain (MRITD) [21], the Least-Squares Complex Exponential (LSCE) [22], the Polyreference Complex Exponential (PRCE) [23] or the Covariance-Driven Stochastic Subspace Identification (SSI-COV) [24]. An alternative method, that allows direct application to the response time series is the Data-Driven Stochastic Subspace Identification (SSI-DATA) [25]. It's still worth noting that the Random Decrement technique, usually associated to the application of time domain methods like Ibrahim's, can be also the base for the application of

frequency domain methods, like PP, FDD or EFDD, as it leads to free vibration responses, from which power spectral densities can be evaluated using the FFT algorithm [26], reducing noise effect (methods RD-PP, RD-FDD and RD-EFDD).

These methods, schematically represented in Figure 6, have been recently systematized, applied and compared by Rodrigues [8]. Figure 6 also indicates the five different types of numerical techniques employed in their development (FFT, SVD, LS, EVD and QR).

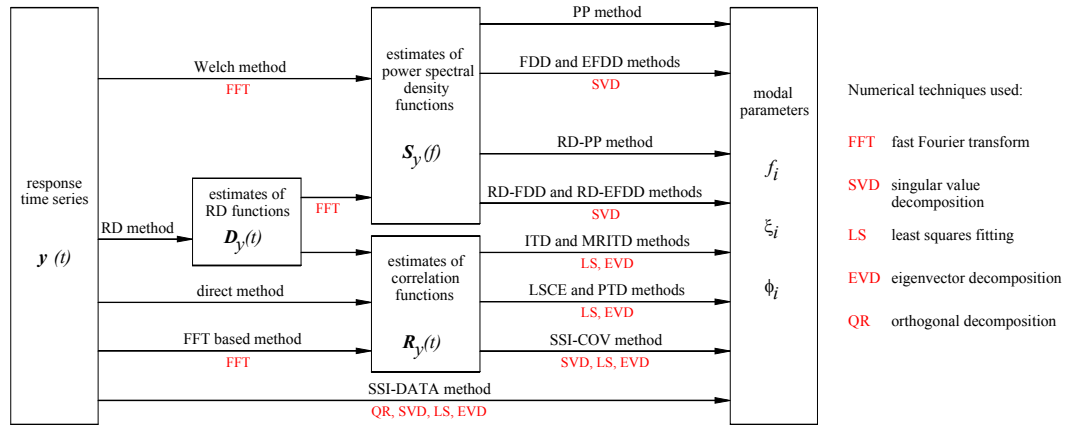


Figure 12. Schematic representation of output-only modal identification methods.

Very recently, the new operational Polymax parameter estimation method was introduced by LMS (www.lms.be) [27]. This method operates on spectra or half spectra (i.e. the Fourier transforms of the positive time lags of the correlation functions) and its main advantage consists in yielding extremely clear stabilization diagrams, making an automation of the parameter identification process rather straightforward, which may enable the continuous monitoring of structural dynamic properties.

3.3 Examples of ambient vibration tests

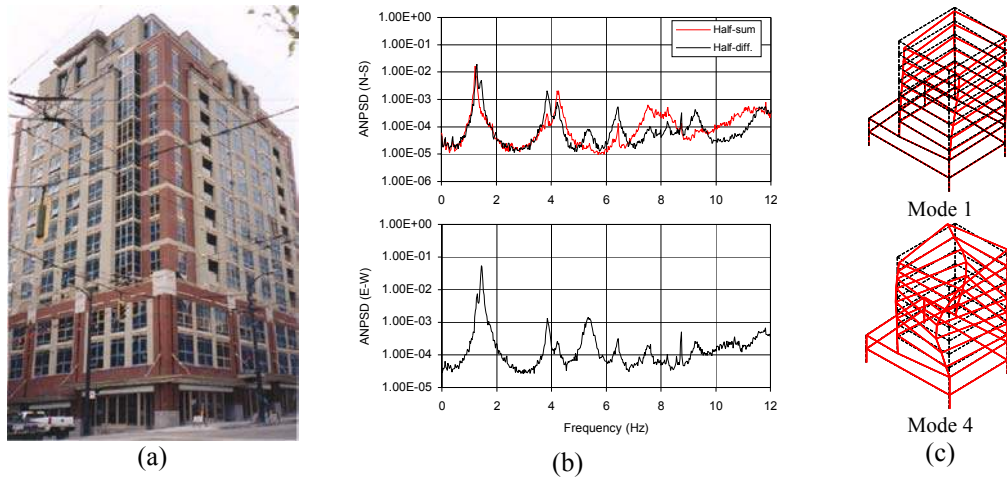


Figure 13. (a) Heritage Court Tower; (b) ANPSDs spectra; (c) Two identified mode shapes.



Figure 14. View of Vasco da Gama Bridge.

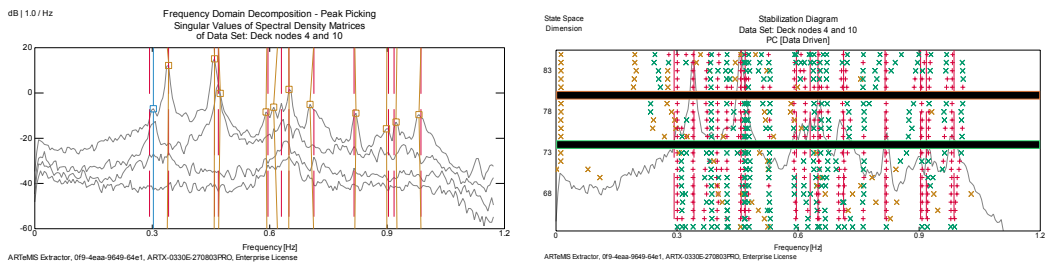


Figure 15. Singular value spectra (left); Stabilization diagram (right).

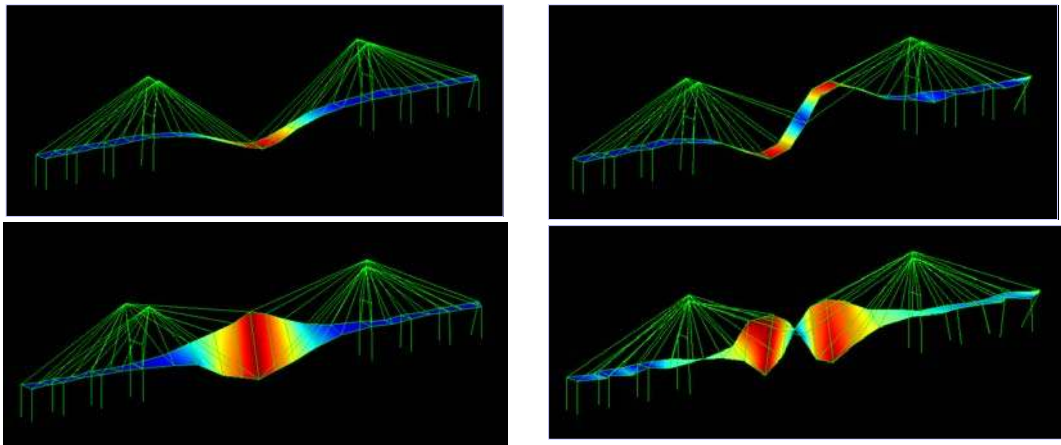


Figure 16. Identified first (left) and second (right) bending (up) and torsion (down) modes.

Ambient vibration tests have been performed with great success in large buildings, bridges or other special structures, allowing the creation of high quality experimental databases that have been used to compare the performance of different output-only modal identification methods. In this context, a benchmark test, concerning the modal identification of the Heritage Court Tower (Vancouver, Canada) has been organized at IMAC-XVIII by Ventura [28]. This example could show the interest of considering a pre-combination of measured signals (half-sum and half-difference signals along two orthogonal directions at two different points at each floor) to emphasize the contributes from bending or torsion, as well as of a high frequency resolution to separate contributions from close

modes, when using the classical PP method [29]. The application of FDD and SSI methods permitted a more automatic identification procedure, distinguishing close modes and extracting modal damping estimates.

In the field of bridges, complete ambient vibration tests were developed along about 5km of the Vasco da Gama Bridge by FEUP. Regarding the main cable-stayed bridge (Figure 14), the ambient structural response was measured during periods of 16 minutes at 58 points along the deck and towers (upstream and downstream) using a wireless system based on 6 tri-axial 16 bit seismographs duly synchronized by a laptop. The identification of a significant number of lateral, vertical and torsion modes in the relevant frequency range of 0-1Hz was performed, in a first instance [7], using the PP method. Subsequently, SSI and FDD methods were also applied [30,31] and compared using the software MACEC [24] and ARTEMIS [32], leading also to estimates of modal damping factors, although very accurate damping estimates require longer measurement periods. Figure 15 shows the singular value spectra and a stabilization diagram associated to the application of these two methods, while Figure 16 presents plots of some fundamental identified modes.

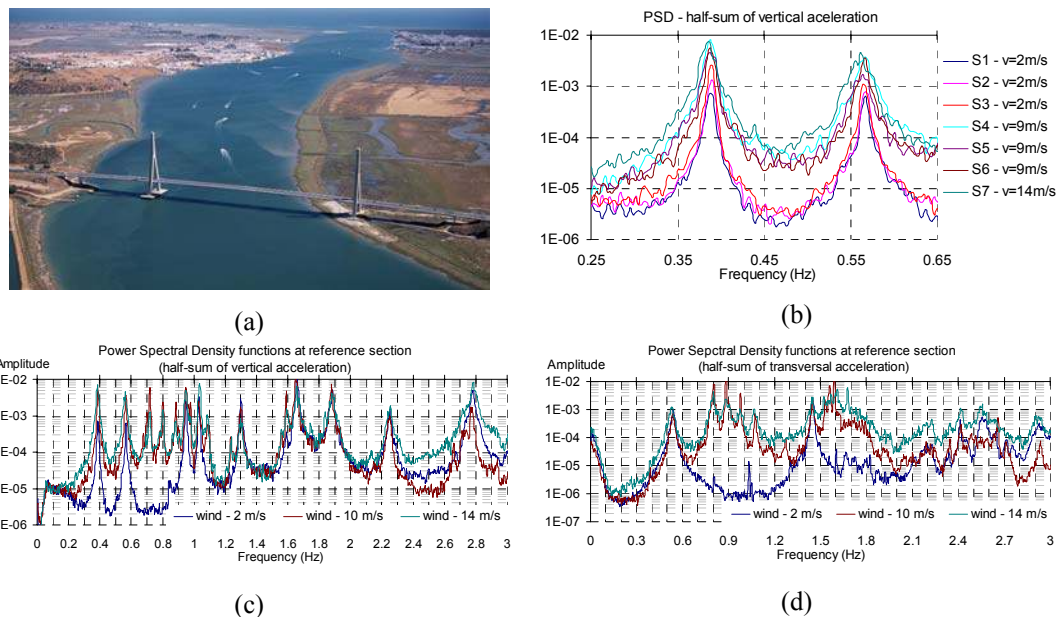


Figure 17. (a) Guadiana cable-stayed bridge; PSD functions of half-sum vertical (b, c) and lateral (d) acceleration at reference section, as function of mean wind speed.

It's worth noting that the existence of cables' frequencies in the frequency range of analysis can difficult the identification of global natural frequencies. Figures 17 (c,d) show, for instance, PSD functions concerning the ambient response of the international Guadiana cable stayed-bridge (Fig. 17 (a)) (linking Portugal to Spain in Algarve), evaluated with three different levels of average wind speed, which show the appearance of spectral contributes from the fundamental modes of stay-cables (in the range 0.6-0.9Hz) or second harmonics, leading to spectral peaks that can not be interpreted as global natural frequencies of the bridge. Inspection of the spectral peaks (Figure 17 (b)) shows also the increase of modal damping with wind speed, which can be evaluated through ambient vibration tests using sufficiently long measurement periods [33].

It's still worth mentioning that the above described output-only modal identification technique used in Vasco da Gama and Guadiana bridges by FEUP, has been also recently applied with great success in the dynamic tests at the commissioning stage of the outstanding Millau viaduct, coordinated by Grillaud and Flamand (CSTB, France) [34].

3.4 Examples of free vibration tests. Damping estimation

The accurate identification of modal damping factors is a point of major difficulty in the identification process, not only due to the considerably larger scatter associated to the estimates provided by the several methods used with regard to natural frequencies and mode shapes, but also because the viscous damping assumption does not correspond exactly to the real damping characteristics, the values of modal damping ratios increasing gradually with the levels of oscillation.

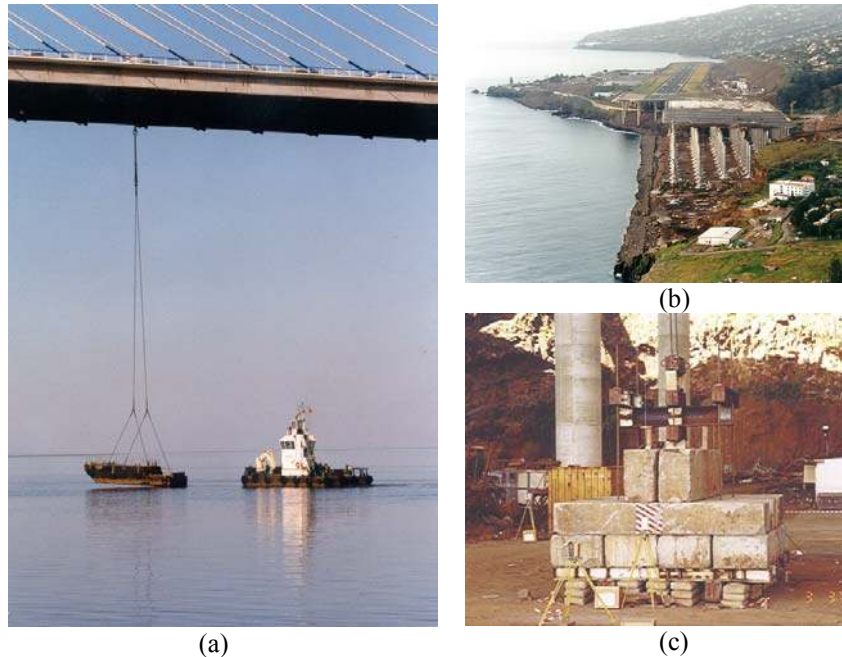


Figure 18. (a) Free vibration test of Vasco da Gama cable-stayed bridge; (b) Aerial view of Madeira airport extension; (c) Mass of 60.8t used in the free vibration test of Madeira airport

However, in several circumstances the accurate identification of modal damping factors is required, which is frequently achieved by performing a free vibration test. That is, for instance, the case of large and slender cable-stayed or suspension bridges, where knowledge of certain damping factors is crucial for the assessment of aeroelastic instability problems. Therefore, such tests have been performed, in particular, at Normandy, Vasco da Gama or Millau bridges. At Vasco da Gama bridge, the test was made suspending a barge with a mass of 60t from an eccentric point at the deck (Fig. 18a) [7], at $1/3$ span upstream, through a cable, which was cut when the tide became low and the wind speed inferior to 3m/s, to avoid the influence of aerodynamic damping. The sudden release of the mass caused a free vibration response, which was measured during 16 minutes by six tri-axial seismographs at $1/2$ and $1/3$ span deck cross-sections. Other alternative techniques can be used with the same purpose, as is the case of Madeira airport [35], where a mass of 60.8t

(Fig. 18b,c) was suspended from the deck, the sudden release of the mass being achieved through an explosion of a fusible element incorporated in the suspension device.



Figure 19. (a) Braga stadium's cable roof; (b) Measurement of modal free vibration response at three different points of the cable-roof after inducing resonance.

In the cable-roof of the new Braga Stadium (EURO'2004) (Fig. 19a), whose aeroelastic stability was proved by different experimental tests on physical models, the modal damping identification was essentially required to study possible resonance effects, which may affect the structural integrity and durability in the long term. For that purpose, sinusoidal excitations were applied at different points by a mechanical vibrator connected to the cable-roof through a cable. Stopping suddenly the vibrator, it was possible to measure modal free vibration responses as those plotted in Fig. 19b. The exponential fitting of the free vibration envelopes led to very accurate estimates of modal damping factors for different levels of oscillation [36].

4 Finite Element Correlation and Updating

4.1 Finite element correlation

The modal identification of bridges and special structures plays a relevant role in terms of experimental calibration and validation of finite element models used to predict the static or dynamic structural behaviour, either at the design stage or at rehabilitation. After appropriate experimental validation, finite element models can provide essential baseline information that can be subsequently compared with information captured by long-term monitoring systems, in order to detect structural damage.



Figure 20. (a) New Hintze Ribeiro and (b) Pinhão bridges, over Douro river.

The correlation of modal parameters can be analyzed both in terms of identified and calculated natural frequencies and in terms of the corresponding mode shapes, using correlation coefficients or MAC values. Beyond that, modal damping estimates can be also compared with the values assumed for numerical modelling. This type of analysis, already developed at Vasco da Gama or

Luiz I bridges with excellent results [7,37], has been recently applied considering two Portuguese bridges over Douro river (Figure 20): the New Hintze Ribeiro Bridge (a six span composite bridge that substituted the centenary bridge that collapsed in 2001) and the Pinhão Bridge (a three span simple supported metallic bridge with a concrete slab at the deck, which is presently under rehabilitation).

In the first case (Fig. 20a), rather good correlation between identified and calculated modal parameters was achieved concerning the vertical bending modes of vibration. However, regarding the lateral response of the bridge, identified frequencies were systematically considerably higher than the corresponding calculated values, though good correlation of modal shapes has been obtained [38]. Such discrepancy stems naturally from the difficulty to simulate numerically the real characteristics of soil-structure interaction at the foundation of the several piers, and it shows the large influence that variations of boundary conditions can have on the global dynamic bridge properties.

In the case of Pinhão Bridge (Fig. 20b), very similar modal estimates were obtained in the three similar spans and good correlation was achieved between significant identified and calculated modal parameters, considering either the vertical or the lateral behaviour of the bridge. However, it was clearly noticed [39] that the initial numerical modeling developed by the designer should be improved to correctly simulate the lateral dynamic response by including the stiffness associated to the concrete slab of the deck, which was made through a discretization in shell elements.

4.2 *Finite element updating*

The accurate identification of the most significant modal parameters based on output-only identification tests can support the updating of finite element models, which may be a very interesting task in order to overcome several uncertainties associated to the numerical modeling.



Figure 21. Stress-ribbon footbridge at FEUP Campus.

Such updating can be developed on the basis of a sensitivity analysis, using several types of models and changing the values of some structural properties in order to achieve a good matching between identified and calculated modal parameters. This type of procedure has been recently followed to study the dynamic behaviour of a stress-ribbon footbridge at FEUP Campus (Figure 21). For that purpose, initial finite element models were developed idealizing the bridge deck as a set of beam elements with the geometry considered at the design stage or measured through a topographic survey (Models 1 and 2). Afterwards, due to the clear nonlinear geometrical behaviour of the bridge, a third model (Model 3) was developed discretizing the deck in truss finite elements with the cables' axial stiffness (neglecting bending stiffness), adjusting the initial cables tension so as to obtain the measured longitudinal profile after progressive application of the loads. In order to take also into account the bending stiffness of the concrete slab, this model was subsequently adapted (Model 4) discretizing the deck in truss finite elements, with progressive loading and activation of

beam elements connecting the nodes of the truss elements. Finally, this model was slightly modified, considering partial rotations between beam elements to simulate the lack of sealing of the joints and reducing the area and inertia of the beam elements to simulate the effects of cracking and lack of adherence between precast and in situ concrete. After all these iterations, very good level of correlation between identified and calculated natural frequencies and mode shapes was achieved, as extensively described in ref. [40].

Beyond this type of sensitivity analyses, more automatic finite element updating techniques can also be used [41]. In this context, a drawback of output-only modal identification seemed to be the impossibility to obtain mass normalized mode shapes. However, this inconvenient can be overcome [42] introducing appropriate mass changes.

5 Conclusion

Civil Engineering structures have peculiar characteristics (large size and relatively low natural frequencies) that make difficult the current application of classical input-output modal identification techniques. Therefore, there is presently a clear tendency worldwide to explore and improve the potential of output-only modal identification techniques, whose efficiency and accuracy were clearly illustrated with the applications shown. These techniques, that may be used under normal operation conditions, can provide a solid basis for: (i) the development of finite element correlation analyses, (ii) the finite element updating and validation; (iii) the definition of a baseline set of dynamic properties of the initially non-damaged structure, that may be subsequently used for the application of vibration based damage detection techniques; (iv) the integration of output-only modal identification techniques in health monitoring systems; (v) the implementation of vibration control devices.

6 References

- [1] Maia, N. *et al.* "Theoretical and Experimental Modal Analysis", Research Studies Press, UK, 1997
- [2] Han, M-C & Wicks, A.L. "On the application of Forsythe orthogonal polynomials for global modal parameter estimation, Proc. 7th Int. Modal Analysis Conference, 1989
- [3] Caetano, E., Cunha, A. & Taylor, C. "Investigation of Dynamic Cable-deck Interaction in a Physical Model of a Cable-stayed Bridge. Part I: Modal Analysis", Int. Journal Earthquake Engineering and Structural Dynamics, Vol.29, No.4, p.481-498, 2000
- [4] Pietrzko, S., Cantieni, R. & Deger, Y. "Modal testing of a steel/concrete composite bridge with a servo-hydraulic shaker", Proc. 14th Int. Modal Analysis Conference, Dearborn, Michigan, 1996
- [5] Cantieni, R., Deger, Y. & Pietrzko, S. "Large structure investigation with dynamic methods: the bridge on the river Aare at Aarburg", Prestressed Concrete in Switzerland, Report of the Swiss FIP Group to the 12th FIP Congress, Washington D.C., 1994
- [6] Cantieni, R. "Assessing a Dam's Structural Properties Using Forced Vibration Testing", Proc. IABSE International Conference on Safety, Risk and Reliability - Trends in Engineering, Malta, 2001
- [7] Cunha, A., Caetano, E. & Delgado, R. "Dynamic Tests on a Large Cable-Stayed Bridge. An Efficient Approach", Journal Bridge Engineering, ASCE, Vol.6, No.1, p.54-62, 2001

- [8] Rodrigues, J. "Stochastic Modal Identification. Methods and Applications in Civil Engineering Structures", Ph.D. Thesis (in Portug.), Univ. of Porto (FEUP/LNEC), 2004
- [9] Crawford, R. & Ward, H.S. "Determination of the Natural Period of Buildings", Bulletin of the Seismological Society of America, Vol.54, No.6, p.1743-1756, 1964
- [10] Trifunac, M.D. "Comparison Between Ambient and Forced Vibration Experiments, Earthquake Engineering and Structural Dynamics, Vol.1, p.133-150, 1972
- [11] Mc Lamore, V.R., Hart, G. & Stubbs, I.R. "Ambient Vibration of Two Suspension Bridges, Journal of the Structural Division, ASCE, Vol.97, N.ST10, p.2567-2582, 1971
- [12] Abdel-Ghaffar, A.M. "Vibration Studies and Tests of a Suspension Bridge", Earthquake Engineering and Structural Dynamics, Vol.6, p.473-496, 1978
- [13] Felber, A. "Development of a Hybrid Bridge Evaluation System", Ph.D. Thesis, University of British Columbia (UBC), Vancouver, Canada, 1993
- [14] Prevosto, M. "Algorithmes d'Identification des Caractéristiques Vibratoires de Structures Mécaniques Complexes", Ph.D. Thesis, Univ. de Rennes I, France, 1982
- [15] Corrêa, M.R. & Campos Costa, A. "Ensaio Dinâmicos da Ponte sobre o Rio Arade", in "Pontes Atirantadas do Guadiana e do Arade" (in Portuguese), ed. by LNEC, 1992
- [16] Brincker, R., Zhang, L. & Andersen, P. "Modal Identification from Ambient Responses using Frequency Domain Decomposition", Proc. 18th Int. Modal Analysis Conference, Kissimmee, USA, 2001
- [17] Brincker, R., Ventura, C. & Andersen, P. "Damping Estimation by Frequency Domain Decomposition", Proc. 19th Int. Modal Analysis Conference, San Antonio, USA, 2000
- [18] Brincker, R., Krenk, S., Kirkegaard, P.H. & Rytter, A. "Identification of the Dynamical Properties from Correlation Function Estimates", Bygningstatiske Meddelelser, Danish Society for Structural Science and Engineering, Vol.63, N.1, p.1-38, 1992
- [19] Asmussen, J.C. "Modal Analysis based on the Random Decrement Technique. Application to Civil Engineering Structures", Ph.D. Thesis, Univ. Aalborg, 1997
- [20] Ibrahim, S.R. & Mikulcik, E.C. "A Method for the Direct Identification of Vibration Parameters from the Free Response", The Shock and Vibration Bulletin, Vol.47, N.4, p.183-198, 1977
- [21] Fukuzono, K. "Investigation of Multiple-Reference Ibrahim Time Domain Modal Parameter Estimation Technique", M.Sc. Thesis, Univ. Cincinnati, USA, 1986
- [22] Brown, D.L., Allemang, R.J., Zimmerman, R. & Mergeay, M. "Parameter Estimation Techniques for Modal Analysis, SAE Technical Paper Series, N.790221, 1979
- [23] Vold, H., Kundrat, J., Rocklin, G.T. & Russel, R. "A Multi-Input Modal Estimation Algorithm for Mini-Computers", SAE Technical Paper Series, N.820194, 1982
- [24] Peeters, B. "System Identification and Damage Detection in Civil Engineering", Ph.D. Thesis, K.U.Leuven, Belgium, 2000
- [25] Van Overschee, P. & De Moor, B. "Subspace Identification for Linear Systems: Theory, Implementation, Applications", Kluwer Academic Publishers, The Netherlands, 1996

- [26] Rodrigues, J., Brincker, R. & Andersen, P. "Improvement of Frequency Domain Output-Only Modal Identification from the Application of the Random Decrement Technique, Proc. 23rd Int. Modal Analysis Conference, Deaborn, USA, 2004
- [27] Peeters, B., Vanhollebeke, F. & Van der Auweraer, H. "Operational PolyMAX for Estimating the Dynamic Properties of a Stadium Structure during a Football Game", Proc. 23rd Int. Modal Analysis Conference, Orlando, USA, 2005
- [28] Ventura, C.E. & Horyna, T. "Measured and Calculated Modal Characteristics of the Heritage Court Tower in Vancouver", Proc. 18th Int. Modal Analysis Conference, San Antonio, USA, 2000
- [29] Cunha, A., Caetano, E. & Moutinho, C. "Ambient Vibration Data Analysis of Heritage Court Tower. Contribution of University of Porto to IMAC Benchmark", Proc. of the 18th Int. Modal Analysis Conference (IMAC), San Antonio, Texas, USA, 2000
- [30] Peeters, B., De Roeck, G., Caetano, E. & Cunha, A. "Dynamic study of the Vasco da Gama Bridge", Proc. of the International Conference on Noise and Vibration Engineering, ISMA, Leuven, Belgium, 2002
- [31] Cunha, A., Caetano, E., Brincker, R. & Andersen, P. "Identification from the Natural Response of Vasco da Gama Bridge", Proc. 22nd Int. Modal Analysis Conference, Deaborn, USA, 2004
- [32] ARTeMIS Extractor Pro, Structural Vibration Solutions, Aalborg, Denmark
- [33] Magalhães, F. "Stochastic Modal Identification for Validation of Numerical Models", M.Sc. Thesis (in Portuguese), Univ. Porto, FEUP, 2004
- [34] Flamand, O. & Grillaud, G. "Identification Modale du Viaduc de Millau", Technical Report EN-CAPE 05.007 C-V0, CSTB, France, 2005
- [35] Rodrigues, J. & Campos Costa, A. "Dynamic Tests of the Structure for Extension of the Madeira Island Airport", Proc. 20th Int. Modal Analysis Conference, L.A., USA, 2002
- [36] Magalhães, F., Caetano, E. & Cunha, A. "Experimental Identification of Modal Damping Coefficients of the New Braga Stadium Cable-Roof", Technical Report (in Portuguese), Univ. Porto, FEUP/VIBEST, 2004
- [37] Cunha, A. & Calçada, R. "Ambient Vibration Test of a Steel Trussed Arch Bridge", Proc. of the 18th Int. Modal Analysis Conference, San Antonio, Texas, 2000
- [38] Caetano, E. & Cunha, A. "Ambient Vibration Test and Finite Element Correlation of the New Hintze Ribeiro Bridge", Proc. Int. Modal Analysis Conf., Kissimmee, USA, 2003
- [39] Magalhães, F., Caetano, E. & Cunha, A. "Ambient Vibration Test of Pinhão Bridge", Technical Report (in Portuguese), Univ. Porto, FEUP/VIBEST, 2004
- [40] Caetano, E. & Cunha, A. "Experimental and Numerical Assessment of the Dynamic Behaviour of a Stress-Ribbon Bridge", Structural Concrete, Journal of FIB, 5, No 1, pp.29-38, 2004
- [41] Teughels, A. "Inverse Modelling of Civil Engineering Structures based on Operational Modal Data", Ph.D. Thesis, K.U.Leuven, Belgium, 2003
- [42] Brincker, R. & Andersen, P. "A way of getting Scaled Mode Shapes in Output Only Modal Testing", Proc. 21st Int. Modal Analysis Conference, 2003

