

# Function and regulation of the *Arabidopsis* floral homeotic gene *PISTILLATA*

Koji Goto<sup>1</sup> and Elliot M. Meyerowitz<sup>2</sup>

Division of Biology 156-29, California Institute of Technology, Pasadena, California 91125 USA

**Mutations in the *PISTILLATA* (*PI*) gene of *Arabidopsis thaliana* cause homeotic conversion of petals to sepals and of stamens to carpels. It is thus classed as a B function floral homeotic gene and acts together with the product of the other known B function gene, *APETALA3* (*AP3*). We have cloned *PI* and determined the time and places of its expression in developing flowers. Surprisingly, the initial patterns of *PI* and *AP3* expression are different. By positive regulatory interactions between *PI* and *AP3*, later expression patterns are coincident or nearly coincident. The pattern of *PI* expression also depends on the activity of the floral development genes *APETALA2* and *SUPERMAN* and on the activity of *PI* itself. The *PI* and *APETALA3* proteins specifically associate in solution and so may act together in regulating *PI* and other genes.**

[Key Words: Flower development; *Arabidopsis*; homeosis; MADS box; gene regulation]

Received March 8, 1994; revised version accepted May 12, 1994.

A model explaining how the action of a collection of organ identity (homeotic) genes specifies the radial pattern of the four organ types of *Arabidopsis* flowers has been proposed and elaborated over the past few years (Bowman et al. 1991; Coen and Meyerowitz 1991; Drews et al. 1991b; Meyerowitz et al. 1991; Jack et al. 1992, 1994; Weigel et al. 1992). This model includes three classes of organ identity genes: class A genes that act in the regions of developing flowers that will later form sepals and petals (whorls 1 and 2); class B genes that act in whorls 2 and 3 (which later will be the site of petals and stamens, respectively); and class C genes that act in the center of the flower, where the stamens and the ovary will develop (whorls 3 and 4). The overlapping pattern of activity of these three classes of genes defines four different regions (whorls) and specifies the four different types of floral organs. The class A genes that are presently known are *APETALA2* (*AP2*) and *APETALA1* (*AP1*) (Bowman et al. 1989, 1993; Kunst et al. 1989; Meyerowitz et al. 1989, 1991; Irish and Sussex 1991; Mandel et al. 1992; Okamuro et al. 1993; Gustafson-Brown et al. 1994), the class B genes of *Arabidopsis* are *PISTILLATA* (*PI*) and *APETALA3* (*AP3*) (Bowman et al. 1989, 1991; Meyerowitz et al. 1989, 1991; Jack et al. 1992), and the only known class C gene is *AGAMOUS* (*AG*; Bowman et al. 1989; Yanofsky et al. 1990; Drews et al. 1991a). To date, the molecular cloning of *AG*, *AP3*, and *AP1* has been reported (Yanofsky et al. 1990; Jack et al. 1992;

Mandel et al. 1992). This report describes the molecular cloning, sequence analysis, coding properties, and regulation of expression of *PI*.

Plants lacking *PI* function have sepals in the places where petals would be found in wild-type flowers and have carpels, filaments, or carpelloid organs in the positions normally occupied by stamens (Bowman et al. 1989, 1991; Hill and Lord 1989). *PI* is therefore necessary for the proper specification of organ identity in the second and third whorls in developing *Arabidopsis* flowers. The other gene in the B class, *AP3*, has an indistinguishable mutant phenotype (Bowman et al. 1989, 1991; Jack et al. 1992). Activity of both of these genes is thus required for specification of petal and stamen organ identity. The molecular cloning of *AP3* has shown it to be a member of the MADS box family of DNA-binding transcription factors (Jack et al. 1992). *AP3* RNA is found in the cells of the second and third whorls in developing flowers.

There is a series of open questions concerning the activity of *PI*. Is *PI* a transcription factor, and a member of the MADS box family, similar to *AP3*, *AG*, and *AP1*? What is the expression domain of *PI*? Is it restricted to whorls 2 and 3, like *AP3*, or is it expressed in a broader domain and restricted in its activity by the limited expression of *AP3*? What is the basis of the similarity of the *AP3* and *PI* mutant phenotypes? Do the proteins coded by these genes act as a heteromultimer, thus causing the mutations to give identical developmental defects, or do the genes act as positive regulators of each other? There are open evolutionary questions, as well. The cognate homolog (ortholog) of *AP3* in snapdragons (*Antirrhinum*

<sup>1</sup>Present address: Molecular Genetics Research Laboratory, University of Tokyo, Bunkyo-ku Tokyo 113, Japan.

<sup>2</sup>Corresponding author.

*majus*) is the related gene *DEFICIENS* (*DEF*). *DEF* acts in partnership with the other known B class gene in snapdragons, *GLOBOSA* (*GLO*; Tröbner et al. 1992). Is *PI* the *Arabidopsis* ortholog of *GLO*?

In this paper we describe experiments that have answered these questions. *PI* is a member of the MADS box family but initially expressed in a different domain than *AP3*. The later expression patterns of *PI* and *AP3* are much more similar; this appears to be attributable to a refinement of the *PI* expression pattern that occurs, at least in part, under the control of *AP3*. Both possibilities for the interaction of *AP3* and *PI* are true: Not only do the genes act as positive regulators of each other, but the proteins they encode associate to form heteromultimers in solution and thus may act together in regulating transcription. Sequence, phenotypic, and expression data make it seem likely that *PI* is the cognate homolog of the snapdragon gene *GLO*.

## Results

### The *PI* gene and its product

Parallel attempts to clone *PI* were made by chromosome walking and by cross-hybridization, based on the assumption that *PI* is a member of the MADS box gene family. The second strategy was the first to yield the gene. The first step in cloning *PI* by MADS box homology was to locate the gene on the *Arabidopsis* restriction fragment length polymorphism (RFLP) map. Standard mapping identified the nearest flanking RFLP markers as g4650 and g6843 (Nam et al. 1989). Then, a variety of MADS box-containing sequences from *Arabidopsis* and *Antirrhinum* were used to isolate *Arabidopsis* genomic and cDNA clones. The resulting genomic clones were placed on the RFLP map to see whether any corresponded to the *PI* locus.

The successful probe was derived from the *Antirrhinum* *GLO* gene (Tröbner et al. 1992). *GLO* cDNA was amplified by polymerase chain reaction (PCR) from *A. majus* flower RNA with degenerate oligonucleotides that were based on the derived amino acid sequence of *GLO* (Tröbner et al. 1992; see Materials and methods). The amplified *GLO* cDNA was used as a probe to screen an *Arabidopsis* flower cDNA library under reduced stringency conditions. From  $2 \times 10^4$  cDNA library plaques, eight strongly hybridizing clones were obtained. They have inserts of varying size, but DNA sequencing showed that all of them derive from the same RNA species. The longest clone (cGH12) has an insert of 916 bp and includes a single long open reading frame of 624 bp with a poly(A) tail.

Similar reduced-stringency screening of an *Arabidopsis* genomic cosmid library gave four clones, only one of which (GH13) hybridized strongly with the cDNA clones. This genomic clone was genetically mapped using RFLPs and found to represent a region very near the *PI* locus. This result suggested that the cDNA clones represent the *PI* gene. Comparison of the cDNA and genomic clone sequences shows that the cloned gene has

six exons and five introns (Fig. 1A). The introns are 997, 119, 72, 88, and 102 bases in length, respectively.

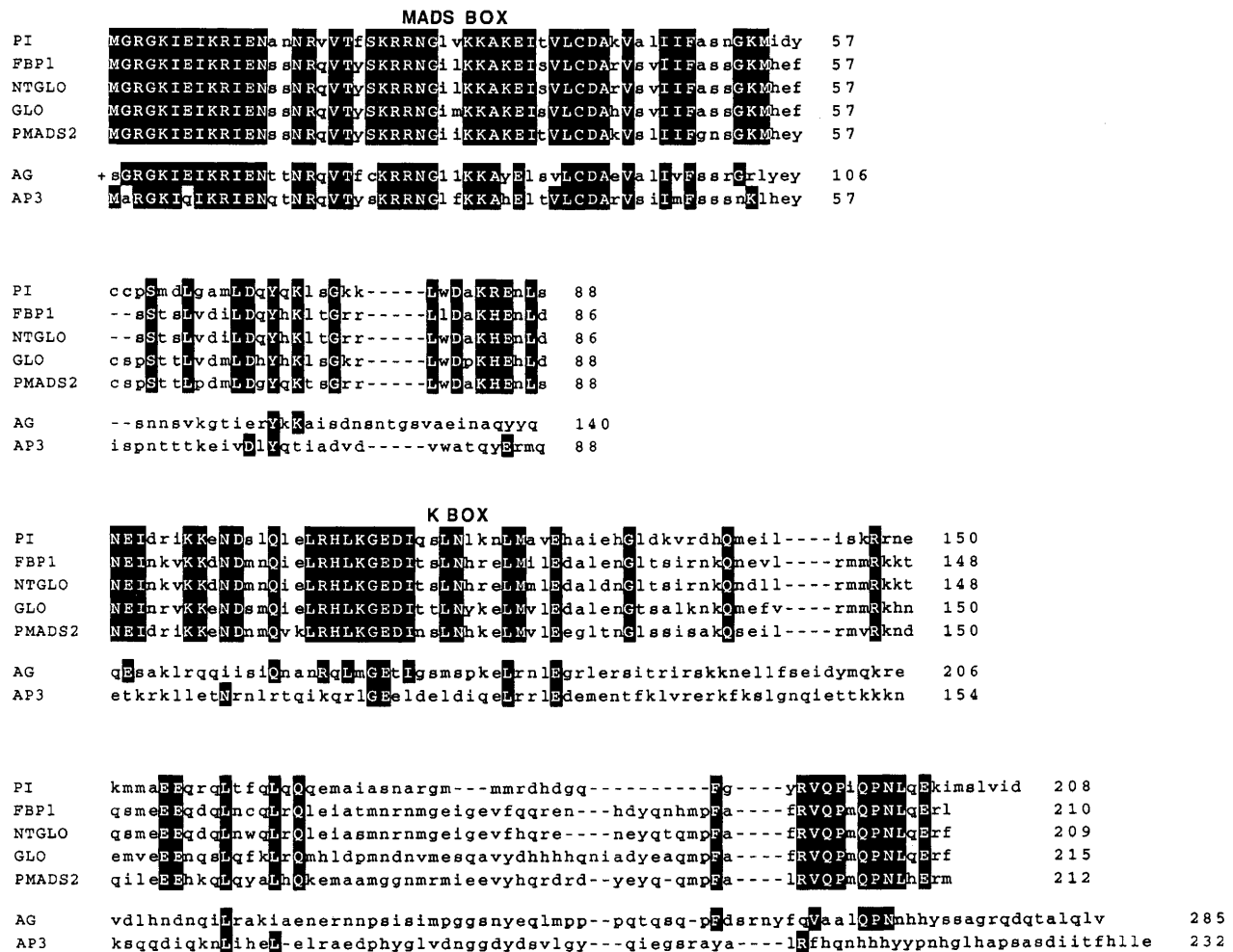
To demonstrate that the cloned gene is *PI*, we sequenced three *PI* mutant alleles, *pi-1*, *pi-2*, and *pi-3* (Bowman et al. 1991). In each, there is a DNA sequence alteration relative to the wild-type progenitor, and the nature of the changes correlates with the severity of the mutant phenotype (Fig. 1A; Bowman et al. 1991).

The *PI* cDNA has an open reading frame that codes for a putative 208-amino-acid protein (Fig. 1B). This protein contains an amino-terminal MADS domain, the conserved DNA-binding domain also found in the *Arabidopsis* organ and meristem identity genes *AGAMOUS*, *APETALA3*, and *APETALA1*, as well as in the *Antirrhinum* floral development genes *DEF*, *GLO*, *SQUAMOSA*, and *PLENA*, and many additional florally expressed genes (Schwarz-Sommer et al. 1990; Sommer et al. 1990; Yanofsky et al. 1990; Ma et al. 1991; Pnueli et al. 1991; Angenent et al. 1992; Jack et al. 1992; Mandel et al. 1992; Tröbner et al. 1992). MADS box genes in other kingdoms include human serum response factor and yeast *MCM1* (Norman et al. 1988; Passmore et al. 1988). In addition to the MADS box, the *PI* gene has a K box in the central part of the putative protein-coding region. The K box codes for a protein domain that resembles the amphipathic  $\alpha$ -helical region of keratin proteins that is responsible for coiled-coil formation (Ma et al. 1991; Pnueli et al. 1991). It is found in all of the sequenced plant MADS box genes but not in any of the MADS box genes from animals or fungi. Although there is structural conservation of the predicted amphipathic  $\alpha$ -helices coded by the K box in the various plant MADS box genes, there is generally very little amino acid sequence conservation in this region (Ma et al. 1991). Figure 2 shows a best-fit alignment of the MADS box genes most closely related to *PI*. The closest relatives are *Antirrhinum* and tobacco *GLO* and *Petunia* *FBP1* and *pMADS2*. On the basis of its sequence, *FBP1* is thought to be the *Petunia* ortholog of *GLO* (Angenent et al. 1992); *pMADS2* is also thought to be a *Petunia* B function gene (van der Krol et al. 1993). *PI*, *GLO*, tobacco *GLO*, *pMADS2*, and *FBP1*, but not other MADS box proteins, are similar in parts of the proteins other than the MADS and K boxes. Met-67 through Ile-113 in *PI* is identical in 37 of 47 amino acids to the comparable region in *GLO*, and 9 of the 10 replacements in this region are conservative. The carboxy-terminal ends of these proteins also show a region of near identity: amino acids 187–202 of *PI* and the corresponding terminal 16 amino acids of the other genes are identical in 10 positions. Overall, *PI* and *GLO* share 58.4% identity among the 202 amino acids paired in a best-fit alignment. This is close to the overall degree of identity shared by *AP3* and *DEF* (61.2%), and much more than that shown by the paralogous pairs *PI*–*DEF* (29.8%) or *AP3*–*GLO* (33.0%).

### Expression of *PI* during wild-type flower development

A *PI* probe detects a 900- to 1000-base RNA transcript in RNA blots of floral RNA; it detects nothing when the





**Figure 2.** Best-fit alignment of the deduced sequence of the PI protein with some of the related deduced protein sequences from *Arabidopsis* and other species. PI, FBP1 (Angenent et al. 1992), NTGLO (Hansen et al. 1993), GLO (Tröbner et al. 1992), and PMADS2 (Kush et al. 1993) form the most closely related group. The uppercase amino acids in the sequences of these five are those shared by all five proteins. These genes are from *Arabidopsis*, *Petunia*, tobacco, *Antirrhinum*, and *Petunia*, respectively. Beneath them is shown the alignment of two *Arabidopsis* MADS box proteins (AG, Yanofsky et al. 1990; AP3, Jack et al. 1992), less closely related to PI than are any of the genes shown from the other species. The uppercase amino acids in these two sequences are those that are identical to the conserved amino acids in the proteins grouped with PI. The + at the amino-terminal end of AG indicates that this protein extends amino-terminally of the depicted portion. Dashes are gaps introduced to maintain alignment. The amino acid sequence alignment was done as described in Fryxell and Meyerowitz (1991).

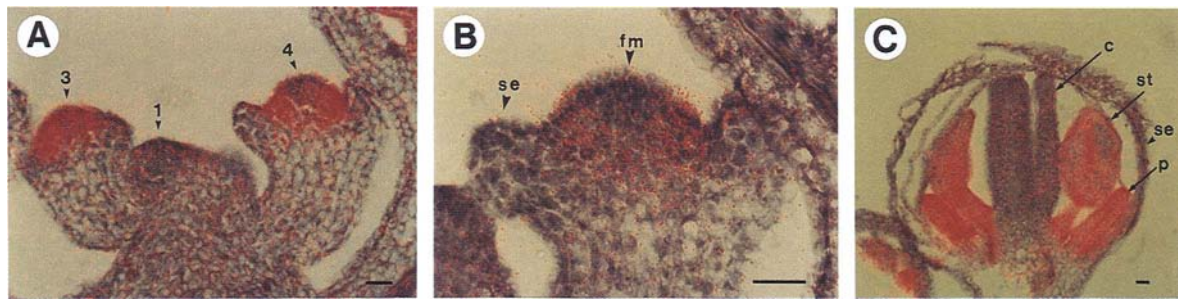
oping inflorescences were made, and alternate sections were hybridized with AP3 and PI antisense probes. The thickness of the sections (6  $\mu$ m) is approximately a single cell width. These sections (Fig. 5) show that AP3 is not expressed in the central floral cells at a time when PI is expressed in them. This experiment was performed three times, with the same results each time. These experiments also suggest a possibility that the outer boundary of AP3 and PI expression is not identical, but without applying double-labeling methods with single-cell resolution, this possibility cannot be proven.

#### Expression of PI in homeotic flower mutants

One key question to be answered is the identity of the genes that specify the normal domain and timing of PI

expression, particularly the genes responsible for the restriction of PI expression that occurs between stages 3 and 5. From their morphological effects, there are several floral development genes that could plausibly be regulators of PI, either directly or through their action on other genes. One candidate is AP3. The phenotypic effects of ap3 mutations are nearly identical to the effects of mutations in PI (Bowman et al. 1989, 1991; Jack et al. 1992). This could be because both genes contribute together to a common organ specification function or because one is a positive regulator of the other, with the downstream gene acting more directly in organ specification. We know that PI function is not necessary for the appropriate initial (stages 3–5) pattern of AP3 expression, because the early pattern of AP3 RNA expression is normal in pi mutants (Jack et al. 1992). To determine whether AP3 is





**Figure 3.** Expression of *PI* RNA in wild-type flowers. The distribution of *PI* RNA was determined by in situ hybridization to longitudinal 8- $\mu$ -thick tissue sections. The tissue was stained with toluidine blue (see Materials and methods). All photographs are bright-field/dark-field double exposures in which a red filter was placed in the light path of the microscope during the dark-field exposure, to cause the silver grains (signal) to appear red. Bars, 20  $\mu$ m. (A) Inflorescence apex. In the inflorescence meristem and in floral meristems to stage 2, signal from the *PI* RNA is not seen above background levels. In early stage 3 flowers, *PI* transcripts are first detectable in the cells that will later form the primordia of petals, stamens, and carpels but not in the cells that will develop to sepals. The developmental stage of each floral meristem (using the stages of Smyth et al. 1990) is indicated. (B) Higher magnification of a later stage 4 flower. At this stage, sepal primordia are apparent (se), but other organ primordia are not yet morphologically distinguishable from the remaining floral meristem (fm). *PI* RNA is disappearing from the region that later will develop into carpels and is expressed in the cells between the sepal primordia and the outer boundary of the region that will develop into carpels. (C) A stage 10 flower, when all floral organs are differentiating. *PI* transcripts are expressed at high levels throughout the stamens (st) and petals (p) but not in the carpels (c) or sepals (se).

a positive regulator of *PI* expression, we analyzed the pattern of expression of *PI* RNA in *ap3-3* mutant flowers. This *ap3* mutant allele causes a severe mutant phenotype; the mutation is a change of the codon for the eighteenth amino acid in the deduced AP3 protein to a stop codon. The initial pattern of *PI* expression is normal in *ap3-3* flowers; thus, for their initial expression patterns, *AP3* and *PI* are independent (Fig. 6A). This is not true for later expression; high levels of *PI* RNA are not maintained after stage 4 or 5 in *ap3-3* flowers (Fig. 6A). This indicates a role for *AP3* in maintenance, but not establishment, of *PI* expression. Absence of *AP3* in the fourth whorl of wild-type flowers can therefore explain the disappearance of *PI* RNA from that region.

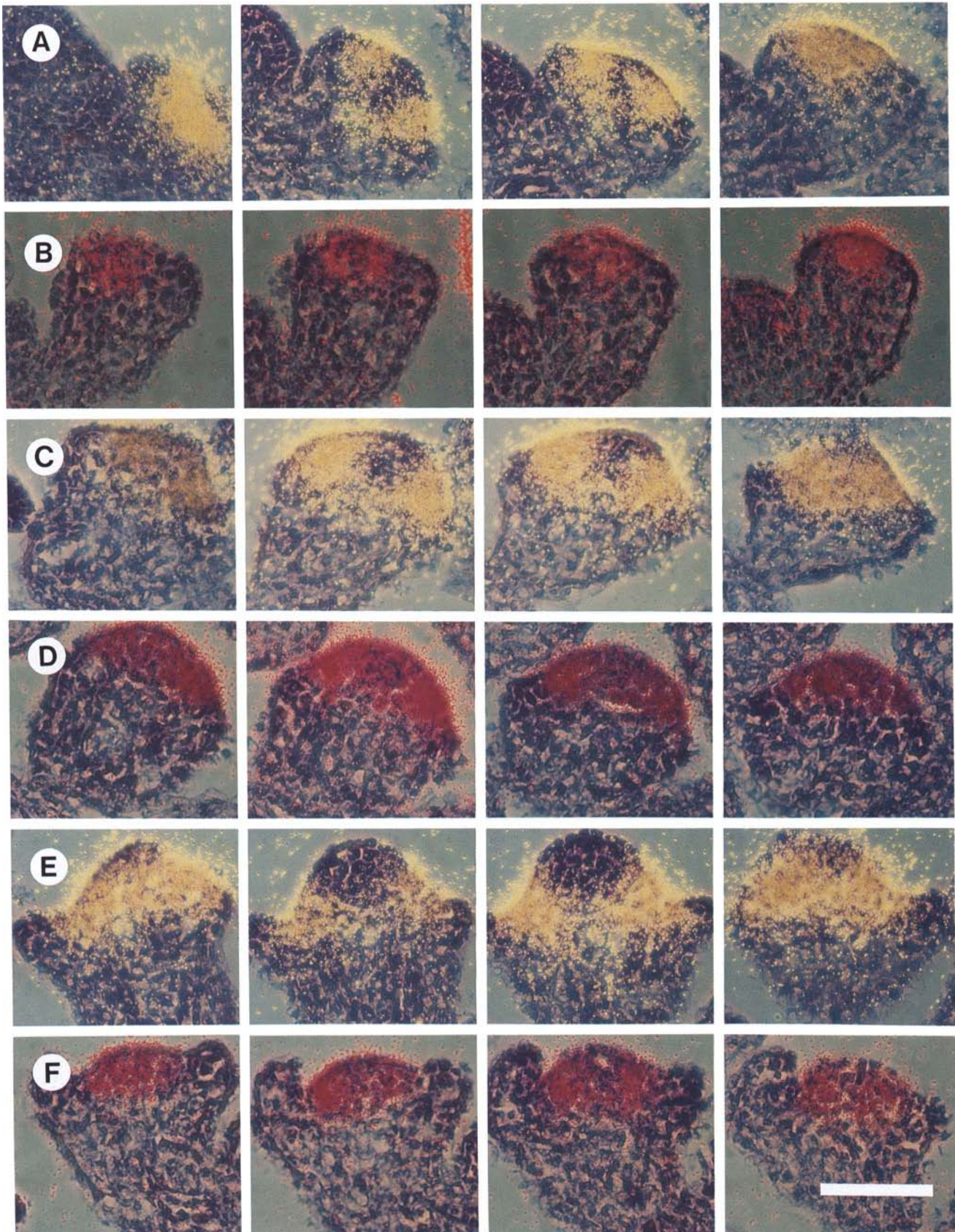
*PI* is necessary for maintaining its own expression. In *pi-1* mutant flowers, *PI* RNA accumulates normally in stages 3–6, before the primordia of the second and third whorl organs begin to differentiate obviously. Subsequently, the level of *PI* RNA decreases: The *PI* transcript is not detectable above background in flowers older than stage 7 (Fig. 6B). The weaker mutant allele *pi-2* has a less severe effect on the reduction of *PI* RNA level. In *pi-2* mutants *PI* RNA accumulates normally in early stages

and is reduced to a level lower than normal in later stages, as is true in *pi-1*. In *pi-2*, however, *PI* expression becomes reduced later than in *pi-1* flowers, and the *PI* RNA is present in fully developed flowers, although only at the base of the giant ovary in the region formed from the third whorl (Fig. 6C). In flowers homozygous for *pi-3*, the weakest allele, *PI* expression is similar to that in wild-type flowers (Fig. 6D). These results show that different gene products are responsible for the initial expression of *PI* and for maintenance of that expression: Both *AP3* and *PI* are involved in the maintenance of *PI* expression, whereas neither is required for the initiation of *PI* expression.

Another mutation that affects the *PI* expression pattern is *superman*. The phenotype of this mutation is reduction or elimination of the ovary, with concomitant formation of many extra stamens in the central region of each flower (Schultz and Haughn 1991; Bowman et al. 1992). One explanation for this mutant phenotype is that the absence of *SUP* activity results in the expansion of the normal domain of *AP3* and *PI* function to include cells that would ordinarily develop into fourth-whorl carpels. That *SUP* normally acts as a repressor of *AP3*

**Figure 4.** Serial sections through early-stage developing wild-type flowers, showing the different patterns of expression of *PI* and *AP3*. In situ hybridization to *PI* RNA in 8- $\mu$ m sections was used to show the position of *PI* RNA. Photographs were as described in the legend to Fig. 3, except a yellow filter was used in the dark-field exposure when the probe was to *AP3* RNA, and a red filter for *PI* RNA. The rows of photographs labeled A, C, and E, with the autoradiographic silver grains colored yellow, are hybridized with an antisense *AP3* probe; the photographs in rows B, D, and F, color-coded red, show the hybridization pattern of an antisense *PI* probe. The flowers shown in rows A and B are early stage 3; C and D are later stage 3; and rows E and F depict stage 4 flowers. In row E one section has not been shown in the serial series; it comes between the third and fourth panel, and resembles the third panel. At stages 3 and 4, at least two adjacent sections show undetectable levels of *AP3* RNA in the center of the developing flowers. There are no sections in which *PI* RNA is undetectable in the whorl four region of stage 3 and 4 flowers. It does appear that by stage 4, the level of *PI* RNA is declining in the center of the flowers. By late stage 4 or stage 5, *PI* RNA is undetectable in the whorl 4 region, and the *PI* expression pattern is indistinguishable from the *AP3* pattern in the center of developing flowers (see Figs. 3 and 5). All panels are at the same magnification. The white size bar (bottom right) represents 50  $\mu$ m.

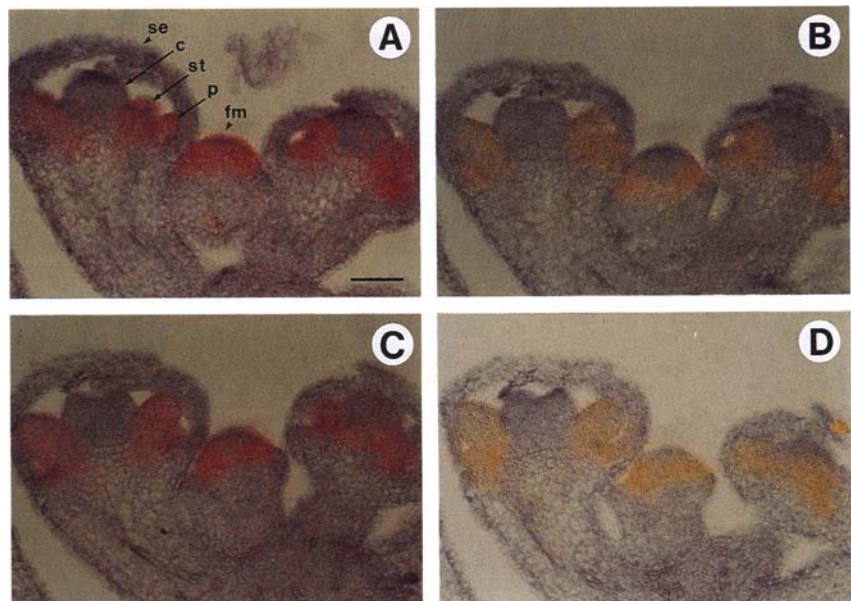




**Figure 4.** (See facing page for legend.)



**Figure 5.** *PI* and *AP3* expression in alternate sections of the same wild-type inflorescence. Adjacent 6- $\mu$ m sections of a wild-type inflorescence were alternately in situ hybridized with labeled antisense *PI* (A,C) or *AP3* (B,D) probe. (A–D) The serial order of the sections. The photographs are double exposures as in Figs. 3 and 4; in A and C a red filter was used during the dark-field exposure; while in B and D a yellow filter was used. Stage 3 (center), stage 6 (right), and stage 8 (left) flowers are shown in these photographs. Both *PI* and *AP3* express in petals (p) and stamens (st), and not in sepals (se) or carpels (c) when these organs are differentiating. In the stage 3 flower, *PI* is expressed in the center, whereas *AP3* is not. Bar, 50  $\mu$ m.



RNA accumulation in the fourth whorl has been shown directly by in situ hybridization with *AP3* antisense probes and *sup* homozygous flowers (Bowman et al. 1992). Parallel experiments with *PI* antisense probes were performed and show that the initial domain of *PI* RNA accumulation in *sup-1* mutant flowers is the whorl 2, 3, and 4 region of *PI* RNA accumulation in wild-type flowers. Later (after approximately stage 5) *PI* RNA is seen much more centrally than in wild type: Whorl 4 expression does not become reduced as in wild-type. In the center of the flowers, however, there is a small region free of *PI* signal (Fig. 6E). The same lack of signal in a few central cells has been seen in similar experiments performed with an *AP3* probe (Bowman et al. 1992; T. Jack and E.M. Meyerowitz, unpubl.). Formally *SUP* can be considered a negative regulator of both *PI* and *AP3* in whorl 4. The direct effect of *SUP* may be only on *AP3*, however; and because *AP3* is a maintenance factor for *PI*, the absence of *SUP* activity may indirectly allow continued expression of *PI* in the center of developing flowers.

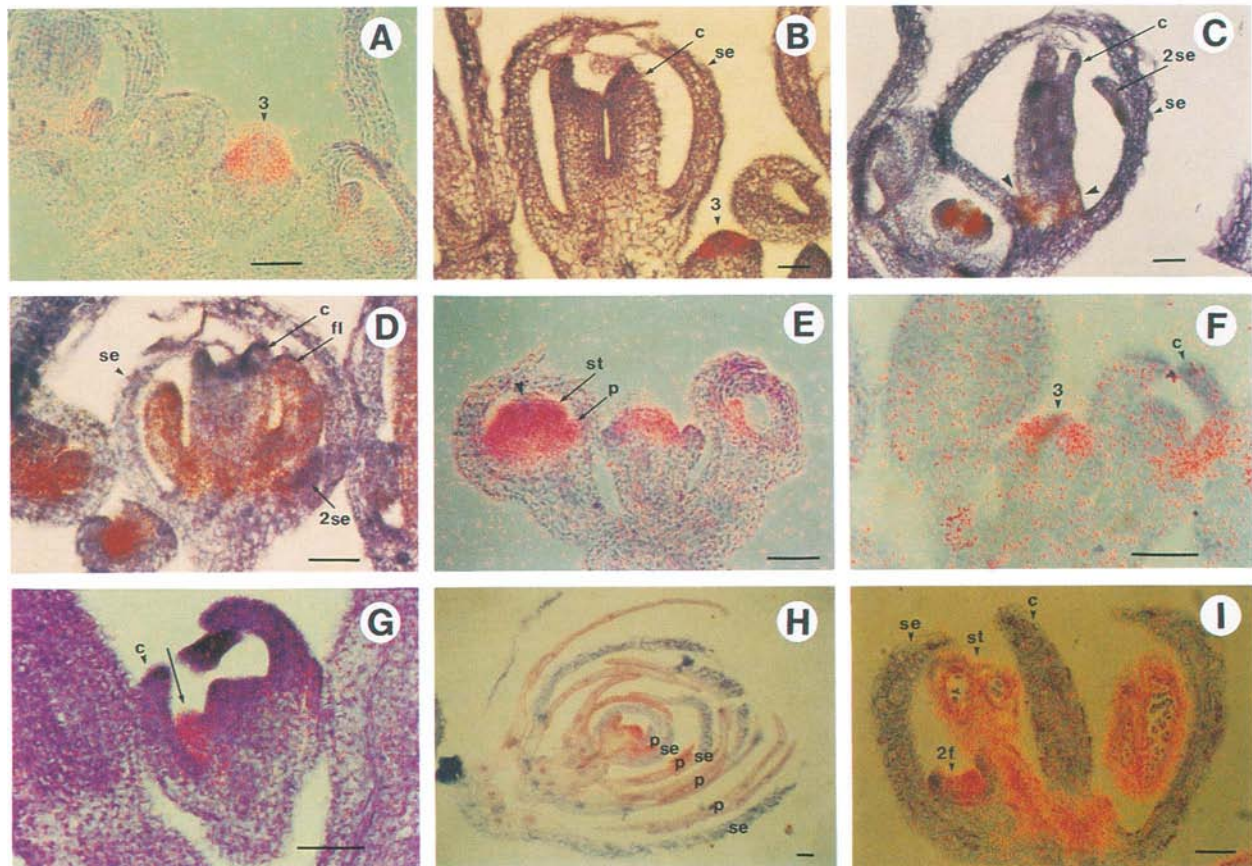
*AP2* is another candidate for a gene that controls *PI* expression, because *ap2* mutations are known to affect *AP3* RNA levels: When strong *ap2* alleles such as *ap2-2* and *ap2-8* are homozygous, *AP3* RNA initially accumulates only to very low levels and in spatial domains smaller than in wild type. *PI* RNA expression resembles that of *AP3* in *ap2-8* homozygotes (Fig. 6F,G). The expression pattern of *PI* RNA has been examined in two additional mutant genotypes, *ag-1* and *ap1-1*. *PI* expression is as expected if the *AG* and *AP1* genes are not specific *PI* regulators (Fig. 6H,I).

#### Protein–protein interactions between *PI* and *AP3*

There are several reasons to believe that *PI* and *AP3* might act as partners in a heteromultimer. They act in the same places, times, and processes; and the homologs

of *AP3* and *PI* in snapdragons (*DEF* and *GLO*) have been reported to bind in vitro to MADS domain-binding sites, although only if the two proteins are translated together in the same in vitro translation reaction (Schwarz-Sommer et al. 1992; Tröbner et al. 1992). To see if *PI* and *AP3* might act as a heteromultimer, we examined whether *PI* and *AP3* proteins bind to each other in solution. A gene for a modified *PI* protein was constructed from a *PI* cDNA clone: At the carboxyl terminus a synthetic oligonucleotide coding for an amino acid octamer (FLAG) was added, which is an epitope for commercially available monoclonal antibodies (anti-FLAG; see Materials and methods). RNA transcribed in vitro from this gene was translated in vitro to provide a source of epitope-tagged *PI*. *AP3* RNA was then produced by in vitro transcription from an *AP3* cDNA construct, and this was translated in vitro in the presence of [<sup>35</sup>S] methionine to provide radioactively labeled *AP3* protein. After mixing unlabeled but epitope-tagged *PI* with radioactively labeled *AP3* protein, anti-FLAG antibody was used to precipitate the *PI* protein. The resulting immunoprecipitate was analyzed by SDS-PAGE (Fig. 7). Labeled *AP3* was coprecipitated with the epitope-tagged *PI* protein, indicating that the two proteins associate in vitro.

Additional experiments were performed to determine whether the K domain, which by analogy to the similar region of keratin has been proposed to be involved in protein–protein interactions among plant MADS box proteins (Ma et al. 1991; Pnueli et al. 1991), or the MADS domain, is required for this interaction. An epitope-tagged *PI* protein with part of the K box deleted (the part coding for amino acids 105–134) was used in experiments similar to the ones described above, and labeled *AP3* was coprecipitated, though less efficiently than when full-length *PI* protein is used. Deletion of the MADS box from the epitope-tagged *PI* protein virtually eliminated the *PI*–*AP3* interaction (Fig. 7).



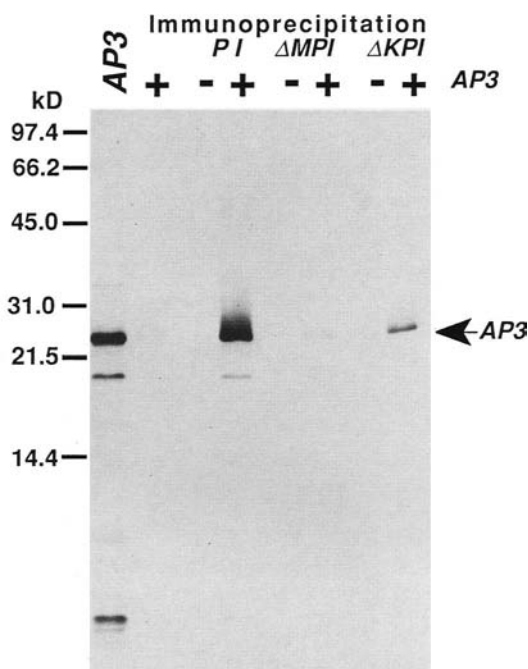
**Figure 6.** Expression of *PI* RNA in mutant plants. The distribution of *PI* transcripts in sections of various mutant flowers, as revealed by in situ hybridization with a labeled antisense *PI* probe. Exposure times are the same as those in Fig. 3. Sepals (se), petals (p), stamens (st), and carpels (c) are labeled. Bars, 50  $\mu$ m. (A) *ap3-3*, a severe allele of *ap3*. In the stage 3 flower (indicated by the labeled arrowhead) *PI* begins to express as in a wild-type flower, but the expression level begins to reduce at stage 5, and by approximately stage 7 (to the right of the stage 3 floral bud) it is at a background level, except perhaps in the developing whorl 2 sepals, where it is approaching background level. Later stage buds are to the left of the stage 3 bud. (B) *pi-1*, the most severe allele of *pi*. As in an *ap3-3* flower, *PI* expresses normally in stages 3 and 4, but after this, the level of *PI* RNA is reduced to an undetectable level. The middle flower is approximately stage 9, and there is no signal in the second whorl (no organ is seen in this section) or the third whorl region (occupied by developing carpels). (C) *pi-2*, which gives an intermediate phenotype among three *pi* mutant alleles, also shows normal *PI* expression during stages 3 and 4. In approximately stage 10, *PI* RNA is seen only in the base of the gynoecium forming in the third whorl region (arrowheads). In this flower, second whorl sepals (2se) develop, but signal is not observed in them at this late stage of development. (D) *pi-3*, the weakest *pi* mutant allele. The *PI* RNA expression pattern is similar to that seen in wild-type flowers, though sepals develop in the second whorl (2se) and filamentous carpels (fl) develop in the third whorl. (E) In the *superman-1* mutant, early *PI* expression seems much like that in wild type (stages 3 and 4, as in the central stage 3/4 flower of this panel). In later stage flowers, *PI* RNA is seen much more centrally than in wild type, though in the center of each flower there is a small region without *PI* signal (arrowhead). Arrows labeled p and st represent developing petal and stamen, respectively. (F,G) *ap2-8*, a strong allele of *ap2*. At stage 3 (F), *PI* is expressed at a lower level than in a wild-type flower but in a normal domain. Second and third whorl organs are usually absent in *ap2-8* flowers. On occasion, a staminoid organ will develop in this region; when it does, *PI* is expressed in it (arrow in G). When the first whorl carpels (c in F and G) develop, *PI* RNA is generally absent from them, as in G. Infrequently *PI* is expressed at the base of developing first whorl organs, as in the flower on the right in F. (H) An *ag-1* flower has multiple repeats of (sepals, petals, petals). *PI* RNA is clearly present in all petals (which arise in the second and third whorls) and in the same region of the floral meristem in which it is found in wild type. (I) *ap1-1*, a strong loss-of-function allele of *AP1*. Second whorl organs are missing in these mutants, so the region of the second whorl cannot be identified (if it is there at all). Strong *PI* expression is observed in the stamens in primary and secondary (2f) flowers.

## Discussion

The sequence of *PI* shows it to be a member of the MADS box family of proteins, which includes the other *Arabidopsis* organ identity genes *AG*, *AP3*, and *AP1*, the snapdragon organ identity genes *DEF*, *GLO*, and

*SQUAMOSA*, and additional genes active in flower development in these and other plant species (Schwarz-Sommer et al. 1990; Ma et al. 1991; Pnueli et al. 1991; Angenent et al. 1992; van der Krol et al. 1993). The MADS box family also includes transcription factor proteins from animals [serum response factor or CARG-bind-





**Figure 7.** Coimmunoprecipitation of PI and AP3 proteins. A fluorograph of a polyacrylamide gel containing immunoprecipitated proteins. The arrow indicates the position of the full-length AP3 protein.  $^{35}\text{S}$ -Labeled AP3 protein was run in the lane marked AP3. The two minor bands in this lane are consistent with the expected sizes of products translated from internal methionines. The adjacent lane contains labeled AP3 protein immunoprecipitated without addition of epitope-tagged PI protein, to show the background of nonspecific precipitation of AP3 by the antibody. The following lanes contain epitope-tagged PI (PI), tagged PI without the MADS box ( $\Delta\text{MPI}$ ), and tagged PI with a partial deletion of the K-box ( $\Delta\text{KPI}$ ), which were mixed (+) or not (–) with radiolabeled AP3 protein and immunoprecipitated with anti-FLAG antibody.

ing factor (Norman et al. 1988; Boxer et al. 1989); myocyte-specific enhancer factor 2 (Yu et al. 1992), and fungi [MCM1 or GRM/PRTF (Jarvis et al. 1989; Passmore et al. 1989)], as well as genes of unknown function from both of these kingdoms (Dubois et al. 1987; Pollock and Treisman 1991). These findings imply that PI is likely to encode a DNA-binding transcriptional regulator, which is in accord with its known developmental functions. The identities of the immediate downstream genes are unknown, though as discussed below, PI regulates both its own expression and that of the AP3 gene. It is not yet known whether these activities are mediated directly. Because the absence of PI function influences the number and pattern of cells in floral organs and the differentiated phenotypes of these cells, the downstream genes must regulate pattern and number of cell divisions as well as differentiation of specific cell types.

In situ hybridization experiments have revealed that PI RNA accumulates in the second, third, and fourth whorls of developing flowers, starting by stage 3 of flower development, which occurs prior to the first ap-

pearance of the primordia of petals and stamens. This initial pattern of expression does not coincide with the domain of the *pi* mutant phenotype, which is in the second and third whorls. It also does not coincide with the initial expression pattern of AP3, the mutant phenotype of which is nearly identical with that of *pi*. Thus, fourth whorl expression does not seem to correlate with any organ identity activity. This early expression pattern does demonstrate that despite their similar activities and apparent action as partners, the genes AP3 and PI are controlled, at least in part, by different upstream regulatory factors. This implies a greater complexity to the earliest events in the specification of floral organ identity than has been realized so far.

After stage 4, the pattern of PI expression largely coincides with that of AP3: PI is no longer detected in whorl 4. This is apparently attributable to the absence of AP3 expression. Evidence for this is both that eliminating AP3 activity from all whorls causes PI RNA to disappear from all whorls, as it does normally only in whorl 4, and that when AP3 is ectopically expressed in the fourth whorl of developing flowers by attaching the AP3 gene to a foreign promoter, PI remains active in the fourth whorl and allows stamens to form there (Jack et al. 1994). Because PI is also a maintenance factor for AP3, at least in the third whorl (Jack et al. 1992), AP3 and PI clearly form a positive regulatory circuit in which the activity of each is necessary for maintaining RNA accumulation from both.

The initial expression pattern of PI raises the question of the mechanism by which PI (and the other organ identity genes) is activated in its initial expression domain. This is a central question in understanding organ specification in flowers, because both genetic and molecular experiments have shown that the differentiation of appropriate organ types in appropriate positions depends on the pattern of RNA accumulation from organ identity genes. The only gene whose activity is known to be necessary for initial expression of PI is *LEAFY* (LFY; Weigel and Meyerowitz 1993). LFY acts along with AP1 and AP2 in the initial induction of the floral developmental pathway (Bowman et al. 1993). In situ hybridizations in which PI probes were used to locate the PI RNA in developing flowers of several additional mutant genotypes have shown that the pattern of expression of PI depends in different ways on activity of the PI gene itself, of the AP3 gene, and of the *SUPERMAN* and AP2 genes. None of these genes is necessary for the initial expression of PI, however, indicating that other activities are responsible for initiating PI expression and eliminating the possibility that AP3 is required as an initial PI activator. *SUPERMAN* regulates PI expression similarly to the way it regulates AP3 expression: In the later stages of flower development in *sup* mutants, both AP3 and PI RNAs are expressed much closer to the center of the flower than in the wild type, resulting in the development of extra stamens and, at the same time, a reduction or elimination of the region of the flower that develops into carpels. *SUP* is thus formally a negative regulator of PI in the region of flowers that in the wild type will give rise to

the ovary. Although the activity of the *SUP* gene (possibly acting directly as a negative regulator of *AP3* and on *PI* only indirectly) explains the absence of *PI* RNA in the center of wild-type flowers, we still do not know why *PI* RNA is not present in the first floral whorl. This could be attributable to an absence of *PI* induction in this whorl or to the action of an as-yet-undiscovered negative regulator of *PI* RNA accumulation that acts in the first whorl.

*AP2* is also a regulator of *PI* RNA accumulation: A strong *ap2* mutation reduces early, and generally eliminates late, RNA accumulation from the *PI* gene. There are two reasonable models for this interaction: Either *AP2* is one of the early-acting genes that induces *PI* expression (like *LFY*) or *PI* RNA is not found in developing *ap2* flowers because the cells that would ordinarily comprise the second and third whorls are absent, or nearly so, in strong *ap2* mutants. That the second of these possibilities may account for the absence of *PI* RNA in later-stage *ap2* flowers is indicated by the fact that *PI* RNA is found in the rare second or third whorl staminoid organs that occasionally develop in *ap2-8* flowers. *PI* is therefore expressed in late-stage *ap2* mutant flowers, but this expression is only seen when second or third whorl cells divide to form organs.

Because many of the phenotypic and gene-regulatory effects of *pi* mutations are identical to those of *ap3* mutations, it seems possible that *AP3* and *PI* may act together as a heteromultimer. This possibility was tested by epitope tagging of a *PI* protein and showing that *AP3* protein coprecipitates with *PI* in the presence of anti-tag antibodies. This coprecipitation is almost eliminated by deletion of the MADS box region of the *PI* protein and is reduced by deletion of part of the K box. This shows that *AP3* and *PI* can form a heteromultimer in solution and indicates that the formation of the multimer may require the MADS domain and that it may be facilitated by the K domain. It is possible that the deletions affect protein folding, however, and that the MADS and K domains are not directly involved in the *AP3*—*PI* protein-protein interaction.

As detailed below, *PI* and the *GLO* gene of snapdragons are orthologs, as are *AP3* and *DEF* (Jack et al. 1992). A different type of binding studies has been performed with the two snapdragon genes, in which in vitro cotranslation of the two proteins is necessary for them to bind to the MADS domain-binding site in the yeast *STE6* promoter (CArG box; Schwarz-Sommer et al. 1992), and for binding to other CArG boxes, as well (Tröbner et al. 1992). These studies assay DNA binding by use of gel mobility retardation methods, whereas our studies assay protein—protein interactions between *PI* and *AP3* directly, without requiring that they bind to specific DNA sequences. The results differ in detail because the snapdragon proteins need to be cotranslated to bind together to DNA, whereas in our studies heteromultimers form upon mixing of the proteins, without any need for their cotranslation. Nonetheless, both sets of in vitro studies suggest that *AP3*/*PI* or the orthologous pair *DEF*/*GLO* act as heteromultimers in vivo.

*PI* is the ortholog of the *Antirrhinum* gene *GLO* (Tröbner et al. 1992), much as *AP3* is the ortholog of the *Antirrhinum* gene *DEF* (Jack et al. 1992). This is indicated by the similarity of their derived amino acid sequences. Although all four putative proteins (*AP3*, *PI*, *DEF*, and *GLO*) are related through their 57-amino-acid amino-terminal MADS box sequences, the pairs *PI*—*GLO* and *AP3*—*DEF* are related much more closely than the other possible pairs and are related through the entire length of the protein, including the carboxy-terminal region. These results clearly show that (as long as the picture has not been confounded by gene conversion, and there is no indication of this) the pairs *PI*/*GLO* and *AP3*/*DEF* are orthologous, and the ancestral gene of each pair was present in the last common ancestor of *A. thaliana* and *A. majus*. These two species are in different subclasses of dicots (Cronquist 1981) and are thought to have been diverging since the Cretaceous, when the major radiations of flowering plants took place (Stewart and Rothwell 1993). The mechanisms served by these genes would thus seem to be similar in most or all flowering plants. Despite this, recent work on the apparent orthologs of *AP3* and *PI* in *Petunia* (*FBP1*, *pMADS1*, and *pMADS2*) has shown that whereas the activity of these genes in *Petunia* appears to be similar to that in *Arabidopsis* and *Antirrhinum*, in that together, they specify petals and stamens, the number and regulation of the genes may be different (Angenent et al. 1992, 1993; Kush et al. 1993; van der Krol et al. 1993). It therefore remains to be seen which aspects of B gene function and regulation are fundamental and which have changed during the evolution of flowering plants.

## Materials and methods

### Amplification of *GLO* cDNA

Total RNA was extracted from *A. majus* flowers (collected on the Caltech campus) as described (Crawford et al. 1986), and poly(A)<sup>+</sup> RNA was purified by use of PolyATtract system (Promega). Poly(A)<sup>+</sup> RNA (3 µg) was used to synthesize double-stranded cDNA with a RiboClone cDNA synthesis system (Promega). This cDNA was amplified by PCR with degenerate oligonucleotides derived from the amino acid sequence of *GLO*. The primer sequences used for amplifying *GLO* were K1—5′-[TC]TCCATNAC[GA]TT[GA]TC[GA]TTCAT-3′—and K11—5′-GA[GA]AT[ATC]AA[GA][AC]GNAT[ATC]GA[GA]AA[CT]-TC-3′. Mixed nucleotides are shown in brackets, with *N* indicating a GATC mixture. One major and several minor amplified bands were seen by agarose gel electrophoresis. The major band was cut out and sequenced directly. The deduced amino acid sequence of this DNA corresponds to that of *GLO*. This PCR-amplified *GLO* DNA was labeled by nick translation with [ $\alpha$ -<sup>32</sup>P]dCTP and used as a probe for library screening.

### Cloning of *PI*

An *Arabidopsis* flower cDNA library (Weigel et al. 1992), constructed using floral RNA from the Landsberg *erecta* (L-er) wild type and in the Lambda ZAP II Vector (Stratagene), was screened with PCR-amplified *GLO* cDNA under reduced stringency conditions (hybridization, 50°C, 4× SSPE; wash, 55°C, 2× SSPE). Eight independent plaques out of 2 × 10<sup>4</sup> plaques screened were



hybridized strongly with the probe. These eight positives were isolated and in vivo excision of pBluescript and the cDNA insertion sequences was performed according to the manufacturer's instructions. The cDNA insert was then sequenced with a Sequenase II kit (U.S. Biochemical). The insert sizes of these clones ranged from ~500 to 900 bp. All of the shorter inserts had truncated versions of the sequence in the longest one, which was designated cGH12.

In parallel, a cosmid library, made from L-er genomic DNA by use of the vector pCIT30 (Ma et al. 1992), was screened under the same conditions as were used in the cDNA library screening. Four cosmid clones gave strong hybridization signals. Inserts of these isolated cosmids were tested for cross-hybridization but none of them hybridized with each other under high stringency conditions (hybridization, 65°C, 4× SSPE; wash, 65°C, 0.1× SSPE). One cosmid clone, GH13, hybridized to the cDNA clone (cGH12) at high stringency conditions.

Two *Xba*I fragments of GH13 (1.2 and 3.7 kb) hybridize to the cDNA clone. These two fragments were ligated to the *Xba*I site of pGEM-7Zf(+), and a series of restriction endonuclease digestions were made and the resulting fragments subcloned, after which the subclones were sequenced as described above.

#### RFLP mapping

Plants from the L-er wild type, homozygous for *pi-1*, were crossed to wild-type plants of the Niederzenz [Nd-0] ecotype. F<sub>1</sub> plants were backcrossed to *pi-1* homozygotes, and DNA was prepared from individual progeny of this cross. The DNA was analyzed by Southern blot hybridization for the segregation of known RFLP markers (Chang et al. 1988; Hauge et al. 1993). For cosmid GH13, 63 of 64 individuals that we examined scored identically to *pi*, indicating very close but not perfect linkage. Before it was used for DNA extraction, the plant numbered 102 had been scored as phenotypically Pi<sup>-</sup>. It scored as a Landsberg/Niederzenz heterozygote in RFLP mapping when markers adjacent to *PI* on either side were used as probes, as well as heterozygous for the GH13 polymorphism. We conclude that this individual was scored incorrectly for the *pi* phenotype because molecular evidence shows both that the entire *PI* region was heterozygous and that GH13 contains the *PI* gene.

#### Direct sequencing of PCR products

PCR-amplified products were separated by electrophoresis on 1% LMP agarose gels (BRL), and bands of expected sizes were excised. The excised fragments of the LMP agarose gel were melted at 65°C, and 9 µl of melted agarose was mixed with 1 µl of 10 µM sequence primer and 1.2 µl of 5% NP-40. Immediately after boiling for 3 min, this mixture was placed in a 37°C water bath, after which dideoxy sequencing was performed by use of a Sequenase II kit (U.S. Biochemicals) according to the manufacturer's instructions.

#### Sequencing of *pi* mutant alleles

The first strand of cDNA was synthesized from 2 µg of poly(A)<sup>+</sup> RNA extracted from the flowers of *pi-1*, *pi-2*, and *pi-3* homozygous mutant plants. Each of these *PI* mutations was induced by use of the mutagen EMS (ethylmethane sulfonate) in the genetic background L-er (Bowman et al. 1991). These cDNAs were amplified by PCR with primers that have the sequences of the 5' and 3' ends of the sequenced wild-type cDNA. Each PCR reaction with mutant cDNA produced the expected size of amplified DNA. We directly sequenced two independent PCR products for each mutant allele. To confirm the results of direct

sequencing, amplified DNAs were cloned into pGEM-7Zf(+) (Promega), and three independent clones of each mutant type were sequenced. The sequences of these clones correspond to the results obtained from direct sequencing.

#### In situ hybridization

To make the hybridization probe, we constructed pcPINX, which has an *Nco*I-*Xho*I fragment of *PI* cDNA (a fragment not including the MADS box, to avoid cross-hybridization to other MADS box genes) inserted in the *Bam*HI and *Xho*I sites of pGEM-7Zf(+). To make an antisense probe, pcPINX was linearized by *Bam*HI, and in vitro transcription with T7 RNA polymerase was used to incorporate [<sup>35</sup>S]UTP. Tissue fixation, hybridization, and washing conditions were carried out as described by Drews et al. (1991a). The thickness of the paraffin sections used was 8 µm except for the alternate sections experiment (shown in Fig. 5), in which the sections used were 6 µm thick. Slides were developed following 2- to 5-week exposures. As a control, a sense-orientation probe made from an identical template was used in identical experiments; no signal was seen in the controls.

#### Immunoprecipitation

To make the FLAG-tagged *PI* protein, pPIFLAG was constructed in pGEM-3Z (Promega). This plasmid includes a synthetic oligonucleotide that codes for the FLAG epitope, in place of the *Cla*I-*Xho*I region of the *PI* cDNA. This results in the addition of a peptide, DDADTKDDDDK, at the carboxy-terminal end of the *PI* protein. By *Nco*I digestion, pΔMPIFLAG was made to produce MADS box-deleted *PI* protein that has the deletion from M (at position 1) to S (61). To delete the K box, pPIFLAG was digested with *Sac*I and *Tth*111I, and after removing the small fragment, the plasmid was recircularized by blunt-end ligation. pΔKPIFLAG encodes a *PI* protein with L (105) through K (134) deleted, which removes 30 amino acids from the K box.

The TNT-coupled reticulocyte lysate system (Promega) was used to make in vitro-translated proteins. To produce radioactively labeled AP3 protein, pF730 (Jack et al. 1992) was used as a template and [<sup>35</sup>S]methionine was incorporated. After 1 hr incubation at 30°C, the in vitro translation solution was diluted with an equal volume of 2× buffer A (40 mM HEPES-KOH at pH 7.9, 0.4 mM EDTA, 20% glycerol, 200 mM KCl, 2 mM DTT) to stop the translation reaction (Blancar and Rutter 1992). Each protein solution (20 µl) was mixed and left at room temperature for 30 min to allow protein association. After this, 1 µg of anti-FLAG M2 monoclonal antibody (Kodak-IBI) and 10 µg of protein A-Sepharose (Sigma) in ice-cold 500 µl of buffer B (buffer B contains 2.5 mM MgCl<sub>2</sub> and 0.1% NP-40 in addition to buffer A) were added. After incubation on a rotating wheel at 4°C for 1 hr and centrifugation, the pellet was washed four times with ice-cold buffer B. The washed pellet was resuspended in 2× SDS sample buffer, and the proteins were analyzed by SDS-PAGE and fluorography using EN<sup>3</sup>HANCE (DuPont).

#### Acknowledgments

We thank the members of our laboratory for reading and suggesting changes to the manuscript, and S. Schwarz-Sommer for communicating the amino acid sequence of the *GLOB* gene prior to its publication. K.G. was a Human Frontier Science Program postdoctoral fellow. This work was funded by grant MCB-9204839 from the U.S. National Science Foundation.

The publication costs of this article were defrayed in part by

payment of page charges. This article must therefore be hereby marked "advertisement" in accordance with 18 USC section 1734 solely to indicate this fact.

### Note added in proof

The nucleotide sequence data described in this paper have been submitted to the GSDB, DDBJ, EMBL, and NCBI data bases under accession number D30807.

### References

- Angenent, G.C., M. Busscher, J. Franken, J.N.M. Mol, and A.J. van Tunen. 1992. Differential expression of two MADS box genes in wild-type and mutant *Petunia* flowers. *Plant Cell* **74**: 983–993.
- Angenent, G.C., J. Franken, M. Busscher, L. Colombo, and A.J. van Tunen. 1993. Petal and stamen formation in *petunia* is regulated by the homeotic gene *fbp1*. *Plant J.* **4**: 101–112.
- Blancar, M.A. and W.J. Rutter. 1992. Interaction cloning: Identification of a helix-loop-helix zipper protein that interacts with c-Fos. *Science* **256**: 1014–1018.
- Bowman, J.L., D.R. Smyth, and E.M. Meyerowitz. 1989. Genes directing flower development in *Arabidopsis*. *Plant Cell* **1**: 37–52.
- Bowman, J.L., D.R. Smyth, and E.M. Meyerowitz. 1991. Genetic interactions among floral homeotic genes of *Arabidopsis*. *Development* **112**: 1–20.
- Bowman, J.L., H. Sakai, T. Jack, D. Weigel, U. Mayer, and E.M. Meyerowitz. 1992. *SUPERMAN*, a regulator of floral homeotic genes in *Arabidopsis*. *Development* **114**: 599–615.
- Bowman, J.L., J. Alvarez, D. Weigel, E.M. Meyerowitz, and D.R. Smyth. 1993. Control of flower development in *Arabidopsis thaliana* by *APETALA1* and interacting genes. *Development* **119**: 721–743.
- Boxer, L.M., R. Prywes, R.G. Roeder, and L. Kedes. 1989. The sarcomeric action CARG-binding factor is indistinguishable from the c-fos serum response factor. *Mol. Cell. Biol.* **9**: 515–522.
- Chang, C., J.L. Bowman, A.W. DeJohn, E.S. Lander, and E.M. Meyerowitz. 1988. Restriction fragment length polymorphism linkage map for *Arabidopsis thaliana*. *Proc. Natl. Acad. Sci.* **85**: 6856–6860.
- Coen, E.S. and E.M. Meyerowitz. 1991. The war of the whorls: Genetic interactions controlling flower development. *Nature* **353**: 31–37.
- Crawford, N.M., W.H. Campbell, and R.H. Davis. 1986. Nitrate reductase from squash: cDNA cloning and nitrate regulation. *Proc. Nat. Acad. Sci.* **83**: 8073–8076.
- Cronquist, A. 1981. *An integrated system of classification of flowering plants*. Columbia University Press, New York.
- Drews, G.N., J.L. Bowman, and E.M. Meyerowitz. 1991a. Negative regulation of the *Arabidopsis* homeotic gene *AGAMOUS* by the *APETALA2* product. *Cell* **65**: 991–1002.
- Drews, G.N., D. Weigel, and E.M. Meyerowitz. 1991b. Floral patterning. *Curr. Opin. Genet. Dev.* **1**: 174–178.
- Dubois, E., J. Bercy, and F. Messenguy. 1987. Characterization of 2 genes, *ARGRI* and *ARGRIII* required for specific regulation of arginine metabolism in yeast. *Mol. & Gen. Genet.* **207**: 142–148.
- Fryxell, K.J. and E.M. Meyerowitz. 1991. The evolution of rhodopsins and neurotransmitter receptors. *J. Mol. Evol.* **33**: 367–378.
- Gustafson-Brown C., B. Savidge, and M.F. Yanofsky. 1994. Regulation of the *Arabidopsis* floral homeotic gene *APETALA1*. *Cell* **76**: 131–143.
- Hansen, G., J.J. Estruch, H. Sommer, and A. Spena. 1993. *NT-GLO*: A tobacco homolog of the *GLOBOSA* floral homeotic gene of *Antirrhinum majus*: cDNA sequence and expression pattern. *Mol. & Gen. Genet.* **239**: 310–312.
- Hauge, B.M., S.M. Hanley, S. Cartinhour, J.M. Cherry, H.M. Goodman, M. Koornneef, P. Stam, C. Chang, S. Kempin, L. Medrano, and E.M. Meyerowitz. 1993. An integrated genetic/RFLP map of the *Arabidopsis thaliana* genome. *Plant J.* **3**: 745–754.
- Hill, J.P. and E.M. Lord. 1989. Floral development in *Arabidopsis thaliana*: Comparison of the wildtype and the homeotic pistillata mutant. *Can. J. Bot.* **67**: 2922–2936.
- Irish, V.F. and I.M. Sussex. 1990. Function of the *apetala-1* gene during *Arabidopsis* floral development. *Plant Cell* **2**: 741–753.
- Jack, T., L.L. Brockman, and E.M. Meyerowitz. 1992. The homeotic gene *APETALA3* of *Arabidopsis thaliana* encodes a MADS box and is expressed in petals and stamens. *Cell* **68**: 683–697.
- Jack T., G.L. Fox, and E.M. Meyerowitz. 1994. *Arabidopsis* homeotic gene *APETALA3* ectopic expression: Transcriptional and posttranscriptional regulation determine floral organ identity. *Cell* **76**: 703–716.
- Jarvis, E.E., K.L. Clark, and G.F. Sprague Jr. 1989. The yeast transcription factor PRTE, a homolog of the mammalian serum response factor, is encoded by the *MCM1* gene. *Genes & Dev.* **3**: 936–945.
- Kunst, L., J.E. Klenz, J. Martinez-Zapater, and G.W. Haughn. 1989. *AP2* gene determines the identity of perianth organs in flowers of *Arabidopsis thaliana*. *Plant Cell* **1**: 1195–1208.
- Kush, A., A. Brunelle, D. Shevell, and N.-H. Chua. 1993. The cDNA sequence of 2 MADS box proteins in *petunia*. *Plant Physiol.* **102**: 1051–1052.
- Ma, H., M.F. Yanofsky, and E.M. Meyerowitz. 1991. *AGL1*–*AGL6*, an *Arabidopsis* gene family with similarity to floral homeotic and transcription factor genes. *Genes & Dev.* **5**: 484–495.
- Ma, H., M.F. Yanofsky, H.J. Klee, J.L. Bowman, and E.M. Meyerowitz. 1992. Vectors for plant transformation and cosmid libraries. *Gene* **117**: 161–167.
- Mandel, M.A., C. Gustafson-Brown, B. Savidge, and M.F. Yanofsky. 1992. Molecular characterization of the *Arabidopsis* floral homeotic gene *APETALA1*. *Nature* **360**: 273–277.
- Meyerowitz, E.M., D.R. Smyth, and J.L. Bowman. 1989. Abnormal flowers and pattern formation in floral development. *Development* **106**: 209–217.
- Meyerowitz, E.M., J.L. Bowman, L.L. Brockman, G.N. Drews, T. Jack, L.E. Sieburth, and D. Weigel. 1991. A genetic and molecular model for flower development in *Arabidopsis thaliana*. *Development* (Suppl. 1) **112**: 157–168.
- Nam, H.-G., J. Giraudat, B. den Boer, F. Moonan, W.D.B. Loos, B.M. Hauge, and H.M. Goodman. 1989. Restriction fragment length polymorphism linkage map of *Arabidopsis thaliana*. *Plant Cell* **1**: 699–705.
- Norman, C., M. Runswick, R. Pollock, and R. Treisman. 1988. Isolation and properties of cDNA clones encoding SRF, a transcription factor that binds to the c-fos serum response element. *Cell* **55**: 989–1003.
- Okamuro, J.K., B.G.W. Den Boer, and K.D. Jofuku. 1993. Regulation of *Arabidopsis* flower development. *Plant Cell* **5**: 1183–1193.
- Passmore, S., G.T. Maine, R. Elble, C. Christ, and B.-K. Tye. 1988. *Saccharomyces cerevisiae* protein involved in plasmid maintenance is necessary for mating of *mat-alpha* cells. *J. Mol. Biol.* **204**: 593–606.
- Passmore, S., R. Elble, and B.-K. Tye. 1989. A protein involved in minichromosome maintenance in yeast binds a transcrip-



- tional enhancer conserved in eukaryotes. *Genes & Dev.* **3**: 921–935.
- Pnueli, L., M. Abu-Abeid, D. Zamir, W. Nacken, Z. Schwarz-Sommer, and E. Lifschitz. 1991. The MADS box gene family in tomato: Temporal expression during floral development, conserved secondary structure and homology with homeotic genes from *Antirrhinum* and *Arabidopsis*. *Plant J.* **1**: 255–266.
- Pollock, R. and R. Treisman. 1991. Human SRF-related proteins—DNA-binding and potential regulatory targets. *Genes & Dev.* **5**: 2327–2341.
- Schultz, E.A. and G.W. Haughn. 1991. Leafy, a homeotic gene that regulates inflorescence development in *Arabidopsis*. *Plant Cell* **3**: 771–781.
- Schwarz-Sommer, Z., P. Huijser, W. Nacken, H. Saedler, and H. Sommer. 1990. Genetic control of flower development: Homeotic genes in *Antirrhinum majus*. *Science* **250**: 931–936.
- Schwarz-Sommer, Z., I. Hue, P. Huijser, P.J. Flor, R. Hansen, F. Tetens, W.-E. Lönnig, H. Saedler, and H. Sommer. 1992. Characterization of the *Antirrhinum* floral homeotic MADS-box gene *deficiens*: Evidence for DNA binding and autoregulation of its persistent expression throughout flower development. *EMBO J.* **11**: 251–263.
- Smyth, D.R., J.L. Bowman, and E.M. Meyerowitz. 1990. Early flower development in *Arabidopsis*. *Plant Cell* **2**: 755–767.
- Sommer, H., J.P. Beltrán, P. Huijser, H. Pape, W.E. Lönnig, H. Saedler, and Z. Schwarz-Sommer. 1990. *Deficiens*, a homeotic gene involved in the control of flower morphogenesis in *Antirrhinum majus*: The protein shows homology to transcription factors. *EMBO J.* **9**: 605–613.
- Stewart, W.N. and G.W. Rothwell. 1993. *Paleobotany and the evolution of plants*. Cambridge University Press, Cambridge, UK.
- Tröbner, L. Ramirez, P. Motte, I. Hue, P. Huijser, W. Lönnig, H. Saedler, H. Sommer, and Z. Schwarz-Sommer. 1992. *Globosa*—A homeotic gene which interacts with *deficiens* in the control of *Antirrhinum* floral organogenesis. *EMBO J.* **11**: 4693–4704.
- van der Krol, A.R., A. Brunelle, S. Tsuchimoto, and N.-H. Chua. 1993. Functional analysis of petunia floral homeotic MADS box gene pMADS1. *Genes & Dev.* **7**: 1214–1228.
- Weigel, D. and E.M. Meyerowitz. 1993. Activation of floral homeotic genes in *Arabidopsis*. *Science* **261**: 1723–1726.
- Weigel, D., J. Alvarez, D.R. Smyth, M.F. Yanofsky, and E.M. Meyerowitz. 1992. LEAFY controls floral meristem identity in *Arabidopsis*. *Cell* **69**: 843–859.
- Yanofsky, M.F., H. Ma, J.L. Bowman, G.N. Drews, K.A. Feldmann, and E.M. Meyerowitz. 1990. The protein encoded by the *Arabidopsis* homeotic gene *agamous* resembles transcription factors. *Nature* **346**: 35–39.
- Yu, Y.-T., R.E. Breitbart, L.B. Smoot, Y. Lee, V. Mahdavi, and B. Nadal-Ginard. 1992. Human myocyte-specific enhancer factor-II comprises a group of tissue-restricted MADS box transcription factors. *Genes & Dev.* **6**: 1783–1798.



## Function and regulation of the Arabidopsis floral homeotic gene PISTILLATA.

K Goto and E M Meyerowitz

*Genes Dev.* 1994, **8**:

Access the most recent version at doi:[10.1101/gad.8.13.1548](https://doi.org/10.1101/gad.8.13.1548)

---

### References

This article cites 48 articles, 23 of which can be accessed free at:  
<http://genesdev.cshlp.org/content/8/13/1548.full.html#ref-list-1>

### License

### Email Alerting Service

Receive free email alerts when new articles cite this article - sign up in the box at the top right corner of the article or [click here](#).

---

Dharmacon<sup>®</sup> Reagents  
Custom synthesis, RNAi, and CRISPR solutions

Infinite  
Reliability

More

horizon  
a PerkinElmer company