

SUPPLEMENTARY MATERIAL

	Factor 1
<i>CLC</i>	0.928
<i>PL</i>	-0.725
<i>D</i>	0.897

Structural network

	Factor 1	Factor 2	Factor 3
<i>CLC</i> pre-stimulus	0.059	0.900	0.388
<i>PL</i> pre-stimulus	0.131	0.960	-0.110
<i>D</i> pre-stimulus	-0.085	0.158	0.923
<i>CLC</i> modulation	0.936	0.163	0.080
<i>PL</i> modulation	0.929	0.037	0.081
<i>D</i> modulation	0.429	-0.014	0.739

Functional global band

	Factor 1	Factor 2
<i>CLC</i> pre-stimulus	-0.167	0.935
<i>PL</i> pre-stimulus	-0.088	0.934
<i>D</i> pre-stimulus	-0.229	0.570
<i>CLC</i> modulation	0.889	-0.302

<i>PL</i> modulation	0.870	-0.253
<i>D</i> modulation	0.856	-0.029

Functional theta band

	Factor 1
Verbal memory	0.783
Working memory	0.794
Motor speed	0.505
Verbal fluency	0.710
Performance speed	0.806
Tower of London	0.654
Perseverative errors	-0.608

Cognitive scores

Table S2: Factor structure of connectivity networks and cognitive scores: Results of the principal components analyses performed to obtain factor scores for structural and functional (global band and theta band) networks and cognitive performance. The variables included in each component are boldfaced.

	Schizophrenia	Controls	<i>p</i> -value
P300 amplitude (μV)	2.15 ± 1.56	2.9863 ± 1.62	0.0086
P300 latency (ms)	435.38 ± 70.35	454.68 ± 71.89	0.1698

Table S1. P300 latency and amplitude at Pz electrode.

7. Supplementary figures

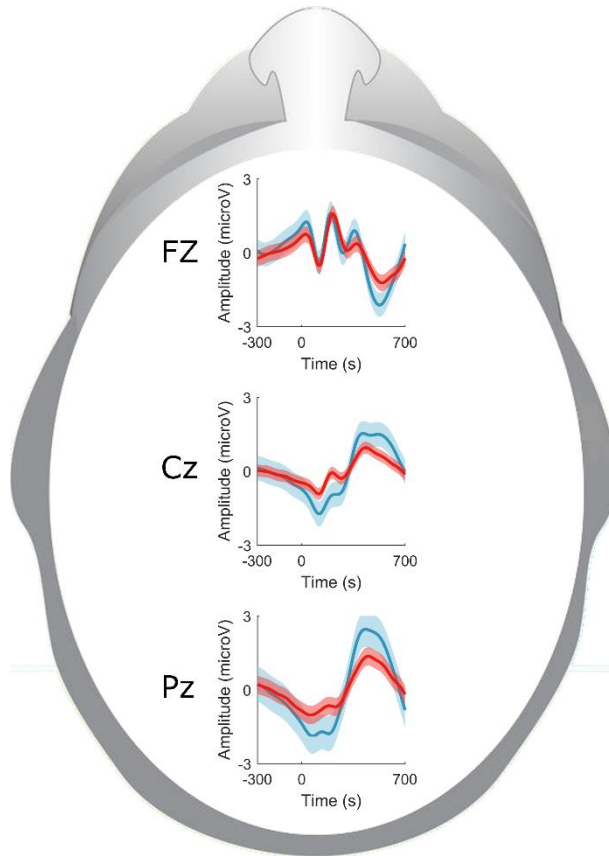


Figure S1 P300 waveforms in the middle line of the brain scalp (Fz, Cz and Pz electrodes). (blue patients, red controls)

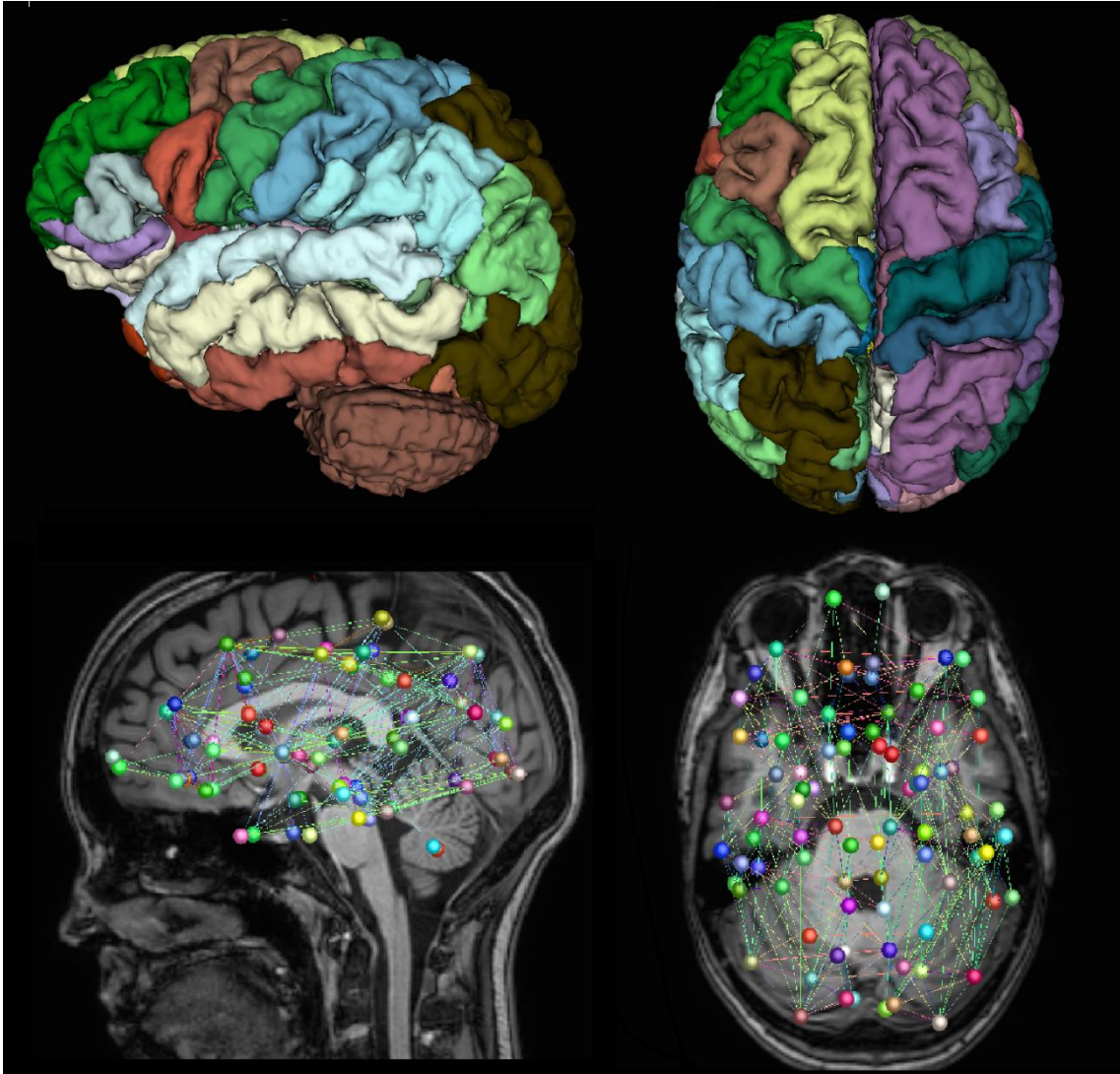


Figure S2: Upper row: Lateral and superior views of the regions from which the structural connectivity matrix was built. Lower row: Lateral and superior views of hypothetical dMRI network based on segmented regions.

8. Supplementary References