

2021

Functional maturation of immature β cells: A roadblock for stem cell therapy for type 1 diabetes

Zi-Yi Sun

Ting-Yan Yu

Fang-Xu Jiang
Edith Cowan University

Wei Wang

Follow this and additional works at: <https://ro.ecu.edu.au/ecuworkspost2013>



Part of the [Diseases Commons](#)

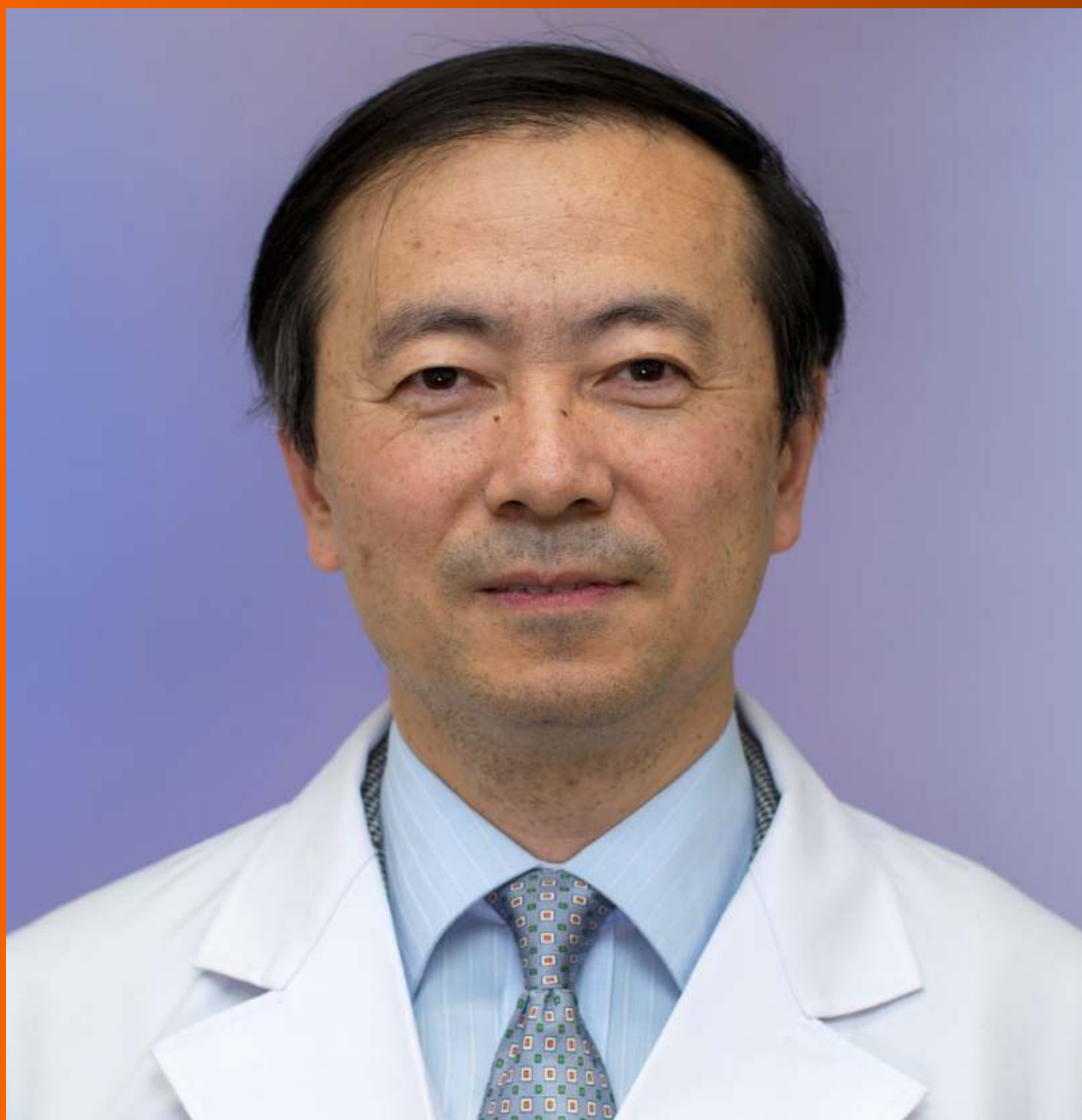
[10.4252/wjsc.v13.i3.193](https://doi.org/10.4252/wjsc.v13.i3.193)

Sun, Z. Y., Yu, T. Y., Jiang, F. X., & Wang, W. (2021). Functional maturation of immature β cells: A roadblock for stem cell therapy for type 1 diabetes. *World Journal of Stem Cells*, 13(3), 193-207. <https://doi.org/10.4252/wjsc.v13.i3.193>

This Journal Article is posted at Research Online.
<https://ro.ecu.edu.au/ecuworkspost2013/10168>

World Journal of *Stem Cells*

World J Stem Cells 2021 March 26; 13(3): 193-235



REVIEW

- 193 Functional maturation of immature β cells: A roadblock for stem cell therapy for type 1 diabetes
Sun ZY, Yu TY, Jiang FX, Wang W

MINIREVIEWS

- 208 Mesenchymal stromal cell-dependent immunoregulation in chemically-induced acute liver failure
Zhou JH, Lu X, Yan CL, Sheng XY, Cao HC
- 221 Insulin resistance in diabetes: The promise of using induced pluripotent stem cell technology
Elsayed AK, Vimalraj S, Nandakumar M, Abdelalim EM

ABOUT COVER

Editorial Board Member of *World Journal of Stem Cells*, Yun-Wen Zheng, PhD, Associate Professor, Department of Gastrointestinal and Hepato-Biliary-Pancreatic Surgery, University of Tsukuba Faculty of Medicine, Tennodai 1-1-1, Tsukuba, Ibaraki 305-8575, Japan. ywzheng@md.tsukuba.ac.jp

AIMS AND SCOPE

The primary aim of *World Journal of Stem Cells (WJSC, World J Stem Cells)* is to provide scholars and readers from various fields of stem cells with a platform to publish high-quality basic and clinical research articles and communicate their research findings online. *WJSC* publishes articles reporting research results obtained in the field of stem cell biology and regenerative medicine, related to the wide range of stem cells including embryonic stem cells, germline stem cells, tissue-specific stem cells, adult stem cells, mesenchymal stromal cells, induced pluripotent stem cells, embryonal carcinoma stem cells, hemangioblasts, lymphoid progenitor cells, etc.

INDEXING/ABSTRACTING

The *WJSC* is now indexed in Science Citation Index Expanded (also known as SciSearch®), Journal Citation Reports/Science Edition, Biological Abstracts, BIOSIS Previews, Scopus, PubMed, and PubMed Central. The 2020 Edition of Journal Citation Reports® cites the 2019 impact factor (IF) for *WJSC* as 3.231; IF without journal self cites: 3.128; Ranking: 18 among 29 journals in cell and tissue engineering; Quartile category: Q3; Ranking: 113 among 195 journals in cell biology; and Quartile category: Q3. The *WJSC*'s CiteScore for 2019 is 4.9 and Scopus CiteScore rank 2019: Histology is 15/60; Genetics is 124/324; Genetics (clinical) is 35/90; Molecular Biology is 177/381; Cell Biology is 143/274.

RESPONSIBLE EDITORS FOR THIS ISSUE

Production Editor: Yan-Xia Xing, Production Department Director: Yun-Xiaoqian Wu, Editorial Office Director: Ze-Mao Gong.

NAME OF JOURNAL

World Journal of Stem Cells

ISSN

ISSN 1948-0210 (online)

LAUNCH DATE

December 31, 2009

FREQUENCY

Monthly

EDITORS-IN-CHIEF

Shengwen Calvin Li, Tong Cao, Carlo Ventura

EDITORIAL BOARD MEMBERS

<https://www.wjgnet.com/1948-0210/editorialboard.htm>

PUBLICATION DATE

March 26, 2021

COPYRIGHT

© 2021 Baishideng Publishing Group Inc

INSTRUCTIONS TO AUTHORS

<https://www.wjgnet.com/bpg/gerinfo/204>

GUIDELINES FOR ETHICS DOCUMENTS

<https://www.wjgnet.com/bpg/GerInfo/287>

GUIDELINES FOR NON-NATIVE SPEAKERS OF ENGLISH

<https://www.wjgnet.com/bpg/gerinfo/240>

PUBLICATION ETHICS

<https://www.wjgnet.com/bpg/GerInfo/288>

PUBLICATION MISCONDUCT

<https://www.wjgnet.com/bpg/gerinfo/208>

ARTICLE PROCESSING CHARGE

<https://www.wjgnet.com/bpg/gerinfo/242>

STEPS FOR SUBMITTING MANUSCRIPTS

<https://www.wjgnet.com/bpg/GerInfo/239>

ONLINE SUBMISSION

<https://www.f6publishing.com>

Functional maturation of immature β cells: A roadblock for stem cell therapy for type 1 diabetes

Zi-Yi Sun, Ting-Yan Yu, Fang-Xu Jiang, Wei Wang

ORCID number: Zi-Yi Sun [0000-0003-0236-4396](https://orcid.org/0000-0003-0236-4396); Ting-Yan Yu [0000-0003-4538-3335](https://orcid.org/0000-0003-4538-3335); Fang-Xu Jiang [0000-0003-3172-0476](https://orcid.org/0000-0003-3172-0476); Wei Wang [0000-0002-7453-7391](https://orcid.org/0000-0002-7453-7391).

Author contributions: Sun ZY wrote the paper; Yu TY drew the figures; Jiang FX and Wang W proposed the ideas, revised the manuscript, and finally approved the submission.

Supported by the National Natural Science Foundation of China, No. 81471081; the Natural Science Foundation of Fujian Province, China, No. 2019J01010; Xiamen Research Foundation for Science and Technology Project No. 3502Z20194037; and Scientific Research Foundation for Advanced Talents, Xiang'an Hospital of Xiamen University, No. PM201809170005.

Conflict-of-interest statement: The authors declare no conflict of interests for this article.

Open-Access: This article is an open-access article that was selected by an in-house editor and fully peer-reviewed by external reviewers. It is distributed in accordance with the Creative Commons Attribution NonCommercial (CC BY-NC 4.0) license, which permits others to distribute, remix, adapt, build

Zi-Yi Sun, Ting-Yan Yu, Fang-Xu Jiang, Wei Wang, Department of Endocrinology, Xiang'an Hospital of Xiamen University, School of Medicine, Xiamen University, Xiamen 361100, Fujian Province, China

Fang-Xu Jiang, School of Biomedical Science, University of Western Australia, Nedlands 6009, Australia

Fang-Xu Jiang, School of Health and Medical Sciences, Edith Cowan University, Perth 6000, Australia

Corresponding author: Wei Wang, MD, Doctor, Department of Endocrinology, Xiang'an Hospital of Xiamen University, School of Medicine, Xiamen University, No. 2000 Xiang'an East Road, Xiang'an District, Xiamen 361100, Fujian Province, China.

wwei19742007@hotmail.com

Abstract

Type 1 diabetes mellitus (T1DM) is a chronic autoimmune disease caused by the specific destruction of pancreatic islet β cells and is characterized as the absolute insufficiency of insulin secretion. Current insulin replacement therapy supplies insulin in a non-physiological way and is associated with devastating complications. Experimental islet transplantation therapy has been proven to restore glucose homeostasis in people with severe T1DM. However, it is restricted by many factors such as severe shortage of donor sources, progressive loss of donor cells, high cost, *etc.* As pluripotent stem cells have the potential to give rise to all cells including islet β cells in the body, stem cell therapy for diabetes has attracted great attention in the academic community and the general public. Transplantation of islet β -like cells differentiated from human pluripotent stem cells (hPSCs) has the potential to be an excellent alternative to islet transplantation. In stem cell therapy, obtaining β cells with complete insulin secretion *in vitro* is crucial. However, after much research, it has been found that the β -like cells obtained by *in vitro* differentiation still have many defects, including lack of adult-type glucose stimulated insulin secretion, and multi-hormonal secretion, suggesting that *in vitro* culture does not allow for obtaining fully mature β -like cells for transplantation. A large number of studies have found that many transcription factors play important roles in the process of transforming immature to mature human islet β cells. Furthermore, PDX1, NKX6.1, SOX9, NGN3, PAX4, *etc.*, are important in inducing hPSC differentiation *in vitro*. The absent or deficient expression of any of these key factors may lead to

upon this work non-commercially, and license their derivative works on different terms, provided the original work is properly cited and the use is non-commercial. See: <http://creativecommons.org/licenses/by-nc/4.0/>

Manuscript source: Invited manuscript

Specialty type: Endocrinology and metabolism

Country/Territory of origin: China

Peer-review report's scientific quality classification

Grade A (Excellent): 0

Grade B (Very good): B, B

Grade C (Good): 0

Grade D (Fair): 0

Grade E (Poor): 0

Received: August 29, 2020

Peer-review started: August 29, 2020

First decision: January 7, 2021

Revised: January 19, 2021

Accepted: February 25, 2021

Article in press: February 25, 2021

Published online: March 26, 2021

P-Reviewer: Saad K

S-Editor: Zhang H

L-Editor: Wang TQ

P-Editor: Xing YX



the islet development defect *in vivo* and the failure of stem cells to differentiate into genuine functional β -like cells *in vitro*. This article reviews β cell maturation *in vivo* and *in vitro* and the vital roles of key molecules in this process, in order to explore the current problems in stem cell therapy for diabetes.

Key Words: Stem cell therapy; Type 1 diabetes mellitus; β cell; Maturation

©The Author(s) 2021. Published by Baishideng Publishing Group Inc. All rights reserved.

Core Tip: Type 1 diabetes is a metabolic disease characterized by absolute lack of insulin. Current insulin replacement therapy supplies insulin in a non-physiological way and is associated with devastating complications. Diabetes stem cell therapy with insulin-producing β -like cells differentiated *in vitro* from human pluripotent stem cells has recently attracted great interest in the academic community and the general public. Although great progress has been made, the β -like cells differentiated *in vitro* still have many defects. Here we summarize the latest knowledge on β -cell maturation *in vivo* and *in vitro* and the vital roles of key molecules in this process, in order to explore the current problems in diabetes stem cell therapy.

Citation: Sun ZY, Yu TY, Jiang FX, Wang W. Functional maturation of immature β cells: A roadblock for stem cell therapy for type 1 diabetes. *World J Stem Cells* 2021; 13(3): 193-207

URL: <https://www.wjgnet.com/1948-0210/full/v13/i3/193.htm>

DOI: <https://dx.doi.org/10.4252/wjsc.v13.i3.193>

INTRODUCTION

Type 1 diabetes mellitus (T1DM) is an autoimmune disease characterized by the absolute deficiency of β -cell function. Disorders of the immune system cause destruction of β -cells, resulting in the absolute lack of insulin secretion and the inability to properly regulate blood glucose homeostasis^[1,2]. This process is mediated by autoimmunity, with the participation of both innate and adaptive immunity^[3,4]. Due to insufficient insulin secretion, blood glucose rises rapidly in the short term. This can cause life-threatening conditions such as hypoglycemia unawareness, diabetic ketoacidosis, or diabetic hyperosmolar coma. Long-term hyperglycemia will damage the cardiovascular and cerebrovascular systems and microcirculation in varying degrees^[5], resulting in complications including eye disease, nephropathy, peripheral neuropathy, and coronary atherosclerotic heart disease. Significantly, T1DM is also associated with some other chronic autoimmune diseases, such as celiac disease^[6,7]. Finally, as most patients with T1DM have had the condition since childhood, long-term insulin use is not only an inconvenience to daily life, but also an economic burden on society. Therefore, research on new treatment methods for T1DM is crucial.

Since several decades ago, T1DM has been experimentally treated by whole pancreas and then islet transplantation^[8,9]. However, due to its unfeasibly high costs and insufficient donor sources for the increasing number of T1DM patients, this treatment cannot be widely implemented in practice. To resolve this problem, the ultimate goal is to develop a stem cell therapy for diabetes, namely, differentiate islet β -like cells from human pluripotent stem cells (hPSCs) capable of glucose stimulated insulin secretion (GSIS) similar to mature β cells, and effectively regulating blood glucose homeostasis in the body after transplantation. Great efforts have thus been concentrated on discovering technologies in how to effectively differentiate hPSCs into genuine β -like cells that could maintain the long-term survival and functional stability if transplanted. This review article summarizes the latest progresses on the β -cell development and functional maturity *in vivo* and on the differentiation of insulin-secreting β -like cells *in vitro* from human pluripotent or multiple stem cells.

BRIEF SUMMARY OF AUTOIMMUNITY IN T1DM

The etiology and pathogenesis of T1DM are not fully understood, but they are generally believed to be related to genetic and environmental factors. Although most patients do not have a family history of T1DM, genetic susceptibility is an important factor. A combination of epigenetics such as DNA methylation and histone modification, altered microRNA profiles, and other pathological mechanisms may also be related to the development of T1DM and affects the immune reaction on islet β cells. Studies have shown that the main genetic risk factors for T1DM are located in the major histocompatibility complex class II human leukocyte antigen (HLA) region, and the genetic polymorphism in this region largely determines the genetic risk of T1DM^[10-12].

The autoimmunity in T1DM patients is manifested by the presence of circulating islet autoantibodies and autoreactive T cells. The human body temporally establishes an immune balance after birth and the pancreatic islet self-reactive T cells are regulated and suppressed from becoming active^[13,14]. CD4⁺ helper cells and CD8⁺ cytotoxic T lymphocytes play an important role in the pathogenesis of T1DM by producing autoantibodies and recognizing β -cell proteins as autoantigens^[15]. HLA molecules induce the proliferation of pathogenic T cells by presenting self-antigens to naive T cells, and producing self-reactive CD4⁺ T cells. These activated CD4⁺ T cells then produce cytokines, which in turn activate β cell-specific cytotoxic CD8⁺ T cells. Subsequently, these activated T cells are recruited to pancreatic islets and stimulate macrophages and other T cells. This leads to the destruction of pancreatic β cells^[16,17].

DEFECTS OF CURRENT T1DM TREATMENT

Patients with T1DM need lifelong insulin replacement therapy. Exogenous insulin supplementation is not only a cumbersome process but is also associated with acute hypoglycemia unawareness episodes. It can lead to chronic devastating complications such as heart and kidney failures, blindness, foot necrosis, and cancers. Although islet transplantation can replace destroyed β cells and exert insulin secretion function in the human body, this method has many limitations, such as a shortage of donors, high costs, strong immune system rejection after transplantation, and long-term use of anti-rejection drugs^[18,19]. Immunotherapy includes non-self-antigen-specific and self-antigen specific therapies. The former involves regulatory T cell replacement therapy that aims to self-reactivate T cells, B cells, and inflammatory cytokines, while the latter mainly targets the regulation and inactivation of self-antigen. Unfortunately, a T1DM immunotherapy that can totally replace the standard insulin replacement therapy has not yet been developed^[20]. Researchers have also tested the possibility of mesenchymal stem cells (MSCs) as an innovative treatment for autoimmune diseases. MSCs are a class of multipotent stem cells with the ability to self-replicate. Their inherent self-renewal potential and immune regulation ability are considered to be an exciting starting point for the treatment of autoimmune diseases^[21]. For example, MSCs may have the ability to prevent the autoimmune destruction of β cells in T1DM animal models and generate functional β cells to maintain blood glucose homeostasis^[22,23].

At present, there are several issues in the clinical application of stem cell therapy, including selection of appropriate encapsulation materials and transplantation site, and the need for further research on improving immune regulation and new blood vessel formation methods. However, the most pressing issue is how to obtain fully functional and mature β cells through *in vitro* culture. In order to solve these problems, it is critical that the maturation process of islet β cells *in vivo* and *in vitro*, and major functioning transcription factors and other critical molecules are better understood.

MATURATION PROCESS OF β CELLS *IN VIVO*

The pancreas consists largely of exocrine glands and in a smaller proportion, endocrine glands^[24]. The exocrine glands are composed of pancreatic acinar tissues and pancreatic ducts, and the endocrine glands are composed of cell clusters of different sizes, known as the islets of Langerhans^[25]. The islet is an endocrine micro-organ, consisting of at least five types of endocrine cells: α cells (15%-20%), β cells (60%-80%), δ cells (5%-10%), ϵ cells (< 1%), and pancreatic polypeptide-secreting (PP) cells (2%)^[26]. Observed by optical projection tomography, there are about 1000 islets in the pancreas of 8-wk-old mice, with each islet containing an average of 800 β cells. There are about

1000000 islets in the human pancreas, each containing about 400-600 β cells. The β cells as polygonal cells have a diameter of 13-18 μm , and each contains about 100000 insulin secretory vesicles^[27,28]. Insulin is stored in a crystallized form in these vesicles that are ultimately released through exocytosis^[29]. The exocytosis of insulin granules is controlled by the ATP-sensitive K (K_{ATP}) channel and requires calcium ions to flow into the cells through the cell membrane calcium channel. When the blood glucose concentration rises, the glucose uptake and metabolism in β cells also increase, which leads to an increase in ATP production. These changes in adenine nucleotide concentrations cause the K_{ATP} channel to close, triggering calcium influx and insulin secretion^[30].

Embryonic pancreatic development begins with ventral and dorsal pancreatic buds. In mice, the dorsal bud appears on day 9.0 of the embryo development (E9) and the ventral bud appears on E9.5 along the dorsal and ventral surfaces of the posterior foregut endoderm (Figure 1). The first transformation of mouse pancreatic morphology begins from E9.5 to E12.5, during which time pancreatic progenitor cells rapidly proliferate to form the pancreatic endoderm. At E12 to E13, the ventral and dorsal buds contact and fuse together. At E13, pancreatic endodermal cells proliferate, and pancreatic progenitor cells give rise to neurogenin 3 (NGN3) positive progenitor cells, which then form mature endocrine cells^[31-33]. By E14.5, the developing islets consist of many insulin-producing β and glucagon-producing α cells, and δ cells that secrete somatostatin appear for the first time. PP cells begin to appear before birth. At birth, β cells in mice do not have adult-type insulin secretion function, but gradually mature within 2-3 wk after birth^[34].

During human embryonic development, dorsal pancreatic buds appear around the fourth week of gestation, followed by abdominal buds. In contrast to the early presence of glucagon-expressing cells in mouse pancreatic buds, human endocrine-expressing cells are not detected until G7.5-8w after the dorsal buds grow for 3 wk in early embryonic pancreas. These endocrine cells are derived from NGN3+ endocrine progenitor cells, and among them, the first to appear are insulin-producing β cells. The transcription factors PAX6, PAX4, NKX2.2, NKX6.1, HLXB9, *etc.* are involved in the process of differentiation from endocrine progenitor to insulin-producing β cells^[35]. β -cell replication is easily detectable at G9w and peaks around G14-16w^[36-38]. At this time, embryonic β cells are multi-hormonal cells that produce insulin, glucagon, and growth hormone, as they are still in an immature state. Immature β cells have strong proliferative ability, but they do not have the functions of mature β cells.

The hallmark feature of functional β cells is mature GSIS, which means when postprandial blood glucose increases, pancreatic β cells secrete a sufficient amount of insulin to prevent hyperglycemia, and inhibit insulin secretion under fasting conditions to prevent hypoglycemia. This is also known as the biphasic model that is established after β -cell maturation. Human studies have shown that neonatal β cells do not have this biphasic secretion function, because these β cells are not fully mature at this stage. After birth, pancreatic islet cells gradually lose their proliferative capacity and develop highly sensitive and powerful GSIS capacity under the control of transcription factors such as MafA^[39]. There is no definite conclusion about the time point at which β cells fully mature in humans, but it is closely aligned to the time when a newborn begins to take food supplements. According to the experiment of Otonkoski *et al.*^[40], human islet β cells obtain mature insulin secretion function at about 26-44 wk of age. However, further studies are required to confirm the stage of β -cell maturation.

KEY MARKERS IN THE PROCESS OF β CELL MATURATION

At present, due to the limitations on human studies, most of the understanding of β -cell maturation comes from rodent studies. In mice, the β cells in the fetal stage are immature and highly proliferative. At this time, the β cells can already generate insulin granules and show high basal insulin levels, but the regulated mechanism of insulin secretion remains to be established. After birth, the β cells have not yet obtained a mature phenotype to respond to the stimulation of changing glucose concentration to properly secrete insulin^[41,42]. The first mature wave in mice appears 2 wk after birth. At this time, β cells are still proliferative, but this characteristic is gradually lost since β cells follow the biphasic maturation model and need to adapt to the dietary changes of the newborn. The second maturation wave occurs in the third week after birth, which coincides with the weaning period. This is also true for the human newborn^[43-45]. During this period, the proliferative property of β cells gradually

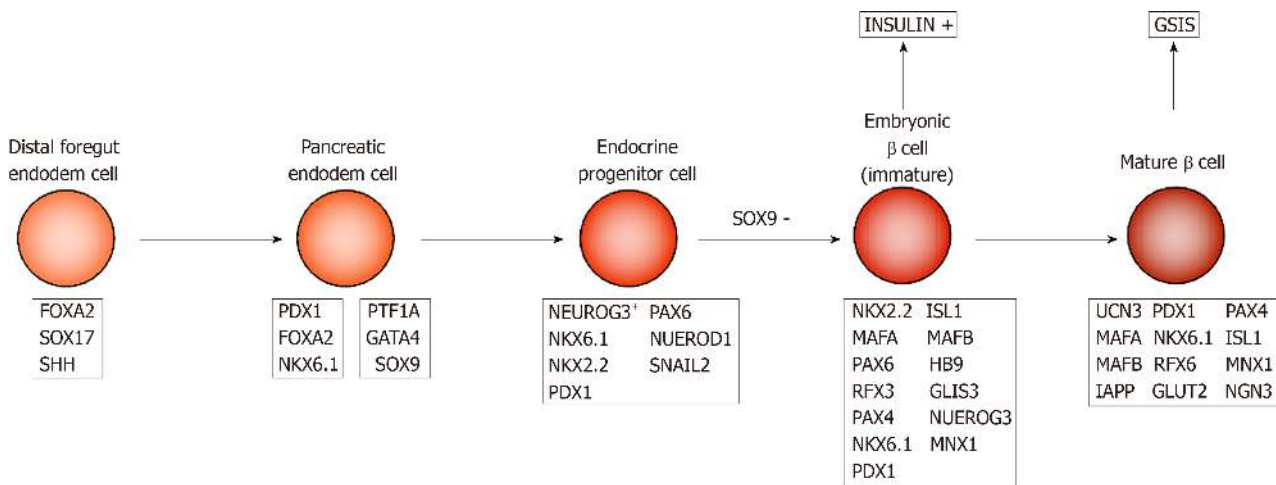


Figure 1 β -cell development and maturation *in vivo*. Important stages of β cell development and maturation *in vivo*, which mainly include distal foregut endoderm, pancreatic endoderm, endocrine progenitor, immature β cells, and mature β cells, and key transcription factors involved are described. GSIS: Glucose stimulated insulin secretion.

disappears, and is replaced by an adult GSIS feature. The GSIS contains a variety of cellular processes, in which β cells sense changes in glucose concentration through specific glucose transporters (GLUT1 & GLUT2)^[46,47]. Subsequently, glucose stimulation causes the mitochondria to actively participate in the control and enhancement of insulin secretion in the mature GSIS process. Finally, the insulin granules fuse with the cytoplasmic membrane and secrete insulin *via* the exocytosis^[48].

There are many key transcription factors involved in the process of β cell maturation. For example, the transcription factors MAFA and MAFB play important roles in the development and maturation of β cells, respectively. MAFB is expressed earlier than MAFA, and appears in mouse pancreatic epithelial cells at E10.5^[49], while MAFA is originally expressed in insulin+ cells at E13.5^[50]. At E15.5, 50% and 90% of cells with insulin secretion ability express MAFA and MAFB, respectively. However, in adult mice, MAFA is only expressed in β cells while MAFB is in α cells^[51], suggesting the transformation from MAFB to MAFA signals β cell maturation. Critical for the development of immature insulin+ cells, MAFB is expressed in most insulin+ cells at E15.5 and E18.5. However, it is only expressed in a small amount of P14 mouse β cells, and by P28, MAFB expression is completely absent^[52]. In contrast, the level of MAFA in islet β cells in immature P2 mice is only 7% of that in adult mice, in which the GSIS properties of these β cells are also poor. MAFA overexpression in P2 β cells can substantially enhance the GSIS ability^[53]. Other experiments indicate that the expression level of MAFA in mature β cells is significantly higher than that in immature cells and is positively related to insulin secretion capacity^[54]. Taken together, the increased expression of MAFA and the disappearance of MAFB signal the maturation of β cell function and are important links for β cells to obtain adult GSIS.

Many other transcription factors are not direct markers of β -cell transformation from immaturity to maturity, but play important roles in the process of β -cells achieving functional maturity. During endocrine cell formation, NGN3 regulate the early differentiation of islet cells and formation of endocrine cells during development^[55]. All pancreatic endocrine cells are derived from NGN3 expressing endocrine progenitor cells. Individuals lacking NGN3 will not be able to produce any functional pancreatic endocrine cells and will subsequently die from diabetes^[56,57]. Individuals lacking NGN3 expression can still produce embryonic β cells and produce insulin, however, they cannot respond to glucose stimulation and eventually obtain functionally mature β cells^[58], suggesting that NGN3 expression is essential for β -cell maturation. The transcription factor PDX1 is activated in the mouse foregut endoderm at E8.5 and expressed in multipotent pancreatic progenitor cells of early pancreatic buds^[59]. In 5-wk-old male mice, the lack of PDX1 expression results in changes in the expression of genes that control β -cell function and proliferation status (such as MAFA and GLUT2), leading to decreased insulin secretion levels^[60]. The β cell glucose tolerance of PDX1-deficient mice is impaired, plasma insulin levels are reduced, and the adult-type GSIS is impaired^[61].

In addition to the above, the transcription factors NEUROD, MNX1, PAX4, NKX6.1, *etc.* also play important roles in the process of β -cells becoming functionally

mature^[62-65].

UCN3 can be used as a marker of β cell maturity^[66]. UCN3 is a member of the CRF (corticotropin release-factor) family^[67,68]. As an endogenous ligand of the CRF receptor 2, it is closely related to the regulation of energy balance and/or glucose metabolism in the body^[69]. It is also expressed as a secreted protein in local areas of the brain and the pancreas. In mouse islets, UCN3 first appears in β cells at E17.5 and is expressed as a characteristic marker of β cells from P7 to the entirety of the adult period. Given that in P14, UCN3 and insulin expression completely overlap, Blum *et al*^[70] used Western blot and immunohistochemistry to analyze the protein expression levels and found that UCN3 expression in mature β cells is 7 times higher than in immature cells. Immunofluorescence staining indicates that UCN3 expression is high in all adult β cells; however, this was not detected in embryonic islets at E18.5^[70].

The functional maturation of β cells involves the switching of cell signals from mTORC1 to AMPK (5' adenosine monophosphate activated protein kinase)^[71-73] (Figure 2). mTOR is a nutrition-sensitive kinase and essential for regulating the proliferation and growth of postnatal pancreatic β cells^[74,75]. Studies have shown that mTORC1 promotes β -cell proliferation in embryonic and neonatal stages by regulating cyclins D2 and D3 and CDK4. The specific loss of mTORC1 in mouse β -cells can lead to severe glucose intolerance, which is related to an insufficient number of β -cells^[76,77]. AMPK is an effective inhibitor of mTORC1, and its kinase activity is regulated by the intracellular ratio of ATP to AMP/ADP^[78]. Loss of LKB1 (AMPK upstream activator) can increase β -cell proliferation and mass by inducing mTORC1, resulting in increased insulin output^[79,80]. Helman *et al*^[81] found that the function of β -cells after birth is closely related to changes in the nutritional environment, which is mainly due to amino acid-stimulated insulin secretion and GSIS and through the mTORC1 signaling pathway. These researchers found that under two nutritional conditions, there was no difference in the expression of PDX1, NKX6.1, UCN3, MAFA, and other transcription factors in β cells, indicating that the switch to adult-type GSIS is not affected by the expression of these markers. Instead, changes in glucose reactivity are related to the activation of mTORC1 after changes in nutritional conditions, and there is a positive correlation between insulin secretion and mTORC1 activation. Disrupting the nutritional sensitivity of mTORC1 in mature β cells will cause their insulin secretion to return to a functional immature state^[82].

Synaptotagmin 4 (Sytx4) may play an important role in the maturation of β cells^[83]. As a non- Ca^{2+} binding paralog of the β cell Ca^{2+} sensor Sytx7, it increases approximately 8-fold during β -cell maturation, and the absence of Sytx4 will increase the secretion of basal insulin in newborn mice. The role of this protein is to reduce the sensitivity of immature β cells to calcium ions that directly regulate the exocytosis of insulin granules and influence the normal secretory process of insulin^[84].

Recently, a Wnt/Plane cell polarity effector protein Flattop (Fltp) was found to distinguish immature (Fltp-) and terminally mature (Fltp+) β cells^[85]. Fltp+ cells have higher expression levels of β -cell functional genes (*i.e.*, *SLC2A2*, *NKX6.1*, *UCN3*, *MAFA*, *etc.*), and it can be observed that the number of mature secreted granules is significantly increased, the mitochondrial physiological function is enhanced, and the static GSIS is higher^[86].

Other studies showed that the microenvironment is also important for obtaining mature β cells^[87,88]. Freshly isolated β cells in suspension culture release much less insulin than scattered β cells that re-aggregate into islets, suggesting that the composition of pancreatic islets, cell polarity, contact between homotype cells, contact between heterotype cells, and interaction with the surrounding tissues and environment can all lead to differences in glucose reactivity and insulin secretion.

Among them, paracrine regulation plays an important role in β cell function (Figure 3). Even if the islets are dispersed to the cellular level, most β cells still retain the link with α cells^[89,90], which suggests the co-evolution of the two types of endocrine cells is necessary for the pancreatic islet development, and may be of great significance to the pancreatic islet maturation. Islet paracrine signals from one cell type can regulate others in the same pancreatic islet by spreading through the gap or circulating through intra-islet blood vessels^[91]. For example, glucagon secreted from α cells inhibits insulin secretion from β cells (Figure 3B). Insulin receptors are found on both α and β cell membranes, which further confirms the existence of the paracrine effect of islet cells^[92]. Insulin secreted from β cells activates the GABAA receptor on the α cell membrane, leading to a large influx of Cl^- and inhibiting the secretion of glucagon^[93]. β cells can electrically couple to surrounding α and δ cells through the gap, to secrete synchronously, thereby generating insulin secretion pulse^[94]. Moreover, secretory molecules of pancreatic islet pericytes and local macrophages have nutritional effects on β cells^[95,96].

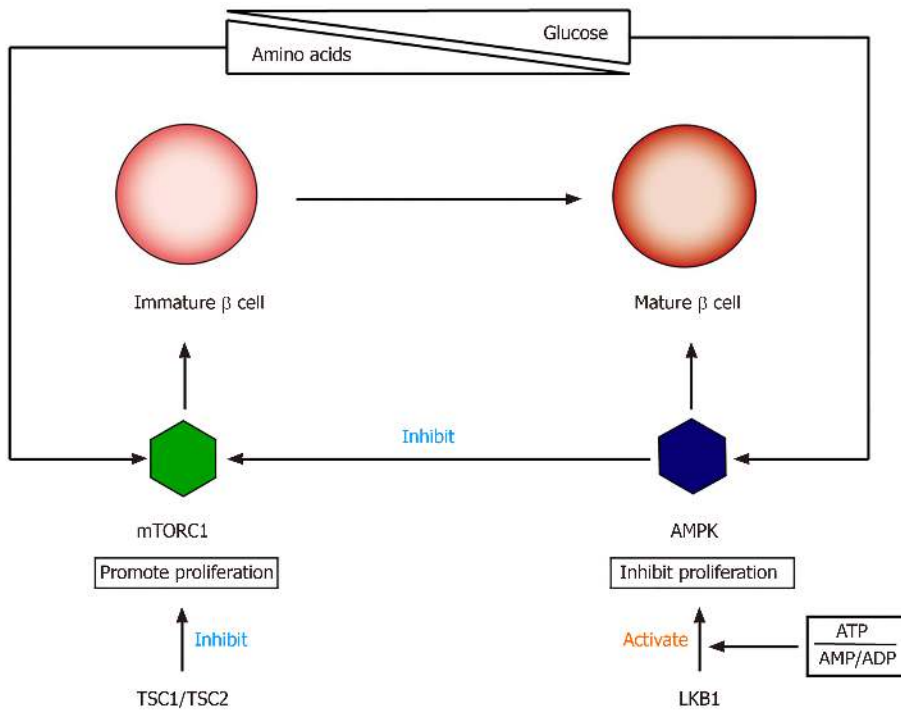


Figure 2 Relationship between mTORC1 and AMPK in the process of β cell transformation from immature to mature. Immediately after birth, the nutritional substrates are mainly amino acids, which activate the nutritionally sensitive mTORC1 and promote cell proliferation. mTORC1 is inhibited by AMPK and upstream regulatory factors TSC1/TSC2. When the nutritional substrate changes from amino acids to glucose, AMPK activity is stimulated. AMPK is activated by the upstream factor LKB1 under the regulation of intracellular ratio of ATP vs AMP/ADP, inhibits β cell proliferation, and promotes maturation, resulting in the establishment of adult-type glucose stimulated insulin secretion.

At low glucose concentrations, the islet α cells secrete glucagon that activates the glucagon receptor on the β cell membrane in a paracrine manner and inhibits insulin secretion^[97]. Additionally, ghrelin locally released by ϵ cells in pancreatic islets can inhibit GSIS. This process may involve the activation of GHSR-coupled G_i , the opening of voltage-dependent K^+ channels, and the inhibition of Ca^{2+} influx^[98]. Finally, enteroendocrine hormones released after food ingesting participate in the GSIS. The most important hormones are glucagon-like peptide 1 (GLP-1) and glucose-dependent insulinotropic polypeptide (GIP)^[99]. Studies have confirmed the expression of GLP-1 and GIP receptors in pancreatic β cells. After activation, these two hormones bind to the receptor coupled to the heterotrimeric G_s protein, thereby activating adenylyl cyclase, increasing intracellular cAMP, and enhancing GSIS^[97].

INDUCTION OF β CELLS *IN VITRO* AND CURRENT PROBLEMS

Due to the increasing demand for *in vitro* differentiation of hPSCs into β cells to treat T1DM, researchers have actively explored ways to obtain functionally β cells *in vitro*. hPSCs include human embryonic stem cells (ESCs) and induced pluripotent stem cells (hiPSCs). These cells are considered a reliable source for β -cell replacement due to their ability to self-renew and differentiate into all major somatic lineages^[100,101]. After experimenting many methods, researchers found that the induction of genuine β cells *in vitro* must follow the same differentiation process *in vivo*. Using Matrigel or low-density mouse embryonic fibroblasts as the culture platform, hPSCs can finally differentiate to β -like cells following the sequence of definitive endoderm, primitive intestinal canal pancreatic progenitor cells, endocrine progenitor cells, and hormone-expressing endocrine cells, when regulated by specific doses and sequences of growth factors and signaling molecules (such as retinoic acid, BMP pathway inhibitors, FGF10, and FGF7)^[102]. However, β -like cells produced *in vitro* by this method are mainly insulin positive multi-hormonal cells. They will only exhibit limited GSIS *in vitro* due to their lack of expression of key transcription factors of β -cells. Once transplanted into mice, they lose the ability to respond to glucose concentration stimuli^[103].

Pagliuca *et al*^[104] used a scalable suspension-based culture system to generate and cultivate hPSCs, and cell clusters (about 100-200 μ m in diameter, each cluster contains

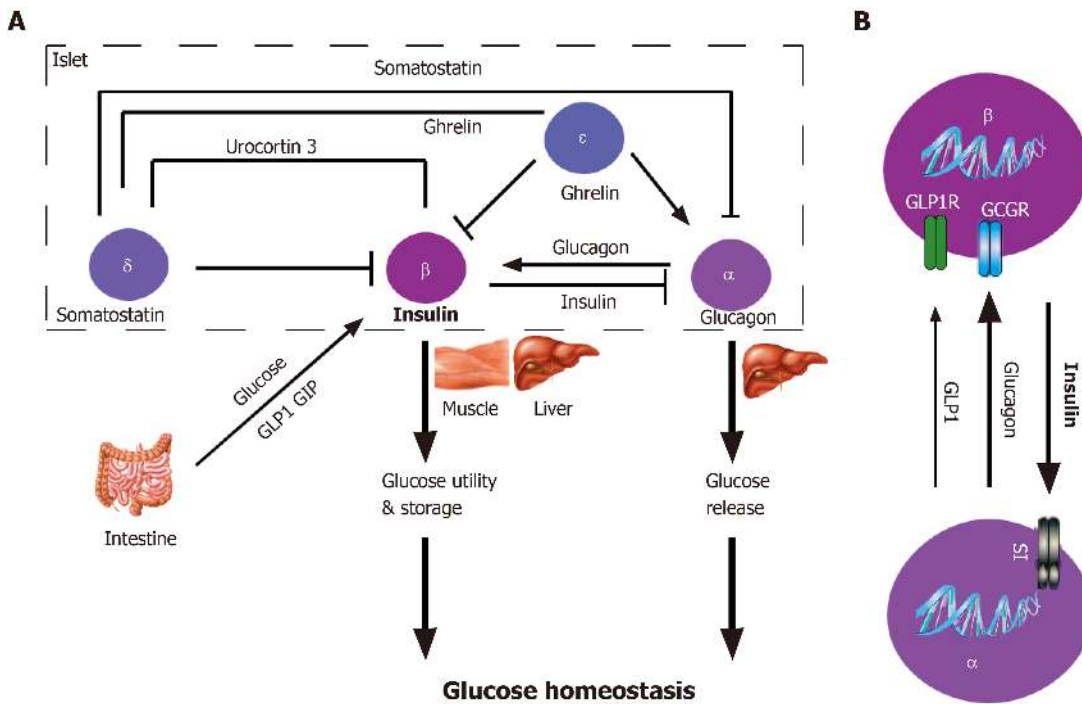


Figure 3 Paracrine regulations within the pancreatic islets. A: There are at least 5 paracrine regulatory circuits within the islets, among which α and β cells are two important cells that fine-tune the secretion of islet hormones that regulate blood glucose homeostasis. At the same time, δ and ϵ cells can also regulate the secretion of insulin and glucagon through the paracrine interactions. Meanwhile, the enteroendocrine hormones GLP1 and GIP secreted from the intestinal endocrine cells can also regulate β -cell insulin secretion by binding to receptors on the cell membrane; B: More detailed interactions between α and β cells.

hundreds of cells) from hESC line (HUES8) or hiPSC line (hiPSC-1 and hiPSC-2) were induced to transform into definitive endoderm (> 95% SOX17+ cells, DE), and subsequently differentiated into early pancreatic progenitor cells (> 85% PDX1+ cells, PP1). Culturing PP1 for 5 d under KGF or FGF7, retinoic acid, and SANT1 (sonic hedgehog signaling pathway antagonists) conditions can lead to forming pancreatic progenitor cells (PP2) expressing PDX1+/*NKX6.1*+, and producing functional β cells 3-4 mo after transplantation into mice. After testing the insulin secretion of these β -like cells, researchers found that their function is similar to that of adult β cells.

These stem cell (SC)-derived β -like cells are known as SC- β cells^[104] that are arguably the most advanced β -like cells induced *in vitro* from hPSCs. The increased level of UCN3 expression was found to coincide with the functional maturation of the SC- β cells^[105,106]. In SC- β cells, the nutritional regulation of mTORC1 activity is mainly determined by the amount of amino acids, not glucose, which is very similar to fetal β cells in the body^[107]. This is consistent with the fact that SC- β cells are not mature at this time. After reducing the amount of amino acids in the culture medium, the SC- β cells can be induced to be more mature^[108]. In adults, the supply of nutrients is periodic, so the activity of mTORC is also dynamic, which requires the participation of AMPK, TSC1, TSC2 (the upstream inhibitors of mTOR), *etc.*

Davis *et al*^[109] found that SC- β cells have lower GSIS levels than cadaver islet β cells. They found that glucose metabolism is a restricting factor that inhibits the formation of mature GSIS in SC- β cells. Abnormal mitochondrial metabolism is also associated with the immature GSIS in SC- β cells that can be used to explore the metabolic processes and quantify their ability to transport glucose. Furthermore SC- β cells can sense and respond to changes in metabolic flux, but the metabolism of glyceraldehyde 3-phosphate is the key "defect" or "bottleneck". The activities of the enzymes GAPDH and PGK1 are significantly lower in SC- β cells than in cadaver islets, and these two enzymes can catalyze the enzymatic conversion of 3-phosphoglycerate to 3-phosphoglycerate. When the enzyme concentrations are reduced, the slow glycolysis flux in SC- β cells inhibits the production of phosphoenolpyruvate in mitochondria, resulting in restrictions on GSIS promoted by downstream mitochondrial phosphoenolpyruvate carboxykinase. Therefore, bypassing the above-mentioned defect in the glycolysis process that is unique to the *in vitro* culture process can drastically increase the intracellular PEP and make the cells have mature islet-like insulin secretion characteristics^[110,111]. The researchers proposed that treating differentiated SC- β cells with metabolized, cell-permeable intermediates that skip

these enzymatic steps in glycolysis can result in islet-like insulin secretion and acts through the same mechanisms that underlie glucose sensing in functional islets. Taken together, these data suggest that the *in vitro* functional maturation of SC- β cells can be achieved by improving the nutritional conditions in the culture medium. However, further exploration is required as to how this bottleneck is formed in the differentiation process *in vitro*.

In the process of differentiation of β cells *in vitro*, it is necessary to ensure the generation of other islet cells. Indeed, other cells may also be differentiated in addition to SC- β cells. Veres *et al.*^[112] showed that in SC-islets derived from hPSCs, there are also α -like cells expressing GCG, ARX, IRX2, and INS and enterochromaffin cells that express CHGA, TPH1, LMX1A, and SLC18A1. These cells are multi-hormonal cells and when transplanted, they can improve the function of β cells through local interactions or autocrine signaling in SC islets. Furthermore, CD49a was found as a surface marker of SC- β cells, and it was showed that pure SC- β cell clusters can be obtained by magnetic separation.

Protein transduction technology for delivering targeted transcription factors is also used to obtain insulin-producing cells from stem cells *in vitro*^[113]. Protein transduction domains (PTD) or cell penetrating peptides can be directly internalized into cells when the protein is synthesized as a recombinant fusion molecule or covalently crosslinked to the PTDs, the mechanism of PTD-mediated protein transduction through endocytosis as a vesicle into the cytoplasm^[114]. Thus, PTD may provide a new strategy of generating insulin-secreting cells from stem/progenitor cells without transferring foreign transcription factor genes such as *PDX-1*, *B2/NEUROD*, *NGN3*, and *ISL-1*^[115,116].

In addition to hPSCs, multipotent stem cells including hematopoietic stem cells, mesenchymal stromal cells/MSCs, and adipose-derived stem cells are also possible sources for generation of insulin-producing cells^[117]. MSCs from various tissues and organs and the umbilical cord blood can be differentiated into islet-like cells or insulin-producing cells (IPC) that express key transcription factors such as *PAX6* and *ISL1*^[118]. Besides IPC differentiation, MSCs may also secrete various cytokines and growth factors to help regenerate endogenous islet β cells^[119]. Si *et al.*^[120] found that injection of MSCs into diabetic rats can lead to significant endogenous β -cell regeneration. Meanwhile, Ianus *et al.*^[121] found that approximately 1.7% to 3% of regenerated islet β cells originated from transplanted MSCs.

CONCLUSION

T1DM is an autoimmune disease, which is generally early onset and is characterized by an absolute lack of insulin secretion. Therefore, the current treatment is to supplement the required insulin from an external source. However, there are many problems with this treatment method, including cumbersome procedures and associated devastating complications. If patients forget to take their medicine, acute complications are immediately developed, such as diabetic ketoacidosis. Therefore, in recent years, researchers have proposed other treatments for T1DM, such as islet transplantation, immunotherapy, and stem cell therapy. Among them, stem cell therapy is the most promising treatment method, but it still faces many obstacles such as generation of matured β -like cells in achieving the clinical application. First, the changes in the nutritional conditions, the surrounding microenvironment, and the related molecular mechanisms may all play a part in the maturation of β -like cells. Second, abnormal mitochondrial function in glucose metabolism is closely related to immature GSIS of β -like cells. Developing normal mitochondrial function in SC- β cells must be achieved in the next few years to generate mature β -like cells. Third, the microenvironment for *in vitro* differentiation also appears to be crucial for the functional maturation of β cells as isolated β cells cannot have adult-type GSIS, which is related to the paracrine effects among pancreatic islet cells as described above. This suggests that the reconstruction of islet-like structures, for example 3D bioprinting with *in vitro* differentiated SC- β and other endocrine cells, is necessary for generating mature SC- β cells. Finally, critical molecules/compounds to mature the reconstructed islet-like structures need to be discovered. It is hoped that in the near future, stem cell therapy can ultimately become a viable curative treatment for most T1DM patients.

REFERENCES

- 1 **Tyka K**, Jörns A, Turatsinze JV, Eizirik DL, Lenzen S, Gurgul-Convey E. MCP1P1 regulates the sensitivity of pancreatic beta-cells to cytokine toxicity. *Cell Death Dis* 2019; **10**: 29 [PMID: 30631045 DOI: 10.1038/s41419-018-1268-4]
- 2 **Shao L**, Zhou HJ, Zhang H, Qin L, Hwa J, Yun Z, Ji W, Min W. SENP1-mediated NEMO deSUMOylation in adipocytes limits inflammatory responses and type-1 diabetes progression. *Nat Commun* 2015; **6**: 8917 [PMID: 26596471 DOI: 10.1038/ncomms9917]
- 3 **Cobo-Vuilleumier N**, Lorenzo PI, Rodríguez NG, Herrera Gómez IG, Fuente-Martin E, López-Noriega L, Mellado-Gil JM, Romero-Zerbo SY, Baquie M, Lachaud CC, Stifter K, Perdomo G, Bugliani M, De Tata V, Bosco D, Parnaud G, Pozo D, Hmadcha A, Florido JP, Toscano MG, de Haan P, Schoonjans K, Sánchez Palazón L, Marchetti P, Schirmbeck R, Martín-Montalvo A, Meda P, Soria B, Bermúdez-Silva FJ, St-Onge L, Gauthier BR. LRH-1 agonism favours an immune-islet dialogue which protects against diabetes mellitus. *Nat Commun* 2018; **9**: 1488 [PMID: 29662071 DOI: 10.1038/s41467-018-03943-0]
- 4 **Silva C**, Sampaio-Pinto V, Andrade S, Rodrigues I, Costa R, Guerreiro S, Carvalho E, Pinto-do-Ó P, Nascimento DS, Soares R. Establishing a Link between Endothelial Cell Metabolism and Vascular Behaviour in a Type 1 Diabetes Mouse Model. *Cell Physiol Biochem* 2019; **52**: 503-516 [PMID: 30897318 DOI: 10.33594/000000036]
- 5 **Yin L**, Zeng C, Yao J, Shen J. Emerging Roles for Noncoding RNAs in Autoimmune Thyroid Disease. *Endocrinology* 2020; **161** [PMID: 32270194 DOI: 10.1210/endo/bqaa053]
- 6 **Needell JC**, Zipris D. The Role of the Intestinal Microbiome in Type 1 Diabetes Pathogenesis. *Curr Diab Rep* 2016; **16**: 89 [PMID: 27523648 DOI: 10.1007/s11892-016-0781-z]
- 7 **Rezaei-Tavirani S**, Rostami-Nejad M, Vafae R, Khalkhal E, Keramatnia A, Ehsani-Ardakani MJ, Razzaghi M. Introducing tumor necrosis factor as a prominent player in celiac disease and type 1 diabetes mellitus. *Gastroenterol Hepatol Bed Bench* 2019; **12**: S123-S129 [PMID: 32099612]
- 8 **Espona-Noguera A**, Ciriza J, Cañibano-Hernández A, Orive G, Hernández RMM, Saenz Del Burgo L, Pedraz JL. Review of Advanced Hydrogel-Based Cell Encapsulation Systems for Insulin Delivery in Type 1 Diabetes Mellitus. *Pharmaceutics* 2019; **11** [PMID: 31726670 DOI: 10.3390/pharmaceutics11110597]
- 9 **Cahill D**, Zamboni F, Collins MN. Radiological Advances in Pancreatic Islet Transplantation. *Acad Radiol* 2019; **26**: 1536-1543 [PMID: 30709732 DOI: 10.1016/j.acra.2019.01.006]
- 10 **Ding H**, Wang F, Shi X, Ma H, Du Y, Hou L, Xing N. LncRNA MALAT1 induces the dysfunction of β cells via reducing the histone acetylation of the PDX-1 promoter in type 1 diabetes. *Exp Mol Pathol* 2020; **114**: 104432 [PMID: 32243891 DOI: 10.1016/j.yexmp.2020.104432]
- 11 **Dvornikova KA**, Bystrova EY, Platonova ON, Churilov LP. Polymorphism of toll-like receptor genes and autoimmune endocrine diseases. *Autoimmun Rev* 2020; **19**: 102496 [PMID: 32062033 DOI: 10.1016/j.autrev.2020.102496]
- 12 **Noble JA**. Immunogenetics of type 1 diabetes: A comprehensive review. *J Autoimmun* 2015; **64**: 101-112 [PMID: 26272854 DOI: 10.1016/j.jaut.2015.07.014]
- 13 **Scherm MG**, Serr I, Zahm AM, Schug J, Bellusci S, Manfredini R, Salb VK, Gerlach K, Weigmann B, Ziegler AG, Kaestner KH, Daniel C. miRNA142-3p targets Tet2 and impairs Treg differentiation and stability in models of type 1 diabetes. *Nat Commun* 2019; **10**: 5697 [PMID: 31836704 DOI: 10.1038/s41467-019-13587-3]
- 14 **Song J**. Development of Auto Antigen-specific Regulatory T Cells for Diabetes Immunotherapy. *Immune Netw* 2016; **16**: 281-285 [PMID: 27799873 DOI: 10.4110/in.2016.16.5.281]
- 15 **Xie Z**, Chang C, Zhou Z. Molecular mechanisms in autoimmune type 1 diabetes: a critical review. *Clin Rev Allergy Immunol* 2014; **47**: 174-192 [PMID: 24752371 DOI: 10.1007/s12016-014-8422-2]
- 16 **Honen J**, Lempainen J, Veijola R. The heterogeneous pathogenesis of type 1 diabetes mellitus. *Nat Rev Endocrinol* 2019; **15**: 635-650 [PMID: 31534209 DOI: 10.1038/s41574-019-0254-y]
- 17 **Morran MP**, Vonberg A, Khadra A, Pietropaolo M. Immunogenetics of type 1 diabetes mellitus. *Mol Aspects Med* 2015; **42**: 42-60 [PMID: 25579746 DOI: 10.1016/j.mam.2014.12.004]
- 18 **Pathak V**, Pathak NM, O'Neill CL, Guduric-Fuchs J, Medina RJ. Therapies for Type 1 Diabetes: Current Scenario and Future Perspectives. *Clin Med Insights Endocrinol Diabetes* 2019; **12**: 1179551419844521 [PMID: 31105434 DOI: 10.1177/1179551419844521]
- 19 **Wu Q**, Zheng S, Qin Y, Zheng X, Chen H, Yang T, Zhang M. Efficacy and safety of stem cells transplantation in patients with type 1 diabetes mellitus-a systematic review and meta-analysis. *Endocr J* 2020; **67**: 827-840 [PMID: 32321876 DOI: 10.1507/endocrj.EJ20-0050]
- 20 **Ni Q**, Pham NB, Meng WS, Zhu G, Chen X. Advances in immunotherapy of type I diabetes. *Adv Drug Deliv Rev* 2019; **139**: 83-91 [PMID: 30528629 DOI: 10.1016/j.addr.2018.12.003]
- 21 **Viswanathan C**, Sarang S. Status of stem cell based clinical trials in the treatment for diabetes. *Curr Diabetes Rev* 2013; **9**: 429-436 [PMID: 24160356 DOI: 10.2174/15733998113096660082]
- 22 **Kakkar A**, Sorout A, Tiwari M, Shrivastava P, Meena P, Saraswat SK, Srivastava S, Datt R, Pandey S. Current Status of Stem Cell Treatment for Type I Diabetes Mellitus. *Tissue Eng Regen Med* 2018; **15**: 699-709 [PMID: 30603589 DOI: 10.1007/s13770-018-0143-9]
- 23 **Sordi V**, Pellegrini S, Krampera M, Marchetti P, Pessina A, Ciardelli G, Fadini G, Pintus C, Pantè G, Piemonti L. Stem cells to restore insulin production and cure diabetes. *Nutr Metab Cardiovasc Dis* 2017; **27**: 583-600 [PMID: 28545927 DOI: 10.1016/j.numecd.2017.02.004]

- 24 **Rorsman P**, Ashcroft FM. Pancreatic β -Cell Electrical Activity and Insulin Secretion: Of Mice and Men. *Physiol Rev* 2018; **98**: 117-214 [PMID: 29212789 DOI: 10.1152/physrev.00008.2017]
- 25 **Baron M**, Veres A, Wolock SL, Faust AL, Gaujoux R, Vetere A, Ryu JH, Wagner BK, Shen-Orr SS, Klein AM, Melton DA, Yanai I. A Single-Cell Transcriptomic Map of the Human and Mouse Pancreas Reveals Inter- and Intra-cell Population Structure. *Cell Syst* 2016; **3**: 346-360. e4 [PMID: 27667365 DOI: 10.1016/j.cels.2016.08.011]
- 26 **Benitez CM**, Qu K, Sugiyama T, Pauerstein PT, Liu Y, Tsai J, Gu X, Ghodasara A, Arda HE, Zhang J, Dekker JD, Tucker HO, Chang HY, Kim SK. An integrated cell purification and genomics strategy reveals multiple regulators of pancreas development. *PLoS Genet* 2014; **10**: e1004645 [PMID: 25330008 DOI: 10.1371/journal.pgen.1004645]
- 27 **Olofsson CS**, Göpel SO, Barg S, Galvanovskis J, Ma X, Salehi A, Rorsman P, Eliasson L. Fast insulin secretion reflects exocytosis of docked granules in mouse pancreatic B-cells. *Pflugers Arch* 2002; **444**: 43-51 [PMID: 11976915 DOI: 10.1007/s00424-002-0781-5]
- 28 **Jiang FX**, Morahan G. Insulin-secreting β cells require a post-genomic concept. *World J Diabetes* 2016; **7**: 198-208 [PMID: 27226815 DOI: 10.4239/wjd.v7.i10.198]
- 29 **Lemaire K**, Ravier MA, Schraenen A, Creemers JW, Van de Plas R, Granvik M, Van Lommel L, Waelkens E, Chimienti F, Rutter GA, Gilon P, in't Veld PA, Schuit FC. Insulin crystallization depends on zinc transporter ZnT8 expression, but is not required for normal glucose homeostasis in mice. *Proc Natl Acad Sci USA* 2009; **106**: 14872-14877 [PMID: 19706465 DOI: 10.1073/pnas.0906587106]
- 30 **Ashcroft FM**, Rorsman P. Diabetes mellitus and the β cell: the last ten years. *Cell* 2012; **148**: 1160-1171 [PMID: 22424227 DOI: 10.1016/j.cell.2012.02.010]
- 31 **Murtaugh LC**. Pancreas and beta-cell development: from the actual to the possible. *Development* 2007; **134**: 427-438 [PMID: 17185316 DOI: 10.1242/dev.02770]
- 32 **Jennings RE**, Berry AA, Strutt JP, Gerrard DT, Hanley NA. Human pancreas development. *Development* 2015; **142**: 3126-3137 [PMID: 26395141 DOI: 10.1242/dev.120063]
- 33 **Al-Khawaga S**, Memon B, Butler AE, Taheri S, Abou-Samra AB, Abdelalim EM. Pathways governing development of stem cell-derived pancreatic β cells: lessons from embryogenesis. *Biol Rev Camb Philos Soc* 2018; **93**: 364-389 [PMID: 28643455 DOI: 10.1111/brv.12349]
- 34 **Collombat P**, Hecksher-Sørensen J, Krull J, Berger J, Riedel D, Herrera PL, Serup P, Mansouri A. Embryonic endocrine pancreas and mature beta cells acquire alpha and PP cell phenotypes upon Arx misexpression. *J Clin Invest* 2007; **117**: 961-970 [PMID: 17404619 DOI: 10.1172/JCI29115]
- 35 **Evans-Molina C**, Vestermark GL, Mirmira RG. Development of insulin-producing cells from primitive biologic precursors. *Curr Opin Organ Transplant* 2009; **14**: 56-63 [PMID: 19337148 DOI: 10.1097/MOT.0b013e3283186fc1]
- 36 **Pan FC**, Brissova M. Pancreas development in humans. *Curr Opin Endocrinol Diabetes Obes* 2014; **21**: 77-82 [PMID: 24569548 DOI: 10.1097/MED.0000000000000047]
- 37 **Jennings RE**, Berry AA, Kirkwood-Wilson R, Roberts NA, Hearn T, Salisbury RJ, Blaylock J, Piper Hanley K, Hanley NA. Development of the human pancreas from foregut to endocrine commitment. *Diabetes* 2013; **62**: 3514-3522 [PMID: 23630303 DOI: 10.2337/db12-1479]
- 38 **Lyttle BM**, Li J, Krishnamurthy M, Fellows F, Wheeler MB, Goodyer CG, Wang R. Transcription factor expression in the developing human fetal endocrine pancreas. *Diabetologia* 2008; **51**: 1169-1180 [PMID: 18491072 DOI: 10.1007/s00125-008-1006-z]
- 39 **Hang Y**, Yamamoto T, Benninger RK, Brissova M, Guo M, Bush W, Piston DW, Powers AC, Magnuson M, Thurmond DC, Stein R. The MafA transcription factor becomes essential to islet β -cells soon after birth. *Diabetes* 2014; **63**: 1994-2005 [PMID: 24520122 DOI: 10.2337/db13-1001]
- 40 **Otonkoski T**, Andersson S, Knip M, Simell O. Maturation of insulin response to glucose during human fetal and neonatal development. Studies with perfusion of pancreatic isletlike cell clusters. *Diabetes* 1988; **37**: 286-291 [PMID: 3286329 DOI: 10.2337/diab.37.3.286]
- 41 **Bastidas-Ponce A**, Scheibner K, Lickert H, Bakhti M. Cellular and molecular mechanisms coordinating pancreas development. *Development* 2017; **144**: 2873-2888 [PMID: 28811309 DOI: 10.1242/dev.140756]
- 42 **Sharon N**, Chawla R, Mueller J, Vanderhooft J, Whitehorn LJ, Rosenthal B, Gürtler M, Estantboulieh RR, Shvartsman D, Gifford DK, Trapnell C, Melton D. A Peninsular Structure Coordinates Asynchronous Differentiation with Morphogenesis to Generate Pancreatic Islets. *Cell* 2019; **176**: 790-804. e13 [PMID: 30661759 DOI: 10.1016/j.cell.2018.12.003]
- 43 **Stolovich-Rain M**, Enk J, Vikesa J, Nielsen FC, Saada A, Glaser B, Dor Y. Weaning triggers a maturation step of pancreatic β cells. *Dev Cell* 2015; **32**: 535-545 [PMID: 25662175 DOI: 10.1016/j.devcel.2015.01.002]
- 44 **Chen TY**, Lines D, Dickson C, Go C, Kirkwood RN, Langendijk P. Elevating glucose and insulin secretion by carbohydrate formulation diets in late lactation to improve post-weaning fertility in primiparous sows. *Reprod Domest Anim* 2016; **51**: 813-818 [PMID: 27548995 DOI: 10.1111/rda.12760]
- 45 **Cappelli APG**, Zoppi CC, Silveira LR, Batista TM, Paula FM, da Silva PMR, Rafacho A, Barbosa-Sampaio HC, Boschero AC, Carneiro EM. Reduced glucose-induced insulin secretion in low-protein-fed rats is associated with altered pancreatic islets redox status. *J Cell Physiol* 2018; **233**: 486-496 [PMID: 28370189 DOI: 10.1002/jcp.25908]
- 46 **Kang T**, Jensen P, Huang H, Lund Christensen G, Billestrup N, Larsen MR. Characterization of the Molecular Mechanisms Underlying Glucose Stimulated Insulin Secretion from Isolated Pancreatic β -

- cells Using Post-translational Modification Specific Proteomics (PTMomics). *Mol Cell Proteomics* 2018; **17**: 95-110 [PMID: 29113996 DOI: 10.1074/mcp.RA117.000217]
- 47 **Meda P**, Schuit F. Glucose-stimulated insulin secretion: the hierarchy of its multiple cellular and subcellular mechanisms. *Diabetologia* 2013; **56**: 2552-2555 [PMID: 24114115 DOI: 10.1007/s00125-013-3073-z]
- 48 **Salinno C**, Cota P, Bastidas-Ponce A, Tarquis-Medina M, Lickert H, Bakhti M. β -Cell Maturation and Identity in Health and Disease. *Int J Mol Sci* 2019; **20** [PMID: 31671683 DOI: 10.3390/ijms20215417]
- 49 **Artner I**, Le Lay J, Hang Y, Elghazi L, Schisler JC, Henderson E, Sosa-Pineda B, Stein R. MafB: an activator of the glucagon gene expressed in developing islet alpha- and beta-cells. *Diabetes* 2006; **55**: 297-304 [PMID: 16443760 DOI: 10.2337/diabetes.55.02.06.db05-0946]
- 50 **Matsuoka TA**, Artner I, Henderson E, Means A, Sander M, Stein R. The MafA transcription factor appears to be responsible for tissue-specific expression of insulin. *Proc Natl Acad Sci U S A* 2004; **101**: 2930-2933 [PMID: 14973194 DOI: 10.1073/pnas.0306233101]
- 51 **Nishimura W**, Kondo T, Salameh T, El Khattabi I, Dodge R, Bonner-Weir S, Sharma A. A switch from MafB to MafA expression accompanies differentiation to pancreatic beta-cells. *Dev Biol* 2006; **293**: 526-539 [PMID: 16580660 DOI: 10.1016/j.ydbio.2006.02.028]
- 52 **Artner I**, Hang Y, Mazur M, Yamamoto T, Guo M, Lindner J, Magnuson MA, Stein R. MafA and MafB regulate genes critical to beta-cells in a unique temporal manner. *Diabetes* 2010; **59**: 2530-2539 [PMID: 20627934 DOI: 10.2337/db10-0190]
- 53 **Hang Y**, Stein R. MafA and MafB activity in pancreatic β cells. *Trends Endocrinol Metab* 2011; **22**: 364-373 [PMID: 21719305 DOI: 10.1016/j.tem.2011.05.003]
- 54 **Aguayo-Mazzucato C**, Koh A, El Khattabi I, Li WC, Toschi E, Jermendy A, Juhl K, Mao K, Weir GC, Sharma A, Bonner-Weir S. Mafa expression enhances glucose-responsive insulin secretion in neonatal rat beta cells. *Diabetologia* 2011; **54**: 583-593 [PMID: 21190012 DOI: 10.1007/s00125-010-2026-z]
- 55 **Ediger BN**, Lim HW, Juliana C, Groff DN, Williams LT, Dominguez G, Liu JH, Taylor BL, Walp ER, Kameswaran V, Yang J, Liu C, Hunter CS, Kaestner KH, Naji A, Li C, Sander M, Stein R, Sussel L, Won KJ, May CL, Stoffers DA. LIM domain-binding 1 maintains the terminally differentiated state of pancreatic β cells. *J Clin Invest* 2017; **127**: 215-229 [PMID: 27941246 DOI: 10.1172/JCI88016]
- 56 **Scavuzzo MA**, Hill MC, Chmielowiec J, Yang D, Teaw J, Sheng K, Kong Y, Bettini M, Zong C, Martin JF, Borowiak M. Endocrine lineage biases arise in temporally distinct endocrine progenitors during pancreatic morphogenesis. *Nat Commun* 2018; **9**: 3356 [PMID: 30135482 DOI: 10.1038/s41467-018-05740-1]
- 57 **Churchill AJ**, Gutiérrez GD, Singer RA, Lorberbaum DS, Fischer KA, Sussel L. Genetic evidence that Nkx2.2 acts primarily downstream of Neurog3 in pancreatic endocrine lineage development. *Elife* 2017; **6** [PMID: 28071588 DOI: 10.7554/eLife.20010]
- 58 **Zhu Z**, Li QV, Lee K, Rosen BP, González F, Soh CL, Huangfu D. Genome Editing of Lineage Determinants in Human Pluripotent Stem Cells Reveals Mechanisms of Pancreatic Development and Diabetes. *Cell Stem Cell* 2016; **18**: 755-768 [PMID: 27133796 DOI: 10.1016/j.stem.2016.03.015]
- 59 **Kropp PA**, Dunn JC, Carboneau BA, Stoffers DA, Gannon M. Cooperative function of Pdx1 and Ocl1 in multipotent pancreatic progenitors impacts postnatal islet maturation and adaptability. *Am J Physiol Endocrinol Metab* 2018; **314**: E308-E321 [PMID: 29351489 DOI: 10.1152/ajpendo.00260.2017]
- 60 **Spaeth JM**, Gupte M, Perelis M, Yang YP, Cyphert H, Guo S, Liu JH, Guo M, Bass J, Magnuson MA, Wright C, Stein R. Defining a Novel Role for the Pdx1 Transcription Factor in Islet β -Cell Maturation and Proliferation During Weaning. *Diabetes* 2017; **66**: 2830-2839 [PMID: 28705881 DOI: 10.2337/db16-1516]
- 61 **Guo L**, Inada A, Aguayo-Mazzucato C, Hollister-Lock J, Fujitani Y, Weir GC, Wright CV, Sharma A, Bonner-Weir S. PDX1 in ducts is not required for postnatal formation of β -cells but is necessary for their subsequent maturation. *Diabetes* 2013; **62**: 3459-3468 [PMID: 23775765 DOI: 10.2337/db12-1833]
- 62 **Romer AI**, Singer RA, Sui L, Egli D, Sussel L. Murine Perinatal β -Cell Proliferation and the Differentiation of Human Stem Cell-Derived Insulin-Expressing Cells Require NEUROD1. *Diabetes* 2019; **68**: 2259-2271 [PMID: 31519700 DOI: 10.2337/db19-0117]
- 63 **Mu C**, Wang T, Wang X, Tian H, Liu Y. Identification of microRNAs regulating Hlxb9 gene expression during the induction of insulin-producing cells. *Cell Biol Int* 2016; **40**: 515-523 [PMID: 26801823 DOI: 10.1002/cbin.10586]
- 64 **Sun J**, Xu M, Ortsäter H, Lundeberg E, Juntti-Berggren L, Chen YQ, Haeggström JZ, Gudmundsson GH, Diana J, Agerberth B. Cathelicidins positively regulate pancreatic β -cell functions. *FASEB J* 2016; **30**: 884-894 [PMID: 26527065 DOI: 10.1096/fj.15-275826]
- 65 **Rezania A**, Bruin JE, Xu J, Narayan K, Fox JK, O'Neil JJ, Kieffer TJ. Enrichment of human embryonic stem cell-derived NKX6.1-expressing pancreatic progenitor cells accelerates the maturation of insulin-secreting cells in vivo. *Stem Cells* 2013; **31**: 2432-2442 [PMID: 23897760 DOI: 10.1002/stem.1489]
- 66 **van der Meulen T**, Xie R, Kelly OG, Vale WW, Sander M, Huising MO. Urocortin 3 marks mature human primary and embryonic stem cell-derived pancreatic alpha and beta cells. *PLoS One* 2012; **7**: e52181 [PMID: 23251699 DOI: 10.1371/journal.pone.0052181]

- 67 **Bhargava A.** CRF and urocortins: a challenging interaction between family members. *Gastroenterology* 2011; **140**: 1391-1394 [PMID: [21447312](#) DOI: [10.1053/j.gastro.2011.03.024](#)]
- 68 **Novembri R,** Carrarelli P, Toti P, Rocha AL, Borges LE, Reis FM, Piomboni P, Florio P, Petraglia F. Urocortin 2 and urocortin 3 in endometriosis: evidence for a possible role in inflammatory response. *Mol Hum Reprod* 2011; **17**: 587-593 [PMID: [21454316](#) DOI: [10.1093/molehr/gar020](#)]
- 69 **Jamieson PM,** Cleasby ME, Kuperman Y, Morton NM, Kelly PA, Brownstein DG, Mustard KJ, Vaughan JM, Carter RN, Hahn CN, Hardie DG, Seckl JR, Chen A, Vale WW. Urocortin 3 transgenic mice exhibit a metabolically favourable phenotype resisting obesity and hyperglycaemia on a high-fat diet. *Diabetologia* 2011; **54**: 2392-2403 [PMID: [21667214](#) DOI: [10.1007/s00125-011-2205-6](#)]
- 70 **Blum B,** Hrvatin S, Schuetz C, Bonal C, Rezanian A, Melton DA. Functional beta-cell maturation is marked by an increased glucose threshold and by expression of urocortin 3. *Nat Biotechnol* 2012; **30**: 261-264 [PMID: [22371083](#) DOI: [10.1038/nbt.2141](#)]
- 71 **Balcazar N,** Sathyamurthy A, Elghazi L, Gould A, Weiss A, Shiojima I, Walsh K, Bernal-Mizrachi E. mTORC1 activation regulates beta-cell mass and proliferation by modulation of cyclin D2 synthesis and stability. *J Biol Chem* 2009; **284**: 7832-7842 [PMID: [19144649](#) DOI: [10.1074/jbc.M807458200](#)]
- 72 **Blandino-Rosano M,** Chen AY, Scheys JO, Alejandro EU, Gould AP, Taranukha T, Elghazi L, Cras-Méneur C, Bernal-Mizrachi E. mTORC1 signaling and regulation of pancreatic β -cell mass. *Cell Cycle* 2012; **11**: 1892-1902 [PMID: [22544327](#) DOI: [10.4161/cc.20036](#)]
- 73 **Jaafar R,** Tran S, Shah AN, Sun G, Valdearcos M, Marchetti P, Masini M, Swisa A, Giacometti S, Bernal-Mizrachi E, Matveyenko A, Hebrok M, Dor Y, Rutter GA, Koliwad SK, Bhushan A. mTORC1 to AMPK switching underlies β -cell metabolic plasticity during maturation and diabetes. *J Clin Invest* 2019; **129**: 4124-4137 [PMID: [31265435](#) DOI: [10.1172/JCI127021](#)]
- 74 **Maiese K.** New Insights for nicotinamide: Metabolic disease, autophagy, and mTOR. *Front Biosci (Landmark Ed)* 2020; **25**: 1925-1973 [PMID: [32472766](#)]
- 75 **Riahi Y,** Israeli T, Yeroslaviz R, Chimenez S, Avrahami D, Stolovich-Rain M, Alter I, Sebag M, Polin N, Bernal-Mizrachi E, Dor Y, Cerasi E, Leibowitz G. Inhibition of mTORC1 by ER stress impairs neonatal β -cell expansion and predisposes to diabetes in the *Akita* mouse. *Elife* 2018; **7** [PMID: [30412050](#) DOI: [10.7554/eLife.38472](#)]
- 76 **Blandino-Rosano M,** Barbaresso R, Jimenez-Palomares M, Bozadjieva N, Werneck-de-Castro JP, Hatanaka M, Mirmira RG, Sonenberg N, Liu M, Rüegg MA, Hall MN, Bernal-Mizrachi E. Loss of mTORC1 signalling impairs β -cell homeostasis and insulin processing. *Nat Commun* 2017; **8**: 16014 [PMID: [28699639](#) DOI: [10.1038/ncomms16014](#)]
- 77 **Ni Q,** Gu Y, Xie Y, Yin Q, Zhang H, Nie A, Li W, Wang Y, Ning G, Wang W, Wang Q. Raptor regulates functional maturation of murine beta cells. *Nat Commun* 2017; **8**: 15755 [PMID: [28598424](#) DOI: [10.1038/ncomms15755](#)]
- 78 **Lin SC,** Hardie DG. AMPK: Sensing Glucose as well as Cellular Energy Status. *Cell Metab* 2018; **27**: 299-313 [PMID: [29153408](#) DOI: [10.1016/j.cmet.2017.10.009](#)]
- 79 **Fu A,** Ng AC, Depatie C, Wijesekara N, He Y, Wang GS, Bardeesy N, Scott FW, Touyz RM, Wheeler MB, Srean RA. Loss of Lkb1 in adult beta cells increases beta cell mass and enhances glucose tolerance in mice. *Cell Metab* 2009; **10**: 285-295 [PMID: [19808021](#) DOI: [10.1016/j.cmet.2009.08.008](#)]
- 80 **Granot Z,** Swisa A, Magenheimer J, Stolovich-Rain M, Fujimoto W, Manduchi E, Miki T, Lennerz JK, Stoeckert CJ Jr, Meyuhos O, Seino S, Permutt MA, Piwnicka-Worms H, Bardeesy N, Dor Y. LKB1 regulates pancreatic beta cell size, polarity, and function. *Cell Metab* 2009; **10**: 296-308 [PMID: [19808022](#) DOI: [10.1016/j.cmet.2009.08.010](#)]
- 81 **Helman A,** Cangelosi AL, Davis JC, Pham Q, Rothman A, Faust AL, Straubhaar JR, Sabatini DM, Melton DA. A Nutrient-Sensing Transition at Birth Triggers Glucose-Responsive Insulin Secretion. *Cell Metab* 2020; **31**: 1004-1016. e5 [PMID: [32375022](#) DOI: [10.1016/j.cmet.2020.04.004](#)]
- 82 **Saxton RA,** Sabatini DM. mTOR Signaling in Growth, Metabolism, and Disease. *Cell* 2017; **169**: 361-371 [PMID: [28388417](#) DOI: [10.1016/j.cell.2017.03.035](#)]
- 83 **Huang C,** Walker EM, Dadi PK, Hu R, Xu Y, Zhang W, Sanavia T, Mun J, Liu J, Nair GG, Tan HYA, Wang S, Magnuson MA, Stoeckert CJ Jr, Hebrok M, Gannon M, Han W, Stein R, Jacobson DA, Gu G. Synaptotagmin 4 Regulates Pancreatic β Cell Maturation by Modulating the Ca^{2+} Sensitivity of Insulin Secretion Vesicles. *Dev Cell* 2018; **45**: 347-361. e5 [PMID: [29656931](#) DOI: [10.1016/j.devcel.2018.03.013](#)]
- 84 **Andersson SA,** Olsson AH, Esguerra JL, Heimann E, Ladenvall C, Edlund A, Salehi A, Taneera J, Degerman E, Groop L, Ling C, Eliasson L. Reduced insulin secretion correlates with decreased expression of exocytotic genes in pancreatic islets from patients with type 2 diabetes. *Mol Cell Endocrinol* 2012; **364**: 36-45 [PMID: [22939844](#) DOI: [10.1016/j.mce.2012.08.009](#)]
- 85 **Gegg M,** Böttcher A, Burtscher I, Hasenoeder S, Van Campenhout C, Aichler M, Walch A, Grant SG, Lickert H. Flattop regulates basal body docking and positioning in mono- and multiciliated cells. *Elife* 2014; **3** [PMID: [25296022](#) DOI: [10.7554/eLife.03842](#)]
- 86 **Bader E,** Migliorini A, Gegg M, Moruzzi N, Gerdes J, Roscioni SS, Bakhti M, Brandl E, Irmeler M, Beckers J, Aichler M, Feuchtinger A, Leitzinger C, Zischka H, Wang-Sattler R, Jastroch M, Tschöp M, Machicao F, Staiger H, Häring HU, Chmelova H, Chouinard JA, Oskolkov N, Korsgren O, Speier S, Lickert H. Identification of proliferative and mature β -cells in the islets of Langerhans. *Nature* 2016; **535**: 430-434 [PMID: [27398620](#) DOI: [10.1038/nature18624](#)]

- 87 **Roscioni SS**, Migliorini A, Gegg M, Lickert H. Impact of islet architecture on β -cell heterogeneity, plasticity and function. *Nat Rev Endocrinol* 2016; **12**: 695-709 [PMID: 27585958 DOI: 10.1038/nrendo.2016.147]
- 88 **Sakhneny L**, Rachi E, Epshtein A, Guez HC, Wald-Altman S, Lisnyansky M, Khalifa-Malka L, Hazan A, Baer D, Priel A, Weil M, Landsman L. Pancreatic Pericytes Support β -Cell Function in a Tcf7 L2-Dependent Manner. *Diabetes* 2018; **67**: 437-447 [PMID: 29246974 DOI: 10.2337/db17-0697]
- 89 **Dolenšek J**, Rupnik MS, Stožer A. Structural similarities and differences between the human and the mouse pancreas. *Islets* 2015; **7**: e1024405 [PMID: 26030186 DOI: 10.1080/19382014.2015.1024405]
- 90 **Briant LJB**, Reinbothe TM, Spiliotis I, Miranda C, Rodriguez B, Rorsman P. δ -cells and β -cells are electrically coupled and regulate α -cell activity via somatostatin. *J Physiol* 2018; **596**: 197-215 [PMID: 28975620 DOI: 10.1113/JP274581]
- 91 **Rodriguez-Diaz R**, Tamayo A, Hara M, Caicedo A. The Local Paracrine Actions of the Pancreatic α -Cell. *Diabetes* 2020; **69**: 550-558 [PMID: 31882565 DOI: 10.2337/dbi19-0002]
- 92 **Muller D**, Huang GC, Amiel S, Jones PM, Persaud SJ. Identification of insulin signaling elements in human beta-cells: autocrine regulation of insulin gene expression. *Diabetes* 2006; **55**: 2835-2842 [PMID: 17003350 DOI: 10.2337/db06-0532]
- 93 **Xu E**, Kumar M, Zhang Y, Ju W, Obata T, Zhang N, Liu S, Wendt A, Deng S, Ebina Y, Wheeler MB, Braun M, Wang Q. Intra-islet insulin suppresses glucagon release via GABA-GABAA receptor system. *Cell Metab* 2006; **3**: 47-58 [PMID: 16399504 DOI: 10.1016/j.cmet.2005.11.015]
- 94 **Head WS**, Orseth ML, Nunemaker CS, Satin LS, Piston DW, Benninger RK. Connexin-36 gap junctions regulate *in vivo* first- and second-phase insulin secretion dynamics and glucose tolerance in the conscious mouse. *Diabetes* 2012; **61**: 1700-1707 [PMID: 22511206 DOI: 10.2337/db11-1312]
- 95 **Sasson A**, Rachi E, Sakhneny L, Baer D, Lisnyansky M, Epshtein A, Landsman L. Islet Pericytes Are Required for β -Cell Maturity. *Diabetes* 2016; **65**: 3008-3014 [PMID: 27388217 DOI: 10.2337/db16-0365]
- 96 **Banaei-Bouchareb L**, Gouon-Evans V, Samara-Boustani D, Castellotti MC, Czernichow P, Pollard JW, Polak M. Insulin cell mass is altered in Csf1op/Csf1op macrophage-deficient mice. *J Leukoc Biol* 2004; **76**: 359-367 [PMID: 15178709 DOI: 10.1189/jlb.1103591]
- 97 **Ahrén B**. Islet G protein-coupled receptors as potential targets for treatment of type 2 diabetes. *Nat Rev Drug Discov* 2009; **8**: 369-385 [PMID: 19365392 DOI: 10.1038/nrd2782]
- 98 **Koh DS**, Cho JH, Chen L. Paracrine interactions within islets of Langerhans. *J Mol Neurosci* 2012; **48**: 429-440 [PMID: 22528452 DOI: 10.1007/s12031-012-9752-2]
- 99 **Meier JJ**, Nauck MA. Incretins and the development of type 2 diabetes. *Curr Diab Rep* 2006; **6**: 194-201 [PMID: 16898571 DOI: 10.1007/s11892-006-0034-7]
- 100 **Zhang Y**, Zhang Z, Chen P, Ma CY, Li C, Au TYK, Tam V, Peng Y, Wu R, Cheung KMC, Sham PC, Tse HF, Chan D, Leung VY, Cheah KSE, Lian Q. Directed Differentiation of Notochord-like and Nucleus Pulposus-like Cells Using Human Pluripotent Stem Cells. *Cell Rep* 2020; **30**: 2791-2806. e5 [PMID: 32101752 DOI: 10.1016/j.celrep.2020.01.100]
- 101 **Gaertner B**, Carrano AC, Sander M. Human stem cell models: lessons for pancreatic development and disease. *Genes Dev* 2019; **33**: 1475-1490 [PMID: 31676735 DOI: 10.1101/gad.331397.119]
- 102 **Kunisada Y**, Tsubooka-Yamazoe N, Shoji M, Hosoya M. Small molecules induce efficient differentiation into insulin-producing cells from human induced pluripotent stem cells. *Stem Cell Res* 2012; **8**: 274-284 [PMID: 22056147 DOI: 10.1016/j.scr.2011.10.002]
- 103 **Bruin JE**, Erener S, Vela J, Hu X, Johnson JD, Kurata HT, Lynn FC, Piret JM, Asadi A, Rezanian A, Kieffer TJ. Characterization of polyhormonal insulin-producing cells derived *in vitro* from human embryonic stem cells. *Stem Cell Res* 2014; **12**: 194-208 [PMID: 24257076 DOI: 10.1016/j.scr.2013.10.003]
- 104 **Pagliuca FW**, Millman JR, Gürtler M, Segel M, Van Dervort A, Ryu JH, Peterson QP, Greiner D, Melton DA. Generation of functional human pancreatic β cells *in vitro*. *Cell* 2014; **159**: 428-439 [PMID: 25303535 DOI: 10.1016/j.cell.2014.09.040]
- 105 **van der Meulen T**, Huising MO. Maturation of stem cell-derived beta-cells guided by the expression of urocortin 3. *Rev Diabet Stud* 2014; **11**: 115-132 [PMID: 25148370 DOI: 10.1900/RDS.2014.11.115]
- 106 **van der Meulen T**, Donaldson CJ, Cáceres E, Hunter AE, Cowing-Zitron C, Pound LD, Adams MW, Zembrzycki A, Grove KL, Huising MO. Urocortin3 mediates somatostatin-dependent negative feedback control of insulin secretion. *Nat Med* 2015; **21**: 769-776 [PMID: 26076035 DOI: 10.1038/nm.3872]
- 107 **Melnik BC**. The pathogenic role of persistent milk signaling in mTORC1- and milk-microRNA-driven type 2 diabetes mellitus. *Curr Diabetes Rev* 2015; **11**: 46-62 [PMID: 25587719 DOI: 10.2174/1573399811666150114100653]
- 108 **Russ HA**, Parent AV, Ringler JJ, Hennings TG, Nair GG, Shveygert M, Guo T, Puri S, Haataja L, Cirulli V, Billeloch R, Szot GL, Arvan P, Hebrok M. Controlled induction of human pancreatic progenitors produces functional beta-like cells *in vitro*. *EMBO J* 2015; **34**: 1759-1772 [PMID: 25908839 DOI: 10.15252/embj.201591058]
- 109 **Davis JC**, Alves TC, Helman A, Chen JC, Kenty JH, Cardone RL, Liu DR, Kibbey RG, Melton DA. Glucose Response by Stem Cell-Derived β Cells *In Vitro* Is Inhibited by a Bottleneck in Glycolysis. *Cell Rep* 2020; **31**: 107623 [PMID: 32402282 DOI: 10.1016/j.celrep.2020.107623]

- 110 **Motté E**, Szepessy E, Suenens K, Stangé G, Bomans M, Jacobs-Tulleneers-Thevissen D, Ling Z, Kroon E, Pipeleers D; Beta Cell Therapy Consortium EU-FP7. Composition and function of macroencapsulated human embryonic stem cell-derived implants: comparison with clinical human islet cell grafts. *Am J Physiol Endocrinol Metab* 2014; **307**: E838-E846 [PMID: [25205822](#) DOI: [10.1152/ajpendo.00219.2014](#)]
- 111 **Robert T**, De Mesmaeker I, Stangé GM, Suenens KG, Ling Z, Kroon EJ, Pipeleers DG. Functional Beta Cell Mass from Device-Encapsulated hESC-Derived Pancreatic Endoderm Achieving Metabolic Control. *Stem Cell Reports* 2018; **10**: 739-750 [PMID: [29503087](#) DOI: [10.1016/j.stemcr.2018.01.040](#)]
- 112 **Veres A**, Faust AL, Bushnell HL, Engquist EN, Kenty JH, Harb G, Poh YC, Sintov E, Gürtler M, Pagliuca FW, Peterson QP, Melton DA. Charting cellular identity during human *in vitro* β -cell differentiation. *Nature* 2019; **569**: 368-373 [PMID: [31068696](#) DOI: [10.1038/s41586-019-1168-5](#)]
- 113 **Vanikar AV**, Trivedi HL, Thakkar UG. Stem cell therapy emerging as the key player in treating type 1 diabetes mellitus. *Cytotherapy* 2016; **18**: 1077-1086 [PMID: [27424148](#) DOI: [10.1016/j.jcyt.2016.06.006](#)]
- 114 **Noguchi H**, Bonner-Weir S, Wei FY, Matsushita M, Matsumoto S. BETA2/NeuroD protein can be transduced into cells due to an arginine- and lysine-rich sequence. *Diabetes* 2005; **54**: 2859-2866 [PMID: [16186386](#) DOI: [10.2337/diabetes.54.10.2859](#)]
- 115 **Domínguez-Bendala J**, Klein D, Ribeiro M, Ricordi C, Inverardi L, Pastori R, Edlund H. TAT-mediated neurogenin 3 protein transduction stimulates pancreatic endocrine differentiation *in vitro*. *Diabetes* 2005; **54**: 720-726 [PMID: [15734848](#) DOI: [10.2337/diabetes.54.3.720](#)]
- 116 **Kilk K**, Magzoub M, Pooga M, Eriksson LE, Langel U, Gräslund A. Cellular internalization of a cargo complex with a novel peptide derived from the third helix of the islet-1 homeodomain. Comparison with the penetratin peptide. *Bioconjug Chem* 2001; **12**: 911-916 [PMID: [11716681](#) DOI: [10.1021/bc0100298](#)]
- 117 **Bosco D**, Armanet M, Morel P, Niclauss N, Sgroi A, Muller YD, Giovannoni L, Parnaud G, Berney T. Unique arrangement of alpha- and beta-cells in human islets of Langerhans. *Diabetes* 2010; **59**: 1202-1210 [PMID: [20185817](#) DOI: [10.2337/db09-1177](#)]
- 118 **Cho J**, D'Antuono M, Glicksman M, Wang J, Jonklaas J. A review of clinical trials: mesenchymal stem cell transplant therapy in type 1 and type 2 diabetes mellitus. *Am J Stem Cells* 2018; **7**: 82-93 [PMID: [30510843](#)]
- 119 **Pokrywczynska M**, Krzyzanowska S, Jundzill A, Adamowicz J, Drewa T. Differentiation of stem cells into insulin-producing cells: current status and challenges. *Arch Immunol Ther Exp (Warsz)* 2013; **61**: 149-158 [PMID: [23283518](#) DOI: [10.1007/s00005-012-0213-y](#)]
- 120 **Si Y**, Zhao Y, Hao H, Liu J, Guo Y, Mu Y, Shen J, Cheng Y, Fu X, Han W. Infusion of mesenchymal stem cells ameliorates hyperglycemia in type 2 diabetic rats: identification of a novel role in improving insulin sensitivity. *Diabetes* 2012; **61**: 1616-1625 [PMID: [22618776](#) DOI: [10.2337/db11-1141](#)]
- 121 **Ianus A**, Holz GG, Theise ND, Hussain MA. *In vivo* derivation of glucose-competent pancreatic endocrine cells from bone marrow without evidence of cell fusion. *J Clin Invest* 2003; **111**: 843-850 [PMID: [12639990](#) DOI: [10.1172/JCI16502](#)]



Published by **Baishideng Publishing Group Inc**
7041 Koll Center Parkway, Suite 160, Pleasanton, CA 94566, USA

Telephone: +1-925-3991568

E-mail: bpgoffice@wjgnet.com

Help Desk: <https://www.f6publishing.com/helpdesk>

<https://www.wjgnet.com>

