



Published in final edited form as:

Naunyn-Schmiedeberg's Arch Pharmacol. 2008 September ; 378(3): 261–274. doi:10.1007/s00210-008-0313-8.

Functional Reconstitution of the Human Chemokine Receptor CXCR4 with G_i/G_o-Proteins in Sf9 Insect Cells

Patrick Kleemann^{*,**}, Dan Papa^{*,***}, Sandy Vigil-Cruz, and Roland Seifert

Patrick Kleemann, Roland Seifert: Lehrstuhl für Pharmakologie und Toxikologie, Institut für Pharmazie, Universität Regensburg, Universitätsstraße 31, D-93053 Regensburg, Germany. Dan Papa: Department of Pharmacology and Toxicology, University of Kansas, Lawrence, KS 66045, USA. Sandy Vigil-Cruz: Department of Medicinal Chemistry, University of Kansas, Lawrence, KS 66045, USA

Abstract

The chemokine stromal cell-derived factor-1 α (SDF-1 α) binds to the chemokine receptor CXCR4 that couples to pertussis toxin-sensitive G-proteins of the G_i/G_o-family. CXCR4 plays a role in the pathogenesis of autoimmune diseases, human immunodeficiency virus infection and various tumors, fetal development as well as endothelial progenitor and T-cell recruitment. To this end, most CXCR4 studies have focused on the cellular level. The aim of this study was to establish a reconstitution system for the human CXCR4 that allows for the analysis of receptor/G-protein coupling at the membrane level. We wished to study specifically constitutive CXCR4 activity and the G-protein-specificity of CXCR4. We co-expressed N- and C-terminally epitope-tagged human CXCR4 with various G_i/G_o-proteins and Regulator of G-Protein Signalling (RGS)-proteins in Sf9 insect cells. Expression of CXCR4, G-proteins and RGS-proteins was verified by immunoblotting. CXCR4 coupled more effectively to G α_{i1} and G α_{i2} than to G α_{i3} and G α_o and insect cell G-proteins as assessed by SDF-1 α -stimulated high-affinity steady-state GTP hydrolysis. The RGS-proteins RGS4 and GAIP enhanced SDF-1 α -stimulated GTP hydrolysis. SDF-1 α stimulated [³⁵S]guanosine 5'-[γ -thio] triphosphate (GTP γ S) binding to G α_{i2} . RGS4 did not enhance GTP γ S binding. Na⁺ salts of halides did not reduce basal GTPase activity. The bicyclam, 1-[[1,4,8,11-tetrazacyclotetradec-1-ylmethyl]phenyl]methyl]-1,4,8,11-tetrazacyclotetradecane (AMD3100), acted as CXCR4 antagonist but was devoid of inverse agonistic activity. Halides reduced the maximum SDF-1 α -stimulated GTP hydrolysis in the order of efficacy I⁻ > Br⁻ > Cl⁻. In addition, salts reduced the potency of SDF-1 α at activating GTP hydrolysis. From our data we conclude the following. (i) Sf9 cells are a suitable system for expression of functionally intact human CXCR4. (ii) Human CXCR4 couples effectively to G α_{i1} and G α_{i2} . (iii) There is no evidence for constitutive activity of CXCR4. (iv) RGS-proteins enhance agonist-stimulated GTP hydrolysis, showing that GTP hydrolysis becomes rate-limiting in the presence of SDF-1 α . (v) By analogy to previous observations made for the β_2 -adrenoceptor coupled to G_s, the inhibitory effects of halides on agonist-stimulated GTP hydrolysis may be due to increased GDP-affinity of G_i-proteins, reducing the efficacy of CXCR4 at stimulating nucleotide exchange.

Email: roland.seifert@chemie.uni-regensburg.de, Phone: +49-941-943-4770, Fax: +49-941-943-4772.

*Patrick Kleemann and Dan Papa contributed equally to this work.

** present address: 3. Medizinische Klinik und Poliklinik, Hämatologie und Onkologie, Johannes-Gutenberg-Universität Mainz, D-55131 Mainz, Germany

*** present address: Biopharmaceutical Analysis, Aptuit, Kansas City, MO 64137, USA

Keywords

Chemokine receptor; Stroma cell-derived factor-1 α ; G_i/G_o-proteins; RGS-proteins; GTPase activity; Sf9 insect cells

Introduction

Chemokines (a condensation of the terms **chemo**attractant and **cytokine**) are a family of peptide mediators that exert their biological effects *via* several GPCRs referred to as chemokine receptors (Murphy, 2002). SDF-1 α , also named CXCL12, is a basic 68 amino acid-peptide that binds to the chemokine receptor CXCR4 (Murphy, 2002; Tamamura et al., 2006). Ionic interactions between positively charged residues in SDF-1 α and negatively charged residues in CXCR4 are critical for ligand recognition and subsequent receptor activation (Zhou and Tai, 2000; Gerlach et al., 2001; Gupta et al., 2001). CXCR4 couples to pertussis toxin-sensitive G-proteins of the G_i/G_o-family (Moepps et al., 1997, 2000; Chen et al., 1998). CXCR4 and SDF-1 α are widely expressed in tissues and play an important role in fetal development, mobilization of hematopoietic stem cells, trafficking of naïve lymphocytes and recruitment of endothelial progenitor cells and T-cells (Kucia et al., 2004; Buckingham et al., 2006; Guyon and Nahon, 2007; Hristov et al., 2007). Whereas many chemokines show promiscuity for chemokine receptors, there is high selectivity between the CXCR4/SDF-1 α pair, and both the knock-outs of the genes for CXCR4 and SDF-1 α are embryonically lethal (Kucia et al., 2004; Buckingham et al., 2006; Guyon and Nahon, 2007).

There is evidence for a role of CXCR4 in the pathogenesis of various autoimmune diseases including rheumatoid arthritis and psoriasis as well as metastatic spread of various malignant tumors including breast, prostate and brain tumors (Kucia et al., 2004; Tamamura et al., 2006; Kryczek et al., 2007). Most intriguingly, CXCR4 serves as a co-receptor for the entry of human immunodeficiency virus into host cells (Tamamura et al., 2006; Tsibris and Kuritzkes, 2007). From all these data it is evident that CXCR4 antagonists could be most valuable therapeutic agents for several important human diseases. The bicyclam AMD3100 prevents human deficiency virus entry into T-lymphocytes by blocking the CXCR4 co-receptor but was not further developed as a drug because of cardiotoxicity (Gerlach et al., 2001; Gupta et al., 2001; Zhang et al., 2002).

Coupling of CXCR4 to pertussis toxin-sensitive G-proteins is well established (Chen et al., 1998; Moepps et al., 1997, 2000), but the precise G_i/G_o-protein isoforms with which CXCR4 can interact, are unknown. However, given the broad organ expression of CXCR4 including the CNS (Bajetto et al., 2001; Kucia et al., 2004; Buckingham et al., 2006; Guyon and Nahon, 2007), this is an important question. Moreover, many signal transduction studies with CXCR4 have been performed with intact cells (Ganju et al., 1998; Chen et al., 1998; Ödemis et al., 2002; Zhang et al., 2002; Rosenkilde et al., 2004), whereas the number of studies assessing CXCR4/G-protein coupling at the membrane level is limited (Moepps et al., 1997; Gupta et al., 2001). The membrane steady-state GTPase- and GTP γ S binding assays, unlike intact cell-assays, provide *direct* insight into GPCR/G-protein coupling (Wieland and Seifert, 2005). Furthermore, several GPCRs functionally related to CXCR4, *i.e.* the chemoattractant receptors for formyl peptides and complement C5a, exhibit agonist-independent, *i.e.* constitutive activity (Wenzel-Seifert et al., 1998, 1999; Seifert and Wenzel-Seifert, 2001), but the extent of constitutive activity of CXCR4 is unknown. This is an important question for antagonist research since inverse agonists, *i.e.* ligands abrogating the constitutive GPCR activity by stabilizing the inactive (R) state of a GPCR, may exhibit larger inhibitory effects *in vivo* than neutral antagonists devoid of inverse agonistic activity (Seifert and Wenzel-Seifert, 2002). Finally, previous studies showed that various chemoattractant receptors differ from each other

in the kinetics of G-protein activation (Wenzel-Seifert et al., 1998, 1999; Seifert and Wenzel-Seifert, 2001), but the kinetics of G-protein activation by CXCR4 are unknown. The aim of this study was to establish a reconstitution system for the human CXCR4 that allows for the analysis of receptor/G-protein coupling at the membrane level. We wished to study specifically constitutive CXCR4 activity and the G-protein-specificity of CXCR4.

To achieve our aim, we expressed N-terminally FLAG-epitope and C-terminally hexahistidine-tagged human CXCR4 in Sf9 insect cells. We chose this tagging orientation to facilitate comparison of CXCR4 with GPCRs that were tagged identically and were functionally intact (Wenzel-Seifert et al., 1998; Seifert et al., 1998; Seifert and Wenzel-Seifert, 2001). We reconstituted CXCR4 with the Gi-proteins $G\alpha_{i1}$, $G\alpha_{i2}$ and $G\alpha_{i3}$. Gi-proteins are broadly expressed in tissues (Birnbaumer et al., 1990). We also co-expressed human CXCR4 with $G\alpha_{o1}$ (in the following simply referred to as $G\alpha_o$), the major neuronal G-protein, since CXCR4 is expressed in neuronal cells (Bajetto et al., 2001; Guyon and Nahon, 2007). As $G\beta\gamma$ -complex, we used the combination $G\beta_{1\gamma_2}$ which is broadly expressed in tissues (Birnbaumer, 2007). It is well established that Sf9 insect cells tolerate the infection with three different recombinant baculoviruses (Wenzel-Seifert et al., 1998; Seifert and Wenzel-Seifert, 2001). Co-expression of GPCRs along with GTPase-activating RGS proteins can enhance GPCR-mediated steady-state GTP hydrolysis (Houston et al., 2002; Ward and Milligan, 2004). Since we were also interested in obtaining a sensitive expression system with a high signal-to noise ratio for future CXCR4 antagonist development, we probed infection of Sf9 cells with four different recombinant baculoviruses. In a previous study, Moepps et al. (1997) had already reconstituted the mouse CXCR4 homologs and human CXCR4 with the G-protein $G\alpha_{i2}\beta_{1\gamma_3}$ in Sf9 cells, measuring [^{35}S]GTP γS binding as read-out.

Methods

Materials

AMD3100 was from Sigma-Aldrich (Munich, Germany) and was dissolved as a 10 mM stock in dimethyl sulfoxide. Human recombinant SDF-1 α was purchased as lyophilized powder in 10 μg (1.25 nmoles) aliquots from R&D Systems (Wiesbaden, Germany) and dissolved in 250 μl of double-distilled water supplemented with 0.1% (m/v) BSA. The resulting 5 μM stock solution was further diluted into 1 μM work stock solutions. Work stock solutions were divided into 50 μl aliquots and stored at -80C until use. Each aliquot was thawed only once, and work dilutions were prepared fresh daily in double-distilled water supplemented with 0.1% (m/v) BSA.

The anti-FLAG Ig (M1 monoclonal antibody) was from Sigma. The anti-RGS4 and anti-GAIP Igs were from Santa Cruz Biotechnology (Santa Cruz, CA, USA). Anti- $G\alpha_{i1-2}$ Ig and anti- $G\alpha_o$ Ig were from Calbiochem (La Jolla, CA, USA). The anti-hexahistidine Ig was from Clontech (Mountain View, CA, USA). The anti- $G\alpha_{i\text{-common}}$ Ig (AS266) and anti- $G\beta_{\text{common}}$ Ig (AS398) were a kind gift from Dr. Bernd Nürnberg (University of Düsseldorf, Germany). [γ - ^{32}P]GTP was synthesized through enzymatic phosphorylation of GDP (Walseth and Johnson, 1979). [^{32}P]P $_i$ (8,500–9,100 Ci/mmol orthophosphoric acid), [^3H]dihydroalprenolol (85–90 Ci/mmol) and [^{35}S]GTP γS (1100 Ci/mmol) were from PerkinElmer Life Sciences (Boston, MA, USA). All unlabeled nucleotides were from Roche. All restriction enzymes and T4 DNA ligase were from New England Biolabs (Beverly, MA, USA). Cloned *Pfu* DNA polymerase was from Stratagene (La Jolla, CA, USA). A plasmid encoding human CXCR4 in pcDNA3.1 was obtained from the Guthrie cDNA Resource Center (Sayre, PA, USA). Baculoviruses encoding for RGS4 and GAIP were a kind gift from Dr. Elliot Ross (University of Texas Southwestern Medical Center, Dallas, TX, USA). Baculoviruses encoding for $G\alpha_{i1}$, $G\alpha_{i2}$ and $G\alpha_{i3}$ were a kind gift from Dr. Alfred. G. Gilman (University of Texas Southwestern Medical Center, Dallas, TX, USA). Baculovirus encoding for rat $G\alpha_{o1}$ (in the following simply

referred to as $G\alpha_o$) (Jones and Reed, 1987; Graber et al., 1992) was generously provided by Dr. James C. Garrison (University of Virginia, Charlottesville, VA, USA). Baculovirus encoding for $G\beta_1$ and $G\gamma_2$ was a kind gift from Dr. Peter Gierschik (University of Ulm, Germany).

Construction of pVL 1392-SF-CXCR4-6His

The cDNA encoding for human CXCR4 with an N-terminal FLAG epitope and a C-terminal hexahistidine epitope was generated by sequential overlap-extension PCR according to previously described procedures (Seifert et al., 1998; Wenzel-Seifert et al., 1998; Seifert and Wenzel-Seifert, 2001). Briefly, with pGEM-3Z-SF-gpH₁R as template, PCR 1A was used to amplify a DNA fragment consisting of the cleavable signal peptide from influenza hemagglutinin (S) and the FLAG epitope (F) recognized by the M1 monoclonal antibody. In PCR 1B, the DNA sequence of CXCR4 was amplified with a sense primer encoding for the FLAG epitope and the first 17 bp of CXCR4 cDNA and an antisense primer encoding for the last 15 bp of CXCR4 and a hexahistidine tag as well as an *Xba* I site in its 3'-extension. In PCR 2, the products of PCR 1A and PCR 1B served as template, using the sense primer of PCR1A and the antisense primer of PCR1B. In this way, the cDNA encoding for human CXCR4 with an N-terminal FLAG epitope and a C-terminal hexahistidine tag (SF-CXCR4-6His) was generated. The product of PCR 2 was digested with *Sac* I and *Xba* I and directly ligated into pVL 1392-SF- β_2 AR- $G\alpha_{i2}$ -6His digested with *Sac* I and *Xba* I. PCR-amplified cDNA sequences were confirmed by extensive restriction enzyme digestion and enzymatic sequencing.

Generation of recombinant baculoviruses, cell culture and membrane preparation

Recombinant baculovirus encoding for SF-CXCR4-6His was obtained in Sf9 cells using the BaculoGOLD transfection kit (BD Pharmingen, San Diego, CA, USA) according to the manufacturer's instructions. After initial transfection, high-titer virus stocks were generated by two sequential virus amplifications. Sf9 cells were cultured in 250 ml disposable Erlenmeyer flasks at 28°C under rotation at 125 rpm in SF 900 II medium (Invitrogen, Carlsbad, CA, USA) supplemented with 5% (v/v) fetal calf serum (BioWhittaker, Walkersville, MD, USA) and 0.1 mg/ml gentamicin (BioWhittaker). Cells were maintained at a density of $0.5\text{--}6.0 \cdot 10^6$ cells/ml. For infection, cells were sedimented by centrifugation and suspended in fresh medium. Cells were seeded at $3.0 \cdot 10^6$ cells/ml and infected with a 1:100 dilution of high-titer baculovirus stocks encoding for SF-CXCR4-6His, G-protein α -subunits and G-protein $\beta\gamma$ -subunits without or with viruses encoding for RGS-proteins. Cells were cultured for 48 h before membrane preparation. Sf9 membranes were prepared as described previously (Seifert et al., 1998), using 1 mM EDTA, 0.2 mM phenylmethylsulfonyl fluoride, 10 μ g/ml benzamidine, and 10 μ g/ml leupeptin as protease inhibitors. Membranes were suspended in binding buffer (12.5 mM MgCl₂, 1 mM EDTA, and 75 mM Tris/HCl, pH 7.4) and stored at -80°C until use. Table 1 provides an overview on the 13 different types of membranes compared in this study. The membranes listed in Table 1 were prepared on the same day, allowing for direct comparison of data. Similar data were obtained with another set of membranes.

SDS-PAGE and immunoblot analysis

Membrane proteins were separated on SDS polyacrylamide gels containing 12% (m/v) acrylamide. Proteins were then transferred onto Immobilon-P transfer membranes (Millipore, Bedford, MA, USA) (Seifert et al., 1998). Membranes were reacted with anti-hexahistidine Ig (1:5,000), anti-FLAG Ig, anti- $G\alpha_o$ Ig and anti- $G\alpha_{i1-2}$ Ig (1:1,000 each), anti-RGS4 Ig, anti-GAIP Ig and anti- $G\alpha_{\text{common}}$ Ig (1:500 each) as well as anti $G\beta_{\text{common}}$ Ig (1:200). Immunoreactive bands were visualized by enhanced chemiluminescence (Pierce, Rockford, IL, USA) using appropriate secondary Igs coupled to peroxidase.

[³⁵S]GTPγS binding assay

Membranes were thawed and sedimented by a 15-min centrifugation at 4°C and 15,000g to remove residual endogenous guanine nucleotides as far as possible. Membranes were resuspended in binding buffer (12.5 mM MgCl₂, 1 mM EDTA and 75 mM Tris/HCl, pH 7.4), supplemented with 0.05% (m/v) BSA. Each tube (total volume of 250 μl) contained 15 μg of membrane protein (Seifert et al., 1998; Wenzel-Seifert et al., 1998). Tubes additionally contained 1 μM GDP and 0.4 nM [³⁵S]GTPγS for time course experiments. For saturation experiments, tubes contained 0.2–2 nM [³⁵S]GTPγS plus 3–18 nM unlabeled GTPγS to give the desired final ligand concentrations. Non-specific binding was determined in the presence of 10 μM GTPγS and amounted to less than 1% of total binding. Incubations were conducted for various periods of time at 25°C and shaking at 250 rpm. Bound [³⁵S]GTPγS was separated from free [³⁵S]GTPγS by filtration through GF/C filters, followed by three washes with 2 ml of binding buffer (4°C). Filter-bound radioactivity was determined by liquid scintillation counting.

Steady-state GTPase activity assay

Membranes were thawed, sedimented, and resuspended in 10 mM Tris/HCl, pH 7.4. Assay tubes contained Sf9 membranes (10 yg of protein/tube), 1.0 mM MgCl₂, 0.1 mM EDTA, 0.1 mM ATP, 100 nM GTP, 0.1 mM adenylyl imidodiphosphate, 5 mM creatine phosphate, 40 μg of creatine kinase, and 0.2% (w/v) bovine serum albumin in 50 mM Tris/HCl, pH 7.4, and SDF-1α and/or AMD3100 at various concentrations (Seifert et al., 1998). Reaction mixtures additionally contained monovalent salts at various concentrations. Reaction mixtures (80 μl) were incubated for 2 min at 25°C before the addition of 20 μl of [γ -³²P]GTP (0.1 μCi/tube). All stock and work dilutions of [γ -³²P]GTP were prepared in 20 mM Tris/HCl, pH 7.4. Reactions were conducted for 20 min at 25°C. Preliminary studies showed that under basal conditions and in the presence of SDF-1α, GTP hydrolysis was linear. Reactions were terminated by the addition of 900 μl of slurry consisting of 5% (m/v) activated charcoal and 50 mM NaH₂PO₄, pH 2.0. Charcoal-quenched reaction mixtures were centrifuged for 7 min at room temperature at 15,000g. Six hundred microliters of the supernatant fluid of reaction mixtures were removed, and ³²P_i was determined by liquid scintillation counting. Enzyme activities were corrected for spontaneous degradation of [γ -³²P]GTP. Spontaneous [γ -³²P]GTP degradation was determined in tubes containing all of the above described components plus a very high concentration of unlabeled GTP (1 mM) that, by competition with [γ -³²P]GTP, prevents [γ -³²P]GTP hydrolysis by enzymatic activities present in Sf9 membranes. Spontaneous [γ -³²P]GTP degradation was <1% of the total amount of radioactivity added. The experimental conditions chosen ensured that not more than 10% of the total amount of [γ -³²P]GTP added was converted to ³²P_i.

Miscellaneous

Protein concentrations were determined using the DC protein assay kit (Bio-Rad, Hercules, CA, USA). [³H]Dihydroalprenolol saturation binding was performed as described (Seifert et al., 1998). All analyses of experimental data were performed with the Prism 4 program (GraphPad Software, San Diego, CA, USA). Expression levels of recombinant proteins were determined using the BioRad GS-710 Calibrated Imaging Densitometer and the software tool Quantity One version 4.0.3. The statistical significance of the effects of RGS-proteins RGS4 and GAIP *versus* control on SDF-1α-stimulated GTP hydrolysis shown in Fig. 3 was assessed using the t-test.

Results and Discussion

Detection of recombinant proteins in Sf9 cell membranes by immunoblotting

In Sf9 membranes, N-terminally FLAG-tagged human CXCR4 migrated as a diffuse 37 kDa protein (Fig. 1A), consistent with the GPCR being glycosylated (Zhou and Tai, 1999). We also detected a less intense diffuse 75 kDa band, most likely representing CXCR4 dimers (Percherancier et al., 2005). It is unlikely that the diffuse 75 kDa band in the anti-FLAG immunoblot represents a non-specific reactivity since the 75 kDa band in the anti-G $\alpha_{i\text{common}}$ immunoblot was crisp and not diffuse (Fig. 1C). The intensities of the 37 kDa- and 75 kDa bands, respectively, were similar in the various membranes. These data indicate that regardless of whether Sf9 cells were infected with CXCR4 virus alone or one, two or even three additional baculoviruses, receptor expression was not substantially affected, greatly facilitating functional comparison of membranes. Fig. 1B shows a calibration gel with increasing amounts of FLAG-tagged β_2 AR expressed at 7.5 pmol/mg as assessed by [3 H]dihydroalprenolol saturation binding. Using this receptor as standard, CXCR4 expression was densitometrically estimated to be ~4 pmol/mg in the various membranes.

Fig. 1C shows the expression of G α_{i1} , G α_{i2} and G α_{i3} in Sf9 membranes as detected by anti-G $\alpha_{i\text{common}}$ Ig. Membrane 1178 was derived from cells infected with CXCR4 virus only, and there was no immunoreactive band in the 40 kDa region. The anti-G $\alpha_{i\text{common}}$ Ig also did not recognize G α_o (membranes 1188–1190). In contrast, the anti-G $\alpha_{i\text{common}}$ Ig recognized G α_{i1} , G α_{i2} and G α_{i3} . The expression levels of G α_{i2} and G α_{i3} were about 10-fold higher than the expression level of G α_{i1} . Unfortunately, even by testing various virus titers and virus generations, we could not further increase the expression level of G α_{i1} . (data not shown). Probably, the low expression is an intrinsic property of G α_{i1} . However, for any given G α_i isoform, expression levels were similar regardless of the co-expression of RGS proteins, allowing for the analysis of the effects of RGS proteins on each G α_i isoform. The 75 kDa band recognized by anti-G $\alpha_{i\text{common}}$ Ig probably represents a non-specific band since it was also recognized in membranes 1178 and 1188–1190. Immunoblots with anti-G α_{i1-2} Ig confirmed that G α_{i1} was expressed at much lower levels than G α_{i2} (Fig. 1D). As expected, anti-G α_{i1-2} Ig did not detect G α_{i3} (Fig. 1D). Immunoblots with anti-G α_o Ig showed that this G-protein (39 kDa) was properly expressed in Sf9 membranes (Fig. 1E). Anti-G α_o Ig did not detect a 39 kDa band in membrane 1178.

We also estimated the expression level of G α_{i2} (and G α_{i1}) with anti-G α_{i1-2} Ig using membranes expressing the β_2 AR-G α_{i2} fusion protein at 3.0 pmol/mg as assessed by [3 H]dihydroalprenolol saturation binding as standard (Fig. 2A). The densitometrically determined G α_{i2} expression level was ~150–200 pmol/mg, whereas the expression level of G α_{i1} was about 10-fold lower. The latter result is in agreement with the data obtained for the anti-G $\alpha_{i\text{common}}$ Ig (Fig. 1C). In the present study (Figs. 1C and 1E) and in a previous study (Wenzel-Seifert et al., 1998) we did not obtain evidence for the expression of endogenous G α_i /G α_o -proteins in Sf9 cells. Our data are in contrast to the results obtained by Leopoldt et al. (1997), reporting on the presence of endogenous G α_i /G α_o -proteins in Sf9 cells. There are also discrepancies between our group and Leopoldt et al. (1997) regarding the coupling of the histamine H $_2$ -receptor to G $_q$ -proteins (Houston et al., 2002). The reason for these discrepancies is unknown. One possibility that will have to be tested in future studies is that the specific cell culture conditions have an impact on endogenous G-protein expression and receptor/G-protein coupling in Sf9 cells.

The expression of G β_1 (36 kDa) was confirmed with the anti-G β_{common} Ig (Fig. 2B). As was observed for the expression of CXCR4 (Fig. 1A), the expression of G β_1 was similar in all membranes studied, regardless of the type of G α present and the absence or presence of an RGS protein. The anti-G β_{common} Ig did not recognize the endogenous G β -like protein of the insect cells (membrane 1178).

Finally, we assessed the expression of RGS proteins. The RGS proteins were N-terminally tagged with a hexahistidine tag, allowing for the simultaneous detection of CXCR4 and RGS proteins with the anti-hexahistidine Ig. We confirmed the migration of CXCR4 as broad glycosylated 37 kDa monomer and 75 kDa dimer (Fig. 2C). RGS4 and GAIP migrated at ~25 kDa, with GAIP and RGS4 being expressed at somewhat varying levels. RGS4 was specifically detected by the anti-RGS4 Ig (Fig. 1D), and exposure of the nitrocellulose to both anti-RGS4 Ig and anti-GAIP Ig detected both RGS proteins (Fig. 2E).

Collectively, our data show that infection of Sf9 cells with four different baculoviruses encoding for five different mammalian signal transduction proteins is technically feasible, allowing for the systematic analysis of RGS proteins on CXCR4/G-protein coupling. The expression level of human CXCR4 and $G\beta_1$ did not vary with the type of $G\alpha$ and/or the absence or presence of RGS-proteins. Moreover, there is a large (40–50-fold) molar excess of $G\alpha_{i2}$ and $G\alpha_{i3}$ relative to CXCR4, whereas for $G\alpha_{i1}$ the molar excess compared to CXCR4 is just 4–5-fold. Furthermore, RGS4 and GAIP are expressed in Sf9 cells and translocated to the membrane fraction. Thus, although exact expression levels of the various signal transduction proteins cannot be controlled in Sf9 cells, a reasonable comparison of CXCR4 coupling to various G_i/G_o -proteins is possible.

Analysis of human CXCR4/G-protein coupling in the steady-state GTPase assay

In the next series of experiments, we compared all 13 membranes side by side in the steady-state GTPase assay (Fig. 3) (Wieland and Seifert, 2005), monitoring the outcome of multiple rounds of GDP/GTP exchange catalyzed by human CXCR4. For these studies, we used a SDF-1 α concentration of 50 nM. Preliminary studies showed that this concentration of chemokine was sufficient to maximally activate GTP hydrolysis (data not shown). Similarly, SDF-1 α at a concentration of 10–100 nM maximally stimulates phospholipase C in COS-7 cells transfected with human CXCR4 (Rosenkilde et al., 2004). In the absence of mammalian G-proteins, SDF-1 α only minimally activated GTPase (membrane 1178), indicative for poor coupling of human CXCR4 to endogenous insect cell G-proteins. The human formyl peptide receptors also couples only poorly to insect cell G-proteins (Wenzel-Seifert et al., 1998).

In the presence of $G\alpha_{i1}$ (membrane 1179), $G\alpha_{i2}$ (membrane 1182) and $G\alpha_{i3}$ (membrane 1185), robust GTPase stimulations by SDF-1 α (80–150%) were observed. In the presence of $G\alpha_o$ (membrane 1188), the GTPase stimulation by SDF-1 α was much smaller (20%). The absolute GTPase activities with $G\alpha_{i3}$ and $G\alpha_o$ were considerably lower than with $G\alpha_{i1}$ and $G\alpha_{i2}$. These data show that human CXCR4 couples particularly well to $G\alpha_{i1}$ and $G\alpha_{i2}$, whereas coupling to $G\alpha_{i3}$ and $G\alpha_o$ is less efficient. The efficient GTPase activation in membranes expressing $G\alpha_{i1}$ is particularly remarkable in view of the fact that this $G\alpha_{i1}$ is expressed at much lower levels than $G\alpha_{i2}$ and $G\alpha_{i3}$ (Fig. 2) and that $G\alpha_{i1}$ is not expressed in cells of the immune systems (Birnbaumer et al., 1990), corroborating the notion that CXCR4 exerts functions beyond leukocytes. Considering the fact that CXCR4 is also expressed in neuronal cells and that $G\alpha_o$ is expressed at high levels in those cells (Birnbaumer et al., 1990; Bajetto et al., 2001; Guyon and Nahon, 2007), the inefficient GTPase activation by SDF-1 α in $G\alpha_o$ -expressing Sf9 membranes suggests that *in vivo*, CXCR4 predominantly operates through G_i - rather than G_o -linked signal transduction pathways.

Previous studies showed that RGS-proteins can enhance GPCR agonist-stimulated steady-state GTP hydrolysis, improving the signal-to-noise ratio of test systems (Houston et al., 2002; Ward and Milligan, 2004). Since the main aim of this study was to establish a sensitive CXCR4 expression system allowing for the analysis of partial agonists/antagonists and inverse agonists, we also examined the effect of RGS-proteins on steady-state GTP hydrolysis catalyzed by CXCR4 with the various G-proteins. As is shown in Fig. 2C, the expression of RGS4 and GAIP exhibited some variability in the various membranes. Despite this variability, both RGS

proteins enhanced SDF-1 α -catalyzed GTP hydrolysis in all G α_i - and G α_o -expressing membranes significantly, *i.e.* by about 50% (Fig. 3). As a result of the enhancement, the membranes with the highest signal-to-noise ratios were those expressing G α_{i2} along with RGS4 or GAIP, yielding GTPase stimulations of >3.5-fold (Fig. 3B). Thus, for future pharmacological studies, a very sensitive test system for human CXCR4 ligands is available. Since the N-terminus of CXCR4 is involved in the initial binding of the agonist SDF-1 α (Gerlach et al., 2001; Gupta et al., 2001) and since introduction of an N-terminal hemagglutinin epitope in a mouse CXCR4 isoform is detrimental for its function (Moepps et al., 1997), we were concerned that the N-terminal FLAG epitope modification may impede with the interaction of SDF-1 α and human CXCR4 as well. In order to address this issue, we analyzed concentration-response curves of SDF-1 α for GTPase activation. In membranes expressing G α_{i2} , the EC₅₀ of SDF-1 α amounted to 1.2 ± 0.4 nM (Fig. 4A) which is in good agreement with the potency of SDF-1 α in other test systems for human CXCR4 (Gupta et al., 2001; Gerlach et al., 2001; Zhang et al., 2002; Rosenkilde et al., 2004). This result also indicates that the N-terminal FLAG epitope modification does not interfere with agonist recognition at human CXCR4. The reason why N-terminal epitope modification interferes with the function of some but not all CXCR4 isoforms is unknown. However, from the practical point of view, one has to be aware of the fact that unlike for other peptide GPCRs (Wenzel-Seifert et al., 1998; Seifert and Wenzel-Seifert, 2001), chemokine receptor function is very sensitive to epitope-tagging. The potencies of agonists may depend on the specific G α subtype to which a GPCR is coupled (Wenzel-Seifert and Seifert, 2000). Therefore, we also determined the potencies of SDF-1 α with G α_{i1} , G α_{i3} and G α_o . However, the fact that in all systems, the EC₅₀ for SDF-1 α ranged just between 1–3 nM (data not shown) indicates that for this GPCR, the type of G α coupling partner is not critical for agonist potency. In agreement with the present data for CXCR4, the potency of agonists at activating the formyl peptide receptor is similar when coupled to G α_{i1} , G α_{i2} and G α_{i3} (Wenzel-Seifert et al., 1999). Fig. 4A also shows that the CXCR4 antagonist AMD3100 exhibited no stimulatory or inhibitory effect on basal GTP hydrolysis, indicating that this compound is neither a partial agonist nor an inverse agonist but a true neutral antagonist (Seifert and Wenzel-Seifert, 2002). At a constitutively active CXCR4 mutant AMD3100 is a weak partial agonist (Zhang et al., 2002). The antagonistic properties of AMD3100 at wild-type human CXCR4 are documented in Fig. 4B. Specifically, AMD3100 inhibited SDF-1 α -stimulated GTP hydrolysis with an apparent K_i value of 47 ± 8 nM which is in good agreement with the literature (Gerlach et al., 2001; Zhang et al., 2002). Again, these data corroborate the notion that the pharmacological properties of human CXCR4 are not altered by the N-terminal FLAG epitope. The apparent discrepancy between the calculated K_i value according to Cheng and Prusoff (1973) and the IC₅₀ value shown in Fig. 4B (440 nM) is due to the fact that we used a SDF-1 α concentration of 10 nM which is about 8-fold above the EC₅₀ value for SDF-1 α (Fig. 4A). We also noted that with AMD3100 at a concentration of 10 μ M, we could not fully reduce GTPase activity to the basal values observed in Fig. 4A. However, due to the limited solubility of this compound, we could not use higher concentrations in our assay.

It is well established that Na⁺ acts as an allosteric inverse agonist at several G_i/G_o-coupled GPCRs and stabilizes the inactive (R) state of the receptors (Seifert and Wenzel-Seifert, 2001, 2002). Accordingly, Na⁺ is very efficient at reducing the basal GTPase activity in systems expressing GPCRs with high constitutive activity, reflecting the high agonist-independent GDP/GTP turnover (Gierschik et al., 1989a; Wenzel-Seifert et al., 1998). In contrast, in systems with low constitutive activity, Na⁺ does not decrease basal GTPase activity (Seifert and Wenzel-Seifert, 2001). It is also well known that other monovalent cations such as K⁺ and Li⁺ are less efficient than Na⁺ at stabilizing the R state of constitutively active GPCRs (Gierschik et al., 1989a; Costa et al., 1990; Wenzel-Seifert et al., 1998). As is shown in Figs 5A, 5E and 5H, Na⁺ exhibited only a very small inhibitory effect on basal GTPase activity in Sf9 membranes expressing human CXCR4 and G α_{i2} , regardless of the halide counter anion

(Cl⁻, Br⁻ or I⁻) used. Since Na⁺ is a universal allosteric stabilizer of the R state of G_i-linked GPCRs (Seifert and Wenzel-Seifert, 2001), our data indicate that human wild-type CXCR4 is essentially devoid of constitutive activity. Consistent with this notion is the fact that certain point mutations result in the generation of constitutively active CXCR4 mutants (Zhang et al., 2002).

The experiments shown in Fig. 5 were performed with SDF-1 α at a concentration of 50 nM, which was sufficient for maximal GTPase stimulation in the absence of added monovalent salts (Fig. 4A). However, we noticed that, despite the lack of inhibitory effects of monovalent salts on basal GTPase activity, they nonetheless reduced the maximum extent of agonist-stimulated GTP hydrolysis in a concentration-dependent manner. Surprisingly, the inhibitory effect of monovalent salts on agonist-stimulated GTP hydrolysis strongly depended on the type of anion. Particularly, the order of potency and efficacy of anions at reducing SDF-1 α -stimulated GTP hydrolysis was I⁻ > Br⁻ > Cl⁻ (Fig. 5), *i.e.* the order depended on the anion radius. Fig. 6 shows that monovalent salts did not only reduce the efficacy of SDF-1 α at activating GTP hydrolysis but also its potency. Specifically, with 150 mM LiCl, NaCl and KCl, the potency of SDF-1 α was reduced by 22-fold, 26-fold and 32-fold, respectively.

Our data on anion effects on SDF-1 α -stimulated GTP hydrolysis are reminiscent of previous observations made for the β_2 AR coupled to the long splice variant of G α_s . In this system, anions reduced the efficacy of the agonist isoproterenol at activating adenylyl cyclase in the order I⁻ > Br⁻ > Cl⁻ (Seifert, 2001). Those data were explained by a model in which halides increase the GDP-affinity of G α_s (Seifert, 2001). In accordance with this model, Cl⁻ anions decrease GDP dissociation from purified G α_o (Higashijima et al., 1987). By analogy, halides could increase the GDP-affinity of G α_{i2} , thereby rendering agonist-stimulated GDP/GTP exchange less efficient (Seifert, 2001). Alternatively, halides may impair the ionic interaction of the positively charged binding site in SDF-1 α with its negatively charged binding groove in CXCR4 (Zhou and Tai, 2000).

However, if anions impair ionic SDF-1 α /hCXCR4 interaction, the same should be true for cations. In fact, monovalent cations do have an impact on SDF-1 α -stimulated GTP hydrolysis as well. Specifically, with NaCl, KCl, NaBr and KBr, biphasic concentration/response curves were observed, *i.e.* salts at concentrations < 50 mM even enhanced SDF-1 α -stimulated GTP hydrolysis, and higher concentrations were inhibitory (Figs. 5B, C, E and F). In contrast, LiCl and LiBr did not show those biphasic properties (Figs. 5A and D). Moreover, KI was more effective at suppressing SDF-1 α -stimulated GTP hydrolysis than LiI and NaI (Figs. 5G-5I). Regardless of the specific mechanism(s) involved, from a technical perspective, the substantial impact of monovalent salts on CXCR4-mediated G-protein activation should be considered in future experiments. It is unknown whether here is any physiological relevance of the regulation of CXCR4/SDF-1 α interaction by monovalent anions and cations, but it is possible that changes in extracellular Na⁺- and/or Cl⁻ concentrations in pathophysiological conditions such as inflammatory edema could affect the potency of SDF-1 α at activating CXCR4. Br⁻ and I⁻ are of no physiological relevance and constitute only pharmacological tools.

Analysis of human CXCR4/G-protein coupling in the GTP γ S binding assay

Whereas the GTPase assay assesses steady-state GDP/GTP turnover of G-proteins, the GTP γ S binding assay monitors the kinetics of G-protein activation and the stoichiometry of GPCR/G-protein interaction (Gierschik et al., 1991; Seifert et al., 1998; Wenzel-Seifert and Seifert, 2000; Wenzel-Seifert et al., 1998, 1999). SDF-1 α activated GTP γ S binding to G α_{i2} with a $t_{1/2}$ of 34.8 ± 6.8 min, and RGS4 had no effect on the GTP γ S binding kinetics ($t_{1/2}$ of 34.8 ± 5.8 min) (Fig. 7A and 7B). Thus, the G α_{i2} activation kinetics of CXCR4 considerably slower than those of chemoattractant receptors for formyl peptides, complement C5a, platelet-activating factor and leukotriene B₄ (Seifert and Wenzel-Seifert, 2001). These data point to

different (patho)physiological functions of CXCR4 relative to chemoattractant receptors. Possibly, the slow $G\alpha_{i2}$ activation kinetics of CXCR4 reflect its role in the long-term regulation of homeostatic functions, i.e. tissue development and differentiation as well as endothelial progenitor and T-cell mobilization (Moepps et al., 2000; Bajetto et al., 2001; Buckingham, 2006; Hristov et al., 2007).

The K_d of SDF-1 α -stimulated GTP γ S binding was 2.8 ± 0.7 nM, and RGS4 had no effect on K_d (2.8 ± 0.3 nM) (Fig. 7C and 7D). The K_d value of agonist-stimulated GTP γ S binding for CXCR4 is higher than the K_d value for most chemoattractant receptors (Seifert and Wenzel-Seifert, 2001), further corroborating the notion of different functions of CXCR4 compared to chemoattractant receptors. The B_{max} value of SDF-1 α -stimulated GTP γ S value was 5.3 ± 0.4 pmol/mg, and again, RGS4 had no major effect (6.5 ± 0.2 pmol/mg) (Fig. 7C and 7D).

The densitometrically determined B_{max} of human CXCR4 was ~ 4 pmol/mg (Fig. 1B), and there is a large molar excess of $G\alpha_{i2}$ relative to CXCR4 in Sf9 membranes (Figs. 1 and 2). Thus, the concentration of $G\alpha_{i2}$ should be sufficiently high to ensure coupling of most if not all CXCR4 molecules to G_i -proteins. Assuming that all expressed CXCR4 molecules are also folded correctly and functionally active, one CXCR4 molecule activated ~ 1.0 – 1.5 $G\alpha_{i2}$ molecules, i.e. in the Sf9 cell system, signal transfer would be linear or almost linear. Linear G-protein activation has also been found for chemoattractant receptors expressed in Sf9 cells (Wenzel-Seifert et al., 1999; Seifert and Wenzel-Seifert, 2001). However, in a native cell system, i.e. membranes from differentiated HL-60 leukemia cells, signal transfer between the formyl peptide receptor and G_i -proteins is catalytic (Gierschik et al., 1991), clearly showing that the stoichiometry of signal transfer between receptors and G-proteins is system-dependent.

The lack of effect of RGS4 on GTP γ S binding (Fig. 7) is expected (Ross and Wilkie, 2000) and contrasts to the prominent stimulatory effect of these regulatory proteins on steady-state GTP hydrolysis (Fig. 3). The stimulatory effect of RGS proteins on agonist-stimulated steady-state GTP hydrolysis shows that under these conditions, GTP hydrolysis becomes the rate-limiting step of the G-protein cycle (Ross and Wilkie, 2000; Houston et al., 2002; Ward and Milligan, 2004).

Conclusions

In the present study, we have reconstituted the human CXCR4 with various G_i/G_o -proteins in Sf9 insect cells. The high-affinity GTPase assay provides an excellent signal-to-noise ratio and constitutes a suitable test system for future pharmacological analysis of CXCR4. Specifically, the system can be used for the characterization of CXCR4 antagonists that are of potential value for the treatment of autoimmune diseases and tumors (Kucia et al., 2004; Tamamura et al., 2006; Kryczek et al., 2007). An advantage of the GTPase assay is that it assesses receptor/G-protein coupling at a proximal level and steady-state conditions and allows for pharmacological analysis without bias introduced by potential non-linearity of down-stream signalling (Wieland and Seifert, 2005; Seifert et al., 1998). Agonist-stimulation of GTPase is very sensitive to monovalent anions; either due to increases in G-protein GDP-affinity or interference with ligand/receptor interaction. Monovalent cations modulate CXCR4-mediated signal transduction as well, although to a lesser extent than anions. The enhancing effects of RGS-proteins on steady-state GTPase activity indicates that GTP hydrolysis becomes rate-limiting under conditions of agonist-stimulation (Ross and Wilkie, 2000).

Human CXCR4 does not exhibit constitutive activity. The lack of constitutive activity points to tight ligand-regulated control of CXCR4 function. Given the crucial role of CXCR4 in the regulation of so many homeostatic functions, lack of constitutive CXCR4 activity may be essential to avoid deleterious effects for the organism. In Sf9 cells, CXCR4 couples

differentially to G_i/G_o-proteins with preference for G α_{i1} and G α_{i2} . The possible physiological relevance of the differential CXCR4 coupling to G_i/G_o-proteins should be assessed in native cell systems using the [α -³²P]GTP azidoanilide labelling technique (Offermanns et al., 1991). A limitation of the Sf9 co-expression system is the fact that the expression levels of G_i/G_o-proteins and RGS-proteins cannot be precisely controlled. A solution to this problem could be the construction, expression and functional analysis of CXCR4-G α - and CXCR4-RGS fusion proteins (Seifert et al., 1998; Wenzel-Seifert et al., 1999; Wenzel-Seifert and Seifert, 2000; Ward and Milligan, 2004). Finally, although the N- and C-terminal epitope tags of CXCR4 used in the present study are very useful in terms of immunological detection of the receptor and apparently without gross effect on receptor function, it should be kept in mind that N-terminal epitopes can affect agonist binding to certain chemokine receptors including defined CXCR4 isoforms and, thereby, impair CXCR4/G-protein coupling (Moepps et al., 1997).

Acknowledgements

We thank Dr. Erich Schneider for stimulating discussions as well as Mrs. Astrid Seefeld and Gertraud Wilberg for expert technical assistance. Thanks are also due to the reviewers of the paper for their constructive critique and suggestions.

This work was supported by the Research Training Program (Graduiertenkolleg) GRK 760 "Medicinal Chemistry: Molecular Recognition – Ligand-Receptor Interactions" of the Deutsche Forschungsgemeinschaft, the "International Study and Training Partnerships (ISAP) Program" of the Deutscher Akademischer Austauschdienst and by the National Institutes of Health COBRE Award 1 P20 RR15563 and matching support from the State of Kansas.

Abbreviations used

AMD3100	1-[[1,4,8,11-tetrazacyclotetradec-1-ylmethyl]phenyl]methyl]-1,4,8,11-tetrazacyclotetradecane
BSA	bovine serum albumin
β_2AR	β_2 -adrenoceptor
GPCR	G-protein-coupled receptor
GTPγS	guanosine 5'-[γ -thio]triphosphate
GAIP	G α -interacting protein
RGS protein	Regulator of G-protein Signalling protein
SDF-1α	stromal cell-derived factor-1 α
Sf9 cells	<i>Spodoptera frugiperda</i> pupal ovary cells

References

- Bajetto A, Bonavia R, Barbero S, Florio T, Schettini G. Chemokines and their receptors in the central nervous system. *Front Neuroendocrinol* 2001;22:147–184. [PubMed: 11456467]
- Birnbaumer L. Expansion of signal transduction by G proteins. The second 15 years or so: from 3 to 16 α subunits plus $\beta\gamma$ dimers. *Biochim Biophys Acta* 2007;1768:772–793. [PubMed: 17258171]
- Birnbaumer L, Abramowitz J, Brown AM. Receptor-effector coupling by G proteins. *Biochim Biophys Acta* 1990;1031:163–224. [PubMed: 2160274]
- Buckingham M. Myogenic progenitor cells and skeletal myogenesis in vertebrates. *Curr Opin Genet Dev* 2006;16:525–532. [PubMed: 16930987]
- Busillo JM, Benovic JL. Regulation of CXCR4 signaling. *Biochim Biophys Acta* 2007;1768:952–963. [PubMed: 17169327]
- Chen W-J, Jayawickreme C, Watson C, Wolfe L, Holmes W, Ferris R, Armour S, Dallas W, Chen G, Boone L, Luther M, Kenakin T. Recombinant human CXC-chemokine receptor-4 in melanophores are linked to G_i protein: Seven transmembrane coreceptors for human immunodeficiency virus entry into cells. *Mol Pharmacol* 1998;53:177–181. [PubMed: 9463473]
- Cheng Y, Prusoff WH. Relationship between the inhibition constant (K_i) and the concentration of inhibitor which causes 50 per cent inhibition (I_{50}) of an enzymatic reaction. *Biochem Pharmacol* 1973;22:3099–3108. [PubMed: 4202581]
- Costa T, Lang J, Gless C, Herz A. Spontaneous association between opioid receptors and GTP-binding regulatory proteins in native membranes: specific regulation by antagonists and sodium ions. *Mol Pharmacol* 1990;37:383–394. [PubMed: 2156152]
- Ganju RK, Brubaker SA, Meyer J, Ditt P, Yang Y, Qin S, Newman W, Groopman JE. The α -chemokine, stromal cell-derived factor-1 α , binds to the transmembrane G-protein-coupled CXCR-4 receptor and activates multiple signal transduction pathways. *J Biol Chem* 1998;273:23169–23175. [PubMed: 9722546]
- Gerlach LO, Skerlj RT, Bridger GJ, Schwartz TW. Molecular interactions of cyclam and bicyclam non-peptide antagonists with the CXCR4 chemokine receptor. *J Biol Chem* 2001;276:14153–14160. [PubMed: 11154697]
- Gierschik P, Sidiropoulos D, Steisslinger M, Jakobs KH. Na^+ regulation of formyl peptide receptor-mediated signal transduction in HL 60 cells. Evidence that the cation prevents activation of the G-protein by unoccupied receptors. *Eur J Pharmacol* 1989a;172:481–492. [PubMed: 2515070]
- Gierschik P, Steisslinger M, Sidiropoulos D, Herrmann E, Jakobs KH. Dual Mg^{2+} control of formyl peptide-receptor-G-protein interaction in HL 60 cells. Evidence that the low-agonist-affinity receptor interacts with and activates G-proteins. *Eur J Biochem* 1989b;183:97–105. [PubMed: 2502402]
- Gierschik P, Moghtader R, Straub C, Dietrich K, Jakobs KH. Signal amplification in HL-60 granulocytes. Evidence that the chemotactic peptide receptor catalytically activates guanine-nucleotide-binding regulatory proteins in native plasma membranes. *Eur J Biochem* 1991;197:725–732. [PubMed: 1903107]
- Graber SG, Figler RA, Garrison JC. Expression and purification of functional G protein α subunits using a baculovirus expression system. *J Biol Chem* 1992;267:1271–1278. [PubMed: 1730649]
- Gupta SK, Pillarisetti K, Thomas RA, Aiyar N. Pharmacological evidence for complex and multiple site interaction of CXCR4 with SDF-1 α : implications for development of selective CXCR4 antagonists. *Immunol Lett* 2001;78:29–34. [PubMed: 11470148]
- Guyon A, Nahon JL. Multiple actions of the chemokine stromal cell-derived factor-1 α on neuronal activity. *J Mol Endocrinol* 2007;38:365–376. [PubMed: 17339399]
- Higashijima T, Ferguson KM, Sternweis PC. Regulation of hormone-sensitive GTP-dependent regulatory proteins by chloride. *J Biol Chem* 1987;262:3597–3602. [PubMed: 3102490]
- Houston C, Wenzel-Seifert K, Bürckstümmer T, Seifert R. The human histamine H_2 -receptor couples more efficiently to Sf9 insect cell G_s -proteins than to insect cell G_q -proteins: limitations of Sf9 cells for the analysis of receptor/ G_q -protein coupling. *J Neurochem* 2002;80:678–696. [PubMed: 11841575]
- Hristov M, Zerneck A, Liehn EA, Weber C. Regulation of endothelial progenitor cell homing after arterial injury. *Throm Haemost* 2007;98:274–277.

- Jones DT, Reed RR. Molecular cloning of five GTP-binding protein cDNA species from rat olfactory neuroepithelium. *J Biol Chem* 1987;262:14241–14249. [PubMed: 2820999]
- Kryczek I, Wei S, Keller E, Liu R, Zou W. Stroma-derived factor (SDF-1/CXCL12) and human tumor pathogenesis. *Am J Physiol Cell Physiol* 2007;292:C987–C995. [PubMed: 16943240]
- Kucia M, Jankowski K, Reza R, Wysoczynski M, Bandura L, Allendorf DJ, Zhang J, Ratajczak J, Ratajczak MZ. CXCR4-SDF1 signalling, locomotion, chemotaxis and adhesion. *J Mol Histol* 2004;35:233–245. [PubMed: 15339043]
- Moepps B, Frodl R, Rodewald HR, Baggiolini M, Gierschik P. Two murine homologues of the human chemokine receptor CXCR4 mediating stromal cell-derived factor 1 α activation of G₁₂ are differentially expressed *in vivo*. *Eur J Immunol* 1997;27:2102–2112. [PubMed: 9295051]
- Moepps B, Braun M, Knöpfle K, Dillinger K, Knöchel W, Gierschik P. Characterization of a *Xenopus laevis* CXC chemokine receptor 4: implications for hematopoietic cell development in the vertebrate embryo. *Eur J Immunol* 2000;30:2924–2934. [PubMed: 11069075]
- Murphy PM. International Union of Pharmacology. XXX. Update on chemokine receptor nomenclature. *Pharmacol Rev* 2002;54:227–229. [PubMed: 12037138]
- Ödemis V, Moepps B, Gierschik P, Engele J. Interleukin-6 and cAMP induce stromal cell-derived factor-1 chemotaxis in astroglia by up-regulating CXCR4 cell surface expression. *J Biol Chem* 2002;277:39801–39808. [PubMed: 12171912]
- Offermanns S, Schultz G, Rosenthal W. Identification of receptor-activated G proteins with photoreactive GTP analog, [α -³²P]GTP azidoanilide. *Methods Enzymol* 1991;195:286–301. [PubMed: 1851930]
- Percherancier Y, Berchiche YA, Slight I, Volkmer-Engert R, Tamamura H, Fujii N, Bouvier M, Heveker N. Bioluminescence resonance energy transfer reveals ligand-induced conformational changes in CXCR4 homo- and heterodimers. *J Biol Chem* 2005;280:9895–9903. [PubMed: 15632118]
- Rosenkilde MM, Gerlach LO, Jakobsen JS, Skerlj RT, Bridger GJ, Schwartz TW. Molecular mechanism of AMD3100 antagonism in the CXCR4 receptor. Transfer of binding site to the CXCR3 receptor. *J Biol Chem* 2004;279:3033–3041. [PubMed: 14585837]
- Ross EM, Wilkie TM. GTPase-activating proteins for heterotrimeric G proteins: regulators of G protein signalling (RGS) and RGS-like proteins. *Annu Rev Biochem* 2000;69:795–827. [PubMed: 10966476]
- Seifert R. Monovalent anions differentially modulate coupling of the β_2 -adrenoceptor to G_{s α} splice variants. *J Pharmacol Exp Ther* 2001;298:840–847. [PubMed: 11454950]
- Seifert R, Wenzel-Seifert K. Unmasking different constitutive activity of four chemoattractant receptors using Na⁺ as universal stabilizer of the inactive (R) state. *Receptors Channels* 2001;7:357–369. [PubMed: 11697079]
- Seifert R, Wenzel-Seifert K. Constitutive activity of G-protein-coupled receptors: cause of disease and common properties of wild-type receptors. *Naunyn-Schmiedeberg's Arch Pharmacol* 2002;366:381–416.
- Seifert R, Lee TW, Lam VT, Kobilka BK. Reconstitution of β_2 -adrenoceptor-GTP-binding-protein interaction in Sf9 cells – high coupling efficiency in a β_2 -adrenoceptor-G_{s α} fusion protein. *Eur J Biochem* 1998;255:369–382. [PubMed: 9716378]
- Tamamura H, Tsutsumi H, Fujii N. The chemokine receptor CXCR4 as a therapeutic target for several diseases. *Mini Rev Med Chem* 2006;6:989–995. [PubMed: 17017998]
- Tsibris AM, Kuritzkes DR. Chemokine antagonists as therapeutics. Focus on HIV. *Annu Rev Med* 2007;58:445–459. [PubMed: 16958560]
- Walseth TF, Johnson RA. The enzymatic preparation of [α -³²P] nucleoside triphosphates, cyclic [³²P] AMP, and cyclic [³²P] GMP. *Biochim Biophys Acta* 1979;562:11–31. [PubMed: 35231]
- Ward RJ, Milligan G. Analysis of function of receptor-G-protein and receptor-RGS fusion proteins. *Methods Mol Biol* 2004;259:225–247. [PubMed: 15250496]
- Wenzel-Seifert K, Seifert R. Molecular analysis of β_2 -adrenoceptor coupling to G_s-, G_i-, and G_q-proteins. *Mol Pharmacol* 2000;58:954–966. [PubMed: 11040042]
- Wenzel-Seifert K, Hurt CM, Seifert R. High constitutive activity of the human formyl peptide receptor. *J Biol Chem* 1998;273:24181–24189. [PubMed: 9727041]
- Wenzel-Seifert K, Arthur JM, Liu HY, Seifert R. Quantitative analysis of formyl peptide receptor coupling to G_i α_1 , G_i α_2 , and G_i α_3 . *J Biol Chem* 1999;274:33259–33266. [PubMed: 10559200]

- Wieland, T.; Seifert, R. Methodological Approaches. In: Seifert, R.; Wieland, T., editors. G-protein-coupled receptors as drug targets (Methods and Principles in Medicinal Chemistry). Wiley-VCH; Weinheim: 2005. p. 81-120.
- Zhang WB, Navenot JM, Haribabu B, Tamamura H, Hiramatu K, Omagari A, Pei G, Manfredi JP, Fujii N, Broach JR, Peiper SC. A point mutation that confers constitutive activity to CXCR4 reveals that T140 is an inverse agonist and that AMD3100 and ALX40-4C are weak partial agonists. *J Biol Chem* 2002;277:24515–24521. [PubMed: 11923301]
- Zhou H, Tai HH. Characterization of recombinant human CXCR4 in insect cells: role of extracellular domains and N-glycosylation in ligand binding. *Arch Biochem Biophys* 1999;369:267–276. [PubMed: 10486146]
- Zhou H, Tai HH. Expression and functional characterization of mutant human CXCR4 in insect cells: role of cysteinyl and negatively charged residues in ligand binding. *Arch Biochem Biophys* 2000;373:211–217. [PubMed: 10620340]

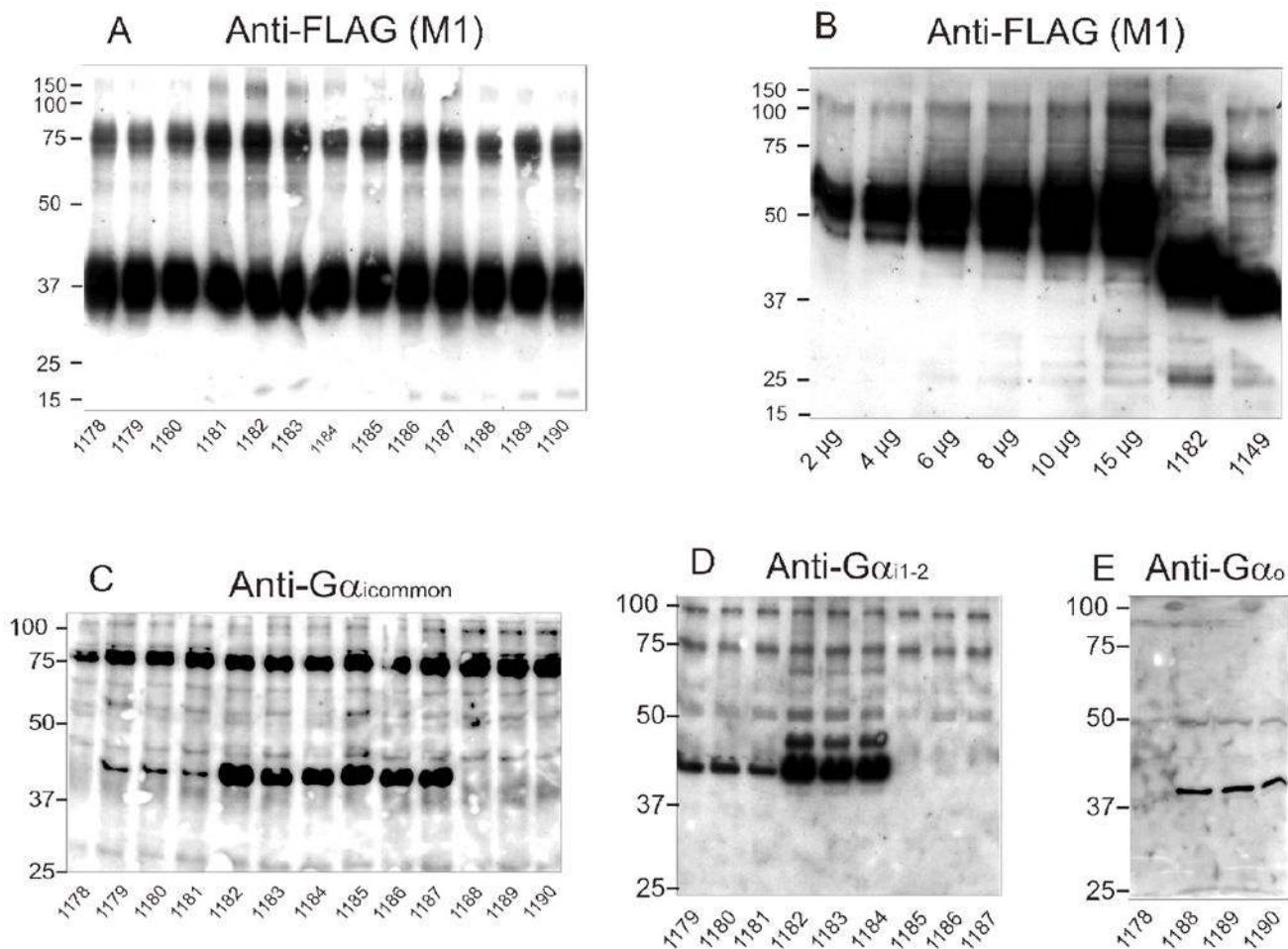


Fig. 1. Analysis of the expression of CXCR4 and G α subunits in Sf9 membranes
 SDS-PAGE and immunoblots were performed as described in Materials and Methods. Unless stated otherwise in panel **B**, 10 μ g of membrane protein were loaded onto each lane. Numbers on the left indicate molecular masses (kDa) of marker proteins. Numbers below immunoblots designate the specific membrane studied (see Table 1 for specific protein composition). Shown are the immunoblots of gels containing 12% (m/v) acrylamide. **A**, anti-FLAG Ig with CXCR4-expressing membranes; **B**, anti-FLAG Ig with β_2 AR standard membrane (7.5 pmol/mg as assessed by [3 H]dihydroalprenolol saturation binding; 2–15 μ g of protein/lane) and one representative CXCR4 membrane; **C**, anti-G α_{icommon} Ig with CXCR4 membranes; **D**, anti-G $\alpha_{i1,2}$ Ig with CXCR4 membranes; **E**, anti-G α_o Ig with CXCR4 membranes.

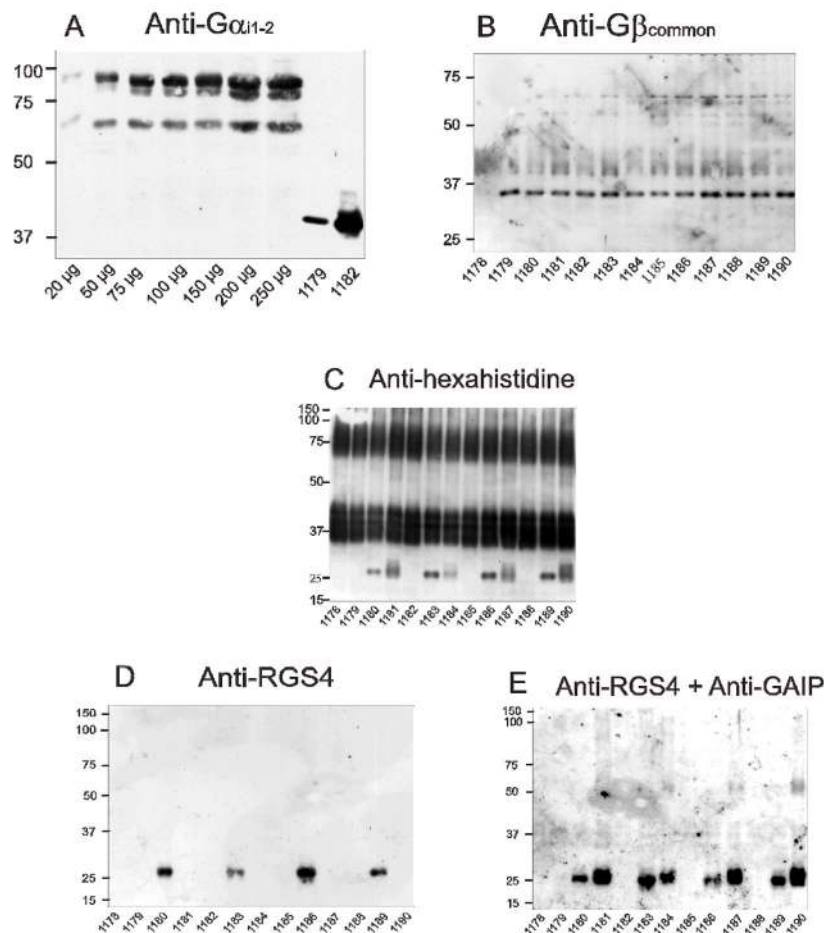


Fig. 2. Analysis of the expression of CXCR4, G α subunits, G β subunits and RGS-proteins in Sf9 membranes

SDS-PAGE and immunoblots were performed as described in Materials and Methods. Unless stated otherwise in panel **A**, 10 μ g of membrane protein were loaded onto each lane. Numbers on the left indicate molecular masses (kDa) of marker proteins. Numbers below immunoblots designate the specific membrane studied (see Table 1 for specific protein composition). Shown are the immunoblots of gels containing 12% (m/v) acrylamide. **A**, anti-G $\alpha_{1,2}$ Ig with β_2 AR-G α_{i2} standard membranes (3.0 pmol/mg as assessed by [3 H]dihydroalprenolol saturation binding; 20–250 μ g of protein/lane) and representative CXCR4-expressing membranes; **B**, anti-G β_{common} Ig with CXCR4 membranes; **C**, anti-hexahistidine Ig with CXCR4 membranes; **D**, anti-RGS4 Ig with CXCR4 membranes; **E**, anti-RGS4 plus anti-GAIP Ig with CXCR4 membranes.

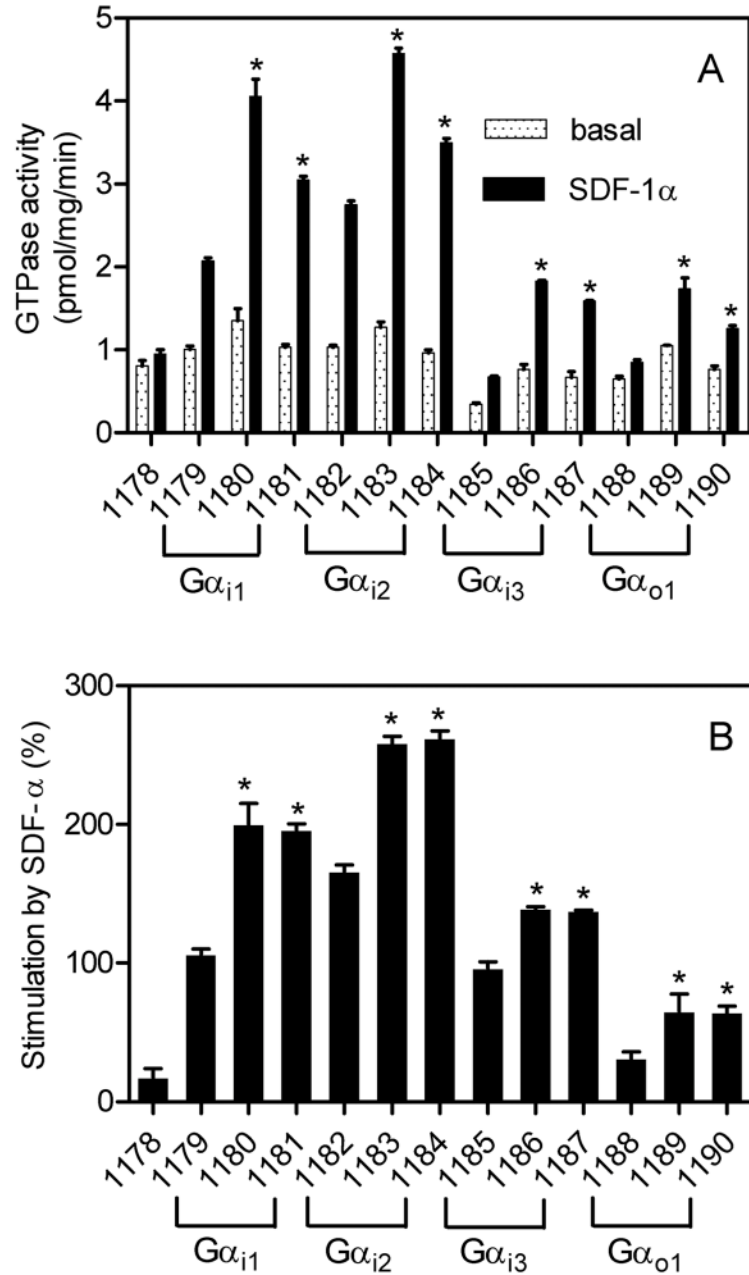


Fig. 3. Comparison of basal and SDF-1 α -stimulated GTPase activity in various CXCR4-expressing Sf9 membranes

High-affinity GTPase activity was determined as described in Materials and Methods. Numbers below columns designate the specific membrane studied (see Table 1 for specific protein composition). **A**, absolute GTPase activities under basal conditions (0.2% (m/v) BSA) or in the presence of a maximally stimulatory concentration of SDF-1 α (50 nM). **B**, relative stimulatory effect of SDF-1 α . Data shown are the means \pm SD of three independent experiments performed in duplicates. The statistical significance of the effects of RGS-proteins RGS4 and GAIP versus control on SDF-1 α -stimulated GTP hydrolysis was assessed using the t-test. *, p < 0.05.

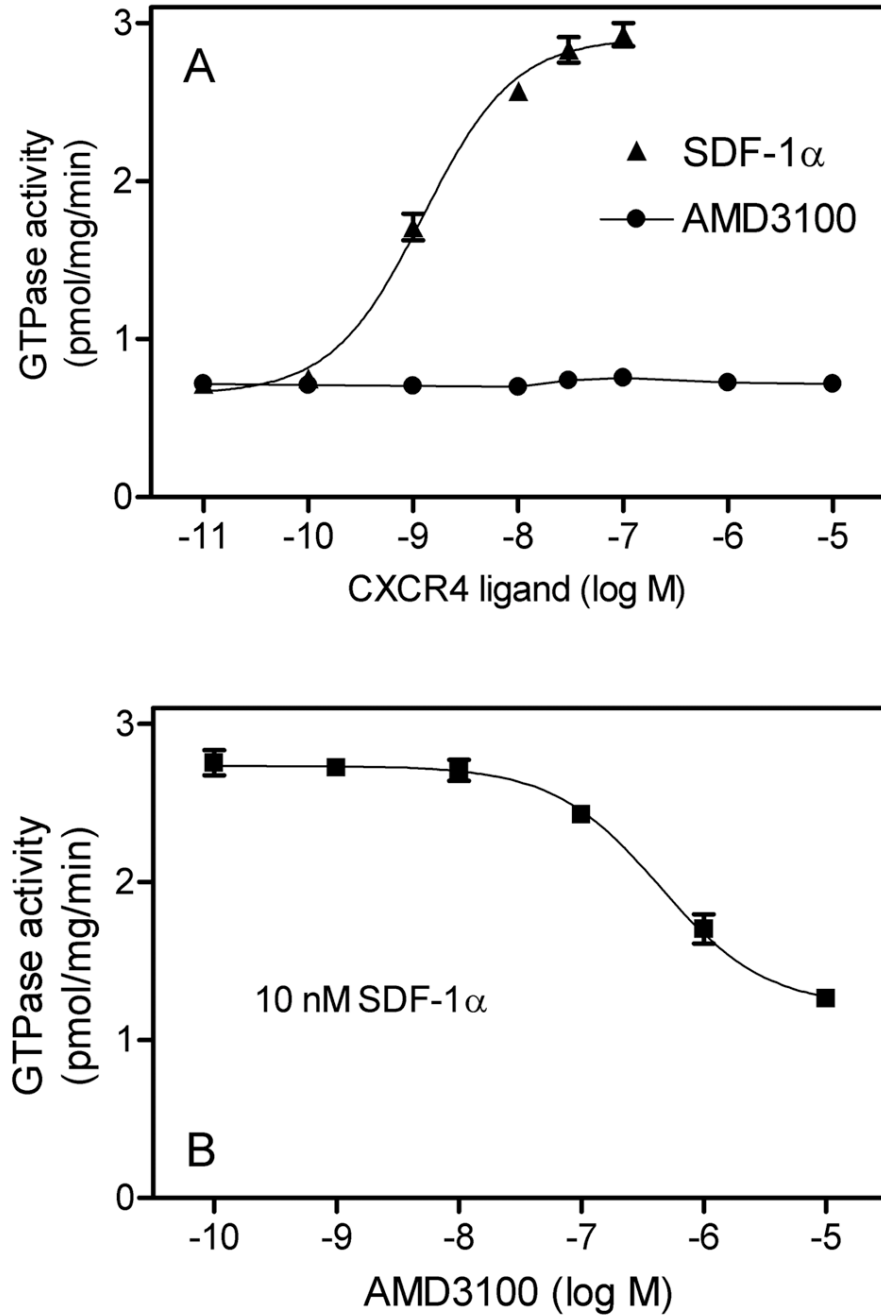


Fig. 4. Concentration/response curves for the effects of SDF-1 α and AMD3100 on GTPase activity in Sf9 membranes expressing CXCR4

High-affinity GTPase activity was determined as described in Materials and Methods in Sf9 membrane 1182 (CXCR4 + G α_{i2} + G $\beta_1\gamma_2$). **A**, Effects of SDF-1 α and AMD3100 on basal GTPase activity. **B**, Inhibitory effect of AMD3100 on GTPase activity stimulated by SDF-1 α (10 nM). Data shown are the means \pm SD of a representative experiment performed in triplicates. Similar results were obtained in two independent experiments with different membrane preparations.

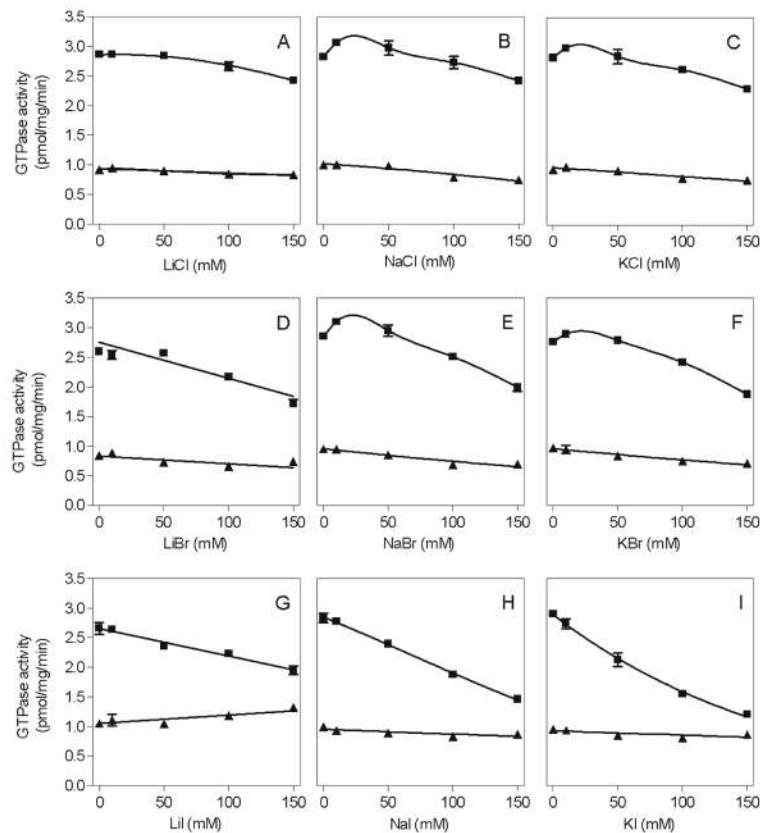


Fig. 5. Concentration/response curves for the effects of various monovalent salts on basal and SDF-1- α -stimulated GTPase activity in Sf9 membranes expressing CXCR4
 High-affinity GTPase activity was determined as described in Materials and Methods in Sf9 membrane 1182 (CXCR4 + $G\alpha_{i2}$ + $G\beta_1\gamma_2$). Reaction mixtures contained either 0.2% (m/v) BSA (basal) or 50 nM SDF-1 α . Additionally, reaction mixtures contained monovalent salts at the concentrations indicated on the abscissa. **A**, LiCl; **B**, NaCl; **C**, KCl; **D**, LiBr; **E**, NaBr; **F**, KBr; **G**, LiI; **H**, NaI; **I**, KI. Data shown are the means \pm SD of a representative experiment performed in triplicates. Similar results were obtained in two independent experiments with different membrane preparations.

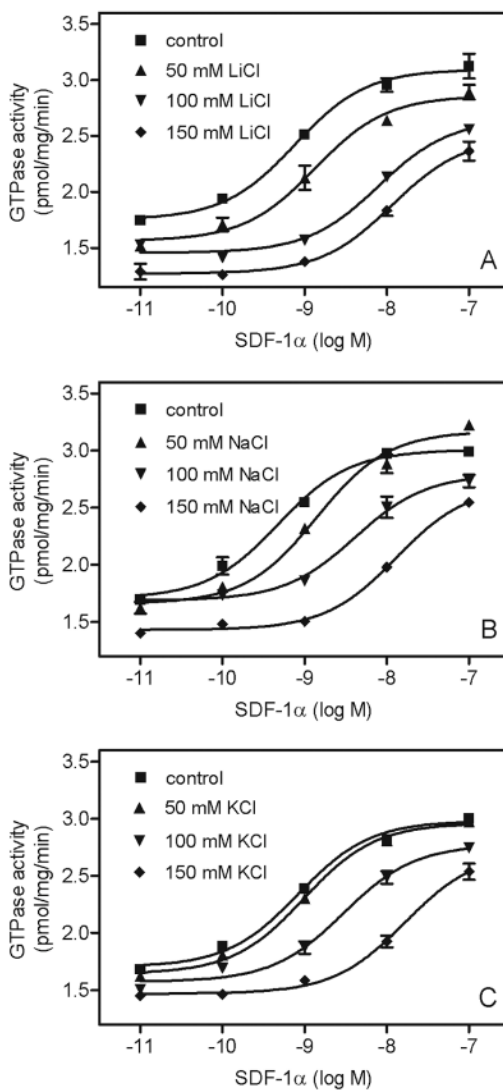


Fig. 6. Concentration/response curves for the effects of SDF-1 α on GTPase activity in Sf9 membranes expressing CXCR4 in the presence of various monovalent salts

High-affinity GTPase activity was determined as described in Materials and Methods in Sf9 membrane 1182 (CXCR4 + G α_{i2} + G $\beta_1\gamma_2$). Reaction mixtures contained SDF-1 α at various concentrations in the absence and presence of monovalent salts at various fixed concentrations (50 mM, 100 mM or 150 mM). **A**, effect of LiCl; **B**, effect of NaCl; **C**, effect of KCl. Data shown are the means \pm SD of a representative experiment performed in triplicates. Similar results were obtained in two independent experiments with different membrane preparations.

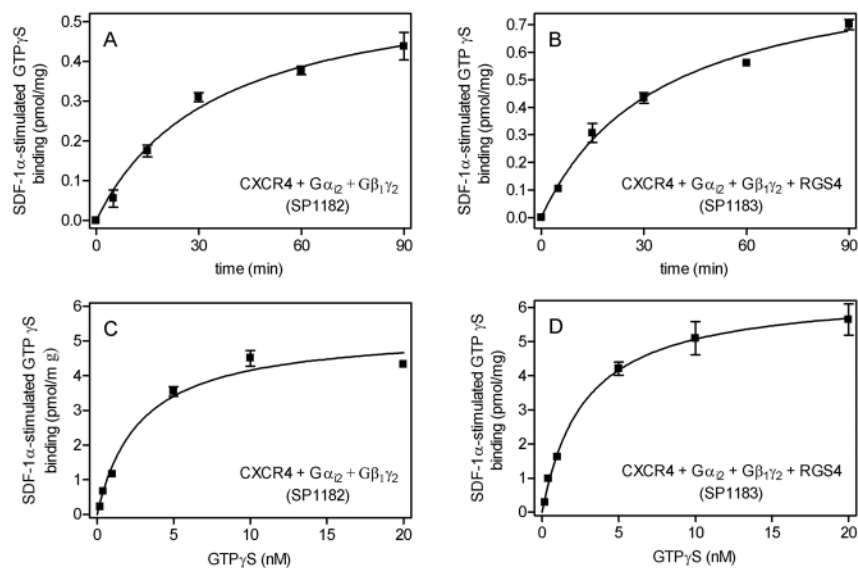


Fig. 7. Regulation of GTP γ S binding by SDF-1 α in Sf9 membranes expressing CXCR4
 GTP γ S binding was determined as described in Materials and Methods in Sf9 membrane 1182 (CXCR4 + G α_{i2} + G $\beta_1\gamma_2$) and 1183 (CXCR4 + G α_{i2} + G $\beta_1\gamma_2$ + RGS4). **A** and **B**, time course of GTP γ S binding. Reaction mixtures contained 1 μ M GDP plus 0.4 nM [35 S]GTP γ S and 15 μ g of membrane 1182 (**A**) or 1183 (**B**). Reactions were conducted for the periods of time indicated on the abscissa. Basal GTP γ S binding was subtracted from GTP γ S binding in the presence of SDF-1 α . Thus, SDF-1 α -stimulated GTP γ S binding is shown. **C** and **D**, GTP γ S saturation binding. Reaction mixtures contained 1 μ M GDP plus 0.2–20 nM [35 S]GTP γ S as indicated on the abscissa and 15 μ g of membrane 1182 (**C**) or 1183 (**D**). Reactions were conducted for 90 min. Basal GTP γ S binding was subtracted from SDF-1 α -stimulated GTP γ S binding. Thus, SDF-1 α -stimulated GTP γ S binding is shown. Data shown are the means \pm SD of three independent experiments performed in duplicates. Similar results were obtained in two independent experiments with different membrane preparations.

Table 1
Overview on the various Sf9 membranes analyzed in the present study

One hundred ml of Sf9 cell suspension ($3.0 \cdot 10^6$ cells/ml) were infected with various combinations of high-titer virus stocks of baculoviruses encoding for signal transduction proteins (virus dilution 1 : 100 each). Sf9 cells were cultured for 48 h before membrane preparation. At the time of harvest, cells showed signs of infection such as drum stick extensions of the plasma membrane, irregular cell shape, inclusion bodies, but cell integrity was preserved even with quadruple-infected cells. The 13 cell membranes were prepared on the same day and in parallel to ensure optimal comparison of functional properties. From each cell batch, 30 1-ml aliquots of membranes were prepared. Protein concentrations of membranes are the means \pm SD of a triplicate determination.

Membrane Preparation Number	GPCR	G α subunit	G $\beta\gamma$ subunit	RGS protein	c protein (μ g/ml)
1178	CXCR4				737 \pm 74
1179	CXCR4	G α_{11}	$\beta_{1\gamma_2}$		773 \pm 77
1180	CXCR4	G α_{11}	$\beta_{1\gamma_2}$	RGS4	723 \pm 72
1181	CXCR4	G α_{11}	$\beta_{1\gamma_2}$	GAIP	901 \pm 90
1182	CXCR4	G α_{12}	$\beta_{1\gamma_2}$		1074 \pm 107
1183	CXCR4	G α_{12}	$\beta_{1\gamma_2}$	RGS4	1096 \pm 110
1184	CXCR4	G α_{12}	$\beta_{1\gamma_2}$	GAIP	869 \pm 87
1185	CXCR4	G α_{13}	$\beta_{1\gamma_2}$		691 \pm 69
1186	CXCR4	G α_{13}	$\beta_{1\gamma_2}$	RGS4	960 \pm 96
1187	CXCR4	G α_{13}	$\beta_{1\gamma_2}$	GAIP	924 \pm 92
1188	CXCR4	G α_{61}	$\beta_{1\gamma_2}$		710 \pm 71
1189	CXCR4	G α_{61}	$\beta_{1\gamma_2}$	RGS4	823 \pm 82
1190	CXCR4	G α_{61}	$\beta_{1\gamma_2}$	GAIP	746 \pm 75