

FIFTH EDITION

FUNDAMENTALS OF GEOTECHNICAL ENGINEERING



BRAJA M. DAS | NAGARATNAM SIVAKUGAN



Fundamentals of Geotechnical Engineering

Fifth Edition



Fundamentals of Geotechnical Engineering

Fifth Edition

Braja M. Das

Dean Emeritus, California State University
Sacramento, California, USA

Nagaratnam Sivakugan

Associate Professor, College of Science, Technology & Engineering
James Cook University, Queensland, Australia



CENGAGE
Learning®

Australia • Brazil • Mexico • Singapore • United Kingdom • United States



CENGAGE
Learning®

**Fundamentals of Geotechnical
Engineering, Fifth Edition**
Braja M. Das and Nagaratnam Sivakugan

Product Director, Global Engineering:
Timothy L. Anderson

Senior Content Developer: Mona ZefTel

Media Assistant: Ashley Kaupert

Product Assistant: Alexander Sham

Marketing Manager: Kristin Stine

Director, Content and Media Production:
Sharon L. Smith

Senior Content Project Manager:
Kim Kusnerak

Production Service: RPK Editorial
Services, Inc.

Copyeditor: Harlan James

Proofreader: Martha McMaster

Indexer: Braja Das

Compositor: MPS Limited

Senior Art Director: Michelle Kunkler

Internal Designer: Carmela Pereira

Cover Designer: Tin Box Studios

Cover Image: Rohini Sivakugan

Intellectual Property

Analyst: Christine Myaskovsky

Project Manager: Sarah Shainwald

Text and Image Permissions Researcher:
Kristiina Paul

Senior Manufacturing Planner: Doug Wilke

© 2017, 2013 Cengage Learning®

WCN: 01-100-101

ALL RIGHTS RESERVED. No part of this work covered by the copyright herein may be reproduced, transmitted, stored, or used in any form or by any means graphic, electronic, or mechanical, including but not limited to photocopying, recording, scanning, digitizing, taping, Web distribution, information networks, or information storage and retrieval systems, except as permitted under Section 107 or 108 of the 1976 United States Copyright Act, without the prior written permission of the publisher.

For product information and technology assistance, contact us at
Cengage Learning Customer & Sales Support, 1-800-354-9706

For permission to use material from this text or product,
submit all requests online at www.cengage.com/permissions
Further permissions questions can be emailed to
permissionrequest@cengage.com

Library of Congress Control Number: 2015937334

ISBN-13: 978-1-305-63518-0

Cengage Learning

20 Channel Center Street
Boston, MA 02210
USA

Cengage Learning is a leading provider of customized learning solutions with employees residing in nearly 40 different countries and sales in more than 125 countries around the world. Find your local representative at www.cengage.com

Cengage Learning products are represented in Canada by
Nelson Education, Ltd.

To learn more about Cengage Learning Solutions, visit
www.cengage.com/engineering.

Purchase any of our products at your local college store or at our preferred
online store www.cengagebrain.com

Unless otherwise noted, all items © Cengage Learning.

The cover photograph by Rohini Sivakugan is of the Shin-Meishin
Expressway construction near Kyoto, Japan. This section connects Kobe
and Takatsuki. The construction site is closer to Takatsuki.

Printed in the United States of America
Print Number: 01 Print Year: 2015

To Janice, Rohini, Joe,
Valerie and Elizabeth



Contents

1	GEOTECHNICAL ENGINEERING— FROM THE BEGINNING	1
<hr/>		
1.1	Introduction	1
1.2	Geotechnical Engineering Prior to the 18th Century	2
1.3	Preclassical Period of Soil Mechanics (1700–1776)	5
1.4	Classical Soil Mechanics—Phase I (1776–1856)	6
1.5	Classical Soil Mechanics—Phase II (1856–1910)	6
1.6	Modern Soil Mechanics (1910–1927)	7
1.7	Geotechnical Engineering after 1927	8
1.8	End of an Era	14
	References	15
2	SOIL DEPOSITS—ORIGIN, GRAIN-SIZE, AND SHAPE	17
<hr/>		
2.1	Introduction	17
2.2	Rock Cycle and the Origin of Soil	17
2.3	Soil Deposits—General	25
2.4	Residual Soil	25
2.5	Gravity-Transported Soil	25
2.6	Alluvial Deposits	26
2.7	Lacustrine Deposits	28

2.8	Glacial Deposits	28
2.9	Aeolian Soil Deposits	29
2.10	Organic Soil	30
2.11	Soil-Grain Size	30
2.12	Clay Minerals	32
2.13	Specific Gravity (G_s)	36
2.14	Mechanical Analysis of Soil	37
2.15	Sieve Analysis	37
2.16	Hydrometer Analysis	40
2.17	Effective Size, Uniformity Coefficient, and Coefficient of Gradation	44
2.18	Grain Shape	50
2.19	Summary	51
	Problems	51
	Critical Thinking Problem	54
	References	55

3 WEIGHT-VOLUME RELATIONSHIPS AND PLASTICITY **56**

3.1	Introduction	56
3.2	Weight-Volume Relationships	56
3.3	Relationships among Unit Weight, Void Ratio, Moisture Content, and Specific Gravity	60
3.4	Relationships among Unit Weight, Porosity, and Moisture Content	62
3.5	Various Unit Weight Relationships	64
3.6	Relative Density	70
3.7	Consistency of Soil	73
3.8	Activity	81
3.9	Liquidity Index	82
3.10	Plasticity Chart	83
3.11	Summary	84
	Problems	84
	Critical Thinking Problems	87
	References	87

4 SOIL CLASSIFICATION **89**

4.1	Introduction	89
4.2	AASHTO Classification System	89
4.3	Unified Soil Classification System (USCS)	93
4.4	Visual Identification of Soils	100
4.5	Summary	101
	Problems	101
	Critical Thinking Problems	103
	References	103

5 SOIL COMPACTION 104

- 5.1 Introduction 104
- 5.2 Compaction—General Principles 104
- 5.3 Standard Proctor Test 105
- 5.4 Factors Affecting Compaction 109
- 5.5 Modified Proctor Test 111
- 5.6 Empirical Relationships 115
- 5.7 Field Compaction 118
- 5.8 Specifications for Field Compaction 120
- 5.9 Determination of Field Unit Weight
after Compaction 122
- 5.10 Effect of Compaction on Cohesive Soil Properties 124
- 5.11 Other Ground Improvement Methods 126
- 5.12 Summary 128
 - Problems 128
 - Critical Thinking Problem 132
 - References 133

6 HYDRAULIC CONDUCTIVITY 135

- 6.1 Introduction 135
- 6.2 Bernoulli's Equation 135
- 6.3 Darcy's Law 138
- 6.4 Hydraulic Conductivity 139
- 6.5 Laboratory Determination of Hydraulic
Conductivity 141
- 6.6 Empirical Relations for Hydraulic Conductivity 146
- 6.7 Equivalent Hydraulic Conductivity in Stratified Soil 152
- 6.8 Permeability Test in the Field by Pumping from Wells 155
- 6.9 Summary 157
 - Problems 157
 - Critical Thinking Problem 161
 - References 162

7 SEEPAGE 163

- 7.1 Introduction 163
- 7.2 Laplace's Equation of Continuity 163
- 7.3 Flow Nets 165
- 7.4 Seepage Calculation from a Flow Net 167
- 7.5 Flow Nets in Anisotropic Soil 171
- 7.6 Summary 175
 - Problems 175
 - Critical Thinking Problem 178

8 STRESSES IN A SOIL MASS**179**

-
- 8.1 Introduction 179
 - Effective Stress Concept* 180
 - 8.2 Stresses in Saturated Soil without Seepage 180
 - 8.3 Stresses in Saturated Soil with Seepage 183
 - 8.4 Seepage Force 189
 - 8.5 Heaving in Soil Due to Flow Around Sheet Piles 191
 - Vertical Stress Increase Due to Various Types of Loading* 194
 - 8.6 Stress Caused by a Point Load 194
 - 8.7 Vertical Stress Caused by a Line Load 195
 - 8.8 Vertical Stress Below a Uniformly Loaded Circular Area 196
 - 8.9 Vertical Stress Caused by a Rectangularly Loaded Area 199
 - 8.10 Summary 203
 - Problems 204
 - Critical Thinking Problems 208
 - References 210

9 CONSOLIDATION**211**

-
- 9.1 Introduction 211
 - 9.2 Fundamentals of Consolidation 212
 - 9.3 One-Dimensional Laboratory Consolidation Test 215
 - 9.4 Void Ratio–Pressure Plots 218
 - 9.5 Normally Consolidated and Overconsolidated Clays 220
 - 9.6 Effect of Disturbance on Void Ratio–Pressure Relationship 222
 - 9.7 Calculation of Settlement from One-Dimensional Primary Consolidation 223
 - 9.8 Compression Index (C_c) and Swell Index (C_s) 225
 - 9.9 Settlement from Secondary Consolidation 233
 - 9.10 Time Rate of Consolidation 236
 - 9.11 Coefficient of Consolidation 241
 - 9.12 Calculation of Primary Consolidation Settlement under a Foundation 248
 - 9.13 Skempton-Bjerrum Modification for Consolidation Settlement 251
 - 9.14 Effects of Initial Excess Pore Pressure Distribution of $U-T_v$ Relationship 255
 - 9.15 Construction Time Correction of Consolidation Settlement 257
 - 9.16 Summary 260
 - Problems 260
 - Critical Thinking Problems 266
 - References 266

10 SHEAR STRENGTH OF SOIL 268

- 10.1 Introduction 268
- 10.2 Mohr–Coulomb Failure Criteria 268
- 10.3 Inclination of the Plane of Failure Caused by Shear 271
- Laboratory Determination of Shear Strength Parameters* 273
- 10.4 Direct Shear Test 273
- 10.5 Triaxial Shear Test 280
- 10.6 Consolidated-Drained Test 282
- 10.7 Consolidated-Undrained Test 291
- 10.8 Unconsolidated-Undrained Test 296
- 10.9 Unconfined Compression Test on Saturated Clay 299
- 10.10 Selection of Shear Strength Parameters 301
- 10.11 Sensitivity and Thixotropy of Clay 302
- 10.12 Anisotropy in Undrained Shear Strength 304
- 10.13 Summary 305
 - Problems 306
 - Critical Thinking Problems 310
 - References 310

11 GROUND IMPROVEMENT 312

- 11.1 Introduction 312
- Chemical Stabilization* 313
- 11.2 Lime Stabilization 313
- 11.3 Cement Stabilization 315
- 11.4 Fly-Ash Stabilization 316
- Mechanical Stabilization* 317
- 11.5 Vibroflotation 317
- 11.6 Dynamic Compaction 320
- 11.7 Blasting 322
- 11.8 Precompression 322
- 11.9 Sand Drains 327
- 11.10 Summary 332
 - Problems 333
 - Critical Thinking Problem 334
 - References 335

12 SUBSURFACE EXPLORATION 336

- 12.1 Introduction 336
- 12.2 Subsurface Exploration Program 337
- 12.3 Exploratory Borings in the Field 340
- 12.4 Procedures for Sampling Soil 344

12.5	Split-Spoon Sampling and Standard Penetration Test	344
12.6	Sampling with Thin Wall Tube	351
12.7	Observation of Water Levels	352
12.8	Vane Shear Test	353
12.9	Cone Penetration Test	358
12.10	Pressuremeter Test (PMT)	364
12.11	Dilatometer Test	366
12.12	Coring of Rocks	368
12.13	Preparation of Boring Logs	370
12.14	Geophysical Exploration	372
12.15	Soil Exploration Report	379
12.16	Field Instrumentation	380
12.17	Summary	382
	Problems	383
	Critical Thinking Problem	387
	References	388

13 SLOPE STABILITY 390

13.1	Introduction	390
13.2	Factor of Safety	391
13.3	Stability of Infinite Slopes	392
13.4	Finite Slopes	396
13.5	Analysis of Finite Slope with Cylindrical Failure Surface—General	400
13.6	Mass Procedure of Stability Analysis (Circularly Cylindrical Failure Surface)	402
13.7	Method of Slices	423
13.8	Bishop's Simplified Method of Slices	426
13.9	Analysis of Simple Slopes with Steady-State Seepage	430
13.10	Mass Procedure for Stability of Clay Slope with Earthquake Forces	435
13.11	Summary	439
	Problems	440
	Critical Thinking Problems	444
	References	445

14 LATERAL EARTH PRESSURE 446

14.1	Introduction	446
14.2	Earth Pressure at Rest	446
14.3	Rankine's Theory of Active and Passive Earth Pressures	451
14.4	Diagrams for Lateral Earth Pressure Distribution against Retaining Walls	458
14.5	Rankine Active Pressure with Sloping Granular Backfill	471

- 14.6 Coulomb's Earth Pressure Theory—Retaining Walls with Friction 472
- 14.7 Passive Pressure Assuming Curved Failure Surface in Soil 481
- 14.8 Summary 483
 - Problems 484
 - Critical Thinking Problems 488
 - References 489

15 RETAINING WALLS, BRACED CUTS, AND SHEET PILE WALLS

490

-
- 15.1 Introduction 490
 - Retaining Walls* 491
 - 15.2 Retaining Walls—General 491
 - 15.3 Proportioning Retaining Walls 493
 - 15.4 Application of Lateral Earth Pressure Theories to Design 494
 - 15.5 Check for Overturning 496
 - 15.6 Check for Sliding along the Base 498
 - 15.7 Check for Bearing Capacity Failure 500
 - Mechanically Stabilized Earth Retaining Walls* 508
 - 15.8 Mechanically Stabilized Earth 508
 - 15.9 General Design Considerations 509
 - 15.10 Retaining Walls with Metallic Strip Reinforcement 509
 - 15.11 Step-by-Step-Design Procedure Using Metallic Strip Reinforcement 512
 - 15.12 Retaining Walls with Geotextile Reinforcement 518
 - 15.13 Retaining Walls with Geogrid Reinforcement 523
 - Braced Cuts* 528
 - 15.14 Braced Cuts—General 528
 - 15.15 Lateral Earth Pressure in Braced Cuts 532
 - 15.16 Soil Parameters for Cuts in Layered Soil 534
 - 15.17 Design of Various Components of a Braced Cut 535
 - 15.18 Heave of the Bottom of a Cut in Clay 541
 - 15.19 Lateral Yielding of Sheet Piles and Ground Settlement 543
 - Sheet Pile Walls* 545
 - 15.20 Cantilever Sheet Pile Wall in Granular Soils ($c' = 0$) 545
 - 15.21 Cantilever Sheet Piles in Cohesive Soils 552
 - 15.22 Anchored Sheet Pile Wall 554
 - 15.23 Deadman Anchor—A Simplified Approach 557
 - 15.24 Summary 558
 - Problems 559
 - Critical Thinking Problems 565
 - References 567

16 SHALLOW FOUNDATIONS— BEARING CAPACITY 568

- 16.1 Introduction 568
- 16.2 Ultimate Bearing Capacity of Shallow Foundations—
General Concepts 569
- 16.3 Terzaghi's Ultimate Bearing Capacity Theory 571
- 16.4 Modification to Terzaghi's Bearing Capacity Equation 573
- 16.5 Modification of Bearing Capacity Equations
for Water Table 577
- 16.6 The Factor of Safety 578
- 16.7 Eccentrically Loaded Foundations (One-Way Eccentricity) 581
- 16.8 Reduction Factor Method for Eccentrically Loaded Strip Foundation
on Granular Soil 584
- 16.9 Strip Foundation Under Eccentrically Inclined Load 586
- 16.10 Foundations with Two-Way Eccentricity 591
- 16.11 Ultimate Bearing Capacity with Earthquake Condition 599
- 16.12 Mat Foundations—Common Types 601
- 16.13 Bearing Capacity of Mat Foundations 604
- 16.14 Compensated Foundations 605
- 16.15 Summary 607
 - Problems 607
 - Critical Thinking Problems 610
 - References 611

17 SETTLEMENT OF SHALLOW FOUNDATIONS 612

- 17.1 Introduction 612
- 17.2 Elastic Settlement of Foundations on Saturated Clay Soils
($\mu_s = 0.5$) 613
- 17.3 Elastic Settlement Based on Theory of Elasticity (Drained Soil) 615
- 17.4 Range of Material Parameters for Computing
Elastic Settlement 623
- 17.5 Improved Method for Settlement Calculation
in Granular Soil 623
- 17.6 Settlement of Sandy Soil: Use of Strain Influence Factor 629
- 17.7 Allowable Bearing Pressure for Spread Footing
in Sand Based on Settlement Consideration 634
- 17.8 Allowable Bearing Pressure of Mat Foundation in Sand 635
- 17.9 Effects of Water Table Rise on Elastic Settlement
in Granular Soils 636
- 17.10 Summary 638
 - Problems 638
 - Critical Thinking Problems 641
 - References 641

18 PILE FOUNDATIONS 643

- 18.1 Introduction 643
- 18.2 Need for Pile Foundations 643
- 18.3 Types of Piles and Their Structural Characteristics 645
- 18.4 Estimation of Pile Length 653
- 18.5 Installation of Piles 654
- 18.6 Load Transfer Mechanism 656
- 18.7 Equations for Estimation of Pile Capacity 659
- 18.8 Load Carrying Capacity of Pile Point, Q_p 660
- 18.9 Frictional Resistance, Q_s 662
- 18.10 Allowable Pile Capacity 668
- 18.11 Load-Carrying Capacity of Pile Point Resting on Rock 669
- 18.12 Elastic Settlement of Piles 679
- 18.13 Pile Load Tests 682
- 18.14 Pile-Driving Formulas 687
- 18.15 Negative Skin Friction 691
- 18.16 Group Piles—Efficiency 693
- 18.17 Elastic Settlement of Group Piles 698
- 18.18 Consolidation Settlement of Group Piles 698
- 18.19 Summary 702
 - Problems 703
 - Critical Thinking Problem 710
 - References 711

19 DRILLED SHAFT 712

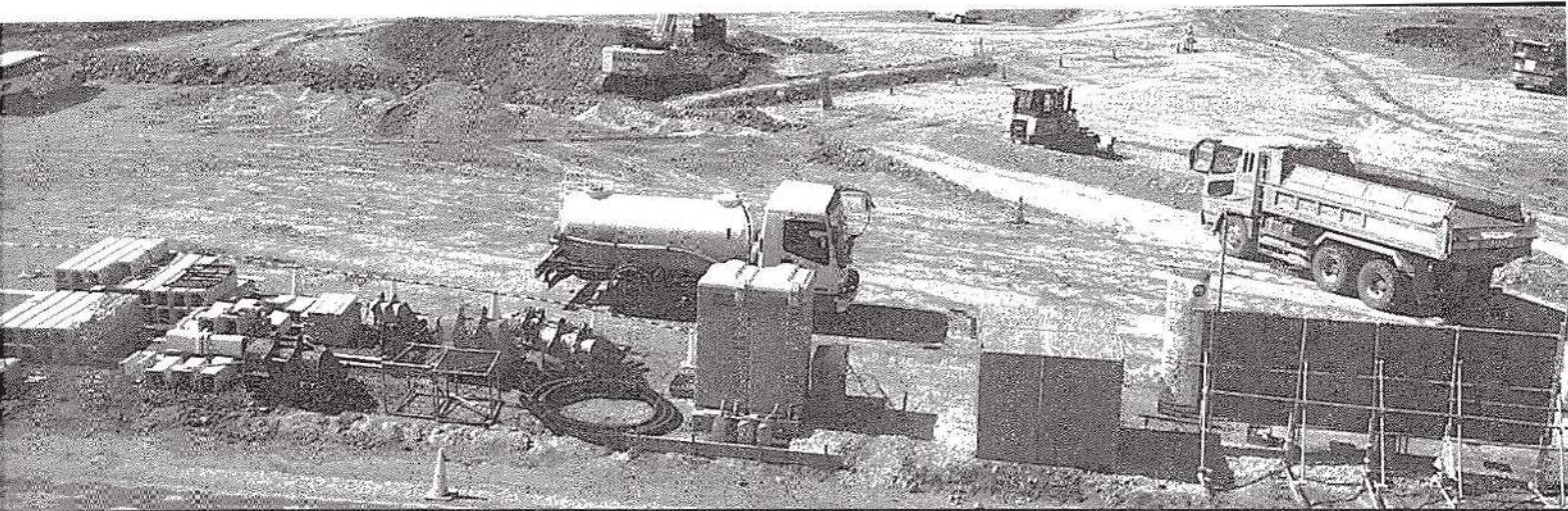
- 19.1 Introduction 712
- 19.2 Types of Drilled Shafts 713
- 19.3 Construction Procedures 714
- 19.4 Estimation of Load-Bearing Capacity 718
- 19.5 Drilled Shafts in Sand—Net Ultimate Load 720
- 19.6 Drilled Shafts in Clay—Net Ultimate Load 723
- 19.7 Settlement of Drilled Shafts at Working Load 728
- 19.8 Load-Bearing Capacity Based on Settlement 728
- 19.9 Summary 736
 - Problems 736
 - Critical Thinking Problem 739
 - References 740

20 LOAD AND RESISTANCE FACTOR DESIGN (LRFD) 741

- 20.1 Introduction 741
- 20.2 Design Philosophy 742
- 20.3 Allowable Stress Design (ASD) 744

20.4	Limit State Design (LSD) and Partial Safety Factors	745
20.5	Summary	750
	Problems	750
	References	750

	Appendix A: Geosynthetics	752
	Answers to Selected Problems	758
	Index	767



Preface

Principles of Foundation Engineering and *Principles of Geotechnical Engineering* were originally published with 1984 and 1985 copyrights, respectively. These texts were well received by instructors, students, and practitioners alike. Depending on the needs of the users, the texts were revised and are presently in their eighth editions. These texts have also been translated in several languages.

Toward the latter part of 1998, there were several requests to prepare a single volume that was concise in nature but combined the essential components of *Principles of Foundation Engineering* and *Principles of Geotechnical Engineering*. In response to those requests, the first edition of *Fundamentals of Geotechnical Engineering* was published in 2000. This text includes the fundamental concepts of soil mechanics as well as foundation engineering, including bearing capacity and settlement of shallow foundations (spread footings and mats), retaining walls, braced cuts, piles, and drilled shafts.

New to This Edition

This fifth edition has been revised and prepared based on comments received from several reviewers and users without changing the philosophy on which the text was originally prepared. Professor Nagaratnam Sivakugan of James Cook University, Australia, has joined as a co-author of this edition. As in the previous editions, SI units are used throughout the text. This edition consists of 20 chapters and an appendix. The major changes from the fourth edition include the following:

- About forty additional photographs have been added.
- A number of additional example problems and homework problems have been added in each chapter.
- Each chapter has some critical thinking problem(s) added to the homework problem set.

- An interactive digital version of this text is now available. Please see the MindTap description on page xix.
- In Chapter 2 on “Soil Deposits—Origin, Grain-Size, and Shape” a discussion has been added for the U.S. sieve size designations. Details for the British standard sieves and the Australian standard sieves have also been added.
- In Chapter 3 on “Weight-Volume Relationships and Plasticity,” a table for various unit-weight relationships has been added.
- Chapter 4 on “Soil Classification” has a new section on visual identification of soils.
- In Chapter 5 on “Soil Compaction,” some recently published correlations for maximum dry unit weight and optimum moisture content has been added. Also added in this chapter is a brief description on various ground improvement methods.
- Chapter 9 on “Consolidation” now has a new section on the effects of initial excess pore water pressure distribution on $U-T_v$ relationships. Also added to this chapter is a discussion on the construction time correction of consolidation settlement.
- A number of recently published correlations for effective stress friction angle (ϕ') and cohesion (c') for cohesive soils has been added to Chapter 10 on “Shear Strength of Soils.” Also included in this chapter are several correlations for the undrained shear strength of remolded clays with liquidity index.
- Chapter 12 on “Subsurface Exploration” now has a section on field instrumentation.
- In Chapter 13 on “Slope Stability,” an analysis to evaluate the factor of safety of clay slopes with the undrained cohesion increasing with depth has been added. This chapter now also has a discussion on the mass procedure for stability analysis of homogeneous clay slopes ($\phi = 0$) with earthquake forces.
- Chapter 15 has been renamed as “Retaining Walls, Braced Cuts, and Sheet Pile Walls.” Analyses of cantilever sheet pile walls and anchored sheet pile walls have been added to this chapter.
- The bearing capacity of strip foundation under eccentrically inclined load has been discussed in greater detail in Chapter 16 on “Shallow Foundations—Bearing Capacity.”
- An improved method for elastic settlement calculation of shallow foundations on granular soil taking into consideration the variation of soil stiffness with stress level has been added to Chapter 17 on “Settlement of Shallow Foundations.”
- A new chapter (Chapter 20) on “Load and Resistance Factor Design (LRFD)” has been added to the text.

Instructor Resource Materials

A detailed *Instructor's Solutions Manual* and Lecture Note PowerPoint slides are available for instructors through a password-protected Web site at www.cengagebrain.com.

MindTap Online Course and Reader

This textbook is also available online through Cengage Learning's MindTap, a personalized learning program. Students who purchase the MindTap have access to the book's multimedia-rich electronic Reader and are able to complete homework and assessment material online, on their desktops, laptops, or iPads. Instructors who use a Learning Management System (such as Blackboard, Canvas, or Moodle) for tracking course content, assignments, and grading, can seamlessly access the MindTap suite of content and assessments for this course.

With MindTap, instructors can:

- Personalize the Learning Path to match their course syllabus by rearranging content or appending original material to the online content
- Connect a Learning Management System portal to the online course and Reader
- Customize online assessments and assignments
- Track student engagement, progress and comprehension
- Promote student success through interactivity, and exercises

Additionally, students can listen to the text through ReadSpeaker, take notes in the digital Reader, study from or create their own Flashcards, highlight content for easy reference, and check their understanding of the material through practice quizzes and automatically-graded homework. The MindTap for *Fundamentals of Geotechnical Engineering* also includes algorithmically generated problems, providing an endless pool for student practice and assessment.

Acknowledgments

Thanks are due to:

The following reviewers for their comments and constructive suggestions:

- Alierza Bayat, University of Alberta
- Raymond Haddad, California State University, Northridge
- Anne Lemnitzer, University of California, Irvine
- Matthew Sleep, Oregon Institute of Technology
- Kamal Tawfiq, Florida A&M University
- Alexandria Wayllace, Colorado School of Mines
- Attila Michael Zsaki, Concordia University, Canada

Several individuals in Cengage Learning, for their assistance and advice in the final development of the text—namely:

- Tim Anderson, Product Director
- Mona ZefTEL, Senior Content Developer

Thanks are also due to Janice Das for her continuous help in the development of the original text and its subsequent four editions.

It is also fitting to thank Rose P. Kernan of RPK Editorial Services. She has been instrumental in shaping the style and overseeing the production of this edition of *Fundamentals of Geotechnical Engineering* as well as all previous editions.

Braja M. Das
Henderson, Nevada, USA

Nagaratnam Sivakugan
Townsville, Queensland, Australia