

# *Gaia* white dwarfs within 40 pc II: the volume-limited Northern hemisphere sample

Jack McCleery,<sup>1</sup>★ Pier-Emmanuel Tremblay,<sup>1</sup> Nicola Pietro Gentile Fusillo,<sup>2</sup> Mark A. Hollands,<sup>1</sup> Boris T. Gänsicke<sup>ⓑ</sup>,<sup>1</sup> Paula Izquierdo,<sup>3,4</sup> Silvia Toonen,<sup>5</sup> Tim Cunningham<sup>1</sup> and Alberto Rebassa-Mansergas<sup>6,7</sup>

<sup>1</sup>Department of Physics, University of Warwick, CV4 7AL, Coventry, UK

<sup>2</sup>European Southern Observatory, Karl-Schwarzschild-Str 2, D 85748 Garching, Germany

<sup>3</sup>Instituto de Astrofísica de Canarias, E-38205 La Laguna, Tenerife, Spain

<sup>4</sup>Departamento de Astrofísica, Universidad de La Laguna, E-38206 La Laguna, Tenerife, Spain

<sup>5</sup>Institute for Gravitational Wave Astronomy, School of Physics and Astronomy, University of Birmingham, Birmingham B15 2TT, UK

<sup>6</sup>Departament de Física, Universitat Politècnica de Catalunya, c/Esteve Terrades 5, E-08860 Castelldefels, Spain

<sup>7</sup>Institut d'Estudis Espacials de Catalunya, Ed. Nexus-201, c/Gran Capità 2-4, E-08034 Barcelona, Spain

Accepted 2020 July 6. Received 2020 June 26; in original form 2020 May 11

## ABSTRACT

We present an overview of the sample of Northern hemisphere white dwarfs within 40 pc of the Sun detected from *Gaia* Data Release 2 (DR2). We find that 521 sources are spectroscopically confirmed degenerate stars, 111 of which were first identified as white dwarf candidates from *Gaia* DR2 and followed up recently with the William Herschel Telescope and Gran Telescopio Canarias. Three additional white dwarf candidates remain spectroscopically unobserved and six unresolved binaries are known to include a white dwarf but were not in our initial selection in the *Gaia* DR2 Hertzsprung–Russell diagram. Atmospheric parameters are calculated from *Gaia* and Pan-STARRS photometry for all objects in the sample, confirming most of the trends previously observed in the much smaller 20 pc sample. Local white dwarfs are overwhelmingly consistent with Galactic disc kinematics, with only four halo candidates. We find that DAZ white dwarfs are significantly less massive than the overall DA population ( $\overline{M}_{\text{DAZ}} = 0.59 M_{\odot}$ ,  $\overline{M}_{\text{DA}} = 0.66 M_{\odot}$ ). It may suggest that planet formation is less efficient at higher mass stars, producing more massive white dwarfs. We detect a sequence of crystallized white dwarfs in the mass range from  $0.6 \lesssim M/M_{\odot} \lesssim 1.0$  and find that the vast majority of objects on the sequence have standard kinematic properties that correspond to the average of the sample, suggesting that their nature can be explained by crystallization alone. We also detect 26 double degenerates and white dwarf components in 56 wide binary systems.

**Key words:** stars: statistics – white dwarfs – solar neighbourhood.

## 1 INTRODUCTION

Stars are born in groups with initial spatial and kinematic homogeneity but large-scale galactic dynamical disturbances due to spiral arms and mergers greatly affect their present-day orbits. The precise astrometric and photometric observations from the *Gaia* spacecraft (Gaia Collaboration 2018a) have improved our understanding of the formation and chemical evolution of stars in the Milky Way (see e.g. Haywood et al. 2018) and have recognized the role played by a merger with at least one satellite galaxy in the formation of the thick disc (Helmi et al. 2018). As these stars age, deplete their nuclear energy source and evolve as giants and white dwarfs, their luminosity can change by a factor of up to  $10^8$ . It has therefore been a challenge to assemble representative stellar samples of all ages and masses. *Gaia* Data Release 2 (DR2) has led to a major increase in the size of the local volume-limited sample, detecting the vast majority of main-sequence stars and white dwarfs within  $\approx 100$  pc (Gaia

Collaboration 2018b; Gentile Fusillo et al. 2019). This constitutes a unique snapshot of stars that have formed at all look-back times and with initial masses from the hydrogen burning limit to  $10 M_{\odot}$ . The detailed formation history of this present-day local stellar sample can help to constrain the overall formation history and radial migration of stars and their planets in the Milky Way (Minchev, Chiappini & Martig 2013; Fantin et al. 2019).

While the advances made by *Gaia* DR2 have been transformative, identifying up to 400 000 sources within 100 pc, a full understanding of the local stellar population is still a major challenge. The local *Gaia* Hertzsprung–Russell diagram (HRD) is contaminated by distant sources with erroneous parallaxes as well as faint sources with improper sky background subtraction, with the recommended quality cuts reducing the size of the local sample by a significant factor (Gaia Collaboration 2018b). Furthermore, most of the local *Gaia* sources do not have spectroscopic follow-up, with the spectral-type completeness dropping to a small percentage beyond 20 pc (see e.g. Henry et al. 2018). This largely prevents the determination of precise stellar parameters from the lack of atmospheric chemical abundances, magnetic field strengths, and binary parameters. Furthermore, stellar

\* E-mail: Jack.McCleery@warwick.ac.uk

modelling needs to be improved considering that currently employed stellar evolution tracks for white dwarfs and M dwarfs deviate from the empirical *Gaia* HRD (Parsons et al. 2018; Hollands et al. 2018b; Morrell & Naylor 2019). These modelling issues directly impact the characterization of the bulk properties of nearby exoplanets around M dwarfs and evolved planetary systems at white dwarfs.

Surveys of nearby cool white dwarfs have historically used reduced proper motion as a proxy for distance coupled with targeted spectroscopic and astrometric follow-ups (Liebert, Dahn & Monet 1988; Bergeron, Ruiz & Leggett 1997; Limoges, Bergeron & Lépine 2015; Subasavage et al. 2017). Over the time, white dwarfs likely to be within 20–25 pc were catalogued in a series of papers that highlighted the diversity of the local stellar remnant population and their space density (Holberg, Oswalt & Sion 2002; Holberg et al. 2008; Sion et al. 2009; Giannichele, Bergeron & Dufour 2012; Holberg et al. 2016). *Gaia* DR2 has improved the completeness of these samples, recovering 130 known white dwarfs within 20 pc and identifying nine new candidates (Hollands et al. 2018b). It has also allowed a fairly complete census of double degenerates or white dwarfs as part of a wide binary system. Hollands et al. (2018b) have estimated the *Gaia* DR2 detection probability to be close to 99 per cent of all white dwarfs at 20 pc, and it is not expected to change significantly for distances up to 70–100 pc (Gentile Fusillo et al. 2019). Previous studies have attempted to assemble larger volume-limited samples of spectroscopically confirmed white dwarfs, e.g. within 40 pc in the Northern hemisphere (Limoges et al. 2015) where the authors estimate the completeness at 65–80 per cent. This needs to be reviewed in light of new *Gaia* DR2 catalogues of white dwarf candidates (Jiménez-Esteban et al. 2018; Gentile Fusillo et al. 2019) and our recent spectroscopic follow-up of these new candidates in Tremblay et al. (2020, hereafter Paper I).

Advantages of using volume-complete samples of white dwarfs are plentiful: for deriving the local stellar formation history and the age of Galactic structures (Tremblay et al. 2014b; Limoges et al. 2015; Fantin et al. 2019; Isern 2019; Kilic et al. 2019), studying binary evolution including mergers (Holberg et al. 2013; Toonen et al. 2017; Cheng, Cummings & Ménard 2019; Temmink et al. 2019), statistics of evolved planetary systems (Zuckerman et al. 2010; Hollands, Gänsicke & Koester 2018a), constraining the origin of stellar magnetism (Ferrario, de Martino & Gänsicke 2015; Landstreet & Bagnulo 2019), deriving the initial-to-final-mass relation (El-Badry, Rix & Weisz 2018), testing white dwarf model accuracy and spectral evolution (Blouin et al. 2019; Coutu et al. 2019; Genest-Beaulieu & Bergeron 2019; Ourique et al. 2019; Tremblay et al. 2019a; Cunningham et al. 2020; Gentile Fusillo et al. 2020), and deepening our understanding on dense matter physics including crystallization (Blouin et al. 2019; Tremblay et al. 2019b). This work focuses on the spectroscopic volume-limited sample of white dwarfs within 40 pc in the Northern hemisphere. We use the *Gaia* DR2 white dwarf catalogue of Gentile Fusillo et al. (2019) as a starting point. The volume contained within the northern 40 pc hemisphere is a factor of 4 larger than the all-sky 20 pc sample of Hollands et al. (2018b), offering a significant advantage in terms of number statistics for the studies described above.

Since 2018 April, we have spectroscopically observed most of the new *Gaia* white dwarf candidates within 40 pc in the Northern hemisphere. The spectral types and stellar parameters for more than 100 new white dwarfs are presented in the companion Paper I. In this work, we focus on the statistics of the overall 40 pc sample, combining spectral types from the literature and Paper I with a new photometric analysis using *Gaia* and Pan-STARRS data. This approach is inspired by our earlier study of *Gaia* DR2 white dwarfs

within 20 pc (Hollands et al. 2018b). We describe the sample and its completeness in Section 2. We discuss the kinematics properties in Section 3, the subsample of binaries in Section 4, and discuss the space density, mass distributions, magnetism and crystallization in Section 5. We conclude in Section 6.

## 2 SAMPLE

Our sample was obtained from a subset of the candidate white dwarf *Gaia* DR2 catalogue compiled by Gentile Fusillo et al. (2019). A simple cut was made to find all objects with parallaxes greater than 25 mas, i.e.  $D < 40$  pc, resulting in 1233 objects, 1048 of which are high-probability white dwarfs ( $P_{WD} > 0.75$ ). The parameter quantifying the probability of a source being a white dwarf was calculated in Gentile Fusillo et al. (2019) by creating a distribution map in HRD space of both spectroscopically confirmed Sloan Digital Sky Survey (SDSS) white dwarfs and contaminants.

Of the 1233 candidates, 587 are located in the Northern hemisphere. Cross-matching with catalogues of confirmed white dwarfs from the literature [e.g. full list in Table A1 (available online); Gianninas; Bergeron & Ruiz 2011; Kawka & Vennes 2012; Limoges et al. 2015; Subasavage et al. 2017], we find that 410 of the *Gaia* sources correspond to white dwarfs with spectral types known before *Gaia* DR2. Of the remaining 177 sources that were newly identified in *Gaia*, 137 were observed spectroscopically and recently classified either in Paper I<sup>1</sup> or in other recent papers (see e.g. Landstreet & Bagnulo 2019, 2020). In total, 111 of them turned out to be new white dwarfs, while 26 are main-sequence stars or spurious *Gaia* sources (see Paper I). These 26 objects and a further 37 unobserved low-probability white dwarf candidates are listed in the online material (Table A2, available online) and discussed in Section 2.3. As a consequence only three high-probability white dwarf candidates specifically discussed in Section 2.2 do not currently have spectral types. Our final volume-limited *Gaia* sample of 521 confirmed white dwarfs and three high-probability white dwarf candidates is presented in the online material (Table A1, available online), with the description of the data content in Table 1. The objects are sorted by their WDJ names as introduced in Gentile Fusillo et al. (2019), while column 2 uses the WD name designation for objects cross-matched with the literature and known prior to *Gaia* DR2. Columns 3–11 repeat key data from *Gaia* DR2 and Gentile Fusillo et al. (2019), while columns 12–23 report information on the atmosphere and stellar parameters as discussed in Section 2.1. Fig. 1 presents an overview in the HRD of the known and new white dwarfs within 40 pc.

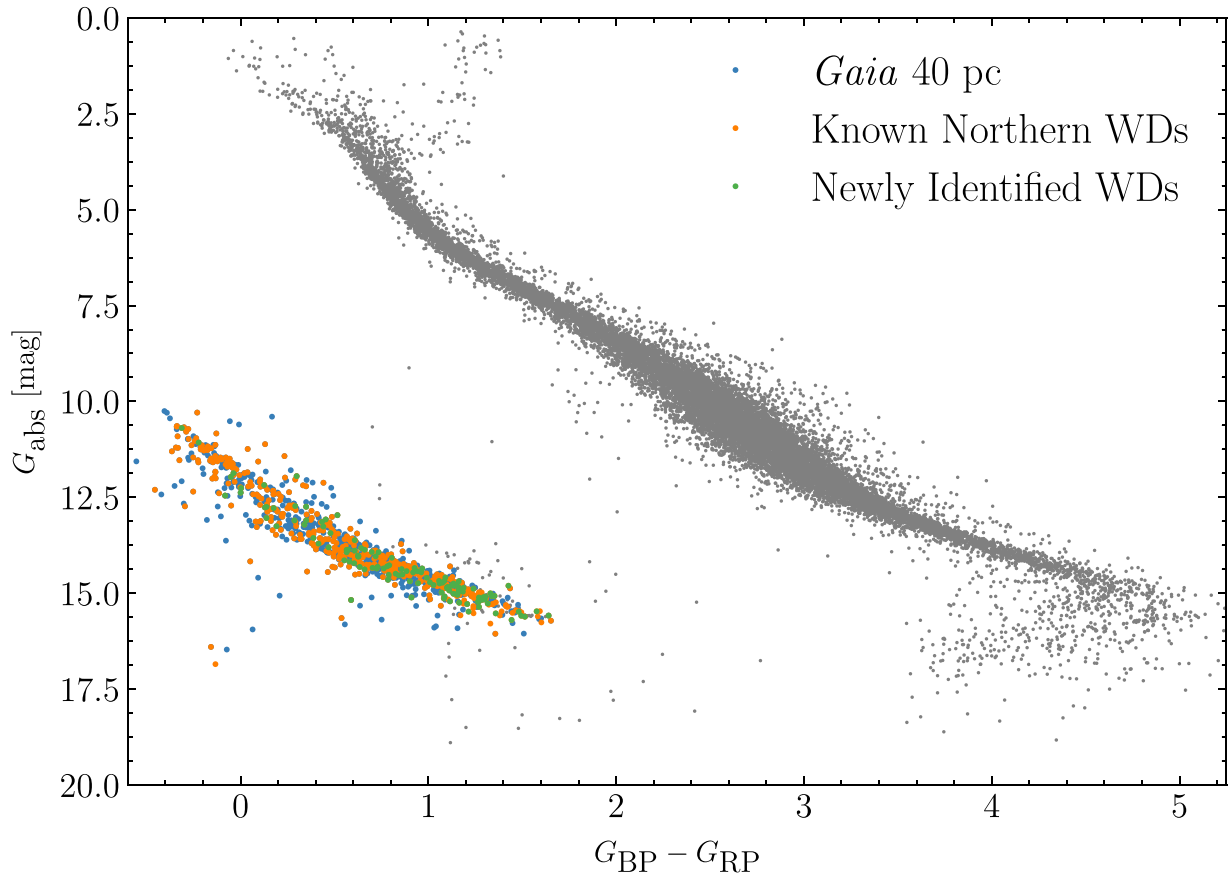
We are missing local white dwarfs that were not selected by Gentile Fusillo et al. (2019). This can be because the *Gaia* DR2 five-parameter astrometric solution or colours are omitted or unreliable, or because the white dwarf is in an unresolved binary system and lies outside their selection in the HRD. We have scanned the Montreal White Dwarf Data base (Dufour et al. 2017) for objects within 40 pc that are not in the full catalogue of Gentile Fusillo et al. (2019), finding a total of 22 white dwarfs presented in Table A3 that we now discuss in turn.

There are 13 white dwarfs for which a parallax value from *Gaia* or other sources (van Altena, Lee & Hoffleit 1995; van Leeuwen 2007; Leggett et al. 2018) confirms 40 pc membership but that were not selected in Gentile Fusillo et al. (2019) owing to missing, incomplete or unreliable *Gaia* data. More than half of these objects are within

<sup>1</sup>Paper I also includes updated spectral types for six northern white dwarfs.

**Table 1.** Format of the online catalogue that can be accessed at [this link](#).

Index	Column name	Units	Description
1	WDJ name	–	WDJ + J2000 RA (hh mm ss.ss) + Dec. (dd mm ss.s), equinox and epoch 2000
2	WD name	–	WD Name (for objects known before <i>Gaia</i> only)
3	Source ID	–	<i>Gaia</i> DR2 source identifier
4	Parallax	(mas)	Parallax of the source
5	Parallax_Error	(mas)	Standard error of parallax
6	RA	(deg)	Right ascension (J2015.5)
7	RA_Error	(mas)	Standard error of right ascension
8	Dec.	(deg)	Declination (J2015.5)
9	Dec_Error	(mas)	Standard error in declination
10	appG	(mag)	Apparent <i>G</i> magnitude
11	bp_rp	(mag)	$G_{BP} - G_{RP}$ colour index
12	SpT	–	Spectral Type
13	Comp	–	Composition (H for hydrogen dominated or He for helium dominated)
14	<i>Gaia</i> Teff	(K)	Adopted <i>Gaia</i> effective temperature
15	<i>Gaia</i> Teff Error	(K)	Standard error of adopted <i>Gaia</i> effective temperature
16	<i>Gaia</i> log(g)	( $\text{cm s}^{-2}$ )	Adopted <i>Gaia</i> surface gravity
17	<i>Gaia</i> log(g) Error	( $\text{cm s}^{-2}$ )	Standard error on adopted <i>Gaia</i> surface gravity
18	Pan-STARRS Teff	(K)	Pan-STARRS effective temperature
19	Pan-STARRS Teff Error	(K)	Standard error on Pan-STARRS effective temperature
20	Pan-STARRS log(g)	( $\text{cm s}^{-2}$ )	Pan-STARRS surface gravity
21	Pan-STARRS log(g) Error	( $\text{cm s}^{-2}$ )	Standard error on Pan-STARRS surface gravity
22	Bibcode	–	Reference paper for spectral type
23	Comment	–	Additional comment

**Figure 1.** Hertzsprung–Russell diagram of the 40 pc population detected by *Gaia*. The high-probability *Gaia* 40 pc white dwarf sample from Gentile Fusillo et al. (2019), both in the Northern and Southern hemispheres, is shown in blue, with the pre-*Gaia* northern white dwarfs (Dec. > 0) shown in orange, and the newly confirmed white dwarfs from Paper I in green. For reference, a *Gaia* 40 pc sample is shown in grey, cleaned using the same methodology as *Gaia* Collaboration (2018b).

**Table 2.** Breakdown of the identified spectral types of the northern 40 pc sample.

Spectral type	Total number	Model composition
DA	282	pure-H (except He for two He-rich DA)
DAe	1	pure-H
DAH or DAP	23	pure-H
DAZ	21	pure-H
DAZH	1	pure-H
DB	1	H/He = $10^{-5}$
DB + dM	1	H/He = $10^{-5}$
DBA	2	H/He = $10^{-5}$
DBAZ	1	H/He = $10^{-5}$
DBP	1	H/He = $10^{-5}$
DC	145	H/He = $10^{-5}$ , pure-He below 7000 K, assumed pure-H below 5000 K
DCP	2	H/He = $10^{-5}$ , pure-He below 7000 K
DQ	14	H/He = $10^{-5}$ , pure-He below 7000 K
DQP	1	H/He = $10^{-5}$ , pure-He below 7000 K
DQpecP	1	H/He = $10^{-5}$ , pure-He below 7000 K
DQZA	1	H/He = $10^{-5}$ , pure-He below 7000 K
DZ	13	H/He = $10^{-5}$ , pure-He below 7000 K
DZA	4	H/He = $10^{-5}$ , pure-He below 7000 K (except H for one H-rich DZA)
DZH or DZP	3	H/He = $10^{-5}$ , pure-He below 7000 K
DX or DXP	3	assumed H/He = $10^{-5}$ , pure-He below 7000 K
Unknown	3	assumed pure-H

20 pc and already discussed in Hollands et al. (2018b). In most cases these missing white dwarfs are nearby ( $< 10$  pc), have large proper motions or are close to a bright stellar companion.

There are a further six multiple stellar systems that are known to include a white dwarf but are missing from our initial sample; UZ Sex, V EG UMa, tet Hya, V DE CVn, HD 169889, and LHS 1817. These systems listed in Table A3 are all unresolved main-sequence + white dwarf binaries with complete *Gaia* DR2 data. They were not selected by Gentile Fusillo et al. (2019) because the main-sequence star largely dominates the *Gaia* photometry. As a consequence, these white dwarfs lay outside the region where they made their cuts on the HRD. As these binary systems were gathered from various literature sources, it remains a challenge to quantify their completeness within 40 pc. We discuss these objects further in Section 4.2. We also note a small number of cool and red objects ( $G_{BP} - G_{RP} > 1.0$ ) lying just above the white dwarf sequence in Fig. 1, which covers both the Southern and Northern hemispheres. These are unobserved low-probability white dwarf candidates from Gentile Fusillo et al. (2019) and are listed in Table A2 (available online), a small number of which may be double degenerate binaries missing from our final sample.

Finally, Table A3 includes three white dwarfs with no parallax from any source, but that are possible 40 pc members based on previously published spectroscopic or estimated photometric distances. We do not include any of the missing white dwarfs listed in Table A3 in the following statistical analysis to ensure homogeneity of the data. We conclude that our 40 pc sample of Table A1 (available online) is at most 96 per cent complete, but that the final completeness is very likely to be close to that value (Gentile Fusillo et al. 2019).

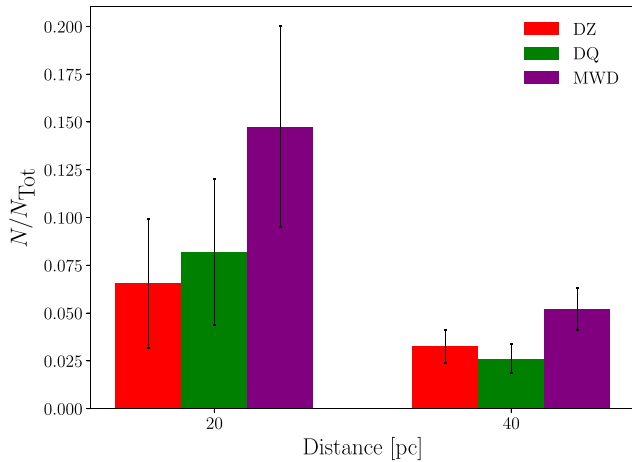
We consider 33 additional northern objects from the catalogue of Gentile Fusillo et al. (2019) that are within  $2\sigma$  of a parallax of 25 mas separately in Table A4. For simplicity, the table merges together 17 confirmed white dwarfs (nine of which were observed in Paper I), two main-sequence contaminants and 14 white dwarf candidates that have not been observed, only three of which are high-probability white dwarf candidates. A few of these white dwarfs may turn out to be 40 pc members with the improved astrometry from *Gaia* DR3, but to ensure that our statistics represent a volume-limited sample, we

do not include any of these additional objects in our main analysis next.

## 2.1 Spectral types and atmospheric parameters

For each 40 pc white dwarf we have gathered the spectral type from the literature, with the references given in Table A1 (available online). A breakdown of the spectral types can be seen in Table 2 (see e.g. Sion et al. 1983 for spectral type definitions). In the majority of cases, the spectral type is sufficient to conclude that the dominant constituent of the atmosphere is either hydrogen or helium, e.g. from the presence or the absence of hydrogen Balmer lines. We do not have evidence of any carbon-dominated atmosphere white dwarf in the northern 40 pc sample, although three magnetic white dwarfs with unknown absorption bands (spectral-type DX or DXP) have an ambiguous atmospheric composition. Below effective temperatures ( $T_{\text{eff}}$ ) of 5000 K, the vast majority of white dwarfs are of featureless DC spectral type and it is not straightforward to determine the atmospheric composition (Blouin et al. 2019). A few of these cool objects are of metal-rich DZ or DZA spectral types, allowing to constrain the atmospheric composition based on the effect of helium or hydrogen broadening on the metal lines.

The classification into different spectral subtypes is sensitive to the signal-to-noise ratio (S/N) of the spectroscopic observations. In particular, the detection of weak metal or carbon lines as well as weak magnetic fields ( $B \lesssim 500$  kG) is only possible at sufficiently high S/N. This is also the case for cool hydrogen atmosphere DA white dwarfs with only weak  $H\alpha$  lines at  $T_{\text{eff}} \approx 5000$  K. A visual inspection of the published spectroscopic studies of local white dwarfs (Giammichele et al. 2012; Limoges et al. 2015; Gentile Fusillo et al. 2019; Tremblay et al. 2020) indeed reveals variations in S/N. Furthermore, when available we have updated our spectral types based on dedicated high-resolution observations or spectropolarimetry, which have observed metal lines or magnetic fields not seen in lower resolution observations. Many of these high-resolution surveys have favoured close (20 pc) and brighter white dwarfs (see e.g. Zuckerman et al. 2003; Landstreet & Bagnulo 2019).



**Figure 2.** Distribution of spectral types as a function of distance with DZs shown in red, DQs in green, and magnetic white dwarfs in purple. The first bins correspond to the 20 pc sample and the second bins to the 20 pc <  $d$  < 40 pc sample.

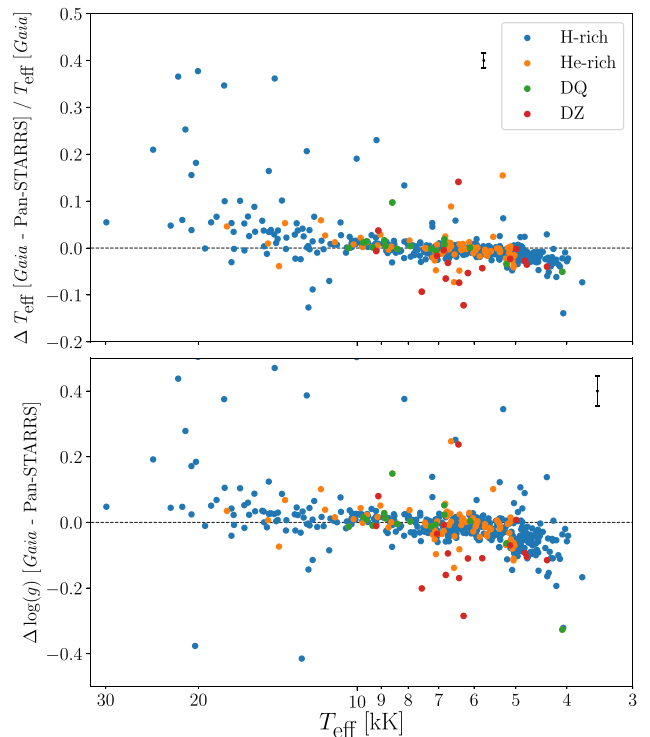
The distribution of spectral types as a function of distance is shown in Fig. 2. The fractions of magnetic, DZ, and DQ white dwarfs within 20 pc <  $d$  < 40 pc are all within  $2\sigma$  of those found for the 20 pc sample, implying that biases due to S/N of the observations are only marginally significant given the small size of the 20 pc sample. This nevertheless suggests that deeper observations of the 40 pc sample could lead to an increase of a factor of about 2 in the number of detected subtypes, and one should be cautious in the determination of the absolute fraction of magnetic, DZ, and DQ white dwarfs using the 40 pc sample.

While atmospheric parameters derived from fits to optical spectroscopy can be gathered in the literature for the warmest objects in the sample, here we take advantage of the high-precision broad-band photometry and astrometry from *Gaia* to derive a homogeneous set of high-precision atmospheric parameters. It should be noted that a systematic offset at the few per cent level has been observed between the *Gaia* and spectroscopic temperature scales, both for warm DA or DB white dwarfs as well as cool DA stars (Genest-Beaulieu & Bergeron 2019; Tremblay et al. 2019a, 2020), hence one should be cautious about the absolute temperature and mass scales.

We used pure-hydrogen (Tremblay et al. 2011), pure-helium (Bergeron et al. 2011), and mixed model atmospheres (Tremblay et al. 2014a) to calculate  $T_{\text{eff}}$  and surface gravity ( $\log g$ ) based on *Gaia*  $G$ ,  $G_{\text{BP}}$ , and  $G_{\text{RP}}$  photometry as well as parallax for each white dwarf in the sample. The fitting method is the same as that described in Gentile Fusillo et al. (2019). In brief, we rely on the Ly  $\alpha$  broadening of Kowalski & Saumon (2006) and the mass–radius relation of Fontaine, Brassard & Bergeron (2001) for thick (H-atmospheres) or thin (He-atmospheres) hydrogen envelopes and C/O-cores. The only differences are that we have completely neglected reddening, which is justified for the 40 pc sample, and we have added the option of mixed He/H atmospheres.

Given that we have now secured a breakdown of the spectral types for all but three objects in the sample, we adopt the atmospheric parameters based on the inferred composition. This is an improvement with respect to Gentile Fusillo et al. (2019) who provided both H- and He-atmosphere options. Assignations of the different spectral types to an atmospheric composition are given in Table 2.

We have taken advantage of the essentially complete Northern hemisphere coverage of the Pan-STARRS survey (Chambers et al.



**Figure 3.** Difference between the measured *Gaia* and Pan-STARRS atmospheric parameters; fractional  $T_{\text{eff}}$  difference is shown in the top panel and absolute  $\log g$  difference in the bottom. Both are shown as a function of  $T_{\text{eff}}$ . The average formal errors on the difference are shown in the top right of both panels.

2016) to derive an independent set of atmospheric parameters based on *grizy* photometry and *Gaia* parallaxes. It was demonstrated in Gentile Fusillo et al. (2019) that Pan-STARRS and *Gaia* photometry are in good agreement for warm DA white dwarfs, and here we explore this further with the cool white dwarfs within 40 pc. Fig. 3 demonstrates that  $\log g$  and  $T_{\text{eff}}$  values are generally within agreement at the few per cent level and within combined error bars. Most of the outliers are in crowded areas of the sky or close to a bright companion (see Paper I). Below  $T_{\text{eff}} \approx 5000$  K, *Gaia* colours are systematically redder than Pan-STARRS colours (and predicted white dwarf cooling sequences, see e.g. Bergeron et al. 2019), resulting in systematically lower temperatures and surface gravities. It is unclear if this is a calibration effect or inaccurate physics influencing the *Gaia* and Pan-STARRS bandpasses differently.

For most local white dwarfs, the *Gaia* passbands are broad enough that the colours are not significantly impacted by average metal pollution or magnetic fields. Furthermore, the large majority of the objects are cool enough that metal line UV blanketing is expected to be negligible. Fig. 3 demonstrates that we obtain similar atmospheric parameters with the much narrower Pan-STARRS filters, apart from DZ white dwarfs that appear to be more scattered. Overall, we conclude that using pure-H, pure-He, and mixed H/He models is not a major concern for our analysis.

There are two cool DQ and DQpec with very broad and deep absorption bands. There are also four ultracool DC white dwarfs with significant collision-induced absorption (CIA). Those do not have meaningful *Gaia* or Pan-STARRS atmospheric parameters and are flagged with a He + CIA composition in Table A1 (available online) where appropriate.

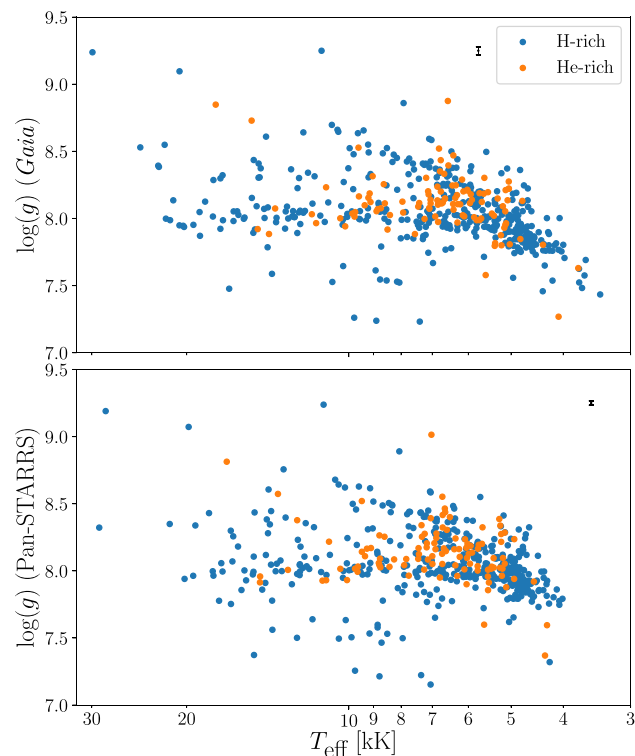
Gentile Fusillo et al. (2019) and Bergeron et al. (2019) have shown that cool helium-rich white dwarfs with  $7000 \text{ K} \lesssim T_{\text{eff}} \lesssim 11\,000 \text{ K}$  have larger masses than their warmer DB/DBA progenitors when fitted with pure helium models. This is inconsistent with an expected stellar evolution at constant mass. Bergeron et al. (2019) have demonstrated that by adding trace hydrogen in the helium-rich atmospheres, the predicted masses are lower and in much better agreement with the expectation of evolution models. The presence of hydrogen is also consistent with DC and DZ white dwarfs being the cooler counterparts of DB/DBA white dwarfs, for which of the order of 50 per cent of objects have detectable hydrogen ( $\text{H}/\text{He} > 10^{-7}$  in number) with a median value of  $\text{H}/\text{He} \approx 10^{-5}$  (Rolland, Bergeron & Fontaine 2018). Such trace hydrogen abundance is not detectable in helium-rich DC or DZ white dwarfs cooler than about  $11\,000 \text{ K}$  for typical low- or medium-resolution observations (Rolland et al. 2018) but is needed for the large majority of these cool objects to fit the predicted cooling tracks. As a consequence, we have adopted helium-rich model atmospheres with  $\text{H}/\text{He} = 10^{-5}$  for all helium-rich spectral types warmer than  $7000 \text{ K}$ .

Below  $T_{\text{eff}} = 7000 \text{ K}$ , our mixed model atmospheres (Tremblay et al. 2014a) predict a blue hook in *Gaia* colours due to CIA opacities, which is not observed for the vast majority of white dwarfs (Gentile Fusillo et al. 2020). This blue hook is also not predicted in more recent mixed H/He model atmospheres discussed in Blouin et al. (2019). As a consequence, we use instead pure-helium solutions for all helium-rich objects below  $7000 \text{ K}$ , where the bifurcation to high masses is not observed. Finally, most objects below  $5000 \text{ K}$  are DC white dwarfs and it is not possible to determine the atmospheric composition based on spectroscopy and optical photometry alone, and challenging even with near-IR photometry (Gentile Fusillo et al. 2020). Therefore, we assign a pure-hydrogen composition for all objects below that temperature. We note that in the range  $7000 \text{ K} \gtrsim T_{\text{eff}} \gtrsim 4500 \text{ K}$  our pure-H and pure-He solutions differ only by a few per cent. As a consequence our  $T_{\text{eff}}$  and  $M$  estimates are, in principle, still robust even with an unconstrained composition.

Fig. 4 shows the  $\log g$  versus  $T_{\text{eff}}$  distribution, using both *Gaia* and Pan-STARRS data, for 40 pc white dwarfs where six ultracool and DQ white dwarfs with unreliable *Gaia* parameters are excluded. The crystallization sequence (Tremblay et al. 2019b) is clearly seen as a parabola with  $\log g$  increasing as a function of  $T_{\text{eff}}$ , starting at  $6000 \text{ K}$  and  $\log g \approx 8.1$  and increasing to  $\log g \approx 8.7$  at  $10\,000 \text{ K}$ . In the 100 pc sample of Tremblay et al. (2019b) and 200 pc sample of Cheng et al. (2019), the crystallization sequence can be seen to extend to higher temperatures and surface gravities, but given the limited volume of the 40 pc sample, the  $\log g > 8.7$  region (corresponding to  $M \gtrsim 1.05 M_{\odot}$ ) is underpopulated. Most white dwarfs on the crystallization sequence are of DA spectral type, as highlighted in Tremblay et al. (2019b). We discuss the crystallization sequence further in Section 5.5.

We observe that parameters for H- and He-rich atmospheres have no obvious offset when using mixed He/H instead of pure-He models, as highlighted in Bergeron et al. (2019) and effectively correcting the so-called *bifurcation* problem (Gentile Fusillo et al. 2019).

For  $T_{\text{eff}} \lesssim 5500 \text{ K}$ ,  $\log g$  values decrease with decreasing temperature as previously highlighted for the 20 pc sample in Hollands et al. (2018b). For fixed mass–radius relation, parallax and apparent magnitude, the effective temperature and surface gravity correlate because of the Stefan–Boltzmann law. This suggests that the problem could arise either from photometric colours that are predicted too blue or absolute magnitudes that are predicted too faint. A very similar pattern is seen with independent grids of models (Blouin et al. 2019), and for any atmospheric composition including pure-H,



**Figure 4.** Distribution of  $\log g$  versus  $T_{\text{eff}}$  for *Gaia* DR2 (top panel) and Pan-STARRS (bottom) photometry. We rely on *Gaia* DR2 astrometry in both cases. H-rich objects are shown in blue, whilst He-rich are shown in orange. The average errors are shown in the top right of both panels. Reliable *Gaia* and Pan-STARRS atmospheric parameters are available for 517 and 492 objects in the sample, respectively.

pure-He, or mixed (Bergeron et al. 2019). The problem is clearly seen using either *Gaia* or Pan-STARRS photometry, although the issue is slightly worse with *Gaia* (see Fig. 3). It is not expected to be a real astrophysical effect as white dwarfs at these temperatures have cooling ages in the range  $\approx 5\text{--}10 \text{ Gyr}$ . Stellar population models predict a constant mean mass for white dwarfs with cooling ages smaller than about  $10 \text{ Gyr}$  (Tremblay et al. 2016). Therefore, the lower than average  $\log g$  (or  $T_{\text{eff}}$ ) values are more likely to be explained from an issue with the model atmospheres. The problem appears for white dwarfs with a vast range of cooling ages, hence this should be taken into account properly in order to extract meaningful stellar formation histories when transforming white dwarf parameters to initial stellar parameters (Tremblay et al. 2014b).

## 2.2 Missing spectral types

There are three objects for which ground-based spectroscopic observations are challenging and currently not available in the literature. All three are listed in Table A1 (available online) but without a spectral type.

### 2.2.1 J050600.41 + 590326.89

is a high proper-motion ( $346.95 \text{ mas yr}^{-1}$ ) *Gaia* source that was blended with a distant background star at the time of our observations in Paper I. The object is extremely faint ( $G = 19.65$ ) and blue

( $G_{BP} - G_{RP} = -0.1335$ ). Due to the faintness, the *Gaia* measurements have high astrometric excess noise, suggesting we must be careful about its status, either as a rare ultracool white dwarf or as a non-degenerate source. For this reason, the atmospheric parameters are omitted in Table A1 (available online).

### 2.2.2 J055602.01 + 135446.71

is a high proper-motion ( $608.06 \text{ mas yr}^{-1}$ ) *Gaia* source that was close to a distant background star at the time of our observations in Paper I. The white dwarf candidate is itself a wide companion to the bright star HD 39881 of spectral class G8 at 47.7 arcsec separation. The presence of a wide companion at the same distance and proper motion makes the identification as a white dwarf fairly secure.

### 2.2.3 J110143.04 + 172139.39

is in the glare (17 arcsec separation) of the background F-type main-sequence star HD 95518 with  $G = 8.37$ .

## 2.3 Non-white dwarfs

Table A2 (available online) lists 26 objects confirmed as main-sequence stars and a further 37 unobserved low-probability white dwarf candidates from the initial sample of Gentile Fusillo et al. (2019). None of the objects they selected within the northern 40 pc sample were known as non-white dwarfs in the literature before *Gaia*. All 26 main-sequence stars were therefore identified as part of our recent spectroscopic follow-up of white dwarf candidates in Paper I. Seven of the 26 *Gaia* sources found to be main-sequence stars were high-probability white dwarf candidates ( $P_{WD} > 0.75$ ). This is a relatively small fraction of the final white dwarf sample (1.3 per cent), and therefore it largely confirms the cleanness of high-probability white dwarf samples selected from Gentile Fusillo et al. (2019). Paper I concludes that a problem with astrometry is the most likely explanation for the spurious low luminosity of these stellar sources that are located well within the white dwarf cooling track according to the *Gaia* DR2 HRD. In all but one case<sup>2</sup> the Pan-STARRS colours do agree with *Gaia* colours.

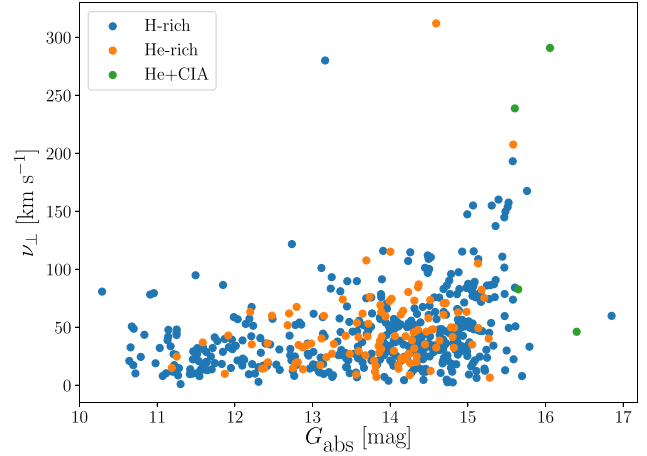
The 40 pc sample of Gentile Fusillo et al. (2019) contained 66 low-probability white dwarf candidates in the Northern hemisphere. Among those, eight objects are white dwarfs that were known before *Gaia*. A further 21 sources were recently observed in Paper I but only two objects turned out to be white dwarfs. There are 37 objects that have not been spectroscopically observed, and among them there could be a few white dwarfs. We have attempted to use kinematics or infrared colours to reveal their nature but found that any cut on only one of these quantities would also eliminate known white dwarfs. *Gaia* DR3 is expected to help in defining a cleaner and more complete 40 pc sample.

## 3 KINEMATICS

We can calculate tangential velocities,  $v_{\perp}$ , for our sample with *Gaia* data alone using

$$v_{\perp} = 4.7405 \sqrt{\mu_{RA}^2 + \mu_{Dec}^2} / \varpi, \quad (1)$$

<sup>2</sup>In one case, the *Gaia* source does not correspond to a real object on the sky.



**Figure 5.** Tangential velocities of the sample as a function of  $G_{abs}$  magnitude. H-rich objects are shown in blue, whilst He-rich objects are shown in orange. Four ultracool white dwarfs are shown in green.

where  $\mu_{RA/Dec}$  are the right ascension/declination components of the proper motion in  $\text{mas yr}^{-1}$ , and  $\varpi$  is the parallax of the white dwarf in mas. Fig. 5 shows  $v_{\perp}$  as a function of  $G_{abs}$ , which is a proxy for cooling age. We expect that throughout their full evolution on the main-sequence and white dwarf cooling sequence, these stars will be subject to kinematic heating by the Galactic potential, with increasing  $v_{\perp}$  as a function of total age (Seabroke & Gilmore 2007). While white dwarf cooling age is only a fraction of the total age, larger cooling ages lead to, on average, larger total ages, and therefore cooling age should also correlate with kinematics, as observed in Fig. 5. In a future study, we will consider total ages, which depend more critically on the absolute precision of our white dwarf masses.

Fig. 5 also reveals that the vast majority of 40 pc white dwarfs are consistent with Galactic disc kinematics. Only four objects are clear outliers in the diagram:

### 3.0.1 J222547.07 + 635727.37

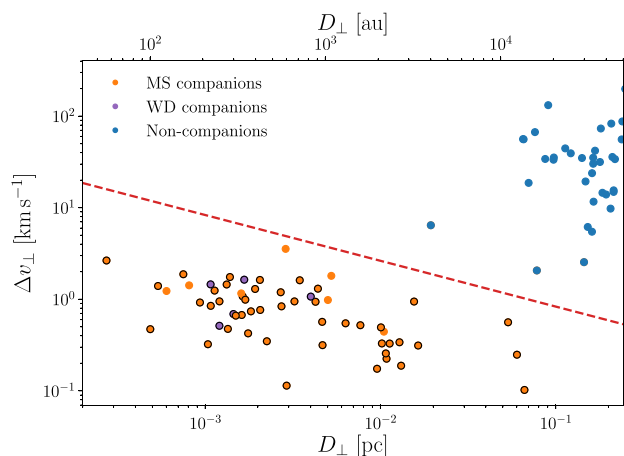
$v_{\perp} = 312 \text{ km s}^{-1}$ , is a white dwarf of spectral type DC discovered by *Gaia* (Tremblay et al. 2020) and previously identified as a halo white dwarf candidate in Kilic et al. (2019). Our low surface gravity ( $\log g = 7.80 \pm 0.03$ ) suggests a large total age in agreement with halo membership.

### 3.0.2 J110217.52 + 411321.18

$v_{\perp} = 291 \text{ km s}^{-1}$ , is an ultracool DC white dwarf first discovered by SDSS and was suggested to be an old halo object with a cooling age of 11 Gyr by Hall et al. (2008). Because of the strong CIA absorption in the optical, it is not possible to constrain the stellar mass with *Gaia* or Pan-STARRS data alone.

### 3.0.3 J174950.15 + 824626.06

$v_{\perp} = 280 \text{ km s}^{-1}$ , is a known 20 pc DA white dwarf (WD 1756 + 827) first suggested to be halo candidate by Fuchs & Jahreiß (1998) and discussed further in Hollands et al. (2018b) and Kilic et al. (2019).



**Figure 6.** Tangential velocity differences as a function of projected separation for all *Gaia* sources within 50 000 au of the white dwarfs in our sample. Companions also found in El-Badry & Rix (2018) are outlined in black. The red-dashed line indicates the maximum tangential velocity difference for a system of two  $1 M_{\odot}$  stars on circular orbits with a semimajor axis of  $D_{\perp}/2$ . Our final candidates are shown in orange (WD + MS) and purple (WD + WD). Blue candidates are rejected because of their nonphysical separation in position–velocity space.

### 3.0.4 J034646.52 + 245602.67

$v_{\perp} = 239 \text{ km s}^{-1}$ , is another ultracool DC white dwarf which was previously known for its high proper-motion and halo membership (WD 0343 + 247; Hambly, Smartt & Hodgkin 1997; Kilic et al. 2019).

## 4 BINARITY

### 4.1 Wide binaries

To search for wide binaries within our sample, both white dwarf + main-sequence (WD + MS) and double white dwarfs (WD + WD), we employ the same technique as Hollands et al. (2018b). In brief, we perform a cylindrical search around each white dwarf in our sample to a projected separation ( $D_{\perp}$ ) of 1 pc. For each object found, a cut was made in the absolute difference in radial distances ( $\Delta D_{\parallel}$ ), also at 1 pc. In addition, we have used the standard quality cuts of Gaia Collaboration (2018b) on astrometric excess noise and colour excess on all wide stellar companions. The remaining stars within the search volume were then checked for consistent tangential velocities ( $\Delta v_{\perp}$ ). Those with large separations and large tangential velocity differences that correspond to physically unbound systems for a total mass of  $2 M_{\odot}$  on circular orbits were rejected as being non-companions.

We find a total of 56 binary system candidates in our sample, these are shown in Fig. 6 and listed in Table A5 (available online). Those consist of 47 WD + MS, 1 WD + MS + MS, and eight WD + WD binaries. From a similar *Gaia* DR2 selection, El-Badry & Rix (2018) found 43 WD + MS and eight WD + WD within the northern 40 pc sample, all of which we recover. El-Badry & Rix (2018) neglected triple systems and used slightly stricter selection rules as they were aiming at minimizing contamination rather than maximizing completeness in their much larger volume of 200 pc.

In comparison, Hollands et al. (2018b) found 23 wide binary systems within 20 pc. Of these, 21 are WD + MS binaries, and only two are WD + WD binaries. Extrapolating the space density

from the 20 pc sample we could expect  $92 \pm 19$  systems within 40 pc. However, it is found in Section 5 that the space density itself is seen to decrease with distance for all white dwarfs (2–5 per cent effect). Furthermore, *Gaia* resolving power is decreasing with distance and therefore 8–13 per cent lower numbers are expected for the 40 pc sample (Toonen et al. 2017; Hollands et al. 2018b). Given these two effects and the relatively large error bars from number statistics, the difference in space density of wide systems including a white dwarf between the 20 and 40 pc samples is only marginally significant.

Based on binary population synthesis for the 50 pc *Gaia* sample and re-scaled to our volume, Toonen et al. (2017) predict 85–150 resolved WD + MS and 60–112 resolved WD + WD systems. These numbers can decrease by 15–30 per cent if we consider the possible disruption of weakly bound binaries by Galactic interactions and stellar winds. The number of observed WD + MS systems is low but marginally in agreement with model predictions if a large fraction of initially formed WD + MS systems were disrupted. The issue of missing WD + WD systems is already discussed at length in Toonen et al. (2017), although the deficit is now strongly confirmed by the 40 pc sample.

El-Badry & Rix (2018) discuss the properties of wide binaries including a white dwarf from the much larger 200 pc sample. They find that their orbital separation distribution differs from that of wide binaries including two stars, suggesting that velocity kicks from mass-loss during stellar evolution play an important role in these systems. El-Badry & Rix (2018) notice that the deficit is enhanced for separations larger than  $\approx 5000$  au. While it is outside the scope of this work to identify the physical processes in which weakly bound WD + MS and WD + WD systems are disrupted, it is hoped that our 40 pc sample can provide further insight.

Given *Gaia* magnitude limit and lack of IR capabilities, our search is incomplete for substellar companions. We note the presence of at least one such confirmed system within the northern 40 pc sample, WD 1422 + 095, which consists of a DA white dwarf at 33.4 pc with a wide L4 brown dwarf companion separated by 120 au (Becklin & Zuckerman 1988). The brown dwarf is not detected in *Gaia* DR2.

Finally, at least three of our wide binaries are part of hierarchical triples. J043644.90 + 270951.52 is the outer companion of a spectroscopic binary of spectral type K2 (Holberg et al. 2013). J163421.55 + 571008.87 is in a wide orbit around an eclipsing MS–MS binary of spectral-type M (Toonen et al. 2017). J170530.44 + 480312.36 is itself a double degenerate (see Section 4.3) with J170530.97 + 480310.27 as a wide companion.

### 4.2 Unresolved WD + MS

From a search of the literature, we have found six unresolved WD + MS binaries that were missing from the selection of Gentile Fusillo et al. (2019) and listed in Table A3. Hollands et al. (2018b) had identified none within the 20 pc sample but a white dwarf companion to the M4.5V star LHS 1817 was recently discovered (Winters et al. 2020). The five other unresolved systems are beyond 20 pc. Based on binary population synthesis models that include observational selection effects, Toonen et al. (2017) predict 3–8 unresolved WD + MS binaries within our surveyed volume. The six objects found are well within that range but our sample is very likely incomplete.

The majority of confirmed unresolved WD + MS systems at all distances have a low-mass M dwarf companion given the relative ease of identifying binarity from optical colours and spectroscopy (Rebassa-Mansergas et al. 2016). However, recent spectroscopic follow-ups such as in Paper I have only focused on *Gaia* sources



**Table 3.** Double degenerates in the *Gaia* DR2 northern 40 pc sample.

WDJ name	Parallax (mas)	SpT	<i>Gaia</i> log $g^a$	Spectro log $g^a$	Orb. period (d)	Ref (Binarity)
Double degenerate component of a triple or quadruple system						
J010349.92 + 050430.57	44.86 (0.12)	DA	7.52 (0.01)	8.17 (0.05)	1.2 or 6.4	Maxted et al. (2000b)
J170530.44 + 480312.36	25.38 (0.03)	DA	7.24 (0.01)	7.67 (0.05)	0.1448	Maxted et al. (2000a)
Known double degenerate						
J053620.21 + 412955.62	30.99 (0.04)	DA	7.23 (0.01)	7.97 (0.05)	–	Zuckerman et al. (2003)
J094846.64 + 242125.88	27.37 (0.07)	DA	8.29 (0.01)	8.40 (0.11)	–	Liebert et al. (1993)
J131257.90 + 580511.29	31.32 (0.24)	DA	7.64 (0.02)	8.15 (0.05)	–	Gentile Fusillo et al. (2018)
J164136.61 + 151237.93	31.48 (0.11)	DA	7.87 (0.02)	8.49 (0.07)	1471	Harris et al. (2013)
Double degenerate candidate (also in literature)						
J012924.26 + 102301.34	34.14 (0.05)	DA	7.54 (0.01)	7.88 (0.06)	–	Zuckerman et al. (2003)
J014511.23 + 313243.56	27.85 (0.09)	DA	7.61 (0.02)	8.12 (0.05)	–	Bergeron et al. (2017)
J134532.97 + 420043.66	26.68 (0.07)	DC	7.15 (0.04)	–	–	Limoges et al. (2015)
J163441.85 + 173634.09	39.05 (0.03)	DAZ	7.26 (0.01)	7.79 (0.05)	–	Toonen et al. (2017)
J205020.65 + 263040.76	52.34 (0.05)	DA	7.27 (0.01)	–	–	Hollands et al. (2018b)
J211345.93 + 262133.27	32.34 (0.32)	DA	7.53 (0.02)	8.15 (0.06)	–	Bergeron et al. (2001)
J225123.02 + 293944.49	51.47 (0.14)	DA	7.71 (0.01)	–	–	Hollands et al. (2018b)
J232519.87 + 140339.61	42.34 (0.13)	DA	7.31 (0.01)	–	–	Limoges et al. (2015)
Double degenerate candidate (this work)						
J000754.11 + 394732.18	29.03 (0.06)	DC	6.88 (0.02)	–	–	–
J002215.19 + 423642.15	29.32 (0.06)	DC	7.58 (0.01)	–	–	–
J020847.22 + 251409.97	25.61 (0.05)	DA	7.48 (0.01)	7.91 (0.05)	–	–
J023117.04 + 285939.88	38.47 (0.38)	DA	7.67 (0.02)	–	–	–
J032020.30 + 233331.72	25.48 (0.19)	DC	7.21 (0.05)	–	–	–
J054457.66 + 260300.14	27.68 (0.10)	DC	7.11 (0.05)	–	–	–
J111536.96 + 003317.11	25.22 (0.14)	DA	7.56 (0.04)	–	–	–
J192359.24 + 214103.62	28.73 (0.15)	DA	7.55 (0.02)	8.06 (0.02)	–	–
J200654.88 + 614310.27	29.84 (0.09)	DA	7.35 (0.02)	–	–	–
J214913.61 + 041550.35	28.44 (0.09)	DA	7.40 (0.04)	–	–	–
Low-mass white dwarf						
J094639.07 + 435452.24	31.29 (0.04)	DA	7.69 (0.05)	7.59 (0.01)	–	Brown et al. (2011)
J102459.83 + 044610.50	25.22 (0.49)	DA	7.53 (0.04)	7.63 (0.05)	1.157	Brown et al. (2011)

<sup>a</sup>All photometric and spectroscopic fits are assuming a single white dwarf and are shown for illustrative purpose only. Spectroscopic parameters are from Limoges et al. (2015) or Tremblay et al. (2020). Both studies account for 3D convective effects (Tremblay et al. 2013).

consistent with single and double white dwarf parameters, and therefore the 40 pc sample has incomplete spectroscopic coverage of unresolved WD + MS candidates. This is largely because of the high level of contamination of the local sample by *Gaia* DR2 sources with incorrect or spurious astrometry (Gentile Fusillo et al. 2019), which has proportionally much greater impact on less crowded regions of the HRD where composite spectra corresponding to unresolved binary systems are found.

White dwarfs with more massive unresolved FGK type companions, as well as cool white dwarfs around M dwarfs, have remained elusive due to the main-sequence component usually dominating the optical flux (Holberg et al. 2013). Parsons et al. (2016) and Rebassa-Mansergas et al. (2017) identify more than a thousand WD + FGK candidates at all distances from their UV excess flux that they interpret as the likely presence of a white dwarf companion. However, the presence of a white dwarf has not been confirmed in any of their candidates within 40 pc. Follow up observations with the *Hubble Space Telescope* has confirmed DA white dwarfs within 8 of 9 of their systems outside 40 pc, however. Furthermore, this technique is only sensitive to white dwarfs warm enough to have detectable UV flux. Nevertheless, these searches could be updated in light of the newer *Gaia* DR2 catalogue coupled with GALEX.

We note that our full sample of Table A1 (available online) contains only one spectral type (DB+dM) indicating an unresolved WD +

MS system, J133601.82 + 482846.25, located at 36.9 pc. However, the system is resolved with *Gaia* DR2, and therefore classified as a wide binary system (Section 4.1).

Finally, in order to detect cool unresolved stellar companions, we have cross-matched our sample with 2MASS and WISE photometry, resulting in 481 and 429 matches, respectively (Gentile Fusillo et al. 2020). Given typical error bars of 0.05–0.10 mag on near-IR and IR magnitudes, we have only considered strong outliers ( $>0.4$  mag) in *JHK*- and *W1*-band absolute magnitudes compared to the median value at a given  $G_{BP}-G_{RP}$  colour. This resulted in seven candidates with a strong near-IR and IR excess. All of them are resolved wide systems in *Gaia* and discussed in Section 4.1 but are only partially resolved or unresolved in 2MASS and WISE. Therefore, this search has not resulted in any additional unresolved WD + MS systems.

### 4.3 Unresolved double white dwarfs

Twenty-six suspected or known double degenerates and low-mass white dwarfs are identified in Table 3 [see also comments in Table A1 (available online)]. We discuss them in turn in this section.

We initially flagged all objects for which *Gaia* log  $g < 7.72$  or the difference between the published spectroscopic and photometric log  $g$  values is greater than 0.5 dex. We have added

J094846.64+242125.88 that do not fit the selection but is mentioned as a double DA + DAH in the literature (Liebert et al. 1993). The published spectroscopic  $\log g$  values in Table 3 as well as our photometric *Gaia* estimates are under the assumption of a single white dwarf and for illustrative purpose only. A low photometric  $\log g$  under this assumption either suggests a low-mass white dwarf ( $M \lesssim 0.45 M_{\odot}$ ) formed through binary evolution and with an unseen companion, or that two white dwarfs with normal  $\log g$  values instead contribute to the total flux. We have reviewed all individual cases and removed those for which a spurious spectroscopic mass, e.g. because of magnetic fields or low S/N, is the most likely explanation. Very cool white dwarfs ( $T_{\text{eff}} < 4500$  K) have a low-mass problem (see Fig. 4), hence we have removed all candidates below this temperature. Our list of double degenerate candidates is therefore incomplete, both because of the initial selection of Gentile Fusillo et al. (2019) that may have missed some unusually high-luminosity (low-mass) sources and our secondary selection based on white dwarf parameters. However, the large majority of the objects in Table 3 are strong double dwarf candidates with no obvious alternative explanation, or already confirmed. Their mean photometric  $\log g$  is 7.46, well below the average of  $\log g \approx 8.0$  for the entire sample.

Only two candidates are within 20 pc and were previously discussed in Hollands et al. (2018b). The increase in the number of double degenerate candidates is consistent with the increase in volume, given the low number statistics of the 20 pc sample. Furthermore, only two of the candidates are from newly identified *Gaia* white dwarfs (J023117.04+285939.88 and J192359.24 + 214103.62).

Seven objects are already confirmed multiple systems. There is a quadruple system (J010349.92+050430.57) consisting of a close double degenerate (1.2 or 6.4 h period) with HD 6101, a wide dK3 + dK8 resolved pair with 0.5 arcsec separation (Maxted, Marsh & Moran 2000b; Toonen et al. 2017). The main-sequence pair appears to have a disrupted and incorrect *Gaia* DR2 parallax measurement, hence the system is not part of our sample of wide binaries including a white dwarf (Section 4.1). Our only triple WD system is the previously known J170530.44 + 480312.36, which consists of a double degenerate with a 0.15 h period (Maxted et al. 2000a) and a wide white dwarf companion (see Section 4.1). Furthermore, five of the double degenerates have been confirmed in the literature, either from radial velocity variations, double cores in Balmer lines at high resolution, or a composite spectrum. This includes the low-mass white dwarf J102459.83 + 044610.50 with radial variations over a 1.16 h orbital period (Brown et al. 2011).

At least eight of our double degenerate candidates have been discussed as such in the literature, including the two objects within 20 pc. However, 10 other objects have no explicit identification as double degenerate candidates in the literature. Two of these are newly discovered white dwarfs from *Gaia* while eight objects had no reliable prior parallax measurements that would have been necessary to flag them as double degenerate candidates.

Of the only two confirmed low-mass white dwarfs, J094639.07 + 435452.24 does not have a confirmed companion although it likely formed through binary evolution (Brown et al. 2011). Both low-mass white dwarfs have  $\log g = 7.50$ – $7.70$ , based on either the photometric or spectroscopic technique, corresponding to  $M = 0.35$ – $0.45 M_{\odot}$ . We do not have evidence of any extremely low-mass white dwarf (Kawka et al. 2020) in our sample. However, some of the double degenerate candidates described above could also harbour a low-mass white dwarf ( $\log g = 6.88$ – $7.72$  according to photometric values in Table 3), especially in those cases where no

spectroscopic  $\log g$  value is available to confirm that the photometry is overluminous compared to model predictions.

The binary population synthesis models of Toonen et al. (2017) predict 5–33 unresolved WD + WD binaries within our surveyed volume, well within the range observed. We hope that our improved number statistics will help to further constrain binary population synthesis models, for which one of main source of uncertainty comes from the physics of the common envelope phase.

## 5 DISCUSSION

### 5.1 Space density

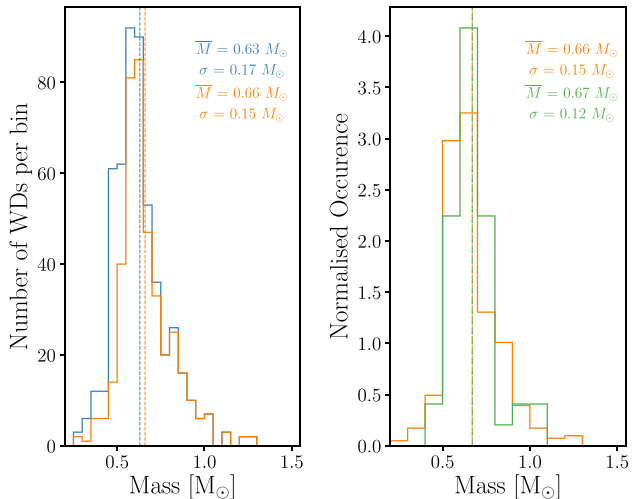
The local space density of white dwarfs has historically been estimated using the 13 or 20 pc volume-complete censuses (Sion et al. 2009; Giammichele et al. 2012; Holberg et al. 2016; Hollands et al. 2018b) or larger samples corrected for completeness and Galactic structure effects (see e.g. Munn et al. 2017; Jiménez-Esteban et al. 2018). Based on the *Gaia* DR2 20 pc sample and a careful consideration of its distance-dependent completeness, Hollands et al. (2018b) derive a space density of  $(4.49 \pm 0.38) \times 10^{-3} \text{ pc}^{-3}$ . That estimate is considerably larger than the value of  $(4.15 \pm 0.35) \times 10^{-3} \text{ pc}^{-3}$  found just by accounting for the 139 white dwarfs or double degenerates detected in *Gaia* DR2 in the same volume. They established that *Gaia* DR2 misses known objects at short distances, but is close to complete for white dwarfs near 20 pc.

Gentile Fusillo et al. (2019) found that Galactic structure effects, namely the density scale height, become increasingly significant for distances beyond  $\approx 20$  pc. They determined that the 100 pc white dwarf sample is best fit with an age-averaged density scale height of  $\approx 250$  pc, assuming that *Gaia* DR2 completeness does not change significantly within that distance (see also Torres et al. 2019). While the 40 pc sample is closer to the Galactic disc, selecting only the Northern hemisphere amplifies Galactic effects. The northern sample favours Galactic latitudes that are further away from the Galactic plane than the Southern hemisphere. Assuming a density scale height of 250 pc, this results in a space density 2.6 per cent lower in the northern 40 pc sample compared to the full 20 pc sample.

The actual numbers of systems including a white dwarf detected in *Gaia* DR2 within 20 pc (139) and within the northern 40 pc sample (524) lead to space densities in agreement within  $1\sigma$ . This is largely a consequence of the relatively large error on number statistics for the much smaller 20 pc sample. However, this does not account for the fact that the *Gaia* detection rate is not constant as a function of distance. Given that the pre-*Gaia* northern 40 pc sample was at most  $\approx 80$  per cent complete (Limoges et al. 2015), it is difficult to establish a robust list of white dwarfs missing from *Gaia* DR2. In other words, it is not sufficient to correct only for the known missing white dwarfs from Table A3 as we also need to include objects that are missing both from earlier samples and *Gaia* DR2. For this reason, we consider that it is premature to update the white dwarf space density with larger volume samples. More work is also needed to understand the Galactic distribution and scale height of white dwarfs as a function of mass and age.

### 5.2 Mass distribution

In Fig. 7, we show the photometric mass distribution for the full 40 pc northern sample in blue and for  $T_{\text{eff}} > 5000$  K in orange. Similar to Hollands et al. (2018b), we present the reduced distribution due to the

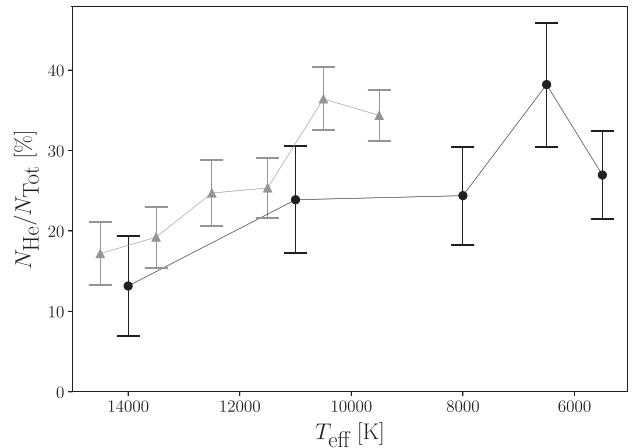


**Figure 7.** *Left-hand panel:* Mass distribution of the northern 40 pc sample (blue) with the reduced sample of objects with  $T_{\text{eff}} > 5000$  K shown in orange ( $\bar{M}_{40 \text{ pc}} = 0.66 M_{\odot}$  and  $\sigma_{40 \text{ pc}} = 0.15 M_{\odot}$ ). *Right-hand panel:* Similar to left, a normalized distribution with the northern 40 pc sample ( $T_{\text{eff}} > 5000$  K) in orange, and the full 20 pc ( $T_{\text{eff}} > 5000$  K) sample in green ( $\bar{M}_{20 \text{ pc}} = 0.67 M_{\odot}$  and  $\sigma_{20 \text{ pc}} = 0.12 M_{\odot}$ ).

low- $T_{\text{eff}}$  regime being affected by the systematic decrease in  $\log g$  (see Section 2). The mass distribution of Hollands et al. (2018b) is also shown alongside ours, with the full sample shown in green, and the reduced sample in orange. Alongside the canonical peak located at  $0.6 M_{\odot}$ , our sample does not show any significant secondary feature in the mass distribution (Tremblay et al. 2016; Hollands et al. 2018b; Temmink et al. 2019). Both the 20 and 40 pc samples have a similar mean mass value of  $0.66\text{--}0.67 M_{\odot}$  ( $T_{\text{eff}} > 5000$  K). The astrophysical implications of the absolute mean mass value directly depend on the accuracy of *Gaia* photometric calibration (Genest-Beaulieu & Bergeron 2019; Tremblay et al. 2019a). Nevertheless, using Pan-STARRS we find a mean mass of  $0.65 M_{\odot}$  for the 40 pc sample, in good agreement with the *Gaia* result and in the same range as previous estimates for the local volume sample (Tremblay et al. 2016).

We find the same mean mass of  $0.66 M_{\odot}$  for both H- and He-rich white dwarfs ( $T_{\text{eff}} > 5000$  K). This may be a coincidence from using He-atmosphere models with a fixed H/He =  $10^{-5}$  trace abundance, which is not expected to fully represent the effects of hydrogen and metals in these atmospheres. Given our temperature cut, the majority of our He-rich atmospheres fall within the range where a bifurcation appears in the HRD when using pure-He models (Gentile Fusillo et al. 2019). Nevertheless, Tremblay et al. (2019a) have shown that warmer DB and DBA white dwarfs in larger magnitude-limited samples have a similar mean mass to DA white dwarfs. Since DB, DBA, and DA white dwarfs are thought to be the progenitors of the cool He-rich atmospheres in our sample (Cunningham et al. 2020), it is expected that they should also have the same mean mass as DA white dwarfs. This suggests that our adopted fixed trace hydrogen abundance leads to a sound astrophysical result, although the different mean masses for DC, DQ, and DZ white dwarfs as described below is still a source of concern.

The 17 DQ white dwarfs have a mean mass of  $0.62 M_{\odot}$ , which is lower than the average. Since cool DQ white dwarfs have broad optical absorption bands, the difference in mass could be explained by the fact that we use mixed H/He atmospheres without carbon for these objects. For 20 DZ white dwarfs, we find a slightly lower



**Figure 8.** Percentage of He-rich atmosphere white dwarfs (DB, DC, DZ, DQ, and He-rich DA) to the total as a function of effective temperature,  $T_{\text{eff}}$ . Data from this work are shown in black, whilst the He incidence from Cunningham et al. (2020) is shown in grey.

mean mass ( $\bar{M} = 0.63 M_{\odot}$ ,  $\bar{M}_{>5000 \text{ K}} = 0.64 M_{\odot}$ ) than other He-atmospheres, which could be the result of our neglect of metals in model atmospheres. This effect is even more pronounced for 22 DA white dwarfs ( $\bar{M} = 0.58 M_{\odot}$ ,  $\bar{M}_{>5000 \text{ K}} = 0.59 M_{\odot}$ ), in which the presence of metals is not expected to contribute to any significant opacity that would lead to a systematic effect on mass determinations. The mean mass difference could be caused by selection biases in detecting metals in DA white dwarfs. Lower mass white dwarfs are more luminous for a volume-limited sample and have brighter apparent magnitudes on average, possibly facilitating metal detection. Nevertheless, the mean mass difference of  $0.07 M_{\odot}$  between DA and DAZ is large and unlikely to be fully explained by this bias. A Kolmogorov–Smirnov test gives a p-value of 1.9 per cent, corresponding to the likelihood that random fluctuations can explain the mean mass difference. This confirms that the mean mass difference is statistically significant but we cannot fully reject a random fluctuation. This could suggest either that planetary formation occurs more frequently in lower mass stars or that planetary debris scattering on to central white dwarf occurs less frequently in remnants with higher mass progenitors (Veras et al. 2020).

### 5.3 Spectral evolution

Fig. 8 shows the percentage of He-rich objects as a function of  $T_{\text{eff}}$ . The small number of warm white dwarfs in the 40 pc sample does not allow to have more than 1 bin above 12 000 K. Even below that temperature, the error bars due to number statistics remain larger than the small observed fluctuations, suggesting that larger volume samples will be needed to fully address spectral evolution (MacDonald & Vennes 1991; Bergeron, Leggett & Ruiz 2001; Tremblay & Bergeron 2008; Blouin et al. 2019; Cunningham et al. 2020).

Below  $T_{\text{eff}} = 20\,000$  K, the only processes that have been invoked to change white dwarf surface abundances are convective mixing of the underlying helium layer with the top hydrogen layer (Rolland et al. 2018; Cunningham et al. 2020), accretion of planetary debris (Gentile Fusillo et al. 2017), or convective dredge-up of carbon (Koester, Weidemann & Zeidler 1982). Only the first scenario of convective mixing is thought to result in a change of the dominant atomic species in the atmosphere, namely a transition from H- to

**Table 4.** Magnetic white dwarfs in the Gaia DR2 northern 40 pc sample.

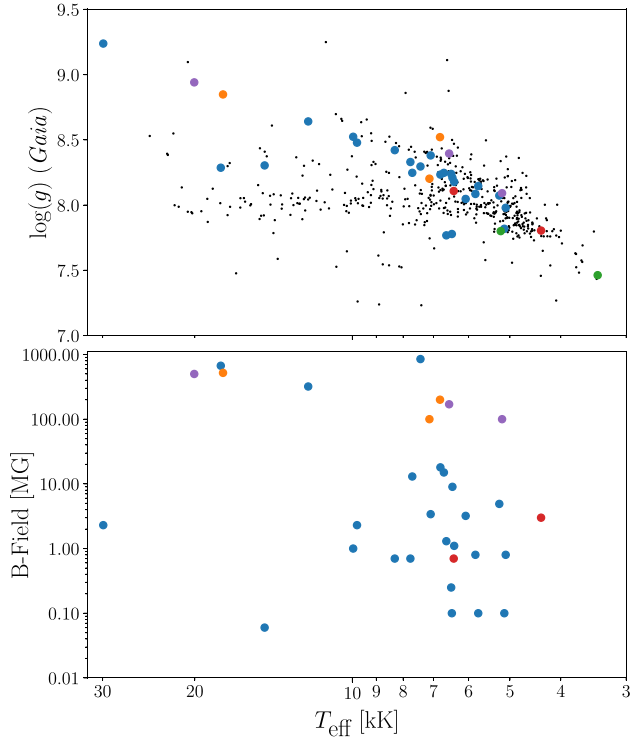
WDJ name	SpT	$\langle B \rangle$ [MG]	Ref
001214.75 + 502520.74	DAH	0.25	Landstreet & Bagnulo (2019)
024208.44 + 111233.00	DAH	0.7	Ferrario et al. (2015)
025959.15 + 081156.43	DAH	0.1	Ferrario et al. (2015)
030350.56 + 060748.75	DXP	500	Landstreet & Bagnulo (2020)
033320.37 + 000720.65	DAH	850	Ferrario et al. (2015)
051553.54 + 283916.81	DAH	1.1	Limoges et al. (2015)
053714.90 + 675950.51	DAH	0.7	Tremblay et al. (2020)
063235.80 + 555903.12	DAH	1	Tremblay et al. (2020)
064400.61 + 092605.76	DAH	3.2	Tremblay et al. (2020)
064926.55 + 752124.97	DAH	9	Tremblay et al. (2020)
073330.88 + 640927.44	DAP	0.1	Ferrario et al. (2015)
075959.58 + 433521.10	DCP	200	Ferrario et al. (2015)
084516.87 + 611704.81	DAH	0.8	Tremblay et al. (2020)
085830.87 + 412635.75	DAH	3.4	Ferrario et al. (2015)
091556.08 + 532523.86	DCP	100	Ferrario et al. (2015)
094846.64 + 242125.88	DAP	670	Ferrario et al. (2015)
101141.58 + 284559.07	DQpecP	100	Ferrario et al. (2015)
102907.46 + 112719.28	DAH	18	Ferrario et al. (2015)
123752.23 + 415624.69	DQP	–	Ferrario et al. (2015)
130841.20 + 850228.16	DAP	4.9	Landstreet & Bagnulo (2019)
133059.42 + 302953.65	DZH	0.7	Ferrario et al. (2015)
151534.80 + 823028.99	DZH	3	Tremblay et al. (2020)
153505.81 + 124745.20	DZH	0.3	Bagnulo & Landstreet (2019)
164057.15 + 534109.32	DAH	13	Ferrario et al. (2015)
165445.69 + 382936.63	DAZH	0.1	Ferrario et al. (2015)
165948.42 + 440104.04	DAH	2.3	Ferrario et al. (2015)
171450.80 + 391837.43	DAH	1.3	Ferrario et al. (2015)
174807.99 + 705235.92	DXP	100	Ferrario et al. (2015)
181608.87 + 245442.85	DAP	15	Ferrario et al. (2015)
183020.27 + 544727.21	DXP	170	Ferrario et al. (2015)
190010.25 + 703951.42	DAP	320	Landstreet & Bagnulo (2019)
201222.27 + 311348.88	DBP	520	Ferrario et al. (2015)
204906.70 + 372814.05	DAP	0.06	Landstreet & Bagnulo (2019)
215140.11 + 591734.85	DAH	0.8	Landstreet & Bagnulo (2019)
233203.52 + 265846.12	DAH	2.3	Ferrario et al. (2015)

He-dominated [DA to DB(A) or DC]. Hence, convective mixing is currently the only reasonable scenario to explain variations in Fig. 8.

Our results can be compared in Fig. 8 to the study of Cunningham et al. (2020) who employed SDSS, *GALEX*, and *Gaia* photometry to study spectral evolution in the range  $9000 \text{ K} \leq T_{\text{eff}} \leq 20000 \text{ K}$  from the strength of the Balmer jump in the 133 pc volume-limited sample. They found a He-rich percentage with respect to total number of white dwarfs of  $18 \pm 3$  per cent at 13 000–15 000 K and  $34 \pm 3$  per cent for the bin in the range 9000–10 000 K. This increase by a factor of  $\approx 2$  is consistent with the picture provided by the 40 pc sample. The He-rich fraction in the 40 pc sample is consistently lower compared to the results found in Cunningham et al. (2020), but still agrees to within  $1\sigma$ – $2\sigma$  for any temperature bin given the small number statistics.

The spectral evolution for  $T_{\text{eff}} < 8000 \text{ K}$  was also studied by Blouin et al. (2019) using a spectral-type identification method similar to the one employed in this work, albeit with a different sample incomplete in volume but likely representative of the local white dwarf population. They also used different model atmospheres. Neglecting the range  $T_{\text{eff}} < 5000 \text{ K}$  for which we did not adopt atmospheric compositions, they find a He-rich percentage of  $\approx 20$ – $25$  per cent in the range 5000–8000 K, which is marginally lower than our average value of  $30 \pm 4$  per cent.

Both studies suggest an increase and subsequent decrease in the He-rich fraction around 6500 K, although in our case the significance is only at the  $1\sigma$ – $2\sigma$  level. The increase can be explained by the occurrence of convective mixing in white dwarfs with relatively thick hydrogen layers ( $\log(M_{\text{H}}/M_{\text{WD}}) \sim -7$ ). But given that this process is non-reversible, there exists no obvious physical explanation for the decrease in He-rich fraction below 6500 K. Similar behaviour has been observed in previous photometric and spectroscopic studies, with an apparent deficit of He-rich objects between  $\approx 6000$  and  $5000 \text{ K}$  being coined the ‘non-DA gap’ (Bergeron et al. 1997; Leggett, Ruiz & Bergeron 1998; Bergeron et al. 2001). This observation was investigated by Chen & Hansen (2012) who proposed that the non-DA gap could be explained by convective mixing in white dwarfs where the convection zone is coupled to the degenerate core. Convective coupling occurs when the base of the convection zone grows deep enough to reach the degenerate core. From evolutionary models, this occurs in white dwarfs with effective temperatures of  $\approx 6000 \pm 300 \text{ K}$  (see fig. 6 of Fontaine et al. 2013) and results in surface layers that are strongly coupled to the central thermal reservoir via an almost adiabatic convection zone. In such a scenario, Chen & Hansen (2012) hypothesized that following convective mixing the surface layers should experience an increase in effective temperature of  $\approx 500 \text{ K}$ . Employing a Monte Carlo approach they found that the non-DA gap arose as a natural



**Figure 9.** Top Panel: Atmospheric parameters of magnetic white dwarfs of different spectral types compared to the full 40 pc sample (the black points). Bottom Panel: Magnetic field strength as a function of  $T_{\text{eff}}$  for different spectral types. In both panels, DAH/DAP/DAZH are shown in blue, DCP/DBP in orange, DQP in green, DZH in red, and DX/DXP in purple.

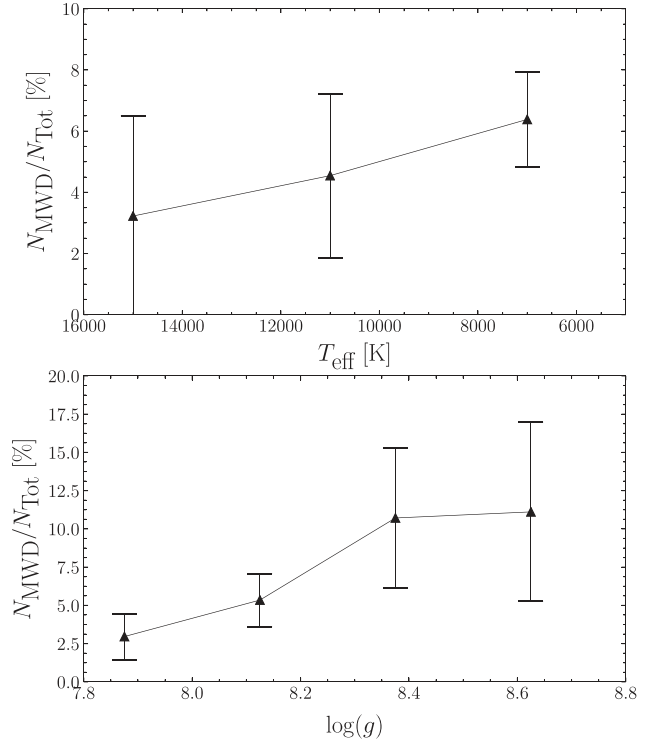
consequence of convective mixing in white dwarfs with effective temperatures  $\approx 6000$  K. Whilst this model has not been well constrained by observations, it provides an explanation for the feature we observe at 6500 K (Fig 8). In the future, larger volume-limited samples will be needed to ascertain the statistical significance of this bump.

#### 5.4 Magnetism

Table 4 summarizes all white dwarfs with a spectral type indicating magnetism. It does not include WD 2150 + 591, a DAH white dwarf at 8.34 pc that does not have an astrometric solution in *Gaia* DR2 (see Table A3). The top panel of Fig. 9 shows the distribution of magnetic white dwarfs in the  $T_{\text{eff}}$  versus  $\log g$  diagram. It excludes the DQpecP J101141.58 + 284559.07 for which we have no reliable *Gaia* atmospheric parameters. The results suggest that magnetic white dwarfs are more massive than the average. We also observe that many magnetic white dwarfs follow the crystallization sequence (see Section 5.5).

Our volume-limited sample allows to look at statistics of field strength versus cooling age as done by Landstreet & Bagnulo (2019) for the 20 pc sample. The results are shown in the bottom panel of Fig. 9 for the Northern hemisphere 40 pc sample. This excludes DQP J123752.23 + 415624.69 for which the magnetic field strength is unclear. We observe no obvious correlation between field strength and temperature, as was found by Landstreet & Bagnulo (2019).

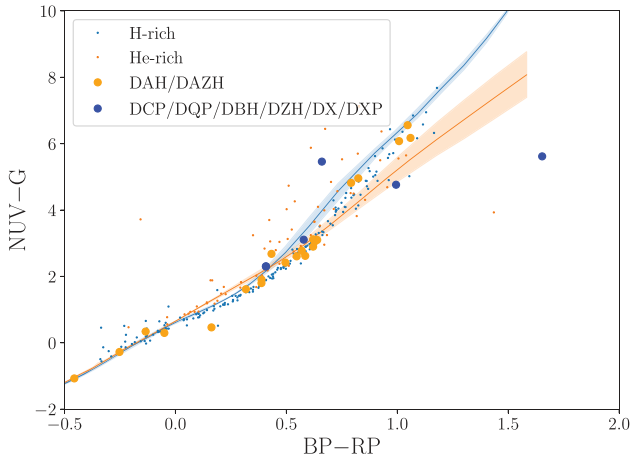
For statistics as a function of mass and temperatures, we limit ourselves to DA white dwarfs with  $T_{\text{eff}} > 5000$  K for which Zeeman splitting can be detected. This is because most helium-



**Figure 10.** Top Panel: Magnetic incidence as a function of  $T_{\text{eff}}$  for H-atmosphere white dwarfs. Bottom Panel: Magnetic incidence as a function of  $\log g$  for H-atmosphere white dwarfs.

rich atmospheres are of DC spectral type, for which magnetic field detection is difficult. Even spectropolarimetric observations are orders of magnitude less sensitive to magnetic fields in DC white dwarfs compared to DA spectral type (Landstreet & Bagnulo 2019). Fig. 10 shows magnetic fraction histograms with  $T_{\text{eff}}$  and  $\log g$  as independent variables for hydrogen-atmosphere white dwarfs. For both parameters, number statistics are relatively poor given that the curves are based on only 24 magnetic hydrogen-atmosphere white dwarfs within 40 pc. It is clear that larger samples will be needed to confirm any correlation of magnetism with temperature and mass, in addition to potential biases against the detection of small magnetic fields. We note that since more massive white dwarfs are intrinsically fainter, the tentative increase in incidence as a function of  $\log g$  observed in the bottom panel of Fig. 10 cannot easily be explained by observational biases. Overall, the 40 pc sample provides strong evidence that magnetic white dwarfs are more massive than the average, with  $\bar{M} = 0.75 M_{\odot}$  for 24 DAH, DAP, and DAZH versus  $\bar{M} = 0.66 M_{\odot}$  for 278 non-magnetic DA and DAZ white dwarfs above 5000 K. A Kolmogorov–Smirnov test gives a p-value of much less than 1 per cent, meaning we can reject this being a random fluctuation.

We have employed non-magnetic models to fit *Gaia* colours of magnetic white dwarfs. This could lead to a systematic effect on their atmospheric parameters. However, we note that they align with the same crystallization sequence as non-magnetic white dwarfs. This is expected as magnetic fields of  $B < 1000$  MG have little influence on the cooling process (Tremblay et al. 2015), suggesting that *Gaia*-derived atmospheric parameters of magnetic white dwarfs are accurate to at least a few per cent. To obtain a better estimate of the accuracy of the atmospheric parameters for magnetic white dwarfs, Figs 11 and 12 show *GALEX–Gaia* and *Gaia–WISE* colour–colour



**Figure 11.** Colour–colour optical *Gaia* versus GALEX NUV diagram highlighting magnetic white dwarfs with H- (blue) and He-rich (orange) composition. The shaded region indicates pure-H and pure-He model predictions for  $7.5 < \log g < 8.5$  with  $\log g = 8.0$  shown with a darker line.

diagrams, respectively. It demonstrates that for the vast majority of the magnetic white dwarfs in the sample, the shape of the energy distribution is empirically similar to non-magnetic white dwarfs. In other words, magnetic white dwarfs can be fitted with a single white dwarf model from the near-UV to the near-IR. Since this range covers most of the emergent flux, it suggests that *Gaia*  $T_{\text{eff}}$  and mass values for magnetic white dwarfs are similarly accurate as those of non-magnetic white dwarfs. We conclude that the previously claimed higher than average mass values of magnetic white dwarfs (Ferrario et al. 2015; Kawka 2020) is a robust result.

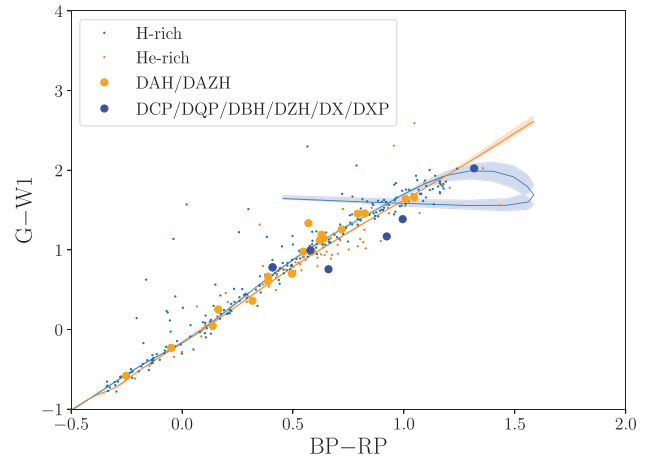
### 5.5 Crystallization

Table 5 provides statistics for white dwarfs roughly defined to be on the crystallization sequence (Tremblay et al. 2019b) from

$$\begin{aligned} \log g_{\text{Gaia}} &> \frac{[(T_{\text{eff,Gaia}} - 5000)/1000]^{0.95}}{10} + 8.00 \text{ and} \\ \log g_{\text{Gaia}} &< \frac{[(T_{\text{eff,Gaia}} - 5000)/1000]^{0.95}}{4} + 8.00 \text{ and} \\ &6000 < T_{\text{eff,Gaia}} [\text{K}] < 12000. \end{aligned} \quad (2)$$

This empirically selected region of overdensity is shown in Fig. 13. We apply a lower temperature limit because there is no distinct crystallization sequence below 6000 K, as it merges with the peak in the  $\log g$  distribution, e.g. the large majority of these cool white dwarfs could have started the crystallization process. The upper temperature limit is applied because it is difficult to empirically isolate a crystallization sequence above that temperature, i.e. only four hot and massive white dwarfs are potentially on the sequence. By applying the upper temperature cut, we also have average temperatures that are more similar for crystallizing white dwarfs and those not on the sequence. We note that this experiment is different to the comparison of white dwarfs that have a liquid interior and those that have crystallized. Only a handful of massive white dwarfs have a temperature above 6000 K and are likely to be fully crystallized, but in the present analysis those are included in the bin of objects not currently crystallizing.

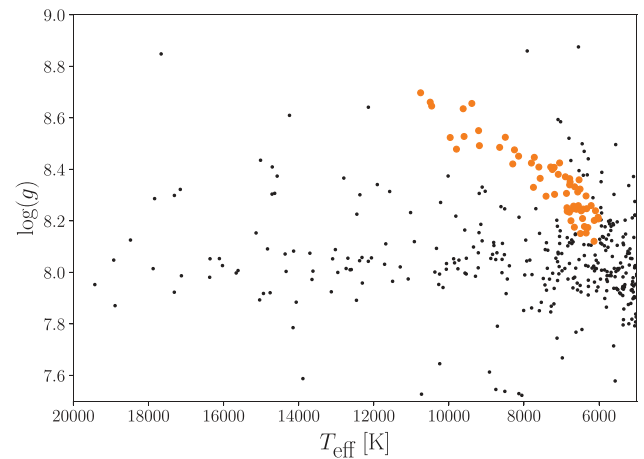
Table 5 demonstrates that white dwarfs on the crystallization sequence are in most measurable quantities very similar to white



**Figure 12.** Colour–colour optical *Gaia* versus WISE W1 near-IR diagram highlighting magnetic white dwarfs with H- (blue) and He-rich (orange) composition. The shaded region indicates pure-H and pure-He model predictions for  $7.5 < \log g < 8.5$  with  $\log g = 8.0$  shown with a darker line.

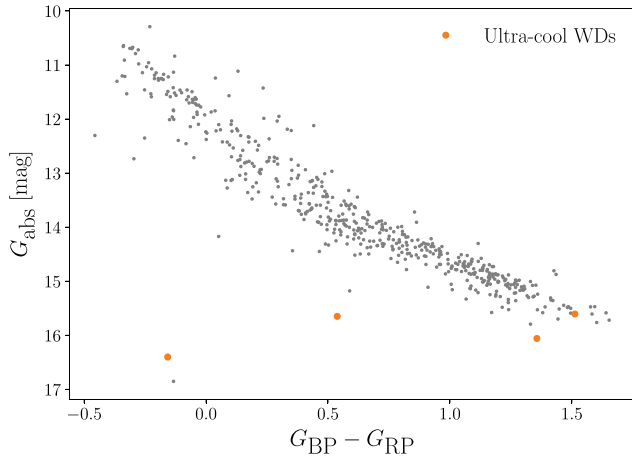
**Table 5.** Statistics of crystallizing and non-crystallizing white dwarfs ( $6000 \text{ K} < T_{\text{eff}} < 12000 \text{ K}$ ).

	Crystallization seq.	Not on seq.
$\overline{\log g}$ ( $\text{cm s}^{-2}$ )	8.37	8.13
$\overline{T_{\text{eff}}}$ (K)	7460	7800
$\overline{v_{\perp}}$ ( $\text{km s}^{-1}$ )	40.3	39.8
$N(\text{DQ})/N_{\text{tot}}$	1.6 per cent $\pm$ 2 per cent	6.4 per cent $\pm$ 2 per cent
$N(\text{DA})/N_{\text{tot}}$	79 per cent $\pm$ 15 per cent	70 per cent $\pm$ 7 per cent
$N(\text{Magnetic})/N_{\text{tot}}$	18 per cent $\pm$ 6 per cent	8.5 per cent $\pm$ 2 per cent



**Figure 13.** Empirically selected crystallization sequence based on equation (2) and the *Gaia*  $\log g$ -temperature distribution.

dwarfs that are not yet at that stage or have already solidified. In particular, white dwarfs on the crystallization sequence are overwhelmingly of DA spectral type as outlined in Tremblay et al. (2019b). By construction, white dwarfs with  $T_{\text{eff}} > 6000 \text{ K}$  on the crystallization are more massive than the average by about  $0.12 M_{\odot}$ . Hence, any difference in their properties could be explained by their past evolution at these characteristic higher masses, and not necessarily by the crystallization process itself. In particular,



**Figure 14.** Position in the *Gaia* HRD of the four known ultracool white dwarfs with strong collision induced absorption and within the northern 40 pc sample (the orange points). The full northern 40 pc white dwarf sample is shown in grey.

we detect a magnetic fraction that is marginally higher on the crystallization sequence. Considering that the fraction of magnetic white dwarfs increases for the full sample as a function of mass (see Section 5.4), we speculate that there is no obvious causal link between magnetic field generation and crystallization given the current sample size.

We find no significant difference between kinematic properties of crystallizing white dwarfs and those that are not. This suggests that below  $M \lesssim 1.0 M_{\odot}$ , there is no need to invoke a population of WD + WD mergers to explain the properties of crystallizing white dwarfs (Cheng et al. 2019). This is a much different picture to the regime  $M > 1.08 M_{\odot}$  studied in Cheng et al. (2019) and for which there is a significant difference between the kinematics of white dwarfs on the crystallization sequence. In the northern 40 pc sample, only six objects have  $M > 1.08 M_{\odot}$  as a consequence of the steep initial mass function. Assuming that 20 per cent of those come from WD + WD mergers as suggested by Cheng et al. (2019), this would result, on average, in only a single example in our surveyed volume. Hence, such high-mass merger population would not produce any detectable signal in our 40 pc sample. The fraction of white dwarfs that come from mergers at lower masses is still an open issue which is difficult to quantify with our sample as these objects are likely to have measurable properties that are similar to white dwarfs that have evolved through single star evolution (Temmink et al. 2019).

### 5.6 Ultracool white dwarfs

Within our sample there are only four so-called ultracool white dwarfs ( $\approx 1$  per cent), whose main feature is strongly non-blackbody-

like optical and near-IR colours due to CIA (Blouin, Kowalski & Dufour 2017). The location of these four ultracool white dwarfs in the *Gaia* HRD is shown in Fig. 14. These are among the faintest in the sample, lying below  $G_{\text{abs}} = 15.5$ . However, they do span a very wide range in *Gaia* colours, making it difficult to estimate the completeness of the current sample. The selection of Gentile Fusillo et al. (2019) managed to recover all four of the brightest previously known ultracool white dwarfs, suggesting that few additional objects are missing within 40 pc. Nevertheless, they lie in regions of the HRD where white dwarf identification is difficult due to a significant contamination from erroneous measurements. Two additional objects in the sample are possible ultracool white dwarfs, the cool DZ J192206.20 + 023313.29 (see Paper I) and J050600.41 + 590326.89 for which spectroscopy is missing (see Section 2.2). Finally, we note that other objects in the sample show milder CIA in the near-IR. It is likely that this class of objects cannot only be defined by surface temperature and chemical composition could also play a role (Kilic et al. 2020).

Table 6 shows the parameters of ultracool white dwarfs as found in the pre-*Gaia* literature, although caution should be used due to the uncertain nature of earlier CIA opacity calculations (see e.g. Tremblay et al. 2014a). Curiously only two of the four objects have halo-like kinematics, while the other two are consistent with the Galactic disc (see Section 3). This could suggest that ultracool white dwarfs do not form a homogeneous Galactic population.

## 6 CONCLUSIONS

We have presented a review of the *Gaia* DR2 selected sample of white dwarfs within the 40 pc Northern hemisphere. This corresponds to the largest and most complete volume-sample of white dwarfs with low-resolution spectroscopic confirmation available so far, an increase of a factor of about 4 in number compared to the 20 pc sample (Hollands et al. 2018b). Our selection is based on the catalogue of Gentile Fusillo et al. (2019) while we have gathered spectral types from the literature and a companion paper (Tremblay et al. 2020). This results in a final sample of 524 white dwarfs, among which 521 have known spectral types. The existing observations are sufficient to determine the dominant atmospheric chemical constituent of individual white dwarfs (above  $\approx 5000$  K), resulting in much better constraints on the atmospheric parameters compared to larger volume samples with low spectroscopic completeness. However, the varying quality of the spectroscopic signal to noise between observations prevents the derivation of robust absolute numbers of subtypes such as magnetic and metal-polluted white dwarfs. We note a systematic but moderate change in detection rates of subtypes with distance, which can only be explained as an observational bias.

We find that most properties of the northern 40 pc sample, such as the mean mass, kinematics, and fraction of wide and unresolved binaries are similar to those found for the four time smaller 20 pc sample, but some new trends appear in more rare subtypes of white dwarfs.

**Table 6.** Ultracool white dwarfs in the *Gaia* DR2 northern 40 pc sample. Error bars should be interpreted with caution because of systematic uncertainties in predicted CIA opacities.

WDJ name	SpT	$T_{\text{eff}}$ (K)	$\log(g)$	Mass ( $M_{\odot}$ )	Ref
J034646.52 + 245602.67	DC	$2970 \pm 40$	$7.66 \pm 0.30$	$0.39 \pm 0.10$	Limoges et al. (2015)
J110217.52 + 411321.18	DC	$3860 \pm 30$	–	–	Limoges et al. (2015)
J165401.26 + 625354.91	DC	$3080 \pm 100$	$7.24 \pm 0.03$	$0.22 \pm 0.01$	Limoges et al. (2015)
J140324.75 + 453333.02	DC	$2670 \pm 1500$	–	–	Kilic et al. (2019)

We find a significantly lower mean mass for metal-rich DAZ white dwarfs compared to their parent DA population, which cannot easily be explained as a simple statistical fluctuation. We suggest that it may inform about planet formation as a function of stellar mass (Veras et al. 2020). We find a significantly larger mean photometric mass for magnetic white dwarfs, which we determine is robust even though we rely on predicted magnitudes from non-magnetic models. Finally, the sample contains a notable sequence in  $\log g - T_{\text{eff}}$  space of white dwarfs currently undergoing crystallization (Tremblay et al. 2019b), which appear otherwise typical in all other measurable quantities.

The main advantage of the 40 pc sample is that of better number statistics, possibly enabling the study of science questions that were not possible to answer with smaller samples. One example is the study of the local stellar formation history by relying on the reasonably well-constrained white dwarf ages (Tremblay et al. 2014b; Fantin et al. 2019). The local white dwarf sample could also be combined with the full 40 pc *Gaia* stellar sample to study overall stellar evolution, especially as new spectroscopic observations become available.

## ACKNOWLEDGEMENTS

The research leading to these results has received funding from the European Research Council under the European Union's Horizon 2020 research and innovation programme n. 677706 (WD3D). This work presents results from the European Space Agency (ESA) space mission *Gaia*. *Gaia* data are being processed by the *Gaia* Data Processing and Analysis Consortium (DPAC). Funding for the DPAC is provided by national institutions, in particular the institutions participating in the *Gaia* MultiLateral Agreement (MLA). BTG has been supported by the STFC grant ST/T000406/1. ST acknowledge support from the Netherlands Research Council NWO (VENI 639.041.645 grants). ARM acknowledges support from the MINECO under the Ramón y Cajal programme (RYC-2016-20254), the AYA2017-86274-P grant, and the AGAUR grant SGR-661/2017. PI acknowledges financial support from the Spanish Ministry of Economy and Competitiveness (MINECO) under the 2015 Severo Ochoa Programme MINECO SEV-2015-0548. The work presented extensively used TOPCAT (Taylor 2005).

## DATA AVAILABILITY STATEMENT

The data underlying this article are available in the *Gaia* and Pan-STARRS public archives.

## REFERENCES

Bagnulo S., Landstreet J. D., 2019, *A&A*, 630, A65  
 Becklin E. E., Zuckerman B., 1988, *Nature*, 336, 656  
 Bergeron P. et al., 2011, *ApJ*, 737, 28  
 Bergeron P., Ruiz M. T., Leggett S. K., 1997, *ApJS*, 108, 339  
 Bédard A., Bergeron P., Fontaine G., 2017, *ApJ*, 848, 11  
 Bergeron P., Leggett S. K., Ruiz M. T., 2001, *ApJS*, 133, 413  
 Bergeron P., Dufour P., Fontaine G., Coutu S., Blouin S., Genest-Beaulieu C., Bédard A., Rolland B., 2019, *ApJ*, 876, 67  
 Blouin S., Kowalski P. M., Dufour P., 2017, *ApJ*, 848, 36  
 Blouin S., Dufour P., Thibeault C., Allard N. F., 2019, *ApJ*, 878, 63  
 Brown J. M., Kilic M., Brown W. R., Kenyon S. J., 2011, *ApJ*, 730, 67  
 Chambers K. C. et al., 2016, preprint (arXiv:1612.05560)  
 Chen E. Y., Hansen B. M. S., 2012, *ApJ*, 753, L16  
 Cheng S., Cummings J. D., Ménard B., 2019, *ApJ*, 886, 100  
 Coutu S., Dufour P., Bergeron P., Blouin S., Loranger E., Allard N. F., Dunlap B. H., 2019, *ApJ*, 885, 74

Crepp J. R., et al., 2018, *ApJ*, 864, 42  
 Cunningham T., Tremblay P.-E., Gentile Fusillo N. P., Hollands M., Cukanovaite E., 2020, *MNRAS*, 492, 3540  
 Dufour P., Blouin S., Coutu S., Fortin-Archambault M., Thibeault C., Bergeron P., Fontaine G., 2017, in Tremblay P. E., Gaensicke B., Marsh T., eds, ASP Conf. Ser. Vol. 509, 20th European White Dwarf Workshop. Astron. Soc. Pac., San Francisco, p. 3  
 El-Badry K., Rix H.-W., 2018, *MNRAS*, 480, 4884  
 El-Badry K., Rix H.-W., Weisz D. R., 2018, *ApJ*, 860, L17  
 Fantin N. J. et al., 2019, *ApJ*, 887, 148  
 Ferrario L., de Martino D., Gänsicke B. T., 2015, *Space Sci. Rev.*, 191, 111  
 Fontaine G., Brassard P., Bergeron P., 2001, *PASP*, 113, 409  
 Fontaine G., Brassard P., Charpinet S., Rand all S. K., Van Grootel V., 2013, EPJ Web Conf., Vol. 43, 40th Liège International Astrophysical Colloquium, EDP Sciences, p. 05001  
 Fuchs B., Jahreiß H., 1998, *A&A*, 329, 81  
 Gaia Collaboration, 2018a, *A&A*, 616, A1  
 Gaia Collaboration, 2018b, *A&A*, 616, A10  
 Genest-Beaulieu C., Bergeron P., 2019, *ApJ*, 871, 169  
 Gentile Fusillo N. P., Gänsicke B. T., Farihi J., Koester D., Schreiber M. R., Pala A. F., 2017, *MNRAS*, 468, 971  
 Gentile Fusillo N. P. et al., 2019, *MNRAS*, 482, 4570  
 Gentile Fusillo N. P., Gänsicke B. T., Farihi J., Koester D., Schreiber M. R., Pala A. F., 2017, *MNRAS*, 468, 971  
 Gentile Fusillo N. P., Tremblay P.-E., Bohlin R. C., Deustua S. E., Kalirai J. S., 2020, *MNRAS*, 491, 3613  
 Giammichele N., Bergeron P., Dufour P., 2012, *ApJS*, 199, 29  
 Gianninas A., Bergeron P., Ruiz M. T., 2011, *ApJ*, 743, 138  
 Hall P. B., Kowalski P. M., Harris H. C., Awal A., Leggett S. K., Kilic M., Anderson S. F., Gates E., 2008, *AJ*, 136, 76  
 Hambly N. C., Smartt S. J., Hodgkin S. T., 1997, *ApJ*, 489, L157  
 Harris H. C., et al., 2013, *ApJ*, 779, 21  
 Haywood M., Di Matteo P., Lehnert M. D., Snaith O., Khoperskov S., Gómez A., 2018, *ApJ*, 863, 113  
 Helmi A., Babusiaux C., Koppelman H. H., Massari D., Veljanoski J., Brown A. G. A., 2018, *Nature*, 563, 85  
 Henry T. J. et al., 2018, *AJ*, 155, 265  
 Hirsch L. A., et al., 2019, *ApJ*, 878, 50  
 Holberg J. B., Oswalt T. D., Sion E. M., 2002, *ApJ*, 571, 512  
 Holberg J. B., Sion E. M., Oswalt T., McCook G. P., Foran S., Subasavage J. P., 2008, *AJ*, 135, 1225  
 Holberg J. B., Oswalt T. D., Sion E. M., Barstow M. A., Burleigh M. R., 2013, *MNRAS*, 435, 2077  
 Holberg J. B., Oswalt T. D., Sion E. M., McCook G. P., 2016, *MNRAS*, 462, 2295  
 Hollands M. A., Gänsicke B. T., Koester D., 2018a, *MNRAS*, 477, 93  
 Hollands M. A., Tremblay P. E., Gänsicke B. T., Gentile-Fusillo N. P., Toonen S., 2018b, *MNRAS*, 480, 3942  
 Isern J., 2019, *ApJ*, 878, L11  
 Jiménez-Esteban F. M., Torres S., Rebassa-Mansergas A., Skorobogatov G., Solano E., Cantero C., Rodrigo C., 2018, *MNRAS*, 480, 4505  
 Kawka A., 2020, preprint (arXiv:2001.10672)  
 Kawka A., Vennes S., 2006, *ApJ*, 643, 402  
 Kawka A., Vennes S., 2012, *MNRAS*, 425, 1394  
 Kawka A., Simpson J. D., Vennes S., Bessell M. S., Da Costa G. S., Marino A. F., Murphy S. J., 2020, *MNRAS*, 495, L129  
 Kilic M., et al., 2010, *ApJS*, 190, 77  
 Kilic M., Bergeron P., Dame K., Hambly N. C., Rowell N., Crawford C. L., 2019, *MNRAS*, 482, 965  
 Kilic M., Bergeron P., Kosakowski A., Brown W. R., Agueros M. A., Blouin S., 2020, *ApJ*, 898, 84  
 Koester D., Weidemann V., Zeidler E. M., 1982, *A&A*, 116, 147  
 Koester D., Voss B., Napiwotzki R., Christlieb N., Homeier D., Lisker T., Reimers D., Heber U., 2009, *A&A*, 505, 441  
 Kowalski P. M., Saumon D., 2006, *ApJ*, 651, L137  
 Landstreet J. D., Bagnulo S., 2019, *A&A*, 628, A1  
 Landstreet J. D., Bagnulo S., 2020, *A&A*, 634, L10  
 Leggett S. K. et al., 2018, *ApJS*, 239, 26  
 Leggett S. K., Ruiz M. T., Bergeron P., 1998, *ApJ*, 497, 294



- Liebert J., Dahn C. C., Monet D. G., 1988, *ApJ*, 332, 891
- Liebert J., Bergeron P., Schmidt G. D., Saffer R. A., 1993, *ApJ*, 418, 426
- Limoges M. M., Bergeron P., Lépine S., 2015, *ApJS*, 219, 19
- MacDonald J., Vennes S., 1991, *ApJ*, 371, 719
- Maxted P. F. L., Marsh T. R., Moran C. K. J., Han Z., 2000a, *MNRAS*, 314, 334
- Maxted P. F. L., Marsh T. R., Moran C. K. J., 2000b, *MNRAS*, 319, 305
- Minchev I., Chiappini C., Martig M., 2013, *A&A*, 558, A9
- Morrell S., Naylor T., 2019, *MNRAS*, 489, 2615
- Munn J. A. et al., 2017, *AJ*, 153, 10
- Ourique G., Romero A. D., Kepler S. O., Koester D., Amaral L. A., 2019, *MNRAS*, 482, 649
- Parsons S. G. et al., 2018, *MNRAS*, 481, 1083
- Putney A., 1997, *ApJS*, 112, 527
- Parsons S. G., et al., 2010, *MNRAS*, 407, 2362
- Parsons S. G., Rebassa-Mansergas A., Schreiber M. R., Gänsicke B. T., Zorotovic M., Ren J. J., 2016, *MNRAS*, 463, 2125
- Rebassa-Mansergas A. et al., 2017, *MNRAS*, 472, 4193
- Rebassa-Mansergas A., Ren J. J., Parsons S. G., Gänsicke B. T., Schreiber M. R., García-Berro E., Liu X. W., Koester D., 2016, *MNRAS*, 458, 3808
- Rolland B., Bergeron P., Fontaine G., 2018, *ApJ*, 857, 56
- Seabroke G. M., Gilmore G., 2007, *MNRAS*, 380, 1348
- Sion E. M., Greenstein J. L., Landstreet J. D., Liebert J., Shipman H. L., Wegner G. A., 1983, *ApJ*, 269, 253
- Sion E. M., Holberg J. B., Oswalt T. D., McCook G. P., Wasatonic R., 2009, *AJ*, 138, 1681
- Subasavage J. P. et al., 2017, *AJ*, 154, 32
- Taylor M. B., 2005, in Shopbell P., Britton M., Ebert R., eds, ASP Conf. Ser. Vol. 347, Astronomical Data Analysis Software and Systems XIV. Astron. Soc. Pac., San Francisco, p. 29
- Temminck K. D., Toonen S., Zapartas E., Justham S., Gänsicke B. T., 2019, *A&A*, 636, A31
- Toonen S., Hollands M., Gänsicke B. T., Boekholt T., 2017, *A&A*, 602, A16
- Torres S., Cantero C., Rebassa-Mansergas A., Skorobogatov G., Jiménez-Esteban F. M., Solano E., 2019, *MNRAS*, 485, 5573
- Tremblay P. E. et al., 2020, *MNRAS*, 497, 130
- Tremblay P. E., Bergeron P., 2008, *ApJ*, 672, 1144
- Tremblay P. E., Ludwig H. G., Steffen M., Bergeron P., Freytag B., 2011, *A&A*, 531, L19
- Tremblay P. E., Ludwig H. G., Steffen M., Freytag B., 2013, *A&A*, 559, A104
- Tremblay P. E., Leggett S. K., Lodieu N., Freytag B., Bergeron P., Kalirai J. S., Ludwig H. G., 2014a, *ApJ*, 788, 103
- Tremblay P. E., Kalirai J. S., Soderblom D. R., Cignoni M., Cummings J., 2014b, *ApJ*, 791, 92
- Tremblay P. E., Fontaine G., Freytag B., Steiner O., Ludwig H. G., Steffen M., Wedemeyer S., Brassard P., 2015, *ApJ*, 812, 19
- Tremblay P. E., Cummings J., Kalirai J. S., Gänsicke B. T., Gentile-Fusillo N., Raddi R., 2016, *MNRAS*, 461, 2100
- Tremblay P. E., Cukanovaite E., Gentile Fusillo N. P., Cunningham T., Hollands M. A., 2019a, *MNRAS*, 482, 5222
- Tremblay P.-E. et al., 2019b, *Nature*, 565, 202
- van Altena W. F., Lee J. T., Hoffleit E. D., 1995, The General Catalogue of Trigonometric [Stellar] Parallaxes. Yale University Observatory, New Haven, CT
- van Leeuwen F., 2007, *A&A*, 474, 653
- Veras D., Tremblay P.-E., Hermes J. J., McDonald C. H., Kennedy G. M., Meru F., Gänsicke B. T., 2020, *MNRAS*, 493, 765
- Winters J. G. et al., 2020, *AJ*, 159, 290
- Zuckerman B., Becklin E. E., Macintosh B. A., Bida T., 1997, *AJ*, 113, 764
- Zuckerman B., Koester D., Reid I. N., Hüensch M., 2003, *ApJ*, 596, 477
- Zuckerman B., Melis C., Klein B., Koester D., Jura M., 2010, *ApJ*, 722, 725

## SUPPORTING INFORMATION

Supplementary data are available at *MNRAS* online.

**Table A1.** The catalogue of 524 *Gaia* white dwarfs in the northern hemisphere and within 40 pc can be accessed online at [this link](#).

**Table A2.** List of 64 main-sequence star contaminants and spectroscopically unobserved low-probability white dwarf candidates within 40 pc can be accessed online at [this link](#).

**Table A5.** The catalogue of 56 wide binary systems including a white dwarf in the northern hemisphere and within 40 pc can be accessed online at [this link](#).

Please note: Oxford University Press is not responsible for the content or functionality of any supporting materials supplied by the authors. Any queries (other than missing material) should be directed to the corresponding author for the article.

## APPENDIX A: TABLES

**Table A3.** White dwarfs in the Northern hemisphere that are likely within 40 pc and missing from Table A1 (available online) and the input sample of Gentile Fusillo et al. (2019), sorting by increasing distance.

Gaia DR2 ID	Name	Parallax (mas)	Ref	SpT	Ref	Note
Confirmed 40 pc Members						
–	WD 0736 + 053	284.56 ± 1.26	(1)	DQZ	Limoges et al. (2015)	(a)
3320184202856027776	WD 0553 + 053	125.0 ± 3.6	(2)	DAH	Limoges et al. (2015)	(b)
–	WD 1334 + 039	121.4 ± 3.4	(2)	DA	Limoges et al. (2015)	(c)
975968340912004352	WD 0727 + 482A	88.543 ± 0.066	(3)	DA	Limoges et al. (2015)	(d)
975968340910692736	WD 0727 + 482B	88.543 ± 0.066	(3)	DA	Limoges et al. (2015)	(d)
3978879594463069312	WD 1121 + 216	74.4 ± 2.8	(2)	DA	Limoges et al. (2015)	(b)
1362295082910131200	HD 159062	46.123 ± 0.024	(3)	G9V + WD	Hirsch et al. (2019)	(e)
2274076301516712704	WD 2126 + 734B	45.15 ± 0.21	(4)	DC	Zuckerman et al. (1997)	(f)
3701290326205270528	WD 1214 + 032	42.784 ± 0.063	(4)	DA	Limoges et al. (2015)	(f)
3817534337626005632	WD 1120 + 073	31.23 ± 0.80	(3)	DC	Limoges et al. (2015)	(d)
3920187251456355072	WD 1153 + 135	28.29 ± 0.66	(5)	DC	Leggett et al. (2018)	(b)
1962707287281651712	PM J22105 + 4532	27.759 ± 0.088	(4)	DC	Limoges et al. (2015)	(f)
307323228064848512	WD 0108 + 277	26.35 ± 0.11	(4)	DAZ	Kawka & Vennes (2006)	(f)
Unresolved Binaries						
1005873614079882880	LHS 1817	61.13 ± 0.15	(4)	M4.5V + WD	Winters et al. (2020)	(g)
1548104507825815296	WD 1213 + 528	34.834 ± 0.032	(4)	DA + dM	Limoges et al. (2015)	(g)
1550299304833675392	WD 1324 + 458	32.734 ± 0.030	(4)	M3V + DA	Parsons et al. (2010)	(g)
3845263368043086080	WD 0911 + 023	28.40 ± 0.37	(4)	B9.5V + WD	Holberg et al. (2013)	(g)
4478524169500496000	HD 169889	28.30 ± 0.07	(4)	G9V + WD	Crepp et al. (2018)	(g)
3831059120921201280	WD 1026 + 002	25.064 ± 0.060	(4)	DA + dM	Koester et al. (2009)	(g)
Possible 40 pc Members						
4018536882933053056	WD 1132 + 275	–	–	DC	Limoges et al. (2015)	(b)
1267487150183614976	WD 1143 + 256	–	–	DA	Limoges et al. (2015)	(h)
2701893698904233216	WD 2140 + 078	–	–	DA	Limoges et al. (2015)	(b)

*Notes.* References: (1) van Leeuwen (2007), (2) van Alena et al. (1995), (3) *Gaia* DR2 (companion), (4) *Gaia* DR2 (white dwarf), (5) Leggett et al. (2018). (a) No *Gaia* detection due to saturation of Procyon A. (b) White dwarf does not have DR2 five-parameter astrometry. (c) No *Gaia* detection, noting that the white dwarf has an  $\approx 4$  arcsec  $\text{yr}^{-1}$  proper motion. (d) White dwarf does not have DR2 five-parameter astrometry, but known companion does. (e) White dwarf resolved at  $2''.7$  according to Hirsch et al. (2019) but no *Gaia* DR2 source detected corresponding to the white dwarf. (f) DR2 five-parameter astrometry available but white dwarf absent from Gentile Fusillo et al. (2019) because of missing or incorrect colours (large BP/RP excess factor). (g) Missing from Gentile Fusillo et al. (2019) because of the important flux contribution from the non-degenerate companion in the optical. (h) Distance estimate of  $<40$  pc in Limoges et al. (2015) based on atmospheric parameters. Detected with the established proper motion, but with a parallax of  $1.44 \pm 0.55$  mas.

**Table A4.** *Gaia* white dwarf candidates in the northern hemisphere that may lie within 40 pc based on *Gaia* parallax errors. The upper rows in each section are the objects within  $1\sigma$ , and the lower those which lie within  $2\sigma$ .

WDJ Name	Gaia DR2 ID	WD Name	Parallax (mas)	SpT	Ref
Confirmed white dwarfs					
WDJ001339.15 + 001924.58	2545505281002947200	WD 0011 + 000	24.96 (0.06)	DA	Gianninas et al. (2011)
WDJ055231.03 + 164250.27	3349849778193723008	–	24.97 (0.06)	DBA	Tremblay et al. (2020)
WDJ080247.02 + 564640.62	1081514379072280320	–	24.87 (0.21)	DC	Tremblay et al. (2020)
WDJ102203.66 + 824310.00	1146403741412820864	–	24.95 (0.13)	DA	Tremblay et al. (2020)
WDJ134118.69 + 022737.01	3713218786120541824	WD 1338 + 027	24.88 (0.13)	DQ	Kilic et al. (2019)
WDJ171430.49 + 212710.45	4567158653660872064	WD 1712 + 215	24.96 (0.06)	DC	Putney (1997)
WDJ180218.60 + 135405.46	4496751667093478016	–	24.97 (0.07)	DAZ	Tremblay et al. (2020)
WDJ184733.18 + 282057.54	4539227892919675648	–	24.87 (0.16)	DC	Tremblay et al. (2020)
WDJ192206.20 + 023313.29	4288942973032203904	–	24.95 (0.32)	DZ	Tremblay et al. (2020)
WDJ202956.18 + 391332.20	2064272612307218176	WD 2028 + 390	24.96 (0.04)	DA	Gianninas et al. (2011)
WDJ221321.31 + 034911.08	2707796667595813248	NLT 53229	24.68 (0.33)	DC	Limoges et al. (2015)
WDJ235750.73 + 194905.90	2822330113802737408	–	24.92 (0.12)	DZ	Tremblay et al. (2020)
WDJ070845.80 + 204451.70	3366672379112835328	PM J07087 + 2044	24.80 (0.10)	DA	Limoges et al. (2015)
WDJ112105.81 + 375615.39	763981296484951936	CBS 429	24.91 (0.06)	DA	Limoges et al. (2015)
WDJ133359.84 + 001655.03	3662951038644235776	WD 1331 + 005	24.45 (0.35)	DQ	Ferrario et al. (2015)
WDJ134043.36 + 020348.30	3663664003222454528	WD 1338 + 023	24.69 (0.16)	DC	Leggett et al. (2018)
WDJ231845.10 + 123602.77	2811321837744375936	WD 2316 + 123	24.87 (0.08)	DAH	Limoges et al. (2015)
Main-sequence contaminants					
WDJ005645.62 + 551556.10	423445945315773440	–	24.36 (0.89)	Star	Tremblay et al. (2020)
WDJ134252.41 + 003312.28	3663164069021692800	–	24.19 (0.96)	Star	Tremblay et al. (2020)

**Table A4** – *continued*

WDJ Name	Gaia DR2 ID	WD Name	Parallax (mas)	SpT	Ref
Unobserved objects					
WDJ015348.12 + 654946.61	518443341936881664	–	22.90 (2.49)	–	Low $P_{WD}$
WDJ171605.95 + 190544.28	4548611473051368576	–	24.43 (0.90)	–	Low $P_{WD}$
WDJ181131.97 + 132601.58	4497270567861853440	–	24.52 (0.50)	–	Low $P_{WD}$
WDJ194052.95 + 170459.04	1823962663799965440	–	24.82 (0.97)	–	Low $P_{WD}$
WDJ194943.60 + 152641.56	1819762318874306048	–	24.53 (0.55)	–	Low $P_{WD}$
WDJ002955.72 + 472645.48	389482855766584704	–	22.91 (1.30)	–	–
WDJ050647.89 + 203014.55	3408829849653432576	LP 416-350	24.76 (0.15)	–	–
WDJ055326.34 + 062759.60	3322605013926459520	–	24.30 (0.54)	–	–
WDJ112542.42 + 041318.02	3812805230740561280	–	21.88 (2.10)	–	Low $P_{WD}$
WDJ115016.52 + 154700.09	3924562444445708288	–	21.81 (2.44)	–	Low $P_{WD}$
WDJ122048.91 + 482912.98	1545564017495017088	–	22.91 (1.29)	–	Low $P_{WD}$
WDJ123010.77 + 100537.85	3903961547910932992	–	22.00 (2.59)	–	Low $P_{WD}$
WDJ174129.76 + 015632.44	4375912002010905600	–	23.77 (0.93)	–	Low $P_{WD}$
WDJ194553.70 + 180829.53	1824144048862367104	–	23.26 (1.05)	–	Low $P_{WD}$

This paper has been typeset from a  $\text{\TeX}/\text{\LaTeX}$  file prepared by the author.