



Kunutsor, S. K. (2016). Gamma-glutamyltransferase—friend or foe within? *Liver International*, 36(12), 1723-1734.  
<https://doi.org/10.1111/liv.13221>

Peer reviewed version

Link to published version (if available):  
[10.1111/liv.13221](https://doi.org/10.1111/liv.13221)

[Link to publication record in Explore Bristol Research](#)  
PDF-document

This is the accepted author manuscript (AAM). The final published version (version of record) is available online via Wiley at <http://doi.org/10.1111/liv.13221>. Please refer to any applicable terms of use of the publisher.

## University of Bristol - Explore Bristol Research

### General rights

This document is made available in accordance with publisher policies. Please cite only the published version using the reference above. Full terms of use are available:  
<http://www.bristol.ac.uk/red/research-policy/pure/user-guides/ebr-terms/>

## **Gamma-glutamyltransferase – Friend or foe within?**

Setor K. Kunutsor

School of Clinical Sciences, University of Bristol, Learning & Research Building (Level 1),  
Southmead Hospital, Southmead Road, Bristol, UK

Correspondence:

School of Clinical Sciences, University of Bristol, Learning & Research Building (Level 1),  
Southmead Hospital, Southmead Road, Bristol, BS10 5NB, UK. Phone: +44-7539589186;

Fax: +44-1174147924; Email address: [skk31@cantab.net](mailto:skk31@cantab.net)

Word count [5,128]

Table [1]

Figures [2]

### **Abbreviations**

AF, atrial fibrillation; ALT, alanine aminotransferase; ALP, alkaline phosphatase; ARIC, Atherosclerosis Risk in Communities; AST, aspartate aminotransferase; BMI, body mass index; CHD, coronary heart disease; CI, confidence interval; CKD, chronic kidney disease; CVD, cardiovascular disease; GGT, gamma-glutamyltransferase; GWAS, Genome Wide Association Study; HCC, hepatocellular carcinoma; HF, heart failure; KIHHD, Kuopio Ischemic Heart Disease; LDL, low-density lipoprotein; MetS, metabolic syndrome; MR, Mendelian randomization; NAFLD, nonalcoholic fatty liver disease; SCD, sudden cardiac death; SD, standard deviation; T2DM, type 2 diabetes mellitus;

*Financial support:* None

*Conflicts of interest:* None

**Key points**

- Serum elevated GGT is associated with vascular disease outcomes, metabolic syndrome, diabetes, cancer, chronic kidney disease, fractures, dementia, and total mortality.
- Biological mechanisms postulated for these relationships include oxidative stress, inflammation, and underlying fatty liver.
- Limited data suggests GGT is unlikely to improve disease risk prediction and data on the causal relevance of GGT to these outcomes are lacking.
- GGT assays may have the potential to aid in the identification of individuals who need further evaluation of risk factors for adverse outcomes.
- Further work is needed to understand the pathophysiological mechanisms that underlie the associations and implications for clinical practice.

## **Abstract**

Gamma-glutamyltransferase, is a liver enzyme which is located on the plasma membranes of most cells and organ tissues, but more commonly in hepatocytes and is routinely used in clinical practice to help indicate liver injury and as a marker of excessive alcohol consumption. Among the liver enzymes, important advances have especially been made in understanding the physiological functions of GGT. The primary role of GGT is the extracellular catabolism of glutathione, the major thiol antioxidant in mammalian cells, which plays a relevant role in protecting cells against oxidants produced during normal metabolism; GGT, therefore plays an important role in cellular defence. Beyond its physiological functions, circulating serum GGT has been linked to a remarkable array of chronic conditions and diseases, which include nonalcoholic fatty liver disease, vascular and non-vascular diseases, as well as mortality outcomes. This review summarizes the available epidemiological and genetic evidence for the associations between GGT and these adverse outcomes; the postulated biologic mechanisms underlying these associations; outlines areas of outstanding uncertainty; and the implications for clinical practice.

## **Keywords**

Gamma-glutamyltransferase - vascular disease - diabetes - fracture - dementia - mortality

Abstract word count [171]

The liver plays a major role in metabolism and has a number of functions including protein synthesis, glycogen storage, lipid metabolism, and secretion of acute phase proteins in response to inflammation. Plasma liver biochemistry tests are groups of clinical laboratory blood assays widely used in the clinic to give information about the state of a patient's liver; and assays for gamma-glutamyltransferase (GGT), alanine aminotransferase (ALT), aspartate aminotransferase (AST), and alkaline phosphatase (ALP) are the most commonly used for this purpose. Circulating levels of these enzymes are markers of liver injury, associated with cellular integrity, or with conditions linked to the biliary tract and can be used to measure the severity of hepatic inflammation, cellular injury, or obstruction (1). They are commonly used to identify patients with liver diseases, monitor the course and severity of these diseases, and the effect of therapies (2). There have been important advances in the understanding of the physiological functions of these liver enzymes and several epidemiological associations have been reported. Among the liver enzymes, research has largely focused on GGT. Beyond its physiological functions, circulating serum GGT has been linked to several adverse outcomes, which include nonalcoholic fatty liver disease (NAFLD), vascular and non-vascular diseases, as well as mortality outcomes. This review aims to summarize available information on the physiological role of GGT; evidence on the epidemiological and genetic associations between GGT and these outcomes; evidence on the postulated biologic mechanisms underlying these associations; outlines areas of outstanding uncertainty; and implications for clinical practice.

### **Occurrence, physiology, and functions of GGT**

Gamma-glutamyltransferase, originally called gamma-glutamyl transpeptidase, was first adopted as a liver biochemistry test in the 1960s and 1970s (3). It is a glycoprotein with a molecular weight of 68,000 daltons and consist of two proteins - a larger and smaller chain with molecular weights of 46,000 and 22,000 daltons respectively (1). It is located on the

plasma membranes of most cells and organ tissues, but more commonly hepatocytes (3). Gamma-glutamyltransferase is also found in the extracellular fluid attached to  $\alpha$  and  $\beta$  lipoproteins (4) and albumin carrier molecules (5). It has recently been reported that GGT is made up of four fractions namely big-GGT (b-GGT), medium-GGT (m-GGT), small-GGT (s-GGT), and free-GGT (f-GGT), with each having its own molecular weight and distinct physiochemical properties (6, 7). Human GGT genes are located on chromosome 22 (8, 9), with related sequences that are non-functional or represent pseudogenes on chromosomes 18, 19, and 20 (9). There are seven or more GGT genes in humans, but only one of these gives rise to a complete and functional protein (10). The active GGT enzyme is coded by *GGT1* on chromosome 22 (11). Gamma-glutamyltransferase activity is significantly genetically determined and its heritability has been estimated to range between 50 to 77% in adults (12-15). It has been suggested that half of the genetic variance in GGT is shared by ALT and AST. Though the same genes influence GGT activity across age and sex, their relative contribution to the variation in its activity differs in males and females and across age (15).

The primary role of GGT is the extracellular catabolism of glutathione, the major thiol antioxidant in mammalian cells, which enables precursor amino acids to be assimilated and re-utilized for intracellular synthesis of glutathione (3). Glutathione plays a relevant role in protecting cells against oxidants produced during normal metabolism. The reaction that GGT catalyzes is the transfer of a glutamyl residue (linked through glutamate's gamma carboxylic acid to an amine or to another amino acid) to an acceptor (3), therefore maintaining adequate levels of glutathione. Gamma-glutamyltransferase is also involved in the transfer of amino acids across cell membranes (16) and metabolism of leukotriene (17). Liver injury or blockage of bile ducts can cause accumulation of GGT in the liver and secretion of excess GGT into circulation. In clinical practice, raised circulating GGT values are routinely and

widely used to help indicate potential hepatic or biliary disease and as a biologic marker of excessive alcohol intake (3). A number of demographic and physiological factors, which shade into risk factors for disease; affect GGT values, making the definition of a reference range very complicated (3). Common factors influencing the reference range include sex, pregnancy, childbirth, race, smoking, oral contraceptive use, and exercise. The reference range for GGT activity is similar across ages, though there are significant gender differences, with males having higher values than females (18) (**Figure 1**). The gender difference in GGT activity is most likely physiologic and has been attributed to the effect of sex hormones. The recommended cut-off for the upper normal limit of GGT has been set at an average of 51 U/L for males and 33 U/L for females (19). Common causes of elevated GGT activity include liver disease, obesity, excessive alcohol consumption, medications (such as phenytoin, phenobarbital, furosemide, and heparin), congestive cardiac failure, and smoking (20, 21). Younger females and pregnancy are associated with decreased GGT activity, whilst postmenopausal women and those taking oral contraceptives have higher GGT activity closer to that of men (3). Black populations have higher values compared with Caucasian populations. Over the past two decades, significant progress has been made in understanding the physiological functions of GGT and evidence for several epidemiological associations has been uncovered.

### **Epidemiological associations of GGT with risk markers for disease**

The multi-functional role of the liver in metabolism and inflammation suggests that complex relationships are likely to exist between the liver markers and several biochemical, metabolic, lipid, or inflammatory factors. Though GGT has a high heritability (13-15), its activity is highly variable, with the variability significantly affected by various environmental factors such as body mass index (BMI), alcohol consumption, and age (14). Gamma-

glutamyltransferase has been demonstrated to be associated with several lifestyle, biophysical, and biochemical factors, majority of which are risk factors for vascular and non-vascular disease. Positive associations with age, BMI, waist circumference, alcohol consumption, smoking, heart rate, blood pressure, serum levels of glucose, ferritin, uric acid, and lipids [triglycerides, total cholesterol, and low-density lipoprotein (LDL) cholesterol] have been demonstrated (22, 23), whereas inverse associations have been observed with high-density lipoprotein cholesterol, physical activity, and lung function (3). Gamma-glutamyltransferase is also known to correlate with several dietary factors such as coffee consumption, fruit and meat intake, as well as vitamin status (24). Studies have consistently demonstrated that BMI has the strongest association with GGT compared with other risk markers, with GGT increasing progressively across all classes of BMI (22, 25-27). Indeed, GGT has been shown to have a causal association with BMI, as well as with fasting insulin (28, 29). The strong relationships between GGT and several risk markers have been attributed to common genetic loci that affect GGT activity and these risk markers (13).

### **Relationship between GGT and NAFLD**

Nonalcoholic fatty liver disease is a common clinical condition characterised by hepatic steatosis with varying degrees of necroinflammation and fibrosis and which develops in the absence of substantial alcohol intake (30). It spans a range of conditions from simple hepatic steatosis to nonalcoholic steato-hepatitis and cirrhosis (30, 31) and is regarded as the hepatic component of the metabolic syndrome (MetS) (32-34). Nonalcoholic fatty liver disease has reached epidemic proportions and it is emerging as the most common cause of chronic liver disease in the developed world (30, 35, 36). The global prevalence of NAFLD has been estimated to be around one-third of the general population (37), with estimates varying between 70-90% in individuals who are obese or have type 2 diabetes mellitus (T2DM) (38-



40). Its diagnosis is based on (i) imaging techniques (i.e., ultrasonography, CT scan, or MRI) confirming the presence of fat infiltration of the liver, and/or liver biopsy showing steatosis in at least 5% of hepatocytes(41) and (ii) exclusion of other liver diseases of other aetiology such as significant alcohol consumption or drug-induced liver disease, autoimmune or viral hepatitis, and cholestatic or metabolic/genetic liver disease (42). It is the most common cause for unexplained elevated liver enzymes including the transaminases and GGT (43-46). The most commonly observed biochemical pattern in NAFLD is increased levels of transaminases, with ALT exceeding levels of AST.(47) Elevated ALT has frequently been used as a biochemical surrogate for NAFLD diagnosis; however, it is not uncommon to diagnose NAFLD in patients with normal ALT levels using ultrasonography or histology (36, 48). Elevated GGT activity has less frequently been used as a surrogate biomarker for NAFLD.

Obesity is one of the most important factors in the development of NAFLD. Fall and colleagues in their recent Mendelian randomization study (29), provided novel evidence for a causal effect of adiposity (as measured by BMI) on GGT and ALT; with suggestions that elevated activity of these liver enzymes caused by an increased BMI, are likely to be related to NAFLD. Nonalcoholic fatty liver disease is strongly associated with obesity as well as several cardiometabolic risk factors (38, 39), MetS, T2DM (49), and mortality, with CVD being the most common cause of death among patients with NAFLD (46, 50). Independent associations have also been demonstrated for other adverse outcomes such as heart failure (HF) (51), cardiac arrhythmias (52, 53), hepatocellular cancer (HCC) (54), chronic kidney disease (CKD) (55), and cognitive decline (56). For these reasons, it has been hypothesized that NAFLD may be the underlying cause for the associations of elevated GGT with several vascular and non-vascular outcomes.

## **Prospective associations of GGT with vascular, non-vascular, and all-cause mortality outcomes**

### **Cardiovascular disease**

Gamma-glutamyltransferase has been implicated in CVD development with epidemiologic evidence suggesting greater CVD risk with higher serum GGT activity. Although interest in GGT as an emerging risk factor for CVD goes back at least several decades, further research was stimulated with the publication of the first systematic review and meta-analysis by Fraser and colleagues (57) (**Table and Figure 2**). They reported an independent and positive association between GGT and risk of CVD. However, despite the evidence and the publication of additional studies, there were still uncertainties regarding the shape and nature of the association between GGT and CVD risk. In 2014, our group published an updated meta-analysis comprising 20 studies (1,054,181 participants and 15,194 events) and which included a dose-response analysis. The findings confirmed a positive and independent association between GGT and CVD, which was consistent with a log-linear relationship (**Table and Figure 2**) (58). Positive and independent associations between GGT and CVD mortality have also been demonstrated (59, 60). Given the somewhat diverse aetiology of different vascular events such as stroke and coronary heart disease, it was uncertain whether the effect of GGT on these cause-specific vascular outcomes may differ. However, several studies have shown GGT to be positively and independently associated with both stroke and CHD outcomes with similar magnitudes of effect (57, 58, 61). Given the independent association of higher GGT levels with increased cardiovascular risk, there has been an evolving debate on whether adding information on GGT to current CVD risk prediction algorithms might be associated with improvements in the ability to predict CVD beyond established cardiovascular risk factors (1, 62, 63). While some studies have reported a

marginal improvement in CVD risk prediction (64, 65), a recent large-population based cohort analysis by our group has shown that addition of GGT to conventional CVD risk factors is unlikely to improve prediction of first-ever cardiovascular events (66).

Several mechanistic pathways for the increased cardiovascular risk associated with elevated levels of GGT have been postulated. Though at normal values, GGT counteracts oxidative stress by making cysteine available for regeneration of intracellular glutathione, recent evidence has also demonstrated that serum GGT values within the normal reference range are associated with promotion of atherosclerosis. Pro-oxidant and pro-inflammatory activities have been proposed to underlie this process (67-69). At normal values, serum GGT catalyzes LDL oxidation *in vitro*; it initially catalyzes the degradation of extracellular glutathione, the major thiol intracellular antioxidant in the body. Glutathione is hydrolyzed by GGT into glutamate and a cysteinyl-glycine dipeptide. Glutamate is subsequently recycled inside the cell, producing additional glutathione. The cysteinyl-glycine dipeptide acts as a strong reducing agent of iron on the cellular membrane and in the extracellular space, resulting in the development of free radical species (1) which may cause oxidation of LDL, which is believed to participate in other processes such as cell proliferation and development of atheroma within the vascular endothelial wall (1, 67). Gamma-glutamyltransferase also mediates interconversion of the glutathione-containing inflammatory mediator leukotriene C4 into leukotriene D4 (70). It has also been reported that GGT may be directly involved in atheromatous plaque formation (68). Indeed, GGT activity has been found within cerebral, carotid, and coronary plaques, co-localizing with oxidised lipids and foam cells (71, 72). Of the four GGT fractions identified, only b-GGT is found within atherosclerotic plaques and has been suggested to be the fraction involved in the pathogenesis of CVD (7). In addition,

GGT may be linked to CVD risk via underlying NAFLD, which is a major risk factor for CVD (73, 74) and commonly associated with increased serum GGT activity.

The consistent findings of a linear and independent association between GGT and CVD risk is suggestive of causality, but this requires robust evidence from randomized controlled trials. However, trials to enable causal inferences may be unlikely, as several pharmacological agents (such as insulin sensitizers and antioxidants) that modify GGT activity also influence levels of other liver enzymes and lipid factors (75). Mendelian randomization (MR) studies of genetic variants specifically related to GGT may provide another route to assess causality (76). There is evidence to suggest that the *GGT1* locus, which is the main protein-coding gene for GGT, may be specific for GGT activity (77, 78) and therefore variants within this locus might be valid instrumental variables for MR studies. Till date, the causal relevance of GGT to CVD has been difficult to assess as these variants explain only a small fraction of the variability in levels of GGT, in addition to their pleiotropic effects on other phenotypic traits (79). Larger Genome Wide Association Studies (GWASs) may help uncover new variants to explain the missing heritability in GGT activity. Next generation DNA sequencing may also provide an opportunity to identify rare genetic variants which have large effects on GGT activity.

### **Heart failure**

The first population-based prospective study of GGT activity and HF risk was reported in 2005 by Ruttman and colleagues (20). This study comprising of 163,944 participants and 162 HF cases, reported a positive and independent association between GGT and HF risk. Three more studies prospective studies (80-82) were published after this study. To provide a better indication of the relevance of GGT to HF, given the small number of HF cases included in

previous studies; our group has recently conducted a detailed assessment of the association of GGT activity with risk of HF using a prospective cohort of 1,780 men and also performed a pooled analysis of available published prospective evidence on the associations in one comprehensive analysis. Given that GGT exhibits high within-person variability which has been recently reported (83), we also corrected for “regression dilution bias” (84). Our meta-analysis of five studies indicated that a two-fold increase in usual GGT values was associated with approximately 40% higher risk of HF (**Table and Figure 2**) (85). Whether GGT has the potential to be used in the identification of individuals at high risk of HF is yet to be elucidated. Dhingra and colleagues reported a marginal improvement in HF risk prediction on addition of GGT to a standard risk engine (80).

Postulated pathways underlying the relationship between elevated GGT values and increased HF risk, include the pro-oxidant and pro-inflammatory properties of GGT (67), as well as its direct involvement in atheromatous plaque formation (68). Other pathways implicated include underlying fatty liver (67) (which is associated with low-grade inflammation, insulin resistance, and oxidative stress (86, 87)); endothelial dysfunction; and exposure to environmental pollutants (88, 89).

### **Cardiac arrhythmias**

Until recently, there was uncertainty as to whether GGT was associated with cardiac arrhythmias. Alonso and colleagues in the Atherosclerosis Risk in Communities (ARIC) study reported a positive, linear, and independent association between GGT activity and risk of atrial fibrillation (AF) (90). Our group has also recently shown a positive log-linear association of GGT with risk of AF in age-adjusted analysis, but which was attenuated on further adjustment for conventional risk factors (85). In the same study, we also demonstrated

a positive log-linear association between GGT and ventricular arrhythmias in analyses adjusted for established vascular risk factors, but the association was attenuated on further adjustment for other potential confounders. Putative biological mechanisms accounting for the associations include oxidative and inflammatory pathways (67), direct involvement of GGT in atheromatous plaque formation (68), fatty liver (67), and endothelial dysfunction and exposure to environmental pollutants (88, 89). Given the limited evidence available, further large-scale prospective studies are warranted to assess the associations and to evaluate whether measurement of GGT activity can usefully contribute to risk prediction algorithms for cardiac arrhythmias.

### **Sudden cardiac death**

In analyses of the Kuopio Ischemic Heart Disease (KIHD) prospective cohort study of 1,780 men aged 42-61 years that recorded 136 sudden cardiac deaths (SCDs) during 22 years of follow-up, we have shown for the first time that GGT is positively, log-linearly, and independently associated with future risk of SCD (83). The association was not importantly modified under different circumstances (such as by age, smoking status, or different levels of established vascular risk factors). As postulated previously, the pro-inflammatory activities of GGT (67) and its direct involvement in atheromatous plaque formation (68, 72) may underlie the association. Nonalcoholic fatty liver disease which is associated with cardiac autonomic dysfunction (a risk factor for SCD) (91), may also be mediating the association. Whether GGT has any clinical use in improving SCD risk prediction is yet to be investigated.

### **Type 2 diabetes mellitus**

The first prospective study to examine the association between GGT and incident T2DM was reported in 1998 (92). Since then, several studies have evaluated the associations between

GGT and T2DM risk, but reported apparently conflicting results. To put the data into context and provide a better indication of the relevance of GGT to T2DM risk, Fraser and colleagues in a meta-analysis of 13 prospective studies showed a positive and independent association between GGT and T2DM risk (**Table and Figure 2**) (93). Given the uncertainty regarding the shape of the GGT-T2DM association, our group conducted an updated meta-analysis which included 24 prospective cohort studies and showed that GGT contributes to an increased risk of T2DM in a nonlinear dose-response pattern (94). A graded increase in T2DM risk was evident at GGT levels 9-35 U/L, with the effects of GGT seeming to level off beyond 35 U/L. Ballestri and colleagues in a meta-analysis of nine studies evaluating the prospective association between NAFLD (as diagnosed by elevated GGT activity) and T2DM, demonstrated an almost two-fold increase in the risk of incident T2DM (95). Gamma-glutamyltransferase has been postulated to be linked to the development of T2DM via oxidative stress, increased inflammation and underlying fatty liver (NAFLD), which are major pathways in the pathophysiology of T2DM (95-97). The causal relevance of GGT to T2DM is still yet to be investigated and current evidence suggests that serum GGT provides little incremental benefit for prediction of T2DM risk (98, 99).

### **Metabolic syndrome**

In a review of nine prospective cohort studies, Liu and colleagues reported a positive and independent association between GGT and the MetS (**Table and Figure 2**) (100). In an updated meta-analysis of 10 studies, we showed a nonlinear relationship (albeit using limited published data) to the positive association which was evident within normal reference values of GGT (101). In pooled analysis of five studies, Ballestri and colleagues reported NAFLD to be associated with a two-fold increase in the risk of incident T2DM, when elevated GGT activity was used as an indicator of NAFLD (95). Mechanistic pathways underlying the

relationship between GGT and the MetS have been linked to similar processes suggested for GGT and T2DM; which include oxidative stress, increased inflammation and excessive deposition of fat in the liver, all of which are implicated in impaired insulin signalling and insulin resistance (32, 102). The relationships between GGT activity and the MetS as well as its components, have been attributed to genetic origins. Loomba and colleagues using a twin study design, reported genetic covariance between GGT and MetS traits such as insulin resistance, increased triglycerides, and blood pressure (103). The adrenergic locus *ADRB2* was also shown to have pleiotropic effects on both circulating GGT and triglycerides.

### **Hypertension**

In a meta-analysis of 13 prospective cohort studies, Liu and colleagues reported a positive association between GGT activity and hypertension risk (**Table and Figure 2**) (104). In an updated meta-analysis of 14 studies, we showed an approximately 30% increased risk of future hypertension when comparing individuals in the top versus bottom thirds of circulating GGT values and this was consistent with a linear dose-response relationship (105). Elevated GGT activity has been suggested to signify states of oxidative stress, increased inflammation, and fatty liver, consequently leading to impaired insulin secretion and insulin resistance, all of which have been implicated in the development of hypertension (106, 107).

### **Cancer**

Gamma-glutamyltransferase has also been linked to the risk of cancer. Long and colleagues in a review of available prospective epidemiological data suggested a positive association between GGT and cancer-related mortality (60). However, a pooled analysis was not conducted which precluded assessment of the magnitude of the association. In a meta-analysis of 10 cohort studies involving 780,553 participants and 52,724 cancer events, we



have shown a positive association between GGT and overall cancer outcomes and which was also consistent with a log-linear relationship (108) (**Table and Figure 2**). Significant positive associations for site-specific cancers such as breast cancer, cancers of male genital organs, cancers of digestive organs, and liver cancer were also reported in this study. In a subgroup analyses, the associations were consistent across several study characteristics including incident cancers and cancer mortality. In a pooled analysis of two population-based cohorts comprising a total of 107,058 participants, Preyer and colleagues reported a significantly higher risk of breast cancer comparing the top versus bottom quartile of GGT values (109). Whether GGT has a direct aetiological role in carcinogenesis or just a risk marker of an underlying aetiology is uncertain. It has however been postulated that the persistent production of reactive oxygen species (ROS) from GGT-mediated metabolism may contribute to tumour progression; as low levels of ROS have been suggested to modulate a range of biological responses involved in cellular growth, proliferation, and apoptosis (110, 111). Gamma-glutamyltransferase activity has also been considered to confer rapid turnover and survival advantages for cancer cells.(112) A number of experimental studies have also suggested a direct causative role of GGT in carcinogenesis (110, 113). The association between GGT and liver cancers, may also reflect underlying NAFLD, which itself is an important risk factor for HCC (54).

### **Chronic kidney disease**

In the first prospective evaluation of GGT and CKD, Ryu and colleagues employed a large cohort of 10,337 nonhypertensive and nondiabetic Korean male workers with normal kidney function at baseline, and demonstrated increased GGT activity to be significantly associated with an increased risk of future CKD in a nonlinear fashion (109). The association remained consistent on adjustment for a comprehensive panel of confounders and mediators. The

authors speculated several mechanistic pathways to underlie the association between GGT and CKD; some of which include alcohol consumption, liver disease, obesity, insulin resistance, and low-grade inflammation. However, since all these factors were accounted for in their multivariate analyses, the authors reported that it was highly unlikely that these pathways were involved in the pathophysiology. Based on the broad body of evidence demonstrating GGT as a marker of oxidative stress, it was suggested that the association of GGT with risk of CKD might be due to mechanisms related to oxidative stress (69). It has been reported that renal ROS cause vasoconstriction of renal vasculature, leading to sodium retention and subsequently renal damage (114, 115). Targher and colleagues in a recent study reviewed evidence on the link between NAFLD and CKD. It was postulated that the origins for this relationship were via pathways such as atherogenic dyslipidemia, insulin resistance, dysglycemia, and the release of pro-inflammatory, pro-coagulant, and pro-fibrogenic factors, which cause kidney damage (55). Given the strong relationship between NAFLD and GGT activity, NAFLD may mediate the association between GGT and CKD. Because of the limited evidence on the GGT-CKD relationship, further studies are needed to replicate this association especially among female populations.

## **Fractures**

Gamma-glutamyltransferase has been demonstrated to have harmful effects on bone metabolism in *in vitro studies* and animal models (116, 117). In the first epidemiological data involving humans, a large prospective study involving 16,036 Korean men with an average follow-up of 3 years, demonstrated a higher serum GGT activity to be independently associated with an increased risk of osteoporotic fractures. Aetiopathogenic pathways suggested to underlie the association between GGT and risk of fractures include oxidative stress, inflammation, and a direct pathogenic role of GGT in metabolic bone diseases.

Oxidative stress has been shown to have adverse effects on bone metabolism (118, 119). An *in vitro* study has shown GGT to induce the formation of osteoclasts, independent of its enzymatic activity, via stimulation of the receptor activator of nuclear factor-kappaB ligand expression (116). An animal study has also shown that GGT overexpression accelerates bone resorption and causes osteoporosis (117).

### **Dementia**

GGT has recently been shown to be positively, log-linearly, and independently associated with future risk of dementia in a population-based cohort of 2,415 apparently healthy men with good cognitive function from eastern Finland (120). This association remained robust in several sensitivity analyses. Since mechanistic research provides strong support for inflammatory and oxidative processes in the aetiology of dementia (121-123), it was proposed that GGT might contribute to the development of dementia via its pro-inflammatory and pro-oxidant properties (67). In addition, since NAFLD has been linked to the pathogenesis of cognitive impairment via insulin resistance,(124) there is a possibility that underlying NAFLD may be a link between the observed association. Being the only longitudinal study so far to report on this association, further research is needed to replicate these findings and help unravel the mechanistic pathways of GGT in the pathogenesis of dementia.

### **All-cause mortality**

Finally, GGT has also been linked to the risk of all-cause mortality, an outcome which has been suggested to be a more ultimate indicator of health than cause-specific outcomes (125). In a meta-analysis of three prospective cohort studies, Du and colleagues showed a positive association of GGT with all-cause mortality comparing the highest versus lowest GGT

quartile (**Table and Figure 2**) (59). Long and colleagues in their review also reported a positive association between GGT and all-cause mortality (60). In the most recent review, pooled analysis of 11 prospective cohorts (comprising over 9 million participants and 236,765 all-cause mortality outcomes) also showed a positive association between GGT and all-cause mortality which was consistent with a linear dose-response relationship (126). Increased mortality risk associated with GGT has been suggested to be mediated by increased cardiovascular risk via pathways reported above.

### **Management of asymptomatic individuals with isolated raised GGT values**

As there are established published clinical guidelines for the management of liver enzymes including GGT, this section is not intended as a comprehensive management guide for elevated GGT. In light of the current overall evidence, there is a possibility that GGT may only be a risk marker for these adverse outcomes. It therefore appears the clinical implications for these findings are elusive. However, despite the limited role of GGT in disease risk prediction and absence of data showing any causal relevance to these adverse outcomes, the preceding observations may be translated into clinical improvements. Assays for GGT may have the potential to aid in the identification of individuals at moderate to high risk of these adverse outcomes. Gamma-glutamyltransferase assays are sensitive, well standardized, simple, inexpensive, and commonly measured as part of routine liver biochemistry panels. Though GGT is not very specific for the liver, mild and subtle elevations in GGT values below the upper limits of normal are very common in the general population and may indicate the presence of subclinical liver disease. Patients with isolated elevated values (even within normal reference ranges) of GGT should be considered for further evaluation. Factors which are associated with elevated GGT (such as increased BMI, alcohol consumption, smoking, and medication use) as discussed in a previous section,

should be assessed for in the individual. Nonalcoholic fatty liver disease should also be suspected and screened for, especially in those with increased body weight and associated factors; though NAFLD may rarely be a cause of isolated raised GGT activity. Patients diagnosed with or suspected of having NAFLD should be screened for T2DM, given their close inter-relationship. Many patients with increased GGT activity will also have risk factors for vascular disease and other chronic diseases, which should be assessed and such patients should have their disease risk assessed using established risk engines. Patients identified to have factors (e.g., NAFLD, excessive smoking and alcohol consumption, obesity) accounting for elevated GGT values, should be provided with lifestyle advice on healthy eating, physical activity, weight loss, smoking cessation, and reduction in alcohol intake. Several studies (75, 127, 128) have found evidence to support a substantial lowering effect of a variety of interventions (including lifestyle-related factors such as sustained weight loss (128), physical activity, and dietary factors (127)) on circulating GGT activity. On implementation of these lifestyle changes, patients should have repeat liver biochemical tests in a few months for reassessment by the clinician. Patients with persistently elevated values not amenable to lifestyle advice should be considered for specialist referral.

## **Conclusion**

Gamma-glutamyltransferase, a liver enzyme, which plays an important role in cellular defence and protection of cells against further oxidative stress; is linked to a remarkable array of chronic diseases as well as all-cause mortality outcomes. It has been consistently demonstrated that increased GGT activity (sometimes within normal reference values) is positively associated with each of the outcomes reviewed, with majority of these associations consistent with linear relationships. Plentiful putative mechanistic pathways underlying these associations have been proposed, but many of these are hypothetical and are not well

understood. Undoubtedly, increased GGT activity is associated with adverse levels of classical vascular risk factors. However, though a large and broadly consistent body of evidence has established GGT as moderately to strongly linked to the development of these vascular and non-vascular outcomes, its role in the causal pathways for these outcomes is uncertain and current evidence (albeit limited) suggests that serum GGT is unlikely to improve disease risk prediction beyond established risk factors. Further work, however, is crucially needed to understand the pathophysiological mechanisms that underlie the associations between GGT and these adverse outcomes; establish any causal relevance to the associations; and whether these could be translated into clinical benefits.

#### **Data sources and selection criteria**

Relevant prospective cohort studies (with at least one year of follow-up) conducted in general populations were sought from MEDLINE, EMBASE, and Web of Science; with particular emphasis on systematic reviews and meta-analyses of these study designs. Search terms included “gamma-glutamyltransferase”, “nonalcoholic fatty liver disease”, “cardiovascular disease”, “coronary heart disease”, “diabetes”, “metabolic syndrome”, “hypertension”, “cancer”, “chronic kidney disease”, “fracture”, “dementia”, and “mortality”. Studies were limited to those in adults and written in English.

## References

1. MASON J E, STARKE R D, VAN KIRK J E. Gamma-glutamyl transferase: a novel cardiovascular risk biomarker. *Prev Cardiol*; 13(1): 36-41.
2. WILKE R A, LIN D W, RODEN D M, et al. Identifying genetic risk factors for serious adverse drug reactions: current progress and challenges. *Nat Rev Drug Discov* 2007; 6(11): 904-16.
3. WHITFIELD J B. Gamma glutamyl transferase. *Crit Rev Clin Lab Sci* 2001; 38(4): 263-355.
4. PAOLICCHI A, EMDIN M, PASSINO C, et al. Beta-lipoprotein- and LDL-associated serum gamma-glutamyltransferase in patients with coronary atherosclerosis. *Atherosclerosis* 2006; 186(1): 80-5.
5. SACCHETTI L, CASTALDO G, FORTUNATO G, SALVATORE F. Improved procedure for measuring gamma-glutamyltransferase isoenzymes in serum. *Clin Chem* 1988; 34(2): 419-22.
6. FRANZINI M, BRAMANTI E, OTTAVIANO V, et al. A high performance gel filtration chromatography method for gamma-glutamyltransferase fraction analysis. *Anal Biochem* 2008; 374(1): 1-6.
7. FRANZINI M, PAOLICCHI A, FORNACIARI I, et al. Cardiovascular risk factors and gamma-glutamyltransferase fractions in healthy individuals. *Clin Chem Lab Med* 2010; 48(5): 713-7.
8. COLLINS J E, MUNGALL A J, BADCOCK K L, FAY J M, DUNHAM I. The organization of the gamma-glutamyl transferase genes and other low copy repeats in human chromosome 22q11. *Genome research* 1997; 7(5): 522-31.
9. FIGLEWICZ D A, DELATTRE O, GUELLAEN G, et al. Mapping of human gamma-glutamyl transpeptidase genes on chromosome 22 and other human autosomes. *Genomics* 1993; 17(2): 299-305.
10. LIEBERMAN M W, BARRIOS R, CARTER B Z, et al. gamma-Glutamyl transpeptidase. What does the organization and expression of a multipromoter gene tell us about its functions? *Am J Pathol* 1995; 147(5): 1175-85.
11. MIDDELBERG R P, BENYAMIN B, DE MOOR M H, et al. Loci affecting gamma-glutamyl transferase in adults and adolescents show age x SNP interaction and cardiometabolic disease associations. *Hum Mol Genet* 2012; 21(2): 446-55.
12. BATHUM L, PETERSEN H C, ROSHOLM J U, HYLTOFT PETERSEN P, VAUPEL J, CHRISTENSEN K. Evidence for a substantial genetic influence on biochemical liver function tests: results from a population-based Danish twin study. *Clin Chem* 2001; 47(1): 81-7.

13. WHITFIELD J B, ZHU G, NESTLER J E, HEATH A C, MARTIN N G. Genetic covariation between serum gamma-glutamyltransferase activity and cardiovascular risk factors. *Clin Chem* 2002; 48(9): 1426-31.
14. RAHMIOGLU N, ANDREW T, CHERKAS L, et al. Epidemiology and genetic epidemiology of the liver function test proteins. *PloS one* 2009; 4(2): e4435.
15. VAN BEEK J H, DE MOOR M H, DE GEUS E J, et al. The genetic architecture of liver enzyme levels: GGT, ALT and AST. *Behavior genetics* 2013; 43(4): 329-39.
16. MEISTER A. The gamma-glutamyl cycle. Diseases associated with specific enzyme deficiencies. *Ann Intern Med* 1974; 81(2): 247-53.
17. RAULF M, STUNING M, KONIG W. Metabolism of leukotrienes by L-gamma-glutamyl-transpeptidase and dipeptidase from human polymorphonuclear granulocytes. *Immunology* 1985; 55(1): 135-47.
18. SCHIELE F, GUILMIN A M, DETIENNE H, SIEST G. Gamma-glutamyltransferase activity in plasma: statistical distributions, individual variations, and reference intervals. *Clin Chem* 1977; 23: 1023-8.
19. GUNTER E W, LEWIS B G, KONCIKOWSKI S M. Laboratory procedures used for the Third National Health and Nutrition Examination Survey (NHANES III), 1988-1994. Hyattsville, MD: US Department of Health and Human Services, Centers for Disease Control and Prevention, National Center for Environmental Health, National Center for Health Statistics; 1996.
20. RUTTMANN E, BRANT L J, CONCIN H, DIEM G, RAPP K, ULMER H. Gamma-glutamyltransferase as a risk factor for cardiovascular disease mortality: an epidemiological investigation in a cohort of 163,944 Austrian adults. *Circulation* 2005; 112(14): 2130-7.
21. SANO J, KAWADA H, YAMAGUCHI N, KAWAKITA M, KOBAYASHI K. Effects of phenytoin on serum gamma-glutamyl transpeptidase activity. *Epilepsia* 1981; 22(3): 331-8.
22. NILSSEN O, FORDE O H, BRENN T. The Tromso Study. Distribution and population determinants of gamma-glutamyltransferase. *American Journal of Epidemiology* 1990; 132(2): 318-26.
23. NILSSEN O, FORDE O H. Seven-year longitudinal population study of change in gamma-glutamyltransferase: the Tromso Study. *American Journal of Epidemiology* 1994; 139(8): 787-92.
24. LEE D H, STEFFEN L M, JACOBS D R, JR. Association between serum gamma-glutamyltransferase and dietary factors: the Coronary Artery Risk Development in Young Adults (CARDIA) Study. *Am J Clin Nutr* 2004; 79(4): 600-5.
25. ARNESEN E, HUSEBY N E, BRENN T, TRY K. The Tromso Heart Study: distribution of, and determinants for, gamma-glutamyltransferase in a free-living population. *Scand J Clin Lab Invest* 1986; 46(1): 63-70.



26. SALVAGGIO A, PERITI M, MIANO L, TAVANELLI M, MARZORATI D. Body mass index and liver enzyme activity in serum. *Clin Chem* 1991; 37(5): 720-3.
27. IKAI E, HONDA R, YAMADA Y. Serum gamma-glutamyl transpeptidase level and blood pressure in nondrinkers: a possible pathogenetic role of fatty liver in obesity-related hypertension. *J Hum Hypertens* 1994; 8(2): 95-100.
28. CONEN D, VOLLENWEIDER P, ROUSSON V, et al. Use of A Mendelian Randomization Approach to Assess the Causal Relation of gamma-Glutamyltransferase with Blood Pressure and Serum Insulin Levels. *American Journal of Epidemiology* 2010; 172(12): 1431-41.
29. FALL T, HAGG S, MAGI R, et al. The role of adiposity in cardiometabolic traits: a mendelian randomization analysis. *PLoS medicine* 2013; 10(6): e1001474.
30. LIDOFISKY S D. Nonalcoholic fatty liver disease: diagnosis and relation to metabolic syndrome and approach to treatment. *Curr Diab Rep* 2008; 8(1): 25-30.
31. NEUSCHWANDER-TETRI B A, CALDWELL S H. Nonalcoholic steatohepatitis: summary of an AASLD Single Topic Conference. *Hepatology* 2003; 37(5): 1202-19.
32. MARCHESINI G, BRIZI M, BIANCHI G, et al. Nonalcoholic Fatty Liver Disease. *Diabetes* 2001; 50(8): 1844-50.
33. FAN J G, PENG Y D. Metabolic syndrome and non-alcoholic fatty liver disease: Asian definitions and Asian studies. *Hepatobiliary Pancreat Dis Int* 2007; 6(6): 572-8.
34. JIN H B, GU Z Y, YU C H, LI Y M. Association of nonalcoholic fatty liver disease with type 2 diabetes: clinical features and independent risk factors in diabetic fatty liver patients. *Hepatobiliary Pancreat Dis Int* 2005; 4(3): 389-92.
35. BELLENTANI S, SACCOCCIO G, MASUTTI F, et al. Prevalence of and risk factors for hepatic steatosis in Northern Italy. *Ann Intern Med* 2000; 132(2): 112-7.
36. BROWNING J D, SZCZEPANIAK L S, DOBBINS R, et al. Prevalence of hepatic steatosis in an urban population in the United States: impact of ethnicity. *Hepatology* 2004; 40(6): 1387-95.
37. YOUNOSSI Z M, KOENIG A B, ABDELATIF D, FAZEL Y, HENRY L, WYMER M. Global epidemiology of nonalcoholic fatty liver disease-Meta-analytic assessment of prevalence, incidence, and outcomes. *Hepatology* 2016; 64(1): 73-84.
38. DE ALWIS N M, DAY C P. Non-alcoholic fatty liver disease: the mist gradually clears. *J Hepatol* 2008; 48 Suppl 1: S104-12.
39. ANGULO P. Nonalcoholic fatty liver disease. *N Engl J Med* 2002; 346(16): 1221-31.
40. MARCHESINI G, MOSCATIELLO S, DI DOMIZIO S, FORLANI G. Obesity-associated liver disease. *J Clin Endocrinol Metab* 2008; 93(11 Suppl 1): S74-80.

41. KLEINER D E, BRUNT E M, VAN NATTA M, et al. Design and validation of a histological scoring system for nonalcoholic fatty liver disease. *Hepatology* 2005; 41(6): 1313-21.
42. ADAMS L A, LINDOR K D. Nonalcoholic fatty liver disease. *Ann Epidemiol* 2007; 17(11): 863-9.
43. DAMERA S, RAPHAEL K L, BAIRD B C, CHEUNG A K, GREENE T, BEDDHU S. Serum alkaline phosphatase levels associate with elevated serum C-reactive protein in chronic kidney disease. *Kidney Int* 2011; 79(2): 228-33.
44. KHASHAB M A, LIANGPUNSAKUL S, CHALASANI N. Nonalcoholic fatty liver disease as a component of the metabolic syndrome. *Curr Gastroenterol Rep* 2008; 10(1): 73-80.
45. CLARK J M, BRANCATI F L, DIEHL A M. The prevalence and etiology of elevated aminotransferase levels in the United States. *Am J Gastroenterol* 2003; 98(5): 960-7.
46. EKSTEDT M, FRANZEN L E, MATHIESEN U L, et al. Long-term follow-up of patients with NAFLD and elevated liver enzymes. *Hepatology* 2006; 44(4): 865-73.
47. SATTAR N, FORREST E, PREISS D. Non-alcoholic fatty liver disease. *BMJ* 2014; 349: g4596.
48. MOFRAD P, CONTOS M J, HAQUE M, et al. Clinical and histologic spectrum of nonalcoholic fatty liver disease associated with normal ALT values. *Hepatology* 2003; 37(6): 1286-92.
49. ANGULO P, KEACH J C, BATTS K P, LINDOR K D. Independent predictors of liver fibrosis in patients with nonalcoholic steatohepatitis. *Hepatology* 1999; 30(6): 1356-62.
50. ADAMS L A, LYMP J F, ST SAUVER J, et al. The natural history of nonalcoholic fatty liver disease: a population-based cohort study. *Gastroenterology* 2005; 129(1): 113-21.
51. VALBUSA F, BONAPACE S, GRILLO C, et al. Nonalcoholic Fatty Liver Disease Is Associated With Higher 1-year All-Cause Rehospitalization Rates in Patients Admitted for Acute Heart Failure. *Medicine (Baltimore)* 2016; 95(7): e2760.
52. MANTOVANI A, BALLESTRI S, LONARDO A, TARGHER G. Cardiovascular Disease and Myocardial Abnormalities in Nonalcoholic Fatty Liver Disease. *Dig Dis Sci* 2016; 61(5): 1246-67.
53. MANTOVANI A, RIGAMONTI A, BONAPACE S, et al. Nonalcoholic Fatty Liver Disease Is Associated With Ventricular Arrhythmias in Patients With Type 2 Diabetes Referred for Clinically Indicated 24-Hour Holter Monitoring. *Diabetes Care* 2016; 39(8): 1416-23.
54. MICHELOTTI G A, MACHADO M V, DIEHL A M. NAFLD, NASH and liver cancer. *Nat Rev Gastroenterol Hepatol* 2013; 10(11): 656-65.
55. TARGHER G, CHONCHOL M B, BYRNE C D. CKD and nonalcoholic fatty liver disease. *Am J Kidney Dis* 2014; 64(4): 638-52.

56. SEO S W, GOTTESMAN R F, CLARK J M, et al. Nonalcoholic fatty liver disease is associated with cognitive function in adults. *Neurology* 2016; 86(12): 1136-42.
57. FRASER A, HARRIS R, SATTAR N, EBRAHIM S, SMITH G D, LAWLOR D A. Gamma-glutamyltransferase is associated with incident vascular events independently of alcohol intake: analysis of the British Women's Heart and Health Study and Meta-Analysis. *Arterioscler Thromb Vasc Biol* 2007; 27(12): 2729-35.
58. KUNUTSOR S K, APEKEY T A, KHAN H. Liver enzymes and risk of cardiovascular disease in the general population: A meta-analysis of prospective cohort studies. *Atherosclerosis* 2014; 236(1): 7-17.
59. DU G, SONG Z, ZHANG Q. Gamma-glutamyltransferase is associated with cardiovascular and all-cause mortality: A meta-analysis of prospective cohort studies. *Prev Med* 2013; 57(1): 31-7.
60. LONG Y, ZENG F, SHI J, TIAN H, CHEN T. Gamma-glutamyltransferase predicts increased risk of mortality: A systematic review and meta-analysis of prospective observational studies. *Free Radic Res* 2014; 48(6): 716-28.
61. ZHANG X W, LI M, HOU W S, LI K, ZHOU J R, TANG Z Y. Association between Gamma-Glutamyltransferase Level and Risk of Stroke: A Systematic Review and Meta-analysis of Prospective Studies. *J Stroke Cerebrovasc Dis* 2015; 24(12): 2816-23.
62. GHOURI N, PREISS D, SATTAR N. Liver enzymes, nonalcoholic fatty liver disease, and incident cardiovascular disease: a narrative review and clinical perspective of prospective data. *Hepatology*; 52(3): 1156-61.
63. TARGHER G, DAY C P, BONORA E. Risk of cardiovascular disease in patients with nonalcoholic fatty liver disease. *N Engl J Med* 2010; 363(14): 1341-50.
64. WANNAMETHEE S G, LENNON L, SHAPER A G. The value of gamma-glutamyltransferase in cardiovascular risk prediction in men without diagnosed cardiovascular disease or diabetes. *Atherosclerosis* 2008; 201(1): 168-75.
65. LEE D S, EVANS J C, ROBINS S J, et al. Gamma glutamyl transferase and metabolic syndrome, cardiovascular disease, and mortality risk: the Framingham Heart Study. *Arterioscler Thromb Vasc Biol* 2007; 27(1): 127-33.
66. KUNUTSOR S K, BAKKER S J, KOOTSTRA-ROS J E, GANSEVOORT R T, DULLAART R P. Circulating gamma glutamyltransferase and prediction of cardiovascular disease. *Atherosclerosis* 2014; 238(2): 356-64.
67. EMDIN M, POMPELLA A, PAOLICCHI A. Gamma-glutamyltransferase, atherosclerosis, and cardiovascular disease: triggering oxidative stress within the plaque. *Circulation* 2005; 112(14): 2078-80.
68. FRANZINI M, CORTI A, MARTINELLI B, et al. Gamma-glutamyltransferase activity in human atherosclerotic plaques--biochemical similarities with the circulating enzyme. *Atherosclerosis* 2009; 202(1): 119-27.

69. LEE D H, BLOMHOFF R, JACOBS D R. Is serum gamma glutamyltransferase a marker of oxidative stress? *Free Radic Res* 2004; 38(6): 535-39.
70. ANDERSON M E, ALLISON R D, MEISTER A. Interconversion of leukotrienes catalyzed by purified gamma-glutamyl transpeptidase: concomitant formation of leukotriene D4 and gamma-glutamyl amino acids. *Proc Natl Acad Sci U S A* 1982; 79(4): 1088-91.
71. EMDIN M, PASSINO C, DONATO L, PAOLICCHI A, POMPELLA A. Serum gamma-glutamyltransferase as a risk factor of ischemic stroke might be independent of alcohol consumption. *Stroke* 2002; 33(4): 1163-64.
72. PAOLICCHI A, EMDIN M, GHLIOZENI E, et al. Human atherosclerotic plaques contain gamma-glutamyl transpeptidase enzyme activity. *Circulation* 2004; 109(11): 1440-40.
73. LONARDO A, BALLESTRI S, TARGHER G, LORIA P. Diagnosis and management of cardiovascular risk in nonalcoholic fatty liver disease. *Expert Rev Gastroenterol Hepatol* 2015; 9(5): 629-50.
74. TARGHER G, BYRNE C D, LONARDO A, ZOPPINI G, BARBUI C. Non-alcoholic fatty liver disease and risk of incident cardiovascular disease: A meta-analysis. *J Hepatol* 2016.
75. MUSSO G, GAMBINO R, CASSADER M, PAGANO G. A meta-analysis of randomized trials for the treatment of nonalcoholic fatty liver disease. *Hepatology* 2010; 52(1): 79-104.
76. DAVEY SMITH G, EBRAHIM S. 'Mendelian randomization': can genetic epidemiology contribute to understanding environmental determinants of disease? *International Journal of Epidemiology* 2003; 32(1): 1-22.
77. YUAN X, WATERWORTH D, PERRY J R, et al. Population-based genome-wide association studies reveal six loci influencing plasma levels of liver enzymes. *Am J Hum Genet* 2008; 83(4): 520-8.
78. KAMATANI Y, MATSUDA K, OKADA Y, et al. Genome-wide association study of hematological and biochemical traits in a Japanese population. *Nat Genet* 2010; 42(3): 210-5.
79. CHAMBERS J C, ZHANG W, SEHMI J, et al. Genome-wide association study identifies loci influencing concentrations of liver enzymes in plasma. *Nat Genet* 2011; 43(11): 1131-8.
80. DHINGRA R, GONA P, WANG T J, FOX C S, D'AGOSTINO R B, SR., VASAN R S. Serum gamma-glutamyl transferase and risk of heart failure in the community. *Arterioscler Thromb Vasc Biol* 2010; 30(9): 1855-60.
81. WANNAMETHEE S G, WHINCUP P H, SHAPER A G, LENNON L, SATTAR N. Gamma-glutamyltransferase, hepatic enzymes, and risk of incident heart failure in older men. *Arterioscler Thromb Vasc Biol* 2012; 32(3): 830-5.

82. WANG Y, TUOMILEHTO J, JOUSILAHTI P, et al. Serum gamma-glutamyltransferase and the risk of heart failure in men and women in Finland. *Heart* 2013; 99(3): 163-7.
83. KUNUTSOR S K, KHAN H, LAUKKANEN J A. gamma-Glutamyltransferase and Risk of Sudden Cardiac Death in Middle-Aged Finnish Men: A New Prospective Cohort Study. *Journal of the American Heart Association* 2016; 5(2).
84. MACMAHON S, PETO R, CUTLER J, et al. Blood pressure, stroke, and coronary heart disease. Part 1, Prolonged differences in blood pressure: prospective observational studies corrected for the regression dilution bias. *Lancet* 1990; 335(8692): 765-74.
85. KUNUTSOR S K, LAUKKANEN J A, BLUEMKE D A, BUTLER J, KHAN H. Baseline and long-term gamma-glutamyltransferase, heart failure and cardiac arrhythmias in middle-aged Finnish men: Prospective study and pooled analysis of published evidence. *Eur J Prev Cardiol* 2016.
86. TARGHER G, BERTOLINI L, RODELLA S, et al. NASH predicts plasma inflammatory biomarkers independently of visceral fat in men. *Obesity (Silver Spring)* 2008; 16(6): 1394-9.
87. ROLO A P, TEODORO J S, PALMEIRA C M. Role of oxidative stress in the pathogenesis of nonalcoholic steatohepatitis. *Free radical biology & medicine* 2012; 52(1): 59-69.
88. LANDMESSER U, HORNIG B, DREXLER H. Endothelial function: a critical determinant in atherosclerosis? *Circulation* 2004; 109(21 Suppl 1): II27-33.
89. HA M H, LEE D H, JACOBS D R. Association between serum concentrations of persistent organic pollutants and self-reported cardiovascular disease prevalence: results from the National Health and Nutrition Examination Survey, 1999-2002. *Environmental health perspectives* 2007; 115(8): 1204-9.
90. ALONSO A, MISIALEK J R, AMIIN M A, et al. Circulating levels of liver enzymes and incidence of atrial fibrillation: the Atherosclerosis Risk in Communities cohort. *Heart* 2014; 100(19): 1511-6.
91. NEWTON J L, PAIRMAN J, WILTON K, JONES D E, DAY C. Fatigue and autonomic dysfunction in non-alcoholic fatty liver disease. *Clin Auton Res* 2009; 19(6): 319-26.
92. PERRY I J, WANNAMETHEE S G, SHAPER A G. Prospective study of serum gamma-glutamyltransferase and risk of NIDDM. *Diabetes Care* 1998; 21(5): 732-7.
93. FRASER A, HARRIS R, SATTAR N, EBRAHIM S, DAVEY SMITH G, LAWLOR D A. Alanine aminotransferase, gamma-glutamyltransferase, and incident diabetes: the British Women's Heart and Health Study and meta-analysis. *Diabetes Care* 2009; 32(4): 741-50.
94. KUNUTSOR S K, ABBASI A, ADLER A I. Gamma-glutamyl transferase and risk of type II diabetes: an updated systematic review and dose-response meta-analysis. *Ann Epidemiol* 2014; 24(11): 809-16.

95. BALLESTRI S, ZONA S, TARGHER G, et al. Nonalcoholic fatty liver disease is associated with an almost twofold increased risk of incident type 2 diabetes and metabolic syndrome. Evidence from a systematic review and meta-analysis. *J Gastroenterol Hepatol* 2016; 31(5): 936-44.
96. CERIELLO A, MOTZ E. Is oxidative stress the pathogenic mechanism underlying insulin resistance, diabetes, and cardiovascular disease? The common soil hypothesis revisited. *Arterioscler Thromb Vasc Biol* 2004; 24(5): 816-23.
97. HOTAMISLIGIL G S. Inflammatory pathways and insulin action. *Int J Obes Relat Metab Disord* 2003; 27 Suppl 3: S53-5.
98. RAYNOR L A, PANKOW J S, DUNCAN B B, et al. Novel risk factors and the prediction of type 2 diabetes in the Atherosclerosis Risk in Communities (ARIC) study. *Diabetes Care* 2013; 36(1): 70-6.
99. MARQUES-VIDAL P, SCHMID R, BOCHUD M, et al. Adipocytokines, hepatic and inflammatory biomarkers and incidence of type 2 diabetes. the CoLaus study. *PloS one* 2012; 7(12): e51768.
100. LIU C F, ZHOU W N, FANG N Y. Gamma-glutamyltransferase levels and risk of metabolic syndrome: a meta-analysis of prospective cohort studies. *International Journal of clinical practice* 2012; 66(7): 692-8.
101. KUNUTSOR S K, APEKEY T A, SEDDOH D. Gamma glutamyltransferase and metabolic syndrome risk: a systematic review and dose-response meta-analysis. *Int J Clin Pract* 2015; 69(1): 136-44.
102. HSUEH W A, QUINONES M J. Role of endothelial dysfunction in insulin resistance. *Am J Cardiol* 2003; 92(4A): 10J-17J.
103. LOOMBA R, RAO F, ZHANG L, et al. Genetic covariance between gamma-glutamyl transpeptidase and fatty liver risk factors: role of beta2-adrenergic receptor genetic variation in twins. *Gastroenterology* 2010; 139(3): 836-45, 45 e1.
104. LIU C F, GU Y T, WANG H Y, FANG N Y. Gamma-glutamyltransferase level and risk of hypertension: a systematic review and meta-analysis. *PloS one* 2012; 7(11): e48878.
105. KUNUTSOR S K, APEKEY T A, CHEUNG B M. Gamma-glutamyltransferase and risk of hypertension: a systematic review and dose-response meta-analysis of prospective evidence. *J Hypertens* 2015; 33(12): 2373-81.
106. ZHOU M S, WANG A, YU H. Link between insulin resistance and hypertension: What is the evidence from evolutionary biology? *Diabetology & metabolic syndrome* 2014; 6(1): 12.
107. IKAI E, ISHIZAKI M, SUZUKI Y, ISHIDA M, NOBORIZAKA Y, YAMADA Y. Association between hepatic steatosis, insulin resistance and hyperinsulinaemia as related to hypertension in alcohol consumers and obese people. *J Hum Hypertens* 1995; 9(2): 101-5.

108. KUNUTSOR S K, APEKEY T A, HEMELRIJCK M V, CALORI G, PERSEGHIN G. Gamma glutamyltransferase, alanine aminotransferase and risk of cancer: Systematic review and meta-analysis. *Int J Cancer* 2014.
109. PREYER O, JOHANSEN D, HOLLY J, et al. gamma-Glutamyltransferase and Breast Cancer Risk Beyond Alcohol Consumption and Other Life Style Factors - A Pooled Cohort Analysis. *PloS one* 2016; 11(2): e0149122.
110. POMPELLA A, CORTI A, PAOLICCHI A, GIOMMARELLI C, ZUNINO F. Gamma-glutamyltransferase, redox regulation and cancer drug resistance. *Curr Opin Pharmacol* 2007; 7(4): 360-6.
111. FRANZINI M, CORTI A, LORENZINI E, et al. Modulation of cell growth and cisplatin sensitivity by membrane gamma-glutamyltransferase in melanoma cells. *Eur J Cancer* 2006; 42(15): 2623-30.
112. HANIGAN M H, GALLAGHER B C, TOWNSEND D M, GABARRA V. Gamma-glutamyl transpeptidase accelerates tumor growth and increases the resistance of tumors to cisplatin in vivo. *Carcinogenesis* 1999; 20(4): 553-9.
113. POMPELLA A, DE TATA V, PAOLICCHI A, ZUNINO F. Expression of gamma-glutamyltransferase in cancer cells and its significance in drug resistance. *Biochemical pharmacology* 2006; 71(3): 231-8.
114. SCHNACKENBERG C G, WELCH W J, WILCOX C S. TP receptor-mediated vasoconstriction in microperfused afferent arterioles: roles of O<sub>2</sub>(-) and NO. *Am J Physiol Renal Physiol* 2000; 279(2): F302-8.
115. ZOU A P, LIN N, COWLEY A W, JR. Production and actions of superoxide in the renal medulla. *Hypertension* 2001; 37(2 Pt 2): 547-53.
116. NIIDA S, KAWAHARA M, ISHIZUKA Y, et al. Gamma-glutamyltranspeptidase stimulates receptor activator of nuclear factor-kappaB ligand expression independent of its enzymatic activity and serves as a pathological bone-resorbing factor. *J Biol Chem* 2004; 279(7): 5752-6.
117. HIRAMATSU K, ASABA Y, TAKESHITA S, et al. Overexpression of gamma-glutamyltransferase in transgenic mice accelerates bone resorption and causes osteoporosis. *Endocrinology* 2007; 148(6): 2708-15.
118. LEE N K, CHOI Y G, BAIK J Y, et al. A crucial role for reactive oxygen species in RANKL-induced osteoclast differentiation. *Blood* 2005; 106(3): 852-9.
119. WAUQUIER F, LEOTOING L, COXAM V, GUICHEUX J, WITTRANT Y. Oxidative stress in bone remodelling and disease. *Trends Mol Med* 2009; 15(10): 468-77.
120. KUNUTSOR S K, LAUKKANEN J A. Gamma glutamyltransferase and risk of future dementia in middle-aged to older Finnish men: A new prospective cohort study. *Alzheimer's & dementia : the journal of the Alzheimer's Association* 2016.

121. ZAFRILLA P, MULERO J, XANDRI J M, SANTO E, CARAVACA G, MORILLAS J M. Oxidative stress in Alzheimer patients in different stages of the disease. *Current medicinal chemistry* 2006; 13(9): 1075-83.
122. GACKOWSKI D, ROZALSKI R, SIOMEK A, et al. Oxidative stress and oxidative DNA damage is characteristic for mixed Alzheimer disease/vascular dementia. *J Neurol Sci* 2008; 266(1-2): 57-62.
123. MCGEER P L, MCGEER E G. The amyloid cascade-inflammatory hypothesis of Alzheimer disease: implications for therapy. *Acta Neuropathol* 2013; 126(4): 479-97.
124. CRAFT S. Insulin resistance and Alzheimer's disease pathogenesis: potential mechanisms and implications for treatment. *Curr Alzheimer Res* 2007; 4(2): 147-52.
125. MANNAN H R, STEVENSON C E, PEETERS A, MCNEIL J J. A new set of risk equations for predicting long term risk of all-cause mortality using cardiovascular risk factors. *Prev Med* 2013; 56(1): 41-5.
126. KUNUTSOR S, APEKEY T A, SEDDOH D, WALLEY J. Liver enzymes and risk of all-cause mortality in general populations: a systematic review and meta-analysis. *International Journal of Epidemiology* 2014; 43(1): 187-201.
127. RUSU E, JINGA M, ENACHE G, et al. Effects of lifestyle changes including specific dietary intervention and physical activity in the management of patients with chronic hepatitis C--a randomized trial. *Nutr J* 2013; 12: 119.
128. SUZUKI A, LINDOR K, ST SAVER J, et al. Effect of changes on body weight and lifestyle in nonalcoholic fatty liver disease. *J Hepatol* 2005; 43(6): 1060-6.



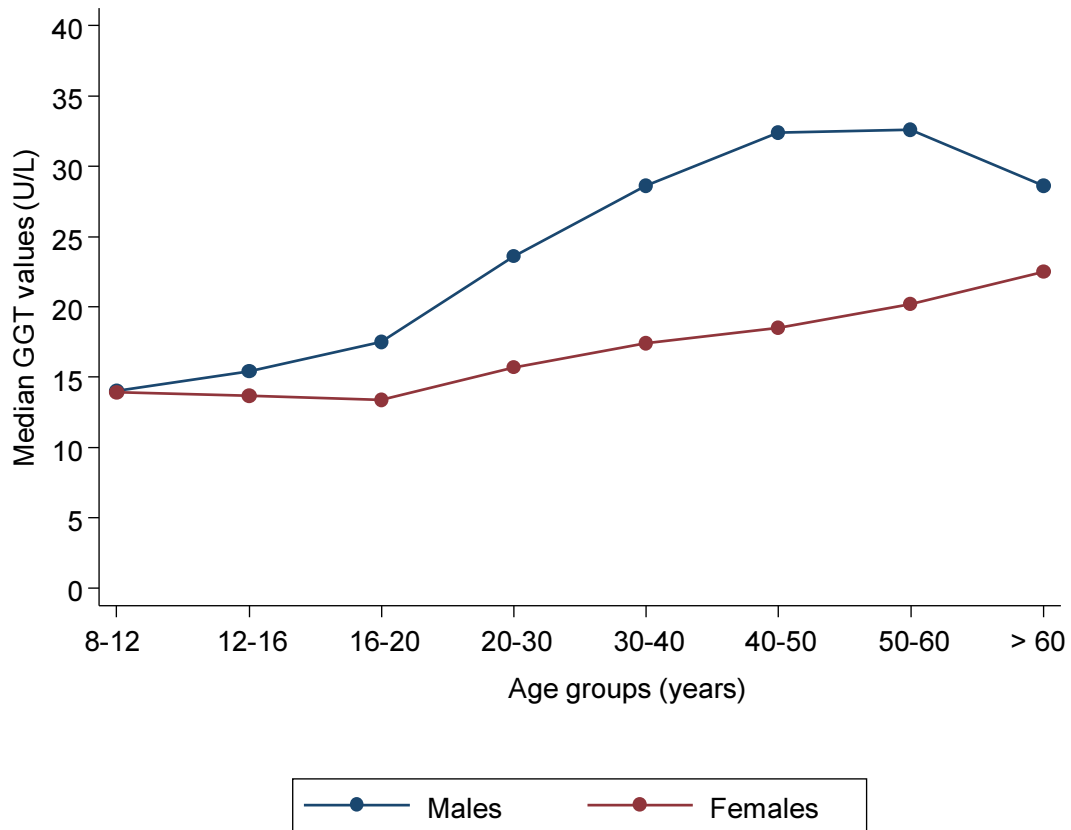
**Table.** Available meta-analyses of prospective studies of gamma-glutamyltransferase and adverse outcomes

Author, year of publication [reference]	No. of studies	Outcome	No. of participants	No. of cases	Combined risk (95% CI)	Risk comparison reported
Fraser, 2007 [57]	11	CVD	1,017,231	12,365	1.34 (1.22-1.48)	Per 1 U/L change
	7	CHD	998,906	5,283	1.20 (1.02-1.40)	Per 1 U/L change
	6	Stroke	976,877	4,682	1.54 (1.19-1.99)	Per 1 U/L change
Kunutsor, 2014 [58]	20	CVD	1,054,181	15,194	1.23 (1.16-1.29)	Per 1 SD change
	9	CHD	1,006,176	4,570	1.17 (1.00-1.36)	Per 1 SD change
	9	Stroke	825,255	4,738	1.28 (1.10-1.50)	Per 1 SD change
Du, 2013 [59]	5	CVD mortality	192,461	4,866	1.52 (1.36-1.70)	Top versus bottom fourth
Long, 2014 [60]		CVD mortality	253,555	7,213	1.60 (1.48-1.73)	Highest versus lowest category
Zhang, 2015 [61]	10	Stroke	926,497	5,707	1.28 (1.16-1.43)	Highest versus lowest category
Kunutsor, 2016 [85]	5	Heart failure	210,841	1,821	1.28 (1.20-1.35)	Per 1 SD change in baseline values
					1.43 (1.31-1.56)	Per 1 SD change in usual values
Kunutsor, 2016 [85]	2	Atrial fibrillation	11,113	1,357	1.09 (1.02-1.16)	Per 1 SD change in baseline values
					1.14 (1.03-1.25)	Per 1 SD change in usual values
Fraser, 2009 [93]	13	T2DM	62915	2732	1.92 (1.66-2.21)	Per 1 U/L change
Kunutsor, 2014 [94]	24	T2DM	177,307	11,155	1.34 (1.27-1.42)	Top versus bottom third
Ballestri, 2016 [95]	9	T2DM	2,006	32,170	1.86 (1.71-2.03)	Highest versus lowest category
Liu, 2012 [100]	9	MetS	47,499	5,009	1.63 (1.43-1.82)	Highest versus lowest category
Kunutsor, 2014 [101]	10	MetS	67,905	6,595	1.88 (1.49-2.38)	Top versus bottom third
Ballestri, 2016 [95]	9	MetS	5,706	69,840	1.98 (1.89-2.07)	Highest versus lowest category
Liu, 2012 [104]	13	Hypertension	43,314	5,280	1.94 (1.55-2.43)	Highest versus lowest category
Kunutsor, 2015 [105]	14	Hypertension	44,582	5,270	1.32 (1.23-1.43)	Top versus bottom third
Kunutsor, 2015 [108]	10	Cancer	780,553	52,724	1.32 (1.15-1.52)	Top versus bottom third
Du, 2013 [59]	3	All-cause mortality	19,241	2,235	1.56 (1.34-1.83)	Top versus bottom fourth
Long, 2014 [60]		All-cause mortality	47,837	7,523	1.75 (1.47-2.08)	Highest versus lowest category
Kunutsor, 2014 [126]	11	All-cause mortality	9,071,005	236,765	1.60 (1.42-1.80)	Top versus bottom third

CHD, coronary heart disease; CVD, cardiovascular disease; MetS, metabolic syndrome; SD, standard deviation; T2DM, type 2 diabetes mellitus

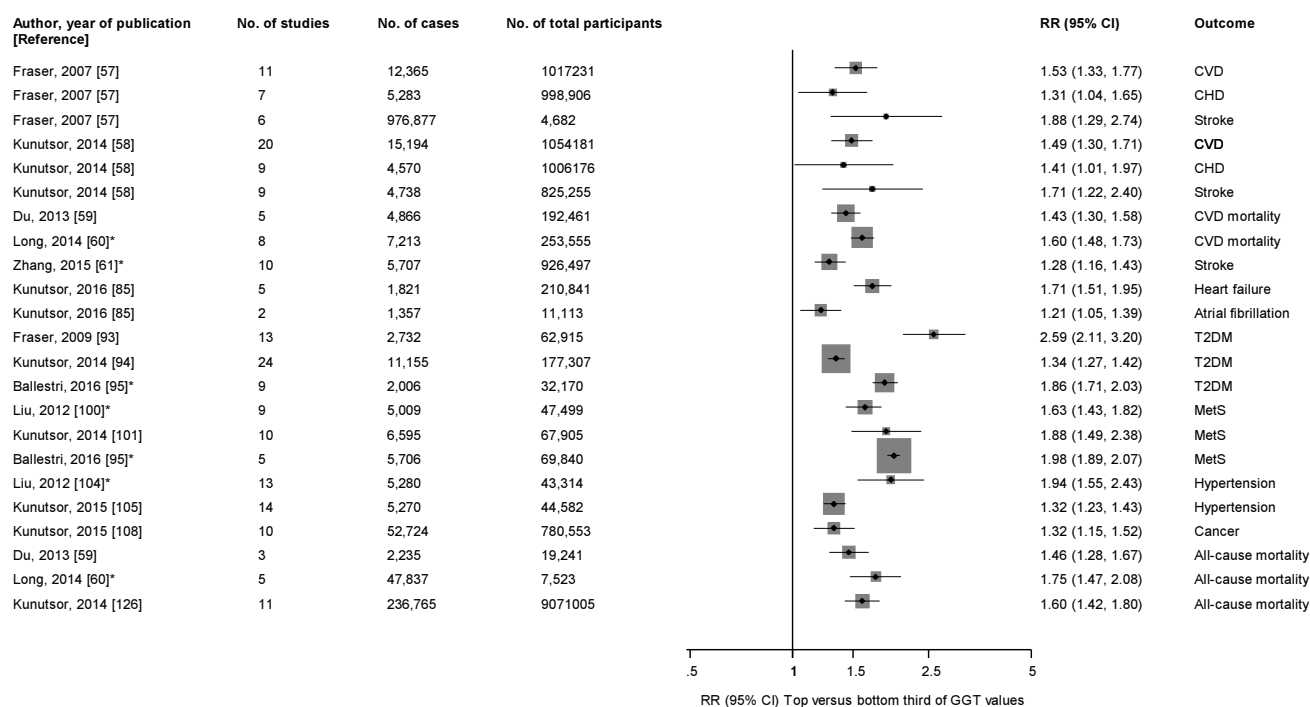
## Figure legends

**Figure 1.** Median serum GGT values in the general population by gender and age groups



GGT, gamma-glutamyltransferase; Data for the figure was extracted from Schiele F, Guilmin AM, Detienne H, Siest, G. Gamma-glutamyltransferase activity in plasma: statistical distributions, individual variations, and reference intervals. *Clin Chem.* 1977; 23: 1023–8.

**Figure 2.** Forest plot of available meta-analyses of prospective studies of gamma-glutamyltransferase and adverse outcomes



CHD, coronary heart disease; CI, confidence interval; CVD, cardiovascular disease; GGT, gamma-glutamyltransferase; MetS, metabolic syndrome; RR, relative risk; SD, standard deviation; T2DM, type 2 diabetes mellitus

Relative risks were converted to “top versus bottom thirds of GGT values” where appropriate, to ensure consistency and enhance comparison; \*, denotes studies where authors reported a risk comparison of “highest versus bottom category of GGT values” which could not be converted.