

## ARTICLE

### Genetic diversity in Brazilian tall coconut populations by microsatellite markers

Francisco Elias Ribeiro<sup>1\*</sup>, Luc Baudouin<sup>2</sup>, Patricia Lebrun<sup>2</sup>, Lázaro José Chaves<sup>3</sup>, Claudio Brondani<sup>4</sup>, Emiliano Fernandes Nassau Costa<sup>1</sup> and Roland Vencovsky<sup>5</sup>

Received 18 February 2013

Accepted 10 October 2013

**Abstract** – The tall coconut palm was introduced in Brazil in 1553, originating from the island of Cape Verde. The aim of the present study was to evaluate the genetic diversity of ten populations of Brazilian tall coconut by 13 microsatellite markers. Samples were collected from 195 individuals of 10 different populations. A total of 68 alleles were detected, with an average of 5.23 alleles per locus. The mean expected and observed heterozygosity value was 0.459 and 0.443, respectively. The number of alleles per population ranged from 36 to 48, with a mean of 40.9 alleles. We observed the formation of two groups, the first formed by the populations of Baía Formosa, Georgino Avelino and São José do Mipibu, and the second by the populations of Japoatã, Pacatuba and Praia do Forte. These results reveal a high level of genetic diversity in the Brazilian populations.

**Key words:** Genetic variability, molecular markers, *Cocos nucifera*.

#### INTRODUCTION

The coconut palm consists of only one species (*Cocos nucifera* L.) and is composed of two main varieties: the tall ('Typica') and the dwarf ('Nana') coconut. It is the most widely distributed and extensively grown palm tree, in addition to being one of the most important tropical species used (Persley 1992, Gunn et al. 2011).

Southeast Asia is probably the main center of domestication of the species because the greatest morphological variability occurs in that region, as well as the greatest number of local names, different uses of the plant and the greatest number of associated insect species (Persley 1992). From Southeast Asia, the coconut was taken to India and from there to east Africa. After discovery of the Cape of Good Hope, the plant was taken to West Africa and from that region to the Americas and the entire tropical region of the globe (Purseglove 1975). The tall variety was introduced in Brazil in 1553, coming from the island of Cape Verde.

In the Northeast of Brazil, where most of the Brazilian coconut plantations are concentrated, there are some tall coconut populations that were established more than 80

years ago, and very little is known in regard to their genetic variability. Obtaining this information is fundamental for use in crop breeding programs because these populations may constitute an excellent source of adapted germplasm (Ribeiro et al. 1999).

The tall coconut has been in development in Brazil for more than 450 years. Currently, planted area is estimated at approximately 270,000 hectares, with production of around 2.9 million tons of fruit per year (FAO 2013). The great majority of coconut plantations are in the Northeast of Brazil. The coconut plantations, distributed in this manner, adapted to different environmental conditions and became divergent (Ribeiro et al. 1999) or diverged through independent introductions which came to be characterized as ecotypes of the tall variety. The Northeast stands out as the region with the greatest planted area and it is responsible for more than 80% of domestic coconut production (IBGE 2013).

DNA-based markers have been indicated as most adequate in studies of genetic diversity in coconut (Lebrun et al. 1995, Wadt et al. 1997), while isoenzymes (Benoit and Ghesquière 1984) and leaf polyphenols (Jay et al. 1989)

<sup>1</sup> Embrapa Tabuleiros Costeiros, Av. Beira Mar, 3250, P.O. Box 44, 49.025-040, Aracaju, SE, Brazil. \*E-mail: elias.ribeiro@embrapa.br

<sup>2</sup> CIRAD, Amélioration Cocotier, Montpellier, France

<sup>3</sup> Universidade Federal de Goiás, Escola de Agronomia, Goiânia, GO, Brazil

<sup>4</sup> Embrapa Arroz e Feijão, Santo Antônio de Goiás, GO, Brazil

<sup>5</sup> Universidade de São Paulo, Escola Superior de Agricultura "Luiz de Queiroz", Departamento de Genética, C. P. 83, 13.418-900, Piracicaba, SP, Brazil

have not provided conclusive results. Studies on diversity performed with microsatellite markers (SSR) have proven to be the most powerful tool in analyses of population structure due to the characteristics of this marker - multiallelic, highly polymorphic and based on the PCR reaction (Chase et al. 1996, Morgante et al. 1996).

The aim of this study was to evaluate genetic diversity in ten Brazilian tall coconut populations by means of microsatellite markers (SSR), with a view toward characterization of genetic variability.

## MATERIAL AND METHODS

### Plant material

Selection of populations for this study was made after genetic prospecting of Brazilian tall coconut and definition of pure (typical) populations of the tall variety. Purity is evaluated based on the criteria of legitimacy, homogeneity and isolation. The first criterion is defined as a function of age, the ideal being populations of more than 80 years of age because, as the dwarf variety was introduced in the country in 1925, the risk of the occurrence of natural hybrids between the two varieties is avoided. Homogeneity, for its part, takes the constitution of the populations into consideration – they must be composed of only plants of the tall variety. The isolation conditions of these populations is another important factor – there must be a minimum distance of 1000 meters, or at least 500 meters if there is a plant barrier isolating them from other coconut plantations, especially dwarf plantations (Ribeiro et al. 2002).

The following populations of the tall variety were identified as pure: 1 - Santo Inácio (MA), 2 - Luís Correia (PI), 3 - Baía Formosa, 4 - Georgino Avelino and 5 - São José do Mipibu (RN), 6 - Santa Rita and 7 - Merepe (PE), 8 - Japoatã and 9 - Pacatuba (SE) and 10 - Praia do Forte (BA). The collection locations were georeferenced and the sampled populations are shown in Table 2.

### DNA extraction

Leaflets from 195 plants were collected in ten Brazilian tall coconut populations, collecting a segment of approximately 50 cm of leaflets from the youngest leaf on each plant chosen in a random manner. DNA was extracted according to the modified CTAB protocol, adapted to coconut (Lebrun et al. 1998, Baudouin and Lebrun 2002). The concentration of the extracted DNA was determined by means of automatic quantification by fluorometry.

### SSR analyses

A final volume of 25 mL was prepared for the PCR reaction, containing a mixture composed of 2.5 mL of 10X

PCR buffer; 2.0 mL of dNTP (2 mM of each dNTP); 0.25 mL of MgCl<sub>2</sub> (50 mM); 0.5 mL of Forward Primer (10 mM); 0.5 mL of Reverse Primer (10 mM); 0.5 mL of Taq DNA Polymerase (2 U mL<sup>-1</sup>); 5 mL of genomic DNA (2.5 ng mL<sup>-1</sup>) and 13.75 mL of sterile water. The PCR reaction cycle consisted of an initial denaturation at 94 °C for five minutes, followed by 36 cycles at temperatures of 94 °C for 30 seconds for denaturation, one minute at 51 °C for annealing of the primer and one minute at 72 °C for extension and, after that, one additional extension period for five minutes at 72 °C.

For amplification of the SSRs, 13 pairs of specific primers designated and selected by Baudouin and Lebrun (2002) were used (Table 3). The amplified fragments were visualized in polyacrylamide gels by means of the Licor IR2 4200 sequencer. The bands were read and genotyped according to the standard marker for coconut (1 kb).

### Statistical analyses

The individuals analyzed were genotyped and the genotype matrix was used for calculations of allele frequencies and genetic distances between individuals and populations and, based on that, the gene (allele) and genotype frequencies at each locus were obtained.

For understanding of the historical-evolutionary aspects of the populations, the Factorial Correspondence Analysis (FCA) technique was used (Perrier et al. 1999). The technique consists of reduction of an n-dimensional hyperspace to a space of few dimensions, in this case a three-dimensional space, making it possible to observe the relative position of the populations and their possible association in groups of similarity. The Genetix 4.03 software (Belkhir et al. 2001) was used for this purpose.

Basic genetic statistics were obtained through the GeneClass2 software (Piry et al. 2004). It was also used with the “individual assignment” option, according to the criterion of Rannala and Mountain (1997), to allocate the individuals to the reference populations, and the statistics option was used for the rest of the descriptive statistics. Classification of the individuals according to the reference population is based on the scores of each individual and on the inverse of the base-ten logarithm of likelihood, classifying them according to the probability of belonging to their population of origin.

## RESULTS AND DISCUSSION

The allelic diversity measured in the 195 individuals of the ten populations of Brazilian tall coconut is shown in Table 1. The 13 loci in combination produced a total of 68 alleles, with a mean of 5.23 alleles per locus, ranging from two alleles for the locus CnCir E12 to 13 alleles for the

locus CnCir E2. Expected heterozygosity ( $H_e$ ) ranged from 0.034 for the locus CnCir A3 to 0.711 for the locus CnCir E2, with a general mean value of 0.459. The loci CnCir A3 and CnCir E2 also exhibited the lowest value (0.036) and the highest value (0.671), for observed heterozygosity ( $H_o$ ) respectively, with a mean value of 0.443, considering all the populations. Monomorphic loci were not found for these samples in the group of populations. These results reflect a high level of diversity and reflect that the variation within the populations makes the greatest contribution to total variation.

The mean number of alleles per locus was similar to other studies performed on the coconut. Rivera et al. (1999), evaluating 20 accessions of coconut from the Philippines with 38 SSR loci, found a mean of 5.2 alleles per locus, ranging from 2 to 9 alleles per locus, with a total of 198 alleles. Genetic diversity ranged from 0.141 to 0.809, with

a mean of 0.547. Perera et al. (2000), for their part, evaluating 130 plants, representing 94 ecotypes from different regions of Sri Lanka, with 8 SSR loci, found a mean of 6.4 alleles per locus, ranging from 3 to 9 alleles per locus, with a total of 50 alleles. Genetic diversity ranged from 0.386 to 0.762, with a mean value of 0.589. The mean value of genetic diversity found in this study was less than that of the authors cited above. That may be related to the common origin of Brazilian coconut. It should be noted that the studies cited above were performed in collections *ex situ*, and that they, therefore, gather materials from diverse genetic and geographic origins.

Konan et al. (2011), evaluating five accessions of dwarf coconut in 25 plants coming from the Philippines, with 12 SSR loci, found a total of 40 alleles, with variation from 2 to 6 alleles per locus and with a mean value of 3.33 alleles per locus. The mean value of expected heterozygosity was

**Table 1.** Results of 13 microsatellite loci in ten populations of the Brazilian tall coconut in relation to the number of alleles per locus, expected ( $H_e$ ) and observed ( $H_o$ ) heterozygosity in the loci

Number	SSR Name	No. of alleles	$H_e$	$H_o$
1	CnCir A3	3	0.034	0.036
2	CnCir A9	4	0.513	0.484
3	CnCir B6	5	0.613	0.531
4	CnCir B12	9	0.515	0.464
5	CnCir C7	5	0.495	0.470
6	CnCir C12	6	0.378	0.355
7	CnCir E2	13	0.711	0.671
8	CnCir E10	4	0.418	0.443
9	CnCir E12	2	0.300	0.302
10	CnCir F2	3	0.510	0.536
11	CnCir G11	7	0.638	0.640
12	CnCir H4'	3	0.330	0.311
13	CnCir H7	4	0.512	0.518
Mean		5.23	0.459	0.443
Total		68		

**Table 2.** Estimates of genetic parameters of diversity in 10 populations of Brazilian tall coconut evaluated by 13 microsatellite loci, with N: number of individuals sampled per population; A: total number of alleles per population; NA: mean number of alleles per locus in the population;  $H_e$ : expected heterozygosity and  $H_o$ : observed heterozygosity and their respective geographic coordinates

Population	N	A	NA	$H_e$	$H_o$	Latitude (S)	Longitude (W.Gr.)
1	17	37	2.85	0.455	0.484	02° 34' 54"	42° 45' 15"
2	17	40	3.10	0.451	0.443	02° 57' 59"	41° 35' 45"
3	30	41	3.20	0.415	0.375	06° 23' 14"	35° 03' 31"
4	21	40	3.10	0.358	0.315	06° 10' 57"	35° 06' 02"
5	18	38	2.92	0.426	0.371	06° 06' 43"	35° 14' 36"
6	21	40	3.10	0.502	0.530	07° 10' 54"	34° 53' 01"
7	20	36	2.80	0.404	0.361	08° 28' 38"	34° 59' 52"
8	18	48	3.70	0.552	0.520	10° 27' 08"	36° 42' 42"
9	19	47	3.62	0.504	0.553	10° 30' 29"	36° 35' 37"
10	14	42	3.23	0.521	0.479	12° 34' 09"	37° 59' 48"
Mean	19.5	40.9	3.16	0.459	0.443		

0.218, ranging from 0.084 to 0.337. These values are less than those presented in this study because they use only ecotypes of the dwarf variety. Since they are autogamous plants, it is expected that they have less genetic diversity when compared to the tall coconuts, which are allogamous.

The number of individuals sampled per population (N), total number of alleles (A), mean number of alleles per locus (NA), expected heterozygosity (He) and observed heterozygosity ( $H_o$ ) in the populations are shown in Table 2. Considering all the loci, expected heterozygosity (He) ranged from 0.358 to 0.552 among the populations, with the lowest value found in the population from Georgino Avelino (4) and the greatest value in the population from Japoatã (8), with a general mean of 0.459. Observed heterozygosity ranged from 0.315 in the Georgino Avelino population (4) to 0.553 in the Pacatuba population (9), with a general mean of 0.443.

The estimate of expected heterozygosity in this study was less than that found by Perera et al. (2001) in *ex situ* collections of tall coconut in Sri Lanka. These authors found values that ranged from 0.426 to 0.846 in the populations, with a mean of 0.682.

For the 13 loci used, the total number of alleles per population ranged from 36 in the Merepe population (7) to 48 in the Japoatã population (8), with an overall mean value of 40.9 alleles per population. It should be noted that the populations that exhibited the greatest numbers of total alleles, 48 (Japoatã), 47 (Pacatuba) and 42 (Praia do Forte), were not the populations with the greatest sample size, which leads us to infer that the results were not affected by the sampling because it was performed at random and the size was sufficient to maintain the representative nature of the population characteristics (Table 2).

The number of exclusive alleles and the respective frequencies per locus are shown in Table 3. The number of exclusive or private alleles observed ranged from 1 to 3, with a total of 12 private alleles (17.65%) distributed over six of the ten populations evaluated. Although the populations share most of the 68 alleles, there are a small number of alleles that characterize determined populations, with three in the populations of Georgino Avelino, Japoatã and Pacatuba, and one in the populations of Santa Rita, Baía Formosa and Praia do Forte. Four of these alleles may be considered as common localized alleles, i.e., they are

**Table 3.** Exclusive alleles per locus and their respective frequencies, obtained with 13 SSR markers in ten Brazilian tall coconut populations

Locus	Allele (pb)	Frequency	Population
CnCir E2	159	0.017	3 - Baía Formosa
CnCir B12	169	0.036	4 - Georgino Avelino
CnCir C12	171	0.029	4 - Georgino Avelino
CnCir G11	190	0.050	4 - Georgino Avelino
CnCir E2	151	0.042	6 - Santa Rita
CnCir B12	179	0.033	8 - Japoatã
CnCir C12	163	0.077	8 - Japoatã
CnCir E2	145	0.033	8 - Japoatã
CnCir A3	240	0.029	9 - Pacatuba
CnCir B12	181	0.038	9 - Pacatuba
CnCir G11	210	0.167	9 - Pacatuba
CnCir E2	165	0.056	10 - Praia do Forte

**Table 4.** Classification of the 195 individuals associated according to the reference population after the formation of two groups

Origin	SI	LC	Natal	SR	ME	South	Total
SI	<b>16</b>	1					17
LC	1	<b>13</b>	1	2			17
Natal	1	2	60	2	1	3	69
SR		2	1	<b>16</b>	1	1	21
ME	1		7		11	1	20
Sul	1	1	2	1	1	45	51
							161

present in a single population but with frequency  $\geq 5\%$ . In this case, the strategy of collecting small samples in many populations may be used to capture these alleles, and it is in this category that breeders concentrate their efforts since dispersed common alleles do not present problems but may be captured even in small samples collected from few populations.

Of the 12 exclusive alleles, eight may also be considered as rare localized alleles, i.e., they are found in a single population and with a frequency of less than 5%. A rare sporadic allele was also found, i.e., with a frequency of less than 5%, but present in three of the ten populations, these three populations lying to the south of Natal. The populations of Santo Inácio, Luís Correia, São José do Mipibu and Merepe did not exhibit exclusive alleles (Table 3).

It should be noted that the issue of exclusive alleles may be directly related to the size of the sample and that, therefore, the classification of a determined allele as exclusive is valid for the sample in question since these alleles present in a given population might not be captured by a small sample.

In coconut, a sample composed of 50 to 100 plants per population collected at random was considered adequate for most cases in capturing at least a copy of each allele that occurs with a frequency greater than 0.05 (Marshall and Brown 1975). These authors suggest that rare alleles probably have low adaptive value and are of less interest to breeders. Nevertheless, it would be strategic to collect at least one copy of each allele that occurs with a frequency of less than 0.05.

The number of exclusive alleles found in this study was greater than that found by Perera et al. (2001) who evaluated 330 individuals from 33 populations of tall coconut in the Active Germplasm Bank in Sri Lanka, using eight SSR loci. These authors found four exclusive alleles in two of the 33 populations in a total of 56 alleles, with two of them considered as rare localized alleles and two as rare sporadic alleles.

Classification of the individuals according to the reference population indicates that 128 (66%) of the 195 individuals analyzed were well classified. It was observed that more than half of the individuals that were not classified in their population of origin were found in two groups of populations. The first group was composed of the populations of Baía Formosa, Georgino Avelino and São José do Mipibu, called the Natal group, and the second group was composed of the populations of Japoatã, Pacatuba and Praia do Forte, called the South group.

Considering each one of the two groups as a single population, a new classification of the 195 individuals was made, associating them according to the reference popula-

tion (Table 4). According to the results, two groups were formed: the Natal group, composed of the populations of Baía Formosa, Georgino Avelino and São José do Mipibu, and the South group, composed of the populations of Japoatã, Pacatuba and Praia do Forte. After grouping, the number of individuals well classified passed from 128 to 161 (83%). Of the 51 individuals that compose the South group, only six individuals were associated preferentially to the other population, and of the 69 individuals that belong to the Natal group, only nine were associated with other populations.

After classification in groups, it was observed that 83% of the individuals were considered as well classified and are represented with numbers in bold print. These results were used for formation of two groups among the populations. After the grouping, the number of individuals not associated with the population of origin passed from 67 to 34 (Table 4). These results were used as a first criterion for grouping of the populations.

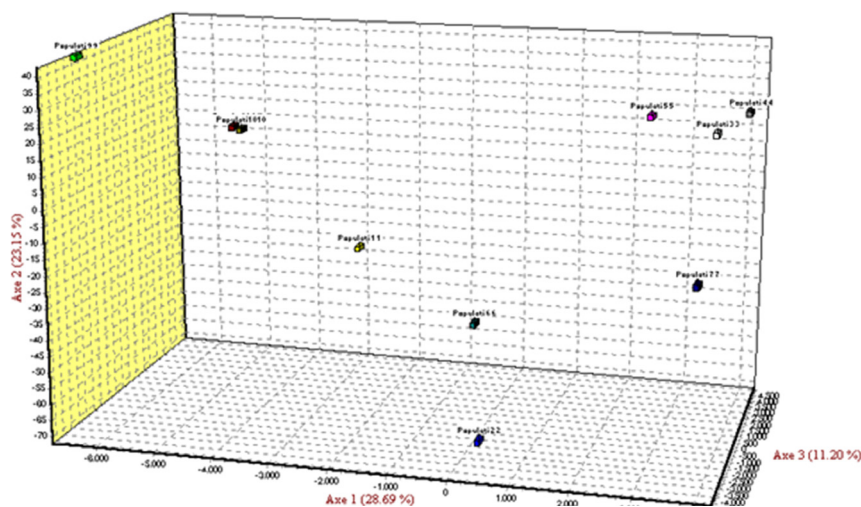
Baudouin et al. (2004) evaluated 74 coconut palms from six populations of tall coconut from the Pacific coast and from Latin America, using the same markers. These authors used the same criterion for association of the individuals and found 53% of the corresponding probabilities greater than 95%, and 33% of the individuals were not associated with their population of origin.

The pattern of genetic divergence among the ten populations of Brazilian tall coconut were also evaluated based on Factorial Correspondence Analysis (FCA) and may be visualized in the three-dimensional representation presented in Figure 1. Each axis represents its contribution to total variation and the relative contribution of the individuals accumulates 63% of the total variation. It is also seen that the geographically nearer populations have lower genetic distances.

Based on the FCA results, it is possible to identify a set of populations that correspond to the populations Baía Formosa (3), Georgino Avelino (4) and São José do Mipibu (5). Another set of populations correspond to the populations Japoatã (8), Pacatuba (9) and Praia do Forte (10). The other populations are dispersed in the multidimensional space and do not exhibit any grouping tendency (Figure 1).

Through analysis of the data, the pattern of genetic divergence may be observed among the ten populations and it permits grouping among the populations with greater similarity. Populations 3 (Baía Formosa), 4 (Georgino Avelino) and 5 (São José do Mipibu), were genetically similar among themselves, forming a group differentiated from the other populations. A similar fact is observed with populations 8 (Japoatã), 9 (Pacatuba) and 10 (Praia do Forte), which also present genetic similarity among themselves, forming





**Figure 1.** Three-dimensional representation of the distribution pattern of the ten Brazilian tall coconut populations obtained by Factorial Correspondence Analysis (FCA).

a second group. The other populations exhibited varied patterns of divergence and, therefore, they did not exhibit a tendency consistent with grouping. Through analysis of the data, it may be observed that the pattern of genetic divergence among the ten populations was similar when compared with the analysis made by the criterion of Rannala and Mountain (1997) and it reinforces the trend of grouping of the populations, providing the same group classification. Similar grouping results were found by Ribeiro et al. (2010) using the neighbor-joining methods, based on the genetic distances and on the populational structure analyses.

It may be concluded from the present study that the microsatellite markers are effective in estimating the level of genetic variation among and within the populations of Brazilian tall coconut, that these Brazilian populations have a high level of genetic diversity and that the variation within the populations makes the greatest contribution to total variation. This suggests that these populations are in a recent process of differentiation, with a common history, and that the structuring of the populations of Brazilian tall

coconut was affected by a strong founder effect and by the subsequent selection practiced by humans. Twelve exclusive alleles were found, distributed in six populations, and these exclusive alleles are responsible for the characterization of determined populations. Of the 12 exclusive alleles, four are considered as common localized alleles, one as a rare sporadic allele and eight as rare localized alleles. Classification of the individuals according to the reference population allows grouping the populations into two groups: the first formed by the populations of Baía Formosa, Georgino Avelino and São José do Mipibu, called the Natal group. The second group is composed by the populations of Japoatã, Pacatuba and Praia do Forte, called the South group. The pattern of genetic divergence based on factorial correspondence analysis exhibits a similar result when compared to the classification based on the reference population, and it allows the formation of the same groups of diversity. These results provide an important tool to assist in collection activities, for greater efficiency in conservation of germplasm and to give support to the coconut breeding program in Brazil.

## Diversidade genética em populações de coqueiro gigante do Brasil por meio de marcadores microssatélites

**Resumo** – A diversidade genética em dez populações de coqueiro gigante do Brasil foi determinada utilizando 13 marcadores microssatélites. Foi detectado um total de 68 alelos, com média de 5,23 alelos por loco. A média da heterozigosidade esperada e observada foi 0,459 e 0,443 respectivamente. O número de locos por população variou de 36 a 48, com média de 40,9 locos. Foram encontrados 12 alelos exclusivos e destes, um foi considerado como alelo raro esporádico e oito como alelos raros localizados. As metodologias de associação dos indivíduos de acordo com a população de referência e com base na análise fatorial de correspondência forneceram resultados semelhantes e permitiram a formação de dois grupos, o primeiro formado pelas populações de Baía Formosa, Georgino Avelino e São José do Mipibu e o segundo pelas populações de Japoatã, Pacatuba e Praia do Forte. Esses resultados revelam um alto nível de diversidade genética nas populações brasileiras.

**Palavras-chave:** Variabilidade genética, marcadores moleculares, Cocos nucifera.

## REFERENCES

- Baudouin L and Lebrun P (2002) The development of a microsatellite kit and dedicated software for use with coconuts. **Burotrop Bulletin** 17: 16-20.
- Baudouin L, Piry S and Cornuet JM (2004) Analytical Bayesian approach for assigning individuals to populations. **Journal of Heredity** 95: 217-224.
- Belkhir K, Borsa P, Chikhi L, Raufaste N and Bonhomme F (2001) **Genetix 4.03. Logiciel sous windows TM pour la génétique des populations**. Université Montpellier II, Montpellier.
- Benoit H and Ghesquière M (1984) **Electrophorèse, compte rendu cocotier. IV. Déterminisme génétique**. IRHO-CIRAD, Montpellier, 11p.
- Chase M, Kesseli R and Bawa K (1996) Microsatellite markers for population and conservation genetics of tropical trees. **American Journal of Botany** 83: 51-57.
- FAO (2013) World production. Available at <<http://faostat.fao.org/site/567/DesktopDefault.aspx>> Accessed on Jun 5, 2013.
- Gun FG, Baudouin L, Olsen KM (2011) Independent origins of coconut (*Cocos nucifera* L.) in the old world tropics. **PLoS ONE** 6: e21143. doi:10.1371/journal.pone.0021143.
- IBGE (2013) Censo Agropecuário. Available at <<http://www.ibge.gov.br/estadosat/temas.php?sigla=pa&tema=lavourapermanente2011>> Accessed on Jun 5, 2013.
- Jay M, Bourdeix R, Potier F and Sanlaville C (1989) Premiers résultats de l'étude des polyphénols foliaires du cocotier. **Oléagineux** 44: 151-161.
- Konan KJN, Koffi KE, Konan KJL and Konan KE (2011) Microsatellite gene diversity within Philippines dwarf coconut palm (*Cocos nucifera* L.) resources at Port-Bouët, Côte d'Ivoire. **Scientific Research Essays** 6: 5986-5992.
- Lebrun P, Baudouin L, Seguin M, N'cho YP and Bourdeix R (1995) Etude de la diversité génétique du cocotier par RFLP. **OCL** 2: 418-420.
- Lebrun P, N'cho YP, Seguin M, Grivet L and Baudouin L (1998) Genetic diversity in coconut (*Cocos nucifera* L.) revealed by restriction fragment length polymorphism (RFLP) markers. **Euphytica** 101: 103-108.
- Marshall DK and Brown AHD (1975) Optimum sampling strategies in genetic conservation. In Frankel OH and Hawkes JGR (eds.) **Crop genetic resources for today and tomorrow**, Cambridge University Press, Cambridge, p. 53-70.
- Morgante M, Pfeiffer A, Costacurta A and Olivieri AM (1996) Molecular tools for population and ecological genetics in coniferous trees. **Phyton** 36: 129-138.
- Perera L, Russel JR, Provan J and Powel W (2000) Use of microsatellite DNA markers to investigate the level of genetic diversity and population genetic structure of coconut (*Cocos nucifera* L.). **Genome** 43: 15-21.
- Perera L, Russel JR, Provan J and Powel W (2001) Level and distribution of genetic diversity of coconut (*Cocos nucifera* L. var. *Typica* form typical) from Sri Lanka assessed by microsatellite markers. **Euphytica** 122: 381-389.
- Perrier X, Flori A and Bonnot F (1999) Les méthodes d'analyse des données. In Hamon P, Seguin M, Perrier X and Glaszmann JC **Diversité génétique des plantes tropicales cultivées**. CIRAD, Montpellier, p. 43-76.
- Persley GJ (1992) **Replanting the tree of life: toward an international agenda for coconut palm research**. CAB/ACIAR, Wallingford, 156p.
- Piry S, Alapetite A, Cornuet JM, Paetkau D, Baudouin L and Estoup A (2004) GeneClass2: a software for genetic assignment and first generation migrants detection. **Journal of Heredity** 95: 536-539.
- Purseglove JW (1975) **Tropical crops: monocotyledons**. Longman, London, 607p.
- Rannala B and Mountain JL (1997) Detecting immigration by using multilocus genotypes. **Proceedings of the National Academy of Sciences** 94: p. 9197-9201.
- Ribeiro FE, Soares AR and Ramalho MAP (1999) Divergência genética entre populações de coqueiro gigante do Brasil. **Pesquisa Agropecuária Brasileira** 34: 1615-1622.
- Ribeiro FE, Siqueira ER and Aragão WM (2002) Coqueiro. In Bruckner CH (ed.) **Melhoramento de Fruteiras Tropicais**. Editora UFV, Viçosa, p. 225-249.
- Ribeiro FE, Baudouin L, Lebrun P, Chaves LJ, Brondani C, Zuchi MI and Vencovsky R (2010) Population structures of Brazilian tall coconut (*Cocos nucifera* L.) by microsatellite markers. **Genetics and Molecular Biology** 33: 696-702.
- Rivera R, Edwards KJ, Barker JHA, Arnold GM, Ayad G and Hodgkin T (1999) Isolation and characterization of polymorphic microsatellites in *Cocos nucifera* L. **Genome** 42: 668-675.
- Wadt LHO, Sakiyama NS, Ferreira MG, Tupinambá EA, Ribeiro FE and Aragão WM (1997) Divergência genética entre coqueiros gigante avaliada por RAPD com amostras individuais e compostas. **Revista Brasileira de Genética** 20: 262-262.