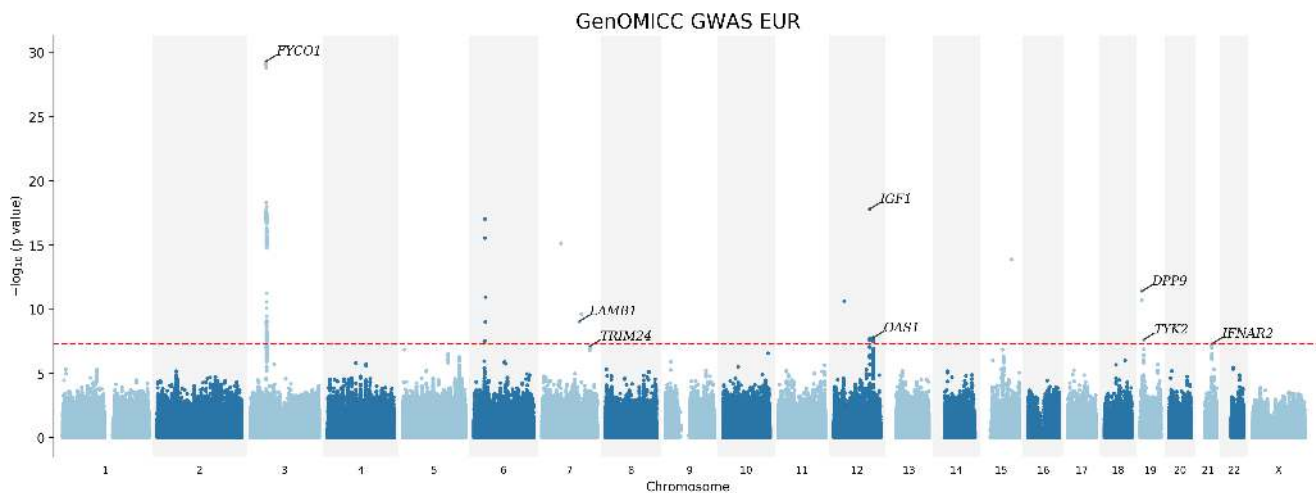


Genetic mechanisms of critical illness in Covid-19 Supplementary
Information

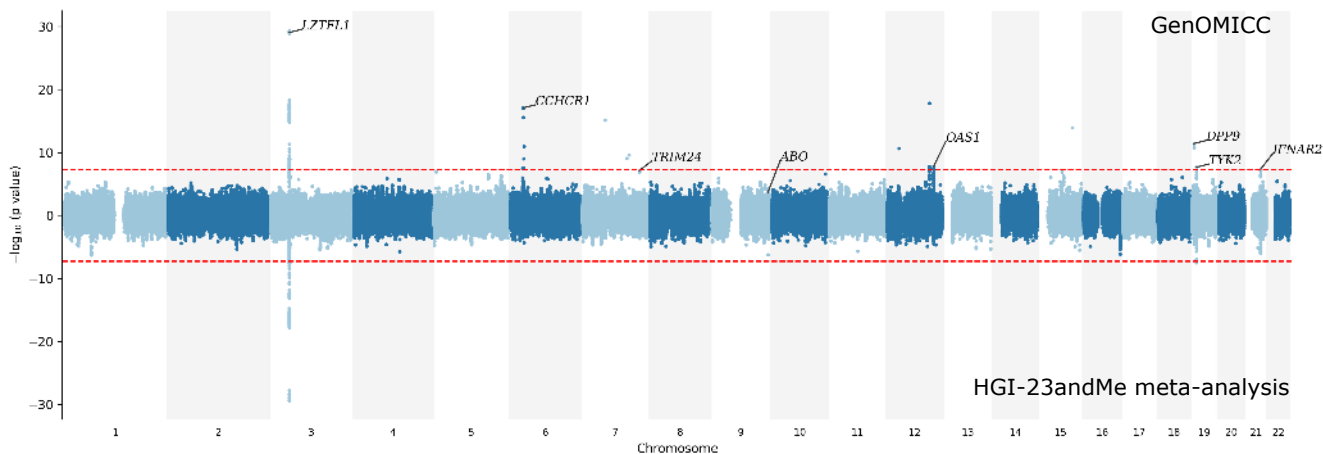
Contents

GWAS details	1
Regions in detail	4
Demographics, recruitment and severity	6
Comorbidity	9
Matched controls	11
Mendelian Randomisation	13
Transcriptome-wide association study	16
Gene-level burden of significance	18
Heritability and high-definition likelihood (HDL)	19
Contributors	22
References	39

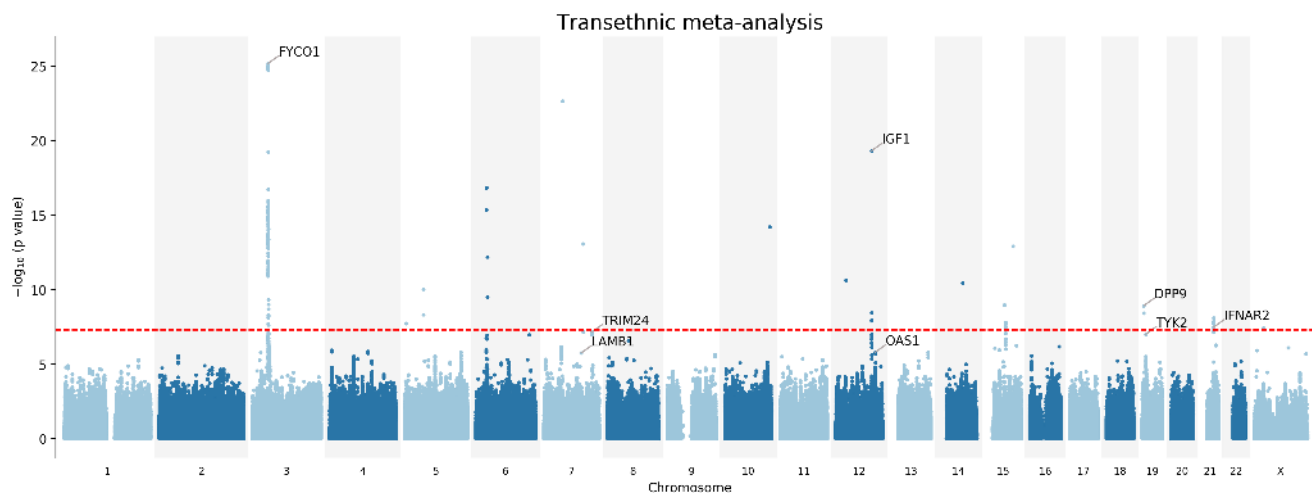
GWAS details



Supplementary Figure 1: Manhattan plot showing single nucleotide polymorphism (SNP)-level uncorrected p-values from GWAS analysis (before validation vs Generation Scotland and 100,000 genomes controls) in largest ancestry group, EUR (red horizontal line shows genome-wide significance at $-\log_{10}(5 \times 10^{-8})$)



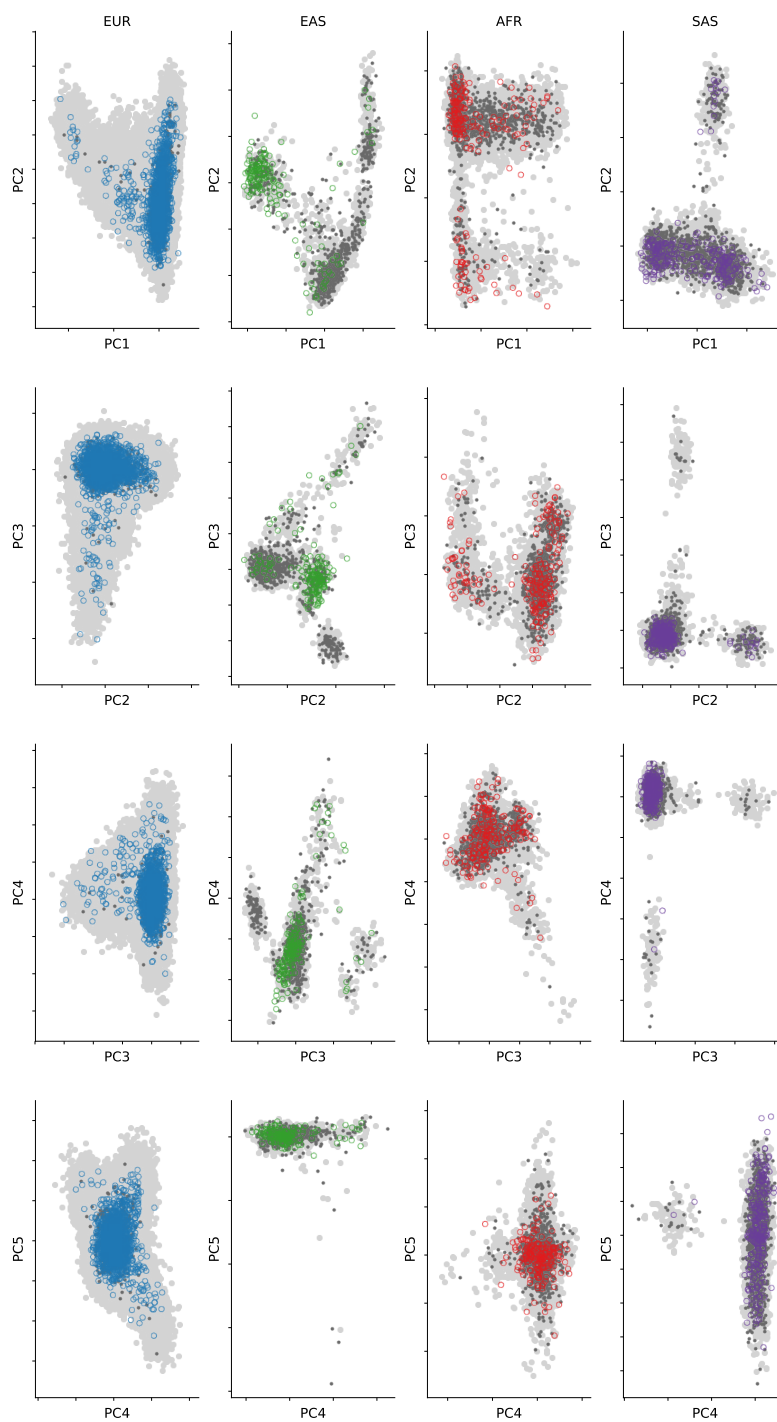
Supplementary Figure 2: Miami plot showing relationship between the EUR GenOMICC GWAS vs UK Biobank (before validation vs Generation Scotland and 100,000 genomes controls) and a restricted meta-analysis including only patients from the Covid-19 Host Genetics Initiative and 23andMe. Raw (uncorrected) p-values from GWAS analysis are shown. In upper (GenOMICC) panel, red horizontal line shows genome-wide significance for common variants at $-\log_{10}(5 \times 10^{-8})$; in lower (meta-analysis) panel, red horizontal line shows a more stringent genome-wide significance threshold for meta-analysis variants at $-\log_{10}(10^{-8})$



Supplementary Figure 3: Manhattan plot showing SNP-level p-values from trans-ethnic meta-analysis including European (EUR), African (AFR), East Asian (EAS), and South Asian (SAS) PCA-determined ancestry groups in GenOMICC. (red horizontal line shows genome-wide significance at $-\log_{10}(5 \times 10^{-8})$)

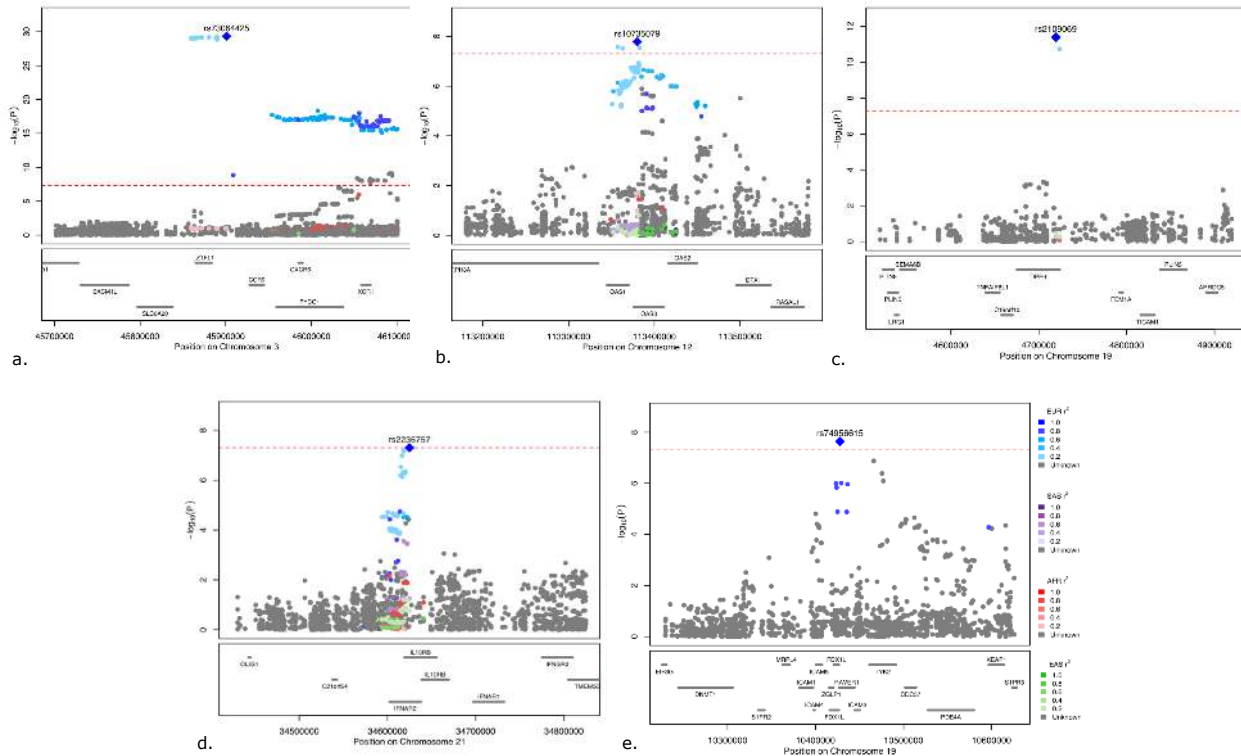
Supplementary Table 1: Lead variants from sex-specific genome-wide significant regions in GenOMICC European ancestry group. chr:pos - chromosome and position of the top SNP (build 37); Risk - risk allele; Other - other allele; RAF - risk allele frequency; OR - effect size (odds ratio) of the risk allele; locus - gene nearest to the top SNP.

snps	chr.pos.b37.	Risk	Other	RAF.male	OR.male	P.male	RAF.female	OR.female	P.female
rs73064425	3:45901089	T	C	0.083	2.3	3.2e-28	0.083	2	1.3e-07
rs143334143	6:31121426	A	G	0.076	1.9	4.7e-15	0.073	2.3	1.1e-09
rs3131294	6:32180146	G	A	0.86	1.5	4.2e-08	0.86	1.5	0.00081

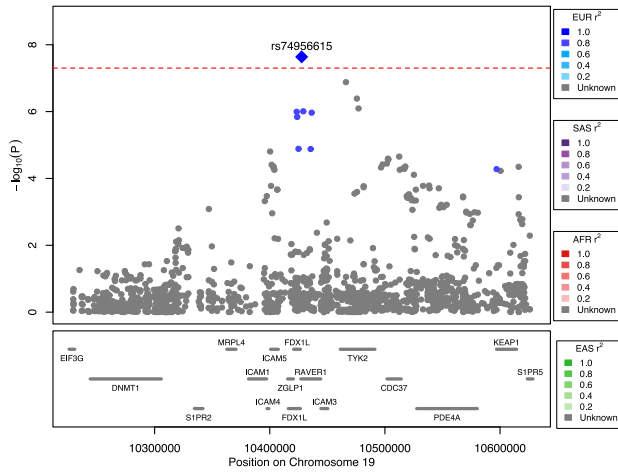


Supplementary Figure 4: PCA plots showing the distribution of all cases and controls for the first 5 principal components for each ancestry group. Cases are shown as coloured open circles: European (EUR, blue), African (AFR, red), East Asian (EAS, green), and South Asian (SAS, purple). Controls are dark grey closed circles. UK Biobank population background is shown as light grey closed circles.

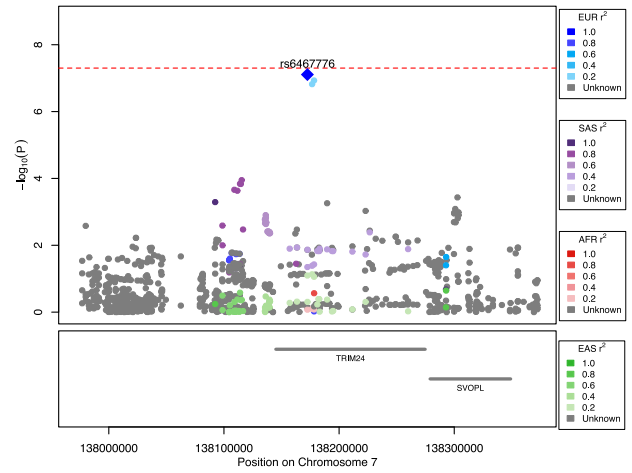
Regions in detail



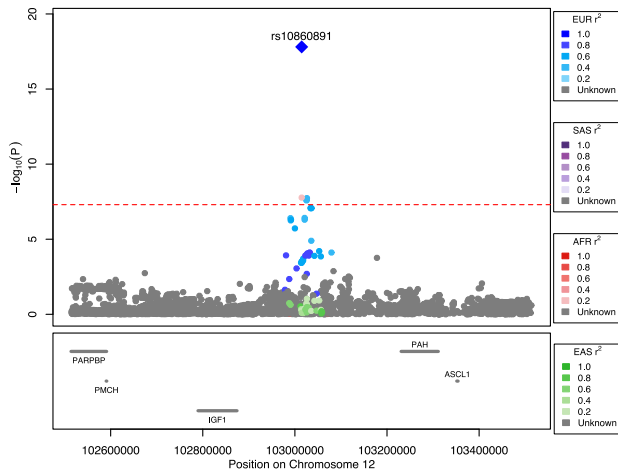
Supplementary Figure 5: Genomic region plots showing ancestry-specific p-values and LD structure. Each variant is plotted at the y-axis position for GWAS within a given ancestry group in GenOMICC vs UK Biobank analysis. A variant is plotted for an ancestry group only if it has MAF>5% in that group in UK Biobank. Colour depicts genetic ancestry group (EUR = blue, EAS = green, AFR = red, SAS = purple); shading shows linkage disequilibrium value (LD, r^2) within a given ancestry group with the lead SNP; variants with unknown LD for each ancestry group are shown in grey; lead SNP for EUR is shown in each plot as a blue diamond. LD reference is calculated using PLINK from 5 cases randomly selected unrelated matched-ethnicity subjects in UK Biobank.



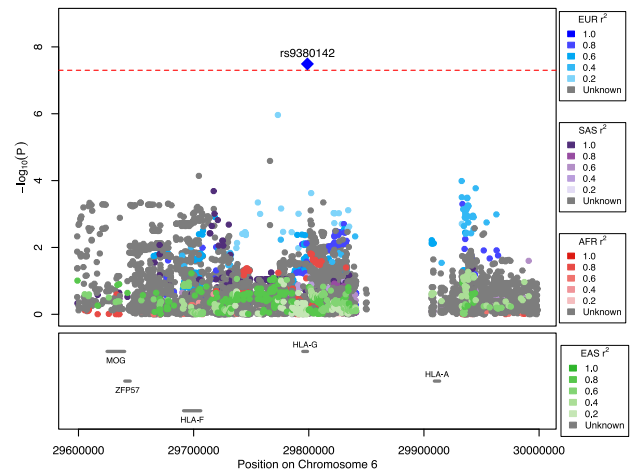
(a)



(b)



(c)

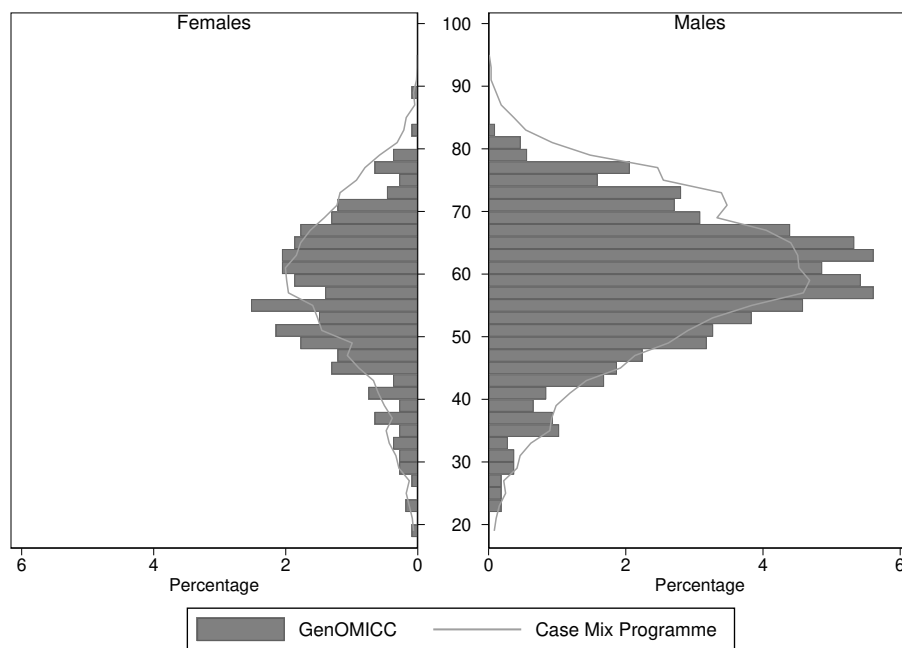


(d)

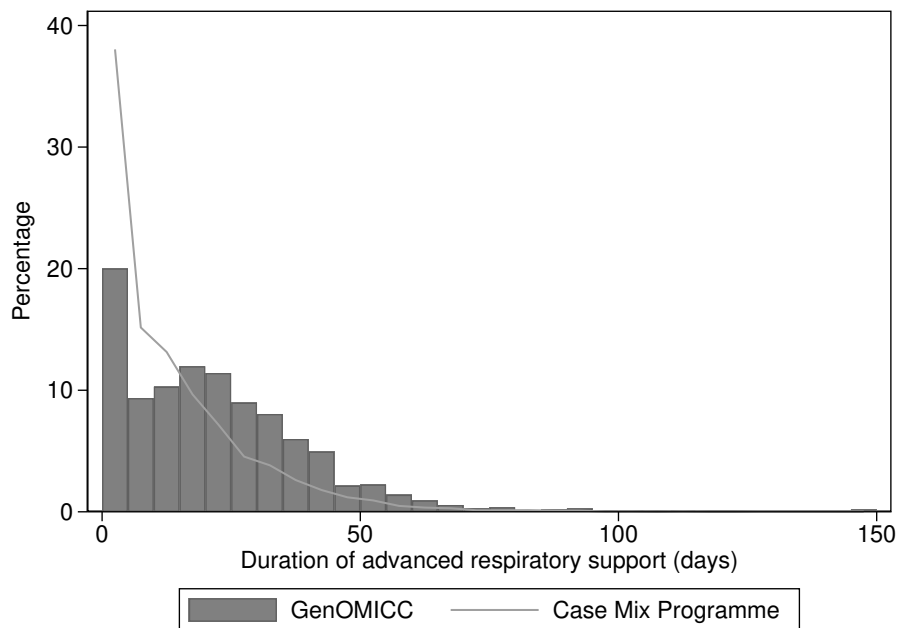
Supplementary Figure 6: Regional plots showing the TYK2, TRIM24, IGF1, and HLA loci. Red horizontal line shows genome-wide significance at $-\log_{10}(5 \times 10^{-8})$. Colour depicts linkage disequilibrium (LD, r^2) with lead SNP (purple diamond) in each plot. LD reference is calculated using PLINK from 10,000 randomly-selected unrelated European subjects in UK Biobank.

Demographics, recruitment and severity

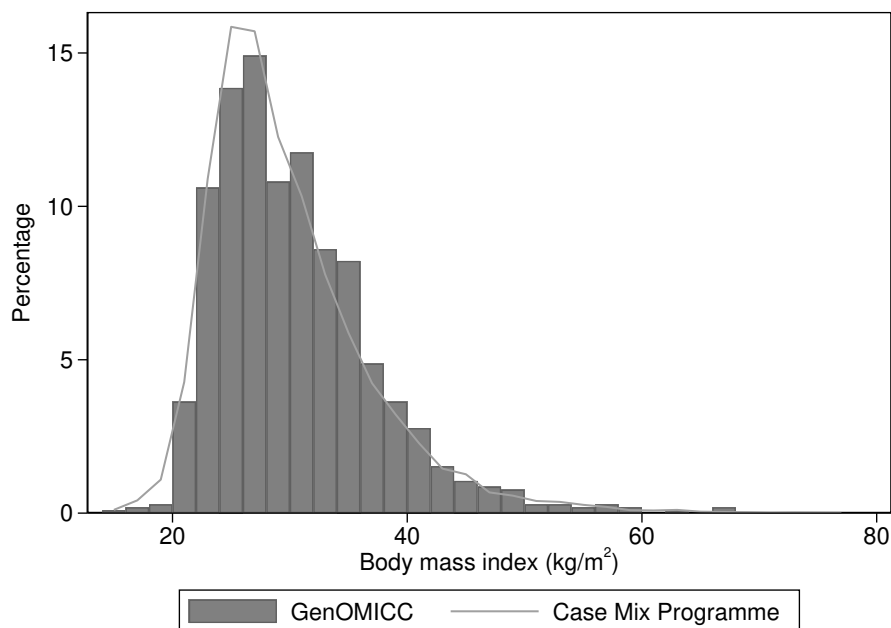
Cases were broadly representative of the UK critically-ill population. For 1069 GenOMICC cases, matched clinical data could be obtained from the Intensive Care National Audit and Research Centre (ICNARC) Case Mix Programme (CMP), a national audit of critical care admission in England, Wales and Northern Ireland.



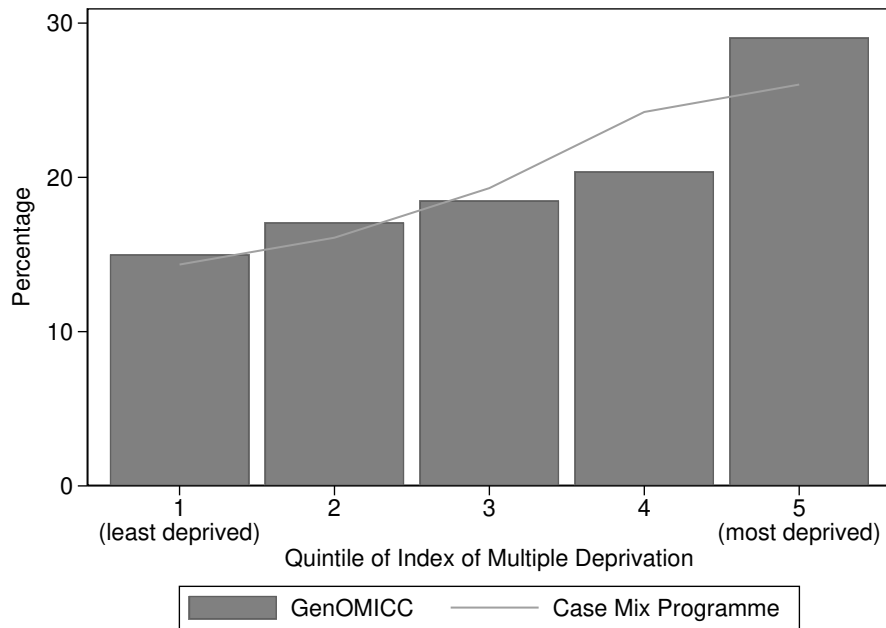
Supplementary Figure 7: Histogram showing age (in 2 year bins; first column shows lower end of band) and sex for 1069 patients recruited to GenOMICC for whom case mix programme data were available (bars), and all critically ill Covid-19 patients from the ICNARC Case Mix Programme (lines).



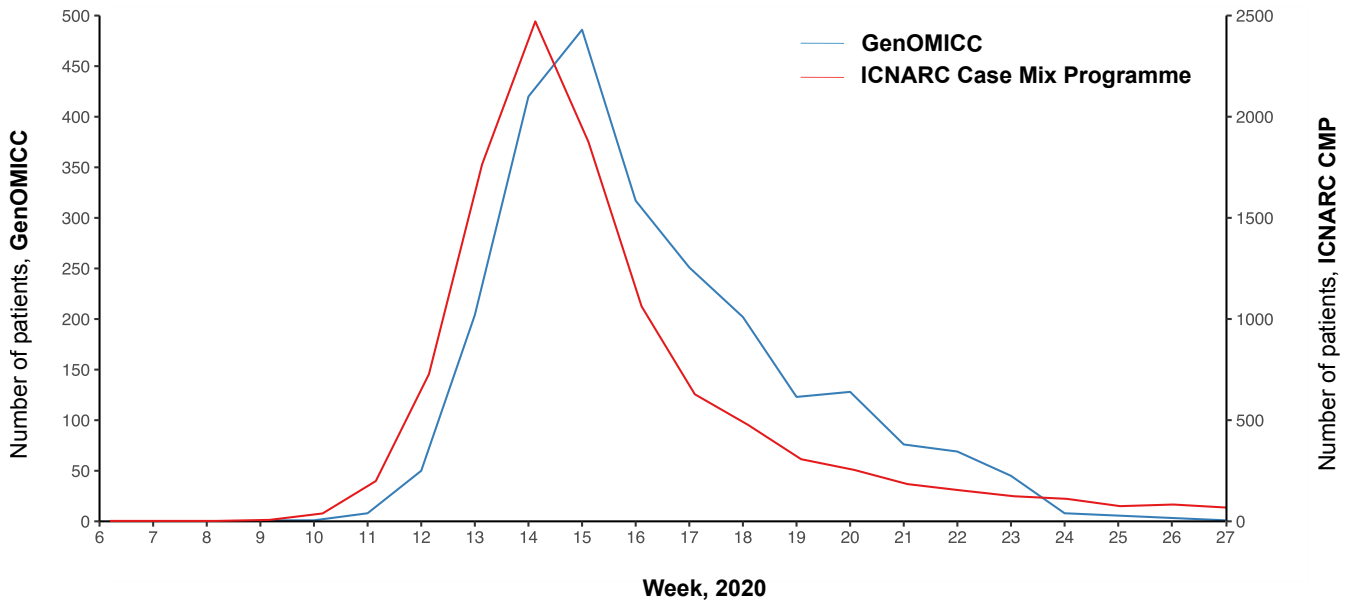
Supplementary Figure 8: Histogram showing duration of advanced respiratory support (invasive ventilation) for 1069 patients recruited to GenOMICC for whom case mix programme data were available (bars), and all critically ill Covid-19 patients from the ICNARC Case Mix Programme (lines). Patients who required a very short period of invasive ventilation are more likely to be discharged early from the ICU, and hence may have been disproportionately missed by the research teams from recruitment to GenOMICC.



Supplementary Figure 9: Histogram showing body mass index (BMI, kg/m²; 2 kg/m² bands; first column shows lower end of band) for 1069 patients recruited to GenOMICC for whom case mix programme data were available (bars), and all critically ill Covid-19 patients from the ICNARC Case Mix Programme (lines).

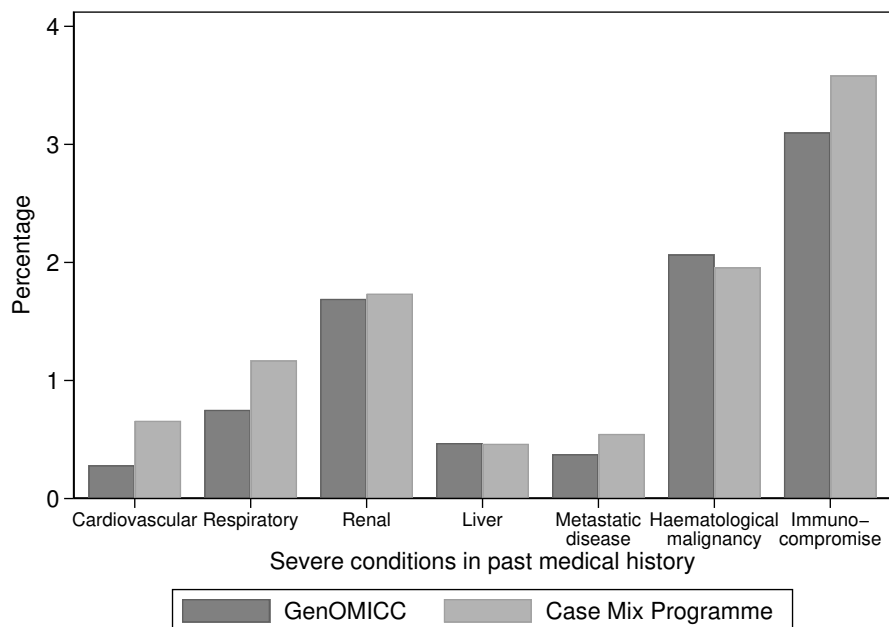


Supplementary Figure 10: Percentage of patients in Index of Multiple Deprivation 2019¹ quintiles (a government statistic measuring deprivation in small local units across the country). Data are shown for 1069 patients recruited to GenOMICC for whom case mix programme data were available (bars), and all critically ill Covid-19 patients from the ICNARC Case Mix Programme (lines).



Supplementary Figure 11: Rate of recruitment showing the GenOMICC cases included in the current analysis (UK-wide), and the overall rate of ICU admissions with Covid-19 in the ICNARC Case Mix Programme (England, Wales and Northern Ireland only).

Comorbidity



Supplementary Figure 12: Past medical history recorded for 1069 patients recruited to GenOMICC for whom case mix programme data were available (dark grey bars), and all critically ill Covid-19 patients from the ICNARC Case Mix Programme (light grey bars).

Supplementary Table 2: Comorbid illness in subsets of cases for whom detailed information are available. [†]n = number of participants with available data. *The specific co-morbidities recorded, and how they were defined, differed between the Intensive Care National Audit & Research Centre (ICNARC) database (for GenOMICC participants) and the ISARIC 4C database. ICNARC used more stringent definitions to capture “very severe” co-morbidities whereas ISARIC 4C recorded any chronic disease affecting an organ system, even if less severe.

Co-morbidity	<i>n</i> (%)	Definition*
GenOMICC (n=1064 [†])		
Cardiovascular	3 (0.3)	Cardiovascular symptoms at rest
Pulmonary	8 (0.8)	Dyspnoea with light activity or requires home ventilation
Renal	18 (1.7)	Requires renal replacement therapy (RRT)
Liver	5 (0.5)	Liver cirrhosis (biopsy-proven), portal hypertension or hepatic encephalopathy

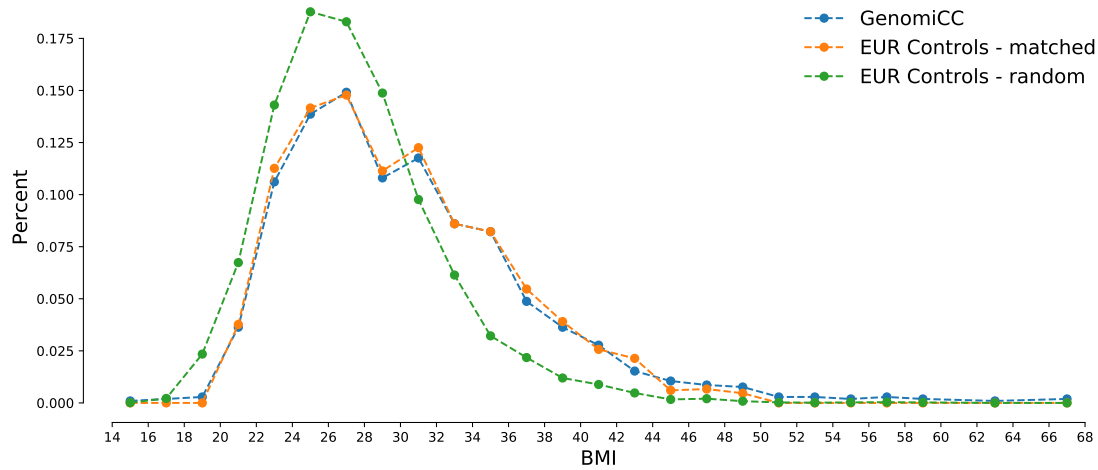
Co-morbidity	<i>n</i> (%)	Definition*
Malignant neoplasm	4 (0.4)	Malignant neoplasm with distant metastases
Haematologic neoplasm	22 (2.1)	Leukaemia, lymphoma or multiple myeloma
Immunocompromise	33 (3.1)	Acquired (iatrogenic, HIV/AIDS) or congenital
ISARIC 4C (n=108 [†])		
Cardiovascular	31 (28.7)	Chronic heart disease (excluding hypertension)
Pulmonary	9 (8.3)	Chronic lung disease (excluding asthma)
Renal	8 (7.4)	Chronic kidney disease, irrespective of requirement for RRT
Liver	0 (0)	Moderate or severe liver disease
Malignant neoplasm	6 (5.6)	Local or metastatic neoplasm
Haematologic disease	0 (0)	Chronic haematologic disease of any aetiology

Matched controls

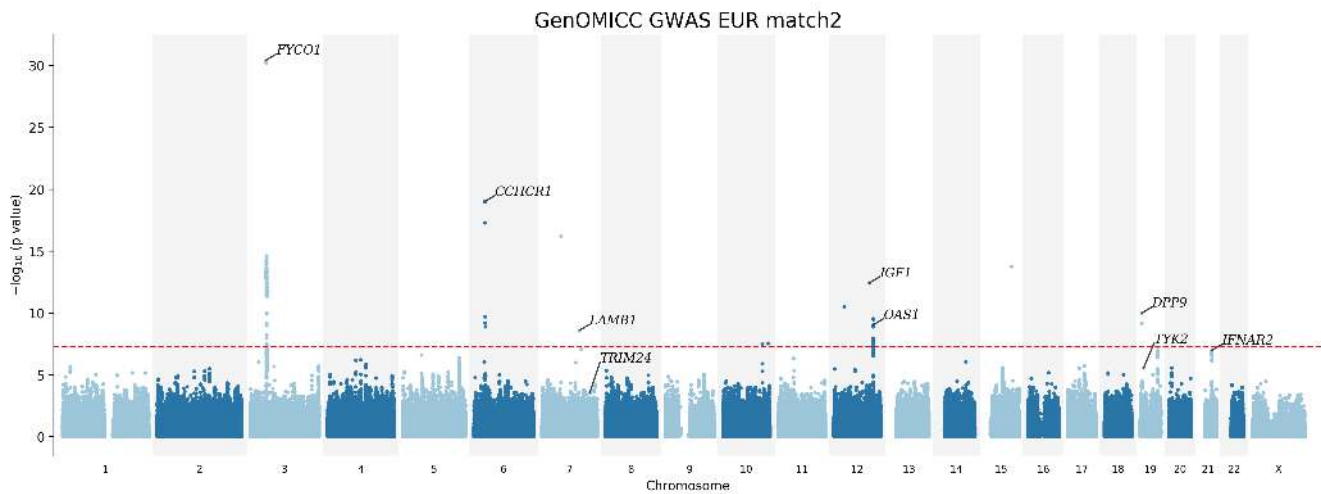
Because of the evidence of residual inflation in the GenOMICC EUR UK Biobank analysis (Supplementary Figure ??), and the genetic correlations with obesity and educational attainment (Supplementary Figure 19a), we undertook further analysis to examine the effect of additional correction for population structure. We performed a GWAS in which we restricted the analysis to cases for whom UK Biobank controls could be identified according to the following rules:

- individual matches by ancestry, sex, age, and deprivation quintile
- BMI sampled from a distribution that parallels the ICNARC CMP BMI distribution for the GenOMICC cases (Supplementary Figure 9)

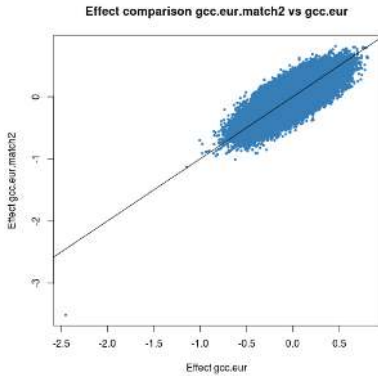
Applying these rules produced a smaller comparison than the primary analysis: $n_{\text{cases}} = 1260$; $n_{\text{controls}} = 6300$.



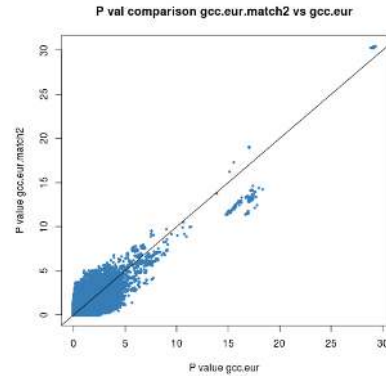
Supplementary Figure 13: Distribution of body mass index (BMI, kg/m^2 ; 2 kg/m^2 bands) for GenOMICCcases (blue), UK Biobank random controls (primary analysis, green) and UK Biobank BMI-matched controls (orange)



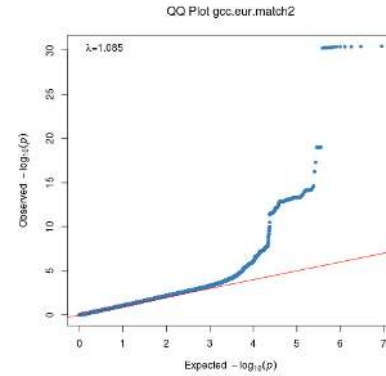
(a)



(b)



(c)



(d)

Supplementary Figure 14: Results from secondary analysis with matched controls. (a) Manhattan plot showing raw (uncorrected) single nucleotide polymorphism (SNP)-level p-values for genome-wide significant associations (red horizontal line shows genome-wide significance at $-\log_{10}(5 \times 10^{-8})$). (b) Correlation with primary analysis in effect sizes (β), and raw p-values (c). (d) QQ plot of raw (uncorrected) p-values.

Mendelian Randomisation

Supplementary Table 3: *a priori* core set genes that are potentially directly informative for prioritisation of drugs in trials. MOA - mechanism of action. MAIC - meta-analysis by information content.

Gene symbol	Rationale
ACE2	Core viral entry mechanism
TMPRSS2	Core viral entry mechanism
CTSL	Core viral entry mechanism
IL1A	MOA anakinra, MAIC top hit 2020-9-1 ²
IL1B	MOA anakinra
IL1R1	MOA anakinra
IL1R2	MOA anakinra
IL6	MOA tocilizumab/sarilumab
IL6R	MOA tocilizumab/sarilumab
CSF1	MAIC Covid 2020-9-1 ² , Differential levels in severe/fatal cases
CSF2	MOA mavrilimumab, ³ other monoclonal ABs ⁴
CSF3	MAIC Covid 2020-9-1 ² , Differential levels in severe/fatal cases
PPIA	MAIC Covid 2020-9-1 ² , MOA cyclophilin inhibitors ⁵
IFNA1	MOA interferon α
IFNB1	MOA interferon β
IFNAR1	MOA interferon α/β
IFNAR2	MOA interferon α/β , MAIC Influenza ⁶
IFNG	MOA interferon γ , MAIC Covid 2020-9-1 ²
IFNGR1	MOA interferon γ , MAIC Influenza ⁶
IFNGR2	MOA interferon γ
FCGR1A	MOA fostamatinib
SYK	MOA fostamatinib
JAK1	MOA baricitinib/ruxolitinib
JAK2	MOA baricitinib/ruxolitinib
TNF	MOA anti-TNF drugs (e.g. infliximab, etanercept)
BTK	MOA Bruton's tyrosine kinase inhibitors (e.g. acalabrutinib)

Supplementary Table 4: Mendelian randomisation of gene expression of genes selected *a priori* as potential therapeutic targets for COVID-19. Gene: gene name; SNPchr: chromosome (GRCh37) of the SNP used as the instrumental variable; SNPpos: position (GRCh37) of the SNP; ALT: GRCh37 alternate allele; REF: GRCh37 reference allele; b_SMR: Mendelian Randomisation effect-size estimate; p_SMR: p-value of the Mendelian Randomisation effect-size estimate; p_HEIDI: p-value of the HEIDI test; nsnp_HEIDI: number of SNPs used in the calculation of p_HEIDI; † is Bonferroni significant.

Gene	SNPchr	SNPpos	ALT	REF	b_SMR	p_SMR	p_HEIDI	nsnp_HEIDI
<i>IFNAR2</i>	21	34610487	C	T	-1.491	0.0043 [†]	0.0150	6
<i>IFNAR1</i>	21	34670914	T	A	-0.782	0.0341	0.1984	10
<i>IL6R</i>	1	154405058	G	T	0.839	0.0362	0.1937	6

Gene	SNPchr	SNPpos	ALT	REF	b_SMR	p_SMR	p_HEIDI	nsnp_HEIDI
<i>JAK1</i>	1	65513680	T	C	0.360	0.4199	0.1094	6
<i>CTSL</i>	9	90355073	A	G	-0.196	0.5021	0.6468	3
<i>IFNGR2</i>	21	34782395	C	A	-0.231	0.5037	0.9570	14
<i>CSF3</i>	17	39156499	G	A	0.012	0.9629	-	-

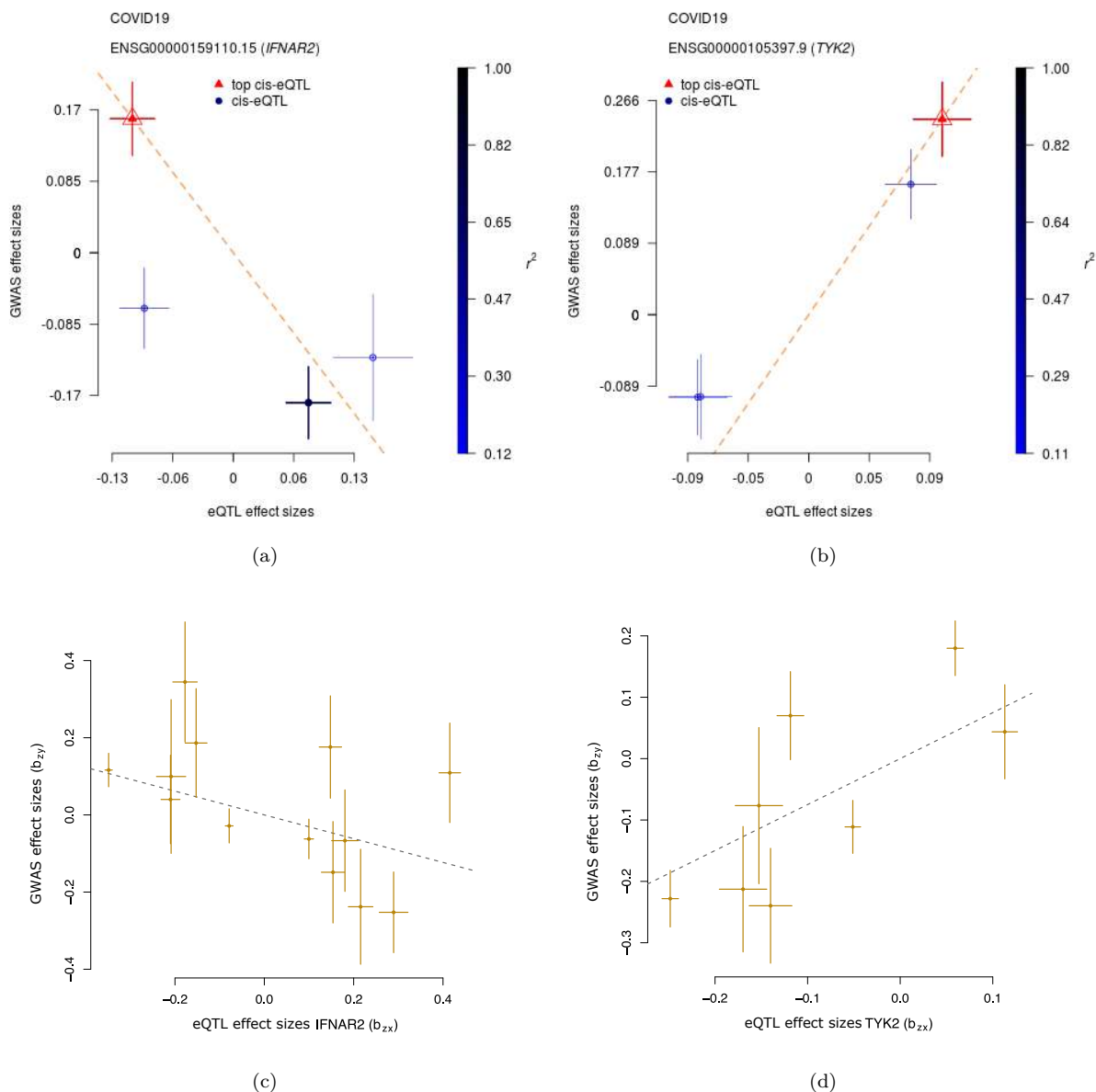
Supplementary Table 5: External replication (using Covid-19 HGI, UK Biobank excluded, and eQTLgen) of 9 genes with suggestive Mendelian randomisation associations from genome-wide analysis in GenOMICC (4,614 unique Ensembl gene IDs included in original analysis, genes selected had MR $p < 0.05/9$ and HEIDI $p > 0.05$). Gene: gene name; SNPchr: chromosome (GRCh37) of the SNP used as the instrumental variable; SNPpos: position (GRCh37) of the SNP; ALT: GRCh37 alternate allele; REF: GRCh37 reference allele; dir_SMR: direction of effect of the Mendelian Randomisation effect-size estimate; p_SMR: p-value of the Mendelian Randomisation effect-size estimate. [†] is Bonferroni significant.

Gene	SNPchr	SNPpos	ALT	REF	dir_SMR	p_SMR
<i>TYK2</i>	19	10466123	T	C	+	5.53E-05 [†]
<i>IGSF9B</i>	11	133812299	C	T	+	1.90E-01
<i>CCDC28A</i>	6	139085617	G	C	+	2.69E-01
<i>ORMDL3</i>	17	38073968	C	G	-	3.85E-01
<i>GNLY</i>	2	85934499	A	C	-	6.99E-01
<i>S100A13</i>	1	153673034	G	A	-	7.04E-01
<i>MMP25</i>	16	3099335	A	G	-	7.84E-01
<i>TOMM7</i>	7	22860474	A	G	+	9.10E-01
<i>TNFSF15</i>	9	117579457	A	G	NA	NA

In order to further validate the key Mendelian randomisation findings, generalized summary-data Mendelian randomisation (GSMR)⁷ was performed using multiple quasi-independent SNPs for TYK2 and IFNAR2 (Methods). Using data from eQTLgen⁸, 8 and 13 quasi-independent SNPs after HEIDI-outlier filtering test were identified for each gene respectively. The GSMR results replicated the SMR results, with both a consistent direction of effect and a significant p-value in both cases (Supplementary Table 6, Supplementary Figure 15).

Supplementary Table 6: Results of GSMR analysis using GenOMICC GWAS EUR as outcome, for IFNAR2 and TYK2. β_{xy} - effect size; se - standard error for β_{xy} ; p - Mendelian randomisation p-value; nsnp - number of SNPs included. {#tbl:mr.cojo}

Exposure	β_{xy}	se	p	nsnp
IFNAR2	-0.307834	0.115121	0.0075	13
TYK2	0.74874	0.168939	9.33e-06	8



Supplementary Figure 15: Exposure and outcome effect-size estimate ($\beta_{exposure}$ vs $\beta_{outcome}$) plots for IFNAR2 (a,c) and TYK2 (b,d). (a,b): SNPs included in the HEIDI tests for IFNAR2 and TYK2 using exposure data from GTEx v7 Whole Blood and outcome data from GenOMICC. Top SNPs are rs1131964 (chr21:34610487) and rs11085727 (chr19:10466123), respectively. Color bars show r^2 with top SNP. The orange dashed line represents the SMR effect-size estimates of the top cis-eQTL (i.e. it is not a regression line). (c,d) Generalized summary-data-based Mendelian randomisation (GSMDR) for IFNAR2 and TYK2 using exposure data from eQTLgen and outcome data from GenOMICC. SNPs are quasi-independent, following LD and HEIDI-outlier filtering. Error bars show standard errors centred on the mean.

Transcriptome-wide association study



Supplementary Figure 16: Z-scores showing direction of effect for genotype-inferred expression of transcripts encoding protein-coding genes in blood (GTExV8).

Supplementary Table 7: Meta-analysis of the TWAS from whole blood and lung using MultiXcan. Gene names are provided, with p value for the meta-analysis. n tissues is the number of tissues in which the original TWAS was performed; best tissue indicates the tissue with lower p value in the original TWAS (Lung or Whole Blood); p best tissue is the p value of the TWAS in the best tissue.

gene name	p.val meta	n tissues	p.val best tissue	best tissue	FDR p.val	Bonferroni p.val
CXCR6	2.4e-15	1	2.4e-15	Lung	2.8e-11	2.8e-11
OAS3	4e-09	2	0.0074	Whole_Blood	2.3e-05	4.6e-05
CCR3	2.7e-07	2	5e-08	Lung	0.0011	0.0032
MAT2B	9.6e-07	1	9.6e-07	Lung	0.0028	0.011
CCR2	1.6e-06	2	6.4e-07	Lung	0.0036	0.018
TNFSF15	1.3e-05	2	1.6e-05	Whole_Blood	0.025	0.15
ICAM5	1.6e-05	2	1.6e-05	Whole_Blood	0.026	0.18
FYCO1	2e-05	2	1.6e-05	Lung	0.029	0.24

Supplementary Table 8: Genes with false discovery rate (FDR)<0.05 from TWAS analysis of imputed summary statistics for European individuals GWAS and Lung gene expression in GTExV8.

gene name	z.score	p.val twas	FDR p.val	Bonferroni p.val
CXCR6	-7.9	2.4e-15	2.3e-11	2.3e-11
CCR3	-5.4	5e-08	0.00024	0.00048
CCR2	5	6.4e-07	0.002	0.006

gene name	z.score	p.val twas	FDR p.val	Bonferroni p.val
MAT2B	-4.9	9.6e-07	0.0023	0.0091
FYCO1	4.3	1.6e-05	0.024	0.15
ICAM5	-4.3	1.6e-05	0.024	0.15
TNFSF15	-4.3	1.8e-05	0.024	0.17

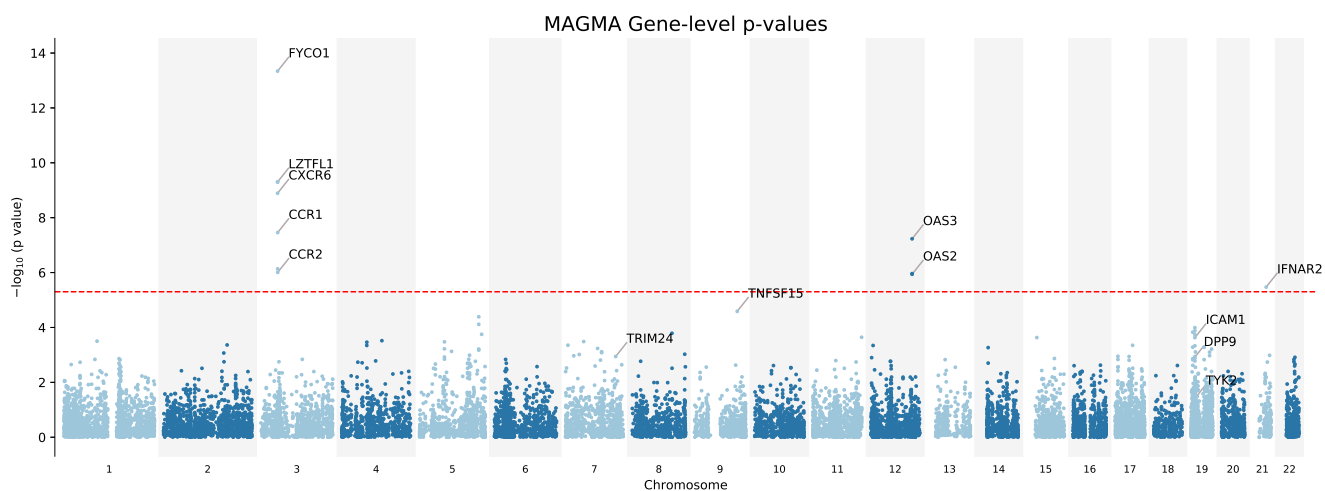
Supplementary Table 9: Genes with false discovery rate (FDR)<0.05 from TWAS analysis of imputed summary statistics for European individuals GWAS and Whole Blood gene expression in GTExV8.

gene name	z.score	p.val twas	FDR p.val	Bonferroni p.val
AC009961.3	-4.3	1.5e-05	0.044	0.12
ICAM5	-4.3	1.6e-05	0.044	0.13
TNFSF15	-4.3	1.6e-05	0.044	0.13

Gene-level burden of significance

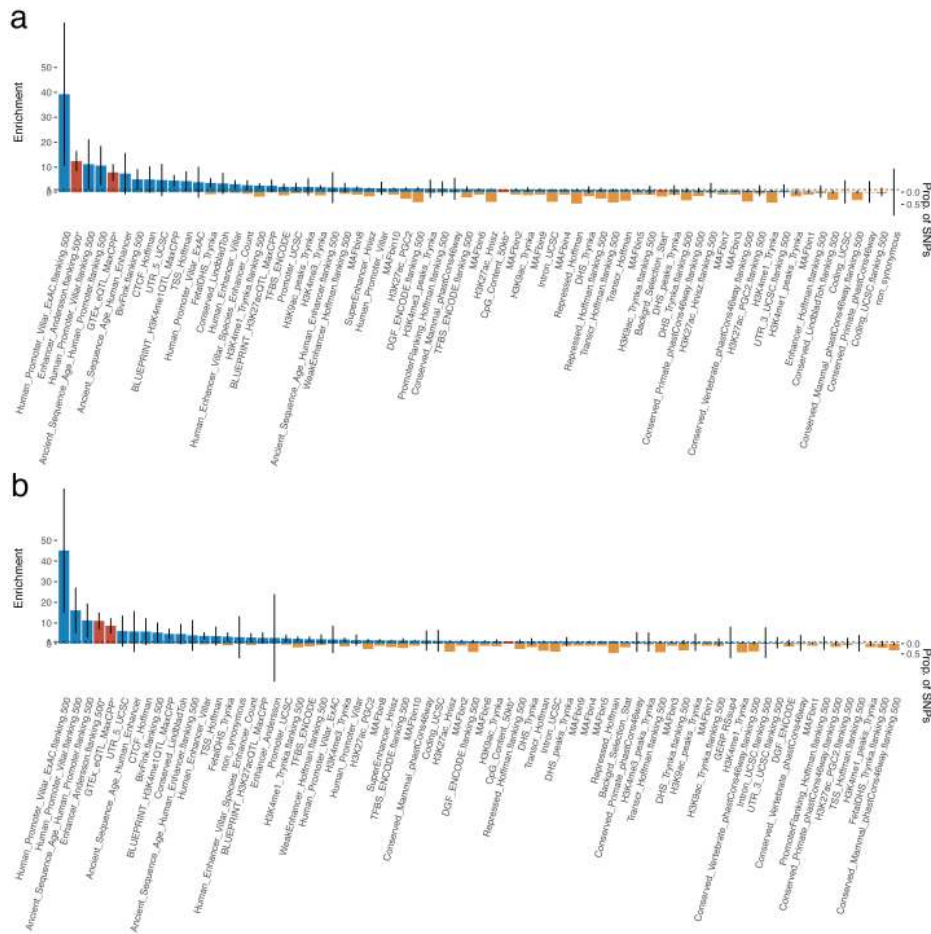
Supplementary Table 10: Protein-coding genes with $< 5 \times 10^{-6}$ in gene-level burden of significance testing with MAGMA in GenOMICC GWAS (European ancestry). These 12 genes had a gene level p-value $< 5 \times 10^{-6}$. Of these 12 genes, 7 are found in the 3p21.31 locus: *LZTFL1*, *FYCO1*, *XCR1*, *CXCR6*, *CCR1*, *CCR3* & *CCR2*. The genes *OAS1*, *OAS2*, *OAS3* are grouped in locus q24.13 on chromosome 12. Gene set analysis of gene-level burden of significance did not identify any significantly enriched pathways or gene ontology terms after correction multiple comparisons (FDR <0.05).⁹

Gene	P	Number of variants
<i>LZTFL1</i>	7.9751E-14	103
<i>FYCO1</i>	1.7685E-13	191
<i>XCR1</i>	3.5541E-13	46
<i>CXCR6</i>	1.5365E-09	34
<i>OAS3</i>	8.6688E-09	111
<i>CCR1</i>	2.1795E-07	32
<i>OAS2</i>	4.3267E-07	55
<i>IFNAR2</i>	6.253E-07	90
<i>CCR3</i>	7.046E-07	52
<i>CCR2</i>	1.2877E-06	27
<i>OAS1</i>	2.1406E-06	36
<i>TNFSF15</i>	5.3835E-06	22

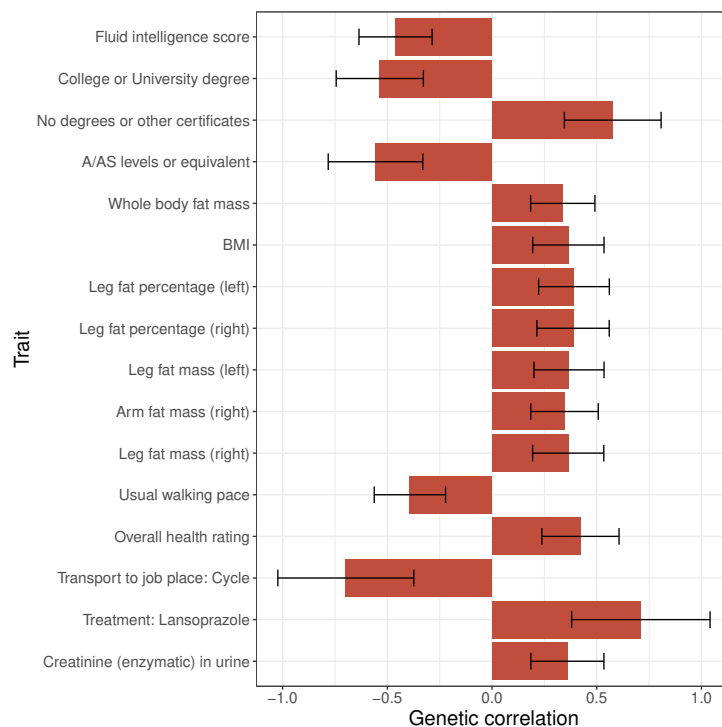


Supplementary Figure 17: Manhattan plot of gene-level burden of significance tests (MAGMA)

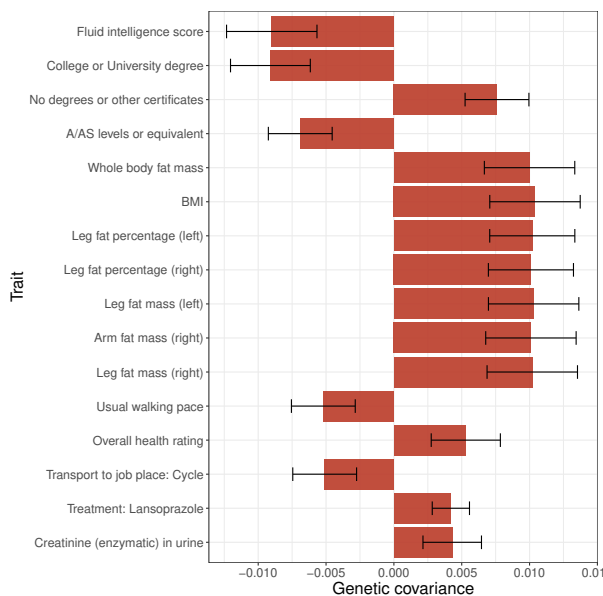
Heritability and high-definition likelihood (HDL)



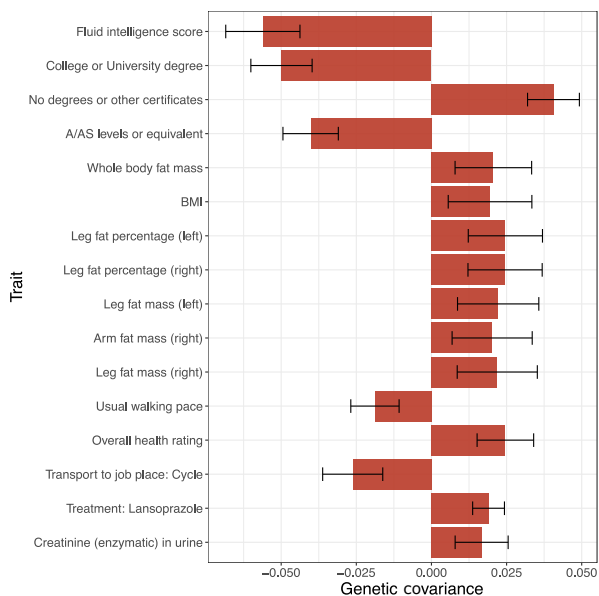
Supplementary Figure 18: Heritability enrichment analysis of COVID-19 across functional genomic annotations. a) EUR ancestry; b) Meta-analysis. Enrichment of COVID-19 heritability was performed using stratified LD score regression by estimating the heritability among the SNPs annotated within the functional regions. The error bars represent standard errors centred around mean enrichment estimates. Enrichment estimates with Bonferroni-corrected $P < 0.05$ are highlighted in red.



(a)

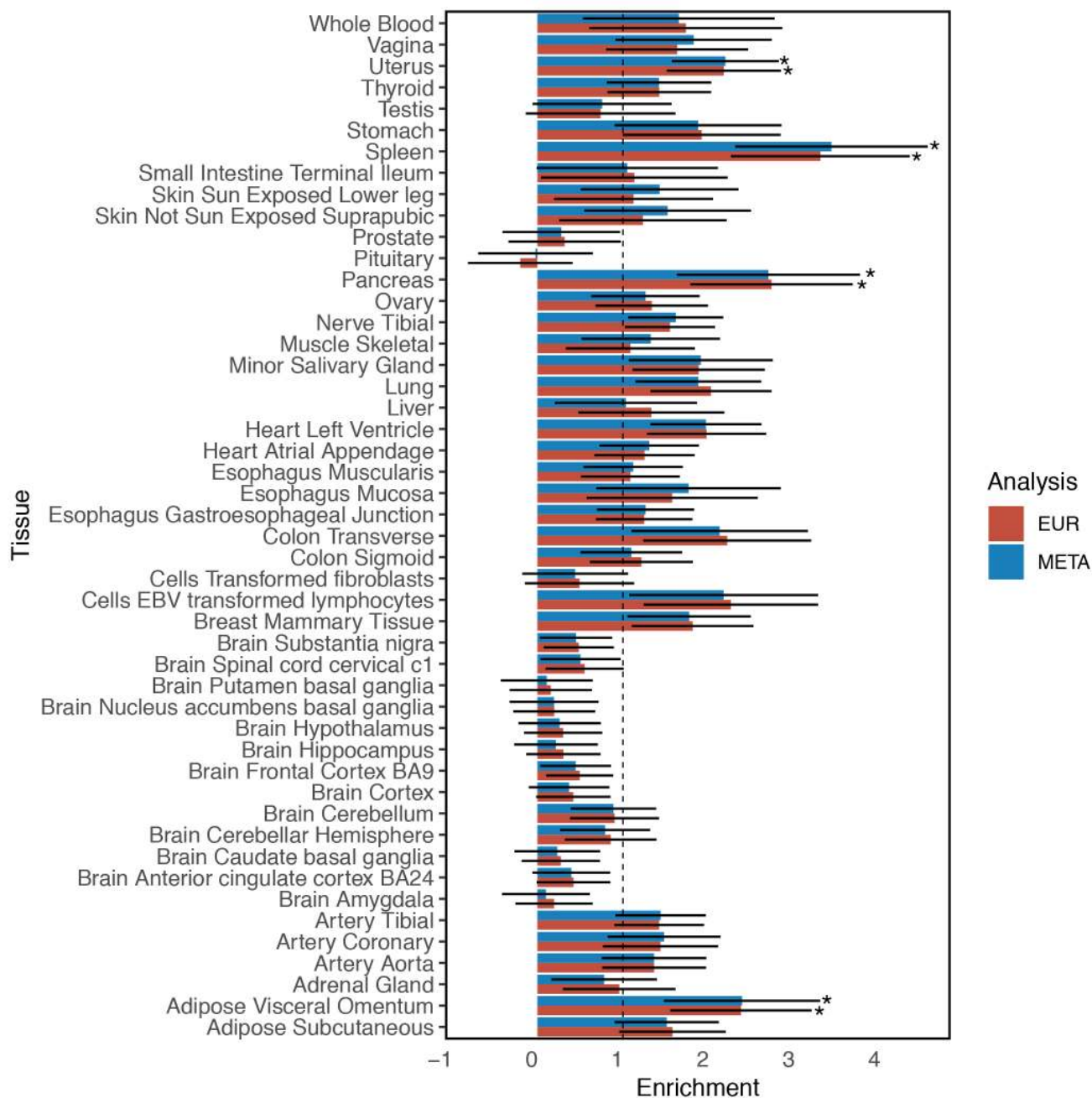


(b)



(c)

Supplementary Figure 19: Genetic correlation and covariance analyses. (a) Significant genetic correlations between GenOMICC primary analysis (EUR vs UK Biobank) of severe COVID-19 and complex traits. Genetic correlations were tested via genetic covariances using high-definition likelihood (HDL) between COVID-19 EUR ancestry GWAS and 818 complex traits GWAS summary statistics. Displayed are significant discoveries at 5% level after Bonferroni correction for 818 tests. Whiskers represent 95% confidence intervals. (b,c) Validation of discovered genetic correlations between severe COVID-19 and complex traits based on GWAS with different control groups: (b) using controls from 100,000 genomes project and (c) closely-matched controls from UK Biobank (see Supplementary Figure 14). HDL was used to estimate the genetic covariances. Genetic correlations are not reported due to estimated COVID-19 heritabilities being close to zero.



Supplementary Figure 20: Heritability enrichment analysis of COVID-19 across human tissues. Enrichment of COVID-19 heritability in 48 tissues was performed using stratified LD score regression by estimating the heritability among the top 10% specifically expressed genes in each tissue. The enrichment statistics represent whether the observed heritability on tissue-specific genes was higher than expected (Enrichment = 1). The error bars represent standard errors centred around mean enrichment estimates. Results are shown for GenOMICC EUR vs UK Biobank (primary analysis) (EUR) and GenOMICC trans-ethnic meta-analysis (META).

Contributors

GenOMICC consortium

(Recruiting sites are listed in descending order of the number of patients recruited per site)

GenOMICC co-investigators Sara Clohisey¹, Peter Horby²¹, Johnny Millar¹, Julian Knight¹⁴, Hugh Montgomery²⁹, David Maslove²⁵, Lowell Ling²⁶, Alistair Nichol²², Charlotte Summers¹⁵, Tim Walsh¹¹, Charles Hinds²⁰, Calum Semple³⁷, Peter Openshaw³⁶, Manu Shankar-Hari¹⁶, Antonia Ho¹⁹, Danny McAuley²⁷, Chris Ponting², Kathy Rowan⁷, J. Kenneth Baillie^{1,11}.

Central management and laboratory team Fiona Griffiths¹, Wilna Oosthuyzen¹, Jen Meikle¹, Paul Finernan¹, James Furniss¹, Ellie McMaster¹, Andy Law¹, Sara Clohisey¹, J. Kenneth Baillie^{1,11}, Trevor Paterson¹, Tony Wackett¹, Ruth Armstrong¹, Lee Murphy⁶, Angie Fawkes⁶, Richard Clark⁶, Audrey Coutts⁶, Lorna Donnelly⁶, Tammy Gilchrist⁶, Katarzyna Hafezi⁶, Louise Macgillivray⁶, Alan Maclean⁶, Sarah McCafferty⁶, Kirstie Morrice⁶, Jane Weaver¹, Ceilia Boz¹, Ailsa Golightly¹, Mari Ward¹, Hanning Mal¹, Helen Szoor-McElhinney¹, Adam Brown¹, Ross Hendry¹, Andrew Stenhouse¹, Louise Cullum¹, Dawn Law¹, Sarah Law¹, Rachel Law¹, Max Head Fourman¹, Maaïke Swets¹, Nicky Day¹, Filip Taneski¹, Esther Duncan¹, Marie Zechner¹, Nicholas Parkinson¹.

Data analysis team Erola Pairo-Castineira, Sara Clohisey, Lucija Klaric, Andrew D. Bretherick, Konrad Rawlik, Dorota Pasko, Susan Walker, Nick Parkinson, Max Head Fourman, Clark D Russell, James Furniss, Anne Richmond, Elvina Gountouna, David Harrison, Bo Wang, Yang Wu, Alison Meynert, Athanasios Kousathanas, Loukas Moutsianas, Zhijian Yang, Ranran Zhai, Chenqing Zheng, Graeme Grimes, Jonathan Millar, Barbara Shih, Marie Zechner, Jian Yang, Xia Shen, Chris P. Ponting, Albert Tenesa, Kathy Rowan, Andrew Law, Veronique Vitart, James F. Wilson, J. Kenneth Baillie.

Barts Health NHS Trust, London, UK D Collier^{†,38}, S Wood^{§,38}, A Zak^{§,38}, C Borra³⁸, M Matharu³⁸, P May³⁸, Z Alldis³⁸, O Mitchelmore³⁸, R Bowles³⁸, A Easthorpe³⁸, F Bibi³⁸, I Lancoma-Malcolm³⁸, J Gurasashvili³⁸, J Pheby³⁸, J Shiel³⁸, M Bolton³⁸, M Patel³⁸, M Taylor³⁸, O Zongo³⁸, P Ebanu³⁸, P Harding³⁸, R Astin-Chamberlain³⁸, Y Choudhury³⁸, A Cox³⁸, D Kallon³⁸, M Burton³⁸, R Hall³⁸, S Blowes³⁸, Z Prime³⁸, J Biddle³⁸, O Prysazhna³⁸, T Newman³⁸, C Tierney³⁸, J Kassam³⁸.

Guys and St Thomas' Hospital, London, UK M Shankar-Hari^{†,39}, M Ostermann^{†,39}, S Campos^{§,39}, A Bociek³⁹, R Lim³⁹, N Grau³⁹, T O Jones³⁹, C Whitton³⁹, M Marotti³⁹, G Arbane³⁹.

James Cook University Hospital, Middlesburgh, UK S. Bonner^{†,40}, K Hugill⁴⁰, J Reid⁴⁰.

The Royal Liverpool University Hospital, Liverpool, UK I Welters^{†,41}, V Waugh^{§,41}, K Williams⁴¹, D Shaw⁴¹, J Fernandez Roman⁴¹, M Lopez Martinez⁴¹, E Johnson⁴¹, A Waite⁴¹, B Johnson⁴¹, O Hamilton⁴¹, S Mulla⁴¹.

King's College Hospital, London, UK M McPhail^{†,42}, J Smith⁴².

Royal Infirmary of Edinburgh, Edinburgh, UK J K Baillie^{†,43}, L Barclay^{§,43}, D Hope⁴³, C McCulloch⁴³, L McQuillan⁴³, S Clark⁴³, J Singleton⁴³, K Priestley⁴³, N Rea⁴³, M Callaghan⁴³, R Campbell⁴³, G Andrew⁴³, L Marshall⁴³.

John Radcliffe Hospital, Oxford, UK S McKechnie^{†,44}, P Hutton^{§,44}, A Bashyal⁴⁴, N Davidson⁴⁴.

Addenbrooke's Hospital, Cambridge, UK C Summers^{†,45}, P Polgarova^{§,45}, K Stroud⁴⁵, N Pathan⁴⁵, K Elston⁴⁵, S Agrawal⁴⁵.

Morrison Hospital, Swansea, UK C Battle^{†,46}, L Newey^{†,46}, T Rees^{§,46}, R Harford⁴⁶, E Brinkworth⁴⁶, M Williams⁴⁶, C Murphy⁴⁶.

Ashford and St Peter's Hospital, Surrey, UK I White^{†,47}, M Croft^{§,47}.

Royal Stoke University Hospital, Staffordshire, UK N Bandla^{†,48}, M Gellamucho^{§,48}, J Tomlinson⁴⁸, H Turner⁴⁸, M Davies⁴⁸, A Quinn⁴⁸, I Hussain⁴⁸, C Thompson⁴⁸, H Parker⁴⁸, R Bradley⁴⁸, R Griffiths⁴⁸.

Queen Elizabeth Hospital, Birmingham, UK J. Scriven^{†,49}, J Gill⁴⁹.

Glasgow Royal Infirmary, Glasgow, UK A Puxty^{†,50}, S Cathcart^{§,50}, D Salutous⁵⁰, L Turner⁵⁰, K Duffy⁵⁰, K Puxty⁵⁰.

Kingston Hospital, Surrey, UK A Joseph^{†,51}, R Hermangrant^{§,51}, R Simms⁵¹, A Swain⁵¹, A Naranjo⁵¹, R Crowe⁵¹, K Sollesta⁵¹, A Loveridge⁵¹, D Baptista⁵¹, E Morino⁵¹.

The Tunbridge Wells Hospital and Maidstone Hospital, Kent, UK M Davey^{†,52}, D Golden^{†,52}, J Jones^{§,52}.

North Middlesex University Hospital NHS trust, London, UK J Moreno Cuesta^{†,53}, A Haldeos^{†,53}, D Bakthavatsalam^{§,53}, R Vincent^{§,53}, M Elhassan⁵³, K Xavier⁵³, A Ganesan⁵³, D Purohit M Abdelrazik⁵³.

Bradford Royal Infirmary, Bradford, UK J Morgan^{†,54}, L Akeroyd^{§,54}, S Bano⁵⁴, D Warren⁵⁴, M Bromley⁵⁴, K Sellick⁵⁴, L Gurr⁵⁴, B Wilkinson⁵⁴, V Nagarajan⁵⁴, P Szedlak⁵⁴.

Blackpool Victoria Hospital, Blackpool, UK J Cupitt^{†,55}, E Stoddard^{§,55}, L Benham^{§,55}, S Preston⁵⁵, N Slawson⁵⁵, Z Bradshaw⁵⁵, J brown⁵⁵, M Caswell⁵⁵, S Melling⁵⁵.

Countess of Chester Hospital, Chester, UK P Bamford^{†,56}, M Faulkner^{§,56}, K Cawley^{§,56}, H Jeffrey^{§,56}, E London⁵⁶, H Sainsbury⁵⁶, I Nagra⁵⁶, F Nasir⁵⁶, Ce Dunmore⁵⁶, R Jones⁵⁶, A Abraheem⁵⁶, M Al-Moasseb⁵⁶, R Girach⁵⁶.

Wythenshawe Hospital, Manchester, UK C Brantwood^{†,57}, P Alexander^{†,57}, J Bradley-Potts^{§,57}, S Allen⁵⁷, T Felton⁵⁷.

St George's Hospital, London, UK S Manna^{†,58}, S Farnell-Ward^{†,58}, S Leaver^{†,58}, J Queiroz^{§,58}, E Maccacari^{§,58}, D Dawson⁵⁸, C Castro Delgado⁵⁸, R Pepermans Saluzzio⁵⁸, O Ezeobu⁵⁸, L Ding⁵⁸, C Sicut⁵⁸, R Kanu⁵⁸, G Durrant⁵⁸, J Teixeira⁵⁸, A Harrison⁵⁸, T Samakomva⁵⁸.

Good Hope Hospital, Birmingham, UK J Scriven^{†,59}, H Willis⁵⁹, B Hopkins^{§,59}, L Thrasyvoulou^{§,59}.

Stepping Hill Hospital, Stockport, UK M Jackson^{†,60}, A Zaki^{†,60}, C Tibke^{§,60}, S Bennett⁶⁰, W Woodyatt⁶⁰, A Kent⁶⁰, E Goodwin⁶⁰.

Manchester Royal Infirmary, Manchester, UK C Brandwood^{†,61}, R Clark⁶¹, L Smith⁶¹.

Royal Alexandra Hospital, Paisley, UK K Rooney^{†,62}, N Thomson^{§,62}, N Rodden^{§,62}, E Hughes^{§,62}, D McGlynn^{§,62}, C Clark^{§,62}, P Clark^{§,62}, L Abel^{§,62}, R Sundaram⁶², L Gemmell⁶², M Brett⁶², J Hornsby⁶², P MacGoey⁶², R Price⁶², B Digby⁶², P O'Neil⁶², P McConnell⁶², P Henderson⁶².

Queen Elizabeth University Hospital, Glasgow, UK S Henderson^{†,63}, M Sim^{†,63}, S Kennedy-Hay^{§,63}, C McParland⁶³, L Rooney⁶³, N Baxter⁶³.

Queen Alexandra Hospital, Portsmouth, UK D Pogson^{†,64}, S Rose^{§,64}, Z Daly⁶⁴, L Brimfield⁶⁴.

BHRUT (Barking Havering) - Queens Hospital and King George Hospital, Essex, UK M K Phull^{†,65}, M Hussain^{†,65}, T Pogreban^{§,65}, L Rosaroso^{§,65}, E Salciute L Grauslyte⁶⁵.

University College Hospital, London, UK D Brealey^{†,66}, E Wraith^{†,66}, N MacCallum^{†,66}, G Bercades^{§,66}, I Hass⁶⁶, D Smyth⁶⁶, A Reyes⁶⁶, G Martir⁶⁶.

Royal Victoria Infirmary, Newcastle Upon Tyne, UK I D Clement^{†,67}, K Webster^{§,67}, C Hays⁶⁷, A Gulati⁶⁷.

Western Sussex Hospitals, West Sussex, UK L Hodgson^{†,68}, M Margaron^{†,68}, R Gomez^{§,68}, Y Baird^{§,68}, Y Thirlwall⁶⁸, L Folkes⁶⁸, A Butler⁶⁸, E Meadows⁶⁸, S Moore⁶⁸, D Raynard⁶⁸, H Fox⁶⁸, L Riddles⁶⁸, K King⁶⁸, S Kimber⁶⁸, G Hobden⁶⁸, A McCarthy⁶⁸, V Cannons⁶⁸, I Balagosa⁶⁸, I Chadbourn⁶⁸, A Gardner⁶⁸.

Salford Royal Hospital, Manchester, UK D Horner^{†,69}, D McLaughlan^{§,69}, B Charles^{§,69}, N Proudfoot⁶⁹, T Marsden⁶⁹, L Mc Morrow⁶⁹, B Blackledge⁶⁹, J Pendlebury⁶⁹, A Harvey⁶⁹, E Apetri⁶⁹, C Basikolo⁶⁹, L Catlow⁶⁹, R Doonan⁶⁹, K Knowles⁶⁹, S Lee⁶⁹, D Lomas⁶⁹, C Lyons⁶⁹, J Perez⁶⁹, M Poulaka⁶⁹, M Slaughter⁶⁹, K Slevin⁶⁹, M Taylor⁶⁹, V Thomas⁶⁹, D Walker⁶⁹, J Harris⁶⁹.

The Royal Oldham Hospital, Manchester, UK A Drummond^{†,70}, R Tully^{†,70}, J Dearden^{§,70}, J Philbin⁷⁰, S Munt⁷⁰, C Rishton⁷⁰, G O'Connor⁷⁰, M Mulcahy⁷⁰, E Dobson⁷⁰, J Cuttler⁷⁰, M Edward⁷⁰.

Pinderfields General Hospital, Wakefield, UK A Rose^{†,71}, B Sloan^{†,71}, S Buckley^{§,71}, H Brooke⁷¹, E Smithson⁷¹, R Charlesworth⁷¹, R Sandu⁷¹, M Thirumaran⁷¹, V Wagstaff⁷¹, J Cebrian Suarez⁷¹.

Basildon Hospital, Basildon, UK A Kaliappan^{†,72}, M Vertue^{§,72}, A Nicholson⁷², J Riches⁷², A Solesbury⁷², L Kittridge⁷², M Forsey⁷², G Maloney⁷².

University Hospital of Wales, Cardiff, UK J Cole^{†,73}, M Davies⁷³, R Davies⁷³, H Hill⁷³, E Thomas⁷³, A Williams⁷³, D Duffin⁷³, B Player⁷³.

Broomfield Hospital, Chelmsford, UK J Radhakrishnan^{†,74}, S Gibson⁷⁴, A Lyle⁷⁴, F McNeela⁷⁴.

Royal Brompton Hospital, London, UK B Patel^{†,75}, M Gummadi^{§,75}, G Sloane⁷⁵, N Dormand⁷⁵, S Salmi⁷⁵, Z Farzad⁷⁵, D Cristiano⁷⁵, K Liyanage⁷⁵, V Thwaites⁷⁵, M Varghese⁷⁵.

Nottingham University Hospital, Nottingham, UK M Meredith^{†,76}.

Royal Hallamshire Hospital and Northern General Hospital, Sheffield, UK G Mills^{†,77}, J Willson^{§,77}, K Harrington⁷⁷, B Lenagh⁷⁷, K Cawthron⁷⁷, S Masuko⁷⁷, A Raithatha⁷⁷, K Bauchmuller⁷⁷, N Ahmad⁷⁷, J Barker⁷⁷, Y Jackson⁷⁷, F Kibutu⁷⁷, S Bird⁷⁷.

Royal Hampshire County Hospital, Hampshire, UK G Watson^{†,78}, J Martin^{§,78}, E Bevan⁷⁸, C Wrey Brown⁷⁸, D Trodd⁷⁸.

Queens Hospital Burton, Burton-On-Trent, UK K English^{†,79}, G Bell^{§,79}, L Wilcox^{§,79}, A Katary⁷⁹.

New Cross Hospital, Wolverhampton, UK S Gopal^{†,80}, V Lake^{§,80}, N Harris^{§,80}, S Metherell⁸⁰, E Radford⁸⁰.

Heartlands Hospital, Birmingham, UK J Scriven^{†,81}, F Moore⁸¹, H Bancroft⁸¹, J Daglish⁸¹, M Sangombe⁸¹, M Carmody⁸¹, J Rhodes⁸¹, M Bellamy⁸¹.

Walsall Manor Hospital, Walsall, UK A Garg^{†,82}, A Kuravi^{†,82}, E Virgilio^{§,82}, P Ranga^{§,82}, J Butler^{§,82}, L Botfield⁸², C Dexter⁸², J Fletcher⁸².

Stoke Mandeville Hospital, Buckinghamshire, UK P Shanmugasundaram^{†,83}, G Hambrook^{§,83}, I Burn⁸³, K Manso⁸³, D Thornton⁸³, J Tebbutt⁸³, R Penn⁸³.

Sandwell General Hospital, Birmingham, UK J Hulme^{†,84}, S Hussain^{§,84}, Z Maqsood⁸⁴, S Joseph⁸⁴, J Colley⁸⁴, A Hayes⁸⁴, C Ahmed⁸⁴, R Haque⁸⁴, S Clamp⁸⁴, R Kumar⁸⁴, M Purewal⁸⁴, B Baines⁸⁴.

Royal Berkshire NHS Foundation Trust, Berkshire, UK M Frise^{†,85}, N Jaques⁸⁵, H Coles^{§,85}, J Caterson⁸⁵, S Gurung Rai⁸⁵, M Brunton⁸⁵, E Tilney⁸⁵, L Keating⁸⁵, A Walden⁸⁵.

Charing Cross Hospital, St Mary's Hospital and Hammersmith Hospital, London, UK D Antcliffe^{†,86}, A Gordon^{†,86}, M Templeton^{§,86}, R Rojo⁸⁶, D Banach⁸⁶, S Sousa Arias⁸⁶, Z Fernandez⁸⁶, P Coghlan⁸⁶.

Dumfries and Galloway Royal Infirmary, Dumfries, UK D Williams^{†,87}, C Jardine^{§,87}.

Bristol Royal Infirmary, Bristol, UK J Bewley^{†,88}, K Sweet^{§,88}, L Grimmer⁸⁸, R Johnson⁸⁸, Z Garland⁸⁸, B Gumbrill⁸⁸.

Royal Sussex County Hospital, Brighton, UK C Phillips^{†,89}, L Ortiz-Ruiz de Gordo^{†,89}, E Peasgood⁸⁹.

Whiston Hospital, Prescot, UK A Tridente^{†,90}, K Shuker S Greer^{§,90}.

Royal Glamorgan Hospital, Cardiff, UK C Lynch^{†,91}, C Potheary^{§,91}, L Roche^{§,91}, B Deacon^{§,91}, K Turner⁹¹, J Singh⁹¹, G Sera Howe⁹¹.

King's Mill Hospital, Nottingham, UK P Paul^{†,92}, M Gill^{§,92}, I Wynter⁹², V Ratnam⁹², S Shelton⁹².

Fairfield General Hospital, Bury, UK J Naisbitt^{†,93}, J Melville⁹³.

Western General Hospital, Edinburgh, UK R Baruah^{†,94}, S Morrison^{§,94}.

Northwick Park Hospital, London, UK A McGregor^{†,95}, V Parris^{†,95}, M Mpelembue^{§,95}, S Srikanan⁹⁵, C Dennis⁹⁵, A Sukha⁹⁵.

Royal Preston Hospital, Preston, UK A Williams^{†,96}, M Verlande⁹⁶.

Royal Derby Hospital, Derby, UK K Holding^{†,97}, K Riches^{§,97}, C Downes⁹⁷, C Swan⁹⁷.

Sunderland Royal Hospital, Sunderland, UK A Rostron^{†,98}, A Roy^{†,98}, L Woods^{§,98}, S Cornell⁹⁸, F Wakinshaw⁹⁸.

Royal Surrey County Hospital, Guildford, UK B Creagh-Brown^{†,99}, H Blackman^{§,99}, A Salberg^{§,99}, E Smith⁹⁹, S Donlon⁹⁹, S Mtuwa⁹⁹, N Michalak-Glinska⁹⁹, S Stone⁹⁹, C Beazley⁹⁹, V Pristopan⁹⁹.

Derriford Hospital, Plymouth, UK N Nikitas^{†,100}, L Lankester^{§,100}, C Wells¹⁰⁰.

Croydon University Hospital, Croydon, UK A S Raj^{†,101}, K Fletcher^{†,101}, R Khade^{§,101}, G Tsinaslanidis¹⁰¹.

Victoria Hospital, Kirkcaldy, UK M McMahon^{†,102}, S Fowler^{§,102}, A McGregor^{§,102}, T Coventry¹⁰².

Milton Keynes University Hospital, Milton Keynes, UK R Stewart^{†,103}, L Wren^{§,103}, E Mwaura^{§,103}, L Mew^{§,103}, A Rose^{§,103}, D Scaletta¹⁰³, F Williams¹⁰³.

Barnsley Hospital, Barnsley, UK K Inweregbu^{†,104}, A Nicholson^{§,104}, N Lancaster¹⁰⁴, M Cunningham¹⁰⁴, A Daniels¹⁰⁴, L Harrison¹⁰⁴, S Hope¹⁰⁴, S Jones¹⁰⁴, A Crew¹⁰⁴, G Wray¹⁰⁴, J Matthews¹⁰⁴, R Crawley¹⁰⁴.

York Hospital, York, UK J Carter^{†,105}, I Birkinshaw^{§,105}, J Ingham¹⁰⁵, Z Scott¹⁰⁵, K Howard¹⁰⁵, R Joy¹⁰⁵, S Roche¹⁰⁵.

University Hospital of North Tees, Stockton on Tees, UK M Clark^{†,106}, S Purvis^{§,106}.

University Hospital Wishaw, Wishaw, UK A Morrison^{†,107}, D Strachan^{†,107}, M Taylor^{§,107}, S Clements¹⁰⁷, K Black¹⁰⁷.

Whittington Hospital, London, UK C Parmar^{†,108}, A Altabaibeh^{†,108}, K Simpson^{§,108}, L Mostoles^{§,108}, K Gilbert¹⁰⁸, L Ma¹⁰⁸, A Alvaro¹⁰⁸.

Southmead Hospital, Bristol, UK M Thomas^{†,109}, B Faulkner^{§,109}, R Worner¹⁰⁹, K Hayes¹⁰⁹, E Gendall¹⁰⁹, H Blakemore¹⁰⁹, B Borislavova¹⁰⁹, E Goff¹⁰⁹.

The Royal Papworth Hospital, Cambridge, UK A Vuylsteke^{†,110}, L Mwaura^{†,110}, J Zamikula^{§,110}, L Garner¹¹⁰, A Mitchell¹¹⁰, S Mephram¹¹⁰, L Cagova¹¹⁰, A Fofano¹¹⁰, H Holcombe¹¹⁰, K Praman¹¹⁰.

Royal Gwent Hospital, Newport, UK T Szakmany^{†,111}, A E Heron^{§,111}, S Cherian^{§,111}, S Cutler¹¹¹, A Roynon-Reed¹¹¹.

Norfolk and Norwich University hospital (NNUH), Norwich, UK G Randell^{†,112}, K Convery^{§,112}, K Stammers D Fottrell-Gould¹¹², L Hudig¹¹², J Keshet-price¹¹².

Great Ormond St Hospital and UCL Great Ormond St Institute of Child Health NIHR Biomedical Research Centre, London, UK M Peters^{†,113}, L O'Neill^{§,113}, S Ray¹¹³, H Belfield¹¹³, T McHugh¹¹³, G Jones¹¹³, O Akinkugbe¹¹³, A Tomas¹¹³, E Abaleke¹¹³, E Beech¹¹³, H Meghari¹¹³, S Yussuf¹¹³, A Bamford¹¹³.

Airedale General Hospital, Keighley, UK B Hairsine^{†,114}, E Dooks^{§,114}, F Farquhar^{§,114}, S Packham^{§,114}, H Bates^{§,114}, C McParland¹¹⁴, L Armstrong¹¹⁴.

Aberdeen Royal Infirmary, Aberdeen, UK C Kaye^{†,115}, A Allan^{§,115}, J Medhora¹¹⁵, J Liew¹¹⁵, A Botello¹¹⁵, F Anderson¹¹⁵.

Southampton General Hospital, Southampton, UK R Cusack^{†,116}, H Golding^{§,116}, K Prager¹¹⁶, T Williams¹¹⁶, S Leggett¹¹⁶, K Golder¹¹⁶, M Male¹¹⁶, O Jones¹¹⁶, K Criste¹¹⁶, M Marani¹¹⁶.

Russell's Hall Hospital, Dudley, UK Dr. Anumakonda^{†,117}, V Amin^{†,117}, K Karthik^{†,117}, R Kausar^{†,117}, E Anastasescu^{§,117}, K Reid^{§,117}, Ms. Jacqui¹¹⁷.

Rotherham General Hospital, Rotherham, UK A Hormis^{†,118}, R Walker^{§,118}, D Collier¹¹⁸.

North Manchester General Hospital, Manchester, UK T Duncan^{†,119}, A Uriel^{†,119}, A Ustianowski^{†,119}, H T-Michael^{§,119}, M Bruce¹¹⁹, K Connolly¹¹⁹, K Smith¹¹⁹.

Basingstoke and North Hampshire Hospital, Basingstoke, UK R Partridge^{†,120}, D Griffin¹²⁰, M McDonald¹²⁰, N Muchenje¹²⁰.

Royal Free Hospital, London, UK D Martin^{†,121}, H Filipe^{§,121}, C Eastgate¹²¹, C Jackson¹²¹.

Hull Royal Infirmary, Hull, UK A Gratrix^{†,122}, L Foster¹²², V Martinson¹²², E Stones¹²², Caroline Abernathy¹²², P Parkinson¹²².

Harefield Hospital, London, UK A Reed^{†,123}, C Prendergast^{§,123}, P Rogers¹²³, M Woodruff¹²³, R Shokkar¹²³, S Kaul¹²³, A Barron¹²³, C Collins¹²³.

Chesterfield Royal Hospital Foundation Trust, Chesterfield, UK S Beavis^{†,124}, A Whileman^{§,124}, K Dale¹²⁴, J Hawes¹²⁴, K Pritchard¹²⁴, R Gascoyne¹²⁴, L Stevenson¹²⁴.

Barnet Hospital, London, UK R Jha^{†,125}, L Lim^{§,125}, V Krishnamurthy¹²⁵.

Aintree University Hospital, Liverpool, UK R Parker^{†,126}, I Turner-Bone^{§,126}, L Wilding¹²⁶, A Reddy¹²⁶.

St James's University Hospital and Leeds General Infirmary, Leeds, UK S Whiteley^{†,127}, E Wilby^{§,127}, C Howcroft¹²⁷, A Aspinwall¹²⁷, S Charlton¹²⁷, B Ogg¹²⁷.

Glan Clwyd Hospital, Bodelwyddan, UK D Menzies^{†,128}, R Pugh^{†,128}, E Allan^{§,128}, R Lean¹²⁸, F Davies¹²⁸, J Easton¹²⁸, X Qiu¹²⁸, S Kumar¹²⁸, K Darlington¹²⁸.

University Hospital Crosshouse, Kilmarnock, UK G Houston^{†,129}, P O'Brien¹²⁹, T Geary¹²⁹, J Allan¹²⁹, A Meikle¹²⁹.

Royal Bolton Hospital, Bolton, UK G Hughes^{†,130}, M Balasubramaniam^{†,130}, S Latham^{§,130}, E McKenna^{§,130}, R Flanagan¹³⁰.

Princess of Wales Hospital, Llantrisant, UK S Sathe^{†,131}, E Davies¹³¹, L Roche¹³¹.

Pilgrim Hospital, Lincoln, UK M Chablani^{†,132}, A Kirkby¹³², K Netherton¹³², S Archer¹³².

Northumbria Healthcare NHS Foundation Trust, North Shields, UK B Yates^{†,133}, C Ashbrook-Raby¹³³.

Ninewells Hospital, Dundee, UK S Cole^{†,134}, M Casey^{†,134}, L Cabrelli^{§,134}, S Chapman¹³⁴, M Casey¹³⁴, P Austin¹³⁴, A Hutcheon¹³⁴, C Whyte¹³⁴, C Almaden-Boyle¹³⁴.

Lister Hospital, Stevenage, UK N Pattison^{†,135}, C Cruz^{§,135}.

Bedford Hospital, Bedford, UK A Vochin^{†,136}, H Kent¹³⁶, A Thomas¹³⁶, S Murdoch^{†,136}, B David^{§,136}, M Penacerrada¹³⁶, G Lubimbi¹³⁶, V Bastion¹³⁶, R Wulandari¹³⁶, J Valentine¹³⁶, D Clarke¹³⁶.

Royal United Hospital, Bath, UK A Serrano-Ruiz^{†,137}, S Hierons^{§,137}, L Ramos¹³⁷, C Demetriou¹³⁷, S Mitchard¹³⁷, K White¹³⁷.

Royal Bournemouth Hospital, Bournemouth, UK N White^{†,138}, S Pitts^{§,138}, D Branney^{§,138}, J Frankham¹³⁸.

The Great Western Hospital, Swindon, UK M Watters^{†,139}, H Langton^{§,139}, R Prout¹³⁹.

Watford General Hospital, Watford, UK V Page^{†,140}, T Varghes¹⁴⁰.

University Hospital North Durham, Darlington, UK A Cowton^{†,141}, A Kay^{§,141}, K Potts¹⁴¹, M Birt¹⁴¹, M Kent¹⁴¹, A Wilkinson¹⁴¹.

Tameside General Hospital, Ashton Under Lyne, UK E Jude^{†,142}, V Turner^{§,142}, H Savill¹⁴², J McCormick¹⁴², M Clark¹⁴², M Coulding¹⁴², S Siddiqui¹⁴², O Mercer¹⁴², H Rehman¹⁴², D Potla¹⁴².

Princess Royal Hospital Shrewsbury and Royal Shrewsbury Hospital, Shrewsbury, UK N Capps^{†,143}, D Donaldson^{§,143}, J Jones¹⁴³, H Button¹⁴³, T Martin¹⁴³, K Hard¹⁴³, A Agasou¹⁴³, L Tonks¹⁴³, T Arden¹⁴³, P Boyle¹⁴³, M Carnahan¹⁴³, J Strickley¹⁴³, C Adams¹⁴³, D Childs¹⁴³, R Rikunen¹⁴³, M Leigh¹⁴³, M Breekes¹⁴³, R Wilcox¹⁴³, A Bowes¹⁴³, H Tiveran¹⁴³, F Hurford¹⁴³, J Summers¹⁴³, A Carter¹⁴³, Y Hussain¹⁴³, L Ting¹⁴³, A Javaid¹⁴³, N Motherwell¹⁴³, H Moore¹⁴³, H Millward¹⁴³, S Jose¹⁴³, N Schunki¹⁴³, A Noakes¹⁴³, C Clulow¹⁴³.

Arrowe Park Hospital, Wirral, UK G Sadera^{†,144}, R Jacob¹⁴⁴, C Jones¹⁴⁴.

The Queen Elizabeth Hospital, King's Lynn, UK M Blunt^{†,145}, Z Coton^{§,145}, H Curgenvin¹⁴⁵, S Mohamed Ally¹⁴⁵, K Beaumont¹⁴⁵, M Elsaadany¹⁴⁵, K Fernandes¹⁴⁵, I Ali Mohamed Ali¹⁴⁵, H Rangarajan¹⁴⁵, V Sarathy¹⁴⁵, S Selvanayagam¹⁴⁵, D Vedage¹⁴⁵, M White¹⁴⁵.

Royal Blackburn Teaching Hospital, Blackburn, UK M Smith^{†,146}, N Truman^{†,146}, S Chukkambotla^{†,146}, S Keith^{§,146}, J Cockerill-Taylor^{§,146}, J Ryan-Smith¹⁴⁶, R Bolton¹⁴⁶, P Springle¹⁴⁶, J Dykes¹⁴⁶, J Thomas¹⁴⁶, M Khan¹⁴⁶, M T Hijazi¹⁴⁶, E Massey¹⁴⁶, G Croston¹⁴⁶.

Poole Hospital, Poole, UK H Reschreite r^{†,147}, J Camsooksai^{§,147}, S Patch¹⁴⁷, S Jenkins¹⁴⁷, C Humphrey¹⁴⁷, B Wadams¹⁴⁷, J Camsooksai¹⁴⁷.

Medway Maritime Hospital, Gillingham, UK N Bhatia^{†,148}, M Msiska^{§,148}, O Adanini¹⁴⁸.

Warwick Hospital, Warwick, UK B Attwood^{†,149}, P Parsons^{§,149}.

The Royal Marsden Hospital, London, UK K Tatham^{†,150}, S Jhanji^{†,150}, E Black^{§,150}, A Dela Rosa¹⁵⁰, R Howle¹⁵⁰, B Thomas¹⁵⁰, T Bemand¹⁵⁰, R Raobaikady¹⁵⁰.

The Princess Alexandra Hospital, Harlow, UK R Saha^{†,151}, N Staines^{§,151}, A Daniel¹⁵¹, J Finn¹⁵¹.

Musgrove Park Hospital, Taunton, UK J Hutter^{†,152}, P Doble^{§,152}, C Shovelton¹⁵², C Pawley¹⁵².

George Eliot Hospital NHS Trust, Nuneaton, UK T Kannan^{†,153}, M Hill¹⁵³.

East Surrey Hospital, Redhill, UK E Combes^{†,154}, S Monnery^{†,154}, T Joefield¹⁵⁴.

West Middlesex Hospital, Isleworth, UK M Popescu^{†,155}, M Thankachen¹⁵⁵, M Oblak¹⁵⁵.

Warrington General Hospital, Warrington, UK J Little^{†,156}, S McIvor¹⁵⁶, A Brady^{†,156}, H Whittle¹⁵⁶, H Prady¹⁵⁶, R Chan¹⁵⁶.

Southport and Formby District General Hospital, Ormskirk, UK A Ahmed^{†,157}, A Morris¹⁵⁷.

Royal Devon and Exeter Hospital, Exeter, UK C Gibson^{†,158}, E Gordon^{§,158}, S Keenan^{§,158}, H Quinn^{§,158}, S Benyon¹⁵⁸, S Marriott¹⁵⁸, L Zitter¹⁵⁸, L Park¹⁵⁸, K Baines¹⁵⁸.

Macclesfield District General Hospital, Macclesfield, UK M Lyons^{†,159}, M Holland^{§,159}, N Keenan^{§,159}, M Young¹⁵⁹.

Borders General Hospital, Melrose, UK S Garrioch^{†,160}, J Dawson^{§,160}, M Tolson¹⁶⁰.

Birmingham Children's Hospital, Birmingham, UK B Scholefield^{†,161}, R Bi¹⁶¹.

William Harvey Hospital, Ashford, UK N Richardson^{†,162}, N Schumacher^{†,162}, T Cosier¹⁶², G Millen¹⁶².

Royal Lancaster Infirmary, Lancaster, UK A Higham^{†,163}, K Simpson^{§,163}.

Queen Elizabeth the Queen Mother Hospital, Margate, UK S Turki^{†,164}, L Allen^{§,164}, N Crisp^{§,164}, T Hazleton¹⁶⁴, A Knight¹⁶⁴, J Deery¹⁶⁴, C Price¹⁶⁴, S Turney¹⁶⁴, S Tilbey¹⁶⁴, E Beranova¹⁶⁴.

Liverpool Heart and Chest Hospital, Liverpool, UK D Wright^{†,165}, L Georg^{§,165}, S Twiss¹⁶⁵.

Darlington Memorial Hospital, Darlington, UK A Cowton^{†,166}, S Wadd^{§,166}, K Postlethwaite¹⁶⁶.

Southend University Hospital, Westcliff-on-Sea, UK P Gondo^{†,167}, B Masunda^{§,167}, A Kayani¹⁶⁷, B Hadebe¹⁶⁷.

Raigmore Hospital, Inverness, UK J Whiteside^{†,168}, R Campbell^{§,168}, N Clarke¹⁶⁸.

Salisbury District Hospital, Salisbury, UK P Donnison^{†,169}, F Trim¹⁶⁹, I Leadbitter¹⁶⁹.

Peterborough City Hospital, Peterborough, UK D Butcher^{†,170}, S O'Sullivan^{§,170}.

Ipswich Hospital, Ipswich, UK B Purewal^{†,171}, B Purewal^{§,171}, S Bell¹⁷¹, V Rivers¹⁷¹.

Hereford County Hospital, Worcester, UK R O'Leary^{†,172}, J Birch^{§,172}, E Collins^{§,172}, S Anderson^{§,172}, K Hammerton¹⁷², E Andrews¹⁷².

Furness General Hospital, Barrow-in-Furness, UK A Higham^{†,173}, K Burns^{§,173}.

Forth Valley Royal Hospital, Falkirk, UK I Edmond^{†,174}, D Salutous^{§,174}, A Todd¹⁷⁴, J Donnachie¹⁷⁴, P Turner¹⁷⁴, L Prentice¹⁷⁴, L Symon¹⁷⁴, N Runciman¹⁷⁴, F Auld¹⁷⁴.

Torbay Hospital, Torquay, UK M Halkes^{†,175}, P Mercer^{§,175}, L Thornton¹⁷⁵.

St Mary's Hospital, Newport, UK G Debreceni^{†,176}, J Wilkins¹⁷⁶, A Brown¹⁷⁶, V Crickmore¹⁷⁶.

Royal Manchester Children's Hospital, Manchester, UK G Subramanian^{†,177}, R Marshall^{§,177}, C Jennings^{§,177}, M Latif¹⁷⁷, L Bunni¹⁷⁷.

Royal Cornwall Hospital, Truro, UK M Spivey^{†,178}, S Bean¹⁷⁸, K Burt¹⁷⁸.

Queen Elizabeth Hospital Gateshead, Gateshead, UK V Linnett^{†,179}, J Ritzema^{§,179}, A Sanderson^{§,179}, W McCormick¹⁷⁹, M Bokhari¹⁷⁹.

Kent & Canterbury Hospital, Canterbury, UK R Kapoor^{†,180}, D Loader^{§,180}.

James Paget University Hospital NHS Trust, Great Yarmouth, UK A Ayers^{†,181}, W Harrison^{§,181}, J North¹⁸¹.

Darent Valley Hospital, Dartford, UK Z Belagodu^{†,182}, R Parasomthy^{†,182}, O Olufuwa^{§,182}, A Gherman¹⁸², B Fuller¹⁸², C Stuart¹⁸².

The Alexandra Hospital, Redditch and Worcester Royal Hospital, Worcester, UK O Kelsall^{†,183}, C Davis^{†,183}, L Wild^{§,183}, H Wood¹⁸³, J Thrush¹⁸³, A Durie¹⁸³, K Austin¹⁸³, K Archer¹⁸³, P Anderson¹⁸³, C Vigers¹⁸³.

Ysbyty Gwynedd, Bangor, UK C Thorpe^{†,184}, A Thomas^{§,184}, E Knights¹⁸⁴, N Boyle¹⁸⁴, A Price¹⁸⁴.

Yeovil Hospital, Yeovil, UK A Kubisz-Pudelko^{†,185}, D Wood^{§,185}, A Lewis¹⁸⁵, S Board¹⁸⁵, L Pippard¹⁸⁵, J Perry¹⁸⁵, K Beesley¹⁸⁵.

University Hospital Hairmyres, East Kilbride, UK A Rattray^{†,186}, M Taylor^{§,186}, E Lee¹⁸⁶, L Lennon¹⁸⁶, K Douglas¹⁸⁶, D Bell¹⁸⁶, R Boyle¹⁸⁶, L Glass¹⁸⁶, A Rattray¹⁸⁶.

Scunthorpe General Hospital, Scunthorpe, UK M Nauman Akhtar^{†,187}, K Dent^{§,187}, D Potoczna¹⁸⁷, S Pearson¹⁸⁷, E Horsley¹⁸⁷, S Spencer¹⁸⁷.

Princess Royal Hospital Brighton, West Sussex, UK C Phillips^{†,188}, D Mullan^{§,188}, D Skinner¹⁸⁸, J Gaylard¹⁸⁸, L Ortiz-Ruizdegordoa¹⁸⁸.

Lincoln County Hospital, Lincoln, UK R Barber^{†,189}, C Hewitt^{§,189}, A Hilldrith¹⁸⁹, S Shepardson¹⁸⁹, M Wills¹⁸⁹, K Jackson-Lawrence¹⁸⁹.

Homerton University Hospital, London, UK A Gupta^{†,190}, A Easthope^{†,190}, E Timlick^{§,190}, C Gorman¹⁹⁰.

Glangwili General Hospital, Camarthen, UK I Otaha^{†,191}, A Gales^{†,191}, S Coetzee^{§,191}, M Raj¹⁹¹, M Peiu¹⁹¹.

Ealing Hospital, Southall, UK V Parris^{†,192}, S Quaid^{§,192}, E Watson¹⁹².

Scarborough General Hospital, Scarborough, UK K Elliott^{†,193}, J Mallinson^{†,193}, B Chandler¹⁹³, A Turnbull¹⁹³.

Royal Albert Edward Infirmary, Wigan, UK A Quinn^{†,194}, C Finch¹⁹⁴, C Holl¹⁹⁴, J Cooper¹⁹⁴, A Evans¹⁹⁴.

Queen Elizabeth Hospital, Woolwich, London, UK W Khaliq^{†,195}, A Collins^{§,195}, E Treus Gude¹⁹⁵.

North Devon District Hospital, Barnstaple, UK N Love^{†,196}, L van Koutrik¹⁹⁶, J Hunt^{§,196}, D Kaye¹⁹⁶, E Fisher¹⁹⁶, A Brayne¹⁹⁶, V Tuckey¹⁹⁶, P Jackson¹⁹⁶, J Parkin¹⁹⁶.

National Hospital for Neurology and Neurosurgery, London, UK D Brealey^{†,197}, E Raith^{†,197}, A Tariq^{§,197}, H Houlden¹⁹⁷, A Tucci¹⁹⁷, J Hardy¹⁹⁷, E Moncur¹⁹⁷.

Eastbourne District General Hospital, East Sussex, UK and Conquest Hospital, East Sussex, UK J Highgate^{†,198}, A Cowley^{§,198}.

Diana Princess of Wales Hospital, Grimsby, UK A Mitra^{†,199}, R Stead^{§,199}, T Behan¹⁹⁹, C Burnett¹⁹⁹, M Newton¹⁹⁹, E Heeney¹⁹⁹, R Pollard¹⁹⁹, J Hatton¹⁹⁹.

The Christie NHS Foundation Trust, Manchester, UK A Patel^{†,200}, V Kasipandian^{†,200}, S Allibone^{§,200}, R M Genetu²⁰⁰.

Prince Philip Hospital, Lianelli, UK I Otahal^{†,201}, L O'Brien^{§,201}, Z Omar²⁰¹, E Perkins²⁰¹, K Davies²⁰¹.

Prince Charles Hospital, Merthyr Tydfil, UK D Tetla^{†,202}, C Potheary²⁰², B Deacon²⁰².

Golden Jubilee National Hospital, Clydebank, UK B Shelley^{†,203}, V Irvine^{§,203}.

Dorset County Hospital, Dorchester, UK S Williams^{†,204}, P Williams^{§,204}, J Birch²⁰⁴, J Goodsell²⁰⁴, R Tutton²⁰⁴, L Bough²⁰⁴, B Winter-Goodwin²⁰⁴.

Calderdale Royal Hospital, Halifax, UK R Kitson^{†,205}, J Pinnell^{†,205}, A Wilson^{§,205}, T Nortcliffe²⁰⁵, T Wood²⁰⁵, M Home²⁰⁵, K Holdroyd²⁰⁵, M Robinson²⁰⁵, KHanson²⁰⁵, R Shaw²⁰⁵, J Greig²⁰⁵, M Brady²⁰⁵, A Haigh²⁰⁵, L Matupe²⁰⁵, M Usher²⁰⁵, S Mellor²⁰⁵, S Dale²⁰⁵, L Gledhill²⁰⁵, L Shaw²⁰⁵, G Turner²⁰⁵, D Kelly²⁰⁵, B Anwar²⁰⁵, H Riley²⁰⁵, H Sturgeon²⁰⁵, A Ali²⁰⁵, L Thomis²⁰⁵, D Melia²⁰⁵, A Dance²⁰⁵, K Hanson²⁰⁵.

West Suffolk Hospital, Suffolk, UK S Humphreys^{†,206}, I Frost²⁰⁶, V Gopal²⁰⁶, J Godden²⁰⁶, A Holden²⁰⁶, S Swann²⁰⁶.

West Cumberland Hospital, Whitehaven, UK T Smith^{†,207}, M Clapham^{§,207}, U Poultney²⁰⁷, R Harper²⁰⁷, P Rice²⁰⁷.

University Hospital Lewisham, London, UK W Khaliq^{†,208}, R Reece-Anthony^{§,208}, B Gurung²⁰⁸.

St John's Hospital Livingston, Livingston, UK S Moultrie^{†,209}, M Odam²⁰⁹.

Sheffield Children's Hospital, Sheffield, UK A Mayer^{†,210}, A Bellini^{§,210}, A Pickard²¹⁰, J Bryant²¹⁰, N Roe²¹⁰, J Sowter²¹⁰.

Hinchingbrooke Hospital, Huntingdon, UK D Butcher^{†,211}, K Lang²¹¹, J Taylor²¹¹.

Glenfield Hospital, Leicester, UK P Barry^{†,212}.

Bronglais General Hospital, Aberystwyth, UK M Hobrok^{†,213}, H Tench^{§,213}, R Wolf-Roberts²¹³, H McGuinness²¹³, R Loosley²¹³.

Alder Hey Children's Hospital, Liverpool, UK D Hawcutt^{†,214}, L Rad²¹⁴, L O'Malley^{§,214}, P Saunderson²¹⁴, G Seddon²¹⁴, T Anderson²¹⁴, N Rogers²¹⁴.

University Hospital Monklands, Airdrie, UK J Ruddy^{†,215}, Margaret H^{§,215}, M Taylor^{§,215}, C Beith²¹⁵, A McAlpine²¹⁵, L Ferguson²¹⁵, P Grant²¹⁵, S MacFadyen²¹⁵, M McLaughlin²¹⁵, T Baird²¹⁵, S Rundell²¹⁵, L Glass²¹⁵, B Welsh²¹⁵, R Hamill²¹⁵, F Fisher²¹⁵.

Cumberland Infirmary, Carlisle, UK T Smith^{†,216}, J Gregory^{§,216}, A Brown²¹⁶.

† - PI

§ - Lead Nurse

¹Roslin Institute, University of Edinburgh, Easter Bush, Edinburgh, EH25 9RG, UK. ²¹Centre for Tropical Medicine and Global Health, Nuffield Department of Medicine, University of Oxford, Old Road Campus, Roosevelt Drive, Oxford, OX3 7FZ, UK. ¹⁴Wellcome Centre for Human Genetics, University of Oxford, Oxford, UK. ²⁹UCL Centre for Human Health and Performance, London, W1T 7HA, UK. ²⁵Department of Critical Care Medicine, Queen's University and Kingston Health Sciences Centre, Kingston, ON, Canada. ²⁶Department of Anaesthesia and Intensive Care, The Chinese University of Hong Kong, Prince of Wales Hospital, Hong Kong, China. ²²Clinical Research Centre at St Vincent's University Hospital, University College Dublin, Dublin, Ireland. ¹⁵Department of Medicine, University of Cambridge, Cambridge, UK. ¹¹Intensive Care Unit, Royal Infirmary of Edinburgh, 54 Little France Drive, Edinburgh, EH16 5SA, UK. ²⁰William Harvey Research Institute, Barts and the London School of Medicine and Dentistry, Queen Mary University of London, London EC1M 6BQ, UK. ³⁷University of Liverpool, Liverpool, UK. ³⁶National Heart & Lung Institute, Imperial College London (St Mary's Campus), Norfolk Place, Paddington, London W2 1PG, UK. ¹⁶Department of Intensive Care Medicine, Guy's and St. Thomas NHS Foundation Trust, London, UK. ¹⁹MRC-University of Glasgow Centre for Virus Research, Institute of Infection, Immunity and Inflammation, College of Medical, Veterinary and Life Sciences, University of Glasgow, Glasgow, UK. ²⁷Wellcome-Wolfson Institute for Experimental Medicine, Queen's University Belfast, Belfast, Northern Ireland, UK. ²MRC Human Genetics Unit, Institute of Genetics and Molecular Medicine, University of Edinburgh, Western General Hospital, Crewe Road, Edinburgh, EH4 2XU, UK. ⁷Intensive Care National Audit & Research Centre, London, UK. ⁶Edinburgh Clinical Research Facility, Western General Hospital, University of Edinburgh,

EH4 2XU, UK. ³⁸Barts Health NHS Trust, London, UK ³⁹Guys and St Thomas' Hospital, London, UK ⁴⁰James Cook University Hospital, Middlesbrough, UK ⁴¹The Royal Liverpool University Hospital, Liverpool, UK ⁴²King's College Hospital, London, UK ⁴³Royal Infirmary of Edinburgh, Edinburgh, UK ⁴⁴John Radcliffe Hospital, Oxford, UK ⁴⁵Addenbrooke's Hospital, Cambridge, UK ⁴⁶Morrison Hospital, Swansea, UK ⁴⁷Ashford and St Peter's Hospital, Surrey, UK ⁴⁸Royal Stoke University Hospital, Staffordshire, UK ⁴⁹Queen Elizabeth Hospital, Birmingham, UK ⁵⁰Glasgow Royal Infirmary, Glasgow, UK ⁵¹Kingston Hospital, Surrey, UK ⁵²The Tunbridge Wells Hospital and Maidstone Hospital, Kent, UK ⁵³North Middlesex University Hospital NHS trust, London, UK ⁵⁴Bradford Royal Infirmary, Bradford, UK ⁵⁵Blackpool Victoria Hospital, Blackpool, UK ⁵⁶Countess of Chester Hospital, Chester, UK ⁵⁷Wythenshawe Hospital, Manchester, UK ⁵⁸St George's Hospital, London, UK ⁵⁹Good Hope Hospital, Birmingham, UK ⁶⁰Stepping Hill Hospital, Stockport, UK ⁶¹Manchester Royal Infirmary, Manchester, UK ⁶²Royal Alexandra Hospital, Paisley, UK ⁶³Queen Elizabeth University Hospital, Glasgow, UK ⁶⁴Queen Alexandra Hospital, Portsmouth, UK ⁶⁵BHRUT (Barking Havering) - Queens Hospital and King George Hospital, Essex, UK ⁶⁶University College Hospital, London, UK ⁶⁷Royal Victoria Infirmary, Newcastle Upon Tyne, UK ⁶⁸Western Sussex Hospitals, West Sussex, UK ⁶⁹Salford Royal Hospital, Manchester, UK ⁷⁰The Royal Oldham Hospital, Manchester, UK ⁷¹Pinderfields General Hospital, Wakefield, UK ⁷²Basildon Hospital, Basildon, UK ⁷³University Hospital of Wales, Cardiff, UK ⁷⁴Broomfield Hospital, Chelmsford, UK ⁷⁵Royal Brompton Hospital, London, UK ⁷⁶Nottingham University Hospital, Nottingham, UK ⁷⁷Royal Hallamshire Hospital and Northern General Hospital, Sheffield, UK ⁷⁸Royal Hampshire County Hospital, Hampshire, UK ⁷⁹Queens Hospital Burton, Burton-On-Trent, UK ⁸⁰New Cross Hospital, Wolverhampton, UK ⁸¹Heartlands Hospital, Birmingham, UK ⁸²Walsall Manor Hospital, Walsall, UK ⁸³Stoke Mandeville Hospital, Buckinghamshire, UK ⁸⁴Sandwell General Hospital, Birmingham, UK ⁸⁵Royal Berkshire NHS Foundation Trust, Berkshire, UK ⁸⁶Charing Cross Hospital, St Mary's Hospital and Hammersmith Hospital, London, UK ⁸⁷Dumfries and Galloway Royal Infirmary, Dumfries, UK ⁸⁸Bristol Royal Infirmary, Bristol, UK ⁸⁹Royal Sussex County Hospital, Brighton, UK ⁹⁰Whiston Hospital, Prescot, UK ⁹¹Royal Glamorgan Hospital, Cardiff, UK ⁹²King's Mill Hospital, Nottingham, UK ⁹³Fairfield General Hospital, Bury, UK ⁹⁴Western General Hospital, Edinburgh, UK ⁹⁵Northwick Park Hospital, London, UK ⁹⁶Royal Preston Hospital, Preston, UK ⁹⁷Royal Derby Hospital, Derby, UK ⁹⁸Sunderland Royal Hospital, Sunderland, UK ⁹⁹Royal Surrey County Hospital, Guildford, UK ¹⁰⁰Derriford Hospital, Plymouth, UK ¹⁰¹Croydon University Hospital, Croydon, UK ¹⁰²Victoria Hospital, Kirkcaldy, UK ¹⁰³Milton Keynes University Hospital, Milton Keynes, UK ¹⁰⁴Barnsley Hospital, Barnsley, UK ¹⁰⁵York Hospital, York, UK ¹⁰⁶University Hospital of North Tees, Stockton on Tees, UK ¹⁰⁷University Hospital Wishaw, Wishaw, UK ¹⁰⁸Whittington Hospital, London, UK ¹⁰⁹Southmead Hospital, Bristol, UK ¹¹⁰The Royal Papworth Hospital, Cambridge, UK ¹¹¹Royal Gwent Hospital, Newport, UK ¹¹²Norfolk and Norwich University hospital (NNUH), Norwich, UK ¹¹³Great Ormond St Hospital and UCL Great Ormond St Institute of Child Health NIHR Biomedical Research Centre, London, UK ¹¹⁴Airedale General Hospital, Keighley, UK ¹¹⁵Aberdeen Royal Infirmary, Aberdeen, UK ¹¹⁶Southampton General Hospital, Southampton, UK ¹¹⁷Russell's Hall Hospital, Dudley, UK ¹¹⁸Rotherham General Hospital, Rotherham, UK ¹¹⁹North Manchester General Hospital, Manchester, UK ¹²⁰Basingstoke and North Hampshire Hospital, Basingstoke, UK ¹²¹Royal Free Hospital, London, UK ¹²²Hull Royal Infirmary, Hull, UK ¹²³Harefield Hospital, London, UK ¹²⁴Chesterfield Royal Hospital Foundation Trust, Chesterfield, UK ¹²⁵Barnet Hospital, London, UK ¹²⁶Aintree University Hospital, Liverpool, UK ¹²⁷St James's University Hospital and Leeds General Infirmary, Leeds, UK ¹²⁸Glan Clwyd Hospital, Bodelwyddan, UK ¹²⁹University Hospital Crosshouse, Kilmarnock, UK ¹³⁰Royal Bolton Hospital, Bolton, UK ¹³¹Princess of Wales Hospital, Llantrisant, UK ¹³²Pilgrim Hospital, Lincoln, UK ¹³³Northumbria Healthcare NHS Foundation Trust, North Shields, UK ¹³⁴Ninewells Hospital, Dundee, UK ¹³⁵Lister Hospital, Stevenage, UK ¹³⁶Bedford Hospital, Bedford, UK ¹³⁷Royal United Hospital, Bath, UK ¹³⁸Royal Bournemouth Hospital, Bournemouth, UK ¹³⁹The Great Western Hospital, Swindon, UK ¹⁴⁰Watford General Hospital, Watford, UK ¹⁴¹University Hospital North Durham, Darlington, UK ¹⁴²Tameside General Hospital, Ashton Under Lyne, UK ¹⁴³Princess Royal Hospital Shrewsbury and Royal Shrewsbury Hospital, Shrewsbury, UK ¹⁴⁴Arrowe Park Hospital, Wirral, UK ¹⁴⁵The Queen Elizabeth Hospital, King's Lynn, UK ¹⁴⁶Royal Blackburn Teaching Hospital, Blackburn, UK ¹⁴⁷Poole Hospital, Poole, UK ¹⁴⁸Medway Maritime Hospital, Gillingham, UK ¹⁴⁹Warwick Hospital, Warwick, UK ¹⁵⁰The Royal Marsden Hospital, London, UK ¹⁵¹The Princess Alexandra Hospital, Harlow, UK ¹⁵²Musgrove Park Hospital, Taunton, UK ¹⁵³George Eliot Hospital NHS Trust, Nuneaton, UK ¹⁵⁴East Surrey Hospital, Redhill, UK ¹⁵⁵West Middlesex Hospital, Isleworth, UK ¹⁵⁶Warrington General Hospital, Warrington, UK ¹⁵⁷Southport and Formby District General Hospital, Ormskirk, UK ¹⁵⁸Royal Devon and Exeter Hospital, Exeter, UK ¹⁵⁹Macclesfield District General Hospital, Macclesfield, UK ¹⁶⁰Borders General Hospital, Melrose, UK ¹⁶¹Birmingham Children's Hospital, Birmingham, UK ¹⁶²William Harvey Hospital, Ashford, UK ¹⁶³Royal Lancaster Infirmary, Lancaster, UK ¹⁶⁴Queen Elizabeth the Queen Mother Hospital, Margate, UK ¹⁶⁵Liverpool Heart and Chest Hospital, Liverpool, UK ¹⁶⁶Darlington Memorial Hospital, Darlington, UK ¹⁶⁷Southend University Hospital, Westcliff-on-Sea, UK ¹⁶⁸Raigmore Hospital, Inverness, UK

¹⁶⁹Salisbury District Hospital, Salisbury, UK ¹⁷⁰Peterborough City Hospital, Peterborough, UK ¹⁷¹Ipswich Hospital, Ipswich, UK ¹⁷²Hereford County Hospital, Worcester, UK ¹⁷³Furness General Hospital, Barrow-in-Furness, UK ¹⁷⁴Forth Valley Royal Hospital, Falkirk, UK ¹⁷⁵Torbay Hospital, Torquay, UK ¹⁷⁶St Mary's Hospital, Newport, UK ¹⁷⁷Royal Manchester Children's Hospital, Manchester, UK ¹⁷⁸Royal Cornwall Hospital, Truro, UK ¹⁷⁹Queen Elizabeth Hospital Gateshead, Gateshead, UK ¹⁸⁰Kent & Canterbury Hospital, Canterbury, UK ¹⁸¹James Paget University Hospital NHS Trust, Great Yarmouth, UK ¹⁸²Darent Valley Hospital, Dartford, UK ¹⁸³The Alexandra Hospital, Redditch and Worcester Royal Hospital, Worcester, UK ¹⁸⁴Ysbyty Gwynedd, Bangor, UK ¹⁸⁵Yeovil Hospital, Yeovil, UK ¹⁸⁶University Hospital Hairmyres, East Kilbride, UK ¹⁸⁷Scunthorpe General Hospital, Scunthorpe, UK ¹⁸⁸Princess Royal Hospital Brighton, West Sussex, UK ¹⁸⁹Lincoln County Hospital, Lincoln, UK ¹⁹⁰Homerton University Hospital, London, UK ¹⁹¹Glangwili General Hospital, Camarthen, UK ¹⁹²Ealing Hospital, Southall, UK ¹⁹³Scarborough General Hospital, Scarborough, UK ¹⁹⁴Royal Albert Edward Infirmary, Wigan, UK ¹⁹⁵Queen Elizabeth Hospital, Woolwich, London, UK ¹⁹⁶North Devon District Hospital, Barnstaple, UK ¹⁹⁷National Hospital for Neurology and Neurosurgery, London, UK ¹⁹⁸Eastbourne District General Hospital, East Sussex, UK and Conquest Hospital, East Sussex, UK ¹⁹⁹Diana Princess of Wales Hospital, Grimsby, UK ²⁰⁰The Christie NHS Foundation Trust, Manchester, UK ²⁰¹Prince Philip Hospital, Lianelli, UK ²⁰²Prince Charles Hospital, Merthyr Tydfil, UK ²⁰³Golden Jubilee National Hospital, Clydebank, UK ²⁰⁴Dorset County Hospital, Dorchester, UK ²⁰⁵Calderdale Royal Hospital, Halifax, UK ²⁰⁶West Suffolk Hospital, Suffolk, UK ²⁰⁷West Cumberland Hospital, Whitehaven, UK ²⁰⁸University Hospital Lewisham, London, UK ²⁰⁹St John's Hospital Livingston, Livingston, UK ²¹⁰Sheffield Children's Hospital, Sheffield, UK ²¹¹Hinchingbrooke Hospital, Huntingdon, UK ²¹²Glenfield Hospital, Leicester, UK ²¹³Bronglais General Hospital, Aberystwyth, UK ²¹⁴Alder Hey Children's Hospital, Liverpool, UK ²¹⁵University Hospital Monklands, Airdrie, UK ²¹⁶Cumberland Infirmary, Carlisle, UK

ISARIC 4C

Consortium Lead Investigator: J Kenneth Baillie, *Chief Investigator:* Malcolm G Semple, *Co-Lead Investigator:* Peter JM Openshaw. *ISARIC Clinical Coordinator:* Gail Carson.

Co-Investigators: Beatrice Alex, Benjamin Bach, Wendy S Barclay, Debby Bogaert, Meera Chand, Graham S Cooke, Annemarie B Docherty, Jake Dunning, Ana da Silva Filipe, Tom Fletcher, Christopher A Green, Ewen M Harrison, Julian A Hiscox, Antonia Ying Wai Ho, Peter W Horby, Samreen Ijaz, Saye Khoo, Paul Klenerman, Andrew Law, Wei Shen Lim, Alexander J Mentzer, Laura Merson, Alison M Meynert, Mahdad Noursadeghi, Shona C Moore, Massimo Palmarini, William A Paxton, Georgios Pollakis, Nicholas Price, Andrew Rambaut, David L Robertson, Clark D Russell, Vanessa Sancho-Shimizu, Janet T Scott, Thushan de Silva, Louise Sigfrid, Tom Solomon, Shiranee Sriskandan, David Stuart, Charlotte Summers, Richard S Tedder, Emma C Thomson, AA Roger Thompson, Ryan S Thwaites, Lance CW Turtle, Maria Zambon.

Project Managers: Hayley Hardwick, Chloe Donohue, Ruth Lyons, Fiona Griffiths, Wilna Oosthuyzen.

Data Analysts: Lisa Norman, Riinu Pius, Tom M Drake, Cameron J Fairfield, Stephen Knight, Kenneth A Mclean, Derek Murphy, Catherine A Shaw.

Data and Information System Manager: Jo Dalton, Michelle Girvan, Egle Saviciute, Stephanie Roberts, Janet Harrison, Laura Marsh, Marie Connor, Sophie Halpin, Clare Jackson, Carrol Gamble.

Data integration and presentation: Gary Leeming, Andrew Law, Murray Wham, Sara Clohisey, Ross Hendry, James Scott-Brown.

Material Management: William Greenhalf, Victoria Shaw, Sarah McDonald.

Patient engagement: Seán Keating

Outbreak Laboratory Volunteers: Katie A. Ahmed, Jane A Armstrong, Milton Ashworth, Innocent G Asimwe, Siddharth Bakshi, Samantha L Barlow, Laura Booth, Benjamin Brennan, Katie Bullock, Benjamin WA Catterall, Jordan J Clark, Emily A Clarke, Sarah Cole, Louise Cooper, Helen Cox, Christopher Davis, Oslem Dincarslan, Chris Dunn, Philip Dyer, Angela Elliott, Anthony Evans, Lewis WS Fisher, Terry Foster, Isabel Garcia-Dorival, William Greenhalf, Philip Gunning, Catherine Hartley, Antonia Ho, Rebecca L Jensen, Christopher B Jones, Trevor R Jones, Shadia Khandaker, Katharine King, Robyn T. Kiy, Chrysa Koukorava, Annette Lake, Suzannah Lant, Diane Latawicz, L Lavelle-Langham, Daniella Lefteri, Lauren Lett, Lucia A Livoti, Maria Mancini, Sarah McDonald, Laurence McEvoy, John McLauchlan, Soeren Metelmann, Nahida S Miah, Joanna Middleton, Joyce Mitchell, Shona C Moore, Ellen G Murphy, Rebekah Penrice-Randal, Jack Pilgrim, Tessa Prince, Will Reynolds, P. Matthew Ridley, Debby Sales, Victoria E Shaw, Rebecca K Shears, Benjamin Small, Krishanthi S Subramaniam,

Agnieska Szemieli, Aislynn Taggart, Jolanta Tanianis-Hughes, Jordan Thomas, Erwan Trochu, Libby van Tonder, Eve Wilcock, J. Eunice Zhang.

Local Principal Investigators: Kayode Adeniji, Daniel Agranoff, Ken Agwuh, Dhiraj Ail, Ana Alegria, Brian Angus, Abdul Ashish, Dougal Atkinson, Shahedal Bari, Gavin Barlow, Stella Barnass, Nicholas Barrett, Christopher Bassford, David Baxter, Michael Beadsworth, Jolanta Bernatoniene, John Berridge, Nicola Best, Pieter Bothma, David Brealey, Robin Brittain-Long, Naomi Bulteel, Tom Burden, Andrew Burtenshaw, Vikki Caruth, David Chadwick, Duncan Chambler, Nigel Chee, Jenny Child, Srikanth Chukkambotla, Tom Clark, Paul Collini, Catherine Cosgrove, Jason Cupitt, Maria-Teresa Cutino-Moguel, Paul Dark, Chris Dawson, Samir Dervisevic, Phil Donnison, Sam Douthwaite, Ingrid DuRand, Ahilanadan Dushianthan, Tristan Dyer, Cariad Evans, Chi Eziefula, Christopher Fegan, Adam Finn, Duncan Fullerton, Sanjeev Garg, Sanjeev Garg, Atul Garg, Effrossyni Gkrania-Klotsas, Jo Godden, Arthur Goldsmith, Clive Graham, Elaine Hardy, Stuart Hartshorn, Daniel Harvey, Peter Havalda, Daniel B Hawcutt, Maria Hobrok, Luke Hodgson, Anita Holme, Anil Hormis, Michael Jacobs, Susan Jain, Paul Jennings, Agilan Kaliappan, Vidya Kasipandian, Stephen Kegg, Michael Kelsey, Jason Kendall, Caroline Kerrison, Ian Kerslake, Oliver Koch, Gouri Koduri, George Koshy, Shondipon Laha, Steven Laird, Susan Larkin, Tamas Leiner, Patrick Lillie, James Limb, Vanessa Linnett, Jeff Little, Michael MacMahon, Emily MacNaughton, Ravish Mankregod, Huw Masson, Elijah Matovu, Katherine McCullough, Ruth McEwen, Manjula Meda, Gary Mills, Jane Minton, Mariyam Mirfenderesky, Kavya Mohandas, Quen Mok, James Moon, Elinoor Moore, Patrick Morgan, Craig Morris, Katherine Mortimore, Samuel Moses, Mbiye Mpenge, Rohinton Mulla, Michael Murphy, Megan Nagel, Thapas Nagarajan, Mark Nelson, Igor Otahal, Mark Pais, Selva Panchatsharam, Hassan Paraiso, Brij Patel, Justin Pepperell, Mark Peters, Mandeep Phull, Stefania Pintus, Jagtur Singh Pooni, Frank Post, David Price, Rachel Prout, Nikolas Rae, Henrik Reschreiter, Tim Reynolds, Neil Richardson, Mark Roberts, Devender Roberts, Alistair Rose, Guy Rousseau, Brendan Ryan, Taranprit Saluja, Aarti Shah, Prad Shanmuga, Anil Sharma, Anna Shawcross, Jeremy Sizer, Manu Shankar-Hari, Richard Smith, Catherine Snelson, Nick Spittle, Nikki Staines, Tom Stambach, Richard Stewart, Pradeep Subudhi, Tamas Szakmany, Kate Tatham, Jo Thomas, Chris Thompson, Robert Thompson, Ascanio Tridente, Darell Tupper-Carey, Mary Twagira, Andrew Ustianowski, Nick Vallotton, Lisa Vincent-Smith, Shico Visuvanathan, Alan Vuylsteke, Sam Waddy, Rachel Wake, Andrew Walden, Ingeborg Welters, Tony Whitehouse, Paul Whittaker, Ashley Whittington, Meme Wijesinghe, Martin Williams, Lawrence Wilson, Sarah Wilson, Stephen Winchester, Martin Wiselka, Adam Wolverson, Daniel G Wooton, Andrew Workman, Bryan Yates, and Peter Young.

This work uses data provided by patients and collected by the NHS as part of their care and support #DataSavesLives. We are extremely grateful to the 2,648 frontline NHS clinical and research staff and volunteer medical students, who collected this data in challenging circumstances; and the generosity of the participants and their families for their individual contributions in these difficult times. We also acknowledge the support of Jeremy J Farrar, Nahoko Shindo, Devika Dixit, Nipunie Rajapakse, Lyndsey Castle, Martha Buckley, Debbie Malden, Katherine Newell, Kwame O'Neill, Emmanuelle Denis, Claire Petersen, Scott Mullaney, Sue MacFarlane, Nicole Maziere, Julien Martinez, Oslem Dincarslan, and Annette Lake.

GEN-COVID

GEN-COVID Multicenter Study (<https://sites.google.com/dbm.unisi.it/gen-covid>)

Francesca Mari Medical Genetics, University of Siena, Italy Genetica Medica, Azienda Ospedaliero-Universitaria Senese, Italy Sergio Daga Medical Genetics, University of Siena, Italy Margherita Baldassarri Medical Genetics, University of Siena, Italy Elisa Benetti Department of Medical Biotechnologies, University of Siena, Italy Simone Furini Department of Medical Biotechnologies, University of Siena, Italy Chiara Fallerini Medical Genetics, University of Siena, Italy Francesca Fava Medical Genetics, University of Siena, Italy Genetica Medica, Azienda Ospedaliero-Universitaria Senese, Italy Floriana Valentino Medical Genetics, University of Siena, Italy Gabriella Doddato Medical Genetics, University of Siena, Italy Annarita Giliberti Medical Genetics, University of Siena, Italy Rossella Tita Genetica Medica, Azienda Ospedaliero-Universitaria Senese, Italy Sara Amitrano Genetica Medica, Azienda Ospedaliero-Universitaria Senese, Italy Mirella Bruttini Medical Genetics, University of Siena, Italy Genetica Medica, Azienda Ospedaliero-Universitaria Senese, Italy Susanna Croci Medical Genetics, University of Siena, Italy Ilaria Meloni Medical Genetics, University of Siena, Italy Anna Maria Pinto Genetica Medica, Azienda Ospedaliero-Universitaria Senese, Italy Elisa Frullanti Medical Genetics, University of Siena, Italy Ilaria Meloni Medical Genetics, University of Siena, Italy Maria Antonietta Mencarelli Genetica Medica, Azienda Ospedaliero-Universitaria Senese, Italy Caterina Lo Rizzo Genetica Medica, Azienda Ospedaliero-Universitaria Senese, Italy Francesca Montagnani Dept of Specialized and Internal Medicine, Tropical and Infectious Diseases Unit Laura Di

Sarno Medical Genetics, University of Siena, Italy Andrea Tommasi Medical Genetics, University of Siena, Italy Genetica Medica, Azienda Ospedaliero-Universitaria Senese, Italy Maria Palmieri Medical Genetics, University of Siena, Italy Arianna Emiliozzi Dept of Specialized and Internal Medicine, Tropical and Infectious Diseases Unit Massimiliano Fabbiani Dept of Specialized and Internal Medicine, Tropical and Infectious Diseases Unit Barbara Rossetti Dept of Specialized and Internal Medicine, Tropical and Infectious Diseases Unit Giacomo Zanelli Dept of Specialized and Internal Medicine, Tropical and Infectious Diseases Unit Elena Bargagli Unit of Respiratory Diseases and Lung Transplantation, Department of Internal and Specialist Medicine, University of Siena Laura Bergantini Unit of Respiratory Diseases and Lung Transplantation, Department of Internal and Specialist Medicine, University of Siena Miriana D'Alessandro Unit of Respiratory Diseases and Lung Transplantation, Department of Internal and Specialist Medicine, University of Siena Paolo Cameli Unit of Respiratory Diseases and Lung Transplantation, Department of Internal and Specialist Medicine, University of Siena David Bennet Unit of Respiratory Diseases and Lung Transplantation, Department of Internal and Specialist Medicine, University of Siena Federico Anedda Dept of Emergency and Urgency, Medicine, Surgery and Neurosciences, Unit of Intensive Care Medicine, Siena University Hospital, Italy Simona Marcantonio Dept of Emergency and Urgency, Medicine, Surgery and Neurosciences, Unit of Intensive Care Medicine, Siena University Hospital, Italy Sabino Scolletta Dept of Emergency and Urgency, Medicine, Surgery and Neurosciences, Unit of Intensive Care Medicine, Siena University Hospital, Italy Federico Franchi Dept of Emergency and Urgency, Medicine, Surgery and Neurosciences, Unit of Intensive Care Medicine, Siena University Hospital, Italy Maria Antonietta Mazzei Department of Medical, Surgical and Neurosciences and Radiological Sciences, Unit of Diagnostic Imaging, University of Siena Susanna Guerrini Department of Medical, Surgical and Neurosciences and Radiological Sciences, Unit of Diagnostic Imaging, University of Siena Edoardo Concinini Rheumatology Unit, Department of Medicine, Surgery and Neurosciences, University of Siena, Policlinico Le Scotte, Italy Luca Cantarini Rheumatology Unit, Department of Medicine, Surgery and Neurosciences, University of Siena, Policlinico Le Scotte, Italy Bruno Frediani Rheumatology Unit, Department of Medicine, Surgery and Neurosciences, University of Siena, Policlinico Le Scotte, Italy Danilo Tacconi Department of Specialized and Internal Medicine, Infectious Diseases Unit, San Donato Hospital Arezzo, Italy Chiara Spertilli Department of Specialized and Internal Medicine, Infectious Diseases Unit, San Donato Hospital Arezzo, Italy Marco Feri Dept of Emergency, Anesthesia Unit, San Donato Hospital, Arezzo, Italy Alice Donati Dept of Emergency, Anesthesia Unit, San Donato Hospital, Arezzo, Italy Raffaele Scala Department of Specialized and Internal Medicine, Pneumology Unit and UTIP, San Donato Hospital, Arezzo, Italy Luca Guidelli Department of Specialized and Internal Medicine, Pneumology Unit and UTIP, San Donato Hospital, Arezzo, Italy Genni Spargi Department of Emergency, Anesthesia Unit, Misericordia Hospital, Grosseto, Italy Marta Corridi Department of Emergency, Anesthesia Unit, Misericordia Hospital, Grosseto, Italy Cesira Nencioni Department of Specialized and Internal Medicine, Infectious Diseases Unit, Misericordia Hospital, Grosseto, Italy Leonardo Croci Department of Specialized and Internal Medicine, Infectious Diseases Unit, Misericordia Hospital, Grosseto, Italy Gian Piero Caldarelli Clinical Chemical Analysis Laboratory, Misericordia Hospital, Grosseto, Italy Maurizio Spagnesi Department of Preventive Medicine, Azienda USL Toscana Sud Est, Italy Paolo Piacentini Department of Preventive Medicine, Azienda USL Toscana Sud Est, Italy Maria Bandini Department of Preventive Medicine, Azienda USL Toscana Sud Est, Italy Elena Desanctis Department of Preventive Medicine, Azienda USL Toscana Sud Est, Italy Silvia Cappelli Department of Preventive Medicine, Azienda USL Toscana Sud Est, Italy Anna Canaccini Territorial Scientific Technician Department, Azienda USL Toscana Sud Est, Italy Agnese Verzuri Territorial Scientific Technician Department, Azienda USL Toscana Sud Est, Italy Valentina Anemoli Territorial Scientific Technician Department, Azienda USL Toscana Sud Est, Italy

Antonella D'Arminio Monforte Department of Health Sciences, Clinic of Infectious Diseases, ASST Santi Paolo e Carlo, University of Milan, Italy Esther Merlini Department of Health Sciences, Clinic of Infectious Diseases, ASST Santi Paolo e Carlo, University of Milan, Italy Mario U. Mondelli Division of Infectious Diseases and Immunology, Fondazione IRCCS Policlinico San Matteo, Pavia, Italy Department of Internal Medicine and Therapeutics, University of Pavia, Italy Stefania Mantovani Division of Infectious Diseases and Immunology, Fondazione IRCCS Policlinico San Matteo, Pavia, Italy Serena Ludovisi Division of Infectious Diseases and Immunology, Fondazione IRCCS Policlinico San Matteo, Pavia, Italy Department of Internal Medicine and Therapeutics, University of Pavia, Italy Massimo Girardis Department of Anesthesia and Intensive Care, University of Modena and Reggio Emilia, Modena, Italy Sophie Venturelli Department of Anesthesia and Intensive Care, University of Modena and Reggio Emilia, Modena, Italy Marco Sita Department of Anesthesia and Intensive Care, University of Modena and Reggio Emilia, Modena, Italy Andrea Antinori HIV/AIDS Department, National Institute for Infectious Diseases, IRCCS, Lazzaro Spallanzani, Rome, Italy Alessandra Vergori HIV/AIDS Department, National Institute for Infectious Diseases, IRCCS, Lazzaro Spallanzani, Rome, Italy Stefano Rusconi III Infectious Diseases Unit, ASST-FBF-Sacco, Milan, Italy Department of Biomedical and Clinical Sciences Luigi Sacco, University of Milan, Milan, Italy Matteo Siano Department of Biomedical and Clinical Sciences Luigi Sacco, University of Milan, Milan, Italy Arianna

Gabrieli Department of Biomedical and Clinical Sciences Luigi Sacco, University of Milan, Milan, Italy Agostino Riva III Infectious Diseases Unit, ASST-FBF-Sacco, Milan, Italy Department of Biomedical and Clinical Sciences Luigi Sacco, University of Milan, Milan, Italy Daniela Francisci Infectious Diseases Clinic, Department of Medicine 2, Azienda Ospedaliera di Perugia and University of Perugia, Santa Maria Hospital, Perugia, Italy Elisabetta Schiaroli Infectious Diseases Clinic, Department of Medicine 2, Azienda Ospedaliera di Perugia and University of Perugia, Santa Maria Hospital, Perugia, Italy Pier Giorgio Scotton Department of Infectious Diseases, Treviso Hospital, Local Health Unit 2 Marca Trevigiana, Treviso, Italy Francesca Andretta Department of Infectious Diseases, Treviso Hospital, Local Health Unit 2 Marca Trevigiana, Treviso, Italy Sandro Panese Clinical Infectious Diseases, Mestre Hospital, Venezia, Italy Renzo Scaggiante Infectious Diseases Clinic, ULSS1, Belluno, Italy Francesca Gatti Infectious Diseases Clinic, ULSS1, Belluno, Italy Saverio Giuseppe Parisi Department of Molecular Medicine, University of Padova, Italy Francesco Castelli Department of Infectious and Tropical Diseases, University of Brescia and ASST Spedali Civili Hospital, Brescia, Italy Maria Eugenia Quiros-Roldan Department of Infectious and Tropical Diseases, University of Brescia and ASST Spedali Civili Hospital, Brescia, Italy Paola Magro Department of Infectious and Tropical Diseases, University of Brescia and ASST Spedali Civili Hospital, Brescia, Italy Isabella Zanella Department of Molecular and Translational Medicine, University of Brescia, Italy; Clinical Chemistry Laboratory, Cytogenetics and Molecular Genetics Section, Diagnostic Department, ASST Spedali Civili di Brescia, Italy Matteo Della Monica Medical Genetics and Laboratory of Medical Genetics Unit, A.O.R.N. "Antonio Cardarelli", Naples, Italy Carmelo Piscopo Medical Genetics and Laboratory of Medical Genetics Unit, A.O.R.N. "Antonio Cardarelli", Naples, Italy Mario Capasso Department of Molecular Medicine and Medical Biotechnology, University of Naples Federico II, Naples, Italy CEINGE Biotecnologie Avanzate, Naples, Italy IRCCS SDN, Naples, Italy Roberta Russo Department of Molecular Medicine and Medical Biotechnology, University of Naples Federico II, Naples, Italy CEINGE Biotecnologie Avanzate, Naples, Italy Immacolata Andolfo Department of Molecular Medicine and Medical Biotechnology, University of Naples Federico II, Naples, Italy CEINGE Biotecnologie Avanzate, Naples, Italy Achille Iolascon Department of Molecular Medicine and Medical Biotechnology, University of Naples Federico II, Naples, Italy CEINGE Biotecnologie Avanzate, Naples, Italy Giuseppe Fiorentino Unit of Respiratory Physiopathology, AORN dei Colli Monaldi Hospital, Naples, Italy Massimo Carella Division of Medical Genetics, Fondazione IRCCS Casa Sollievo della Sofferenza Hospital, San Giovanni Rotondo, Italy Marco Castori Division of Medical Genetics, Fondazione IRCCS Casa Sollievo della Sofferenza Hospital, San Giovanni Rotondo, Italy Giuseppe Merla Division of Medical Genetics, Fondazione IRCCS Casa Sollievo della Sofferenza Hospital, San Giovanni Rotondo, Italy Filippo Aucella Department of Medical Sciences, Fondazione IRCCS Casa Sollievo della Sofferenza Hospital, San Giovanni Rotondo, Italy Pamela Raggi Clinical Trial Office, Fondazione IRCCS Casa Sollievo della Sofferenza Hospital, San Giovanni Rotondo, Italy Carmen Marciano Clinical Trial Office, Fondazione IRCCS Casa Sollievo della Sofferenza Hospital, San Giovanni Rotondo, Italy Rita Perna Clinical Trial Office, Fondazione IRCCS Casa Sollievo della Sofferenza Hospital, San Giovanni Rotondo, Italy Matteo Bassetti Department of Health Sciences, University of Genova, Genova, Italy Infectious Diseases Clinic, Policlinico San Martino Hospital, IRCCS for Cancer Research Genova, Italy Antonio Di Biagio Infectious Diseases Clinic, Policlinico San Martino Hospital, IRCCS for Cancer Research Genova, Italy Maurizio Sanguinetti Microbiology, Fondazione Policlinico Universitario Agostino Gemelli IRCCS, Catholic University of Medicine, Rome, Italy Department of Laboratory Sciences and Infectious Diseases, Fondazione Policlinico Universitario A. Gemelli IRCCS, Rome, Italy Luca Masucci Microbiology, Fondazione Policlinico Universitario Agostino Gemelli IRCCS, Catholic University of Medicine, Rome, Italy Department of Laboratory Sciences and Infectious Diseases, Fondazione Policlinico Universitario A. Gemelli IRCCS, Rome, Italy Serafina Valente Department of Cardiovascular Diseases, University of Siena, Siena, Italy Marco Mandalà Otolaryngology Unit, University of Siena, Italy Alessia Giorli Otolaryngology Unit, University of Siena, Italy Lorenzo Salerni Otolaryngology Unit, University of Siena, Italy Patrizia Zucchi Department of Internal Medicine, ASST Valtellina e Alto Lario, Sondrio, Italy Pierpaolo Parravicini Department of Internal Medicine, ASST Valtellina e Alto Lario, Sondrio, Italy Elisabetta Menatti Study Coordinator Oncologia Medica e Ufficio Flussii, Sondrio, Italy Stefano Baratti Department of Infectious and Tropical Diseases, University of Padova, Padova, Italy Tullio Trotta First Aid Department, Luigi Curto Hospital, Polla, Salerno, Italy Ferdinando Giannattasio First Aid Department, Luigi Curto Hospital, Polla, Salerno, Italy Gabriella Coiro First Aid Department, Luigi Curto Hospital, Polla, Salerno, Italy Fabio Lena Local Health Unit-Pharmaceutical Department of Grosseto, Toscana Sud Est Local Health Unit, Grosseto, Italy Domenico A. Coviello U.O.C. Laboratorio di Genetica Umana, IRCCS Istituto G. Gaslini, Genova, Italy. Cristina Mussini Infectious Diseases Clinics, University of Modena and Reggio Emilia, Modena, Italy. Giancarlo Bosio Department of Respiratory Diseases, Azienda Ospedaliera di Cremona, Cremona, Italy Enrico Martinelli Department of Respiratory Diseases, Azienda Ospedaliera di Cremona, Cremona, Italy Sandro Mancarella U.O.C. Medicina, ASST Nord Milano, Ospedale Bassini, Cinisello Balsamo (MI), Italy Luisa Tavecchia U.O.C. Medicina, ASST Nord Milano, Ospedale Bassini, Cinisello Balsamo (MI), Italy Lia Crotti Istituto Auxologico Italiano, IR-

CCS, Department of Cardiovascular, Neural and Metabolic Sciences, San Luca Hospital, Milan, Italy Department of Medicine and Surgery, University of Milano-Bicocca, Milan, Italy Istituto Auxologico Italiano, IRCCS, Center for Cardiac Arrhythmias of Genetic Origin, Milan, Italy Istituto Auxologico Italiano, IRCCS, Laboratory of Cardiovascular Genetics, Milan, Italy

Nicola Picchiotti^{62,63} Marco Gori^{62,64} Chiara Gabbi⁶⁵ Maurizio Sanarico⁶⁶ Stefano Ceri⁶⁷ Pietro Pinoli⁶⁷ Francesco Raimondi⁶⁸ Filippo Biscarini⁶⁹ Alessandra Stella⁶⁹.

⁶² University of Siena, DIISM-SAILAB, Siena, Italy ⁶³ Department of Mathematics, University of Pavia, Pavia, Italy

⁶⁴ University Cote d'Azur, Inria, CNRS, I3S, Maasai ⁶⁵ Independent Medical Scientist, Milan, Italy ⁶⁶ Independent Data Scientist, Milan, Italy ⁶⁷ Department of Electronics, Information and Bioengineering (DEIB), Politecnico di Milano, Milano, Italy ⁶⁸ Scuola Normale Superiore, Pisa, Italy ⁶⁹ CNR-Consiglio Nazionale delle Ricerche, Istituto di Biologia e Biotecnologia Agraria (IBBA), Milano, Italy. Currently seconded at the ERCEA (European Research Council Executive Agency), Bruxelles, Belgium. The views expressed here are purely those of the writer and may not in any circumstances be regarded as stating an official position of the European Commission.

23andMe: Source data for meta-analysis

We thank the 23andMe research participants who made this study possible. We would also like to thank Altovise Ewing, Aaron Petrakovitz, Anne Park, Anne Silk, Aushawna Collins, Becky Macintosh, Carolyn Kao, Courtney Ball, Christine Pai, David Hinds, Devyn Parry, Elo Ratcliff, Emily Bullis, Eric Hall, Farwa Alam, Jacquie Haggarty, Jess Christenson, Jim Lawrence, Jimmy Chau, Josie Shaw, Joe Cackler, Karl Heilbron, Katelyn Kukar, Katie Watson, Marianna Frendo, Olivia Valenti, Ryan Workman, Rachel Lopatin, Robert Bell, Rose Eckert, Sam Rodgers, Sarah Rys, Shawna Averbeck, Shirin Fuller, Vanessa Lane, and Yunxuan Jiang for contributions and insights.

We also thank the 23andMe Research Team: Barry Hicks, Chao Tian, Devika Dhamija, Elizabeth Babalola, Elizabeth S. Noblin, Ethan M. Jewett, G. David Poznik, Gabriel Cuellar Partida, Jared O'Connell, Jingchunzi Shi, Joanna L. Mountain, Joyce Y. Tung, Katarzyna Bryc, Karen E. Huber, Keng-Han Lin, Kimberly F. McManus, Kipper Fletez-Brant, Marie K. Luff, Matthew H. McIntyre, Maya Lowe, Meghan E. Moreno, Peter Wilton, Pierre Fontanillas, Priyanka Nandakumar, Sahar V. Mozaffari, Sarah L. Elson, Sayantan Das, Steven J. Micheletti, Suyash Shringarpure, Vinh Tran, Wei Wang, Will Freyman, and Xin Wang.

Members of the 23andMe COVID-19 Team are: Adam Auton, Adrian Chubb, Alison Fitch, Alison Kung, Amanda Altman, Andy Kill, Anjali Shastri, Catherine Weldon, Chelsea Ye, Daniella Coker, Janie Shelton, Jason Tan, Jeff Pollard, Jennifer McCreight, Jess Bielenberg, John Matthews, Johnny Lee, Lindsey Tran, Michelle Agee, Monica Royce, Nate Tang, Pooja Gandhi, Raffaello d'Amore, Ruth Tennen, Scott Dvorak, Scott Hadly, Stella Aslibekyan, Sungmin Park, Taylor Morrow, Teresa Filshtein Sonmez, Trung Le, and Yiwen Zheng.

Covid-19 Host Genetics Initiative

Source data for B2 (hospitalised patient) comparison

Andrea Ganna, Andre Franke, Alessandra Renieri, Alexandre Pereira, Patrick Sulem, Kári Stefánsson, Benjamin Neale, Migeotte Isabelle, David van Heel, Aarno Palotie, Mark Daly

Covid-19 HGI contributors

Adam Butterworth, Adeline Busson, Agustín Albillos, Aldo Cordova Palomera, Alessandra Renieri, Alex Stuckey, Alexander Ioannidis, Alexandre Belisle, Alexandre Bolze, Alexandre C Pereira, Alfredo Brusco, Alicia R. Martin, Amy Trankiem, Anastasia Lucas, Andre Franke, Andrea Ganna, Andy Beck, Ann Woolley, Anna Bernasconi, Anna C Need, Anna Maria Pinto, Anna Rita Giliberti, Anne Marie O'Connell, Annique Claringbould, Anurag Verma, Archana Raja, Archie Campbell, Arden Moscati, Areti Papadopoulou, Asgeir Haraldsson, Athanasios Kousathanas, Augusto Rendon, Ben Neale, Benjamin Pinsky, Beth Karlson, Bhavi Trivedi, Binglan Li, Biswarup Ghosh, Björn Jensen, Bogdan Pasaniuc, Branka Vulesevic, Brent Richards, Brooke Wolford, Brooke Wolford, Bruno Pichon, Carlo Maj, Carlos Bustamante, Caroline Hayward, Cathy Tralau-Stewart, Chang Kyung Kang, Charlotte Guzman, Chiara Fallerini, Chloe Fawns-Ritchie, Chris A Odhams, Chris C A Spencer, Christiaan de Leeuw, Christine Stevens, Christopher DeBoever, Christopher Griffiths, Christopher Hughes, Christopher J O'Donnell, Cinthia E Jannes, Claire Churchhouse, Clara Lehmann, Cynthia M Bulik, Dadi Helgason, Dan Mason, Dan Rhodes, Daniel Auld, Daniel J Wilson, Daniel Rader, Daniele Prati, Danielle Henry, Danielle Posthuma, Daniel F Gudbjartsson, Dave Roberts, David A van Heel, David Amar, David Bernardo, David Ellighaus, David H Wyllie, David Jimenez-Morales, David Porteous, David R. Morrison, David van Heel, Denis Franchimont, Dorota Pasko, Drew Altshul, Duncan S.

Palmer, Eco de Geus, Edouard Louis, Eirini Marouli, Elias S Eythorsson, Elisa Benetti, Elisa Frullanti, Elizabeth G. Atkinson, Elizabeth T. Cirulli, Emanuele Di Angelantonio, Emil Uffelmann, Emily Wong, Emma Perez, Emmanuelle Marques, Eric Kerchberger, Erin Smith, Erwin Schurr, Esteban Lopera, Eu Suk Kim, Euan Ashley, Eun-Jeong Joo, Federico Zara, Finngen, Francesca Fava, Francesca Mari, Francisco Tanudjaja, Francoise Wilkin, Frank R Wendt, Frauke Degenhardt, G. Mark Lathrop, Gardar Sveinbjornsson, Genomics England Research Consortium, Georgia Chan, Gina Peloso, Gita Pathak, Global Science Experimental Data Hub Center (GSDC), Gudmundur L Norddahl, Guillaume Butler-Laporte, Guillaume Smits, Hakon Jonsson, Hamdi Mbarek, Han-Na Kim, Hannah de Jong, Hilary C Martin, Hilary Finucane, Hilma Holm, Hong Bin Kim, Huy Nguyen, Hyo-Jung Lee, Hyung-Lae Kim, Ingileif Jonsdottir, Ingo Kurth, Isabell Pink, Isabelle Migeotte, Isabelle Vandernoot, Iva Neveux, J Michael Gaziano, J. Brent Richards, Jacob Armstrong, James Meigs, James Priest, James T. Lu, Jan Rybniker, Janine Altmüller, Javier Fernández, Jean-Christophe Goffard, Jeanne Savage, Jennifer E Huffman, Jeong Su Park, Jesus M. Banales, Jiannis Ragoussis, Jimmy M. Ramirez III, Jin Chung, Jing Hua Zhao, Jiongming Wang, Johannes R Hov, John Danesh, John Gorzynski, John Wright, Jona Saemundsdottir, Jonathan Afilalo, Jongtak Jung, Jordan Smoller, Jose E Krieger, Josep Mercader, Joseph J. Grzymiski, Jouke-Jan Hottenga, Judy H. Cho, Juha Karjalainen, Julia Fazaal, Julia Schröder, Kangbuk Samsung Cohort Study (KSCS), Kangcheng Hou, Karen A Hunt, Karen Dalton, Kari Stefansson, Karolina Chwialkowska, Kate Balaconis, Kelly Cho, Kelly M. Schiabor Barrett, Kerstin U. Ludwig, Kevin Liao, Konrad J. Karczewski, Konrad Karczewski, Korea Research Environment Open Network (KREONET), Kumar Veerapen, Kyoung-Ho Song, Kyoung-Un Park, Laetitia Laurent, Laith J. Abu Raddad, Lea Davis, Les Biesecker, Lisa Knopp, Loic Yengo, Louis Petitjean, Loukas Moutsianas, Luca Valenti, Lude Franke, Luis Bujanda, Manuel Martínez-Bueno, Manuel Rivas, Manuel Romero Gomez, Marc Afilalo, Margherita Baldassarri, Margherita Francescato, Mari Niemi, Maria Buti, Marike Boezen, Mark Caulfield, Mark Daly, Markus Cornberg, Markus M. Nöthen, Marta E. Alarcón-Riquelme, Marylyn Ritchie, Masahiro Kanai, Masahiro Kanai, Matthew Solomonson, Matthew Wheeler, Mattia Cordioli, Max Augustin, Meike Bartels, Meriem Bouab, Michael Chapman, Michael Dreher, Michel G Nivard, Mikael Landen, Mirella Bruttini, Nam-Jong Paik, Nancy Pedersen, Naomi Wray, Nardin Rezk, Nicholas Mancuso, Nick Watkins, Nicky Tiembe, Nicole L. Washington, Nikolas Baya, Nikolaus Marx, Nils Koelling, Nofar Kimchi, Noor Mamlouk, Olivier Delaneau, Olumide Adeleye, Pall Melsted, Pasquale Striano, Patrick Deelen, Patrick Deelen, Patrick Sulem, Patrick Turley, Pedro Orozco del Peno, Peter Visscher, Philip Jansen, Philip Tsao, Philipp Schommers, Pierre Lepage, Pietro Invernizzi, Prabhu Arumugam, Pyoeng Gyun Choe, Qinqin Huang, Rachel Liao, Radja Badji, Ragnar F Ingvarsson, Raymond K. Walters, Renato Polimanti, Richard C Trembath, Richard H Scott, Robert Green, Robert Warmerdam, Rosanna Asselta, Rossella Tita, Runolfur Palsson, Ruth J.F. Loos, Said Ismail, Sam Bryant, Sandor Szalma, Sara Amtrano, Sarah Finer, Scott Weiss, Sebastian Zöllner, Selina Rolker, Seungho Ryu, Severine Vermeire, Shaun Dabe, Shawn Murphy, Shyamalika Gopalan, Silvia Rojo Rello, Simon White, Simone Furini, Simone Rubinacci, Sinyoung Ham, Sonja Volland, Soo-kyung Park, Souad Rahmouni, Stefano Ceri, Stefano Duga, Stephen Riffle, Sue Slaugenhaupt, Sulggi Lee, Sumatra Muraldihar, Susanna Croci, Tala Abdullah, Thomas Eggermann, Thomas Illig, Thomas Ocroft, Tom H Karlsen, Tomoko Nakanishi, Torsten Feldt, Trine Folseraas, Unnur Thorsteinsdottir, Valentino Floriana, Verena Keitel, Vicki Parikh, Vijay Sankaran, Vincent Mooser, Vincenzo Forgetta, Wadha Al-Muftah, Wei Zhou, Willem Ouwehand, Xavier Peyrassol, Xueqing Wang, Yan Sun, Yan Wei Lim, Yasser Al-Sarraj, Yen-Chen Anne Feng, Yoosoo Chang, Yosuke Tanigawa, Youssef Bouysran, Yuk-Lam Ho, Zaman Afrasiabi, Zeyun Lu

BRACOVID

Alexandre C Pereira¹, Jose E Krieger¹, Emmanuelle Marques¹, Cinthia E Jannes¹.

1. Heart Institute, University of Sao Paulo, Brazil

References

1. English indices of deprivation 2019. *GOV.UK*
2. Parkinson, N., Rodgers, N., Fourman, M.H., Wang, B., Zechner, M., Swets, M., Millar, J.E., Law, A., Russell, C., Baillie, J.K. & Clohisey, S. Systematic review and meta-analysis identifies potential host therapeutic targets in COVID-19. *medRxiv* 2020.08.27.20182238(2020).doi:[10.1101/2020.08.27.20182238](https://doi.org/10.1101/2020.08.27.20182238)
3. Luca, G.D., Cavalli, G., Campochiaro, C., Della-Torre, E., Angelillo, P., Tomelleri, A., Boffini, N., Tentori, S., Mette, F., Farina, N., Rovere-Querini, P., Ruggeri, A., D'Aliberti, T., Scarpellini, P., Landoni, G., Cobelli, F.D., Paolini, J.F., Zangrillo, A., Tresoldi, M., Trapnell, B.C., Ciceri, F. & Dagna, L. GM-CSF blockade with mavrilimumab in severe COVID-19 pneumonia and systemic hyperinflammation: A single-centre, prospective cohort study. *The Lancet Rheumatology* **2**, e465–e473(2020).
4. Lang, F.M., Lee, K.M.-C., Teijaro, J.R., Becher, B. & Hamilton, J.A. GM-csf-based treatments in covid-19: Reconciling opposing therapeutic approaches. *Nature reviews. Immunology* **20**, 507–514(2020).
5. Liu, C., Brunn, A. von & Zhu, D. Cyclophilin a and cd147: Novel therapeutic targets for the treatment of covid-19. *Medicine in drug discovery* **7**, 100056(2020).
6. Li, B., Clohisey, S.M., Chia, B.S., Wang, B., Cui, A., Eisenhaure, T., Schweitzer, L.D., Hoover, P., Parkinson, N.J., Nachshon, A., Smith, N., Regan, T., Farr, D., Gutmann, M.U., Bukhari, S.I., Law, A., Sangesland, M., Gat-Viks, I., Digard, P., Vasudevan, S., Lingwood, D., Dockrell, D.H., Doench, J.G., Baillie, J.K. & Hacohen, N. Genome-wide CRISPR screen identifies host dependency factors for influenza A virus infection. *Nature Communications* **11**, 164(2020).
7. Zhu, Z., Zheng, Z., Zhang, F., Wu, Y., Trzaskowski, M., Maier, R., Robinson, M.R., McGrath, J.J., Visscher, P.M., Wray, N.R. & Yang, J. Causal associations between risk factors and common diseases inferred from gwas summary data. *Nature communications* **9**, 224(2018).
8. Vösa, U., Claringbould, A., Westra, H.-J., Bonder, M.J., Deelen, P., Zeng, B., Kirsten, H., Saha, A., Kreuzhuber, R., Kasela, S., Pervjakova, N., Alvaes, I., Fave, M.-J., Agbessi, M., Christiansen, M., Jansen, R., Seppälä, I., Tong, L., Teumer, A., Schramm, K., Hemani, G., Verlouw, J., Yaghootkar, H., Sönmez, R., Brown, A., Kukushkina, V., Kalnapenkis, A., Rüeger, S., Porcu, E., Kronberg-Guzman, J., Kettunen, J., Powell, J., Lee, B., Zhang, F., Arindrarto, W., Beutner, F., Consortium, B., Brugge, H., Consortium, i., Dmitreva, J., Elansary, M., Fairfax, B.P., Georges, M., Heijmans, B.T., Kähönen, M., Kim, Y., Knight, J.C., Kovacs, P., Krohn, K., Li, S., Loeffler, M., Marigorta, U.M., Mei, H., Momozawa, Y., Müller-Nurasyid, M., Nauck, M., Nivard, M., Penninx, B., Pritchard, J., Raitakari, O., Rotzchke, O., Slagboom, E.P., Stehouwer, C.D.A., Stumvoll, M., Sullivan, P., Hoen, P.A.C., Thiery, J., Tönjes, A., Dongen, J. van, Iterson, M. van, Veldink, J., Völker, U., Wijmenga, C., Swertz, M., Andiappan, A., Montgomery, G.W., Ripatti, S., Perola, M., Kutalik, Z., Dermitzakis, E., Bergmann, S., Frayling, T., Meurs, J. van, Prokisch, H., Ahsan, H., Pierce, B., Lehtimäki, T., Boomsma, D., Psaty, B.M., Gharib, S.A., Awadalla, P., Milani, L., Ouwehand, W., Downes, K., Stegle, O., Battle, A., Yang, J., Visscher, P.M., Scholz, M., Gibson, G., Esko, T. & Franke, L. Unraveling the polygenic architecture of complex traits using blood eQTL metaanalysis. *bioRxiv* 447367(2018).doi:[10.1101/447367](https://doi.org/10.1101/447367)
9. Leeuw, C.A. de, Mooij, J.M., Heskes, T. & Posthuma, D. MAGMA: Generalized gene-set analysis of gwas data. *PLoS computational biology* **11**, e1004219(2015).