

RESEARCH PAPER

Genome-wide identification and characterization of the *Populus* WRKY transcription factor family and analysis of their expression in response to biotic and abiotic stresses

Yuanzhong Jiang¹, Yanjiao Duan¹, Jia Yin², Shenglong Ye¹, Jingru Zhu¹, Faqi Zhang², Wanxiang Lu³, Di Fan¹ and Keming Luo^{1,2,*}

¹ Key Laboratory of Eco-environments of Three Gorges Reservoir Region, Ministry of Education, Chongqing Key Laboratory of Transgenic Plant and Safety Control, Institute of Resources Botany, School of Life Sciences, Southwest University, Chongqing 400715, China

² Key Laboratory of Adaptation and Evolution of Plateau Biota, Northwest Institute of Plateau Biology, Chinese Academy of Sciences, 810008 Xining, China

³ College of Horticulture and Landscape Architecture, Southwest University, Chongqing, 400716, China

* To whom correspondence should be addressed. E-mail: kemingl@swu.edu.cn

Received 20 June 2014; Revised 12 August 2014; Accepted 20 August 2014

Abstract

WRKY proteins are a large family of regulators involved in various developmental and physiological processes, especially in coping with diverse biotic and abiotic stresses. In this study, 100 putative *PtrWRKY* genes encoded the proteins contained in the complete WRKY domain in *Populus*. Phylogenetic analysis revealed that the members of this superfamily among poplar, *Arabidopsis*, and other species were divided into three groups with several subgroups based on the structures of the WRKY protein sequences. Various *cis*-acting elements related to stress and defence responses were found in the promoter regions of *PtrWRKY* genes by promoter analysis. High-throughput transcriptomic analyses identified that 61 of the *PtrWRKY* genes were induced by biotic and abiotic treatments, such as *Marssonina brunnea*, salicylic acid (SA), methyl jasmonate (MeJA), wounding, cold, and salinity. Among these *PtrWRKY* genes, transcripts of 46 selected genes were observed in different tissues, including roots, stems, and leaves. Quantitative RT-PCR analysis further confirmed the induced expression of 18 *PtrWRKY* genes by one or more stress treatments. The overexpression of an SA-inducible gene, *PtrWRKY89*, accelerated expression of PR protein genes and improved resistance to pathogens in transgenic poplar, suggesting that *PtrWRKY89* is a regulator of an SA-dependent defence-signalling pathway in poplar. Taken together, our results provided significant information for improving the resistance and stress tolerance of woody plants.

Key words: Pathogen, *Populus*, SA (salicylic acid), stress tolerance, transcription factor, WRKY.

Introduction

Salicylic acid (SA) is a vital hormone and signal molecule in plants, synthesized from cinnamate in a reaction catalysed by phenylalanine ammonia lyase (PAL). The bulk of SA is produced from isochorismate in plants (Chen *et al.*, 2009b) and has many physiological functions such as temperature resistance (Dat *et al.*, 1998; Janda *et al.*, 1999; Clarke *et al.*, 2004), salt resistance (Borsani *et al.*, 2001; Tari *et al.*, 2002; Karlidag

et al., 2009; Palma *et al.*, 2009), drought resistance (Munné-Bosch and Peñuelas, 2003; Cho *et al.*, 2008) and ultraviolet radiation resistance (Yalpani *et al.*, 1994; Mahdavian *et al.*, 2008). Moreover, SA in plant defence responses is well-established because it is essential for the onset of the hypersensitive response (HR) and systemic acquired resistance (SAR) (Malamy *et al.*, 1990).

Induced-pathogen accumulation of SA, or treatment with SA, leads to a rapid increase in the levels of reactive oxygen species (ROS) via inhibition of the activity of SA-binding protein (SABP), which converts H₂O₂ to H₂O and O₂ (Chen *et al.*, 1993; Baker and Orlandi, 1995; Lamb and Dixon, 1997; Klessig *et al.*, 2000). The change in cellular redox potential results in the reduction of the NONEXPRESSION OF PR1 (NPR1) oligomer to its active monomeric form, which is then translocated into the nucleus and enhances the binding of TGA transcription factors to SA-responsive promoter elements as a transcriptional co-activator of SA-responsive genes, such as pathogenesis-related gene (*PR1*) (Dong, 2004; Loake and Grant, 2007). In addition, NPR1 regulates the SA-mediated expression of *WRKY70* from *Arabidopsis*, which encodes an activator protein of SA-dependent defence marker genes (*PR1*, *PR2*, and *PR5*) (Uknes *et al.*, 1992). However, the induction of *WRKY70* expression by SA in *npr1* plants was only eliminated at later time points, implying that *WRKY70* expression is partially NPR1-independent (Li *et al.*, 2004). Recently, Shim *et al.* (2013) reported that AtMYB44 was an NPR1-independent regulatory component that directly regulated *WRKY70* expression. Therefore, SA-mediated defence signalling networks require transcription factors to regulate gene expression, which provides plants with a complex control mechanism against foreign pathogen attack.

In the past 15 years, major advances in WRKY transcription factor research have been made (Rushton *et al.*, 2010). The *WRKY* genes have been greatly expanded in plant genomes due to successive duplication events, resulting in large gene families that include up to 74 members in *Arabidopsis* (Ülker and Somssich 2004), 79 in *Arabidopsis lyrata* (<http://supfam.mrc-lmb.cam.ac.uk/SUPERFAMILY>), 197 in *Glycine max* (Schmutz *et al.*, 2010), 93 in *Sorghum bicolor*, 45 in barley (Mangelsen *et al.* 2008), and 81 in rice (Xie *et al.*, 2005). *WRKY* genes encode transcription factors characterized by the presence of one or two 60 amino-acid WRKY motifs, including a very highly conserved WRKYGQK sequence together with a zinc-finger-like motif CX₄₋₇-CX₂₃₋₂₈-HX₁₋₂-(H/C) that provides binding properties to DNA (see Eulgem *et al.*, 2000, for a review). WRKY domains (WDs) probably evolved from an ancestral group IIC-like WRKY which derived from classical C₂H₂ fingers (Znf) via an intermediate that was structurally close to the BED Zn-finger (Babu *et al.*, 2006; Brand *et al.*, 2013). The WRKY family members were classified into three groups on the basis of both the number of WDs and the features of their zinc-finger-like motif (Eulgem *et al.*, 2000). In general, members of group I typically have two WDs, whereas most proteins with one WD belong to group II. Members of group III contain a single WD, but the pattern of the zinc-finger motif is unique. Furthermore, group II has been divided into five subgroups according to phylogenetic analysis of the WDs (Eulgem *et al.*, 2000; Zhang and Wang, 2005). Most of the WRKY proteins bind to the conserved W-box TTGACY in the promoters of target genes related to the SA signalling pathway, such as chitinase (Yang *et al.*, 1999; Yamamoto *et al.*, 2004), and *PR* genes, such as *PR10* (Despres *et al.*, 1995; Rushton *et al.*, 1996). W-boxes have also been found in the promoter

of *Arabidopsis* non-expressor of *PR* genes 1 (*NPR1*) as an important component of SA-mediated induction of *PR1* (Yu *et al.*, 2001).

More recently, increasing studies have focused on elucidating roles of WRKY factors in SA-biosynthesis, SA induction, and regulation of the signalling pathway. In *Arabidopsis*, the *wrky54wrky70* double mutant showed a remarkably high level of free SA compared to *wrky70* and *wrky54* single mutants, implying that *WRKY70* and *WRKY54* play a role as negative regulators of SA biosynthesis (Wang *et al.*, 2006). Bioinformatics analysis and expression studies demonstrated that WRKY28 and WRKY46 were transcriptional activators of *ICS1* and *PBS3*, which are involved in SA biosynthesis and SA-glucoside (SAG) accumulation, respectively (van Verk *et al.*, 2011). Yu *et al.* (2001) categorized *WRKY3*, *WRKY4*, *WRKY6*, *WRKY7*, *WRKY15*, *WRKY21*, and *WRKY26* into an NPR1-independent group, and *WRKY62* to an NPR1-dependent group. *WRKY53* also showed normal expression at early stages but greatly decreased levels of transcripts at later times after SA treatment in the *npr1* mutant. Subsequently, it was reported that overexpression of *WRKY4* greatly enhanced plant susceptibility to bacterial pathogens and suppressed pathogen-induced *PR1* gene expression (Lai *et al.*, 2008). *WRKY38* and *WRKY62*, which were induced by SA in an NPR1-dependent manner, played a negative role in basal plant defence (Kim *et al.*, 2008). *WRKY18* was dependent on NPR1 in the plant defence response, and constitutive expression of *WRKY18* did not induce, but rather markedly potentiated, developmentally regulated *PR* gene expression (Chen and Chen, 2002). A few WRKY transcription factors have been functionally characterized in *Arabidopsis* and rice (Eulgem *et al.*, 2000; Rushton *et al.*, 2010), but our understanding of precise functions of WRKY members in the SA signalling pathway remains insufficient.

SA and jasmonic acid (JA) response pathways are one of the best studied examples of defence-related signal cross-talk in an antagonistic interaction (Pieterse *et al.*, 2009). For example, WRKY53 mediates negative crosstalk between pathogen resistance and senescence, which is most likely to be governed by the JA and SA equilibrium in *Arabidopsis* (Miao and Zentgraf, 2007). *WRKY70* is downstream of *NPR1* and *MYB44* in an SA-dependent signalling pathway. Plants overexpressing *WRKY70* showed constitutive expression of *PR* genes and suppression of several JA responses including expression of a subset of JA- and *Alternaria brassicicola*-responsive genes, indicating that WRKY70 has a pivotal role in determining the balance between SA-dependent and JA-dependent defence pathways (Li *et al.*, 2004; Li *et al.*, 2006; Shim *et al.*, 2013).

With the completion of the poplar genome sequence (Tuskan *et al.*, 2006), a number of WRKY members have been found in the whole-genome sequence data from *P. trichocarpa* Torr. & A. Gray (http://genome.jgi-psf.org/Poptrl_1/Poptrl_1.home.html). To date, however, there are only limited elaborate studies on the functional characterization of several *WRKY* genes in *Populus*. A recent study reported the molecular cloning and functional characterization of *PtWRKY23* in poplar (*P. tremula* × *P. alba*), which was induced rapidly by

Melampsora infection and SA treatments, and expression patterns of *PtWRKY23* and *AtWRKY23* orthologues are not necessarily identical (Levéé *et al.*, 2009), indicating that *WRKY* in poplar has a different function from *WRKY* orthologues in *Arabidopsis*. Misexpression of *PtWRKY23* in transgenic poplar plants led to increased susceptibility to *Melampsora* infection compared with the wild type, implying that this may be caused by deregulation of genes that disrupt redox homeostasis and cell wall metabolism. However, the role of *PtWRKY23* in the SA signalling pathway is still unknown.

In this study, we found that there is an expanded WRKY family with a total of 100 members in the *Populus* genome. A phylogenetic tree combining WRKY proteins from poplar, *Arabidopsis*, and other species was constructed to test their evolutionary relationships. Promoter analysis revealed that various *cis*-acting elements involved in stress and phytohormone responses were present in the promoter region of *PtrWRKY* genes. Transcriptome analysis showed that the majority (61) of the *PtrWRKY* genes were induced by the fungus *Marssonina brunnea* f.sp. *multigermtubi*, SA, methyl jasmonate (MeJA), wounding, and cold and salinity stresses. Furthermore, stress-response expression profiles were generated to screen candidate genes involved in signal transduction pathways initiated by SA in *Populus*. The function of an SA-inducible gene, *PtrWRKY89*, was characterized in transgenic poplar. Our results will be helpful for understanding the roles of the *WRKY* genes in poplar defence responses and provides valuable information for further identification of the functions of this significant gene family in *Populus*.

Materials and methods

Plant growth conditions and treatments

Plant material and growth conditions *Populus trichocarpa* Torr. & A. Gray and *P. tomentosa* Carr. (clone 741) (Chinese white poplar) were grown in a greenhouse at 25°C under a 14/10 h light/dark cycle.

Hormone treatments SA (5 mM in water) and MeJA [1 mM in 0.1% (v/v) ethanol] were applied at the different concentrations as 5 ml droplets on each plant. The treated plants were immediately covered with a transparent lid. The leaves were collected after 24 h (Li *et al.*, 2004). Additionally, the leaves applied for all stress treatments, pathogen infection, and RT-PCR analysis were excised from the second and third internodes.

Fungal inoculation Leaves of three-month-old plants were inoculated with *M. brunnea* f.sp. *multigermtubi* and *Dothiorella gregaria* Sacc., respectively. Mycelial plugs (6 mm) were placed on excised leaves (at least three leaves for each plant). These leaves were incubated in Petri dishes with humid filter paper in a humid chamber for 3 d (Huang *et al.*, 2012).

Low temperature stress The healthy, well-hydrated plants were transferred to a growth chamber at 4°C under the same light and photoperiodic conditions for 1 h. After cold treatment, plants were allowed to recover at 20°C for 1 h.

Wounding stress For the wounding treatment, the young leaves of poplar plants were harvested after being punctured with sterile needles and placed at 20°C for 2 h.

Salinity stress The four-week-old seedlings were subjected to salt stress. Saline treatments had the NaCl concentrations of 100 mM

added to full-strength Hoagland's solution for 2 d. The method was described previously (Yang *et al.*, 2009a).

Database search and sequence retrieval

The gene model IDs of the *P. trichocarpa* WRKY family were obtained from the DATF website (<http://plantfdb.cbi.pku.edu.cn/index.php>). The nucleotide and amino acid sequences of the *WRKY* genes were downloaded from Phytozome v9.1 website (<http://www.phytozome.net/poplar>). The amino acid sequences of these genes, which could not be detected in Phytozome v9.1 via ID numbers, were used as queries to perform BLAST searches against the *P. trichocarpa* genome database in Phytozome v9.1. After the identification of the *Populus WRKY* (*PtrWRKY*) genes, gene orthologue analysis was performed using the *WRKY* gene sets from *Arabidopsis* based on previously reported results (He *et al.*, 2012). The catalogue of WRKY proteins in poplar is shown in Supplementary Table S1. Sequences of the *AtWRKY* genes were searched and downloaded from the *Arabidopsis* genome TAIR 9.0 website (<http://www.Arabidopsis.org/index.jsp>). Sequences of WRKY proteins from other species were downloaded from NCBI (<http://www.ncbi.nlm.nih.gov/>) and the accession numbers are shown in Supplementary Table S2.

Phylogenetic analysis

The alignments of the amino acid sequences of full *PtrWRKY* proteins and WDs were performed using Clustal X 1.81 (<http://www.clustal.org/>) (Thompson *et al.*, 1994, 1997). The parameters of alignment used were as follows: gap opening penalty, 10.00 (both in pairwise alignment and multiple alignment); gap extension penalty, 0.20 (both in pairwise alignment and multiple alignment); protein weight matrix, gonnet; residue-specific penalties, on; hydrophilic penalties, on; gap separation distance, 0; end-gap separation, on; use negative matrix, off; and delay divergent cutoff (%), 30. Phylogenetic trees were constructed through the neighbour-joining (NJ) method using program MEGA4.1 (<http://www.megasoftware.net/mega.html>) (Tamura *et al.*, 2007). The parameters of the constructed trees were: phylogeny test and options: bootstrap (1000 replicates; random seed = 9928), gaps/missing data: complete deletion, model: amino: Poisson correction, substitutions to include: all, pattern among lineages: same (homogeneous), and rates among sites: uniform rates.

In silico analysis of regulatory elements in promoter region of *PtrWRKY* genes

The transcription start site was designated +1. The elements in the promoter fragments (from -1500 to +1 bp) of *PtrWRKY* genes were found using the program PlantCARE online (<http://bioinformatics.psb.ugent.be/webtools/plantcare/html/>).

Gene expression analysis

Digital transcriptomics analysis Digital gene expression (DGE) experiments were performed as described by Zhang *et al.* (2010). Briefly, total RNA was isolated from poplar leaves treated with SA and MeJA, salinity stress, low temperature, mechanical wounding, and infection with *M. brunnea* f.sp. *multigermtubi*, respectively. Approximately 1 µg of total RNA per sample was incubated with oligo (dT) beads to capture the polyadenylated RNA fraction. First-strand cDNA was synthesized using random hexamer-primer and reverse transcriptase (Invitrogen). The second-strand cDNA was synthesized using RNase H (Invitrogen) and DNA polymerase I (New England BioLabs). The cDNA libraries were then prepared according to protocols of Illumina. To summarize, one individual single-end cDNA library was constructed for each sample, and then sequenced on the Illumina GA platform for 35 cycles. The paired-end libraries were sequenced for 44–75 bp.

The *P. trichocarpa* genome and annotated gene set were downloaded from the DOE Joint Genome Institute website (<http://genome.jgi-psf.org/cgi-bin/>), and 17 273 *P. trichocarpa* full-length cDNAs were collected from the reference genome sequence of *Populus* (version 2.0, Phytozome). The cDNAs were aligned to the *P. trichocarpa* genome and those with identities higher than 80% were retained for further analysis. After removing reads containing sequencing adapters and reads of low quality (containing Ns > 5), we aligned reads to the *P. trichocarpa* genome using SOAP (Li *et al.*, 2008), allowing for a 2 bp mismatch between the tag and reference transcriptome. Reads that failed to be mapped were progressively trimmed off one base from the 39-end and mapped to the genome again until a match was found (P -value ≤ 0.05). For paired-end reads, the insert size was set between paired reads at 1 bp to 10 kb to allow reads spanning introns of different sizes. A similar strategy was used to align reads to the non-redundant gene set, but the insert length range was restricted to 1 kb for paired-end read mapping.

Semi-quantitative RT-PCR analysis Total RNA from fresh tissues of poplar (*P. trichocarpa*) plants was extracted using RNA RNeasy PlantMiniKit (Qiagen, Germany) according to the manufacturer's instructions with a modification as reported previously (Jia *et al.*, 2010). Samples from at least three plants were pooled for analysis. The total RNA before cDNA synthesis was treated with RNase-free DNase (TaKaRa, Dalian, China), according to the manufacturer's instructions to avoid any genomic DNA contamination. First-strand cDNA was synthesized from 2 μ g RNA with RT-AMV transcriptase (TaKaRa, Dalian, China) in a total volume of 20 μ l by using oligo (dT)₁₈ at 42°C for 30 min. 18S rRNA was used as an internal control. The amplification products of RT-PCR were resolved by 1% (w/v) agarose gel electrophoresis and visualized with ethidium bromide under UV light to test the expression levels of *PR* genes in transgenic plants.

Quantitative RT-PCR analysis Verification of transcriptome data was conducted by checking the expression profiles of a number of the representative *PtrWRKY* genes in various tissues by quantitative RT-PCR (qRT-PCR) analysis. The gene-specific primers used for semi-qRT-PCR and qRT-PCR analysis are shown in Supplementary Table S3. RT-PCR analysis was based on at least two biological replicates of each sample and three technical replicates of each biological replicate.

Cloning of *PtrWRKY89*

The full open-reading frame of *PtrWRKY89* was amplified with gene-specific primers (forward, 5'-AGTTCTTGACACCCACCACTC-3'; reverse, 5'-GGAAATACAAAGAGGCTGC-3'; Joint Genome Institute, <http://genome.jgi-psf.org/poplar/poplar.info.html>) by RT-PCR with 2 μ l cDNA from leaves. The PCR reaction was carried out with Pfu DNA polymerase (TaKaRa) in a total volume of 50 μ l with an initial denaturing step at 94°C for 3 min, 34 cycles of 94°C for 45 s, 54°C for 30 s, and 72°C for 90 s, and a final extension step at 72°C for 10 min. The amplification products were cloned into the plant binary vector pCXS_N, which is a zero-background TA cloning system that provides simple and high-efficiency direct cloning of PCR-amplified DNA fragments (Chen *et al.*, 2009a). The resulting vector p35S:*PtrWRKY89*, containing the *PtrWRKY89* open-reading frame under the control of the cauliflower mosaic virus (CaMV) 35S promoter and the hygromycin phosphotransferase gene (*Hpt*) as a plant-selectable marker conferring hygromycin resistance was transferred into *Agrobacterium tumefaciens* EHA105 by the freeze-thaw method.

Transformation of *P. tomentosa* plants

A. tumefaciens strain EHA105 containing 35S:*PtrWRKY89* was incubated in liquid yeast extract peptone medium supplemented with 100 mmol l⁻¹ acetone-syringone at 18°C with constant shaking (200 rpm) until the culture reached an optical density of 0.8 at OD₆₀₀nm. The *A. tumefaciens* culture was then diluted with one volume of liquid woody plant medium (WPM) (Lloyd and McCown, 1980).

Poplar transformation methods were described previously by Jia *et al.* (2010). Leaves of *P. tomentosa* were excised from *in vitro* plantlets, cut into disks, and dipped in the diluted *Agrobacterium* culture for 8–10 min. After excess liquid on the surfaces was absorbed by sterilized paper, the leaf disks were transferred to WPM medium [2.0 mg l⁻¹ zeatin, 1.0 mg l⁻¹ 1-naphthalene acetic acid (NAA)]. The infected disks were co-cultivated in the dark for 2 d and then transferred to callus-inducing medium containing 2.0 mg l⁻¹ zeatin, 1.0 mg l⁻¹ NAA, 400 mg l⁻¹ cefotaxime, 9 mg l⁻¹ hygromycin, and 0.8% (w/v) agar. After 2–3 weeks of culture in the dark, these leaf disks with induced calli were subcultured on screening medium [2.0 mg l⁻¹ zeatin, 0.1 mg l⁻¹ NAA, 400 mg l⁻¹ cefotaxime, 9 mg l⁻¹ hygromycin, and 0.8% (w/v) agar] to induce adventitious buds. Regenerated shoots were transferred to rooting medium containing 0.1 mg l⁻¹ NAA, 400 mg l⁻¹ cefotaxime, and 9 mg l⁻¹ hygromycin. Transgenic plants were selected with 9 mg l⁻¹ hygromycin. Rooted plantlets were acclimatized in pots placed inside a humid chamber (16h photoperiod, 25°C, 70% relative humidity) for 2 weeks and finally transferred to the greenhouse.

Evaluation of transgenic plants for resistance against *D. gregaria*

To test the resistance of transgenic poplar against fungal infections, the *in vivo* test was performed with *D. gregaria* as described previously (Huang *et al.*, 2012). Adobe Photoshop was used to calculate lesion area. Each experiment was performed with at least three replicates, and contained wild-type controls. All data were analysed by *t*-test at $P \leq 0.05$, using the Origin 6.1 software version v6.1052 (B232) (OriginLab Corp, Northampton, MA, USA).

Results

Identification of poplar *WRKY* transcription factors and phylogenetic comparison of the *WRKYs* from different species

WRKY proteins comprise a large family of transcription factors and have been found in various plant species (Eulgem *et al.*, 2000; Xie *et al.*, 2005; Rensing *et al.*, 2008). In this study, a genome-wide analysis was carried out to identify *WRKY* genes in the *P. trichocarpa* genome using the publicly available genomic and putative full-length protein sequences, which were mainly downloaded from Phytozome v9.1 (<http://www.phytozome.net/>). Initially, we obtained 119 partial putative full-length protein sequences of *WRKY* genes in *P. trichocarpa* and their gene model IDs from the Plant Transcription Factor Database v2.0 (<http://planttfdb.cbi.pku.edu.cn/>). In an attempt to determine the reliability of these putative genes, the unique gene IDs for gene models were BLAST searched against Phytozome v6.0, resulting in a total of 105 members that were included in the *WRKY* superfamily identified above. Manual inspection of putative full-length protein sequences among these putative *WRKY* genes showed that three members contained only partial WDs whereas the other two members did not contain WDs or complete zinc finger motifs, and we removed both of them. The CDS sequences of 103 models were BLAST searched against Phytozome v9.1. Eventually we found a total of 100 members representing the unique poplar genes, and created consecutive nomenclature, designated as *PtrWRKY1*–*PtrWRKY100* (Supplementary Table S1). These were used in the analysis.

In general, transcription factor families contain a highly conserved domain or consensus motif involved in DNA binding, but the sequence similarity of other parts is relatively low in most genes (Wu *et al.*, 2005). A conserved DNA domain is considered as an evolutionary unit whose coding sequence can be duplicated and/or undergo recombination. The most prominent structural feature of the WRKY proteins is the WD of 60 amino acid residues (Eulgem *et al.*, 2000). All identified members of the *PtrWRKY* gene family contain either one or two WDs. In order to examine the phylogenetic relationships among *Populus* WRKY proteins, a multiple putative full-length protein sequence alignment of all putative 100 *PtrWRKY* proteins, 72 *AtWRKYs* from *Arabidopsis*, and 27 well-known WRKYs from other species was constructed using Clustal X (Thompson *et al.*, 1994, 1997) and an unrooted tree was built using MEGA 4.1 (Tamura *et al.*, 2007) by employing the NJ method. As shown in Fig. 1, this phylogram was classified into three groups (I, II, and III), based on the primary amino acid sequence. The WRKY members in group II can be further clustered into five subgroups (IIa–e) and a sole member, *PtrWRKY99* (Fig. 1). Using the same method, the phylogenetic tree is also constructed based on WRKYdomainDs (Supplementary Figure S1). The members of group I contain two conserved WDs, an N-terminal WD (NT-WD) and a C-terminal WD (CT-WD), which are apparently clustered into two different clades (I-NT and I-CT), implying the retention of their divergence after duplication. The genes belonging to the NT-WDs and CT-WDs clades are assigned to IIa, IIb, and IIc, respectively, because they are obviously clustered into different clades. In addition, *PtrWRKY99*, which contains a C₂H₂ motif instead of C₂HC, is clustered into subgroup III (Supplementary Figure S1).

Variety of cis-elements in the promoter regions of *Populus* WRKY genes

Regulatory elements of the promoter sequences are essential to temporal, spatial, and cell type-specific control of gene expression (Lescot *et al.*, 2002). Here we searched 1500-bp upstream promoter regions of all putative *Populus* WRKY genes in the plant promoter database PlantCARE, and a number of cis-acting elements related to stresses as well as phytohormone responses were found. As shown in Fig. 2, SA-responsive elements (TCA-elements) and MeJA-responsive elements (CGTCA-motif) were found in the promoters of 65 and 64 *PtrWRKY* genes, respectively. Both of them existed in the promoter regions of 40 genes together. The conserved fungus-responsive elements, such as EIRE and ELI-box3, were present in the promoter regions of eight and nine *PtrWRKYs*, respectively. More than 12 promoters contained Box-S and WUN motifs involved in wounding stress. The low-temperature-responsive element (LTR) was found in 36 promoters of *PtrWRKY* genes. MYB-binding sites (MBSs) and ABA-responsive elements (ABREs) were abundant in *PtrWRKY* gene promoters and these elements were found in 68 and 49 promoters, respectively. In addition,

WDs bound to W-boxes (TTGACC) with the highest affinity; the invariant TGAC core of the W-box is essential for function and WRKY binding (Brand *et al.*, 2010; Brand *et al.*, 2013). There were several W-boxes in the promoters of 67 *PtrWRKYs*, indicating that these genes might be regulated by other WRKY proteins or themselves (Supplementary Table S4). These results indicated that the *Populus* WRKY transcription factors are involved in the transcriptional control of the defence and stress responses.

Digital transcriptomics analysis of *Populus* WRKY genes

To determine the potential roles of *PtrWRKY* genes in plant responses to various environmental stresses, induction experiments with several treatments were conducted with wild-type poplar plants. Total RNA was isolated from leaves of control, *M. brunnea*-infected, SA- and MeJA-treated, wound treated, low temperature-treated, and salinity treated plants, respectively. Global transcriptomics analysis revealed that transcript abundance of 61 *PtrWRKY* genes changed significantly after treatments compared to control plants (Fig. 3; more detailed information is listed in Supplementary Table S5). The majority of *PtrWRKY* genes were induced by both SA and MeJA, except for *PtrWRKY2*, *PtrWRKY22*, *PtrWRKY24*, *PtrWRKY71*, *PtrWRKY80* and *PtrWRKY87*. For example, *PtrWRKY51* and *PtrWRKY95*, belonging to group IIc, were activated by both SA and MeJA treatments, resulting in an obvious increase in mRNA level. Expression of *PtrWRKY80* was apparently increased in SA-treated plants, whereas no change in its expression was observed when treated with MeJA, indicating that *PtrWRKY80* could be only involved in the SA signalling pathway. In contrast, *PtrWRKY71* expression was downregulated significantly after SA treatment (Fig. 3). In addition, most of the *PtrWRKY* genes exhibited a gradual increase in expression levels in response to infection of the pathogen *M. brunnea* (Fig. 3 and Supplementary Table S5). Similar results were obtained in the genome-wide expression analysis of the WRKY gene superfamily in rice following SA- and MeJA-treatments, and pathogen infection (Ryu *et al.*, 2006). Meanwhile, 61 *PtrWRKY* genes were induced by wounding, low temperature, or salinity, except for *PtrWRKY1* (Supplementary Table S5). Transcript levels of *PtrWRKY75* and *PtrWRKY80* showed no change under mechanical wounding and low temperature treatments, but their mRNA levels were enhanced after salinity treatment. Expression of *PtrWRKY61* and *PtrWRKY88* increased after wounding and salinity treatments, but no change was detected under low temperature. In *Arabidopsis*, *AtWRKY18*, *AtWRKY40*, and *AtWRKY60* play important roles in plant responses to both abiotic and biotic stress (Chen *et al.*, 2010a; Wenke *et al.*, 2012), and their *Populus* orthologues, *PtrWRKY18*, *PtrWRKY35*, and *PtrWRKY60*, were transcriptionally upregulated by all treatments, indicating that these three *PtrWRKYs* are associated with responses towards biotic and abiotic stimuli. Based on the results presented here, we speculate that the functional divergence of *PtrWRKY* proteins

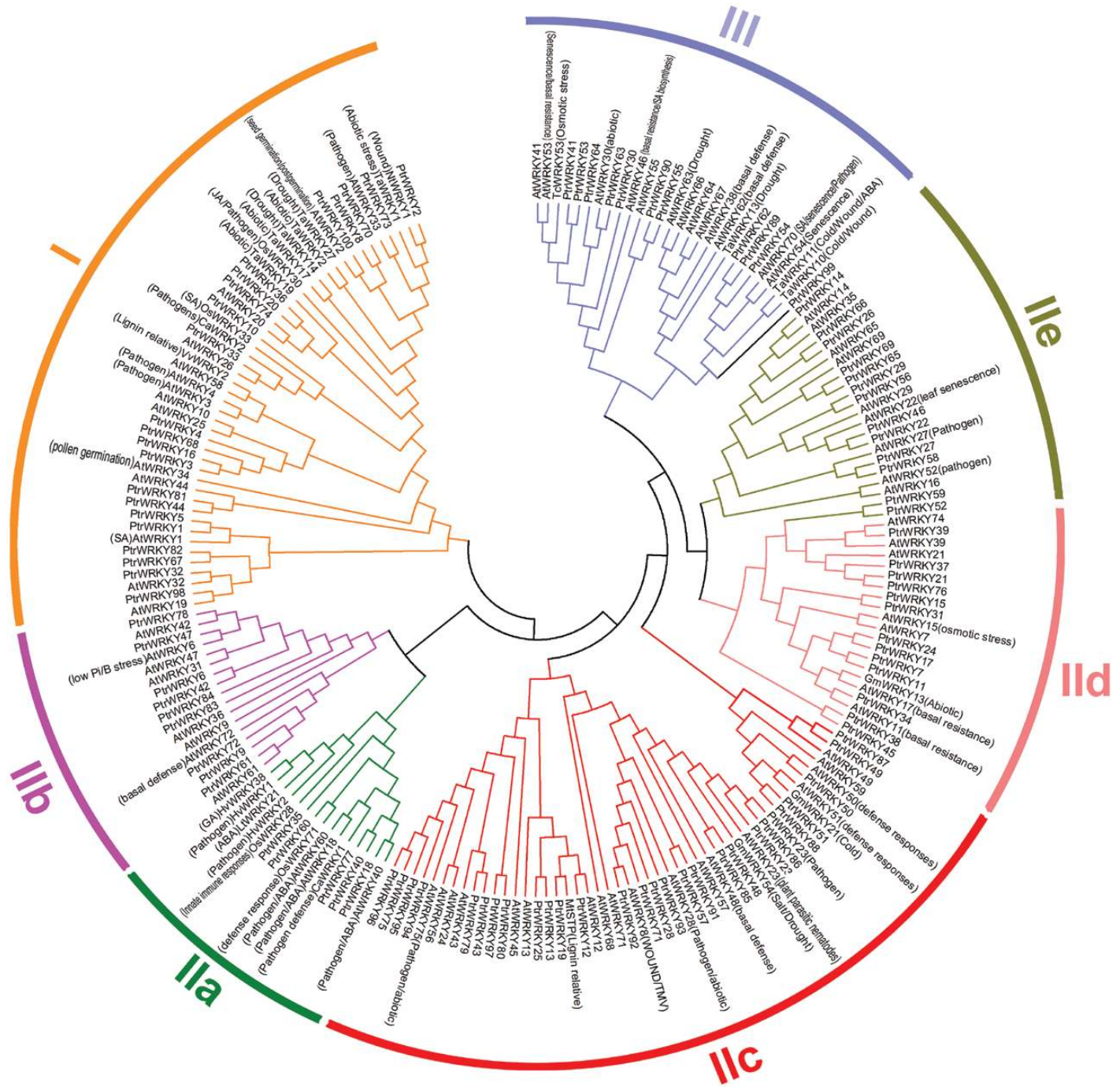


Fig. 1. Phylogenetic tree of WRKY proteins from poplar, *Arabidopsis* and other species. The complete amino acid sequences of 100 poplar and 72 *Arabidopsis* WRKY proteins combined with 27 WRKY proteins from other plants were aligned by ClustalW, and the NJ tree was constructed using MEGA 4.1 with 1000 bootstrap replicates. Pathogen, pathogen response; Abiotic, abiotic stress response; SA, SA response; JA, JA response; ABA, ABA response; GA, GA response; TMV, tobacco mosaic virus response. This figure is available in colour at JXB online.

plays a critical role in the responses of poplar plants to various stresses.

Expression profiles of Populus WRKY genes in poplar

To investigate the tissue-specific expression of the *Populus WRKY* genes, qRT-PCR was used to determine the expression patterns of 61 *PtrWRKY* genes in various tissues including roots, stems, and leaves. Expression of only 46 *Populus*

WRKY genes could be detected at the transcript level and these genes showed a diverse range of tissue-specific expression patterns in different tissues (Fig. 4). Most of *Populus WRKY* genes were more highly expressed in roots and leaves than in stems. Expressions of 14 *PtrWRKYs*, including *PtrWRKY3*, 6, 11, 16, 28, 35, 49, 62, 63, 70, 74, 77, 89 and 95, occur preferentially in leaves (Fig. 4A). Transcript levels of *PtrWRKY40* and *PtrWRKY60* were lower in roots but mRNA accumulation in stems and leaves was nearly

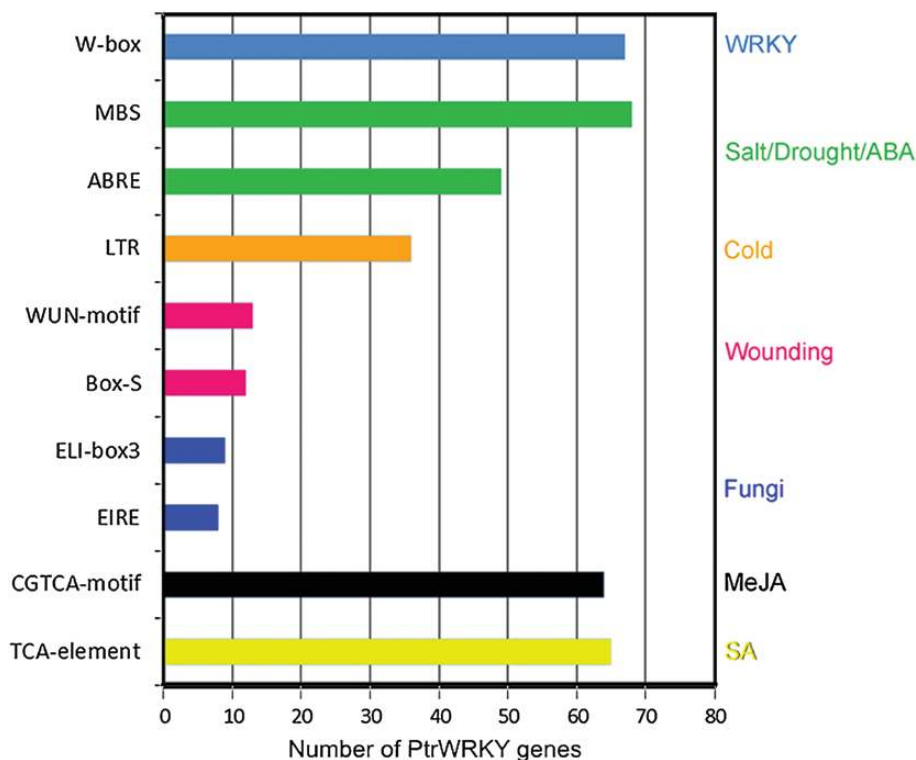


Fig. 2. The number of WRKY genes containing various *cis*-acting elements. W-box, WRKY binding site; MBS, MYB binding site; ABRE, ABA-responsive element; LTR, *cis*-acting element involved in low-temperature responsiveness; WUN-motif: wound-responsive element; BOX-S, wounding responsive element; ELI-box3, elicitor-responsive element; EIRE, elicitor-responsive element; CGTCA-motif, *cis*-acting regulatory element involved in MeJA-responsiveness; TCA-element, *cis*-acting element involved in SA responsiveness. This figure is available in colour at JXB online.

similar. *PtrWRKY18* and *PtrWRKY73* showed higher expression levels in roots and leaves compare to stems. Both *PtrWRKY62* and *PtrWRKY89*, which are orthologous genes of *AtWRKY70* (Fig. 1), shared a similar expression patterns, indicating that they might play specific or redundant functional roles in poplar. For the other 23 *PtrWRKY* genes, high mRNA levels were observed in roots and relatively low but unambiguous expression was evident in stems and leaves (Fig. 4B). Additionally, five *PtrWRKY* genes, including *PtrWRKY2*, *PtrWRKY7*, *PtrWRKY15*, *PtrWRKY71* and *PtrWRKY86*, were mainly expressed in stems (Fig. 4C).

Expression patterns of 18 *Populus WRKY* genes in response to different treatments

To further confirm if the expression of *Populus WRKY* genes was induced by different biotic and abiotic stresses, 18 *PtrWRKY* members, whose mRNA levels were relatively high in leaves, were selected and qRT-PCRs were performed to analyse their expression patterns in response to these treatments. Overall, transcript levels of all *PtrWRKY* genes tested were detected to respond to at least one treatment (Fig. 5). Among them, three *PtrWRKY* genes were significantly induced by only one treatment. For instance, *PtrWRKY28* responded to *M. brunnea*, whereas SA induced a remarkable increase in mRNA levels of *PtrWRKY60* and *PtrWRKY89*. Several *PtrWRKY* genes, such as *PtrWRKY6*, *PtrWRKY16*, *PtrWRKY18*, *PtrWRKY35*, *PtrWRKY40*, *PtrWRKY62* and *PtrWRKY74*, were able to respond to two treatments.

For example, *PtrWRKY18* was induced by both SA and MeJA, indicating that it might be a node of convergence for JA-mediated and SA-mediated signal transduction pathways. The expression of *PtrWRKY40* was enhanced significantly after treatments with SA and *M. brunnea* (Fig. 5), implying that its role might be involved in pathogen resistance mediated by an SA signal.

Identification and sequence analysis of the *PtrWRKY89* gene

As shown in Fig. 1, *PtrWRKY89* has been classified into group III of the WRKY family and formed a subgroup with *PtrWRKY54*, *PtrWRKY62*, *AtWRKY54* and *AtWRKY70*, whose domains are distinct from those of monocot species (He *et al.*, 2012). To elucidate the role of *PtrWRKY89* in SA signalling, we identified the *PtrWRKY89* cDNA encoding a putative WRKY protein by RT-PCR with gene-specific primers based on the sequences deposited in Phytozome version 9.1. *PtrWRKY89* appeared to be a full-length cDNA of 1002 bp encoding a protein of 333 amino acids residues. *PtrWRKY89* contains a typical WD with a C₂HC-type zinc finger and putative nuclear localization signals. Interestingly, the putative full-length protein sequence of *PtrWRKY89* exhibits low similarity to *AtWRKY70* (48.38%) (Fig. 6), but their WDs were conserved (81.09%) (Fig. 6). Previous studies demonstrated that almost all WRKY III proteins were responsive to SA treatment (Kalde *et al.*, 2003). Among them, *AtWRKY38*, *AtWRKY46*, *AtWRKY53*, *AtWRKY54*,

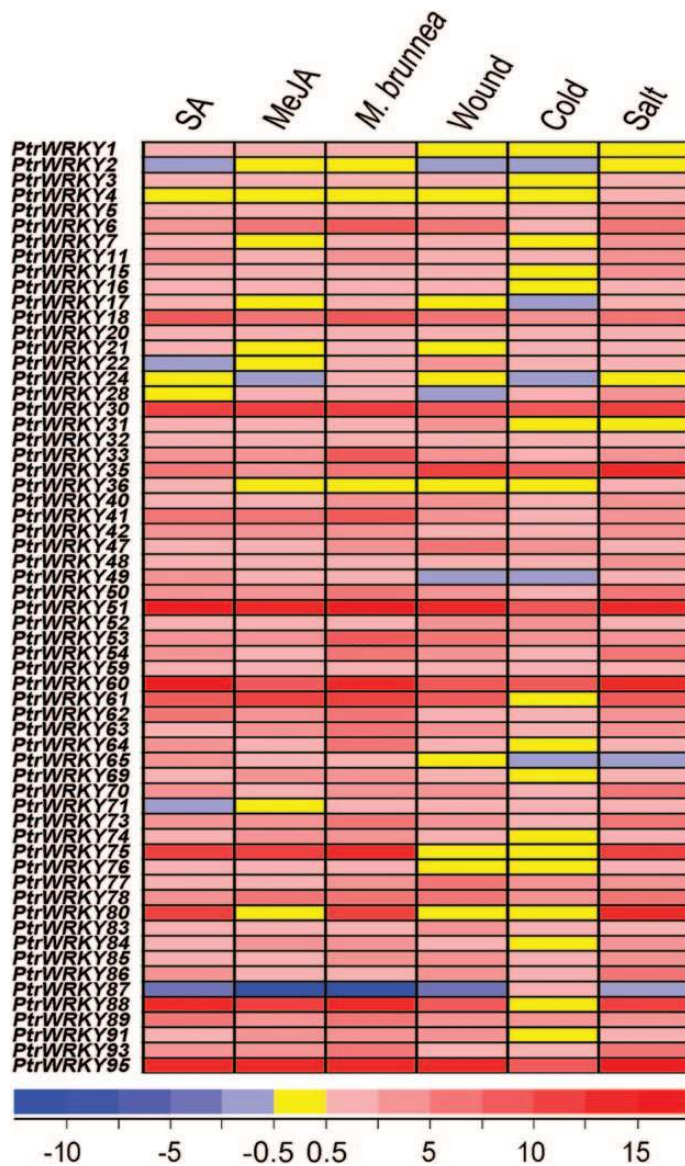


Fig. 3. Digital transcriptomics analysis of *PtrWRKY* genes shows that 61 *PtrWRKY* genes are significantly sensitive to SA, MeJA, *M. brunnea* f.sp. *multigermtubi*, wounding, cold, and salinity stresses. Levels of transcript accumulation are shown. Each column represents a discreet biological sample. This figure is available in colour at JXB online.

AtWRKY62 and AtWRKY70 were early SA-induced, with highest expression levels 2h after SA treatment (Besseau et al., 2012). As shown in Fig. 1, *PtrWRKY89* belongs to the same cluster as AtWRKY54 and AtWRKY70 characterized in *Arabidopsis* (Knoth et al., 2007). These results indicate that *PtrWRKY89* is a potential transcriptional activator in the SA signalling pathway and is induced by SA at an early stage.

PtrWRKY89 is induced at an early stage by SA treatment

The expression pattern of *PtrWRKY89* was analysed by semi-qRT-PCR at different time points when treated with SA. As shown in Fig. 7, expression of *PtrWRKY89* was not induced by mock treatment. While the mRNA level of *PtrWRKY89* increased 4-fold up to 2h after exposure to SA, the highest

transcript level was detected from 5–8h. However, transcript accumulation decreased significantly after 24h of SA treatment. These data indicate that *PtrWRKY89* is an early gene activated by the SA signal.

Overexpression of *PtrWRKY89* confers increased resistance to *D. gregaria* in transgenic poplar

To further investigate the roles of *PtrWRKY89* in plant biotic stress responses, a plant binary construct containing a full-length *PtrWRKY89* cDNA driven by the CaMV 35S promoter was generated and transformed into *P. tomentosa* by *A. tumefaciens*-mediated transformation. A total of 17 putative transformants with hygromycin resistance were obtained and grown in the greenhouse. No obvious phenotypic change was observed in transgenic plants when compared to wild-type plants (Supplementary Figure S3). PCR analysis using gene-specific primers was employed to confirm the presence of the transgenes in transformed plants. An expected amplification product of a 1202-bp *PtrWRKY89* fragment combining a T-NOS terminal region was obtained from all transgenic lines tested, whereas no signal was detected from untransformed plants (Supplementary Figure S4), indicating the successful integration of the transgene into the poplar genome. From all independent transgenic lines containing the 35S:*PtrWRKY89* construct, two lines (LC and LI) with high transcript levels of *PtrWRKY89* were selected for further analysis.

To determine the effect of *PtrWRKY89* overexpression on disease resistance in poplar, leaves excised from transgenic and control lines were inoculated with agar plugs containing hyphae of *D. gregaria*, a hemibiotrophic fungus. Compared with the severe disease symptoms appeared on the control leaves at 3 d post inoculation (dpi), only slight necrotic lesions appeared on the leaves of the transgenic 35S:*PtrWRKY89* lines tested (Fig. 8A). Quantification assays showed that the lesions were significantly ($P < 0.05$) smaller in 35S:*PtrWRKY89* lines than in the control plants (Fig. 8B), indicating that *PtrWRKY89* might act as a positive regulator of basal resistance to infection of hemibiotrophic fungal pathogens.

Constitutive expression of the *PtrWRKY89* gene in poplar resulted in the upregulation of several PR genes

Increased disease resistance in plants is often accompanied by the accumulation of elevated transcript levels of *PR* genes associated with the SA-mediated defence pathway (Uknes et al., 1992; Dong, 2004; Loake and Grant, 2007). Because exogenous SA-triggered expression of *PtrWRKY89* and overexpression of *PtrWRKY89* enhanced resistance to pathogens, we further determined whether *PtrWRKY89* is directly involved in controlling expression of *Populus PR* genes. A genome-wide candidate gene screen found 15 putative *Populus PR* genes, homologues to *PR1*, *PR2*, and *PR5* from *Arabidopsis*. Semi-qRT-PCR analysis showed that eight out of 15 *PR* genes, including *PR1.2*, *PR2.3*, *PR2.6*, and *PR5s*, were activated in *PtrWRKY89*-overexpressing lines (Fig. 9). Interestingly, the expression of other *Populus PR*

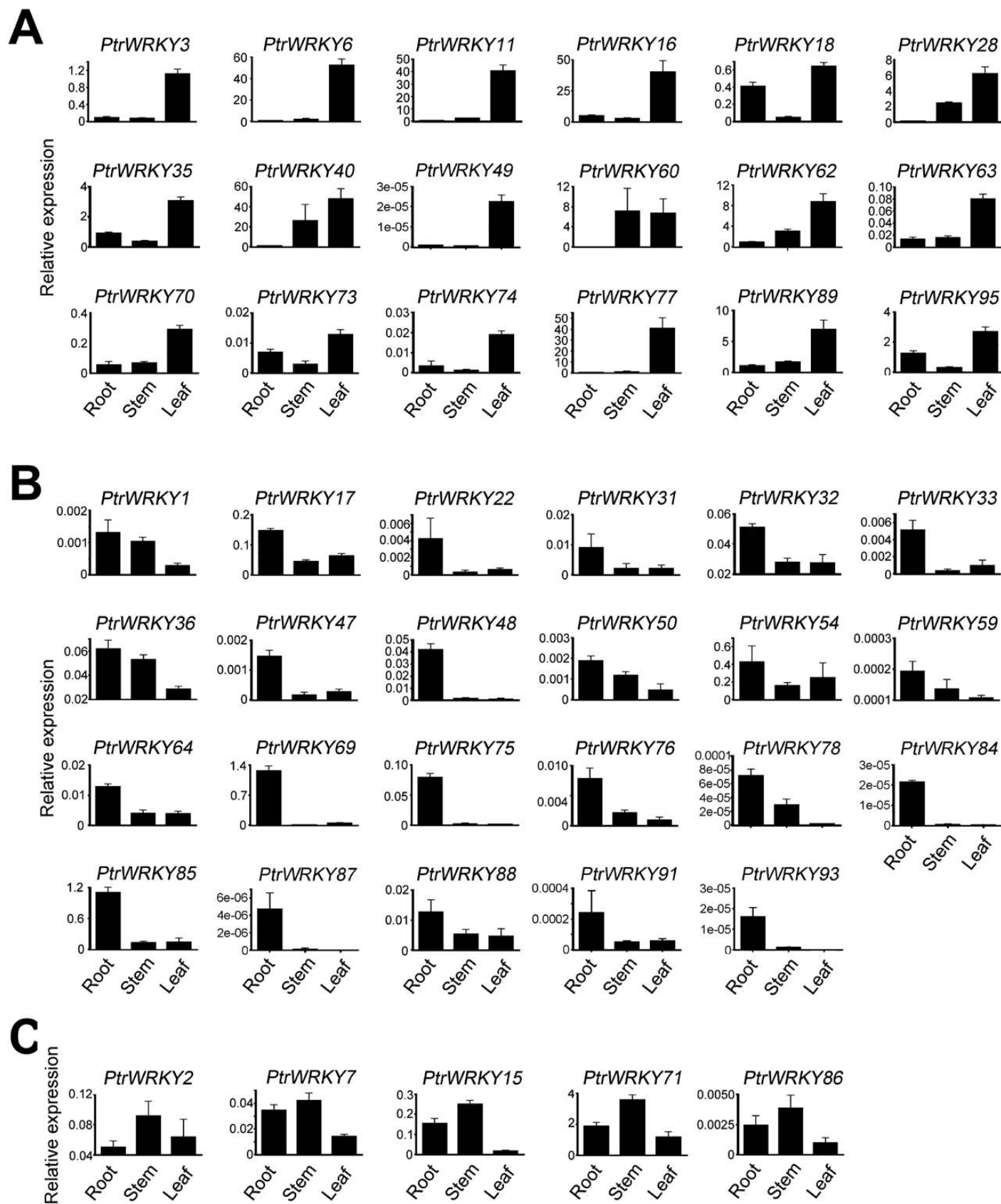


Fig. 4. Expression analysis of 46 *PtrWRKY* genes using qRT-PCR. Relative quantities of *PtrWRKY* members in root, stem, and leaf are illustrated. (A–C) The members have highest expression levels in leaves, stems, and roots, respectively. Error bars result from three biological replicates. Poplar 18S expression was used as a control and gene-specific primers were used for qRT-PCR analysis of *Populus WRKY* genes.

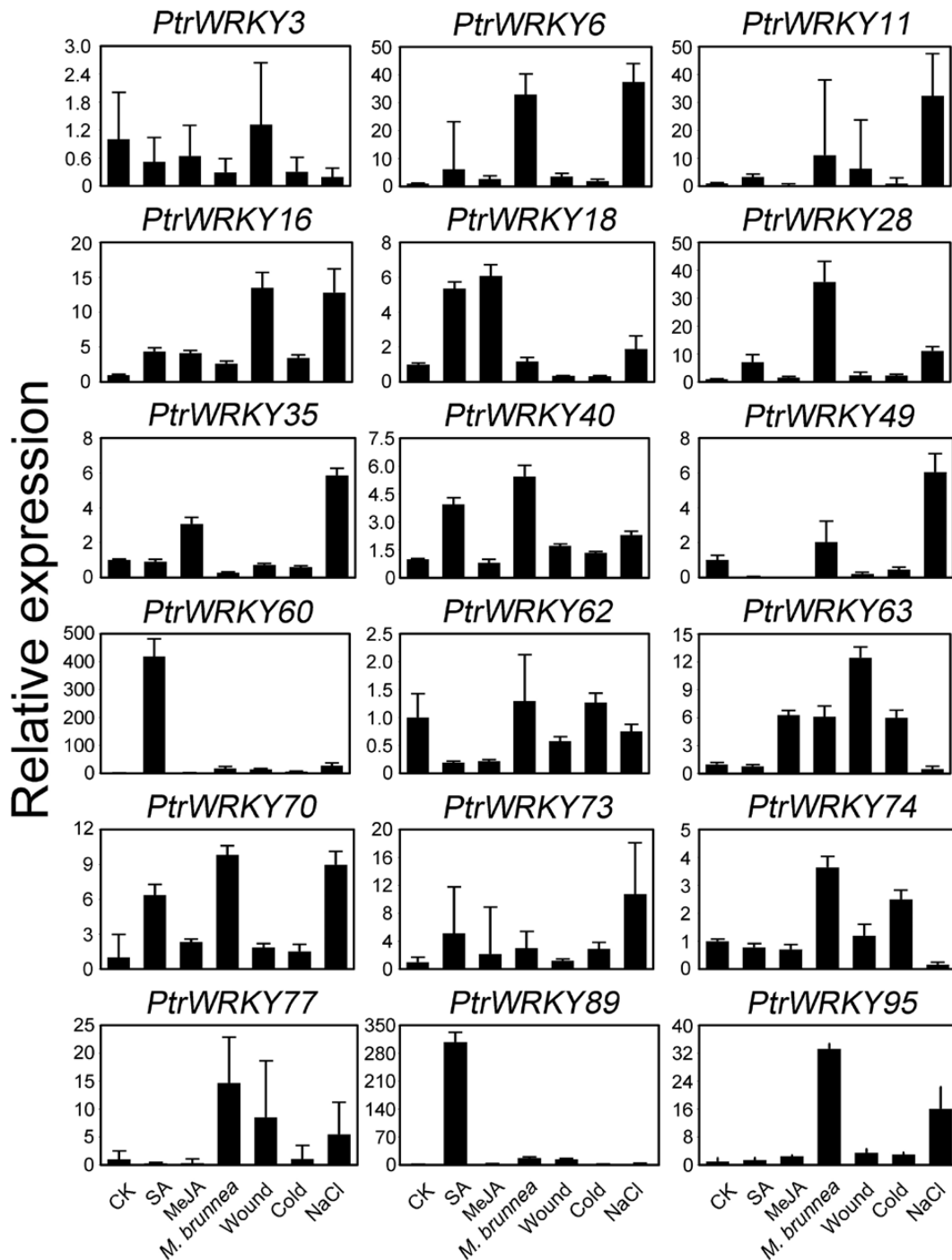


Fig. 5. Expression profiles of 18 *Populus WRKY* genes under different treatments. Leaves excised from poplar were sprayed with SA and MeJA, inoculated with *M. brunnea* f.sp. *multigermtubi*, and treated with wounding, cold, and salinity stresses. The untreated leaves were regarded as the control (CK). Leaves were collected for transcript profile analysis by qRT-PCR. Error bars result from three biological replicates. Poplar 18S expression was used as a control and gene-specific primers were used for qRT-PCR analysis of *Populus WRKY* genes.

genes was not upregulated in *PtrWRKY89*-overexpressing plants. In addition, the mRNA levels of *NPR1.1*, *MYB44.1*, *MYB44.2*, and *SID2* showed no remarkable differences between wild-type and transgenic plants (Fig. 9). Similarly, *AOS7* and *JAZ10*, involved in the JA-signalling pathway, showed no change (Fig. 9). Taken together, these results indicate that *PtrWRKY89* might be one of the coactivators of SA-mediated defence marker genes in poplar.

Discussion

Characterization of the *Populus WRKY* gene family

In a previous study, Zhu et al. (2007) proposed the existence of 104 WRKY family genes in the *P. trichocarpa* genome using the conserved WDs as the defining feature. He et al. (2012) further presented detailed information regarding the specifics of the individual *Populus WRKY* genes. However, in our study,

PtrWRKY54	MGTCLSEKLSRERVIKELVQGHFAAOLQIRLOKP.....CGNFDGRFSSAGELVGGKILRSE	61
PtrWRKY62	MDSSWHGNLPANRKAIDEIVRGQEIAAQIKLVMNKS.....IG..VDESVFAEDLVKKIMNSFNS	59
PtrWRKY89	MESSWPENLPSHRKKVIDELLRGQEIAKKLFVMSKS.....TG..DDGSMSAENLVREIMNSFNS	59
AtWRKY70	MDTN....KAKKLKVMNQLVEGHDLTTOLOQLLSQP.....GSG.....LEDLVAKILVCFNN	49
AtWRKY54	MDSNS.NNNTKSIKRKVVDCIVEGYEFATQIQLLLSHQHSNQYHIDETRLVSGSGSVSGGPDVDELMSKILGSEHK	75

PtrWRKY54	TLSVITSSSESAGGEICQNLASSLGDSACYDD.....RRSEDSGSESKK..RPATTKDRRGCYKRRKISQSWTTVCP	129
PtrWRKY62	SLYILNGGEFDEVASQIP...QVGSPCWDGR.....KSSKDSGESGRGTAEKLVKDRRGCYKRRKSSHSRTDDST	126
PtrWRKY89	TLNILNGGGYDDVVSQTPATTKVCSPLWDGR.....KSEDSGSESKSTATVKVKDRRGCYKRRRSSHSWTNETS	129
AtWRKY70	TISVLDTFPEISSSSSLAAVEGSONASCND.....GKFEDSGDSRK..RLGPVKGKRGCYKRRKRSETCTIEST	117
AtWRKY54	TISVLDSFDPVAVS.VPIAVEGSWNASCGDSDATPVSCNGGDSGSESKK.RLGVGKGRGCYTRKTRSHTRIVEAK	149
	WRKY Domain	
PtrWRKY54	TIEDS.HAWRKYGQKILNAKYPRSYFRCRKYEQGCKATKQVQRMEDNPDLYHTTYIGSHTCRNIPEAPQIITDS	204
PtrWRKY62	TLTDDGHAWRKYGQKIVILNAKYPRNYFRCTHKYDQCCQATKQVQRIQEEPLYRTTYIGHHTCKNLLKAS.QFVLD	201
PtrWRKY89	TLTDDGHAWRKYGQKIMILNAKFRNYFRCTHKYDQCCQATKQVQVEDEPPLYRTTYIGHYHTCKNLLKASDQFVLD	205
AtWRKY70	ILEDA.FSWRKYGQKIELNAKFRSYFRCRKYEQGCKATKQVQKVELEPKMFSITYIGNHTCNTNAETPKSKTCD	192
AtWRKY54	SSEDR.YAWRKYGQKIELNNTTFRSYFRCRKYEQGCKATKQVQKQDQSEMFOITYIGYHTCTANDQT.HAKTEP	223
PtrWRKY54	DPWESYNLTSSVISSHSKIPR...YEEQDHPHMGSPCEVEQE...SKEDQTPSG.....LADNVSSLDSEFMWK	267
PtrWRKY62	PSDHHIDISSILISFNSNGDH...ASNKPSNSLLT.SFQTVKQECCHKEDDMNIPIS...YDPTTQYNNQASSSD	269
PtrWRKY89	PIDHFHTDSSLLSFNNSNHQMMTNKQNHFFFTTSFQSIKQEYNNKED.NDMPG...YDP.TIHNQALSSD	274
AtWRKY70	HHDEIFMDSE.....DHKSPSLSTS...MKEEDNPHR.....HHGSSTENDLSLWVP	236
AtWRKY54	FDQEIIMDSEKTLAASTAQN...VNAMVQEQENNTSSVTAIDAGMVKBEQNNNGDQSKDYEGSSTGEDLSLWVQ	296
PtrWRKY54	DLIPFEEPVEPTMILRSDYEAVDSIHLFS.CTEVTSQSLDMDFVVKSFDFDCDFHFD..	324
PtrWRKY62	YLLSPDDY..MSAFDHGDVIGVNSSCTTS..SHSLDMDGIMMESADFDDG.VFGF...	321
PtrWRKY89	YLLPTDDHDRISTFDHGLISGVNSSCTTS..SHSLDIDSIMAESVGFDDGVDLGFDFEFC	332
AtWRKY70	EMVFEEDYHHQASYVNGKTSTSIDVLGSQDLMVFGGGDFEFSENEHFSIFSSCSNLS..	294
AtWRKY54	ETMMFDD..HQNHYYCGETSTTSHQFG.....FIDNDDQFSSFFDSYCADYERTSAM...	346

Fig. 6. Comparison of PtrWRKY89-deduced amino acid sequence with PtrWRKY54, PtrWRKY62, AtWRKY54, and AtWRKY70 proteins. Identical amino acids are indicated by white letters on a black background, and conserved amino acids by black on a grey background. Asterisks indicate the nuclear localization signals. The WD is underlined. Putative full-length protein sequences were aligned with the DNAMAN program.

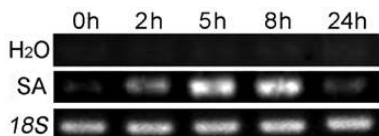


Fig. 7. Induction profiles of *PtrWRKY89*. Leaves from poplar were sprayed with SA. Control plants were sprayed with H₂O. Leaves were collected after 0, 2, 5, 8, and 24 h for transcript profile analysis by semi-qRT-PCR. Poplar 18S expression was used as a control and gene-specific primers were used for semi-qRT-PCR analysis of *PtrWRKY89*.

only 100 members of the WRKY transcription factor superfamily were found in the *P. trichocarpa* genome. A new member, POPTR_0017s14630.1, was identified (Supplementary Table S1) and two members (POPTR_0003s20860.1 and POPTR_0810s00200.1) described by He *et al.* (2012) were removed in our database because they could not be found in the upgraded database; we also identified three members (POPTR_0014s08600.2, POPTR_0015s11130.2, and POPTR_0001s47670.2) that should be considered as alternative transcripts of POPTR_0014s08600.1, POPTR_0015s11130.1, and POPTR_0001s47670.1, respectively.

Classification and phylogenetic analysis of WRKY genes in *Populus*, *Arabidopsis* and other species

Phylogenetic comparison of the WRKY proteins has been conducted extensively in *Arabidopsis*, rice, canola, and poplar, and the evolutionary relationships of this gene family

within and among the different species has been intensively studied (Eulgem *et al.*, 2000; Xie *et al.*, 2005; Yang *et al.*, 2009b; He *et al.*, 2012). In *Arabidopsis* and rice, the WRKY members were classified into three large groups (I, II, and III) based on the number of the WD and the features of their zinc-finger-like motifs (Wu *et al.*, 2005). However, group I contained two subgroups, Ia and Ib: members of subgroup Ia harboured two WDs; subgroup Ib contained these proteins with a single WD. Additionally, on the basis of the phylogenetic results, group II was divided into four subgroups (IIa–d) and group III divided into subgroups IIIa and IIIb (Wu *et al.*, 2005). In *Populus*, three major groups were categorized as described by Wu *et al.* (2005). Several subgroups, such as Ia, Ib, and IIa–e, were clearly formed on the basis of the phylogenetic analysis (He *et al.*, 2012). An alternative method also divided *Arabidopsis* WRKY members into three big groups (I, II, and III) (Eulgem *et al.*, 2000). In detail, the members with two WDs with C₂H₂ zinc fingers belonged to group I, the members of group II encoded proteins containing a single WD and C₂H₂-type zinc finger, split up into five distinct subgroups (IIa–e) and the single WDs of the proteins including C₂HC zinc fingers belonged to group III. However, further studies indicated that the spacing of the zinc fingers was responsible for the diversity of WRKYs (Zhang and Wang., 2005; Brand *et al.*, 2013). For example, subgroup IIc contained C-X₄-C-X_{22–23}-HXH. Subgroup IIa, IIb, IIc, and IIe shared C-X₅-C-X₂₃-HXH and group III contained the C-X_{4–7}-C-X_{23–(24–30)}-HXC pattern (Brand *et al.*, 2013).

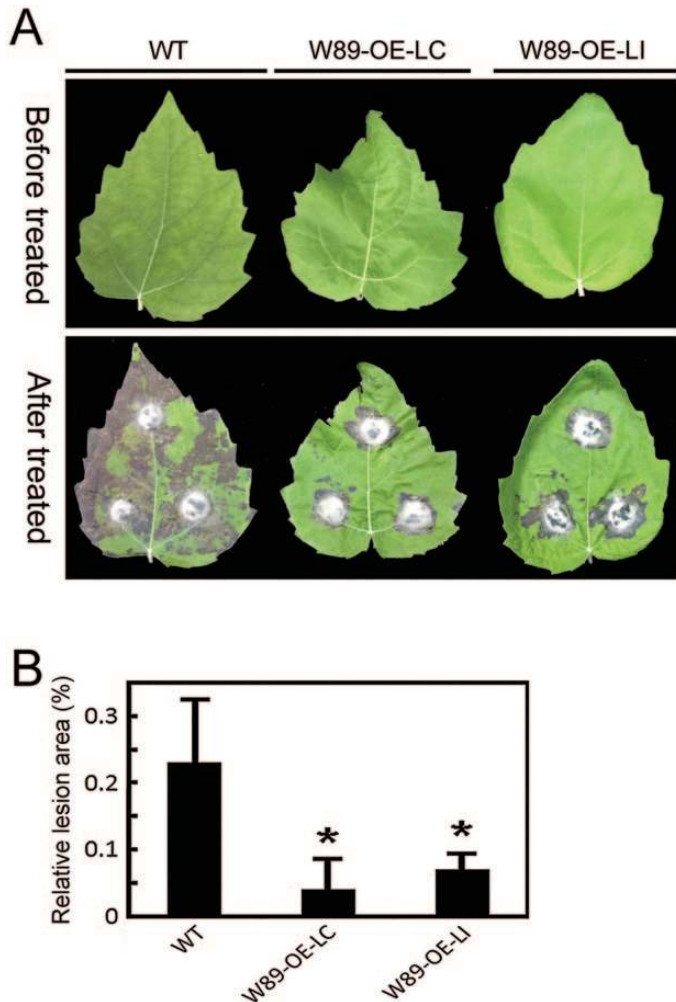


Fig. 8. Resistance of transgenic poplar plants inoculated with *D. gregaria*. (A) The leaves from wild-type and transgenic plants before treatment and after infection with *D. gregaria* 3 d after inoculation were photographed. (B) Mean infected area of transgenic lines to the fungal pathogen; *PtrWRKY89* confers resistance to *D. gregaria* in transgenic poplar plants. Values are means of three replications. Error bars indicate standard deviations. Asterisks indicate a statistically significant difference between wild-type and transgenic plants ($P < 0.05$ by student's *t*-test). This figure is available in colour at *JXB* online.

According to the results reported by [Eulgem *et al.* \(2000\)](#) and [Brand *et al.* \(2013\)](#), we obtained an overall phylogenetic tree of the WRKY proteins from *Arabidopsis*, *Populus* and other species. Among the 100 putative *PtrWRKY* proteins, 22 members with two WDs and C₂H₂ zinc fingers belonged to group I. Most (68) *PtrWRKY* genes, which encoded proteins containing a single WD and C₂H₂-type zinc finger, belong to group II and there was also a sole member (*PtrWRKY99*) ([Fig. 1](#) and [Supplementary Figure S1](#)). Generally, the WDs of group I and II members have the same type of zinc finger motif (C₂H₂), whose pattern of potential zinc ligands (C₂H₂) is unique among all zinc-like-motifs described ([Eulgem *et al.*, 2000](#)). However, these WRKY members containing a C₂HC motif, instead of a C₂H₂ pattern, were classified into group III ([Eulgem *et al.*, 2000](#)). In *Populus*, 10 WRKY proteins with C₂HC zinc fingers together with one WD belong to group III ([Fig. 1](#)). Interestingly, phylogenetic analyses revealed

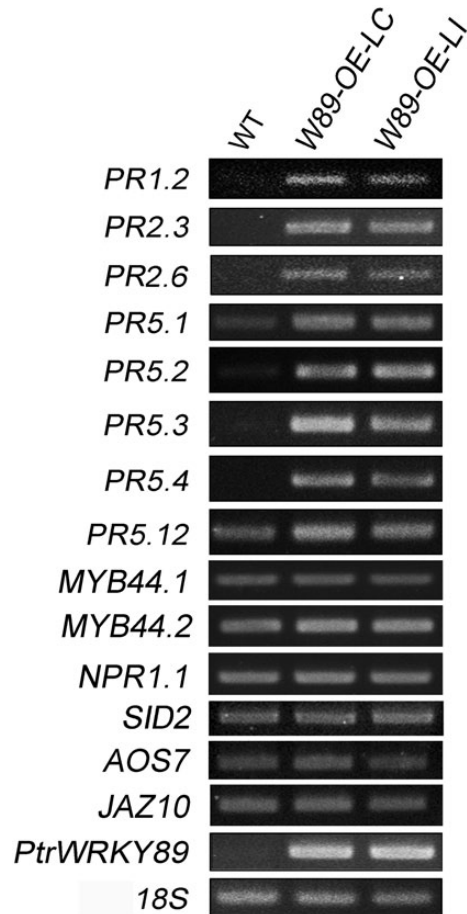


Fig. 9. Gene expression analyses of defence-related genes in plants overexpressing *PtrWRKY89*. Transcript levels of PR genes, *MYB44.1*, *MYB44.2*, *NPR1.1*, *SID2*, *AOS7*, and *JAZ10* in wild-type and transgenic plants were elevated by semi-qRT-PCR. Poplar 18S expression was used as a control.

that *PtrWRKY99* was clustered into subgroup III. However, this member has a typical C₂H₂-type zinc finger of group II ([Eulgem *et al.*, 2000](#)). Based on the report by [Brand *et al.* \(2013\)](#), *PtrWRKY99*, which contained a C-X₄-C-X₂₁-HXH motif, should be assigned to group II but as a sole member ([Fig. 1](#); [Supplementary Figures S1](#) and [S2](#)). In addition, based on the conserved WDs, *PtrWRKY49* and *PtrWRKY87* with high similarity were separated from subgroup II_d, II_e, and group III ([Supplementary Figure S1](#)). This finding was inconsistent with the results shown in [Fig. 1](#), in which these two members and *AtWRKY49* were clustered with subgroup II_c. In an attempt to further confirm the classification of *PtrWRKY49* and *PtrWRKY87*, sequence alignment of their WDs was conducted. The result showed that WDs of these two members contained a C-X₄-C-X₂₃-HXH zinc finger ([Supplementary Figure S2](#)), indicating that *PtrWRKY49* and *PtrWRKY87* were typical members of subgroup II_c.

A phylogenetic tree combining transcription factor families from different species will not only help our understanding of the phylogenetic relationships among the members, but also allow speculation on the putative functions of the proteins based on the functional clades identified ([Zhang *et al.*, 2012](#)). For instance, *TaMYB32* was selected out from 60

isolated wheat MYB genes and demonstrated to enhance the tolerance to salt stress in transgenic *Arabidopsis* (Zhang *et al.*, 2012). Because the functions of several WRKY proteins have been well characterized experimentally, phylogenetic analysis allowed the identification of several functional clades. However, it was obvious that some members had various or overlapping functions (Fig. 1). For example, AtWRKY18, AtWRKY40, and AtWRKY60 were involved in pathogen and ABA responses simultaneously (Chen *et al.*, 2010a), while HvWRKY38, belonging to group IIa, responded to gibberellin (GA) (Zou *et al.*, 2008). In the clade of group III, AtWRKY53 was related to senescence and basal resistance (Miao and Zentgraf, 2007); however, TcWRKY53 was associated with the osmotic stress response (Niu *et al.*, 2012). Additionally, PtrWRKY54, PtrWRKY62, and PtrWRKY89 could be assigned to a clade with AtWRKY54 and AtWRKY70 (Fig. 1), which seemed to have similar roles. However, PtrWRKY62 and PtrWRKY89 had different expression patterns (Fig. 5). These results imply that it is arbitrary to divide clades of the WRKY family according to their motif sequence similarity without further experiment evidence.

Populus WRKY proteins respond to biotic and abiotic stresses

Plants have had to adopt different strategies to respond to various biotic and abiotic stresses for survival in adverse environmental conditions (Ahuja *et al.*, 2010). Increasing research has indicated that WRKY proteins play vital roles in the regulation of gene expression to deal with environmental change (Ülker and Somssich, 2004; Eulgem and Somssich, 2007; Rushton *et al.*, 2010). In plants, response to stress needs several signalling molecules including SA, JA, abscisic acid (ABA) and ethylene (ET). The expression levels of WRKY genes changed rapidly after hormone treatments (Chen and Chen, 2002; Li *et al.*, 2004; Lai *et al.*, 2008; Yang *et al.*, 2009a; Ramiro *et al.*, 2010). In *Populus*, CGTCA-motifs and TCA elements randomly distributed in the promoter regions of PtrWRKY genes (Fig. 2 and Supplementary Table 4), implying that most PtrWRKY genes were involved in SA and JA responses. PtrWRKY60 and PtrWRKY89 were significantly induced by SA (Fig. 5), indicating that they functioned as key factors in regulating specific signalling pathways. WRKY genes were also directly induced by pathogens in plants, such as AtWRKY18 (Chen and Chen, 2002), CaWRKY2 (Oh *et al.*, 2006), AtWRKY70 (Knoth *et al.*, 2007), PtWRKY23 (Levéé *et al.*, 2009), AtWRKY3, and AtWRKY4 (Lai *et al.*, 2008). Many PtrWRKY genes contained EIRE and ELI-box3 elements in their promoters and 59 members were induced after inoculation of *M. brunnea* (Fig. 3). Additionally, WRKY transcription factors were associated with responses to abiotic stresses. For instance, TaWRKY2 and TaWRKY19 regulate abiotic stress tolerance in transgenic *Arabidopsis* plants (Niu *et al.*, 2012). Expression of GsWRKY20 in *Arabidopsis* enhances drought tolerance and regulates ABA signalling (Luo *et al.*, 2013). Overexpression of WRKY25 or WRKY33 was sufficient to increase *Arabidopsis* NaCl tolerance and

increasing sensitivity to ABA (Jiang and Deyholos, 2009). GmWRKY13, GmWRKY21, and GmWRKY54 confer differential tolerance to abiotic stresses in transgenic *Arabidopsis* plants (Zhou *et al.*, 2008). Wounding-induced AtWRKY8 functions antagonistically with its interacting partner VQ9 to modulate salinity stress tolerance (Chen *et al.*, 2010b; Hu *et al.*, 2013). In *Populus*, 10 WRKY genes, belonging to group III, were induced by varieties of stresses, such as cold, salinity, and drought, but no further analysis was performed (He *et al.*, 2012). In this work, among the 100 PtrWRKY genes, 60 members responded differentially to at least one treatment including wounding, cold, and salt, except for PtrWRKY1 (Fig. 3), and at least eight PtrWRKY genes were significantly induced by salinity stress (Fig. 5). Overall, the results reveal that most PtrWRKY genes are involved in responses to multiple biotic and abiotic stresses, consistent with previous studies (Eulgem and Somssich, 2007).

Different expression trajectories between PtrWRKY89 and its paralogue

In *planta*, some genes and their paralogues had constantly redundant functions: AtWRKY18, AtWRKY40, and AtWRKY60 (Xu *et al.*, 2006); AtWRKY11 and AtWRKY17 (Journot-Catalino *et al.*, 2006); AtWRKY54 and AtWRKY70 (Besseau *et al.*, 2012; Li *et al.*, 2013); and AtWRKY3 and AtWRKY4 (Lai *et al.*, 2008). However, expression patterns of these paralogous genes might not always be identical. In *Arabidopsis*, AtWRKY53 was more sensitive to SA treatment than its paralogue AtWRKY41 (Besseau *et al.*, 2012). The synergistic effect of losing AtWRKY11 and AtWRKY17 function in untreated plants implied that they acted in a partially redundant manner as repressors of AtWRKY70, but not AtWRKY54 (Journot-Catalino *et al.*, 2006). In addition, AtWRKY4 could be induced by *B. cinerea* but the expression level of AtWRKY3 was not affected (Lai *et al.*, 2008). In *Populus*, we also noticed that PtrWRKY62 and PtrWRKY89 had different expression trajectories (Fig. 5). Like AtWRKY54 and AtWRKY70, PtrWRKY62 and PtrWRKY89 are paralogues but still showed sequence divergence outside the WD. Therefore, we speculate that these two members had redundant roles, but diverse functions surely exist in *Populus*.

Constitutive expression of PtrWRKY89 enhanced resistance to fungal pathogens

In plants, plenty of WRKY proteins played important roles in defence responses by mediating SA, JA, ethylene and ABA signalling. Ectopic expression of some WRKY genes changed the transduction of hormone signalling and then altered tolerance of transgenic plants to biotic stresses. For example, transgenic poplars overexpressing and underexpressing PtWRKY23 were both more susceptible to *Melampsora* infection than wild-type plants (Levéé *et al.*, 2009). In *Arabidopsis*, single WRKY mutants of AtWRKY18, AtWRKY40, and AtWRKY60 exhibited no or small alterations in response to the pathogens. However, wrky18/wrky40 and wrky18/wrky60

double mutants and the *wrky18/wrky40/wrky60* triple mutant were substantially more resistant to *P. syringae* but more susceptible to *B. cinerea* than untransformed plants (Xu *et al.*, 2006). Overexpression of *AtWRKY70* did not affect endogenous levels of free SA in *Arabidopsis* (Li *et al.*, 2004). However, *AtWRKY70* was downstream of *NPR1* and *MYB44* in an SA-dependent signal pathway and acted as an activator of SA-induced genes such as *PR1*, *PR2*, and *PR5*. Meanwhile it was also a repressor of JA-responsive genes. Hence overexpression of *AtWRKY70* could enhance resistance to hemibiotrophic pathogens and make plants more susceptible to necrotrophic fungal pathogens (Li *et al.*, 2004; Shim *et al.*, 2013). In our study, *PtrWRKY89* were significantly induced by SA, indicating its potential role in SA-mediated signalling pathways (Fig. 5). Overexpression of *PtrWRKY89* did not enhance the level of *SID2* mRNA involved in SA synthesis (Fig. 9), indicating the stability of free SA in transgenic poplars compared with the wild type. Additionally, *PtrWRKY89* was constitutively expressed in transgenic poplar plants, resulting in an increased resistance to hemibiotrophic fungal pathogen *D. gregaria* (Fig. 8). Moreover, expression of *PR* genes, as a molecular marker of the SA signalling pathway, was activated in *PtrWRKY89* overexpressors (Fig. 9). These results indicate that *PtrWRKY89* enhanced resistance to *D. gregaria* via the activation of *PR* genes but not improvement of SA levels. Our findings are partially consistent with a previous report in *Arabidopsis* WRKY70 (Li *et al.*, 2004). In addition, we also noticed that overexpression of *PtrWRKY89* did not change the levels of *AOS7* and *JAZ10*, which were involved in the JA signalling pathway. However, it is still unknown what the precise function of *PtrWRKY89* is in the JA pathway in *Populus*. Overall, our work provided useful information for improving the resistance and stress tolerance of woody plants and suggested that *PtrWRKY89* plays a regulatory role in the SA signalling pathway to increase poplar defence.

Supplementary material

Supplementary data can be found at *JXB* online.

Supplementary Table S1. Common names and gene IDs of putative *PtrWRKYs* in different versions of Phytosome.

Supplementary Table S2. Common names of *WRKYs* from different species and their accession numbers in GenBank.

Supplementary Table S3. Primers for qRT-PCR and semi-qRT-PCR in this study.

Supplementary Table S4. Various *cis*-acting elements responsive to stresses in *WRKY* promoters.

Supplementary Table S5. Results of DGE analysis.

Supplementary Figure S1. Phylogenetic analyses of *Populus* WDs.

Supplementary Figure S2. Multiple sequence alignment of WDs using DNAMAN.

Supplementary Figure S3. Transgenic *P. tomentosa* plants overexpressing *PtrWRKY89*.

Supplementary Figure S4. PCR analysis of transgenic poplar plants.

Funding

This work was supported by the National Natural Science Foundation of China (31370672, 31171620), the National Key Project for Research on Transgenic Plants (2011ZX08010-003), 100 Talents Programme of The Chinese Academy of Sciences, the Natural Science Foundation Project of CQ CSTC (CSTC2013JJB8007), the programme for New Century Excellent Talents in University (NCET-11-0700) and the Research Fund for the Doctoral Programme of Higher Education (20110182110004).

Acknowledgements

The authors thank Prof. Jingjiang Hu (Northwest A&F University, Shanxi, China) for providing *M. brunnea* f.sp. *multigermtubi* and *D. gregaria*, and Prof. Guoliang Wang (Hunan Agricultural University, Changsha 410128, China) for providing the plant binary vector pCXSXN.

References

- Ahuja I, de Vos RC, Bones AM, Hall RD. 2010. Plant molecular stress responses face climate change. *Trends in Plant Science* **15**, 664–674.
- Babu MM, Iyer LM, Balaji S, Aravind L. 2006. The natural history of the WRKY-GCM1 zinc fingers and the relationship between transcription factors and transposons. *Nucleic Acids Research* **34**, 6505–6520.
- Baker CJ, Orlandi EW. 1995. Active oxygen in plant pathogenesis. *Annual Review of Phytopathology* **33**, 299–321.
- Besseau S, Li J, Palva ET. 2012. WRKY54 and WRKY70 co-operate as negative regulators of leaf senescence in *Arabidopsis thaliana*. *Journal of Experimental Botany* **63**, 2667–2679.
- Borsani O, Valpuesta V, Botella MA. 2001. Evidence for a role of salicylic acid in the oxidative damage generated by NaCl and osmotic stress in *Arabidopsis* seedlings. *Plant Physiology* **126**, 1024–1030.
- Brand LH, Fischer NM, Harter K, Kohlbacher O, Wanke D. 2013. Elucidating the evolutionary conserved DNA-binding specificities of WRKY transcription factors by molecular dynamics and *in vitro* binding assays. *Nucleic Acids Research* **41**, 9764–9778.
- Brand LH, Kirchlner T, Hummel S, Chaban C, Wanke D. 2010. DPI-ELISA: a fast and versatile method to specify the binding of plant transcription factors to DNA *in vitro*. *Plant Methods* **6**, 25.
- Chen C, Chen Z. 2002. Potentiation of developmentally regulated plant defense response by AtWRKY18, a pathogen-induced *Arabidopsis* transcription factor. *Plant Physiology* **129**, 706–716.
- Chen H, Lai Z, Shi J, Xiao Y, Chen Z, Xu X. 2010a. Roles of *Arabidopsis* WRKY18, WRKY40 and WRKY60 transcription factors in plant responses to abscisic acid and abiotic stress. *BMC Plant Biology* **10**, 1471–2229.
- Chen L, Zhang L, Yu D. 2010b. Wounding-induced WRKY8 is involved in basal defense in *Arabidopsis*. *Molecular Plant-Microbe Interactions* **23**, 558–565.
- Chen S, Songkumarn P, Liu J, Wang GL. 2009a. A versatile zero background T-vector system for gene cloning and functional genomics. *Plant Physiology* **150**, 1111–1121.
- Chen Z, Silva H, Klessig DF. 1993. Active oxygen species in the induction of plant systemic acquired resistance by salicylic acid. *Science* **262**, 1883–1886.
- Chen Z, Zheng Z, Huang J, Lai Z, Fan B. 2009b. Biosynthesis of salicylic acid in plants. *Plant Signaling & Behavior* **4**, 493–496.
- Cho SM, Kang BR, Han SH, Anderson AJ, Park JY, Lee YH, Cho BH, Yang KY, Ryu CM, Kim YC. 2008. 2R,3R-butanediol, a bacterial volatile produced by *Pseudomonas chlororaphis* O6, is involved in induction of systemic tolerance to drought in *Arabidopsis thaliana*. *Molecular Plant-Microbe Interactions* **21**, 1067–1075.

- Clarke SM, Mur LA, Wood JE, Scott IM.** 2004. Salicylic acid dependent signaling promotes basal thermo tolerance but is not essential for acquired thermo tolerance in *Arabidopsis thaliana*. *The Plant Journal* **38**, 432–447.
- Dat JF, Foyer CH, Scott IM.** 1998. Changes in salicylic acid and antioxidants during induced thermo tolerance in mustard seedlings. *Plant Physiology* **118**, 1455–1461.
- Despres C, Subramaniam R, Matton DP, Brisson N.** 1995. The activation of the potato *PR-10a* gene requires the phosphorylation of the nuclear factor PBF-1. *The Plant Cell* **7**, 589–598.
- Dong X.** 2004. NPR1, all things considered. *Current Opinion in Plant Biology* **7**, 547–552.
- Eulgem T, Rushton PJ, Robatzek S, Somssich IE.** 2000. The WRKY superfamily of plant transcription factors. *Trends in Plant Science* **5**, 199–206.
- Eulgem T, Somssich IE.** 2007. Networks of WRKY transcription factors in defense signaling. *Current Opinion in Plant Biology* **10**, 366–371.
- He H, Dong Q, Shao Y, Jiang H, Zhu S, Cheng B, Xiang Y.** 2012. Genome-wide survey and characterization of the WRKY gene family in *Populus trichocarpa*. *Plant Cell Reports* **31**, 1199–1217.
- Huang Y, Liu H, Jia Z, Fang Q, Luo K.** 2012. Combined expression of antimicrobial genes (*Bbchit1* and *LJAMP2*) in transgenic poplar enhances resistance to fungal pathogens. *Tree Physiology* **32**, 1313–2130.
- Hu Y, Chen L, Wang H, Zhang L, Wang F, Yu D.** 2013. *Arabidopsis* transcription factor WRKY8 transcriptionally with its interacting partner VQ9 to modulate salinity stress tolerance. *The Plant Journal* **74**, 730–745.
- Janda T, Szalai G, Tari I, Páldi E.** 1999. Hydroponic treatment with salicylic acid decreases the effects of chilling injury in maize (*Zea mays* L.) plants. *Planta* **208**, 175–180.
- Jia Z, Sun Y, Yuan L, Tian Q, Luo K.** 2010. The chitinase gene (*Bbchit1*) from *Beauveria bassiana* enhances resistance to *Cytospora chrysosperma* in *Populus tomentosa* Carr. *Biotechnology Letters* **32**, 1325–1332.
- Jiang Y, Deyholos MK.** 2009. Functional characterization of *Arabidopsis* NaCl-inducible WRKY25 and WRKY33 transcription factors in abiotic stresses. *Plant Molecular Biology* **69**, 91–105.
- Journot-Catalino N1, Somssich IE, Roby D, Kroj T.** 2006. The transcription factors WRKY11 and WRKY17 act as negative regulators of basal resistance in *Arabidopsis thaliana*. *The Plant Cell* **18**, 3289–3302.
- Karlidag H, Yildirim E, Turan M.** 2009. Salicylic acid ameliorates the adverse effect of salt stress on strawberry. *Scientia Agricola* **66**, 180–187.
- Kim KC, Lai Z, Fan B, Chen Z.** 2008. *Arabidopsis* WRKY38 and WRKY62 transcription factors interact with histone deacetylase 19 in basal defense. *The Plant Cell* **20**, 2357–2371.
- Kalde M, Barth M, Somssich IE, Lippok B.** 2003. Members of the *Arabidopsis* WRKY group III transcription factors are part of different plant defense signaling pathways. *Molecular Plant-Microbe Interactions* **16**, 295–305.
- Klessig DF, Durner J, Noad R et al.** 2000. Nitric oxide and salicylic acid signaling in plant defence. *Proceedings of the National Academy of Sciences, USA* **97**, 8849–8855.
- Knott C, Ringler J, Dangi JL, Eulgem T.** 2007. *Arabidopsis* WRKY70 is required for full RPP4-mediated disease resistance and basal defense against *Hyaloperonospora parasitica*. *Molecular Plant-Microbe Interactions* **20**, 120–128.
- Lai Z, Vinod K, Zheng Z, Fan B, Chen Z.** 2008. Roles of *Arabidopsis* WRKY3 and WRKY4 transcription factors in plant responses to pathogens. *BMC Evolutionary Biology* **8**, 68.
- Lamb C, Dixon RA.** 1997. The oxidative burst in plant disease resistance. *Annual Review of Plant Physiology and Plant Molecular Biology* **48**, 251–275.
- Lescot M, Déhais P, Thijs G, Marchal K, Moreau Y, Van de Peer Y, Rouzé P, Rombauts S.** 2002. PlantCARE, a database of plant cis-acting regulatory elements and a portal to tools for *in silico* analysis of promoter sequences. *Nucleic Acids Research* **30**, 325–327.
- Levéé V, Major I, Levasseur C, Tremblay L, MacKay J, Séguin A.** 2009. Expression profiling and functional analysis of *Populus WRKY23* reveals a regulatory role in defense. *New Phytologist* **184**, 48–70.
- Li J, Besseau S, Törönen P, Sipari N, Kollist H, Holm L, Palva ET.** 2013. Defense-related transcription factors WRKY70 and WRKY54 modulate osmotic stress tolerance by regulating stomatal aperture in *Arabidopsis*. *New Phytologist* **200**, 457–472.
- Li J, Brader G, Kariola T, Palva ET.** 2006. WRKY70 modulates the selection of signaling pathways in plant defense. *The Plant Journal* **46**, 477–491.
- Li J, Brader G, Palva ET.** 2004. The WRKY70 transcription factor: a node of convergence for jasmonate-mediated and salicylate-mediated signals in plant defense. *The Plant Cell* **16**, 319–331.
- Li R, Li Y, Kristiansen K, Wang J.** 2008. SOAP: short oligonucleotide alignment program. *Bioinformatics* **24**, 713–714.
- Lloyd G, McCown B.** 1980. Commercially feasible micropropagation of mountain laurel (*Kalmia latifolia*) by use of shoot tip cultures. *Combined Proceedings of the International Plant Propagators' Society* **30**, 421–427.
- Loake G, Grant M.** 2007. Salicylic acid in plant defence—the players and protagonists. *Current Opinion in Plant Biology* **10**, 466–472.
- Luo X, Bai X, Sun X et al.** 2013. Expression of wild soybean WRKY20 in *Arabidopsis* enhances drought tolerance and regulates ABA signaling. *Journal of Experimental Botany* **64**, 2155–2169.
- Mahdavian K, Kalantari KM, Ghorbanli M, Torkzade M.** 2008. The effects of salicylic acid on pigment contents in ultraviolet radiation stressed pepper plants. *Biologia Plantarum* **52**, 170–172.
- Malamy J, Carr JP, Klessig DF, Raskin I.** 1990. Salicylic Acid: a likely endogenous signal in the resistance response of tobacco to viral infection. *Science* **250**, 1002–1004.
- Mangelsen E, Kilian J, Berendzen KW, Kolukisaoglu UH, Harter K, Jansson C, Wanke D.** 2008. Phylogenetic and comparative gene expression analysis of barley (*Hordeum vulgare*) WRKY transcription factor family reveals putatively retained functions between monocots and dicots. *BMC Genomics* **9**, 194.
- Miao Y, Zentgraf U.** 2007. The antagonist function of *Arabidopsis* WRKY53 and ESR/ESP in leaf senescence is modulated by the jasmonic and salicylic acid equilibrium. *The Plant Cell* **19**, 819–830.
- Munné-Bosch S, Peñuelas J.** 2003. Photo- and antioxidative protection, and a role for salicylic acid during drought and recovery in field-grown *Phillyrea angustifolia* plants. *Planta* **217**, 758–766.
- Niu CF, Wei W, Zhou QY et al.** 2012. Wheat WRKY genes TaWRKY2 and TaWRKY19 regulate abiotic stress tolerance in transgenic *Arabidopsis* plants. *Plant, Cell and Environment* **35**, 1156–1170.
- Oh SK, Yi SY, Yu SH, Moon JS, Park JM, Choi D.** 2006. CaWRKY2, a chili pepper transcription factor, is rapidly induced by incompatible plant pathogens. *Molecules and Cells* **22**, 58–64.
- Palma F, Lluch C, Iribarne C, et al.** 2009. Combined effect of salicylic acid and salinity on some antioxidant activities, oxidative stress and metabolite accumulation in *Phaseolus vulgaris*. *Plant Growth Regulation* **58**, 307–316.
- Pieterse CM, Leon-Reyes A, Van der Ent S, Van Wees SC.** 2009. Networking by small-molecule hormones in plant immunity. *Nature Chemical Biology* **5**, 308–316.
- Ramiro D, Jalloul A, Petitot AS, De Sá MFG, Maluf MP, Fernandez D.** 2010. Identification of coffee WRKY transcription factor genes and expression profiling in resistance responses to pathogens. *Tree Genetics & Genomes* **6**, 767–781.
- Rensing SA, Lang D, Zimmer AD et al.** 2008. The *Physcomitrella* genome reveals evolutionary insights into the conquest of land by plants. *Science* **319**, 64–69.
- Rushton PJ, Somssich IE, Ringler P, Shen QJ.** 2010. WRKY transcription factors. *Trends in Plant Science* **15**, 247–258.
- Rushton PJ, Torres JT, Parniske M, Wernert P, Hahlbrock K, Somssich IE.** 1996. Interaction of elicitor-induced DNA-binding proteins with elicitor response elements in the promoters of parsley *PR1* genes. *The EMBO Journal* **15**, 5690–5700.
- Ryu HS, Han M, Lee SK et al.** 2006. A comprehensive expression analysis of the WRKY gene superfamily in rice plants during defense response. *Plant Cell Reports* **25**, 836–847.
- Schmutz J, Cannon SB, Schlueter J, et al.** 2010. Genome sequence of the palaeopolyploid soybean. *Nature* **463**, 178–183.

- Shim JS, Jung C, Lee S, Min K, Lee YW, Choi Y, Lee JS, Song JT, Kim JK, Choi YD.** 2013. AtMYB44 regulates WRKY70 expression and modulates antagonistic interaction between salicylic acid and jasmonic acid signaling. *The Plant Journal* **73**, 483–495.
- Tamura K, Dudley J, Nei M, Kumar S.** 2007. MEGA4: Molecular evolutionary genetics analysis (MEGA) software version 4.0. *Molecular Biology and Evolution* **24**, 1596–1599.
- Tari I, Csiszár G, Szalai F, et al.** 2002. Acclimation of tomato plants to salinity stress after a salicylic acid pre-treatment. *Acta Biologica Szegediensis* **46**, 55–56.
- Thompson JD, Gibson TJ, Plewniak F, Jeanmougin F, Higgins DG.** 1997. The CLUSTAL_X windows interface: flexible strategies for multiple sequence alignment aided by quality analysis tools. *Nucleic Acids Research* **25**, 4876–4882.
- Thompson JD, Higgins DG, Gibson TJ.** 1994. CLUSTAL W: improving the sensitivity of progressive multiple sequence alignment through sequence weighting, position-specific gap penalties and weight matrix choice. *Nucleic Acids Research* **22**, 4673–4680.
- Tuskan GA, Difazio S, Jansson S, et al.** 2006. The genome of black cottonwood *Populus trichocarpa* (Torr. & Gray). *Science* **313**, 1596.
- Uknes S, Mauch-Mani B, Moyer M, Potter S, Williams S, Dincher S, Chandler D, Slusarenko A, Ward E, Ryals J.** 1992. Acquired resistance in *Arabidopsis*. *The Plant Cell* **4**, 645–656.
- Ülker B, Somssich IE.** 2004. WRKY transcription factors: from DNA binding towards biological function. *Current Opinion in Plant Biology* **7**, 491–498.
- van Verk MC, Bol JF, Linthorst HJ.** 2011. WRKY transcription factors involved in activation of SA biosynthesis genes. *BMC Plant Biology* **11**, 89.
- Wang D, Amornsiripanitch N, Dong X.** 2006. A genomic approach to identify regulatory nodes in the transcriptional network of systemic acquired resistance in plants. *PLoS Pathogens* **2**, e123.
- Wenke K, Wanke D, Kilian J, Berendzen K, Harter K, Piechulla B.** 2012. Volatiles of two growth-inhibiting rhizobacteria commonly engage AtWRKY18 function. *The Plant Journal* **70**, 445–459.
- Wu KL, Guo ZJ, Wang HH, Li J.** 2005. The WRKY family of transcription factors in rice and *Arabidopsis* and their origins. *DNA Research* **12**, 9–26.
- Xie Z, Zhang ZL, Zou X, Huang J, Ruas P, Thompson D, Shen QJ.** 2005. Annotations and functional analyses of the rice WRKY gene superfamily reveal positive and negative regulators of abscisic acid signaling in aleurone cells. *Plant Physiology* **137**, 176–189.
- Xu X, Chen C, Fan B, Chen Z.** 2006. Physical and functional interactions between pathogen-induced *Arabidopsis* WRKY18, WRKY40, and WRKY60 transcription factors. *The Plant Cell* **18**, 1310–1326.
- Yalpani N, Enyedi AJ, Leon J, Raskin I.** 1994. Ultraviolet light and ozone stimulate accumulation of salicylic acid, pathogenesis-related proteins and virus resistance in tobacco. *Planta* **193**, 372–376.
- Yamamoto S, Nakano T, Suzuki K, Shinshi H.** 2004. Elicitor-induced activation of transcription via W box-related cis-acting elements from a basic chitinase gene by WRKY transcription factors in tobacco. *Biochimica et Biophysica Acta* **1679**, 279–287.
- Yang B, Jiang Y, Rahman MH, Deyholos MK, Kav NN.** 2009a. Identification and expression analysis of WRKY transcription factor genes in canola (*Brassica napus* L.) in response to fungal pathogens and hormone treatments. *BMC Plant Biology* **9**, 68.
- Yang F, Xiao XW, Zhang S, Korpelainen H, Li CY.** 2009b. Salt stress responses in *Populus cathayana* Rehder. *Plant Science* **176**, 669–677.
- Yang P, Chen C, Wang Z, Fan B, Chen Z.** 1999. A pathogen- and salicylic acid-induced WRKY DNA-binding activity recognizes the elicitor response element of the tobacco class I chitinase gene promoter. *The Plant Journal* **18**, 141–149.
- Yu D, Chen C, Chen Z.** 2001. Evidence for an important role of WRKY DNA binding proteins in the regulation of *NPR1* gene expression. *The Plant Cell* **7**, 1527–1540.
- Zhang G, Guo G, Hu X et al.** 2010. Deep RNA sequencing at single base-pair resolution reveals high complexity of the rice transcriptome. *Genome Research* **20**, 646–654.
- Zhang L, Zhao G, Jia J, Liu X, Kong X.** 2012. Molecular characterization of 60 isolated wheat MYB genes and analysis of their expression during abiotic stress. *Journal of Experimental Botany* **63**, 203–214.
- Zhang Y, Wang L.** 2005. The WRKY transcription factor superfamily: its origin in eukaryotes and expansion in plants. *BMC Evolutionary Biology* **5**, 1.
- Zhou QY, Tian AG, Zou HF, Xie ZM, Lei G, Huang J, Wang CM, Wang HW, Zhang JS, Chen SY.** 2008. Soybean WRKY-type transcription factor genes, *GmWRKY13*, *GmWRKY21*, and *GmWRKY54*, confer differential tolerance to abiotic stresses in transgenic *Arabidopsis* plants. *Plant Biotechnology Journal* **6**, 486–503.
- Zou X, Neuman D, Shen Q.** 2008. Interactions of two transcriptional repressors and two transcriptional activators in modulating gibberellin signaling in aleurone cells. *Plant Physiology* **148**, 176–86.
- Zhu QH, Guo AY, Gao G, Zhong YF, Xu M, Huang M, Luo J.** 2007. DPTF: a database of poplar transcription factors. *Bioinformatics* **23**, 1307–1308.