

Geometry-Based Vehicle-to-Vehicle Channel Modeling for Large-Scale Simulation

Mate Boban, João Barros, and Ozan K. Tonguz

Abstract—Due to the dynamic nature of vehicular traffic and the road surroundings, vehicle-to-vehicle (V2V) propagation characteristics vary greatly on both small and large scale. Recent measurements have shown that both large static objects (e.g., buildings and foliage) and mobile objects (surrounding vehicles) have a profound impact on V2V communication. At the same time, system-level vehicular ad hoc network (VANET) simulators by and large employ simple statistical propagation models, which do not account for surrounding objects explicitly. We designed Geometry-based Efficient propagation Model for V2V communication (GEMV²), which uses outlines of vehicles, buildings, and foliage to distinguish the following three types of links: line of sight (LOS), non-LOS (NLOS) due to vehicles, and NLOS due to static objects. For each link, GEMV² calculates the large-scale signal variations deterministically, whereas the small-scale signal variations are calculated stochastically based on the number and size of surrounding objects. We implement GEMV² in MATLAB and show that it scales well by using it to simulate radio propagation for city-wide networks with tens of thousands of vehicles on commodity hardware. We make the source code of GEMV² freely available. Finally, we validate GEMV² against extensive measurements performed in urban, suburban, highway, and open-space environments.

Index Terms—Channel model, large-scale simulation, propagation model, vehicular ad hoc network (VANET), vehicle-to-vehicle (V2V) communication.

I. INTRODUCTION

VEHICULAR ad hoc network (VANET) research relies heavily on simulations, due to the prohibitive costs of deploying real-world testbeds. Propagation models implemented in VANET simulators for both vehicle-to-vehicle (V2V) and vehicle-to-infrastructure (V2I) links are by and large simple statistical models (e.g., free space, log-distance path loss [1], etc.). These models are computationally efficient and easy to

implement; however, they are applied to all links in the simulation indiscriminately, without taking into account specific link conditions (e.g., whether a link has a clear LOS path or it is obstructed by nearby objects). The reason for this simplification is that efficient modeling of complex VANET surroundings is not trivial. While simple propagation models are useful for obtaining the overall statistics of VANET communication (e.g., average packet delivery rate (PDR) and average communication range), previous measurement studies have shown that these models are often unable to accurately represent the link-level VANET communication, particularly in more complex environments (e.g., urban) [2], [3]. Modeling the links accurately is particularly important for safety applications [4], where the goal is to simulate whether the vehicle will receive a safety-critical message or not.

On the other hand, existing geometry-based models, such as those based on ray tracing [5], yield results that are in very good agreement with the real world. However, these models are computationally too expensive to be practically useful for modeling large-scale networks in VANET simulators. Other notable problems of ray-tracing models are the need for a detailed object database and sensitivity to inaccuracies of the object database, which make it difficult to correctly predict the path of the reflecting and diffracting rays. For these reasons, ray-tracing models have not been implemented in large-scale VANET simulators.

In this paper, we aim to bridge the gap between overly simplified statistical models and computationally expensive geometry-based models by performing location-specific propagation modeling with respect to large objects in the vicinity of the communicating vehicles, at the same time limiting the calculations by using only the simple representation of the objects (i.e., their outlines). We use the real-world locations and dimensions of nearby buildings, foliage,¹ and vehicles to determine the line of sight (LOS) conditions for each link. We showed in [3] and [6] that vehicles are the most significant source of signal attenuation and variation in highway environments. In urban and suburban environments, apart from vehicles, static objects such as buildings and foliage have a significant impact on V2V communication [7]. Therefore, there is a need for a model that incorporates both mobile and static objects to enable realistic modeling in different environments.

¹Throughout the text, due to the lack of a more appropriate all-encompassing term, we use the term “foliage” for vegetation such as trees, bushes, shrubbery, etc.

Manuscript received April 4, 2013; revised September 11, 2013 and December 6, 2013; accepted February 25, 2014. Date of publication April 16, 2014; date of current version November 6, 2014. This work was supported by the Portuguese Foundation for Science and Technology under Grant SFRH/BD/33771/2009 and Grant CMU-PT/NGN/0052/2008. The review of this paper was coordinated by Dr. D. W. Matolak.

M. Boban is with the NEC Laboratories Europe, NEC Europe Ltd., Kurfürsten-Anlage 36, 69115 Heidelberg, Germany (e-mail: mate.boban@neclab.eu).

J. Barros is with the Instituto de Telecomunicações, Departamento de Engenharia Electrotécnica e de Computadores, Faculdade de Engenharia, Universidade do Porto, 4200-465 Porto, Portugal (e-mail: jbarros@fe.up.pt).

O. K. Tonguz is with the Department of Electrical and Computer Engineering, Carnegie Mellon University, Pittsburgh, PA 15213-3890 USA (e-mail: tonguz@ece.cmu.edu).

Color versions of one or more of the figures in this paper are available online at <http://ieeexplore.ieee.org>.

Digital Object Identifier 10.1109/TVT.2014.2317803

We first analyze an extensive set of measurements (detailed in Section II) to prepare the ground for designing a scalable V2V propagation model. We measure received power and PDR in and around Pittsburgh, PA, USA, and Porto, Portugal, containing distinct environments where VANETs will be deployed: highway, suburban, urban, open space, and parking lot. We characterize the impact of vehicles and static objects (buildings and foliage) on the received power, PDR, and effective range.

The premise of our approach to modeling propagation for V2V communication is that LOS and non-LOS (NLOS) links exhibit considerably different channel characteristics. This is corroborated by numerous experimental studies (e.g., [7]–[9]) that have shown that the resulting channel characteristics for LOS and NLOS links are fundamentally different. Based on these studies and by using the findings from our previous work described in [3], which identified surrounding vehicles as an important factor in V2V communication, our approach is to use simple geographical descriptors of the simulated environment (outlines of buildings, foliage, and vehicles on the road) to classify V2V links into three groups:

- Line of sight (**LOS**)—links that have an unobstructed optical path between the transmitting and receiving antennas;
- Non-LOS due to vehicles (**NLOS_v**)—links whose LOS is obstructed by other vehicles;
- Non-LOS due to buildings/foilage (**NLOS_b**)—links whose LOS is obstructed by buildings or foliage.

Based on the link classification, we design GEMV² (short for Geometry-based Efficient propagation Model for V2V communication), a propagation model that separates links into LOS, NLOS_v, and NLOS_b link types and deterministically calculates the large-scale signal variation (i.e., path loss and shadowing) for each link type. Furthermore, GEMV² employs a simple geometry-based small-scale signal variation model that stochastically calculates the signal variation based on the information about the surrounding objects. GEMV² can use vehicle locations available from traffic mobility models (e.g., SUMO [10]) or real-world traces (e.g., via GPS) and the building and foliage outlines and locations that are freely available from projects such as OpenStreetMap [11]. To efficiently process the object outlines, GEMV² employs computational geometry concepts suitable for representation of geographic data. Specifically, it uses R-trees [12] to store information about the outlines of vehicles, buildings, and foliage. We provide more details on geographic data processing in Section III, whereas Section IV describes GEMV² in detail.

We validate GEMV² against extensive measurements and show that it successfully captures both small- and large-scale propagation effects for LOS, NLOS_v, and NLOS_b links in different environments (highway, urban, suburban, and open space).

We implement GEMV² in MATLAB and show that it scales well by simulating networks with up to tens of thousands of objects in the scene and hundreds of thousands of communicating pairs. We make the MATLAB source code of GEMV² freely available at <http://vehicle2x.net>. Since GEMV² requires minimum geographic information (the outlines of modeled objects), it is well suited for implementation in VANET simulators. We

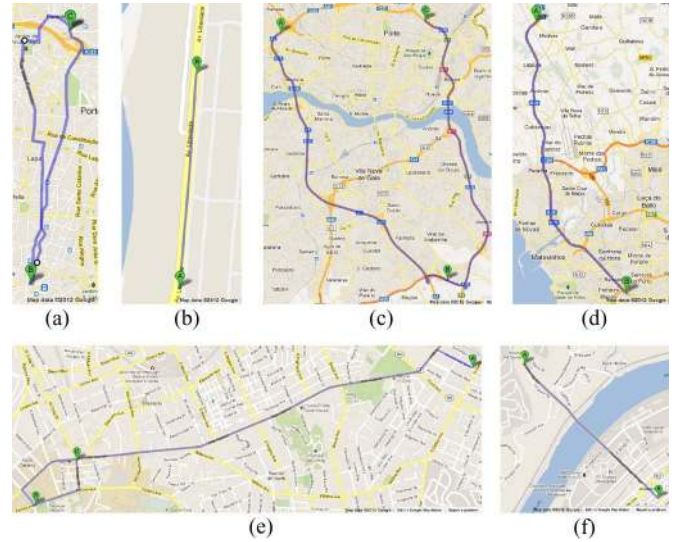


Fig. 1. Measurement locations with indicated routes. Figures are not in the same scale. (a) Porto downtown. (b) Porto open space. (c) Porto urban highway (VCI). (d) Porto highway (A28). (e) Pittsburgh suburban. (f) Pittsburgh open space.

provide the complete simulation recipe for its implementation in packet-level discrete-event VANET simulators.

The rest of this paper is organized as follows. Details of the measurement setup are shown in Section II. Section III explains the spatial tree structures we use to implement GEMV². Section IV describes GEMV² in detail, whereas Section V presents the results validating GEMV² against measurements. We discuss the computational performance of GEMV² in Section VI. Section VII describes the related work, whereas Section VIII concludes this paper.

II. MEASUREMENT SETUP

As a baseline for the validation of GEMV² and to inform its design, we performed measurements in the following locations:

- Porto Downtown—9-km route shown in Fig. 1(a), going from the Paranhos parish to the Avenida dos Aliados in downtown Porto and back. Approximate coordinates (lat, lon): 41.153673, -8.609913;
- Porto Open Space—1-km route shown in Fig. 1(b). Approximate coordinates (lat, lon): 41.210615, -8.713418;
- Porto Urban Highway (VCI)—24-km route shown in Fig. 1(c). Approximate coordinates (lat, lon): 41.1050224, -8.5661420;
- Porto Highway (A28)—13.5-km route shown in Fig. 1(d). Approximate coordinates (lat, lon): 41.22776, -8.695148;
- Porto Outlet—shown in Fig. 13(a). Approximate coordinates (lat, lon): 41.300137, -8.707385;
- Pittsburgh Suburban (5th Ave)—7-km route shown in Fig. 1(e). Approximate coordinates (lat, lon): 40.4476089, -79.9398574;
- Pittsburgh Open Space (Homestead Grays Bridge)—2-km route shown in Fig. 1(f). Approximate coordinates (lat, lon): 40.4103279, -79.9181137.

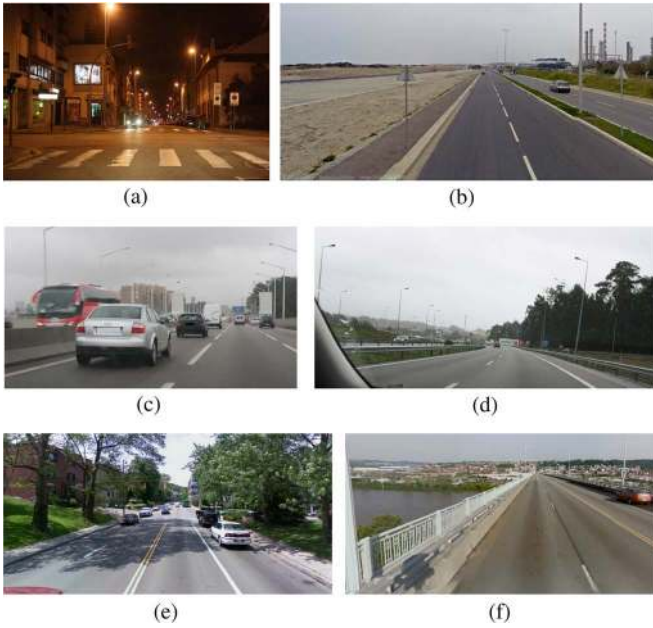


Fig. 2. Snapshots of the measurement locations. (a) Porto downtown. (b) Porto open space. (c) Porto urban highway (VCI). (d) Porto highway (A28). (e) Pittsburgh suburban. (f) Pittsburgh open space.



Fig. 3. Vehicles used in the measurements. First row: Kia Cee'd and Honda Jazz. Second row: Mercedes Sprinter and Fiat Ducato. Third row: Toyota Corolla and Pontiac G6.

Measurement locations are shown in Fig. 2. We performed measurements multiple times at each of these locations between May 2010 and December 2011. We used regular passenger cars and commercial vehicles shown in Fig. 3; their dimensions are listed in Table I. Each vehicle was equipped with an NEC LinkBird-MX V3 [13], which is a development platform for vehicular communications that implements the IEEE 802.11p standard [14]. IEEE 802.11p parameters are shown in Table II. An identical hardware setup and parameters were used in all measurements. We also performed measurements in downtown Pittsburgh. However, due to many high-rise structures taller than 100 m, GPS reception suffered from multipath

TABLE I
DIMENSIONS OF VEHICLES USED IN MEASUREMENTS

Vehicle	Dimensions (m)		
	Height	Width	Length
<i>Portugal</i>			
2007 Kia Cee'd	1.480	1.790	4.260
2002 Honda Jazz	1.525	1.676	3.845
2010 Mercedes Sprinter	2.591	1.989	6.680
2010 Fiat Ducato	2.524	2.025	5.943
<i>USA</i>			
2009 Toyota Corolla	1.466	1.762	4.539
2009 Pontiac G6	1.450	1.793	4.801

TABLE II
HARDWARE CONFIGURATION PARAMETERS

Parameter	802.11p
Channel	180
Center frequency (MHz)	5900
Bandwidth (MHz)	20
Data rate (Mbps)	6
Tx power	10
Antenna gain (dBi)	5
Beacon frequency (Hz)	10
Beacon size (Byte)	36

TABLE III
PORTO DOWNTOWN BUILDINGS AND VEHICLE DATASET
(MORE DETAILS AVAILABLE IN [16])

City area	# buildings	Area of buildings	# vehicles	# tall vehicles
41.3 km ²	17346	8.6 km ²	10566	595 (5.6%)

that occasionally generated location errors in excess of 30 m. Therefore, we did not include these results in our analysis. The buildings in downtown Porto are significantly lower; thus, the GPS location information was more accurate: We observed only slight deviations of the vehicles from the roads they were traveling on. Furthermore, since the update frequency of the GPS is 1 Hz (i.e., one location update per second) and the vehicles occasionally moved at high speeds (up to 30 m/s), to get a more accurate location of the vehicles, we performed dead reckoning on the GPS location data. For each received packet, we linearly interpolated the position between the two consecutive GPS location updates that occurred before and after the packet reception.

We separated the collected data into LOS, NLOS_v, and NLOS_b category using the videos we recorded from the trailing vehicle. Based on a technique from our previous measurement studies [6], [9], [15], we synchronized the videos with the measurements using visual recognition of known geographical locations and GPS coordinates from the received messages. To avoid misalignment of videos and received messages, we periodically resynchronized the videos.²

We used object outlines in the city of Porto, which are summarized in Table III and described in detail in [16]. A snapshot of the data is shown in Fig. 4. We also used the building and foliage outlines from OpenStreetMap [11].

²Since the separation of measured data into LOS, NLOS_v, and NLOS_b links was performed manually, occasional classification errors may exist (e.g., while transitioning from one link type to another).

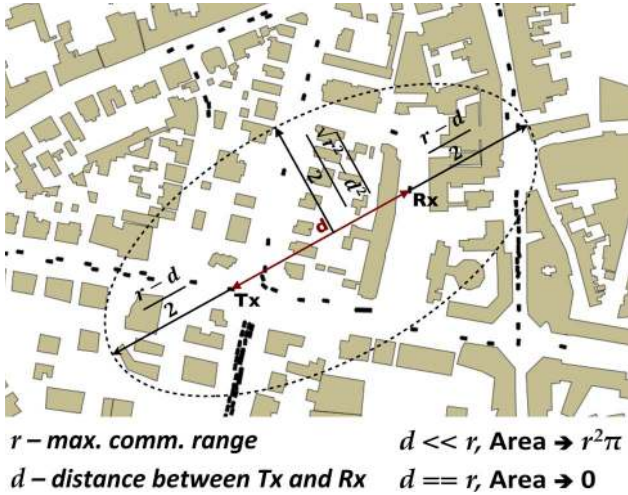


Fig. 4. Outlines of the buildings and vehicles (vehicles colored black) extracted from aerial imagery in a neighborhood in Porto with the ellipse-bound area that GEMV² uses to determine small- and large-scale signal variations. The search space encompasses the ellipse whose foci are the transmitting (Tx) and receiving (Rx) vehicles. This ensures that the model accounts for all objects whose sum of distances to Tx and to Rx (i.e., from Tx to object and from object to Rx) is less than r (maximum communicating distance for a given environment). The objects in the same area are also used to calculate the small-scale signal variations. Note that the length of the major diameter of the ellipse is r , irrespective of distance d between Tx and Rx. The minor diameter's length is $\sqrt{r^2 - d^2}$. The area of the ellipse is largest when Tx and Rx are close together, and the area goes to zero as the distance between Tx and Rx d goes to r .

III. USING R-TREES FOR EFFICIENT MANIPULATION OF OBJECT OUTLINES

Before we discuss the structure of GEMV², we introduce the spatial tree structure we use for efficient VANET object manipulation. For a description of the modeled area, we use the outlines of vehicles, buildings, and foliage. Outlines of buildings and foliage are available through free geographic databases such as OpenStreetMap [11]. Such sources of geographical descriptors have recently become available, with a crowdsourced approach to geographic data collection and processing. Apart from the outlines of buildings and foliage available in such databases, we also use outlines and locations of the vehicles. Locations of the vehicles can be obtained from vehicular mobility models (e.g., SUMO [10]), GPS logs, or aerial photography [16], whereas the dimensions of vehicles can be either measured or drawn from statistical distributions [3].

In networks with hundreds (or thousands) of vehicles, checking whether two nodes can communicate using a naïve approach (i.e., every node against each other) is computationally too expensive. Therefore, to model large networks, efficient data structures are required. Based on the outlines of the objects, we form R-trees [12]. R-tree is a tree data structure in which objects in the field are bound by rectangles and hierarchically structured based on their location in space. VANET-related geometric data lend itself to an efficient R-tree representation, due to its inherent geometrical structure (namely, relatively simple nonoverlapping object outlines). R-trees are often used to store spatial objects (streets, buildings, geographic regions, counties, etc.) in geographic databases.



Fig. 5. R-tree built atop vehicles in the city of Porto.

Although they do not have good worst-case performance,³ in practice, they were shown to have good tree construction and querying performance, particularly when the stored data have certain properties, such as limited object overlap [17]. We store vehicle outlines in a separate R-tree. The main difference in storing the outlines of vehicles when compared with buildings and foliage is that, unlike vehicles, buildings and foliage do not move; therefore, their R-tree needs to be computed only once. On the other hand, the vehicle R-tree changes at each simulation time step. Fig. 5 shows the R-tree built on top of the outlines of vehicles in the city of Porto for one time snapshot obtained through aerial photography.

We construct each tree using a top-down approach, whereby the algorithm starts with all objects (i.e., vehicles, buildings, or foliage) and splits them into two child nodes (i.e., we use a binary R-tree). To keep the tree balanced, we sort the objects at each node splitting based on the currently longer axis so that each created child node contains approximately half of the objects. We note that similar tree data structures, such as k -d tree and quadtree/octree, could be used instead of R-tree, with consideration to the specific application at hand and limitations and advantages of a specific data structure (for details, see the work of de Berg *et al.* [18]).

IV. DESCRIPTION OF GEMV²

In addition to LOS propagation, GEMV² incorporates the following propagation effects (shown in Fig. 6): 1) transmission (propagation through material), 2) diffraction, and 3) reflection. We focus on modeling the impact of vehicles, buildings, and foliage (as opposed to smaller objects such as traffic signs, traffic lights, etc.) for two reasons. First, on highways, obstructing vehicles are the most important objects for modeling the V2V channel, as the roads are predominantly straight, and the largest portion of communication happens over the face of the road [3]. In urban areas, obstructing vehicles have a significant impact for communicating pairs that are on the same street [6]. However, when vehicles are on different streets, static obstructions such as buildings and foliage also play an important role [19], [20]. Buildings and foliage are the main source of obstructions for communication on the intersections and across different streets [7], whereas buildings and vehicles are the main sources

³When bounding rectangles of all objects overlap in a single point/area, the operation of checking the object intersection is quadratic in the number of objects in the R-tree (i.e., it is the same as the naïve approach that checks for intersection of every object with every other object). However, such extreme situations do not occur when modeling vehicular environments.

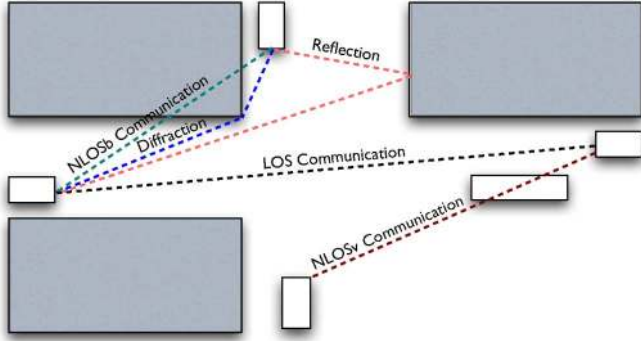


Fig. 6. Link types and propagation effects captured by GEMV². White rectangles represent vehicles; gray rectangles represent buildings.

of reflections and diffractions [21]. Furthermore, other static objects such as lamp posts, street signs, railings, etc., are neither readily available in geographic databases nor computationally feasible to model due to their number, shape, and size.

We validate GEMV² against extensive measurements performed in typical VANET environments. Based on the measurements, we limit the model's complexity to a point where it represents the real world well, but requires orders of magnitude less computations than more complex geometry-based models (as discussed in detail in Section VI).

Propagation models for V2V communication need to incorporate different propagation mechanisms, typically divided by their scale into *path loss* (distance-dependent attenuation), *large-scale fading* (variations including, but not limited to, shadowing by objects significantly larger than the carrier wavelength), and *small-scale fading* (variations due to multipath and/or Doppler spread). As will become apparent in this section, parts of GEMV² do not directly translate into these three groups, since for the three link types, GEMV² handles these mechanisms differently. For this reason, in the rest of this paper, we use the term *large-scale signal variations* for effects roughly pertaining to path loss and large-scale fading and the term *small-scale signal variations* for all effects that cause variations of the signal over distances of up to a few tens of wavelengths. For example, small-scale signal variations can include a combination of the following: multipath due to single and higher order diffractions and reflections, scattering, Doppler spread, variation in the type of the obstructing object (e.g., different shapes of the obstructing vehicle in case of NLOSv), etc. Accordingly, we classify the models used for these two groups of effects as those modeling large- or small-scale signal variations.

A. Classification of Link Types

As previously mentioned, we distinguish three types of links: 1) LOS, 2) NLOSv, and 3) NLOSb. Using the insights from measurements we performed in different environments (see Section II), we apply different propagation models for each of the three link types and for both large- and small-scale signal variations. Table IV-A shows the employed models. Specifically, through measurements in open space, urban, suburban, and highway environments, as well as by consulting the existing V2V measurements (e.g., [22]–[24]), we concluded that large-

TABLE IV
PROPAGATION MODELS USED FOR DIFFERENT LINK TYPES

Link Type	Propagation Model	
	Large-scale	Small-scale
LOS	Two-ray ground reflection with effective reflection coefficient [22], [23]	Section IV-D
NLOSv	Vehicles-as-obstacles [3] with side diffractions (Section IV-B2)	Section IV-D
NLOSb	Log-distance path loss Optional: reflections & diffractions (Section IV-B)	Section IV-D

scale signal variations for LOS links are well approximated by a two-ray ground reflection model, whereas for NLOSv links, we use an experimentally validated model in [3], which we extend to include diffraction off the sides of vehicles, in addition to diffraction over the vehicle roofs. For NLOSb links, we calculate single-interaction reflections and diffractions to account for “around the corner” communication and log-distance path loss [1] for cases where single-interaction rays are either nonexistent or carry low power. To increase the execution speed, GEMV² allows for utilizing only log-distance path loss for NLOSb links (i.e., without calculating reflections and diffractions). For small-scale signal variations, we design a simple stochastic model described in Section IV-D, which takes into account the number and density of the objects around the communicating pair.

B. Modeling Large-Scale Signal Variation

1) *LOS Communication*: For LOS links, we implement the complete two-ray ground reflection model given by [1, Ch. 3]

$$|E_{\text{TOT}}| = \frac{E_0 d_0}{d_{\text{LOS}}} \cos \left(\omega_c \left(t - \frac{d_{\text{LOS}}}{c} \right) \right) + R_{\text{ground}} \frac{E_0 d_0}{d_{\text{ground}}} \cos \left(\omega_c \left(t - \frac{d_{\text{ground}}}{c} \right) \right) \quad (1)$$

where the reflection coefficient R_{ground} and distance d_{ground} for the ground-reflected ray are calculated according to the exact antenna heights (i.e., we do not assume that the distance between the transmitter and the receiver is large compared to their heights, as is often done in simulators [25], [26]). As will become apparent from our results (see Section V), using the exact height of the antennas is important, since even a centimeter-grade difference in height of either Tx or Rx results in a significantly different interference relationship between the LOS and ground-reflected ray.

In calculating R_{ground} , we model the relative permittivity ϵ_r to obtain the “effective” range of the reflection coefficient for the road. As pointed out in [22], the idealized two-ray model is an approximation of the actual V2V channel, since the reflection coefficient is affected by the antenna location, diffraction over the vehicle roof below antenna, and the roughness of the road. Therefore, we set the ϵ_r value used to generate the LOS results to 1.003, as this value minimized the mean square error for the Porto Open Space dataset (see Section V). Then, we use the same ϵ_r value for LOS links in all environments. A similar concept of effective reflection coefficient range calculation was used in [22] and [24].

2) *NLOS_v Communication*: For modeling NLOS_v links, we employ the model described in [3], which accounts for additional attenuation due to vehicles by taking into consideration their exact locations and dimensions and applying the multiple knife-edge diffraction [27] over the rooftops of obstructing vehicles. In addition to diffraction over the vehicle roofs (*vertical plane diffraction*), we model the diffraction off each side of the vehicles (*horizontal plane diffraction*), also using the multiple knife-edge diffraction (i.e., diffraction off the sides of multiple vehicles in the horizontal plane).

3) *Reflections*: With respect to the reflection coefficients off building walls, we apply similar reasoning on the “effective” range of reflection coefficients as with the two-ray ground reflection model. We match the reflection coefficient distribution to the values empirically derived by Landron *et al.* [28], where the authors extract the reflection coefficients for brick building walls from controlled measurements. In the locations where we performed measurements (see Fig. 1), the buildings were predominantly made of brick and concrete.

Reflections are calculated off buildings and vehicles. Since all buildings are significantly taller than any vehicle, any building can reflect the signal for any communicating pair. On the other hand, to be a reflector, a vehicle needs to be taller than both communicating vehicles’ antennas, since otherwise, the reflected ray does not exist. Furthermore, tall vehicles are more likely to block reflections coming off the building walls or other vehicles, whereas short vehicles are less likely to do so, since they are less likely to be taller than the height of the line between the communicating antennas discounted for 60% of the first Fresnel zone [1, Ch. 2.]. With respect to reflections off vehicle roofs: Since vehicle roofs are predominantly made of metal, they are potential reflectors for any communicating pairs whose antennas are taller than the roof itself. However, in an effort to keep the computational complexity of GEMV² low, we do not model this effect.

4) *Diffraction Off Buildings*: Similar to diffraction over the rooftops and off the sides of the vehicles, for diffraction off buildings, we use the multiple knife-edge model [27]. In the case of buildings, however, diffraction is calculated in the *horizontal plane only*, since we assume that the buildings are too tall for diffraction over the rooftops.

5) *Log-Distance Path Loss in Deep-Fade Areas*: Reflections and diffractions off buildings and vehicles are used for NLOS_b links only. We limit the calculation of diffracted and reflected rays to single-interaction (single-bounce) rays, except for multiple diffractions due to vehicles. It was recently shown by Abbas *et al.* [29] that single-interaction reflections and diffraction are most often the dominating propagation mechanisms in the absence of LOS. Similar findings are reported by Paier *et al.* [30]. By determining the LOS conditions and modeling LOS and single-interaction rays, we aim to design a model that accounts for the most important rays, at the same time keeping the computational load manageable.⁴

⁴GEMV² can be extended to (recursively) account for the higher order interactions, however at a prohibitively increasing computational cost. Furthermore, an increasingly precise geographical database would be required to model higher order interaction rays correctly.

However, communicating pairs that are not located on the same street or adjacent orthogonal streets most often do not have strong single-interaction reflected or diffracted rays, but can still be able to communicate. For such communicating pairs, multiple interaction reflections and scattering are the dominant contributors of power at the receiver [31]; calculating such rays incurs prohibitively high computations and a geographical database with a high level of detail. Furthermore, our measurement results and those reported in similar studies (e.g., [6], [19], and [20]) show that the communication range in NLOS_b conditions using IEEE 802.11p radios operating in the 5.9-GHz frequency band is limited to approximately 200 m, even with the maximum transmit power allowed by the standard [14]. Thus, to avoid costly geometric computations that predominantly yield power levels below the reception threshold, at the same time allowing for communication in deeply faded areas, we determine the received power as follows. We calculate the received power using both the single-interaction diffractions and reflections and using the log-distance path loss model [31]. The log-distance path loss PL (in decibels) for distance d is given by

$$PL(d) = PL(d_0) + 10\gamma \log_{10} \left(\frac{d}{d_0} \right) \quad (2)$$

where γ is the path loss exponent (PLE), and $PL(d_0)$ is the path loss at a reference distance d_0 . For the log-distance path loss model, the received power Pr_{PL} (in decibels) at distance d , assuming unit antenna gains, is given by

$$Pr_{PL}(d) = Pt - PL(d) \quad (3)$$

where Pt is the transmitted power in decibels.

In our simulations, we used $\gamma = 2.9$, which we extracted from the Porto Downtown dataset for the NLOS_b conditions where there were no significant single-interaction reflections/diffractions. Previous studies reported similar values: $\gamma = 2.9$ by Durgin *et al.* [32] (NLOS_b environment) and $2.44 \leq \gamma \leq 3.39$ by Paschalidis *et al.* [33] (urban environment—various (N)LOS conditions).

In case of NLOS_b links, we determine the received power as the maximum of 1) received power calculated by using reflections and diffractions and 2) log-distance path loss [see 2]. The maximum is taken so that the log-distance path loss model is used in case no strong one-interaction reflections/diffractions are present.

6) *Transmission Through Foliage*: For transmission through foliage, we use the attenuation-through-transmission model based on the measurements described in [32], [34], and [35]. Specifically, we use the empirically derived formulation in [34], where attenuation for deciduous trees is calculated per meter of transmission as

$$MEL = 0.79f^{0.61} \quad (4)$$

where MEL is the mean excess loss per meter of transmission through trees, and f is the frequency in gigahertz [35]. For the IEEE 802.11p frequency centered at 5.9 GHz, this results in attenuation of 2.3 dB per meter of transmission through

trees, which is in line with the measurement results in the 5.85 GHz band reported in [32]. Similar calculations can be performed for coniferous trees and for seasonal changes when trees are not in full foliage [34]. Decision on which kind of trees to model (deciduous or coniferous) and the level of foliage (e.g., due to the time of the year) can be determined for the location where the simulations are carried out. Finally, we do not explicitly model reflections, diffractions, or scattering off foliage (i.e., only transmission is accounted for); rather, we encompass these effects with the small-scale signal variation model (see Section IV-D).

C. Combining Multiple Rays: E-Field and Received Power Calculations

Once all contributing rays (LOS, reflected, and diffracted) have been calculated, we determine their contributions in terms of the E-field and the received power for each link. We obtain the resultant E-field envelope as follows [1, Ch. 3]:

$$|E_{\text{TOT}}| = \left| E_{\text{LOS}} + \sum_j E_{\text{Ref}j} + \sum_k E_{\text{diff}r_k} \right| \quad (5)$$

where E_{LOS} , E_{Ref} , and $E_{\text{diff}r}$ are E-fields of line of sight, reflected, and diffracted rays, respectively. Expanding eq. 5, we get

$$\begin{aligned} |E_{\text{TOT}}| &= \frac{E_0 d_0}{d_{\text{LOS}}} \cos \left(\omega_c \left(t - \frac{d_{\text{LOS}}}{c} \right) \right) \\ &+ \sum_j R_j \frac{E_0 d_0}{d_j} \cos \left(\omega_c \left(t - \frac{d_j}{c} \right) \right) \\ &+ \sum_k D_k \frac{E_0 d_0}{d_k} \cos \left(\omega_c \left(t - \frac{d_k}{c} \right) \right) \end{aligned} \quad (6)$$

where $E_0 d_0 / d_{\text{LOS}}$ is the envelope E-field at a reference distance d_0 , ω_c is the angular frequency ($\omega_c = 2\pi f$), t is the time at which the E-field is evaluated, d_x represents distance traversed by ray x , R_j is the reflection coefficient of reflected ray j , and D_k is the diffraction coefficient of diffracted ray k . When the originating medium is free space, the reflected coefficient R is calculated as follows for vertical and horizontal polarizations, respectively [1, Ch. 3]:

$$R_{\parallel} = \frac{-\epsilon_r \sin \theta_i + \sqrt{\epsilon_r - \cos^2 \theta_i}}{\epsilon_r \sin \theta_i + \sqrt{\epsilon_r - \cos^2 \theta_i}} \quad (7)$$

$$R_{\perp} = \frac{\sin \theta_i - \sqrt{\epsilon_r - \cos^2 \theta_i}}{\sin \theta_i + \sqrt{\epsilon_r - \cos^2 \theta_i}} \quad (8)$$

where θ_i is the incident angle, and ϵ_r is the relative permittivity of the material. We do not calculate the diffraction coefficient directly; we approximate the E-field for diffracted rays using the knife-edge model [27]. The ensuing received power Pr (in watts), assuming unit antenna gains, is calculated as

$$Pr = \frac{|E_{\text{TOT}}|^2 \lambda^2}{480\pi^2} \quad (9)$$

where λ is the wavelength. Note that Pr accounts for the large-scale signal variation of the LOS links, whereas for NLOSv and NLOSb links, there can also exist contributions in terms of multipath generated by multiple diffractions around vehicles for NLOSv links (horizontal and vertical multiple knife-edge diffraction) and single-interaction reflections and diffractions for NLOSb links.

D. Modeling Small-Scale Signal Variations

To account for small-scale signal variation inherent in V2V communication due to multipath, scattering, first or higher order diffractions, and reflections, etc., using the insights obtained through measurements, we designed a small-scale signal variation model that aims to capture the richness of the propagation environment surrounding the communicating pair. We first characterize the per-bin signal variations in the collected measurements; next, we design a simple model to include the per-bin signal variation that complements the previously described components of GEMV² that deal with large-scale signal variations.

1) *Small-Scale Signal Variations in Measurement Datasets:* We used the collected measurements to characterize small-scale signal variation for different LOS conditions and environments and with different levels of vehicular traffic (i.e., temporal variation). For each collected measurement, we separate the links into LOS, NLOSv, and NLOSb, using the videos recorded during the measurements. Then, we divide the collected data into two-meter distance bins. We selected two-meter bins because they are small enough not to incur significant distance-related path loss dependence, at the same time containing enough data points to allow for a meaningful statistical characterization. Fig. 7 shows the distribution of received power for two-meter distance bins. For the LOS links, the normal distribution seems to fit the data reasonably well, with a better fit for the open-space environment LOS links [see Fig. 7(a)] than for the urban LOS links [see Fig. 7(b)], due to the richer reflection environment in the case of the latter. Normal fit for the NLOSv and NLOSb links is less accurate due to the variety of conditions that are encompassed (e.g., different number of obstructing vehicles in case of NLOSv and deep or slight building obstruction in case of NLOSb). Based on the measured data, we choose to use zero-mean normal distribution $N(0, \sigma)$ to describe the small-scale signal variation for all three link types.

2) *Accounting for Small-Scale Signal Variations:* Apart from establishing the distribution of signal variation, we also need to determine its parameter, i.e., the standard deviation (σ) of the normal distribution, since different environments and link types experience different levels of signal variation, as shown in Fig. 7. Therefore, we implement a simple model that accounts for the additional small-scale signal variation due to the objects in the area around the communicating pair as follows. Using the communication ellipse for each pair as explained in Fig. 4, we count the *number of vehicles* and sum up the *area of static objects* in the ellipse. We chose the area of the static objects rather than their number because, unlike the size of vehicles, their area varies greatly (see Fig. 4). Since a large-area building/foliage

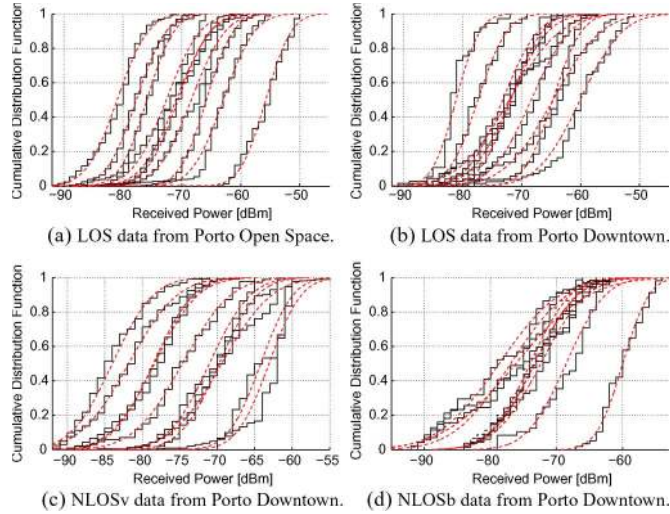


Fig. 7. Cumulative distribution functions of the received power for selected two-meter distance bins with best-fit normal distributions (dashed red lines). All plotted bins contain at least 40 data points. For LOS [see (a) and (b)] and NLOSv [see (c)] data, the bins are centered at decades from 10 to 100 m (i.e., the curves represent the following bins (left to right): [99–101], [89–91], . . . , [9–11] m). For NLOSb data [see (d)], due to lack of data points at lower distances, the two-meter bins centered at the following distances are shown (left to right): 90, 85, 70, 65, 60, 55, 50, 45, and 15 m. All plots are for measurements involving passenger (short) vehicles.

is more likely to impact the communication than a smaller building/foilage, we use their area instead of their number in the calculations. In terms of different link types, the objects in the ellipse have the following effects: 1) For the communicating pairs located on the same street (i.e., LOS or NLOSv links), the objects inside the ellipse will include the vehicles along that street and buildings and foliage lining the street—arguably, these are the most important sources of multipath for such links; 2) similarly, for NLOSb links (i.e., links between vehicles on different streets and with buildings/foilage blocking the LOS), the ellipse will include buildings, foliage, and vehicles that generate significant reflections, diffractions, and scattering (see Fig. 4).

Next, we set the minimum and maximum σ for a given LOS condition based on the collected measurements. We do not extract the minimum and maximum σ for each experiment location, since we aim to determine a single pair of values for each of the three link types (LOS, NLOSv, and NLOSb), which could then be used across a number of different locations. Therefore, we utilize minimum and maximum σ as calculated from the measurements and shown in Table V, which we obtained by averaging σ for all two-meter distance bins with more than 40 samples in that dataset. For simplicity, we use a single pair of minimum/maximum values for both short and tall vehicles. For LOS and NLOSv links, we extract the minimum σ from the least variable environments in terms of small-scale signal variation (Porto Open Space and Porto Highway, respectively). On the other hand, when reflections and diffractions are calculated, the minimum σ for NLOSb links is set to zero, since the most significant reflected and diffracted rays for these links are already accounted for. Alternatively, when only log-distance path loss is used for NLOSb links, we set the minimum σ based

TABLE V
MINIMUM AND MAXIMUM VALUES OF THE SMALL-SCALE SIGNAL DEVIATION σ EXTRACTED FROM EXPERIMENTAL DATA

Link Type	σ_{min} (source)	σ_{max} (source)
LOS	3.3 dB (Porto Open space)	5.2 dB (Porto Downtown)
NLOSv	3.8 dB (Porto Highway)	5.3 dB (Porto Downtown)
NLOSb	0 dB (when using refl./diffr.) 4.1 dB (based on [20])	6.8 dB (Porto Downtown)

on [20]. The maximum values for all three link types have been taken as the environment with the most variable small-scale signal variation from the collected datasets. Note that minimum and maximum σ values can be different for other environments; if this is the case, the values of σ different than those in Table V can be used.

We calculate the small-scale signal deviation σ (in decibels) for the communication pair i , σ_i , as

$$\sigma_i = \sigma_{\min} + \frac{\sigma_{\max} - \sigma_{\min}}{2} \cdot \left(\sqrt{\frac{NV_i}{NV_{\max}}} + \sqrt{\frac{AS_i}{AS_{\max}}} \right) \quad (10)$$

where σ_{\min} is the minimum small-scale signal deviation (in decibels) for i 's LOS type (LOS, NLOSv, or NLOSb), σ_{\max} is the maximum deviation value for i 's LOS type, NV_i is the number of vehicles per unit area in i 's ellipse, NV_{\max} is the maximum number of vehicles per unit area, AS_i is the area of static objects per unit area in i 's ellipse, and AS_{\max} is the maximum area of static objects per unit area. The value of NV_{\max} can be calculated *a priori* from historical data (e.g., maximum number of vehicles per area in a given city or highway), whereas AS_{\max} can be calculated from geographical databases, such as in [11]. In our calculations, we used NV_{\max} and AS_{\max} derived from the Porto dataset, with references defined on a square kilometer (i.e., maximum number of vehicles and maximum area of static objects in a square kilometer). For each of its constituents (vehicle- and static-object-induced signal variations), eq. 10 is essentially a square interpolation between minimum small-scale signal variation in an environment (e.g., open space without any objects other than communicating vehicles) and maximum variation (e.g., the downtown of a city during rush hour with a high density of vehicles and buildings/foilage). The square root in eq. 10 is taken to give comparatively more significance to lower number of vehicles than the higher number, because previous studies have shown that the difference between having no vehicles near the communicating pair and having a few vehicles nearby is more pronounced than the difference between a few and many vehicles [6], [29]. Similar reasoning is applied to buildings and foliage. Furthermore, due to the lack of a better classification, we give equal weight to the number of vehicles and the area of static objects when calculating the small-scale signal variation.

Once σ_i is calculated for pair i , we combine the results of the small- and large-scale signal variation model by adding a normally distributed random variable $N(0, \sigma_i)$ to the previously calculated received power [see eq. 9], i.e.,

$$Pr_{TOT_i} = 10 \log_{10}(Pr_i) + N(0, \sigma_i). \quad (11)$$

TABLE VI
MAXIMUM COMMUNICATION RANGES USED FOR DIFFERENT
LINK TYPES

Link Type	Max. comm. range
r_{LOS} - urban	500
r_{LOS} - outside urban	1000
r_{NLOSv}	400
r_{NLOSb}	300

E. Implementation Details and Simulation Structure of GEMV²

To improve the performance of GEMV² and make it suitable for implementation in VANET simulators, we exploit additional information available in VANETs, along with known geometric properties of the environment. Specifically, we implement the following rules.

- 1) For each link, we first check the blockage of LOS by buildings and foliage. If there is LOS blockage, we do *not* check the vehicle R-tree for LOS blockage, since obstructing buildings and foliage reduce the power at the receiver considerably more than obstructing vehicles (see, e.g., [6] and [7]). For links whose LOS is not blocked by buildings or foliage, we check the R-tree containing vehicles.
- 2) R-trees enable efficient intersection testing and neighbor querying [12]. Apart from using R-trees for link type classification, we use them to efficiently search for objects around the communicating pair and to implement a variation of the method of images [31, Ch. 7]—a technique used to geometrically determine the reflected and diffracted rays.
- 3) For LOS, NLOS_v, and NLOS_b links, we define the maximum communication range r as shown in Fig. 4, which determines the threshold distance above which the received power is assumed to be insufficient to correctly decode the message at the receiver, irrespective of the channel conditions. Specifically, we define r_{LOS} , r_{NLOSv} , and r_{NLOSb} for LOS, NLOS_v, and NLOS_b links, respectively. These radii are functions of transmit power, receiver sensitivity, antenna gains, and the surrounding environment. For a given set of radio parameters (reception threshold, transmit power, etc.), the ranges can be obtained either through field measurements or analytically. Radii used for the purpose of this study are shown in Table VI.
- 4) We used the insights from the measurements to refine GEMV². Specifically, we tested the benefits we obtain when considering reflections and diffractions for each of link types (LOS, NLOS_v, and NLOS_b). As we will show in Section V, the comparison between the model employing path loss propagation mechanisms shown in Table IV-A and the measurement results for LOS and NLOS_v links showed a good match. Furthermore, adding reflections and diffractions resulted in minimal benefits in terms of accuracy, while incurring a high computational overhead. Therefore, we do not calculate reflections and diffractions for LOS and NLOS_v links. On the other hand, NLOS_b links can benefit from single-interaction reflected

and diffracted rays (see, e.g., [29]). However, when computational speed is of essence, not calculating reflections and diffractions results in a considerable speedup of the execution time (as discussed later in Section VI). Therefore, for NLOS_b links, we provision for calculating the received power both with explicit calculation of the single-interaction reflections and diffractions and without (i.e., relying on log-distance path loss).

Figure 8 shows the simulation execution flowchart of GEMV². The flowchart synthesizes the large- and small-scale propagation models, describes how the rules for reducing the complexity of GEMV² are implemented, and contains the basic information required to implement it in discrete-event VANET simulators.

F. Assumptions

To keep the computational complexity of GEMV² low, we made the following assumptions and simplifications.

- 1) We assume that buildings are too tall for any meaningful amount of power to be received over them. Since even the shortest buildings are at least 5 m taller than the vehicles, simple calculations using knife-edge diffraction [27] show that the losses due to diffraction over the rooftops is in excess of 30 dB (with 40+ dB loss for buildings 15 or more meters taller than vehicles), thus making the power contribution over the rooftops negligible.
- 2) Currently, vehicles, buildings, and foliage are accounted for in our model. In environments where other objects have a significant impact (e.g., lamp posts, signs, railing, etc.), the model would need geographical information about these objects as well. However, such objects are currently not readily available in geographic databases. Furthermore, the additional gains in realism would need to be compared with the increase in the computational complexity due to the additional objects, particularly if the number of such objects is large.
- 3) Due to the limited precision of the databases and the focus on simulating large vehicular networks, we do not model scattering (i.e., dispersion of radio signal by objects significantly smaller than the wavelength of the carrier wave). Because of their potentially large number, scattering objects could significantly increase the complexity of the calculations that need to be performed.
- 4) Currently, we assume that the terrain is flat. For locations with significant elevation changes, GEMV² would need to be adapted so that the elevation is included, provided such data are sufficiently accurate.

V. RESULTS

We validate GEMV² against the measurements we performed in locations shown in Figs. 1 and 2. For the purpose of comparison, we use the GPS locations of the vehicles recorded during measurements to perform simulations in the same locations where the communication occurred. In simulations, we use the actual dimensions of the vehicles used for measurements (see Table I) and the corresponding buildings

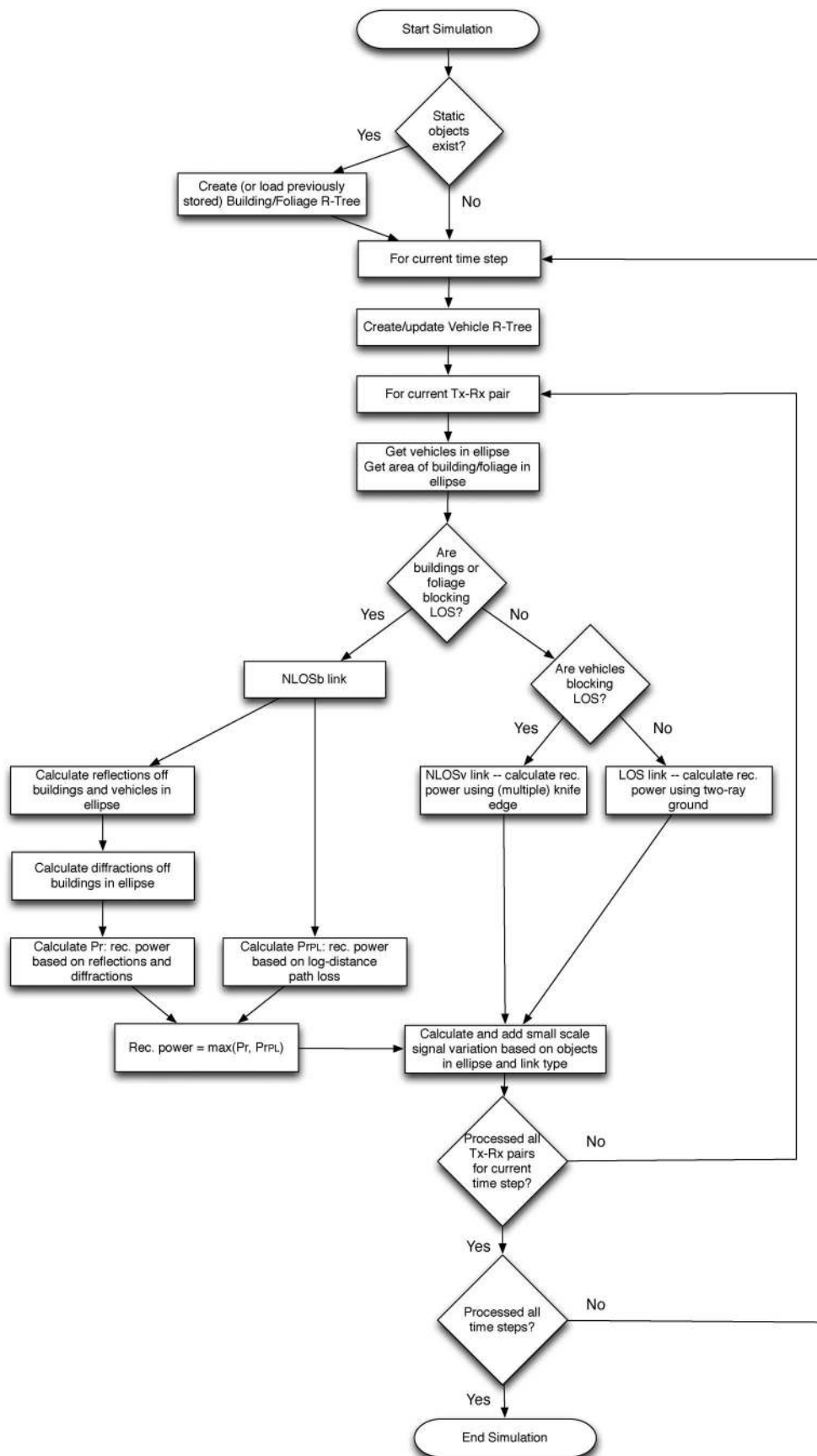


Fig. 8. GEMV²: Simulation flow.

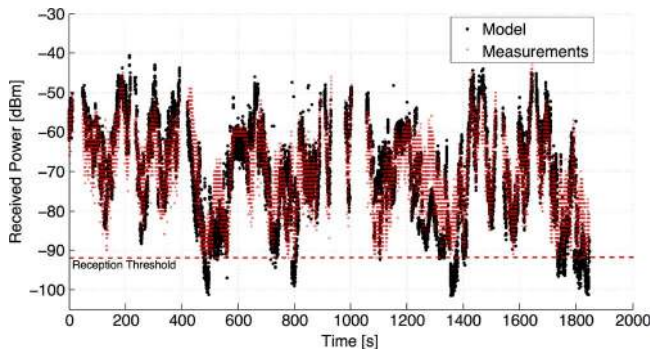


Fig. 9. Received power for a 30-min experiment in downtown Porto, along with the received power predicted by GEMV². Number of data points: 16 500.

and foliage extracted from geographical databases. Furthermore, we use the communication ranges specified in Table VI. These values are based on our own measurements, as well as results previously reported in [7], [19], and [20]. Note that r_{LOS} was set to 1000 m outside urban areas and 500 m in urban areas, whereas we use the same values of r_{NLOS_v} and r_{NLOS_b} in all environments.

Figure 9 shows the received power for a 30-min experiment conducted on a 10-km route in downtown Porto [see Fig. 2(a)], along with the results generated by GEMV².

Since we extracted the small-scale signal variation from the measured datasets, we consider that the best performance GEMV² can have is bounded by the empirically measured small-scale signal variation for the given link type. In other words, the performance of the employed model is upper-bounded by the measured small-scale signal variation. Therefore, for all results henceforth, apart from the mean difference in terms of received power between measured and modeled results, we also report the standard deviation around the mean (i.e., the standard error of the model). It is important to note that for each collected measurement data point, we calculate the mean and standard deviation using the per-packet received power difference between GEMV² and measurements. Furthermore, we use the same value of relative permittivity ($\epsilon_r = 1.003$) in all environments to calculate the reflection coefficient for the ground reflection (i.e., we do not fit the value to a given dataset).

Using the videos to separate the measurement data into LOS, NLOS_v, and NLOS_b links allowed us to evaluate the performance of GEMV² for each of these link types. Next, we analyze the ability of GEMV² to simulate LOS, NLOS_v, and NLOS_b links.

A. LOS Links

Figure 10 shows the results for the LOS links in different environments. The results generated by GEMV² fit the experimental data quite well in all environments, with the mean difference between model and measurements within 0.6 dB. Similarly, the standard error for all LOS datasets (shown in a text box in each of the subfigures in Fig. 10) is within 0.6 dB of the measured small-scale signal variation for each dataset (noted in the caption of each subfigure). Regarding the open-

space LOS results, we attribute the higher variability of the Pittsburgh Open Space dataset [see Fig. 10(c)] compared with the Porto Open Space dataset [see Fig. 10(b)] to the guard rails and metal fence [visible in Fig. 2(f)], which did not exist in the Porto Open Space location [see Fig. 2(b)]. The daytime Pittsburgh Suburban [see Fig. 10(e)] and Porto Downtown scenarios [Fig. 10(f)] have significantly richer propagation environments due to the nearby vehicles in case of the former and both vehicles and buildings in case of the latter. This results in the increase of both the small-scale signal variation and the standard error. More details on the suitability of the two-ray ground reflection model for LOS links in different environments, as well as the impact on the application-level performance metrics, is available in [23].

B. NLOS_v Links

Figure 11 shows the results for the NLOS_v links in different environments with both passenger (short) and tall vehicles. The results generated by GEMV² fit the experimental data well in all environments, with the mean difference between model and measurements within 1.3 dB in each of the environments. Again, the standard error for NLOS_v links (shown in a text box in each of the subfigures in Fig. 11) is within 0.9 dB of the measured small-scale signal variation of each dataset (noted in the caption of each subfigure). It is interesting to see that NLOS_v results for tall vehicles (vans) experience both lower small-scale signal variation and lower standard error. This is due to the taller position of the antennas, which experience fewer significant reflected, diffracted, and scattered rays than the antennas on the shorter vehicles, thus resulting in a more stable channel.

To illustrate the impact of different types of vehicular obstructions, Fig. 12 shows the received power when the LOS is blocked by a car, a van, and a truck. For a mean distance of 100 m between the transmitter and the receiver, different obstructing vehicle types attenuate the power in a distinct fashion, with the mean attenuation compared with LOS values of approximately 5, 13, and 20 dB for the car, the van, and the truck, respectively. The attenuation varies depending on the position of the obstructing vehicle: it is lowest when the obstructing vehicle is near the middle of the transmit–receive distance, whereas it increases as the vehicle gets closer to either the transmitter or the receiver. These results, which are in line with previous measurements reported in [3], [6], and [36], demonstrate the ability of GEMV² to incorporate the impact of different types of vehicular obstructions.

C. NLOS_b Links

Figure 13(a) shows the Porto Outlet location with the overlaid reflecting and diffracting rays as generated by GEMV². Once the vehicles are not in LOS, single-interaction reflections and diffractions become the predominant propagation mechanisms. Fig. 13(b) shows distinct transitions in the received power as the vehicles go from LOS to NLOS_b conditions. GEMV² is able to capture the steep drop in the received power once the LOS is obstructed by a building. At the same time, the log-distance path loss, because it is unable to capture the

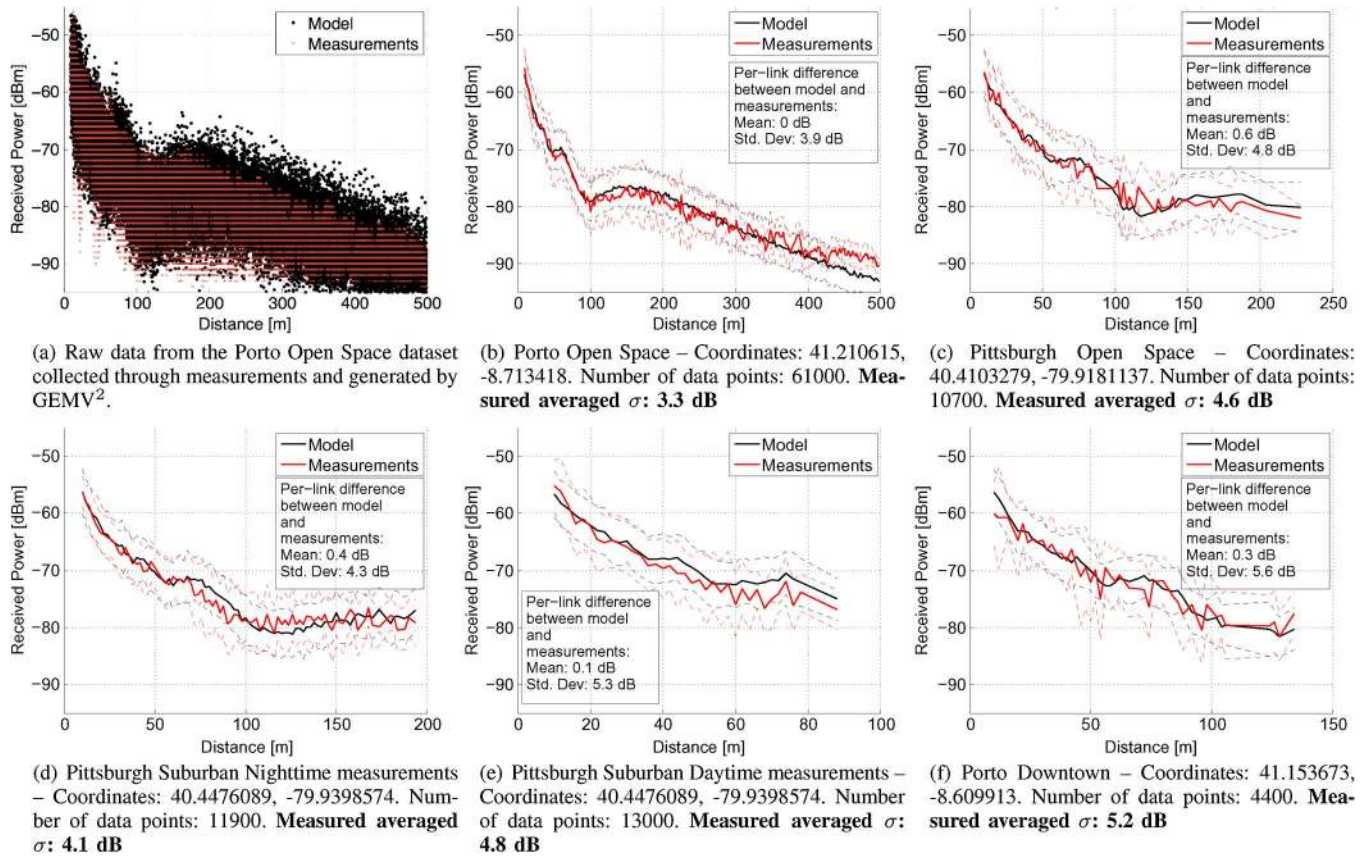


Fig. 10. LOS data: comparison of the received power generated by GEMV² and collected during the measurements in terms of the mean and the standard deviation (dashed lines) around the mean received power for two-meter distance bins. Results are plotted for bins with at least 40 data points. All results show the data collected with passenger (short) vehicles. The results with tall vehicles (vans) exhibited similar behavior.

transition between LOS and NLOS_b, underestimates the received power in LOS conditions and overestimates it in NLOS_b conditions. This result highlights the importance of location-specific link-level propagation modeling: the transition between different link types, which exhibit considerably different characteristics, can only be performed by taking into account the objects in the specific location. On the other hand, models relying on the common parameters of an environment (such as the overall path-loss exponent in the case of log-distance path loss) are unable to model such transitions, which results in the “averaging” of the received power across different link types. These results show that the different link types need to be identified and modeled separately.

Previous measurement studies concluded that, for communication in the 1–6-GHz frequency band, transmission through buildings does not play as important a role as reflections and diffractions do around buildings. For example, Anderson in [37] performed measurements at 1.8 GHz and modeled the reflection and diffraction around an isolated building corner using uniform theory of diffraction. The author concluded that through-wall transmission is negligible compared with the corner diffraction and wall reflections. Durgin *et al.* in [32] performed measurements at 5.85 GHz and pointed out that “transmission through the house was not as important as outdoor multipath scattering.” Similarly, as shown in Fig. 13, there is a good match between the measurements and GEMV² including reflections and diffractions only (i.e., without model-

ing the transmission through buildings). For this reason, we do not consider the through-building transmission as an important effect, and therefore, we did not include it in our model.

Figure 14 shows NLOS_b links for the measurements performed in downtown Porto. The difference between results generated by GEMV² and measurements is higher than in the case of LOS and NLOS_v (mean difference is -1.6 dB, and the standard deviation is 7.6 dB). The increased difference is due to two reasons: 1) the variety of communication scenarios encompassed by NLOS_b data is higher (e.g., slight obstruction by a building corner, deep obstruction by an entire building, obstruction by foliage, etc.), resulting in a standard deviation of the measured received power of 6.8 dB, which is considerably higher than LOS and NLOS_v; and 2) along the measurement route, there was occasional foliage that was not recorded in the geographical database; thus, it was not modeled.

Furthermore, unlike the LOS and NLOS_v data, where the PDR was above 80% for the observed distances, the PDR for the collected NLOS_b data was above 80% for distances below 50 m, approximately 30% between 50 and 150 m, and below 15% between 150 and 500 m. Additionally, during measurements, only decodable data were recorded (i.e., only packets received above the reception threshold of -92 dBm were recorded). This made it impossible to compare the results generated by GEMV² with the measurement data below the reception threshold, thus increasing the difference between measurements and the model.

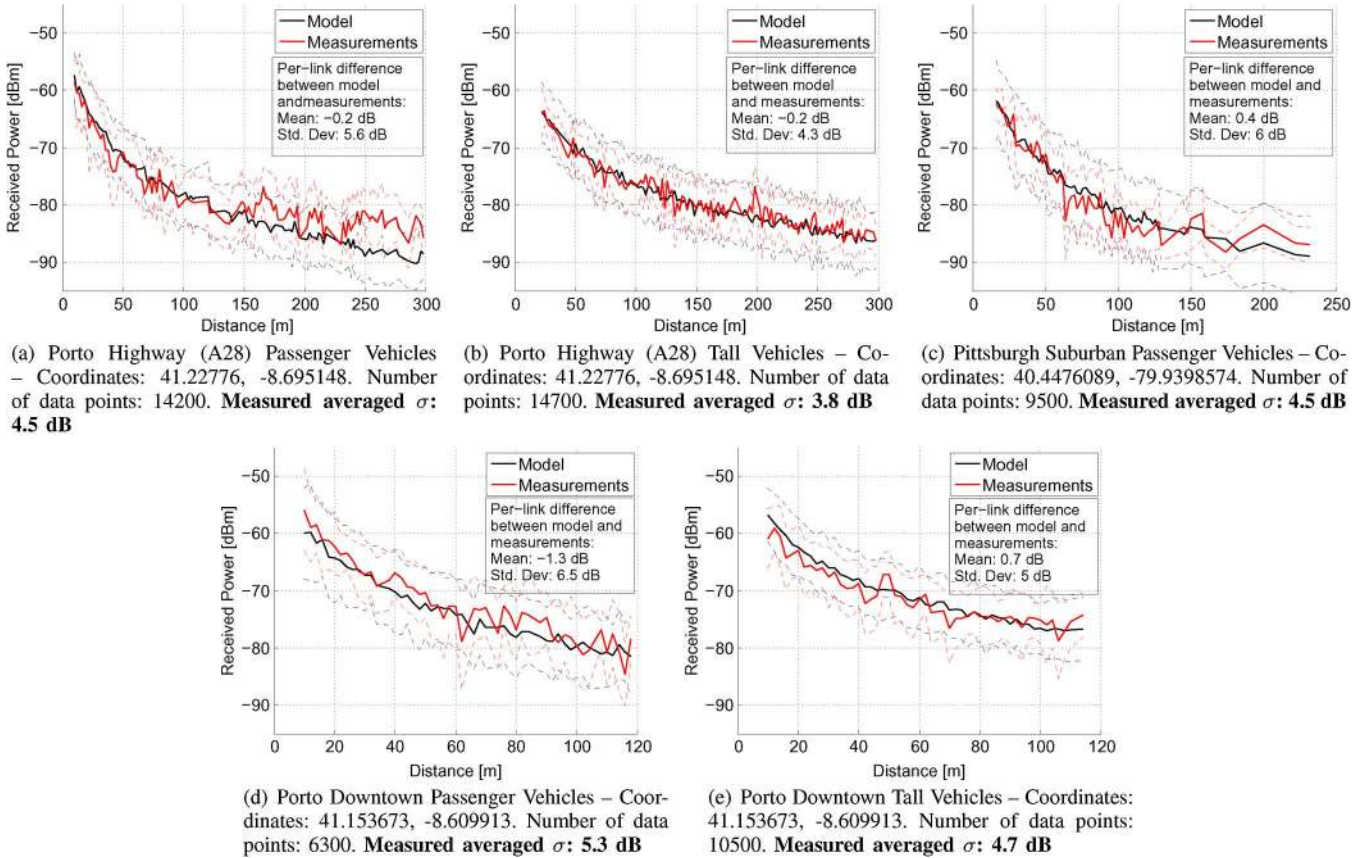


Fig. 11. NLOSv data. Comparison of the received power generated by GEMV² and collected during the measurements. Mean (full lines) and the standard deviation (dashed lines) around the mean received power for two-meter distance bins. Results are plotted for bins with at least 40 data points.

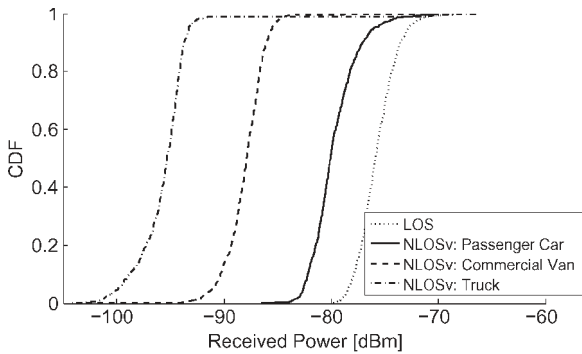


Fig. 12. Received power distribution as generated by GEMV² for LOS and NLOSv links due to three vehicle types: passenger car (mean height: 1.5 m), commercial van (mean height: 2 m), and truck (mean height: 3 m); standard deviation for the height of each vehicle type was set to 0.15 m. For each link, a single vehicle of a given type is placed between the transmitter and the receiver, both of which are passenger cars with the height of 1.5 m. Distance between the transmitter and the receiver is uniformly distributed between 75 and 125 m. Transmit power is set to 10 dBm, and gains at both transmit and receive antennas are 1 dBi.

D. Small-Scale Signal Variation

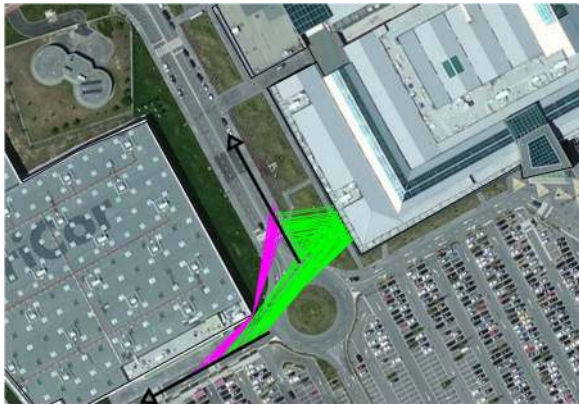
Figure 15 shows the standard deviation of the small-scale signal variation for GEMV² and measurements. For each two-meter distance bin, the variation is a composite result generated by the large-scale model (that also includes a part of small-scale effects through three diffracted rays in case of NLOSv links and

reflections and diffractions in case of NLOSb links) with the addition of the zero-mean normally distributed variable with standard deviation σ determined using eq. 10. GEMV² generates the overall signal variation comparable to that obtained through measurements, with the variation across the distance bins for both GEMV² and the measurements of approximately 6.3 dB. This result shows that GEMV² can capture the fast-varying signal changes in vehicular environment by considering the objects surrounding the communicating pair.

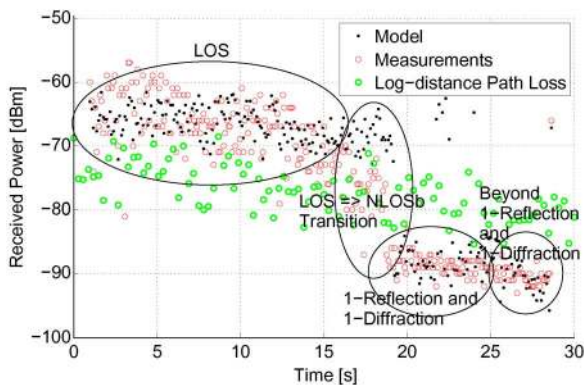
VI. FEW NOTES ON MATLAB IMPLEMENTATION AND SCALABILITY OF GEMV²

We implemented GEMV² in MATLAB and made the source code freely available at <http://vehicle2x.net>. GEMV² was able to simulate propagation for the entire city of Porto (41 km² area containing 10 566 vehicles and 17 346 static objects) using commodity hardware and the communication ranges shown in Table VI. Google Earth visualization of the received power in Porto as generated by GEMV² is shown in Fig. 16.

In terms of scalability, Fig. 17(a) shows the time it takes to process 10 000 links (Tx–Rx communication pairs) in networks of varying size. By increasing the network size (i.e., the number of objects in the scene), the processing time linearly increases even for the largest network size with more than 28 000 objects.



(a) Reflections (green lines) and diffractions (magenta) generated by the model and overlaid on the image of the Porto Outlet location. The vehicles started close to each other with clear LOS and slowly moved along paths indicated by the arrows, thus going from LOS to NLOSb conditions. During the measurements, the two large buildings that create reflections and diffractions were the only large protruding objects in the scene, with clearance in excess of 100 meters to the nearest objects (i.e., there were no parked vehicles). Coordinates of the location: 41.300137, -8.707385



(b) Transition of the model between LOS and NLOSb conditions at the Porto Outlet location for a single 30-second run. The annotations refer to the LOS conditions as identified by the model. The outliers in the top right corner are due to GPS inaccuracy while vehicles were stationary. For comparison, we plot the log-distance path loss for the same location. The log-distance path loss model was calculated by taking the reference distance of one meter and fitting the path loss exponent to the measurement data and minimizing the square residuals with respect to the received power in dBm.

Fig. 13. Porto Outlet experiment.

Figure 17(b) shows that the R-tree construction scales linearly with the number of objects that need to be stored in the tree. The results for constructing vehicle and static object R-trees are similar, since it takes marginally more time to fit the more complex static objects (outlines of buildings/foliage) in the minimum bounding rectangles. After that stage, the calculations per object are identical. Fig. 17(c) shows the increase in link classification time when the network size (and therefore, the vehicle and static R-tree size) increases. Again, the increase is linear with the size of the network.

To calculate signal-to-interference-plus-noise ratio (SINR), network simulators need to take into account signal contributions from all currently transmitting neighboring vehicles (i.e., all vehicles concurrently transmitting within the collision domain). For this reason, we analyze the per-link processing

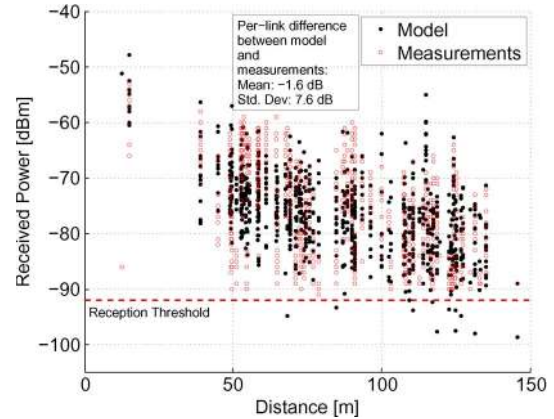


Fig. 14. NLOSb data: comparison of the received power generated by GEMV² and collected during the measurements in Porto downtown location using passenger vehicles. Measured averaged σ : 6.8 dB.

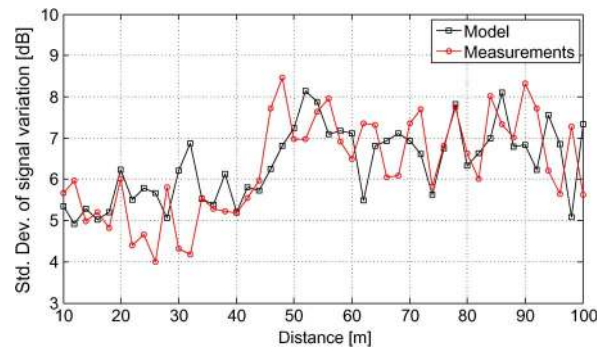


Fig. 15. Standard deviation of the small-scale signal variation generated by GEMV² and extracted from measurements in downtown Porto. All three link types (LOS, NLOSv, and NLOSb) are combined and placed in two-meter distance bins. Only bins with more than 40 data points are included.

time. Fig. 17(d) shows that, for a fixed network size, increasing the number of links results in a linear increase in processing time with a mild slope (e.g., to classify 5000 links, it takes 1.1 s, whereas for 100 000 links, it takes 3.1 s).

Since calculating reflections and diffractions takes up two thirds of the overall processing time across all network sizes [see Fig. 17(a)], we investigate the performance of GEMV² when it relies on the log-distance path loss only while calculating the received power for NLOSb links (i.e., without calculating reflections and diffractions). We found that, as the maximum transmission range for NLOSb links (r_{NLOSb}) increases, proportionally fewer links are affected by omitting reflections and diffractions. This is to be expected, since the larger transmission range results in a larger average distance between the communicating pairs, which makes it less likely for NLOSb links to have single-interaction reflections and diffractions. Depending on the selected r_{NLOSb} , in the Porto Downtown environment, the proportion of links that are affected ranges between approximately 5% (when $r_{\text{NLOSb}} = 500$ m) and 55% (when $r_{\text{NLOSb}} = 50$ m). In other words, between 45% and 95% of NLOSb links relied on the log-distance path loss model in the first place, since the power contribution of single-interaction reflections and diffractions was low. Thus, a good approach might be to model reflections and diffractions for NLOSb links

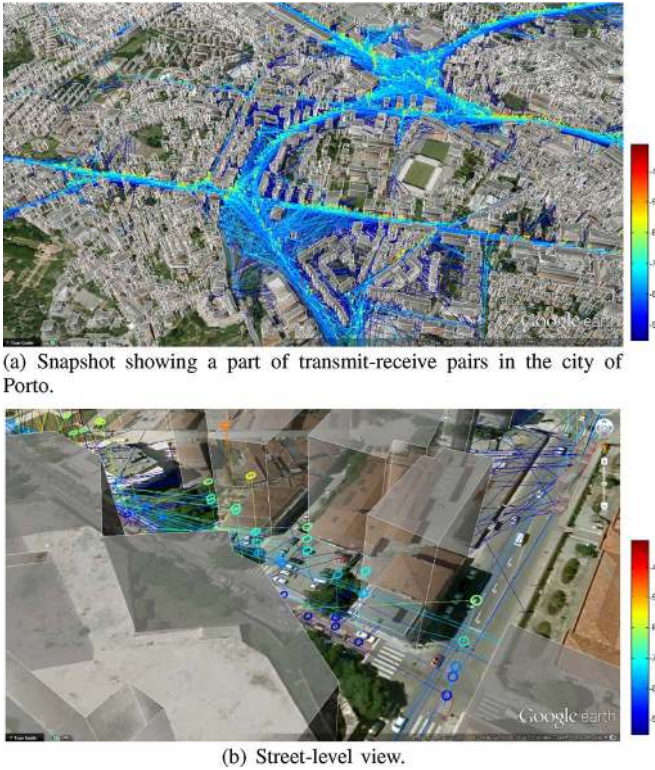


Fig. 16. Google Earth visualization of the received power calculated by GEMV². Building outlines are colored white; vehicle outlines are colored red. Each communicating pair is connected with a line that has circles representing transmitter (dark-blue circle at the ground level) and receiver (elevated circle). Warmer line colors and receiver circles positioned higher represent higher received power. Color bars are in dBm.

whose distance between the communicating pair is relatively small (e.g., up to 50 m), thus accounting for the majority of links that are likely to have single-interaction reflections and diffractions.

Furthermore, for the affected links, when compared against the measurement data, the log-distance path loss model performs well: in the Porto Downtown dataset, for 90% of the links, both the mean and standard error are within 2 dB of the results generated by the model implementing reflections and diffractions. While this might not be the case for all scenarios, it is a good indicator that the most important factor for V2V propagation modeling is the separation of different link types based on the obstruction type. In terms of the processing time, when not calculating reflections and diffractions, the processing time corresponds to the lowest (red) curve in Fig. 17(a).

Furthermore, it has to be noted that selecting the correct communication range is quite important in terms of the processing time. Specifically, increasing the range results in quadratic increase in the number of objects that need to be analyzed for a given communication pair. By design, in the extreme case, if the communication range is equal to the size of the simulated area, the number of neighboring objects (and, therefore, calculations) is quadratic with the number of communicating pairs. Therefore, the communication range for each of the LOS types needs to be carefully chosen so that it is minimized while accounting for potentially communicating pairs.

With regard to the scalability of GEMV², the trends shown in Fig. 17 are far more important than the actual processing times. The results show linear behavior even for large networks comprising tens of thousands of objects and communicating pairs. We also point out that most operations performed by the model (e.g., R-tree construction, classification of links through object querying, and intersection tests) can be parallelized. Since GEMV² relies on geometric manipulations of the objects that impact the propagation, analogies can be made to computer graphics problems, where parallel rendering techniques are utilized to perform occlusion/visibility and intersection testing. Parallelization techniques can be employed in both object querying and intersection testing, as well as the R-tree construction. Since there is no dependence between different communication pairs (links), parallelizing the computations across different links is straightforward. Furthermore, recent advances in parallel R-tree construction, querying, and intersection testing (e.g., see the work of Luo *et al.* in [38]) indicate that significant speed increase can be obtained by using multicore graphics processing units.

VII. RELATED WORK

Several recent studies tackled efficient and realistic simulation of V2V channels in different VANET environments. Karedal *et al.* [7] and Mangel *et al.* [39] designed propagation models focused on street intersections, where buildings create NLOSb conditions. Both studies selected representative urban intersections and performed measurements that were then used to design the models and calibrate the path loss and fading parameters. Karedal *et al.* [40] designed a V2V channel model based on measurements performed in highway and suburban environments at the 5.2-GHz frequency band. The model distributes the vehicles and static objects randomly and analyzes four distinct signal components: LOS, discrete components from vehicles, discrete components from static objects, and diffuse scattering. Based on the measurements, the authors propose a set of model parameters for highway and suburban environments. While it enables modeling of different propagation characteristics (path loss, multipath, Doppler spread, etc.), the proposed model assumes that the LOS component exists; therefore, it does not specify how to determine the LOS conditions of the channel and the transitions between LOS, NLOSv, and NLOSb link types. Fig. 13 shows that modeling the transitions between the LOS conditions is essential for obtaining realistic results, since the ensuing path loss is the most important component for determining the received power and, consequently, the decodability of the packet.

Sommer *et al.* [41] performed measurements and used them for calibrating a computationally efficient path loss model aimed at distinguishing between the LOS and NLOSb conditions. In case of NLOSb, the model calculates the received power based on the length of transmission through buildings and the number of walls through which the transmitted ray travels, whereas diffracted and reflected rays are not accounted for. Conversely, empirical studies reported by Anderson in [37] and Durgin *et al.* [32] concluded that reflections and diffractions are the dominant propagation mechanisms for NLOSb links in the

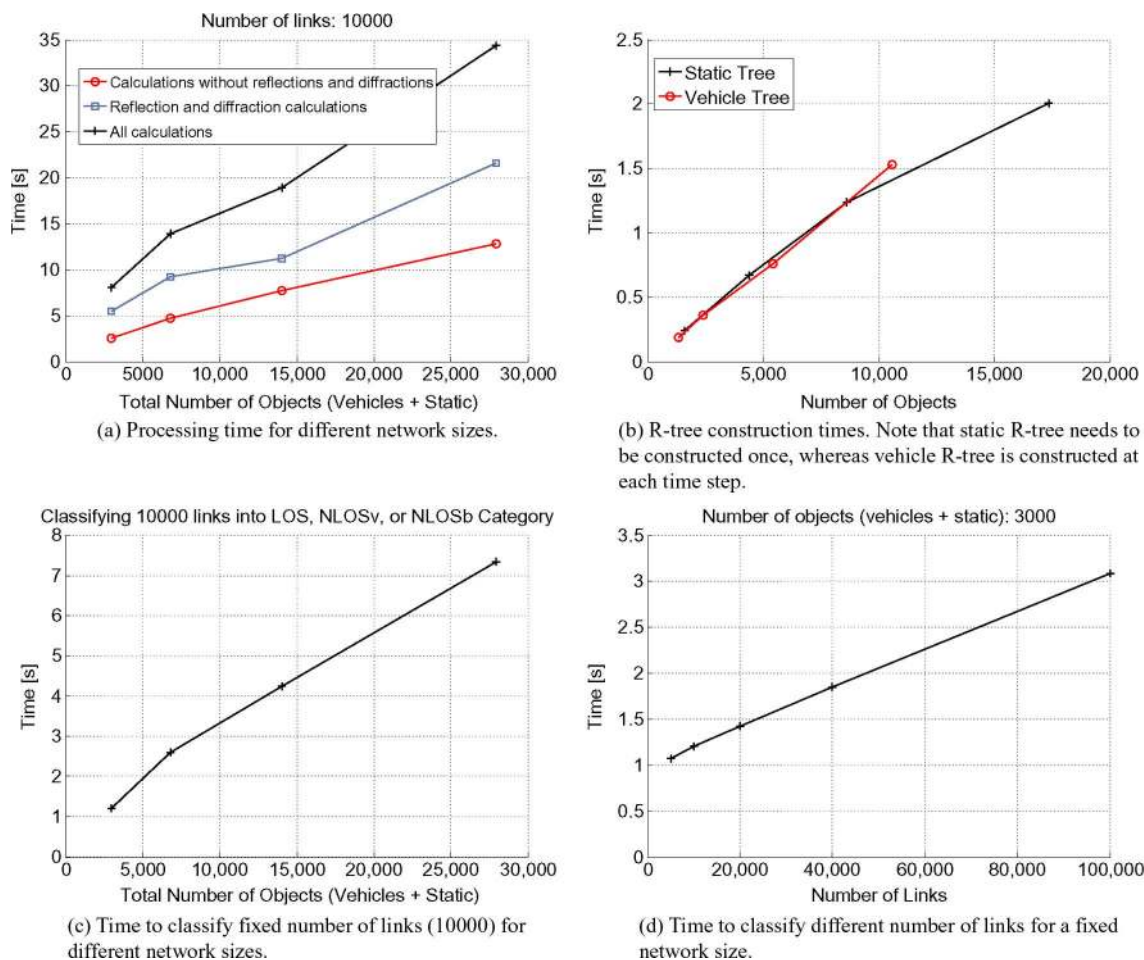


Fig. 17. Execution times of GEMV² implemented in MATLAB (version R2012a) under OS X v10.8 using the following hardware: 2011 Apple MacBook Air, 1.7 GHz Core i5, 4 GB RAM. We used the Porto Downtown dataset, which contains 10 566 vehicles and 17 346 static objects spread over 41 km². For simulations on smaller networks, we used a half, a quarter, and an eighth of the entire area, which contained corresponding number of vehicles and static objects. All results were generated using a single CPU core (i.e., no parallel execution).

1.9 GHz and 5.9 GHz frequency bands, whereas transmission through buildings was found not to contribute considerably.

In terms of propagation modeling on a city-wide scale, studies reported by Giordano *et al.* [42] and Cozzetti *et al.* [43] focus on computationally efficient propagation modeling in grid-like urban environments, where streets are assumed to be straight and intersecting at a right angle. While such assumptions hold for certain urban areas, in others, they might not (e.g., in the city of Porto; see Fig. 4).

With regard to improving propagation modeling using location-specific information, Wang *et al.* [44] utilize aerial photography to determine the density of scatterers in the simulated area. By processing the aerial data to infer the scatterer density, the authors determine the fading level for a given location on the road.

A number of studies were performed in various VANET environments to estimate the channel by performing measurements and fitting the measured data using well-known models (e.g., log-distance path loss [31]). For example, Paschalidis *et al.* in [33] performed measurements in different environments (urban, suburban, rural, and highway) and fitted the measurements data to the log-distance path loss model. The PLE varied considerably (between 1.83 and 3.59) for different locations

and LOS conditions. The large range of PLE values goes to show that a single PLE value cannot capture the characteristics of a channel, even for a single location/environment. Therefore, different link types (LOS, NLOS_v, and NLOS_b) need to be distinguished and modeled separately.

When it comes to evaluating the impact of vehicular obstructions, apart from our previous studies described in [3] and [6], several experimental studies emphasized the importance of obstructing vehicles. Gallagher *et al.* [45] quantified the impact of vehicular obstructions on different parameters, such as packet reception, throughput, and communication range. Interestingly, Gozalvez *et al.* in [46] performed measurements where the impact of vehicular traffic and tall vehicles (buses) also heavily influenced the V2I links, despite the roadside units being placed at elevated positions (between 3 and 10 m) next to or above the roads. Tall vehicles decreased the effective communication range by 40%, whereas the dense traffic reduced the range by more than 50%. Furthermore, other studies suggested that obstructing vehicles could be an important factor in propagation modeling (e.g., [8] and [47]).

The studies above were aimed at measuring the propagation channel characteristics and fitting the models to the already collected measurements. However, research aimed at

incorporating the vehicles in the propagation model, and therefore, *predicting* their effect has been scarce. Apart from our previous work reported in [3], to the best of our knowledge, there have only been two studies aimed at explicitly introducing vehicular obstruction in propagation modeling. Abbas *et al.* [36] performed V2V measurements and showed that a single vehicle can incur attenuation of more than 10 dB, which is in line with the results reported in [3]. Based on the measurements, the authors designed a stochastic propagation model for highway environments that incorporates vehicular obstructions and determines the time duration of LOS, NLOS_v, and NLOS_b states using the measured probability distributions of each state. Wang *et al.* [48] performed isolated (parking lot) measurements and characterized the loss due to vehicles obstructing the LOS. Furthermore, they model the loss due to vehicles by employing a three-ray knife-edge model, where diffraction loss is calculated over the vehicles and on the vehicle sides. Their results show good agreement between the isolated measurement results and the proposed method.

VIII. CONCLUSION

We have proposed GEMV², which is a computationally efficient geometry-based V2V propagation model. Unlike the models currently used in VANET simulators, GEMV² utilizes the geographic descriptors to enable location-specific modeling of the V2V channel. Furthermore, the time-dependent component of the channel is accounted for: Depending on the density of the vehicles in an area, the channel between two vehicles can considerably change as the surrounding vehicles move and create varying LOS conditions. Compared with the more complex geometry-based models (e.g., ray tracing), the proposed model is beneficial in terms of: 1) computational complexity, since it performs only a subset of complex calculations required for full ray-tracing models; and 2) reduced requirements for geographical information—the required information is limited to outlines and types of buildings and foliage, as well as locations and dimensions of vehicles, which are readily available through geographical databases and mobility traces.

Furthermore, with limited (and often imperfect) geographical description of the simulated area, there is a point of diminishing returns in terms of simulation realism, where a marginal improvement in realism requires large computational effort. For this reason, we used VANET-specific information (e.g., the number of surrounding objects, the dimensions of objects, their propagation characteristics, etc.) to limit the complexity of the model. To enable a more efficient modeling, GEMV² divides the links into three categories: LOS, NLOS_v, and NLOS_b. The results regarding LOS and NLOS_v conditions shown in Figs. 10 and 11 indicate that, to correctly model LOS and NLOS_v links, it is sufficient to consider the main type of propagation mechanism for the respective link type (specifically, two-ray ground reflection model for LOS and vehicles-as-obstacles model for NLOS_v [3]), with additional small-scale signal variation proportional to the number of vehicles and the area of buildings and foliage around the communicating pair. This allows for an efficient implementation in the simulation environments, as the required calculations are limited to link

classification based on LOS conditions and determining the number and area of objects around the communication pair, both of which can be efficiently performed using spatial data structures. On the other hand, for NLOS_b links, in certain scenarios, it is beneficial to consider reflections and diffractions as the main propagation mechanisms, since they enable a better estimation of the received power, particularly when vehicles are communicating “around the corner” (i.e., where vehicles are on two sides of a corner of a single building, as shown in Fig. 13(a) and (b)). However, reflections and diffractions incur a high computational cost: in case of our test data, they accounted for two thirds of the overall computation time. At the expense of losing some accuracy, considerable speed improvement can be achieved if a simpler model (e.g., log-distance path loss) is used to calculate the power for NLOS_b links, once those links have been distinguished from LOS and NLOS_v links.

The main goal of GEMV² is efficient propagation modeling for VANET simulations involving a large number of vehicles over large geographic areas. However, since it inherently distinguishes both link types (LOS, NLOS_v, and NLOS_b) and different environments (urban, suburban, and highway), GEMV² can also be used as a basis for fine-grained channel modeling. For example, by using impulse response measurements of LOS, NLOS_v, and NLOS_b channels in different environments such as those described by Bernardó *et al.* [49] and Alexander *et al.* [50], GEMV² can be used to correctly assign the appropriate channel statistics (e.g., delay and Doppler spreads) to each link.

Finally, we implemented GEMV² in MATLAB and showed that it can simulate networks with hundreds of thousands of communicating vehicle pairs in different environments (highway, suburban, and urban).

ACKNOWLEDGMENT

The authors would like to thank R. Meireles and C. Pereira for their invaluable help with the measurements and data processing.

REFERENCES

- [1] T. S. Rappaport, *Wireless Communications: Principles and Practice*. Englewood Cliffs, NJ, USA: Prentice-Hall, 1996.
- [2] D. Dhoutaut, A. Regis, and F. Spies, “Impact of radio propagation models in vehicular ad hoc networks simulations,” in *Proc. 3rd Int. Workshop VANET*, 2006, pp. 40–49.
- [3] M. Boban, T. T. V. Vinhoza, J. Barros, M. Ferreira, and O. K. Tonguz, “Impact of vehicles as obstacles in vehicular ad hoc networks,” *IEEE J. Sel. Areas Commun.*, vol. 29, no. 1, pp. 15–28, Jan. 2011.
- [4] F. Bai, T. Elbatt, G. Hollan, H. Krishnan, and V. Sadekar, “Towards characterizing and classifying communication-based automotive applications from a wireless networking perspective,” in *Proc. 1st IEEE Workshop AutoNet Appl.*, 2006, pp. 1–7.
- [5] J. Maurer, T. Fugen, T. Schafer, and W. Wiesbeck, “A new Inter-Vehicle Communications (IVC) channel model,” in *Proc. IEEE VTC-Fall*, Sep. 2004, pp. 9–13.
- [6] R. Meireles, M. Boban, P. Steenkiste, O. K. Tonguz, and J. Barros, “Experimental study on the impact of vehicular obstructions in VANETs,” in *Proc. IEEE VNC*, Jersey City, NJ, USA, Dec. 2010, pp. 338–345.
- [7] J. Karedal *et al.*, “Radio channel measurements at street intersections for vehicle-to-vehicle safety applications,” in *Proc. IEEE VTC-Spring*, May 2010, pp. 1–5.
- [8] I. Tan, W. Tang, K. Laberteaux, and A. Bahai, “Measurement and analysis of wireless channel impairments in DSRC vehicular communications,” in *Proc. IEEE ICC*, May 2008, pp. 4882–4888.

- [9] M. Boban, R. Meireles, J. Barros, O. K. Tonguz, and P. Steenkiste, "Exploiting the height of vehicles in vehicular communication," in *Proc. IEEE VNC*, Amsterdam, The Netherlands, Nov. 2011, pp. 284–291.
- [10] D. Krajzewicz, G. Hertkorn, C. Rössel, and P. Wagner, "SUMO (simulation of urban mobility)," in *Proc. 4th Middle East Symp. Simul. Model.*, 2002, pp. 183–187.
- [11] M. Haklay and P. Weber, "OpenStreetMap: User-generated street maps," *IEEE Pervasive Comput.*, vol. 7, no. 4, pp. 12–18, Oct.–Dec. 2008.
- [12] A. Guttman, "R-trees: A dynamic index structure for spatial searching," *SIGMOD Rec.*, vol. 14, no. 2, pp. 47–57, Jun. 1984.
- [13] A. Festag *et al.*, "CAR-2-X communication for safety and infotainment in Europe," *NEC Tech. J.*, vol. 3, no. 1, pp. 21–26, 2008.
- [14] *IEEE Standard for Information technology—Local and Metropolitan Area Networks—Specific Requirements—Part 11: Wireless LAN Medium Access Control (MAC) and Physical Layer (PHY) Specifications Amendment 6: Wireless Access in Vehicular Environments*, IEEE Std. 802.11p-2010, Jul. 2010, pp. 1–15.
- [15] M. Boban, R. Meireles, J. Barros, P. A. Steenkiste, and O. K. Tonguz, "TVR—Tall vehicle relaying in vehicular networks," *IEEE Trans. Mobile Comput.*, to be published, DOI: 10.1109/TMC.2013.70.
- [16] M. Ferreira, H. Conceição, R. Fernandes, and O. K. Tonguz, "Stereoscopic aerial photography: An alternative to model-based urban mobility approaches," in *Proc. 6th ACM Int. Workshop VANET*, New York, NY, USA, 2009, pp. 53–62.
- [17] Y. Theodoridis and T. Sellis, "A model for the prediction of R-tree performance," in *Proc. 15th ACM SIGACT-SIGMOD-SIGART Symp. PODS*, New York, NY, USA, 1996, pp. 161–171.
- [18] M. de Berg, M. van Kreveld, M. Overmars, and O. Schwarzkopf, *Computational Geometry Algorithms and Applications*. Berlin, Germany: Springer-Verlag, 1997.
- [19] F. Neves, A. Cardote, R. Moreira, and S. Sargento, "Real-world evaluation of IEEE 802.11p for vehicular networks," in *Proc. 8th ACM Int. Workshop VANET*, New York, NY, USA, 2011, pp. 89–90.
- [20] T. Mangel, M. Michl, O. Klemp, and H. Hartenstein, "Real-world measurements of non-line-of-sight reception quality for 5.9 GHz IEEE 802.11p at intersections," in *Proc. 3rd Int. Conf. Commun. Technol. Vehicles, ser. Nets4Cars/Nets4Trains*, Berlin, Germany, 2011, pp. 189–202, Springer-Verlag.
- [21] A. Paier *et al.*, "First results from car-to-car and car-to-infrastructure radio channel measurements at 5.2 GHz," in *Proc. IEEE 18th Int. Symp. PIMRC*, Sep. 2007, pp. 1–5.
- [22] J. Kunisch and J. Pamp, "Wideband car-to-car radio channel measurements and model at 5.9 GHz," in *Proc. IEEE VTC-Fall*, Sep. 2008, pp. 1–5.
- [23] M. Boban, W. Viriyasitavat, and O. K. Tonguz, "Modeling vehicle-to-vehicle line of sight channels and its impact on application-layer performance," in *Proc. 10th ACM Int. Workshop VANET, Syst. Appl.*, New York, NY, USA, 2013, pp. 91–94.
- [24] J. Karedal, N. Czink, A. Paier, F. Tufvesson, and A. Molisch, "Path loss modeling for vehicle-to-vehicle communications," *IEEE Trans. Veh. Technol.*, vol. 60, no. 1, pp. 323–328, Jan. 2011.
- [25] Network Simulator 2. [Online]. Available: http://nsnam.isi.edu/nsnam/index.php/Main_Page
- [26] Network Simulator 3. [Online]. Available: www.nsnam.org
- [27] "Propagation by diffraction," Int. Telecommun. Union Radiocomm. Sector, Geneva, Switzerland, Recommendation P.526, Feb. 2007.
- [28] O. Landron, M. Feuerstein, and T. Rappaport, "A comparison of theoretical and empirical reflection coefficients for typical exterior wall surfaces in a mobile radio environment," *IEEE Trans. Antennas Propag.*, vol. 44, no. 3, pp. 341–351, Mar. 1996.
- [29] T. Abbas *et al.*, "Directional analysis of vehicle-to-vehicle propagation channels," in *Proc. 73rd IEEE VTC Spring*, May 2011, pp. 1–5.
- [30] A. Paier *et al.*, "Characterization of vehicle-to-vehicle radio channels from measurements at 5.2 GHz," *Wireless Pers. Commun.*, vol. 50, no. 1, pp. 19–32, Jul. 2009.
- [31] J. D. Parsons, *The Mobile Radio Propagation Channel*. Hoboken, NJ, USA: Wiley, 2000.
- [32] G. Durgin, T. Rappaport, and H. Xu, "Measurements and models for radio path loss and penetration loss in and around homes and trees at 5.85 GHz," *IEEE Trans. Commun.*, vol. 46, no. 11, pp. 1484–1496, Nov. 1998.
- [33] P. Paschalidis, K. Mahler, A. Kortke, M. Peter, and W. Keusgen, "Pathloss and multipath power decay of the wideband car-to-car channel at 5.7 GHz," in *Proc. IEEE VTC Spring*, May 2011, pp. 1–5.
- [34] J. Goldhirsh and W. J. Vogel, "Handbook of propagation effects for vehicular and personal mobile satellite systems—Overview of experimental and modeling results," Appl. Phys. Lab., Johns Hopkins Univ./Elect. Eng. Res. Lab., Univ. Texas Austin, Austin, TX, USA, Tech. Rep. A2A-98-U-0-021 (APL), EERL-98-12A (EERL), Dec. 1998.
- [35] B. Benzair, H. Smith, and J. Norbury, "Tree attenuation measurements at 1–4 GHz for mobile radio systems," in *Proc. 6th Int. Conf. Mobile Radio Pers. Commun.*, Dec. 1991, pp. 16–20.
- [36] T. Abbas, F. Tufvesson, and J. Karedal, "Measurement based shadow fading model for vehicle-to-vehicle network simulations," *arXiv preprint arXiv:1203.3370v2*, 2012.
- [37] H. Anderson, "Building corner diffraction measurements and predictions using UTD," *IEEE Trans. Antennas Propag.*, vol. 46, no. 2, pp. 292–293, Feb. 1998.
- [38] L. Luo, M. Wong, and L. Leong, "Parallel implementation of R-trees on the GPU," in *Proc. 17th ASP-DAC*, 2012, pp. 353–358.
- [39] T. Mangel, O. Klemp, and H. Hartenstein, "A validated 5.9 GHz non-line-of-sight path-loss and fading model for inter-vehicle communication," in *Proc. 11th ITST*, Aug. 2011, pp. 75–80.
- [40] J. Karedal *et al.*, "A geometry-based stochastic MIMO model for vehicle-to-vehicle communications," *IEEE Trans. Wireless Commun.*, vol. 8, no. 7, pp. 3646–3657, Jul. 2009.
- [41] C. Sommer, D. Eckhoff, R. German, and F. Dressler, "A computationally inexpensive empirical model of IEEE 802.11p radio shadowing in urban environments," in *Proc. 8th Int. Conf. WONS*, 2011, pp. 84–90.
- [42] E. Giordano, R. Frank, G. Pau, and M. Gerla, "CORNER: A realistic urban propagation model for VANET," in *Proc. 7th Int. Conf. WONS*, 2010, pp. 57–60.
- [43] H. Cozzetti, C. Campolo, R. Scopigno, and A. Molinaro, "Urban VANETs and hidden terminals: Evaluation through a realistic urban grid propagation model," in *Proc. IEEE ICVES*, Jul. 2012, pp. 93–98.
- [44] X. Wang, E. Anderson, P. Steenkiste, and F. Bai, "Improving the accuracy of environment-specific vehicular channel modeling," in *Proc. 7th ACM Int. Workshop WiNTECH*, New York, NY, USA, 2012, pp. 43–50.
- [45] B. Gallagher, H. Akatsuka, and H. Suzuki, "Wireless communications for vehicle safety: Radio link performance and wireless connectivity methods," *IEEE Veh. Technol. Mag.*, vol. 1, no. 4, pp. 4–24, Dec. 2006.
- [46] J. Gozalvez, M. Sepulcre, and R. Bauza, "IEEE 802.11p vehicle to infrastructure communications in urban environments," *IEEE Commun. Mag.*, vol. 50, no. 5, pp. 176–183, May 2012.
- [47] D. Matolak, I. Sen, W. Xiong, and N. Yaskoff, "5 GHz wireless channel characterization for vehicle to vehicle communications," in *Proc. IEEE MILCOM*, Oct. 2005, pp. 3016–3022.
- [48] P.-J. Wang, C.-M. Li, and H.-J. Li, "Influence of the shadowing on the information transmission distance in inter-vehicle communications," in *Proc. IEEE Int. Symp. PIMRC*, Sep. 2009, pp. 3015–3019.
- [49] L. Bernadó, T. Zemen, F. Tufvesson, A. F. Molisch, and C. F. Mecklenbräuker, "Delay and Doppler spreads of non-stationary vehicular channels for safety relevant scenarios," *CoRR*, vol. abs/1305.3376, 2013.
- [50] P. Alexander, D. Haley, and A. Grant, "Cooperative intelligent transport systems: 5.9 GHz field trials," *Proc. IEEE*, vol. 99, no. 7, pp. 1213–1235, Jul. 2011.



Mate Boban received the Diploma in Informatics from the University of Zagreb, Croatia, and the Ph.D. degree in electrical and computer engineering from Carnegie Mellon University, Pittsburgh, PA, USA. He is currently a Research Scientist with NEC Laboratories Europe. His current research interests are in the areas of Intelligent Transportation Systems, wireless communications, and networking. More information can be found on his website <http://mateboban.net>.



João Barros received his undergraduate education in electrical and computer engineering from the Universidade do Porto, Porto, Portugal, and the Universitaet Karlsruhe, Karlsruhe, Germany; a performing arts degree in flute from the Music Conservatory of Porto; and the Ph.D. degree in electrical engineering and information technology from the Technische Universität München, München, Germany.

He is an Associate Professor of electrical and computer engineering with the University of Porto and the Founding Director of the Institute for Telecommunications in Porto, which includes almost 100 active members. He was a Fulbright Scholar at Cornell University, Ithaca, NY, USA, and has been a Visiting Professor with the Massachusetts Institute of Technology, Cambridge, MA, USA, since 2008. He also teaches at the Porto Business School and cofounded two recent startups, namely, Streambolico and Veniam, commercializing wireless video and vehicular communication technologies, respectively. Between 2009 and 2012, he served as the National Director of the Carnegie Mellon Portugal Program, which is a five-year international partnership funded by the Portuguese Foundation of Science and Technology, with a total budget of 56M€. In recent years, he has been a Principal Investigator (PI) and a Co-PI of numerous national, European, and industry funded projects. He has coauthored one book and 145 research papers in the fields of networking, information theory, and security, with special focus on smart city technologies, network coding, physical-layer security, sensor networks, and intelligent transportation systems.

Dr. Barros has received several awards, including the 2010 IEEE Communications Society Young Researcher Award for the Europe, Middle East, and Africa region; the 2011 IEEE ComSoC and Information Theory Society Joint Paper Award; the 2012 BES National Innovation Award; and a state-wide best teaching award by the Bavarian State Ministry of Sciences, Research, and the Arts. He is frequently invited as an expert speaker by international organizations such as the European Commission, OECD, ITU, EuroDIG, and IEEE. He also works as an independent consultant for various organizations and projects. He is fluent in Portuguese, German, English, French, and Spanish.



Ozan K. Tonguz received the B.Sc. degree from the University of Essex, Colchester, U.K., and the M.Sc. and Ph.D. degrees from Rutgers University, Camden, NJ, USA, all in electrical engineering.

He currently serves as a tenured Full Professor with the Department of Electrical and Computer Engineering, Carnegie Mellon University (CMU), Pittsburgh, PA, USA. Before joining CMU in August 2000, he was with the Department of Electrical and Computer Engineering (ECE), State University of New York at Buffalo (SUNY/Buffalo), Buffalo, NY, USA. He joined SUNY/Buffalo in 1990 as an Assistant Professor, where he was granted early tenure and promoted to Associate Professor in 1995 and to Full Professor in 1998. Prior to joining academia, he was with Bell Communications Research (Bellcore) between 1988 and 1990, doing research in optical networks and communication systems. He is the Founder and President of Virtual Traffic Lights, LLC, which is a CMU startup that was launched in December 2010 for providing solutions to several key transportation problems related to safety and traffic information systems, using vehicle-to-vehicle and vehicle-to-infrastructure communications paradigms. His industrial experience includes periods with Bell Communications Research, CTI Inc., Harris RF Communications, Aria Wireless Systems, Clearwire Technologies, Nokia Networks, Nokia Research Center Neuro Kinetics, Asea Brown Boveri (ABB), General Motors (GM), Texas Instruments, and Intel. He currently serves or has served as a consultant or an expert for several companies (such as Aria Wireless Systems, Harris RF Communications, Clearwire Technologies, Nokia Networks, Alcatel, and Lucent Technologies), major law firms (Jones Day, WilmerHale, Williams and Connolly, Heller Ehrman, Baker Botts, Soroker-Agmon, Dinsmore&Shohl, Carlson and Caspers, etc.), and government agencies (such as the National Science Foundation) in the United States, Europe, and Asia in the broad area of telecommunications and networking. He also served as the Codirector (Thrust Leader) of the Center for Wireless and Broadband Networking Research at Carnegie Mellon University. He has published about 300 technical papers in IEEE journals and conference proceedings. He is well known for his contributions in vehicular networks, wireless communications and networks, and optical communications and networks. His work on the Integrated Cellular and Ad Hoc Relay Systems (ICAR) is internationally acclaimed as well. He is the author (with G. Ferrari) of the Wiley book *Ad Hoc Wireless Networks: A Communication-Theoretic Perspective*. He was the architect of the "High Performance Waveform (HPW)" that was implemented in Harris RF Communications' AN/PRC-117f UHF band man-pack tactical radio. His current research interests include vehicular networks, sensor networks, computer networks, wireless networks and communications systems, self-organizing networks, smart grid, Internet of Things, optical communications and networks, bioinformatics, and security. (More details about his research interests, research group, projects, and publications can be found at <http://www.ece.cmu.edu/~tonguz/>.)

Dr. Tonguz has served on the Technical Program Committee of several IEEE conferences (such as INFOCOM, SECON, GLOBECOM, ICC, VTC, WCNC, etc.) and symposia in the area of wireless communications and optical networks. He currently serves or has served as an Associate Editor for the IEEE TRANSACTIONS ON COMMUNICATIONS, the IEEE COMMUNICATIONS MAGAZINE, the IEEE JOURNAL OF LIGHTWAVE TECHNOLOGY, and the *Ad Hoc Networks Journal* (Elsevier). He was a Guest Editor for the Special Issue of the IEEE JOURNAL OF LIGHTWAVE TECHNOLOGY and the IEEE JOURNAL ON SELECTED AREAS IN COMMUNICATIONS ON MULTI-WAVELENGTH OPTICAL NETWORKS AND TECHNOLOGY, published in 1996; the Special Issue of the *Journal of Mobile Multimedia* on Advanced Mobile Technologies for Health Care Applications (2006); the Special Issue of *Ad Hoc Networks Journal on Vehicular Networks* (2010); and the Special Issue of the IEEE COMMUNICATIONS MAGAZINE ON VEHICULAR NETWORKS (2011).