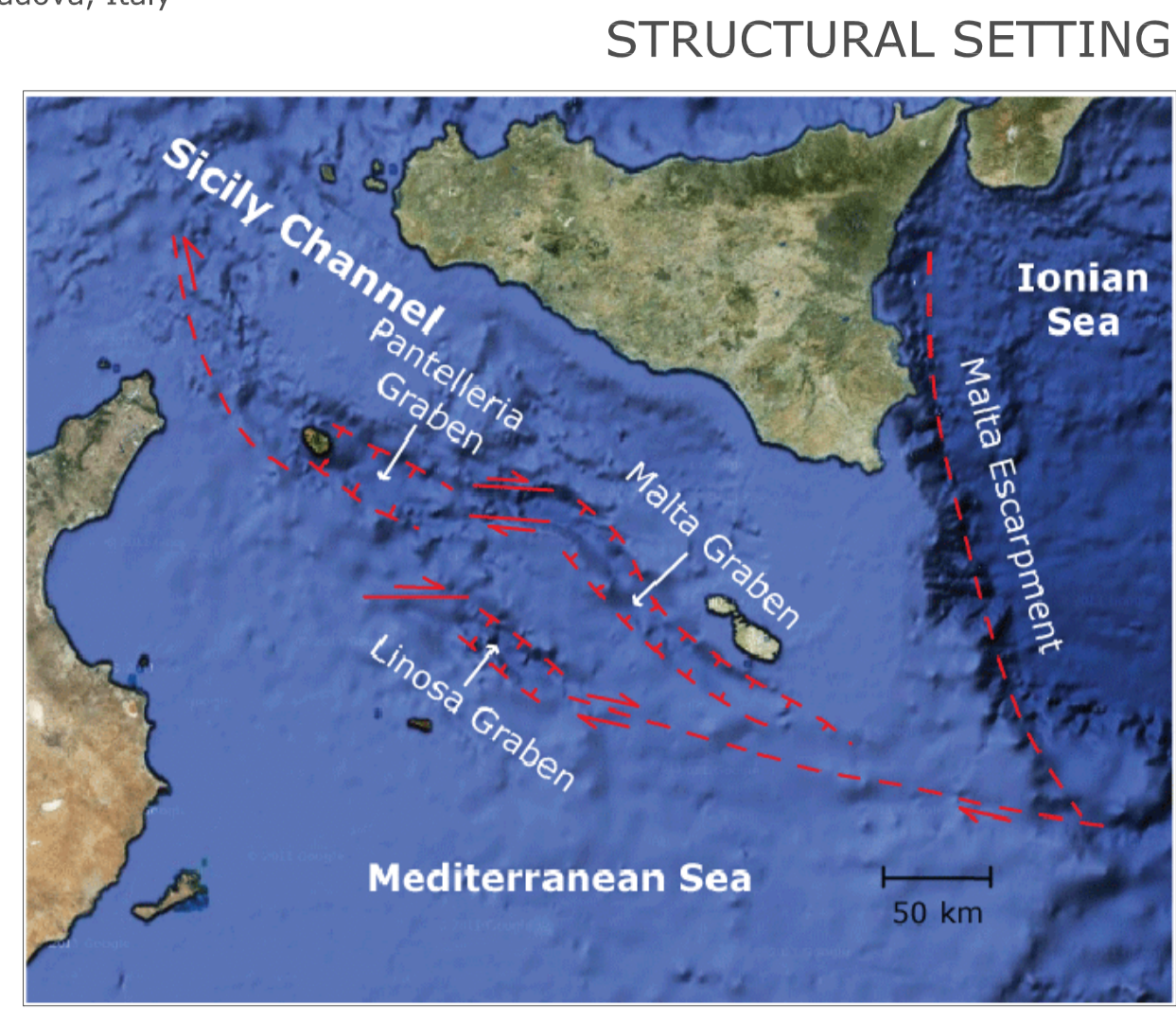
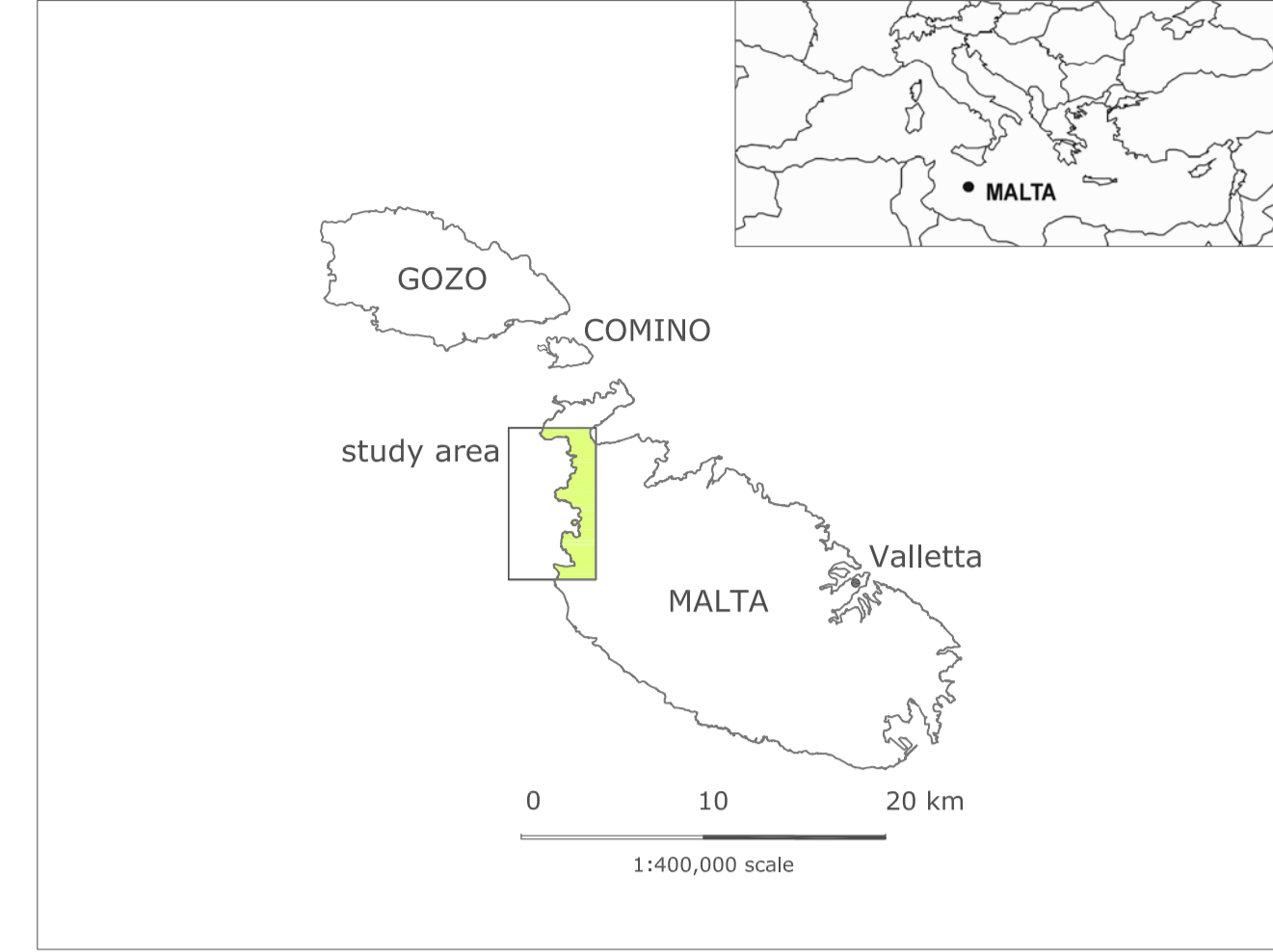


# Geomorphological map of the NW coast of the Island of Malta (Mediterranean Sea)

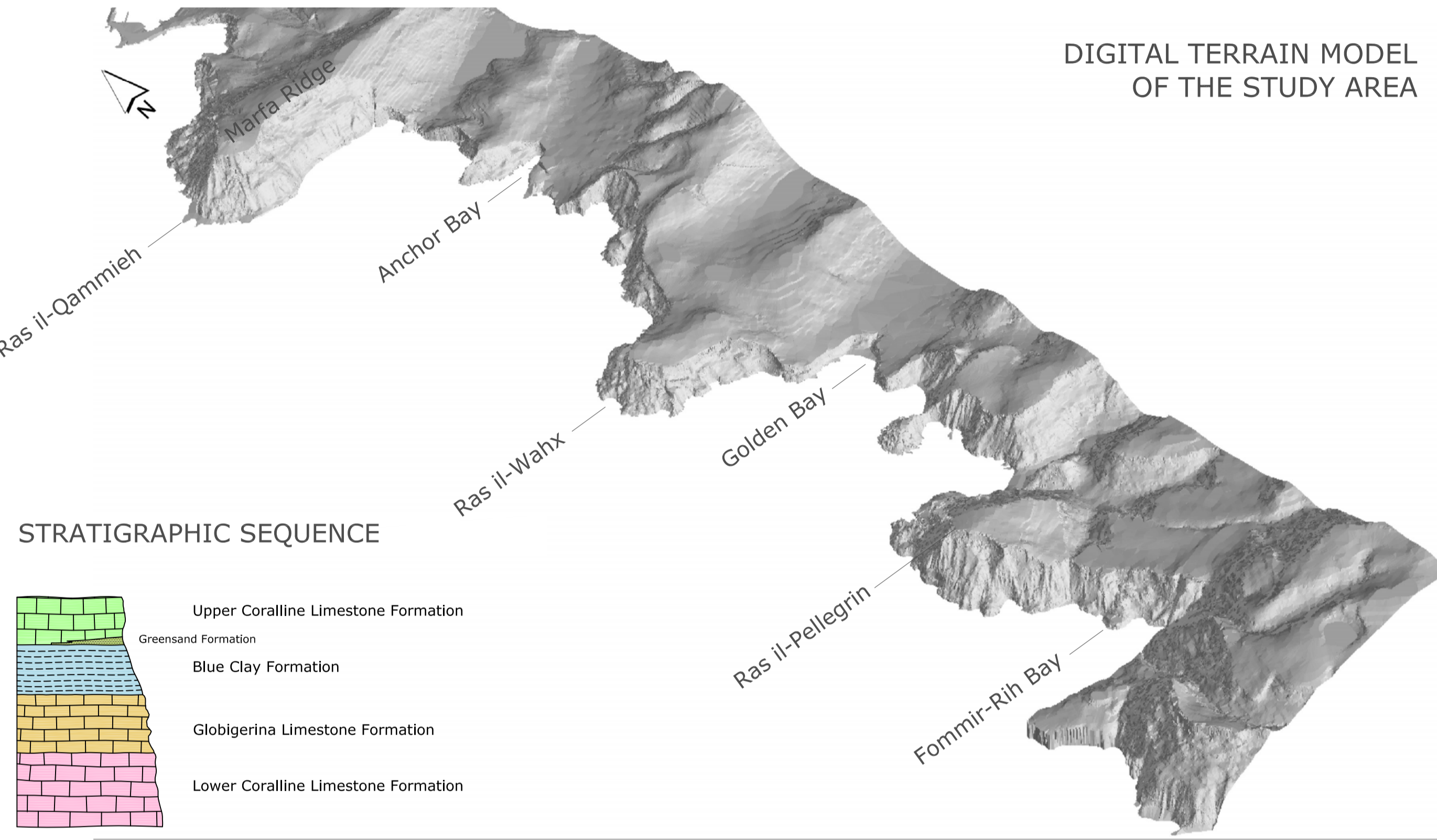
© Journal of Maps

Stefano DEVOTO<sup>(1)</sup>, Sara BIOLCHI<sup>(1,2)</sup>, Viola Maria BRUSCHI<sup>(3)</sup>, Stefano FURLANI<sup>(2,4)</sup>,  
Matteo MANTOVANI<sup>(5)</sup>, Daniela PIACENTINI<sup>(1)</sup>, Alessandro PASUTO<sup>(5)</sup>, Mauro SOLDATI<sup>(1)</sup>

1) Dipartimento di Scienze della Terra, Università degli Studi di Modena e Reggio Emilia, Modena, Italy  
2) Dipartimento di Geoscienze, Università degli Studi di Trieste, Trieste, Italy  
3) Departamento de Ciencias de la Tierra y Física de la Materia Condensada, Universidad de Cantabria, Santander, Spain  
4) Dipartimento di Geografia "G. Morandini", Università degli Studi di Padova, Padova, Italy  
5) Consiglio Nazionale delle Ricerche, Istituto di Ricerca per la Protezione Idrogeologica, Padova, Italy

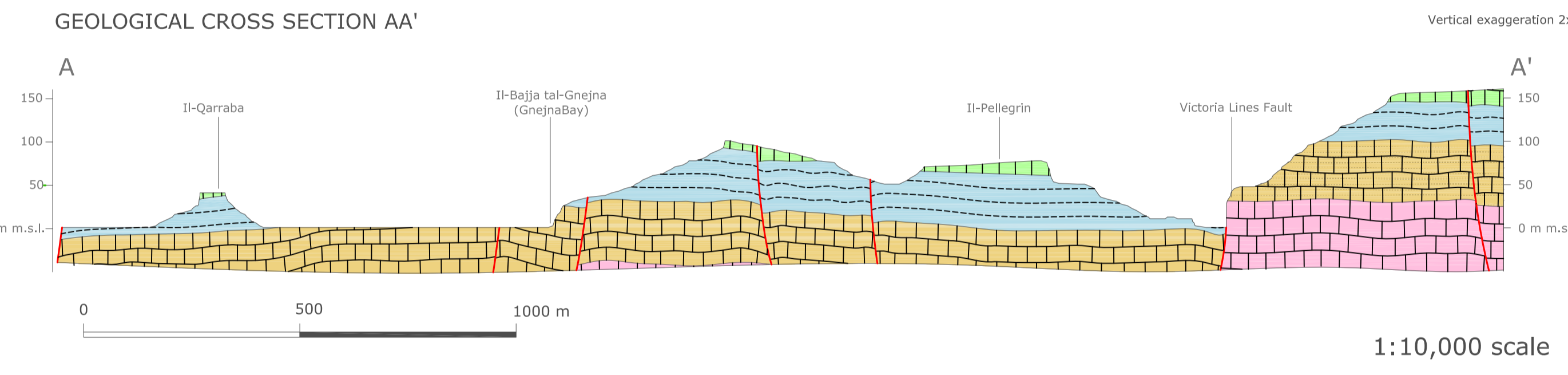
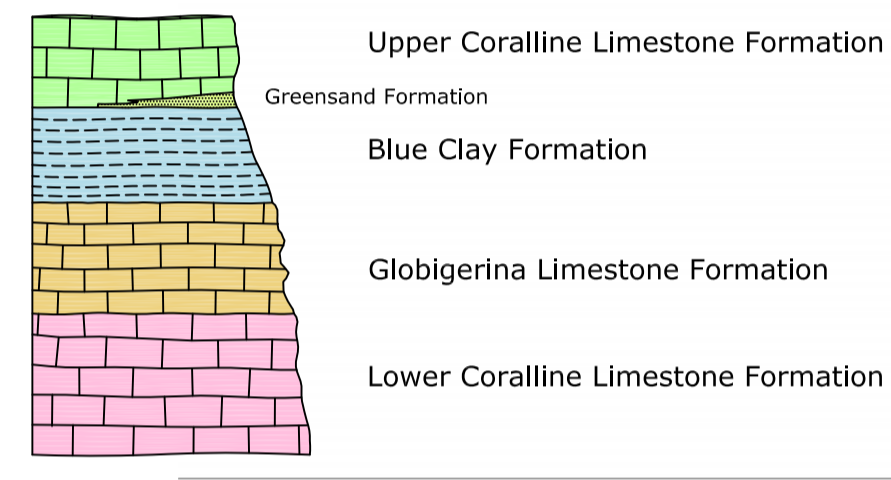


STRUCTURAL SETTING

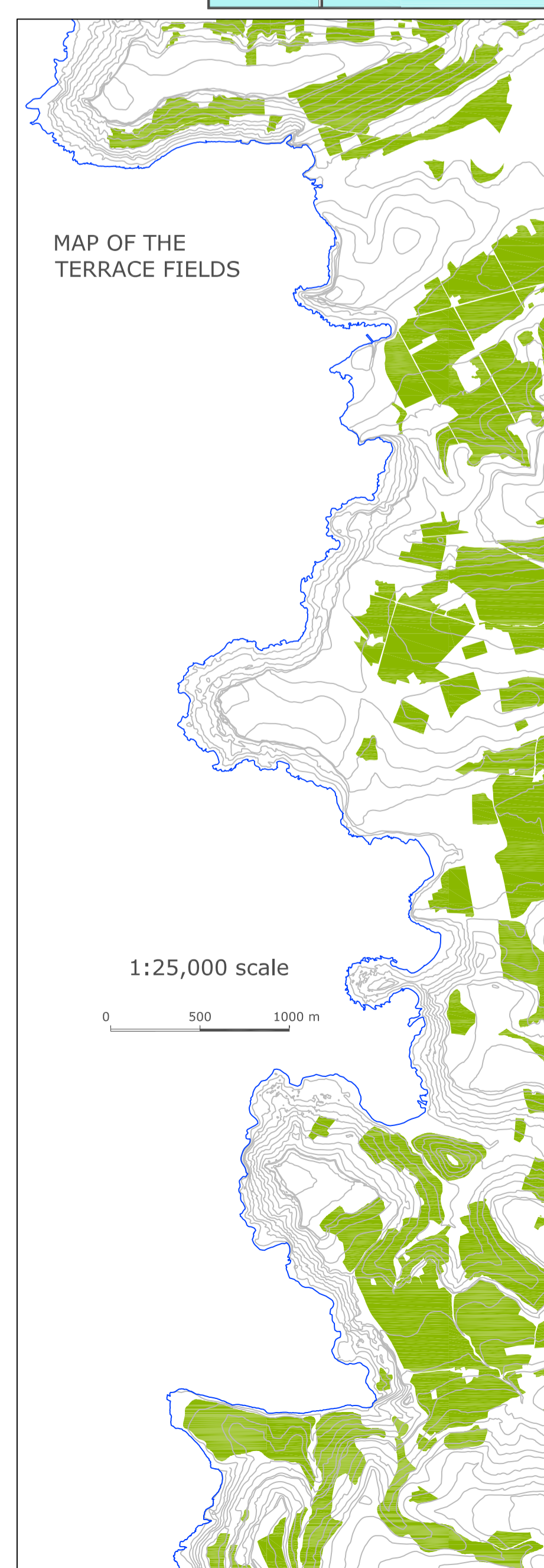
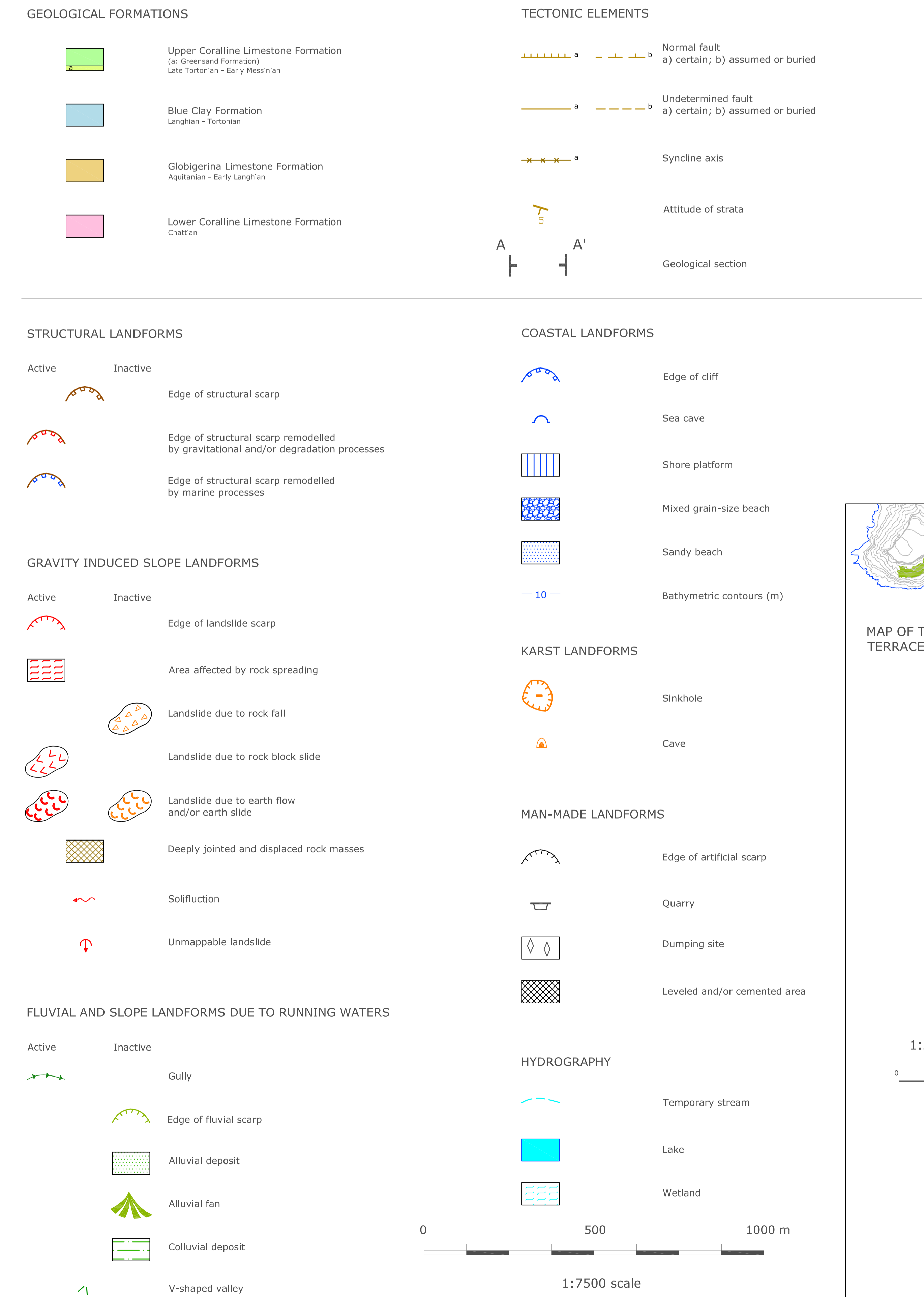


DIGITAL TERRAIN MODEL OF THE STUDY AREA

## STRATIGRAPHIC SEQUENCE



## LEGEND



Geographical Coordinates  
Projection: Transverse Mercator  
Grid Datum: WGS 84  
UTM Zone: 33 S

Topographic data derived from MEPA maps at 1:2500 scale  
Contours interpolated from MEPA maps and shown at 5m vertical intervals  
Bathymetric data derived from the Nautical Chart of Ghawdex (Gozo),  
Kemmunia (Comino) and the Northern part of Malta, scale 1:50,000