



HAL
open science

Global stability of buoyant jets and plumes

R. V K Chakravarthy, Lutz Lesshafft, P. Huerre

► **To cite this version:**

R. V K Chakravarthy, Lutz Lesshafft, P. Huerre. Global stability of buoyant jets and plumes. *Journal of Fluid Mechanics*, Cambridge University Press (CUP), 2018, 835, pp.654-673. 10.1017/jfm.2017.764 . hal-02322490

HAL Id: hal-02322490

<https://hal.archives-ouvertes.fr/hal-02322490>

Submitted on 21 Oct 2019

HAL is a multi-disciplinary open access archive for the deposit and dissemination of scientific research documents, whether they are published or not. The documents may come from teaching and research institutions in France or abroad, or from public or private research centers.

L'archive ouverte pluridisciplinaire **HAL**, est destinée au dépôt et à la diffusion de documents scientifiques de niveau recherche, publiés ou non, émanant des établissements d'enseignement et de recherche français ou étrangers, des laboratoires publics ou privés.

Global stability of buoyant jets and plumes

R. V. K. Chakravarthy, L. Lesshafft and P. Huerre

Laboratoire d'Hydrodynamique, CNRS/École polytechnique, 91128 Palaiseau, France.

(Received xx; revised xx; accepted xx)

The linear global stability of laminar buoyant jets and plumes is investigated under the low Mach number approximation. For Richardson numbers in the range $10^{-4} \leq Ri \leq 10^3$ and density ratios $S = \rho_\infty/\rho_{jet}$ between 1.05 and 7, only axisymmetric perturbations are found to exhibit global instability, consistent with experimental observations in helium jets. By varying the Richardson number over seven decades, the effects of buoyancy on the base flow and on the instability dynamics are characterised, and distinct behaviour is observed in the low- Ri (jet) and in the high- Ri (plume) regimes. A sensitivity analysis indicates that different physical mechanisms are responsible for the global instability dynamics in both regimes. In buoyant jets at low Richardson number, the baroclinic torque enhances the basic shear instability, whereas buoyancy provides the dominant instability mechanism in plumes at high Richardson number. The onset of axisymmetric global instability in both regimes is consistent with the presence of absolute instability. While absolute instability also occurs for helical perturbations, it appears to be too weak or too localised in order to give rise to a global instability.

1. Introduction

Vertical injection of light fluid into a denser ambient creates a flow that either bears the characteristics of a jet, if the injected momentum is dominant over the buoyant forces, or those of a plume, if the momentum that is generated by buoyancy is dominant over the momentum that is imparted at the orifice.

The instability behaviour of jets is known to be strongly affected by density variations, even if buoyancy is not taken into account. Monkewitz & Sohn (1988) found that jets at a jet-to-ambient density ratio below 0.72 in zero gravity display absolute instability, which leads to the self-sustained formation of ring vortices at a well-defined frequency. This phenomenon has been observed experimentally (Sreenivasan *et al.* 1989; Monkewitz *et al.* 1990; Boujemaâ *et al.* 2004; Hallberg & Strykowski 2006) and numerically (Lesshafft *et al.* 2006; Nichols *et al.* 2007). Lesshafft & Huerre (2007) established that the absolute instability arises from non-buoyant baroclinic effects. Mollendorf & Gebhart (1973) included the action of buoyancy in the form of weak forcing terms in a local instability analysis. Recently, Coenen *et al.* (2017) performed a global instability analysis for light jets in the zero Mach number limit, achieving good agreement with the helium jet experiments of Hallberg & Strykowski (2006). A small Richardson number in these experiments characterises buoyant effects as being small, and the global analysis confirms that their impact on the instability behaviour is negligible in this regime.

The instability of plumes, at high Richardson numbers, has received far less attention from a theoretical perspective. Wakitani (1980) and Riley & Tveitereid (1984) investigated the local instability characteristics, both temporal and spatial, of self-similar plumes within the limits of the Boussinesq approximation. Under the same assumption, Chakravarthy *et al.* (2015) considered the convective/absolute nature of local instability in plumes, both in the self-similar regime far removed from the buoyancy

source, and in the near-source region for one particular configuration. It was established that helical perturbations of azimuthal wavenumber $m = 1$ undergo a transition to absolute instability, due to a saddle point in the dispersion relation that is conditioned on the presence of buoyancy. However, the associated growth rates seem to be small, and their relevance for global and non-Boussinesq dynamics remains to be proven. The axisymmetric mode was found to be at most convectively unstable.

The instability of internal plumes in a confined domain appears to be a separate subject. In direct numerical simulations performed in the Boussinesq limit, Lopez & Marques (2013) document a sequence of global state bifurcations in such closed flows, occurring at successive critical Rayleigh numbers. A linear global instability analysis of the same configuration (Lesshafft 2015) suggests that at least the first of these bifurcations arises due to pressure feedback between the top and bottom solid walls.

Numerous experiments have been performed on plumes with large density differences, where the Boussinesq approximation is not justified. Subbarao & Cantwell (1992) conducted helium-air experiments, and they reported periodic axisymmetric puffing at Reynolds and Richardson numbers, Re and Ri , above critical values. Similar observations were made by Cetegen & Kasper (1996) for a larger range of Ri . A power law was obtained in the latter study that relates the puffing Strouhal number to Re and Ri . These experimental findings were corroborated by numerical simulations (Jiang & Luo 2000; Satti & Agrawal 2006) and in additional recent experiments by Bharadwaj & Das (2017). Through systematic variation of the gravity parameter, Satti & Agrawal (2006) demonstrated that the onset of self-sustained oscillations in their setting is contingent on the presence of gravity. The large majority of experiments and simulations suggest a dominant role of axisymmetric instability structures, contrary to the conclusions drawn from local instability analysis of self-similar Boussinesq plumes by Chakravarthy *et al.* (2015).

The present investigation addresses the linear instability of buoyant jets and plumes in a global and non-Boussinesq framework. The low Mach number approximation of McMurtry *et al.* (1986) is used in a form where density variations arise from heating of a single-species fluid. This formulation allows to examine the stability of buoyant jets and plumes on a continuous scale provided by the Richardson number, while the density ratio as an independent parameter characterises the departure from the Boussinesq condition. Special attention will be given to the physical origin of flow instability, by means of sensitivity analysis.

A similar approach has been pursued by Bharadwaj & Das (2017) in their analysis of helium plumes. That study demonstrated close agreement between the occurrence of self-excited puffing in experiments and the onset of global linear instability. Furthermore, the linear analysis was shown to accurately predict the puffing frequency, even far from the instability threshold.

The paper is organised in the following manner. Section 2 introduces the governing equations and the numerical procedures employed for the computation of base flows and their instability characteristics in global and local frameworks. Global instability results are presented in §3, followed by a discussion of the relevant physical mechanisms in §4. The global results are complemented by a local absolute/convective analysis in §5, which provides a link with the study by Chakravarthy *et al.* (2015) of local instability in Boussinesq settings. Conclusions are offered in §6.

2. Problem formulation

2.1. Governing equations

A calorically perfect fluid is injected into an unstratified quiescent ambient of the same fluid at lower temperature, from a circular orifice in an adiabatic wall. In order to model a flow with strong density variations but negligible compressibility, a low-Mach-number approximation of the compressible Navier–Stokes equation is used. This approximation, which retains all effects of variable density in the convective terms, but discards the compressible dependency of density on pressure, was introduced by McMurtry *et al.* (1986) for a study of non-buoyant jets in the limit of zero Mach number. It was then extended to include a buoyancy term by Nichols *et al.* (2007) and Chandler (2010), and their formulation is used in the present investigation. The dimensional governing equations in this approximation are given by

$$\frac{\partial \tilde{\rho}}{\partial t} + \operatorname{div}(\tilde{\rho} \tilde{\mathbf{u}}) = 0, \quad (2.1a)$$

$$\tilde{\rho} \frac{D \tilde{\mathbf{u}}}{Dt} = -\operatorname{grad} \tilde{p} + \mu \left[\Delta \tilde{\mathbf{u}} + \frac{1}{3} \operatorname{grad}(\operatorname{div} \tilde{\mathbf{u}}) \right] + g(\tilde{\rho}_\infty - \tilde{\rho}) \mathbf{e}_z, \quad (2.1b)$$

$$\tilde{\rho} C_p \frac{D \tilde{T}}{Dt} = \alpha \Delta \tilde{T}, \quad (2.1c)$$

$$\tilde{\rho} \mathcal{R} \tilde{T} = p_0, \quad (2.1d)$$

where $\tilde{\rho}$, $\tilde{\mathbf{u}}$, \tilde{p} , \tilde{T} denote the dimensional density, velocity, pressure and temperature, $\tilde{\rho}_\infty$ is the ambient density, g is the acceleration due to gravity, α is the thermal conductivity, C_p is the specific heat, μ is the dynamic viscosity, and \mathcal{R} is the specific gas constant. Note that the pressure in this formulation is split into a thermodynamic component p_0 , which is constant throughout the flow, and a fluctuating hydrodynamic component \tilde{p} . While the continuity and momentum equations (2.1a,b) are of the same form as in the fully compressible case, the energy equation (2.1c) simplifies to a simple advection-diffusion equation for temperature.

In dimensionless form, scaled with the nozzle radius R , the inlet centreline velocity \tilde{u}_j , the temperature difference $\tilde{T}_j - \tilde{T}_\infty$ between inflowing and ambient fluid, and the ambient density $\tilde{\rho}_\infty$, equations (2.1) become

$$\frac{\partial \rho}{\partial t} + \operatorname{div}(\rho \mathbf{u}) = 0, \quad (2.2a)$$

$$\rho \frac{D \mathbf{u}}{Dt} = -\operatorname{grad} p + \frac{1}{ReS} \left[\Delta \mathbf{u} + \frac{1}{3} \operatorname{grad}(\operatorname{div} \mathbf{u}) \right] + \frac{Ri}{S-1} (1 - \rho) \mathbf{e}_z, \quad (2.2b)$$

$$\rho \frac{DT}{Dt} = \frac{1}{PrReS} \Delta T. \quad (2.2c)$$

$$\rho(1 + T(S - 1)) = 1. \quad (2.2d)$$

A reduced temperature $T = (\tilde{T} - \tilde{T}_\infty)/(\tilde{T}_j - \tilde{T}_\infty)$ is used, and in all further calculations, this variable is expressed in terms of ρ by use of (2.2d). The flow is characterised by the

following parameters:

$$\text{Prandtl number} \quad Pr = \frac{\mu C_P}{\alpha}, \quad (2.3)$$

$$\text{density ratio} \quad S = \frac{\tilde{\rho}_\infty}{\tilde{\rho}_j}, \quad (2.4)$$

$$\text{Reynolds number} \quad Re = \frac{\tilde{\rho}_j \tilde{u}_j R}{\mu} \quad \text{and} \quad (2.5)$$

$$\text{Richardson number} \quad Ri = gR \frac{(\tilde{\rho}_\infty - \tilde{\rho}_j)}{\tilde{\rho}_j \tilde{u}_j^2}. \quad (2.6)$$

In the homogeneous limit $S \rightarrow 1$, the state equation (2.2d) prescribes $\rho \rightarrow 1$, and the system (2.2) is then identical to the Boussinesq equations used in Chakravarthy *et al.* (2015), provided $\rho - 1$ is taken to be of order $S - 1$; the present formulation is therefore consistent with our earlier study. A rigorous derivation of the Boussinesq equations and a discussion on the underlying assumptions may be found in Tritton (2012).

2.2. Base flow

In a cylindrical coordinate system (r, θ, z) , the flow variables $q = (\rho, \mathbf{u}, p, T)^T$ are split into steady and unsteady components as

$$\mathbf{q}(r, \theta, z, t) = \bar{\mathbf{q}}(r, \theta, z) + \mathbf{q}'(r, \theta, z, t). \quad (2.7)$$

The numerical tools used for the construction of the base flow, as well as for the linear perturbation analysis described in §2.3, are very similar to those employed by Coenen *et al.* (2017), except that density variations are modelled as an effect of heating, rather than species mixing. Equations (2.2) are discretised with finite elements in FreeFEM++, and a steady axisymmetric solution $\bar{\mathbf{q}}$ is obtained from Newton–Raphson iterations (Garnaud *et al.* 2013). The numerical domain is 80 radii long in the streamwise direction and 30 radii in the transverse direction. Iterations are performed until all flow quantities are converged to within 10^{-9} times their maximum values. At the inlet, $z = 0$, boundary conditions

$$\bar{u}_z = \frac{1}{2} + \frac{1}{2} \tanh \left[\frac{5}{2} \left(\frac{1}{r} - r \right) \right], \quad \bar{u}_r = 0 \quad \text{and} \quad \bar{\rho} = 1 - \left(1 - \frac{1}{S} \right) \bar{u}_z \quad (2.8)$$

are prescribed for the axial velocity \bar{u}_z , the radial velocity \bar{u}_r and the density $\bar{\rho}$. The initial shear layer momentum thickness is 10% of the nozzle radius. All other boundary conditions are specified as

$$\frac{1}{Re} \frac{\partial \bar{\mathbf{u}}}{\partial r} - \bar{p} \mathbf{e}_r = 0, \quad \bar{\rho} = 1 \quad \text{at } r = r_{max}, \quad (2.9a)$$

$$\frac{1}{Re} \frac{\partial \bar{\mathbf{u}}}{\partial z} - \bar{p} \mathbf{e}_z = 0, \quad \frac{\partial \bar{\rho}}{\partial z} = 0 \quad \text{at } z = z_{max}, \quad (2.9b)$$

$$\frac{\partial \bar{u}_z}{\partial r} = \bar{u}_r = \frac{\partial \bar{\rho}}{\partial r} = \frac{\partial \bar{p}}{\partial r} = 0 \quad \text{at } r = 0. \quad (2.9c)$$

These boundary conditions are obtained from the kinematic constraints on the axis (Khorrami *et al.* 1989), and by imposing zero normal stresses at r_{max} and z_{max} , together with Dirichlet and Neumann conditions for the density.

As the objective is to characterise the role of buoyancy in the instability dynamics, the main parameters to be varied are the Richardson number and the density ratio. The ranges of parameters $10^{-4} \leq Ri \leq 10^3$ and $1.05 \leq S \leq 7$ will be investigated. The

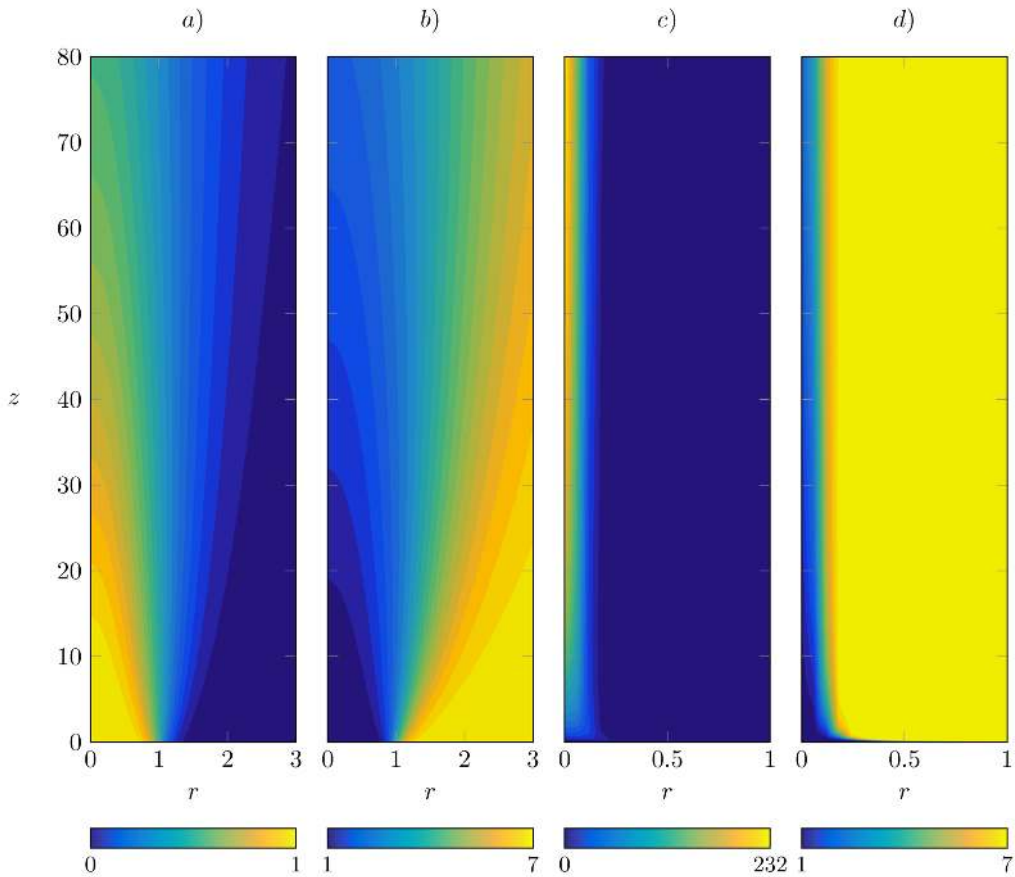


Figure 1: Axisymmetric steady base flows obtained for $Ri = 10^{-4}$ (*a,b*) and for $Ri = 10^3$ (*c,d*). Axial velocity (*a,c*) and density (*b,d*) are shown in the (r, z) plane.

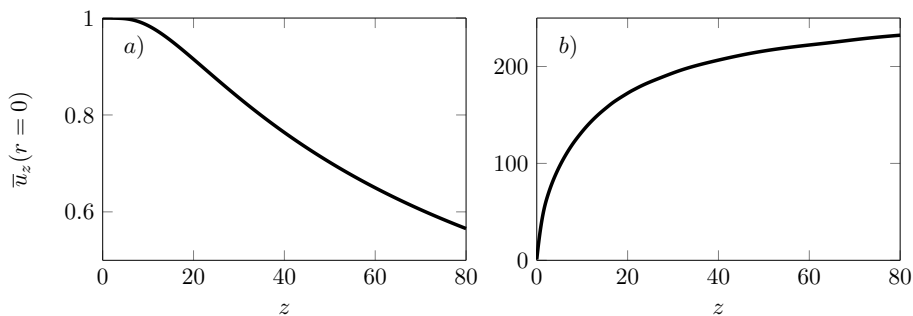


Figure 2: Variations of the centreline velocity along z . (*a*) $Ri = 10^{-4}$; (*b*) $Ri = 10^3$.

effect of the Reynolds number above a value of 100 is found to be weak, and a standard value of $Re = 200$ (in some cases $Re = 500$) will be used, while $Pr = 0.7$ is maintained throughout.

For a strong density ratio $S = 7$, and the two extreme values $Ri = 10^{-4}$ and $Ri = 10^3$, steady base flow profiles of axial velocity and density are shown in figure 1. The flow at low

Ri is dominated by the momentum of the injected fluid, which diffuses radially with axial distance under the effect of viscosity. This is clearly the case of a *jet*, in a configuration where buoyancy has no noticeable impact on the base flow dynamics, despite the strong density variations. The flow at high Ri , on the contrary, is principally driven by the buoyancy force, as the injected momentum is negligibly weak in comparison. The fluid in this case is not pushed out of the orifice, but rather pulled out by buoyancy, forming a slender rising column around the axis (note the different radial scales in figure 1). This flow is characteristic of a *plume*, and it is often called a ‘lazy’ plume, as the momentum at its base is much lower than that of a self-similar profile, where momentum and buoyancy are in balance.

Between the two extremes shown in figure 1, the aspect of the base flow at different Richardson numbers changes gradually. Cases with $Ri < 1$ will be denoted ‘buoyant jets’ in the following, as opposed to ‘plumes’ with $Ri > 1$. Vertical variations of the centreline velocity are shown in figure 2 for the same two configurations as in figure 1. The jet, at $Ri = 10^{-4}$, exhibits a short potential core region, where the centreline velocity is constant, followed by hyperbolic decay. The plume flow, at $Ri = 10^3$, accelerates progressively with vertical distance from the inlet, and the centreline velocity approaches asymptotically a limit value in the self-similar regime (Yih 1988). Buoyant jets at low but finite Richardson number behave as plumes at large distances from the nozzle, when their excess momentum is sufficiently diffused. While a jet entrains ambient fluid only through momentum diffusion, entrainment into a plume tends to be much stronger due to its continuous production of axial momentum. The plume base flow presented in figures 1(c,d) is particularly marked by radial entrainment close to $z = 0$.

2.3. Linear stability problem

Infinitesimal perturbations of a steady base flow are sought with a global ansatz

$$[\rho', \mathbf{u}', p', T']^T = \left[\hat{\rho}(r, z), \hat{\mathbf{u}}(r, z), \hat{p}(r, z), \hat{T}(r, z) \right]^T e^{i(m\theta - \omega t)} + c.c. \quad (2.10)$$

The integer m denotes the azimuthal wavenumber and $\omega = \omega_r + i\omega_i$ is a complex frequency. Upon linearising the governing equations (2.2), and substitution of (2.10), the linear perturbation equations are found as

$$-i\omega\hat{\rho} + \text{div}_m(\hat{\rho}\bar{\mathbf{u}} + \bar{p}\hat{\mathbf{u}}) = 0, \quad (2.11a)$$

$$-i\omega\bar{\rho}\hat{\mathbf{u}} + \bar{\rho}[(\text{grad}_m\bar{\mathbf{u}}) \cdot \hat{\mathbf{u}} + (\text{grad}_m\hat{\mathbf{u}}) \cdot \bar{\mathbf{u}}] + \hat{\rho}(\text{grad}_m\bar{\mathbf{u}}) \cdot \bar{\mathbf{u}} = \quad (2.11b)$$

$$-\text{grad}_m\hat{p} - \frac{Ri}{S-1}\hat{\rho}\mathbf{e}_z + \frac{1}{ReS}[\Delta_m\hat{\mathbf{u}} + \frac{1}{3}\text{grad}_m(\text{div}_m\hat{\mathbf{u}})],$$

$$-i\omega\bar{\rho}\hat{T} + \bar{\rho}[(\text{grad}_m\bar{T}) \cdot \hat{\mathbf{u}} + (\text{grad}_m\hat{T}) \cdot \bar{\mathbf{u}}] + \hat{\rho}(\text{grad}_m\bar{T}) \cdot \bar{\mathbf{u}} = \frac{1}{PrReS}\Delta_m\hat{T}, \quad (2.11c)$$

$$\hat{\rho} + \bar{\rho}^2\hat{T}(S-1) = 0. \quad (2.11d)$$

Differential operators in the above equations are written with a subscript m in order to indicate that azimuthal derivatives are replaced with a factor im ; these operators are documented in the appendix. While the base flow is taken to be swirl free, $\bar{u}_\theta = 0$, the azimuthal perturbation velocity u'_θ may in general be non-zero. Homogeneous Dirichlet conditions are imposed on $\hat{\mathbf{u}}$ and $\hat{\rho}$ at the inlet, $z = 0$, and a homogeneous Neumann condition is prescribed for \hat{p} . On the axis, depending on the azimuthal mode considered, appropriate boundary conditions as detailed in Khorrami *et al.* (1989) and Chakravarthy *et al.* (2015) are enforced. On the outer boundaries at r_{max} and z_{max} , no-stress conditions consistent with (2.9) are used.

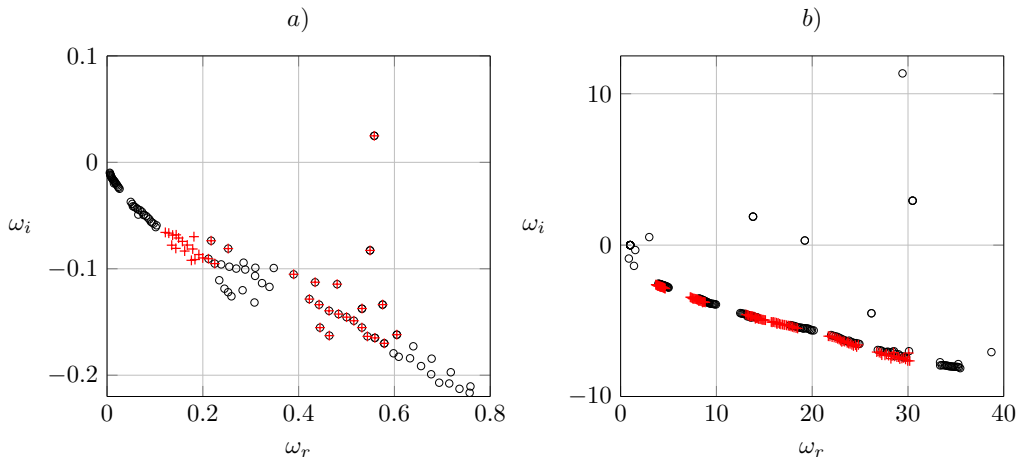


Figure 3: Global spectra of axisymmetric perturbations ($m = 0$), for the two configurations shown in figure 1. a) $Ri = 10^{-4}$, jet case; b) $Ri = 10^3$, plume case. $Re = 200$ and $S = 7$ are set identically for both cases. True eigenvalues (\circ) are compared to their counterparts ($+$) that are obtained when the buoyancy term in (2.11b) is removed.

The system (2.11) is cast into the form of an eigenvalue problem

$$\omega B \hat{q} = L \hat{q}. \quad (2.12)$$

According to the ansatz (2.10), the real part of the eigenvalue, ω_r , represents the oscillation frequency while the imaginary part, ω_i , is the growth rate of the perturbation. As before, the variable \hat{T} is eliminated through the equation of state (2.11d). So-called *global* eigenmodes are computed by resolving $\hat{\rho}$, $\hat{\mathbf{u}}$ and \hat{p} in both r and z , such that spatial variations of the base flow and the perturbation quantities are accounted for without further limiting assumptions (Theofilis 2003). The eigenvalue problem (2.12) is then solved with an iterative shift-invert IRAM algorithm, in the same way as in Garnaud *et al.* (2013), with an accuracy close to machine precision.

In addition, a *local* analysis is performed in §5, in order to identify the absolute mode in a parallel base flow (Huerre & Monkewitz 1990). Perturbations (2.10) are then Fourier-transformed in z , leading to the standard ansatz

$$[\hat{\rho}(r, z), \hat{\mathbf{u}}(r, z), \hat{p}(r, z), \hat{T}(r, z)]^T = [\check{\rho}(r), \check{\mathbf{u}}(r), \check{p}(r), \check{T}(r)]^T e^{ikz}. \quad (2.13)$$

3. Global spectra and eigenfunctions

Instability results obtained from the global formulation (2.10) are presented first for axisymmetric modes, $m = 0$, since experimental and numerical evidence suggests their leading role in the self-sustained dynamics of plumes, as discussed in §1. A brief discussion of helical perturbations, $m = 1$, follows in §3.2.

3.1. Axisymmetric perturbations

Eigenvalues ω obtained for two configurations, $Ri = 10^{-4}$ and 10^3 , with otherwise identical parameters $S = 7$ and $Re = 200$, are presented in figure 3 as black symbols. These are the two extreme jet and plume cases discussed in §2.2.

The jet, at $Ri = 10^{-4}$ (figure 3a), exhibits one unstable mode with $\omega = 0.558 +$

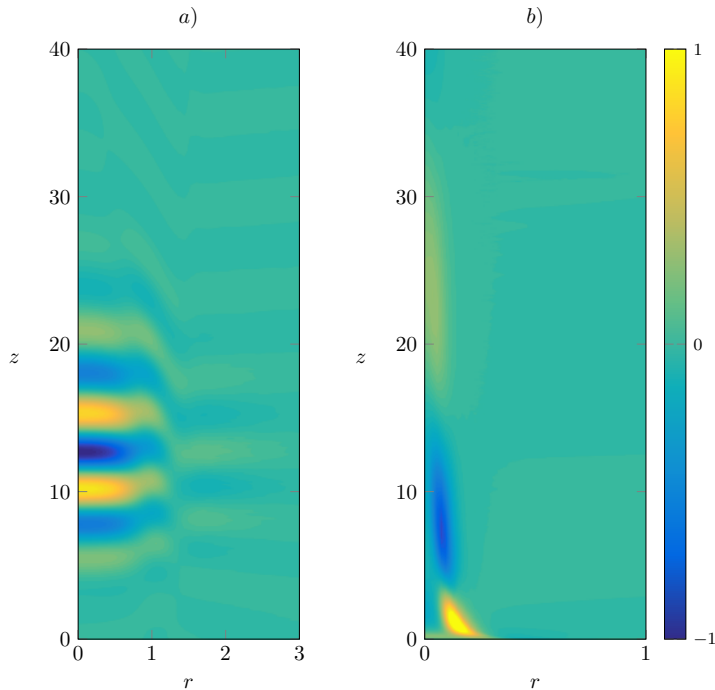


Figure 4: Spatial distributions of axial velocity eigenfunctions \hat{u}_z , corresponding to the most unstable modes of the two respective cases shown in figure 3. *a)* Jet at $Ri = 0.0001$, $S = 7$ and $Re = 200$; *b)* plume at $Ri = 1000$, $S = 7$ and $Re = 200$.

0.025i. When buoyancy effects are eliminated, by setting $Ri = 0$ in the perturbation equations but still using the same base flow, eigenvalues shown as red crosses are obtained; visibly, the buoyancy term in the perturbation equations has no significant impact on the instability dynamics. This observation, as well as the overall appearance of the spectrum, is fully consistent with the non-buoyant and slightly buoyant results of Coenen *et al.* (2017), and many more details on the unstable eigenmode of pure jets are provided in their study.

The plume, at $Ri = 10^3$ (figure 3*b*), possesses five unstable modes, one being strongly dominant with $\omega = 29.4 + 11.3i$. When the perturbation Richardson number is set to zero in this configuration, *all* unstable modes vanish from the spectrum. It can be concluded that buoyancy plays a determining role for the instability of this plume, not only by setting up the base flow, but also by the coupling of density and velocity perturbations. It is also noted that the high- Ri plume base flow is not subject to the non-buoyant instability that affects the low- Ri jet.

Unstable eigenvalues of the plume take on significantly higher values, both in their real and in their imaginary parts, than those of the jet. This is clearly a result of the scaling with the inflow centreline velocity, which appropriately characterises a jet, but is less pertinent for ‘lazy’ plumes. A common scaling is employed here for the sake of consistency across the full range of Richardson number values; if only high- Ri plumes were considered, a buoyancy-based velocity scaling would be more suitable.

The distinct nature of the instability modes of the jet and the plume flows is also apparent in the shape of their eigenfunctions. Figure 4 shows the spatial distribution of the axial velocity amplitude in the dominant modes for the two respective cases. At low

Richardson number, the maximum perturbation amplitude is found on the centreline, 12 radii downstream of the nozzle. Perturbations are confined inside the jet column, as documented in more detail by Coenen *et al.* (2017). In the high- Ri plume, the spatial eigenmode structure is very different: the maximum amplitude is located inside the mixing layer very close to the inflow, in the region where the density gradient in the base flow is maximal.

In the reference experiments by Cetegen & Kasper (1996) and Bharadwaj & Das (2017), a slightly different definition is chosen for the Richardson number, which corresponds to $2Ri/S$ in our nomenclature. Variations of the dominant eigenvalue in the present analysis are therefore presented as functions of Ri/S in figure 5 in order to facilitate a comparison. The baseline case, with $Re = 200$, $S = 7$ and inflow conditions (2.8), is represented by solid circles. Eigenvalues of this configuration display continuous variations both in the Strouhal number $St = \omega_r/(2\pi)$ and in the growth rate ω_i . Strouhal number values are asymptotically constant in the low- Ri/S regime, whereas they follow a power law at values $Ri/S > 0.1$. A regression fit yields the dependence $St = 0.55(Ri/S)^{0.43}$, which is in good agreement with experimental results in the range $1 \leq Ri/S \leq 250$: after conversion to the present definition of the Richardson number, the power law determined by Cetegen & Kasper (1996) in this regime is given by $St = 0.52(Ri/S)^{0.38}$ (shown as a line in figure 5a), and the corresponding measurements of Bharadwaj & Das (2017) for plumes from an orifice convert to $St = 0.51(Ri/S)^{0.39}$. A different scaling, measured as $St \propto (Ri/S)^{0.28}$ for $Ri/S > 250$ by Cetegen & Kasper (1996), is outside the parameter range considered here. The growth rate in the baseline configuration, shown in figure 5b, increases monotonically with Ri/S , and it is positive throughout.

Eigenvalues from three other flow configurations are included in figure 5 in order to assess the sensitivity of the instability with respect to the Reynolds number, to the density ratio and to the inlet velocity profile. With the standard profile (2.8), parameter combinations $Re = 500$, $S = 7$ (white circles) and $Re = 200$, $S = 4.5$ (triangles) are chosen. The Strouhal number values in subfigure *a* are barely affected by these changes, and the growth rates in subfigure *b* follow a similar trend as in the baseline case. The less heated configuration (triangles) is stable at $Ri < 0.1$, consistent with the analysis by Coenen *et al.* (2017).

Square symbols indicate results for a special case where $Re = 200$ and $S = 7$ are maintained, but the velocity inlet profile is changed to a parabolic pipe flow, while the density profile is still given by (2.8). This flow case is introduced in order to better approach the experimental conditions of Subbarao & Cantwell (1992) and Cetegen & Kasper (1996), where the fluid exits from a nozzle as a developed laminar pipe flow. This change in the velocity profile barely has any effect on the Strouhal number across all Ri/S values, but it does inhibit the global instability in the low- Ri/S regime. The latter is consistent with the absence of self-excited behaviour at low Ri in the experiments of Subbarao & Cantwell (1992) and Cetegen & Kasper (1996), and in the simulations of Satti & Agrawal (2006).

As the effect of heating enters the problem both through the density ratio S and through the Richardson number Ri , the onset of instability is examined for independent variations of these two parameters. The main results of the local (see §5) and global instability analyses are summarized in the state diagram in the (Ri, S) plane shown in figure 6. The thin line delineates the neutral boundary separating locally convectively unstable inlet base flows (in white below the curve) from locally absolutely unstable ones (in blue and red above the curve). The thick neutral line separates the globally stable states (in white and blue below the curve) from the globally unstable states (in red above the curve). In the white area, convective instability prevails and in the blue and

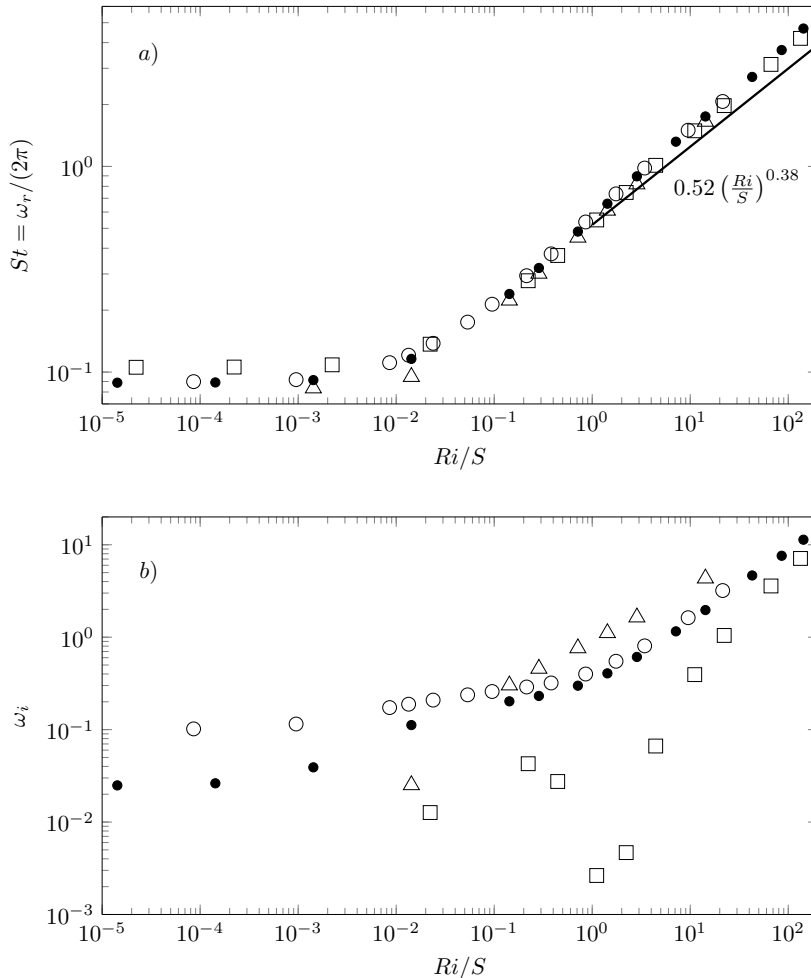


Figure 5: *a*) Strouhal number and *b*) growth rate of the global eigenvalue ω , as a function of Ri/S . Legend: (\bullet) $Re = 200$, $S = 7$; (\circ) $Re = 500$, $S = 7$; (\square) $S = 4.5$, $Re = 200$; (\triangle) $Re = 200$, $S = 7$, with parabolic inlet velocity profile. All other configurations take the inlet velocity profile (2.8). (—) Power law from the Cetegen & Kasper (1996) experiments, rescaled to match the present definition of Ri .

red areas, absolute instability prevails. Along a diagonal line in the state diagram, the flow changes from convectively unstable to absolutely unstable to globally unstable, once the absolutely unstable region is large enough. For buoyant jets (low Ri) and plumes (large Ri) the same sequence takes place as S increases at a given Ri . Note that the globally unstable domain is reached much ‘sooner’ for plumes than for buoyant jets. The dip in the global stability neutral curve for Ri of order unity signals a gradual shift from a shear dominated instability to a buoyancy dominated instability, as further discussed in §4.

3.2. Helical perturbations

The local analysis of plumes in the Boussinesq limit $S \rightarrow 1$ by Chakravarthy *et al.* (2015) concluded that absolute instability only occurs for helical perturbations, $m = 1$,

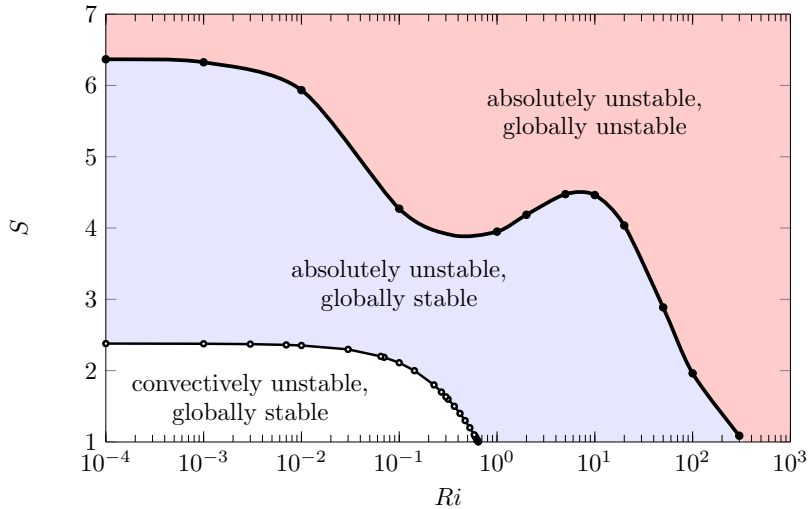


Figure 6: Instability regimes in the S - Ri plane for the axisymmetric mode at $Re = 200$. The thick line denotes the global stability boundary, and the thin line denotes the boundary between local convective and absolute instability of the inlet profile.

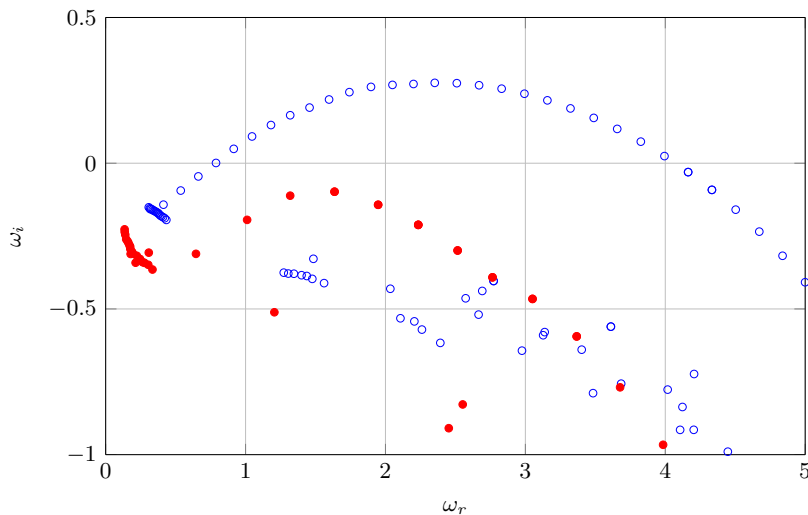


Figure 7: Global spectrum of helical perturbations ($m = 1$), for the configuration $S = 7$, $Ri = 1$ and $Re = 200$. Results from two calculations are shown: (\circ) without absorbing layer; (\bullet) with absorbing layer at $z > 30$.

whereas axisymmetric perturbations in that setting were found to be only convectively unstable. Although the global instability of axisymmetric eigenmodes in non-Boussinesq situations, as documented above, appears to be fully consistent with experimental and numerical observations of self-excited behaviour, the possibility of helical global instabilities remains to be explored.

Eigenvalues pertaining to helical instability modes are displayed in figure 7 for two different calculations, both for the same physical parameter setting $S = 7$, $Ri = 1$ and

$Re = 200$. One case, represented by blue unfilled circles, was computed with the same boundary conditions as all previous results. A branch of regularly spaced modes is seen to be unstable over the interval $0.8 \leq \omega_r \leq 4$. The features of this branch are very similar to several jet cases discussed by Coenen *et al.* (2017), as well as observations made in many different flow cases, especially in the boundary layer calculations by Åkervik *et al.* (2008). In a recent study (Lesshafft 2017), the occurrence of such ‘arc branches’ is ascribed to the presence of spurious pressure feedback from the downstream end of a truncated flow domain, and it is predicted that artificial damping near the outflow should be effective in reducing the growth rate of such unphysical modes.

Indeed, if artificial damping is applied in an ‘absorbing layer’ (Colonus 2004) at $z > 30$, the growth rates of the arc branch modes decrease, and all modes recede to the stable half plane if the damping is sufficiently strong. Such a case is represented by red filled circles in figure 7, where a damping term $-\lambda(z)\hat{q}$ has been added to the right-hand side of equation (2.12). The damping coefficient $\lambda(z)$ ramps up from zero to 16, over the interval $30 < z < 50$, according to equation (2.4) of Chomaz (2003). No unstable helical modes are found with this boundary treatment. In contrast, the same artificial damping has no discernible effect on the unstable eigenvalues for axisymmetric perturbations shown in figure 3. This behaviour is in full agreement with the arguments of Lesshafft (2017), as $m = 0$ perturbations are locally stable in the downstream flow region, whereas $m = 1$ perturbations remain convectively unstable, as will be shown in §5.

4. Influence of buoyant, baroclinic and shear-related mechanisms

The results discussed in §3.1 suggest that different mechanisms drive the global instability dynamics in the low- and the high- Ri regimes. These mechanisms are investigated in the present section, on the basis of the formalism proposed by Marquet & Lesshafft (2015). This formalism is introduced here in a slightly different and weaker manner, which is sufficient for the present purpose.

A sensitivity analysis is to be performed, in order to quantify the influence of the various forces in the momentum equation onto the unstable growth of velocity perturbations. The latter are governed by the equation

$$-i\omega\hat{\mathbf{u}} = \mathcal{C} + \mathcal{S} + \mathcal{P} + \mathcal{B} + \mathcal{V}, \quad (4.1)$$

with the right-hand side terms

$$\mathcal{C} = -(\text{grad } \hat{\mathbf{u}}) \cdot \bar{\mathbf{u}}, \quad (4.2a)$$

$$\mathcal{S} = -(\text{grad } \bar{\mathbf{u}}) \cdot \hat{\mathbf{u}}, \quad (4.2b)$$

$$\mathcal{P} = -\frac{\text{grad } \hat{p}}{\bar{\rho}} + \frac{\hat{\rho} \text{grad } \bar{p}}{\bar{\rho}^2}, \quad (4.2c)$$

$$\mathcal{B} = -\frac{Ri}{S-1} \frac{\hat{\rho}}{\bar{\rho}^2} \mathbf{e}_z, \quad (4.2d)$$

$$\mathcal{V} = \frac{1}{ReS} \left[\frac{1}{\bar{\rho}} \left(\Delta \hat{\mathbf{u}} + \frac{\text{grad}(\text{div } \hat{\mathbf{u}})}{3} \right) - \frac{\hat{\rho}}{\bar{\rho}^2} \left(\Delta \bar{\mathbf{u}} + \frac{\text{grad}(\text{div } \bar{\mathbf{u}})}{3} \right) \right]. \quad (4.2e)$$

These individual terms represent the mechanisms of base flow convection \mathcal{C} , base flow shear \mathcal{S} , pressure force \mathcal{P} , buoyancy \mathcal{B} , and viscous diffusion \mathcal{V} . As only axisymmetric $m = 0$ perturbations are considered in this chapter, it is not necessary to append a subscript m to the differential operators.

For a better physical discussion, the pressure force can be split into a divergence-free (baroclinic) and a curl-free (barotropic) component; the former is linked to the baroclinic

torque in the vorticity equation, after application of the curl operator to (4.1), whereas the latter does not affect the evolution of perturbation vorticity.

A Helmholtz decomposition is performed on the pressure force \mathcal{P} , such that

$$\mathcal{P} = \text{curl } \mathcal{A} - \text{grad } \phi, \quad (4.3)$$

where \mathcal{A} and ϕ are found from

$$\mathcal{A} = \frac{1}{4\pi} (\text{curl } \mathcal{P}) \otimes (1/\mathbf{r}), \quad (4.4a)$$

$$\phi = \frac{1}{4\pi} (\text{div } \mathcal{P}) \otimes (1/\mathbf{r}). \quad (4.4b)$$

The operator \otimes denotes a convolution over the entire volume V of the numerical domain, and \mathbf{r} represents any position in V . This decomposition is performed numerically, such that $\mathcal{P} = \mathcal{P}_1 + \mathcal{P}_2$ is explicitly obtained, with a baroclinic component \mathcal{P}_1 and a barotropic component \mathcal{P}_2 .

Further analysis is restricted to the action of shear, baroclinic and buoyant forces, because all other contributions are found to be strictly stabilising at all Richardson numbers. The dependence of an eigenvalue ω on these three components is obtained by introducing small variations into (4.1),

$$-i\omega \hat{\mathbf{u}} = \mathcal{C} + (1 + \varepsilon_S)\mathcal{S} + (1 + \varepsilon_P)\mathcal{P}_1 + \mathcal{P}_2 + (1 + \varepsilon_B)\mathcal{B} + \mathcal{V}, \quad (4.5)$$

from where sensitivities can be defined as

$$\partial_{S\omega} = \frac{\partial\omega}{\partial\varepsilon_S} = \frac{\langle \hat{q}^\dagger, \mathcal{S} \rangle}{\langle \hat{q}^\dagger, B\hat{q} \rangle}, \quad \partial_{P\omega} = \frac{\partial\omega}{\partial\varepsilon_P} = \frac{\langle \hat{q}^\dagger, \mathcal{P}_1 \rangle}{\langle \hat{q}^\dagger, B\hat{q} \rangle}, \quad \partial_{B\omega} = \frac{\partial\omega}{\partial\varepsilon_B} = \frac{\langle \hat{q}^\dagger, \mathcal{B} \rangle}{\langle \hat{q}^\dagger, B\hat{q} \rangle}. \quad (4.6)$$

Note that the terms \mathcal{S} , \mathcal{P}_1 and \mathcal{B} contain components of the eigenvector \hat{q} , and that \hat{q}^\dagger is the associated adjoint eigenvector, defined with respect to the scalar product $\langle \cdot, \cdot \rangle$. A standard non-weighted discrete scalar product has been chosen in the present calculations, but the scalar quantities $\partial\omega$ in (4.6) are independent of this choice, as demonstrated by Marquet & Lesshafft (2015).

The sensitivities (4.6) are interpreted in the following way. An infinitesimally small positive value ε_S proportionally increases the strength of the shear-related force term, resulting in an eigenvalue variation $\delta\omega = \varepsilon_S \partial_{S\omega}$. If the imaginary part of $\partial_{S\omega}$ is positive, then \mathcal{S} has a destabilising effect; if it is negative, then \mathcal{S} acts in a stabilising way. The same reasoning applies to $\partial_{P\omega}$ and $\partial_{B\omega}$. The three sensitivities are commensurate, so that a larger absolute value of one compared to another indicates a stronger stabilising or destabilising effect.

Results from this analysis are presented in figure 8 over the full range of Ri values, for the standard setting $S = 7$ and $Re = 200$. Imaginary values of $\partial_{S\omega}$, $\partial_{P\omega}$ and $\partial_{B\omega}$ are shown in two separate diagrams for low and high Richardson numbers, for better readability. In the jet regime $Ri < 1$, the strongest destabilising force is due to the base flow shear. At very low Ri , the effect of buoyancy vanishes, while the baroclinic force provides a small additional destabilisation. The local analysis of Lesshafft & Huerre (2007) demonstrated that the baroclinic torque is the determining ingredient that renders a non-buoyant heated jet absolutely unstable, through co-operation with the basic shear instability. The present global results are consistent with that conclusion. In the plume regime $Ri > 1$, the buoyancy force becomes strongly destabilising, dominating all other contributions for $Ri > 5$. Shear and baroclinic effects are negligible in comparison at very high Ri , the baroclinic force even becomes stabilising above $Ri = 100$.

It is concluded that the observed global instability in the jet and plume regimes indeed

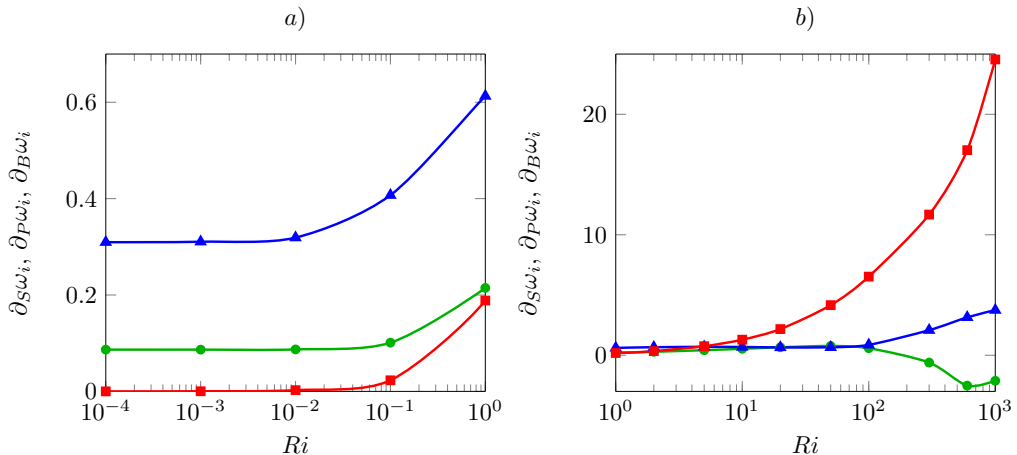


Figure 8: Sensitivity of the growth rate with respect to (\blacktriangle) shear, (\bullet) baroclinic and (\blacksquare) buoyancy terms, as functions of the Richardson number, with parameters $S = 7$ and $Re = 200$.

involve distinct physical mechanisms. In buoyant jets at low Richardson number, the dynamics are driven by a *shear instability*, which is strengthened by a baroclinic force. In high- Ri plumes, the instability arises principally from *buoyancy* effects. These conclusions are fully consistent with the results of Bharadwaj & Das (2017), who observed that the leading eigenmode could be stabilised through artificial compensation of the baroclinic torque at low Ri , and through suppression of the buoyancy force at high Ri .

5. Local analysis

The results so far have shown a dominance of axisymmetric global instabilities, which is in stark contrast to our earlier local analysis in the $S \rightarrow 1$ Boussinesq limit (Chakravarthy *et al.* 2015), where absolute instability was found only for helical perturbations. The absolute/convective nature of local instability in non-Boussinesq settings is now investigated.

The same algorithm as in Chakravarthy *et al.* (2015) is used for tracking saddle points of the local dispersion relation in the complex k plane. Again, the group-velocity root-finding procedure of Lesshafft & Marquet (2010) has been found to be more efficient and robust than the classical Briggs or the cusp map methods (see Schmid & Henningson 2001).

5.1. Axisymmetric perturbations, $m = 0$

For the standard setting $S = 7$ and $Re = 200$, and for Richardson numbers of 10^{-4} and 10^2 , variations of the absolute frequency ω_0 and of the absolute wavenumber k_0 along the streamwise z direction are shown in figure 9. In the more extreme case $Ri = 10^3$, numerical difficulties led to unreliable results. In both configurations, the flow is found to be absolutely unstable ($\omega_{0,i} > 0$) over a streamwise interval of 6 or 7 radii downstream of the inlet. In the weakly non-parallel case of $Ri = 10^{-4}$, the real part $\omega_{0,r}$ shows moderate variations around a value of 0.5, in reasonable agreement with the global frequency $\omega_r = 0.56$ as given in figure 5a. In the strongly non-parallel setting $Ri = 10^2$, $\omega_{0,r}$ displays a variation between 1.3 and 80 over the absolutely unstable interval. This is not

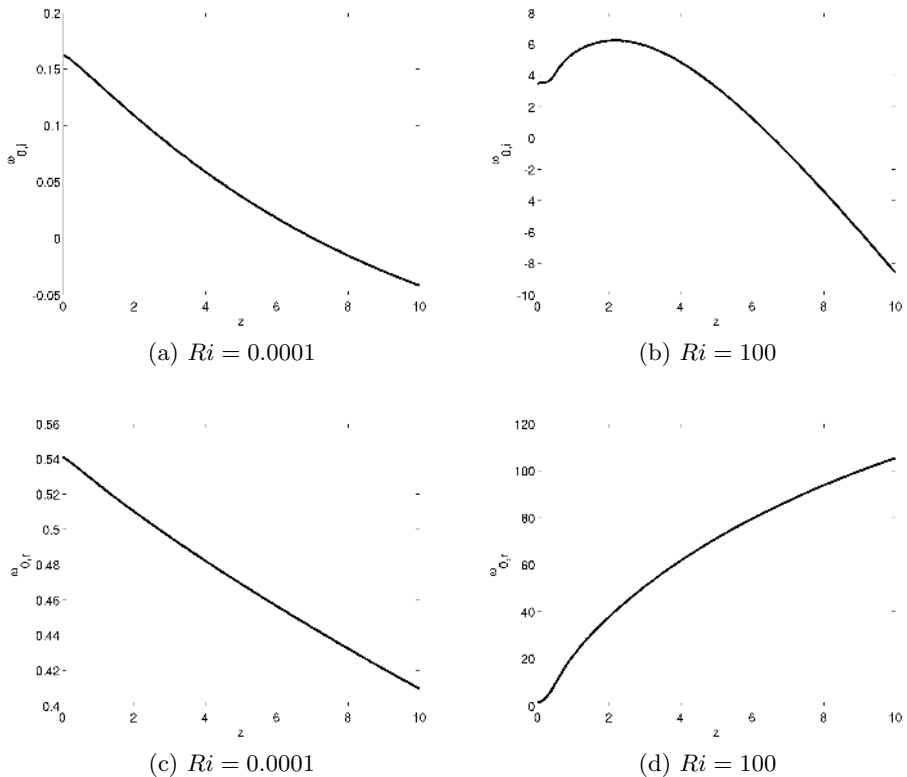


Figure 9: Variation of the absolute frequency ω_0 with streamwise location z for the axisymmetric mode $m = 0$ and $Ri = 10^{-4}$ (left) and $Ri = 10^2$ (right) at $S = 7$, $Re = 200$.

inconsistent with the global frequency $\omega_r = 10.99$, but it does not provide a means of predicting ω_r at leading order.

Nonetheless, the link between local absolute and global instability of axisymmetric perturbations is very plausibly confirmed by these results, both in the low- and in the high-Richardson number regime. The neutral curve for the onset of absolute instability in the (Ri, S) plane is reported in figure 6 for axisymmetric perturbations at $z = 0$. It is found that the transition from convective to absolute *local* instability at the inlet, with increasing Ri and S , occurs before *global* instability sets in. This is consistent with the common observation, both in model problems (Chomaz *et al.* 1991) and in slowly varying flow (e.g. Lesshafft *et al.* 2007), that absolute instability must prevail over a sufficiently long streamwise region with sufficient growth rate in order to prompt a global instability.

5.2. Helical perturbations, $m = 1$

The saddle point in the complex k -plane that is associated with helical absolute instability in the study of Chakravarthy *et al.* (2015) is also recovered in the analysis of the present inflow profiles. The absolute growth rate $\omega_{0,i}$ for $m = 1$ perturbations at $z = 0$ is displayed in figure 10a as a function of S , for parameters $Ri = 1$ and $Re = 200$. A unity Richardson number is chosen here for comparison with the analysis in §3 of Chakravarthy *et al.* (2015), but higher values of Ri lead to the same conclusions. The

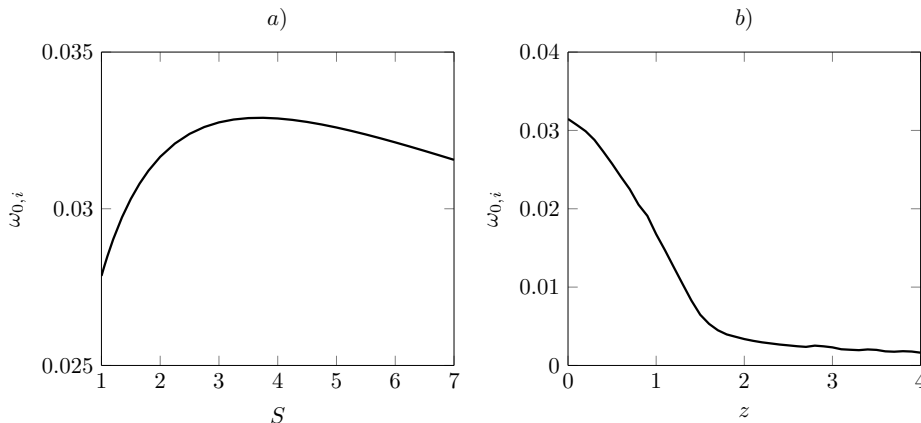


Figure 10: Absolute growth rate $\omega_{0,i}$ of helical perturbations, for $Re = 200$ and $Ri = 1$, (a) at the inlet, as a function of the density ratio S ; (b) as a function of z , for $S = 7$.

density ratio S characterises the departure from the Boussinesq limit, and it is seen to have a very weak effect on the growth rate $\omega_{0,i}$ of the absolute helical mode.

The spatial variation of $\omega_{0,i}$, over a short interval of z adjacent to the inlet, is shown in figure 10b for the highly non-Boussinesq setting $S = 7$; values beyond this streamwise region could not be obtained with sufficient confidence, due to numerical difficulties. The absolute helical growth rate at $S = 7$ displays the same qualitative characteristics as the one described in Chakravarthy *et al.* (2015) for the Boussinesq limit: the growth rate declines quickly downstream of the inlet, perhaps asymptotically tending towards zero. It is not surprising that under these conditions the weak absolute instability of $m = 1$ perturbations does not lead to a global flow destabilisation, as was found in §3.2.

6. Conclusions

The linear instability dynamics in spatially developing buoyant jets and plumes have been investigated for a wide range of values of the Richardson number and the fluid density ratio. In the limit of zero Mach number, all variable-density effects have been taken into account in the mathematical formulation, so that configurations outside the realm of validity of the Boussinesq approximation could be considered.

Axisymmetric global instability modes have been found and documented over the entire investigated range of parameters, whereas no helical global instability could be identified. Some doubts remain only in the very high Richardson number regime, $Ri > 100$, where spurious helical modes could not be entirely stabilised due to numerical limitations. The preponderance of axisymmetric instability is in agreement with experimental observations by Subbarao & Cantwell (1992), Cetegen & Kasper (1996) and Bharadwaj & Das (2017), who reported axisymmetric puffing in free plumes. The present global analysis furthermore reproduces the experimentally measured frequencies with satisfactory accuracy. In particular, the experimental power law $\omega_r \propto (Ri/S)^{0.38}$ has been retrieved as $\omega_r \propto (Ri/S)^{0.43}$ in the present calculations. It is noted that Bharadwaj & Das (2017) found even closer agreement from their linear analysis, which was designed to specifically model helium plumes, as opposed to thermal plumes in the present study.

The physical mechanisms behind global instability have been characterised by means of a sensitivity analysis. As proposed by Marquet & Lesshafft (2015), the sensitivity of the

perturbation growth rate with respect to individual terms in the linear equations has been evaluated, which provides a quantitative measure for the stabilising or destabilising role of mechanisms represented by these terms. The main conclusion is that instability in the low- Ri jet regime is caused primarily by a shear mechanism, aided by a baroclinic force that arises from density variations, whereas the instability in the high- Ri plume regime is brought about principally by way of the buoyancy force, with a small contribution from shear. Nothing in the results indicates an abrupt switching between two distinct instability modes; the most unstable mode appears instead to vary smoothly as a function of Ri , with a gradual shift from the dominance of one mechanism to a dominance of the other.

These global results contrast with the conclusions of Chakravarthy *et al.* (2015), on the basis of local analysis in the Boussinesq limit, that the instability dynamics of *self-similar* plumes are dominated by helical perturbations. In particular, that earlier study showed axisymmetric perturbations to be only convectively unstable, whereas helical perturbations exhibit absolute instability, as well as larger temporal growth at real wavenumbers than axisymmetric modes. The global analysis in the present study was performed on base flows that develop from an orifice with prescribed inlet profiles, and that only relax asymptotically in the streamwise direction towards a self-similar flow solution. Close to the orifice, these base flows are markedly different from self-similar conditions, and this is the flow region where unstable axisymmetric perturbations reside in high- Ri plumes, according to the present results (see figure 4b). Global instability in low- Ri buoyant jets has been shown to depend on baroclinic effects, which are absent in the Boussinesq approximation. The Boussinesq framework used by Chakravarthy *et al.* (2015) is therefore inappropriate for an instability analysis in this regime.

It has finally been demonstrated, for selected configurations, that the global instability characteristics are consistent with the absolute or convective nature of local instability. All globally unstable settings in the (Ri, S) plane, with $Re = 200$, feature an absolutely unstable flow region in the vicinity of the inflow. In the examined cases, the absolute growth rate of axisymmetric perturbations is significantly larger than that of helical perturbations, and it remains positive over a longer streamwise region. Although absolute instability also arises for helical perturbations, it appears to be too weak to set off a global instability.

It must be cautioned that the conclusions drawn from the present results may not be easily extendable to generic plume and jet flows. In particular, the instability characteristics seem to be rather sensitive to details of the inflow profiles: with similar but not identical inflow profiles, axisymmetric perturbations are absolutely unstable in the present settings, but convectively unstable in the configuration of Chakravarthy *et al.* (2015). Test calculations, documented in Chakravarthy (2015), indicate that the functional shape of the density profile has a marked influence on the local stability characteristics, even when the mixing layer thickness is matched. Subbarao & Cantwell (1992) point out, for instance, that helium release and diffusion flames create plumes with very distinct density variations, which therefore may present quite different instability dynamics. It can also not be ruled out that nonlinear effects alter the threshold of global instability (Couairon & Chomaz 1997). The influence of the Prandtl number has not been investigated in this study, but it has been shown by Lakkaraju & Alam (2007) that the instability behaviour of planar plumes undergoes qualitative changes as Pr is varied far from unity.

The authors are grateful to Wilfried Coenen for his aid with the adjoint implementation in FreeFEM++, to Olivier Marquet for his contribution to the sensitivity analysis, and

to Prof. Debopam Das for precious comments on the comparison with experiments. This work has been funded by the DGA under grant number LADX2331 and by the Agence Nationale de la Recherche under the ‘‘Cool Jazz’’ project. RVKC was supported by a PhD fellowship from École polytechnique.

Appendix A. Differential operator definitions for azimuthally decomposed field quantities

The operators for divergence, gradient, Laplacian and advection in cylindrical coordinates in equations (2.11) are written with a subscript m . This is meant to express that azimuthal derivatives of perturbations (2.10) are included in these operators in the form of terms in m , such that formally

$$\text{grad}(\hat{\mathbf{u}} e^{im\theta}) = (\text{grad}_m \hat{\mathbf{u}}) e^{im\theta}, \quad (\text{A } 1a)$$

$$\text{div}(\hat{\mathbf{u}} e^{im\theta}) = (\text{div}_m \hat{\mathbf{u}}) e^{im\theta}, \quad (\text{A } 1b)$$

$$\Delta(\hat{\mathbf{u}} e^{im\theta}) = (\Delta_m \hat{\mathbf{u}}) e^{im\theta}, \quad (\text{A } 1c)$$

and accordingly for all other flow variables. All relevant terms from the equations (2.11) are written out below for the sake of completeness.

$$\text{div}_m(\hat{\rho}\bar{\mathbf{u}} + \bar{\rho}\mathbf{u}) = \frac{1}{r}\partial_r(r\hat{\rho}\bar{u}_r + r\bar{\rho}\hat{u}_r) + \frac{im}{r}\bar{\rho}\hat{u}_\theta + \partial_z(\hat{\rho}\bar{u}_z + \bar{\rho}\hat{u}_z), \quad (\text{A } 2)$$

$$(\text{grad}_m \bar{\mathbf{u}}) \cdot \hat{\mathbf{u}} = [\hat{u}_r \partial_r \bar{u}_r + \hat{u}_z \partial_z \bar{u}_r] \mathbf{e}_r + \frac{\hat{u}_\theta \bar{u}_r}{r} \mathbf{e}_\theta + [\hat{u}_r \partial_r \bar{u}_z + \hat{u}_z \partial_z \bar{u}_z] \mathbf{e}_z, \quad (\text{A } 3)$$

$$\begin{aligned} (\text{grad}_m \hat{\mathbf{u}}) \cdot \bar{\mathbf{u}} &= [\bar{u}_r \partial_r \hat{u}_r + \bar{u}_z \partial_z \hat{u}_r] \mathbf{e}_r + [\bar{u}_r \partial_r \hat{u}_\theta + \bar{u}_z \partial_z \hat{u}_\theta] \mathbf{e}_\theta \\ &\quad + [\bar{u}_r \partial_r \hat{u}_z + \bar{u}_z \partial_z \hat{u}_z] \mathbf{e}_z, \end{aligned} \quad (\text{A } 4)$$

$$(\text{grad}_m \bar{T}) \cdot \hat{\mathbf{u}} = \hat{u}_r \partial_r \bar{T} + \hat{u}_z \partial_z \bar{T} \quad (\text{A } 5)$$

$$(\text{grad}_m \hat{T}) \cdot \bar{\mathbf{u}} = \bar{u}_r \partial_r \hat{T} + \bar{u}_z \partial_z \hat{T}, \quad (\text{A } 6)$$

$$\text{grad}_m \hat{p} = \partial_r \hat{p} \mathbf{e}_r + \frac{im}{r} \hat{p} \mathbf{e}_\theta + \partial_z \hat{p} \mathbf{e}_z, \quad (\text{A } 7)$$

$$\begin{aligned} \text{grad}_m(\text{div}_m \hat{\mathbf{u}}) &= \left[\partial_r \frac{\partial_r(r\hat{u}_r)}{r} - \frac{2im}{r^2} \hat{u}_\theta + \frac{im}{r} \partial_r \hat{u}_\theta + \partial_{rz} \hat{u}_z \right] \mathbf{e}_r \\ &\quad + \frac{1}{r} \left[im \partial_r \hat{u}_r + \frac{im}{r} \hat{u}_r - \frac{m^2}{r} \hat{u}_\theta + im \partial_z \hat{u}_z \right] \mathbf{e}_\theta \\ &\quad + \left[\partial_{rz} \hat{u}_r + \frac{\partial_z \hat{u}_r}{r} + \frac{im}{r} \partial_z \hat{u}_\theta + \partial_{zz} \hat{u}_z \right] \mathbf{e}_z, \end{aligned} \quad (\text{A } 8)$$

$$\begin{aligned} \Delta_m \hat{\mathbf{u}} &= \left[\partial_r \frac{\partial_r(r\hat{u}_r)}{r} - \frac{m^2}{r^2} \hat{u}_r + \partial_{zz} \hat{u}_r - \frac{2im}{r^2} \hat{u}_\theta \right] \mathbf{e}_r \\ &\quad + \left[\partial_r \frac{\partial_r(r\hat{u}_\theta)}{r} - \frac{m^2}{r^2} \hat{u}_\theta + \partial_{zz} \hat{u}_\theta + \frac{2im}{r^2} \hat{u}_r \right] \mathbf{e}_\theta \\ &\quad + \left[\frac{\partial_r(r\partial_r \hat{u}_z)}{r} - \frac{m^2}{r^2} \hat{u}_z + \partial_{zz} \hat{u}_z \right] \mathbf{e}_z, \end{aligned} \quad (\text{A } 9)$$

$$\Delta_m \hat{T} = \frac{\partial_r(r\partial_r \hat{T})}{r} - \frac{m^2}{r^2} \hat{T} + \partial_{zz} \hat{T}. \quad (\text{A } 10)$$

REFERENCES

- ÅKERVIK, E., EHRENSTEIN, U., GALLAIRE, F. & HENNINGSON, D. 2008 Global two-dimensional stability measures of the flat plate boundary-layer flow. *Eur. J. Mech. B/Fluids* **27**, 1–13.
- BHARADWAJ, K. & DAS, D. 2017 Global instability analysis and experiments of buoyant plumes. *J. Fluid Mech.* p. to appear.
- BOUJEMAA, SAMI, AMIELH, MURIEL & CHAUVE, MARIE PIERRE 2004 Analyse spatio-temporelle de jets axisymétriques d'air et d'hélium. *C. R. Mecanique* **332** (11), 933–939.
- CETEGEN, B. M. & KASPER, K. D. 1996 Experiments on the oscillatory behavior of buoyant plumes of helium and helium-air mixtures. *Phys. Fluids* **8(11)**, 2974–2984.
- CHAKRAVARTHY, R. V. K. 2015 Local and global instabilities in buoyant jets and plumes. PhD thesis, École polytechnique, Palaiseau, France.
- CHAKRAVARTHY, R. V. K., LESSHAFFT, L. & HUERRE, P. 2015 Local linear stability of laminar axisymmetric plumes. *J. Fluid Mech.* **780**, 344–369.
- CHANDLER, G. J. 2010 Sensitivity analysis of low density jets and flames. PhD thesis, University of Cambridge, Cambridge, U. K.
- CHOMAZ, J.-M. 2003 Fully nonlinear dynamics of parallel wakes. *J. Fluid Mech.* **495**, 57–75.
- CHOMAZ, J. M., HUERRE, P. & REDEKOPP, L. G. 1991 A frequency selection criterion in spatially developing flows. *Stud. Appl. Math.* **84(2)**, 119–144.
- COENEN, W., LESSHAFFT, L., GARNAUD, X. & SEVILLA, A. 2017 Global instability of low-density jets. *J. Fluid Mech.* **820**, 187–207.
- COLONIUS, T. 2004 Modeling artificial boundary conditions for compressible flow. *Annu. Rev. Fluid Mech.* **36**, 315–345.
- COUAIRON, A. & CHOMAZ, J. M. 1997 Absolute and convective instabilities, front velocities and global modes in nonlinear systems. *Physica D: Nonlinear Phenomena*. **108(3)**, 236–276.
- GARNAUD, X., LESSHAFFT, L., SCHMID, P. J. & HUERRE, P. 2013 Modal and transient dynamics of jet flows. *Phys. Fluids* **25(4)**, 044103.
- HALLBERG, M. P. & STRYKOWSKI, P. J. 2006 On the universality of global modes in low-density axisymmetric jets. *J. Fluid Mech.* **569**, 493–507.
- HUERRE, P. & MONKEWITZ, P. A. 1990 Local and global instabilities in spatially developing flows. *Annu. Rev. Fluid Mech.* **22(1)**, 473–537.
- JIANG, X. & LUO, K. H. 2000 Direct numerical simulation of the puffing phenomenon of an axisymmetric thermal plume. *Theoret. Comput. Fluid Dynamics* **14**, 55–74.
- KHORRAMI, M. R., MALIK, M. R. & ASH, R. L. 1989 Application of spectral collocation techniques to the stability of swirling flows. *J. Comput. Phys.* **81**, 206–229.
- LAKKARAJU, R. & ALAM, M. 2007 Effects of Prandtl number and a new instability mode in a plane thermal plume. *J. Fluid Mech.* **592**, 221–231.
- LESSHAFFT, L. 2015 Linear global stability of a confined plume. *Theoretical. Appl. Mech. Lett.* **5(3)**, 126–128.
- LESSHAFFT, L. 2017 Artificial eigenmodes in truncated flow domains. *arXiv:1704.08450* .
- LESSHAFFT, L. & HUERRE, P. 2007 Linear impulse response in hot round jets. *Phys. Fluids* **19(2)**, 024102.
- LESSHAFFT, L., HUERRE, P. & SAGAUT, P. 2007 Frequency selection in globally unstable round jets. *Phys. Fluids* **19**, 054108.
- LESSHAFFT, L., HUERRE, P., SAGAUT, P. & TERRACOL, M. 2006 Nonlinear global modes in hot jets. *J. Fluid Mech.* **554**, 393–409.
- LESSHAFFT, L. & MARQUET, O. 2010 Optimal velocity and density profiles for the onset of absolute instability in jets. *J. Fluid Mech.* **662**, 398–408.
- LOPEZ, J. M. & MARQUES, F. 2013 Instability of plumes driven by localized heating. *J. Fluid Mech.* **736**, 616–640.
- MARQUET, O. & LESSHAFFT, L. 2015 Identifying the active flow regions that drive linear and nonlinear instabilities. *arXiv:1508.07620* .
- MCMURTRY, P. A., JOU, W. H., RILEY, J. J. & METCALFE, R. W. 1986 Direct numerical simulations of a reacting mixing layer with chemical heat release. *AIAA journal* **24(6)**, 962–970.
- MOLLENDORF, J. C. & GEBHART, B. 1973 An experimental and numerical study of the viscous

- stability of a round laminar vertical jet with and without thermal buoyancy for symmetric and asymmetric perturbations. *J. Fluid Mech.* **61**(2), 367–399.
- MONKEWITZ, P.A. & SOHN, K. 1988 Absolute instability in hot jets. *AIAA J.* **26**, 911–916.
- MONKEWITZ, P. A., BECHERT, D. W., BARSIKOW, B. & LEHMANN, B. 1990 Self-excited oscillations and mixing in a heated round jet. *Phys. Fluids* **213**, 611–639.
- NICHOLS, J. W., SCHMID, P. J. & RILEY, J. J. 2007 Self-sustained oscillations in variable-density round jets. *J. Fluid Mech.* **582**, 341–376.
- RILEY, D. S. & TVEITEREID, M. 1984 On the stability of an axisymmetric plume in a uniform flow. *J. Fluid Mech.* **142**, 171–186.
- SATTI, R. P. & AGRAWAL, A. K. 2006 Computational analysis of gravitational effects in low-density gas jets. *AIAA* **44**(7), 1505–1515.
- SCHMID, P. J. & HENNINGSON, D. S. 2001 *Stability and Transition in Shear Flows, Applied Mathematical Sciences*, vol. 142. Springer Verlag, New York.
- SREENIVASAN, K. R., RAGHU, S. & KYLE, D. 1989 Absolute instability in variable density round jets. *Exps. Fluids* **213**, 309–317.
- SUBBARAO, E. R. & CANTWELL, B. J. 1992 Investigation of a co-flowing buoyant jet: experiments on the effect of reynolds number and richardson number. *J. Fluid Mech.* **245**, 69–90.
- THEOFILIS, V. 2003 Advances in global linear instability analysis of nonparallel and three-dimensional flows. *Prog. Aero. Sci.* **39**(4), 249–315.
- TRITTON, D. J. 2012 *Physical Fluid Dynamics*. Springer Science & Business Media.
- WAKITANI, S. 1980 The stability of a natural convection flow above a point heat source. *J. Phys. Soc. Japan* **49**(6), 2392–2399.
- YIH, C. S. 1988 *Fluid mechanics*. West River Press, Ann Arbor.