

Glucocerebrosidase Deficiency in Substantia Nigra of Parkinson Disease Brains

Matthew E. Gegg, PhD,¹ Derek Burke, MSc,^{2,3} Simon J. R. Heales, PhD,^{2,3}
J. Mark Cooper, PhD,¹ John Hardy, PhD,⁴ Nicholas W. Wood, PhD, MD,⁵
and Anthony H. V. Schapira, Dsc, MD¹

Objective: Mutations in the glucocerebrosidase gene (*GBA*) represent a significant risk factor for developing Parkinson disease (PD). We investigated the enzymatic activity of glucocerebrosidase (GCase) in PD brains carrying heterozygote *GBA* mutations (PD+*GBA*) and sporadic PD brains.

Methods: GCase activity was measured using a fluorescent assay in cerebellum, frontal cortex, putamen, amygdala, and substantia nigra of PD+*GBA* ($n = 9-14$) and sporadic PD brains ($n = 12-14$). Protein expression of GCase and other lysosomal proteins was determined by western blotting. The relation between GCase, α -synuclein, and mitochondria function was also investigated in vitro.

Results: A significant decrease in GCase activity was observed in all PD+*GBA* brain areas except the frontal cortex. The greatest deficiency was in the substantia nigra (58% decrease; $p < 0.01$). GCase activity was also significantly decreased in the substantia nigra (33% decrease; $p < 0.05$) and cerebellum (24% decrease; $p < 0.05$) of sporadic PD brains. GCase protein expression was lower in PD+*GBA* and PD brains, whereas increased C/EBP homologous protein and binding immunoglobulin protein levels indicated that the unfolded protein response was activated. Elevated α -synuclein levels or PTEN-induced putative kinase 1 deficiency in cultured cells had a significant effect on GCase protein levels.

Interpretation: GCase deficiency in PD brains with *GBA* mutations is a combination of decreased catalytic activity and reduced protein levels. This is most pronounced in the substantia nigra. Biochemical changes involved in PD pathogenesis affect wild-type GCase protein expression in vitro, and these could be contributing factors to the GCase deficiency observed in sporadic PD brains.

ANN NEUROL 2012;72:455-463

The lysosomal storage disorder Gaucher disease (GD) is caused by autosomal recessive mutations in the glucocerebrosidase (*GBA*) gene. *GBA* encodes a lysosomal enzyme (GCase) that catalyses the metabolism of the sphingolipid glucosylceramide to ceramide and glucose. Deficiency of GCase activity results in accumulation of substrate in the lysosomes of several tissues, including brain. Mutations in *GBA* result in 3 clinical manifestations. Type 1 GD occurs in both children and adults and predominantly impacts on the non-neuronal organs, whereas types 2 and 3 have an onset in childhood and

adolescence, respectively, and exhibit neurological deficits.¹

Parkinson disease (PD) is primarily characterized by the motor symptoms of resting tremor, bradykinesia, rigidity, and postural instability. Pathological hallmarks include loss of dopaminergic neurons from the substantia nigra (SN) and the presence of cytoplasmic inclusions known as Lewy bodies in the surviving cells of affected brain regions.²

Typical parkinsonism is among the neurological complications of GD (including type 1).^{3,4} The

View this article online at wileyonlinelibrary.com. DOI: 10.1002/ana.23614

Received Nov 23, 2011, and in revised form Apr 2, 2012. Accepted for publication Apr 2, 2012.

Address correspondence to Dr Schapira, Department of Clinical Neurosciences, UCL Institute of Neurology, Hampstead Campus, Rowland Hill Street, London NW3 2PF, United Kingdom. E-mail: a.schapira@ucl.ac.uk

From the ¹Department of Clinical Neurosciences, University College London Institute of Neurology; ²Molecular and Genetics Unit, University College London Institute of Child Health; ³Enzyme Unit and Metabolic Unit, Chemical Pathology, Great Ormond Street Hospital; ⁴Reta Lila Weston Research Laboratories, Departments of Molecular Neuroscience and Clinical Neuroscience, University College London Institute of Neurology; and ⁵Department of Molecular Neuroscience, University College London Institute of Neurology, London, United Kingdom.

Additional supporting information can be found in the online version of this article.

neuropathology of GD brains includes the typical hallmarks of PD, such as cortical and brainstem Lewy bodies.⁵ Heterozygote carriers of *GBA* mutations also have an increased frequency of PD, and these mutations are the most common genetic risk factor for developing the disease.^{6–8}

Although the pathogenesis of PD is still unknown, the accumulation of α -synuclein and other ubiquitinated proteins in Lewy bodies has implicated protein mishandling as a putative cause. The proteasome and lysosomes are the 2 principal mechanisms for degrading cellular constituents. Autophagy utilizes lysosomes to degrade long-lived proteins, misfolded/aggregated proteins, and organelles such as mitochondria.⁹ Defective autophagy and/or lysosomal depletion have been implicated in PD.^{10–13} Cellular or animal models of GCase deficiency have caused α -synuclein accumulation.^{14–18} GCase has also been suggested to bind directly with α -synuclein in lysosomes¹⁹ and the GCase substrate glucosylceramide stabilizes soluble oligomeric α -synuclein species.¹⁸ These observations have led to the notion that GCase deficiency might contribute to the α -synuclein aggregation characteristic of PD pathology.

Despite the recognized association between *GBA* mutations and PD, it is unknown how heterozygous *GBA* mutations affect GCase activity in PD brains. In this paper, we provide the first report of the activity of GCase in several regions of PD brains from *GBA* mutation carriers and sporadic PD brains. GCase deficiency was greatest in the SN of PD brains with *GBA* mutations. This loss of activity was in part mediated by a decrease in GCase protein levels. GCase activity was also significantly decreased in the SN of sporadic PD brains.

Materials and Methods

Brain Samples

Control brains (n = 10), PD brains from *GBA* mutation carriers (PD+GBA; n = 14), and sporadic PD brains (n = 14) were obtained from the Queen Square Brain Bank for Neurological Disorders (London, UK) following local ethical approval. All PD cases met the UK Brain Bank Clinical Criteria for PD. The 3 groups were matched for age (control, 67.7 \pm 6.0 years; PD+GBA, 67.5 \pm 2.8 years; PD, 68.9 \pm 2.8 years) and post-mortem delay (control, 53.5 \pm 8.1 hours; PD+GBA, 50.5 \pm 6.6 hours; PD, 41.8 \pm 5.0 hours). GCase enzyme activity was not influenced by postmortem delay (Supplementary Fig 1). Details of *GBA1* mutations are listed in the Table.

Enzymatic Assays

Brain samples were homogenized in 250mM sucrose, 10mM Tris (pH 7.4), 1mM ethylenediaminetetraacetic acid supplemented with protease inhibitors (1mM phenylmethanesulfonyl

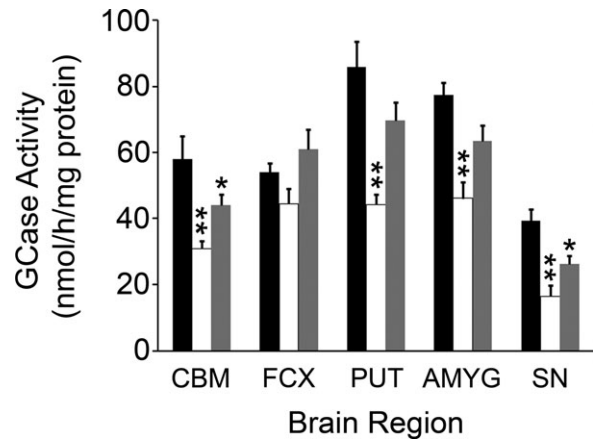


FIGURE 1: Glucocerebrosidase enzyme (GCase) deficiency in Parkinson disease (PD) brains carrying *GBA* mutations and sporadic PD. GCase activity was significantly decreased in the cerebellum (CBM, n = 14), putamen (PUT, n = 12), amygdala (AMYG, n = 12), and SN (SN, n = 9), but not the frontal cortex (FCX, n = 14) of PD brains with *GBA* mutations (PD+GBA, white bars), when compared to controls (n = 6–10, black bars). GCase activity was also significantly decreased in the CBM (n = 14) and SN (n = 14) of sporadic PD brains (gray bars), but not the FCX (n = 14), PUT (n = 14), or AMYG (n = 12). **p* < 0.05 versus control, ***p* < 0.01 versus control.

fluoride, 1 μ g/ml pepstatin A, 1 μ g/ml leupeptin), and 1mM NaVO₄. Homogenate was diluted to 2mg/ml in water and sonicated, and GCase activity was determined in samples (20 μ g protein) by hydrolysis of 5mM 4-methylumbelliferyl- β -D-glucopyranoside in McIlvaine buffer (pH 5.4) in the presence of 22mM sodium taurocholate at 37°C for 1 hour.²⁰ The reaction was stopped by addition of 0.25M glycine (pH 10.4) and 4-methylumbelliferone fluorescence measured at excitation 365nm, emission 450nm.

Measurement of nonlysosomal GCase (GBA2) was performed as above but in the absence of sodium taurocholate and with the addition of 1 μ M deoxynojirimycin, a GBA2 inhibitor.²¹

β -Hexosaminidase was assayed in the above homogenates (2 μ g protein) using the fluorogenic substrate 4-methylumbelliferyl-2-acetoamido-2-deoxy-6-sulfo- β -D-glucopyranoside (2mM) in sodium citrate buffer (pH 4.2) at 37°C for 30 minutes. The reaction was stopped by addition of 0.25M glycine (pH 10.4), and fluorescence was measured as above.²²

Western Blotting

Brain homogenates were mixed 1:1 with 1% (vol/vol) Triton X-100, and debris was removed by centrifugation at 17,000 \times g. Supernatant (25 μ g protein) was separated on 4 to 12% or 12% (LC3-II blots) NuPAGE Tris-Bis gels (Invitrogen, Carlsbad, CA), transferred to Hybond P (GE Healthcare, Milwaukee, WI), and probed with primary and respective horseradish peroxidase-conjugated secondary antibodies. Bands were detected by enhanced chemiluminescence (Pierce, Rockford, IL), and density was measured using Image J software (NIH). Protein expression was expressed as a ratio against β -actin.

TABLE : Parkinson Disease Brains with Heterozygote *GBA* Mutations

Patient	Age, yr	Sex	Allele
1	62	M	G193E/wt
2	55	M	R131C/wt
3	67	F	L444P/wt
4	57	M	RecA456P
5	91	M	R131C/wt
6	85	M	N370S/wt
7	65	M	N370S/wt
8	68	M	L444P/wt
9	75	M	R463C/wt
10	62	M	L444P/wt
11	64	F	D409H/wt
12	59	M	Rec <i>Nci</i> I
13	57	F	L444P/wt
14	82	M	L444P/wt

Mutation analysis of these samples has previously been described.⁸
F = female; M = male.

Details of mammalian cell culture, quantitative polymerase chain reaction, antibodies, GCCase RNA interference (RNAi), soluble/insoluble fractionation, endoglycosidase-H (endo-H) assay, lysosomal integral membrane protein (LIMP)-2 immunoprecipitation, Xbp-1 splicing, and statistical analyses can be found in the Supplementary Methods.

Results

GCCase Activity Decreased in PD Brains

GCCase activity was assayed in the cerebellum, frontal cortex, amygdala, putamen, and SN of control brains, PD brains from *GBA* mutation carriers (PD+GBA), and sporadic PD brains (Fig 1). GCCase activity was significantly decreased ($p < 0.01$) in all PD+GBA brain regions except the frontal cortex, when compared to control. GCCase deficiency was greatest in the SN (58% decrease), whereas GCCase activity was decreased in the cerebellum (47%), frontal cortex (17%), amygdala (40%), and putamen (48%). GCCase activity was also significantly decreased ($p < 0.05$) in the cerebellum by 24% and SN by 33% in sporadic PD brains.

GCCase activity was unaffected in the amygdala of Alzheimer disease patients, suggesting that the deficiency seen in the SN of sporadic PD brains was not simply a consequence of neurodegeneration (Supplementary Fig 2).

The activity of nonlysosomal GCCase (*GBA2*)²¹ was not significantly affected in any region of either PD+GBA or sporadic PD brains (Supplementary Fig 3).

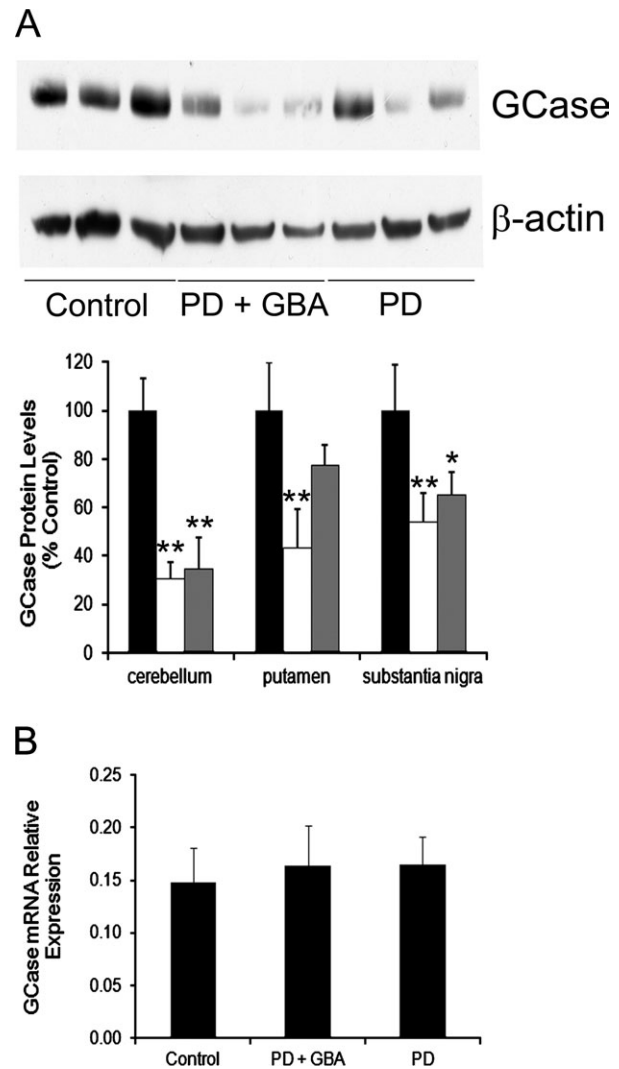


FIGURE 2: Glucocerebrosidase enzyme (GCCase) protein expression was decreased in Parkinson disease (PD) brains carrying *GBA* mutations and sporadic PD brains. (A) Western blotting for GCCase protein levels in cerebellum, putamen, and substantia nigra (example blot shown). GCCase protein was significantly decreased in the cerebellum of both PD+GBA (white bars) and sporadic PD brains (gray bars, PD+GBA, 30.4 ± 7.0%, n = 14; PD, 34.6 ± 13.1%, n = 6, of control brain optical density [black bars], 100 ± 13%, n = 9). GCCase was significantly decreased in the putamen of PD+GBA brains but not sporadic PD brains (PD+GBA, 43.4 ± 16.0%, n = 7; PD, 77.2 ± 8.8%, n = 6, of control brain optical density, 100 ± 20%, n = 7). GCCase was significantly decreased in the substantia nigra of PD+GBA brains and sporadic PD brains (PD+GBA, 53.9 ± 12.0%, n = 9; PD, 65.1 ± 9.3%, n = 11, of control brain optical density, 100 ± 19%, n = 7). (B) RNA was extracted from the putamen of control (n = 6), PD+GBA (n = 10), and sporadic PD brains (n = 6), and GCCase mRNA relative expression was measured with quantitative real time polymerase chain reaction. No changes in mRNA were detected. * $p < 0.05$ versus control, ** $p < 0.01$ versus control.

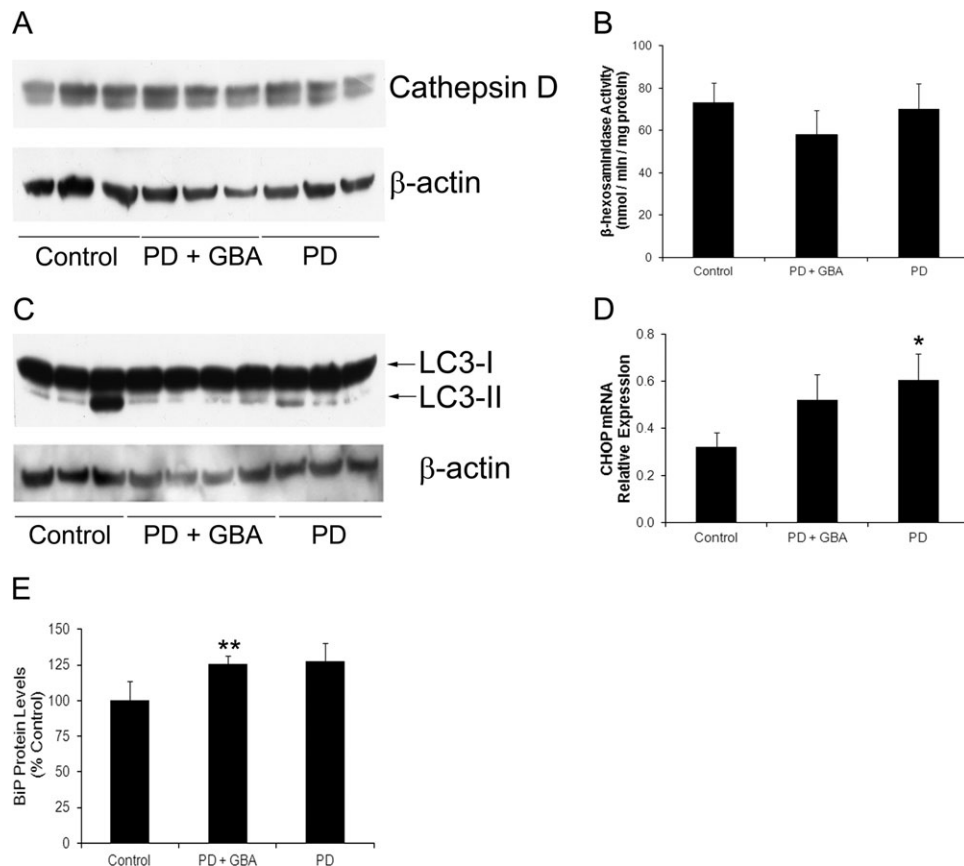


FIGURE 3: Glucocerebrosidase enzyme deficiency was not due to decreased lysosomal content, but C/EBP homologous protein (CHOP) and binding immunoglobulin protein (BiP) levels were increased. (A) Western blots for cathepsin D in the substantia nigra (SN) of control brains, PD brains carrying *GBA* mutations (PD+GBA), and sporadic PD brains (PD) was unaffected. (B) The activity of the lysosomal enzyme β -hexosaminidase in the SN of control ($n = 7$), PD+GBA ($n = 9$), and PD ($n = 14$) was unaffected. (C) Measurement of LC3-II levels in the putamen did not differ significantly between the groups (control, 0.624 ± 0.329 , $n = 6$; PD+GBA, 1.122 ± 0.596 , $n = 7$; PD, 0.816 ± 0.213 , $n = 6$). (D) CHOP mRNA levels were increased in the putamen of both PD+GBA ($n = 10$) and PD brains ($n = 6$) compared to control brain ($n = 6$). (E) Protein levels of the chaperone BiP were found to be increased by western blotting in the putamen of both PD+GBA ($n = 8$) and PD brains ($n = 10$) compared to control brain ($n = 8$). * $p < 0.05$ versus control, ** $p < 0.01$ versus control.

GCCase Protein Levels Decreased in PD Brains

GCCase protein levels were measured in PD+GBA and sporadic PD brains to determine whether the deficiency in GCCase activity was due to inhibition of the enzyme or decreased protein levels. GCCase protein levels were significantly decreased in the cerebellum ($p < 0.01$), putamen ($p < 0.01$), and SN ($p < 0.01$) of PD+GBA brains (Fig 2A). In PD brains, GCCase levels were significantly decreased in the cerebellum ($p < 0.01$) and SN ($p < 0.05$). Similar to a previous report on GCCase expression in human brain,¹⁸ only 1 predominant GCCase species (~60kDa) was detected. Two GCCase species were seen in the neuroblastoma cell line SH-SY5Y, the lower of which migrates exactly the same way as GCCase detected in brain (Supplementary Fig 4). Silencing of GCCase in SH-SY5Y cells with small interfering RNA (siRNA) significantly diminished both GCCase species, confirming the veracity of the antibody.

To eliminate the possibility that the decreased GCCase protein levels in Triton X-100-soluble brain homogenates was due to the protein becoming insoluble, brains were sequentially homogenized in high salt, high salt + Triton X-100, and urea + sodium dodecyl sulfate (insoluble fraction). Western blotting of soluble and insoluble fractions of brain samples showed that GCCase was predominantly located in Triton X-100-soluble fractions in all 3 groups, and that the decreased GCCase protein levels in PD+GBA and PD brains was not due to a greater proportion of GCCase becoming Triton X-100 insoluble (see Supplementary Fig 4). There was a trend for increased levels of monomeric α -synuclein in PD+GBA and PD brains, with less α -synuclein being soluble in the high-salt fraction.

GCCase mRNA levels were unaffected in the putamen of PD+GBA and sporadic PD brains (see Fig 2B), indicating that the decreased protein levels were not due

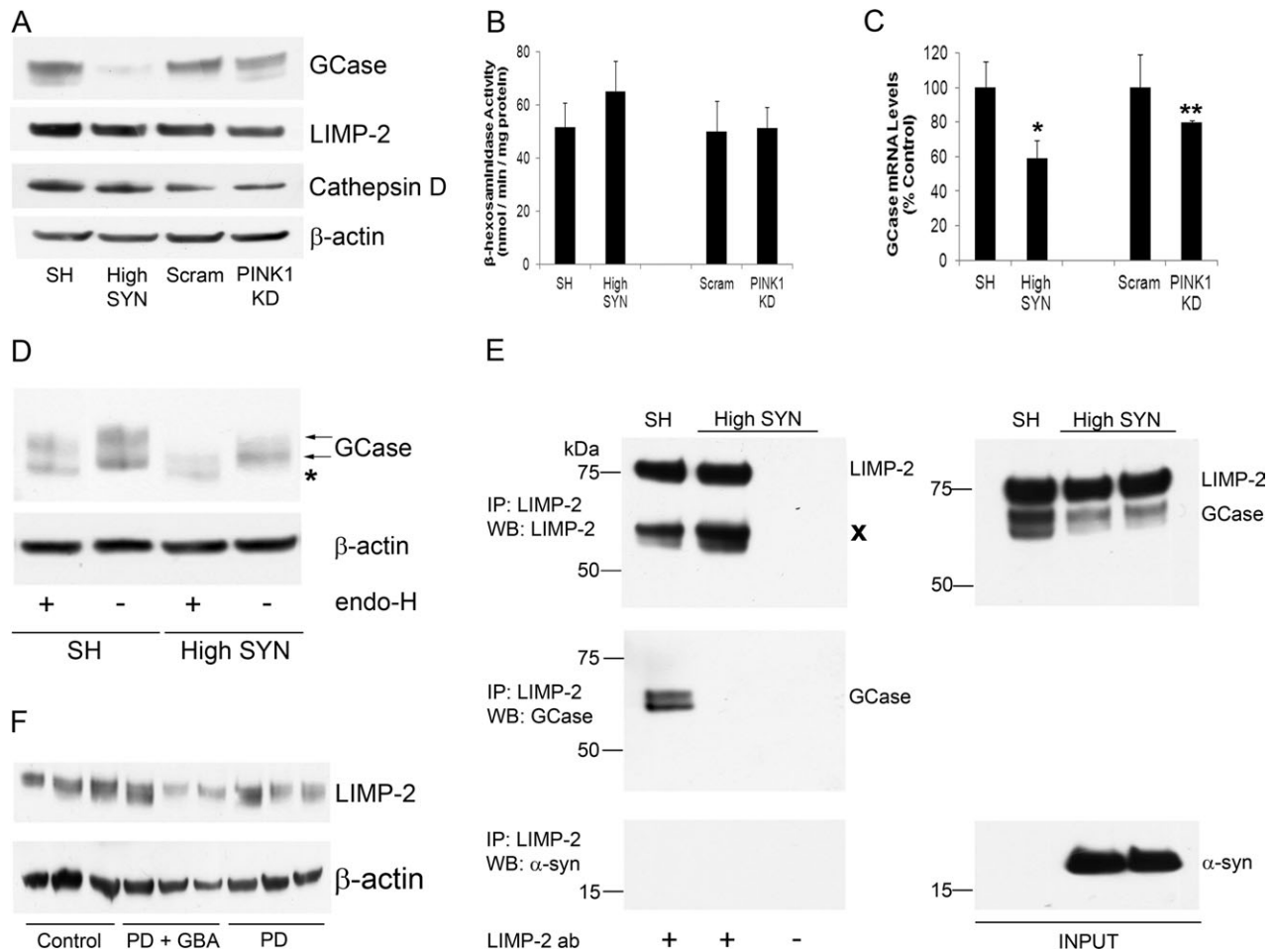


FIGURE 4: Glucocerebrosidase enzyme (GCase) protein levels were decreased in SH-SY5Y cells overexpressing α -synuclein (α -syn) or with PTEN-induced putative kinase 1 (PINK1) deficiency. (A) Western blotting for GCase in α -synuclein overexpressing cells (High SYN) or PINK1 knockdown (KD) cells showed a significant decrease in protein levels (High SYN, $13.4 \pm 7.1\%$, $n = 3$, $p < 0.001$; PINK1 KD, $65.3 \pm 9.3\%$, $n = 3$, $p < 0.05$, of respective control optical density [SH-SY5Y cells, $100 \pm 16\%$, $n = 3$; scram short hairpin RNA cells, $100 \pm 9\%$, $n = 3$]). Cathepsin D and lysosomal integral membrane protein (LIMP)-2 protein levels were unaffected in either cell type, compared to their respective controls. (B) The activity of the lysosomal enzyme β -hexosaminidase was unaffected in High SYN or PINK1 KD cells ($n = 6$), when compared to respective control cell lines. (C) Quantitative real time polymerase chain reaction indicated that steady-state GCase mRNA levels were decreased in cells with exogenous α -synuclein or PINK1 KD (High SYN, $58.9 \pm 10.1\%$, $n = 3$; PINK1 KD, $79.9 \pm 1.3\%$, $n = 3$ of respective control GCase mRNA levels, $n = 3$). (D) SH or High SYN cell lysates ($20\mu\text{g}$) were treated with or without endoglycosidase-H (endo-H) and GCase protein species analyzed by Western blot. The 2 normal species of GCase detected in SH cells are indicated by arrows. An additional lower molecular weight band was observed in High SYN but not SH cells following endo-H treatment (asterisk). (E) LIMP-2 was immunoprecipitated (ip) from lysates of SH or High SYN cells to a similar extent (left panel). No LIMP-2 was immunoprecipitated from lysates incubated without antibody (ab). Cross denotes heavy chain of antibody used for immunoprecipitation. Two bands corresponding to GCase were pulled down in SH cells, but not High SYN cells (left panel). α -Synuclein was not pulled down in SH or High SYN cells (left panel). The right panel shows the expression of GCase, LIMP-2, and α -synuclein in the initial lysates (INPUT). WB, western blotting (F) Western blotting for LIMP2 in the substantia nigra from control, PD+GBA, or sporadic PD brains showed that there was no difference in expression between the groups (PD+GBA, $92.0 \pm 17.2\%$, $n = 8$; PD, $123.3 \pm 10.7\%$, $n = 8$, of control optical density, $n = 7$). * $p < 0.05$ versus SH, ** $p < 0.01$ versus scram.

to reduced transcription of the *GBA* gene. There was not enough material for RNA analysis of the SN.

The decrease in GCase protein expression was not associated with a decrease in lysosomal content. Expression of the lysosomal enzyme cathepsin D was unaffected in cerebellum, putamen, and SN (shown) in PD+GBA and sporadic PD brains (Fig 3A), and β -hexosaminidase activity in the SN was similar in all groups (see Fig 3B).

LC3-II protein levels can be used as a measure of autophagosomal number.²³ Autophagosomes are double membrane structures that carry macromolecules and organelles destined for degradation to lysosomes. There was a trend for higher LC3-II in GBA+PD and sporadic PD putamen, although this was not significant (see Fig 3C).

Certain GCase mutants (eg, N370S, L444P) have been reported to be retained in the endoplasmic

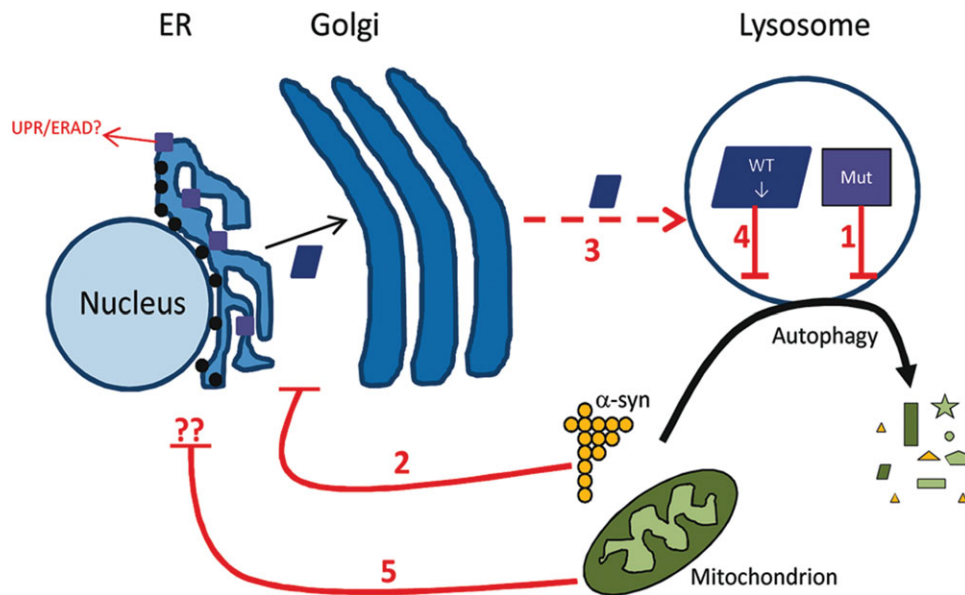


FIGURE 5: Scheme of glucocerebrosidase enzyme (GCase) deficiency in PD pathogenesis. Mutant (Mut) GCase (purple squares) disrupts the degradation of α -synuclein and organelles such as mitochondria by the autophagy–lysosomal pathway (1). Some GCase mutants may also become trapped in the endoplasmic reticulum (ER) and activate the unfolded protein response (UPR)/endoplasmic reticulum-associated degradation (ERAD). Increased levels of α -synuclein impair the trafficking of wild-type (WT) GCase (blue rectangle) via the ER/Golgi apparatus (2), resulting in less WT GCase being delivered to the lysosomes by lysosomal integral membrane protein-2 (3). This will exacerbate any lysosomal/autophagic dysfunction (4). Dysfunctional mitochondria can also affect WT GCase protein levels by an unidentified mechanism (5).

reticulum (ER), triggering the unfolded protein response (UPR) and undergoing ER-associated degradation (ERAD) via the proteasome.^{24–26} We measured 3 markers of the UPR: splicing of the transcription factor Xbp1, increased transcription of C/EBP homologous protein (CHOP), and increased protein levels of the chaperone binding immunoglobulin protein (BiP).²⁵ CHOP mRNA levels were increased in the putamen of PD+GBA (163%) and sporadic PD brains (189%; $p < 0.05$; see Fig 3D). BiP protein levels were increased in the putamen of PD+GBA (126%; $p < 0.01$) and sporadic PD brains (128%; see Fig 3E). Splicing of Xbp1 was detected in 3 of 10 PD+GBA brains (N370S/wt, R463C/wt, L444P/wt) and 2 of 6 sporadic PD brains, compared to 1 of 6 control brains (Supplementary Fig 5).

Increased α -Synuclein Levels Cause GCase Deficiency

Because GCase protein expression was decreased in sporadic PD brains, we investigated whether increased α -synuclein levels affected GCase levels in the human neuroblastoma SH-SY5Y cell line. Two SH-SY5Y stable cell lines expressing either high levels of exogenous wild-type α -synuclein protein (High SYN) or approximately 10-fold lower levels of exogenous α -synuclein (SYN) were used. (Supplementary Fig 6; normal SH-SY5Y cells contain endogenous α -synuclein, but it is undetectable by

western blot.¹⁰ Exogenous α -synuclein has a hemagglutinin tag at the C-terminal.) GCase enzyme activity was significantly decreased by 70% in High SYN cells (SH cells, 145.7 ± 26.0 nmol/h/mg protein; High SYN, 44.1 ± 6.8 nmol/h/mg, $n = 3$; $p < 0.05$), whereas GCase protein levels were significantly decreased by 87% (Fig 4; $n = 3$; $p < 0.001$). GCase protein levels were decreased by 33% in SYN cells (see Supplementary Fig 6). Protein levels of cathepsin D and the activity of β -hexosaminidase activity were unaffected by increased α -synuclein. It should be noted that steady-state GCase mRNA levels in High SYN cells were decreased by 41% ($p < 0.05$).

Increased α -synuclein levels have been reported to inhibit intracellular trafficking of GCase.¹⁸ The sensitivity of GCase to endo-H digestion can indicate that GCase is becoming trapped prior to reaching the mid-Golgi apparatus.²⁴ Mature, properly folded glycoproteins that have reached the mid-Golgi apparatus are not substrates of endo-H. An additional GCase band of lower molecular weight was detected in High SYN cells after endo-H treatment that was not present in SH cells, indicating that a proportion of GCase was becoming trapped in cells with increased α -synuclein levels (see Fig 4D).

Loss of Mitochondrial Function Causes GCase Deficiency

Mitochondrial dysfunction and oxidative stress have been implicated in PD pathogenesis.² Treatment of cells with

the complex I inhibitor rotenone, the glutathione synthesis inhibitor L-BSO, or the reactive oxygen species generator paraquat for 48 hours had no effect on GCase protein levels (Supplementary Fig 7).

The half-life of GCase has been reported to be 30 hours in cultured cells, with de novo GCase synthesis continually replacing degraded protein.²⁷ The toxic nature of the above treatments meant that cells were only treated for 48 hours. Therefore, we investigated GCase expression in SH-SY5Y cells with constitutive PTEN-induced putative kinase 1 (PINK1) knockdown (KD) by short hairpin RNA (shRNA). Mutations in *PINK1* (*PARK6*) are a cause of autosomal recessive PD. Loss of the mitochondrial kinase PINK1 results in mitochondrial dysfunction and increased oxidative stress.^{28,29} In PINK1 RNAi cells, GCase activity was decreased by 30% (scrambled control, 257.0 ± 35.0 nmol/h/mg protein; PINK1 KD, 180.3 ± 45.1 nmol/h/mg protein; $n = 3$; $p < 0.05$). Steady-state GCase protein and mRNA levels were decreased by 35% and 20%, respectively ($n = 3$; $p < 0.01$), when compared to control (scram) cells (see Fig 4A, C). GCase activity was significantly decreased by 24% ($n = 4$; $p < 0.05$) in a different RNAi clone. Transient transfection of a PINK1 siRNA cocktail into SH-SY5Y cells also decreased GCase protein levels and activity, which could be rescued by exogenous expression of PINK1 (Supplementary Fig 8).

GCase Transporter LIMP-2 Was Unaffected in PD Brains or SH-SY5Y Cells with Increased α -Synuclein Levels

Unlike other lysosomal hydrolases, GCase is targeted to lysosomes independently of the mannose-6-phosphate receptor.³⁰ GCase specifically binds the lysosomal integral membrane protein LIMP-2 in the ER and is transported via the Golgi apparatus to lysosomes. Western blotting for LIMP-2 in High SYN cells indicated that LIMP-2 levels were unaffected (see Fig 4A). To determine whether α -synuclein binds to LIMP-2 and interferes with GCase trafficking, LIMP-2 was immunoprecipitated in control and High SYN cells. LIMP-2 failed to pull down α -synuclein (see Fig 4E). Two bands corresponding to GCase were pulled down in control cells but were absent in α -synuclein overexpressing cells. These data suggest that increased α -synuclein levels do result in decreased amounts of GCase being delivered to lysosomes by LIMP-2. However, this does not appear to be due to a direct interaction between LIMP-2 and α -synuclein.

Western blotting for LIMP-2 in the SN of PD+GBA brains or sporadic PD brains (see Fig 4F) indicated that LIMP-2 protein levels were unaffected.

Discussion

We report the first comprehensive biochemical analysis of the effects of *GBA* mutations in PD brains. There is widespread deficiency of GCase activity and protein levels in PD+GBA brains, with the most severe defect located in the SN (58%) and putamen (48%). This loss of GCase is unlikely to simply represent neurodegeneration, as there was a 47% defect in cerebellum, an area not involved in the degenerative process of PD. GCase activity was also unaffected in the amygdala of AD brains, a region associated with marked neurodegeneration. There was no decrease in GCase mRNA levels in the putamen, indicating that the reduction in protein levels, in this region at least, was not a result of downregulation of gene expression, but rather a post-translational effect on protein levels. Three markers of UPR/ERAD were increased and might play a role in reduced protein levels, although further studies are required to confirm this. Given the normal cathepsin D levels and hexosaminidase activity, the loss of GCase protein was not due to a general reduction in lysosomal content or activity. There was a trend for LC3-II levels to be increased in PD+GBA putamen, suggesting an increase in autophagosome number, a feature previously reported in PD SN and amygdala.^{10,11} As autophagy flux cannot be measured in postmortem tissue, it is unclear whether this is due to an increase in macroautophagy or an inhibition of lysosomal degradation of autophagosomes.

We also report for the first time a significant deficiency of GCase activity in PD SN (33%) and cerebellum (24%), with reduced protein levels, in sporadic PD brains. Enzyme activities were comparable to control in other PD brain regions. The patterns of lysosomal proteins and UPR/ERAD markers were similar in PD and GBA+PD brains.

The SN is the site of greatest pathology in PD brain and biochemical abnormalities thought relevant to PD pathogenesis, including α -synuclein deposition, mitochondrial dysfunction, and oxidative stress. Although the loss of GCase activity in PD+GBA brains is in part related to *GBA* mutations, this cannot be the explanation in PD brains. Thus, we hypothesized that mitochondrial dysfunction and/or oxidative stress, or increased α -synuclein levels might cause this defect in PD and an exacerbation of the GCase deficiency in PD+GBA. Mitochondrial dysfunction/oxidative stress as a result of PINK1 KD^{28,29} caused a loss of GCase activity and protein in cells. Increased α -synuclein expression also significantly decreased GCase activity and protein levels.

Recent studies have highlighted the reciprocal relation between GCase activity and α -synuclein. Decreased

GCase activity caused increased α -synuclein levels in toxin and transgenic GBA mouse models, and in neuronal cultures.^{14–18} Accumulation of the GCase substrate glucosylceramide can stabilize soluble α -synuclein oligomers in vitro,¹⁸ and oligomeric α -synuclein has been reported in patients with homozygous or heterozygous *GBA* mutations with Lewy body dementia, although not in PD.^{18,31} No statistical differences in Lewy body pathology were reported between sporadic PD brains and PD+GBA brains studied here.⁸ We also found no noticeable difference in the solubility or amount of monomeric α -synuclein between PD+GBA brains and sporadic PD. Differences in α -synuclein conformation between these groups warrants further investigation.

GCase has also been shown to bind α -synuclein at lysosomal pH, and increased α -synuclein levels in the cortex can result in the depletion of lysosomal GCase.^{18,19} Our in vitro data suggest that increased sensitivity of GCase to endo-H in cells with increased α -synuclein results in the aberrant trafficking of GCase through the ER. α -Synuclein can affect ER/Golgi apparatus trafficking,^{32,33} but the mechanism by which GCase transport is reduced remains unclear. LIMP-2, the protein required for GCase transport to the lysosome,³⁰ does not bind α -synuclein. However, less GCase is bound to LIMP-2 in α -synuclein-overexpressing cells, and therefore the amount of enzyme delivered to the lysosome is decreased. LIMP-2 levels were unaffected in the SN of PD brains. The decrease in steady-state GCase mRNA levels observed in vitro needs further investigation to determine whether this is a decrease in transcription or increased degradation of mRNA, and the extent to which this contributes to GCase deficiency.

Accumulation of proteins in the ER can induce UPR/ERAD. The 2 most common heterozygote *GBA* mutations associated with PD (N370S and L444P)⁷ have been reported to undergo UPR/ERAD in cultured cells.^{24,25,34} However, 2 Gaucher mouse studies could not find evidence of UPR/ERAD in the brain.^{17,35} UPR/ERAD markers were increased in both PD brains with *GBA* mutations and sporadic PD. Aberrant trafficking of GCase might contribute to this increase in UPR/ERAD. However, it could also be a result of perturbed calcium homeostasis, redox status, or proteostasis or mitochondrial dysfunction, all of which are linked with PD pathogenesis.^{26,36}

Surprisingly, GCase activity was decreased in the cerebellum of PD and PD+GBA brains, although this is not a site associated with neurodegeneration, α -synuclein accumulation,³⁷ mitochondrial dysfunction, or oxidative stress in PD.³⁸ It is unclear why GCase activity is decreased in this region. We speculate that

deficiency in the cerebellum is caused by a mechanism separate from that occurring in recognized pathogenic areas of PD such as the SN, putamen, and amygdala.

In conclusion, our studies confirm a widespread deficiency of GCase activity in the brains of PD patients carrying *GBA* mutations. We also demonstrate that PD patients without *GBA* mutations exhibit deficiency of GCase in SN. Based upon the relation between GCase, α -synuclein, and mitochondrial function shown here and by others, we propose that PD pathology is exacerbated and accelerated, but not necessarily initiated, by *GBA* mutations (Fig 5). This would explain why not all *GBA* mutation carriers develop PD, and why those who do tend to do so at an earlier age.

Acknowledgment

This work was supported by the Wellcome Trust/Medical Research Council (MRC) Joint Call in Neurodegeneration award (WT089698) to the UK Parkinson's Disease Consortium, whose members are from the University College London/Institute of Neurology, University of Sheffield, and MRC Protein Phosphorylation Unit at the University of Dundee. Parkinson's UK and the Kattan Trust also provided funding. The Great Ormond Street Children's Charity supported D.B.

We thank Drs J Obeso, C Caballero, and I Ferrer for amygdala samples from Alzheimer disease patients.

Potential Conflicts of Interest

Nothing to report.

References

1. Grabowski GA. Phenotype, diagnosis, and treatment of Gaucher's disease. *Lancet* 2008;372:1263–1271.
2. Schapira AHV. Mitochondria in the aetiology and pathogenesis of Parkinson's disease. *Lancet Neurol* 2008;7:97–109.
3. Neudorfer O, Giladi N, Elstein D, et al. Occurrence of Parkinson's syndrome in type I Gaucher disease. *QJM* 1996;89:691–694.
4. Aharon-Peretz J, Rosenbaum H, Gershoni-Baruch R. Mutations in the glucocerebrosidase gene and Parkinson's disease in Ashkenazi Jews. *N Engl J Med* 2004;351:1972–1977.
5. Wong K, Sidransky E, Verma A, et al. Neuropathology provides clues to the pathophysiology of Gaucher disease. *Mol Genet Metab* 2004;82:192–207.
6. Goker-Alpan O, Schiffmann R, LaMarca ME, et al. Parkinsonism among Gaucher disease carriers. *J Med Genet* 2004;41:937–940.
7. Velayati A, Yu WH, Sidransky E. The role of glucocerebrosidase mutations in Parkinson disease and Lewy body disorders. *Curr Neurol Neurosci Rep* 2010;10:190–198.
8. Neumann J, Bras J, Deas E, et al. Glucocerebrosidase mutations in clinical and pathologically proven Parkinson's disease. *Brain* 2009;132:1783–1794.

9. Cuervo AM, Wong ESP, Martinez-Vicente M. Protein degradation, aggregation, and misfolding. *Mov Disord* 2010;25(suppl 1):S49–S54.
10. Alvarez-Erviti L, Rodriguez-Oroz MC, Cooper JM, et al. Chaperone-mediated autophagy markers in Parkinson disease brains. *Arch Neurol* 2010;67:1464–1472.
11. Dehay B, Bové J, Rodríguez-Muela N, et al. Pathogenic lysosomal depletion in Parkinson's disease. *J Neurosci* 2010;30:12535–12544.
12. Cuervo AM, Stefanis L, Fredenburg R, et al. Impaired degradation of mutant alpha-synuclein by chaperone-mediated autophagy. *Science* 2004;305:1292–1295.
13. Gegg ME, Schapira AHV. PINK1-parkin-dependent mitophagy involves ubiquitination of mitofusins 1 and 2: implications for Parkinson disease pathogenesis. *Autophagy* 2011;7:243–245.
14. Sardi SP, Clarke J, Kinnecom C, et al. CNS expression of glucocerebrosidase corrects alpha-synuclein pathology and memory in a mouse model of Gaucher-related synucleinopathy. *Proc Natl Acad Sci U S A* 2011;108:12101–12106.
15. Xu YH, Sun Y, Ran H, et al. Accumulation and distribution of α -synuclein and ubiquitin in the CNS of Gaucher disease mouse models. *Mol Genet Metab* 2011;102:436–447.
16. Manning-Boğ AB, Schüle B, Langston JW. Alpha-synuclein-glucocerebrosidase interactions in pharmacological Gaucher models: a biological link between Gaucher disease and parkinsonism. *Neurotoxicology* 2009;30:1127–1132.
17. Cullen V, Sardi SP, Ng J, et al. Acid β -glucosidase mutants linked to Gaucher disease, Parkinson disease, and Lewy body dementia alter α -synuclein processing. *Ann Neurol* 2011;69:940–953.
18. Mazzulli JR, Xu Y-H, Sun Y, et al. Gaucher disease glucocerebrosidase and α -synuclein form a bidirectional pathogenic loop in synucleinopathies. *Cell* 2011;146:37–52.
19. Yap TL, Gruschus JM, Velayati A, et al. Alpha-synuclein interacts with glucocerebrosidase providing a molecular link between Parkinson and Gaucher diseases. *J Biol Chem* 2011;286:28080–28088.
20. Wenger DA, Clark C, Sattler M, Wharton C. Synthetic substrate beta-glucosidase activity in leukocytes: a reproducible method for the identification of patients and carriers of Gaucher's disease. *Clin Genet* 1978;13:145–153.
21. Boot RG, Verhoek M, Donker-Koopman W, et al. Identification of the non-lysosomal glucosylceramidase as beta-glucosidase 2. *J Biol Chem* 2007;282:1305–1312.
22. Wendeler M, Sandhoff K. Hexosaminidase assays. *Glycoconj J* 2009;26:945–952.
23. Klionsky DJ, Abeliovich H, Agostinis P, et al. Guidelines for the use and interpretation of assays for monitoring autophagy in higher eukaryotes. *Autophagy* 2008;4:151–175.
24. Ron I, Horowitz M. ER retention and degradation as the molecular basis underlying Gaucher disease heterogeneity. *Hum Mol Genet* 2005;14:2387–2398.
25. Mu T-W, Ong DST, Wang Y-J, et al. Chemical and biological approaches synergize to ameliorate protein-folding diseases. *Cell* 2008;134:769–781.
26. Doyle KM, Kennedy D, Gorman AM, et al. Unfolded proteins and endoplasmic reticulum stress in neurodegenerative disorders. *J Cell Mol Med* 2011;15:2025–2039.
27. Witte MD, Kallemeijn WW, Aten J, et al. Ultrasensitive in situ visualization of active glucocerebrosidase molecules. *Nat Chem Biol* 2010;6:907–913.
28. Gegg ME, Cooper JM, Schapira AHV, Taanman J-W. Silencing of PINK1 expression affects mitochondrial DNA and oxidative phosphorylation in dopaminergic cells. *PLoS ONE* 2009;4:e4756.
29. Wood-Kaczmar A, Gandhi S, Yao Z, et al. PINK1 is necessary for long term survival and mitochondrial function in human dopaminergic neurons. *PLoS ONE* 2008;3:e2455.
30. Reczek D, Schwake M, Schröder J, et al. LIMP-2 is a receptor for lysosomal mannose-6-phosphate-independent targeting of beta-glucocerebrosidase. *Cell* 2007;131:770–783.
31. Choi JH, Stubblefield B, Cookson MR, et al. Aggregation of α -synuclein in brain samples from subjects with glucocerebrosidase mutations. *Mol Genet Metab* 2011;104:185–188.
32. Cooper AA, Gitler AD, Cashikar A, et al. Alpha-synuclein blocks ER-Golgi traffic and Rab1 rescues neuron loss in Parkinson's models. *Science* 2006;313:324–328.
33. Thayani N, Helm JR, Nycz DC, et al. Alpha-synuclein delays endoplasmic reticulum (ER)-to-Golgi transport in mammalian cells by antagonizing ER/Golgi SNAREs. *Mol Biol Cell* 2010;21:1850–1863.
34. Lu J, Chiang J, Iyer RR, et al. Decreased glucocerebrosidase activity in Gaucher disease parallels quantitative enzyme loss due to abnormal interaction with TCP1 and c-Cbl. *Proc Natl Acad Sci U S A* 2010;107:21665–21670.
35. Farfel-Becker T, Vitner E, Dekel H, et al. No evidence for activation of the unfolded protein response in neuronopathic models of Gaucher disease. *Hum Mol Genet* 2009;18:1482–1488.
36. Bouman L, Schlierf A, Lutz AK, et al. Parkin is transcriptionally regulated by ATF4: evidence for an interconnection between mitochondrial stress and ER stress. *Cell Death Differ* 2011;18:769–782.
37. Westerlund M, Belin AC, Anvret A, et al. Cerebellar alpha-synuclein levels are decreased in Parkinson's disease and do not correlate with SNCA polymorphisms associated with disease in a Swedish material. *FASEB J* 2008;22:3509–3514.
38. Mann VM, Cooper JM, Krige D, et al. Brain, skeletal muscle and platelet homogenate mitochondrial function in Parkinson's disease. *Brain* 1992;115:333–342.