



# GmWRKY16 Enhances Drought and Salt Tolerance Through an ABA-Mediated Pathway in *Arabidopsis thaliana*

Qibin Ma<sup>1,2,3,4†</sup>, Zhenglin Xia<sup>1,2,3,4†</sup>, Zhandong Cai<sup>1,2,3,4†</sup>, Lu Li<sup>1,2,3,4</sup>, Yanbo Cheng<sup>1,2,3,4</sup>, Jia Liu<sup>1,2,3,4</sup> and Hai Nian<sup>1,2,3,4\*</sup>

<sup>1</sup> The State Key Laboratory for Conservation and Utilization of Subtropical Agro-Bioresources, South China Agricultural University, Guangzhou, China, <sup>2</sup> The Key Laboratory of Plant Molecular Breeding of Guangdong Province, College of Agriculture, South China Agricultural University, Guangzhou, China, <sup>3</sup> National Engineering Research Center of Plant Space Breeding, South China Agricultural University, Guangzhou, China, <sup>4</sup> The Guangdong Subcenter of the National Center for Soybean Improvement, College of Agriculture, South China Agricultural University, Guangzhou, China

## OPEN ACCESS

### Edited by:

Ruth Grene,  
Virginia Tech, United States

### Reviewed by:

Yang Zhao,  
Shanghai Institutes for Biological  
Sciences (CAS), China  
Yong Hwa Cheong,  
Sunchon National University,  
South Korea

### \*Correspondence:

Hai Nian  
hnian@scau.edu.cn

†These authors have contributed  
equally to this work

### Specialty section:

This article was submitted to  
Plant Abiotic Stress,  
a section of the journal  
Frontiers in Plant Science

Received: 07 June 2018

Accepted: 20 December 2018

Published: 21 January 2019

### Citation:

Ma Q, Xia Z, Cai Z, Li L, Cheng Y,  
Liu J and Nian H (2019) GmWRKY16  
Enhances Drought and Salt Tolerance  
Through an ABA-Mediated Pathway  
in *Arabidopsis thaliana*.  
Front. Plant Sci. 9:1979.  
doi: 10.3389/fpls.2018.01979

The WRKY transcription factors (TFs) are one of the largest families of TFs in plants and play multiple roles in plant development and stress response. In the present study, *GmWRKY16* encoding a WRKY transcription factor in soybean was functionally characterized in *Arabidopsis*. *GmWRKY16* is a nuclear protein that contains a highly conserved WRKY domain and a C<sub>2</sub>H<sub>2</sub> zinc-finger structure, and has the characteristics of transcriptional activation ability, presenting a constitutive expression pattern with relative expression levels of over fourfold in the old leaves, flowers, seeds and roots of soybean. The results of quantitative real time polymerase chain reaction (qRT-PCR) showed that *GmWRKY16* could be induced by salt, alkali, ABA, drought and PEG-6000. As compared with the control, overexpression of *GmWRKY16* in *Arabidopsis* increased the seed germination rate and root growth of seedlings in transgenic lines under higher concentrations of mannitol, NaCl and ABA. In the meantime, *GmWRKY16* transgenic lines showed over 75% survival rate after rehydration and enhanced *Arabidopsis* tolerance to salt and drought with higher proline and lower MDA accumulation, less water loss of the detached leaves, and accumulated more endogenous ABA than the control under stress conditions. Further studies showed that *AtWRKY8*, *KIN1*, and *RD29A* were induced in *GmWRKY16* transgenic plants under NaCl treatment. The expressions of the ABA biosynthesis gene (*NCED3*), signaling genes (*ABI1*, *ABI2*, *ABI4*, and *ABI5*), responsive genes (*RD29A*, *COR15A*, *COR15B*, and *RD22*) and stress-related marker genes (*KIN1*, *LEA14*, *LEA76*, and *CER3*) were regulated in transgenic lines under drought stress. In summary, these results suggest that *GmWRKY16* as a WRKY TF may promote tolerance to drought and salt stresses through an ABA-mediated pathway.

**Keywords:** *GmWRKY16*, soybean, salt, drought, ABA, *Arabidopsis thaliana*

## INTRODUCTION

The growth and yield of plants are seriously affected and inhibited by various biotic and abiotic stresses such as high salinity, drought and extreme temperatures, which are the main limiting factors (Hennig, 2012; Liang et al., 2017; He et al., 2018). Plants have evolved some effective mechanisms to face environmental challenges (Munns, 2002; He et al., 2018). Among all the stress-resistance systems in plants, many transcription factors (TFs) related to plant tolerance to stresses have been identified as playing important roles in abiotic stresses. Under stressful conditions, transcriptome changes are the earliest responses in plants. The TFs from the bZIP, NAC, AP2, WRKY, PHD, DREB, or MYB families are essential for plant stress response by binding specific *cis*-acting elements to form a complex regulatory network. Overexpression of these TF genes usually increases the adaptability of plants to drought and salt stresses (Liu et al., 2012; Ying et al., 2012; Zong et al., 2016; Ullah et al., 2018).

The WRKY TFs, dominating the genetic transcription, have become one of the largest TF families in plants (Eulgem et al., 2000; Rushton et al., 2010; Bencke-Malato et al., 2016; Goel et al., 2016; Meng et al., 2016; Yu Y. et al., 2016; Wu J. et al., 2017; Xiao et al., 2017; Bai et al., 2018; Finatto et al., 2018; Song et al., 2018; Xie et al., 2018). All the WRKY proteins have one or two conserved WRKY domains of approximately 60 amino acids with a highly conserved sequence motif WRKYGQK and a Zn-finger motif at N and C termini, respectively (Eulgem et al., 2000). The WRKY TFs can be classified into three groups (I, II, and III) according to the number of WRKY domains and the Zn-finger motif type. The WRKY proteins of group I have two domains of WRKY and a C<sub>2</sub>H<sub>2</sub>-type zinc-finger structure, while the WRKY proteins of groups II and III have a WRKY domain with C<sub>2</sub>H<sub>2</sub> and/or C<sub>2</sub>HC-type Zn-finger motifs, respectively. Most TF proteins of group II with one WRKY domain are divided into five subgroups (IIa–IIe) on their phylogenetic clades (Eulgem et al., 2000; Zhang and Wang, 2005; Rushton et al., 2010; Zhang et al., 2017; Song et al., 2018; Xie et al., 2018; Yang et al., 2018).

Since the first WRKY gene *SPF1* was isolated from sweet potato (Ishiguro and Nakamura, 1994), more WRKY family genes with multiple roles in plants were discovered and widely reported to be particularly involved in response to biotic and abiotic stresses (Dai et al., 2016; Kiranmai et al., 2018) as well as regulatory roles such as leaf senescence (Miao and Zentgraf, 2007; Rinerson et al., 2015), trichome development (Bakshi and Oelmüller, 2014), root growth (Grunewald et al., 2013), seed development (Schlutenhofer and Yuan, 2015), dormancy (Ding et al., 2014), and secondary metabolites biosynthesis (Eulgem et al., 2000).

Recently, the functional characterization of WRKY proteins in plants was focused on their response to abiotic stresses. An individual WRKY gene can enhance plant tolerance to abiotic stress (Wang et al., 2013; Bakshi and Oelmüller, 2014; Dai et al., 2016; Kiranmai et al., 2018). In rice, overexpression of *OsWRKY11* and *OsWRKY42* improved heat and/or salt tolerance in transgenic rice seedlings (Wu et al., 2009; Pillai et al., 2018), and overexpression of *OsWRKY11* and *OsWRKY30* enhanced drought tolerance in transgenic rice (Wu et al., 2009;

Shen et al., 2012), whereas *OsWRKY76* played opposite roles in cold stress tolerance and blast disease resistance (Yokotani et al., 2013). In Arabidopsis, overexpression of *AtWRKY25*, *AtWRKY26* and *AtWRKY30* enhanced resistance to heat and salt stresses, respectively (Li et al., 2011; Scarpeci et al., 2013); overexpression of *AtWRKY46*, *AtWRKY54*, *AtWRKY70*, and *ABO3* enhanced resistance to drought stress (Ren et al., 2010; Chen et al., 2017). In contrast to rice and Arabidopsis, many WRKY genes in other plants have been identified specifically in relation to abiotic stress. For example, *GhWRKY41/SpWRKY1* enhances salt and drought tolerance in transgenic tobacco by regulating stomatal conductance and ROS levels (Li et al., 2015; Chu et al., 2016). Other WRKY genes such as *TaWRKY2* and *TaWRKY19* (wheat), *TaWRKY146* (wheat), *TaWRKY1* and *TaWRKY33* (wheat), *VaWRKY14* (grapevine), *ZmWRKY17* and *ZmWRKY40* (maize), and *PeWRKY83* (moso bamboo) are overexpressed in Arabidopsis, and the heterologous transgenic plants of the WRKY genes conferred tolerance to drought and/or salt stresses, respectively (Niu et al., 2012; He et al., 2016; Cai et al., 2017; Ma et al., 2017; Wu M. et al., 2017; Wang et al., 2018; Zhang et al., 2018). Among the WRKY genes in soybean, the overexpression of *GmWRKY21* enhanced the tolerance to cold stress in Arabidopsis, whereas *GmWRKY54* conferred salt and drought tolerance. By contrast, overexpression of *GmWRKY13* resulted in more sensitivity to salt and mannitol stress (Zhou et al., 2008). *GmWRKY27* overexpression improved salt and drought tolerance by interacting with *GmMYB174* to reduce expression of *GmNAC29* (Wang et al., 2015).

The plant hormone abscisic acid (ABA) plays important roles in the regulation of plant responses to adverse environmental stresses including drought, extreme temperatures and osmotic stress partly mediated by ABA-independent and -dependent pathways (Shinozaki and Yamaguchi-Shinozaki, 1997; Fujii and Zhu, 2009; Umezawa et al., 2010; Rushton et al., 2012; Shang et al., 2012; Yoshida et al., 2014; Song et al., 2016). Recently, some WRKY genes responding to abiotic stresses have been reported within the ABA signaling pathways. *GhWRKY6*-like from cotton improved Arabidopsis tolerance to salt stress by activating the ABA signaling pathway and eliminating reactive oxygen species (Ullah et al., 2018). *GhWRKY17* in transgenic *Nicotiana glauca* enhanced the sensitivity of plants to salt and drought stresses through the ABA signaling pathway by reducing the level of ABA and transcript levels of some ABA-inducible genes (Yan et al., 2014). The overexpression of *ZmWRKY17* in Arabidopsis resulted in the enhanced sensitivity of transgenic plants to salt stress and decreased ABA sensitivity by regulating the expression of some ABA- and stress-responsive genes (Cai et al., 2017). *GsWRKY20* and *ABO3* in Arabidopsis increased drought tolerance of transgenic plants by regulating gene expression of the ABA signaling pathway (Ren et al., 2010; Luo et al., 2013). *CmWRKY1* and *CmWRKY10* enhanced drought and dehydration tolerance of chrysanthemum by an ABA-mediated pathway through the regulation of ABA-associated genes (Fan et al., 2016; Jaffar et al., 2016).

In this study, *GmWRKY16*, a stress responsive gene induced by drought, salt, alkali, PEG, and ABA, was analyzed for its functional characterization of stress tolerance in Arabidopsis.

Transgenic *Arabidopsis* plants of *GmWRKY16* enhanced drought and salt tolerance as compared to wild type. Furthermore, the regulated genes responding to stresses were investigated in *Arabidopsis* for potential mechanisms through an ABA-mediated pathway.

## MATERIALS AND METHODS

### Plant Materials, Growth Conditions, and Treatments

A spring-sowing soybean cultivar, “Huachun 2” (HC2), bred by the Guangdong Subcenter of National Center for Soybean Improvement in South China Agricultural University, China, was used to investigate the tissue expression pattern of *GmWRKY16* and its responses to various stresses including mannitol, salt, drought, and ABA. Soybean seeds of HC2 were germinated, and its seedlings grew in growth chamber under a 12 h light/12 h dark cycle with 100  $\mu\text{M}$  photons  $\text{m}^{-2} \text{s}^{-1}$  at 25–30°C for 3 weeks as described previously by Zeng et al. (2012). The soybean roots of 3-week-old seedlings were immersed in Hoagland solution saturated with 200 mM NaCl, 50 mM  $\text{NaHCO}_3$ , 20% (w/v) PEG-6000 or 100  $\mu\text{M}$  ABA, respectively (Luo et al., 2013; Chen et al., 2015). Root samples were harvested after time intervals of 0, 1, 3, 6, 9, 12, and 24 h, respectively. Samples were frozen immediately in liquid nitrogen and subsequently stored for RNA extraction at  $-80^\circ\text{C}$ .

Ecotype Col-0 of *Arabidopsis* was used as the receptor for genetic transformation of *GmWRKY16* gene. All the *Arabidopsis* seeds of wild-type and transgenic lines were grown on the agar medium of 1/2 Murashige and Skoog (MS) in darkness for 2 days at 4°C after the seeds were sterilized with  $\text{ddH}_2\text{O}$ . The seedlings were then cultured for several days under long-day conditions (16 h light/8 h dark cycle) at 22°C in new 1/2 MS medium. The chemical compounds of mannitol, NaCl, and ABA were dissolved in MS medium, respectively. The taken samples of *Arabidopsis* were frozen immediately in liquid nitrogen and stored at  $-80^\circ\text{C}$  (Chen et al., 2015).

### *GmWRKY16* Gene Isolation and Sequence Analysis

According to previous reports, the sequence information of the *GmWRKY16* gene involved in abiotic stress was obtained from the database of the National Center for Biotechnology Information (NCBI) with the accession number XP\_003518509. The full-length sequence of *GmWRKY16* was amplified by RT-PCR using specific primers (Supplementary Table S1) and Super-Fidelity DNA polymerase (Phanta Max, Vazyme Biotech Co., Ltd.; Nanjing, China). The seedlings of HC2 under the treatment of 100 mM NaCl were used to extract total RNA by TRIzol reagent (Invitrogen). The methods of generated cDNA, RT-PCR reaction and agarose gel electrophoresis were described in detail previously (Lü et al., 2015). The purified PCR product was then inserted into the multiple cloning sites of the pLB vector (Tiangen Rapid DNA Ligation Kit, Beijing, China). The positive clones in *Escherichia coli* were used to obtain the full cDNA

sequence of *GmWRKY16* identified by PCR, enzyme digestion and sequencing [Sangon Biotech (Shanghai) Co., Ltd., China] (Lü et al., 2015; Ma et al., 2018).

The nucleotide sequence of *GmWRKY16* and the amino acid sequence of GmWRKY16 protein were used to search its homologous genes and proteins using the database of NCBI<sup>1</sup>. The alignment of nucleotide sequences was performed with the software of DNAMAN. The structure prediction of the GmWRKY16 protein was carried out using the NCBI blast results. Phylogenetic analysis was enforced by using the software of MEGA 7 (Kumar et al., 2016). The alignment was adjusted manually, while the unrooted phylogenetic trees were constructed by the Neighbor-Joining method (Sievers et al., 2011).

### Plasmid Construction and Transformation of *GmWRKY16* in *Arabidopsis*

The full-length coding sequence of *GmWRKY16* (Supplementary Table S1) amplified from the GmWRKY16-pLB vector was inserted into the *Bam*HI and *Kpn*I sites of a pTF-101 vector using specific primers (Supplementary Table S1). The pTF-101-GmWRKY16 fusion construct with a  $\beta$ -glucuronidase (GUS) reporter was generated under the control of the cauliflower mosaic virus 35S (CaMV 35S) promoter. The pTF-101-GmWRKY16 plasmid was then transformed into *Agrobacterium tumefaciens* GV3101 competent cells by the electroporation method. The full-flowering *Arabidopsis* plants were used for genetic transformation by the floral dip method (Clough and Bent, 1998). All the *GmWRKY16* transgenic seedlings were screened by an herbicide to obtain the positive plants.

### Subcellular Localization of *GmWRKY16* Protein

Localization of the GmWRKY16 protein was carried out using the method described previously (Lü et al., 2015). The complete coding sequence of *GmWRKY16* without a stop codon amplified by PCR using the specific primers was inserted into the *Nco*I and *Spe*I restriction sites to generate a fusion construct under the control of CaMV 35S promoter. The plasmids of pCAMBIA1302 and pCAMBIA1302-GmWRKY16 were transformed into *Agrobacterium tumefaciens* strain GV3101 by the heat shock method. The young leaves of 4-week-old tobacco plants were contaminated by the recombinant *Agrobacterium tumefaciens* using the method according to Kokkiralala et al. (2010). The leaves after 48 h agro-infiltration were photographed with a confocal laser scanning microscope (Leica, Germany).

### Transactivation Assay

The full-length cDNA of *GmWRKY16* amplified by PCR using specific primers was inserted into the *Eco*RI and *Sac*I sites to create a fusion construct of pGBKT7-GmWRKY16

<sup>1</sup><https://blast.ncbi.nlm.nih.gov/Blast.cgi>

(**Supplementary Table S1**). The pGBKT7-GmWRKY16 plasmid was transformed into yeast strain Y2H. An empty pGBKT7 vector was used as a negative control. Transcriptional activation was analyzed according to the methods described previously (Yang et al., 2010).

### Expression Analysis by qRT-PCR

Total RNA was extracted from the seedlings of soybean or Arabidopsis using the plant total RNA kit (GeneMark, Taiwan, China). Reversing transcription for the first strand cDNA synthesis was performed with 2  $\mu$ g of total RNA using a Prime Script<sup>TM</sup> RT reagent Kit (Takara, Beijing, China). The qRT-PCR analyses were performed on a CFX96<sup>TM</sup> Real-Time system (United States) with SYBR Premix ExTaq II (Takara, Beijing, China). The inner reference gene  $\beta$ -*tubulin* was used to normalize the data. The quantitative variations of gene expression between the examined replicates were evaluated by the  $2^{-\Delta\Delta C_t}$  method described previously (Willems et al., 2008; Lü et al., 2015). Three independent biological repeats were performed to ensure accurate statistical analysis. The specific primers were listed in **Supplementary Table S1**.

### Stress Tolerance Assays of Seed Germination

To detect seed germination of *GmWRKY16* transgenic lines under the condition of mannitol, NaCl or ABA stresses, the surface-sterilized Arabidopsis seeds of wild type and transgenic lines were planted on solid 1/2 MS media with various concentrations of mannitol (0, 100, 200, and 300 mM), NaCl (0, 100, 150, and 200 mM), and ABA (0, 0.5, 1, and 1.5  $\mu$ M). The rates of seed germination were recorded every day with images taken on the 4th and 7th day after seed was sown. For the root length assay, the sterilized seeds of transgenic lines and WT were grown on 1/2 MS media for 3 days, and then the seedlings were transplanted to fresh media supplemented with mannitol (0, 150, and 300 mM), NaCl (0, 75, and 150 mM), and ABA (0, 0.5, and 1.0  $\mu$ M) for another 7 days to examine the root length (Rushton et al., 2012; Seo et al., 2012; Shang et al., 2012; Chen et al., 2015). The root elongation of Arabidopsis plants was monitored and analyzed using Image J software<sup>2</sup>.

### Drought and Salt Treatments in Transgenic Arabidopsis

For drought treatments, Arabidopsis seeds of the T<sub>3</sub> generation of WT and *GmWRKY16* overexpression lines were sown in mixed soil (vermiculite and flower nutrient soil, 1:1) for 3 weeks under optimal irrigation conditions. The following drought stress treatments were set as 5, 7, and 9 days without watering, respectively. All the Arabidopsis plants were watered again for 5 days after their photographs were taken and their survival rates were determined (Seo et al., 2012; Ying et al., 2012; Babitha et al., 2013). For salt treatments, Arabidopsis seeds of the WT and *GmWRKY16* overexpression lines of the T<sub>3</sub> generation were sown in mixed soil (vermiculite and flower nutrient soil, 1:1) in the

chambers. The 3-week-old Arabidopsis plants were then irrigated with a solution of 200 mM NaCl for 15 days (Niu et al., 2012; Ying et al., 2012; Babitha et al., 2013).

### Measurements for Small Molecules and Dehydration

The content of free proline in plants was determined following methods described previously (Bates et al., 1973). Briefly, 0.5 g of plant samples were homogenized in 5 ml of 3% sulfosalicylic acid using a mortar. The 2 ml supernatant was transferred to a new tube, and then 2 ml of acid ninhydrin and 2 ml of glacial acetic acid were added to form the extraction solution. The reaction mixture was boiled in a water bath at 100°C for 1 h and then stored at 4°C for 30 min. After the mixtures were centrifuged at 3,000 g for 5 min, the proline content for each sample was measured at 520 nm absorbance. The 3-week-old Arabidopsis seedlings were prepared in accordance with the above description. After treatment of 200 mM NaCl for 1 week, the leaf samples were taken to measure the MDA contents using the method of thiobarbituric acid (TBA) described in detail previously (Heath and Packer, 1968). For measuring dehydration, the leaves of rosettes were cut from the 3-week-old plants and immediately placed on a laboratory bench (40% relative humidity). Water loss of fresh leaves was weighed at treatment intervals set as 0, 0.5, 1, 1.5, 2, 3, 4, 5, and 6 h, respectively. All of the experiments comprised three replicates. ABA content was measured using an enzyme-linked immunosorbent assay (ELISA), as previously described (Yang et al., 2001).

### Data Analysis

All data were presented as the mean of three biological replicates  $\pm$  SD. Student's test at  $P = 0.01$  or  $P = 0.05$  was used to identify the difference between observation values (Lü et al., 2015).

## RESULTS

### Cloning and Bioinformatics Analysis of *GmWRKY16*

The WRKY superfamily is one of the biggest transcription factor (TF) families in soybean and plays multiple roles in plant growth and development, abiotic stresses, etc. (Bencke-Malato et al., 2014; Dias et al., 2016; Yu Y. et al., 2016; Yang et al., 2017). Based on recent reports on the functions of WRKY TFs in soybean (Yu Y. et al., 2016), a salt and/or drought stress-induced gene encoding a transcription factor of WRKY proteins was obtained from the database under gene locus LOC100790175 and protein accession number of XP\_003518509. The *WRKY* gene, located on chromosome 2 of soybean and designed as *GmWRKY16*, was cloned using the specific primers (**Supplementary Table S1**) from the cultivar HC2. The full-length genome sequence of *GmWRKY16* included 3 exons and 2 introns with a full-length cDNA of 1014 bp (data not shown). The predicted *GmWRKY16* protein comprises 337

<sup>2</sup><http://rsb.info.nih.gov/ij>



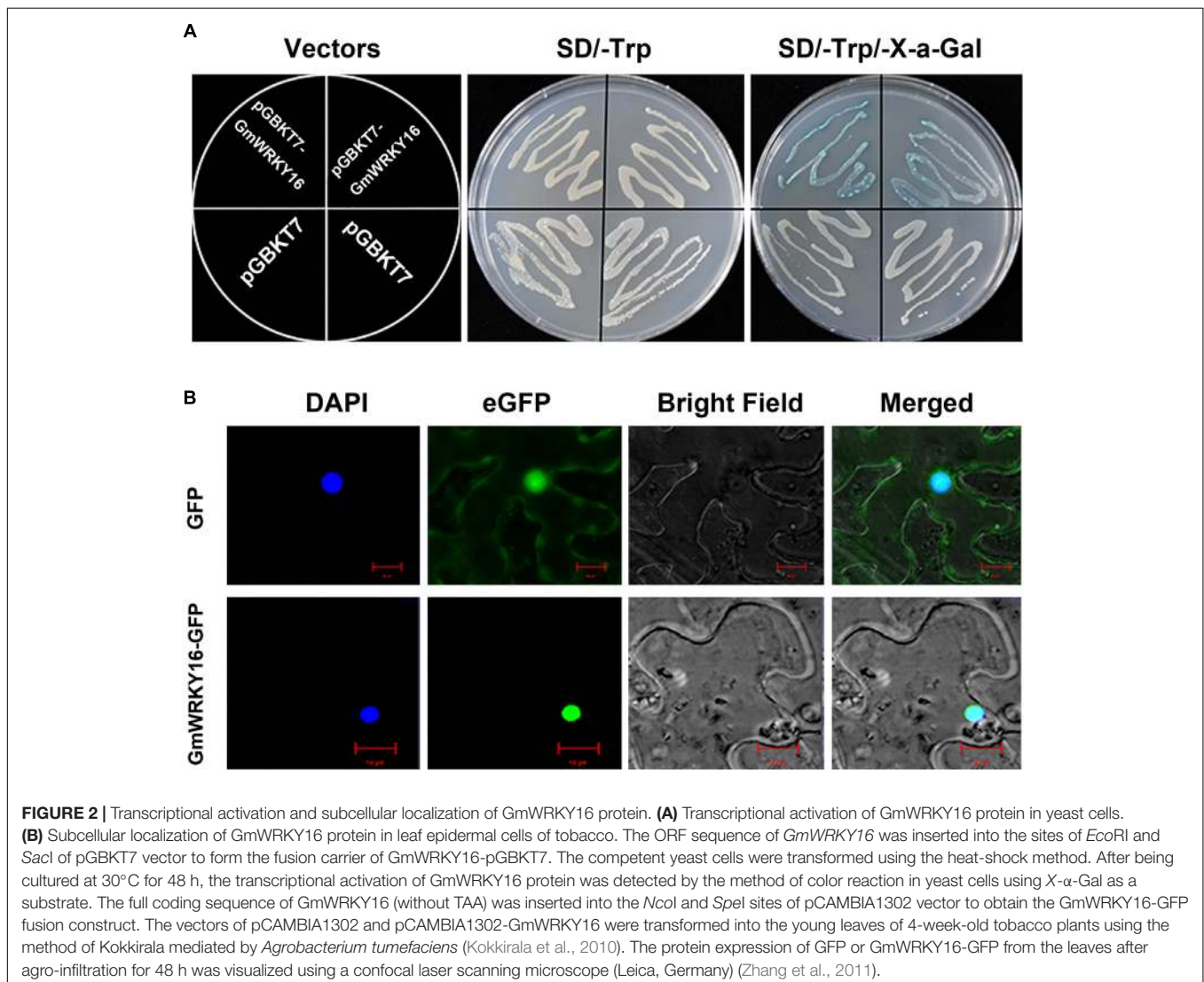
amino acids (AA) with 38.113 kDa of molecular weight (data not shown).

The NCBI BLAST analysis of the full amino acids sequence indicated that the GmWRKY16 protein had a WRKY DNA-binding domain at the location of the peptide chain between 190 AA and 250 AA (data not shown). The results of multiple alignment using the Phytozome data showed that the GmWRKY16 protein contained two small domains with a motif of WRKYGQK and a C<sub>2</sub>H<sub>2</sub> zinc-finger motif similar to those of five other WRKY proteins from Arabidopsis and soybean (Figure 1A). To investigate the relationship between GmWRKY16 and other WRKY proteins from soybean, rice and Arabidopsis, a phylogenetic tree was constructed by the neighbor-joining method using the MEGA 7.0 software (Figure 1B). The results indicated that all the 80 WRKY proteins were divided into three major groups: Group I (15 proteins), Group II (59 proteins), and Group III (6 proteins). In addition, 59 WRKY proteins in Group II were further divided into five subgroups: Group II-a, Group II-b, Group II-c, Group II-d,

and Group II-e. GmWRKY16 protein belongs to the WRKY members of Group II-c with 93% similarity to GmWRKY129 protein (Figure 1B). Therefore, the bioinformatics analysis suggest that GmWRKY16 protein may have a function in abiotic stresses.

## Characteristics of Localization and Transcriptional Activation Ability of GmWRKY16 Protein

To determine the transcriptional activity of GmWRKY16 protein, the ORF sequence of *GmWRKY16* was inserted into the *EcoRI* and *SacI* sites of pGBKT7 to form a GmWRKY16-pGBKT7 construct (data not shown). The fusion plasmid of GmWRKY16-pGBKT7 and pGBKT7 alone (negative control) were transformed into the cells of yeast strain Y2H, respectively. As shown in Figure 2A, yeast cells transformed by the GmWRKY16-pGBKT7 and pGBKT7 vectors could grow well on the SD/-Trp medium without any differences. However, the cell deposits



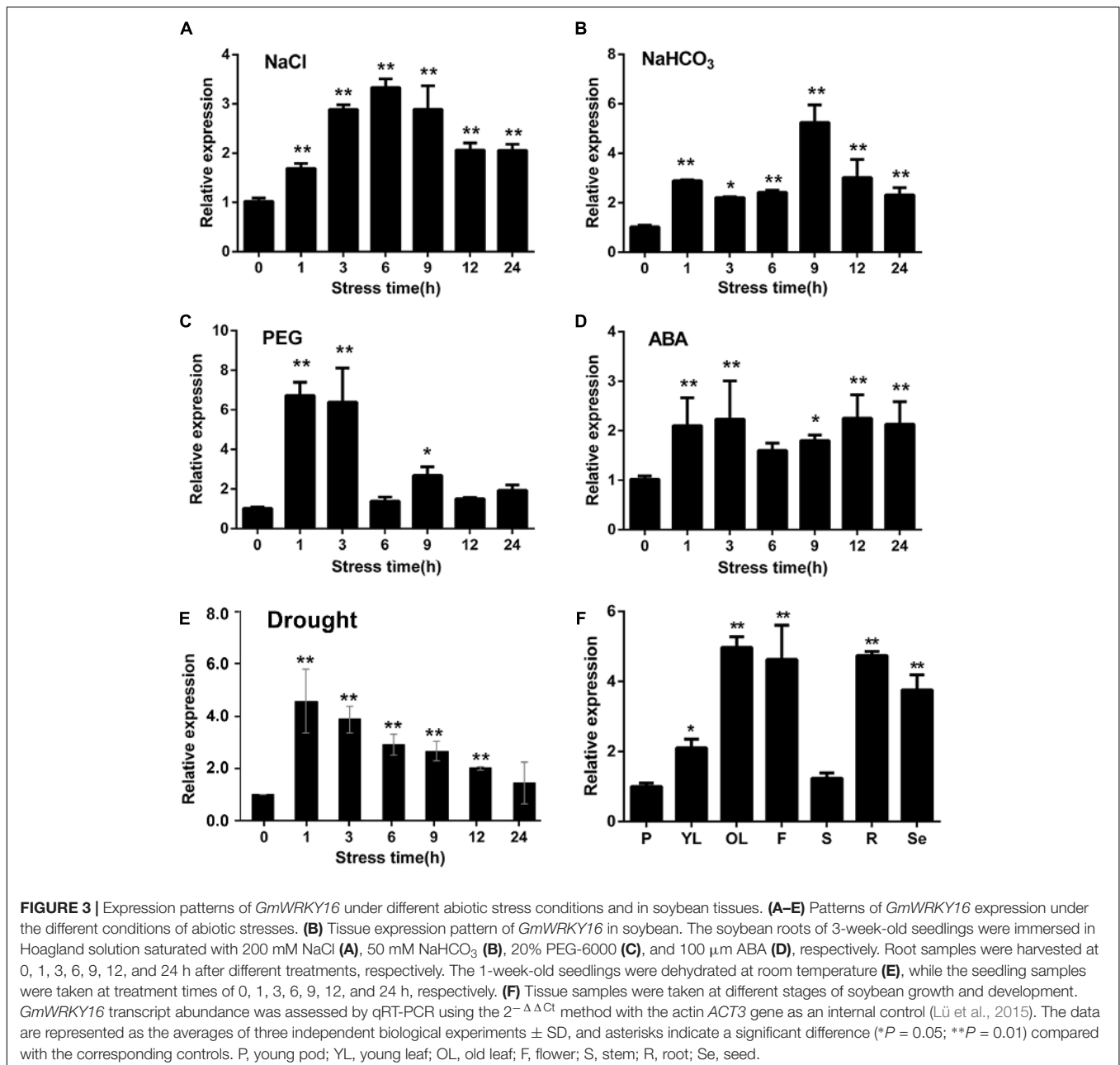
transformed by the GmWRKY16-pGBKT7 construct turned blue on the SD/-Trp/X- $\alpha$ -Gal medium colored with chromogenic substrate of X-gal (**Figure 2A**). These results indicated that GmWRKY16 protein had transcriptional activity in yeast cell.

To verify the subcellular localization of GmWRKY16 protein, the full-length GmWRKY16 cDNA without the termination codon was fused in-frame to the 5' end of GFP gene at the NcoI and SpeI sites of the pCAMBIA1302 vector to obtain the GmWRKY16-GFP fusion construct (data not shown). The fusion plasmid of pCAMBIA1302-GmWRKY16 and pCAMBIA1302 alone were transformed into the young leaves of 4-week-old tobacco plants, respectively. As shown in **Figure 2B**, the

GmWRKY16-GFP protein accumulated mainly in the nucleus with strong signals of green fluorescence. In contrast, GFP alone was distributed evenly throughout all parts of the cell including the nucleus and cytoplasm (**Figure 2B**). The result of confocal microscopic analysis suggests that the GmWRKY16 protein may function as a transcription factor.

## Expression Patterns of GmWRKY16 Under Abiotic Stress Conditions

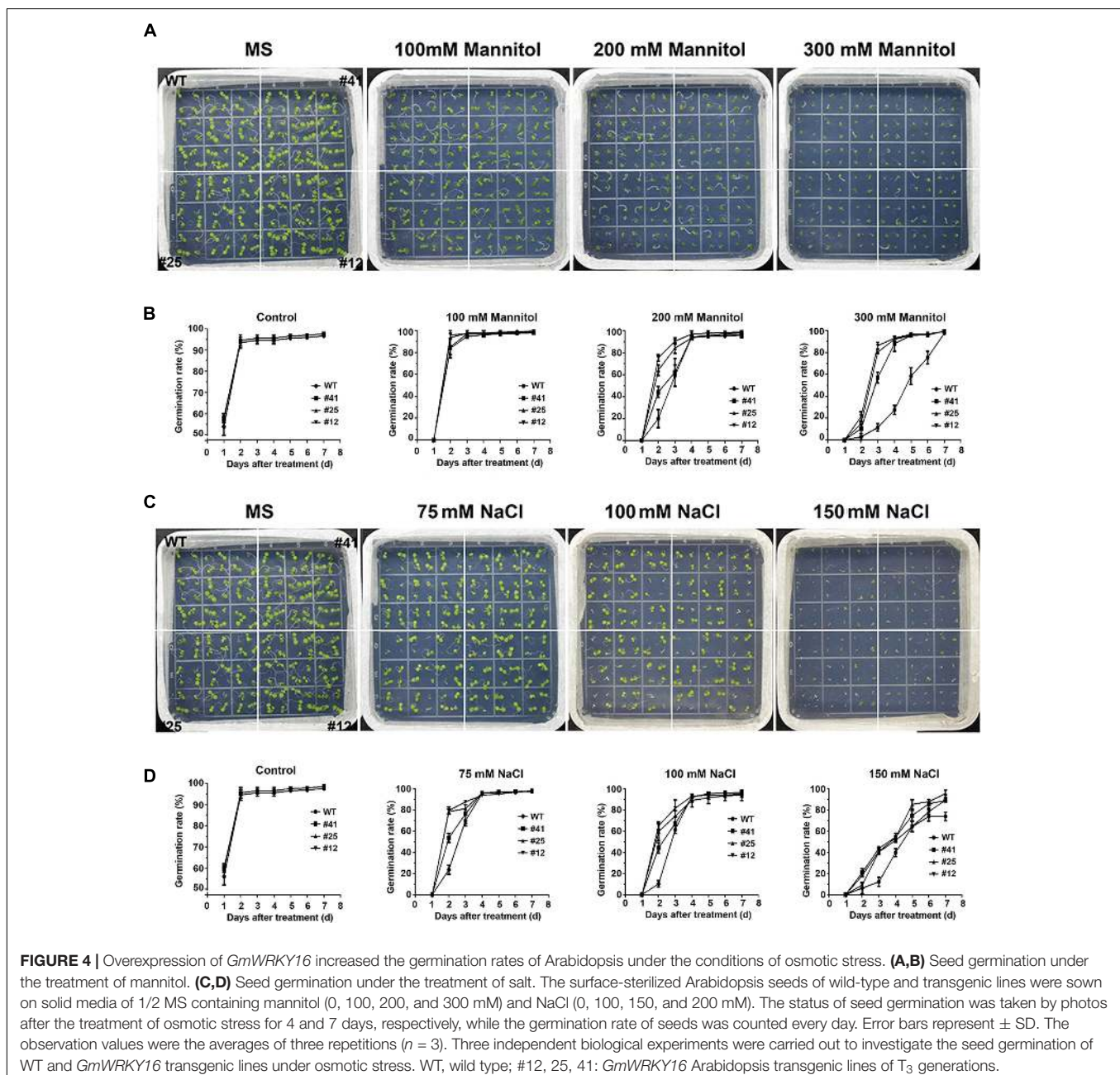
To investigate the expression patterns of GmWRKY16 response to abiotic stresses, quantitative real-time PCR (qRT-PCR) was performed to analyze the transcript abundance of GmWRKY16



under salt, alkali, PEG-6000, ABA and drought treatments. As shown in **Figure 3A**, *GmWRKY16* was quickly induced by 200 mM NaCl with increasing expression levels. Total RNA of *GmWRKY16* was increased up to the highest level of 3.5-fold at the 6 h treatment in roots compared to that of the control, and then declined to a lower level under the 9 h to 24 h treatments. Similarly, under treatment of 50 mM NaHCO<sub>3</sub>, *GmWRKY16* increased slowly under the treatments from 1 to 9 h up to the highest expression level of 5.8-fold (**Figure 3B**). Meanwhile, *GmWRKY16* was induced rapidly by PEG-6000 up to the highest expression level of 6.8-fold (**Figure 3C**). For ABA treatment, *GmWRKY16* was also induced rapidly up to its highest expression level of 2.5-fold, and then the expression of *GmWRKY16*

maintained at a relatively high level (**Figure 3D**). Furthermore, the expression of *GmWRKY16* was increased along with the treatments of dehydration with its highest expression level of 4.6-fold (**Figure 3E**). These findings suggest that *GmWRKY16* might play a role in multiple abiotic stresses.

To detect the tissue expression pattern of *GmWRKY16*, the leaf, stem, pod, flower, root, and seed samples were taken from the soybean cultivar HC2. The analysis of qRT-PCR indicated that *GmWRKY16* was expressed constitutively in soybean with a more than fivefold expression level in old leaves compared to those in the stem and young pod (**Figure 3F**). In addition, *GmWRKY16* has higher expression of more than 3.8-fold levels in soybean organs including flower, root, and seed (**Figure 3F**). These results





suggest that *GmWRKY16* may have some functions in soybean tissues and/or organs.

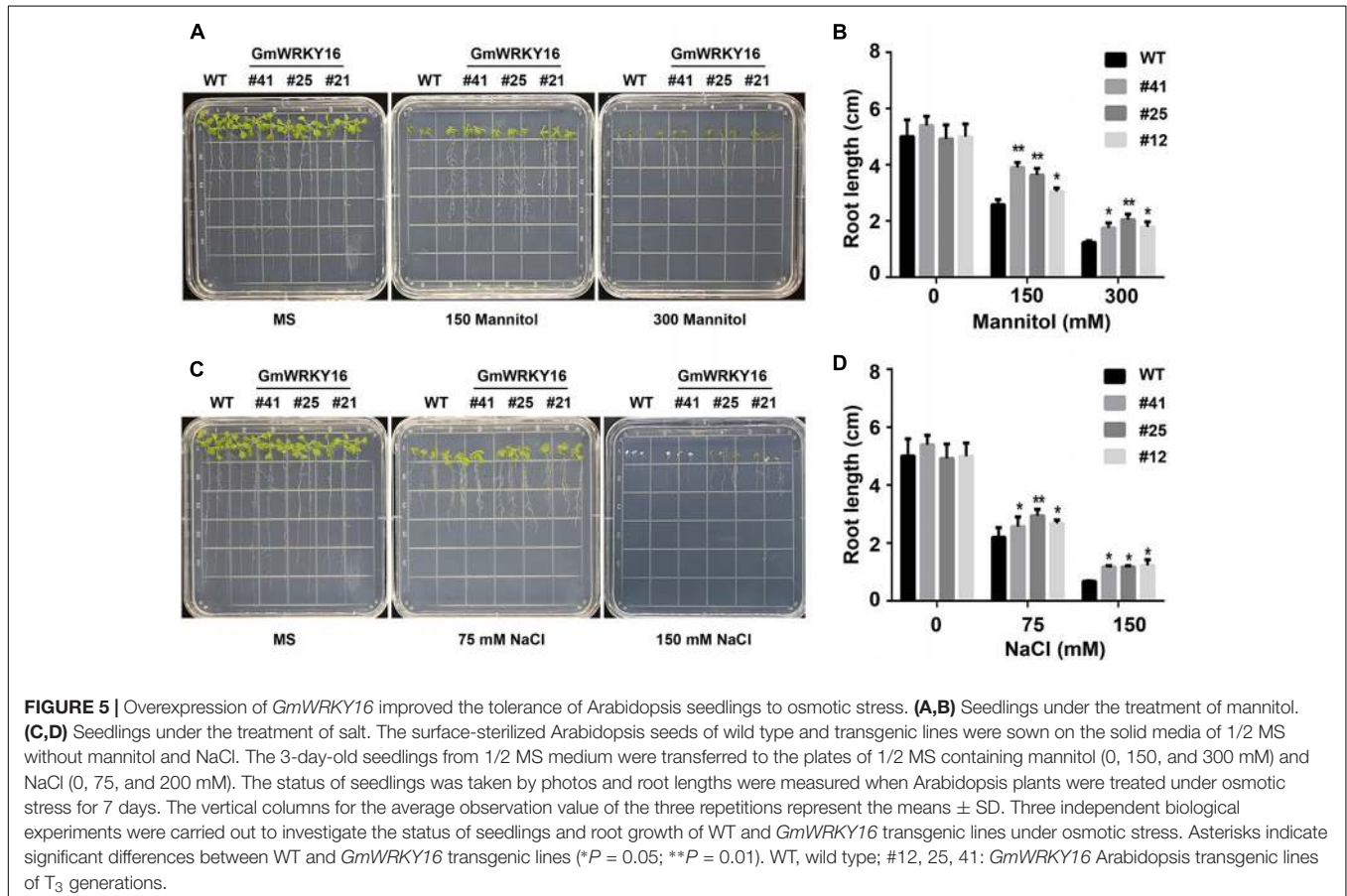
## *GmWRKY16* Improved the Tolerance of Transgenic Arabidopsis to Osmotic Stress

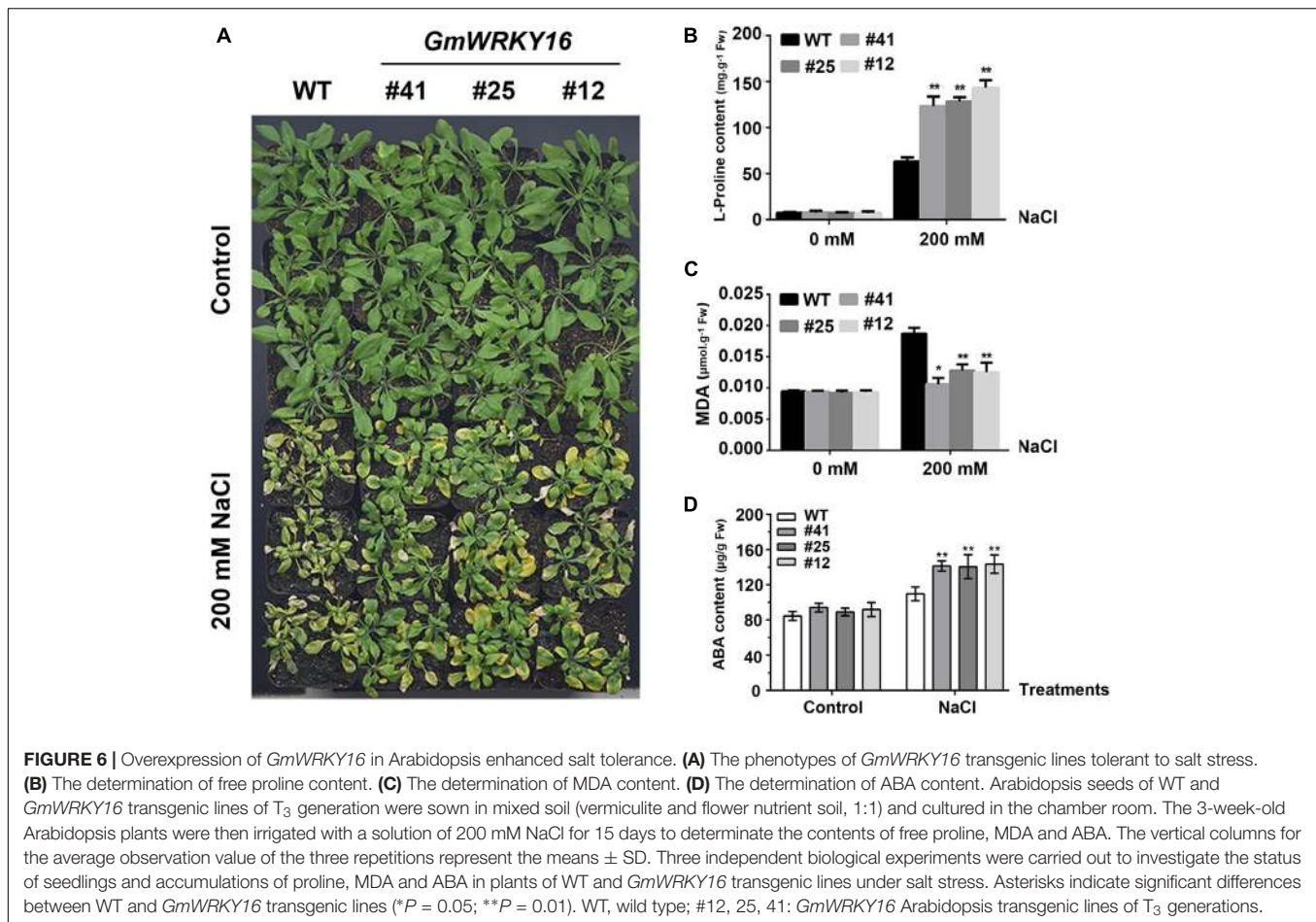
To investigate the tolerance to osmotic stress of *GmWRKY16* transgenic lines after molecular identification (**Supplementary Figure S1**), different treatments of mannitol and NaCl were performed on 1/2 MS medium to determine the germination rates and root elongation of Arabidopsis (**Figures 4, 5**). Statistical results showed that seed germination of Arabidopsis was inhibited by mannitol stress (**Figures 4A,B**). As compared with the control (0 mM mannitol), the transgenic Arabidopsis lines of *GmWRKY16* overexpression enhanced seed germination rates at 100, 200, and 300 mM of mannitol, respectively. The germination rates of *GmWRKY16* transgenic lines were almost up to 100% under the mannitol treatments at the 3rd, 4th, and 5th days, respectively. The wild-type germination was severely suppressed, with lower germination rates compared to those of *GmWRKY16* transgenic lines under treatments of 200 mM and 300 mM mannitol, respectively (**Figures 4A,B**). When Arabidopsis seeds were treated with NaCl, *GmWRKY16* transgenic plants germinated faster than those of WT in the first 3 days. However, no significant differences in germination

rate were found between WT and *GmWRKY16* transgenic lines after 3 days under the treatments of 75, 100, and 150 mM NaCl, respectively (**Figures 4C,D**).

The root lengths of Arabidopsis were inhibited by mannitol and NaCl stresses with the increase of the treatment concentrations (**Figure 5**). The root lengths of WT plants were 2.5 cm long under treatment of 150 mM mannitol, which was almost half the length of the control, while the root lengths of *GmWRKY16* transgenic lines were more than 3 cm up to 4.1 cm long under treatment of 150 mM mannitol (**Figures 5A,B**). Under treatment of 300 mM mannitol, the root lengths of WT and of *GmWRKY16* transgenic lines were inhibited to 1.5 cm and more than 2 cm long, respectively (**Figures 5A,B**). In the meantime, the inhibition of root elongation was also found under salt stress (**Figures 5C,D**). Compared to the control, the root lengths of WT were 2.2 and 0.7 cm long under the treatments of 75 and 150 mM NaCl, respectively, while the root lengths of *GmWRKY16* transgenic lines were over 2.5 and 1.1 cm long under the corresponding treatments (**Figures 5C,D**). These results suggest that overexpression of *GmWRKY16* enhances tolerance to osmotic stress.

To test the performance of the adult transgenic plants under NaCl stress, 21-day-old Arabidopsis plants were irrigated with a solution of 200 mM NaCl for 15 days. We observed that the leaves of the wild type were severely affected by salinity, whereas the leaves of *GmWRKY16* transgenic lines were less





affected (**Figure 6A**). It was found that 200 mM NaCl treatment induced proline accumulation both in wild-type plants and *GmWRKY16* transgenic lines, with 65 and over 135 mg.g<sup>-1</sup> of fresh weight, respectively (**Figure 6B**). In contrast, a greater MDA accumulation of 0.019  $\mu$ mol.g<sup>-1</sup> of fresh weight was found in WT compared to those of *GmWRKY16* transgenic lines, with less than 0.013  $\mu$ mol.g<sup>-1</sup> of fresh weight under salt stress (**Figure 6C**). Meanwhile, ABA accumulation of over 130  $\mu$ g.g<sup>-1</sup> of fresh weight was determined in *GmWRKY16* transgenic plants compared to those of WT, with less than 100  $\mu$ g.g<sup>-1</sup> of fresh weight (**Figure 6D**).

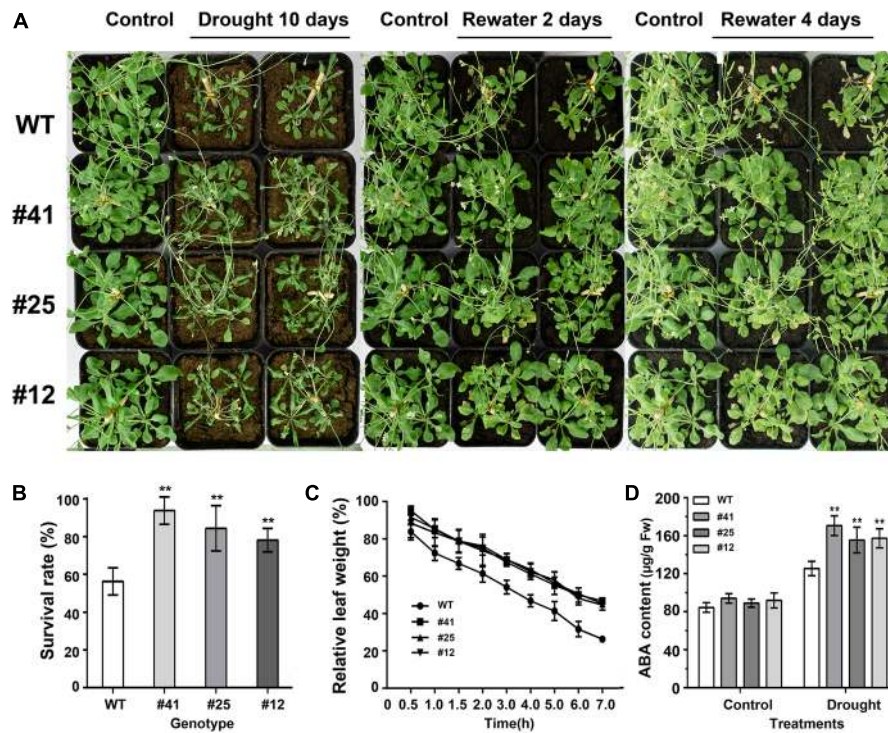
### ***GmWRKY16* Enhanced the Tolerance of Transgenic Arabidopsis to Drought Stress**

To test plant response to drought stress, 21-day-old Arabidopsis plants under optimal irrigation conditions were treated without watering for 6, 8, or 10 days, respectively. The observation results showed that Arabidopsis plants were damaged by water shortage. As shown in **Figure 7A**, WT plants were severely damaged, with symptoms of leaf yellowing and crimping as well as a 60% survival rate after 10 days of drought treatment (**Figure 7B**), while *GmWRKY16* transgenic plants grew well with an over 80%

survival rate (**Figure 7B**). Furthermore, detached leaves of WT lost water much faster than those of *GmWRKY16* transgenic lines under the dehydration treatment (**Figure 7C**). Meanwhile, ABA accumulation of over 150  $\mu$ g.g<sup>-1</sup> of fresh weight was determined in *GmWRKY16* transgenic plants compared to those of WT, with less than 120  $\mu$ g.g<sup>-1</sup> of fresh weight (**Figure 7D**). Therefore, the data indicated that overexpression of *GmWRKY16* enhanced Arabidopsis tolerance to drought stress.

### ***GmWRKY16* Conferred the Tolerance of Transgenic Arabidopsis to ABA**

To study *GmWRKY16* sensitivity to ABA, different treatments of ABA were performed on 1/2 MS medium to determine the germination rates and root elongation of Arabidopsis (**Figure 8**). The statistical results showed that seed germination of Arabidopsis was inhibited by ABA stress with increasing concentrations (**Figures 8A,B**). When compared to the control (0  $\mu$ M ABA), the *GmWRKY16* transgenic lines enhanced seed germination rates under ABA treatments of 0.5, 1.0, and 1.5 mM, respectively. The germination rates of *GmWRKY16* transgenic lines were almost up to 100% under the ABA treatments at the 6th day. Meanwhile, the germination rates of the wild type were less than 90, 80, and 70% with increasing concentrations under ABA treatments (**Figures 8A,B**).



**FIGURE 7 |** Overexpression of *GmWRKY16* in Arabidopsis conferred drought tolerance. **(A)** The phenotypes of *GmWRKY16* transgenic lines tolerant to drought stress. **(B)** The survival rates of Arabidopsis plants. **(C)** The water loss of detached leaves. **(D)** The determination of ABA content. Arabidopsis seeds of WT and *GmWRKY16* transgenic lines of T<sub>3</sub> generation were sown in mixed soil (vermiculite and flower nutrient soil, 1:1) and cultured in the chamber room. The 3-week-old Arabidopsis plants were subjected to water shortage for 5, 7, and 9 days, respectively. All the drought-treated plants were then rehydrated after they were dried for 5 days. The fresh weight was measured at the set intervals of drought stress. The vertical columns for the average observation value of the three repetitions represent the means  $\pm$  SD. Three independent biological experiments were carried out to investigate the status of seedlings, the survival rate and water loss of the detached leaves of WT and *GmWRKY16* transgenic lines under drought stress. Asterisks indicate the significant differences between WT and *GmWRKY16* transgenic lines (\* $P = 0.05$ ; \*\* $P = 0.01$ ). WT: wild type; #12, 25, 41: *GmWRKY16* Arabidopsis transgenic lines of T<sub>3</sub> generations.

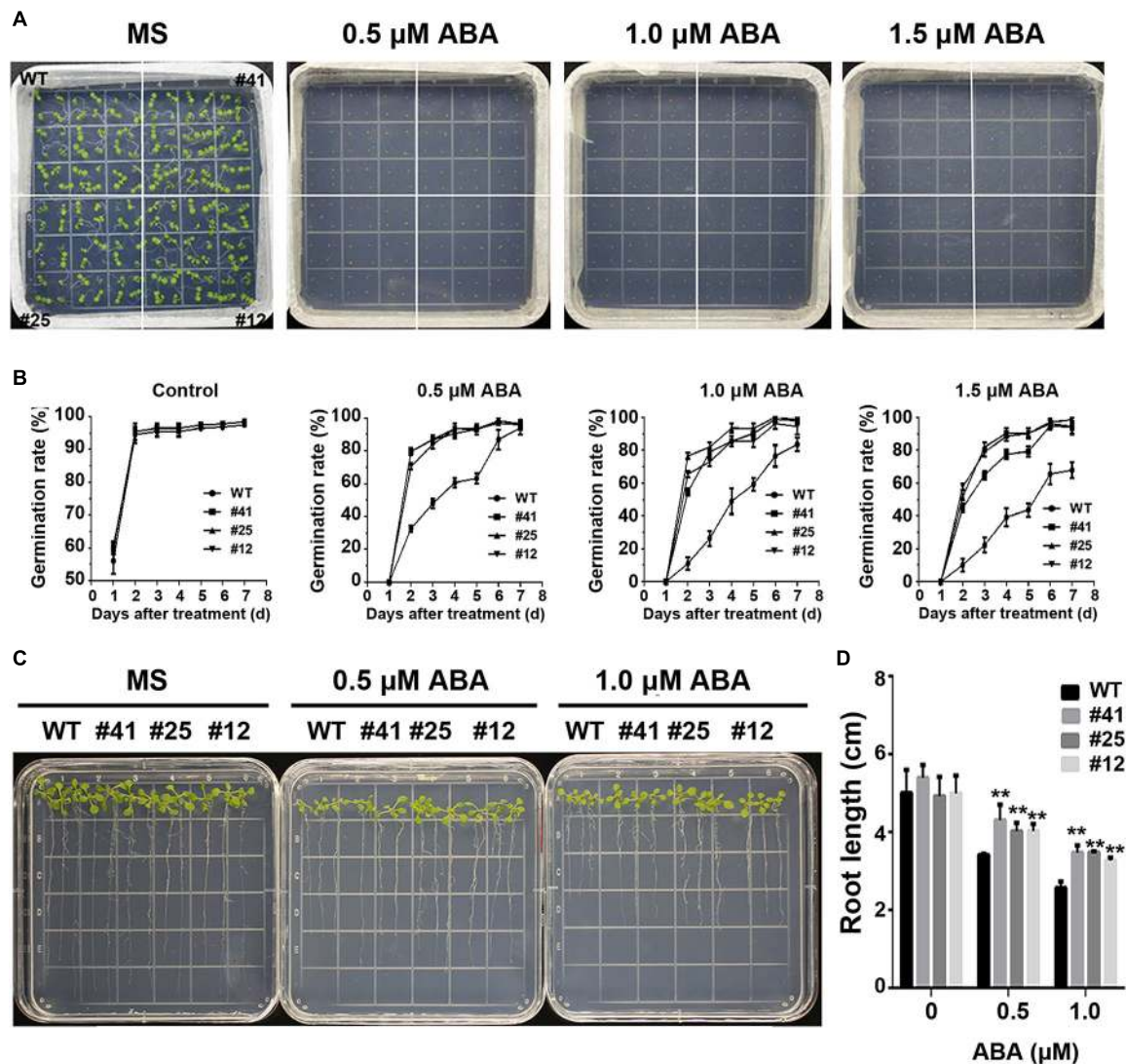
The root lengths of Arabidopsis were also inhibited by ABA stress (Figures 8C,D). The root lengths of WT plants were 3.5 cm long under the treatment of 0.5  $\mu$ M ABA, or around 1.8 cm shorter than that under the control, while the root lengths of *GmWRKY16* transgenic lines were over 4.1 cm long under the treatment of 0.5  $\mu$ M ABA (Figures 8C,D). Under the treatment of 1  $\mu$ M ABA, the root elongations of WT and *GmWRKY16* transgenic lines were also inhibited with 2.8 cm and over 3.2 cm long, respectively (Figures 8C,D). These results suggest that overexpression of *GmWRKY16* enhances the Arabidopsis tolerance to ABA stress.

### Expression Patterns of Stress/ABA Responsive Genes Regulated by *GmWRKY16*

To further investigate the pathway regulated by *GmWRKY16* under abiotic stress, expression patterns of stress/ABA responsive genes were performed by qRT-PCR. Two genes of *KINI* and *RD29A* were induced with much higher expression levels, over 220- and 130-fold greater under the NaCl treatment compared with those of the control, respectively (Figure 9A). Meanwhile, *AtWRKY8* was

induced with an expression level of over 12-fold greater under the NaCl treatment compared to that of the control (Figure 9A).

Under drought stress, the expressions of *COR15A* and *LEA76* were upregulated in *GmWRKY16* transgenic lines that were increased over 10-fold as compared to those in the wild type (Figure 9B). The expressions of *LEA14*, *RD29A*, *KINI*, *COR15B*, *RD22*, *CER3*, and *NCED3* were upregulated in *GmWRKY16* transgenic lines by less than sixfold as compared to those of wild type (Figure 9B). Among all the detected genes, *RD29A* was induced by *GmWRKY16* in transgenic lines with about a sixfold increased expression level in comparison to that of the wild type (Figure 9B). *ABI2* was induced by *GmWRKY16* in transgenic lines, with 3.6- and 2.8-fold increased expression levels under the drought treatment and the control, respectively. However, *ABI1* was induced by *GmWRKY16* in transgenic lines with a 2.2-fold increased expression level under the drought treatment (Figure 9C). In contrast, two drought-induced genes of *ABI4* and *ABI5* were inhibited with much lower expression levels under the treatment of drought stress (Figure 9C). All the results suggest that *GmWRKY16* may enhance Arabidopsis resistance to salt and drought stresses through ABA and/or other pathways.

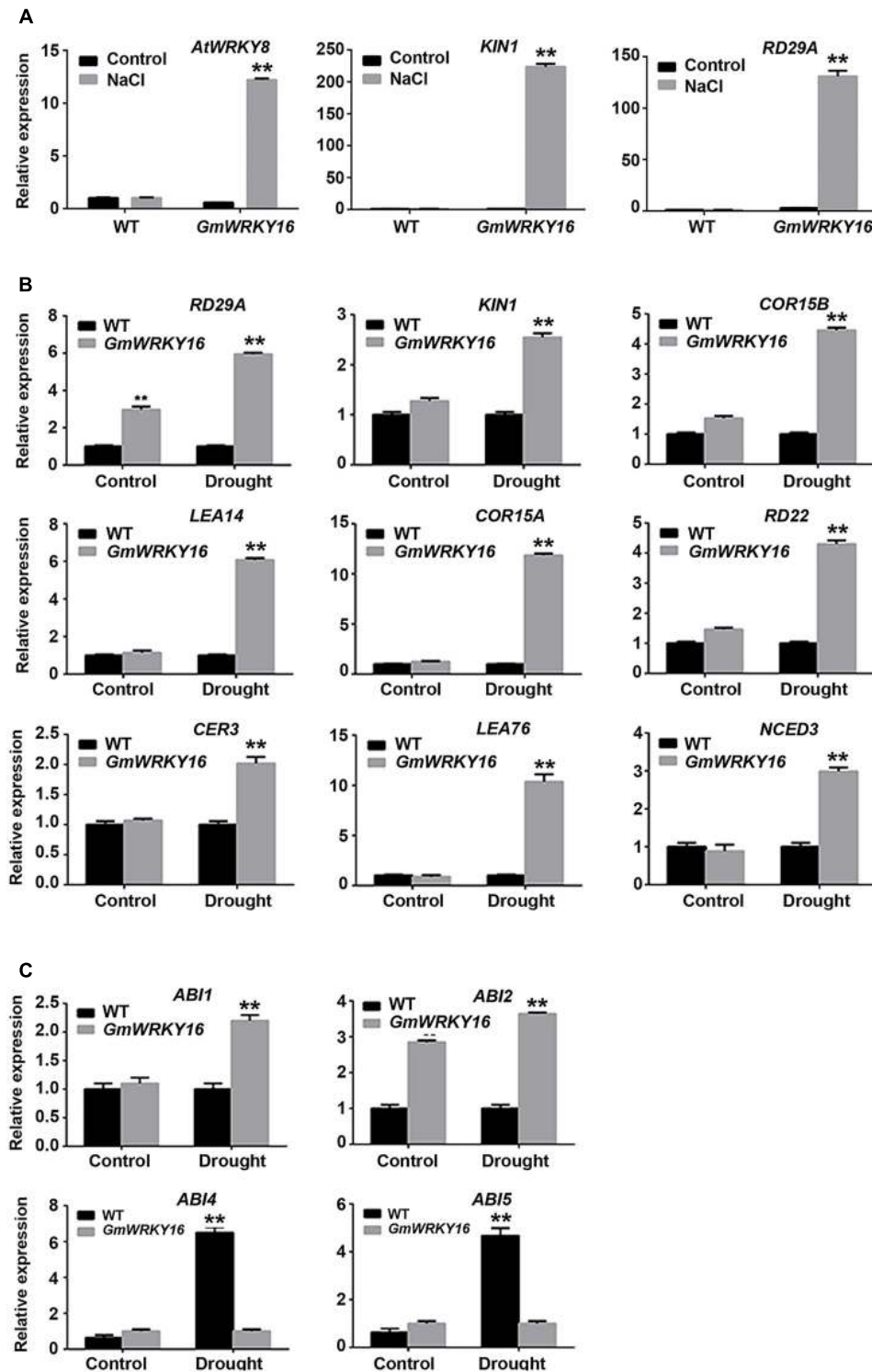


**FIGURE 8 |** Overexpression of *GmWRKY16* in *Arabidopsis* confers tolerance to ABA. **(A,B)** Seed germination under ABA treatment. The surface-sterilized *Arabidopsis* seeds of wild-type and transgenic lines were sown on the solid media of 1/2 MS containing ABA (0, 0.5, 1.0, and 1.5  $\mu\text{M}$ ). The photos were taken for the status of seed germination after the ABA treatment for 4 and 7 days, respectively. The 3-day-old seedlings from 1/2 MS medium were transferred to the plates of 1/2 MS containing ABA (0, 0.5, and 1.0  $\mu\text{M}$ ). The root lengths were measured when *Arabidopsis* plants were treated under the ABA stress for 7 days. Error bars represent  $\pm$  SD. The observation values were the averages of three repetitions. Three independent biological experiments were carried out to investigate the seed germination and root growth of WT and *GmWRKY16* transgenic lines under ABA stress. WT, wild type; #12, 25, 41: *GmWRKY16* *Arabidopsis* transgenic lines of T<sub>3</sub> generations.

## DISCUSSION

The WRKY TFs constitute one of the biggest transcription factor families, which play multiple roles in plants. Since the *SPF1* gene was firstly discovered in sweet potato (Ishiguro and Nakamura, 1994), some WRKY family genes have been investigated for their functional roles and mechanisms involved particularly in biotic and abiotic stresses (Dai et al., 2016; Kiranmai et al., 2018). However, little is known about the WRKYs functional roles and their mechanisms in soybean. In this study, *GmWRKY16* encoding a TF protein of the soybean WRKY family was cloned to determine its potential role in

soybean resistance to salt and drought stresses (Figures 6, 7). The phylogenetic tree analysis of *GmWRKY16* and other WRKY proteins from soybean, rice and *Arabidopsis* showed that *GmWRKY16* protein in subgroup IIc had more similarity to *GmWRKY129* and other WRKY proteins such as *AtWRKY8*, *AtWRKY28*, *AtWRKY48*, *AtWRKY71* (Figure 1B). Previous reports indicated that *AtWRKY8* enhanced the tolerance of *Arabidopsis* to salinity stress through modulating its interacting partner VQ9 protein (Hu et al., 2013), that *AtWRKY28* conferred resistance to abiotic stress in *Arabidopsis* by co-expression of *AtbHLH17* (Babitha et al., 2013), and that *AtWRKY71* hastened flowering in *Arabidopsis thaliana* in the presence of salt



**FIGURE 9** | Expression patterns of stress/ABA responsive genes regulated by *GmWRKY16*. **(A)** Expression patterns of genes responsive to salt stress. **(B)** Expression patterns of ABA and/or stress-responsive genes under drought stress. **(C)** Expression patterns of ABA-responsive genes under drought stress. Arabidopsis seeds of WT and *GmWRKY16* transgenic line #12 of T<sub>3</sub> generation were sown in mixed soil (vermiculite and flower nutrient soil, 1:1) and cultured in the chamber room. The 2-week-old seedlings were subjected to drought treatment (withholding water) and 200 mM NaCl treatment for 10 days. The samples from the aerial parts of Arabidopsis plants were taken for total RNA extraction. The relative expression of drought- and/or salt stress-responsive genes was quantified by qRT-PCR using *ACT3* as the reference gene to normalize the data (\*\**P* = 0.01). The  $2^{-\Delta\Delta Ct}$  method was used to evaluate the quantitative variation between the examined replicates (Lü et al., 2015). The details for the specific primers of the *GmWRKY16*, *ACT3* and stress-responsive genes are listed in **Supplementary Table S1**.

stress (Yu et al., 2018). Furthermore, the multiple alignment of amino acid sequence indicated that GmWRKY16 protein had a conserved WRKY motif and a zinc-finger motif at the central region with characteristics similar to other five WRKY proteins (Figure 1A). The analysis of the biochemistry characteristics of GmWRKY16 protein indicated that GmWRKY16 localizing to the nucleus could activate the expression of GFP in leaf epidermal cells of tobacco and held the transcriptional activation in yeast cells (Figure 2). Therefore, the results above suggest that GmWRKY16 protein may regulate various functions as a WRKY transcription factor involved in abiotic stress and/or development in plants.

Previous studies revealed that WRKY TFs were widely investigated for key roles in abiotic stress responses to drought and salt stresses (Zhou et al., 2008; Wang et al., 2015; Liu et al., 2016). In the present study, the WRKY gene *GmWRKY16* in soybean was quickly induced to the highest expression levels at 3–6 h after treatments of NaCl, PEG, drought, and ABA, respectively (Figure 3). Overexpression of *GmWRKY16* in Arabidopsis promoted seed germination and root elongation of seedlings under NaCl and mannitol treatments (Figures 4, 5), and enhanced the tolerance of transgenic plants to salt and drought stresses (Figures 6, 7). Similar resistant phenotypes to abiotic stress were also found in other WRKY TF genes in soybean. For example, *GmWRKY54* enhanced the tolerance of transgenic Arabidopsis plants to salt and drought stresses through the regulation of *DREB2A* and *STZ/Zat10* (Zhou et al., 2008). Furthermore, *GmWRKY27* was found to improve tolerance to salt and drought stress in soybean plants by interacting with *GmMYB174* (Wang et al., 2015). Recent research indicates that abiotic stresses of drought and salt impose osmotic stresses, which result in the enhanced production of ROS that cause lipid peroxidation, protein oxidation, nucleic acid damage, activation of programmed cell death and then cell death. Meanwhile, it was found that transgenic plants enhanced tolerance to drought as well as osmotic and salt stress through the scavenging of ROS (Foyer and Noctor, 2005; Sharma et al., 2012). The MDA level was an indicator of ROS destructive effects under stress conditions (Sharma et al., 2012), and the content of H<sub>2</sub>O<sub>2</sub> and MDA in overexpressing transgenic plants were significantly reduced under salt and osmotic stresses (Sairam et al., 1998; Ullah et al., 2018). Proline as an osmolyte plays important roles in stabilizing macromolecules and membranes in cells by a higher accumulation in transgenic plants under salt and osmotic stress (Wang et al., 2003; Mahajan and Tuteja, 2005; Couée et al., 2006; Cao et al., 2009; Ullah et al., 2018). The contents of proline and MDA in *GmWRKY16* transgenic lines and the wild type were also determined to detect the response of Arabidopsis to drought and salt stresses (Figures 6, 7), and the results were consistent with those of previous reports (Ding et al., 2014; Wang et al., 2015; Yu L. et al., 2016; Ullah et al., 2018), suggesting that overexpression of *GmWRKY16* may enhance the tolerance of drought and salinity by the accumulation of proline and the reduction of MDA in transgenic plants.

Recently, more studies have indicated that WRKY TFs play vital roles in various responses to abiotic stresses in plants with the potential tolerance mechanisms related to ABA

signaling (Zhou et al., 2008; Jiang et al., 2012; Luo et al., 2013; Sun et al., 2015; Cai et al., 2017). Some physiological processes such as seed germination, seedling growth and plant development under various stresses may be inhibited by the accumulation of ABA induced through the ABA-dependent signaling pathway (Xiong et al., 2006; Wang et al., 2014; Wu M. et al., 2017). Overexpression of *GmWRKY16* resulted in better seed germination and longer roots of seedlings under the stress treatments of NaCl, mannitol and exogenous ABA compared to those of the wild type (Figures 4, 5, 8). Moreover, the transgenic Arabidopsis plants exhibited a distinct resistance to salt and drought stresses with higher accumulations of ABA in comparison with the WT plants (Figures 6, 7). Furthermore, overexpression of *GmWRKY16* caused a reduction of stomatal aperture under ABA treatments (Supplementary Figure S2) and decreased water loss rate under drought treatment (Figure 7). There are some reports about ABA role in tolerance to stress. For example, it was found that stoma controlling transpiration water loss in plants is an important factor related to plant resistance to drought stress through changes in ABA level (Holbrook et al., 2002); Luo et al. (2013) found that overexpression of *GsWRKY20* exhibited great tolerance of transgenic Arabidopsis plants to drought stress by decreasing stomatal density under ABA treatment (Luo et al., 2013); and the cotton WRKY transcription factor GhWRKY17 regulated the increased sensitivity of transgenic nicotiana plants to drought stress by reducing the ABA level (Yan et al., 2014). All these results suggest that *GmWRKY16* may enhance plant tolerance to salt, osmotic and drought stresses through positive regulation of ABA pathways. Similar observations were found in other plant species (Zhou et al., 2008; Wu M. et al., 2017; Ullah et al., 2018; Wang et al., 2018).

Some studies have demonstrated that several WRKY TF genes enhanced tolerance to salt and drought stresses through expression regulation of stress/ABA-responsive genes (Yoshida et al., 2014; He et al., 2016; Jaffar et al., 2016; Ullah et al., 2018). To gain insight into the molecular function basis of *GsWRKY16* in salt and drought stress responses, we detected several well-characterized marker genes in transgenic lines (Figure 9). The qRT-PCR results of gene expression showed that *AtWRKY8* and two stress-related marker genes of *KIN1* and *RD29A* were significantly upregulated in transgenic Arabidopsis plants under salt treatment (Figure 9A). Previous reports indicated that *AtWRKY8* directly bound the promoter of *RD29A* to modulate salinity stress tolerance (Hu et al., 2013), suggesting that *GmWRKY16* may function in an ABA-independent pathway. *NCED3* (9-cis epoxy-carotenoid dioxygenase 3) encoding a key and rate-limiting enzyme was supposed to participate in ABA biosynthesis to regulate the drought-stress response (Qin and Jan, 1999; Thompson et al., 2000; Seki et al., 2003). Under drought conditions, *NCED3* was determined in *GmWRKY16* transgenic plants with higher levels than those in the WT plants as a result of ABA accumulation (Figures 7D, 9B). Similar results were also found in other WRKY genes, such as *AtWRKY57*, which conferred drought tolerance of Arabidopsis by elevating ABA levels induced by *NCED3* (Jiang et al., 2012). These

results suggest that *GmWRKY16* may play a role in stress-induced ABA-biosynthesis along with additional factors. The *ABI1* and *ABI2* genes encode two serine/threonine phosphatases 2C (PP2C) proteins that acted as negative regulators of ABA response (Merlot et al., 2001), and the *ABI4* and *ABI5* genes are the best characterized positive regulators of ABA signaling (Reeves et al., 2011; Rushton et al., 2012). In this study, *ABI1* and *ABI2* were upregulated by *GmWRKY16*, whereas *ABI4* and *ABI5* were downregulated in transgenic lines under drought stress (Figure 9C). Previous reports indicated that there was no positive correlation between the gene expression of the ABA signaling pathway and the stress tolerance of transgenic plants to abiotic stresses. Several reports showed that some transgenic plants increased stress tolerance with downregulation of *ABI1/2*, while other transgenic plants decreased stress tolerance with upregulation of *ABI1/2* (Jung et al., 2007; Seo et al., 2010). However, contrary phenotypes of drought tolerance by regulating *ABI1/2* have also been reported over the past several years. For example, overexpression of *GmbZIP44*, *GmbZIP62*, or *GmbZIP78* enhanced more tolerance of transgenic Arabidopsis plants to abiotic stress, which may play an important role in ABA signaling by upregulation of *ABI1* and *ABI2* (Liao et al., 2008). Overexpression of *GsWRKY20* in Arabidopsis increased the tolerance of transgenic plants to drought stress by regulating the expression of some key ABA signaling regulators with upregulation of *ABI1/2* and downregulation of *ABI4/5* (Luo et al., 2013). However, *ZmPP2C* transgenic plants decrease tolerance to salt and drought stresses with lower expression of *ABI1* and *ABI2* (Liu et al., 2009). Furthermore, ABREs were detected in a number of ABA-responsive genes (*RD29*, *COR15*, and *RD22*) in several plant species (Kim, 2005). A group of LEA genes, which play important roles in dehydration tolerance (Ingram and Bartels, 1996), was also investigated. In the present study, overexpression of *GmWRKY16* promoted drought tolerance of transgenic plants through regulating expression levels of these stress-related marker genes including *RD29A*, *KINI*, *COR15A*, *COR15B*, *RD22*, *CER3*, *LEA14*, and *LEA76* (Figure 9B). All of these results suggest that overexpression of *GmWRKY16* in Arabidopsis improves the tolerance of transgenic plants to drought and salt stresses through inducing ABA synthesis and regulating the expression levels of ABA signaling and/or stress-related genes.

## CONCLUSION

In summary, we identified a soybean WRKY transcription factor, *GmWRKY16*, which is a multiple stress-inducible gene induced by salt drought and ABA stresses and enriched in the old leaves,

## REFERENCES

Babitha, K. C., Ramu, S. V., Pruthvi, V., Mahesh, P., Nataraja, K. N., and Udayakumar, M. (2013). Co-expression of *AtbHLH17* and *AtWRKY28* confers resistance to abiotic stress in Arabidopsis. *Transgenic Res.* 22, 327–341. doi: 10.1007/s11248-012-9645-8

flowers, seeds, and roots of soybean. *GmWRKY16* overexpression enhanced the resistance of transgenic plants to drought and salt stresses, and less sensitivity to ABA during the processes of seed germination and seedling root growth. The analysis of molecular mechanisms revealed that enhanced tolerance to drought and salt might result in comprehensive roles in upregulating and/or downregulating transcripts of the stress- and/or ABA-responsive genes with ABA and proline accumulation, and MDA decrease. Therefore, these results suggest that *GmWRKY16* may increase the resistance to drought and salt stresses through ABA-mediated and/or independent pathways.

## AUTHOR CONTRIBUTIONS

QM and HN conceived of and designed the study. ZX, QM, ZC, LL, and JL conducted the experiments. ZX, QM, and YC performed data as well as statistical analysis. QM and ZX prepared the manuscript. All authors read and approved the final manuscript.

## FUNDING

This work was supported by the grants from the Projects of Science and Technology of Guangzhou (201804020015), the National Natural Science Foundation of China (31771816 and 31371642), the National Key R&D Program of China (2017YFD0101500), the New Varieties Cultivation of Genetically Modified Organisms (2016ZX08004002-007), the China Agricultural Research System (CARS-04-PS09), and the Research Project of the State Key Laboratory of Agricultural and Biological Resources Protection and Utilization in Subtropics (4100-31331).

## ACKNOWLEDGMENTS

We thank Dr. Bo Zhang (Assistant Professor, Virginia Tech, United States) for her critical comments and language improvement of the present manuscript. We are very grateful to Prof. Yaoguang Liu (South China Agricultural University, China) for kindly providing us with the pCAMBIA1302 vector.

## SUPPLEMENTARY MATERIAL

The Supplementary Material for this article can be found online at: <https://www.frontiersin.org/articles/10.3389/fpls.2018.01979/full#supplementary-material>

Bai, Y., Sunarti, S., Kissoudis, C., Visser, R. G. F., and van der Linden, C. G. (2018). The role of tomato WRKY genes in plant responses to combined abiotic and biotic stresses. *Front. Plant Sci.* 9:801. doi: 10.3389/fpls.2018.00801

Bakshi, M., and Oelmüller, R. (2014). WRKY transcription factors. *Plant Signal. Behav.* 9:e27700. doi: 10.4161/psb.27700

- Bates, L. S., Waldren, R. P., and Teare, I. D. (1973). Rapid determination of free proline for water-stress studies. *Plant Soil* 39, 205–207. doi: 10.1016/j.dental.2010.07.006
- Bencke-Malato, M., Cabreira, C., Wiebke-Strohm, B., Bucker-Neto, L., Mancini, E., and Osorio, M. B. (2014). Genome-wide annotation of the soybean WRKY family and functional characterization of genes involved in response to *Phakopsora pachyrhizi* infection. *BMC Plant Biol.* 14:236. doi: 10.1186/s12870-014-0236-0
- Bencke-Malato, M., Cabreira, C., Wiebke-Strohm, B., Bucker-Neto, L., Mancini, E., and Osorio, M. B. (2016). Genome-wide annotation of the soybean WRKY family and functional characterization of genes involved in response to *Phakopsora pachyrhizi* infection. *Phys. Chem. Chem. Phys.* 18, 6607–6617. doi: 10.1186/s12870-014-0236-0
- Cai, R., Dai, W., Zhang, C., Wang, Y., Wu, M., Zhao, Y., et al. (2017). The maize WRKY transcription factor ZmWRKY17 negatively regulates salt stress tolerance in transgenic Arabidopsis plants. *Planta* 246, 1215–1231. doi: 10.1007/s00425-017-2766-9
- Cao, Y., Wei, Q., Liao, Y., Song, H., Li, X., Xiang, C., et al. (2009). Ectopic overexpression of *AHMG11* in tall fescue resulted in enhanced tolerance to drought and salt stress. *Plant Cell Rep.* 28, 579–588. doi: 10.1007/s00299-008-0659-x
- Chen, C., Sun, X., Duanmu, H., Zhu, D., Yu, Y., Cao, L., et al. (2015). *GsCML27*, a gene encoding a calcium-binding EF-hand protein from *Glycine soja*, plays differential roles in plant responses to bicarbonate, salt and osmotic stresses. *PLoS One* 10:e141888. doi: 10.1371/journal.pone.0141888
- Chen, J., Nolan, T., Ye, H., Zhang, M., Tong, H., Xin, P., et al. (2017). Arabidopsis WRKY46, WRKY54 and WRKY70 transcription factors are involved in brassinosteroid-regulated plant growth and drought response. *Plant Cell* 29, 425–1439. doi: 10.1105/tpc.17.00364
- Chu, X., Wang, C., Chen, X., Lu, W., Li, H., Wang, X., et al. (2016). Correction: the cotton WRKY gene GhWRKY41 positively regulates salt and drought stress tolerance in transgenic *Nicotiana benthamiana*. *PLoS One* 11:e157026. doi: 10.1371/journal.pone.0157026
- Clough, S. J., and Bent, A. F. (1998). Floral dip: a simplified method for Agrobacterium-mediated transformation of *Arabidopsis thaliana*. *Plant J.* 16, 735–743. doi: 10.1046/j.1365-3113x.1998.00343.x
- Couée, I., Sulmon, C., Gouesbet, G., and El Amrani, A. (2006). Involvement of soluble sugars in reactive oxygen species balance and responses to oxidative stress in plants. *J. Exp. Bot.* 57, 449–459. doi: 10.1093/jxb/erj027
- Dai, X., Wang, Y., and Zhang, W. (2016). OsWRKY74, a WRKY transcription factor, modulates tolerance to phosphate starvation in rice. *J. Exp. Bot.* 67, 947–960. doi: 10.1093/jxb/erv515
- Dias, L. P., de Oliveira-Busatto, L. A., and Bodanese-Zanettini, M. H. (2016). The differential expression of soybean [*Glycine max* (L.) Merrill] WRKY genes in response to water deficit. *Plant Physiol. Biochem.* 107, 288–300. doi: 10.1016/j.plaphy.2016.06.018
- Ding, Z. J., Yan, J. Y., Xu, X. Y., Yu, D. Q., Li, G. X., Zhang, S. Q., et al. (2014). Transcription factor WRKY46 regulates osmotic stress responses and stomatal movement independently in Arabidopsis. *Plant J.* 79, 13–27. doi: 10.1111/tpj.12538
- Eulgem, T., Rushton, P. J., Robatzek, S., and Somssich, I. E. (2000). The WRKY superfamily of plant transcription factors. *Trends Plant Sci.* 5, 199–206. doi: 10.1016/S1360-1385(00)01600-9
- Fan, Q., Song, A., Jiang, J., Zhang, T., Sun, H., Wang, Y., et al. (2016). CmWRKY1 enhances the dehydration tolerance of chrysanthemum through the regulation of ABA-associated genes. *PLoS One* 11:e150572. doi: 10.1371/journal.pone.0150572
- Finatto, T., Viana, V. E., Woyann, L. G., Busanello, C., Maia, L. C. D., and Oliveira, A. C. D. (2018). Can WRKY transcription factors help plants to overcome environmental challenges? *Genet. Mol. Biol.* 41, 533–544. doi: 10.1590/1678-4685-GMB-2017-0232
- Foyer, C. H., and Noctor, G. (2005). Redox homeostasis and antioxidant signaling: a metabolic interface between stress perception and physiological responses. *Plant Cell* 17, 1866–1875. doi: 10.1105/tpc.105.033589
- Fujii, H., and Zhu, J. (2009). Arabidopsis mutant deficient in 3 abscisic acid-activated protein kinases reveals critical roles in growth, reproduction, and stress. *Proc. Natl. Acad. Sci. U.S.A.* 106, 8380–8385. doi: 10.1073/pnas.0903144106
- Goel, R., Pandey, A., Trivedi, P. K., and Asif, M. H. (2016). Genome-wide analysis of the musa WRKY gene family: evolution and differential expression during development and stress. *Front. Plant Sci.* 7:299. doi: 10.3389/fpls.2016.00299
- Grunewald, W., Smet, D. I., Rybel, D. B., Robert, H. S., Cotte, V. D. B., Willemsen, V. A., et al. (2013). Tightly controlled WRKY23 expression mediates Arabidopsis embryo development. *EMBO Rep.* 14, 1136–1142. doi: 10.1038/embor.2013.169
- He, G., Xu, J., Wang, Y., Liu, J., Li, P., Chen, M., et al. (2016). Drought-responsive WRKY transcription factor genes *TaWRKY1* and *TaWRKY33* from wheat confer drought and/or heat resistance in Arabidopsis. *BMC Plant Biol.* 16:116. doi: 10.1186/s12870-016-0806-4
- He, L., Wu, Y., Zhao, Q., Wang, B., Liu, Q., and Zhang, L. (2018). Chrysanthemum *DgWRKY2* gene enhances tolerance to salt stress in transgenic Chrysanthemum. *Int. J. Mol. Sci.* 19:2062. doi: 10.3390/ijms19072062
- Heath, R. L., and Packer, L. (1968). Photoperoxidation in isolated chloroplasts. I. Kinetics and stoichiometry of fatty acid peroxidation. *Arch. Biochem. Biophys.* 125, 189–198. doi: 10.1016/0003-9861(68)90654-1
- Hennig, L. (2012). Plant gene regulation in response to abiotic stress. *Biochim. Biophys. Acta* 1819:85. doi: 10.1016/j.bbagr.2012.01.005
- Holbrook, N. M., Shashidhar, V., James, R. A., and Rana, M. (2002). Stomatal control in tomato with ABA-deficient roots: response of grafted plants to soil drying. *J. Exp. Bot.* 373, 1503–1514.
- Hu, Y., Chen, L., Wang, H., Zhang, L., Wang, F., and Yu, D. (2013). Arabidopsis transcription factor WRKY8 functions antagonistically with its interacting partner VQ9 to modulate salinity stress tolerance. *Plant J.* 74, 730–745. doi: 10.1111/tpj.12159
- Ingram, J., and Bartels, D. (1996). The molecular basis of dehydration tolerance in plants. *Annu. Rev. Plant Physiol. Plant Mol. Biol.* 47:377. doi: 10.1146/annurev.arplant.47.1.377
- Ishiguro, S., and Nakamura, K. (1994). Characterization of a cDNA encoding a novel DNA-binding protein, SPF1, that recognizes SP8 sequences in the 5' upstream regions of genes coding for sporamin and  $\beta$ -amylase from sweet potato. *Mol. Gen. Genet.* 244, 563–571. doi: 10.1007/BF00282746
- Jaffar, M., Song, A., Faheem, M., Chen, S., Jiang, J., Liu, C., et al. (2016). Involvement of CmWRKY10 in drought tolerance of Chrysanthemum through the ABA-signaling pathway. *Int. J. Mol. Sci.* 17:693. doi: 10.3390/ijms17050693
- Jiang, Y., Liang, G., and Yu, D. (2012). Activated expression of WRKY57 confers drought tolerance in Arabidopsis. *Molecular Plant* 5, 1375–1388. doi: 10.1093/mp/sss080
- Jung, C., Seo, J. S., Han, S. W., Koo, Y. J., Kim, C. H., Song, S. I., et al. (2007). Overexpression of *AtMYB44* enhances tomato closure to confer abiotic stress tolerance in transgenic Arabidopsis. *Plant Physiol.* 146, 623–635. doi: 10.1104/pp.107.110981
- Kim, S. Y. (2005). The role of ABF family bZIP class transcription factors in stress response. *Physiol. Plantarum* 126, 519–527. doi: 10.1111/j.1399-3054.2005.00601.x
- Kiranmai, K., Lokanadha Rao, G., Pandurangiah, M., Nareshkumar, A., Amaranatha Reddy, V., Lokesh, U., et al. (2018). A novel WRKY transcription factor, MuWRKY3 (Macrotyloma uniflorum Lam. Verdc.) enhances drought stress tolerance in transgenic groundnut (*Arachis hypogaea* L.) plants. *Front. Plant Sci.* 9:346. doi: 10.3389/fpls.2018.00346
- Kokkiral, V. R., Yonggang, P., Abbagini, S., Zhu, Z., and Umate, P. (2010). Subcellular localization of proteins of *Oryza sativa* L. in the model tobacco and tomato plants. *Plant Signal. Behav.* 5, 1336–1341. doi: 10.4161/psb.5.11.13318
- Kumar, S., Stecher, G., and Tamura, K. (2016). MEGA7: molecular evolutionary genetics analysis version 7.0 for bigger datasets. *Mol. Biol. Evol.* 33, 1870–1874. doi: 10.1093/molbev/msw054
- Li, J. B., Luan, Y. S., and Liu, Z. (2015). Overexpression of *SpWRKY1* promotes resistance to *Phytophthora nicotianae* and tolerance to salt and drought stress in transgenic tobacco. *Physiol. Plant.* 155, 248–266. doi: 10.1111/pp.12315
- Li, S., Fu, Q., Chen, L., Huang, W., and Yu, D. (2011). Arabidopsis thaliana WRKY25, WRKY26, and WRKY33 coordinate induction of plant thermotolerance. *Planta* 233, 1237–1252. doi: 10.1007/s00425-011-1375-2
- Liang, Q., Wu, Y., Wang, K., Bai, Z., Liu, Q., Pan, Y., et al. (2017). Chrysanthemum WRKY gene *DgWRKY5* enhances tolerance to salt stress in transgenic chrysanthemum. *Sci. Rep.* 7:4799. doi: 10.1038/s41598-017-05170-x
- Liao, Y., Zou, H., Wei, W., Hao, Y., Tian, A., Huang, J., et al. (2008). Soybean GmbZIP44, GmbZIP62 and GmbZIP78 genes function as negative regulator of



- ABA signaling and confer salt and freezing tolerance in transgenic Arabidopsis. *Planta* 228, 225–240. doi: 10.1007/s00425-008-0731-3
- Liu, C., Wu, Y., and Wang, X. (2012). bZIP transcription factor OsbZIP52/RISBZ5: a potential negative regulator of cold and drought stress response in rice. *Planta* 235, 1157–1169. doi: 10.1007/s00425-011-1564-z
- Liu, L., Hu, X., Song, J., Zong, X., Li, D., and Li, D. (2009). Over-expression of a *Zea mays* L. protein phosphatase 2C gene (*ZmPP2C*) in *Arabidopsis thaliana* decreases tolerance to salt and drought. *J. Plant Physiol.* 166, 531–542. doi: 10.1016/j.jplph.2008.07.008
- Liu, X., Song, Y., Xing, F., Wang, N., Wen, F., and Zhu, C. (2016). GhWRKY25, a group I WRKY gene from cotton, confers differential tolerance to abiotic and biotic stresses in transgenic *Nicotiana benthamiana*. *Protoplasma* 253, 1265–1281. doi: 10.1007/s00709-015-0885-3
- Lü, J., Suo, H., Yi, R., Ma, Q., and Nian, H. (2015). Glyma11g13220, a homolog of the vernalization pathway gene VERNALIZATION 1 from soybean [*Glycine max* (L.) Merr.], promotes flowering in *Arabidopsis thaliana*. *BMC Plant Biol.* 15:232. doi: 10.1186/s12870-015-0602-6
- Luo, X., Bai, X., Sun, X., Zhu, D., Liu, B., Ji, W., et al. (2013). Expression of wild soybean *WRKY20* in Arabidopsis enhances drought tolerance and regulates ABA signalling. *J. Exp. Bot.* 64, 2155–2169. doi: 10.1093/jxb/ert073
- Ma, J., Gao, X., Liu, Q., Shao, Y., Zhang, D., Jiang, L., et al. (2017). Overexpression of *TaWRKY146* increases drought tolerance through inducing stomatal closure in *Arabidopsis thaliana*. *Front. Plant Sci.* 8:2036. doi: 10.3389/fpls.2017.02036
- Ma, Q., Yi, R., Li, L., Liang, Z., Zeng, T., Zhang, Y., et al. (2018). GsMATE encoding a multidrug and toxic compound extrusion transporter enhances aluminum tolerance in *Arabidopsis thaliana*. *BMC Plant Biol.* 18:212. doi: 10.1186/s12870-018-1397-z
- Mahajan, S., and Tuteja, N. (2005). Cold, salinity and drought stresses: an overview. *Arch. Biochem. Biophys.* 444, 139–158. doi: 10.1016/j.abb.2005.10.018
- Meng, D., Li, Y., Bai, Y., Li, M., and Cheng, L. (2016). Genome-wide identification and characterization of WRKY transcriptional factor family in apple and analysis of their responses to waterlogging and drought stress. *Plant Physiol. Biochem.* 103, 71–83. doi: 10.1016/j.plaphy.2016.02.006
- Merlot, S., Gosti, F., Guerrier, D., Vavasseur, A., and Giraudat, J. (2001). The ABI1 and ABI2 protein phosphatases 2C act in a negative feedback regulatory loop of the abscisic acid signalling pathway. *Plant J.* 25, 295–303. doi: 10.1046/j.1365-313x.2001.00965.x
- Miao, Y., and Zentgraf, U. (2007). The antagonist function of Arabidopsis WRKY53 and ESR/ESP in leaf senescence is modulated by the jasmonic and salicylic acid equilibrium. *Plant Cell* 19, 819–830. doi: 10.1105/tpc.106.042705
- Munns, R. (2002). Comparative physiology of salt and water stress. *Plant Cell Environ.* 25, 239–250. doi: 10.1046/j.0016-8025.2001.00808.x
- Niu, C., Wei, W., Zhou, Q., Tian, A., Hao, Y., Zhang, W., et al. (2012). Wheat WRKY genes TaWRKY2 and TaWRKY19 regulate abiotic stress tolerance in transgenic Arabidopsis plants. *Plant Cell Environ.* 35, 1156–1170. doi: 10.1111/j.1365-3040.2012.02480.x
- Pillai, S. E., Kumar, C., Patel, H. K., and Sonti, R. V. (2018). Overexpression of a cell wall damage induced transcription factor, OsWRKY42, leads to enhanced callose deposition and tolerance to salt stress but does not enhance tolerance to bacterial infection. *BMC Plant Biol.* 18:177. doi: 10.1186/s12870-018-1391-5
- Qin, X., and Jan, A. D. Z. (1999). The 9-cis-epoxycarotenoid cleavage reaction is the key regulatory step of abscisic acid biosynthesis in water-stressed bean. *Proc. Natl. Acad. Sci. U.S.A.* 96, 15354–15361. doi: 10.1073/pnas.96.26.15354
- Reeves, W. M., Lynch, T. J., Mobin, R., and Finkelstein, R. R. (2011). Direct targets of the transcription factors ABA-insensitive (ABI)4 and ABI5 reveal synergistic action by ABI4 and several bZIP ABA response factors. *Plant Mol. Biol.* 75, 347–363. doi: 10.1007/s11103-011-9733-9
- Ren, X., Chen, Z., Liu, Y., Zhang, H., Zhang, M., Liu, Q., et al. (2010). ABO3, a WRKY transcription factor, mediates plant responses to abscisic acid and drought tolerance in Arabidopsis. *Plant J.* 63, 417–429. doi: 10.1111/j.1365-313x.2010.04248.x
- Rinerson, C. I., Scully, E. D., Palmer, N. A., Donze-Reiner, T., Rabara, R. C., Tripathi, P., et al. (2015). The WRKY transcription factor family and senescence in switchgrass. *BMC Genomics* 16:912. doi: 10.1186/s12864-015-2057-4
- Rushton, D. L., Tripathi, P., Rabara, R. C., Lin, J., Ringler, P., Boken, A. K., et al. (2012). WRKY transcription factors: key components in abscisic acid signalling. *Plant Biotechnol. J.* 10, 2–11. doi: 10.1111/j.1467-7652.2011.00634.x
- Rushton, P. J., Somssich, I. E., Ringler, P., and Shen, Q. J. (2010). WRKY transcription factors. *Trends Plant Sci.* 15, 247–258. doi: 10.1016/j.tplants.2010.02.006
- Sairam, R., Deshmukh, P., and Saxena, D. (1998). Role of antioxidant systems in wheat genotypes tolerance to water stress. *Biol. Plant.* 3, 387–394. doi: 10.1007/s11356-015-5452-0
- Scarpeci, T. E., Zanor, M. I., Mueller-Roeber, B., and Valle, E. M. (2013). Overexpression of AtWRKY30 enhances abiotic stress tolerance during early growth stages in Arabidopsis thaliana. *Plant Mol. Biol.* 83, 265–277. doi: 10.1007/s11103-013-0090-8
- Schluttenhofer, C., and Yuan, L. (2015). Regulation of specialized metabolism by WRKY transcription factors. *Plant Physiol.* 167, 295–306. doi: 10.1104/pp.114.251769
- Seki, M., Kamei, A., Yamaguchi-Shinozaki, K., and Shinozaki, K. (2003). Molecular responses to drought, salinity and frost: common and different paths for plant protection. *Curr. Opin. Biotechnol.* 14, 194–199. doi: 10.1016/S0958-1669(03)00030-2
- Seo, D. H., Ryu, M. Y., Jammes, F., Hwang, J. H., Turek, M., Kang, B. G., et al. (2012). Roles of four Arabidopsis U-Box E3 ubiquitin ligases in negative regulation of abscisic acid-mediated drought stress responses. *Plant Physiol.* 160, 556–568. doi: 10.1104/pp.112.202143
- Seo, Y., Park, J., Cho, Y., Jung, C., Seo, H., Park, S., et al. (2010). Overexpression of the ethylene-responsive factor gene BrERF4 from *Brassica rapa* increases tolerance to salt and drought in Arabidopsis plants. *Mol. Cells* 3, 271–277. doi: 10.1007/s10059-010-0114-z
- Shang, Y., Yan, L., Liu, Z., Cao, Z., Mei, C., Xin, Q., et al. (2012). The Mg-Chelatase H subunit of Arabidopsis antagonizes a group of WRKY transcription repressors to relieve ABA-responsive genes of inhibition. *Plant Cell* 22, 1909–1935. doi: 10.1105/tpc.110.073874
- Sharma, P., Jha, A. B., Dubey, R. S., and Pessarakli, M. (2012). Reactive oxygen species, oxidative damage, and antioxidative defense mechanism in plants under stressful conditions. *J. Bot.* 2012:217037. doi: 10.1155/2012/217037
- Shen, H., Liu, C., Zhang, Y., Meng, X., Zhou, X., Chu, C., et al. (2012). OsWRKY30 is activated by MAP kinases to confer drought tolerance in rice. *Plant Mol. Biol.* 80, 241–253. doi: 10.1007/s11103-012-9941-y
- Shinozaki, K., and Yamaguchi-Shinozaki, K. (1997). Gene expression and signal transduction in water-stress response. *Plant Physiol.* 115, 327–334. doi: 10.1104/pp.115.2.327
- Sievers, F., Wilm, A., Dineen, D., Gibson, T. J., Karplus, K., Li, W., et al. (2011). Fast, scalable generation of high-quality protein multiple sequence alignments using Clustal Omega. *Mol. Syst. Biol.* 7:539. doi: 10.1038/msb.2011.75
- Song, H., Sun, W., Yang, G., and Sun, J. (2018). WRKY transcription factors in legumes. *BMC Plant Biol.* 18:243. doi: 10.1186/s12870-018-1467-2
- Song, L., Huang, S. C., Wise, A., Castanon, R., Nery, J. R., Chen, H., et al. (2016). A transcription factor hierarchy defines an environmental stress response network. *Science* 354:g1550. doi: 10.1126/science.aag1550
- Sun, J., Hu, W., Zhou, R., Wang, L., Wang, X., Wang, Q., et al. (2015). The Brachypodium distachyon *BdWRKY36* gene confers tolerance to drought stress in transgenic tobacco plants. *Plant Cell Rep.* 34, 23–35. doi: 10.1007/s00299-014-1684-6
- Thompson, A., Jackson, A., Symonds, R., Mulholland, B., Dadswell, A., Blake, P., et al. (2000). Ectopic expression of a tomato 9-cis-epoxycarotenoid dioxygenase gene causes over-production of abscisic acid. *Plant J.* 23, 363–374. doi: 10.1046/j.1365-313x.2000.00789.x
- Ullah, A., Sun, H., Hakim, Yang, X., and Zhang, X. (2018). A novel cotton WRKY gene, GhWRKY6-like, improves salt tolerance by activating the ABA signaling pathway and scavenging of reactive oxygen species. *Physiol. Plant.* 162, 439–454. doi: 10.1111/ppl.12651
- Umezawa, T., Nakashima, K., Miyakawa, T., Kuromori, T., Tanokura, M., Shinozaki, K., et al. (2010). Molecular basis of the core regulatory network in ABA responses: sensing, signaling and transport. *Plant Cell Physiol.* 51, 1821–1839. doi: 10.1093/pcp/pcq156
- Wang, C., Deng, P., Liulin, C., Xi Tian, W., Hui, M., Wei, H., et al. (2013). A wheat WRKY transcription factor TaWRKY10 confers tolerance to multiple abiotic stresses in transgenic tobacco. *PLoS One* 6:e65120. doi: 10.1371/journal.pone.0065120
- Wang, C., Ru, J., Liu, Y., Yang, J., Li, M., Xu, Z., et al. (2018). The maize WRKY transcription factor ZmWRKY40 confers drought resistance

- in transgenic Arabidopsis. *Int. J. Mol. Sci.* 19:2580. doi: 10.3390/ijms19092580
- Wang, F., Chen, H., Li, Q., Wei, W., Li, W., Zhang, W., et al. (2015). GmWRKY27 interacts with GmMYB174 to reduce expression of GmNAC29 for stress tolerance in soybean plants. *Plant J.* 83, 224–236. doi: 10.1111/tpj.12879
- Wang, L., Zhu, W., Fang, L., Sun, X., Su, L., Liang, Z., et al. (2014). Genome-wide identification of WRKY family genes and their response to cold stress in *Vitis vinifera*. *BMC Plant Biol.* 14:103. doi: 10.1186/1471-2229-14-103
- Wang, W., Vinocur, B., and Altman, A. (2003). Plant responses to drought, salinity and extreme temperatures: towards genetic engineering for stress tolerance. *Planta* 218, 1–14. doi: 10.1007/s00425-003-1105-5
- Willems, E., Leyns, L., and Vandesompele, J. (2008). Standardization of real-time PCR gene expression data from independent biological replicates. *Anal. Biochem.* 379, 127–129. doi: 10.1016/j.ab.2008.04.036
- Wu, J., Chen, J., Wang, L., and Wang, S. (2017). Genome-wide investigation of WRKY transcription factors involved in terminal drought stress response in common bean. *Front. Plant Sci.* 8:380. doi: 10.3389/fpls.2017.00380
- Wu, M., Liu, H., Han, G., Cai, R., Pan, F., and Xiang, Y. (2017). A moso bamboo WRKY gene *PeWRKY83* confers salinity tolerance in transgenic Arabidopsis plants. *Sci. Rep.* 7:11721. doi: 10.1038/s41598-017-10795-z
- Wu, X., Shiroto, Y., Kishitani, S., Ito, Y., and Toriyama, K. (2009). Enhanced heat and drought tolerance in transgenic rice seedlings overexpressing *OsWRKY11* under the control of *HSP101* promoter. *Plant Cell Rep.* 28, 21–30. doi: 10.1007/s00299-008-0614-x
- Xiao, Y., Zhou, L., Lei, X., Cao, H., Wang, Y., Dou, Y., et al. (2017). Genome-wide identification of WRKY genes and their expression profiles under different abiotic stresses in *Elaeis guineensis*. *PLoS One* 12:e189224. doi: 10.1371/journal.pone.0189224
- Xie, T., Chen, C., Li, C., Liu, J., Liu, C., and He, Y. (2018). Genome-wide investigation of WRKY gene family in pineapple: evolution and expression profiles during development and stress. *BMC Genomics* 19:490. doi: 10.1186/s12864-018-4880-x
- Xiong, L., Wang, R., Mao, G., and Koczan, J. (2006). Identification of drought tolerance determinants by genetic analysis of root response to drought stress and abscisic acid. *Plant Physiol.* 142, 1065–1074. doi: 10.1104/pp.106.084632
- Yan, H., Jia, H., Chen, X., Hao, L., An, H., and Guo, X. (2014). The cotton WRKY transcription factor GhWRKY17 functions in drought and salt stress in transgenic *Nicotiana benthamiana* through ABA signaling and the modulation of reactive oxygen species production. *Plant Cell Physiol.* 55, 2060–2076. doi: 10.1093/pcp/pcu133
- Yang, J., Zhang, J., Wang, Z., Zhu, Q., and Wang, W. (2001). Hormonal changes in the grains of rice subjected to water stress during grain filling. *Plant Physiol.* 127, 315–323. doi: 10.1104/pp.127.1.315
- Yang, L., Ji, W., Zhu, Y., Gao, P., Li, Y., Cai, H., et al. (2010). GsCBRLK, a calcium/calmodulin-binding receptor-like kinase, is a positive regulator of plant tolerance to salt and ABA stress. *J. Exp. Bot.* 61, 2519–2533. doi: 10.1093/jxb/erq084
- Yang, X., Li, H., Yang, Y., Wang, Y., Mo, Y., Zhang, R., et al. (2018). Identification and expression analyses of WRKY genes reveal their involvement in growth and abiotic stress response in watermelon (*Citrullus lanatus*). *PLoS One* 13:e191308. doi: 10.1371/journal.pone.0191308
- Yang, Y., Zhou, Y., Chi, Y., Fan, B., and Chen, Z. (2017). Characterization of soybean WRKY gene family and identification of soybean WRKY genes that promote resistance to soybean cyst nematode. *Sci. Rep.* 7:17804. doi: 10.1038/s41598-017-18235-8
- Ying, S., Zhang, D., Fu, J., Shi, Y., Song, Y., Wang, T., et al. (2012). Cloning and characterization of a maize bZIP transcription factor, ZmbZIP72, confers drought and salt tolerance in transgenic Arabidopsis. *Planta* 235, 253–266. doi: 10.1007/s00425-011-1496-7
- Yokotani, N., Sato, Y., Tanabe, S., Chujo, T., Shimizu, T., Okada, K., et al. (2013). WRKY76 is a rice transcriptional repressor playing opposite roles in blast disease resistance and cold stress tolerance. *J. Exp. Bot.* 64, 5085–5097. doi: 10.1093/jxb/ert298
- Yoshida, T., Mogami, J., and Kazuko, Y. (2014). ABA-dependent and ABA-independent signaling in response to osmotic stress in plants. *Curr. Opin. Plant Biol.* 21, 133–139. doi: 10.1016/j.pbi.2014.07.009
- Yu, L., Wu, S., Peng, Y., Liu, R., Chen, X., Zhao, P., et al. (2016). Arabidopsis *EDT1/HDG11* improves drought and salt tolerance in cotton and poplar and increases cotton yield in the field. *Plant Biotechnol. J.* 14, 72–84. doi: 10.1111/pbi.12358
- Yu, Y., Wang, L., Chen, J., Liu, Z., Park, C., and Xiang, F. (2018). WRKY71 Acts Antagonistically Against Salt-Delayed Flowering in Arabidopsis thaliana. *Plant Cell Physiol.* 59, 414–422. doi: 10.1093/pcp/pcx201
- Yu, Y., Wang, N., Hu, R., and Xiang, F. (2016). Genome-wide identification of soybean WRKY transcription factors in response to salt stress. *SpringerPlus* 5:920. doi: 10.1186/s40064-016-2647-x
- Zeng, Q., Yang, C., Ma, Q., Li, X., Dong, W., and Nian, H. (2012). Identification of wild soybean miRNAs and their target genes responsive to aluminum stress. *BMC Plant Biol.* 12:182. doi: 10.1186/1471-2229-12-182
- Zhang, C., Wang, D., Yang, C., Kong, N., Shi, Z., Zhao, P., et al. (2017). Genome-wide identification of the potato WRKY transcription factor family. *PLoS One* 12:e181573. doi: 10.1371/journal.pone.0181573
- Zhang, L., Cheng, J., Sun, X., Zhao, T., Li, M., Wang, Q., et al. (2018). Overexpression of *VaWRKY14* increases drought tolerance in Arabidopsis by modulating the expression of stress-related genes. *Plant Cell Rep.* 37, 1159–1172. doi: 10.1007/s00299-018-2302-9
- Zhang, Y., Su, J., Duan, S., Ao, Y., Dai, J., Liu, J., et al. (2011). A highly efficient rice green tissue protoplast system for transient gene expression and studying light/chloroplast-related processes. *Plant Methods* 7:30. doi: 10.1186/1746-4811-7-30
- Zhang, Y., and Wang, L. (2005). The WRKY transcription factor superfamily: its origin in eukaryotes and expansion in plants. *BMC Evol. Biol.* 5:1.
- Zhou, Q., Tian, A., Zou, H., Xie, Z., Lei, G., Huang, J., et al. (2008). Soybean WRKY-type transcription factor genes, *GmWRKY13*, *GmWRKY21*, and *GmWRKY54*, confer differential tolerance to abiotic stresses in transgenic Arabidopsis plants. *Plant Biotechnol. J.* 6, 486–503. doi: 10.1111/j.1467-7652.2008.00336.x
- Zong, W., Tang, N., Yang, J., Peng, L., Ma, S., Xu, Y., et al. (2016). Feedback regulation of ABA signaling and biosynthesis by a bZIP transcription factor targets drought resistance related genes. *Plant Physiol.* 171, 2810–2825. doi: 10.1104/pp.16.00469

**Conflict of Interest Statement:** The authors declare that the research was conducted in the absence of any commercial or financial relationships that could be construed as a potential conflict of interest.

Copyright © 2019 Ma, Xia, Cai, Li, Cheng, Liu and Nian. This is an open-access article distributed under the terms of the Creative Commons Attribution License (CC BY). The use, distribution or reproduction in other forums is permitted, provided the original author(s) and the copyright owner(s) are credited and that the original publication in this journal is cited, in accordance with accepted academic practice. No use, distribution or reproduction is permitted which does not comply with these terms.