



## BRIEF COMMUNICATION

**Gradient of brain mosaic *RHEB* variants causes a continuum of cortical dysplasia**

Wei Shern Lee<sup>1,2,a</sup>, Sara Baldassari<sup>3,a</sup>, Mathilde Chipaux<sup>4</sup>, Homa Adle-Biassette<sup>5,6,7</sup>, Sarah E. M. Stephenson<sup>1,2</sup>, Wirginia Maixner<sup>2,8,9</sup>, A. Simon Harvey<sup>2,8,10</sup>, Paul J. Lockhart<sup>1,2</sup>, Stéphanie Baulac<sup>3,b</sup>  & Richard J. Leventer<sup>2,8,10,b</sup> 

<sup>1</sup>Bruce Lefroy Centre, Murdoch Children's Research Institute, Parkville, 3052, Australia

<sup>2</sup>Department of Paediatrics, The University of Melbourne, Parkville, 3052, Australia

<sup>3</sup>Sorbonne Université, Institut du Cerveau - Paris Brain Institute - ICM, Inserm, CNRS, Paris, F-75013, France

<sup>4</sup>Department of Pediatric Neurosurgery, Rothschild Foundation Hospital, Paris, F-75019, France

<sup>5</sup>INSERM, UMR 1141, Hôpital Robert-Debré, Paris, 75019, France

<sup>6</sup>Faculté de Médecine Denis Diderot, Université Paris 7, Paris, France

<sup>7</sup>Service d'Anatomie et de Cytologie Pathologiques, Hôpital Lariboisière, APHP, Paris, 75010, France

<sup>8</sup>Murdoch Children's Research Institute, Parkville, 3052, Australia

<sup>9</sup>Department of Neurosurgery, The Royal Children's Hospital, Parkville, 3052, Australia

<sup>10</sup>Department of Neurology, The Royal Children's Hospital, Parkville, 3052, Australia

**Correspondence**

Richard J. Leventer, Department of Neurology, Royal Children's Hospital, 50 Flemington Road, Parkville, VIC 3052, Australia. Tel: +61 3 93455661; Fax: +61 3 9345 5977; E-mail: richard.leventer@rch.org.au  
Stéphanie Baulac, Institut du Cerveau – ICM, Hôpital Pitié-Salpêtrière, 47, bd de l'hôpital - 75013 Paris. Tel: +33 (0)157274339; E-mail: stephanie.baulac@icm-institute.org

**Funding information**

This study was funded by the National Health and Medical Research Council (GNT1128933 to RJL and PJJ and GNT1161549 to PJJ and RJL), European Research Council (N°682345 to SB), "Investissements d'avenir" (ANR-10-IAIHU-06 and ANR-18-RHUS-0005 to SB) and the Brain Foundation (to RJL). Additional funding was provided by the Independent Research Institute Infrastructure Support Scheme and the Victorian State Government Operational Infrastructure Program. RJL is supported by a Melbourne Children's Clinician Scientist Fellowship. PJJ is supported by the Vincent Chiodo Foundation. WSL is supported by the Melbourne Research Scholarship and the Research Training Program Scholarship. This study was not industry sponsored.

Received: 6 October 2020; Revised: 6 December 2020; Accepted: 7 December 2020

**Abstract**

Focal cortical dysplasia (FCD) and hemimegalencephaly (HME) are related malformations with shared etiologies. We report three patients with a spectrum of cortical malformations associated with pathogenic brain-specific somatic Ras homolog enriched in brain (*RHEB*) variants. The somatic variant load directly correlated with the size of the malformation, with upregulated mTOR activity confirmed in dysplastic tissues. Laser capture microdissection showed enrichment of *RHEB* variants in dysmorphic neurons and balloon cells. Our findings support the role of *RHEB* in a spectrum of cortical malformations confirming that FCD and HME represent a disease continuum, with the extent of dysplastic brain directly correlated with the somatic variant load.

*Annals of Clinical and Translational Neurology* 2021; 8(2): 485–490

doi: 10.1002/acn3.51286

<sup>a</sup>Joint first authors.

<sup>b</sup>Joint senior and corresponding authors.

## Introduction

Focal cortical dysplasia (FCD) and hemimegalencephaly (HME) can cause drug-resistant epilepsy, with histopathological features of FCDII including cortical dyslamination and dysmorphic neurons (DNs) with (FCDIIB) or without (FCDIIA) balloon cells (BCs).<sup>1</sup> Pathogenic somatic variants restricted to brain tissue in PI3K–AKT–mTOR pathway genes are implicated in a range of cortical malformations.<sup>2</sup> We and others have hypothesized that the lesion size may correlate with the degree of mosaicism (the “variant load”) within dysplastic tissue.<sup>3–5</sup>

Recently, somatic variants in the gene encoding Ras homolog enriched in brain (*RHEB*) were reported in cortical malformations; a *RHEB* p.E40V substitution in one HME patient (21% variant load)<sup>6</sup> and a p.Y35L substitution in one FCDIIA patient (6% variant load).<sup>7</sup> In concordance with these findings, we previously reported genetic data in one FCDIIB patient with *RHEB* p.E40V substitution (8.9% variant load) and one HME patient with *RHEB* p.Y35L substitution (17.6% variant load).<sup>3</sup>

Here, we characterize a new patient with a transmantle FCD due to a brain-specific somatic variant in *RHEB* with a low variant load. In combination with newly presented genetic and imaging data from our two previously described patients with somatic *RHEB* variants,<sup>3</sup> we determined that variant load correlates with the variable severity observed across the spectrum of FCD. We investigated the enrichment of *RHEB* variants in abnormal cell types using laser capture microdissection (LCM) as an extension of our previous work in the related mTOR pathway genes *DEPDC5*, *MTOR*, and *PIK3CA*.<sup>3,4</sup>

## Methods

### Standard protocol approvals, registrations and patient consents

This study was approved by the Human Research Ethics Committee at the Royal Children’s Hospital (ID 29077) and ethical committee CPP Ile de France II (N° ID-RCB/EUDRACT-2015-A00671-48). Patient 2 and Patient 3 were registered on ClinicalTrials.gov (N° NCT02890641). Clinical details were obtained from medical records.

Written informed consent was obtained from participants or their parents.

## Molecular analyses

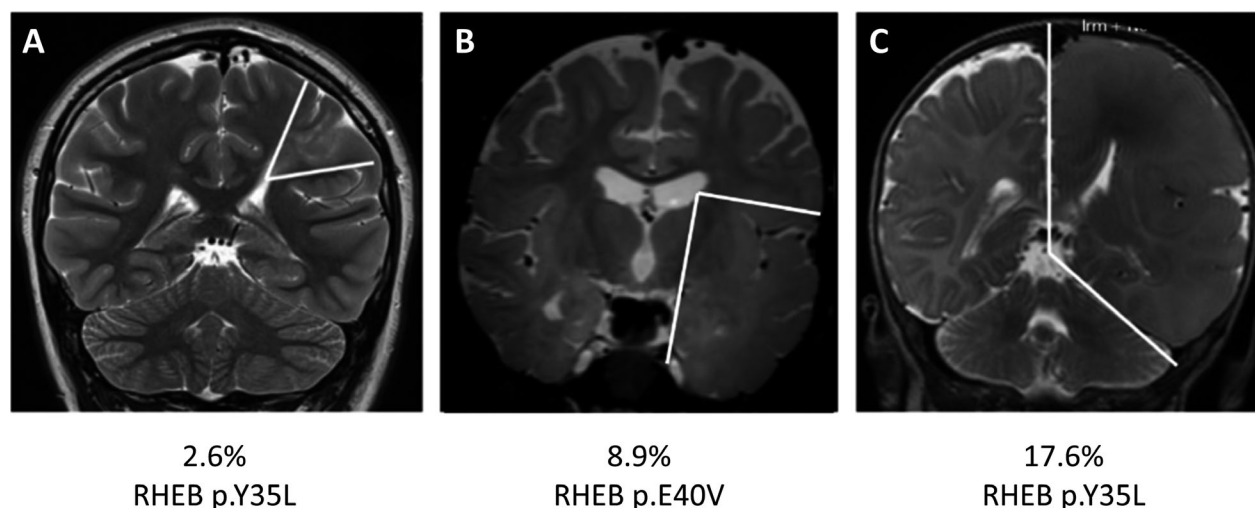
Brain tissues were collected at the time of surgery and stored as frozen and formalin-fixed paraffin-embedded (FFPE) tissue, taken from the left postcentral gyrus in Patient 1, from the opercular and insular region in Patient 2 (first surgery), and the left medial frontal lobe from Patient 3. Blood and FCD-derived DNA were sequenced using deep targeted sequencing, and variants were validated by droplet digital PCR (ddPCR), site-specific amplicon sequencing, or Sanger sequencing as previously described.<sup>3,4</sup> For immunostaining, FFPE tissues were processed and incubated with anti-Phospho-S6 Ribosomal Protein (Ser235/236) antibody (Cell Signalling, #2211, #4856), a routinely used antibody to assess mTOR activation. LCM was performed as previously described.<sup>3</sup> Pools of 500 cells (DNs from Patient 2 and DN and BCs from Patient 3) were isolated. There was insufficient tissue available from Patient 1 for LCM studies.

## Results

### Clinical descriptions

#### Patient 1

This 21-year-old female presented at age 7 years with sensorimotor seizures manifest by ascending right numbness then weakness. Seizures occurred in clusters of multiple daily events over a few weeks with seizure free periods of up to 12 months in between. Video EEG showed low amplitude left centroparietal slowing and sharp activity and seizures associated with low voltage left centroparietal periodic rhythms. Brain MRI showed a transmantle FCD involving left pre- and postcentral gyri (Fig. 1A). Leading up to surgery, seizures had been present for 6 months occurring on a multiple weekly to multiple daily frequency and accompanied by altered responsiveness. Partial resection was performed at age 16 years while awake with resection limited by right arm weakness, which did not persist. Brief right hand sensory seizures continued postoperatively and gradually reduced in frequency until



**Figure 1.** Correlation between somatic variant load in *RHEB* and the extent of lesion. Coronal T2 MRI scans showing transmantle FCD in Patient 1 (A) lobar FCD in Patient 2 (B), and HME in Patient 3 (C). The boundaries of the malformations are illustrated by white lines. Somatic variants in *RHEB* were identified in all three patients, with positive correlation between the variant load and the size of the brain lesion. The corresponding genetic variant and somatic variant load are indicated for each patient.

ceasing 15 months postsurgery. During this time, triple anticonvulsant therapy with topiramate, lamotrigine, and clobazam was slowly weaned to low dose topiramate monotherapy. Her brief sensory seizures returned after a 14-month period of seizure freedom and she has had ongoing incomplete seizure control since then despite trials of additional anticonvulsant medications, varying from a multiple daily to multiple weekly frequency.

### Patient 2

This 6-year-old male presented at age 6 months with focal seizures manifest by right arm tonic posturing and head deviation to the left. Video EEG showed left fronto-temporal epileptic discharges. Stereo EEG showed a left operculo-insular and lateral temporal seizure onset zone. Brain MRI showed a left temporo-opercular FCD (Fig. 1B). First surgery at age 2 consisted of resection of the opercular and insular region but did not control seizures (Engel outcome score 4). Due to ongoing seizures, a hemispherotomy was subsequently performed at age 4.

The patient has been seizure free for 4 years without AED (Engel outcome score 1).

### Patient 3

This 3-year-old male presented at age 3 days with multiple daily focal seizures manifest by right-sided clonic jerking, eyelid blinking, and cyanosis. EEG revealed multiple left hemisphere foci and 3T MRI showed left HME (Fig. 1C). A syndromic diagnosis of epidermal naevus syndrome was made. Hemispherotomy was performed at age 5 months. This patient has been seizure free for 2.5 years without AED (Engel outcome score 1).

### Molecular findings

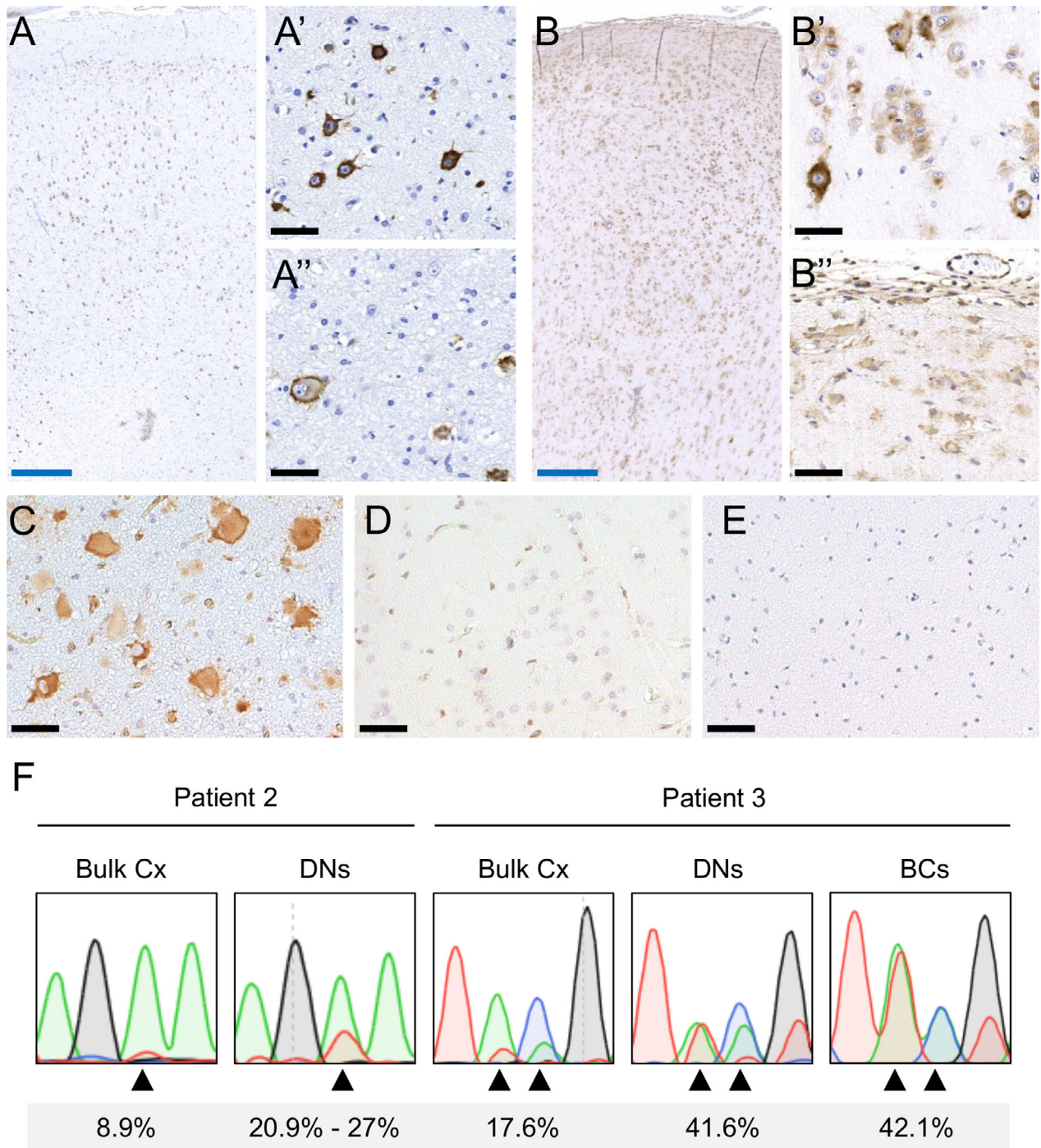
We identified a brain-specific somatic *RHEB* variant (NM\_005614.4:c.104\_105delACinsTG; p.Y35L) in Patient 1. Brain-specific somatic *RHEB* variants were previously identified in Patient 2 and Patient 3<sup>3</sup> (Table 1). Variants were not detected in the matched blood samples.

**Table 1.** Somatic *RHEB* variants detected in the patients with cortical malformations.

Patient ID	Histopathology	cDNA Change	Protein Change	Brain VAF (targeted sequencing)	Validation
Patient 1	FCDIIB	c.104_105delACinsTG	p.Y35L	2.6%	Droplet Digital PCR (2.6%)
Patient 2 <sup>1</sup>	FCDIIB	c.119A > T	p.E40V	8.9%	Site-specific amplicon sequencing (8.9%)
Patient 3 <sup>1</sup>	FCDIIB (HME)	c.104_105delACinsTA	p.Y35L	17.6%	Sanger sequencing

VAF, variant allele frequency.

<sup>1</sup>Patient 2 and Patient 3 have previously been reported.



**Figure 2.** RHEB-mutated DNs and BCs show p-S6 immunoreactivity. Immunostaining of patient brain sections with an antibody directed against p-S6 shows abnormal cells with strong immunoreactivity in Patient 2 (A), Patient 3 (B), and Patient 1 (C). In contrast, immunostaining of p-S6 in an FCDI resection specimen (D) and a normal postmortem specimen (E) did not show strong immunoreactivity. In Patient 2, p-S6-positive cells are distributed in all cortical layers (A), a predominance of DNs is observed (A'), while scattered BCs are found at the gray–white matter borders (A''). In Patient 3 cortical layering is completely lost (B), with high density of BCs all over the specimen, including layer 1 (B), and often organized in clusters (B''), while DNs are more interspersed (B'). Black scale bar = 50  $\mu$ m, blue scale bar = 500  $\mu$ m. Sequencing of LCM-isolated cells shows variant enrichment in DNs and BCs (F). There were insufficient BCs from Patient 2 for LCM. Arrowheads indicate the altered bases in Patient 2 (A > T) and Patient 3 (AC > TA). Variant allele frequencies quantified by site-specific amplicon sequencing are shown. DN: Dysmorphic neuron; BC: Balloon cell.

Analysis of imaging showed that the extent of the malformation correlated with somatic variant load. In Patient 1 (2.6% variant load), the small FCD was restricted to a transmantle dysplasia affecting left pre- and postcentral gyri (Fig. 1A). In Patient 2 (8.9% variant load), a lobar FCD affected the entire left temporal lobe (Fig. 1B) and in Patient 3 (17.6% variant load), left HME was present (Fig. 1C).

We performed immunostaining against p-S6 (canonical hallmark of mTOR kinase activity) and identified abundant DNs and BCs in brain specimens of all patients with strong immunoreactivity (Fig. 2A–C), indicating upregulated mTOR activity. In contrast, immunoreactivity against p-S6 was not observed in non-mTOR-related FCDI and postmortem control specimens (Fig. 2D–E).

Density of pS6-positive cells in cortical layers could not be well appreciated in Patient 1 due to limited tissue. Density of pS6-positive cells was lower in Patient 2 compared to Patient 3, consistent with the lower variant load. In Patient 2, pS6-positive cells were distributed in all cortical layers (except layer 1), with a higher proportion and distribution of DNs compared to scattered BCs at the gray–white junction (Fig. 2A). In Patient 3, cortical layering was completely absent, with high density of BCs throughout the specimen, including layer 1, often organized in small clusters, while DNs were rarer (Fig. 2B).

To investigate which cell types harbor the somatic variants, we used LCM to isolate pools of DNs from Patient 2, and pools of DNs and BCs from Patient 3. There was insufficient material to perform LCM from Patient 1 and insufficient number of BCs from frozen tissue of Patient 2. Sanger and site-specific amplicon sequencing of each pool revealed clear enrichment of the variants in DNs and BCs compared to bulk tissue, suggesting enrichment in these cell types (Fig. 2F).

## Discussion

Here, we report clinical, neuropathological and genetic data of three patients with brain mosaic *RHEB* variants leading to a spectrum of FCD, the extent of which correlates with the somatic variant load. *RHEB* is a member of the Ras superfamily GTPases that can activate mTOR signaling pathway.<sup>8</sup> Immunostaining of dysplastic tissues showed that *RHEB* p.Y35L and p.E40V substitutions result in hyperactivation of mTOR. LCM findings show enrichment of somatic *RHEB* variants in DNs and BCs, as we previously reported in other mTOR pathway genes *DEPDC5*, *MTOR*, and *PIK3CA*,<sup>3,4</sup> confirming that these variants account for the abnormal cell types. The presence of the variants, at similar allele frequencies in both DNs and BCs suggests that both cell types share a common developmental lineage.

Patient 1 and Patient 3 both carried the p.Y35L substitution, with lower variant load causing small FCD and higher variant load causing HME. This supports the hypothesis that the timing of the postzygotic somatic mutation is crucial in determining lesion size. In accordance with this notion, germline de novo *RHEB* mutations have been previously reported in three patients with macrocephaly.<sup>9</sup> Furthermore, a mouse model expressing a constitutively active form of *RHEB* (*RHEB*<sup>CA</sup>) showed a dose-dependent phenotype, characterized by no seizures at low *RHEB*<sup>CA</sup> levels and spontaneous recurrent seizures increasing proportionally with higher doses in the mutant.<sup>10</sup> The findings in human patients and mouse models further strengthen the correlation between the lesion size and variant load.

Our findings support the role of *RHEB* somatic variants in the etiology of FCD and HME, confirming that both entities are a continuum of mTOR-related cortical malformations. The detection of somatic variants in lesional tissue relies on deep targeted sequencing to identify mosaic variants at low (<5%) allele frequencies. The finding of recurrent *RHEB* variants in FCD and HME emphasizes that *RHEB* should be included with other mTOR pathway genes in sequencing panels for cortical malformations. Precision therapeutic strategies targeting the mTOR pathway are currently under investigation for the treatment of seizures and neurodevelopmental symptoms associated with FCD. For example, an ongoing clinical trial uses the mTOR inhibitor everolimus to treat patients with FCDII who have ongoing seizures after more than two antiepileptic drugs and surgery (NCT03198949).

## Acknowledgments

We thank the families involved in this research and acknowledge the assistance of Kate Pope and Greta Gillies in manuscript preparation.

## Conflict of Interest

The authors report no disclosures.

## References

- Blumcke I, Thom M, Aronica E, et al. The clinicopathologic spectrum of focal cortical dysplasias: a consensus classification proposed by an ad hoc Task Force of the ILAE Diagnostic Methods Commission. *Epilepsia* 2011;52:158–174.
- Marsan E, Baulac S. Review: mechanistic target of rapamycin (mTOR) pathway, focal cortical dysplasia and epilepsy. *Neuropathol Appl Neurobiol* 2018;44:6–17.

3. Baldassari S, Ribierre T, Marsan E, et al. Dissecting the genetic basis of focal cortical dysplasia: a large cohort study. *Acta Neuropathol* 2019;138:885–900.
4. Lee WS, Stephenson SEM, Howell KB, et al. Second-hit DEPDC5 mutation is limited to dysmorphic neurons in cortical dysplasia type IIA. *Ann Clin Transl Neurol* 2019;6:1338–1344.
5. D’Gama AM, Woodworth MB, Hossain AA, et al. Somatic mutations activating the mTOR pathway in dorsal telencephalic progenitors cause a continuum of cortical dysplasias. *Cell Rep* 2017;21:3754–3766.
6. Salinas V, Vega P, Piccirilli MV, et al. Identification of a somatic mutation in the RHEB gene through high depth and ultra-high depth next generation sequencing in a patient with Hemimegalencephaly and drug resistant Epilepsy. *Eur J Med Genet* 2019;62:103571.
7. Zhao S, Li Z, Zhang M, et al. A brain somatic RHEB doublet mutation causes focal cortical dysplasia type II. *Exp Mol Med* 2019;51:84.
8. Goitre L, Trapani E, Trabalzini L, Retta SF. The Ras superfamily of small GTPases: the unlocked secrets. *Methods Mol Biol* 2014;1120:1–18.
9. Reijnders MRF, Kousi M, van Woerden GM, et al. Variation in a range of mTOR-related genes associates with intracranial volume and intellectual disability. *Nat Commun* 2017;8:1052.
10. Nguyen LH, Mahadeo T, Bordey A. mTOR hyperactivity levels influence the severity of epilepsy and associated neuropathology in an experimental model of tuberous sclerosis complex and focal cortical dysplasia. *J Neurosci* 2019;39:2762–2773.



Minerva Access is the Institutional Repository of The University of Melbourne

**Author/s:**

Lee, WS;Baldassari, S;Chipaux, M;Adle-Biassette, H;Stephenson, SEM;Maixner, W;Harvey, AS;Lockhart, PJ;Baulac, S;Leventer, RJ

**Title:**

Gradient of brain mosaic RHEB variants causes a continuum of cortical dysplasia

**Date:**

2021-01-12

**Citation:**

Lee, W. S., Baldassari, S., Chipaux, M., Adle-Biassette, H., Stephenson, S. E. M., Maixner, W., Harvey, A. S., Lockhart, P. J., Baulac, S. & Leventer, R. J. (2021). Gradient of brain mosaic RHEB variants causes a continuum of cortical dysplasia. *ANNALS OF CLINICAL AND TRANSLATIONAL NEUROLOGY*, 8 (2), pp.485-490. <https://doi.org/10.1002/acn3.51286>.

**Persistent Link:**

<http://hdl.handle.net/11343/272603>

**License:**

[CC BY-NC-ND](#)