

GRB 050509b: the elusive optical/nIR/mm afterglow of a short-duration GRB[★]

A. J. Castro-Tirado¹, A. de Ugarte Postigo¹, J. Gorosabel¹, T. Fathkullin², V. Sokolov², M. Bremer³, I. Márquez¹,
A. J. Marín¹, S. Guziy^{1,4}, M. Jelínek¹, P. Kubánek⁵, R. Hudec⁵, S. Vitek⁶, T. J. Mateo Sanguino⁷, A. Eigenbrod⁸,
M. D. Pérez-Ramírez⁹, A. Sota¹, J. Masegosa¹, F. Prada¹, and M. Moles¹

¹ Instituto de Astrofísica de Andalucía (IAA-CSIC), PO Box 3.004, 18.080 Granada, Spain
e-mail: ajct@iaa.es

² Special Astrophysical Observatory, Russian Academy of Sciences, Karachai-Cherkessia, Nizniy-Arkhyz, 357147, Russia

³ Institute de Radioastronomie Milimetrique (IRAM), 300 rue de la Piscine, 38406 Saint-Martin-d'Hères, France

⁴ Nikolaev State University, Nikolskaya 24, 54.030 Nikolaev, Ukraine

⁵ Astronomical Institute, Academy of Sciences of the Czech Republic, 25165 Ondřejov, Czech Republic

⁶ Fakulta elektrotechnická, Czech Technical University, 121 35 Praha, Czech Republic

⁷ Dept. de Ing. Electrónica, Sistemas Informáticos y Automática, Univ. de Huelva, 21.819 Palos de la Frontera (Huelva), Spain

⁸ Laboratoire d'Astrophysique, École Polytechnique Fédérale de Lausanne, Observatoire, 1290 Sauverny, Switzerland

⁹ Departamento de Física (EPS), Univ. de Jaén, Campus Las Lagunillas, 23071 Jaén, Spain

Received 27 May 2005 / Accepted 26 June 2005

Abstract. We present multiwavelength (optical/near infrared/millimetre) observations of a short duration gamma-ray burst detected by *Swift* (GRB 050509b) collected between 0 seconds and ~18.8 days after the event. No optical, near infrared or millimetre emission has been detected in spite of the well localised X-ray afterglow, confirming the elusiveness of the short duration events. We also discuss the possibility of the burst being located in a cluster of galaxies at $z = 0.225$ or beyond. In the former case, the spectral energy distribution of the neighbouring, potential host galaxy, favours a system harbouring an evolved dominant stellar population (age ~360 Myr), unlike most long duration GRB host galaxies observed so far, i.e. thus giving support to a compact binary merger origin. Any underlying supernova that could be associated with this particular event should have been at least 3 magnitudes fainter than the type Ib/c SN 1998bw and 2.3 mag fainter than a typical type Ia SN.

Key words. gamma rays: bursts – techniques: photometric – cosmology: observations

1. Introduction

Gamma Ray Bursts (GRBs) are flashes of high energy (~1 keV–10 GeV) photons (Fishman & Meegan 1995), occurring at cosmological distances. The detection of counterparts at other wavelengths for long duration GRBs, revealed their cosmological origin (see van Paradijs et al. 2000, for a review) and it is accepted nowadays that they are associated with the death of massive stars. On the other hand, the nature of short duration GRBs, a class that comprises about 25% of all events (Mazets et al. 1981; Kouveliotou et al. 1993), still remains a puzzle. No counterparts have been discovered so far, in spite of intense efforts in order to detect the optical, infrared and radio

counterparts to several short, hard bursts (Kehoe et al. 2001; Gorosabel et al. 2002; Hurley et al. 2002; Klotz et al. 2003). A possible optical transient, related to GRB 000313 was proposed by Castro-Tirado et al. (2002) but a firm conclusion could not be established.

The *Swift* satellite (Gehrels et al. 2004) offers unique capabilities for the detection of GRBs thanks to its high sensitivity and imaging capabilities at γ -rays, X-rays and optical wavelengths. The short GRB 050509b was discovered by *Swift*/BAT detector on 9 May 2005. The burst started at 04:00:19.23 UT and lasted for ~40 ms, putting it in the “short-duration” class of GRBs. It had a fluence of $(0.95 \pm 0.25) \times 10^{-8}$ erg cm⁻² in the 15–150 keV range (Gehrels et al. 2005). The prompt dissemination (13.7 s) of the GRB position (Hurkett et al. 2005) enabled prompt responses of automated and robotic telescopes on ground, like ROTSE-III (Rykoff et al. 2005), RAPTOR (Wozniak et al. 2005) and BOOTES-1 (shown in this Letter), although no prompt afterglow emission was detected. By the time when *Swift* slewed and started data acquisition (about 60 s after the event onset), a fading X-ray emission was detected by

[★] Based on observations taken with the 1.2 m Mercator telescope at Observatorio del Roque de los Muchachos, with the 1.5 m telescope at Observatorio de Sierra Nevada, with the 2.2 m and 3.5 m telescopes at the Centro Astronómico Hispano Alemán (CAHA) at Calar Alto (operated jointly by the Max-Planck Institut für Astronomie and the Instituto de Astrofísica de Andalucía (CSIC)) and with the 6.0 m telescope at the Special Astrophysical Observatory in Russia.

Table 1. Journal of optical and nIR observations of the GRB 050509b field.

Date of 2005 UT (mid exposure)	Telescope/instrument	Filtre	Exposure time (s)	Seeing (arcsec)	Limiting magnitude (3σ)
May 09, 04:00:25	BOOTES-1 (ASCCD)	<i>R</i>	30	3.0	6.0
May 09, 04:40	1.2Mer (MEROPE)	<i>R</i>	600	2.5	21.0
May 09, 23:40	1.2Mer (MEROPE)	<i>R</i>	600	1.3	22.1
May 11, 20:00	6.0BTA (SCORPIO)	<i>R</i>	7 020	2.0	26.0
May 18, 23:00	1.5OSN (CCD)	<i>I</i>	3 600	1.4	21.9
May 27, 22:57	2.2CAHA (BUSCA)	<i>R</i>	2 500	1.4	23.9
May 09, 21:21	3.5CAHA (OMEGA2000)	<i>H</i>	3 378	2.1	20.2
May 09, 23:22	3.5CAHA (OMEGA2000)	<i>K</i>	2 730	1.6	18.8
May 10, 00:05	3.5CAHA (OMEGA2000)	<i>J</i>	3 656	2.1	21.2
May 10, 02:29	3.5CAHA (OMEGA2000)	<i>H</i>	3 563	2.4	20.5
May 10, 21:50	3.5CAHA (OMEGA2000)	<i>J</i>	1 897	1.9	20.3
May 12, 21:55	3.5CAHA (OMEGA2000)	<i>H</i>	2 314	1.7	20.3
May 15, 22:29	3.5CAHA (OMEGA2000)	<i>J</i>	1 620	1.4	21.7
May 17, 23:00	3.5CAHA (OMEGA2000)	<i>J</i>	3 656	2.0	22.2

Table 2. Journal of mm observations of the GRB 050509b field.

Date of 2005 UT	Configuration	Detection level (mJy, 1σ)	Frequency (GHz)	Beam (arcsec)	Position angle (deg)
May 11, 02:56-03:38	6Dp	1.9	80.327	32.2×4.44	-136
		12.0	242.842	9.89×1.62	-137
May 11, 21:38-23:49	6Dp	0.8	80.467	9.56×4.51	+ 66
		5.9	242.842	3.24×1.73	+ 64
May 13, 00:26-02:44	6Dp	1.0	80.467	25.30×4.54	+ 48
		4.4	221.501	6.05×1.70	-128
May 16, 17:33-22:28	5Dp	0.3	92.682	6.55×5.44	+ 93

the *Swift*/XRT; this can be considered as the first clear detection of an afterglow in a short duration GRB (Kennea et al. 2005). This triggered a multiwavelength campaign at many observatories aimed at detecting the afterglow at other wavelengths, as in the case of the long duration GRB class. Here we report the results of the multiwavelength observations carried out by our group, from millimetre (mm) wavelengths to the optical bands.

2. Observations and data reduction

The BOOTES-1 very wide field camera, located at Estación de Sondeos Atmosféricos (INTA-CEDEA) in Huelva (Spain), observed the region of the sky containing the *Swift*/BAT error box of GRB 050509b as part of its routine observing schedule (Castro-Tirado et al. 2004). A 30 s exposure started at 04:00:00 UT (19 s prior to the onset of the 40 ms short burst), with the following frame starting at 04:01:00 UT. A limiting (unfiltered, airmass 4.0) magnitude of 6.0 is derived for any prompt optical flash arising from this event.

ToO observations in the optical were triggered starting 0.53 h after the event at the 1.2 m Mercator telescope (+ MEROPE CCD camera) at Observatorio del Roque de los Muchachos in La Palma (Spain). Subsequently, ToO observations were made at the 1.5 m telescope at Observatorio de Sierra Nevada in Granada (Spain) and at the 6.0 m BTA telescope (+ SCORPIO) at the Special Astrophysical Observatory (SAO-RAS) in Nizhnij-Arkhyz (Russia), and at the 2.2 m telescope (+BUSCA) at Calar Alto (Spain). Near infrared (nIR) observations were obtained at the 3.5 m telescope

(+ OMEGA2000) at Calar Alto as part of the ALHAMBRA¹ back-up programme. Table 1 displays the observing log.

Additionally, mm observations were obtained at the Plateau de Bure Interferometer (PdBI) as part of our ToO programme. The PdBI observed the source on May 11 and May 13 (6 antennas compact D configuration) and May 16 (5 antennas compact D configuration). The data reduction was done with the standard CLIC and MAPPING software distributed by the Grenoble GILDAS group²; the flux calibration is relative to the carbon star MWC349. Table 2 displays the observing log.

In order to subtract in all of our optical and nIR images the contribution of the bright elliptical galaxy 9'5 away from the XRT error box, we modeled it using the ELLIPSE routine under IRAF³. We used the residual to perform further analysis in the optical and nIR images. The optical field was calibrated using the field photometry provided by Henden (2005). The nIR images were calibrated using the 2MASS Catalogue.

3. Results and discussion

The main observational result is the lack of any variable optical/nIR/mm counterpart in our images, within the refined *Swift*/XRT error box (Gehrels et al. 2005), in spite of the intensive searches, in agreement with the upper limits reported by ROTSE-III and RAPTOR and *Swift*/UVOT

¹ <http://alhambra.iaa.es:8080>

² <http://www.iram.es/IRAMFR/GS/gildas/gildas.html>

³ IRAF is distributed by the NOAO, which are operated by USRA, under cooperative agreement with the US NSF.

(Gehrels et al. 2005) for the prompt optical emission and by PAIRITEL (Bloom et al. 2005) for the prompt nIR emission. Similarly, the deep upper limits reported at the Keck (Bloom et al. 2005; Cenko et al. 2005) and at the VLT (Hjorth et al. 2005a; Covino et al. 2005) are in agreement with our conclusions drawn from the deep 6.0BTA observations.

3.1. No optical/nIR/mm afterglow at all?

The fact that the detected X-ray afterglow for GRB 050509b (Gehrels et al. 2005) is the faintest of all afterglows detected by the *Swift*/XRT so far may indicate that the density of the surrounding medium where the progenitor took place is much lower than the typical value of $\approx 1 \text{ cm}^{-3}$ derived for several long-duration GRBs. Assuming that the X-ray afterglow is caused by synchrotron emission, as in the case of the long-duration family, one should also expect some contribution at nIR and optical wavelengths, but a simple $S_{\text{X-ray}}/S_{\text{optical}}$ scaling would predict prompt optical fluxes $\sim 10^2$ (i.e. ~ 5 mag) fainter than the optical afterglows observed so far for the long-duration events. Moreover, the combined *Swift*/XRT and *Chandra* X-ray Observatory (*CXO*) observations (Patel et al. 2005) imply that the decay exponent α is 1.1 (Gehrels et al. 2005), i.e., an optical afterglow might have rapidly decayed in brightness with a similar power-law decay index for $\nu_{\text{opt}} < \nu_{\text{X}} < \nu_{\text{c}}$ (Sari et al. 1998).

3.2. Is GRB 050509b at $z = 0.225$?

GRB 050509b is located in the direction of the NSC J123610+285901 cluster of galaxies (Gal et al. 2003) at $z = 0.225$ (see also Bloom et al. 2005). In fact, during the prompt search for the X-ray afterglow detected by *Swift*/XRT, *CXO* has detected the diffuse X-ray emission from the intracluster gas rather than the point source itself (Patel et al. 2005).

If this would be the case, taking into account the proximity ($9''.5$) of the X-ray error box to the elliptical galaxy 2MASX J12361286+2858580 (Fig. 1), the relationship to it cannot be discarded. It would be only ~ 33 kpc in projection ($3.563 \text{ kpc}''$), as the angular size distance $D_A = 735 \text{ Mpc}$, considering a Hubble constant of $H_0 = 71 \text{ km s}^{-1} \text{ Mpc}^{-1}$, a matter density $\Omega_m = 0.3$, and a cosmological constant $\Omega_\Lambda = 0.7$. Assuming this, the progenitor would have been originated in the halo of the elliptical galaxy and could favour a neutron-star merger origin (Goodman et al. 1987; Eichler et al. 1989; Narayan et al. 1992), a physical scenario that can explain a short-duration burst like GRB 050509b. We note that past searches for correlations between clusters of galaxies and GRBs did not reveal positive results (Hurley et al. 1997; Gorosabel & Castro-Tirado 1997).

Radio emission in (or close to) the center of this galaxy has been detected at the WSRT (van der Horst et al. 2005) although no emission lines are seen in the optical spectrum (Bloom et al. 2005). The restframe colours (and therefore the associated K-corrections) have been obtained based on the HyperZ code (Bolzonella et al. 2000). Fitting synthetic

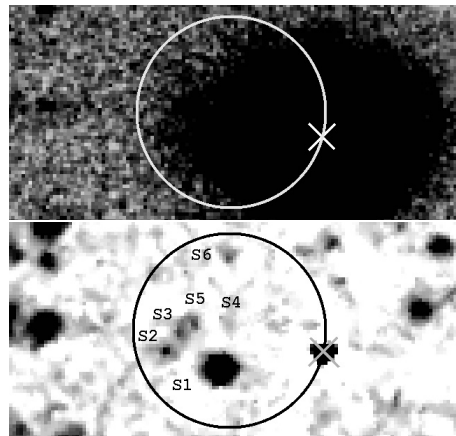


Fig. 1. The deep R band image of the GRB 050509b field taken at the 6.0BTA on 11 May 2005. The contribution of the elliptical galaxy, marked with a cross (*upper panel*) has been removed in order to better show the content of the *Swift*/XRT error box (*lower panel*). The six sources S1–S4 (Cenko et al. 2005) and S5–S6 (Hjorth et al. 2005b) within the *Swift*/XRT error box are indicated. The field is $41'' \times 20''$ with North up and East to the left.

spectral energy distributions (SED) templates to the B band magnitude (19.73 ± 0.08), derived from the Bok telescope image (Engelbracht & Eisenstein 2005) and from our own data and taking the nIR magnitudes from the 2MASS, produces $U - B = -0.50 \pm 0.20$, $B - V = 1.08 \pm 0.20$, $V - R = 0.31 \pm 0.20$ and $R - I = 0.69 \pm 0.20$, (correcting all for the Galactic reddening $E(B - V) = 0.019$; Schlegel et al. 1998). At $z = 0.225$, this is a rather luminous galaxy, with $M_B = -20.6$ and $M_R = -22.2$. According to HyperZ, the *BRIJHK* band SED of the neighbour galaxy at $z = 0.225$ favours ($\chi^2/\text{d.o.f.} = 2.4$) a moderately extinguished ($A_V \sim 0.4$ mag) galaxy harbouring an evolved dominant stellar population (age ~ 360 Myr). Figure 2 shows the SED of the elliptical galaxy.

In this scenario, an intriguing possibility arises if the event would be the result of a stellar collapse, similarly to the long duration GRBs. At such a redshift, an underlying type Ib/c SN similar to SN 1998bw/GRB 980425 (Galama et al. 1998) should have peaked at $R \sim 21$, about 20 days since the burst onset. An underlying Type Ia SN is also expected if the event is the result of the gravitational collapse of a C/O white dwarf into a neutron star (Dar & De Rújula 2004). Our optical limits in the R -band 18.5 days after the event onset imply that the peak flux of any underlying supernova should have been ~ 3 mag fainter than the one observed for the type Ib/c SN 1998bw/GRB 980425 (Galama et al. 1998), and 2.3 mag fainter than a typical type Ia SN (Filippenko 1997, and references therein), in agreement with the VLT results (Hjorth et al. 2005a).

3.3. Is GRB 050509b at high redshift?

It is also plausible that GRB 050509b has been originated at a redshift considerably higher than 0.225, i.e. it could lie in the S1 galaxy or in one of the fainter sources (S2–S6) detected within the XRT error box (Fig. 1) at unknown redshift (see Bloom et al. 2005) or it occurred in a much more distant object,

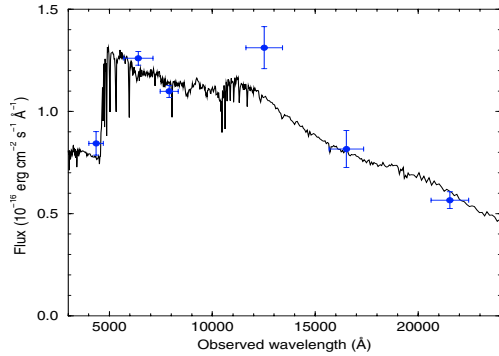


Fig. 2. Synthetic fit to the *BRIJHK* band photometric points of the elliptical galaxy. The best fit is achieved with a moderately extinguished ($A_V = 0.4$ mag) galaxy harbouring an evolved stellar population (age ~ 360 Myr). The SED fit assumed a Salpeter (1955) IMF and a Calzetti et al. (2000) extinction law.

at very high redshift. In the former case, extinction might have played a considerable role in order to hide optical variability in the first hours/days following the event. However, the lack of detection of a nIR transient in the observations presented here disfavours this argument. On the contrary, if GRB 050509b arose from a high-redshift host galaxy, it would have easily been beyond the limit of the optical/nIR telescopes, because of the Lyman α blanketing affecting the optical band.

4. Conclusions

We have shown multiwavelength observations of the short duration gamma-ray burst detected by *Swift* (GRB 050509b) between 0 s and ~ 18.8 days after the event. No optical/nIR/mm afterglow emission has been detected, in spite of the reported X-ray afterglow detection by *Swift* few minutes after the event, confirming the elusiveness of the afterglow of the short duration events. The spectral energy distribution of the neighbouring, potential host galaxy, favours a system harbouring an evolved dominant stellar population (age ~ 360 Myr), unlike most long duration GRB host galaxies observed so far, i.e. thus giving support to a compact binary merger origin. Any underlying supernova that could be associated with this particular event should have been at least 3 mag fainter than SN 1998bw and 2.3 mag fainter than a type Ia SN.

GRB 050509b is the second short duration GRB which is detected by *Swift*/BAT after GRB 050202 (which occurred too close to the Sun and could not be properly followed-up), and the first one localised with high accuracy by *Swift*/XRT. In spite of *CGRO*/BATSE detecting about 1/4 of events belonging to the short duration class, *Swift* has only detected 2 (out of ~ 40 events), most likely due to its softer threshold energy. However, thanks to its extraordinary repointing capabilities, the accurate localisations for future events and the corresponding multiwavelength follow-up, will shed more light on the origin of the short-duration GRBs.

Acknowledgements. We acknowledge the comments from the anonymous referee, and C. W. Engelbracht and D. J. Eisenstein for making available their B-band image. This work is based partly on observations carried out with the IRAM Plateau de Bure Interferometer,

supported by INSU/CNRS (France), MPG (Germany) and IGN (Spain); and on data products from the Two Micron All Sky Survey (2MASS), which is a joint project of the Univ. of Massachusetts and the IPAC/CalTech, funded by NASA and the NSF. The work was partially supported by the grant A3003206 of the Grant Agency of the Academy of Sciences of the Czech Republic, by the RFBR grant 04-02-16300a and by the Program of the Presidium of RAN entitled “Non-stationary Phenomena in Astronomy 2005” and by the Spanish MEC programmes AYA2004-01515 and ESP2002-04124-C03-01.

References

- Bloom, J. S., Prochaska, J. X., Pooley, D., et al. 2005, *ApJ*, submitted [arXiv:astro-ph/0505480]
- Bolzonella, M., Miralles, J.-M., & Pelló, R. 2000, *A&A*, 363, 476
- Calzetti, D., Armus, L., Bohlin, R. C., et al. 2000, *ApJ*, 533, 682
- Castro-Tirado, A. J., Castro Cerón, J. M., Gorosabel, J., et al. 2002, *A&A*, 393, L55
- Castro-Tirado, A. J., Jelínek, M., Mateo Sanguino, T. J., et al. 2004, *AN*, 325, 679
- Cenko, S. B., Soifer, B. T., Bian, C., et al. 2005, *GCN Circ.*, 3401
- Covino, S., Israel, G. L., Antonelli, L. A., et al. 2005, *GCN Circ.*, 3413
- Dar, A., & De Rújula, A. 2004, *Phys. Rep.*, 405, 203
- Eichler, D., Livio, M., Piran, T., & Schramm, D. N. 1989, *Nature*, 340, 126
- Engelbracht, C. W., & Eisenstein, D. J. 2005, *GCN Circ.*, 3420
- Filippenko, A. V. 1997, *ARA&A*, 35, 309
- Fishman, G. J., & Meegan, C. A. 1995, *ARA&A*, 33, 415
- Gal, R. R., de Carvalho, R. R., Lopes, P. A. A., et al. 2003, *AJ*, 125, 2064
- Galama, T. J., Vreeswijk, P. M., van Paradijs, J., et al. 1998, *Nature*, 395, 670
- Gehrels, N., Chincarini, G., Giommi, P., et al. 2004, *ApJ*, 611, 1005
- Gehrels, N., Barbier, L., Barthelmy, S. D., et al. 2005, *Nature*, submitted [arXiv:astro-ph/0505630]
- Goodman, J., Dar, A., & Nussinov, S. 1987, *ApJ*, 314, L7
- Gorosabel, J., & Castro-Tirado, A. J. 1997, *ApJ*, 483, L83
- Gorosabel, J., Andersen, M. I., Hjorth, J., et al. 2002, *A&A*, 383, 112
- Henden, A. A. 2005, *GCN Circ.*, 3454
- Hjorth, J., Sollerman, J., Gorosabel, J., et al. 2005a, *ApJ*, submitted [arXiv:astro-ph/0506123]
- Hjorth, J., Sollerman, J., Jensen, B. L., et al. 2005b, *GCN Circ.*, 3410
- Hurkett, C., Rol, E., Barbier, L., et al. 2005, *GCN Circ.*, 3381
- Hurley, K., Hartmann, D., Kouveliotou, C., et al. 1997, *ApJ*, 479, L113
- Hurley, K., Berger, E., Castro-Tirado, A. J., et al. 2002, *ApJ*, 567, 447
- Kehoe, R., Akerlof, C., Balsano, R., et al. 2001, *ApJ*, 554, L159
- Kennea, J. A., Burrows, D. N., Housek, J., et al. 2005, *GCN Circ.*, 3383
- Klotz, A., Böer, M., & Atteia, J.-L. 2003, *A&A*, 404, 815
- Kouveliotou, C., Meegan, C. A., Fishman, G. J., et al. 1993, *ApJ*, 413, 101
- Mazets, E. P., Golenetskii, S. V., Ilyinskii, V. N., et al. 1981, *Ap&SS*, 80, 119
- Narayan, R., Paczyński, B., & Piran, T. 1992, *ApJ*, 395, L83
- Patel, S., Kouveliotou, C., Burrows, D. N., et al. 2005, *GCN Circ.*, 3419
- Rykoff, E. S., Swan, H., Schaefer, B., et al. 2005, *GCN Circ.*, 3382
- Salpeter, E. E. 1955, *ApJ*, 121, 161
- Sari, R., Piran, T., & Narayan, R. 1998, *ApJ*, 497, L17
- Schlegel, D. J., Finkbeiner, D. P., & Davis, M. 1998, *ApJ*, 500, 525
- van der Horst, A. J., Wiersema, K., Wijers, R. A. M. J., et al. 2005, *GCN Circ.*, 3405
- van Paradijs, J., Kouveliotou, C., & Wijers, R. A. M. J. 2000, *ARA&A*, 38, 379
- Wozniak, P., Vestrand, W. T., Wren, J., et al. 2005, *GCN Circ.*, 3414