

GRB 120422A/SN 2012bz: Bridging the gap between low- and high-luminosity gamma-ray bursts[★]

S. Schulze^{1,2,3}, D. Malesani⁴, A. Cucchiara⁵, N. R. Tanvir⁶, T. Krühler^{4,20}, A. de Ugarte Postigo^{7,4}, G. Leloudas^{8,4}, J. Lyman⁹, D. Bersier⁹, K. Wiersema⁶, D. A. Perley^{10,11}, P. Schady¹², J. Gorosabel^{7,44,45}, J. P. Anderson^{13,20}, A. J. Castro-Tirado⁷, S. B. Cenko^{14,15}, A. De Cia¹⁶, L. E. Ellerbroek¹⁷, J. P. U. Fynbo⁴, J. Greiner¹², J. Hjorth⁴, D. A. Kann^{12,18}, L. Kaper¹⁷, S. Klose¹⁸, A. J. Levan¹⁹, S. Martín²⁰, P. T. O’Brien⁶, K. L. Page⁶, G. Pignata²¹, S. Rapaport²², R. Sánchez-Ramírez⁷, J. Sollerman²³, I. A. Smith²⁴, M. Sparre⁴, C. C. Thöne⁷, D. J. Watson⁴, D. Xu^{16,4}, F. E. Bauer^{1,2,43}, M. Bayliss^{25,26}, G. Björnsson³, M. Bremer²⁸, Z. Cano³, S. Covino²⁷, V. D’Elia^{29,46}, D. A. Frail³⁰, S. Geier^{4,31}, P. Goldoni³², O. E. Hartoog¹⁷, P. Jakobsson³, H. Korhonen³³, K. Y. Lee²³, B. Milvang-Jensen⁴, M. Nardini³⁴, A. Nicuesa Guelbenzu¹⁸, M. Oguri^{35,36}, S. B. Pandey³⁷, G. Petitpas²⁵, A. Rossi¹⁸, A. Sandberg²³, S. Schmidl¹⁸, G. Tagliaferri²⁷, R. P. J. Tilanus^{38,39}, J. M. Winters²⁸, D. Wright⁴⁰, and E. Wuyts^{41,42}

(Affiliations can be found after the references)

Received 8 January 2014 / Accepted 7 March 2014

ABSTRACT

Context. At low redshift, a handful of gamma-ray bursts (GRBs) have been discovered with luminosities that are substantially lower ($L_{\text{iso}} \lesssim 10^{48.5} \text{ erg s}^{-1}$) than the average of more distant ones ($L_{\text{iso}} \gtrsim 10^{49.5} \text{ erg s}^{-1}$). It has been suggested that the properties of several low-luminosity (low- L) GRBs are due to shock break-out, as opposed to the emission from ultrarelativistic jets. This has led to much debate about how the populations are connected.

Aims. The burst at redshift $z = 0.283$ from 2012 April 22 is one of the very few examples of intermediate- L GRBs with a γ -ray luminosity of $L_{\text{iso}} \sim 10^{49.6-49.9} \text{ erg s}^{-1}$ that have been detected up to now. With the robust detection of its accompanying supernova SN 2012bz, it has the potential to answer important questions on the origin of low- and high- L GRBs and the GRB-SN connection.

Methods. We carried out a spectroscopy campaign using medium- and low-resolution spectrographs with 6–10-m class telescopes, which covered a time span of 37.3 days, and a multi-wavelength imaging campaign, which ranged from radio to X-ray energies over a duration of ~ 270 days. Furthermore, we used a tuneable filter that is centred at $H\alpha$ to map star-formation in the host and the surrounding galaxies. We used these data to extract and model the properties of different radiation components and fitted the spectral energy distribution to extract the properties of the host galaxy.

Results. Modelling the light curve and spectral energy distribution from the radio to the X-rays revealed that the blast wave expanded with an initial Lorentz factor of $\Gamma_0 \sim 50$, which is a low value in comparison to high- L GRBs, and that the afterglow had an exceptionally low peak luminosity density of $\lesssim 2 \times 10^{30} \text{ erg s}^{-1} \text{ Hz}^{-1}$ in the sub-mm. Because of the weak afterglow component, we were able to recover the signature of a shock break-out in an event that was not a genuine low- L GRB for the first time. At 1.4 hr after the burst, the stellar envelope had a blackbody temperature of $k_B T \sim 16 \text{ eV}$ and a radius of $\sim 7 \times 10^{13} \text{ cm}$ (both in the observer frame). The accompanying SN 2012bz reached a peak luminosity of $M_V = -19.7 \text{ mag}$, which is 0.3 mag more luminous than SN 1998bw. The synthesised nickel mass of $0.58 M_\odot$, ejecta mass of $5.87 M_\odot$, and kinetic energy of $4.10 \times 10^{52} \text{ erg}$ were among the highest for GRB-SNe, which makes it the most luminous spectroscopically confirmed SN to date. Nebular emission lines at the GRB location were visible, which extend from the galaxy nucleus to the explosion site. The host and the explosion site had close-to-solar metallicity. The burst occurred in an isolated star-forming region with an SFR that is 1/10 of that in the galaxy’s nucleus.

Conclusions. While the prompt γ -ray emission points to a high- L GRB, the weak afterglow and the low Γ_0 were very atypical for such a burst. Moreover, the detection of the shock break-out signature is a new quality for high- L GRBs. So far, shock break-outs were exclusively detected for low- L GRBs, while GRB 120422A had an intermediate L_{iso} of $\sim 10^{49.6-49.9} \text{ erg s}^{-1}$. Therefore, we conclude that GRB 120422A was a transition object between low- and high- L GRBs, which supports the failed-jet model that connects low- L GRBs that are driven by shock break-outs and high- L GRBs that are powered by ultra-relativistic jets.

Key words. gamma-ray burst: individual: GRB 120422A – supernovae: individual: SN 2012bz – dust, extinction – galaxies: ISM – galaxies: individual: GRB 120422A

1. Introduction

The discovery of SN 1998bw in the errorbox of GRB 980425 by Galama et al. (1998) gave the study of the gamma-ray burst (GRB) – supernova (SN) connection a flying start. This event remains unique in several ways, among the many hundred GRBs that have been studied since. It is still the closest GRB with

a measured redshift, and it is the least energetic GRB yet observed. Nevertheless, SN 1998bw seems to be representative for the type of SNe that accompanies the more typical and brighter long-duration GRBs (For recent reviews, see Woosley & Bloom 2006; Modjaz 2011; Hjorth & Bloom 2012), which are bright ($M_{\text{bol, peak}} \lesssim -19 \text{ mag}$), broad-lined (indicating expansion velocities of several 10^4 km s^{-1}) type Ic SNe (i.e. lacking hydrogen and helium). Interestingly, in only two out of 16 cases of nearby long-duration GRBs ($z < 0.5$), no SN was found to limits several

[★] Appendices are available in electronic form at <http://www.aanda.org>

magnitudes deeper than any other GRB-SN. (Fynbo et al. 2006; Della Valle et al. 2006a; Gal-Yam et al. 2006; Ofek et al. 2007; Kann et al. 2011), though their classification is not free of ambiguity (e.g. McBreen et al. 2008; Thöne et al. 2008; Zhang et al. 2009; Kann et al. 2011).

So far, most GRBs with spectroscopically-confirmed SN associations have had a much lower apparent luminosity than the bulk of long-duration GRBs. The GRB 030329 was the first example of an high-luminosity GRB ($\log L_{\text{iso}}/(\text{erg s}^{-1}) = 50.9$) that was accompanied by an SN (Hjorth et al. 2003; Matheson et al. 2003; Stanek et al. 2003). However, there is a growing number of high-luminosity bursts, which are defined by $\log L_{\text{iso}}/(\text{erg s}^{-1}) \gtrsim 49.5$ (Hjorth 2013), with a spectroscopically-confirmed SN, such as GRBs 050525A (Della Valle et al. 2006b), 081007 (Della Valle et al. 2008; Jin et al. 2013), 091127 (Cobb et al. 2010; Berger et al. 2011), 101219B (Sparre et al. 2011), 130215A (de Ugarte Postigo et al. 2013), 130427A (Xu et al. 2013; Levan et al. 2013), and 130831A (Klose et al. 2013).

Bromberg et al. (2011) suggested that low-luminosity GRBs, such as GRBs 060218 and 100316D, ($\log L_{\text{iso}}/(\text{erg s}^{-1}) \lesssim 48.5$; Hjorth 2013) are driven by a high-energy emission that is associated with the shock break-out of their progenitor stars rather (see also Nakar & Sari 2012) than an emerging jet that is typical in high-luminosity GRBs (Colgate & McKee 1969; Kulkarni et al. 1998; Campana et al. 2006; Soderberg et al. 2006a; Nakar & Sari 2012; Olivares et al. 2012). A consequence of these different energy sources is that low- L GRBs seem to be about 10–1000 times more common than high- L GRBs (Pian et al. 2006; Chapman et al. 2007; Guetta & Della Valle 2007; Liang et al. 2007; Virgili et al. 2009; Wanderman & Piran 2010). Because of their low luminosities, however, they are primarily found at low redshifts as rare events (one every ~ 3 years). In contrast to high- L GRBs, low- L GRBs typically have single-peak high-energy prompt light curves and can have soft high-energy spectra with peak energies below ~ 50 keV (Campana et al. 2006; Starling et al. 2011, but see Kaneko et al. 2007). Their optical emission is dominated by the SN emission. Until now, their afterglows have been detected only in radio and X-rays but not in optical. The recent GRB 120422A is a particularly interesting case. It has a γ -ray luminosity that is intermediate between low- and high-luminosity GRBs and has a robust detection of the associated SN (Malesani et al. 2012a; Sánchez-Ramírez et al. 2012; Wiersema et al. 2012; Melandri et al. 2012). A study of this event may thus answer important questions about the origin of both high- and low- L GRBs.

The paper is structured as follows. We describe the data gathering and outline the data analysis in Sect. 2. We then present the results on the transient following the GRB from radio to X-ray wavelengths and the accompanying GRB-SN, SN 2012bz, in Sect. 3. The properties of the GRB environment and the host galaxy are described in Sect. 4. In Sect. 5, we compare our findings to other events and argue that GRB 120422A represents the *missing link between low- and high- L GRBs*. Finally, we summarise our findings and present our conclusions in Sect. 6.

Throughout the paper, we use the convention for the flux density $F_\nu(t) \propto t^{-\alpha} \nu^{-\beta}$, where α is the temporal slope and β is the spectral slope. We refer to the solar abundance compiled in Asplund et al. (2009) and adopt cm^{-2} as the linear unit of column densities, N . Magnitudes reported in the paper are given in the AB system, and uncertainties are given at an 1σ confidence level (c.l.). We assume a Λ CDM cosmology with $H_0 = 71 \text{ km s}^{-1} \text{ Mpc}^{-1}$, $\Omega_m = 0.27$, and $\Omega_\Lambda = 0.73$ (Larson et al. 2011).

2. Observations and data reduction

On 2012 April 22 at 7:12:49 UTC (hereafter called T_0 ; MJD = 56 039.30057), the Burst Alert Telescope (BAT, Barthelmy et al. 2005) aboard *Swift* detected and localised a faint burst (Troja et al. 2012). Its γ -ray light curve was comprised of a single peak with a duration of $T_{90} = 5.4 \pm 1.4$ s, followed by a fainter and lower-energetic emission that began 45 s after the trigger and lasted for 20 s. Within 86 s, the *Swift* X-ray Telescope XRT (Burrows et al. 2005) and the UV/Optical Telescope UVOT (Roming et al. 2005) started to observe the field and detected an uncatalogued and rapidly decaying source at RA, Dec (J2000) = $09^{\text{h}}07^{\text{m}}38^{\text{s}}42 (\pm 0.01)$, $+14^{\circ}01'07''.1 (\pm 0.2)$ (Beardmore et al. 2012; Kuin & Troja 2012; Zauderer et al. 2012). At only $2''$ NE of the explosion site, there is a SDSS galaxy (Cucchiara et al. 2012; Tanvir et al. 2012). Spectra of the explosion site revealed several absorption and emission lines at a common redshift of $z = 0.283$, and a large number of emission lines at the location of the SDSS galaxy at a redshift identical to that of the GRB (Schulze et al. 2012b; Tanvir et al. 2012).

Thanks to its low redshift and its γ -ray luminosity ($E_{\text{iso}} = (1.6\text{--}3.2) \times 10^{50}$ erg and $L_{\text{iso}} \sim 10^{49.6\text{--}49.9}$ erg s^{-1} measured between 1 keV and 1000 keV; Melandri et al. 2012), which is between that of high- and low- L GRBs, it is an ideal target to search for the accompanying GRB-SN. We therefore triggered an extensive imaging campaign with several telescopes from mm to optical wavelengths, as well as a large low- and medium-resolution spectroscopy campaign carried out at 6-m to 10-m class telescopes. These campaigns began ~ 31 min after the trigger and ended ~ 44.6 days later. Furthermore, we obtained an X-ray spectrum with *XMM-Newton* 12 days after the explosion. In addition to our own efforts, the GRB-dedicated satellite *Swift* observed the GRB at UV/optical and X-ray wavelengths for 54.3 days. We incorporated these data and the radio data obtained with the Arcminute Microkelvin Imager Large Array (AMI-LA; Staley et al. 2013) to present a comprehensive study of this event. In the following, we summarise the observations and describe how the data were analysed. A log of our observations is presented in Tables 1, 2, A.1, and B.1.

2.1. Optical and NIR spectroscopy

Our spectroscopic campaign began 51 min after the trigger and covered a time span of 37.7 days. The spectral sequence was comprised of seven medium-resolution spectra obtained with VLT/X-shooter (Vernet et al. 2011); the first three spectra covered the full spectral bandwidth from 3000 to 24 800 Å, while a K -blocking filter (cutting the wavelength coverage at 20 700 Å; Vernet et al. 2011) was adopted to increase the signal-to-noise ratio (S/N) in the H band for the remaining ones. These observations were complemented with ten low-resolution spectra acquired with the Gemini Multi-Object Spectrograph (GMOS, Hook et al. 2004), which is mounted on Gemini-North and -South, the Gran Telescopio Canarias (GTC) OSIRIS camera, the Keck Low Resolution Imaging Spectrometer (LRIS; Oke et al. 1995), and the *Magellan* Low Dispersion Survey Spectrograph 3 (LDSS3). Table 1 summarises these observations.

Observing conditions were not always photometric, and observations were performed irrespective of moon distance and phase. For each epoch, we centred the slit on the explosion site and varied the position angle to probe different parts of the host galaxy in some cases, as illustrated in Fig. 1.

Table 1. Summary of spectroscopic observations.

MJD (days)	Epoch (days)	Telescope/Instrument	Arm/Grating	Spectral range (Å)	Resolving power	Exposure time (s)	Slit width	Position angle		
56 039.345	0.0443	Gemini/GMOS-N	R400+OG515	5942–10 000	960	2 × 900	1′′0	180°0		
56 039.431	0.1301	Gemini/GMOS-N	B600	3868–6632	844	2 × 400	1′′0	180°0		
56 040.017	0.7160	VLT/X-shooter	UVB	3000–5500	4350	4 × 1200	1′′0	41°0		
			VIS	5500–10 000	8800	4 × 1200	0′′9			
			NIR	10 000–24 800	5100	16 × 300	0′′9			
56 042.911	3.6112	GTC/OSIRIS	R500R	4800–10 000	500	4 × 1500	1′′2	100°0		
56 044.014	4.7139	VLT/X-shooter	UVB	3000–5500	4350	4 × 1200	1′′0	41°0		
			VIS	5500–10 000	8800	4 × 1200	0′′9			
			NIR	10 000–24 800	5100	16 × 300	0′′9			
56 044.257	4.9565	Keck/LRIS	400/3400	3000–5500	750	2 × 900	0′′7	50°0		
			400/8500	5500–10 000	1700					
			UVB	3000–5500	4350				4 × 1200	1′′0
56 048.061	8.7604	VLT/X-shooter	VIS	5500–10 000	8800	4 × 1200	0′′9	41°0		
			NIR	10 000–24 800	5100	16 × 300	0′′9			
			UVB	3000–5500	4350	4 × 1200	1′′0			
56 048.304	9.0036	Gemini/GMOS-N	R400	4442–8608	960	4 × 1200	1′′0	170°0		
56 052.978	13.6772	Gemini/GMOS-S	R400+GG455	4892–9008	960	1 × 2400	1′′0	180°0		
56 053.930	14.6301	GTC/OSIRIS	R500R	4800–10 000	500	3 × 1200	1′′2	75°0		
			UVB	3000–5500	4350				4 × 1200	1′′0
			VIS	5500–10 000	8800				4 × 1200	0′′9
56 057.996	18.6962	VLT/X-shooter ^a	NIR	10 000–20 700	5100	16 × 300	0′′9	52°0		
			UVB	3000–5500	4350				4 × 1200	1′′0
			VIS	5500–10 000	8800				4 × 1200	0′′9
56 061.996	22.6953	Gemini/GMOS-S	R400+GG455	4892–9108	960	2 × 2400	1′′0	−30°0		
			UVB	3000–5500	4350				4 × 1200	1′′0
			VIS	5500–10 000	8800				4 × 1200	0′′9
56 063.999	24.6992	VLT/X-shooter ^a	NIR	10 000–20 700	5100	16 × 300	0′′9	52°0		
			UVB	3000–5500	4350				4 × 1200	1′′0
			VIS	5500–10 000	8800				4 × 1200	0′′9
56 066.068	26.7680	<i>Magellan</i> /LDSS3	VPH_ALL	3700–9400	800	1 × 1400	1′′2	141°0		
			UVB	3000–5500	4350				4 × 1200	1′′0
			VIS	5500–10 000	8800				4 × 1200	0′′9
56 076.025	36.7250	VLT/X-shooter ^a	NIR	10 000–20 700	5100	16 × 300	0′′9	−143°9		
			UVB	3000–5500	4350				4 × 1200	1′′0
			VIS	5500–10 000	8800				4 × 1200	0′′9
56 077.000	37.7001	VLT/X-shooter ^a	NIR	10 000–20 700	5100	16 × 300	0′′9	151°1		
			UVB	3000–5500	4350				4 × 1200	1′′0
			VIS	5500–10 000	8800				4 × 1200	0′′9

Notes. Column “Epoch” shows the logarithmic mean-time after the burst in the observer frame. Resolving powers and spectral ranges are the nominal values from instrument manuals. ^(a) The *K*-band blocking filter was used to increase the S/N in *JH* band.

The VLT/X-shooter data were reduced with the X-shooter pipeline v2.0 (Goldoni et al. 2006)¹. To extract the one-dimensional spectra of the transient and the host galaxy, we used a customised tool that adopts the optimal extraction algorithm by Horne (1986). The Gemini, GTC, and *Magellan* spectra were reduced and calibrated using standard procedures in IRAF (Tody 1993). The Keck data were reduced with a custom pipeline that makes use of standard techniques of long-slit spectroscopy. In all cases, we chose a small aperture for studying the optical transient. For studying the emission lines, we extracted the spectral point spread (PSF) function and extracted the spectrum of the nucleus and the afterglow within an aperture of $1 \times FWHM$ of each trace, for example, the FWHMs were 1′′34 for the galaxy nucleus and 0′′86 for the explosion site, for the UVB and VIS of the first X-shooter spectrum.

All spectra were flux-calibrated with corresponding spectrophotometric standard star observations, and the absolute flux scale was adjusted by comparing to photometry. The data were corrected for the Galactic reddening of $E(B - V) = 0.04$ mag (Schlegel et al. 1998). All wavelengths were transformed to vacuum wavelengths. In addition, X-shooter data were corrected for

heliocentric motion. No telluric correction was applied, as it has no implications for our analysis.

2.2. Imaging

Following the BAT trigger, *Swift* slewed immediately to the burst, and UVOT took a *v*-band settling exposure 86 s after the BAT trigger. Science observations began at $T_0 + 104$ s and cycled through all filters. Follow-up observations in the *v* and *b* bands continued until $T_0 + 2.3$ days, in the *uwv1*, *uvm2*, and *uwv2* UV filters until $T_0 + 9.7$ days, and in the *u* band until $T_0 + 54.3$ days, at which time a final set of observations of the host galaxy was taken in all filters².

Our ground-based imaging campaign began 31 min after the explosion and spanned a time interval of ~ 45 days. Due to the proximity of an $R = 8.24$ mag star (79′′ NW of the explosion site), we either moved the position of the optical transient to the NW corner of the chip or (most of the time) obtained short dithered exposures to avoid excessive saturation.

¹ <http://www.eso.org/sci/software/pipelines/>

² Additional UVOT data were acquired in October 2012. These data are not discussed in this paper. This has no implications on our work.

Table 2. Summary of mm and sub-mm observations.

MJD (days)	Epoch (days)	Instrument	Frequency	Exposure time (s)	F_ν (mJy; 3σ)
56039.3291	0.0537	SCUBA-2	350 GHz	5639	<7.20
56039.3291	0.0537	SCUBA-2	665 GHz	5639	<225
56039.5676	0.2670	AMI-LA ^a	15 GHz		<0.62
56040.1923	0.8917	SMA	272 GHz	3420	<3.60
56041.6806	2.3800	AMI-LA ^a	15 GHz		<0.47
56041.9422	2.6416	PdBI	86.7 GHz	5040	<0.39
56041.9943	2.6937	CARMA	92.5 GHz	3480	<1.15
56043.6806	4.3800	AMI-LA ^a	15 GHz		<0.37
56046.7206	7.4200	AMI-LA ^a	15 GHz		<0.24
56048.8054	9.5048	PdBI	86.7 GHz	5040	<0.24
56052.7506	13.450	AMI-LA ^a	15 GHz		<0.23
56067.8906	28.590	AMI-LA ^a	15 GHz		<0.46

Notes. Column “Epoch” shows the logarithmic mean time after the burst in the observer frame. ^(a) Data taken from [Staley et al. \(2013\)](#).

Observations were carried out with the 2.56-m Nordic Optical Telescope (NOT) equipped with ALFOSC, MOSCA, and StanCAM in the $u'g'Rr'i'i'$ bands ([Malesani et al. 2012b](#); [Schulze et al. 2012a](#)). These observations began at 14.29 h post-burst and were stopped at 44.5 days because of the small Sun distance. Further imaging data were acquired with GMOS-N and GMOS-S in the $u'g'r'i'z'$ bands between 31 min and 40.7 days after the explosion ([Cucchiara et al. 2012](#); [Perley et al. 2012a](#)). The Gamma-Ray Optical/Near-infrared Detector (GROND, [Greiner et al. 2007, 2008](#)) mounted at the MPG/ESO 2.2 m telescope on La Silla imaged the field simultaneously in four optical ($g'r'i'z'$) and three NIR (JHK_s) bands starting at $T_0 + 16.5$ hr ([Nardini et al. 2012](#)). Additional epochs were obtained on nights 2, 9, 11, 20, and 29 before the visibility of the field was compromised by its small Sun distance on day 39. We monitored the optical transient in the $g'r'i'$ bands with the 60-inch Palomar telescope for 37 days beginning at $T_0 + 0.87$ day and in the JHK bands with the Wide Field Camera (WFCAM) mounted at the United Kingdom Infrared Telescope (UKIRT) on Mauna Kea at seven epochs between $T_0 + 0.06$ day and $T_0 + 25.98$ day.

We complemented these optical observations with the 10.4-m GTC telescope equipped with OSIRIS in the $g'r'i'z'$ bands, the multi-filter imager BUSCA mounted at the 2.2-m telescope of Calar Alto (CAHA) in g' and the r' bands³, the 3.5-m CAHA telescope equipped with the Omega₂₀₀₀ camera in the z' band⁴, the LDSS3 camera mounted at the 6-m Clay telescope in the r' and i' bands, the Direct CCD Camera mounted on the Irene du Pont 2.5-m telescope at Las Campanas in the r' and i' bands, the 2.4-m Gao-Mei-Gu (GMG) telescope in i' , and the 1.04-m and the 2-m optical-infrared Himalayan Chandra Telescope in R_c and I_c . Additional NIR data were acquired with the Omega₂₀₀₀ in the $YJHK_s$ bands, the Near-InfraRed Imager (NIRI) mounted on Gemini-North in the J and K bands, and the Wide-field Infrared Camera (WIRC) on the 200-inch Hale telescope at Palomar Observatory in the J band ([Perley et al. 2012b](#)).

Very late-time observations were secured with the 2.0-m Liverpool telescope, with BUSCA mounted at the 2.2-m CAHA, and GMOS mounted at Gemini-North (Table B.1). The observation with the Liverpool telescope comprises 185 images.

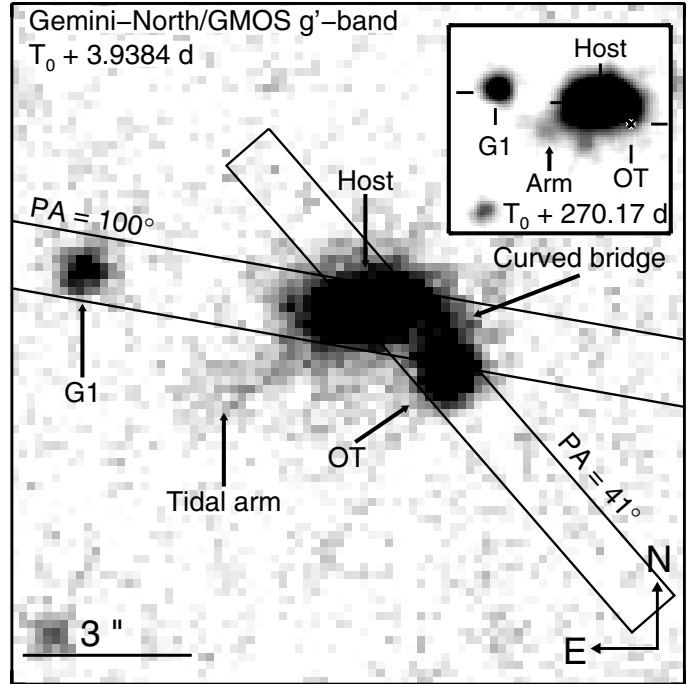


Fig. 1. Field of GRB 120422A ($12'' \times 12''$). The position of the optical transient (OT) accompanying GRB 120422A is marked, as well as the host galaxy and the curved bridge of emission that connects the explosion site with the host’s nucleus. Galaxy G1 has the same redshift as the GRB. The projected distance between the explosion site and the galaxy G1 is 28.7 kpc. The inset shows the field observed in the g' band with GMOS-N at 270.2 days after the burst. The image cuts were optimised to increase the visibility of the tidal arm that partly connects the host galaxy and G1. The most important slit orientations of our spectroscopic campaign (Table 1) are overlaid.

To minimise the data heterogeneity, an observational seeing constraint of $<1''$ was imposed for all epochs. The CAHA observation did, unfortunately, not go very deep. We do not discuss these data in the following.

In addition to these broadband observations, we made use of the tuneable filters at the 10.4-m GTC to trace the $H\alpha$ emission in the host galaxy on 2012 May 16, which was 25.5 days after the burst. Observations consisted of 5×600 s exposures using a 15-Å wide filter tuned to the wavelength of $H\alpha$ at the redshift of the burst ($\lambda_{\text{obs}} = 8420$ Å) and a 3×100 s exposure with a 513-Å-wide order-sorter filter centred at 8020 Å to probe the continuum emission (filter f802/51). The seeing was $\sim 1''$, although the transparency was affected by extinction due to Saharan dust suspended in the atmosphere (Calima).

In general, observing conditions were not always photometric; in particular, part of the NOT observations suffered from poor transparency due to the Calima. Table A.1 summarises all observations with good data quality.

We obtained the UVOT data from the *Swift* Data Archive⁵. These data had bad pixels identified, were mod-8 noise corrected, and are endowed with FK5 coordinates. We used the standard UVOT data analysis software distributed with HEASOFT 6.12 along with the standard calibration data⁶. Optical and NIR data were processed through standard procedures (bias subtraction and flat field normalisation) using

³ <http://www.caha.es/newsletter/news01a/busca/>

⁴ <http://www.mpia-hd.mpg.de/IRCAM/O2000/>

⁵ http://www.swift.ac.uk/swift_portal/

⁶ <http://heasarc.nasa.gov/lheasoft/>

IRAF or instrument-specific software packages, which include the GEMINI IRAF software package for GMOS and NIRI, a customised pipeline for the GROND data (for details, we refer to Yoldaş et al. 2008 and Krühler et al. 2008), a modified version of the WIRCSOFT package for P200/WIRC data⁷, and the UKIRT pipeline for the WFCAM data⁸. Some observations suffered from variable conditions, and in those cases, individual images were weighted according to their S/N. The i' - and z' -band images suffer from fringing, which were corrected using a fringe pattern computed from the science data themselves, although the presence of the halo from the nearby bright star hampered the process in some cases. These data resulted in a lower S/N. Astrometric calibration was computed against the USNO-B1 catalog (Monet et al. 2003), yielding an RMS of 0".4. All images were then registered together, yielding a relative RMS of less than 0".08. We measure the afterglow location to be RA, Dec (J2000) = 09^h07^m38^s.42, +14°01'07".5.

2.2.1. Sub-mm/mm observations

Our sub-mm/mm observations comprise of five epochs and cover a time interval of 9.48 days. First, Smith et al. (2012) simultaneously obtained an early epoch at 450 μ m and 850 μ m with the sub-millimetre continuum camera SCUBA-2 (Holland et al. 2013) on the James Clerk Maxwell Telescope (JCMT). The 1.6-h observation began at $T_0 + 41.5$ min and was performed under moderate weather conditions. The CSO 225 GHz tau, which measures the zenith atmospheric attenuation, was 0.089 initially but generally degraded through the run. The elevation of GRB 120422A fell from 54°.6 to 30°.4. In the consecutive night, Martin et al. (2012) triggered a short 45-min snapshot observation at the Submillimeter Array (SMA) at $T_0 + 21.4$ hr. Receivers were tuned to the local oscillator (LO) centre frequency of 271.8 GHz ($\lambda = 1.1$ mm) with the correlator configured to cover two 4-GHz bands centred at ± 6 GHz from the LO frequency. All 8 SMA antennas were used in its very extended configuration under excellent weather conditions with an average zenith opacity of 0.03 (precipitable water vapour of PWV ~ 0.5 mm) at 225 GHz. A further observation was carried out by Perley (2012) with the Combined Array for Research in Millimeter-Wave Astronomy (CARMA) in D-configuration at 92.5 GHz ($\lambda = 3$ mm). This observation was carried out between 23:13 UT on 24 April and 00:29 UT on April 25. The total on-source integration time was 58 min. We finally obtained two epochs with the Plateau de Bure Interferometer (PdBI) at a frequency of 86.7 GHz ($\lambda = 3.4$ mm) in its six-antenna compact D configuration. These observations began at $T_0 + 2.6416$ and 9.5048 days and lasted for 84 min each. The AMI-LA observed at six epochs between 0.27 and 28.59 days after the burst (Staley et al. 2013).

The SCUBA-2 data were reduced in the standard manner (Chapin et al. 2013) using SMURF (version 1.5.0) and KAPPA (version 2.1-4) from the Starlink Project⁹. Observations of the SCUBA-2 calibrator Mars bracketed the GRB 120422A observation, and observations of the calibrator CRL2688 were taken several hours later. The calibration observations spanned a larger range of weather conditions than that during the GRB 120422A run and generally agreed with the standard values of the flux conversion factors (Dempsey et al. 2013), which were then used

for the flux normalisation. We reduced CARMA and SMA data with the MIRIAD and MIR-IDL software packages (Sault et al. 1995)¹⁰. The CARMA data were absolute flux calibrated with observations of 3C84 and Mars. The calibration of the SMA data is twofold: first, we used the nearby quasars J0854+201 and J0909+013 as atmospheric gain calibrators and then J0854+201 for bandpass calibration. Absolute flux calibration was bootstrapped from previous measurements of these quasars, which resulted in an absolute flux uncertainty of $\sim 30\%$. The PdBI data were reduced with the standard CLIC and MAPPING software distributed by the Grenoble GILDAS group¹¹. The flux calibration was secured with the Be binary star system MWC349 ($F_\nu = 1.1$ Jy at 86.7 GHz).

2.2.2. X-ray observations

The X-ray telescope (XRT) aboard *Swift* started to observe the BAT GRB error circle roughly 90 s after the trigger, while it was still slewing. Observations were first carried out in window timing (WT) mode for 80 s. When the count rate was $\lesssim 1$ ct s⁻¹, the XRT switched to photon counting (PC) mode. Observations continued until $T_0 + 53.8$ days, when the visibility of the field was compromised by its small Sun distance. We obtained the temporal and spectroscopic data from the *Swift*/XRT Light Curve and Spectrum Repository (Evans et al. 2007, 2009). GRB 120422A was also observed by *XMM-Newton* under a DDT proposal, starting at 2012 May 3, 15:13 UT. At this epoch, exposures of 56841, 58421, and 58426 s were obtained with the PN, MOS1, and MOS2 detectors, respectively.

To analyse the spectroscopic data, we used Xspec, version 12.7.1, as part of HeaSoft 6.12 and the respective calibration files for *XMM-Newton* and *Swift*/XRT. The X-ray emission up to $T_0 + 200$ s was discussed in detail in Starling et al. (2012) and Zhang et al. (2012). Therefore, we focus on the analysis of the data after that epoch. In total, XRT registered 270 background-subtracted photons between 0.3 and 10 keV; data that were flagged as bad were excluded from analysis. We re-binned the spectrum to have at least 20 count per bin and applied χ^2 statistics.

2.3. Photometry

Measuring the brightness of the transient is complicated due to blending with its extended, offset host galaxy. To limit the contribution of the host to the photometry of the transient photometry, we used PSF fitting techniques. Using bright field stars, a model of the PSF was constructed for each individual image and fitted to the optical transient. To provide reliable fit results, all images were registered astrometrically to a precision that is greater than 0".08, and the centroid of the fitted PSF was held fixed to the position of the optical transient with a small margin of re-centring that corresponds to the uncertainty of the astrometric alignment of the individual images. In addition, the PSF-fitting radius was adjusted to the specific conditions of the observations and instrument, in particular, to the seeing and pixel scale. The fit radius is different for each observation but is typically in the range between 0".5 and 0".8. Generally, the radius was smaller under unfavourable sky conditions in an attempt to minimise the host's effect on the fit. Naturally, this leads to a lower S/N for these measurements than one would expect for isolated point sources.

⁷ <http://humu.ipac.caltech.edu/~jason/sci/wircsoft/index.html>

⁸ <http://casu.ast.cam.ac.uk/surveys-projects/wfcam>

⁹ <http://starlink.jach.hawaii.edu/starlink>

¹⁰ <http://www.atnf.csiro.au/computing/software/miriad/>
<https://www.cfa.harvard.edu/~cqi/mircook.html>

¹¹ <http://www.iram.fr/IRAMFR/GILDAS>

For images taken under adverse sky conditions (seeing $\geq 1''.6$) with either imagers with large pixel scales (e.g. the NIR channels of GROND with $0''.6$ per pixel) or filters/epochs with low S/N (e.g. most of the late NIR data), the individual contributions of point-source and galaxy cannot be disentangled robustly. These measurements are ignored in the following analysis. For all observations, the source was close to the centre of the field of view, and differences in the PSF between observations were, therefore, negligible.

To measure the brightness of the transient in the UVOT images, we measured the host galaxy flux at the position of the SN from the later UVOT observations, where there was no longer a contribution from the GRB or SN. This additional flux was then subtracted from our photometric measurements at the position of the GRB. In contrast, host-galaxy photometry was performed via aperture techniques. Here, we used our PSF-model to subtract the transient from the deepest images in each filter with the clearest separation between galaxy and point source, which are those images with the smallest full width at half maximum (FWHM) of the stellar PSF. A circular aperture radius was chosen to be sufficiently large ($2''.5$, e.g. 10.7 kpc at $z = 0.2825$), so that the missed emission from low surface brightness regions does not affect our photometry significantly. In addition, we also corroborated the galaxy photometry using elliptical Kron apertures (Kron 1980) via their implementation in Source Extractor (Bertin & Arnouts 1996).

Once an instrumental magnitude was established, it was photometrically calibrated against the brightness of a number of field stars measured in a similar manner. Photometry was tied to the SDSS DR8 (Aihara et al. 2011) in the optical filters ($u'g'r'i'z'$) and 2MASS (Skrutskie et al. 2006) in the NIR (JHK_s). For those filter bands not covered by our primary calibration systems (e.g. I_C or Y), we used the instrument-specific band passes to transform magnitudes into the respective filter system via synthetic photometry, which is similar to the procedure outlined in Krühler et al. (2011b). The UVOT images were calibrated using the method described in Poole et al. (2008).

The photometric error was then estimated based on the contributions from photon statistics and goodness of the PSF fit (typically between 0.5 to 15%), the absolute accuracy of the primary calibration system (≈ 2 –3%), the systematic scatter of different instrument/bandpasses with respect to the primary calibrators (≈ 3 –6%), or the uncertainty in the colour transformation (if applicable, ≈ 6 –9%).

The photometry described in the earlier paragraph inevitably contains a seeing-dependent fraction of the host light directly at the position of the transient. This contribution is best removed via differential imaging with deep reference frames from the same instrument/filter combination taken after the transient has faded completely. Given the vast number of different observers taking part in our photometry campaign, however, this procedure was not feasible in our case for all images. We instead used reference frames from a single telescope (Gemini-N, obtained ~ 270 days after the explosion) in three filters. We measure $g' = 24.62 \pm 0.10$, $r' = 24.09 \pm 0.09$, and $i' = 24.09 \pm 0.09$ mag, which correspond to a host light contribution of 10%, 7%, and 7% in $g'r'i'$, respectively, at the maximum light of the SN at the position of the optical transient. To estimate the fraction in different filters, we scaled the above numbers to the respective filters using the spectral energy distribution (SED) of the host. We assume that this factor is similar for all data from various telescopes. We note that the values in Table A.1 are *not* corrected for this host contribution.

3. The transient accompanying GRB 120422A

Figure 2 displays the brightness evolution of the transient that accompanies GRB 120422A from the X-ray to the NIR bands. During the first three days, its brightness in the UVOT filters gradually decreases with a decay slope of $\alpha = 0.2$ that is followed by a rebrightening, which peaked at ~ 20 after the GRB. The time scale and the colour evolution of the rebrightening are comparable to those of GRB-SNe (e.g. Zeh et al. 2004). The initially decaying transient could, therefore, be a superposition of the afterglow and the thermal emission of the cooling photosphere after the SN emerged. The key to understanding the evolution of the transient accompanying GRB 120422A is in determining how to disentangle the different radiation components. In the following sections, we present our results on each component.

3.1. The stellar envelope cooling-phase

Figure 3 displays SEDs at 0.054 and 0.267 days after the GRB. While afterglows have spectra formed by piecewise-connected power-laws from radio to X-rays (Sari et al. 1998), the cooling phase of the stellar envelope that was heated by the SN shock break-out is characterised by thermal emission peaking in the UV.

The early UV emission is indeed well fitted with a blackbody (for details, see Sect. 3.2.3). We measure a blackbody temperature of $kT_{\text{obs}} \sim 16$ eV ($\approx 185\,000$ K) and a radius of $R_{\text{obs}} \sim 7 \times 10^{13}$ cm (both in the observer frame) at $T_0 + 0.054$ days. These values are consistent with the expectation from the shock break-out model (e.g. Ensman & Burrows 1992; Campana et al. 2006, and references therein) and lie in the ballpark of the observed values of Ib/c SNe, such as 1993J (Richmond et al. 1994, 1996; Blinnikov et al. 1998), 1999ex (Stritzinger et al. 2002), 2008D (Soderberg et al. 2008; Malesani et al. 2009; Modjaz et al. 2009), and 2011dh (Arcavi et al. 2011; Soderberg et al. 2012; Ergon et al. 2014), and of the GRB-SNe, 2006aj (Campana et al. 2006) and 2010bh (Cano et al. 2011a; Olivares et al. 2012). In Sect. 3.2.3, we use the X-ray-to-NIR SED to provide further circumstantial evidence for the shock break-out interpretation.

The observed decline in the u band between its first detection and $T_0 + 2.8$ days of ~ 2 mag is comparable to that observed in GRB 060218 (Campana et al. 2006). However, for this event these authors also reported an increase in brightness that lasted up to 0.57 days after the burst (shifted to the observer frame of GRB 120422A). This initial rise is not present in our data, although the first observation was at 86.4 s after the onset of the γ -ray emission.

3.2. The afterglow emission

3.2.1. X-rays

Zhang et al. (2012) reported that the early X-ray emission ($t < 200$ s) is consistent with high-latitude emission from the prompt emission phase (e.g. Fenimore & Sumner 1997; Kumar & Panaitescu 2000; Dermer 2004), with evidence for small-scale deviation from power-law models (Starling et al. 2012), possibly due to a thermal component as seen in other GRBs (e.g. Campana et al. 2006; Page et al. 2011; Starling et al. 2011, 2012; Sparre & Starling 2012; Friis & Watson 2013). Friis & Watson (2013) suggested that such a thermal component is not produced by the stellar photosphere but by the photosphere of the GRB jet.

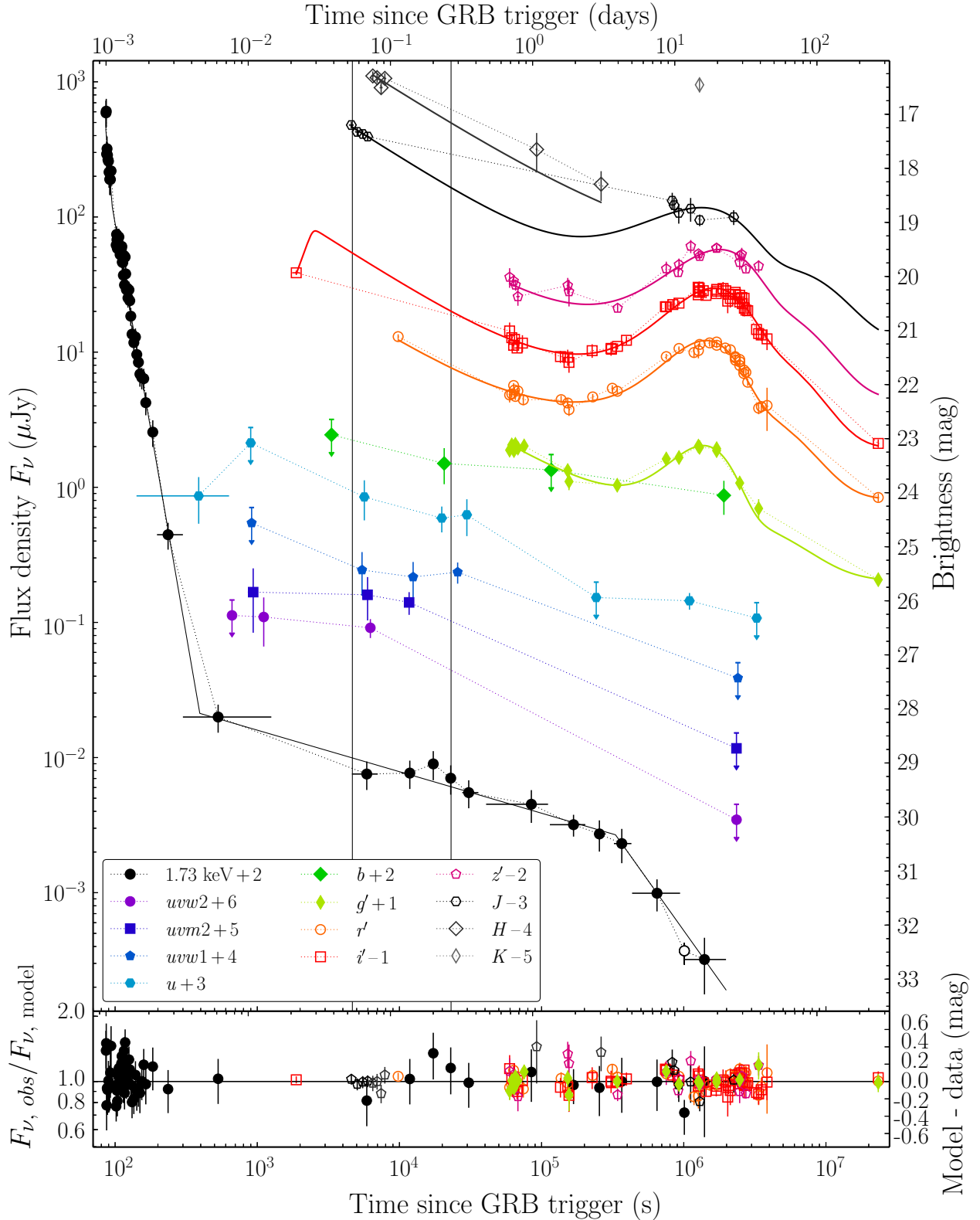


Fig. 2. X-ray, optical and NIR light curves of the transient that followed GRB 120422A. Arrows indicate 3σ upper limits. The UVOT v -band upper limits are very shallow and not displayed. Data in the $g'r'i'z'J$ bands were modelled with a rescaled SN 1998bw template at $z = 0.283$, which was superposed on a power-law (where the slope was identical in all bands) using the formalism in Zeh et al. (2004). The best-fit model parameters are shown in Table 3. Model light curves in bluer or redder filters are not shown, since they would require extrapolation of the spectral range of the SN1998bw template. Fit residuals are displayed in the bottom panel. The shifts (in magnitude) of the different bands are given in the legend. To convert the X-ray light curve to flux density, we assumed a spectral slope of $\beta = 0.9$ and no spectral evolution (for details on the SED modelling see Sect. 3.2.3). Both assumptions have no implications on our analysis. The *XMM-Newton* observation was carried out at 980 ks (open dot). The *XMM-Newton* data point was discarded from the light curve fit because of uncertainties in the cross-calibration between *Swift*/XRT and *XMM-Newton*. The vertical lines indicate the epochs of the X-ray-to-NIR SEDs presented in Sect. 3.2.3. Error bars can in some cases be smaller than the marker size.

In the following, we focus on the emission at >200 s after the burst.

At the time of our *XMM-Newton* observation, the X-ray spectrum is adequately fit as an absorbed power-law with a spectral slope of $\beta = 0.94^{+0.12}_{-0.11}$ and absorption entirely consistent with the Galactic column ($3.71 \times 10^{20} \text{ cm}^{-2}$). The spectral slope is consistent with that derived from the late time XRT spectrum ($\beta = 0.98 \pm 0.13$) and suggests no late time spectral changes ($t > 4600$ s). The spectral slope is typical for GRB afterglows at that phase.

The joint XRT and *XMM-Newton* light curve is shown in Fig. 2, where we converted the XRT observations to flux density based on the mean spectral index of the system (following Evans et al. 2009) and then added the *XMM-Newton* observations by assuming their measured spectral parameters. The X-ray light curve is adequately fit by a multiple broken power-law with indices of $\alpha_1 = 12.7 \pm 4.1$, $\alpha_2 = 6.09 \pm 0.16$, $\alpha_3 = 0.31 \pm 0.04$, and $\alpha_4 = 1.48 \pm 0.40$, and break times of $t_{b,1} = 95.3 \pm 3.2$ s, $t_{b,2} = 394 \pm 19$ s, and $t_{b,3} = 330.5 \pm 89.0$ ks; the resulting $\chi^2/\text{d.o.f.} = 43.5/54$. We note that an early break is needed to fit the WT settling mode exposures, which has a chance improvement probability of $\sim 6.6 \times 10^{-5}$.

The steep to shallow to normal decay-phase evolution is typical for X-ray afterglows of high- L GRBs (Nousek et al. 2006; Evans et al. 2010). In particular, the very rapid decay phase ($\propto t^{-13}$) points to high-latitude emission and has not been observed for low- L GRBs so far.

3.2.2. Optical/NIR

As mentioned before, the thermal emission of the cooling photosphere has an intrinsically blue spectrum and does not significantly contribute to the integrated emission in the optical and NIR. Therefore, the optical/NIR emission can be decomposed into three distinct emission components: i) the afterglow, which can be modelled with simple and broken power-law models; ii) the supernova; and iii) the host galaxy, which can be accounted for by a constant flux. To characterise the SN component, we follow the approach in Zeh et al. (2004). They used the multi-color light curves of the prototypical GRB-SN 1998bw (Galama et al. 1998; Patat et al. 2001) as templates. They derived the SN 1998bw light curves at both the given GRB redshift as well as the given observed band (including the cosmological k -correction) and then additionally modified the template with two parameters. The luminosity factor k determines the SN peak luminosity in a given band in units of the SN 1998bw peak luminosity in that band. The stretch factor s determines if the light curve evolution is faster ($s < 1$) or slower ($s > 1$) than that of SN 1998bw, whereby the actual evolutionary shape remains the same, and the explosion time is always identical to the GRB trigger time. However, we limit the SN modelling to the $g'r'i'z'J$ bands. Model light curves in bluer or redder filters require extrapolating the spectral range of the SN1998bw template.

The results of our fits are given in Table 3. In this section, we report on the properties of the afterglow, whereas those of the SN are given in Sect. 3.3.2. The light curve fits reveal that there is indeed a power-law component and, hence, provide strong evidence for an optical/NIR afterglow accompanying GRB 120422A. The fit with a simple power-law assumes that the afterglow light curve does not steepen until $T_0 + 270.2$ days, the time of the host galaxy observation. For a collimated outflow, the observer sees the edge of the jet at a certain time, which

Table 3. Properties of the SN modelling.

Simple power-law + free host magnitude				
$\alpha_1 = 0.69 \pm 0.02$				
Band	Host magnitude (mag)	Luminosity factor k	Stretch factor s	$\chi^2/\text{d.o.f.}$
g'	24.65 ± 0.12	0.86 ± 0.03	0.94 ± 0.02	194.9/146
r'	24.06 ± 0.04	1.25 ± 0.02	0.89 ± 0.02	
i'	24.17 ± 0.08	1.10 ± 0.01	0.92 ± 0.01	
z'	24.31 ± 0.12	0.99 ± 0.02	0.92 ± 0.03	
J	24.22 ± 0.22	1.12 ± 0.09	0.74 ± 0.12	
H	
Smoothly broken power-law + fixed host magnitude				
$\alpha_1 = 0.67 \pm 0.02$, $\alpha_2 = 2.00$ (fixed), t_b (days) = 9.7 ± 4.4 , $n = 10$ (fixed)				
Band	Host magnitude (mag)	Luminosity factor k	Stretch factor s	$\chi^2/\text{d.o.f.}$
g'	24.62	0.88 ± 0.05	0.97 ± 0.02	186.6/150
r'	24.09	1.25 ± 0.02	0.90 ± 0.01	
i'	24.09	1.11 ± 0.02	0.92 ± 0.01	
z'	24.15	0.99 ± 0.03	0.92 ± 0.03	
J	23.96	1.06 ± 0.09	0.68 ± 0.09	
H	23.84	

Notes. Best-fit parameters of the $g'r'i'z'JH$ band light curve fits. We modelled $g'r'i'z'J$ light curves with a SN1998bw template redshifted to $z = 0.2825$, as described in Zeh et al. (2004), which is superposed on a simple power-law or smoothly broken power-law (Beuermann et al. 1999), where α denotes the decay slope, t_b the break time, and n the smoothness, to account for the early emission and the flux from the host galaxy at the explosion site. For the H band, we used the afterglow models only. We assumed that the afterglow component evolves achronically from the g' to the H band. The supernova and afterglow light curve is equally well fitted with the two models. Column 2 gives the contribution of the host galaxy in the used aperture. See Sect. 3.3.2 for details.

results in a significant steepening (Sari et al. 1999). A jet break after 270 days has been observed in GRB 060729 (Grupe et al. 2010, see also Perley et al. 2014 for a further example of a very late jet break), but a typical value is ~ 0.6 day (rest-frame; e.g. Zeh et al. 2006; Racusin et al. 2009). We refitted the light curve with a smoothly broken power-law (Beuermann et al. 1999), where the post-break decay slope was fixed to 2. The pre-break slope is identical to the value from the simple power-law fit. The jet-break time of 9.7 ± 4.4 days (observer frame) is still large and very uncertain, but its value is more consistent with the observed distribution in Racusin et al. (2009). A reason for this large uncertainty in the break time is the brightness of the SN.

Both afterglow models over-predict the i' -band brightness at $T_0 + 1880$ s by 0.9 mag. The required rise could be either due to the crossing of the injection frequency ν_m or due to the coasting phase before the afterglow blast wave began decelerating. In the former case, the slope of the rise α_r is -0.5 (with $F_\nu \propto t^{-\alpha_r}$; Sari et al. 1998), and in the latter, the slope is between -3 and -2 for constant-density medium and >0.5 for a free-stellar-wind density profile (Shen & Matzner 2012).

The crossing of the injection frequency ν_m is by definition a chromatic feature. It evolves $\propto t^{-3/2}$ (Sari et al. 1998). This means the ratio between break times in two different bands has to obey $t_2/t_1 = (\nu_2/\nu_1)^{-2/3}$. The J band has the earliest detection after the first i' observation and is not affected by the thermal emission from the cooling stellar photosphere. Since the J -band light curve is only decaying, ν_m crossed this band at $t < 4550$ s after the burst and, hence, the i' band at $\lesssim 3260$ s. Already in

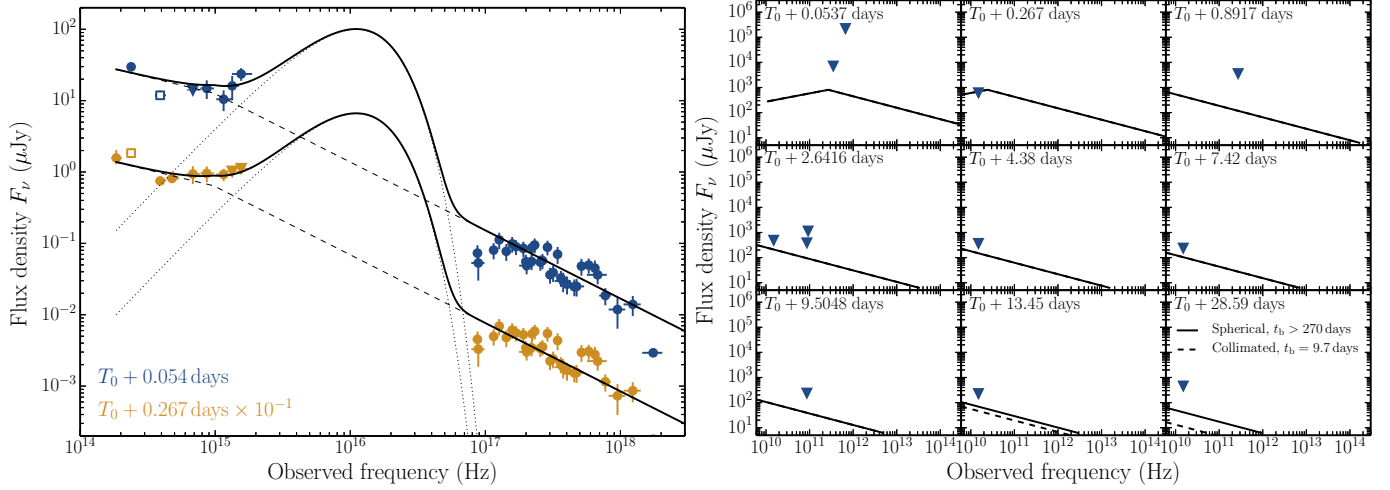


Fig. 3. *Left:* spectral energy distribution from the NIR to the X-ray at early epochs. The optical-to-X-ray SEDs are best described by the sum of an absorbed broken power-law (dashed lines) and a blackbody (dotted lines). Data excluded from the fits are shown as empty squares. If these data would be added, the fit statistic for an absorbed broken power-law (excluding the UV data) significantly worsens from $\chi^2/\text{d.o.f.} = 103.7/65$ to $\chi^2/\text{d.o.f.} = 159.1/67$. The interpolated values also significantly deviate from the best-fit model afterglow light curves (Fig. 2). Upper limits are shown by triangles. *Right:* extrapolation of the X-ray/NIR SED to the sub-mm-region compared to the available upper limits (Table 2). The NIR-to-X-ray SED from $T_0 + 0.267$ days was extrapolated to radio frequencies and evolved in time for a collimated and spherical expansion of the blast wave (for details see text). The AMI-LA measurement from $T_0 + 2.38$ was shifted to 2.6416 days, assuming the injection frequency to be blueward of the observed bandpass and using the scaling relations in Sari et al. (1998). This has no implications on our analysis.

the limiting case, the expected i' -band magnitude is 0.24 mag brighter than the observed value. Considering the small photometric error of 0.04 mag makes the deviation statistically significant, and this scenario unlikely. The blast wave coasting into a free-stellar-wind density profile is also in conflict with our data, since we detect a clear rise and not a shallow decay.

A steep rise of $\alpha_r = -2$ to -3 is fully consistent with our data. In both cases, the break time is ~ 2500 s (observer frame). We hence identify the coasting phase into a constant-density circumburst medium as the most likely scenario¹². Since the break time determines the transition from the coasting to the deceleration phase, it can be used to measure the initial Lorentz factor Γ_0 of the decelerating blast wave (Sari & Piran 1999; Panaitescu & Kumar 2000; Mészáros 2006). Following Molinari et al. (2007), we measure $\Gamma_0 \sim 50$ using the observed break time and the measurement of the energy released during the prompt γ -ray emission, $E_{\text{iso}} = (1.6\text{--}3.2) \times 10^{50}$ erg.

3.2.3. The SED from the radio to the X-rays

To characterise the afterglow properties in more detail, we model the NIR-to-X-ray SED. We limit this analysis to $<T_0 + 0.6$ day, since SN 2012bz started contributing a non-negligible amount of flux to the integrated light at later times. We choose the epochs $T_0 + 0.054$ days and $T_0 + 0.267$ days to match the dates of the sub-mm observations. The optical and NIR fluxes were

obtained through interpolation between adjacent data points¹³. Errors were estimated by interpolation. The flux scales of the XRT and XMM (MOS1, MOS2, and PN) data were adjusted to the brightness of the X-ray afterglow at the respective epochs.

These early SEDs may in principle contain evidence for the thermal emission from the cooling photosphere after the shock break-out (Sect. 3.1). The SEDs of GRB afterglows are well described through single or broken power-laws, which are possibly altered by dust and metal absorption. A single (absorbed) power law almost always suffices to fit the optical/NIR data. In the case of GRB 120422A, the simultaneous fit of the NIR-to-UV data with a single power law is very poor ($\chi^2 = 16.6$ for 8 d.o.f.). At both epochs, a clear excess is apparent in the UV data. Unaccounted extinction would only make the intrinsic SED even bluer¹⁴.

To isolate this radiation component, we fit the two NIR-to-X-ray SEDs by excluding the UV data with absorbed power-law and broken power-law models. The SEDs are best described by an absorbed broken power-law with $\beta_x \sim 0.97$ and $\beta_o \sim \beta_x - 0.5$, as expected for the simplest blast-wave model, where the cooling break in the synchrotron spectrum is between the optical and the X-rays and has a break energy of the order of eV (Fig. 3). The degeneracy between the spectral slope and the break energy is very strong (Fig. C.1). A 7% larger spectral slope would double the break energy. In comparison, the cooling frequency ($\nu_c \propto t^{-1/2}$) would decrease by a factor of 2.2 between both epochs, which is within the uncertainty of the cooling frequency measurement. Without loss of generality, we assume a break energy of 4 eV in the following (Fig. 3).

In the next step, we add the UV data to elucidate the nature of the UV excess. By adding these data, the fit statistics for the

¹² Applying the closure relations between spectral and temporal slopes (Sari et al. 1998; Chevalier & Li 2000) to the NIR/optical afterglow and using the spectral slope of $\beta_o \sim 0.46$ derived in Sect. 3.2.3, we find that the relation for a blast wave traversing a constant density medium ($\alpha_{\text{exp}} = 3\beta/2 = 0.7$, $\alpha_{\text{obs}} = 0.69$) is satisfied, if $v_m < v < v_c$ and the blast wave is expanding spherically. A free stellar-wind-density profile, as proposed by Zhang et al. (2012), does not fulfil the closure relations ($\alpha_{\text{exp}} = 3\beta/2 + 0.5 = 1.2$), which provides circumstantial evidence for our interpretation of the early rise in the i' band.

¹³ In the UV, there are cases where one of the adjacent data points is an upper limit but the epoch of the SED is very close to the time of the detection ($\Delta t < 0.1$ dex). In these cases, we treated the interpolated data point as a detection but not as an upper limit.

¹⁴ In Sect. 4.1, we show that the line-of-sight extinction is negligible.

broken power-law model worsen from $\chi^2 = 103.7$ for 65 d.o.f. to $\chi^2 = 120.8$ for 72 d.o.f. Although the chance probability of 17% is statistically not significant, we note that the residuals of the UV data increase with decreasing wavelength (Fig. 3). Fitting the SED from 2000 to 2600 Å at $T_0 + 0.054$ days with a simple power law ($F_\nu \propto \nu^{-\beta}$) returns a spectral slope of $\beta = -3.3 \pm 1.6$. Such a hard spectrum is inconsistent with any afterglow model (see e.g. Zhang & Mészáros 2004) but is fully consistent with the slope or the Rayleigh-Jeans tail of a blackbody spectrum ($F_\nu \propto \nu^2 T$).

Measured temperatures of the cooling photospheres after the shock break-out of GRBs 060218 and 100316D were between several 10 eV and a few 100 eV (Campana et al. 2006; Olivares et al. 2012). The soft X-ray bands of the *XMM-Newton* and *Swift*/XRT spectra show no evidence for a prominent thermal component at the given epochs, which limits the temperature $k_B T$ to several 10 eV. Considering that the *w2* band, the bluest UV filter in our campaign, is just sensitive to emission at ~ 6 eV, our data can only probe the Rayleigh-Jeans tail, which naturally explains why the excess is not stronger.

To constrain this thermal component, we add a blackbody to the power-law model that is defined by

$$BB(E; C, T) = 1.0344 \times 10^{-3} C \frac{E^2 \Delta E}{\exp(E/k_B T) - 1},$$

where the numerical constant C is defined as $R_{\text{km}}^2/D_{10\text{kpc}}^2$, R_{km} is the blackbody radius in km, $D_{10\text{kpc}}$ is the distance in units of 10 kpc, k_B the Boltzmann constant, T the temperature in units of keV, and E the energy and ΔE is the width of the energy bin, where both are in units of keV. Given the sparsity of UV data at $T_0 + 0.267$ days, the normalisation constant and the temperature of the blackbody component cannot be constrained simultaneously. We therefore assume the blackbody temperature to not evolve.

The fit to both SEDs is shown in Fig. 3. The best fit is characterised by a spectral slope of $\beta_0 \sim 0.46$ (unchanged with respect to the fit without UV data), a blackbody temperature of $k_B T_{\text{obs}} \sim 16$ eV ($T_{\text{obs}} \approx 185\,000$ K), and a blackbody radius of $R_{\text{obs}} \sim 7 \times 10^{13}$ cm at 1.4 hr after the burst. The blackbody component in the second epoch is barely constrained because of the limited amount of UV data. The fit statistics are $\chi^2/\text{d.o.f.} = 112.4/69$. We note that the fit statistics are affected by scatter in the X-ray spectra.

The peak of an afterglow spectrum is typically at cm/sub-mm wavelengths and usually crosses this band within the first week. We therefore extrapolate the afterglow SED from $T_0 + 0.267$ days to radio wavelengths (Fig. 3) and evolve the SED to all epochs of the radio and sub-mm observation listed in Table 2. We used the scaling relations for the injection frequency and the peak flux density for a spherical expansion and a post-jet peak evolution respectively from Sari et al. (1998, 1999). In both dynamical scenarios, the peak flux density is $\lesssim 810 \mu\text{Jy}$, which corresponds to a specific luminosity of $\lesssim 2 \times 10^{30} \text{ erg s}^{-1} \text{ Hz}^{-1}$ before the jet break occurred.

3.3. Supernova properties

3.3.1. Supernova spectrum

Our spectra of SN 2012bz are displayed in Fig. 4. The very early spectra are dominated by a smooth power-law continuum, which is characteristic of GRB afterglows. At around 4.7 days, after the transient started re-brightening (Fig. 2), the shape of

the spectrum changed, and became redder. By May 1 (8.8 days after the GRB), the spectrum clearly started resembling that of a supernova with broad lines (Sect. 5.1.1; Malesani et al. 2012a; Sánchez-Ramírez et al. 2012; Wiersema et al. 2012). By May 10 (18.7 days after the GRB), the transformation was complete, and our X-shooter spectra from +18.7 to +24.7 days were found to be very similar to those of other broad-lined Type Ic SNe accompanying GRBs (Fig. 10). The *Magellan* spectrum obtained 26.8 days after the GRB has a low S/N, despite showing absorption troughs at locations consistent with the previous data, and should be interpreted with great caution. The modelling of the spectral evolution will be presented in a forthcoming paper.

Usually, GRB-SN expansion velocities are reported for the Si II $\lambda 6355$ feature, while the Ca II NIR triplet at 8600 Å is reported sometimes as the only alternative (Patat et al. 2001; Hjorth et al. 2003; Chornock et al. 2010; Bufano et al. 2012). In the case of SN 2012bz, the Si II line is contaminated by the telluric A-band, while the Ca IR triplet is redshifted outside the optical spectrum. For this reason, we chose to measure the expansion velocities based on the Fe II $\lambda 5169$ feature. In addition, this feature appears earlier than the Si II feature and its minimum is easier to locate, as it lies between two clearly visible maxima (Figs. 4, 10). This makes it a potentially better expansion velocity tracer for GRB-SNe than Si II, which is super-imposed on a blue continuum, and it is not always easy to locate and measure, especially at early times.

We have used the fiducial rest-wavelength of 5169 Å for Fe II, as done e.g. in Hamuy & Pinto (2002) for the expansion velocities of Type IIP SNe. If this identification is not correct for GRB-SNe due to blending, we stress that even these measurements are still valuable to monitor the expansion velocity evolution and for comparison between different objects, as long as the measurements are done consistently. Based on these assumptions, we present the first, to our knowledge, diagram of GRB-SNe expansion velocities based on Fe II $\lambda 5169$ (Fig. 5). The velocities (of the order of 5000–50000 km s⁻¹) are in the range measured for other SNe associated with GRBs. SN 2010bh shows the fastest explosion velocities as seen from Si II, while SN 2006aj the slowest (Chornock et al. 2010; Bufano et al. 2012). SN 2012bz shows large velocities at three days past explosion (The earliest spectrum where a measurement is possible.) and slows down to 17000 km s⁻¹ ~ 21 days later. This behaviour is very similar to SN 2003dh, which is associated with the high-*L* GRB 030329 (Hjorth et al. 2003).

3.3.2. Absolute magnitude

The luminosities of SNe are usually reported in the rest-frame *V* band. The *r'* bandpass (observer frame) partly overlaps with the rest-frame *V* band, though it is not identical. We compute the *k*-corrected *V*-band magnitude from the *r'*-band maximum, following Hogg et al. (2002) and using the X-shooter spectrum from $T_0 + 18.7$ days (i.e. < 2 days after the maximum in *r'* band) as a weighing function. The peak luminosity of $M_V = -19.7$ mag is 0.3 mag brighter than SN 1998bw, if we use the face value of $M_V = -19.4$ mag from Cano et al. (2011b).

Measuring the SN luminosity by using a *k*-correction from the observed spectrum is the most direct and accurate approach. However, the number of spectroscopically confirmed GRB-SNe is still small. Moreover, optical spectroscopy is limited to mostly low redshifts ($z < 0.3$) because of the prohibitively long exposures required for a $M_V \sim -19$ mag SN at higher redshifts. In addition, the useful wavelength range is reduced to the red part of

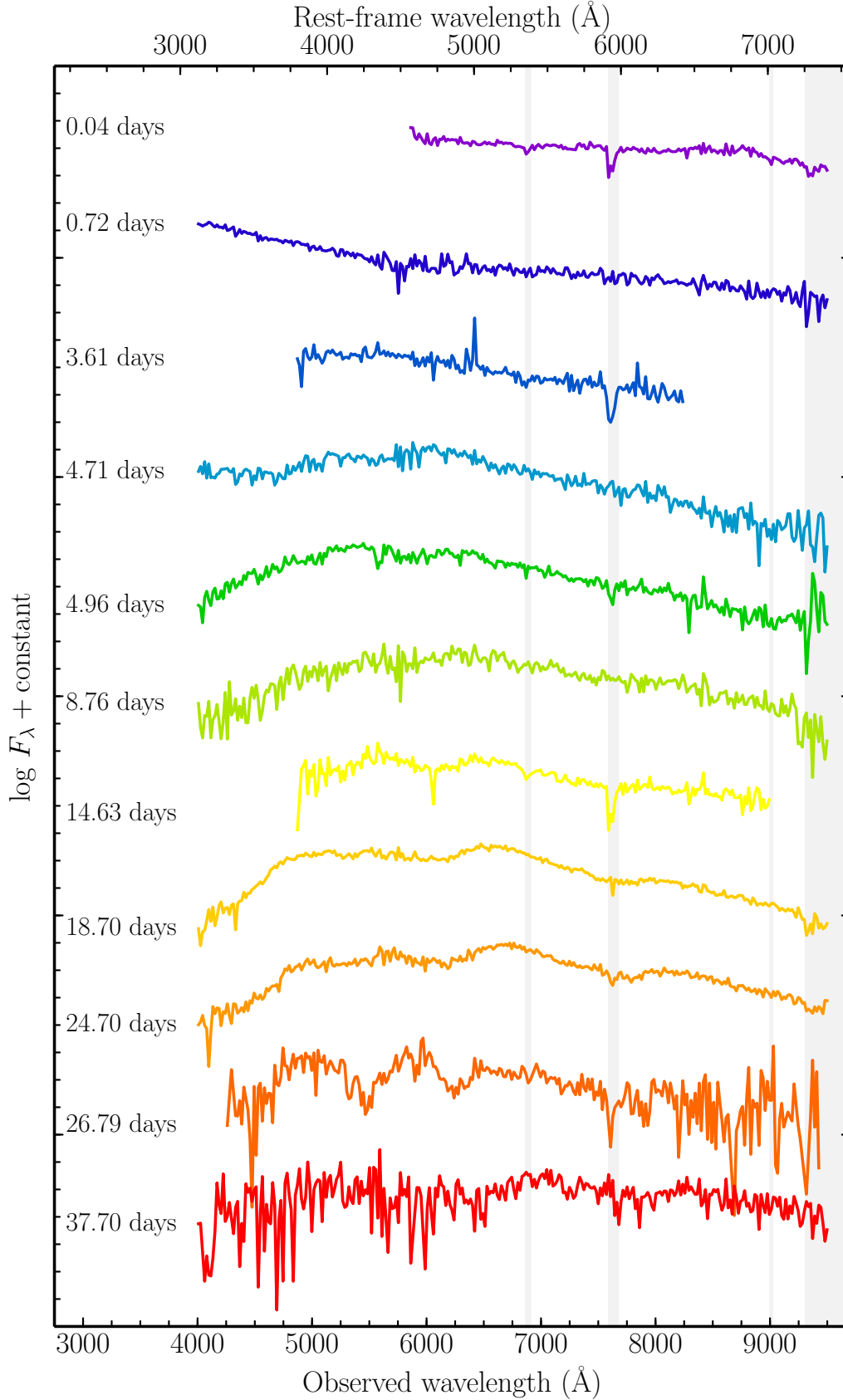


Fig. 4. Spectral evolution of the optical transient accompanying GRB 120422A. The first two epochs show a smooth power-law-shaped continuum, which is characteristic of GRB afterglows. After the transient started re-brightening, the shape of the spectrum becomes redder. At 8.8 days after the GRB, the spectrum has clearly started to resemble that of a broad-lined SN. At 18.7 days, the transformation was complete, and the spectra look similar to other GRB-SNe. All spectra were shifted vertically by an arbitrary constant. They were rebinned (18 \AA) to increase S/N for presentation purposes. We only display spectra with a large spectral range. Strong telluric lines (transparency $<20\%$) are highlighted by the grey-shaded areas.

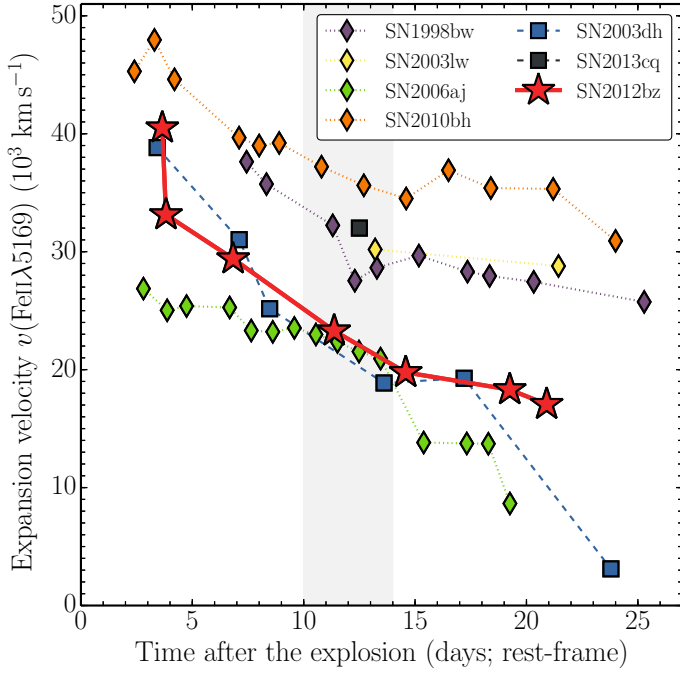


Fig. 5. Evolution of the expansion velocities measured from Fe II $\lambda 5169$ for SN 2012bz and six GRB-SNe of low (diamonds) and high-luminosity GRBs (boxes) with good spectroscopic data. Measurements were performed on our data as well as on the spectra of Patat et al. (2001), Hjorth et al. (2003), Malesani et al. (2004), Pian et al. (2006), and Bufano et al. (2012). The value of SN 2013cq was taken from Xu et al. (2013). The grey-shaded area displays the interval of observed GRB-SN peak times.

the observed spectrum due to line blanketing by iron, as the rest-frame UV moves into the optical V band (Filippenko 1997). An alternative approach is to look for “late red bumps” in afterglow light curves, which are due to the SNe. The best-fit parameters of the SN bump with SN 1998bw templates in the $g'r'i'z'J$ bands, as shown in Sect. 3.2.2, are displayed in Table 3. The fit reveals that SN 2012bz is 0.3 mag more luminous than SN 1998bw in the observed r' band. The evolution is slightly faster than that of SN 1998bw, and it is somewhat redder.

3.3.3. The explosion-physics parameters

The peak and width of an SN light curve are determined by the explosion-physics parameters, such as ejecta mass M_{ej} , ^{56}Ni mass M_{Ni} , and kinetic energy E_k of the SN ejecta. These values are estimated from the bolometric light curve. An estimate of the bolometric light curve was constructed using $g'r'i'z'$ photometric points, as coverage outside these bands is limited around the SN peak. The light curves in each filter were fitted with spline interpolations starting at two days past the GRB trigger, such that an estimated magnitude for all four bands was available at each epoch of observation. Magnitudes were converted into monochromatic fluxes at the effective (rest-frame) wavelengths of the filters for every epoch to produce an SED¹⁵. Each SED was then integrated over the limits of the filter wavelength range, which is the blue edge of g' and the red edge of z' ($\sim 3000\text{--}8000 \text{ \AA}$). The SED was tied to zero flux at these

¹⁵ Since we are evaluating the SED for every observation, nearby epochs (within <0.2 day of each other) were first calculated individually and then averaged when producing the final light curve for clarity.

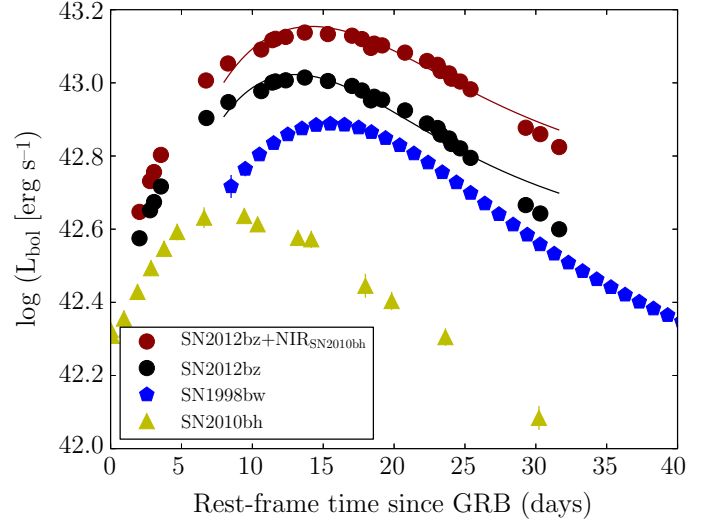


Fig. 6. Pseudo-bolometric light curves of SN 2012bz from direct integration of the SED over $g'r'i'z'$ filters, and after including a NIR contribution as found for SN 2010bh. For comparison, the $UBVRI$ light curve of SN 1998bw (Clocchiatti et al. 2011) and the $g'r'i'z'JH$ light curve of SN 2010bh are shown (Olivares et al. 2012). The models for SN 2012bz are shown as solid lines. Early light-curve time data are not fitted as the analytical model does not account for other non-negligible sources of luminosity at these times (Sect. 3.3.3). Only photometric and calibration uncertainties are included in the error bars, which are usually smaller than the size of the plot symbol.

limits, which were defined as the wavelength at which the respective filter’s normalised transmission curve falls below 10%. The integrated fluxes were converted to luminosities using the redshift and cosmology adopted previously. The resulting light curve (Fig. 6) gives a luminosity of the SN over approximately the optical wavelength range.

Contributions to the flux outside this regime, however, are not insignificant with the optical accounting for $\sim 50\text{--}60\%$ of the bolometric flux for stripped-envelope SNe (Lyman et al. 2014). Of particular importance is the contribution from the NIR, wherein the fraction of the total luminosity emitted increases with time and reaches a comparable contribution to the optical within 30 days (e.g. Valenti et al. 2008; Cano et al. 2011a). We estimate this missing NIR flux by using the fractional NIR flux of a similar event, as done in Cano et al. (2011a). A photometric study by Olivares et al. (2012) of the low redshift ($z = 0.059$) XRF 100316D/SN 2010bh contains well-sampled light curves in the $z'JH$ bands, extending upon our rest-frame wavelength limits. The contribution of wavelengths $>8000 \text{ \AA}$ to the flux was determined by first integrating SN 2010bh’s de-reddened SED over the same wavelength range used for SN 2012bz above and then over the wavelength range redward of 8000 \AA . Thus, for each epoch of observation, we obtain the NIR contribution as a fraction of the optical flux. The phase of the contributions were normalised, so $t = 0$ was the peak of the respective SNe and stretched by a factor $\Delta m_{15, (3000\text{--}8000) \text{ \AA}}$ to match the light curve shape of the two SNe ($\Delta m_{15, (3000\text{--}8000) \text{ \AA}} = 0.78$ for SN 2012bz, 1.00 for SN 2010bh)¹⁶. The fractional values were interpolated using a smooth spline to sample it at the epochs of observations of SN 2012bz, and the appropriate amount was added to the optical flux. This gives a NIR-corrected light curve covering

¹⁶ Phillips (1993) introduced Δm_{15} as the decline in the brightness between the maximum and 15 days post maximum in B band.

3000–17 000 Å. No attempt was made to account for flux missed below 3000 Å due to the paucity of data that constrained the UV in such objects. However, contributions from the UV account for only ~5–15% of the bolometric flux around peak (Lyman et al. 2014).

The bolometric light curve was modelled using the simplified analytical prescription of Arnett (1982), which were updated by Valenti et al. (2008), to obtain estimates of M_{Ni} , M_{ej} and E_k . Since obtaining a truly bolometric light curve is unfeasible, we use our optical and optical+NIR correction light curves as approximations. Our data cover the photospheric phase of SN evolution, when the ejecta are optically thick. The opacity is chosen to be $\kappa = 0.07 \text{ cm}^2 \text{ g}^{-1}$ (see Cano et al. 2011a). To constrain the E_k/M_{ej} ratio, a *scale velocity* is required (see Eq. (54) in Arnett 1982). This is taken to be the photospheric velocity (v_{ph}) at peak. The Fe II lines are a good tracer of v_{ph} (Valenti et al. 2011), and the peak of the pseudo-bolometric light curve occurs at ~13.9 days (from fitting low-order polynomials around peak). Using data in Fig. 5, we take $20\,500 \text{ km s}^{-1}$ as an estimate of v_{ph} at peak by linearly interpolating between the measurements taken from spectra at epochs of 11.380 days and 14.575 days.

Fitting the optical bolometric light curve reveals the following parameters: $M_{\text{Ni}} = 0.40 \pm 0.01 M_{\odot}$, $M_{\text{ej}} = 4.72 \pm 0.04 M_{\odot}$, and $E_k = (3.29 \pm 0.03) \times 10^{52} \text{ erg}$. When the NIR contribution is included from SN 2010bh, we obtain $M_{\text{Ni}} = 0.58 \pm 0.01 M_{\odot}$, $M_{\text{ej}} = 5.87 \pm 0.03 M_{\odot}$, and $E_k = (4.10 \pm 0.03) \times 10^{52} \text{ erg}$. The first eight days were ignored in the fit as contributions from other sources (GRB afterglow and cooling phase following the shock break-out) would compromise the assumptions of the SN model.

It is crucial to note that the errors quoted here include only the statistical uncertainties relating to the construction of the pseudo-bolometric light curves. Systematic errors arise from both the simplifying assumptions in the model (spherical symmetry, centrally concentrated ^{56}Ni mass etc.) and our choice of parameters for the fit, which typically dominate the statistical errors. For example, taking an uncertainty in v_{ph} of 2000 km s^{-1} translates into an error in M_{ej} and E_k of ~10% and ~25%, respectively. The two-component model for very energetic supernovae ($E_k \gtrsim 5 \times 10^{51} \text{ erg}$) by Maeda et al. (2003) would also suggest that we are only observing the outer, lower density region of the ejecta during the photospheric phase ($\lesssim 30$ days), and a fraction is hidden in a denser, inner component during this time. Although the afterglow component is not expected to contribute significantly around the SN peak, given that different afterglow models do not significantly affect the k , s parameters (Sect. 3.3.2), potential contamination by underlying host galaxy light is included in this bolometric light curve (Sect. 2.3).

Melandri et al. (2012) modelled SN 2012bz using a scaled spectral model for SN 2003dh to obtain estimates of the physical parameters. They obtained values of $M_{\text{Ni}} \approx 0.35 M_{\odot}$, $M_{\text{ej}} \approx 7 M_{\odot}$, and $E_k \approx 3.5 \times 10^{52} \text{ erg}$ using a bolometric light curve covering 3300–7400 Å. Comparing these to our values for the optical (3000–8000 Å) bolometric light curve, the M_{Ni} values are in good agreement. Given our slightly extended wavelength range, the E_k values are consistent; however, their derived ejected mass is larger than our measurement. Differences could be caused by the choice of photospheric velocity v_{ph} , asymmetries, or varying opacity κ , which spectral modelling can account for.

4. Environments

Absorption and emission lines are powerful diagnostics to characterise the gas- and dust-phase properties of interstellar media,

Table 4. Absorption and emission lines at the explosion and the host site.

λ_{obs} (Å)	Transition	Redshift	EW_{obs} (Å)	$F \times 10^{16}$ ($\text{erg cm}^{-2} \text{ s}^{-1}$)
Explosion site ($\langle z \rangle_{\text{abs}} = 0.28253$, $\langle z \rangle_{\text{em}} = 0.28259$)				
3586.22	Mg II $\lambda 2796$	0.2824	3.25 ± 0.42	...
3595.95	Mg II $\lambda 2803$	0.2827	1.86 ± 0.46	...
...	Mg I $\lambda 2852$...	<1.57	...
4779.79	[O II] $\lambda 3727$	0.28245	...	0.09 ± 0.01
4783.37	[O II] $\lambda 3729$	0.28245	...	0.16 ± 0.01
5046.00	Ca II $\lambda 3934$	0.2825	...	0.75 ± 0.25
...	Ca II $\lambda 3968$...	<1.08	...
6236.87	H β	0.05 ± 0.04
6362.18	[O III] $\lambda 4959$	0.28262	...	0.05 ± 0.02
6423.34	[O III] $\lambda 5007$	0.28255	...	0.19 ± 0.02
8419.55	H α	0.28257	...	0.24 ± 0.01
8447.92	[N II] $\lambda 6583$	0.28286	...	0.06 ± 0.02
8616.96	[S II] $\lambda 6717$	0.28261	...	0.03 ± 0.01
Host site (PA = 41°, $\langle z \rangle_{\text{em}} = 0.28256$)				
4780.16	[O II] $\lambda 3727$	0.28254	...	2.30 ± 0.03
4783.73	[O II] $\lambda 3729$	0.28254	...	3.50 ± 0.67
4920.46	H η	0.28255	...	0.09 ± 0.01
4963.37	[Ne III] $\lambda 3869$	0.28262	...	0.27 ± 0.02
4979.74	H ζ	0.28248	...	0.20 ± 0.01
5093.04	H ϵ	0.28250	...	0.19 ± 0.02
5262.10	H δ	0.28252	...	0.30 ± 0.02
5567.86	H γ^a	0.28242	...	0.59 ± 0.04
6236.89	H β	0.28260	...	1.28 ± 0.04
6362.15	[O III] $\lambda 4959$	0.28261	...	0.83 ± 0.03
6423.60	[O III] $\lambda 5007$	0.28261	...	2.51 ± 0.05
8419.75	H α^b	0.28260	...	5.36 ± 0.05
8446.38	[N II] $\lambda 6583$	0.28262	...	0.81 ± 0.04
8616.90	[S II] $\lambda 6717$	0.28260	...	0.91 ± 0.02
8635.40	[S II] $\lambda 6731$	0.28260	...	0.67 ± 0.03

Notes. The reported wavelengths were derived from the first momentum of a line profile (see Figs. E.1 and E.2). The fluxes were corrected for foreground extinction. For each spectrum, we report the average absorption- ($\langle z \rangle_{\text{abs}}$) and emission-line ($\langle z \rangle_{\text{em}}$) redshift if available. ^(a) Blended line. ^(b) This value is the total flux of both velocity components.

such as the extinction, metallicity, and star-formation rate (SFR). Since long GRBs are associated with massive stars, these diagnostics give the unique opportunity to study star-forming regions in distant galaxies. In the following, we present our findings on the explosion site, the host galaxy, and the large scale environment (For an independent analysis, see Levesque et al. 2012).

4.1. The explosion site

The X-shooter spectrum, which was obtained on 23 April (17.2 h post burst; see Fig. E.1), exhibits two absorption lines, which we identify as Mg II $\lambda 2796$, 2803 (see Table 4). After applying the heliocentric correction, we measure a mean absorption-line redshift of $z_{\text{abs}} = 0.28253 \pm 0.00008$ (the error denotes the standard error of the mean), which refines the redshift measurements of Schulze et al. (2012b) and Tanvir et al. (2012).

Both lines lie in a rather noisy part of the spectrum. To measure their equivalent widths, we rebinned the spectrum by a factor of two to increase the S/N (i.e. a wavelength binning of 0.4 Å) and fixed the aperture size for the weaker Mg II line to 100 km s^{-1} (the FWHM of the Mg II $\lambda 2796$ absorption

line). Their rest-frame EWs are listed in Table 4. The observed line ratio of 1.7 ± 0.5 is not well constrained. It is consistent with the theoretical expected line ratio for an optically thin line but also for a saturated line. Assuming the weak line regime, we can place a lower limit of $\log N \geq 13.8$ on the Mg II column density. When Mg II is detected, three further absorption lines are usually detected at longer wavelengths as well: Mg I $\lambda 2852$ and Ca II $\lambda 3934, 3969$. Only Ca II $\lambda 3934$ is detected at $\leq 3\sigma$ c.l. To place limits on their rest-frame EWs, we measure the noise within an aperture of $2 \times FWHM$ (Mg II $\lambda 2796$) at the wavelength of each line. Table 4 displays their derived upper limits. We caution that Mg II absorption lines can be broader than other absorption lines; hence, our upper limits might not be very stringent.

We also detect several emission lines that are summarised in Table 4 and shown in Fig. E.1 at a common redshift of $z_{\text{em}} = 0.28259 \pm 0.00005$, which are consistent with the absorption line redshift within errors. Their fluxes were measured through direct integration. From these measurements we derive key diagnostics of H II regions, such as extinction, SFR, and metallicity. Balmer lines are a good diagnostic for determining the level of extinction in H II regions. Their line ratio is purely determined by atomic constants. The observed 3σ limit on the $H\alpha/H\beta$ flux ratio of $>1.9 \pm 0.11$ is consistent with the expected value of 2.76 for negligible extinction, when case B recombination is assumed. Since we have no indication otherwise, we use $A_{V,\text{host}} = 0$ as a working hypothesis. Knowing that, the SFR at the explosion site is $0.037 \pm 0.002 M_{\odot} \text{ yr}^{-1}$, as measured from $H\alpha$ using the relation in Kennicutt (1998) and correcting for a Chabrier initial mass function (IMF; Chabrier et al. 2000; Förster Schreiber et al. 2009). Since $H\beta$ is only marginally detected, we use the N2 diagnostic by Pettini & Pagel (2004) to measure the metallicity. This oxygen abundance of $12 + \log \text{O}/\text{H} \geq 8.57 \pm 0.05$ corresponds to a very high metallicity of $Z = (0.8 \pm 0.1) Z_{\odot}$. The systematic error of this indicator is 0.18 dex (Pettini & Pagel 2004).

4.2. Host galaxy

4.2.1. Emission line diagnostics

The X-shooter spectrum of the host galaxy's nucleus (obtained 0.7 days after the GRB; see Fig. E.2) shows no absorption but a large number of emission lines at a common redshift of $z_{\text{em}} = 0.28256 \pm 0.00002$, as listed in Table 4. Their fluxes were measured in the same fashion as at the explosion site.

Interestingly, the $H\alpha$ emission line is significantly broader than any other emission line in the spectrum, where $FWHM(H\alpha) = 1.83 \pm 0.01 \text{ \AA}$ but $FWHM(H\beta) = 1.22 \pm 0.05 \text{ \AA}$. To elucidate the origin of the broadening, we followed Chatzopoulos et al. (2011, and references therein) and assumed three distinct models: i) thermal broadening, ii) single Thompson scattering of free electrons, and iii) multiple scattering of hot free electrons. In the first scenario, the proper motion of atoms leads to broadening that results in a Gaussian-shaped line profile. Since the flux of an emission line stems from the total flux of all star-forming regions, we additionally assume that there are two velocity components. The second is typical for a broad-lined region in an AGN, which produces exponential line profiles ($\propto \exp(-\Delta v/\sigma)$), where Δv is the Doppler shift from the line centre and σ is the velocity dispersion). The third describes dense media and produces Lorentzian line profiles.

The top right panel in Fig. 7 shows the $H\alpha$ emission line with the best-fit model. The best-fit model consists of two

Gaussians centred at wavelengths $\lambda_1 = 8419.79 \pm 0.01 \text{ \AA}$ and $\lambda_2 = 8419.73 \pm 0.03 \text{ \AA}$ with FWHMs of $3.17 \pm 0.17 \text{ \AA}$ ($\Delta v = 112.9 \text{ km s}^{-1}$) and $1.38 \pm 0.04 \text{ \AA}$ ($\Delta v = 49.1 \text{ km s}^{-1}$) and amplitudes of $(2.27 \pm 0.16) \times 10^{-16}$ and $(3.04 \pm 0.18) \times 10^{-16} \text{ erg cm}^{-2} \text{ s}^{-1}$, respectively. The width of the narrow component is consistent with the width of the other lines. The S/N of $H\beta$ is not sufficient to resolve both velocity components. We therefore simultaneously re-fit the $H\alpha$ and $H\beta$ lines assuming no offset between the two velocity components and using the width of each velocity component as a free but shared parameter. The best-fit values of the $H\alpha$ line are identical to the aforementioned measurements within errors. For $H\beta$, we measure a line flux of $(-0.13 \pm 0.27) \times 10^{-16} \text{ erg cm}^{-2} \text{ s}^{-1}$ and $(1.41 \pm 0.27) \times 10^{-16} \text{ erg cm}^{-2} \text{ s}^{-1}$ for the broad and narrow component, respectively.

To check for the possible contribution of an AGN to the emission lines, we put the integrated line measurements of $H\alpha$, $H\beta$, [N II] $\lambda 6584$, and [O III] $\lambda 5007$ in the BPT diagnostic plot (Fig. 14; Baldwin et al. 1981). The emission-line ratios are fully consistent with those expected from star-formation. Knowing that, we use the Balmer decrements to measure the extinction. The Balmer decrements of the broad and the narrow component are consistent with negligible dust extinction. The inferred SFRs (computed in the same way as for the explosion site) are $0.33 \pm 0.03 M_{\odot} \text{ yr}^{-1}$ and $0.48 \pm 0.03 M_{\odot} \text{ yr}^{-1}$ for the broad and narrow component, respectively. We note that our galaxy spectrum covers only the inner 1.34 arcsec^2 of the host galaxy, while the galaxy has an area of 4.71 arcsec^2 , as measured from the FWHMs of the semi-major and semi-minor axes. To measure the total SFR of the host galaxy, as traced by $H\alpha$, and hence corrected for slit losses, we scaled the spectrum with photometry. This commonly used approach assumes the spectrum to be self-similar. The N2 metallicity indicator is calibrated on integrated measurements. Therefore, we measure an integrated oxygen abundance of $12 + \log \text{O}/\text{H} = 8.43 \pm 0.01$. The metallicity of $Z = 0.55 Z_{\odot}$ is a bit lower than that of the explosion site, though the two are consistent with each other within 2.5σ .

Levesque et al. (2012) carried out an independent study of the emission-line properties of the explosion site, the curved bridge connecting the galaxy's nucleus with the explosion site (Fig. 1), and the host's nucleus using *Magellan*'s low-resolution LDSS3 spectrograph with two different position angles (PA = 50° and 141°). They inferred a significant reddening between $E(B - V) = 0.24\text{--}0.31$ mag towards the nucleus and explosion site. Our higher S/N and higher spectral-resolution data reveal that there are two dominant populations of star-forming regions at the nucleus but no evidence for reddening. The line measurements in Levesque et al. (2012) were corrected for this apparent reddening. If the extinction correction is undone, their values agree with ours within $\sim 3\sigma$ for most lines. Some differences do exist though. They used a fixed aperture of $1''.14$, while we based the aperture size on the FWHM of the spectral PSF of the galaxy nucleus and the explosion site, where $FWHM(\text{nucleus}) = 1''.34$ and $FWHM(\text{GRB}) = 0''.86$. As described in Sect. 2.1, we also ensured absolute flux-calibration and checked for differential flux losses by scaling the spectra to photometry.

The correction for the apparent extinction significantly overestimates the SFR measurements: Levesque et al. (2012) derived a value of $SFR \gtrsim 2.7 M_{\odot} \text{ yr}^{-1}$, while our total measurement is $0.81 M_{\odot} \text{ yr}^{-1}$. As we show in the following section, the SED fit of the host galaxy agrees with our spectroscopy results but is in conflict with theirs. Furthermore, our data show no evidence for the claimed asymmetries in the emission-line profiles (see Figs. 7, E.1 and E.2), in contrast to Levesque et al. (2012). The

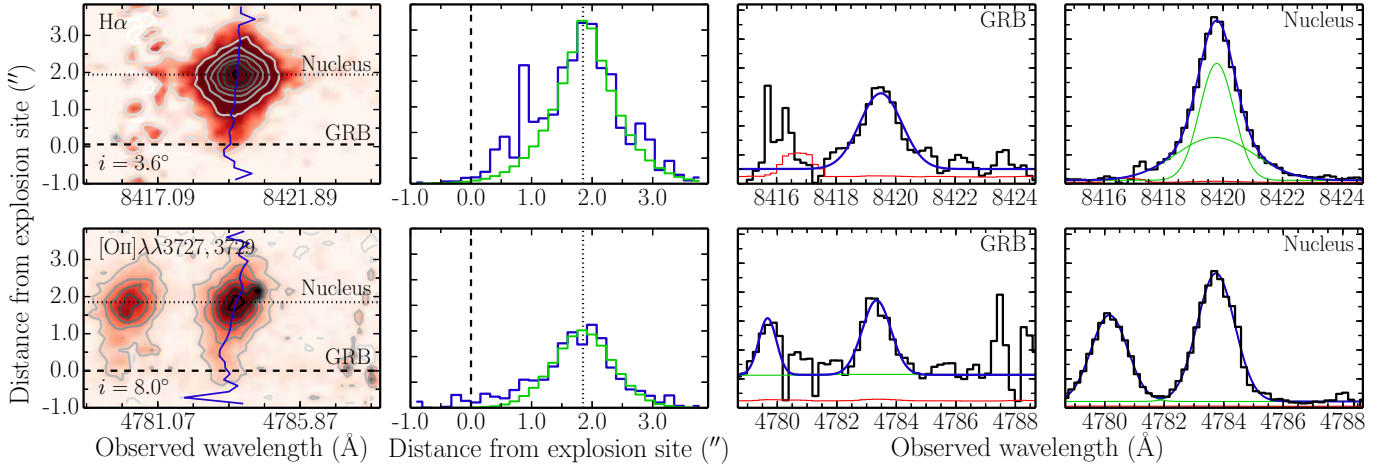


Fig. 7. Parts of the rectified and wavelength-calibrated 2D X-shooter spectrum (PA = 41°) obtained 0.72 days after the explosion (Table 1). The first column shows the 2D profile of H α and the [O II] doublet. The blue lines trace the position of maximum flux. The inclination angles i (defined as the angle between the major axis and a vertical line) are displayed in the lower left corner. Contour lines are overlaid to guide the eye. The cross-dispersion profiles (shown in blue) are displayed in the second column. The coding of the vertical lines is identical to that in the first column. For illustration purposes, we fitted the profiles with a Sérsic function (displayed in green), where the wings left of the centres of lines were excluded from the fit. The line profiles in dispersion direction are shown in the last two columns. The green line is the fit of individual components and the blue line of the compound. At $z = 0.283$, an angular distance of 1'' translates into a projected distance of 4.3 kpc. The error spectra in the third and fourth columns are overlaid in red.

nominal values for the skewness parameter are 0.06–0.21 with a significance of $<2.1\sigma$ at the explosion site and -0.03 – 0.1 with a significance of $<1.7\sigma$ at the galaxy's nucleus.

4.2.2. Morphology and SED

The X-shooter spectrum from 2012 April 23 (PA = 41°; Fig. 1) reveals that the most prominent nebular lines, which are the [O II] doublet and H α , extend from the galaxy's nucleus to the explosion site and slightly beyond (see Fig. 7). To obtain a better understanding of the peculiarity of the explosion site and the host morphology, we extracted their cross-dispersion profiles by fitting each row with a Gaussian (i.e. slicing the galaxy in chunks of $0''.15 \times 0''.9$, which is equivalent to an area of 0.64×3.9 kpc² at $z = 0.283$). The largest fluxes are recorded at the galaxy's nucleus (second column in Fig. 7), while the flux at the GRB site is very low. Since neither line of sight is affected by reddening in the host galaxy, the difference in H α flux directly translates into a SFR difference. Hence, the explosion site does not show an enhanced SFR with respect to its surroundings and the nucleus. A fit of the cross-dispersion profiles with a Sérsic function (Col. 2 in Fig. 7) reveals an excess from the nucleus towards the GRB site. The excess in [O II] is more diffuse and extends to larger galactocentric radii. A possible explanation could be that this nebular line is in general less tightly correlated with star-formation and affected by differences in ionisation, metallicity, and dust content (for a detailed discussion, see e.g. Kewley et al. 2004). We also note that the 2D profiles are slightly slanted. We measure a velocity difference between the galaxy's nucleus and the explosion site of 7 and 22.6 km s⁻¹ at H α and [O II] λ 3729, respectively. Strictly speaking, these are lower limits because this X-shooter spectrum does not fully cover the nucleus.

An image of the host galaxy obtained 3.6 days after the explosion, shown in Fig. 1, reveals a curved bridge of emission connecting the transient with the host. The curved bridge was also covered by the slit of the X-shooter afterglow spectrum from 2013 April 23 (Fig. 7). Even there, stars are formed at a rate that is in between that of the galaxy nucleus and the explosion site.

The GRB could therefore have occurred in either a morphologically disturbed/irregular galaxy, within an interacting companion, or in a spiral arm (however, no counter arm is visible on the opposite side of the galaxy).

Table 5 lists the brightness of the GRB host galaxy from 360 to 2140 nm. We modelled the SED with Le Phare (Arnouts et al. 1999; Ilbert et al. 2006)¹⁷, using a grid of galaxy templates based on Bruzual & Charlot (2003) stellar population-synthesis models with the Chabrier IMF and a Calzetti dust attenuation curve (Calzetti et al. 2000). For a description of the galaxy templates, physical parameters of the galaxy fitting and their error estimation, we refer to Krühler et al. (2011a). To account for zero-point offsets in the cross calibration and absolute flux scale, a systematic error contribution of 0.05 mag was added in quadrature to the uncertainty introduced by photon noise. Figure 8 displays the observed host SED and its best fit. The observed SED is best described by a low-mass, barely-extinguished star-forming galaxy with a very young starburst (see Table 7). The extracted attenuation and SFR are consistent with results from emission-line diagnostics.

4.3. GRB host galaxy environment

In the previous section, we briefly mentioned the possibility that the true host could be a smaller galaxy interacting/merging with the $r' = 21$ mag galaxy. To explore this scenario further, we studied the nature of other objects in the vicinity of the GRB to find evidence for a galaxy over-density or galaxy interaction. Our GTC spectrum from 2012 April 25 showed that object G1 is at the same redshift as the GRB ($z = 0.2828$; Figs. 1, D.1; Table 6). The angular distance of $7''.1$ corresponds to a projected distance of 28.7 kpc at $z = 0.283$ from the host galaxy's nucleus. Intriguingly, we detect a curved arm of emission, though not fully recovered, that connects G1 with the GRB host in our deep Gemini and Liverpool Telescope images (Fig. 1). The blue colour of the tidal arm points to recent star formation. With G1's

¹⁷ <http://www.cfht.hawaii.edu/~arnouts/LEPHARE>

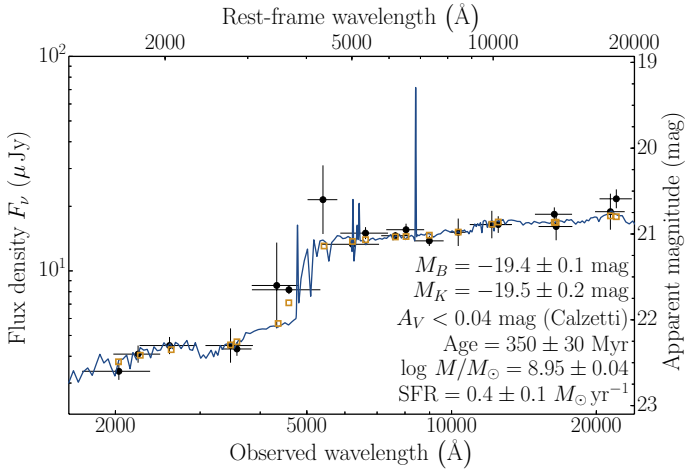


Fig. 8. Spectral energy distribution of the GRB host galaxy from 1600 to 24 000 Å. The solid line displays the best-fit model of the SED with Le Phare ($\chi^2 = 24.7$, number of filters = 20). The beige open squares are the model predicted magnitudes.

blue colour, we have compelling evidence that both galaxies are interacting. This could be an indication that the arm connecting the host’s nucleus to the GRB site is not a spiral arm but another tidal arm due to interaction of the $r' = 21$ mag galaxy with another galaxy. Deep HST observations are needed to investigate this issue further.

To map the star-formation activity inside the host galaxy and identify more galaxies at the GRB redshift up to distances of hundreds of kpc, we acquired a deep image with a tuneable filter ($FWHM = 15$ Å) that is centred at $H\alpha$ at $z = 0.283$ with the GTC 25.5 days after the GRB. Figure 9 shows a $33'' \times 33''$ -wide post stamp. The left panel was obtained with the 15 Å wide tuneable filter; that is, it contains the emission from the $H\alpha$ line and the continuum emission. The continuum, displayed in the middle panel, was imaged with a broadband filter centred at 8020 Å (width 513 Å) that does not cover $H\alpha$. The SN continuum is not highly variable, in neither the spectral range of the broadband filter nor at $H\alpha$ (Fig. 4); the same is true for the host galaxy (Fig. 8). Hence, the difference image of both observations shows the pure $H\alpha$ emission (right panel).

We detect four galaxy candidates that show excess emission at 8422 Å (i.e. $H\alpha$ redshifted to $z = 0.283$; Fig. 9, Table 6). We identify the closest one, which is located at 7.8 kpc of the GRB, as the host. The galaxy G1 (23 kpc from the centre of the host galaxy), already identified with the GTC spectrum from 25 April, is a satellite galaxy. Fitting its SED reveals G1 to be a smaller but more dusty version of the host galaxy (Fig. D.1, Table 6). The UV continuum of galaxy G2, shown in Fig. D.2, is poorly sampled. This results in a not well-constrained photo- z of $z = 0.23^{+0.27}_{-0.10}$ (99% c.l.). The only strong emission line falling in that redshift interval is $H\alpha$ at $z = 0.283$. We therefore conclude that G2 is at the same redshift as the GRB. In contrast, galaxy G3 is a moderately high star-forming galaxy at $z \sim 0.66$ (Fig. D.3, Table 6). Most likely, either $H\beta$, [O III] $\lambda 4960$ or [O III] $\lambda 5007$ fell in the passband of the tuneable filter.

5. Discussion

5.1. SN 2012bz

In Sects. 3.1 and 3.3, we presented the properties of the GRB-SN. The initial UV/optical emission until 10 ks is dominated

Table 5. Brightness of the GRB host galaxy in the optical/NIR.

Filter	λ_{center} (Å)	Brightness (mag)	Filter	λ_{center} (nm)	Brightness (mag)
<i>w2</i>	2033	22.60 ± 0.10	<i>i'</i>	7640.1	21.02 ± 0.05
<i>m2</i>	2229	22.40 ± 0.10	<i>I</i>	8040.8	20.95 ± 0.07
<i>w1</i>	2591	22.30 ± 0.10	<i>z'</i>	8989.3	21.08 ± 0.06
<i>u</i>	3501	22.30 ± 0.20	<i>Y</i> _{CAHA}	10 322.8	20.98 ± 0.16
<i>u'</i>	3578.8	22.34 ± 0.08	<i>J</i> _{CAHA}	12 124.1	20.89 ± 0.16
<i>b</i>	4329	21.60 ± 0.50	<i>J</i> _{UKIRT}	12 502.4	20.89 ± 0.10
<i>g'</i>	4589.8	21.65 ± 0.05	<i>H</i> _{UKIRT}	16 353.5	20.77 ± 0.08
<i>v</i>	5402	20.60 ± 0.40	<i>H</i> _{CAHA}	16 495.9	20.91 ± 0.16
<i>r'</i>	6219.6	21.12 ± 0.04	<i>K</i> _{CAHA}	21 389.7	20.74 ± 0.21
<i>R</i>	6623.0	20.99 ± 0.07	<i>K</i> _{UKIRT}	22 004.5	20.59 ± 0.11

Notes. The brightness was measured within a circular aperture (diameter $2''.5$). The brightness was measured in *w2m2w1ubv* with *Swift*/UVOT, in *u'RI* with NOT, in *g'r'i'z'* with GROND, in *YJHK* with CAHA, and in *JHK* with UKIRT.

by the thermal emission of the cooling stellar envelope after the shock break-out. About 1.4 hr after the GRB, the stellar envelope had a temperature of 16 eV and a radius of 7×10^{13} cm (both in the observer frame). By modelling the radioactively powered light curve, we obtained $M_{\text{Ni}} = 0.40 M_{\odot}$, $M_{\text{ej}} = 4.72 M_{\odot}$, and $E_k = 3.29 \times 10^{52}$ erg. When the NIR emission is included, the nickel and ejecta masses would increase by 45 and 25%, respectively, and the kinetic energy by 25%. These values are among the highest recorded for GRB-SNe (Cano 2013). We computed the intrinsic *V*-band luminosity through direct integration over the SN spectrum. SN 2012bz has an absolute *V*-band peak magnitude of -19.7 mag, making it 0.3 mag more luminous than SN 1998bw. The phenomenological modelling of the SN light curve gave a similar value. In the r' band that overlaps with the rest-frame *V* band, we inferred that the SN to be 0.3 mag brighter than SN 1998bw but evolved slightly faster. In the following, we discuss the SN properties in the context of other GRB-SNe.

5.1.1. SN 2012bz in the context of other GRB-SNe

Figure 10 shows the comparison of SN 2012bz at two different phases for which simultaneous spectra of SNe 1998bw, 2006aj, and 2010bh are available, all of which accompanied low-*L* GRBs (Patat et al. 2001; Pian et al. 2006; Bufano et al. 2012). Overall, the spectra are very similar and show the same features, although line strengths and expansion velocities vary from object to object. We have illustrated this by annotating the main features as they have been identified in the past (e.g. Patat et al. 2001): Fe II, usually visible between 4500–5000 Å; Si II, around 5600–6100 Å; the Ca II IR triplet (that for SN 2012bz is in a noisy part of the spectrum between the VIS and the NIR arms; see lower panel); and possibly He I or Na I at around 5500 Å (e.g. Bufano et al. 2012). We stress that these SNe have very large explosion velocities and that their broad lines are likely the result of blending that hampers the identification of the dominating line species producing the absorption feature, unless detailed modelling of the SN photosphere is carried out.

Nevertheless, the spectra of different GRB-SNe displayed in Fig. 10 are remarkably similar, reinforcing the idea that the nature of these blends, whatever it is, is the same for all GRB-SNe and pointing towards similar explosions. Differences do, however, exist in the expansion velocities (see Fig. 5). The spectra

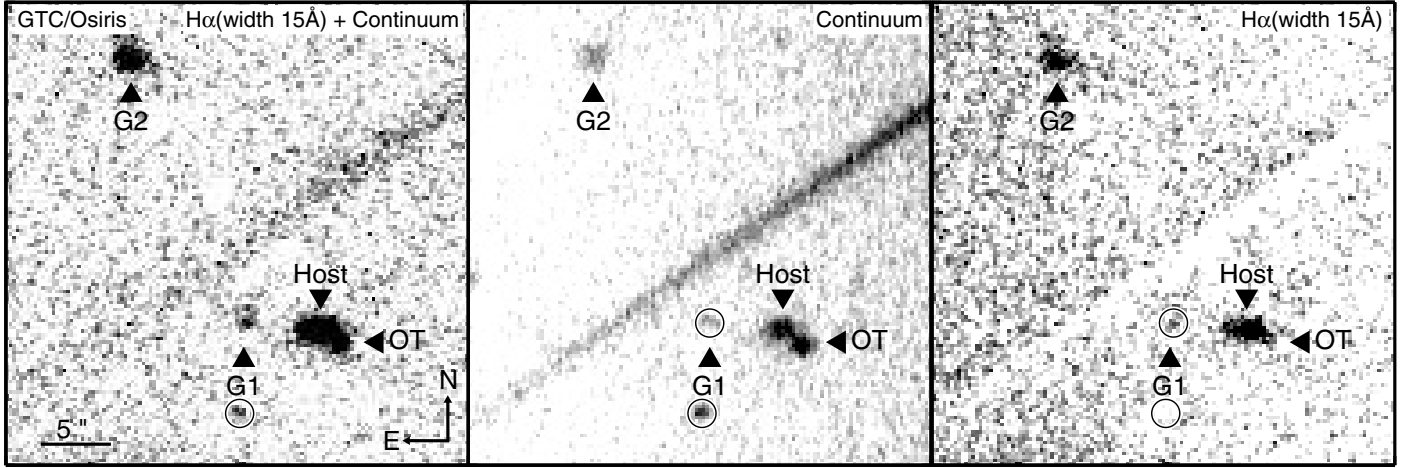


Fig. 9. Galaxy environment of GRB 120422A. The field size is $33'' \times 33''$. The *left panel* shows the $H\alpha$ image (15 Å wide), which includes the emission line and the continuum. The *middle panel* shows the continuum centred at 8020 Å (6250 Å rest frame) to avoid the emission from $H\alpha$ (obtained with a 513-Å wide filter). The *right panel* is the subtraction of the left and middle panel, which is a pure $H\alpha$ image. The host, G1, and G2 are at the same redshift as the GRB (OT). Their projected distances are 7.3, 28.7, and 107.8 kpc from the GRB site, respectively (see Table 6 for details). The diagonal stripes are produced by the $R = 8.24$ mag foreground star that is $79''$ NW of the explosion site. To illustrate the power of this observing method, we highlight an object south of G1 that does not have an emission line falling in the observed bandpass.

Table 6. Properties of emission-line galaxies detected with the tuneable filter.

	Host	G1	G2	G3
RA (J2000)	09:07:38.5	09:07:38.9	09:07:39.4	09:07:42.9
Dec (J2000)	+14:01:08.46	+14:01:09.12	+14:01:27.83	+14:00:15.40
Redshift	0.28256 ^a	0.2828 ^a	0.283 ^b	0.66 ^{+0.02c} _{-0.16}
Projected distance (kpc) ^d	7.3	28.7	107.8	584.5
M_B (mag)	-19.4 ± 0.1	-17.1 ± 0.1	-18.7 ± 0.1	-21.5 ± 0.1
M_{K_s} (mag)	-19.5 ± 0.2	-17.9 ± 0.2	-19.1 ± 0.2	-22.4 ± 0.2
A_V (mag)	<0.04	~ 0.6	~ 0	~ 0.6
$\log M_*(M_\odot)$	8.95 ± 0.04	$8.1^{+0.3}_{-0.6}$	8.8 ± 0.1	$10.0^{+0.1}_{-0.2}$
Age (Myr)	350 ± 30	460^{+1320}_{-380}	1100^{+750}_{-520}	730^{+2470}_{-250}
SFR ($M_\odot \text{ yr}^{-1}$)	0.4 ± 0.1	$0.3^{+0.2}_{-0.1}$	$0.7^{+0.3}_{-0.2}$	$14.3^{+10.1}_{-9.5}$
$\chi^2/\text{n.o.f.}^e$	24.7/20	3.1/4	14.8/8	18.0/9

Notes. The SEDs were fitted with Le Phare by assuming a Calzetti dust-attenuation law and a Chabrier IMF. For details, see Sect. 4.2.2. ^(a) Spectroscopic redshift. ^(b) The SED blueward of the Balmer break is poorly sampled, resulting in a not well-constrained photo- z of $z = 0.23^{+0.27}_{-0.10}$ (99% c.l.). The only strong emission line falling in that redshift interval is $H\alpha$ at $z = 0.283$. The reported galaxy properties were obtained for that redshift. ^(c) Photometric redshift. ^(d) Projected distances are measured from the optical transient to the galaxies. The projected distance of G3 assumes $z = 0.66$. ^(e) “n.o.f.” denotes the number of filters.

are displayed in an “expansion velocity sequence” going from the “fastest” (SN 2010bh; see also the discussion in Chornock et al. 2010; Bufano et al. 2012) to the “slowest” (SN 2006aj). This is at least true for the Fe II and Si II lines, and, in this respect, SN 2012bz seems intermediate and more similar to SN 1998bw. The Ca IR triplet shows a different velocity behaviour, which is not correlated with the one determined by the other elements, and SN 1998bw is clearly faster at all phases.

It is interesting to point out that the notch that has been possibly identified as He I, which could also be due to Na I (Bufano et al. 2012, see also Fig. 10 panel a), is also visible in SN 2012bz and in most optical GRB-SNe spectra with sufficient S/N to the

left of the main Si II trough. A powerful diagnostic to test the presence of He I is NIR spectroscopy (Patat et al. 2001; Bufano et al. 2012). Our X-shooter NIR spectra are unfortunately of low S/N, and for this reason, we focus our analysis only on the one obtained at maximum light (Fig. 10 lower panel). Still, however, this spectrum is dominated by a weak continuum, while most prominent features are located in unfavourable regions (the error spectrum is displayed). For comparison, we have also plotted an X-shooter spectrum of SN 2010bh obtained at a similar phase (Bufano et al. 2012). SN 1998bw does not have a contemporaneous spectrum but we show the one obtained at $T_0 + 33$ day, where the identified features are more clearly visible (Patat et al. 2001). Both the locations where one would expect to see He I $\lambda 10830$ or C I $\lambda 10695, 16890$ are located in very noisy atmospheric regions of our spectra at the redshift of SN 2012bz, which prevents us from drawing any meaningful conclusion.

5.1.2. A Phillips-type relation for GRB-SNe?

Spectroscopy of GRB-SNe is in most cases limited to $z \lesssim 0.3$, which is the redshift domain that is observationally dominated by low- L GRBs. At higher redshifts, the detection of a GRB-SN mostly depends on the detection of late red bumps that are modelled with a SN1998bw template (e.g. Zeh et al. 2004). In the past years, the sample of GRBs with detected late red bumps has been substantially increased (Zeh et al. 2004; Ferrero et al. 2006; Thöne et al. 2011; Cano 2013). We use these samples to compare the luminosity factor k and the stretch factor s of low- and high- L GRBs. Among these, we only select those with meaningful values, which are either the GRB-SNe that have a clear bump in the light curve consistent with other GRB-SNe at the redshift of the GRB (rank “C” in Hjorth & Bloom 2012) or spectroscopic evidence for the accompanying GRB-SNe (rank “B” and “A” in Hjorth & Bloom 2012)¹⁸. Furthermore, most values were only obtained in the observed R band. Since GRB-SNe have up to now been identified between $z = 0.0085$ and $z \approx 1$, the observed R band probes different regions in the rest-frame. Supernovae

¹⁸ For an updated list see:

http://www.dark-cosmology.dk/GRBSN/GRB-SN_Table.html

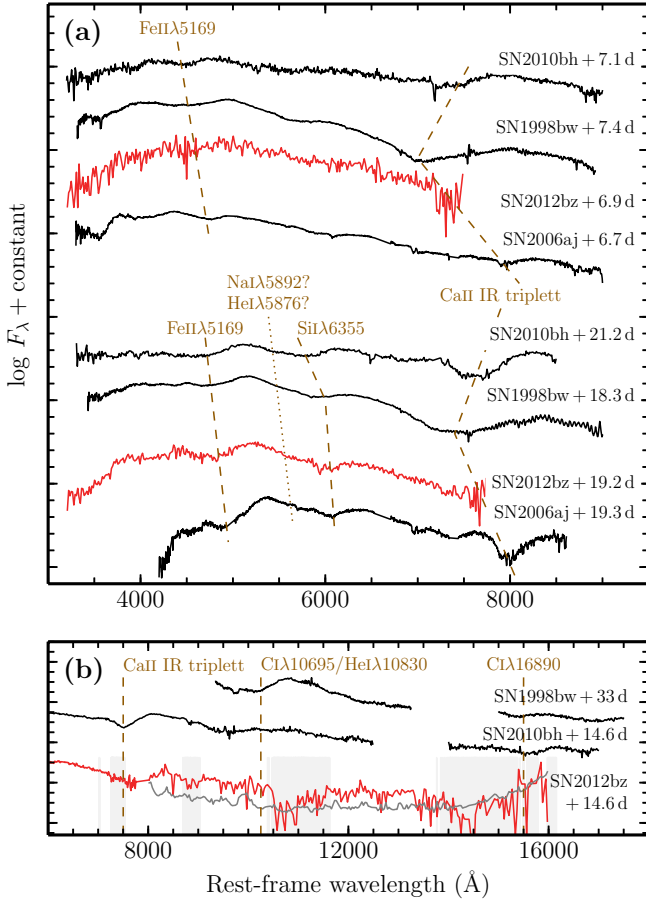


Fig. 10. **a)** Comparison of SN 2012bz (blue) to spectra of low- L GRB SNe (black) at two different phases, ~ 7 and ~ 20 days past explosion, respectively. All comparisons are made in the rest frame. The dashed lines connect the approximate minima for the Fe II and Si II features, and the spectra are shown in an expansion velocity sequence from the fastest (SN 2010bh) to the slowest (SN 2006aj). A less significant (but real) feature that has been proposed to be He I or Na I is also identified. **b)** NIR arm of the X-shooter spectrum of SN 2012bz at maximum light (blue). The thin grey line is the error spectrum. The Ca II IR triplet at the redshift of SN 2012bz is located between the VIS and NIR arms. For comparison, NIR spectra of SN 1998bw and SN 2010bh are shown along with identification of the most prominent lines (Patat et al. 2001; Bufano et al. 2012). Unfortunately, these features fall in unfavourable noisy regions of our spectrum. Positions of atmospheric features (shifted to the redshift of GRB 120422A) are highlighted by the grey-shaded areas.

of GRBs emit most of their energy in the rest-frame V band. Therefore, we only use those values where the observed bandpass partly overlaps with the rest-frame V band (in the following called “quasi V ” band).

Figure 11 displays the parameter space of the nine GRB-SNe that fulfil both criteria. Supernovae of low- L and high- L GRBs occupy the same parameter space. Intriguingly, there is a trend between the luminosity and the stretch factor¹⁹. This is in line with recent findings by Hjorth (2013), who independently reported a correlation between the peak magnitude and the width of the peak. To estimate the correlation degree and significance,

¹⁹ In the case of GRB-SNe, such a correlation was searched for by Ferrero et al. (2006) and Cano et al. (2011a) but not found. These studies disregarded the rest-frame waveband the data probed. In the case of Stanek et al. (2005), additionally the data set used was significantly smaller.

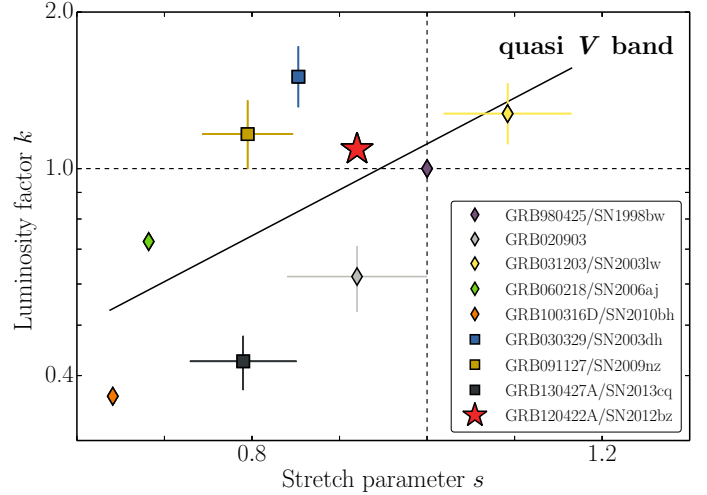


Fig. 11. SN luminosity factor k (peak luminosity in units of SN 1998bw’s peak luminosity) vs. stretch factor s (time dilation vs. SN 1998bw’s peak time) in the quasi V band. Quasi rest-frame V band means that the observed bandpass partly overlaps with the rest-frame V band. Low- L GRBs are highlighted by diamonds, high- L GRBs by squares, and the intermediate- L GRB 120422A by a star. References: Ferrero et al. (2009): GRBs 020903, 030329, 031203, 060218, Kann (in priv. comm.): GRBs 091127 and 100316D, here: GRBs 120422A and 130427A.

we applied a Monte Carlo technique. In this method, every data point is represented by a 2D Gaussian, where the centre of peaks in each dimension is the parameter estimate, and the corresponding 1σ errors are the width of the distributions. From these results, we construct 30 000 resamples of the observed data sets, where each is obtained by a random sampling with replacement from the original data set. Note SN 1998bw was excluded since it is the reference value. For each of these data sets, we do a linear regression fit, using the model $\log_{10} k = A \times s + B$, and determine the correlation coefficients. The best fit values and their uncertainties are given by the centre and the width of the distribution functions. The best-fit values are $A = 0.89 \pm 0.24$ and $B = -0.84 \pm 0.19$. The Pearson’s correlation coefficient, Spearman’s rank, and Kendall’s τ give significances of $\sim 1.3\sigma$. Despite the correlation being statistically not significant, the trend is similar to the Phillips relation (Phillips 1993), which builds the foundation for using Type Ia SNe as standard candles in cosmology.

The degree of correlation is affected by several systematics. First of all, none of the displayed k, s values represent the true rest-frame V band. To obtain the rest-frame V -band values, a more sophisticated approach is needed, which is beyond the scope of this paper. Systematic differences can arise because all GRB-SNe are broad-lined Type Ic SNe, but the evolution and the strength of absorption features depend on the specific GRB-SN (see Figs. 5, 10). Uncertainties in the line-of-sight extinction are the second largest source of error affecting k but not s . For instance, the afterglow data of GRB 020903 are not good enough to build a SED for estimating the line-of-sight extinction. The extinction towards GRB 060218/SN 2006aj and GRB 100316D/SN 2010dh is very high and uncertain (Cano et al. 2011a; Bufano et al. 2012; Olivares et al. 2012). Furthermore, there are different approaches to how a 1998bw-template light curve for a specific band is constructed. Specifically, we measure a difference of 0.10 mag for GRB 120422A in the observed r' -band peak magnitude between the methods by Zeh et al. (2004) and Cano (2013). The host

contribution was considered either by image subtraction, subtraction of the nominal host flux, or addition of the host magnitude as a free parameter to the light curve fit for all GRB-SNe, except for GRB 130427A. Last but not least, the SN fit depends on how well the afterglow component is modelled. This affects k as well as s .

5.2. The afterglow of GRB 120422A

Our analysis in Sect. 3.2 reveals: i) the optical (redward of B band) and the NIR emission of the transient accompanying GRB 120422A is afterglow-dominated between ~ 2 and 60 ks; ii) the X-ray emission is consistent with synchrotron radiation at all times (except for some small deviations during the first 200 s after the burst; Starling et al. 2012); iii) the initial Lorentz factor is $\Gamma_0 \sim 50$; iv) the afterglow peak luminosity-density is $\lesssim 2 \times 10^{30} \text{ erg s}^{-1} \text{ Hz}^{-1}$; and v) the circumburst medium has constant density. Like the SN discussion, we put the afterglow in context of low- and high- L GRBs.

As counterintuitive as it might be, a constant-density circumburst medium has been found around many GRBs (Schulze et al. 2011). van Marle et al. (2006) discussed several scenarios, such as a complex mass-loss history, a weak stellar wind, or a high pressure ISM, which can stall the undisturbed stellar wind close to a star. Employing the formalism in Schulze et al. (2011) and Eq. (4) in Chevalier & Li (2000), we use the earliest i' -band detections to infer a tentative limit of $< 4 \times 10^{15} \text{ cm}$ (0.001 pc) on the wind-termination shock radius, which is a very small value in the sample of Schulze et al. (2011).

Measurements of the initial Lorentz factor are limited to a small number of bursts with rapid follow-up. Typical values are about a few hundred for high- L GRBs (Molinari et al. 2007; Ferrero et al. 2009; Greiner et al. 2009; Liang et al. 2010; Perley et al. 2011). For low- L GRBs, measurements exist for 060218 (Soderberg et al. 2006a) and 100316D (Margutti et al. 2013). The inferred Lorentz factor of $\Gamma = 1.5\text{--}2.3$ at 1 (GRB 100316D) and 5 days (GRB 060218) after the burst were obtained when the blast wave had already decelerated. According to Zhang & Mészáros (2004, and references therein), a blast-wave's Lorentz factor evolves as $\Gamma \propto t^{-3/8}$ for a constant-density medium and as $\Gamma \propto t^{-1/4}$ for a free-stellar-wind ambient density profile during the deceleration phase. Considering the time when the Lorentz factors were measured, the initial Lorentz factors were at most one order of magnitude larger, which is still smaller than that of GRB 120422A. This re-assures us in the identification of this phase transition and also illustrates the decrease in the blast-wave's velocity from high- to low- L GRBs.

As mentioned in Sect. 3.2.3, the peak of an afterglow synchrotron spectrum crosses the sub-mm to cm range within the first week. During the first week, an afterglow can exhibit variability that can affect the peak flux and value of the injection frequency. Several sub-mm observations during the first week after the burst can be used as a proxy for the peak luminosity without the need for modelling the broadband afterglow (de Ugarte Postigo et al. 2012b). Figure 12 displays the inferred sub-mm peak fluxes as a function of redshift. The observed limit on GRB 120422A's peak flux-density from the sub-mm observations and the limit from the SED modelling point to a faint afterglow. The limit of $\lesssim 2 \times 10^{30} \text{ erg s}^{-1} \text{ Hz}^{-1}$ is exceptionally deep for high- L GRBs. For example, the afterglow of GRB 030329, a burst with spectroscopically confirmed SN and with $E_{\text{iso}} > 10^{51} \text{ erg}$, had a peak luminosity-density that is ~ 200 -times larger and the afterglow of GRB 080319B, a burst with photometric evidence for a SN (Tanvir et al. 2010), was

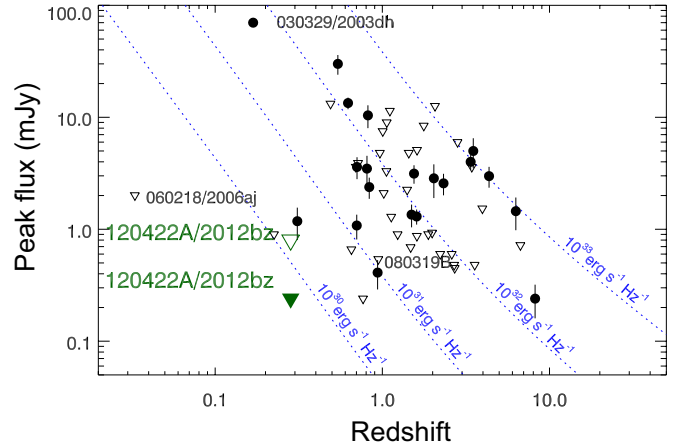


Fig. 12. Peak flux-density measured at sub-mm/mm wavelengths vs. redshift. Triangles indicate 3σ detection limits. The deepest observed limit on the peak flux-density of GRB 120422A is displayed by the filled green triangle, while the limit from the SED modelling is highlighted by the empty green triangle. Dotted lines display flux-density levels for equal luminosity at varying redshifts. Several interesting bursts are highlighted in the figure: the high- L GRBs 030329 and 080319B and the low- L GRB 060218. Figure adapted from de Ugarte Postigo et al. (2012b).

about ~ 20 -times more luminous than 120422A. Intriguingly, the peak luminosity density is in the expected range of low- L GRBs, such as GRB 060218.

Current sub-mm observations are limited to a small number of GRBs ($\sim 5\%$ of all GRBs) and have only been successful in detecting bright afterglows. The number of *Swift* GRBs with measured redshift is $\sim 27\%$, which is ~ 5 -times larger than the sub-mm/radio recovery rate and almost all them have a detected X-ray afterglow. de Ugarte Postigo et al. (2012b) reported on the existence of a correlation between the sub-mm flux density and the X-ray flux density at 0.5 days. Hence, we can re-address the question on the faintness of GRB 120422A's afterglow by exploring the X-ray luminosity distribution.

We downloaded the 0.3–10-keV light curves of long *Swift* GRBs (i.e. $T_{90} \geq 2$ s) with detected X-ray afterglows (requiring at least two X-ray detections) and a known redshift from the *Swift* Burst Analyser (Evans et al. 2010) that were discovered between December 2004 and February 2014. Because of the small number of low- L GRBs in the *Swift* sample, we include all pre-*Swift*-era GRBs with detected supernova (ranked better than “C” in Hjorth & Bloom 2012). We retrieve their light curves from the *BeppoSAX* GRB Afterglow Database (de Pasquale et al. 2006; Gendre et al. 2006)²⁰. The differences in the observed bandpasses are considered when the X-ray luminosity in the 0.3–10-keV rest-frame is computed. In total, 292 GRBs fulfil both criteria. Following Hogg et al. (2002) and assuming a top-hat response function, the luminosity between 0.3 and 10 keV is given by

$$L_{(0.3-10)\text{keV}} = 4\pi d_L^2(z) (1+z)^{\beta-1} F_{(0.3-10)\text{keV}},$$

where d_L is the luminosity distance and β is the spectral slope. The Burst Analyser provides information on the spectral slope for each data point. Sometimes, the reported slope is highly variable or has unphysical values (for limitations of the Burst Analyser, see Evans et al. 2010), especially at late times ($t > 1000$ s) when statistics are poor. To minimise the impact of such

²⁰ <http://www.asdc.asi.it/GRBase/>

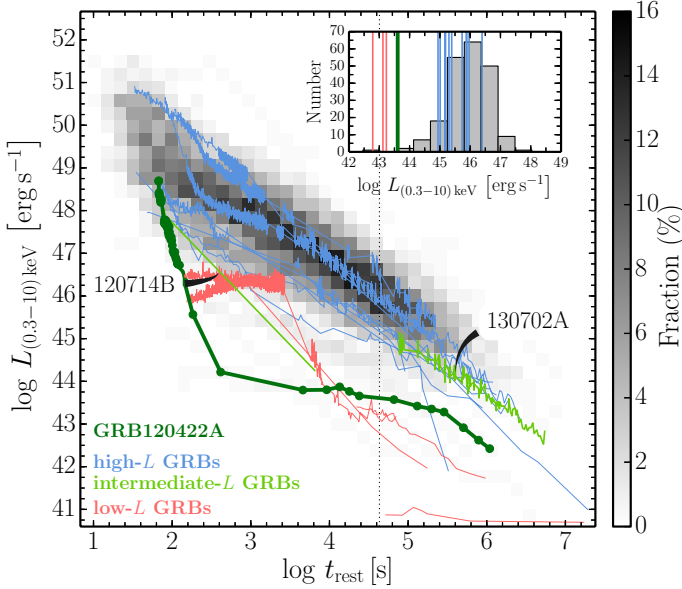


Fig. 13. X-ray light curves of low-, intermediate-, and high- L SN-GRBs. Overlaid is the evolution of the observed luminosity distribution of 273 long *Swift* GRBs for which a SN search was not feasible or unsuccessful (i.e. GRBs 060505 and 060614). These were discovered between December 2004 and February 2014. The colour table on the right side translates a grey shade at a given luminosity and time into a fraction of bursts. The inset displays the observed luminosity distribution at 0.5 days (dotted vertical line). The vertical lines in the inset show the luminosity of the intermediate- L GRB 120422A and the low- L GRBs 031203, 060218, and 100316D.

artefacts, we set the spectral slope to the median late-time spectral slope (i.e. $t > 1000$ s) if deviations are $< 3\sigma$ and if the slope is larger than 4. For pre-*Swift* GRBs, only time-average spectral slopes are available. From these data, we build a density plot by resampling the rest-frame X-ray light-curves to a grid that is defined by the observed luminosities of and the time interval spanned by all X-ray afterglows and interpolated between adjacent data points in case of data gaps.

The luminosity distribution as a function of rest-frame time is shown in Fig. 13 (the grey-shaded area). Highlighted in this plot are GRBs with detected SNe, colour-coded according to their time-averaged γ -ray luminosity. High- L GRBs with detected SNe occupy the same parameter space as all high- L GRBs for which no SN search was feasible (grey-shaded area). This supports the discovery made by Xu et al. (2013) that even bursts with the largest energy releases during the prompt γ -ray emission are accompanied by SNe (see also Tanvir et al. 2010), while intermediate- and low- L GRBs are at the very faint end of the high- L distribution. They even extend the observed high- L distribution to much lower luminosities; for example, GRB 980425 was about 4.5 dex fainter than an average high- L GRB at 100 ks. To quantify how faint intermediate- and low- L GRBs are and to compare them to the peak-luminosity distribution, we build a histogram of 210 GRBs with detected X-ray afterglows at 0.5 days, which is presented in the inset of Fig. 13. The high- L GRB distribution has a mean luminosity of $\langle \log L / (\text{erg s}^{-1}) \rangle = 45.92$ and a dispersion of 0.69 dex. Among the intermediate- L GRBs, only GRB 120422A was detected in the X-rays at 0.5 days. Compared to high- L GRBs, GRB 120422A is 2.3 dex fainter than the mean value, whereas its luminosity is only a factor of a few greater than the brightest low- L GRBs, which is in line with the results from the sub-mm.

5.3. The host galaxy and galaxy environment

Our analysis in Sect. 4 reveals the following i) negligible extinction at the explosion site and at the galaxy nucleus; ii) two populations of H II regions in the nucleus; iii) a very low SFR at the explosion site; iv) a value close to solar metallicity at the explosion site and at the nucleus; v) the interaction of the host galaxy with a galaxy at a projected distance of 23 kpc; and vi) evidence for a galaxy group environment. At first, we discuss the GRB environment in the context of all GRBs, then the host galaxy and, finally, the galaxy environment.

The environment of GRB 120422A appears to be rather average. The lower limit on the Mg II column density of $\log N > 13.8$ is ~ 1 dex lower than that of an average GRB environment (Christensen et al. 2011). However, such a low column density was reported for other GRBs before: 050922C had a value of $\log N = 14.6 \pm 0.3$ (Piranomonte et al. 2008), and 121019B had $\log N = 13.43^{+0.08}_{-0.10}$ (Sparre et al. 2011). Even lower values were found, such as $\log N = 12.96^{+0.12}_{-0.18}$ for GRB 070125 (De Cia et al. 2011) and $\log N > 12.6$ for GRB 071003 (Perley et al. 2008). To quantify the integrated absorption-line strength of the interstellar medium in GRB host galaxies, de Ugarte Postigo et al. (2012a) introduced the line-strength parameter (LSP) that is derived from EW measurements of detected absorption lines. The observed LSP of -0.15 ± 0.40 is small, but the value is consistent with the mean for GRB environments, considering the large error.

In contrast, the negligible reddening with the value close to solar metallicity is remarkable (Table 7). The high metallicity is challenging for the well-accepted collapsar model (Woosley 2012, and references therein) that requires metal-poor stars but is viable in binary scenarios (e.g. Fryer & Woosley 1998; Detmers et al. 2008), which predict that even massive, metal-rich stars in tight binary systems can form a long GRB. However, we note that the X-shooter spectrum of the explosion site probes an area of 0.64×3.9 kpc². Based on HST observations, Fynbo et al. (2000) showed that the stellar-cluster hosting the GRB 980425 progenitor was very compact (the radius being 2.25 pc) and faint, and at lower spatial resolution, it would merge with a much brighter Wolf-Rayet-star-hosting complex that is 800 pc away (see also Le Flocc'h et al. 2006; Michałowski et al. 2014). Therefore, the possibility that the GRB occurred in a metal-poor environment cannot be rejected.

To investigate this peculiarity further, we compare the [O III]/H β vs [N II]/H α line ratios with those of other GRB hosts (see Fig. 14). We furthermore distinguish between spatially-resolved and integrated line measurements. The emission-line ratio of the host's nucleus is not different from other GRB hosts, apart from its exceptionally high metallicity. All hosts are located in the region that is dominated by H II regions. Compared to models by Dopita et al. (2006), the observed line ratios always point to stellar populations with an age of a few million years and metallicities between 0.05 and $2 Z_{\odot}$, in contrast to the bulk of emission-line galaxies in the SDSS DR9 (Ahn et al. 2012). The host of GRB 120422A is among the most metal-rich GRB hosts. Taken at face value, the line ratios place the explosion site at the high-metallicity end of the observed distribution in a region, which is equally populated by H II regions and AGN. This is odd because of two reasons: i) the line ratio of the host nucleus is dominated by the H II region and ii) the GRB explosion site is 7.3 kpc off the galactic centre; that is, we would not expect a supermassive black hole so far off the galaxy centre. The large uncertainties in the line measurements do not allow drawing a firm conclusion on this peculiarity.

Table 7. Properties of the host galaxy and GRB hosts at $z < 1.5$.

Parameter	Host	GHostS	TOUGH
Sample size		74	20
Redshift	0.28256	$0.78^{+0.23}_{-0.33}$	$0.83^{+0.25}_{-0.44}$
$M_{UV,est}$ (mag)	-18.2	$<-18.6 \pm 1.2$	$<-18.4 \pm 1.4$
$M_{K_s,est}$ (mag)	-19.8	$<-20.6^{+0.6}_{-0.9}$	$<-19.4^{+0.7}_{-0.6}$
$M_{B,SED}$ (mag)	-19.4 ± 0.1	$-20.5^{+1.1}_{-1.0}$...
$M_{K_s,SED}$ (mag)	-19.5 ± 0.2	$-20.2^{+1.0}_{-0.9}$...
A_V (mag)	<0.04	$0.6^{+0.6}_{-0.2}$...
$\log M_*(M_\odot)$	8.95 ± 0.04	9.3 ± 0.5	...
Age (Myr)	350 ± 30	1119^{+896}_{-325}	...
$SFR (M_\odot \text{ yr}^{-1})$	0.4 ± 0.1	$2.4^{+4.0}_{-1.7}$...
$Z (Z_\odot)$	0.6	$0.5^{+0.2}_{-0.1}$...
Offset (kpc)	7.3	$1.9^{+1.2}_{-1.3}$...

Notes. Host properties of 120422A and the median values of GRB hosts, as compiled in the GHostS database (date: 2013 December 3) and of the homogeneous, optically unbiased TOUGH survey (Hjorth et al. 2012, incl. results from Schulze et al., in prep.). The errors of the comparison samples indicate the distance from the median values to the 25 and 75% percentiles. The age represents the age of the starburst. The stellar mass of GRB 120422A's host was calculated by assuming the Chabrier IMF. The UV and K_s luminosities, marked by “est” were computed using the method in Schulze et al. (in prep.) and Laskar et al. (2011), respectively. Measurements designated with “SED” were obtained from SED fitting. The GRB offsets of the sub-set of bursts in the GHostS sample are compiled in Bloom et al. (2002), and the age distribution and results from SED fitting for the GHost sample were taken from Savaglio et al. (2009).

Comparing the integrated host properties with GRB samples is not straightforward. Most samples are heterogeneous and biased towards a particular GRB population, such as GRBs with negligible reddening or bright afterglows. On the other hand, optically unbiased samples are limited to observations in a few bands, from which only a few host properties can be extracted. Keeping these limitations in mind, we compare GRB 120422A's host to the GHostS database, which was built by Savaglio et al. (2009). This contains well-sampled multi-band SEDs and host spectra for several hosts (~ 25), which have been selected in a heterogeneous way, and the optically-unbiased, homogeneous GRB host (TOUGH) sample by Hjorth et al. (2012), which is in most cases limited to observations in the R and in the K_s bands. Based on recent findings by Perley et al. (2013) where GRB hosts at $z < 1.5$ are bluer and significantly less massive than at higher redshifts, we limit the comparison to hosts at $z < 1.5$.

Table 7 lists the host properties of 120422A and the median values for both comparison samples. In context of the GHostS sample, GRB 120422A's host is in the lower half of the luminosity, mass, and SFR distribution. Only its very low extinction (0.5 mag less than the GHostS median) in combination with high metallicity is peculiar. We caution that the completeness of both properties is very low. Another peculiarity is the exceptionally large distance between the explosion site and the galaxy's nucleus. The offset of 7.3 kpc is among the largest values reported in Bloom et al. (2002). Most GRBs are found close to the centre of their host galaxies (Bloom et al. 2002) and in particular close to/in the UV-brightest regions (Fruchter et al. 2006). A similar picture can be drawn from the TOUGH survey. Since only observations in two filters are available for most hosts, we assume that the rest-frame NIR and UV at 1700 \AA can be approximated by power-laws, similar to the approaches in Laskar et al. (2011)

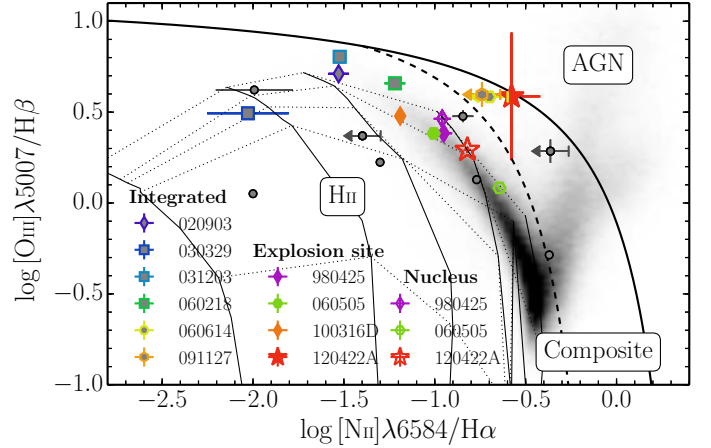


Fig. 14. Emission-line ratios for low- L (\diamond) and high- L (\square) GRB hosts and explosion sites. Long GRBs, for which a SN search was not feasible, are shown as circles. Limits are denoted by arrows. For comparison, the emission-line ratios are overlaid for a wide population of field galaxies from the SDSS DR9 (Ahn et al. 2012) sample as a density plot. Among these data, we selected those whose emission lines were detected at $>5\sigma$ c.l. The discerning line between star-formation and AGN-dominated galaxies is shown as a thick solid line and was taken from Kewley et al. (2001). The region of composite galaxies is encircled by the thick solid the thick dashed lines (Kauffmann et al. 2003). Evolutionary models, calculated by Dopita et al. (2006), that link emission-line regions at ages from 0.1 to 5 Myr (shown as dotted lines; ages: 0.1, 1, 2, 3, and 4 Myr with the youngest stellar populations having the highest [O III]/H β line ratios) and different metallicities (shown as thin solid lines; $Z = 0.05, 0.2, 0.5, 1.0,$ and $2.0 Z_\odot$; metallicity increases from left to right) are displayed. Errors are shown, if available. In some cases these are smaller than the size of the respective plot symbol. Figure adapted from Christensen et al. (2008). References: Della Valle et al. (2006a): the SN-less GRB 060614; Christensen et al. (2008): 980425, Han et al. (2010): 990712, 020903, and 030329; Levesque et al. (2010a): 991208, 010921, 050826, and 070612; Levesque et al. (2010b): 020819B; Thöne et al. (2008): the SN-less GRB 060505; Wiersema et al. (2007): 060218; Krühler et al. (2012): 080605A; Vergani et al. (2011): 091127; Levesque et al. (2011): 100316D.

and in Schulze et al. (in prep.). We measure a UV luminosity at 1700 \AA of -18.2 mag and a K_s -band luminosity of -19.8 mag (see Table 7). These values are consistent with the ensemble median values.

Observations with the tuneable filters revealed that the host is interacting with another galaxy that is at a projected distance of 23 kpc from the host galaxy's nucleus and that there is a further star-forming galaxies at the same redshift within ~ 110 kpc. In general, little is known about the galaxy environments of GRB host galaxies. Several GRB fields show an increased galaxy density, e.g. GRBs 000301C, 000926 (Fynbo et al. 2002), 011211 (Fynbo et al. 2003), 021004 (Jakobsson et al. 2005; Baryshev et al. 2010), 030226 (Jakobsson et al. 2005), 030115 (Levan et al. 2006), 050820A (Chen 2012), and 060505 (Thöne et al. 2008), but the nearest burst, GRB 980425, does not (Foley et al. 2006). The comparison is also limited due to the lack of information for SN fields.

5.4. The missing link between low- and high- L GRBs

The division between low- and high- L GRBs is not entirely operational. Both populations have very distinct properties. Low- L GRBs are thought to be driven by shock break-outs,

producing (quasi-)spherical explosions whose γ -ray light curves are smooth and single-peaked (Campana et al. 2006; Starling et al. 2011; Nakar & Sari 2012), spectra that can have peak energies of only a few keV (e.g. Campana et al. 2006; Kaneko et al. 2007; Starling et al. 2011), and mildly relativistic outflows ($\Gamma < 10$; e.g. Soderberg et al. 2006a; Margutti et al. 2013). In contrast, high- L GRBs are powered by ultra-relativistic collimated outflows with Lorentz factors of a few hundred (Molinari et al. 2007; Ferrero et al. 2009; Greiner et al. 2009; Perley et al. 2011) and γ -ray light curves that can exhibit variability in the milli-second domain (Bhat et al. 2012). The rate of low- L GRBs in the nearby Universe exceeds that of high- L GRBs by a factor of 10–1000 (Pian et al. 2006; Chapman et al. 2007; Guetta & Della Valle 2007; Liang et al. 2007; Virgili et al. 2009; Wanderman & Piran 2010). However, recent work by Lazzati et al. (2012) based on relativistic jet simulations propose a non-uniform distribution of the central engine's on-time to account for the differences.

GRB 120422A is one of the very few examples of intermediate-luminosity GRBs. Its γ -ray light curve exhibits an initial spike (starting at $T_0 - 3$ s and ending at $\sim T_0 + 20$ s; Barthelmy et al. 2012) followed by a weaker and softer extended component (starting at $T_0 + 45$ s and ending at $T_0 + 65$ s; Barthelmy et al. 2012), as observed in other high- L GRBs before (Bostanci et al. 2013). In addition, the X-ray emission is not dominated by thermal emission from the cooling photosphere after the shock break-out, like the low- L GRBs 060218 and 100316D (Campana et al. 2006; Nakar & Sari 2012). In contrast, the properties of the longer-lasting transient that accompanies the GRB point in a different direction. The blast wave had a very low initial Lorentz factor of $\Gamma_0 \sim 50$, and the afterglow that was produced had a peak luminosity of $L_{\nu, \max} \lesssim 2 \times 10^{30} \text{ erg s}^{-1} \text{ Hz}^{-1}$, which is unprecedentedly low for a high- L GRB. Thanks to the weak afterglow, the signature of the shock break-out was for the first time detected for a non-low- L GRB.

The failed-jet model predicts high- L GRBs to transition via low- L bursts to engine-driven SNe, as the jet produced by the central engine gets weaker, because of a lower kinetic energy in the outflow, a central engine that is active for a shorter period, or a less collimated outflow (Bromberg et al. 2011; Lazzati et al. 2012). According to this model, the weaker a jet, the more it gets decelerated in the stellar envelope until it is choked. Examples for choked jets are the Type Ib/c SNe 2002ap, 2009bb, 2012ap, and 2012au (Soderberg et al. 2006b, 2010; Milisavljevic et al. 2013; Margutti et al. 2013, 2014; Chakraborti et al. 2014) and the almost choked GRB 100316D, whose jet barely broke through the stellar cocoon (Margutti et al. 2013). Because we do detect the thermal emission from the cooling photosphere after the shock break-out, it raises the questions of how much energy GRB 120422A's jet has already transferred into the stellar envelope and how much more energy it could have lost before getting choked. As coined by Hjorth (2013), GRB 120422A is indeed a transition object between shock-break-out-driven low- L and high- L GRBs that are powered by ultra-relativistic jets.

To fully connect GRBs of low and high luminosities, it has to be shown that even the most luminous bursts ($L_{\text{iso}} \sim 10^{54} \text{ erg s}^{-1}$) are accompanied by SNe. These very energetic bursts have, however, been found at redshifts where SN searches are getting unfeasible; that is, $z \gtrsim 1$. Fortunately, one of the most energetic bursts, GRB 130427A, occurred at $z = 0.34$ (Perley et al. 2013; Xu et al. 2013). During its prompt γ -ray emission that had a duration of $T_{90} = 276$ s, this burst released $8.1 \times 10^{53} \text{ erg}$ (Maselli et al. 2014). This translates into a time-averaged γ -ray luminosity of $L_{\text{iso}} \sim 10^{51.6} \text{ erg s}^{-1}$. Thanks to its low redshift, an

accompanying broad-lined Type Ic SN was spectroscopically detected with properties similar to those of low- L GRBs (Xu et al. 2013, see also Tanvir et al. 2010, who reported on the photometric SN discovery for an almost 1 dex more luminous GRB). In addition, Maselli et al. (2014) showed that its afterglow properties are similar to those of very energetic, high-redshift GRBs, making it a genuine very high- L GRB.

Combining the findings on GRBs 120422A and 130427A lets us conclude that low- and high- L GRBs are not distinct populations of stellar explosions. They are due to the gravitational collapse of very massive stars and are accompanied by SNe. Their central engines are the same. Only the properties of their prompt emissions and of their afterglows (shock break-out vs. jet-dominated) differ, depending on whether the jet can successfully drill through the stellar cocoon. This does not make them disjunctive phenomena.

6. Summary and conclusions

We carried out extensive imaging and spectroscopy campaigns to study the intermediate-luminosity GRB 120422A that shares properties of low- L and high- L GRBs. Our detailed analysis focussed on the GRB-SN 2012bz, the GRB afterglow, the host galaxy, and its environment.

We showed that SN 2012bz is the most luminous spectroscopically-confirmed GRB-SN to date with a peak luminosity of $M_V = -19.7$ mag. The explosion physics parameters of $M_{\text{Ni}} = 0.58 M_{\odot}$, $M_{\text{ej}} = 5.87 M_{\odot}$, and $E_k = 4.10 \times 10^{52} \text{ erg}$ are among the largest values known to date. However, the exact values highly depend on the NIR contribution. Cano et al. (2011a) showed that the nickel and the ejecta masses and the kinetic energy can be underestimated by 25–45% if the NIR is not included in the modelling of the bolometric light curve. For future GRB-SN studies, it is imperative to secure NIR data to place more stringent constraints on GRB progenitor models. As an alternative to a campaign with long wavelength coverage, the method presented in Lyman et al. (2014) would allow us to construct the bolometric light curve from two optical light curves with well-determined k -corrections.

The spectral sequence of the SN covers a time span of ~ 40 days. All spectra are similar to those of other GRB-SNe. Differences exist in the strength of the absorption features and expansion velocities. For the first time, Fe II $\lambda 5169$ was used to trace the evolution of the GRB-SN expansion velocity. The velocities and their evolution are not very different from Si II measurements. The advantages of Fe II $\lambda 5169$ are that it is easier to identify and it is detectable at earlier times. We find an intriguing trend between the peak luminosity k and SN stretch factor s , which is similar to the Philips relation. Its significance is poor but several systematic errors affect the result.

GRB 120422A was accompanied by one of the least luminous afterglows detected to date. Its blast wave expanded with a low initial Lorentz factor of $\Gamma_0 \sim 50$ into a constant-density medium and produced a weak afterglow $L_{\nu, \max} \lesssim 2 \times 10^{30} \text{ erg s}^{-1} \text{ Hz}^{-1}$. Thanks to the weak afterglow, we recovered emission from the cooling photosphere after the shock break-out, which was only observed for the low- L GRBs 060218 and 100316D. The photosphere of GRB 120422A had a temperature of $T_{\text{obs}} \sim 16 \text{ eV}$ and a radius of $R_{\text{obs}} \sim 7 \times 10^{13} \text{ cm}$ at 1.4 h after the GRB, which are typical values of SNe with detected shock break-out signatures. This fundamentally new quality for a non-low- L GRB questions whether 120422A is a genuine high- L GRB. Considering the properties of the prompt emission and the afterglow makes us conclude that GRB 120422A is the missing

link between shock-break-out-driven low- L and high- L GRBs that are powered by an ultra-relativistic jet, hence providing evidence for the failed-jet model for low- L GRBs.

The GRB occurred in an almost typical host galaxy. Its close-to-solar metallicity, along with its negligible extinction, makes it peculiar. Thanks to the large offset of 7.3 kpc from the nucleus, we perform spatially resolved spectroscopy. Surprisingly, even at the explosion site, the metallicity is close to solar, while the SFR is not enhanced with respect to its immediate environment and is only 1/10 of that of the galaxy's nucleus. Based on the N_2 indicator, we measure $Z = (0.8 \pm 0.1) Z_\odot$ at the explosion site. This does not necessarily mean that the GRB-hosting star-forming region had these properties. The X-shooter spectrum was only sensitive to a region of $4.0 \times 3.9 \text{ kpc}^2$. What needs to be stressed is that emission-line measurements from low-resolution spectra should be taken with caution. Our medium resolution data revealed that the $H\alpha$ line is resolved into two components. This can lead to an overestimation of the extinction and SFR in low-resolution data.

Our narrow-band imaging (width 15 Å) showed that the host is possibly interacting with a galaxy that lies at a projected distance of 23 kpc away. We identified an additional putative galaxy-group member within 110 kpc from the GRB. In contrast to previous studies of GRB galaxy environments, tuneable filters allow us to more efficiently identify star-forming galaxies at a GRB redshift. In particular, this approach is complementary to SED fitting techniques, which are limited to bright galaxies but not necessarily highly star-forming galaxies. Both approaches are needed to address the long-standing questions on the peculiarity of GRB host galaxies and how galaxy interaction affects the production of GRB progenitors at low and high metallicities.

Acknowledgements. We thank Shri Kulkarni (Caltech) for obtaining the Keck spectrum. S.S. thanks Tsvi Piran (The Hebrew University, Israel), Nir Sapir, Eli Waxman (Weizmann Institute of Science, Israel), Milena Bufano (Universidad Andrés Bello, Chile), Maryam Modjaz (New York University, USA), and the anonymous referee for many productive and valuable discussions. S.S. acknowledges support by a Grant of Excellence from the Icelandic Research Fund, from the University of Iceland Research Fund, from the Dark Cosmology Centre, where part of this study was performed, and from CONICYT through FONDECYT grant 3140534. We acknowledge support from Basal-CATA PFB-06/2007 (FEB, SS), Iniciativa Científica Milenio grant P10-064-F (Millennium Center for Supernova Science), by Project IC120009 “Millennium Institute of Astrophysics (MAS)” of Iniciativa Científica Milenio del Ministerio de Economía, Fomento y Turismo de Chile, with input from “Fondo de Innovación para la Competitividad, del Ministerio de Economía, Fomento y Turismo de Chile” (F.E.B., G.P., J.A.P., S.S.), CONICYT-Chile FONDECYT 1101024 (FEB). J.A.P. acknowledges support by CONICYT through FONDECYT grant 3110142. D.M. acknowledges the Instrument Center for Danish Astrophysics for support. T.K. and H.K. acknowledge support by the European Commission under the Marie Curie Intra-European Fellowship Programme in FP7. J.P.U.F., B.M.J., and D.X. acknowledge support from the ERC-StG grant EGGS-278202. K.L.P. acknowledges financial support by the UK Space Agency for the *Swift* project. G.L. is supported by the Swedish Research Council through grant No. 623-2011-7117. J.L. acknowledges the UK Science and Technology Facilities Council for research studentship support. The research activity of AdUP, C.T., and J.G. is supported by Spanish research project AYA2012-39362-C02-02. A.d.U.P. acknowledges support by the European Commission under the Marie Curie Career Integration Grant programme (FP7-PEOPLE-2012-CIG 322307). A.J.C.T. acknowledges support from the Spanish research project AYA2009-14000-C03-01 and AYA2012-39727-C03-01 D.A.K. acknowledges support by the DFG cluster of excellence “Origin and Structure of the Universe” and funding by the Thüringer Landessternwarte Tautenburg. A.R. acknowledges support by the Thüringer Landessternwarte Tautenburg. P.S. acknowledges support through the Sofja Kovalevskaja Award from the Alexander von Humboldt Foundation of Germany. A.N.G. and S.K. acknowledge support by DFG KL 766/16-1. S. Schmidl acknowledges support by the Thüringer Ministerium für Bildung, Wissenschaft und Kultur under FKZ 12010-514. The Dark Cosmology Centre is funded by the Danish National Research Foundation. This work made use of data supplied by the UK *Swift* Science Data Centre at the University of Leicester.

This research has made use of the GHOSTS database (www.grbhosts.org), which is partly funded by *Spitzer*/NASA grant RSA Agreement No. 1287913. Based in part on observations collected at the European Organisation for Astronomical Research in the Southern Hemisphere, Chile, as part of the program 089.A-0067, the Gemini Observatory, which is operated by the Association of Universities for Research in Astronomy, Inc., under a co-operative agreement with the NSF on behalf of the Gemini partnership, as part of the programs GN-2012A-Q-9, GN-2012A-Q-39, GN-2012B-Q-5, GS-2012A-Q-30, GS-2012A-Q-38, GS-2012A-Q-30, and GN-2012B-Q-5, the Nordic Optical Telescope (NOT), operated by the Nordic Optical Telescope Scientific Association at the Observatorio del Roque de los Muchachos, La Palma, Spain, of the Instituto de Astrofísica de Canarias, as part of the program P45-002 (PI: Jakobsson) and ITP10-04 (PI: Kotak, QUB), the Gran Telescopio Canarias (GTC), installed in the Spanish Observatorio del Roque de los Muchachos of the Instituto de Astrofísica de Canarias, in the island of La Palma, with *Magellan* as part of CN2012A-059, with the IRAM Plateau de Bure Interferometer, the James Clerk Maxwell Telescope, as part of the program M12A112, with *XMM-Newton*, an ESA science mission with instruments and contributions directly funded by ESA Member States and NASA. Some of the data presented herein were obtained at the W.M. Keck Observatory, which is operated as a scientific partnership among the California Institute of Technology, the University of California and the National Aeronautics and Space Administration. The observatory was made possible by the generous financial support of the W.M. Keck Foundation. The United Kingdom Infrared Telescope is operated by the Joint Astronomy Centre on behalf of the Science and Technology Facilities Council of the UK. The James Clerk Maxwell Telescope is operated by the Joint Astronomy Centre on behalf of the Science and Technology Facilities Council of the United Kingdom, the National Research Council of Canada, and the Netherlands Organisation for Scientific Research. Additional funds for the construction of SCUBA-2 were provided by the Canada Foundation for Innovation. The Submillimeter Array is a joint project between the Smithsonian Astrophysical Observatory and the Academia Sinica Institute of Astronomy and Astrophysics and is funded by the Smithsonian Institution and the Academia Sinica. IRAM is supported by INSU/CNRS (France), MPG (Germany) and IGN (Spain). Support for CARMA construction was derived from the Gordon and Betty Moore Foundation, the Kenneth T. and Eileen L. Norris Foundation, the James S. McDonnell Foundation, the Associates of the California Institute of Technology, the University of Chicago, the states of California, Illinois, and Maryland, and the National Science Foundation. Ongoing CARMA development and operations are supported by the National Science Foundation under a cooperative agreement, and by the CARMA partner universities. Part of the funding for GROND (both hardware as well as personnel) was generously granted from the Leibniz-Prize to Prof. G. Hasinger (DFG grant HA 1850/28-1). Funding for SDSS-III has been provided by the Alfred P. Sloan Foundation, the Participating Institutions, the National Science Foundation, and the US Department of Energy Office of Science. The SDSS-III web site is <http://www.sdss3.org/>. SDSS-III is managed by the Astrophysical Research Consortium for the Participating Institutions of the SDSS-III Collaboration including the University of Arizona, the Brazilian Participation Group, Brookhaven National Laboratory, Carnegie Mellon University, University of Florida, the French Participation Group, the German Participation Group, Harvard University, the Instituto de Astrofísica de Canarias, the Michigan State/Notre Dame/JINA Participation Group, Johns Hopkins University, Lawrence Berkeley National Laboratory, Max Planck Institute for Astrophysics, Max Planck Institute for Extraterrestrial Physics, New Mexico State University, New York University, Ohio State University, Pennsylvania State University, University of Portsmouth, Princeton University, the Spanish Participation Group, University of Tokyo, University of Utah, Vanderbilt University, University of Virginia, University of Washington, and Yale University.

References

- Ahn, C. P., Alexandroff, R., Allende Prieto, C., et al. 2012, *ApJS*, 203, 21
 Aihara, H., Allende Prieto, C., An, D., et al. 2011, *ApJS*, 193, 29
 Arcavi, I., Gal-Yam, A., Yaron, O., et al. 2011, *ApJ*, 742, L18
 Arnett, W. D. 1982, *ApJ*, 253, 785
 Arnouts, S., Cristiani, S., Moscardini, L., et al. 1999, *MNRAS*, 310, 540
 Asplund, M., Grevesse, N., Sauval, A. J., & Scott, P. 2009, *ARA&A*, 47, 481
 Baldwin, J. A., Phillips, M. M., & Terlevich, R. 1981, *PASP*, 93, 5
 Barthelmy, S. D., Barbier, L. M., Cummings, J. R., et al. 2005, *Space Sci. Rev.*, 120, 143
 Barthelmy, S. D., Baumgartner, W. H., Cummings, J. R., et al. 2012, *GCN Circ.*, 13246
 Baryshev, Y. V., Sokolov, I. V., Moskvitin, A. S., et al. 2010, *Astrophys. Bull.*, 65, 311
 Beardmore, A. P., Evans, P. A., Goad, M. R., & Osborne, J. P. 2012, *GCN Circ.*, 13247
 Berger, E., Chornock, R., Holmes, T. R., et al. 2011, *ApJ*, 743, 204

- Bertin, E., & Arnouts, S. 1996, *A&AS*, 117, 393
- Beuermann, K., Hessman, F. V., Reinsch, K., et al. 1999, *A&A*, 352, L26
- Bhat, P. N., Briggs, M. S., Connaughton, V., et al. 2012, *ApJ*, 744, 141
- Blinnikov, S. I., Eastman, R., Bartunov, O. S., Popolitov, V. A., & Woosley, S. E. 1998, *ApJ*, 496, 454
- Bloom, J. S., Kulkarni, S. R., & Djorgovski, S. G. 2002, *AJ*, 123, 1111
- Bostanci, Z. F., Kaneko, Y., & Göğüş, E. 2013, *MNRAS*, 428, 1623
- Bromberg, O., Nakar, E., & Piran, T. 2011, *ApJ*, 739, L55
- Bruzual, G., & Charlot, S. 2003, *MNRAS*, 344, 1000
- Bufano, F., Pian, E., Sollerman, J., et al. 2012, *ApJ*, 753, 67
- Burrows, D. N., Hill, J. E., Nousek, J. A., et al. 2005, *Space Sci. Rev.*, 120, 165
- Calzetti, D., Armus, L., Bohlin, R. C., et al. 2000, *ApJ*, 533, 682
- Campana, S., Mangano, V., Blustin, A. J., et al. 2006, *Nature*, 442, 1008
- Cano, Z. 2013, *MNRAS*, 434, 1098
- Cano, Z., Bersier, D., Guidorzi, C., et al. 2011a, *ApJ*, 740, 41
- Cano, Z., Bersier, D., Guidorzi, C., et al. 2011b, *MNRAS*, 413, 669
- Chabrier, G., Baraffe, I., Allard, F., & Hauschildt, P. 2000, *ApJ*, 542, 464
- Chakraborti, S., Soderberg, A., Chomiuk, L., et al. 2014, *ApJ*, submitted [[arXiv:1402.6336](#)]
- Chapin, E. L., Berry, D. S., Gibb, A. G., et al. 2013, *MNRAS*, 430, 2545
- Chapman, R., Tanvir, N. R., Priddey, R. S., & Levan, A. J. 2007, *MNRAS*, 382, L21
- Chatzopoulos, E., Wheeler, J. C., Vinko, J., et al. 2011, *ApJ*, 729, 143
- Chen, H.-W. 2012, *MNRAS*, 419, 3039
- Chevalier, R. A., & Li, Z.-Y. 2000, *ApJ*, 536, 195
- Chornock, R., Berger, E., Levesque, E. M., et al. 2010, unpublished [[arXiv:1004.2262](#)]
- Christensen, L., Vreeswijk, P. M., Sollerman, J., et al. 2008, *A&A*, 490, 45
- Christensen, L., Fynbo, J. P. U., Prochaska, J. X., et al. 2011, *ApJ*, 727, 73
- Clocchiatti, A., Suntzeff, N. B., Covarrubias, R., & Candia, P. 2011, *AJ*, 141, 163
- Cobb, B. E., Bloom, J. S., Perley, D. A., et al. 2010, *ApJ*, 718, L150
- Colgate, S. A., & McKee, C. 1969, *ApJ*, 157, 623
- Cucchiara, A., Levan, A., Fox, D. B., & Tanvir, N. R. 2012, *GCN Circ.*, 13245
- De Cia, A., Starling, R. L. C., Wiersema, K., et al. 2011, *MNRAS*, 418, 129
- de Pasquale, M., Piro, L., Gendre, B., et al. 2006, *A&A*, 455, 813
- de Ugarte Postigo, A., Fynbo, J. P. U., Thöne, C. C., et al. 2012a, *A&A*, 548, A11
- de Ugarte Postigo, A., Lundgren, A., Martín, S., et al. 2012b, *A&A*, 538, A44
- de Ugarte Postigo, A., Cano, Z., Thoene, C. C., et al. 2013, *Central Bureau Electronic Telegrams*, 3637
- Della Valle, M., Chincarini, G., Panagia, N., et al. 2006a, *Nature*, 444, 1050
- Della Valle, M., Malesani, D., Bloom, J. S., et al. 2006b, *ApJ*, 642, L103
- Della Valle, M., Benetti, S., Mazzali, P., et al. 2008, *Central Bureau Electronic Telegrams*, 1602
- Dempsey, J. T., Friberg, P., Jenness, T., et al. 2013, *MNRAS*, 430, 2534
- Dermer, C. D. 2004, *ApJ*, 614, 284
- Detmers, R. G., Langer, N., Podsiadlowski, P., & Izzard, R. G. 2008, *A&A*, 484, 831
- Dopita, M. A., Fischera, J., Sutherland, R. S., et al. 2006, *ApJS*, 167, 177
- Ensman, L., & Burrows, A. 1992, *ApJ*, 393, 742
- Ergon, M., Sollerman, J., Fraser, M., et al. 2014, *A&A*, 562, A17
- Evans, P. A., Beardmore, A. P., Page, K. L., et al. 2007, *A&A*, 469, 379
- Evans, P. A., Beardmore, A. P., Page, K. L., et al. 2009, *MNRAS*, 397, 1177
- Evans, P. A., Willingale, R., Osborne, J. P., et al. 2010, *A&A*, 519, A102
- Fenimore, E., & Sumner, M. C. 1997, in *All-Sky X-Ray Observations in the Next Decade*, eds. M. Matsuoka, & N. Kawai, 167
- Ferrero, P., Kann, D. A., Zeh, A., et al. 2006, *A&A*, 457, 857
- Ferrero, P., Klose, S., Kann, D. A., et al. 2009, *A&A*, 497, 729
- Filippenko, A. V. 1997, *ARA&A*, 35, 309
- Foley, S., Watson, D., Gorosabel, J., et al. 2006, *A&A*, 447, 891
- Förster Schreiber, N. M., Genzel, R., Bouché, N., et al. 2009, *ApJ*, 706, 1364
- Friis, M., & Watson, D. 2013, *ApJ*, 771, 15
- Fruchter, A. S., Levan, A. J., Strolger, L., et al. 2006, *Nature*, 441, 463
- Fryer, C. L., & Woosley, S. E. 1998, *ApJ*, 502, L9
- Fynbo, J. U., Holland, S., Andersen, M. I., et al. 2000, *ApJ*, 542, L89
- Fynbo, J. P. U., Möller, P., Thomsen, B., et al. 2002, *A&A*, 388, 425
- Fynbo, J. P. U., Jakobsson, P., Möller, P., et al. 2003, *A&A*, 406, L63
- Fynbo, J. P. U., Watson, D., Thöne, C. C., et al. 2006, *Nature*, 444, 1047
- Gal-Yam, A., Fox, D. B., Price, P. A., et al. 2006, *Nature*, 444, 1053
- Galama, T. J., Vreeswijk, P. M., van Paradijs, J., et al. 1998, *Nature*, 395, 670
- Gendre, B., Corsi, A., & Piro, L. 2006, *A&A*, 455, 803
- Goldoni, P., Royer, F., François, P., et al. 2006, in *SPIE Conf. Ser.*, 6269
- Greiner, J., Bornemann, W., Clemens, C., et al. 2007, *The Messenger*, 130, 12
- Greiner, J., Bornemann, W., Clemens, C., et al. 2008, *PASP*, 120, 405
- Greiner, J., Krühler, T., McBreen, S., et al. 2009, *ApJ*, 693, 1912
- Grupe, D., Burrows, D. N., Wu, X.-F., et al. 2010, *ApJ*, 711, 1008
- Guetta, D., & Della Valle, M. 2007, *ApJ*, 657, L73
- Hamuy, M., & Pinto, P. A. 2002, *ApJ*, 566, L63
- Han, X. H., Hammer, F., Liang, Y. C., et al. 2010, *A&A*, 514, A24
- Hjorth, J. 2013, *Roy. Soc. Lond. Philosophical Trans. Ser. A*, 371, 20275
- Hjorth, J., & Bloom, J. S. 2012, in *Gamma-Ray Bursts*, eds. C. Kouveliotou, R. A. M. J. Wijers, & S. Woosley (Cambridge University Press), 169
- Hjorth, J., Sollerman, J., Møller, P., et al. 2003, *Nature*, 423, 847
- Hjorth, J., Malesani, D., Jakobsson, P., et al. 2012, *ApJ*, 756, 187
- Hogg, D. W., Baldry, I. K., Blanton, M. R., & Eisenstein, D. J. 2002, unpublished [[arXiv:astro-ph/0210394](#)]
- Holland, W. S., Bintley, D., Chapin, E. L., et al. 2013, *MNRAS*, 430, 2513
- Hook, I. M., Jørgensen, I., Allington-Smith, J. R., et al. 2004, *PASP*, 116, 425
- Horne, K. 1986, *PASP*, 98, 609
- Ilbert, O., Arnouts, S., McCracken, H. J., et al. 2006, *A&A*, 457, 841
- Jakobsson, P., Björnsson, G., Fynbo, J. P. U., et al. 2005, *MNRAS*, 362, 245
- Jin, Z.-P., Covino, S., Della Valle, M., et al. 2013, *ApJ*, 774, 114
- Kaneko, Y., Ramirez-Ruiz, E., Granot, J., et al. 2007, *ApJ*, 654, 385
- Kann, D. A., Klose, S., Zhang, B., et al. 2011, *ApJ*, 734, 96
- Kauffmann, G., Heckman, T. M., Tremonti, C., et al. 2003, *MNRAS*, 346, 1055
- Kennicutt, Jr., R. C. 1998, *ARA&A*, 36, 189
- Kewley, L. J., Dopita, M. A., Sutherland, R. S., Heisler, C. A., & Trevena, J. 2001, *ApJ*, 556, 121
- Kewley, L. J., Geller, M. J., & Jansen, R. A. 2004, *AJ*, 127, 2002
- Klose, S., Nicuesa Guelbenzu, A., Kruehler, T., et al. 2013, *Central Bureau Electronic Telegrams*, 3677
- Kron, R. G. 1980, *ApJS*, 43, 305
- Krühler, T., Küpcü Yıldız, A., Greiner, J., et al. 2008, *ApJ*, 685, 376
- Krühler, T., Greiner, J., Schady, P., et al. 2011a, *A&A*, 534, A108
- Krühler, T., Schady, P., Greiner, J., et al. 2011b, *A&A*, 526, A153
- Krühler, T., Fynbo, J. P. U., Geier, S., et al. 2012, *A&A*, 546, A8
- Kuin, N. P. M., & Troja, E. 2012, *GCN Circ.*, 13248
- Kulkarni, S. R., Frail, D. A., Wieringa, M. H., et al. 1998, *Nature*, 395, 663
- Kumar, P., & Panaitescu, A. 2000, *ApJ*, 541, L51
- Larson, D., Dunkley, J., Hinshaw, G., et al. 2011, *ApJS*, 192, 16
- Laskar, T., Berger, E., & Chary, R.-R. 2011, *ApJ*, 739, 1
- Lazzati, D., Morsony, B. J., Blackwell, C. H., & Begelman, M. C. 2012, *ApJ*, 750, 68
- Le Floc'h, E., Charmandaris, V., Forrest, W. J., et al. 2006, *ApJ*, 642, 636
- Levan, A., Fruchter, A., Rhoads, J., et al. 2006, *ApJ*, 647, 471
- Levan, A. J., Tanvir, N. R., Fruchter, A. S., et al. 2013, *ApJ*, submitted [[arXiv:1307.5338](#)]
- Levesque, E. M., Kewley, L. J., Berger, E., & Zahid, H. J. 2010a, *AJ*, 140, 1557
- Levesque, E. M., Kewley, L. J., Graham, J. F., & Fruchter, A. S. 2010b, *ApJ*, 712, L26
- Levesque, E. M., Berger, E., Soderberg, A. M., & Chornock, R. 2011, *ApJ*, 739, 23
- Levesque, E. M., Chornock, R., Soderberg, A. M., Berger, E., & Lunnan, R. 2012, *ApJ*, 758, 92
- Liang, E., Zhang, B., Virgili, F., & Dai, Z. G. 2007, *ApJ*, 662, 1111
- Liang, E.-W., Yi, S.-X., Zhang, J., et al. 2010, *ApJ*, 725, 2209
- Lyman, J. D., Bersier, D., & James, P. A. 2014, *MNRAS*, 437, 3848
- Maeda, K., Mazzali, P. A., Deng, J., et al. 2003, *ApJ*, 593, 931
- Malesani, D., Tagliaferri, G., Chincarini, G., et al. 2004, *ApJ*, 609, L5
- Malesani, D., Fynbo, J. P. U., Hjorth, J., et al. 2009, *ApJ*, 692, L84
- Malesani, D., Schulze, S., Krühler, T., et al. 2012a, *Central Bureau Electronic Telegrams*, 3100
- Malesani, D., Schulze, S., Krühler, T., et al. 2012b, *GCN Circ.*, 13275
- Margutti, R., Soderberg, A. M., Wieringa, M. H., et al. 2013, *ApJ*, 778, 18
- Margutti, R., Milisavljevic, D., Soderberg, A. M., et al. 2014, *ApJ*, submitted [[arXiv:1402.6344](#)]
- Martin, S., Pettipas, G., & de Ugarte Postigo, A. 2012, *GCN Circ.*, 13260
- Maselli, A., Melandri, A., Nava, L., et al. 2014, *Science*, 343, 48
- Matheson, T., Garnavich, P. M., Stanek, K. Z., et al. 2003, *ApJ*, 599, 394
- McBreen, S., Foley, S., Watson, D., et al. 2008, *ApJ*, 677, L85
- Melandri, A., Pian, E., Ferrero, P., et al. 2012, *A&A*, 547, A82
- Mészáros, P. 2006, *Rep. Prog. Phys.*, 69, 2259
- Michałowski, M. J., Hunt, L. K., Palazzi, E., et al. 2014, *A&A*, 562, A70
- Milisavljevic, D., Soderberg, A. M., Margutti, R., et al. 2013, *ApJ*, 770, L38
- Modjaz, M. 2011, *Astron. Nachr.*, 332, 434
- Modjaz, M., Li, W., Butler, N., et al. 2009, *ApJ*, 702, 226
- Molinari, E., Vergani, S. D., Malesani, D., et al. 2007, *A&A*, 469, L13
- Monet, D. G., Levine, S. E., Canzian, B., et al. 2003, *AJ*, 125, 984
- Nakar, E., & Sari, R. 2012, *ApJ*, 747, 88
- Nardini, M., Schmidl, S., Greiner, J., & Kann, D. A. 2012, *GCN Circ.*, 13256
- Nousek, J. A., Kouveliotou, C., Grupe, D., et al. 2006, *ApJ*, 642, 389
- Ofek, E. O., Cenko, S. B., Gal-Yam, A., et al. 2007, *ApJ*, 662, 1129
- Oke, J. B., Cohen, J. G., Carr, M., et al. 1995, *PASP*, 107, 375
- Olivares E., F., Greiner, J., Schady, P., et al. 2012, *A&A*, 539, A76
- Page, K. L., Starling, R. L. C., Fitzpatrick, G., et al. 2011, *MNRAS*, 416, 2078
- Panaitescu, A., & Kumar, P. 2000, *ApJ*, 543, 66

- Patat, F., Cappellaro, E., Danziger, J., et al. 2001, *ApJ*, 555, 900
- Perley, D. A. 2012, *GCN Circ.*, 13278
- Perley, D. A., Li, W., Chornock, R., et al. 2008, *ApJ*, 688, 470
- Perley, D. A., Morgan, A. N., Updike, A., et al. 2011, *AJ*, 141, 36
- Perley, D. A., Cucchiara, A., Cenko, S. B., et al. 2012a, *GCN Circ.*, 13267
- Perley, D. A., Jones, T., & Ellis, R. 2012b, *GCN Circ.*, 13279
- Perley, D. A., Levan, A. J., Tanvir, N. R., et al. 2013, *ApJ*, 778, 128
- Perley, D. A., Cenko, S. B., Corsi, A., et al. 2014, *ApJ*, 781, 37
- Pettini, M., & Pagel, B. E. J. 2004, *MNRAS*, 348, L59
- Phillips, M. M. 1993, *ApJ*, 413, L105
- Pian, E., Mazzali, P. A., Masetti, N., et al. 2006, *Nature*, 442, 1011
- Piranomonte, S., Ward, P. A., Fiore, F., et al. 2008, *A&A*, 492, 775
- Poole, T. S., Breeveld, A. A., Page, M. J., et al. 2008, *MNRAS*, 383, 627
- Racusin, J. L., Liang, E. W., Burrows, D. N., et al. 2009, *ApJ*, 698, 43
- Richmond, M. W., Treffers, R. R., Filippenko, A. V., et al. 1994, *AJ*, 107, 1022
- Richmond, M. W., van Dyk, S. D., Ho, W., et al. 1996, *AJ*, 111, 327
- Roming, P. W. A., Kennedy, T. E., Mason, K. O., et al. 2005, *Space Sci. Rev.*, 120, 95
- Sánchez-Ramírez, R., Leloudas, G., Postigo, A. D. U., et al. 2012, *GCN Circ.*, 13281
- Sari, R., & Piran, T. 1999, *ApJ*, 520, 641
- Sari, R., Piran, T., & Narayan, R. 1998, *ApJ*, 497, L17
- Sari, R., Piran, T., & Halpern, J. P. 1999, *ApJ*, 519, L17
- Sault, R. J., Teuben, P. J., & Wright, M. C. H. 1995, in *Astronomical Data Analysis Software and Systems IV*, eds. R. A. Shaw, H. E. Payne, & J. J. E. Hayes, *ASP Conf. Ser.*, 77, 433
- Savaglio, S., Glazebrook, K., & Le Borgne, D. 2009, *ApJ*, 691, 182
- Schlegel, D. J., Finkbeiner, D. P., & Davis, M. 1998, *ApJ*, 500, 525
- Schulze, S., Klose, S., Björnsson, G., et al. 2011, *A&A*, 526, A23
- Schulze, S., Levan, A. J., Malesani, D., et al. 2012a, *GCN Circ.*, 13257
- Schulze, S., Malesani, D., de Ugarte Postigo, A., et al. 2012b, *GCN Circ.*, 13252
- Shen, R., & Matzner, C. D. 2012, *ApJ*, 744, 36
- Skrutskie, M. F., Cutri, R. M., Stiening, R., et al. 2006, *AJ*, 131, 1163
- Smith, I. A., Tilanus, R. P. J., Tanvir, N. R., & Frail, D. A. 2012, *GCN Circ.*, 13259
- Soderberg, A. M., Kulkarni, S. R., Nakar, E., et al. 2006a, *Nature*, 442, 1014
- Soderberg, A. M., Nakar, E., Berger, E., & Kulkarni, S. R. 2006b, *ApJ*, 638, 930
- Soderberg, A. M., Berger, E., Page, K. L., et al. 2008, *Nature*, 453, 469
- Soderberg, A. M., Chakraborti, S., Pignata, G., et al. 2010, *Nature*, 463, 513
- Soderberg, A. M., Margutti, R., Zauderer, B. A., et al. 2012, *ApJ*, 752, 78
- Sparre, M., & Starling, R. L. C. 2012, *MNRAS*, 427, 2965
- Sparre, M., Sollerman, J., Fynbo, J. P. U., et al. 2011, *ApJ*, 735, L24
- Staley, T. D., Titterton, D. J., Fender, R. P., et al. 2013, *MNRAS*, 428, 3114
- Stanek, K. Z., Matheson, T., Garnavich, P. M., et al. 2003, *ApJ*, 591, L17
- Stanek, K. Z., Garnavich, P. M., Nutzman, P. A., et al. 2005, *ApJ*, 626, L5
- Starling, R. L. C., Wiersema, K., Levan, A. J., et al. 2011, *MNRAS*, 411, 2792
- Starling, R. L. C., Page, K. L., Pe'er, A., Beardmore, A. P., & Osborne, J. P. 2012, *MNRAS*, 427, 2950
- Stritzinger, M., Hamuy, M., Suntzeff, N. B., et al. 2002, *AJ*, 124, 2100
- Tanvir, N. R., Rol, E., Levan, A. J., et al. 2010, *ApJ*, 725, 625
- Tanvir, N. R., Levan, A. J., Cucchiara, A., & Fox, D. B. 2012, *GCN Circ.*, 13251
- Thöne, C. C., Fynbo, J. P. U., Östlin, G., et al. 2008, *ApJ*, 676, 1151
- Thöne, C. C., de Ugarte Postigo, A., Fryer, C. L., et al. 2011, *Nature*, 480, 72
- Tody, D. 1993, in *Astronomical Data Analysis Software and Systems II*, eds. R. J. Hanisch, R. J. V. Brissenden, & J. Barnes, *ASP Conf. Ser.*, 52, 173
- Troja, E., D'Elia, V., Guidorzi, C., et al. 2012, *GCN Circ.*, 13243
- Valenti, S., Benetti, S., Cappellaro, E., et al. 2008, *MNRAS*, 383, 1485
- Valenti, S., Fraser, M., Benetti, S., et al. 2011, *MNRAS*, 416, 3138
- van Marle, A. J., Langer, N., Achterberg, A., & García-Segura, G. 2006, *A&A*, 460, 105
- Vergani, S. D., Flores, H., Covino, S., et al. 2011, *A&A*, 535, A127
- Vernet, J., Dekker, H., D'Odorico, S., et al. 2011, *A&A*, 536, A105
- Virgili, F. J., Liang, E.-W., & Zhang, B. 2009, *MNRAS*, 392, 91
- Wanderman, D., & Piran, T. 2010, *MNRAS*, 406, 1944
- Wiersema, K., Savaglio, S., Vreeswijk, P. M., et al. 2007, *A&A*, 464, 529
- Wiersema, K., Cucchiara, A., Levan, A. J., et al. 2012, *GCN Circ.*, 13276
- Woosley, S. E. 2012, in *Gamma-Ray Bursts*, ed. C. Kouveliotou, R. A. M. J. Wijers, & S. Woosley (Cambridge University Press), 191
- Woosley, S. E., & Bloom, J. S. 2006, *ARA&A*, 44, 507
- Xu, D., de Ugarte Postigo, A., Leloudas, G., et al. 2013, *ApJ*, 776, 98
- Yoldaş, A. K., Krühler, T., Greiner, J., et al. 2008, in *AIP Conf. Ser.* 1000, eds. M. Galassi, D. Palmer, & E. Fenimore, 227
- Zauderer, A., Berger, E., & Laskar, T. 2012, *GCN Circ.*, 13254
- Zeh, A., Klose, S., & Hartmann, D. H. 2004, *ApJ*, 609, 952
- Zeh, A., Klose, S., & Kann, D. A. 2006, *ApJ*, 637, 889
- Zhang, B., & Mészáros, P. 2004, *Int. J. Mod. Phys. A*, 19, 2385
- Zhang, B., Zhang, B.-B., Virgili, F. J., et al. 2009, *ApJ*, 703, 1696
- Zhang, B.-B., Fan, Y.-Z., Shen, R.-F., et al. 2012, *ApJ*, 756, 190
-
- ¹ Instituto de Astrofísica, Facultad de Física, Pontificia Universidad Católica de Chile, Av. Vicuña Mackenna 4860, Santiago, Chile
e-mail: sschulze@astro.puc.cl
- ² Millennium Center for Supernova Science
- ³ Centre for Astrophysics and Cosmology, Science and, University of Iceland, Dunhagi 5, 107 Reykjavík, Iceland
- ⁴ Dark Cosmology Centre, Niels Bohr Institute, University of Copenhagen, Juliane Maries Vej 30, 2100 Copenhagen, Denmark
- ⁵ Department of Astronomy and Astrophysics, UCO/Lick Observatory, University of California, Santa Cruz, CA 95064, USA
- ⁶ Department of Physics and Astronomy, University of Leicester, University Road, Leicester LE1 7RH, UK
- ⁷ Instituto de Astrofísica de Andalucía Consejo Superior de Investigaciones Científicas (IAA-CSIC), Glorieta de la Astronomía s/n, 18008 Granada, Spain
- ⁸ The Oskar Klein Centre, Department of Physics, Stockholm University, AlbaNova University Centre, 10691 Stockholm, Sweden
- ⁹ Astrophysics Research Institute, Liverpool John Moores University, IC2, Liverpool Science Park Liverpool L3 5RF, UK
- ¹⁰ Department of Astronomy, California and of Technology, MC 249-17, 1200 East California Blvd, Pasadena CA 91125, USA
- ¹¹ Hubble Fellow
- ¹² Max-Planck-Institut für extraterrestrische Physik, Giessenbachstrasse 1, 85748 Garching, Germany
- ¹³ Departamento de Astronomía, Universidad de Chile, Casilla 36-D, Santiago, Chile
- ¹⁴ Astrophysics Science Division, NASA Goddard Space Flight Center, Mail Code 661, Greenbelt MD 20771, USA
- ¹⁵ Department of Astronomy, University of California, Berkeley, CA 94720-3411, USA
- ¹⁶ Department of Particle Physics and Astrophysics, Faculty of Physics, Weizmann Institute of Science, 76100 Rehovot, Israel
- ¹⁷ Astronomical and Anton Pannekoek, University of Amsterdam, Science Park 904, 1098 XH Amsterdam, The Netherlands
- ¹⁸ Thüringer Landessternwarte Tautenburg, Sternwarte 5, 07778 Tautenburg, Germany
- ¹⁹ Department of Physics, University of Warwick, Coventry, CV4 7AL, UK
- ²⁰ European Southern Observatory, Alonso de Córdova 3107, Vitacura Casilla 19001, Santiago 19, Chile
- ²¹ Departamento de Ciencias Físicas, Universidad Andres Bello, Avda. Republica 252, Santiago, Chile
- ²² Research School of Astronomy and Astrophysics, Mount Stromlo Observatory, Cotter Road, Weston Creek, ACT 2611, Australia
- ²³ The Oskar Klein Centre, Department of Astronomy, Stockholm University, AlbaNova University Centre, 10691 Stockholm, Sweden
- ²⁴ Department of Physics and Astronomy, Rice University, 6100 South Main MS-108, Houston, TX 77005-1892, USA
- ²⁵ Harvard-Smithsonian Center for Astrophysics, 60 Garden Street, Cambridge, MA 02138, USA
- ²⁶ Department of Physics, Harvard University, 17 Oxford Street, Cambridge, MA 02138, USA
- ²⁷ INAF – Osservatorio Astronomico di Brera, via E. Bianchi 46 23807 Merate, Italy
- ²⁸ Institute de Radioastronomie Millimétrique (IRAM), 300 rue de la Piscine, 38406 Saint Martin d'Hères, France
- ²⁹ ASI-Science Data Center, via del Politecnico, 00133 Roma, Italy
- ³⁰ National Radio Astronomy Observatory, PO Box O, Socorro NM 87801, USA
- ³¹ Nordic Optical Telescope, Apartado 474, 38700 Santa Cruz de La Palma, Spain
- ³² APC, Astroparticule et Cosmologie, Université Paris Diderot, CNRS/IN2P3, CEA/Irfu, Observatoire de Paris, Sorbonne Paris Cité, 10 rue Alice Domon et Léonie Duquet, 75205 Paris Cedex 13, France
- ³³ Finnish Centre for Astronomy with ESO (FINCA), University of Turku, Väisäläntie 20, 21500 Piikkiö, Finland

- ³⁴ Università degli studi di Milano-Bicocca, Piazza della Scienza 3, 20126 Milano, Italy
- ³⁵ Department of Physics, University of Tokyo, 7-3-1 Hongo, Bunkyo-ku, 113-0033 Tokyo, Japan
- ³⁶ Kavli Institute for the Physics and Mathematics of the Universe (Kavli IPMU, WPI), University of Tokyo, 277-8583 Chiba, Japan
- ³⁷ Aryabhata Research and of observational-sciences, Manora peak, Nainital 263 129, India
- ³⁸ James Clerk Maxwell Telescope, Joint Astronomy Centre, 660 North A'ohoku Place, University Park, Hilo, HI 96720, USA
- ³⁹ Netherlands Organization for Scientific Research, Laan van Nieuw Oost-Indie 300, 2509 AC The Hague, The Netherlands
- ⁴⁰ Astrophysics Research Centre, School of Mathematics and Physics, Queen's University Belfast, Belfast BT7 1NN, UK
- ⁴¹ Department of Astronomy & Astrophysics, The University of Chicago, 5640 S. Ellis Avenue, Chicago, IL 60637, USA
- ⁴² Kavli Institute for Cosmological Physics at the University of Chicago, USA
- ⁴³ Space Science Institute, 4750 Walnut Street, Suite 205, Boulder, CO 80301, USA
- ⁴⁴ Unidad Asociada Grupo Ciencia Planetarias UPV/EHU-IAA/CSIC, Departamento de Física Aplicada I, E.T.S. Ingeniería, Universidad del País Vasco UPV/EHU, Alameda de Urquijo s/n, 48013 Bilbao, Spain
- ⁴⁵ Ikerbasque, Basque Foundation for Science, Alameda de Urquijo 36-5, 48008 Bilbao, Spain
- ⁴⁶ INAF-Osservatorio Astronomico di Roma, via Frascati 33, 00040 Monteporzio Catone, Italy

Appendix A: Photometry of the optical transient

Table A.1. continued.

Table A.1. Log of optical and NIR observations.

MJD (days)	Epoch (s)	Instrument	Filter	Exposure time (s)	Brightness (mag _{AB})
56 039.308	664.2	Swift/UVOT	uwv2	38.9	>20.27
56 039.313	1110.2	Swift/UVOT	uwv2	38.9	20.30 ^{+0.55} _{-0.47}
56 039.373	6244.8	Swift/UVOT	uwv2	332.2	20.50 ^{+0.36} _{-0.16}
56 066.505	2 350 484	Swift/UVOT	uwv2	16 823.3	>24.05
56 039.311	935.9	Swift/UVOT	uvm2	77.8	20.84 ^{+0.75} _{-0.44}
56 039.370	5967.3	Swift/UVOT	uvm2	196.6	20.89 ^{+0.47} _{-0.33}
56 039.436	11 694.8	Swift/UVOT	uvm2	885.6	21.03 ^{+0.23} _{-0.19}
56 066.471	2 347 530	Swift/UVOT	uvm2	16 365	>23.73
56 039.311	912.7	Swift/UVOT	uwv1	58.3	>20.56
56 039.364	5454.6	Swift/UVOT	uwv1	393.2	21.43 ^{+0.48} _{-0.33}
56 039.445	12 479.4	Swift/UVOT	uwv1	645.3	21.56 ^{+0.37} _{-0.28}
56 039.598	25 671.6	Swift/UVOT	uwv1	1771.2	21.47 ^{+0.21} _{-0.18}
56 067.110	2 402 743	Swift/UVOT	uwv1	11 529.3	>23.43
56 039.305	387.2	Swift/UVOT	u	245.8	21.06 ^{+0.51} _{-0.35}
56 039.311	898.9	Swift/UVOT	u	52.9	>20.08
56 039.366	5659.9	Swift/UVOT	u	393.2	21.08 ^{+0.43} _{-0.31}
56 039.530	19 853.4	Swift/UVOT	u	1770.3	21.47 ^{+0.27} _{-0.20}
56 039.645	29 800.8	Swift/UVOT	u	651.6	21.41 ^{+0.30} _{-0.29}
56 042.104	242 229.9	Swift/UVOT	u	11 277.9	>22.94
56 051.997	1 096 947	Swift/UVOT	u	69 897.4	23.00 ^{+0.17} _{-0.14}
56 077.011	3 258 148	Swift/UVOT	u	27 766.2	>23.32
56 039.339	3328.3	Swift/UVOT	b	451.6	>20.93
56 039.539	20 641.6	Swift/UVOT	b	1523.7	21.46 ^{+0.39} _{-0.28}
56 040.652	116 790.9	Swift/UVOT	b	1444	>21.58
56 061.463	1 914 851	Swift/UVOT	b	7250.3	22.05 ^{+0.36} _{-0.27}
56 093.296	4 665 241	Swift/UVOT	b	449.7	>20.33
56 039.302	90.4	Swift/UVOT	v	9	>17.52
56 039.311	912	Swift/UVOT	v	77.7	>18.83
56 039.541	20 785.9	Swift/UVOT	v	1607.4	>20.28
56 041.111	156 431	Swift/UVOT	v	1282.9	>20.27
56 093.300	4 665 526	Swift/UVOT	v	449.8	>19.17
56 039.990	59 563	GROND	g'	4 × 115	22.21 ± 0.10
56 040.015	61 702	GROND	g'	4 × 369	22.12 ± 0.05
56 040.036	63 556	GROND	g'	4 × 369	22.15 ± 0.07
56 040.040	63 883	Gemini/GMOS	g'	1 × 60	22.22 ± 0.06
56 040.057	65 383	GROND	g'	4 × 369	22.11 ± 0.08
56 040.089	68 118	GROND	g'	8 × 369	22.18 ± 0.06
56 040.173	75 361	P60	g'	900	22.14 ± 0.10
56 041.067	152 661	GROND	g'	16 × 115	22.59 ± 0.10
56 041.104	155 811	GROND	g'	16 × 115	22.79 ± 0.16
56 043.239	340 286	Gemini/GMOS	g'	1 × 100	22.86 ± 0.06
56 048.018	753 173	GROND	g'	8 × 369	22.38 ± 0.10
56 050.011	925 358	GROND	g'	8 × 369	22.35 ± 0.08
56 053.969	1 267 371	GTC/OSIRIS	g'	1 × 100	22.14 ± 0.11
56 054.249	1 291 574	Gemini/GMOS	g'	1 × 30	22.16 ± 0.07
56 059.005	1 702 443	GROND	g'	8 × 369	22.22 ± 0.04
56 059.020	1 703 734	Gemini/GMOS	g'	1 × 120	22.19 ± 0.07
56 067.938	2 474 262	GROND	g'	4 × 369	22.82 ± 0.05

MJD (days)	Epoch (s)	Instrument	Filter	Exposure time (s)	Brightness (mag _{AB})
56 078.217	3 362 396	GROND	g'	24 × 115	23.29 ± 0.20
56 039.414	9793	Gemini/GMOS	r'	1 × 60	21.11 ± 0.04
56 039.990	59 563	GROND	r'	4 × 115	22.19 ± 0.14
56 040.015	61 702	GROND	r'	4 × 369	22.17 ± 0.07
56 040.036	63 556	GROND	r'	4 × 369	22.02 ± 0.05
56 040.047	64 459	Gemini/GMOS	r'	1 × 60	22.10 ± 0.05
56 040.057	65 383	GROND	r'	4 × 369	22.22 ± 0.07
56 040.089	68 118	GROND	r'	8 × 369	22.12 ± 0.08
56 040.161	74 357	P60	r'	900	22.28 ± 0.10
56 040.888	137 134	NOT/MOSCA	r'	4 × 300	22.28 ± 0.08
56 041.068	152 661	GROND	r'	16 × 115	22.34 ± 0.09
56 041.104	155 811	GROND	r'	16 × 115	22.47 ± 0.12
56 041.949	228 856	NOT/MOSCA	r'	12 × 300	22.23 ± 0.06
56 042.938	314 237	NOT/ALFOC	r'	24 × 150	22.07 ± 0.06
56 043.247	340 990	Gemini/GMOS	r'	1 × 100	22.12 ± 0.06
56 048.018	753 173	GROND	r'	8 × 369	21.48 ± 0.05
56 048.967	835 203	NOT/StanCAM	R	8 × 150	21.45 ± 0.10
56 050.011	925 358	GROND	r'	8 × 369	21.33 ± 0.04
56 052.958	1 179 975	Gemini/GMOS	r'	1 × 30	21.41 ± 0.10
56 053.886	1 260 196	NOT/StanCAM	R	12 × 150	21.25 ± 0.06
56 053.972	1 267 581	GTC/OSIRIS	r'	1 × 100	21.37 ± 0.14
56 054.258	1 292 332	Gemini/GMOS	r'	1 × 30	21.26 ± 0.05
56 056.895	1 520 199	NOT/ALFOC	r'	8 × 150	21.23 ± 0.07
56 059.032	1 704 797	Gemini/GMOS	r'	1 × 120	21.27 ± 0.05
56 059.005	1 702 443	GROND	r'	8 × 369	21.21 ± 0.04
56 061.962	1 957 915	Gemini/GMOS	r'	1 × 30	21.32 ± 0.06
56 063.912	2 126 451	NOT/ALFOC	r'	15 × 90	21.36 ± 0.08
56 065.897	2 297 894	NOT/MOSCA	r'	16 × 90	21.48 ± 0.05
56 065.968	2 304 100	Gemini/GMOS	r'	1 × 100	21.51 ± 0.04
56 066.028	2 309 230	Magellan/LDSS3	r'	3 × 180	21.55 ± 0.04
56 067.938	2 474 262	GROND	r'	4 × 369	21.65 ± 0.04
56 067.957	2 475 887	NOT/MOSCA	r'	15 × 90	21.54 ± 0.08
56 067.979	2 477 779	DuPont/CCD	r'	4 × 500	21.58 ± 0.05
56 069.966	2 649 489	Gemini/GMOS	r'	1 × 100	21.73 ± 0.04
56 069.902	2 643 961	NOT/MOSCA	r'	15 × 90	21.79 ± 0.07
56 070.957	2 735 091	Gemini/GMOS	r'	1 × 100	21.77 ± 0.08
56 071.907	2 817 199	NOT/ALFOC	r'	10 × 90	21.96 ± 0.07
56 078.217	3 362 396	GROND	r'	24 × 115	22.43 ± 0.11
56 079.955	3 512 502	Gemini/GMOS	r'	1 × 30	22.41 ± 0.11
56 083.915	3 854 715	NOT/ALFOC	r'	20 × 90	22.39 ± 0.47
56 039.322	1880	Gemini/GMOS	i'	1 × 240	20.93 ± 0.04
56 039.896	51 451	NOT/MOSCA	I	12 × 300	22.19 ± 0.08
56 039.990	59 563	GROND	i'	4 × 115	22.01 ± 0.18
56 040.015	61 702	GROND	i'	4 × 369	22.13 ± 0.07
56 040.036	63 556	GROND	i'	4 × 369	22.27 ± 0.10
56 040.047	64 459	Gemini/GMOS	i'	1 × 60	22.16 ± 0.06
56 040.078	67 209	GROND	i'	12 × 369	22.32 ± 0.09
56 040.149	73 289	P60	i'	900	22.23 ± 0.17
56 040.871	135 683	NOT/MOSCA	i'	4 × 300	22.48 ± 0.12
56 041.067	152 661	GROND	i'	16 × 115	22.50 ± 0.16
56 041.104	155 811	GROND	i'	16 × 115	22.59 ± 0.19
56 041.924	226 705	NOT/MOSCA	i'	6 × 300	22.37 ± 0.13
56 042.866	308 045	GTC/OSIRIS	i'	1 × 10	22.33 ± 0.14
56 042.885	309 735	NOT/ALFOC	i'	13 × 300	22.35 ± 0.06
56 043.255	341 689	Gemini/GMOS	i'	1 × 100	22.29 ± 0.06
56 043.874	395 133	NOT/ALFOC	i'	12 × 150	22.18 ± 0.08
56 047.890	742 159	NOT/ALFOC	i'	3150 ^a	21.56 ± 0.08
56 048.018	753 173	GROND	i'	8 × 369	21.56 ± 0.08
56 048.987	836 905	NOT/StanCam	i _i	8 × 150	21.52 ± 0.08
56 050.011	925 358	GROND	i'	8 × 369	21.49 ± 0.05
56 053.916	1 262 736	NOT/StanCAM	i _i	12 × 150	21.34 ± 0.05
56 053.903	1 261 613	GTC/OSIRIS	i'	1 × 100	21.20 ± 0.09
56 063.974	1 267 805	GTC/OSIRIS	i'	1 × 100	21.27 ± 0.06
56 054.163	1 284 132	P60	i'	1800	21.21 ± 0.14
56 054.264	1 292 809	Gemini/GMOS	i'	1 × 30	21.29 ± 0.05
56 055.175	1 371 560	P60	i'	3600	21.26 ± 0.11
56 055.884	1 432 840	NOT/StanCAM	i _i	8 × 150	21.35 ± 0.05
56 058.889	1 692 472	NOT/ALFOC	i'	11 × 150	21.32 ± 0.07
56 059.005	1 702 443	GROND	i'	8 × 369	21.27 ± 0.03
56 059.005	1 702 494	Gemini/GMOS	i'	1 × 120	21.24 ± 0.04
56 061.176	1 890 072	P60	i'	3240	21.22 ± 0.14
56 062.181	1 976 858	P60	i'	3600	21.27 ± 0.15

Notes. Magnitudes are corrected for Galactic extinction ($E(B - V) = 0.03$ mag). Column “Epoch” shows the logarithmic mean-time after the GRB in the observer frame. We only display the total observing time of the Swift/UVOT and P60 data (see Sect. 2.2 for details). As described in Sect. 2.3, photometry was tied to the SDSS DR8 standard ($g'r'i'z'$) and to the 2MASS standard (JHK_s). For those filters not covered by our primary calibration systems ($RIcIY$), we used the instrument-specific band passes to transform magnitudes into the respective filter system. ^(a) The image is a stack of images with different exposure times. The shown time is the sum of the single images.

Table A.1. continued.

MJD (days)	Epoch (s)	Instrument	Filter	Exposure time (s)	Brightness (mag _{AB})
56 062.886	2 037 796	NOT/ALFOSC	<i>i'</i>	15 × 90	21.46 ± 0.22
56 063.180	2 063 213	P60	<i>i'</i>	3600	21.33 ± 0.10
56 063.891	2 124 602	NOT/ALFOSC	<i>i'</i>	10 × 120	21.41 ± 0.17
56 065.921	2 300 003	NOT/MOSCA	<i>i'</i>	10 × 120	21.29 ± 0.05
56 066.040	2 310 267	Magellan/LDSS3	<i>i'</i>	3 × 180	21.33 ± 0.04
56 067.934	2 473 900	NOT/MOSCA	<i>i'</i>	10 × 120	21.35 ± 0.05
56 067.938	2 474 262	GROND	<i>i'</i>	4 × 369	21.47 ± 0.06
56 068.014	2 480 838	DuPont/CCD	<i>i'</i>	4 × 500	21.41 ± 0.04
56 068.923	2 559 358	NOT/MOSCA	<i>i'</i>	19 × 60	21.39 ± 0.06
56 069.1911	2 582 542	P60	<i>i'</i>	720	21.50 ± 0.09
56 070.0313	2 655 131	Magellan/LDSS3	<i>i'</i>	3 × 300	21.40 ± 0.06
56 070.1766	2 667 689	P60	<i>i'</i>	2340	21.59 ± 0.15
56 070.9694	2 736 187	Gemini/GMOS	<i>i'</i>	1 × 120	21.62 ± 0.04
56 071.8946	2 816 120	NOT/ALFOSC	<i>i'</i>	13 × 90	21.63 ± 0.08
56 076.8994	3 248 536	NOT/ALFOSC	<i>i'</i>	20 × 90	21.98 ± 0.09
56 078.2172	3 362 396	GROND	<i>i'</i>	24 × 115	22.06 ± 0.12
56 079.8939	3 507 261	NOT/ALFOSC	<i>i'</i>	30 × 90	22.08 ± 0.11
56 083.8841	3 852 020	NOT/ALFOSC	<i>i'</i>	20 × 90	22.15 ± 0.21
56 039.9900	59 563	GROND	<i>z'</i>	4 × 115	22.01 ± 0.20
56 040.0360	63 541	GROND	<i>z'</i>	12 × 369	22.09 ± 0.11
56 040.0599	65 605	Gemini/GMOS	<i>z'</i>	1 × 60	22.16 ± 0.11
56 040.0890	68 118	GROND	<i>z'</i>	8 × 369	22.37 ± 0.17
56 041.0675	152 661	GROND	<i>z'</i>	8 × 369	22.17 ± 0.16
56 041.1039	155 811	GROND	<i>z'</i>	8 × 369	22.28 ± 0.27
56 043.2633	342 383	Gemini/GMOS	<i>z'</i>	1 × 100	22.59 ± 0.07
56 048.0179	753 173	GROND	<i>z'</i>	8 × 369	21.86 ± 0.15
56 049.8781	913 895	CAHA/Omega2000	<i>z'</i>	20 × 90	21.93 ± 0.08
56 050.0107	925 358	GROND	<i>z'</i>	8 × 369	21.78 ± 0.12
56 052.2596	1 119 664	UKIRT/WFCAM	<i>z'</i>	4 × 360	21.44 ± 0.13
56 053.9770	1 268 047	GTC/OSIRIS	<i>z'</i>	3 × 70	21.58 ± 0.07
56 054.2708	1 293 429	Gemini/GMOS	<i>z'</i>	1 × 30	21.63 ± 0.06
56 058.9733	1 699 722	Gemini/GMOS	<i>z'</i>	1 × 120	21.48 ± 0.04
56 059.0048	1 702 443	GROND	<i>z'</i>	8 × 369	21.48 ± 0.07
56 067.9101	2 471 861	NOT/MOSCA	<i>z'</i>	12 × 120	21.74 ± 0.15
56 067.9379	2 474 262	GROND	<i>z'</i>	4 × 369	21.62 ± 0.07
56 068.8970	2 557 129	NOT/MOSCA	<i>z'</i>	13 × 120	21.59 ± 0.12
56 070.9776	2 736 894	Gemini/GMOS	<i>z'</i>	1 × 120	21.86 ± 0.06
56 078.2172	3 362 396	GROND	<i>z'</i>	24 × 115	21.81 ± 0.12
56 049.9204	917 552	CAHA/Omega2000	<i>Y</i>	20 × 90	21.93 ± 0.17
56 039.3537	4589	UKIRT/WFCAM	<i>J</i>	360	20.20 ± 0.06
56 039.3590	5048	UKIRT/WFCAM	<i>J</i>	360	20.33 ± 0.07
56 039.3644	5514	UKIRT/WFCAM	<i>J</i>	360	20.36 ± 0.07
56 039.3698	5979	UKIRT/WFCAM	<i>J</i>	360	20.41 ± 0.07
56 048.9026	829 616	CAHA/Omega2000	<i>J</i>	60 × 60	21.60 ± 0.17
56 049.9727	922 069	CAHA/Omega2000	<i>J</i>	30 × 60	21.83 ± 0.20
56 052.2354	1 117 569	UKIRT/WFCAM	<i>J</i>	4 × 360	21.75 ± 0.24
56 054.2834	1 294 514	Gemini-N/NIRI	<i>J</i>	1 × 60	21.96 ± 0.11
56 065.2816	2 244 761	UKIRT/WFCAM	<i>J</i>	6 × 360	21.90 ± 0.15
56 049.1898	854 426	P200/WIRC	<i>J</i>	15 × 240	21.68 ± 0.16
56 039.3757	6493	UKIRT/WFCAM	<i>H</i>	360	20.29 ± 0.09
56 039.3812	6963	UKIRT/WFCAM	<i>H</i>	360	20.32 ± 0.09
56 039.3866	7432	UKIRT/WFCAM	<i>H</i>	360	20.51 ± 0.11
56 039.3919	7894	UKIRT/WFCAM	<i>H</i>	360	20.34 ± 0.10
56 040.3685	92 266	UKIRT/WFCAM	<i>H</i>	4 × 360	21.65 ± 0.42
56 042.3348	262 155	UKIRT/WFCAM	<i>H</i>	4 × 360	22.29 ± 0.31
56 054.2376	1 290 555	Gemini-N/NIRI	<i>K</i>	1 × 60	21.46 ± 0.14

Appendix B: Late time observations

Table B.1. Summary of late-time observations.

MJD (days)	Epoch (s)	Instrument	Filter	Exposure time (s)
56 205.1849	14 332 405	CAHA/BUSCA	<i>u'</i>	13 × 45
56 206.1974	14 419 882	CAHA/BUSCA	<i>u'</i>	50 × 45
56 208.1930	14 592 304	CAHA/BUSCA	<i>u'</i>	21 × 45
56 209.1754	14 677 188	CAHA/BUSCA	<i>u'</i>	52 × 45
56 205.1849	14 332 405	CAHA/BUSCA	<i>g'</i>	13 × 45
56 206.1974	14 419 882	CAHA/BUSCA	<i>g'</i>	50 × 45
56 208.1930	14 592 304	CAHA/BUSCA	<i>g'</i>	21 × 45
56 209.1754	14 677 188	CAHA/BUSCA	<i>g'</i>	52 × 45
56 205.1849	14 332 405	CAHA/BUSCA	<i>r'</i>	13 × 45
56 206.1974	14 419 882	CAHA/BUSCA	<i>r'</i>	50 × 45
56 208.1930	14 592 304	CAHA/BUSCA	<i>r'</i>	21 × 45
56 209.1754	14 677 188	CAHA/BUSCA	<i>r'</i>	52 × 45
56 205.1849	14 332 405	CAHA/BUSCA	<i>z'</i>	13 × 45
56 206.1974	14 419 882	CAHA/BUSCA	<i>z'</i>	50 × 45
56 208.1930	14 592 304	CAHA/BUSCA	<i>z'</i>	21 × 45
56 209.1754	14 677 188	CAHA/BUSCA	<i>z'</i>	52 × 45
56 245.1818	17 788 140	LT/IO:O	<i>r'</i>	5 × 100
56 254.1677	18 564 517	LT/IO:O	<i>r'</i>	9 × 100
56 270.1558	19 945 888	LT/IO:O	<i>r'</i>	9 × 100
56 275.1809	20 380 060	LT/IO:O	<i>r'</i>	9 × 100
56 277.2116	20 555 512	LT/IO:O	<i>r'</i>	9 × 100
56 279.0852	20 717 394	LT/IO:O	<i>r'</i>	9 × 100
56 282.2041	20 986 865	LT/IO:O	<i>r'</i>	9 × 100
56 283.0932	21 063 685	LT/IO:O	<i>r'</i>	9 × 100
56 284.1360	21 153 781	LT/IO:O	<i>r'</i>	9 × 100
56 296.0438	22 182 616	LT/IO:O	<i>r'</i>	9 × 100
56 300.9702	22 608 259	LT/IO:O	<i>r'</i>	9 × 100
56 302.1352	22 708 908	LT/IO:O	<i>r'</i>	9 × 100
56 303.1084	22 792 994	LT/IO:O	<i>r'</i>	9 × 100
56 303.9884	22 869 026	LT/IO:O	<i>r'</i>	9 × 100
56 305.0037	22 956 752	LT/IO:O	<i>r'</i>	9 × 100
56 306.0300	23 045 418	LT/IO:O	<i>r'</i>	9 × 100
56 310.0862	23 395 876	LT/IO:O	<i>r'</i>	15 × 100
56 310.9812	23 473 205	LT/IO:O	<i>r'</i>	15 × 100
56 312.1042	23 570 230	LT/IO:O	<i>r'</i>	15 × 100
56 360.9795	27 793 059	LT/IO:O	<i>r'</i>	15 × 100
56 364.8835	28 130 364	LT/IO:O	<i>r'</i>	15 × 100
56 365.9379	28 221 466	LT/IO:O	<i>r'</i>	15 × 100
56 370.9299	28 652 774	LT/IO:O	<i>r'</i>	15 × 100
56 309.4711	23 342 731	Gemini-N/GMOS	<i>g'</i>	5 × 100
56 309.4704	23 342 671	Gemini-N/GMOS	<i>r'</i>	5 × 100
56 309.4624	23 341 981	Gemini-N/GMOS	<i>i'</i>	5 × 100

Notes. Column “Epoch” shows the logarithmic mean-time after the burst in the observer frame.

Appendix C: Afterglow modelling

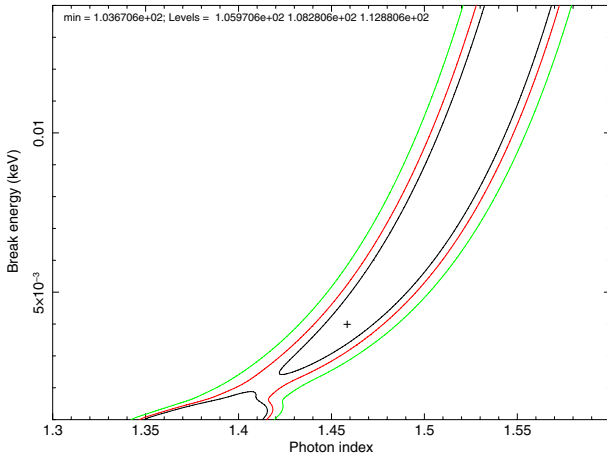


Fig. C.1. Contour plot of the best-fit parameters: the photon index Γ , defined as $\Gamma = \beta_0 + 1$, and the break energy. The contours correspond to regions of 68%, 90%, and 99% confidence level for two parameters. The χ^2 values for the different levels are shown in the figure.

Appendix D: Spectra and SEDs of selected galaxies

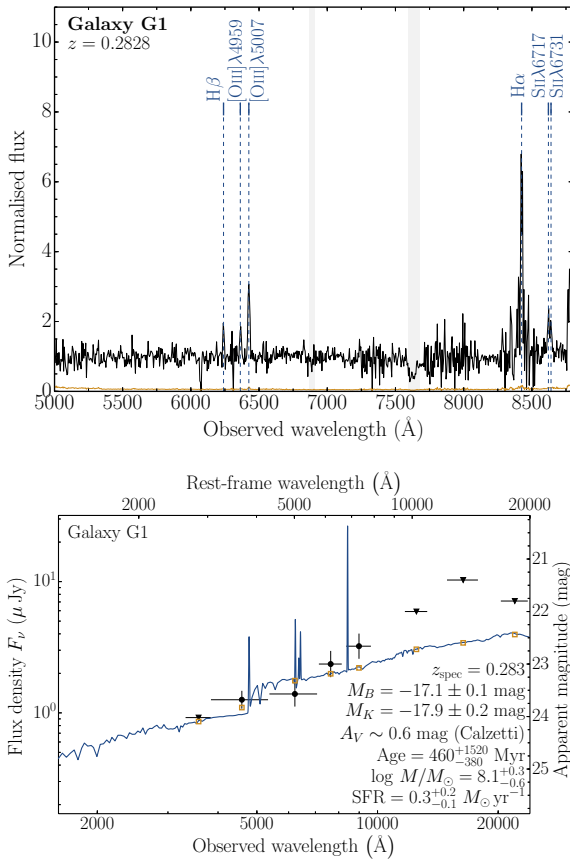


Fig. D.1. *Top:* normalised spectrum of galaxy G1 (Fig. 9; Table 6) obtained with GTC/OSIRIS 3.6 days after the GRB. Several emission lines are detected at $z = 0.2828$. $H\alpha$ is partly blended with a sky emission line. The error spectrum is shown in orange. The positions of telluric bands are highlighted by grey-shaded areas. *Bottom:* spectral energy distribution from 1600 to 24000 Å (similar to Fig. 8). The solid line displays the best-fit model obtained with Le Phare ($\chi^2 = 3.1$, number of filters = 4). The beige open squares represent the model predicted values. Upper limits are displayed as triangles.

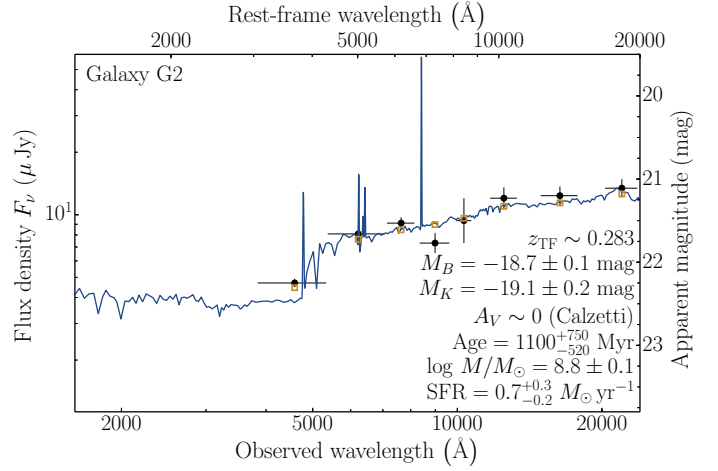


Fig. D.2. Same as Fig. D.1 but for galaxy G2 (Fig. 9; Table 6). The fit statistics are $\chi^2 = 14.8$ for eight filters. The redshift was set to $z = 0.283$ from the tuneable filters.

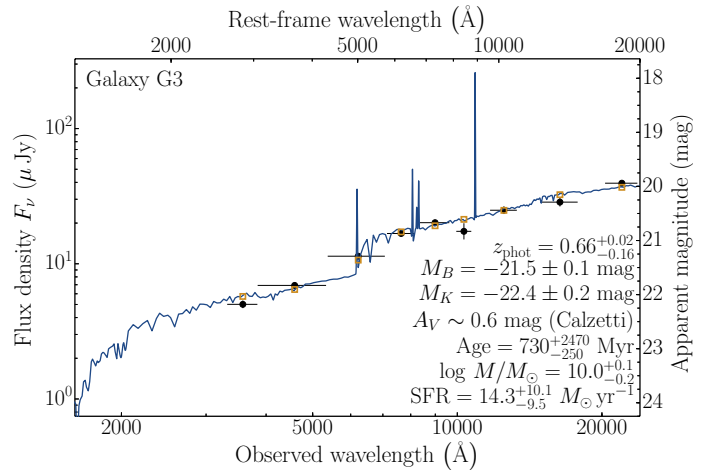


Fig. D.3. Same as Fig. D.1 but for galaxy G3 (Table 6). The fit statistics are $\chi^2 = 18$ for nine filters.

Appendix E: X-shooter spectra of the afterglow and host galaxy's nucleus

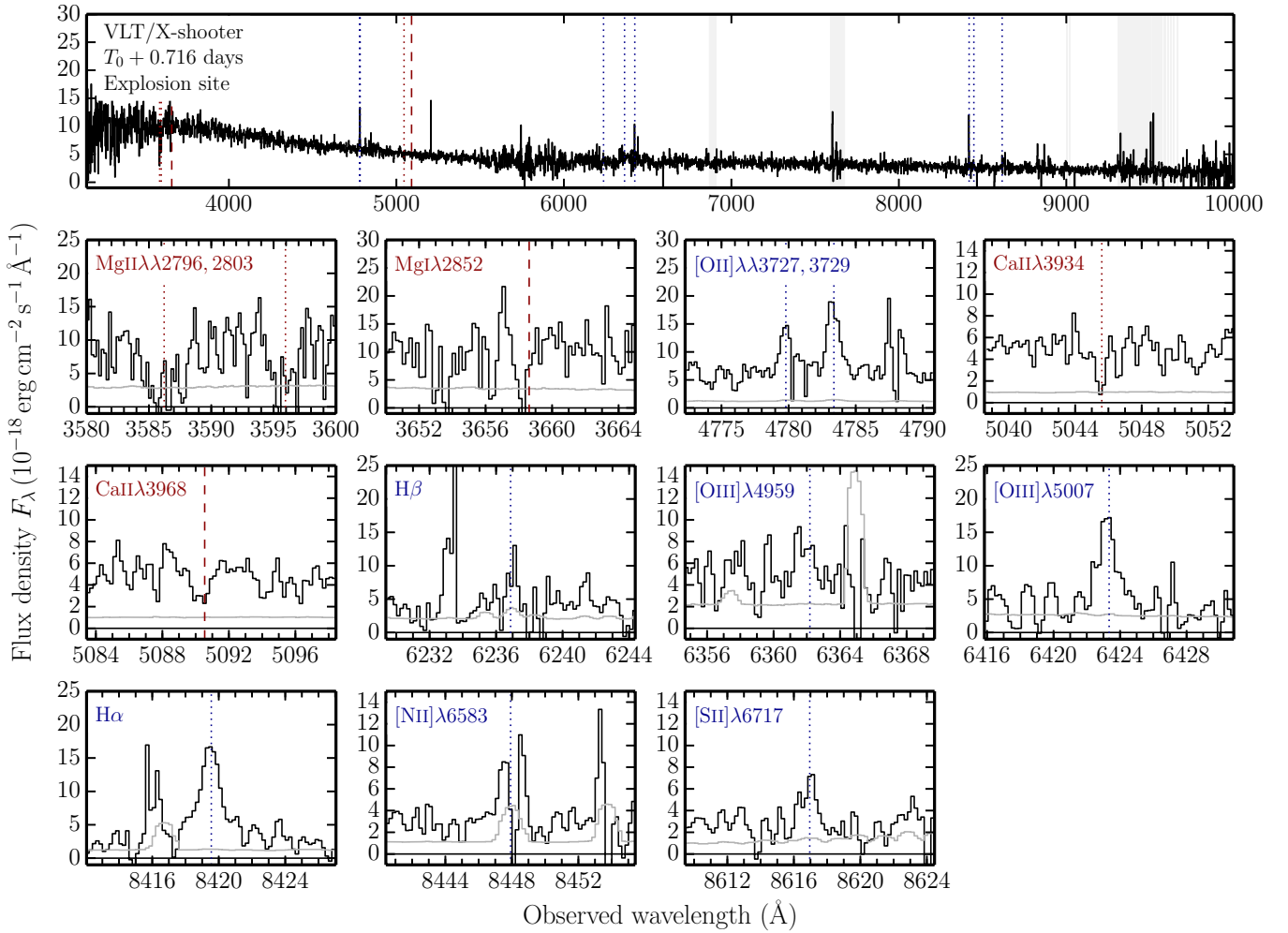


Fig. E.1. X-shooter spectrum of GRB 120422A's afterglow obtained 0.716 days after the burst. The *top panel* shows the combined UVB- and VIS-arm spectrum from 3150 to 10 000 Å. The absolute flux-calibrated spectrum is corrected for heliocentric motion and Galactic reddening. The spectral data are shown in black, and the corresponding noise level in grey. For illustrative purposes, we rebinned the spectrum to 2 Å bins. The positions of absorption lines that are typically associated with GRB absorbers are indicated by red lines (dotted if detected and dashed if a feature evaded detection). Nebular lines are shown in blue. The *panels below* zoom-in on each absorption and emission line (wavelength binning 0.15 Å). Table 4 summarises the fluxes and equivalent widths for each line. Regions that are heavily affected by atmospheric absorption (transparency: <20%) are indicated by the grey shaded areas.

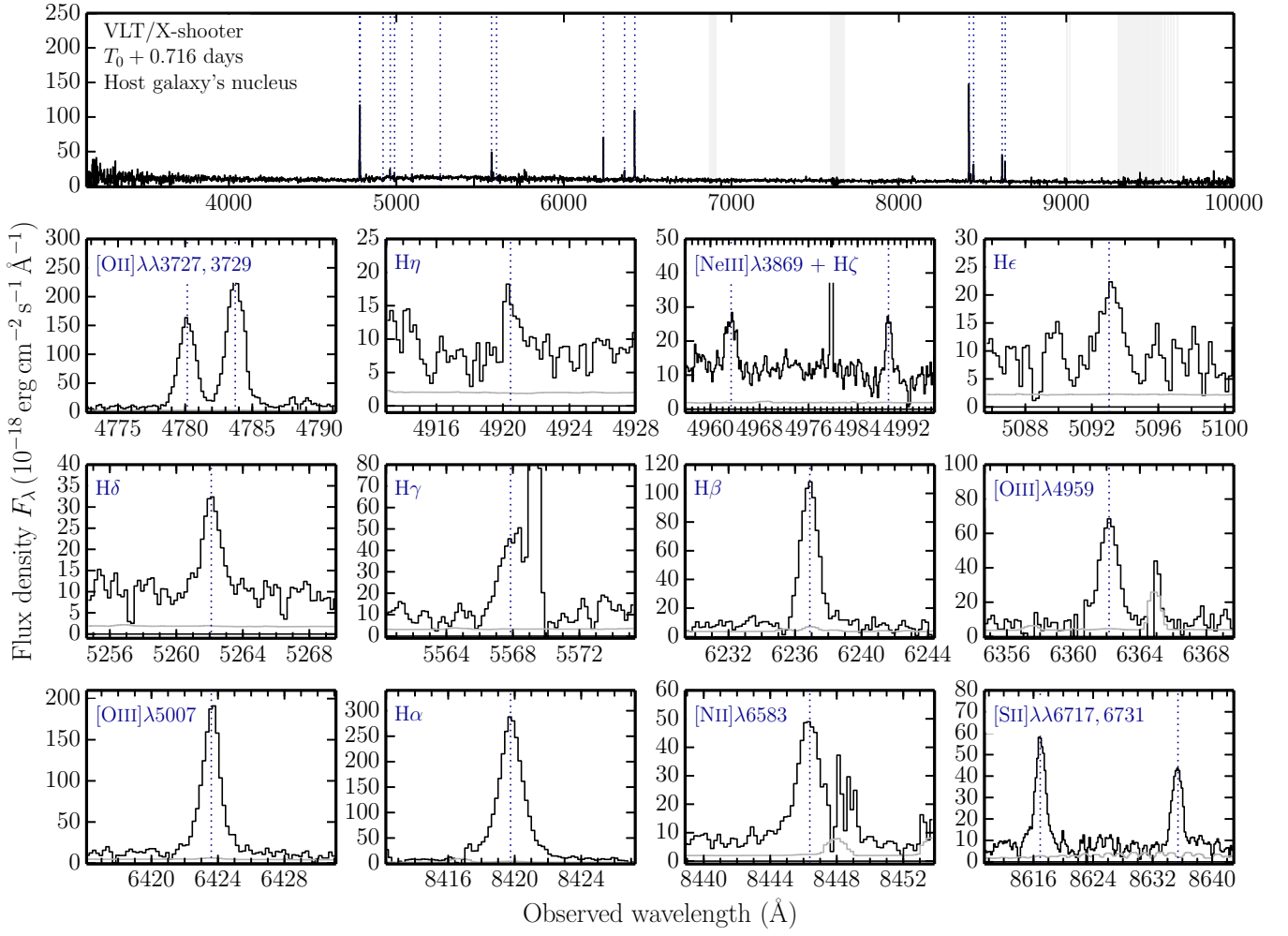


Fig. E.2. Same as Fig. E.1 but for the host galaxy's nucleus. Absorption lines are omitted since none was detected.