

## Supplementary Data

---

# Grey Matter and Cognitive Patterns in Cognitive Impaired Subjects Using CSF Biomarker Cut-Offs

Julia Miralbell<sup>a,\*</sup>, Gabriela Spulber<sup>b,f</sup>, Babak Hooshmand<sup>c,d</sup>, Ariadna Besga<sup>e</sup>, Maria Mataró<sup>a</sup>, Angel Cedazo-Minguez<sup>d</sup>, Miia Kivipelto<sup>c,d,f</sup> and Lars-Olof Wahlund<sup>b</sup>

<sup>a</sup>Department of Psychiatry and Clinical Psychobiology, University of Barcelona, Barcelona, Spain

<sup>b</sup>Division of Clinical Geriatrics, Department of Neurobiology, Care Sciences and Society, Karolinska Institutet, Stockholm, Sweden

<sup>c</sup>Aging Research Center, Department of Neurobiology, Care Sciences and Society, Karolinska Institutet, Stockholm, Sweden

<sup>d</sup>KI Alzheimer's Disease Research Center, Department of Neurobiology, Care Sciences and Society, Karolinska Institutet, Stockholm, Sweden

<sup>e</sup>Psychiatric Department, Santiago Apostol Hospital, Vitoria, Spain

<sup>f</sup>Department of Neurology, University of Eastern Finland, Kuopio, Finland

Accepted 2 January 2012

Supplementary Table 1

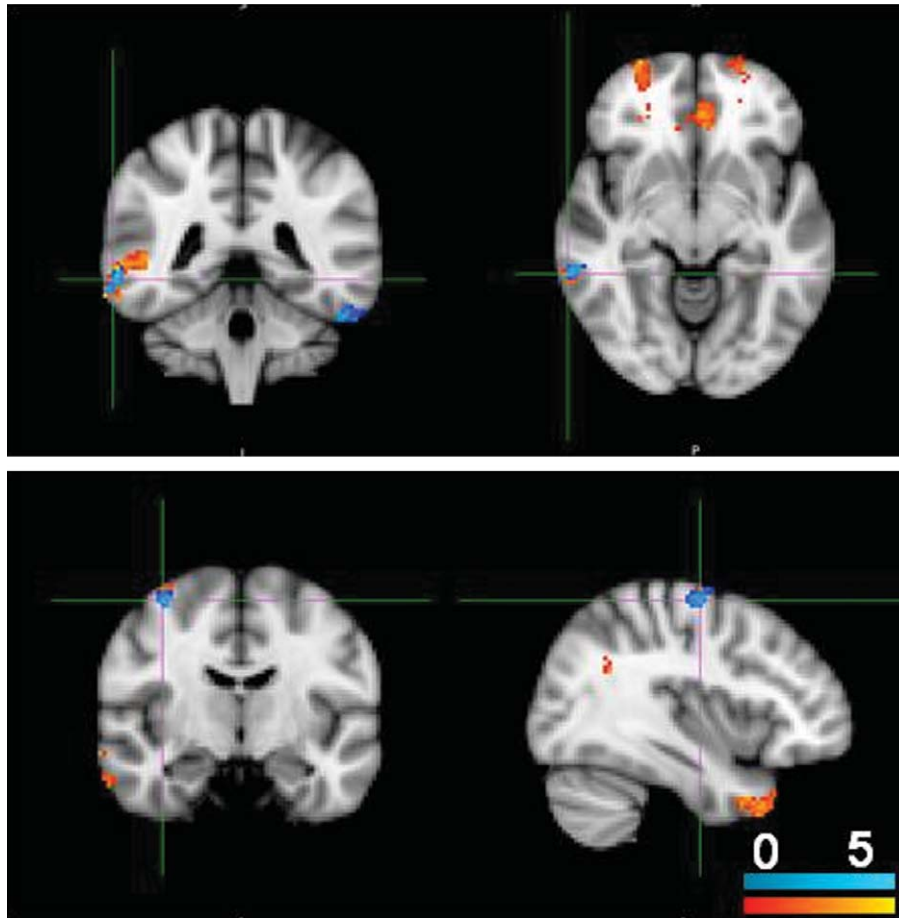
Decreased areas of GM volume in subjects with abnormal levels of CSF P-tau (t-tau >60 ng/dl) compared with subjects showing normal levels of CSF P-tau (t-tau <60 ng/dl)

Anatomical region	Size (mm <sup>3</sup> )	<i>p</i>	MNI coordinates		
			x	y	z
Inferior temporal gyrus (L)	100	0.001	-44	-28	-30
	91	0.001	-54	-46	-30
Middle temporal gyrus (R)	79	0.001	64	-42	-8
Precentral gyrus (R)	73	0.001	38	-10	60

*p* = significance levels on statistical tests (results are at significant level *p* < 0.001 uncorrected for multiple comparisons (extent threshold 50 voxels)); MNI: Montreal National Institute; R: Right; L: left. Results are corrected for age, gender APOE-ε4 status and clinical diagnoses.

---

\*Correspondence to: Julia Miralbell, Psychiatry and Clinical Psychobiology Department, University of Barcelona, Pg. Vall d'Hebron 171; 17300; Barcelona, Spain. Tel.: +34934031147; Fax: +34934021584; E-mail: jmiralbell@ub.edu.



Supplementary Figure 1. The selected images illustrate the significant regions where subjects with abnormal levels of CSF  $p - \tau_{181}$  showed a decrease in GM compared with subjects with normal levels of  $p - \tau_{181}$ . Blue color represents results corrected for age, gender, APOE- $\epsilon 4$  status and clinical diagnoses. In red-yellow color clinical diagnoses is removed from the analysis. The Statistical Parametric Maps are represented according to radiological convention (right corresponds to left hemisphere) and are displayed superimposed on an MNI152 template. The colored bar represents the  $t$  scores.