

 Open access • Posted Content • DOI:10.1101/274977

GWAS in 446,118 European adults identifies 78 genetic loci for self-reported habitual sleep duration supported by accelerometer-derived estimates

— [Source link](#) 

Hassan S. Dashti, Steven Jones, Andrew R. Wood, Jacqueline M. Lane ...+28 more authors

Institutions: Harvard University, University of Exeter, Brigham and Women's Hospital, University of Manchester ...+5 more institutions

Published on: 19 Apr 2018 - bioRxiv (Cold Spring Harbor Laboratory)

Topics: Dopamine binding, Sleep in non-human animals and Mendelian randomization

Related papers:

- [UK biobank: an open access resource for identifying the causes of a wide range of complex diseases of middle and old age](#)
- [Genome-Wide Association Analyses in 128,266 Individuals Identifies New Morningness and Sleep Duration Loci.](#)
- [Genome-wide association analyses of sleep disturbance traits identify new loci and highlight shared genetics with neuropsychiatric and metabolic traits](#)
- [Functional mapping and annotation of genetic associations with FUMA](#)
- [Genetic studies of accelerometer-based sleep measures in 85,670 individuals yield new insights into human sleep behaviour](#)

Share this paper:    



View more about this paper here: <https://typeset.io/papers/gwas-in-446-118-european-adults-identifies-78-genetic-loci-29nw5te1h1>

ARTICLE

<https://doi.org/10.1038/s41467-019-08917-4>

OPEN

Genome-wide association study identifies genetic loci for self-reported habitual sleep duration supported by accelerometer-derived estimates

Hassan S. Dashti ^{1,2}, Samuel E. Jones ³, Andrew R. Wood et al.[#]

Sleep is an essential state of decreased activity and alertness but molecular factors regulating sleep duration remain unknown. Through genome-wide association analysis in 446,118 adults of European ancestry from the UK Biobank, we identify 78 loci for self-reported habitual sleep duration ($p < 5 \times 10^{-8}$; 43 loci at $p < 6 \times 10^{-9}$). Replication is observed for *PAX8*, *VRK2*, and *FBXL12/UBL5/PIN1* loci in the CHARGE study ($n = 47,180$; $p < 6.3 \times 10^{-4}$), and 55 signals show sign-concordant effects. The 78 loci further associate with accelerometer-derived sleep duration, daytime inactivity, sleep efficiency and number of sleep bouts in secondary analysis ($n = 85,499$). Loci are enriched for pathways including striatum and subpallium development, mechanosensory response, dopamine binding, synaptic neurotransmission and plasticity, among others. Genetic correlation indicates shared links with anthropometric, cognitive, metabolic, and psychiatric traits and two-sample Mendelian randomization highlights a bidirectional causal link with schizophrenia. This work provides insights into the genetic basis for inter-individual variation in sleep duration implicating multiple biological pathways.

Correspondence and requests for materials should be addressed to R.S. (email: rsaxena@partners.org). [#]A full list of authors and their affiliations appears at the end of the paper.

Sleep is an essential homeostatically regulated state of decreased activity and alertness conserved across animal species, and both short and long sleep duration associate with chronic disease and all-cause mortality^{1,2}. Research in model organisms (reviewed in refs. 3,4) has delineated aspects of the neural circuitry of sleep–wake regulation⁵ and molecular components including specific neurotransmitter and neuropeptide systems, intracellular signaling molecules, ion channels, circadian clock genes and metabolic and immune factors⁴, and more recently phosphorylation of synaptic proteins⁶, but their specific roles and relevance to human sleep regulation are largely unknown. Prospective epidemiologic studies suggest that both short (<6 h per night) and long (>9 h per night) habitual self-reported sleep duration associate with cognitive and psychiatric, metabolic, cardiovascular, and immunological dysfunction as well as all-cause mortality compared to sleeping 7–8 h per night^{7–9}. Furthermore, chronic sleep deprivation in modern society may lead to increased errors and accidents¹⁰. Yet, whether short or long habitual sleep duration causally contributes to disease initiation or progression remains to be established.

Habitual self-reported sleep duration is a complex trait with an established genetic component (twin- and family-based heritability (h^2) estimates = 9–45%^{11–14}). Candidate gene sequencing in pedigrees and functional validation of rare, missense variants established *BHLHE41* (previously *DEC2*), a repressor of *CLOCK/ARNTL* activity, as a causal gene^{15,16}, supporting the role of the circadian clock in sleep regulation. Previous genome-wide association studies (GWASs), including a recent GWAS in up to 128,286 individuals, identified association of common variants at or near the *PAX8* and *VRK2* genes, among other signals that have not yet been replicated^{13,14,17–19}.

Here, we extend GWAS of self-reported sleep duration in UK Biobank, test for consistency of effects in independent studies of adults and children/adolescents, determine their impact on accelerometer-derived estimates, perform pathway and tissue enrichment to highlight relevant biological processes, and explore causal relationships with disease traits.

Results

GWAS for self-reported habitual sleep duration. Among UK Biobank participants of European ancestry ($n = 446,118$), mean self-reported habitual sleep duration was 7.2 h (1.1 standard deviation) per day (Supplementary Table 1). GWAS using 14,661,600 imputed genetic variants identified 78 loci ($P < 5 \times 10^{-8}$; Fig. 1a, Supplementary Data 1,2, Supplementary Figure 1a). Individual signals exert an average effect of 1.04 min (0.34 standard deviation) per allele, with the largest effect at the *PAX8* locus, with an estimate of 2.44 min (0.16 standard error) per allele. The 5% of participants carrying the most sleep duration-increasing alleles self-reported 22.2 min longer sleep duration compared to the 5% carrying the fewest. The 78 loci explained 0.69% of the variance in sleep duration, and genome-wide single-nucleotide polymorphism (SNP)-based heritability was estimated at 9.8 (0.1)%. Of the 78 variants, 43 variants passed a more stringent multiple correction threshold of $P < 6 \times 10^{-9}$ established by permutation testing for a related sleep trait²⁰.

Sensitivity analyses indicated that the 78 genetic associations were largely independent of known risk factors (Supplementary Data 3). Effect estimates at 15/78 loci were attenuated by 15–25% upon adjustment for frequent insomnia symptoms, perhaps reflecting contribution to an insomnia sub-phenotype with physiological hyperarousal and objective short sleep duration²¹ (Supplementary Data 3). Effect estimates at 19/78 were also slightly attenuated after adjustment of lifestyle factors. No signal attenuation was observed when accounting for body mass index

(BMI) at rs9940646 at *FTO*, the established BMI-associated signal ($r^2 = 0.81$ with rs9939609²² and where the higher BMI allele associated with shorter sleep duration). Analysis conditioned on the lead SNPs in each genomic region identified 4 secondary association signals at the *VRK2*, *DAT1* (*SLC6A3*), *DRD2*, and *MAPT* loci (Supplementary Table 2). Effect estimates were largely consistent in GWAS excluding shift workers and those with prevalent chronic and psychiatric disorders (excluding $n = 119,894$ participants) (Supplementary Data 1, 2, Supplementary Table 3, Supplementary Figure 1b, 2). GWAS results were similar for men and women (r_g (SE) = 0.989 (0.042); $P < 0.001$) (Supplementary Table 4, Supplementary Figure 1c, 1d, 3).

GWAS for self-reported short and long sleep. Separate GWAS for short (<7 h; $n = 106,192$ cases) and long (≥ 9 h; $n = 34,184$ cases) sleep relative to 7–8 h sleep duration ($n = 305,742$ controls) highlighted 27 and 8 loci, respectively, of which 13 were independent from the 78 sleep duration loci (Fig. 1b, Supplementary Data 2,4, Supplementary Table 5, Supplementary Figures 1e, 1f). Only the *PAX8* signal was shared across all three traits, consistently indicating associations between the minor allele and longer sleep duration. For most long sleep loci, we could exclude equivalent effects on short sleep based on 95% confidence intervals (CIs) of effect estimates (Supplementary Figure 4, Supplementary Table 5). Sensitivity analyses accounting for factors potentially influencing sleep did not alter the results (Supplementary Data 5, Supplementary Table 6).

Replication of sleep duration loci in independent studies. We tested for independent replication of lead loci in the CHARGE (Cohorts for Heart and Aging Research in Genomic Epidemiology) consortium GWAS of adult sleep duration ($n = 47,180$ from 18 studies¹⁴) and observed replication evidence for individual association signals at the *PAX8*, *VRK2*, and *FBXL12/UBL5/PIN1* loci ($P < 6.4 \times 10^{-4}$; Supplementary Data 2,6,7, Supplementary Figure 5a), and nominal replication ($P < 0.05$) for 14 additional loci. Of the 70 loci covered in the CHARGE consortium, 55 signals showed a consistent direction of effect (binomial $P = 6.1 \times 10^{-7}$), and a combined weighted genetic risk score (GRS) of the 70 signals was associated with a 0.66 min (95% CI: 0.54–0.78) longer sleep per allele ($P = 1.23 \times 10^{-25}$) in the CHARGE consortium (Table 1). Consistently strong genetic correlation was observed between the CHARGE consortium and UK Biobank studies (r_g (SE) = 1.00 (0.123); $P < 0.001$; Supplementary Table 7). In meta-analysis of CHARGE consortium and UK Biobank studies, 52/70 signals retained GWAS significance, and 38/70 signals passed the more stringent multiple correction threshold of $P < 6 \times 10^{-9}$ (Supplementary Data 6).

In the childhood/adolescent GWAS for sleep duration from the EAGLE (EARly Genetics and Lifecourse Epidemiology) consortium¹⁹ ($n = 10,554$), none of the 78 GWAS signals showed independent replication (all $P > 0.05$; Supplementary Data 6, 7, Supplementary Figure 5b). Of the 77 loci covered in the EAGLE consortium, marginal evidence of association was observed for the adult sleep duration loci, with 45/77 signals demonstrating consistent directionality (binomial $P = 0.031$). For a combined 77 SNP GRS, we observed an effect of 0.16 min (95% CI: 0.02–0.30) longer sleep per allele ($P = 0.03$; Table 1). No significant overall genetic correlation was observed with GWAS of adult sleep duration (r_g (SE) = 0.098 (0.076), $P = 0.20$ with UK Biobank; Supplementary Table 7). In meta-analysis of all three sleep duration GWASs, 56/78 signals retained GWAS significance, and 40/78 passed the more stringent multiple correction threshold of $P < 6 \times 10^{-9}$ (Supplementary Data 2, 6, 7, Supplementary Figure 5c).

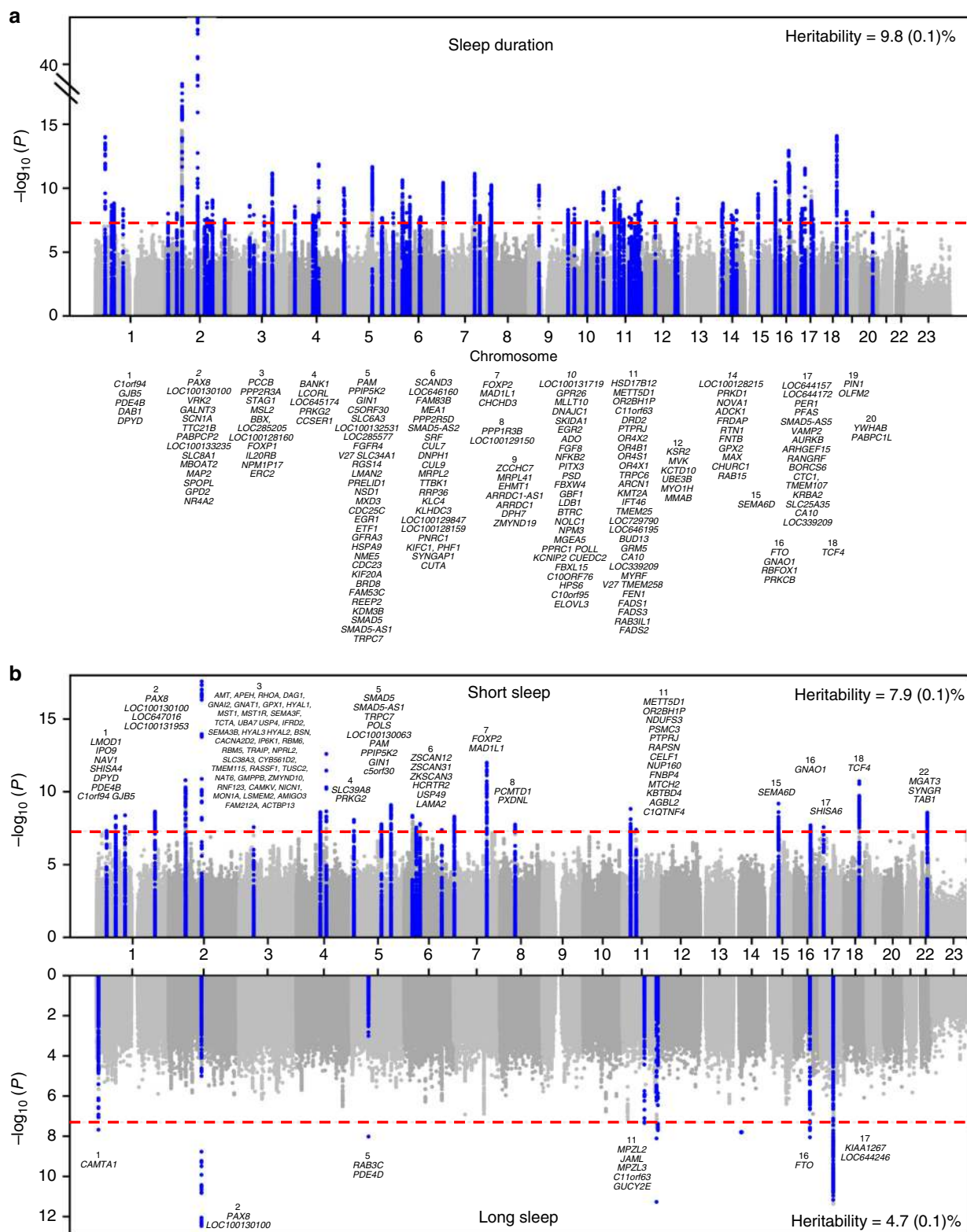


Fig. 1 Plots for genome-wide association analysis results for sleep duration and short/long sleep. **a** Manhattan plot of sleep duration ($n = 446,118$) and **b** Miami plot of short (cases $n = 106,192/305,742$) and long (cases $n = 34,184/305,742$) sleep. Plots show the $-\log_{10}P$ values (y -axis) for all genotyped and imputed single-nucleotide polymorphisms (SNPs) passing quality control in each genome-wide association study (GWAS), plotted by chromosome (x -axis). Blue peaks represent genome-wide significant loci. Horizontal red line denotes genome-wide significance ($P = 5 \times 10^{-8}$)

Table 1 A risk score of genetic variants for self-reported sleep duration (78 SNPs), self-reported short (27 SNPs) or long (8 SNPs) sleep duration associates with self-reported sleep duration in the CHARGE (adult) consortium ($n = 47,180$), self-reported sleep duration in the EAGLE (childhood/adolescent) consortium ($n = 10,554$), and activity-monitor-based measures of sleep fragmentation, timing, and duration from 7-day accelerometry in the UK Biobank ($n = 85,499$)

Trait	Sleep duration GRS		Short sleep GRS		Long sleep GRS	
	Beta or OR* (95% CI) per effect allele	P value	Beta or OR* (95% CI) per effect allele	P value	Beta or OR* (95% CI) per effect allele	P value
CHARGE Study ($n = 47,180$); self-reported sleep duration (min) ^a	0.66 (0.54 to 0.78)	1.23×10^{-25}				
EAGLE Study ($n = 10,554$); self-reported sleep duration (min) ^b	0.16 (0.02 to 0.30)	2.80×10^{-2}				
UK Biobank 7-day accelerometry ($n = 85,499$) sleep duration estimates						
Sleep duration (min)	0.47 (0.40 to 0.53)	1.93×10^{-44}	-0.43 (-0.56 to -0.31)	1.21×10^{-11}	2.12 (1.65 to 2.59)	1.08×10^{-18}
Short sleep duration ($n = 13,760$ cases, 66,110 controls)	0.98 (0.98 to 0.99)*	4.00×10^{-19}	1.02 (1.01 to 1.02)*	4.91×10^{-6}	0.94 (0.92 to 0.97)*	1.10×10^{-5}
Long sleep duration ($n = 5629$ cases, 66,110 controls)	1.01 (1.01 to 1.02)*	3.78×10^{-9}	0.99 (0.98 to 1.00)*	0.11	1.10 (1.07 to 1.14)*	1.29×10^{-8}
Daytime inactivity duration (min)	0.08 (0.03 to 0.13)	2.74×10^{-3}	0.01 (-0.09 to 0.11)	0.89	0.65 (0.28 to 1.02)	6.49×10^{-4}
Sleep duration standard deviation (min)	-0.02 (-0.07 to 0.02)	0.34	0.05 (-0.04 to 0.14)	0.26	-0.07 (-0.40 to 0.27)	0.69
Sleep fragmentation estimates						
Sleep efficiency %	0.05 (0.04 to 0.06)	8.38×10^{-23}	-0.05 (-0.07 to -0.04)	4.79×10^{-9}	0.15 (0.08 to 0.22)	1.56×10^{-5}
Number of sleep bouts (n)	0.02 (0.01 to 0.02)	1.59×10^{-10}	-0.01 (-0.02 to 0.00)	2.42×10^{-3}	0.02 (-0.01 to 0.05)	0.24
Sleep timing estimates						
Midpoint of 5 h daily period of minimum activity (L5 timing) (minutes)	-0.05 (-0.13 to 0.03)	0.23	0.07 (-0.09 to 0.22)	0.41	0.39 (-0.20 to 0.97)	0.20
Midpoint of 10 h daily period of maximum activity (M10 timing) (minutes)	0.03 (-0.06 to 0.12)	0.51	-0.05 (-0.23 to 0.12)	0.55	0.65 (-0.02 to 1.32)	6.00×10^{-2}
Sleep midpoint (min)	-0.03 (-0.07 to 0.01)	0.20	0.01 (-0.07 to 0.08)	0.88	0.05 (-0.24 to 0.34)	0.74

Genetic risk scores for sleep duration, short sleep and long sleep were tested using the weighted genetic risk score calculated by summing the products of the sleep trait risk allele count for all 78, 27, or 8 genome-wide significant SNPs multiplied by the scaled effect from the primary genome-wide association study (GWAS) using the GTX package in R. Effect estimates (beta or OR) are reported per additional effect allele for sleep duration, short sleep, or long sleep. Significant GRS associations ($P < 0.05$) are shown in bold.

SNP single-nucleotide polymorphism, CI confidence interval, GRS genetic risk score, OR odds ratio, CHARGE Cohorts for Heart and Aging Research in Genomic Epidemiology, EAGLE EARly Genetics and Lifecourse Epidemiology

^aSelf-reported and varied by cohorts, typically: "How many hours of sleep do you usually get at night (or your main sleep period)?"

^bIn all cohorts, except in GLAKU, child sleep duration was assessed by a single, parent-rated, open question, "How many hours does your child sleep per day including naps?" In GLAKU, parents were asked about the usual bed and rise times during school days, from which the total sleep duration could be estimated

*indicates OR (95% CI)

Association of sleep duration loci with objective sleep. Given the limitations of self-reported sleep duration^{23,24}, and in order to explore underlying physiologic mechanisms, in secondary analyses, we tested the 78 lead variants for association with 8 accelerometer-derived sleep estimates in a subgroup who had completed up to 7 days of wrist-worn accelerometry ($n = 85,499$; Supplementary Table 8)²⁵. The lead *PAX8* genetic variant was associated with 2.68 min (0.29) longer sleep duration (compared to 2.44 min (0.16) by self-report), 0.21% (0.04%) greater sleep efficiency, and 0.94 min (0.23) greater daytime inactivity duration per minor A allele ($P < 0.00064$; Supplementary Data 8). The 5% of participants carrying the most sleep duration-increasing alleles were estimated to have 9.7 min (95% CI: 7.5–11.8) accelerometer measured longer sleep duration compared to the 5% carrying the fewest. The 78 SNP GRS associated with longer accelerometer-derived sleep duration, longer duration of daytime inactivity, greater sleep efficiency, and larger number of sleep bouts, but not with day-to-day variability in sleep duration or estimates of sleep timing (Table 1). A GRS of 27 short sleep variants was associated with shorter accelerometer-derived sleep duration, lower sleep efficiency, and fewer sleep bouts, whereas a GRS of 8 long sleep variants associated with longer accelerometer-derived sleep duration, higher sleep efficiency, and longer daytime inactivity (Table 1, Supplementary Data 9).

Functional annotation for identified loci. The sleep duration association signals encompass >200 candidate causal genes determined by SNPsea²⁶ through assessing linkage disequilibrium (LD) intervals of each identified loci, defined by the furthest SNPs in a 1 Mb window with $r^2 > 0.05$, and a summary of reported

gene-phenotype annotations is shown in Supplementary Data 10. Compelling candidates include genes in the dopaminergic (*DRD2*, *SLC6A3*), MAPK/ERK (mitogen-activated protein kinase/extracellular signal-regulated kinase) signaling (*ERBB4*, *VRK2*, *KSR2*), orexin receptor (*HCRTR2*), and GABA (*GABRR1*) signaling systems^{4,27}. Further, studies of sleep regulation in animal models prioritize several candidates (*GABRR1*, *GNAO1*, *HCRTR2*, *NOVA1*, *PITX3*, *SLC6A3*, *DRD2*, and *VAMP2* for sleep duration; *PDE4B* and *SEMA3F* for short sleep; *PDE4D* for long sleep). Circadian genes within associated loci include *PER3*, *BTRC*, and the previously implicated *PER1*²⁸, which may act through glucocorticoid stress-related pathways to influence sleep duration. Association signals at 4 loci directly overlapped with other GWAS signals ($r^2 > 0.8$ in 1KG CEU; from the National Human Genome Research Institute (NHGRI)), with the shorter sleep allele associated with higher BMI (*FTO*), increased risk of Crohn's disease (*NFKB1*, *SLC39A8*, *BANK1* region), febrile seizures and generalized epilepsy (*SCN1A*), and cardiometabolic risk (*FADS1/2* gene cluster), and decreased risk of interstitial lung disease (*MAPT/KANSL*). Fine-mapping using credible set analysis in PICS²⁹ highlighted 52 variants (Supplementary Data 11, 12). Partitioning of heritability by functional annotations identified excess heritability across genomic regions conserved in mammals, consistent with earlier findings¹⁸, and additionally in regions with active promoters and enhancer chromatin marks (Supplementary Data 13).

Gene- and pathway-based analysis. Gene-based tests identified 235, 54, and 20 genes associated with sleep duration, short sleep, and long sleep, respectively ($P \leq 2.29 \times 10^{-6}$; Supplementary

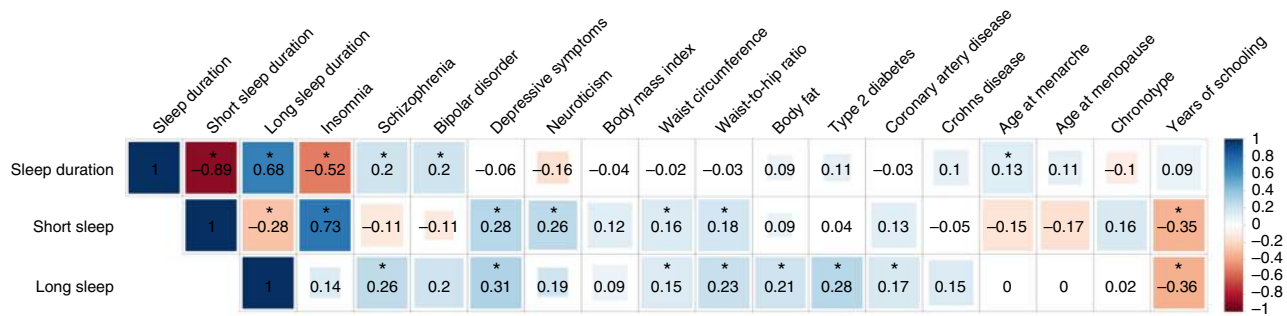


Fig. 3 Shared genetic architecture between sleep duration and behavioral and disease traits. Linkage disequilibrium (LD) score regression estimates of genetic correlation (r_g) were obtained by comparing genome-wide association estimates for sleep duration with summary statistics estimates from 224 publicly available genome-wide association studies (GWASs). Blue indicates positive genetic correlation and red indicates negative genetic correlation; r_g values are displayed for significant correlations. Larger colored squares correspond to more significant P values, and asterisks indicate significant ($P < 2.2 \times 10^{-4}$) genetic correlations. All genetic correlations in this report can be found in tabular form in Supplementary Data 18

Genetic correlation and Mendelian randomization. Genome-wide genetic correlations using LD score regression analyses³⁸ indicated shared links between sleep duration and eight cognitive, psychiatric, and physical disease traits (Fig. 3, Supplementary Data 18). We observed modest positive genetic correlations between sleep duration and schizophrenia, bipolar disorder, and age at menarche, and a negative correlation with insomnia that persisted even upon excluding participants with psychiatric disorders, indicating that genetic relationships are not driven by the presence of co-morbid conditions. In addition, both short and long sleep showed positive genetic correlations with depressive symptoms, waist circumference, and waist-to-hip ratio, and negative correlations with years of schooling. For short sleep, genetic correlations were also observed with insomnia, neuroticism, and smoking, and for long sleep, positive correlations were evident with schizophrenia, body fat, type 2 diabetes, and coronary artery disease.

Mendelian randomization (MR) analyses to test for causal links between sleep duration and genetically correlated traits suggested longer sleep duration is causal for increased risk of schizophrenia (two-sample MR: inverse variance weighted: 0.0088 (0.003) log odds ratio per min, $P = 3.70 \times 10^{-3}$; weighted median: 0.008 (0.003) log odds ratio per min, $P = 3.95 \times 10^{-3}$) (Fig. 4, Supplementary Table 13). These data suggest that a 1 h longer sleep duration leads to a 69.6% increase in the risk for schizophrenia. In leave-one-out sensitivity analyses, MR results remained robust and consistent (all $P < 6.86 \times 10^{-3}$; Supplementary Data 19). Sensitivity MR analyses limited to signals from GWAS adjusting for confounders (BMI, insomnia, or other lifestyle traits) and using corresponding effect estimates remained significant (Supplementary Table 14). In addition, MR remained significant when restricted to the 56 signals that retained GWAS significance in meta-analysis (Supplementary Table 14). Conversely, MR also indicated that risk of schizophrenia is causal for longer sleep duration (inverse variance weighted: 0.025 min (0.007) per log odds ratio, $P = 6.05 \times 10^{-4}$; two-sample MR: weighted median: 0.026 min (0.006) per log odds ratio, $P = 3.36 \times 10^{-5}$) (Fig. 4, Supplementary Table 14). These data suggest a 1.04 h longer sleep duration per doubling in risk of schizophrenia. No other causal links were identified in two-sample MR. Furthermore, using two-sample MR with data from the GIANT consortium³⁹ ($n = 339,224$) and DIAGRAM consortium⁴⁰ ($n = 26,488$ cases and $n = 83,964$ controls), we found no evidence of causal effects of altered sleep duration with BMI and type 2 diabetes (Supplementary Table 13, Supplementary Figure 7).

Discussion

This study expands our understanding of the genetic architecture of self-reported sleep duration, estimating SNP-based heritability at 9.8%, consistent with earlier reports⁴¹. We identified 76 independent loci beyond the two previously known loci (*PAX8* and *VRK2*^{14,17,18}). The largest effect remains at the *PAX8* locus (2.44 min per allele), consistent with previous reports^{14,17,18}. Whereas individual signals exerted more modest effects on average (~1.04 min per allele), the aggregate effect of risk alleles could exceed 20 min, which is comparable to other well-recognized factors influencing sleep duration, such as gender⁴². Our GWAS findings were largely consistent upon adjustment for known risk factors, including BMI; however, attenuated effects were seen for some loci with adjustment for insomnia, reflecting some overlap between these sleep characteristics.

In separate GWAS for short and long sleep duration, 13 additional independent variants were identified, and only the *PAX8* locus was shared across all 3 GWASs. Our distinct findings for short and long sleep suggest the possibility of some distinct underlying biological mechanisms. As all three sleep traits were correlated, however, we did not account for multiple testing as have been done in previous GWAS of multiple correlated traits¹⁸. Future larger studies will be necessary to test if these loci reflect partially distinct genetic effects on short or long sleep, or reflect differences in statistical power in these dichotomized analyses.

The CHARGE consortium (adults) and EAGLE consortium (children/adolescents) sleep duration GWAS studies represent the largest independent available studies for replication, but are considerably smaller than the UK Biobank discovery cohort which limits opportunities for adequate replication⁴³. Indeed, we had limited power to replicate individual SNPs in the two replication cohorts: the CHARGE consortium study with ~1/10th the sample size of the UK Biobank provided <12.5% power for all SNPs that did not individually replicate, and the EAGLE consortium study with ~1/40th the sample size of the UK Biobank provided power <70% for all SNPs that did not individually replicate. Despite these limitations, 52 loci remained significant after meta-analysis of both adult studies and 56 loci remained significant after meta-analysis of all three studies, a substantial advance over knowledge from prior studies. Future replication is necessary when appropriate resources become available, such as the US Department of Veterans Affairs Million Veteran Program and the All of Us Research program.

Furthermore, we validated effects of the combined sleep duration GRS in both adults and children/adolescents, further supporting our findings. Consistency between findings from the

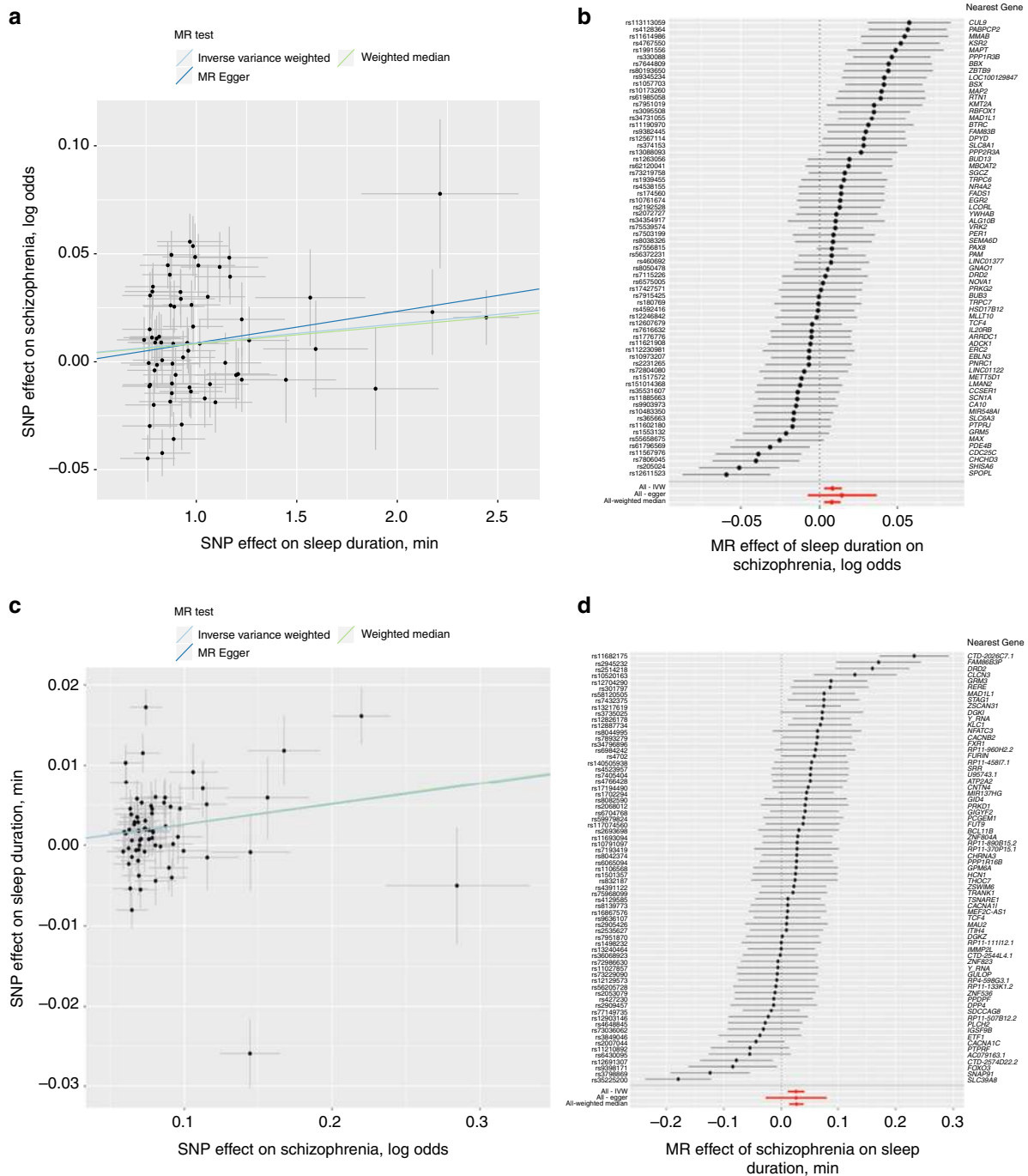


Fig. 4 Bidirectional causal relationship of sleep duration with schizophrenia using Mendelian randomization. Association between single-nucleotide polymorphisms (SNPs) associated with sleep duration and schizophrenia (**a**) or SNP associated with schizophrenia and sleep duration (**c**) and forest plots show the estimate of the effect of genetically increased sleep duration on schizophrenia (**b**) or increased risk of schizophrenia on sleep duration (**d**). Lines identify the slopes for three Mendelian randomization (MR) association tests (**a**, **c**). Forest plots show each SNP with the 95% confidence interval (gray line segment; error bars) of the estimate and the inverse variance weighted, MR-Egger, and weighted median MR results in red

UK Biobank GWAS and sleep duration in independent studies despite differences in demographics and sleep duration ascertainment, two important extraneous factors that may influence self-report⁴⁴, reflect the generalizability of our signals. However, smaller effect estimates of the GRS in children/adolescents compared to adults supports previous studies that suggest the genetic architecture of sleep duration might differ between children and adults¹⁹. Furthermore, our finding of no significant overall genetic correlation between the GWAS of adults and children/adolescents sleep duration, as reported previously¹⁹,

supports changes in sleep patterns throughout the lifespan^{45–47}, and larger GWAS of sleep duration in children/adolescents are needed.

Despite limitations of biases and imprecision in self-report, we observed largely consistent effects of our 78 signals with accelerometer-estimated sleep duration in a large subsample of 85,499 participants from the UK Biobank with up to 7 days of wrist-worn accelerometer. Self-report, actigraphy, and polysomnography estimated sleep duration provide both unique and overlapping information, have different sources of measurement

error, and may reflect different neurophysiological and psychological aspects^{23,24,44}. Association of the sleep duration GRS with increased sleep efficiency, longer duration of daytime inactivity, but a larger number of sleep bouts, suggests that sleep duration genetic loci might impact other correlated parameters such as sleep latency, sleep fragmentation, and early awakening. Therefore, this secondary analysis allows us to begin exploring physiologic mechanisms underlying these associations. However, considering that the UK Biobank subsample with accelerometer data overlap with the discovery GWAS sample, these results should be interpreted with caution and further validation in an independent dataset is necessary. Furthermore, our study cannot resolve if a longer sleep GRS always reflects improved, higher quality sleep because of increased sleep efficiency, or may include qualitatively poorer, longer sleep or greater sleep need, given association with a larger number of sleep bouts and increased daytime napping. Thus, further investigation of the role of these loci in electroencephalography-derived physiological correlates of sleep architecture and sleep homeostasis from polysomnography and follow-up in cellular and animal models will help to dissect functional mechanisms.

We found compelling evidence of association near genes implicated with sleep traits in animal models, confirming that sleep-wake regulation is a highly conserved process with mechanisms shared between humans and model organisms. In agreement with the *FADS1/2* signal, we also observe an enrichment in genes related to unsaturated fatty acid metabolism, supporting experimental and observational evidence linking polyunsaturated fatty acids with sleep and related diseases, including neuropsychiatric disorders and depression^{48–50}. We demonstrate enrichment in sleep duration GWAS signals within/near 80 genes identified as SNIPPs in mouse models⁶, highlighting the potential importance of synaptic phosphorylation in sleep homeostasis in humans. A genetic variant, rs9382445, near the orexin receptor *HCRTR2* previously implicated for chronotype¹⁷ associated significantly with sleep duration and retained significance and consistent effect estimates upon adjustment for diurnal preference.

Lastly, we extended the comparative analysis of the genetic architecture of sleep duration with other traits and found shared links between continuous sleep duration and cognitive, psychiatric, and disease traits, as well as u-shaped genetic correlations between short and long sleep duration and key lifestyle and disease traits including adiposity traits, years of schooling, and depressive symptoms. In bidirectional two-sample MR analyses, we observed causal links between longer sleep duration and increased risk of schizophrenia, consistent with previous findings^{18,51}, and conversely, causal links between schizophrenia and longer sleep duration. Associations remained robust in sensitivity analyses and the bidirectional causal link may suggest pleiotropy. Furthermore, MR effects may be biased due to collider bias as individuals with a genetic liability to neuropsychiatric diseases are underrepresented in studies such as the UK Biobank compared to the general population, while some independent protective factors for these conditions, including favorable sleep patterns, may be over-represented^{52,53}. No other causal links were identified. Considering the non-specific and partially overlapping signals between the sleep duration and short/long sleep GWAS, we limited our MR analyses to sleep duration, and future MR should be carried out for short/long sleep duration separately. Follow-up MR analyses are warranted to verify null results identified in the one-sample insomnia MR, as well as other outcomes beyond those investigated.

In summary, our GWAS constitutes a large increase in associated loci for sleep duration that implicate multiple biological pathways and causal links to disease. This work and follow-up

studies will advance understanding of the molecular processes underlying sleep regulation and have the potential to identify new avenues of treatment for sleep and related disorders.

Methods

Population and study design. Study participants were from the UK Biobank study, described in detail elsewhere⁵⁴. In brief, the UK Biobank is a prospective study of >500,000 people living in the United Kingdom. All people in the National Health Service registry who were aged 40–69 years and living <25 miles from a study center were invited to participate between 2006 and 2010. In total, 503,325 participants were recruited from over 9.2 million invitations. Extensive phenotypic data were self-reported upon baseline assessment by participants using touchscreen tests and questionnaires and at nurse-led interviews. Anthropometric assessments were also conducted and health records were obtained from secondary care data from linked Hospital episode statistics (HES) obtained up until 04/2017. For the current analysis, 24,533 individuals of non-white ethnicity (as defined in genotyping and quality control) were excluded to avoid confounding effects. The UK Biobank study was approved by the National Health Service National Research Ethics Service (ref. 11/NW/0382), and all participants provided written informed consent to participate in the UK Biobank study.

Sleep duration and covariate measures. Study participants ($n \sim 500,000$) self-reported sleep duration at baseline assessment. Participants were asked: About how many hours sleep do you get in every 24 h? (please include naps), with responses in hour increments. Sleep duration was treated as a continuous variable and also categorized as either short (6 h or less), normal (7 or 8 h), or long (9 h or more) sleep duration. Extreme responses of less than 3 h or more than 18 h were excluded¹⁷ and Do not know or Prefer not to answer responses were set to missing. Participants who self-reported any sleep medication (see Supplementary Method 1) were excluded. Furthermore, participants who self-reported any shift work or night shift work or those with prevalent chronic disease (i.e., breast, prostate, bowel or lung cancer, heart disease, or stroke) or psychiatric disorders (see Supplementary Method 2) were later additionally excluded in a secondary GWAS.

Participants further self-reported age, sex, caffeine intake (self-reported cups of tea per day and cups of coffee per day), daytime napping (*Do you have a nap during the day?*), smoking status, alcohol intake frequency (never, once/week, 2–3 times/week, 4–6 times/week, daily), chronotype (*Do you consider yourself to be ...*, with the following response options: Definitely a ‘morning’ person, More a ‘morning’ than ‘evening’ person, More an ‘evening’ than a ‘morning’ person, and Definitely an ‘evening’ person), menopause status, and employment status during assessment. Socio-economic status was represented by the Townsend deprivation index based on national census data immediately preceding participation in the UK Biobank. Weight and height were measured and BMI was calculated as weight (kg)/height²(m²). Cases of sleep apnea were determined from self-report during nurse-led interviews or health records using International Classification of Diseases (ICD)-10 codes for sleep apnea (G47.3). Cases of insomnia were determined from self-report to the question, *Do you have trouble falling asleep at night or do you wake up in the middle of the night?* with responses never/rarely, sometimes, usually, prefer not to answer. Participants who responded *usually* were set as insomnia cases, and remaining participants were set as controls. Missing covariates were imputed using sex-specific median values for continuous variables (i.e., BMI, caffeine intake, alcohol intake, and Townsend index), or using a missing indicator approach for categorical variables (i.e., napping, smoking, menopause, employment, and chronotype).

Activity-monitor-derived measures of sleep. Actigraphy devices (Axivity AX3) were worn 2.8–9.7 years after study baseline by 103,711 individuals from the UK Biobank for up to 7 days⁵⁵. Of these 103,711 individuals, we excluded 11,067 individuals based on accelerometer data quality. Samples were excluded if they satisfied at least one of the following conditions (see also <http://biobank.ctsu.ox.ac.uk/crystal/label.cgi?id=1008>): a non-zero or missing value in data field 90002 (Data problem indicator), good wear time flag (field 90015) set to 0 (No), good calibration flag (field 90016) set to 0 (No), calibrated on own data flag (field 90017) set to 0 (No), or overall wear duration (field 90051) less than 5 days. Additionally, samples with extreme values of mean sleep duration (<3 h or >12 h) or mean number of sleep periods (<5 or >30) were excluded. After non-white ethnicity exclusions, 85,502 samples remained. Sleep measures were derived by processing raw accelerometer data (.cwa). First, we converted .cwa files available from the UK Biobank to .wav files using Omconvert (<https://github.com/digitalinteraction/openmovement/tree/master/Software/AX3/omconvert>) for signal calibration to gravitational acceleration^{55,56} and interpolation⁵⁵. The .wav files were processed with the R package GGIR to infer activity-monitor wear time⁵⁷, and extract the z-angle across 5-s epoch time-series data for subsequent use in estimating the sleep period time window (SPT-window)²⁵ and sleep episodes within it⁵⁸.

The SPT-window was estimated using an algorithm²⁵ implemented in the GGIR R package and validated using polysomnography (PSG) in an external cohort consisting of 28 adult sleep clinic patients and 22 healthy good sleepers. Briefly, for each individual, median values of the absolute change in z-angle (representing the dorsal–ventral direction when the wrist is in the anatomical

position) across 5-min rolling windows were calculated across a 24 h period, chosen to make the algorithm insensitive to activity-monitor orientation. The 10th percentile was incorporated into the threshold distinguishing movement from non-movement. Bouts of inactivity lasting ≥ 30 min are recorded as inactivity bouts. Inactivity bouts that are < 60 min apart are combined to form inactivity blocks. The start and end of longest block defines the start and end of the SPT-window²⁵.

Sleep duration: Sleep episodes within the SPT-window were defined as periods of at least 5 min with no change larger than 5° associated with the z -axis of the accelerometer⁵⁸. The summed duration of all sleep episodes was used as indicator of sleep duration.

Sleep efficiency: This was calculated as sleep duration (defined above) divided by the time elapsed between the start of the first inactivity bout and the end of the last inactivity bout (which equals the SPT-window duration).

Number of sleep bouts within the SPT-window: This is defined as the number of sleep bouts separated by last least 5 min of wakefulness within the SPT-window. The least-active 5 h hours (*L5*) and the most-active 10 h (*M10*) of each day were defined using a 5 h and 10 h daily period of minimum and maximum activity, respectively. These periods were estimated using a rolling average of the respectively time window. *L5* was defined as the number of hours elapsed from the previous midnight, whereas *M10* was defined as the number of hours elapsed from the previous midday.

Sleep midpoint: Sleep midpoint was calculated for each sleep period as the midpoint between the start of the first detected sleep episode and the end of the last sleep episode used to define the overall SPT-window (above). This variable is represented as the number of hours from the previous midnight, e.g., $2am = 26$.

Daytime inactivity duration: Daytime inactivity duration is the total daily duration of estimated bouts of inactivity that fall outside of the SPT-window. A minimum of 16 wear-hours was required for each night to be included. For non-wear data, the sleep phenotypes were imputed. Briefly, a minimum of 16 wear-hours was required for each night to be included. For each 15-min block that was classified as non-wear, data were replaced by the average of blocks at the same time periods from the other days in each individual record⁵⁷. All activity-monitor phenotypes were adjusted for age at accelerometer wear, sex, season of wear, release (categorical; UK BiLeVe, UK Biobank Axiom interim, release UK Biobank Axiom full release), and number of valid recorded nights (or days for *M10*) when performing the association test in BOLT-LMM. Genetic risk scores for sleep duration, short sleep, and long sleep were tested using the weighted genetic risk score calculated by summing the products of the sleep trait risk allele count for all 78, 27, or 8 genome-wide significant SNPs multiplied by the scaled effect from the primary GWAS using the GTX package in R.

Genotyping and quality control. Phenotype data are available for 502,631 subjects in the UK Biobank. Genotyping was performed by the UK Biobank, and genotyping, quality control, and imputation procedures are described in detail here⁵⁹. In brief, the following was conducted by the UK Biobank. Blood, saliva, and urine was collected from participants, and DNA was extracted from the buffy coat samples. Participant DNA was genotyped on two arrays, UK BiLeVe and UK Biobank Axiom with $>95\%$ common content and genotypes for $\sim 800,000$ autosomal SNPs were imputed to two reference panels. Genotypes were called using Affymetrix Power Tools software. Sample and SNPs for quality control were selected from a set of 489,212 samples across 812,428 unique markers. Sample quality control (QC) was conducted using 605,876 high-quality autosomal markers. Samples were removed for high missingness or heterozygosity (968 samples) and sex chromosome abnormalities (652 samples). Genotypes for 488,377 samples passed sample QC ($\sim 99.9\%$ of total samples). Marker-based QC measures were tested in the European ancestry subset ($n = 463,844$), which was identified based on principal components of ancestry. SNPs were tested for batch effects (197 SNPs/batch), plate effects (284 SNPs/batch), Hardy-Weinberg equilibrium (572 SNPs/batch), sex effects (45 SNPs/batch), array effects (5417 SNPs), and discordance across control replicates (622 on UK BiLeVe Axiom array and 632 UK Biobank Axiom array) (p value $< 10^{-12}$ or $< 95\%$ for all tests). For each batch (106 batches total) markers that failed at least one test were set to missing. Before imputation, 805,426 SNPs pass QC in at least one batch ($>99\%$ of the array content). Population structure was captured by principal component analysis on the samples using a subset of high-quality (missingness $< 1.5\%$), high-frequency SNPs ($> 2.5\%$) ($\sim 100,000$ SNPs) and identified the subsample of white British descent. In addition to the calculated population structure by the UK Biobank, we locally further clustered subjects into four ancestry clusters using K -means clustering on the principal components, identifying 453,964 subjects of European ancestry. The UK Biobank centrally further imputed autosomal SNPs to UK10K haplotype, 1000 Genomes Phase 3, and Haplotype Reference Consortium (HRC) with the current analysis using only those SNPs imputed to the HRC reference panel. Autosomal SNPs were pre-phased using SHAPEIT3 and imputed using IMPUTE4. In total, ~ 96 million SNPs were imputed. Related individuals were identified by estimating kinship coefficients for all pairs of samples, using only markers weakly informative of ancestral background. In total, there are 107,162 related pairs comprising 147,731 individuals related to at least one other participants in the UK Biobank.

Genome-wide association analysis. Genetic association analysis was performed in related subjects of European ancestry ($n = 446,118$) using BOLT-LMM⁶⁰ linear

mixed models and an additive genetic model adjusted for age, sex, 10 principal components of ancestry, genotyping array, and genetic correlation matrix [j12] with a maximum per SNP missingness of 10% and per sample missingness of 40%. We used a genome-wide significance threshold of 5×10^{-8} for each GWAS. Odds ratio (OR; 95% CI) estimates for short/long sleep are from adjusted PLINK⁶¹ logistic regression analyses where genetic association analysis was also performed in unrelated subjects of white British ancestry ($n = 326,224$) using PLINK logistic regression and an additive genetic model adjusted for age, sex, 10 PCs, and genotyping array to determine SNP effects on sleep traits. We used a hard-call genotype threshold of 0.1, SNP imputation quality threshold of 0.80, and a minor allele frequency (MAF) threshold of 0.001. Genetic association analysis for the X chromosome was performed using the genotyped markers on the X chromosome with the additional $-sex$ flag in PLINK. Similarly, sex-specific GWASs were also performed using BOLT-LMM⁶⁰ linear mixed models. Trait heritability was calculated as the proportion of trait variance due to additive genetic factors measured in this study using BOLT-REML⁶⁰, to leverage the power of raw genotype data together with low-frequency variants (MAF ≥ 0.001). Lambda inflation (λ) values were calculated using GenABEL in R, and estimated values were consistent with those estimated for other highly polygenic complex traits. Additional independent risk loci were identified using the approximate conditional and joint association method implemented in GCTA (GCTA-COJO)⁶².

Sensitivity analyses of top signals. Follow-up analyses on genome-wide significant loci in the primary analyses included covariate sensitivity analyses adjusting for BMI, insomnia (continuous only), chronotype (continuous only), or caffeine intake adjustments individually, or a combined adjustment for lifestyle and clinical traits, including day naps, Townsend index, smoking, alcohol intake, menopause status, employment status, and sleep apnea in addition to baseline adjustments for age, sex, 10 principal components of ancestry, and genotyping array. Sensitivity analyses were performed using BOLT-LMM⁶⁰ linear mixed models using the same input set of SNPs (i.e., hard-call genotypes) as for the main GWAS, and OR (95% CI) estimates for short/long sleep are from adjusted PLINK⁶¹ logistic regression analyses in unrelated subjects of white British ancestry.

Replication and meta-analyses of sleep duration loci. Using publicly available databases, we conducted a lookup of lead self-reported sleep duration signals in self-reported sleep duration GWAS results from adult (CHARGE; $n = 47,180$) and childhood/adolescent (EAGLE; $n = 10,554$). If lead signal was unavailable, a proxy SNP was used instead. As different imputation panels were used compared to the UK Biobank, 8 of the 78 SNPs and 1 of the 78 SNPs were not covered in the CHARGE consortium and EAGLE consortium, respectively. In addition, we combined self-reported sleep duration GWAS results from adult (CHARGE) and childhood/adolescent (EAGLE) with the UK Biobank (primary model) in fixed-effects meta-analyses using the inverse variance weighted method in METAL⁶³. Meta-analyses were conducted first separately (UK Biobank + CHARGE ($n = 3,044,490$ variants) or UK Biobank + EAGLE ($n = 7,147,509$ variants)), then combined (UK Biobank + CHARGE + EAGLE; $n = 2,545,157$ variants). A genetic risk score (GRS) for sleep duration was tested using the weighted GRS calculated by summing the products of the sleep duration risk allele count for as many available SNPs of the 78 genome-wide significant SNPs in each study (70 for CHARGE, 77 for EAGLE) multiplied by the scaled effect from the primary GWAS using the GTX package in R⁶⁴.

Gene, pathway, and tissue enrichment analyses. Genes overlapping the LD interval of the identified loci, defined by the furthest SNPs in a 1 Mb window with $r^2 > 0.05$, were identified by SNPsea²⁶. Gene-based analysis was performed using Pascal³¹. Pascal gene-set enrichment analysis uses 1077 pathways from KEGG, REACTOME, BIOCARTA databases, and a significance threshold was set after Bonferroni correction accounting for 1077 pathways tested ($P < 0.05/1,077$). Pathway analysis was also conducted using MAGMA³⁰ gene-set analysis in FUMA⁶⁵, which uses the full distribution of SNP P values and is performed for curated gene sets and Gene Ontology (GO) terms obtained from MsigDB (total of 10,891 pathways). A significance threshold was set after Bonferroni correction accounting for all pathways tested ($P < 0.05/10,891$). Using Pascal, we created a custom pathway of the SNIPP genes⁶ using human orthologs identified in DAVID (Database for Annotation, Visualization and Integrated Discovery; 79 out of 80 identified SNIPPs). We then verified enrichment of the pathway in our sleep duration GWAS (continuous, short, and long sleep). Tissue enrichment analysis was conducted using FUMA⁶⁵ for 53 tissue types, and a significance threshold was set following Bonferroni correction accounting for all tested tissues ($P < 0.05/53$). Single cell enrichment analysis was conducted in FUMA⁶⁵ utilizing the Tabula Muris³³ dataset, and a significance threshold was set following Bonferroni correction accounting for all tested cell types ($P < 0.05/115$). Integration of gene expression data with GWAS using transcriptome-wide association analyses in 11 tissues³⁴ identified 38 genes for which sleep duration SNPs influence gene expression in the tissues of interest (Supplementary Table 28). Integrative transcriptome-wide association analyses with GWAS were performed using the FUSION TWAS package³⁴ with weights generated from gene expression in 9 brain regions and 2 tissues from the GTEx consortium (v6). Tissues for TWAS testing

were selected from the FUMA tissue enrichment analyses and here we present significant results that survive Bonferroni correction for the number of genes tested per tissue and for all 11 tissues.

Genetic correlation analyses. Post-GWAS genome-wide genetic correlation analysis of LD Score Regression (LDSC)^{66–68} using LDHub was conducted using all UK Biobank SNPs also found in HapMap3 and included publicly available data from 224 published genome-wide association studies, with a significance threshold after Bonferroni correction for all tests performed ($P < 0.05/224$ tests). LDSC estimates genetic correlation between two traits from summary statistics (ranging from -1 to 1) using the fact that the GWAS effect-size estimate for each SNP incorporates effects of all SNPs in LD with that SNP, SNPs with high LD have higher X^2 statistics than SNPs with low LD, and a similar relationship is observed when single study test statistics are replaced with the product of z -scores from two studies of traits with some correlation. Furthermore, genetic correlation is possible between case/control studies and quantitative traits, as well as within these trait types. We performed partitioning of heritability using the 8 pre-computed cell-type regions, and 25 pre-computed functional annotations available through LDSC, which were curated from large-scale robust datasets⁶⁶. Enrichment both in the functional regions and in an expanded region (+500 bp) around each functional class was calculated in order to prevent the estimates from being biased upward by enrichment in nearby regions. The multiple testing threshold for the partitioning of heritability was determined using the conservative Bonferroni correction ($P < 0.05/25$ classes). Summary GWAS statistics will be made available at the UK Biobank web portal.

Mendelian randomization analyses. MR analysis was carried out using the R package MR-Base⁶⁹ (available: github.com/MRCIEU/TwoSampleMR), using the inverse variance weighted approach as our main analysis method⁷⁰, and MR-Egger⁷¹ and weighted median estimation⁷² as sensitivity analyses. MR results may be biased by horizontal pleiotropy—i.e., where the genetic variants that are robustly related to the exposure of interest (here sleep duration) independently influence levels of a causal risk factor for the outcome. Inverse variance weighted (IVW) assumes that there is either no horizontal pleiotropy, or that across all SNPs, horizontal pleiotropy is (i) uncorrelated with SNP-risk factor associations and (ii) has an average value of zero. MR-Egger assumes (i) but relaxes (ii) by explicitly estimating the non-zero mean pleiotropy, and adjusting the causal estimate accordingly. Estimation of the pleiotropy parameter means that the MR-Egger estimate is generally far less precise than the IVW estimate. The weighted median approach is valid if less than 50% of the weight is pleiotropic (i.e., no single SNP that contributes 50% of the weight or a number of SNPs that together contribute 50% should be invalid because of horizontal pleiotropy). Given these different assumptions, if all three methods are broadly consistent, this strengthens our causal inference. For all our MR analyses, except insomnia, we used two-sample MR, in which for all 78 GWAS hits identified in this study for sleep duration, we looked for the per allele difference in odds (binary outcomes) or means (continuous) with outcomes from summary publicly available data in the MR-Base platform. Results are therefore a measure of ‘longer sleep duration’ and sample 1 is UK Biobank (our GWAS) and sample 2 a number of different GWAS consortia covering the outcomes we explored. For interpretation purposes, inverse variance weighted MR causal effect estimates were converted in OR per hour by multiplying log ORs by 60 in order to represent the OR per hour, and then exponentiating. For significant two-sample MR findings, in sensitivity analyses, we further conducted leave-one-out analyses, MR using sleep duration effect estimates adjusting for standard confounders including BMI, insomnia, and other lifestyle factors, and restricted to those GWAS variants from each respective analysis, MR restricted to the signals that retained GWAS significance in meta-analysis, and lastly, reverse direction MR analysis. For reverse direction MR, inverse variance weighted MR causal effect estimates in minutes were first converted to hours by multiplying by 60, and then were converted by multiplying by 0.693 ($=\ln(2)$) in order to represent changes in sleep duration in hours per doubling in odds of the binary exposure. The number of SNPs used in each MR analysis varies by outcome because of some SNPs (or proxies for them) not being located in the outcome GWAS. In addition, for schizophrenia MR, we excluded two pleiotropic SNPs rs34556183 (near *HIST1H2B*) and rs13109404 (near *SLC39A8*) from our analysis and, to test for bidirectional links, we derived the schizophrenia instrumental variable using GWAS variants reported by the Psychiatric Genomics Consortium Schizophrenia working group⁷³.

Data availability

Summary GWAS statistics are publicly available at the Sleep Disorder Knowledge Portal (<http://sleepdisordergenetics.org/>) and the UK Biobank website (<http://biobank.ctsu.ox.ac.uk/>).

Received: 1 November 2018 Accepted: 31 January 2019

Published online: 07 March 2019

References

- Joiner, W. J. Unraveling the evolutionary determinants of sleep. *Curr. Biol.* **26**, R1073–R1087 (2016).
- Campbell, S. S. & Tobler, I. Animal sleep: a review of sleep duration across phylogeny. *Neurosci. Biobehav. Rev.* **8**, 269–300 (1984).
- Krueger, J. M., Frank, M. G., Wisor, J. P. & Roy, S. Sleep function: toward elucidating an enigma. *Sleep Med. Rev.* **28**, 46–54 (2016).
- Sehgal, A. & Mignot, E. Genetics of sleep and sleep disorders. *Cell* **146**, 194–207 (2011).
- Scammell, T. E., Arrigoni, E. & Lipton, J. O. Neural circuitry of wakefulness and sleep. *Neuron* **93**, 747–765 (2017).
- Wang, Z. et al. Quantitative phosphoproteomic analysis of the molecular substrates of sleep need. *Nature* **558**, 435–439 (2018).
- Ayas, N. T. et al. A prospective study of self-reported sleep duration and incident diabetes in women. *Diabetes Care* **26**, 380–384 (2003).
- Qureshi, A. I., Giles, W. H., Croft, J. B. & Bliwise, D. L. Habitual sleep patterns and risk for stroke and coronary heart disease: a 10-year follow-up from NHANES I. *Neurology* **48**, 904–911 (1997).
- Cappuccio, F. P., D’Elia, L., Strazzullo, P. & Miller, M. A. Sleep duration and all-cause mortality: a systematic review and meta-analysis of prospective studies. *Sleep* **33**, 585–592 (2010).
- Czeisler, C. A. Impact of sleepiness and sleep deficiency on public health—utility of biomarkers. *J. Clin. Sleep Med.* **7**, S6–S8 (2011).
- Heath, A. C., Kendler, K. S., Eaves, L. J. & Martin, N. G. Evidence for genetic influences on sleep disturbance and sleep pattern in twins. *Sleep* **13**, 318–335 (1990).
- de Castro, J. M. The influence of heredity on self-reported sleep patterns in free-living humans. *Physiol. Behav.* **76**, 479–486 (2002).
- Byrne, E. M. et al. A genome-wide association study of sleep habits and insomnia. *Am. J. Med. Genet. B Neuropsychiatr. Genet.* **162**, 439–451 (2013).
- Gottlieb, D. J. et al. Novel loci associated with usual sleep duration: the CHARGE Consortium Genome-Wide Association Study. *Mol. Psychiatry* **20**, 1232–1239 (2015).
- Toh, K. L. et al. An hPer2 phosphorylation site mutation in familial advanced sleep phase syndrome. *Science* **291**, 1040–1043 (2001).
- Pellegrino, R. et al. A novel *BHLHE41* variant is associated with short sleep and resistance to sleep deprivation in humans. *Sleep* **37**, 1327–1336 (2014).
- Jones, S. E. et al. Genome-wide association analyses in 128,266 individuals identifies new morningness and sleep duration loci. *PLoS Genet.* **12**, e1006125 (2016).
- Lane, J. M. et al. Genome-wide association analyses of sleep disturbance traits identify new loci and highlight shared genetics with neuropsychiatric and metabolic traits. *Nat. Genet.* **49**, 274–281 (2017).
- Marinelli, M. et al. Heritability and genome-wide association analyses of sleep duration in children: the EAGLE Consortium. *Sleep* **39**, 1859–1869 (2016).
- Jones, S. E. et al. Genome-wide association analyses of chronotype in 697,828 individuals provides new insights into circadian rhythms in humans and links to disease. *Nat. Commun.* **10**, 343 (2019).
- Vgontzas, A. N. & Fernandez-Mendoza, J. Insomnia with short sleep duration: nosological, diagnostic, and treatment implications. *Sleep Med. Clin.* **8**, 309–322 (2013).
- Frayling, T. M. et al. A common variant in the *FTO* gene is associated with body mass index and predisposes to childhood and adult obesity. *Science* **316**, 889–894 (2007).
- Lauderdale, D. S., Knutson, K. L., Yan, L. L., Liu, K. & Rathouz, P. J. Self-reported and measured sleep duration. *Epidemiology* **19**, 838–845 (2008).
- Matthews, K. A. et al. Similarities and differences in estimates of sleep duration by polysomnography, actigraphy, diary, and self-reported habitual sleep in a community sample. *Sleep. Heal* **4**, 96–103 (2018).
- van Hees, V. T. et al. Estimating sleep parameters using an accelerometer without sleep diary. *Sci. Rep.* **8**, 12975 (2018).
- Slowikowski, K., Hu, X. & Raychaudhuri, S. SNPsea: an algorithm to identify cell types, tissues and pathways affected by risk loci. *Bioinformatics* **30**, 2496–2497 (2014).
- Allada, R., Cirelli, C. & Sehgal, A. Molecular mechanisms of sleep homeostasis in flies and mammals. *Cold Spring Harb. Perspect. Biol.* **9**, a027730 (2017).
- Mongrain, V. et al. Separating the contribution of glucocorticoids and wakefulness to the molecular and electrophysiological correlates of sleep homeostasis. *Sleep* **33**, 1147–1157 (2010).
- Farh, K. K.-H. et al. Genetic and epigenetic fine mapping of causal autoimmune disease variants. *Nature* **518**, 337–343 (2015).
- de Leeuw, C. A., Mooij, J. M., Heskes, T. & Posthuma, D. MAGMA: generalized gene-set analysis of GWAS data. *PLoS Comput. Biol.* **11**, e1004219 (2015).
- Lamparter, D., Marbach, D., Rueedi, R., Kutalik, Z. & Bergmann, S. Fast and rigorous computation of gene and pathway scores from SNP-based summary statistics. *PLoS Comput. Biol.* **12**, e1004714 (2016).

32. Canto, C. B., Onuki, Y., Bruinsma, B., van der Werf, Y. D. & De Zeeuw, C. I. The sleeping cerebellum. *Trends Neurosci.* **40**, 309–323 (2017).
33. Tabula Muris Consortium et al. Single-cell transcriptomics of 20 mouse organs creates a Tabula Muris. *Nature* **562**, 367–372 (2018).
34. Gusev, A. et al. Integrative approaches for large-scale transcriptome-wide association studies. *Nat. Genet.* **48**, 245–252 (2016).
35. Elliott, L. T. et al. Genome-wide association studies of brain imaging phenotypes in UK Biobank. *Nature* **562**, 210–216 (2018).
36. Demos, K. E. et al. The effects of experimental manipulation of sleep duration on neural response to food cues. *Sleep* **40**, <https://doi.org/10.1093/sleep/zsx125> (2017).
37. Spira, A. P. et al. Sleep duration and subsequent cortical thinning in cognitively normal older adults. *Sleep* **39**, 1121–1128 (2016).
38. Bulik-Sullivan, B. K. et al. LD Score regression distinguishes confounding from polygenicity in genome-wide association studies. *Nat. Genet.* **47**, 291–295 (2015).
39. Locke, A. E. et al. Genetic studies of body mass index yield new insights for obesity biology. *Nature* **518**, 197–206 (2015).
40. DIAbetes Genetics Replication And Meta-analysis (DIAGRAM) Consortium et al. Genome-wide trans-ancestry meta-analysis provides insight into the genetic architecture of type 2 diabetes susceptibility. *Nat. Genet.* **46**, 234–244 (2014).
41. Ge, T., Chen, C.-Y., Neale, B. M., Sabuncu, M. R. & Smoller, J. W. Phenome-wide heritability analysis of the UK Biobank. *PLoS Genet.* **13**, e1006711 (2017).
42. Burgard, S. A. & Ailshire, J. A. Gender and time for sleep among U.S. adults. *Am. Sociol. Rev.* **78**, 51–69 (2013).
43. Huffman, J. E. Examining the current standards for genetic discovery and replication in the era of mega-biobanks. *Nat. Commun.* **9**, 5054 (2018).
44. Bianchi, M. T., Thomas, R. J. & Westover, M. B. An open request to epidemiologists: please stop querying self-reported sleep duration. *Sleep Med.* **35**, 92–93 (2017).
45. Roffwarg, H. P., Muzio, J. N. & Dement, W. C. Ontogenetic development of the human sleep-dream cycle. *Science* **152**, 604–619 (1966).
46. Barclay, N. L. & Gregory, A. M. Sleep in childhood and adolescence: age-specific sleep characteristics, common sleep disturbances and associated difficulties. *Curr. Top. Behav. Neurosci.* **16**, 337–365 (2014).
47. Kayser, M. S. & Biron, D. Sleep and development in genetically tractable model organisms. *Genetics* **203**, 21–33 (2016).
48. Montgomery, P., Burton, J. R., Sewell, R. P., Spreckelsen, T. F. & Richardson, A. J. Fatty acids and sleep in UK children: subjective and pilot objective sleep results from the DOLAB study—a randomized controlled trial. *J. Sleep Res.* **23**, 364–388 (2014).
49. Young, G. & Conquer, J. Omega-3 fatty acids and neuropsychiatric disorders. *Reprod. Nutr. Dev.* **45**, 1–28 (2005).
50. Dashti, H. S. et al. Habitual sleep duration is associated with BMI and macronutrient intake and may be modified by CLOCK genetic variants. *Am. J. Clin. Nutr.* **101**, 135–143 (2015).
51. Byrne, E. M., Gehrman, P. R., Trzaskowski, M., Tiemeier, H. & Pack, A. I. Genetic correlation analysis suggests association between increased self-reported sleep duration in adults and schizophrenia and type 2 diabetes. *Sleep* **39**, 1853–1857 (2016).
52. Munafò, M. R., Tilling, K., Taylor, A. E., Evans, D. M. & Davey Smith, G. Collider scope: when selection bias can substantially influence observed associations. *Int. J. Epidemiol.* **47**, 226–235 (2018).
53. Martin, J. et al. Association of genetic risk for schizophrenia with nonparticipation over time in a population-based cohort study. *Am. J. Epidemiol.* **183**, 1149–1158 (2016).
54. Sudlow, C. et al. UK biobank: an open access resource for identifying the causes of a wide range of complex diseases of middle and old age. *PLoS Med.* **12**, e1001779 (2015).
55. Doherty, A. et al. Large scale population assessment of physical activity using wrist worn accelerometers: the UK Biobank Study. *PLoS ONE* **12**, e0169649 (2017).
56. van Hees, V. T. et al. Autocalibration of accelerometer data for free-living physical activity assessment using local gravity and temperature: an evaluation on four continents. *J. Appl. Physiol.* **117**, 738–744 (2014).
57. van Hees, V. T. et al. Separating movement and gravity components in an acceleration signal and implications for the assessment of human daily physical activity. *PLoS ONE* **8**, e61691 (2013).
58. van Hees, V. T. et al. A novel, open access method to assess sleep duration using a wrist-worn accelerometer. *PLoS ONE* **10**, e0142533 (2015).
59. Bycroft, C. et al. The UK Biobank resource with deep phenotyping and genomic data. *Nature* **562**, 203–209 (2018).
60. Loh, P.-R. et al. Efficient Bayesian mixed-model analysis increases association power in large cohorts. *Nat. Genet.* **47**, 284–290 (2015).
61. Purcell, S. et al. PLINK: a tool set for whole-genome association and population-based linkage analyses. *Am. J. Hum. Genet.* **81**, 559–575 (2007).
62. Yang, J. et al. Conditional and joint multiple-SNP analysis of GWAS summary statistics identifies additional variants influencing complex traits. *Nat. Genet.* **44**, 369–375 (2012).
63. Willer, C. J., Li, Y. & Abecasis, G. R. METAL: fast and efficient meta-analysis of genomewide association scans. *Bioinformatics* **26**, 2190–2191 (2010).
64. International Consortium for Blood Pressure Genome-Wide Association Studies et al. Genetic variants in novel pathways influence blood pressure and cardiovascular disease risk. *Nature* **478**, 103–109 (2011).
65. Watanabe, K., Taskesen, E., van Bochoven, A. & Posthuma, D. Functional mapping and annotation of genetic associations with FUMA. *Nat. Commun.* **8**, 1826 (2017).
66. Finucane, H. K. et al. Partitioning heritability by functional annotation using genome-wide association summary statistics. *Nat. Genet.* **47**, 1228–1235 (2015).
67. Zheng, J. et al. LD Hub: a centralized database and web interface to perform LD score regression that maximizes the potential of summary level GWAS data for SNP heritability and genetic correlation analysis. *Bioinformatics* **33**, 272–279 (2017).
68. Bulik-Sullivan, B. et al. An atlas of genetic correlations across human diseases and traits. *Nat. Genet.* **47**, 1236–1241 (2015).
69. Hemani, G. et al. The MR-Base platform supports systematic causal inference across the human phenome. *Elife* **7**, pii: e34408 (2018).
70. Burgess, S., Butterworth, A. & Thompson, S. G. Mendelian randomization analysis with multiple genetic variants using summarized data. *Genet. Epidemiol.* **37**, 658–665 (2013).
71. Bowden, J., Davey Smith, G. & Burgess, S. Mendelian randomization with invalid instruments: effect estimation and bias detection through Egger regression. *Int. J. Epidemiol.* **44**, 512–525 (2015).
72. Bowden, J., Davey Smith, G., Haycock, P. C. & Burgess, S. Consistent estimation in Mendelian randomization with some invalid instruments using a weighted median estimator. *Genet. Epidemiol.* **40**, 304–314 (2016).
73. Schizophrenia Working Group of the Psychiatric Genomics Consortium et al. Biological insights from 108 schizophrenia-associated genetic loci. *Nature* **511**, 421–427 (2014).

Acknowledgements

This research has been conducted using the UK Biobank Resource (UK Biobank application number 6818 and 9072). We would like to thank the participants and researchers from the UK Biobank who contributed or collected data. A.R.W. and T.M.F. are supported by 323195:SZ-245 50371-GLUCOSEGENES-FP7-IDEAS-ERC. B.E.C. is supported by K01-HL135405-01, R01-HL13338-04, R35-HL135818-01, American Thoracic Society Foundation Unrestricted Grant (Sleep). D.J.G. is supported by NIH/NHLBI contracts N01-HC-25195 and N02-HL-6-4278 and cooperative agreement U01HL53941. D.W.R. is supported by Wellcome Investigator award 107849/Z/15/Z. H.T. is supported by Dutch Medical Research Foundation grants (016.VICI.170.200 and VIDI 017.106.370). J.M.L. is supported by F32DK102323, 4T32HL007901. M.G. is supported by the Spanish Government of Investigation, Development and Innovation (SAF2017-84135-R) including FEDER co-funding, and NIDDK R01DK105072. M.K.R. is supported by The University of Manchester Research Infrastructure Fund. M.K.R. has acted as a consultant for GSK, Novo Nordisk, Roche and MSD, and also participated in advisory board meetings on their behalf. M.K.R. has received lecture fees from MSD and grant support from Novo Nordisk, MSD and GSK. M.N.W. is supported by Wellcome Trust Institutional Strategic Support Award (WT097835MF). S.E.J. is funded by the Medical Research Council (grant: MR/M005070/1). S.M.P. is funded by MH108908 (S.M.P.), HL135818 (S.R.). T.M.F. is funded by 323195:SZ-245 50371-GLUCOSEGENES-FP7-IDEAS-ERC. J.T. is funded by Diabetes Research and Wellness Foundation Fellowship. R.N.B. is funded by Wellcome Trust and Royal Society grant: 104150/Z/14/Z. H.S.D. and R.S. are supported by NIH R01DK107859, NIH R01 DK102696 (R.S., F.A.J.L.S.), MGH Research Scholar Fund (R.S.), and NIH R35-HL135818 (S.R.).

Author contributions

The study was designed by H.S.D., S.E.J., J.M.L., V.T.v.H., D.A.L., M.K.R., M.N.W. and R.S. H.S.D., S.E.J., A.R.W., J.M.L., V.T.v.H., J.A.R., Y.S., K.P., R.B., J.B., S.D.K., M.A.L., A.I.L., K.S., J.T., D.J.G., H.T., D.W.R., S.M.P., T.M.F., S.R., D.A.L., M.K.R., M.N.W. and R.S. participated in acquisition, analysis, and/or interpretation of data. H.S.D., J.M.L., H.W. and R.S. wrote the manuscript and all co-authors reviewed and edited the manuscript, before approving its submission. R.S. is the guarantor of this work and, as such, had full access to all the data in the study and takes responsibility for the integrity of the data and the accuracy of the data analysis.

Additional information

Supplementary Information accompanies this paper at <https://doi.org/10.1038/s41467-019-08917-4>.

Competing interests: F.A.J.L.S. has received speaker fees from Bayer Healthcare, Sentara Healthcare, Philips, Kellogg Company, and Vanda Pharmaceuticals. M.K.R. reports

receiving research funding from Novo Nordisk, consultancy fees from Novo Nordisk and Roche Diabetes Care, and modest owning of shares in GlaxoSmithKline. The remaining authors declare no competing interests.

Reprints and permission information is available online at <http://npg.nature.com/reprintsandpermissions/>

Journal peer review information: *Nature Communications* thanks the anonymous reviewers for their contribution to the peer review of this work. Peer reviewer reports are available.

Publisher's note: Springer Nature remains neutral with regard to jurisdictional claims in published maps and institutional affiliations.



Open Access This article is licensed under a Creative Commons Attribution 4.0 International License, which permits use, sharing, adaptation, distribution and reproduction in any medium or format, as long as you give appropriate credit to the original author(s) and the source, provide a link to the Creative Commons license, and indicate if changes were made. The images or other third party material in this article are included in the article's Creative Commons license, unless indicated otherwise in a credit line to the material. If material is not included in the article's Creative Commons license and your intended use is not permitted by statutory regulation or exceeds the permitted use, you will need to obtain permission directly from the copyright holder. To view a copy of this license, visit <http://creativecommons.org/licenses/by/4.0/>.

© The Author(s) 2019

Hassan S. Dashti^{1,2}, Samuel E. Jones³, Andrew R. Wood³, Jacqueline M. Lane^{1,2,4}, Vincent T. van Hees⁵, Heming Wang^{2,6,7}, Jessica A. Rhodes^{1,2}, Yanwei Song^{1,8}, Krupal Patel^{1,8}, Simon G. Anderson⁹, Robin N. Beaumont³, David A. Bechtold¹⁰, Jack Bowden^{11,12}, Brian E. Cade^{2,6,7}, Marta Garaulet^{13,14}, Simon D. Kyle¹⁵, Max A. Little^{16,17}, Andrew S. Loudon¹⁰, Annemarie I. Luik¹⁵, Frank A.J.L. Scheer^{2,7,18}, Kai Spiegelhalter¹⁹, Jessica Tyrrell³, Daniel J. Gottlieb^{6,7,20}, Henning Tiemeier^{21,22}, David W. Ray¹⁰, Shaun M. Purcell²³, Timothy M. Frayling³, Susan Redline²⁴, Deborah A. Lawlor^{11,12}, Martin K. Rutter^{10,25}, Michael N. Weedon³ & Richa Saxena^{1,2,4}

¹Center for Genomic Medicine, Massachusetts General Hospital and Harvard Medical School, Boston 02114 MA, USA. ²Broad Institute, Cambridge 02142 MA, USA. ³Genetics of Complex Traits, University of Exeter Medical School, Exeter EX2 5DW, UK. ⁴Department of Anesthesia, Critical Care and Pain Medicine, Massachusetts General Hospital and Harvard Medical School, Boston 02114 MA, USA. ⁵Netherlands eScience Center, Amsterdam 1098 XG, The Netherlands. ⁶Division of Sleep and Circadian Disorders, Department of Medicine, Brigham and Women's Hospital, Boston 02115 MA, USA. ⁷Division of Sleep Medicine, Harvard Medical School, Boston 02115 MA, USA. ⁸Northeastern University College of Science, 176 Mugar Life Sciences, 360 Huntington Avenue, Boston, MA 02015, USA. ⁹Division of Cardiovascular Sciences, School of Medical Sciences, Faculty of Biology, Medicine and Health, The University of Manchester, Manchester M13 9PL, UK. ¹⁰Division of Endocrinology, Diabetes & Gastroenterology, School of Medical Sciences, Faculty of Biology, Medicine and Health, University of Manchester, Manchester M13 9PL, UK. ¹¹MRC Integrative Epidemiology Unit at the University of Bristol, Bristol BS8 2BN, UK. ¹²Population Health Sciences, Bristol Medical School, University of Bristol, Bristol BS8 2BN, UK. ¹³Department of Physiology, University of Murcia, Murcia 30100, Spain. ¹⁴IMIB-Arrixaca, Murcia 30120, Spain. ¹⁵Sleep and Circadian Neuroscience Institute, Nuffield Department of Clinical Neurosciences, University of Oxford, Oxford OX3 7LF, UK. ¹⁶Department of Mathematics, Aston University, Birmingham B4 7ET, UK. ¹⁷Media Lab, Massachusetts Institute of Technology, Cambridge 02139 MA, USA. ¹⁸Medical Chronobiology Program, Division of Sleep and Circadian Disorders, Departments of Medicine and Neurology, Brigham and Women's Hospital, Boston 02115 MA, USA. ¹⁹Clinic for Psychiatry and Psychotherapy, Medical Centre - University of Freiburg, Faculty of Medicine, University of Freiburg, Freiburg 79106, Germany. ²⁰VA Boston Healthcare System, Boston 02132 MA, USA. ²¹Department of Social and Behavioral Science, Harvard TH Chan School of Public Health, Boston 02115 MA, USA. ²²Department of Epidemiology, Erasmus Medical Center, Rotterdam 3015, The Netherlands. ²³Department of Psychiatry, Brigham & Women's Hospital, Harvard Medical School, 02115, Boston, MA, USA. ²⁴Departments of Medicine, Brigham and Women's Hospital and Beth Israel Deaconess Medical Center, Harvard Medical School, Boston 02115 MA, USA. ²⁵Manchester Diabetes Centre, Manchester University NHS Foundation Trust, Manchester Academic Health Science Centre, Manchester M13 9PL, UK. These authors contributed equally: Hassan S. Dashti, Samuel E. Jones, Andrew R. Wood. These authors jointly supervised this work: Martin K. Rutter, Michael N. Weedon, Richa Saxena.