



RESEARCH ARTICLE

Open Access

Health impact assessment of air pollution in megacity of Tehran, Iran

Kazem Naddafi^{1,2}, Mohammad Sadegh Hassanvand^{1,2*}, Masud Yunesian^{1,2}, Fatemeh Momeniha^{1,3}, Ramin Nabizadeh^{1,2}, Sasan Faridi¹ and Akbar Gholampour¹

Abstract

The aims of the present study were to provide quantitative data on the impact of air pollution on the health of people living in Tehran city, the most populated city of Iran. The approach proposed by the World Health Organization (WHO) was applied using the AirQ 2.2.3 software developed by the WHO European Centre for Environment and Health, Bilthoven Division. Concentrations of ozone, nitrogen dioxide, sulfur dioxide and particulate matter of aerodynamic diameter $\leq 10 \mu\text{m}$ (PM_{10}) were used to assess human exposure and health impacts in terms of attributable proportion of the health outcome, annual number of excess cases of mortality for all causes, and cardiovascular and respiratory diseases. The annual average of PM_{10} , SO_2 , NO_2 and O_3 in Tehran were 90.58, 89.16, 85 and 68.82 $\mu\text{g}/\text{m}^3$, respectively. Considering short-term effects, PM_{10} had the highest health impact on the 8,700,000 inhabitants of Tehran city, causing an excess of total mortality of 2194 out of 47284 in a year. Sulfur dioxide, nitrogen dioxide and ozone caused about, respectively, 1458, 1050 and 819 excess cases of total mortality. Results indicate that the magnitude of the health impact estimated for the city of Tehran underscores the need for urgent action to reduce the health burden of air pollution.

Keywords: Tehran air pollution, Air Q software, Health impact assessment, Mortality, Morbidity

Introduction

Exposure to air pollution can cause both acute (short-term) and chronic (long-term) health effects. The acute effects of air pollution on human health were amply proven in the 20th century, when severe air pollution in Europe (Meuse Valley and London) and in the United States (Donora, Pa) caused deaths and disease in hundreds of thousands of people [1,2]. This episode has demonstrated that high concentrations of air pollution lead to an increase in mortality [2] and morbidity. In later studies, investigators found that levels below even current air pollution guidelines are associated with adverse effects on health [3-13] and air quality standards may not be protective enough for the most sensitive groups [14]. In addition, even though pollution due to combustion fuels has fallen dramatically in recent years, emerging pollutants such as O_3 and NO_x , and changes

in the composition and size distribution of particulate matter, have become important in the health effects of air pollution [3,15].

The present study assessed the health impact of air quality on the residents of Tehran, the capital city of Iran, the largest urban area of Iran with a population of 8,700,000 in 2011 (Figure 1) [16]. The city also is ranked as one of the largest cities in Western Asia and 19th in the whole world. As in other large cities, Tehran is faced with serious air quality problems. In general, 20% of the total energy of the country is consumed in Tehran. Pollutants such as PM_{10} , SO_2 , NO_2 , HC, O_3 and CO are the major air pollutants in Tehran, about 80-85% of which is produced by mobile sources of pollution [8].

The city has a capacity for 700,000 registered cars yet 3 million roam its streets on a daily basis. Compounding Tehran's air pollution problem is its geographical location. With the location of 35° 41' N - 51° 25' E and altitude of 1000-1800 meters above mean sea level, Tehran is located in valleys and is surrounded on the north, northwest, east and southeast by high to medium high (3800-1000 m) mountain ranges. The mountain range

* Correspondence: hassanvand@razi.tums.ac.ir

¹Department of Environmental Health Engineering, School of Public Health, Tehran University of Medical Sciences, Tehran, Iran

²Center for Air Pollution Research (CAPR), Institute for Environmental Research (IER), Tehran University of Medical Sciences, Tehran, Iran
Full list of author information is available at the end of the article

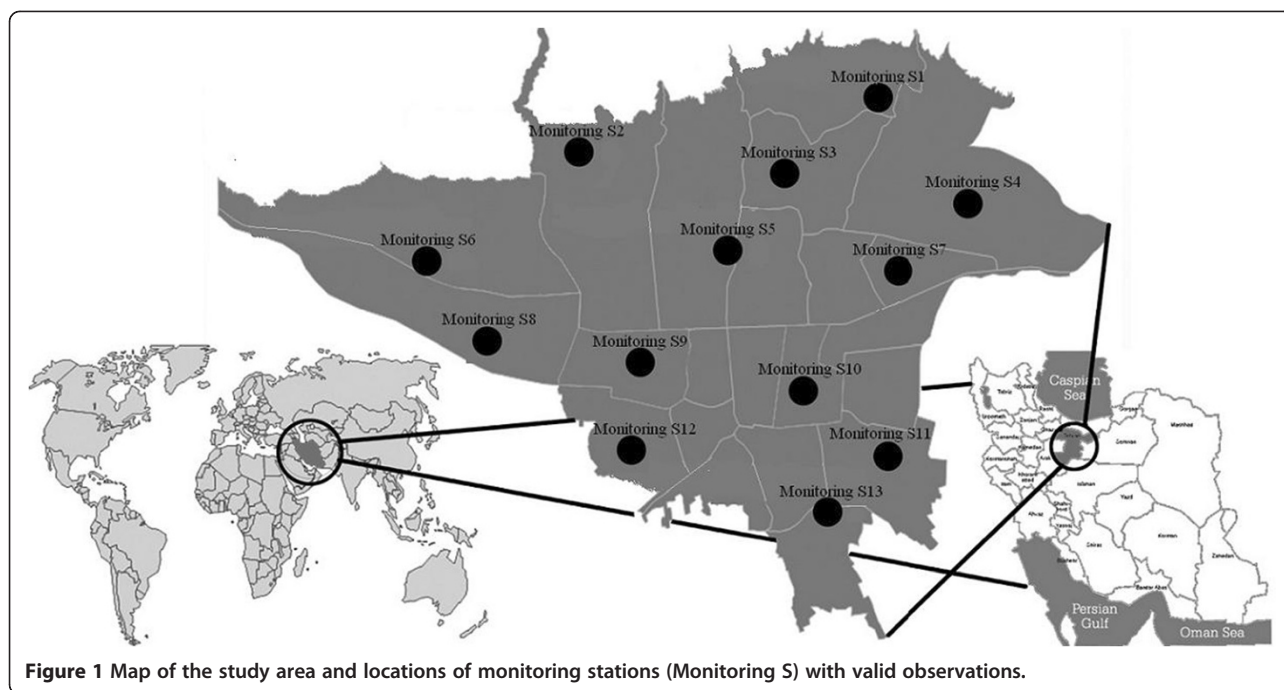


Figure 1 Map of the study area and locations of monitoring stations (Monitoring S) with valid observations.

stops the flow of the humid wind to the main capital and prevents the polluted air from being carried away from the city. Thus, during winter, the lack of wind and cold air causes the polluted air to be trapped within the city.

These concomitant conditions make Tehran as one of the worst areas in the world for atmospheric pollution with many days exceeding air quality standards during each year [17]. Because of the air pollution in the Great Tehran area, morbidity, mortality and symptoms emerge. At the moment, the concentration of these pollutants is higher than the standard level most of the time which means that they have numerous effects on the health of Tehran citizens [8].

Up to now the human health endpoints of air pollution has not been quantified in Tehran. The main aim of this study was the quantification of the short-term health effect of air pollutants for people living in Tehran, by using World Health Organization (WHO) approach.

Materials and methods

AirQ software

The approach proposed by the WHO was adopted using the Air Quality Health Impact Assessment (AirQ 2.2.3) software developed by WHO European Centre for Environment Health, Bilthoven Division. This program is used to estimate the impact of exposure to specific atmospheric pollutants on the health of people living in a certain period and area. The assessment is based on the attributable proportion (AP), defined as the fraction of the health outcome in a certain population attributable to exposure to a given atmospheric pollutant, assuming

a proven causal relation between exposure and health outcome and no major confounding effects in that association. The AP can be easily calculated by the following general formula [18]:

$$AP = \frac{\Sigma\{[RR(c) - 1] \times P(c)\}}{\Sigma[RR(c) \times P(c)]} \quad (1)$$

Where AP is the attributable proportion of the health outcome, RR is the relative risk (RR) for a given health outcome, in category “c” of exposure, obtained from the exposure–response functions derived from epidemiological studies and $P(c)$ is the proportion of the population in category “c” of exposure.

If the baseline frequency of the health outcome in the population under investigation is known, the rate attributable to the exposure can be calculated as

$$IE = I \times AP \quad (2)$$

Where IE is the rate of the health outcome attributable to the exposure and I is the baseline frequency of the health outcome in the population under investigation.

Finally, knowing the size of the population, the number of cases attributable to the exposure can be estimated as follows:

$$NE = IE \times N \quad (3)$$

Where NE is the number of cases attributed to the exposure and N is the size of the population investigated.

RR gives the increase in the probability of the adverse effect associated with a given change in the exposure

levels, and comes from time-series studies where day-to-day changes in air pollutants over long periods were related to daily mortality, hospital admissions and other public health indicators. RR values used in the present assessment are shown in Table 1. The RR values used for PM₁₀ were summary estimates derived from a quantitative meta-analysis of peer-reviewed studies focused on European investigations [19], while for SO₂ the RR implemented in the software and proposed as summary estimate in the WHO Air Quality Guidelines for Europe [20] was used. Finally, for O₃ and NO₂ the RR values came directly from published studies on short-term effects within the Air Pollution and Health: a European Approach (APHEA) project [21,22]. The baseline rates of all mortality for the calendar year 2010 were obtained from death certificates recorded at the Civil Registration Office of Tehran. For hospital admissions, the baseline rates that proposed by WHO were used.

Exposure assessment

Air concentrations of the selected pollutants in the area of interest were measured by Tehran Air Quality Control Corporation (TAQCC), Iran, using 25 permanent monitoring stations (Figure 1). Finally, the air

pollutants data from the permanent monitoring station of Tehran city from January 2010 to January 2011 year were used.

There are 25 stations for the measurement of air pollution in Tehran, but some of them, based on WHO Criteria for Air Quality Health Impact Assessment, had an invalid data for assessment. Finally, data from 7, 10, 11, 13 and 13 stations located in north, west, south and central parts of Tehran that were consistently active during the study period for, respectively, PM₁₀, SO₂, NO₂ and O₃, were used.

For all the pollutants, the parameters required by the software (annual and seasonal maximum and annual 98th percentiles) were obtained and concentrations were recorded to 10 µg/m³ categories, corresponding to equivalent exposure categories. For O₃, data were expressed as an 8 h “moving average”; for NO₂, as a 1 h average concentrations and for SO₂ and PM₁₀ as daily averages.

Exposure was estimated considering the city of Tehran as single agglomerate, with a residential population 8,700,000 people. The software assumes that concentrations measured are representative of the average exposure of the people. For example, if on 5% of sampling days concentrations were between 10 and 20 µg/m³, it

Table 1 Relative risk (RR) with 95% confidence intervals (95% CI), and corresponding reference, implemented in AirQ 2.2.3 software and used for the health effect estimates

Health endpoint		Incidence ^a	RR (95% CI) per 10 µg/m ³			
			O ₃	NO ₂	PM ₁₀	SO ₂
Mortality	Total ICD-9-cm ^b <800	543.5	1.003 (1.002–1.005) ^e [21]	1.003 (1.002–1.004) ^c [22]	1.006 (1.004–1.008) ^d [19]	1.004 (1.003–1.0048) [23]
	Cardiovascular ICD-9-cm 390–459	231	1.005 (1.002–1.007) ^e [21]	1.004 (1.003–1.005) ^c [22]	1.009 (1.005–1.013) ^d [19]	1.008 (1.002–1.012) [24]
	Respiratory ICD-9-cm 460–519	48.4	1.013 (1.007–1.015) ^e [21]	-	1.013 (1.005–1.020) ^d [19]	1.01 (1.006–1.014) [24]
Morbidity	HA ^f Respiratory Disease	1260	-	-	1.008 (1.0048–1.0112) [20]	-
	HA COPD ^g	101.4	-	1.0026 (1.0006–1.0044) [22]	-	1.0044 (1–1.011) [25]
	HA cardiovascular disease	436	-	-	1.009 (1.006–1.013) [26]	-
	Acute myocardial infarction	132	-	-	-	1.0064 (1.0026–1.0101) [27]

^a Crude rate per 100,000 inhabitants.

^b International Classification of Diseases, 9th Revision, Clinical Modification (ICD-9-cm).

^c 1 h average.

^d Daily average.

^e 8 h “moving average”.

^f Hospital admissions.

^g Chronic obstructive pulmonary disease.

Table 2 Summary of the concentrations of air pollutants, and meteorological variables, Tehran (2010–2011)

	Mean (SD)	Minimum	P25	P50	P75	P98	Maximum	No. of station	No. of days
PM ₁₀ , Annual 24 h (µg/m ³)	90.58 (41.99)	22.54	60.34	86.65	114.80	175.68	329.95	7	2438
SO ₂ , Annual 24 h (µg/m ³)	89.16 (29.27)	45.47	69.24	84.47	101.60	161.45	313.27	10	3172
NO ₂ , Annual 24 h (µg/m ³)	85 (24.183)	49.37	68.88	77.72	95.70	145.88	163.85	13	4115
O ₃ , Annual 8 h (µg/m ³)	68.82 (40.48)	10.88	35.32	59.75	99.28	158.60	187.16	11	3530
Temperature (°C)	19.68 (9.87)	-5	10.69	21.10	28.92	38.12	42		365
Relative humidity (%)	38.87 (16.45)	6	27.82	34.23	48.70	62.84	100		365

No. Station: number of monitoring stations with valid observations.
 No. days: number of days with valid observations.

was assumed that people were exposed to the corresponding concentration for 5% of their time.

Results

Table 2 shows the summary of the statistics of environmental data in Tehran.

The highest PM₁₀ concentration was detected in the summer period with maximum value of 329.95 µg/m³. For O₃ the maximum 8 h average concentration was 187 µg/m³ detected as expected in summer, while the maximum NO₂ and SO₂ concentrations, respectively, 163.85 and 313.27 µg/m³ were detected in winter.

The obtained results show that annual average of PM₁₀ in Tehran was 1.3 times the world's average

(71 µg/m³) [17] and 4.5 times the guideline values prescribed by the WHO [28]. Also the annual average of NO₂ in Tehran was 2.1 times the guideline value prescribed by the WHO [28].

Figure 2A–D illustrates the concentrations of different pollutants and the percentage of time to which people were exposed to these concentrations. The data were used to estimate the short-term effects.

The short-term health impacts of exposure to PM₁₀, SO₂, NO₂ and O₃ above a reference value of 10 µg/m³ are shown in Table 3. The figures represent the estimated AP and number of excess cases in comparison to the cases if concentration values of the pollutants were 10 µg/m³. For O₃, the numbers of excess cases over total

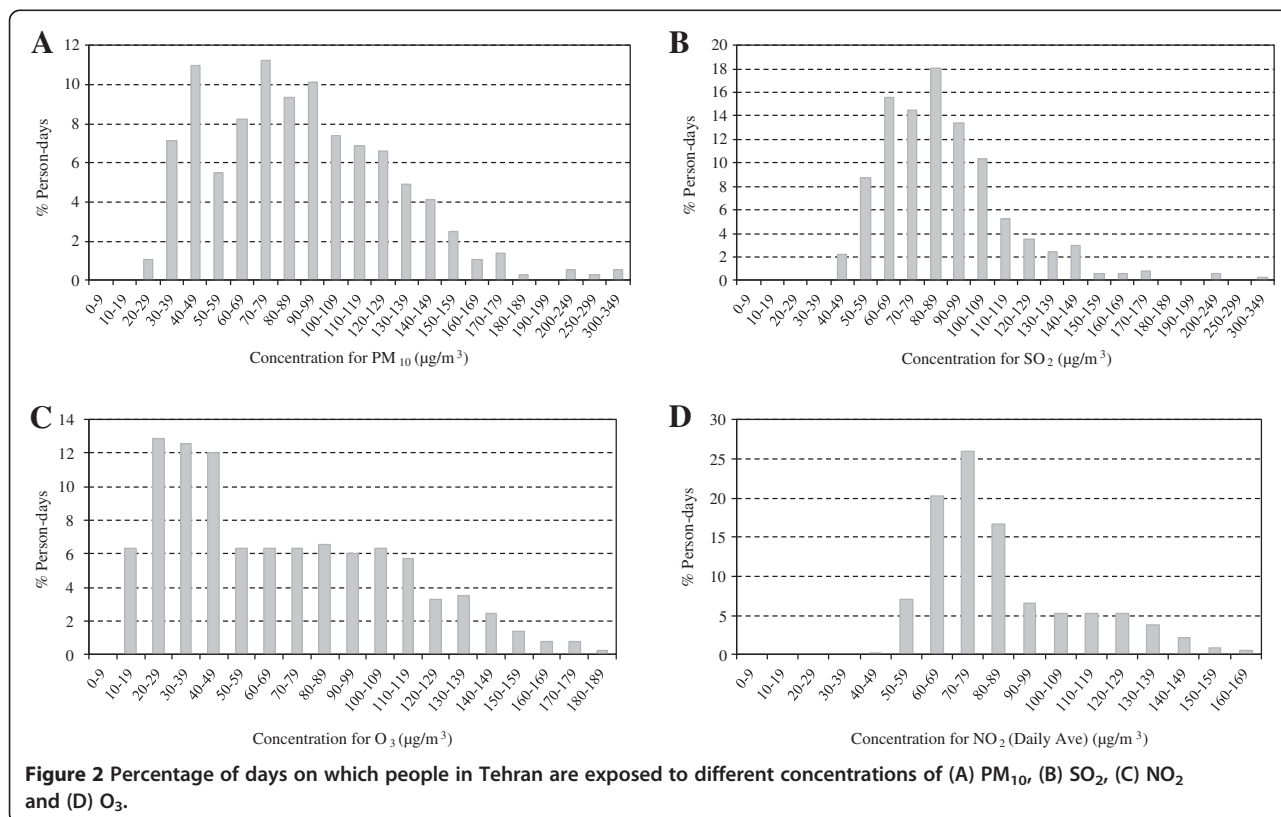


Table 3 Estimated attributable proportion (AP) expressed as percentage and number of excess cases in a year due to short-term exposure above 10 µg/m³ for PM₁₀, SO₂, O₃ and NO₂

Health Endpoints	Air pollutants	AP (uncertainty range) ^a	No. of excess cases (uncertainty range) ^a
Total mortality	PM ₁₀	4.6 (3.14-6)	2194 (1486-2880)
	SO ₂	3 (2.33-3.67)	1458 (1102-1739)
	NO ₂	2.2 (1-2.93)	1050 (705-1389)
	O ₃	1.73 (1.16-2.85)	819 (549-1349)
Cardiovascular mortality	PM ₁₀	6.8 (3.89-9.35)	1367 (738-1916)
	SO ₂	5.98 (1.56-8.7)	1202 (315-1751)
	NO ₂	2.93 (2.22-3.64)	591 (446-733)
	O ₃	2.85 (1.16-3.95)	574 (233-794)
Respiratory mortality	PM ₁₀	9.53 (3.89-13.95)	402 (164-588)
	SO ₂	7.73 (4.55-10)	310 (192-422)
	O ₃	7 (3.4-8)	299 (143-341)
Hospital Admissions Cardiovascular Disease	PM ₁₀	6.8 (4.64-9.53)	2580 (1760-3617)
Hospital Admissions Respiratory Disease	PM ₁₀	6.09 (3.74-8.32)	6677 (4107-9126)
Hospital Admissions COPD	NO ₂	2.79 (0.3-6.64)	247 (27-586)
	O ₃	4.80 (2.52-7.09)	424 (222-626)
	SO ₂	3.38 (0-8.04)	298 (0-710)
Acute Myocardial Infarction	SO ₂	4.84 (2.02-7.43)	556 (233-854)
	NO ₂	2.65 (1.12-5.97)	305 (129-687)

^a Obtained using the lower and upper RR values.

mortality, cardiovascular and respiratory mortality (Table 3) were based on the RR values from the APHEA-2 project, which investigated health effects of ambient O₃ in 23 European cities/areas for at least three years [21]. For NO₂ the estimated short-term effects (Table 3) are based on the pooled estimates for the increase in mortality associated with an increase of 10 µg/m³ in 30 European cities participating in the APHEA-2 project [22].

Discussion

This paper offers a study case using the WHO approach to assess the impact of atmospheric pollution on human health for people living in Tehran, one of the most populated areas in the world, where the geographical features make the air quality among the worst in the world. The impact was estimated as the increase in all-causes, cardiovascular and respiratory mortality, and hospital admissions for cardiovascular and respiratory diseases, COPD and acute myocardial Infarction for short-term exposure.

Considering short-term effects, PM₁₀ had the greatest health impact on the 8,700,000 inhabitants of Tehran city, causing an excess of total mortality of 2,194 out of 47,284 people in a year. The effect of SO₂, NO₂ and O₃ on total mortality was an excess of about, respectively, 1458, 1050 and 819 cases in a year.

The AirQ software has been used by other investigators to assess the human health impact of PM_{2.5} [15,29] or PM₁₀ [30]. [15] estimated the human health risk in relation to air quality in two municipalities in an industrialized area of Northern Italy, the authors found that PM_{2.5} had the highest health impact on the 24,000 inhabitants of the two small towns, causing an excess of total mortality of 8 out of 177 in a year; also Ozone and nitrogen dioxide each caused about three excess cases of total mortality. [30] focused on short-term effects of PM₁₀ in Trieste (about 200,000 inhabitants), a city in north-east Italy; For PM₁₀ concentrations above 20 µg/m³, 52, 28 and 6 cases in excess, respectively, were estimated for total, cardiovascular and respiratory mortality. These figures, if normalized to the population in Tehran (8,700,000 inhabitants), would result in a number of excess cases very similar to those reported for PM₁₀ in Table 2.

In another study, [31] found in Milan (1,308,000 inhabitants), a big industrial city in the Po Valley, the central estimate of the number of excess cases attributable to PM₁₀ was 677 for total mortality. In a study of PM₁₀ and O₃ impact on human health in 13 Italian cities, with about nine million inhabitants during the period 2002-2004, [32] it was reported that on average 8220 deaths a year, excluding accidental causes, were attributable to PM₁₀ above 20 µg/m³. For O₃ the effect was estimated at 516 extra deaths yearly. For short-term effects

exposure to PM₁₀ above 20 µg/m³ was responsible for 1372 extra deaths.

Results obtained from studies of health effects of air pollution in various parts of the world differ. Particulate matter is the pollutant with the biggest health effects in all of these papers, including the present study.

This study has several limitations. One of the limitations of this approach is that the health impact focuses on individual compounds without considering the simultaneous exposure to several, which is what actually occurs [15]. The health effects of atmospheric pollution are indeed the consequence of interactions between different air contaminants, and between these and other compounds of natural origin. Generally, in quantitative assessments of health effects, the interactions between different contaminants are not investigated as it would require a good knowledge of the mechanisms of toxicity for the different compounds, which is rarely available. In order to take account of co-exposure to different pollutants, it is often assumed that the health effects of individual compounds are additive. However the simple addition of the effects of the single pollutants would not be right because atmospheric pollutants are usually positively related.

A further limitation related to the exposure assessment is that the approach assumes that concentrations measured in specific sampling points are representative of the average exposure suffered from people living in Tehran. Another limitation is due to the RR estimates derived in studies of different populations in comparison to the one under investigation. In particular, while for PM₁₀, SO₂, NO₂ and O₃ the RRs were mainly based on studies on the European population. The transferability of the mortality effect estimates from the evidentiary (e.g., the US cohort) to the target population, however, is feasible if no compelling evidence that the target population and the evidentiary population differ in the response to the air pollution [33].

Conclusion

In conclusion, this study applied the AirQ software and the approach proposed by the WHO to provide quantitative data on the impact of PM₁₀, SO₂, NO₂ and O₃ on the health of people living in a certain area. The results are in line with those of other investigations and, despite the limitations, which are in common to similar studies, indicate that this method offers an effective and easy tool, helpful in decision-making.

The magnitude of the health impact estimated for the city of Tehran underscores the need for urgent action to reduce the health burden of air pollution. Local authorities, through policies that aim mainly to reduce emissions from urban transport and energy production, can achieve sizeable health gains.

Competing interests

The authors declare that they have no competing interests.

Authors' contributions

KN drafted the parts of the manuscript. MSH carried out the data processing, analysis of data by AirQ software and finalized the manuscript. MY carried out the some of a processing data. FM gathered the some of air quality data, population data and processed the some of data by Excell. RN drafted the parts of the manuscript. SF gathered the some of air quality data, population data and processed the some of data by Excell. AG gathered the some of air quality data, population data and processed the some of data by Excell. All authors read and approved the final manuscript.

Acknowledgements

The authors wish to thank Tehran University of Medical Sciences (grant number #11956) and the Institute for Environmental Research (IER) for their financial support for conduct of this study. We also thank Tehran Air Quality Control Corporation for providing us with pollutants concentrations data.

Author details

¹Department of Environmental Health Engineering, School of Public Health, Tehran University of Medical Sciences, Tehran, Iran. ²Center for Air Pollution Research (CAPR), Institute for Environmental Research (IER), Tehran University of Medical Sciences, Tehran, Iran. ³Center for Solid Waste Research (CSWR), Institute for Environmental Research (IER), Tehran University of Medical Sciences, Tehran, Iran.

Received: 28 November 2012 Accepted: 1 December 2012

Published: 17 December 2012

References

1. Ciocco A, Thompson DJ: **A follow-up of Donora ten years after: methodology and findings.** *Am J Public Health Nations Health* 1961, **51**:155-164.
2. Nemery B, Hoet PH, Nemmar A: **The Meuse Valley fog of 1930: an air pollution disaster.** *Lancet* 2001, **357**:704-708.
3. Brunekreef B, Holgate ST: **Air pollution and health.** *Lancet* 2002, **360**:1233-1242.
4. Delfino RJ, Becklake MR, Hanley JA: **The relationship of urgent hospital admissions for respiratory illnesses to photochemical air pollution levels in Montreal.** *Environ Res* 1994, **67**:1-19.
5. Downs SH, Schindler C, Liu LJ, Keidel D, Bayer-Oglesby L, Brutsche MH, Gerbase MW, Keller R, Kunzli N, Leuenberger P, Probst-Hensch NM, Tschopp JM, Zellweger JP, Rochat T, Schwartz J, Ackermann-Lieblich U: **Reduced exposure to PM₁₀ and attenuated age-related decline in lung function.** *N Engl J Med* 2007, **357**:2338-2347.
6. Gauderman WJ, Vora H, McConnell R, Berhane K, Gilliland F, Thomas D, Lurmann F, Avol E, Kunzli N, Jerrett M, Peters J: **Effect of exposure to traffic on lung development from 10 to 18 years of age: a cohort study.** *Lancet* 2007, **369**:571-577.
7. Ghorbanli M, Bakand Z, Bakhshi khaniki G, Bakand S: **Air pollution effects on the activity of antioxidant enzymes in Nerium Oleander and Robinia Pseudo Acacia plants in Tehran. Iran.** *J Environ Health Sci Eng* 2007, **4**:157-162.
8. Hosseinpour AR, Forouzanfar MH, Yunesian M, Asgharic F, Holakouie K, Farhood D: *Environ Res* 2005, **99**:126-131.
9. Jerrett M, Shankardass K, Berhane K, Gauderman WJ, Kunzli N, Avol E, Gilliland F, Lurmann F, Molitor JN, Thomas DC, Peters J, McConnell R: **Traffic-related air pollution and asthma onset in children: a prospective cohort study with individual exposure measurement.** *Environ Health Perspect* 2008, **116**:1433-1438.
10. Kunzli N, Jerrett M, Mack WJ, Beckerman B, LaBree L, Gilliland F, Thomas D, Peters J, Hodis HN: **Ambient air pollution and atherosclerosis in Los Angeles.** *Environ Health Perspect* 2005, **113**:201-206.
11. Miller KA, Siscovick DS, Sheppard L, Shepherd K, Sullivan JH, Anderson GL, Kaufman JD: **Long-term exposure to air pollution and incidence of cardiovascular events in women.** *N Engl J Med* 2007, **356**:447-458.
12. Pope CA, Burnett RT, Thun MJ, Calle EE, Krewski D, Ito K, Thurston GD: **Lung cancer, cardiopulmonary mortality, and long-term exposure to fine particulate air pollution.** *JAMA* 2002, **287**:1132-1141.

13. Schwartz J, Morris R: **Air pollution and hospital admissions for cardiovascular disease in Detroit Michigan.** *Am J Epidemiol* 1995, **142**:23–35.
14. USEPA: *Air Quality Criteria for Particulate Matter. Final Report.* Washington, DC: US Environmental Protection Agency; 1996. EPA 600/P-95/001.
15. Fattore E, Paiano V, Borgini A, Tittarelli A, Bertoldi M, Crosignani P, Fanelli R: **Human health risk in relation to air quality in two municipalities in an industrialized area of Northern Italy.** *Environ Res* 2011, **111**:1321–1327.
16. SCI: *Statistic Center of Iran.* 2011. Available at: www.amar.org.ir.
17. WHO: *Urban outdoor air pollution database.* Geneva, Switzerland: August 2011 Department of Public Health and Environment, World Health Organization; 2011. Available at: <http://www.who.int/phe>.
18. Krzyzanowski M: **Methods for assessing the extent of exposure and effects of air pollution.** *Occup Environ Med* 1997, **54**:145–151.
19. Anderson R, Atkinson A, Peacock JL, Marston L, Konstantinou K: *Meta-Analysis of Time-Series and Panel Studies on Particulate Matter and Ozone (O3).* Copenhagen, Denmark: Document EUR/04/5042688, WHO Task Group. WHO Regional Office for Europe; 2004.
20. WHO: *World Health Organization Regional Office for Europe Copenhagen. Air Quality Guidelines for Europe.* secondth edition. WHO Regional Publications (European Series, No. 91); 2000.
21. Gryparis A, Forsberg B, Katsouyanni K, Analitis A, Touloumi G, Schwartz J, Samoli E, Medina S, Anderson HR, Niciu EM, Wichmann HE, Kriz B, Kosnik M, Skorkovsky J, Vonk JM, Dortbudak Z: **Acute effects of ozone on mortality from the “air pollution and health: a European approach” project.** *Am J Respir Crit Care Med* 2004, **170**:1080–1087.
22. Samoli E, Aga E, Touloumi G, Nisiotis K, Forsberg B, Lefranc A, Pekkanen J, Wojtyniak B, Schindler C, Niciu E, Brunstein R, Dodic Fikfak M, Schwartz J, Katsouyanni K: **Short-term effects of nitrogen dioxide on mortality: an analysis within the APHEA project.** *Eur Respir J* 2006, **27**:1129–1138.
23. WHO: *Overview of the environment and health in Europe in the 1990s - Background document.* World Health Organization Regional Publications, European Series, No 89; 1999.
24. Burrett RT, Doles RE: **Association between ambient carbon monoxide levels and hospitalization for congestive heart failure in the elderly in 10 Canadian cities.** *Epidemiology* 1997, **8**:162–167.
25. Spix C: **Short-Term Effects of Air Pollution on Hospital Admissions of Respiratory Diseases in Europe: a quantitative summary of APHEA study results.** *Arch Environ Health* 1997, **53**:54–64.
26. Touloumi G, Samoli E, Katsouyanni K: **Daily mortality in “winter type” air pollution in Athens-a time-series analysis within the APHEA project.** *J Epidemiol Community Health* 1996, **50**(suppl 1):S47–S51.
27. Anderson HR, Leon AP: **Air pollution and daily mortality in London: 1987–92.** *BMJ* 1996, **312**:665–669.
28. WHO: *Air quality guidelines for particulate matter, ozone, nitrogen dioxide and sulfur dioxide: Summary of risk assessment, Global update 2005.* World Health Organization; 2005. Available at: <http://www.euro.who.int/Document/E87950.pdf>.
29. Boldo E, Medina S, LeTertre A, Hurley F, Mucke HG, Ballester F, Aguilera I, Eilstein D: **Apheis: health impact assessment of long-term exposure to PM(2.5) in 23 European cities.** *Eur J Epidemiol* 2006, **21**:449–458.
30. Tominz R, Mazzoleni B, Daris F: **Estimate of potential health benefits of the reduction of air pollution with PM10 in Trieste, Italy.** *Epidemiol Prev* 2005, **29**:149–155.
31. Martuzzi M, Galassi C, Ostro B, Forastiere F, Bertollini R: *Health Impact Assessment of Air Pollution in the Eight Major Italian Cities.* WHO Europe EURO /02/5040650; 2002. Available at: <http://www.euro.who.int/healthimpact>.
32. Martuzzi M, Mitis M, Iavarone I, Serinelli M: *Health Impact of PM10 and Ozone in 13 Italian Cities.* WHO Europe; 2006. Available at: <http://www.euro.who.int/pubrequest>.
33. WHO: *European Centre for Environment and Health. Quantification of the Health Effects of Exposure to Air Pollution.* Bilthoven, Netherlands: Report of a WHO Working Group; 2000. EUR/01/5026342.

doi:10.1186/1735-2746-9-28

Cite this article as: Naddafi et al.: Health impact assessment of air pollution in megacity of Tehran, Iran. *Iranian Journal of Environmental Health Sciences & Engineering* 2012 **9**:28.

Submit your next manuscript to BioMed Central and take full advantage of:

- Convenient online submission
- Thorough peer review
- No space constraints or color figure charges
- Immediate publication on acceptance
- Inclusion in PubMed, CAS, Scopus and Google Scholar
- Research which is freely available for redistribution

Submit your manuscript at
www.biomedcentral.com/submit

