

HIDDEN GRAFFITI IDENTIFICATION ON MARBLE SURFACES THROUGH PHOTOGRAMMETRY AND REMOTE SENSING TECHNIQUES

D. Abate ^{1*}, M. Trentin ¹

¹Andreas Pittas Art Characterization Laboratories (APAC),
Science and Technology in Archaeology and Culture Research Centre (STARC),
The Cyprus Institute, Nicosia, Cyprus
(d.abate, m.trentin)@cyi.ac.cy

Commission II, WG VII/8

KEY WORDS: Graffiti, Marble, Photogrammetry, Remote Sensing, Edge-detection, Change-detection

ABSTRACT:

Nowadays, considering the various methodological approaches used by the scientific community to study graffiti, there is a need for the improvement of the documentation and analysis workflow that must be addressed. Historic graffiti are recognized by scholars of different disciplines as a relevant and genuine written source, able to provide an insight into the everyday life of the past. Many studies have indeed flourished during the last decades stating the relevance of graffiti as a multidisciplinary source of information and showing, at the same time, the fragmented research scenario due to the lack of reliable and standardized methodologies. Currently, the scientific community involved in the study of graffiti has largely benefited from the use of digital technologies. However, most of the efforts and research projects were focused on the analysis of graffiti immediately visible on the surface or graffiti the position of which was easily identifiable due to the depth and width of the engraving. The proposed study is intended to tackle the documentation pipeline a step earlier than the documentation itself when the graffiti are yet to be identified. The San Marco Basilica in Venice is used as a unique case study for the analysis of non-directly visible-to-human-eye graffiti in a rather challenging environment.

1. INTRODUCTION

1.1 Traditional Graffiti Documentation Methodologies

The main issues in reproducing graffiti are represented by the light scratches composing their *ductus*, which is difficult to recognize or not visible at all using traditional photographic techniques. Usually, graffiti have been mostly documented through handmade copy. This method is easy to apply since it uses a transparent sheet, a marker and a flashlight. The surveyor reproduces the graffiti by placing the transparent *medium* on the surface and copying with a marker the visible lines. Often the help of a flashlight is required to better identify the scratches. This is the simplest documentation workflow, but scholars are now aware of its limitations. First of all, this approach is biased by the researcher's ability and knowledge which might lead to a subjective reproduction. It has been verified that different researchers produce copies of the same artefact differing in more or less relevant details and features (Demesticha et al., 2017). Furthermore, during the copy, the human perception tends to select the lines to reproduce, affecting the objectivity of the documentation itself.

Additionally criticisms about the mechanical copy concern: (i) the spatial distribution of graffiti in a large area, documented only through the use of transparent, can be lost, together with the mutual relations between them; (ii) the handmade material copy requires direct contact between the transparent and the surface, a factor that sometimes may affect the support conservation conditions; (iii) at a later stage, the copy made on transparent is challenging to be implemented and transferred into other systems, both printed and digital. (Horn et al., 2018).

1.2 Related Works

In the last decade, thanks to the advancement in the digital domain, few techniques have been used to improve the documentation and analysis of graffiti: Reflectance Transformation Imaging (RTI) and Photogrammetry among all. Different studies have been indeed published analysing the pros and cons of each methodology.

In (Mudge et al., 2006; Mudge et al., 2012), the authors presented a study concerning the use of RTI for the documentation of 3D rock art possessing an extensive range of sizes, shapes, and environmental contexts.

Polynomial Texture Map (PTM), one of the chief tools of RTI, has been used as recording technology at Roughting Linn rock art site (UK) by (Duffy 2010). The author examined the added value of incorporating PTM into the existing record of the rock carvings.

RTI was used for the documentation of graffiti in the Nile Valley (Frood and Howley et al., 2014). In this scenario, graffiti were realized on stone blocks often as a palimpsest, plastered, and sometimes possibly erased.

For the Musawwarat Graffiti Project (Kleinitz, 2014), the digital recording strategy, including RTI, aimed at the detailed graphic and descriptive documentation of the graffiti in their exact location, taking into account their placement, and motivations of graffiti making.

In (Dhoop et al., 2016), ship graffiti were recorded using RTI in the medieval church of St. Thomas in Winchelsea (UK). Eleven

* Corresponding author

possible objects were identified and recorded, including a variety of ship types.

The application of RTI to ancient graffiti from Herculaneum (Italy) is discussed in (DiBiasie-Sammons, 2018). The author describes several examples of ancient graffiti, showing that RTI can improve the capabilities to decipher graffiti and their uniquely individual letterforms.

Today digital photogrammetry can be a feasible and flexible solution, and a quasi-standard procedure may be found to suggest general best practices for systematic 3D surveys. The scientific community studying graffiti has hence started to benefit from this technique largely.

Image-based modelling coupled with RTI, Infrared Photography (IR) and X-Ray Fluorescence (XRF) for the study of two mural paintings and their historical graffiti located in the catacombs of San Giovanni in Syracuse (Italy) were used by (Cosentino et al., 2015). The results of the infrared RTI were particularly powerful in their ability to document graffiti on deteriorated surfaces painted with earth pigments.

In (Porter et al., 2016), RTI and photogrammetry have been compared for the analysis of art object from the Palaeolithic site of Solutré (Burgundy, France). The authors concluded that these methods can be seen as complementary and that the resulting products may be used for several purposes, including the creation of stylistic analysis and the dissemination of digital object.

The use of digital tools to document ancient graffiti is described in (Valente et al., 2019). Due to the high level of detail required for the documentation, the authors highlighted that despite the additional efforts required to set the image acquisition and photogrammetric pipeline, the final results are a relevant improvement of traditional photographic documentation of graffiti.

1.3 Paper Objectives and Contribution

All the examples, described above in Section 1.2, refer to graffiti where (i) the spatial location is known, and (ii) the readability is clear enough at naked-eye or with the use of raking light.

This study intends to tackle those scenarios where, due to the almost invisible depth of the incisions, the graffiti are not visible and are impossible to locate at first glance. A combination of image-based modelling and remote sensing techniques is used and described below in Section 3.

In the San Marco Basilica, different factors prevent direct graffiti identification. The traditional techniques used to detect them, such as UV light or oblique light, although being helpful are indeed not conclusive.

The inner space of the Basilica is wholly covered and decorated with juxtaposed marble slabs. Restoration works and routine cleaning have removed the natural patina and critically reduced the depth and visibility of graffiti, now faded and almost disappeared.

A second issue in detecting and documenting graffiti on marble slabs is that the surface is extremely reflective. Light sources, though, must be adequately and correctly located and calibrated to avoid further disturb, and allow better visibility.

Moreover, in the marble revetments, the veins of the stone create a sort of continuous drape, as is still seen today in the Justinian churches of S. Sophia in Constantinople and of S. Vitale in Ravenna. This polychromy produces a non-neutral visual background where the shades of colours can be easily confused with scratched lines.

Due to these reasons, the knowledge of such an amount, in number and quality, of graffiti inside the Basilica was not known until the present survey.

2. CASE STUDY

2.1 The San Marco Basilica of Venice

The San Marco Basilica is the principal monument of the unique city of Venice. It represents and summarises the history and the vocation of the city, settled between the land and the sea, between East and West. Together with the Doge's palace, it embodies the political and religious power of the Republic of Venice. The building was erected during the 10th century as the Doge's private chapel. It was gradually expanded and decorated from the 12th century thanks to the income derived from Venetian commercial activities in the eastern Mediterranean and the crusades (mainly the fourth, guided by Enrico Dandolo, the Doge himself). *Spolia* from Constantinople and the Greek territories reached Venice to decorate and embellish the Basilica and many other private buildings in the city. The result is the magnificent monument still visible today. The external is a rich marble casket realised with precious architectural elements that constitute the background of the Piazza, where the main political and social events of the city took place. Once inside the visitor is immersed in an astonishing space, created by marble revetments in the lower part and golden mosaics covering the five domes and the vaults. This overwhelming environment has always inspired the visitors, in the past as well as today, combining the physical beauty of the monument to its religious and political value (Puppi et al., 1999).

Visitors' wonder and devotion have been registered through the centuries with the scratching of graffiti. Few works from the end of the 19th century mention the presence of Armenian graffiti inscription and ship reproduction on the main facade (Zorzi, 1877; Predelli, 1890; Helms, 1975; Ray Martin, 2001). As far as now, few other inscriptions and drawings were known thanks to their deep and well-defined furrow that made them visible. They are preserved mainly in the upper-level women's' gallery and in the external terrace, behind the bronze horses.

Recently, a more detailed survey of the ground level marble decoration, realized by the Andreas Pittas Art Characterization Labs (APAC) of the Cyprus Institute, showed the presence of very faint linear features that, due to their state of preservation, have not been previously identified as graffiti but just as accidental scratches.

In the framework of this pilot case-study, it has been decided to focus the search and documentation efforts in two areas, easily reachable and located in the transept (south-west part) with direct visual access to the apse and altar (Figure 1). The first area is a portion of the wall located next to the entrance of what today is the 'Treasure of the Basilica'. The second one is instead positioned in the lower part of one face of the first pillar on the left, flanking the central nave (Figure 1).

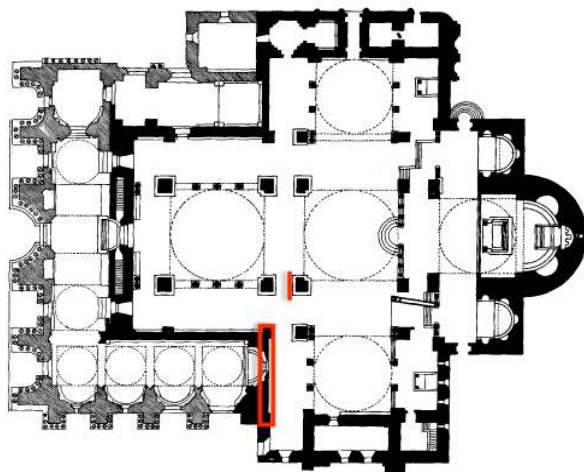


Figure 1. San Marco Basilica, plan with the location of analysed areas.

These locations are also still enriched by the presence of marble benches. The presence of the latter has been considered as an important element that could foster the making of graffiti by providing the carvers with a comfortable position that could have allowed them to realize, undisturbed, not only simple drawings but also extended portraits, scenes and inscriptions (Figure 2).



Figure 2. San Marco Basilica, south transept, marble decoration.

In Table 1 the extension of the walls surveyed is described.

Location	Dimension	Area
South Transept	1.2m X 1 m	1.2 Sqm
Pillar	1.1m X 0.8 m	0.88 Sqm

Table 1. Surveyed areas.

3. DATA COLLECTION AND PROCESSING

Figure 3 summarizes the methodological workflow developed for the first identification and documentation of invisible graffiti.

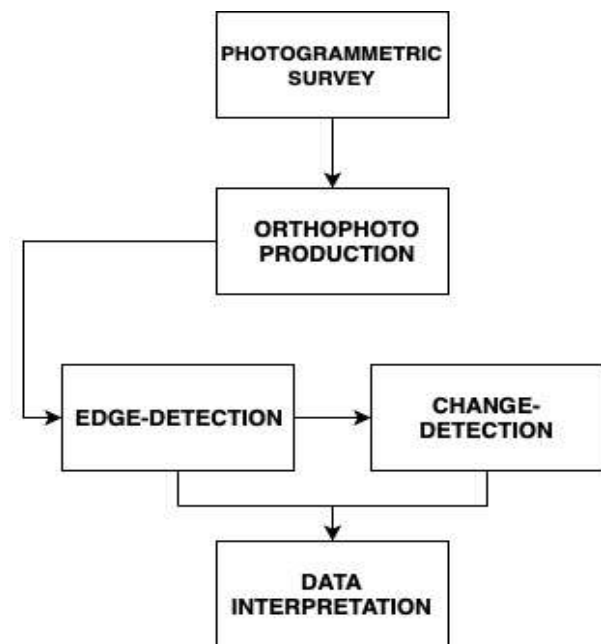


Figure 3. The workflow adopted in the project.

After a photogrammetric survey of the marble decoration and the production of the relative orthophotos where graffiti are suspected to exist (section 3.1), the pipeline consists of (i) computation of edge-detection to identify graffiti (section 3.2); (ii) computation of change-detection to highlight the differences between the pre-processed image and the one created by the edge-detection algorithm (section 3.3).

The orthophotos have been processed using the open-source software Orfeo ToolBox (OTB), a remote sensing image processing library developed by CNES, the French Space Agency, including a fast image viewer, applications callable from command-line, Python or QGIS, and a powerful C++ API. (Grizonnet et al., 2017).

3.1 Photogrammetric Survey

The photogrammetric setup consisted of a Canon 5D Mark IV camera, 30-megapixel full-frame sensor (6 μ pixel size), equipped with a Canon EF 70-200 mm f/4L IS USM lens, two photographic lamps, polarised sheets, and polarizer filter. The camera's autofocus was disabled, and the lens focusing ring and Focal Length were fixed at 200 mm with a piece of insulating tape to avoid accidental changes of interior orientation parameters during the photogrammetric survey.

In 3D dense stereo matching, surface reflections may lead to incorrect measurements and blunders in the resulting dense point cloud. The use of a lens polarised filter, oriented in the same polarisation plane, mainly results in a surface enhancement effect, increasing the saturation and contrast of the image. However, with this configuration, the reflections are not eliminated. In order to overcome the problem of disturbing reflections, such as for the marble slabs of the San Marco Basilica, polarising filters can be mounted both on the camera lens and on the light source(s). Reflections in the images can be then suppressed by crossing the polarising direction of the filters leading to homogeneously illuminated images and better matching results. To achieve this goal, two polarised sheets were placed over the circular lamps, equipped with fluorescent light bulbs, and rotated accordingly until perpendicular or crossed planes of polarisation were reached.

Few studies have been published concerning the use of polarising films for image-based 3D reconstruction (Table 2).

A photogrammetric camera network was a priori planned (Nocerino et al., 2014), following a normal and convergent schema, with the primary aim to guarantee the automated matching of homologous points and an adequate number of intersecting rays (Fraser, 1987). The images were acquired with a mean overlap between two consecutive normal views of about 75-80%. Moreover, convergent images were acquired, yielding convergent angles of 45°.

Given the requirements of sub-millimetre accuracy, a photographic scale of 1:10 was selected. An estimated camera-object distance of 2 m was set, thus resulting in a mean Ground Sample Distance (GSD) of 0.06 mm. An average base-to-depth ratio (B/D) of 0.5 was computed.

Site	Method	Notes	Authors
Lab experiment	Polarised filters/photogrammetry	Detected shiny structures	Wells et al., 2012
Forestry related sites	Polarised filters/aerial imaging	Suppress reflection from water	Paine and Kise, 2012
Museum	Polarised filters/photogrammetry	historical globe digitisation	Menna et al., 2012
Museum	Polarised filters/photogrammetry	Bronze artefact digitisation	Nicolae et al., 2014
Museum,	Polarised filters/photogrammetry	image-based reconstruction improvement	Guidi et al., 2014
Lab experiment	Polarised filters/photogrammetry	Camera orientation assessment	Conen et al., 2018
Museum	Polarised filters/photogrammetry	Icon restoration process	Abate, 2019

Table 2. Use of polarised light in 3D dense stereo matching, literature review

Starting from the estimated camera poses and orientation, a dense 3D reconstruction via a pixel-based image matching algorithm was applied. This was performed using the first-level image pyramid, corresponding to the original full image resolution. The derived orthomosaics, radiometrically balanced, and digitally blended so that the seam lines between images are not visible, were finally produced with a pixel size of 0.13 mm (Figure 4). Several Ground Control Points (GCPs), regularly distributed on the area of interest, were measured with a surveying network to scale the model and avoid any deformation due to the planarity of the object digitized.

3.2 Edge-Detection

Edge-detection is an image processing technique, mainly used in the remote sensing domain, for finding the boundaries of objects within images. It works by detecting discontinuities in brightness, computing edge features on every pixel of the input image selected channel.

In recent years, many approaches have been explored for automatic edge-detection (Roberts, 1965; Canny, 1986; Touzi et al., 1988; Sobel, 1990).

For the detection of graffiti in the San Marco Basilica, the Sobel edge detector implemented in OTB has been used. It exploits a pair of 3 x 3 convolution masks, one estimating gradient in the x-direction and the other estimating gradient in y-direction (Figure 5).



Figure 4. San Marco Basilica, western wall of the southern transept, RGB orthophoto

It is anticipated that, due to the intrinsic features of the marble slabs used in San Marco, and characterized by linear veins, the algorithms created several artefacts which were discarded by manual and visual inspections at a later stage.



Figure 5. San Marco Basilica, western wall of the southern transept, orthophoto of the Crucifixion scene, edge-detection

3.3 Change-Detection

Many techniques have been developed in the remote sensing domain, with the purpose of identifying the differences occurred on the Earth surface over time. This task usually referred to as change-detection, can be approached in a supervised or unsupervised way, being the latter preferred when no training samples or only a little knowledge on the ground is available.

The Multivariate Alteration Detection (MAD) algorithm (Nielsen et al., 1998) was selected in this study with the main aim of highlighting the changes occurred on the analysed surface after the application of the edge-detection step.

Since MAD analysis lacks in semantic interpretation, the adoption of a combined procedure can be preferred to support the understanding of changes found by MAD. For this reason, Nielsen proposed to apply the Maximum Autocorrelation Factor (MAF) transformation to the MAD components (Nielsen et al., 2010).

The compared images used as input for the MAD/MAF analysis, were a desaturated version of the original RGB orthophoto and the outcome of the edge-detection process.

Concerning the change-detection step, no image alignment was performed since the input and output data share the same physical space.

4. RESULTS

The results of the application of edge-detection and change-detection algorithm are twofold. First, thanks to the computation of the edge-detection process, graffiti invisible at naked-eye have been located and highlighted (Figure 6 and 7).

Second, undocumented graffiti, have been identified and located.

Within the field of graffiti studies, the applied techniques represent an original and very efficient digital workflow able to improve scholar's ability to detect, verify and document, using high-resolution images, this very feeble heritage.



Figure 6. San Marco Basilica, pillar, orthophoto, Doge's head detail, RGB (top) – change-detection (bottom)

In normal environmental condition (indoor spaces), indeed, graffiti detection with naked-eye is challenging, and often the traditional methods fail. Moreover, although the application of photogrammetry and RTI have improved visible graffiti documentation, the present contribution brings the research a step forward. Exploiting remote-sensing born algorithms, it has been demonstrated how it is possible not only to enhance visible graffiti but also to locate non visible ones.

Two graffiti represented the most impressive examples: the scene of the crucifixion (Figure 5), and a portrait identified as a Doge's head (Figure 6).

The crucifixion, due to the extended area of the graffito, is characterized by a high concentration of scratches. Moreover, the graffito is located on a marble section with natural veins that hampered the complete and correct reading of the drawing. In this case, the described digital workflow crucially enhanced the general understanding providing a global view of the scene with relevant details. It was possible to see the peculiarity of the blood spreading from Christ's rib cage, and to identify a second graffito (on the left) reproducing a horse, that is juxtaposed to the crucifixion.

The Doge's head, identified as such thanks to the characteristic corn hat, has a very small dimension which did not allow the identification with the naked-eye. The proposed methodology allowed to recognise it with a high level of definition, recording every detail.



Figure 7. San Marco Basilica, pillar, orthophoto, inscription detail, change-detection

5. CONCLUSIONS

This study proposes a new workflow for the initial identification of graffiti which due to the material properties, the geometrical features of the scratches and the environmental conditions are invisible and not directly perceivable by the human eye.

The described pipeline is mainly based on the application of photogrammetric techniques and remote sensing algorithms not directly developed for the graffiti domain.

From a broader point of view, this project represents a new frontier for the field of study of graffiti since it allows to identify their presence in challenging contexts. It is now possible to perform a more detailed analysis, detecting the presence of such elusive evidence that can help not only to enhance our specific knowledge about graffiti but also connect them to the monument where they are located, its history and use, such as for the Basilica of San Marco in Venice.

RTI, which became a *quasi*-standard procedure in the analysis and study of graffiti, is not intended to be replaced by the described approach. It must be instead stressed that once invisible graffiti are pinpointed on extended surfaces, RTI can still represent a valuable source of information focusing on specific artefacts, making the two techniques complementary.

6. FUTURE WORKS

Considering the positive and relevant results obtained in the framework of the presented pilot case-study, future activities will focus on a systematic graffiti documentation campaign. Due to the extension of the San Marco Basilica inner space and pursuing the efforts of time and man-efforts optimization, the next phase of the research will be represented by the implementation of a customized photogrammetric rig which will help in the acquisition of a broader area of the Basilica.

Despite the presence of a-priori documented graffiti, the photogrammetric documentation will indeed regard an extensive band of the marble decoration from the ground level to 1.5-meter height. This approach is expected to allow a more time efficient data collection without reducing the geometric and radiometric accuracy of the outcomes.

ACKNOWLEDGEMENTS

The authors wish to thank Mario Piana (*proto*), Ettore Vio (*proto emeritus*), Nicola Benassi and Paolo Gasparotto of the *Procuratoria di San Marco* for their collaboration and support during the field work.

They would also like to express their great appreciation to Associate Professor Nikolas Bakirtzis and Associate Professor Sorin Hermon for the advices provided during the data analysis.

REFERENCES

Abate D., 2019. Documentation of paintings restoration through photogrammetry and change detection algorithms. In: *Heritage Science*, Vol. 7:13, <https://doi.org/10.1186/s40494-019-0257-y>.

Canny, J., 1986. A Computational approach to edge detection. In: *IEEE Transactions on Pattern Analysis and Machine Intelligence*, Vol. 8:6, pp. 679-698. DOI: 10.1109/TPAMI.1986.4767851.

Conen N., Hastedt H., Kahmen O., Luhmann T., 2018. Improving image matching by reducing surface reflections using polarising filter techniques. In: *ISPRS Annals of the Photogrammetry, Remote Sensing and Spatial Information Science*, Vol. XLII-2, pp. 267–274.

Cosentino, A., Stout S., Scandurra, C., 2015. Innovative imaging techniques for examination and documentation of mural paintings and historical graffiti in the catacombs of San Giovanni, Syracuse. In: *International Journal of Conservation Science* Vol. 6 (1), pp. 23–34.

Demesticha, S., Delouca, K., Trentin, M. G., Bakirtzis, N., Neophytou, A., 2017. Seamen on Land? A preliminary analysis of medieval ship graffiti on Cyprus. In: *International Journal of Nautical Archaeology*, Vol. 46, pp. 346–381.

Dhoop T., Cooper C., Copeland, P., 2016. Recording and analysis of ship graffiti in St. Thomas' Church and Blackfriars Barn Undercroft in Winchelsea, East Sussex, UK. In: *The International Journal of Nautical Archaeology*, Vol. 45.2, pp. 296-309.

DiBiasie-Sammons J.F., 2018. Application of Reflectance Transformation Imaging (RTI) to the study of ancient graffiti from Herculaneum, Italy. In: *Journal of Archaeological Science Reports*, Vol. 17, pp. 184-194, DOI: 10.1109/36.7708.

Duffy, S.M., 2010. Polynomial texture mapping at Roughting Linn rock art site. In: *International Archives of Photogrammetry, Remote Sensing and Spatial Information Sciences*, Vol. XXXVIII, Part 5, pp. 213-217.

Fraser C. 1987. Limiting error propagation in network design. In: *Photogramm Eng Remote Sens*. Vol. 53(5), pp. 487–493.

Frood, E., Howley, K., 2014. Applications of Reflectance Transformation Imaging (RTI) in the study of temple graffiti. In: Pischikova, E., Budka, J., Griffin, K. (Eds.), *Thebes in the First Millennium BC*, pp. 625–638.

Grizonnet M., Michel J., Poughon V., Inglada J., Savinaud M., Cresson R., 2017. Orfeo ToolBox: open source processing of remote sensing images. In: *Open Geospatial Data, Software and Standards*, Vol. 2:15. DOI 10.1186/s40965-017-0031-6.

Guidi G., Gonizzi Barsanti S., Micoli L.L., 2014. Image pre-processing for optimizing automated photogrammetric performance. In: *ISPRS Annals of the Photogrammetry, Remote Sensing and Spatial Information Science*, Vol. II-5, pp. 145–152.

Helms S. W., 1975. Ship graffiti in the church of San Marco in Venice. In: *The international journal of Nautical Archaeology and Underwater Exploration*, Vol. 4.2 pp. 229-236.

Horn C., Ling J., Bertilsson U., Potter R., 2018. By all means necessary - 2.5 and 3D recording of surfaces in the study of Southern Scandinavian Rock Art. In: *Open Archaeology*, Vol. 4, pp. 81-96. <https://doi.org/10.1016/j.jasrep.2017.08.011>.

Kleinitz C., 2014. The graffiti of Musawwarat es-Sufra: current research on historic inscriptions, images and markings at the Great Enclosure. In: *Sudan & Nubia*, Vol. 18, pp. 93-103.

- Menna F., Rizzi A., Nocerino E., Remondino F., Gruen A., 2012. High resolution 3D modelling of the Behaim globe. In: *The International Archives of the Photogrammetry, Remote Sensing and Spatial Information Sciences*, Vol. XXXIX-B5, pp. 115–20.
- Mudge, M., Malzbender, T., Schroer, C., Lum, M., 2006. New Reflection Transformation Imaging methods for rock art and multiple-view display. In: Ioannides, M., Arnold, D., Niccolucci, F., Mania, K. (Eds.), *The 7th International Symposium on Virtual Reality, Archaeology and Cultural Heritage (VAST)*, pp. 195–202.
- Mudge, M., Schroer, C., Noble, T., Matthews, N., Rusinkiewicz, S., Toler-Franklin, C., 2012. Robust and scientifically reliable rock art documentation from digital photographs. In: *A Companion to Rock Art*, pp. 644–659.
- Nicolae C., Nocerino E., Menna F., Remondino F., 2014. Photogrammetry applied to problematic artefacts. In: *ISPRS Annals of the Photogrammetry, Remote Sensing and Spatial Information Science*, Vol. II-5, pp. 451–456.
- Nielsen A.A., Conradsen K., Simpson J.J., 1998. Multivariate alteration detection (MAD) and MAF postprocessing in multispectral, bitemporal image data: new approaches to change detection studies. In: *Remote Sensing of Environment*, Vol. 64 (1), pp. 1–19. [https://doi.org/10.1016/S0034-4257\(97\)00162-4](https://doi.org/10.1016/S0034-4257(97)00162-4).
- Nielsen A.A., Hecheltjen A., Thonfeld F., Canty M.J. 2010. Automatic change detection in RapidEye data using the combined MAD and kernel MAF methods. In: *IEEE International Geoscience and Remote Sensing Symposium*, pp. 3078-3081.
- Nocerino E., Menna F., Remondino F., 2014. Accuracy of typical photogrammetric networks in cultural heritage 3D modelling projects. In: *The International Archives of the Photogrammetry, Remote Sensing and Spatial Information Sciences*, Vol. XL-5, pp. 465-472.
- Paine D.P., Kise J.D., 2012. Aerial photography and image interpretation.
- Porter S. T., Huber N., Hoyer C., Floss H., 2016. Portable and low-cost solutions to the imaging of Paleolithic art objects: A comparison of photogrammetry and reflectance transformation imaging. In: *Journal of Archaeological Science*, Vol. 10, pp. 859–863.
- Predelli R., 1890. Delle forme della scrittura nei marmi e nei mosaici della basilica di San Marco. In: Ongania F. (Ed), *La basilica di San Marco in Venezia, I testi*, Vol. 3, XII, pp. 443-448.
- Puppi L., Dorigo W., Sinding-Larsen S., 1999. *La Basilica di San Marco. Arte e simbologia*.
- Ray Martin L., 2001. *The art and archaeology of Venetian ships and boats*.
- Roberts, G.L., 1965. Machine perception of three-dimensional solids. In J.T. Tipp et al., editor, *Optical and Electro-Optical, Information Processing*, pp. 159-167 MIT Press.
- Sobel, I., 1990. An Isotropic 3×3 Gradient Operator. In: Freeman, H. (Ed), *Machine Vision for Three – Dimensional Scenes*, pp. 376-379. DOI: 10.13140/RG.2.1.1912.4965.
- Touzi, R., Lopes, A., Bouquet, P., 1988. A Statistical and geometrical edge detector for SAR Images. In *IEEE Transactions on Geoscience and Remote Sensing*, Vol. 26, pp. 764-773.
- Valente R., Barazzetti L., Previtali M., Roncoroni F., 2019. Considerations on the use of digital tools for documenting ancient wall graffiti. In: *The International Archives of the Photogrammetry, Remote Sensing and Spatial Information Sciences*, Vol. XLII-2/W9, pp. 731-737. <https://doi.org/10.5194/isprs-archives-XLII-2-W9-731-2019>.
- Wells J.M., Jones T.W., Danehy P., 2005. Polarisation and colour filtering applied to enhance photogrammetric measurements of reflective surfaces. In: *46th AIAA/ASME/ASCE/ASC structures, structural dynamics & materials conference*, pp. 1887–1896.
- Zorzi A. P., 1877. Osservazioni intorno ai restauri interni ed esterni della Basilica di San Marco.