

ARTICLE

DOI: 10.1038/s41467-018-05760-x

OPEN

High efficiency planar-type perovskite solar cells with negligible hysteresis using EDTA-complexed SnO₂

Dong Yang^{1,2}, Ruixia Yang¹, Kai Wang², Congcong Wu², Xuejie Zhu¹, Jiangshan Feng¹, Xiaodong Ren¹, Guojia Fang³, Shashank Priya² & Shengzhong (Frank) Liu^{1,4}

Even though the mesoporous-type perovskite solar cell (PSC) is known for high efficiency, its planar-type counterpart exhibits lower efficiency and hysteretic response. Herein, we report success in suppressing hysteresis and record efficiency for planar-type devices using EDTA-complexed tin oxide (SnO₂) electron-transport layer. The Fermi level of EDTA-complexed SnO₂ is better matched with the conduction band of perovskite, leading to high open-circuit voltage. Its electron mobility is about three times larger than that of the SnO₂. The record power conversion efficiency of planar-type PSCs with EDTA-complexed SnO₂ increases to 21.60% (certified at 21.52% by Newport) with negligible hysteresis. Meanwhile, the low-temperature processed EDTA-complexed SnO₂ enables 18.28% efficiency for a flexible device. Moreover, the unsealed PSCs with EDTA-complexed SnO₂ degrade only by 8% exposed in an ambient atmosphere after 2880 h, and only by 14% after 120 h under irradiation at 100 mW cm⁻².

¹Key Laboratory of Applied Surface and Colloid Chemistry, Ministry of Education; Shaanxi Engineering Lab for Advanced Energy Technology, School of Materials Science and Engineering, Shaanxi Normal University, Xi'an 710119, China. ²Center for Energy Harvesting Materials and System (CEHMS), Virginia Tech, Blacksburg, VA 24061, USA. ³Key Laboratory of Artificial Micro- and Nano-structures of Ministry of Education of China, School of Physics and Technology, Wuhan University, Wuhan 430072, China. ⁴Dalian National Laboratory for Clean Energy, iChEM, Dalian Institute of Chemical Physics, Chinese Academy of Sciences, 457 Zhongshan Road, Dalian 116023, China. Correspondence and requests for materials should be addressed to D.Y. (email: dongyang@vt.edu) or to S.P. (email: spriya@vt.edu) or to S.L. (email: szliu@dicp.ac.cn)

Owing to the singular properties, including tuned band gap, small exciton energy, excellent bipolar carrier transport, long charge diffusion length, and amazingly high tolerance to defects^{1–7}, organometal halide perovskites have been projected to be promising candidates for a multitude of optoelectronic applications, including photovoltaics, light emission, photodetectors, X-ray imaging, lasers, gamma-ray detection, subwavelength photonic devices in a long-wavelength region, etc.^{8–14}. The rapid increase efficiency in a solar cell based on organometal halide perovskites validates its promise in photovoltaics. In the last few years, the power conversion efficiency (PCE) of mesoporous-type perovskite solar cells (PSCs) has increased to 23.3% by optimizing thin-film growth, interface, and absorber materials^{15–17}. As of today, almost all PSCs with high PCE are based on mesoporous-type PSCs that often require high temperature to sinter the mesoporous layer for the best performance, compromising its low-cost advantage and limiting its application in flexible and tandem devices^{16,17}. In order to overcome this issue, planar-type PSC comprising of stacked planar thin films has been developed^{18,19} using low-temperature and low-cost synthesis processes^{20–22} since the long charge diffusion length and bipolar carrier properties of perovskites^{23,24}. However, compared to the mesoporous-type PSC, its planar-type counterpart suffers from significant lower certified PCE^{18,25}.

In a typical planar-type PSC, the perovskite absorber usually inserts between the electron-transport layer (ETL) and the hole-transport layer (HTL) to achieve inverted p–i–n or regular n–i–p configuration²¹. Generally, the inverted device structure utilizing fullerene ETL displays very low hysteresis, however, it usually yields lower PCE, not to mention that fullerene is very expensive^{26,27}. Therefore, research has focused on n–i–p architecture to provide low cost and high efficiency^{28,29}. Even though ETL-free planar-type PSCs have been reported^{30,31}, their highest PCE is only 14.14%, significantly lower than that of the cells with ETL, demonstrating the importance of the ETL in this configuration of PSCs. A suitable ETL should meet some basic requirements for high device efficiency³². For instance, decent optical transmittance to ensure enough light is transmitted into the perovskite absorber, matched energy level with the perovskite materials to produce the expected open-circuit voltage (V_{oc}), and high electron mobility to extract carriers from the active layer effectively in order to avoid charge recombination, etc. Fast carrier extraction is desired to restrict charge accumulation at the interface due to ion migration for reduced hysteresis in the planar-type PSCs. Thus, emphasis has been on developing high-quality ETLs with suitable energy level and high electron mobility for high PCE devices.

Thus far, TiO_2 is still the most widely used ETL in high-efficiency n–i–p planar-type PSCs due to its excellent photoelectric properties³³. However, the electron mobility of TiO_2 ETL is too low (ca. $10^{-4} \text{ cm}^2 \text{ V}^{-1} \text{ s}^{-1}$) to match with high hole mobility of commonly used HTLs (ca. $10^{-3} \text{ cm}^2 \text{ V}^{-1} \text{ s}^{-1}$), leading to charge accumulation at the TiO_2 /perovskite interface that causes hysteresis and reduced efficiency³⁴. There have been extensive efforts in developing low-temperature TiO_2 ETL, such as exploring low-temperature synthesis processes through doping and chemical engineering. The results shown by Tan et al. demonstrate that use of chlorine to modify the TiO_2 microstructure at low temperatures provides promising PCE of 20.1%³⁵. Recently, SnO_2 has been demonstrated as an alternative ETL to replace TiO_2 , owing to its more suitable energy level relative to perovskite and higher electron mobility. Ke et al. first used SnO_2 thin film as an ETL in regular planar-type PSCs and demonstrated a PCE of 16.02% with improved hysteresis³⁶. Later, the SnO_2 - TiO_2 (planar and mesoporous) composite layers were developed to enhance the performance of the PSCs^{37,38}. It is

noteworthy to mention that Al^{3+} -doped SnO_2 provides even better performance³⁹. Subsequently, a variety of methods, such as solution deposition, atomic layer deposition, chemical bath deposition, etc.^{40–42} have been developed for synthesizing SnO_2 thin film to improve the performance of planar-type PSCs⁴³. Recently, Jiang et al. developed the SnO_2 nanoparticles as the ETL and demonstrated a certified efficiency as high as 19.9% with very low hysteresis²¹. However, the PCE of the planar-type PSCs is still lower than that of the mesoporous-type devices likely due to charge accumulation at the ETL/perovskite interface caused by relatively low electron mobility of the ETL⁴⁴. It is expected that better PSC performance will be achieved by increasing electron mobility of the ETLs.

Ethylene diamine tetraacetic acid (EDTA) provides excellent modification of ETLs in organic solar cells owing to its strong chelation function. Li et al. have employed EDTA to passivate ZnO-based ETL and demonstrated improved performance of the organic solar cells⁴⁵. However, when the EDTA-ZnO layer is used in the present perovskite cells, the hydroxyl groups or acetate ligands on the ZnO surface react with the perovskite and proton transfer reactions occur at the perovskite/ZnO interface, leading to poor device performance⁴⁶.

In the present work, we realize an EDTA-complexed SnO_2 (E- SnO_2) ETLs by complexing EDTA with SnO_2 in planar-type PSCs to attain PCE as high as 21.60%, and certified PCE reaches to 21.52%, the highest reported value to date for the planar-type PSCs. Owing to the low-temperature processing for E- SnO_2 , we fabricate flexible PSCs, and the PCE reaches to 18.28%. Besides, the PSCs based on E- SnO_2 show negligible hysteresis because of the eliminated charge accumulation at the perovskite/ETL interface. We find that the electron mobility of E- SnO_2 increases by about three times compared to that of SnO_2 , leading to negligible current density–voltage (J - V) hysteresis due to improved electron extraction from the perovskite absorber²¹. Furthermore, we find that SnO_2 surface becomes more hydrophilic upon EDTA treatment, which decreases the Gibbs free energy for heterogeneous nucleation, resulting in high quality of the perovskite film.

Results

Fabrication and characterization of E- SnO_2 . It is well known that EDTA can react with transition metal oxide to form a complex, because it can provide its lone-pair electrons to the vacant d -orbital of the transition metal atom⁴⁷. Thus, EDTA was chosen to modify the SnO_2 to improve its performance. Supplementary Fig. 1a describes the chemical reaction that occurred when the SnO_2 was treated using the EDTA aqueous solution, resulting in the formation of a five-membered ring chelate. The images of EDTA, SnO_2 , and E- SnO_2 samples are shown in Supplementary Fig. 1b. It is apparent that the unmodified EDTA and SnO_2 samples are transparent, while EDTA-treated SnO_2 turned into milky white. Supplementary Fig. 2 compares the Fourier-transform infrared spectroscopy (FTIR) spectra of the E- SnO_2 solution measured in the freshly prepared condition and again after it was stored in an ambient atmosphere for 2 months. It is clear that there is no obvious difference between the two solutions indicating the high stability.

Figure 1a shows the X-ray photoelectron spectra (XPS) for EDTA, SnO_2 , and E- SnO_2 films deposited on quartz substrates. In order to reduce the charging effect, the exposed surface of the quartz substrate was coated with a conductive silver paint and connected to the ground. We calibrated the binding energy scale for all XPS measurements to the carbon 1s line at 284.8 eV. It is clear from these measurements that SnO_2 shows only peaks attributed to Sn and O. After the EDTA treatment, the E- SnO_2 film shows an additional peak located at ca. 400 eV, ascribed to N.

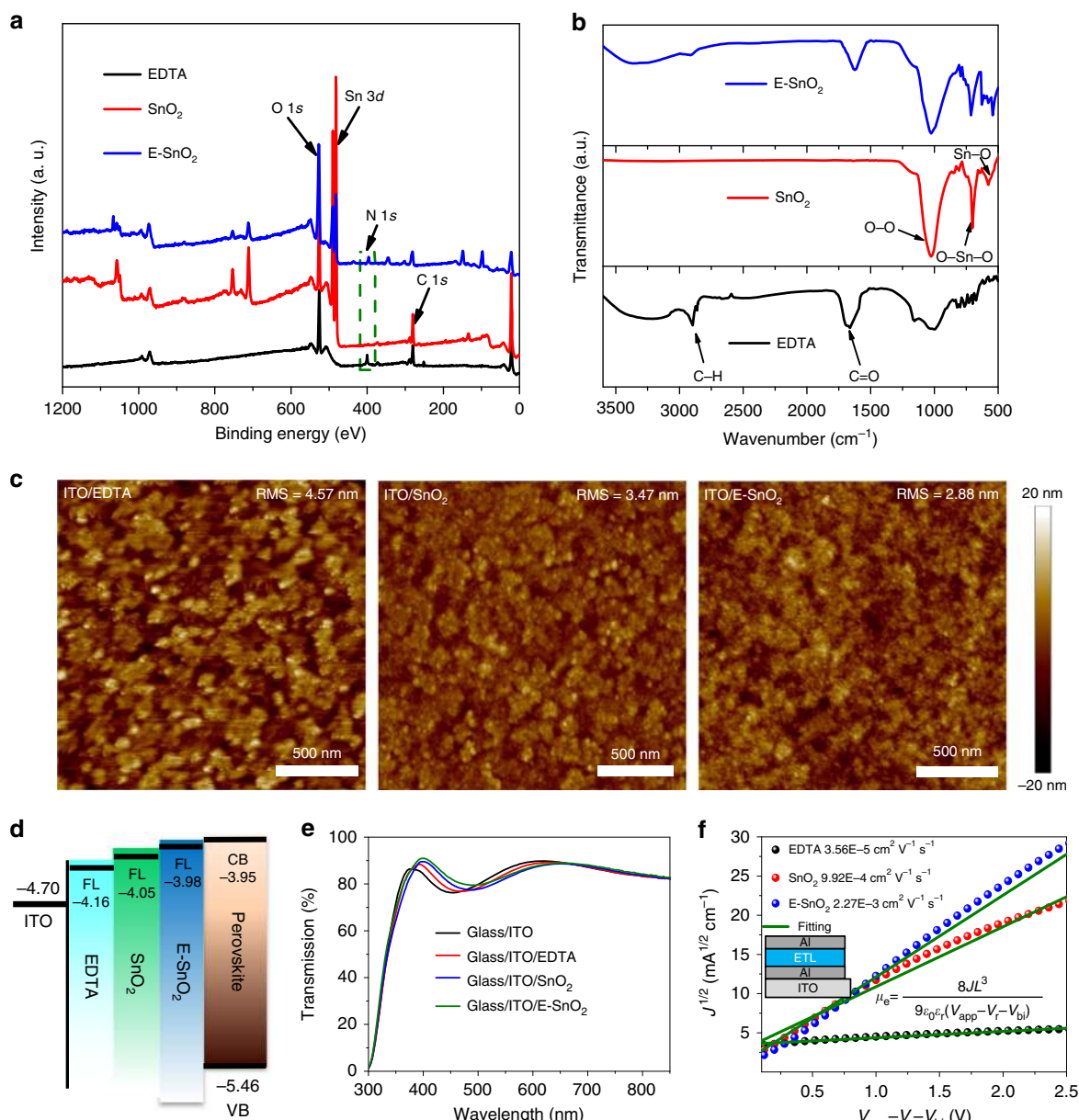


Fig. 1 Characterization of the ETLs. **a** XPS and **b** FTIR spectra of EDTA, SnO₂, and E-SnO₂ films deposited on quartz substrates. **c** AFM topographical images of EDTA, SnO₂, and E-SnO₂ films. **d** Schematic illustration of Fermi level of EDTA, SnO₂, and E-SnO₂ relative to the conduction band of the perovskite layer. The Fermi level of EDTA, SnO₂, and E-SnO₂ is measured by KPFM, and the conduction and valence band of the perovskite materials are obtained from the previous report⁷⁴. **e** Optical transmission spectra of EDTA, SnO₂, and E-SnO₂ films on ITO substrates. **f** Electron mobility for EDTA, SnO₂, and E-SnO₂ using the SCLC model, and the inset shows the device structure of ITO/Al/ETL/Al

Meanwhile, the Sn 3*d* peaks from E-SnO₂ are shifted by ca. 0.16 eV in contrast to the pristine SnO₂ (Supplementary Fig. 3), indicating that EDTA is bound to the SnO₂.

FTIR was used to study the interaction between SnO₂ and EDTA. As shown in Fig. 1b, the peaks around 2895 cm⁻¹ and 1673 cm⁻¹ belong to C-H and C=O stretching vibration in the EDTA, respectively. The characteristic peaks of SnO₂ observed at ca. 701 cm⁻¹ and 549 cm⁻¹ are due to O-Sn-O stretch and the Sn-O vibration, respectively⁴⁸. In addition, the peak at 1040 cm⁻¹ in the SnO₂ film is attributed to O-O stretching vibration due to oxygen adsorption on the SnO₂ surface⁴⁹. For the E-SnO₂ sample, the characteristic peaks of SnO₂ shift to 713 cm⁻¹ and 563 cm⁻¹, and the C-H and C=O stretching vibration peaks shift

to 2913 cm⁻¹ and 1624 cm⁻¹, further demonstrating that the EDTA is indeed complexed with SnO₂.

Atomic force microscopy (AFM) images of EDTA, SnO₂, and E-SnO₂ films deposited on the ITO substrates are shown in Fig. 1c. The data reveal that the E-SnO₂ film shows the smallest root-mean-square roughness of 2.88 nm, a key figure-of-merit for the PSCs⁵⁰. We also measured their Fermi level by Kelvin probe force microscopy (KPFM), with the surface potential images shown in Supplementary Fig. 4, and the calculated details are described in Supplementary Note 1. Figure 1d provides energy band alignment between perovskites and different ETLs. The Fermi level of E-SnO₂ is very close to the conduction band of perovskite, which is beneficial for enhancing V_{oc} ⁵¹.

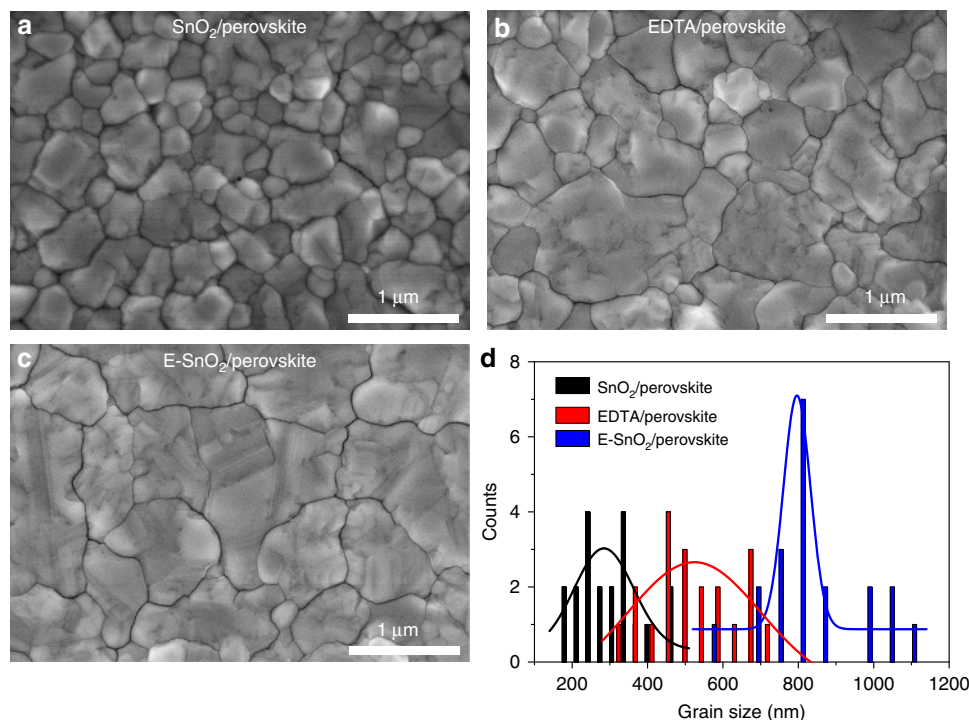


Fig. 2 The morphology of perovskite films deposited on different substrates. Top-view scanning electron microscope (SEM) images of perovskite films coated on **a** EDTA, **b** SnO₂, and **c** E-SnO₂ substrates. **d** The grain size distribution of perovskite deposited on various substrates

Figure 1e shows the optical transmission spectra of EDTA, SnO₂, and E-SnO₂ films coated on ITO. All these samples display high average transmittance in the visible region, demonstrating good optical quality. In addition, the electron mobility of various ETLs was measured using the space charge-limited current (SCLC) method²⁰, as shown in Fig. 1f. It is found that electron mobility of E-SnO₂ is $2.27 \times 10^{-3} \text{ cm}^2 \text{ V}^{-1} \text{ s}^{-1}$, significantly larger than those of the EDTA ($3.56 \times 10^{-5} \text{ cm}^2 \text{ V}^{-1} \text{ s}^{-1}$) and the SnO₂ ($9.92 \times 10^{-4} \text{ cm}^2 \text{ V}^{-1} \text{ s}^{-1}$). It is known that the electron mobility is a key figure-of-merit for ETLs in PSCs. Supplementary Fig. 5 shows the electron injection models for ITO/SnO₂ or E-SnO₂/perovskite/PCBM/Al structures, with their corresponding *J*-*V* curves, and the details are described in Supplementary Note 2. It is apparent that the high electron mobility effectively promotes electron transfer in the PSCs, reduces charge accumulation at the ETL/perovskite interface, improves efficiency, and suppresses hysteresis for the PSCs²¹.

Perovskite growth mechanism. The quality of the perovskite films, including grain size, crystallinity, surface coverage, etc., is very important for high-performance PSCs. For a consistent microstructure, a solution deposition technique was used to fabricate perovskite films on EDTA, SnO₂, and E-SnO₂ substrates. Figure 2a–c shows the morphology of the perovskite films deposited on different ETLs. It is clear from these images that continuous pinhole-free films with full surface coverage were obtained. Figure 2d shows the distribution diagram with an average grain size of about 309 nm for the perovskite coated on SnO₂. The grain size increased to about 518 nm for the EDTA sample. Surprisingly, the average perovskite grain size is further enhanced to as much as about 828 nm (Fig. 2c, d) for the E-SnO₂ substrates.

According to the established model for nucleation and growth of thin films^{52,53}, the perovskite formation process can be divided into four steps: (i) formation of a crystal nucleus, (ii) evolution of nuclei into an island structure, (iii) formation of a networked

microstructure, and (iv) growth of networks into a continuous film. The Gibbs free energy for heterogeneous nucleation in the first step can be expressed as Eq. (1)

$$\Delta G_{\text{heterogeneous}} = \Delta G_{\text{homogeneous}} \times f(\theta) \quad (1)$$

wherein $f(\theta) = (2 - 3 \cos \theta + \cos^3 \theta) / 4$ ⁵⁴, and θ is the contact angle of the precursor solution. Since the magnitude of θ varies in the range of $[0, \pi/2]$, the larger the θ is, the smaller is the magnitude of $\cos \theta$, and therefore larger is the parameter $f(\theta) \in [0, 1]$. In other words, a smaller contact angle results in reduced Gibbs free energy for heterogeneous nucleation, thereby assisting the nucleation process. Higher nucleation density will promote the film densification process⁵³. Compared to EDTA and SnO₂, E-SnO₂ shows the smallest contact angle (20.67°, Supplementary Fig. 6), resulting in the wettability interface for the perovskite^{55–57}. Thus, the perovskite coated on the E-SnO₂ exhibits better crystallinity (Supplementary Fig. 7) and full surface coverage (Fig. 2c). In addition, the small contact angle of the substrate provides the low surface energy⁵⁸, leading to increased grain size during the growth of the networked structure⁵³, as observed in the SEM measurements.

Charge transfer dynamics. The electron-only devices with the structure of ITO/ETL/perovskite/PCBM/Ag were fabricated to evaluate the trap density of perovskite deposited on different substrates. Figure 3a shows the dark current–voltage (*I*-*V*) curves of the electron-only devices. The linear correlation (dark yellow line) reveals an ohmic-type response at low bias voltage, when the bias voltage is above the kink point, which defines as the trap-filled limit voltage (*V*_{TFL}), the current nonlinearly increases (cyan line), indicating that the traps are completely filled. The trap density (*N*_t) can be obtained using Eq. (2)

$$N_t = \frac{2\epsilon_0\epsilon V_{\text{TFT}}}{eL^2} \quad (2)$$

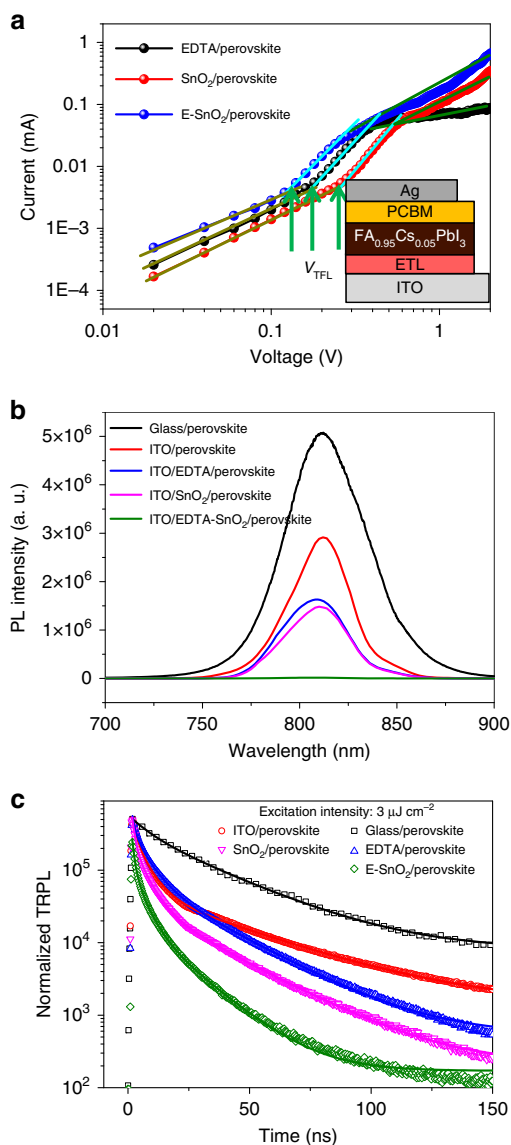


Fig. 3 The charge transfer between perovskite and different ETLs. **a** Dark I - V curves of the electron-only devices with the V_{TFL} kink points. The inset shows the structure of the electron-only device. **b** Steady-state PL and **c** TRPL spectra with an excitation intensity of $3 \mu\text{J cm}^{-2}$ of perovskite films deposited on different substrates

where ϵ_0 is the vacuum permittivity, ϵ is the relative dielectric constant of $\text{FA}_{0.95}\text{Cs}_{0.05}\text{PbI}_3$ ($\epsilon = 62.23$)⁵⁹, e is the electron charge, and L is the thickness of the film. The trap densities of the perovskite film coated on SnO_2 and EDTA substrates are 1.93×10^{16} and $1.27 \times 10^{16} \text{ cm}^{-3}$, respectively. Interestingly, the trap density is reduced to as low as $8.97 \times 10^{15} \text{ cm}^{-3}$ for the film deposited on E-SnO₂. The significantly lower trap density is related to low grain boundary density in the perovskite film (Fig. 2).

Figure 3b shows the steady-state photoluminescence (PL) spectra of the perovskite deposited on different substrates. Compared with other samples, significant PL quench is observed in the ITO/E-SnO₂/perovskite, demonstrating that the E-SnO₂ has the most appealing merits as the highest electron mobility (Fig. 1f). Figure 3c shows the normalized time-resolved PL (TRPL) for perovskite coated on various ETLs. The lifetime and the corresponding amplitudes are listed in Supplementary Table 1. Generally, the slow decay component (τ_1) is attributed to the radiative recombination of free charge carriers due to traps in the

bulk, and the fast decay component (τ_2) is originated from the quenching of charge carriers at the interface⁶⁰. The glass/perovskite sample shows the longest lifetime under excitation intensity of $3 \mu\text{J cm}^{-2}$. For perovskite coated on the ITO substrate, the lifetime is decreased to more than half due to the charge transfer from perovskite into ITO. For EDTA/perovskite and SnO_2 /perovskite samples, both the fast and slow decay lifetimes are very similar, and τ_1 dominates the PL decay for both samples, indicating severe recombination before they were extracted. When the perovskite is deposited on E-SnO₂, both τ_1 and τ_2 were shortened to 14.16 ns and 0.97 ns, with a proportion of 45.32% and 54.68%, respectively. Meanwhile, τ_2 appears to dominate the PL decay, indicating that electrons are effectively extracted from the perovskite layer to the E-SnO₂ with minimal recombination loss. Even under smaller excitation intensity ($0.5 \mu\text{J cm}^{-2}$), the acceleration of the lifetime for E-SnO₂/perovskite is observed. The lifetime increases with reduced excitation intensity (Supplementary Fig. 8 and Supplementary Table 1), in agreement with a previous report⁶¹. The electron-transport yield (Φ_{tr}) of different ETLs with different excitation intensities can be estimated using equation, $\Phi_{tr} = 1 - \tau_p/\tau_{\text{glass}}$, where τ_p is the average lifetime for perovskite deposited on different substrates, and τ_{glass} is the average lifetime for glass/perovskite. With the excitation intensity of $3 \mu\text{J cm}^{-2}$, the electron-transport yields of ITO, EDTA, SnO_2 , and E-SnO₂ are 49.72%, 67.58%, 68.31%, and 81.50%, respectively. When the excitation intensity reduces to $0.5 \mu\text{J cm}^{-2}$, the electron-transport yields of ITO, EDTA, SnO_2 , and E-SnO₂ are increased to 60.37%, 74.46%, 80.65%, and 90.82%, respectively. It is clear that the excitation intensity can significantly increase the electron-transport yield. These results further indicate that the E-SnO₂ is a good electron extraction layer for planar-type PSCs.

The performance of PSCs. With the superior optoelectronic properties discussed above, it is expected that the E-SnO₂ would make a better ETL in the PSCs than the SnO_2 . Planar-type PSCs are therefore designed and fabricated based on different ETLs with the device structure shown in Fig. 4a inset. FAPbI_3 was used as the active absorber for its proper band gap, with a small amount of Cs doping to improve its phase stability^{62,63}. Supplementary Fig. 9 presents the cross-sectional SEM images for the complete device structure. The thickness of the perovskite film is controlled at ca. 420 nm for all devices. While the perovskite grains are not large enough to penetrate through the film thickness when the SnO_2 is used as the substrate, the grains are significantly larger when deposited on EDTA and E-SnO₂ with the grains grown across the film thickness, which is consistent with top-view SEM results (Fig. 2).

Figure 4a shows the J - V curves of planar-type PSCs using different ETLs, with the key parameters, including short-circuit current density (J_{sc}), V_{oc} , fill factor (FF), and PCE summarized in Table 1. The device based on EDTA gives a PCE of 16.42% with $J_{sc} = 22.10 \text{ mA cm}^{-2}$, $V_{oc} = 1.08 \text{ V}$, and $\text{FF} = 0.687$. The device based on SnO_2 substrate shows a PCE of 18.93% with $J_{sc} = 22.79 \text{ mA cm}^{-2}$, $V_{oc} = 1.10 \text{ V}$, and $\text{FF} = 0.755$. Interestingly, when the E-SnO₂ is employed as ETL, the J_{sc} , FF, and V_{oc} are increased to 24.55 mA cm^{-2} , 0.792, and 1.11 V, yielding a PCE up to 21.60%, (the certified efficiency is 21.52%, and the certified document is shown in Supplementary Fig. 10), the highest efficiency reported to date for the planar-type PSCs. The low device performance for the EDTA is caused by small J_{sc} and FF, which is related to low electron mobility and high resistance⁴⁷, and the low V_{oc} results from the small offset of Fermi energy between the EDTA and HTL (Fig. 1d)⁶⁴. In comparison, the planar-type PSCs with E-SnO₂ ETLs exhibit the best performance. The higher J_{sc} and FF are

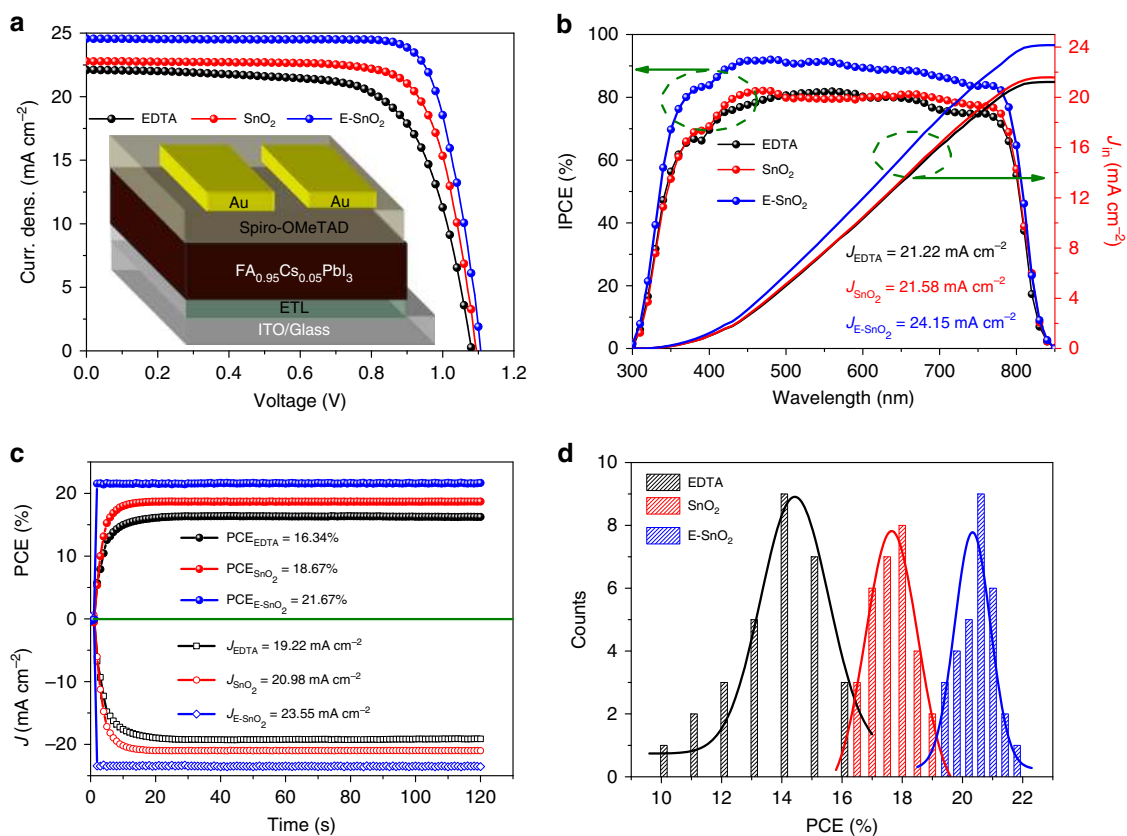


Fig. 4 PSC performance using ETLs. **a** J - V curves with the inset showing device configuration, and **b** the corresponding IPCE of the planar-type PSCs with various ETLs. The integrated current density from the IPCE curves with the AM 1.5 G photon flux spectrum. **c** Static current density and PCE measured as a function of time for the EDTA, SnO_2 , and E- SnO_2 devices biased at 0.85 V, 0.89 V, and 0.92 V, respectively. **d** The PCE distribution histogram of the planar-type PSCs based on different ETLs

Table 1 The parameters of the rigid and flexible devices

Style	ETL	J_{sc} (mA cm^{-2})	V_{oc} (V)	FF	PCE (%)
Rigid	EDTA	22.10	1.08	0.687	16.42
		21.43 ± 1.19	1.05 ± 0.02	0.649 ± 0.074	14.60 ± 1.60
	SnO_2	22.79	1.10	0.755	18.93
		22.70 ± 0.32	1.08 ± 0.03	0.735 ± 0.022	18.04 ± 0.63
Flexible	E- SnO_2	24.57	1.11	0.792	21.60
		24.55 ± 0.76	1.11 ± 0.01	0.750 ± 0.011	20.41 ± 0.55
	E- SnO_2 R ₀	23.42	1.09	0.716	18.28
		22.64 ± 0.46	1.09 ± 0.03	0.699 ± 0.028	17.26 ± 0.75
Flexible	E- SnO_2 R ₁₄ -500	23.42	1.09	0.715	18.25
		23.11	1.08	0.714	17.82
	E- SnO_2 R ₁₂ -500	23.11	1.08	0.714	17.82
		22.66	1.08	0.688	16.84

attributed to the high electron mobility that promotes effective electron extraction, and the larger V_{oc} due to the closer energy level between E- SnO_2 and perovskite⁶⁵. Figure 4b shows the incident-photon-to-charge conversion efficiency (IPCE) and the integrated current of the PSCs based on different ETLs. The integrated current values calculated by the IPCE spectra for the devices using EDTA, SnO_2 , and E- SnO_2 are 21.22, 21.58, and 24.15 mA cm^{-2} , respectively, very close to the J - V results. It is apparent that the device based on the E- SnO_2 shows significantly higher IPCE due to less optical loss when perovskite is deposited on E- SnO_2 ETL (Supplementary Fig. 11), consistent with the J - V measurement.

To further demonstrate the device characteristics, photocurrent density of the champion devices from each group based on EDTA, SnO_2 , and E- SnO_2 was measured when the devices were

biased at 0.85, 0.89, and 0.92 V, respectively. Figure 4c shows the corresponding curves at the maximum power point (V_{mp}) in the J - V plots. The PCEs of the champion devices using the EDTA, SnO_2 , and E- SnO_2 stabilize at 16.34%, 18.67%, and 21.67% with photocurrent densities of 19.22, 20.98, and 23.55 mA cm^{-2} , respectively, very close to the values measured from the J - V curves. Next, we fabricated and measured 30 individual devices for each ETL to study repeatability. Figure 4d shows the PCE distribution histogram for devices with different ETLs, with the statistics listed in Supplementary Tables 2–4. Amazingly, the devices based on E- SnO_2 exhibit excellent repeatability with a very small standard deviation in contrast to the devices based on EDTA and SnO_2 , indicating that the E- SnO_2 is an excellent ETL in the planar-type PSC.

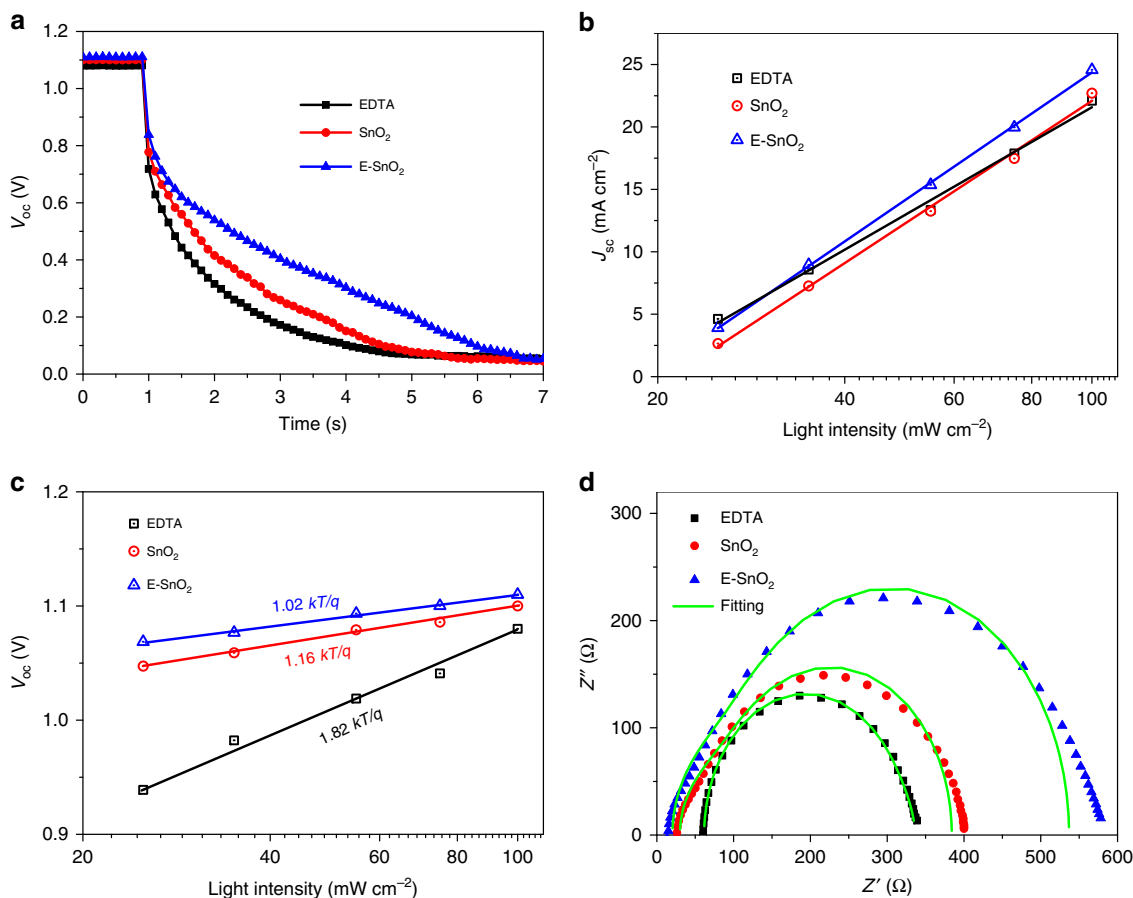


Fig. 5 Charge transfer properties of the planar-type PSCs using different ETLs. **a** V_{oc} decay curves, **b** J_{sc} vs. light intensity, **c** V_{oc} vs. light intensity, and **d** EIS of planar-type PSCs with various ETLs

In order to gain further insight into the charge transport mechanism, the charge transfer processes in the perovskite devices were studied in detail. The carrier recombination rate in the PSCs was evaluated by the V_{oc} decay measurements. Figure 5a shows the V_{oc} decay curves of the PSCs based on different ETLs. It is apparent that the planar-type PSC based on E-SnO₂ exhibits the slowest V_{oc} decay time compared to the devices based on EDTA and SnO₂, indicating that the devices with E-SnO₂ have the lowest charge recombination rate and the longest carrier lifetime, consistent with the highest V_{oc} for the device based on E-SnO₂ by J - V measurements. Figure 5b shows J_{sc} versus light intensity of the PSCs using various ETLs. It appears that all devices show a linear correlation with the slopes very close to 1, indicating that the bimolecular recombination in the devices is negligible⁶⁶. Figure 5c shows that V_{oc} changes linearly with the light intensity. Prior studies have indicated that the deviation between the slope and the value of (kT/q) reflects the trap-assisted recombination²⁰. In the present case, the device using the E-SnO₂ shows the smallest slope, indicating the least trap-assisted recombination, which is in excellent agreement with the result showing the lowest trap density when the perovskite is deposited on E-SnO₂ (Fig. 3a). In fact, the slope is as small as $1.02 kT/q$, implying that the trap-assisted recombination is almost negligible.

The electrical impedance spectroscopy (EIS) was employed to extract transfer resistance in the solar cells. Figure 5d shows the Nyquist plots of the devices using different ETLs measured at V_{oc} under dark conditions, with the equivalent circuit shown in Supplementary Fig. 12. It is known that in the EIS analysis, the high-frequency component is the signature of the transfer resistance (R_{tr}) and the low-frequency one for the recombination

resistance (R_{rec})⁶⁷. In the present study, because the perovskite/HTL interface is identical for all devices, the only variable affecting R_{tr} is the perovskite/ETL interface. The numerical fitting gives the device parameters, as listed in Supplementary Table 5. Apparently, compared to PSCs based on EDTA and SnO₂, the device with E-SnO₂ shows the smallest R_{tr} of 14.8Ω and the largest R_{rec} of 443.3Ω . The small R_{tr} is beneficial for electron extraction, and the large R_{rec} effectively resists charge recombination, which is in agreement with the observations discussed above. Combined, all the results confirm that E-SnO₂ is the most effective ETL for the planar-type PSC.

Stability and hysteresis. Stability and hysteresis are two key characteristics for the PSCs. Figure 6a shows normalized PCE measured as a function of storage time, with more detailed J - V parameters summarized in Supplementary Table 6. It is clear that while the device based on E-SnO₂ maintains 92% of its initial efficiency exposed to an ambient atmosphere after 2880 h in the dark, the device using SnO₂ only provides 74% of its initial efficiency under the same storage condition. The PSCs were also tested under continuous irradiation at 100 mW cm^{-2} . Figure 6b shows the normalized PCE changes as a function of test time, with more detailed J - V parameters provided in Supplementary Table 7. It is clear that after 120 h of illumination, the device using the E-SnO₂ maintains 86% of its initial efficiency, while for the same test duration, the device using SnO₂ remains only 38% relative to its initial efficiency. It is apparent that the device fabricated on E-SnO₂ shows excellent stability under both the dark and continuous irradiation. The instability of PSC is mainly

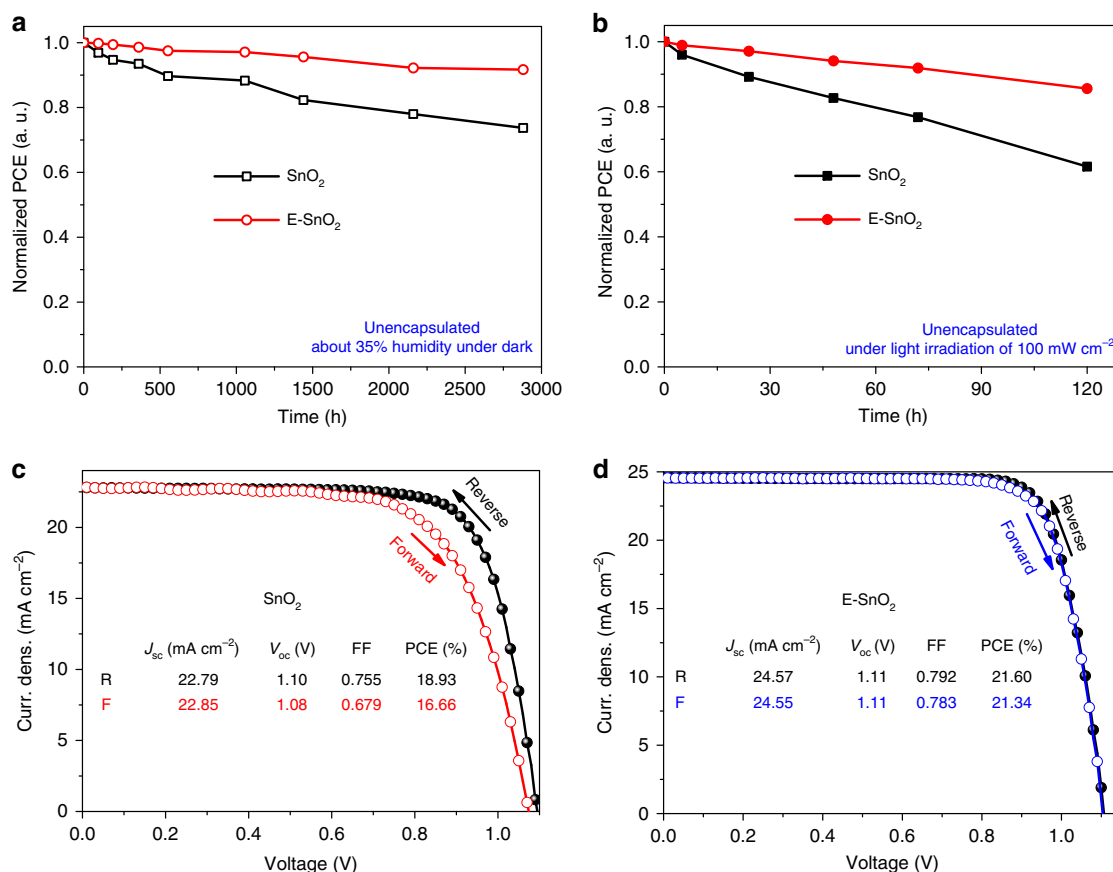


Fig. 6 Stability and hysteresis test for planar-type PSCs. Long-term stability measurements of devices without any encapsulation under **a** ambient condition and **b** illumination of 100 mW cm⁻². The J - V curves of the device with **c** SnO₂ and **d** E-SnO₂ measured under both reverse- and forward-scan directions

caused by degradation of the perovskite film and spiro-OMeTAD HTL. In the present work, all devices used the same spiro-OMeTAD HTL, therefore, the degradation from the HTL should be the same for all the devices. It is found that the grain size of the perovskite film is increased by three times when it is deposited on E-SnO₂ in comparison to that on the pristine SnO₂ (Fig. 2). The larger grain size can effectively suppress the moisture permeation at grain boundaries⁶⁸, resulting in improved environmental stability for the PSCs based on the E-SnO₂ ETLs.

For the hysteresis test, Fig. 6c and d show the J - V curves measured under both reverse- and forward- scan directions. It is found that the device with E-SnO₂ has almost identical J - V curves with negligible hysteresis, even when it is measured using different scan rates from 0.01 to 0.5 V s⁻¹. Supplementary Fig. 13 presents J - V curves measured for the device based on E-SnO₂ at different scan rates. It is apparent that the J - V curves almost remain the same, regardless of scan rate and direction, demonstrating that the hysteresis is negligible. Generally, the hysteresis of PSCs is ascribed to interfacial capacitance caused by charge accumulation at the interface, which originates from ion migration, high trap density, and unbalanced charge transport within the perovskite device^{69–71}. It is found that the trap density of the perovskite film is significantly reduced when it is deposited on the E-SnO₂, one of the primary reasons for reduced hysteresis. In addition, the electron mobility of the SnO₂ ETL is only 9.92×10^{-4} cm² V⁻¹ s⁻¹ (Fig. 1f), about an order of magnitude slower than the hole mobility of the doped spiro-OMeTAD (ca. 10^{-3} cm² V⁻¹ s⁻¹) HTL. Thus, the electron flux (F_e) is ca. 10 times smaller than the hole flux (F_h) due to the same interface area of the ETL/perovskite and perovskite/HTL, that leads to charge accumulation at the SnO₂/perovskite interface, as shown in

Supplementary Fig. 14a. The accumulated charge would cause hysteresis in the solar cells (Fig. 6c). When the high electron mobility E-SnO₂ (2.27×10^{-3} cm² V⁻¹ s⁻¹) is employed as the ETL, the F_e is comparable to the F_h of the spiro-OMeTAD HTL (Supplementary Fig. 14b), resulting in equivalent charge transport at both electrodes. Therefore, the high electron mobility of E-SnO₂ would enhance electron transport from perovskite to E-SnO₂ ETL, leading to no significant charge accumulation, and consequently, the devices based on the E-SnO₂ exhibit negligible hysteresis.

High-efficiency flexible PSCs. Given the advantage of low-temperature preparation, we applied the E-SnO₂ ETL in flexible PSCs. Figure 7a shows J - V curves of flexible PSCs using the poly(ethylene terephthalate) (PET)/ITO substrates, with key J - V parameters summarized in Table 1. The champion flexible device exhibits PCE of 18.28% ($J_{sc} = 23.42$ mA cm⁻², $V_{oc} = 1.09$ V, and FF = 0.716). The lower J_{sc} of the flexible device is caused by the lower transparency of the PET/ITO substrate compared to the glass/ITO used for the rigid device (Supplementary Fig. 15). The lower V_{oc} and FF are likely due to higher sheet resistance of the PET/ITO substrate⁶⁷. Figure 7c shows the IPCE and integral current density of the flexible device. It is clear that the integral current is 23.12 mA cm⁻², in perfect agreement with the J - V results. For the reproducibility test, 30 individual cells were fabricated with the PCE distribution histogram shown in Fig. 7d and detailed parameters are summarized in Supplementary Table 8, both confirming very good reproducibility.

The mechanical stability is an important quality indicator for the flexible solar cells. According to a previous report⁷², it is safe

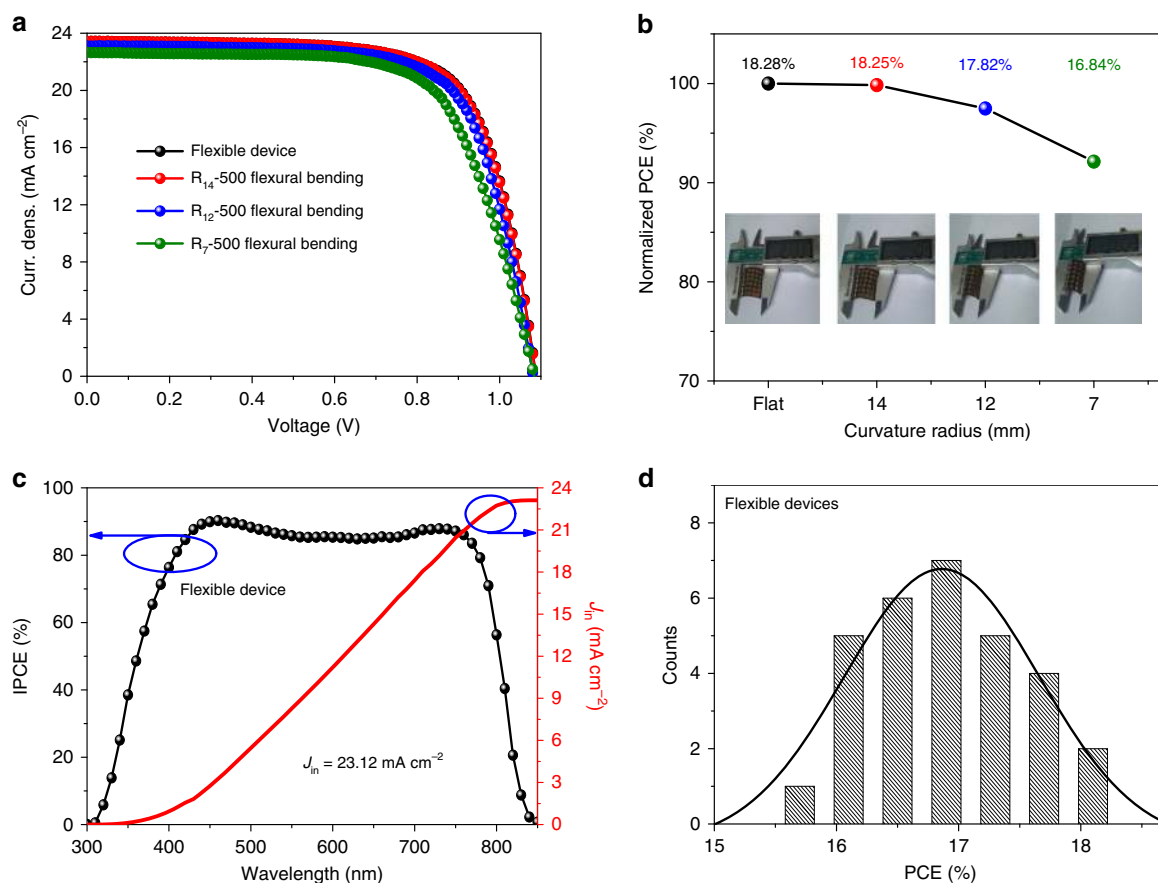


Fig. 7 The performance of flexible PSCs based on E-SnO₂ ETLs. **a** *J*-*V* curves of the flexible devices and after flexing at curvature radii of 14 mm, 12 mm, and 7 mm for 500 cycles, respectively. **b** The normalized PCE measured after flexing at different curvature radii. **c** IPCE curves of the flexible device. **d** The PCE distribution histogram of the flexible PSCs

for ITO to be bended to a radius of 14 mm, and when the bending radius is smaller than 14 mm, the ITO layer starts to crack, leading to significant degradation in conductivity. In order to examine the mechanical stability of the flexible PSCs, we therefore adopted the bending radii of 14 mm, 12 mm, and 7 mm to test the flexible device. Figure 7a shows device performance of the flexible solar cells measured after flexing for 500 times with different curvature radii, and the test procedure is shown in Fig. 7b. It shows that after flexing for 500 times at a bending radius of 14 mm, the *J*-*V* curve and the associated parameters remain the same without obvious degradation. However, when the bending radius is decreased to 12 mm and 7 mm, the PCE degraded to 17.82% and 16.84%, respectively, attributing to the conductivity degradation of ITO⁷².

Discussion

An effective E-SnO₂ ETL has been developed, and the PCE of planar-type PSCs is increased to 21.60% with negligible hysteresis, and the certified efficiency is 21.52%, this is the highest reported value for planar-type PSCs so far. By taking advantage of low-temperature processing for E-SnO₂ ETLs, flexible devices with high PCE of 18.28% are also fabricated. The significant performance of the planar-type PSCs is attributed to the superior advantages when perovskite is deposited on E-SnO₂ ETLs, including larger grain size, lower trap density, and good crystallinity. The higher electron mobility facilitates electron transfer for suppressed charge accumulation at the interface, leading to high efficiency with negligible *J*-*V* hysteresis. Furthermore, the long-term stability is significantly enhanced since the large grain size

that suppressed perovskite degradation at grain boundaries. This work provides a promising direction toward developing high-quality ETLs, and we believe that the present work will facilitate transition of perovskite photovoltaics.

Methods

Materials. NH₂CHNH₂I (FAI) was synthesized and purified according to a reported procedure⁴⁵. The SnO₂ solution was purchased from Alfa Aesar (tin (IV) oxide, 15 wt% in H₂O colloidal dispersion). PbI₂ (purity > 99.9985%) was purchased from Alfa Aesar. EDTA (purity > 99.995%), CsI (purity > 99.999%), dimethylformamide (DMF, purity > 99%), and dimethyl sulfoxide (DMSO, purity > 99%) were obtained from Sigma Aldrich. In total, 2,2',7,7'-tetrakis(*N,N*-di-*p*-methoxyphenylamine)-9,9'-spirobifluorene (spiro-OMeTAD) was bought from Yingkou OPV Tech Co., Ltd. All of the other solvents were purchased from Sigma Aldrich without any purification.

Fabrication of EDTA, SnO₂, and E-SnO₂ films. The 0.2-mg EDTA was dissolved in 1 mL of deionized water, and the SnO₂ aqueous colloidal dispersion (15 wt%) was diluted using deionized water to the concentration of 2.5 wt%. These solutions were stirred at room temperature for 2 h. The SnO₂ and EDTA layers were fabricated by spin-coating at 5000 rpm for 60 s using the corresponding solution, and then dried in a vacuum oven at 60 °C under ca. 5 Pa for 30 min to remove residual solvent. The EDTA and SnO₂ solution were mixed with a volume ratio of 1:1, then put on a hot plate at 80 °C for 5 h under stirring conditions, and the milky-white E-SnO₂ colloidal solution (Supplementary Fig. 1b) was obtained. The E-SnO₂ colloidal solution was spin-coated at 5000 rpm for 60 s, and then transferred the samples into a vacuum oven at 60 °C under ca. 5 Pa for 30 min to remove the residual solvent. Finally, the E-SnO₂ films were obtained.

Electron mobility of EDTA, SnO₂, and E-SnO₂ films. To gain insights into the charge transport, we have measured electron mobility using different ETLs in the same device structure. Specifically, the electron-only device was designed and fabricated using ITO/Al/ETL/Al structure, as shown in the inset in Fig. 1f. In this

analysis, we assumed that the current is only related to electrons. When the effects of diffusion and the electric field are neglected, the current density can be determined by the SCLC⁷³. The thickness of 80-nm Al was deposited on ITO substrates by thermal evaporation, and then the different ETLs were spin-coated on ITO/Al. Finally, 80-nm-thick Al was deposited on ITO/Al/ETL samples. The dark J - V curves of the devices were performed on a Keithley 2400 source at ambient conditions. The electron mobility (μ_e) is extracted by fitting the J - V curves using the Mott-Gurney law (3)

$$\mu_e = \frac{8JL^3}{9\epsilon_0\epsilon_r(V_{\text{app}} - V_r - V_{\text{bi}})^2} \quad (3)$$

where J is the current density, L the thickness of different ETLs, ϵ_0 the vacuum permittivity, ϵ_r the dielectric permittivity of various ETLs, V_{app} the applied voltage, V_r the voltage loss due to radiative recombination, and V_{bi} the built-in voltage owing to the different work function between the anode and cathode.

Fabrication of solar cells. The perovskite absorbers were deposited on different ETL substrates using one-step solution processed. In total, 240.8 mg of FAI, 646.8 mg of PbI_2 , and 18.2 mg of CsI were dissolved in 1 mL of DMF and DMSO (4:1, volume/volume), with stirring at 60 °C for 2 h. The precursor solution was spin-coated on the EDTA, SnO_2 and E- SnO_2 substrates. The spin-coated process was divided by a consecutive two-step process, the spin rate of the first step is 1000 rpm for 15 s with accelerated speed of 200 rpm, and the spin rate of the second step is 4000 rpm for 45 s with accelerated speed of 1000 rpm. During the second step end of 15 s, 200 μL of chlorobenzene was drop-coated to treat the perovskite films, and then the perovskite films were annealed at 100 °C for 30 min in a glovebox. After cooling down to room temperature, the spiro-OMeTAD solution was coated on perovskite films at 5000 rpm for 30 s with accelerated speed of 3000 rpm. The 1-mL HTL chlorobenzene solution contains 90 mg of spiro-OMeTAD, 36 μL of 4-tert-butylpyridine, and 22 μL of lithium bis(trifluoromethylsulfonyl) imide of 520 mg mL^{-1} in acetonitrile. The samples were retained in a desiccator overnight to oxidate the spiro-OMeTAD. Finally, 100-nm-thick Au was deposited using thermal evaporation. The device area of 0.1134 cm^2 was determined by a metal mask.

Characterization. The J - V curves of the PSCs were measured using a Keithley 2400 source under ambient conditions at room temperature. The light source was a 450-W xenon lamp (Oriol solar simulator) with a Schott K113 Tempax sunlight filter (Prazisions Glas & Optik GmbH) to match AM1.5 G. The light intensity was 100 mW cm^{-2} calibrated by a NREL-traceable KG5-filtered silicon reference cell. The active area of 0.1017 cm^2 was defined by a black metal aperture to avoid light scattering into the device, and the aperture area was determined by the MICRO VUE sol 161 instrument. The J - V curves for PSCs were tested both at reverse scan (from 2 to -0.1 V, step 0.02 V) and forward scan (from -0.1 to 2 V, step 0.02 V), and the scan rate was selected from 0.01 to 0.5 V s^{-1} . There was no pre-conditioning before the test. The IPCE was implemented on the QTest Station 2000ADI system (Crowntech, Inc., USA). AFM height images were attained by a Bruker Multimode 8 in tapping mode. KPFM was carried out on Bruker Metrology Nanoscope VIII AFM in an ambient atmosphere. The TRPL spectra were performed on an Edinburgh Instruments FLS920 fluorescence spectrometer. SEM images were gained by a field-emission scanning electron microscope (SU8020) under an accelerating voltage of 2 kV. XPS measurements were performed on an AXISULTRA X-ray photoelectron spectrometer. The optical transmission was acquired by a Hitachi U-3900 spectrophotometer.

Data availability. The data that support the findings of this study are available from the corresponding author upon reasonable request.

Received: 16 March 2018 Accepted: 26 July 2018

Published online: 13 August 2018

References

- Manser, J. S. & Kamat, P. V. Band filling with free charge carriers in organometal halide perovskites. *Nat. Photonics* **8**, 737–747 (2014).
- Chen, H. et al. A solvent- and vacuum-free route to large-area perovskite films for efficient solar modules. *Nature* **550**, 92–95 (2017).
- Xing, G. et al. Long-range balanced electron and hole-transport lengths in organic-inorganic $\text{CH}_3\text{NH}_3\text{PbI}_3$. *Science* **342**, 344–347 (2013).
- Liu, M., Johnston, M. B. & Snaith, H. J. Efficient planar heterojunction perovskite solar cells by vapour deposition. *Nature* **501**, 395–398 (2013).
- Wang, Z. et al. Efficient ambient-air-stable solar cells with 2D-3D heterostructured butylammonium-caesium-formamidinium lead halide perovskites. *Nat. Energy* **2**, 17135 (2017).
- Liu, Y. et al. Two-inch-sized perovskite $\text{CH}_3\text{NH}_3\text{PbX}_3$ (X = Cl, Br, I) crystals: growth and characterization. *Adv. Mater.* **27**, 5176–5183 (2015).
- Yang, D. et al. Alternating precursor layer deposition for highly stable perovskite films towards efficient solar cells using vacuum deposition. *J. Mater. Chem. A* **3**, 9401–9405 (2015).
- Yakunin, S. et al. Detection of gamma photons using solution-grown single crystals of hybrid lead halide perovskites. *Nat. Photonics* **10**, 585–589 (2016).
- Hao, F. et al. Lead-free solid-state organic-inorganic halide perovskite solar cells. *Nat. Photonics* **8**, 489–494 (2014).
- Shao, Y., Xiao, Z., Bi, C., Yuan, Y. & Huang, J. Origin and elimination of photocurrent hysteresis by fullerene passivation in $\text{CH}_3\text{NH}_3\text{PbI}_3$ planar heterojunction solar cells. *Nat. Commun.* **5**, 5784 (2015).
- Wei, H. et al. Sensitive X-ray detectors made of methylammonium lead tribromide perovskite single crystals. *Nat. Photonics* **10**, 333–339 (2016).
- Chung, I., Lee, B., He, J., Chang, R. P. H. & Kanatzidis, M. G. All-solid-state dye-sensitized solar cells with high efficiency. *Nature* **485**, 486–489 (2012).
- Kim, Y. C. et al. Printable organometallic perovskite enables large-area, low-dose X-ray imaging. *Nature* **550**, 87–91 (2017).
- Liu, Y. et al. Thinness- and shape-controlled growth for ultrathin single-crystalline perovskite wafers for mass production of superior photoelectronic devices. *Adv. Mater.* **28**, 9204–9209 (2016).
- NREL. Efficiency chart. <https://www.nrel.gov/pv/assets/images/efficiency-chart-20180716.jpg> (2018).
- Yang, W. S. et al. Iodide management in formamidinium-lead-halide-based perovskite layers for efficient solar cells. *Science* **356**, 1376–1379 (2017).
- Cho, K. T. et al. Highly efficient perovskite solar cells with a compositionally engineered perovskite/hole transporting material interface. *Energy Environ. Sci.* **10**, 621–627 (2017).
- Jiang, Q. et al. Planar-structure perovskite solar cells with efficiency beyond 21%. *Adv. Mater.* **29**, 1703852 (2017).
- Zheng, X. et al. Defect passivation in hybrid perovskite solar cells using quaternary ammonium halide anions and cations. *Nat. Energy* **2**, 17102 (2017).
- Yang, D. et al. Surface optimization to eliminate hysteresis for record efficiency planar perovskite solar cells. *Energy Environ. Sci.* **9**, 3071–3078 (2016).
- Jiang, Q. et al. Enhanced electron extraction using SnO_2 for high-efficiency planar-structure $\text{HC}(\text{NH}_2)_2\text{PbI}_3$ -based perovskite solar cells. *Nat. Energy* **2**, 16177 (2016).
- Yang, D. et al. Hysteresis-suppressed high-efficiency flexible perovskite solar cells using solid-state ionic-liquids for effective electron transport. *Adv. Mater.* **28**, 5206–5213 (2016).
- Dong, Q. et al. Electron-hole diffusion lengths $>175 \mu\text{m}$ in solution-grown $\text{CH}_3\text{NH}_3\text{PbI}_3$ single crystals. *Science* **347**, 967–970 (2015).
- Lang, F. et al. Influence of radiation on the properties and the stability of hybrid perovskites. *Adv. Mater.* **30**, 172905 (2018).
- Ranjan, R. et al. Effect of tantalum doping in a TiO_2 compact layer on the performance of planar spiro-OMeTAD free perovskite solar cells. *J. Mater. Chem. A* **6**, 1037–1047 (2018).
- Meng, L., You, J., Guo, T. F. & Yang, Y. Recent advances in the inverted planar structure of perovskite solar cells. *Acc. Chem. Res.* **49**, 155–165 (2016).
- Nie, W. et al. Critical role of interface and crystallinity on the performance and photostability of perovskite solar cell on nickel oxide. *Adv. Mater.* **30**, 1703879 (2018).
- Dong, Q., Shi, Y., Zhang, C., Wu, Y. & Wang, L. Energetically favored formation of SnO_2 nanocrystals as electron transfer layer in perovskite solar cells with high efficiency exceeding 19%. *Nano Energy* **40**, 336–344 (2017).
- Jung, K.-H., Seo, J.-Y., Lee, S., Shin, H. & Park, N.-G. Solution-processed SnO_2 thin film for hysteresis-less 19.2% planar perovskite solar cell. *J. Mater. Chem. A* **5**, 24790–24803 (2017).
- Ke, W. et al. Efficient hole-blocking layer-free planar halide perovskite thin-film solar cells. *Nat. Commun.* **6**, 6700 (2015).
- Liu, D., Yang, J. & Kelly, T. L. Compact layer free perovskite solar cells with 13.5% efficiency. *J. Am. Chem. Soc.* **136**, 17116 (2014).
- Zhang, P. et al. Perovskite solar cells with ZnO electron-transporting materials. *Adv. Mater.* **30**, 1703737 (2018).
- Singh, T. & Miyasaka, T. Stabilizing the efficiency beyond 20% with a mixed cation perovskite solar cell fabricated in ambient air under controlled humidity. *Adv. Energy Mater.* **8**, 1700677 (2018).
- Tress, W. et al. Understanding the rate-dependent J-V hysteresis, slow time component, and aging in $\text{CH}_3\text{NH}_3\text{PbI}_3$ perovskite solar cells: the role of a compensated electric field. *Energy Environ. Sci.* **8**, 995–1004 (2015).
- Tan, H. et al. Efficient and stable solution-processed planar perovskite solar cells via contact passivation. *Science* **355**, 722–726 (2017).
- Ke, W. et al. Low-temperature solution-processed tin oxide as an alternative electron transporting layer for efficient perovskite solar cells. *J. Am. Chem. Soc.* **137**, 6730–6733 (2015).

37. Huang, X. et al. Low-temperature processed SnO₂ compact layer by incorporating TiO₂ layer toward efficient planar heterojunction perovskite solar cells. *Sol. Energy Mater. Sol. Cells* **164**, 87–92 (2017).
38. Dagar, J. et al. Efficient fully laser-patterned flexible perovskite modules and solar cells based on low-temperature solution-processed SnO₂/mesoporous-TiO₂ electron transport layers. *Nano Res.* **11**, 2669–2681 (2018).
39. Chen, H. et al. Enhanced performance of planar perovskite solar cells using low-temperature solution-processed Al-doped SnO₂ as electron transport layers. *Nanoscale Res. Lett.* **12**, 1–6 (2017).
40. Baena, J. P. C. et al. Highly efficient planar perovskite solar cells through band alignment engineering. *Energy Environ. Sci.* **8**, 2928–2934 (2015).
41. Zhu, Z. et al. Enhanced efficiency and stability of inverted perovskite solar cells using highly crystalline SnO₂ nanocrystals as the robust electron-transporting layer. *Adv. Mater.* **28**, 6478–6484 (2016).
42. Barbé, J. et al. Amorphous tin oxide as a low-temperature-processed electron-transport layer for organic and hybrid perovskite solar cells. *ACS Appl. Mater. Interfaces* **9**, 11828–11836 (2017).
43. Anaraki, E. H. et al. Highly efficient and stable planar perovskite solar cells by solution-processed tin oxide. *Energy Environ. Sci.* **9**, 3128–3134 (2016).
44. Park, M. et al. Low-temperature solution-processed Li-doped SnO₂ as an effective electron transporting layer for high-performance flexible and wearable perovskite solar cells. *Nano Energy* **26**, 208–215 (2016).
45. Li, X., Liu, X., Zhang, W., Wang, H.-Q. & Fang, J. Fullerene-free organic solar cells with efficiency over 12% based on EDTA-ZnO hybrid cathode interlayer. *Chem. Mater.* **29**, 4176–4180 (2017).
46. An, Q. et al. High performance planar perovskite solar cells by ZnO electron transport layer engineering. *Nano Energy* **39**, 400–408 (2017).
47. Li, X., Zhang, W., Wang, X., Gao, F. & Fang, J. Disodium edetate as a promising interfacial material for inverted organic solar cells and the device performance optimization. *ACS Appl. Mater. Interfaces* **6**, 20569–20573 (2014).
48. Majumder, S. Synthesis and characterisation of SnO₂ films obtained by a wet chemical process. *Mater. Sci.* **27**, 123–129 (2009).
49. Gundrizer, T. A. & Davydov, A. A. IR spectra of oxygen adsorbed on SnO₂. *React. Kinet. Catal. Lett.* **3**, 63–70 (1975).
50. Yang, D., Zhou, L., Yu, W., Zhang, J. & Li, C. Work-function-tunable chlorinated graphene oxide as an anode interface layer in high-efficiency polymer solar cells. *Adv. Energy Mater.* **4**, 1400591 (2014).
51. Snaith, H. J. & Ducati, C. SnO₂-based dye-sensitized hybrid solar cells exhibiting near unity absorbed photon-to-electron conversion efficiency. *Nano Lett.* **10**, 1259–1265 (2010).
52. Zhumekenov, A. A. et al. The role of surface tension in the crystallization of metal halide perovskites. *ACS Energy Lett.* **2**, 1782–1788 (2017).
53. Zhao, H. et al. Enhanced stability and optoelectronic properties of MAPbI₃ films with cationic surface active agent for perovskite solar cells. *J. Mater. Chem. A* **6**, 10825–10834 (2018).
54. Salim, T. et al. Perovskite-based solar cells: impact of morphology and device architecture on device performance. *J. Mater. Chem. A* **3**, 8943–8969 (2015).
55. Li, P. et al. Polyethyleneimine high-energy hydrophilic surface interfacial treatment toward efficient and stable perovskite solar cells. *ACS Appl. Mater. Interfaces* **30**, 32574–32580 (2016).
56. Wang, W. et al. Enhanced performance of CH₃NH₃PbI_{3-x}Cl_x perovskite solar cells by CH₃NH₃I modification of TiO₂-perovskite layer interface. *Nanoscale Res. Lett.* **11**, 1–9 (2016).
57. Lee, H., Rhee, S., Kim, J., Lee, C. & Kim, H. Surface coverage enhancement of a mixed halide perovskite film by using an UV-ozone treatment. *J. Korean Phys. Soc.* **69**, 406–411 (2016).
58. Fu, P. et al. Efficiency improved for inverted polymer solar cells with electrostatically self-assembled BenMeIm-Cl ionic liquid layer as cathode interface layer. *Nano Energy* **13**, 175–282 (2015).
59. Liu, Y. et al. 20-mm-Large single-crystalline formamidinium-perovskite wafer for mass production of integrated photodetectors. *Adv. Opt. Mater.* **4**, 1829–1837 (2016).
60. Li, M. et al. High-efficiency robust perovskite solar cells on ultrathin flexible substrates. *Nat. Commun.* **7**, 10214 (2016).
61. Makuta, S. et al. Photo-excitation intensity dependent electron and hole injections from lead iodide perovskite to nanocrystalline TiO₂ and spiro-OMeTAD. *Chem. Commun.* **52**, 673–676 (2016).
62. Zhu, X. et al. Superior stability for perovskite solar cells with 20% efficiency using vacuum co-evaporation. *Nanoscale* **9**, 12316–12323 (2017).
63. Liu, T. et al. High-performance formamidinium-based perovskite solar cells via microstructure-mediated δ-to-α phase transformation. *Chem. Mater.* **29**, 3246–3250 (2017).
64. Ryu, S. et al. Voltage output of efficient perovskite solar cells with high open-circuit voltage and fill factor. *Energy Environ. Sci.* **7**, 2614–2618 (2014).
65. Li, Y. et al. Ultra-high open-circuit voltage of perovskite solar cells induced by nucleation thermodynamics on rough substrates. *Sci. Rep.* **7**, 46141 (2017).
66. Cowan, S. R., Street, R. A., Cho, S. & Heeger, A. J. Transient photoconductivity in polymer bulk heterojunction solar cells: competition between sweep-out and recombination. *Phys. Rev. B* **83**, 035205 (2011).
67. Yang, D. et al. High efficiency flexible perovskite solar cells using superior low temperature TiO₂. *Energy Environ. Sci.* **8**, 3208–3214 (2015).
68. Chu, Z. et al. Impact of grain boundaries on efficiency and stability of organic-inorganic trihalide perovskites. *Nat. Commun.* **8**, 2230 (2017).
69. Chen, B. et al. Impact of capacitive effect and ion migration on the hysteretic behavior of perovskite solar cells. *J. Phys. Chem. Lett.* **6**, 4693–4700 (2015).
70. Reenen, S. V., Kemerink, M. & Snaith, H. J. Modeling anomalous hysteresis in perovskite solar cells. *J. Phys. Chem. Lett.* **6**, 3808–3814 (2015).
71. Heo, J. H. et al. Planar CH₃NH₃PbI₃ perovskite solar cells with constant 17.2% average power conversion efficiency irrespective of the scan rate. *Adv. Mater.* **27**, 3424–3430 (2015).
72. Zardetto, V., Brown, T. M., Reale, A. & Carlo, A. D. Substrates for flexible electronics: a practical investigation on the electrical, film flexibility, optical, temperature, and solvent resistance properties. *J. Polym. Sci. Polym. A Phys.* **49**, 638–648 (2011).
73. Murgatroyd, P. N. Theory of space-charge-limited current enhanced by Frenkel effect. *J. Phys. D: Appl. Phys.* **3**, 151–156 (1970).
74. Ma, F. et al. Stable α/δ phase junction of formamidinium lead iodide perovskites for enhanced near-infrared emission. *Chem. Sci.* **8**, 800–805 (2017).

Acknowledgements

The authors acknowledge support from the National Key Research Program of China (2016YFA0202403), the National Natural Science Foundation of China (61604090/91733301), the financial support from the Institute of Critical Technology and Applied Science (ICTAS), and the Shaanxi Technical Innovation Guidance Project (2018HJCG-17). S.P. would like to acknowledge the financial support from the Air Force Office of Scientific Research (A. Sayir). S.L. would like to acknowledge the support from the National University Research Fund (GK261001009), the Innovative Research Team (IRT_14R33), the 111 Project (B14041), and the Chinese National 1000-Talent-Plan program.

Author contributions

D.Y. designed and conducted the experiments, fabricated and characterized the devices, and analyzed the data. R.Y., K.W., C.W., X.Z., and J.F. contributed to useful comments for the paper. X.R. performed the FTIR. D.Y. wrote the first draft of the paper. S.(F.)L. and S.P. supervised the overall project, discussed the results, and contributed to the final manuscript.

Additional information

Supplementary Information accompanies this paper at <https://doi.org/10.1038/s41467-018-05760-x>.

Competing interests: The authors declare no competing interests.

Reprints and permission information is available online at <http://npg.nature.com/reprintsandpermissions/>

Publisher's note: Springer Nature remains neutral with regard to jurisdictional claims in published maps and institutional affiliations.



Open Access This article is licensed under a Creative Commons Attribution 4.0 International License, which permits use, sharing, adaptation, distribution and reproduction in any medium or format, as long as you give appropriate credit to the original author(s) and the source, provide a link to the Creative Commons license, and indicate if changes were made. The images or other third party material in this article are included in the article's Creative Commons license, unless indicated otherwise in a credit line to the material. If material is not included in the article's Creative Commons license and your intended use is not permitted by statutory regulation or exceeds the permitted use, you will need to obtain permission directly from the copyright holder. To view a copy of this license, visit <http://creativecommons.org/licenses/by/4.0/>.

© The Author(s) 2018