

High-speed scanning stereoscopic PIV for 3D vorticity measurement in liquids

Toshio Hori and Jun Sakakibara

Institute of Engineering Mechanics and Systems, University of Tsukuba, Tsukuba 305-8573, Japan

E-mail: sakakiba@kz.tsukuba.ac.jp

Received 31 October 2003, in final form 26 February 2004

Published 13 May 2004

Online at stacks.iop.org/MST/15/1067

DOI: 10.1088/0957-0233/15/6/005

Abstract

A scanning stereo particle image velocimetry (SSPIV) system was developed to measure the three-dimensional (3D) distribution of three-component (3C) velocity in a turbulent round jet. A laser light sheet produced with a high-repetition-rate pulsed Nd:YLF laser was scanned by an optical scanner in a direction normal to the sheet. Two high-speed mega-pixel resolution C-MOS cameras captured the particle images illuminated by the light sheet, and the stereoscopic PIV method was adopted to acquire the 3D-3C velocity distribution of turbulent water flow. A water jet formed by a round nozzle with an exit diameter of $D = 5$ mm was diagnosed by the current technique. The jet Reynolds number was set at $Re \approx 1000$, and the streamwise location of the measurement was fixed at approximately $x = 45D$. A measurement volume ($\sim 100 \times 100 \times 100$ mm³) containing 50 velocity planes was scanned in 0.22 s, which was sufficiently short to capture the instantaneous vortical structures. The residue of the continuity equation (divergence) was approximately 7% of rms vorticity on the centreline of the jet. The iso-vorticity surfaces clearly depict vortical structures in the jet shear layer.

Keywords: stereo PIV, three-dimensional measurement, scanning light sheet, vortical structure, turbulence

1. Introduction

One of the most desirable velocimetries is one that can resolve time-dependent three-dimensional (3D) three-component (3C) velocity vectors in a complex turbulent flow field. Such a method would enable us to obtain all the elements of the velocity gradient tensor, thus allowing the turbulent structures to be visualized by an appropriate vector or scalar such as vorticity or the second invariant of the velocity gradient tensor. Several methods of three-dimensional velocimetry have been presented thus far. Three-dimensional particle tracking velocimetry (3D-PTV), which tracks individual tracer particles using multiple cameras, has been used for several decades (Chiu and Rib 1956, Nedderman 1961). Recca and Dewey (1988) measured the 3D velocity of tracer particles seeded in a water flow inside a square duct by using a 16 mm high-speed cine-camera. Within a decade, the film-based camera was replaced by modern CCD cameras as imaging

devices for 3D-PTV. Nishino *et al* (1989) developed a 3D-PTV system consisting of three TV cameras. Their measurements of decaying turbulence in a stirred water tank demonstrated that their technique could be applied to turbulent flows. Since individual particles were identified and tracked with 3D-PTV, the interrogation spot size was relatively smaller than that with regular particle image velocimetry (PIV) and thus the technique was robust against the higher shear rate of the flow field. However, each particle has to be sparsely distributed in a measurement volume to identify it in a three-dimensional volume, and the typical number of instantaneous velocity vectors in a volume is of the order of a hundred, which is not sufficient to compute the spatial derivative of velocity. Note that the density of 2D-PTV has been significantly improved (Stitou and Riethmuller 2001) to the extent where the three-dimensional location of each particle does not necessarily have to be distinguished.

Particle image velocimetry is now commonly used for measuring two- or three-velocity components in 2D slices of the velocity field. Since the particles are densely seeded, the number of velocity vectors measured is larger than that with PTV and more feasible for obtaining the spatial derivative of velocity than with PTV. However, it has been difficult to identify the 3D position of each particle, and thus 3D volumetric measurement has not been available except through holographic PIV (Zhang *et al* 1997), which requires a considerably complex optical system. One possible way of extending 2D-PIV to 3D volumetric measurement is with PIV using a fast scanning light sheet. Ushijima and Tanaka (1996) developed a scanning 3D-PIV system that visualizes an entire three-dimensional flow field with scanning laser light sheets generated from a pair of optical scanners. The technique was applied to rotating fluids accompanied by Ekman boundary layers. Brucker (1995) measured multiple 2D slices of two velocity components with scanning PIV employing one video camera, and evaluated the out-of-plane component of velocity by integrating the continuity equation. This method, however, can only be applied in flows for which the third velocity component is known at the boundary of the integration domain. He presented another technique: scanning stereo PIV, which requires two video cameras viewing the same measurement region from different directions to evaluate the out-of-plane component of velocity (Brucker 1996). He used two regular CCD cameras with a frame rate of 25 Hz and a scanning laser light sheet, and measured the wake flow behind the spherical cap at $Re = 100$. Since the frame rate was low, the slices in the measurement volume were limited to 9, which was not sufficient for the higher Re flow occupied by the finer scale of eddies.

In the present study, we describe a scanning stereo PIV system capable of higher spatial resolution that resolves eddies in a turbulent flow field at $Re \approx 1000$. Two high-speed megapixel resolution C-MOS cameras and a high-repetition pulse laser were used to construct the system. Light sheet scanning was achieved with a fast optical scanner. We could measure a fully developed turbulent jet with the system, and were able to visualize 3D vortical structures.

2. Method

It is now common in standard non-scanning stereo PIV for the laser light sheet to be adjusted to fit on the surface of the calibration plate placed on the plane to be measured. Once the calibration procedure is performed on this calibration plate, the projection of the physical location of any point (although limited in view) in the light sheet plane to the image coordinate is known based on the mapping function obtained from the calibration procedure. Similar calibration can be done with scanning PIV such that the calibration plate can be placed on any plane which the light sheet illuminates during scanning. However, this method requires considerable time to set the calibration plate on the many planes to be measured. Also, a complicated traversing mechanism is needed to place the calibration plate within the light sheet planes, if they are not parallel to one another as in the present setup. Because of these difficulties, we propose a new method that is suitable for scanning PIV, which we will describe in the sections that follow.

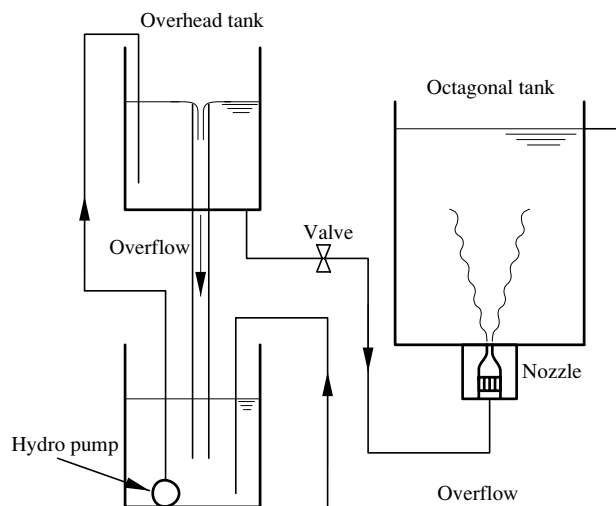


Figure 1. Flow apparatus.

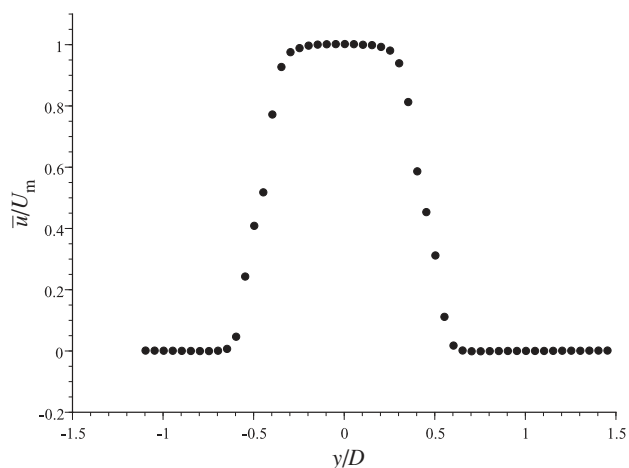


Figure 2. Velocity profile at $0.25D$ behind the jet exit. Velocity is normalized by the velocity at the centre of the jet.

2.1. Flow apparatus and experimental conditions

Figure 1 outlines the flow apparatus for a turbulent round jet. Water in the overhead tank was introduced into a honeycomb flow straightener and an axisymmetric contraction nozzle having a 5 mm exit diameter, D . The nozzle was figured smoothly in a third-order polynomial curve, and the downstream end of the nozzle was mounted beneath the bottom plate of a 500 mm high Plexiglas octagonal tank, with 400 mm between the opposing sidewalls. This configuration created an initially laminar jet with a top hat velocity profile issuing upward into the octagonal tank. The water in the tank overflowed through four equally spaced drainpipes mounted 450 mm from the bottom surface of the tank. The water was then returned to the overhead tank with a hydro pump. The bulk velocity at the exit of the nozzle was $U_0 = 206 \text{ mm s}^{-1}$, and the corresponding jet Reynolds number was $Re = U_0 D / \nu = 995$, where ν is kinematic viscosity. A top hat velocity profile at the nozzle exit was measured by an alternative 2D-2C PIV as we can see in figure 2.

Since the tank had finite dimensions, the flow surrounding the jet had to be reversed. The maximum velocity of the reverse

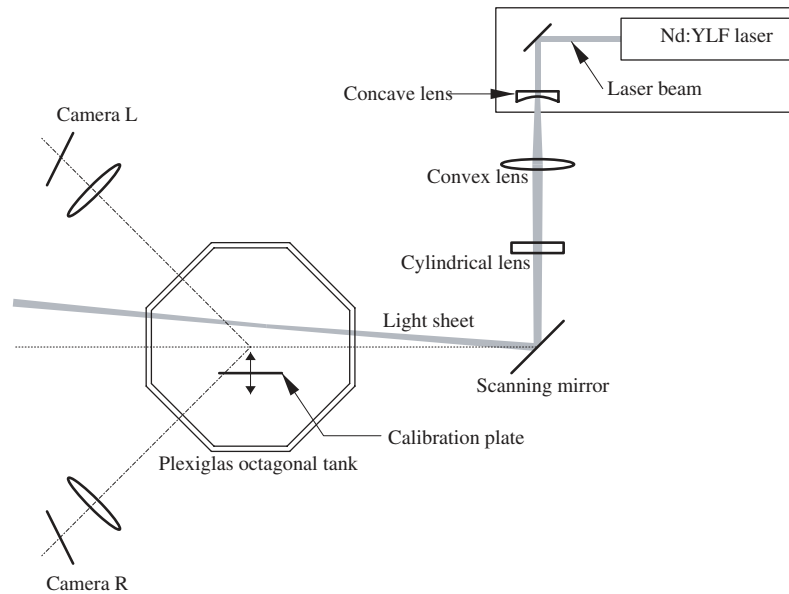


Figure 3. Optical arrangement.

flow in this apparatus was $0.036U_m$, where U_m is the centreline mean velocity of the jet at each streamwise station.

2.2. Hardware setup

The optical configuration is shown in figure 3. The laser light beam emitted from a diode-pumped pulsed Nd:YLF laser (20 mJ per pulse at 2000 Hz, Evolution 30, Positive Light) was converged through a pair of spherical lenses ($f = -150$ and 200 mm) and expanded vertically through a cylindrical lens ($f = -70$ mm) to form a 2 mm thick laser light sheet at the test section. The light sheet was scanned with a flat mirror mounted on an optical scanner (VM2000, GSI Lumonics), which is controlled with a programmable scanner controller (SC2000, GSI Lumonics).

Tracer particles (40 μm Polyamid 12, Daiamid 2157, Daicel Degussa) were seeded in the flow, and scattered light was imaged with two high-speed high-resolution C-MOS cameras (2000 fps with 1024×1024 pixels resolution in maximum, Fastcam APX, Photron). Camera L was placed at the left of the light sheet plane towards the laser source, and the angle of the camera axis with respect to the light sheet plane was set at approximately 45° . This was also done for camera R at the right. Both cameras could then detect stronger forward scattering light from the particles compared to weaker side or backscattering, with a smaller lens aperture, i.e., a higher f -number of 22, which provided a greater depth of field.

Each camera was tilted with respect to the lens axis to satisfy the Scheimpflug condition and was focused at the centre of the measurement volume. The centre of the measurement volume ($100 \times 100 \times 100 \text{ mm}^3$) was located $45D$ above the nozzle on the jet centreline, which was 800 mm from the axis of the scanning mirror. Images captured with the cameras were recorded in their memory, and then transferred to a PC hard disk.

Figure 4 is an actual image of particles at the centre of the volume. The projected size of a particle was on average approximately 3 pixels at this point, and 4 pixels at each edge

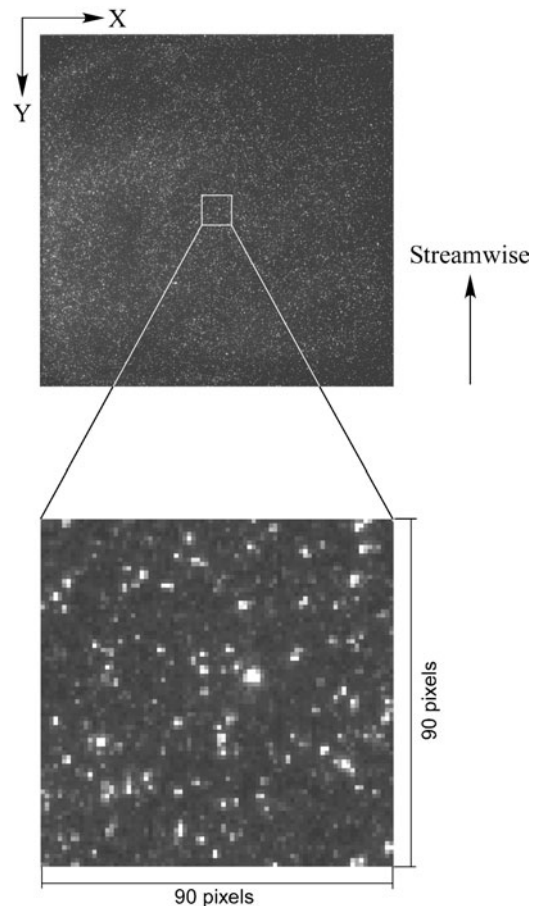


Figure 4. Actual image of particles captured by camera L in figure 3.

of the measurement volume. Therefore, it was likely that the depth of the field would cover the whole measurement volume with this configuration. Our analysis in terms of geometrical optics suggested that the diameter of the most

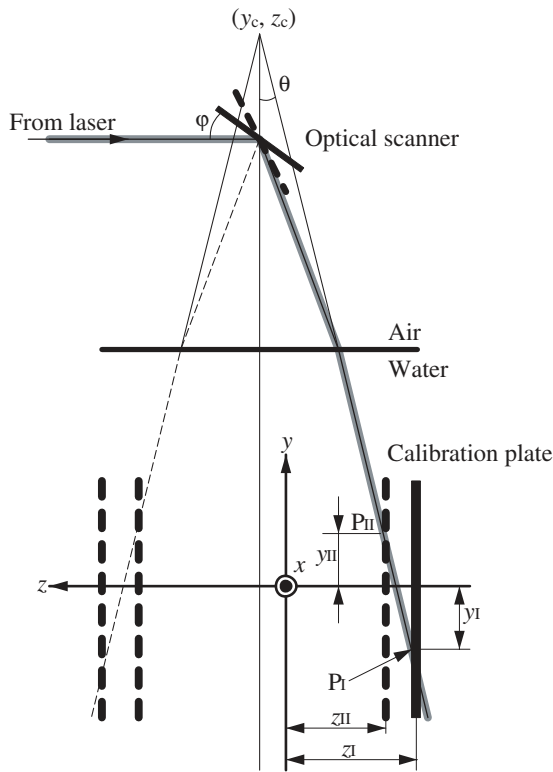


Figure 5. Schematic of light sheet plane viewed from top.

blurred particle located approximately 70 mm from the plane of focus along the camera axis, reached more than 8 pixels, when the f -number was reduced below 11. Such significant blurring of particles may make PIV image processing more difficult due to overlapping neighbouring particles and reduced image contrast, although we did not systematically evaluate the relationship between the error in velocity measurement and the size of the blurred particle.

The calibration plate was made of flat aluminium and had through hole arrays of 1.5 mm in diameter at 5 mm intervals to provide the same calibration target pattern on both sides for each camera. The plate was 150 mm wide, 500 mm long and 5 mm thick, and was installed vertically on a servomotor-driven traversing mechanism (Robo-cylinder, IAI) with a traversing accuracy of 20 μm . The plate was perpendicular to the traversing direction. The Cartesian coordinates with x in the jet's streamwise (vertical) direction, z in the direction normal to the plate, y in the other direction and the origin at the centre of the nozzle exit were defined. Also u , v and w denote the x , y and z components of the velocity vector, respectively. Note that the rotation axis of the optical scanner was aligned precisely parallel to the x -axis.

2.3. Measurement of light sheet position

After setting up the imaging hardware, the physical location of the light sheet planes for a given angle of the mirror scanner had to be determined. Figure 5 outlines the geometry of the light sheet and calibration plate. The rotation axis of the laser light sheet, which was parallel to the x -axis, was centred at $(y_c, z_c) = (1035.8 \text{ mm}, 176.65 \text{ mm})$ on the y - z plane. The angle of the light sheet θ with respect to the y -axis and the

angle of the scanner mirror φ were also defined. Here, the rotation axis of the scanning mirror does not coincide with the rotation axis of the laser light sheet since rays are refracted at the air/Plexiglas/water interface. The equation for the light sheet plane at any given mirror angle was determined in the following way. The scanning mirror was set at angle φ_A , where the light sheet remained at one edge of the measurement volume. The calibration plate was then precisely traversed to position $z = z_I$, where the light sheet hit the grid point P_I , whose location on the plate was previously established as (x_I, y_I) . Here, the width of the area illuminated by the light sheet was approximately $w_I = 20 \text{ mm}$, although the light sheet thickness was $t_I = 2 \text{ mm}$, because the light sheet and the calibration plate were nearly parallel. The centre of the illuminated area could be adjusted to point P_I within an error of $\sigma_y = 1 \text{ mm}$ by operating the traverser. After adjusting the traverser to hit the light sheet on P_I , the three-dimensional location of P_I , (x_I, y_I, z_I) , was obtained. Here, z_I is the value read from (or written to) the traverser. The error in z_I can be estimated as $t_I \sigma_y / w_I = 0.1 \text{ mm}$.

Next, the calibration plate was slightly traversed to another position of $z = z_{II}$ to hit the light sheet at another point P_{II} , and the point (x_{II}, y_{II}, z_{II}) was measured in the same manner. This was repeated until five different points were measured up to (x_V, y_V, z_V) . Using this set of points, the following equation for this light sheet plane was obtained by the least-squares method:

$$c_1^A y + c_2^A z = 1. \quad (1)$$

The same procedure was repeated for another mirror angle φ_B , where the light sheet remained at the other edge of the measurement volume, allowing an equation for the other plane to be obtained:

$$c_1^B y + c_2^B z = 1. \quad (2)$$

The angles of these two planes with respect to the y -axis are given as

$$\theta_A = \tan^{-1} (-c_1^A / c_2^A) \quad (3)$$

and

$$\theta_B = \tan^{-1} (-c_1^B / c_2^B) \quad (4)$$

for φ_A and φ_B , respectively. Thus, the angle of the light sheet θ at a given mirror angle of the scanner φ was formulated in terms of linear interpolation as

$$\theta = \frac{\varphi - \varphi_A}{\varphi_B - \varphi_A} (\theta_B - \theta_A) + \theta_A. \quad (5)$$

Here, the error in θ associated with the above linear approximation is less than 5.2×10^{-6} rad, which is caused by the refraction of the light sheet at the air/Plexiglas/water interface. Finally, the equation for the light sheet plane at any given angle θ was defined as

$$c_1(\theta)y + c_2(\theta)z = 1, \quad (6)$$

where the coefficients were calculated as

$$\begin{pmatrix} c_1(\theta) \\ c_2(\theta) \end{pmatrix} = \begin{pmatrix} \cos(\theta - \theta_A) & -\sin(\theta - \theta_A) \\ \sin(\theta - \theta_A) & \cos(\theta - \theta_A) \end{pmatrix} \begin{pmatrix} c_1^A \\ c_2^A \end{pmatrix}. \quad (7)$$

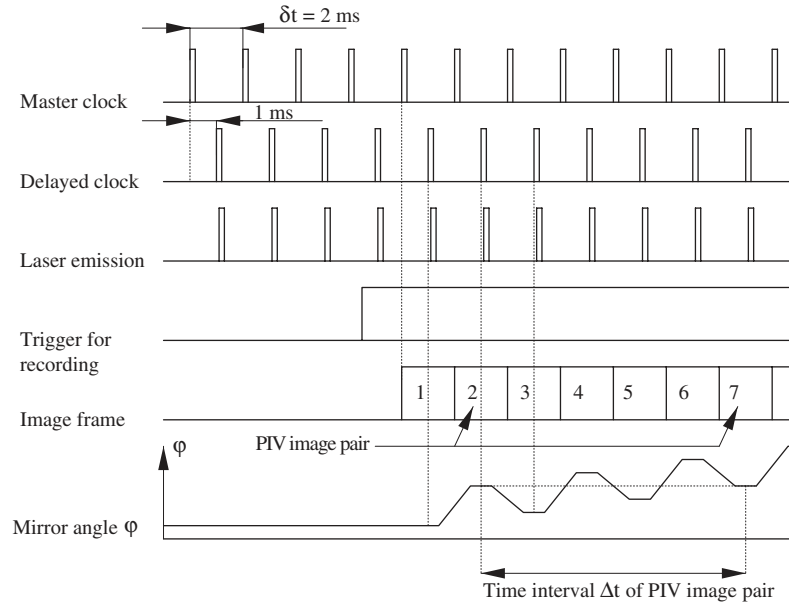


Figure 6. Time chart for signals and operation. m is 3 in this time chart for simplicity, although actually m was set at 6.

2.4. Scanning mirror control and synchronization

The particle images required to obtain the volumetric velocity distribution for one instance with our scanning stereo PIV consisted of a series of PIV images taken at successive light sheet planes stacked in the azimuthal direction of the light sheet scan. Each PIV image was a pair of particle images separated by time Δt , and successive light sheet planes were separated in the azimuthal direction by angle $\delta\theta$. Each step in the mirror angle corresponding to $\delta\theta$ was defined as

$$\delta\varphi = \frac{\varphi_B - \varphi_A}{\theta_B - \theta_A} \delta\theta. \quad (8)$$

Here, $\Delta t = 22$ ms was needed to ensure sufficient particle displacement (~ 10 pixels) in the images. Moreover, this interval was too short to scan the light sheet completely in the measurement volume due to limitations with the camera's maximum frame rate. Moreover, this interval was too long to leave the light sheet at a single location, resulting in an insufficient scanning speed. We thus propose the following scanning scheme.

The mirror is placed at an initial position $\varphi = \varphi_0$, and the laser is emitted. Then, the particle images are captured at time $t = 0$. The mirror is then rotated to $\varphi = \varphi_0 + m\delta\varphi$ at $t = \delta t$, where m is an integer value, and δt is the frame interval of the camera, which is identical to the inverse of the camera's frame rate, f_c . Next, the light sheet is moved to $\varphi_0 + \delta\varphi$, and it continues in a series such as $\varphi_0 + (m+1)\delta\varphi$, $\varphi_0 + 2\delta\varphi$, $\varphi_0 + (m+2)\delta\varphi$, \dots , $\varphi_0 + (n-1)\delta\varphi$, $\varphi_0 + (n-1+m)\delta\varphi$, $\varphi_0 + n\delta\varphi$, $\varphi_0 + (n+m)\delta\varphi$, where n denotes the number of measurement planes in a measurement volume. With this motion, the location of the light sheet at any time t is identical to its location at time $t + (2m-1)\delta t$. The example of the evolution of φ in figure 6 is referred to in the next paragraph. Thus, the images captured at these two sheet locations, separated by $\Delta t = (2m-1)\delta t$, were used as a PIV image pair at each measurement plane. This allowed more freedom to set Δt to an appropriate value independent of the

Table 1. Operating conditions for imaging hardware.

Hardware	Operating conditions
Pulse/delay generator	500 Hz master pulse with 1 ms delayed pulse
C-MOS camera	500 fps, 1024×1024 pixels
Nd:YLF pulse laser	500 Hz ^a , 20 mJ/pulse
Optical scanner	500 Hz ^a , 0.14°_{p-p}

^a Synchronize with delayed pulse.

frame rate. We selected $n = 50$, $m = 6$, $\delta\varphi = 0.07^\circ$ and $\delta\theta = 0.11^\circ$ for the present study.

To synchronize the optical equipment, trigger pulses were generated by a digital pulse/delay generator (DG535, Stanford Research) to send signals to the cameras, the laser and the optical scanner. Figure 6 is a timing chart of the signals. Table 1 lists the actual settings for the imaging hardware.

A master clock with a frequency of $f_c = 500$ Hz generated by the digital delay/pulse generator was sent to both cameras to trigger the exposures. Thus, the cameras were operated at a frame rate of 500 fps. A delayed clock, which lagged 1 ms behind the master clock, was sent to trigger the laser. The signal 'Trigger for recording' was manually sent at arbitrary times to the cameras. The cameras actually started recording after this signal was received. This signal and the delayed clock were also sent to the scanner controller, which began to rotate the mirror to the next angle immediately after every leading edge of the delayed clock, unless the signal 'Trigger for recording' was on. Thus, the laser and the cameras were initially running at frequency f_c , and immediately after manually turning on the 'Trigger for recording' signal, image recording and mirror scanning both started. The frame rate of 500 fps was 1/4 of the maximum frame rate of our cameras, since the optical scanner could not realize the expected motion above this frame rate with the present configuration.

Note that the time required to scan the light sheet over the measurement volume became $T_s = 2(n+m-1)/f_c = 0.22$ s,

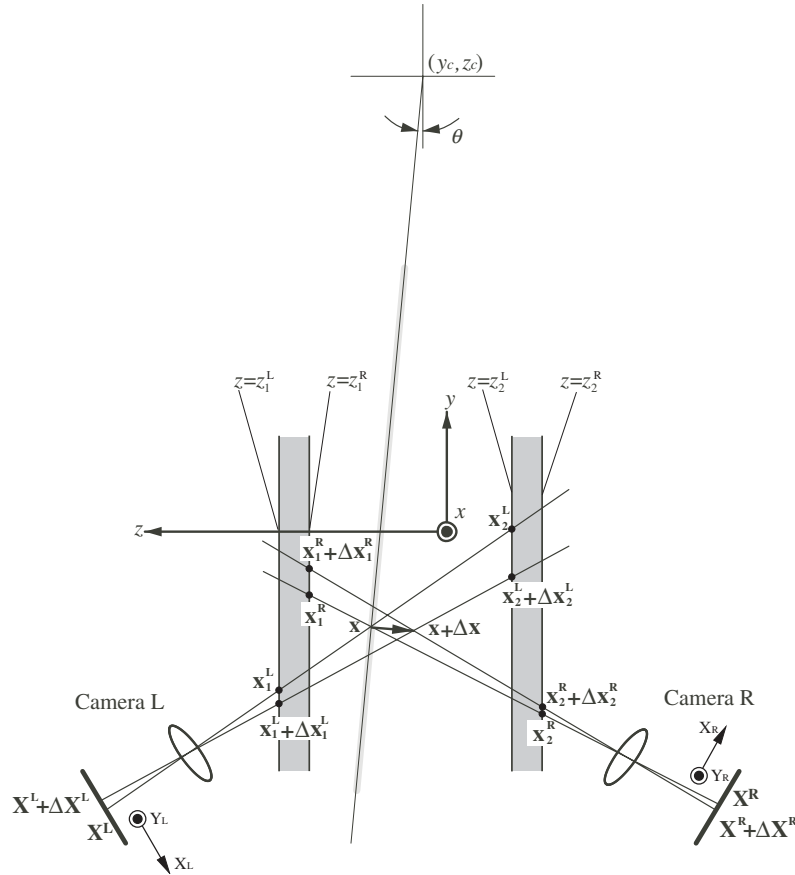


Figure 7. Projection of particle(s) onto the cameras. The light sheet plane (thin grey line) and calibration planes are also indicated.

Table 2. System parameters.

Description	Value
Number of planes in a volume, n	50
Light sheet thickness, t_l	2 mm
Interval between adjacent planes, Δz	2 mm
Scanning time for a volume, T_s	0.22 s
Time interval between successive volumes, ΔT	0.33 s
Interrogation spot size	28×28 pixels (2.5×3.5 mm ²)
Size of measurement volume	$100 \times 100 \times 100$ mm ³

and also the time required to bring the light sheet back to the initial position was $T_r = 0.11$ s. Thus, the time interval between successive volumetric data was $\Delta T = T_s + T_r = 0.33$ s. The spatial interval between adjacent light sheet planes (or measurement planes) was $\Delta z = 2.0$ mm at the centre of the measurement volume. Thus, the scanning speed was $V_s = n\Delta z/T_s = 454.5$ mm s⁻¹. The major parameters of the measurement system are listed in table 2.

2.5. Interrogation

Let us now consider measuring the velocity at a given point (x, y) on a light sheet plane at angle θ . Referring to (6), the dependent variable z is simply determined by

$$z = \frac{1 - c_1^\theta y}{c_2^\theta}. \quad (9)$$

As we can see in figure 7, particle(s) at $\mathbf{x} = (x, y, z)$ are projected on the 2D image coordinate of the left camera,

$(X^L, Y^L) = \mathbf{X}^L$, and of the right camera, $(X^R, Y^R) = \mathbf{X}^R$. Both image coordinates were computed with 3D–2D calibration functions, $\mathbf{X}^L = \mathbf{F}^L(x, y, z)$ and $\mathbf{X}^R = \mathbf{F}^R(x, y, z)$, which will be described in the following section.

Then, the image displacements $\Delta \mathbf{X}^L$ and $\Delta \mathbf{X}^R$ of particle(s) at \mathbf{X}^L and \mathbf{X}^R were calculated, respectively, with the regular PIV method in terms of direct cross-correlation between the small sub-domains (interrogation spot) of two successive images separated by time Δt . Next, the image coordinate of these points for the left camera was transformed back into the 3D physical coordinate (x, y, z) in the form

$$\begin{aligned} \mathbf{x}_1^L &= \mathbf{f}_1^L(\mathbf{X}^L) \\ \mathbf{x}_2^L &= \mathbf{f}_2^L(\mathbf{X}^L) \\ \mathbf{x}_1^L + \Delta \mathbf{x}_1^L &= \mathbf{f}_1^L(\mathbf{X}^L + \Delta \mathbf{X}^L) \\ \mathbf{x}_2^L + \Delta \mathbf{x}_2^L &= \mathbf{f}_2^L(\mathbf{X}^L + \Delta \mathbf{X}^L). \end{aligned} \quad (10)$$

For the right camera,

$$\begin{aligned} \mathbf{x}_1^R &= \mathbf{f}_1^R(\mathbf{X}^R) \\ \mathbf{x}_2^R &= \mathbf{f}_2^R(\mathbf{X}^R) \\ \mathbf{x}_1^R + \Delta\mathbf{x}_1^R &= \mathbf{f}_1^R(\mathbf{X}^R + \Delta\mathbf{X}^R) \\ \mathbf{x}_2^R + \Delta\mathbf{x}_2^R &= \mathbf{f}_2^R(\mathbf{X}^R + \Delta\mathbf{X}^R), \end{aligned} \quad (11)$$

where \mathbf{f} is the mapping function from the 2D image coordinate of each camera to an x - y plane at constant z (where the surfaces of the calibration plate were located as shown in figure 7) in the 3D physical coordinate system. If the subscripts are 1, this means $z = z_1^L$ (z_1^R). If the subscripts are 2, this means $z = z_2^L$ (z_2^R). The superscript specifies the camera. These mapping functions will also be described in the following section. Let us now calculate the point \mathbf{x}_{t0} where the line $\mathbf{x}_1^L \rightarrow \mathbf{x}_2^L$ and the line $\mathbf{x}_1^R \rightarrow \mathbf{x}_2^R$ intersect. Also calculate the point \mathbf{x}_{t1} where the line $\mathbf{x}_1^L + \Delta\mathbf{x}_1^L \rightarrow \mathbf{x}_2^L + \Delta\mathbf{x}_2^L$ and the line $\mathbf{x}_1^R + \Delta\mathbf{x}_1^R \rightarrow \mathbf{x}_2^R + \Delta\mathbf{x}_2^R$ intersect. Since two lines may not intersect due to errors in calibration functions or in measured particle displacement, we define ‘intersection’ as the centre of the smallest sphere to which both lines are tangential. Obviously, the two intersecting points, \mathbf{x}_{t0} and \mathbf{x}_{t1} , are the three-dimensional positions of particle(s) at $t = 0$ and $t = \Delta t$, respectively. Thus the velocity vector was obtained by

$$\mathbf{v} = (\mathbf{x}_{t1} - \mathbf{x}_{t0}) / \Delta t. \quad (12)$$

The size of the interrogation spot on the image plane of each camera was 28×28 pixels, which is approximately $2.5 \times 3.5 \text{ mm}^2$ in the x - y physical plane.

2.6. Calibration

The calibration functions in the previous sections were obtained with the following procedure. First, a surface of the calibration plate facing camera L was placed at $z = z_1^L$, whereas the opposite surface of the plate was located at $z = z_1^R$ ($= z_1^L - 5 \text{ mm}$) as previously shown in figure 7. Note that z_1^L (z_1^R) is not identical to the position of the plate set in section 2.3. The calibration grid images captured by the cameras were processed individually using the following algorithms. Each grid point was searched with pattern matching, which found the peak location of the correlation of the original image and template pattern that was similar to the grid. After finding the location of each grid in the image coordinate, the physical location of each grid was determined automatically based on the location of the reference grid and the known spacing between the grids. This procedure produced a table of image coordinates and physical coordinates for the grid points, and created 2D–2D calibration functions $\mathbf{f}_1^L, \mathbf{f}_1^R$ in the sense of the least-squares method. Next, the calibration plate was traversed at $z = z_2^L$ ($z = z_2^R$), and a similar procedure produced another set of functions $\mathbf{f}_2^L, \mathbf{f}_2^R$. The form of the calibration function was based on a pinhole camera model with second-order distortion (Willert 1997), such as

$$\begin{pmatrix} x \\ y \end{pmatrix} = \mathbf{f}_\zeta^\Pi(X, Y) = \begin{pmatrix} \frac{a_0^{\Pi,\zeta} + a_1^{\Pi,\zeta} X + a_2^{\Pi,\zeta} Y + a_3^{\Pi,\zeta} X^2 + a_4^{\Pi,\zeta} Y^2 + a_5^{\Pi,\zeta} XY}{1 + a_{12}^{\Pi,\zeta} X + a_{13}^{\Pi,\zeta} Y + a_{14}^{\Pi,\zeta} X^2 + a_{15}^{\Pi,\zeta} Y^2 + a_{16}^{\Pi,\zeta} XY} \\ \frac{a_6^{\Pi,\zeta} + a_7^{\Pi,\zeta} X + a_8^{\Pi,\zeta} Y + a_9^{\Pi,\zeta} X^2 + a_{10}^{\Pi,\zeta} Y^2 + a_{11}^{\Pi,\zeta} XY}{1 + a_{12}^{\Pi,\zeta} X + a_{13}^{\Pi,\zeta} Y + a_{14}^{\Pi,\zeta} X^2 + a_{15}^{\Pi,\zeta} Y^2 + a_{16}^{\Pi,\zeta} XY} \end{pmatrix}, \quad (13)$$

where the index Π denotes either L or R for identifying the camera, and the index ζ denotes 1 if the plate location is $z = z_1^L$ (z_1^R) and denotes 2 if the plate location is $z = z_2^L$ (z_2^R). The coefficient $a_i^{\Pi,\zeta}$ was evaluated with the non-linear least-squares method.

Once these 2D–2D calibration functions were obtained, the remaining 3D–2D functions \mathbf{F}^L and \mathbf{F}^R were determined in the following way. The point \mathbf{X}^Π in the image coordinate of camera Π is a projection of all points on a line connecting $\mathbf{f}_1^\Pi(\mathbf{X}^\Pi)$ and $\mathbf{f}_2^\Pi(\mathbf{X}^\Pi)$. The intersection of this projection line and the measurement plane at angle θ is given by a function,

$$\mathbf{x}(\theta, \mathbf{X}^\Pi) = s[\mathbf{f}_2^\Pi(\mathbf{X}^\Pi) - \mathbf{f}_1^\Pi(\mathbf{X}^\Pi)] + \mathbf{f}_1^\Pi(\mathbf{X}^\Pi) \quad (14)$$

and

$$s = \frac{1 - c_1(\theta)y_1 - c_2(\theta)z_1^\Pi}{c_1(\theta)(y_2 - y_1) + c_2(\theta)(z_2^\Pi - z_1^\Pi)}, \quad (15)$$

where $(x_1, y_1, z_1^\Pi) = \mathbf{f}_1^\Pi(\mathbf{X}^\Pi)$ and $(x_2, y_2, z_2^\Pi) = \mathbf{f}_2^\Pi(\mathbf{X}^\Pi)$. The intersections for all θ values on which the measurement plane is located are found. Furthermore, these points are found for many possible \mathbf{X}^Π , and finally a set of data with many possible pairs of \mathbf{X}^Π and $\mathbf{x}(\theta, \mathbf{X}^\Pi)$ can be prepared. These data were fitted into the following function based on a pinhole camera model with second-order distortion using the non-linear least-squares method:

$$\begin{pmatrix} X \\ Y \end{pmatrix} = \mathbf{F}^\Pi \begin{pmatrix} x \\ y \\ z \end{pmatrix} = \begin{pmatrix} \frac{a_0^\Pi + a_1^\Pi x + a_2^\Pi y + a_3^\Pi z + a_4^\Pi x^2 + a_5^\Pi y^2 + a_6^\Pi z^2 + a_7^\Pi xy + a_8^\Pi yz + a_9^\Pi zx}{1 + a_{20}^\Pi x + a_{21}^\Pi y + a_{22}^\Pi z + a_{23}^\Pi x^2 + a_{24}^\Pi y^2 + a_{25}^\Pi z^2 + a_{26}^\Pi xy + a_{27}^\Pi yz + a_{28}^\Pi zx} \\ \frac{a_{10}^\Pi + a_{11}^\Pi x + a_{12}^\Pi y + a_{13}^\Pi z + a_{14}^\Pi x^2 + a_{15}^\Pi y^2 + a_{16}^\Pi z^2 + a_{17}^\Pi xy + a_{18}^\Pi yz + a_{19}^\Pi zx}{1 + a_{20}^\Pi x + a_{21}^\Pi y + a_{22}^\Pi z + a_{23}^\Pi x^2 + a_{24}^\Pi y^2 + a_{25}^\Pi z^2 + a_{26}^\Pi xy + a_{27}^\Pi yz + a_{28}^\Pi zx} \end{pmatrix}. \quad (16)$$

2.7. Flow chart

The whole process above is summarized in figure 8. To begin the procedure, 2D–2D calibration functions were obtained with subprocess (A), section 2.6. Equations of all light sheet planes were estimated in subprocess (B), section 2.3 from their measured positions. Next, 3D–2D calibration functions were obtained by using the equations of light sheet planes and 2D–2D calibration functions in subprocess (C), section 2.6. Finally, velocity vectors were calculated with all the calibration functions and equations of light sheet planes in subprocess (D), section 2.5.

3. Error estimation

Estimation was done to clarify the error in instantaneous velocity and also that in the position of each measurement point. Error factor and values are summarized in table 3. Here the column ‘Error’ denotes the error in each error factor represented by standard deviation of random realizations, and ‘Sensitivity’ denotes the coefficient to adjust the unit of ‘Error’ into millimetres, i.e. ‘Error in mm’ = ‘Error’ \times ‘Sensitivity’.

Although the light sheet position was formulated with (1) as a general form, c_2 is significantly larger than c_1 because the light sheet plane is mostly perpendicular to the z -axis. Thus, the position of the light sheet is now regarded as the z

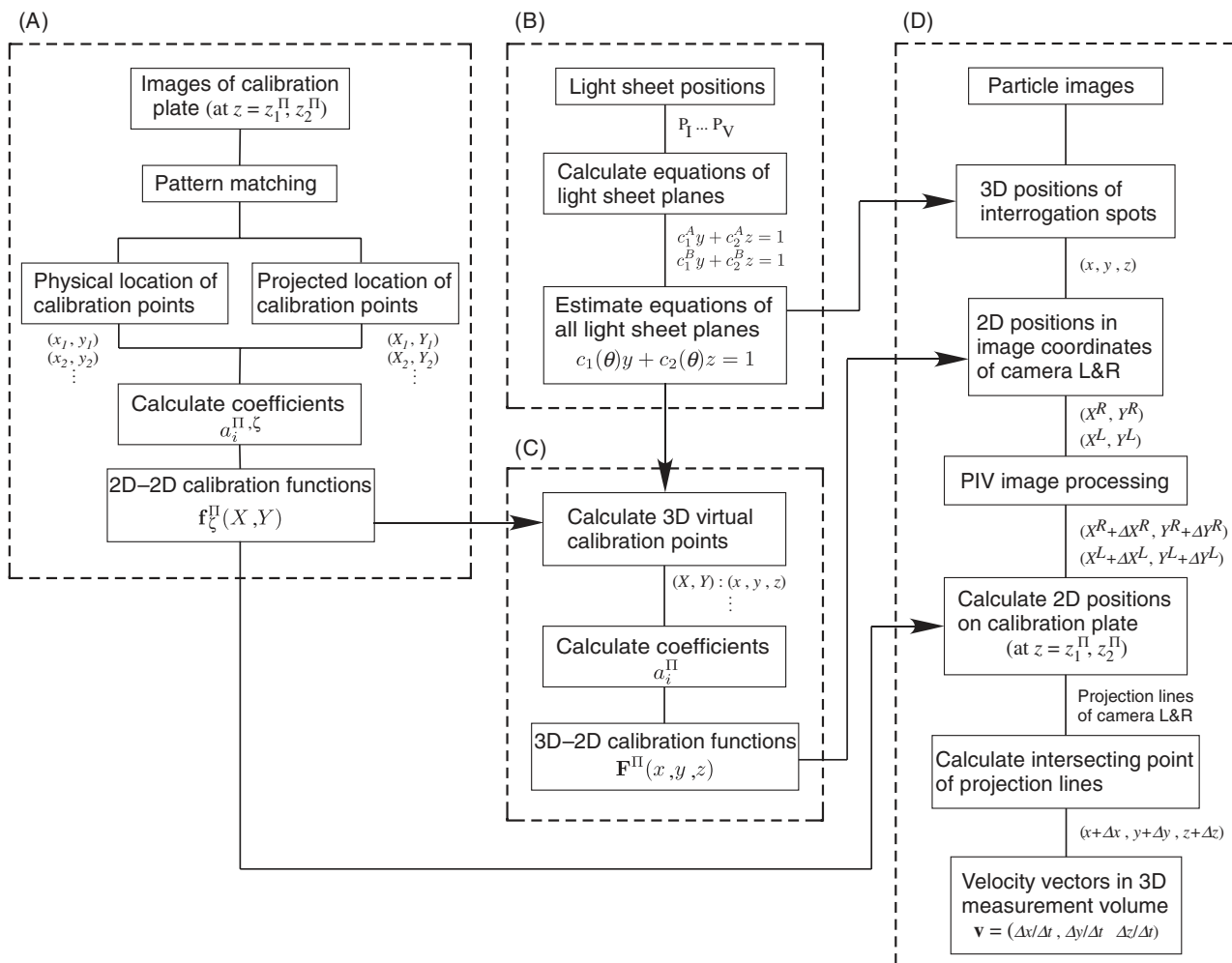


Figure 8. Flowchart for the data processing procedure.

Table 3. Major sources of error in measurement.

Position			
Source	Error	Sensitivity	Error in mm
Light sheet			
Edge			
P	0.1 mm	1	0.1
Traverser	0.02 mm	1	0.02
Relation between φ and θ	5.2×10^{-6} rad	1035.8 mm	0.0054
Calibration function			
2D-2D			
Fitting+machining	0.05 mm	1	0.05
Traverser	0.02 mm	1	0.02
3D-2D			
Fitting+machining	0.05 mm	1	0.05
Traverser	0.02 mm	1	0.02
Total			0.13
Velocity			
Source	Error	Sensitivity	Error in mm s^{-1}
Particle displacement (camera L)	0.1 pixels	$4.2 \text{ mm pixel}^{-1} \text{ s}^{-1}$	0.42
Particle displacement (camera R)	0.1 pixels	$4.2 \text{ mm pixel}^{-1} \text{ s}^{-1}$	0.42
Calibration (camera L)	1.8%	24 mm s^{-1}	0.43
Calibration (camera R)	1.8%	24 mm s^{-1}	0.43
Total			0.85

location of a point where it crosses a line $(x, y) = (45D, 0)$, i.e. the centreline of the measurement volume parallel to the z -axis. The error in the light sheet position consists of two factors, error in the position of the light sheet at the edges of the measurement volume section (2.3) and the error due to presupposing that the angle of the mirror and the angle of the light sheet are linearly related (5). The first factor can be further divided into another two. The first is the error in the location of $P_1 \cdots P_V$ equivalent to the error in $z_1 \cdots z_V$, which is estimated as 0.1 mm as described in section 2.3. The second is the error in the servomotor-driven traversing mechanism, which is expected to be 0.02 mm. The error associated with the linear approximation of the light sheet angle to the mirror angle was 5.2×10^{-6} rad, as stated in section 2.3. This leads to an error in the light sheet position of 0.0054 mm.

The calibration function is also a source of position error. The error in the 2D–2D calibration function represented by (13) was estimated by

$$\sigma_{2D} = \left(\frac{1}{n} \sum_{i=1}^n (f_y(X_i, Y_i) - y_i)^2 \right)^{1/2}, \quad (17)$$

where f_y denotes a y component of function \mathbf{f} , and i is the index of the grid point in the calibration plate. This might include the fitting error in the function to the grid point in the calibration image, and also the machining error in the grid position, which is expected to be 0.01–0.05 mm. The value of σ_{2D} was 0.05 mm. Note that this calibration error was comparable to the error in the third-order polynomial type calibration function. The traversing error in the calibration plate was 0.02 mm.

The error in the 3D–2D calibration function (16) was estimated by

$$\sigma_{3D} = \left(\frac{1}{n} \sum_{i=1}^n (F_X(x_i, y_i, z_i) - X_i)^2 \right)^{1/2}, \quad (18)$$

where F_X denotes an X component of function \mathbf{F} , and i is the index of the grid point in the calibration plate placed in the middle of z_1 and z_2 . The value of σ_{3D} was 0.05 mm. Thus, the squared sum of these errors is 0.13 mm as standard deviation type total position error.

Next, let us consider the error in velocity measurement. Here, we have only described the error in the velocity component v with $u = w = 0$ for the sake of simplicity. Note that the error in v is expected to be similar to the error in w , and larger than the error in u . Since the error in velocity may depend on its magnitude, that listed in table 3 is $v = U_m$ ($= 24 \text{ mm s}^{-1}$). The velocity error has two major factors. The first is the error in measured particle displacement on the image. This is often called the ‘sub-pixel error’, and was typically estimated as 0.1 pixels in our own simulations. A similar degree of error independently arose in both camera images.

The second factor is the error in the spatial gradient of the 2D–2D calibration function (13). The measured velocity v_{meas} at the image coordinate (X_i, Y_i) , on which the location of the i th grid of the calibration plate (x_i, y_i) is projected, is approximated as

$$v_{\text{meas}} \approx \frac{\Delta X}{\Delta t} \frac{\partial f_y(X, Y)}{\partial X} \Big|_{X=X_i, Y=Y_i}, \quad (19)$$

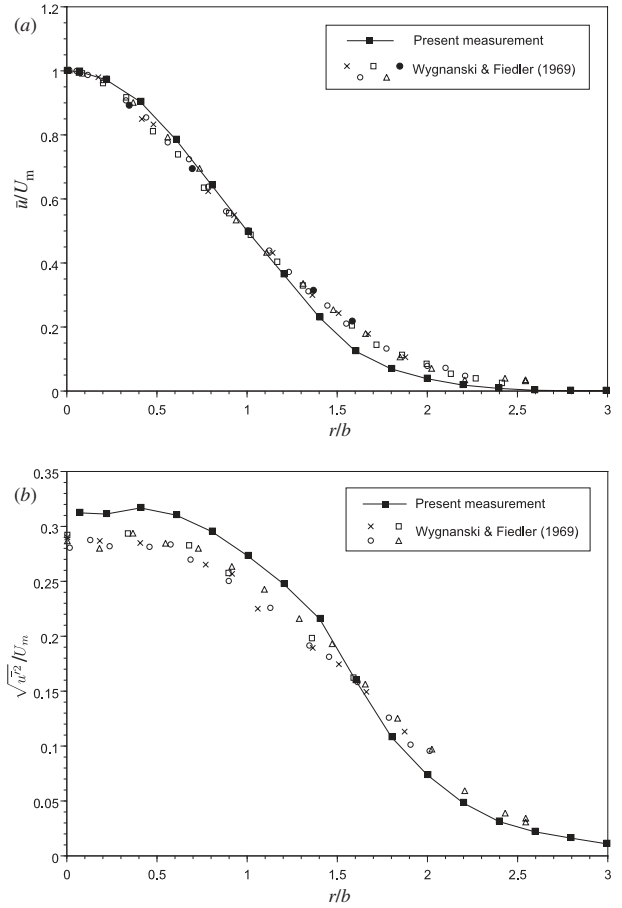


Figure 9. Mean and rms velocity profiles.

where ΔX is the X component of particle displacement in the image. In the meantime, the ‘true’ velocity was approximated by

$$v_{\text{true}} = \frac{\Delta X}{\Delta t} \frac{\partial y}{\partial X} \Big|_{y=y_i} \approx \frac{\Delta X}{\Delta t} \frac{y_i - y_j}{X_i - X_j}, \quad (20)$$

where j denotes the index of a grid that is the neighbouring grid of the i th grid facing the y direction. Thus, the error in v_{meas} was estimated by subtracting v_{true}

$$\begin{aligned} \sigma_v &= \left(\frac{1}{n} \sum_{i=1}^n (v_{\text{meas}} - v_{\text{true}})^2 \right)^{1/2} \\ &= \frac{\Delta X}{\Delta t} \left(\frac{1}{n} \sum_{i=1}^n \left(\frac{\partial f_y(X, Y)}{\partial X} \Big|_{X=X_i, Y=Y_i} - \frac{y_i - y_j}{X_i - X_j} \right)^2 \right)^{1/2}. \end{aligned} \quad (21)$$

This was computed from actual calibration images and the standard deviation is listed in table 3. Note that the approximated value of v_{true} includes the gradient of the randomly occurring machining error in the actual grid spacing of the calibration plate (0.02 mm–0.05 mm) and also the error in the pattern matching process to measure the grid location on the calibration image. Thus the value of σ_v may have been overestimated. The grand total of error in velocity measurement was 0.85 mm s^{-1} ($0.035 U_m$) in standard deviation.

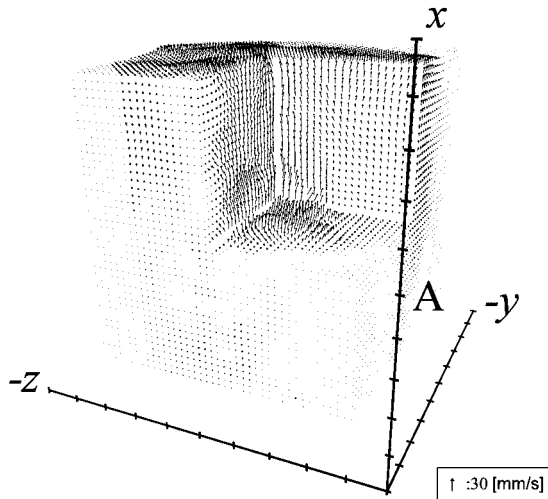


Figure 10. Three-dimensional view of instantaneous velocity vectors. Tic intervals are 10 mm in all directions. Symbol A represents the x -location of cross-sections in figure 12.

4. Results

Let us begin our discussion on the measured data with the mean and rms velocity profiles in figure 9. Here, r is the radial distance from the jet centreline estimated by fitting a 2D Gaussian function to the mean velocity data. The mean and rms velocities were obtained by ensemble averaging over the eight independent series of velocity data: each series consists of 12 instantaneous volumetric velocity data measured with 0.33 s intervals. The profile was then computed by averaging in the azimuthal direction, and also by averaging in the streamwise direction over a range $x = 35D$ to $55D$, where the velocity profiles are self-similar, after normalizing with the half velocity width, b , and the centreline mean velocity, U_m , at each streamwise station. Both mean and rms velocity profiles were in reasonable agreement with the data previously measured by Wygnanski and Fiedler (1969). Note that the centreline mean velocity at $x = 45D$ was $U_m = 24 \text{ mm s}^{-1}$ and the velocity half width was $b = 22 \text{ mm}$.

The three-dimensional velocity vectors have been reconstructed in figure 10. Here, only a few sections of the measurement domain have been displayed for clarity. The centreline of the jet is located near the centre of the domain. The velocity vectors are raw results and no smoothing or enhancement has been done.

The vorticity vectors were computed with the second-order finite difference of the velocity vectors and were smoothed by averaging $3 \times 3 \times 3$ nodes surrounding each node to reduce random noise. Although the original measurement grids (nodes) were located on a non-parallel cylindrical coordinate, they were relocated to form parallel rectangular grids with a linear interpolation scheme prior to calculating vorticity just for convenience. Figure 11 represents surfaces of constant vorticity magnitude, $|\omega| = 2.5 \text{ s}^{-1}$. Vortical structures exhibiting elongated loops can be clearly observed.

These vortical structures convect downstream without significantly changing their geometrical features. This implies

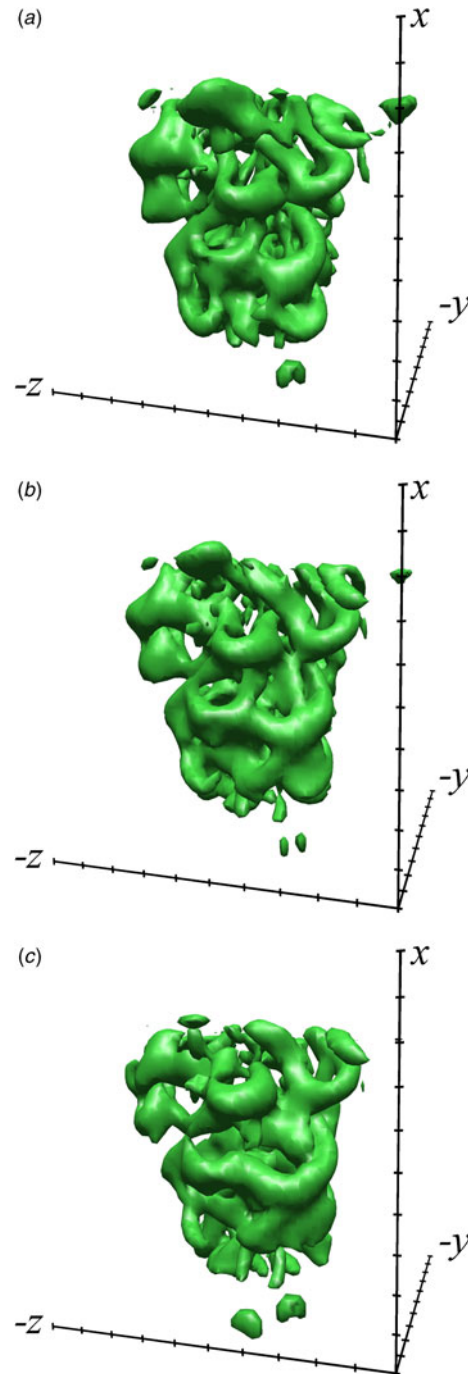


Figure 11. Surfaces of constant vorticity magnitude, $|\omega| = 2.5 \text{ s}^{-1}$. Orientation of axis and tick intervals are identical to those in figure 10. (a) $t = t_0$, (b) $t = t_0 + 0.330 \text{ s}$, (c) $t = t_0 + 0.660 \text{ s}$.

that the scanning duration T_s ($=0.22 \text{ s}$) and interval of successive volumes ΔT ($=0.33 \text{ s}$) are sufficiently small to capture the temporal evolution of such structures.

Quantities derived from velocity in the y - z cross-section at $x = 45D$ represented by symbol A in figure 10 are depicted in figure 12. Figure 12(a) shows the in-plane velocity component (vector) and the out-of-plane velocity component (contour). The direction in which the light sheet is scanned is indicated by the arrow on the right of the figure. Vectors and contours in each corner of the measurement domain are

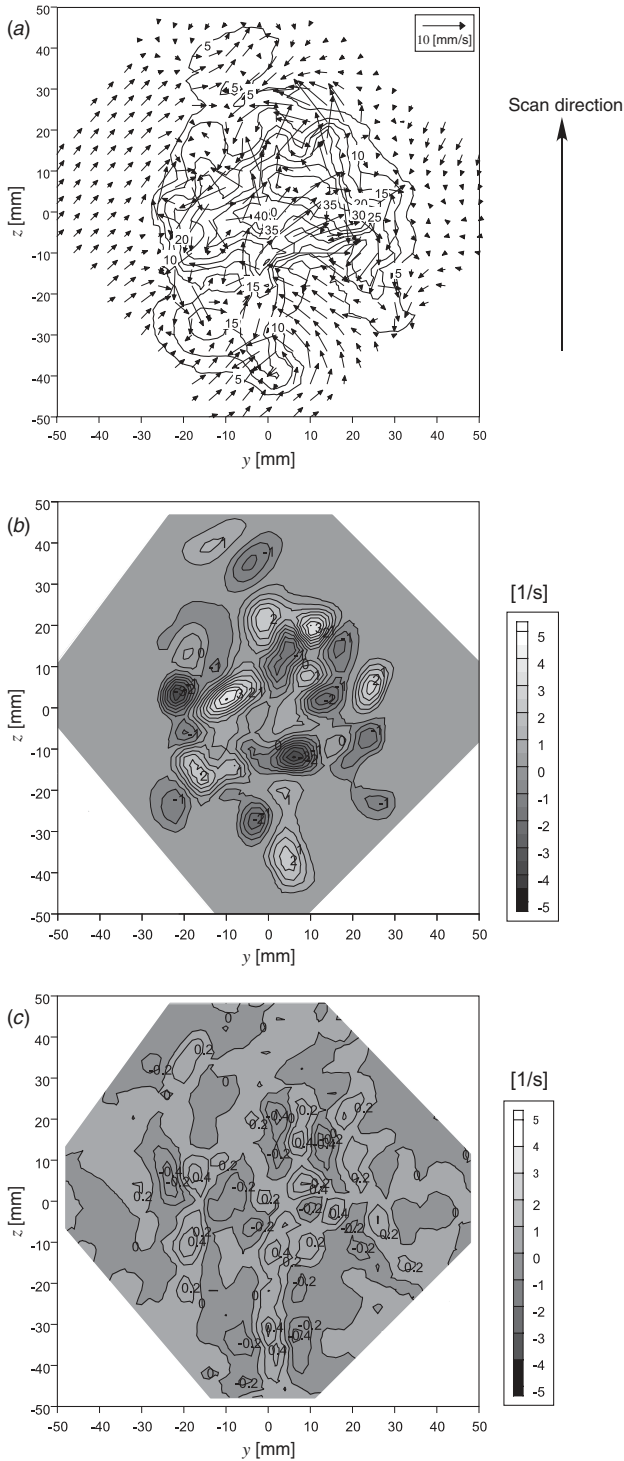


Figure 12. Instantaneous quantities on the y - z plane at the x -location represented by symbol A in figure 10. (a) In-plane velocity component (vectors) and out-of-plane velocity component (contours); (b) x -component of vorticity; (c) residue of continuity equation.

eliminated where particles are not projected onto either of the CCD cameras. The jet core centred near $y = z = 0$ is dominated by the large out-of-plane velocity component with complex fine eddies.

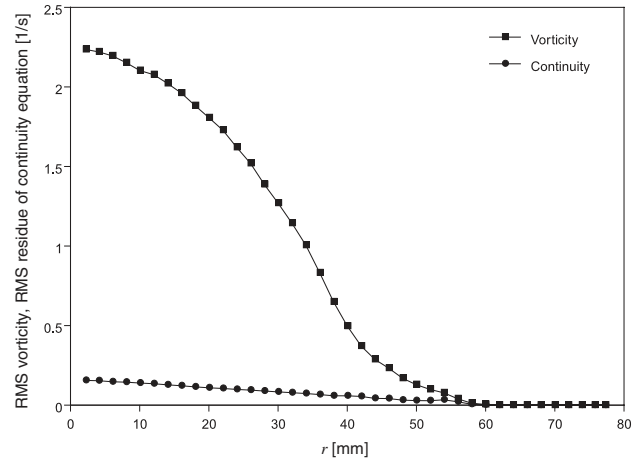


Figure 13. Ensemble rms vorticity magnitude and ensemble rms residue of the continuity equation. Both quantities were also square-summed over the x direction within the measurement volume.

Figures 12(b) and (c) depict the corresponding vorticity distributions and the residue of the continuity equation, which should be zero in theory. Vorticity and residue peaks are concentrated around the centre of the plane. It is obvious that the instantaneous residue is much smaller than the vorticity. Figure 13 plots the ensemble rms vorticity magnitude and ensemble rms residue of the continuity equation. Both quantities were also square-summed over the x direction within the measurement volume. The residue has a maximum at $r = 0$, where the vorticity is also the largest. The ratio between rms vorticity and rms residue of the continuity equation at $r = 0$ was approximately 0.07. The residue was reasonably small to capture the vortical structures.

5. Discussion

In this section, we discuss the time and spatial scales of the flow field, and temporal and spatial resolution with the present technique.

Since the light sheet scan in the measurement volume takes a finite time, T_s , the measured vortical structure may be distorted compared with a truly instantaneous structure. The greatest distortion is estimated with the ratio of the convection velocity of the structure and the scanning speed, $V_s (= 454.5 \text{ mm s}^{-1})$. Since the convection velocity of the vortical structures is approximately the same as the local mean velocity (Wynanski and Fiedler 1969), the maximum convection velocity can be assumed to be U_m . Thus, the largest distortion is estimated as $U_m/V_s = 0.053$, which is sufficiently small to discuss the topology of the vortical structures.

The time scale of the smallest eddies in the turbulent flow field is represented with a Kolmogorov time scale, $\tau = (\nu/\epsilon)^{1/2}$, where ϵ is the dissipation rate. The Kolmogorov time scale of the present jet is estimated as $\tau = 0.45 \text{ s}$ in the measurement volume, where ϵ was evaluated based on the value reported by Wynanski and Fiedler (1969). It is apparent that the time interval between successive data, $\Delta T (= 0.314 \text{ s})$, is less than the Kolmogorov time scale. Thus, the temporal resolution is not too low to resolve the smallest

eddies, and also high enough to resolve the large coherent vortices, such as the looped structures in figure 11.

In addition to the time scale, the spatial scale should also be considered. The Kolmogorov length scale is estimated as $\eta = (v^3/\epsilon)^{1/4} = 0.52$ mm. Although direct numerical simulation typically requires a grid spacing approximately two to three times wider than the Kolmogorov length scale, the interrogation spot size (≈ 2 mm) is still too large to resolve the smallest eddies. Furthermore, as previously mentioned, the vorticity was computed by averaging over the surrounding $3 \times 3 \times 3$ nodes, i.e. the spatial resolution of vorticity is roughly 6 mm. Thus, the magnitude of the measured vorticity may have significant error due to the lack of spatial resolution. However, the residue of the continuity equation is sufficiently small as can be seen from figure 13. This implies that the measured vorticity field can be viewed as a spatially low-pass-filtered field that can still satisfy continuity, and the topology and dynamics of large-scale structures can be discussed on the basis of such a low-pass-filtered field without sub-grid small scales.

6. Conclusion

We developed a scanning stereo PIV system to measure the three-dimensional distribution of three-component velocity in a turbulent round jet. A laser light sheet produced with a high-repetition-rate pulsed Nd:YLF laser was scanned with an optical scanner. The evolution of the mirror angle had the form of a linear slope with small amplitude oscillations, which allowed more freedom in choosing the time interval Δt of a pair of particle images. Two high-speed mega-pixel resolution C-MOS cameras captured the particle images illuminated by the light sheet, and we adopted a new stereoscopic PIV method to acquire the 3D-3C velocity distribution of a turbulent water jet that was formed by a round nozzle with an exit diameter of $D = 5$ mm. The jet Reynolds number was set at $Re \approx 1000$, and the streamwise location of the centre of the measurement volume was fixed at approximately $x = 45D$, where the centreline mean velocity was approximately 24 mm s^{-1} .

The measurement volume ($\sim 100 \times 100 \times 100 \text{ mm}^3$) containing 50 velocity planes was scanned in 0.22 s, which was sufficiently short to capture instantaneous vortical structures. The residue of the continuity equation (divergence) was approximately 7% of rms vorticity on the centreline of the jet. Iso-vorticity surfaces clearly showed large-scale coherent vortices.

Acknowledgments

We are grateful to Professor H Hayami of Kyusyu University, the leader of Dynamic PIV Project, for his cooperation and Mr S Aramaki of the same university for his assistance with the experiments. We also wish to thank the project members, Dr K Okamoto of University of Tokyo, Dr K Nishino of Yokohama National University, Dr M Kawahashi of Saitama University, Dr T Saga of University of Tokyo and Dr T Kobayashi of the Japan Automobile Research Institute for their helpful discussions. Further, Mr T Nakajima and Mr F Yamada of the University of Tsukuba are gratefully acknowledged for designing and machining hardware needed for the optical scanner system. The experiments were conducted at the Institute for Materials Chemistry and Engineering of Kyushu University, Japan. This work was partly supported by a Grant-in-Aid (No 14205031) for Scientific Research by the Japan Society of Promotion for Science.

References

- Brucker C 1995 Digital-particle-image-velocimetry (DPIV) in a scanning light-sheet: 3-D starting flow around a short cylinder *Exp. Fluids* **19** 255–63
- Brucker C 1996 3-D Scanning-particle-image-velocimetry: technique and application to a spherical cap wake flow *Appl. Sci. Res.* **56** 157–79
- Chiu W C and Rib L N 1956 The rate of dissipation of energy and the energy spectrum in a low-speed turbulent jet *Trans. Am. Geophys. Union* **37** 13–26
- Nedderman R M 1961 The use of stereoscopic photography for the measurement of velocities in liquids *Chem. Eng. Sci.* **16** 113–9
- Nishino K, Kasagi N and Hirata M 1989 Three-dimensional particle tracking velocimetry based on automated digital image processing *Trans. ASME, J. Fluids Eng.* **111** 384–91
- Recca R G and Dewey J M 1988 A method for automatic particle tracking in a three-dimensional flow fluid *Exp. Fluids* **6** 25–32
- Stitou A and Riethmuller M L 2001 Extension of PIV to super resolution using PTV *Meas. Sci. Technol.* **12** 1398–403
- Ushijima S and Tanaka N 1996 Three dimensional particle tracking velocimetry with laser light sheet scanings *Trans. ASME, J. Fluids Eng.* **118** 352–7
- Willert C 1997 Stereoscopic digital particle image velocimetry for application in wind tunnel flows *Meas. Sci. Technol.* **8** 1465–79
- Wynanski I and Fiedler H 1969 Some measurements in the self-preserving jet *J. Fluid Mech.* **38** 577–612
- Zhang J, Tao B and Katz J 1997 Turbulent flow measurement in a square duct with hybrid holographic PIV *Exp. Fluids* **23** 373–81

ISSN 0957-0233

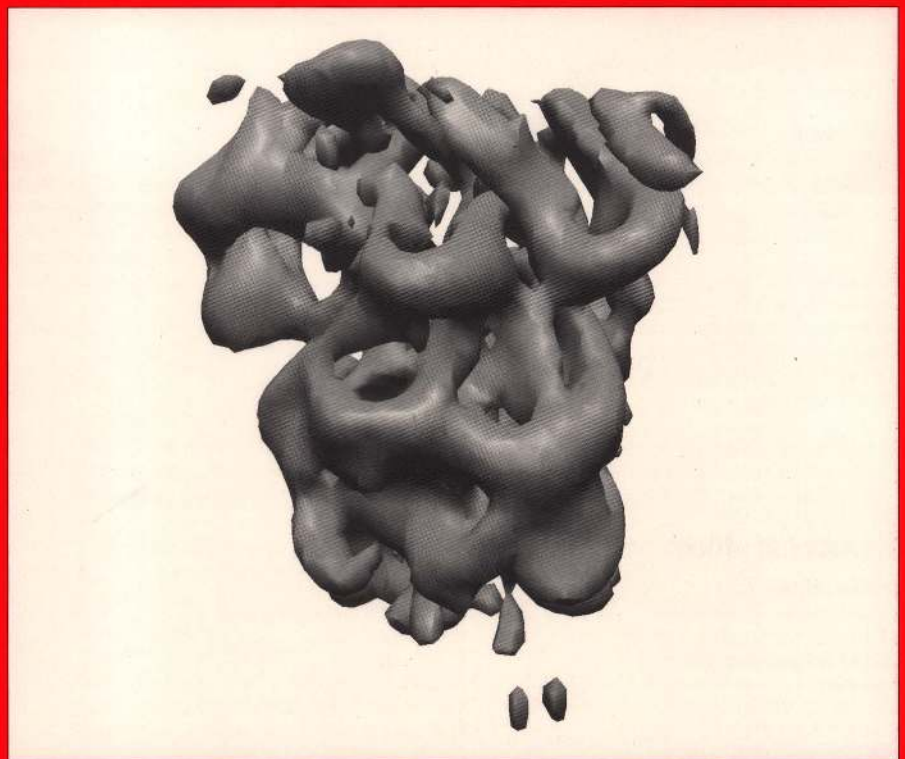
IOP

Measurement Science and Technology

Volume 15 Number 6 June 2004

**Special feature: 5th International Symposium on Particle Image
Velocimetry, PIV'03**

Online: www.iop.org/journals/mst



Institute of **Physics** PUBLISHING

Measurement Science and Technology

Published monthly in hard copy and online by Institute of Physics Publishing, Dirac House, Temple Back, Bristol BS1 6BE, UK.

Institutional subscription information: 2004 volume

For all countries, except the United States, Canada and Mexico, the subscription rate is £886.00 per annual volume. Single-issue price £73.83 (except conference issues/supplements—prices available on application). Delivery is by air-speeded mail from the UK.

Orders to:

Journals Subscription Fulfilment
Institute of Physics Publishing
Dirac House, Temple Back
Bristol BS1 6BE, UK

For the USA, Canada, Mexico, Central and South America, the subscription rate is US\$1740.00 per annual volume. Delivery is by transatlantic airfreight and onward mailing.

Orders to:

American Institute of Physics Subscriber Services
Suite 1NO1, 2 Huntington Quadrangle
Melville, NY 11747-4502, USA

Non-institutional subscription rates are also available.

Back issues

Orders and enquiries for earlier volumes should be sent to the subscription addresses above.

United States Postal Identification Statement

Measurement Science and Technology (ISSN: 0957-0233) is published monthly by Institute of Physics Publishing, Dirac House, Temple Back, Bristol BS1 6BE, UK in association with the American Institute of Physics, Suite 1NO1, 2 Huntington Quadrangle, Melville, NY 11747-4502, USA. Periodicals Postage Paid at Huntington Station, NY, and additional mailing offices. POSTMASTER: Send address changes to *Measurement Science and Technology*, American Institute of Physics, Suite 1NO1, 2 Huntington Quadrangle, Melville, NY 11747-4502, USA.

Copyright ©2004 by IOP Publishing Ltd and individual contributors. All rights reserved. No part of this publication may be reproduced, stored in a retrieval system or transmitted in any form or by any means, electronic, mechanical, photocopying, recording or otherwise, without the written permission of the publisher, except as stated below. Single photocopies of single articles may be made for private study or research. Illustrations and short extracts from the text of individual contributions may be copied provided that the source is acknowledged, the permission of the authors is obtained and IOP Publishing Ltd is notified. Multiple copying is permitted in accordance with the terms of licences issued by the Copyright Licensing Agency under the terms of its agreement with Universities UK (UUK). Authorization to photocopy items for internal or personal use, or the internal or personal use of specific clients, is granted by IOP Publishing Ltd to libraries and other users registered with the Copyright Clearance Center (CCC) Transactional Reporting Service, provided that the base fee of \$30.00 per copy is paid directly to CCC, 222 Rosewood Drive, Danvers, MA 01923, USA.

©™ The paper used in this publication meets the minimum requirements of American National Standard for Information Sciences—Permanence of Paper for Printed Library Materials, ANSI Z39.48-1992.

Printed in the UK by J W Arrowsmith Ltd, Bristol BS3 2NT.

Devoted to the theory, practice and application of measurement in physics, chemistry, engineering and the environmental and life sciences from inception to commercial exploitation.

Editor-in-Chief

P Hauptmann *Universität Magdeburg, Germany*

North American Regional Editor and Special Issue Editor

J Foss *Michigan State University, East Lansing, MI, USA*

European Regional Editor and Reviews Editor

R J Dewhurst *UMIST, Manchester, UK*

Asian Regional Editor

K Fujii *National Metrology Institute of Japan, Tsukuba, Japan*

Editorial Board

D J S Birch *Strathclyde University, UK*

P Gill *National Physical Laboratory, Teddington, UK*

D C Hurley *National Institute of Standards and Technology, Boulder, CO, USA*

Y Ikeda *Imagineering, Inc., Kobe, Japan*

R S Jachowicz *Warsaw University of Technology, Poland*

U Kaatz *Universität Göttingen, Germany*

M Kühne *Physikalisch-Technische Bundesanstalt, Braunschweig, Germany*

B MacCraith *Dublin City University, Ireland*

J McGrath *University of Arizona, Tucson, USA*

H Meixner *Siemens AG, Munich, Germany*

Y Naruse *Toshiba Corp., Kawasaki, Japan*

Yuxin Nie *Chinese Academy of Sciences, Beijing, China*

M Player *University of Aberdeen, UK*

M Prudenziati *Università degli Studi di Modena, Italy*

P P L Regtien *University of Twente, Enschede, The Netherlands*

M C Roco *National Science Foundation, Arlington, VA, USA*

R P Tatam *Cranfield University, Bedford, UK*

J Turner *London South Bank University, UK*

M Wernet *NASA Glenn Research Center, Cleveland, OH, USA*

International Advisory Board

G Cloud *Michigan State University, USA*

S Crozier *University of Queensland, Brisbane, Australia*

P K Das *Indian Institute of Science, Bangalore, India*

T Fansler *General Motors R&D Center, Warren, MI, USA*

K Hishida *Keio University, Yokohama, Japan*

M Koshi *University of Tokyo, Japan*

R Lec *Drexel University, Philadelphia, PA, USA*

J M Myers *Harvard University, Cambridge, MA, USA*

H Nagai *Anritsu Corporation, Kanagawa, Japan*

K Okamoto *University of Tokyo, Japan*

A Sacconi *Istituto di Metrologia 'G Colonnetti', Torino, Italy*

E Tomita *Okayama University, Japan*

C Tropea *Technische Universität, Darmstadt, Germany*

Publisher Natasha Leeper

Publishing Administrator James Dimond

Production Editor Alan Evans

Marketing Executive Beatrice Purser-Hallard

Publishing office

Institute of Physics Publishing
Dirac House
Temple Back
Bristol BS1 6BE, UK
Tel: +44 (0)117 929 7481
Fax: +44 (0)117 929 4318
E-mail: mst@iop.org

Advertisement sales

Maria Maisey
Institute of Physics Publishing
Dirac House
Temple Back
Bristol BS1 6BE, UK
Tel: +44 (0)117 930 1152
Fax: +44 (0)117 930 0741
E-mail: maria.maisey@iop.org

Front cover picture

A surface of constant vorticity magnitude in a turbulent round jet. See the article by T Hori and J Sakakibara on page 1067 of this issue.