

Article

High Voltage Mg-doped $\text{Na}_{0.67}\text{Ni}_{0.3-x}\text{Mg}_x\text{Mn}_{0.7}\text{O}_2$ ($x = 0.05, 0.1$) Na-ion Cathodes with Enhanced Stability and Rate Capability

Gurpreet Singh, Nuria Tapia-Ruiz, Juan Miguel Lopez del Amo, Urmimala Maitra, James W. Somerville, A. Robert Armstrong, Jaione Martinez de Ilarduya, Teofilo Rojo, and Peter G. Bruce

Chem. Mater., **Just Accepted Manuscript** • DOI: 10.1021/acs.chemmater.6b01935 • Publication Date (Web): 27 Jun 2016

Downloaded from <http://pubs.acs.org> on June 28, 2016

Just Accepted

“Just Accepted” manuscripts have been peer-reviewed and accepted for publication. They are posted online prior to technical editing, formatting for publication and author proofing. The American Chemical Society provides “Just Accepted” as a free service to the research community to expedite the dissemination of scientific material as soon as possible after acceptance. “Just Accepted” manuscripts appear in full in PDF format accompanied by an HTML abstract. “Just Accepted” manuscripts have been fully peer reviewed, but should not be considered the official version of record. They are accessible to all readers and citable by the Digital Object Identifier (DOI®). “Just Accepted” is an optional service offered to authors. Therefore, the “Just Accepted” Web site may not include all articles that will be published in the journal. After a manuscript is technically edited and formatted, it will be removed from the “Just Accepted” Web site and published as an ASAP article. Note that technical editing may introduce minor changes to the manuscript text and/or graphics which could affect content, and all legal disclaimers and ethical guidelines that apply to the journal pertain. ACS cannot be held responsible for errors or consequences arising from the use of information contained in these “Just Accepted” manuscripts.



ACS Publications

Chemistry of Materials is published by the American Chemical Society, 1155 Sixteenth Street N.W., Washington, DC 20036

Published by American Chemical Society. Copyright © American Chemical Society. However, no copyright claim is made to original U.S. Government works, or works produced by employees of any Commonwealth realm Crown government in the course of their duties.

High Voltage Mg-doped $\text{Na}_{0.67}\text{Ni}_{0.3-x}\text{Mg}_x\text{Mn}_{0.7}\text{O}_2$ ($x = 0.05, 0.1$) Na-ion Cathodes with Enhanced Stability and Rate Capability

Gurpreet Singh,^{1,†} Nuria Tapia-Ruiz,^{2,‡} Juan Miguel Lopez del Amo,¹ Urmimala Maitra,² James W. Somerville,² A. Robert Armstrong,³ Jaione Martinez de Ilarduya,¹ Teófilo Rojo,^{1,4} Peter G. Bruce.²

¹CICenergigune, Parque Tecnológico de Álava, Albert Einstein 48, ED.CIC, 01510, Miñano, Spain

²Department of Materials, University of Oxford, Oxford OX1 3PH, United Kingdom

³School of Chemistry, University of St. Andrews, St. Andrews, Fife KY16 9ST, United Kingdom

⁴Departamento de Química Inorgánica, Universidad del País Vasco UPV/EHU, P.O. Box. 644, 48080, Bilbao, Spain

ABSTRACT: Magnesium substituted P2-structure $\text{Na}_{0.67}\text{Ni}_{0.3}\text{Mn}_{0.7}\text{O}_2$ materials have been prepared by a facile solid-state method and investigated as cathodes in sodium-ion batteries. The Mg-doped materials described here were characterised by X-ray diffraction (XRD), ²³Na solid-state nuclear magnetic resonance (SS-NMR) and scanning electron microscopy (SEM). The electrochemical performance of the samples was tested in half cells vs. Na metal at room temperature. The Mg-doped materials operate at a high average voltage of ca. 3.3 V vs. Na/Na^+ delivering specific capacities of $\sim 120 \text{ mAh g}^{-1}$ which remain stable up to 50 cycles. Mg doping suppresses the well-known P2-O2 phase transition observed in the undoped composition by stabilising the reversible OP4 phase during charging (during Na removal). GITT measurements showed that the Na-ion mobility is improved by two orders of magnitude with respect to the parent P2- $\text{Na}_{0.67}\text{Ni}_{0.3}\text{Mn}_{0.7}\text{O}_2$ material. The fast Na-ion mobility may be the cause of the enhanced rate performance.

INTRODUCTION

Over the last two decades, most of the portable electronic market has been dominated by lithium-ion batteries (LIBs). These batteries are now finding new market opportunities in the electric vehicle industry along with stationary energy storage [1]. Even though the high energy density of lithium-ion batteries makes them attractive for many applications, there is a demand for inexpensive technology for which the sources of the ores are more uniformly distributed across the globe. Sodium-ion batteries (SIBs) are a promising alternative, addressing the aforementioned issues related to the cost and sources. Following their inception in the 1980s these batteries are under reinvestigation as an alternative to LIBs for certain applications [2-6]. Various types of cathode and anode materials have been proposed and studied for SIBs, often mimicking their LIB counterparts. Among cathode materials, layered oxide compounds of the type Na-TM-O₂ (TM = 3d Transition Metal) have shown promise in terms of energy density and rate capability. The most studied layered compounds can be classified as P2-type and O3-type structures as described by Delmas' notation [7]. P and O refer to the Na coordination, *i.e.* trigonal prismatic or octahedral, respectively, while the number represents the repeated transition metal oxide stacking within the unit cell (ABBA, ABCABC). Of these two layered structures, P2-type compounds provide great promise as they undergo fewer structural transitions when (de)intercalating Na-ions [2].

P2- $\text{Na}_{2/3}\text{Ni}_{1/3}\text{Mn}_{2/3}\text{O}_2$ was first reported in 2001 by Lu and Dahn [8,9]. This material has a relatively high theoretical capacity (173 mAh g^{-1}) but more importantly, it shows an average operating voltage greater than 3.5 V (vs. Na/Na^+), attributed to the $\text{Ni}^{2+}/\text{Ni}^{4+}$ redox couple [10,11]. The main drawback, however, is its poor cycle life which has been attributed to the detrimental P2-O2 transformation that occurs at high voltages. This transition is caused by gliding of the transition metal layers upon sodium removal [8,9,12]. In order to address the issue of capacity fade,

doping of $\text{Na}_{0.67}\text{Ni}_{0.33}\text{Mn}_{0.67}\text{O}_2$ with ions such as Zn^{2+} or Ti^{4+} (substituting for Ni and Mn respectively) has been adopted [13,14]. Doping with these cations increases the amount of sodium left in the structure at the end of charge, alleviating the layer gliding at the expense of capacity. Similarly, Li^+ doping accompanied by an increase in sodium content to 0.85 (*i.e.* $\text{Na}_{0.85}\text{Li}_{0.17}\text{Ni}_{0.21}\text{Mn}_{0.64}\text{O}_2$) stabilises the structure while cycling with reversible capacities of $\sim 120 \text{ mAh g}^{-1}$ [15]. Recent reports in the literature have shown that Mg doping on the transition metal site improved the cycling stability of P2- $\text{Na}_{2/3}\text{Mn}_{1-x}\text{Mg}_x\text{O}_2$ ($0 \leq x \leq 0.2$) whilst smoothing the charge/discharge voltage profiles [16]. Moreover, further increase in the Mg content led to an abnormally high capacity due to the participation of oxygen anions and/or partial loss of oxygen, although the capacity of the material falls at a faster rate compared with the lightly doped samples [17]. Recent reports, have shown that Mg could also be substituted in the Na-Mn-Ni-O system [18,19,20]. Even though in these reports the authors have highlighted the suppression of the O2 phase when doping with Mg^{2+} , no identification and characterisation of the OP4 phase occurring at high voltages in the Mg-doped materials was made. Here we report a systematic study on effective Mg-doping in the P2- $\text{Na}_{0.67}\text{Ni}_{0.3}\text{Mn}_{0.7}\text{O}_2$ system and have shown that in the Mg-doped compounds a reversible P2-OP4 transition occurs at high voltages in contrast to the P2-O2 transition observed in the undoped material. Reducing the Ni content from the typical $\text{Na}_{2/3}\text{Ni}_{1/3}\text{Mn}_{2/3}\text{O}_2$ material [8,9] is beneficial from a cost perspective. Increased Mg contents favour Na^+ vacancy disorder upon cycling, which could explain the increased Na-ion mobility observed in these materials.

EXPERIMENTAL

$\text{Na}_{0.67}\text{Ni}_{0.3}\text{Mn}_{0.7}\text{O}_2$ was synthesized as described in reference [12]. The Mg-doped samples were synthesized *via* a solid state synthesis route by mixing the precursors Na_2CO_3 (Sigma Aldrich, anhydrous $\geq 99.5\%$), NiO (Ni 78.5%, Alfa Aesar), Mn_2O_3 (~ 325

mesh, 99%, Sigma Aldrich) and MgO (99.99% Alfa Aesar) in appropriate ratios. The powdered mixture was pressed as pellets under a load of 4 tons cm^{-2} before calcining at 900 °C for 12 h in air followed by slow cooling in the furnace. Samples were kept in an Ar filled glove box maintained at < 0.1 ppm H_2O and O_2 .

Powder X-ray diffraction (PXRD) patterns were recorded on a 9 KW Rigaku Smartlab diffractometer using $\text{Cu K}\alpha_1$ radiation ($\lambda = 1.54051 \text{ \AA}$). PXRD data was refined by the Rietveld method using the GSAS software suite with the EXPGUI software interface [21]. A customized air-tight sample holder covered with Kapton film was used to avoid severe air/moisture contact during measurement. In-situ X-ray diffraction was performed on electrochemical cells equipped with an aluminium-coated beryllium window. The active material (70 wt%) was mixed with carbon black (30 wt%) for 1 h and used in the electrochemical cells for the charge/discharge measurements. X-ray diffraction data were collected using $\text{Cu K}\alpha_1$ radiation ($\lambda = 1.54051 \text{ \AA}$). Each X-ray pattern was collected for 1 h. Metallic sodium was used as counter electrode with 1M NaPF_6 in EC:DEC (1:1 by vol. %) as electrolytic solution. The cell was cycled at 5 mA g^{-1} between 2.0–4.5 V.

Chemical analyses were performed by Inductively Coupled Plasma (ICP) emission spectroscopy using a Perkin Elmer Elan 6100 DRC ICP-MS.

The sample morphology was determined using scanning electron microscopy (SEM, Zeiss Merlin Analytical) at 1 kV and 84 μA .

^{23}Na Magic Angle Spinning Nuclear Magnetic Resonance (MAS NMR) experiments were performed at 52.9 MHz, on a Bruker-300 spectrometer charged to a field of 4.7 T. A 1.3 mm standard probe head was used and the rotor MAS spinning speed used was 50 kHz in all cases. A rotor synchronized spin-echo pulse sequence ($90^\circ-\tau-180^\circ-\tau_1$ -acquisition) was used with typical 90° and 180° pulses of 1.2 and 2.4 μs , respectively, and the recycle delay was set to 0.8 s. The spectra were referenced to a 0.1 M solution of $^{23}\text{NaCl}$. The fitting of the ^{23}Na NMR signals were performed using the Dmfit software [22].

Electrode preparation involved mixing the active material with conductive carbon black and PVDF (Polyvinylidene fluoride) as binder in the ratio of 75:15:10 respectively. Slurries were prepared by adding a few drops of NMP (n-methyl-2-pyrrolidone) to the mixture under constant stirring for 30 minutes. The slurry was cast onto Al foil that acts as current collector. Loading of active material for the galvanostatic cycling is 5.81 mg cm^{-2} and for GITT measurements is 2 mg cm^{-2} . The coated foil was dried under vacuum at 120 °C for 2 h and electrodes of desired diameter were punched out and pressed under a load of 4 tons cm^{-2} . Galvanostatic cycling was performed in CR2032 coin cells, where metallic sodium was used as counter electrode with glass fiber filter paper (Whatman) as separator and 1 M NaPF_6 (99.99% Sigma Aldrich) in 50% volume ethylene carbonate (EC) and 50% diethyl carbonate (DEC) was used as the electrolyte. Electrochemical cells were charged/discharged at different current rates between 2–4.5 V. AC impedance spectroscopy was carried out in a VMP3 (Bio Logic) in the frequency range 200 KHz to 5 mHz. Measurements were conducted in a 2-electrode cell (coin-cell type) with an AC signal amplitude of 10 mV.

RESULTS AND DISCUSSION

Figure 1 shows the refined powder X-ray diffraction (PXRD) plots of $\text{Na}_{0.67}\text{Ni}_{0.3-x}\text{Mg}_x\text{Mn}_{0.7}\text{O}_2$, where $x = 0.05$ (a) and $x = 0.1$ (b). Table 1 shows the relevant crystallographic data obtained from the Rietveld refinements. For comparison, refinement data on the undoped material are also shown in the SI. Detailed inspection of PXRD data showed extra reflections at $2\theta \approx 20^\circ$ (not shown here) from the honeycomb $\sqrt{3}a \times \sqrt{3}a$ in-plane ordering typically seen in $\text{Mg}^{2+}/\text{Mn}^{4+}$ systems [15]. By contrast, the observation of $\text{Ni}^{2+}/\text{Mn}^{4+}$ ordering is difficult by PXRD as the X-ray scattering factors of Ni and Mn are very similar. The similar refined lattice parameters observed in these samples suggest that the long-range structure remains unaltered when increasing from $x = 0.05$ to 0.1 (Table 1). Transition metal occupancy factors were fixed using the nominal stoichiometry which matched, in turn, the values obtained from ICP (Table 2). Slightly larger SOF were observed for Na_e sites (edge-shared) since these are energetically more favourable from the electrostatic point of view than the Na_f site (face-shared).

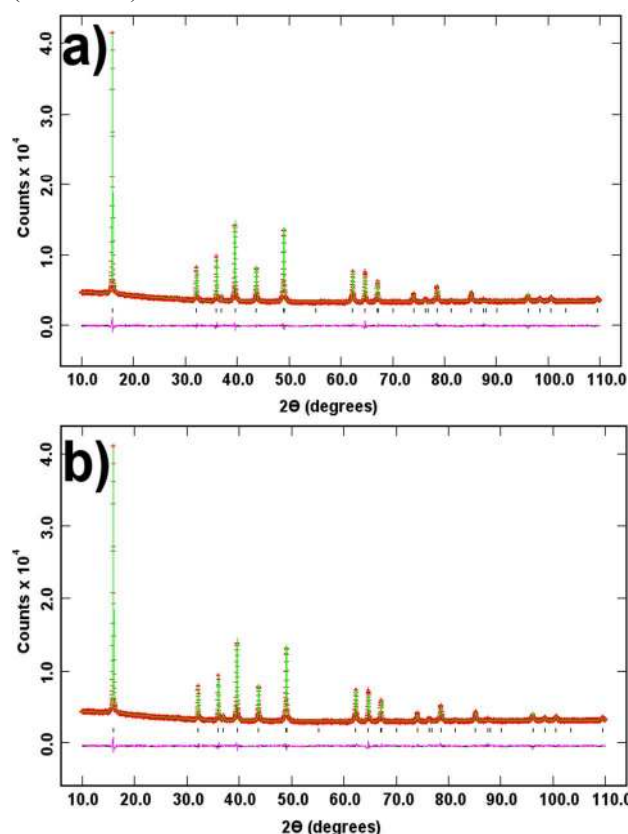


Figure 1. Fitted powder X-ray diffractograms at room temperature for $\text{Na}_{0.67}\text{Ni}_{0.3-x}\text{Mg}_x\text{Mn}_{0.7}\text{O}_2$ where $x = 0.05$ (a); and $x = 0.1$ (b). Observed data are shown in red, calculated data are shown in green and the difference between the two profiles is shown in pink. Black tick marks indicate Bragg reflections from the calculated data.

Table 1. Selected Rietveld refinement data from X-ray data at room temperature for $\text{Na}_{0.67}\text{Ni}_{0.3-x}\text{Mg}_x\text{Mn}_{0.7}\text{O}_2$ ($x = 0.05$ and 0.1).

Sample	Atom	Wyckoff position	X	Y	Z	SOF	$B_{\text{iso}}/\text{\AA}^2$
$x = 0.05$ $a = 2.88482(2) \text{ \AA}$ $c = 11.1583(2) \text{ \AA}$ $\chi^2 = 1.806$ $R_p = 1.70\%$ $R_{pw} = 2.29\%$	Na(e)	2d	2/3	1/3	0.25	0.374(1)	2.8 (1)
	Na(f)	2b	0	0	0.25	0.296(1)	1.2 (1)
	Ni/Mn/Mg	2a	0	0	0	0.25/0.7/0.05	2.51(4)
	O	4f	2/3	1/3	0.0898(1)	1	2.82(1)
$x = 0.1$ $a = 2.88482(3) \text{ \AA}$ $c = 11.1587(2) \text{ \AA}$ $\chi^2 = 2.301$ $R_p = 1.78\%$ $R_{pw} = 2.55\%$	Na(e)	2d	2/3	1/3	0.25	0.403(2)	3.8(1)
	Na(f)	2b	0	0	0.25	0.267(2)	1.0(1)
	Ni/Mn/Mg	2a	0	0	0	0.2/0.7/0.1	2.94(2)
	O	4f	2/3	1/3	0.0912(1)	1	3.34(6)

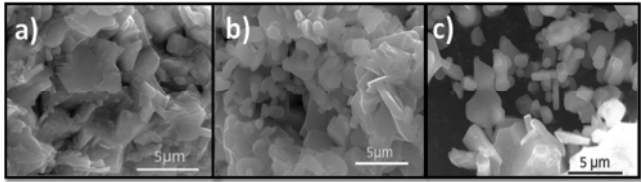


Figure 2. SEM images of (a) $\text{Na}_{0.67}\text{Ni}_{0.3}\text{Mn}_{0.7}\text{O}_2$ (b) $\text{Na}_{0.67}\text{Ni}_{0.25}\text{Mg}_{0.05}\text{Mn}_{0.7}\text{O}_2$ and (c) $\text{Na}_{0.67}\text{Ni}_{0.2}\text{Mg}_{0.1}\text{Mn}_{0.7}\text{O}_2$, showing a platelet-like morphology with average particle size in the 1 - 5 μm .

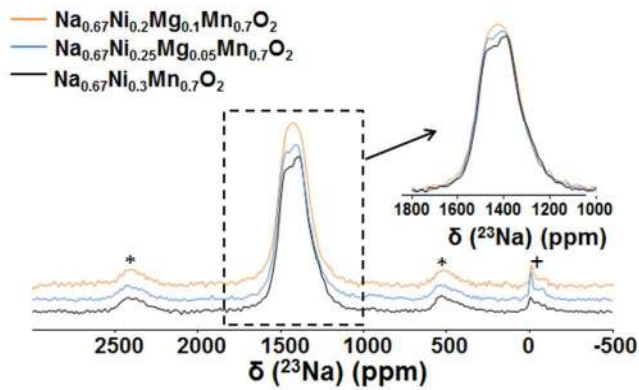


Figure 3. ^{23}Na NMR spectra of $\text{Na}_{0.67}\text{Ni}_{0.3-x}\text{Mg}_x\text{Mn}_{0.7}\text{O}_2$ ($x = 0, 0.05$ and 0.1). The second order quadrupolar features observed in the spectrum of $\text{Na}_{0.67}\text{Ni}_{0.3}\text{Mn}_{0.7}\text{O}_2$ disappear gradually as the level of Mg is increased, in agreement with a reduction of the structural ordering of the Na^+ ions in the structure.

The morphological features and particle size of the pristine materials were determined by scanning electron microscopy (SEM). SEM micrographs showed irregular particles with hexagonal platelet shapes and sizes ranging between 1-5 μm (Figure 2). The ^{23}Na solid state NMR spectra of $\text{Na}_{0.67}\text{Ni}_{0.3-x}\text{Mg}_x\text{Mn}_{0.7}\text{O}_2$ ($x = 0, 0.05$ and 0.1) are shown in Figure 3. The spectra are characterized by a main signal centered at around 1420 ppm corresponding to the central transition of one or more ^{23}Na NMR signals broadened by second order quadrupolar interactions. The two minor symmetric signals marked by asterisks in the spectra, are rotational side bands and the signal at around 0 ppm corresponds to a minor diamagnetic Na_2CO_3 impurity of the sample [23-25]. The quadrupolar features observed in the ^{23}Na NMR spectrum of P2-

$\text{Na}_{0.67}\text{Ni}_{0.3}\text{Mn}_{0.7}\text{O}_2$ (black) are indicative of a high degree of structural ordering in the material. As previously discussed by Cabana and coworkers [23], the ^{23}Na NMR spectrum of this compound cannot be satisfactorily fitted considering a single line, consistent with the presence of more than one Na^+ site in the alkali layers of the structure. Although an unambiguous fitting of the spectrum would require the measurement of the NMR signal at different fields, an accurate fit is possible considering two ^{23}Na populations with the relative intensities obtained from the Rietveld refinement on the PXRD data (Table 1). The result of this fitting is shown in Figure S2.

It is clear from the inspection of the inset of Figure 3, that the quadrupolar features observed in the spectrum of P2- $\text{Na}_{0.67}\text{Ni}_{0.3}\text{Mn}_{0.7}\text{O}_2$ vanish gradually when the level of Mg^{2+} doping is increased progressively to 0.05 and 0.1. Mg^{2+} ions favour the presence of new Na^+ environments which result in broadening of the ^{23}Na NMR signals observed in Figure 3 and the subsequent disappearance of the quadrupolar features. The ^{23}Na NMR broadening can be additionally induced by the increased Na^+ mobility in the Mg doped phases (as will be described below).

The ^{23}Na NMR shifts observed for the central transition in Figure 3 are very large, as expected by the presence of Na-O-M ($\text{M} = \text{Ni}, \text{Mn}$) hyperfine interactions with paramagnetic centres, in agreement with the spectra previously recorded by Cabana et al. for the $\text{Na}_x\text{Ni}_{x/2}\text{Mn}_{1-x/2}\text{O}_2$ family [23]. The hyperfine interactions generating such large shifts are very sensitive to variations in Na-O-M distances and angles and the signs of the interactions can be positive or negative with variable magnitudes depending on the local geometries of the orbitals and the number of unpaired electrons involved in the interaction. Although the replacement of a paramagnetic Ni^{2+} ion in the structure by an Mg^{2+} cation with no unpaired electron density should, in principle, give rise to a signal with a different shift in the NMR spectrum, no significant changes in the ^{23}Na NMR shifts are observed for the different spectra of Figure 3. Similar observations were made for the ^{23}Na NMR shifts of the $\text{Na}_x\text{Ni}_{x/2}\text{Mn}_{1-x/2}\text{O}_2$ polytype and for the ^6Li NMR signals in $\text{Li}_x\text{Ni}_{x/2}\text{Mn}_{1-x/2}\text{O}_2$. Very subtle variations of shifts were observed in both cases despite the different $\text{Mn}^{4+}/\text{Ni}^{2+}$ ratios [23]. These results were explained by the small variations of interlayer spacing in these compounds, that result in different strengths of the Fermi contact interaction that compensate the different paramagnetism in $\text{Mn}^{4+}/\text{Ni}^{2+}$.

Table 2. Nominal compositions for $\text{Na}_{0.67}\text{Ni}_{0.3-x}\text{Mn}_{0.7}\text{O}_2$ ($x = 0.05$ and 0.1) obtained from ICP measurements.

	$x = 0.05$	$x = 0.1$
	$\text{Na}_{0.66}\text{Ni}_{0.26}\text{Mg}_{0.04}\text{Mn}_{0.7}\text{O}_2$	$\text{Na}_{0.67}\text{Ni}_{0.20}\text{Mg}_{0.09}\text{Mn}_{0.71}\text{O}_2$
M	Molar fraction [†]	Molar fraction [†]
Na	0.66	0.67
Ni	0.26	0.20
Mn	0.70	0.71
Mg	0.04	0.09

[†] Errors are within 5% of the values given

The electrochemical performance of the various samples has been evaluated in the voltage range of 2.0 - 4.5 V. Three plateaus at ~ 3.3 , ~ 3.7 and ~ 4.2 V were observed during the first charge cycle of the undoped sample, which are in agreement with those reported in the literature on $\text{Na}_{2/3}\text{Ni}_{1/3}\text{Mn}_{2/3}\text{O}_2$ [12]. Charge/discharge curves of the pristine material are shown in Figure 4 (a). An initial charge capacity of $\sim 150 \text{ mAh g}^{-1}$ (removal of 0.59 Na^+) was observed at 12 mA g^{-1} corresponding to the oxidation of Ni^{2+} . It can be observed from the figure that the plateau at ~ 4.2 V, which corresponds to the evolution of the O2 phase (0.35 Na^+ removed) [9], diminished over 50 cycles. The discharge capacity drops from 133 mAh g^{-1} to 56 mAh g^{-1} over the course of 50 cycles. The drop in the capacity is mainly attributed to the disappearance of the highest voltage process. This is in agreement with earlier studies on $\text{Na}_{2/3}\text{Ni}_{1/3}\text{Mn}_{2/3}\text{O}_2$ [12]. Galvanostatic charge/discharge profiles of $\text{Na}_{0.67}\text{Ni}_{0.25}\text{Mg}_{0.05}\text{Mn}_{0.7}\text{O}_2$ and $\text{Na}_{0.67}\text{Ni}_{0.2}\text{Mg}_{0.1}\text{Mn}_{0.7}\text{O}_2$ compositions are shown in Figure 4(b) and (c) respectively. Table 3 summarizes the electrochemical data obtained from the doped samples. Even though the voltage steps that were observed in the pristine samples at ~ 3.3 , ~ 3.7 and ~ 4.2 V are visible, in the Mg^{2+} doped compositions they are suppressed to a larger extent with Mg content. With the doping of Mg^{2+} ions in the structure, the initial charge capacity falls from 150 mAh g^{-1} for the undoped sample to 136 mAh g^{-1} for $x = 0.05$ (0.52 Na^+ removed). This may be attributed to the replacement of the electrochemically active Ni^{2+} ions with electrochemically inactive Mg^{2+} ions. X-ray absorption was used to probe the changes in oxidation state of Ni and Mn upon cycling. From the results we can establish that the capacity mainly originates from the redox active $\text{Ni}^{2+}/\text{Ni}^{4+}$ couple. Small changes in the manganese K edge associated with the $\text{Mn}^{3+}/\text{Mn}^{4+}$ redox couple were observed (Figures S3 and S4). A further drop in the initial charge capacity to $\sim 128 \text{ mAh g}^{-1}$ (0.48 Na^+ removed) is observed when $x = 0.1$. For $x = 0.05$, the discharge capacity drops from 136 to 121 mAh g^{-1} after 50 cycles at a rate of 12 mA g^{-1} , which corresponds to $\sim 90\%$ of capacity retention. For $x = 0.1$, the discharge capacity falls from 128 to 122 mAh g^{-1} after 50 cycles, which corresponds to 95% of the initial capacity. For all compositions an average operating voltage of ~ 3.3 V was observed. Evolution of the capacity with the cycle life is shown in Figure 4(d). Ex-situ X-ray diffraction was carried out after 50 charge/discharge cycles. Cells were opened after discharging the samples to 2.0 V. X-ray diffraction patterns of the Mg-doped samples after 50 cycles are shown in Figure S5. Lattice parameters of the $\text{Na}_{0.67}\text{Ni}_{0.2}\text{Mg}_{0.1}\text{Mn}_{0.7}\text{O}_2$ material (Table S3) remained almost identical after 50 cycles whereas for the undoped sample a large increase in the c parameter was observed due to sodium loss upon cycling.

In-situ X-ray diffraction of $\text{P2-Na}_{0.67}\text{Ni}_{0.33}\text{Mn}_{0.67}\text{O}_2$ has been reported in previous studies showing the structural evolution as Na ions are removed and re-inserted in the material [9]. The struc

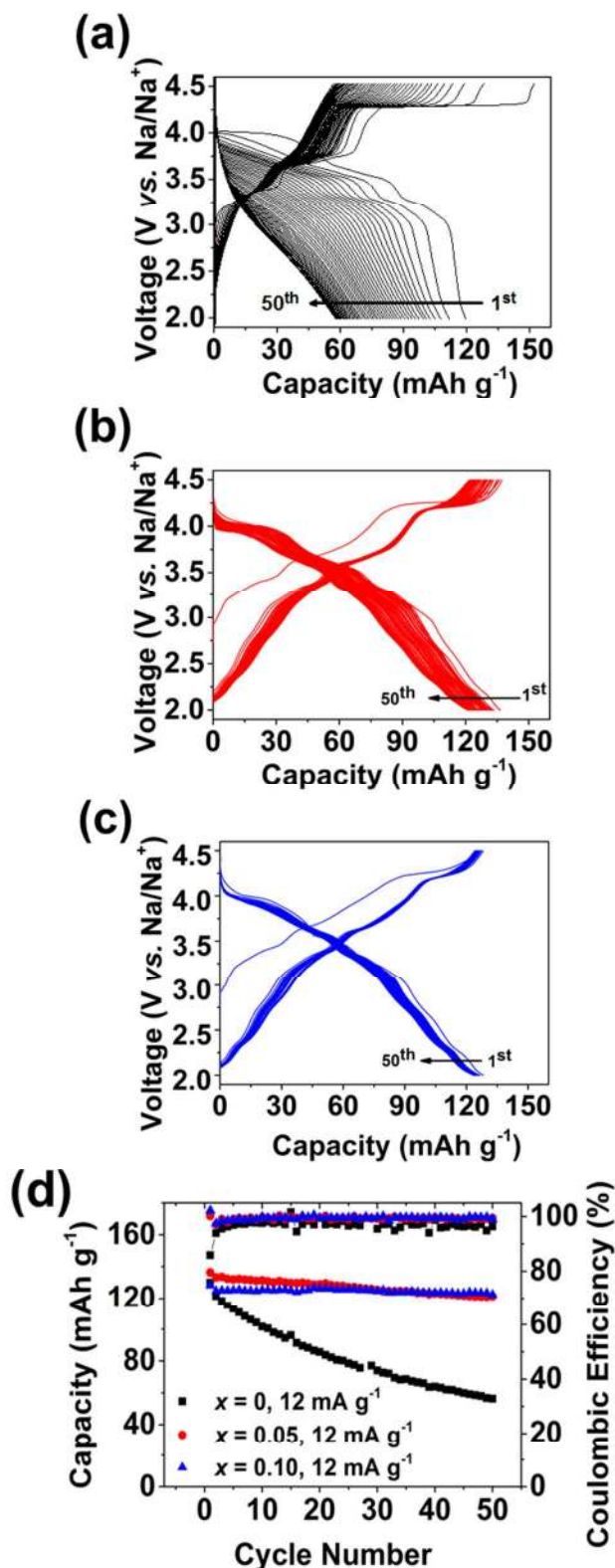


Figure 4. Galvanostatic charge/discharge curves in the 2-4.5 V range at 12 mA g^{-1} showing 50 cycles for a) $\text{Na}_{0.67}\text{Ni}_{0.3}\text{Mn}_{0.7}\text{O}_2$, b) $\text{Na}_{0.67}\text{Mg}_{0.05}\text{Ni}_{0.25}\text{Mn}_{0.7}\text{O}_2$ and c) $\text{Na}_{0.67}\text{Mg}_{0.1}\text{Ni}_{0.2}\text{Mn}_{0.7}\text{O}_2$. d) Capacities and coulombic efficiency of the samples vs. cycle number.

ture changes from P2 to O2 as the cell voltage reaches ~ 4.25 V, as shown by the evolution of the characteristic (002) peak present Figure 4. Galvanostatic charge/discharge curves in the 2–4.5 V near $20 \sim 20^\circ$. An identical phase transition has been observed in the undoped $\text{Na}_{0.67}\text{Ni}_{0.3}\text{Mn}_{0.7}\text{O}_2$ material studied here (Fig. S6). In order to study the effects of Mg on the structure upon cycling, we have performed in-situ PXRD measurements on the $x = 0.1$ doped sample (*i.e.* $\text{Na}_{0.67}\text{Ni}_{0.2}\text{Mg}_{0.1}\text{Mn}_{0.7}\text{O}_2$, Figure 5). Changes in the a and c lattice parameters upon cycling are shown in Fig. S7 and Table S2. No characteristic peak corresponding to the O2 phase is observed in the high voltage region (4.2–4.5 V). However, evolution of a clear broad peak as a shoulder on the highest intensity peak corresponding to the P2 phase is observed at *ca.* 0.35 Na content. This broad peak is characteristic of the OP4 phase, which has been described previously as an intergrowth structure between the P2 and O2-type structures [16]. From these results we believe that the suppression of the P2-O2 phase transition in the Mg-doped sample is responsible for the excellent cycling performance. In fact, several authors have related the P2-OP4 transition to enhanced electrochemical performance [16, 26].

To further analyze the galvanostatic charge/discharge curves we have calculated the derivative of the capacity with respect to voltage. The differential capacity plots are shown in Figure S8. Peaks corresponding to different voltage plateaus in the galvanostatic charge/discharge curves were observed in the differential capacity plots. The oxidation peak at ~ 4.25 V is attributed to the P2-O2 phase transition in the pristine sample (Figure S8 (a)). The reduction peak corresponding to the O2-P2 phase transition appears at ~ 4.0 V. This peak disappears and shifts to lower potential with cycling, showing damage to the crystal structure caused by this phase transition. By contrast, in the doped samples, from the second cycle onwards, no significant change in the peak position or intensity is observed. This could be due to the suppression of the P2-O2 phase transition by Mg doping and consequent formation of the more reversible OP4 phase at high voltages (Figure S8 (b) and (c)).

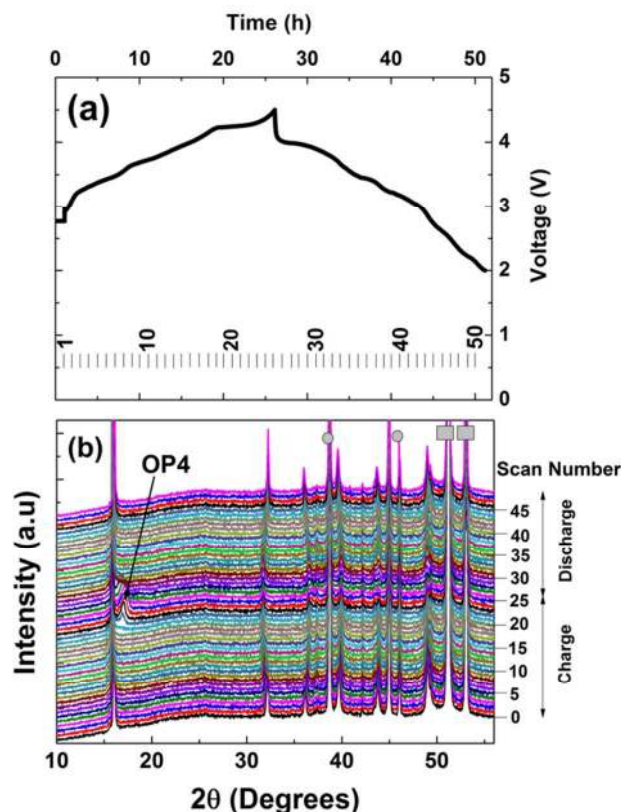


Figure 5. (a) Galvanostatic charge/discharge curves (1st cycle) and (b) in-situ powder X-ray diffraction of $\text{Na}_{0.67}\text{Ni}_{0.2}\text{Mg}_{0.1}\text{Mn}_{0.7}\text{O}_2$ showing the reversible evolution of P2-OP4 phase transition at the end of the charge and beginning of the discharge. (c) Zoomed region showing (002) reflection and OP4 phase. In the figure (b) ■ shows the peaks corresponding to the Be window used and ● corresponds to the presence of the Al current collector. Each X-ray diffraction pattern was collected for 1 h.

This demonstrates the significant stabilizing effect of the Mg^{2+} ions in the structure. The differential capacity plots of the doped samples show additional peaks at low voltages, which are attributed to $\text{Mn}^{3+}/\text{Mn}^{4+}$ redox processes. The theoretical capacity based on $\text{Ni}^{2+}/\text{Ni}^{4+}$ is slightly lower than the experimentally observed capacity, which is further evidence of the activation of the $\text{Mn}^{3+}/\text{Mn}^{4+}$ redox couple in these materials.

The rate capability of the materials is shown in Figure 6, where it is apparent that the Mg doping increases the rate performance and capacity retention if compared to the undoped material. For $x = 0.1$ the initial discharge capacity decreases from 128 to 118 mAh g^{-1} (92% retention) when the rate is increased two-fold from 200 mA g^{-1} to 400 mA g^{-1} . Additional electrochemical data is shown in Table 3. Ex-situ XRD data $\text{Na}_{0.67}\text{Ni}_{0.3-x}\text{Mg}_x\text{Mn}_{0.7}\text{O}_2$ ($x = 0.05$ and 0.1) after 50 cycles (charged at 10 mA g^{-1} and discharged at 200 and 400 mA g^{-1}) are shown in Figures S9 and S10. XRD patterns of both samples could be indexed to the pristine materials described above, showing the robustness of these structures upon cycling. The broadening observed in the peaks was attributed to large concentration gradients across the particles caused by the high stress produced in the materials when cycling at fast rates (Table S4).

The enhanced rate capability of the Mg-doped compounds described here was further investigated using galvanostatic intermittent titration methods (GITT). GITT measurements were also conducted on as-synthesised $\text{P2-Na}_{0.67}\text{Ni}_{0.3}\text{Mn}_{0.7}\text{O}_2$ for further comparison (Figures S11-S13). For GITT measurements a pulse of 1.7 μA was applied for 1 h followed by a relaxation time of 2 h. Figure 7 shows the variation of the Na diffusion coefficient (D_{Na^+}) in the studied samples determined from the GITT profiles. The D_{Na^+} is calculated using equation S(i) (see SI). Na-ion mobility in $\text{Na}_{0.67}\text{Ni}_{0.2}\text{Mg}_{0.1}\text{Mn}_{0.7}\text{O}_2$ is the highest of all the materials described here, with diffusion coefficients ranging from 10^{-7} to $10^{-10} \text{ cm}^2 \text{ s}^{-1}$ in the Na range $0.67 \geq x \geq 0.33$. Comparable sodium diffusion coefficients were obtained by AC impedance in order to validate these results (Figure S14). Li et al. have also observed improved high-rate performance in the Mg and Ni-doped $\text{Na}_{0.67}\text{MnO}_2$ with formula $\text{Na}_{0.67}\text{Ni}_{0.1}\text{Mg}_{0.1}\text{Mn}_{0.8}\text{O}_2$ and explained this with the expansion of the interplanar spacing of the sodium layer caused by shortening of the TM-O bond lengths and the shrinkage of the TMO_6 octahedra [19]. These observations may be caused by the greater Na disorder caused by the increased Mg content in the transition metal layers. $\text{P2-Na}_{0.67}\text{Ni}_{0.25}\text{Mg}_{0.05}\text{Mn}_{0.7}\text{O}_2$ showed diffusion coefficients of 10^{-8} to

Table 3. Summary of electrochemical data for $\text{Na}_{0.67}\text{Ni}_{0.3}\text{Mg}_x\text{Mn}_{0.7}\text{O}_2$ ($x = 0.05$ and 0.1) samples at different current rates.

Current (mA g^{-1})		$x = 0.05$	$x = 0.1$
12	Initial discharge capacity (mAh g^{-1})	136.4	128.2
	Discharge capacity after 50 cycles (mAh g^{-1})	121.4	122.4
	Capacity retention (%)	89.0	95.4
200	Initial discharge capacity (mAh g^{-1})	124.5	128.6
	Discharge capacity after 50 cycles (mAh g^{-1})	113.9	123.7
	Capacity retention (%)	91.5	96.2
400	Initial discharge capacity (mAh g^{-1})	110.6	118.1
	Discharge capacity after 50 cycles (mAh g^{-1})	95.0	111.7
	Capacity retention (%)	85.9	94.6

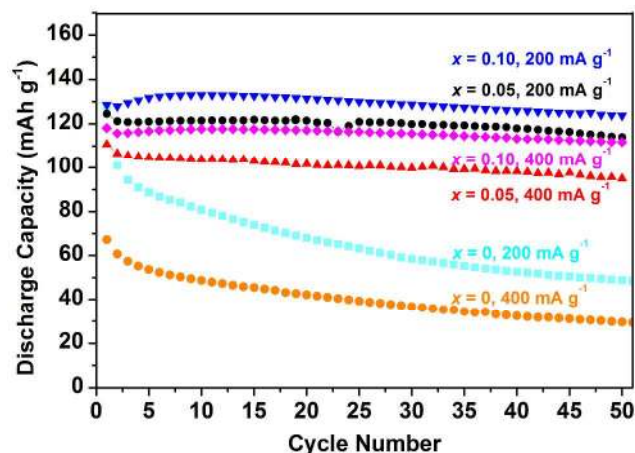


Figure 6. Cycling data of $\text{Na}_{0.67}\text{Ni}_{0.3-x}\text{Mg}_x\text{Mn}_{0.7}\text{O}_2$ ($x = 0, 0.05$ and 0.1) over 50 cycles. Samples were discharged at 200 mA g^{-1} and 400 mA g^{-1} and slowly charged at 10 mA g^{-1} .

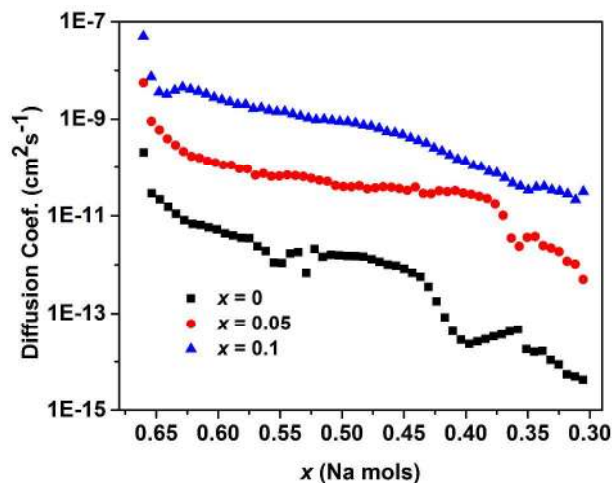


Figure 7. Na diffusion coefficients (D_{Na^+}) calculated from GITT measurements in $\text{P2-Na}_{0.67}\text{Ni}_{0.3}\text{Mn}_{0.7}\text{O}_2$ (black); $\text{Na}_{0.67}\text{Ni}_{0.25}\text{Mg}_{0.05}\text{Mn}_{0.7}\text{O}_2$ (red); and $\text{Na}_{0.67}\text{Ni}_{0.2}\text{Mg}_{0.1}\text{Mn}_{0.7}\text{O}_2$ (blue) as a function of the Na concentration remaining in the structure.

$10^{-10} \text{ cm}^2 \text{ s}^{-1}$ within the same range of sodium contents. These values are higher than those reported by Mendiboure et al. in $\text{P2-Na}_{0.70}\text{MnO}_2$ and $\text{P2-Na}_{0.7}\text{CoO}_2$ of $1.7 \times 10^{-14} \text{ cm}^2 \text{ s}^{-1}$ and $5 \times 10^{-12} \text{ cm}^2 \text{ s}^{-1}$ respectively [27]. Interestingly, no jumps in the Na diffusion coefficient values, attributed to sodium ordering in the undoped compound [28], were observed for $x = 0.05$ and $x = 0.1$. Hence the results are in agreement with the smoothing of the load curves observed in these materials. The abrupt decrease in Na-ion mobility in the doped samples at high potentials (low Na^+ contents ~ 0.35) could be explained by the formation of the OP4 structure caused by gliding of the transition metal layers leading to octahedral Na^+ vacancies.

CONCLUSIONS

Magnesium doping in $\text{P2-Na}_{0.67}\text{Ni}_{0.3}\text{Mn}_{0.7}\text{O}_2$ enhances the cyclability and rate performance of the material in the 2–4.5 V range. Doping the structure with Mg^{2+} led to the formation of the OP4 phase at high voltages and the P2-OP4 phase transition is observed to be highly reversible as reflected by the X-ray diffraction data. The sodium-ion mobility is observed to improve with Mg doping. Na-ion mobility in $\text{Na}_{0.67}\text{Ni}_{0.2}\text{Mg}_{0.1}\text{Mn}_{0.7}\text{O}_2$ is the highest of all the materials discussed in this study, with diffusion coefficients as high as $10^{-7} \text{ cm}^2 \text{ s}^{-1}$. Excellent capacity retention ($\sim 95\%$ of initial (128 mAh g^{-1})) over 50 cycles with an average operating voltage $\sim 3.3 \text{ V}$ vs. Na/Na^+ makes $\text{Na}_{0.67}\text{Ni}_{0.2}\text{Mg}_{0.1}\text{Mn}_{0.7}\text{O}_2$ very interesting as a potential candidate for the sodium ion batteries.

ASSOCIATED CONTENT

Supporting Information

Rietveld plot for $\text{Na}_{0.67}\text{Ni}_{0.3}\text{Mn}_{0.7}\text{O}_2$ (Figure S1); ^{23}Na NMR data of $\text{Na}_{0.67}\text{Ni}_{0.3}\text{Mn}_{0.7}\text{O}_2$ (Figure S2); X-ray absorption spectra showing Ni K edge and Mn K edge of $\text{Na}_{0.67}\text{Ni}_{0.25}\text{Mg}_{0.05}\text{Mn}_{0.7}\text{O}_2$ (Figures S3 and S4), Ex-situ PXRD patterns of $\text{Na}_{0.67}\text{Ni}_{0.3-x}\text{Mg}_x\text{Mn}_{0.7}\text{O}_2$ ($x = 0.05$ and 0.1) after 50th discharge in the 2–4.5 V range at 12 mA g^{-1} (Figure S5); In-situ X-ray data for $\text{Na}_{0.67}\text{Ni}_{0.3}\text{Mn}_{0.7}\text{O}_2$ (Figure S6); Variation of lattice parameters for $\text{Na}_{0.67}\text{Ni}_{0.2}\text{Mg}_{0.1}\text{Mn}_{0.7}\text{O}_2$ (Figure S7); Differential capacity plots for $\text{Na}_{0.67}\text{Ni}_{0.3-x}\text{Mg}_x\text{Mn}_{0.7}\text{O}_2$ ($x = 0, 0.05$ and 0.1) (Figure S8); Ex-situ PXRD data of $\text{Na}_{0.67}\text{Ni}_{0.3-x}\text{Mg}_x\text{Mn}_{0.7}\text{O}_2$ ($x = 0.05$ and 0.1) after 50 cycles of charge discharge at 200 mA g^{-1} and 400 mA g^{-1}

(Figure S9 and S10); GITT profiles for $\text{Na}_{0.67}\text{Ni}_{0.3-x}\text{Mg}_x\text{Mn}_{0.7}\text{O}_2$ ($x = 0, 0.05$ and 0.1) (Figure S11–S13), Impedance spectrum of $\text{Na}_{0.67}\text{Ni}_{0.2}\text{Mg}_{0.1}\text{Mn}_{0.7}\text{O}_2$ (Figure S14); Selected Rietveld refinement data for $\text{Na}_{0.67}\text{Ni}_{0.3}\text{Mn}_{0.7}\text{O}_2$ (Table S1); Refined lattice parameters and fraction of OP4 phase obtained when cycling $\text{Na}_{0.67}\text{Ni}_{0.2}\text{Mg}_{0.1}\text{Mn}_{0.7}\text{O}_2$ (2–4.5 V) (Table S2); Lattice parameters of $\text{Na}_{0.67}\text{Ni}_{0.3}\text{Mn}_{0.7}\text{O}_2$ and $\text{Na}_{0.67}\text{Ni}_{0.2}\text{Mg}_{0.1}\text{Mn}_{0.7}\text{O}_2$ after 50 cycles (Table S3); Calculated FWHM for $\text{Na}_{0.67}\text{Ni}_{0.2}\text{Mg}_{0.1}\text{Mn}_{0.7}\text{O}_2$ at OCV and after 50th discharge at 12 mA g^{-1} and at 400 mA g^{-1} (Table S4). This material is available free of charge via the Internet at <http://pubs.acs.org>.

AUTHOR INFORMATION

Corresponding Authors

* Email: peter.bruce@materials.ox.ac.uk

* Email: trojo@cicenergigune.com

Author Contributions

The manuscript was written by GS and NTR through contributions of all authors. The project was supervised by GS, NTR and PGB. ‡GS and NTR contributed equally.

ACKNOWLEDGMENT

At CIC Energigune this work was financially supported by LINABATT project from Ministerio de Economía Competitividad (ENE2013- 44330-R).

REFERENCES

- Larcher, D.; Tarascon, J. M. Towards greener and more sustainable batteries for electrical energy storage. *Nat. Chem.* **2015**, 1, 19–29.
- Palomares, V.; Serras, P.; Villaluenga, I.; Hueso, K. B.; Carretero-González, J.; Rojo, T. Na-ion batteries, recent advances and present challenges to become low cost energy storage systems. *Energy Environ. Sci.* **2012**, 5, 5884–5901.
- Kundu, D.; Talaie, E.; Duffort, V.; Nazar, L. F. The emerging chemistry of sodium ion batteries for electrochemical energy storage. *Angew. Chem. Int. Ed.* **2015**, 54, 2–20.
- Ellis, B. L.; Nazar, L. F. Sodium and sodium-ion energy storage batteries. *Curr. Opin. Solid State Mater. Sci.* **2012**, 16, 168–177.
- Kim, S.-W.; Seo, D.-H.; Ma, X.; Ceder, G.; Kang, K. Electrode materials for rechargeable sodium-ion batteries: potential alternatives to current lithium-ion batteries. *Adv. Energy Mater.* **2012**, 2, 710–721.
- Palomares, V.; Casas-Cabanas, M.; Castillo-Martínez, E.; Han, M. H.; Rojo, T. Update on Na-based battery materials. A growing research path. *Energy Environ. Sci.* **2013**, 6, 2312–2337.
- Delmas, C.; Fouassier, C.; Hagenmuller, P. Structural classification and properties of the layered oxides. *Phys. B+C* **1980**, 99, 81–85.
- Lu, Z.; Dahn, J. R. Can all the lithium be removed from $\text{T}_2\text{-Li}_{2/3}[\text{Ni}_{1/3}\text{Mn}_{2/3}]\text{O}_2$? *J. Electrochem. Soc.* **2001**, 148, A710–A715.
- Lu, Z.; Dahn, J. R. In-situ X-ray diffraction study of $\text{P}_2\text{-Na}_{2/3}[\text{Ni}_{1/3}\text{Mn}_{2/3}]\text{O}_2$. *J. Electrochem. Soc.* **2001**, 148, A1225–A1229.
- Talaie, E.; Duffort, V.; Smith, H. L.; Fultz, B.; and Nazar, L. F. Structure of the high-voltage phase of layered $\text{P}_2\text{-Na}_{2/3-x}[\text{Mn}_{1/2}\text{Fe}_{1/2}]\text{O}_2$ and the positive effect of Ni substitution on its stability. *Energy and Environ. Sci.*, **2015**, 8, 2512
- Hasa, I.; Buchholz, D.; Passerini, S.; and Hassoun, J. A comparative study of layered transition metal oxide cathodes for application in sodium-ion battery. *ACS Appl. Mater. Interfaces* **2015**, 7, 5206–5212.
- Lee, D. H.; Xu, J.; Meng, Y. S. An advanced cathode for Na-ion batteries with high rate and excellent structural stability. *Phys. Chem. Chem. Phys.* **2013**, 15, 3304–3312.
- Yoshida, H.; Yabuuchi, N.; Kubota, K.; Ikeuchi, I.; Gar-such, A.; Schulz-Dobrick, M.; Komaba, S. $\text{P}_2\text{-type Na}_{2/3}\text{Ni}_{1/3}\text{Mn}_{2/3-x}\text{Ti}_x\text{O}_2$ as a new positive electrode for higher energy Na-ion batteries. *Chem. Commun.* **2014**, 50, 3677–3680.
- Wu, X.; Guo, J.; Wang, D.; Zhong, G.; McDonald, M. J.; Yang, Y. $\text{P}_2\text{-type Na}_{0.66}\text{Ni}_{0.33-x}\text{Zn}_x\text{Mn}_{0.67}\text{O}_2$ as new high-voltage cathode materials for sodium-ion batteries. *J. Power Sources* **2015**, 281, 18–26.
- Kim, D.; Kang, S.-H.; Slater, M.; Rood, S.; Vaughey, J. T.; Karan, N.; Balasubramanian, M.; Johnson, C. S. Enabling sodium batteries using lithium-substituted sodium layered transition metal oxide cathodes. *Adv. Energy Mater.* **2011**, 1, 333–336.
- Billaud, J.; Singh, G.; Armstrong, A. R.; Gonzalo, E.; Rod-datis, V.; Armand, M.; Rojo, T.; Bruce, P. G. $\text{Na}_{0.67}\text{Mn}_{1-x}\text{Mg}_x\text{O}_2$ ($0 \leq x \leq 0.2$): a high capacity cathode for sodium-ion batteries. *Energy Environ. Sci.* **2014**, 7, 1387–1391.
- Yabuuchi, N.; Hara, R.; Kubota, K.; Paulsen, J.; Kumakura, S.; Komaba, S. New electrode material for rechargeable sodium batteries: $\text{P}_2\text{-type Na}_{2/3}[\text{Mg}_{0.28}\text{Mn}_{0.72}]\text{O}_2$ with anomalously high reversible capacity. *J. Mater. Chem. A* **2014**, 2, 16851–16855.
- a) Zhao, W.; Kirie, H.; Tanaka, A.; Unno, M.; Yamamoto, S.; Noguchi, H. Synthesis of metal ion substituted $\text{P}_2\text{-Na}_{2/3}\text{Ni}_{1/3}\text{Mn}_{2/3}\text{O}_2$ cathode material with enhanced performance for Na ion batteries. *Mater. Lett.* **2014**, 135, 131–134. b) Hemalatha, K.; Jayakumar, M.; Bera, P.; Prakash, A. S. Improved electrochemical performance of $\text{Na}_{0.67}\text{MnO}_2$ through Ni and Mg substitution. *J. Mater. Chem. A* **2015**, 3, 20908–20912. c) Ikeuchi, I.; Kubota, K.; Yabuuchi, N.; Komaba, S. Impacts of Mg and Al substitution on $\text{Na}_{2/3}\text{Ni}_{1/3}\text{Mn}_{2/3}\text{O}_2$ as positive electrode materials for Na-ion batteries. Abstract MA2014-04 235, IMLB 2014.
- Li, Z.-Y.; Gao, R.; Zhang, J.; Zhang, X.; Hu, Z.; Liu, X. New insights into designing high-rate performance cathode materials for sodium ion batteries by enlarging the slab-spacing of the Na-ion diffusion layer. *J. Mater. Chem. A* **2016**, 4, 3453–3461.
- Wang, P.-F.; You, Y.; Yin, Y.-X.; Wang, Y.-S.; Wan, L.-J.; Gu, Li.; Guo, Y.-G. Suppressing the $\text{P}_2\text{-O}_2$ phase transition of $\text{Na}_{0.67}\text{Mn}_{0.67}\text{Ni}_{0.33}\text{O}_2$ by Magnesium Substitution for Improved Sodium-ion Batteries. *Angew. Chem. Int. Ed.* **2016**, 55, in press.
- a) Larson, A. C.; Von Dreele, R. B. General Structural Analysis System (GSAS), *Los Alamos National Laboratory Report LAUR* **1994**, 86–748; and b) Toby, B. H. EXPGUI, a graphical user interface for GSAS. *J. Appl. Cryst.* **2001**, 34, 210–213.
- Massiot, D.; Fayon, F.; Capron, M.; King, I.; Le Calvé, S.; Alonso, B.; Durand, J. O.; Bujoli, B.; Gan Z.; Hoatson, G. Modelling one and two-dimensional solid-state NMR spectra. *Magn. Reson. Chem.* **2002**, 40, 70–76.
- Cabana, J.; Chernova, N. A.; Xiao, J.; Roppolo, M.; Aldi, K. A.; Whittingham, M. S.; Grey, C. P. Study of the transition metal ordering in layered $\text{Na}(x)\text{Ni}(x/2)\text{Mn}(1-x/2)\text{O}_2$ ($2/3 \leq x \leq 1$) and consequences in Na/Li exchange. *Inorg. Chem.* **2013**, 52, 8540–8550.
- Singh, G.; Lopez del Amo, J. M.; Galceran, M.; Perez Vil-lar, S.; Rojo, T. Structural evolution during sodium deintercalation/intercalation in $\text{Na}_{2/3}[\text{Fe}_{1/2}\text{Mn}_{1/2}]\text{O}_2$. *J. Mater. Chem. A* **2015**, 3, 6954–6961.
- Gonzalo, E.; Han, M. H.; Lopez del Amo, J. M.; Acebedo, B.; Casas-Cabanas, M.; Rojo, T. Synthesis and characterization of pure $\text{P}_2\text{-}$ and $\text{O}_3\text{-Na}_{2/3}\text{Fe}_{2/3}\text{Mn}_{1/3}\text{O}_2$ as cathode materials for Na ion batteries. *J. Mater. Chem. A* **2014**, 2, 18523–18530.
- Yabuuchi, N.; Kajiyama, M.; Iwatate, J.; Nishikawa, H.; Hitomi, S.; Okuyama, R.; Usui, R.; Yamada, Y.; Komaba, S. $\text{P}_2\text{-type Na}_x[\text{Fe}_{1/2}\text{Mn}_{1/2}]\text{O}_2$ made from earth-abundant elements for rechargeable Na batteries. *Nat. Mater.* **2012**, 11, 512–517.
- Mendiboure, A.; Delmas, C.; Hagenmuller, P. Electrochemical intercalation and deintercalation of Na_xMnO_2 . *J. Solid State Chem.* **1985**, 57, 323–331.
- Shu, G. J.; Chou, F. C. Sodium-ion diffusion and ordering in single-crystal $\text{P}_2\text{-Na}_x\text{CoO}_2$. *Phys. Rev. B* **2008**, 78, 052101–1–0.52101–4.

