

# *Hippurate: the natural history of a mammalian-microbial co-metabolite*

Article

Accepted Version

Lees, H. J., Swann, J. R., Wilson, I. D., Nicholson, J. K. and Holmes, E. (2013) Hippurate: the natural history of a mammalian-microbial co-metabolite. *Journal of Proteome Research*, 12 (4). pp. 1527-1546. ISSN 1535-3907 doi: <https://doi.org/10.1021/pr300900b> Available at <https://centaur.reading.ac.uk/33294/>

It is advisable to refer to the publisher's version if you intend to cite from the work. See [Guidance on citing](#).

To link to this article DOI: <http://dx.doi.org/10.1021/pr300900b>

Publisher: American Chemical Society

All outputs in CentAUR are protected by Intellectual Property Rights law, including copyright law. Copyright and IPR is retained by the creators or other copyright holders. Terms and conditions for use of this material are defined in the [End User Agreement](#).

[www.reading.ac.uk/centaur](http://www.reading.ac.uk/centaur)

**CentAUR**

Central Archive at the University of Reading

Reading's research outputs online

Review

## Hippurate: the natural history of a mammalian-microbial co-metabolite

Hannah Lees, Jonathan Richard Swann, Ian David Wilson, Jeremy Kirk Nicholson, and Elaine Holmes

*J. Proteome Res.*, **Just Accepted Manuscript** • DOI: 10.1021/pr300900b • Publication Date (Web): 23 Jan 2013

Downloaded from <http://pubs.acs.org> on January 28, 2013

### Just Accepted

“Just Accepted” manuscripts have been peer-reviewed and accepted for publication. They are posted online prior to technical editing, formatting for publication and author proofing. The American Chemical Society provides “Just Accepted” as a free service to the research community to expedite the dissemination of scientific material as soon as possible after acceptance. “Just Accepted” manuscripts appear in full in PDF format accompanied by an HTML abstract. “Just Accepted” manuscripts have been fully peer reviewed, but should not be considered the official version of record. They are accessible to all readers and citable by the Digital Object Identifier (DOI®). “Just Accepted” is an optional service offered to authors. Therefore, the “Just Accepted” Web site may not include all articles that will be published in the journal. After a manuscript is technically edited and formatted, it will be removed from the “Just Accepted” Web site and published as an ASAP article. Note that technical editing may introduce minor changes to the manuscript text and/or graphics which could affect content, and all legal disclaimers and ethical guidelines that apply to the journal pertain. ACS cannot be held responsible for errors or consequences arising from the use of information contained in these “Just Accepted” manuscripts.



1  
2  
3  
4  
5  
6  
7  
8  
9  
10  
11  
12  
13  
14  
15  
16  
17  
18  
19  
20  
21  
22  
23  
24  
25  
26  
27  
28  
29  
30  
31  
32  
33  
34  
35  
36  
37  
38  
39  
40  
41  
42  
43  
44  
45  
46  
47  
48  
49  
50  
51  
52  
53  
54  
55  
56  
57  
58  
59  
60

# Hippurate: the natural history of a mammalian- microbial co-metabolite

*§HANNAH J. LEES, †JONATHAN R. SWANN, §IAN D. WILSON, §JEREMY K. NICHOLSON,  
§ELAINE HOLMES\**

*§*Biomolecular Medicine, Department of Surgery and Cancer, Faculty of Medicine, Imperial  
College London, South Kensington, London SW7 2AZ, United Kingdom

*†*Department of Food and Nutritional Sciences, School of Chemistry, Food and Pharmacy,  
University of Reading, Whiteknights, Reading RG6 6AP, United Kingdom

KEYWORDS. Metabolic profiling, microbial metabolites, polyphenols, health

ABSTRACT.

1  
2  
3 Hippurate, the glycine conjugate of benzoic acid, is a normal constituent of the endogenous  
4 urinary metabolite profile and has long been associated with the microbial degradation of  
5 certain dietary components, hepatic function and toluene exposure, and is also commonly used  
6 as a measure of renal clearance. Here we discuss the potential relevance of hippurate excretion  
7 with regards to normal endogenous metabolism and trends in excretion relating to gender, age,  
8 and the intestinal microbiota. Additionally, the significance of hippurate excretion with regards  
9 to disease states including obesity, diabetes, gastrointestinal diseases, impaired renal function,  
10 psychological disorders and autism, as well as toxicity and parasitic infection, are considered.  
11  
12  
13  
14  
15  
16  
17  
18  
19  
20  
21  
22  
23  
24  
25  
26  
27  
28  
29  
30  
31  
32  
33  
34  
35  
36  
37  
38  
39  
40  
41  
42  
43  
44  
45  
46  
47  
48  
49  
50  
51

52  
53 TEXT.  
54  
55

56  
57 *Introduction*  
58  
59  
60

1  
2  
3  
4  
5  
6 Hippurate, the glycine conjugate of benzoic acid, is a normal component of urine with a strong  
7  
8 association with diet and the intestinal microbiota. Spectroscopic profiling of urine has found  
9  
10 hippurate to be a distinguishing feature of many physiological and pathological conditions.  
11  
12 Since it is a ubiquitous compound in nature, its utility in elucidating biochemical mechanisms  
13  
14 is partially dependent on co-perturbed metabolites (Table 1). As well as being part of the  
15  
16 endogenous urinary metabolite profile, hippurate has other specific uses; it has been identified  
17  
18 as a biomarker for high dose exposure to certain toxic compounds such as toluene,<sup>1-2</sup> and is also  
19  
20 commonly used as a measure of renal clearance.<sup>3-4</sup> Additionally, the ability of a microorganism  
21  
22 to hydrolyze hippurate to benzoic acid and glycine has been used extensively as an aid in  
23  
24 bacterial species characterization and identification.<sup>5-12</sup> Here we review the origin, etiology and  
25  
26 behavior of hippurate in response to physiological and pathological challenges, and consider  
27  
28 the effects of gene-environment interaction on its urinary excretion.  
29  
30  
31  
32  
33  
34  
35

### 36 *History, chemistry and biosynthesis*

37  
38  
39  
40  
41

42 Hippurate, also known as hippuric acid, benzoylglycine, (benzoylamino)-acetate, is the glycine  
43  
44 conjugate of benzoic acid, and has the chemical formula  $C_9H_9NO_3$ . Hippurate was first  
45  
46 identified in urine by Liebig in 1829,<sup>13</sup> and the glycine conjugation of benzoate is thought to  
47  
48 have been the first described metabolism reaction,<sup>14</sup> after a report by Alexander Ure in 1841  
49  
50 demonstrated a relationship between the ingestion of benzoic acid and the excretion of  
51  
52 hippurate.<sup>15</sup> The reaction was then later confirmed by Wilhelm Keller in 1842.<sup>16</sup> Liebig  
53  
54 assigned the name 'hippuric' from the Greek word for horse, hippos, as the acid was first  
55  
56  
57  
58  
59  
60

1  
2  
3 isolated from horse urine. The metabolite is found in high concentrations in the urine of horses  
4  
5 and other herbivores and the decomposition of the alkaline hippurates has been attributed to  
6  
7 causing the odor associated with horse urine.  
8  
9

10  
11  
12  
13 Hippurate has a molecular weight of 179.17266 g/mol, a melting point of 187 – 188 °C and a  
14  
15 boiling point of 240 °C. In a <sup>1</sup>H NMR spectrum (phosphate buffer, pH 7.4; prepared in 8:2  
16  
17 H<sub>2</sub>O:D<sub>2</sub>O), hippurate is identified by the presence of peaks at 3.97 (doublet, CH<sub>2</sub>), 7.56 (triplet,  
18  
19 m-CH), 7.64 (triplet, p-CH) and 7.84 (doublet, αCH) ppm, and in <sup>13</sup>C NMR spectra by the  
20  
21 presence of chemical shifts at (ppm): 179.4, 173.1, 134.8, 131.4 and 129.8.<sup>17-19</sup> In mass  
22  
23 spectrometry hippurate has a mass-to-charge ratio of 180.0660 in positive ion analysis, and  
24  
25 178.0504 in negative ion analysis. Fragmentation of hippurate using mass spectrometry  
26  
27 predominantly involves loss of glycine.  
28  
29  
30  
31  
32  
33  
34

35 Urinary hippurate concentrations can be measured using a variety of techniques including <sup>1</sup>H<sup>20</sup>  
36  
37 and <sup>13</sup>C NMR spectroscopy,<sup>21</sup> capillary zone electrophoresis (CZE) and capillary  
38  
39 electrochromatography (CEC) coupled with NMR spectroscopy,<sup>22</sup> high performance liquid  
40  
41 chromatography (HPLC),<sup>23-24</sup> HPLC coupled with mass spectrometry (HPLC-MS),<sup>25</sup> gas  
42  
43 chromatography (GC),<sup>2,26</sup> GC-MS,<sup>27</sup> solid phase extraction (SPE),<sup>28</sup> colorimetric reaction,<sup>29</sup>  
44  
45 immunochromatographic analysis<sup>30</sup> and microfluidic chip-based electrochemical  
46  
47 immunoassay.<sup>31</sup>  
48  
49  
50  
51  
52  
53

54 Some dictionaries and other literature state that hippurate is a substance that is found in the  
55  
56 urine of herbivores and rarely in man ('hippuric acid' Encyclopaedia Britannica Online, 2011).  
57  
58  
59  
60

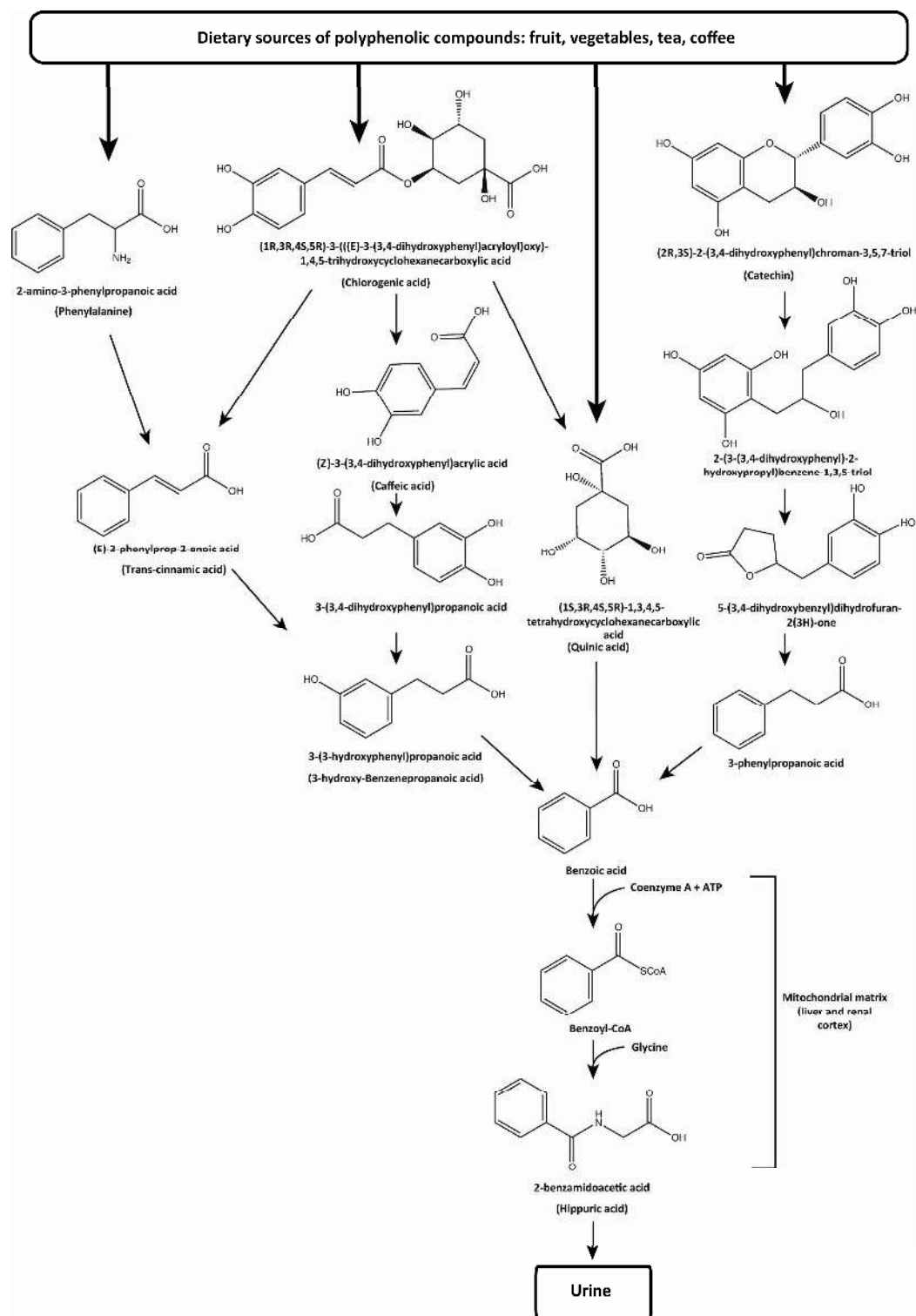
1  
2  
3 Despite this common assertion, more recent measurements of the comparative urinary  
4 concentration of hippurate in horse and man in the literature are scarce. However, in a book  
5 published in 1885, Gresswell and Gresswell state that hippurate “occurs in very small  
6 proportion in the urine of man (less than 1 per cent.) and carnivora, but is present in abundance  
7 as alkaline hippurates in that of herbivorous animals.”, and reference Ernst von Bibra as finding  
8 hippurate to be “from five to fifteen parts in 1000 of the urine of the horse”.<sup>32</sup> While these  
9 comments might suggest that hippurate is a trace component in urine, when compared to other  
10 common organic molecules present in the urine, as detected by <sup>1</sup>H NMR spectroscopy for  
11 example, it is seen to be one of the dominant signals in the aromatic region of samples obtained  
12 from a wide range of species, including man.  
13  
14  
15  
16  
17  
18  
19  
20  
21  
22  
23  
24  
25  
26  
27  
28

29 The typical urinary concentration of hippurate in man has been measured as  $1.83 \pm 1.24$  mM  
30 (absolute), and  $2.28 \pm 1.43$  mM (normalized to creatinine), in healthy subjects,<sup>33</sup> and The  
31 Human Metabolome Database reports urinary concentrations of hippurate, relative to  
32 creatinine, ranging from 27.92 to 932.66  $\mu\text{mol}/\text{mmol}$  creatinine.<sup>34</sup> More recently, the mean 24-  
33 hr urinary excretion for hippurate was measured by UPLC-MS/MS as 6284.6 (4008.1)  
34  $\mu\text{mol}/24\text{-hr}$  in men and 4793.0 (3293.3)  $\mu\text{mol}/24\text{-hr}$  in women (standard deviation shown in  
35 brackets).<sup>35</sup> The findings of this latter study may be more informative than single time point  
36 concentration values, as 24-hr urinary excretion measurements account for intra-individual  
37 differences and factors such as diurnal variation and diet, which may affect the urinary  
38 concentration of both hippurate and creatinine.  
39  
40  
41  
42  
43  
44  
45  
46  
47  
48  
49  
50  
51  
52  
53  
54

55 The biosynthesis of hippurate occurs within the mitochondrial matrix and requires two  
56 reactions,<sup>36</sup> as illustrated in Figure 1. The first reaction involves the conversion of benzoic acid  
57  
58  
59  
60



1  
2  
3 to benzoyl adenylate via pyrophosphate (PP<sub>i</sub>) exchange with ATP. Benzoyl-CoA synthetase  
4  
5 catalyses this step and substitutes the adenylate moiety for coenzyme A (CoA). In the second  
6  
7 reaction, glycine freely crosses the inner mitochondrial membrane to react with benzoyl-CoA,<sup>37</sup>  
8  
9 catalyzed by benzoyl CoA: glycine N-acyltransferase, to produce hippurate.<sup>38-43</sup> Benzoyl CoA:  
10  
11 glycine N-acyltransferase has been found to have a higher specific activity compared to  
12  
13 benzoyl-CoA synthetase; thus, administration of substances which are able to form CoA esters  
14  
15 with the latter enzyme may inhibit the first step in glycine conjugation of benzoic acid, an  
16  
17 effect studied using valproate.<sup>44</sup> Evidence suggests that hepatic uptake of hippuric acid is  
18  
19 mediated by MCT2, a monocarboxylate transporter, and that there is competition for this  
20  
21 transporter with benzoate and L-lactate.<sup>45</sup> Investigators have determined that active renal  
22  
23 tubular secretion is the principle elimination route for hippurate,<sup>46</sup> and disruption of this  
24  
25 mechanism results in accumulation of hippurate in the blood.<sup>47</sup> Upon ingestion, benzoic acid is  
26  
27 biotransformed to hippurate and excreted in urine within 4 hours in man.<sup>48-49</sup>  
28  
29  
30  
31  
32  
33  
34  
35  
36  
37  
38  
39  
40  
41  
42  
43  
44  
45  
46  
47  
48  
49  
50  
51  
52  
53  
54  
55  
56  
57  
58  
59  
60



**Figure 1.** Possible routes of metabolism of dietary polyphenolic compounds, leading to the excretion of hippurate. Adapted from Ure 1841; Kao et al., 1978; Akira et al., 1994; and Clifford et al., 2000.<sup>15,48,63,82</sup>

1  
2  
3 *Rate-limiting factors for hippurate formation*  
4  
5  
6  
7

8  
9 Several factors have been implicated as rate-limiting steps in benzoic acid glycine conjugation,  
10 and it has been demonstrated that, following intravenous administration of sodium benzoate,  
11 both glycine and CoA supply are limiting factors for hippurate production.<sup>50-51</sup>  
12  
13  
14  
15  
16  
17

18  
19 Many investigators have concluded that glycine availability is one of the most significant  
20 factors in determining the rate of hippurate production. An investigation in rats in 1941  
21 demonstrated that the growth inhibiting-effect of orally administered sodium benzoate was  
22 normalized by glycine supplementation.<sup>52</sup> This was further supported by a study in which the  
23 co-administration of glycine with sodium benzoate resulted in a normalization of liver serine  
24 and glycine concentrations, and also reduced benzoyl CoA accumulation, compared to  
25 controls.<sup>53</sup> Studies have also found that glycine administration results in increased hippurate  
26 production in man.<sup>54-55</sup>  
27  
28  
29  
30  
31  
32  
33  
34  
35  
36  
37  
38  
39

40  
41 In addition to glycine, the depletion of CoA has been implicated as a rate-limiting factor. If  
42 available glycine supplies become reduced, CoA is trapped as benzoyl-CoA; the result is that  
43 free CoA is unavailable to be recycled for the first reaction in glycine conjugation, and thus  
44 production of further benzoyl-CoA is halted, limiting the rate of the reaction and the production  
45 of hippurate.<sup>50</sup> Further to this, it has also been suggested that the glycine cleavage system may  
46 be important in determining the rate of glycine conjugation, due to its role in endogenous  
47 glycine catabolism.<sup>51</sup> In addition to rate-limiting factors, evidence suggests that the rate of  
48  
49  
50  
51  
52  
53  
54  
55  
56  
57  
58  
59  
60

1  
2  
3 glycine conjugation is subject to inter-individual variability in humans, and is normally  
4  
5 distributed within the population.<sup>56</sup>  
6  
7  
8  
9

10  
11 *Species differences in glycine conjugation of benzoic acid*  
12  
13

14  
15  
16  
17 Inter-species variation in benzoic acid metabolism has been investigated in several studies<sup>57-61</sup>;  
18  
19 as with man, it has been found that 95-100% of benzoic acid is excreted as hippurate in several  
20  
21 animals including rodents, the rabbit, cat and the Capuchin and Rhesus monkey. However,  
22  
23 differences in the excretion of benzoic acid metabolites were found in animals including the  
24  
25 dog, ferret, hedgehog, pig and sheep, with up to 20% of administered benzoic acid excreted as  
26  
27 benzoyl glucuronide and benzoic acid. These differences have been attributed to the dose of  
28  
29 benzoic acid administered, and also inter-species variation in the glycine and the glucuronic  
30  
31 acid conjugation capacity of kidney and liver cells, and the rate of glycine mobilisation.<sup>62-63</sup> In  
32  
33 man, hippurate  
34  
35

36  
37  
38 synthesis occurs in both the liver and cortical cells of the kidney<sup>55, 64-65</sup>; although, it is thought  
39  
40 that, due to the anatomical position and larger mass of the liver, this organ is more  
41  
42 quantitatively significant for the glycine conjugation of benzoic acid.<sup>50, 56</sup> However, it is also  
43  
44 important to note the major site of biosynthesis of hippurate is not always the liver. Indeed, in  
45  
46 the dog it would seem that the liver has no part in hippurate synthesis and that this occurs in the  
47  
48 kidney.<sup>66</sup>  
49  
50  
51  
52  
53  
54  
55  
56  
57  
58  
59  
60

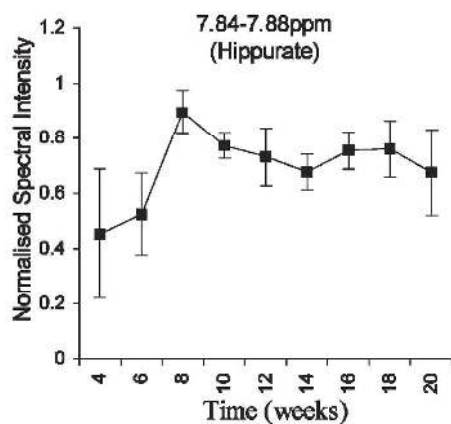
### *Gender*

Differences in hippurate excretion in males and females have been illustrated in animal studies; Williams et al. found that the urinary metabolite profiles of male and female 8-week-old Zucker rats could be differentiated using PLS-DA modeling of  $^1\text{H}$  NMR spectral data, with hippurate elevated in the urine of female animals.<sup>67</sup> Higher excretion of hippurate by females was also found by Gavaghan McKee et al. across three different strains of mice (Alpk:ApfCD, C57BL10J and the “Nude mouse”).<sup>68</sup>

Gender-associated variation in the excretion of hippurate has also been observed in studies in man. For example, females were found to excrete a significantly greater amount of hippurate compared to males in a study of a Brazilian population ( $P < 0.05$ ).<sup>69</sup> A  $^1\text{H}$  NMR-based study which recruited subjects from Xiamen, China, employed PCA to highlight a trend of increased hippurate excretion in females, although the difference was not statistically significant according to a further ANOVA analysis.<sup>70</sup> Similarly, Psihogios et al. used  $^1\text{H}$  NMR coupled with PLS-DA, and found that hippurate excretion was higher in the female subjects, but that the difference between gender groups was not statistically significant as judged by an unpaired t-test.<sup>71</sup> As demonstrated by these studies, high inter-individual variation can confound the interpretation of data relating to gender-associated differences in hippurate excretion. In contrast to these studies, Wijeyesekera et al., found that 24-hr hippurate excretion was significantly higher in men compared to women.<sup>35</sup> This difference in findings most likely reflects the intra-individual variation that is accounted for with 24-hr measurements, compared to single timepoint urine collections.

*Age*

Animal studies have demonstrated a trend of increasing hippurate excretion during the early stages of life.  $^1\text{H}$  NMR spectroscopic analysis of urine samples from male Wistar-derived rats collected from 4 to 20 weeks of age demonstrated that hippurate excretion was relatively low and highly variable at 4 weeks of age. Excretion then increased as the animals aged, before stabilizing at approximately 8 weeks (Figure 2). It was thought that this pattern was due to the maturation of the gut microbiota and adaptation to an adult diet.<sup>25</sup> These results are further supported by an analysis in Sprague-Dawley rats,<sup>72</sup> and also a life-long study in dogs, in which excretion of hippurate was found to be increased in dogs aged 1.5 years, compared to samples taken from the same animals at 13 weeks old.<sup>73</sup>



**Figure 2.** Normalized spectral intensity of hippurate from  $^1\text{H}$  NMR spectra of urine samples collected from male rats aged between 4 and 20 weeks (Data expressed as mean  $\pm$  standard deviation). Taken from Williams et al.<sup>25</sup>

1  
2  
3 Studies in man have also highlighted age-related differences in hippurate excretion. A study  
4  
5 which recruited subjects from Minas Gerais, Brazil, with no occupational exposure to toluene,  
6  
7 found that subjects aged 36-60 years old ( $n = 45$ ) excreted significantly more hippurate  
8  
9 compared to subjects aged 18-35 years old ( $n = 70$ ) ( $P < 0.05$ ).<sup>69</sup> Wijeyesekera et al also found a  
10  
11 trend of increased 24-hr hippurate excretion with increasing age, with higher excretion in  
12  
13 individuals aged 50-59, compared to individuals aged 40-49 years.<sup>35</sup> However, in contrast to  
14  
15 these findings, a recent study of a Greek population concluded that subjects over 50 years of  
16  
17 age tended to excrete lower concentrations of hippurate compared to subjects under 35 years of  
18  
19 age.<sup>71</sup> It is difficult to interpret data regarding age-related differences in hippurate excretion in  
20  
21 man, due to the high inter-individual and intra-individual variance in synthesis of hippurate.<sup>56,</sup>  
22  
23  
24  
25 <sup>74</sup> Additionally, several environmental factors have been shown to significantly influence  
26  
27 hippurate excretion, such as diet, disease and exposure to certain toxins, which are often  
28  
29 difficult to control within the context of a human study, and which may co-vary with age, for  
30  
31 example body weight.  
32  
33

### 34 35 36 37 38 *Diet* 39 40 41 42

43  
44 Benzoic acid, and thus hippurate, can be produced from the metabolism of many dietary  
45  
46 components including phenylalanine,<sup>75</sup> quinic acid,<sup>76</sup> shikimic acid,<sup>76-78</sup> and various phenolic  
47  
48 compounds such as chlorogenic acid and (+)-catechin (see Figure 1).<sup>79</sup> Hippurate excretion has  
49  
50 long been associated with the metabolism of polyphenol-rich components of the diet such as  
51  
52 vegetables, fruit, tea and coffee.<sup>80-82</sup> The large polyphenolic molecules found in the diet, such  
53  
54 as chlorogenic acid and (+)-catechin, are transformed via microbial and mammalian co-  
55  
56 metabolism through a series of steps, resulting in a range of simpler aromatics, such as  
57  
58  
59  
60

1  
2  
3 phenylpropionic acid, which can then be further metabolized to produce benzoic acids.<sup>79, 82-83</sup>

4  
5 Also, benzoic acid used as a food preservative is a further source of hippurate synthesis.  
6  
7

8  
9  
10  
11 There has been much interest in the key polyphenolic molecules found in the human diet due to  
12 their antioxidant potential and associated impact on health. As such, various studies have  
13 investigated the metabolism and absorption of polyphenols such as chlorogenic acid,<sup>84</sup> quinic  
14 acid<sup>76</sup> and cinnamic acid,<sup>85-87</sup> and in each case, hippurate has been identified as a predominant  
15 urinary metabolite.  
16  
17  
18  
19  
20  
21

22  
23  
24  
25  
26 Additionally, a number of studies have shown that increased hippurate excretion can result  
27 from the ingestion of specific dietary components, including chamomile tea,<sup>88</sup> *Gingko biloba*,<sup>89-</sup>  
28<sup>90</sup> apple cider,<sup>91</sup> sweet potato,<sup>92</sup> cranberry,<sup>93</sup> and other edible fruits.<sup>94</sup> The metabolism of tea and  
29 the bioavailability of tea flavanoids has been the subject of particular interest,<sup>79, 82, 95-98</sup> and it  
30 has been shown that hippurate is the main urinary metabolite from consumption of black<sup>82, 95</sup>  
31 and green<sup>96</sup> tea, with a three-fold increase in hippurate excretion reported following the  
32 consumption of eight cups of black tea per day.<sup>82</sup>  
33  
34  
35  
36  
37  
38  
39  
40  
41  
42  
43  
44

45  
46 It is thought that hippurate production, following consumption of tea, is due to the metabolism  
47 of catechins and related polymers such as theaflavins and thearubigins.<sup>99</sup> The phenolic  
48 molecules originating from tea are poorly absorbed in the small intestine, and are thus available  
49 for metabolism by the colonic microbiota.<sup>100</sup> The microbial species cleave the catechin ring into  
50 valerolactones, which are then metabolized to phenylpropionic acids. These molecules are  
51 absorbed and metabolized in the liver via  $\beta$ -oxidation to produce benzoic acid, before glycine  
52  
53  
54  
55  
56  
57  
58  
59  
60



1  
2  
3 conjugation and excretion as hippurate.<sup>83, 101</sup> Olthof et al. demonstrated the significance of the  
4  
5 gut microbiota in metabolizing polyphenolic compounds when it was shown that, following  
6  
7 administration of chlorogenic acid and tea phenols, subjects with an intact colon metabolized  
8  
9 roughly half of the phenols to hippurate; whereas in subjects without a colon, only trace  
10  
11 amounts of phenolic acid metabolites were excreted.<sup>79</sup>  
12  
13

14  
15  
16  
17  
18 There has also been interest in how black and green tea may differ in their effects on human  
19  
20 metabolism,<sup>97</sup> and much debate as to the superiority of green tea with respect to conferring  
21  
22 health benefits. Van Dorsten et al. compared the effects of black and green tea on metabolism  
23  
24 in 17 male subjects, in a randomized cross-over study. Urine samples were analyzed using <sup>1</sup>H  
25  
26 NMR spectroscopy coupled with PCA and PLS-DA. Consumption of both black and green tea  
27  
28 resulted in increased excretion of hippurate and 1,3-dihydroxyphenyl-2-O-sulfate; however,  
29  
30 PCA demonstrated separate clustering of samples for black and green tea, with green tea  
31  
32 consumption resulting in the excretion of several unidentified aromatic metabolites.  
33  
34  
35 Additionally, subtle differences in the effect on endogenous metabolism were found between  
36  
37 green and black tea, with green tea causing an increase in the excretion of TCA-cycle  
38  
39 intermediates, such as pyruvate, oxaloacetate, 2-oxoglutarate, succinate and citrate.  
40  
41  
42  
43  
44  
45

46  
47 Certain studies have examined the impact of entire food groups and diets on urinary metabolite  
48  
49 profiles. In a recent <sup>1</sup>H NMR spectroscopy-based metabonomic study, urine samples were  
50  
51 collected from 41 male and 40 female omnivorous (OMN) subjects, aged between 23 and 55;  
52  
53 and 42 male and 38 female lacto-vegetarian (VEG) subjects, aged between 18 and 40. VEG  
54  
55 participants were observed to excrete higher amounts of hippurate than those on a OMN diet.  
56  
57 The greater phenolic content of the lacto-vegetarian diet was implicated in such differences. In  
58  
59  
60

1  
2  
3 addition, succinate, citrate and formate excretion was also found to be higher in VEG samples,  
4  
5 whereas TMAO, taurine, glycine, phenylalanine and methylhistidine were higher in OMN  
6  
7 samples. However, significant differences in the lifestyles of VEG and OMN subjects may also  
8  
9 have contributed to the differences in urinary metabolites observed.<sup>70</sup>  
10  
11

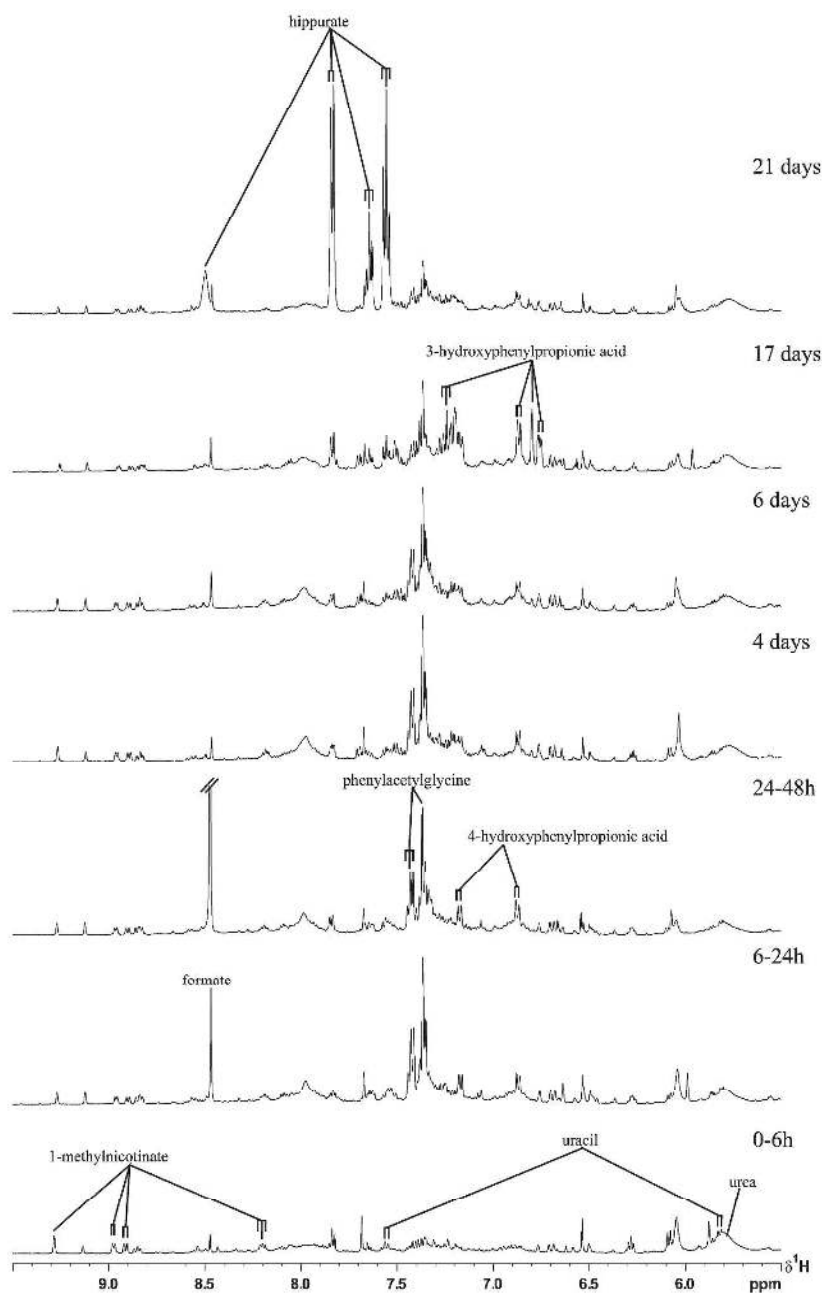
12  
13  
14  
15  
16 Similar findings were described by Walsh et al. in a study which compared urinary metabolite  
17  
18 profiles from subjects on a low-phytochemical diet (LPD) in which fruit and vegetables were  
19  
20 absent, a standard-phytochemical diet (SPD) which did contain sources of fruits and vegetables,  
21  
22 and also a 'normal diet' (ND), which allowed subjects to follow their usual dietary routine.  
23  
24 Samples were analyzed using <sup>1</sup>H NMR spectroscopy and mass spectrometry, and PCA and  
25  
26 PLS-DA revealed that the LPD samples contained lower amounts of hippurate compared to the  
27  
28 SPD and ND, further supporting the association between phytochemical intake and hippurate  
29  
30 excretion.<sup>102</sup> Further to this, a recent study by Fardet et al. highlighted the potential impact of  
31  
32 whole grains on human metabolism; it was found that a change in diet from 60% refined wheat  
33  
34 flour to 60% whole-grain wheat flour resulted in an increase in the excretion of hippurate, a  
35  
36 result the authors attributed to the increased polyphenol content of the latter diet<sup>103</sup>. In  
37  
38 addition, specific dietary interventions have also been shown to result in reduced hippurate  
39  
40 excretion; in a recent NMR-based metabonomic study it was found that a milk protein diet  
41  
42 reduced the urinary excretion of hippurate. The authors attributed this result to changes in gut  
43  
44 microbial metabolism.<sup>104</sup>  
45  
46  
47  
48  
49  
50  
51  
52

53 The influence of a diet high in benzoic acid has also been demonstrated; Zuppi et al.  
54  
55 investigated the difference in urinary metabolites of subjects from different geographical  
56  
57 locations, and thus differing diets. A comparison of urine samples from 25 subjects living in  
58  
59  
60

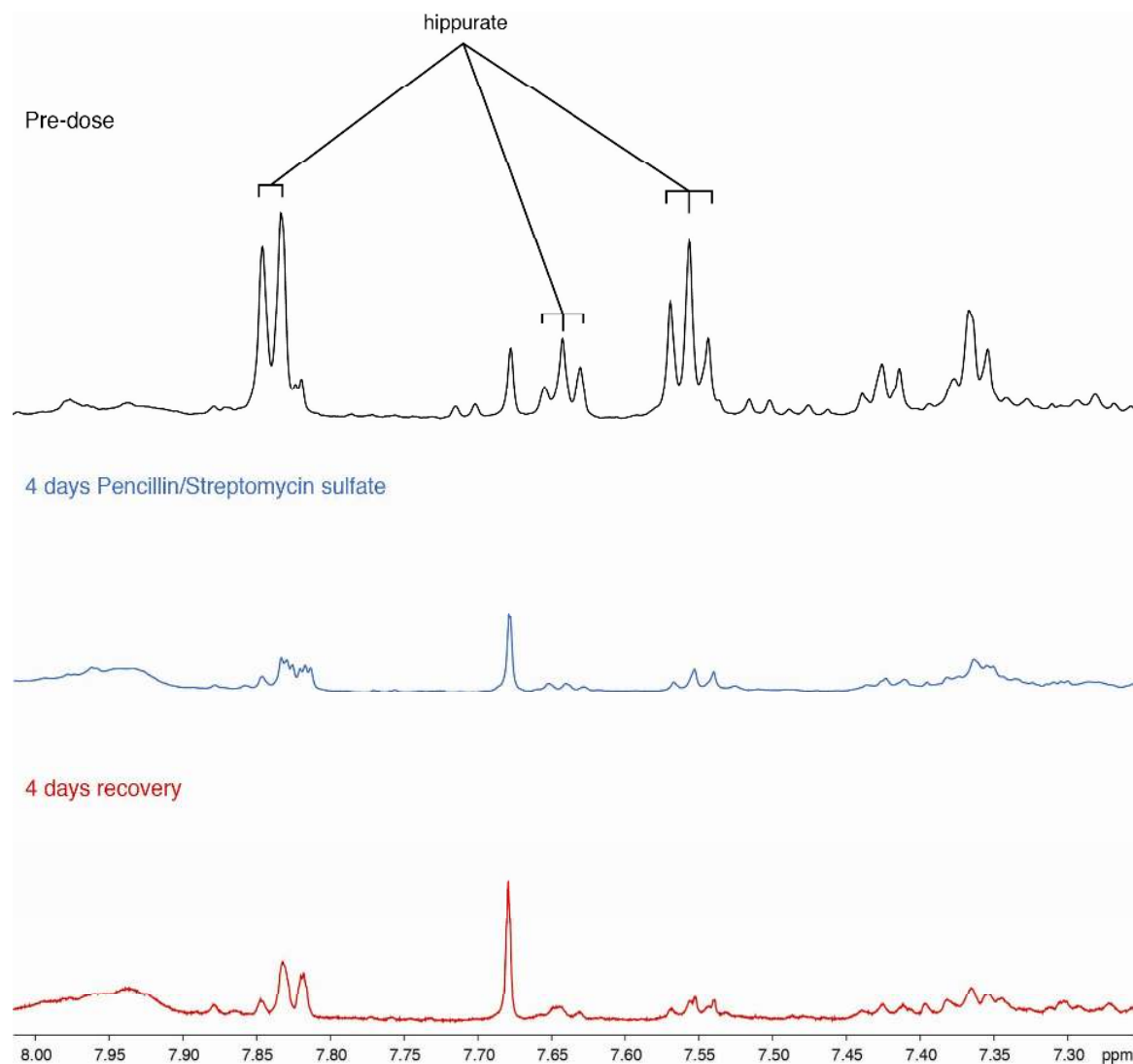
1  
2  
3 Rome, consuming a typical Mediterranean diet, and 25 subjects living in Ny-Alesund  
4  
5 (Svaldbard, Norway), consuming a diet high in preserved food, revealed that the latter group  
6  
7 excreted higher amounts of hippurate. This difference was thought to have derived from the  
8  
9 high benzoic acid content of preserved food.<sup>105</sup>  
10  
11

### 12 13 14 15 16 *Microbiota*

17  
18  
19  
20  
21 Research is ongoing into the wider importance of the intestinal microbiota in host health and  
22  
23 disease<sup>106-108</sup>; a number of studies have demonstrated the importance of the gut microbiota in  
24  
25 contributing to the excretion of a range of metabolites including TMAO, indoxyl sulfate,  
26  
27 trimethylamine, phenylacetylglutamine, and hippurate, and as such they are often referred to as  
28  
29 urinary mammalian-microbial co-metabolites. The significance of perturbation in hippurate  
30  
31 levels is often attributed to gut microbial activity; certainly, germ free animals do not excrete  
32  
33 hippurate, and on exposure to the environment, at around 2 weeks post exposure, hippurate  
34  
35 becomes the dominant aromatic metabolite (Figure 3).<sup>109-112</sup> Likewise, treatment of rats and  
36  
37 mice with antibiotics have been shown to eliminate hippurate (Figure 4), and as with the germ  
38  
39 free rats, concentrations have been shown to stabilize and reach a maximum at around three  
40  
41 weeks post dose.<sup>113-114</sup>  
42  
43  
44  
45  
46  
47  
48  
49  
50  
51  
52  
53  
54  
55  
56  
57  
58  
59  
60



**Figure 3.** Expansion of the aromatic region ( $\delta$ 9.5-5.5) of a 500 MHz  $^1\text{H}$  NMR spectrum of rat urine at selected time points (shown on the right). Time 0h represents the introduction of the germ free rats to a standard laboratory environment. Note that by day 21, hippurate is a dominant species in the aromatic region of the spectrum. Taken from Nicholls et al.<sup>112</sup>



**Figure 4.** Aromatic region of 600 MHz  $^1\text{H}$  NMR spectra of urine obtained from a rat pre-dose, 4 days treatment with penicillin and streptomycin sulfate and 4 days after the final dosing. Adapted from Swann et al.<sup>114</sup>

The role of the gut microbiota in the metabolism of polyphenolic compounds has been investigated extensively via the use of orally administered antibiotics in ‘conventional’ animals possessing an established intestinal microbiota. Results have shown that antibiotic-induced suppression of the gut microbiota results in a reduction in the excretion of hippurate and related

1  
2  
3 metabolites (Figure 4).<sup>113, 115-119</sup> In addition, it has been shown that ‘germ free’ animals, born  
4 into and maintained in a sterilized environment, and lacking in conventional intestinal  
5 microbiota, are unable to excrete hippurate or related metabolites, thus confirming their  
6 microbial origin.<sup>109-111</sup> Furthermore, it was shown that when germ free animals were introduced  
7 to a standard non-sterile laboratory environment<sup>112</sup> or inoculated with intestinal bacteria,<sup>120</sup>  
8 excretion of hippurate and other phenolic acids significantly increased. Taken together, these  
9 results indicate that the presence of an established gut microbiota is fundamental to the  
10 metabolism of phenolic dietary components, and consequently the production of hippurate.  
11  
12  
13  
14  
15  
16  
17  
18  
19  
20  
21  
22  
23

24 There is evidence to suggest that high-molecular-weight polyphenolic compounds are poorly  
25 absorbed in the small intestine<sup>121-122</sup>; for example, it was calculated that only 33% of  
26 administered chlorogenic acid was absorbed in the small intestine of ileostomy subjects.<sup>100</sup> This  
27 allows for a large proportion of consumed polyphenolic compounds to reach the colon where  
28 the majority of commensal bacteria reside ( $10^9$ - $10^{12}$  cfu/ml). In vitro and in vivo studies have  
29 demonstrated the capacity of the intestinal bacteria in metabolizing polyphenolic compounds  
30 through a variety of reactions, including dehydroxylation, reduction, hydrolysis,  
31 decarboxylation and demethylation.<sup>109, 123-127</sup> For example, hydrolysis of chlorogenic acid by  
32 the gut microbiota yields caffeic acid and quinic acid; the microbiota are then able to reduce the  
33 former to 3,4-dihydroxyphenylpropionic acid, and then dehydroxylate this to 3-  
34 hydroxyphenylpropionic acid (3-HPPA). Both 3-HPPA and quinic acid can then be further  
35 metabolized to benzoic acid, and excreted as hippurate.<sup>84, 101, 125-126</sup>  
36  
37  
38  
39  
40  
41  
42  
43  
44  
45  
46  
47  
48  
49  
50  
51  
52  
53  
54

55 Certain bacterial species have been linked to specific reactions involved in the metabolism of  
56 phenolic compounds.<sup>128</sup> Accordingly, it has been postulated that changes in the species  
57  
58  
59  
60

1  
2  
3 population or activities of the intestinal microbiota may result in a difference in the metabolic  
4  
5 processing of polyphenolic compounds within the colon and, consequently, a difference in the  
6  
7 yield of microbially derived urinary metabolites. Thus, the urinary metabolite profile can be an  
8  
9 informative tool in the analysis of the intestinal microbial profile.  
10  
11

12  
13  
14  
15  
16 Further to this, certain studies have speculated that a potential redistribution of the microbiota  
17  
18 has been caused by a change in diet<sup>101</sup> or cage environment.<sup>115, 129</sup> For example, in a study of  
19  
20 Wistar rats by Phipps et al., dietary modulation was found to cause a change in the aromatic  
21  
22 excretion profile, such that excretion of 3-HPPA was replaced by hippurate. Interestingly, when  
23  
24 the animals were returned to the original Special Dietary Services (SDS) diet, excretion of  
25  
26 hippurate persisted. It was proposed that, in addition to the precursors available in the diet, the  
27  
28 absence and presence of urinary hippurate and 3-HPPA was influenced by variation of the  
29  
30 intestinal microbiota, and that a change in diet had potentially caused a redistribution of the  
31  
32 microbiota, resulting in the production of hippurate as the primary excretion product, regardless  
33  
34 of the specific diet.<sup>101</sup> See Figure 1 for the metabolic pathways involved.  
35  
36  
37  
38  
39  
40  
41

#### 42 *Disease states and disorders*

43  
44  
45  
46  
47

#### 48 *Obesity.*

49  
50  
51  
52  
53

54 There is gathering evidence to suggest that alterations in the functional intestinal microbiome-  
55  
56 host relationship are associated with the development of obesity; in addition, hippurate has  
57  
58  
59  
60

1  
2  
3 been highlighted as a discriminatory metabolite in a number of metabonomic comparisons of  
4  
5 the urinary profiles of obese and lean subjects.  
6  
7  
8  
9

10  
11 The intestinal microbiota are beneficial for the host in several respects, with one key activity  
12  
13 being energy extraction and metabolism of otherwise indigestible dietary components. The  
14  
15 relationship between the intestinal microbiota and an increase in caloric extraction and  
16  
17 promotion of fat deposition, was clearly demonstrated by Bäckhed et al.; conventional mice  
18  
19 were found to have 42% more total body fat compared to germ-free mice, despite consuming  
20  
21 29% less food than the germ-free animals. Further to this, the conventionalization of germ-free  
22  
23 mice with intestinal bacteria from the cecum of conventional mice produced a 57% increase in  
24  
25 total body fat content after 14 days, despite an associated decrease in chow consumption.<sup>130</sup>  
26  
27  
28  
29  
30  
31

32  
33 Several studies have demonstrated a difference in the species populations of the microbiota of  
34  
35 lean and obese individuals, most noticeably in terms of the relative proportions of the two  
36  
37 dominant phyla of anaerobic bacteria, the Bacteroidetes and Firmicutes<sup>131-133</sup>; a finding also  
38  
39 supported by animal studies.<sup>134-137</sup>  
40  
41  
42  
43  
44

45  
46 A relatively small human study by Ley et al. explored the relationship between caloric intake  
47  
48 and the impact on intestinal microbial ecology; an analysis of the intestinal microbiota revealed  
49  
50 that 12 obese individuals had fewer Bacteroidetes ( $P < 0.001$ ), and a greater number of  
51  
52 Firmicutes ( $P = 0.002$ ), compared to lean controls. They were then randomly assigned to either a  
53  
54 fat-restricted (FAT-R) or carbohydrate-restricted (CARB-R) low calorie diet. Over the course  
55  
56  
57  
58  
59  
60



1  
2  
3 of one year, the relative abundance of Bacteroidetes increased, and the number of Firmicutes  
4  
5 decreased, and the increase in Bacteroidetes correlated with percentage loss of body weight.<sup>131</sup>  
6  
7

8  
9  
10  
11 This shift in the relative proportions of Firmicutes and Bacteroidetes during weight loss was  
12  
13 also seen in a study of 39 overweight and obese adolescents, using fluorescence in situ  
14  
15 hybridization (FISH) analysis.<sup>133</sup> Additionally, a metagenomic study of 154 individuals,  
16  
17 comprising adult monozygotic and dizygotic twin pairs concordant for leanness or obesity, and  
18  
19 their mothers, found that obesity was associated with phylum-level alterations in gut microbial  
20  
21 ecology and reduced bacterial diversity.<sup>132</sup>  
22  
23  
24  
25  
26  
27

28 However, several studies have indicated that the relationship between obesity and the intestinal  
29  
30 microbiota goes beyond the relative proportions of Firmicutes and Bacteroidetes. For example,  
31  
32 studies have found higher numbers of Bacteroidetes during excessive weight gain, or in obese  
33  
34 compared to lean individuals,<sup>138-139</sup> or no difference in the proportions of Bacteroidetes  
35  
36 between obese and lean groups.<sup>140</sup> Thus, it is clear that it is too broad a taxonomic description  
37  
38 to compare microbiota in terms of Bacteroidetes,<sup>141</sup> and that there may be complex associations  
39  
40 with obesity at the genus level, as has been found with Bifidobacteria.<sup>142</sup> Taken together, these  
41  
42 data imply that small changes and very specific modulation of intestinal microbial ecology may  
43  
44 be related to the development of obesity.  
45  
46  
47  
48  
49  
50  
51

52 In addition to the evidence of perturbations in intestinal bacteria associated with the obese  
53  
54 phenotype, a number of studies have shown that this condition results in an altered urinary  
55  
56 metabolite profile, compared to lean subjects.<sup>143-144</sup> For example, Calvani et al. used a <sup>1</sup>H  
57  
58  
59  
60

1  
2  
3 NMR-based metabonomic approach to analyze the urinary metabolite profiles of 15 morbidly  
4 obese individuals and age-matched healthy controls. Significant separation of the obese and  
5 lean subjects was achieved using PLS-DA. Hippurate was identified as the most important  
6 discriminant metabolite, and was found to be lower in the samples from the obese  
7 individuals.<sup>144</sup> Decreased hippurate excretion was also previously seen in an <sup>1</sup>H NMR-based  
8 metabonomic analysis of Zucker (fa/fa) obese rats, compared to Zucker (fa/-) lean controls.<sup>145</sup>  
9  
10 Further to this, life-long caloric restriction has also been linked to variation in hippurate  
11 excretion; Wang et al. concluded that life-long diet restriction altered the activities of the gut  
12 microbiota, as demonstrated by variation in aromatic metabolites and aliphatic amine  
13 compounds, with hippurate excretion consistently higher in calorie-restricted dogs, compared to  
14 controls.<sup>73</sup>  
15  
16  
17  
18  
19  
20  
21  
22  
23  
24  
25  
26  
27  
28  
29  
30

31 Taking into consideration the evidence relating to the characterization of an ‘obese  
32 microbiome’, it is likely that the differences in hippurate excretion seen in these studies are  
33 due, at least in part, to functional or compositional differences in intestinal microbiota between  
34 the obese and lean individuals. Indeed, a recent study by Waldram et al. combined a <sup>1</sup>H NMR-  
35 based metabonomic analysis of urinary metabolite profiles with FISH and DGGE analyses of  
36 variation in the structural composition of the intestinal microbiome. It was shown that Zucker  
37 (fa/fa) obese rats excreted less hippurate compared to Zucker (-/-) and (fa/-) lean controls, and  
38 that this correlated with lower Bifidobacteria counts in the obese rats.<sup>146</sup> More recent studies  
39 however, suggest that the functional relationship between the host and microbiome may be far  
40 more complex than first appreciated. Significant variation in the composition of the gut  
41 microbiota has been shown to be subject to environmental effects, such as animal housing (so  
42 called “cage-effects”), whilst the urinary hippurate profile may be more dependent on host  
43 phenotype, rather than particular populations of microbiota per se (Lees et al, in preparation). It  
44  
45  
46  
47  
48  
49  
50  
51  
52  
53  
54  
55  
56  
57  
58  
59  
60

1  
2  
3 is hoped that correlation of urinary metabolite profiles, to measure the metabolic output of host-  
4  
5 intestinal microbiome interactions, with bacterial compositional profiling approaches, such as  
6  
7 next generation sequencing, will give further insight in to the significance of functional  
8  
9 differences in host-microbiome interaction in health and disease.  
10  
11

### 12 13 14 15 16 *Diabetes.* 17

18  
19  
20  
21 Urinary metabolite profiles have been used by a number of investigators to investigate  
22  
23 differences in metabolism relating to diabetes. Zuppi et al. performed  $^1\text{H}$  NMR spectroscopic  
24  
25 analysis of urine from children and adolescents with type 1 diabetes; the spectra were  
26  
27 normalized to the signal of creatinine and metabolites were quantified using peak height.  
28  
29 Comparisons with samples from sex and age-matched healthy individuals revealed that  
30  
31 hippurate excretion was significantly elevated in diabetic individuals ( $P < 0.001$ ).<sup>147</sup> The  
32  
33 authors suggested that the increased hippurate excretion might have been due to increased  
34  
35 glomerular filtration rate, a characteristic of type 1 diabetes,<sup>148</sup> or other differences in renal  
36  
37 function. It was also proposed that the diabetic individuals had increased availability of hepatic  
38  
39 acetyl-CoA, and thus an increased capacity for the glycine conjugation of benzoic acid.  
40  
41 However, the authors made no mention of controlling for diet-related differences between the  
42  
43 groups, and it is possible that this influenced the concentration of hippurate in the samples.  
44  
45  
46  
47  
48  
49

50  
51  
52 Increased hippurate excretion has also been seen in studies of type II diabetic patients;  
53  
54 investigators have found differences between type II diabetic patients and healthy controls by  
55  
56 supervised multivariate statistical analysis of the  $^1\text{H}$  NMR spectra of urine samples<sup>149</sup> and also  
57  
58  
59  
60

1  
2  
3 through quantification of metabolites.<sup>150</sup> Doorn et al. found that hippurate excretion was  
4  
5 positively correlated with glycosuria and glycohemoglobin, which might reflect an association  
6  
7 between hippurate excretion and deterioration of metabolic control, or alteration in renal  
8  
9 function in type II diabetic patients. Further to this, the authors used principal component  
10  
11 discriminant analysis (PC-DA) to investigate the effect of rosiglitazone, an antidiabetic  
12  
13 pharmaceutical, on metabolism in type II diabetics and healthy controls. It was found that  
14  
15 treatment resulted in a reduction in hippurate excretion in diabetic patients, and no significant  
16  
17 treatment-related changes in metabolite excretion in the healthy controls were found.  
18  
19

20  
21  
22  
23  
24 In contrast to these findings, Salek et al. used a <sup>1</sup>H NMR-based metabonomic approach to  
25  
26 compare the urinary metabolite profiles of type II diabetes patients with healthy volunteers, and  
27  
28 identified hippurate to be lower in the urine of type II diabetes patients compared to controls,  
29  
30 using PLS-DA.<sup>145</sup> However, it was not made clear how significantly signals from hippurate  
31  
32 contributed to the model, and thus, how significant the difference in excretion was between the  
33  
34 groups.  
35  
36

37  
38  
39  
40  
41 It is important to note that type II diabetes is often related to obesity and other components of  
42  
43 ‘the metabolic syndrome’, as they are risk factors for the disease.<sup>151</sup> These associated  
44  
45 complications may also influence hippurate excretion, and as such, consideration should also be  
46  
47 given to differences in diet, and potential differences in microbiota as a result of the ‘obese  
48  
49 microbiome’, when interpreting results.  
50  
51

52  
53  
54  
55  
56 *Blood pressure and atherosclerosis.*  
57  
58  
59  
60

1  
2  
3  
4  
5  
6 A correlation of increased blood pressure with reduced hippurate excretion was established in a  
7  
8 study of human populations; the International Study of Macronutrients and Blood Pressure  
9  
10 (INTERMAP) used an  $^1\text{H}$  NMR-based metabonomic approach to investigate the urinary  
11  
12 metabolite phenotype variation across and within population samples from China, Japan, the  
13  
14 United Kingdom, and the United States. The excretion profiles varied across different  
15  
16 geographical populations, and gut microbial-mammalian co-metabolites, including hippurate,  
17  
18 were found to be discriminatory. This analysis was then linked to data on the individuals  
19  
20 regarding blood pressure, and hippurate was found to be inversely associated with blood  
21  
22 pressure in multiple linear regression models. It was postulated that this association might  
23  
24 reflect differences in diet and gut microbial activity between the different populations.<sup>152</sup>  
25  
26  
27  
28  
29  
30  
31

32 An association between hippurate excretion and blood pressure has also been explored using  
33  
34 the urinary metabolite profiles of spontaneously hypertensive rats (SHR). Akira et al. found  
35  
36 that hippurate excretion was lower in SHR compared to normotensive Wistar Kyoto rats, using  
37  
38  $^1\text{H}$  NMR spectroscopy combined with PCA.<sup>153</sup> The authors considered that this difference in  
39  
40 hippurate excretion might reflect the differing microbiomes of the two strains, due to  
41  
42 differences in host genetic and metabolic factors, as the diet was kept the same for both groups.  
43  
44 The authors note that the animals were bred under the same circumstances, however, it cannot  
45  
46 be ruled out that differing cage environments may also have contributed.  
47  
48  
49  
50  
51  
52

53 In addition to an association with blood pressure, hippurate has also been identified as a  
54  
55 potential biomarker in atherosclerosis rat models. Using ultra fast liquid chromatography  
56  
57  
58  
59  
60

1  
2  
3 coupled with IT-TOF mass spectrometry (UFLC/MS-IT-TOF) to analyze the urine of diet-  
4  
5 induced atherosclerotic rats, Zhang et al. identified several discriminatory metabolites using  
6  
7 multivariate statistical analysis, with hippurate excretion found to be higher in the  
8  
9 atherosclerotic rats, compared to controls.<sup>154</sup> This result contrasts with other studies that have  
10  
11 shown hippurate to be associated with a lean phenotype and with ingestion of a flavanol rich  
12  
13 diet.<sup>82, 95-96, 144</sup> No specific mechanism was offered by the authors with regard to this  
14  
15 discrepancy in hippurate excretion. It is plausible that higher hippurate excretion may relate to  
16  
17 the progression of atherosclerosis however, differing dietary regimes between the two groups  
18  
19 as well as potential differences in cage environment may also have contributed to the observed  
20  
21 results.  
22  
23  
24  
25  
26  
27  
28

### 29 *Gastrointestinal Diseases.*

30  
31  
32  
33  
34  
35 There is increasing evidence to suggest that the gut microbiota contribute to the development of  
36  
37 various gastrointestinal diseases such as inflammatory bowel disease, colorectal cancer and  
38  
39 irritable bowel syndrome.<sup>155-157</sup> Molecular techniques have been used in several studies to  
40  
41 demonstrate differences in the species populations of mucosal or fecal bacteria in IBD patients  
42  
43 compared with healthy individuals,<sup>158-165</sup> with evidence of a decrease in microbial species  
44  
45 diversity in IBD.<sup>166</sup> Further to this, urinary metabolite profiles have been shown to differ  
46  
47 between individuals with Crohn's disease and ulcerative colitis and those sampled from healthy  
48  
49 controls.<sup>167-168</sup> In an analysis of urine samples using <sup>1</sup>H NMR spectroscopy combined with  
50  
51 multivariate statistics, Williams et al. found that hippurate was the dominant metabolite for  
52  
53 discriminating between Crohn's disease patients and healthy controls, and also between  
54  
55 patients with Crohn's disease and ulcerative colitis. The study also compared quantified levels  
56  
57  
58  
59  
60

1  
2  
3 of hippurate, expressed as a relative index to total spectral integral. Hippurate excretion was  
4  
5 significantly lower in patients with ulcerative colitis compared to controls (P=0.0001), and  
6  
7 lowest overall for individuals with Crohn's disease. In an attempt to minimize confounding  
8  
9 factors, detailed histories of food intake were kept for all participants and analyzed for potential  
10  
11 differences in tea intake and other dietary sources of precursors for benzoic acid and hippurate.  
12  
13 Statistical analysis of these dietary factors revealed no differences between groups, and thus,  
14  
15 the authors postulated that the differences in hippurate excretion were a reflection of  
16  
17 differences in the intestinal microbiota of the different disease groups. Following this study,  
18  
19 Williams et al. provided further evidence in support of this theory regarding Crohn's disease  
20  
21 patients specifically. In an analysis of urinary NMR spectra, baseline urinary hippurate  
22  
23 concentrations were found to be significantly lower in patients with Crohn's disease, compared  
24  
25 to controls, despite no significant difference in the diets of the two groups. Further to this, in  
26  
27 order to investigate whether the reduced concentration of urinary hippurate seen in the Crohn's  
28  
29 disease patients was due to an intrinsic deficiency in glycine conjugation, a dose of sodium  
30  
31 benzoate was administered to both groups, and the concentration of urinary hippurate  
32  
33 measured. The peak excretion of hippurate was seen at one hour post-dose, and no significant  
34  
35 difference was found between the control and disease groups. The investigators concluded that  
36  
37 the patients with Crohn's disease did therefore not have a deficit in the conjugation of benzoate,  
38  
39 providing strong evidence for dysbiosis of the microbiome underlying the reduced hippurate  
40  
41 excretion seen in Crohn's disease patients.<sup>169</sup>  
42  
43  
44  
45  
46  
47  
48  
49  
50

51 *Renal function.*  
52  
53  
54  
55  
56  
57  
58  
59  
60

1  
2  
3 Hippurate has been characterized as a protein-bound uremic toxin,<sup>170-171</sup> accumulating in serum  
4  
5 when renal clearance is impaired.<sup>172</sup> It has been suggested that the renal clearance of  
6  
7 endogenous hippurate is a useful indicator of other alterations in renal secretion that are  
8  
9 associated with reduced expression of organic anion transporters in chronic renal failure.<sup>46</sup> In  
10  
11 this manner hippurate can be used in addition to urea as a marker for the assessment of the  
12  
13 efficacy of dialysis.<sup>173</sup>  
14  
15  
16  
17  
18  
19

20  
21 The kidneys serve as both a site of glycine conjugation of benzoic acid, and also as the primary  
22  
23 elimination route for hippurate via renal tubular secretion. As such, altered renal functioning  
24  
25 due to disease may result in the disruption of hippurate production or its elimination. A trend of  
26  
27 reduced hippurate excretion has been noted by investigators of certain renal disorders; for  
28  
29 example, Bairaktari et al. investigated renal tubular damage in patients with obstructive  
30  
31 jaundice and noted reduced hippurate excretion in patients compared to age and sex-matched  
32  
33 controls.<sup>174</sup> Further to this, the <sup>1</sup>H NMR signal of hippurate was absent from the urine of a  
34  
35 patient presenting with rhabdomyolysis, and associated renal tubular malfunction. Following  
36  
37 treatment of the condition, and subsequent improvements to renal function, hippurate excretion  
38  
39 was observed to increase.<sup>175</sup> Additionally, patients with glomerulonephritis (GN) have also  
40  
41 been found to excrete reduced hippurate. Psihogios et al. analyzed the urine samples of patients  
42  
43 with mild, moderate and severe GN using an <sup>1</sup>H NMR-based metabonomic approach.<sup>176</sup> OPLS-  
44  
45 DA models revealed metabolic differences between samples from GN patients and healthy  
46  
47 controls, and also differentiation between those with mild and severe lesions, with hippurate  
48  
49 identified as contributing significantly to the model. The onset of tubulointerstitial lesions were  
50  
51 found to be associated with a decreased excretion of hippurate, while further deterioration  
52  
53 resulted in the total depletion of urinary hippurate. The authors proposed that this result was  
54  
55  
56  
57  
58  
59  
60



1  
2  
3 indicative of a potential alteration in metabolism, or a reflection of the efficacy of tubular  
4  
5 secretion, as this is the primary elimination route for hippurate.<sup>46</sup>  
6  
7  
8  
9

10  
11 More recently, decreased hippurate excretion was observed in patients with primary renal  
12  
13 hypouricemia (PRH), a rare condition that results in increased renal clearance of urate. OPLS-  
14  
15 DA models of <sup>1</sup>H NMR spectral data demonstrated separation between urine samples from  
16  
17 PRH patients and sex and age-matched healthy individuals, with hippurate identified as an  
18  
19 important metabolite underlying the separation. The decreased excretion of hippurate in the  
20  
21 PRH patients was thought to have resulted from compromised tubular secretion, or as a result  
22  
23 of reduced availability of glycine, since increased excretion of this amino acid was seen in  
24  
25 hypouricemic individuals.<sup>177</sup>  
26  
27  
28  
29  
30  
31  
32

### 33 *Psychological disorders.*

34  
35  
36  
37

38  
39 Variation in hippurate excretion has long been investigated in patients with anxiety, depression,  
40  
41 schizophrenia and other psychological disorders. Investigators have described decreased  
42  
43 excretion of hippurate in patients with schizophrenia and depression,<sup>178-179</sup> and elevated  
44  
45 hippurate excretion during episodes of anxiety.<sup>180-182</sup> Diminished hippurate excretion in  
46  
47 schizophrenic patients is thought to relate to reduced availability of glycine,<sup>178</sup> however the  
48  
49 connection between glycine and this disorder remains to be elucidated.<sup>183</sup>  
50  
51  
52  
53  
54  
55  
56  
57  
58  
59  
60

1  
2  
3 More recently, an association between anxiety and hippurate excretion has been shown using a  
4  
5 metabonomic approach; Martin et al. described a ‘specific metabolic signature’, characterized  
6  
7 by  $^1\text{H}$  NMR and MS, which was associated with individuals with high anxiety traits. It was  
8  
9 found that individuals with high anxiety had differing concentrations of gut microbially derived  
10  
11 metabolites, including higher hippurate excretion. Interestingly, daily consumption of dark  
12  
13 chocolate for two weeks was found to reduce urinary excretion of cortisol and catecholamines,  
14  
15 in subjects with high anxiety, and also partially normalized stress-related differences in  
16  
17 hippurate, as compared to controls.<sup>184</sup>  
18  
19  
20  
21  
22  
23

24  
25 Variation in hippurate excretion was also observed after Sprague-Dawley rats were subjected to  
26  
27 acute stress and chronic unpredictable mild stress, in the form of ‘cold exposure’, ‘forced  
28  
29 swim’, and ‘chronic unpredictable mild stress’ (CUMS) tests.<sup>185</sup> This was further investigated  
30  
31 by Zheng et al. in an UPLC-MS-based metabonomic study of an animal model of depression  
32  
33 produced by CUMS, and it was found that CUMS-treated rats were characterized by increased  
34  
35 hippurate excretion, compared to controls.<sup>186</sup> Variation in plasma hippurate concentrations in  
36  
37 an animal model of depression has also been noted.<sup>187</sup> However, it is unknown to what extent  
38  
39 such animal models of stress and depression are able to give insight in to human psychological  
40  
41 disorders and any associated alteration in metabolism.  
42  
43  
44  
45  
46  
47

#### 48 *Autism.*

49  
50  
51  
52  
53

54  
55 Autism spectrum disorders (ASDs) are primarily characterized by a complex range of socio-  
56  
57 psychological and neurodevelopmental problems, with great variation in the severity and  
58  
59  
60

1  
2  
3 specific nature of deficits among individuals.<sup>188</sup> In addition to these clinical signs, autism is  
4  
5 associated with a range of metabolic, immunological and gastrointestinal problems.<sup>189-191</sup> In  
6  
7 order to investigate the metabolic abnormalities associated with autism and potentially identify  
8  
9 diagnostic markers, Yap et al. analyzed the urine samples of 39 autistic children, their  
10  
11 unaffected siblings, and age-matched controls, using <sup>1</sup>H NMR spectroscopy and multivariate  
12  
13 statistical analyses.<sup>192</sup> The relative patterns of mammalian-microbial co-metabolites, including  
14  
15 dimethylamine, phenylacetylglutamine and hippurate, were found to differ between the samples  
16  
17 from autistic children and controls. The investigators observed a trend towards decreased  
18  
19 hippurate excretion in samples from autistic children, although a non-parametric 2-tailed Mann-  
20  
21 Whitney test revealed that the difference was not statistically significant. Additionally, a prior  
22  
23 study by Lis et al. also found an association between hippurate excretion and autism using  
24  
25 high-resolution ion-exchange chromatography. After analysis of urine samples from 19 autistic  
26  
27 children, a trend of decreased hippurate excretion was described, compared to controls.<sup>193</sup> Yap  
28  
29 et al. suggested that the differences in microbially derived metabolites could be related to  
30  
31 gastrointestinal dysfunction associated with autism, and specifically, differences in the  
32  
33 clostridial species diversity of the microbiota.<sup>194-195</sup>  
34  
35  
36  
37  
38  
39  
40  
41

#### 42 *Toxicity.*

43  
44  
45  
46  
47

48 Variation in hippurate excretion has been observed following administration or exposure to a  
49  
50 number of compounds associated with toxicity. As with altered renal functioning due to  
51  
52 disease, nephrotoxins also have the potential to affect both hippurate synthesis and elimination.  
53  
54  
55 Indeed, decreased hippurate excretion has been observed following the administration of a  
56  
57  
58  
59  
60

1  
2  
3 variety of nephrotoxins including mercury II chloride, and other S3 proximal tubular  
4  
5 nephrotoxins; ifosfamide and calcineurin inhibitors.<sup>196-204</sup>  
6  
7  
8  
9

10  
11 Inhibition of proximal tubular secretion and increased hydrolysis of hippurate by kidney  
12  
13 aminoacylase have been cited as possible mechanisms for reduced hippurate excretion in the  
14  
15 case of ifosfamide<sup>201-202</sup> and calcineurin inhibitors,<sup>204</sup> respectively. However, certain  
16  
17 nephrotoxins, such as gentamicin and cephaloridine, act as antibiotics and therefore,  
18  
19 modulation of the microbiota is the likely mechanism for the variation in hippurate excretion  
20  
21 observed with these compounds.<sup>196, 198-200, 205</sup> Modification of the microbiota has been  
22  
23 associated with a number of other toxic compounds, resulting in either an increase<sup>206-208</sup> or  
24  
25 decrease<sup>209</sup> in hippurate excretion.  
26  
27  
28  
29  
30  
31  
32

33 In addition to nephrotoxins, certain hepatotoxins, including hydrazine, methylene dianiline,  
34  
35 galactosamine and Huang-yao-zi, have also been linked with decreased hippurate excretion.<sup>203,</sup>  
36  
37<sup>210-212</sup> The liver is thought to be the primary site of glycine conjugation of benzoic acid in many  
38  
39 species, and as such, disruption of this reaction may be a possible mechanism for reduced  
40  
41 hippurate excretion. Liu et al. proposed that administration of Huang Yao-zi caused damage to  
42  
43 hepatic mitochondria, resulting in a shortage of ATP, and thus inhibiting the ATP-dependent  
44  
45 process of hippurate synthesis.<sup>211</sup> The hippurate ratio has been highlighted as a potential  
46  
47 preoperative tool for the assessment of functional hepatic reserve in cirrhotic patients selected  
48  
49 for liver resection.<sup>213</sup>  
50  
51  
52  
53  
54  
55  
56  
57  
58  
59  
60

1  
2  
3 Variation in hippurate excretion has also been linked to compounds with more generalized,  
4  
5 multi-system organ toxicity such as cadmium<sup>214</sup> and selenium.<sup>215</sup> In addition, inhibition of  
6  
7 glycine conjugation has been proposed as a possible cause of reduced hippurate excretion  
8  
9 following administration of chlorophenoxyacetic acid herbicides<sup>216</sup> and 1,3-butadiene.<sup>217</sup>  
10  
11

12  
13  
14  
15  
16 Increased hippurate excretion also results directly from the metabolism of certain toxic  
17  
18 compounds such as toluene,<sup>1,218</sup> N-ethylbenzamide<sup>219</sup> and gasoline.<sup>220</sup> Toluene is primarily  
19  
20 metabolized via hydroxylation to benzyl alcohol by members of the cytochrome P450  
21  
22 superfamily.<sup>221</sup> Benzyl alcohol is then metabolized to benzaldehyde and benzoic acid, with the  
23  
24 majority of benzoic acid glycine conjugated and excreted as hippurate.<sup>222-223</sup> Similarly, benzoic  
25  
26 acid is the source of hippurate excretion following exposure to N-ethylbenzamide; it is first  
27  
28 metabolized via hydrolysis to ethylamine and benzoic acid, with the majority of the dose  
29  
30 excreted as hippurate.<sup>219</sup> Accordingly, an increase in the excretion of hippurate has been  
31  
32 observed following environmental exposure to such compounds<sup>1,224</sup> with hippurate cited as a  
33  
34 urinary biomarker for high dose exposure to toluene.<sup>1,218</sup>  
35  
36  
37  
38  
39  
40  
41

#### 42 *Parasitic infection.*

43  
44  
45  
46  
47

48 Reduced hippurate excretion has been associated with a number of parasitic infections,  
49  
50 investigated using a metabonomic approach; these have included *Schistosoma mansoni*,  
51  
52 *Schistosoma japonicum*, *Trypanosoma brucei brucei*, *Echinostoma caproni* and *Necator*  
53  
54 *americanus*.<sup>225-231</sup> Moreover, hippurate excretion was found to be negatively correlated with the  
55  
56 levels of worm burden.<sup>230</sup> In addition to a reduction in hippurate excretion, certain studies also  
57  
58  
59  
60

1  
2  
3 found alterations in other mammalian-microbial co-metabolites, suggestive of an alteration in  
4  
5 the species population or activities of the microbiota. Additionally, infection with either *E.*  
6  
7 *caproni*, *S. mansoni* or *S. japonicum* resulted in reduced hippurate excretion and increased  
8  
9 phenylacetyl-glycine, p-cresol-glucuronide and trimethylamine excretion suggesting that these  
10  
11 trematodes share similarities in how they influence the gut microbiota.<sup>225-227</sup>  
12  
13  
14  
15  
16  
17

18 It has also been suggested that decreased hippurate excretion following *S. mansoni* infection in  
19  
20 mice may have been in part due to altered glycine conjugation,<sup>225</sup> as *S. mansoni* infection has  
21  
22 been previously associated with increased cytochrome P450 activity,<sup>232</sup> which may have  
23  
24 influenced phase II metabolism.  
25  
26  
27  
28  
29

### 30 *Co-variation with other urinary metabolites*

31  
32  
33  
34  
35

36 In several of the metabonomic studies discussed in this review, TCA cycle intermediates, in  
37  
38 particular citrate, succinate and 2-oxoglutarate, have often been found to co-vary with hippurate  
39  
40 excretion in the same direction (i.e. either increased or decreased in biofluids) (Table 1). In  
41  
42 certain cases this co-variation can be explained by the link between hippurate formation and  
43  
44 mitochondrial function. The first step in the metabolism of benzoate to hippurate requires ATP,  
45  
46 and both steps take place in the mitochondrial matrix. Indeed, Krahenbuhl et al. demonstrated  
47  
48 that benzoate metabolism, and thus hippurate formation, was a reflection of hepatic  
49  
50 mitochondrial function in rats.<sup>233</sup> Thus, it is possible that impaired mitochondrial functioning  
51  
52 may have contributed to the decreased excretion of hippurate and citrate in patients with  
53  
54 obstructive jaundice and glomerulonephritis<sup>174, 176</sup>. Additionally, diminished hepatic and renal  
55  
56  
57  
58  
59  
60

1  
2  
3 mitochondrial function may have been a factor in the reduced excretion of hippurate, citrate, 2-  
4  
5 oxoglutarate and succinate documented in investigations of nephrotoxins and hepatotoxins.<sup>201,</sup>  
6

7 204, 210-212  
8  
9  
10  
11  
12  
13  
14  
15  
16  
17  
18  
19  
20  
21  
22  
23  
24  
25  
26  
27  
28  
29  
30  
31  
32  
33  
34  
35  
36  
37  
38  
39  
40  
41  
42  
43  
44  
45  
46  
47  
48  
49  
50  
51  
52  
53  
54  
55  
56  
57  
58  
59  
60

**Table 1:** Variation in the excretion of hippurate associated with differences in diet, microbiota, disease states and disorders, toxicity, and parasitic infection. Arrows pointing upwards indicate increased excretion; arrows pointing downwards indicate decreased excretion. H.A; hippuric acid.

Group of interest	Comparison group	H.A excretion	In samples from group of interest relative to controls		Technique(s) used for measuring hippurate	Sample size	Subjects used	Reference
			Other urinary metabolites for which excretion ↑	Other urinary metabolites for which excretion ↓				
<b>Diet</b>								
Black and green tea	Wash out periods	↑	1,3-dihydroxyphenyl-2-O-sulfate, glycine, valine, pyruvate, 2-oxoglutarate, succinate, dimethylamine, <i>N</i> -acetyl (glycoproteins)	Glutamine/glutamate	<sup>1</sup> H NMR spectroscopy	17	Healthy men	97
60% whole-grain wheat flour diet	60% refined wheat flour diet	↑	Tyrosine, tryptophan, creatine, citrate, phenylalanine, fumarate	Pyruvate, taurine	<sup>1</sup> H NMR spectroscopy	2 groups (n = 10/group)	Male Wistar rats	103
Standard phytochemical diet (SPD)	Low phytochemical diet (LPD)	↑		Creatinine and methyl histidine	<sup>1</sup> H NMR spectroscopy and HPLC-MS	21 (12 women, 9 men)	Healthy women and men	102
Lacto-vegetarian subjects	Omnivorous subjects	↑	Succinate, citrate, formate	TMAO, taurine, glycine, phenylalanine, methyl histidine	<sup>1</sup> H NMR spectroscopy	161 (78 women, 83 men)	Healthy men and women	70
<b>Microbiota</b>								
Suppression of microbiota with antibiotics	Saline/vehicle injection	↓	Guanidoacetic acid	m-HPPA	<sup>1</sup> H NMR spectroscopy	Controls vs antibiotics (n = 10/group)	Male Wistar rats	115
						Controls vs antibiotics (n = 6/group)	Female outbred NMRI strain mice	113
Germ-free animals	Conventional animals	↓	Creatinine	3-hydroxycinnamic acid, PAG, 4-hydroxypropionic acid, <i>N</i> -acetylated	<sup>1</sup> H NMR spectroscopy	Conventional vs germ-free (n = 5/group)	C3H/HeJ mice	111



				glycoprotein				
Germ-free animals introduced to non-sterile environment/inoculated with intestinal microbiota	Germ-free urinary profiles	↑	Trimethylamine N-oxide, Phenylacetyl glycine, 3-hydroxypropionic acid, benzoic acid		<sup>1</sup> H NMR spectroscopy	3	Male Fischer 344 germ-free rats	112
<b>Disease states and disorders:</b>								
<b>Obesity</b>								
Obese individuals	Healthy controls	↓	2-hydroxyisobutyrate	Trigonelline, xanthine	<sup>1</sup> H NMR spectroscopy	25 (15 obese, 10 controls)	Men	143
Obese Zucker (fa/fa) rats	Lean Zucker (fa/-) and (-/-) rats	↓	α-hydroxy- <i>n</i> -butyrate, lactate, fumarate, citrate, free fatty acids, DMA, dimethylglycine, valine, lysine, glutamine/glutamate, succinate/malate, formate, 3-methylglutarate, propionate, acetate	2-oxoglutarate, phenylacetyl glycine (PAG), allantoin, N-acetylglycoprotein, proline, ornithines, creatinine, pyridoxine, guanidoacetate	<sup>1</sup> H NMR spectroscopy	16 (n = 8 for lean and obese Zucker rats)	Male Zucker rats	144
					<sup>1</sup> H NMR spectroscopy	24 (n = 8 per genotype)	Male Zucker rats	145
<b>Diabetes</b>								
Children with type 1 diabetes	Healthy controls	↑	Citrate, alanine, lactate		<sup>1</sup> H NMR spectroscopy	50 (n = 25/group)	Children with type 1 diabetes and age- and sex-matched controls	146
Type II diabetic patients	Healthy controls	↑	Lactate, citrate, glycine, alanine, TMAO, dimethylamine, creatine, acetate, betaine, phenylalanine, tyrosine	Glutamate/glutamine, N-methyl nicotinamide, uridine.	<sup>1</sup> H NMR spectroscopy	53 (33 type II diabetic patients, 20 controls)	Type II diabetic patients	149
					<sup>1</sup> H NMR spectroscopy	32 (16 patients, 16 healthy subjects)	Type II diabetic patients	148

<b>Blood pressure</b>								
Subjects with high blood pressure	(correlation)	↓	Alanine (positive correlation with blood pressure)	Formate (inverse correlation)	<sup>1</sup> H NMR spectroscopy	4,630 participants	Men and women in China, Japan, UK and USA.	151
Spontaneously hypertensive rats	Wistar Kyoto controls	↓		Citrate, 2-oxoglutarate	<sup>1</sup> H NMR spectroscopy	12 (n = 6/group)	Spontaneously hypertensive and Wistar Kyoto rats	152
<b>Gastrointestinal diseases</b>								
Crohns disease (CD) and ulcerative colitis (UC) patients	Healthy controls	↓	Formate	4-cresol sulfate	<sup>1</sup> H NMR spectroscopy	206 subjects (86 CD patients, 60 UC patients, 60 healthy controls)	Male and female CD and UC patients, and healthy controls	166
<b>Renal function</b>								
Patients with obstructive jaundice	Healthy controls	↓	3-hydroxybutyrate, acetate	Citrate	<sup>1</sup> H NMR spectroscopy	75 (35 patients, 40 healthy individuals)	Male and female patients and healthy controls	172
Patients with glomerulonephritis	Healthy controls	↓	Lactate, acetate, TMAO	Citrate, glycine, and creatinine		77 patients, 85 controls		174
Patients with primary renal hypouricemia	Healthy controls	↓	Phenylalanine, alanine, glycine, glutamate, acetate	Creatinine, TMAO		36 patients, 39 sex- and age-matched healthy individuals		175
<b>Psychological disorders</b>								
Individuals with high anxiety traits	Individuals with low-anxiety traits	↑	Glycine, citrate, 3-methoxytyrosine, β-alanine, proline, 3,4-dihydroxyphenylalanine (DOPA), adrenaline	Methyl-succinate, trans-aconitate, p-cresol sulfate	<sup>1</sup> H NMR spectroscopy	30 subjects (13 high anxiety, 17 low anxiety)	Male and females with high or low anxiety traits	182

Chronic unpredictable mild stress-treated rats	Control rats (housed together)	↑	Kynurenic acid, xanthurenic acid, phenylalanine, N <sub>2</sub> -succinyl-L-ornithine, phenylacetylglutamine	Tryptophan, indoxyl sulfate, indole-3-acetate, citrate, 2-oxoglutarate, creatinine	UPLC-MS	16 (n = 8/group)	Male Sprague–Dawley rats	184
<b>Autism</b>								
Autistic children	Healthy controls	↓	N-methyl-2-pyridone-5-carboxamide, N-methyl nicotinic acid, and N-methyl nicotinamide, taurine	Glutamate, phenylacetylglutamine.	<sup>1</sup> H NMR spectroscopy	39 autistic children, 28 nonautistic siblings	Male and female children	190
<b>Toxicity</b>								
Nephrotoxins	pre-dose urine sample/vehicle controls	↓	Glucose, glycine, alanine, histidine, lactate, acetate, succinate, TMAO	Citrate, creatinine, 2-oxoglutarate	<sup>1</sup> H NMR spectroscopy	11	Patients who received ifosfamide chemotherapy	200
					<sup>1</sup> H NMR spectroscopy	36 (6 treatment groups, n = 6/group)	Male Wistar rats	202
Nephrotoxins (which act as antibiotics)	Vehicle controls	↓	Glucose, lactate, acetoacetate, alanine, valine, lysine, glycine, glutamine/glutamate, citrate	Allantoin	<sup>1</sup> H NMR spectroscopy	12 (4 groups, n = 3/group)	Male Fischer 344 rats	194
					<sup>1</sup> H NMR spectroscopy	12 (n = 3/group)	Male New Zealand White rabbits	196
Hepatotoxins	Vehicle controls	↓	Alanine, creatine, taurine	2-oxoglutarate, citrate, succinate, TMAO	<sup>1</sup> H NMR spectroscopy	10 (n = 5/group)	Male Sprague–Dawley rats	209
					<sup>1</sup> H NMR spectroscopy	20 (n = 5/group)	Male Han Wistar rats	210
					<sup>1</sup> H NMR spectroscopy	15 (n = 3/group)	Male Crj:CD (SD) rats	208
<b>Parasitic infection</b>								
<i>S. mansoni</i> , <i>S. japonicum</i> , <i>T. brucei brucei</i> , <i>E. caproni</i> and <i>N. americanus</i> infection	uninfected mice	↓	TMA, PAG, pyruvate, p-cresol glucuronide	Citrate, succinate, creatine, taurine, acetate, 2-ketoisocaproate, butyrate	<sup>1</sup> H NMR spectroscopy	20 (n = 10/group)	Female mice (NMRI strain)	88
						36 (n = 18/group)	Male Syrian SLAC hamsters	224
						24 (n =	Female NMRI	225

1  
2  
3  
4  
5  
6  
7  
8  
9  
10  
11  
12  
13  
14  
15  
16  
17  
18  
19  
20  
21  
22  
23  
24  
25  
26  
27  
28  
29  
30  
31  
32  
33  
34  
35  
36  
37  
38  
39  
40  
41  
42  
43  
44  
45  
46  
47  
48  
49

						12/group)	mice	
						24 (n = 12/group)	Female out- bred NMRI mice	227
						20 (n = 10/group)	Male Syrian SLAC hamsters	228
						20 (n = 10/group)	Male golden hamsters	229

Co-variation in the excretion of hippurate and TCA cycle intermediates has been seen in other diverse subject areas; with decreased excretion observed in studies of hypertension and parasitic infection<sup>153, 225-226, 231</sup>; and increases observed in studies of diet, diabetes and psychological disorders.<sup>70, 97, 103, 147, 184</sup>

1  
2  
3 In the study of SHR by Akira et al., it was found that SHR excreted reduced concentrations of  
4 hippurate, citrate and 2-oxoglutarate, compared to normotensive Wistar Kyoto rats.<sup>153</sup> The  
5 authors speculated that the reduced citrate excretion may have been due to increased proximal  
6 tubular reabsorption of this metabolite, or also alteration of the TCA cycle. The reduced  
7 excretion of hippurate in the SHR strain was proposed by the authors to be due to strain-related  
8 differences in the microbiomes of the animals. Nevertheless, if the TCA cycle was impaired in  
9 the SHR, this may have influenced the rate of metabolism of benzoate, and thus hippurate  
10 formation.  
11  
12  
13  
14  
15  
16  
17  
18  
19  
20  
21  
22  
23

24 Differences in the microbiome were also suggested to underlie reduced hippurate excretion in  
25 several studies of parasitic infection.<sup>225-226, 231</sup> However, the authors also cited that the reduced  
26 excretion of TCA cycle intermediates could be due to an inadequate acetyl-CoA formation,<sup>225</sup>  
27 and “perturbation in mitochondrial function”.<sup>226</sup> Accordingly, it is possible that reduced  
28 mitochondrial ability for glycine conjugation of benzoate also contributed to the reduced  
29 excretion of hippurate observed in these studies.  
30  
31  
32  
33  
34  
35  
36  
37  
38  
39  
40  
41

## 42 *Conclusions*

43  
44  
45  
46  
47

48 Together with established connections with dietary components, hepatic function and toluene  
49 exposure, hippurate has been associated with a diverse range of disease states and alterations in  
50 metabolism. In particular, the relationship between hippurate excretion and variation in the  
51 microbiota is proving to be a significant area for investigation, particularly in light of evidence  
52 relating to the differing microbiomes of obese and lean individuals, and also those with  
53  
54  
55  
56  
57  
58  
59  
60

1  
2  
3 gastrointestinal diseases. Clearly, given the many factors that have been found to be associated  
4  
5 with changes in the urinary excretion of hippurate, its use as a biomarker needs to be performed  
6  
7 with care. It is not unusual for these variations to be accompanied by changes in the excretion  
8  
9 of other metabolites (Table 1). It is likely that the value of urinary hippurate as a biomarker lies  
10  
11 in the conditional relationships between hippurate excretion and the excretion of a variety of  
12  
13 other urinary metabolites, with the directional change in concentration of a variety of  
14  
15 metabolites in combination, giving rise to a specific co-variation pattern, indicative of the  
16  
17 disease state or response to intervention, rather than one metabolite alone. Future developments  
18  
19 in analytical techniques and statistical analyses, and the combined use of complementary  
20  
21 techniques such as proteomics, metabonomics and metagenomics, will give further insight into  
22  
23 the biological significance of urinary metabolites such as hippurate, host endogenous  
24  
25 metabolism and intestinal microbial metabolism, in health and disease.  
26  
27  
28  
29  
30  
31  
32  
33  
34  
35  
36  
37  
38  
39  
40  
41  
42  
43  
44  
45  
46  
47  
48  
49  
50  
51  
52  
53  
54  
55  
56  
57  
58  
59  
60

1  
2  
3 AUTHOR INFORMATION  
45 **Corresponding Author**  
6

7 Professor Elaine Holmes, Biomolecular Medicine, Department of Surgery and Cancer,  
8 Faculty of Medicine, Imperial College London, South Kensington, London SW7 2AZ, U.K.  
9  
10  
11  
12 Tel: 020 7594 3220. E-mail: [elaine.holmes@imperial.ac.uk](mailto:elaine.holmes@imperial.ac.uk).  
13  
14  
15  
16  
17

18 Author Contributions  
19

20  
21 The manuscript was written through contributions of all authors. All authors have given  
22 approval to the final version of the manuscript. <sup>§†</sup>These authors contributed equally.  
23  
24  
25  
26  
27  
28  
29  
30  
31  
32  
33  
34  
35  
36  
37  
38  
39  
40  
41  
42  
43  
44  
45  
46  
47  
48  
49  
50  
51  
52  
53  
54  
55  
56  
57  
58  
59  
60

## REFERENCES

1. Kawai, T.; Ukai, H.; Inoue, O.; Maejima, Y.; Fukui, Y.; Ohashi, F.; Okamoto, S.; Takada, S.; Sakurai, H.; Ikeda, M., Evaluation of biomarkers of occupational exposure to toluene at low levels. *Int Arch Occup Environ Health* **2008**, *81* (3), 253-62.
2. Kira, S., Measurement by gas chromatography of urinary hippuric acid and methylhippuric acid as indices of toluene and xylene exposure. *Br J Ind Med* **1977**, *34* (4), 305-9.
3. Castellani, S.; Ungar, A.; Cantini, C.; La Cava, G.; Di Serio, C.; Altobelli, A.; Vallotti, B.; Pellegrini, M.; Brocchi, A.; Camaiti, A.; Coppo, M.; Meldolesi, U. G. O.; Messeri, G.; Masotti, G., Excessive vasoconstriction after stress by the aging kidney: Inadequate prostaglandin modulation of increased endothelin activity. *J Lab Clin Med* **1998**, *132* (3), 186-194.
4. Jonker, G. J.; Visscher, C. A.; de Zeeuw, D.; Huisman, R. M.; Piers, D. A.; Beekhuis, H.; van der Hem, G. K., Changes in renal function induced by ACE-inhibition in the conscious two-kidney, one-clip Goldblatt hypertensive dog. *Nephron* **1992**, *60* (2), 226-31.
5. Ayers, S. H.; Rupp, P., Differentiation of Hemolytic Streptococci from Human and Bovine Sources by the Hydrolysis of Sodium Hippurate. *J Infect Dis* **1922**, *30* (4), 388-399.
6. Edberg, S. C.; Samuels, S., Rapid, colorimetric test for the determination of hippurate hydrolysis by group B Streptococcus. *J. Clin. Microbiol.* **1976**, *3* (1), 49-50.
7. Hajna, A. A.; Damon, S. R., Differentiation of *A. aerogenes* and *A. cloacae* on the basis of the hydrolysis of sodium hippurate. *Am J Epidemiol* **1934**, *19* (2), 545-548.
8. Harvey, S. M., Hippurate hydrolysis by *Campylobacter fetus*. *J. Clin. Microbiol.* **1980**, *11* (4), 435-437.
9. Hwang, M.-N.; Ederer, G. M., Rapid Hippurate Hydrolysis Method for Presumptive Identification of Group B Streptococci. *J. Clin. Microbiol.* **1975**, *1* (1), 114-115.
10. Luechtefeld, N. W.; Wang, W. L., Hippurate hydrolysis by and triphenyltetrazolium tolerance of *Campylobacter fetus*. *J. Clin. Microbiol.* **1982**, *15* (1), 137-140.
11. Ziegler, P.; Kutzner, H. J., Hippurate hydrolysis as a taxonomic criterion in the genus *Streptomyces* (order Actinomycetales). *Z Allg Mikrobiol* **1973**, *13* (3), 265-72.
12. Piot, P.; Van Dyck, E.; Totten, P. A.; Holmes, K. K., Identification of *Gardnerella* (*Haemophilus*) *vaginalis*. *J Clin Microbiol* **1982**, *15* (1), 19-24.



13. Liebig, J., Ueber die Säure welche in dem Harn der grasfressenden vierfüßigen Thiere enthalten ist. *Annalen der Physik* **1829**, 93 (11), 389-399.
14. Hutt, A. J.; Caldwell, J., *Amino acid conjugation. In: Conjugation reactions in drug metabolism: An integrated approach*. Taylor & Francis, Inc.: 1990.
15. Ure, A., On gouty concretions, with a new method of treatment. *Med Chir Trans* **1841**, 24, 30-35.
16. Keller, W., On the conversion of benzoic acid into hippuric acid. *Annalen der Chemie und Pharmacie* **1842**, 43 (1), 108-111.
17. Keun, H. C.; Beckonert, O.; Griffin, J. L.; Richter, C.; Moskau, D.; Lindon, J. C.; Nicholson, J. K., Cryogenic Probe <sup>13</sup>C NMR Spectroscopy of Urine for Metabonomic Studies. *Analytical Chemistry* **2002**, 74 (17), 4588-4593.
18. Fan, T. W. M., Metabolite profiling by one-and two-dimensional NMR analysis of complex mixtures. *Progress in nuclear magnetic resonance spectroscopy* **1996**, 28, 161.
19. Dumas, M. E.; Canlet, C.; Andre, F.; Vercauteren, J.; Paris, A., Metabonomic assessment of physiological disruptions using <sup>1</sup>H-<sup>13</sup>C HMBC-NMR spectroscopy combined with pattern recognition procedures performed on filtered variables. *Anal Chem* **2002**, 74 (10), 2261-73.
20. Bales, J. R.; Higham, D. P.; Howe, I.; Nicholson, J. K.; Sadler, P. J., Use of high-resolution proton nuclear magnetic resonance spectroscopy for rapid multi-component analysis of urine. *Clin Chem* **1984**, 30 (3), 426-32.
21. Akira, K.; Hashimoto, T., Hippuric Acid Test Using <sup>13</sup>C-Labeling and NMR Spectroscopy. *Clin Chem Lab Med* **2005**, 39 (3), 215-217.
22. Schewitz, J.; Gfrorer, P.; Pusecker, K.; Tseng, L. H.; Albert, K.; Bayer, E.; Wilson, I. D.; Bailey, N. J.; Scarfe, G. B.; Nicholson, J. K.; Lindon, J. C., Directly coupled CZE-NMR and CEC-NMR spectroscopy for metabolite analysis: paracetamol metabolites in human urine. *Analyst* **1998**, 123 (12), 2835-7.
23. Sakai, T.; Ninuma, Y.; Yanagihara, S.; Ushio, K., Simultaneous determination of hippuric acid and o-, m- and p-methylhippuric acids in urine by high-performance liquid chromatography. *J Chromatogr B: Biomed Sci App* **1983**, 276, 182-188.
24. Burrini, C., [The simultaneous determination of hippuric acid, o-, m-, p-methylhippuric acids, mandelic acid and phenylglyoxylic acid in urine by HPLC]. *Med Lav* **1998**, 89 (5), 404-11.
25. Williams, R. E.; Lenz, E. M.; Lowden, J. S.; Rantalainen, M.; Wilson, I. D., The metabonomics of aging and development in the rat: an investigation into the effect of age on

- 1  
2  
3 the profile of endogenous metabolites in the urine of male rats using  $^1\text{H}$  NMR and HPLC-  
4 TOF MS. *Mol BioSyst* **2005**, *1* (2), 166-175.
- 5  
6 26. Kongtip, P.; Vararusami, J.; Pruktharathikul, V., Modified method for determination  
7 of hippuric acid and methylhippuric acid in urine by gas chromatography. *J Chromatogr B:*  
8 *Biomed Sci App* **2001**, *751* (1), 199-203.
- 9  
10  
11 27. Sarkissian, C. N.; Scriver, C. R.; Mamer, O. A., Quantitation of phenylalanine and its  
12 trans-cinnamic, benzoic and hippuric acid metabolites in biological fluids in a single GC-MS  
13 analysis. *J Mass Spectrom* **2007**, *42* (6), 811-817.
- 14  
15  
16 28. Gartzke, J.; Burck, D., Occupational health monitoring using solid phase extraction of  
17 urine. *J Pharma Biomed Anal* **1997**, *15* (6), 851-854.
- 18  
19  
20 29. Tomokuni, K.; Ogata, M., Direct Colorimetric Determination of Hippuric Acid in  
21 Urine. *Clin Chem* **1972**, *18* (4), 349-351.
- 22  
23  
24 30. Park, H. M.; Lee, S. H.; Chung, H.; Kwon, O. H.; Yoo, K. Y.; Kim, H. H.; Heo, S. C.;  
25 Park, J. S.; Tae, G. S., Immunochromatographic analysis of hippuric acid in urine. *J Anal*  
26 *Toxicol* **2007**, *31* (6), 347-53.
- 27  
28  
29 31. Yoo, S. J.; Choi, Y. B.; Ju, J. I.; Tae, G.-S.; Kim, H. H.; Lee, S.-H., Microfluidic chip-  
30 based electrochemical immunoassay for hippuric acid. *The Analyst* **2009**, *134* (12), 2462-  
31 2467.
- 32  
33  
34 32. Gresswell, J. B.; Gresswell, A., A manual of the theory and practice of equine  
35 medicine. **1885**, pp. 259.
- 36  
37  
38 33. Saude, E.; Adamko, D.; Rowe, B.; Marrie, T.; Sykes, B., Variation of metabolites in  
39 normal human urine. *Metabolomics* **2007**, *3* (4), 439-451.
- 40  
41  
42 34. Putnam, D. F.; Company-West, M. D. A.; Center, L. R.; Aeronautics, U. S. N.;  
43 Administration, S., *Composition and concentrative properties of human urine*. National  
44 Aeronautics and Space Administration: 1971.
- 45  
46  
47 35. Wijeyesekera, A.; Clarke, P. A.; Bictash, M.; Brown, I. J.; Fidock, M.; Ryckmans, T.;  
48 Yap, I. K. S.; Chan, Q.; Stamler, J.; Elliott, P.; Holmes, E.; Nicholson, J. K., Quantitative  
49 UPLC-MS/MS analysis of the gut microbial co-metabolites phenylacetylglutamine, 4-cresyl  
50 sulphate and hippurate in human urine: INTERMAP Study. *Analytical Methods* **2012**, *4* (1),  
51 65-72.
- 52  
53  
54 36. Gatley, S. J.; Sherratt, H. S., The synthesis of hippurate from benzoate and glycine by  
55 rat liver mitochondria. Submitochondrial localization and kinetics. *Biochem J* **1977**, *166* (1),  
56 39-47.  
57  
58  
59  
60

- 1  
2  
3 37. Gatley, S. J.; Sherratt, S. A., The localization of hippurate synthesis in the matrix of  
4 rat liver mitochondria. *Biochem Soc Trans* **1976**, *4* (3), 525-6.  
5  
6 38. Kielley, R. K.; Schneider, W. C., Synthesis of p-aminohippuric acid by mitochondria  
7 of mouse liver homogenates. *J Biol Chem* **1950**, *185* (2), 869-80.  
8  
9 39. Schachter, D.; Taggart, J. V., Glycine N-acylase: purification and properties. *J Biol*  
10 *Chem* **1954**, *208* (1), 263-75.  
11  
12 40. Chantrenne, H., The requirement for coenzyme A in the enzymatic synthesis of  
13 hippuric acid. *J Biol Chem* **1951**, *189* (1), 227-33.  
14  
15 41. Nandi, D. L., Benzoyl-coenzyme A: glycine N-acyltransferase and phenylacetyl-  
16 coenzyme A: glycine N-acyltransferase from bovine liver mitochondria. Purification and  
17 characterization. *J Biol Chem* **1979**, *254* (15), 7230.  
18  
19 42. Webster, L. T.; Siddiqui, U. A.; Lucas, S. V.; Strong, J. M.; Mיעאל, J. J.,  
20 Identification of separate acyl- CoA:glycine and acyl-CoA:L-glutamine N-acyltransferase  
21 activities in mitochondrial fractions from liver of rhesus monkey and man. *J Biol Chem* **1976**,  
22 *251* (11), 3352-8.  
23  
24 43. Borsook, H., The biological synthesis of hippuric acid in vitro. *J Biol Chem* **1940**, *132*  
25 (1), 307.  
26  
27 44. Gregus, Z.; Fekete, T.; Varga, F.; Klaassen, C. D., Effect of valproic acid on glycine  
28 conjugation of benzoic acid. *J Pharmacol Exp Ther* **1993**, *267* (3), 1068-75.  
29  
30 45. Yoshimura, T.; Schwab, A. J.; Tao, L.; Barker, F.; Pang, K. S., Hepatic uptake of  
31 hippurate: a multiple-indicator dilution, perfused rat liver study. *Am J Physiol* **1998**, *274* (1 Pt  
32 1), G10-20.  
33  
34 46. Deguchi, T.; Takemoto, M.; Uehara, N.; Lindup, W. E.; Suenaga, A.; Otagiri, M.,  
35 Renal clearance of endogenous hippurate correlates with expression levels of renal organic  
36 anion transporters in uremic rats. *J Pharmacol Exp Ther* **2005**, *314* (2), 932-8.  
37  
38 47. Tsutsumi, Y.; Deguchi, T.; Takano, M.; Takadate, A.; Lindup, W. E.; Otagiri, M.,  
39 Renal disposition of a furan dicarboxylic acid and other uremic toxins in the rat. *J Pharmacol*  
40 *Exp Ther* **2002**, *303* (2), 880-7.  
41  
42 48. Akira, K.; Farrant, R. D.; Lindon, J. C.; Caddick, S. T.; Nicholls, A. W.; Nicholson, J.  
43 K., High-Field Deuterium Nuclear Magnetic Resonance Spectroscopic Monitoring of the  
44 Pharmacokinetics of Selectively Deuterated Benzoic Acid in Man. *Anal Biochem* **1994**, *221*  
45 (2), 297-302.  
46  
47  
48  
49  
50  
51  
52  
53  
54  
55  
56  
57  
58  
59  
60

- 1  
2  
3 49. Baba, S.; Akira, K.; Suzuki, H.; Imachi, M., Use of nuclear magnetic resonance  
4 spectroscopy and selective C-labeling for pharmacokinetic research in man: detection of  
5 benzoic acid conversion to hippuric acid. *Biol Pharm Bull* **1995**, *18* (5), 643-7.  
6  
7  
8 50. Gregus, Z.; Fekete, T.; Varga, F.; Klaassen, C. D., Availability of glycine and  
9 coenzyme A limits glycine conjugation in vivo. *Drug Metab Dispos* **1992**, *20* (2), 234-40.  
10  
11 51. Gregus, Z.; Fekete, T.; Varga, F.; Klaassen, C. D., Dependence of glycine conjugation  
12 on availability of glycine: role of the glycine cleavage system. *Xenobiotica* **1993**, *23* (2), 141-  
13 53.  
14  
15  
16 52. White, A., Growth-Inhibition Produced in Rats by the Oral Administration of Sodium  
17 Benzoate: Effects of Various Dietary Supplements. *Yale J Biol Med.* **1941**, *13* (6), 759-768.  
18  
19 53. Beliveau, G. P.; Brusilow, S. W., Glycine availability limits maximum hippurate  
20 synthesis in growing rats. *J Nutr* **1987**, *117* (1), 36-41.  
21  
22  
23 54. Kingsbury, F. B., The synthesis and excretion of hippuric acid: the glycine factor. *Exp*  
24 *biol and med* **1923**, *20*, 405.  
25  
26 55. Quick, A. J., The conjugation of benzoic acid in man. *J Biol Chem* **1931**, *92* (1), 65.  
27  
28 56. Temellini, A.; Mogavero, S.; Giulianotti, P. C.; Pietrabissa, A.; Mosca, F.; Pacifici, G.  
29 M., Conjugation of benzoic acid with glycine in human liver and kidney: a study on the  
30 interindividual variability. *Xenobiotica* **1993**, *23* (12), 1427 - 1433.  
31  
32  
33 57. Chiba, M.; Poon, K.; Hollands, J.; Pang, K. S., Glycine conjugation activity of  
34 benzoic acid and its acinar localization in the perfused rat liver. *J Pharmacol Exp Ther* **1994**,  
35 *268* (1), 409-16.  
36  
37  
38 58. Bray, H. G.; Thorpe, W. V.; White, K., Kinetic studies of the metabolism of foreign  
39 organic compounds; the formation of benzoic acid from benzamide toluene, benzyl alcohol  
40 and benzaldehyde and its conjugation with glycine and glucuronic acid in the rabbit. *Biochem*  
41 *J* **1951**, *48* (1), 88-96.  
42  
43  
44 59. French, M. R.; Bababunmi, E. A.; Golding, R. R.; Bassir, O.; Caldwell, J.; Smith, R.  
45 L.; Williams, R. T., The conjugation of phenol, benzoic acid, 1-naphthylacetic acid and  
46 sulphadimethoxine in the lion, civet and genet. *FEBS Lett* **1974**, *46* (1), 134-7.  
47  
48  
49 60. Knoefel, P. K.; Huang, K. C., Biochemorphology of renal tubular transport: hippuric  
50 acid and related substances. *J Pharmacol Exp Ther* **1959**, *126*, 296-303.  
51  
52  
53 61. Pagella, J. H.; Chen, X. B.; MacLeod, N. A.; Orskov, E. R.; Dewey, P. J., Excretion  
54 of benzoic acid derivatives in urine of sheep given intraruminal infusions of 3-  
55 phenylpropionic and cyclohexanecarboxylic acids. *Br J Nutr* **1997**, *77* (4), 577-92.  
56  
57  
58  
59  
60

- 1  
2  
3 62. Bridges, J. W.; French, M. R.; Smith, R. L.; Williams, R. T., The fate of benzoic acid  
4 in various species. *Biochem J* **1970**, *118* (1), 47-51.
- 5  
6 63. Kao, J.; Jones, C. A.; Fry, J. R.; Bridges, J. W., Species differences in the metabolism  
7 of benzoic acid by isolated hepatocytes and kidney tubule fragments. *Life Sci* **1978**, *23* (12),  
8 1221-1228.
- 9  
10 64. Vree, T. B.; Hekster, Y. A.; Anderson, P. G., Contribution of the human kidney to the  
11 metabolic clearance of drugs. *Ann Pharmacother* **1992**, *26* (11), 1421-8.
- 12  
13 65. Caldwell, J.; Moffatt, J. R.; Smith, R. L., Post-mortem Survival of Hippuric Acid  
14 Formation in Rat and Human Cadaver Tissue Samples. *Xenobiotica* **1976**, *6* (5), 275 - 280.
- 15  
16 66. Knoefel, P. K.; Huang, K. C.; Despopoulos, A., Conjugation and excretion of the  
17 amino and acetamido benzoic acids. *American Journal of Physiology -- Legacy Content*  
18 **1959**, *196* (6), 1224-1230.
- 19  
20 67. Williams, R. E.; Lenz, E. M.; Evans, J. A.; Wilson, I. D.; Granger, J. H.; Plumb, R. S.;  
21 Stumpf, C. L., A combined <sup>1</sup>H NMR and HPLC-MS-based metabonomic study of urine  
22 from obese (fa/fa) Zucker and normal Wistar-derived rats. *Journal of Pharmaceutical and*  
23 *Biomedical Analysis* **2005**, *38* (3), 465-471.
- 24  
25 68. Gavaghan McKee, C. L.; Wilson, I. D.; Nicholson, J. K., Metabolic phenotyping of  
26 nude and normal (Alpk:ApfCD, C57BL10J) mice. *J Proteome Res* **2006**, *5* (2), 378-84.
- 27  
28 69. Siqueira, M. E.; Paiva, M. J., Hippuric acid in urine: reference values. *Rev Saude*  
29 *Publica* **2002**, *36* (6), 723-7.
- 30  
31 70. Xu, J.; Yang, S.; Cai, S.; Dong, J.; Li, X.; Chen, Z., Identification of biochemical  
32 changes in lactovegetarian urine using <sup>1</sup>H NMR spectroscopy and pattern recognition. *Anal*  
33 *Bioanal Chem* **2010**, *396* (4), 1451-1463.
- 34  
35 71. Psihogios, N. G.; Gazi, I. F.; Elisaf, M. S.; Seferiadis, K. I.; Bairaktari, E. T., Gender-  
36 related and age-related urinalysis of healthy subjects by NMR-based metabonomics. *NMR*  
37 *Biomed* **2008**, *21* (3), 195-207.
- 38  
39 72. Schnackenberg, L., Metabonomics evaluations of age-related changes in the urinary  
40 compositions of male Sprague Dawley rats and effects of data normalization methods on  
41 statistical and quantitative analysis. *BMC bioinformatics* **2007**, *8* (Suppl 7), S3.
- 42  
43 73. Wang, Y.; Lawler, D.; Larson, B.; Ramadan, Z.; Kochhar, S.; Holmes, E.; Nicholson,  
44 J. K., Metabonomic Investigations of Aging and Caloric Restriction in a Life-Long Dog  
45 Study. *J Proteome Res* **2007**, *6* (5), 1846-1854.
- 46  
47  
48  
49  
50  
51  
52  
53  
54  
55  
56  
57  
58  
59  
60

- 1  
2  
3 74. Zuppi, C.; Messina, I.; Forni, F.; Rossi, C.; Pennacchietti, L.; Ferrari, F.; Giardina,  
4 B., 1H NMR spectra of normal urines: Reference ranges of the major metabolites. *Clinica*  
5 *Chimica Acta* **1997**, *265* (1), 85-97.  
6  
7  
8 75. Rowe, V. D.; Fales, H. M.; Pisano, J. J.; Andersen, A. E.; Guroff, G., Urinary  
9 metabolites of phenylalanine in the preweanling rat treated with p-chlorophenylalanine and  
10 phenylalanine. *Biochem Med* **1975**, *12* (2), 123-36.  
11  
12 76. Pero, R. W.; Lund, H.; Leanderson, T., Antioxidant metabolism induced by quinic  
13 acid. increased urinary excretion of tryptophan and nicotinamide. *Phytother Res* **2009**, *23* (3),  
14 335-346.  
15  
16 77. Brewster, D., The metabolism of shikimate in the rat. *Biochem J* **1978**, *170* (2), 257.  
17  
18 78. Booth, A. N.; Robbins, D. J.; Masri, M. S.; De, E. F., Excretion of catechol after  
19 ingestion of quinic and shikimic acids. *Nature* **1960**, *187* (691), 691.  
20  
21 79. Olthof, M. R.; Hollman, P. C. H.; Buijsman, M. N. C. P.; van Amelsvoort, J. M. M.;  
22 Katan, M. B., Chlorogenic Acid, Quercetin-3-Rutinoside and Black Tea Phenols Are  
23 Extensively Metabolized in Humans. *J. Nutr.* **2003**, *133* (6), 1806-1814.  
24  
25 80. Blatherwick, N. R., Studies of urinary acidity. *J Biol Chem* **1922**, *53* (1), 103.  
26  
27 81. Cathcart-Rake, W.; Porter, R.; Whittier, F.; Stein, P.; Carey, M.; Grantham, J., Effect  
28 of diet on serum accumulation and renal excretion of aryl acids and secretory activity in  
29 normal and uremic man. *Am J Clin Nutr* **1975**, *28* (10), 1110-5.  
30  
31 82. Clifford, M. N.; Copeland, E. L.; Bloxside, J. P.; Mitchell, L. A., Hippuric acid as a  
32 major excretion product associated with black tea consumption. *Xenobiotica* **2000**, *30* (3),  
33 317-26.  
34  
35 83. Das, N. P., Studies on flavonoid metabolism. Absorption and metabolism of (+)-  
36 catechin in man. *Biochem Pharmacol* **1971**, *20* (12), 3435-45.  
37  
38 84. Gonthier, M.-P.; Verny, M.-A.; Besson, C.; Remesy, C.; Scalbert, A., Chlorogenic  
39 Acid Bioavailability Largely Depends on Its Metabolism by the Gut Microflora in Rats. *J.*  
40 *Nutr.* **2003**, *133* (6), 1853-1859.  
41  
42 85. Nutley, B. P.; Farmer, P.; Caldwell, J., Metabolism of trans-cinnamic acid in the rat  
43 and the mouse and its variation with dose. *Food Chem Toxicol* **1994**, *32* (10), 877-886.  
44  
45 86. Yuan, J. H.; Dieter, M. P.; Bucher, J. R.; Jameson, C. W., Toxicokinetics of  
46 cinnamaldehyde in F344 rats. *Food Chem Toxicol* **1992**, *30* (12), 997-1004.  
47  
48 87. Peters, M. M. C. G.; Caldwell, J., Studies on trans-cinnamaldehyde. I. The influence  
49 of dose size and sex on its disposition in the rat and mouse. *Food Chem Toxicol* **1994**, *32*  
50 (10), 869-876.  
51  
52  
53  
54  
55  
56  
57  
58  
59  
60

- 1  
2  
3 88. Wang, Y.; Tang, H.; Nicholson, J. K.; Hylands, P. J.; Sampson, J.; Holmes, E., A  
4 Metabonomic Strategy for the Detection of the Metabolic Effects of Chamomile (*Matricaria*  
5 *recutita* L.) Ingestion. *J Agr Food Chem* **2004**, *53* (2), 191-196.  
6  
7  
8 89. Pietta, P. G.; Gardana, C.; Mauri, P. L., Identification of Ginkgo biloba flavonol  
9 metabolites after oral administration to humans. *J Chromatogr B Biomed Sci Appl* **1997**, *693*  
10 (1), 249-55.  
11  
12 90. Pietta, P. G.; Gardana, C.; Mauri, P. L.; Maffei-Facino, R.; Carini, M., Identification  
13 of flavonoid metabolites after oral administration to rats of a Ginkgo biloba extract. *J*  
14 *Chromatogr B Biomed Appl* **1995**, *673* (1), 75-80.  
15  
16 91. DuPont, M. S.; Bennett, R. N.; Mellon, F. A.; Williamson, G., Polyphenols from  
17 Alcoholic Apple Cider Are Absorbed, Metabolized and Excreted by Humans. *J. Nutr.* **2002**,  
18 *132* (2), 172-175.  
19  
20 92. Oomen, H. A., Nitrogen compounds and electrolytes in the urine of New Guinean  
21 sweet potato eaters. A study of normal values. *Trop Geogr Med* **1967**, *19* (1), 31-47.  
22  
23 93. Palikova, I.; Vostalova, J.; Zdarilova, A.; Svobodova, A.; Kosina, P.; Vecera, R.;  
24 Stejskal, D.; Proskova, J.; Hrbac, J.; Bednar, P.; Maier, V.; Cernochova, D.; Simanek, V.;  
25 Ulrichova, J., Long-Term Effects of Three Commercial Cranberry Products on the  
26 Antioxidative Status in Rats: A Pilot Study. *J Agr Food Chem* **2010**, *58* (3), 1672-1678.  
27  
28 94. Toromanovic, J.; Kovac-Besovic, E.; Sapcanin, A.; Tahirovic, I.; Rimpapa, Z.;  
29 Kroyer, G.; Sofic, E., Urinary hippuric acid after ingestion of edible fruits. *Bosn J Basic Med*  
30 *Sci* **2008**, *8* (1), 38-43.  
31  
32 95. Daykin, C. A.; Duynhoven, J. P. M. V.; Groenewegen, A.; Dachtler, M.; Amelsvoort,  
33 J. M. M. V.; Mulder, T. P. J., Nuclear Magnetic Resonance Spectroscopic Based Studies of  
34 the Metabolism of Black Tea Polyphenols in Humans. *J Agr Food Chem* **2005**, *53* (5), 1428-  
35 1434.  
36  
37 96. Mulder, T. P.; Rietveld, A. G.; van Amelsvoort, J. M., Consumption of both black tea  
38 and green tea results in an increase in the excretion of hippuric acid into urine. *Am J Clin*  
39 *Nutr* **2005**, *81* (1), 256S-260.  
40  
41 97. Van Dorsten, F. A.; Daykin, C. A.; Mulder, T. P. J.; Van Duynhoven, J. P. M.,  
42 Metabonomics Approach To Determine Metabolic Differences between Green Tea and Black  
43 Tea Consumption. *J Agr Food Chem* **2006**, *54* (18), 6929-6938.  
44  
45 98. van Velzen, E. J. J.; Westerhuis, J. A.; van Duynhoven, J. P. M.; van Dorsten, F. A.;  
46 GruÃn, C. H.; Jacobs, D. M.; Duchateau, G. S. M. J. E.; Vis, D. J.; Smilde, A. K.,  
47  
48  
49  
50  
51  
52  
53  
54  
55  
56  
57  
58  
59  
60

- 1  
2  
3 Phenotyping Tea Consumers by Nutrikinetic Analysis of Polyphenolic End-Metabolites. *J*  
4 *Proteome Res* **2009**, *8* (7), 3317-3330.
- 6 99. Balentine, D. A.; Wiseman, S. A.; Bouwens, L. C., The chemistry of tea flavonoids.  
7 *Crit Rev Food Sci Nutr* **1997**, *37* (8), 693-704.
- 10 100. Olthof, M. R.; Hollman, P. C.; Katan, M. B., Chlorogenic acid and caffeic acid are  
11 absorbed in humans. *J Nutr* **2001**, *131* (1), 66-71.
- 14 101. Phipps, A. N.; Stewart, J.; Wright, B.; Wilson, I. D., Effect of diet on the urinary  
15 excretion of hippuric acid and other dietary-derived aromatics in rat. A complex interaction  
16 between diet, gut microflora and substrate specificity. *Xenobiotica* **1998**, *28* (5), 527-37.
- 18 102. Walsh, M. C.; Brennan, L.; Pujos-Guillot, E.; Sebedio, J.-L.; Scalbert, A.; Fagan, A.;  
19 Higgins, D. G.; Gibney, M. J., Influence of acute phytochemical intake on human urinary  
20 metabolomic profiles. *Am J Clin Nutr* **2007**, *86* (6), 1687-1693.
- 23 103. Fardet, A.; Canlet, C.; Gottardi, G.; Lyan, B.; Llorach, R.; Remesy, C.; Mazur, A.;  
24 Paris, A.; Scalbert, A., Whole-Grain and Refined Wheat Flours Show Distinct Metabolic  
25 Profiles in Rats as Assessed by a 1H NMR-Based Metabonomic Approach. *J. Nutr.* **2007**,  
26 *137* (4), 923-929.
- 29 104. Bertram, H. C.; Hoppe, C.; Petersen, B. O.; Duus, J. O.; Molgaard, C.; Michaelsen, K.  
30 F., An NMR-based metabonomic investigation on effects of milk and meat protein diets  
31 given to 8-year-old boys. *Br J Nutr* **2007**, *97* (4), 758-63.
- 34 105. Zuppi, C.; Messana, I.; Forni, F.; Ferrari, F.; Cristina, R.; Giardina, B., Influence of  
35 feeding on metabolite excretion evidenced by urine 1H NMR spectral profiles: a comparison  
36 between subjects living in Rome and subjects living at arctic latitudes (Svaldbard). *Clinica*  
37 *Chimica Acta* **1998**, *278* (1), 75-79.
- 41 106. Kinross, J. M.; von Roon, A. C.; Holmes, E.; Darzi, A.; Nicholson, J. K., The human  
42 gut microbiome: implications for future health care. *Curr Gastroenterol Rep* **2008**, *10* (4),  
43 396-403.
- 46 107. Nicholson, J. K.; Holmes, E.; Wilson, I. D., Gut microorganisms, mammalian  
47 metabolism and personalized health care. *Nat Rev Microbiol* **2005**, *3* (5), 431-8.
- 49 108. Leser, T. D.; Molbak, L., Better living through microbial action: the benefits of the  
50 mammalian gastrointestinal microbiota on the host. *Environ Microbiol* **2009**, *11* (9), 2194-  
51 206.
- 54 109. Scheline, R. R., Absence of dehydroxylation of caffeic acid in germ-free rats. *Cell*  
55 *Mol Life Sci* **1970**, *26* (10), 1068-1069.
- 57  
58  
59  
60



- 1  
2  
3 110. Peppercorn, M. A.; Goldman, P., Caffeic acid metabolism by gnotobiotic rats and  
4 their intestinal bacteria. *Proc Natl Acad Sci U S A* **1972**, *69* (6), 1413-5.  
5  
6 111. Claus, S. P.; Tsang, T. M.; Wang, Y.; Cloarec, O.; Skordi, E.; Martin, F.-P.; Rezzi, S.;  
7 Ross, A.; Kochhar, S.; Holmes, E.; Nicholson, J. K., Systemic multicompartmental effects of  
8 the gut microbiome on mouse metabolic phenotypes. *Mol Syst Biol* **2008**, *4*.  
9  
10 112. Nicholls, A. W.; Mortishire-Smith, R. J.; Nicholson, J. K., NMR spectroscopic-based  
11 metabonomic studies of urinary metabolite variation in acclimatizing germ-free rats. *Chem*  
12 *Res Toxicol* **2003**, *16* (11), 1395-404.  
13  
14 113. Yap, I. K. S.; Li, J. V.; Saric, J.; Martin, F.-P.; Davies, H.; Wang, Y.; Wilson, I. D.;  
15 Nicholson, J. K.; Utzinger, J.; Marchesi, J. R.; Holmes, E., Metabonomic and  
16 Microbiological Analysis of the Dynamic Effect of Vancomycin-Induced Gut Microbiota  
17 Modification in the Mouse. *J Proteome Res* **2008**, *7* (9), 3718-3728.  
18  
19 114. Swann, J. R.; Tuohy, K. M.; Lindfors, P.; Brown, D. T.; Gibson, G. R.; Wilson, I. D.;  
20 Sidaway, J.; Nicholson, J. K.; Holmes, E., Variation in antibiotic-induced microbial  
21 recolonization impacts on the host metabolic phenotypes of rats. *J Proteome Res* **2011**, *10*  
22 (8), 3590-603.  
23  
24 115. Williams, R. E.; Eyton-Jones, H. W.; Farnworth, M. J.; Gallagher, R.; Provan, W. M.,  
25 Effect of intestinal microflora on the urinary metabolic profile of rats: a <sup>1</sup>H-nuclear magnetic  
26 resonance spectroscopy study. *Xenobiotica* **2002**, *32* (9), 783-794.  
27  
28 116. Adamson, R. H., Species differences in the aromatization of quinic acid in vivo and  
29 the role of gut bacteria. *Biochem J* **1970**, *116* (3), 437.  
30  
31 117. Cotran, R.; Kendrick, M. I.; Kass, E. H., Role of intestinal bacteria in aromatization of  
32 quinic acid in man and guinea pig. *Proc Soc Exp Biol Med* **1960**, *104*, 424-6.  
33  
34 118. Dayman, J., The metabolism of caffeic acid in humans: the dehydroxylating action of  
35 intestinal bacteria. *Biochem J* **1969**, *113* (2), 11P.  
36  
37 119. Griffiths, L. A., Studies on flavonoid metabolism. Identification of the metabolites of  
38 (+)-catechin in rat urine. *Biochem J* **1964**, *92* (1), 173.  
39  
40 120. Goodwin, B. L.; Ruthven, C. R. J.; Sandler, M., Gut flora and the origin of some  
41 urinary aromatic phenolic compounds. *Biochem Pharmacol* **1994**, *47* (12), 2294-2297.  
42  
43 121. Gonthier, M.-P.; Cheynier, V.; Donovan, J. L.; Manach, C.; Morand, C.; Mila, I.;  
44 Lapierre, C.; Remesy, C.; Scalbert, A., Microbial Aromatic Acid Metabolites Formed in the  
45 Gut Account for a Major Fraction of the Polyphenols Excreted in Urine of Rats Fed Red  
46 Wine Polyphenols. *J. Nutr.* **2003**, *133* (2), 461-467.  
47  
48  
49  
50  
51  
52  
53  
54  
55  
56  
57  
58  
59  
60

- 1  
2  
3 122. Rechner, A. R.; Kuhnle, G.; Bremner, P.; Hubbard, G. P.; Moore, K. P.; Rice-Evans,  
4 C. A., The metabolic fate of dietary polyphenols in humans. *Free Radical Bio Med* **2002**, *33*  
5 (2), 220-235.  
6  
7  
8 123. Deprez, S.; Brezillon, C.; Rabot, S.; Philippe, C.; Mila, I.; Lapierre, C.; Scalbert, A.,  
9 Polymeric Proanthocyanidins Are Catabolized by Human Colonic Microflora into Low-  
10 Molecular-Weight Phenolic Acids. *J. Nutr.* **2000**, *130* (11), 2733-2738.  
11  
12 124. Groenewoud, G.; Hundt, H. K. L., The microbial metabolism of (+)-catechin to two  
13 novel diarylpropan-2-ol metabolites in vitro. *Xenobiotica* **1984**, *14* (9), 711-717.  
14  
15 125. Booth, A. N.; Williams, R. T., Dehydroxylation of caffeic acid by rat and rabbit  
16 caecal contents and sheep rumen liquor. *Nature* **1963**, *198*, 684-5.  
17  
18 126. Scheline, R. R., Metabolism of phenolic acids by the rat intestinal microflora. *Acta*  
19 *Pharmacol Toxicol (Copenh)* **1968**, *26* (2), 189-205.  
20  
21 127. Couteau, D.; McCartney, A. L.; Gibson, G. R.; Williamson, G.; Faulds, C. B.,  
22 Isolation and characterization of human colonic bacteria able to hydrolyse chlorogenic acid. *J*  
23 *Appl Microbiol* **2001**, *90* (6), 873-81.  
24  
25 128. Peppercorn, M. A.; Goldman, P., Caffeic acid metabolism by bacteria of the human  
26 gastrointestinal tract. *J Bacteriol* **1971**, *108* (3), 996-1000.  
27  
28 129. Robosky, L. C.; Wells, D. F.; Egnash, L. A.; Manning, M. L.; Reily, M. D.;  
29 Robertson, D. G., Metabonomic Identification of Two Distinct Phenotypes in Sprague-  
30 Dawley (CrI:CD(SD)) Rats. *Toxicol. Sci.* **2005**, *87* (1), 277-284.  
31  
32 130. Backhed, F.; Ding, H.; Wang, T.; Hooper, L. V.; Koh, G. Y.; Nagy, A.; Semenkovich,  
33 C. F.; Gordon, J. I., The gut microbiota as an environmental factor that regulates fat storage.  
34 *Proc Natl Acad Sci U S A* **2004**, *101* (44), 15718-23.  
35  
36 131. Ley, R. E.; Turnbaugh, P. J.; Klein, S.; Gordon, J. I., Microbial ecology: human gut  
37 microbes associated with obesity. *Nature* **2006**, *444* (7122), 1022-3.  
38  
39 132. Turnbaugh, P. J.; Hamady, M.; Yatsunenko, T.; Cantarel, B. L.; Duncan, A.; Ley, R.  
40 E.; Sogin, M. L.; Jones, W. J.; Roe, B. A.; Affourtit, J. P.; Egholm, M.; Henrissat, B.; Heath,  
41 A. C.; Knight, R.; Gordon, J. I., A core gut microbiome in obese and lean twins. *Nature* **2009**,  
42 *457* (7228), 480-4.  
43  
44 133. Nadal, I.; Santacruz, A.; Marcos, A.; Warnberg, J.; Garagorri, M.; Moreno, L. A.;  
45 Martin-Matillas, M.; Campoy, C.; Marti, A.; Moleres, A.; Delgado, M.; Veiga, O. L.; Garcia-  
46 Fuentes, M.; Redondo, C. G.; Sanz, Y., Shifts in clostridia, bacteroides and immunoglobulin-  
47 coating fecal bacteria associated with weight loss in obese adolescents. *Int J Obes (Lond)*  
48 **2009**, *33* (7), 758-67.  
49  
50  
51  
52  
53  
54  
55  
56  
57  
58  
59  
60

- 1  
2  
3 134. Ley, R. E.; Backhed, F.; Turnbaugh, P.; Lozupone, C. A.; Knight, R. D.; Gordon, J. I.,  
4 Obesity alters gut microbial ecology. *Proc Natl Acad Sci U S A* **2005**, *102* (31), 11070-5.  
5  
6 135. Guo, X.; Xia, X.; Tang, R.; Zhou, J.; Zhao, H.; Wang, K., Development of a real-time  
7 PCR method for Firmicutes and Bacteroidetes in faeces and its application to quantify  
8 intestinal population of obese and lean pigs. *Lett Appl Microbiol* **2008**, *47* (5), 367-73.  
9  
10 136. Cani, P. D.; Amar, J.; Iglesias, M. A.; Poggi, M.; Knauf, C.; Bastelica, D.; Neyrinck,  
11 A. M.; Fava, F.; Tuohy, K. M.; Chabo, C.; Waaget, A.; Delmee, E.; Cousin, B.; Sulpice, T.;  
12 Chamontin, B.; Ferrieres, J.; Tanti, J. F.; Gibson, G. R.; Casteilla, L.; Delzenne, N. M.;  
13 Alessi, M. C.; Burcelin, R., Metabolic endotoxemia initiates obesity and insulin resistance.  
14 *Diabetes* **2007**, *56* (7), 1761-72.  
15  
16 137. Turnbaugh, P. J.; Ley, R. E.; Mahowald, M. A.; Magrini, V.; Mardis, E. R.; Gordon,  
17 J. I., An obesity-associated gut microbiome with increased capacity for energy harvest.  
18 *Nature* **2006**, *444* (7122), 1027-31.  
19  
20 138. Collado, M. C.; Isolauri, E.; Laitinen, K.; Salminen, S., Distinct composition of gut  
21 microbiota during pregnancy in overweight and normal-weight women. *Am J Clin Nutr* **2008**,  
22 *88* (4), 894-9.  
23  
24 139. Schwartz, A.; Taras, D.; Schafer, K.; Beijer, S.; Bos, N. A.; Donus, C.; Hardt, P. D.,  
25 Microbiota and SCFA in lean and overweight healthy subjects. *Obesity (Silver Spring)* **2010**,  
26 *18* (1), 190-5.  
27  
28 140. Duncan, S. H.; Lopley, G. E.; Holtrop, G.; Ince, J.; Johnstone, A. M.; Louis, P.; Flint,  
29 H. J., Human colonic microbiota associated with diet, obesity and weight loss. *Int J Obes*  
30 *(Lond)* **2008**, *32* (11), 1720-4.  
31  
32 141. Hoyles, L.; McCartney, A. L., What do we mean when we refer to Bacteroidetes  
33 populations in the human gastrointestinal microbiota? *FEMS Microbiol Lett* **2009**, *299* (2),  
34 175-83.  
35  
36 142. Santacruz, A.; Marcos, A.; Warnberg, J.; Marti, A.; Martin-Matillas, M.; Campoy, C.;  
37 Moreno, L. A.; Veiga, O.; Redondo-Figuero, C.; Garagorri, J. M.; Azcona, C.; Delgado, M.;  
38 Garcia-Fuentes, M.; Collado, M. C.; Sanz, Y., Interplay between weight loss and gut  
39 microbiota composition in overweight adolescents. *Obesity (Silver Spring)* **2009**, *17* (10),  
40 1906-15.  
41  
42 143. Friedrich, N.; Budde, K.; Wolf, T.; Jungnickel, A.; Grotevendt, A.; Dressler, M.;  
43 Volzke, H.; Bluher, M.; Nauck, M.; Lohmann, T.; Wallaschofski, H., Short-term changes of  
44 the urine metabolome after bariatric surgery. *OMICS* **2012**, *16* (11), 612-20.  
45  
46  
47  
48  
49  
50  
51  
52  
53  
54  
55  
56  
57  
58  
59  
60

- 1  
2  
3 144. Calvani, R.; Miccheli, A.; Capuani, G.; Tomassini Miccheli, A.; Puccetti, C.; Delfini,  
4 M.; Iaconelli, A.; Nanni, G.; Mingrone, G., Gut microbiome-derived metabolites characterize  
5 a peculiar obese urinary metabolite. *Int J Obes (Lond)* **2010**, *34* (6), 1095-8.  
6  
7 145. Salek, R. M.; Maguire, M. L.; Bentley, E.; Rubtsov, D. V.; Hough, T.; Cheeseman,  
8 M.; Nunez, D.; Sweatman, B. C.; Haselden, J. N.; Cox, R. D.; Connor, S. C.; Griffin, J. L., A  
9 metabolomic comparison of urinary changes in type 2 diabetes in mouse, rat, and human.  
10 *Physiol. Genomics* **2007**, *29* (2), 99-108.  
11  
12 146. Waldram, A.; Holmes, E.; Wang, Y.; Rantalainen, M.; Wilson, I. D.; Tuohy, K. M.;  
13 McCartney, A. L.; Gibson, G. R.; Nicholson, J. K., Top-Down Systems Biology Modeling of  
14 Host Metabotype-Microbiome Associations in Obese Rodents. *J Proteome Res* **2009**, *8* (5),  
15 2361-2375.  
16  
17 147. Zuppi, C.; Messana, I.; Tapanainen, P.; Knip, M.; Vincenzoni, F.; Giardina, B.;  
18 Nuutinen, M., Proton Nuclear Magnetic Resonance Spectral Profiles of Urine from Children  
19 and Adolescents with Type 1 Diabetes. *Clin Chem* **2002**, *48* (4), 660-662.  
20  
21 148. Thomson, S. C.; Vallon, V.; Blantz, R. C., Kidney function in early diabetes: the  
22 tubular hypothesis of glomerular filtration. *Am J Physiol Renal Physiol* **2004**, *286* (1), F8-15.  
23  
24 149. Doorn, M. v.; Vogels, J.; Tas, A.; Hoogdalem, E. J. v.; Burggraaf, J.; Cohen, A.;  
25 Greef, J. v. d., Evaluation of metabolite profiles as biomarkers for the pharmacological  
26 effects of thiazolidinediones in Type 2 diabetes mellitus patients and healthy volunteers. *Br J*  
27 *Clin Pharmacol* **2007**, *63* (5), 562-574.  
28  
29 150. Messana, I.; Forni, F.; Ferrari, F.; Rossi, C.; Giardina, B.; Zuppi, C., Proton nuclear  
30 magnetic resonance spectral profiles of urine in type II diabetic patients. *Clin Chem* **1998**, *44*  
31 (7), 1529-1534.  
32  
33 151. Alberti, K. G.; Zimmet, P.; Shaw, J., The metabolic syndrome--a new worldwide  
34 definition. *Lancet* **2005**, *366* (9491), 1059-62.  
35  
36 152. Holmes, E.; Loo, R. L.; Stamler, J.; Bictash, M.; Yap, I. K. S.; Chan, Q.; Ebbels, T.;  
37 De Iorio, M.; Brown, I. J.; Veselkov, K. A.; Daviglus, M. L.; Kesteloot, H.; Ueshima, H.;  
38 Zhao, L.; Nicholson, J. K.; Elliott, P., Human metabolic phenotype diversity and its  
39 association with diet and blood pressure. *Nature* **2008**, *453* (7193), 396-400.  
40  
41 153. Akira, K.; Masu, S.; Imachi, M.; Mitome, H.; Hashimoto, M.; Hashimoto, T., 1H  
42 NMR-based metabonomic analysis of urine from young spontaneously hypertensive rats. *J*  
43 *Pharma Biomed Anal* **2008**, *46* (3), 550-556.  
44  
45 154. Zhang, F.; Jia, Z.; Gao, P.; Kong, H.; Li, X.; Chen, J.; Yang, Q.; Yin, P.; Wang, J.;  
46 Lu, X.; Li, F.; Wu, Y.; Xu, G., Metabonomics study of atherosclerosis rats by ultra fast liquid  
47  
48  
49  
50  
51  
52  
53  
54  
55  
56  
57  
58  
59  
60

- 1  
2  
3 chromatography coupled with ion trap-time of flight mass spectrometry. *Talanta* **2009**, *79*  
4 (3), 836-844.
- 5  
6 155. O'Mahony, L.; Feeney, M.; O'Halloran, S.; Murphy, L.; Kiely, B.; Fitzgibbon, J.; Lee,  
7 G.; O'Sullivan, G.; Shanahan, F.; Collins, J. K., Probiotic impact on microbial flora,  
8 inflammation and tumour development in IL-10 knockout mice. *Aliment Pharmacol Ther*  
9 **2001**, *15* (8), 1219-25.
- 10  
11 156. Frank, D. N.; St Amand, A. L.; Feldman, R. A.; Boedeker, E. C.; Harpaz, N.; Pace, N.  
12 R., Molecular-phylogenetic characterization of microbial community imbalances in human  
13 inflammatory bowel diseases. *Proc Natl Acad Sci U S A* **2007**, *104* (34), 13780-5.
- 14  
15 157. Maukonen, J.; Satokari, R.; Matto, J.; Soderlund, H.; Mattila-Sandholm, T.; Saarela,  
16 M., Prevalence and temporal stability of selected clostridial groups in irritable bowel  
17 syndrome in relation to predominant faecal bacteria. *J Med Microbiol* **2006**, *55* (Pt 5), 625-  
18 33.
- 19  
20 158. Baumgart, M.; Dogan, B.; Rishniw, M.; Weitzman, G.; Bosworth, B.; Yantiss, R.;  
21 Orsi, R. H.; Wiedmann, M.; McDonough, P.; Kim, S. G.; Berg, D.; Schukken, Y.; Scherl, E.;  
22 Simpson, K. W., Culture independent analysis of ileal mucosa reveals a selective increase in  
23 invasive *Escherichia coli* of novel phylogeny relative to depletion of Clostridiales in Crohn's  
24 disease involving the ileum. *Isme J* **2007**, *1* (5), 403-18.
- 25  
26 159. Bibiloni, R.; Mangold, M.; Madsen, K. L.; Fedorak, R. N.; Tannock, G. W., The  
27 bacteriology of biopsies differs between newly diagnosed, untreated, Crohn's disease and  
28 ulcerative colitis patients. *J Med Microbiol* **2006**, *55* (Pt 8), 1141-9.
- 29  
30 160. Conte, M. P.; Schippa, S.; Zamboni, I.; Penta, M.; Chiarini, F.; Seganti, L.; Osborn,  
31 J.; Falconieri, P.; Borrelli, O.; Cucchiara, S., Gut-associated bacterial microbiota in paediatric  
32 patients with inflammatory bowel disease. *Gut* **2006**, *55* (12), 1760-7.
- 33  
34 161. Darfeuille-Michaud, A.; Neut, C.; Barnich, N.; Lederman, E.; Di Martino, P.;  
35 Desreumaux, P.; Gambiez, L.; Joly, B.; Cortot, A.; Colombel, J. F., Presence of adherent  
36 *Escherichia coli* strains in ileal mucosa of patients with Crohn's disease. *Gastroenterology*  
37 **1998**, *115* (6), 1405-13.
- 38  
39 162. Gophna, U.; Sommerfeld, K.; Gophna, S.; Doolittle, W. F.; Veldhuyzen van Zanten,  
40 S. J., Differences between tissue-associated intestinal microfloras of patients with Crohn's  
41 disease and ulcerative colitis. *J Clin Microbiol* **2006**, *44* (11), 4136-41.
- 42  
43 163. Liu, Y.; van Kruiningen, H. J.; West, A. B.; Cartun, R. W.; Cortot, A.; Colombel, J.  
44 F., Immunocytochemical evidence of *Listeria*, *Escherichia coli*, and *Streptococcus* antigens in  
45 Crohn's disease. *Gastroenterology* **1995**, *108* (5), 1396-404.
- 46  
47  
48  
49  
50  
51  
52  
53  
54  
55  
56  
57  
58  
59  
60

- 1  
2  
3 164. Martinez-Medina, M.; Aldeguer, X.; Gonzalez-Huix, F.; Acero, D.; Garcia-Gil, L. J.,  
4 Abnormal microbiota composition in the ileocolonic mucosa of Crohn's disease patients as  
5 revealed by polymerase chain reaction-denaturing gradient gel electrophoresis. *Inflamm*  
6 *Bowel Dis* **2006**, *12* (12), 1136-45.  
7  
8  
9 165. Swidsinski, A.; Ladhoff, A.; Pernthaler, A.; Swidsinski, S.; Loening-Baucke, V.;  
10 Ortner, M.; Weber, J.; Hoffmann, U.; Schreiber, S.; Dietel, M.; Lochs, H., Mucosal flora in  
11 inflammatory bowel disease. *Gastroenterology* **2002**, *122* (1), 44-54.  
12  
13 166. Manichanh, C.; Rigottier-Gois, L.; Bonnaud, E.; Gloux, K.; Pelletier, E.; Frangeul, L.;  
14 Nalin, R.; Jarrin, C.; Chardon, P.; Marteau, P.; Roca, J.; Dore, J., Reduced diversity of faecal  
15 microbiota in Crohn's disease revealed by a metagenomic approach. *Gut* **2006**, *55* (2), 205-  
16 11.  
17  
18 167. Williams, H. R. T.; Cox, I. J.; Walker, D. G.; North, B. V.; Patel, V. M.; Marshall, S.  
19 E.; Jewell, D. P.; Ghosh, S.; Thomas, H. J. W.; Teare, J. P.; Jakobovits, S.; Zeki, S.; Welsh,  
20 K. I.; Taylor-Robinson, S. D.; Orchard, T. R., Characterization of Inflammatory Bowel  
21 Disease With Urinary Metabolic Profiling. *Am J Gastroenterol* **2009**, *104* (6), 1435-1444.  
22  
23 168. Schicho, R.; Shaykhutdinov, R.; Ngo, J.; Nazyrova, A.; Schneider, C.; Panaccione,  
24 R.; Kaplan, G. G.; Vogel, H. J.; Storr, M., Quantitative Metabolomic Profiling of Serum,  
25 Plasma, and Urine by 1H NMR Spectroscopy Discriminates between Patients with  
26 Inflammatory Bowel Disease and Healthy Individuals. *Journal of Proteome Research* **2012**,  
27 *11* (6), 3344-3357.  
28  
29 169. Williams, H. R.; Cox, I. J.; Walker, D. G.; Cobbold, J. F.; Taylor-Robinson, S. D.;  
30 Marshall, S. E.; Orchard, T. R., Differences in gut microbial metabolism are responsible for  
31 reduced hippurate synthesis in Crohn's disease. *BMC Gastroenterol* **2010**, *10* (108), 108.  
32  
33 170. Vanholder, R.; De Smet, R.; Lameire, N., Protein-bound uremic solutes: The  
34 forgotten toxins. *Kidney Int* **2001**, *59* (S78), S266-S270.  
35  
36 171. Vanholder, R.; De Smet, R.; Glorieux, G.; Argiles, A.; Baurmeister, U.; Brunet, P.;  
37 Clark, W.; Cohen, G.; De Deyn, P. P.; Deppisch, R.; Descamps-Latscha, B.; Henle, T.;  
38 Jorres, A.; Lemke, H. D.; Massy, Z. A.; Passlick-Deetjen, J.; Rodriguez, M.; Stegmayr, B.;  
39 Stenvinkel, P.; Tetta, C.; Wanner, C.; Zidek, W., Review on uremic toxins: classification,  
40 concentration, and interindividual variability. *Kidney Int* **2003**, *63* (5), 1934-43.  
41  
42 172. Niwa, T., Organic acids and the uremic syndrome: protein metabolite hypothesis in  
43 the progression of chronic renal failure. *Semin Nephrol* **1996**, *16* (3), 167-82.  
44  
45 173. Vanholder, R.; De Smet, R.; Ringoir, S., Assessment of urea and other uremic  
46 markers for quantification of dialysis efficacy. *Clin Chem* **1992**, *38* (8), 1429-1436.  
47  
48  
49  
50  
51  
52  
53  
54  
55  
56  
57  
58  
59  
60

- 1  
2  
3 174. Bairaktari, E.; Liamis, G.; Tsolas, O.; Elisaf, M., Partially reversible renal tubular  
4 damage in patients with obstructive jaundice. *Hepatology* **2001**, *33* (6), 1365-1369.
- 5  
6 175. Bairaktari, E.; Seferiadis, K.; Liamis, G.; Psihogios, N.; Tsolas, O.; Elisaf, M.,  
7 Rhabdomyolysis-related renal tubular damage studied by proton nuclear magnetic resonance  
8 spectroscopy of urine. *Clin Chem* **2002**, *48* (7), 1106-9.
- 9  
10 176. Psihogios, N. G.; Kalaitzidis, R. G.; Dimou, S.; Seferiadis, K. I.; Siamopoulos, K. C.;  
11 Bairaktari, E. T., Evaluation of tubulointerstitial lesions' severity in patients with  
12 glomerulonephritides: an NMR-based metabonomic study. *J Proteome Res* **2007**, *6* (9), 3760-  
13 70.
- 14  
15 177. Tzouvaras, V. T.; Psychogios, N. G.; Kostara, C. E.; Bairaktari, E. T.; Elisaf, M. S.,  
16 Evaluation of the proximal tubular function in individuals with primary renal hypouricemia:  
17 an NMR-based metabonomic study. *NMR Biomed* **2009**, *22* (10), 1072-1083.
- 18  
19 178. Fabisch, W.; Fellner, C., Excretion of hippuric acid in schizophrenic and depressive  
20 patients after E.C.T. *Psychosom Med* **1957**, *19* (4), 320-5.
- 21  
22 179. Quastel, J. H.; Wales, W. T. H., Faulty Detoxication in Schizophrenia. *Journal of*  
23 *Mental Science* **1938**, *84* (352), 622-625.
- 24  
25 180. Johannsen, W. J.; Friedman, S. H.; Feldman, E. I.; Negrete, A., A re-examination of  
26 the hippuric acid--anxiety relationship. *Psychosom Med* **1962**, *24*, 569-78.
- 27  
28 181. Persky, H.; Grinker, R. R.; Mirsky, I. A., The excretion of hippuric acid in subjects  
29 with free anxiety. *J Clin Invest* **1950**, *29* (1), 110-4.
- 30  
31 182. Basowitz, H.; Board, F. A.; Chevalier, J. A.; Grinker, R. R.; Hamburg, D. A.;  
32 Korchin, S. J.; Persky, H.; Sabshin, M., A theoretical and experimental approach to problems  
33 of anxiety. *AMA Arch Neurol Psychiatry* **1956**, *76* (4), 420-31.
- 34  
35 183. Hons, J.; Zirko, R.; Ulrychova, M.; Cermakova, E.; Doubek, P.; Libiger, J., Glycine  
36 serum level in schizophrenia: relation to negative symptoms. *Psychiatry Res* **2010**, *176* (2-3),  
37 103-8.
- 38  
39 184. Martin, F.-P. J.; Rezzi, S.; PereÅÅ-Trepat, E.; Kamlage, B.; Collino, S.; Leibold, E.;  
40 Kastler, J.; Rein, D.; Fay, L. B.; Kochhar, S., Metabolic Effects of Dark Chocolate  
41 Consumption on Energy, Gut Microbiota, and Stress-Related Metabolism in Free-Living  
42 Subjects. *J Proteome Res* **2009**, *8* (12), 5568-5579.
- 43  
44 185. Wang, X.; Zhao, T.; Qiu, Y.; Su, M.; Jiang, T.; Zhou, M.; Zhao, A.; Jia, W.,  
45 Metabonomics Approach to Understanding Acute and Chronic Stress in Rat Models, Å†. *J*  
46 *Proteome Res* **2009**, *8* (5), 2511-2518.
- 47  
48  
49  
50  
51  
52  
53  
54  
55  
56  
57  
58  
59  
60

- 1  
2  
3 186. Zheng, S.; Yu, M.; Lu, X.; Huo, T.; Ge, L.; Yang, J.; Wu, C.; Li, F., Urinary  
4 metabonomic study on biochemical changes in chronic unpredictable mild stress model of  
5 depression. *Clinica Chimica Acta* **2010**, *411* (3-4), 204-209.  
6  
7  
8 187. Zhang, F.; Jia, Z.; Gao, P.; Kong, H.; Li, X.; Lu, X.; Wu, Y.; Xu, G., Metabonomics  
9 study of urine and plasma in depression and excess fatigue rats by ultra fast liquid  
10 chromatography coupled with ion trap-time of flight mass spectrometry. *Mol Biosyst* **2010**, *6*  
11 (5), 852-61.  
12  
13  
14 188. Johnson, C. P.; Myers, S. M., Identification and evaluation of children with autism  
15 spectrum disorders. *Pediatrics* **2007**, *120* (5), 1183-215.  
16  
17  
18 189. Kidd, P. M., Autism, an extreme challenge to integrative medicine. Part: 1: The  
19 knowledge base. *Altern Med Rev* **2002**, *7* (4), 292-316.  
20  
21  
22 190. Chugani, D. C.; Sundram, B. S.; Behen, M.; Lee, M. L.; Moore, G. J., Evidence of  
23 altered energy metabolism in autistic children. *Prog Neuropsychopharmacol Biol Psychiatry*  
24 **1999**, *23* (4), 635-41.  
25  
26  
27 191. Levy, S. E.; Souders, M. C.; Ittenbach, R. F.; Giarelli, E.; Mulberg, A. E.; Pinto-  
28 Martin, J. A., Relationship of dietary intake to gastrointestinal symptoms in children with  
29 autistic spectrum disorders. *Biol Psychiatry* **2007**, *61* (4), 492-7.  
30  
31  
32 192. Yap, I. K.; Angley, M.; Veselkov, K. A.; Holmes, E.; Lindon, J. C.; Nicholson, J. K.,  
33 Urinary Metabolic Phenotyping Differentiates Children with Autism from Their Unaffected  
34 Siblings and Age-Matched Controls. *J Proteome Res* **2010**, *13*, 13.  
35  
36  
37 193. Lis, A. W.; McLaughlin, I.; Mpclaughlin, R. K.; Lis, E. W.; Stubbs, E. G., Profiles of  
38 ultraviolet-absorbing components of urine from autistic children, as obtained by high-  
39 resolution ion-exchange chromatography. *Clin Chem* **1976**, *22* (9), 1528-32.  
40  
41  
42 194. Parracho, H. M.; Bingham, M. O.; Gibson, G. R.; McCartney, A. L., Differences  
43 between the gut microflora of children with autistic spectrum disorders and that of healthy  
44 children. *J Med Microbiol* **2005**, *54* (Pt 10), 987-91.  
45  
46  
47 195. Finegold, S. M.; Molitoris, D.; Song, Y.; Liu, C.; Vaisanen, M. L.; Bolte, E.;  
48 McTeague, M.; Sandler, R.; Wexler, H.; Marlowe, E. M.; Collins, M. D.; Lawson, P. A.;  
49 Summanen, P.; Baysallar, M.; Tomzynski, T. J.; Read, E.; Johnson, E.; Rolfe, R.; Nasir, P.;  
50 Shah, H.; Haake, D. A.; Manning, P.; Kaul, A., Gastrointestinal microflora studies in late-  
51 onset autism. *Clin Infect Dis* **2002**, *35* (Suppl 1), S6-S16.  
52  
53  
54 196. Anthony, M. L.; Gartland, K. P.; Beddell, C. R.; Lindon, J. C.; Nicholson, J. K.,  
55 Cephaloridine-induced nephrotoxicity in the Fischer 344 rat: proton NMR spectroscopic  
56  
57  
58  
59  
60



- 1  
2  
3 studies of urine and plasma in relation to conventional clinical chemical and  
4 histopathological assessments of nephronal damage. *Arch Toxicol* **1992**, *66* (8), 525-37.
- 5  
6 197. Holmes, E.; Bonner, F. W.; Sweatman, B. C.; Lindon, J. C.; Beddell, C. R.; Rahr, E.;  
7  
8 Nicholson, J. K., Nuclear magnetic resonance spectroscopy and pattern recognition analysis  
9 of the biochemical processes associated with the progression of and recovery from  
10 nephrotoxic lesions in the rat induced by mercury(II) chloride and 2-bromoethanamine. *Mol*  
11 *Pharmacol* **1992**, *42* (5), 922-30.
- 12  
13 198. Halligan, S.; Byard, S. J.; Spencer, A. J.; Gray, T. J. B.; Harpur, E. S.; Bonner, F. W.,  
14 A study of the nephrotoxicity of three cephalosporins in rabbits using <sup>1</sup>H NMR spectroscopy.  
15 *Toxicology Letters* **1995**, *81* (1), 15-21.
- 16  
17 199. Boudonck, K. J.; Mitchell, M. W.; Nemet, L.; Keresztes, L.; Nyska, A.; Shinar, D.;  
18 Rosenstock, M., Discovery of metabolomics biomarkers for early detection of nephrotoxicity.  
19 *Toxicol Pathol* **2009**, *37* (3), 280-92.
- 20  
21 200. Espandiari, P.; Zhang, J.; Rosenzweig, B. A.; Vaidya, V. S.; Sun, J.; Schnackenberg,  
22 L.; Herman, E. H.; Knapton, A.; Bonventre, J. V.; Beger, R. D.; Thompson, K. L.; Hanig, J.,  
23 The Utility of a Rodent Model in Detecting Pediatric Drug-Induced Nephrotoxicity. *Toxicol.*  
24 *Sci.* **2007**, *99* (2), 637-648.
- 25  
26 201. Foxall, P. J.; Lenz, E. M.; Lindon, J. C.; Neild, G. H.; Wilson, I. D.; Nicholson, J. K.,  
27 Nuclear magnetic resonance and high-performance liquid chromatography-nuclear magnetic  
28 resonance studies on the toxicity and metabolism of ifosfamide. *Ther Drug Monit* **1996**, *18*  
29 (4), 498-505.
- 30  
31 202. Foxall, P. J.; Singer, J. M.; Hartley, J. M.; Neild, G. H.; Lapsley, M.; Nicholson, J. K.;  
32 Souhami, R. L., Urinary proton magnetic resonance studies of early ifosfamide-induced  
33 nephrotoxicity and encephalopathy. *Clin Cancer Res* **1997**, *3* (9), 1507-18.
- 34  
35 203. Holmes, E.; Nicholls, A. W.; Lindon, J. C.; Connor, S. C.; Connelly, J. C.; Haselden,  
36 J. N.; Damment, S. J. P.; Spraul, M.; Neidig, P.; Nicholson, J. K., Chemometric Models for  
37 Toxicity Classification Based on NMR Spectra of Biofluids. *Chem Res Toxicol* **2000**, *13* (6),  
38 471-478.
- 39  
40 204. Klawitter, J.; Klawitter, J.; Kushner, E.; Jonscher, K.; Bendrick-Peart, J.; Leibfritz,  
41 D.; Christians, U.; Schmitz, V., Association of Immunosuppressant-Induced Protein Changes  
42 in the Rat Kidney with Changes in Urine Metabolite Patterns: A Proteo-Metabonomic Study.  
43 *J Proteome Res* **2009**, *9* (2), 865-875.
- 44  
45 205. Lenz, E. M.; Bright, J.; Knight, R.; Westwood, F. R.; Davies, D.; Major, H.; Wilson,  
46 I. D., Metabonomics with <sup>1</sup>H-NMR spectroscopy and liquid chromatography-mass  
47  
48  
49  
50  
51  
52  
53  
54  
55  
56  
57  
58  
59  
60

1  
2  
3 spectrometry applied to the investigation of metabolic changes caused by gentamicin-induced  
4 nephrotoxicity in the rat. *Biomarkers* **2005**, *10* (2-3), 173-87.

5  
6 206. Bu, Q.; Yan, G.; Deng, P.; Peng, F.; Lin, H.; Xu, Y.; Cao, Z.; Zhou, T.; Xue, A.;  
7 Wang, Y.; Cen, X.; Zhao, Y. L., NMR-based metabonomic study of the sub-acute toxicity of  
8 titanium dioxide nanoparticles in rats after oral administration. *Nanotechnology* **2010**, *21*  
9 (12), 125105.

10  
11  
12 207. Hopton, R. P.; Turner, E.; Burley, V. J.; Turner, P. C.; Fisher, J., Urine metabolite  
13 analysis as a function of deoxynivalenol exposure: an NMR-based metabolomics  
14 investigation. *Food Additives & Contaminants: Part A: Chemistry, Analysis, Control,*  
15 *Exposure & Risk Assessment* **2010**, *27* (2), 255 - 261.

16  
17 208. Wei, L.; Liao, P.; Wu, H.; Li, X.; Pei, F.; Li, W.; Wu, Y., Toxicological effects of  
18 cinnabar in rats by NMR-based metabolic profiling of urine and serum. *Toxicol Appl Pharm*  
19 **2008**, *227* (3), 417-429.

20  
21 209. Wei, L.; Liao, P.; Wu, H.; Li, X.; Pei, F.; Li, W.; Wu, Y., Metabolic profiling studies  
22 on the toxicological effects of realgar in rats by 1H NMR spectroscopy. *Toxicol Appl Pharm*  
23 **2009**, *234* (3), 314-325.

24  
25 210. Ishihara, K.; Katsutani, N.; Aoki, T., A Metabonomics Study of the Hepatotoxicants  
26 Galactosamine, Methylene Dianiline and Clofibrate in Rats\*. *Basic Clin Pharmacol Toxicol*  
27 **2006**, *99* (3), 251-260.

28  
29 211. Liu, Y.; Huang, R.; Liu, L.; Peng, J.; Xiao, B.; Yang, J.; Miao, Z.; Huang, H.,  
30 Metabonomics study of urine from Sprague-Dawley rats exposed to Huang-yao-zi using 1H  
31 NMR spectroscopy. *J Pharma Biomed Anal* **2010**, *52* (1), 136-141.

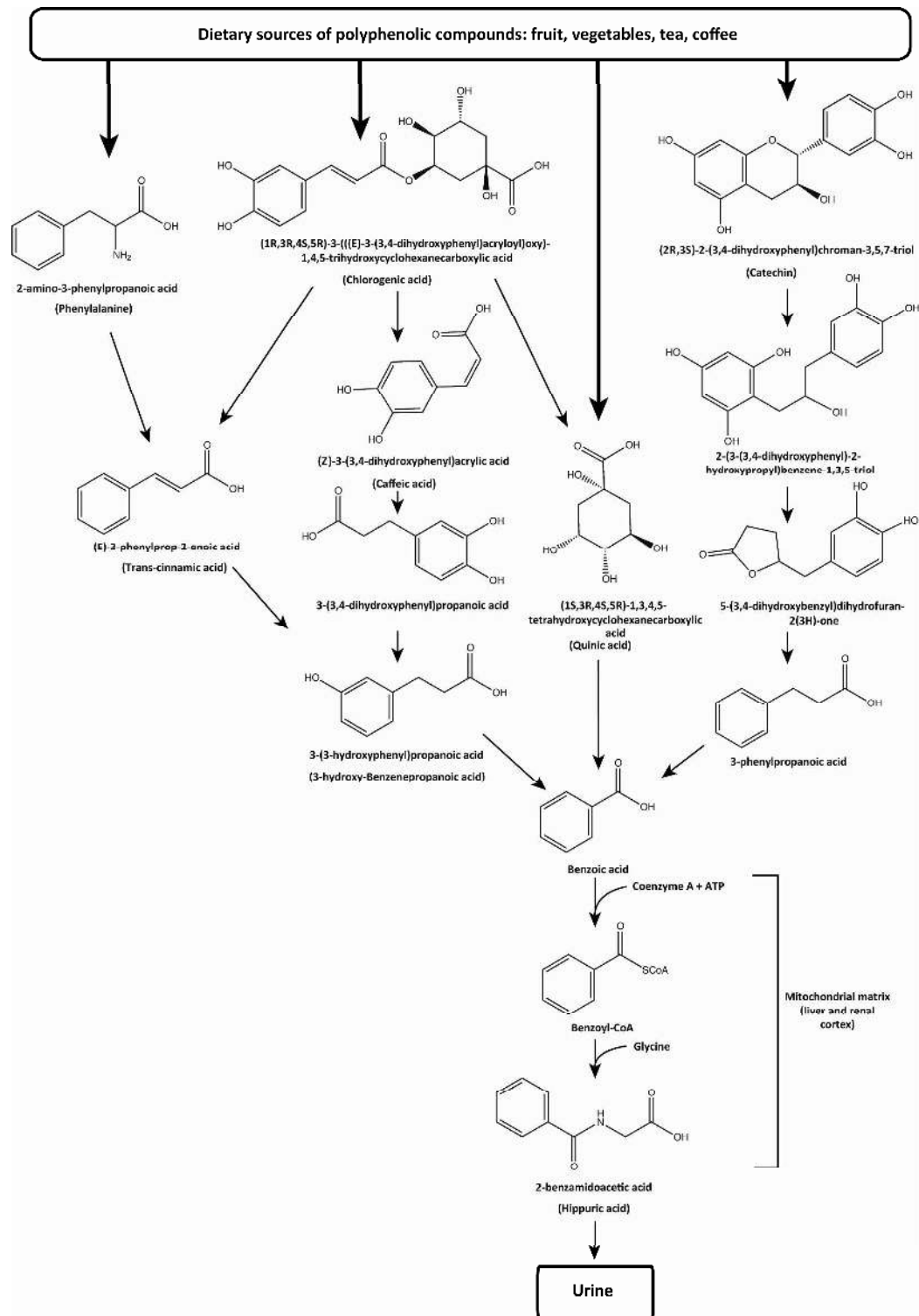
32  
33 212. Nicholls, A. W.; Holmes, E.; Lindon, J. C.; Shockcor, J. P.; Farrant, R. D.; Haselden,  
34 J. N.; Damment, S. J. P.; Waterfield, C. J.; Nicholson, J. K., Metabonomic Investigations into  
35 Hydrazine Toxicity in the Rat. *Chem Res Toxicol* **2001**, *14* (8), 975-987.

36  
37 213. Hemming, A. W.; Gallinger, S.; Greig, P. D.; Cattral, M. S.; Langer, B.; Taylor, B.  
38 R.; Verjee, Z.; Giesbrecht, E.; Nakamachi, Y.; Furuya, K. N., The hippurate ratio as an  
39 indicator of functional hepatic reserve for resection of hepatocellular carcinoma in cirrhotic  
40 patients. *J Gastrointest Surg* **2001**, *5* (3), 316-21.

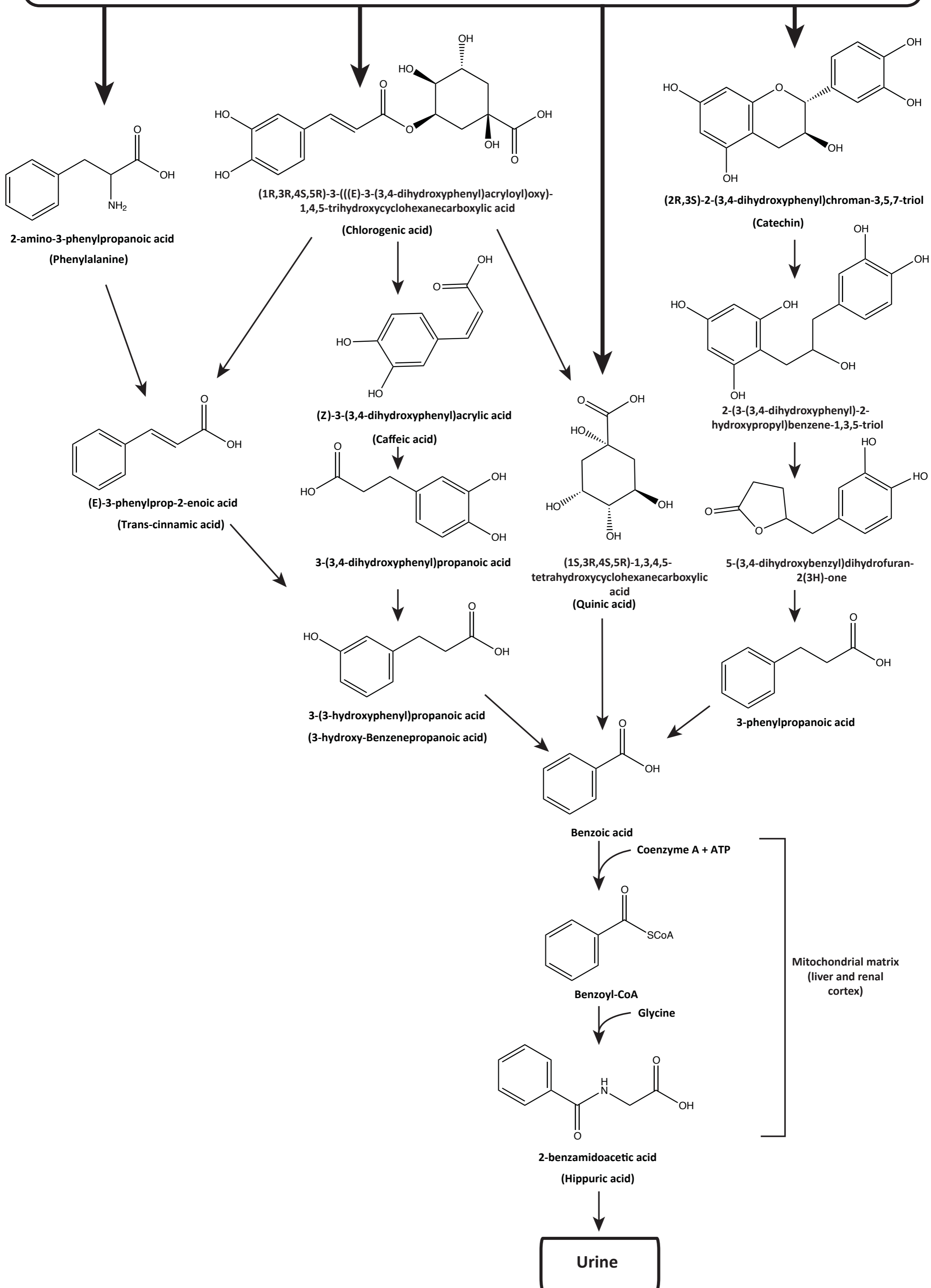
41  
42 214. Nicholson, J. K.; Higham, D. P.; Timbrell, J. A.; Sadler, P. J., Quantitative high  
43 resolution 1H NMR urinalysis studies on the biochemical effects of cadmium in the rat. *Mol*  
44 *Pharmacol* **1989**, *36* (3), 398-404.

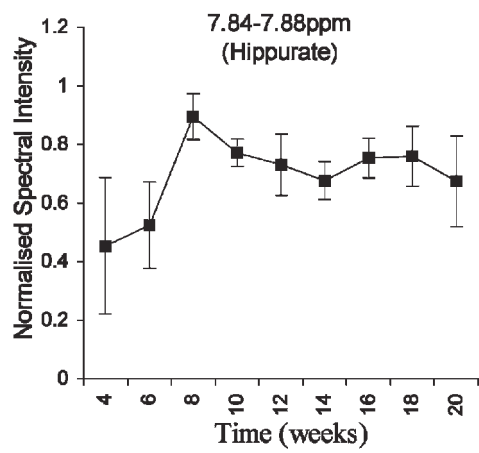
- 1  
2  
3 215. Zhu, Y. S.; Xu, H. B.; Huang, K. X.; Hu, W. H.; Liu, M. L., A study on human urine  
4 in a high-selenium area of China by  $^1\text{H-NMR}$  spectroscopy. *Biol Trace Elem Res* **2002**, *89*  
5 (2), 155-63.  
6  
7  
8 216. Gregus, Z.; Halaszi, E.; Klaassen, C. D., Effect of chlorophenoxyacetic acid  
9 herbicides on glycine conjugation of benzoic acid. *Xenobiotica* **1999**, *29* (6), 547-59.  
10  
11 217. Sprague, C. L.; Elfarra, A. A., Detection of carboxylic acids and inhibition of hippuric  
12 acid formation in rats treated with 3-butene-1,2-diol, a major metabolite of 1,3-butadiene.  
13 *Drug Metab Dispos* **2003**, *31* (8), 986-92.  
14  
15  
16 218. Veulemans, H.; Van Vlem, E.; Janssens, H.; Masschelein, R., Exposure to toluene and  
17 urinary hippuric acid excretion in a group of heliorotagravure printing workers. *Int Arch*  
18 *Occup Environ Health* **1979**, *44* (2), 99-107.  
19  
20  
21 219. Taylor, W. G.; Hall, T. W.; Vedres, D. D., Metabolites of N-ethylbenzamide, N,N-  
22 diethylbenzamide and related compounds detected in rat urine by NMR spectroscopy. *Drug*  
23 *Metab Dispos* **1995**, *23* (11), 1188-94.  
24  
25  
26 220. Poon, R.; Yagminas, A.; Singh, A.; Valli, V. E.; Chu, I., Short-term oral toxicity of  
27 gasohol in female rats. *J Appl Toxicol* **2001**, *21* (6), 461-467.  
28  
29  
30 221. Shou, M.; Lu, T.; Krausz, K. W.; Sai, Y.; Yang, T.; Korzekwa, K. R.; Gonzalez, F. J.;  
31 Gelboin, H. V., Use of inhibitory monoclonal antibodies to assess the contribution of  
32 cytochromes P450 to human drug metabolism. *Eur J Pharmacol* **2000**, *394* (2-3), 199-209.  
33  
34  
35 222. Chapman, D. E.; Moore, T. J.; Michener, S. R.; Powis, G., Metabolism and covalent  
36 binding of [ $^{14}\text{C}$ ]toluene by human and rat liver microsomal fractions and liver slices. *Drug*  
37 *Metab Dispos* **1990**, *18* (6), 929-36.  
38  
39  
40 223. El Masry, A. M.; Smith, J. N.; Williams, R. T., Studies in detoxication. 69. The  
41 metabolism of alkylbenzenes: n-propylbenzene and n-butylbenzene with further observations  
42 on ethylbenzene. *Biochem J* **1956**, *64* (1), 50-6.  
43  
44  
45 224. Lee, J.; Kim, M.-h.; Ha, M.; Chung, B. C., Urinary metabolic profiling of volatile  
46 organic compounds in acute exposed volunteers after an oil spill in Republic of Korea.  
47 *Biomed Chromatogr* **2010**, *24* (5), 562-568.  
48  
49  
50 225. Wang, Y.; Holmes, E.; Nicholson, J. K.; Cloarec, O.; Chollet, J.; Tanner, M.; Singer,  
51 B. H.; Utzinger, J., Metabonomic investigations in mice infected with *Schistosoma mansoni*:  
52 an approach for biomarker identification. *Proc Natl Acad Sci U S A* **2004**, *101* (34), 12676-  
53 81.  
54  
55  
56  
57  
58  
59  
60

- 1  
2  
3 226. Wang, Y.; Utzinger, J. r.; Xiao, S.-H.; Xue, J.; Nicholson, J. K.; Tanner, M.; Singer,  
4 B. H.; Holmes, E., System level metabolic effects of a Schistosoma japonicum infection in  
5 the Syrian hamster. *Mol Biochem Parasit* **2006**, *146* (1), 1-9.  
6  
7  
8 227. Saric, J.; Li, J. V.; Wang, Y.; Keiser, J.; Bundy, J. G.; Holmes, E.; Utzinger, J.,  
9 Metabolic profiling of an Echinostoma caproni infection in the mouse for biomarker  
10 discovery. *PLoS Negl Trop Dis* **2008**, *2* (7), e254.  
11  
12  
13 228. Wang, Y.; Utzinger, J.; Saric, J.; Li, J. V.; Burckhardt, J.; Dirnhofer, S.; Nicholson, J.  
14 K.; Singer, B. H.; Brun, R.; Holmes, E., Global metabolic responses of mice to Trypanosoma  
15 brucei brucei infection. *Proc Natl Acad Sci U S A* **2008**, *105* (16), 6127-32.  
16  
17  
18 229. Saric, J.; Li, J. V.; Wang, Y.; Keiser, J.; Veselkov, K.; Dirnhofer, S.; Yap, I. K.;  
19 Nicholson, J. K.; Holmes, E.; Utzinger, J., Panorganismal metabolic response modeling of an  
20 experimental Echinostoma caproni infection in the mouse. *J Proteome Res* **2009**, *8* (8), 3899-  
21 911.  
22  
23  
24 230. Wang, Y.; Xiao, S. H.; Xue, J.; Singer, B. H.; Utzinger, J.; Holmes, E., Systems  
25 metabolic effects of a necator americanus infection in Syrian hamster. *J Proteome Res* **2009**,  
26 *8* (12), 5442-50.  
27  
28  
29 231. Wu, J.-F.; Holmes, E.; Xue, J.; Xiao, S.-H.; Singer, B. H.; Tang, H.-R.; Utzinger, J.;  
30 Wang, Y.-L., Metabolic alterations in the hamster co-infected with Schistosoma japonicum  
31 and Necator americanus. *Int J Parasitol* **2010**, *40* (6), 695-703.  
32  
33  
34 232. Sheweita, S. A.; Mangoura, S. A.; el-Shemi, A. G., Different levels of Schistosoma  
35 mansoni infection induce changes in drug-metabolizing enzymes. *J Helminthol* **1998**, *72* (1),  
36 71-7.  
37  
38  
39 233. Krahenbuhl, L.; Reichen, J.; Talos, C.; Krahenbuhl, S., Benzoic acid metabolism  
40 reflects hepatic mitochondrial function in rats with long-term extrahepatic cholestasis.  
41 *Hepatology* **1997**, *25* (2), 278-83.  
42  
43  
44  
45  
46  
47  
48  
49  
50  
51  
52  
53  
54  
55  
56  
57  
58  
59  
60



Dietary sources of polyphenolic compounds: fruit, vegetables, tea, coffee





1  
2  
3  
4  
5  
6  
7  
8  
9  
10  
11  
12  
13  
14  
15  
16  
17  
18  
19  
20  
21  
22  
23  
24  
25  
26  
27  
28  
29  
30  
31  
32  
33  
34  
35  
36  
37  
38  
39  
40  
41  
42  
43  
44  
45  
46  
47  
48  
49  
50  
51  
52  
53  
54  
55  
56  
57  
58  
59  
60

