

NBER WORKING PAPER SERIES

HOUSING PROGRAMS FOR LOW-INCOME HOUSEHOLDS

Edgar O. Olsen

Working Paper 8208  
<http://www.nber.org/papers/w8208>

NATIONAL BUREAU OF ECONOMIC RESEARCH  
1050 Massachusetts Avenue  
Cambridge, MA 02138  
April 2001

An early version of this paper was presented in May 2000 at the NBER Conference on Means-Tested Transfers. I am grateful to Neil Seftor for superb research assistance and to Fred Eggers, Dennis Fricke, Bob Gray, Steve Malpezzi, Jim Mikesell, Kathy Nelson, Carla Pedone, Joe Riley, John Quigley, Jim Wallace, and John Weicher for helpful conversations and comments. The views expressed herein are those of the authors and not necessarily those of the National Bureau of Economic Research.

© 2001 by Edgar O. Olsen. All rights reserved. Short sections of text, not to exceed two paragraphs, may be quoted without explicit permission provided that full credit, including © notice, is given to the source.

Housing Programs for Low-Income Households  
Edgar O. Olsen  
NBER Working Paper No. 8208  
April 2001  
JEL No. H

### **ABSTRACT**

The primary purposes of this paper are to (1) consider the justifications that have been offered for housing subsidies to low-income households and the implications of these justifications for the evaluation and design of housing programs, (2) describe the most important features of the largest rental housing programs for low-income households in the United States, (3) summarize the empirical evidence on the major effects of these programs, and (4) analyze the major options for reform of the system of housing subsidies. The largest rental programs are HUD's Public Housing, Section 236, Section 8 New Construction/Substantial Rehab, Section 8 Existing, USDA's Section 515, and the IRS's Low Income Housing Tax Credit. The effects of these programs that will be considered include effects on the housing occupied by recipients of the subsidy and their consumption of other goods, effects on labor supply of assisted households, the distribution of benefits among recipients, participation rates among different types of households, effects on the types of neighborhoods in which subsidized households live and the effect of subsidized housing and households on their neighbors, the effect on prices of unsubsidized housing, and the cost-effectiveness of alternative methods for delivering housing assistance.

Edgar O. Olsen  
Department of Economics  
University of Virginia  
Charlottesville, VA 22901  
804-924-3443  
eoo@virginia.edu

## I. Introduction

Federal, state, and local governments in the United States spend substantially more on housing subsidies to the poor than on other better-known parts of the welfare system such as Food Stamps and TANF. The most widely cited figures for government expenditures on housing subsidies refer to the direct expenditures of the U.S. Department of Housing and Urban Development. They ignore the USDA programs that account for more than 20 percent of all subsidized units, the tax expenditures on the Low Income Housing Tax Credit (about \$3 billion per year), the expenditures of state and local governments often funded by block grants from the federal government, and the many indirect subsidies such as local property tax exemptions and abatements received by all public housing projects and many privately owned projects, the federal income tax exemption of interest on the bonds issued by state and local governments to finance housing projects, and the underpriced mortgage insurance received by many privately owned projects.

Given the enormous amount of money that has been spent on means-tested housing assistance over the years, the amount of research on the most important effects of these programs is shockingly small. There is no evidence on the effects of some major programs and little evidence on the effects of other large programs. For example, there are only two studies of the most important effects of Section 236, a program that still serves almost a million people. There are no studies of the important effects of the Low-Income Housing Tax Credit (LIHTC), a program that has been the fastest growing housing program over the last decade accounting for the majority of additional recipients of housing subsidies. The evidence on the most heavily studied programs is old. For example, the studies of the effects of the public housing program on housing consumption are based on data from 1965 through 1977. At the midpoint of this period, the median age of public housing units was 10 years. Today, the median age is about thirty years. It stands to reason that the effect of public housing on the housing consumption of tenants is very different today than it was at the time of these studies. Since direct HUD expenditure on public housing in the form of operating and modernization subsidies is about \$6 billion annually and the real resource cost of continuing to use these units to house low-income households is much larger due to their opportunity cost and the substantial local property tax abatement that they receive, this is a sad state of affairs.

If a housing program consists of a set of eligible households and suppliers operating under one set of rules, the United States has had an enormous number of programs intended to improve the housing of low-income households since the federal government became seriously involved in this activity in 1937. There have been many programs as this term is commonly used, each of these programs has typically had a number of variants, and each change in the regulations produces a new program. For example, the public housing program has at least 29 variants. Each has its own rules and these rules have changed from time to time, though they have many rules in common.

To keep the length of this paper within reasonable limits, it will focus on four broad programs that account for the bulk of all subsidized *rental* units. These programs are Public Housing, project-based assistance under the Section 236 and Section 8 New Construction/ Substantial Rehabilitation Programs, and tenant-based assistance under the

Section 8 Existing Housing Program. They illustrate the three basic approaches that have been used to provide housing assistance: government ownership and operation of housing newly built for occupancy by low-income households, government contracts with private parties to build (or substantially rehabilitate) and operate housing for these households, and subsidies to eligible households who select housing in the private market meeting certain minimum quality standards and, under some variants, other restrictions.

Even though there have been almost no studies of their major effects, a more comprehensive paper would have devoted considerable attention to the Low Income Housing Tax Credit Program (that currently serves more than 700,000 households and has been growing rapidly since 1988), Section 515 (a rental housing program operated by the Department of Agriculture in rural areas and small towns that no longer produces new units but still serves more than half a million households), and the HOME housing block grant program from the federal government to state and local housing agencies on which we currently spend about \$1.6 billion annually, primarily for project-based assistance. In light of the continuing interest in increasing the homeownership rate of the near poor, it would also be desirable to devote considerable attention to several fairly large homeownership programs – HUD’s Section 235 Program that provided subsidies to about a half a million households since 1969 and USDA’s Section 502 Program that has subsidized almost two million households since 1949 and currently provides subsidies to about half a million households.

The primary purposes of this paper are to (1) consider the justifications that have been offered for housing subsidies to low-income households and the implications of these justifications for the evaluation and design of housing programs, (2) describe the most important features of the largest rental housing programs for low-income households in the United States, (3) summarize the empirical evidence on the major effects of these programs, and (4) analyze the most important options for reform of the system of housing subsidies to low-income households. The effects of these programs that will be considered include effects on the housing occupied by recipients of the subsidy and their consumption of other goods, effects on labor supply of recipients, the participation rates of different types of households, the distribution of benefits among recipients and all eligible households, effects on the types of neighborhoods in which subsidized households live and the effect of subsidized housing and households on their neighbors, effects on the rents of unsubsidized units, and the cost-effectiveness of alternative methods for delivering housing assistance. Since we continue to seriously consider or embark upon new programs that have the same basic features of older programs and the major effects of the newer programs have not been estimated, an understanding of the older programs is highly relevant for current discussions of housing policy.

Section II discusses the justifications for housing subsidies for low-income households and goals consistent with these justifications, gives a brief overview of the development of the current system of housing subsidies, and describes in more detail the development and most important rules of the major rental housing programs. Section III provides information about the number of households served by major programs, direct federal expenditures on these programs, and the characteristics of the households assisted. Section IV discusses what can be said on theoretical grounds about the effects of the programs and reviews the evidence on these effects. Section V analyzes options

for reform of the system of housing subsidies to low-income households. Section VI summarizes the major results.

## **II. Program Justifications, Goals, History, and Rules**

### *A. Justifications and Goals*

Without a clear understanding of the justifications for government activity in a particular area, it is difficult (though not impossible) to conduct an incisive evaluation of current programs or design better programs. For example, a person who has not thought seriously about the justifications for housing subsidies to low-income households might imagine that a housing program for these households is successful if it induces them to occupy better housing. However, a program of cash grants with no strings attached would have this effect for all recipients whose income elasticity of demand for housing is positive, that is, almost everyone. Indeed, it would be possible to devise a subsidy that led to a smaller improvement in housing for all recipients than would result from an equally costly lump-sum grant. A subsidy equal to a fraction of expenditure on all goods except housing would have this effect for recipients whose price elasticity of demand for these other goods is less than one. Should this be considered a successful housing program?

In general, a justification for a government program is an explanation of why we should have a program of that type. Obviously, this involves value judgments. The value judgment underlying this paper is that we should have a program of a particular type if and only if an appropriately designed program of that type will lead to an efficient allocation of resources that is preferred by everyone to the allocation in the absence of government action. Although this simple view leaves much to be desired because it ignores the impact of the multiplicity of external effects, market imperfections, and informational problems that justify other programs and hence the design of a set of programs to deal simultaneously with all of these problems, it is at least a step in the direction of clear thinking about policy evaluation and design.

The major justification for housing subsidies to low-income households is that some taxpayers care about these households but feel that at least some low-income households undervalue housing. If some taxpayers feel this way while others are either completely selfish or non-paternalistic altruists, it is possible for the government to achieve an efficient allocation and to make everyone better off as they judge their own well-being by providing these low-income households with housing subsidies (Olsen, 1981).

It is clear that paternalistic altruists do not think that all low-income households undervalue housing. In recent years, proponents of housing subsidies have frequently argued that the primary housing problem of low-income households is an excessive rent-income ratio rather than inadequate housing. That is, the majority of low-income households occupy adequate housing by spending too much of their income on it and hence too little on other goods. People who make this argument must be saying that these low-income households undervalue other goods. If we want to attain an efficient allocation of resources that is preferred by everyone to the allocation in the absence of government action, we must provide non-housing, rather than housing, subsidies to this

group. The implications of these feelings for housing policy are not clear. If housing programs are designed to deal with both poor housing and excessive rent burden, what is the role of food stamps, Medicaid, and other programs designed to subsidize various non-housing goods?

It is often claimed that housing subsidies to low-income households are justified by more tangible externalities. For example, it has been argued that better housing for low-income families leads to better health for its occupants, and since some diseases are contagious, to better health for the middle- and upper-income families with whom they come in contact. Available evidence suggests that some such externalities exist but that their magnitudes are small (Weicher, 1979, pp. 489-492). If the goal of housing subsidies is to make both recipients and the taxpayers better off, it is doubtful that substantial expenditure can be justified on the basis of these externalities.

No attempt has been made to derive implications for the evaluation and design of government housing programs of a coherent set of justifications for programs of this type. However, the following properties seem broadly consistent with the preceding justifications. First, the program must induce the worst-housed families at each income level to occupy better housing than they would choose if they were given equally costly cash grants with no strings attached. This goal is consistent with the stated purposes of the two major housing acts, namely “to remedy the acute shortage of decent, safe, and sanitary dwellings” (Housing Act of 1937) and “the elimination of substandard and other inadequate housing” (Housing Act of 1949).<sup>1</sup> Second, families that are the same with respect to characteristics of interest to taxpayers should be offered the same assistance. Third, the greatest assistance should go to the neediest families. Finally, the housing provided to participants should have the lowest possible total cost to tenants and governments given its overall desirability.

Other goals for housing programs have been suggested, for example, reducing racial segregation in housing or stabilizing new construction. The rationales for achieving these goals are different from those underlying housing subsidies to low-income families, and they are arguably best achieved by other means.

## *B. History*

Table 1 contains some milestones in the development of the system of housing subsidies for low-income households in the United States.<sup>2</sup> This subsection provides a brief overview of the development of each part of the system, namely public housing, privately owned projects, tenant-based certificates and vouchers, homeownership programs, housing block grants. The next subsection provides details about the rules governing the four largest rental programs.

*Public Housing.* Substantial government involvement in subsidizing the housing of low-income households began with the Public Housing Program enacted in the U.S.

---

<sup>1</sup> In discussions of housing policy, the word “shortage” is not used as economists use it. Instead it means that the market outcome does not provide all households with the type of housing that the speaker thinks they should occupy. All major housing programs were enacted in these laws or as amendments to them.

<sup>2</sup> The dates listed in the table are the dates that programs were enacted. Programs do not become operational until regulations have been written, and this sometimes requires considerable time.

TABLE 1  
DEVELOPMENT OF SYSTEM OF HOUSING PROGRAMS

---



---

1937	Public housing, HUD, rental, publicly owned
1949	S502, USDA, homeownership
1954	S221(d)(3) MIR, HUD, rental, privately owned,
1959	S202, HUD, rental, privately owned, elderly & handicapped
1961	S221(d)(3) BMIR, HUD, rental, privately owned
1962	S515, USDA, rental, privately owned
1965	Rent supplements, HUD, rental, extra subsidy to private projects
1965	S23, HUD, rental, leasing existing units for public housing tenants
1968	S235, HUD, homeownership
1968	S236, HUD, rental, privately owned
1969	Modernization subsidies for public housing
1969	Rents in public housing limited to 25% of income
1970	Substantial operating subsidies for public housing
1974	S8 Existing, HUD, rental, tenant-based
1974	S8 New Construction/Substantial Rehab, HUD, rental, privately owned
1975	Operating subsidies for public housing (Performance Funding System)
1976	Operating subsidies for privately-owned projects (LMSA & PD)
1979	Modernization subsidies for privately owned projects (Flexible Subsidy)
1983	Housing Voucher Demonstration, HUD, rental, tenant-based
1986	Low Income Housing Tax Credit, IRS, rental
1990	HOME, HUD, rental and homeownership, block grants to states and localities
1998	New Voucher Program, HUD, rental, tenant-based

---

Housing Act of 1937. Public housing projects are owned and operated by local public housing authorities established by local governments. Almost all are newly built for the program. Until 1969, with minor exceptions, federal taxpayers paid the initial development cost of public housing while tenants and local taxpayers paid the operating cost. Between 1968 and 1972, the federal government greatly increased its previously modest subsidies for operating public housing projects in conjunction with restrictions on the rents that local housing authorities could charge their tenants. In 1969, the federal government began to provide subsidies to local housing authorities for the modernization of their projects. These additional subsidies and restrictions on rent were intended to insure that public housing would provide satisfactory housing to its tenants without charging rents that were regarded as excessive.

*Privately Owned Projects.* In 1954, the federal government began to contract with private parties to provide housing for low-income households. Under most programs, these parties agreed to provide housing meeting certain standards to households with particular characteristics for a specified number of years. The overwhelming majority of the projects were newly built. Almost all of the rest were substantially rehabilitated as a condition for participation in the program. The federal government insures the mortgages on the vast majority of these projects, and default loss in excess of mortgage insurance payments is a major indirect cost of many of the programs. It is important to realize that none of these programs provide subsidies to all suppliers who would like to participate. Since subsidies are provided to selected private suppliers, the market mechanism does not insure that subsidies are passed along to occupants of the subsidized units. If this is to be achieved, it must be achieved by other means.

The earlier programs such as HUD's Section 221(d)(3) MIR and Section 202 limited the private parties who operate the projects to nonprofits and cooperatives.<sup>3</sup> They were succeeded by programs that allowed the participation of for-profit firms, while attempting to limit their profits by restricting their net revenues during the period of the use agreement. For-profit firms have accounted for the majority of the units in the most recent programs such as Section 8 New Construction / Substantial Rehabilitation and the Low Income Housing Tax Credit. Despite this trend, nonprofits still account for a substantial minority of units under some recent programs such as the LIHTC.<sup>4</sup>

The earlier programs (Section 221(d)(3) MIR and Section 202) did not have income limits. Instead they attempted to insure occupancy by households of low and moderate income by limiting the per-unit cost of the project, thereby providing relatively modest housing. The subsidy under the earlier programs was a below-market interest rate on the loan used to finance the project, and the subsidy received by an occupant of the project did not depend on the household's income. The modest magnitude of the subsidy and the high cost of newly built housing meeting the program's standards resulted in few units occupied by the poorest households.

---

<sup>3</sup> The original Section 221(d)(3) program is usually called the Market Interest Rate Program (MIR). This is misleading because the program does provide financing at below-market interest rates, albeit not as far below market as the later Section 221(d)(3) Below-Market Interest Rate (BMIR) Program.

<sup>4</sup> The extent of the involvement of the two types of sponsor is not well documented because they often work in partnership and only one is listed as the sponsor in official records.



The initial response to this situation (HUD's Section 221(d)(3) Below-Market Interest Rate Program) was to provide a larger interest subsidy, thereby reducing the rent to tenants at all income levels by the same amount. Another response (for example, the Rent Supplement Program) was to provide an additional subsidy to many of the poorest households in projects that received an interest subsidy in order to reduce their rents to 25 percent of their adjusted incomes. (The poorest of the poor paid a flat rent equal to 30 percent of the rent that would otherwise be charged for the apartment.) Rent supplements were used almost exclusively with the Section 221(d)(3) MIR and the Section 236 Programs.

HUD's basic Section 236 Program and the USDA's 515 Program are similar to the Section 221(d)(3) BMIR Program in providing a substantial interest subsidy that reduces the rent of all of the poorest households occupying identical apartments in a project by the same amount. The more affluent among the eligibles initially paid 25 percent of their adjusted incomes. Over time, an increasing fraction of the poorest occupants of these projects have received additional subsidies under a succession of programs that initially reduced their rents to 25 percent of adjusted income and later to 30 percent.<sup>5</sup> Some of these programs were intended to insure that projects built under construction programs continued to house low-income households and to avoid defaults on loans insured by the federal government. However, about a fourth of the occupants of apartments in privately owned HUD subsidized projects have rents that do not vary with their income (U. S. Department of Housing and Urban Development, 1997, p. 3).

In 1978, Congress enacted the Flexible Subsidy Program to provide modernization subsidies to older privately owned subsidized projects, especially under Section 236, 221(d)(3), and 202, just as it had done earlier for public housing. The money is awarded on a competitive basis rather than by formula.

The largest program of subsidized privately owned projects for low-income households is HUD's Section 8 New Construction/Substantial Rehabilitation Program enacted in 1974. Section 8 NC/SR not only provides subsidies for the construction or rehabilitation of projects but also rental assistance payments that initially reduced the rents paid by all tenants to 25 percentage of their adjusted incomes.<sup>6</sup>

With minor exceptions, Congress had terminated all of HUD's construction programs by 1983. Section 236 replaced Section 221(d)(3) BMIR, Section 8 NC/SR replaced Section 236, and Section 8 NC/SR was terminated in 1983 in the sense that no additional applications for projects under this program were accepted after this time.<sup>7</sup> This was in response to the large per-unit cost under all new construction programs compared with tenant-based Section 8 Certificates and studies indicating that these costs were also large relative to the market rents of the units provided. Only public housing and the small Section 202 program for the elderly and handicapped that had been revised to operate like the Section 8 NC/SR Program were allowed to approve a modest number of additional applications.

---

<sup>5</sup> The programs involved were the Rent Supplement Program, the Rental Assistance Payments Program, Section 8 Conversion Assistance, and the Section 8 Loan Management Set-Aside (LMSA) and Property Disposition (PD) Programs.

<sup>6</sup> Beginning in 1982, it rose one percentage point each year until it reached 30.

<sup>7</sup> It is a testimony to the long lags between the appropriation of money under construction programs and their completion that the number of occupied units under this program continued to grow for 13 years after its termination. For systematic evidence on these lags, see Schnare and others (1982, Table 4-8).

The Low Income Housing Tax Credit was enacted hastily as a part of the Tax Reform Act of 1986 to replace other tax subsidies for low-income housing that were eliminated.<sup>8</sup> Within the next decade, it will become the second largest program of housing subsidies to low-income households, surpassing public housing. For projects not financed by tax-exempt bonds, the tax credit pays 70 percent of the cost of developing the project. The tax credit is not available to all developers who want to build housing under the terms specified in the law. Instead each state housing finance agency is allocated an amount of money that is proportional to the state's population to distribute to selected private suppliers. In recent years, developers have proposed projects that would use three times the amount of money appropriated for the program, and many do not apply because the probability of success is too small to justify the effort.

The overwhelming majority of tax credit projects receive subsidies from other sources, primarily development grants or loans at below-market interest rates from state and local governments and rental assistance payments that depend upon the income of the tenants. These additional development subsidies account for about a third of the total capital subsidy (Cummings and DiPasquale, 1999, Table 7), and owners of tax credit properties receive rental assistance payments on behalf of about 39 percent of their tenants (GAO, 1997, p.40). The typical project receives subsidized financing from many sources, thereby complicating the task of insuring that the subsidy is passed along to the tenant. The median was five in Stegman's non-random sample of 24 projects (Stegman, 1991, p. 362).

Under the LIHTC, the tenant's maximum rent is 30 percent of the upper income limit for eligibility.<sup>9</sup> Tenant rent within a project does not vary with income except for households who receive assistance from other programs that require it. As a result, the poorest households occupy relatively few LIHTC units. According to Wallace (1995, p.790), only 28% of households in LIHTC projects are very low income as HUD defines this term (50% of local median for a family of four). The percentages are 90 for Section 8 New Construction, 81 for public housing, and 77 for Section 236 and 221(d)(3) BMIR.

*Tenant-Based Assistance.* Until 1965, all housing assistance to the poor was project-based and the overwhelming majority of units were newly constructed under a

---

<sup>8</sup>Virtually nothing is known about the effects of the LIHTC. There is no repository of information on the characteristics of the households served by this program or the characteristics of the housing provided. Some rudimentary statistical information can be found at <http://www.huduser.org/datasets/lihtc.html> and <http://ncsha.org/NCSHA/public/whatHFAsdo/whatHFAsdoindex.htm>. In assessing opinions expressed on the homepage of the National Council of State Housing Agencies, it is important to realize that distributing the tax credits is a major activity of state housing agencies and hence lobbying for the expansion of this program is a major activity of the NCSHA. What is known about the program is the result of a few studies. Wallace (1995, pp. 794-801) provides an accurate description of the program's rules and a summary of basic descriptive statistics that had been produced by earlier studies. Cummings and DiPasquale (1999) add an unusually thorough analysis of all of the subsidies provided for the development of LIHTC projects. This analysis does not, however, include the substantial tenant-based and project-based Section 8 subsidies received by about 39 percent of the units (GAO, 1997, p. 40). GAO (1997) provides additional descriptive material. Despite the absence of evidence on the effects of the LIHTC, the Congress just increased appropriations for this program by more than 40 percent to about \$5 billion per year.

<sup>9</sup>The upper income limit for a family of four is effectively 60 percent of the local median. Increasing or decreasing these income limits by nationally uniform percentages used for the largest HUD programs yields the income limits for households of other sizes.

government program. In 1965 Congress created Section 23, a program under which public housing authorities could lease apartments in existing private unsubsidized housing for the use of households eligible for public housing.<sup>10</sup> One variant of this program allowed tenants to locate their own apartments meeting the program's minimum standards. This was the first program of tenant-based assistance in the United States. In 1974, the Section 8 Existing Housing Program replaced Section 23. Since then, tenant-based Section 8 has become the country's largest program of housing assistance. This program was called the Certificate Program. Another program of tenant-based housing assistance, called the Section 8 Voucher Program, that had somewhat different constraints than the Certificate Program was introduced in 1983. This program operated simultaneously with the Certificate Program until 1998 when the two programs were consolidated into another tenant-based program that combined features of the two earlier programs.

Despite the rapid growth of the tenant-based Section 8 Certificate and Voucher Programs, the majority of additional recipients of rental housing assistance since 1975 have received project-based assistance. Between 1975 and 1990, the major sources of this assistance were Section 8 New Construction/Substantial Rehabilitation and Section 515. Since 1990, the overwhelming majority of HUD's incremental assistance has been tenant based, but project-based assistance has continued to account for the majority of additions to number of subsidized households in the U.S. due to the rapid growth of the IRS's LIHTC. Furthermore, HUD spends a substantial fraction of its budget providing additional assistance to units in subsidized housing projects beyond the subsidies initially promised.

*Homeownership Programs.* The United States has had two major homeownership programs that provide housing assistance to low-income households. The Housing Act of 1949 established the USDA's Section 502 Single Family Direct Loan Program.<sup>11</sup> Until 1968, the magnitude of the subsidy was modest and did not depend on the household's income. The subsidy consisted of lending to farmers, and later others living in rural areas, at the federal borrowing rate. (Farmers now account for a small share of all borrowers.) The Housing Act of 1968 authorized the USDA to pay a portion of the loan repayments for low-income households. For the poorest households, the USDA paid the difference between principal and interest payments at the government's borrowing rate and at an interest rate of 1 percent. For eligible households with higher incomes, the USDA paid the difference between property taxes, homeowners insurance, operating expenses and principal and interest payments at the government's borrowing rate and 20 percent of the household's adjusted income. During its 50-year history, Section 502 Single Family Direct Loan Program has provided over \$51 billion in homeownership loans to about 1.9 million households. The program currently provides subsidies to over 500,000 low-income households.

---

<sup>10</sup> For a comprehensive analysis of this program and a detailed survey of the literature on it, see Reid (1989).

<sup>11</sup> See Carliner (1998, pp. 314-315) for a brief history of the development of the program and Mikesell and others (1999) for descriptive statistics and the first analysis of this program based on a nationally representative survey.

The Housing Act of 1968 also established Section 235, a HUD program similar in many respects to USDA's Section 502. Unlike Section 502, this program suffered from scandals and high default rates (Carliner, 1998, p.313-314). Section 235 was suspended in 1973, reactivated in 1975, severely limited in geographical scope in 1983, and terminated in 1987. Over this period, it provided subsidies to more 500,000 low-income households. Little is known about the reasons for the difference in outcomes of the two programs. The poor performance of Section 235 is usually attributed to consumer naivete and FHA mismanagement. More plausible explanations would rely on differences in the structures of the programs such as the magnitude of the downpayment required and whether the subsidy is allocated to the seller or the buyer of the house.

*Housing Block Grants.* The HOME Investment Partnerships Program enacted in 1990 is a block grant for housing assistance. It allocates federal funds by formula to state and local governments to spend on any type of housing assistance subject to certain limits on the incomes of the households served, the cost to acquire and develop units, and the rents that may be charged for rental units. This program is based on the untested assumptions that the best mix of housing programs differs from locality to locality and local officials are better able to determine and implement the best mix.<sup>12</sup>

### C. *Rules*

This section presents information concerning many of the important rules governing HUD's four largest programs of rental housing assistance for low-income households and the evolution of these rules over the history of the programs. The rules considered determine who is eligible to receive assistance, how the limited assistance is allocated among households that would like to participate, upper and lower limits on the desirability of the housing that can be occupied, and upper limits on spending on goods other than housing. These rules affect which households are served and a program's effects on consumption patterns.

Other rules that determine the incentives facing potential and actual suppliers will not be discussed. For construction and rehabilitation programs, these rules affect the types of housing that will be proposed and selected. For all programs, they affect how well the units will be maintained and the total cost of the housing provided. Although these rules determine the cost-effectiveness of a program and the level of housing services provided, they have not been seriously analyzed by housing policy analysts. This represents a major gap in our knowledge of housing programs.

It is not possible within reasonable time and space constraints to describe accurately the rules of the four programs that are the focus of this paper over their histories. The rule describing what is and is not included in a household's annual income in determining its eligibility for assistance illustrates the problem. The current rule is more than three pages single spaced. This rule is now the same for all major low-income

---

<sup>12</sup> These assumptions could be tested by comparing the outcomes of different federal programs across localities to see whether one program performs better than all others on all measures and then comparing the overall effect of the mix of programs chosen by local officials with the federal mix in a random sample of localities.

housing programs. In earlier years, it was different for different programs and has been changed on a number of occasions over the history of each program.

Researchers who want to conduct empirical studies of the effects of housing programs, or indeed any program, should consult the Code of Federal Regulations (CFR) for the time period to which their data refer to determine the rules that were in effect at that time.<sup>13</sup> HUD's regulations are in Title 24 of the CFR. That is, references to them all begin with 24CFR. For example, since 1996 the reference for HUD's physical condition standards for virtually all subsidized housing has been 24CFR5.703. In earlier years, the standards for each program were located in the CFR under the regulations for that program.

The CFR is an annual publication that contains the updated regulations of the federal government as of April 1. A searchable electronic version containing the CFR and the Federal Register since 1981 is available at <http://web.lexis-nexis.com/congcomp/>. Virtually all rules of interest must be published in the Federal Register along with the date on which they became effective, and each regulation in the CFR cites the relevant passage in the Federal Register. For example, the citation for the proposed regulation that ultimately led to a unified set of physical condition standards applying to all low-income housing programs is 63FR35650. As usual, this source contained a history of previous regulations. The citation for the final rule is 63FR46566, which contains the date on which the regulation became effective.

These sources are useful not only for researchers who have a data set that identifies which households participate in housing programs and are attempting to determine the parameters of the budget spaces of these households but also to others who are trying to learn when major changes in program parameters occurred with an eye to selecting which data to use to maximize exogenous variation in budget constraint parameters. Using these sources, it is easy to determine when important changes in the regulations have occurred.

Prior to the regulations implementing the Housing and Community Development Act of 1974 (hereafter HA74), there was considerable diversity in the rules of different housing programs. This legislation introduced many similarities in the rules across programs, and this trend has continued over the past twenty-five years, culminating in the 1990s with the placement of many common rules in Part 5 of Title 24 of the CFR. These include rules for preferences for admission into subsidized housing (24CFR5.4XY since 1996), income limits, the definitions of annual income and adjusted income, tenant rents, and certifying eligibility (24CFR5.6XY since 1997), and minimum physical housing standards (24CFR7XY since 1999).

---

<sup>13</sup> In the case of housing programs, secondary sources, even government publications or agency websites, are always incomplete and sometimes erroneous. For example, it is often said in official HUD documents that the upper income limit for admission to public housing is 80 percent of the local median. This might lead the unsuspecting to conclude that the income limit is the same for families of all sizes, or perhaps that for families of each size it is 80 percent of the local median for families of that size. Neither is correct. Reading the legislation is not a substitute for reading the regulations. Legislation typically specifies some, but not all, of a program's rules. It provides general guidelines concerning other matters, but leaves the design of specific regulations to the administering agency. Furthermore, the operation of a program does not change with the passage of legislation. This does not occur until after new regulations have been announced in the Federal Register.

To help aspiring housing policy analysts navigate through the regulations and to provide others with an overview of the rules that have governed low-income housing programs, this section describes the key rules that prevailed of April 1, 1999 and some of the major changes that have occurred in these rules over the years.

Before proceeding, it is useful to mention several general features of the rules. In recent years, the majority of privately owned projects under HUD's programs receive project-based Section 8 Housing Assistance Payments and are therefore subject to the key rules of the Section 8 Program. Since the enactment of the Section 8 Program in 1974, Section 8 and Public Housing have had very similar rules in many respects. This means that the overwhelming majority of HUD's subsidized households are subject to many of the same rules.

*Eligibility.* With a few minor exceptions such as Section 221(d)(3) MIR and Section 202 in its early years, all housing programs have had upper income limits for eligibility. Indeed, the earlier programs such as public housing had two limits for households of each size -- one for initial receipt of a subsidy and a larger limit for retaining the subsidy.<sup>14</sup> The income limits that are discussed here and elsewhere are limits for initial receipt of a subsidy unless otherwise stated.

Prior to the HA74, local public housing authorities chose their own upper income limits based on a vaguely worded provision of the law. The upper income limits for other programs were related to the limits for public housing and always greater than these limits. For example, the income limits for Section 236 in its early years were 35 percent above the limits for public housing in the same locality.

Since the HA74, public housing, Section 236, and all variants of Section 8 have had a common set of income limits. These programs account for the overwhelming majority of HUD-subsidized households. Each year, the Economic and Market Analysis Division (EMAD) in HUD's Office of Policy Development and Research estimates these limits in accordance with the regulations.

The basic income limit for a family of four is 80 percent of the median income of all families in a locality.<sup>15</sup> Income limits for families of other sizes are obtained from the 4-person income limit by applying the following percentages.<sup>16</sup>

---

<sup>14</sup> The earliest housing programs involved construction and so households had to move in order to receive the subsidy. Even after these programs stopped producing additional units, households entering the program had to move into a project in order to receive a subsidy. The higher limit for continued occupancy was introduced to avoid forcing a household to move if its income rose too much. This problem only arises if the market rent of the unit occupied exceeds the tenant's rent at the upper income limit for admission, that is, if there is a notch at this upper income limit. This is almost surely the case for every construction program in its early years when the housing is new. Based on a vague provision in the law, many local housing authorities set their upper income limits for continued occupancy 25 percent above their limits for admission. Under Section 8 certificates and vouchers the effective upper income limit for continued receipt of a subsidy is the income at which the subsidy is zero.

<sup>15</sup> Income limits were related to local median incomes in an attempt to account for geographical price differences, but differences in median incomes obviously also reflect other factors such as differences in skill levels.

<sup>16</sup> There is no good rationale for these percentages. For example, they are not based on differences in poverty lines for households of different sizes.

## Family Size and Percentage Adjustments

1	2	3	4	5	6	7	8
70%	80%	90%	100%	108%	116%	124%	132%

In the terminology of housing regulations and policy discussions, these families are described as low-income families.<sup>17</sup> In the absence of exceptions, only low-income families are eligible for the housing programs that account for almost all means-tested housing subsidies.

However, there are important exceptions to these simple rules. In 2000, these affected the limits for 37 percent of the metropolitan areas and 86 percent of the non-metropolitan areas. The most important exception in terms of the number of areas affected is the requirement that the income limits in a non-metropolitan area may not be less than limits based on the State non-metropolitan median family income.

In a series of amendments to housing laws since 1975, Congress has specified that an increasing percentage of recipients of housing subsidies have incomes below 50 percent of the local median for 4-person families and the aforementioned adjustments for family size.<sup>18</sup> These households are called very low income households, and these laws are codified in 24CFR1275 (1975), 24CFR882 (1976), 24CFR813 (1985), and 24CFR982 (1999).

Finally, the Quality Housing and Work Responsibility Act of 1998 created a new category called extremely low income families whose incomes were 30 percent of the local median for families of four and required a high percentage of new recipients of housing subsidies to be in this category [24CFR982.201 (2000)]. Consistent with a trend over several decades to avoid concentrations of the poorest households in public housing, the required percentage was much lower for public housing than tenant-based vouchers and certificates.

The details concerning the rules and methods for calculating income limits are contained in FY 2000 Income Limits Briefing Material available at <http://www.huduser.org/datasets/il.html>. Fortunately, understanding these complexities is not important for most purposes because the income limits themselves are available in electronic form for all areas from 1990 to the present at the aforementioned website. They can be obtained for earlier years through HUD's EMAD.

Unlike many other means-tested welfare programs, there are no asset tests for eligibility for housing assistance. Actual or imputed income from specified assets is included in income in determining eligibility and rent.

*Preferences.* Since housing programs are not entitlements, some system is required to allocate the available money to the many families that would like to

---

<sup>17</sup> To put these limits in perspective, the poverty line is about 30 percent of median income.

<sup>18</sup> The income limits calculated based on 80 percent of the local median and income limits for virtually all other housing programs, including non-HUD programs, that use different percentages are calculated by first calculating the limits based on 50 percent, then applying the exceptions, and finally multiplying by the relevant percentage. For example, almost all LIHTC projects involve a program option that restricts the rents of tenants to income limits based on 60 percent of the local median. To calculate these limits, the limits based on 50 percent are multiplied by 1.2.

participate.<sup>19</sup> The most salient feature of the system is that there has never been a uniform national system to rank families on a waiting list. Instead Congress has specified that some preference must be given to certain types of families but left it to local housing authorities and owners of subsidized private projects to devise preference schemes. For example, in 1971 Section 10(g)(2) of the United States Housing Act of 1937 read as follows.

The public housing agency shall adopt and promulgate regulations establishing admissions policies which shall give full consideration to its responsibility for the rehousing of displaced families, to the applicant's status as a serviceman or veteran or relationship to a serviceman or veteran . . . , and to the applicant's age or disability, housing conditions, urgency of housing need, and source of income: Provided, That in establishing such admission policies the public housing agency shall accord to families of low income such priority over single persons as it determines to be necessary to avoid undue hardship

HUD has never been authorized to establish a nationally uniform preference system. Its role has been to review preference systems for consistency with Congressional intent.

Obviously, there are infinitely many schemes for ranking families on a waiting list that give some preference to the types of households mentioned in this passage. There are now about 3400 local public housing authorities and more than 22,000 privately-owned HUD-subsidized projects. Although some undoubtedly copy the schemes of others, it seems likely that there have always been an enormous number of different schemes in existence. A common scheme has been to assign points to different family attributes mentioned in the law. However, there are infinitely many different weights that could be assigned to the favored household types consistent with the wording of the law.<sup>20</sup>

Although the language of the law with respect to priorities for receipt of housing subsidies has changed from time to time and other types of families have been singled out for preferential treatment, some of the family types mentioned in the preceding passage have been accorded preferential treatment for receipt of housing assistance under many programs over much of their histories. The elderly and handicapped have been given a preference for subsidized housing for at least forty years. There are two programs (Section 202 and 811) limited to such households, many projects built under other programs are built exclusively for them, and they have typically been given priority for admission into projects not built exclusively for them. Families living in substandard housing or displaced by government action have always been given a preference for

---

<sup>19</sup> The next section discusses the extent of the excess demand for assistance to the extent possible with existing data.

<sup>20</sup> This creates a problem for research where information on the preference scheme is important. These preference systems could be collected because each public housing agency and manager of a privately-owned project is required by law to have a written preference scheme that is available to the public. However, it would be quite expensive to do it for all subsidized housing unless they are available in HUD's central office.



housing subsidies.<sup>21</sup> Single persons who are not elderly, disabled, or displaced by government action have always been given a low priority for assistance.

Congress suspended federal preferences on January 26, 1996 and repealed them in the Quality Housing and Work Responsibility Act of 1998 (64FR23460, 65FR16692). The final regulations implementing these changes became effective April 30, 2000. Since these legislative changes did not require housing authorities to alter their current preference system, it is likely that they had little immediate effect. Prior to the suspension of federal preferences, federal law required that for the overwhelming majority of new recipients of housing assistance, local housing authorities must give preference to families who were occupying substandard housing, involuntarily displaced, or paying more than fifty percent of income for rent. They were allowed to use local preferences for a small minority of new recipients (53FR1122).

*Restrictions on Housing Consumption.* Under all forms of project-based housing assistance, households that reach the top of the waiting list are offered a particular unit. To a first approximation, they have no choice concerning the quantity of housing services that they consume if they want to receive housing assistance. It is only to the extent that they can reject particular units without dropping to the bottom of the waiting list and the possibility of being simultaneously on the waiting lists for public housing and individual private projects that eligible families have a range of housing choices.<sup>22</sup> Even if we ignore the complexities resulting from these possibilities, it is not the case that all households offered assistance under a project-based program are offered the same housing. Under mature construction and substantial rehabilitation programs, the variance in the desirability of the program's units of a particular size is enormous. Therefore, the housing offered by these programs at a point in time cannot be characterized by a single number such as its market rent divided by a housing price index or a single vector of characteristics. As explained later and depicted in Figure 4, families eligible for tenant-based housing vouchers or certificates have a wide range of housing choices, but the program adds the same consumption bundles to the budget spaces of all eligible families with the same characteristics living in one locality provided that they are offered assistance.

Since a primary goal of housing programs is to improve the housing occupied by participants, it should not be surprising that almost all housing programs have minimum housing standards. For some programs such as the older programs involving privately owned projects, these standards have been so vague as to be unenforceable. They require that the housing be decent, safe, and sanitary. For others such as tenant-based vouchers and certificates, much more specific standards have existed.<sup>23</sup> It was not until 1999 that the same detailed standards applied to virtually all subsidized housing (63FR46566).

With the exception of the housing voucher program that began as a demonstration in 1983 and is currently being phased out, all housing programs place upper limits on the

---

<sup>21</sup> Many involved in discussions of housing policy view living in substandard housing as something that happens to a person rather than something that is chosen.

<sup>22</sup> Some housing authorities allow tenants to reject a few units before being dropped from the waiting list. Nothing prevents eligible households from being on the public housing waiting list and simultaneously applying for an apartment in any privately-owned subsidized project.

<sup>23</sup> See 63FR35650 for a history of the occupancy standards.

quantity of housing available to participants. In the case of production programs, these result from upper limits on construction costs and limits on the amount of money that the housing authority or owner of a private project can receive from the tenant and the government each month. Although this limits how good any program unit can be, it is not a parameter of the budget space of most households offered units under the program for the reasons mentioned above. With the exception of the aforementioned voucher program, the other programs of tenant-based assistance impose upper limits on the rents that landlords can receive. This is a parameter of the budget space of each household offered assistance under a particular program in a specific locality.

Under all housing programs, the size of the apartment offered to a household depends on the size and composition of the household. For example, two children of the same sex will be expected to share a bedroom. Beyond a certain age, two children of different sexes will have their own bedrooms.

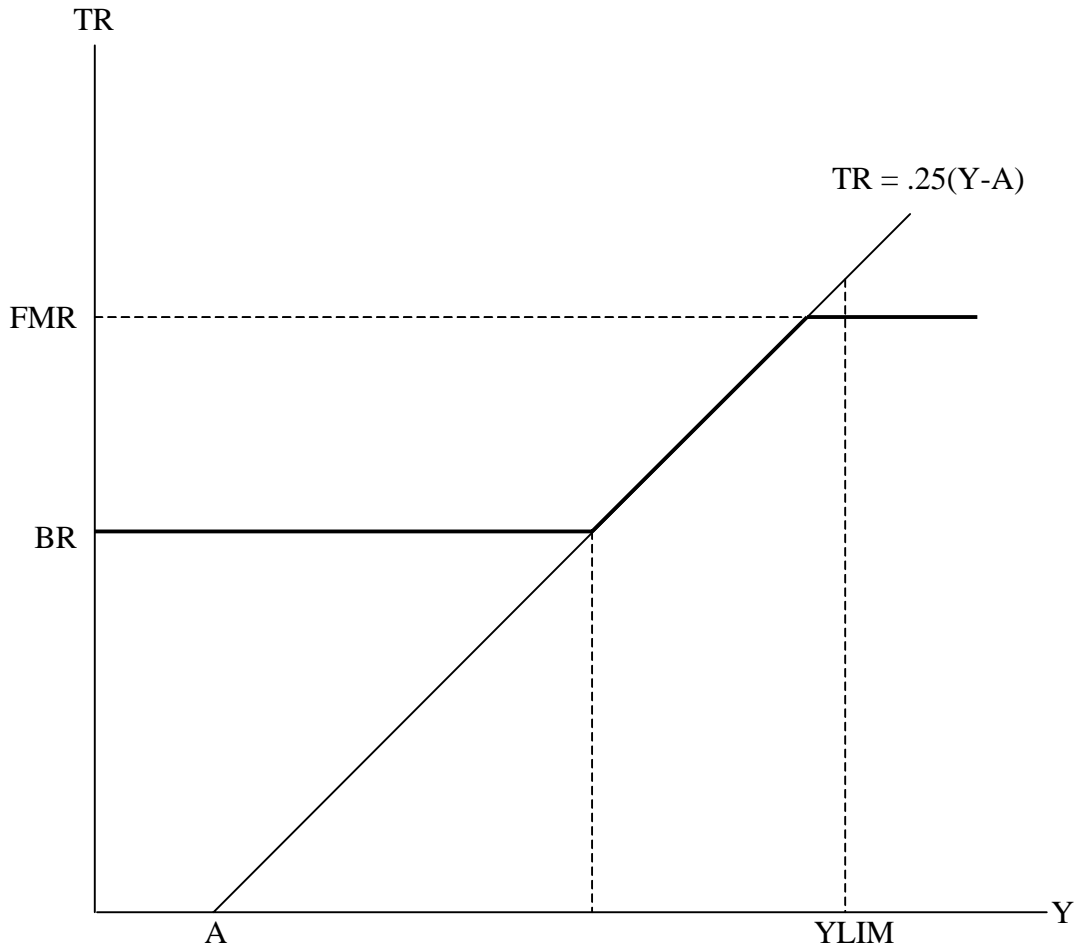
*Tenant Rent.* For more than thirty years, the tenant's contribution to rent under all construction programs has been specified in the program's regulations. For all units in the largest programs (Public Housing and Section 8 New Construction/Substantial Rehabilitation) and many units in other programs, it has depended on household characteristics, but not on the desirability of the housing occupied. Similar remarks apply to the Section 8 Certificate Program since 1980. For the other programs of tenant-based assistance, the tenant's contribution to rent depends on the market rent of the apartment selected.

In public housing prior to 1969, each local housing authority had its own system for determining the rent paid by public housing tenants subject to very general guidelines. Some housing authorities charged a fixed fraction of adjusted income (usually 20 percent), others charged the same rents for all apartments of the same size, and still others charged a certain minimum rent to the poorest households and a fraction of adjusted income to households for which this was larger. In 1969, legislation imposed a uniform upper limit on rents at 25 percent of adjusted income, and almost all local authorities charged the maximum rents permitted. Between 1982 and 1985, a transition to a higher percentage 30% occurred and the authorities were required to charge this rent. The Section 8 New Construction/Substantial Rehabilitation Program and the Section 8 Certificate Program after 1980 used the 25 percent rule initially and made the aforementioned transition to 30 percent in the early 1980s.

The history of the rules for tenant rent in the Section 236 Program is similar to the history in several other construction programs. The thick lines in Figure 1 depict how the tenant's rent TR under Section 236 without rent supplements or other additional subsidies varies with the tenant's income Y. In the diagrams, FMR is the sum of the allowed monthly costs of providing an apartment, including repayment of the mortgage loan at the interest rate charged by the lender.<sup>24</sup> HUD directly pays enough of the mortgage payment to reduce the effective interest rate to one percent. This determines the basic rent BR paid by the poorest participants. Richer participants paid 25 percent of their adjusted incomes, and owners rebated to HUD the excess of this amount over BR. If the

---

<sup>24</sup> This interest rate is below the market rate due to indirect interest subsidies. For this and other reasons, FMR should not be interpreted as the market rent of the unit.



**FIG. 1. – Tenant Rent Under Section 236 Without Rent Supplements**

upper income limit for eligibility YLIM is sufficiently high that 25 percent of the adjusted incomes of some tenants exceeds FMR (as in Figure 1), their rent is FMR.

The thick lines in Figure 2 depict how the tenant's rent varies with income for Section 236 with rent supplements. The Rent Supplement Program was an attempt to make it more attractive for the poorest households to occupy units in these projects and for the owners of the projects to accept these tenants by guaranteeing a part of the rent payment.<sup>25</sup> To achieve this goal, the program paid a portion of the rent that the poorest households would otherwise have to pay to live in these projects. Specifically, these extra payments reduced tenant rents to 25 percent of adjusted income except when this was less than .3·BR. In that event, the tenant paid .3·BR. The minimum rent supplement payment was .1·BR. A succession of later programs replaced the Rent Supplement Program in providing additional subsidies to the poorest households in privately-owned subsidized projects.

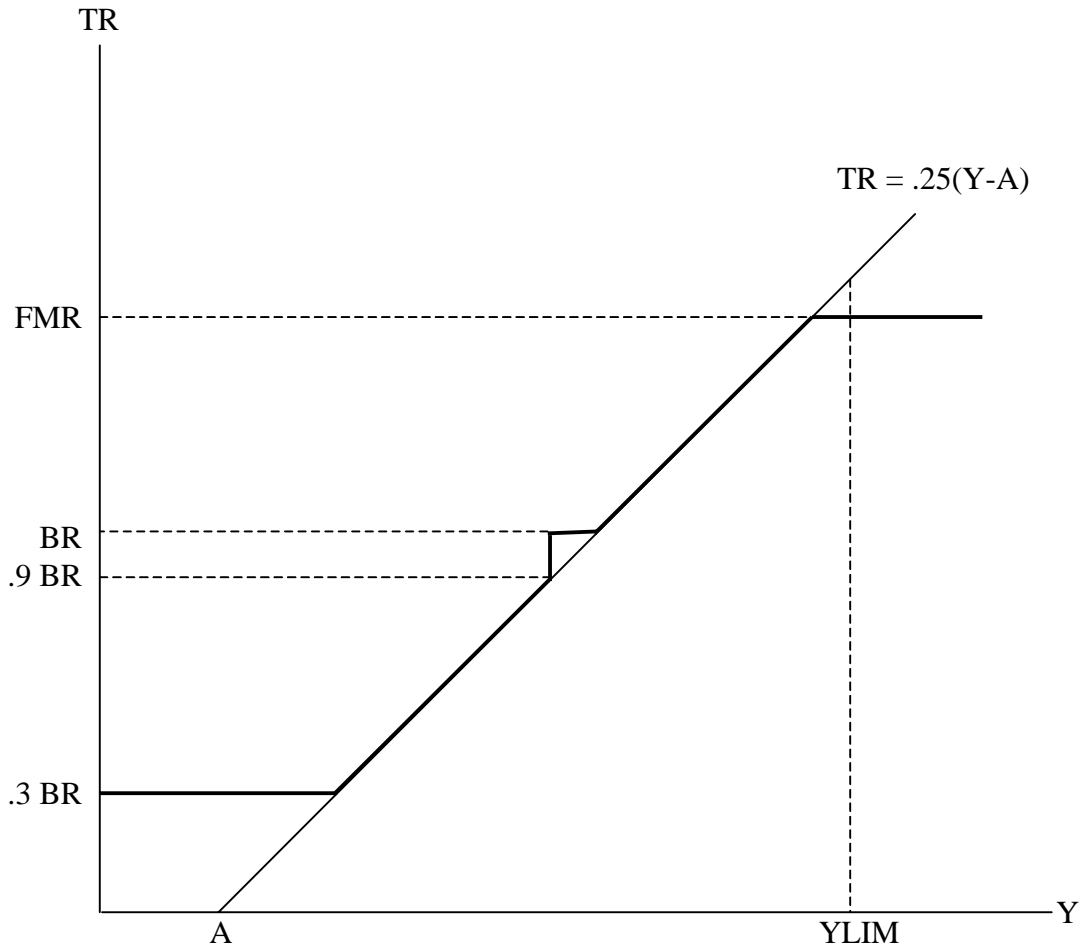
### **III. Program Statistics**

Table 2 contains the standard information on the number of households assisted by each broad type of housing program. In some respects, these numbers are misleading. First, the numbers concerning assisted homeowners are not comparable to the numbers for rental assistance. When the loan on a unit subsidized under a means-tested homeownership program is repaid that household is no longer counted as being assisted even though it continues to live in the house. That is one reason why the number of homeowners assisted has declined. This contrasts sharply with rental assistance where households living in housing built under new construction programs are counted independent of whether the mortgage has been repaid. In fact, the purchase of more than 2.5 million houses has been subsidized under Section 235, Section 502, and other smaller programs. Second, the numbers in Table 2 take no account of the large number of households assisted by the Low Income Housing Tax Credit. About 700,000 households lived in such units in 1999 (U. S. Department of Housing and Urban Development, 2000, p. 7). Third, the numbers do not account for households that receive subsidies from only state and local programs. The numbers in Table 2 reflect only households assisted by HUD and USDA.

With these caveats in mind, we see that in percentage terms the fastest growing part of the system of rental housing subsidies over this period has been household-based assistance to live in existing units. This, however, is a bit misleading because there were no programs in this category prior to 1965 when the small precursor to Section 8 Existing was established. In total, more additional households have been served over the past twenty years by new construction programs than by household-based certificates and vouchers even when the LIHTC is ignored.

---

<sup>25</sup> The Rent Supplement Program enacted in 1965 was always used in conjunction with subsidized construction programs involving private ownership of housing projects, especially Section 236 and Section 221(d)(3) Market Interest Rate. Piggybacks with other construction programs were rare. Except for providing supplements for projects in the pipeline at the time, no new commitments under this program have been made since January 5, 1973. At its peak, the program provided subsidies to about 180,000 households.



**FIG. 2. – Tenant Rent Under Section 236 With Rent Supplements**

**TABLE 2**  
**TOTAL HOUSEHOLDS RECEIVING ASSISTANCE BY TYPE OF SUBSIDY, 1977-97**  
(in thousands)

Fiscal year	Assisted Renters						Total Assisted Homeowners and Renters*
	Existing Housing			New Construction	Total Assisted Renters	Total Assisted Homeowners*	
	Household Based	Project Based	Subtotal				
1977	162	105	268	1,825	2,092	1,071	3,164
1978	297	126	423	1,977	2,400	1,082	3,482
1979	427	175	602	2,052	2,654	1,095	3,749
1980	521	185	707	2,189	2,895	1,112	4,007
1981	599	221	820	2,379	3,012	1,127	4,139
1982	651	194	844	2,559	3,210	1,201	4,411
1983	691	265	955	2,702	3,443	1,226	4,668
1984	728	357	1,086	2,836	3,700	1,219	4,920
1985	749	431	1,180	2,931	3,887	1,193	5,080
1986	797	456	1,253	2,986	3,998	1,176	5,174
1987	893	473	1,366	3,047	4,175	1,126	5,301
1988	956	490	1,446	3,085	4,296	918	5,213
1989	1,025	509	1,534	3,117	4,402	892	5,295
1990	1,090	527	1,616	3,141	4,515	875	5,390
1991	1,137	540	1,678	3,180	4,613	853	5,465
1992	1,166	554	1,721	3,204	4,680	826	5,506
1993	1,326	574	1,900	3,196	4,851	774	5,625
1994	1,392	593	1,985	3,213	4,962	751	5,714
1995	1,487	595	2,081	3,242	5,087	705	5,792
1996	1,413	608	2,021	3,293	5,079	670	5,748
1997	1,465	586	2,051	3,305	5,120	631	5,751

\* Starting in 1988, figures reflect a one-time decrease of 141,000 in the number of assisted homeowners because of asset sales by the FmHA to private investors.

NOTES. – Figures for total assisted renters have been adjusted since 1980 to avoid double-counting households receiving more than one subsidy. Data are for beginning of fiscal year.

SOURCE. – U.S. House of Representatives, Committee on Ways and Means (1998 Green Book, Table 15-26).

Table 3 contains the standard numbers on HUD outlays. It shows that, contrary to newspaper accounts, real expenditures on housing assistance has more than tripled over the past twenty years, and Table 4 shows that real expenditure per household has increased more than 80 percent over this period. With minor exceptions, both have increased continuously for the last twenty years.

Although there is no good reason to believe that these numbers give an erroneous view of the trends over time, it is important to realize that the outlay for a particular year is not the total cost of providing HUD-subsidized housing in that year for several reasons. First, it does not include the many indirect subsidies involved such as local property tax exemptions and abatements received by all public housing projects and some privately owned projects, the federal income tax exemption of interest on the bonds issued by state and local governments to finance housing projects, and the underpriced mortgage insurance received by many privately owned projects.<sup>26</sup> Second, it includes outlays that are mainly used to provide housing in future years and excludes costs that are the result of past outlays. For example, if HUD pays the cost of building a public housing project this year, that outlay will appear this year. This enormously exceeds the real cost of providing the public housing units for whatever part of the current year they are available. It also greatly understates the cost of providing these units in all future years. That the development costs have been paid does not mean that the cost of using the land and structure to house low-income households is zero. These units have an opportunity cost. To the extent that few units have been built recently or the units built have been financed with capital grants rather than annual payments, the real resource cost of HUD's programs is understated. HUD has built few units recently and has moved towards development grants and away from partially or fully subsidizing mortgage payments. However, without a knowledge of the trend in the importance of indirect subsidies in the total cost of providing housing assistance, it is impossible to say whether the trends reported in Tables 3 and 4 are understated or overstated.

Table 5 shows the number of units under the larger individual rental programs. The decline in the number of public housing units in recent years is due in part to the demolition of some projects, though most of the large decline between October 1997 and October 1998 is due to the exclusion of about 73,000 Indian public housing units from the total. It is a testimony to the difficulty in producing information on the number of units receiving various combinations of subsidies that this table indicates that only 38 percent of Section 236 units received rent supplements or Section 8 project-based assistance in 1997 while HUD's Picture of Subsidized Households indicates that 67 percent receive Section 8 project-based assistance. The decline in the number of units under the Section 236 and Section 8 programs reflects in part the decisions of owners of some projects not to continue to participate at the termination of their contract with the government.

Table 6 presents information about the characteristics of the households served by HUD's four largest programs. Although household income is about the same across the four programs, the substantial differences in household sizes leads to substantial differences in per-capita income. Mean household sizes are 2.8 for tenant-based vouchers and certificates, 2.4 for public housing, 2.1 for Section 236, and 1.6 for Section

---

<sup>26</sup> Mortgage insurance is underpriced when the present value of the losses exceeds the present value of insurance premiums. Some programs are designed to provide a subsidy in this form.

**TABLE 3**  
**OUTLAYS FOR HOUSING AID ADMINISTERED BY HUD, 1977-97**  
(in millions of current and 1997 dollars)

Fiscal year	Outlays	
	Current Dollars	1997 Dollars
1977	2,928	7,515
1978	3,592	8,660
1979	4,189	9,275
1980	5,364	10,687
1981	6,733	12,189
1982	7,846	13,273
1983	9,419	15,257
1984	11,000	17,096
1985	25,064	37,569
1986	12,179	17,813
1987	12,509	17,784
1988	13,684	18,684
1989	14,466	18,860
1990	15,690	19,484
1991	16,898	19,973
1992	18,243	20,936
1993	20,490	22,817
1994	22,191	24,079
1995	* 24,059	25,394
1996	* 25,349	26,032
1997 (estimate)	* 26,110	26,110

\* Figures have been adjusted to account for \$1.2 billion of advance spending that occurred in 1995 but that should have occurred in 1996.

NOTES. – The bulge in outlays in 1985 is caused by a change in the method of financing housing, which generated close to \$14 billion in one-time expenditures. This amount paid off, all at once, the capital cost of public housing construction and modernization activities undertaken between 1974 and 1985, which otherwise would have been paid off over periods of up to 40 years. Because of this one-time expenditure, however, outlays for public housing since that time have been lower than they would have been otherwise.

SOURCE. – U.S. House of Representatives, Committee on Ways and Means (1998 Green Book, Table 15-28).



TABLE 4  
 PER UNIT OUTLAYS FOR HOUSING AID ADMINISTERED BY HUD, 1977-79  
 (in current and 1997 dollars)

Fiscal year	Per Unit Outlays	
	Current Dollars	1997 Dollars
1977	1,160	2,980
1978	1,310	3,160
1979	1,430	3,160
1980	1,750	3,480
1981	2,100	3,810
1982	2,310	3,900
1983	2,600	4,220
1984	2,900	4,500
1985	6,420	9,620
1986	3,040	4,440
1987	3,040	4,320
1988	3,270	4,460
1989	3,390	4,420
1990	3,610	4,480
1991	3,830	4,530
1992	4,060	4,670
1993	4,450	4,960
1994	4,720	5,120
1995	5,080	5,360
1996	5,350	5,490
1997 (estimate)	5,490	5,490

NOTES. – The peak in outlays per unit in 1985 of \$6,420 is attributable to the bulge in 1985 expenditures associated with the change in the method for financing public housing. Without this change, outlays per unit would have amounted to around \$2,860.

SOURCE. – U.S. House of Representatives, Committee on Ways and Means (1998 Green Book, Table 15-29).

TABLE 5

NUMBER OF UNITS ELIGIBLE FOR ASSISTED HOUSING PAYMENTS BY PROGRAM TYPE, END OF FISCAL YEAR

Year	Section 515			Section 236		Section 8			LIHTC #	
	Public Housing	Total	With Section 8	Rent Supplement	Total	With Rent Supplements or Section 8	Tenant-Based	New Subrehab †		Other Project-Based ‡
1957	365,896	0	0	0	0	0	0	0	0	0
1958	374,172	0	0	0	0	0	0	0	0	0
1959	401,467	0	0	0	0	0	0	0	0	0
1960	425,481	0	0	0	0	0	0	0	0	0
1961	465,481	0	0	0	0	0	0	0	0	0
1962	482,714	N/A	0	0	0	0	0	0	0	0
1963	511,047	N/A	0	0	0	0	0	0	0	0
1964	539,841	N/A	0	0	0	0	0	0	0	0
1965	577,347	N/A	0	0	0	0	0	0	0	0
1966	608,554	N/A	0	0	0	0	0	0	0	0
1967	639,631	N/A	0	930	0	N/A	0	0	0	0
1968	687,336	N/A	0	2,731	0	N/A	0	0	0	0
1969	767,723	N/A	0	12,299	0	N/A	0	0	0	0
1970	830,454	N/A	0	30,804	5,437	N/A	0	0	0	0
1971	892,651	N/A	0	57,786	32,322	N/A	0	0	0	0
1972	989,419	N/A	0	92,070	98,699	N/A	0	0	0	0
1973	1,047,000	N/A	0	118,184	191,261	N/A	0	0	0	0
1973	1,109,000	N/A	0	147,847	293,831	N/A	0	0	0	0
1975	1,151,000	N/A	0	165,326	400,360	N/A	0	0	0	0
1976	1,172,000	25,702	0	174,339	447,126	N/A	162,085	5,701	105,480	0
1977	1,174,000	50,261	647	179,908	543,360	N/A	297,256	30,281	125,598	0
1978	1,173,000	80,842	7,064	171,598	544,515	N/A	427,331	88,738	174,845	0
1979	1,178,000	114,429	15,800	178,891	541,460	N/A	521,329	191,815	185,297	0
1980	1,192,000	150,714	24,422	164,992	538,285	163,000	599,122	333,153	221,036	0
1981	1,204,000	185,253	32,274	157,779	537,206	161,000	650,817	474,465	193,645	0
1982	1,224,000	216,974	40,412	153,355	536,531	174,600	690,643	571,298	264,742	0
1983	1,313,816	247,164	44,129	76,919	533,469	176,736	728,406	664,395	357,103	0
1984	1,340,575	273,928	45,465	55,606	530,735	178,115	748,543	730,148	431,121	0
1985	1,355,152	300,602	45,510	45,611	527,978	196,280	797,383	757,091	455,832	0
1986	1,379,679	326,212	45,510	34,376	529,121	192,000	892,863	777,656	472,820	0

Year	Public Housing	Section 515			Section 236		Section 8			LIHTC #
		Total	With Section 8	Rent Supplement	Total	With Rent Supplements or Section 8	Tenant-Based	New Subrehab †	Other Project-Based ‡	
1987	1,390,098	349,178	45,510	23,487	528,174	189,389	956,181	793,812	489,510	34,491
1988	1,397,907	368,456	45,510	23,476	528,174	202,575	1,024,689	798,551	509,222	115,899
1989	1,403,816	385,677	45,510	20,000	528,000	197,329	1,089,598	803,618	526,650	242,099
1990	1,404,870	401,941	45,510	20,000	530,625	199,617	1,137,244	822,962	540,256	316,128
1991	1,410,137	417,998	45,510	20,000	528,115	199,000	1,166,257	827,474	554,264	428,098
1992	1,409,191	433,616	45,510	20,000	510,442	199,000	1,326,250	822,383	573,844	519,398
1993	1,407,923	448,767	45,510	19,270	510,105	190,140	1,391,794	826,791	593,423	623,154
1994	1,409,455	463,742	45,510	18,808	504,966	190,140	1,486,533	844,663	594,763	740,253
1995	1,397,205	476,213	45,510	20,860	508,353	190,140	1,413,311	890,241	608,140	826,596
1996	1,388,746	482,980	45,510	20,860	505,305	190,140	1,464,588	907,215	586,359	902,188
1997*	1,372,260	482,980	45,510	20,860	494,121	190,140	1,499,329	880,369	563,937	972,408
1998*	1,295,437	482,980	45,510	20,860	476,451	190,140	1,605,898	853,523	541,514	1,041,499

SOURCE. – Wayne Baker, Housing Budget Office, U.S. Department of Housing and Urban Development (HUD), Washington, D.C., December 1979, for 1941-1975; Carla Pedone, Congressional Budget Office, U.S. Congress, Washington, D.C., April 2000, for 1976-1998. CBO tabulations based on Congressional Justifications for the Department of Housing and Urban Development (HUD) and unpublished data from HUD and the Rural Housing Administration.

NOTES. – N/A = Not Available. Because reliable data is not available at this point, this table excludes rental assistance for units funded through the various block grant programs to state and local governments, including the McKinney Homeless programs, Housing Opportunities for Persons with AIDS (HOPWA), HOME, and, starting in FY 1998, all units assisted through the Indian Housing Block Grants program. CBO has made some adjustments to published data in certain years to smooth out extremely weird patterns in those years. In particular, figures were reduced for the end of FY 1992 because renewals of expiring contracts in the LMSA program were being double-counted as additional units. Some other strange patterns remain in the data, however.

\* Numbers for these years are estimates

† Excludes units funded with capital grants and project rental assistance through the Section 202/811 program.

‡ Includes units receiving assistance through the Section 8 Loan Management Set Aside (LMSA), Property Disposition (PD), Conversion (from Rent Supplement and Section 236 RAP), and Moderate Rehabilitation programs.

# Unlike other numbers in the table, the number of units for the LIHTC are the number of units authorized rather than the number of units available for occupancy. Due to the lag between authorization and completion, these numbers exceed the number of units available for occupancy each year.

TABLE 6  
CHARACTERISTICS OF HUD SUBSIDIZED HOUSEHOLDS 1997

	Section 8 Vouchers and Certificates	Public Housing	Section 8 New and SubRehab	Section 236
Number of Projects	-	13755	15177	4224
Subsidized People (thousands)	3973	2859	1403	902
Subsidized Units (thousands)	1433	1322	895	448
Average Rent/Month, Inc. Utilities	204	192	190	255
Average Household Income/Year	9100	8900	8900	10000
Average People/Household	2.8	2.4	1.6	2.1
Per Capita Income	3250	3708	5563	4762
Neighborhood Poverty Rate	20	37	20	21
% Age 62+, Head or Spouse	16	32	60	34
% Age 62+ or Disability	34	48	74	43
% With Children Under 18	66	45	23	45
% Single Parent	57	39	20	37
% Minority total	58	68	37	53
% Black	39	48	23	35
% Hispanic	15	17	11	13
Minority as % of Neighborhood	39	59	34	40

NOTES. – Most Section 236 units (67%) use Section 8 Loan Management as well as Section 236 subsidy.

SOURCE. – 1997 Picture of Subsidized Households Quick Facts (<http://www.huduser.org/datasets/assthsq/picqwik.html>).

8 NC/SR. The latter program serves the elderly and disabled to a much greater extent than the other programs. Three fourths of the households served by this program are in this category as opposed to about 45 percent in public housing and Section 236 and only 34 percent with vouchers and certificates. Section 8 NC /SR serves minorities to a much lesser extent than the other programs. More than half of the households served by the three other programs are members of a minority group, but only 37 percent of households served by this program are minorities. Finally, public housing projects are much more often located in neighborhoods with a high poverty rate and a high fraction of households that are minorities.

One of the most salient features of the system of housing subsidies is the extent to which it fails to offer assistance to all eligible households.<sup>27</sup> Consider the largest group that has been given priority for assistance by the biggest housing programs. For many years, Congress has required that Public Housing and Section 8 reserve a substantial majority of newly allocated units for households whose incomes are less than limits based on 50 percent of the local median income for four-person households, with nationally uniform percentage adjustments for households of other sizes as previously described. These households account for 27% of all households in the country. Only 28% of the renters in this income group receive housing assistance. Local housing agencies have been allowed to admit households into these programs with incomes up to 60% higher than the limits based on 50 percent of the local median for almost twenty years. Forty two percent of all households meet these higher income limits, and 23% of the renters in this larger group receive housing assistance.

Because the upper income limit for continued receipt of housing assistance under these programs greatly exceeds the upper income limit for admission into the programs and exceptions to the limits are allowed in some cases and some programs have higher upper income limits, many households with higher incomes receive housing subsidies under means-tested housing programs. Specifically, 10% of all renters with incomes between limits based on 50 and 80 percent of the local median for four-person households and the standard HUD adjustments for households of other sizes receive means-tested housing assistance. Seven percent with incomes between limits based on 80 and 120 percent of the local median and 7% with incomes in excess of limits based on 120 percent of the local median also receive means-tested housing assistance.

Obviously, the overwhelming majority of eligible households do not receive housing assistance. This is not because they do not want it on the terms offered. There are long waiting lists to get into subsidized housing in all localities, and the length of the waiting list understates excess demand in many localities because housing authorities often close their waiting lists when they get sufficiently long.<sup>28</sup>

Two numbers clearly reveal the extent to which HUD's housing assistance is focused on the poorest households. Forty three percent of the household's served by HUD's programs are above the poverty line (U.S. Department of Housing and Urban Development, 1992, Table 1-1.) while seventy percent of renters below the poverty line

---

<sup>27</sup> See U.S. Department of Housing and Urban Development (2000) for the numbers reported in this and the next paragraph.

<sup>28</sup> HUD does not regularly collect data on the size of the waiting lists under any of its programs. However, a telephone survey in 1999 by HUD staff revealed that the Los Angeles Housing Authority alone had 342,000 households on its waiting list for Section 8 vouchers.

are not served (U.S. Department of Commerce, 1991, Table 4-12, and U.S. Department of Housing and Urban Development, 1992, Table 1-1).

#### **IV. Program Effects**

This section discusses what program effects should be expected based on each program's rules and the general assumptions of economic theory, and it describes the evidence on important effects of Public Housing, Section 236, Section 8 NC/SR, and tenant-based Section 8 Certificates and Vouchers. To the best of my knowledge, no research on Section 515 or the LIHTC deals with the effects considered in this paper.

One theme of this section is that little can be said about many effects of government housing programs based on the usual assumptions of economic theory even combined with plausible additional assumptions such as the normality of housing and leisure. For example, housing programs change budget spaces in ways that do not imply that recipients will occupy better housing or work less.

##### *A. Cost-Effectiveness*

Since large sums of money are spent on housing subsidies and many different methods are used to deliver them, it is important to consider the cost-effectiveness of alternative approaches. When needlessly expensive methods of delivering housing assistance are used, many low-income households who could have been provided with adequate housing at an affordable rent within the current budget continue to live in deplorable housing.

All cost-effectiveness analyses of housing programs involve a comparison of the total cost of providing the housing with its market rent. For tenant-based vouchers and certificates, the approach is straightforward because all of the costs associated with providing the housing during a period occur in that period and they are all in the records of the administering agency. Estimating a statistical relationship between the rent and characteristics of unsubsidized apartments and then substituting the characteristics of the subsidized units into it yields estimates of the market rents of the units occupied by subsidized households.

Dealing with construction or rehabilitation programs is more difficult because the time path of cost bears no particular relationship to the time path of the market rent of a unit and all of these programs involve indirect costs that are not in the records of the administering agency. The most widely accepted measure of cost-effectiveness for programs of this type is the ratio of (1) the present value of the rents paid by tenants and all direct and indirect costs incurred by federal, state, and local governments to (2) the present value of the market rents of the units over the period that the units are used to house subsidized families. If a government owns the project at the time that it stops being used to house subsidized families, the present value of the project's market value at that time should be subtracted from the present value of the costs. A severe practical problem in implementing this approach is that data on the condition of the apartments in subsidized housing projects over their lives is not available, and some of the costs are difficult to obtain for each year. As a result, only one study (U. S. Department of Housing and Urban Development, 1974, pp.123-128) has fully implemented this

approach. Other studies take various shortcuts or rely on strong assumptions about missing data.

This measure of cost-effectiveness focuses on effectiveness in providing housing to the recipient. It does not capture benefits or costs of a housing program to others. For example, it is possible that some housing projects make the neighborhoods in which they are located more attractive places to live. Other projects may have the opposite effect. The standard measure of cost-effectiveness captures neither positive nor negative effects of this sort.

Broadly speaking, there are three potential sources of cost-ineffectiveness of housing programs – distortions in input choices for producing housing services, insufficient incentives for efficiency on the part of civil servants, and excessive profits to developers of private projects. This section discusses each source.

Almost all of the subsidies for housing projects are subsidies for the initial development of the project or subsidies that are independent of input usage. For example, some programs provide direct loans for development at below-market interest rates, others pay a fixed proportion of the mortgage payment on private loans, still others provide tax credits that are proportional to development cost, and some pay directly the entire development cost. Among subsidies that do not depend on input usage are rental assistance payments under the Section 8 NC/SR Program and Public Housing operating subsidies since 1975. (Recall that the latter do not depend on the housing authority's actions.)

This has led some to conclude that housing services in these projects will be produced with too much initial capital and too little of other inputs from the viewpoint of efficient production. However, since all of these programs contain limits on per-unit development cost, the net effect on input usage is ambiguous on theoretical grounds. Nevertheless, the combination of capital subsidies and development cost limits surely results in productive inefficiency to some extent.

The preceding argument applies most directly to for-profit firms who own and operate housing for low-income households. However, to the extent that the decision makers in local housing authorities and the nonprofits who sponsor subsidized projects are interested in the well being of their tenants rather than other taxpayers, they apply with some force to them as well.

Another incentive for inefficient production of housing services in privately-owned projects is that the supplier's revenue is independent of the condition of the apartment, provided that it meets the program's minimum occupancy standards. Given the below-market rents that subsidized households are charged, there is a tremendous excess demand for these units for many years after they are built. Therefore, owners will have no trouble renting them even if they are allowed to deteriorate substantially. Just as in the case of simple rent control, this should lead to too little maintenance from the viewpoint of efficient production of housing services.

An additional source of inefficiency is involved in the case of public housing. Under the public housing program, government employees make all of the decisions that are made by managers of profit maximizing firms in the private market. These include the exact specifications of the project to be built and exactly what maintenance and renovations to undertake. These decisionmakers also must monitor the performance of the employees of the housing authorities. The government managers involved do not

have the same financial incentives to operate efficiently as owners of private rental housing. If they make good decisions, they are not rewarded. If they make bad decisions, they suffer no consequences over a wide range of bad decisions. Indeed, they cannot easily learn whether they have made good or bad decisions. Due to the subsidy, they will not lose their tenants unless they make extraordinarily bad decisions.

The other construction and rehabilitation programs such as Section 8 NC/SR and the Low Income Housing Tax Credit provide subsidies to selected private suppliers, albeit with restrictions concerning who may live in the units, how much rent may be charged, etc. The subsidies and restrictions are designed (or redesigned based on initial experience) to insure that the money budgeted is spent. In all cases, the result has been that many more suppliers want to participate than can be accommodated with available funds. For example, developers have requested three times as much money as state housing agencies have to allocate under the LIHTC in recent years. The reason that there is an excess demand for program funds by suppliers of housing is that those who are allowed to participate make excessive profits, provided that they do not have to pay anything for the privilege. This explains the bribery and influence peddling under these programs that comes to light from time to time.

Four major studies attempt to compare the costs incurred to provide units under various housing programs with the market rents of these units.<sup>29</sup> Table 7 reports the results of these studies. In assessing the results in this table, it is important to realize that the Olsen-Barton and HUD studies of public housing did not include the federal or local cost of administering the program as opposed to the cost of managing the housing. The other studies did include administrative cost. This would add about 14% to the cost of these programs. Furthermore, the cost of the Section 8 New Construction Program did not include any indirect costs. These include the tax exemption of the interest on state bonds issued to finance state housing agency projects and the interest subsidy involved in the Tandem Plan financing of FHA-insured projects. Previous research on the magnitudes of these subsidies led Wallace and his coauthors to conclude that these indirect subsidies add 20 to 30 percent to the total cost of the projects.

With the aforementioned adjustments to insure comparability, these studies are unanimous in finding that it costs significantly more than a dollar to provide a dollar's worth of housing under construction programs such as Public Housing, Section 236, and Section 8 New Construction. The studies of housing certificates and vouchers show that the total costs of these programs exceed the market rents of the units by approximately the cost of administering the program. Excluding administrative cost, the two earliest studies find excess costs of public housing in the range of 10 to 17 percent. The more recent studies find excess costs for this program in the range of 65 to 106 percent. The range of the estimated excess cost of Section 236 is 33 to 87 percent, and the estimated excess cost of Section 8 NC/SR is 30 to 40 percent.

These estimates almost surely understate the extent of the inefficiency of construction programs compared with tenant-based certificates and vouchers for two

---

<sup>29</sup> See Olsen (2000) for a description and appraisal of the data and methods used in these studies. This paper also discusses a study by Schnare and others (1982) that focuses on differences in development costs across programs and contains problematic results on overall cost-effectiveness. Weinberg (1982) summarizes the research in Wallace and others (1981) and Mayo (1986) summarizes his studies of the cost-effectiveness of U.S. and German housing programs.



TABLE 7

## RATIO OF PRESENT VALUE OF COST TO PRESENT VALUE OF MARKET RENT

Housing Vouchers				
Mayo and others (1980B)	Phoenix	1975	1.15	
Mayo and others (1980B)	Pittsburgh	1975	1.09	
Wallace and others (1981)	National	1979	0.91	
Public Housing				
Olsen and Barton (1983)	New York City	1965	1.14 <sup>a</sup>	
Olsen and Barton (1983)	New York City	1968	1.10 <sup>a</sup>	
U.S. Department of Housing and Urban Development (1974)	Baltimore, Boston, Los Angeles, St. Louis, San Francisco, Washington	1971	1.17 <sup>a</sup>	
Mayo and others (1980B)	Phoenix	1975	1.79	
Mayo and others (1980B)	Pittsburgh	1975	2.20	
Section 236				
Mayo and others (1980B)	Phoenix	1975	1.47	
Mayo and others (1980B)	Pittsburgh	1975	2.01	
Section 8 New Construction				
Wallace and others (1981)	National	1979	1.24 <sup>b</sup>	

NOTES. -- (a) Excludes cost of program administration of about 14%.

(b) Excludes all indirect costs estimated to add 20% to 30%.

reasons. First, the studies using data before 1975 based their estimates of market rent on an estimated hedonic equation containing a short list of easily observed housing characteristics. Older public housing projects did not have many of the unobserved amenities that were common in the private sector. So there is good reason to expect the estimated hedonic equation to overstate the market rents of public housing units. The more recent studies are based on much more detailed data on housing characteristics and hence are likely to provide more accurate estimates of the market rents of public housing units. Second, unlike tenant-based assistance, the construction programs involve indirect subsidies that do not appear in the program's records. All studies attempt to estimate the magnitude of the major indirect subsidies. However, no study attempts to estimate the magnitude of all of the indirect subsidies. For example, some public housing units were built on land donated by federal, state and local governments. No study has attempted to add the market value of this land to the cost of public housing. Nonprofit developers of Section 8 New Construction projects sometimes receive property tax exemptions or abatements. No study has attempted to account for this indirect subsidy.

An influential view in discussions of housing policy is that subsidized new construction is needed in localities with the lowest vacancy rates. This suggests that construction programs will be more cost-effective than vouchers in these areas. Obviously, the small number of studies of cost-effectiveness and the different methodologies used in these studies preclude making any judgment about this matter. Whether there are any market conditions under which construction programs are more cost-effective than vouchers is surely one of the most important unanswered questions in housing policy analysis.

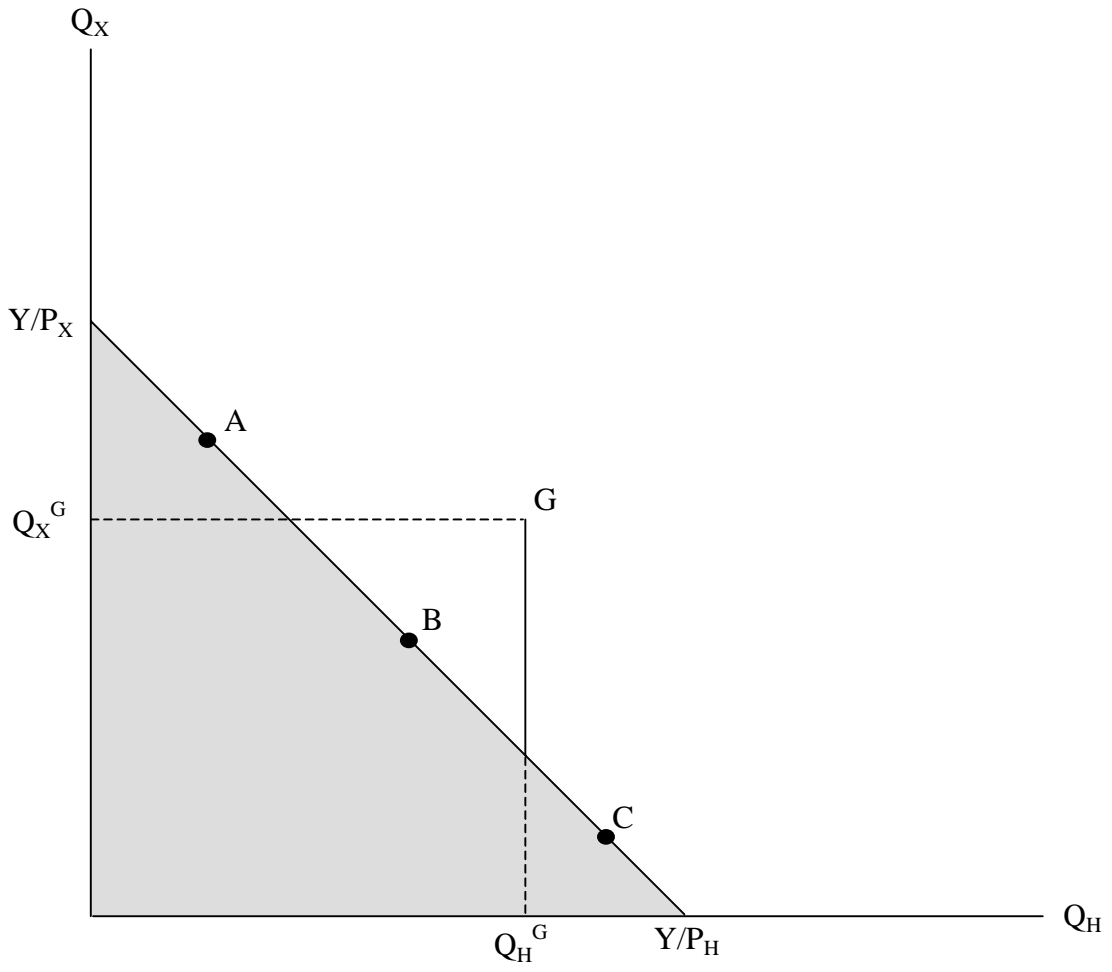
## *B. Consumption Patterns*

Ideally, a theoretical analysis of the possible effects of housing programs on consumption patterns would consider all of the other welfare programs for which a household is eligible in describing its budget space in the absence of the housing program and define preferences over at least three composites – housing, other produced goods, and leisure. This has never been done in a theoretical analysis.<sup>30</sup> In this section, we will follow the more traditional approach in the literature, namely to assume that income is not subject to choice and that households would face a linear budget frontier defined by this income and market prices for all goods in the absence of housing subsidies. These same assumptions underlie almost all empirical studies of the effects of housing programs on consumption patterns. Even with these simplifying assumptions, little can be said on theoretical grounds about the effect of any housing program on consumption of housing and other goods. For example, the public housing program could induce households to consume more housing services and consume less of other goods, more of all goods, or less housing service and more of other goods.

To see why the usual assumptions of economic theory have no important implications for consumption of housing services and other produced goods under any form of project-based assistance, consider Figure 3. In this figure, consumption of

---

<sup>30</sup> Schone (1994) accounts for several major welfare programs and taxes in her empirical study of the effects of housing and other programs on consumption patterns that will be discussed when we consider work disincentive effects.



**FIG. 3. – Budget Space for Project-Based Program**

housing services is measured on the horizontal axis and consumption of other produced goods on the vertical axis.<sup>31</sup> The line segment is the budget line in the absence of the housing subsidy. Since housing assistance is not an entitlement, each subsidized privately owned project and each local housing authority has a waiting list. When a unit becomes available, it is offered to a household on the waiting list of an appropriate size for that apartment. This apartment provides a certain quantity of housing service  $Q_H^G$  and the rent that the eligible household must pay enables it to consume a certain quantity of other goods  $Q_X^G$ . Normally, if the household declines the offer, they are removed from the waiting list. In some cases, the household is allowed to decline several offers before removal. This does not change the argument in any fundamental way. In essence, the household is offered an all-or-nothing choice of a particular bundle. The household accepting this offer might choose bundle A, B, or C in the absence of the program. Therefore, the program can have any effect on the consumption bundle of a participant other than reducing its consumption of both goods.

The same conclusion is reached for any type of tenant-based assistance that has been used except for the form of housing voucher that was used between 1983 and 1999. Figure 4 depicts the budget spaces of eligible households who were offered assistance under the major certificate and voucher programs. In this diagram,  $Y$  is the household's income and  $P_H$  and  $P_X$  are unsubsidized prices of housing services and other goods. Since participation in these programs is voluntary, a household that is offered assistance can consume any bundle on or below the usual budget line defined by these parameters. All of these programs of tenant-based assistance require recipients to live in apartments meeting minimum housing standards in order to receive assistance. To describe the budget space accurately, it would be necessary to decompose the housing bundle into its components because the standards apply to some, but not all, characteristics of housing. When a scalar index of the quantity of housing services is used, this constraint places a lower limit on housing consumption  $Q_H^{\text{MIN}}$  as a condition for receipt of a subsidy.<sup>32</sup>

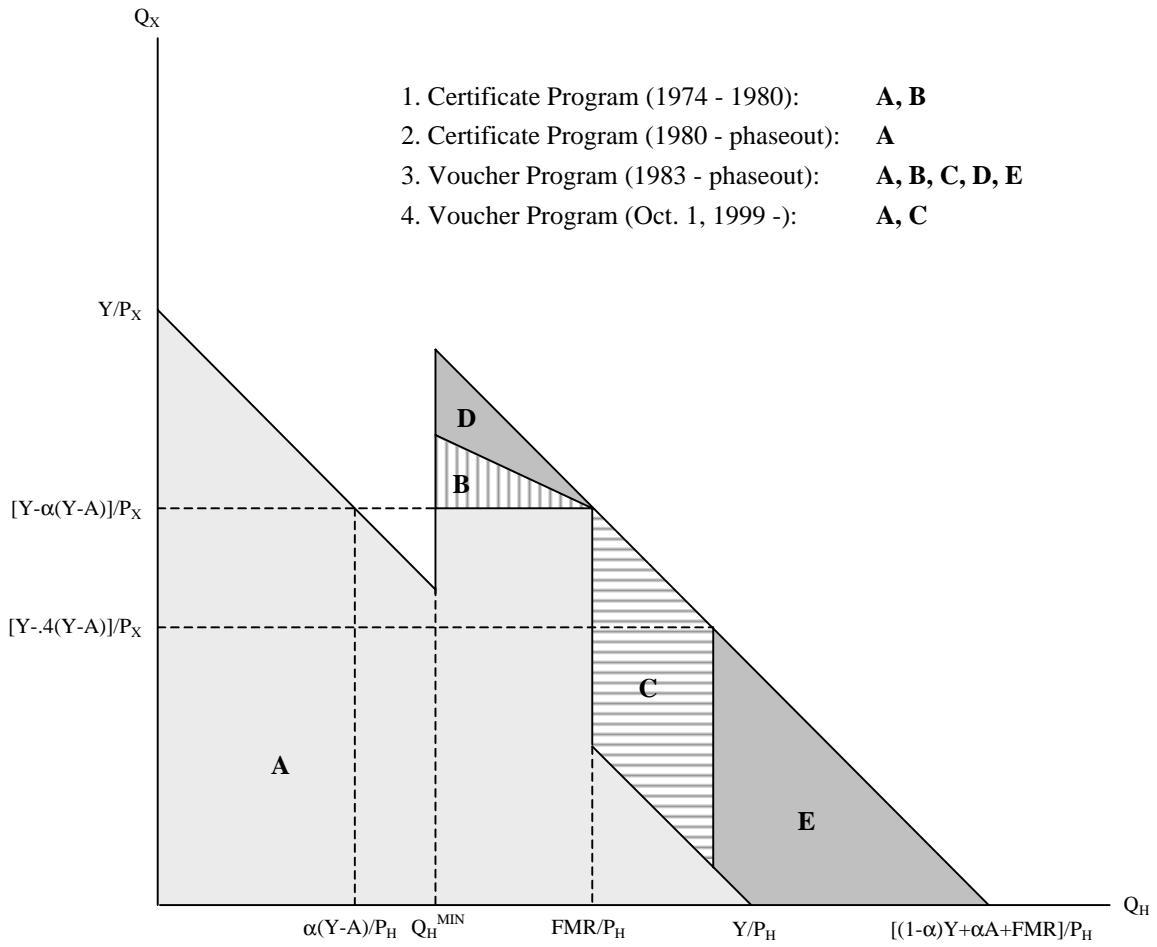
Under the original certificate program, participants had to occupy units renting for less than the local Fair Market Rent (FMR) for units of the size occupied. The FMR in an area for units with a certain number of bedrooms has always been the rent at a specified percentile of the distribution of rents of a subset of units of this size. Currently, it is the fortieth percentile of the rents of standard quality units occupied within the past fifteen months and not built within the last two years.<sup>33</sup> Since there is an upper limit on the number of bedrooms that may be occupied by each household depending upon its size and composition and a ceiling rent for apartments of each size, the FMR places an upper

---

<sup>31</sup> The quantity of housing service is an index of all of the attributes of housing valued by consumers, including its neighborhood characteristics. In much of the empirical literature, it is measured by the market rent of the dwelling divided by a housing price index. A housing price index across areas or over time is the market rent of dwellings with the same characteristics. The more comprehensive the list of housing characteristics, the better the housing price index. A few studies based on the housing occupied immediately before and after receipt of housing assistance provide information on the program's effect on a few particular housing characteristics.

<sup>32</sup> In research on these programs, this has been measured as the market rent of units that just meet the program's standards but are minimal in other respects divided by a housing price index (Olsen and Reeder, 1983; Olsen and Crews, 1997).

<sup>33</sup> Fair Market Rents apply to entire metropolitan areas and their surrounding counties and nonmetropolitan counties and are published in the Federal Register each year. See, for example, 64FR53450.



**FIG. 4. – Budget Spaces Under Section 8 Certificate and Voucher Programs**

limit  $FMR/P_H$  on each participant's consumption of housing services.<sup>34</sup> A participant that occupied a unit renting for the applicable FMR paid a fraction  $\alpha$  of its adjusted income  $Y-A$  in rent. (The fraction is currently .3.) In this case, the subsidy was  $FMR-\alpha\cdot(Y-A)$  and the participant's consumption of other goods would be  $[Y-\alpha\cdot(Y-A)]/P_X$ . If the participant occupied a unit renting for less than the applicable FMR, she paid a fraction  $\alpha\cdot(Y-A)/FMR$  of the rent. Therefore, the budget space under the original certificate program was the areas A and B in Figure 4.

The feature of the original certificate program that reduced the rent of a tenant occupying a unit renting for less than the FMR was intended to create an incentive for participants to be economical. However, surveys revealed that few participants understood the rent reduction credit, and it was eliminated in 1980. The budget space under the revised certificate program was the area A.

The voucher program that was introduced as a demonstration in 1983 and operated simultaneously with the Certificate Program had a simpler structure. It paid a fixed amount towards the participant's rent provided that the participant occupied a unit meeting the program's standards. The fixed amount was  $PS-\alpha\cdot(Y-A)$ , where PS refers to the payment standard. The payment standard for households of each size and composition could not exceed the applicable FMR, but housing authorities could set payment standards at lower levels.<sup>35</sup> For simplicity, Figure 4 assumes that PS is equal to FMR. In this case, the budget space under the original voucher program is areas A, B, C, D, and E.

The preceding certificate and voucher programs are being phased out in favor of a voucher program that has some features of each of its predecessors. Starting from the budget space under the most recent certificate program (the area A), the new voucher program enables participants to occupy apartments renting for more than FMR, but neither increases nor decreases their subsidy if they do it. The program places an upper limit on housing consumption by limiting the tenant's contribution to rent to 40 percent of adjusted income. The tenant's contribution is simply the excess of the rent received by the landlord over the government's subsidy,  $FMR-\alpha\cdot(Y-A)$ . Since  $\alpha$  is currently .3, the upper limit on housing consumption is currently  $FMR+.1\cdot(Y-A)$ .

If housing is a normal good, the type of voucher program in operation between 1983 and 1999 will induce households to occupy better housing than in the absence of the program, though not necessarily better than they would choose if given a cash grant equal to the amount of the housing subsidy. This type of voucher could have the same effect as the cash grant for some, all, or none of its recipients. It is easy to show that each of the other certificate or voucher programs can have any effect on consumption patterns of recipients except less of both goods.

---

<sup>34</sup> Given the methodology used to calculate them, differences in FMRs between areas do not reflect only geographical differences in housing prices, that is, the difference in the mean rent of identical units in different areas. Therefore, the ceiling on housing consumption has been different for identical households in different localities.

<sup>35</sup> Since each authority was allocated a fixed amount of money, setting the payment standard below the FMR enabled it to serve more households. Under the Certificate Program, the authority was allocated a certain number of certificates. This created an incentive for each authority to lobby for higher FMRs in its area to increase the subsidies received by local residents.

In short, the design of housing programs does not insure that they change consumption patterns in a way that is consistent with their justifications. It is an empirical matter whether they have the desired effects.

The available evidence reported in Table 8 strongly suggests that all housing programs result in substantially better housing for participants. The percentage increase tends to be greatest for new construction programs in their early years when most of the units are new. As the average age of the units under a construction program increases, the percentage increase in housing consumption of participants declines. The results reported in Table 9 illustrate this feature of construction programs. In 1970, the median age of public housing units was 22 years and the mean market rent of these units differed little from the mean rent of all unsubsidized rental units. At the same time, all Section 236 units were only a few years old. The mean market rent of these units was almost twice as great as the mean rent of all unsubsidized rental units.

Almost all housing programs at almost all times have also increased the consumption of other goods by participants. That is, participants spend less on housing than they would have spent in the absence of the program. Because the overwhelming majority of participants in each housing program pay the same percentage of their adjusted income for rent, there is little difference in expenditure on other goods among households with the same income. Expenditure on other goods under the program differs on account of different adjustments to income and possibly because the household must pay more than 30% of adjusted income in order to live in a privately owned subsidized project (about 25% of the households in privately-owned HUD projects are in this category).

The numbers reported in Table 8 indicate that the percentage increase in consumption of other goods is less than the percentage increase in housing consumption in public housing, that the opposite is true for tenant-based certificates, and that Section 236 had little effect on consumption of other goods in its early years when the rent schedule required the poorest participants to pay a flat rent exceeding 25 percent of their income. Currently, about two thirds of the occupants of Section 236 units pay 30 percent of their adjusted income in rent because they receive project-based Section 8 subsidies, and so this program's effect on consumption of other goods is almost surely positive now.

Unfortunately, the contract reports done for HUD have consistently failed to calculate the percentage increase in consumption of other goods resulting from the programs studied or to provide the relevant mean incomes that would allow others to do it. However, these studies do indicate the dollar magnitude of the decrease in expenditure on housing. With income fixed, this is the dollar magnitude of the increase in expenditure on other goods. These studies consistently report that housing programs lead to decreases in housing expenditure.

A careful consideration of the justifications for housing subsidies to the poor suggests that a housing program is not successful unless it induces the worst housed households with each income to occupy better housing and consume less of other goods than they would choose if they were given cash grants involving the same subsidy.<sup>36</sup> These are the households who undervalue housing in the eyes of paternalistic altruists.

---

<sup>36</sup> The subsidy is the excess of the market value of goods consumed under the program over the market value of goods consumed in the absence of the program.

TABLE 8  
PERCENTAGE INCREASE IN CONSUMPTION OF HOUSING AND OTHER GOODS

			Housing	Other
<b>Public Housing</b>				
Olsen and Barton (1983)	New York City	1965	58%	17%
Olsen and Barton (1983)	New York City	1968	66%	17%
U.S. Department of Housing and Urban Development (1974)	Austin, Boston, Honolulu, Indianapolis, Minneapolis, Pittsburgh, Washington	1971	82%	19%
U.S. Department of Housing and Urban Development (1974)	Baltimore, Boston, Los Angeles, St. Louis, San Francisco, Washington	1971	71%	16%
U.S. Department of Housing and Urban Development (1974)	Boston, Pittsburgh, St. Louis, San Francisco, Washington	1971	59%	5%
Kraft and Olsen (1977)	National	1971	33%	14%
Mayo and others (1980A)	Phoenix	1975	35%	NA
Mayo and others (1980A)	Pittsburgh	1975	22%	NA
Hammond (1987)	National	1977	41%	*
<b>Section 236</b>				
U.S. Department of Housing and Urban Development (1974)	NA	1972	51%	0%
Mayo and others (1980A)	Phoenix	1975	31%	NA
Mayo and others (1980A)	Pittsburgh	1975	26%	NA
<b>Section 8 New Construction</b>				
Wallace and others (1981)	National	1979	58%	NA
<b>Section 8 Existing (Tenant-based)</b>				
Reeder (1985)	National	1976	16%	50%
Wallace and others (1981)	National	1979	31%	NA
Leger and Kennedy (1990B)	Large Urban PHA	1986		
Certificates			59%	NA
Vouchers			63%	NA
<b>All Programs</b>				
Hammond (1987)	National	1977	40%	*

NOTES. – The percentage increase in consumption is the percentage increase in the real market value (that is, market value divided by an index of the prices of the goods in a category).

NA = Not available.

\* = Not comparable with other results due to intertemporal approach used.



TABLE 9

MEAN GROSS MARKET RENTS OF SUBSIDIZED AND UNSUBSIDIZED UNITS, 1970

Metropolitan Area	Unsubsidized All Renters	Public Housing	Section 236	
			New	Rehab
Baltimore	116	113	–	–
Boston	135	125	245	206
Los Angeles	128	117	–	–
Pittsburgh	110	92	226	214
St. Louis	97	103	224	–
San Francisco	144	133	224	–
Washington, D.C.	134	136	215	197

SOURCE. – U.S. Department of Housing and Urban Development (1974, Tables 18 and 31).

NOTES. – The mean rents for all renters include the rents paid by subsidized households. Since the mean rent paid by subsidized households was below the mean rent of unsubsidized households, these mean rents understate the mean rent of unsubsidized households. However, since less than five percent of renters received housing assistance, the bias is surely small. Section 236 market rents are from 1972-73 data, adjusted to 1970 dollars using a national consumer price index.

Since other programs such as Food Stamps and Medicaid are intended to deal with households who overvalue housing in the eyes of paternalistic altruists (that is, households with excessive rent burdens), it is not clear how housing programs should change the consumption patterns of these households.

Since substantial empirical evidence supports the view that the mean income elasticity of demand for housing is no greater than one, the results in Table 9 strongly suggest that in aggregate occupants of public housing projects consume more housing services than they would consume if given cash grants equal to their housing subsidies. If the relevant numbers had been included in the reports of HUD's contractors, it might have been possible to make similar statements about other programs.

While many studies compare housing consumption with and without the program, only four make the more relevant comparison between housing consumption under the program and housing consumption with cash grants equal to the housing subsidies. Table 10 reports the results of these studies. They show that public housing, tenant-based Section 8 certificates, and the entire system of housing subsidies have this effect in aggregate, though the effect is more pronounced for public housing than for certificates.

What the existing studies do not tell us is whether the households whose consumption is "distorted" towards housing by these programs would have been among the worst housed households with the same budget constraint in the absence of housing assistance. Recall that the rationale for housing subsidies implies that these are the households whose consumption should be distorted towards housing.

In deciding how many households should be subsidized to consume housing beyond the levels resulting from cash grants, it is important to realize that the overwhelming majority of households eligible for housing assistance would not live in housing with severe or moderate physical problems or more than one person per room in the absence of the assistance. [See U.S. Department of Housing and Urban Development (2000, pp. A28-A29) for HUD's definition of these terms.] In 1997, only 23 percent of unassisted eligible households lived in such housing (U.S. Department of Housing and Urban Development, 2000, Table A5). Since the preprogram housing of recipients of housing assistance differs little from the housing of all eligible households (Wallace and others, 1981, p.171), about three fourths of all eligible households would not have these housing problems in the absence of housing programs.

### *C. Neighborhood Choices*

In discussing the neighborhood effects of subsidized housing, it is important to distinguish between its effect on the types of neighborhoods in which assisted families live and the effect of housing programs on the characteristics of the people and housing in a particular neighborhood. This section deals with the former. In the absence of housing subsidies, each currently assisted household would live in a particular neighborhood. With housing assistance, many of these households live in different neighborhoods. The difference in the characteristics of these neighborhoods for program participants is the effect of the program in this regard.

Before considering program effects, it is useful to provide some information on the neighborhoods occupied by households under the three broad types of rental housing assistance. Until quite recently, good national information on the neighborhoods in

TABLE 10

## PERCENTAGE INCREASE IN HOUSING CONSUMPTION BEYOND CASH GRANTS

Public Housing			
Olsen and Barton (1983)	New York City	1965	48%
Olsen and Barton (1983)	New York City	1968	53%
Hammond (1987)	National	1977	40%
Schone (1994)	National	1984	49%
Section 8 Existing (Tenant-based)			
Reeder (1985)	National	1976	10%
All Programs			
Hammond (1987)	National	1977	39%

NOTES. – Cash grant involved in these calculations is equal to the subsidy (that is, market rent minus tenant rent) rather than the cost to taxpayers.

which subsidized households live did not exist. Sandra Newman and her collaborators have remedied this deficiency. (See Newman and Schnare (1997) for a description of the data base that they have assembled and some initial results based on it.) Table 11 reports one of the results of their efforts. It shows that the neighborhoods occupied by public housing tenants have many more households with incomes below the poverty line than the neighborhoods occupied by recipients of other types of project-based assistance, certificates and vouchers, and welfare recipients. Recipients of certificates and vouchers live in noticeably better neighborhoods in this regard than households in the other categories.

Under the assumption that, in the absence of housing subsidies, households under each broad type of housing assistance would live in neighborhoods with the same characteristics as the neighborhoods currently occupied by welfare recipients, this table would indicate the effect of housing subsidies on the neighborhoods of assisted households. However, since there are some marked differences in the characteristics of the households served by the three types of program (see Table 6), it is not reasonable to expect that average characteristics of the neighborhoods of the households in these three groups would be the same in the absence of a housing subsidy.

A number of studies attempt to estimate this program effect directly by comparing the characteristics of the neighborhoods of households immediately before and after receipt of a housing subsidy. Tables 12 through 15 report some results of studies of the project-based Section 8 NC/SR Program and the tenant-based Section 8 Existing Program. The data underlying these studies are for a random sample of units in a random sample of projects (in the case of project-based assistance) within a random sample of urban areas.

Table 12 reveals that 57% of the minority households who moved into Section 8 NC/SR projects lived in the central city before and after their move and that 32% lived in the suburbs before and after their move. Only 11% of these households moved from the central city to the suburbs. So this program does not induce mass migration of minorities from central cities to suburbs. Table 13 indicates that participation in this program typically induced black households to move to a neighborhood with a substantially lower minority percentage.

Tables 14 and 15 refer to the effects on recipients of the tenant-based Section 8 Existing Program. Many participants in this program receive subsidies without moving because their initial units already meet the program's standards or (less often) are repaired to meet the standards and they choose not to move at least initially. The program has no immediate effect on their neighborhoods. Table 14 indicates that those households who move on receipt of the subsidy have fewer poor neighbors and live in neighborhoods where the housing is better. However, these effects are modest. Table 15 indicates that tenant-based certificates and vouchers also have a modest effect in reducing racial segregation in housing.

Finally, studies done as a part of the Experimental Housing Allowance Program indicated that public housing induces its participants to live in neighborhoods with a much higher fraction of low-income households and its black participants to live in neighborhoods with a significantly higher fraction of minority households (Kennedy, 1980, Table 3-9 and 3-14).

TABLE 11  
 DISTRIBUTION OF UNITS BY POVERTY RATE  
 (Percent)

	Assisted Housing			Welfare Households	All Rental Units
	Public Housing	Private Developments	Certificates and Vouchers		
Less than 10 percent	7.5	27.4	27.5	25.3	42.1
10-29 percent	38.9	50.7	57.8	51.0	45.4
20-39 percent	17.1	11.5	9.5	12.1	6.8
40 percent or more	36.5	10.4	5.3	11.6	5.7

SOURCE. – Newman and Schnare (1997, Table 3).

TABLE 12  
 MINORITY PERCENTAGE OF ALL HOUSEHOLDS BY LOCATION  
 BEFORE AND AFTER ENROLLMENT:  
 SECTION 8 NEW CONSTRUCTION AND SUBSTANTIAL REHAB PROGRAM

		Destination		
		Central City	Suburb	All Locations
Origin	Central City	57%	11%	68%
	Suburb	2%	30%	32%
	All Locations	59%	41%	100%

NOTES. – The sample size is 1385 observations.  
 SOURCE. – Wallace and others (1981, Table 3-8).

TABLE 13  
 MEAN CHANGE IN MINORITY CONCENTRATION FROM ORIGIN TRACT  
 TO DESTINATION TRACT FOR MAJOR DEMOGRAPHIC GROUPS:  
 SECTION 8 NEW CONSTRUCTION AND SUBSTANTIAL REHAB

Household Type	Number of Observations	Mean Percentage Minority in Tract of Origin	Mean Percentage Minority in Destination Tract	Mean Change in Percentage Minority
Black	1001	54%	35%	-19%
Hispanic	184	34%	32%	-2.3%
Minority	1314	47%	32%	-15%
Non-minority White	5918	7.2%	7.0%	0.2%

SOURCE. – Wallace and others (1981, Table 3-9).

TABLE 14  
 INCOME AND HOUSING MARKET CHARACTERISTICS OF CENSUS TRACTS  
 OCCUPIED BY RECIPIENTS BEFORE AND AFTER PARTICIPATION:  
 SECTION 8 EXISTING

	Housing Voucher Program	Certificate Program
Median Family Income (000s)		
Stayers	13.3	13.3
Movers' Origin Tract	12.6	12.5
Movers' Destination Tract	13.7	13.5
Percent of Families Receiving Welfare		
Stayers	16.2	16.9
Movers' Origin Tract	19.3	19.9
Movers' Destination Tract	17.2	16.1
Median Monthly Rent		
Stayers	233	240
Movers' Origin Tract	217	215
Movers' Destination Tract	235	234
Percent of Units Without Adequate Plumbing		
Stayers	2.6	2.6
Movers' Origin Tract	2.6	2.2
Movers' Destination Tract	1.7	1.9

SOURCE. – Leger and Kennedy (1990B, Tables 4.20 and 4.22).

TABLE 15

CHANGE IN RACIAL/ETHNIC CONCENTRATION OF TRACTS OCCUPIED BY BLACK  
(NON-HISPANIC) RECIPIENTS WHO MOVED FROM THEIR PRE-ENROLLMENT UNIT:  
SECTION 8 EXISTING

	Housing Voucher Program	Certificate Program
Percent Minority		
Origin Census Tract	75.8	77.1
Destination Census Tract	73.8	73.7
Percent Hispanic		
Origin Census Tract	7.9	8.8
Destination Census Tract	8.4	9.4
Percent Black		
Origin Census Tract	63.9	64.0
Destination Census Tract	61.9	61.2

SOURCE. – Leger and Kennedy (1990B, Table 4.25B).



#### D. *Work Disincentives*

With minor exceptions, all programs mentioned in this paper have always been means tested in the sense that there have been upper income limits for eligibility for households of each size.<sup>37</sup> Even the programs that have not been means-tested in this sense for all participants over their entire histories have had income limits for many participants for at least twenty years because the program's rules applying to new projects have changed or some participants receive extra subsidies under other programs that have income limits.

The largest programs (Section 8 Certificates/Vouchers and Public Housing) and three fourths of the units in privately owned HUD projects are also means tested in the sense that the magnitude of the subsidy received by a household occupying a particular dwelling depends upon its earned income (U. S. Department of Housing and Urban Development, 1997, p. 3). All units in the Section 8 New Construction Program, the largest HUD program involving privately owned projects, are means tested in the second sense. For more than fifteen years, the tenant has paid 30 percent of adjusted income in rent under these programs.<sup>38</sup>

Under some project-based programs such as the LIHTC, Section 221(d)(3), and Section 202 (older projects), the subsidy does not depend on income unless the unit or household receives a subsidy from some other source. In each of these cases, the basic program reduces the rent for each unit below the market rent, and the occupant pays this rent independent of its income. However, as far back as 1965, some households in the projects funded under these programs have received additional subsidies that reduced their rents to a fixed fraction of their incomes, and a significant minority of the current participants in these programs receives these extra subsidies. For example, about forty percent of LIHTC units receive Section 8 assistance (GAO, 1997, p.40.).

The basic Section 236 program is between the two extremes of proportional adjustment of rent to changes in adjusted income for all participants and no adjustment of rent for all participants. Under the original program, all households who occupied identical units in a Section 236 project and had incomes below a certain level paid the same rent. (Within a project, the income cutoff was different for households occupying apartments of different sizes.) If income exceeded the cutoff, the rent was twenty five percent of adjusted income. Therefore, the benefit reduction rate was zero at low levels of income and .25 at higher levels. Substantial numbers of households were in each category. Between 1965 and 1974, some, but not all, of the poorest households living in Section 236 projects received rent supplements that reduced their rents to 25 percent of their adjusted incomes over a larger range of adjusted income. Only if the household's income fell below a very low level would its rent and hence subsidy be independent of its earnings. After 1974, many more of the poorest households in Section 236 projects received subsidies under the Section 8 Loan Management Set-Aside Program that initially reduced their rents to twenty five percent of their adjusted incomes and later to thirty percent.

In studying the work disincentive effects of housing programs, it is important to realize that the subsidy is not the same function of earnings for all households with the

---

<sup>37</sup> The primary exceptions have been the Section 202 and Section 221(d)(3) MIR.

<sup>38</sup> This ignores several alternative rent schemes that applied to a small minority of recipients.

same characteristics, even within a given program and the same locality. The subsidy is the excess of the market rent of the unit occupied over the rent paid by the tenant. The preceding paragraphs pointed out the differences in the rents paid by households with the same characteristics under some programs. Even more important are the enormous differences in the market rents of the units occupied by similar households under all mature construction programs. The newest units under these programs are very good and hence have a high market rent. The worst are deplorable in part because the program's minimum occupancy standards are not always enforced. The maximum subsidy within a locality under the each certificate or voucher program is the same for households with the same characteristics. However, the maximum real subsidy under this program to a household with the same real income will vary across localities because the program's guarantee (the FMR) is not the same everywhere in real terms.

Because the magnitude of the housing subsidy received by a household occupying a particular dwelling is a decreasing function of its earned income in the vicinity of its chosen bundle for the overwhelming majority of recipients of housing assistance and is independent of earned income for all other recipients, it seems plausible that the standard assumptions of economic theory together with the assumption that leisure is a normal good would imply that each recipient would work less as a result of the program. Schone (1992) has shown that this intuition is incorrect for a program such as public housing that offers a household a specified apartment for a rent that is proportional to its earned income. She does it by producing a counterexample that involves no peculiar assumptions about preferences or the budget space of the household offered a public housing unit. As usual, this is a result of the nonlinearities of the budget frontier. Therefore, empirical research is required to determine even the qualitative effect of the program in this regard.

In the seminal study of the labor supply effects of means-tested housing programs, Murray (1980) estimated that public housing induces tenants to reduce their labor earnings by about 4 percent. Since the study predated data on the hours worked by participants in housing programs and information about multiple program participation, many highly restrictive assumptions were required to make this estimate. First, Murray assumed that leisure is separable from produced goods in household preferences. Many utility functions used in empirical research have this property. Second, he relied on a utility function defined over leisure and a composite of produced goods that was estimated ignoring all nonlinearities in budget frontiers and all differences in market prices facing households living in different localities. It also ignored differences in tastes for leisure versus produced goods across different households, thereby ignoring selection bias. Participants in housing programs may have a different taste for leisure than others. Third, in estimating the subutility function defined over housing and other produced goods, he ignored the other in-kind subsidies for which public housing participants were eligible. However, he did allow for differences in taste based on certain observed characteristics of households, and he did avoid selection bias at this stage by using data on public housing tenants immediately prior to entering the program to estimate the subutility function.

Since the SIPP, it has been possible (though extremely difficult) to estimate household preferences accounting for many of the nonlinearities in budget frontiers that result from government programs and to predict the effects of changes in the parameters

of these programs in a way that avoids selection bias. In the most important published contribution to this literature, Keane and Moffitt (1998) estimate a model of labor supply and program participation for female heads of household who are eligible for AFDC, food stamps, and housing assistance. They model Medicaid as a benefit automatically received by all participants in AFDC and account for federal income and social security taxes. The estimated model is then used to predict the effects of a wide variety of changes in the welfare system.

The treatment of housing assistance is the most problematic part of their analysis. Since estimation is extremely challenging without disaggregation of produced goods into housing and other produced goods, they did not do it. However, they recognized that housing subsidies, unlike food stamps, are worth much less to many recipients than cash grants in the amount of the subsidy. They also recognized that housing subsidies are not entitlements and that many households that want to participate are not offered assistance. Keane and Moffitt attempted to capture these aspects of reality by assuming that each household could choose to participate in a program that would provide them with a cash grant equal to an unknown fraction of the difference between the local fair market rent under the Section 8 Certificate/Voucher Program for a household with its characteristics and 30 percent of its adjusted income. That is, housing assistance was treated as an entitlement NIT whose known parameters are parameters of the Section 8 Certificate/Voucher Program. However, they judged the results based on this specification to be so implausible that they abandoned this approach and reestimated the model treating the housing subsidy as an exogenous component of nonlabor income for participants and not attempting to explain housing program participation.

Ignoring the possibility that the household alters its behavior to affect the probability that it will be selected to participate in a housing program, the information missing from the SIPP that precludes estimation of preferences in a straightforward manner is whether a household that is not receiving housing assistance was offered housing assistance during the period under consideration and what housing assistance was offered. For example, was the household offered a Section 8 voucher? Was it offered a particular public housing unit, and what were the characteristics of that unit? (Even without this detailed information on what the household was offered, it would be possible to proceed based on a knowledge of which households rejected offers and approximations of the offer.) Accounting for the possibility that the household alters its behavior to affect the probability that it will be selected to participate in a housing program would require a model of decision making under uncertainty and a model of administrative selection.<sup>39</sup>

The best study of the work disincentive effect of a housing program is also one of the most sophisticated econometric studies of the labor supply effects of any government program. In this study, Schone (1994) uses data from the SIPP to estimate the distribution of preferences defined over leisure, housing and other produced goods for a population of female-headed households. These estimates account for many of the nonlinearities in the budget frontier resulting from eligibility for AFDC, food stamps, public housing, federal and state income taxes, and social security taxes. (She deleted households who are assisted by other housing programs from the sample because the

---

<sup>39</sup> Crews (1995) has developed such a model to study the effects of housing programs on the consumption of produced goods, treating labor earnings as exogenous.

specific program was not identified and hence she could not describe the household's budget frontier.) She then uses these estimates to predict the effects of several changes in policy. She estimates that the combined effect of AFDC, food stamps, and public housing is to reduce the labor supply of female-headed households by 42 percent and to increase their consumption of housing by 18 percent (Schone, 1994, Table 7). Table 16 reproduces her Table 8. It shows that cashing out housing programs, that is, eliminating housing programs and adding the housing subsidy to the AFDC guarantee of the participants in these programs, will increase the labor supply of these households only 2 percent but will reduce their consumption of housing 33 percent.

One assumption underlying these estimates is that households who did not receive housing assistance during the last quarter of 1984 were not offered housing assistance during that period. Since it is certainly not the case that all households who are offered housing assistance accept it, this assumption is violated to some extent. For example, Kennedy and Finkel (1994) found that 13 percent of the households offered Section 8 vouchers and certificates in the early 1990s did not use them. The figure was 27 percent in the mid-1980s (Leger and Kennedy, 1990A). (Similar figures for public housing and subsidized privately owned projects are not available.) However, since turnover in housing programs is low and the number of assisted households was not increasing rapidly at this time, it is safe to say that only a minute fraction of Schone's sample declined an offer of housing assistance during the last quarter of 1984. In this sense, her assumption is quite close to the truth.

Of course, some households surely declined to apply for housing assistance based on the cost of participation broadly conceived and their perceptions of the likelihood of being chosen to participate in each program and, in the case of project-based assistance, the likelihood of being offered particular units. Modeling the decision to apply may enable us to estimate the distribution of taste parameters in the population with less bias and more precision. Two problems in implementing this approach are that few databases contain information on whether a household is on a waiting list for housing assistance and waiting lists are frequently closed to additional applicants. Therefore, it is incorrect to conclude that households that are not on the waiting list do not want to participate.

#### *E. Mean Benefit and Subsidy*

Since housing programs change budget spaces in ways very different from lump-sum grants, we certainly expect any satisfactory measure of benefit to be less than the subsidy for almost all households. Therefore, the mean benefit should be less than the mean subsidy.

Table 17 contains the results of seven studies that estimate both the mean benefit and mean subsidy for one of the four programs or for the entire system of housing subsidies. Clearly, there are few estimates for programs other than public housing, and there are no recent estimates for any program or for the system as a whole. The median of the estimated ratios of mean benefit to mean subsidy for public housing is .76, and seventy percent of the estimated ratios are between .71 and .81. Based on one study apiece, the ratio is between .63 and .77 for Section 8 NC/SR, .83 for tenant-based Section 8 Existing, and .61 for the system as a whole.

TABLE 16  
SIMULATION OF CASHING OUT PUBLIC HOUSING  
(for current public housing recipients)

Original Program Participation Combination	N	Predicted Labor Supply / Week		Predicted H / Month	
		Baseline	Public Housing Cashed Out	Baseline	Public Housing Cashed Out
Public Housing Only	23	26.28	27.95	399.88	283.51
Public Housing, AFDC	2	0.98	0	492.46	230.53
Public Housing, Food Stamps	10	8.57	6.42	356.95	242.15
All Programs	39	0	0	394.44	259.14
All Public Housing Recipients	74	9.35	9.56	393.71	263.65

SOURCE. – Schone (1994), Table 8.

TABLE 17  
RATIO OF MEAN BENEFIT TO MEAN SUBSIDY

			Measure	Sample	Ratio
<b>Public Housing</b>					
Olsen and Barton (1983)	New York City	1965	EV	1366	0.77
Olsen and Barton (1983)	New York City	1968	EV	1515	0.73
Murray (1975)	7 Cities	1968	EV	1388	
Cobb-Douglas					0.81
CES					0.84
Kraft and Olsen (1977)	Boston, Pittsburgh, St. Louis, San Francisco, Washington	1972	EV	333	0.73
Clemmer (1984)	33 SMSAs	1977	EV	>20,000	
Cobb-Douglas					0.92
Stone-Geary					0.80
Linear Demand					0.71
Nonlinear Demand					0.76
Hammond (1987)	National	1977	EV	804	0.64
<b>Section 8 New Construction</b>					
Schwab (1985)	13 Metro areas	1979	CV	167	
Loglinear H Expenditure Function					0.63
Linear H Expenditure Function					0.77
<b>Section 8 Existing (Tenant-based)</b>					
Reeder (1985)	National	1976	EV	1099	0.83
<b>All Programs</b>					
Hammond (1987)	National	1977	EV	1088	0.61

F. *Distribution of Benefits*

Little can be said on the basis of the program's rules and the general assumptions of economic theory about how mean benefit will vary with household characteristics under any of the programs even within a single locality. Since larger households are entitled to larger apartments under the programs considered, the subsidy will be greater for larger households on this account. However, since larger units under new construction programs may typically be in worse condition or in worse neighborhoods than smaller units, they are not necessarily better overall. Therefore, the mean subsidy is not necessarily greater for larger households. The certificate and voucher programs provide a larger maximum subsidy to larger households within a locality. However, if larger households experience a larger consumption distortion than smaller households, they could receive a smaller benefit even though they receive a larger subsidy.

Similar remarks apply to the variation in mean benefit with household income within a locality. For all units under many project-based housing programs and many units under the rest, the rent that the tenant pays varies directly with income among households of the same size. Therefore, if all households of a particular size served by a program lived in apartments with the same market rent, the subsidy would be larger for the poorest households of that size. Under all variants of tenant-based Section 8, the maximum subsidy varies inversely with income among households of the same size. However, it is far from the truth that all households served by a mature construction program (that is, a construction program that has been in existence for many years) occupy housing with the same real market rent. Furthermore, a larger subsidy does not imply a larger benefit. If poorer households experience a larger consumption distortion than richer households, they could receive a smaller benefit even though they receive a larger subsidy.

Table 18 summarizes the results of regressions of estimated benefit on household characteristics in which a linear relationship between mean benefit and income, family size, age, race and other characteristics are assumed. All of the studies except Kraft and Olsen used real benefit and income in their analyses. That is, they divided money benefit and income by a cross-sectional price index.<sup>40</sup>

Some results are consistent across the studies. In public housing, tenant-based Section 8, and the system as a whole, the mean benefit is larger for poorer households that are the same with respect to other characteristics. Similarly, mean benefit is larger for larger households. These results continue to hold when the authors allow for the possibility of a non-monotonic relationship by including income and family size squared. The results are less consistent for race and age of the head of the household. The coefficients have different signs in different studies, they are often statistically insignificant, and the magnitudes of the coefficients indicate small differences in mean benefit among otherwise similar households who differ in these respects.

Two other noteworthy results emerged from these analyses. First, when Murray included dummy variables for the different cities represented in his data in the regression equation, he found substantial differences in the real mean benefit of public housing for households with the same characteristics living in different urban areas. In her study of

---

<sup>40</sup> Since Kraft and Olsen's study is based on data for five of the country's largest metropolitan areas, it is not clear that taking account of overall differences in prices would have had much effect on their results.

TABLE 18  
DISTRIBUTION OF BENEFITS AMONG PROGRAM RECIPIENTS

	Income	Family Size	Black	Age	SE/Benefit	Sample
Public Housing						
Olsen and Barton (1983) - 1965	—*	+*	—	—	0.38	1366
Olsen and Barton (1983) - 1968	—*	+*	—	—	0.43	1515
Murray (1975)	—	+	+*	+*		1388
Kraft and Olsen (1977)	—*	+*	—*	—*	0.93	333
Hammond (1987)	—*	+*	—	+*	0.89	804
Section 8 Existing (Tenant-based)						
Reeder (1985)	—*	+*	—	+	0.42	1099
All Programs						
Hammond (1987)	—*	+*	+	+*	1.23	1088

NOTES. — This table summarizes the results from multiple regression analyses in several articles. In each case, the benefit is regressed on the variables presented in the first four columns and other variables. Olsen-Barton and Kraft-Olsen included sex of the head of the household; Hammond included sex and education of the head and dummy variables for region of the country and size of the locality; and Reeder included dummy variables for sex of the head, other minority, and nonmetropolitan residence as well as an overall price index and the squares of income and family size. In Murray, Age is a dummy variable which indicates whether the head is 62 years or older. Murray also includes dummy variables for different household compositions rather than a single variable for family size. The signs presented in the table indicate whether mean benefit varies directly (+) or inversely (-) with the household characteristic. The fifth column presents the standard deviation of the error term divided by the mean benefit, as a measure of the amount of variation present. Finally, the last column gives the number of observations used in the regression.

\* = the coefficient was statistically significant at the 5% level.



public housing and the entire system of housing subsidies, Hammond also found substantial differences in real mean benefit for otherwise similar households living in different regions and in places with different degrees of urbanicity. Reeder found large differences in the real mean benefit of the Section 8 Existing Program between otherwise similar households living in expensive and inexpensive locations. Second, when Reeder included a measure of the household's taste for housing in the regression equation, he found that households with the strongest taste received the largest benefit from the Section 8 Existing Program.

### *G. Participation Rates*

There are few studies of participation rates under housing programs. The majority of studies are purely descriptive. They are intended to be useful for judging whether the programs are serving the intended groups rather than testing hypotheses about behavior.<sup>41</sup> Reeder (1985, Table 6) presents the percentage of households in each income and family size class who participate in any HUD program in 1977. The highest participation rate in any of the 77 classes was less than 25 percent. The regularities are that, for any family size, the participation rate first rises and then falls as income increases. The poorest households of each size have very low participation rates. Within each income class, participation rates are highest for one-person households, reflecting the strong preference received by the elderly in housing programs, and for medium sized families.

Wallace and others (1981, Figure S-3 and Table 2-8) compare the fraction of eligible households and participants in the Section 8 Existing and New Construction Programs with particular characteristics. For Section 8 Existing they find that in 1979 the percentage of participants who were elderly was about the same as the percentage of eligible in this category, that minorities were a slightly larger fraction of participants than eligibles, and very-low income households were a noticeably larger fraction of participants than eligibles. For Section 8 New Construction, elderly, white, females, and small families were greatly overrepresented in the sense that they were a higher fraction of participants than eligibles.

Olsen and Barton (1985, p. 325) use a linear probability model to estimate how the participation rate in public housing in New York City in 1965 and 1968 varied with the household's income and size and with the age, race, and sex of the head of the household. (At that time, public housing accounted for almost all subsidized housing for the poor in the City.) The most striking finding is that blacks had a much higher participation rate (about 20 percentage points) than whites with the same other characteristics. Participation also increased noticeably with family size (about 4 percentage points per person).

In her attempt to account for both self and administrative selection in estimating the preferences of recipients of housing subsidies and the benefits that they receive from housing programs, Crews (1995) used data from the 11 metropolitan areas in the 1987 American Housing Survey to estimate a probit model explaining whether a household

---

<sup>41</sup> Of course, different people may desire different patterns. For example, some may prefer no difference in participation rates among otherwise identical blacks and whites, and others may have different preferences in this regard. Whatever a person's preferences, the pattern of participation is useful information.

receives housing assistance. Her explanatory variables reflect participation costs broadly conceived and the factors involved in the preference systems of housing authorities. She found that the poorest households, nonwhites, food stamp and welfare participants, and the unemployed had higher participation rates that were statistically significant at the 1% level. The elderly have a much higher participation rate that is statistically significant at the 5% level. The variables representing federal preferences were jointly significant at the 1% level.

#### *H. Market Prices*

It is often argued that housing programs will have effects on the rents of unsubsidized units with specified characteristics throughout the housing market. For example, it has been argued that housing vouchers will lead to a higher demand and hence higher rents for units that just meet the standards of the housing program and lower demand and hence lower rents for the worst units because these units will be abandoned by households who receive vouchers. This argument is certainly well founded on economic theory at least in the short run. Others argue that new construction programs will lead to lower prices for existing apartments. If the new construction comes as a complete surprise to private suppliers, this is also a clear implication of standard economic theory. However, if the new construction under the program is completely anticipated by private suppliers, the opposite effect is to be expected. To the extent that subsidized construction programs lead to greater production of housing, they drive up the prices of inputs that are most important in the production of housing and thereby increase the cost of producing housing with any specified characteristics.

Other than studies of the effects of housing programs on the rents of units in the immediate neighborhoods of subsidized housing that will be discussed later, there are no studies of the effects of any of the programs under consideration on market rents. The aforementioned studies are usually interpreted as measuring the magnitude of nonpecuniary external effects rather than market effects due to changes in the pattern of demand and supply. NBER and Urban Institute simulation models have been used to study the effects of hypothetical programs bearing some resemblance to the programs under consideration (Kain, 1981). The Housing Allowance Supply Experiment did study the effect on market prices of an entitlement housing voucher program similar to the Section 8 voucher program in operation between 1983 and 1999. This study found little effect on the market rents of units of any type (Barnett and Lowry, 1979; Mills and Sullivan, 1981; Rydell, Neels, and Barnett, 1982). If an entitlement housing allowance program for which 20% of households were eligible had no discernible effect on housing prices, it is perhaps reasonable to conclude that existing tenant-based programs have little effect. Nothing is known about the effects of the construction programs on housing prices.

#### *I. Tangible External Benefits*

Many of the alleged tangible external benefits and costs of particular types of housing program would accrue to neighbors of subsidized households. To the extent that they existed, these external benefits and costs would be reflected in neighboring property

values. Although the oldest study of this matter was conducted more than forty years ago, there have been relatively few studies over the years.<sup>42</sup> Until recently, these studies have usually been limited to a small number of projects in one city or based on crude methods and data. Recent advances in software for analyzing geographical data have led to several detailed analyses based on data on sales of all unsubsidized single family units and the location of all subsidized households or projects in several large metropolitan areas. Lee, Culhane, and Wachter (1999) studied the effects of all major urban rental housing programs.<sup>43</sup> They find small positive effects on average for some programs and small negative effects for others. Galster, Tatian, and Smith (1999B) find statistically significant effects of the occupancy of units by recipients of Section 8 certificates and vouchers on neighborhood property values. The direction of the effect depends on the nature of the neighborhood and the concentration of program participants in the neighborhood, and the magnitudes are relatively small.

#### *J. Other Issues*

Other important issues dealt with in the literature on housing policy are the extent to which subsidized new construction reduces unsubsidized construction (Murray, 1983; 1999), the effect of public housing waiting lists on intra-urban mobility (Painter, 1997), the effect of subsidized housing on homelessness (Early, 1998), the effect of living in public housing on the educational attainment of children (Currie and Yelowitz, 2000), the effect of living in different types of housing project as a child on educational attainment and earnings as an adult (Newman and Harkness, 2000), and the effect of requiring subsidized households to live in low-poverty neighborhoods on self-sufficiency, educational outcomes, and juvenile crime (Ludwig, Ladd, and Duncan, 2000A, 2000B, 2001).<sup>44</sup>

#### *K. Experimental Housing Allowance Program*

No discussion of housing policy research would be complete without some mention of the Experimental Housing Allowance Program (EHAP). The major goals of EHAP were to determine the market effects of an entitlement program of tenant-based housing assistance and the effects of various types of such assistance on household choices. Congress authorized this program in 1970, planning for the experiment occurred in the early 1970s, data were collected during the mid-1970s, and the final reports were completed in the late 1970s and early 1980s. The experiment cost almost \$200 million (that is, more than \$500 million in 2000 prices); research and data collection accounted for almost half of this amount.<sup>45</sup> The research firms that ran the experiments issued more

---

<sup>42</sup> See Galster, Tatian, and Smith (1999A) for a review of the literature.

<sup>43</sup> They incorrectly assume that the FHA-assisted units in their data are owner-occupied units. In fact, these are units in privately owned subsidized rental projects under programs such as Section 221(d)(3) and 236 whose mortgages are insured by the FHA. Therefore, their conclusions about the effect of homeownership programs on neighboring property values is not supported by their results.

<sup>44</sup> Ludwig, Ladd, and Duncan's research is based on data from HUD's Moving to Opportunity Demonstration Program in Baltimore. Their papers contain references to similar research based on data from the other cities in the demonstration.

<sup>45</sup> Sadly, HUD lost all of the data that had been so carefully collected and documented.

than 300 reports, technical notes, and professional papers. As a result of these expenditures, we know more about the effects of the experimental programs studied than any established housing program.

The experiment had four components: the Supply Experiment, the Demand Experiment, the Administrative Agency Experiment, and the Integrated Analysis. The first two were the largest and most important.

The Rand Corporation conducted the Supply Experiment. The experiment involved operating entitlement housing allowance programs in the Green Bay and the South Bend metropolitan areas. At the time of the experiment, Green Bay had few minorities and a very low vacancy rate. South Bend had a large minority population and a high vacancy rate. About 20 percent of the households in each area were eligible for housing assistance. Unlike established housing programs, both renters and homeowners could participate. These households were offered a cash grant on the condition that they occupy housing meeting certain standards. These payments could continue for up to ten years provided that the household remained eligible. The primary purposes of the experiment were to determine the market effects of an entitlement program of household-based assistance such as its effects on the rents of units with specified characteristics and how suppliers alter their units in response to the program. The Supply Experiment research still accounts for the bulk of what is known about these matters.

Abt Associates conducted the Demand Experiment in the Pittsburgh and Phoenix metropolitan areas. This experiment was primarily intended to see how recipients would respond to different types of household-based housing assistance and, for a given type, to different program parameters. To this end, eligible households were assigned at random to the different programs or to a control group that was paid a small amount of money to provide needed information. One type of housing assistance offered eligible households a cash grant under the condition that they occupy housing meeting certain standards, another offered a cash grant under the condition that they spend at least a certain amount on housing (two different amounts were tested), and another offered the same cash grant with no strings attached. Two other plans offered to pay different fractions of the household's housing expenditure with no other strings attached. Since the Demand Experiment provided subsidies for only three years and large changes in housing consumption have a large fixed cost component, the Demand Experiment results undoubtedly understate the responsiveness to a permanent program (Bradbury and Downs, 1981, pp. 367-368).

The most important Demand Experiment research from the viewpoint of influence on housing policy went beyond a comparison of different types of household-based assistance. It compared the effects of the minimum standards housing allowance program with the major established housing programs in existence at the time, namely Public Housing, Section 236, and Section 23. The results of some of this research are reported earlier in this paper.

In the Integrated Analysis, the Urban Institute helped to design all of the experiments and used data from all of the experiments to analyze many of the same questions considered by the contractors operating the experiments. The Administrative Agency Experiment conducted by Abt Associates focused on the behavior of local administrative agencies in operating an allowance program. Unlike the Demand Experiment, it was not a controlled experiment.

The best introductions to this vast literature are the final reports of the Supply Experiment, the Demand Experiment, and the Integrated Analysis (Lowry, 1983; Kennedy, 1980; Struyk and Bendick, 1981), an edited volume containing (with one exception) summaries of the findings by the major contributors to EHAP research (Friedman and Weinberg, 1983), an edited volume containing evaluations of this research by outside scholars (Bradbury and Downs, 1981), a monograph containing some of the more technical results on consumer behavior from the Demand Experiment (Friedman and Weinberg, 1982), and HUD's 1980 summary report.

Although it is impossible to present a detailed review of the findings here, it is possible to state a few of the most important results for housing policy. Since the only type of tenant-based housing assistance studied in EHAP that has been used in an established program is the cash grant conditional on occupying a dwelling meeting certain housing standards and both the Supply and the Demand Experiments studied this type of program, the summary will focus on it.<sup>46</sup>

About half of the eligible families in the Supply Experiment occupied housing meeting its standards and about a fourth of the eligible families in the Demand Experiment sites occupied housing meeting its more stringent standards prior to receiving assistance. Even at the lowest income levels, many households occupied units meeting the standards of the Demand Experiment. This suggests the importance of preferences in determining whether poor households meet housing standards. Not surprisingly, households whose units met the standards prior to the program were much more likely to participate in the minimum standards housing allowance program. They could receive a subsidy without moving or getting their landlords to improve their apartments.

Although the entitlement housing allowance programs in Green Bay and South Bend were heavily publicized, the participation rate leveled off at about a third after three years. It was about 41 percent for eligible renters and 27 percent for eligible homeowners. The primary reasons for the low participation rates are easy to understand. Since the subsidy declines linearly with income until the upper income limit is reached and the density of eligible households increases with income, many eligible households were entitled to small subsidies. Many others who were eligible for somewhat larger subsidies had to move to get them because their apartments were substantially below the program's minimum standards. Many households eligible at a point in time were only briefly eligible. Finally, despite the heavy publicity, seventeen percent of eligible households had not learned about the program by the end of its third year. Obviously, we should not conclude that the participation rate in any entitlement minimum standards housing allowance program would be a third. This is heavily dependent on the generosity of the subsidy and the minimum standards. It is possible to have an expensive entitlement housing allowance program serving a large number of households or an inexpensive program serving a small number.

---

<sup>46</sup> The Section 8 Voucher Program implemented in 1983 and currently being phased out is a program of this type. (See Figure 4.) Since this program does not have the same specific parameters (housing standards, real guarantee, and benefit reduction rate) as the programs studied in the experiments and participation in the Section 8 Voucher Program depends importantly on administrative selection, it should not be expected to have the same quantitative effects as the experimental programs. The best sources of information about the effects of the Voucher Program are the detailed studies commissioned by HUD (Leger and Kennedy, 1990A, 1990B; Kennedy and Finkel, 1994).

The minimum standards housing allowance program tested in the Supply and Demand Experiments resulted in modest increases in overall housing consumption as measured by the mean market rent of the units occupied and a substantial effect in terms of the fraction of eligible households meeting the program's minimum standards. Recipients in the Supply Experiment devoted 80 percent of their increased spending to goods other than housing. For a slight majority of recipients, the minimum housing standards were non-binding constraints. So the effect of the program on the consumption patterns of these households was an income effect alone. For many others, only modest improvements in their current housing were necessary to meet the standards. Indeed, the required improvements were so modest that many renters made them without involving their landlords.

Evidence from the Supply Experiment shows beyond a reasonable doubt that an entitlement housing allowance program similar to the one tested will have no significant effects on rents of units with specified characteristics even in the short run. Reasons for the program's small effect on rental housing prices are easy to find. Eligible families account for only a small fraction of the demand for housing services in a given housing market, and many of these families choose not to participate. So even a large increase in demand by participants will have a small effect on aggregate demand for housing services, and this small increase occurs gradually over time because not all families respond instantly to an offer of assistance.<sup>47</sup> Furthermore, the Supply Experiment revealed that even over short periods suppliers are willing to make many changes in existing units in response to small changes in the profitability of housing with different characteristics. The effect of the housing allowance program on the rents of unsubsidized units in submarkets defined in terms of housing characteristics was not studied.

## **V. Reform Options**

The major options for reform of the system of housing subsidies to low-income households are answers to the following questions. Should housing assistance be an entitlement? Should the poorest households of each size be given priority for housing assistance? Should housing subsidies be delivered to additional households by building new projects under some type of construction or substantial rehabilitation program or by giving them housing vouchers? Should we require households currently living in subsidized projects for which future federal expenditure is discretionary to live in these projects to receive a subsidy and their owners given a sufficient subsidy to induce them to continue to serve these households, or should these households be given housing vouchers? This section will consider each of these questions.

Unlike other major means-tested transfer programs, housing assistance is not an entitlement despite its stated goal of "a decent home and suitable living environment for every American family" (Housing Act of 1949). No coherent justification for this feature

---

<sup>47</sup> The response to an offer of housing assistance with minimum housing standards is surely slower than the response to an offer of assistance for most other goods because many households must substantially renovate their current housing or move in order to receive assistance. Despite this drawback of tenant-based housing assistance of this form, it still gets households into satisfactory housing much faster than any form of new construction. The lag between authorization of funds and occupancy under all construction programs is much greater than the lag under this form of tenant-based assistance.

of the system of housing subsidies has been offered. That is, no one has attempted to explain why we should offer assistance to some, but not other, households with the same characteristics.

The usual argument against making housing assistance an entitlement is that it would be too expensive. Those who make this argument seem to have in mind delivering housing assistance to all currently eligible households using the current mix of housing programs and the current rules for the tenant's contribution to rent. This would indeed increase the amount spent on housing assistance greatly, though this magnitude has not been estimated. However, we do not have to make more than forty percent of the population eligible for housing assistance, we can reduce the fraction of housing assistance delivered through programs that are cost-ineffective, and we can reduce subsidies at every income level. Indeed, U.S. housing policy has been moving in this direction as a result of (1) a series of amendments of 1937 Housing Act that required an increasing percentage of households served by tenant-based assistance to be the poorest of the currently eligible households, (2) the introduction and rapid expansion of the cost-effective tenant-based Section 8 Program authorized by the 1974 Housing Act, and (3) the increase in the tenant contribution to rent mandated by the Housing and Community Development Amendments of 1981. Each of these reforms moved us in the direction of an entitlement program.

Furthermore, it is easy to develop an entitlement housing assistance program with any cost desired. For example, we could have an entitlement housing assistance program without spending any additional money by a simple change in the Section 8 Voucher Program, namely reducing the subsidy available to each eligible household by the same amount. This will effectively eliminate from the program all households currently eligible for subsidies smaller than this amount. These are the currently eligible households with the largest incomes. This will free up money to provide vouchers to poorer households who want to participate. The reduction in subsidies to those who continue to participate will free up money to provide vouchers to households with identical characteristics who had not previously been served. At current subsidy levels, many more people want to participate than can be served with the existing budget. As we reduce the subsidy at each income level, the number of households that are eligible for a subsidy and willing to participate will decline until we reach a point where all households who want to participate in the program are participating. So without any change in the program's budget, we can create an entitlement housing assistance program serving the poorest of the currently eligible households. If reductions in the subsidies received by current participants seem too draconian, we could phase in the new system by freezing subsidies at current levels and allowing inflation to erode real subsidy levels.

In discussions of housing policy, a common objection to this proposal is that no one would be able to find housing meeting the program's standards with the lower subsidies. Obviously, this objection is logically flawed. If we start from a position where many more people want to participate than can be served with the existing budget and we reduce subsidy levels slightly, it will still be the case that more people want to participate than can be served. If we decrease the subsidy levels so much that no one wants to participate, we have decreased them more than the proposed amounts.

A more sophisticated argument against the proposal is that the poorest households will be unable to participate in the proposed program. The simple proposal above calls

for reducing the guarantee under the Voucher Program (called the Payment Standard). This is the subsidy received by a household with no income. If the Payment Standard is less than the rent required to occupy a unit meeting the Program's minimum housing standards, then a household whose income and assistance from other sources is just sufficient to buy subsistence quantities of other goods would be unable to participate in the proposed Voucher Program. Previous studies (Olsen and Reeder, 1983; Olsen and Crews, 1997) have shown that the Payment Standard exceeds the market rent of units just meeting the Program's minimum housing standards in all of the many metropolitan areas and bedroom sizes studied. The median excess was about 60 percent in the mid-1970s and the mid-1980s. So a considerable reduction in the payment standard could occur almost everywhere without precluding participation by the poorest of the poor. However, the preceding proposal might lead to a particularly low participation rate by these households. This could be counteracted by a smaller reduction in the guarantee combined with a greater benefit reduction rate. For a given program budget, this would yield a higher participation rate by the poorest of the poor and a lower participation rate by other eligible households.

Another objection to the proposed program is that participants in the revised Section 8 Voucher Program would receive much smaller subsidies than the majority of identical households receiving project-based assistance, thereby introducing additional inequities into the system of housing subsidies. This objection could be overcome by increasing the tenant contribution under the programs of project-based assistance and using the savings from the reduced subsidies under these programs to increase the budget of the Voucher Program. If this were done, subsidies under the Voucher Program would not have to be reduced as much to make it an entitlement program and hence the program's participation rate would be higher.

The other three questions in the introduction to this section are important whether or not housing assistance is an entitlement. For example, whether the poorest households should be given priority for housing assistance is an issue for an entitlement program in the sense that the parameters of the program determine the participation rates of households at each income level.

The trend in housing policy has been towards targeting assistance to the poorest of the currently eligible households in tenant-based programs and in the opposite direction for project-based assistance. The latter trend reflects a widespread agreement among those involved in discussions of housing policy that concentrating the poorest households at high densities in projects is a bad idea.<sup>48</sup> To the extent that this belief is justified and focusing aid on the poorest of the currently eligible households is desired, the obvious policy options are to voucher out project-based assistance as soon as possible given contractual commitments and to avoid building large new projects at high densities. Both options will be discussed in detail below. However, it is worth mentioning at this point that public housing authorities with HUD assistance have been tearing down some of their worst large projects and replacing them with lower-density projects on the same sites. (This initiative is called HOPE VI.) Since the optimal density of housing production on a site from the viewpoint of efficient production depends on the price of

---

<sup>48</sup> This view is not based on a substantial body of empirical evidence (though some evidence exists), and it is not the case that the majority of housing projects are large high-rise buildings.



land, this policy might well have a substantial effect on the cost-effectiveness of the public housing program.

The unanimity of the evidence on the cost-effectiveness of tenant-based vouchers versus any form of project-based assistance studied is a strong argument for providing vouchers to all additional households receiving housing assistance, especially because the parameters of a voucher plan can be altered to change many of its other effects without affecting its cost-effectiveness or its total cost to taxpayers. For example, if we want to increase the effect of the latest voucher program on housing consumption at the expense of consumption of other goods, we can reduce the subsidy at each income level and allow recipients to spend more than 40 percent of their adjusted income on housing. (See Figure 4.) The latter effectively increases allowed housing consumption. If we want to increase the participation rate of the poorest households at the expense of other eligible households, we can increase the program's guarantee (that is, the Payment Standard) and benefit reduction rate (that is, the tenant contribution as a fraction of adjusted income).

Two main objections have been raised to exclusive reliance on tenant-based assistance.<sup>49</sup> Specifically, it has been argued that tenant-based assistance will not work in markets with the lowest vacancy rates and new construction programs have an advantage compared with tenant-based assistance that offsets their cost-ineffectiveness, namely they promote neighborhood revitalization to a much greater extent.

Taken literally, the first argument is clearly incorrect in that Section 8 Certificates and Vouchers have been used continuously in all housing markets for more than two decades. Obviously, it is impossible to keep all vouchers in use at all times due to the inevitable lags between the time that the LHA receives new vouchers, or old vouchers from households leaving the program, and the time that new recipients find housing that suits them and meets the program's standards. It is also true that some households who are offered vouchers do not find such housing within their housing authority's time limits.<sup>50</sup> However, other eligible households use these vouchers. The overwhelming majority of certificates and vouchers are in use at each point in time. Local housing authorities rarely, if ever, return certificates and vouchers to HUD.<sup>51</sup>

The real issue is not whether tenant-based vouchers can be used in all market conditions but whether it would be better to use new construction or substantial rehabilitation programs in tight markets. In this regard, two questions seem especially important. Will construction programs get eligible households into satisfactory housing faster than tenant-based vouchers in some market conditions? Are construction programs more cost-effective than tenant-based vouchers under some circumstances? Although

---

<sup>49</sup> See Weicher (1990) for a more extended discussion of the voucher/production debate.

<sup>50</sup> In recent years, many housing authorities have tried to maintain the highest possible usage rate by allocating more certificates and vouchers to potential new recipients than the number available to be used, relying on the failure of a certain fraction of potential recipients to use the voucher allocated. Once authorized to search for a unit, a household has a certain amount of time to find a unit that meets the program's rules and that it is willing to occupy. Different authorities have different rules; limits between two and four months are common.

<sup>51</sup> Although there are significant differences across areas during each year in the fraction of households offered certificates and vouchers who return them unused, these do not seem to be strongly related to differences in market conditions (Kennedy and Wallace, 1983; Leger and Kennedy, 1990; Kennedy and Finkel, 1994).

careful studies of these two questions have not been done, we can be very confident about the answer to the first question.

Based on existing evidence, there can be little doubt that tenant-based vouchers get households into satisfactory housing much faster than any construction program even in the areas where the highest fraction of vouchers are returned unused. Two major studies of success rates under the tenant-based Section 8 Program have been completed over the past fifteen years (Leger and Kennedy, 1990; Kennedy and Finkel, 1994). These studies collected data on more than 50 local housing authorities selected at random. The lowest success rate observed was 33 percent for New York City in the mid-1980s.<sup>52</sup> If a housing authority with this success rate issued only the vouchers available at each point in time and allowed recipients up to three months to find a unit meeting the program's standards, about 80 percent of the vouchers would be in use within a year. If they followed the current practice of authorizing more households to search for units than the number of vouchers available, almost all of the vouchers would be in use in much less than a year.

Based on data on a large stratified random sample of 800 projects built between 1975 and 1979, Schnare, Pedone, Moss, and Heintz (1982) found the mean time from application for project approval to completion of the project ranged from 23 months for Section 236 to 53 months for conventional public housing. Mean times ranged from 26 to 31 months for the variants of the Section 8 New Construction and Substantial Rehabilitation Program. Occupancy of the completed units required additional time. Although the authors did not report results separately for different markets, it seems reasonable to believe that these times were greater in the tightest housing markets because the demand for unsubsidized construction would be greatest in these locations. So if Congress were to simultaneously authorize an equal number of tenant-based vouchers and units under any construction program, it is clear that all of the vouchers would be in use long before the first newly built unit was occupied no matter what the condition of the local housing market at the time that the money is appropriated.

Although the cost-effectiveness studies discussed in Section IV are based on data for projects built in 25 cities at many different times and these studies are unanimous in finding that it costs significantly more than a dollar to provide a dollar's worth of housing under construction programs such as Public Housing, Section 236, and Section 8 New Construction, they do not report results that enable us to determine how the cost-effectiveness of these programs vary with market conditions. Therefore, we cannot be certain that vouchers are more cost-effective than construction programs in all circumstances. Whether there are any market conditions under which construction programs are more cost-effective than vouchers is one of the most important unanswered questions in housing policy analysis.

The second major objection to the exclusive reliance on tenant-based assistance is that new construction promotes neighborhood revitalization to a much greater extent than

---

<sup>52</sup> The success rate is the percentage of the households authorized to search for a unit who occupy a unit meeting the program's standards within the housing authority's time limit. The success rate in New York City in the mid-1980s was much lower than the second lowest (47 percent in Boston in the mid-1980s) and much lower than in New York City in 1993 (65 percent). An earlier study based on data from the late 1970s found lower success rates. However, at that time housing authorities were still figuring out how to administer this new program. So these success rates are of no relevance for predicting the effects of expanding the program today.

tenant-based assistance. The evidence from EHAP is that even an entitlement housing voucher program will have modest effects on neighborhoods and the small literature on the Section 8 Voucher Program confirms these findings for a similar non-entitlement program (Lowry, 1993, pp. 205-217; Galster, Tatian, Smith, 1999B). These programs result in the upgrading of many existing dwellings, but this is concentrated on their interiors. It is plausible to believe that a new subsidized project built at low-density in a neighborhood with the worst housing and poorest households would make that neighborhood a more attractive place to live for some years after its construction. The issue is not, however, whether some construction projects lead to neighborhood upgrading. The issues are who benefits from this upgrading, the extent to which upgrading of one neighborhood leads to the deterioration of other neighborhoods, and the magnitude of neighborhood upgrading across all projects under a program over the life of these projects.

Economic theory suggests that the primary beneficiaries of neighborhood upgrading will be the owners of nearby properties. Since the overwhelming majority of the poorest households are renters, it is plausible to believe that most of the housing surrounding housing projects located in the poorest neighborhoods is rental. Therefore, if a newly built subsidized project makes the neighborhood a more attractive place to live, the owners of this rental housing will charge higher rents and the value of their property will be greater. Since the occupants of this rental housing could have lived in a nicer neighborhood prior to the project by paying a higher rent, they are hurt by its construction. The poor will benefit from the neighborhood upgrading only to the extent that they own the property surrounding the project.

With the passage of time, the initial residents will leave the neighborhood in response to the projects and others who value a better neighborhood more highly will replace them. The desirability of the neighborhoods into which the original residents move will decline in response to their weaker demand for neighborhood amenities. In short, housing programs involving new construction may primarily shift the location of the worst neighborhoods. The aforementioned possibilities have not even been recognized in discussions of housing policy, let alone studied.

What has been studied is the extent to which projects under various housing programs affect neighborhood property values. The existing studies find small positive effects on average for some programs and small negative effects for others (Lee, Culhane, and Wachter, 1999; Galster, Tatian, and Smith, 1999B). No study finds substantial positive effects on average for any program.

HUD devotes a substantial fraction of its budget for housing assistance to discretionary expenditures that provide additional subsidies to public housing authorities and the owners of privately owned subsidized projects in an attempt to insure that their projects provide satisfactory housing without charging rents that are regarded as excessive. For example, more than \$6 billion annually is spent on operating and modernization subsidies for public housing. Many units under all major construction programs that have been in existence for more than twenty years receive similar subsidies. Given the evidence on the cost-effectiveness of different methods of delivering housing assistance, an obvious policy reform is to replace these discretionary expenditures with tenant-based vouchers.

In the case of public housing, this would involve using the money currently devoted to operating and modernization subsidies to offer public housing tenants vouchers that can be used in private or public housing.<sup>53</sup> Under the proposed reform, housing authorities would be forced to compete with the private sector for tenants, albeit with the considerable advantage of having been given their projects. At present, if a tenant leaves public housing, she loses her subsidy. So housing authorities have a captive audience.

To offset this large reduction in revenue and enable housing authorities to raise the money to continue to provide housing meeting program standards, they could be allowed to charge market rents for the units vacated after the implementation of the reform. Households with tenant-based vouchers would occupy many of these units. Other households eligible for housing assistance would occupy the rest. Public housing tenants who rejected vouchers would be able to remain in their apartments on the previous terms.

Housing authorities could raise additional money by taking advantage of the current regulation that allows them to sell projects. At present, they have little incentive to do it. Without guaranteed federal operating and modernization subsidies, many of the larger authorities may well decide to sell their worst projects. These are the projects that will be abandoned to the greatest extent by their tenants with vouchers, and they are the most expensive to operate. If they are sold to the highest bidders, some of these buildings will undoubtedly be torn down and the land put to some better use.

The main issues involved here are the same as the issues involved in the decision concerning whether to serve additional households by building or substantially rehabilitating housing for them or by providing them with tenant-based vouchers, and these issues have already been discussed. However, two other objections to vouchering out public housing warrant consideration.

One objection to this proposal is that it will force some tenants who prefer to stay in their current units to move. This objection applies equally to the current initiatives within the public housing program involving the demolition or major rehabilitation of projects. When these activities occur, displaced tenants are provided with tenant-based vouchers. It also applies equally to similar activities in the unsubsidized housing market. Legal prohibitions against this displacement are rare.

Another objection to the proposal is that it will reduce the number of affordable housing units. The meaning of this objection is not entirely clear. Since any dwelling is affordable with sufficient subsidy, vouchering out public housing does not change the number of affordable units unless it leads to a smaller housing stock. Even if vouchering out public housing led to the demolition of more public housing units than pursuing current policies, it does not follow that the total housing stock will be smaller on that account. When vacancy rates fall, private unsubsidized construction increases. Finally, this objection might refer to a reduction in the number of apartments reserved for occupancy by subsidized households. However, the advantages to assisted households or taxpayers of requiring subsidized households to live in particular units in order to receive a subsidy have not been explained. Among the disadvantages are the cost-ineffectiveness

---

<sup>53</sup> During its first term, the Clinton Administration proposed this reform (HUD, 1995). Robert Dole made a similar proposal during his presidential campaign.

of project-based assistance and the severe limitation on the tenant's ability to adjust his or her housing in response to changes in circumstances such as job location.

Under all programs that provide substantial project-based assistance to private parties who build or rehabilitate housing for low-income households, these parties agreed to provide housing meeting certain standards to households with particular characteristics for a specified number of years. At the end of the use agreement, the government must decide whether to change the terms of the agreement and the private parties must decide whether to participate on these terms. Since the government provides mortgage insurance for the overwhelming majority of these projects, it must also decide whether to provide additional subsidies to these projects when the private parties default on their loans or to sell these projects without subsidies. When use agreements are not renewed, current occupants are always provided with other housing assistance, usually tenant-based vouchers.<sup>54</sup> Up to this point, housing policy has leaned heavily in the direction of providing owners with a sufficient subsidy to induce them to continue to serve the low-income households in their projects.

Given the evidence on the cost-effectiveness of different methods of delivering housing assistance, an obvious policy reform is not to renew any use agreement and provide the subsidized occupants of these projects with tenant-based vouchers. The issues involved in this decision are the same as those involved in the decision to voucher out public housing. However, it should be pointed out that for-profit sponsors will not agree to extend the use agreement unless this provides a higher present value of net revenues over the remaining life of the project than operating in the unsubsidized market. Since these subsidies are provided to selected private suppliers, the market mechanism does not insure that net revenues under the new use agreement will be driven down to market levels. If this does not happen, it will be more cost-effective to provide the occupants of these units with tenant-based vouchers.

## **VI. Summary and Conclusions**

The primary justification for housing subsidies to low-income households seems to be a desire on the part of many citizens to help these households combined with the view that many low-income households undervalue housing. To provide assistance consistent with this justification, an incredibly complicated system of housing programs has been developed, involving much larger indirect subsidies than is common for means-tested transfer programs. The total cost of this system exceeds the cost of other better-known parts of the welfare system. Only Medicaid is larger. The evidence on the major effects of housing programs is sparse or old or both. Based on this evidence, the effects of low-income housing programs can be summarized as follows.

In aggregate, all major housing programs increase housing consumption substantially and almost all significantly increase consumption of other goods. The increase in housing consumption is especially marked for new construction programs in their early years. However, well before they reach the midpoint of their useful lives these projects have provided less desirable housing than the housing occupied by voucher

---

<sup>54</sup> Indeed, they have normally been given the option of staying in their current apartment with the government paying the difference between the market rent of the unit and the standard tenant contribution or receiving the regular voucher that would be offered to any household with the same characteristics.

recipients. All programs increase aggregate housing consumption more than would occur if each participant were given a cash grant equal to his or her housing subsidy.

The net effect of these changes in consumption patterns is that housing programs typically provide large benefits to their recipients. Although mean benefit is large compared with their mean income, it is small compared with the cost to taxpayers. The mean benefit is about 75 percent of the mean subsidy for construction programs and about 80 percent for vouchers. For vouchers the cost to taxpayers exceeds the subsidy by the modest administrative cost. For construction programs, the cost to taxpayers is much larger than the sum of the subsidy and administrative cost. Mean benefit of each program varies directly with income and inversely with family size, but the variance in real benefit among similar households is large under most programs.

For the entire system of housing subsidies, the participation rate among eligible households is far below 50 percent for all combinations of income and family size. For each family size, the participation rate first rises and then falls as income increases. The poorest households of each size have very low participation rates. Within each income class, participation rates are highest for one-person households, reflecting the strong preference received by the elderly in housing programs.

Evidence on the effect of housing programs on the characteristics of the neighborhoods in which recipients live is particularly meager. It suggests that that public housing tenants live in noticeably worse neighborhoods than in the absence of the program and that the program contributes to racial segregation in housing. Section 8 New Construction / Substantial Rehabilitation and Section 8 Certificates and Vouchers appear to have modest effects in the opposite direction. With respect to the effect of subsidized housing and households on their neighbors, the existing studies find small positive effects on neighboring property values on average for some programs and small negative effects for others. No study finds substantial positive effects on average for any program.

Housing programs appear to have small work disincentive effects. They also have miniscule effects on the prices of unsubsidized units that are not located near subsidized units.

The most important finding of the empirical literature from the viewpoint of housing policy is that tenant-based vouchers and certificates provide equally good housing at a much lower cost than any type of project-based assistance that has been studied. This finding implies that a shift of all discretionary resources from programs of project-based assistance to tenant-based vouchers would enable us to provide several million additional households with adequate housing at an affordable rent without any increase in government expenditure.

The major issues in housing policy for low-income households are whether (1) housing assistance should be an entitlement, (2) the poorest households of each size should be given priority for housing assistance, (3) housing subsidies should be delivered to additional households by building new projects under some type of construction or substantial rehabilitation program or by giving them housing vouchers, and (4) whether we should require households currently living in subsidized projects for which future federal expenditure is discretionary to live in these projects to receive a subsidy and their owners given a sufficient subsidy to induce them to continue to serve these households, or give these households housing vouchers. Although the available evidence suggests

particular answers to some of these questions, the magnitude of the public expenditures involved argues for producing better information on which to base these decisions.

## References

- Barnett, C.L. and Lowry, I.S. *How Housing Allowances Affect Housing Prices*. Santa Monica, CA: The Rand Corporation, October 1979.
- Bradbury, Katherine and Downs, Anthony. *Do Housing Allowances Work?* Washington, D.C.: Brookings Institution, 1981.
- Carliner, Michael S. "Development of Federal Homeownership 'Policy'." *Housing Policy Debate* 9 (1998): 299-321.
- Clemmer, Richard B. "Measuring Welfare Effects of In-Kind Transfers." *Journal of Urban Economics* 15 (1984): 46-65.
- Crews, Amy D. "Self Selection, Administrative Selection, and Aggregation Bias in the Estimation of the Effects of In-Kind Transfers." Unpublished Ph.D. dissertation, University of Virginia, 1995.
- Cummings, Jean L. and DiPasquale, Denise. "The Low-Income Housing Tax Credit: An Analysis of the First Ten Years." *Housing Policy Debate* 10 (1999): 251-307.
- Currie, Janet and Yelowitz, Aaron. "Are Public Housing Projects Good for Kids?" *Journal of Public Economics* 75 (2000): 99-124.
- Early, Dirk W. "The Role of Subsidized Housing in Reducing Homelessness: An Empirical Investigation Using Micro-Data." *Journal of Policy Analysis and Management* 17 (1998): 687-696.
- Friedman, Joseph and Weinberg, Daniel H. *The Economics of Housing Vouchers*. New York: Academic Press, 1982.
- . *The Great Housing Experiment*. Sage Press, 1983.
- Galster, George; Smith, Robin E.; Tatian, Peter A.; and Santiago, Anna M. with Mary Cunningham and Charlene Y. Wilson. *Assessing Property Value Impacts of Dispersed Housing Subsidy Programs: Final Report*. Washington, D.C.: The Urban Institute, May 1999A.
- Galster, George C.; Tatian, Peter; and Smith, Robin. "The Impact of Neighbors Who Use Section 8 Certificates on Property Value." *Housing Policy Debate* 10 (1999B): 879-917.
- Hammond, Claire H. *The Benefits of Subsidized Housing Programs: An Intertemporal Approach*. Cambridge: Cambridge University Press, 1987.

- Kain, John F. "A Universal Housing Allowance Program" in Katherine Bradbury and Anthony Downs (ed.) *Do Housing Allowances Work?* Washington, D.C.: Brookings Institution, 1981.
- Keane, Michael and Moffitt, Robert. "A Structural Model of Multiple Welfare Program Participation and Labor Supply." *International Economic Review* 39 (August 1998): 553-589.
- Kennedy, Stephen D. *Housing Allowance Demand Experiment: Final Report*. Cambridge, MA: Abt Associates Inc.: June 1980.
- Kennedy, Stephen D. and Finkel, Meryl. *Section 8 Rental Voucher and Rental Certificate Utilization Study*. Cambridge, MA: Abt Associates Inc., 1994.
- Kennedy, Stephen D. and MacMillan, J. *Participation Under Alternative Housing Allowance Programs: Evidence From the Housing Allowance Demand Experiment*. Cambridge, MA: Abt Associates Inc., 1980.
- Kennedy, Stephen D. and Wallace, James E. *An Evaluation of Success Rates in Housing Assistance Programs Using the Existing Housing Stock: Implications for the Housing Payment Certificate Program from the Section 8 Existing Housing Program*. Cambridge, MA: Abt Associates Inc., March 1983.
- Kraft, John and Olsen, Edgar O. "The Distribution of Benefits from Public Housing," in F. T. Juster (ed.) *The Distribution of Economic Well-Being*. New York: National Bureau of Economic Research, 1977.
- Lee, Chang-Moo; Culhane, Dennis P.; and Wachter, Susan M. "The Differential Impacts of Federally Assisted Housing Programs on Nearby Property Values: A Philadelphia Case Study." *Housing Policy Debate* 10 (1999): 75-93.
- Leger, Mireille L. and Kennedy, Stephen D. *Final Comprehensive Report of the Freestanding Housing Voucher Demonstration*. Volume 1 & 2. Cambridge, MA: Abt Associates Inc., May 1990A.
- . *Recipient Housing in the Housing Voucher and Certificate Programs*. Cambridge, MA: Abt Associates Inc., May 1990B.
- Lowry, Ira S. (ed.) *Experimenting With Housing Allowances: The Final Report of the Housing Assistance Supply Experiment*. Cambridge, MA: Oelgeschlager, Gunn & Hain, 1983.
- Ludwig, Jens; Duncan, Greg J.; and Pinkston, Joshua C. "Urban Poverty and Juvenile Crime: Evidence from a Randomized Housing-Mobility Experiment. *Quarterly Journal of Economics*, forthcoming 2001.



- . “Neighborhood Effects on Economic Self-Sufficiency: Evidence from a Randomized Housing Mobility Experiment. Unpublished manuscript, January 2000A.
- . “The Effects of Urban Poverty on Educational Outcomes: Evidence from a Randomized Experiment. Unpublished manuscript, October, 2000B.
- Mayo, Stephen K. "Sources of Inefficiency in Subsidized Housing Programs: A Comparison of U.S. and German Experience." *Journal of Urban Economics*. 20 (September 1986): 229-249.
- Mayo, Stephen K.; Mansfield, Shirley; Warner, David; and Zwetchkenbaum, Richard. *Housing Allowances and Other Rental Assistance Programs-A Comparison Based on the Housing Allowance Demand Experiment, Part 1: Participation, Housing Consumption, Location, and Satisfaction*. Cambridge, MA: Abt Associates Inc., June 1980A.
- . *Housing Allowances and Other Rental Assistance Programs-A Comparison Based on the Housing Allowance Demand Experiment, Part 2: Costs and Efficiency*. Cambridge, MA: Abt Associates Inc, June 1980B.
- Mikesell, James J.; Ghelfi, Linda M.; Salant, Priscilla; Wallace, George; and Whitener, Leslie A. *Meeting the Housing Needs of Rural Residents: Results of the 1998 Survey of USDA's Single Family Direct Loan Program*. Washington, D.C.: United States Department of Agriculture, Economic Research Service, Rural Development Research Report 91, December 1999.
- Mills, Edwin S. and Sullivan, Arthur. “Market Effects” in Katherine Bradbury and Anthony Downs (ed.) *Do Housing Allowances Work?* Washington, D.C.: Brookings Institution, 1981.
- Murray, Michael. “The Distribution of Tenant Benefits in Public Housing.” *Econometrica* 43 (July 1975): 771-788.
- . “A Reinterpretation of the Traditional Income-Leisure Model, With Application to In-Kind Subsidy Programs.” *Journal of Public Economics* 14 (1980): 69-81.
- . “Subsidized and Unsubsidized Housing Starts: 1961-1977.” *Review of Economics and Statistics* 65 (November 1983): 590-597.
- . “Subsidized and Unsubsidized Housing Stocks 1935 to 1987: Crowding Out and Cointegration.” *Journal of Real Estate Economics and Finance* 18 (1999): 107-124.
- Newman, Sandra J. and Schnare, Ann B. “ ‘... And a Suitable Living Environment’: The Failure of Housing Programs to Deliver on Neighborhood Quality.” *Housing Policy Debate* 8 (1997): 703-741.

- Newman, Sandra J. and Harkness, Joseph M. "The Long-Term Effects of Housing Assistance on Self-Sufficiency." Unpublished manuscript, 2000.
- Olsen, Edgar O. "The Simple Analytics of the Externality Argument for Redistribution," in M. B. Ballabon (ed.) *Economic Perspectives: An Annual Survey of Economics*, Vol. 2. New York: Harwood Academic Publishers, 1981.
- . "The Implications of the Experimental Housing Allowance Program for Housing Policy," in Joseph Friedman and Daniel Weinberg (ed.) *The Great Housing Experiments* Beverly Hills, California: Sage Publications, 1983.
- . "The Cost-Effectiveness of Alternative Methods of Delivering Housing Subsidies." Unpublished manuscript, December 2000.
- Olsen, Edgar O., and Barton, David M. "The Benefits and Costs of Public Housing in New York City." *Journal of Public Economics* 20 (April 1983): 299-332.
- Olsen, Edgar O. and Crews, Amy D. "Are Section 8 Housing Subsidies Too High?" Unpublished manuscript, December 1996.
- Olsen, Edgar O. and Reeder, William. "Misdirected Rental Subsidies." *Journal of Policy Analysis and Management* 2 (Summer 1983): 614-620.
- Painter, Gary. "Does Variation in Public Housing Waiting Lists Induce Intra-Urban Mobility?" *Journal of Housing Economics* 6 (1997): 248-276.
- Reeder, William J. "The Benefits and Costs of the Section 8 Existing Housing Program." *Journal of Public Economics* 26 (April 1985): 349-377.
- Reid, William J. "A Benefit-Cost Analysis of Section 23 Leased Public Housing." Ph.D. dissertation, University of Virginia, January 1989.
- Rydell, C. Peter; Neels, Kevin; and Barnett, C. Lance. *Price Effects of a Housing Allowance Program*. R-2720. Santa Monica, CA: Rand Corporation, September 1982.
- Schnare, Ann; Pedone, Carla; Moss, William; and Heintz, Kathleen. *The Costs of HUD Multifamily Housing Programs: A Comparison of the Development, Financing and Life Cycle Costs of Section 8, Public Housing, and Other Major HUD Programs*. Volume 1 & 2. Cambridge, MA: Urban Systems Research and Engineering, Inc., May 1982.
- Schone, Barbara Steinberg. "Do Means Tested Transfers Reduce Labor Supply?" *Economics Letters* 40 (1992): 353-358.
- . "Estimating the Distribution of Taste Parameters of Households Facing Complex Budget Spaces: The Effects of In-Kind Transfers." Unpublished manuscript, 1994.

- Schwab, Robert M. "The Benefits of In-Kind Government Programs." *Journal of Public Economics* 27 (July 1985): 195-210.
- Stegman, Michael A. "The Excessive Costs of Creative Finance: Growing Inefficiencies in the Production of Low-Income Housing." *Housing Policy Debate* 2 (1991): 357-373.
- Struyk, Raymond J. and Bendick, Marc (eds.). *Housing Vouchers for the Poor: Lessons From a National Experiment*. Washington, D.C.: The Urban Institute Press, 1981.
- U.S. Department of Commerce, Bureau of the Census. *American Housing Survey for the United States in 1989*. Current Housing Reports. Series H150/89. Washington, D.C.: Government Printing Office, 1991.
- U.S. Department of Housing and Urban Development. *HUD Statistical Yearbook*. Washington, D.C.: Government Printing Office, 1969-1979.
- . *Housing in the Seventies*. Washington, D.C.: Government Printing Office, 1974.
- . *Experimental Housing Allowance Program: The 1980 Report*. Washington, D.C.: Government Printing Office, February 1980.
- . *Characteristics of HUD-Assisted Renters and Their Units in 1989*. Washington, D.C.: Government Printing Office, 1992.
- . *HUD Reinvention: From Blueprint to Action*. Washington, D.C.: Government Printing Office, March 1995.
- . *Characteristics of HUD-Assisted Renters and Their Units in 1993*. Washington, D.C.: Government Printing Office, May 1997.
- . *Rental Housing Assistance – The Worsening Crisis: A Report to Congress on Worst Case Housing Needs*. Washington, D.C.: Government Printing Office, March 2000.
- United States General Accounting Office, *Tax Credits: Opportunities to Improve Oversight of the Low-Income Housing Programs*. Washington, D.C.: United States General Accounting Office, 1997. GAO/GGD/RCED-97-55.
- U.S. House of Representatives. Committee on Ways and Means. *1998 Green Book: Background Material and Data on Programs within the Jurisdiction of the Committee on Ways and Means*. Washington, D.C.: Government Printing Office, 1998.
- U.S. House of Representatives. Committee on Banking and Financial Services, Subcommittee on Housing and Community Opportunity. *Basic Laws on Housing and Community Development (Revised through December 31, 1998)*. Washington, D.C.: Government Printing Office, April 1999.

Wallace, James E. "Financing Affordable Housing in the United States." *Housing Policy Debate* 6 (1995): 785-814.

Wallace, James E.; Bloom, Susan Philipson; Holshouser, William L.; Mansfield, Shirley; and Weinberg, Daniel H. *Participation and Benefits in the Urban Section 8 Program: New Construction and Existing Housing*. Volume 1 & 2. Cambridge, MA: Abt Associates Inc., January 1981.

Weicher, John C. "Urban Housing Policy," in P. Miezkowski and M. Straszheim (eds.) *Current Issues in Urban Economics* Baltimore, MD: John Hopkins University Press, 1979.

———. "The Voucher/Production Debate," in Denise DiPasquale and Langley C. Keyes (eds.) *Building Foundations: Housing and Federal Policy* Philadelphia: University of Pennsylvania Press, 1990.

Weinberg, Daniel H. "Housing Benefits from the Section 8 Program." *Evaluation Review* 6 (February 1982): 5-24.