

How Much, How Fast?: A Science Review and Outlook for Research on the Instability of Antarctica's Thwaites Glacier in the 21st century

TA Scambos, RE Bell, RB Alley, S Anandakrishnan, DH Bromwich, K Brunt, K Christianson, T Creyts, SB Das, R DeConto, P Dutrieux, HA Fricker, D Holland, J MacGregor, B Medley, JP Nicolas, D Pollard, MR Siegfried, AM Smith, EJ Steig, LD Trusel, DG Vaughan, P Yager

Abstract

Constraining how much and how fast the West Antarctic Ice Sheet (WAIS) will change in the coming decades has recently been identified as the highest priority in Antarctic research (National Academies, 2015). Here we review recent research on WAIS and outline further scientific objectives for the area now identified as the most likely to undergo near-term significant change: Thwaites Glacier and the adjacent Amundsen Sea. Multiple lines of evidence point to an ongoing rapid loss of ice in this region in response to changing atmospheric and oceanic conditions. Models of the ice sheet's dynamic behavior indicate a potential for greatly accelerated ice loss as ocean-driven melting at the Thwaites Glacier grounding zone and nearby areas leads to thinning, faster flow, and retreat. A complete retreat of the Thwaites Glacier basin would raise global sea level by more than three meters by entraining ice from adjacent catchments. This scenario could occur over the next few centuries, and faster ice loss could occur through processes omitted from most ice flow models such as hydrofracture and ice cliff failure, which have been observed in recent rapid ice retreats elsewhere. Increased basal melt at the grounding zone and increased potential for hydrofracture due to enhanced surface melt could initiate a more rapid collapse of Thwaites Glacier within the next few decades.

217 words

Keywords:

West Antarctic Ice Sheet, Thwaites Glacier, climate change, sea-level rise, ice-ocean interaction, marine ice sheet instability

Highlights:

- Thwaites Glacier is a likely site of greatly increased Antarctic ice sheet mass loss;
- Changes in the atmosphere and ocean and their interaction with the glacier are the cause;
- A coordinated multi-disciplinary research plan to study Thwaites Glacier is outlined.

Corresponding author-

Ted Scambos teds@nsidc.org tascambos@gmail.com 303 492 1113

Contents

1	Introduction	3
1.1	Geographic focus	4
1.2	Research foci.....	6
2	Research Review of WAIS Ice Sheet Collapse:.....	6
	Drivers, Boundary Conditions, Processes, and Models.....	6
2.1	DRIVERS: Why is the West Antarctic Ice Sheet changing now?	7
2.1.1	Present-day Atmosphere and Ocean	8
2.1.2	Century-scale Atmospheric Trends	10
2.2	BOUNDARY CONDITIONS: What is the present state of the West Antarctic Ice Sheet? 10	
2.2.1	Ice sheet surface, flow, and thickness observations.....	11
2.2.2	Internal and basal ice observations	11
2.2.3	Subglacial geology.....	12
2.2.4	Ocean bathymetry, grounding zone, ice shelf, and ocean cavity observations ...	12
2.3	PROCESSES: What mechanisms are involved in marine ice-sheet collapse?.....	13
2.3.1	Grounding zone processes	13
2.3.2	Ice-ocean interface processes	14
2.3.3	Ice-cliff processes	14
2.3.4	Ice-Earth coupling.....	14
2.3.5	Surface melting and hydrofracturing.....	15
2.3.6	Basal sliding and subglacial till deformation	16
2.3.7	Subglacial hydrology.....	16
2.4	MODELS: improving our projections of future behavior	17
3	Research Objectives for the coming decade	18
3.1	Atmosphere and Climate	19
3.2	Ocean	20
3.3	Ice Sheet and Ice Shelves.....	21
3.4	Solid Earth	25
3.5	Life Sciences	25
3.6	Models.....	26
4	Summary – How Much, How Fast?	28

35
36
37
38
39
40
41
42
43
44
45
46
47
48
49
50
51
52
53
54
55
56
57
58
59
60
61
62
63
64
65
66
67
68
69
70
71
72
73
74
75
76
77
78
79
80
81

1 Introduction

Mass loss from the Greenland and West Antarctic ice sheets is increasing (Shepherd et al., 2012; IPCC, 2013; Velicogna et al., 2014, Harig and Simons, 2015). Recent studies have identified significant ongoing ice loss from West Antarctic Ice Sheet (WAIS) in response to recent climate and ocean changes (Jenkins et al., 2011; Pritchard et al., 2012; Rignot et al., 2014; Mougnot et al., 2014; Dutrieux et al., 2014; Paolo et al., 2015). These studies suggest that the contribution of Antarctica to global sea-level rise could soon outpace all other sources, and a much more dramatic increase in ice discharge is possible within the next few decades (Joughin et al., 2014; DeConto and Pollard, 2016). The resulting acceleration in sea-level rise would require a large increase in adaptation or infrastructure replacement in coastal areas worldwide. This issue is of particular concern for the coastal United States and other parts of the northern hemisphere, where the impact of increased sea level would be amplified by around 30% due to changes in the global gravitational field arising from the ice loss (Bamber et al., 2009; Bamber and Riva, 2010; Hay et al., 2014). This static component can be intensified by storm surges that can locally raise sea level by several meters during an event (Biasutti et al., 2011).

Current mass loss underway in WAIS could lead to its eventual collapse through marine ice sheet instability (Weertman, 1974; Mercer, 1978; Alley et al., 2015). Evidence from sea-level records, marine sediment cores, and ice cores suggests that WAIS has collapsed before, possibly as recently as 125,000 years ago during the last interglacial (Scherer et al., 1998; Dutton et al., 2015; Steig et al., 2015). More recently, during the Last Glacial Maximum, WAIS was larger than today and extended seaward to the edge of the continental shelf. Geological evidence of its subsequent fast-paced retreat (Fairbanks 1989; Alley et al., 2005; Overpeck et al., 2006) makes it clear that rapid marine-based ice loss is possible (Larter et al., 2014; McKay et al., 2015). However, the physical mechanisms that drive rapid retreat are poorly quantified because of a lack of direct observations. Key data needed to evaluate processes and project likely rates of ice loss are at present spatially sparse and span only a couple of decades. Few observations exist in the critical places: underneath the ice, in the ocean offshore, and in sub-ice-shelf cavities. Atmospheric data in the region are sparse and temporally intermittent. These gaps will need to be addressed before robust projections of the timing and rate of ice sheet collapse can be made (Alley et al., 2015; Holland and Holland, 2015).

In this paper, we present a review of recent research on the continuing evolution of WAIS, and provide a set of objectives for future work – called “How Much, How Fast?” – designed to improve our understanding of ice-ocean interaction and its impact on the interior ice sheet dynamics within the framework of the continuing changes in Antarctic climate, oceanic circulation, and ongoing ice flow changes. Central to achieving this goal will be: long-term continuous observations of the ice, atmosphere, and ocean; high-resolution mapping of the Thwaites Glacier catchment and Amundsen Sea; dedicated studies of key processes to understand behaviors and improve models at all scales; and a next generation of coupled models that include better physical and dynamical representations of the ice, solid-earth, ocean, and atmosphere components.

This paper is an outcome of discussions in 2014-15 convened by the National Academies attended by several of the authors (see National Academies, 2105), and is a formalized and expanded version of a white paper submitted to the US National Science Foundation in May, 2016 by almost the same author group. Further discussions at the

82 West Antarctic Ice Sheet Workshops (www.waisworkshop.org) of 2015 and 2016 and a
83 Royal Society meeting sponsored the United Kingdom's National Environmental
84 Research Council (NERC) helped shape the ideas presented ([www.istar.ac.uk/wp-](http://www.istar.ac.uk/wp-content/uploads/sites/5/sites/5/2016/05/West-Antarctica-Royal-Society-Meeting-Report-final.pdf)
85 [content/uploads/sites/5/sites/5/2016/05/West-Antarctica-Royal-Society-Meeting-Report-](http://www.istar.ac.uk/wp-content/uploads/sites/5/sites/5/2016/05/West-Antarctica-Royal-Society-Meeting-Report-final.pdf)
86 [final.pdf](http://www.istar.ac.uk/wp-content/uploads/sites/5/sites/5/2016/05/West-Antarctica-Royal-Society-Meeting-Report-final.pdf)). The white paper was part of the motivation for a joint NSF-NERC program
87 solicitation released in October 2016 (NSF-NERC, 2016).

88 1.1 Geographic focus

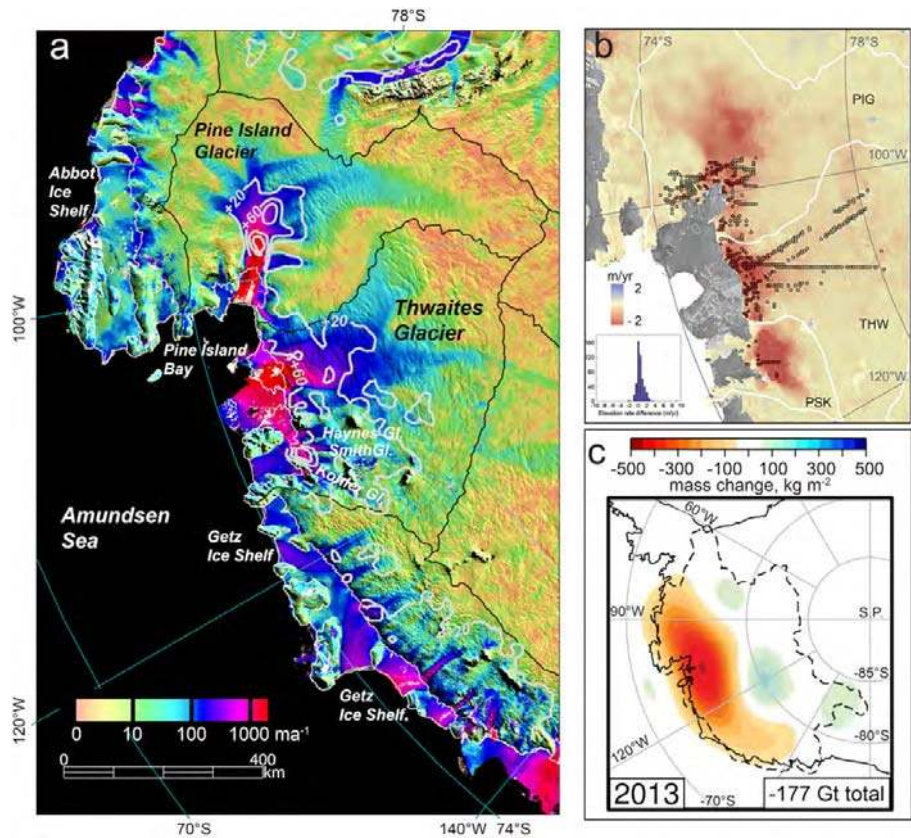
89 This How Much, How Fast? WAIS science review and objectives for new research
90 focuses on the key geographic area of ongoing rapid change: Thwaites Glacier and the
91 adjacent Amundsen Sea. The possibility of surges and runaway retreat of West Antarctic
92 glacier grounding zones into the central WAIS has long been recognized (e.g., Hughes,
93 1972; Weertman, 1974; Mercer, 1978; Lingle and Clark, 1979; Thomas, 1979). The
94 specific vulnerability of Pine Island and Thwaites Glaciers and the danger of rapid retreat
95 into their inland basins and central WAIS was emphasized by Hughes (1981).

96 Observations show unequivocally that the Thwaites Glacier ice-ocean system is
97 undergoing the largest changes of any ice-ocean system in Antarctica (Mouginot et al.,
98 2014; Paolo et al., 2015). Recent assessments indicate that Thwaites is contributing
99 $\sim 0.1 \text{ mm a}^{-1}$ to sea-level rise, a rate double its mid-1990s value (Rignot, 2008; Medley et
100 al., 2014). Ice flow speed of lower Thwaites Glacier has increased by 50 to 100 m a^{-1}
101 since 2009, and ice flux across the grounding zone of the Thwaites-Haynes-Pope-Smith-
102 Kohler glacier complex has increased by 10 -- 15 Gt a^{-1} since 2009 (Mouginot et al.,
103 2014; Martín-Español et al., 2016; Gardner et al., 2017 in review). Gravitationally-
104 determined mass loss estimates for WAIS have increased significantly since 2009,
105 centered on the lower Thwaites region (Harig and Simons, 2015) and between 2011 and
106 2014 its surface lowered by 1.5 to 2.0 m a^{-1} (Helm et al., 2014; McMillan et al., 2014).
107 Combined, these observations show that Thwaites Glacier has experienced a more
108 significant increase in mass loss in the past few years than Pine Island Glacier (PIG),
109 Totten Glacier, or the Antarctic Peninsula.

110 Recent coupled-system and ice-sheet models indicate that Thwaites Glacier has the
111 greatest potential for further near-term increases in ice flux and consequent rapid sea-
112 level rise (e.g., Joughin et al., 2014; DeConto and Pollard, 2016). Analysis suggests that
113 major ice losses could occur within just decades to a few centuries — timescales that
114 could strain society's ability to adapt. Thwaites Glacier has a wide ice front ($\sim 120 \text{ km}$)
115 that interacts with the ocean, is grounded below sea level, and thickens inland, making it
116 a textbook case of a potentially unstable marine ice sheet (e.g., Weertman, 1974;
117 Schoof, 2012). A significant retreat of the Thwaites Glacier system would likely trigger a
118 wider collapse of much of WAIS.

119 Two decades of work on WAIS has revealed the importance of accurate bathymetry,
120 ocean circulation, and subglacial topography in governing rates of change over the past
121 few decades (Payne et al., 2004; Jacobs et al., 2012; Jenkins et al., 2012; Stanton et al.,
122 2013; Dutrieux et al., 2014; Smith et al., 2017). Specifically, investigations on PIG, the
123 catchment to the east of Thwaites Glacier, highlight the challenges of making relevant
124 observations necessary for model projections, largely due to scale differences. Recent
125 modeling studies have suggested that PIG is likely to evolve slowly and steadily over the
126 next century or two (Joughin et al., 2010; Favier et al., 2014); observations indicate that
127 the ongoing mass loss will be modulated but likely not reversed by variability in the
128 adjacent ocean (Medley et al., 2014; Christianson et al., 2016). There is less certainty

129 about the near-term future evolution of the Thwaites Glacier system, which has a more
 130 direct connection between the deep WAIS interior and the ocean than does PIG
 131 (Vaughan et al., 2006; Holt et al., 2006). Over the past decade, new observations of bed



132
 133 Figure 1. Indications of recent significant increases in mass loss from Thwaites Glacier. a) Map of
 134 the central WAIS (Haran et al., 2014) overlaid with surface ice flow speed derived from Landsat 8
 135 satellite image pairs acquired between October 2013 and March 2016. Basin outlines are shown
 136 as black lines (Zwally et al., 2012); speed change of grounded ice since 2008 in m a^{-1} is shown as
 137 thick white lines (Rignot et al., 2011b); ice edge and grounding zone are shown as thin white lines.
 138 b) Elevation change over the Pine Island, Thwaites, and adjacent glaciers derived from CryoSat-2
 139 elevation mappings (adapted from figure 3 of McMillan et al., 2014). c) Mass change inferred from
 140 satellite gravity measurements for calendar year 2013 (Harig and Simonds, 2015); total mass loss
 141 within black dashed line is given in lower right of the inset.

142 topography in this area have improved our knowledge to the point where models can
 143 partially predict flow dynamics, clearly identifying the possibility for rapid ice loss
 144 (Joughin et al., 2014; Cornford et al., 2015). Because of this potential, the most
 145 important Antarctic climate science and societally-relevant scientific insight on sea level
 146 in the next decade will come from an improved understanding of the Thwaites Glacier
 147 system.

148 Although the proposed research objectives focuses on Thwaites Glacier and areas with
 149 similar characteristics for observations, we note that coupled-system modeling efforts
 150 will need to encompass a much larger area to capture the relevant climate, ice, and
 151 ocean regions. Studies of processes relevant to a Thwaites Glacier collapse in other
 152 similar regions such as Getz Ice Shelf, the Antarctic Peninsula, and Totten Glacier may

153 provide useful insight as well. Although the science objectives presented here are
154 directed at Antarctic research, research aimed at Greenland's outlet glaciers and fjord
155 ice-ocean interactions can also contribute in important ways to understanding the
156 relevant processes (e.g., ice-cliff stability, ice-front circulation).

157 1.2 Research foci

158 A meeting held in January 2016 in Boulder, Colorado produced an outline of the
159 research plan presented here, drawing upon the National Academies of Sciences,
160 Engineering, and Medicine report A Strategic Vision for NSF Investments in Antarctic
161 and Southern Ocean Research (National Academies, 2015). The National Academies'
162 report was guided by extensive, wide-ranging outreach to the Antarctic glaciological,
163 atmospheric, and oceanographic research communities, and the results were broadly
164 circulated. Research on the Thwaites Glacier-Amundsen Sea climate-ice-ocean-earth-
165 life biogeophysical system emerged as the research target with the greatest level of
166 community support.

167 Four fundamental questions for future research emerged from the National Academies'
168 report and the January 2016 Boulder meeting:

- 169 1. Drivers: Why is the West Antarctic Ice Sheet changing now?
- 170 2. Boundary Conditions: What is the present state of the West Antarctic Ice Sheet?
- 171 3. Processes: What mechanisms are involved in marine ice sheet collapse?
- 172 4. Models: How can we improve our projections of sea-level rise from West
173 Antarctica?

174 This review describes the steps necessary to address the four questions listed above,
175 and briefly outlines the instrumentation and logistical needs required to meet these
176 research goals. If these objectives are reached, the outcome will be a decadal-scale
177 community effort that will advance our knowledge of how quickly WAIS will change and
178 how much sea level will rise in response. The Thwaites Glacier system has been
179 identified as a region of interest and is now the focus of an international collaborative
180 effort. A joint US National Science Foundation (NSF) and UK Natural Environmental
181 Research Council (NERC) program has been initiated for new research in the region.
182 We review and update the research that led to this effort.

183

184 2 Research Review of WAIS Ice Sheet Collapse: 185 Drivers, Boundary Conditions, Processes, and Models

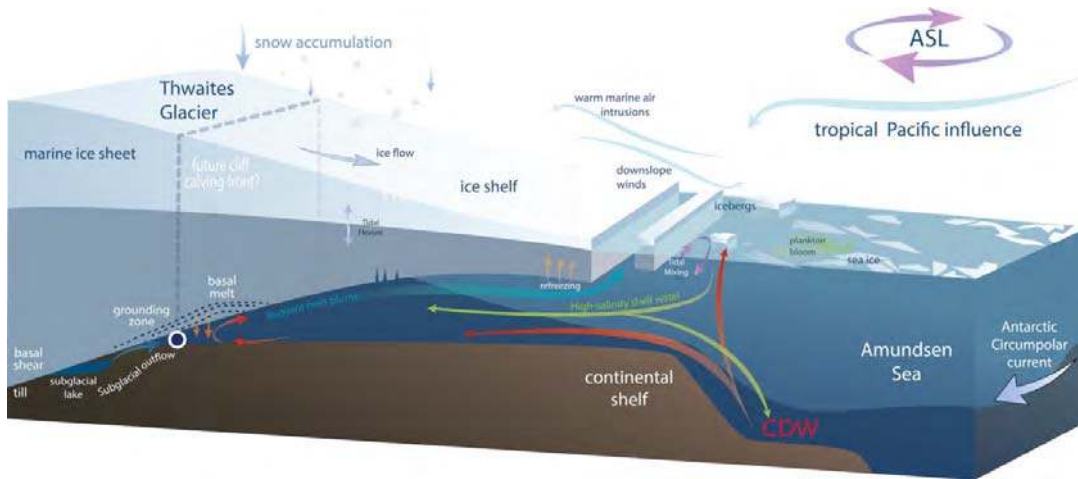
186 In the current scenario for a marine ice sheet collapse of Thwaites Glacier and then
187 WAIS, the collapse is initiated by changes in atmosphere and ocean drivers that affect
188 ocean circulation, surface accumulation, and summer surface-melt rates (e.g., Parizek et
189 al., 2013, Joughin et al., 2014; Feldmann and Levermann, 2015; DeConto and Pollard,
190 2016). In particular, warm, dense mid-depth ocean water surrounding the Antarctic
191 continental shelf is upwelled onto the continental shelf (Circumpolar Deep Water, CDW).
192 This CDW moves toward the ice fronts and ice-shelf grounding zones along troughs in
193 the bathymetry, causing increased melting and retreat at the ice-ocean interfaces. This
194 process thins the ice shelves, reducing drag along their sides and at local pinning points
195 on sea-floor highs, which in turn reduces the buttressing i.e., the resistive stress that the
196 ice shelves exert on the grounded ice (Thomas, 1979; Paolo et al., 2015). Thinning ice
197 shelves lead to faster grounded-ice flow (Pritchard et al., 2012). Faster flow of grounded

198 ice leads to further thinning, causing previously grounded ice to float as the grounding
199 zone retreats farther inland along a retrograde slope (i.e., the bed deepens inland),
200 leading to more ice crossing the grounding zone and a smaller accumulation area (e.g.,
201 Weertman, 1974; Chugunov and Wilchinsky, 1996; Schoof, 2007, 2012; Durand et al.,
202 2009). This positive feedback process is the marine ice sheet instability.

203 The retreat of a marine ice sheet could be exacerbated if surface-meltwater-driven
204 hydrofracture or other processes lead to rapid calving of the ice shelf and ice front (e.g.,
205 Scambos et al., 2000; 2003; 2009; MacAyeal et al., 2003; Pollard et al., 2015; DeConto
206 and Pollard, 2016). Following removal of the ice shelf, cliff failure could dramatically
207 increase the rate of grounded marine-terminating glacier calving (Bassis and Walker,
208 2012; DeConto and Pollard, 2016). In combination, these processes could trigger a rapid
209 deglaciation of the marine basins of WAIS, potentially in a few decades or centuries.

210 Changes in snow accumulation over the Thwaites Glacier catchment can affect the
211 timing of collapse. Antarctic snow accumulation rates are expected to increase over the
212 next century, resulting from an increase in the atmospheric moisture holding capacity
213 due to warming (Krinner et al., 2007; Ligtenberg et al., 2013; Lenaerts et al., 2016).
214 Under such a scenario, additional snow accumulation within the Thwaites Glacier
215 catchment could delay the onset of collapse, mitigating a small portion of the sea-level
216 contribution from WAIS (Joughin et al., 2014).

217 Each aspect of this marine ice sheet collapse scenario has a background of existing
218 research results, as well as areas in need of further study. We review the existing level
219 of understanding and projections in the framework of our four questions (drivers,
220 boundary conditions, processes, and models).



221
222 Figure 2. Schematic of key drivers and some of their effects for the Thwaites Glacier – Amundsen
223 Sea region.

224 2.1 DRIVERS: Why is the West Antarctic Ice Sheet changing now?

225 While both the rate and extent of recent ice-sheet change are now well documented,
226 there is an urgent need to better identify and measure the drivers of the observed
227 change. The large-scale drivers of the system, such as changes in ocean or atmospheric
228 circulation, or surface mass balance variability, arise from a complex group of changes
229 linked to global processes. Advancing our knowledge of the processes governing these
230 drivers will improve our ability to project future change.

231 2.1.1 Present-day Atmosphere and Ocean

232 Ice sheet mass balance change in the Thwaites region is driven by the influence of
233 ongoing warming in the ocean and atmosphere and significant circulation changes in
234 these two systems (Shepherd et al., 2004; Steig et al., 2009; 2012; 2013; Bromwich et
235 al., 2013; Schmidtko et al., 2014; Li et al., 2014). Seasonally stronger westerly winds in
236 the northern Amundsen Sea sector have driven a change in ocean circulation, favoring
237 intrusions of warm salty deep water (CDW) across the continental shelf break in the
238 Amundsen Sea Embayment towards the grounding zones of Thwaites Glacier and
239 adjacent ice outlets (Thoma et al., 2008; Steig et al., 2012; Walker et al., 2013; Paolo et
240 al., 2015; Turner et al., 2017).

241 The details of how wind forcing entrains CDW over the continental shelf break and
242 through bathymetric troughs leading to the Thwaites Glacier ice front remain poorly
243 known, making attribution challenging (e.g., Arneborg et al., 2012; Assmann et al., 2013;
244 Kalén et al., 2016; Jenkins et al., 2016). Ekman transport, induced by along-slope
245 currents over the continental slope and shelf break, can contribute to the cross-shelf
246 transport (Wåhlin et al., 2012) and buoyancy forces can drive the bottom flow down the
247 troughs toward the ice shelf (Wåhlin et al., 2013). Numerical models confirm the
248 dominant role played by changing winds in key regions in shifting the transport of ocean
249 heat from open ocean to the ice sheet (Dinniman et al., 2015), with a lesser role of
250 changing atmospheric temperature.

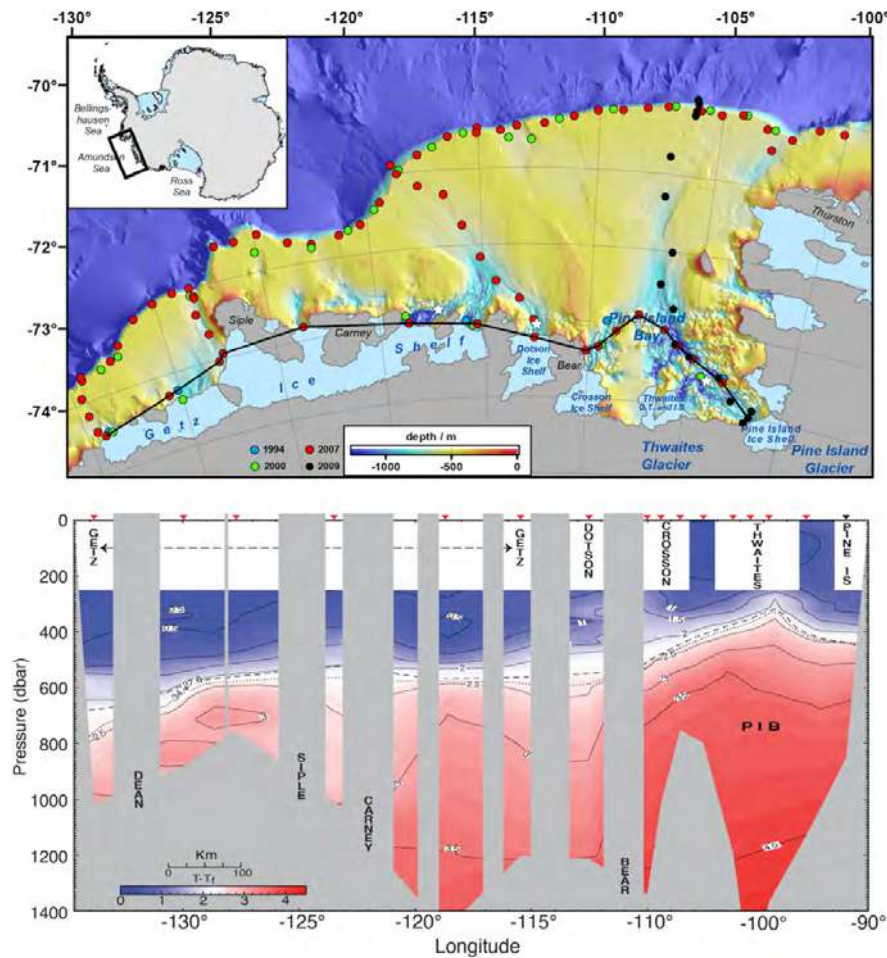
251 The strengthening of the regional westerly winds that have forced warmer waters to the
252 grounding zones can be attributed primarily to remote changes occurring in the tropics
253 (Schneider and Steig, 2008; Ding et al., 2011; Bracegirdle, 2012; Steig et al., 2012;
254 2013; Dutrieux et al., 2014; Simpkins et al., 2014; Clem and Fogt, 2015; Clem and
255 Renwick, 2015; Fogt and Wovrosh, 2015; Li et al., 2014, 2015a,b). However, there is
256 also likely a component of change resulting from larger-scale circulation changes (the
257 Southern Annular Mode, or SAM) owing to stratospheric ozone depletion and increased
258 greenhouse gases (e.g., Thompson et al., 2011; Arblaster et al., 2011). Although the
259 anthropogenic origin of the ozone and greenhouse-gas forcing is unequivocal, it remains
260 unclear whether the tropically-related circulation changes are distinguishable from
261 natural, unforced climate variability (Steig et al., 2013). Furthermore, there is strong SAM
262 modulation of the tropical teleconnection affecting West Antarctica, and vice versa (e.g.,
263 L'Heureux and Thompson, 2006; Ding et al., 2012; Fogt and Wovrosh, 2015; Wilson et
264 al., 2016).

265 Understanding these changes and projecting their future course is further complicated
266 by variability in the nearby Amundsen Sea Low (ASL), a persistent but fluctuating
267 minimum in atmospheric pressure that has been called “the pole of variability” for the
268 Antarctic atmosphere (Connolley, 1997; Turner et al., 2013; Hosking et al., 2013, 2016;
269 Raphael et al., 2016). By imparting surface wind stress on the ocean, changes in the
270 ASL drive changes in deep ocean circulation near the continental shelf edge. Changes
271 in the mean intensity or location of this low-pressure area also influence the frequency
272 and strength of warm marine air intrusion, with profound effects on the climate of West
273 Antarctica on seasonal to multi-decadal time scales (e.g., Bromwich et al., 2004; Krinner
274 et al., 2006; Nicolas and Bromwich, 2011).

275 The large, climatically driven spatial and temporal variability of snowfall in the Amundsen
276 Sea embayment is not fully captured by available data due to sparse spatial coverage
277 and short records. For instance, a recent study found no significant change in snow
278 accumulation over much of the Thwaites catchment (Medley et al., 2013), but the

279 observations cover only a 32-year interval (1980-2011), making it difficult to adequately
280 distinguish long-term trends from natural variability.

281 Regional oceanic changes in the ocean of the ice sheets include a warming of the CDW
282 layer (e.g., Gille et al., 2002) and a change in the mean flow of the Antarctic Circumpolar
283 Current (Martinson and McKee, 2012). Downstream of the interface with ice in Pine
284 Island Bay, CDW is observed to be gradually modified (cooler and fresher; Wahlin et al.,
285 2011, 2013; Jacobs et al., 2012), leading to a slow freshening of the mid-level ocean
286 water in the coastal seas downstream (Jacobs and Giulivi, 2010). Recent studies of
287 ocean soundings along the continental shelf break seaward of Pine Island



288
289 Figure 3. Ocean bathymetry and thermal profile across the Amundsen Sea Embayment and Getz
290 Ice shelf. Top, ocean bathymetry and conductivity-temperature-depth (CTD) measurements (filled
291 circles, color-coded to year of collection) and mooring sites (white stars). Black line near the ice
292 shelf fronts and down Pine Island Bay links the CTD casts used in the profile, at bottom (adapted
293 with permission from Jacobs et al., 2012, their figures 1 and 2).

294 and Thwaites glaciers, and the adjacent Dotson and Getz continental shelf areas
295 highlight this gradual freshening and deepening of CDW, and show the value of dense
296 multi-year measurements (Figure 3; Jacobs et al., 2011; 2012; 2013). An extended
297 program of measurements with moorings would facilitate a better attribution of CDW

298 transport across the continental shelf break, and the scaling of how coastal wind
299 patterns help drive the water toward the ice interfaces.

300 2.1.2 Century-scale Atmospheric Trends

301 Records from shallow ice cores collected under US research efforts such as the
302 International Trans-Antarctic Scientific Expedition (ITASE), as well as related British
303 Antarctic Survey programs, have played an important role in complementing the short
304 instrumental climate record, helping to understand the atmospheric and oceanic drivers
305 of recent changes in WAIS and the Antarctic Peninsula (Schneider and Steig, 2008;
306 Steig et al., 2013). Coastal ice core records from the base of the western Antarctic
307 Peninsula have provided important information documenting a shift in the position of the
308 ASL for the past few hundred years, providing a dynamical explanation for the large 20th
309 century increase in snow accumulation in that area (e.g., Thomas et al., 2015). Coastal
310 ice core records from James Ross Island near the northern Antarctic Peninsula, have
311 similarly been invaluable in documenting the rapid 20th century warming and increased
312 surface melt in that region to levels unprecedented in the past 1000 years (Abram et al.,
313 2013). This record revealed that circulation-induced atmospheric warming led to a
314 nonlinear increase in surface melting, a process that climate models indicate could
315 expand greatly across Antarctic ice shelves in a warming future (Trusel et al., 2015).

316 Records from shallow ice cores situated along the Amundsen Coast, including on
317 coastal ice domes adjacent to Pine Island Bay and on nearby ice shelves, could reveal
318 even more information specific to the Thwaites Glacier and Amundsen Sea region, but
319 are lacking across the study region. Two records from the US ITASE traverse lie at the
320 edge of this region but are at much higher elevation and end in 2001 (Steig et al., 2013).
321 This observational gap is particularly concerning as the high natural climate variability
322 across West Antarctica means that the instrumental period may be insufficient to
323 document the variability in many of the drivers responsible for large-scale ice sheet
324 changes or the impact (e.g., Medley et al., 2013; Previdi and Polvani, 2016).

325 2.2 BOUNDARY CONDITIONS: What is the present state of the West Antarctic 326 Ice Sheet?

327 It is essential to map the current boundary conditions of the atmosphere-ice-ocean-earth
328 in the Thwaites Glacier region. While much has been learned in the past two decades,
329 mapping at improved resolution is needed to advance predictive models and understand
330 processes in greater detail. The major boundary conditions of the Thwaites Glacier
331 system include the following: the detailed shape of the surface of the ice sheet; ice sheet
332 thickness; surface accumulation and near-surface density; temperature and fabric within
333 the ice; the shape of the base of the ice sheet, its thermal state (frozen or thawed), and
334 geothermal flux; the location of the grounding zone and its rate of change; the shape
335 (detailed ice thickness) of the ice shelves and glacier fronts; and the bathymetry of the
336 sub-ice shelf cavities and the adjacent Amundsen Sea out to the continental shelf break.
337 Each boundary condition has a different influence on the mass balance and dynamics of
338 Thwaites Glacier, and each respond differently to oceanic and atmospheric drivers.
339 Next-generation ice sheet modeling will require higher resolution maps of these
340 boundaries to best project changes on decadal to centennial time scales.

341 2.2.1 Ice sheet surface, flow, and thickness observations

342 The number and spatial resolution of mappings of ice-sheet surface elevation, ice
343 velocity, and ice thickness have greatly increased in the last few decades. Landsat data

344 have provided the means to map ice velocity and ice-front positions in parts of the
345 Amundsen Sea Embayment since the 1970s (Lucchitta et al., 1993; MacGregor et al.,
346 2012; Mouginito et al., 2014). Synthetic aperture radar data allowed the first
347 comprehensive, high-spatial resolution mappings of ice velocity and grounding zone
348 position in the early-to-mid 1990s (Rignot, 1998; Rignot, 2001; Rignot et al., 2002, 2008,
349 2011, 2014; Mouginito et al., 2014). These velocity data were supplemented by ice-sheet
350 surface elevation mapping and change detection using radar altimetry (Bamber, 1994;
351 Wingham et al., 1998) and, later, satellite laser altimetry in the early 2000s (Pritchard et
352 al., 2009, 2012). Ice sheet surface elevation is today mapped several times per year via
353 advanced satellite radar altimetry and key regions are mapped seasonally with airborne
354 laser altimetry. Changes in ice sheet surface elevation and velocity identified the
355 Thwaites Glacier basin as a region of rapid change (e.g., Rignot, 2002; Pritchard et al.,
356 2009, 2012; Mouginito et al., 2014; Rignot et al., 2014; Paolo et al., 2015). The current
357 satellite constellations (InSAR, optical, radar altimetry) and annual airborne campaigns
358 (e.g., NASA's Operation IceBridge) support a detailed ongoing analysis of the Thwaites
359 Glacier region (Mouginito et al., 2014; Rignot et al., 2014; Christianson et al., 2016;
360 Joughin et al., 2016; Khazendar et al., 2016) that has provided the basis for the
361 observational and modelling results leading to this initiative.

362 Ice thickness of the Thwaites basin was first comprehensively mapped on a 15-km grid
363 in 2004–2005 by a collaborative UK/US airborne ice-penetrating radar campaign (Holt et
364 al., 2006; Vaughan et al., 2006). Since that time, Operation IceBridge and the Center for
365 Remote Sensing of Ice Sheets have continued to collect ice thickness data in some
366 areas near the Thwaites grounding zone. These new data, combined with mass-
367 conservation gridding techniques (Rignot et al., 2014) and new analytic techniques for
368 extracting subglacial bedforms and hydrology from radar profiles (Schroeder et al., 2013,
369 2014) have greatly improved our knowledge of ice thickness and bed topography.

370 Model results, however, remain highly dependent on detailed bed topography at the limit
371 of presently available resolution. Modeling that incorporates detailed ground-based bed
372 mapping of PIG has shown that the resolution of the ice thickness grid strongly
373 influences model results (Joughin et al., 2010; Favier et al., 2014; Seroussi et al., 2014;
374 Nias et al., 2016) and is insufficient to allow high-resolution modeling in most locations
375 (Parizek et al., 2013). Acquiring new knowledge of the bed topography and morphologic
376 character of the Thwaites Glacier bed is a top priority for this initiative.

377 2.2.2 Internal and basal ice observations

378 The ice rheology, internal ice temperature, crystal fabric, distribution of crevasses, and
379 past history of deformation all exert basic controls on current and future ice flow. These
380 parameters have been inferred in the upper Thwaites Glacier and other locations from
381 radar and seismic internal reflectivity, and by drilling and sampling (e.g., Horgan et al.,
382 2011; Matsuoka et al., 2012). Some internal reflections indicate transitions in ice fabric,
383 marking layers capable of greater deformation with respect to applied stresses (Peters et
384 al., 2012; MacGregor et al., 2015a). The radar and seismic layer geometry and
385 amplitude have been used as constraints in ice-sheet models to infer past ice flux,
386 accumulation rate, and basal conditions (e.g., Neumann et al., 2008; Christianson et al.,
387 2013; Koutnik et al., 2016; MacGregor et al., 2015b, 2016a, 2016b). These all point to
388 useful observational data sets for forecasting the evolution of Thwaites Glacier.

389 Most of the base of Thwaites Glacier is thawed, but some critical ice flow transitions
390 such as the eastern shear margin may reflect thawed-to-frozen bed transitions
391 (MacGregor et al., 2013; Schroeder et al., 2016). Recent advances in analysis of phase-

392 sensitive airborne radar data allow better mapping of the thermal state of the bed and
393 the subglacial hydrologic system (Schroeder et al., 2013, 2014, 2016). Targeted high-
394 resolution ground-based radar and seismic campaigns conducted over critical areas will
395 strengthen the interpretation of existing basin-wide airborne data and provide ground-
396 truth validation.

397 2.2.3 Subglacial geology

398 The geology beneath an ice sheet exerts a direct control on the flow of the overlying ice
399 (Anandakrishnan et al., 1998; Bell et al., 1998). This subglacial geology is of particular
400 concern for Thwaites Glacier, because this basin is part of a broader rift basin with
401 several subglacial volcanoes and associated geothermal anomalies that influence the
402 regional thinning pattern (Corr and Vaughan, 2008; Jordan et al., 2010; Bingham et al.,
403 2013; Chaput et al., 2014; Schroeder et al., 2014). Further constraining the nature of the
404 geology beneath Thwaites Glacier will help distinguish the subglacial contribution to
405 ongoing regional changes from atmospheric and oceanic forcings.

406 Subglacial geology is best observed either in situ (through drilling) or using ground-
407 based active-source seismic methods, which regularly image subglacial sediment and
408 bedrock (e.g., Peters et al., 2006, Muto et al., 2016). The internal layers of the ice sheet
409 may also deform in response to changes in friction at the ice-bed interface, resulting
410 from spatial variation in subglacial hydrology, basal friction, and rate of basal melting
411 where the geothermal flux is sufficiently high (Fahnestock et al., 2001; Catania et al.,
412 2003; Christianson et al., 2013; MacGregor et al., 2016b). Hence, a comprehensive
413 radiostratigraphy of the Thwaites Glacier system, comparable to earlier work for the
414 Greenland Ice Sheet (MacGregor et al., 2015a), could clarify where subglacial geology
415 has a significant influence upon ice flow.

416 Knowledge of conditions at the base of Thwaites Glacier is crucial for understanding
417 both ongoing ice-flow and grounding-zone changes as well as for predicting where and
418 when future rapid changes could occur. Many of the critical parameters describing bed
419 conditions, including the distribution of thawed versus frozen bed regions, geologic
420 structure, geothermal heat flow, erosion rates, presence of subglacial water, and
421 locations of sediments, are not available at the necessary resolution in the Thwaites
422 drainage to understand the interactions among them. Together, these properties
423 influence the bed strength and the basal traction that resists flow and how the ice-bed
424 interface responds over time. Marine surveys of the bed in front of Thwaites show both
425 till and bedrock features (Nitsche et al., 2013). The distribution of these in the region just
426 upstream of the grounding zone, and farther, will greatly influence how the ice sheet
427 evolves.

428 2.2.4 Ocean bathymetry, grounding zone, ice shelf, and ocean cavity 429 observations

430 Bathymetric mapping of the Amundsen Sea continental shelf has revealed the presence
431 of deep channels, carved by extended glaciers from the Pine Island Bay area during
432 past glacial epochs (Figure 3a). These channels have been shown to be the primary
433 pathways by which warmer ocean water is directed to the glacier fronts and sub-ice-shelf
434 cavities (Jenkins et al., 2011; Dutrieux et al., 2014).

435 Within and near the grounding zones of Thwaites Glacier, three distinct types of ice-
436 ocean interfaces are present: a relatively flat ice shelf, near-vertical ice cliffs, and
437 tidewater areas having extensive crevassing (Parizek et al., 2013; Schroeder et al.,

438 2016). Bed geometry, sediment wedges, and various dynamical feedbacks can stabilize
439 the grounding zone for long periods, while other mechanisms and feedbacks can cause
440 unstable retreat once triggered (e.g., Weertman, 1974; Alley et al., 2007; Schoof, 2007;
441 Parizek et al., 2013). Repeat mapping of the grounding zone across the Amundsen Sea
442 Embayment has demonstrated that it is retreating at rates up to hundreds of meters per
443 year in the regions of faster flow (Rignot et al., 2011a; Rignot et al., 2014). Currently,
444 interferometric synthetic aperture radar has mapped the grounding zones to a resolution
445 of ~250 m on seasonal timescales (Joughin et al., 2016).

446 2.3 PROCESSES: What mechanisms are involved in marine ice-sheet collapse?

447 Many of the key processes inherent to the dynamics of retreating marine ice sheets are
448 not well understood, either from lack of basic knowledge, or more commonly, from lack
449 of detailed site-specific data for model calibration and parameterization. These
450 processes include: (1) grounding zone changes arising from ocean-driven melting,
451 grounding zone sedimentation, tidal effects, and formation of new pinning points as
452 grounded ice becomes ungrounded; (2) ice-ocean interface processes in other areas of
453 contact, such as melt plume formation, feedbacks to ocean circulation from melt-induced
454 buoyancy, generation of sub-ice-shelf channels, and tidal and seasonal changes that
455 transport ocean water to and away from the interface; (3) ice-cliff processes, including
456 ice cliff strength, fracture processes, the role of surface melt, and mélange processes
457 that may slow the progress of cliff failure; (4) the effects of warm marine air intruding
458 over the ice sheet and ice shelves or other drivers of surface melting, and of changes in
459 snow accumulation and surface melting, and water storage in firn; (5) hydrofracture on
460 the ice-shelf and glacier surface; (6) ice-sheet sliding and subglacial sediment
461 deformation, and viscous and stick-slip processes; and (7) the role of subglacial water
462 both beneath the fast flowing grounded ice and at the ice-ocean interface where it can
463 trigger basal ice shelf melting and impact sub-ice-shelf ocean circulation and channel
464 formation.

465 These processes and subsequent feedbacks require dedicated observational study with
466 the aim of improving their representation in predictive models. Although these processes
467 are best studied in the Thwaites Glacier and Amundsen Sea regions, studies of other
468 similar Antarctic systems and also targeted work in Greenland and elsewhere can
469 contribute to our understanding of Thwaites Glacier evolution.

470 2.3.1 Grounding zone processes

471 Grounding zone retreat may be accelerated by the effects of deep local basins and
472 channels, but can be slowed by the effects of sedimentation wedges (e.g., Alley et al.,
473 2007) and local high spots (pinning points) that remain in contact with the ice shelf after
474 grounding zone migration upstream (e.g., Christianson et al., 2016). Basal and surface
475 crevasses preferentially form at the grounding zone, driven in part by tidal flexure. These
476 crevasses weaken ice shelves and likely contribute to complete break off beyond some
477 threshold. Tidally-driven flexure can compact till sediments inland of the grounding zone,
478 contributing to stability (e.g., Christianson et al., 2013), but can also pump ocean water
479 well inland, favoring instability (e.g., Walker et al., 2013). Sedimentation near the
480 grounding zone tends to stabilize it (Alley et al., 2007), as do isostatic crustal response
481 and self-gravitational effects on local sea level.

482 Understanding the processes arising from the Thwaites-specific grounding zone
483 interactions, and incorporating them to diagnostic and prognostic models, require high-
484 resolution data from near the grounding zone and in the sub-ice-shelf cavity.

485 2.3.2 Ice-ocean interface processes

486 Ice-ocean interface processes related to ice-front, grounding line, and ice-shelf melting
487 are central to understanding ice shelf weakening and grounding line retreat (Dinniman et
488 al., 2016). Recent change has highlighted the important role that ice-ocean interaction
489 plays in ice-sheet stability, which had sometimes been overlooked in the past (Joughin
490 et al., 2012). The ocean's large heat capacity means that shifting currents or warming
491 water can substantially alter the rate of melting at the ice-ocean interface (Rignot and
492 Jacobs, 2002). This interaction is particularly important at Thwaites where little melting
493 presently occurs at the ice-air interface, but considerable (tens of meters) melting occurs
494 beneath the glacier's ice shelf (Jacobs et al., 1992; Khazendar et al., 2016).
495 Furthermore, removing ice from the land-terminating margin requires that heat be
496 supplied to melt or sublimate ice in situ, limiting the rate of loss. In contrast, ocean
497 currents can rapidly carry away excess ice to melt elsewhere as it calves from an ice-
498 ocean terminus in response to forcing at the boundary (e.g., oceanic or atmospheric
499 heating), enabling rapid retreat. As mentioned earlier, the ice-sheet grounding line,
500 where the grounded ice sheet transitions to a floating ice shelf, often lies at a point of
501 tenuous stability such that small initial perturbations can trigger large-scale retreat (i.e.,
502 marine ice-sheet instability; Weertman, 1974).

503 2.3.3 Ice-cliff processes

504 Ice-cliff processes have recently been recognized as having the potential to cause rapid
505 ice-front retreat, and would exacerbate the ongoing thinning and retreat observed at
506 Thwaites Glacier (Bassis and Walker, 2012; Bassis and Jacobs, 2013; Pollard et al.,
507 2015; DeConto and Pollard, 2016). The grounding line of Thwaites Glacier lies currently
508 on the seafloor 600 m below sea level (Fretwell et al., 2013; Milan et al., 2017), too
509 shallow to trigger ice-cliff failure. However, the seafloor is more than 1000 m below sea
510 level only 25 km inland, and therefore has the potential to form unstable ice cliffs more
511 than 100 m high. Beyond a (presently uncertain) threshold of increased rifting, surface
512 melting or basal melting, ice shelves have been observed to break off entirely, leaving
513 calving ice-front cliffs above a deeply grounded glacier front (Hanson and Hooke, 2003;
514 Motyka et al., 2011; Joughin and Alley, 2011; Bassis and Walker, 2012; Alley et al.,
515 2015). The rate of retreat is linked to the rate of cliff-failure-driven calving, which likely
516 increases significantly with cliff height because higher cliffs are under higher stresses.
517 Current data and theory suggest that an ice terminus height of significantly more than
518 ~100 m above waterline will trigger repeated brittle failure of the ice front, leading to very
519 rapid retreat. Studies of the Antarctic Peninsula and Greenland have shown that brief
520 episodes of ice cliff instability led to significantly faster retreat (e.g., Scambos et al.,
521 2004; 2011; Joughin et al., 2008; Xie et al., 2016).

522 2.3.4 Ice-Earth coupling

523 Interactions between changing ice load and the underlying Earth are important in West
524 Antarctica, where the West Antarctic Rift System is characterized by high heat flow, a
525 low-viscosity mantle zone, and thin lithosphere (Gomez et al., 2015). Self-gravitational
526 feedbacks between a retreating ice-sheet margin and the surrounding ocean can cause
527 local relative sea-level to drop, which can stabilize grounding zones, i.e. a negative

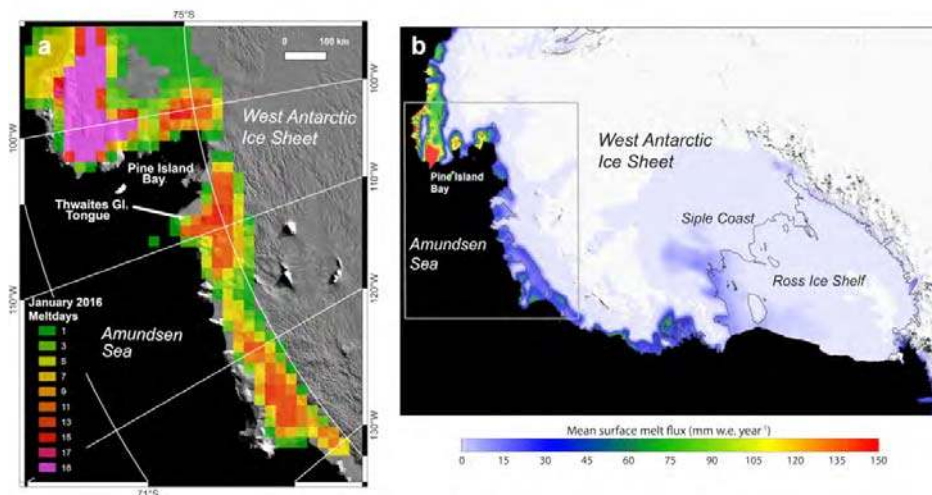
528 feedback effect (Gomez et al., 2013). Most current ice-sheet models use simplistic
529 representations of the underlying Earth, such as Elastic Lithosphere Relaxing
530 Asthenosphere (ELRA) models, that fail to capture the realistic viscous response of the
531 Earth or the gravitational-sea level feedbacks that could be critically important for
532 Thwaites Glacier.

533 2.3.5 Surface melting and hydrofracturing

534 Intrusions of warm marine air over WAIS and its peripheral ice shelves may become
535 more frequent as global temperatures increase and as air circulation patterns shift. With
536 strong and sustained advection of warm air from the north, coastal areas around Pine
537 Island Bay could experience prolonged melt episodes, as occurred in January 2016 (Fig.
538 4a; Nicolas et al., 2017). The frequency of these events has been shown to be related to
539 the position and strength of the ASL (Nicolas and Bromwich, 2011).

540 Accumulated surface meltwater is of concern because it can cause crevasses to
541 propagate downward through the entire thickness of the grounded ice or ice shelf in a
542 process known as hydrofracture. Meltwater ponding and resulting hydrofracturing has
543 been an important contributing factor of past ice shelf collapses in the Antarctic
544 Peninsula (Scambos et al., 2000, 2003). Although surface melting typically occurs every
545 austral summer on the ice shelves along the Amundsen Sea coast (Fig. 4b; Trusel et al.,
546 2013), the phenomenon remains generally short-lived and has not yet reached the
547 intensities observed in the Antarctic Peninsula (Kuipers Munneke et al., 2014; Trusel et
548 al., 2013, 2015). Nevertheless, the potential for hydrofracture underscores the
549 importance of understanding factors governing the frequency and amount of surface
550 melt and how these processes may evolve in the future.

551 Recent modeling experiments have shown that, under future high-emission scenarios,
552 enhanced surface melting and subsequent hydrofracturing could potentially destabilize
553 ice shelves outside of the Peninsula, particularly when they lead to ice-cliff failure
554 (DeConto and Pollard 2016). An important caveat to such projections is that current
555 climate models continue to poorly simulate fundamental aspects of climate and climate
556 variability in the Amundsen Sea region (e.g., Bracegirdle et al., 2013, 2014).
557 Nonetheless, process studies of the drivers of surface melting and high-resolution
558 regional



559

560 Figure 4. January 2016 surface melt event in the Thwaites region(adapted from Nicolas et al.,
561 2017), and 1999-2009 mean surface melt flux for the western WAIS (as discussed in Trusel et al.,
562 2013). (a) Melt days in January, 2016 arising from a warm marine air intrusion estimated from
563 passive microwave satellite observations. (b) Average summer surface melt flux for 1999-2009 in
564 millimeters of water showing the relatively common occurrence of melt across ice shelves and the
565 result of an extensive, but relatively low intensity, melt event across WAIS in 2005.

566 climate modeling can help identify the likely onset of widespread melting depending on
567 future emissions pathways and atmosphere circulation changes. Further process-based
568 studies of Antarctic surface hydrology and the integration of climate projections with
569 numerical ice-shelf models is an important component of addressing the problem and
570 generating plausible sea-level projections.

571 2.3.6 Basal sliding and subglacial till deformation

572 Basal sliding and subglacial deformation are the primary processes by which Thwaites
573 Glacier flows rapidly and ultimately discharges into the Amundsen Sea. Modeling studies
574 have demonstrated that basal conditions are a large source of uncertainty once retreat
575 initiates. Depending on how the bed is characterized in the rheological model, the
576 response to driving stress can vary dramatically. For example, a more plastic rheological
577 bed may resist retreat for longer than a linear-viscous bed, but once initiated, retreat is
578 likely to proceed more quickly (Parizek et al., 2013).

579 Sliding can occur either on cavitated glacier beds (e.g., Liboutry, 1983, Kamb, 1987;
580 Schoof, 2005) or over subglacial tills (Alley et al., 1986; Iverson, 2012), where water
581 pressure and availability determine the strength of the interface. Understanding the
582 distribution of till and bedrock as well as the roughness of the bed is essential.

583 The interaction of initial bed conditions and the overlying ice determine the evolution of
584 basal tractions that resist ice flow and influence rapid deglaciation (e.g., Tulaczyk et al.,
585 2000; Leeman et al., 2016). Improved understanding and parameterization of basal
586 sliding under different and evolving conditions is also needed, as are better inversions
587 for initial basal conditions, which vary significantly between models and require
588 additional observational validation (Joughin et al., 2004a, Sergienko and Hindmarsh,
589 2013),

590 2.3.7 Subglacial hydrology

591 Subglacial hydrology has a strong influence on ice sheets, from controlling the onset of
592 fast ice flow (e.g., Bell et al., 2007) and influencing the strength of subglacial materials
593 (Kamb, 2001, Iverson, 2012), to potentially modulating large-scale ice velocity (e.g.,
594 Stearns et al., 2008; Siegfried et al., 2016) and basal melting at the grounding zone and
595 beneath the ice shelves (e.g., LeBrocq et al., 2013; Alley et al., 2016; Marsh et al.,
596 2016). Tracking the movement of water and mapping the subglacial drainage network
597 are necessary to understand subglacial hydrology (Smith et al., 2009, 2017).

598 Subglacial water availability and rate of formation depend on the balance between
599 geothermal flux, surface temperature and accumulation, ice thickness and basal shear
600 stress, and the rate of basal water flow (e.g., Joughin et al., 2004b). Subglacial water
601 networks may gain or lose water by basal melt, refreezing, or exchange with subglacial
602 storage, including aquifers (e.g., Christoffersen et al., 2014). Water can remain
603 distributed across the bed, or become channelized, or be temporarily stored as lakes
604 that experience cyclical filling and drainage (e.g., Carter et al., 2017), each with very
605 different implications for lubrication of ice flow (e.g., Flowers, 2015; Carter et al., 2016).
606 Channels can be opened from inland to the coast and can then remain open by tidal

607 pumping and serve to extend the destabilizing influence of warming ocean water farther
608 inland (e.g., Winberry et al., 2009; Walker et al., 2013; Horgan et al., 2013). Subglacial
609 drainage may also nucleate channels in ice-shelf bases that can locally weaken the
610 shelves (Alley et al., 2016). Additional sub-ice-shelf channelization and associated
611 fracture may be triggered by processes downstream of the grounding zone (Vaughan et
612 al., 2012). Finally, subglacial outflow across the grounding zone contains fine-grained
613 sediments and nutrients that may act to fertilize the Southern Ocean (e.g., Wadhams et
614 al., 2013; Vick-Majors, 2016).

615 2.4 MODELS: improving our projections of future behavior

616 The threat of rapid mass loss of WAIS, and Thwaites Glacier in particular, is based on
617 theoretical and numerical studies of marine ice sheet instability which involves strongly
618 increasing ice flux across grounding zones as they retreat into basins with bedrock
619 deepening upstream, after an initial loss of buttressing by floating ice shelves (Weertman,
620 1974; Schoof, 2007).

621 Drastic retreat of WAIS in this manner (sometimes termed 'collapse') was partly
622 reproduced by ice sheet models in the 2000s, particularly during simulations emulating
623 past warm interglacial periods of the Pleistocene (e.g., Ritz et al., 2001; Raynaud et al.,
624 2003; Pollard and DeConto, 2009). However, these studies used coarse spatial
625 resolution and simplified climate and ocean forcing, and in most cases induced retreat in
626 all major embayments simultaneously (Ross, Weddell, Amundsen, Bellingshausen)
627 without distinguishing the PIG/Thwaites sector.

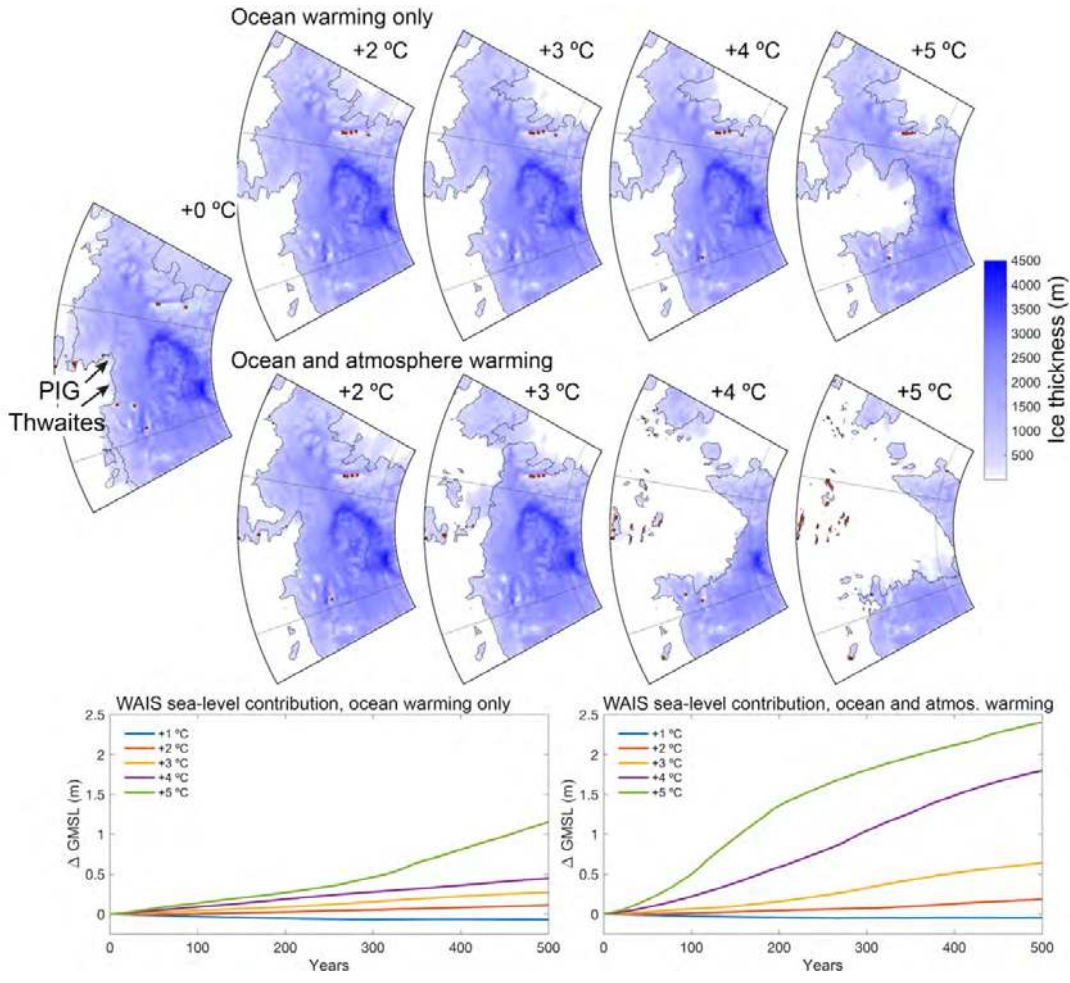
628 Motivated by observed recent thinning and incipient retreat of PIG and Thwaites (e.g.,
629 Rignot et al., 2014), many recent modeling studies have focused on this region using
630 higher spatial resolutions and/or more rigorous ice dynamics (Morlighem et al., 2010;
631 Gladstone et al., 2012a; Parizek et al., 2013; Docquier et al., 2014; Dutrieux et al., 2014;
632 Favier et al., 2014; Joughin et al., 2014). As a whole, these studies indicate that future
633 rapid retreat of PIG and Thwaites Glacier grounding zones, forced by climate and ocean
634 warming, will evolve on time scales of a century to one millennium. The timing of retreat
635 of the outlet glaciers depends sensitively on small-scale topography of bedrock sills,
636 small-scale troughs and rises upstream of the modern grounding zones, and dwindling
637 buttressing by the remaining floating ice downstream (Durand et al., 2011; Favier et al.,
638 2012; Parizek et al., 2013). However, Thwaites Glacier connects more directly to the
639 deep central basins where retreat could become especially rapid, and a collapse of
640 Thwaites is more likely to entrain adjacent basins into collapse.

641 Consistent with these studies, numerous large-scale modeling studies conducted in the
642 last two years (spanning all of WAIS or Antarctica) have simulated future collapse of
643 WAIS (Cornford et al., 2015; Feldmann and Levermann, 2015; Golledge et al., 2015;
644 Ritz et al., 2015; Winkelmann et al., 2015) under various climate-warming scenarios.
645 These studies find that future grounding-zone retreat into the central WAIS region is
646 expected on time scales of a few centuries to a millennium, contributing several meters
647 to global mean sea level rise, beginning with retreat of the Pine Island Bay glaciers.

648 Even faster and more drastic future retreat of WAIS was recently simulated by DeConto
649 and Pollard (2016), who proposed additional physical mechanisms to explain geologic
650 evidence of high sea-level stands ~10–20 meters above present during the warm mid-
651 Pliocene period ~3 Myr ago, and 6–9 m higher during the more recent Last Interglacial
652 (~125 ka; Pollard et al., 2015; Dutton et al., 2015). In their model, assuming business-as-
653 usual greenhouse gas emissions, the central WAIS can collapse on time scales as short

654
655
656
657
658
659
660
661

as ~100–200 years, with initial retreat occurring in the PIG and Thwaites Glacier basins (Figure 5). Moreover, their study specified a maximum retreat limit, and faster rates may be possible. The proposed mechanisms driving the accelerated retreat include the hydrofracturing of ice shelves by increased surface melt, and the structural failure of large ice cliffs at the grounding zone described above. The role of surface melt focuses attention on the timing of future atmospheric warming around Antarctica, in contrast to increasing sub-ice ocean melt which plays the central role in most recent modeling studies.



662
663
664
665
666
667
668
669
670

Figure 5. WAIS model simulations run for 500 years, applying uniform ocean warming (top row) or uniform oceanic and atmospheric warming (middle row), to a baseline mid-20th century climatology used in previous simulations (DeConto and Pollard, 2016). These simple sensitivity tests demonstrate the rapid retreat of Thwaites Glacier once a climatic threshold is exceeded. The warming required to trigger retreat is reduced when the influence of processes driven by both sub-ice oceanic warming and the warming of atmospheric temperatures (leading to surface meltwater production) are considered. Contributions of WAIS to global mean sea-level for the simulations are shown at bottom.

671 3 Research Objectives for the Coming Decade

672 This How Much, How Fast? science outline, focused on Thwaites Glacier catchment and
673 the adjacent Amundsen Sea, is aimed at improving our understanding of marine ice
674 sheet collapse and increasing our skill at forecasting critical changes in the system and
675 the resulting rates of sea-level rise.

676 A transformative advance in our understanding of the processes driving WAIS change
677 will require a coordinated research effort with measurements taking place over an
678 extended period. Short-term variability of the Thwaites geophysical system must be
679 measured and parsed from longer-term variations driven by external forcings. How the
680 drivers of this variability interact, and how they are modulated by local ocean and sea ice
681 behavior, need to be better quantified. The How Much, How Fast? observational
682 program aims to provide more-comprehensive atmospheric and ice-sheet data
683 necessary to evaluate these large-scale processes for the Thwaites Glacier region. This
684 in turn will support advanced models, ranging from global to local scales, to better
685 constrain system response in the coming decades to centuries.

686 In the discussion below, we provide an approximate scale for future research in the How
687 Much, How Fast? focus region (e.g., number of observation sites, resolution of
688 measurements) as a reference for the scope of the effort needed to produce an
689 adequate improvement in our understanding of the system.

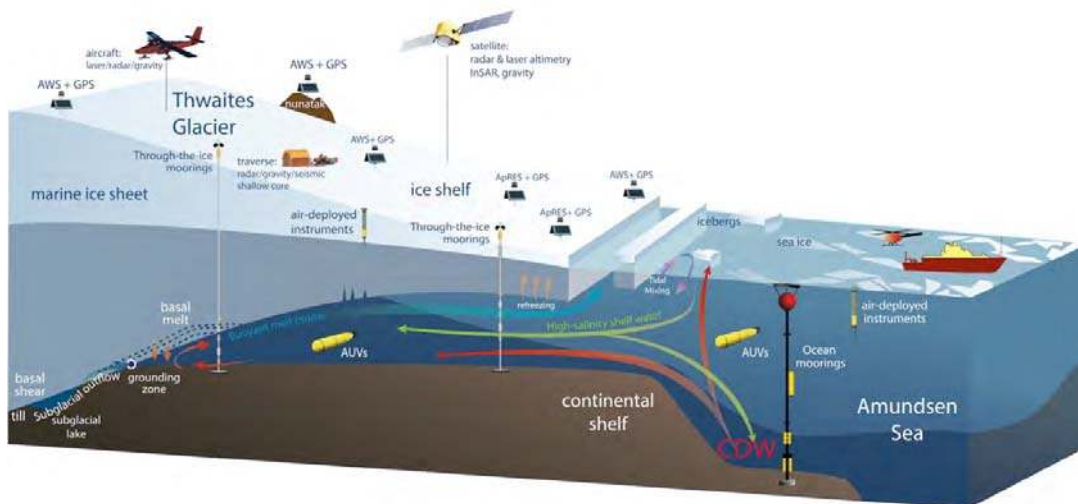
690 3.1 Atmosphere and Climate

691 Installation and maintenance of an improved atmospheric observation network in WAIS
692 will provide measurements to improve atmospheric model simulations and capture
693 climate change and variability. A network of four stations installed over the PIG region in
694 the last decade has pointed out biases in atmospheric reanalysis products (Jones and
695 Lister, 2015). Part of the improved research infrastructure should include a suite of ~6
696 new automatic weather stations (AWS) along the two main flowlines of Thwaites Glacier
697 and another 4 AWSs along the coast between the eastern Ross Ice Shelf and Thwaites
698 Glacier (see nominal Thwaites-region AWS locations in Fig. 7 and 8). New AWSs should
699 include basic meteorological measurements (temperature, pressure, winds, humidity)
700 and, for those in the Thwaites region, instruments to measure surface and near surface
701 processes including energy balance, snow accumulation, snowpack temperature, and
702 firn compaction rates. The meteorological observations should be telemetered in near-
703 real-time. The proposed Thwaites network of approximately 6 AWS with ~100 km
704 spacing should be linked with accumulation radar surveys and shallow boreholes,
705 especially along flow lines.

706 The installation of a fiducial atmospheric observation station (e.g., instrumented tower) at
707 Byrd Station would continue the existing climate change record started there in 1957
708 (Bromwich et al., 2013). The goal is to provide continuous high-quality atmospheric
709 measurements, similar to those currently collected at Summit, Greenland by NOAA
710 (basic surface atmospheric variables, radiation fluxes, surface energy balance, firn
711 temperature measurements, cloud sensors, and precipitation). This would provide a
712 continuation of an observation series at Byrd Station that spanned several decades in
713 the 1950s – 1990s. While early data came from human-attended instrument observation,
714 the proposed fiducial site can be automated with extensive redundancy and Iridium
715 telemetry to operate unattended year-round.

716 A comprehensive shallow ice coring campaign is desirable to provide a high-resolution
717 (seasonal to annual) reconstruction of past atmospheric and oceanic driver variability
718 and trends (as described in Section 2.1.2 above), as well as to investigate the role of
719 atmospheric and oceanic processes (e.g. ASL position, intensity, and potential links to
720 the central Pacific variability) in Thwaites Glacier surface mass balance and surface melt
721 variability over recent decades to centuries. This ice core record should complement
722 continued remote sensing observations of melt and surface mass balance variability
723 (e.g., Trusel et al., 2013; Medley et al., 2013), while providing direct measurements of
724 annually-resolved accumulation rate and surface melt intensity.

725 Glaciochemical proxies (such as sea salts and methanesulfonic acid, or MSA) can be
726 developed to provide additional information on past sea ice and polynya variability and
727 their atmospheric drivers (e.g. Thomas and Abram, 2016; Criscitiello et al., 2013; 2014).
728 Stable water isotope records and borehole thermometry can be used to reconstruct a
729 longer-term temperature record from coastal West Antarctica and further document
730 recent decadal-scale warming over WAIS (Orsi et al., 2012; Steig and Orsi, 2013; Steig
731 et al., 2013). As accumulation rates are high along the coast, it would be possible to
732 derive sub-annual information at many sites. There are multiple locations for shallow
733 (10-100 m), small-diameter ice cores depending on the target variable of interest (e.g.,
734 surface melt, accumulation rate, or ice chemistry) including on the Thwaites Glacier itself
735 (along flowlines or across the grounding zone) as well as on small ice domes, separated
736 over a significant longitudinal range across WAIS-Amundsen Sea coastline.



737
738 Figure 6. Schematic of instruments and research activities for the How Much, How Fast? future
739 research objectives.

740 3.2 Ocean

741 Accurate ocean bathymetric data are necessary on the continental shelf to determine the
742 steering of deep water from the continental shelf break to the ice front. For significant
743 improvement, a 500-m grid of bathymetric measurements is needed, supplemented in
744 key areas with high-resolution side-scanning sonar to identify finer details and provide
745 clues to present-day interactions between the ice and the underlying bed. Local
746 circulation patterns driven by the ocean bathymetric geometry, which can influence
747 water mixing and mass transport, will require a ~250 m grid at key sites. Bathymetry

748 should be acquired for the entire study area, specifically the continental shelf extending
749 from Thurston Island westward across the full length of the Getz Ice Shelf, with
750 emphasis on the Thwaites continental shelf.

751 Another critical need is an extended time series of ocean-water properties and
752 circulation changes. Obtaining these data will require the development and deployment
753 of instrumentation designed specifically for studying the interface between an ice sheet
754 and the ocean, the grounding zone region, and the sub-ice-shelf cavity. We need to
755 understand processes in this near-field region, close to the grounding zone, which could
756 be achieved through data acquired by new ocean and on-ice instrumentation as well as
757 airborne and ground surveys. A major goal in the near-field is to distinguish between the
758 sources of freshwater input to the ocean (notably subglacial water flowing into the ocean
759 from beneath the grounded ice or melting of the ice-shelf base), as each source will
760 have a different impact on ice-ocean dynamics.

761 Ocean observations are best obtained through an integrated program of continental
762 shelf and sub-ice shelf moorings, and open-ocean and sub-ice-shelf vehicles, such as
763 gliders. Targeting processes near the grounding line would require installing and
764 maintaining a minimum of several long-term ocean moorings near the Thwaites Glacier.
765 Additional far-field moorings are needed in the major troughs near the continental shelf
766 break (at least two moorings for each trough) to understand ocean variability in the
767 Amundsen Sea. Airborne deployment of ocean sensors to measure temperature and
768 salinity (e.g., Airborne Expendable Conductivity Temperature Depth Probe, or AXCTD,
769 and mini-Argo floats) will expand the geographic coverage of observations during field
770 campaigns. Boreholes through the Thwaites ice shelf will facilitate the installation of
771 through-ice moorings with laser-stimulated fiber optic Distributed Temperature Sensors
772 (DTS) and traditional mooring instruments, to enable the measurement of ice and water
773 temperature profiles, as well as ocean salinity and flow at specific depths.

774 Additional information could be acquired by autonomous vehicle transects or casting
775 profiles in the ocean linking the mooring sites from the grounding zone out to 200 km.
776 Beneath the ice shelf regions, sub-ice-shelf vehicles could be used to assist in mapping
777 bathymetry and studying the processes beneath the ice shelf. Repeated autonomous
778 vehicle transects running from the grounding zone to the continental shelf edge will
779 provide critical integrating data regarding water circulation and water modifications
780 occurring in the sub-ice shelf cavity. Measuring salinity, chemistry, and circulation near
781 the grounding zone with these vehicles, supplemented by the on-ice moorings, will lead
782 to a better assessment of the role of subglacial hydrology in sub-ice-shelf ocean
783 circulation.

784 Integration of sea-ice extent, concentration, and thickness data should continue. “Winter
785 water” formation, forced by sea-ice formation, can cool the top several hundred meters
786 of the water column, some of which enters the ice-shelf cavities under certain conditions.
787 Such integration can be done at adequate resolution (~1 km) using existing or planned
788 airborne and satellite missions, but should be augmented by data from moorings and
789 casts

790 3.3 Ice Sheet and Ice Shelves

791 Surface elevation and surface ice velocity are two critical boundary conditions that
792 require near-continuous monitoring because changes in surface slope and ice flow are
793 continuous; measurement of both parameters should remain a high priority for NASA
794 and other space agencies. Current and planned satellite altimeter missions (specifically,

795 the ongoing CryoSat-2 mission, and the ICESat-2 satellite planned for launch in 2018)
796 will monitor surface elevation. Repeat ice velocity measurements at 250 m resolution
797 should be produced annually on an ice-sheet-wide scale, and seasonally or shorter for
798 the Thwaites Glacier front and adjacent ice shelf and grounding zone areas. Several
799 existing and upcoming satellites are capable of supporting this program (e.g., TerraSAR-
800 X; Sentinel-1 and -2; Landsat 8, meter-scale imagers, and NISAR).

801 Airborne missions such as to NASA's Operation IceBridge or NSF's IcePod can support
802 once-annual mappings of ice surface elevation at decimeter resolution. Such mapping
803 campaigns should acquire data at a spatial resolution at least 5 km. Sampling should be
804 at higher resolution throughout the Thwaites Glacier basin in areas that are especially
805 sensitive to change, e.g., ~250 m in the first 20 km inland of the current grounding lines
806 and ~500 m in the next 50 km inland; this should be supplemented with 1-km grid
807 surveys along the shear margins (Pritchard, 2014) and in transition zones from high to
808 low basal shear stress in the main trunk. A continued airborne measurement strategy,
809 similar to that of NASA's Operation IceBridge mission, which includes ice-penetrating
810 radar, laser altimetry, and gravimetry, through the period of field activity for How Much,
811 How Fast? would be greatly beneficial to its science goals.

812 Measurements of the detailed ice bed shape and the ice-bed interface properties are a
813 key part of forecasting later evolution and pace of sea level rise. Airborne radar can
814 contribute greatly to the bedrock shape and the thermal state of the interface, but till
815 properties require seismic profiling. An extensive program (e.g., ~800 km) of ground-
816 based radar surveys with seismic survey lines at key locations (total 100 km) to
817 investigate the ice thickness and structure of Thwaites Glacier in the region 200 to 300
818 km upstream from the grounding line will provide essential information for models
819 examining a critical ramp-up period in the evolution of Thwaites Glacier during collapse.

820 Mapping of ice shelf thinning rates across the entire floating portion of Thwaites Glacier
821 and the adjacent Haynes, Smith, Kohler, and eastern Getz ice shelves should be
822 conducted at 250-m scale on an annual basis using high-resolution optical stereo-
823 imagery, and seasonally at coarser scale by integrating satellite radar and laser altimetry
824 (CryoSat-2, and ICESat-2 which will launch in 2018). This will update and add detail to
825 the time series of Pritchard et al., (2012) and Paolo et al., (2015). This effort should
826 include validation of derived basal melt rates from a network of autonomous phase-
827 sensitive radar (ApRES) installations to determine both the melt rate and the vertical
828 strain at high-resolution.

829 Measurements of ice-shelf thickness and ocean water column thickness are needed at a
830 resolution of ~250 m near the grounding zone to support process-related modeling of
831 ice-shelf melt, including generation of sub-ice-shelf channels that may weaken shelves.
832 Integrated mapping strategies for ice shelf thickness and sub-ice-shelf cavities should
833 include airborne gravity, seismic bathymetry soundings, and radar profile soundings.
834 Repeat mapping of grounding zones is needed across the Amundsen Sea Embayment,
835 as they are retreating rapidly (Rignot et al., 2011a; Rignot et al., 2014; Christie et al.,
836 2016). Currently, interferometric synthetic aperture radar has mapped the grounding
837 zones to a resolution of ~250 m on seasonal timescales (Joughin et al., 2016).

838 Key details of the variations and feedbacks in the ice-ocean interface are possible only
839 through in situ ocean observations at the ice base or in the sub-ice-shelf cavity.
840 Technological improvements are necessary to achieve this, including the development of
841 autonomous surface stations (through-the-ice moorings), and advanced underwater
842 vehicles (AUVs). Surface stations should be deployed as multiple small arrays (e.g., two

843 to three pairs of stations) to investigate the grounding zone environment at selected
 844 sites. Key data on the interaction between sub-ice-shelf oceanic plumes and eddies and
 845 the ice shelf ice are needed, requiring water flow rate measurements at several levels
 846 near the ice-ocean and ocean-bed interface. The design of these fixed stations must be
 847 sustainable with low logistical demand to allow collection of records across
 848 climatologically significant times (years to decades). Detailed (<500 m grid profiles)
 849 measurements by AUVs in key areas of the sub-shelf cavity once or twice per field

850

851 Table 1. Science Infrastructure Plan for How Much, How Fast?

Measurement System	Location	Units	Contribution
Ocean Moorings, distal zone (not shown in Figure 2)	Bathymetric trough areas, Amundsen Sea continental shelf break.	~6	Drivers: fundamental measurements of ocean water types and circulation, diurnal to multi-year scales
Ocean Moorings, proximal to ice	Ice front and shelf regions	~5	Drivers: fundamental measurements of the link between large-scale ocean variability and near-ice delivery of warm water; Processes: ocean circulation and water mixing, identifying rates and sources of freshwater input.
Through-the-ice moorings	Ice shelf and multi-year fast ice areas	~4	Processes: ocean circulation and water mixing, rates and sources of freshwater input. Ice shelf thickness change, basal melting and mixing.
ApRES +GPS stations	Thwaites Gl. trunk, grounding line, ice shelf areas	~15	Processes: ice thickness changes, firn densification, vertical strain in the ice column, ice shelf basal melt rates, grounding line retreat, ice shelf tidal flexure; Boundary Conditions: till character, and grounding-zone processes.
Automated Weather Systems +GPS	Coastal areas near Thwaites Gl. and adjacent regions	~6	Drivers: atmospheric measurements to establish baseline conditions and variability in surface mass balance; establishing connections and teleconnections to broader climate patterns
Fiducial weather station, tower	Byrd Station or WAIS Divide site	1	Drivers: atmospheric measurements to establish baseline conditions and variability in surface mass balance; establishing connections and teleconnections to broader climate patterns
Traverse Radar / gravity / shallow core	Upper Thwaites catchment	~400 km	Boundary Conditions: ice thickness, bed topography, till character and freeze-thaw state, accumulation and recent climate history, bedrock density
Combined seismic / radar / gravity surveys	Lower Thwaites trunk, shear margins, grounding zone	~80 x 80 km variable grid density	Boundary Conditions: ice thickness, bed topography, till character and freeze-thaw state, ice thinning rate, subglacial hydrology, ice layering and fabric.
Automated Underwater Vehicle surveys	Grounding line, sub-ice shelf, near-coastal ocean	500m-grid, 250m in focus areas	Processes: ocean circulation and water mixing, identifying rates and sources of freshwater input, bathymetry.
Airborne geophysics Surveys	Thwaites Gl., grounding zone, ice shelf areas	Variable flight-track density	Boundary Conditions: ice thickness, bed topography, till character and freeze-thaw state, ice layering, ice fabric, subglacial hydrology, sub-ice geology
Air-deployed instruments	Thwaites Gl., proximal ice fronts	several 10s	Processes: ocean circulation and water mixing, identifying rates and sources of freshwater input, bathymetry; glacier speed in dynamic crevassed areas, grounding zone.

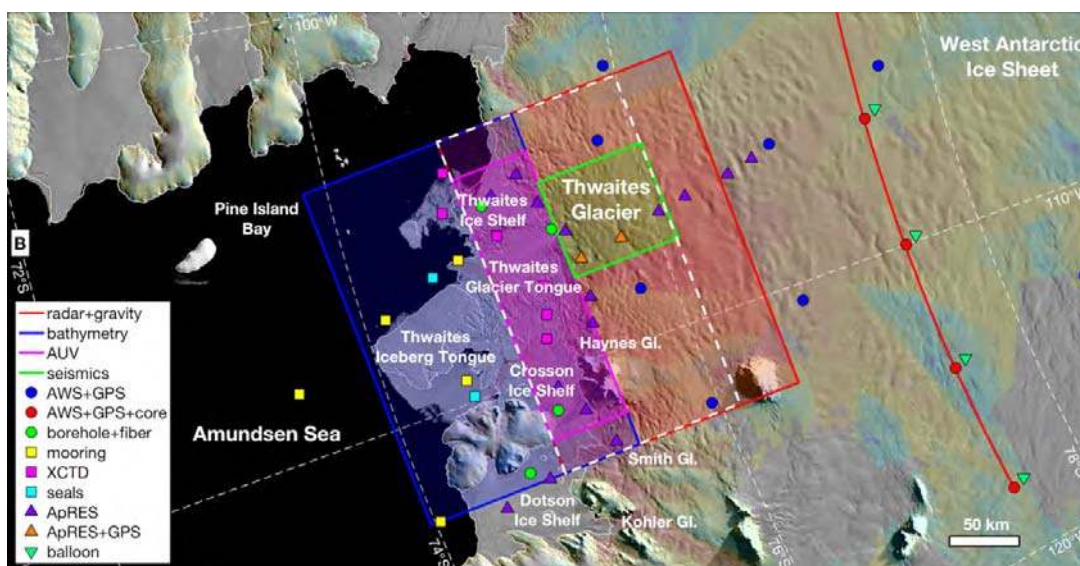
852

853 season would lead to rapid advances in understanding of multiple ice-ocean processes.
854 AUVs should collect observations of (at least) water temperature, salinity, velocity,
855 dissolved oxygen content, and suspended sediment content, to constrain models of sub-
856 ice-shelf circulation.

857 Imagery, seismicity measurements, and in situ strain measurements (e.g., borehole
858 tiltmeters and accelerometers) should be used to increase knowledge of ice fracture
859 mechanics (location, frequency, mechanism) to inform models of ice cliff failure. Motion
860 of icebergs and ice mélange, and measurements of ice mélange strength, should also
861 be tracked using satellite data. In addition to buttressing the ice margin, mélange
862 impedes atmosphere-ocean connectivity and transfer of wind stress to the ocean and
863 thus has a significant effect on local ocean circulation, as well as potentially damping
864 waves that would tend to stress the ice front (Joughin et al., 2008). Ice shelves may re-
865 grow episodically during retreat, justifying additional study of calving from ice shelves.
866 This work to understand the ice cliff failure and calving from adjacent ice shelves may be
867 conducted at the Thwaites grounding zone and at other large ice cliffs (e.g., Crane
868 Glacier in the Antarctic Peninsula; Scambos et al., 2004; 2011), along thicker ice shelves
869 such as Getz Ice Shelf, and in Greenland.

870 To validate and constrain hydrological process models, geophysical observations should
871 be collected in targeted locations where large-scale transitions are observed (e.g.,
872 Schroeder et al., 2013) and non-steady-state behavior in the hydrological regime is
873 possible (e.g., Smith et al., 2009; 2017). This effort should include repeat radar and
874 seismic surveys, installation of autonomous GPS and phase-sensitive radar stations,
875 and development of novel techniques for mapping subglacial conductivity structure
876 (Mikucki et al., 2015, Foley et al., 2016, Key and Siegfried, 2017 in review).

877 All of the components of these systems are research targets for How Much, How Fast?.
878 Selected other regions may also exhibit some of the key processes involved or
879 contribute to an understanding of the history of the focus area. The interaction of
880 Thwaites Glacier and the Amundsen Sea with the wider atmosphere and ocean are the
881 basis for a broader study of global climate change, focused on these teleconnections, as
882 part of How Much, How Fast?



883

884 Figure 7. Notional scope of field science activities in WAIS under How Much, How Fast?.
885 Red box indicates Amundsen Sea Embayment (ASE) focus area. Base map shows the ASE
886 region, with surface morphology from MOA (Haran et al., 2014) and surface ice-flow speed
887 from a synthetic aperture radar compilation (Rignot et al., 2011b). Boxes and symbols show
888 survey focus areas and potential instrument locations and traverse measurement sites.

889 3.4 Solid Earth

890 The main goals of an observation program to understand the interplay of the underlying
891 bed at Thwaites Glacier and vicinity should be a distributed program to gather
892 geothermal heat flux measurements, data on the till strength and thickness in several
893 areas of the glacier, and the rate of crustal uplift (and parsing that rate between its
894 elastic and longer-term response rates).

895 As noted in section 3.2, a traverse across the mid-to-lower glacier trunk aimed at
896 detailed radar mapping of the bed should include gravity and seismic data. This will
897 support inversions for bed characteristics and the underlying geology. Data on internal
898 layer deformation from the radar profiles, combined with ice flow speed, can be used to
899 diagnose basal friction (Christianson et al., 2014). Precise repetition of selected surveys
900 in areas where erosion rates are likely to be high would allow quantification of subglacial
901 sediment erosion and transport on decadal timescales (Smith et al., 2007), helping to
902 characterize the till beneath the Thwaites Glacier trunk.

903 Observations of the bed conditions are needed over a significant part of the lower part of
904 Thwaites Glacier, and especially near the current grounding zone (Horgan et al., 2013).
905 Knowledge of the till rheology as well as the hardness of the bed in till-free regions is a
906 key part of prognostic modeling. Detailed coincident measurements of tidally-modulated
907 driving stress and flow speed, coupled with high-temporal resolution GPS
908 measurements of ice flow near the grounding line, can yield estimates of basal shear
909 stress and basal rheology. These values can then be used to inform large-scale models.

910 A GPS array of four to eight stable rock sites (nunataks in the vicinity of Thwaites) is
911 needed to characterize the rate of uplift as mass changes occur in the region, and
912 separate elastic response of the crust from longer-term mantle flow-driven rebound. This
913 information will allow a refinement of modeling that examines the extent to which
914 rebound (and sea level effects) could mitigate the pace of ice loss during a collapse of
915 the ice sheet.

916 Satellite-derived velocity maps should be supplemented by high-temporal resolution
917 flow-speed and surface slope observations from five or more continuous GPS stations
918 on the lower portion of Thwaites Glacier and nearby areas to resolve high-frequency
919 (seasonal to sub-daily) velocity fluctuations, which are diagnostic of ice dynamic
920 response to variable basal rheology. While the most direct method of assessing the
921 basal interface remains borehole sampling (e.g., Engelhardt et al., 1990), model-based
922 inversions of time series of surface measurements can lead to a better assessment of
923 the basal interface across the ice sheet.

926 3.5 Life Sciences

927 The ocean's biological and solubility carbon pumps regulate deep-sea sequestration of
928 carbon dioxide (CO₂) over geologic time scales, and their efficiency, especially at high
929 latitudes, exerts control on atmospheric CO₂ levels over glacial-interglacial cycles

930 (Sarmiento and Toggweiler, 1984; Sigman et al., 2010; Sigman and Hain, 2012). These
931 pumps are also responsible for the ocean taking up about a third of the anthropogenic
932 CO₂ supply (Le Quéré et al., 2015). Thus, large climate-driven changes to these pumps
933 may trigger acceleration or deceleration of global forcing towards a warmer climate.
934 Although regional biological impacts on the causation and progress of marine ice sheet
935 collapse may be small, the effects of ice sheet melting and retreat on the ecosystem of
936 the Amundsen Sea will be significant if a larger ice-front polynya with intensive algal
937 bloom activity is formed. Since these processes are tightly coupled to ice-ocean
938 interface processes, understanding how climate drivers of polynya formation and
939 changing ice discharge impact ecological systems should be included as an ancillary,
940 low-cost/high-impact component of the How Much, How Fast? science program.

941 Regional variation in the average productivity of coastal Antarctic polynyas can be
942 explained by differences in nearby basal ice-shelf melt (Arrigo et al., 2015), with the
943 Amundsen Sea Polynya (ASP) receiving the greatest melt from WAIS as well as having
944 the greatest productivity. The high biological productivity and CO₂ uptake of the ASP (Mu
945 et al., 2014) is attributed to increased availability of the limiting nutrient iron (Fe;
946 Alderkamp et al., 2015), which has been linked to the melting WAIS (Yager et al., 2012;
947 2016). Modified Circumpolar Deep Water (mCDW) flowing from beneath the Dotson Ice
948 Shelf transports high concentrations of dissolved and particulate Fe () along with a high
949 meltwater fraction (Sherrell et al., 2015; Randall-Goodwin et al., 2015). In the ASP, the
950 extent and timing of sea ice cover, and therefore light availability (another major factor
951 controlling biological productivity of the polynya), has also been linked to changes to the
952 Thwaites Iceberg tongue (Stammerjohn et al., 2015).

953 Discharge from sub-ice-shelf channels contributes to formation of polynyas in some
954 places (Mankoff et al., 2012; Alley et al., 2016), which influence sea-ice and water-mass
955 formation. The polynyas along the Amundsen Sea coast are among the most biologically
956 productive areas of the entire ocean, at least in part because of the melting ice sheet.
957 Their presence is a result of oceanic processes but also of local and synoptic wind
958 patterns, both of which are likely to change in the coming decades. In the near-term, this
959 ecosystem's productivity may increase if micronutrient fluxes increase via glacial
960 meltwater, but the mechanisms are poorly quantified and must be investigated before
961 they can be incorporated into predictive models. Longer-term physical-biological
962 coupling processes are even less clear, especially in a scenario of major ice-sheet
963 retreat, but could be important at a global scale. By impacting the food web and
964 increasing the uptake of atmospheric carbon dioxide, some offsetting carbon
965 sequestration may occur. These ecosystem processes, once understood, may also
966 serve as proxy measures of meltwater flux. The ASP also shows the greatest
967 interannual variability in productivity, which may be useful for interpreting interannual
968 variability of other WAIS records (Arrigo and van Dijken, 2003).

969 3.6 Models

970 WAIS is an active part of the globally-coupled atmosphere-ocean-sea ice-ice sheet
971 system whose past, present and future behavior is usually simulated with global Earth-
972 system models. Representation of Antarctic and Southern Ocean physics in these
973 models, and the input fields such as atmospheric re-analyses, need to be refined.

974 The body of ice-sheet modeling described above identifies the danger of large-scale
975 retreat and collapse of WAIS, starting with grounding-zone retreat into the PIG and/or
976 Thwaites basins within the coming century. To improve projections, particularly on

977 decadal time scales, some clear needs have emerged: 1) conducting model inter-
978 comparisons to determine the rigor of ice model dynamics (full Stokes, higher order, or
979 hybrid treatments; cf. Pattyn et al., 2013); 2) further sensitivity studies to determine the
980 spatial resolution needed, both for ice dynamics and for bedrock topography (Durand et
981 al., 2011; Gladstone et al., 2012b); and 3) better characterization and inclusion of basal
982 properties and hydrology in the central WAIS basins (Parizek, et al., 2013; Schroeder et
983 al., 2013). Of particular importance is that most models lack physical representations of
984 fracture processes involved in iceberg calving (Bassis and Walker, 2012), and also
985 relevant to ice cliff failure that could control future ice-sheet evolution. Benchmarking or
986 tuning to the recent instrumental record is important; however, because an ice-sheet
987 collapse has not occurred during the observational record, a successful test does not
988 demonstrate that the model will be successful in simulating anticipated ice sheet
989 changes. The use of paleoclimate data from warmer periods in the past can partially
990 solve this problem, although human forcing will likely exceed the rate of any past natural
991 analogs.

992 Modeling efforts must advance ice, ocean, and atmosphere representations at all
993 relevant spatial and temporal scales, and focus on the decadal-to-century evolution of
994 the system (e.g., Alley et al., 2015; DeConto and Pollard, 2016). Currently, the full
995 spectrum of teleconnection behavior in the atmosphere and ocean systems is not well-
996 captured. Many key processes in the atmosphere, ocean, sea ice, and ice sheet occur at
997 spatial scales too small to be resolved by global earth system models (grid cells of 20
998 km), e.g. oceanic eddies on the continental shelf that deliver heat to the grounding zone
999 have a length scale of only a few kilometers (Thompson et al., 2014). The growing
1000 recognition that the ice sheet margins are responding to changes in the ocean and the
1001 atmosphere emphasizes the importance of simulating the evolution of regional
1002 atmospheric climate at spatial scales capable of resolving the complex intersection of
1003 ocean, sea-ice, ice shelves, and steep ice-sheet flanks that characterize the Amundsen
1004 Sea region and capture relevant processes such as iceberg calving, surface melting,
1005 hydrofracturing, etc. One approach is to use of adaptive grid models that place high
1006 spatial resolution where it is needed most (e.g., at the grounding zone). The Marine Ice
1007 Sheet Ocean Modeling Intercomparison Project (MISOMIP), an effort put forward by the
1008 World Climate Research Program, currently has such a focus on coupled, regional ice-
1009 ocean modeling of the Thwaites Glacier region and would greatly benefit from the
1010 observational data to be collect in this suggested research activity.

1011 Process modeling efforts to address the How Much, How Fast? questions must build on
1012 both observational data from the new field-based studies proposed and information
1013 about past changes in the ice sheet. The focus on specific processes will directly support
1014 the effort to improve ice sheet models with the overarching goal of improving predictive
1015 capabilities. Each of the processes discussed above requires deeper understanding both
1016 in terms of the long-term nonlinear effects as well as the integration with other parts of
1017 the ice sheet-ocean-climate system.

1018 A hierarchy of models spanning a range of complexity and capabilities will be required to
1019 address different components of WAIS system over a range of spatial and temporal
1020 scales. Understanding future ice loss will require models targeting specific processes
1021 and behaviors, models of coupled atmosphere-ocean-ice systems (described above),
1022 multicomponent models of intermediate complexity capable of running long simulations
1023 testable against geological records, and coordinated model intercomparison activities,
1024 examining simulations of Thwaites Glacier's response to specified forcings.

1025 Lastly, “Modeling” and “observations” should not be viewed as separate entities, but
1026 rather as two aspects of an integrated whole. Modeling should guide design and
1027 implementation of observational campaigns, potentially with real-time adjustments in
1028 data collection as the results are interpreted, and coupled model improvements should
1029 result from comparisons between predictions and collected data. New and improved
1030 paleoclimatic data are not a focus of this paper, but their high value is recognized and
1031 endorsed here (see Section 4).

1032 4 Summary – How Much, How Fast?

1033 We have reviewed the state of current research and outlined several research objectives
1034 for the next decade of research in WAIS, focused on the Thwaites Glacier region and the
1035 adjacent Amundsen Sea, to address ideas presented in a 2015 National Academies’
1036 report, “A Strategic Vision for NSF Investment in Antarctic and Southern Ocean
1037 Research”. How Much, How Fast? is a direct response to address their identified key
1038 theme of constraining how much and how fast WAIS will change in the coming decades.
1039 How Much, How Fast? is based on four fundamental questions: (1) Drivers: Why is the
1040 West Antarctic Ice Sheet changing now?; (2) Boundary Conditions: What is the present
1041 state of the West Antarctic Ice Sheet?; (3) Processes: What mechanisms are involved in
1042 marine ice-sheet collapse?; and (4) Models: How can we improve our projections of sea-
1043 level rise from West Antarctica? The primary geographic focus of the How Much, How
1044 Fast? effort will be the Thwaites Glacier and the adjacent areas of the Amundsen Sea.
1045 This targeted effort will provide the template for studying the other portions of Antarctica
1046 that are likely to become increasingly vulnerable in the future, such as the Aurora and
1047 Wilkes basins in East Antarctica.

1048 The initiative proposed here builds directly upon the recent history of US research
1049 investment in WAIS research. It also incorporates the international partnerships needed
1050 to undertake a large and coordinated study of global importance. The US, under both the
1051 NSF Antarctic Sciences field research programs and NASA via satellite and airborne
1052 missions, has made important contribution to understanding the central WAIS region.
1053 Indeed, the region was first mapped by US explorers and scientists such as Richard
1054 Byrd, Lincoln Ellsworth, and Charles Bentley.

1055
1056 More recently, several extensive international programs of oceanographic research,
1057 airborne reconnaissance, and ground-based geophysical surveys operating from WAIS
1058 Divide ice core site are largely responsible for the data currently available for model
1059 studies to identify the potential rapid evolution of Thwaites Glacier and the vicinity. WAIS
1060 Divide ice core itself, completed in 2012, provides the most precise record of climate and
1061 atmospheric conditions for the region for the past 68,000 years (WAIS Divide Project
1062 Members, 2013). Records from shallow ice cores under US and related UK programs
1063 have played an important role in complementing the very short instrumental climate
1064 record, helping to quantify the drivers of recent change in this region. Coastal records
1065 from ice cores could answer important remaining questions, but are lacking in most of
1066 the study region.

1067
1068 A further avenue for addressing the How Much, How Fast? plan, not discussed here, is
1069 the collection of new paleoclimate evidence from ice and sediment cores. The same
1070 National Academies’ report that provided the basis for the How Much, How Fast?
1071 research plan acknowledged that a paleoclimate-based approach to understanding the
1072 potential of future rapid changes in sea level from WAIS collapse is also of high priority.

1073 The report noted that ice-core studies could provide decadal-scale records of change
1074 during past interglacial periods, when the central WAIS may have collapsed. The
1075 potential for a detailed record of climate for the Eemian (the most recent interglacial
1076 period prior to the present) from an ice core near the boundary of the West Antarctic and
1077 East Antarctic ice sheets (Hercules Dome) was underscored (Steig et al., 2015). Near-
1078 shore marine sediment records and cosmogenic isotope studies of bedrock obtained
1079 from shallow areas beneath the present-day ice sheet can provide important constraints
1080 on the timing and extent of WAIS retreat during this period as well. Such paleo-
1081 constraints on past ice sheet behavior are becoming increasingly important for model
1082 validation and the calibration of model physics used in simulations of future ice sheet
1083 evolution.

1084 Answering the paired How Much, How Fast? question, and its component questions
1085 detailed here, is a major challenge. The Thwaites Glacier region is vast and difficult to
1086 access. Success will require a focused international community effort, major logistical
1087 support, and integrated international collaboration over the course of the next decade.
1088 The scientific discoveries and understandings will provide a tool for planning adaptation
1089 and risk management strategies for coastal communities, capital assets and natural
1090 environments around the world.

1091

1092

1093 Acknowledgements: We thank the National Science Foundation, NASA, the U.S.
1094 National Academies of Science, Engineering, and Medicine, and the U.K. National
1095 Environmental Research Council for providing support for several forums where the
1096 research objectives were formulated. Ideas developed by a National Academies panel,
1097 and at the West Antarctic Ice Sheet Workshops in 2015 and 2016, and a March 2016
1098 meeting of the Royal Society formed the basis for the research objectives developed
1099 here. Laurie Geller of the National Academies and Betsy Sheffield of the National Snow
1100 and Ice Data Center (NSIDC) provided organizational assistance for the meetings.
1101 Thanks to J. Matthews of Scripps Institution of Oceanography for graphic work on
1102 Figures 2 and 6. This work was supported by the National Science Foundation [NSF-
1103 PLR 1340261, NSF-PLR 1341695, and NSF-PLR 1649109], and NASA [NNX16AN60G].

1104

1105 REFERENCES CITED

1106 Alderkamp, A.C., van Dijken, G.L., Lowry, K.E., Connelly, T.L., Lagerström, M., Sherrell,
1107 R.M., Haskins, C., Rogalsky, E., Schofield, O., Stammerjohn, S.E. and Yager, P.L.,
1108 2015. Fe availability drives phytoplankton photosynthesis rates during spring bloom in
1109 the Amundsen Sea Polynya, Antarctica. *Elementa: Science of the Anthropocene*, 3(1),
1110 43, doi:

1111 Alley, K.E., Scambos, T.A., Siegfried, M.R. and Fricker, H.A., 2016. Impacts of warm
1112 water on Antarctic ice shelf stability through basal channel formation. *Nature*
1113 *Geoscience*, 9(4), pp.290-293, doi:10.1038/ngeo2675.

1114 Alley, R. B., S. Anandakrishnan, T. K. Dupont, B. R. Parizek, and D. Pollard, 2007.
1115 Effect of sedimentation on ice-sheet grounding-line stability, *Science*, 315, 1838–1841,
1116 doi: 10.1126/science.1138396.

- 1117 Alley, R.B., Anandakrishnan, S., Christianson, K., Horgan, H.J., Muto, A., Parizek, B.R.,
 1118 Pollard, D. and Walker, R.T., 2015. Oceanic forcing of ice-sheet retreat: West Antarctica
 1119 and more. *Annual Review of Earth and Planetary Sciences*, 43, 207-231,
 1120 doi:10.1146/annurev-earth-060614-105344.
- 1121 Alley, RB, PU Clark, P Huybrechts, I Joughin, 2005. Ice-sheet and sea-level changes.
 1122 *Science* 310 (5747): 456-460, doi:10.1126/science.1114613.
- 1123 Anandakrishnan, S., D. D. Blankenship, R. B. Alley, and P. L. Stoffa, 1998. Influence of
 1124 subglacial geology on the position of a West Antarctic ice stream from seismic
 1125 observations, *Nature*, 394, 62–65, doi:10.1038/27889.
- 1126 Arblaster, J.M., Meehl, G.A., Karoly, D.J., 2011. Future climate change in the Southern
 1127 Hemisphere: Competing effects of ozone and greenhouse gases. *Geophys. Res. Lett.*
 1128 38, L02701. doi:10.1029/2010GL045384.
- 1129 Arneborg, L., Wåhlin, A.K., Björk, G., Liljebladh, B. and Orsi, 2012, A.H. Persistent inflow
 1130 of warm water onto the central Amundsen shelf. *Nature Geoscience* 5, 876–880,
 1131 doi:10.1038/ngeo1644.
- 1132 Arrigo KR, van Dijken GL. 2003. Phytoplankton dynamics within 37 Antarctic coastal
 1133 polynya systems. *J. Geophys. Res.* 108, 3271, doi:10.1029/2002JC001739.
- 1134 Arrigo KR, van Dijken GL, Strong A. 2015. Environmental controls of marine productivity
 1135 hot-spots around Antarctica. *J Geophys Res.* 120(8), 5545–5565,
 1136 doi:10.1002/2015JC010888.
- 1137 Assmann, K.M., A. Jenkins, D.R. Shoosmith, D.P. Walker, S.S. Jacobs, and K.W.
 1138 Nicholls. 2013. Variability of Circumpolar Deep Water transport onto the Amundsen Sea
 1139 continental shelf through a shelf break trough. *Journal of Geophysical Research Oceans*
 1140 118, 6603–6620, doi:10.1002/2013JC008871.
- 1141 Bamber, J.L., 1994. A digital elevation model of the Antarctic ice sheet derived from
 1142 ERS-1 altimeter data and comparison with terrestrial measurements. *Annals of*
 1143 *Glaciology*, 20(1), 48-54, doi:10.3198/1994AoG20-1-48-54.
- 1144 Bamber, J. and Riva, R.E.M., 2010. The sea level fingerprint of recent ice mass fluxes.
 1145 *The Cryosphere*, 4 (4), 2010. doi:10.5194/tc-4-621-2010.
- 1146 Bamber, J. L., R. E. M. Riva, B. L. A. Vermeersen and A. M. Le Brocq, 2009.
 1147 Reassessment of the potential sea-level rise from a collapse of the West Antarctic Ice
 1148 Sheet. *Science*, 324(5929), 901–903, doi:10.1126/science.1169335.
- 1149 Bart, P. J., and J. B. Anderson, 2000. Relative temporal stability of the Antarctic ice
 1150 sheets during the late Neogene based on the minimum frequency of outer shelf
 1151 grounding events. *Earth and Planetary Science Letters*, 182, 259–272,
 1152 doi:10.1016/S0012-821X(00)00257-0.
- 1153 Bassis, J.N. and Walker, C.C., 2012, November. Upper and lower limits on the stability
 1154 of calving glaciers from the yield strength envelope of ice. *Proc. Roy. Soc. A. The Royal*
 1155 *Society*, doi:10.1098/rspa.2011.0422.

- 1156 Bell, R. E., D. D. Blankenship, C. A. Finn, D. L. Morse, T. A. Scambos, J. M. Brozena,
1157 and S. M Hodge, 1998. Influence of subglacial geology on the onset of a West Antarctic
1158 ice stream from aerogeophysical observations, *Nature*, 394, 58–61, doi:10.1038/27883.
- 1159 Bell, R.E., Studinger, M., Shuman, C.A., Fahnestock, M.A. and Joughin, I., 2007. Large
1160 subglacial lakes in East Antarctica at the onset of fast-flowing ice
1161 streams. *Nature*, 445(7130), pp.904-907, doi:10.1038/nature05554.
- 1162 Berthier, E., T. A. Scambos, and C. A. Shuman, 2012. Mass loss of Larsen B tributary
1163 glaciers (Antarctic Peninsula) continues unabated since 2002. *Geophysical Research*
1164 *Letters* 39, L13501, doi:10.1029/2012GL051755.
- 1165 Bindschadler, R., D. G. Vaughan, and P. Vornberger, 2011. Variability of basal melt
1166 beneath the Pine Island Glacier ice shelf, West Antarctica. *Journal of Glaciology*,
1167 57(204), 581–595, doi: 10.3189/002214311797409802.
- 1168 Biasutti, M., Sobel, A.H., Camargo, S.J. and Creyts, T.T., 2012. Projected changes in
1169 the physical climate of the Gulf Coast and Caribbean. *Climatic Change*, 112(3-4), 819-
1170 845, doi:10.1007/s10584-011-0254-y.
- 1171 Bracegirdle, T. J., 2012. Climatology and recent increase of westerly winds over the
1172 Amundsen Sea derived from six reanalyses. *International Journal of Climatology*, 33(4),
1173 843-851. doi:10.1002/joc.3473.
- 1174 Bracegirdle, T.J., Shuckburgh, E., Sallee, J.-B., Wang, Z., Meijers, A.J.S., Bruneau, N.,
1175 Phillips, T., Wilcox, L.J., 2013. Assessment of surface winds over the Atlantic, Indian,
1176 and Pacific Ocean sectors of the Southern Ocean in CMIP5 models: historical bias,
1177 forcing response, and state dependence. *J. Geophys. Res.*, 118, 547–562,
1178 doi:10.1002/jgrd.50153.
- 1179 Bracegirdle, T.J., Turner, J., Scott Hosking, J., Phillips, T., 2014. Sources of uncertainty
1180 in projections of twenty-first century westerly wind changes over the Amundsen Sea,
1181 West Antarctica, in CMIP5 climate models. *Clim. Dyn.* 43, 2093–2104,
1182 doi:10.1007/s00382-013-2032-1.
- 1183 Bromwich, D.H., Monaghan, A.J., Guo, Z., 2004. Modeling the ENSO Modulation of
1184 Antarctic Climate in the Late 1990s with the Polar MM5. *J. Clim.* 17, 109–132.
- 1185 Bromwich, D.H., Nicolas, J.P., Monaghan, A.J., Lazzara, M.A., Keller, L.M., Weidner,
1186 G.A. and Wilson, A.B., 2013. Central West Antarctica among the most rapidly warming
1187 regions on Earth. *Nature Geoscience*, 6(2), pp.139-145, doi:10.1038/NGEO1671.
- 1188 Carter, S.P., Fricker, H.A., and Siegfried, M.R., in press. Antactic subglacial lakes drain
1189 through sediment-floored canals: Theory and model testing on real and idealized
1190 domains. *The Cryosphere*,
- 1191 Catania, G., C. Hulbe, and H. Conway, 2010. Grounding-line basal melt rates
1192 determined using radar-derived internal stratigraphy, *J. Glaciol.*, 56(197), 545–554,
1193 doi:10.3189/002214310792447842.
- 1194 Catania, G., Hulbe, C., Conway, H., Scambos, T. A., and Raymond, C. F., 2012.
1195 Variability in the mass flux of the Ross ice streams, West Antarctica, over the last
1196 millennium. *Journal of Glaciology*, 58(210), 741-752, doi:10.3189/2012JoG11J219.

- 1197 Chen, J. L., C. R. Wilson, D. D. Blankenship and B. D. Tapley, 2010. Accelerated
1198 Antarctic ice loss from satellite gravity measurements. *Nature Geoscience*, 2(12), 859–
1199 862, doi:10.1038/ngeo694.
- 1200 Chugunov, V.A. and Wilchinsky, A.V., 1996. Modelling of a marine glacier and ice-sheet-
1201 ice-shelf transition zone based on asymptotic analysis. *Annals of Glaciology*, 23(1),
1202 pp.59-67, doi:10.3198/1996AoG23-59-67.
- 1203 Christianson, K., B. R. Parizek, R. B. Alley, H. J. Horgan, R. W. Jacobel, S.
1204 Anandakrishnan, B. A. Keisling, B. D. Craig, and A. Muto, 2013. Ice sheet grounding
1205 zone stabilization due to till compaction, *Geophys. Res. Lett.*, 40, 5406–5411,
1206 doi:10.1002/2013GL057447.
- 1207 Christianson, K., L. E. Peters, R. B. Alley, S. Anandakrishnan, R. W. Jacobel, K. L.
1208 Riverman, A. Muto, and B. A. Keisling, 2014. Dilatant till facilitates ice-stream flow in
1209 northeast Greenland, *Earth Planet. Sci. Lett.*, 401, 57–69,
1210 doi:10.1016/j.epsl.2014.05.060.
- 1211 Christianson, K., Bushuk, M., Dutrieux, P., Parizek, B.R., Joughin, I.R., Alley, R.B.,
1212 Shean, D.E., Abrahamsen, E.P., Anandakrishnan, S., Heywood, K.J. and Kim, T.W.,
1213 2016. Sensitivity of Pine Island Glacier to observed ocean forcing. *Geophysical*
1214 *Research Letters*, doi: 10.1002/2016GL070500.
- 1215 Christie, F.D., Bingham, R.G., Gourmelen, N., Tett, S.F. and Muto, A., 2016.
1216 Four-decade record of pervasive grounding line retreat along the Bellingshausen margin
1217 of West Antarctica. *Geophysical Research Letters*, 43(11), 5741-5749, doi:
1218 10.1002/2016GL068972.
- 1219 Clem, K. R., and Fogt, R. L., 2015. South Pacific circulation changes and their
1220 connection to the tropics and regional Antarctic warming in austral spring, 1979–2012.
1221 *Journal of Geophysical Research Atmospheres*, 120(7), 2773-2792,
1222 doi:10.1002/2014JD022940
- 1223 Clem, K.R., Renwick, J.A., 2015. Austral Spring Southern Hemisphere Circulation and
1224 Temperature Changes and Links to the SPCZ. *J. Clim.* 28, 7371–7384.
1225 doi:10.1175/JCLI-D-15-0125.1.
- 1226 Connolley, W.M., 1997. Variability in annual mean circulation in southern high latitudes.
1227 *Climate Dynamics*, 13(10), 745-756, doi:10.1007/s003820050195
- 1228 Cornford, S.L., Martin, D.F., Payne, A.J., Ng, E.G., Le Brocq, A.M., Gladstone, R.M.,
1229 Edwards, T.L., Shannon, S.R., Agosta, C., Van Den Broeke, M.R. and Hellmer, H.H.,
1230 2015. Century-scale simulations of the response of the West Antarctic Ice Sheet to a
1231 warming climate. *Cryosphere (The)*, 9, 1579-1600, doi:10.5194/tcd-9-1887-2015.
- 1232 Criscitiello, A.S., Das, S.B., Evans, M.J., Frey, K.E., Conway, H., Joughin, I., Medley, B.,
1233 Steig, E.J., 2013. Ice sheet record of recent sea-ice behavior and polynya variability in
1234 the Amundsen Sea, West Antarctica. *J. Geophys. Res. Oceans*, 118, 118–130.
1235 doi:10.1029/2012JC008077.
- 1236 Criscitiello, A.S., Das, S.B., Karnauskas, K.B., Evans, M.J., Frey, K.E., Joughin, I., Steig,
1237 E.J., McConnell, J.R., Medley, B., 2014. Tropical Pacific Influence on the Source and

- 1238 Transport of Marine Aerosols to West Antarctica. *J. Climate*, 27, 1343–1363.
1239 doi:10.1175/JCLI-D-13-00148.1.
- 1240 DeConto, R.M. and Pollard, D., 2016. Contribution of Antarctica to past and future sea-
1241 level rise. *Nature*, 531(7596), pp.591-597, doi:10.1038/nature17145.
- 1242 Ding, Q., Steig, E.J., Battisti, D.S. and Küttel, M., 2011. Winter warming in West
1243 Antarctica caused by central tropical Pacific warming. *Nature Geoscience*, 4(6), 398-403,
1244 doi:10.1038/ngeo1129.
- 1245 Ding, Q., Steig, E.J., Battisti, D.S., and Wallace, J.M. 2012. Influence of the tropics on
1246 the Southern Annular Mode. *J. Climate*, 25, 6330-6348, doi: 10.1175/JCLI-D-11-00523.1.
- 1247 Dinniman, M.S., J.M. Klinck, L.-S. Bai, D.H. Bromwich, K.M. Hines, D.M. Holland, 2015.
1248 The Effect of Atmospheric Forcing Resolution on Delivery of Ocean Heat to the Antarctic
1249 Floating Ice Shelves. *J. Climate* 28: 6067 – 6085, doi: 10.1175/JCLI-D-14-00374.1.
- 1250 Dinniman, M.S., X.S. Asay-Davis, B.K. Galton-Fenzi, P.R. Holland, A. Jenkins, and R.
1251 Timmermann. 2016. Modeling Ice Shelf/Ocean Interaction in Antarctica - a review.
1252 *Oceanography* 29(4): 32-41,
- 1253 Docquier, D., Pollard, D. and Pattyn, F., 2014. Thwaites Glacier grounding-line retreat:
1254 influence of width and buttressing parameterizations. *Journal of Glaciology*, 60(220),
1255 305-313, doi:10.3189/2014JoG13J117.
- 1256 Durand, G., Gagliardini, O., De Fleurian, B., Zwinger, T. and Le Meur, E., 2009. Marine
1257 ice sheet dynamics: Hysteresis and neutral equilibrium. *Journal of Geophysical*
1258 *Research: Earth Surface*, 114(F3), doi:10.1029/2008JF001170.
- 1259 Durand, G., Gagliardini, O., Favier, L., Zwinger, T. and Le Meur, E., 2011. Impact of
1260 bedrock description on modeling ice sheet dynamics. *Geophysical Research Letters*,
1261 38(20), doi:10.1029/2011GL048892.
- 1262 Dutrieux, P., De Rydt, J., Jenkins, A., Holland, P.R., Ha, H.K., Lee, S.H., Steig, E.J.,
1263 Ding, Q., Abrahamsen, E.P. and Schröder, M., 2014. Strong sensitivity of Pine Island
1264 ice-shelf melting to climatic variability. *Science*, 343(6167), pp.174-178,
1265 doi:10.1126/science.124434.
- 1266 Dutton, A., Carlson, A.E., Long, A.J., Milne, G.A., Clark, P.U., DeConto, R., Horton, B.P.,
1267 Rahmstorf, S. and Raymo, M.E., 2015. Sea-level rise due to polar ice-sheet mass loss
1268 during past warm periods. *Science*, 349(6244), doi:10.1126/science.aaa4019.
- 1269 Engelhardt, H., Humphrey, N., Kamb, B. and Fahnestock, M., 1990. Physical conditions
1270 at the base of a fast moving Antarctic ice stream. *Science*, 248(4951), 57-59,
1271 doi:10.1126/science.248.4951.57.
- 1272 Fairbanks, R.G., 1989. A 17,000-year glacio-eustatic sea level record: influence of
1273 glacial melting rates on the Younger Dryas event and deep-ocean circulation. *Nature*
1274 342, 637-642. doi:10.1038/342637a0.
- 1275 Favier, L., Gagliardini, O., Durand, G., and Zwinger, T. 2012. A three dimensional full
1276 Stokes model of the grounding line dynamics: effect of a pinning point beneath the ice
1277 shelf. *The Cryosphere*, 6, 101-112, doi:10.5194/tc-6-101-2012.

- 1278 Favier, L., G. Durand, S. L. Cornford, G. H. Gudmundsson, O. Gagliardini, F. Gillet-
1279 Chaudet, T. Zwinger, A. J. Payne, and A. M. Le Brocq, 2014. Retreat of Pine Island
1280 Glacier controlled by marine ice-sheet instability, *Nature Climate Change.*, 4, 117–121,
1281 doi:10.1038/nclimate2094.
- 1282 Feldmann, J. and Levermann, A., 2015. Collapse of the West Antarctic Ice Sheet after
1283 local destabilization of the Amundsen Basin. *Proceedings of the National Academy of
1284 Sciences*, 112(46), 14191-14196, doi: 10.1073/pnas.1512482112.
- 1285 Fogt, R.L. and Wovrosh, A.J., 2015. The Relative Influence of Tropical Sea Surface
1286 Temperatures and Radiative Forcing on the Amundsen Sea Low. *Journal of Climate*,
1287 28(21), 8540-8555, doi:10.1175/JCLI-D-15-0091.1.
- 1288 Foley, N., Tulaczyk, S., Auken, E., Schamper, C., Dugan, H., Mikucki, J., Virginia, R. and
1289 Doran, P., 2015. Helicopter-borne transient electromagnetics in high-latitude
1290 environments: An application in the McMurdo Dry Valleys, Antarctica. *Geophysics*, 81(1),
1291 WA87-WA99, doi:10.1190/geo2015-0186.1.
- 1292 Fretwell, P., Pritchard, H.D., Vaughan, D.G., Bamber, J.L., Barrand, N.E., Bell, R.,
1293 Bianchi, C., Bingham, R.G., Blankenship, D.D., Casassa, G. and Catania, G., 2013.
1294 Bedmap2: improved ice bed, surface and thickness datasets for Antarctica. *The
1295 Cryosphere*, 7(1), doi:10.5194/tcd-6-4305-2012.
- 1296 Fricker, H.A., Powell, R., Priscu, J., Tulaczyk, S., Anandkrishnan, S., Christner, B.,
1297 Fisher, A.T., Holland, D., Horgan, H., Jacobel, R. and Mikucki, J., 2011. Siple coast
1298 subglacial aquatic environments: The Whillans ice stream subglacial access research
1299 drilling project. *Geophys. Monogr. Ser.*, 194, 199-219, doi:10.1029/2010GM000932.
- 1300 Fricker, H.A. and L. Padman, 2012. Thirty years of elevation change on Antarctic
1301 Peninsula ice shelves from multi-mission satellite radar altimetry. *J. Geophys. Res.-
1302 Oceans*, 117, C02026, doi:10.1029/2011JC007126.
- 1303 Gardner, A., G. Molholdt, T. Scambos, M. Fahnestock, S. Ligtenberg, M. van den
1304 Broeke, and J. Nilsson, 2017 in review. Increased West Antarctic ice discharge and East
1305 Antarctic stability over the last eight years. [In review to Nature Climate Change, April
1306 2017.](#)
- 1307 Gille, S.T., 2002. Warming of the Southern Ocean Since the 1950s. *Science*, 295, 1275–
1308 1277, doi:10.1126/science.1065863
- 1309 Gladstone, R.M., Lee, V., Rougier, J., Payne, A.J., Hellmer, H., Le Brocq, A., Shepherd,
1310 A., Edwards, T.L., Gregory, J. and Cornford, S.L., 2012a. Calibrated prediction of Pine
1311 Island Glacier retreat during the 21st and 22nd centuries with a coupled flowline model.
1312 *Earth and Planetary Science Letters*, 333, 191-199, doi:10.1016/j.epsl.2012.04.022.
- 1313 Gladstone, R.M., Payne, A.J. and Cornford, S.L., 2012. Resolution requirements for
1314 grounding-line modelling: sensitivity to basal drag and ice-shelf buttressing. *Annals of
1315 glaciology*, 53(60), 97-105, doi:10.3189/2012AoG60A148.
- 1316 Golledge, N.R., Kowalewski, D.E., Naish, T.R., Levy, R.H., Fogwill, C.J. and Gasson,
1317 E.G., 2015. The multi-millennial Antarctic commitment to future sea-level rise. *Nature*,
1318 526(7573), 421-425, doi:10.1038/nature15706.

- 1319 Gomez, N., D. Pollard and D. Holland, 2015. Sea level feedback lowers projections of
1320 future Antarctic Ice Sheet mass loss. *Nature Commun.*, 6, 8798,
1321 doi:10.1038/ncomms9798.
- 1322 Gomez, N., D. Pollard and J.X. Mitrovica, 2013. A 3-D coupled ice sheet-sea level model
1323 applied to Antarctica through the last 40 ky. *Earth Plan. Sci. Lett.*, 384, 88-99, doi:
1324 10.1016/j.epsl.2013.09.042.
- 1325 Gudmundsson, G. H. (2013), Ice-shelf buttressing and the stability of marine ice sheets,
1326 *Cryosphere*, 7, 647–655, doi:10.5194/tc-7-647-2013.
- 1327 Hanson, B. and Hooke, R.L., 2003. Buckling rate and overhang development at a
1328 calving face. *Journal of Glaciology*, 49(167), 577-586,
1329 doi:10.3189/172756503781830476.
- 1330 Haran, T., Bohlander, J., Scambos, T., Painter, T. and Fahnestock, M., 2014. MODIS
1331 mosaic of Antarctica (MOA2009) image map. Boulder, Colorado USA: National Snow
1332 and Ice Data Center. Digital media, doi:10.7265/N5KP8037.
- 1333 Harig, C. and Simons, F.J., 2015. Accelerated West Antarctic ice mass loss continues to
1334 outpace East Antarctic gains. *Earth and Planetary Science Letters*, 415, pp.134-141, doi:
1335 10.1016/j.epsl.2015.01.029.
- 1336 Hay, C., Mitrovica, J.X., Gomez, N., Creveling, J.R., Austermann, J. and Kopp, R.E.,
1337 2014. The sea-level fingerprints of ice-sheet collapse during interglacial
1338 periods. *Quaternary Science Reviews*, 87, pp.60-69,
1339 doi:10.1016/j.quascirev.2013.12.022.
- 1340 Helm, V., Humbert, A. and Miller, H., 2014. Elevation and elevation change of Greenland
1341 and Antarctica derived from CryoSat-2. *The Cryosphere*, 8(4), pp.1539-1559,
1342 doi:10.5194/tc-8-1539-2014.
- 1343 Holland, D.M., and D. Holland 2015, On the rocks: The challenges of predicting sea
1344 level rise, *Eos*, 96, doi:10.1029/2015EO036667. Published on 19 October 2015.
- 1345 Holland, DM, D Voytenko, K Christianson, TH. Dixon, MJ Mei, BR Parizek, I Vaňková,
1346 RT Walker, JI. Walter, K Nicholls, and D. Holland. An Intensive Observation of Calving at
1347 Helheim Glacier, East Greenland. *Oceanography*, in press.
- 1348 Holland, P. R., Jenkins, A., and Holland, D. M., 2010. Ice and ocean processes in the
1349 Bellingshausen Sea, Antarctica. *J. Geophys. Res*, 115, C05020,
1350 doi:10.1029/2008JC005219.
- 1351 Holt, J. W., D. D. Blankenship, D. L. Morse, D. A. Young, M. E. Peters, S. D. Kempf, T.
1352 G. Richter, D. G. Vaughan, and H. F. J. Corr, 2006. New boundary conditions for the
1353 West Antarctic Ice Sheet: Subglacial topography of the Thwaites and Smith glacier
1354 catchments, *Geophys. Res. Lett.*, 33, L09502, doi:10.1029/2005GL025561.
- 1355 Horgan, H.J., Anandakrishnan, S., Alley, R.B., Burkett, P.G. and Peters, L.E., 2011.
1356 Englacial seismic reflectivity: Imaging crystal-orientation fabric in West Antarctica.
1357 *Journal of Glaciology*, 57(204), 639-650, doi:10.3189/002214311797409686.

- 1358 Horgan, H.J., Alley, R.B., Christianson, K., Jacobel, R.W., Anandakrishnan, S., Muto, A.,
1359 Beem, L.H. and Siegfried, M.R., 2013. Estuaries beneath ice sheets. *Geology*, 41(11),
1360 1159-1162, doi:10.1130/G34654.
- 1361 Hosking, J.S., Orr, A., Marshall, G.J., Turner, J., Phillips, T., 2013. The influence of the
1362 Amundsen--Bellingshausen Seas low on the climate of West Antarctica and its
1363 representation in coupled climate model simulations. *J. Clim.* 26, 6633–6648.
1364 doi:10.1175/JCLI-D-12-00813.1.
- 1365 Hosking, J.S., Orr, A., Bracegirdle, T.J. and Turner, J., 2016. Future circulation changes
1366 off West Antarctica: Sensitivity of the Amundsen Sea Low to projected anthropogenic
1367 forcing. *Geophysical Research Letters*, 43(1), pp.367-376, doi:10.1002/2015GL067143.
- 1368 Hughes, T. J. 1972. Is the west Antarctic ice sheet disintegrating? ISCAP [Ice Streamline
1369 Cooperative Antarctic Project] Bulletin (Ohio State University), No. 1.
- 1370 Hughes, T. 1981. The weak underbelly of the West Antarctic ice sheet. *Journal of*
1371 *Glaciology*, 27, 518-525.
- 1372 Jacobs, S.S., and Giulivi, C.F. 2010. Large multidecadal salinity trends near the Pacific–
1373 Antarctic continental margin. *J. Climate* 23: 4508-4524. DOI: 10.1175/2010JCLI3284.1.
- 1374 Jacobs, S.S., Jenkins, A., Giulivi, C.F. and Dutrieux, P., 2011. Stronger ocean circulation
1375 and increased melting under Pine Island Glacier ice shelf. *Nature Geoscience*, 4(8),
1376 pp.519-523, doi:10.1038/ngeo1188.
- 1377 Jacobs, S. S., A. Jenkins, H. Hellmer, C. Giulivi, F. Nitsche, B. Huber, and R. Gurrero.
1378 2012. The Amundsen Sea and the Antarctic Ice Sheet. *Oceanography* 25(3),
1379 doi:10.5670/oceanog.2012.90.
- 1380 Jacobs, S. S., C. Giulivi, P. Dutrieux, E. Rignot, F. Nitsche, and J. Mouginot, 2013. Getz
1381 Ice Shelf melting response to changes in ocean forcing. *Jour. Geophys. Res. Oceans*
1382 118, 4152-4168, doi:10.1002/jgrc.20298.
- 1383 Jenkins, A., Dutrieux, P., Jacobs, S.S. McPhail, S.D. Perrett, J.R., Webb, A.T. and
1384 White, D.. 2011. Observations beneath Pine Island Glacier in West Antarctica and
1385 implications for its retreat. *Nature Geoscience* 3, 468–472, doi: 10.1038/ngeo890.
- 1386 Jenkins, A., Dutrieux, P., Jacobs, S., Steig, E.J., Gudmundsson, G.H., Smith, J. and
1387 Heywood, K.J., 2016. Decadal Ocean Forcing and Antarctic Ice Sheet Response:
1388 Lessons from the Amundsen Sea. *Oceanography*, in press.
- 1389 Jones, P.D. and Lister, D.H., 2015. Antarctic near-surface air temperatures compared
1390 with ERA-Interim values since 1979. *International Journal of Climatology*, 35(7), 1354-
1391 1366, doi:10.1002/joc.4061.
- 1392 Joughin, I. and Alley, R.B., 2011. Stability of the West Antarctic ice sheet in a warming
1393 world. *Nature Geoscience*, 4(8), 506-513, doi:10.1038/ngeo1194.
- 1394 Joughin, I., Howat, I.M., Fahnestock, M., Smith, B., Krabill, W., Alley, R.B., Stern, H. and
1395 Truffer, M., 2008. Continued evolution of Jakobshavn Isbrae following its rapid speedup.
1396 *Journal of Geophysical Research: Earth Surface*, 113(F4), doi:10.1029/2008JF001023.

- 1397 Joughin, I., MacAyeal, D.R. and Tulaczyk, S., 2004. Basal shear stress of the Ross ice
1398 streams from control method inversions. *Journal of Geophysical Research: Solid Earth*,
1399 109(B9), doi:10.1029/2003JB002960.
- 1400 Joughin, I. and S. Tulaczyk. 2002. Positive mass balance of the Ross Ice Streams, West
1401 Antarctica. *Science*, 295(5554), 476–480.
- 1402 Joughin, I., Smith, B. E., and Holland, D. M., 2010. Sensitivity of 21st century sea level
1403 to ocean-induced thinning of Pine Island Glacier, Antarctica. *Geophysical Research*
1404 *Letters*, 37(20), L20502; doi: 10.1029/2010GL044819.
- 1405 Joughin, I., D. E. Shean, B. E. Smith, and P. Dutrieux, 2016. Grounding Line Variability
1406 and Subglacial Lake Drainage on Pine Island Glacier, Antarctica, *Geophys. Res. Lett.*,
1407 doi: 10.1002/2016GL070259.
- 1408 Joughin, I., Smith, B.E. and Medley, B., 2014. Marine ice sheet collapse potentially
1409 under way for the Thwaites Glacier Basin, West Antarctica. *Science*, 344(6185), pp.735-
1410 738, doi: 10.1126/science.1249055.
- 1411 Kalén, O., K.M. Assmann, A.K. Wählin, H.K. Ha, T.W. Kim, and S.H. Lee. 2016. Is the
1412 oceanic heat flux on the central Amundsen sea shelf caused by barotropic or baroclinic
1413 currents? *Deep Sea Research Part II* 123, 7–15, doi:10.1016/j.dsr2.2015.07.014.
- 1414 Kamb, B., 2001. Basal zone of the West Antarctic ice streams and its role in lubrication
1415 of their rapid motion. In *The West Antarctic ice sheet: behavior and environment*. Antarct.
1416 *Res. Ser.*, 77, R. B. Alley and R. A. Bindschadler, eds. AGU, Washington, D. C., doi:
1417 10.1029/AR077p0157.
- 1418 Key and Siegfried, 2017, in review. *Journal of Glaciology*.
- 1419 Khazendar, A., Rignot, E., Schroeder, D.M., Seroussi, H., Schodlok, M.P., Scheuchl, B.,
1420 Mouginot, J., Sutterley, T.C. and Velicogna, I., 2016. Rapid submarine ice melting in the
1421 grounding zones of ice shelves in West Antarctica. *Nature Communications*, 7, 13243,
1422 doi:10.1038/ncomms13243.
- 1423 Krinner, G., Magand, O., Simmonds, I., Genthon, C., Dufresne, J.-L., 2007. Simulated
1424 Antarctic precipitation and surface mass balance at the end of the twentieth and twenty-
1425 first centuries. *Clim. Dyn.* 28, 215–230. doi:10.1007/s00382-006-0177-x.
- 1426 Kuipers Munneke, P., Ligtenberg, S.R.M., Van Den Broeke, M.R., Vaughan, D.G., 2014.
1427 Firm air depletion as a precursor of Antarctic ice-shelf collapse. *J. Glaciol.* 60, 205–214,
1428 doi:10.3189/2014JoG13J183.
- 1429 Le Brocq, A.M., Payne, A.J. and Vieli, A., 2010. An improved Antarctic dataset for high
1430 resolution numerical ice sheet models (ALBMAP v1). *Earth System Science Data.*, 2(2),
1431 247-260, doi: 10.5194/essd-2-247-2010.
- 1432 Le Brocq, A.M., Ross, N., Griggs, J.A., Bingham, R.G., Corr, H.F., Ferraccioli, F.,
1433 Jenkins, A., Jordan, T.A., Payne, A.J., Rippin, D.M. and Siegert, M.J., 2013. Evidence
1434 from ice shelves for channelized meltwater flow beneath the Antarctic Ice Sheet. *Nature*
1435 *Geoscience*, 6(11), pp.945-948, doi:10.1038/ngeo1977.

- 1436 Le Quéré, C., R. Moriarty, R.M. Andrew, J.G. Canadell, S. Sitch, et al., 2015. Global
1437 carbon budget 2015, *Earth Syst. Sci. Data*, 7, 349–396, doi:10.5194/essd-7-349-2015.
- 1438 Leeman, J.R., Valdez, R.D., Alley, R.B., Anandakrishnan, S. and Saffer, D.M., 2016.
1439 Mechanical and hydrologic properties of Whillans Ice Stream till: Implications for basal
1440 strength and stick-slip failure. *Journal of Geophysical Research: Earth Surface*, 121(7),
1441 1295-1309, doi:10.1002/2016JF003863.
- 1442 Lenaerts, J.T., Vizcaino, M., Fyke, J., Kampenhout, L. and Broeke, M.R., 2016. Present-
1443 day and future Antarctic ice sheet climate and surface mass balance in the Community
1444 Earth System Model. *Climate Dynamics*, 1-15, doi:10.1007/s00382-015-2907-4.
- 1445 Levermann, A., Winkelmann, R., Nowicki, S., Fastook, J. L., Frieler, K., Greve, R., ... and
1446 Bindshadler, R. A., 2012. Projecting Antarctic ice discharge using response functions
1447 from SeaRISE ice-sheet models. *The Cryosphere Discuss*, 6, 3447-3489.
- 1448 L'Heureux, M. L., and D. W. J. Thompson, 2006: Observed relationships between the El
1449 Niño–Southern Oscillation and the extratropical zonal-mean circulation. *J. Climate*, 19,
1450 276–287, doi: 10.1175/JCLI3617.1.
- 1451 Li, X., Holland, D. M., Gerber, E. P., Yoo, C., 2014. Impacts of the north and tropical
1452 Atlantic Ocean on the Antarctic Peninsula and sea ice. *Nature*, 505(7484), 538-542.
- 1453 Li, X., Holland, D. M., Gerber, E. P., Yoo, C., 2015a. Rossby Waves Mediate Impacts of
1454 Tropical Oceans on West Antarctic Atmospheric Circulation in Austral Winter. *Journal of
1455 Climate*, 28(20), 8151-8164.
- 1456 Li, X., Gerber, E.P., Holland, D.M., Yoo, C., 2015. A Rossby wave bridge from the
1457 tropical Atlantic to West Antarctica. *J. Clim.* 28, 2256–2273. doi:10.1175/JCLI-D-14-
1458 00450.1.
- 1459 Ligtenberg S, Van de Berg W, Van den Broeke M, Rae J, Van Meijgaard E. Future
1460 surface mass balance of the antarctic ice sheet and its influence on sea level change,
1461 simulated by a regional atmospheric climate model. *Clim Dyn.* 2013;41(3-4):867-884,
1462 doi:10.1007/s00382-013-1749-1.
- 1463 Lingle, C.S. and Clark, J.A., 1979. Antarctic ice-sheet volume at 18000 years BP and
1464 Holocene sea-level changes at the West Antarctic margin. *Journal of Glaciology*, 24(90),
1465 213-230, doi:10.3198/1979JoG24-90-213-230.
- 1466 Lythe, M., D. G. Vaughan, BEDMAP and Consortium. 2001. BEDMAP: A new ice
1467 thickness and subglacial topographic model of Antarctica. *Journal of Geophysical
1468 Research*, 106(B6), 11335–11352.
- 1469 MacAyeal, D.R., Scambos, T.A., Hulbe, C.L. and Fahnestock, M.A., 2003. Catastrophic
1470 ice-shelf break-up by an ice-shelf-fragment-capsize mechanism. *Journal of Glaciology*,
1471 49(164), 22-36, doi:10.3189/172756503781830863.
- 1472 MacGregor, J.A., Catania, G.A., Markowski, M.S., and Andrews, A.G., 2012.
1473 Widespread rifting and retreat of ice-shelf margins in the eastern Amundsen Sea
1474 Embayment between 1972 and 2011. *Journal of Glaciology*, 58(209), 458–466, doi:
1475 10.3189/2012JoG11J262.

- 1476 MacGregor, J.A., M.A. Fahnestock, G.A. Catania, J.D. Paden, S. P. Gogineni, S.K.
 1477 Young, S.C. Rybarski, A.N. Mabrey, B.M. Wagman and M. Morlighem, Radiostratigraphy
 1478 and age structure of the Greenland Ice Sheet. 2015a. *Journal of Geophysical Research*
 1479 *Earth Surface*, 120(2), 212–241, doi:10.1002/2014JF003215.
- 1480 MacGregor, J.A., Li, J., Paden, J.D., Catania, G.A., Clow, G.D., Fahnestock, M.A.,
 1481 Gogineni, S.P., Grimm, R.E., Morlighem, M., Nandi, S. and Seroussi, H., 2015b. Radar
 1482 attenuation and temperature within the Greenland Ice Sheet. *Journal of Geophysical*
 1483 *Research: Earth Surface*, 120(6), pp.983-1008, doi:10.1002/2014JF003418.
- 1484 MacGregor, J.A., Colgan, W.T., Fahnestock, M.A., Morlighem, M., Catania, G.A., Paden,
 1485 J.D. and Gogineni, S.P., 2016a. Holocene deceleration of the Greenland Ice Sheet.
 1486 *Science*, 351(6273), pp.590-593, doi:10.1016/science.aab1702.
- 1487 MacGregor, J.A., M.A. Fahnestock, G.A. Catania, A. Aschwanden, G.D. Clow, W.T.
 1488 Colgan, S.P. Gogineni, M. Morlighem, S.M.J. Nowicki, J.D. Paden, S.F. Price and H.
 1489 Seroussi, A synthesis of the basal thermal state of the Greenland Ice Sheet. 2016b.
 1490 *Journal of Geophysical Research Earth Surface*, 121, doi:10.1002/2015JF003803.
- 1491 Mankoff, K.D., Jacobs, S.S., Tulaczyk, S.M. and Stammerjohn, S.E., 2012. The role of
 1492 Pine Island Glacier ice shelf basal channels in deep-water upwelling, polynyas and
 1493 ocean circulation in Pine Island Bay, Antarctica. *Annals of Glaciology*, 53(60), pp.123-
 1494 128, doi:10.3189/2012AoG60A062.
- 1495 Marsh, O.J., Fricker, H.A., Siegfried, M.R., Christianson, K., Nicholls, K.W., Corr, H.F.
 1496 and Catania, G., 2016. High basal melting forming a channel at the grounding line of
 1497 Ross Ice Shelf, Antarctica. *Geophysical Research Letters*, 43(1), pp.250-255,
 1498 doi:10.1002/2015GL066612.
- 1499 Martín-Español, A., Zammit-Mangion, A., Clarke, P.J., Flament, T., Helm, V., King, M.A.,
 1500 Luthcke, S.B., Petrie, E., Rémy, F., Schön, N. and Wouters, B., 2016. Spatial and
 1501 temporal Antarctic Ice Sheet mass trends, glacio-isostatic adjustment, and surface
 1502 processes from a joint inversion of satellite altimeter, gravity, and GPS data. *Journal of*
 1503 *Geophysical Research: Earth Surface*, 121, 182-200, doi: 10.1002/2015JF003550.
- 1504 Martinson, D. G., 2011. Antarctic circumpolar current's role in the Antarctic ice system:
 1505 An overview. *Palaeogeography, Palaeoclimatology, Palaeoecology*, 335-336,
 1506 doi.org/10.1016/j.palaeo.2011.04.007.
- 1507 Martinson, D.G. and McKee, D.C., 2012. Transport of warm Upper Circumpolar Deep
 1508 Water onto the western Antarctic Peninsula continental shelf. *Ocean Science*, 8(4), 433-
 1509 442, doi:10.5194/os-8-433-2012.
- 1510 Matsuoka, K., Power, D., Fujita, S. and Raymond, C.F., 2012. Rapid development of
 1511 anisotropic ice-crystal-alignment fabrics inferred from englacial radar polarimetry, central
 1512 West Antarctica. *Journal of Geophysical Research: Earth Surface*, 117(F3), doi:
 1513 10.1029/2012JF002440.
- 1514 McMillan, M., Shepherd, A., Sundal, A., Briggs, K., Muir, A., Ridout, A., Hogg, A. and
 1515 Wingham, D., 2014. Increased ice losses from Antarctica detected by CryoSat-2.
 1516 *Geophysical Research Letters*, 41(11), pp.3899-3905, doi:10.1002/2014GL060111.

1517 Medley, B., Joughin, I., Das, S.B., Steig, E.J., Conway, H., Gogineni, S., Criscitiello, A.S.,
1518 McConnell, J.R., Smith, B.E., Broeke, M.R., Lenaerts, J.T.M., Bromwich, D. H., and
1519 Nicolas, J. P., 2013. Airborne-radar and ice-core observations of annual snow
1520 accumulation over Thwaites Glacier, West Antarctica confirm the spatiotemporal
1521 variability of global and regional atmospheric models. *Geophysical Research Letters*,
1522 40(14), 3649-3654, doi: 10.1002/grl.50706.

1523 Medley, B., Joughin, I., Smith, B.E., Das, S.B., Steig, E.J., Conway, H., Gogineni, S.,
1524 Lewis, C., Criscitiello, A.S., McConnell, J.R., Van Den Broeke, M.R., Lenaerts, J. T. M.,
1525 Bromwich, D. H., Nicolas, J. P., and Leuschen, C., 2014. Constraining the recent mass
1526 balance of Pine Island and Thwaites glaciers, West Antarctica, with airborne
1527 observations of snow accumulation. *The Cryosphere*, 8(4), pp.1375-1392, doi:
1528 10.5194/tc-8-1375-2014.

1529 Mercer, J.H., 1978. West Antarctic ice sheet and CO₂ greenhouse effect- A threat of
1530 disaster. *Nature*, 271(5643), 321-325; doi:10.1038/271321a0.

1531 Mikucki, J.A., Auken, E., Tulaczyk, S., Virginia, R.A., Schamper, C., Sørensen, K.I.,
1532 Doran, P.T., Dugan, H. and Foley, N., 2015. Deep groundwater and potential subsurface
1533 habitats beneath an Antarctic dry valley. *Nature communications*, 6,
1534 doi:10.1038/ncomms7831.

1535 Millan R., Rignot E., Bernier V., Morlighem M., and Dutrieux P., 2017. Bathymetry of the
1536 Amundsen Sea Embayment sector of West Antarctica from Operation IceBridge gravity
1537 and other data. *Geophysical Research Letters* 44: 1360-1368, doi:

1538 Mougnot, J., Rignot, E. and Scheuchl, B., 2014. Sustained increase in ice discharge
1539 from the Amundsen Sea Embayment, West Antarctica, from 1973 to 2013. *Geophysical*
1540 *Research Letters*, 41(5), pp.1576-1584, doi: 10.1002/2013GL059069.

1541 Morlighem, M., Rignot, E., Seroussi, H., Larour, E., Ben Dhia, H., and Aubry, D. 2010.
1542 Spatial patterns of basal drag inferred using control methods from a full-Stokes and
1543 simpler models for Pine Island Glacier, West Antarctica. *Geophys. Res. Lett.*, 37,
1544 L14502, doi:10.1029/2010GL043853.

1545 Motyka, R.J., Truffer, M., Fahnestock, M., Mortensen, J., Rysgaard, S. and Howat, I.,
1546 2011. Submarine melting of the 1985 Jakobshavn Isbræ floating tongue and the
1547 triggering of the current retreat. *Journal of Geophysical Research: Earth Surface*,
1548 116(F1), doi:10.1029/2009JF001632.

1549 Mu L, Stammerjohn SE, Lowry KE, Yager PL. 2014. Spatial variability of surface pCO₂
1550 and air-sea CO₂ flux in the Amundsen Sea Polynya, Antarctica. *Elem. Sci. Anth.* 2:
1551 000036, doi: 10.12952/journal.elementa.000036.

1552 Muto, A., L. E. Peters, K. Gohl, I. Sasgen, R. B. Alley, S. Anandkrishnan, and K. L.
1553 Riverman, 2016. Subglacial bathymetry and sediment distribution beneath Pine Island
1554 Glacier ice shelf modeled using aerogravity and in situ geophysical data: New results,
1555 *Earth Planet. Sci. Lett.*, 433, 63–75, doi:10.1016/j.epsl.2015.10.037.

1556 Naish, T., R. Powell, R. Levy, G. Wilson, R. Scherer, F. Talarico, L. Krissek, F. Niessen,
1557 M. Pompilio, T. Wilson, L. Carter, R. DeConto, P. Huybers, R. McKay, D. Pollard, J.
1558 Ross, D. Winter, and 39 others, 2009. Obliquity-paced Pliocene West Antarctic ice sheet
1559 oscillations, *Nature*, 458(7236), 322–328, doi:10.1038/nature07867.

- 1560 National Academies of Sciences, Engineering, and Medicine. 2015. A Strategic Vision
1561 for NSF Investments in Antarctic and Southern Ocean Research. Washington, DC:
1562 National Academies Press, 170 p., ISBN 978-0-309-37367-8.
- 1563 National Research Council, 2011, Future Science Opportunities in Antarctica and the
1564 Southern Ocean, National Academies Press, Washington D.C.
- 1565 Nias, I.J., Cornford, S.L. and Payne, A.J., 2016. Contrasting the modelled sensitivity of
1566 the Amundsen Sea Embayment ice streams. *Journal of Glaciology* 62(233), 1-11,
1567 doi:10.1017/jog.2016.40.
- 1568 Nicolas, J.P., Bromwich, D.H., 2011. Climate of West Antarctica and influence of marine
1569 air intrusions. *J. Clim.* 24, 49–67. doi:10.1175/2010JCLI3522.1.
- 1570 Nicolas, J.P., Vogelmann, A.M., Scott, R.C., Wilson, A.B., Cadeddu, M.P., Bromwich,
1571 D.H., Verlinde, J., Lubin, D., Russell, L.M., Jenkinson, C., Powers, H.H., Ryczek, M.,
1572 Stone, G., Wille, J.D., 2017. January 2016 extensive summer melt in West Antarctica
1573 favored by strong El Niño. *Nature Communications*, accepted.
- 1574 NSF-NERC, 2016. Thwaites: The Future of Thwaites Glacier and its Contribution to
1575 Sea-level Rise. NSF Solicitation 17-505, 14pp. Available at:
1576 https://www.nsf.gov/funding/pgm_summ.jsp?pims_id=505320.
- 1577 Orsi, A.J., Cornuelle, B.D., Severinghaus, J.P., 2012. Little Ice Age cold interval in West
1578 Antarctica: Evidence from borehole temperature at the West Antarctic Ice Sheet (WAIS)
1579 Divide. *Geophys. Res. Lett.*, 39, L09710. doi:10.1029/2012GL051260.
- 1580 Overpeck, JT, BL Otto-Bliesner, GH Miller, DR Muhs, RB Alley, JT Kiehl (2006).
1581 Paleoclimatic Evidence for Future Ice-Sheet Instability and Rapid Sea-Level Rise.
1582 *Science* 311(5768): 1747-1750, doi: 10.1126/science.1115159.
- 1583 Paolo, F.S., Fricker, H.A. and Padman, L., 2015. Volume loss from Antarctic ice shelves
1584 is accelerating. *Science*, 348(6232), 327-331, doi:10.1126/science.aaa0940.
- 1585 Parizek, B.R., Christianson, K., Anandakrishnan, S., Alley, R.B., Walker, R.T., Edwards,
1586 R.A., Wolfe, D.S., Bertini, G.T., Rinehart, S.K., Bindschadler, R.A. and Nowicki, S.M.J.,
1587 2013. Dynamic (in) stability of Thwaites Glacier, West Antarctica. *Journal of Geophysical*
1588 *Research: Earth Surface*, 118(2), 638-655, doi:10.1002/jgrf.20044.
- 1589 Pattyn, F., Perichon, L., Durand, G., Favier, L., Gagliardini, O., Hindmarsh, R.C.,
1590 Zwinger, T., Albrecht, T., Cornford, S., Docquier, D. and Fürst, J.J., 2013. Grounding-line
1591 migration in plan-view marine ice-sheet models: results of the ice2sea MISMIP3d
1592 intercomparison. *Journal of Glaciology*, 59(215), 410-422, doi: 10.3189/2013JoG12J129.
- 1593 Payne, A.J., Vieli, A., Shepherd, A.P., Wingham, D.J. and Rignot, E., 2004. Recent
1594 dramatic thinning of largest West Antarctic ice stream triggered by oceans. *Geophysical*
1595 *Research Letters*, 31(23), doi:10.1029/2004GL021284.
- 1596 Peters, L.E., Anandakrishnan, S., Alley, R.B. and Voigt, D.E., 2012. Seismic attenuation
1597 in glacial ice: A proxy for englacial temperature. *Journal of Geophysical Research: Earth*
1598 *Surface*, 117(F2), doi:10.1029/2011JF002201.

- 1599 Pollard, D. and DeConto, R.M., 2009. Modelling West Antarctic ice sheet growth and
1600 collapse through the past five million years. *Nature*, 458(7236), 329-332, doi:
1601 10.1038/nature07809.
- 1602 Pollard, D., DeConto, R.M. and Alley, R.B., 2015. Potential Antarctic Ice Sheet retreat
1603 driven by hydrofracturing and ice cliff failure. *Earth and Planetary Science Letters*, 412,
1604 pp.112-121, doi:10.1016/j.epsl.2014.12.035.
- 1605 Pritchard, H.D., Arthern, R.J., Vaughan, D.G. and Edwards, L.A., 2009. Extensive
1606 dynamic thinning on the margins of the Greenland and Antarctic ice sheets. *Nature*,
1607 461(7266), 971-975, doi:10.1038/nature08471.
- 1608 Pritchard, H., S. Ligtenberg, H. A. Fricker, D. G. Vaughan, M. R. van den Broeke, L.
1609 Padman, 2012. Antarctic ice-sheet loss driven by basal melting of ice shelves. *Nature*
1610 484(7395): 502 doi: 10.1038/nature10968.
- 1611 Randall-Goodwin E, Meredith MP, Jenkins A, Yager PL, Sherrell RM, et al., 2015.
1612 Freshwater distributions and water mass structure in the Amundsen Sea Polynya region,
1613 Antarctica. *Elem Sci Anth* 3: 000065, doi:10.12952/journal.elementa.000065
- 1614 Raphael, M.N., Marshall, G.J., Turner, J., Fogt, R.L., Schneider, D., Dixon, D.A.,
1615 Hosking, J.S., Jones, J.M., Hobbs, W.R., 2016. The Amundsen Sea Low: Variability,
1616 Change, and Impact on Antarctic Climate. *Bull. Am. Meteorol. Soc.* 97, 111–121.
1617 doi:10.1175/BAMS-D-14-00018.1.
- 1618 Raynaud, D., Loutre, M.F., Ritz, C., Chappellaz, J., Barnola, J.M., Jouzel, J., Lipenkov,
1619 V.Y., Petit, J.R. and Vimeux, F., 2003. Marine Isotope Stage (MIS) 11 in the Vostok ice
1620 core: CO₂ forcing and stability of East Antarctica. *Earth's Climate and Orbital*
1621 *Eccentricity: The Marine Isotope Stage 11 Question*, 27-40, doi:10.1029/137GM03.
- 1622 Rignot, E., 1998. Fast Recession of a West Antarctic Glacier. *Science*, 281(5376), 549–
1623 551, doi:10.1126/science.281.5376.549.
- 1624 Rignot, E., 2001. Evidence for rapid retreat and mass loss of Thwaites Glacier, West
1625 Antarctica. *Journal of Glaciology*, 47(157), 213–222, doi: 10.3189/172756501781832340.
- 1626 Rignot, E., Vaughan, D.G., Schmelz, M., Dupont, T. and MacAyeal, D., 2002.
1627 Acceleration of Pine island and Thwaites glaciers, west Antarctica. *Annals of Glaciology*,
1628 34(1), 189-194, doi: 10.3189/172756402781817950.
- 1629 Rignot, E., J. L. Bamber, M. R. van den Broeke, C. Davis, Y. Li, W. J. van de Berg, and
1630 E. van Meijgaard, 2008. Recent Antarctic ice mass loss from radar interferometry and
1631 regional climate modeling. *Nature Geoscience*, 1 106-110, doi:10.1038/ngeo102.
- 1632 Rignot, E., J. Mouginot, and B. Scheuchl. 2011a. Antarctic Grounding Line Mapping from
1633 Differential Satellite Radar Interferometry, *Geophysical Research Letters*. 38. L10504,
1634 doi:10.1029/2011GL047109.
- 1635 Rignot, E., Mouginot, J. and Scheuchl, B., 2011b. Ice flow of the Antarctic ice sheet.
1636 *Science*, 333(6048), 1427-1430, doi: 10.1126/science.1208336.
- 1637 Rignot, E., Mouginot, J., Morlighem, M., Seroussi, H. and Scheuchl, B., 2014.
1638 Widespread, rapid grounding line retreat of Pine Island, Thwaites, Smith, and Kohler

- 1639 glaciers, West Antarctica, from 1992 to 2011. *Geophysical Research Letters*, 41(10),
1640 pp.3502-3509, doi:10.1002/2014GL060140.
- 1641 Ritz, C., Rommelaere, V. and Dumas, C., 2001. Modeling the evolution of Antarctic ice
1642 sheet over the last 420,000 years: Implications for altitude changes in the Vostok region.
1643 *Journal of Geophysical Research: Atmospheres*, 106(D23), 31943-31964, doi:
1644 10.1029/2001JD900232.
- 1645 Ritz, C., Edwards, T.L., Durand, G., Payne, A.J., Peyaud, V. and Hindmarsh, R.C., 2015.
1646 Potential sea-level rise from Antarctic ice-sheet instability constrained by observations.
1647 *Nature*, 528(7580), 115-118, doi:10.1038/nature16147.
- 1648 Sarmiento JL, Toggweiler JF. 1984. A new model for the role of the oceans in
1649 determining atmospheric pCO₂. *Nature* 308, 621–624, doi:10.1038/308621a0.
- 1650 Scambos, T.A., Hulbe, C., Fahnestock, M. and Bohlander, J., 2000. The link between
1651 climate warming and break-up of ice shelves in the Antarctic Peninsula. *Journal of*
1652 *Glaciology*, 46(154), 516-530, doi:10.3189/172756500781833043.
- 1653 Scambos, T., Hulbe, C. and Fahnestock, M., 2003. Climate-induced ice shelf
1654 disintegration in the Antarctic peninsula. *Antarctic Peninsula Climate Variability:*
1655 *Historical and Paleoenvironmental Perspectives*, pp.79-92, doi:10.1029/AR079p0079.
- 1656 Scambos, T., H. A. Fricker, C-C Liu, J. Bohlander, J. Fastook, A. Sargent, R. Massom,
1657 and A-W Lu, 2009. Ice shelf disintegration by plate bending and hydro-fracture: satellite
1658 observations and model results of the 2008 Wilkins Ice Shelf break-ups. *Earth and*
1659 *Planetary Science Letters*, 280(1-4), doi:10.1016/j.epsl/2008.12.027.
- 1660 Scambos, T.A., Berthier, E. and Shuman, C.A., 2011. The triggering of subglacial lake
1661 drainage during rapid glacier drawdown: Crane Glacier, Antarctic Peninsula. *Annals of*
1662 *Glaciology*, 52(59), 74-82, doi:10.2189/1727564117999096204.
- 1663 Scherer, R.P., A. Aldahan, S. Tulaczyk, G. Possnert, H. Engelhardt and B. Kamb, 1998.
1664 Pleistocene collapse of the West Antarctic Ice Sheet. *Science*, 281(373), 82-85,
1665 doi:10.1126/science.281.5373.82.
- 1666 Schoof, C., 2007. Ice sheet grounding line dynamics: Steady states, stability, and
1667 hysteresis, *J. Geophys. Res.*, 112, F03S28, doi:10.1029/2006JF000664.
- 1668 Schoof, C., 2012. Marine ice sheet stability. *Journal of Fluid Mechanics*, 698, pp.62-72,
1669 doi:10.1017/jfm.2012.43.
- 1670 Schmidtko, S., Heywood, K.J., Thompson, A.F. and Aoki, S., 2014. Multidecadal
1671 warming of Antarctic waters. *Science*, 346(6214), 1227-1231,
1672 doi:10.1126/science.1256117.
- 1673 Schneider, D.P. and Steig, E.J., 2008. Ice cores record significant 1940s Antarctic
1674 warmth related to tropical climate variability. *Proceedings of the National Academy of*
1675 *Sciences*, 105(34), 12154–12158, doi:10.1073/pnas.0803627105.
- 1676 Schroeder, D.M., Blankenship, D.D. and Young, D.A., 2013. Evidence for a water
1677 system transition beneath Thwaites Glacier, West Antarctica. *Proceedings of the*
1678 *National Academy of Sciences*, 110(30), 12225-12228, doi:10.1073/pnas.1302828110.

- 1679 Schroeder, D.M., Blankenship, D.D., Young, D.A., Witus, A.E., and Anderson, J.B., 2014.
1680 Airborne radar sounding evidence for deformable sediments and outcropping bedrock
1681 beneath Thwaites Glacier, Antarctica. *Geophysical Research Letters*, 41, 7200–7208,
1682 doi:10.1002/2014GL061645.
- 1683 Schroeder, D.M., Grima, C. and Blankenship, D.D., 2015. Evidence for variable
1684 grounding-zone and shear-margin basal conditions across Thwaites Glacier, West
1685 Antarctica. *Geophysics*, 81(1), WA35-WA43, doi:10.1190/geo2015-0122.1.
- 1686 Seroussi, H., M. Morlighem, E. Rignot, J. Mouginot, E. Larour, M. Schodlok, and A.
1687 Khazendar, 2014. Sensitivity of the dynamics of Pine Island Glacier, West Antarctica, to
1688 climate forcing for the next 50 years, *Cryosphere*, 8, 1699–1710, doi:10.5194/tc-8-1699-
1689 2014.
- 1690 Shepherd, A., Wingham, D. and Rignot, E., 2004. Warm ocean is eroding West Antarctic
1691 ice sheet. *Geophysical Research Letters*, 31(23), doi:10.1029/2004GL021106.
- 1692 Shepherd, A., Ivins, E.R., Geruo, A., Barletta, V.R., Bentley, M.J., Bettadpur, S., Briggs,
1693 K.H., Bromwich, D.H., Forsberg, R., Galin, N. and Horwath, M., 2012. A reconciled
1694 estimate of ice-sheet mass balance. *Science*, 338(6111), 1183-1189, doi:
1695 10.1126/science.1228102.
- 1696 Sherrell RM, Lagerström M, Forsch KO, Stammerjohn SE, Yager PL. (2015). Dynamics
1697 of dissolved iron and other bioactive trace metals (Mn, Ni, Cu, Zn) in the Amundsen Sea
1698 Polynya, Antarctica. *Elem Sci Anth* 3: 000071, doi:10.12952/journal.elementa.000071
- 1699 Sigman DM, Hain MP, Haug GH. 2010. The polar ocean and glacial cycles in
1700 atmospheric CO2 concentration. *Nature* 466: 47-55. doi:10.1038/nature09149.
- 1701 Sigman DM, Hain MP. 2012. The biological productivity of the ocean. *Nature Education*
1702 *Knowledge* 3(10):21.
- 1703 Simpkins, G.R., McGregor, S., Taschetto, A.S., Ciasto, L.M., England, M.H., 2014.
1704 Tropical connections to climatic change in the extratropical Southern Hemisphere: The
1705 role of Atlantic SST trends. *J. Clim.* 27, 4923–4936. doi:10.1175/JCLI-D-13-00615.1.
- 1706 Smith, J.A., Andersen, T.J., Shortt, M., Gaffney, A.M., Truffer, M., Stanton, T.P.,
1707 Bindschadler, R., Dutrieux, P., Jenkins, A., Hillenbrand, C.D., Ehrmann, W., Corr, H.F.J.,
1708 Farley, N., Crowhurst, S., and Vaughan, D.G., 2016. Sub-ice-shelf sediments record
1709 history of twentieth-century retreat of Pine Island Glacier. *Nature* 541, 77-80, doi:
1710 10.1038/nature20136.
- 1711 Smith, A.M., Murray, T., Nicholls, K.W., Makinson, K., Aðalgeirsdóttir, G., Behar, A.E.
1712 and Vaughan, D.G., 2007. Rapid erosion, drumlin formation, and changing hydrology
1713 beneath an Antarctic ice stream. *Geology*, 35(2), pp.127-130, doi: 10.1130/G23036A.
- 1714 Smith, Benjamin E., Helen A. Fricker, Ian R. Joughin, and Slawek Tulaczyk. "An
1715 inventory of active subglacial lakes in Antarctica detected by ICESat (2003–
1716 2008)." *Journal of Glaciology* 55, no. 192 (2009): 573-595.
1717
- 1718 Smith, B.E., Gourmelen, N., Huth, A., and Joughin, I., 2017. Connected subglacial lake
1719 drainage beneath Thwaites Glacier, West Antarctica. *The Cryosphere* 11, no. 1 (2017):
1720 451-467.

- 1721
1722 Spada, G., Bamber, J.L. and Hurkmans, R.T.W.L., 2013. The gravitationally consistent
1723 sea-level fingerprint of future terrestrial ice loss. *Geophysical Research Letters*, 40(3),
1724 pp.482-486., doi: 10.1029/2012GL053000.
- 1725
1726 Stammerjohn SE, Maksym T, Massom RA, Lowry KE, Arrigo KR, et al., 2015. Seasonal
1727 sea ice changes in the Amundsen Sea, Antarctica, over the period of 1979–2014. *Elem
Sci Anth* 3: 000055, doi:10.12952/journal.elementa.000055.
- 1728
1729 Stanton, T.P., Shaw, W.J., Truffer, M., Corr, H.F.J., Peters, L.E., Riverman, K.L.,
1730 Bindschadler, R., Holland, D.M. and Anandakrishnan, S., 2013. Channelized ice melting
1731 in the ocean boundary layer beneath Pine Island Glacier, Antarctica. *Science*, 341(6151),
pp.1236-1239, DOI: 10.1126/science.1239373.
- 1732
1733 Steig, E.J., Schneider, D.P., Mann, M.E., Rutherford, S.D., Comiso, J.C. and Shindell
1734 D.T., 2009, Antarctic ice sheet surface since the 1957 International Geophysical Year.
/Nature/*457*, pp. 459-462, doi: 10.1038/nature07669.
- 1735
1736 Steig, E.J. and Orsi, A.J., 2013. The heat is on in Antarctica. *Nature Geoscience* 6, 87–
88, doi: 10.1038/ngeo1717.
- 1737
1738 Steig, E.J., Ding, Q., White, J.W., Küttel, M., Rupper, S.B., Neumann, T.A., Neff, P.D.,
1739 Gallant, A.J., Mayewski, P.A., Taylor, K.C. and Hoffmann, G., 2013. Recent climate and
1740 ice-sheet changes in West Antarctica compared with the past 2,000 years. *Nature
Geoscience*, 6(5), pp.372-375, doi:10.1038/ngeo1778.
- 1741
1742 Steig, E.J., Ding, Q., Battisti, D.S. and Jenkins, A., 2012. Tropical forcing of Circumpolar
1743 Deep Water inflow and outlet glacier thinning in the Amundsen Sea Embayment, West
Antarctica. *Annals of Glaciology*, 53(60), 19-28, doi:10.3189/2012AoG60A110.
- 1744
1745 Steig, E.J., Huybers, K., Singh, H.A., Steiger, N.J., Ding, Q., Frierson, D.M., Popp, T.
1746 and White, J.W., 2015. Influence of West Antarctic Ice Sheet collapse on Antarctic
1747 surface climate. *Geophysical Research Letters*, 42(12), pp.4862-4868, doi:
10.1002/2015GL063861.
- 1748
1749 Thoma, M., Jenkins, A., Holland, D., and Jacobs, S., 2008. Modelling circumpolar deep
1750 water intrusions on the Amundsen Sea continental shelf, Antarctica. *Geophysical
Research Letters*, 35(18), L18602, doi:10.1029/2008GL034939.
- 1751
1752 Thomas, R.H., 1979. The dynamics of marine ice sheets. *Journal of Glaciology*, 24(90),
167-177, doi:10.3198/1979JoG24-90-167-177.
- 1753
1754 Thomas, E.R., Abram, N.J., 2016. Ice core reconstruction of sea ice change in the
1755 Amundsen-Ross Seas since 1702 A.D. *Geophys. Res. Lett.*, 43, 2016GL068130.
doi:10.1002/2016GL068130.
- 1756
1757 Thomas, E.R., Hosking, J.S., Tuckwell, R.R., Warren, R.A. and Ludlow, E.C., 2015.
1758 Twentieth century increase in snowfall in coastal West Antarctica. *Geophysical
Research Letters*, 42(21), pp.9387-9393, doi:10.1002/2015GL065750.
- 1759
1760 Thompson, A.F., Heywood, K.J., Schmidtko, S., Stewart, A.L., 2014. Eddy transport as a
1761 key component of the Antarctic overturning circulation. *Nat. Geosci.*, 7, 879–884.
doi:10.1038/ngeo2289.

- 1762 Thompson, D.W.J., Solomon, S., Kushner, P.J., England, M.H., Grise, K.M., Karoly, D.J.,
1763 2011. Signatures of the Antarctic ozone hole in Southern Hemisphere surface climate
1764 change. *Nat. Geosci.* 4, 741–749. doi:10.1038/ngeo1296.
- 1765 Trusel, L. D., K. E. Frey, and S. B. Das (2012), Antarctic surface melting dynamics:
1766 Enhanced perspectives from radar scatterometer data, *J. Geophys. Res.*, 117, F02023,
1767 doi:201210.1029/2011JF002126.
- 1768 Trusel, L. D., K. E. Frey, S. B. Das, P. Kuipers Munneke, and M. R. van den Broeke
1769 (2013), Satellite-based estimates of Antarctic surface meltwater fluxes, *Geophysical*
1770 *Research Letters*, 40, doi:10.1002/2013GL058138.
- 1771 Trusel, L. D., K. E. Frey, S. B. Das, K. B. Karnauskas, P. Kuipers Munneke, E. van
1772 Meijgaard, and M. R. van den Broeke (2015), Divergent trajectories of Antarctic surface
1773 melt under two twenty-first-century climate scenarios. *Nature Geoscience*, 8, (12), 927-
1774 932 doi:10.1038/ngeo2563
- 1775 Tulaczyk, S., Kamb, W.B. and Engelhardt, H.F., 2000. Basal mechanics of ice stream B,
1776 West Antarctica: 1. Till mechanics. *Journal of Geophysical Research: Solid Earth*,
1777 105(B1), 463-481, doi:10.1029/1999JB900329.
- 1778 Turner, J., Phillips, T., Hosking, J.S., Marshall, G.J., Orr, A., 2013. The Amundsen Sea
1779 low. *Int. J. Climatol.* 33, 1818–1829. doi:10.1002/joc.3558.
- 1780 Turner, J., Orr, A., Gudmundsson, G.H., Jenkins, A., Bingham, R.G., Hillenbrand, C.D.
1781 and Bracegirdle, T.J., 2017. Atmosphere-ocean-ice interactions in the Amundsen Sea
1782 Embayment, West Antarctica. *Reviews of Geophysics*, 55, doi:10.1002/2016RG000532.
- 1783 Vaughan, D.G., Corr, H.F., Ferraccioli, F., Frearson, N., O'Hare, A., Mach, D., Holt, J.W.,
1784 Blankenship, D.D., Morse, D.L. and Young, D.A., 2006. New boundary conditions for the
1785 West Antarctic ice sheet: Subglacial topography beneath Pine Island Glacier.
1786 *Geophysical Research Letters*, 33(9), doi: 10.1029/2005GL025588.
- 1787 Vaughan, D.G., Corr, H.F., Bindschadler, R.A., Dutrieux, P., Gudmundsson, G.H.,
1788 Jenkins, A., Newman, T., Vornberger, P. and Wingham, D.J., 2012. Subglacial melt
1789 channels and fracture in the floating part of Pine Island Glacier, Antarctica. *Journal of*
1790 *Geophysical Research: Earth Surface*, 117(F3), doi:10.1029/2012JF002360.
- 1791 Velicogna, I., Sutterley, T.C. and Van Den Broeke, M.R., 2014. Regional acceleration in
1792 ice mass loss from Greenland and Antarctica using GRACE time-variable gravity data.
1793 *Geophysical Research Letters*, 41(22), pp.8130-8137, doi:10.1002/2014GL061052.
- 1794 Vick-Majors, T.J., 2016. Biogeochemical processes in Antarctic aquatic environments:
1795 Linkages and limitations (Doctoral dissertation, Montana State University).
- 1796 Wadham, J.L., De'Ath, R., Monteiro, F.M., Tranter, M., Ridgwell, A., Raiswell, R. and
1797 Tulaczyk, S., 2013. The potential role of the Antarctic Ice Sheet in global biogeochemical
1798 cycles. *Earth and Environmental Science Transactions of the Royal Society of*
1799 *Edinburgh*, 104(01), 55-67, doi:10.1017/S1755691013000108
- 1800 WAIS Divide Project Members, 2013. Onset of deglacial warming in West Antarctica
1801 driven by local orbital forcing. *Nature*, 500(7463), pp.440-444, doi: 10.1038/nature12376.

- 1802 Wåhlin, A. K., X. Yuan, C. Nohr, and G. Björk, 2010: Inflow of warm Circumpolar Deep
1803 Water in the Western Amundsen Sea. *J. Phys. Oceanogr.*, 40, 1427–1434,
1804 doi:10.1175/2010JPO4431.1.
- 1805 Wåhlin A.K., R. D. Muench, L. Arneborg, G. Björk, H. K. Ha, S. H. Lee, H. Alsén, 2012:
1806 Some implications of Ekman layer dynamics for cross-shelf exchange in the Amundsen
1807 Sea. *J. Phys. Oceanogr.*, 42, 1461–1474, doi:10.1175/JPO-D-11-041.1.
- 1808 Wåhlin A.K., O. Kalén, L. Arneborg, G. Björk, G.K. Carvajal, H.K. Ha, T.W. Kim, S. H.
1809 Lee. 2013: Variability of warm deep water inflow in a submarine trough on the
1810 Amundsen Sea Shelf. *J. Phys. Oceanogr.*, 43, 2054–2070, doi:10.1175/JPO-D-12-
1811 0157.1.
- 1812 Walker, D.P., Jenkins, A., Assmann, K.M., Shoosmith, D.R. and Brandon, M.A., 2013.
1813 Oceanographic observations at the shelf break of the Amundsen Sea, Antarctica.
1814 *Journal of Geophysical Research: Oceans*, 118(6), pp.2906-2918,
1815 doi:10.1002/jgrc.20212.
- 1816 Walker, R.T., Christianson, K., Parizek, B.R., Anandakrishnan, S. and Alley, R.B., 2012.
1817 A viscoelastic flowline model applied to tidal forcing of Bindschadler Ice Stream, West
1818 Antarctica. *Earth and Planetary Science Letters*, 319, 128-132,
1819 doi:10.1016/j.epsl.2011.12.019.
- 1820 Walker, R.T., Parizek, B.R., Alley, R.B., Anandakrishnan, S., Riverman, K.L. and
1821 Christianson, K., 2013. Ice-shelf tidal flexure and subglacial pressure variations. *Earth
1822 and Planetary Science Letters*, 361, pp.422-428, doi:10.1016/j.epsl.2012.11.008.
- 1823 Weertman, J. 1974. Stability of the junction of an ice sheet and an ice shelf. *Journal of
1824 Glaciology*, 13(67), 3–11.
- 1825 Whillans, I. M., 1976. Radio-echo layers and the recent stability of the Antarctic ice sheet,
1826 *Nature*, 264, 152–155, doi: 10.1038/264152a0.
- 1827 Wilson, A. B., D. H. Bromwich, and K. M. Hines, 2016: Simulating the mutual forcing of
1828 anomalous high-southern latitude atmospheric circulation by El Niño flavors and the
1829 Southern Annular Mode. *J. Climate*, 29, 2291-2309, doi: 10.1175/JCLI-D-15-0361.1.
- 1830 Wingham, D.J., Ridout, A.J., Scharroo, R., Arthern, R.J. and Shum, C.K., 1998. Antarctic
1831 elevation change from 1992 to 1996. *Science*, 282(5388), 456-458, doi:
1832 10.1126/science.282.5388.456.
- 1833 Winkelmann, R., A. Levermann, A. Ridgwell, K. Caldeira. 2015. Combustion of available
1834 fossil fuel resources sufficient to eliminate the Antarctic Ice Sheet. *Sci. Adv*, 1, 8,
1835 e1500589, doi:10.1126/sciadv.1500589.
- 1836 Xie, S., TH Dixon, D. Voytenko, DM Holland, D. Holland, and T. Zheng, 2016. Precursor
1837 motion to iceberg calving at Jakobshavn Isbræ, Greenland, observed with terrestrial
1838 radar interferometry. *Journal of Glaciology*, 1-9, doi: 10.1017/jog.2016.104.
- 1839 Yager, P.L., Sherrell, L.M., Stammerjohn, S.E., Alderkamp, A.C., Schofield, O.,
1840 Abrahamsen, E.P., Arrigo, K.R., Bertilsson, S., Garay, D., Guerrero, R. and Lowry, K.E.,
1841 2012. ASPIRE: the Amundsen Sea Polynya international research expedition.
1842 *Oceanography*, 25(3), pp.40-53, doi:10.5670/oceanog.2012.73.

- 1843 Yager, PL, RM Sherrell, SE Stammerjohn, HW Ducklow, OME Schofield, et al., (2016
1844 under review). A carbon budget for the Amundsen Sea Polynya, Antarctica; estimating
1845 net community production and export in a highly productive polar ecosystem. *Elem. Sci.*
1846 *Anth.*
- 1847 Zwally, H. J., M. B. Giovinetto, J. Li, H. G. Cornejo, M. A. Beckley, A. C. Brenner, J. L.
1848 Saba, and D. Yi, 2005. Mass changes of the Greenland and Antarctic ice sheets and
1849 shelves and contributions to sea-level rise: 1992 – 2002. *J. Glaciol.*, 51, 509 – 527,
1850 doi:10.3189/172756505781829007.
- 1851 Zwally, H. Jay, Mario B. Giovinetto, Matthew A. Beckley, and Jack L. Saba, 2012,
1852 Antarctic and Greenland Drainage Systems, GSFC Cryospheric Sciences Laboratory, at
1853 http://icesat4.gsfc.nasa.gov/cryo_data/ant_grn_drainage_systems.php.

Highlights:

- 1 Thwaites Glacier is a likely site of greatly increased Antarctic ice sheet mass loss;
- 2 Changes in the atmosphere and ocean and their interaction with the glacier are the cause;
- 3 A coordinated multi-disciplinary research plan to study Thwaites Glacier is outlined.