

## How to track cellular aging of mesenchymal stromal cells?

Wolfgang Wagner<sup>1</sup>, Simone Bork<sup>2</sup>, Günther Lepperdinger<sup>3</sup>, Sylvia Jousen<sup>1</sup>, Nan Ma<sup>4</sup>, Dirk Strunk<sup>5</sup>, Carmen Koch<sup>1</sup>

<sup>1</sup> *Helmholtz Institute for Biomedical Engineering, Department of Cell Biology, RWTH Aachen University Medical School, 52074 Aachen, Germany*

<sup>2</sup> *Department of Medicine V, University of Heidelberg, 69120 Heidelberg, Germany*

<sup>3</sup> *Institute for Biomedical Aging Research, Rennweg 10, 6020 Innsbruck, Austria*

<sup>4</sup> *Reference and translational center for cardiac stem cell therapy, University of Rostock, 18057 Rostock, Germany*

<sup>5</sup> *Stem Cell Research Unit Graz, Medical University of Graz, 8036 Graz, Austria*

**Running title:** How to track cellular aging in MSC?

**Key words:** mesenchymal stem cells, replicative senescence, long-term culture, senescence marker, gene expression

**Correspondence:** Wolfgang Wagner, MD, PhD; Helmholtz Institute for Biomedical Engineering – Cell Biology; Aachen University Medical School, Pauwelsstrasse 20; 52074 Aachen; Germany

**Received:** 03/26/10; **accepted:** 04/05/10; **published on line:** 04/08/10

**E-mail:** [wwagner@ukaachen.de](mailto:wwagner@ukaachen.de)

**Copyright:** © Wagner et al. This is an open-access article distributed under the terms of the Creative Commons Attribution License, which permits unrestricted use, distribution, and reproduction in any medium, provided the original author and source are credited

**Abstract:** Mesenchymal stromal cells (MSC) are currently tested in a large number of clinical trials and raise high hope in regenerative medicine. These cells have to be expanded in vitro before transplantation and several studies demonstrated that long-term culture evokes continuous changes in MSC: proliferation rate decays, the cell size increases, differentiation potential is affected, chromosomal instabilities may arise and molecular changes are acquired. Long-term culture of cell preparations might also have therapeutic consequences, although this has hardly been addressed in ongoing trials so far. Reliable therapeutic regimens necessitate quality control of cellular products. This research perspective summarizes available methods to track cellular aging of MSC. We have demonstrated that gene expression changes [1] and epigenetic modifications [2] are continuously acquired during replicative senescence. Molecular analysis of a suitable panel of genes might provide a robust tool to assess efficiency and safety of long-term expansion.

### Quality control for cellular therapeutics

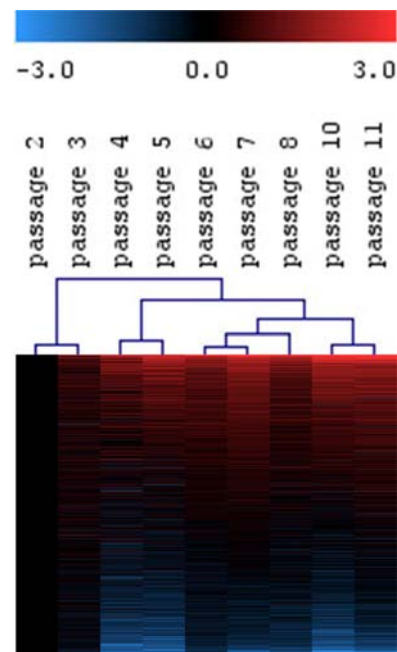
There is growing interest in transplantation of *ex vivo* amplified cell preparations for various therapeutic applications. This has been fueled by novel insights from stem cell biology, new molecular tools and promising preclinical model systems. Mesenchymal stromal cells (MSC) can be isolated from various tissues including bone marrow and adipose tissue, which contain a rare population of adult stem cells (mesenchymal stem cells) with multilineage differentiation potential towards at least adipogenic, osteogenic and chondrogenic lineage [3]. To date, MSC

are tested for a wide spectrum of diseases taking into account their paracrine effect, immunomodulatory activity and differentiation potential [4]. Hence, the use of MSC as cellular therapeutics necessitates standardized isolation and reliable quality control of cell preparations. This, however, is greatly hampered by the multitude of different methods to prepare MSC [5]. Furthermore, there is a growing perception that even under highly standardized culture conditions, continuous effects during long-term culture and eventually replicative senescence need to be taken into account [6,7].

MSC can only be culture expanded for a limited time before they reach a senescent state. This so called “Hayflick limit” is commonly observed in all primary cell isolates [8]. Senescent cells are mitotically arrested, thus are not dead, and remain metabolically active. However due to acquired functional and molecular changes, MSC increase in size, they adopt “fried egg morphology”, expression of specific surface markers is attenuated [1] and adipogenic and osteogenic differentiation potential is affected [9-13]. Recently, we have demonstrated, that long-term culture is also associated with continuous changes in the global gene expression profile [1] (Figure 1). Genes involved in cell cycle, DNA replication, mitosis and DNA repair are significantly down-regulated in late passages. This reproducible pattern of senescence associated gene expression changes strengthens the hypothesis that cellular aging is driven by an organized process rather than a random accumulation of cellular defects [14]. Interestingly, long-term culture associated gene expression changes were related to age-associated changes in MSC from young *versus* elderly donors [15]. This indicates that cellular aging might be related to aging of the organism. The underlying molecular mechanisms of replicative senescence are still unraveled but it evidently has consequences for cellular therapy [6,16]. However, it is not a trivial question how to track cellular aging of MSC.

### Restrictions of passage numbers and population doublings

Cells in culture can be continuously observed and hence, it appears straightforward to determine proliferation and the number of cell divisions. Obviously, the most convenient parameter for documentation of long-term culture is simply counting the number of cell passages. Under standardized culture conditions this procedure provides a predictive indicator for replicative senescence. However, as seeding densities often greatly vary between different laboratories (10 to 10<sup>4</sup> cells/cm<sup>2</sup>) and also confluence at the time of harvesting [5,6,17,18], the sole recording of passage numbers may lead to deceptive results in order to compare the state of senescence under non-standardized conditions. In this respect, calculation of the number of cumulative population doublings (PD) is more accurate [19]. MSC cultures are usually isolated by plastic adherent growth and hence, the initial MSC number can only be estimated by accounting fibroblastoid colony-forming unit (CFU-F) frequency based on the assumption that every colony has been derived from a single clonogenic MSC. Thereafter, cell numbers have to be exactly determined at all consecutive passages as any inaccuracy will be carried



**Figure 1. Continuous gene-expression changes in MSC upon long-term culture.** MSC from human bone marrow were expanded for 11 passages and analyzed by Affymetrix GeneChip technology. Differential gene expression was always determined *versus* P2. Hierarchical cluster analysis of all expressed genes (19,448 ESTs) revealed continuous changes with higher passages. Hence, molecular changes in replicative senescence do not suddenly occur in late passages, but are acquired in the course of long-term culture.

over to the next passage and falsify PD. Yet, analysis of PD excludes the likely events of cells undergoing apoptosis, necrosis or loss during passaging. More importantly, there are big variations between different donor samples. Taken together, it is hard to predict at which passage or number of cell divisions MSC are approaching either a replicative or stress-induced senescent state.

### Surface molecules and histochemical markers for senescence

To date no specific molecular marker is available that prospectively reflects the degree of cellular aging in MSC. For instance the leptin receptor (CD295) increases with higher passages under hyperoxic culture conditions in MSC of elderly donors [20]. Flow cytometric analysis of this surface marker discriminates a CD295-positive subpopulation, but these cells also stained positive for annexin V. CD295 therefore stains apoptotic cells that accumulate at higher passages rather

than senescent cells [20]. It is also possible to stain the enlarged senescent cells based on the accumulation of senescence-associated beta galactosidase (SA- $\beta$ -gal). This lysosomal protein is predominantly active in senescent fibroblasts and also, albeit to a lower extent, in MSC [21]. The staining procedure is easy and reliable but the result can hardly be quantified and almost exclu-

sively the very large senescent cells exhibiting a “fried egg morphology” stain positive for SA- $\beta$ -gal [1,22]. It should be mentioned, that SA- $\beta$ -gal itself is neither required nor causative for manifestation of senescence [23]. Despite limitations in quantification and prospective analysis of MSC, SA- $\beta$ -gal is the most widely used biomarker for senescent and aging cells.

**Table 1: Methods to track changes upon long-term culture**

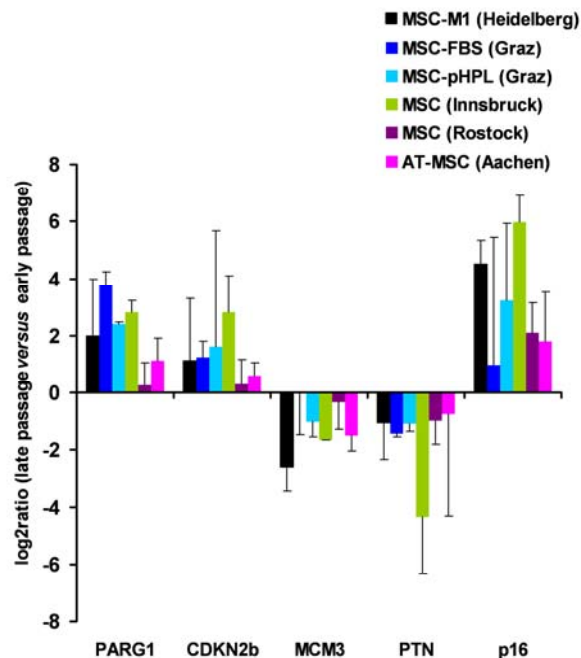
Method	Advantage	Disadvantage
<b>Number of passages</b>	<ul style="list-style-type: none"> <li>Counting of passages can be easily documented.</li> <li>Under standardized culture conditions it provides an indicator for long-term culture.</li> </ul>	<ul style="list-style-type: none"> <li>Seeding density and expansion techniques vary between different laboratories.</li> <li>Even under standardized conditions there is variation between different probes.</li> </ul>
<b>Cumulative population doublings</b>	<ul style="list-style-type: none"> <li>PD can be calculated based on precise cell numbers at every passage and exact seeding densities.</li> <li>This parameter is more robust for comparison between different laboratories.</li> </ul>	<ul style="list-style-type: none"> <li>The initial CFU-F frequency is required to estimate initial PD.</li> <li>MSC are heterogeneous and the number of PD does not correspond to the number of cell divisions in individual cells.</li> <li>Prospective information on the senescent state is hampered by large variation between different samples.</li> </ul>
<b>SA-<math>\beta</math>-galactosidase</b>	<ul style="list-style-type: none"> <li>Fast and easy method to stain activity of lysosomal, senescence associated beta-galactosidase.</li> <li>SA-<math>\beta</math> gal is over-expressed and accumulates specifically in senescent cells.</li> </ul>	<ul style="list-style-type: none"> <li>SA-<math>\beta</math>-gal is not required for senescence.</li> <li>Especially the large cells become beta-gal positive.</li> <li>Quantitative analysis for quality control is difficult.</li> </ul>
<b>Karyotype / array-CGH</b>	<ul style="list-style-type: none"> <li>May detect mutations and potentially immortalized cell clones.</li> <li>Might prevent transplant-associated tumor formation.</li> </ul>	<ul style="list-style-type: none"> <li>Human MSC appear to be relatively stable for karyotypic aberrations.</li> <li>No marker for normal cellular aging.</li> </ul>
<b>Telomere length</b>	<ul style="list-style-type: none"> <li>Might provide a direct measure for prospective analysis of potential cell divisions.</li> <li>Several techniques are available to quantify telomere length.</li> </ul>	<ul style="list-style-type: none"> <li>Stress induced senescence might be independent of cell cycle and telomere shortening.</li> <li>It is yet unclear if analysis of telomere length facilitates reliable quality control in different MSC preparations.</li> </ul>
<b>Gene expression markers</b>	<ul style="list-style-type: none"> <li>RT-PCR and microarray techniques facilitate fast and reliable quantification.</li> <li>A panel of up-regulated and down-regulated genes may be more robust than individual markers.</li> </ul>	<ul style="list-style-type: none"> <li>Differential gene expression needs to be normalized to “house keeping genes”.</li> <li>Suitable gene-sets need to be established and cross-validated in different MSC preparations.</li> </ul>

## Genomic aberrations

Clinical trials with MSC usually employ  $1-2 \times 10^6$  MSC per kg bodyweight for transplantation and therefore large-scale expansion is an indispensable prerequisite. Proliferation under non-physiologic in vitro culture conditions can result in mutations and chromosomal aberrations and eventually leads to malignant transformations. Karyotypic aberrations are commonly observed in MSC from mice and rats [24-26] whereas they have only been examined in few studies with human MSC [27-29]. So far tumor formation has not been described in clinical trials with MSC. Malignant transformation is obviously the “sword of Damocles” hovering above therapeutic cell products. The risk can be reduced by conventional karyotyping of MSC, however, minor genomic gains or losses may not be detected. Array complete genomic hybridization (CGH) analysis is more sensitive but this technique is incapable of revealing balanced translocations or very small mutations. Furthermore, malignant transformation may involve over-expression of c-myc, activation of cyclin dependent kinases, deletion of tumor suppressor genes such as p16<sup>ink4a</sup>, RB or p53 and re-expression of telomerase [30]. Initially, these changes may only occur in a small subset of cell preparations. At that point, it remains to be demonstrated whether routine karyotype analysis does actually reduce the risk of transplant-related tumor formation. It is however generally accepted that the stochastic effects of malignant transformation are no suitable markers in order to determine normal senescence-associated changes in MSC.

## Telomere length

MSC do not express telomerase and therefore telomere length decreases approximately 50-200 nucleotides per cell cycle [31] and there is evidence, that telomere shortening occurs also upon aging *in vivo* [33]. Ectopic expression of telomerase can immortalize MSC while their differentiation potential is maintained [32]. It is still under debate, if telomere loss really plays a causal role for replicative senescence or aging. Either way, loss of telomere length might facilitate some kind of internal clock to assess the state of cellular aging. Various methods are available to determine telomere length including Southern hybridization, flow cytometry based methods or quantitative PCR [34]. Therefore, telomere length may serve as another good indicator for mitotic history and the prospective additional life span. However, stress induced senescence may occur independent of cell division and it needs to be demonstrated if quantitative analysis of telomere length facilitates reliable and prospective quality control with regard to cellular aging.



**Figure 2. Gene expression markers for replicative senescence.**

MSC from human bone marrow were either culture expanded as described before in medium-M1 with 2% fetal calf serum (M1, in Heidelberg, Germany [1]; n=3), in culture medium with 10% fetal calf serum (FCS, n=2) or 10% pooled human platelet lysate (pHPL, n=2; both in Graz, Austria [38]), in MEM supplemented with 20% FCS (Innsbruck, Austria [40]; n=2), and in MSCGM (Lonza) culture medium (Rostock, Germany; n=4). Furthermore, MSC from adipose tissue were expanded with 10% pHPL (Aachen, Germany, n=4). RNA was isolated from corresponding early and late passages and analyzed for differential gene expression in PARG1, CDKN2B, MCM3, PTN and p16<sup>ink4a</sup>. Primers and methods have been described before [38]. These genes did not facilitate reliable discrimination of senescent cells in all samples but the tendency was consistent in all different MSC preparations.

## Senescence markers on gene expression level

Long-term culture induces continuous changes in gene expression [1]. A clear-cut characterization of distinct aberrations might facilitate determination when cells are shifting into the final state of senescence. A prerequisite is the reproducibility of senescence-associated gene expression changes in different MSC preparations, whereas techniques for cell isolation, culture media and cell culture methods have major impact on the composition of MSC and their gene expression profiles [35-37]. Recently, we have compared gene expression changes in MSC from human bone marrow, which had been isolated in two different laboratories, grown in long-term culture with different culture media and

subsequently also analyzed with different microarray platforms [38]. Despite these differences there was a high resemblance in senescence-associated gene expression signatures. This led us to conclude, that these specific changes may be suitable for analysis of cellular aging. A matrix of distinctly up- and down-regulated genes thus provides a robust method for quality control. Taken together, we found senescence-associated up-regulation of the phosphate-associated RhoGAP protein-tyrosine (PARG1; alternatively termed ARHGAP29) and of the cyclin-dependent kinase-inhibitor 2B (CDKN2B). Genes that were down-regulated included pleiotrophin (PTN) and minichromosome maintenance complex component 3 (MCM3) (patent pending) [38]. Furthermore, work from other laboratories demonstrated that p16<sup>ink4a</sup> is up-regulated at higher passages. We now performed quantitative RT-PCR analysis of these five genes in five different types of MSC preparations and long-term cultures from different laboratories (Figure 2). Overall, there were related changes when comparing early and senescent passage. However, standard deviations were rather high in these analyses and it was not always possible to discern MSC in late passage. As microarray technology facilitates simultaneous analysis of thousands of genes, a larger panel of genes most likely yields a more robust predictor for quality control purposes. Further specification of senescence-associated markers and cross-validation in different MSC preparations may pave the way for a reliable quality control of cell preparations on gene expression level.

Besides whole genome expression profiling, we could also demonstrate that DNA methylation profiles are clearly affected by long-term culture [2]. Using HumanMethylation27 BeadChip that represents 27,578 CpG sites in more than 13,500 annotated genes, it was shown that specific promoter regions become either hyper- or hypo-methylated upon expansion of MSC. Some of these deviations were also differentially methylated in fibroblasts (unpublished data). Diploid cells have only two copies of DNA, whereas gene expression is based on multiple copies of mRNA. Therefore, distinction of methylation changes is a potent way to monitor cellular aging and this type of epigenetic analysis could be more suitable for accounting the heterogeneity within primary MSC preparations and also with regard to cellular aging.

## Outlook

Cellular therapies are currently tested for various novel therapeutic applications. At the same time requirements for quality control of cell products have to be specified and standardized. Establishing efficient quality control

is challenging as it bases on trial and error to accumulate knowledge on optimal culture conditions for therapeutic applications. So far there are only limited numbers of reports available tracking side effects of clinical application of MSC. Notably, some of the preliminary observations are very promising [4,39]. It is yet unclear how many passages, population doublings or senescence-associated molecular changes are acceptable to grant optimal therapeutic effect for the different applications. Clearly, we need to establish a reliable method to track cellular aging of MSC. Molecular changes either on gene expression or DNA methylation levels provide powerful perspectives. Further bioinformatic analyses of datasets and validation enrolling different MSC preparations will pave the way for a reliable panel of distinct aging and senescence markers.

## ACKNOWLEDGEMENTS

This work was supported by the German Ministry of Education and Research (CB-HERMES), the Academy of Sciences and Humanities, Heidelberg (WIN-Kolleg), by the FWF (SOP3 and N211-NAN), the Austrian Research Promotion Agency (FFG: N200), by the Jubilee Fund of the Austrian National Bank (P12518), by the excellence initiative of the German federal and state governments (Pathfinder project – AGenFinder) and the Stem Cell Network North Rhine Westphalia. The authors have no conflict of interest to declare.

## CONFLICT OF INTERESTS STATEMENT

The authors of this manuscript have no conflict of interest to declare.

## REFERENCES

1. Wagner W, Horn P, Castoldi M, Diehlmann A, Bork S, Saffrich R, Benes V, Blake J, Pfister S, Eckstein V, Ho AD. Replicative Senescence of Mesenchymal Stem Cells - a Continuous and Organized Process. *PLoS ONE* 2008; 5: e2213.
2. Bork S, Pfister S, Witt H, Horn P, Korn B, Ho AD, Wagner W. DNA Methylation Pattern Changes upon Long-Term Culture and Aging of Human Mesenchymal Stromal Cells. *Aging Cell* 2010; 9: 54-63.
3. Dominici M, Le Blanc K, Mueller I, Slaper-Cortenbach I, Marini F, Krause D, Deans R, Keating A, Prockop D, Horwitz E. Minimal criteria for defining multipotent mesenchymal stromal cells. The International Society for Cellular Therapy position statement. *Cytotherapy* 2006; 8: 315-317.
4. Sensebe L, Krampera M, Schrezenmeier H, Bourin P, Giordano R. Mesenchymal stem cells for clinical application. *Vox Sang* 2010; 98: 93-107.
5. Wagner W, Ho AD. Mesenchymal stem cell preparations-comparing apples and oranges. *Stem Cell Rev* 2007; 3: 239-248.

6. Wagner W, Ho AD, Zenke M. Different Facets of Aging in Human Mesenchymal Stem Cells. *Tissue Eng Part B Rev* 2010.
7. Roobrouck VD, Ulloa-Montoya F, Verfaillie CM. Self-renewal and differentiation capacity of young and aged stem cells. *Exp Cell Res* 2008; 314: 1937-1944.
8. Hayflick L. The limited in vitro lifetime of human diploid cell strains. *Exp Cell Res* 1965; 37: 614-636.
9. Bonab MM, Alimoghaddam K, Talebian F, Ghaffari SH, Ghavamzadeh A, Nikbin B. Aging of mesenchymal stem cell in vitro. *BMC Cell Biol* 2006; 7: 14.
10. Noer A, Boquest AC, Collas P. Dynamics of adipogenic promoter DNA methylation during clonal culture of human adipose stem cells to senescence. *BMC Cell Biol* 2007; 8: 18.
11. Baxter MA, Wynn RF, Jowitt SN, Wraith JE, Fairbairn LJ, Bellantuono I. Study of telomere length reveals rapid aging of human marrow stromal cells following in vitro expansion. *Stem Cells* 2004; 22: 675-682.
12. Lepperdinger G, Brunauer R, Jamnig A, Laschober G, Kassem M. Controversial issue: is it safe to employ mesenchymal stem cells in cell-based therapies? *Exp Gerontol* 2008; 43: 1018-1023.
13. Kim J, Kang JW, Park JH, Choi Y, Choi KS, Park KD, Baek DH, Seong SK, Min HK, Kim HS. Biological characterization of long-term cultured human mesenchymal stem cells. *Arch Pharm Res* 2009; 32: 117-126.
14. Blagosklonny MV. TOR-driven aging: speeding car without brakes. *Cell Cycle* 2009; 8: 4055-4059.
15. Wagner W, Bork S, Horn P, Kronic D, Walenda T, Diehlmann A, Benes V, Blake J, Huber FX, Eckstein V, Boukamp P, Ho AD. Aging and replicative senescence have related effects on human stem and progenitor cells. *PLoS ONE* 2009; 4: e5846.
16. Fehrer C and Lepperdinger G. Mesenchymal stem cell aging. *Exp Gerontol* 2005; 40: 926-930.
17. Larson BL, Ylostalo J, Prockop DJ. Human multipotent stromal cells undergo sharp transition from division to development in culture. *Stem Cells* 2008; 26: 193-201.
18. Bartmann C, Rohde E, Schallmoser K, Purstner P, Lanzer G, Linkesch W, Strunk D. Two steps to functional mesenchymal stromal cells for clinical application. *Transfusion* 2007; 47: 1426-1435.
19. Cristofalo VJ, Allen RG, Pignolo RJ, Martin BG, Beck JC. Relationship between donor age and the replicative lifespan of human cells in culture: a reevaluation. *Proc Natl Acad Sci U S A* 1998; 95: 10614-10619.
20. Laschober GT, Brunauer R, Jamnig A, Fehrer C, Greiderer B, Lepperdinger G. Leptin receptor/CD295 is upregulated on primary human mesenchymal stem cells of advancing biological age and distinctly marks the subpopulation of dying cells. *Exp Gerontol* 2009; 44: 57-62.
21. Dimri G P, Lee X, Basile G, Acosta M, Scott G, Roskelley C, Medrano EE, Linskens M, Rubelj I, Pereira-Smith O. A biomarker that identifies senescent human cells in culture and in aging skin in vivo. *Proc Natl Acad Sci U S A* 1995; 92: 9363-9367.
22. Zhou S, Greenberger JS, Epperly MW, Goff JP, Adler C, Leboff MS, Glowacki J. Age-related intrinsic changes in human bone-marrow-derived mesenchymal stem cells and their differentiation to osteoblasts. *Aging Cell* 2008; 7: 335-343.
23. Lee BY, Han JA, Im JS, Morrone A, Johung K, Goodwin EC, Kleijer WJ, DiMaio D, Hwang ES. Senescence-associated beta-galactosidase is lysosomal beta-galactosidase. *Aging Cell* 2006; 5: 187-195.
24. Josse C, Schoemans R, Niessen NA, Delgaudine M, Hellin AC, Herens C, Delvenne P, Bours V. Systematic chromosomal aberrations found in murine bone marrow-derived mesenchymal stem cells. *Stem Cells Dev* 2010 [Epub ahead of print].
25. Foudah D, Redaelli S, Donzelli E, Bentivegna A, Miloso M, Dalpra L, Tredici G. Monitoring the genomic stability of in vitro cultured rat bone-marrow-derived mesenchymal stem cells. *Chromosome Res* 2009; 17: 1025-1039.
26. Furlani D, Li W, Pittermann E, Klopsch C, Wang L, Knopp A, Jungebluth P, Thedinga E, Havenstein C, Westien I, Ugurlucan M, Li R. K, Ma N, et al. A transformed cell population derived from cultured mesenchymal stem cells has no functional effect after transplantation into the injured heart. *Cell Transplant* 2009; 18: 319-331.
27. Rubio D, Garcia-Castro J, Martin MC, de la FR, Cigudosa JC, Lloyd AC, Bernad A. Spontaneous human adult stem cell transformation. *Cancer Res* 2005; 65: 3035-3039.
28. Rosland G V, Svendsen A, Torsvik A, Sobala E, McCormack E, Immervoll H, Mysliwicz J, Tonn JC, Goldbrunner R, Lonning PE, Bjerkvig R, Schichor C. Long-term cultures of bone marrow-derived human mesenchymal stem cells frequently undergo spontaneous malignant transformation. *Cancer Res* 2009; 69: 5331-5339.
29. Meza-Zepeda LA, Noer A, Dahl JA, Micci F, Myklebost O, Collas P. High-resolution analysis of genetic stability of human adipose tissue stem cells cultured to senescence. *J Cell Mol Med* 2008; 12: 553-563.
30. Rubio D, Garcia S, Paz MF, De la CT, Lopez-Fernandez LA, Lloyd A. C, Garcia-Castro J, Bernad A. Molecular characterization of spontaneous mesenchymal stem cell transformation. *PLoS ONE* 2008; 3: e1398.
31. Shay JW, Zou Y, Hiyama E, Wright WE. Telomerase and cancer. *Hum Mol Genet* 2001; 10: 677-685.
32. Simonsen JL, Rosada C, Serakinci N, Justesen J, Stenderup K, Rattan SI, Jensen TG, Kassem M. Telomerase expression extends the proliferative life-span and maintains the osteogenic potential of human bone marrow stromal cells. *Nat Biotechnol* 2002; 20: 592-596.
33. Harley CB, Futcher AB, Greider CW. Telomeres shorten during ageing of human fibroblasts. *Nature* 1990; 345: 458-460.
34. Fehrer C, Voglauer R, Wieser M, Pfister G, Brunauer R, Cioca D, Grubeck-Loebenstien B, Lepperdinger G. Techniques in gerontology: cell lines as standards for telomere length and telomerase activity assessment. *Exp Gerontol* 2006; 41: 648-651.
35. Wagner W, Feldmann RE, Jr, Seckinger A, Maurer MH, Wein F, Blake J, Krause U, Kalenka A, Burgers HF, Saffrich R, Wuchter P, Kuschinsky W, Ho A D. The heterogeneity of human mesenchymal stem cell preparations-Evidence from simultaneous analysis of proteomes and transcriptomes. *Exp Hematol* 2006; 34: 536-548.
36. Wagner W, Wein F, Seckinger A, Frankhauser M, Wirkner U, Krause U, Blake J, Schwager C, Eckstein V, Ansoerge W, Ho AD. Comparative characteristics of mesenchymal stem cells from human bone marrow, adipose tissue, and umbilical cord blood. *Exp Hematol* 2005; 33: 1402-1416.
37. Tanabe S, Sato Y, Suzuki T, Suzuki K, Nagao T, Yamaguchi T. Gene expression profiling of human mesenchymal stem cells for

identification of novel markers in early- and late-stage cell culture. *J Biochem* 2008; 144: 399-408.

**38.** Schallmoser K, Bartmann C, Rohde E, Bork S, Guelly C, Obenauf A. C, Reinisch A, Horn P, Ho AD, Strunk D, Wagner W. Replicative senescence-associated gene expression changes in mesenchymal stromal cells are similar under different culture conditions. *Haematologica* 2010 [Epub ahead of print].

**39.** Le Blanc K., Frassoni F, Ball L, Locatelli F, Roelofs H, Lewis I, Lanino E, Sundberg B, Bernardo ME, Remberger M, Dini G, Egeler RM, Bacigalupo A, et al. Mesenchymal stem cells for treatment of steroid-resistant, severe, acute graft-versus-host disease: a phase II study. *Lancet* 2008; 371: 1579-1586.

**40.** Fehrer C, Brunauer R, Laschober G, Unterluggauer H, Reitinger S, Kloss F, Gully C, Gassner R, Lepperdinger G. Reduced oxygen tension attenuates differentiation capacity of human mesenchymal stem cells and prolongs their lifespan. *Aging Cell* 2007; 6: 745-757.