

Human papillomavirus infection in women with and without cervical cancer in Nepal

Ang Tshering Lama Sherpa · Gary M. Clifford · Salvatore Vaccarella · Sadhina Shrestha · Mari Nygård · Balman Singh Karki · Peter J. F. Snijders · Chris J. L. M. Meijer · Silvia Franceschi

Received: 15 June 2009 / Accepted: 29 October 2009 / Published online: 22 November 2009
© Springer Science+Business Media B.V. 2009

Abstract

Objectives Cervical cancer is the most common malignancy among Nepalese women. Rational prevention measures are informed by epidemiological data on human papillomavirus (HPV) prevalence.

Methods Cervical specimens were obtained from 932 married women aged 15–59 years from the general population of Bharatpur, Nepal, as well as from 61 locally diagnosed invasive cervical cancers (ICC). HPV was detected using a GP5+/6+ PCR-based assay.

Results Among the general population, the overall prevalence of HPV was 8.6% (6.1% for high-risk types). Prevalence of abnormal Pap smears was 3.6%, including five high-grade squamous intraepithelial lesions. Residence in slum housing, lower education level, ≥ 3 sexual partners in a woman's lifetime, and husband's extramarital affairs were significantly associated with HPV positivity. HPV

prevalence was relatively constant across all age groups. HPV16 was the most common type, both among the general population (1.9%) and among 54 women with HPV-positive ICC (68.5%). HPV18 (22.2%) and 45 (5.6%) were also common in ICC.

Conclusions Nepal has an intermediate burden of HPV infection, lower than many areas in India and China. Approximately 80% of cervical cancer in Nepal is theoretically preventable by HPV16/18 vaccines. In the meantime, screen-and-treat approaches should be encouraged to overcome difficulties that were encountered to recall women with screening-positive findings.

Keywords Cervical cancer · Human papillomavirus · Prevalence · Nepal

Abbreviations

CI	Confidence interval
HSIL	High-grade squamous intraepithelial lesions
HPV	Human papillomavirus
HPV16/18	HPV16 and/or 18
IARC	International Agency for Research on Cancer
ICC	Invasive cervical cancer
OR	Odds ratio

Introduction

Nepal is a land-locked country between India and China. Its 27 million inhabitants are divided approximately equally between the mountain/hills and the low plains bordering India. The adult literacy rate is estimated at 49% [1], and 24% of the population lives below the poverty line [2]. Life expectancy at birth is 61 years for men and women alike [3].

A. T. L. Sherpa · B. S. Karki
Kist Medical College, Lalitpur, Nepal

A. T. L. Sherpa
Section for International Health, University of Oslo, Oslo, Norway

G. M. Clifford (✉) · S. Vaccarella · S. Franceschi
International Agency for Research on Cancer,
150 cours Albert Thomas, 69372 Lyon cedex 08, France
e-mail: clifford@iarc.fr

S. Shrestha
B.P. Koirala Memorial Cancer Hospital, Bharatpur, Nepal

M. Nygård
Cancer Registry of Norway, Oslo, Norway

P. J. F. Snijders · C. J. L. M. Meijer
Vrije University Medical Center, Amsterdam, The Netherlands

Cervical cancer is the most commonly reported malignancy among women in Nepal [4], although no population-based estimates of cervical cancer incidence exist. Neither are there any data on the prevalence of high-risk human papillomavirus (HPV) infection in Nepal, which, in the absence of good-quality screening, is known to correlate with cervical cancer incidence [5].

The establishment of the viral etiology of cervical cancer has raised the hopes for primary and secondary prevention through HPV vaccination [6] and HPV DNA test-based screening [7, 8], respectively. The rationale and planning of such measures greatly benefit from knowledge of overall, age-, and type-specific HPV prevalence in women with and without cancer. To this end, the International Agency for Research on Cancer (IARC) has carried out surveys in representative samples of women worldwide [9].

The purpose of the study was to assess the prevalence of type-specific HPV infection in the general female population and in invasive cervical cancer (ICC) in Nepal.

Materials and methods

HPV prevalence survey

Study methods were similar to those used for previous IARC HPV prevalence surveys [9]. The study area included four semi-urban districts (Ganesthan, Muktinagar, Naurange and Bhojad) of Bharatpur municipality, Chitawan Province, in the low plains of Nepal. The study purpose was to enroll approximately 100 women from the general population in each five-year age group between 15–19 and 54–59 years. All mentally and physically competent women aged 15–59 years were eligible for the study, regardless of their marital status. All women were enumerated at their homes by local community workers and invited to the study clinic, which was set up in the community specifically for the present study between October 2006 and March 2007.

Of the 1,606 invited women, 514 (32.0%) did not accept the invitation, including 42 who had never been married. Refusal rates were 47, 13, 10, and 49% among women aged 15–24, 25–34, 35–44, and 45–59 years, respectively. The most common reasons for non-participation were lack of perception of the need to undergo screening in the absence of symptoms ($n = 195$) and lack of permission of husband ($n = 63$). In addition, among the 1,092 women who accepted the invitation to come to the study clinic, 113 eventually refused to undergo a pelvic examination, (including 54 unmarried women who reported themselves to be virgins and 18 pregnant women) and hence were unable to provide a cervical cell specimen. In the end, no unmarried woman provided a cervical cell specimen.

An interview was administered by one of two female interviewers in the local dialect. The structured questionnaire included information on socio-demographic characteristics, reproductive and menstrual factors, sexual habits of women and their husbands, and lifetime use of contraceptive methods.

A total of 979 women underwent a pelvic examination by a midwife or female doctor. After the preparation of a conventional Pap smear, a sample of exfoliated cervical cells from the endocervix and ectocervix was collected with a cervexbrush (Rovers Medical Devices B.V., Oss, the Netherlands). After being inserted into the endocervical canal and rotated gently 180°, the brush containing cellular material was placed in a vial containing PreservCyt media (Hologic, Inc., Marlborough, MA, USA).

Pap smears were read by a pathologist (S.S.) at the B.P. Koirala Memorial Cancer Hospital, Bharatpur, the national referral centre for all cancer in Nepal.

Women with ICC

Tumor biopsies, formalin fixed and embedded in paraffin, were retrieved for all women ($n = 68$) with histologically confirmed ICC to B.P. Koirala Memorial Cancer Hospital during 2006.

Ethical approval

All participants for the HPV prevalence survey signed informed consent forms according to the recommendations of the IARC and the B.P. Koirala Memorial Cancer Hospital ethical review committees, both of which approved the present study.

HPV detection

HPV testing was performed on exfoliated cervical cells and ICC biopsies at the Department of Pathology at the Vrije University Medical Center, Amsterdam, The Netherlands. DNA was extracted from the PreservCyt sample using magnetic beads (Macherey-Nagel, Düren, Germany) on a robotic system (Hamilton, Germany), according to the manufacturer's instructions. ICC biopsies were sectioned using a 'sandwich' approach, whereby inner tumor sections were destined for HPV testing and outer sections for histological confirmation of tumor tissue. One or more five- μm sections representing approximately 1 cm^2 of tissue were predigested with proteinase K after which DNA was extracted using magnetic beads (Macherey-Nagel).

Beta-globin PCR analysis was performed firstly to confirm the presence of human DNA in all specimens [10]. The overall presence of HPV DNA was determined by performing a general primer GP5+/6+ -mediated PCR,

which permits the detection of a broad spectrum of genital HPV types at the subpicogram level [11]. HPV positivity was assessed by hybridization of PCR products in an enzyme immunoassay using two HPV oligoprobe cocktails which, together, detect the following 44 HPV types: HPV6, 11, 16, 18, 26, 30, 31, 32, 33, 34, 35, 39, 40, 42, 43, 44, 45, 51, 52, 53, 54, 55, 56, 57, 58, 59, 61, 64, 66, 67, 68, 69, 70, 71 (equivalent to CP8061), 72, 73, 81 (equivalent to CP8304), 82 (IS39 and MM4 subtypes), 83 (equivalent to MM7), 84 (equivalent to MM8), cand85, 86, cand89 (equivalent to CP6108), and JC9710. Subsequent HPV typing was performed by reverse-line blot hybridization of PCR products, as described previously [12]. HPV types considered high-risk for this analysis included HPV16, 18, 31, 33, 35, 39, 45, 51, 52, 56, 58, 59, 68, 73, and 82 [13]. All other HPV types were considered low-risk.

Statistical analysis

Crude, age-stratified, and age-standardized (world standard population [14]) HPV prevalence with 95% confidence intervals (CIs) was estimated.

Odds ratios (ORs) for HPV positivity and corresponding 95% CIs were calculated by means of unconditional logistic regression equations adjusted for age (<25, 25–34, 35–44, and 45–59 years). Adjustment for additional variables was also performed, but not shown. The statistical significance of trends for ORs was assessed by considering the categorical variables as a continuous variable in the logistic model.

Prevalence ratios and corresponding 95% CIs were used to compare the relative frequency of the most common HPV types in HPV-positive ICC with that among cytologically normal HPV-positive women from the HPV prevalence survey.

Results

HPV prevalence survey

Of 979 married women who provided cervical cell samples, 36 had inadequate HPV DNA results (i.e., beta-globin PCR negative), and an additional 11 had inadequate cytology, leaving 932 women with valid results for both HPV and cytology. Among them, 34 (3.6%) had abnormal cytological findings, including 29 (3.1%) atypical squamous cells of undetermined significance/low-grade squamous intraepithelial lesions, and five (0.5%) high-grade squamous intraepithelial lesions (HSIL).

Overall HPV prevalence was 8.6%, being 20.6 and 8.1% among women with and without cervical abnormalities, respectively (Table 1). The corresponding prevalence age-

standardized to the world population was also 8.6%. In total, 64 (6.9%) women had single-type infections, and 16 (1.7%) had multiple-type infections. Prevalence of high-risk types was 6.1%, compared to 3.8% for low-risk types. The most common high-risk types among women with normal cytology were HPV16 (1.5%), 58 (0.9%), 56 (0.7%), 18 (0.6%), and 52 (0.5%). HPV42 (0.8%) was the most commonly detected low-risk type. HPV16 also predominated among women with cervical abnormalities, including four out of five HSIL.

Figure 1 shows the age-specific prevalence of HPV, classified hierarchically into 1) HPV16 and/or 18 (HPV16/18), 2) other high-risk types and [3] low-risk types only. Overall, HPV prevalence was not significantly different by age group. However, the prevalence of HPV16/18 increased from 1.1% among women aged 15–24 years to 5.2% among women aged 45–59 years (*p* for trend by age group = 0.02). Finer stratification of women aged less than 25 years revealed overall HPV prevalences of 8.9, 6.9, and 7.2% among women aged less than 20, 20–22, and 23–24 years, respectively.

Table 2 shows the relationship between HPV positivity and various characteristics of study participants, adjusted for age. Significant differences in HPV positivity were observed for residence in slum housing (OR = 2.96; 95% CI: 1.76–4.98), education level (OR for none versus higher = 2.41; 95% CI: 1.04–5.56), lifetime number of sexual partners (OR for ≥ 3 vs. 1 partner = 4.09; 95% CI: 1.52–11.01), reporting of husband's extramarital sexual relationships (OR = 1.71; 95% CI: 1.04–2.80), and lack of history of cervical cancer screening (OR = 1.88; 95% CI: 1.01–3.51). These associations remained materially unchanged when additionally adjusted for residence in slum housing, education level, and/or lifetime number of sexual partners, as appropriate (data not shown).

Religion, occupation, age at first marriage, age at first sexual intercourse, and number of births were not significantly related to HPV positivity in either adjustment model (Table 2) and neither were smoking or chewing tobacco habits (reported by 18.6 and 6.2% of women, respectively), hormonal contraceptive use (reported by 43.4% of women), condom use (18.3%), intrauterine device use (5.1%), or a history of spontaneous (26.5%) or induced abortions (26.0%) (data not shown).

Women with ICC

Biopsies that were beta-globin PCR negative (*n* = 5) or without histological evidence of tumor (*n* = 2) were excluded. Among the remaining 61 ICC biopsies, six were adenocarcinoma, and the rest were squamous-cell carcinoma. The median age of women with ICC was 50 years (range: 29–60 years). Seven squamous-cell carcinoma

Table 1 Prevalence of human papillomavirus (HPV) types by cytological findings and overall among 932 married women. Bharatpur, Nepal, 2006–2007

HPV type	Normal cytology (<i>n</i> = 898)			Abnormal cytology (<i>n</i> = 34)			Total (<i>n</i> = 932)		
	Single	Multiple	Total (%)	Single	Multiple	Total (%)	Single	Multiple	Total (%)
HPV–	–	–	825 (91.9)	–	–	27 (79.4) ^a	–	–	852 (91.4)
HPV+	59	14	73 (8.1)	5	2	7 (20.6)	64	16	80 (8.6)
HR HPV+	37	13	50 (5.6)	5	2	7 (20.6)	42	15	57 (6.1)
LR HPV+	22	11	33 (3.7)	0	2	2 (5.9)	22	13	35 (3.8)
High-risk infections									
16	10	3	13 (1.5)	3 ^b	2 ^b	5 (14.7)	13	5	18 (1.9)
18	4	1	5 (0.6)	0	0	0	4	1	5 (0.5)
31	1	0	1 (0.1)	1	0	1 (2.9)	2	0	2 (0.2)
33	2	0	2 (0.2)	0	0	0	2	0	2 (0.2)
35	2	1	3 (0.3)	0	0	0	2	1	3 (0.3)
39	4	0	4 (0.5)	0	0	0	4	0	4 (0.4)
45	0	2	2 (0.2)	0	0	0	0	2	2 (0.2)
51	2	0	2 (0.2)	0	0	0	2	0	2 (0.2)
52	2	2	4 (0.5)	1	0	1 (2.9)	3	2	5 (0.5)
56	2	4	6 (0.7)	0	0	0	2	4	6 (0.6)
58	6	2	8 (0.9)	0	0	0	6	2	8 (0.9)
59	0	0	0	0	0	0	0	0	0
68	0	1	1 (0.1)	0	0	0	0	1	1 (0.1)
73	2	0	2 (0.2)	0	0	0	2	0	2 (0.2)
82	0	1	1 (0.1)	0	0	0	0	1	1 (0.1)
Subtotal	37	17	54 –	5	2	7 –	42	19	61 –
Low-risk infections									
6	2	0	2 (0.2)	0	0	0	2	0	2 (0.2)
11	0	0	0	0	0	0	0	0	0
26	0	0	0	0	0	0	0	0	0
30	2	0	2 (0.2)	0	0	0	2	0	2 (0.2)
34	0	0	0	0	0	0	0	0	0
40	0	0	0	0	0	0	0	0	0
42	2	5	7 (0.8)	0	1 ^a	1 (2.9)	2	6	8 (0.9)
43	0	1	1 (0.1)	0	0	0	0	1	1 (0.1)
44	0	0	0	0	0	0	0	0	0
53	0	0	0	0	0	0	0	0	0
54	0	0	0	0	0	0	0	0	0
55	1	0	1 (0.1)	0	0	0	1	0	1 (0.1)
61	0	0	0	0	0	0	0	0	0
64	0	0	0	0	0	0	0	0	0
66	0	0	0	0	0	0	0	0	0
67	1	3	4 (0.5)	0	0	0	1	3	4 (0.4)
69	2	0	2 (0.2)	0	0	0	2	0	2 (0.2)
70	4	0	4 (0.5)	0	0	0	4	0	4 (0.4)
72	0	0	0	0	0	0	0	0	0
81	1	0	1 (0.1)	0	0	0	1	0	1 (0.1)
86	3	0	3 (0.3)	0	0	0	3	0	3 (0.3)
CP6108	1	0	1 (0.1)	0	0	0	1	0	1 (0.1)
JC9710	2	4	6 (0.7)	0	1 ^a	1 (2.9)	2	5	7 (0.8)
Subtotal	21	13	34 –	0	2	2 –	21	15	36 –
X	1	0	1 (0.1)	0	0	0	1	0	1 (0.1)
Total infections	59	30	89 –	5	4	9 –	64	34	98 –

X uncharacterized type

^a One high-grade squamous intraepithelial lesion (HSIL)^b Two HSIL

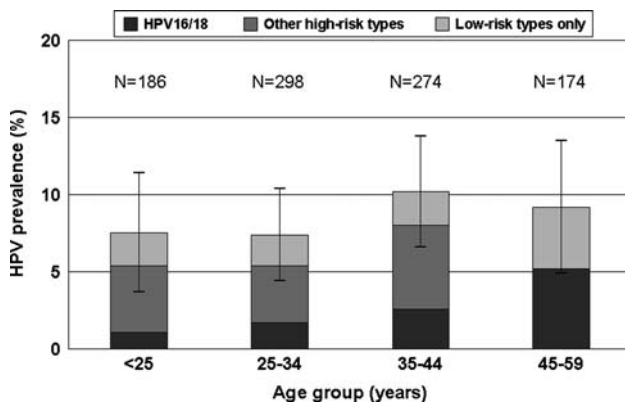


Fig. 1 Age-specific prevalence of human papillomavirus (HPV) DNA by HPV type(s) among 932 married women. Bharatpur, Nepal, 2006–2007

biopsies were HPV negative. The comparison of type-specific HPV prevalence in the 54 women with HPV-positive ICC and the 73 HPV-positive women with normal cytology from the HPV prevalence survey is shown in Table 3. HPV16 was found in 37 (68.5%) HPV-positive ICC biopsies. The next most common types were HPV18 (22.2%) and 45 (5.6%). Prevalence ratios in women with ICC versus those with normal cytology were 3.85 (95% CI: 2.79–5.32) for HPV16; 3.24 (95% CI: 1.84–5.71) for HPV18; 2.03 (95% CI: 0.65–6.20) for HPV45; and 0.13 (95% CI: 0.04–0.39) for the combination of other high-risk types. Multiple-type infections were much less common in HPV-positive women with ICC than in HPV-positive women with normal cytology (Table 3).

Discussion

The major finding of this present study, the first undertaken in Nepal, is that the burden of HPV infection in the general population (8.6%) is somewhat lower than that observed in previous studies performed using the same HPV testing protocol in neighboring countries (e.g., 17% in Tamil Nadu, India, [15] and 15–18% range in three provinces in China [16–18]), and much less than in the high-risk areas in Asia and Africa (e.g., 35% in Mongolia [19] and 51% in Guinea [20]). Nevertheless, HPV prevalence remained greater than that in other areas in Asia (e.g., 2% in Hanoi, Vietnam [21], 4% in Songkla, Thailand [22]), and in Europe [23].

One of the other main aims of the IARC HPV prevalence surveys is to describe the variations of age- and type-specific HPV prevalence by geographical region. The age-specific curve of HPV prevalence in Nepal resembled the flat age curves reported previously in some low-resource countries in Asia and Africa [15–18, 24], albeit at a lower

level of HPV prevalence. It clearly differed, on the other hand, from the steep decrease in HPV prevalence seen by age in high- and medium-resource countries in Europe, the Americas, and Asia [23, 25].

As in previous IARC HPV prevalence surveys in Asia [15–18], the gynecological exam was acceptable only to married women, so, the HPV prevalence estimate represents that in married women only. Nevertheless, age at first marriage (median = 17 years, intraquartile range 15–19) was relatively early, and 91% of participants reported an age at first sexual intercourse that was the same as, or greater than, age at first marriage, suggesting that marriage is a good proxy for sexual activity in this population. HPV16/18 prevalence, however, was highest among older women. HPV16/18 infections in older women are more likely to represent persistent infections [26] and are more likely to progress to cancer than other high-risk types [27].

As expected, the strongest risk factors for HPV positivity were confirmed, as elsewhere [28], to be the sexual behavior of women and their husbands. Nevertheless, both the percentage of women who reported two sexual partners or more in their lifetime (9.9%) and the prevalence of husband's extramarital sexual relationships (32.1%) were relatively low compared to similar surveys in other geographical areas (ranges: 6–64 and 12–100%, respectively) [16–19, 28, 29]. A fourfold elevated risk of HPV positivity was, however, detected among the 2.6% of women who reported three sexual partners or more in their lifetime, which included at least four known commercial sex workers.

Residence in slum housing, low education level, and absence of previous cervical cancer screening were also associated with HPV positivity in this population, even after adjustment for sexual behavior, suggesting some association between lower socio-economic status and HPV prevalence in Nepal. Of note, the relationship between education level and HPV prevalence in previous IARC surveys in Asia included inverse [25] and direct associations [21, 22] as well as no relationship [16].

A pilot project of screening by visual inspection of 5,000 women was undertaken at the B.P. Koirala Memorial Cancer Hospital between 2003 and 2005. Therefore, the reported percentage of previous cervical cancer screening in our present study (24.6%) is expected to be much higher than the national average, and to largely reflect a history of visual inspection.

As in most previous similar studies, HPV16 was confirmed to be the most common type in the whole range of women considered, i.e., 1.5, 14.7, and 68.5%, respectively, in cytologically normal and abnormal women and in women with HPV-positive ICC [9, 30]. HPV52 and 58, however, were not as predominant as in similar surveys in China [16–18]. We also confirmed that the type distribution

Table 2 Odds ratios (ORs) for human papillomavirus (HPV) positivity and corresponding 95% confidence intervals (CIs) according to selected characteristics among 932 married women. Bharatpur, Nepal, 2006–2007

Characteristics ^a	N women	HPV-positive		OR ^b	95% CI
		n	(%)		
Age (years)					
<25	186	14	(7.5)	1	–
25–34	298	22	(7.4)	0.98	(0.49–1.97)
35–44	274	28	(10.2)	1.40	(0.72–2.73)
45–59	174	16	(9.2)	1.24	(0.59–2.63)
χ^2_1 for trend				0.98	$p = 0.321$
Religion					
Hindu	789	63	(8.0)	1	–
Buddhist	117	15	(12.8)	1.69	(0.92–3.08)
Other	26	2	(7.7)	0.96	(0.22–4.15)
Occupation					
Unemployed	744	67	(9.0)	1	–
Employed	188	13	(6.9)	0.74	(0.40–1.38)
Residence in slum housing					
No	798	56	(7.0)	1	–
Yes	134	24	(17.9)	2.96	(1.76–4.98)
Education level					
Higher than secondary	147	7	(4.8)	1	–
Primary/secondary	361	27	(7.5)	1.65	(0.70–3.90)
None	424	46	(10.9)	2.41	(1.04–5.56)
χ^2_1 for trend				5.24	$p = 0.022$
Age at 1st marriage					
≥ 19	280	19	(6.8)	1	–
16–18	352	33	(9.4)	1.44	(0.79–2.62)
≤ 15	299	28	(9.4)	1.42	(0.76–2.66)
χ^2_1 for trend				1.09	$p = 0.297$
Age at 1st intercourse					
≥ 19	286	19	(6.6)	1	–
16–18	373	33	(8.9)	1.38	(0.76–2.50)
≤ 15	269	28	(10.4)	1.67	(0.89–3.11)
χ^2_1 for trend				2.59	$p = 0.108$
Lifetime number of sexual partners					
1	828	68	(8.2)	1	–
2	67	5	(7.5)	0.90	(0.35–2.32)
≥ 3	24	6	(25.0)	4.09	(1.52–11.01)
χ^2_1 for trend				4.56	$p = 0.033$
Husband's extramarital sexual relationships					
No	588	40	(6.8)	1	–
Yes	278	31	(11.2)	1.71	(1.04–2.80)
History of cervical cancer screening					
Yes	229	13	(5.7)	1	–
No	703	67	(9.5)	1.88	(1.01–3.51)
Number of births					
0	45	4	(8.9)	1.11	(0.37–3.29)
1–2	472	38	(8.1)	1	–
3–5	322	27	(8.4)	0.94	(0.54–1.65)
≥ 6	92	11	(12.0)	1.39	(0.63–3.05)
χ^2_1 for trend				0.18	$p = 0.674$

^a Some figures do not add up to the total because of few missing

^b Adjusted for age

Table 3 Prevalence of selected human papillomavirus (HPV) types in 54 women with HPV-positive invasive cervical carcinomas (ICC)^a and 73 HPV-positive women with normal cytology. Bharatpur, Nepal, 2006–2007

HPV type	ICC (<i>n</i> = 54) Total (%)	Normal cytology (<i>n</i> = 73) Total (%)	ICC:Normal cytology Prevalence ratio (95%CI)
16	37 (68.5)	13 (17.8)	3.85 (2.79–5.32)
18	12 (22.2)	5 (6.8)	3.24 (1.84–5.71)
45	3 (5.6)	2 (2.7)	2.03 (0.65–6.20)
Other high-risk types	3 ^b (5.6)	32 (43.8)	0.13 (0.04–0.39)
Any low-risk type	0	32 (43.8)	0 (0–0.17) ^d
X	0	1 (1.4)	0 (0–52.72) ^d
Multiple infections	1 ^c (1.9)	14 (19.2)	0.10 (0.01–0.68)

X uncharacterized type

CI confidence interval

^a Seven HPV-negative cancers are not included

^b One HPV31, one HPV33, and one HPV56

^c HPV16 + 18

^d Exact 95% CIs

among the general population was not representative of that in women with cervical cancer from the same region, with the relative importance of HPV16/18 being much greater in ICC, accounting for a total of 89% (95% CI: 77–96%) of HPV-positive cases. If seven (probably falsely) HPV-negative ICC were included in the denominator, HPV16/18-related ICC would represent 79% (95% CI: 66–88%) of cases. This is consistent with the findings of a meta-analysis, which reported that the fraction of ICC attributable to HPV16/18 may be higher in the Indian subcontinent than in China and other parts of East Asia, and similar to that in Europe and the United States [30]. Furthermore, although multiple infections were frequent in the general population, 98.1% of HPV-positive ICC were infected with a single HPV type, highlighting the selection of one high-risk type in the course of malignant transformation.

Major strengths of our present study include a large and population-based sample, the use of a standardized and well-validated HPV test allowing comparisons with similar studies around the world [9] and the presence of a concurrent series of women with ICC drawn from the same study area. An overall participation rate of 70% was also relatively high compared to previous similar studies in Asia. However, there was a differential participation rate by age, being lower in the extreme age groups. Although HPV infection is asymptomatic, it is possible that lack of participation could have affected HPV prevalence estimates. The comparisons relative to other worldwide regions remain consistent, however, even when restricted to women aged 25–44 years, for whom participation approached 90% in Nepal.

No large-scale cytology-based screening programs have been performed in Nepal. Therefore, problems of sensitivity and specificity in Pap smear reading are likely to have existed, as suggested by the low HPV prevalence (20%) among women with cytological abnormalities. Detection of high-risk HPV DNA in HSIL, however, was consistent with findings from elsewhere.

Finally, despite the availability of a fund to cover all diagnostic and treatment costs, and repeated insistence by the study staff, the greatest disappointment of the study was the refusal of the women with HSIL to be referred to colposcopy for diagnostic follow-up. This refusal might have been related to delays incurred by the political unrest in Nepal in 2006–2007 and some rumors of bleeding and pain from women who had undergone biopsy and/or cryotherapy in previous pilot screening programs. Although efforts to follow up screening-positive women continue, our experience highlights once again [31] how lack of familiarity with the usefulness of screening and the treatable nature of cervical cancer can act as strong barriers to the accomplishment of complete follow-up and treatment of screening-detected cervical lesions.

In conclusion, the prevalence of HPV infection in the general population would suggest that Nepal, where cancer registration is not available, is a country with intermediate cervical cancer risk. Screen-and-treat approaches should be encouraged to overcome the difficulties encountered in the recall of women [32, 33]. The care HPV test, for example, appears particularly promising [7]. In respect to the potential benefit of vaccination, approximately 80% of cervical cancer in Nepal would be prevented by a vaccine including HPV16/18.

Acknowledgments The authors of the manuscript have no conflict of interest to declare. The authors thank Dr Johanne Sundby for valuable comments.

Financial support This work was supported by the Bill & Melinda Gates Foundation (grant number 35537).

References

- United Nations Educational Scientific and Cultural Organization (2006) EFA Global Monitoring Report. Available from URL: <http://gmr.uis.unesco.org/selectindicators.aspx>
- The World Bank Group (2006) 2006 World Development Indicators. Table 2.7: Poverty. Available from URL: <http://devdata.worldbank.org/wdi2006/contents/Section2.htm>
- World Health Organization (2006) The world health report 2006: working together for health. World Health Organization, Geneva
- B.P. Koirala Memorial Cancer Hospital (Nepal) (2004) Annual report 2003. B.P. Koirala Memorial Cancer Hospital, Chitawan
- Maucort-Boulch D, Franceschi S, Plummer M (2008) International correlation between human papillomavirus prevalence and cervical cancer incidence. *Cancer Epidemiol Biomarkers Prev* 17:717–720
- Kahn JA, Burk RD (2007) Papillomavirus vaccines in perspective. *Lancet* 369:2135–2137
- Qiao YL, Sellors JW, Eder PS et al (2008) A new HPV-DNA test for cervical-cancer screening in developing regions: a cross-sectional study of clinical accuracy in rural China. *Lancet Oncol* 9:929–936
- Sankaranarayanan R, Nene BM, Shastri SS et al (2009) HPV screening for cervical cancer in rural India. *N Engl J Med* 360:1385–1394
- Clifford GM, Gallus S, Herrero R et al (2005) Worldwide distribution of human papillomavirus types in cytologically normal women in the International Agency for Research on Cancer HPV prevalence surveys: a pooled analysis. *Lancet* 366:991–998
- Roda Husman AM, Snijders PJ, Stel HV, van den Brule AJ, Meijer CJ, Walboomers JM (1995) Processing of long-stored archival cervical smears for human papillomavirus detection by the polymerase chain reaction. *Br J Cancer* 72:412–417
- Jacobs MV, Walboomers JM, Snijders PJ et al (2000) Distribution of 37 mucosotropic HPV types in women with cytologically normal cervical smears: the age-related patterns for high-risk and low-risk types. *Int J Cancer* 87:221–227
- van den Brule AJ, Pol R, Franssen-Daalmeijer N, Schouls LM, Meijer CJ, Snijders PJ (2002) GP5+/6+ PCR followed by reverse line blot analysis enables rapid and high-throughput identification of human papillomavirus genotypes. *J Clin Microbiol* 40:779–787
- Muñoz N, Bosch FX, de Sanjosé S et al (2003) Epidemiologic classification of human papillomavirus types associated with cervical cancer. *N Engl J Med* 348:518–527
- Doll R, Payne P, Waterhouse J (1966) Cancer incidence in five continents: a technical report. Springer-Verlag (for UICC), Berlin
- Franceschi S, Rajkumar R, Snijders PJF et al (2005) Papillomavirus infection in rural women in southern India. *Br J Cancer* 92:601–606
- Dai M, Bao YP, Li N et al (2006) Human papillomavirus infection in Shanxi Province, People's Republic of China: a population-based study. *Br J Cancer* 95:96–101
- Li LK, Dai M, Clifford GM et al (2006) Human papillomavirus infection in Shenyang City, People's Republic of China: a population-based study. *Br J Cancer* 95:1593–1597
- Wu RF, Dai M, Qiao YL et al (2007) Human papillomavirus infection in women in Shenzhen City, People's Republic of China, a population typical of recent Chinese urbanisation. *Int J Cancer* 121:1306–1311
- Dondog B, Clifford GM, Vaccarella S et al (2008) Human papillomavirus infection in Ulaanbaatar, Mongolia: a population-based study. *Cancer Epidemiol Biomarkers Prev* 17:1731–1738
- Keita N, Clifford GM, Koulibaly M et al (2009) HPV infection in women with and without cervical cancer in Conakry, Guinea. *Br J Cancer* 101:865–870
- Anh PT, Hieu NT, Herrero R et al (2003) Human papillomavirus infection among women in South and North Vietnam. *Int J Cancer* 104:213–220
- Sukvirach S, Smith JS, Tunsakul S et al (2003) Population-based human papillomavirus prevalence in Lampang and Songkla, Thailand. *J Infect Dis* 187:1246–1256
- De Vuyst H, Clifford GM, Li N, Franceschi S (2009) HPV infection in Europe. *Eur J Cancer* 45:2632–2639
- Thomas JO, Herrero R, Omigbodun AA et al (2004) Prevalence of papillomavirus infection in women in Ibadan, Nigeria: a population-based study. *Br J Cancer* 90:638–645
- Franceschi S, Herrero R, Clifford GM et al (2006) Variations in the age-specific curves of human papillomavirus prevalence in women worldwide. *Int J Cancer* 119:2677–2684
- Castle PE, Schiffman M, Herrero R et al (2005) A prospective study of age trends in cervical human papillomavirus acquisition and persistence in Guanacaste, Costa Rica. *J Infect Dis* 191:1808–1816
- Khan MJ, Castle PE, Lorincz AT et al (2005) The elevated 10-year risk of cervical precancer and cancer in women with human papillomavirus (HPV) type 16 or 18 and the possible utility of type-specific HPV testing in clinical practice. *J Natl Cancer Inst* 97:1072–1079
- Vaccarella S, Franceschi S, Herrero R et al (2006) Sexual behavior, condom use and HPV: pooled analysis of the International Agency for Research on Cancer HPV Prevalence Surveys. *Cancer Epidemiol Biomarkers Prev* 15:326–333
- Bardin A, Vaccarella S, Clifford GM et al (2008) Human papillomavirus infection in women with and without cervical cancer in Warsaw, Poland. *Eur J Cancer* 44:557–564
- Smith JS, Lindsay L, Hoots B et al (2007) Human papillomavirus type distribution in invasive cervical cancer and high-grade cervical lesions: a meta-analysis update. *Int J Cancer* 121:621–632
- Agurto I, Arrossi S, White S et al (2005) Involving the community in cervical cancer prevention programs. *Int J Gynaecol Obstet* 89(Suppl 2):S38–S45
- Murillo R, Almonte M, Pereira A et al (2008) Cervical cancer screening programs in Latin America and the Caribbean. *Vaccine* 26(Suppl 11):L37–L48
- Garland SM, Cuzick J, Domingo EJ et al (2008) Recommendations for cervical cancer prevention in Asia Pacific. *Vaccine* 26(Suppl 12):M89–M98