

Supporting Information

Hyaluronic acid functional amphipathic and redox-responsive polymer particles for co-delivery of doxorubicin and cyclopamine to eradicate breast cancer cells and cancer stem cells

Kelei Hu^{a,b,1}, Huige Zhou^{a,1}, Ying Liu^{a*}, Zhu Liu^a, Jing Liu^a, Jinglong Tang^a, Jiayang Li^a, Jiakun Zhang^a, Wang Sheng^b, Yuliang Zhao^a, Yan Wu^{a*} and Chunying Chen^{a,c*}

^a CAS Key Laboratory for Biomedical Effects of Nanomaterials and Nanosafety, National Center for Nanoscience and Technology of China, Beijing 100190, China

^b College of Life Science and Bioengineering, Beijing University of Technology, Beijing 100124, China

^c Collaborative Innovation Center of Radiological Medicine of Jiangsu Higher Education Institutions, P.R. China

¹ These authors contributed equally to this work.

*Corresponding authors.

Tel: +86 10 82545560; fax: +86 10 62656765

E-mail address: chenchy@nanoctr.cn (C. Chen)

Tel: +86 10 82545614; fax: +86 10 62656765

E-mail address: wuy@nanoctr.cn (Y. Wu)

Tel: +86 10 82543785; fax: +86 10 62656765

E-mail address: liuy@nanoctr.cn (Y. Liu)

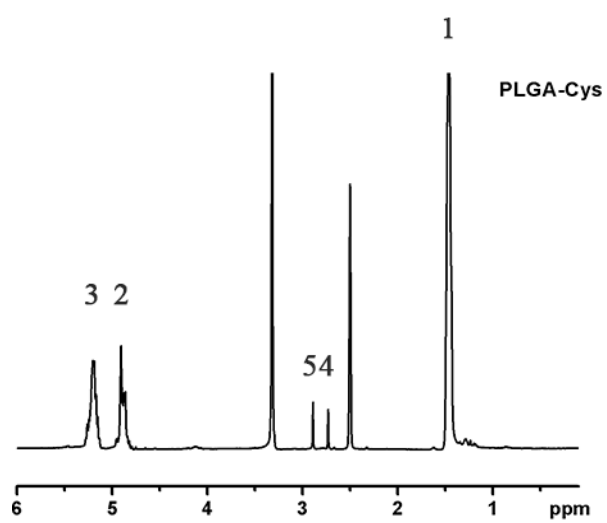


Figure S1. ¹H NMR spectrum of PLGA-Cys.

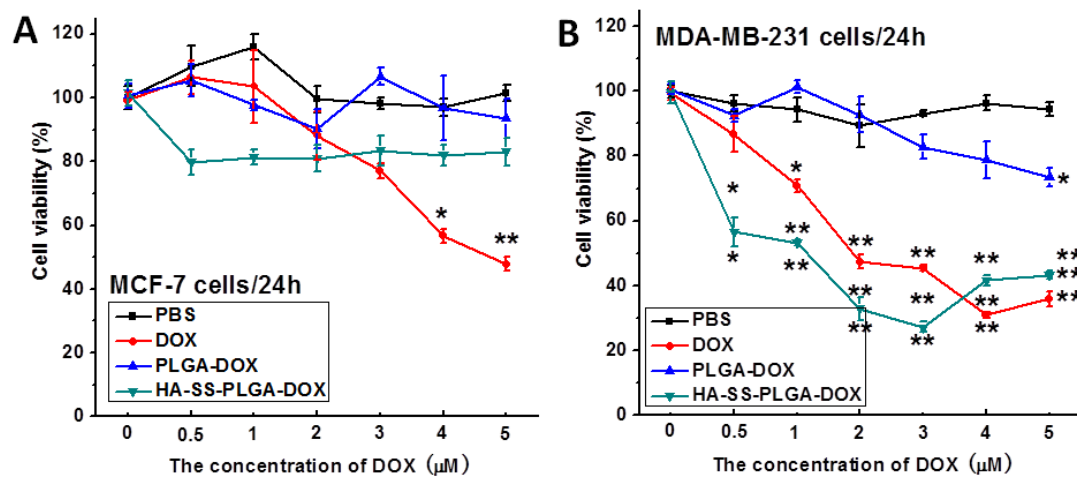


Figure S2. *In vitro* cytotoxicity after 24h treatment. The cytotoxicity of DOX, PLGA-DOX and HA-SS-PLGA-DOX towards breast cancer cells was evaluated by CCK-8 assay. (A) MCF-7 cells. (B) MDA-MB-231 cells. * $p < 0.05$ and ** $p < 0.01$ compared to the PBS control group (one-way ANOVA, Tukey's post-hoc test).

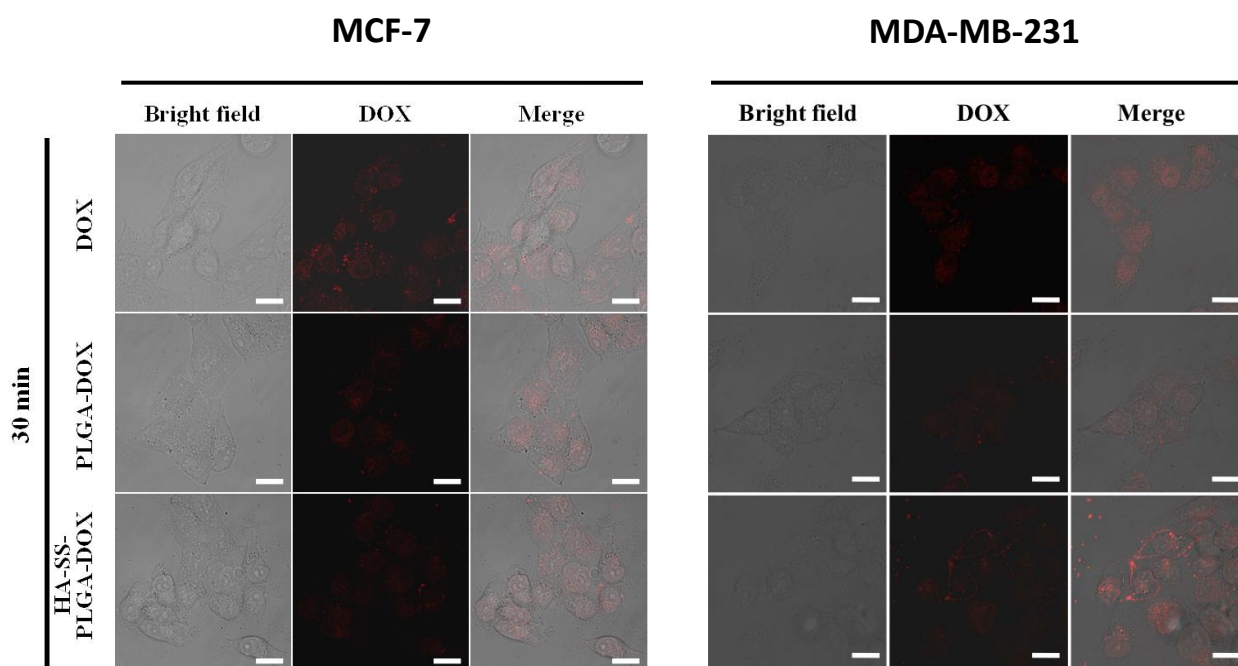


Figure S3. The cell uptake of particles by confocal microscopic study. The MCF-7 and MDA-MB-231 cells were treated with free DOX, PLGA-DOX, HA-SS-PLGA-DOX for 30 min. The red fluorescence of DOX was observed by a confocal microscope.

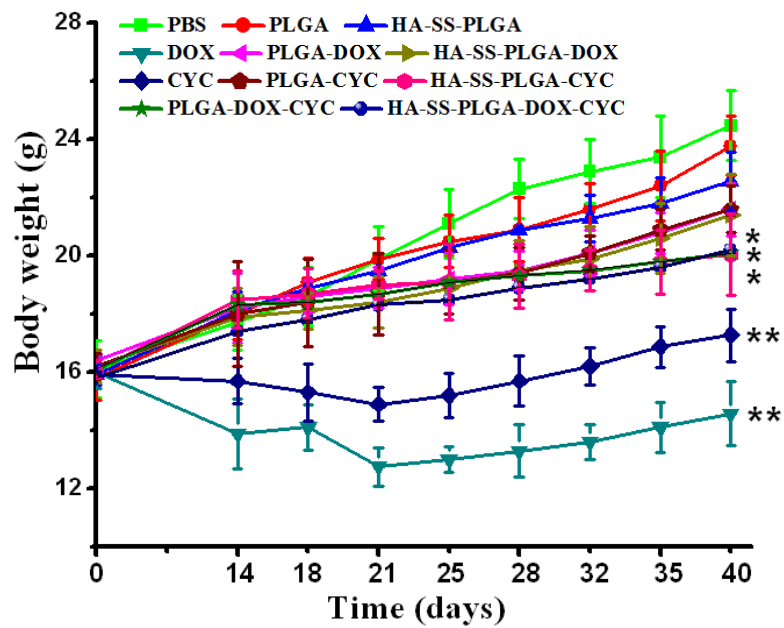


Figure S4. The body weights of mice. Data are expressed as mean \pm SD. At the end of treatment, the average body weight between groups was compared by Student's t test. * $p < 0.05$ and ** $p < 0.01$, vs. PBS group.

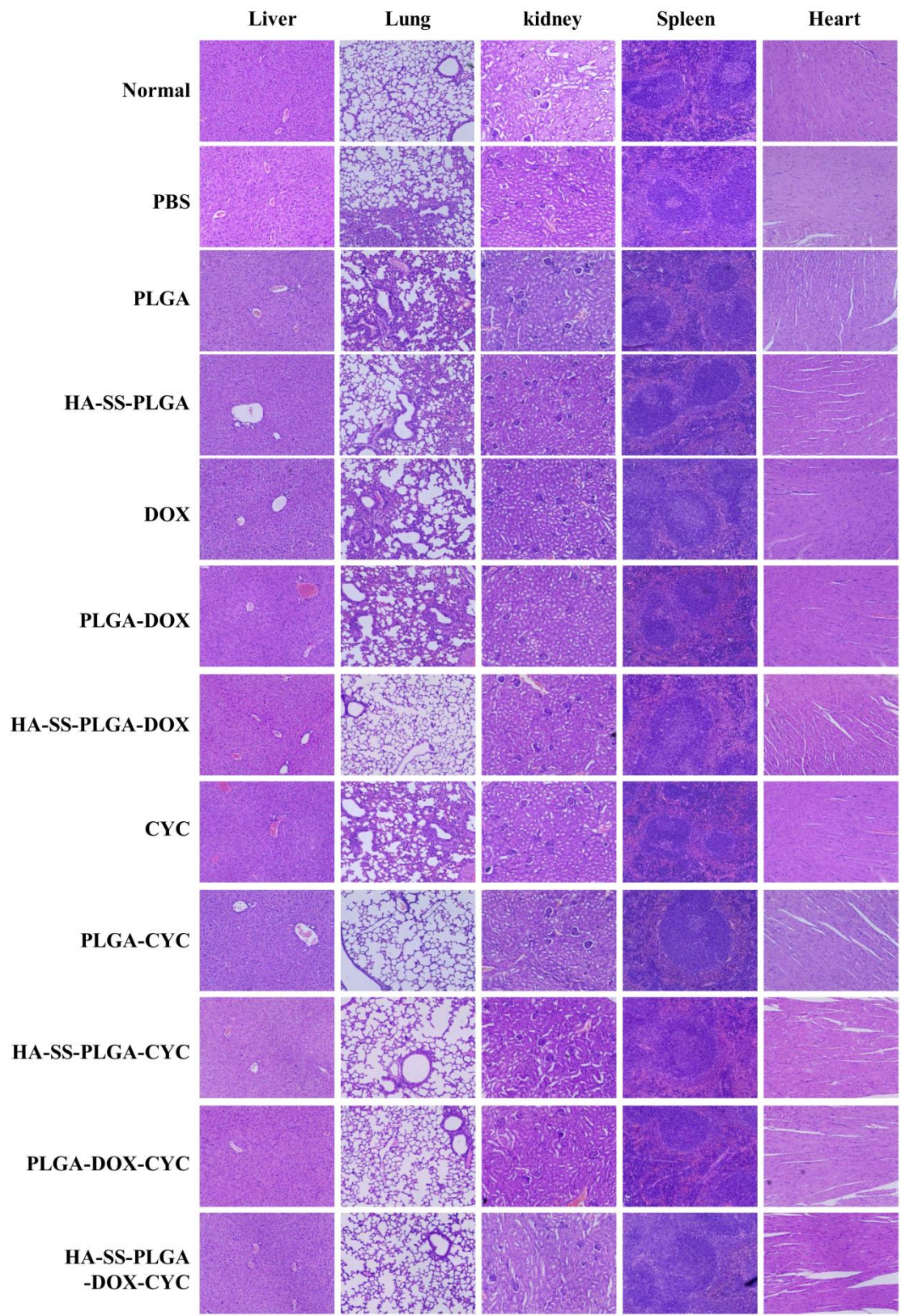


Figure S5. Histological examinations of liver, spleen, lung and kidney.

Table S1. The effects of formulation parameters on drug loading content and encapsulation efficiency

Sample number	PVA&F68 (W/V %)	Copolymer : DOX : CYC (mass ratio)	EE (%) of DOX&CYC	Size(nm) (By DLS)	PDI (By DLS)	Zeta Potential (mv)
1	0.5&0	50:1:2	65.3±2.1&43.3±2.1	327.4±3.2	0.116±0.016	-40.2±5.2
2	1&0	50:1:2	72.2±1.2&48.5±1.1	298.4±2.4	0.176±0.021	-42.1±4.5
3	2&0	50:1:2	76.1±1.9&66.0±1.4	270.6±4.5	0.181±0.006	-36.2±7.1
4	1&1	50:1:2	70.6±0.9&58.2±1.2	245.3±6.1	0.091±0.012	-38.5±2.3
5	1&1	100:1:2	80.3±0.6&71.2±2.4	264.2±2.1	0.114±0.042	-41.1±7.4
6	1&1	200:1:2	85.1±1.1&75.1±1.3	283.1±7.1	0.211±0.012	-32.8±4.7
7	1&1	50:0:2	----- & 68.5±2.5	223.1±4.3	0.164±0.024	-32.1±5.2
8	1&1	50:1:0	77.2±2.4 & ----	210.1±1.2	0.087±0.047	-34.5±2.4

Table S2. The body weights and coefficients of various tissues to body weight at the end of treatment

Group	Organ coefficients (mg/g)				
	Body weight (g)	Liver	Spleen	Lung	Kidneys
PBS	24.48 ± 1.20	71.88 ± 8.16	7.12 ± 0.97	7.11 ± 0.98	14.99 ± 4.09
PLGA	23.78 ± 1.02	72.12 ± 9.65	6.97 ± 0.63	7.09 ± 1.31	15.16 ± 5.11
HA-SS-PLGA	22.55 ± 1.01	71.09 ± 7.67	6.88 ± 0.59	7.12 ± 0.77	15.21 ± 3.98
DOX	14.57 ± 1.11**	74.88 ± 6.98	7.54 ± 0.33	7.32 ± 0.56	15.48 ± 3.12
PLGA-DOX	21.60 ± 0.94	69.65 ± 7.22	7.28 ± 1.28	6.99 ± 0.87	14.87 ± 4.61
HA-SS-PLGA-DOX	21.42 ± 1.45	71.32 ± 6.45	6.86 ± 0.73	7.10 ± 0.59	15.23 ± 5.32
CYC	17.28 ± 0.98**	73.34 ± 9.51	7.37 ± 1.14	7.24 ± 1.23	15.34 ± 5.43
PLGA-CYC	21.61 ± 0.87	70.11 ± 10.43	7.20 ± 0.63	6.89 ± 0.96	15.32 ± 3.46
HA-SS-PLGA-CYC	20.03 ± 1.41*	69.62 ± 6.47	7.04 ± 0.77	7.21 ± 1.72	15.21 ± 4.13
PLGA-DOX-CYC	20.10 ± 1.62*	73.12 ± 5.41	6.91 ± 0.83	7.17 ± 1.14	15.44 ± 4.32
HA-SS-PLGA-DOX-CYC	20.19 ± 1.08*	68.95 ± 8.34	7.10 ± 0.29	7.14 ± 1.21	15.35 ± 4.09

* and ** represent significant difference compared to the control group, * $p < 0.05$ and ** $p < 0.05$.

Table S3. Complete blood counts

Group	WBC (10⁹/L)	RBC (10¹²/L)	HGB (g/L)	PLT (10⁹/L)	NEUT (%)	LY (%)	MONO (%)
Normal	3.22 ±0.28	10.61 ±1.31	157.76 ±9.74	894.34 ±52.11	1.28 ±0.07	85.47 ±7.26	3.51 ±0.99
PBS	4.23 ±0.54	11.02 ±2.21	160.65 ±9.28	842.98 ±49.67	2.08 ±0.03	90.52 ±7.84	3.90 ±1.11
PLGA	3.97 ±0.26	9.84 ±1.45	153.97 ±6.18	910.75 ±57.31	1.91 ±0.11	90.10 ±8.95	3.55 ±0.65
HA-SS-PLGA	3.84 ±0.61	10.06 ±2.07	151.98 ±7.09	891.56 ±46.78	1.57 ±0.31	91.23 ±8.31	4.07 ±1.23
DOX	3.52 ±0.76	9.88 ±1.98	151.36 ±9.77	735.57 ±32.46*	1.51 ±0.14	92.10 ±9.11*	1.81 ±0.33*
PLGA-DOX	3.47 ±0.76	9.99 ±2.31	149.53 ±10.16	791.09 ±41.98	2.11 ±0.24	91.53 ±7.27	3.60 ±1.63
HA-SS-PLGA-DOX	3.31 ±0.57	9.96 ±1.78	158.09 ±10.31	906.22 ±54.13	1.65 ±0.41	90.06 ±8.03	3.78 ±0.36
CYC	3.23 ±0.56	10.11 ±1.69	151.57 ±7.08	769.53 ±65.32*	1.83 ±0.65	90.43 ±7.22	1.27 ±0.87*
PLGA-CYC	3.07 ±0.41	9.90 ±2.17	152.75 ±9.87	896.11 ±45.78	1.78 ±0.97	88.95 ±8.05	4.08 ±0.07
HA-SS-PLGA-CYC	3.49 ±0.77	10.03 ±1.99	159.31 ±10.22	900.56 ±51.43	2.09 ±0.19	91.32 ±6.45	3.82 ±0.95
PLGA-DOX-CYC	3.74 ±0.24	9.81 ±2.06	152.87 ±9.34	861.75 ±53.13	1.93 ±0.31	88.97 ±3.96	3.64 ±1.02
HA-SS-PLGA-DOX-CYC	3.44 ±0.64	9.95 ±1.98	156.43 ±10.54	891.09 ±45.65	2.07 ±0.54	92.43 ±7.54	4.33 ±1.65

* represents significant difference compared to the normal control group, * $p < 0.05$.

Table S4. Blood biochemical analyses

Group	BUN (mmol/L)	CR (mmol/L)	ALT(U/L)	AST(U/L)	LDH(U/L)	CK(U/L)
Normal	11.71 ±1.23	12.09 ±2.13	60.77 ±9.88	127.38 ±10.94	597.65 ±77.35	673.77 ±54.12
PBS	12.22 ±0.97	11.34 ±1.76	58.54 ±10.05	166.19 ±9.65*	1943.09 ±324.98**	1270.52 ±34.87**
PLGA	11.93 ±2.43	11.79 ±1.98	53.77 ±7.64	153.87 ±8.21	991.26 ±76.56**	1025.43 ±85.12**
HA-SS-PLGA	11.21 ±2.08	10.87 ±2.01	58.34 ±6.15	131.44 ±6.94	1064.34 ±127.43**	877.45 ±43.09*
DOX	7.65 ±1.94*	7.49 ±1.46*	43.67 ±6.23*	137.81 ±5.09	1144.58 ±109.87**	687.45 ±34.21
PLGA-DOX	7.89 ±0.69*	8.03 ±2.41*	44.81 ±9.76*	132.09 ±6.83	721.73 ±43.71*	598.35 ±19.65
HA-SS-PLGA-DOX	10.95 ±2.06	11.12 ±1.97	62.54 ±5.16	129.65 ±7.87	607.67 ±10.76	631.56 ±26.77
CYC	7.18 ±1.94*	6.62 ±0.67*	50.31 ±4.76*	133.45 ±6.15	599.98 ±12.78	909.54 ±43.67*
PLGA-CYC	10.23 ±1.87	7.26 ±2.01*	56.43 ±3.95	130.26 ±4.22	578.53 ±63.84	694.39 ±32.08
HA-SS-PLGA-CYC	11.67 ±1.94	11.89 ±1.09	58.93 ±7.25	129.27 ±8.41	626.87 ±51.65	701.65 ±31.93
PLGA-DOX-CYC	10.99 ±0.52	13.17 ±3.07	68.42 ±6.22	134.12 ±7.87	641.04 ±91.82	688.63 ±46.01
HA-SS-PLGA-DOX-CYC	11.06 ±2.11	11.98 ±2.07	63.74 ±5.24	132.76 ±8.43	609.45 ±87.31	704.87 ±54.22

* and ** represent significant difference compared to the normal control group, * $p < 0.05$ and ** $p < 0.05$.