

# Lawrence Berkeley National Laboratory

## Recent Work

### Title

Identification of genetic factors that modify motor performance and body weight using Collaborative Cross mice.

### Permalink

<https://escholarship.org/uc/item/57c6r2cr>

### Journal

Scientific reports, 5(1)

### ISSN

2045-2322

### Authors

Mao, Jian-Hua  
Langley, Sasha A  
Huang, Yurong  
[et al.](#)

### Publication Date

2015-11-01

### DOI

10.1038/srep16247

Peer reviewed

# SCIENTIFIC REPORTS

**OPEN**

## Identification of genetic factors that modify motor performance and body weight using Collaborative Cross mice

Received: 27 August 2015  
Accepted: 13 October 2015  
Published: 09 November 2015

Jian-Hua Mao<sup>1</sup>, Sasha A. Langley<sup>1</sup>, Yurong Huang<sup>1</sup>, Michael Hang<sup>1</sup>, Kristofer E. Bouchard<sup>1</sup>, Susan E. Celniker<sup>1</sup>, James B. Brown<sup>1</sup>, Janet K. Jansson<sup>2</sup>, Gary H. Karpen<sup>1,3</sup> & Antoine M. Snijders<sup>1</sup>

Evidence has emerged that suggests a link between motor deficits, obesity and many neurological disorders. However, the contributing genetic risk factors are poorly understood. Here we used the Collaborative Cross (CC), a large panel of newly inbred mice that captures 90% of the known variation among laboratory mice, to identify the genetic loci controlling rotarod performance and its relationship with body weight in a cohort of 365 mice across 16 CC strains. Body weight and rotarod performance varied widely across CC strains and were significantly negatively correlated. Genetic linkage analysis identified 14 loci that were associated with body weight. However, 45 loci affected rotarod performance, seven of which were also associated with body weight, suggesting a strong link at the genetic level. Lastly, we show that genes identified in this study overlap significantly with those related to neurological disorders and obesity found in human GWA studies. In conclusion, our results provide a genetic framework for studies of the connection between body weight, the central nervous system and behavior.

Impaired motor function is associated with a broad spectrum of human conditions including neurodegenerative diseases, and neurological and neurodevelopmental disorders. For example, Parkinson's disease (PD), the second most common neurodegenerative disease, is characterized by severe and progressive motor impairment<sup>1,2</sup>. In addition, accumulating evidence indicates that motor impairment is a common feature of early Alzheimer's disease (AD)<sup>3,4</sup>. Motor deficits ranging from fine to gross motor skills have been observed in subsets of children diagnosed with autism spectrum disorder or attention-deficit hyper-activity disorder (ADHD)<sup>5</sup>. However, motor function is multifactorial and depends on the coordinated activity of motor control systems in the brain, the spinal cord, the peripheral nervous system and the musculoskeletal system. Not surprisingly, the genetic risk factors that may contribute to many of these conditions remain poorly understood.

The discovery of susceptibility genes is facilitated in genetic reference populations with assembled genomes that allow dissection of the complex interactions that underlie the roles of genes in disease. The identification of high penetrance genes that confer genetic predisposition in certain rare human families has been successful, but it is likely that low penetrance genes present at high frequency in the human population are major genetic components associated with disease risk and many complex phenotypic traits. Recent biotechnological advances paved the way for large-scale genome-wide association (GWA) studies to identify genetic loci that contribute to human phenotypes. GWA studies have identified many

<sup>1</sup>Life Sciences Division, Lawrence Berkeley National Laboratory, Berkeley, CA, USA. <sup>2</sup>Biological Sciences Division, Pacific Northwest National Laboratory Richland, WA, USA. <sup>3</sup>Department of Molecular and Cell Biology, University of California, Berkeley, CA, USA. Correspondence and requests for materials should be addressed to J.-H.M. (email: JHMao@lbl.gov) or A.M.S. (email: AMSnijders@lbl.gov)

loci and genes associated with numerous diseases and phenotypic traits, including body weight, obesity and neurological disorders<sup>6–9</sup>. However, disease risk often depends on life history, specifically interactions between genetic background and the environment<sup>10–13</sup>. Diet, lifestyle, chemical exposures, and other confounding factors are difficult to control in human populations. Thus, GWA studies often require enormous sample sizes to identify significant genetic associations, and still provide no guarantees that the most important loci will be discovered.

Model systems offer many advantages for the study of the genetic basis of complex traits because both genetic and environmental components of risk can be specified and tightly controlled. Studies in mouse strains with diverse genetic backgrounds and known genetic structures offer unprecedented opportunities to identify genetic loci that contribute to traits of interest, and to investigate mechanistic contributions. “The Collaborative Cross (CC)”, a large multi-parental panel of recombinant inbred strains, recently became available<sup>14–17</sup>. The CC consists of a population of mice with genetic and phenotypic diversity on par with the human population<sup>15</sup>. This resource, which was established by combining the genomes of eight diverse founder strains (A/J, C57BL/6J, 129S1/SvImJ, NOD/LtJ, NZO/HILtJ, CAST/EiJ, PWK/PhJ, and WSB/EiJ), captures nearly 90% of the known variation present in laboratory mice.

We leveraged the CC and the commonly used rotarod test to generate measurements of a complex phenotype with neurological components. Locomotor function and motor coordination depend on balance, muscle strength and non-motor factors including body weight skeletal traits (e.g. body, tail and foot length), aggressiveness, motivation and fear of falling. Differences have been reported in motor ability among different inbred strains of mice, and correlation analyses between weight and rotarod performance was observed for certain strains<sup>18,19</sup>; however, other studies reported a lack of correlation between body weight and rotarod performance<sup>20</sup>. Previously, a F2 mouse intercross study (129/S6 × C57BL/6) identified quantitative trait loci (QTL) associated with rotarod performance<sup>21</sup>. This study identified two separate QTL affecting performance, but did not analyze the effect of body weight on rotarod performance. One of the limitations of F2 mapping studies is that only genomic loci that vary between the two target strains are interrogated by linkage analysis. The strength of using the CC mice is that genetic variation is distributed densely across the genome.

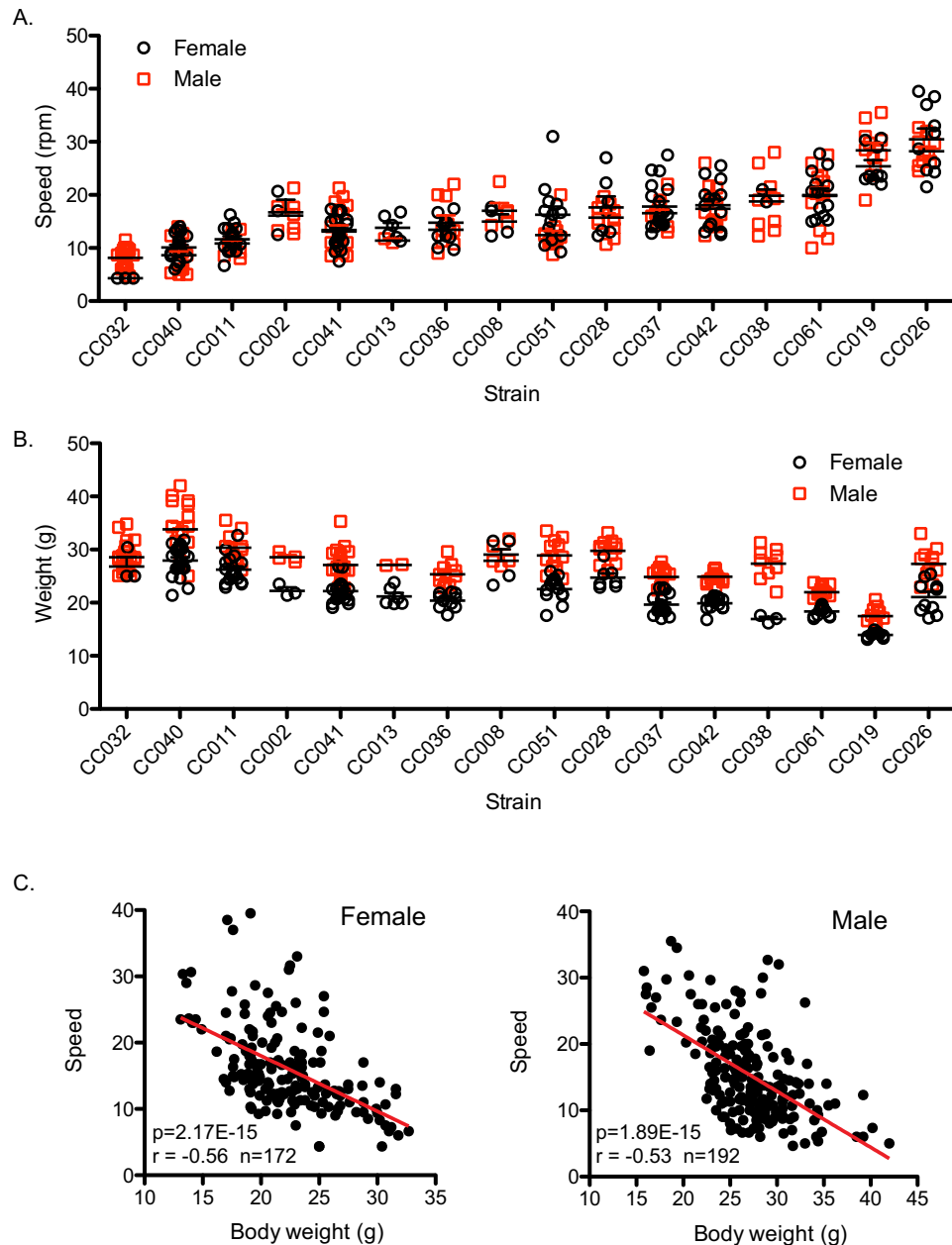
Here we identified genetic loci associated with motor performance and body weight using the CC mice. We observed that rotarod performance and body weight are highly variable among the CC strains. Linkage analysis revealed many loci contributing to rotarod performance and body weight and, importantly, a significant overlap of genetic linkage demonstrating an inverse correlation between these two phenotypes. Finally, we identify numerous candidate genes in CC quantitative trait loci with orthologs that are associated with obesity and neurodegenerative disorders in human populations.

## Results

**Rotarod performance covers a wide range in Collaborative Cross mice.** Rotarod performance was measured in a total of 365 mice (173 female; 192 male) from 16 CC strains at 10 weeks of age, with at least eight mice tested for each strain (N = 8 to 42 mice; Table S1). Mice were individually placed on a slowly rotating rod (4 rpm/minute), subjected to continuous acceleration set at 20 rpm/minute, and the speed at which the mouse fell off the rod was recorded. The average rotarod performance (average speed at the time of fall) for male and female mice of each strain was highly correlated (Pearson  $r = 0.94$ ,  $p < 0.0001$ ; Figure S1). However, rotarod performance varied widely among different CC strains, strongly suggesting the influence of genotype (Fig. 1A; Table S1). The average speed at the time of fall ranged from 4.3 rpm (CC032) to 30.5 rpm (CC026) in female mice, and 8.1 rpm (CC032) to 28.4 rpm (CC019) in male mice.

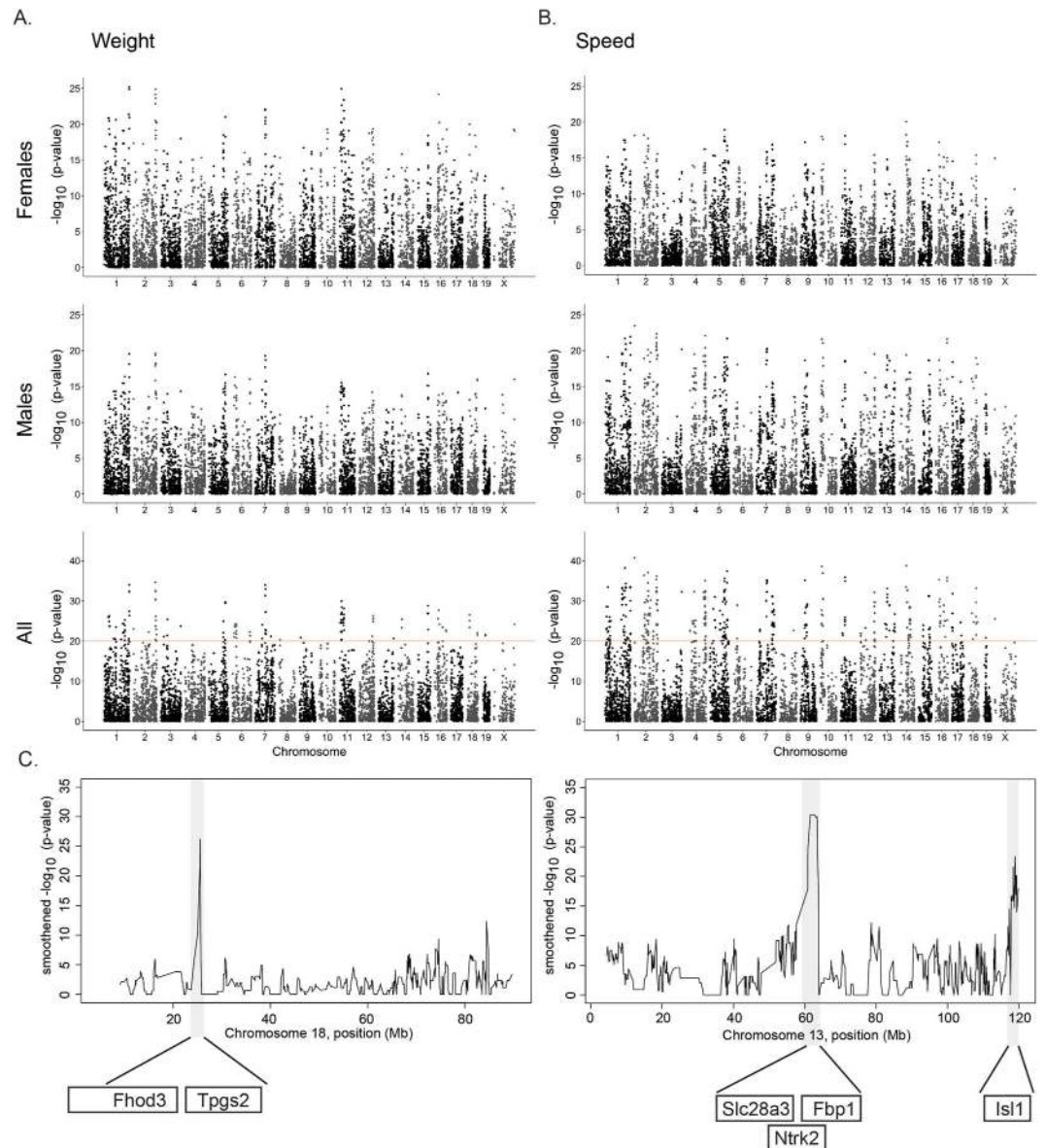
**Body weight is significantly correlated with rotarod performance.** Some studies have reported a significant correlation between body weight and rotarod performance<sup>18,19</sup>. To investigate whether this relationship is maintained in a genetically diverse mouse population, we measured body weight of all mice on the day of rotarod testing (10 weeks of age). Similar to rotarod performance, the average body weight for male and female mice of each strain was highly correlated (Pearson  $r = 0.86$ ,  $p < 0.0001$ ; Figure S1), but displayed a wide range among different CC strains (Fig. 1B; Table S1). Average body weight in female mice ranged from 13.1 g for CC019 to 27.9 g for CC040, and from 17.5 g for CC019 to 33.8 g for CC040 in male mice. Importantly, we observed a significant inverse correlation between body weight and rotarod performance in male (Fig. 1C;  $p = 1.89E-15$ , Spearman  $r = -0.53$ ) and female mice (Fig. 1C;  $p = 2.17E-15$ , Spearman  $r = -0.56$ ). We conclude that higher body weight is significantly correlated with decreased rotarod performance, and that both phenotypes are affected by genetic background.

**Genetic linkage analysis of rotarod performance and body weight.** To identify the genetic loci associated with rotarod performance or body weight we performed independent quantitative trait locus (QTL) analyses using 20,199 informative SNPs across the genome. Significant linkage was defined as  $-\log(p\text{-value}) > 20$  ( $-\log(\text{FDR}) > 18$ ), and suggestive linkage was defined as  $10 \leq -\log(p\text{-value}) \leq 20$  ( $8 \leq -\log(\text{FDR}) \leq 18$ ). This analysis revealed a complex association of QTL across the genome with rotarod performance or body weight (Fig. 2; Table S2). Linkage profiles were highly correlated between male and female mice (Fig. 2A,B), so we combined male and female data for each strain to determine significant loci associated with body weight or rotarod performance.



**Figure 1. Rotarod performance and body weight are variable in Collaborative Cross mice.** (A) Rotarod performance was measured using the accelerating rotarod test (20 rpm/min) in 16 CC strains at 10 weeks of age. The speed at animal fall is indicated for male (blue open squares) and female mice (black open circles). (B) Body weight of 16 CC strains at 10 weeks of age is shown for male (blue open squares) and female mice (black open circles). (C) Rotarod speed at the time of falling is significantly correlated with body weight in both female (left;  $r = -0.56$ ,  $p = 2.17E-15$ ) and male (right;  $r = -0.53$ ,  $p = 1.89E-15$ ) mice.

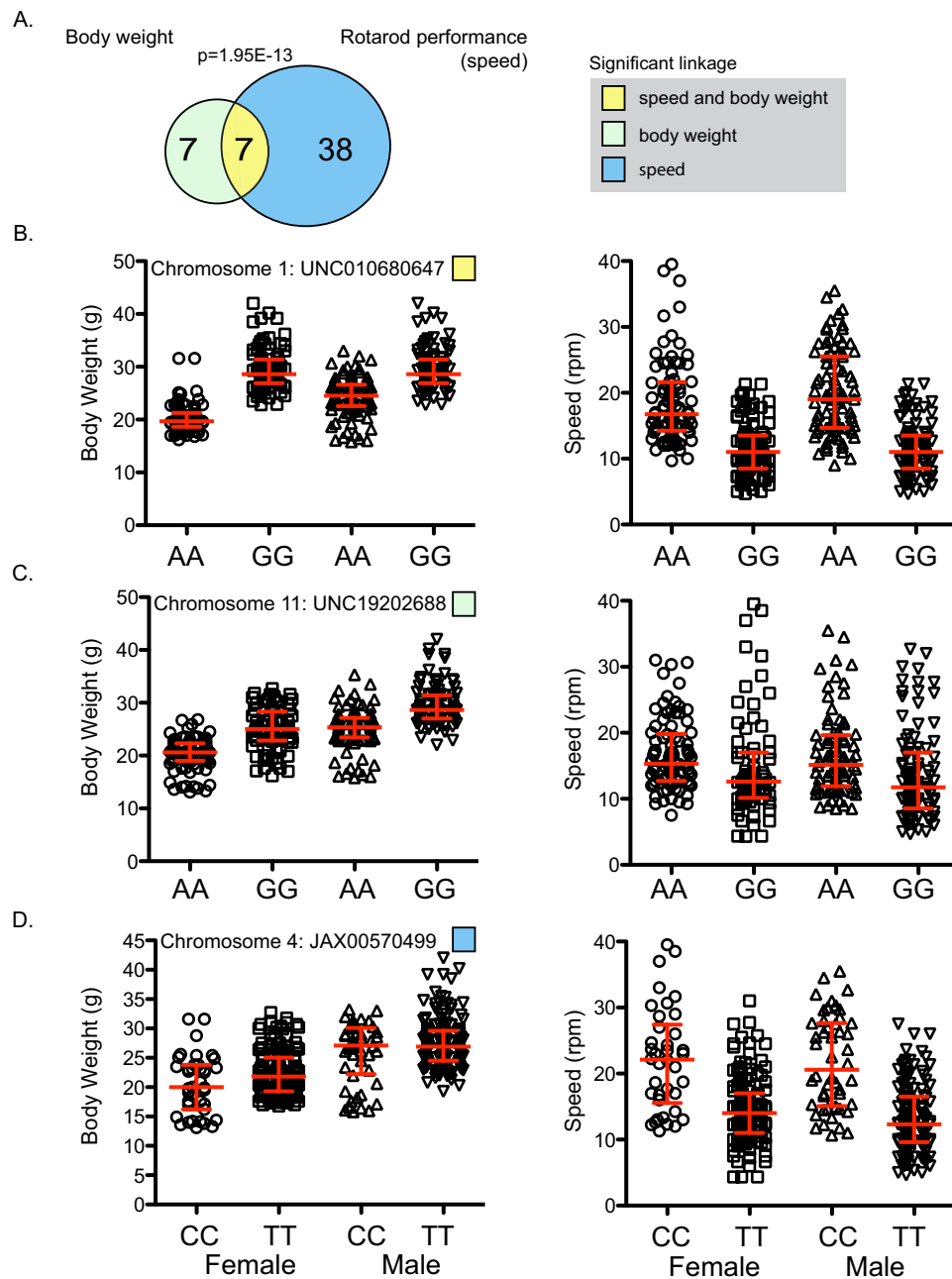
Importantly, genetic loci for rotarod performance significantly overlap with those that control body weight, and display an inverse correlation (Fig. 3A). We identified 45 significant loci associated with rotarod performance, and 14 significant loci associated with body weight. Importantly, 7 of these loci showed significant association with both rotarod performance and body weight ( $p$ -value of overlap  $1.95E-13$ ; Figs 3A and 4 and Tables S2 and S3). All 7 loci associated with body weight and rotarod performance were inversely correlated; none showed association with increased body weight and increased rotarod performance. Examples of the classes of linkage data are shown for three individual SNPs in Fig. 3A–C. The major pattern observed is reflected in the GG allele at SNP UNC010680647 on chromosome 1, which is significantly associated with increased body weight ( $-\log(p) = 27.5$ ) and decreased rotarod performance ( $-\log(p) = 33$ ) (Fig. 3B). On the other hand, the GG allele at SNP UNC19202688 on chromosome 11 is significantly associated with increased body weight ( $-\log(p) = 22.2$ ), but not



**Figure 2. Linkage analysis identified genetic loci associated with rotarod performance and body weight.** (A) Genome wide linkage is shown for body weight in female (top) and male (middle) mice separately and combined (bottom). The  $-\log(p\text{-value})$  is shown for 20,199 SNPs ordered based on genomic position. (B) Genome wide linkage is shown for rotarod performance in female (top) and male (middle) mice separately and combined (bottom; the horizontal red line indicates the QTL significance threshold at  $-\log(p\text{-value}) = 20$ ). The  $-\log(p\text{-value})$  is shown for 20,199 SNPs ordered based on genomic position. (C) Chromosome specific linkage is shown for chromosomes 18 (body weight, left) and 13 (rotarod performance, right) and only genes are listed that show association with human body weight and neurological disorders by GWAS (see Fig. 4).

rotarod performance ( $-\log(p) = 3.5$ ) (Fig. 3C). Conversely, the TT allele at SNP JAX00570499 on chromosome 4 is significantly associated with rotarod performance ( $-\log(p) = 25.6$ ), but not body weight ( $-\log(p) = 2.2$ ) (Fig. 3D).

We then asked if QTL significantly associated with body weight exceeded the suggestive linkage threshold ( $10 < -\log(p\text{-value}) < 20$ ) for rotarod performance, and vice versa. We found that 3 out of 7 body weight QTL showed suggestive linkage for rotarod performance, and 36 out of 45 rotarod performance QTL showed suggestive linkage for body weight (Table S2). The extensive overlap between body weight and rotarod performance QTL for both significant and suggestive loci indicates a strong link at the genetic level. It should be noted that additional suggestive loci associated with either body weight or rotarod performance alone are likely to exist. In addition, we identified 4 loci that were associated



**Figure 3. Relationship between genetic loci affecting rotarod performance and body weight.** (A) Overlap of fifty-two loci that showed significant linkage with body weight and/or rotarod performance (speed) ( $p$ -value for overlap =  $1.95E-13$ ). (B) SNP UNC010680647 on chromosome 1 is significantly associated with body weight (left) and rotarod performance (right) in male mice. (C) SNP UNC19202688 on chromosome 11 is significantly associated with body weight (left), but not rotarod performance (right) in male mice. (D) SNP JAX00570499 on chromosome 4 is significantly associated with rotarod performance (right), but not body weight (left) in male and female mice. Error bars represent median and interquartile range.

exclusively with body weight and not rotarod performance, suggesting that other genotypic differences can override the strong inverse correlation between body weight and neuromuscular capabilities (Fig. 4).

**Rotarod performance and body weight candidate genes show significant overlap with human GWAS for neurological disorders and obesity.** To discover candidate genes that could impact body weight and rotarod performance, we first compiled a list of all genes contained within the boundaries of the 52 significant QTL identified as affecting these phenotypes in the linkage analysis ( $n = 1694$  genes; Table S3). We then compared these candidate mouse genes to a compiled list of genes ( $n = 1776$



129S6/SvEvTac allele) and one QTL associated with longer latency to falling on day 3 (D1MIT270; C57BL/6J allele). We identify a genome-wide significant SNP ( $-\log(p) = 15.3$ ) on chromosome 1 (SNP UNC2191344) for rotarod performance, but not body weight, corresponding to the QTL at D1MIT270, thus confirming this result. There is substantial genetic variation among substrains of 129, which could explain the fact that we did not detect the QTL at D2MIT224. This seems likely since the 129 substrain used in the F1 intercross study is distinct from the one used to generate the CC. Also, our study did not incorporate a learning component across multiple days, and instead consisted of 3–5 consecutive trials all on the same day. Thus, it is possible that the QTL identified on day 2 and 3 of rotarod testing in<sup>21</sup> are also associated with learning.

We identified 52 genetic loci associated with either body weight and/or rotarod performance. We were able to identify candidate genes in QTL by comparing to human GWAS and other association studies for 43 out of 52 QTL. For 9 loci, we were not able to identify candidate genes associated with human body weight or neurological disorders. There are several possible explanations. The most obvious is that rotarod performance is a complex phenotype depending on many factors in addition to body weight and motor impairment associated with neurological disorders, and it is possible that we identified genetic loci that control body weight and rotarod performance in mice that have not yet been identified in human studies. For example, we found strong linkage of two genetic loci on chromosome 5 (Fig. 4) containing *Ncapg* and *Lcorl* (chromosome 5: 46.03–46.48 Mb) and *Bmp3* and *Prkg2* (chromosome 5: 99.02–102.0 Mb). Human GWAS have found that these genes are strongly associated with human adult height<sup>31,32</sup>. Since body length in mice has been correlated with rotarod performance for certain mouse strains<sup>18</sup>, it is possible that allelic variation at these loci control body length in CC mice and contribute to rotarod performance. In addition, sight-impairment has been shown to affect rotarod performance<sup>18</sup>. We did not measure sight-impairment in our CC strains, however, a human GWAS of age-related macular degeneration identified a QTL at human chromosome 4q12 containing the following genes: *REST*, *C4orf14*, *POLR2B* and *IGFBP7*<sup>33</sup>. This locus corresponds to mouse chromosome 5 and overlaps with a genetic locus with significant association with rotarod performance (chromosome 5: 75.87–82.15 Mb; Fig. 4). Similarly, we found *Barhl2*, which is required for the development of multiple retinal cell types<sup>34</sup>, contained within a small (0.39 Mb) genetic locus associated with rotarod performance. Together, these data suggest that at least some of our genetic loci associated with rotarod performance could control body length and eyesight, however, further work is needed to confirm this. Additionally, our study focused on protein coding genes within these regions, and it is possible that other genetic regulatory sequences (e.g. lncRNA or miRNA) within our association loci could contribute to body weight and rotarod performance.

In our study, we observed a significant overlap in QTL associated with rotarod performance and body weight. QTL exclusively associated with body weight also showed overlap with human GWAS of neurodegenerative and neurodevelopmental disorders and vice versa. Obesity affects glucose and energy metabolism of brain cells, resulting in neuroinflammation in the brain and impaired neuronal function<sup>35</sup>. Indeed, weight loss has been suggested as a protective course for Alzheimer's and Parkinson's disease<sup>36</sup>. Moreover, it was recently shown that midlife adiposity can predict earlier onset of Alzheimer's disease<sup>37</sup>. Taken together, our data provides further evidence for a relationship between obesity and neurodegenerative disease, and demonstrates the utility of the CC mice for further investigations of the genetic control of these and other traits and diseases.

## Materials and Methods

**Mice.** Collaborative Cross mice were obtained from UNC Chapel Hill. Genotyping data was obtained from the UNC Systems Genetics Core website (<http://csbio.unc.edu/CCstatus/index.py>), which used Mouse Universal Genotyping Arrays containing 77.8 K markers (megaMUGA). Mice were acclimated at LBNL for eight weeks prior to the initiation of breeding. The study was carried out in strict accordance with the Guide for the Care and Use of Laboratory Animals of the National Institutes of Health. The animal use protocol was approved by the Animal Welfare and Research Committee of the Lawrence Berkeley National Laboratory (Protocol File Number 271004). All mice were weaned at 21 days and group housed whenever possible. Body weight and rotarod performance were measured at ten weeks of age. For details on the numbers and sex of mice used for each strain refer to Table S1.

**Rotarod performance.** Mice were tested for their ability to maintain themselves upright on a rotating rod. Animals were placed on a spindle at 45-degree angle and subjected to a slow-speed “waiting” mode (4 rpm for 5–10 seconds) before acceleration. To avoid passive rotation of the mice on the rod we used a spindle with a diameter of 30 mm and a lane dimension of 50 mm. Acceleration was started after the “waiting” period and was set at 20 rpm/min for all mice. Trials where mice fell off in less than five seconds are likely due to operator error and were repeated and not included in the analysis. Animal falls were detected by a pressure sensitive lever, which automatically stops and records the speed at the time of the fall. All testing was conducted during the animal's light cycle. All mice were tested consecutively an average of 3.3 times (range: 3–5), and repeat measurements of speed at the time of animal falling were averaged.



**Linkage analysis.** At each SNP, phenotypic values (weight, rotarod performance) from individual CC mice were assigned to their respective alleles. We used logistic regression to regress phenotypic trait values on alleles at each SNP<sup>38,39</sup>. We computed p-values for the contribution of each allele to each phenotypic trait in the logistic model. We applied a false discovery rate (FDR) correction to the p-values for the estimated coefficients. SNPs with an FDR of  $p < 1E-18$  were called as significant, while those with  $1E-18 < p < 1E-8$  were classified as suggestive<sup>40</sup>. QTL loci were defined as loci where at least 3 adjacent or closely clustered SNPs reached significance, and boundaries were defined by non-significant SNPs flanking significant loci. Suggestive loci were only identified for regions where either body weight or rotarod performance showed significant association. Putative candidate genes were defined as those genes (NCBI37/mm9 freeze) partially overlapping or contained within a QTL locus. The list of candidate genes was compared to human GWAS of neurological disorders and body weight-related phenotypes downloaded from [www.ebi.ac.uk/gwas](http://www.ebi.ac.uk/gwas) (see Table S4 for details).

## References

- Rocchi, C. *et al.* Autonomic function tests and MIBG in Parkinson's disease: correlation to disease duration and motor symptoms. *CNS Neurosci Ther*, doi: 10.1111/cns.12437 (2015).
- Paul, S. S., Sherrington, C., Fung, V. S. & Canning, C. G. Motor and cognitive impairments in Parkinson disease: relationships with specific balance and mobility tasks. *Neurorehabil Neural Repair* **27**, 63–71, doi: 10.1177/1545968312446754 (2013).
- Buchman, A. S. & Bennett, D. A. Loss of motor function in preclinical Alzheimer's disease. *Expert Rev Neurother* **11**, 665–676, doi: 10.1586/ern.11.57 (2011).
- Hebert, L. E. *et al.* Upper and lower extremity motor performance and functional impairment in Alzheimer's disease. *Am J Alzheimers Dis Other Dement* **25**, 425–431, doi: 10.1177/1533317510367636 (2010).
- Kaiser, M. L., Schoemaker, M. M., Albaret, J. M. & Geuze, R. H. What is the evidence of impaired motor skills and motor control among children with attention deficit hyperactivity disorder (ADHD)? Systematic review of the literature. *Res Dev Disabil* **36C**, 338–357, doi: 10.1016/j.ridd.2014.09.023 (2014).
- Satake, W. *et al.* Genome-wide association study identifies common variants at four loci as genetic risk factors for Parkinson's disease. *Nat Genet* **41**, 1303–1307, doi: 10.1038/ng.485 (2009).
- Thorleifsson, G. *et al.* Genome-wide association yields new sequence variants at seven loci that associate with measures of obesity. *Nat Genet* **41**, 18–24, doi: 10.1038/ng.274 (2009).
- Kamboh, M. I. *et al.* Genome-wide association study of Alzheimer's disease. *Transl Psychiatry* **2**, e117, doi: 10.1038/tp.2012.45 (2012).
- Bradfield, J. P. *et al.* A genome-wide association meta-analysis identifies new childhood obesity loci. *Nat Genet* **44**, 526–531, doi: 10.1038/ng.2247 (2012).
- Caspi, A. & Moffitt, T. E. Gene-environment interactions in psychiatry: joining forces with neuroscience. *Nat Rev Neurosci* **7**, 583–590, doi: 10.1038/nrn1925 (2006).
- Burza, M. A. *et al.* Effect of excess body weight on the genetic susceptibility to cancer. *J Clin Gastroenterol* **48** Suppl 1, S78–79, doi: 10.1097/MCG.0000000000000237 (2014).
- Kelishadi, R. & Poursafa, P. A review on the genetic, environmental, and lifestyle aspects of the early-life origins of cardiovascular disease. *Curr Probl Pediatr Adolesc Health Care* **44**, 54–72, doi: 10.1016/j.cppeds.2013.12.005 (2014).
- Romao, I. & Roth, J. Genetic and environmental interactions in obesity and type 2 diabetes. *J Am Diet Assoc* **108**, S24–28, doi: 10.1016/j.jada.2008.01.022 (2008).
- Collaborative Cross, C. The genome architecture of the Collaborative Cross mouse genetic reference population. *Genetics* **190**, 389–401, doi: 10.1534/genetics.111.132639 (2012).
- Churchill, G. A. *et al.* The Collaborative Cross, a community resource for the genetic analysis of complex traits. *Nat Genet* **36**, 1133–1137, doi: 10.1038/ng1104-1133 (2004).
- Threadgill, D. W., Hunter, K. W. & Williams, R. W. Genetic dissection of complex and quantitative traits: from fantasy to reality via a community effort. *Mamm Genome* **13**, 175–178, doi: 10.1007/s00335-001-4001-Y (2002).
- Zou, F. *et al.* Quantitative trait locus analysis using recombinant inbred intercrosses: theoretical and empirical considerations. *Genetics* **170**, 1299–1311, doi: 10.1534/genetics.104.035709 (2005).
- McFadyen, M. P., Kusek, G., Bolivar, V. J. & Flaherty, L. Differences among eight inbred strains of mice in motor ability and motor learning on a rotarod. *Genes Brain Behav* **2**, 214–219 (2003).
- Cook, M. N., Bolivar, V. J., McFadyen, M. P. & Flaherty, L. Behavioral differences among 129 substrains: implications for knockout and transgenic mice. *Behav Neurosci* **116**, 600–611 (2002).
- Kovacs, A. D. & Pearce, D. A. Location- and sex-specific differences in weight and motor coordination in two commonly used mouse strains. *Sci Rep* **3**, 2116, doi: 10.1038/srep02116 (2013).
- Kelly, M. A., Low, M. J., Phillips, T. J., Wakeland, E. K. & Yanagisawa, M. The mapping of quantitative trait loci underlying strain differences in locomotor activity between 129S6 and C57BL/6j mice. *Mamm Genome* **14**, 692–702 (2003).
- Welter, D. *et al.* The NHGRI GWAS Catalog, a curated resource of SNP-trait associations. *Nucleic Acids Res* **42**, D1001–1006, doi: 10.1093/nar/gkt1229 (2014).
- Hindorf, L. *et al.* A Catalog of Published Genome-Wide Association Studies. <<http://www.ebi.ac.uk/gwas>> (Accessed [07/22/15]).
- Tabassum, R., Chavali, S., Dwivedi, O. P., Tandon, N. & Bharadwaj, D. Genetic variants of FOXA2: risk of type 2 diabetes and effect on metabolic traits in North Indians. *J Hum Genet* **53**, 957–965, doi: 10.1007/s10038-008-0335-6 (2008).
- Tabassum, R. *et al.* Evaluation of DOK5 as a susceptibility gene for type 2 diabetes and obesity in North Indian population. *BMC Med Genet* **11**, 35, doi: 10.1186/1471-2350-11-35 (2010).
- Wang, H. F. *et al.* Age-dependent association of KIBRA gene polymorphism with Alzheimer's disease in Han Chinese. *Mol Biol Rep* **40**, 7077–7082, doi: 10.1007/s11033-013-2830-x (2013).
- Chavali, S. *et al.* Association of variants in genes involved in pancreatic beta-cell development and function with type 2 diabetes in North Indians. *J Hum Genet* **56**, 695–700, doi: 10.1038/jhg.2011.83 (2011).
- Lee, J. M. *et al.* Identification of genetic factors that modify clinical onset of Huntington's Disease. *Cell* **162**, 516–526, doi: 10.1016/j.cell.2015.07.003 (2015).
- Kimura, T. *et al.* Impaired function of p53R2 in Rrm2b-null mice causes severe renal failure through attenuation of dNTP pools. *Nat Genet* **34**, 440–445, doi: 10.1038/ng1212 (2003).
- Bourdon, A. *et al.* Mutation of RRM2B, encoding p53-controlled ribonucleotide reductase (p53R2), causes severe mitochondrial DNA depletion. *Nat Genet* **39**, 776–780, doi: 10.1038/ng2040 (2007).
- Weedon, M. N. *et al.* Genome-wide association analysis identifies 20 loci that influence adult height. *Nat Genet* **40**, 575–583, doi: 10.1038/ng.121 (2008).

32. Gudbjartsson, D. F. *et al.* Many sequence variants affecting diversity of adult human height. *Nat Genet* **40**, 609–615, doi: 10.1038/ng.122 (2008).
33. Arakawa, S. *et al.* Genome-wide association study identifies two susceptibility loci for exudative age-related macular degeneration in the Japanese population. *Nat Genet* **43**, 1001–1004, doi: 10.1038/ng.938 (2011).
34. Ding, Q. *et al.* BARHL2 differentially regulates the development of retinal amacrine and ganglion neurons. *J Neurosci* **29**, 3992–4003, doi: 10.1523/JNEUROSCI.5237-08.2009 (2009).
35. Cai, D. Neuroinflammation and neurodegeneration in overnutrition-induced diseases. *Trends Endocrinol Metab* **24**, 40–47, doi: 10.1016/j.tem.2012.11.003 (2013).
36. Ashrafian, H., Harling, L., Darzi, A. & Athanasiou, T. Neurodegenerative disease and obesity: what is the role of weight loss and bariatric interventions? *Metab Brain Dis* **28**, 341–353, doi: 10.1007/s11011-013-9412-4 (2013).
37. Chuang, Y. F. *et al.* Midlife adiposity predicts earlier onset of Alzheimer's dementia, neuropathology and presymptomatic cerebral amyloid accumulation. *Mol Psychiatry*, doi: 10.1038/mp.2015.129 (2015).
38. Ram, R., Mehta, M., Balmer, L., Gatti, D. M. & Morahan, G. Rapid identification of major-effect genes using the collaborative cross. *Genetics* **198**, 75–86, doi: 10.1534/genetics.114.163014 (2014).
39. Gatti, D. M. *et al.* Quantitative trait locus mapping methods for diversity outbred mice. *G3 (Bethesda)* **4**, 1623–1633, doi: 10.1534/g3.114.013748 (2014).
40. Benjamini, Y. & Yekutieli, D. The control of the false discovery rate in multiple testing under dependency. *Ann Statist.* **29**, 1165–1188 (2001).

## Acknowledgements

This work was supported by the Low Dose Scientific Focus Area, Office of Biological and Environmental Research, U.S. Department of Energy under Contract No. DE AC02-05CH11231 to G.H.K. (principle investigator) and J.H.M., A.M.S. (co-principle investigators), Lawrence Berkeley National Laboratory Directed Research and Development (LDRD) program funding under Contract No. DE AC02-05CH11231 to S.E.C. and J.B.B. (co-principle investigators), G.H.K., J.H.M., A.M.S. and funding from the Office of Naval Research under ONR contract N0001415IP00021 to J.K.J. (principle investigator) and J.H.M., A.M.S. (co-principle investigators).

## Author Contributions

A.M.S. and J.H.M. conceived of and designed the study. A.M.S., J.H.M., Y.H. and M.H. acquired the data. S.A.L., J.B.B., K.B., A.M.S. and J.H.M. performed data analysis. A.M.S., J.H.M., J.K.J., J.B.B. G.H.K. and S.E.C. interpreted the results and wrote the manuscript. All authors read and approved the final manuscript.

## Additional Information

**Supplementary information** accompanies this paper at <http://www.nature.com/srep>

**Competing financial interests:** The authors declare no competing financial interests.

**How to cite this article:** Mao, J.-H. *et al.* Identification of genetic factors that modify motor performance and body weight using Collaborative Cross mice. *Sci. Rep.* **5**, 16247; doi: 10.1038/srep16247 (2015).



This work is licensed under a Creative Commons Attribution 4.0 International License. The images or other third party material in this article are included in the article's Creative Commons license, unless indicated otherwise in the credit line; if the material is not included under the Creative Commons license, users will need to obtain permission from the license holder to reproduce the material. To view a copy of this license, visit <http://creativecommons.org/licenses/by/4.0/>