



Identification of Nitrogen-Fixing *Bradyrhizobium* Associated With Roots of Field-Grown Sorghum by Metagenome and Proteome Analyses

Shintaro Hara¹, Takashi Morikawa¹, Sawa Wasai¹, Yasuhiro Kasahara², Taichi Koshiba³, Kiyoshi Yamazaki⁴, Toru Fujiwara⁴, Tsuyoshi Tokunaga³ and Kiwamu Minamisawa^{1*}

OPEN ACCESS

Edited by:

Benjamin Gounion,
Laboratoire des Interactions
Plantes-Microorganismes (LIPM),
France

Reviewed by:

Angela Sessitsch,
Austrian Institute of Technology (AIT),
Austria
Claudia Knief,
Universität Bonn, Germany

*Correspondence:

Kiwamu Minamisawa
kiwamu@ige.tohoku.ac.jp

Specialty section:

This article was submitted to
Plant Microbe Interactions,
a section of the journal
Frontiers in Microbiology

Received: 15 September 2018

Accepted: 15 February 2019

Published: 12 March 2019

Citation:

Hara S, Morikawa T, Wasai S,
Kasahara Y, Koshiba T, Yamazaki K,
Fujiwara T, Tokunaga T and
Minamisawa K (2019) Identification
of Nitrogen-Fixing *Bradyrhizobium*
Associated With Roots
of Field-Grown Sorghum by
Metagenome and Proteome
Analyses. *Front. Microbiol.* 10:407.
doi: 10.3389/fmicb.2019.00407

¹ Graduate School of Life Sciences, Tohoku University, Sendai, Japan, ² Institute of Low Temperature Science, Hokkaido University, Sapporo, Japan, ³ Earthnote Co., Ltd., Okinawa, Japan, ⁴ Graduate School of Agricultural and Life Sciences, The University of Tokyo, Tokyo, Japan

Sorghum (*Sorghum bicolor*) is cultivated worldwide for food, bioethanol, and fodder production. Although nitrogen fixation in sorghum has been studied since the 1970s, N₂-fixing bacteria have not been widely examined in field-grown sorghum plants because the identification of functional diazotrophs depends on the culture method used. The aim of this study was to identify functional N₂-fixing bacteria associated with field-grown sorghum by using “omics” approaches. Four lines of sorghum (KM1, KM2, KM4, and KM5) were grown in a field in Fukushima, Japan. The nitrogen-fixing activities of the roots, leaves, and stems were evaluated by acetylene reduction and ¹⁵N₂-feeding assays. The highest nitrogen-fixing activities were detected in the roots of lines KM1 and KM2 at the late growth stage. Bacterial cells extracted from KM1 and KM2 roots were analyzed by metagenome, proteome, and isolation approaches and their DNA was isolated and sequenced. Nitrogenase structural gene sequences in the metagenome sequences were retrieved using two nitrogenase databases. Most sequences were assigned to *nifHDK* of *Bradyrhizobium* species, including non-nodulating *Bradyrhizobium* sp. S23321 and photosynthetic *B. oligotrophicum* S58^T. Amplicon sequence and metagenome analysis revealed a relatively higher abundance (2.9–3.6%) of *Bradyrhizobium* in the roots. Proteome analysis indicated that three NifHDK proteins of *Bradyrhizobium* species were consistently detected across sample replicates. By using oligotrophic media, we purified eight bradyrhizobial isolates. Among them, two bradyrhizobial isolates possessed 16S rRNA and *nif* genes similar to those in S23321 and S58^T which were predicted as functional diazotrophs by omics approaches. Both free-living cells of the isolates expressed N₂-fixing activity in a semi-solid medium according to an acetylene reduction assay. These results suggest that major functional N₂-fixing bacteria in sorghum roots are unique bradyrhizobia that

resemble photosynthetic *B. oligotrophicum* S58^T and non-nodulating *Bradyrhizobium* sp. S23321. Based on our findings, we discuss the N₂-fixing activity level of sorghum plants, phylogenetic and genomic comparison with diazotrophic bacteria in other crops, and *Bradyrhizobium* diversity in N₂ fixation and nodulation.

Keywords: *Bradyrhizobium*, nitrogen fixation, sorghum, metagenome, proteome

INTRODUCTION

Biological N₂ fixation in non-leguminous plants is required to improve agricultural sustainability by decreasing the global use of synthetic nitrogen fertilizers (Steffen et al., 2015; Yoneyama et al., 2017; Rosenblueth et al., 2018). Diazotrophic endophytes can provide fixed nitrogen to non-leguminous crops (Boddey et al., 2001; Yoneyama et al., 2017). ¹⁵N-labeling significantly contributed to N₂ fixation in sugarcane (Yoneyama et al., 1997; Boddey et al., 2001). *Gluconacetobacter* and *Herbaspirillum* were isolated from sugarcane stems as candidate endophytic N₂-fixing bacteria (Cavalcante and Dobereiner, 1988; James, 2000). Recent metatranscriptome analyses targeting *nifH* (encoding dinitrogenase reductase) suggested that *Bradyrhizobium* members play a role in N₂ fixation in sugarcane (Thaweenut et al., 2011; Fischer et al., 2012; Rosenblueth et al., 2018). Abundant expression of *Bradyrhizobium* and *Azorhizobium nifH* was also detected in sweet potato stems and tubers (Terakado-Tonooka et al., 2008).

Sorghum [*Sorghum bicolor* (L.) Moench] is a C₄ plant. Sorghum has little breeding history compared to sugarcane and maize but has the potential for broad agro-ecological adaptation (Khawaja et al., 2014). Sorghum provides grain for use in food and feed, sugary juice for producing syrup or bioethanol and is an excellent fodder (Khawaja et al., 2014). Omics studies of sorghum-associated microbes (Naylor et al., 2017; Xu et al., 2018) showed that drought increased the abundance and activity of monoderm bacteria including *Actinobacteria* in field-grown sorghum and verified that these bacteria contribute to the drought-resistance of sorghum plants. Thus, sorghum root-associated microbiomes play an important role in determining plant fitness.

For nitrogen fixation in sorghum plants, Pedersen et al. (1978) first detected the N₂-fixing activities of washed root segments and soil cores of grain sorghum in NE, United States, in an acetylene reduction assay. Wani et al. (1984) observed the acetylene-reducing activity (ARA) of intact sorghum plants grown in pots. These studies suggested that sorghum-associated bacteria play a role in N₂ fixation. Coelho et al. (2008) reported several diazotrophic bacteria (*Paenibacillus*, *Azohydromonas*, *Ideonella*, *Rhizobium*, and *Bradyrhizobium*) in the rhizosphere soils of field-grown sorghum in Brazil based on *nifH* PCR of soil DNA extracts. However, N₂-fixing bacteria associated with sorghum plant tissues have not been fully explored.

Recent “omics” approaches have been used to identify and isolate functional diazotrophs in sugarcane (Thaweenut et al., 2011; Fischer et al., 2012), sweet potato (Terakado-Tonooka et al., 2008; Terakado-Tonooka et al., 2013), and paddy rice (Bao et al., 2014, 2016). Particularly, the combination of metagenome

and metaproteome analyses based on extracted bacterial cells (EBCs) isolated from plant tissues (Ikeda et al., 2009) revealed type II methanotrophs in paddy rice roots as functional N₂-fixing bacteria (Bao et al., 2014; Minamisawa et al., 2016). We adopted a similar strategy to identify diazotrophs responsible for N₂ fixation in field-grown sorghum plants. We identified tissues showing significant N₂-fixing activity by ARA and ¹⁵N₂ fixation, identified functional diazotrophs by proteome analysis of nitrogenase proteins based on metagenomic data, and isolated bacteria with nitrogenase proteins and phylogenetic markers predicted from the omics results (Figure 1). Our results strongly suggest that bradyrhizobia fixed N₂ in the roots of field-grown sorghum plants at late growth stages. Because the N₂-fixing bradyrhizobia in sorghum roots are phylogenetically close to an aquatic legume, *Aeschynomene* (Okubo et al., 2012a), we describe their functional roles.

MATERIALS AND METHODS

Plant Materials and Field Conditions

We used four lines (KM1, KM2, KM4, and KM5) of sorghum developed by Earthnote Co., Ltd. (Okinawa, Japan). KM1 is a late-ripening line with vigorous leaf growth. KM2 is an early-ripening line with lodging resistance and salt tolerance. KM4 and KM5 were pre-selected because of their high (KM4) and low (KM5) N₂-fixing activities as estimated by the ¹⁵N dilution method (Lee et al., unpublished).

Seeds were sown in 200-cell plug trays on May 10, 2016. The seedlings were transplanted into a field owned by Earthnote (Fukushima, Japan; 37°30'46.43"140°34'13.7") on June 6, 2016. The soil had the following chemical properties: pH (H₂O), 5.9; total C, 13.9 g kg⁻¹ dry soil; total N, 0.8 g kg⁻¹ dry soil; available phosphorus, 560.4 mg P kg⁻¹ dry soil (Truog method). Before transplanting the seedlings, the field was treated with 85 kg N as urea, 84 kg N as controlled-release coated-urea fertilizer (LP100, JCAM Agri. Co., Ltd., Tokyo, Japan), which releases 80% of its total N over 100 days, and 85 kg K₂O as potassium sulfate per hectare. This is the standard fertilization regime used for sorghum cropping under the local conditions. Each line was planted in three plots, with 50 plants per plot (0.075 m between plants, 1.00 m between rows).

Outlines of Polyphasic Approach and Experimental Design

Figure 1 shows the outlines of our polyphasic approach based on nitrogen-fixing activity and omics analyses. Because the experimental designs were complicated for respective

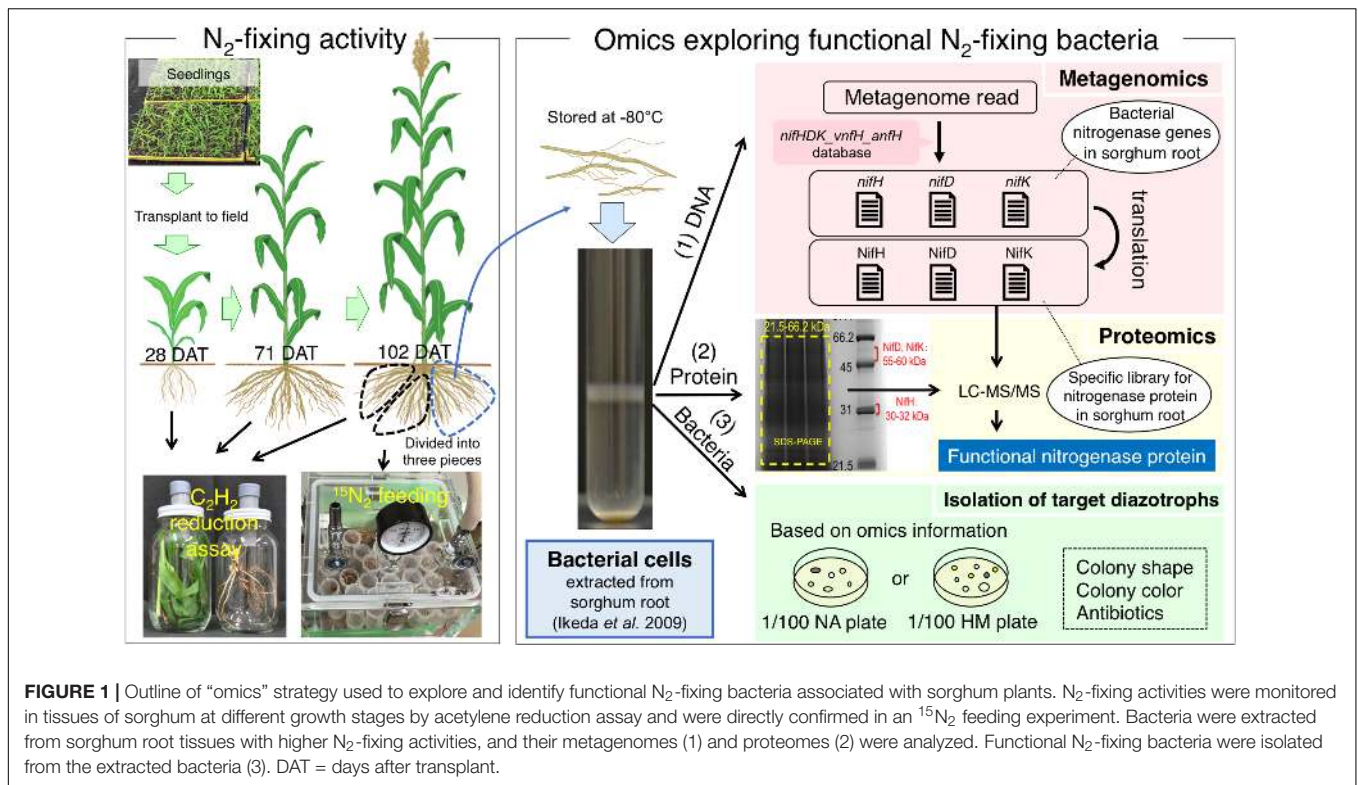


FIGURE 1 | Outline of “omics” strategy used to explore and identify functional N₂-fixing bacteria associated with sorghum plants. N₂-fixing activities were monitored in tissues of sorghum at different growth stages by acetylene reduction assay and were directly confirmed in an ¹⁵N₂ feeding experiment. Bacteria were extracted from sorghum root tissues with higher N₂-fixing activities, and their metagenomes (1) and proteomes (2) were analyzed. Functional N₂-fixing bacteria were isolated from the extracted bacteria (3). DAT = days after transplant.

analyses, we show the detailed sampling strategies used in the polyphasic approach along with the sorghum growth stages in **Supplementary Figures S1, S2**.

At least three plants were sampled individually from three different field plots or from the seedling trays for transplanting. When the sorghum seedlings were transplanted into the field, six seedlings were randomly selected from the plug trays [0 days after transplanting (DAT)], which were subjected to the acetylene reduction assay (**Supplementary Figure S1A**) as described below. At 28 DAT and 71 DAT, field-grown sorghum plants were harvested from three plots individually, and each plant tissue including the leaves, stems, and roots were subjected to the acetylene reduction assay (**Supplementary Figure S1B**). At 102 DAT, three plants were harvested from three plots individually, and the roots were washed with tap water, weighted, and further subdivided into three parts for the acetylene reduction assay, ¹⁵N₂-feeding analysis, and omics/isolation analysis (metagenome, proteome, bacterial isolation) (**Supplementary Figure S2** and **Figure 1**). Thus, the acetylene reduction assay, ¹⁵N₂-feeding experiment, and omics analyses (metagenome and proteome) were performed based on three biological replicates.

Acetylene Reduction Assay of Field-Grown Sorghum

Nitrogen-fixing activity was examined by the acetylene reduction assay (Schollhorn and Burris, 1967) at four growth stages: 0, 27, 71, and 102 DAT. Sorghum plants were maintained in the vegetative stage until 71 DAT, while the plants generally moved

to the reproductive stage with ears at 102 DAT (**Figure 1**). One or two healthy plants were randomly sampled (**Supplementary Figures S1, S2**). The tissues to be used for ARA were determined according to the growth stage of the plant (**Figure 1**): 0 DAT, whole seedling; 28 DAT, shoot and root; 71 DAT, leaf, stem, and root; and 102 DAT, root. At 0 and 28 DAT, two plants were harvested, one of which was used for acetylene reduction with acetylene, while the others were used for control analysis without acetylene (**Supplementary Figure S1**). At 71 and 102 DAT, one plant was divided equally into two pieces of similar weight and structure; one piece was used to analyze acetylene reduction with acetylene and the other was used for control analysis without acetylene (**Supplementary Figures S1, S2**).

At 0 DAT, seedling roots were washed in tap water to remove adhering soil and placed in a 100-mL vial with a butyl rubber septum (SVG-100, Nichiden-Rika Glass Co., Ltd., Kobe, Japan) (**Figure 1**). At 27, 71, and 102 DAT, each tissue was placed in a 900-mL glass jar with a modified lid fitted with a butyl rubber W-plug (W-24T, Taiyo Kogyo, Tokyo, Japan) (**Figure 1**).

Acetylene gas (99.9999% vol/vol purity; Toho Acetylene Co., Tokyo, Japan) was injected to provide a concentration of 10% (vol/vol), and the vial or jar was incubated for 1 day at ambient temperature. We drew 20 mL of headspace gas in a sampling syringe and stored it in a vacuumed gas vial (SVG-5; Nichiden-Rika Glass Co.) until analysis. Gas samples (0.5 mL) were analyzed to determine their ethylene concentrations with a Shimadzu GC-18A gas chromatograph equipped with a flame ionization detector and Porapak R column as described previously (Elbeltagy et al., 2001).

¹⁵N₂ Feeding of Field-Grown Sorghum

At 102 DAT, the divided roots from the same plant used for ARA were introduced into a gas chamber with a sampling port (Figure 1 and Supplementary Figure S2). The gas phase in the chamber was replaced with 32% (v/v) ¹⁵N₂ (99.4 atom % ¹⁵N; Shoko, Tokyo, Japan)/20% O₂/48% Ar. The negative control included air gas containing atmospheric N₂ [natural abundance of ¹⁵N (0.366 atom %)]. After static incubation in the chamber at 25°C for 23 h in the dark, the root samples were dried at 80°C for 3 days and then powdered in a Multi-Beads Shocker (Yasui Kikai, Osaka, Japan). To determine the level of ¹⁵N₂ fixation in the roots, we analyzed ¹⁵N and total N contents of the powdered root tissues with an elemental analyzer/isotope ratio mass spectrometer (Flash EA1112-Delta V Advantage ConFlo IV System; Thermo Fisher Scientific, Waltham, MA, United States).

Bacterial Cell Extraction and Metagenome Analysis

Root tissues of the same plant used for the ARA and ¹⁵N₂-feeding experiments were stored at -80°C for metagenome analysis (Figure 1 and Supplementary Figure S2). EBCs, including both endophytes and epiphytes, were directly prepared from ~100 g of root tissues as previously reported (Ikeda et al., 2009). The extraction of EBC allowed for the elimination of plant organelles and plant genomic DNA. Metagenomic DNA was prepared from the bacterial cells using an IsoPlant II kit (Nippon Gene, Tokyo, Japan) with bead beating treatment. In the first step, 0.5 g of bacterial cells were disrupted by bead beating in a Lysing Matrix B tube (MP Biomedicals, Santa Ana, CA, United States) with Solution I (Extraction Buffer) from the IsoPlant II kit. Bead beating was performed using a FastPrep FP100A (MP Biomedicals) at 5.5 m s⁻¹ for 30 s. Other steps were conducted according to the manufacturer's instructions, and the DNA preparation was stored at -20°C until use.

DNA libraries were prepared using the Illumina TruSeq DNA library preparation kit v. 2 (Illumina, San Diego, CA, United States). The size and quality of the libraries were assessed using a BioAnalyzer High Sensitivity Chip, and the average fragment size was around 700 base pairs (bp). Next, 250-bp paired-end libraries were sequenced on an Illumina MiSeq sequencer. The quality of the sequence data was checked by using the FastQC v. 0.10.1 software¹. Reads were trimmed using Prinseq-lite 0.20.4 (Schmieder and Edwards, 2011) with the following settings: -trim_left 20 -trim_right 5 -trim_qual_right 30 -min_qual_mean 20 -min_len 70.

Extraction of Structural Genes of Nitrogenase

To extract *nifH*, we first assigned the metagenomic reads in each sample according to the results of BLAST analysis against the *nifH* database (Gaby and Buckley, 2014) with a threshold identity of 90%. The *nifH* database developed by Gaby and Buckley (2014) contains 32,954 nitrogenase reductase genes sequences including *anfH*, an alternative nitrogenase that is a paralog of *nifH*, and

vnfH, a V-Fe alternative nitrogenase. Next, we used candidate reads in BLAST searches against the NCBI NR database with an *E*-value threshold of 10⁻¹⁰ and removed false *nifH* reads by manual inspection of the BLAST results. *nifH* genes were taxonomically assigned based on the best BLAST hit and counted. The retrieved reads were translated into amino acid sequences and incorporated into our database for proteome analysis with taxonomic information. If a best-hit was part of a genome sequence, *nifD* and *nifK* were picked up and used for database construction as described below.

To extract *nifD* and *nifK*, we modified the *nifD* and *nifK* database of Gaby and Buckley (2014), which contains only 268 and 315 sequences, respectively. To enrich the *nifDK* database, sequences were collected from (i) NCBI databases matched with respective keywords ("nitrogenase molybdenum-iron," "*nifD*," or "*nifK*") and (ii) *nifD* and *nifK* encoded on genome sequences of *nifH* best-hits. The metagenomic reads in each sample were assigned according to the BLAST analysis against the *nifD* and *nifK* database with a threshold identity of 80% in-house. Next, the candidate reads of *nifD* and *nifK* from the metagenomic data were subjected to BLAST searches against the NCBI NR public database with an *E*-value threshold of 10⁻¹⁰, and false *nifD* or *nifK* reads were removed by manual inspection of the BLAST results. The resulting DNA sequences of *nifD* and *nifK* were taxonomically assigned based on the best BLAST hit, translated into amino acid sequences, and incorporated in our nitrogenase database for proteome analysis with taxonomic information.

Community Analyses of Sorghum Root Microbes

Amplicon sequencing of 16S rRNA and metagenomics analysis targeting 31 AMPHORA genes (Wu and Eisen, 2008), which are housekeeping genes that are mostly present in single copies, were performed to analyze the bacterial community associated with the sorghum roots.

A partial bacterial 16S rRNA gene fragment was amplified by two-step PCR. First, a partial sequence of the V4 variable region was amplified with simultaneous addition of sequencing priming sites. The target region was amplified using primers 515F (5'-ACACTCTTTCCCTACACGACGCTCTTCCGATCTGTGC CAGCMGCCGCGGTAA-3') and 806R (5'-GTGACTGG AGTTCAGACGTGTGCTCTTCCGATCTGGACTACHVGGGT WTCTAAT-3') (Caporaso et al., 2011). In the second round of PCR, the first-round PCR products were amplified using the above sequencing priming sites as PCR priming sites by adding dual-index tag sequences and flow cell binding sites of the Illumina adapter. The primer sequences were 5'-AATGATAC GGCGACCACCGAGATCTACAC-Index2-ACACTCTTTCCC TACACGACGC-3' (forward) and 5'-CAAGCAGAAGACGGC ATACGAGAT-Index1-GTGACTGGAGTTCAGACGTGTG-3' (reverse). Each 20-μL PCR mixture contained 0.2 μL TaKaRa ExTaq HS DNA polymerase (TaKaRa Bio, Shiga, Japan), 2.0 μL of buffer (10 × Ex buffer), 1.6 μL of 2.5 mM dNTP mix, 1.0 μL of each forward and reverse primer (10 μM), and 1 μL of template DNA. First-round PCR conditions were as follows: 94°C for 2 min, followed by 25 cycles of 94°C for 30 s, 50°C

¹<http://www.bioinformatics.babraham.ac.uk/projects/fastqc/>

for 30 s, and 72°C for 30 s. The PCR products were purified using an Agencourt AMPure XP purification system (Beckman Coulter, Brea, CA, United States) following the manufacturer's instructions. Second-round PCR conditions were as follows: 94°C for 2 min; 12 cycles of 94°C for 30 s, 60°C for 30 s, and 72°C for 30 s; and a final 72°C for 5 min. The purified tag-indexed PCR products were quantified by using a Qubit 2.0 Fluorometer and dsDNA HS Assay Kit (Life Technologies, Carlsbad, CA, United States). Samples were then pooled in equal amounts and sequenced by using a 250-bp paired-end sequencing protocol with the MiSeq Sequencing Reagent Kit v. 2 (Illumina) at Bioengineering Lab Co., Ltd., (Kanagawa, Japan). Sequence reads of all samples were processed using QIIME2 (Caporaso et al., 2010). In summary, assembly of pair-end reads was performed with default settings and then primer removal, quality control, and chimeric sequence trimming were performed using dada2 (Callahan et al., 2016). Taxonomic classification was assigned using a SILVA 16S rRNA reference alignment [Release 132 (Quast et al., 2013)]. Each sample contained 0.3–1.7% of plant organelle reads. Therefore, all sequences classified as chloroplast or mitochondria were removed.

A universal marker set of 31 protein-encoding phylogenetic marker genes was extracted from the metagenome data of KM1 and KM2 using AMPHORA2 with default settings (Wu and Scott, 2012).

Proteome Analysis

Proteins were extracted from the EBCs from the roots, and ~50 µg of sample was separated by 12.5% sodium dodecyl sulfate-polyacrylamide gel electrophoresis (SDS-PAGE) and stained with Coomassie blue. Gel strips containing proteins ranging from 21.5 to 66.2 kDa (NifHDK protein sizes) were excised (Figure 1). Proteome analysis was performed as described previously (Kasahara et al., 2012; Bao et al., 2014). Briefly, the gel lanes were cut into strips of approximately 1 mm, and the gel strips were digested with trypsin. Nano-liquid chromatography (LC)–electrospray ionization–tandem mass spectrometry (MS/MS) analysis of the peptide mixtures was performed with an LTQ ion-trap MS (Thermo Fisher Scientific) coupled with a multidimensional high-performance LC (HPLC) Paradigm MS2 chromatograph (AMR, Inc., Tokyo, Japan) and nanospray electrospray ionization device (Michrom Bioresources, Inc., Auburn, CA, United States). The MS/MS data were searched against the protein database constructed in this study using Mascot program ver. 2.4 (Matrix Science, London, United Kingdom).

Isolation of Bradyrhizobia From Sorghum Roots

The bacterial cells extracted from the roots of lines KM1 and KM2 were pre-incubated at 28°C for 6 h in HM salt medium (Cole and Elkan, 1973) supplemented with 0.1% (w/v) arabinose and 0.025% (w/v) yeast extract to activate the bacterial cells for subsequent plating. These samples were serially diluted with sterilized water and plated on two types of agar plates, 1/100-strength nutrient medium (BD Biosciences, Franklin Lakes, NJ,

United States) containing 1.5% agar and 10 mg L⁻¹ polymyxin B or 1/100-strength HM salt medium containing 1.5% agar and 10 mg L⁻¹ polymyxin B. This isolation strategy was used because *Bradyrhizobium* species are oligotrophic slow-growing bacteria (Okubo et al., 2012b, 2013) and resistant to polymyxin B (Hirayama et al., 2011; Piromyou et al., 2015a). After 10 days of cultivation at 28°C, slow-growing white colonies were picked up and re-streaked on the same types of agar plates for the first cultivation without polymyxin B. This step was repeated one more time. Cell lysates of the resulting isolates were used to amplify the 16S rRNA gene by PCR as described previously (Itakura et al., 2009).

Phylogenetic Analyses of Bradyrhizobial Isolates

The 16S rRNA gene regions were amplified with Blend Taq polymerase (Toyobo, Osaka, Japan) and sequenced by direct PCR using universal forward (27f) and reverse (1492r) primers (Lane, 1991). The PCR conditions were as follows: preheating at 94°C for 2 min; 30 cycles of denaturation at 94°C for 30 s, annealing at 55°C for 30 s, and extension at 72°C for 90 s; extension at 72°C for 60 s; a final extension at 72°C for 5 min, and cooling at 12°C. For direct PCR sequence analysis with the 27f primer, an ABI Prism 3130xl genetic analyzer was used with a BigDye Terminator v. 3.1 Cycle Sequencing Ready-Reaction Kit (Applied Biosystems, Foster City, CA, United States). Phylogenetic trees of the gene sequences were constructed in MEGA v. 7.0 software (Tamura et al., 2011) by using the neighbor-joining method (Saitou and Nei, 1987).

Mapping of Shotgun Sequences

Genomic DNA of bradyrhizobial isolates TM122 or TM124 was extracted with an Illustra Bacteria GenomicPrep Mini Spin Kit (GE Healthcare, Little Chalfont, United Kingdom). DNA libraries were prepared with a Nextera DNA Sample Preparation Kit and sequenced on an MiSeq system using a MiSeq Reagent Nano Kit v. 2 (500 cycles) (both Illumina). Raw reads were trimmed in CLC Genomics Workbench v. 7.5.1 software (CLC Bio, Aarhus, Denmark) with the following parameters: ambiguous limit, 2; quality limit, 0.05; number of 5' terminal nucleotides, 20; number of 3' terminal nucleotides, 5; minimum number of nucleotides in reads, 70.

Shotgun sequence reads of the isolates were mapped to a reference genome of *B. diazoefficiens* USDA110^T (Kaneko et al., 2002). Mapping was performed in CLC Genomics Workbench software with the following parameters: mismatch cost, 2; insertion cost, 3; deletion cost, 3; length fraction, 0.9; similarity fraction, 0.9. The shotgun sequences of TM122 and TM124 were assembled in CLC Genomics Workbench software with default parameters. The contigs containing *nif* genes were annotated by using the Microbial Genome Annotation Pipeline (MiGAP²).

Acetylene Reduction Assay of Isolates

Bradyrhizobium sp. TM122, and TM124 were pre-cultured in HM medium (Cole and Elkan, 1973) with shaking at 28°C. Five

²<http://www.migap.org/>

milliliters of the exponential growing culture were collected by centrifugation ($13,000 \times g$, 3 min, 4°C) and washed twice with sterilized water. The cell density was adjusted to 10^7 cells/mL, and 1 mL of the cell suspension was inoculated into 7 mL of Rennie semi-solid medium (5 g of sucrose, 5 g of mannitol, 0.5 mL of sodium lactate, 0.8 g of K_2HPO_4 , 0.2 g of KH_2PO_4 , 0.1 g of NaCl, 28 mg of Na_2FeEDTA , 25 mg of $\text{Na}_2\text{MoO}_4 \cdot 4\text{H}_2\text{O}$, 100 mg of yeast extract, 0.2 g of $\text{MgSO}_4 \cdot 7\text{H}_2\text{O}$, 0.06 g of CaCl_2 , 5 μg of biotin, 10 μg of *para*-aminobenzoic acid, and 0.2 g of noble agar per L) (Rennie, 1981) in a 28-mL test tube, which was capped with a butyl rubber W-plug. After the test tubes were incubated at 28°C for 3 days, 10% (v/v) of the gas phase was replaced with acetylene (99.9999% vol/vol purity; Toho Acetylene Co., Tokyo, Japan). The samples were re-incubated at 28°C without shaking for 3 days. The gas phase (0.5 mL) was sampled to determine the concentration of ethylene by a gas chromatograph as described above.

Acetylene Reduction Assay of Sorghum Seedling Inoculated With Isolates

Sorghum seeds of KM2 were shaken in 0.5% NaOCl solution for 1 min and then washed five times with sterile distilled water. Two sterilized seeds were planted in a Leonard's jar containing sterilized vermiculite (Inaba et al., 2012) and plant nutrient solution (Mae and Ohira, 1981) with 0.05 mM of NH_4NO_3 under aseptic conditions (**Supplementary Figure S3**). A cell suspension of TM122 or TM124 was added to the sorghum seeds at a concentration of 10^7 cells per seed.

The plants were grown in a growth cabinet (LH300; NK System Co., Ltd., Osaka, Japan) that provided 65 mol photons $\text{m}^{-2} \text{s}^{-1}$ of photosynthetically active radiation (400–700 nm) under a daily cycle of 16 h of light and 8 h of dark at 25°C . After 7 days, the seedlings were thinned out to one plant. At 28 days after inoculation, the roots were carefully harvested and then transferred into a 100-mL vial with a butyl rubber septum (SVG-100, Nichiden-Rika Glass Co., Ltd.). Acetylene (10 mL) was introduced into the bottles, which were incubated for 24 h at 25°C in the dark.

Accession Numbers

DNA sequences obtained by the metagenomic analysis and 16S rRNA gene amplicon, TM122 genome, and TM124 genome were deposited under the accession numbers DRA006465, DRA006466, DRA006492, and DRA006493 in the DDBJ Sequence Read Archive, respectively. The sequences of 16S rRNA genes of bacterial isolates were deposited in DDBJ/EMBL/GenBank under the accession numbers LC367220–LC367221 and LC433572–LC433596, respectively.

RESULTS

Acetylene Reduction Assay of Field-Grown Sorghum

N_2 -fixing activities were monitored at different growth stages for four sorghum lines (KM1, KM2, KM4, and KM5) by an acetylene

reduction assay in closed bottles (**Figure 1** and **Supplementary Figures S1, S2**). Because sorghum tissues emit ethylene as a plant hormone, we calculated the ARA of bacterial nitrogenase as the difference in the rate of ethylene production in the presence and absence of acetylene (**Supplementary Table S1**).

We detected no ARA in the seedlings at 0 DAT or in the shoots and roots at 28 DAT (**Table 1**). However, we detected significant ARA values (KM1, $36.1 \text{ nmol plant}^{-1} \text{ h}^{-1}$, KM2, $52.6 \text{ nmol plant}^{-1} \text{ h}^{-1}$) at 71 DAT in the washed roots (**Table 1**). At 102 DAT, the roots of all lines showed significantly higher ARA values than at 71 DAT. Particularly, the roots of KM1 showed the highest ARA ($585.8 \text{ nmol plant}^{-1} \text{ h}^{-1}$), followed by line KM2 ($332.5 \text{ nmol plant}^{-1} \text{ h}^{-1}$). The ARA of KM5 roots ($6.7 \text{ nmol plant}^{-1} \text{ h}^{-1}$) was significantly lower than that of KM1 (**Table 1**), indicating that root ARA depends on the sorghum genotype.

$^{15}\text{N}_2$ -Feeding Experiment of Field-Grown Sorghum

The above results suggest that N_2 fixation in the roots is high in late growth stages of some sorghum lines. To confirm N_2 fixation more directly, we conducted $^{15}\text{N}_2$ -feeding experiments using the roots at 102 DAT (**Figure 1** and **Supplementary Figure S2**). When the roots were exposed to $^{15}\text{N}_2$ for 23 h, ^{15}N was apparently incorporated into the root tissues inhabited by bacteria including diazotrophs, indicating that the bacteria fixed N_2 (**Table 2**). We calculated the $^{15}\text{N}_2$ -fixing activity from the ^{15}N concentration (atom% excess) and total N amount (biomass \times N content) (**Table 2**). Although the four lines showed $^{15}\text{N}_2$ -fixation, the highest activity was detected in the roots of KM1 ($102.8 \mu\text{g N plant}^{-1} \text{ day}^{-1}$), which was significantly higher than the values in the other lines (**Table 2**). KM2 showed the second highest activity ($40.7 \mu\text{g N plant}^{-1} \text{ day}^{-1}$).

Comparison Between ARA and $^{15}\text{N}_2$ -Feeding Experiments

ARA values were converted to gram N basis to compare the results of the ARA and $^{15}\text{N}_2$ -feeding experiments (**Table 3**). N_2 fixation values in KM1 roots reached a maximum at 102 DAT and were nearly identical between the ARA and $^{15}\text{N}_2$ -feeding methods (98.4 – $102.8 \mu\text{g N plant}^{-1} \text{ day}^{-1}$; **Table 3**). N_2 fixation values in KM2 and KM4 roots were lower in the $^{15}\text{N}_2$ feeding method than in ARA measurement. KM5 roots consistently showed the lowest values ($\sim 1 \mu\text{g N plant}^{-1} \text{ day}^{-1}$) in both methods. Thus, we focused on the root microbiomes of KM1 and KM2 at 102 DAT for subsequent metagenome, proteome, and isolation analyses (**Figure 1**) because their N_2 -fixing activities were the highest (**Table 2**).

Metagenome Analysis

We extracted bacterial cells from the roots of KM1 and KM2 with three biological replicates at 102 DAT. The metagenomes of the six DNA samples were sequenced by MiSeq. The metagenomic data comprised 4.3 – 5.4×10^6 reads and 196–208-bp average lengths per DNA sample (**Supplementary Table S2**).

By using a *nif* database (see section “Materials and Methods”), we retrieved genes encoding nitrogenase reductase (NifH) and

TABLE 1 | Acetylene-reducing activity (ARA) of four sorghum lines (KM1, KM2, KM4, and KM5) at each growth stage^a.

DAT	Tissue	Acetylene-reducing activity (ARA) (nmol C ₂ H ₄ plant ⁻¹ h ⁻¹)							
		KM1		KM2		KM4		KM5	
0	Seedling	0.0 ± 0.0	C	0.1 ± 0.1	C	0.5 ± 0.4	C	-0.1 ± 0.0	C
28	Shoot	0.1 ± 0.3	C	-0.9 ± 0.2	C	0.1 ± 0.6	C	0.3 ± 0.6	C
28	Root	-0.1 ± 0.0	C	0.2 ± 0.1	C	0.0 ± 0.2	C	0.1 ± 0.0	C
71	Leaf	0.4 ± 0.4	C	1.6 ± 0.4	C [†]	0.2 ± 0.0	C	0.2 ± 0.1	C
71	Stem	1.4 ± 0.6	C	0.4 ± 0.5	C	0.7 ± 0.4	C	0.1 ± 0.5	C
71	Root	36.1 ± 10.9	C [†]	52.6 ± 15.6	C [†]	25.1 ± 9.2	C	1.7 ± 0.7	C
102	Root	585.8 ± 100.0	A [‡]	332.5 ± 21.8	B [‡]	292.1 ± 73.3	B [†]	6.7 ± 1.5	C [†]

^aData are mean ± SEM (n = 3). Daggers indicate significant increase in ethylene production in the presence of acetylene (positive acetylene-reducing activity) compared to natural ethylene production in plant tissues in the absence of acetylene (Welch's t-test, [†]P < 0.05; [‡]P < 0.01; **Supplementary Table S1**). DAT = days after transplanting. Means with the same letter were not significantly different by Tukey's HSD test (P < 0.05).

TABLE 2 | Incorporation of ¹⁵N from ¹⁵N₂ into sorghum roots at 102 days after transplant^a.

Sorghum line and gas phase	¹⁵ N concentration			Root biomass		Root N content	N ₂ fixation	
	‰	Atom%	Atom% excess (a)	Root dry wt (g) plant ⁻¹ (b)		% of total dry wt (c)	μg-N plant ⁻¹ day ⁻¹ (d)	
KM1								
¹⁵ N ₂	57.0 ± 14.0	0.387 ± 0.005	0.021 ± 0.005	88.7 ± 17.9	A	0.54 ± 0.06	102.8 ± 25.6	A
None	3.6 ± 1.4	0.368 ± 0.000						
KM2								
¹⁵ N ₂	50.3 ± 23.0	0.385 ± 0.008	0.019 ± 0.008	46.5 ± 16.3	AB	0.57 ± 0.04	40.7 ± 9.0	B
None	1.3 ± 0.9	0.367 ± 0.000						
KM4								
¹⁵ N ₂	41.7 ± 6.7	0.382 ± 0.002	0.016 ± 0.002	24.4 ± 3.6	B	0.68 ± 0.08	26.1 ± 3.2	B
None	1.5 ± 0.1	0.367 ± 0.000						
KM5								
¹⁵ N ₂	34.4 ± 12.1	0.379 ± 0.004	0.013 ± 0.004	1.6 ± 0.3	B	0.61 ± 0.02	1.3 ± 0.5	B
None	1.2 ± 1.3	0.367 ± 0.000						

^aData are mean ± SEM (n = 3). DAT = days after transplant. N₂ fixation was based on differences in ¹⁵N concentrations between root systems with and without ¹⁵N₂ (None) (see text). Means with the same letter were not significantly different by Tukey's HSD test (P < 0.05). N₂ fixation rate (d) was respectively calculated for three datasets of each sorghum line according to the following formula: d (μg-N plant⁻¹ day⁻¹) = (b × c × 10⁻²) × 10⁶ × a (atom%)/99.4 (atom%) × 24 h/23 h.

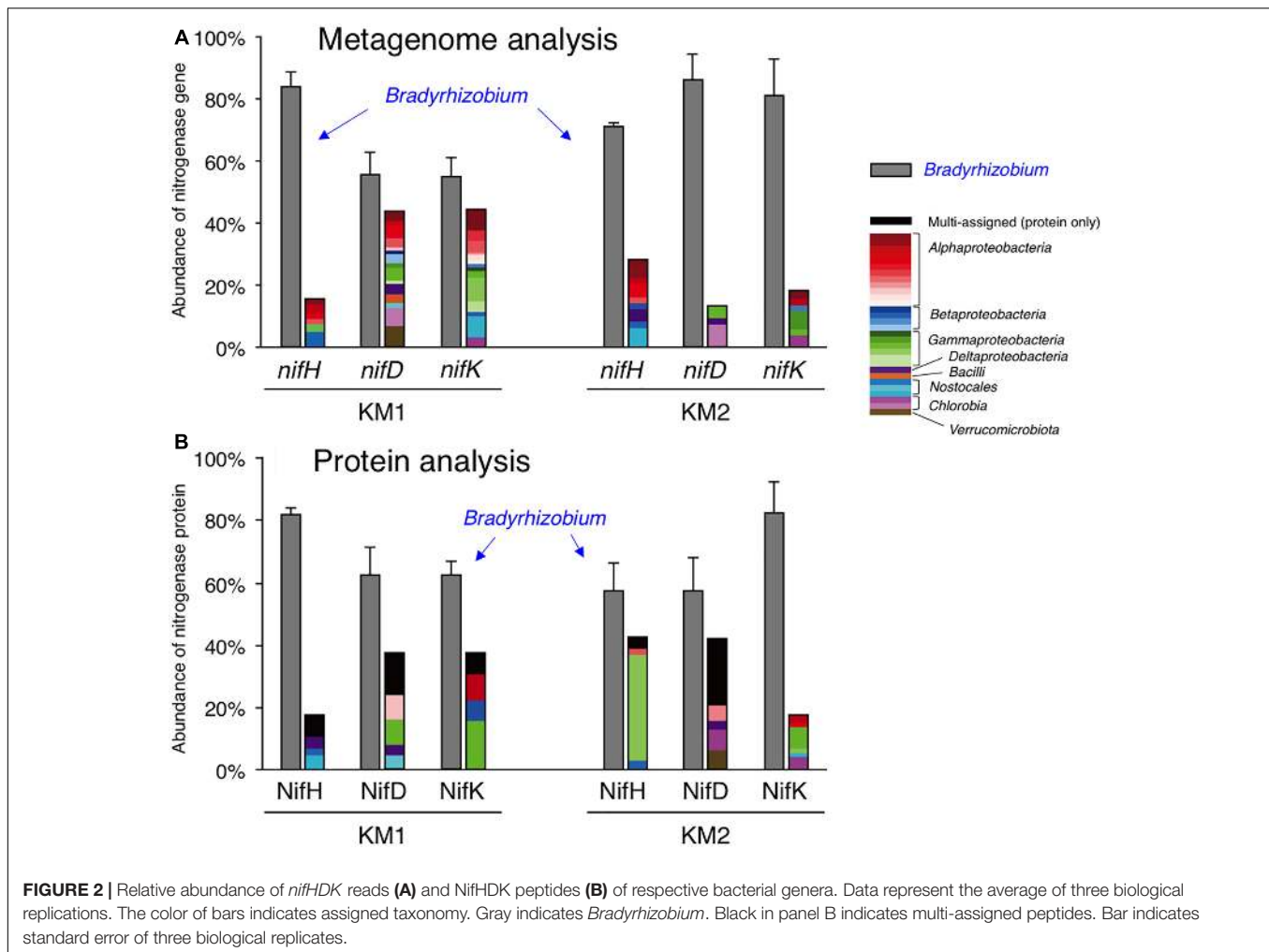
TABLE 3 | Comparison of acetylene-reducing activity and ¹⁵N₂ feeding methods of evaluating N₂-fixing activity in roots of four sorghum lines at 102 days after transplant^a.

Sorghum line	N ₂ fixation from acetylene-reducing activity (ARA)			N ₂ fixation from ¹⁵ N ₂ feeding	¹⁵ N/ARA ratio
	nmol C ₂ H ₄ plant ⁻¹ h ⁻¹	nmol N ₂ plant ⁻¹ day ⁻¹	μg N plant ⁻¹ day ⁻¹	μg N plant ⁻¹ day ⁻¹	
KM1	585.8 ± 100.0	3515 ± 600	98.4 ± 16.8	102.8 ± 25.6	1.18 ± 0.41
KM2	332.5 ± 21.8	1995 ± 131	55.9 ± 3.7	40.7 ± 9.0	0.73 ± 0.16
KM4	292.1 ± 73.3	1753 ± 440	49.1 ± 12.3	26.1 ± 3.2	0.59 ± 0.11
KM5	6.7 ± 1.5	40 ± 9	1.1 ± 0.3	1.3 ± 0.5	1.21 ± 0.41

^aAverage values of acetylene-reducing activity and ¹⁵N₂ feeding with SEM (n = 3) are derived from **Tables 1, 2**, respectively. For calculations of nmol N₂ fixation from ARA, the molar conversion factor of 4 from ARA to N₂ fixation was based on equations 1 and 2 below. ¹⁵N/ARA ratio indicates the ratio of N₂ fixation estimated by ARA and ¹⁵N₂ feeding experiments. N₂ + 8H⁺ + 8e⁻ + 16Mg-ATP → 2NH₃ + H₂ + 16Mg-ADP + 16 Pi (Eq. 1 for physiological reaction of nitrogenase). 4C₂H₂ + 8H⁺ + 8e⁻ + 16Mg-ATP → 4C₂H₄ + 16Mg-ADP + 16 Pi (Eq. 2 for acetylene reduction by nitrogenase).

dinitrogenase (NifDK) from the six datasets. Most nitrogenase genes were proteobacterial *nifHDK* genes (**Supplementary Table S3** for KM1, **Supplementary Table S4** for KM2) and did not include *vnfH*, *anfH*, or archaeal nitrogenase genes. At the genus level, *Bradyrhizobium nifHDK* genes were most abundant (**Figure 2A**, 55–86% in each nitrogenase gene of

KM1 and KM2), and three *nif* structural genes (*nifHDK*) of *Bradyrhizobium* were consistently detected among the six datasets including sorghum lines KM1 and KM2 (**Figure 2A** and **Supplementary Table S5**). In contrast, *nifHDK* genes of other genera showed relatively low abundance (**Figure 2A**, 1–7% in each nitrogenase gene of KM1 and KM2), with



parts of three *nif* structural genes (Supplementary Table S5). For example, *nif* structural genes from *Azorhizobium* were exclusively found in *nifDK* genes from the sorghum line KM1 (Supplementary Table S5).

BLAST analysis indicated that most bradyrhizobial *nifHDK* genes belonged to the non-nodulating *Bradyrhizobium* sp. S23321 (AP012279) (Okubo et al., 2012a) and photosynthetic *B. oligotrophicum* S58^T (AP012603) (Okubo et al., 2013) (Supplementary Tables S6, S7). Among the *Bradyrhizobium nifHDK* reads, S23321 *nifH* genes accounted for 40% of the *nifH* reads from KM1 reads and 45% of the *nifH* reads from KM2 reads. S58^T *nifH* genes accounted for 17% and 21%, respectively (Supplementary Tables S6, S7). Abundant *nifDK* reads were also observed in S23321 (31–37%) and S58 (11–29%) among *Bradyrhizobium nifDK* reads of sorghum lines KM1 and KM2 (Supplementary Tables S6, S7). These results suggest that *Bradyrhizobium*-homologous *nifHDK* genes are abundant in the KM1 and KM2 root microbiomes. The expression of nitrogenase genes is regulated by oxygen and nitrogen, as microbial N₂ fixation requires a large amount of energy (Yoneyama et al., 2017; Rosenblueth et al., 2018). Thus, we examined which *nifHDK* genes were expressed

in the plant environments by determining their resulting protein levels.

Proteome Analysis

We analyzed the proteomes of EBCs from the roots of KM1 and KM2 at 102 DAT (Figure 1). The proteins were separated by SDS-PAGE, and we excised gel strips with protein sizes ranging from 21.5 to 66.2 kDa because the estimated sizes of NifH as well as NifD and NifK (Boyd and Peters, 2013; Gaby and Buckley, 2014) were 30–32 and 55–60 kDa, respectively (Figure 1). First, we constructed a database of NifHDK peptides based on the DNA sequences of *nifHDK* genes from our metagenome data (Data Set 1). Next, amino acid sequences of the peptide generated by proteome analysis (Data Set 2) were assigned based on 100% identity (Data Set 2) in the NifHDK database (Data Set 1). The results were summarized at the genus level (Figure 2B and Table 4), which revealed that the NifHDK peptides were from 15 genera and 1 family of *Alpha*-, *Beta*-, *Gamma*-, and *Delta*-proteobacteria and cyanobacteria in the root microbiomes. Among them, *Bradyrhizobium* NifHDK peptides were simultaneously detected in all three sampling replicates with an apparently higher abundance than those of

TABLE 4 | Total number of NifHDK peptides in root microbiomes of sorghum lines KM1 and KM2^a.

Class	Genus	KM1			KM2		
		NifH	NifD	NifK	NifH	NifD	NifK
Alphaproteobacteria	<i>Bradyrhizobium</i>	32**	17**	13**	23**	21**	27**
Alphaproteobacteria	<i>Hartmannibacter</i>			2*			2
Alphaproteobacteria	<i>Methylobacterium</i>						1
Alphaproteobacteria	<i>Rhizobium</i>	2			1		
Alphaproteobacteria	<i>Rhodospirillum</i>		2*			2*	
Betaproteobacteria	<i>Pseudodesulfobivrio</i>			1			
Gammaproteobacteria	<i>Klebsiella</i>		2*	4*			4*
Gammaproteobacteria	<i>Kosakonia</i>			1	15**	1	
Deltaproteobacteria	<i>Desulfobivrio</i>		1			1	
Nostocales	<i>Anabaena</i>	1			1		
Nostocales	<i>Calothrix</i>		1				
Nostocales	<i>Nostoc</i>	2					1
Chlorobia	<i>Chlorobaculum</i>					1	2*
Verrucomicrobia	<i>Opitutaceae</i>					3	
Others		2	4	1		3	
	Total	39	27	21	40	31	38

^aData obtained from three biological replications. Asterisks indicate that each nitrogenase protein was detected in **three and *two replicates. The original data with three replications of sorghum plants are shown in **Supplementary Table S8**.

other genera (**Table 4** and **Supplementary Table S8**). At the strain level, the bradyrhizobial NifHDK peptides (**Table 4**) were heavily assigned to NifHDK of *Bradyrhizobium* sp. S23321 and *B. oligotrophicum* S58 in sorghum lines KM1 and KM2, although the NifD peptide of *B. oligotrophicum* S58 was not detected in sorghum line KM2 (**Supplementary Table S9**). In contrast, NifH peptides of *Kosakonia* of *Gammaproteobacteria* were abundantly detected in KM2, whereas the corresponding NifDK peptides were not abundant (**Table 4** and **Supplementary Table S8**). Three peptides (NifHDK) were not simultaneously detected in non-bradyrhizobia (**Table 4**).

Therefore, our culture-independent results indicate that *Bradyrhizobium* species fixed N₂ at the late growth stage of sorghum lines KM1 and KM2 under field conditions. Particularly, close relatives of *Bradyrhizobium* sp. S23321 and *B. oligotrophicum* S58 are likely crucial candidates as functional diazotrophs in field-grown sorghum roots according to our proteome results.

Microbial Community of Sorghum Root

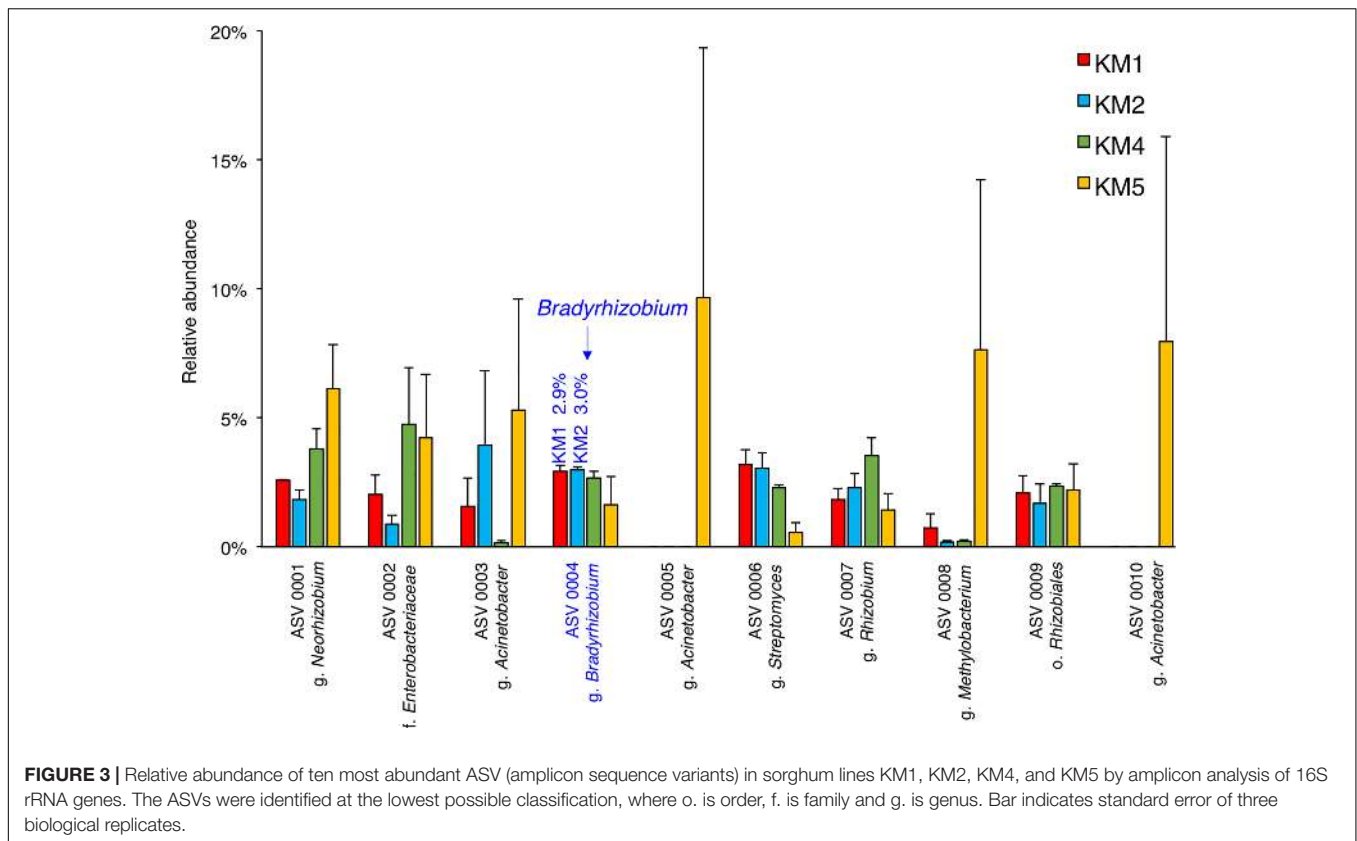
We sequenced amplicons of 16S rRNA genes to evaluate the relative abundance of *Bradyrhizobium* members in the root microbiomes of the four sorghum lines at 102 DAT. Taxonomic classification represented Amplicon Sequence Variants (ASVs) generated by dada2 (Callahan et al., 2016) in QIIME2 (Caporaso et al., 2010). The relative abundances of *Bradyrhizobium* (ASV 0004) in KM1 and KM2 root microbiomes were 2.9 and 3.0%, respectively (**Figure 3**). Phylogenetic analysis of our metagenomic data using 31 AMPHORA genes also showed a similar relative abundance of *Bradyrhizobium* of KM1 and KM2 (3.6%) (**Supplementary Figure S4**). These results suggest that *Bradyrhizobium* species

are consistent members of the root microbiomes of sorghum lines KM1 and KM2.

Isolation of Bradyrhizobia From Sorghum Roots

Because horizontal transfer of *nif* genes among several lineages of bacteria (Boyd and Peters, 2013), and even within *Bradyrhizobium* (Okubo et al., 2016), has been suggested, *Bradyrhizobium* may not always harbor bradyrhizobial *nif* genes. Therefore, we isolated bradyrhizobia from the sorghum roots on two types of oligotrophic media (1/100-strength nutrient agar medium or 1/100-strength HM agar medium) containing polymixin B. Twenty-eight slow-growing white colonies were isolated, eight of which were identified as *Bradyrhizobium* based on 16S rRNA gene sequencing (**Supplementary Table S10**). The other 20 isolates belonged to *Ancylobacter*, *Boseae*, *Sphingobium*, *Mesorhizobium*, *Deinococcus*, *Mycobacterium*, and *Terrabacter*.

Phylogenetic analysis based on 16S rRNA gene sequences indicated that bradyrhizobial isolates TM122 and TM124 were very close to photosynthetic *B. oligotrophicum* S58^T (Okubo et al., 2013) and non-nodulating *Bradyrhizobium* sp. S23321 (Okubo et al., 2012a), respectively (**Figure 4**). The isolate TM220 apparently belonged to *B. diazoefficiens*, while the other bradyrhizobial isolates (TM102, TM228, TM233, TM239, and TM221) were close to *B. japonicum*. Both species are typical soybean endosymbionts (Kaneko et al., 2002, 2011). Metagenome and subsequent proteome analyses suggested that potential candidates of functional diazotrophs in the field-grown sorghum roots were close relatives of *Bradyrhizobium* sp. S23321 and *B. oligotrophicum* S58 (**Supplementary Tables S6, S7, S9**). Thus, we used the isolates TM122 and TM124 for subsequent genome analysis and N₂ fixation experiments.



Draft Genome Analyses of Bradyrhizobial Isolates

Mapping of the MiSeq reads of TM122 and TM124 to the soybean-nodulating *B. diazoefficiens* USDA110^T genome showed that their genomes lacked symbiosis island structures of soybean bradyrhizobia that include *nod* genes (Figure 5A). A BLAST search confirmed that the genomes of both strains lacked the common nodulation genes (*nodD**YABC*) required for legume nodulation (Andrews and Andrews, 2017). After assembling the MiSeq reads of TM122 and TM124, we retrieved the sequence contigs containing *nif* genes. The organization of *nif* genes in each genome resembled those of *B. oligotrophicum* S58^T and *Bradyrhizobium* sp. S23321, but differed from those of nodulating *B. diazoefficiens* USDA110^T, which contains symbiosis islands (Kaneko et al., 2002; Kaneko et al., 2011; Okubo et al., 2016).

Acetylene Reduction Assay of Two Bradyrhizobial Isolates

The potential for N₂ fixation by the two bradyrhizobial isolates was evaluated in free-living and plant-associated states (Table 5). Free-living cells of TM122 and TM124 in semi-solid medium produced ethylene over time in the presence of acetylene (Supplementary Figure S5) and showed significant ARA in the semi-solid medium (Table 5). This result indicates that both isolates can fix N₂ in a free-living state.

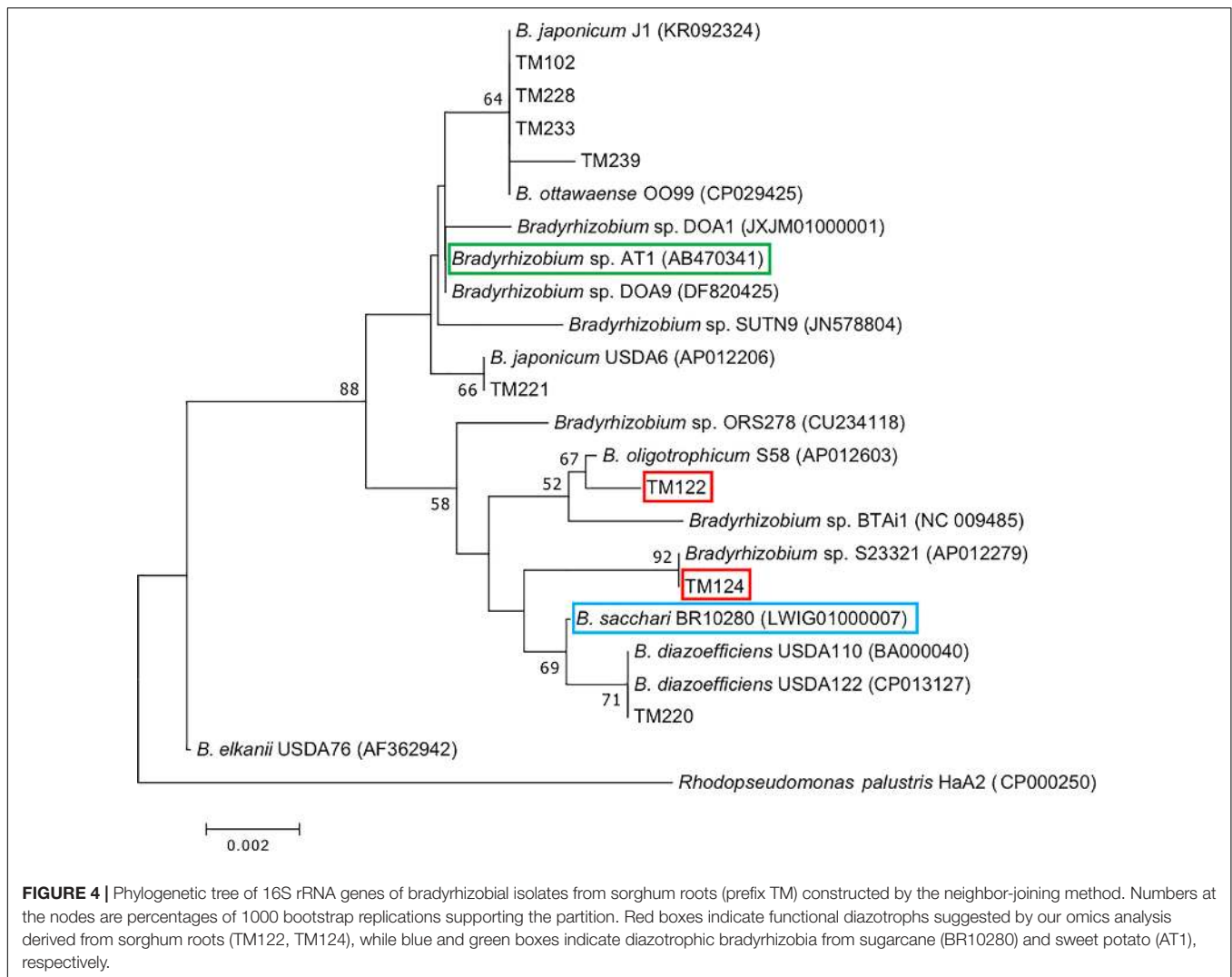
Thereafter, seeds from the sorghum line KM2 were inoculated with isolates TM122 or TM124 and aseptically grown for

28 days after inoculation (Supplementary Figure S3). We detected weak but significant ARA (22.6–31.4 pmol plant⁻¹ h⁻¹) in the roots inoculated with TM122 compared to that in uninoculated roots. In contrast, TM124-inoculated roots showed no ARA under the two different treatments of N supply under our experimental conditions (Table 5 and Supplementary Figure S3), which may have been because of weak colonization or low nitrogenase expression in the sorghum seedlings following TM124 inoculation.

DISCUSSION

Our omics results revealed that functional N₂-fixing bradyrhizobia associated with the roots of field-grown sorghum plants have significant N₂-fixing activities in late growth stages. Experimentally, in addition to the *nifH* gene encoding nitrogenase reductase (NifH), the usage of *nifDK* genes encoding NifDK facilitated the reliable identification of functional diazotrophs in sorghum roots (Figure 2), as the *nifH* gene is often diversely multiplied (Figure 5B; Okubo et al., 2016). Here, we discuss the results in terms of the level of nitrogen fixation, phylogenetic comparison with diazotrophs in other crops, and *Bradyrhizobium* diversity in N₂ fixation and nodulation.

The N₂-fixing activities of the field-grown sorghum roots (102 DAT) were determined by both the ARA and ¹⁵N₂-feeding methods (Tables 1, 2). The N₂-fixing activities of the roots were

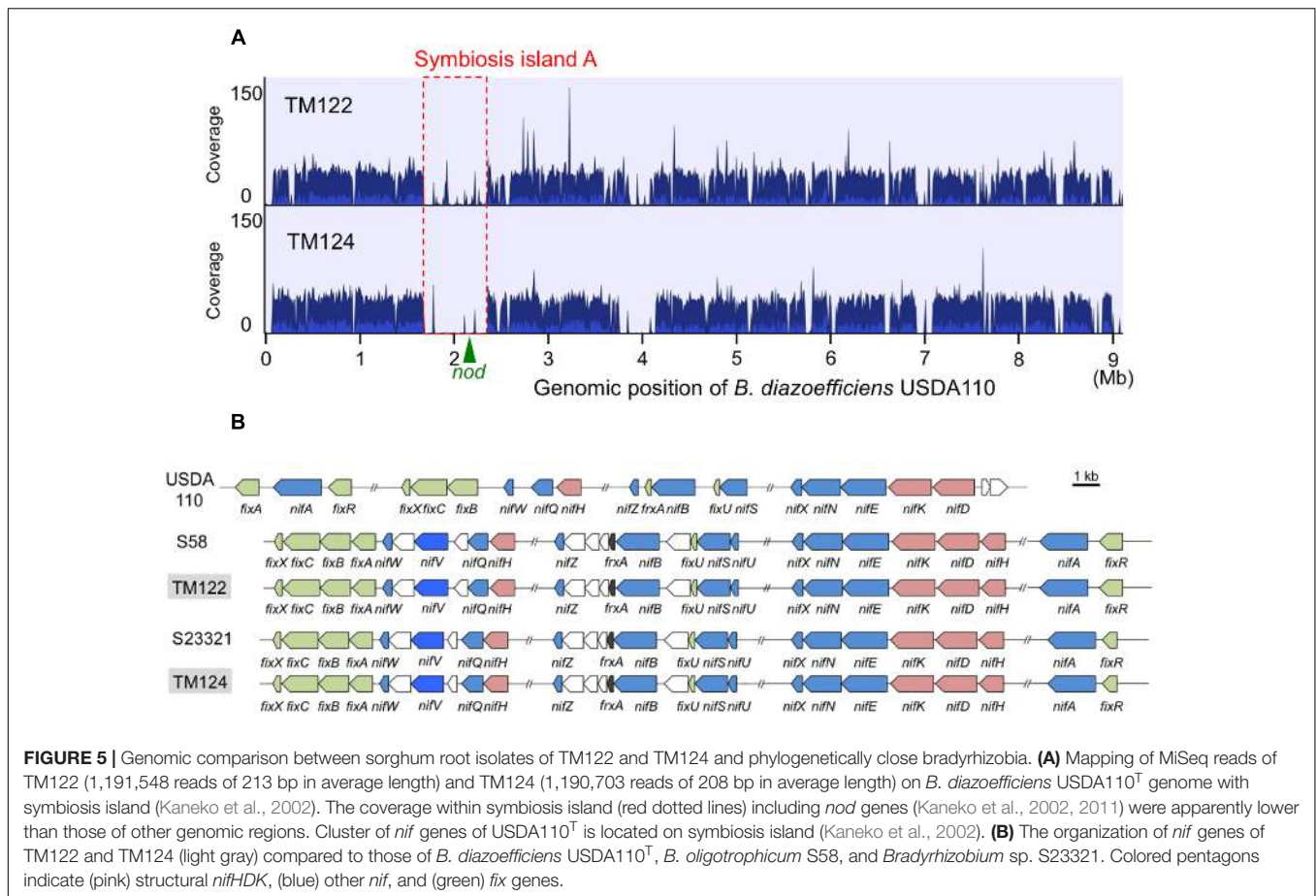


consistent between the methods (Table 3), indicating that the values obtained for the N_2 -fixing activities are reliable. Wani et al. (1984) evaluated the ARA of intact sorghum plants grown in sand, soil, and farmyard manure. Although the ARA depended on the manure content, temperature, and sorghum cultivar, the average ARA values of 15 cultivars was $625 \text{ nmol C}_2\text{H}_4 \text{ plant}^{-1} \text{ h}^{-1}$ at $30\text{--}35^\circ\text{C}$ during the day. This is similar to the value of $585.8 \text{ nmol C}_2\text{H}_4 \text{ plant}^{-1} \text{ h}^{-1}$ in the KM1 roots (Table 1), although the experiments were performed in very different environments (Supplementary Table S11).

Active expression of the dinitrogenase reductase-encoded gene (*nifH*) was abundant in sugarcane stems, sweet potato stems, and pineapple leaves, which are rich in sugars and organic acids (Yoneyama et al., 2017). The leaves and stems of field-grown sorghum showed no ARA at 28 and 71 DAT except for a low ARA value for the sorghum line KM2 (Table 1 and Supplementary Table S1). In contrast, considerably higher ARA values were detected in sorghum lines KM1, KM2, and KM4 at 71 DAT (Table 1). These results suggest that the functional N_2 -fixing bacteria exclusively reside in the roots of field-grown sorghum.

Bradyrhizobium are versatile bacteria inhabiting soils and plants (Zhalnina et al., 2013; VanInsberghe et al., 2015; Jones et al., 2016; Szoboszlai et al., 2017). Genomic and ecological studies have focused on soybean bradyrhizobia (*B. diazoefficiens* and *B. japonicum*) because of their prominent roles in nodule formation and their agricultural significance (Masuda et al., 2016; Shiro et al., 2016; Saeki et al., 2017; Siqueira et al., 2017). However, photosynthetic diazotrophs often nodulate an aquatic legume, *Aeschynomene*, but sometimes lack *nod* genes (Giraud et al., 2007; Okubo et al., 2012a; Okazaki et al., 2016), and, thus, appear to function as an intermediate between free-living diazotrophs and classical nodulating diazotrophs (Okubo et al., 2013). Our results suggest that sorghum roots harbor functional N_2 -fixing bradyrhizobia that are similar to photosynthetic *B. oligotrophicum* S58^T and *Bradyrhizobium* sp. S23321.

Recent metatranscriptome analyses targeting *nifH* genes suggested that *Bradyrhizobium* species play a role in sugarcane-associated N_2 fixation (Thaweenut et al., 2011; Fischer et al., 2012). Representative isolates, including BR10280^T, from surface-sterilized sugarcane tissues (Rouws et al., 2014) were



recently classified as *B. sacchari* (de Matos et al., 2017). The phylogenetic position of *B. sacchari* BR10280^T is close to that of *B. diazoefficiens* USDA110^T, a typical soybean-nodulating bacterium (Figure 4). *Bradyrhizobium* sp. AT1 (Terakado-Tonooka et al., 2013; Okubo et al., 2016) from sweet potato is close to the soybean-nodulating *B. japonicum* USDA6^T (Figure 4). Although the phylogenetic positions of eight sorghum isolates were widely distributed within *Bradyrhizobium*

(Figure 4), our omics data suggest that the candidates responsible for *in planta* N₂ fixation are close relatives of *B. oligotrophicum* S58^T and *Bradyrhizobium* sp. S23321 such as TM122 and TM124. Recently, diverse non-diazotrophic bradyrhizobia were endophytically colonized in *Arabidopsis thaliana* roots (Schneijderberg et al., 2018). Therefore, functional diversity may be important for symbiosis and N₂ fixation.

Two bradyrhizobial isolates from the sorghum roots based on our omics data showed potential for N₂ fixation (ARA), at least in sorghum seedlings inoculated with TM122 (28 days after sowing) and in the free-living state for TM122 and TM124 (Table 5). Under field conditions, no ARA was detected in the sorghum roots at 28 DAT (53 days after sowing), but the highest ARA values were observed at 102 DAT (Table 1). There are two possibilities for explaining this growth-stage dependent phenomenon. First, N fertilization depletion may explain the highest nitrogenase activity at 102 DAT under field conditions. Second, physiological factors in plant-microbe interactions were likely involved. N₂ fixation also occurs at a high rate in the late growth stages of field-grown maize, although diazotrophic bacteria were not identified (van Deynze et al., 2018). Thus, the expression of bradyrhizobial nitrogenase may require specific environments that provide appropriate carbon source supply, chemical signals, and low oxygen concentration (Terakado-Tonooka et al., 2008; Rouws et al., 2014; Yoneyama et al., 2017)

TABLE 5 | Acetylene-reducing activity (ARA) of free-living cells of *Bradyrhizobium* sp. TM122 and TM124 in semi-solid medium and sorghum seedlings inoculated with TM122 and TM124.

Inoculation	Semi-solid medium (pmol tube ⁻¹ h ⁻¹)	Sorghum seedling (pmol plant ⁻¹ h ⁻¹)	
		Limited N	Continuous N
TM122	64.7 ± 7.8**	22.6 ± 4.7*	31.4 ± 7.5*
TM124	7810 ± 520***	7.71 ± 1.48	13.8 ± 0.8
Uninoculated	1.4 ± 0.1	8.26 ± 0.96	10.1 ± 1.7

Data show average ± standard error of three replicates. Asterisk indicates significant difference compared with uninoculated treatment (Welch's *t*-test, **P* < 0.05; ***P* < 0.01, and ****P* < 0.01). After ammonium nitrate (0.05 mM) was supplied to all sorghum pots by 7 days after inoculation, the N supply was ceased (Limited N) or continued (Continuous N).

along with plant stage and microbial community development in the roots. Recently, root mucilage of land maize was found to be a suitable microenvironment for N₂ fixation and subsequent plant assimilation of fixed nitrogen (van Deynze et al., 2018).

Bradyrhizobium cells often endophytically colonize plant roots (Chaintreuil et al., 2000; Okubo et al., 2012a, 2013; Piromyot et al., 2015b). *Bradyrhizobium* sp. SUT-PR9 deeply invaded the central tissues of rice roots (Piromyot et al., 2015a,b). Cells of *B. oligotrophicum* S58^T and *Bradyrhizobium* sp. ORS278 inhabited the surface tissues (epidermal and surface cortex cells) of cultivated and wild rice plants (Chaintreuil et al., 2000; Okubo et al., 2012b, 2013). Thus, bradyrhizobia may endophytically colonize sorghum root tissues. Microscopy studies should be conducted to localize bradyrhizobia in sorghum roots.

Interactions between diazotrophs and host plant genotypes have remained unclear in the use of N₂-fixing bacteria in crops (Okubo et al., 2013; Yoneyama et al., 2017). Further analyses targeting bradyrhizobia and sorghum genotypes may contribute to the understanding of the interactions between N₂-fixing bradyrhizobia and sorghum plants for sustainable agriculture.

CONCLUSION

The highest nitrogen-fixing activities were detected in the roots of sorghum lines KM1 and KM2 in the late growth stage (102 DAT). Nitrogenase structural genes (*nifH*, *nifD*, and *nifK*) in the metagenome sequences were assigned to *Bradyrhizobium* species by metagenome analysis. Proteome analysis indicated that three NifHDK proteins of *Bradyrhizobium* species were consistently detected across sample replicates. Most of these proteins were assigned to photosynthetic *B. oligotrophicum* S58^T and non-nodulating *Bradyrhizobium* sp. S23321. The polyphasic approach suggested that major functional N₂-fixing bacteria

in the sorghum roots are unique bradyrhizobia that resemble non-nodulating *Bradyrhizobium* sp. S23321 and photosynthetic *B. oligotrophicum* S58^T.

AUTHOR CONTRIBUTIONS

SH, TK, KY, TF, TT, and KM designed the research. SH, TM, SW, and YK analyzed the data. SH and TM analyzed the DNA sequences of PCR products and metagenome. YK performed the proteome analysis. TK, SH, and SW characterized isolated diazotrophs. SH and KM wrote the article.

FUNDING

This work was supported by a Grant-in-Aid for Scientific Research (A) (26252065) and (B) (18H02112) from the Ministry of Education, Culture, Sports, Science and Technology of Japan, and by a grant from Earthnote Co., Ltd.

ACKNOWLEDGMENTS

We thank Mihoko Tokunaga, Maho Tokunaga, Hisayasu Tokunaga, Umeko Sakuma, and Junichi Yoneda (Earthnote) for their support in cultivation, sampling, acetylene reduction, and for providing information on sorghum.

SUPPLEMENTARY MATERIAL

The Supplementary Material for this article can be found online at: <https://www.frontiersin.org/articles/10.3389/fmicb.2019.00407/full#supplementary-material>

REFERENCES

- Andrews, M., and Andrews, M. E. (2017). Specificity in legume-rhizobia symbioses. *Int. J. Mol. Sci.* 18:E705. doi: 10.3390/ijms18040705
- Bao, Z., Okubo, T., Kubota, K., Kasahara, Y., Tsurumaru, H., Anda, M., et al. (2014). Metaproteomic identification of diazotrophic methanotrophs and their localization in root tissues of field-grown rice plants. *Appl. Environ. Microbiol.* 80, 5043–5052. doi: 10.1128/AEM.00969-14
- Bao, Z., Shinoda, R., and Minamisawa, K. (2016). Draft genome sequence of *Methylosinus* sp. Strain 3S-1, an isolate from rice root in a low-N paddy field. *Genome Announc.* 4:e00932–16. doi: 10.1128/genomeA.00932-16
- Boddey, R. M., Polidoro, J. C., Resende, A. S., Alves, B. J. R., and Urquiaga, S. (2001). Use of the 15N natural abundance technique for the quantification of the contribution of N₂ fixation to sugar cane and other grasses. *Aust. J. Plant Physiol.* 28, 889–895. doi: 10.1071/PP01058
- Boyd, E. S., and Peters, J. W. (2013). New insights into the evolutionary history of biological nitrogen fixation. *Front. Microbiol.* 4:201. doi: 10.3389/fmicb.2013.00201
- Callahan, B. J., McMurdie, P. J., Rosen, M. J., Han, A. W., Johnson, A. J., and Holmes, S. P. (2016). DADA2: high-resolution sample inference from illumina amplicon data. *Nat. Methods* 13, 581–583. doi: 10.1038/nmeth.3869
- Caporaso, J. G., Kuczynski, J., Stombaugh, J., Bittinger, K., Bushman, F. D., Costello, E. K., et al. (2010). QIIME allows analysis of high-throughput community sequencing data. *Nat. Methods* 7, 335–336. doi: 10.3389/fmicb.2013.00201
- Caporaso, J. G., Lauber, C. L., Walters, W. A., Berg-Lyons, D., Lozupone, C. A., Turnbaugh, P. J., et al. (2011). Global patterns of 16S rRNA diversity at a depth of millions of sequences per sample. *Proc. Natl. Acad. Sci. U.S.A.* 108, 4516–4522. doi: 10.1073/pnas.1000080107
- Cavalcante, V. A., and Dobereiner, J. (1988). A new acid-tolerant nitrogen-fixing bacterium associated with sugarcane. *Plant Soil* 108, 23–31. doi: 10.1007/BF02370096
- Chaintreuil, C., Giraud, E., Prin, Y., Lorquin, J., Bâ, A., Gillis, M., et al. (2000). Photosynthetic bradyrhizobia are natural endophytes of the African wild rice *Oryza breviligulata*. *Appl. Environ. Microbiol.* 66, 5437–5447. doi: 10.1007/BF02370096
- Coeelho, M. R., de Vos, M., Carneiro, N. P., Marriel, I. E., Paiva, E., and Seldin, L. (2008). Diversity of *nifH* gene pools in the rhizosphere of two cultivars of sorghum (*Sorghum bicolor*) treated with contrasting levels of nitrogen fertilizer. *FEMS Microbiol. Lett.* 279, 15–22. doi: 10.1111/j.1574-6968.2007.00975.x
- Cole, M. A., and Elkan, G. H. (1973). Transmissible resistance to penicillin G, neomycin, and chloramphenicol in *Rhizobium japonicum*. *Antimicrob. Agents Chemother.* 4, 248–253. doi: 10.1128/AAC.4.3.248
- de Matos, G., Zilli, J., de Araújo, J., Parma, M., Melo, I., Radl, V., et al. (2017). *Bradyrhizobium sacchari* sp. nov., a legume nodulating bacterium isolated from sugarcane roots. *Arch. Microbiol.* 199, 1251–1258. doi: 10.1007/s00203-017-1398-6

- Elbeltagy, A., Nishioka, K., Sato, T., Suzuki, H., Ye, B., Hamada, T., et al. (2001). Endophytic colonization and in planta nitrogen fixation by a *Herbaspirillum* sp. isolated from wild rice species. *Appl. Environ. Microbiol.* 67, 5285–5293. doi: 10.1128/AEM.67.11.5285-5293.2001
- Fischer, D., Pfitzner, B., Schmid, M., Simões-Araújo, J. L., Reis, V. M., Pereira, W., et al. (2012). Molecular characterisation of the diazotrophic bacterial community in uninoculated and inoculated field-grown sugarcane (*Saccharum* sp.). *Plant Soil* 356, 83–99. doi: 10.1007/s11104-011-0812-0
- Gaby, J. C., and Buckley, D. H. (2014). A comprehensive aligned nifH gene database: a multipurpose tool for studies of nitrogen-fixing bacteria. *Database* 2014:bau001. doi: 10.1093/database/bau001
- Giraud, E., Moulin, L., Vallenet, D., Barbe, V., Cytryn, E., Avarre, J. C., et al. (2007). Legumes symbioses: absence of Nod genes in photosynthetic bradyrhizobia. *Science* 316, 1307–1312. doi: 10.1126/science.1139548
- Hirayama, J., Eda, S., Mitsui, H., and Minamisawa, K. (2011). Nitrate-dependent N₂O emission from intact soybean nodules via denitrification by *Bradyrhizobium japonicum* bacteroids. *Appl. Environ. Microbiol.* 77, 8787–8790. doi: 10.1128/AEM.06262-11
- Ikeda, S., Kaneko, T., Okubo, T., Rallos, L. E., Eda, S., Mitsui, H., et al. (2009). Development of a bacterial cell enrichment method and its application to the community analysis in soybean stems. *Microb. Ecol.* 58, 703–714. doi: 10.1007/s00248-009-9566-0
- Inaba, S., Ikenishi, F., Itakura, M., Kikuchi, M., Eda, S., Chiba, N., et al. (2012). N₂O emission from degraded soybean nodules depends on denitrification by *Bradyrhizobium japonicum* and other microbes in the rhizosphere. *Microbes Environ.* 27, 470–476. doi: 10.1264/jsm2.ME12100
- Itakura, M., Saeki, K., Omori, H., Yokoyama, T., Kaneko, T., Tabata, S., et al. (2009). Genomic comparison of *Bradyrhizobium japonicum* strains with different symbiotic nitrogen-fixing capabilities and other Bradyrhizobiaceae members. *ISME J.* 3, 326–339. doi: 10.1038/ismej.2008.88
- James, E. K. (2000). Nitrogen fixation in endophytic and associative symbiosis. *Field Crops Res.* 65, 197–209. doi: 10.1016/S0378-4290(99)00087-8
- Jones, F. P., Clark, I. M., King, R., Shaw, L. J., Woodward, M. J., and Hirsch, P. R. (2016). Novel European free-living, non-diazotrophic *Bradyrhizobium* isolates from contrasting soils that lack nodulation and nitrogen fixation genes - a genome comparison. *Sci. Rep.* 6:25858. doi: 10.1038/srep25858
- Kaneko, T., Maita, H., Hirakawa, H., Uchiike, N., Minamisawa, K., Watanabe, A., et al. (2011). Complete genome sequence of the soybean symbiont *Bradyrhizobium japonicum* strain USDA6T. *Genes* 2, 763–787. doi: 10.3390/genes2040763
- Kaneko, T., Nakamura, Y., Sato, S., Minamisawa, K., Uchiyama, T., Sasamoto, S., et al. (2002). Complete genomic sequence of nitrogen-fixing symbiotic bacterium *Bradyrhizobium japonicum* USDA110. *DNA Res.* 9, 189–197. doi: 10.1093/dnares/9.6.189
- Kasahara, Y., Morimo, H., Kuwan, M., and Kadoya, R. (2012). Genome-wide analytical approaches using semi-quantitative expression proteomics for aromatic hydrocarbon metabolism in *Pseudomonas putida* F1. *J. Microbiol. Meth.* 91, 434–442. doi: 10.1016/j.mimet.2012.09.017
- Khawaja, C., Janssen, R., Rutz, D., Luquet, D., Trouche, G., Reddy, B. V. S., et al. (2014). *Energy Sorghum: An alternative Energy crop A Handbook*. Available at: <http://oar.icrisat.org/9049/>
- Lane, D. J. (1991). “16S/23S rRNA sequencing,” in *Nucleic Acid Techniques in Bacterial Systematics*, eds E. Stackebrandt and M. Goodfellow (Chichester: John Wiley and Sons), 115–175.
- Mae, T., and Ohira, K. (1981). The remobilization of nitrogen related to leaf growth and senescence in rice plants (*Oryza sativa* L.). *Plant Cell Physiol.* 22, 1067–1074. doi: 10.1093/oxfordjournals.pcp.a076248
- Masuda, S., Saito, M., Sugawara, C., Itakura, M., Eda, S., and Minamisawa, K. (2016). Identification of the hydrogen uptake gene cluster for chemolithoautotrophic growth and symbiosis hydrogen uptake in *Bradyrhizobium diazoefficiens*. *Microbes Environ.* 31, 76–78. doi: 10.1264/jsm2.ME15182
- Minamisawa, K., Imaizumi-Anraku, H., Bao, Z., Shinoda, R., Okubo, T., and Ikeda, S. (2016). Are symbiotic methanotrophs key microbes for N acquisition in paddy rice root? *Microbes Environ.* 31, 4–10. doi: 10.1264/jsm2.ME15180
- Naylor, D., DeGraaf, S., Purdom, E., and Coleman-Derr, D. (2017). Drought and host selection influence bacterial community dynamics in the grass root microbiome. *ISME J.* 11, 2691–2704. doi: 10.1038/ismej.2017.118
- Okazaki, S., Tittabutr, P., Teulet, A., Thouin, J., Fardoux, J., Chaintreuil, C., et al. (2016). Rhizobium-legume symbiosis in the absence of Nod factors: two possible scenarios with or without the T3SS. *ISME J.* 10, 64–74. doi: 10.1038/ismej.2015.103
- Okubo, T., Fukushima, S., Itakura, M., Oshima, K., Longtonglang, A., Teamroong, N., et al. (2013). Genome analysis suggests that the soil oligotrophic bacterium *Agromonas oligotrophica* (*Bradyrhizobium oligotrophicum*) is a nitrogen-fixing symbiont of *Aeschynomene indica*. *Appl. Environ. Microbiol.* 79, 2542–2551. doi: 10.1128/AEM.00009-13
- Okubo, T., Fukushima, S., and Minamisawa, K. (2012a). Evolution of *Bradyrhizobium-Aeschynomene* mutualism: living testimony of the ancient world or highly evolved state? *Plant Cell Physiol.* 53, 2000–2007. doi: 10.1093/pcp/pcs150
- Okubo, T., Tsukui, T., Maita, H., Okamoto, S., Oshima, K., Fujisawa, T., et al. (2012b). Complete genome sequence of *Bradyrhizobium* sp. S23321: insights into symbiosis evolution in soil oligotrophs. *Microbes Environ.* 27, 306–315. doi: 10.1264/jsm2.ME11321
- Okubo, T., Piromyong, P., Tittabutr, P., Teamroong, N., and Minamisawa, K. (2016). Origin and evolution of nitrogen fixation genes on symbiosis islands and plasmid in *Bradyrhizobium*. *Microbes Environ.* 31, 260–267. doi: 10.1264/jsm2.ME15159
- Pedersen, W. L., Chakrabarty, K. R. V., Klucas, R. V., and Vidaver, A. K. (1978). Nitrogen fixation (acetylene reduction) associated with roots of winter wheat and sorghum in Nebraska. *Appl. Environ. Microbiol.* 35, 129–135.
- Piromyong, P., Greetatorn, T., Teamtisong, K., Okubo, T., Shinoda, R., Nuntakij, A., et al. (2015a). Preferential association of endophytic bradyrhizobia with different rice cultivars and its implications for rice endophyte evolution. *Appl. Environ. Microbiol.* 81, 3049–3061. doi: 10.1128/AEM.04253-14
- Piromyong, P., Songwattana, P., Greetatorn, T., Okubo, T., Kakizaki, K. C., Prakamhang, J., et al. (2015b). The Type III secretion system (T3SS) is a determinant for rice-endophyte colonization by non-photosynthetic *Bradyrhizobium*. *Microbes Environ.* 30, 291–300. doi: 10.1264/jsm2.ME15080
- Quast, C., Pruesse, E., Yilmaz, P., Gerken, J., Schweer, T., Yarza, P., et al. (2013). The SILVA ribosomal RNA gene database project: improved data processing and web-based tools. *Nucleic Acids Res.* 41, D590–D596. doi: 10.1093/nar/gks1219
- Rennie, R. J. (1981). A single medium for the isolation of acetylene-reducing (dinitrogen-fixing) bacteria from soils. *Can. J. Microbiol.* 27, 8–14. doi: 10.1139/m81-002
- Rosenblueth, M., Ormeño-Orrillo, E., López-López, A., Rogel, M. A., Reyes-Hernández, B. J., Martínez-Romero, J. C., et al. (2018). Nitrogen fixation in cereals. *Front. Microbiol.* 9:1794. doi: 10.3389/fmicb.2018.01794
- Rouws, L. F. M., Leite, J., de Matos, G. F., Zilli, J. E., Coelho, M. R. R., Xavier, G. R., et al. (2014). Endophytic *Bradyrhizobium* spp. isolates from sugarcane obtained through different culture strategies. *Environ. Microbiol. Rep.* 6, 354–363. doi: 10.1111/1758-2229.12122
- Saeki, Y., Nakamura, M., Mason, M. L. T., Yano, T., Shiro, S., Sameshima-Saito, R., et al. (2017). Effect of flooding and the nosZ gene in bradyrhizobia on bradyrhizobial community structure in the soil. *Microbes Environ.* 32, 154–163. doi: 10.1264/jsm2.ME16132
- Saitou, N., and Nei, M. (1987). The neighbor-joining method: a new method for reconstructing phylogenetic trees. *Mol. Biol. Evol.* 4, 406–425. doi: 10.1093/oxfordjournals.molbev.a040454
- Schmieder, R., and Edwards, R. (2011). Quality control and preprocessing of metagenomic datasets. *Bioinformatics* 27, 863–864. doi: 10.1093/bioinformatics/btr026
- Schneiderberg, M., Schmitz, L., Cheng, X., Polman, S., Franken, C., Geurts, R., et al. (2018). A genetically and functionally diverse group of non-diazotrophic *Bradyrhizobium* spp. Colonizes the root endophytic compartment of *Arabidopsis thaliana*. *BMC Plant Biol.* 18:61. doi: 10.1186/s12870-018-1272-y
- Schollhorn, R., and Burris, R. H. (1967). Acetylene as a competitive inhibitor of N₂ fixation. *Proc. Natl. Acad. Sci. U.S.A.* 58, 213–216. doi: 10.1073/pnas.58.1.213
- Shiro, S., Kuranaga, C., Yamamoto, A., Sameshima-Saito, R., and Saeki, Y. (2016). Temperature-dependent expression of nodC and community structure of

- soybean-nodulating bradyrhizobia. *Microbes Environ.* 31, 27–32. doi: 10.1264/jsme2.ME15114
- Siqueira, A. F., Minamisawa, K., and Sánchez, C. (2017). Anaerobic reduction of nitrate to nitrous oxide is lower in *Bradyrhizobium japonicum* than in *Bradyrhizobium diazoefficiens*. *Microbes Environ.* 32, 398–401. doi: 10.1264/jsme2.ME17081
- Steffen, W., Richardson, K., Rockström, J., Cornell, S. E., Fetzer, I., Bennett, E. M., et al. (2015). Planetary boundaries: guiding human development on a changing planet. *Science* 347:1259855. doi: 10.1126/science.1259855
- Szoboszlay, M., Dohrmann, A. B., Poeplau, C., Don, A., and Tebbe, C. C. (2017). Impact of land-use change and soil organic carbon quality on microbial diversity in soils across Europe. *FEMS Microbiol. Ecol.* 93:fix146 doi: 10.1093/femsec/fix146
- Tamura, K., Peterson, D., Peterson, N., Stecher, G., Nei, M., and Kumar, S. (2011). MEGA5: molecular evolutionary genetics analysis using maximum likelihood, evolutionary distance, and maximum parsimony methods. *Mol. Biol. Evol.* 28, 2731–2739. doi: 10.1093/molbev/msr121
- Terakado-Tonooka, J., Fujihara, S., and Ohwaki, Y. (2013). Possible contribution of *Bradyrhizobium* on nitrogen fixation in sweet potatoes. *Plant Soil* 367, 639–650. doi: 10.1007/s11104-012-1495-x
- Terakado-Tonooka, J., Owaki, Y., Yamakawa, H., Tanaka, F., Yoneyama, T., and Fujihara, S. (2008). Expressed nifH genes of endophytic bacteria detected in field-grown sweet potatoes (*Ipomoea batatas* L.). *Microbes Environ.* 23, 89–93. doi: 10.1264/jsme2.23.89
- Thaweenut, N., Hachisuka, Y., Ando, S., Yanagisawa, S., and Yoneyama, T. (2011). Two seasons' study on nifH gene expression and nitrogen fixation by diazotrophic endophytes in sugarcane (*Saccharum* spp. *hybrids*): expression of nifH genes similar to those of rhizobia. *Plant Soil* 338, 435–449. doi: 10.1007/s11104-010-0557-1
- van Deynze, A., Zamora, P., Delaux, P. M., Heitmann, C., Jayaraman, D., Rajasekar, S., et al. (2018). Nitrogen fixation in a landrace of maize is supported by a mucilage-associated diazotrophic microbiota. *PLoS Biol.* 16:e2006352. doi: 10.1371/journal.pbio.2006352
- VanInsberghe, D., Maas, K. R., Cardenas, E., Strachan, C. R., Hallam, S. J., and Mohn, W. W. (2015). Non-symbiotic *Bradyrhizobium* ecotypes dominate North American forest soils. *ISME J.* 9, 2435–2441. doi: 10.1038/ismej.2015.54
- Wani, S. P., Upadhyaya, M. N., and Dart, P. J. (1984). An intact plant assay for estimating nitrogenase activity (C₂H₂ reduction) of sorghum and millet plants grown in pots. *Plant Soil* 82, 15–29. doi: 10.1007/BF02220766
- Wu, M., and Eisen, J. A. (2008). A simple, fast, and accurate method of phylogenomic inference. *Genome Biol.* 9:R151. doi: 10.1186/gb-2008-9-10-r151
- Wu, M., and Scott, A. J. (2012). Phylogenomic analysis of bacterial and archaeal sequences with AMPHORA2. *Bioinformatics* 28, 1033–1034. doi: 10.1093/bioinformatics/bts079
- Xu, L., Naylor, D., Dong, Z., Simmons, T., Pierroz, G., Hixson, K., et al. (2018). Drought delays development of the sorghum root microbiome and enriches for monoderm bacteria. *Proc. Natl. Acad. Sci. U.S.A.* 115, E4284–E4293. doi: 10.1073/pnas.1717308115
- Yoneyama, T., Muraoka, T., Kim, T. H., Dacanay, E. V., and Nakanishi, Y. (1997). The natural 15N abundance of sugarcane and neighboring plants in Brazil, the Philippines and Miyako (Japan). *Plant Soil* 189, 239–244. doi: 10.1023/A:1004288008199
- Yoneyama, T., Terakado-Tonooka, J., and Minamisawa, K. (2017). Exploration of bacterial N₂-fixation systems in association with soil-grown sugarcane, sweet potato, and paddy rice: a review and synthesis. *Soil Sci. Plant Nutri.* 63, 578–590. doi: 10.1080/00380768.2017.1407625
- Zhalnina, K., de Quadros, P. D., Gano, K. A., Davis-Richardson, A., Fagen, J. R., Brown, C. T., et al. (2013). Ca. Nitrososphaera and *Bradyrhizobium* are inversely correlated and related to agricultural practices in long-term field experiments. *Front. Microbiol.* 4:104. doi: 10.3389/fmicb.2013.00104

Conflict of Interest Statement: The authors declare that the research was conducted in the absence of any commercial or financial relationships that could be construed as a potential conflict of interest.

Copyright © 2019 Hara, Morikawa, Wasai, Kasahara, Koshiba, Yamazaki, Fujiwara, Tokunaga and Minamisawa. This is an open-access article distributed under the terms of the Creative Commons Attribution License (CC BY). The use, distribution or reproduction in other forums is permitted, provided the original author(s) and the copyright owner(s) are credited and that the original publication in this journal is cited, in accordance with accepted academic practice. No use, distribution or reproduction is permitted which does not comply with these terms.