

## **Identifying Residential Water End Uses Underpinning Peak Day and Peak Hour Demand**

### **Author**

Beal, Cara D, Stewart, Rodney A

### **Published**

2014

### **Journal Title**

Journal of Water Resources Planning and Management

### **DOI**

[https://doi.org/10.1061/\(ASCE\)WR.1943-5452.0000357](https://doi.org/10.1061/(ASCE)WR.1943-5452.0000357)

### **Copyright Statement**

© 2014 American Society of Civil Engineers (ASCE). This is the author-manuscript version of this paper. Reproduced in accordance with the copyright policy of the publisher. Please refer to the journal's website for access to the definitive, published version.

### **Downloaded from**

<http://hdl.handle.net/10072/61228>

### **Griffith Research Online**

<https://research-repository.griffith.edu.au>

**Citation:** Beal, C.D., Stewart, R.A., (2013). "Identifying Residential Water End-Uses Underpinning Peak Day and Peak Hour Demand." *J. Water Resour. Plann. Manage.*, doi: 10.1061/(ASCE)WR.1943-5452.000035.

## **Identifying residential water end-uses underpinning peak day and peak hour demand**

### **Authors:**

**Cara D. Beal<sup>1</sup> (corresponding author)**

<sup>1</sup>Research Fellow, Smart Water Research Centre, Griffith University, Gold Coast Campus, 4222 Australia, E-mail: [c.beal@griffith.edu.au](mailto:c.beal@griffith.edu.au)

**Rodney A. Stewart<sup>2</sup>**

<sup>3</sup>Director, Centre for Infrastructure Engineering & Management, Griffith University, Gold Coast Campus, 4222, Australia, E-mail: [r.stewart@griffith.edu.au](mailto:r.stewart@griffith.edu.au)

## **Abstract**

Accurate and up-to-date peak demand data is essential to ensure that future mains water supply networks reflect current usage patterns and are designed efficiently from an engineering, environmental and economic perspective. The aim of this paper was to identify the water end-uses which drive peak day demand and to examine their associated hourly diurnal demand patterns based on over 18 months of water consumption data obtained from high resolution smart meters installed in 230 residential properties across south east Queensland, Australia. Peak Day (PD) to Average Day (AD) ratios between 1-1.5 were driven by both external and internal end-uses. However, as the PD:AD ratio increased above 1.5, demand was driven largely by external water usage (i.e. lawn and garden irrigation).. Peak hour ratios (i.e. PHPD:PHAD) ranged from 1.3 to 3.0 for the four peak demand days. At the end-use level, the individual end-use category PHPD:PHAD ratios were in the range of 0.7 – 3.3 for all end-uses, with the exception of external or irrigation. The ratio for this latter end-use category was typically very high, at over 10 times the average irrigation demand. Comparisons with historically-based, but currently used, peaking factors used for network distribution modelling suggests that the degree and frequency of high peaking factors are lower now, due to the high penetration of water-efficient technology and growing water conservation awareness by consumers.

**Keywords:** water end-use consumption, water micro-components, water demand management, peak demand, urban water supply design

## **Introduction**

### **Urban water planning and design**

A reticulated water supply is considered one of the most significant infrastructure assets in a community (Savic and Walters 1997), and as such, the optimal planning and design of this infrastructure is critical. It has been recognised that urban network planning needs to be more optimised (Lucas et al. 2010), and in this regard, understanding the patterns of residential water demand is paramount. Residential water consumption patterns typically vary on both a daily basis, where an *average day peak hour* demand will occur, and on an annual basis, where a *peak day* demand will occur. Moreover, there is an *annual peak hour* demand that can be many multiples of the average day peak hour consumption. Previous research demonstrates that variations in consumption are mainly driven by climate (rainfall and temperature), household demand, consumer behaviour, household stock water efficiency and consumer socio-demographics (Beal and Stewart 2011, Willis et al. 2011a, Arbues et al. 2010). Key water design planning parameters for construction of water delivery infrastructure are the average day, peak day and peak hour demand (Swamee and Sharma 2008, Lucas et al. 2010). Peaking factors are calculated from the average and peak day demand values including the peak day factor which is the ratio of peak day demand/average day demand (PD/AD). A range of peaking factors reported in the literature, is presented in Table 1.

Understanding peaking factors are critical in determining the pipe infrastructure that is sufficient to deliver water during peak water demand periods. Numerous models and algorithms have been developed over several decades which have required the fundamental input parameter of peak hour demand (Goulter and Morgan 1985, Savic and Walters 1997, Jacobs 2007, Adamowski and Karapataki 2010, Alcocer-Yamanaka et al. 2012); these are typically based on top-down estimations rather than bottom-up actual measurement. Also,

beyond the strict engineering focus, AD and PD data and diurnal demand patterns are vital empirical input parameters for other decision support tools for integrated urban water planning such as those proposed by Lim et al. (2010) and Makropoulos et al. (2008).

**Table 1.** Peaking factor ranges reported in the literature

| Peaking factor range | Location   | Source                      |
|----------------------|--|-----------------------------|
| <b>Peak day</b>      |  |                             |
| 1.0 to 1.5           | Data used from various cities in South Africa, France, USA | Van Zyl et al. (2008, 2011) |
| 1.1 to 1.7           | North West England, UK                                     | Surendran et al. (2005)     |
| 1.4 to 2.0           | Ireland  | Twort et al. (1994)         |
| 1.5 to 2.0           | Victoria, Australia  | WSAA (2002)                 |
| 1.5 to 2.3           | Queensland, Australia                                      | DERM (2010)                 |
| 1.8 to 2.9           | Various cities, UK   | Twort et al. (1994)         |
| <b>Peak hour</b>     |  |                             |
| 1.0 to 1.5           | Data used from various cities in South Africa, France, USA | Van Zyl et al (2008, 2011)  |
| 1.2 to 1.8           | Boston, USA  | Shvartser et al. (1993)     |
| 2 to 5               | Various cities, Australia                                  | WSAA (2002)                 |
| 3.6 to 5.0           | Queensland, Australia                                      | DERM (2010)                 |

In recent times, through either a mandatory or voluntary basis, new developments have incorporated a much higher degree of water-efficient stock than previously (e.g. low water use clothes washers, toilets and shower fittings) (Beal et al. 2011, Polebitski et al. 2011). Additionally, these new developments commonly adopt alternative water sources such as rainwater tanks (Lucas et al. 2010, Willis et al. 2011a). Therefore, on balance, water

consumption parameters (volume and frequency of use) today are likely to be considerably different to 20, 10 or even 5 years ago due to the presence of technology designed to reduce mains water flow. Accurate and up-to-date peak demand data is therefore essential to ensure that future mains water supply (and sewerage) networks reflect current usage patterns and are designed efficiently from an engineering, environmental and economic perspective.

### **Using disaggregated water consumption data to identify peak demand**

Water end-use studies (also known as water micro-component studies) provide a fundamental basis for evaluating the effectiveness of a range of water demand management strategies. End-use studies also inform water demand modelling forecasts which underpin all water service infrastructure modelling and reticulation plans (Jacobs, 2007; Blokker et al. 2010). Knowledge of the average and peak end-use water consumption volumes (e.g. toilet, tap, shower, clothes washer, external [e.g. irrigation] and leaks) at hourly, daily and monthly levels of resolution, can strongly inform the planning process (Mayer et al. 2006; Beal et al. 2011; Willis et al. 2011b).

Diurnal water end usage patterns can also be generated from high resolution micro-component data. Diurnal usage patterns have been used to identify trends and peaks in water (e.g. Willis et al. 2011a) and energy (e.g. Firth et al. 2008) consumption over time Stewart et al. (2010) also noted that this type of peak demand analysis can provide valuable information to water utilities to address issues such as planning, asset management and hydraulic engineering based problems.

These patterns have aided in the characterisation of daily water consumption trends across different socio-demographic groups and varying climatic regions (Beal et al. 2011; Willis et al. 2011b). Diurnal patterns provide valuable information on demand (per capita) and end-use

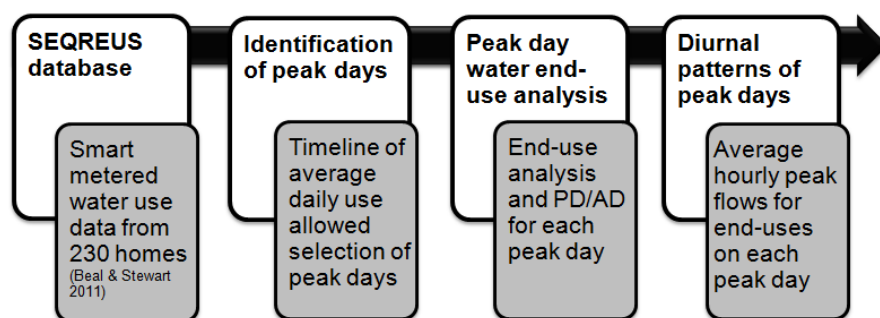
consumption at an hourly level for AD demand in a study period. Other benefits of such data include the real-time observation of AD peaks and troughs, understanding daily demand quantities and reservoir storage needs as well as creating demand parameters for optimisation of the supply infrastructure through offsets to network upgrades (Beal et al. 2010; Basupi et al. 2011; Stewart et al. 2010). Diurnal water end-use patterns can also be examined for peak day demand, allowing a greater understanding of the types of household practices that drive peak usage.

Drawing from the identified research gaps and the clear need for a greater understanding of peak flows in new developments, the objectives of this study are to:

1. identify the water end-uses which drive peak demand using measured water end-use data;.
2. determine the peak day diurnal demand patterns at an end-use level of resolution;
3. determine the relative frequency of peaking factors over the study period of measurement;
4. determine ratios of peak to average day demand, and average day peak hour with peak day peak hour demand and compare with ratios reported in the literature; and
5. provide recommendations on how high resolution smart water metering and end-use studies can enable improved future urban water infrastructure planning.

## **Methodology**

The data for the current study was generated from the South East Queensland Residential End-use Study (SEQREUS) located in the south eastern corner of Queensland, Australia (Beal and Stewart 2011). The methodological approach used to obtain the data for this paper is shown in Fig. 1.



**Fig. 1.** Process used for obtaining water end-use data on selected peak demand days.

### Study sample characteristics

A total of 230 households were used in this study, providing a good representation of SEQ households with a varying range of household occupancies, family composition and household income categories (Table 2). The rainfall and temperature data for the three periods of measurement are provided in Table 3. Of note, the summer 2010-11 recorded above average rainfall with widespread flooding throughout SEQ. This substantially reduced the need for irrigation over the summer period, and also resulted in a considerable number of the data loggers malfunctioning, due to water ingress.

**Table 2.** Selected characteristics of households in the SEQREUS sample

| <b>Sample Characteristics<sup>1</sup></b>     | <b>Gold Coast</b> | <b>Brisbane</b> | <b>Ipswich</b> | <b>Sunshine Coast</b> | <b>SEQ combined</b> |
|---|-------------------|-----------------|----------------|-----------------------|---------------------|
| Household occupancy                           | 2.6               | 2.6             | 2.7            | 2.5                   | 2.6                 |
| No of people                                  | 230               | 164             | 96             | 171                   | 661                 |
| No. homes                                     | 65                | 61              | 37             | 67                    | 230                 |
| % Households with ≤ 2 people                  | 58                | 41              | 51             | 69                    | 55                  |
| % Households pensioners/retired               | 36                | 16              | 32             | 45                    | 32                  |
| % Households with children (aged ≤ 17)        | 34                | 30              | 21             | 25                    | 28                  |
| Average age of children (years)               | 8.8               | 2.7             | 4.4            | 10                    | 6.5                 |
| Average household income (\$AUD) <sup>2</sup> | 73,290            | 81,630          | 87,900         | 60,070                | 75,722              |

Notes: <sup>1</sup>data presented are averages; <sup>2</sup>Estimated from taking the average of the household income category that each respondents selected (Gregory and Di Leo 2003), where categories were: 1 = <\$30,000, 2 = \$30,000 – \$59,000, 3 = \$60,000 – \$89,999, 4 = \$90,000 - \$119,999, 5 = \$120,000 - \$149,999, 6 ≥ \$150,000.



**Table 3.** Climate data for four regions during the specific periods of flow trace analysis<sup>1</sup>

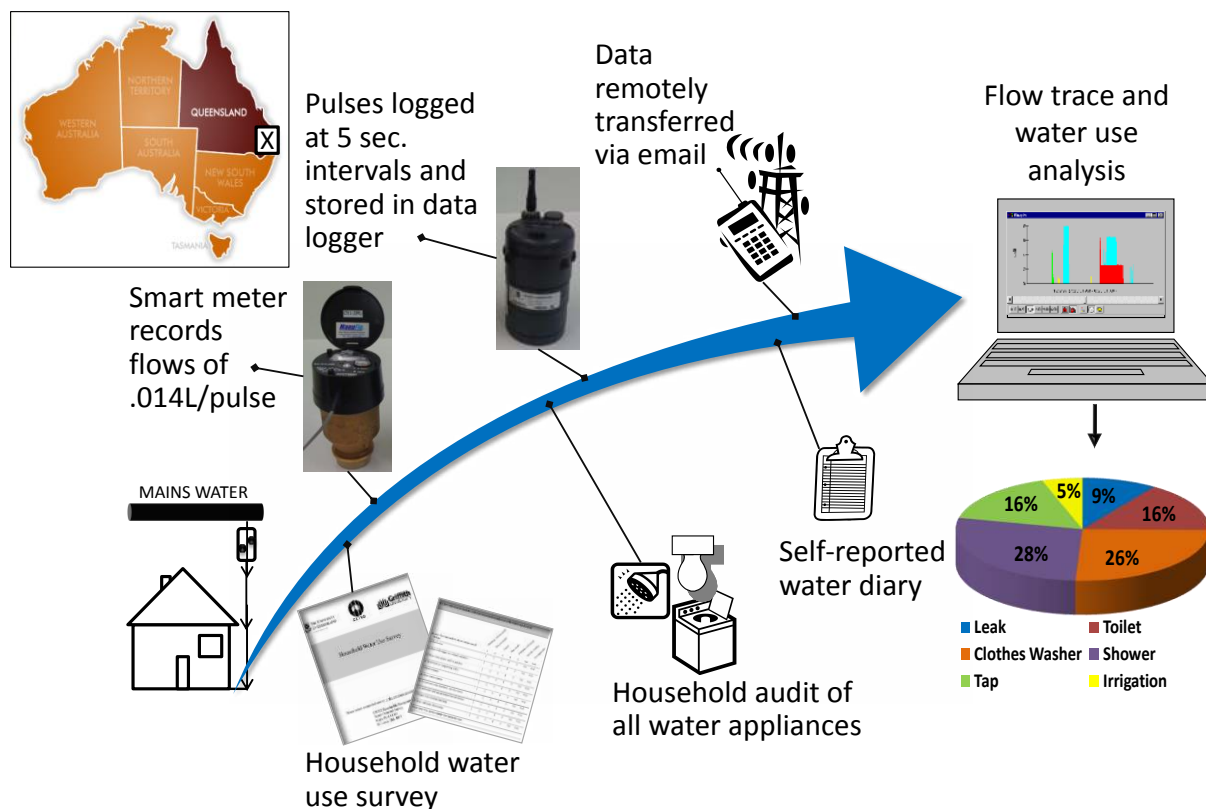
| Study region                | Average Maximum (°C) |                |                | Total rainfall (mm) |              |             | No. of wet days <sup>2</sup> |              |             |
|-----------------------------|----------------------|----------------|----------------|---------------------|--------------|-------------|------------------------------|--------------|-------------|
|                             | Winter 2010          | Summer 10-11   | Winter 2011    | Winter 2010         | Summer 10-11 | Winter 2011 | Winter 2010                  | Summer 10-11 | Winter 2011 |
| Gold Coast <sup>3</sup>     | 21.3<br>(±0.8)       | 27.9<br>(±1.7) | 20.5<br>(±2.9) | 21.5                | 567.2        | 20.4        | 4                            | 25           | 4           |
| Brisbane <sup>4</sup>       | 21.4<br>(±0.9)       | 27.9<br>(±1.7) | 20.1<br>(±3.5) | 9.6                 | 488.7        | 6.5         | 2                            | 29           | 2           |
| Ipswich <sup>5</sup>        | 21.8<br>(±1.2)       | 28.7<br>(±2.9) | 20.3<br>(±3.7) | 8.8                 | 342.2        | 9.2         | 1                            | 22           | 2           |
| Sunshine Coast <sup>6</sup> | 21.4<br>(±0.9)       | 27.6<br>(±1.6) | 21.3<br>(±3)   | 47.1                | 543.7        | 8.6         | 7                            | 27           | 1           |

Notes: <sup>1</sup>Data taken from Bureau of Meteorology (BOM) <http://www.bom.gov.au/climate/data/index.shtml>; <sup>2</sup>Number of days where rainfall  $\geq 1$ mm; <sup>3</sup>average of Coolangatta and Gold Coast BOM stations; <sup>4</sup>average of Brisbane Airport and Archerfield BOM stations; <sup>5</sup>Amberley BOM station; <sup>6</sup>average of Sunshine Coast airport and Tewantin BOM stations, <sup>7</sup>( $\pm x$ ) indicates standard deviation from mean for the period of analysis.

### Disaggregating total flow into individual end-uses

The SEQREUS, on which the data for this paper is based, used a mixed method, advanced water end-use measurement approach to capture and analyse water use data (Fig. 2). Full details of the methods used to undertake these measurements is provided in Beal and Stewart (2011), however a short summary is provided here.

Upon completion of recruitment, standard council residential water meters were replaced with modified Actaris CTS-5 water meters. These ‘smart’ meters measure flow to a resolution of 72 pulses/L or a pulse every 0.014 L. The smart meters were connected to Aegis Data Cell series R-CZ21002 data loggers. The loggers were programmed to record pulse counts at five second intervals. This data was wirelessly transferred to a central computer, via email, and stored in a database for subsequent analysis



**Fig. 2.** Mixed method approach used in the SEQREUS. Inset: location of study in Qld, Australia.

A representative sample of received data was extracted from the database and disaggregated into all end-use events associated with the sampled residential households. Disaggregation of total household flow into the specific end-uses such as irrigation, toilet, clothes washer, shower and tap, was performed using the software package Trace Wizard® (Aquacraft 2010, Mayer et al. 2006). This software allows the user to identify specific flow patterns and assign them into end-use categories, and is a commonly accepted method of disaggregating fixture/appliance events from a single flow meter (Froehlich et al. 2011). Using this flow trace analysis to disaggregate flow has shown to have over an 80% accuracy rate (Wilkes et al. 2005). This is likely to be higher for single event identification, identification of automated appliances such as clothes washers and dishwashers, and also when using a high resolution smart meter such as those employed in the current study (Mayer et al. 1999, 2006).

In the current study, we have included two further steps to the normal process to further improve flow trace analysis accuracy, including a detailed water audit of household water use behaviours and water use stock efficiency as well as asking them to complete a water use diary for a week period. Both of these extra measures ensure that the analyst using the flow trace software will be able to establish robust categorisation templates and could understand user behaviours (e.g. use bath in the evening). The event flow signature and this understanding of each home's water use behaviours enabled accurate end-use disaggregation in this study.

Identification of end-uses is informed not only by the high resolution trace flows, but also the specific knowledge of each household's fixtures and appliances. Thus, concomitantly with meter and logger installation, a water fixture/appliance stock survey was conducted at each participating home in order to investigate how householders interact with such stock (Fig. 2). By completing the stock survey, the householder provided information on the number and degree of water-efficient appliances and the typical water consumption behaviours of the householders. As discussed, this facilitated the disaggregation of trace flows from each home and also provided a valuable snapshot of the daily water consumption habits within each home.

The limitations of the software relate to the ability to discern multiple simultaneous events and low flow external consumption. These limitations can be substantially minimised by high resolution meters, experienced analysts and a comprehensive understanding of the water use stock, and habits / behaviours of the participants involved. All these factors were considered in the experimental design phase and implemented in the establishment phase of the

SEQREUS project. Further discussion on the research methods is provided in Beal and Stewart (2011).

### **Diurnal pattern generation and peak demand ratios**

Using the SEQREUS database, a complete timeline of average daily total water consumption was sourced from 567 days of continuous logging from up to 230 homes per day, equating to over 93,000 measured data points. From this, peak demand days could be clearly seen over the timeline with four being selected for further detailed examination. The four peak days were selected as they included both week and weekend days and occurred during 'business as usual' and holiday (e.g. Christmas / summer holidays) periods.

AD demand was calculated by averaging the consumption from 230 homes over the 18 month measurement period. AD diurnal demand patterns, at an end-use level, were generated using a software application specifically developed for this study. The software package is a basic windows executable file (.exe) that gathers the start and completion time of each characterised end-use event from all of the respective end-use database files, and assigns the events to the respective hourly time-of-use interval (e.g. 11.00 to 12.00 am). After accumulation of the water used by each end-use in each respective hourly period of the day, the program divides by the number of days in the study period, as well as the number of people or households in the sample size depending on unit of analysis requirements. For this paper, the units were in average litres per person per hour per day (L/p/h/d). Diurnal water end-use patterns were generated from consumption data for a number of average and peak day periods.

## Results and Discussion

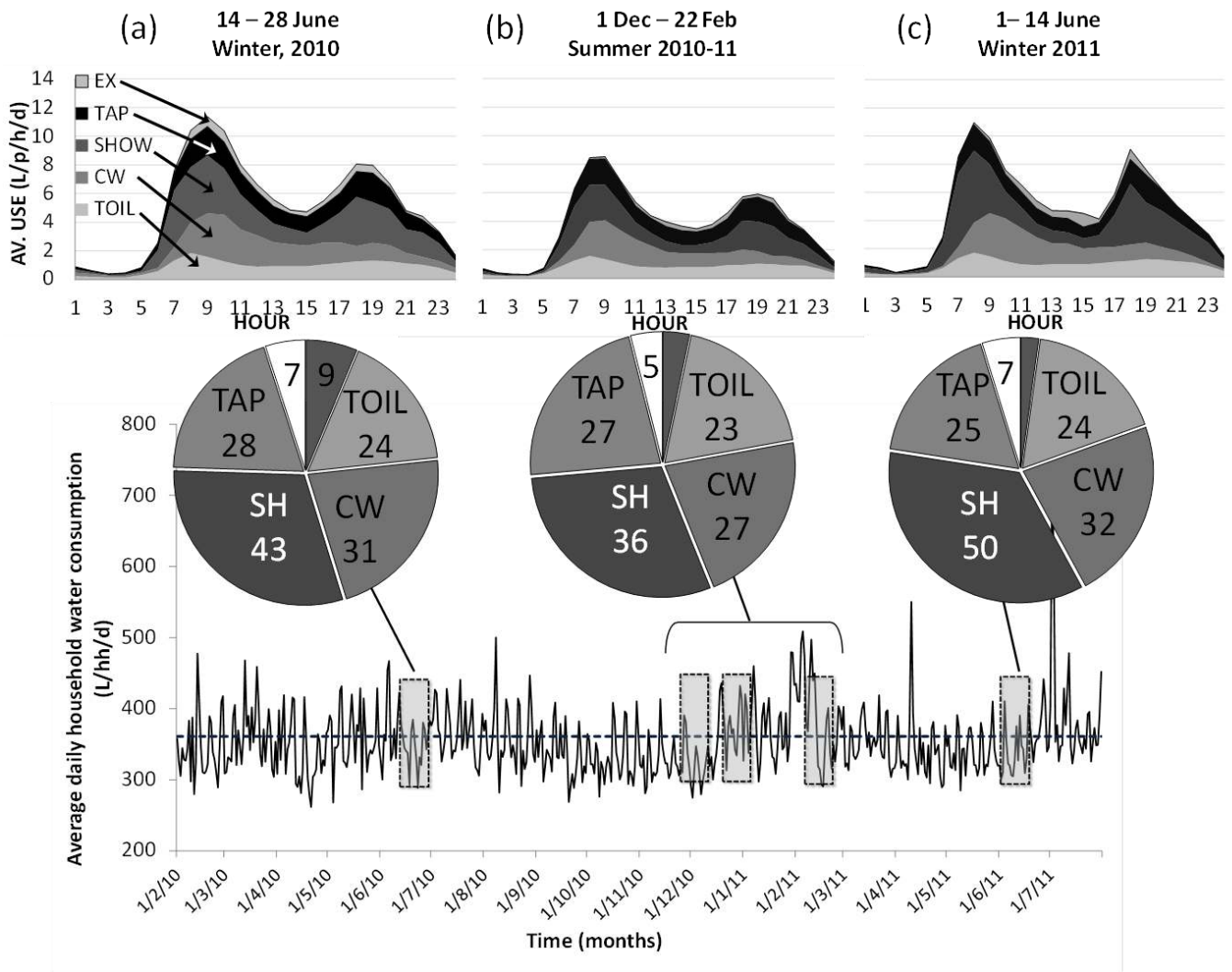
### Water end-use breakdown of peak day demand

The timeline of daily total household water consumption (L/hh/d), recorded from all functioning data loggers, is presented as a combined SEQ average (Fig. 3). The Insets (a) to (d) presented in Fig. 3 provide per capita water end-use breakdowns (L/p/d) for a 24 hour period for four days of above average water consumption: Thursday, 30/12/2010 (Fig. 3a), Friday, 07/01/11 (Fig. 3b), Sunday, 10/04/2011 (Fig. 3c), and Saturday, 02/07/11 (Fig. 3d). Also shown are reproductions of the winter 2010 (Fig. 3e), summer 2010-11 (Fig. 3f) and winter 2011 (Fig. 3g) end-use pie charts (Beal and Stewart 2011). Inclusion of these pie charts offer 'baseline' datasets for comparison with the end-use breakdowns from peak demand days. Note that the pie charts and diurnal usage patterns for the peak demand days are generated from a smaller, random sample size ( $n = 25$ ). This smaller sample size is due to the human resource requirements to undertake the Trace Wizard® analysis which generates end-use breakdowns. As such, the pie charts and diurnal usage patterns have been included to provide an indication or snapshot only of the type of end-use activities that typically contribute to peak hour and peak day demand.

The end-use consumption data for selected peak days are presented in the pie charts shown in Insets (a), (b) and (c) of Fig. 3. For comparison, the baseline data from the three SEQREUS reads, are shown in Fig. 3e-3g. Peak day water consumption is clearly higher than baseline consumption for shower (SHOW), clothes washer (CW), toilet (TOIL) and external (EX) (Fig 3a-3d). For the indoor uses of shower, clothes washer and toilet, average peak volumes are 23%, 96% and 49% greater than the baseline, respectively. For external end-uses, which are assumed to be primarily irrigation and high tap use, there is considerable variation between

the peak consumption volumes, averaged at 24 L/p/d for the four days with a standard deviation of 25.4 L/p/d.

There was little variation in tap usage across all pie chart snapshots, suggesting that this is not likely to be an end-use that would drive peak day demand, although it may be attributable to peak hour demand, if they are external tap fixtures. Note that the 'tap' category in this paper refers to indoor tap use or low external tap use. Large tap events have been allocated to the external water use category, as this is typically the location of such large flows from taps (Mayer and DeOreo 1999).



1  
2  
3

Notes: EX = external, TOIL = toilet, CW = clothes washer, SHOW = shower, DW = dishwasher, L = leak.

4 **Fig. 3.** Timeline for total water consumption showing water use breakdown in L/p/d and average daily  
5 diurnal water use (L/p/h/d) for baseline data during (a) winter 2010, (b) summer 2010-11, (c) winter 2011.

6

## 7 **Diurnal breakdown of peak demand**

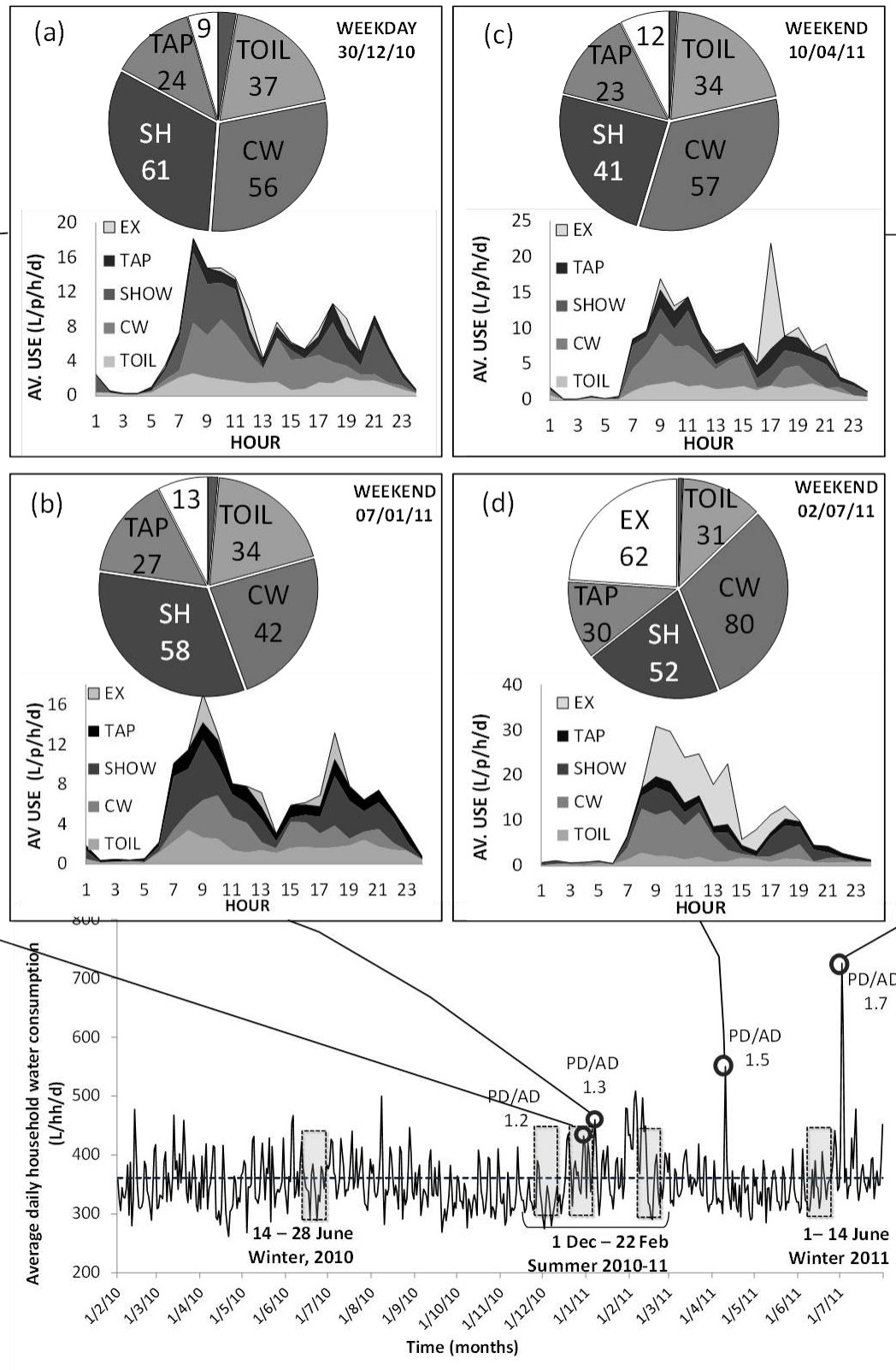
8 The peak hour demand for each of the four days investigated ranged from 10.8 L/p/h/d to  
9 30.8 L/p/h/d (Fig. 3a-d). The uniform, twin peak periods occurring in the morning and  
10 afternoon which are typically seen in average day demand diurnal patterns (Fig. 3e) are not so  
11 evident for the four peak day demand diurnal patterns shown in Fig. 3a-d. The peak day  
12 diurnal patterns exhibited a frequent occurrence of peak events throughout the day,  
13 particularly for the external water usage. The greatest peak demand day of 605 L/hh/d (261  
14 L/p/d) on 02/07/11 is shown in Inset (d) and is clearly driven by external (irrigation) water  
15 use where the peak hour and peak day irrigation demand was 13.4 L/h/p/d and 140 L/hh/d (61  
16 L/p/d), respectively. In terms of peak hour versus peak day consumption; large outdoor usage  
17 events are more likely to primarily drive peak hour demand, relative to the overall peak day  
18 demand. Whereas peak day demand may be influenced by both indoor and outdoor end-uses.  
19 For example, high shower and clothes washer usage dominated total household consumption  
20 as shown in the 30/12/10 and 07/01/11 pie and diurnal charts (Fig. 3a,b). Others have also  
21 drawn similar conclusions on the different end-uses driving peak hour versus peak day  
22 demand (Cole and Stewart 2012; Polebitski et al. 2011; Lucas et al. 2010).

23

24 One other important characteristic of the peak day diurnal patterns is the timing of the  
25 external water use activities. In the State of Queensland, where the data was sourced from,  
26 there is a current restriction on irrigation between 10 am and 4 pm. The results demonstrate a  
27 degree of non-compliance during this timeframe and further, this practice appeared to have  
28 increased rather than decreased over the 18 month monitoring period, judging by the  
29 consumption timeline shown in Fig. 4.

30





31

32 **Fig. 4.** Timeline for total water consumption showing water use breakdown in L/p/d and  
 33 average daily diurnal water use (L/p/h/d) for the selected peak demand days of (a) 30/12/10,  
 34 (b) 07/01/11, (c) 10/04/11, and (d) 02/07/11.

35

## 36 **Peaking factors and end-use analysis**

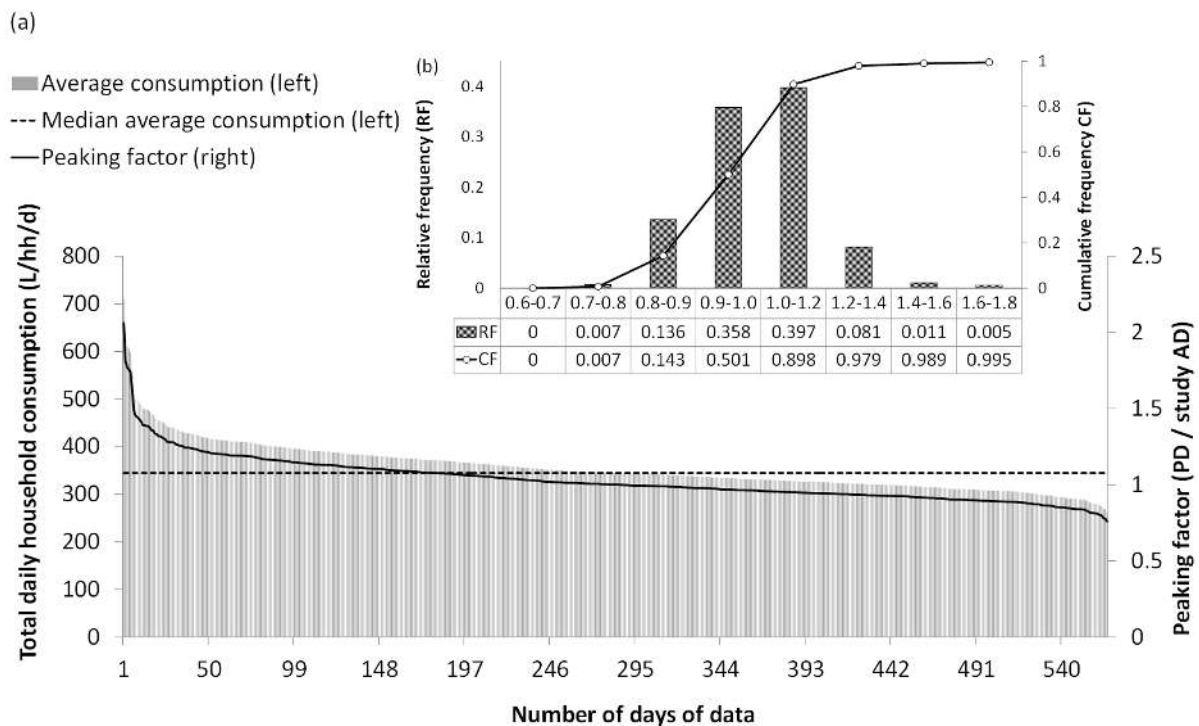
37 The peaking factor (PF) is the ratio of the maximum flow to the average daily flow in a water  
38 system. Peaking factors for peak day (e.g. PD/AD) and peak hour (e.g. PHPD/PHAD) are the  
39 basis for designing mains water supply infrastructure. Pipe infrastructure must be designed  
40 such that it can handle peak demand periods without a loss in pressure to the customer below  
41 desired service standards. While it is acknowledged that annual AD (AAD) and PD/AAD are  
42 conventionally used in infrastructure modelling, all the data (across 18 months) was used for  
43 this study as the seasonal variation is less marked in the subtropical climate of Queensland,  
44 with rainfall or dry periods often occurring out of the typical winter or summer periods. (Note  
45 that statistical tests revealed that comparison of means of the AD and AAD datasets were not  
46 significantly different [ $p>0.1$ ] at 356 L/hh/d [SD±51.4] and 353.3 L/hh/d [SD±52.4],  
47 respectively).

48

### 49 *Peak day factors*

50 A breakdown of average daily total water consumption showing the peaking factor trend for  
51 the combined SEQ sample is shown in Fig. 5. The four peak demand days selected had  
52 increasing peak day factors of 1.3, 1.5, 1.6 and 1.7 (Fig. 5). Generally, the proportion of  
53 external consumption increased concomitantly with the increase in peaking factor. Less than  
54 a third of the data had peaking factors over 1, suggesting extreme usage from a small number  
55 of days may have a strong influence on the average peaking factor of any given region in this  
56 sample. This trend also supports previous research regarding peaking factors and network  
57 distribution design (e.g. Basupi et al 2011; Swamee and Sharma 2008; Savic and Walters  
58 1997). The relative frequency distribution of PD/AD for each month is shown in Fig. 5b  
59 (inset) where it can be observed that PD/AD factors between 0.8 and 1.2 occurred at the  
60 greatest frequency. Knowledge on the range and distribution of peaking factors can inform

61 water distribution modelling, particularly if historical, and potentially out-dated factors,  
 62 continue to be applied. The peaking factor values reported here, determined from 18 months  
 63 of measured water consumption, lie within the lower end of the range reported for local  
 64 guidelines; of 1.5 to 2.3 (DERM, 2010), but well within the ranges reported elsewhere in the  
 65 literature (Table 1). This suggests that in Queensland, and particularly in urban areas in the  
 66 South East corner, where water consumption is trending downwards (Willis et al. 2011b, Beal  
 67 and Stewart 2011), there is a potential for over-sizing of water distribution infrastructure to  
 68 new residential developments. The reduced consumption in new dwellings in Queensland is  
 69 discussed in more detail later in the paper.



70

71 **Fig. 5.** Breakdown of (a) average daily total water consumption (LHS) and PD:AD ratio  
 72 (RHS) and (b) frequency distributions for combined SEQ sample peaking factors.

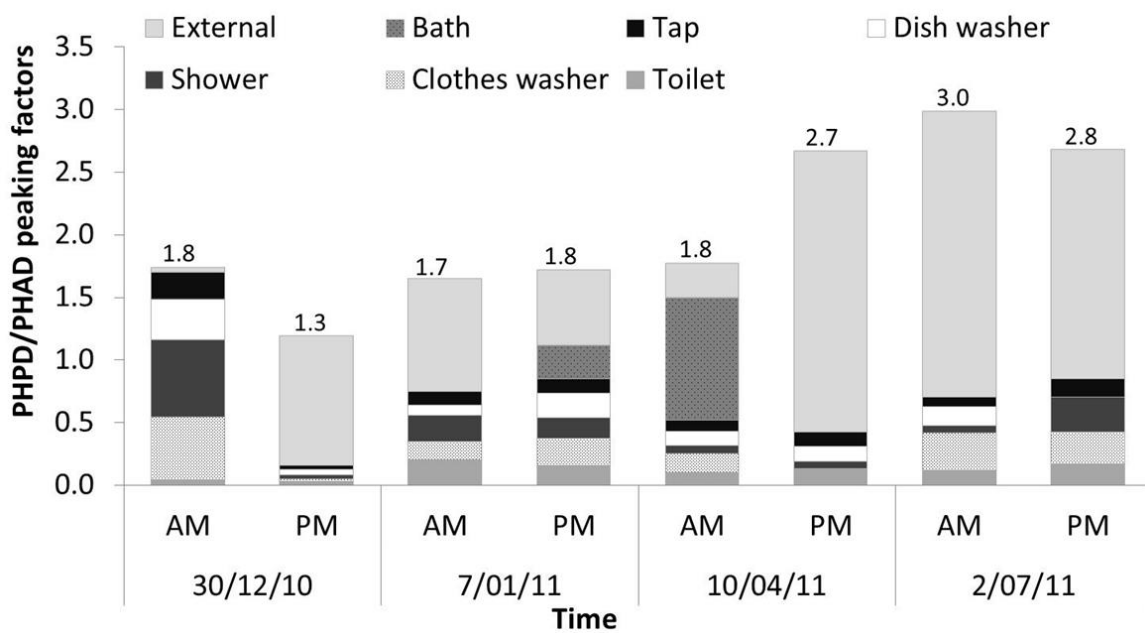
73

74 *Peak hour factors and contributing end-uses*

75 The peak hour in average day (PHAD) values (i.e. morning and evening peak hour in average  
 76 day) were derived from an average of the three periods of analysis: winter 2010, summer  
 77 2010-11 and winter 2011. The peak hour in peak day (PHPD) values were taken from each of

78 the four peak day end-use diurnal demand patterns. As expected the hourly peaking factors  
 79 are higher than the daily factors. Hourly peaking factors ranged from 1.7 to 3.0 in the  
 80 morning and 1.3 to 2.8 in the afternoon (Fig. 6). Notably, they are lower than the range of  
 81 Queensland government reported values (i.e. 3.6 to 5.0), although, as shown in Table 1, other  
 82 researchers have reported similar ranges to those observed in this study (e.g. Shvarster et al.  
 83 1993, WSAA, 2002).

84



85

86 **Fig. 6.** PHPD/PHAD ratios and relative end-use proportions for morning and afternoon peak  
 87 hours  
 88

89 A breakdown of individual end-use peak hour (PHPD/PHAD) factors demonstrate that most  
 90 end-uses are elevated during peak demand days, however, it is clear that external water use  
 91 events are driving peak hour use (Fig. 6). This is consistent with other findings such as Willis  
 92 et al. (2011b) who found a strong association with irrigation and peak morning and afternoon  
 93 diurnal patterns. Similar results were reported by Roberts (2005) and Heinrich (2007). Other  
 94 end-uses such as shower and clothes washer, have also been associated with peak hour, and  
 95 in particular, peak day demand (Beal et al. 2011; Willis et al. 2011b). At the end-use level,

96 the individual end-use category PHPD:PHAD ratios were in the range of 0.7 – 3.3 for all end-  
97 uses, with the exception of external or irrigation. The ratio for this latter end-use category  
98 was typically very high, at over 10 times the average irrigation demand.

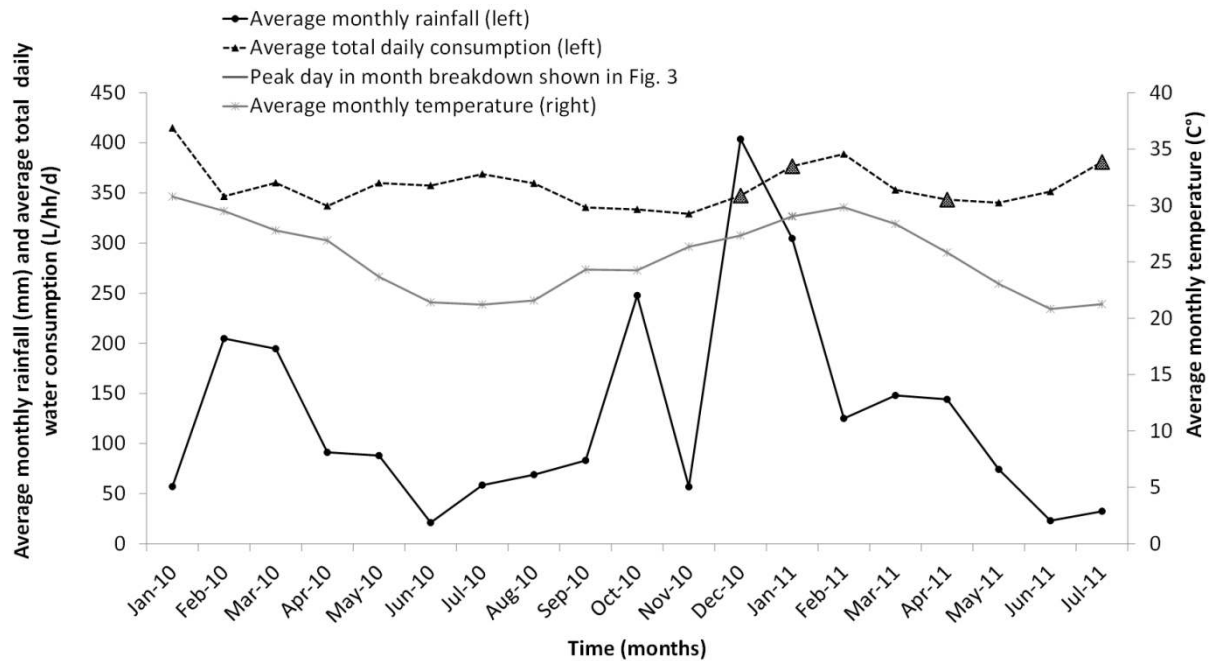
99

### 100 **Influence of climate on total household consumption**

101 A timeline of average temperature, rainfall and daily total consumption for each month of the  
102 study is presented in Fig. 7. The four peak days selected for analysis are indicated by the  
103 hatched triangles on the water consumption curve. There is a weak relationship between  
104 increased temperature and peak demand days, although this is not consistent across the  
105 timeline. There is a stronger association between temperature and total household water  
106 consumption for the warmer months e.g. January to March 2010 and November to March  
107 2011. Cole and Stewart (2012) report a strong correlation between temperature and bulk  
108 water demand for the Hervey Bay region of Queensland, Australia. Others have also  
109 observed this relationship between temperature and residential water consumption (Water  
110 Corporation 2011, Willis et al. 2011b, Adamowski 2008). Another weak relationship is  
111 apparent for low rainfall and increased water demand during the months of April to August  
112 2010 and June to July 2011 (Fig. 7). It should be noted that the high rainfall events occurring  
113 in December 2010 and January 2011 contributed to major flooding across SEQ, effectively  
114 eliminating the need for irrigation during this period.

115

116 Prior to the peak per capita water usage day on 02/07/11 of 261 L/p/d (Inset (d) Fig.4), there  
117 was a period of approximately four weeks where low rainfall (0.4 mm) and relative humidity  
118 (59%) occurred in the SEQ region. These conditions are typical of winter climate in SEQ and  
119 it is believed that the conditions were likely to have contributed to the observed sudden  
120 increase in the number of irrigation events occurring on that Saturday.



121  
122  
123  
124  
125  
126  
127

Note: Climate data sourced from the Bureau of Meteorology <http://www.bom.gov.au/climate/data/index.shtml>, using data averaged from the Gold Coast, Brisbane, Sunshine Coast and Ipswich weather stations – see notes from Table 3.

**Fig. 7.** Timeline of average monthly climate data and daily household water consumption

128 There is wide acknowledgement of the need to adapt to, as well as mitigate for, climate  
129 change impacts on the urban water systems (Gleick 2003, Polebitski et al. 2011, Short et al.  
130 2012). Recent climate modelling in Queensland has predicted shorter, but more intense,  
131 rainfall patterns in the summer, resulting in longer periods of dry weather over the winter  
132 months (Queensland Government 2012). Direct impacts to urban water supplies from climate  
133 change, such as changes to rainfall and temperature patterns, may see the past peak water  
134 usage period, historically in the hotter months (December to February) in sub-tropical  
135 Queensland, shift toward the drier, cooler months in winter and spring (June to September).  
136 Indeed, the data presented in this paper demonstrates that peak demand times were not  
137 restricted to summer months, but instead they occurred throughout the year, in the drier  
138 months of April and July.

139  
140

141 **Future trends in peak demand**

142 There exists a strong possibility in Queensland, and indeed elsewhere in Australia, that a  
143 downward trend in future peak demand will be observed. Factors influencing this downward  
144 trend include the introduction of resource-efficient planning initiatives, the penetration of  
145 water efficient or alternative water supply technology, and changes in consumer behaviour ..

146

147 The introduction of resource-efficient planning initiatives such as water conservation and  
148 intervention programmes, high density, low footprint housing, water-efficient fixtures,  
149 internally connected rainwater tanks have shown to substantially reduce household water  
150 consumption (Fidar et al. 2010, Beal et al. 2012, Fielding et al. 2012). For example in SEQ,  
151 average water consumption was effectively halved from 300 L/p/d to around 150 L/p/d  
152 within less than 5 years (Traves et al. 2008, Walton and Hume 2011), as a result of a range of  
153 water demand management approaches. Thus, this marked reduction in average consumption  
154 is likely to be mirrored by a reduction in peaking factors.

155

156 The effect of water efficient technology on daily diurnal patterns and peak flow is discussed  
157 by Carragher et al. (2012). They concluded that water efficient stock (e.g. low flow shower  
158 roses, water-efficient clothes washers) has a significant reduction in ADPH demand and that  
159 this trend towards lower peak hour consumption, will continue as new dwellings are  
160 constructed, and existing homes are refurbished. Reduced peak day and peak hour demand,  
161 due to residential water stock efficiency measures (including government rebate programs for  
162 water-efficient appliances and water conservation awareness campaigns), has implications for  
163 optimising pipe network modelling and capital infrastructure, e.g. deferral or reduction in  
164 water distribution infrastructure (Basupi et al. 2011; Carragher et al. 2012). For example,  
165 Tsang (2010) utilised the SEQREUS diurnal demand patterns as input into pipe network

166 models in Gold Coast City, Australia, and discovered that reduced hourly demand provided  
167 spare capacity in existing pipe infrastructure, thereby reducing the need for costly  
168 augmentations.

169

170 Irrigation has shown to be dramatically reduced in the post-drought and post water restriction  
171 environment in SEQ (Walton and Hume 2010; Willis et al. 2011b; Beal et al. 2011). Further,  
172 three years post-drought, the expected rebound back to higher (e.g. >200 – 300 L/p/d)  
173 consumption is still not fully evident, despite the present high water storage levels and lack of  
174 water conservation social marketing programs. Together with this entrenched water  
175 conservation behaviour, the residential landscape in SEQ has changed markedly over the  
176 years, with new developments being built on smaller allotment sizes, with reduced garden or  
177 lawn areas. This trend towards affordable, higher density developments is evident  
178 internationally (e.g. Forsyth et al. 2010). Planning guidelines in Australia also strongly  
179 promote native species to be planted that require a lower frequency and volume of water.

180

181 For the various the reasons described above, household water consumption in SEQ and  
182 potentially other regions internationally, is not likely to return to the daily capita usage of 300  
183 L/p/d that was typical a decade ago. Consequently, the variation and volume of peak demand  
184 is also likely to change (decline). It is postulated that peak demand days will not occur to a  
185 lesser degree and with lower incidences of high peaking factors in the future. Some evidence  
186 of this has been presented herein with lower daily and hourly peaking factors than historically  
187 reported however, further analysis of the correlation between climate pattern and peak end  
188 usage, based on an additional year of end-use data, is an important next step of this research.

189

190



191 **Conclusions**

192 The aim of this study was to determine peak hourly and daily demand for a range of water  
193 end-uses in households located in South East Queensland, Australia. Peak day and peak hour  
194 demand was examined for four peak days identified from 18 months of empirical household  
195 water consumption data. Given the reduced dominating role of irrigation contributing towards  
196 peak demand in this study, other end-uses have become evident as potential contributors to  
197 the lower peaking levels. Peak day demand that yielded peaking factors between 1 and 1.5  
198 were observed to be driven by clothes washer and shower use, as well as external use.  
199 However, peak hour demand was primarily driven by external water usage.

200

201 Overall, peaking factors were lower than those being used in current local planning  
202 guidelines for residential water supply. A reduction in the degree and frequency of peak  
203 demand days is likely due to the high penetration of residential water stock efficient  
204 measures, water consumer behavioural changes and higher dwelling density. Thus, caution  
205 should be exercised if using historic peak day and peak hour demand data for infrastructure  
206 design and modelling. This is especially pertinent in jurisdictions where factors influencing  
207 future water demand are evident, such as the wide incorporation of water efficient stock and  
208 permanent shifts in water conservation behaviours. In these jurisdictions, future network  
209 modelling and urban water system planning should carefully consider such reductions in peak  
210 demand and may require the recalibration of peaking factors.

211

212 The SEQREUS has recently received additional funding to extend data collection to early  
213 2015 and it is hoped that sufficient end-use data sets can be established to provide an  
214 intelligent predictive tool of water end-use consumption (especially outdoor which is highly  
215 variable) based on a range of variables including climatic conditions. Additionally, future

216 work will target longer time scales and a larger sub-sample of homes during peak demand  
217 days, to establish greater certainty on current peaking factors and diurnal hourly patterns.  
218 Such smart metering and end-use analysis research can provide data to underpin more  
219 accurate demand forecasting models, and facilitate the optimisation of pump and pipe  
220 infrastructure planning and design. Essentially, the technology allows a paradigm shift  
221 towards just-in-time (JIT) pipe network modelling and infrastructure design.

222

### 223 **Acknowledgements**

224 The authors would like to acknowledge the Urban Water Security Research Alliance for  
225 funding the SEQREUS project, from which much of this data was based. The authors would  
226 also like to thank eResearch Services for the creation and maintenance of the SMIP database.

227

### 228 **References**

229 Adamowski, J. and Karapataki, C. (2010) "Comparison of Multivariate Regression and  
230 Artificial Neural Networks for Peak Urban Water-Demand Forecasting: Evaluation of  
231 Different ANN Learning Algorithms." *J. Hydrol. Eng.* 15(10), 729-743.

232

233 Adamowski, J. (2008) "Peak Daily Water Demand Forecast Modeling Using Artificial  
234 Neural Networks." *J. Water Resour. Plann. Manage.* 134(2), 119-128.

235

236 Alcocer-Yamanaka, V., Tzatchkov, V., and Arreguin-Cortes, F. (2012). "Modeling of  
237 Drinking Water Distribution Networks Using Stochastic Demand." *Water Resour.*  
238 *Manage.* 26, 1779-1792.

239

240 Aquacraft (2010). Trace Wizard® software version 4.1. 1995-2010 Aquacraft, Inc. Boulder,  
241 CO, USA. <http://www.aquacraft.com/>

242

243 Arbues, F., Villanua, I. and Barberan, R., 2010. "Household size and residential water  
244 demand: an empirical approach." *Aust. J. Agr. Resour. Ec.* 54, 61-80.

245

246 Basupi, I., Kapelan, Z., and Butler, D. (2011). "Optimising rehabilitation of water distribution  
247 systems accounting for water demand management interventions." *Computing and*

248 Control for the Water Industry (CCWI) 2011, University of Exeter, UK, 5th-7th Sept,  
249 2011.

250

251 Beal, C., Stewart, R., Huang, T., Rey, E., (2011). "SEQ residential end-use study." *Aust. Wat.*  
252 *Assoc. J.*, 38(1), 80-84.

253

254 Beal, C.D., Stewart, R.A. (2011). "South East Queensland Residential End-use Study: Final  
255 Report." Urban Water Security Research Alliance Technical Report No. 47.

256

257 Beal C.D., Gardner, T., Sharma, A., Chong, M. (2012) "A desktop analysis of potable water  
258 savings from internally plumbed rainwater tanks in south-east Queensland, Australia."  
259 *Water Resour. Man.* 26, 1577-1590.

260

261 Blokker, E., Vreeburg, J., and van Dijk, J. (2010). "Simulating residential water demand with  
262 a stochastic end-use model." *J. Water Resour. Plann. Manage.*, 136(1), 19-26.

263

264 Carragher, B., Stewart, R., and Beal, C. (2012). "Quantifying the influence of residential  
265 water appliance efficiency on average day diurnal demand patterns at an end-use level:  
266 A precursor to optimised water service infrastructure planning." *Resour Conserv Recy.*  
267 62, 81-90.

268

269 Cole, G., and Stewart, R.A., (2012) "Smart meter enabled disaggregation of urban peak water  
270 demand: precursor to effective urban water planning." *Urban Water J.*, under review,  
271 [revised May 2012].

272

273 DERM (2010) "Planning guidelines for water supply and sewerage." Chapter 5 -  
274 Demand/Flow projections., Office of the Water Supply Regulator, Department of  
275 Environment and Resource Management (DERM), Brisbane, Qld.  
276 [http://www.derm.qld.gov.au/water/regulation/pdf/guidelines/water\\_services/wsguidelines.pdf](http://www.derm.qld.gov.au/water/regulation/pdf/guidelines/water_services/wsguidelines.pdf).

277

278 Fidar, A., Memon, F., and Butler, D. (2010). "Environmental implications of water efficient  
279 microcomponents in residential buildings." *Sci Total Environ*, 408, 5828-5835.

280

281 Fielding, K., Spinks, A., Russell, S., McCrea, R, Stewart, R.A., Gardner, J. "An experimental  
282 test of voluntary strategies to promote urban water demand management." In  
283 preparation, 2012.

284

285 Firth, S., Lomas, K., Wright, A., and Wall, R. (2008) Identifying trends in the use of  
286 domestic appliances from household electricity consumption measurements. *Energ*  
287 *Buildings*, 40(5), 926-936.

288

289 Forsyth, A., Nicholls, G., and Raye, B. (2010). "Higher Density and Affordable Housing:  
290 Lessons from the Corridor Housing Initiative." *J Urban Design*, 15(2), 269-284.

291

292 Froehlich, J., Larson, E., Saba, E., Campbell, T., Atlas, L., Fogarty, J., and Patel, S. (2011).  
293 "A Longitudinal Study of Pressure Sensing to Infer Real-World Water Usage Events in  
294 the Home." *Pervasive Computing*, K. Lyons, J. Hightower, and E. Huang, eds.,  
295 Springer Berlin Heidelberg, 50-69.

296

297 Gleick, P., (2003). "Global freshwater resources: Soft-Path Solutions for the 21st Century."  
298 *Science*, 302, 1524-1528.

299

300 Goulter, I., and Morgan, D. (1985) "An integrated approach to the layout and design of water  
301 distribution networks." *Civ. Engrg. Sys.* 2(2), 104-113.

302

303 Gregory, G., Di Leo, M. (2003) "Repeated behavior and environmental psychology: the role  
304 of personal involvement and habit formation in explaining water consumption." *Appl.*  
305 *Soc. Psychol.* 33(6), 1261-1296.

306

307 Heinrich, M. (2007). "Water End-use and Efficiency Project (WEEP) - Final Report."  
308 BRANZ Study Report 159, Branz, Judgeford, New Zealand.

309

310 Jacobs, H. (2007) "The first reported correlation between end-use estimates of residential  
311 water demand and measured use in South Africa." *Water SA*, 33(4), 549-558.

312

313 Lim, S.-R., Suh, S., Kim, J.-H. and Park, H.S. (2010) "Urban water infrastructure  
314 optimization to reduce environmental impacts and costs." *J. of Environ. Manage.* 91(3),  
315 630-637.

316

317 Lucas, S., Coombes, P., Sharma, A., (2010). "The impact of diurnal water use patterns,  
318 demand management and rainwater tanks on water supply network design. *Wa. Sci.*  
319 *Technol.* 10, 69-80.

320

321 Mayer, P. (2006). "Trace wizard water use analysis tool." Aquacraft Inc., Boulder, CO, USA.

322

323 Mayer, P., DeOreo, W., Opitz, E., Kiefer, J., Davis, W., Dziegielewski, B., and Nelson, J.  
324 (1999). "Residential end-uses of water." *Am. Water Works Assoc. Res. Found.*, Denver,  
325 Colorado.

326

327 Makropoulos, C.K., Natsis, K., Liu, S., Mittas, K. and Butler, D. (2008) "Decision support  
328 for sustainable option selection in integrated urban water management." *Environ.*  
329 *Modell. Softw.* 23(12), 1448-1460.

330

331 Polebitski, A.S., Palmer, R.N. and Waddell, P. (2011) "Evaluating water demands under  
332 climate change and transitions in the urban environment." *J. Water Resour. Plann.*  
333 *Manage.* 137(3), 249-257.

334

335 Queensland Government. (2012). "Queensland rainfall - past, present and future." A joint  
336 report by the Queensland Government (Office of Climate Change, DERM), the Walker  
337 Institute, and the UK National Centre for Atmospheric Science,  
338 [www.climatechange.qld.gov](http://www.climatechange.qld.gov), January 2012.

339

340 Roberts, P. (2005) "Yarra Valley Water 2004 Residential End-use Measurement Study."  
341 Yarra Valley Water.

342

343 Savic, D.A. and Walters, G.A. (1997) "Genetic algorithms for least-cost design of water  
344 distribution networks." *J. Water Resour. Plann. Manage.* 123, 67-77.

345

346 Short, M., Peirson, W., Peters, G., and Ronald, J. (2012). "Managing Adaptation of Urban  
347 Water Systems in a Changing Climate." *Water Resour. Manage.* 26, 1953-1981.

348

349 Shvartser, L., Shamir, U., and Feldman, M. (1993). "Forecasting Hourly Water Demands by  
350 Pattern Recognition Approach." *J. Water Resour. Plann. Manage.* 119(6), 611-627.

351

352 Stewart, R., Willis, R., Giurco, D., Panuwatwanich, K., and Capati, G. (2010) "Web based  
353 knowledge management system: linking smart metering to the future of urban water  
354 planning." *Aust Planner*, 47(2), 66-74.

355

356 Swamee, P. and Sharma, A. (2008) "Design of Water Supply Pipe Networks", John Wiley &  
357 Sons, New Jersey, ISBN 978-0-470-17852-2.

358

359 Surendran, S., Tanyimboh, T. T., and Tabesh, M. (2005). "Peaking demand factor-based  
360 reliability analysis of water distribution systems." *Adv. Eng. Soft.* 36, 789-796.

361

362 Traves, W., Gardner, E., Dennien, B., and Spiller, D. (2008). "Towards indirect potable reuse  
363 in South East Queensland." *Water Science and Technology*, 58(1), 153.

364

365 Tsang, M. (2010) "Utilising high resolution water consumption data to inform peak demand  
366 factors in gold coast pipe network models." Thesis submitted as part of the Industry

367 Affiliates Program / Honours Program, School of Engineering, Griffith University, June  
368 2010.

369

370 Twort, A., Law, F., Crowley, F., and Ratnayaka, D. (1996). "Water Supply." Edward Arnold,  
371 London, 1994. .

372

373 van Zyl, J. E., le Gat, Y., Piller, O., and Walski, T. M. (2011). "Impact of Water Demand  
374 Parameters on the Reliability of Municipal Storage Tanks." *J. Water Resour. Plann.*  
375 *Manage.* doi:10.1061/(ASCE)WR.1943-5452.0000200.

376

377 van Zyl, J. E., Piller, O., and le Gat, Y. (2008). " Sizing Municipal Storage Tanks Based on  
378 Reliability Criteria." *J. Water Resour. Plann. Manage.* 134(6), 548-555.

379

380 Walton, A. and Hume, M. (2011) "Creating positive habits in water conservation: the case of  
381 the Queensland Water Commission and the Target 140 campaign." *Internat. J.*  
382 *Nonprofit Voluntary Sect. Market.* 16(3), 215-224.

383

384 Water Corporation, (2011) "Perth residential water use study 2008/2009", Water Forever,  
385 Water Corporation, Western Australia.

386

387 Wilkes, C., Mason, A., Niang, L., Jensen, K., and Hern, S. (2005). "Evaluation of the Meter-  
388 Master Data Logger and the Trace Wizard Analysis Software. Special Appendix to the  
389 Report Quantification of Exposure-Related Water Uses for Various U.S.  
390 Subpopulations. " Prepared for United States Environmental Protection Agency  
391 (USEPA), (December 2005).

392

393 Willis, R.M., et al., (2011a) "End-use water consumption in households: impact of socio-  
394 demographic factors and efficient devices." *J Clean. Prod.*  
395 doi:10.1016/j.jclepro.2011.08.006

396

397 Willis, R.M., Stewart, R.A., Williams, P.R., Hacker, C.H., Emmonds, S.C., Capati, G.,  
398 (2011b) "Residential potable and recycled water end-uses in a dual reticulated supply  
399 system." *Desalination*, 273(1-3), 201-211. doi: 10.1016/j.desal.2011.01.022.

400

401 WSAA. (2002). "Water Supply Code of Australia, Melbourne retail water agencies edition:  
402 version 1.0." Water Services Association of Australia (WSA 03-2002).

403

404