



TITLE:

IFN- γ from lymphocytes induces PD-L1 expression and promotes progression of ovarian cancer.

AUTHOR(S):

Abiko, K; Matsumura, N; Hamanishi, J; Horikawa, N; Murakami, R; Yamaguchi, K; Yoshioka, Y; Baba, T; Konishi, I; Mandai, M

CITATION:

Abiko, K ...[et al]. IFN- γ from lymphocytes induces PD-L1 expression and promotes progression of ovarian cancer.. British journal of cancer 2015, 112(9): 1501-1509

ISSUE DATE:

2015-03-31

URL:

<http://hdl.handle.net/2433/198280>

RIGHT:

© 2015 Cancer Research UK.; 許諾条件により本文ファイルは2015-10-01に公開.; This is not the published version. Please cite only the published version.; この論文は出版社版ではありません。引用の際には出版社版をご確認ご利用ください。

IFN-gamma from lymphocytes induces PD-L1 expression and promotes progression of ovarian cancer

Running title: IFN-gamma promotes ovarian cancer progression

Kaoru Abiko¹, Noriomi Matsumura¹, Junzo Hamanishi¹, Naoki Horikawa¹, Ryusuke Murakami¹, Ken Yamaguchi¹, Yumiko Yoshioka¹, Tsukasa Baba¹, Ikuo Konishi¹, and Masaki Mandai²

¹ Department of Gynecology and Obstetrics, Kyoto University Graduate School of Medicine, 54 Shogoin Kawahara-cho, Sakyo-ku, Kyoto 606-8507, Japan

² Department of Obstetrics and Gynecology, Faculty of Medicine, Kinki University, 377-2 Onohigashi, Osakasayama, Osaka 589-0014, Japan

Correspondence: Noriomi Matsumura, Department of Gynecology and Obstetrics, Graduate School of Medicine, Kyoto University, 54 Shogoin Kawahara-cho, Sakyo-ku, Kyoto 606-8507, Japan. noriomi@kuhp.kyoto-u.ac.jp

Telephone: +81 75 751 3269 Fax: +81 75 761 3967

Abstract

Background: PD-L1 on tumour cells suppresses host immunity through binding to its receptor PD-1 on lymphocytes, and promotes peritoneal dissemination in mouse models of ovarian cancer. However, how PD-L1 expression is regulated in ovarian cancer microenvironment remains unclear.

Methods: Number of CD8-positive lymphocytes and PD-L1 expression in tumour cells was assessed in ovarian cancer clinical samples. PD-L1 expression and tumour progression in mouse models under conditions of altering IFN- γ signals was assessed.

Results: The number of CD8-positive cells in cancer stroma was very high in peritoneally disseminated tumours, and was strongly correlated to PD-L1 expression on the tumour cells ($P < 0.001$). In mouse models, depleting IFNGR1 resulted in lower level of PD-L1 expression in tumour cells, increased number of tumour-infiltrating CD8-positive lymphocytes, inhibition of peritoneal disseminated tumour growth, and longer survival ($P = 0.02$). The injection of IFN- γ into subcutaneous tumours induced PD-L1 expression and promoted tumour growth, and PD-L1 depletion completely abrogated tumour growth caused by IFN- γ injection ($P = 0.01$).

Conclusion: IFN- γ secreted by CD8-positive lymphocytes up-regulates PD-L1 on ovarian cancer cells and promotes tumour growth. The lymphocyte infiltration and the

IFN- γ status may be the key to effective anti-PD-1 or anti-PD-L1 therapy in ovarian cancer.

Keywords: ovarian cancer, interferon-gamma, PD-L1, lymphocyte, peritoneal dissemination, CD8

Introduction

Ovarian cancer is the most lethal disease among the gynaecological malignancies. Most cases present massive peritoneal dissemination, and, although many of the cases respond to initial chemotherapy following tumour reductive surgery, the majority of cases recur and eventually become resistant to chemotherapy (Coleman *et al*, 2013). Therefore, a new strategy for peritoneal dissemination other than conventional chemotherapy is urgently needed.

Immune evasion is an important hallmark of cancer, and a better understanding of this mechanism is essential to develop a strong strategy against cancers (Hanahan & Weinberg, 2011). In ovarian cancer, multiple inhibitory mechanisms are present, including regulatory T cells (Barnett *et al*, 2010; Curiel *et al*, 2004), tumour-associated macrophages (Zhang *et al*, 2012), myeloid-derived suppressor cells (MDSCs) (Godoy *et al*, 2013) and inhibitory molecules expressed on tumour cells (Kandalaft *et al*, 2010; Thibodeaux & Curiel, 2011). These players work as strong brakes for anti-tumour immunity and obstruct the elimination of cancer by the host immune system (Junttila & de Sauvage, 2013). We have attempted to elucidate the inhibitory immune molecules in ovarian cancer, such as ULBP2 (NKG2D ligand), COX-1, COX-2, and PD-L1 (programmed cell death 1 ligand 1, CD274) (Hamanishi *et al*, 2007; Li *et al*, 2009; Liu

et al, 2009). Among them, PD-L1, a co-inhibitory factor that is expressed on many types of cancer cells, showed the closest relation to unfavourable prognosis in ovarian cancer (Hamanishi *et al*, 2011). By binding to its receptor, PD-1 on lymphocytes, PD-L1 transmits a signal that inhibits lymphocyte activation (Freeman *et al*, 2000). Efficacy of anti-PD-1 antibodies in multiple cancer types is reported (Topalian *et al*, 2012), and clinical trials in ovarian cancer cases are in process.

IFN- γ is a cytokine that is critical for innate and adaptive immunity. Once antigen-specific immunity develops, IFN- γ is secreted by activated effector T cells (Dunn *et al*, 2006). IFN- γ up-regulates MHC class I and class II molecules and promotes antigen presentation on tumour cells (Freedman *et al*, 2000). By these functions, IFN- γ was expected to work as an antitumour agent. Nevertheless, in a clinical trial, tumour progression was promoted upon administration of IFN- γ to ovarian cancer patients (Alberts *et al*, 2008). The mechanisms of tumour promotion by IFN- γ remain unknown.

IFN- γ is also known to up-regulate PD-L1 expression on tumour cells (Blank *et al*, 2004). In mouse melanoma models, IFN- γ secreted from CD8-positive T cells was reported to up-regulate PD-L1 (Spranger *et al*, 2013). Similarly, in mouse ovarian cancer peritoneal dissemination models, we have shown that IFN- γ secreted from

lymphocytes induces PD-L1 on tumour cells (Abiko *et al*, 2013). However in clinical samples of ovarian cancer, especially in peritoneal dissemination, the association between PD-L1 expression and IFN- γ has not been clarified so far.

In the present study, using clinical samples of ovarian cancer including peritoneal dissemination, we analyse correlation between CD8-positive lymphocytes and PD-L1 expression on ovarian cancer cells. Furthermore, relationship between IFN- γ status and number of infiltrating lymphocytes is assessed. Then using ovarian cancer mouse models, we investigate the role of IFN- γ in the microenvironment of peritoneal dissemination. Our findings shed light on the relationship between PD-L1 expression and tumour microenvironment, and may provoke a discussion on biomarkers for anti-PD-1 therapy.

Materials and Methods

Microarray datasets of cell lines

We downloaded a cancer cell line expression dataset from the Cancer Cell Line Encyclopedia (CCLE), <http://www.broadinstitute.org/ccle> (Barretina *et al*, 2012). It consists of 990 cell lines of 24 tissue origins and includes 51 cell lines of ovarian origin. Robust Multi-Array Average (RMA) normalisation was performed using R (R: A

language and environment for statistical computing, <http://www.R-project.org>). The cut off line for positive expression was determined as previously reported (Yoshihara *et al*, 2013).

Cell lines

The OV2944-HM-1 (HM-1) mouse ovarian cancer cell line was purchased from RIKEN BioResource Center and cultured as previously described (Yamamura *et al*, 2012). The ID8 mouse ovarian cancer cell line was kindly provided by Dr. Margit Maria Janát-Amsbury (Janat-Amsbury *et al*, 2006), and were maintained as previously described (Abiko *et al*, 2013). The immortalised human ovarian surface epithelial cell line, HOSE1-E7/hTERT (HOSE) was kindly provided by Dr. Hironori Tashiro and was maintained as described (Maeda *et al*, 2005).

The IFNGR1 (Interferon- γ receptor 1)-depleted cell lines, HM1-shIFNGR1 and ID8-shIFNGR1, were generated by lentiviral transfection of short hairpin RNAs (shRNA) targeting IFNGR1 using Mouse GIPZ Lentiviral shRNAmir individual clone-viral particles (Thermo Scientific; clone ID V2LMM_76619, gene target sequence CTAATACTAACCACATAGA). Control cell lines, HM1-control and ID8-control, were generated by transfecting a non-silencing, control shRNA (Thermo

Scientific; clone ID V12070603). The PD-L1-overexpressing cell line, HM1-pdl1, PD-L1-depleted cell line, HM1-Mirpd11, and the control cell line, HM1-Mircontrol, were generated and cultured as previously described (Abiko *et al*, 2013).

Flow cytometric analysis of PD-L1 expression on tumour cells in patient ascites

Under the approval of the Institutional Ethical Committee and with written informed consent from each patient, ascites from ovarian cancer patients were collected during their initial operations. After brief centrifugation, red blood cells were lysed, and the remaining cells were washed twice and incubated in RPMI 1640 medium (Nacalai Tesque) supplemented with 10% FBS (v/v; Biowest) with or without adding 20 ng/ml recombinant human IFN- γ (R&D Systems) to the culture medium for 24 hours prior to analysis. At analysis, ascites cells were incubated with fluorescein isothiocyanate (FITC)-conjugated anti-EpCAM (epithelial cell adhesion molecule; CD326) antibody (clone 9C4; BioLegend) and phycoerythrin (PE)-conjugated anti-PD-L1 antibody (clone MIH1; BD Biosciences) or a matched isotype control (BD Biosciences) at 4°C for 30 minutes, washed twice and analysed using a FACSCalibur cytometer (Beckton Dickinson) and CellQuest Pro software (Beckton Dickinson). 7-Amino-Actinomycin D (AAD) Staining Solution (BD Biosciences) was added 10 minutes prior to analysis to

gate out nonviable cells. EpCAM-positive and 7-AAD-negative gated cells were analysed as tumour cells, as previously reported (Kitayama *et al*, 2014).

Immunohistochemistry for ovarian cancer cases

Under the approval of the Institutional Ethical Committee, written informed consent was obtained from the patients, and surgical specimens from 27 ovarian cancer cases who underwent an initial operation in Kyoto University Hospital between 1996 and 2008 were obtained for immunohistochemical analysis. The clinical characteristics of the 27 cases are shown in Supplementary Table S1. All 27 cases were advanced ovarian cancer cases accompanied by peritoneal dissemination to the omentum or pelvic peritoneum. Formalin-fixed, paraffin-embedded blocks from primary ovarian tumours and peritoneal disseminated sites were sliced into 4-micrometer-thick sections and used for immunohistochemistry.

Immunohistochemical staining for human PD-L1 was performed as previously described (Hamanishi *et al*, 2007). Two independent gynaecologic pathologists, who had no prior information regarding the clinical history of the patients, analysed the PD-L1 expression. The samples were evaluated according to the intensity of the staining and scored as follows: 0, negative; 1, very weak expression; 2, moderate expression but weaker than the positive control; and 3, equivalent to or stronger than the positive

control. Placenta was used as a positive control. Samples with heterogeneous staining were scored by the intensity of the staining in the largest area. Samples with staining in <50% of tumour cells was considered negative.

Immunohistochemical staining for CD8 (clone C8/144B, Nichirei) and CD4 (clone 1F6, Nichirei) was performed (Hamanishi *et al*, 2011; Hamanishi *et al*, 2007) and evaluated as previously described (Barnett *et al*, 2010).

Microarray profiling of ovarian cancer tissues

Ovarian cancer specimens were newly obtained from 12 patients, who underwent primary surgery for ovarian cancer at Kyoto University Hospital between 2010 and 2013 and served for microarray analysis. These microarray data (deposited in NCBI's Gene Expression Omnibus, accession number GSE55512, <http://www.ncbi.nlm.nih.gov/geo/query/acc.cgi?acc=GSE55512>) were added to 63 patients' data from our previously reported dataset of 64 ovarian cancer patients, KOV-MA-64 (GEO accession GSE 39204) (Abiko *et al*, 2013), and termed KOV-75. One case in KOV-MA-64 was excluded because we could not obtain slides for immunohistochemistry. The patient characteristics of KOV-75 are listed in Supplementary Table S2.

HOSE cells were incubated in 8 separate culture dishes, 4 dishes with and 4 dishes without 500 IU/ml recombinant human IFN- γ (R&D Systems) in the culture medium for 6 hours prior to the analysis. The cells were then harvested, and total RNA was extracted using the RNAeasy Kit (Qiagen) and analysed using the Human Genome U133 Plus 2.0 Array (Affymetrix). The results were deposited in Gene Expression Omnibus, and are accessible through GEO series accession number GSE55510 (<http://www.ncbi.nlm.nih.gov/geo/query/acc.cgi?acc=GSE55510>). A student t-test was performed between the IFN- γ -added and IFN- γ -free groups, and probes showing an expression value greater than 5.0 in at least one of the samples, a fold change of over 2 and a p value <0.001 were selected as “IFN- γ signature genes (295 probes)”. A publicly accessible microarray dataset of IFN-treated cells (GEO accession GSE3920) was downloaded (Indraccolo *et al*, 2007). Single sample gene set enrichment analysis (ssGSEA) (Barbie *et al*, 2009) for “IFN- γ signature” in GSE3920 and KOV-75 was performed using R, as previously reported (Kawasaki *et al*, 2014). Briefly, R code for ssGSEA was downloaded from Genepattern (<http://www.broadinstitute.org/cancer/software/genepattern/>), and gmt file for IFN- γ signature gene symbols and gct file for KOV75 were used as input files and ‘ssGSEA-Projection. Library. R’ and ‘common R’ were calculated using R

Animals

Female B6C3F1 and C57BL/6 mice were purchased from CLEA Japan. All animal experiments were approved by the Kyoto University Animal Research Committee, and animals were maintained under specific pathogen-free conditions. To evaluate the effect of IFNGR1 on the survival and progression of peritoneal dissemination, HM-1 cells (1×10^6) were injected into the abdominal cavities of syngeneic mice. Mice were euthanised before reaching the moribund state. To evaluate the effect of IFN- γ on tumour growth, HM-1 (1×10^6) or ID8 cells (5×10^6) were injected subcutaneously into the right flanks of syngeneic mice, tumour size was calculated every other day, and the volume of the tumour was estimated using the following formula;

$$\text{Estimated tumour volume} = (r1 \times r2 \times r3) / 2.$$

Immunohistochemistry for mouse tumours

Mouse tumour cryosections (10-micrometer thick) were fixed on a glass slide with acetone and stained with an anti-CD4 (clone H129.19; BD Pharmingen) or anti-CD8 antibody (clone KT15; SeroTec), as previously described (Hamanishi *et al*, 2010). Anti-mouse-PD-L1 antibody (R & D Systems) was used according to the same protocol.

Western blotting analysis of mouse tumours

Tumor tissue was lysed in RIPA buffer with a protease inhibitor cocktail (EMD) and a phosphatase inhibitor cocktail (Nacalai Tesque). Protein was separated by SDS-PAGE gel and immunoblotted with anti-mouse-PD-L1 antibody (R & D Systems) or anti-GAPDH antibody (Abcam). Specific proteins were visualized using ECL Plus Western Blotting Reagent (GE Healthcare Life Sciences).

Flow cytometric analysis for mouse cell line

Cultured cells were harvested and incubated with a FITC-conjugated antibody against mouse IFNGR1 (clone 2E2, eBioscience) or a matched isotype control (eBioscience) at 4°C for 30 minutes, washed twice and analysed as described above.

Flow cytometric analysis of tumour-infiltrating lymphocytes in mice

Mice with tumour formations were sacrificed, and the tumours were collected. After straining through a 70-micrometer cell strainer (BD Biosciences), the tumour cells were washed twice and incubated with a PerCP-conjugated anti-mouse CD3e antibody (BD Biosciences), FITC-conjugated anti-mouse CD4 antibody (BD Biosciences), Alexa

Fluor 647-conjugated anti-mouse CD8a antibody (BD Biosciences) or matched isotype controls. For analysis for MDSCs, cells were stained with PerCP-conjugated anti-mouse Gr-1 antibody (BD Biosciences) and APC-conjugated anti-mouse CD11b antibody (BD Biosciences) or matched isotype controls. Flow cytometric analysis was performed as described above.

Statistics

A paired t-test and student t-test were used for the immunohistochemistry analysis of human samples and mice tumours. Survival was analysed using the Kaplan-Meier survival analysis with the log-rank test using the GraphPad Prism 5 software. The one way ANOVA test was used to analyse tumour volume in mouse subcutaneous tumours. A P value less than 0.05 was considered significant.

Results

The majority of unstimulated ovarian cancer cell lines does not express PD-L1, but does express IFN- γ receptors

The expression of *PD-L1* mRNA in the CCLE dataset of 990 cell lines was evaluated. As shown in Figure 1A, the average PD-L1 expression levels were relatively

low in 51 ovarian cancer cell lines when compared with the cell lines of other origins. Only 16 of 51 ovarian cancer cell lines (31%) were PD-L1-positive, while 411 of 939 cell lines of other origins (44%) were PD-L1 positive.

However, we have reported that PD-L1 protein expression in ovarian cancer is positive in 68-69% of the cases using immunohistochemistry (Abiko *et al*, 2013; Hamanishi *et al*, 2007). As IFN- γ induced PD-L1 in many types of ovarian cancer cell lines (Abiko *et al*, 2013), we hypothesised that PD-L1 in ovarian cancer cells in patients is not expressed constitutively, but expressed transiently in response to IFN- γ in the tumour microenvironment. The IFN- γ receptor is a heterodimer that consists of two chains: IFNGR1 and IFNGR2. As it is reported that some ovarian cancer cells lack protein expression of IFNGR1 (Duncan *et al*, 2007), we then evaluated the expression of *IFNGR1* and *IFNGR2* mRNA in the same dataset. As shown in Figure 1B, all 51 ovarian cancer cell lines expressed *IFNGR1* and *IFNGR2*. Thus, the majority of ovarian cancer cell lines does not express *PD-L1* without induction, but does express two subunits of the IFN- γ receptor.

IFN- γ induces PD-L1 on ovarian cancer cells

It is known that IFN- γ induces PD-L1 on many cell types *in vitro* (Muhlbauer *et al*,

2006; Waeckerle-Men *et al*, 2007) including ovarian cancer cell lines (Abiko *et al*, 2013). To show that IFN- γ can also induce PD-L1 on tumour cells in ovarian cancer patients, we performed flow cytometric assays on ovarian cancer patient ascites cells. Two of 4 analysed cases were positive for PD-L1 expression on tumour cells (Figure 1C). When cells from the PD-L1-negative case (*) were incubated with IFN- γ , the PD-L1 expression on tumour cells was markedly induced (Figure 1D).

The IFN- γ signature score is high in samples with high CD4- and CD8-positive lymphocyte infiltration

To analyse the IFN- γ status in ovarian cancer clinical samples and because immunohistochemistry for IFN- γ is technically difficult, we generated an IFN- γ signature using microarray data to evaluate the amount of IFN- γ in each case. A set of 295 probes targeting 194 known gene and 17 unknown gene sites were significantly up-regulated by IFN- γ and was named the “IFN- γ signature” (Supplementary Table S3). To validate the IFN- γ signature, we applied this signature using ss-GSEA to a publicly accessible gene dataset, GSE3920, and found that IFN- γ signature score was high in IFN-treated cells (Supplementary Figure S1).

We then applied IFN- γ signature to KOV-75 microarray data, which included 75

ovarian cancer clinical samples, by means of ss-GSEA and obtained IFN γ signature score for each sample. Immunohistochemistry for CD4 and CD8 was performed, and the CD4-positive and CD8-positive cell number was counted (Supplementary Figure S2A, Supplementary Table S4). Strikingly, the IFN- γ signature score was strongly correlated to the number of infiltrating CD8- or CD4-positive lymphocytes, or the sum of them ($P<0.0001$, $P=0.0011$, $P<0.0001$, respectively, Figure 2A-C). These data suggest that the IFN- γ in the ovarian cancer microenvironment is derived from lymphocytes, and an IFN- γ -rich microenvironment is strongly correlated to a lymphocyte-rich microenvironment.

The stromal CD8-positive cell number is high in peritoneally disseminated ovarian cancer and is correlated with PD-L1 expression

Immunohistochemical analysis for CD8 was performed in paired surgical specimens of primary ovarian tumour and peritoneal dissemination from 27 ovarian cancer cases. In both primary ovarian and peritoneally disseminated tumours, CD8-positive cell numbers tended to be higher in the cancer stroma than in the tumour epithelium ($P=0.09$, $P=0.0001$, respectively, Supplementary Figure S2B, Figure 3A). Furthermore, the number of CD8-positive cells in the cancer stroma was significantly

high in the peritoneal dissemination samples compared to the primary ovarian tumour samples ($P=0.004$, Supplementary Figure S2C), while the CD8-positive cell number in the cancer epithelium was not significantly different between the peritoneal dissemination and primary ovarian tumour samples (Supplementary Figure S2D).

When serial sections from peritoneal disseminations were stained with the anti-PD-L1 antibodies (Figure 3B), the CD8-positive cell number in the stroma were strongly correlated to PD-L1 expression (PD-L1 staining score 0-1 vs 2-3, $P<0.001$, Figure 3C, Supplementary Figure S2E).

Subcutaneous or peritoneal mouse tumours show different levels of PD-L1 expression and lymphocyte infiltration

As CD8-positive lymphocytes are reported to be the source of IFN- γ in cancer microenvironment (Kooi *et al*, 1993; Taube *et al*, 2012), we next attempted to investigate the relationship between PD-L1 expression on tumour cells and the tumour microenvironment by using two types of mouse models, focusing on IFN- γ in the tumour microenvironment. The mouse ovarian cancer cell line, HM-1, forms subcutaneous tumours or peritoneally disseminated tumours after injection into syngeneic immune-competent B6C3F1 mice. Peritoneally disseminated tumour cells

strongly expressed PD-L1, while subcutaneous tumours showed low PD-L1 expression (Figure 4A). Tumour-infiltrating CD8-positive cells were scarce in subcutaneous tumours, while they were prominent in peritoneally disseminated tumours ($P=0.045$, Figure 4B). Strong infiltration of CD8-positive cells in peritoneally disseminated tumours was also confirmed using flow cytometry ($P=0.011$, Figure 4C). Though the difference in CD4-positive cell count between subcutaneous and peritoneally disseminated tumours did not reach statistical significance using immunohistochemistry (Figure 4D), flow cytometric analysis showed significant difference between the two groups ($P=0.026$, Figure 4E).

IFN- γ signal blockade in tumour cells resulted in lower PD-L1 expression and longer mouse survival in a mouse peritoneal dissemination model

To examine the effects of IFN- γ on tumour cells, we established an IFNGR1 (Interferon-gamma Receptor 1) knockdown cell line, HM1-shIFNGR1, using shRNA. Stable depletion of the IFNGR1 protein was confirmed using flow cytometry (Figure 5A). After injection into the mouse peritoneal cavity, both HM1-shIFNGR1 and HM1-control formed peritoneally disseminated tumours, but the expression of PD-L1 was weaker in HM1-shIFNGR1 cells (Figure 5B, C). Number of tumour-infiltrating

CD8-positive lymphocytes was significantly larger in HM1-shIFNGR1 group (Figure 5D). Dissemination occurred earlier and was prominent in the HM1-control group on day 19, while it was macroscopically invisible in the HM1-shIFNGR1 group (Figure 6A). Mouse survival was significantly longer in the HM1-shIFNGR1 group ($P=0.021$, Figure 6B), which indicated that the IFN- γ signal associated with PD-L1 up-regulation accelerated tumour progression of ovarian cancer cells in the peritoneal cavity.

IFN- γ induces PD-L1 expression on tumour cells and facilitates tumour growth in a mouse subcutaneous model

To further examine the effects of IFN- γ on tumour cells, we administered IFN- γ to subcutaneous tumours in the mice using two previously established cell lines, HM1-Mirpd11 (PD-L1-depleted HM-1) or HM1-Mircontrol. The protocol scheme is shown in Supplementary Figure S3A. PD-L1 expression was induced by IFN- γ (Supplementary Figure S3B) and tumour growth was significantly accelerated by IFN- γ in HM1-Mircontrol subcutaneous tumours ($P<0.05$, Supplementary Figure S3C). On the other hand, HM1-Mirpd11 IFN- γ -injected tumours showed growth that was similar to that of PBS-injected tumours, indicating that tumour growth caused by IFN- γ was completely abrogated by knockdown of PD-L1 (Supplementary Figure S3C). We

repeated this procedure in another mouse cell line, ID8. Although the ID8 subcutaneous tumours were smaller and the difference between groups did not reach statistical significance, the results showed the same tendency, with the ID8-control with IFN- γ administration presenting the largest tumour size (Supplementary Figure S3D).

PD-L1 attenuates CD8+ lymphocytes infiltration into the tumour

To investigate the effect of PD-L1 on host immunity, we compared the tumour-infiltrating immune cells in peritoneal disseminated tumour of HM1-pdl1 (PD-L1-overexpressing HM-1) and in that of HM1-Mirpd11. As shown in Supplementary Figure S4A, number of CD8+ (-positive) tumour-infiltrating lymphocytes (TILs) was significantly larger in HM1-Mirpd11, indicating that PD-L1 reduces the absolute number of infiltration of the CD8+ TILs. On the other hand, number of CD4+ TILs and myeloid derived suppressor cells (MDSCs) was similar in both groups (Supplementary Figure S4B, C).

Discussion

We previously reported that PD-L1 expression is positive in nearly 70% of ovarian cancer cases (Hamanishi *et al*, 2007), and is significantly related to positive malignant

cells in ascites and unfavourable prognosis (Abiko *et al*, 2013). We also reported that PD-L1 can be induced by IFN- γ secreted from CTLs in mouse models (Abiko *et al*, 2013). Though PD-L1 was not expressed in most of the ovarian cancer cell lines, ovarian cancer cells in patient ascites expressed PD-L1 in response to IFN- γ , and the IFN- γ signature score was closely related to lymphocyte infiltration into the tumour in clinical samples (Figure 1). These results are compatible with the report in melanoma (Spranger *et al*, 2013; Taube *et al*, 2012), which indicates that IFN- γ derived from CD8-positive T lymphocytes induces PD-L1 *in vivo*.

It was reported that a high number of intraepithelial CTLs in ovarian cancer is associated with favourable prognosis (Hwang *et al*, 2012), but few reports concerning the stromal CTL number have been published. Here we reported for the first time that, the number of CTLs in cancer stroma was very high in peritoneal dissemination, and was strongly correlated to PD-L1 expression in peritoneally disseminated tumour cells (Figure 2). Abundant lymphocytes are originally present in the omentum, and they may eventually distribute into the stroma of disseminated tumours. Interestingly, intraepithelial CTL number was low in both primary tumour and peritoneal dissemination (Supplementary Figure S2E). Since PD-L1 on tumour cells decreases CD8+ lymphocyte infiltration (Supplementary Figure S4A), PD-L1 on tumour cells,

induced by IFN- γ from CTLs, may expel CTLs from the tumour epithelium to the stroma especially in peritoneal dissemination. Although PD-L1 is known to suppress cytotoxic activity of CTLs (Abiko *et al*, 2013; Hirano *et al*, 2005; Iwai *et al*, 2002), function of TILs was similar regardless of different expression status of PD-L1 on tumour cells (data not shown) probably because TIL function is inevitably suppressed by various mechanisms other than PD-L1 expression (Curiel *et al*, 2004; Gabrilovich & Nagaraj, 2009; Lob *et al*, 2009; Walunas *et al*, 1996).

The biological function of IFN- γ includes increasing antigen presentation and promoting Th1 differentiation, leading to cellular immunity (Dunn *et al*, 2006). Therefore, IFN- γ has been expected to possess anti-tumour effects in cancer patients. Nevertheless, upon administration of IFN- γ to ovarian cancer patients, the opposite results were observed in two phase-III clinical trials (Alberts *et al*, 2008; Windbichler *et al*, 2000); tumour progression was promoted when IFN- γ was combined with standard chemotherapy (Alberts *et al*, 2008). Recent studies have shown that IFN- γ seems to have two faces, one good and one bad: immunoactivating/immunoregulatory and anti-tumour/tumour-promoting (Zaidi & Merlino, 2011). One indirect tumour-promoting mechanism of IFN- γ was described as the tumour-immunoediting theory (Dunn *et al*, 2002; Dunn *et al*, 2006), in which IFN- γ works through selective

pressure and forces the evolution of tumour cells to IFN- γ -resistant phenotypes. However, no direct mechanism to explain the tumour-promoting effect of IFN- γ was identified. To explain the tumour-promoting effect of IFN- γ , we hypothesised that induction of PD-L1 by IFN- γ overwhelms the anti-tumour effects of IFN- γ . To prove our hypothesis, we conducted animal experiments to describe tumours grown in different microenvironment. The subcutaneous model refers to a tumour grown in a microenvironment with a smaller number of CTL infiltration; and the peritoneal dissemination model refers to a microenvironment with a larger amount of CTL infiltration, as is the case in many cases of human ovarian cancer peritoneal dissemination. IFN- γ signal inhibition resulted in lower PD-L1 expression in the tumour cells and prolonged survival in the peritoneal dissemination model (Figure 5, 6). IFN- γ administration resulted in higher PD-L1 expression in the tumour cells and the acceleration of tumour progression in the subcutaneous model (Supplementary Figure S3). PD-L1 knockdown in tumour cells abrogated the tumour-promoting effect of IFN- γ (Supplementary Figure S3C). These data indicate that IFN- γ promotes tumour growth by inducing PD-L1 in the tumour.

The anti-PD-1 antibody, Nivolumab, shows striking effects in melanoma, lung and renal cancers (Topalian *et al*, 2012). In our ongoing clinical trial for ovarian cancer, we

have also found that some patients strikingly respond to Nivolumab but others do not (Hamanishi *et al*, unpublished data). In 2012, a report suggesting that the predictive biomarker for anti-PD-1 therapy was PD-L1 expression in the tumour won attention (Topalian *et al*, 2012). However, upon further investigation, conflicting reports followed, and now the issue is controversial (Wolchok *et al*, 2013). Our data in this study imply that PD-L1 expression on ovarian cancer cells can be altered by its microenvironment. Therefore, verifying PD-L1 expression on a single slide from one single biopsy site may not represent the immune microenvironment of the entire tumour and, thus, may not be sufficient for predicting the efficacy of Nivolumab in the entire patient. Instead, indicators such as IFN- γ signature or lymphocyte infiltration, which reflect the IFN- γ status in the tumour microenvironment may serve as potential biomarkers. Further investigation regarding these markers and response to anti-PD-1 therapy in clinical trial is required.

In conclusion, stromal CTLs in ovarian cancer peritoneal dissemination are strongly affecting anti-tumour immunity through PD-L1 expression. IFN- γ from stromal CTLs induces PD-L1 and promotes tumour progression in ovarian cancer microenvironment. Our results indicate that PD-L1 expression on ovarian cancer cells varies according to the microenvironment. Lymphocyte infiltration and the IFN- γ status

may be the keys for effective immunotherapy, including anti-PD-1 therapy.

Acknowledgements

We are grateful to Yuko Hosoe for her excellent technical assistance.

Research Support

This work was supported by Grant-in-Aid for Scientific Research (KAKENHI) from MEXT (The Ministry of Education, Culture, Sports, Science and Technology).

Conflicts of Interest

We have no conflicts of interest to disclose.

References

Abiko K, Mandai M, Hamanishi J, Yoshioka Y, Matsumura N, Baba T, Yamaguchi K, Murakami R, Yamamoto A, Kharma B, Kosaka K, Konishi I (2013) PD-L1 on tumor cells is induced in ascites and promotes peritoneal dissemination of ovarian cancer through CTL dysfunction. *Clin Cancer Res* **19**(6): 1363-1374, doi:10.1158/1078-0432.CCR-12-2199

Alberts DS, Marth C, Alvarez RD, Johnson G, Bidzinski M, Kardatzke DR, Bradford WZ, Loutit J, Kirn DH, Clouser MC, Markman M (2008) Randomized phase 3 trial of interferon gamma-1b plus standard carboplatin/paclitaxel versus carboplatin/paclitaxel alone for first-line treatment of advanced ovarian and primary peritoneal carcinomas: results from a prospectively designed analysis of progression-free survival. *Gynecol Oncol* **109**(2): 174-181, doi:10.1016/j.ygyno.2008.01.005

Barbie DA, Tamayo P, Boehm JS, Kim SY, Moody SE, Dunn IF, Schinzel AC, Sandy P, Meylan E, Scholl C, Frohling S, Chan EM, Sos ML, Michel K, Mermel C, Silver SJ, Weir BA, Reiling JH, Sheng Q, Gupta PB, Wadlow RC, Le H, Hoersch S, Wittner BS, Ramaswamy S, Livingston DM, Sabatini DM, Meyerson M, Thomas RK, Lander ES,

Mesirov JP, Root DE, Gilliland DG, Jacks T, Hahn WC (2009) Systematic RNA interference reveals that oncogenic KRAS-driven cancers require TBK1. *Nature* **462**(7269): 108-112, doi:10.1038/nature08460

Barnett JC, Bean SM, Whitaker RS, Kondoh E, Baba T, Fujii S, Marks JR, Dressman HK, Murphy SK, Berchuck A (2010) Ovarian cancer tumor infiltrating T-regulatory (T(reg)) cells are associated with a metastatic phenotype. *Gynecol Oncol* **116**(3): 556-562, doi:10.1016/j.ygyno.2009.11.020

Barretina J, Caponigro G, Stransky N, Venkatesan K, Margolin AA, Kim S, Wilson CJ, Lehar J, Kryukov GV, Sonkin D, Reddy A, Liu M, Murray L, Berger MF, Monahan JE, Morais P, Meltzer J, Korejwa A, Jane-Valbuena J, Mapa FA, Thibault J, Bric-Furlong E, Raman P, Shipway A, Engels IH, Cheng J, Yu GK, Yu J, Aspesi P, Jr., de Silva M, Jagtap K, Jones MD, Wang L, Hatton C, Palesscandolo E, Gupta S, Mahan S, Sougnez C, Onofrio RC, Liefeld T, MacConaill L, Winckler W, Reich M, Li N, Mesirov JP, Gabriel SB, Getz G, Ardlie K, Chan V, Myer VE, Weber BL, Porter J, Warmuth M, Finan P, Harris JL, Meyerson M, Golub TR, Morrissey MP, Sellers WR, Schlegel R, Garraway LA (2012) The Cancer Cell Line Encyclopedia enables predictive modelling of

anticancer drug sensitivity. *Nature* **483**(7391): 603-607, doi:10.1038/nature11003

Blank C, Brown I, Peterson AC, Spiotto M, Iwai Y, Honjo T, Gajewski TF (2004)

PD-L1/B7H-1 inhibits the effector phase of tumor rejection by T cell receptor (TCR)

transgenic CD8+ T cells. *Cancer Res* **64**(3): 1140-1145

Coleman RL, Monk BJ, Sood AK, Herzog TJ (2013) Latest research and treatment of

advanced-stage epithelial ovarian cancer. *Nat Rev Clin Oncol* **10**(4): 211-224,

doi:10.1038/nrclinonc.2013.5

Curiel TJ, Coukos G, Zou L, Alvarez X, Cheng P, Mottram P, Evdemon-Hogan M,

Conejo-Garcia JR, Zhang L, Burow M, Zhu Y, Wei S, Kryczek I, Daniel B, Gordon A,

Myers L, Lackner A, Disis ML, Knutson KL, Chen L, Zou W (2004) Specific

recruitment of regulatory T cells in ovarian carcinoma fosters immune privilege and

predicts reduced survival. *Nat Med* **10**(9): 942-949, doi:10.1038/nm1093

Duncan TJ, Rolland P, Deen S, Scott IV, Liu DT, Spendlove I, Durrant LG (2007) Loss

of IFN gamma receptor is an independent prognostic factor in ovarian cancer. *Clin*

Cancer Res **13**(14): 4139-4145, doi:10.1158/1078-0432.CCR-06-2833

Dunn GP, Bruce AT, Ikeda H, Old LJ, Schreiber RD (2002) Cancer immunoediting:
from immunosurveillance to tumor escape. *Nat Immunol* **3**(11): 991-998,
doi:10.1038/ni1102-991

Dunn GP, Koebel CM, Schreiber RD (2006) Interferons, immunity and cancer
immunoediting. *Nat Rev Immunol* **6**(11): 836-848, doi:10.1038/nri1961

Freedman RS, Kudelka AP, Kavanagh JJ, Verschraegen C, Edwards CL, Nash M, Levy
L, Atkinson EN, Zhang HZ, Melichar B, Patenia R, Templin S, Scott W, Platsoucas CD
(2000) Clinical and biological effects of intraperitoneal injections of recombinant
interferon-gamma and recombinant interleukin 2 with or without tumor-infiltrating
lymphocytes in patients with ovarian or peritoneal carcinoma. *Clin Cancer Res* **6**(6):
2268-2278

Freeman GJ, Long AJ, Iwai Y, Bourque K, Chernova T, Nishimura H, Fitz LJ,
Malenkovich N, Okazaki T, Byrne MC, Horton HF, Fouser L, Carter L, Ling V,

Bowman MR, Carreno BM, Collins M, Wood CR, Honjo T (2000) Engagement of the PD-1 immunoinhibitory receptor by a novel B7 family member leads to negative regulation of lymphocyte activation. *J Exp Med* **192**(7): 1027-1034

Gabrilovich DI, Nagaraj S (2009) Myeloid-derived suppressor cells as regulators of the immune system. *Nat Rev Immunol* **9**(3): 162-174, doi:10.1038/nri2506

Godoy HE, Khan AN, Vethanayagam RR, Grimm MJ, Singel KL, Kolomeyevskaya N, Sexton KJ, Parameswaran A, Abrams SI, Odunsi K, Segal BH (2013) Myeloid-derived suppressor cells modulate immune responses independently of NADPH oxidase in the ovarian tumor microenvironment in mice. *PLoS One* **8**(7): e69631, doi:10.1371/journal.pone.0069631

Hamanishi J, Mandai M, Abiko K, Matsumura N, Baba T, Yoshioka Y, Kosaka K, Konishi I (2011) The comprehensive assessment of local immune status of ovarian cancer by the clustering of multiple immune factors. *Clin Immunol* **141**(3): 338-347, doi:10.1016/j.clim.2011.08.013

Hamanishi J, Mandai M, Iwasaki M, Okazaki T, Tanaka Y, Yamaguchi K, Higuchi T, Yagi H, Takakura K, Minato N, Honjo T, Fujii S (2007) Programmed cell death 1 ligand 1 and tumor-infiltrating CD8+ T lymphocytes are prognostic factors of human ovarian cancer. *Proc Natl Acad Sci U S A* **104**(9): 3360-3365, doi:10.1073/pnas.0611533104

Hamanishi J, Mandai M, Matsumura N, Baba T, Yamaguchi K, Fujii S, Konishi I (2010) Activated local immunity by CC chemokine ligand 19-transduced embryonic endothelial progenitor cells suppresses metastasis of murine ovarian cancer. *Stem Cells* **28**(1): 164-173, doi:10.1002/stem.256

Hanahan D, Weinberg RA (2011) Hallmarks of cancer: the next generation. *Cell* **144**(5): 646-674, doi:10.1016/j.cell.2011.02.013

Hirano F, Kaneko K, Tamura H, Dong H, Wang S, Ichikawa M, Rietz C, Flies DB, Lau JS, Zhu G, Tamada K, Chen L (2005) Blockade of B7-H1 and PD-1 by monoclonal antibodies potentiates cancer therapeutic immunity. *Cancer Res* **65**(3): 1089-1096

Hwang WT, Adams SF, Tahirovic E, Hagemann IS, Coukos G (2012) Prognostic

significance of tumor-infiltrating T cells in ovarian cancer: a meta-analysis. *Gynecol*

Oncol **124**(2): 192-198, doi:10.1016/j.ygyno.2011.09.039

Indraccolo S, Pfeffer U, Minuzzo S, Esposito G, Roni V, Mandruzzato S, Ferrari N,

Anfosso L, Dell'Eva R, Noonan DM, Chieco-Bianchi L, Albini A, Amadori A (2007)

Identification of genes selectively regulated by IFNs in endothelial cells. *J Immunol*

178(2): 1122-1135

Iwai Y, Ishida M, Tanaka Y, Okazaki T, Honjo T, Minato N (2002) Involvement of

PD-L1 on tumor cells in the escape from host immune system and tumor

immunotherapy by PD-L1 blockade. *Proc Natl Acad Sci U S A* **99**(19): 12293-12297,

doi:10.1073/pnas.192461099

Janat-Amsbury MM, Yockman JW, Anderson ML, Kieback DG, Kim SW (2006)

Comparison of ID8 MOSE and VEGF-modified ID8 cell lines in an immunocompetent

animal model for human ovarian cancer. *Anticancer Res* **26**(4B): 2785-2789

Junttila MR, de Sauvage FJ (2013) Influence of tumour micro-environment

heterogeneity on therapeutic response. *Nature* **501**(7467): 346-354,

doi:10.1038/nature12626

Kandalaft LE, Singh N, Liao JB, Facciabene A, Berek JS, Powell DJ, Jr., Coukos G

(2010) The emergence of immunomodulation: combinatorial immunochemotherapy

opportunities for the next decade. *Gynecol Oncol* **116**(2): 222-233,

doi:10.1016/j.ygyno.2009.11.001

Kawasaki K, Kondo E, Chigusa Y, Ujita M, Murakami R, Mogami H, Brown JB, Okuno

Y, Konishi I (2014) Reliable pre-eclampsia pathways based on multiple independent

microarray data sets. *Mol Hum Reprod* **21**(2): 217-224, doi:10.1093/molehr/gau096

Kitayama J, Emoto S, Yamaguchi H, Ishigami H, Kamei T, Yamashita H, Seto Y,

Matsuzaki K, Watanabe T (2014) Flow cytometric quantification of intraperitoneal free

tumor cells in patients with peritoneal metastasis. *Cytometry B Clin Cytom* **86**(1): 56-62,

doi:10.1002/cyto.b.21126

Kooi S, Freedman RS, Rodriguez-Villanueva J, Platsoucas CD (1993) Cytokine

production by T-cell lines derived from tumor-infiltrating lymphocytes from patients with ovarian carcinoma: tumor-specific immune responses and inhibition of antigen-independent cytokine production by ovarian tumor cells. *Lymphokine Cytokine Res* **12**(6): 429-437

Li K, Mandai M, Hamanishi J, Matsumura N, Suzuki A, Yagi H, Yamaguchi K, Baba T, Fujii S, Konishi I (2009) Clinical significance of the NKG2D ligands, MICA/B and ULBP2 in ovarian cancer: high expression of ULBP2 is an indicator of poor prognosis. *Cancer Immunol Immunother* **58**(5): 641-652, doi:10.1007/s00262-008-0585-3

Liu M, Matsumura N, Mandai M, Li K, Yagi H, Baba T, Suzuki A, Hamanishi J, Fukuhara K, Konishi I (2009) Classification using hierarchical clustering of tumor-infiltrating immune cells identifies poor prognostic ovarian cancers with high levels of COX expression. *Mod Pathol* **22**(3): 373-384, doi:10.1038/modpathol.2008.187

Lob S, Konigsrainer A, Rammensee HG, Opelz G, Terness P (2009) Inhibitors of indoleamine-2,3-dioxygenase for cancer therapy: can we see the wood for the trees? *Nat*

Rev Cancer **9**(6): 445-452, doi:10.1038/nrc2639

Maeda T, Tashiro H, Katabuchi H, Begum M, Ohtake H, Kiyono T, Okamura H (2005)

Establishment of an immortalised human ovarian surface epithelial cell line without chromosomal instability. *Br J Cancer* **93**(1): 116-123, doi:10.1038/sj.bjc.6602662

Muhlbauer M, Fleck M, Schutz C, Weiss T, Froh M, Blank C, Scholmerich J,

Hellerbrand C (2006) PD-L1 is induced in hepatocytes by viral infection and by interferon-alpha and -gamma and mediates T cell apoptosis. *J Hepatol* **45**(4): 520-528, doi:10.1016/j.jhep.2006.05.007

Spranger S, Spaapen RM, Zha Y, Williams J, Meng Y, Ha TT, Gajewski TF (2013)

Up-regulation of PD-L1, IDO, and T(regs) in the melanoma tumor microenvironment is driven by CD8(+) T cells. *Sci Transl Med* **5**(200): 200ra116, doi:10.1126/scitranslmed.3006504

Taube JM, Anders RA, Young GD, Xu H, Sharma R, McMiller TL, Chen S, Klein AP,

Pardoll DM, Topalian SL, Chen L (2012) Colocalization of inflammatory response with

B7-h1 expression in human melanocytic lesions supports an adaptive resistance mechanism of immune escape. *Sci Transl Med* **4**(127): 127ra137, doi:10.1126/scitranslmed.3003689

Thibodeaux SR, Curiel TJ (2011) Immune therapy for ovarian cancer: promise and pitfalls. *Int Rev Immunol* **30**(2-3): 102-119, doi:10.3109/08830185.2011.567361

Topalian SL, Hodi FS, Brahmer JR, Gettinger SN, Smith DC, McDermott DF, Powderly JD, Carvajal RD, Sosman JA, Atkins MB, Leming PD, Spigel DR, Antonia SJ, Horn L, Drake CG, Pardoll DM, Chen L, Sharfman WH, Anders RA, Taube JM, McMiller TL, Xu H, Korman AJ, Jure-Kunkel M, Agrawal S, McDonald D, Kollia GD, Gupta A, Wigginton JM, Sznol M (2012) Safety, activity, and immune correlates of anti-PD-1 antibody in cancer. *N Engl J Med* **366**(26): 2443-2454, doi:10.1056/NEJMoa1200690

Waeckerle-Men Y, Starke A, Wuthrich RP (2007) PD-L1 partially protects renal tubular epithelial cells from the attack of CD8+ cytotoxic T cells. *Nephrol Dial Transplant* **22**(6): 1527-1536, doi:10.1093/ndt/gfl818

Walunas TL, Bakker CY, Bluestone JA (1996) CTLA-4 ligation blocks CD28-dependent

T cell activation. *J Exp Med* **183**(6): 2541-2550

Windbichler GH, Hausmaninger H, Stummvoll W, Graf AH, Kainz C, Lahodny J,

Denison U, Muller-Holzner E, Marth C (2000) Interferon-gamma in the first-line

therapy of ovarian cancer: a randomized phase III trial. *Br J Cancer* **82**(6): 1138-1144,

doi:10.1054/bjoc.1999.1053

Wolchok JD, Kluger H, Callahan MK, Postow MA, Rizvi NA, Lesokhin AM, Segal NH,

Ariyan CE, Gordon RA, Reed K, Burke MM, Caldwell A, Kronenberg SA, Agunwamba

BU, Zhang X, Lowy I, Inzunza HD, Feely W, Horak CE, Hong Q, Korman AJ,

Wigginton JM, Gupta A, Sznol M (2013) Nivolumab plus ipilimumab in advanced

melanoma. *N Engl J Med* **369**(2): 122-133, doi:10.1056/NEJMoa1302369

Yamamura S, Matsumura N, Mandai M, Huang Z, Oura T, Baba T, Hamanishi J,

Yamaguchi K, Kang HS, Okamoto T, Abiko K, Mori S, Murphy SK, Konishi I (2012)

The activated transforming growth factor-beta signaling pathway in peritoneal

metastases is a potential therapeutic target in ovarian cancer. *Int J Cancer* **130**(1): 20-28,

doi:10.1002/ijc.25961

Yoshihara K, Shahmoradgoli M, Martinez E, Vegesna R, Kim H, Torres-Garcia W,
Trevino V, Shen H, Laird PW, Levine DA, Carter SL, Getz G, Stemke-Hale K, Mills
GB, Verhaak RG (2013) Inferring tumour purity and stromal and immune cell
admixture from expression data. *Nat Commun* **4**: 2612, doi:10.1038/ncomms3612

Zaidi MR, Merlino G (2011) The two faces of interferon-gamma in cancer. *Clin Cancer
Res* **17**(19): 6118-6124, doi:10.1158/1078-0432.CCR-11-0482

Zhang QW, Liu L, Gong CY, Shi HS, Zeng YH, Wang XZ, Zhao YW, Wei YQ (2012)
Prognostic significance of tumor-associated macrophages in solid tumor: a
meta-analysis of the literature. *PLoS One* **7**(12): e50946,
doi:10.1371/journal.pone.0050946

Titles and Legends to Figures

Figure 1. PD-L1 expression on ovarian cancer cells is induced by IFN- γ .

A, PD-L1 expression in cell lines from the CCLE dataset. The horizontal line at value 4.950718 represents the determined cut off value, as mentioned in the materials and methods section.

B, Expression of *IFNGR1* and *IFNGR2* in cell lines of ovarian origin from the CCLE dataset. The horizontal and vertical lines represent the determined cut off values.

C, PD-L1 expression in ascites tumour cells from four cases of ovarian cancer. CD326-positive and 7-AAD-negative cells were gated as viable tumour cells. Open histogram with grey line; anti-PD-L1 antibody, filled histogram; isotype control. PD-L1-positive cases (lower panels) and negative cases (upper panels) are shown.

D, Ascites cells designated by * in Figure 1C were incubated with (upper panel) or without (lower panel) IFN- γ for 24 hours, and PD-L1 expression is shown. Open histogram with grey line; anti-PD-L1 antibody, filled histogram; isotype control.

Figure 2. IFN- γ signature score is correlated to lymphocyte infiltration in ovarian cancer clinical samples.

The IFN- γ signature score (x-axis) and number of CD8-positive (A), CD4-positive

(B), or both (C), lymphocytes (y-axis) showed a significant, positive correlation in KOV75 cases.

Figure 3. Stromal CD8-positive cells are prominent in peritoneal dissemination and are related to PD-L1 expression on tumour cells in ovarian cancer clinical samples.

A, Number of intraepithelial and stromal CD8-positive cells in peritoneal dissemination.

B, Immunohistochemistry for PD-L1 and CD8. Representative cases are shown. The area marked “E” represents tumour epithelium, and the area marked “S” represents tumour stroma. Note the abundant stromal infiltration of CD8-positive cells, and dense PD-L1 staining on both cancer cells and immune cells. Bars; 50µm.

C, PD-L1 expression level and stromal CD8-positive cell number in a peritoneal dissemination sample. PD-L1 staining score 0-1 vs. 2-3, $P < 0.001$.

Figure 4. PD-L1 expression and lymphocyte infiltration vary between mouse subcutaneous and peritoneal tumours.

A, Representative images of immunohistochemistry for PD-L1 and CD8 for subcutaneous and peritoneal disseminated tumours of HM-1. Green bars; 25µm, black

bars; 50µm.

B, CD8-positive cell number per high-power field using immunohistochemistry (n=3).

C, The percentage of CD8-positive cells in the total cells of tumour tissue analysed by flow cytometry (n=4).

D, CD4-positive cell number per high-power field using immunohistochemistry (n=3).

E, The percentage of CD4-positive cells in the total cells in tumour tissue analysed using flow cytometry (n=4).

Figure 5. Blocking the IFN- γ signal in the mouse peritoneal dissemination model resulted in lower PD-L1 expression and more TILs.

A, IFNGR1 expression on HM-1 cells was successfully depleted by shRNA. HM1-control (black line histogram), HM1-shIFNGR1 (blue line histogram) and matched isotype control (shaded histogram).

B, Upper panels; Immunohistochemistry for PD-L1 in mouse peritoneal disseminated tumours. Green bars; 25µm. Lower panels; Expression of PD-L1 on tumour cells. Green line histogram; anti-PD-L1 antibody, filled histogram; isotype

control. Representative data from 4 mice per group with similar results.

C, Western blotting analysis for mouse peritoneally disseminated tumours. Cont; HM1-control, sh; HM1-shIFNGR1.

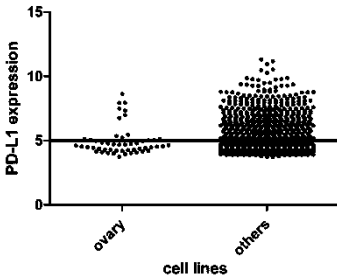
D, CD8-positive cells in mouse peritoneally disseminated tumour. Upper panel; representative dot plots. The percentage of CD3-positive, CD8-positive cells in total tumour cells are shown in the box. Lower panel; bar graph, n=4.

Figure 6. Blocking the IFN- γ signal in the mouse peritoneal dissemination model resulted in slower tumour progression and longer survival.

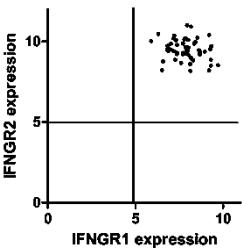
A, Photograph of mouse peritoneum from HM1-control- or HM1-shIFNGR1 injected group on day 19. Yellow arrow heads: peritoneally disseminated tumours on peritoneum, blue arrow heads: disseminated tumours on omentum.

B, Survival of HM1-shIFNGR1-injected mice (blue line) and HM1-control-injected mice (green line) (n=6).

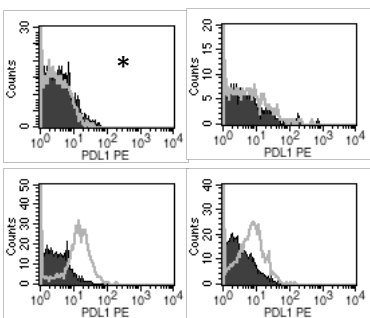
A



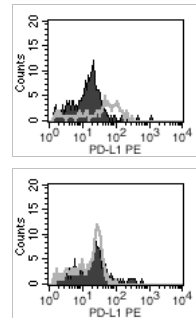
B



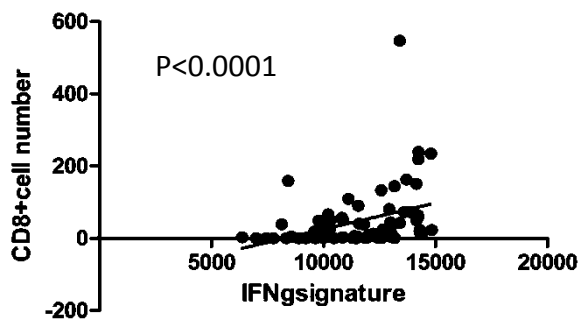
C



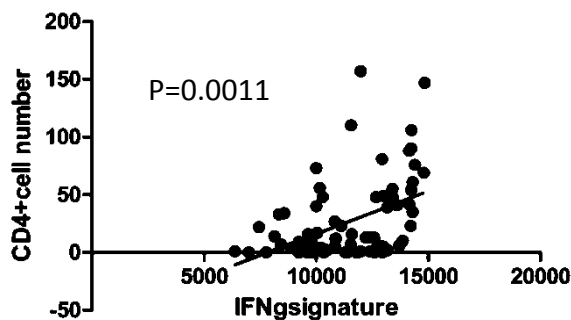
D



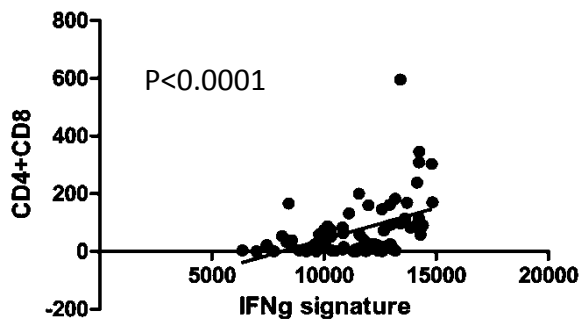
A



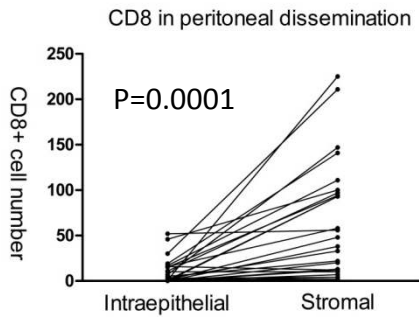
B



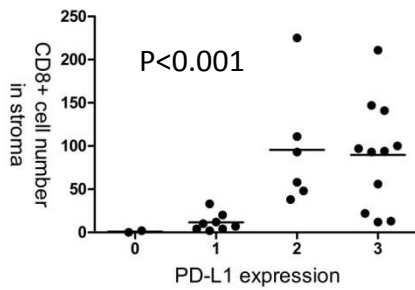
C



A

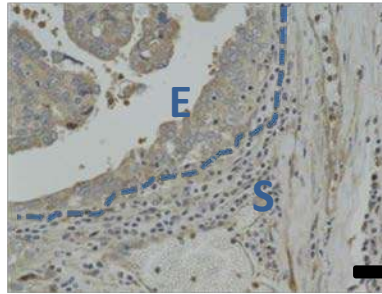


C

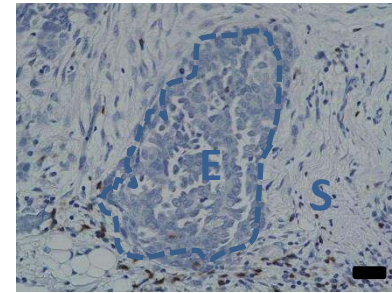
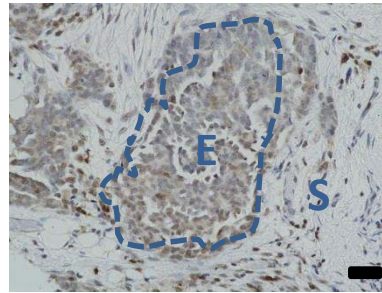
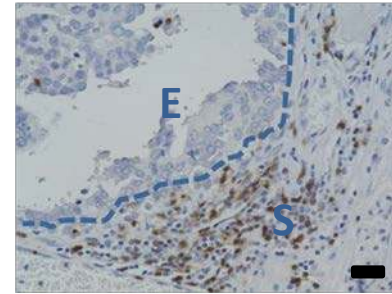


B

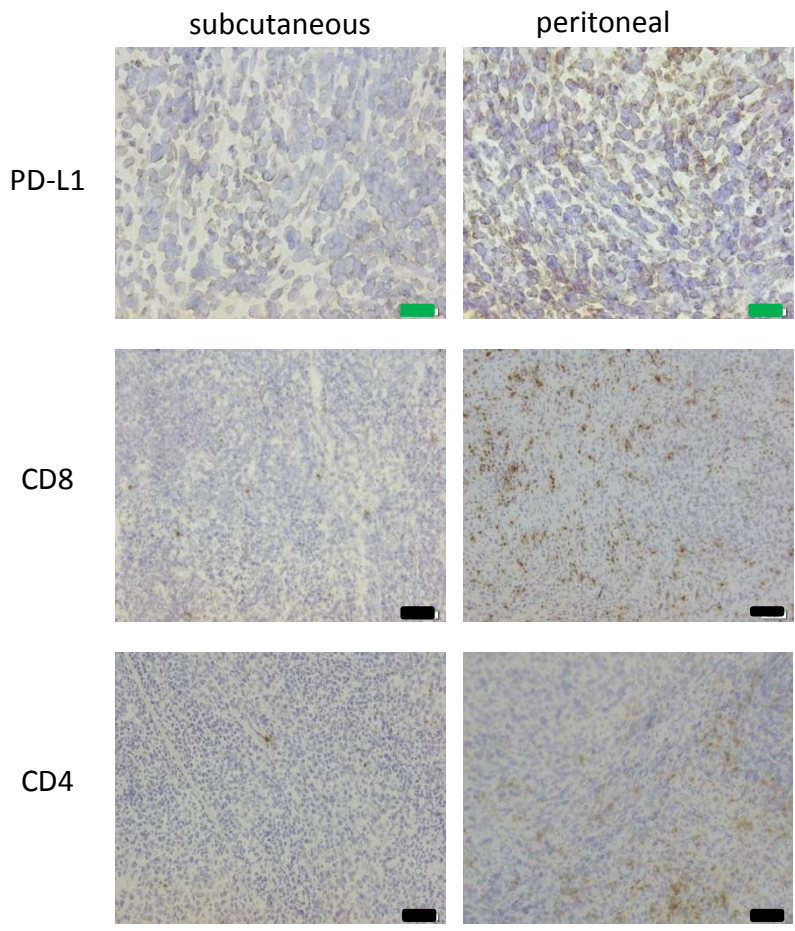
PD-L1



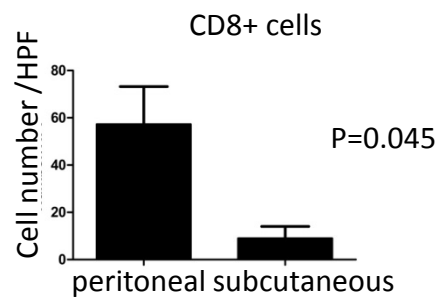
CD8



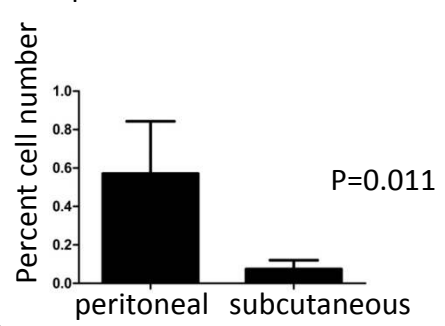
A



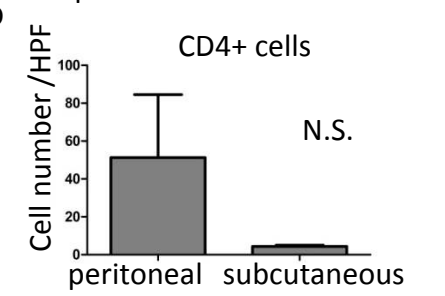
B



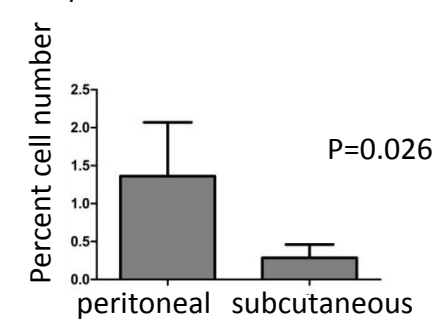
C



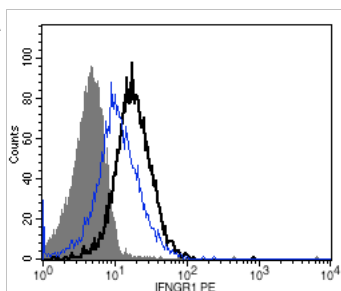
D



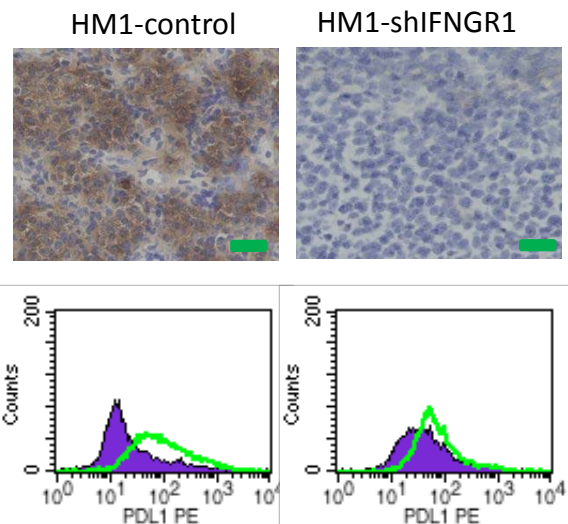
E



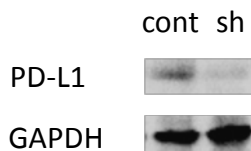
A



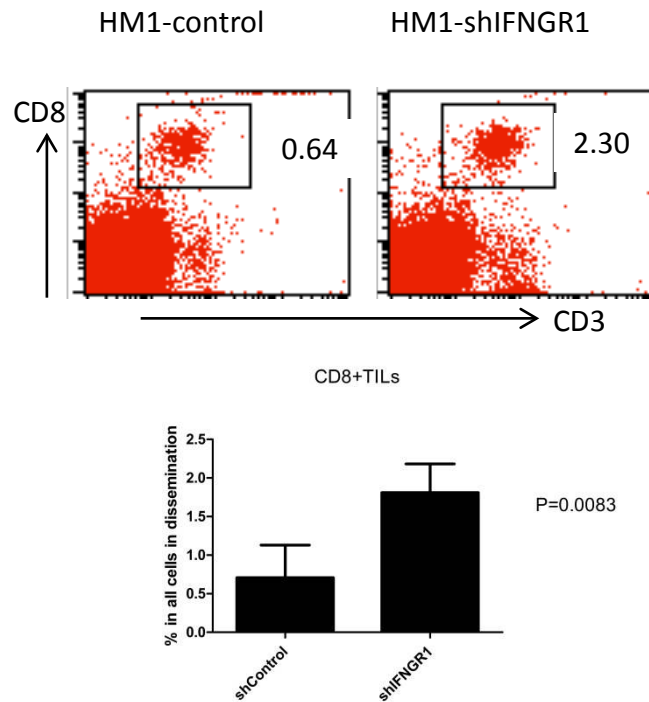
B



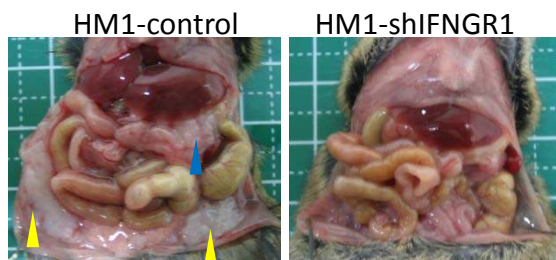
C



D



A



B

