



# IL-27 Mediates Pro-Inflammatory Effects *via* the ERK Signaling Pathway During Preterm Labor

Dongni Huang<sup>1,2,3</sup>, Yuxin Ran<sup>1,2,3</sup>, Zheng Liu<sup>1,2,3</sup>, Jie He<sup>1,2,3</sup>, Nanlin Yin<sup>1,2,3,4\*</sup> and Hongbo Qi<sup>1,2,3,4\*</sup>

<sup>1</sup> Department of Obstetrics, The First Affiliated Hospital of Chongqing Medical University, Chongqing, China, <sup>2</sup> Chongqing Key Laboratory of Maternal and Fetal Medicine, Chongqing Medical University, Chongqing, China, <sup>3</sup> Joint International Research Laboratory of Reproduction and Development of Chinese Ministry of Education, Chongqing Medical University, Chongqing, China, <sup>4</sup> Center for Reproductive Medicine, The First Affiliated Hospital of Chongqing Medical University, Chongqing, China

## OPEN ACCESS

### Edited by:

Andreas Von Knethen,  
Goethe University Frankfurt, Germany

### Reviewed by:

Alexandre Quintas,  
Egas Moniz Interdisciplinary Research  
Center, Portugal  
Gowrishankar Muthukrishnan,  
University of Rochester, United States

### \*Correspondence:

Nanlin Yin  
yinnanlin@cqmu.edu.cn  
Hongbo Qi  
qihongbocy@gmail.com

### Specialty section:

This article was submitted to  
Inflammation,  
a section of the journal  
Frontiers in Immunology

Received: 13 May 2021

Accepted: 21 September 2021

Published: 08 October 2021

### Citation:

Huang D, Ran Y, Liu Z, He J,  
Yin N and Qi H (2021) IL-27  
Mediates Pro-Inflammatory  
Effects *via* the ERK Signaling  
Pathway During Preterm Labor.  
*Front. Immunol.* 12:709229.  
doi: 10.3389/fimmu.2021.709229

Preterm labor (PTL) is a multifactorial syndrome that results in birth prior to 37 weeks of gestation. However, the specific molecular mechanisms underlying this condition have yet to be elucidated. Previous research demonstrated that the abnormal expression of IL-27, and its receptors, played a role in the pathophysiology of preterm labor. In the present study, we established a Lipopolysaccharide (LPS)-stimulated, infection-induced, preterm mouse model based on wild-type C57BL/6 mice and WSX-1<sup>-/-</sup>C57BL/6 mice. WSX-1 knockdown led to a significant delay in birth by 11.32 ± 2.157h. In addition, compared with wild-type C57BL/6 mice, the expression levels of *IFN-γ*, *IL-1β*, *IL-6*, *TNF-α*, and *CXCL10*, in the fetal membrane and myometrium of WSX-1<sup>-/-</sup>mice were significantly lower, particularly in the myometrium. We also confirmed similar pro-inflammatory effects arising from IL-27 in human amniotic cell line (WISH) and human myometrial smooth muscle cell line (HMSMC). Once stimulated by LPS, the pro-inflammatory action exhibited a synergistic effect and appeared to be time-dependent. Finally, we demonstrated that LY3214996, an inhibitor of the ERK pathway, significantly inhibited the pro-inflammatory effect mediated by IL-27. Overall, our data confirmed that the inflammatory effect mediated by the IL-27/IFN- $\gamma$ /ERK axis is involved in preterm labor. Our findings, therefore, provide an enhancement in our etiological understanding of the mechanisms underlying PTL.

**Keywords:** IL-27/WSX-1, preterm labor, inflammation, ERK signaling pathway, mice model

## INTRODUCTION

Preterm labor is defined as delivery within 37 weeks of gestation (1). According to global estimates by the World Health Organization (WHO), approximately 15 million neonates are born prematurely each year, thus accounting for 11.1% of all births (2). Preterm labor is the only direct cause of 35% of neonatal deaths (3). In addition, preterm labor is associated with a range of long-term complications, including respiratory distress syndrome (4), neurological dysfunction (5), hearing loss, cerebral palsy (6), and visual impairment; collectively, these conditions bring heavy

burden to both family and society (5). At present, the etiology of preterm labor is still unclear. In 2014, Romero et al. were the first to propose the concept of preterm labor as a multifactorial syndrome (5). Moreover, it is becoming clear that one of the main mechanisms associated with PTL is inflammation mediated by intrauterine infection (7).

Approximately 25% of premature babies are born with an amniotic infection (8); the ascending route is the most common route of infection. A previous study reported that the LPS-induced activation of uterine inflammation was sufficient to override the repressive effects of progesterone and induce a laboring phenotype (9). Pathogens and products are recognized by pattern recognition receptors (PRRs); these trigger the activation of the immune system and play a pro-inflammatory role by releasing cytokines (IL-1 $\beta$ , TNF- $\alpha$ , and IL-6), chemokines (CXCL11, CXCL10, and CXCL8), and prostaglandins. The activation of these specific signal transduction pathways causes uterine contractions, cervical structural changes, and weakened fetal membranes; ultimately, these events eventually lead to preterm labor (10).

The fetal membranes and myometrium are the main components of the maternal-fetal interface. These structures not only participate in signal transmission between the mother and fetus, but they are also important components in the maternal-fetal microenvironment (11). Previous studies have shown that amniotic epithelial cells are the first to be exposed to fetal signals (12). These amniotic epithelial cells are susceptible to hormones, mechanical tension, and other external stimuli; such susceptibility can result in the infiltration of a large number of immune cells and inflammatory mediators and can ultimately lead to preterm labor (13). Research has shown that LPS activates Toll-like receptors (TLR) through the NF- $\kappa$ B pathway in amniotic cells, thus releasing a range of secondary pro-inflammatory factors, including IL-6, IL-8, and MMP-9 in PTL (14). Similarly, when myometrial cells are stimulated by LPS, they can also release contraction-related proteins (CAP) (e.g., COX-2, CX-43, and OTR) and inflammatory mediators (e.g., IL-1 $\beta$  and TNF- $\alpha$ ) (15). Therefore, epithelial cells in the amniotic membrane and myometrial cells may play an important role in the process of inflammatory imbalance in preterm labor.

Since the imbalance of inflammation is so important in the pathogenesis of preterm labor, it is vital that we develop an understanding of the specific molecular mechanisms involved. It is worth noting that pathogenic infection has been associated with increased levels of various pro-inflammatory cytokines, particularly IL-6 (16). Studies have also confirmed that the concentrations of IL-6 in cord blood from cases of preterm premature rupture of membranes (PPROM) are significantly increased; these high levels of IL-6 mediate a strong inflammatory response, stimulate the secretion of prostaglandin E2 (PGE2) and matrix metalloproteinases (MMPs), and play a key role in fetal membrane damage and rupture (17, 18). In addition, it is known that the level of IL-6 in fetal plasma is related to vaginitis and chorioamnionitis. Moreover, when IL-6 levels are higher than 11 pg/ml, it is also helpful to diagnose Fetal Inflammatory Response Syndrome

(FIRS) (19). Therefore, IL-6 is an important biomarker for intrauterine infection-mediated inflammation imbalance. Based on present understanding, we hypothesized that IL-27, a member of the IL-6 family, will also play a role in preterm labor. In a previous study, Devergne et al. reported the expression levels of both IL-27 and IL-27R in extravillous trophoblast cells for the first time (20). Subsequent studies also reported that both IL-27 and WSX-1 are expressed in syncytiotrophoblast cells, extravillous trophoblast cells, and decidual cells (21–23). In addition, we reported that IL-27 can mediate inflammatory imbalances associated with Preeclampsia and preterm labor (23, 24). We were specifically interested in the fact that there was a significant increase of IL-27 levels in the peripheral blood of women with PROM. Therefore, we hypothesized that IL-27 also plays an important role in the pathophysiology of PTL.

In the present study, we used a variety of molecular biology techniques to investigate the specific mechanisms of how IL-27 might play a role in preterm labor, both *in vivo* and *in vitro*. Our results showed that IL-27 can promote the secretion of certain cytokines, particularly IFN- $\gamma$  in WISH and HMSMC cells, *via* the ERK signaling pathway, thus leading to an imbalance of inflammation that was associated with PTL. Our findings enrich our understanding of the etiology of preterm labor and provide new concepts for the diagnosis and treatment of this condition.

## MATERIALS AND METHODS

### Mice

IL-27 receptor alpha chain-deficient mice on a C57BL/6 background (WSX-1<sup>-/-</sup> mice) were purchased from The Jackson Laboratory in the USA. Wild-type C57BL/6 (WSX-1<sup>+/+</sup> mice) were purchased from the Experimental Animal Center of Chongqing Medical University. The absence of the *WSX-1* gene was confirmed by western blotting and qRT-PCR. The WSX-1<sup>-/-</sup> colony was housed together with a colony of wide-type C57BL/6 mice under specific pathogen-free conditions under a specific circadian cycle (12 h light/12 h dark). Animals had access to clean food and water *ad libitum*. Females (8–12 weeks of age) and male mice of the same genotype were mated in a chamber at a ratio of 2:1. Mating was confirmed by the presence of a vaginal plug at 8.00 am; the day of plug formation was counted as day 0.5 of pregnancy (dpc). Males were left with the females for a maximum of 2 days to ensure that the gestation date could be determined accurately. A rapid weight gain of more than 2 g from 12.5 dpc was deemed to confirm pregnancy. All operations were approved by the Animal Ethics Committee of Chongqing Medical University.

### Susceptibility to LPS

On 16.5 dpc, mice were divided into 16 groups depending on the genotype and the concentration of LPS to be administered (n = 5 mice per group). LPS was administered to both wild-type and WSX-1<sup>-/-</sup> mice *via* the intraperitoneal route using 200  $\mu$ l of sterile

phosphate buffer saline (PBS) containing 0  $\mu$ g, 3  $\mu$ g, 6  $\mu$ g, 12.5  $\mu$ g, 25 $\mu$ g, 50  $\mu$ g, 75  $\mu$ g, or 100  $\mu$ g of LPS/kg. The various doses of LPS were randomly assigned to mice of the two different genotypes. We then recorded the timing of preterm delivery, neonatal/fetal mortality, birth weight, and pup crown-rump, for wild-type and WSX-1<sup>-/-</sup> mice 24 h after receiving LPS (**Figure 1A**). Mice were monitored continuously and separately with closed-circuit television cameras and a digital video recorder.

## A Mouse Model of Preterm Labor Induced by LPS

On 16.5 dpc, mice were divided into four groups (n = 6 mice per group) and administered with different drug treatments: a group of wide-type mice were given 0  $\mu$ g of LPS/kg (the WTN group), a group of wide-type mice were given 25  $\mu$ g of LPS/kg (the WTP group), a group of WSX-1<sup>-/-</sup> mice were given 0  $\mu$ g of LPS/kg (the WSX-1<sup>-/-</sup>N group), and a group of WSX-1<sup>-/-</sup> mice were given 25  $\mu$ g of LPS/kg (the WSX-1<sup>-/-</sup>P group) (**Figure 1B**). Two hours after intraperitoneal injection, the mice were anesthetized with avertin, and blood was collected by eye puncture and placed into a 2 ml microcentrifuge tube. Serum was then separated from the maternal peripheral blood and stored at -20°C to await analysis. For tissue harvesting, a separate group of animals were euthanized 6 h after surgery (**Figure 1A**); most of the amnions and uterine tissues were recovered and immediately frozen in liquid nitrogen. Some of the amnions and uterine tissues were recovered and fixed in 4% paraformaldehyde for immunohistochemistry. We also ensured that all fetuses were counted and weighed.

## Cell Culture

The Human Amniotic Cell Lineage was obtained from the American Type Culture Collection (ATCC, VA). Amniotic cells were cultivated in Minimum Essential Medium (MEM) containing 10% FBS, 1% Non-essential Amino Acid Solution, 100  $\mu$ g/ml of streptomycin and 100 U/ml of penicillin. Cells were maintained in a humid 5% CO<sub>2</sub> atmosphere at 37°C and the medium was changed every 2 days. When the cells had grown to 80% confluency, the cells were treated with 1ml of 0.25% trypsin for 1 min and then 3 ml of MEM.

The Human Myometrial Smooth Muscle Cell Line was obtained from the American Type Culture Collection (ATCC, VA). HMSMCs were cultivated in Dulbecco's Modified Eagle Medium (DMEM) containing 10% FBS, 100  $\mu$ g/ml streptomycin, and 100 U/ml of penicillin. Cells were maintained in a humid 5% CO<sub>2</sub> atmosphere at 37°C and the medium was changed every 2 days. When the cells had grown to 80% confluency, the cells were treated with 1 ml of 0.25% trypsin for 1 min and then 3 ml of DMEM.

## Reagents

Recombinant human IL-27 was purchased from R&D Systems (Minneapolis, MN, USA). Lipopolysaccharide was obtained from Sigma (USA). IL-6, IFN- $\gamma$ , and IL-1 $\beta$  ELISA kits were purchased from Elabscience (USA). Beta-actin antibodies were purchased from Cell Signaling Technology (Danvers, MA, USA). A mouse IL-27 antibody was obtained from Abcam (Cambridge, MA, USA). The human WSX-1 antibody was obtained from

Bioss (Beijing, China). p-ERK, T-ERK, p-JNK, and T-JNK antibodies were purchased from Santa Cruz Biotechnology (Dallas, TX, USA). The extracellular signal-regulated kinase (ERK) inhibitor (LY3214996) was purchased from MCE (USA). The concentration of DMSO was 0.1% (vol/vol) for all data subsets.

## Immunohistochemistry

Amniotic tissues were fixed in 4% paraformaldehyde, embedded in paraffin, and sectioned at a thickness of 5  $\mu$ m. After deparaffinization in xylene and rehydration in a graded series of alcohol solutions, the sections were heated in sodium citrate buffer at 95°C for 20 min for antigen retrieval. The sections were then treated with 0.3% hydrogen peroxide in methanol for 20 min to block the activity of endogenous peroxidase. Then, 5% (wt/vol) BSA (Amresco, Solon, OH, USA)/PBS was used to block the slides for 1 h. Next, the samples were incubated at 4°C overnight with appropriate primary antibodies (1:50 dilution). The following morning, the sections were washed and incubated with a biotin-labeled secondary antibody (ZSGB-BIO, Beijing, China). The expression of IL-27 in amniotic tissues was detected by substrate chromatin 3- (3-)-diaminobenzidine (DAB) and hematoxylin (blue) staining. We also included negative controls that were not incubated with primary antibody. The stained sections were then evaluated by two observers using a Super Sensitive™ Link-Label IHC Detection System (BioGenex, San Ramon, CA, USA).

## Hematoxylin and Eosin (H&E) Staining

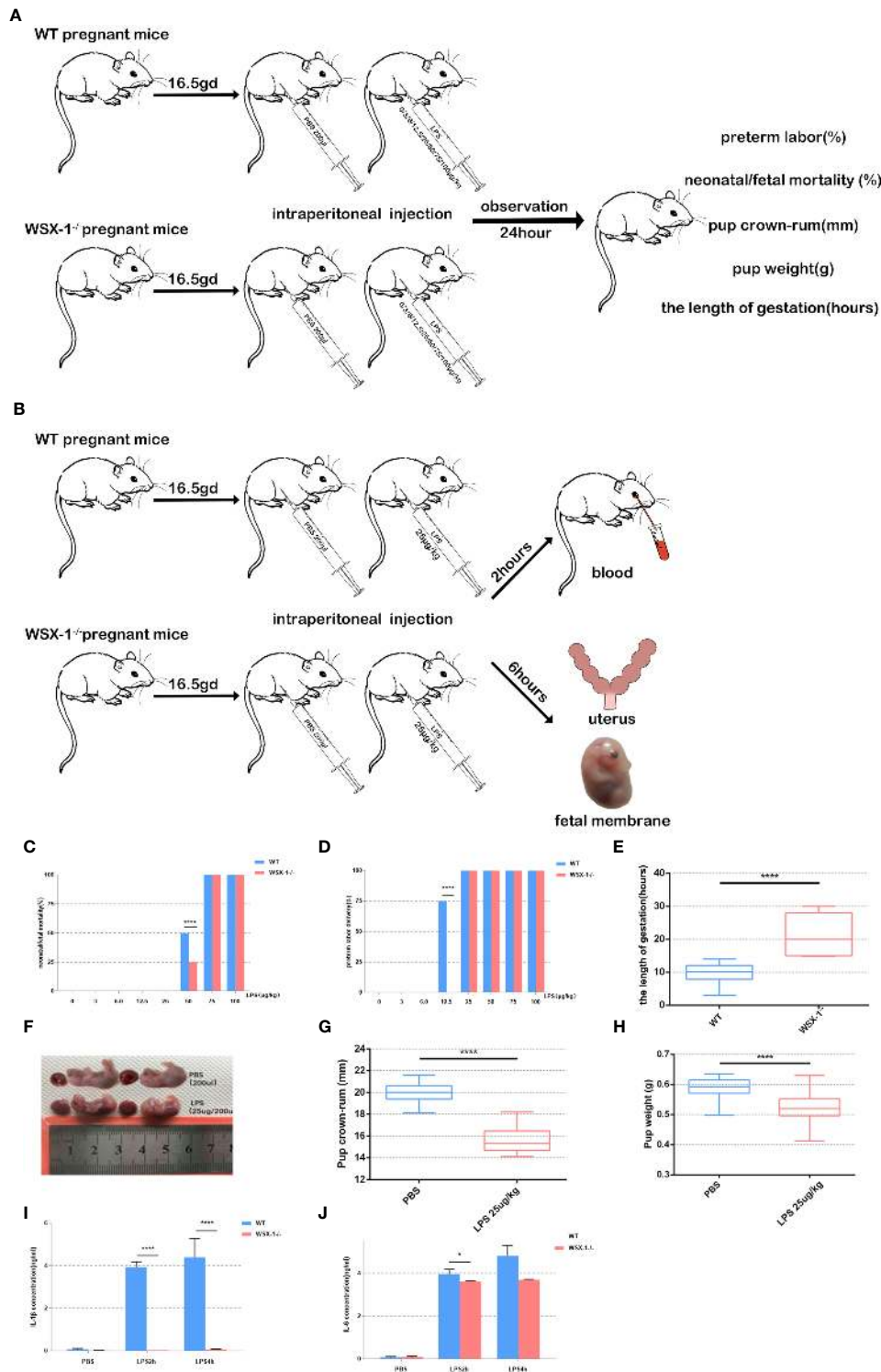
Paraffin sections were prepared as described above and stained with hematoxylin and eosin (H&E). After staining, we then used microscopy to evaluate the structure of the amniotic tissue.

## Immunofluorescence

WISH and HMSMC cells were grown in 24-well glass-bottomed dishes. Cells were treated with LPS (10ng/ml) or IL-27 (50 ng/ml) for 6 h or 15 min, fixed in 4% paraformaldehyde for 10 min, permeabilized with 0.1% Triton X-100 for 15 min, and blocked with 5% BSA for 1 h at 37°C. The cells were then incubated overnight at 4°C with primary antibodies at an appropriate dilution in blocking buffer. After overnight incubation, we performed three 10-min rinses with antibody wash solution (151 mM NaCl, 17 mM 263 trisodium citrate, and 0.05% TritonX-100). Cells were then treated with appropriate fluorescein-conjugated secondary antibodies against rabbit or mouse IgG. 6-diamidino-2-phenylindole (DAPI) was used for nuclear staining. We captured these images under a fluorescence microscope (Life Technologies EVOS FL Auto, Beijing, China). The assay was repeated in triplicate.

## Western Blotting

Frozen tissue was removed from liquid nitrogen and immediately mixed with 500  $\mu$ l of Radio Immunoprecipitation Assay (RIPA) lysis buffer containing Phenylmethylsulfonyl fluoride (PMSF) (at a proportion of 1:100). After homogenization with an IKA T10 basic ULTRA-TURRAX I (Germany), the tissue was centrifuged at 12000 rpm for 15 min to extract the supernatant. We then



**FIGURE 1** | Flowchart showing the mouse model of preterm labor (A, B). Reduced susceptibility to LPS in WSX-1<sup>-/-</sup> mice. Statistical analyses of preterm labor rate and neonatal mortality in WSX-1<sup>-/-</sup> and wild-type genotypes when treated with increasing concentrations of LPS for 24 h (0-100 μg/kg) (n = 5 mice for each concentration per group) (C, D). 16.5gd mice were injected with 25 μg LPS/kg and monitored for delivery with video recordings (E). Fetal body length and weight of preterm and control fetal mice (E-H). IL-1β and IL-6 protein levels in peripheral blood from mice of both genotypes after treatment with different concentrations of LPS treatment (25 μg/kg) (n = 6), as determined by ELISA (I, J). \*P < 0.05, \*\*\*\*P < 0.0001.

determined the concentration of total protein in each supernatant. Next, equal amounts of protein (20 µg) were separated by electrophoresis on 10% Sodium dodecyl sulfate (SDS)-polyacrylamide gels and blotted onto polyvinylidene fluoride (PVDF) membranes. Membranes were then blocked with 5% non-fat milk/PBS for 2 h and then incubated overnight with primary antibody. The next morning, the membranes were washed in PBS and incubated with an appropriate secondary antibody for 1 h. Finally, positive bands were detected using the ECL chemiluminescent detection system (GE Healthcare, Marlborough, MA, USA).

## Quantitative RT-PCR

Tissues and cells were lysed by Trizol in 2 ml microcentrifuge tubes in accordance with the manufacturer's instructions. Next, we added 200 µl of chloroform, shook the samples vigorously for 15 s, incubated at room temperature for 2 min, and then centrifuged at 4°C at 12000 rpm for 10 min. The aqueous layer (containing the RNA) was extracted and mixed with 200 µl of isopropanol with gently shaking. After incubation for 10 min, the mixture was centrifuged at 4°C for 10 min to extract the precipitation which was then resuspended in DEPC water. Next, we determined RNA integrity by measuring the A260nm/A280nm ratio. Next, we reverse-transcribed the RNA with a PrimeScript RT Reagent Kit (Takara Bio Inc., Tokyo, Japan) in accordance with the manufacturer's instructions. The primers used for qRT-PCR are listed in **Table 1** (Sangon Biotech, Shanghai, China). qRT-PCR was performed in an ABI PRISM 7000 system (Applied Biosystems, Foster City, CA, USA) with 2 µL of cDNA, 400 nm of each primer, 12.5 µL of Brilliant SYBR Green QPCR Master Mix (Takara Bio Inc., Tokyo, Japan), and 9.5 µL of ultra-pure water (a total volume of 25 µL per reaction) under the following conditions: 5 min at 95°C, 40 cycles of 30 s each at 95°C and 53°C, respectively; melting curves were generated after each endpoint amplification for 10 s at 95°C, followed by 30 s increments of 0.5°C from 65 to 95°C. *GAPDH* was used as an endogenous reference.

**TABLE 1** | Primers used for polymerase chain reaction (PCR).

Primers	Sequence
IL-1β F1	5'-CCTTAGGGTAGTGCTAAGAGGA-3'
IL-1β R1	5'-AAGTGAGTAGGAGAGGTGAGAG-3'
IFN-γ F1	5'-TCCTGTGACTGTCTCACTTAATC-3'
IFN-γ R1	5'-CTTAGGTTGGCTGCCTAGTT-3'
IL-6 F1	5'-CCTAGAGTACCTCCAGAACAGA-3'
IL-6 R1	5'-CAGGAACTGGATCAGGACTTT-3'
CXCL10 F1	5'-TCTCCATCACTTCCCTACAT-3'
CXCL10 R1	5'-GGAGTAGTAGCAGCTGATTGG-3'
MMP9 F1	5'-GGGCTTAGATCATTCCTCAGTG-3'
MMP9 R1	5'-GCCATTACGTCGTCCTTAT-3'
MCP-1 F1	5'-GGCTGAGACTAACCAGAAAC-3'
MCP-1 R1	5'-GAATGAAGGTGGCTGCTATGA-3'
TNF-α F1	5'-AGAGGGAGAGAGCAACTACA-3'
TNF-α R1	5'-GGGTCAGTATGTGAGAGGAAGA-3'
GAPDH F1	5'-CAAGAGCACAAAGAGGAAGAGAG-3'
GAPDH R1	5'-CTACATGGCAACTGTGAGGAG-3'

## ELISA

The serum levels of IL-6 and IL1β were detected with IL-6 and IL1β ELISA kits, respectively; these were purchased from R&D (Minnesota, USA). Optical absorbance was measured in a MultiskanGO plate reader (Thermo, Waltham, MA, USA) at 450 nm.

## Statistical Analysis

All data analysis was carried out with GraphPad Prism version 5.0 software (San Diego, CA, USA). Differences between groups were analyzed by randomized grouping analysis or by one-way analysis of variance (ANOVA). When ANOVA identified significant differences, we carried out a Bonferroni post-hoc test with Bonferroni correction to further test the differences among groups. P values < 0.05 were regarded as statistically significant.

## RESULTS

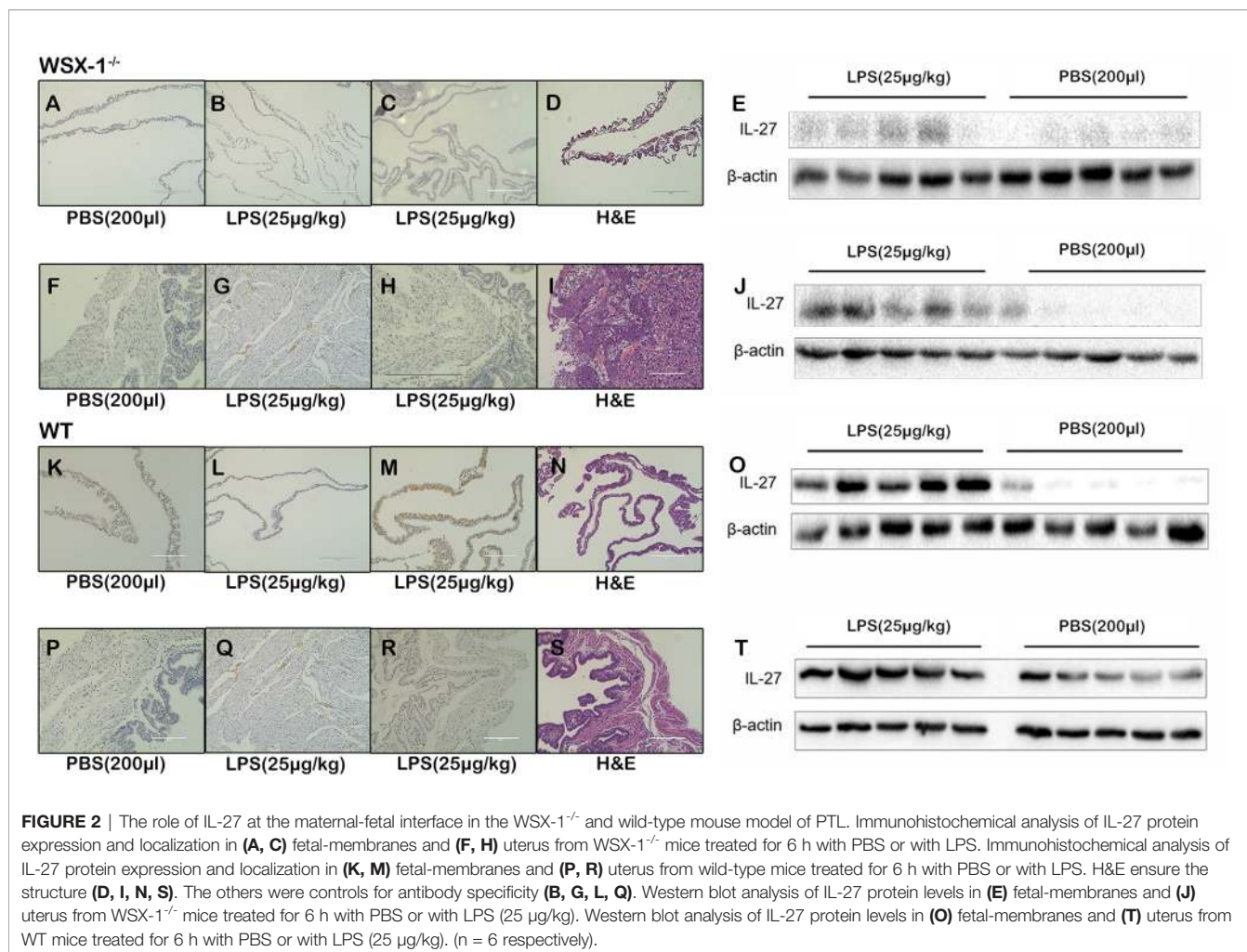
### LPS-Induced Preterm Birth Mice With Intrauterine Inflammation

No preterm labors were recorded in the groups of mice receiving 0 µg, 3 µg, and 6 µg of LPS. At 12.5 µg of LPS/kg, the preterm labor rate of the wild-type mice was significantly higher than that of the *WSX-1<sup>-/-</sup>* mice ( $P < 0.0001$ ). This suggests that *WSX-1* deficiency may have potential effect on preterm labor. When stimulated with 50 µg of LPS/kg, the neonatal mortality rate of the wild-type mice was significantly higher than that of the *WSX-1<sup>-/-</sup>* mice (**Figure 1C**,  $P < 0.0001$ ). As the dose of LPS increased, the preterm labor rate for both groups reached 100% (**Figure 1D**). In order to establish an effective and stable mouse model of preterm birth, on the basis of ensuring that both *WSX-1<sup>-/-</sup>* mice and WT mice will have preterm birth, and there will be differences in gestational weeks between the two groups. The most important thing is that neither mother nor fetus will die. Fortunately, at the concentration of 25 µg/kg, the duration of pregnancy in *WSX-1<sup>-/-</sup>* mice after LPS injection was indeed prolonged  $11.32 \pm 2.157$  hours (**Figure 1E**). Therefore, we chose to use 25 µg of LPS/kg as the optimal dose for subsequent experiments.

In addition, the body length of preterm fetal mice was lower than that in the PBS group ( $4.306 \pm 0.1767$ mm,  $P < 0.0001$ ) (**Figures 1F, G**). The same difference in weight of fetal mice (**Figure 1H**). We also found that the expression levels of IL-1β and IL-6 in the peripheral blood serum of *WSX-1<sup>-/-</sup>* mice treated by LPS were significantly lower than those in the wild-type mice (**Figures 1I, J**).

### The Differential Expression of IL-27 in the Uterine and Fetal Membranes

Following the intraperitoneal administration of 25 µg of LPS/kg at 16.5 dpc, we observed that the expression of IL-27 at the fetal membrane of *WSX-1<sup>-/-</sup>* mice (**Figures 2A, C**). Moreover, the expression of IL-27 in fetal membranes of wild-type mice was significantly higher (**Figures 2K, M**). Western blot showed IL-27 was released under LPS induction (**Figures 2E**), and the



concentration of IL-27 at the fetal membrane of wild-type mice was significantly higher than that of *WSX-1*<sup>-/-</sup> mice (Figures 2E, O). Similarly, Immunohistochemistry identified the location of IL-27 in uterus (Figures 2F, H). The Significant differences in expression of IL-27 can be seen in the uterus of wild-type mice (Figures 2P, R). The expression levels of IL-27 in the uterus of *WSX-1*<sup>-/-</sup> mice were significantly increased following the intrauterine administration of LPS (Figure 2J). Wild-type mice also showed the same trend and the expression of IL-27 was also higher than which in *WSX-1*<sup>-/-</sup> mice (Figures 2T). H & E staining showed their structure (Figures 2D, I, N, S). The others were controls for antibody specificity (Figures 2B, G, L, Q).

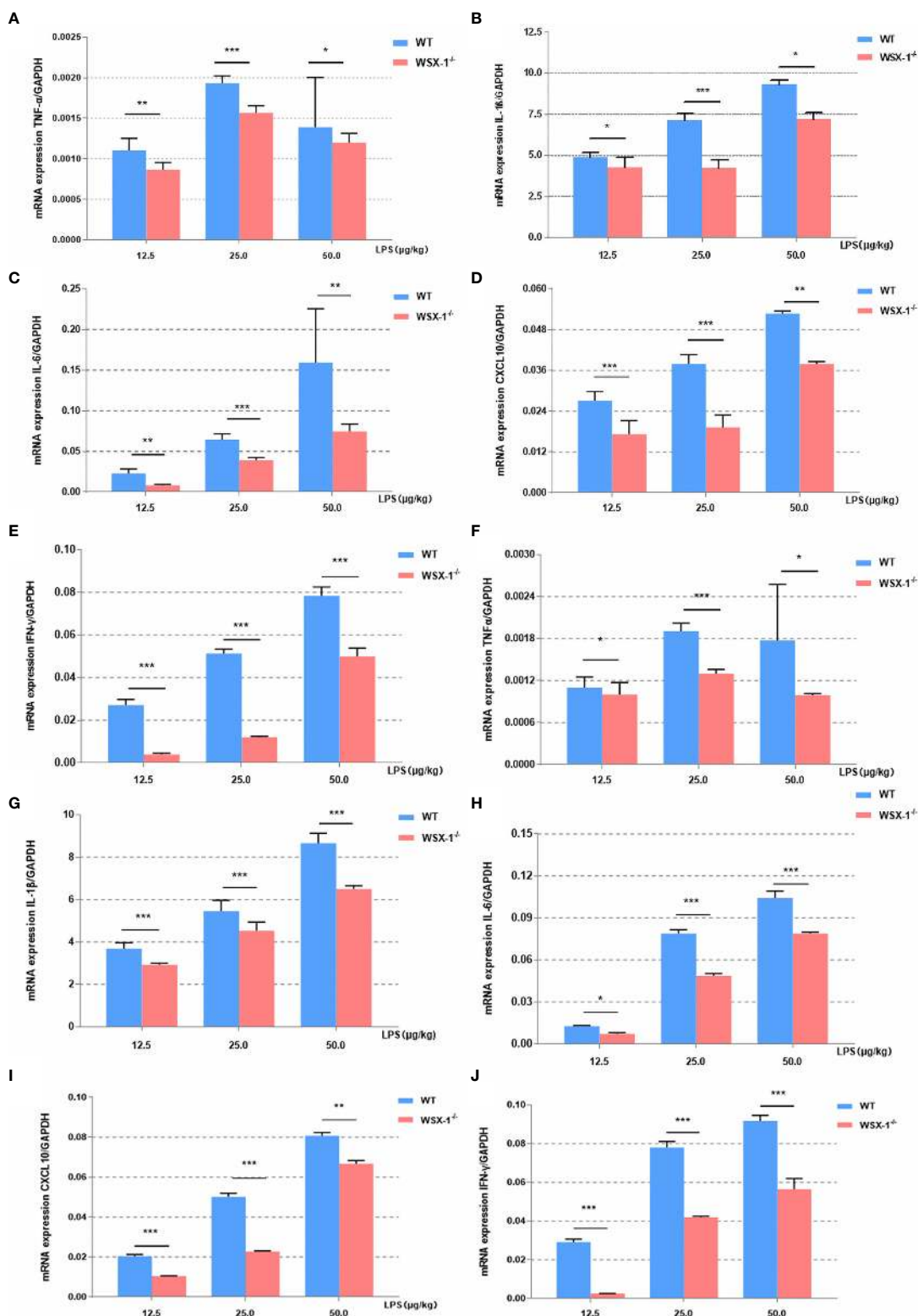
### Inflammation Imbalance Was Observed in LPS-Induced *WSX-1*<sup>-/-</sup> Mice

Next, we compared differences in the inflammatory effect induced by LPS between the *WSX-1*<sup>-/-</sup> mice and the wild-type mice. The expression levels of various inflammatory mediators were determined by qRT-PCR in uterine and fetal membrane tissues. Whether 12.5µg, 25µg or 50µg LPS/kg can lead to the release of various inflammatory mediators in membranes (Figures 3A–E). or uterus (Figures 3F–J). Moreover, the

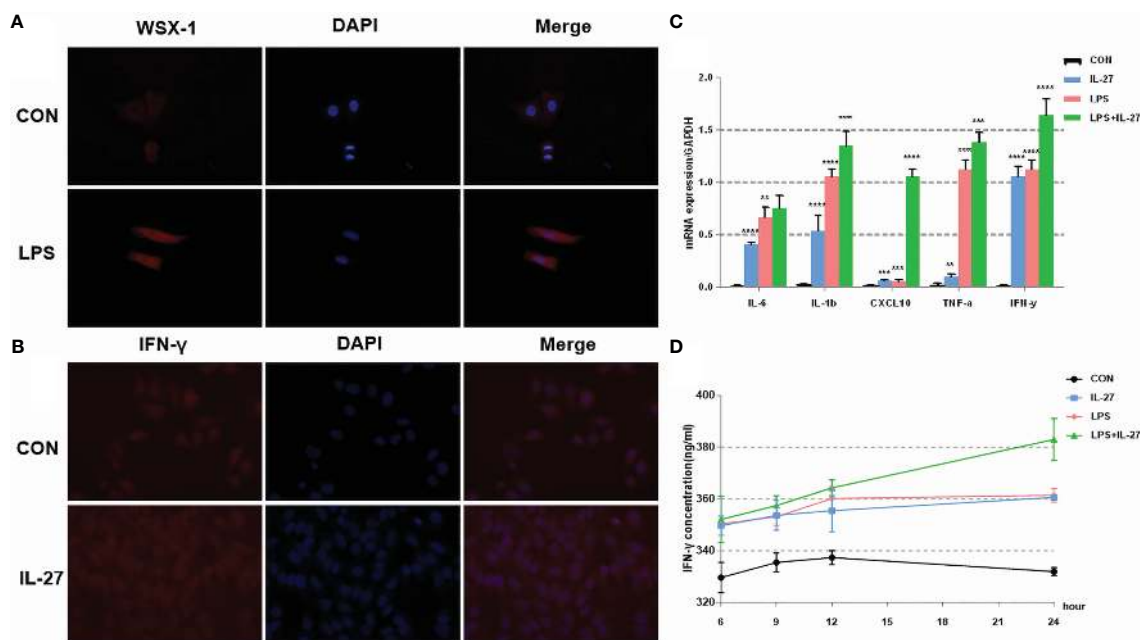
release of other inflammatory factors was positively correlated with the concentration of LPS except *TNF-α*. Analysis showed that the mRNA levels of *IL-6*, *IFN-γ*, *TNF-α*, *CXCL10*, and *IL-1β* in *WT*<sup>-/-</sup> mice were significantly lower than those of wild-type mice after 12.5µg, 25µg and 50µg LPS/kg. This difference is even more pronounced at 25µg LPS/kg, which also confirms our previous dose selection.

### IL-27 Mediated Inflammation Imbalance in a LPS-Treated Human Amniotic Cell Line (WISH) and a Human Myometrial Smooth Muscle Cell Line (HMSMC)

To further confirm the observed IL-27-mediated inflammation imbalance, we next performed *in vitro* experiments using WISH and HMSMC cell lines. First, we investigated changes in the expression of *WSX-1* in both cell lines following the administration of LPS. After 6 h of treatment with LPS (1 µg/mL), the protein expression levels of *WSX-1* increased significantly (Figures 4A, 5A). To determine the extent of IL-27-induced inflammation, we stimulated these cells with LPS (1 µg/mL), IL-27 (50 ng/mL), IL-27 (50 ng/mL) + LPS (1 µg/mL) and used quantitative RT-PCR to determine the levels of various



**FIGURE 3** | Inflammatory effects induced by LPS at the maternal-fetal interface from both genotypes. Concentration-dependent effects of LPS (12.5  $\mu$ g/kg, 25  $\mu$ g/kg, and 50  $\mu$ g/kg) for 6 h on the mRNA expression of a range of key cytokines, including TNF- $\alpha$ , IL1 $\beta$ , IL6, IFN- $\gamma$ , and CXCL10, in the fetal membranes (A-E) and uteri (F-J) of WT or WSX-1<sup>-/-</sup> mice. Data are expressed as the mean  $\pm$  SEM and the Student's t-test. \*P < 0.05, \*\*P < 0.01 and \*\*\*P < 0.001 when compared between groups denoted by horizontal lines (n = 6).



**FIGURE 4** | The expression and localization of WSX-1 and the inflammatory effects induced by IL-27 in WISH cells. **(A)** immunofluorescence analysis of WSX-1 protein expression and localization in WISH cells treated for 6 h with PBS or with LPS (1  $\mu$ g/ml). **(B)** relative expression levels of several key cytokines, including TNF- $\alpha$ , IL1 $\beta$ , IL6, IFN- $\gamma$ , and CXCL10, from WISH cells treated for 6 h without (CON) or with LPS (1  $\mu$ g/ml) or IL-27 (50 ng/ml) or both, as measured by qRT-PCR. **(C)** Immunofluorescence analysis of IFN- $\gamma$  protein expression and localization in WISH cells after IL-27 (50 ng/ml) treatment for 6 h **(D)** time-dependent effects of 50 ng/mL of IL-27, 1  $\mu$ g/ml of LPS, or both of these factors, of those on the expression of IFN- $\gamma$ , as measured by ELISA. \*\* $P < 0.01$ , \*\*\* $P < 0.001$ , \*\*\*\* $P < 0.0001$ .

downstream mediators of inflammation. Interestingly, the levels of IFN- $\gamma$ , TNF- $\alpha$ , IL-1 $\beta$ , and CXCL10, were all augmented. Moreover, the synergistic effect of IL-27 and LPS amplified the inflammatory cascade induced by LPS at the maternal-fetal interface by 1.45-fold, 1.13-fold, 1.28-fold, and 9.16-fold, respectively. A similar inflammatory response was also observed in HMSMC cells (Figures 4B, 5B). Of the increased inflammatory mediators, IFN- $\gamma$  showed the largest increase in both cell lines and was very stable. The expression levels of IFN- $\gamma$  in the supernatant of WISH and HMSMC cells were tested by ELISA following treatment with LPS alone, IL-27 alone, and LPS + IL-27, in a time-dependent manner. The treatment groups all showed different patterns of IFN- $\gamma$  increase; however, the IL-27 + LPS group showed the greatest increase in IFN- $\gamma$  expression after 24 h of treatment (Figures 4D, 5D). These results were further confirmed by immunofluorescence (Figure 4C). In addition, the treatment of HMSMC cells with IL-27 led to an increase in the expression levels of classic contractile proteins (e.g., COX-2 and CX-43), thus implying that IL-27 may be involved in preterm delivery by mediating uterine contractions (Figure 5C).

### IL-27 Mediated Inflammation Imbalance via the ERK Signaling Pathway

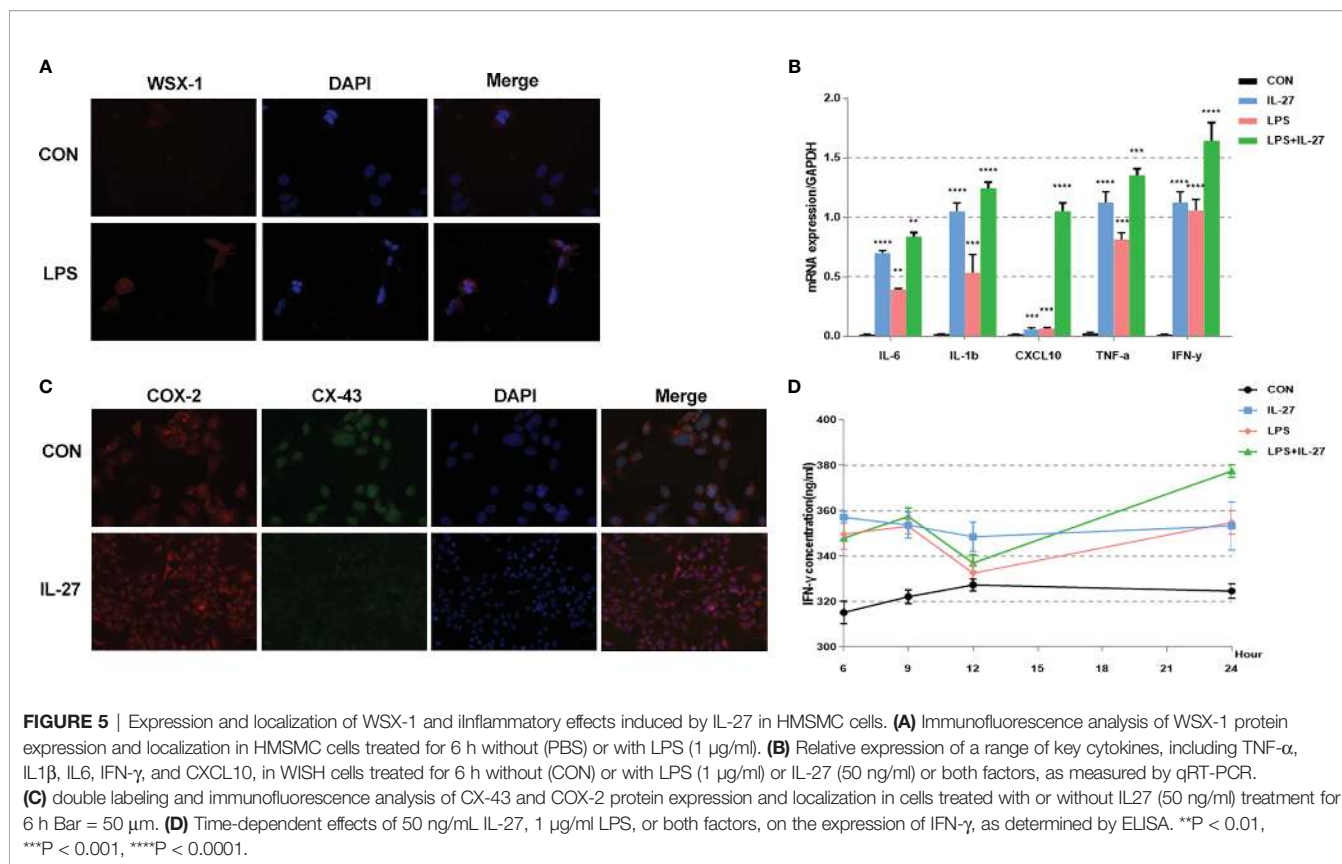
Previous data showed that IL-27 could release various inflammatory mediators such as IL-6, IFN- $\gamma$ , TNF- $\alpha$ , IL-1 $\beta$ , MCP-1, MMP9 and CXCL10 mainly via the ERK and JNK signaling pathways (24, 25). Therefore, we investigated the

inflammatory imbalance mediated by IL-27 in WISH and HMSMC cells. Cells were treated with IL-27 (50 ng/ml) at specific time points used western blotting to determine the levels of phosphorylated ERK (p-ERK) and JNK (p-JNK) proteins. Our analysis showed that IL-27 significantly induced the phosphorylation of ERK in WISH and HMSMC cells in a time-dependent manner (Figures 6A, C) but not the JNK pathway. Immunofluorescence microscopy further confirmed the activation of the ERK signaling pathway (Figures 6B, D). Moreover, the administration of LY3214996, an inhibitor of the ERK pathway, led to a significant inhibition in the release of various inflammatory mediators induced by IL-27 (Figures 6E, G), especially with regards to IFN- $\gamma$  (Figures 6F, H).

## DISCUSSION

Preterm labor is a process of inflammatory imbalance that involves inflammatory mediators (26, 27). Our previous data indicated that the abnormal expression levels of IL-27 in human tissues were related to the pathogenesis of preterm labor, particularly in the fetal membrane. However, this has not been verified *in vivo*, and the specific molecular mechanisms underlying these observations have yet to be elucidated. In the present study, we identified several new findings: 1) The rates of preterm labor and neonatal mortality in the wild-type mice were higher than that of the WSX-1-deficient mice when treated with LPS;



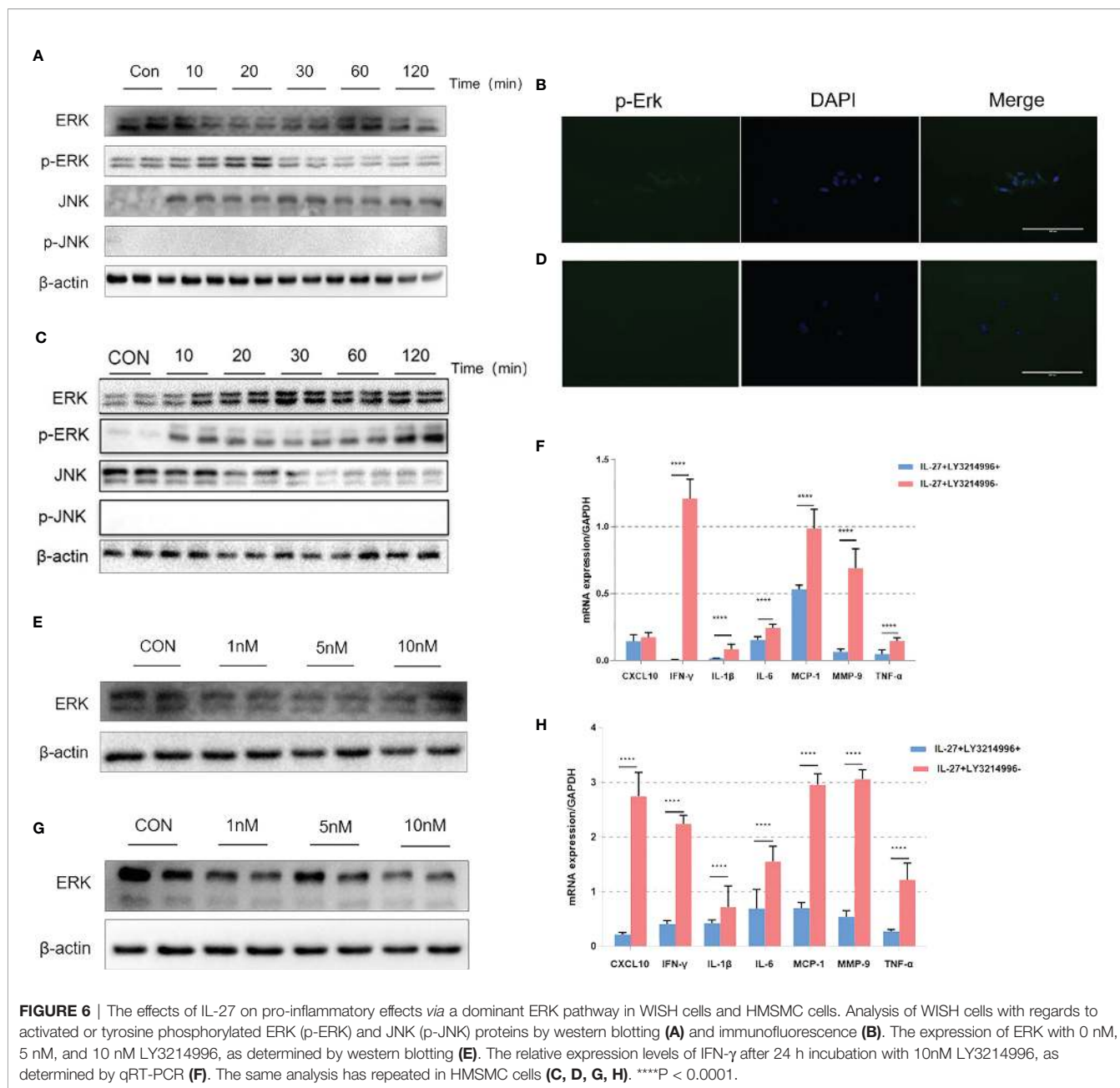


2) The mRNA levels of IL-6, IFN- $\gamma$ , TNF- $\alpha$ , IL-1 $\beta$ , and CXCL10, in the fetal membranes and myometrium of the WSX-1<sup>-/-</sup> mice when treated with LPS were significantly lower than in the group of wild-type mice, especially for IFN- $\gamma$ ; 3) IL-27 synergistically enhanced the expression of downstream inflammatory mediators that were stimulated by LPS in WISH and HMSMC cell lines, thereby amplifying the pro-inflammatory effect; 4) By applying specific signaling pathway inhibitors, we found that IL-27-mediated inflammation occurred mainly *via* the ERK signaling pathway in WISH and HMSMC cell lines.

The LPS-induced mouse represents a classical model of preterm labor. At first, We tried to find the inflection point where WSX-1 deficiency affects preterm birth. According to the results, it is likely to be 12.5 $\mu$ g/kg. However, 12.5 $\mu$ g LPS/kg cannot induce 100% preterm labor in all groups. In the present study, 25  $\mu$ g of LPS/kg was dissolved in 200  $\mu$ l of PBS and administered as intraperitoneal injections into wild-type and WSX-1<sup>-/-</sup> mice. The reasons for this choice are as follows: Firstly, there are no deaths of mice (both mothers and fetuses) at this dose. Secondly, using this dose both groups will induce preterm labor. Lastly, Compared with the wild-type mice, WSX-1<sup>-/-</sup> took the mice more  $11.32 \pm 2.157$  hours to begin delivery. Which reflected that IL-27 had a potential effect on pregnancy maintenance. In other words, our study not only focused on the inflection point of the incidence of preterm delivery, but also pays more attention to how to prolong the gestational age. Similarly, IL-6, a member of the same family as IL-27, has also been confirmed to be involved in preterm labor.

Robertson et al. administered mice with intraperitoneal injections of 2.0  $\mu$ g of LPS in 200  $\mu$ l of PBS; these authors found that IL-6 null mutant mice were delivered 24 h later than wild-type mice (28). However, these findings should be interpreted cautiously; there are many differences between mice and humans with regards to anatomy.

Inflammatory imbalance plays a key role in the pathogenesis of preterm labor. In the present study, we investigated the downstream inflammatory mediators that were activated by IL-27 after LPS stimulation *in vivo*. The expression levels of IL-6, IFN- $\gamma$ , TNF- $\alpha$ , CXCL10, and IL-1 $\beta$ , in WSX-1<sup>-/-</sup> mice were all significantly lower than that those in wild-type mice following LPS stimulation. Similarly, IL-27 caused a similar inflammation imbalance in both WISH and HUMSC cells. Data derived from both our *in vivo* and *in vitro* experiments demonstrated a significant increase in IFN- $\gamma$ , a pleiotropic cytokine that is involved in both acquired immunity and innate immune and associated with various autoinflammatory and autoimmune diseases (29). Elevations of IFN- $\gamma$  in the peripheral blood have been reported in both Preeclampsia (PE) and Gestational Diabetes Mellitus (GDM) (30, 31). Studies have indicated that IFN- $\gamma$  may affect vascular recasting by regulating the levels of EPHB4 and IGF-1/2, thus leading to PE (32, 33). As an inflammatory disease, preterm labor is also related to IFN- $\gamma$ . Significant increases in the levels of IFN- $\gamma$  in the amniotic fluid of women at term were first reported in 1996 (34). Subsequently, a series of studies showed that the levels of IFN- $\gamma$  in maternal plasma and cord blood were also related to preterm labor (35, 36).



Schust et al. reported that IFN- $\gamma$  produced by activated iNKT cells may be related to the activation of other immune cells, thus further amplifying the inflammatory effect that leads to PTL. However, contradictory reports are also evident in the literature. For example, some authors highlighted the fact that IFN- $\gamma$  plays a key anti-inflammatory role during preterm labor (37, 38). In short, the specific molecular mechanisms underlying the action of IFN- $\gamma$  in the pathophysiology of preterm labor remains unclear and further research is vital.

Previous studies showed that IL-27 regulates IFN- $\gamma$  from both pro-inflammatory and anti-inflammatory aspects (39). The pro-inflammatory effect has been extensively studied. For example, when affected with *Toxoplasma gondii*, WSX-1<sup>-/-</sup> mice produced

a strong IFN- $\gamma$  response that led to fatal inflammation (40). In contrast, when mediated by IL-27, IFN- $\gamma$  can also play an anti-inflammatory effect. WSX-1<sup>-/-</sup> mice are known to be more susceptible to Leishmania due to the inhibition of interferon- $\gamma$  production (41, 42). It follows, therefore, that IFN- $\gamma$  may represent a double-edged sword. It appears that the microenvironment determines its specific inflammatory effect. We have previously reported that IL-27 regulates IFN- $\gamma$ -mediated pro-inflammatory effects in PE and that the IL-27/IFN- $\gamma$  axis also plays a pro-inflammatory effect in preterm labor (43); our present findings concur with these previous findings.

Since IL-27-mediated inflammation imbalance plays an important role in preterm labor, we wanted to identify the

specific molecular mechanisms that are involved in this pathway. By using different pathway inhibitors, we found that IL-27 mainly activates the ERK signaling pathway in WISH and HMSMC cells, thus triggering an inflammatory cascade that ultimately leads to preterm labor. Moreover, we will try to find the expression of p-ERK in fetal membrane and uterus of WSX-1<sup>-/-</sup> mice was lower than WT mice in further study. The extracellular signal-regulated kinase (ERK) pathway is a member of the mitogen-activated protein kinase (MAPK) superfamily. The ERK signaling pathway plays an important role in mediating cell migration, division, and survival, and has been widely reported to mediate diseases of the cardiovascular, nervous, and immune systems, as well as tumors and other diseases (39, 44, 45). *In vivo* experiments involving rat and mice models, and *in vitro* experiments involving fetal membranes and myometrium, have confirmed that activation of the ERK signaling pathway is closely related to the pathogenesis of preterm labor, particularly with regards to inflammatory aspects (24, 46–48). Sepsis is associated with an increase in phosphorylated extracellular signal-regulated kinase (p-ERK) which can be used as a therapeutic target for sepsis (49). The inhibition of ERK can also reduce the production of IL-23 and IL-1 $\beta$  and reduce the symptoms of autoimmune diseases such as demyelinating diseases (50), colitis (51), and rheumatoid arthritis (52). In an earlier study, we showed that IL-27 could mediate an excessive inflammatory response in whole fetal membranes *via* the ERK signaling pathways, thus contributing to preterm labor (13). Moreover, Yao et al. previously reported that the IFN- $\gamma$ -induced production of invariant natural killer T cells plays an important role in inflammation-induced preterm labor by activating the ERK pathways (53). LY3214996 is a highly selective inhibitor of ERK1 and ERK2 and exhibits similar or higher levels of anti-tumor activity and anti-inflammatory effects when compared with other ERK inhibitors (54). In the present study, LY3214996 significantly suppressed the inflammatory response, particularly the production of IFN- $\gamma$  induced by IL-27. Accordingly, we speculate that IL-27 might cause cytokine storms by activating the ERK pathway to release a large number of proinflammatory factors under the regulatory control of IFN- $\gamma$ . Our data suggest that LY3214996 might effectively reverse or alleviate the severity of such cytokine storms, thus enriching the development of theoretical strategies for the treatment of preterm labor.

It is worth noting that LPS has always been considered to play an important role in preterm birth caused by inflammatory imbalance. Compared with LPS, other inflammatory mediators play a relatively mild role which IL-27 is no exception. Therefore, we need to interpret the results very carefully. The previous studies have reported that IL-27 has both pro-inflammatory and anti-inflammatory properties. When stimulated by external pathogens, such as LPS, IL-27 can exert a pro-inflammatory response, and by activating Th1 cells, can also mediate immune activation in diseases. In addition, IL-27 can also increase the content and ratio of

Th1 and Th17 cells, thus leading to the excessive secretion of inflammatory mediators in local tissues, such as IFN- $\gamma$ , CXCL10, and TNF- $\alpha$ . Thereby forming an inflammatory cascade that eventually induces autoimmune diseases (55, 56). However, when there are pro-inflammatory effects in the external environment, the anti-inflammatory effects of IL-27 can also be triggered (57, 58). Finally, this study has certain limitations. For example, considering the consistency of the experiment and the limitations of the condition, we applied two different cell lines instead of using primary cells, but we do believe that it can still bring some new information to a certain extent. In conclusion, we found that IL-27 mediates the inflammatory cascade by activating the ERK pathway in the fetal membrane and myometrium, thereby influencing the remodeling process in the fetal membrane tissue and the contraction of the myometrium, thus participating in the pathogenesis of preterm labor. This study may further enrich the inflammatory pathogenesis of preterm labor and facilitate the development of novel diagnostic and treatment strategies.

## DATA AVAILABILITY STATEMENT

The raw data supporting the conclusions of this article will be made available by the authors, without undue reservation.

## ETHICS STATEMENT

The animal study was reviewed and approved by the Animal Ethics Committee of Chongqing Medical University.

## AUTHOR CONTRIBUTIONS

DH, NY, and HQ conceived the study. DH and YR collected the data. DH, YR, ZL, JH, and NY performed the statistical analysis. All authors contributed to the article and approved the submitted version.

## FUNDING

This research was supported by a grant from the National Natural Science Foundation of China (References: 81801483).

## ACKNOWLEDGMENTS

The authors also would like to appreciate the support from “111 program” of Ministry of Education P.R.C and State Administration of Foreign Experts Affairs P.R.C.

## REFERENCES

- Di Renzo GC, Cabero Roura L, Facchinetti F, Helmer H, Hubinont C, Jacobsson B, et al. Preterm Labor and Birth Management: Recommendations From the European Association of Perinatal Medicine. *J Maternal-Fetal Neonatal Med* (2017) 30:2011–30. doi: 10.1080/14767058.2017.1323860
- The Lancet. The Unfinished Agenda of Preterm Births. *Lancet* (2016) 388:2323. doi: 10.1016/S0140-6736(16)32170-5
- Blencowe H, Cousens S, Chou D, Oestergaard M, Say L, Moller A-B, et al. The Born Too Soon Preterm Birth Action Group (See Acknowledgement for Full List). Born Too Soon: The Global Epidemiology of 15 Million Preterm Births. *Reprod Health* (2013) 10:S2. doi: 10.1186/1742-4755-10-S1-S2
- Kugelman A, Colin AA. Late Preterm Infants: Near Term But Still in a Critical Developmental Time Period. *Pediatrics* (2013) 132:741–51. doi: 10.1542/peds.2013-1131
- Mwaniki MK, Atieno M, Lawn JE, Newton CR. Long-Term Neurodevelopmental Outcomes After Intrauterine and Neonatal Insults: A Systematic Review. *Lancet* (2012) 379:445–52. doi: 10.1016/S0140-6736(11)61577-8
- Korzeniewski SJ, Slaughter J, Lenski M, Haak P, Paneth N. The Complex Aetiology of Cerebral Palsy. *Nat Rev Neurol* (2018) 14(9):528–43. doi: 10.1038/s41582-018-0043-6
- Romero R, Dey SK, Fisher SJ. Preterm Labor: One Syndrome, Many Causes. *Science* (2014) 345:760–5. doi: 10.1126/science.1251816
- Rubens CE, Sadovsky Y, Muglia L, Gravett MG, Lackritz E, Gravett C. Prevention of Preterm Birth: Harnessing Science to Address the Global Epidemic. *Sci Trans Med* (2014) 6:262sr5–5. doi: 10.1126/scitranslmed.3009871
- Romero R, Espinoza J, Gonçalves L, Kusanovic J, Friel L, Hassan S. The Role of Inflammation and Infection in Preterm Birth. *Semin Reprod Med* (2007) 25:021–39. doi: 10.1055/s-2006-956773
- Migale R, MacIntyre DA, Cacciatori S, Lee YS, Hagberg H, Herbert BR, et al. Modeling Hormonal and Inflammatory Contributions to Preterm and Term Labor Using Uterine Temporal Transcriptomics. *BMC Med* (2016) 14:86. doi: 10.1186/s12916-016-0632-4
- Olin A, Henckel E, Chen Y, Lakshmi K, Pou C, Mikes J, et al. Stereotypic Immune System Development in Newborn Children. *Cell* (2018) 174:1277–92.e14. doi: 10.1016/j.cell.2018.06.045
- Menon R. Human Fetal Membranes at Term: Dead Tissue or Signalers of Parturition? *Placenta* (2016) 44:1–5. doi: 10.1016/j.placenta.2016.05.013
- Dudley DJ. Immunoendocrinology of Preterm Labor: The Link Between Corticotropin-Releasing Hormone and Inflammation. *Am J Obstet Gynecol* (1999) 180:S251–6. doi: 10.1016/S0002-9378(99)70711-8
- Abe Y, Komatsubara M, Saito M, Toda M, Shinozaki H, Tamura T, et al. Activin A Is Stimulated by Tumor Necrosis Factor-Alpha and Modulates Collagen Gene Expression in Human Amniotic Cells. *J Endocrinol Invest* (2013) 36(7): 515–20. doi: 10.3275/8816
- Gomez-Lopez N, StLouis D, Lehr MA, Sanchez-Rodriguez EN, Arenas-Hernandez M. Immune Cells in Term and Preterm Labor. *Cell Mol Immunol* (2014) 11:571–81. doi: 10.1038/cmi.2014.46
- Cappelletti M, Della Bella S, Ferrazzi E, Mavilio D, Divanovic S. Inflammation and Preterm Birth. *J Leukocyte Biol* (2016) 99:67–78. doi: 10.1189/jlb.3MR0615-272RR
- Gillaux C, Méhats C, Vaiman D, Cabrol D, Breuille-Fouché M. Functional Screening of TLRs in Human Amniotic Epithelial Cells. *J Immunol* (2011) 187:2766–74. doi: 10.4049/jimmunol.1100217
- Yoon BH, Kim YA, Romero R, Kim JC, Park KH, Kim MH, et al. Association of Oligohydramnios in Women With Preterm Premature Rupture of Membranes With an Inflammatory Response in Fetal, Amniotic, and Maternal Compartments. *Am J Obstet Gynecol* (1999) 181:784–8. doi: 10.1016/S0002-9378(99)70301-7
- Pacora P, Chaiworapongsa T, Maymon E, Kim YM, Gomez R, Yoon BH, et al. Funisitis and Chorionic Vasculitis: The Histological Counterpart of the Fetal Inflammatory Response Syndrome. *J Matern Fetal Neonatal Med* (2002) 11(1):18–25. doi: 10.1080/jmf.11.1.18.25
- Coulomb-L'Herminé A, Laroussier F, Pflanz S, Bardel E, Kastelein RA, Devergne O. Expression of Interleukin-27 by Human Trophoblast Cells. *Placenta* (2007) 28:1133–40. doi: 10.1016/j.placenta.2007.06.004
- Ge H, Yin N, Han T-L, Huang D, Chen X, Xu P, et al. Interleukin-27 Inhibits Trophoblast Cell Invasion and Migration by Affecting the Epithelial–Mesenchymal Transition in Preeclampsia. *Reprod Sci* (2019) 26:928–38. doi: 10.1177/1933719118799206
- Zhang B, Xie F, Dong C-L, Gu C-J, Cheng J, Wang Y, et al. The Cross Talk Between Cervical Carcinoma Cells and Vascular Endothelial Cells Mediated by IL-27 Restrains Angiogenesis. *Am J Reprod Immunol* (2017) 78:e12706. doi: 10.1111/aji.12706
- Hwang JH, Lee MJ, Seok OS, Paek YC, Cho GJ, Seol HJ, et al. Cytokine Expression in Placenta-Derived Mesenchymal Stem Cells in Patients With Pre-Eclampsia and Normal Pregnancies. *Cytokine* (2010) 49:95–101. doi: 10.1016/j.cyto.2009.08.013
- Yin N, Wang H, Zhang H, Ge H, Tan B, Yuan Y, et al. IL-27 Induces a Pro-Inflammatory Response in Human Fetal Membranes Mediating Preterm Birth. *Int Immunopharmacol* (2017) 50:361–9. doi: 10.1016/j.intimp.2017.06.031
- Ran Y, Huang D, Mei Y, Liu Z, Zhou Y, He J, et al. Identification of the Correlations Between Interleukin-27 (IL-27) and Immune-Inflammatory Imbalance in Preterm Birth. *Bioengineered* (2021) 12:3201–18. doi: 10.1080/21655979.2021.1945894
- Gilman-Sachs A, Dambaeva S, Salazar Garcia MD, Hussein Y, Kwak-Kim J, Beaman K. Inflammation Induced Preterm Labor and Birth. *J Reprod Immunol* (2018) 129:53–8. doi: 10.1016/j.jri.2018.06.029
- Di Renzo GC, Tosto V, Giardina I. The Biological Basis and Prevention of Preterm Birth. *Best Pract Res Clin Obstet Gynaecol* (2018) 52:13–22. doi: 10.1016/j.bpobgyn.2018.01.022
- Robertson SA, Christiaens I, Dorian CL, Zaragoza DB, Care AS, Banks AM, et al. Interleukin-6 Is an Essential Determinant of On-Time Parturition in the Mouse. *Endocrinology* (2010) 151:3996–4006. doi: 10.1210/en.2010-0063
- Stanbery AG, Newman ZR, Barton GM. Dysregulation of TLR9 in Neonates Leads to Fatal Inflammatory Disease Driven by IFN- $\gamma$ . *Proc Natl Acad Sci USA* (2020) 117:3074–82. doi: 10.1073/pnas.1911579117
- Yang Y, Su X, Xu W, Zhou R. Interleukin-18 and Interferon Gamma Levels in Preeclampsia: A Systematic Review and Meta-Analysis. *Am J Reprod Immunol* (2014) 72:504–14. doi: 10.1111/aji.12298
- Hara C de CP, França EL, Fagundes DLG, de Queiroz AA, Rudge MVC, Honorio-França AC, et al. Characterization of Natural Killer Cells and Cytokines in Maternal Placenta and Fetus of Diabetic Mothers. *J Immunol Res* (2016) 2016:1–8. doi: 10.1155/2016/7154524
- Liu X, Hu Y, Liu X, Zheng Y, Luo M, Liu W, et al. EPHB4, a Down Stream Target of IFN- $\gamma$ /STAT1 Signal Pathway, Regulates Endothelial Activation Possibly Contributing to the Development of Preeclampsia. *Am J Reprod Immunol* (2016) 76:307–17. doi: 10.1111/aji.12555
- Hu Y, Tan R, MacCalman CD, Eastbrook G, Park S-H, Dutz JP, et al. IFN-Mediated Extravillous Trophoblast Outgrowth Inhibition in First Trimester Explant Culture: A Role for Insulin-Like Growth Factors. *Mol Hum Reprod* (2008) 14:281–9. doi: 10.1093/molehr/gan018
- OlBh' KS, Vinceb GS, Neilson JP, Johnsonb PM. Interleukin-6, Interferon-Y, Interleukin-8, and Granulocyte-Macrophage Colony Stimulating Factor Levels in Human Amniotic Fluid at Term. *J Reprod Immunol* (1996) 32(1):89–98. doi: 10.1016/s0165-0378(96)00990-4
- Curry AE, Vogel I, Drews C, Schendel D, Skogstrand K, Dana Flanders W, et al. Mid-Pregnancy Maternal Plasma Levels of Interleukin 2, 6, and 12, Tumor Necrosis Factor-Alpha, Interferon-Gamma, and Granulocyte-Macrophage Colony-Stimulating Factor and Spontaneous Preterm Delivery. *Acta Obstet Gynecol Scand* (2007) 86:1103–10. doi: 10.1080/00016340701515423
- Hansen-Pupp I, Harling S, Berg A-C, Cilio C, Hellström-Westas L, Ley D. Circulating Interferon-Gamma and White Matter Brain Damage in Preterm Infants. *Pediatr Res* (2005) 58:946–52. doi: 10.1203/01.PDR.0000182592.76702.E8
- Matoba N, Yu Y, Mestan K, Pearson C, Ortiz K, Porta N, et al. Differential Patterns of 27 Cord Blood Immune Biomarkers Across Gestational Age. *PEDIATRICS* (2009) 123:1320–8. doi: 10.1542/peds.2008-1222
- Hanna N, Bonifacio L, Reddy P, Hanna I, Weinberger B, Murphy S, et al. IFN-Gamma-Mediated Inhibition of COX-2 Expression in the Placenta From Term and Preterm Labor Pregnancies. *Am J Reprod Immunol* (2004) 51:311–8. doi: 10.1111/j.1600-0897.2004.00162.x
- Peng S, Zhang Y, Zhang J, Wang H, Ren B. ERK in Learning and Memory: A Review of Recent Research. *IJMS* (2010) 11:222–32. doi: 10.3390/ijms11010222

40. Villarino A, Hibbert L, Lieberman L, Wilson E, Mak T, Yoshida H, et al. The IL-27r (WSX-1) Is Required to Suppress T Cell Hyperactivity During Infection. *Immunity* (2003) 19:645–55. doi: 10.1016/S1074-7613(03)00300-5
41. Abdalla AE, Li Q, Xie L, Xie J. Biology of IL-27 and Its Role in the Host Immunity Against *Mycobacterium Tuberculosis*. *Int J Biol Sci* (2015) 11:168–75. doi: 10.7150/ijbs.10464
42. Yoshida H, Hamano S, Senaldi G, Covey T, Faggioni R, Mu S, et al. WSX-1 Is Required for the Initiation of Th1 Responses and Resistance to L. Major Infection. *Immunity* (2001) 15:569–78. doi: 10.1016/S1074-7613(01)00206-0
43. Yin N, Zhang H, Luo X, Ding Y, Xiao X, Liu X, et al. IL-27 Activates Human Trophoblasts to Express IP-10 and IL-6: Implications in the Immunopathophysiology of Preeclampsia. *Mediators Inflammation* (2014) 2014:1–10. doi: 10.1155/2014/926875
44. Howe AK, Aplin AE, Juliano R. Anchorage-Dependent ERK Signaling – Mechanisms and Consequences. *Curr Opin Genet Dev* 12(1):30–5. doi: 10.1016/s0959-437x(01)00260-x
45. Sun Y, Liu W-Z, Liu T, Feng X, Yang N, Zhou H-F. Signaling Pathway of MAPK/ERK in Cell Proliferation, Differentiation, Migration, Senescence and Apoptosis. *J Receptors Signal Transduct* (2015) 35:600–4. doi: 10.3109/10799893.2015.1030412
46. Liu W, Xu C, You X, Olson DM, Chemtob S, Gao L, et al. Hydrogen Sulfide Delays LPS-Induced Preterm Birth in Mice via Anti-Inflammatory Pathways. *PLoS One* (2016) 11:e0152838. doi: 10.1371/journal.pone.0152838
47. Li Y, Je H-D, Malek S, Morgan KG. Role of ERK1/2 in Uterine Contractility and Preterm Labor in Rats. *Am J Physiol-Regulat Integr Comp Physiol* (2004) 287:R328–35. doi: 10.1152/ajpregu.00042.2004
48. Sooranna SR, Engineer N, Loudon JAZ, Terzidou V, Bennett PR, Johnson MR. The Mitogen-Activated Protein Kinase Dependent Expression of Prostaglandin H Synthase-2 and Interleukin-8 Messenger Ribonucleic Acid by Myometrial Cells: The Differential Effect of Stretch and Interleukin-1 $\beta$ . *J Clin Endocrinol Metab* (2005) 90:3517–27. doi: 10.1210/jc.2004-1390
49. Komic A, Martinez-Quinones P, McCarthy CG, Webb RC, Wenceslau CF. Increase in Soluble Protein Oligomers Triggers the Innate Immune System Promoting Inflammation and Vascular Dysfunction in the Pathogenesis of Sepsis. *Clin Sci* (2018) 132:1433–8. doi: 10.1042/CS20180368
50. Suo N, Guo Y, He B, Gu H, Xie X. Inhibition of MAPK/ERK Pathway Promotes Oligodendrocytes Generation and Recovery of Demyelinating Diseases. *Glia* (2019) 67:1320–32. doi: 10.1002/glia.23606
51. Liu H, Yao S, Dann SM, Qin H, Elson CO, Cong Y. ERK Differentially Regulates Th17- and Treg-Cell Development and Contributes to the Pathogenesis of Colitis: Cellular Immune Response. *Eur J Immunol* (2013) 43:1716–26. doi: 10.1002/eji.201242889
52. Liu F, Feng XX, Zhu SL, Huang HY, Chen YD, Pan YF, et al. Sonic Hedgehog Signaling Pathway Mediates Proliferation and Migration of Fibroblast-Like Synoviocytes in Rheumatoid Arthritis via MAPK/ERK Signaling Pathway. *Front Immunol* (2018) 9:2847. doi: 10.3389/fimmu.2018.02847
53. Li L, Yang J, Jiang Y, Tu J, Schust DJ. Activation of Decidual Invariant Natural Killer T Cells Promotes Lipopolysaccharide-Induced Preterm Birth. *MHR: Basic Sci Reprod Med* (2015) 21:369–81. doi: 10.1093/molehr/gav001
54. Bhagwat SV, McMillen WT, Cai S, Zhao B, Whitesell M, Shen W, et al. ERK Inhibitor LY3214996 Targets ERK Pathway-Driven Cancers: A Therapeutic Approach Toward Precision Medicine. *Mol Cancer Ther* (2020) 19:325–36. doi: 10.1158/1535-7163.MCT-19-0183
55. Qiu S-L, Duan M-C, Liang Y, Tang H-J, Liu G-N, Zhang L-M, et al. Cigarette Smoke Induction of Interleukin-27/WSX-1 Regulates the Differentiation of Th1 and Th17 Cells in a Smoking Mouse Model of Emphysema. *Front Immunol* (2016) 7:553. doi: 10.3389/fimmu.2016.00553
56. Shibata S, Tada Y, Asano Y, Yanaba K, Sugaya M, Kadono T, et al. IL-27 Activates Th1-Mediated Responses in Imiquimod-Induced Psoriasis-Like Skin Lesions. *J Invest Dermatol* (2013) 133:479–88. doi: 10.1038/jid.2012.313
57. Gong F, Pan Y-H, Huang X, Chen J, Xiao J-H, Zhu H-Y. Interleukin-27 as a Potential Therapeutic Target for Rheumatoid Arthritis: Has the Time Come? *Clin Rheumatol* (2013) 32:1425–8. doi: 10.1007/s10067-013-2341-0
58. Shahi A, Afzali S, Salehi S, Aslani S, Mahmoudi M, Jamshidi A, et al. IL-27 and Autoimmune Rheumatologic Diseases: The Good, the Bad, and the Ugly. *Int Immunopharmacol* (2020) 84:106538. doi: 10.1016/j.intimp.2020.106538

**Conflict of Interest:** The authors declare that the research was conducted in the absence of any commercial or financial relationships that could be construed as a potential conflict of interest.

**Publisher's Note:** All claims expressed in this article are solely those of the authors and do not necessarily represent those of their affiliated organizations, or those of the publisher, the editors and the reviewers. Any product that may be evaluated in this article, or claim that may be made by its manufacturer, is not guaranteed or endorsed by the publisher.

Copyright © 2021 Huang, Ran, Liu, He, Yin and Qi. This is an open-access article distributed under the terms of the Creative Commons Attribution License (CC BY). The use, distribution or reproduction in other forums is permitted, provided the original author(s) and the copyright owner(s) are credited and that the original publication in this journal is cited, in accordance with accepted academic practice. No use, distribution or reproduction is permitted which does not comply with these terms.