

# Impact of ice-shelf basal melting on inland ice-sheet thickness: a model study

Jürgen DETERMANN,<sup>1</sup> Malte THOMA,<sup>1,2</sup> Klaus GROSFELD,<sup>1</sup> Sylvia MASSMANN<sup>3</sup>

<sup>1</sup>*Alfred Wegener Institute for Polar and Marine Research, Bremerhaven, Germany  
E-mail: Juergen.Determann@awi.de*

<sup>2</sup>*Commission for Glaciology, Bavarian Academy of Sciences, Munich, Germany*

<sup>3</sup>*Federal Maritime and Hydrographic Agency, Hamburg, Germany*

**ABSTRACT.** Ice flow from the ice sheets to the ocean contains the maximum potential contributing to future eustatic sea-level rise. In Antarctica most mass fluxes occur via the extended ice-shelf regions covering more than half the Antarctic coastline. The most extended ice shelves are the Filchner–Ronne and Ross Ice Shelves, which contribute ~30% to the total mass loss caused by basal melting. Basal melt rates here show small to moderate average amplitudes of  $<0.5 \text{ m a}^{-1}$ . By comparison, the smaller but most vulnerable ice shelves in the Amundsen and Bellinghousen Seas show much higher melt rates (up to  $30 \text{ m a}^{-1}$ ), but overall basal mass loss is comparably small due to the small size of the ice shelves. The pivotal question for both characteristic ice-shelf regions, however, is the impact of ocean melting, and, coevally, change in ice-shelf thickness, on the flow dynamics of the hinterland ice masses. In theory, ice-shelf back-pressure acts to stabilize the ice sheet, and thus the ice volume stored above sea level. We use the three-dimensional (3-D) thermomechanical ice-flow model RIMBAY to investigate the ice flow in a regularly shaped model domain, including ice-sheet, ice-shelf and open-ocean regions. By using melting scenarios for perturbation studies, we find a hysteresis-like behaviour. The experiments show that the system regains its initial state when perturbations are switched off. Average basal melt rates of up to  $2 \text{ m a}^{-1}$  as well as spatially variable melting calculated by our 3-D ocean model ROMBAX act as basal boundary conditions in time-dependent model studies. Changes in ice volume and grounding-line position are monitored after 1000 years of modelling and reveal mass losses of up to  $40 \text{ Gt a}^{-1}$ .

## INTRODUCTION

The volume of marine ice sheets depends on the ice thickness  $H$  at the grounding line. Taking  $H$  as the boundary value, inland ice thickness evolves such that the surface slope can drive an ice flow sufficient to drain the total accumulation. This view holds for a simple steady state, an isotropic rheology and a frozen bed, in particular. In general, basal melting due to a geothermal heat flux and a transient occurrence of water at the ice-sheet base makes the system more difficult to understand. Ice shelves contribute a buttressing effect as a result of lateral shear forces at their margins. By exerting a back-stress, the ice shelf's geometry and shape codetermine the thickness and position of the grounding line (e.g. Dupont and Alley, 2005).

As early as 1978 Mercer drew attention to the 'threat of disaster', a possible collapse of the West Antarctic ice sheet following a climate-induced disintegration of the hitherto buttressing ice shelves (Mercer, 1978). A first hint was measured after the disintegration of the Larsen B ice shelf. Scambos and others (2004) reported further retreat of the grounding line after the break-up in 2002. Similarly, Pine Island Glacier (PIG) showed retreat of the grounding line together with upstream thinning and increasing balance velocities (Payne and others, 2004). PIG did not yet disintegrate, but was exposed to high ocean-induced melt rates causing the thinning of its floating part. Subsequent heave from a sill led to a reduction in basal stresses and decreased buttressing.

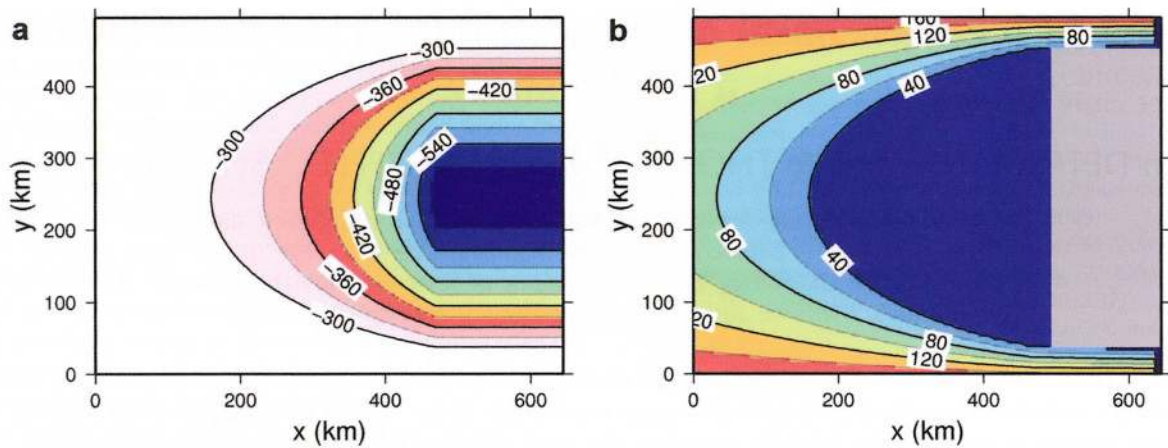
Hydrographic conditions in the Amundsen Sea reveal relatively warm water masses (Hellmer and others, 1998) which are held to favour further extensive melting in the PIG

area (Thoma and others, 2006). Anticipated melt rates of  $33 \text{ m a}^{-1}$  (Jacobs and others, 2011) would lead to further retreat of the grounding line and, due to an inland-sloping bedrock, could initiate a substantial loss of grounded ice (Payne and others, 2004).

To quantify ice-volume changes and grounding-line migrations, we apply the dynamic three-dimensional (3-D) ice-sheet/ice-shelf model RIMBAY (Revised Ice sheet Model Based on firAnk pattYn; Thoma and others, 2010a) to a regular model domain, in the first instance. The model is forced by surface accumulation and by basal melting in the floating part. We perform time-dependent simulations in order to investigate volume changes relevant to sea-level changes. Starting at steady state, the system's reaction after 1000 years of constant melt rates is monitored. Thus, we prescribe evenly distributed melting as well as spatially varying melt rates derived from our ocean circulation model ROMBAX (Revisited Ocean Model based on Bryan And CoX; Thoma and others, 2006). The latter is not fully coupled over the whole model period, but is invoked for 3 years to simulate basal melting according to the initial ice-shelf draft. Here our focus is on the effect of distributed melting on the 3-D figure of our ice compartment. The mode of operation using RIMBAY and ROMBAX as a coupled model is described by Thoma and others (2010a).

## THE ICE MODEL

Our 3-D ice-sheet/ice-shelf model RIMBAY is based on the dynamic–thermodynamic model constructed by Pattyn (2003). A later version of RIMBAY is described by Thoma



**Fig. 1.** Bottom topography (a) and initial ice surface elevation (b) at time  $T=0$ . Values are given in metres. The ice-sheet/ice-shelf system gains mass from flux across the inland boundary ( $3000\text{ m}^2\text{ a}^{-1}$ ) and from surface precipitation ( $0.25\text{ m w.e. a}^{-1}$ ).

and others (2010a); several changes, especially concerning the numerical treatment, have been made (Thoma, unpublished information). In its most complex version, RIMBAY can solve the momentum balance by means of the full-Stokes equations (Pattyn, 2008). By solving the temperature field within the ice, fully coupled thermomechanical simulations are possible.

Instead of using the model in its highest complexity, we employ the commonly used approximations, namely the shallow-ice approximation (SIA) and the shallow-shelf approximation (SSA). Given the small ratio of ice thickness  $H$  to horizontal extent  $L$  in the presented experiment, this introduces only negligible errors. A comprehensive description of the SIA and SSA is given by Greve and Blatter (2009).

The basal boundary condition for ice sheets and ice shelves determines the flow condition and hence the flow field of the ice body. In the case of a frozen bed, the entire flow is driven by internal shearing. At this time, no attempt is made to incorporate sliding into the simulations. Both SIA and SSA contain the depth-averaged temperature-dependent coefficient  $A$  and the exponent  $n$  from Glen’s flow law (Paterson, 1994):

$$\dot{\epsilon}_{ij} = A\tau^{n-1}\tau'_{ij} \tag{1}$$

where  $\dot{\epsilon}_{ij}$  denote the components of the strain tensor,  $\tau'_{ij}$  are the stress-deviator tensor components and  $\tau$  is the effective stress. Because our perturbation studies span timescales of the order of  $10^3$  years, we can omit the solution for the temperature field. For ice sheets the latter would attain a stationary state after  $10^4$ – $10^5$  years. This assumption allows use of a constant  $A$ , still in the perspective of the experiments described in this paper. We chose a constant  $A = 3.0 \times 10^{-17}\text{ kPa}^{-3}\text{ s}^{-1}$ , corresponding to an ice temperature of 263 K, and the exponent  $n = 3$ .

The SIA and SSA yield the velocity field from a given ice-thickness distribution. While the SIA offers a local solution of the flow components  $u$  and  $v$ , the SSA can be solved as a boundary-value problem. At the ice-shelf front, one can specify the velocity gradient according to (Mayer, 1996)

$$\frac{\partial u}{\partial x} = \frac{1}{2}A^{1/3}\epsilon^{2/3}\frac{\rho_{ice}gH}{2}\left(1 - \frac{\rho_{ice}}{\rho_w}\right) - \frac{\partial v}{\partial y} \tag{2}$$

where  $\epsilon$  is the effective strain rate and  $H$  the ice thickness. We use an ice density  $\rho_{ice}$  of  $915\text{ kg m}^{-3}$ ; the sea-water

density  $\rho_w$  is taken as  $1028\text{ kg m}^{-3}$ . At the ice shelf’s inland boundary, the grounding line, the velocities from the last grounded ice-sheet node are taken as the boundary value. Hence, no attempt is made to resolve the exact grounding-line position within a gridcell. The error that could thus be introduced affects the value of the horizontal strain rate in the first SSA gridcell downstream of the grounding line. Subsequent thinning due to an overestimated velocity would cause retreat of the grounding line, to the next gridpoint at most. In this case, the mass flux from the ice sheet could be correctly transferred into the ice shelf.

In time-dependent simulations, the continuity equation yields temporal ice-thickness changes according to

$$\frac{\partial H}{\partial t} = -\nabla(HU) + a - m \tag{3}$$

where  $a$  denotes surface accumulation,  $m$  is the basal melt rate and  $U$  the depth-averaged flow velocity. In the case of basal freezing,  $m$  becomes negative.

All experiments are performed on a rectangular model domain consisting of an ice sheet, ice shelf and an open-ocean compartment. The bedrock topography resembles a depression opening to one side of the domain. Water depths range from 200 to  $\sim 600\text{ m}$  at the open-ocean side. The model domain has  $130 \times 100$  evenly spaced nodes with a horizontal grid size of  $5\text{ km} \times 5\text{ km}$ . Initially, it is covered by a  $350\text{ m}$  thick slab of ice except for the outermost 30 gridlines covering the area with higher water depths. Due to a flotation condition, we find ice-shelf nodes where  $H < H_{bed}\rho_w/\rho_{ice}$  (Fig. 1). During time-dependent simulations, Eqn (3) is solved at different boundary conditions for accumulation  $a$  and melting  $m$ . We apply a constant accumulation rate of  $0.25\text{ m w.e. a}^{-1}$ , while basal melting varies in the experiments (Table 1). The time-step for all experiments is 0.25 years.

The model does not handle the possibility of an advancing ice-shelf front. Instead, all ice passing its initial position ( $x = 500\text{ km}$  over most of the domain except along the edges) would calve as iceberg. Contrary to this constraint, the ice shelf may retreat if the continuity equation (Eqn (3)) yields a negative ice thickness. All perturbation experiments start from a steady state, which was taken from a 16,000 years spin-up run. The corresponding ice volumes evolve as shown in Figure 2. Figure 3 shows the ice thickness distribution and ice flow at that time.



**Table 1.** Comparison of model results. Given melt rates have been active from  $T=16.000$  to  $T=17.000$ . Numbers for OceanA and OceanB represent average values

Experiment	Melt rate $\text{m a}^{-1}$	Model time years	Ice volume $\text{km}^3$	Area		$H_{\text{ice}}$ max. m
				Sheet $\text{km}^2$	Shelf $\text{km}^2$	
INITIAL	0.0	16 000	173 800	191 275	53 225	1010
Melt05	0.5	17 000	168 008	186 250	58 100	1004
Melt20	2	17 000	129 551	154 100	44 200	960
OceanA	0.35	17 000	171 113	188 950	55 500	1007
OceanB	0.55	17 000	167 580	186 025	58 350	1004

**THE OCEAN MODEL**

The ocean model ROMBAX is a primitive-equation Ocean General Circulation Model (OGCM), which has been applied to sub-ice-shelf cavities and adjacent oceans since the early 1990s in a precursor version. A detailed description is given by Grosfeld and others (1997) and Thoma and others (2006). Successful simulations used ROMBAX to model melting and freezing under prominent Antarctic ice shelves, as well as the circulation in sub-ice lakes (Thoma and others, 2007, 2010b). The latest version simulates a thermohaline circulation driven by buoyancy forces, but forcing by wind or sea-ice formation is also taken into account.

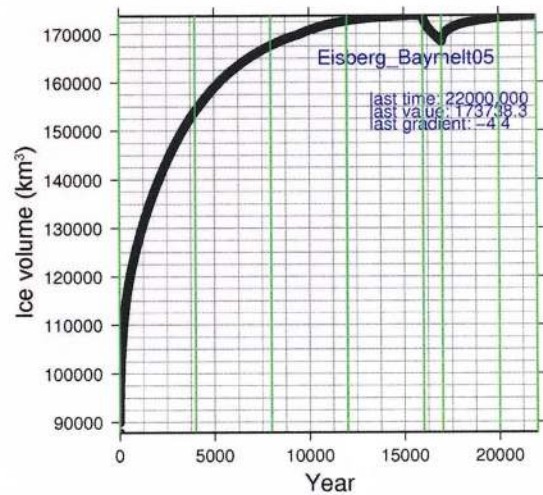
A major driving mechanism for ocean currents within an ice-shelf cavity is the heat exchange across the ice/ocean boundary. Due to the pressure dependence of the freezing point of sea water according to Foldvik and Kvinge’s (1974) formulation,

$$T_{\text{freez}} = T_0 - 0.764 \times 10^{-3} p(z) \quad (4)$$

a 400 m deep ice-shelf base would melt at ocean temperatures of about  $-2.2^\circ\text{C}$ .  $T_0 = -1.89^\circ\text{C}$  is the freezing point of sea water (at a salinity of 34.7) at the ocean surface, and  $p(z)$  is the pressure at depth  $z$ . Relatively warmer currents with respect to the in situ freezing point provide heat for melting, become fresher, and tend to rise, due to mixing with fresh water, to shallower areas. Here, being supercooled with respect to a shallower boundary, the water has the potential to form ice platelets, which will accrete at the ice-shelf base. In ROMBAX, the process of ice/ocean interaction is implemented according to the three-equation formulation of Holland and Jenkins (1999), applying heat- and salt-conserving formulations with respect to the empirical function for the freezing point. Here, frazil-ice formation is not explicitly modelled, but expressed as a bulk formula.

The growth of ice platelets in conjunction with the release of latent heat from this phase transition makes the upper ocean layer warmer and more saline. These water masses could then descend and recirculate or could leave the cavity as Ice-Shelf Water (ISW). At the continental-shelf break, ISW contributes to the formation of Bottom Water when mixing with branches of Circumpolar Deep Water.

All water nodes, either of the open ocean or of the sub-ice-shelf cavity, belong to the ocean model. Unlike RIMBAY, which works on a Cartesian grid, ROMBAX uses geographic coordinates. The horizontal resolution of  $0.05^\circ$  in latitude  $\times 0.2^\circ$  in longitude corresponds to gridcells of approximately  $5 \text{ km} \times 5.7 \text{ km}$  at  $75^\circ\text{S}$ . In the vertical direction the



**Fig. 2.** Time-dependent ice volume. Spin-up of the ice model and perturbation test. Ice volume reaches a quasi-steady state at  $T=16.000$  years. An imposed melt rate of  $0.5 \text{ m a}^{-1}$  from  $T=16.000$  to  $T=17.000$  years causes a volume loss of  $\sim 3.3\%$ . The system needs  $\sim 5.000$  years to recover after melting is switched off.

water column is divided into 14 sigma levels in the open ocean, while 10 levels extend into the ice-shelf cavity.

Using two grid types means that every coupling step of both models requires a coordinate transformation. We use a transformation such that the open-ocean boundary faces the eastern end of the model domain which extends to  $76^\circ\text{S}$ .

At this boundary, a prescribed mass transport stream function  $\Psi = 4 \text{ Sv}$  ( $1 \text{ Sv} = 10^6 \text{ m}^3 \text{ s}^{-1}$ ) forces a cyclonic circulation within the ice-free ocean area. Respectively, vertical profiles of the potential temperature  $\Theta$ , and salinity  $S$ , kept constant along the open-ocean boundary, serve as boundary values for tracers. In order to keep the experiments simple at this stage, we do not allow temporal changes at the ocean’s eastern boundary. Although ROMBAX would allow for incorporating wind action as well as sea-ice formation and flow, we chose to force the ocean just by prescribing boundary values of  $\Psi$ ,  $\Theta$  and  $S$ . However, within the model domain, ice-shelf/ocean interaction will feed back on the circulation until a steady state evolves.

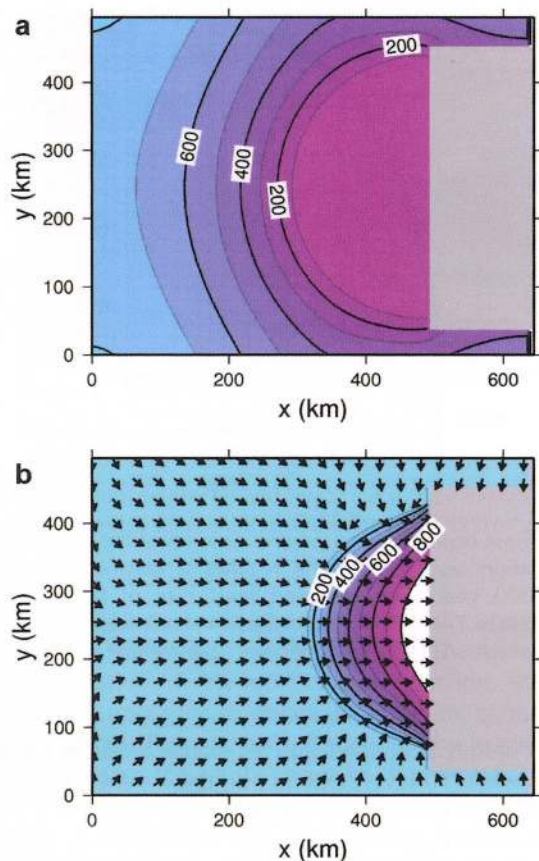
**EXPERIMENTS**

Our main objective is to investigate the response of the ice-sheet/ice-shelf system to changing melt rates at the ice-shelf base. We focus especially on the movement of the grounding line and the change in grounded ice volume. Thus, we specify two experiments using uniformly distributed melting, and two tests with melt rates from the ocean model. The latter are chosen to investigate the effect of spatially varying melting on the 3-D-ice distribution. One experiment is made to test whether the system readjusts to a pre-perturbation state. If this is the case, coupling across the grounding line seems well defined in our model. Table 1 gives an overview of the experiments concerning ice volume, extent and thickness.

**INITIAL**

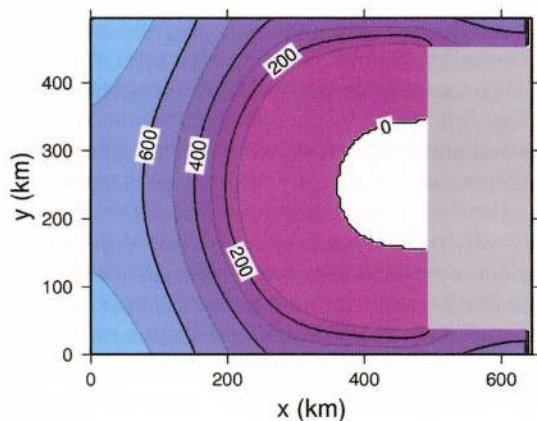
All experiments start from the result of the control run INITIAL at a quasi-steady state which is attained after 16.000



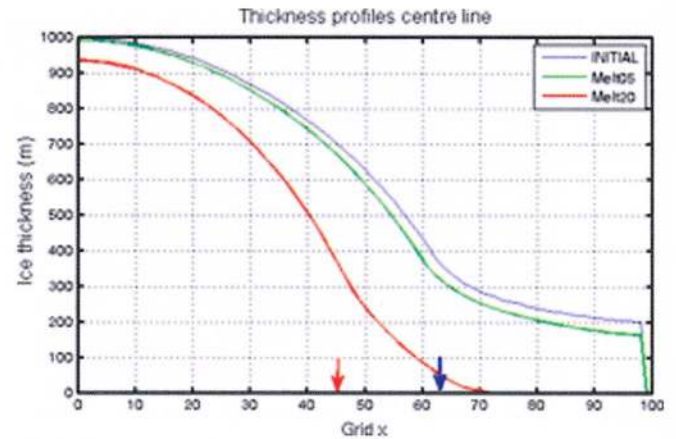


**Fig. 3.** INITIAL. Surface elevation at  $t=16,000$  years in metres (a). The grounding-line position coincides with the onset of small surface gradients. Velocities reach  $1150 \text{ m a}^{-1}$  at the ice-shelf front. Arrows indicate flow direction (b).

model years. At this time the model has spun up to an ice volume of  $173,800 \text{ km}^3$  (Fig. 2). The corresponding thickness distribution and the vertically integrated flow can be inferred from Figure 3. All contributions of ice across the boundary from a virtual catchment area and from precipitation are balanced by calving into the ocean. Ice thickness varies from  $>1000 \text{ m}$  at the inland boundary to  $<200 \text{ m}$  at the ice-shelf front. Here the magnitude of the ice flow reaches  $1150 \text{ m a}^{-1}$  as a maximum.



**Fig. 4.** Ice-surface height for Melt20. Due to a melt rate of  $2.0 \text{ m a}^{-1}$ , the grounding line has retreated by  $90 \text{ km}$  within 1000 years. About 900 ice-shelf nodes ( $>22,000 \text{ km}^2$ ) have disappeared beyond the 0-contour in the white area.



**Fig. 5.** Resulting ice-thickness profiles at  $T=17,000$  compared with the initial state at  $T=16,000$  (blue). Melt05 melt rate is  $0.5 \text{ m a}^{-1}$  for the entire ice shelf (Melt20 =  $2.0 \text{ m a}^{-1}$ ). The grounding line for Melt20 is situated at  $x=63$  ( $=315 \text{ km}$ , red arrow) compared with  $x=45$  ( $=225 \text{ km}$ , blue arrow) for INITIAL. This corresponds to a retreat of  $90 \text{ km}$ .

### Melt05

To test whether the model will readjust after a perturbation terminates, all floating points are exposed to a uniform melt rate of  $0.5 \text{ m a}^{-1}$ . After 1000 years, the ice volume has decreased by  $\sim 3.3\%$ . Accordingly, the grounding-line position has retreated by three grid nodes ( $15 \text{ km}$ ), and the ice-sheet area decreased by almost  $5,000 \text{ km}^2$ . When basal melting is switched off again, the volume needs longer than 1000 years to readjust. This is the case after  $\sim 5000$  years (Fig. 2). After this time the grounding line also reaches its former position.

### Melt20

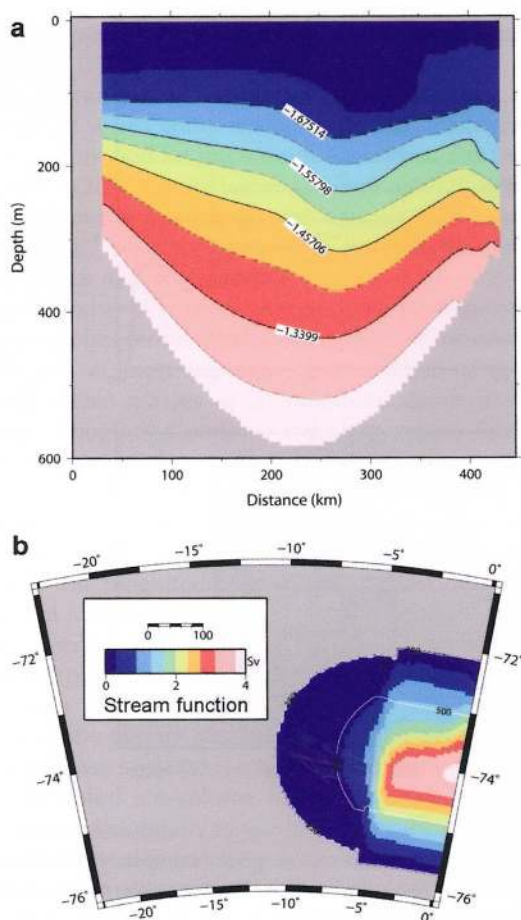
Unlike Melt05 where moderate melt rates are of the order of the surface accumulation, a much higher rate of  $2.0 \text{ m a}^{-1}$  is chosen to impose a stronger perturbation. After 1000 years this case shows a strong effect on ice-volume loss. The total ice volume decreases by 25%. Maximum ice thickness in the ice sheet reduces by  $>5\%$ . The ice-shelf front has retreated by  $150 \text{ km}$  in the central area while the grounding line has moved inland up to  $90 \text{ km}$ . Due to balance fluxes from the ice sheet, the ice shelf remains as a  $125 \text{ km}$  wide rim along the grounding line (Fig. 4). Compared to INITIAL, the ice sheet has also lost 20% of its area, which accounts for a loss of  $\sim 37,000 \text{ km}^2$  at this stage (Table 1).

A comparison of ice-thickness changes in Melt05 and Melt20 is provided in Figure 5. As expected, the impact of Melt20 on the thickness profile is apparent. Although high melt rates exceeding  $2.0 \text{ m a}^{-1}$  have been reported in some areas (Hellmer, 2004), we try to quantify these values independently using ROMBAX. Therefore, we designed two ocean scenarios, yielding melt rates in time and space, driven only by an initial  $\theta, S$ -distribution in our ocean model.

### OceanA and OceanB

For the hydrography, we specified two model scenarios, OceanA and OceanB. In both, the potential temperature  $\Theta$  increases with depth, while an increase in salinity  $S$ , ranging from 34.52 to 34.82, keeps the stratification stable with respect to the potential density. For OceanA,  $\Theta$  linearly increases from  $-1.9^\circ\text{C}$  at the surface to  $-1.5^\circ\text{C}$  at the





**Fig. 6.** ROMBAX, OceanB. (a) Temperature transect along the ice-shelf front from south to north after 3 model years, looking from the ocean into the ice-shelf cavity. Water masses of higher temperature at the left flowing into the cavity provide heat for basal melting. In the outflow region, colder water deflects the isotherms downward. (b) The stream function represents the vertically integrated mass transport. A maximum of 4 Sv ( $1 \text{ Sv} = 10^6 \text{ m}^3 \text{ s}^{-1}$ ) is prescribed at the open-ocean boundary. Within the ice-shelf cavity, the transport is  $<0.5 \text{ Sv}$ . The ice-shelf front is situated at  $\sim 5^\circ \text{ W}$ .

lowermost level. OceanB has a surface temperature of  $-1.8^\circ \text{C}$  and reaches  $-1.2^\circ \text{C}$  at the sea floor. This configuration prescribes a moderate ocean warming of  $0.1\text{--}0.3^\circ \text{C}$  compared to OceanA. The vertical  $\Theta, S$ -profiles are kept fixed at the open boundary, while inside the domain the

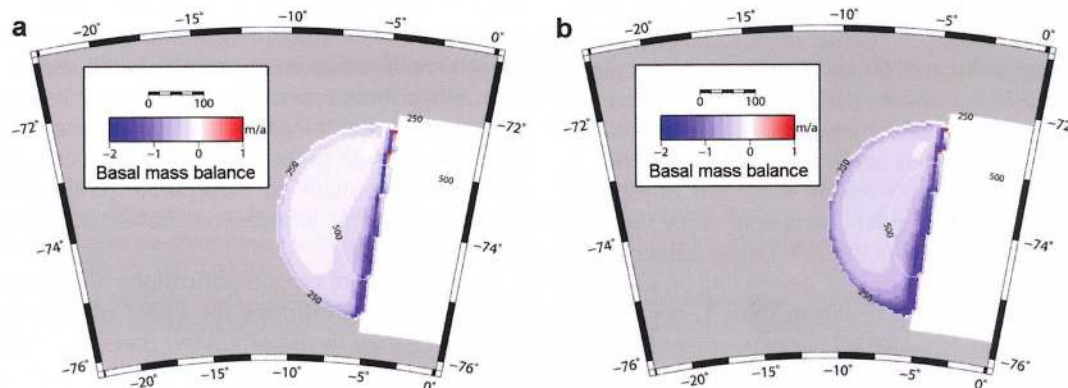
ice-shelf/ocean interaction will change the 3-D  $\Theta, S$ -pattern. Figure 6a shows a temperature transect along the ice-shelf front for OceanB. In the outflow region, cold water masses from the cavity deflect the isotherms downwards.

OceanA and OceanB melt rates calculated after 3 years of integration are shown in Figure 7. In both cases, the highest melt rates occur near the ice-shelf front where the main fraction of the ocean current is situated. This is due to the dynamic principle that ocean currents follow  $f/H_w$  ( $f$  is the Coriolis parameter,  $H_w$  the water column thickness) contours, meaning that, in our model set-up, only  $\sim 10\%$  of the water masses enter the cavity. This value could rise if the relationship of ice thickness to water-column height decreased to a condition similar to that found, for instance, in the Filchner Trough. Compared to the real bathymetry in that area, our model geometry imposes an extra barrier for an exchange of water masses (Fig. 6b).

Due to the cyclonic circulation, inflow into the cavity occurs in the southern region. Although the main current evolves along the ice-shelf front, a portion of the water masses propagates along the grounding line. Here the potential for melting is highest, but the small transport carries only enough heat to cause melt rates of  $0.5 \text{ m a}^{-1}$  near the grounding line compared to  $6.0 \text{ m a}^{-1}$  at the ice-shelf front. OceanB yields respective values of 1.0 and  $12 \text{ m a}^{-1}$  at some front regions. Average melt rates amount to  $0.35 \text{ m a}^{-1}$  for OceanA and  $0.55 \text{ m a}^{-1}$  for OceanB.

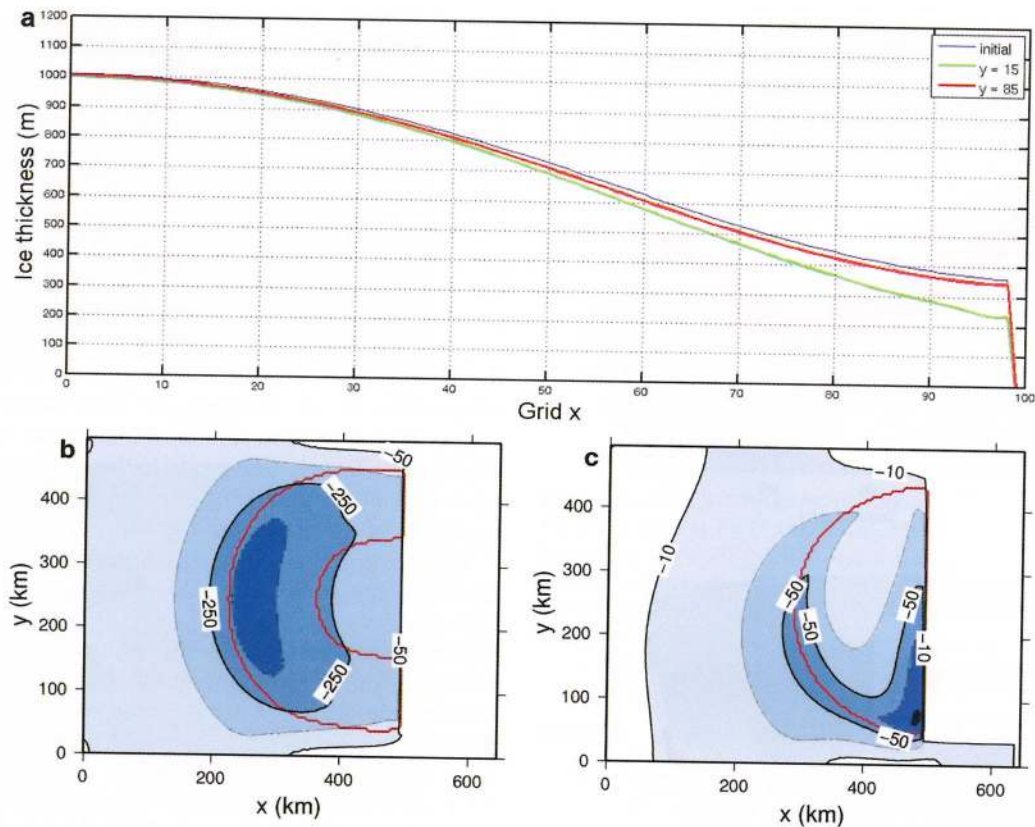
As in experiments Melt05 and Melt20, we use the output from the ocean model to solve the continuity Eqn (3) in OceanA and OceanB. We simulate the ice thickness evolution for 1000 years, again starting from the control run INITIAL at 16,000 years. Melt rates from Figure 7 last throughout the perturbation time-span. In the case of a retreating ice sheet, a simple extrapolation of melt rates towards the new grounding line handles geometric changes of the cavity. No attempt is made to apply a full coupling of ice and ocean models including repeated reruns of ROMBAX.

As would be expected,  $H$  decreases more in the ocean inflow area ( $y=15$  ( $=75 \text{ km}$ )) than in the outflow area ( $y=85$  ( $=425 \text{ km}$ )). This is the case in both experiments, but the higher melt rates of OceanB make the effect more obvious. The maximum decrease in ice thickness here is in the order of 100 m. Figure 8b provides a 2-D view of the changes as a comparison of Melt20 and OceanB. Decreases exceed 300 m within the ice shelf close to the grounding line in Melt20.



**Fig. 7.** Melt rates as derived by ROMBAX for (a) OceanA and (b) OceanB. Average melt rates are  $0.35$  and  $0.55 \text{ m a}^{-1}$ , respectively. Highest values occur at the ice-shelf front, for OceanB.





**Fig. 8.** (a) Resulting thickness profiles for OceanB at  $T = 17,000$  years. High melt rates in the inflow region (green) compared with the profile at  $T = 16,000$  years. High melt rates at the ice-shelf front cause a thinning by up to 30% in the inflow region. Thinning stays moderate, where a colder outflow would allow even freezing (red). Due to symmetry, INITIAL is identical on both sides. (b, c) 2-D views of ice-thickness changes in metres: Melt20–INITIAL (b); OceanB–INITIAL, with different scale (c). The red line marks the boundary of the ice shelf at the end of the simulation.

## DISCUSSION AND OUTLOOK

With a view to quantifying the stability of the Antarctic ice sheet, we applied a coupled model to a synthetic ice-sheet/ice-shelf ocean system. Special emphasis is given to the ocean and its contribution to the ice-sheet mass balance. High basal melt rates thereby codetermine the steady-state profile of our idealized model ice-sheet configuration.

From the hysteresis experiment (Fig. 2) we conclude that the loss of ice is faster after a grounding-line retreat than the rebuild following a grounding-line advance. Once ice becomes afloat, the corresponding grid nodes obey the ice-shelf flow, causing higher strain rates with respect to a given surface gradient than compared to an ice-sheet flow. This should also happen in nature, implying that the ice shelf would drain inland ice faster than before. On the other hand, if grounding leads to a change from ice-shelf to ice-sheet flow, smaller velocities (fluxes) in the ice sheet need longer to build up an ice-sheet profile at the new margin.

In our study we investigated a coupled 3-D ice-sheet/ice-shelf ocean model. Although each model part underlies a different timescale to attain a steady state, our objectives concentrate on the time-dependent behaviour of ice shelves. Being forced by perturbations of the basal mass balance, ice shelves react within  $10^3$  years or less, depending on size and flow velocity. According to the results in Table 1, our system loses on average about  $40 \text{ Gt ice a}^{-1}$ , in experiment Melt20. This value, which is even higher at the onset of the melt event, even illustrates a possible impact on a centennial timescale.

Running ROMBAX only once at the beginning of the simulations does not take into account changes in the

ice-shelf geometry and their implications for the sub-ice circulation. If we expect a balance of ice dynamics and basal mass flux, erosion of the ice-shelf bottom will make the interface with the ocean steeper. Simultaneously, if the draft at the grounding line stays almost constant, the total magnitude of depth variation will increase. This results in a higher potential for circulation within the cavity, in line with increased melting. In the case of an inland sloping bedrock, a grounding-line retreat would foster melting even more. Therefore we conclude that our restriction to one ROMBAX run at the beginning of the perturbation time period will underestimate the potential for melting. Nevertheless, future experiments will have to use a perennial coupling of ice and ocean models, especially if climate scenarios are taken into account (e.g. Grosfeld and Sandhäger, 2004).

Concerning the coupling to the grounded ice sheet, the main simplification in our model is the use of the SIA and SSA. Since these approximations neglect higher-order stress components, the transition from grounding to floating takes place at a single point, where the flotation criterion holds. No attempt is made to incorporate partly grounded areas like ice streams whose wet bases could explain their accelerated flow.

Being aware of our simplifications, we are confident that our results underestimate the effect of melting ice on the volume change in the grounded parts. By omitting an ice-stream process, our model restrains the discharge of inland ice when a shrinking ice shelf leads to higher thickness gradients at the grounding line. Nevertheless, experiment Melt20 shows that a substantial ice-volume loss could be

possible if our ice shelf were exposed to a sufficiently high melt rate.

Still, OceanA and OceanB do not simulate the case of an intrusion of warm water masses onto the continental shelf like those reported for the eastern Amundsen Sea by Jenkins and others (2010). Here water as warm as +1°C comes into contact with the floating glacier, causing melt rates higher than 30 m a<sup>-1</sup> near the grounding line (Payne and others, 2007; Jacobs and others, 2011).

On the other side of the Antarctic Peninsula, the coastal current reaches temperatures of +0.75°C at the continental-shelf break off Kapp Norvegia (Fahrbach and others, 2004). If these water masses at intermediate depth flushed the Filchner Trough and partially the cavity of the Filchner Ice Shelf, they could also cause high melting.

Our ocean model experiment OceanA yields a mean melt rate of 0.35 m a<sup>-1</sup> which is in good agreement with 0.32 m a<sup>-1</sup> from Hellmer (2004) for the Filchner Ice Shelf. Rates of this magnitude seem not to harm our model ice sheet, but if water masses of higher temperature entered the cavity, average melt rates as high as in scenario Melt20 would be possible. Hellmer (2004) presented such present-day values for the Getz Ice Shelf, as well as for the ice shelves of the eastern Weddell Sea. Our results imply that if this is the case for large ice shelves like Filchner and Ronne, the anticipated ice-volume loss in grounded areas would contribute substantially to sea-level rises. This might happen even on timescales less than 1000 years.

Melt-rate outcomes of ROMBAX show a large variability in magnitude and horizontal distribution. This even holds for our regularly shaped model domain. If applied as a boundary condition to an ice-shelf base, they will influence the ice thickness in both horizontal directions. This implies that simple parameterizations of basal melt rates (e.g. with respect to offshore ocean temperatures) could lead to misinterpreted ice-thickness distributions.

The model results shown demonstrate the possible suitability of the coupled model for application with real topography. Hence, favoured regions of the Antarctic continent can be simulated now, with a special emphasis on their vulnerability to increasing ocean temperatures. To quantify such scenarios in further studies, we aim to apply our coupled model to the Filchner Ice Shelf in the Weddell Sea, and Pine Island Glacier in the Amundsen Sea, including their inland drainage basins.

## ACKNOWLEDGEMENTS

This work was supported by the ice2sea programme, funded through the European Union 7th Framework Programme, grant No. 226375. This is ice2sea contribution No. 044. We gratefully acknowledge the two anonymous reviewers.

## REFERENCES

- Dupont TK and Alley RB (2005) Assessment of the importance of ice-shelf buttressing to ice-sheet flow. *Geophys. Res. Lett.*, **32**(4), L04503 (doi: 10.1029/2004GL020224)
- Fahrbach E, Hoppema M, Rohardt G, Schröder M and Wisotzki A (2004) Decadal-scale variations of water mass properties in the deep Weddell Sea. *Ocean Dyn.*, **54**(1), 77–91 (doi: 10.1007/s10236-003-0082-3)
- Foldvik A and Kvinge T (1974) Conditional instability of sea water at the freezing point. *Deep-Sea Res.*, **21**(3), 169–174 (doi: 10.1016/0011-7471(74)90056-4)

- Greve R and Blatter H (2009) *Dynamics of ice sheets and glaciers*. Springer-Verlag, Dordrecht
- Grosfeld K and Sandhäger H (2004) The evolution of a coupled ice shelf–ocean system under different climate states. *Global Planet. Change*, **42**(1–4), 107–132 (doi: 10.1016/j.gloplacha.2003.11.004)
- Grosfeld K, Gerdes R and Determann J (1997) Thermohaline circulation and interaction between ice shelf cavities and the adjacent open ocean. *J. Geophys. Res.*, **102**(C7), 15 595–15 610
- Hellmer HH (2004) Impact of Antarctic ice shelf basal melting on sea ice and deep ocean properties. *Geophys. Res. Lett.*, **31**(10), L10307 (doi: 10.1029/2004GL019506)
- Hellmer HH, Jacobs SS and Jenkins A (1998) Oceanic erosion of a floating Antarctic glacier in the Amundsen Sea. In Jacobs SS and Weiss RF eds. *Ocean, ice and atmosphere: interactions at the Antarctic continental margin*. American Geophysical Union, Washington, DC, 83–100 (Antarctic Research Series 75)
- Holland DM and Jenkins A (1999) Modeling thermodynamic ice–ocean interactions at the base of an ice shelf. *J. Phys. Oceanogr.*, **29**(8), 1787–1800 (doi: 10.1175/1520-0485(1999)029<1787:MTIOIA>2.0.CO;2)
- Jacobs SS, Jenkins A, Giulivi CF and Dutrieux P (2011) Stronger ocean circulation and increased melting under Pine Island Glacier ice shelf. *Nature Geosci.*, **4**(8), 519–523 (doi: 10.1038/ngeo1188)
- Jenkins A and 6 others (2010) Observations beneath Pine Island Glacier in West Antarctica and implications for its retreat. *Nature Geosci.*, **3**(7), 468–472 (doi: 10.1038/ngeo890)
- Mayer C (1996) Numerische Modellierung der Übergangszone zwischen Eisschild und Schelfeis. *Ber. Polarforsch/Rep. Pol. Res.* 214
- Mercer JH (1978) West Antarctic ice sheet and CO<sub>2</sub> greenhouse effect: a threat of disaster. *Nature*, **271**(5643), 321–325 (doi: 10.1038/271321a0)
- Paterson WSB (1994) *The physics of glaciers*, 3rd edn. Elsevier, Oxford
- Pattyn F (2003) A new three-dimensional higher-order thermo-mechanical ice-sheet model: basic sensitivity, ice stream development, and ice flow across subglacial lakes. *J. Geophys. Res.*, **108**(B8), 2382 (doi: 10.1029/2002JB002329)
- Pattyn F (2008) Investigating the stability of subglacial lakes with a full Stokes ice-sheet model. *J. Glaciol.*, **54**(185), 353–361 (doi: 10.3189/002214308784886171)
- Payne AJ, Vieli A, Shepherd A, Wingham DJ and Rignot E (2004) Recent dramatic thinning of largest West Antarctic ice stream triggered by oceans. *Geophys. Res. Lett.*, **31**(23), L23401 (doi: 10.1029/2004GL021284)
- Payne AJ, Holland PR, Shepherd AP, Rutt IC, Jenkins A and Joughin I (2007) Numerical modeling of ocean–ice interactions under Pine Island Bay's ice shelf. *J. Geophys. Res.*, **112**(C10), C10019 (doi: 10.1029/2006JC003733)
- Scambos TA, Bohlander JA, Shuman CA and Skvarca P (2004) Glacier acceleration and thinning after ice shelf collapse in the Larsen B embayment, Antarctica. *Geophys. Res. Lett.*, **31**(18), L18402 (doi: 10.1029/2004GL020670)
- Thoma M, Grosfeld K and Lange MA (2006) Impact of the Eastern Weddell Ice Shelves on water masses in the eastern Weddell Sea. *J. Geophys. Res.*, **111**(C12), C12010 (doi: 10.1029/2005JC003212)
- Thoma M, Grosfeld K and Mayer C (2007) Modelling mixing and circulation in subglacial Lake Vostok, Antarctica. *Ocean Dyn.*, **57**(6), 531–540 (doi: 10.1007/s10236-007-0110-9)
- Thoma M, Grosfeld K, Smith AM and Mayer C (2010a) A comment on the Equation of State and the freezing point equation with respect to subglacial lake modelling. *Earth Planet. Sci. Lett.*, **294**(1–2), 80–84 (doi: 10.1016/j.epsl.2010.03.005)
- Thoma M, Grosfeld K, Mayer C and Pattyn F (2010b) Interaction between ice sheet dynamics and subglacial lake circulation: a coupled modelling approach. *Cryosphere*, **4**(1), 1–12 (doi: 10.5194/tc-4-1-2010)