



"Impact of rice cultivar and organ on elemental composition
of phytoliths and the release of bio-available silicon."

Li, Zimin ; Song, Zhaoliang ; Cornélis, Jean-Thomas

CITE THIS VERSION

Li, Zimin ; Song, Zhaoliang ; Cornélis, Jean-Thomas. *Impact of rice cultivar and organ on elemental composition of phytoliths and the release of bio-available silicon..* In: *Frontiers in Plant Science*, Vol. 5, no. 529, p. 1-8 (october 2014) <http://hdl.handle.net/2078.1/151683> -- DOI : 10.3389/fpls.2014.00529

Le dépôt institutionnel DIAL est destiné au dépôt et à la diffusion de documents scientifiques émanant des membres de l'UCLouvain. Toute utilisation de ce document à des fins lucratives ou commerciales est strictement interdite. L'utilisateur s'engage à respecter les droits d'auteur liés à ce document, principalement le droit à l'intégrité de l'œuvre et le droit à la paternité. La politique complète de copyright est disponible sur la page [Copyright policy](#)

DIAL is an institutional repository for the deposit and dissemination of scientific documents from UCLouvain members. Usage of this document for profit or commercial purposes is strictly prohibited. User agrees to respect copyright about this document, mainly text integrity and source mention. Full content of copyright policy is available at [Copyright policy](#)



Impact of rice cultivar and organ on elemental composition of phytoliths and the release of bio-available silicon

Zimin Li¹, Zhaoliang Song^{1,2*} and Jean-Thomas Cornelis³

¹ School of Environment and Resources, Zhejiang Agricultural and Forestry University, Lin'an, China

² State Key Laboratory of Environmental Geochemistry, Institute of Geochemistry, Chinese Academy of Sciences, Guiyang, China

³ Soil Science and Environment Geochemistry, Earth and Life Institute, Université Catholique de Louvain, Louvain-la-Neuve, Belgium

Edited by:

Julia Cooke, University of Western Sydney, Australia

Reviewed by:

Jean-Dominique Meunier, Centre National de la Recherche

Scientifique, France

Wim Clymans, Lund University, Sweden

Hongyan Liu, Peking University, China

*Correspondence:

Zhaoliang Song, School of Environment and Resources, Zhejiang Agricultural and Forestry University, 88 North Huan Cheng Road, Lin'an, Zhejiang 311300, China
e-mail: songzhaoliang78@163.com

The continental bio-cycling of silicon (Si) plays a key role in global Si cycle and as such partly controls global carbon (C) budget through nutrition of marine and terrestrial biota, accumulation of phytolith-occluded organic carbon (PhytOC) and weathering of silicate minerals. Despite the key role of elemental composition of phytoliths on their solubility in soils, the impact of plant cultivar and organ on the elemental composition of phytoliths in Si high-accumulator plants, such as rice (*Oryza sativa*) is not yet fully understood. Here we show that rice cultivar significantly impacts the elemental composition of phytoliths (Si, Al, Fe, and C) in different organs of the shoot system (grains, sheath, leaf and stem). The amount of occluded OC within phytoliths is affected by contents of Si, Al, and Fe in plants, while independent of the element composition of phytoliths. Our data document, for different cultivars, higher bio-available Si release from phytoliths of leaves and sheaths, which are characterized by higher enrichment with Al and Fe (i.e., lower Si/Al and Si/Fe ratios), compared to grains and stems. We indicate that phytolith solubility in soils may be controlled by rice cultivar and type of organs. Our results highlight that the role of the morphology, the hydration rate and the chemical composition in the solubility of phytoliths and the kinetic release of Si in soil solution needs to be studied further. This is central to a better understanding of the impact of soil amendment with different plant organs and cultivars on soil OC stock and on the delivery of dissolved Si as we show that sheath and leaf rice organs are both characterized by higher content of OC occluded in phytolith and higher phytolith solubility compared to grains and stems. Our study shows the importance of studying the impact of the agro-management on the evolution of sinks and sources of Si and C in soils used for Si-high accumulator plants.

Keywords: phytolith, rice, silicon solubility, PhytOC, soil-plant systems

INTRODUCTION

Silicon (Si), the second most abundant element in the continental surface (Wedepohl, 1995), is present in soils mostly as silicates, adsorbed Si onto oxides, biogenic precipitates called phytoliths and microorganisms remains. Dissolved Si (H_4SiO_4), can be readily taken up by plants and plays an important role as an alleviator of both biotic and abiotic stress (Epstein, 1994; Marschner, 1995; Mecfel et al., 2007). More importantly, Si is usually coupled with carbon (C) in different terrestrial biogeochemical processes (silicate weathering, soil formation, biota nutrition) that occur at different time-scales, which plays a crucial role in the regulation of atmospheric CO_2 (Oldenburg et al., 2008; Street-Perrott and Barker, 2008; Li et al., 2011; Song et al., 2012).

Si taken up by roots is mainly deposited in the transpiration sites of plants (e.g., cell walls, cell lumina, and intercellular spaces typically near evaporating surfaces) where polymerization of hydrated amorphous silica occurs to form phytoliths (Piperno, 1988; Ma, 2003). The chemical compositions of phytoliths consists mainly of SiO_2 (66–91%), organic carbon OC (1–6%), H_2O (0–11%), Al (0.01–4.55%), and Fe (0–2.1%) (Jones and Milne,

1963; Wilding, 1967; Wilding et al., 1967; Wang and Lü, 1993; Wang, 1998; Blecker et al., 2006). The chemical composition of phytoliths is highly dependent on plant species (Kameník et al., 2013). Despite their higher solubility compared to silicate minerals (Frayse et al., 2009, 2010), phytoliths can be highly resistant to dissolution in specific physico-chemical conditions and can remain for thousands of years in soils (Wilding, 1967; Parr and Sullivan, 2005). Therefore, plant phytoliths play a major role in palaeobotanical, palaeoecological and archeological reconstructions (Clarke, 2003; Piperno, 2006; Cao et al., 2007; Raven and Giordano, 2009). Recent studies report that OC (0.2–5.8%) can be occluded in phytoliths (PhytOC) during plant growth (Parr and Sullivan, 2005; Parr et al., 2010; Li et al., 2013). Si polymerized in plant phytoliths may be more soluble compared to other crystalline mineral phases (Frayse et al., 2009, 2010), while PhytOC is relatively more stable than other OC fractions in soils (Parr and Sullivan, 2005). For example, Parr and Sullivan (2005) report that the age of phytoliths in volcanic soils and peatland sediments ranges from 0 to 8000 year BP. Moreover, it has been reported that phytoliths in some sediments have a radiocarbon

date of $13,300 \pm 450$ year BP (Wilding, 1967). PhytOC, a crucial component of terrestrial C sink, can represent up to 82% of total C in some soils and sediments after 2000 years of litter fall decomposition, contributing 15–37% in long term terrestrial C sequestration (Alexandre et al., 1997; Parr and Sullivan, 2005).

Cultivated rice (*Oryza sativa*) is the main food source for more than 50% of the global population (Salekdeh et al., 2002) and is currently cultivated on around 1.55×10^8 ha (i.e., 1.04% of the global terrestrial surface) (IRRI, 2011)¹. Rice, a typical Si high-accumulator, can accumulate more than 10% of SiO₂ in dry matter (Alvarez and Datnoff, 2001) and application of Si may improve rice growth both under greenhouse and field conditions (Epstein, 1994, 1999; Liang et al., 2007). Recent studies showed that rice plays a significant role in the coupled terrestrial biogeochemical cycles of C and Si through the production of PhytOC (Parr et al., 2010; Song et al., 2012; Li et al., 2013). However, the impact of rice cultivar and of different rice organs on the phytolith elemental composition and solubility has never been reported (Savant et al., 1997), while solubility studies are important to make correct estimates of PhytOC preservation in soils and Si release in soil solution.

In this study, we investigated elemental compositions of organs and phytoliths, and the release of bio-available Si from rice phytoliths of different cultivars and organs (leaves, sheaths, stems and grains) cultivated in identical pedo-climatic conditions (Hortic Anthrosol in subtropical humid climate), to better understand the role of rice cultivars and organs on elemental composition (Si, Al, Fe, C) of phytolith and the release of bio-available Si (solubility in CaCl₂ solution at 0.01 M). Our results offer a research perspective to further study how to improve the phytolith C sequestration and Si fertility in soil-plant ecosystem.

MATERIALS AND METHODS

SAMPLING SITES

Organ samples (leaves, sheaths, stems and grains) of five rice cultivars (three replicates) were collected during the harvest season in October 2010, from the regional trials of new varieties of crops grown at the experimental site of Zhejiang Soil and Fertilizer Station (30°56′06.3″N and 120°51′52.9″E) in Jiaxing City, Zhejiang Province, southeast China. The experimental

site is located in Hangjiahu Plain which experiences a typical subtropical humid monsoon climate, with an average annual precipitation of 1200 mm. The mean annual temperature is 16°C and the number of frost free days is 230. Soil is classified as the Gleysols (FAO, 1974)².

PLANT SAMPLE PREPARATION AND ANALYSIS

The five rice cultivars planted in the experiment were Jiahua-11, Xianghu-301, Zhejing-37, Ning-81, and Xiushui-09 which have been grown there for 8 years under identical pedo-climatic conditions to eliminate factors that might influence Si uptake and deposition (Table 1). We collected 8–10 rice cultivars from each site and their associated surface soil (0–5 cm). Then the stem, leaf, sheath and grains of each rice cultivar plant were separated. The sample material was thoroughly washed with ultrapure water after an ultrasonic bath for 15 min, dried at 75°C for 48 h. The dried and mixed samples were separated into two subsamples. One subsample was crushed to determine total elemental composition. Total Si, Al and Fe contents in plant samples and in a plant standard GBW 07602 (GSV-1) were determined by ICP-AES after combustion at 950°C followed by borate fusion (Lu, 2000).

The other subsample was cut into small pieces around 5 mm to extract phytoliths. Using a microwave digestion method (Parr and Sullivan, 2011) and Walkley-Black type digest (Walkley and Black, 1934), we extracted the phytoliths from all rice organs and thoroughly removed extraneous organic materials in the samples (Li et al., 2013). The phytoliths extracted were oven-dried at 75°C to a constant weight. The organic C released from phytoliths after HF treatment was dried at 45°C and the C content was determined by classical potassium dichromate method (Lu, 2000; Li et al., 2013). The organic C data were monitored with a standard reference soil of 30 mg (GBW07405). The precision is better than 7%.

Phytoliths samples were dissolved in an alkaline solution (NaOH, 1 M) (Saccone et al., 2006), in which the contents of Si, Al, and Fe were analyzed by ICP-AES.

BIO-AVAILABLE Si ANALYSIS

The pool of “bio-available Si” was determined by a CaCl₂ extraction (0.01 M) (Haysom and Chapman, 1975; Buck et al., 2010;

¹ Available online at: <http://ricestat.irri.org:8080/wrs2/entrypoint.htm>.

² Available online at: http://en.wikipedia.org/wiki/FAO_soil_classification.

Table 1 | Physicochemical soil parameters in the soil surface (0–5 cm) for the different rice species cultivated in the experimental site.

Rice cultivars	pH	SOC	SiO ₂	Fe ₂ O ₃	Al ₂ O ₃	Phytoliths
				g/kg		
Jiahua-11	5.8 ± 0.2a	23.4 ± 1.0b	661.1 ± 41.1a	279 ± 18.8a	142 ± 3.7a	19.2 ± 3.2a
Xianghu-301	5.8 ± 0.1a	15.2 ± 0.7c	681.4 ± 49.2a	286.5 ± 12.1a	146.2 ± 3.5a	11.6 ± 2.1b
Zhejing-37	6.0 ± 0.2a	24.8 ± 0.5b	660.6 ± 23.4a	271.9 ± 1.8a	147.1 ± 3.5a	15.3 ± 1.3ab
Ning-81	6.0 ± 0.0a	22.6 ± 0.4b	661.7 ± 37.4a	260.5 ± 11.3a	146.8 ± 2.8a	16.9 ± 2.1ab
Xiushui-09	5.8 ± 0.1a	29.3 ± 0.7a	670.2 ± 46.9a	281.2 ± 10.1a	146.10.5a	15.1 ± 1.0ab
Mean	5.9a	22.9b	667.0a	275.8a	145.7a	15.6ab

Means with various letters are significantly different at the $p < 0.05$ level of confidence according to Duncan's Multiple Range Test.

Narayanaswamy and Prakash, 2010) on dried phytolith samples. 30 mg of phytoliths was shaken in 50 ml of CaCl_2 solution at 20°C for 5 h, 1–9 days. At the end of each extraction, the concentration of Si was analyzed by ICP-AES. The amount of Si released in the extract over time represents the evolution of the immediately available Si fraction of the readily soluble Si pool (Berthelsen et al., 2001; Sauer et al., 2006; Cornelis et al., 2011). This kinetic extraction (expressed as mg bioavailable Si/g SiO_2 in phytoliths) has been designed to study the potential of phytoliths present in rice cultivars to replenish the bio-available Si pool (Houben et al., 2014).

SOIL SAMPLES PREPARATION AND ANALYSIS

Soil pH was measured in a 1:5 soil: water suspension. Soil organic carbon (SOC) was determined by wet digestion method with 133 mol L^{-1} $\text{K}_2\text{Cr}_2\text{O}_7$ and concentrated H_2SO_4 at 170–180°C. Total SiO_2 , Fe_2O_3 , and Al_2O_3 in soil were measured by ICP-AES after calcinations at 950°C followed by borate fusion (Lu, 2000). Soil phytolith extraction methods were slightly modified from methods of Piperno (1988) and Lu et al. (2006) as follows: $\text{Na}_4\text{P}_2\text{O}_7$ (20%) deflocculating, treatment with H_2O_2 (30%), and cold HCl (15%), ZnBr_2 heavy liquid (2.38 g·cm³) separation. At the end of the soil extraction, the supernatant was separated from the solid residue by centrifugation (3000 g; 5 min) for analyzing phytolith content. All phytoliths extracted were oven-dried at 75°C and weighed to calculate their contents.

STATISTICAL ANALYSIS

All data are presented as the average of three analytical replicates (soil and plant samples). A One-Way analysis of variation (ANOVA) was carried out on the data obtained from the present study, and means were compared using Duncan's Multiple Range Test ($p < 0.05$). The statistical analyses were carried out with SAS software (SAS Institute, 1989).

RESULTS

PHYSICO-CHEMICAL SOIL CHARACTERISTICS

As shown in Table 1, the pH value (5.9) was similar in the soil surface of the five different rice species. The total concentration of Fe_2O_3 and Al_2O_3 were also identical in the soil surface of the five experimental plots, with mean value at 276 and 146 g/kg, respectively. The total concentration of SiO_2 was also identical in the soil surface of the five experimental plots, with mean value at 667 g/kg. The concentration of SOC and phytoliths varied from 15 to 29 g/kg, (mean at 23 g/kg) and from 12 to 19 g/kg (mean at 16 g/kg), respectively. This variation can be explained by the fact that the cultivation of different rice cultivars may cause differences in terms of straw production and residue input in soils, which can influence significantly the content of phytoliths and organic matter in soil.

PHYTOLITH CONTENT AND CHEMICAL COMPOSITION OF RICE ORGANS OF DIFFERENT CULTIVARS

The average content of phytoliths in the five rice cultivars varied significantly from 2.2 to 12.0% between rice organs (Table 2). Generally, the phytolith content decreased from 12.0% in sheaths > 7.0% in leaves > 3.7% in stems > 2.2% in grains. The average of Al content for different organs in the five rice cultivars

varied from 0.003 to 0.009% (sheaths > leaves = stems = grains). The Fe content in rice organs varied between 0.012 and 0.034% and showed the following trend: sheaths > stems = leaves = grains. The content of OC occluded in phytoliths (PhytOC) of rice organs varied significantly between 0.06 and 0.23% and showed the following trend: sheaths > leaves > stems > grains.

CHEMICAL COMPOSITION OF PHYTOLITHS EXTRACTED FROM DIFFERENT ORGANS

The mean H_2O content in phytoliths ranged from 5.4 to 14.5% and showed the following trend: stems > leaves > sheaths = grains. As a result of different hydration rates of phytoliths in the different organs, the SiO_2 content of phytolith was the highest in the grains (94.71%), then significantly decreased in sheaths (92.50%), leaves (88.47%), and stems (83.04%) (Table 3). The average Al content in phytoliths significantly varied from 0.012 to 0.043%: sheaths and leaves > grains and stems (Table 3; Figure 1A). The average Mg content in phytoliths varied from 0.0043 to 0.0082%: sheaths and leaves = grains > stems (Table 3). The average Fe content in phytoliths ranged from 0.017 to 0.009%: sheaths = leaves = grains = stems (Table 3; Figure 1B). The average OC content in phytoliths varied from 1.93 to 2.46%, without significant change between plant organs (Table 3).

THE RELEASE OF BIO-AVAILABLE Si

After 7 days, the cumulative release of bio-available Si from phytoliths of different plant organs (mg Si/g SiO_2 in phytoliths; Figure 2A) significantly varied from 7.8 to 44.9 mg Si/g SiO_2 and was the highest in leaves (44.9 mg Si/g of SiO_2), then significantly decreased in sheaths (18.1 mg Si/g of SiO_2), stems (12.2 mg Si/g of SiO_2), and grains (7.8 mg Si/g of SiO_2). After 7 days, the release of bio-available Si from phytoliths of stems of different rice cultivars (mg Si/g SiO_2 in phytoliths; Figure 2B) significantly varied from 6.9 to 15.7 mg Si/g SiO_2 : Xiushui-09 (15.7 mg Si/g SiO_2) > Xianghu-301 (13.2 mg Si/g SiO_2) and Ning-81 (13.0 mg Si/g SiO_2) > Zhejiang-37 (7.5 mg Si/g SiO_2) and Jiahua11 (6.9 mg Si/g SiO_2).

DISCUSSION

IMPACT OF RICE CULTIVAR AND ORGAN ON CONCENTRATION AND ELEMENTAL COMPOSITION OF PHYTOLITHS

Our results show that a significant correlation exists between the phytolith content in plants and the elemental concentration in plants for the five rice cultivars (Phytolith vs. Si, $R^2 = 0.8895$; Phytolith vs. Al, $R^2 = 0.6494$; Phytolith vs. Fe, $R^2 = 0.572$) (Table 4). A correlation also exists between the phytolith content in plants and the phytolith elemental content (Phytolith vs. Phytolith-Al, $R^2 = 0.6518$; Phytolith vs. Phytolith-Fe, $R^2 = 0.2973$; Phytolith vs. Phytolith-Mg, $R^2 = 0.3194$) (Table 5). This implies that the uptake of Si Al, Fe may significantly affect phytolith production in plant organs. Previous studies already show that climatic (transpiration flow), pedologic conditions (Si availability) and plant species can influence significantly the uptake of Si and the formation of phytoliths in plants (Bartoli and Wilding, 1980; Epstein, 1999; Piperno et al., 2002; Hodson et al., 2005; Henriot et al., 2008; Cornelis et al., 2010, 2011; Kamenik et al., 2013; Li et al., 2013). Our study

Table 2 | Elemental compositions (%) and phytolith content in organs (grains, sheath, stem and leaf) of the different rice cultivars.

Rice cultivars	Rice organs	Phytolith	Si	Al	Fe	PhytOC ^a
		%				
Xiushui-09	Grains	2.06 ± 0.03C	1.21 ± 0.15A	0.004 ± 0.001A	0.013 ± 0.002A	0.04 ± 0.00AB
Ning-81		2.66 ± 0.39A	0.98 ± 0.12A	0.003 ± 0.000AB	0.012 ± 0.000A	0.08 ± 0.02A
Xianghu-301		2.72 ± 0.58A	0.99 ± 0.02A	0.003 ± 0.000AB	0.012 ± 0.001A	0.06 ± 0.02AB
Zhejiang-37		1.55 ± 0.58D	0.64 ± 0.06B	0.002 ± 0.001AB	0.013 ± 0.001A	0.04 ± 0.02B
Jiahua-11		2.16 ± 0.21B	1.26 ± 0.06A	0.001 ± 0.000B	0.009 ± 0.002A	0.06 ± 0.01AB
Mean		2.23d	1.00d	0.003b	0.012b	0.06d
Xiushui-09	Sheath	12.48 ± 0.57B	4.95 ± 0.09AB	0.012 ± 0.001A	0.030 ± 0.005B	0.25 ± 0.02A
Ning-81		10.89 ± 0.38D	4.37 ± 0.48B	0.011 ± 0.001A	0.047 ± 0.005A	0.21 ± 0.01BC
Xianghu-301		11.86 ± 0.58C	4.38 ± 0.21B	0.009 ± 0.001AB	0.033 ± 0.004B	0.24 ± 0.02AB
Zhejiang-37		10.31 ± 0.24D	3.89 ± 0.38B	0.006 ± 0.001B	0.027 ± 0.002B	0.23 ± 0.01ABC
Jiahua-11		14.40 ± 0.70A	6.41 ± 0.79A	0.006 ± 0.002B	0.031 ± 0.001B	0.20 ± 0.01C
Mean		11.99a	4.80a	0.009a	0.034a	0.23a
Xiushui-09	Leaf	7.46 ± 0.01B	3.51 ± 0.32B	0.007 ± 0.002A	0.020 ± 0.004A	0.14 ± 0.00B
Ning-81		6.46 ± 0.92C	3.76 ± 0.25B	0.006 ± 0.001A	0.019 ± 0.003A	0.16 ± 0.03B
Xianghu-301		7.79 ± 0.52A	3.72 ± 0.23B	0.005 ± 0.001A	0.022 ± 0.001A	0.17 ± 0.02AB
Zhejiang-37		7.93 ± 0.52A	3.37 ± 0.16B	0.004 ± 0.001A	0.022 ± 0.001A	0.20 ± 0.02A
Jiahua-11		7.46 ± 0.01AB	4.99 ± 0.35A	0.003 ± 0.001A	0.014 ± 0.001A	0.17 ± 0.00AB
Mean		7.04b	3.87b	0.005b	0.019b	0.17b
Xiushui-09	Stem	3.09 ± 0.34C	2.14 ± 0.07A	0.003 ± 0.000AB	0.029 ± 0.004A	0.07 ± 0.01C
Ning-81		3.74 ± 1.16B	1.26 ± 0.07A	0.005 ± 0.000A	0.012 ± 0.002B	0.07 ± 0.03C
Xianghu-301		3.91 ± 0.24AB	1.46 ± 0.17B	0.004 ± 0.000AB	0.029 ± 0.004A	0.13 ± 0.01A
Zhejiang-37		4.02 ± 0.23A	2.14 ± 0.23B	0.004 ± 0.001AB	0.014 ± 0.000B	0.09 ± 0.01BC
Jiahua-11		4.00 ± 0.50A	2.08 ± 0.19A	0.002 ± 0.001B	0.014 ± 0.001B	0.11 ± 0.02AB
Mean		3.75c	1.82c	0.004b	0.020b	0.09c

Means with various letters are significantly different at the $p < 0.05$ level of confidence according to Duncan's Multiple Range Test.

Different lowercase and uppercase letters indicate significant differences among the stands in rice organs and rice cultivars.

^a PhytOC, OC occluded in phytoliths per 100 g of dry matter for each organs.

in identical pedo-climatic conditions shows that the precipitation of elements between plant organs of rice cultivars is also controlled by plant physiology, i.e., more transpiration sites in leaves and sheaths. This explains why the elemental composition in organs is related to elemental composition in phytoliths.

Our study also demonstrates that for rice cultivars, a significant negative correlation exists between OC content of phytoliths and the elemental composition in plants (Phytolith-C vs. Phytolith, $R^2 = -0.3177$, Phytolith-C vs. Si, $R^2 = -0.312$, Phytolith-C vs. Al, $R^2 = -0.2656$) (Table 5). The higher the elemental content in plants is, the higher the phytolith content will be but the amount of occluded OC within the phytoliths will be lower. The different types of phytolith morphology and specific surface area between plant organs (e.g., between rice stem and rice sheath) may imply different occluded-OC content in phytoliths (Li et al., 2013). However, the impact of this factor on the OC occlusion within phytoliths remains to be examined.

THE PRODUCTION AND STABILITY OF RICE PHYTOLITHS

In the literature, we find some contradictory results about the control of plant species on the dissolution rate of phytoliths. Frayse et al. (2009) document similar dissolution rates of phytoliths for four different plant species (horsetail, larch, elm and fern), while Bartoli and Wilding (1980) and Bartoli (1985) show that phytoliths from grass plants and deciduous species are more easily dissolved than that of coniferous species because of physico-chemical differences, i.e., higher Si/Al and Si/Fe ratios and water content. The adsorption of Al, Fe and other bi- and trivalent metals on phytoliths may influence their surface properties and decrease their rate of dissolution in the soil environment (Dove, 1995). In this study, the phytoliths of leaves and sheaths in five rice cultivars are characterized by lower ratio of Si/Fe and Si/Al compared to grains and stem (Figures 1A,B), which means that phytolith in leaves and sheaths incorporate more Al and Fe in their structure than in grains and stems. However, we clearly show that the kinetic release of bio-available Si from phytoliths in leaves are much higher relative to phytoliths from sheaths, grains and

stems (**Figure 1A**). This is in contradiction with a previous view showing that phytolith solubility decreases with increasing metal content (Bartoli and Wilding, 1980; Bartoli, 1985; van Bennekom et al., 1989), but not with the results of Frayse et al. (2009) showing similar dissolution rates for phytoliths with different elemental composition. This can be explained by the fact that phytolith solubility of rice cultivars could be controlled more by differences in terms of morphology (i.e., specific surface area) (**Figure 3**) and hydration rate (**Table 3**) than chemical composition. Our data show that the hydration rates of phytoliths (highest H₂O content in stem phytoliths) are not related to Si bio-availability which indicates that hydration rate can only explain a small part of the variation in phytolith solubility. This observation requires further investigations for better quantifying the impact of morphology and hydration rate on dissolution rates of phytoliths from different rice cultivars. The **Figure 1B** also shows that the release of bio-available Si from phytoliths in stems among different rice cultivars vary significantly. Thus, besides the impact of

rice organs on phytolith solubility, we show that the genetics also partly governs the release of bio-available Si from phytoliths.

Phytoliths are a readily soluble, potential Si source for plants (Berthelsen et al., 2001; Sauer et al., 2006; Cornelis et al., 2011). Recent research also indicate that organic matter pyrolyzed from plants (biochar) with high phytolith content can be applied as a

Table 4 | Correlation analysis of the composition (elemental concentration and phytolith content) of organs in rice cultivars.

Elements	Phytolith	Si	Al	Fe
Phytolith	1	0.8895**	0.6494**	0.572**
Si		1	0.4612**	0.4249**
Al			1	0.4481**
Fe				1

** $p < 0.01$; ($n = 20$).

Table 3 | Elemental composition (%) of phytoliths extracted from organs of different rice cultivars. Means with various letters are significantly different at the $p < 0.05$ level of confidence according to Duncan's Multiple Range Test.

Rice cultivars	Rice organs	SiO ₂	Al	Mg	Fe	OC	H ₂ O ^a
%							
Xiushui-09	Grains	95.27 ± 1.93A	0.011 ± 0.007A	0.0050 ± 0.0004C	0.005 ± 0.001A	2.11 ± 0.12A	2.58 ± 1.73AB
Ning-81		95.08 ± 0.54A	0.011 ± 0.004A	0.0073 ± 0.0007AB	0.012 ± 0.001A	2.89 ± 0.84A	1.98 ± 0.76B
Xianghu-301		91.40 ± 1.02A	0.011 ± 0.003A	0.0058 ± 0.0003BC	0.007 ± 0.006A	2.35 ± 0.01A	6.21 ± 1.44A
Zhejiang-37		95.74 ± 0.29A	0.022 ± 0.004A	0.0051 ± 0.0005C	0.014 ± 0.005A	2.32 ± 0.03A	1.87 ± 0.41B
Jiahua-11		96.07 ± 0.89A	0.016 ± 0.005A	0.0081 ± 0.0004A	0.018 ± 0.002A	2.62 ± 0.20A	1.24 ± 1.26B
Mean		94.71a	0.014b	0.0063ab	0.011ab	2.46a	2.78c
Xiushui-09	Sheath	93.16 ± 0.36A	0.048 ± 0.010A	0.0067 ± 0.0008B	0.014 ± 0.001A	2.03 ± 0.15A	4.69 ± 0.51AB
Ning-81		94.31 ± 0.15A	0.041 ± 0.002AB	0.0092 ± 0.0004A	0.012 ± 0.002A	1.96 ± 0.11A	3.62 ± 0.21B
Xianghu-301		91.34 ± 0.23A	0.028 ± 0.002B	0.0087 ± 0.0004A	0.013 ± 0.002A	2.05 ± 0.01A	6.52 ± 0.33A
Zhejiang-37		92.31 ± 1.19A	0.055 ± 0.005A	0.0074 ± 0.0003AB	0.016 ± 0.002A	2.21 ± 0.11A	5.34 ± 1.68AB
Jiahua-11		91.40 ± 0.85B	0.043 ± 0.002AB	0.0091 ± 0.0004A	0.030 ± 0.001A	1.42 ± 0.17B	7.04 ± 1.20A
Mean		92.50b	0.043a	0.0082a	0.017a	1.93a	5.44c
Xiushui-09	Leaf	87.87 ± 2.50AB	0.036 ± 0.010A	0.0057 ± 0.0007B	0.016 ± 0.003AB	1.87 ± 0.31A	10.16 ± 3.54AB
Ning-81		93.54 ± 0.98A	0.052 ± 0.003A	0.0105 ± 0.0008A	0.022 ± 0.002A	2.45 ± 0.14A	3.86 ± 1.39B
Xianghu-301		83.22 ± 0.84B	0.043 ± 0.002A	0.0092 ± 0.0004A	0.011 ± 0.001A	2.21 ± 0.04A	14.46 ± 1.19A
Zhejiang-37		87.83 ± 1.87AB	0.034 ± 0.009A	0.0050 ± 0.0004B	0.012 ± 0.003AB	2.57 ± 0.15A	9.51 ± 2.64AB
Jiahua-11		89.87 ± 2.43AB	0.034 ± 0.004A	0.0042 ± 0.0004B	0.009 ± 0.004B	2.30 ± 0.04A	7.75 ± 3.44AB
Mean		88.47c	0.040 a	0.0069a	0.014ab	2.28a	9.15b
Xiushui-09	Stem	80.22 ± 1.63C	0.009 ± 0.005A	0.0053 ± 0.0001A	0.005 ± 0.002B	2.11 ± 0.12C	17.64 ± 2.31A
Ning-81		82.14 ± 2.75BC	0.013 ± 0.004A	0.0047 ± 0.0003B	0.010 ± 0.001AB	1.85 ± 0.16C	15.96 ± 3.89AB
Xianghu-301		80.75 ± 0.52BC	0.013 ± 0.002A	0.0041 ± 0.0004B	0.010 ± 0.001AB	3.36 ± 0.04A	15.84 ± 0.74AB
Zhejiang-37		84.74 ± 1.68AB	0.009 ± 0.005A	0.0037 ± 0.0004B	0.007 ± 0.001AB	2.21 ± 0.11C	13.02 ± 2.38AB
Jiahua-11		87.37 ± 0.12A	0.015 ± 0.005A	0.0039 ± 0.0004B	0.012 ± 0.002A	2.73 ± 0.15B	9.85 ± 0.17B
Mean		83.04c	0.012b	0.0043b	0.009b	2.45a	14.46a

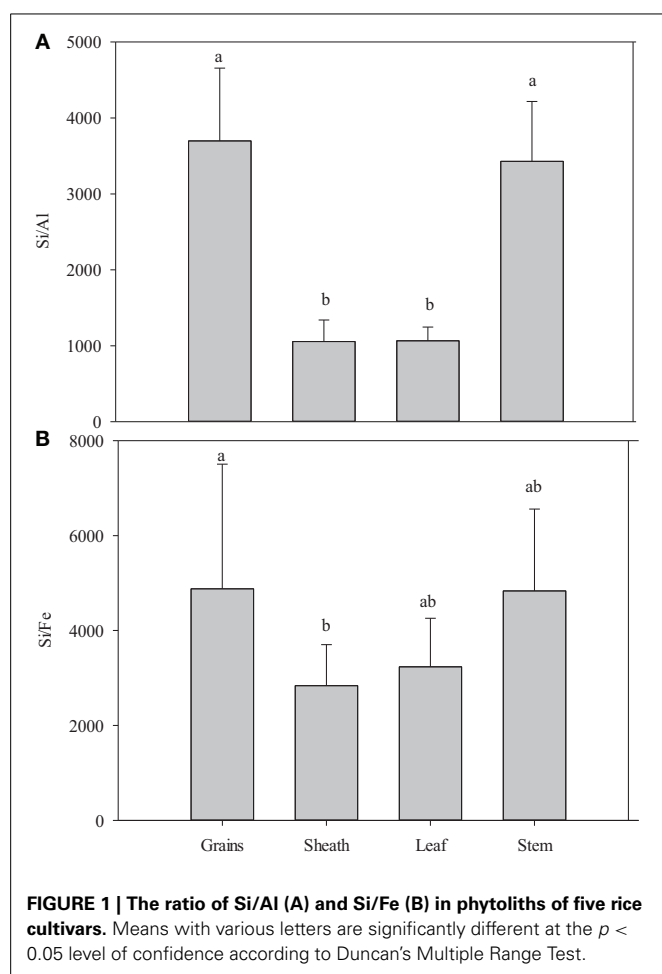
Different lower case and uppercase letters indicate significant differences among the stands in rice organs and rice cultivars.

^aAccording to the following equation to estimate the content of H₂O in phytoliths. $H_2O = 100 - SiO_2 - Al_2O_3 - Fe_2O_3 - MgO - OC$.

Table 5 | The correlation between phytolith elements and plant elements.

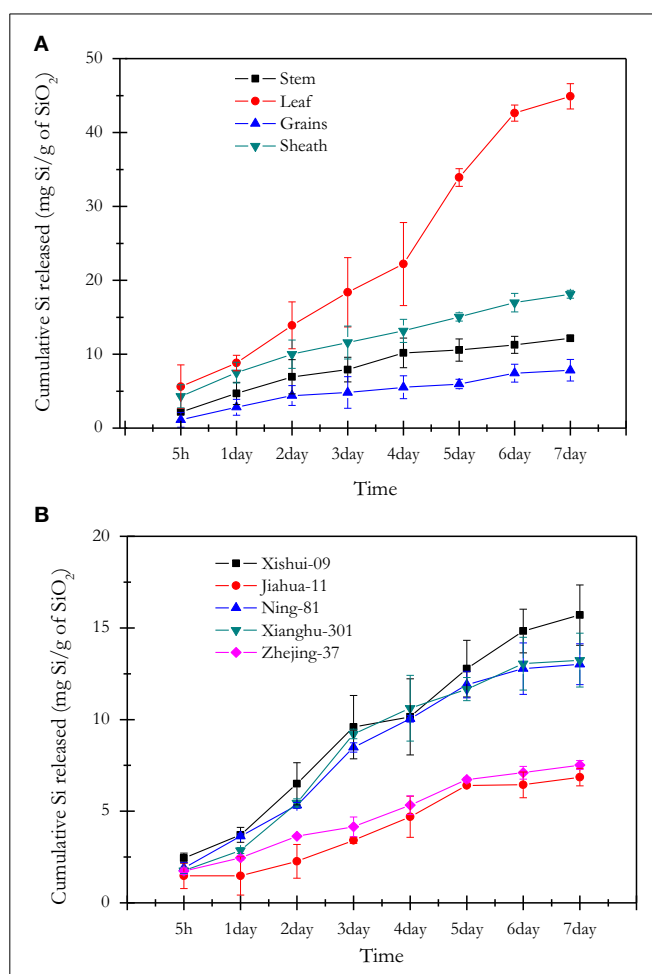
Phytolith elements \ plant elements	Phytolith-Si	Phytolith-C	Phytolith-Al	Phytolith-Fe	Phytolith-Mg
Phytolith	0.0158	-0.3177**	0.6518**	0.2973**	0.3194**
Si	0.0056	-0.312**	0.6809**	0.3128**	0.254*
Al	0.0223	-0.2656*	0.4069**	0.0731	0.2311*
Fe	0.0044	-0.1153	0.2711*	0.061	0.1953*

* $p < 0.05$; ** $p < 0.01$; ($n = 20$).



potential source of bio-available Si for crops of Si-accumulator plants (Houben et al., 2014; Liu et al., 2014). Therefore, amendment with biochar made from leaves and sheaths of rice characterized by the highest amount of phytoliths and the highest release rate of Si could be promising for enhancing the bio-availability of Si while increasing OC storage and soil fertility.

The findings of this study suggest that the optimization of utilization of different plant organs as Si amendment could play a key role for more efficient productivity in high Si-accumulating plants. On the other hand, we should increase PhytOC content in soils by increasing return of plant organs characterized by lower phytolith solubility such as grains and stems. We thus suggest further study of the kinetic release of dissolved Si and dissolved OC



and the evolution of Si and OC stock in soils after amendment with different plant organs.

CONCLUSIONS

The present study mainly focused on the elemental compositions of organs and phytoliths in rice of different cultivars. The

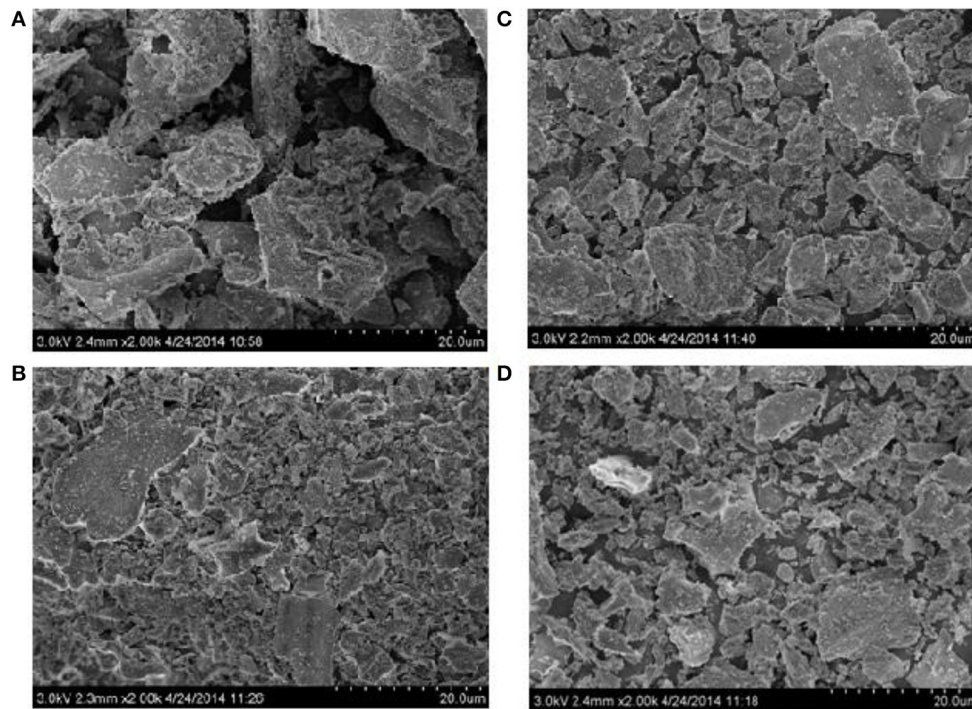


FIGURE 3 | Representative scanning electron microscope (SEM) images of phytoliths from rice organs (A) grains, (B) leaf, (C) sheath, and (D) stem.

rice cultivar significantly influences the elemental composition of plant organs and phytoliths. Our results show that rice cultivar and Si, Al, Fe uptake may impact production of phytoliths in plants and their quality (chemical composition). The OC content of phytoliths in rice cultivars seems to be significantly affected by the content of Si, Al, and Fe in plants, but not by the elemental concentrations in phytoliths.

In different rice cultivars, the role of the morphology and hydration rate of phytoliths seems to be at least as important as the chemical composition. This documents that rice organs and cultivar can largely influence Si dynamics in soil-plant systems through variable solubility of phytoliths. The soil amendment with plant residues and/or plant biochar should therefore be carried out taking into account the phytolith solubility of different plant organs of Si-high accumulator plants (e.g., leaves and sheaths of rice). On the other hand, phytoliths from grains and stems of rice seem to be more stable in soil and should be used if we aim to increase the soil OC stock through higher PhytOC. A more efficient use of plant residue (type of plant organ) as soil amendment should be considered to improve agronomical productivity of Si-high accumulating plants.

ACKNOWLEDGMENTS

The work was supported by the National Natural Science Foundation of China (41103042), the Field Frontier Project of Institute of Geochemistry, Chinese Academy of Sciences (2045200295), the Training Program for the Top Young Talents of Zhejiang Agricultural and Forestry University (2034070001), the Program for the Distinguished Young and middle-aged Academic Leaders of Higher Education Institutions of Zhejiang Province

(PD2013240). Jean-Thomas Cornelis is supported by “Fonds National de la Recherche Scientifique” (FNRS) of Belgium.

REFERENCES

- Alexandre, A., Meunier, J. D., Colin, F., and Koud, J. M. (1997). Plant impact on the biogeochemical cycle of silicon and related weathering processes. *Geochim. Cosmochim. Acta* 61, 677–682. doi: 10.1016/S0016-7037(97)00001-X
- Alvarez, J., and Datnoff, L. E. (2001). The economic potential of silicon for integrated management and sustainable rice production. *Crop Protect.* 20, 43–48. doi: 10.1016/S0261-2194(00)00051-X
- Bartoli, F. (1985). Crystallochemistry and surface properties of biogenic opal. *J. Soil Sci.* 36, 335–350.
- Bartoli, F., and Wilding, L. P. (1980). Dissolution of biogenic opal as a function of its physical and chemical properties. *Soil Sci. Soc. Am. J.* 44, 873–878.
- Berthelsen, S., Noble, A., and Garside, A. (2001). “Silicon research down under: past, present, and future,” in *Silicon in Agriculture*, eds L. E. Datnoff, G. H. Snyder, and G. H. Korndörfer (Amsterdam: Elsevier Sciences), 241–255.
- Blecker, S. W., McCulley, R. L., Chadwick, O. A., and Kelly, E. F. (2006). Biologic cycling of silica across a grassland bioclimate sequence. *Glob. Biogeochem. Cycles* 20, 1–11. doi: 10.1029/2006GB002690
- Buck, G. B., Korndörfer, G. H., and Datnoff, L. E. (2010). Extractors for estimating plant available silicon from potential silicon fertilizer sources. *J. Plant Nutr.* 34, 272–282. doi: 10.1080/01904167.2011.533327
- Cao, Z. H., Yang, L. Z., Lin, X. G., Hu, Z. Y., Dong, Y. H., Zhang, G. Y., et al. (2007). Morphological characteristics of paddy fields, paddy soil profile, phytoliths and fossil rice grain of the Neolithic age in Yangtze River Delta. *Acta Pedologica Sinica* 44, 839–847 (In Chinese).
- Clarke, J. (2003). The occurrence and significance of biogenic opal in the regolith. *Earth Sci. Rev.* 60, 175–194. doi: 10.1016/S0012-8252(02)00092-2
- Cornelis, J. T., Delvaux, B., and Titeux, H. (2010). Contrasting silicon uptakes by coniferous trees: a hydroponic experiment on young seedlings. *Plant Soil* 336, 99–106. doi: 10.1007/s11104-010-0451-x
- Cornelis, J. T., Titeux, H., Ranger, J., and Delvaux, B. (2011). Identification and distribution of the readily soluble silicon pool in a temperate forest soil below three distinct tree species. *Plant Soil* 342, 369–378. doi: 10.1007/s11104-010-0702-x

- Dove, P. M. (1995). Kinetic and thermodynamic controls on silica reactivity in weathering environments. *Rev. Mineral. Geochem.* 31, 235–290.
- Epstein, E. (1994). The anomaly of silicon in plant biology. *Proc. Natl. Acad. Sci. U.S.A.* 91, 11–17. doi: 10.1073/pnas.91.1.11
- Epstein, E. (1999). Silicon. *Ann. Rev. Plant Physiol. Plant Mol. Biol.* 50, 641–644. doi: 10.1146/annurev.arplant.50.1.641
- Frayssé, F., Pokrovsky, O. S., and Meunier, J. D. (2010). Experimental study of terrestrial plant litter interaction with aqueous solutions. *Geochim. Cosmochim. Acta* 74, 70–84. doi: 10.1016/j.gca.2009.09.002
- Frayssé, F., Pokrovsky, O. S., Schott, J., and Meunier, J.-D. (2009). Surface chemistry and reactivity of plant phytoliths in aqueous solutions. *Chem. Geol.* 258, 197–206. doi: 10.1016/j.chemgeo.2008.10.003
- Haysom, M. B. C., and Chapman, L. S. (1975). Some aspects of the calcium silicate trials at Mackay. *Proc. Aust. Sugar Cane Technol.* 42, 117–122.
- Henriet, C., Draye, X., Dorel, M., Bodarwe, L., and Delvaux, B. (2008). Leaf silicon content in banana (*Musa* spp.) reveals the weathering stage of volcanic ash soils in Guadeloupe. *Plant Soil* 313, 71–82. doi: 10.1007/s11104-008-9680-7
- Hodson, M. J., White, P. J., Mead, A., and Broadley, M. R. (2005). Phylogenetic variation in the silicon composition of plants. *Ann. Bot.* 96, 1027–1046. doi: 10.1093/aob/mci255
- Houben, D., Sonnet, P., and Cornelis, J. T. (2014). Biochar from *Miscanthus*: a potential silicon fertilizer. *Plant Soil* 374, 871–882. doi: 10.1007/s11104-013-1885-8
- Jones, L. H. P., and Milne, A. A. (1963). Studies of silica in the oat plant. *Plant Soil* 43, 207–220. doi: 10.1007/BF01347875
- Kamenik, J., Mizera, J., and Qanda, Z. (2013). Chemical composition of plant silica phytoliths. *Environ. Chem. Lett.* 11, 189–195. doi: 10.1007/s10311-012-0396-9
- Li, D. D., Lerman, A., and Mackenzie, F. T. (2011). Human perturbations on the global biogeochemical cycles of coupled Si–C and responses of terrestrial processes and the coastal ocean. *Appl. Geochem.* 26, S289–S291. doi: 10.1016/j.apgeochem.2011.03.084
- Li, Z. M., Song, Z. L., Parr, J. F., and Wang, H. L. (2013). Occluded C in rice phytoliths: implications to biogeochemical carbon sequestration. *Plant Soil* 370, 615–623. doi: 10.1007/s11104-013-1661-9
- Liang, Y. C., Sun, W. C., Zhu, Y. G., and Peter, C. (2007). Mechanisms of silicon-mediated alleviation of abiotic stresses in higher plants: a review. *Environ. Pollut.* 147, 422–428. doi: 10.1016/j.envpol.2006.06.008
- Liu, X., Li, L., Bian, R., Chen, D., Qu, J., Kibue, G. W., et al. (2014). Effect of biochar amendment on soil-silicon availability and rice uptake. *J. Plant Nutr. Soil Sci.* 177, 91–96. doi: 10.1002/jpln.201200582
- Lu, R. K. (2000). *Methods of Soil and Agrochemical Analysis*. Beijing: China Agriculture Press.
- Lu, H. Y., Wu, N. Q., Yang, X. D., Jiang, H., Liu, K. B., and Liu T. S. (2006). Phytoliths as quantitative indicators for the reconstruction of past environmental conditions in China I: phytolith-based transfer functions. *Quat. Sci. Rev.* 25, 945–959. doi: 10.1016/j.quascirev.2005.07.014
- Ma, J. F. (2003). “Functions of silicon in higher plants,” in *Silicon Biomineralization*, ed W. E. G. Müller (Berlin: Springer Verlag), 127–148.
- Marschner, H. (1995). *Mineral Nutrition of Higher Plants*, 2nd Edn. London: Academic Press.
- Mecfel, J., Hinke, S., Goedel, W. A., Marx, G., Fehlaber, R., and Baucker, E. (2007). Effect of silicon fertilizers on silicon accumulation in wheat. *J. Plant Nutr. Soil Sci.* 170, 769–772. doi: 10.1002/jpln.200625038
- Narayanawamy, C., and Prakash, N. B. (2010). Evaluation of selected extractants for plant-available silicon in rice soils of southern India. *Commun. Soil Sci. Plant Anal.* 41, 977–989. doi: 10.1080/00103621003646063
- Oldenburg, C. M., Torn, M. S., De Angelis, K. M., Ajo-Franklin, J. B., Amundson, R. G., and Bernacchi, C. J., et al. (2008). “Biologically enhanced carbon sequestration: research needs and opportunities,” in *Report on the Energy Biosciences Institute Workshop on Biologically Enhanced Carbon Sequestration* (Berkeley, CA).
- Parr, J. F., and Sullivan, L. A. (2005). Soil carbon sequestration in phytoliths. *Soil Biol. Biochem.* 37, 117–124. doi: 10.1016/j.soilbio.2004.06.013
- Parr, J. F., and Sullivan, L. A. (2011). Phytolith occluded carbon and silica variability in wheat cultivars. *Plant Soil* 342, 165–171. doi: 10.1007/s11104-010-0680-z
- Parr, J. F., Sullivan, L. A., Chen, B., and Ye, G. (2010). Carbon bio-sequestration within the phytoliths of economic bamboo species. *Glob. Change Biol.* 16, 2661–2667. doi: 10.1111/j.1365-2486.2009.02118.x
- Piperno, D. R. (1988). *Phytolith Analysis: An Archaeological and Geological Perspective*. London: Academic Press.
- Piperno, D. R. (2006). *Phytoliths: A Comprehensive Guide for Archaeologists and Paleoecologists*. Oxford: Altamira Press.
- Piperno, D. R., Holst, I., Wessel-Beaver, L., and Andres, T. C. (2002). Evidence for the control of phytolith formation in Cucurbita fruits by the hard rind (Hr) genetic locus: archaeological and ecological implications. *Proc. Natl. Acad. Sci. U.S.A.* 99, 10923–10928. doi: 10.1073/pnas.152275499
- Raven, J. A., and Giordano, M. (2009). Biomineralization by photosynthetic organisms: evidence of coevolution of the organisms and their environment? *Geobiology* 7, 140–154. doi: 10.1111/j.1472-4669.2008.00181.x
- Saccone, L., Conley, D. J., and Sauer, D. (2006). Methodologies for amorphous silica analysis. *J. Geochem. Explor.* 88, 235–238. doi: 10.1016/j.gexplo.2005.08.045
- Salekdeh, G. H., Siopongco, J., Wade, L. J., Ghareyazie, B., and Bennett, J. (2002). A proteomic approach to analyzing drought- and salt-responsiveness in rice. *Field Crops Res.* 76, 199–219. doi: 10.1016/S0378-4290(02)00040-0
- SAS Institute. (1989). *SAS/STAT User's Guide. Version 6, 4th Edn.* Cary, NC: SAS Institute.
- Sauer, D., Saccone, L., Conley, D. J., Herrmann, L., and Sommer, M. (2006). Review of methodologies for extracting plant-available and amorphous Si from soils and aquatic sediments. *Biogeochemistry* 80, 89–108. doi: 10.1007/s10533-005-5879-3
- Savant, N. K., Datnoff, L. E., and Snyder, G. H. (1997). Depletion of plant-available silicon in soils: a possible cause of declining rice yields 1. *Commun. Soil Sci. Plant Anal.* 28, 1245–1252. doi: 10.1080/00103629709369870
- Song, Z. L., Wang, H. L., Strong, P. J., Li, Z. M., and Jiang, P. K. (2012). Plant impact on the coupled terrestrial biogeochemical cycles of silicon and carbon: implications for biogeochemical carbon sequestration. *Earth-Sci. Rev.* 155, 319–331. doi: 10.1016/j.earscirev.2012.09.006
- Street-Perrott, F. A., and Barker, P. A. (2008). Biogenic silica: a neglected component of the coupled global continental biogeochemical cycles of carbon and silicon. *Earth Surf. Process. Landf.* 33, 1436–1457. doi: 10.1002/esp.1712
- van Bennekom, A. J., Fred Jansen, J. H., van der Gaast, S. J., van Iperen, J. M., and Pieters, J. (1989). Aluminium-rich opal: an intermediate in the preservation of biogenic silica in the Zaire (Congo) deep-sea fan. *Deep Sea Res.* 36, 173–190. doi: 10.1016/0198-0149(89)90132-5
- Walkley, A., and Black, I. A. (1934). An examination of the Degtjareff method for determining soil organic matter, and a proposed modification of the chromic acid titration method. *Soil Sci.* 37, 29–38.
- Wang, Y. (1998). A study on the chemical composition of phytoliths. *J. Oceanogr. Huanghai Bohai Seas* 16, 33–38 (in Chinese with English abstract).
- Wang, Y., and Lü, H. (1993). *Study and Application of Phytoliths*. Peking: Ocean Press. (in Chinese).
- Wedepohl, H. K. (1995). The composition of the continental crust. *Geochim. Cosmochim. Acta* 59, 1217–1232. doi: 10.1016/0016-7037(95)00038-2
- Wilding, L. P. (1967). Radiocarbon dating of biogenic opal. *Science* 156, 66–67. doi: 10.1126/science.156.3771.66
- Wilding, L. P., Brown, R. E., and Holowaychuk, N. N. (1967). Accessibility and properties of occluded carbon in biogenic opal. *Soil Sci.* 103, 56–61. doi: 10.1097/00010694-196701000-00009

Conflict of Interest Statement: The authors declare that the research was conducted in the absence of any commercial or financial relationships that could be construed as a potential conflict of interest.

Received: 09 May 2014; accepted: 17 September 2014; published online: 10 October 2014.

Citation: Li Z, Song Z and Cornelis J-T (2014) Impact of rice cultivar and organ on elemental composition of phytoliths and the release of bio-available silicon. *Front. Plant Sci.* 5:529. doi: 10.3389/fpls.2014.00529

This article was submitted to *Functional Plant Ecology*, a section of the journal *Frontiers in Plant Science*.

Copyright © 2014 Li, Song and Cornelis. This is an open-access article distributed under the terms of the Creative Commons Attribution License (CC BY). The use, distribution or reproduction in other forums is permitted, provided the original author(s) or licensor are credited and that the original publication in this journal is cited, in accordance with accepted academic practice. No use, distribution or reproduction is permitted which does not comply with these terms.