

Fall 1983

Improving the Analysis and Presentation of Data on Case Processing Time

David W. Neubauer

Follow this and additional works at: <https://scholarlycommons.law.northwestern.edu/jclc>

 Part of the [Criminal Law Commons](#), [Criminology Commons](#), and the [Criminology and Criminal Justice Commons](#)

Recommended Citation

David W. Neubauer, *Improving the Analysis and Presentation of Data on Case Processing Time*, 74 *J. Crim. L. & Criminology* 1589 (1983)

This Criminology is brought to you for free and open access by Northwestern University School of Law Scholarly Commons. It has been accepted for inclusion in *Journal of Criminal Law and Criminology* by an authorized editor of Northwestern University School of Law Scholarly Commons.

IMPROVING THE ANALYSIS AND PRESENTATION OF DATA ON CASE PROCESSING TIME

DAVID W. NEUBAUER*

I. INTRODUCTION

Delay is one of the most pressing problems facing the American judicial system. Several prestigious national commissions have identified delay as a critical problem.¹ In addition to the constitutional guarantee of a speedy trial,² federal and state legislatures have passed speedy-trial bills mandating that criminal defendants be processed within a set period of time.³ Advocates of judicial reform point to burdensome caseloads and excessive delay as direct or indirect rationales for their proposals.⁴

The general public is similarly dissatisfied with slow and inefficient justice. Over fifty percent of the respondents in a survey conducted by the Yankelovich, Skelly, and White polling organization rated the efficiency of the courts as a "serious" or "very serious" social problem.⁵ Dissatisfaction and complaints, however, have far surpassed systematic

* Chairman & Professor, Political Science Dep't, University of New Orleans; Ph.D., Political Science, University of Illinois, 1971; M.A., Political Science, University of Illinois, 1968; A.B., Augustana (Illinois), 1966.

¹ AMERICAN BAR ASSOCIATION PROJECT ON MINIMUM STANDARDS FOR CRIMINAL JUSTICE, STANDARDS RELATING TO SPEEDY TRIAL (1968); NATIONAL ADVISORY COMMISSION ON CRIMINAL JUSTICE STANDARDS AND GOALS, COURTS (1973) [hereinafter cited as NATIONAL ADVISORY COMMISSION]; TASK FORCE ON THE ADMINISTRATION OF JUSTICE, THE PRESIDENT'S COMMISSION ON LAW ENFORCEMENT AND ADMINISTRATION OF JUSTICE, THE COURTS (1967) [hereinafter cited as PRESIDENT'S COMMISSION].

² U.S. CONST. amend. VI.

³ Speedy Trial Act of 1974, 18 U.S.C. §§ 3161-74 (1979); R. MISNER, SPEEDY TRIAL: FEDERAL AND STATE PRACTICE (1983); B. FORT, J. MCCULLOUGH, B. HOEL, J. MAIRS, J. SIMONITSCH, C. CLARK, P. HEENAN & L. CATT, SPEEDY TRIAL (1978); R. NIMMER, THE NATURE OF SYSTEM CHANGE 73-75 (1978); Misner, *Delay, Documentation and the Speedy Trial Act*, 70 J. CRIM. L. & CRIMINOLOGY 214 (1979); Poulos & Coleman, *Speedy Trial, Slow Implementation: The ABA Standards in Search of a Statehouse*, 28 HASTINGS L.J. 357 (1976).

⁴ M. FEELEY, THE PROCESS IS THE PUNISHMENT: HANDLING CASES IN A LOWER CRIMINAL COURT (1979); Nardulli, *The Caseload Controversy and the Study of Criminal Courts*, 70 J. CRIM. L. & CRIMINOLOGY 89 (1979).

⁵ Yankelovich, Skelly & White, Inc., *Highlights of a National Survey of the General Public, Judges, Lawyers, and Community Leaders*, THE PUBLIC IMAGE OF COURTS 1, 19 (1979).

research on the subject. While the notion of "justice delayed is justice denied" is central to our system of government, it is only within the last several decades that empirical research has been brought to bear on this issue.⁶

The threshold problem faced by researchers is to develop a conceptual definition of "delay" that can be measured.⁷ The prime utility of the term "delay" lies in calling attention to the problem area. Several major ambiguities, however, make the term "delay" inappropriate for research purposes.

In a general sense, the term "delay" connotes abnormal or unacceptable time lapses in the processing of cases. However, the inherent subjectivity of the term becomes apparent when we try to define "unnecessary delay." The total time that a case is on the court's docket may consist of acceptable (normal) time plus unacceptable (abnormal) time.⁸ In turn, many empirical measures of "delay" are measures of total time, that is, normal and abnormal time mixed together. Given that the term "delay" is typically used pejoratively to suggest unnecessary time, we need to keep in mind that not all case processing time is unnecessary.⁹ Yet it is difficult to determine what "normal time" for case disposition should be.¹⁰ Further, one must be mindful of varied and subjective local definitions. What is considered an old case in one community may be viewed in another as merely ripe for disposition.¹¹

⁶ T. CHURCH, J. LEE, T. TAN, A. CARLSON & V. MCCONNEL, *PRETRIAL DELAY: A REVIEW AND BIBLIOGRAPHY* (1978).

⁷ Church, *The "Old and the New" Conventional Wisdom of Court Delay*, 7 JUST. SYS. J. 395 (1982).

⁸ R. NIMMER, *supra* note 3, at 72.

⁹ Luskin, *Building A Theory of Case Processing Time*, 62 JUDICATURE 114 (1978).

¹⁰ The reform literature discusses normal time and delay in reference to an ideal time frame. R. NIMMER, *supra* note 3, at 72-73. A time interval cannot be considered normal or abnormal until such judgments are made. There is no consensus, though, about what this ideal time frame should be. The National Advisory Commission recommended 60 days from arrest to the start of trial of a felony prosecution. NATIONAL ADVISORY COMMISSION, *supra* note 1, at 65. The earlier President's Commission specified a maximum of 81 days for the same events. PRESIDENT'S COMMISSION, *supra* note 1, at 86-87. The Federal Speedy Trial Act mandates approximately 100 days. Speedy Trial Act of 1974, 18 U.S.C. § 1361 (1979). Other commissions, groups, and state speedy-trial laws have suggested time frames varying from six months to two years. JUDICIAL ADMINISTRATION: TEXT AND READING 15 (R. Wheeler & H. Whitcomb eds. 1977) [hereinafter cited as JUDICIAL ADMINISTRATION]. These varying and conflicting attempts to specify a maximally desirable time for disposing of a criminal case are largely abstract efforts. They are not grounded in a working knowledge of the dynamics of the court process. Moreover, they provide no linkages between the advantages to be derived from speeding up the dockets and the specific time frames. The President's Commission, for instance, acknowledged that its recommendations were the product of consecutive, arbitrary choices. PRESIDENT'S COMMISSION, *supra* note 1, at 84.

¹¹ A key dimension of a "local legal culture" is the local expectation about how long is too long for case dispositions. T. CHURCH, A. CARLSON, J. LEE & T. TAN, *JUSTICE DELAYED* 54 (1978) [hereinafter cited as T. CHURCH].

Recognition of these ambiguities has prompted researchers to adopt a more objective and measureable concept—case processing time.¹² Case processing time is an objective measure of how long cases take from start to finish.

After adopting the proper definitional framework, secondary problems arise in using the concept of case processing time to generate empirical measures. The purpose of this Research Note is to examine some important conceptual, measurement, and analytical problems that arise in applying the concept of case processing time to data gathered in four state courts that had instituted innovations designed to reduce case processing time.¹³ After discussing the overall study, this Research Note will examine: (1) the need to focus on appropriate time frames; (2) the necessity of limiting analysis to time under control of the court; (3) simple visual statistical techniques for examining variation; and (4) ways to highlight changes over time.

II. THE STUDY

The need to refine data analysis and to develop better ways to present data on criminal case processing time emerged during an evaluation of delay reduction programs in four state trial courts of general jurisdiction: Providence, Rhode Island; Dayton, Ohio; Las Vegas, Nevada; and Detroit, Michigan.¹⁴ In each site, case processing information was gathered from official court records. Key dates in the life-history of a case were collected, including the dates of filing, arraignment, disposition, and sentencing. Given our rudimentary knowledge of the analysis of case processing time, it is best to focus attention on routine cases, leaving the clearly atypical cases for later research.

¹² T. CHURCH, *supra* note 11; JUDICIAL ADMINISTRATION, *supra* note 10; Grossman, Kritzer, Bumiller & McDougal, *Measuring the Pace of Civil Litigation in Federal and State Trial Courts*, 65 JUDICATURE 86 (1981) [hereinafter cited as Grossman]; Luskin, *supra* note 9.

¹³ The purpose of this Research Note, however, is not to examine the specifics of these innovations. Discussions of the specific programs, the context in which they operate, and their success in reducing delay can be found elsewhere. See D. NEUBAUER, M. LIPETZ, M. LUSKIN & J. RYAN, *MANAGING THE PACE OF JUSTICE: AN EVALUATION OF LEAA'S COURT DELAY-REDUCTION PROGRAMS* (1981) [hereinafter cited as D. NEUBAUER].

¹⁴ The jurisdictions adopted a diverse array of programs. In Providence, the court created a case scheduling office and focused on old cases. Providence and Dayton received advice from Dean Friesen of the Whittier College of Law. Las Vegas created a Team and Tracking program. Cases were randomly assigned to a "team" consisting of four prosecutors, two public defenders, one justice of the peace, and two district court judges. In Detroit, the delay reduction program involved a special judicial administrator, a crash program focusing on old cases, reinstatement of the individual calendar, and a case tracking procedure. For further details, see D. NEUBAUER, *supra* note 13; Ryan, Lipetz, Luskin & Neubauer, *Analyzing Court Delay-Reduction Programs: Why Do Some Succeed?*, 65 JUDICATURE 58 (1981).

TABLE 1
BACKGROUND AND SAMPLING INFORMATION ON THE FOUR CITIES

City	Court	Court Jurisdiction	Sampling Period	Number ^a of Months	Sample ^b Size
Providence, R.I.	Superior Court	Providence & Bristol Counties	1/76-12/78	36	1381
Dayton, Ohio	Common Pleas	Montgomery County	7/77-6/79	24	700
Las Vegas, Nevada	District	Clark County	1/77-1/79	25	844
Detroit, Michigan	Recorder's Court	City of Detroit	4/76-3/78	24	2079

^a Given the numerous changes phased in over time in Providence, it was necessary to draw a three year sample.

^b Cases were randomly sampled from the court's docket. In Detroit, a 11% sampling fraction for each month was employed. In the other three courts, a 30% sampling fraction for each year was used. For further details, see D. Neubauer, M. Lipetz, M. Luskin, and J. Ryan, *Managing the Pacc of Justice: An Evaluation of LEAA's Court Delay-Reduction Programs* (1981).

Because the principal task of the study was to assess changes over time, criminal cases were sampled for one year prior to the introduction of the program and one year after introduction. See Table 1 for further details.

A. SUBDIVIDING CASE PROCESSING TIME

The next task in analyzing case flow data is deciding which time frames should be measured. For some purposes, it is appropriate to examine total case processing time: the number of days from arrest to sentence. The central benefit of measuring total case duration is that it views the court process through the eyes of the consumers of the process. Defendants, victims, witnesses, the police, and often the general public assess the work of the court in terms of how long it takes from the original event until the case finally reaches disposition.

For legal, policy, and analytical purposes, however, subdividing case processing time into component parts provides a more instructive picture. It is well understood that criminal cases proceed through several distinct stages: arrest, arraignment, trial, and sentencing. While studies of the criminal court process regularly examine these different stages, research on case processing time in the state courts has only occasionally considered the impact of differing time frames.¹⁵

In subdividing case processing time, one could analyze elapsed time between each separate court event. This approach was not used for two equally compelling reasons. First, as a practical matter, the case file data from the four courts did not permit such analysis.¹⁶ Second, the amount of elapsed time between two legal events is heavily tied to the specific court in which it occurs. Analyzing such separate time frames runs the risk of focusing too narrowly on isolated and local considerations. Moreover, such an analysis makes cross-court comparisons difficult, if not impossible.

Conceptually and operationally, therefore, it is better to focus analysis on three general time frames: lower court time, trial court time, and sentencing time. Each involves a different type of legal event, each involves a different set of actors— police, attorneys, and judges—and each involves separate and independent courts.

Analyzing separate time phases is a recognition that “the duration of a case is actually the summation of several phase to phase dura-

¹⁵ *But see* J. HAUSNER & M. SEIDEL, AN ANALYSIS OF CASE PROCESSING TIME IN THE DISTRICT OF COLUMBIA SUPERIOR COURT (1981).

¹⁶ In each of the four courts studied, there were some incongruities in the time spans between key events like arrest, arraignment, charging, screening, trial, and sentencing. Because not all cases proceed in a normal ordering, analysis of time between specific legal events can be misleading.

tions."¹⁷ It allows the researcher to ask how case processing time is linked to key substantive decisions in the judicial process.¹⁸

1. *The Phases Defined*

Lower court time begins with arrest and ends when the trial court gains control of the case. During this phase, the preliminary stages of a case are handled: initial appearance, bail setting, appointment of counsel, preliminary examination, and case screening.¹⁹ As Table 2 indicates, lower court time in Dayton and Detroit is minimal. In Las Vegas and Providence, by contrast, it is quite substantial.

TABLE 2
CASE PROCESSING TIME IN FOUR COURTS (MEDIANS)^a

	Providence	Dayton	Las Vegas	Detroit
Lower Court Time	89	12	65	7
Trial Court Time	101	57	49	34
Sentencing Time	0	28	43	14
Total	190	97	137	55

^a Numbers refer to case processing time in days.

Trial court time begins when the trial court of general jurisdiction gains control of a case and ends when the trial court disposes of the case on the merits. Typically, a trial court case begins with the filing of an

¹⁷ R. Peterson, *Pretrial Delay: Workload, Neophytes, and Charge Distribution 191* (1977) (unpublished Ph.D. dissertation; University of Wisconsin, Madison).

¹⁸ Our analytic divisions of case processing time are not always coterminous with legal definitions of the same phases. Applicable state speedy-trial laws are usually triggered by a specific legal event (typically the filing of an information or an indictment) different from the one we have measured. More importantly, speedy-trial laws typically focus on trial court time, thus excluding what we have labeled lower court time. In Dayton, Las Vegas, and Detroit, official time begins to toll when the case is officially filed in court. Similar problems occur in the choice of an ending date. For trial court time, we stopped counting when the defendant entered a plea of guilty, the case was dismissed, and/or the trial began. In most states, however, there is no formal disposition of a case until the defendant is sentenced and a judgment of conviction is entered.

For these reasons, the figures presented often differ from those reported by the courts. At times our figures will indicate more time because we started counting earlier. At other times our figures will indicate less time because we stopped counting when guilt or innocence had, for all practical purposes, been determined.

¹⁹ These decisions are made by a different set of actors than are found elsewhere in the process. In the lower courts, police officers, police laboratories, rookie prosecutors, fledgling public defenders, and justices of the peace are the most important actors. These differences are multiplied in three sites by the presence of a separate lower court. In Detroit, there is a single court that hears criminal matters, but "lower court" matters are handled quite separately.

information or an indictment.²⁰ Referring again to Table 2, note that there are substantial differences in trial court time among the four sites. In particular, the Providence trial court was substantially slower than the other three courts. These differences are less dramatic than for overall case processing time, however, because of the variation introduced by lower court time.

Sentencing time, which extends from a finding of guilt to the imposition of a sentence, is seldom discussed in studies of delay. Indeed, the Federal Speedy Trial Act²¹ is silent on this important time frame.

The most distinctive characteristic of sentencing time is that it is controlled by a very different actor (the probation department) than the other two time frames. The growing use of pre-sentence investigations (PSI) means that elapsed time typically reflects the standard operating procedures of a particular bureaucracy. Because sentencing time is largely outside of the control of the trial court, reforms and innovations directed at the court can little affect the length of this time frame. The diversity of actors and varying local practices are reflected in Table 2. There is considerable variation in sentencing time from zero days in Providence (where the practice is to sentence on the day of the entry of the plea of guilty) to forty-three days (median) in Las Vegas (where a burdensome caseload limited the ability of the probation department to complete the PSI in a timely fashion).

2. Discussion

Analyzing separate time frames has a number of important advantages over merely examining total case processing time.²² First, analysis of separate time frames allows us to pinpoint the stage in the process which consumes the bulk of case processing time. As Table 2 demonstrates, the four sites vary considerably in overall processing time. In Detroit, the typical case took about two months, in Dayton about three, in Las Vegas over five months, and in Providence over half a year. Moreover, there were important differences among the four courts within individual time frames. Note, for example, that Dayton is two months faster than Las Vegas in terms of total case duration, but when we compare trial court time separately, Las Vegas is faster than Dayton by one week.

Second, analysis of separate time frames indicates that case dura-

²⁰ In the trial court, better trained judges and more experienced attorneys typically dominate. Case duration, for example, is less affected by the vagaries of local police departments.

²¹ 18 U.S.C. § 3161 (1979).

²² Analyzing separate phases of case processing time has the added advantage of highlighting case attrition. Cases drop from the court process during different phases, affecting the results in each phase.

tion during the three different phases is not necessarily related.²³ Providence, which consumes the most time in disposing of cases in both the lower court and the trial court, is the fastest in imposing sentence. By contrast, sentencing the guilty takes the longest in Las Vegas (forty-three days), but this city ranks second in terms of trial court time.

Third, analysis of separate time frames allows a more focused evaluation. The delay reduction programs being evaluated concentrate on different phases of the court process. Only in Las Vegas did the program attempt to control lower court time. All four courts, however, attempted to make changes in trial court time. Evaluative measures examining only total case duration would have provided less focused indicators of changes.

B. TIME UNDER THE CONTROL OF THE COURT

In measuring case processing time, one must eliminate all time which is not under the direct control of the court.²⁴ Prior studies of delay in state courts, however, have not typically taken such factors into consideration.²⁵

Across our four sites, two types of events consistently occur which

TABLE 3
TRIAL COURT CASE PROCESSING TIME FOR PSYCHIATRIC
CASES

	Providence	Dayton	Las Vegas	Detroit
<i>Psychiatric Cases</i>				
Mean	366 days	275 days	140 days	153 days
Median	257	234	107	143
N	(16)	(17)	(30)	(63)
<i>Other Cases</i>				
Mean	232 days	75 days	72 days	66 days
Median	101	57	49	34
N	(1131)	(520)	(772)	(1616)

²³ This study also gathered data on case characteristics and defendant attributes. See Neubauer & Ryan, *Criminal Courts and the Delivery of Speedy Justice: The Influence of Case and Defendant Characteristics*, 7 JUST. SYS. J. 213 (1982). Analysis of this data underscores the fact that the lower court process differs significantly from the trial court process. In particular, the correlates of case processing time and levels of explained variation differ markedly.

²⁴ The Speedy Trial Act, which governs federal prosecutions, recognizes this important fact; the section on excludable time provides for special time accounting for some events in the life-history of a criminal case. 18 U.S.C. § 3161(h) (1979).

²⁵ See T. CHURCH, *supra* note 11; Peterson, *supra* note 17.

are outside of the court's control: sanity hearings and bail skipping. Each event requires a different type of adjustment.

In cases in which a defendant's sanity is under question, the defendant is frequently institutionalized in a hospital for a period of observation.²⁶ The period of institutionalization is not time under the control of the court. In the four courts, psychiatric cases take at least twice as long to reach disposition as other cases (see Table 3). For these reasons, psychiatric cases were dropped from the analysis of trial court time because that is the phase in which hospitalization and psychiatric exams occur.²⁷

Defendants frequently fail to appear at scheduled court appearances. Looking at Table 4, we find that the proportion of cases involving at least one bench warrant ranges from five percent in Dayton to twenty-one percent in Providence. The time during which a defendant is not available is outside the court's control.²⁸ Thus, it is appropriate to adjust the case processing time variable to subtract time lost due to warrants at whichever stage such loss of time occurred. The subtraction procedure is used rather than excluding these cases because the number of such cases is not trivial and because the time lost due to the failure to appear can be accurately determined. The time loss resulting from the issuance of a warrant can be quite substantial. In Providence, the median number of days lost due to warrants was twenty-eight days; the mean, however, was 102, indicating that a few defendants were missing for very long periods.²⁹ In Providence, subtracting this time has a substantial effect. Estimates decrease by one full month—the median of 133 days drops to 101 for total case processing time. In the other cities, however, estimates were reduced by seven days or less.³⁰

²⁶ This period (often mandated by statute) may consume thirty, sixty, or even ninety days.

²⁷ By contrast, psychiatric cases proceed as quickly as other cases in the lower courts. Thus, these cases are retained in the analysis of lower court time.

²⁸ It cannot be argued that the court is to blame for defendants skipping in the first place. Numerous studies have concluded that the type of pre-trial release—own recognizance versus bond—is unrelated to failure-to-appear rates. *See, e.g.*, P. WICE, FREEDOM FOR SALE (1974).

²⁹ If defendants were never apprehended, the cases have been excluded because they lack a final disposition date. In many other cases, defendants reappear subsequent to the issuance of a bench warrant. A simple summary measure can be misleading. While defendants in a significant proportion of warrant cases are missing for only brief periods, some were missing for periods of two years or more.

³⁰ Excluding psychiatric cases from the analysis and subtracting days lost due to warrants from the measurement of case processing time are important for conceptual reasons. These adjustments, however, also have salutary benefits for statistical analyses because they reduce (but do not eliminate) the small proportion of cases with very lengthy processing time. Often referred to as outliers, these extreme values can introduce a high degree of bias into linear statistical analysis. *See* H. BLALOCK, SOCIAL STATISTICS 68-69 (1972).

TABLE 4
BENCH WARRANTS IN THE FOUR CITIES

	Number of Bench Warrants			Days Lost Due to Bench Warrants	
	n	%	N	Mean	Median
Providence	290	21%	(1381)	102 days	28 days
Dayton	37	5%	(700)	56	35
Las Vegas	143	17%	(844)	72	20
Detroit	213	10%	(2079)	78	27

Once corrective actions have been taken, we achieve a more accurate measure of case processing time attributable to the actions of the court.³¹ Thus, the impact of the innovations can be better assessed.

C. VARIATIONS IN CASE PROCESSING TIME

The most striking thing about case processing time is its variability; some cases reach disposition soon after filing while others may languish for years. Understanding variations in case processing time is vital. Past studies have used one or more statistical measures: mean, median, and/or the toughest ten percent.³² These efforts have failed to present and analyze important variations in case processing time, since no single statistical measure can capture the full range of variation. One instead must examine case processing time with a variety of statistical measurements to detect important variations in case duration.³³

In statistics, the most commonly used summary measure is the

³¹ Some other events, idiosyncratic to a particular site—such as a habeas petition to the Nevada State Supreme Court—were also deemed to be outside the court's control. This time was likewise subtracted out.

³² T. CHURCH, *supra* note 11; S. FLANDERS, E. HOLLEMAN, J. LEDERER, J. McDERMOTT & D. NEUBAUER, *CASE MANAGEMENT AND COURT MANAGEMENT IN UNITED STATES DISTRICT COURTS* (1977); S. WASBY, T. MARVELL & A. AIKMAN, *VOLUME AND DELAY IN STATE APPELLATE COURTS: PROBLEMS AND RESPONSES* (1979) [hereinafter cited as S. WASBY].

³³ This approach reflects currently popular analysis and display techniques from "exploratory data analysis" (EDA) developed in J. TUKEY, *EXPLORATORY DATA ANALYSIS* (1977); see also P. HARTWIG & B. DEARING, *EXPLORATORY DATA ANALYSIS* 9 (1979):

The underlying assumption of the exploratory approach is that the more one knows about the data, the more effectively data can be used to develop, test, and refine theory. Thus, the explanatory approach to data analysis seeks to maximize what is learned from the data, and this requires adherence to two principles: *skepticism* and *openness*. One should be skeptical of measures which summarize data since they can sometimes conceal or even misrepresent what may be the most informative aspects of the data, and one should be open to anticipated patterns in the data since they can be the most revealing outcomes of the analysis.

mean (arithmetic average). Means are sometimes used to measure case processing time, but they do not provide a good portrayal of a "typical" case since they are heavily influenced by a handful of extreme values. Particularly in court delay studies, the mean gives undue weight to a few cases that take a relatively long time to reach disposition.

Because the mean can hide important variations, it is common to report the standard deviation (s.d.) in addition to the mean. The standard deviation is a measure of dispersion of the data around the mean. The extremely high standard deviations in Table 5 are quite obvious. Standard deviations that approach the level of the mean itself are a warning that interpretation of the mean may be problematic.

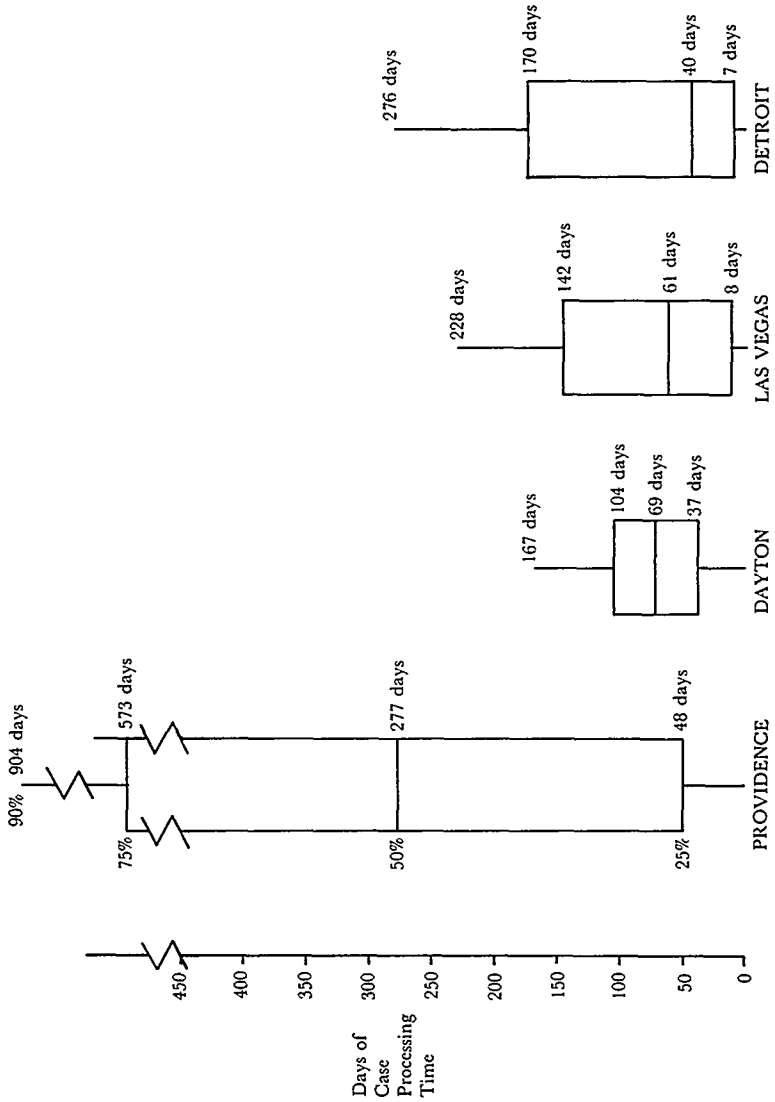
TABLE 5
TRIAL COURT CASE PROCESSING TIME PRIOR TO DELAY-
REDUCTION PROGRAMS

	Baseline Period	Mean	Median	Standard Deviation	N
Providence	Jan.-Dec., 1976	365 days	277 days	345	362
Dayton	July-Oct., 1978	82	69	60	265
Las Vegas	Jan.-March, 1977	102	61	138	74
Detroit	April-Oct., 1976	105	55	111	440

The median is a better summary measure of case processing time,³⁴ and for that reason it has been used exclusively in the past. A median indicates that half of the cases took more time and half took less than the median score. Because the median is less influenced by a handful of extreme cases, it typically provides a lower estimate of case processing time than the mean. Table 5 provides data for each city's trial court time in the pre-innovation period only. The Table shows that the median is consistently lower than the mean. Note that for Providence, the difference is substantial (almost ninety days), and in Detroit and Las Vegas the mean is nearly twice as long as the median trial court time. Only in Dayton is the difference between the mean and the median relatively small (thirteen days). Thus, the view of case processing time differs considerably depending upon which statistical measure—the mean or the median—is employed.

³⁴ S. WASBY, *supra* note 32, at 25.

FIGURE 1
COMPARATIVE BOX-AND-WHISKER PLOTS OF TRIAL COURT CASE PROCESSING TIME PRIOR TO DELAY-
REDUCTION PROGRAMS IN FOUR COURTS



Box-and-whisker plots, developed by Tukey,³⁵ are another effective method of displaying information about the entire range of a variable.³⁶ Whereas means and medians attempt to summarize the central tendency of a variable, a box-and-whisker plot provides information about cases *surrounding* the median and extreme cases as well. Figure 1 presents box-and-whisker plots for the pre-innovation period in our four sites.

The "box" represents the range of the cases falling between the twenty-fifth percentile and the seventy-fifth percentile. The size (length) of the box is a visual summary of the range in values: the larger the box, the greater the range; the smaller the box, the more constricted the range. The horizontal line inside the box is the median value—the age of the case(s) at the fiftieth percentile.

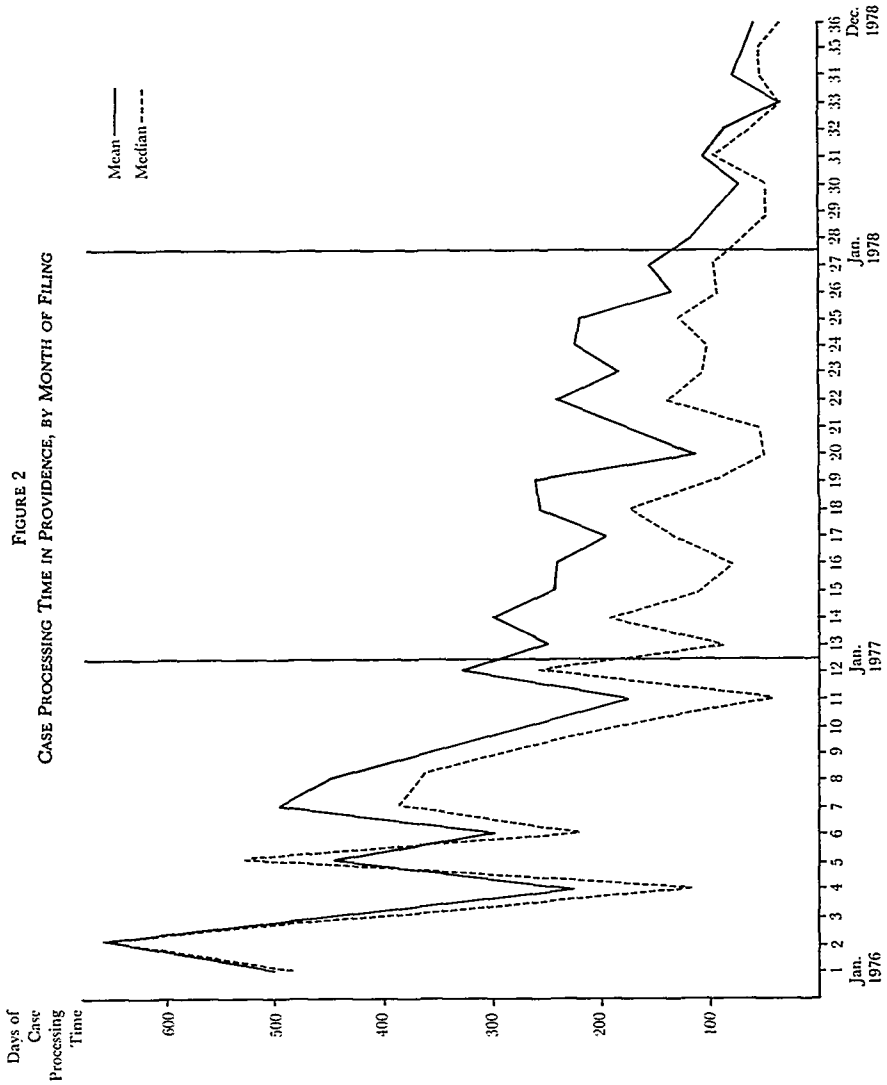
The boxes highlight interesting differences in case processing time between the four sites. In Providence, not only do cases take longer on an average to reach disposition, but the range is also great. This suggests that the process is less routinized than in the other three cities. A less drastic, but nonetheless important, difference between Las Vegas and Dayton also becomes apparent. Comparison of the medians indicates that the cities are about the same (median of sixty-nine for Dayton and sixty-one for Las Vegas). However, the range in Las Vegas is much greater. Fully twenty-five percent of the cases are disposed of quickly (eight days), but cases at the seventy-fifth percentile take longer than in Dayton. In short, the Las Vegas distribution is skewed at both ends. Scrutiny of the bottom hinge (twenty-fifth percentile) reveals another important dimension of case processing time: all four courts were able to dispose of a fair proportion of cases relatively quickly. Even in Providence, one quarter were disposed of within one and one-half months. Note that in Las Vegas and Detroit, the courts produced a fairly large proportion of very early guilty pleas.

The "whisker" represents the value of an outlier, an extreme case. Some distributions may have numerous outliers, at the upper end (above the box) or at the lower end (below the box). The whiskers connote outlying values to facilitate substantive interpretation. Therefore, we have included only one whisker atop the line extending down to the box. This whisker, in our analysis, represents the value of the case(s) lying at the ninetieth percentile. This allows us to determine how long the courts' long cases take to process.

³⁵ J. TUKEY, *supra* note 33.

³⁶ An "Aging Profile" is another technique for analyzing and presenting data on variations in case processing time. See Grossman, *supra* note 12, at 98.

FIGURE 2
CASE PROCESSING TIME IN PROVIDENCE, BY MONTH OF FILING



The contrast between the four sites is again instructive. In Las Vegas, the ninetieth percentile case took 228 days, which was less than the median case processing time in Providence. Dayton and Las Vegas differ far more than either the mean or median would suggest. Cases at the ninetieth percentile are disposed of two months earlier in Dayton than in Las Vegas. Detroit was marked by a higher-than-expected proportion of long cases. While the median time in Detroit was the fastest, it had more long cases than either Dayton or Las Vegas. The central advantage of the box-and-whisker technique is that it provides a good visual summary of important variations in case processing time.

D. CHANGES OVER TIME

Often, one is interested not only in the duration of cases, but also in changes over time. The most fundamental question is whether case processing time decreases after the introduction of delay reduction programs.

A basic way of examining time-series data is through a time line—a graph indicating the value of the observed variable over several points in time. Since this Research Note is not concerned with substantive interpretations but rather with conceptual and methodological problems, it is easiest to depict changes over time by using data from just one court. Figure 2, therefore, provides a time line for Providence, using both mean and median values.³⁷ Providence was chosen because that court underwent the greatest degree of change and therefore provides the most illustrative material.

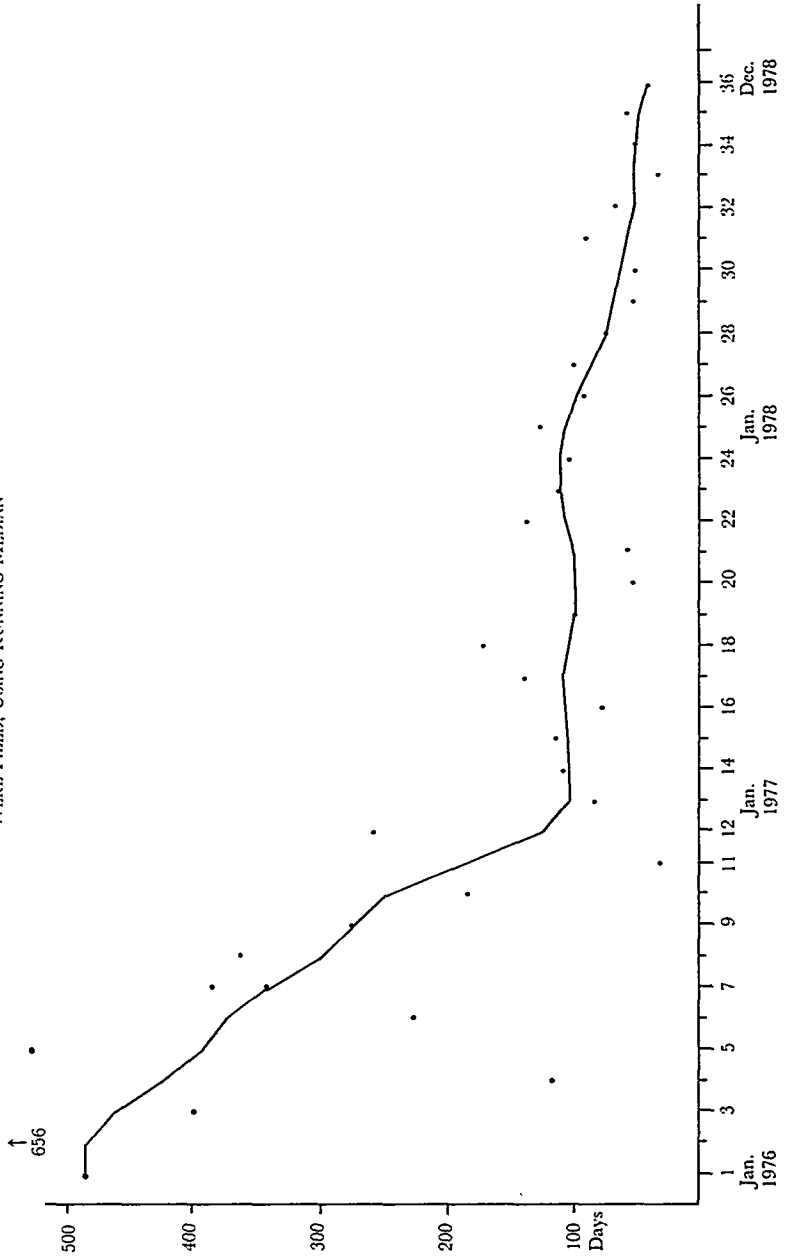
Median values are likely to fluctuate less than mean values. Nevertheless, there may be substantial fluctuation from month to month because the sample size is typically small.³⁸ Ascertaining a trend in such data may not be easy, at least not by mere visual inspection. Tukey pioneered a method of “smoothing” data to provide a “clearer view of the general, once it is unencumbered by details.”³⁹ One way to smooth

³⁷ The time lines displayed in Figures 2 and 3 differ in an important way from most time-series data. Time-series analysis is typically based on a quasi-experimental design. After a certain period, a new program is put into effect. The data points prior to the innovation serve as a baseline, while those after seek to measure the impact, if any, of the program. These data points would either follow a group through the program or would be based on non-reactive measures (numbers of highway accidents, for example). Our time-series, however, does not display these independent measures, for the innovations also worked on cases filed (but not disposed of) *prior* to the innovation. Thus, our base period is contaminated. As a result, the base periods often look better than they would have if the innovations had not been instituted. In addition, downturns in trend lines may start before the innovations are put into place. This may suggest anticipatory impact, but may also reflect a statistical artifact.

³⁸ Detroit is the exception; approximately 80 cases per month comprise the sample in this site.

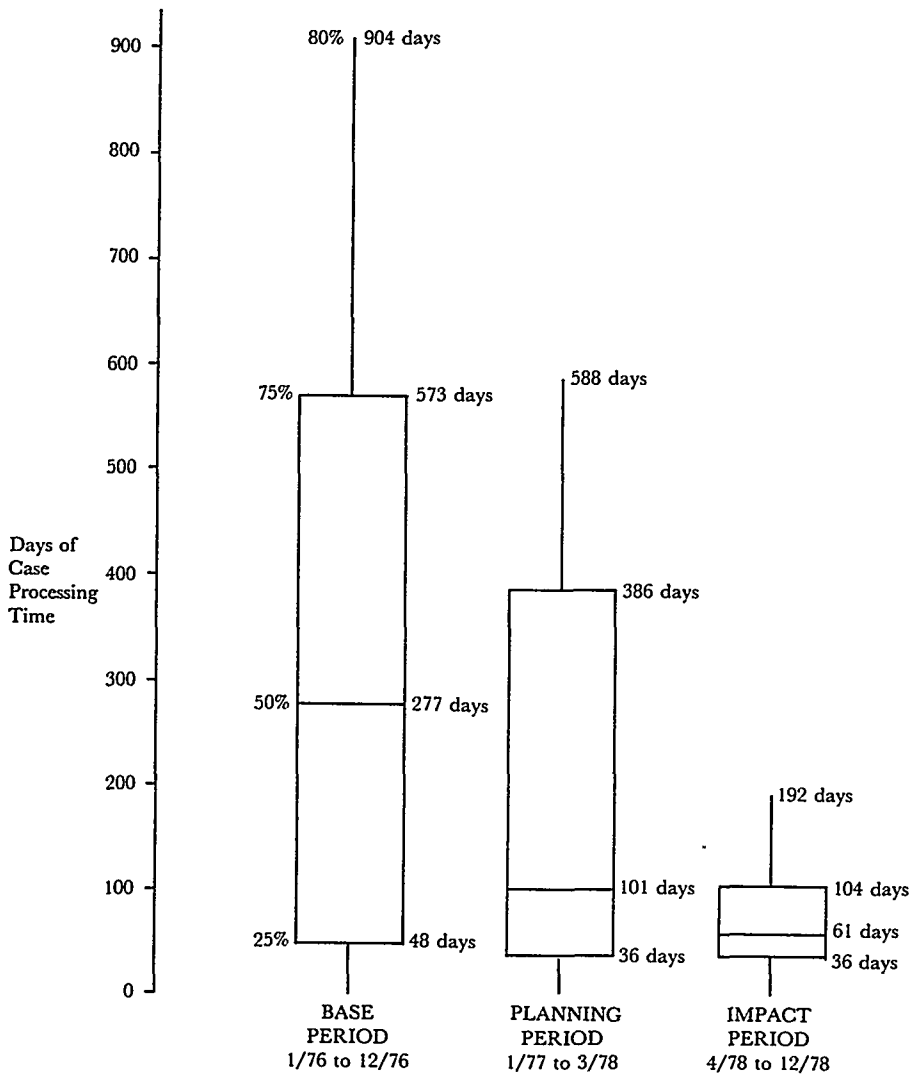
³⁹ J. TUKEY, *supra* note 33, at 205; see P. HARTWIG & B. DEARING, *supra* note 33, at 36-39.

FIGURE 3
CASE PROCESSING TIME FROM FILING TO DISPOSITION IN PROVIDENCE PLOTTED BY MONTH CHARGES
WERE FILED, USING RUNNING MEDIAN



fluctuating values over time is through the use of "running medians," a technique which takes a median of surrounding medians, thereby casting to one side extreme median values.⁴⁰ Figure 3 illustrates a time line

FIGURE 4
BOX-AND-WHISKER PLOT OF CASE PROCESSING TIME IN
PROVIDENCE, BY TIME PERIOD



⁴⁰ The actual computation of the running median is quite simple. The specific technique, "5 3 3R' (H) 53R'H," is lucidly explained by P. HARTWIG & B. DEARING, *supra* note 33, at 37-39.

connecting running medians for the median values indicated in Figure 2. The result is a vastly clearer picture of the general—a significant downward sloping trend in case processing time. Through this method, one can still get a picture of the “rough” or residuals by examining the distance between the actual median (marked by an “.” in Figure 3) and the running median for any time point.

While the running median provides a useful overview, we also need to examine dispersion. A box-and-whisker plot for every month's sample of cases would be impractical, both logistically and visually. We have therefore divided time spans into either two or three periods, which roughly correspond to key transitions in our courts. Thus, the first time period is always the baseline period, and later time periods may reflect planning and impact periods (as in Providence).

By comparing the box-and-whisker plots in several different time periods, we can identify a number of changes. We can see changes in a court's handling of tougher cases by examining shifts in the top of the box (seventy-fifth percentile) and the location of the whisker (ninetieth percentile). Finally, we are able to inspect changes in the size of the boxes across time periods. We would expect that in courts which improve their processing of cases, the size of the boxes would become smaller. Cases would be processed more uniformly in time, especially in the middle fifty percent of a court's cases. The upper tails (whiskers) also should drop sharply, as the amount of time needed to process the longest ten percent of a court's cases decreases.

Figure 4 illustrates these expectations for Providence. The earlier use of the running median indicated that, overall, case processing time declined after the introduction of the delay reduction programs. We now see that the effects extended far beyond a decrease in the median. The strikingly smaller size of the box indicates that delay reduction was felt across the entire range of cases. Case processing time became more uniform. Moreover, the number of cases taking a very long time to reach disposition declined dramatically. The ninetieth percentile now stands at 192 days, a decrease of over one and one-half years from the baseline period.

III. CONCLUSION

The determination of case processing time is as elusive as it is important. As research on court delay emerges from infancy, a host of subsidiary research problems arise. What one chooses to measure and which statistical measurements one chooses have important consequences for the determination of case processing time.

Analyzing total case processing time provides too gross a measure because it lumps together separate and distinct phases. It is far preferable to analyze individual time frames: lower court time, trial court time, and sentencing time.

Because not all case processing time is attributable to the court, one needs to measure only "time under the control of the court." We therefore must exclude cases involving a psychiatric examination because they are few in number and involve significant time not under the control of the court. Similarly, we subtract days lost due to the defendant's failure to appear. These refinements leave us with a set of more "typical" and "routine" cases.

Having identified the cases for analysis, we must next tackle a different set of measurement issues. No single summary statistic can adequately capture the range of variation. Thus, we must use not only means, but also medians and box-and-whisker plots. Similarly, to measure changes over time, time lines that illustrate means, medians, and "smoothed" (running) medians are used. By utilizing time lines, running medians, and the box-and-whisker plots, we look at the key variable—case processing time—in a number of different ways. We thus come to a better understanding of the nature of its distribution, enhancing our ability to analyze the effects of case characteristics and innovations.