

Influence of reservoir shape upon the choice of Hydraulic vs. Hydrologic reservoir routing method

Cristina Sorana Ionescu¹, and Daniela Elena Gogoaş Nistoran^{1,*}

¹University Politehnica of Bucharest, Power Engineering Faculty, Hydraulics, Hydraulic Machinery and Environmental Engineering Department, 313 Spl. Independenței, Bucharest, Romania

Abstract. The objective of the paper is to compare the hydrologic and hydraulic reservoir routing methods in term of assumptions, equations, numerical computation procedures, necessary data and advantages-disadvantages of their use. To test the results provided by the two methods, a set of two reservoirs from Romania was chosen: one long and narrow and the other one roundly shaped. Corresponding inflow hydrographs were chosen, and similar conditions were imposed for the outflow dam control structures, namely the initial water level in the reservoir to be at the Spillway Crest Level (SCL) and no outflow control. For the hydrologic method the Puls procedure was used and a program was written in Scilab to solve the continuity equation in finite differences. For the hydraulic method HEC-RAS software was used to solve the 1D Saint-Venant equations. Outflow and stage hydrographs at the dam were compared together with the stage hydrograph at the reservoir tail for the hydraulic method. Results show that the hydraulic method should be used for the long and narrow reservoirs, as it considers the backwater effect, whereas the hydrologic method can be efficiently used for all other reservoirs where this effect is negligible.

1 Introduction

Flood attenuation is one of the roles of storage, flood control or multipurpose reservoirs created by dam impoundment, as a key component of hydropower development schemes. Attenuation has a major protective impact upon downstream areas by decreasing the peak discharge and delaying the time of its arrival, therefore diminishing depth and extent of downstream flooding, protecting river banks of erosion and the floodplain of scour, at the same time limiting the transport and deposition of large quantities of sediments [1]. *Reservoir (or storage) routing* is a mathematical procedure for computing changes over time in magnitude and shape of a flood wave transition through a water retention facility. The wave travels from the reservoir's tail to the outflow structures of the dam. Computations are made considering the elevation-storage and elevation-discharge characteristics of the reservoir and of its outflow structures, respectively.

Applications are in the flood forecasting, regulation and protection, design of reservoir and its outflow structures and reservoir operation, since the flow downstream the reservoir is usually limited to a predetermined maximum value [2].

For computing the outflow hydrograph two reservoir routing methods are used: (i) *hydrologic method* and (ii) *hydraulic method*. The first conceptual method solves the continuity equation using a relationship between storage in the reservoir and the outflow discharge under the assumption of a horizontal water surface elevation

(known as level pool reservoir routing). The second one, solves both the continuity equation and the momentum conservation equations (describing the physics of water movement), i.e. the nonlinear, hyperbolic, partial differential Saint Venant equations.

From mathematical point of view, the *hydrologic methods* involve simplified numerical techniques (usually finite difference) and steady-flow hydraulics [2, 3, 4]. For solving the *hydraulic* Saint-Venant equations, which take into account the backwater effect of the water surface profile along the reservoir, various numerical methods have been proposed, such as: direct finite difference (implicit and explicit) – considered as the standard for 1D approximation, method of characteristics, finite volume and, only in case of 2D and 3D models, finite element methods [5].

In terms of necessary *data/input*, both methods need the inflow hydrograph $I(t)$. The hydrologic method however requires only a relationship between elevation (or stage) and storage (elevation-storage/capacity curve) and an elevation-discharge relationship for the outflow (usually a spillway), while the hydraulic method needs detailed topobathymetric data for the reservoir (continuous bottom surface elevations for the 2D approximation or cross-section profiles with distance between them for the 1D approximation), roughness coefficients, and the same elevation-discharge relationship for the outflow as a downstream boundary condition.

Therefore, if the hydraulic method is more data consuming and its equations are more difficult to

* Corresponding author: dnistoran@gmail.com

integrate than the hydrologic one, a justified question pops up: for which reservoir is worth using the hydraulic routing? Fenton J.D., [6] and Haktanir, T. & Ozmen, H. [7] state that for long and narrow reservoirs where backwater effect of water surface profile is important the hydraulic routing should be used, while for the others there is no difference in applying the hydrologic routing. The objective of this paper is to prove this by analysing comparatively the two methods of reservoir routing for two differently-shaped reservoirs from Romania: one long and narrow and one roundly shaped.

2 Method

2.1 Hydrologic method

Level pool routing is the procedure for calculating the outflow hydrograph from a reservoir with a horizontal water surface (figure 1), given its inflow hydrograph and storage characteristics [8]. The characteristics of the inflow hydrograph, depicted in figure 1 are: $I(t)$ and $O(t)$ input and output volumetric flow rates respectively (*inflow* and *outflow*), $S(t)$ = water *storage* volume in the reservoir, T is the total duration of the flood wave, T_i and T_r rising and recession limb duration respectively, t_{lag} the difference in time between the peak inflow and peak outflow (known as *translation*), and a , *attenuation*, or the flow difference between the two.

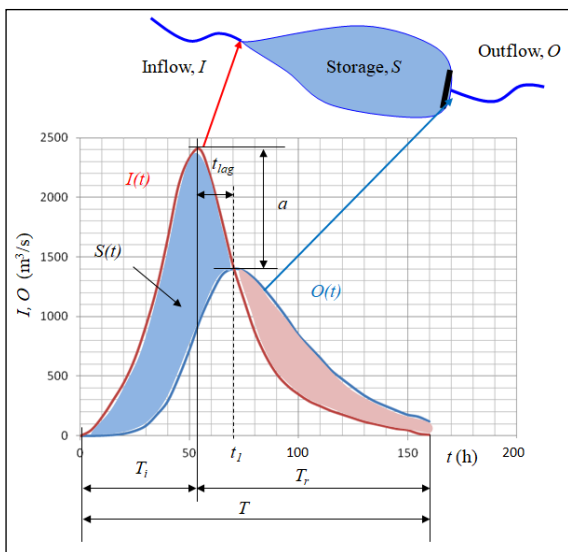


Fig. 1. Schematic of the reservoir routing process.

Neglecting precipitation, evaporation, infiltration and tributary inflow, the continuity (mass conservation) equation is given by:

$$I(t) - O(t, S) = \frac{dS}{dt} \quad (1)$$

The reservoir storage may therefore be written as:

$$S(t) = \int_0^{t_1} (I - O) dt \quad (2)$$

where t_1 is the intersection time of the two inflow and outflow hydrographs (figure 1). For this time, $I(t_1) =$

$O(t_1)$ and therefore water storage in the reservoir, $S(t)$ has reached its maximum, $dS/dt = 0$, meaning that the period of accumulation in storage has ended and the release/depletion period from storage begins. If at the initial and final time, $t = 0$, water level is at the dam spillway crest the two highlighted surface areas in figure 1 representing storage and outflow volumes have to be equal.

For two successive moments 1 and 2 corresponding to the beginning and the end of a time step, equation (1) written in finite differences becomes

$$\frac{I_1 + I_2}{2} - \frac{O_1 + O_2}{2} = \frac{(S_2 - S_1)}{\Delta t} \quad (3)$$

According to the Puls method [9] equation (3) may be rewritten in terms of storage volumes as follows

$$\frac{I_1 + I_2}{2} \Delta t + \left(S_1 - \frac{O_1 \Delta t}{2} \right) = S_2 + \frac{O_2 \Delta t}{2} \quad (4)$$

with all the terms in the left-hand side being known at the beginning of each time step and all terms in the right-hand side being unknown at the end of the time step. Alternatives of the Puls method are: Modified Puls method, which postulates that storage depends only on outflow rate through a nonlinear function, $S=f(O)$ [10], Goodrich method (also semi-graphical) and the Standard Fourth-Order Runge-Kutta Method (SRK) [2, 11]. Since equation (4) has two unknowns, (storage and outflow at the end of the time step, S_2 and O_2), another relationship to relate $S=f(O)$ is needed. This may be found if two other relationships are known: $S(h)$ or the *elevation-storage relation* and $O(h)$, or the *elevation-discharge equation* of the outflow hydraulic structure, where h is the reservoir water depth (alternatively, water surface elevation in the reservoir, z , may be used).

A unique (invariable) relationship between storage and outflow holds for reservoirs having horizontal water surface. Such reservoirs have a pool that is wide and deep compared with their length in the flow direction [8]. However, the invariable storage relationship $S=f(O)$ requires that a fixed discharge from the reservoir is released for a given water surface elevation at the dam, which means that the outlet works must be *uncontrolled*, or, if controlled, the gates should be held at a fixed position [8].

Therefore, the data needed for Puls method applied for level-pool routing of uncontrolled reservoirs are:

(i) $S(h)$ = *depth - storage relationship*; this is developed from topographic data prior to building the dam and may be expressed through a table or a curve/plot. Usually, the elevation-storage curve may be approximated for values around the Normal Pool Level (NPL) elevation value by a power-law equation as follows:

$$S = k \cdot h^m \quad (5)$$

where k and m are coefficients determined experimentally;

(ii) $O(h)$ = *elevation-discharge relationship* that depends on the geometry of outflow structure, such as an

uncontrolled overflow spillway (or a morning glory spillway, a gate-controlled spillway with constant opening):

$$O(h) = \frac{2}{3} C_d \sqrt{2g} B h_d^{3/2} = C B f(h) \quad (6)$$

where C_d and C are the non-dimensional and the dimensional discharge coefficients (the latter including the acceleration due to gravity) and h_d - the nappe height.

Alternatively, for an orifice (bottom or lateral outlet) the outflow is expressed as:

$$O(h) = C A \sqrt{2gh_o} \quad (7)$$

where A is the area of the orifice and h_o is the depth of the orifice axis;

(iii) $I(t)$ = *Inflow hydrograph* of the flood wave is given by the rainfall event with its peak flow, I_p , having a certain exceeding probability, $p(\%)$. For the present study the inflow hydrographs were taken as being the synthetic ones to produce the largest allowable outflow in the river channel downstream the dam. The total flood volume is represented by the area beneath the flow hydrograph and computed with:

$$V_f = \int_0^T I(t) dt \quad (8)$$

The computation time step, Δt must be small enough so that the hydrographs can be assumed to be straight lines between two successive time values. As a rule of thumb, the time step has to be smaller than 0.2 of the time to peak of the inflow hydrograph [12].

Equations (4), (5) and (6) may be solved simultaneously semi-graphically or by inverse interpolation of tabular values [6]. With the advance of computerization graphical methods have been replaced by functional methods so that computational procedure can be automated [8].

For the present study, the Puls procedure was used and a program was written in Scilab to provide a numerical solution of the equation (4) and thus obtaining the outflow and stage hydrographs.

2.2 Hydraulic method

The hydraulic method consists in routing the inflow hydrograph between the tail of the reservoir and the outflow structures at the dam (similarly to the flood routing along river reaches). This is accomplished by applying the Saint Venant equations for 1D unsteady flow conditions embedded into the HEC-RAS software program [13]:

$$\begin{cases} \frac{\partial Q}{\partial x} + \frac{\partial A}{\partial t} = q_l \\ \frac{\alpha}{gA} \frac{\partial}{\partial x} \left(\frac{Q^2}{A} \right) + \frac{1}{gA} \frac{\partial Q}{\partial t} + \frac{\partial h}{\partial x} = J - J_f \end{cases} \quad (9)$$

In these equations, x is the distance along river channel/reservoir, h the depth of the reservoir in each cross-section, A the cross-sectional area, J the bed slope, α the kinetic energy coefficient, J_f the friction (energy) slope due to roughness and q_l the lateral inflow into the reservoir from other tributaries (usually equal to 0).

Under unsteady flow conditions the Chezy-Manning relationship becomes biunivocal, thus leading to looped rating curves:

$$Q(h) = \frac{1}{n} \frac{A^{5/3}(h)}{P^{2/3}(h)} \sqrt{J_f} = \frac{1}{n} \frac{A^{5/3}(h)}{P^{2/3}(h)} \cdot \sqrt{\left[J - \frac{\partial h}{\partial x} - \frac{\alpha}{gA(h)} \frac{\partial}{\partial x} \left(\frac{Q^2}{A} \right) - \frac{1}{gA(h)} \frac{\partial Q(h)}{\partial t} \right]} \quad (10)$$

where n is the Manning friction coefficient and P is the wetted perimeter. If all terms are considered in the reservoir routing process, the method is also called *dynamic routing* [14].

Necessary data to build a numerical model and solve these equations through the finite difference method with the help of HEC-RAS software (implemented with the 4-point implicit finite-difference numerical scheme) are:

(i) the *geometry* of the reservoir, dam and outflow structures. The topobathymetry of the reservoir must be described by multiple cross-sections with known distance between them;

(ii) *upstream boundary condition* consists of the *inflow hydrograph*, $I(t)$, at the tail of the reservoir whereas as the *downstream boundary condition* is considered the *elevation-discharge equation* of the dam outflow structures, $O(h)$ (equation (6) or (7));

(iii) as *initial conditions* a water surface profile for the initial value of the inflow hydrograph along the reservoir must be developed for steady gradually varied flow starting from a water surface elevation at the dam's Spillway Crest Level (SCL).

Space steps may be different along reservoir and depend on the variability of the cross-section, whereas computational time steps have to be equal. To avoid numerical instabilities (even if the implicit scheme is more stable), the time step should be smaller than the time of travel of the flood wave between any two successive cross-sections (Courant condition: $\Delta t < \Delta x / c \Rightarrow \Delta t < \Delta x / \sqrt{gh}$, where c is the wave celerity).

This method is supposed to be better for the long and narrow reservoirs (and also to routing in open channels and streams), where the water surface profiles are curved due to backwater effect and a variable relationship between Q and S applies [8].

3 Sites and data

The first considered long and narrow reservoir (figure 2) is the largest in Romania - Izvorul Muntelui. The Reservoir was created in 1960 by building the Bicaz gravity dam across Bistrița River in the North-Eastern

part of Romania. Latitude and longitude of the reservoir center are 47°00'53"N and 26°03'32"E, respectively.

The second roundly shaped reservoir considered (figure 3) is the Morii Reservoir. It was created by the Ciurel earth dam built in 1987 across Dambovită River, in Bucharest City (capital of Romania). Latitude and longitude of the reservoir centre are 44°27'18"N and 26°01'39"E, respectively.



Fig. 2. Izvorul Muntelui Reservoir on Bistrita River.

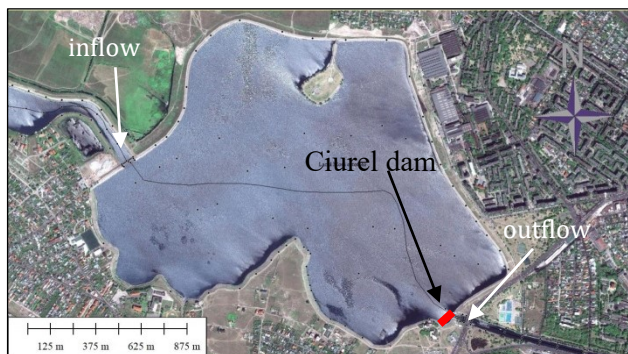


Fig. 3 Morii Reservoir on Dambovită River (Bucharest City).

Inflow hydrographs were chosen to produce the maximum allowable flood wave into the river channel downstream of the dam. For the Izvorul Muntelui reservoir this is the hydrograph with the peak inflow value having a 0.01% exceedance probability whereas for the Morii reservoir this is the hydrograph with the peak inflow value having a 1% exceedance probability. These hydrographs have also the same order of ratio between their inflow volume and the reservoir storage at NPL: 0.373 and 0.588 (Table 1).

For both routing methods the same discharge coefficients and geometry were considered in computations for the outlet structures.

The elevation-storage curves for both reservoirs are shown in figures 4 and 5, together with the Normal Pool Levels (NPL) and Maximum Water Levels (MWL) elevations, in m above sea level (a.s.l.). Sea reference is for Morii Reservoir the Black Sea and for Izvorul Muntelui the Baltic Sea levels.

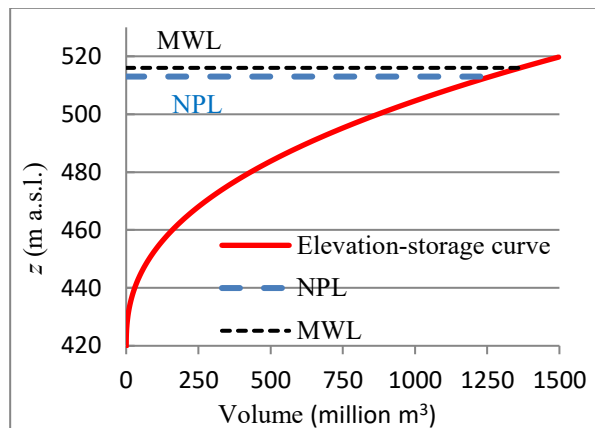


Fig. 4. Elevation-storage curve for the Izvorul Muntelui Reservoir.

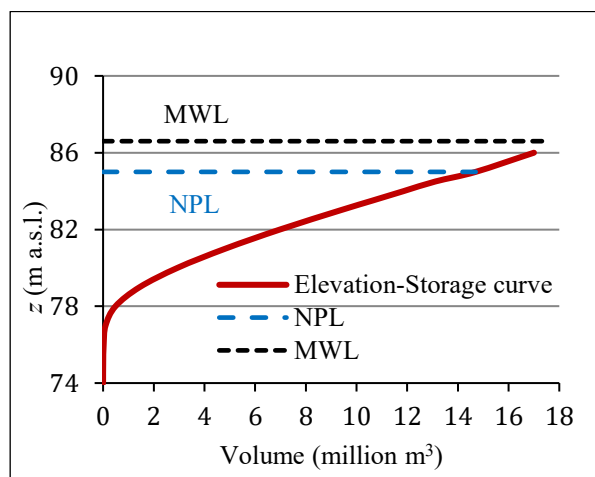


Fig. 5. Elevation-storage curve for the Morii Reservoir.

The physical and technical characteristics of the two reservoirs and inflow hydrographs which were chosen for the analysis are presented comparatively in Table 1 [15-18].

One may see that the last ratio of reservoir length over maximum width L/B_{max} factor differs by two orders of magnitude between the two reservoirs, due to their very different shapes.

4 Results and discussions

For the Izvorul Muntelui reservoir, 36 cross-section topobathymetric profiles surveyed along the reservoir were linearly interpolated at a maximum distance of 100 m in order to create the hydraulic model geometry (figure 6). The dam has four bottom outlets and an intake for the hydropower plant (considered not to operate) and a 4 gated (Tainter gates) ogee spillway.

For the Morii reservoir 16 cross-section profiles were extracted at a mean distance of 150 m in Global Mapper

from the Digital Elevation Model (DEM) built with the surveyed bathymetric data (figure 7). The profiles were imported into HEC-RAS and successively interpolated at a maximum distance of 50 m. The dam has two bottom outlets (considered closed) and a 3 gated (flap gates) broad-crested weir-type spillway.

Table 1. Characteristics of the two considered reservoirs

Reservoir Characteristic	Notation	MU	Mountain Spring Res.	Morii Res.
River annual flow Gauging St. US Res.	Qa	m^3/s	25.1 (Dorna Arini)	9.59
Reservoir bottom slope	J	-	0.0036	0.0022
Probability of exceeding, Inflow	p	%	0.01	1
Inflow peak	Ip	m^3/s	2478	78
T total inflow hydrograph	Tt	h	168	78
T rise (increase) inflow hydrograph	Ti	h	50	22
T recession inflow hydrograph	Tr	h	118	56
Volume of inflow hydrograph	Vi	$10^6 m^3$	418	8.65
Max. depth of reservoir	D_{max}	m	97	11
Spillway Crest Level (SCL) elev.	z_{SCL}	m	509	81.75
Spillway width	B	m	46	10.35
Normal Pool Level (NPL) elev.	z_{NPL}	m	513	85
Max. Water Level (MWL) elev.	z_{MWL}	m	516	86.6
reservoir volume at SCL	V_{SCL}	$10^6 m^3$	1000	6.5
Reservoir volume at NPL	V_{NPL}	$10^6 m^3$	1122	14.7
Reservoir volume at MWL	V_{MWL}	$10^6 m^3$	1217	17.94
Volume Inflow / reservoir V NPL	V_i / V_{NPL}	-	0.373	0.588
Area at NPL	A_{NPL}	km^2	32.6	2.46
Maximum depth at NPL	$D_{max, NPL}$	m	86	8.25
Reservoir length at NPL	L_{NPL}	km	35	2
Reservoir max. width	B_{max}	km	2	1.2
Length / max. width factor	L/B_{max}	-	17.5	0.6

As mentioned at Method, the scenario considered in the present study consists of no control of the evacuated flow (spillway gates completely opened) and the initial water level at the dam being at the Spillway Crest Level.

For the Izvorul Muntelui Reservoir, in figure 8 are shown the outflow hydrographs obtained with the two routing methods, whereas in figure 9 are presented the stage hydrographs at the dam together with the

difference between stage hydrographs at the reservoir tail and dam obtained with the hydraulic method.

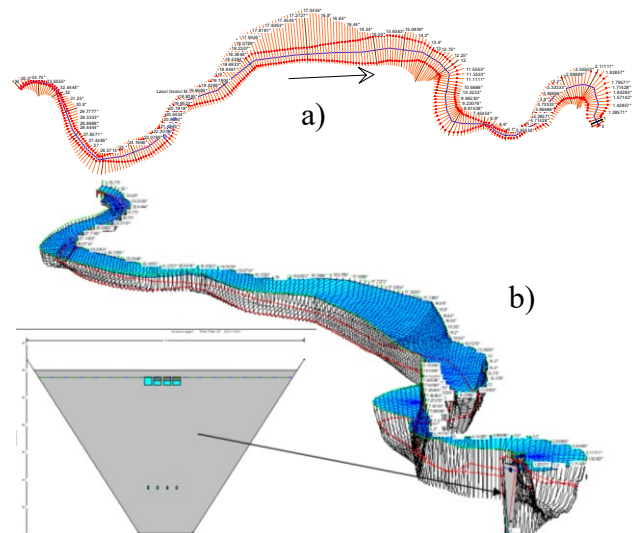


Fig. 6. The geometry of the Izvorul Muntelui reservoir and Bicaz dam with 4 gated spillways (and 4 bottom outlets), used for the hydraulic model and method. a) plane view, b) 3D view.

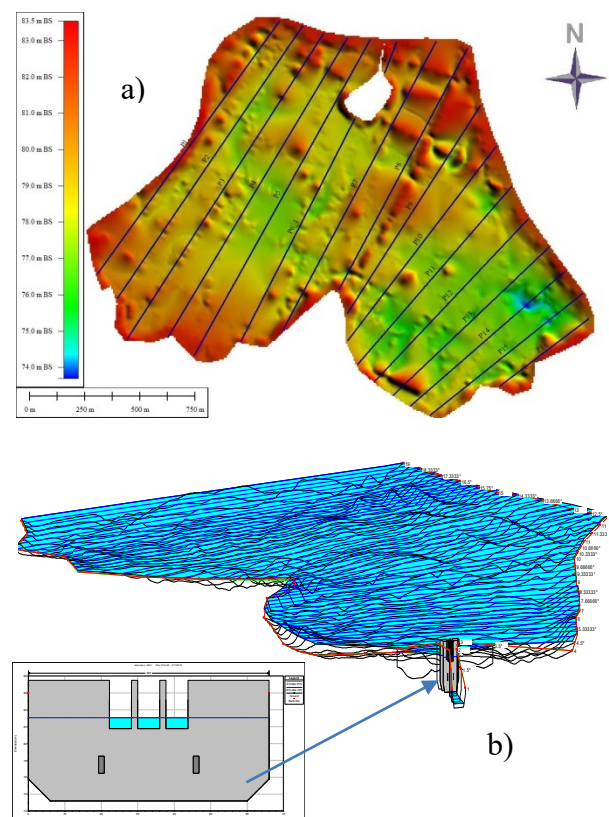


Fig. 7. The geometry of the Morii reservoir and Ciurel dam with 3 flap-gated spillway (and two bottom outlets) used for the hydraulic method; a) DEM of bathymetric survey; b) 3D view.

As one may see from the above mentioned two figures and from Table 2, there is a small difference between the outflow hydrographs' peaks obtained with the two reservoir routing methods (120 m^3/s in absolute values, which corresponds to 4.8% in relative value with respect to peak inflow value). However, there is a larger

difference between the two WSE hydrographs peaks at dam (0.96m in absolute values, i.e. 13.5% in relative value with respect to maximum difference).

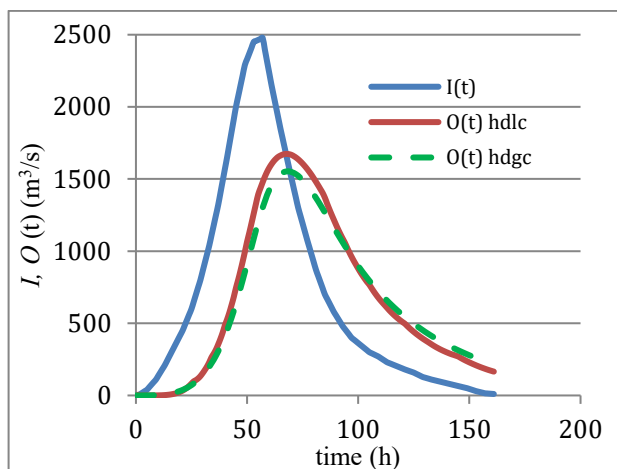


Fig. 8. Izvorul Muntelui reservoir computed outflow through hydrologic and hydraulic routing.

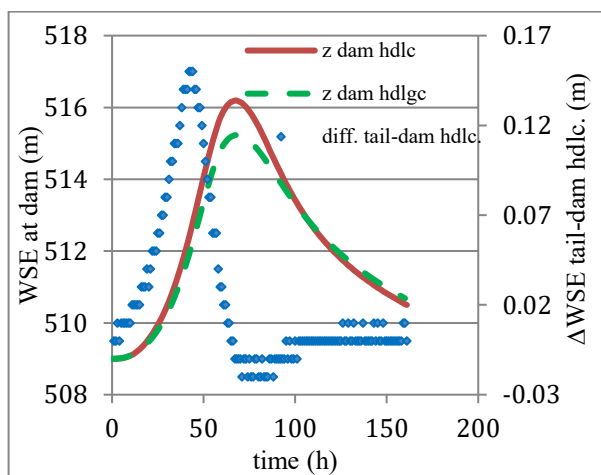


Fig. 9. Izvorul Muntelui reservoir computed stage hydrographs through hydrologic and hydraulic routing; difference between WSE at the reservoir tail and dam through hydraulic routing.

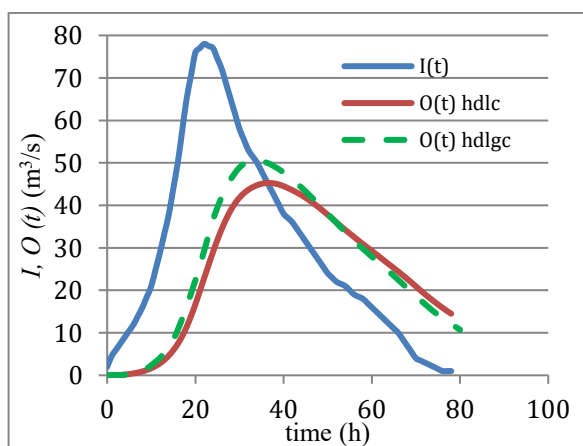


Fig. 10. Morii Reservoir computed outflow through hydrologic and hydraulic routing.

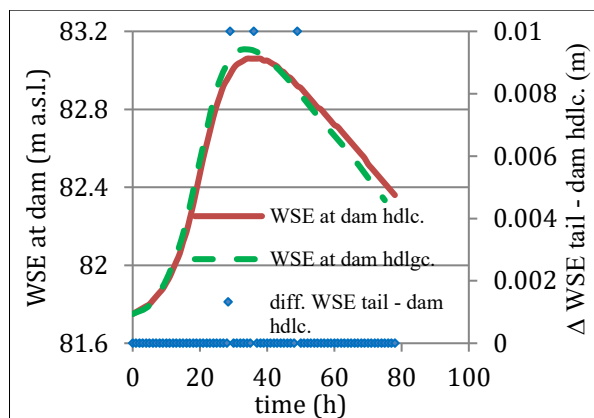


Fig. 11. Morii reservoir computed stage hydrographs through hydrologic and hydraulic routing; difference between WSE at the reservoir tail and dam through hydraulic routing.

Table 2. Computed reservoir routing characteristics

Characteristic	Notation	Measure Unit	Mountain Spring Res.	Morii Res.
Maximum outflow (hdlc.)	$O_{max} \text{ hdlc.}$	m^3/s	1672	45.25
Maximum outflow (hdlg.)	$O_{max} \text{ hdlg.}$	m^3/s	1552	48.91
Reduction flow ratio (hdlc.)	$O_{max} / I_{max} \text{ hdlc.}$	-	0.67	0.58
Reduction flow ratio (hdlg.)	$O_{max} / I_{max} \text{ hdlg.}$	-	0.63	0.63
Peak WSE at dam during Atten. (hdlc.)	$z_{max} \text{ hdlc.}$	m	515.23	83.06
Peak. WSE at dam during Atten. (hdlg.)	$z_{max} \text{ hdlg.}$	m	516.19	83.1
Max. diff. WSE tail - dam reservoir (hdlc.)	$\Delta z_{max} \text{ (tail - dam) hdlc.}$	m	0.15	0
Average diff. WSE tail - dam (hdlg.)	$\Delta z_{avg} \text{ (tail - dam) hdlg.}$	m	0.023	0
Volume difference due to backwater	$\Delta V_{backwater}$	$10^6 m^3$	0.75	0
Time when WSL reaches NPL elev. (hdl.)	$t_{NPL} \text{ hdlc.}$	h	45	
Time when WSL reaches NPL elev. (hdlg.)	$t_{NPL} \text{ hdlg.}$	h	48	

Also, as the hydraulic method considers the backwater effect, there is quite an important difference between the computed WSE at the tail and at the dam with an absolute maximum of 0.15 m and an average value of 0.024 m throughout the routing time. The volume of water associated with this difference is quite big and may be computed by multiplying the average

difference with an average reservoir surface area (at NPL, for example). A total value of 750 000 m³ is obtained.

The differences between the two methods in terms of peak outflow values are of 5 m³/s in absolute values, which translates into 6.4% relative values with respect to peak inflow, whereas the differences in terms of WSE at dam are negligible (of only 3.5 cm in absolute value, i.e. 2.6% relative to maximum difference).

On the other hand, for the Morii Reservoir, whose routing results are shown in figures 10 and 11 and Table 2, the hydraulic method gives practically no difference between the WSE at the dam and at the reservoir tail (since there is no backwater effect).

5 Conclusions

Reservoir routing is a mathematical procedure that routes an inflow flood hydrograph between the tail of the reservoir and the dam outflow structures. The shape of the hydrograph changes by having attenuated peaks and enlarged time bases.

For the present paper the hydrologic (Puls) and hydraulic (1D Saint-Venant) routing methods were applied to test the efficiency of their use for two reservoirs from Romania under similar hydrologic input and same reservoir engineering data and outlet structures conditions: one long and narrow – Izvorul Muntelui reservoir on Bistrita River and one roundly shaped – Morii reservoir on Dambovita River, Bucharest.

A computer program was written in Scilab to perform the simulations of the Puls routing procedure. For the hydraulic routing Hec-RAS software was used to create the geometry of the model and make the simulations under boundary and initial conditions.

Application of the two methods confirm that the hydrologic one is simpler and quicker in terms of mathematical procedure and necessary input data, whereas the hydraulic one is more costly and time-consuming to prepare the geometry of the reservoir and dam outflow structures, based on cross-section profiles and engineering data.

As expected, results show very little difference between the two methods for the Morii reservoir, whereas for the Izvorul Muntelui, the significant backwater effect leads to important differences in computed water surface elevations at dam.

If the backwater effect is not very significant (depending on the time rate of change of flow through the system), the level pool routing method can also be applied with very similar results [8]. All the above findings confirm the conclusions of other researchers [19, 6] that for long and narrow reservoirs the best routing method is hydraulic but is not worthwhile using it for others than these.

For the hydrologic reservoir routing method to accurately predict outflow and stage hydrographs (primarily relying on elevation-storage relationship), care must be taken that the storage-capacity curve must be periodically revised, since it is very sensitive to reservoir siltation. Also, for longer reservoirs, the

elevation-storage curves differ between static and dynamic flow conditions.

To find quantitative criteria to better classify routing methods based on the reservoir shape (such as a critical ratio between the reservoir maximum width over length), studies like this should be extended to include more sites.

References

1. ***, *USDA-NRCS - United States Department of Agriculture, Natural Resources Conservation Service, Part 630 Hydrology, National Engineering Handbook, Ch. 17 Flood Routing* (2014) <https://www.wcc.nrcs.usda.gov/ftpref/wntsc/H&H/N/EHhydrology/ch17.pdf>
2. M. Fiorentini, S. Orlandini, *Adv. Water Resour.*, **59**, 123 (2013) <https://doi.org/10.1016/j.advwatres.2013.05.013>
3. X. Li, B.D. Wang, R. Shi, *J. Hydrol. Eng.*, **14**(2), 197 (2009) [https://doi.org/10.1061/\(ASCE\)1084-0699\(2009\)14:2\(197\)](https://doi.org/10.1061/(ASCE)1084-0699(2009)14:2(197))
4. D.L. Fread, K.S. Hsy, Applicability of two simplified flood routing methods: level-pool and Muskingum-Cunge, in: Shen H.W., Su S.T., Wen F., *ASCE National Hydraulic Engineering Conference*, CA: ASCE, (1993) <http://cedb.asce.org/CEDBsearch/record.jsp?dockey=0084080>
5. B.A. Dendrou, E.N. Houstis, T.S. Papatheodorou, S.A. Dendrou, Department of Computer Science Technical Reports, Purdue e-Pubs, Report no. 78-279 (1978) <https://docs.lib.purdue.edu/cgi/viewcontent.cgi?referer=https://www.google.ro/&httpsredir=1&article=1209&context=cstech>
6. J.D. Fenton, *Hydrolog. Sci. J.*, **37**(3), 233 (2010) <http://johndfenton.com/Papers/Fenton92-Reservoir-routing.pdf>
7. T. Haktanir, H. Ozmen, *Comparison of hydraulic and hydrologic routing on three long reservoirs*, *J. Hydraul. Eng.*, ASCE, **123**(2), 153 (1997) [https://doi.org/10.1061/\(ASCE\)0733-9429\(1997\)123:2\(153\)](https://doi.org/10.1061/(ASCE)0733-9429(1997)123:2(153))
8. V.T. Chow, D.R. Maidment, L.W. Mays, *Applied Hydrology, second ed.* (Mc-Graw Hill Inc., Europe 2013)
9. L.G. Puls, *Flood Regulation of Tennessee River*, In Proceedings of the 70th Congress, 1st Session, House Document No. 185, Part 2, Appendix B, US Govt. Printing Office, Washington, D.C. (1928)
10. T. Strelkoff, USACE, Hydrologic Engineering Center, Research Documents RD-23 (1980) <http://www.hec.usace.army.mil/publications/ResearchDocuments/RD-23.pdf>
11. R.D. Goodrich, *Civil Eng.*, **1**, 417 (1931)
12. ***, *USACE - United States Army Corps of Engineers, Engineering and Design, Flood Runoff Analysis, Manual No. 1110-2-1417* (1994)

- https://www.publications.usace.army.mil/Portals/76/Publications/EngineerManuals/em_1110-2-1417.pdf
13. ***, *USACE - United States Army Corps of Engineers, HEC-RAS, Hydrologic Engineering Centre- River Analysis System, Version 5.05* (2018)
<http://www.hec.usace.army.mil/software/hec-ras/>
 14. C. Goodell, B. Walhin, Dynamic and Level Pool Reservoir drawdown – a Practical Comparison for Dam Breach modeling, *33rd IAHR Congress Proceedings*, Vancouver (2009)
 15. O. Cocoș, *Water management in Bucharest City*, in Romanian (Ars Docendi, București, 2006)
 16. D.M. Cojoc, *Hydrologic analysis of Dâmbovița river in the context of regulated regime*, in Romanian, (Terra Nostra, Iași, 2016)
 17. D.E. Gogoășe Nistoran, A. Dragomirescu, C.S. Ionescu, M. Schiaua, N. Vasiliu, M. Georgescu, *A Procedure to Develop Area– Storage Capacity Curves of Reservoirs from Depth Sounding Surveys*, *IEEE Conf. Publications, 2017 Int. Conf. on Energy and Environment CIEM*, (2017)
<https://ieeexplore.ieee.org/document/8120761>
 18. D.E. Gogoășe Nistoran, D. A. Gheorghe Popovici, B. A. Craia Savin, I. Armaș, GIS for dam-break flooding. Study area: Bicz – Izvorul Muntelui (Romania), in: M. Bostenaru M., C. Crăciun, *Space and time visualizations*, Springer, 253 (2016)
https://link.springer.com/chapter/10.1007%2F978-3-319-24942-1_15
 19. P.B. Bedient, W.C. Huber, B.E. Vieux, *Hydrology and floodplain analysis*, 6th edition (Pearson, 2018)