



# Inhibitory control of hippocampal inhibitory neurons

Simon Chamberland and Lisa Topolnik\*

Axis of Cellular and Molecular Neuroscience, IUSMQ, Department of Biochemistry, Microbiology and Bio-informatics, Université Laval, Québec, QC, Canada

Information processing within neuronal networks is determined by a dynamic partnership between principal neurons and local circuit inhibitory interneurons. The population of GABAergic interneurons is extremely heterogeneous and comprises, in many brain regions, cells with divergent morphological and physiological properties, distinct molecular expression profiles, and highly specialized functions. GABAergic interneurons have been studied extensively during the past two decades, especially in the hippocampus, which is a relatively simple cortical structure. Different types of hippocampal inhibitory interneurons control spike initiation [e.g., axo-axonic and basket cells (BCs)] and synaptic integration (e.g., bistratified and oriens–lacunosum moleculare interneurons) within pyramidal neurons and synchronize local network activity, providing a means for functional segregation of neuronal ensembles and proper routing of hippocampal information. Thus, it is thought that, at least in the hippocampus, GABAergic inhibitory interneurons represent critical regulating elements at all stages of information processing, from synaptic integration and spike generation to large-scale network activity. However, this raises an important question: if inhibitory interneurons are fundamental for network computations, what are the mechanisms that control the activity of the interneurons themselves? Given the essential role of synaptic inhibition in the regulation of neuronal activity, it would be logical to expect that specific inhibitory mechanisms have evolved to control the operation of interneurons. Here, we review the mechanisms of synaptic inhibition of interneurons and discuss their role in the operation of hippocampal inhibitory circuits.

**Keywords:** hippocampus, inhibition, interneuron-specific interneuron, GABA, synapse

## INTRODUCTION

The cerebral cortex is populated by a large diversity of **GABAergic inhibitory neurons**. These cells represent only 10–20% of the total neuronal population; however, they are able to efficiently control the information flow within cortical circuits (DeFelipe, 1993; Somogyi et al., 1998; Markram et al., 2004). A particularly vast heterogeneity of GABAergic cells has been reported in the CA1 hippocampal region

(Klausberger and Somogyi, 2008). The division of labor between different types of CA1 interneurons in sculpting the hippocampal output activity is an area of intensive investigation. Research in this field has been stimulated mainly by the discovery of the tremendous capacity of individual interneuron types to control different domains of glutamatergic principal neurons at precise moments during hippocampal activity that are associated with various brain states

### Edited by:

Enrico Cherubini, International School for Advanced Studies, Italy

### Reviewed by:

Marlene Bartos, University of Freiburg, Germany

Marco Capogna, Medical Research Council, UK

### \*Correspondence:



**Lisa Topolnik** holds a faculty position in Biophotonics at the Department of Biochemistry, Microbiology, and Bioinformatics at Laval University (Québec-city, Canada). She trained at Odessa National University and Bogomoletz Institute of Physiology in Ukraine (Ph.D. in Neurobiology), Laval University (Post-doctoral Fellow) and Université de Montréal (Post-doctoral Fellow). Her laboratory uses a variety of optical and physiological techniques to understand the cellular basis of synaptic communication between inhibitory interneurons and interneuron dendritic integration and plasticity.  
lisa.topolnik@ctrulrg.ulaval.ca

**GABAergic inhibitory neurons**

Non-principal neuron which releases  $\gamma$ -aminobutyric acid (GABA) to inhibit its targets. In the hippocampus, these cells represent both local and projection neurons. At least 21 different types of GABAergic inhibitory cells populate the CA1 area of the hippocampus.

(Sik et al., 1995; Ylinen et al., 1995; Miles et al., 1996; Csicsvari et al., 1999; Klausberger et al., 2003, 2004, 2005; Hajos et al., 2004; Pouille and Scanziani, 2004; Gloveli et al., 2005; Tukker et al., 2007; Fuentealba et al., 2008; Klausberger and Somogyi, 2008). Accordingly, to date, most research has focused on the role of GABAergic interneurons in the coordination of the activity of principal cells. However, glutamatergic pyramidal neurons are not the only postsynaptic target of interneurons. Early anatomical and electrophysiological studies provided evidence that GABAergic cells in the hippocampal formation innervate each other (Misgeld and Frotscher, 1986; Lacaille et al., 1987; Kunkel et al., 1988), suggesting that interneurons themselves are controlled via specific inhibitory mechanisms. This was to be expected, as the proper routing of hippocampal information and functional segregation of neuronal ensembles (Buzsaki and Chrobak, 1995) require strong coordination of the inhibition. Therefore, the inhibitory control of inhibitory interneurons should be of primary importance for circuit operation and information processing.

According to previous reports, the inhibition received by interneurons may arise from four principal sources. First, different types of interneurons can be connected by GABAergic synapses (Lacaille and Schwartzkroin, 1988; Cobb et al., 1997; Vida et al., 1998). Second, it was demonstrated that a subgroup of interneurons, the so-called interneuron-specific (IS) interneurons, specializes in innervating exclusively other GABAergic cells (Acsady et al., 1996; Gulyas et al., 1996). Third, long-range GABAergic projections (e.g., originating from the septum or the entorhinal cortex) are involved in the inhibitory control of hippocampal interneurons (Freund and Antal, 1988; Melzer et al., 2012). Finally, some types of interneurons, such as basket cells (BCs), bistratified cells, and neurogliaform cells are also self-connected via functional autapses (Cobb et al., 1997; Pawelzik et al., 2003; Karayannis et al., 2010). Compared with excitatory inputs onto interneurons, the functional organization of their inhibitory inputs has received far less attention. Here, we consider the mechanisms of synaptic inhibition of hippocampal interneurons and discuss the manner via which their complex interactions may take part in the local and regional coordination of neuronal activity. To begin assembling a connectome of hippocampal inhibitory circuits, we first explore the functional and structural evidence of connectivity between various types of interneurons.

We also review the limited data available on the major differences in the organization of inhibitory synapses targeting principal cells and interneurons. Finally, we consider the important consequences of interneuron inhibition in the working brain and discuss new venues that should guide future work. It is not our intention to discuss the widespread presence and the important role of electrical coupling between interneurons as this topic has been explored in several fine reviews (Cruikshank et al., 2005; Hestrin and Galarreta, 2005; Söhl et al., 2005; Fukuda, 2007).

## LOCAL CONNECTIONS BETWEEN INTERNEURONS

In different brain areas, interneurons belonging to the same class are often connected by GABAergic synapses. For example, combined electrophysiological and anatomical studies in the neocortex have shown that BCs expressing parvalbumin (PV) form a high number of synapses (7–20) onto each other (Tamas et al., 1998; Galarreta and Hestrin, 2002). Further examples of GABAergic connections between interneurons of the same type have been reported in the cerebellum, thalamic reticular nucleus, and retina (Hausser and Clark, 1997; Sanchez-Vives et al., 1997; Wei et al., 2011). Therefore, it appears that connectivity within the same class of interneurons is a basic property of inhibitory microcircuit organization. Nonetheless, several studies have demonstrated the existence of inhibitory connections between distinct types of interneurons. In the visual cortex, BCs can form a few synapses onto double-bouquet and dendrite-targeting GABAergic cells (Tamas et al., 1998). In addition, in the neocortex, fast-spiking (likely PV-expressing) and somatostatin (SOM)-expressing interneurons are interconnected (Gibson et al., 1999; Hu et al., 2011). In the hippocampus, morphological analysis revealed that pyramidal neurons represent the major postsynaptic target of most interneurons, whereas a small fraction of synaptic contacts (5–15%) from interneurons is made onto other GABAergic cells (Sik et al., 1995; Cobb et al., 1997). Below, we analyze the experimental evidence of the existence of connections within morphologically defined classes of interneurons, as well as between different classes. As quantitative neuroanatomical and electrophysiological data from identified interneurons are mostly available for the CA1 hippocampal region, we focus our discussion on this brain area.

### Paired recordings

Electrophysiological recordings from two neurons simultaneously aimed to identify synaptically connected partners. If neurons are connected, generating an action potential (AP) in one cell will evoke a postsynaptic response in the other one.

Combination of paired recordings with biocytin labeling allows anatomical identification of synaptically connected neurons.

### Interneuron-specific (IS) interneurons

GABAergic interneuron that innervates selectively other GABAergic cells. In the hippocampus, three distinct types of IS interneurons have been identified based on the combination of anatomical and molecular features. IS interneurons can express the calcium-binding protein calretinin, the vasoactive intestinal peptide, or a combination of both.

The first direct evidence of synaptic connections between interneurons came from **paired-recording** experiments combined with biocytin labeling and anatomical reconstruction of recorded neurons. In these early experiments, accidental penetration of a postsynaptic interneuron, instead of a principal cell, revealed that BCs can form functional GABAergic synapses onto each other (**Figure 1**) (Cobb et al., 1997). BCs, with their basket-like axonal arborization surrounding the pyramidal cell soma, provide one of the major sources of perisomatic inhibition to pyramidal neurons in the cortex (Ramon y Cajal, 1893). In the CA1 hippocampus, BCs are further subdivided into three distinct subclasses, based on their neurochemical profile. They may express either PV or cholecystokinin (CCK). In addition, BCs that are positive for CCK may coexpress either the vesicular glutamate transporter 3 or the vasoactive intestinal peptide (VIP) (Somogyi and Klausberger, 2005). The axon of the three types of BCs arborizes almost exclusively within the stratum pyramidale (PYR), where it may contact at least 1500 pyramidal cells, but may also form fewer synapses (up to 12) onto interneurons (Buhl et al., 1994; Sik et al., 1995; Cobb et al., 1997). As it can be predicted from the pattern of axon arborization, GABAergic cells located in the vicinity of the PYR may be contacted by BCs. Indeed, a combination of paired recordings and *post-hoc* anatomical reconstruction in acute hippocampal slices showed that, in addition to being connected with each other, BCs form synapses onto trilaminar cells (Ali et al., 1999). Furthermore, PV-positive BCs form synapses onto CCK-positive BCs and *vice versa*, suggesting that the different BC microcircuits are cross-linked (**Figure 1**) (Karson et al., 2009).

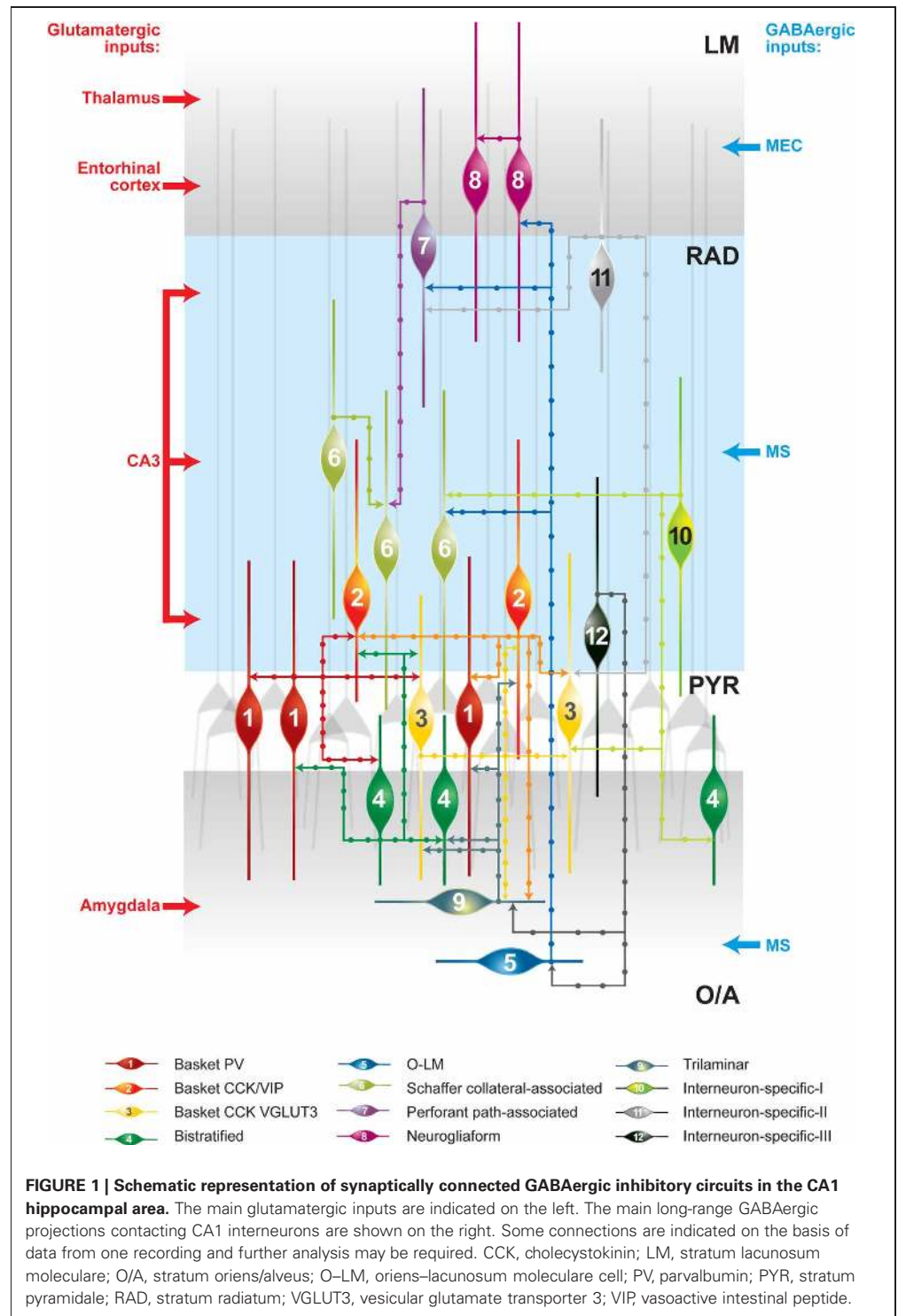
Another example is found in Schaffer collateral-associated cells (SC-ACs), which, in addition to principal cells, target interneurons (Vida et al., 1998; Pawelzik et al., 2002; Ali, 2007, 2011). Interestingly, although the extensive axonal arborization of SC-ACs within the stratum radiatum (RAD) predicts their connectivity with many distinct classes of RAD interneurons, this is not the case, as they contact mainly each other (**Figure 1**) (Pawelzik et al., 2002; Ali, 2007). Furthermore, oriens-lacunosum moleculare cells (O-LMs), which represent a major component of the CA1 feedback inhibitory circuit and provide inhibition to the distal dendrites of pyramidal neurons (Lacaille and Schwartzkroin, 1988), can form synapses onto GABA-positive material within

the LM (Katona et al., 1999). SOM-positive presynaptic terminals in the LM can contact PV-, CCK-, calretinin (CR)-, and VIP-expressing dendrites (Katona et al., 1999), suggesting that O-LMs may innervate different types of interneurons. Electrophysiological recordings combined with *post-hoc* anatomical identification have shown that O-LMs target neurogliaform cells (NGFCs), BCs, SC-ACs, and perforant path-ACs in the LM (**Figure 1**) (Elfant et al., 2008). In turn, NGFCs form synapses onto pyramidal neurons and interneurons (Vida et al., 1998; Olah et al., 2009). The identity of the GABAergic cells that may be targeted by NGFCs remains to be determined. Importantly, these cells are tightly interconnected with each other via chemical and electrical synapses (**Figure 1**) (Price et al., 2005).

Together, these data indicate that, as in the neocortex, hippocampal interneurons of the same, as well as different, classes are likely to form reciprocally connected circuits. As a rule, different subtypes of interneurons targeting the soma and proximal dendrites of pyramidal neurons (e.g., BCs and trilaminar and bistratified cells) form a small fraction of synapses with each other. Similarly, interneurons targeting the distal dendrites of principal neurons (e.g., O-LMs and NGFCs) tend to also control other interneurons that are responsible for distal dendritic inhibition. Finally, the populations of soma- and distal-dendrite-targeting interneurons can be also interconnected. For example, O-LMs make monosynaptic connection with LM BCs (Elfant et al., 2008). Moreover, recent experiments using a combination of optogenetic and pharmacogenetic approaches revealed that a population of SOM-positive interneurons, including O-LMs, can be inhibited by selective activation of PV-expressing cells in slices obtained from PV-Cre mice (Lovett-Barron et al., 2012).

### INTERNEURONS SPECIALIZED TO CONTROL OTHER INTERNEURONS

In addition to being connected with each other, GABAergic cells in the hippocampus may receive synapses from interneurons specialized in the executive control of inhibitory circuits, the so-called **interneuron-specific (IS) interneurons**. First, a combination of immunohistochemistry and anatomical analysis identified three distinct subtypes of IS interneurons in the rat hippocampus (Acsady et al., 1996; Gulyas et al., 1996). Furthermore, the existence of IS cells in the human hippocampus has been confirmed (Urban et al., 2002). Intriguingly, the



hippocampus and the superficial cortical layers (layers 1–3) may be the only cortical regions that possess such a highly specialized population of GABAergic cells (Meskenaite, 1997; Gonchar and Burkhalter, 1999; Melchitzky and Lewis, 2008; Caputi et al., 2009).

**IS INTERNEURONS TYPE I**

Hippocampal IS interneurons type I (IS-Is) have a soma located in the stratum oriens/alveus (O/A), PYR, or RAD and express CR. In addition to innervating other interneurons exclusively, these cells show further preferences, as

they avoid PV-expressing BCs and axo-axonic cells and contact calbindin (CB)- and CR-positive interneurons (**Figure 1**) (Acsady et al., 1996; Gulyas et al., 1996). The prominent feature of IS-Is is the characteristic organization of their dendrites. Morphological analysis revealed that dendrites of different cells come in close apposition with each other to form dendrodendritic junctions. Therefore, in addition to the numerous GABAergic synapses established by these cells onto CR- and CB-positive dendrites, IS-Is are likely to be connected by electrical synapses. As such, clusters of ~15 cells were estimated to be connected by dendrodendritic junctions, suggesting a highly coordinated activity within this population of interneurons.

### IS INTERNEURONS TYPE II

IS interneurons type II (IS-IIIs) have been found at the border between the RAD and the LM. These interneurons express VIP, but lack CR. They have a vertically oriented cell body, dendrites restricted to the LM, and an axon that arborizes in the RAD. It has been shown that the VIPergic projections in the RAD form synapses onto CB- or VIP-positive dendrites, with a preference for CCK/VIP-coexpressing BCs (**Figure 1**) (Acsady et al., 1996).

### IS INTERNEURONS TYPE III

IS interneurons type III (IS-IIIs) are typically located at the PYR and RAD border and has a vertically oriented cell body with dendrites extending into the LM. Their axons form a dense plexus in the O/A (Acsady et al., 1996; Gulyas et al., 1996; Chamberland et al., 2010), where they provide multiple contacts with dendrites of horizontally oriented mGluR1 $\alpha$ -expressing interneurons. IS-IIIs coexpress CR and VIP (Gulyas et al., 1996) and may also express enkephalins and the substance P receptor (Freund and Buzsaki, 1996; Blasco-Ibanez et al., 1998). In addition, IS-IIIs are positive for mGluR1 $\alpha$  (Ferraguti et al., 2004) and their axonal terminals are decorated with mGluR7 (Somogyi et al., 2003). In contrast to IS-Is, IS-IIIs form synapses mainly onto SOM- and mGluR1 $\alpha$ -expressing O-LMs (Baude et al., 1993; Ferraguti et al., 2004; Chamberland et al., 2010), but may also contact other CB-positive interneurons located in the O/A (**Figure 1**). Our recent findings revealed a functional connection between cells corresponding to IS-IIIs and O-LMs (Chamberland et al., 2010). Using a combination of **two-photon glutamate uncaging-based photostimulation** and patch-clamp recordings in slices obtained from

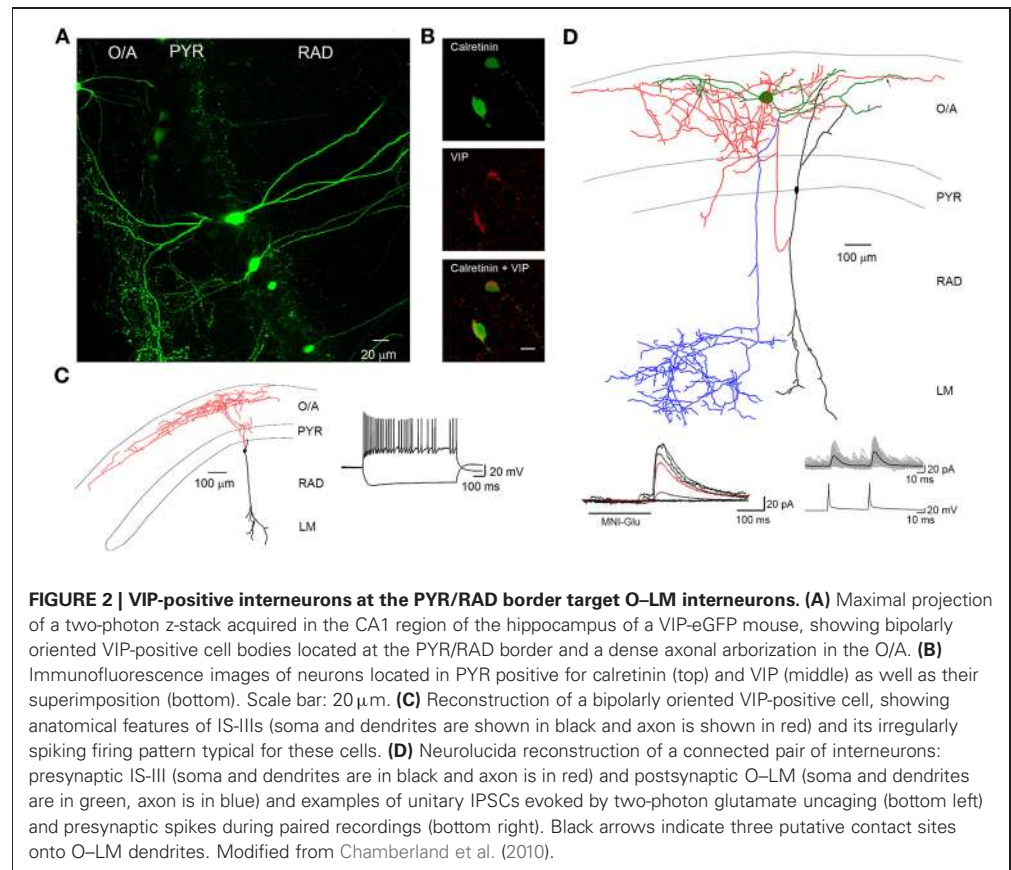
VIP-eGFP mice, we found that the activation of VIP-positive interneurons located at the border between the PYR and the RAD produces small-amplitude and kinetically slow inhibitory postsynaptic currents (IPSCs) in O-LMs. After the uncaging experiments, VIP-positive interneurons connected to O-LMs were patched and filled with biocytin. Further electrophysiological, anatomical, and neurochemical analyses revealed that putative IS-IIIs exhibit a high input resistance and an irregularly spiking firing pattern, establish several synaptic contacts onto dendrites of O-LMs, and coexpress CR (**Figure 2**) (Chamberland et al., 2010).

In summary, IS interneurons represent a unique population of inhibitory cells, which, via executive control of other interneurons, may provide a higher level of coordination of hippocampal network activity. This is in contrast to neocortical CR-positive interneurons, which preferentially innervate other interneurons, but also contact principal cells. Interestingly, CR-positive interneurons in the neocortex and the hippocampus have a common origin within the caudal ganglionic eminence (Xu et al., 2004; Tricoire et al., 2011); however, as they are integrated in different circuits, these cells may choose different communication partners. The circuit-guiding mechanisms that are responsible for the integration of distinct types of interneurons and their target selectivity remain to be determined.

### LONG-RANGE GABAergic PROJECTIONS

In addition to the local circuit inhibitory connections, the activity of hippocampal interneurons can be controlled by extrinsic GABAergic projections: one arising from the medial septum (MS) (Freund and Antal, 1988) and the other from the medial entorhinal cortex (MEC) (Germroth et al., 1989a,b). First, anterograde labeling together with immunohistochemistry showed that septohippocampal GABAergic projections originating from PV-positive interneurons located in the MS innervate the perisomatic region of various types of hippocampal interneurons (Freund and Antal, 1988). As a result, activation of septal GABAergic afferents produced a silencing of interneurons and was associated with disinhibition in pyramidal cells (Toth et al., 1997). Remarkably, two distinct populations of MS interneurons have been identified: fast-firing and burst-firing cells (Jones et al., 1999; Morris et al., 1999; Knapp et al., 2000; Sotty et al., 2003; Simon et al., 2006; Manseau et al., 2008). A subset of these cells express hyperpolarization-activated

**Two-photon glutamate uncaging-based photostimulation**  
Optophysiological mapping of synaptically connected neurons with single-cell resolution. Highly-localized excitation of putative presynaptic neurons is achieved by two-photon uncaging of caged glutamate. When combined with electrophysiological recording, this method allows a fast examination of multiple connections to a given neuron.



and cyclic-nucleotide-gated non-selective cation channels and exhibit  $I_h$  and rebound spiking in response to rhythmic inhibition (Sotty et al., 2003; Borhegyi et al., 2004; Manseau et al., 2008). Furthermore, MS interneurons show a different phase preference during hippocampal theta activity *in vivo* and may target different types of hippocampal interneurons (Dragoi et al., 1999; Borhegyi et al., 2004). In particular, cells that are active at the positive peak of the theta oscillation control dendritic inhibition of CA1 pyramidal cells (e.g., O-LMs) (Borhegyi et al., 2004). Recently, we found that the MS inhibitory input is able to provide large-amplitude sustained perisomatic inhibition to O-LMs during theta-like activity and, therefore, is ideally suited for suppressing O-LM activity at the positive peak of the theta wave (Chamberland et al., 2010).

Second, a bidirectional GABAergic connection between the MEC and the hippocampus has been identified (Germroth et al., 1989a,b; Melzer et al., 2012). In particular, a combination of electrophysiological and optogenetic approaches revealed that a MEC GABAergic projection originating primarily from PV-positive cells can preferentially target

interneurons located in the LM (Melzer et al., 2012). This is in contrast to the widespread arborization of septal GABAergic projections in the CA1 region (Freund and Antal, 1988). The preferential innervation of interneurons in the LM supports a specific role for the GABAergic MEC input in controlling the feedforward inhibition that operates in conjunction with the perforant pathway and is necessary for the coordination of activity across different cortical structures.

In summary, hippocampal interneurons receive GABAergic inputs from three main sources: non-specific local inhibitory connections, IS interneurons, and long-range inhibitory projections. Some inhibitory microcircuits, which represent a single class of interconnected interneurons, can be considered as relatively autonomous. For example, dentate gyrus PV-positive BCs are connected in a tight network that is sufficient for generating oscillations in the gamma range (Bartos et al., 2001, 2002). Other inhibitory microcircuits (e.g., composed of CCK-positive BCs or O-LMs) may require a higher level of control via selective activation of IS cells. Finally, the activity of hippocampal inhibitory circuits is

tuned via long-range GABAergic projections, providing a means for the tight coordination of activity between connected brain structures.

### PROPERTIES OF INHIBITORY SYNAPSES ONTO INTERNEURONS

Although the same basic mechanisms of GABA<sub>A</sub> receptor activation operate in principal cells and interneurons, input- and target-cell specificities of synaptic inhibition have been reported. The inhibitory postsynaptic responses recorded in interneurons can be significantly faster than those recorded in principal cells (Ali et al., 1999; Bartos et al., 2001; Patenaude et al., 2005; Ali and Todorova, 2010). For example, paired recordings showed that IPSCs recorded at dentate gyrus BC–BC synapses were twofold faster than those recorded at BC–granule cell synapses (Bartos et al., 2001). Similarly, evoked IPSCs recorded in the hippocampal RAD interneurons were consistently faster than those in pyramidal cells (Patenaude et al., 2005). Furthermore, paired recordings between SC-ACs and their targets showed that inhibitory postsynaptic potentials recorded in SC-ACs were faster than those in pyramidal cells (Ali and Todorova, 2010). Conversely, spontaneous IPSCs recorded in different subclasses of O/A interneurons decayed more slowly than those in principal cells (Hajos and Mody, 1997). Together, these findings indicate that inhibitory synapses formed onto interneurons may exhibit cell-type-specific properties. What mechanisms can account for such differences in the properties of synaptic inhibition?

First, different location of various inhibitory synapses along the dendritic tree and associated electrotonic attenuation can explain kinetic variations of inhibitory currents in different targets. In fact, even in a given interneuron the rise time and decay of inhibitory currents can vary over 10-fold as a result of dendritic filtering (Hajos and Mody, 1997). In addition, the kinetics of the inhibitory current associated with the opening of the GABA<sub>A</sub> receptor channel is determined by the subunit composition of the receptor. For example, the presence of the  $\alpha 1$  or  $\alpha 6$  GABA<sub>A</sub> receptor subunits is associated with a faster current (Tia et al., 1996; Dunning et al., 1999; Okada et al., 2000; Bosman et al., 2005). In contrast, the presence of the  $\alpha 5$  subunit is responsible for the generation of a slower current (Caraiscos et al., 2004; Ali and Thomson, 2008; Salesse et al., 2011). In the hippocampus, the expression of five  $\alpha$  subunits ( $\alpha 1$ – $5$ ) and  $\beta 1$ ,  $\beta 3$ ,  $\gamma 2$ , and  $\delta$  subunits has been reported (Sperk et al., 1997).

Interestingly, hippocampal interneurons were shown to express a wide spectrum of GABA<sub>A</sub> receptor subunits, supporting the heterogeneity of the properties of their inhibitory synapses (Gao and Fritschy, 1994; Nusser et al., 1995; Patenaude et al., 2001). Accordingly, immunohistochemical analysis revealed that, in contrast to pyramidal cells, which coexpress the  $\alpha 1$ ,  $\alpha 2$ , and  $\alpha 5$  subunits (the  $\alpha 5$  subunit being expressed extrasynaptically), some interneurons express preferentially the  $\alpha 1$  GABA<sub>A</sub> receptor subunit at their synapses, which may account for the faster IPSC kinetics observed in these cells (Gao and Fritschy, 1994; Fritschy and Mohler, 1995; Nusser et al., 1996; Bartos et al., 2001, 2002; Ali and Todorova, 2010). In other subclasses of interneurons (e.g., O–LMs), the  $\alpha 5$  GABA<sub>A</sub> receptor subunit can be incorporated into synapses later during development and is responsible for the age-dependent slowing of IPSCs (Salesse et al., 2011). Furthermore, significant kinetic fluctuations have been observed in interneurons expressing a single type of the GABA<sub>A</sub> receptor (Nusser et al., 2001). In this case, a significant variability in IPSC decay was associated with the spatiotemporal profile of fluctuations in GABA concentration in the synaptic cleft. In particular, changes in the concentration peak and the speed of GABA clearance have been reported as an important source of synaptic variability (Barberis et al., 2004). For example, the NGFCs provide unusually slow inhibition to their postsynaptic targets due to a specific spatiotemporal profile of GABA near the activated synapses (Karayannis et al., 2010). In addition, NGFCs provide a significantly slower inhibition to CA1 pyramidal cells than to interneurons (Price et al., 2005, 2008) probably as a result of stronger dendritic filtering in principal neurons. Input-specific differences in GABA release have been also reported in different subclasses of hippocampal interneurons (Daw et al., 2009; Chamberland et al., 2010). Anatomical data indicate that septal GABAergic terminals have a larger volume and synapse surface area with a larger number of vesicles than do terminals formed by local GABAergic projections. Furthermore, septal terminals contact their postsynaptic targets via multiple release sites (Eyre et al., 2007). Consistent with these data, we found a sustained reliable transmission during repetitive activity at septohippocampal GABAergic synapses formed onto O–LMs (Chamberland et al., 2010). Finally, cell-type-specific differences in the intracellular chloride concentration can also account for the differences in the amplitude and kinetics of

GABAergic currents (Houston et al., 2009). Accordingly, a more depolarized chloride reversal potential was found in CA1 RAD interneurons ( $-61.3$  mV) compared with CA1 pyramidal cells ( $-66.7$  mV) (Patenaude et al., 2005). Moreover, whereas hippocampal circuit maturation is associated with a shift in the chloride reversal potential and, accordingly, the GABA effect in pyramidal neurons, the chloride reversal potential remains unchanged during the maturation of stratum lucidum interneurons and dentate gyrus BCs (Cherubini et al., 1990; Banke and McBain, 2006; Sauer et al., 2012).

Together, these findings highlight the input- and target-specific organization of synaptic inhibition in hippocampal interneurons. In particular, the properties and spatiotemporal profile of transmitter release, the composition of the GABA<sub>A</sub> receptor, the dendritic filtering and the intracellular chloride concentration shape the dynamics of transmission at different inhibitory synapses. The mechanisms of synaptic inhibition in interneurons and, in particular, the great diversity of the properties of inhibitory synapses within and between different inhibitory circuits remain to be explored.

### LONG-TERM PLASTICITY AT INHIBITORY SYNAPSES ONTO INTERNEURONS

The efficacy of GABAergic synapses can be regulated in an activity-dependent manner (Stelzer et al., 1987; Grunze et al., 1996; Nusser et al., 1998; Chevaleyre and Castillo, 2003; Nugent et al., 2007; Xu et al., 2008). Some forms of plasticity found at GABAergic synapses onto pyramidal cells are also present in interneurons. For example, the endocannabinoid-dependent long-term depression (LTD) described at inhibitory synapses onto pyramidal cells also occurs in interneurons (Chevaleyre and Castillo, 2003; Ali, 2007, 2011; Ali and Todorova, 2010). In other cases, the mechanisms of plasticity at GABAergic synapses made onto interneurons can differ significantly from those formed onto principal cells. For example, theta-burst synaptic stimulation induces the long-term potentiation (LTP) of IPSCs in both RAD interneurons and CA1 pyramidal cells, but is regulated via different induction mechanisms. In pyramidal cells, LTP is mediated by the activation of both GABA<sub>B</sub> receptors and group I/II metabotropic glutamate receptors (Patenaude et al., 2003). In interneurons, the induction of LTP does not require GABA<sub>B</sub> receptors or group I/II metabotropic glutamate receptors. Furthermore, high-frequency stimulation or postsynaptic depolarization alone produces a

short-term depression of IPSCs in principal cells, but not in interneurons (Patenaude et al., 2005). In RAD interneurons, postsynaptic firing at theta frequency is associated with the LTP of IPSCs, which is induced postsynaptically but expressed presynaptically (Evstratova et al., 2011). Although the retrograde messenger required for this LTP induction is unknown, it may involve nitric oxide, which is present in several subclasses of RAD interneurons (Jinno and Kosaka, 2002; Nugent et al., 2007).

These findings highlight the similarities and major differences between specific forms of plasticity at GABAergic synapses formed onto different targets. Such heterogeneity in plasticity mechanisms may result from the cellular and molecular heterogeneity of interneurons and the distinct types of inhibitory inputs that contact these cells. Obviously, understanding these mechanisms will require careful examination of synapses formed by specific inhibitory projections onto the same GABAergic target. To this end, recent data from our laboratory demonstrate the selective strengthening of GABAergic synapses formed by different inputs onto O-LM interneurons (Chamberland et al., 2010; Salesse et al., 2011). Whole-cell and perforated patch-clamp recordings from O-LMs identified in slices from young mice ( $15 < P < 25$ ) revealed that a 10 Hz stimulation induced postsynaptic LTP of IPSCs at septal synapses, but not at those formed by local GABAergic projections. Interestingly, in slices obtained from mature animals ( $26 < P < 40$ ), GABAergic synapses formed onto O-LMs by local projections exhibited LTP. The expression of the latter form of LTP correlated well with the synaptic incorporation of the  $\alpha 5$ -GABA<sub>A</sub> receptor subunit and LTP was blocked by an  $\alpha 5$ -GABA<sub>A</sub> receptor subunit inverse agonist, highlighting the primary role of this subunit in LTP at local synapses.

### CONCLUSION AND FUTURE DIRECTIONS

There is growing evidence that the activity of hippocampal inhibitory circuits is tightly regulated by multiple inhibitory mechanisms. First, distinct classes of interneurons are reciprocally interconnected and form closely interacting networks. As proposed by Buzsáki (1997), such networks of inhibitory interneurons impose coordinated oscillatory “contexts” for the “content” carried by the networks of principal cells. Therefore, interneuron interconnectivity has been considered to be a fundamental mechanism in maintaining network oscillations at different frequencies: from relatively slow theta to gamma and higher-frequency ripple



oscillations (Bragin et al., 1995; Cobb et al., 1995; Whittington et al., 1995; Traub et al., 1996; Wang and Buzsaki, 1996; Bartos et al., 2001, 2002; Traub et al., 2001). The properties of connections between interneurons, in particular synaptic strength and kinetics, the presence of electrical coupling and spacing between connected interneurons appear to play a major role in the frequency and coherence of network oscillations (Whittington et al., 1995; Traub et al., 1996; Bartos et al., 2002). In addition, the presence of autaptic connections in some interneurons (e.g., PV-positive BCs) increases the spike fidelity in these cells to ensure their temporally precise firing (Bacci and Huguenard, 2006). As a result, fast inhibitory circuits of tightly coupled PV-positive BCs promote synchronized gamma oscillations (Bartos et al., 2001, 2002), whereas slower inhibitory circuits that link O-LMs and LM interneurons have been associated with the generation of theta-frequency outputs (Maccaferri and McBain, 1996; Traub et al., 1998; Chapman and Lacaille, 1999). It is to be noted that depending on the expression of the  $K^+/Cl^-$  cotransporter KCC2, the effect of GABA can be depolarizing (Rivera et al., 1999). However, the presence of shunting and depolarizing GABA currents is likely to improve the overall coherence of the interneuronal network by accelerating weakly activated interneurons and decelerating the strongly activated ones (Vida et al., 2006). This will support the generation of fast coherent oscillations even in the absence of strong tonic drive to the interneuronal network (Mann and Paulsen, 2006). Therefore, specific inhibitory mechanisms connecting interneuron nets are built to support their oscillatory behavior. Furthermore, the hippocampus is populated by a large variety of classes of interneurons, with synaptic connections formed within a class as well as between classes. It will now be crucial to examine how these different levels of inhibitory communication are engaged in the intact animal during behavior. Addressing this question will require a set of innovative techniques that combine electrophysiological recordings and labeling of interneurons in freely moving animals. Recent data show that specific classes of hippocampal interneurons can be recorded and labeled in freely moving rats (Lapray et al., 2012), suggesting that the contribution of the various interconnected inhibitory circuits to network activity during behavior will soon be discovered.

Why does a dedicated population of interneurons specialized in the exclusive innervation of other GABAergic cells exist? First, it

appears that IS interneurons are highly selective in choosing their targets, suggesting that not all classes of hippocampal interneurons are controlled by IS cells. Interestingly, both IS-Is and IS-IIs prefer to contact CCK-positive BCs, whereas IS-IIIs prefer O-LMs. The reasons underlying such preferences remain to be determined. It is important to note, however, that IS-IIIs are strategically positioned to detect the changes in network activity that are transmitted by the perforant path and, therefore, to adjust the strength of inhibition exerted by the O-LMs on perforant path integration. As O-LMs are not contacted by the perforant path, such an indirect mechanism of regulation of their activity seems functionally plausible. Unfortunately, very little is currently known about the physiological organization of IS interneurons. Thus, even though IS-IIIs exhibit extensively branching dendrites in the LM and are likely to be recruited via activation of the perforant path, this hypothesis has not been tested directly. Therefore, from the functional point of view, IS interneurons may be positioned to control selective inhibitory circuits. Second, IS cells may sense and communicate specific changes in network activity and the environment depending on the brain state. For example, the coexpression of enkephalins (Blasco-Ibanez et al., 1998), 5-HT-3 (Jakab and Goldman-Rakic, 1996; Morales et al., 1996), D1/D2 (Gangarossa et al., 2012), and substance P receptors (Freund and Buzsaki, 1996) in IS interneurons indicates that these cells may detect specific intrinsic and extrinsic influences to control the balance of hippocampal inhibition.

Finally, given that the strength and time course of inhibitory transmission serve to control the recruitment and synchronization of interneurons during network activity, a better understanding of the properties of synaptic transmission between individual inhibitory circuit elements is required. The efficiency of the communication between inhibitory circuits given a relatively sparse connection pattern, the manner via which it may change during different forms of activity, and the manner via which the balance between excitatory and inhibitory inputs is achieved to provide coordinated interneuron activity remain largely unknown. The view that coordinated inhibition is required for the proper routing of excitatory trajectories and for the spatiotemporal organization of hippocampal cell assemblies should inspire further research on the targeting of interconnected inhibitory circuits.

## ACKNOWLEDGMENTS

We thank Dimitry Topolnik for help with figure preparation. This work was supported by the Canadian Institute of Health Research, the Natural Sciences and Engineering

Research Council of Canada and the Savoy Foundation. Simon Chamberland was supported by a PhD fellowship from the Natural Sciences and Engineering Research Council of Canada.

## REFERENCES

- Acsady, L., Arabadzisz, D., and Freund, T. F. (1996). Correlated morphological and neurochemical features identify different subsets of vasoactive intestinal polypeptide-immunoreactive interneurons in rat hippocampus. *Neuroscience* 73, 299–315.
- Acsady, L., Gorcs, T. J., and Freund, T. F. (1996). Different populations of vasoactive intestinal polypeptide-immunoreactive interneurons are specialized to control pyramidal cells or interneurons in the hippocampus. *Neuroscience* 73, 317–334.
- Ali, A. B. (2007). Presynaptic Inhibition of GABAA receptor-mediated unitary IPSPs by cannabinoid receptors at synapses between CCK-positive interneurons in rat hippocampus. *J. Neurophysiol.* 98, 861–869.
- Ali, A. B. (2011). CB1 modulation of temporally distinct synaptic facilitation among local circuit interneurons mediated by N-type calcium channels in CA1. *J. Neurophysiol.* 105, 1051–1062.
- Ali, A. B., Bannister, A. P., and Thomson, A. M. (1999). IPSPs elicited in CA1 pyramidal cells by putative basket cells in slices of adult rat hippocampus. *Eur. J. Neurosci.* 11, 1741–1753.
- Ali, A. B., and Thomson, A. M. (2008). Synaptic alpha 5 subunit-containing GABAA receptors mediate IPSPs elicited by dendrite-preferring cells in rat neocortex. *Cereb. Cortex* 18, 1260–1271.
- Ali, A. B., and Todorova, M. (2010). Asynchronous release of GABA via tonic cannabinoid receptor activation at identified interneuron synapses in rat CA1. *Eur. J. Neurosci.* 31, 1196–1207.
- Bacci, A., and Huguenard, J. R. (2006). Enhancement of spike-timing precision by autaptic transmission in neocortical inhibitory interneurons. *Neuron* 49, 119–130.
- Banke, T. G., and McBain, C. J. (2006). GABAergic input onto CA3 hippocampal interneurons remains shunting throughout development. *J. Neurosci.* 26, 11720–11725.
- Barberis, A., Petrini, E. M., and Cherubini, E. (2004). Presynaptic source of quantal size variability at GABAergic synapses in rat hippocampal neurons in culture. *Eur. J. Neurosci.* 20, 1803–1810.
- Bartos, M., Vida, I., Frotscher, M., Geiger, J. R., and Jonas, P. (2001). Rapid signaling at inhibitory synapses in a dentate gyrus interneuron network. *J. Neurosci.* 21, 2687–2698.
- Bartos, M., Vida, I., Frotscher, M., Meyer, A., Monyer, H., Geiger, J. R., et al. (2002). Fast synaptic inhibition promotes synchronized gamma oscillations in hippocampal interneuron networks. *Proc. Natl. Acad. Sci. U.S.A.* 99, 13222–13227.
- Baude, A., Nusser, Z., Roberts, J. D., Mulvihill, E., McIlhinney, R. A., and Somogyi, P. (1993). The metabotropic glutamate receptor (mGluR1 alpha) is concentrated at perisynaptic membrane of neuronal subpopulations as detected by immunogold reaction. *Neuron* 11, 771–787.
- Blasco-Ibanez, J. M., Martinez-Guijarro, F. J., and Freund, T. F. (1998). Enkephalin-containing interneurons are specialized to innervate other interneurons in the hippocampal CA1 region of the rat and guinea-pig. *Eur. J. Neurosci.* 10, 1784–1795.
- Borhegyi, Z., Varga, V., Szilagyi, N., Fabo, D., and Freund, T. F. (2004). Phase segregation of medial septal GABAergic neurons during hippocampal theta activity. *J. Neurosci.* 24, 8470–8479.
- Bosman, L. W., Heinen, K., Spijker, S., and Brussaard, A. B. (2005). Mice lacking the major adult GABAA receptor subtype have normal number of synapses, but retain juvenile IPSC kinetics until adulthood. *J. Neurophysiol.* 94, 338–346.
- Bragin, A., Jando, G., Nadasy, Z., Hetke, J., Wise, K., and Buzsaki, G. (1995). Gamma (40–100 Hz) oscillation in the hippocampus of the behaving rat. *J. Neurosci.* 15, 47–60.
- Buhl, E. H., Halasy, K., and Somogyi, P. (1994). Diverse sources of hippocampal unitary inhibitory postsynaptic potentials and the number of synaptic release sites. *Nature* 368, 823–828.
- Buzsaki, G. (1997). Functions for interneuronal nets in the hippocampus. *Can. J. Physiol. Pharmacol.* 75, 508–515.
- Buzsaki, G., and Chrobak, J. J. (1995). Temporal structure in spatially organized neuronal ensembles: a role for interneuronal networks. *Curr. Opin. Neurobiol.* 5, 504–510.
- Caputi, A., Rozov, A., Blatow, M., and Monyer, H. (2009). Two calretinin-positive GABAergic cell types in layer 2/3 of the mouse neocortex provide different forms of inhibition. *Cereb. Cortex* 19, 1345–1359.
- Caraiscos, V. B., Elliott, E. M., Youten, K. E., Cheng, V. Y., Belelli, D., Newell, J. G., et al. (2004). Tonic inhibition in mouse hippocampal CA1 pyramidal neurons is mediated by alpha5 subunit-containing gamma-aminobutyric acid type A receptors. *Proc. Natl. Acad. Sci. U.S.A.* 101, 3662–3667.
- Chamberland, S., Salesse, C., Topolnik, D., and Topolnik, L. (2010). Synapse-specific inhibitory control of hippocampal feedback inhibitory circuit. *Front. Cell. Neurosci.* 4:130. doi: 10.3389/fncel.2010.00130
- Chapman, C. A., and Lacaille, J. C. (1999). Intrinsic theta-frequency membrane potential oscillations in hippocampal CA1 interneurons of stratum lacunosum-moleculare. *J. Neurophysiol.* 81, 1296–1307.
- Cherubini, E., Rovira, C., Gaiarsa, J. L., Corradetti, R., and Ben Ari, Y. (1990). GABA mediated excitation in immature rat CA3 hippocampal neurons. *Int. J. Dev. Neurosci.* 8, 481–490.
- Chevalyere, V., and Castillo, P. E. (2003). Heterosynaptic LTD of hippocampal GABAergic synapses: a novel role of endocannabinoids in regulating excitability. *Neuron* 38, 461–472.
- Cobb, S. R., Buhl, E. H., Halasy, K., Paulsen, O., and Somogyi, P. (1995). Synchronization of neuronal activity in hippocampus by individual GABAergic interneurons. *Nature* 378, 75–78.
- Cobb, S. R., Halasy, K., Vida, I., Nyiri, G., Tamas, G., Buhl, E. H., et al. (1997). Synaptic effects of identified interneurons innervating both interneurons and pyramidal cells in the rat hippocampus. *Neuroscience* 79, 629–648.
- Cruikshank, S. J., Landisman, C. E., Mancilla, J. G., and Connors, B. W. (2005). Connexon connexions in the thalamocortical system. *Prog. Brain Res.* 149, 41–57.
- Csicsvari, J., Hirase, H., Czurko, A., Mamiya, A., and Buzsaki, G. (1999). Oscillatory coupling of hippocampal pyramidal cells and interneurons in the behaving rat. *J. Neurosci.* 19, 274–287.
- Daw, M. I., Tricoire, L., Erdelyi, F., Szabo, G., and McBain, C. J. (2009). Asynchronous transmitter release from cholecystokinin-containing inhibitory interneurons is widespread and target-cell independent. *J. Neurosci.* 29, 11112–11122.
- DeFelipe, J. (1993). Neocortical neuronal diversity: chemical heterogeneity revealed by colocalization studies of classic neurotransmitters, neuropeptides, calcium-binding proteins, and cell surface molecules. *Cereb. Cortex* 3, 273–289.
- Dragoi, G., Carpi, D., Recce, M., Csicsvari, J., and Buzsaki, G. (1999). Interactions between hippocampus and medial septum during sharp waves and theta oscillation in the behaving rat. *J. Neurosci.* 19, 6191–6199.
- Dunning, D. D., Hoover, C. L., Soltesz, I., Smith, M. A., and O'Dowd, D. K. (1999). GABA(A) receptor-mediated miniature postsynaptic currents and alpha-subunit expression in developing cortical neurons. *J. Neurophysiol.* 82, 3286–3297.
- Elfant, D., Pal, B. Z., Emptage, N., and Capogna, M. (2008). Specific inhibitory synapses shift the balance from feedforward to feedback inhibition of hippocampal CA1 pyramidal cells. *Eur. J. Neurosci.* 27, 104–113.
- Evstratova, A., Chamberland, S., and Topolnik, L. (2011). Cell type-specific and activity-dependent dynamics of action potential-evoked Ca<sup>2+</sup> signals in dendrites of hippocampal inhibitory interneurons. *J. Physiol.* 589, 1957–1977.
- Eyre, M. D., Freund, T. F., and Gulyas, A. I. (2007). Quantitative ultrastructural differences between local and medial septal GABAergic axon terminals in the rat hippocampus. *Neuroscience* 149, 537–548.
- Ferraguti, F., Cobden, P., Pollard, M., Cope, D., Shigemoto, R.,

- Watanabe, M., et al. (2004). Immunolocalization of metabotropic glutamate receptor 1alpha (mGluR1alpha) in distinct classes of interneuron in the CA1 region of the rat hippocampus. *Hippocampus* 14, 193–215.
- Freund, T. F., and Antal, M. (1988). GABA-containing neurons in the septum control inhibitory interneurons in the hippocampus. *Nature* 336, 170–173.
- Freund, T. F., and Buzsaki, G. (1996). Interneurons of the hippocampus. *Hippocampus* 6, 347–470.
- Fritschy, J. M., and Mohler, H. (1995). GABAA-receptor heterogeneity in the adult rat brain: differential regional and cellular distribution of seven major subunits. *J. Comp. Neurol.* 359, 154–194.
- Fuentealba, P., Begum, R., Capogna, M., Jinno, S., Marton, L. F., Csicsvari, J., et al. (2008). Ivy cells: a population of nitric-oxide-producing, slow-spiking GABAergic neurons and their involvement in hippocampal network activity. *Neuron* 57, 917–929.
- Fukuda, T. (2007). Structural organization of the gap junction network in the cerebral cortex. *Neuroscientist* 13, 199–207.
- Galarreta, M., and Hestrin, S. (2002). Electrical and chemical synapses among parvalbumin fast-spiking GABAergic interneurons in adult mouse neocortex. *Proc. Natl. Acad. Sci. U.S.A.* 99, 12438–12443.
- Gangarossa, G., Longueville, S., De Bundel, D., Perroy, J., Herve, D., Girault, J. A., et al. (2012). Characterization of dopamine D1 and D2 receptor-expressing neurons in the mouse hippocampus. *Hippocampus*. doi: 10.1002/hipo.22044. [Epub ahead of print].
- Gao, B., and Fritschy, J. M. (1994). Selective allocation of GABAA receptors containing the alpha 1 subunit to neurochemically distinct subpopulations of rat hippocampal interneurons. *Eur. J. Neurosci.* 6, 837–853.
- Germroth, P., Schwertfeger, W. K., and Buhl, E. H. (1989a). GABAergic neurons in the entorhinal cortex project to the hippocampus. *Brain Res.* 494, 187–192.
- Germroth, P., Schwertfeger, W. K., and Buhl, E. H. (1989b). Morphology of identified entorhinal neurons projecting to the hippocampus. A light microscopic study combining retrograde tracing and intracellular injection. *Neuroscience* 30, 683–691.
- Gibson, J. R., Beierlein, M., and Connors, B. W. (1999). Two networks of electrically coupled inhibitory neurons in neocortex. *Nature* 402, 75–79.
- Gloveli, T., Dugladze, T., Saha, S., Monyer, H., Heinemann, U., Traub, R. D., et al. (2005). Differential involvement of oriens/pyramidal interneurons in hippocampal network oscillations *in vitro*. *J. Physiol.* 562, 131–147.
- Gonchar, Y., and Burkhalter, A. (1999). Connectivity of GABAergic calretinin-immunoreactive neurons in rat primary visual cortex. *Cereb. Cortex* 9, 683–696.
- Grunze, H. C., Rainnie, D. G., Hasselmo, M. E., Barkai, E., Hearn, E. F., McCarley, R. W., et al. (1996). NMDA-dependent modulation of CA1 local circuit inhibition. *J. Neurosci.* 16, 2034–2043.
- Gulyas, A. I., Hajos, N., and Freund, T. F. (1996). Interneurons containing calretinin are specialized to control other interneurons in the rat hippocampus. *J. Neurosci.* 16, 3397–3411.
- Hajos, N., and Mody, I. (1997). Synaptic communication among hippocampal interneurons: properties of spontaneous IPSCs in morphologically identified cells. *J. Neurosci.* 17, 8427–8442.
- Hajos, N., Palhalmi, J., Mann, E. O., Nemeth, B., Paulsen, O., and Freund, T. F. (2004). Spike timing of distinct types of GABAergic interneuron during hippocampal gamma oscillations *in vitro*. *J. Neurosci.* 24, 9127–9137.
- Hausser, M., and Clark, B. A. (1997). Tonic synaptic inhibition modulates neuronal output pattern and spatiotemporal synaptic integration. *Neuron* 19, 665–678.
- Hestrin, S., and Galarreta, M. (2005). Electrical synapses define networks of neocortical GABAergic neurons. *Trends Neurosci.* 28, 304–309.
- Houston, C. M., Bright, D. P., Sivilotti, L. G., Beato, M., and Smart, T. G. (2009). Intracellular chloride ions regulate the time course of GABA-mediated inhibitory synaptic transmission. *J. Neurosci.* 29, 10416–10423.
- Hu, H., Ma, Y., and Agmon, A. (2011). Submillisecond firing synchrony between different subtypes of cortical interneurons connected chemically but not electrically. *J. Neurosci.* 31, 3351–3361.
- Jakab, R. L., and Goldman-Rakic, P. (1996). Presynaptic and postsynaptic subcellular localization of substance P receptor immunoreactivity in the neostriatum of the rat and rhesus monkey (*Macaca mulatta*). *J. Comp. Neurol.* 369, 125–136.
- Jinno, S., and Kosaka, T. (2002). Patterns of expression of calcium binding proteins and neuronal nitric oxide synthase in different populations of hippocampal GABAergic neurons in mice. *J. Comp. Neurol.* 449, 1–25.
- Jones, G. A., Norris, S. K., and Henderson, Z. (1999). Conduction velocities and membrane properties of different classes of rat septohippocampal neurons recorded *in vitro*. *J. Physiol.* 517(Pt 3), 867–877.
- Karayannis, T., Elfant, D., Huerta-Ocampo, I., Teki, S., Scott, R. S., Rusakov, D. A., et al. (2010). Slow GABA transient and receptor desensitization shape synaptic responses evoked by hippocampal neurogliaform cells. *J. Neurosci.* 30, 9898–9909.
- Karson, M. A., Tang, A. H., Milner, T. A., and Alger, B. E. (2009). Synaptic cross talk between perisomatic-targeting interneuron classes expressing cholecystokinin and parvalbumin in hippocampus. *J. Neurosci.* 29, 4140–4154.
- Katona, I., Acsady, L., and Freund, T. F. (1999). Postsynaptic targets of somatostatin-immunoreactive interneurons in the rat hippocampus. *Neuroscience* 88, 37–55.
- Klausberger, T., Magill, P. J., Marton, L. F., Roberts, J. D., Cobden, P. M., Buzsaki, G., et al. (2003). Brain-state- and cell-type-specific firing of hippocampal interneurons *in vivo*. *Nature* 421, 844–848.
- Klausberger, T., Marton, L. F., Baude, A., Roberts, J. D., Magill, P. J., and Somogyi, P. (2004). Magill, P. J., and Somogyi, P. (2004). Spike timing of dendrite-targeting bistratified cells during hippocampal network oscillations *in vivo*. *Nat. Neurosci.* 7, 41–47.
- Klausberger, T., Marton, L. F., O'Neill, J., Huck, J. H., Dalezios, Y., Fuentealba, P., et al. (2005). Complementary roles of cholecystokinin- and parvalbumin-expressing GABAergic neurons in hippocampal network oscillations. *J. Neurosci.* 25, 9782–9793.
- Klausberger, T., and Somogyi, P. (2008). Neuronal diversity and temporal dynamics: the unity of hippocampal circuit operations. *Science* 321, 53–57.
- Knapp, J. A., Morris, N. P., Henderson, Z., and Matthews, R. T. (2000). Electrophysiological characteristics of non-bursting, glutamate decarboxylase messenger RNA-positive neurons of the medial septum/diagonal band nuclei of guinea-pig and rat. *Neuroscience* 98, 661–668.
- Kunkel, D. D., Lacaille, J. C., and Schwartzkroin, P. A. (1988). Ultrastructure of stratum lacunosum-moleculare interneurons of hippocampal CA1 region. *Synapse* 2, 382–394.
- Lacaille, J. C., Mueller, A. L., Kunkel, D. D., and Schwartzkroin, P. A. (1987). Local circuit interactions between oriens/alveus interneurons and CA1 pyramidal cells in hippocampal slices: electrophysiology and morphology. *J. Neurosci.* 7, 1979–1993.
- Lacaille, J. C., and Schwartzkroin, P. A. (1988). Stratum lacunosum-moleculare interneurons of hippocampal CA1 region. II. Intracellular and intradendritic recordings of local circuit synaptic interactions. *J. Neurosci.* 8, 1411–1424.
- Lapray, D., Lasztoczy, B., Lagler, M., Viney, T. J., Katona, L., Valenti, O., et al. (2012). Behavior-dependent specialization of identified hippocampal interneurons. *Nat. Neurosci.* 15, 1265–1271.
- Lovett-Barron, M., Turi, G. F., Kaifosh, P., Lee, P. H., Bolze, F., Sun, X. H., et al. (2012). Regulation of neuronal input transformations by tunable dendritic inhibition. *Nat. Neurosci.* 15, 423–430. S421–S423.
- Maccafferri, G., and McBain, C. J. (1996). The hyperpolarization-activated current (Ih) and its contribution to pacemaker activity in rat CA1 hippocampal stratum oriens-alveus interneurons. *J. Physiol.* 497(Pt 1), 119–130.
- Mann, E. O., and Paulsen, O. (2006). Keeping inhibition timely. *Neuron* 49, 8–9.
- Manseau, F., Goutagny, R., Danik, M., and Williams, S. (2008). The hippocampal pathway generates rhythmic firing of GABAergic neurons in the medial septum and diagonal bands: an investigation using a complete septohippocampal preparation *in vitro*. *J. Neurosci.* 28, 4096–4107.
- Markram, H., Toledo-Rodriguez, M., Wang, Y., Gupta, A., Silberberg, G., and Wu, C. (2004). Interneurons of the neocortical inhibitory system. *Nat. Rev. Neurosci.* 5, 793–807.
- Melchitzky, D. S., and Lewis, D. A. (2008). Dendritic-targeting GABA neurons in monkey prefrontal cortex: comparison of somatostatin- and calretinin-immunoreactive axon terminals. *Synapse* 62, 456–465.
- Melzer, S., Michael, M., Caputi, A., Eliava, M., Fuchs, E. C., Whittington, M. A., et al. (2012). Long-range-projecting GABAergic

- neurons modulate inhibition in hippocampus and entorhinal cortex. *Science* 335, 1506–1510.
- Meskenaite, V. (1997). Calretinin-immunoreactive local circuit neurons in area 17 of the cynomolgus monkey, *Macaca fascicularis*. *J. Comp. Neurol.* 379, 113–132.
- Miles, R., Toth, K., Gulyas, A. I., Hajos, N., and Freund, T. F. (1996). Differences between somatic and dendritic inhibition in the hippocampus. *Neuron* 16, 815–823.
- Misgeld, U., and Frotscher, M. (1986). Postsynaptic-GABAergic inhibition of non-pyramidal neurons in the guinea-pig hippocampus. *Neuroscience* 19, 193–206.
- Morales, M., Battenberg, E., de Lecea, L., and Bloom, F. E. (1996). The type 3 serotonin receptor is expressed in a subpopulation of GABAergic neurons in the rat neocortex and hippocampus. *Brain Res.* 731, 199–202.
- Morris, N. P., Harris, S. J., and Henderson, Z. (1999). Parvalbumin-immunoreactive, fast-spiking neurons in the medial septum/diagonal band complex of the rat: intracellular recordings *in vitro*. *Neuroscience* 92, 589–600.
- Nugent, F. S., Penick, E. C., and Kauer, J. A. (2007). Opioids block long-term potentiation of inhibitory synapses. *Nature* 446, 1086–1090.
- Nusser, Z., Hajos, N., Somogyi, P., and Mody, I. (1998). Increased number of synaptic GABA(A) receptors underlies potentiation at hippocampal inhibitory synapses. *Nature* 395, 172–177.
- Nusser, Z., Naylor, D., and Mody, I. (2001). Synapse-specific contribution of the variation of transmitter concentration to the decay of inhibitory postsynaptic currents. *Biophys. J.* 80, 1251–1261.
- Nusser, Z., Roberts, J. D., Baude, A., Richards, J. G., Sieghart, W., and Somogyi, P. (1995). Immunocytochemical localization of the alpha 1 and beta 2/3 subunits of the GABA(A) receptor in relation to specific GABAergic synapses in the dentate gyrus. *Eur. J. Neurosci.* 7, 630–646.
- Nusser, Z., Sieghart, W., Benke, D., Fritschy, J. M., and Somogyi, P. (1996). Differential synaptic localization of two major gamma-aminobutyric acid type A receptor alpha subunits on hippocampal pyramidal cells. *Proc. Natl. Acad. Sci. U.S.A.* 93, 11939–11944.
- Okada, M., Onodera, K., Van Renterghem, C., Sieghart, W., and Takahashi, T. (2000). Functional correlation of GABA(A) receptor alpha subunits expression with the properties of IPSCs in the developing thalamus. *J. Neurosci.* 20, 2202–2208.
- Olah, S., Fule, M., Komlosi, G., Varga, C., Baldi, R., Barzo, P., et al. (2009). Regulation of cortical microcircuits by unitary GABA-mediated volume transmission. *Nature* 461, 1278–1281.
- Patenaude, C., Chapman, C. A., Bertrand, S., Congar, P., and Lacaille, J. C. (2003). GABAB receptor- and metabotropic glutamate receptor-dependent cooperative long-term potentiation of rat hippocampal GABA(A) synaptic transmission. *J. Physiol.* 553, 155–167.
- Patenaude, C., Massicotte, G., and Lacaille, J. C. (2005). Cell-type specific GABA synaptic transmission and activity-dependent plasticity in rat hippocampal stratum radiatum interneurons. *Eur. J. Neurosci.* 22, 179–188.
- Patenaude, C., Nurse, S., and Lacaille, J. C. (2001). Sensitivity of synaptic GABA(A) receptors to allosteric modulators in hippocampal oriens-alveus interneurons. *Synapse* 41, 29–39.
- Pawelzik, H., Hughes, D. I., and Thomson, A. M. (2002). Physiological and morphological diversity of immunocytochemically defined parvalbumin- and cholecystokinin-positive interneurons in CA1 of the adult rat hippocampus. *J. Comp. Neurol.* 443, 346–367.
- Pawelzik, H., Hughes, D. I., and Thomson, A. M. (2003). Modulation of inhibitory autapses and synapses on rat CA1 interneurons by GABA(A) receptor ligands. *J. Physiol.* 546, 701–716.
- Pouille, F., and Scanziani, M. (2004). Routing of spike series by dynamic circuits in the hippocampus. *Nature* 429, 717–723.
- Price, C. J., Cauli, B., Kovacs, E. R., Kulik, A., Lambolez, B., Shigemoto, R., et al. (2005). Neurogliaform neurons form a novel inhibitory network in the hippocampal CA1 area. *J. Neurosci.* 25, 6775–6786.
- Price, C. J., Scott, R., Rusakov, D. A., and Capogna, M. (2008). GABA(B) receptor modulation of feedforward inhibition through hippocampal neurogliaform cells. *J. Neurosci.* 28, 6974–6982.
- Ramon y Cajal, S. (1893). Estructura del asta de ammon y fascia dentata. *Anal. Soc. Esp. Hist. Nat.* 22, 53–114.
- Rivera, C., Voipio, J., Payne, J. A., Ruusuvuori, E., Lahtinen, H., Lamsa, K., et al. (1999). The K<sup>+</sup>/Cl<sup>-</sup>-co-transporter KCC2 renders GABA hyperpolarizing during neuronal maturation. *Nature* 397, 251–255.
- Salesse, C., Mueller, C. L., Chamberland, S., and Topolnik, L. (2011). Age-dependent remodelling of inhibitory synapses onto hippocampal CA1 oriens-lacunosum moleculare interneurons. *J. Physiol.* 589, 4885–4901.
- Sanchez-Vives, M. V., Bal, T., and McCormick, D. A. (1997). Inhibitory interactions between perigeniculate GABAergic neurons. *J. Neurosci.* 17, 8894–8908.
- Sauer, J. F., Struber, M., and Bartos, M. (2012). Interneurons provide circuit-specific depolarization and hyperpolarization. *J. Neurosci.* 32, 4224–4229.
- Sik, A., Penttonen, M., Ylinen, A., and Buzsáki, G. (1995). Hippocampal CA1 interneurons: an *in vivo* intracellular labeling study. *J. Neurosci.* 15, 6651–6665.
- Simon, A. P., Poindessous-Jazat, F., Dutar, P., Epelbaum, J., and Bassant, M. H. (2006). Firing properties of anatomically identified neurons in the medial septum of anesthetized and unanesthetized restrained rats. *J. Neurosci.* 26, 9038–9046.
- Söhl, G., Maxeiner, S., and Willecke, K. (2005). Expression and functions of neuronal gap junctions. *Nat. Rev. Neurosci.* 6, 191–200.
- Somogyi, P., Dalezios, Y., Lujan, R., Roberts, J. D., Watanabe, M., and Shigemoto, R. (2003). High level of mGluR7 in the presynaptic active zones of select populations of GABAergic terminals innervating interneurons in the rat hippocampus. *Eur. J. Neurosci.* 17, 2503–2520.
- Somogyi, P., and Klausberger, T. (2005). Defined types of cortical interneurone structure space and spike timing in the hippocampus. *J. Physiol.* 562, 9–26.
- Somogyi, P., Tamas, G., Lujan, R., and Buhl, E. H. (1998). Salient features of synaptic organisation in the cerebral cortex. *Brain Res. Brain Res. Rev.* 26, 113–135.
- Sotty, F., Danik, M., Manseau, F., Laplante, F., Quirion, R., and Williams, S. (2003). Distinct electrophysiological properties of glutamatergic, cholinergic and GABAergic rat septohippocampal neurons: novel implications for hippocampal rhythmicity. *J. Physiol.* 551, 927–943.
- Sperk, G., Schwarzer, C., Tsunashima, K., Fuchs, K., and Sieghart, W. (1997). GABA(A) receptor subunits in the rat hippocampus I: immunocytochemical distribution of 13 subunits. *Neuroscience* 80, 987–1000.
- Stelzer, A., Slater, N. T., and ten Bruggencate, G. (1987). Activation of NMDA receptors blocks GABAergic inhibition in an *in vitro* model of epilepsy. *Nature* 326, 698–701.
- Tamas, G., Somogyi, P., and Buhl, E. H. (1998). Differentially interconnected networks of GABAergic interneurons in the visual cortex of the cat. *J. Neurosci.* 18, 4255–4270.
- Tia, S., Wang, J. F., Kotchabhakdi, N., and Vicini, S. (1996). Developmental changes of inhibitory synaptic currents in cerebellar granule neurons: role of GABA(A) receptor alpha 6 subunit. *J. Neurosci.* 16, 3630–3640.
- Toth, K., Freund, T. F., and Miles, R. (1997). Disinhibition of rat hippocampal pyramidal cells by GABAergic afferents from the septum. *J. Physiol.* 500(Pt 2), 463–474.
- Traub, R. D., Kopell, N., Bibbig, A., Buhl, E. H., LeBeau, F. E., and Whittington, M. A. (2001). Gap junctions between interneuron dendrites can enhance synchrony of gamma oscillations in distributed networks. *J. Neurosci.* 21, 9478–9486.
- Traub, R. D., Spruston, N., Soltesz, I., Konnerth, A., Whittington, M. A., and Jefferys, G. R. (1998). Gamma-frequency oscillations: a neuronal population phenomenon, regulated by synaptic and intrinsic cellular processes, and inducing synaptic plasticity. *Prog. Neurobiol.* 55, 563–575.
- Traub, R. D., Whittington, M. A., Colling, S. B., Buzsáki, G., and Jefferys, J. G. (1996). Analysis of gamma rhythms in the rat hippocampus *in vitro* and *in vivo*. *J. Physiol.* 493(Pt 2), 471–484.
- Tricoire, L., Pelkey, K. A., Erkkila, B. E., Jeffries, B. W., Yuan, X., and McBain, C. J. (2011). A blueprint for the spatiotemporal origins of mouse hippocampal interneuron diversity. *J. Neurosci.* 31, 10948–10970.
- Tukker, J. J., Fuentealba, P., Hartwich, K., Somogyi, P., and Klausberger, T. (2007). Cell type-specific tuning of hippocampal interneuron firing during gamma oscillations *in vivo*. *J. Neurosci.* 27, 8184–8189.
- Urban, Z., Maglóczy, Z., and Freund, T. F. (2002). Calretinin-containing interneurons innervate both principal cells and interneurons in the CA1 region of the human hippocampus. *Acta Biol. Hung.* 53, 205–220.
- Vida, I., Bartos, M., and Jonas, P. (2006). Shunting inhibition improves robustness of gamma oscillations in hippocampal interneuron networks

- by homogenizing firing rates. *Neuron* 49, 107–117.
- Vida, I., Halasy, K., Szinyei, C., Somogyi, P., and Buhl, E. H. (1998). Unitary IPSPs evoked by interneurons at the stratum radiatum-stratum lacunosum-moleculare border in the CA1 area of the rat hippocampus *in vitro*. *J. Physiol.* 506(Pt 3), 755–773.
- Wang, X. J., and Buzsaki, G. (1996). Gamma oscillation by synaptic inhibition in a hippocampal interneuronal network model. *J. Neurosci.* 16, 6402–6413.
- Wei, W., Hamby, A. M., Zhou, K., and Feller, M. B. (2011). Development of asymmetric inhibition underlying direction selectivity in the retina. *Nature* 469, 402–406.
- Whittington, M. A., Traub, R. D., and Jefferys, J. G. (1995). Synchronized oscillations in interneuron networks driven by metabotropic glutamate receptor activation. *Nature* 373, 612–615.
- Xu, C., Zhao, M. X., Poo, M. M., and Zhang, X. H. (2008). GABA(B) receptor activation mediates frequency-dependent plasticity of developing GABAergic synapses. *Nat. Neurosci.* 11, 1410–1418.
- Xu, Q., Cobos, I., De La Cruz, E., Rubenstein, J. L., and Anderson, S. A. (2004). Origins of cortical interneuron subtypes. *J. Neurosci.* 24, 2612–2622.
- Ylinen, A., Soltesz, I., Bragin, A., Penttonen, M., Sik, A., and Buzsaki, G. (1995). Intracellular correlates of hippocampal theta rhythm in identified pyramidal cells, granule cells, and basket cells. *Hippocampus* 5, 78–90.
- Conflict of Interest Statement:** The authors declare that the research was conducted in the absence of any commercial or financial relationships that could be construed as a potential conflict of interest.
- Received: 18 September 2012; accepted: 24 October 2012; published online: 14 November 2012.
- Citation: Chamberland S and Topolnik L (2012) Inhibitory control of hippocampal inhibitory neurons. *Front. Neurosci.* 6:165. doi: 10.3389/fnins.2012.00165
- Copyright © 2012 Chamberland and Topolnik. This is an open-access article distributed under the terms of the Creative Commons Attribution License, which permits use, distribution and reproduction in other forums, provided the original authors and source are credited and subject to any copyright notices concerning any third-party graphics etc.