



IMAGE

Insights Image for “Effect of prebiotic and probiotic supplementation on neurodevelopment in preterm very low birth weight infants: findings from a meta-analysis”

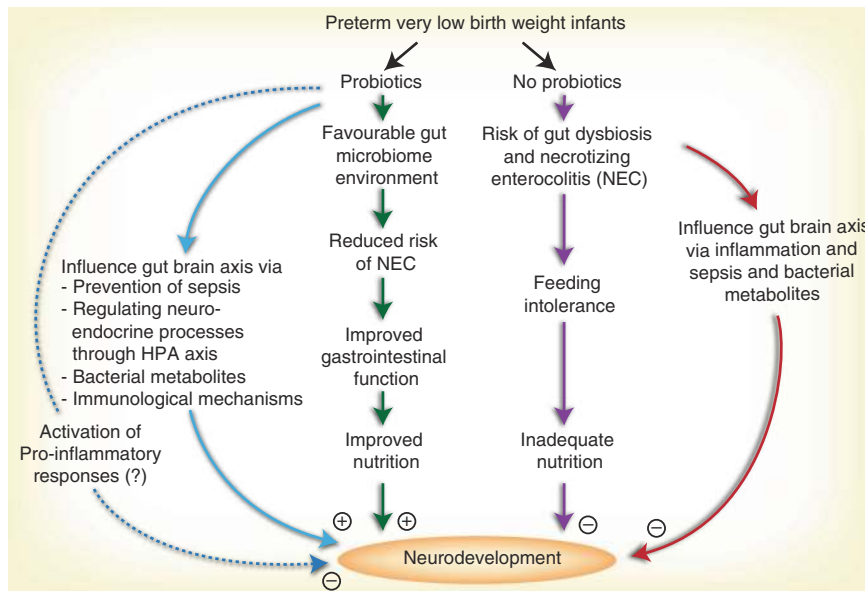
Ravi Prakash Upadhyay¹, Sunita Taneja¹, Ranadip Chowdhury¹, Tor A. Strand^{2,3} and Nita Bhandari¹

Pediatric Research (2020) 87:969; <https://doi.org/10.1038/s41390-019-0616-0>

Pathways through which prebiotic/probiotic supplementation in preterm very low birth weight infants could influence neurodevelopment.

REFERENCES

1. Upadhyay, R. et al. Effect of prebiotic and probiotic supplementation on neurodevelopment in preterm very low birth weight infants: findings from a meta-analysis. *Pediatric Res.* (2018). <https://www.nature.com/articles/s41390-018-0211-9>



¹Centre for Health Research and Development, Society for Applied Studies, New Delhi, India; ²Centre for Intervention Science in Maternal and Child Health, Centre for International Health, University of Bergen, Bergen, Norway and ³Department of Research, Innlandet Hospital Trust, Brumunddal, Norway
Correspondence: Ravi Prakash Upadhyay (ravi.upadhyay@sas.org.in)

Received: 13 August 2019 Revised: 13 August 2019 Accepted: 13 August 2019
Published online: 17 October 2019