

 Open access • Journal Article • DOI:10.1364/JOSAA.3.000165

## **Intensity-dependent spatial summation: errata** — [Source link](#)

Tom N. Cornsweet, John I. Yellott

**Institutions:** University of California, Irvine

**Published on:** 01 Jan 1986 - Journal of The Optical Society of America A-optics Image Science and Vision (Optical Society of America)

**Topics:** Summation and Intensity (physics)

Related papers:

- [Erratum: Temporal modulation sensitivity and pulse-detection thresholds for chromatic and luminance perturbations \[J. Opt. Soc. Am. A 4, 1992-2005 \(1987\)\]](#)
- [Spatial summation of broadband contrast.](#)
- [Contrast dependence of spatial summation revealed by classification image analysis](#)

Share this paper:    

View more about this paper here: <https://typeset.io/papers/intensity-dependent-spatial-summation-errata-lq93ha0av4>

# UC Irvine

## UC Irvine Previously Published Works

**Title**

CORRECTION

**Permalink**

<https://escholarship.org/uc/item/39z441zg>

**Journal**

JOURNAL OF THE OPTICAL SOCIETY OF AMERICA A-OPTICS IMAGE SCIENCE AND VISION, 3(1)

**ISSN**

0740-3232

**Author**

CORNSWEET, TN

**Publication Date**

1986

**DOI**

10.1364/JOSAA.3.000165

**Copyright Information**

This work is made available under the terms of a Creative Commons Attribution License, available at <https://creativecommons.org/licenses/by/4.0/>

Peer reviewed

# Intensity-dependent spatial summation: errata

Tom N. Cornsweet and John I. Yellott, Jr.

Cognitive Science Group, University of California, Irvine, California 92717

The following corrections should be made to our recent paper.<sup>1</sup>

On page 1771, Fig. 1: The top part of the figure was chopped off. It contained a line indicating the profile of the input image. Figure 1 is reprinted correctly here.

$$O(p, q) = 1 + \{N[A(W/2 - p)] - N[-A(W/2 + p)]\} \\ \times \{N[A(W/2 - q)] - N[-A(W/2 + q)]\} \\ - \{N[B(W/2 - p)] - N[-B(W/2 + p)]\} \\ \times \{N[B(W/2 - q)] - N[-B(W/2 + q)]\}.$$

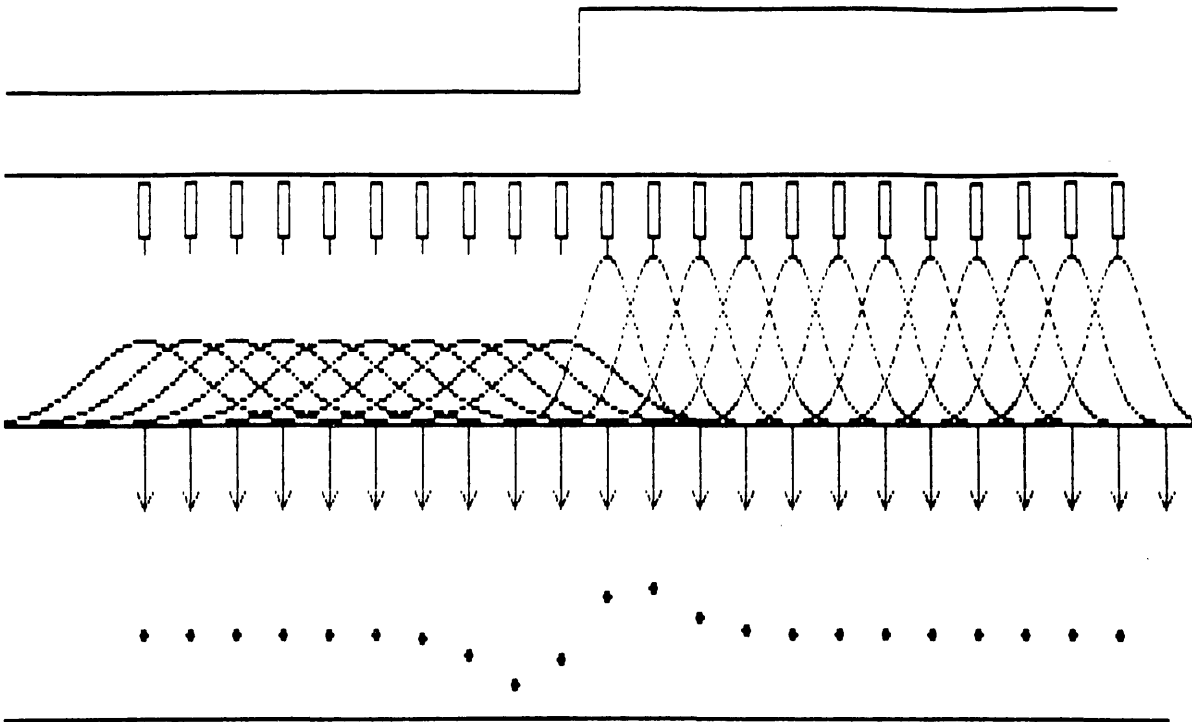


Fig. 1. Schematic diagram of the IDS model. From top to bottom: input image profile (here, a sharp edge); photoreceptors; photoreceptor point-spread functions (for the Gaussian case of the model); output channels (arrows); output image profile (dots).

On page 1772, right-hand column, line 20 should read:  $y = v \cos \theta - u \sin \theta$ .

On page 1773, Eq. (5) should read:  $O(p) = N[p(I + D)^{1/2}] + N[-p\sqrt{I}]$ .

On page 1778, Eq. (11) should read:

On page 1785, left-hand column, line 1 should read:  $(1 + k \cos 2\pi fx)^{1/2} \approx 1 + k/2 \cos 2\pi fx$ .

## REFERENCE

1. T. N. Cornsweet and J. I. Yellott, Jr., "Intensity-dependent spatial summation," *J. Opt. Soc. Am. A* 2, 1769-1786 (1985).